

# UC Irvine

## UC Irvine Previously Published Works

### Title

The ancestral stringent response potentiator, DksA has been adapted throughout Salmonella evolution to orchestrate the expression of metabolic, motility, and virulence pathways

### Permalink

<https://escholarship.org/uc/item/6kh926js>

### Journal

Gut Microbes, 14(1)

### ISSN

1949-0976

### Authors

Cohen, Helit

Adani, Boaz

Cohen, Emiliano

et al.

### Publication Date

2022-12-31

### DOI

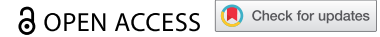
10.1080/19490976.2021.1997294

### Copyright Information

This work is made available under the terms of a Creative Commons Attribution License, available at <https://creativecommons.org/licenses/by/4.0/>

Peer reviewed

RESEARCH PAPER



# The ancestral stringent response potentiator, DksA has been adapted throughout *Salmonella* evolution to orchestrate the expression of metabolic, motility, and virulence pathways

Helit Cohen<sup>a</sup>, Boaz Adani<sup>a,\*</sup>, Emiliano Cohen<sup>a,\*</sup>, Bar Piscon<sup>a,b,c</sup>, Shalhevet Azriel<sup>a</sup>, Prerak Desai<sup>d,e</sup>, Heike Bähre<sup>f</sup>, Michael McClelland<sup>e</sup>, Galia Rahav<sup>a,b</sup>, and Ohad Gal-Mor<sup>a,b,c</sup>

<sup>a</sup>Sheba Medical Center, The Infectious Diseases Research Laboratory, Tel-Hashomer, Israel; <sup>b</sup>Sackler Faculty of Medicine, Tel Aviv University, Tel Aviv, Israel; <sup>c</sup>Department of Clinical Microbiology and Immunology, Tel Aviv University, Tel Aviv, Israel; <sup>d</sup>Janssen Research & Development, LLC, Raritan, New Jersey, USA; <sup>e</sup>Department of Microbiology and Molecular Genetics, University of California, Irvine, California, USA; <sup>f</sup>Hannover Medical School, Research Core Unit Metabolomics, Hannover, Germany

## ABSTRACT

DksA is a conserved RNA polymerase-binding protein known to play a key role in the stringent response of proteobacteria species, including many gastrointestinal pathogens. Here, we used RNA-sequencing of *Escherichia coli*, *Salmonella bongori* and *Salmonella enterica* serovar Typhimurium, together with phenotypic comparison to study changes in the DksA regulon, during *Salmonella* evolution. Comparative RNA-sequencing showed that under non-starved conditions, DksA controls the expression of 25%, 15%, and 20% of the *E. coli*, *S. bongori*, and *S. enterica* genes, respectively, indicating that DksA is a pleiotropic regulator, expanding its role beyond the canonical stringent response. We demonstrate that DksA is required for the growth of these three enteric bacteria species in minimal medium and controls the expression of the TCA cycle, glycolysis, pyrimidine biosynthesis, and quorum sensing. Interestingly, at multiple steps during *Salmonella* evolution, the type I fimbriae and various virulence genes encoded within SPIs 1, 2, 4, 5, and 11 have been transcriptionally integrated under the ancestral DksA regulon. Consequently, we show that DksA is necessary for host cells invasion by *S. Typhimurium* and *S. bongori* and for intracellular survival of *S. Typhimurium* in bone marrow-derived macrophages (BMDM). Moreover, we demonstrate regulatory inversion of the conserved motility-chemotaxis regulon by DksA, which acts as a negative regulator in *E. coli*, but activates this pathway in *S. bongori* and *S. enterica*. Overall, this study demonstrates the regulatory assimilation of multiple horizontally acquired virulence genes under the DksA regulon and provides new insights into the evolution of virulence genes regulation in *Salmonella* spp.

## ARTICLE HISTORY

Received 14 July 2021  
Revised 8 October 2021  
Accepted 12 October 2021

## KEYWORDS

*Salmonella*; DksA; virulence; pathogenicity; regulation; SPIs; HGT; RNA-Seq; enteric pathogens

## Introduction


The ubiquitous bacterial genus *Salmonella* is a facultative intracellular animal and human pathogen, belonging to the Proteobacteria phylum. The *Salmonella* genus comprises the two defined species *Salmonella bongori* (*S. bongori*) and *Salmonella enterica* (*S. enterica*). *Salmonella* diverged from a common ancestor with *Escherichia coli* about 100–160 million years ago.<sup>1,2</sup> The two current species of *Salmonella* diverged from a common ancestor about 40 to 63 million years ago.<sup>1,3,4</sup> One of these species, *S. bongori*, is frequently associated with infection of cold-blooded animals, like reptiles and amphibians. The other species, *S. enterica*,

includes seven distinct subspecies. Among the *S. enterica* subspecies known, subspecies *enterica* (ssp. I) is associated with human and warm-blooded animal infections and responsible for 99% of all human salmonellosis infections.<sup>5</sup>

Human infection by one of the *S. enterica* serovars can result in different clinical outcomes, ranging from asymptomatic infection, acute self-limiting gastroenteritis, invasive systemic disease and bacteremia, to enteric (typhoid) fever. The result of a *Salmonella* infection is dependent on the nature of the infecting serovar and the immunological status of the host.<sup>6</sup> These *S. enterica* infections are a significant cause of morbidity and

**CONTACT** Ohad Gal-Mor  [Ohad.Gal-Mor@sheba.health.gov.il](mailto:Ohad.Gal-Mor@sheba.health.gov.il)  The Infectious Diseases Research Laboratory Sheba Medical Center, Tel-Hashomer, Israel

\*These authors contributed equally to this work.

 Supplemental data for this article can be accessed on the [publisher's website](#).

© 2021 The Author(s). Published with license by Taylor & Francis Group, LLC.

This is an Open Access article distributed under the terms of the Creative Commons Attribution License (<http://creativecommons.org/licenses/by/4.0/>), which permits unrestricted use, distribution, and reproduction in any medium, provided the original work is properly cited.

mortality with an annual incidence of over 27 million cases of enteric fever<sup>7</sup> and 78.7 million cases of gastroenteritis<sup>8</sup> worldwide.

*Salmonella* speciation and the development of its pathogenicity have been fundamentally shaped by the horizontal acquisition of discrete genomic islands that encode new virulence capabilities including host cell invasion and intracellular pathogenesis.<sup>3,9</sup> Many of the pan-*Salmonella* virulence genes are clustered within 23 horizontally acquired accessory genetic elements, known as *Salmonella* pathogenicity islands (SPIs).<sup>10</sup> SPIs, like pathogenicity islands in other bacterial pathogens, are often located adjacent to tRNA genes and have been characterized as a “molecular toolbox” for bacterial virulence.<sup>11</sup> The key acquisition of the *Salmonella* pathogenicity island 1 (SPI-1) prior to the divergence of *S. bongori* and *S. enterica* confers invasion ability into non-phagocytic host cells, via a type three secretion system (T3SS) and an associated array of secreted effectors encoded within and outside of SPI-1.<sup>12,13</sup> *S. enterica* speciation was marked by the acquisition of SPI-2 that encodes a second T3SS, required for survival in professional phagocytes and long-term persistence in the host.<sup>14,15</sup> Throughout *S. enterica* evolution, additional horizontally acquired SPIs have further shaped *Salmonella* virulence and host-specificity.

All living cells, including bacteria, need to sense and respond to nutrient deprivation and environmental stressors efficiently. This pathway, known as the “stringent response,” is primarily governed by the intracellular small signaling molecules guanosine-5',3'-tetrphosphate, and pentaphosphate, collectively referred to as ppGpp.<sup>16</sup> In proteobacteria species, the stringent response is also dependent on the RNA polymerase (RNAP)-binding protein, DksA that together with ppGpp, mediates a global transcriptional shift.<sup>17</sup>

DksA is a conserved 151-amino acids, 17.5 kDa transcription factor, containing a globular domain and a coiled coil structure that docks into the secondary channel of the  $\beta'$  subunit of RNAP to influence RNAP activity.<sup>18</sup> DksA binds RNAP either alone or in conjunction with ppGpp, which allosterically potentiates the function of DksA.<sup>19</sup> The current view of how DksA regulates transcription suggests that the interaction of DksA with RNAP changes the stability of the open

promoter complex, resulting in either a decrease or an increase in transcription initiation, depending on the properties of the target promoter.<sup>20,21</sup> Other regulatory mechanisms of DksA may also include affecting transcription elongation,<sup>22</sup> or fidelity<sup>23</sup> of target genes.

Previously, we showed that in *S. enterica* serovar Typhimurium (*S. Typhimurium*), DksA is involved in the regulation of motility and biofilm formation, positively regulates SPI-1 genes, and is necessary for *S. Typhimurium* invasion into epithelial cells. In addition, we demonstrated that *dksA* is expressed during intestinal infection and is needed for gastrointestinal colonization and systemic infection in the mouse model.<sup>24</sup> Nevertheless, it was unclear when during *Salmonella* evolution these roles have been acquired.

Here, we used comparative RNA-Sequencing (RNA-Seq) to systematically dissect the DksA regulon and identify the adaptation of the DksA regulatory circuits during *Salmonella* evolution, represented by *E. coli*, *S. bongori* and *S. enterica*. We found that in *Salmonella* spp., the DksA network was significantly rewired, inverted the directionality of the motility-chemotaxis regulation and evolved as a key coordinator of the type 1 fimbriae, SPI-1, and SPI-4 and of genes encoded on SPI-2, SPI-5, and SPI-11. In agreement with these findings, we show that DksA is required for growth in minimal medium by all three species, the invasion of *S. Typhimurium* and *S. bongori* into host cells and significantly contributes to the intracellular survival of *S. Typhimurium* in phagocytic cells.

## Results

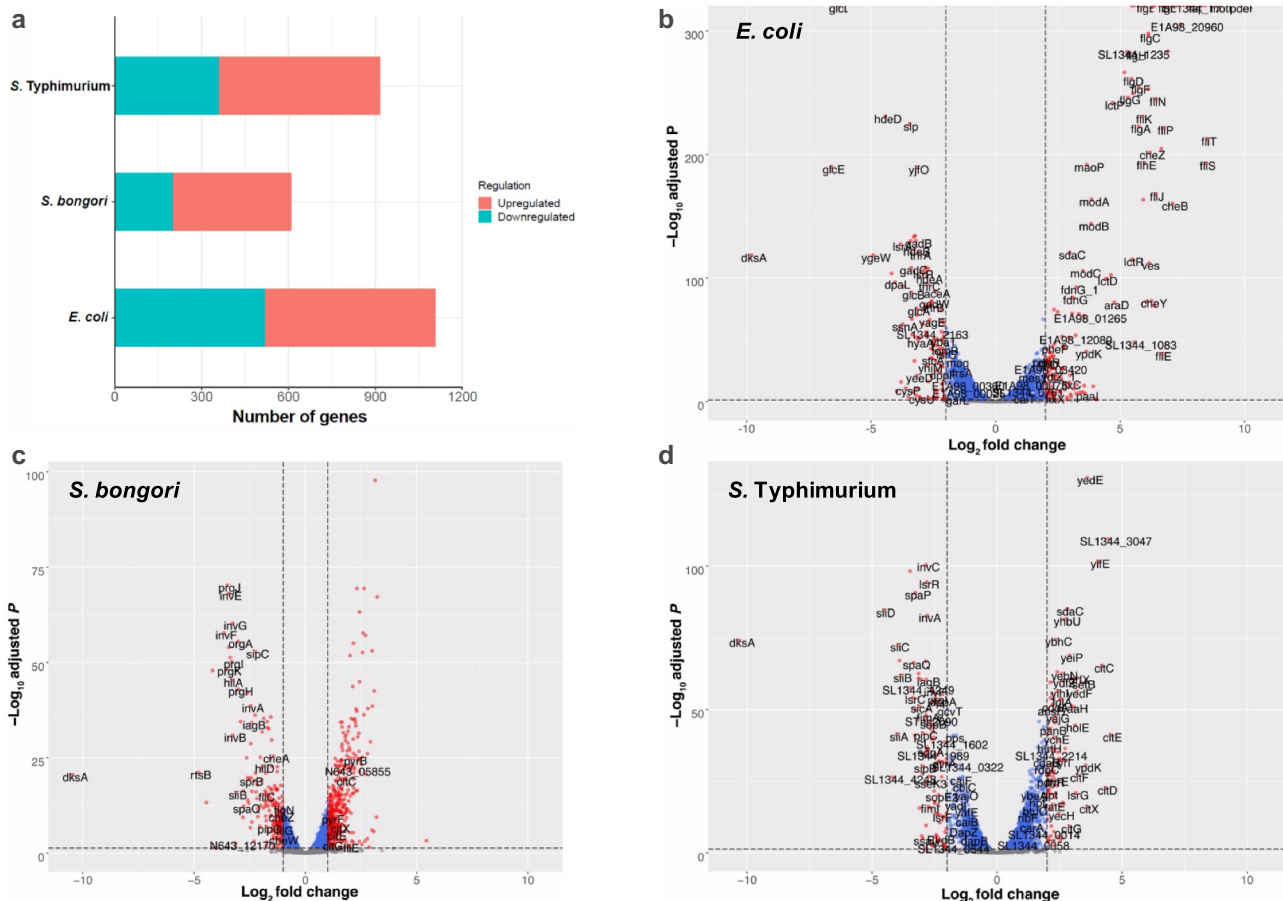
### ***DksA controls metabolic and virulence pathways under non-stringent growth conditions***

In recent years, several reports have shown that DksA may affect the transcription of target genes independently of ppGpp and plays a regulatory role beyond simply being an auxiliary factor of the stringent response.<sup>25–27</sup> To systematically analyze DksA-dependent transcription and to follow its regulatory evolution, we applied comparative RNA-Seq and determined the transcriptome of the wild-type and its isogenic *dksA* mutant in

*E. coli*, *S. bongori*, and *S. Typhimurium* strains, representing different phylogenetic branches during *Salmonella* evolution. Importantly, to determine what effect on transcription DksA has outside of the stringent response, all cultures were grown under non-starved conditions to late logarithmic phase in rich LB medium. Under these growth conditions, the cellular concentration of ppGpp is very low and was estimated to be in the range of only a few  $\mu\text{M}$ .<sup>28</sup> Here, we were able to confirm the low abundance of ppGpp in *E. coli*, *S. bongori* and *S. Typhimurium* (between 50 to 250 fmol/  $\mu\text{g}$  protein) and demonstrated similar concentrations in the wild-type and the *dksA* backgrounds, when cultures were grown to the late exponential phase in LB (Fig. S1). Bacterial RNA

was harvested from three independent wild-type and  $\Delta dksA$  mutant cultures of each species (18 cultures in total), and analyzed by deep RNA-Seq.

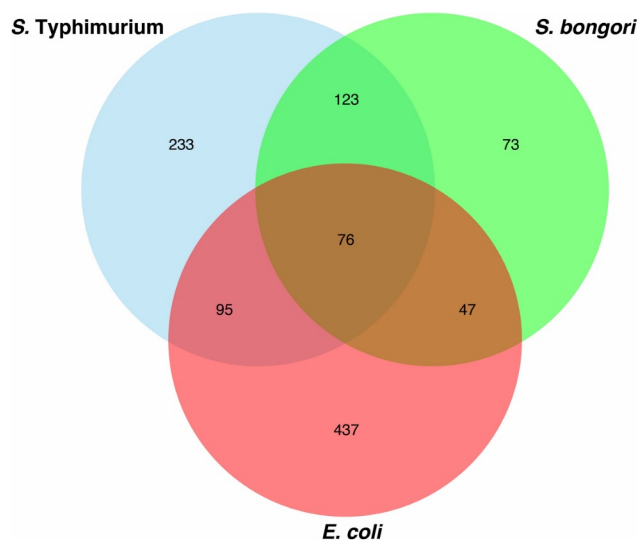
Overall, we identified 1106, 609, and 917 differentially expressed genes in the  $\Delta dksA$  vs. the wildtype background that changed 2-fold or more (adjusted  $P < .05$ ), corresponding to 25%, 15% and 20% of the *E. coli*, *S. bongori* and *S. Typhimurium* gene inventories, respectively (Figure 1(a)). In *E. coli*, 589 genes were upregulated, and 517 genes were downregulated (Figure 1(b); Table S1A); in *S. bongori*, 409 genes were upregulated, and 200 genes were downregulated (Figure 1(c); Table S1B); and in *S. Typhimurium*, 558 genes were upregulated, while 359 genes were downregulated (Figure 1(d); Table S1C) in the absence of DksA.



**Figure 1.** DksA is a pleiotropic regulator in *E. coli* and *Salmonella* spp. Comparative RNA-Seq analyses between a null *dksA* mutant and its isogenic wildtype strain were conducted in *E. coli*, *S. bongori*, and *S. Typhimurium*. (a) The number of DEGs, which were upregulated or downregulated by  $\geq 2$ -fold in the *dksA* mutant relative to the wildtype background, is shown for each species. Volcano plots showing the fold change ( $\log_2$  ratio) in the expression of genes in  $\Delta dksA$  vs. the wildtype (X-axis) plotted against the  $-\log_{10}$  adjusted  $p$ -value (Y-axis) in *E. coli* (b), *S. bongori* (c) and *S. Typhimurium* (d) are shown. Each dot on the plot represents the mean value (from three independent cultures) of one gene. Genes that were changed by more than 2-fold are colored in red. Orthologous genes were designated according to their names in *Salmonella*.

To identify orthologous DksA-regulated genes in *S. Typhimurium*, *S. bongori*, and *E. coli*, we defined their core genome comprising 2,794 genes (Table S2A) and found that 76 genes were regulated by DksA in all of these three species. 20 genes are positively regulated by DksA in all three species, 50 genes are negatively regulated, and 6 genes are differentially regulated by DksA in *Salmonella* spp. and *E. coli*. In addition, 123 genes were commonly regulated by DksA in *S. bongori* and *S. Typhimurium*, 95 orthologous genes were DksA-regulated in *E. coli*, and *S. Typhimurium*, and 47 genes were mutually regulated by DksA in *E. coli* and *S. bongori* (Figure 2 and Table S2B). Importantly, these numbers do not include changes in the expression lower than 2-fold or an adjusted  $P > .05$ . In addition, the RNA-Seq workflow included an rRNA-depletion step, and so it did not identify any changes in rRNA gene expression.

Pathway enrichment analysis using the KEGG mapping tool demonstrated that common differentially expressed genes between the wild-type and *dksA* mutant in all three species were involved in metabolic pathways, biosynthesis of secondary metabolites, biosynthesis of amino



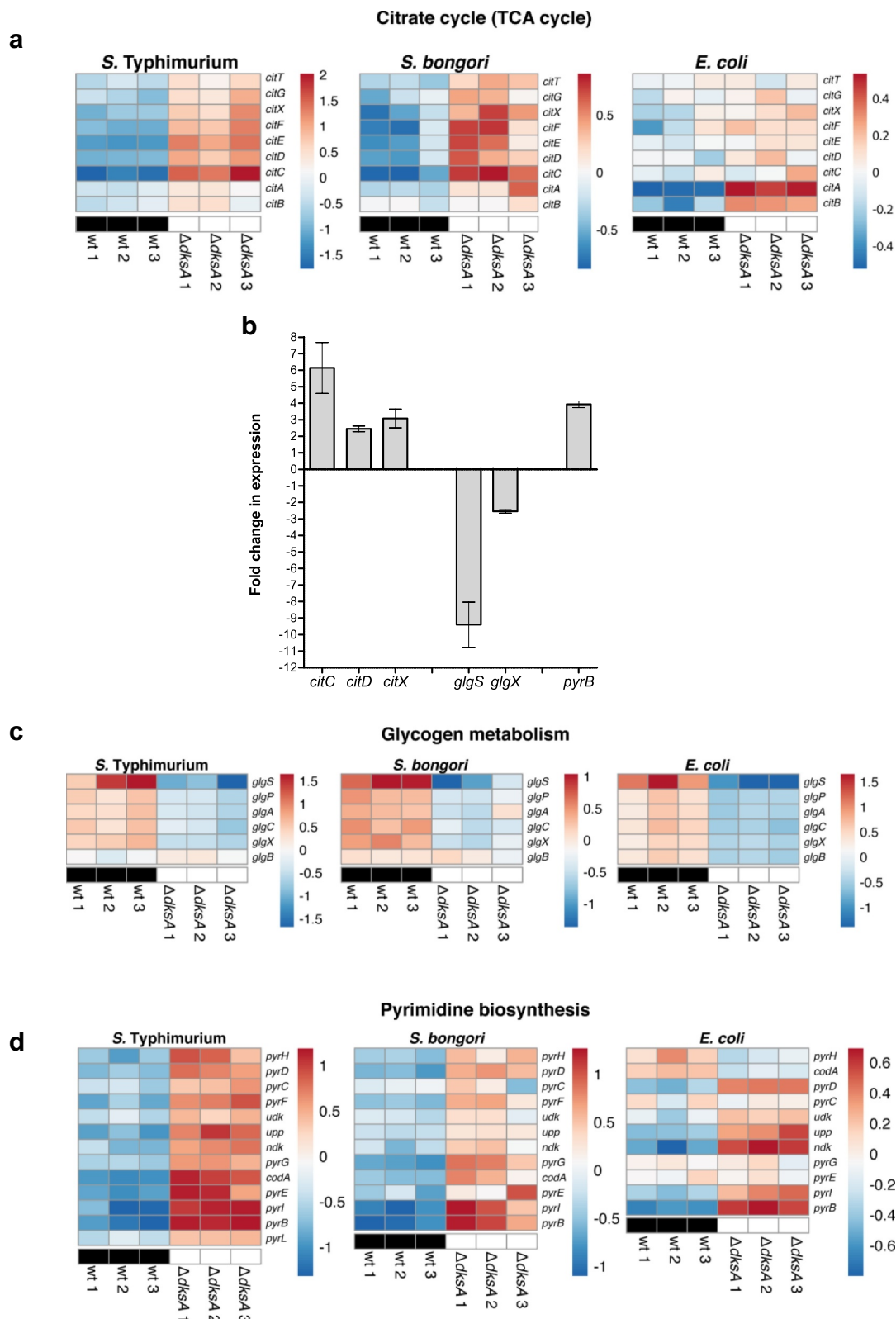
**Figure 2.** Core genes regulated by DksA in at least one species. The fold change in the expression of 2794 orthologous core genes present in *E. coli*, *S. bongori*, and *S. Typhimurium* was analyzed by RNA-seq. Venn diagram showing the number of common and species-specific DksA-regulated genes, whose expression was changed by  $\geq 2$ -fold (adj  $P < .05$ ).

acids, pyrimidine metabolism, quorum sensing, glycolysis, flagellar assembly and citrate (TCA) cycle (Fig. S2-S4).

### **DksA regulates genes involved in citrate, glycogen and pyrimidine metabolism in *E. coli* and *Salmonella***

Some Enterobacteriaceae species, including *S. enterica*, are capable of utilizing citrate as a carbon and energy source. Under aerobic conditions, growth on citrate is dependent on an appropriate transport system and a functional tricarboxylic acid (TCA cycle, also known as Krebs or citric acid cycle). Citrate fermentation requires the functional citrate transporter CitT, the citrate lyase (encoded by *citCDEFXG*), and the two-component regulatory system encoded by *citAB*.<sup>29</sup> RNA-Seq data showed that DksA strongly represses the citrate regulon in *S. Typhimurium* and also (although to a lesser extent) in *S. bongori* and *E. coli* (Figure 3(a)). qRT-PCR analysis confirmed these results and showed that in *S. Typhimurium*, in the absence of DksA, the expression of *citC*, *citD* and *citX* increased by 6, 2.5, and 3-fold, respectively (Figure 3(b)), indicating that DksA is a negative regulator of the citrate regulon in *S. enterica*.

Another important carbon metabolic pathway in Enterobacteriaceae is glycogen biosynthesis. Glycogen is a branched homopolysaccharide that accumulates in Enterobacteriaceae during growth arrest in the presence of a carbon source excess. In *Salmonella* and *E. coli*, glycogen is synthesized by both glycogen synthase GlgA and the branching enzyme GlgB. Glycogen biosynthesis is highly interlinked with a wide range of cellular and physiological processes and is dependent on the expression of the *glgBX*, *glgS*, and *glgCAP* operons.<sup>30</sup> RNA-Seq analysis showed that expression of the entire glycogen biosynthesis regulon (*glgBXCAPS*) decreased in the absence of DksA in *E. coli*, *S. bongori*, and *S. Typhimurium* (Figure 3(c)). In agreement with these data, qRT-PCR experiments showed that *glgS* and *glgX* are downregulated by about 9 and 2.5-fold, respectively in the *dksA* background in *S. Typhimurium* (Figure 3(b)), indicating that DksA acts as an activator of the glycogen biosynthesis genes.



**Figure 3.** DksA regulates the citrate, glycogen, and pyrimidine metabolic pathways in *E. coli* and *Salmonella* spp. (a) Heat map based on RNA-Seq results showing the relative transcription of genes involved in the citrate (TCA) cycle. (b) The fold change in the expression of the citrate regulon (*citC*, *citD*, and *citX* genes), the glycogen regulon genes (*glgS* and *glgX*), and the pyrimidine biosynthesis gene (*pyrB*) in a  $\Delta dksA$  relative to the expression in the wildtype strain was determined using qRT-PCR. RNA was extracted from late logarithmic phase *S. Typhimurium* cultures grown in LB broth at 37°C. The chart shows the mean value of 3–6 qRT-PCR reactions from two independent RNA extractions, and the error bars indicate the SEM. (c) Heat map based on RNA-Seq results showing the relative transcription of genes involved in glycogen metabolism and (d) pyrimidine biosynthesis.

In contrast to glycogen biosynthesis, all of the pyrimidine biosynthesis genes (*pyrA*, *B*, *C*, *D*, *E*, *F*, *G*, *H*, *I* and *ndk*) were found to be significantly upregulated in *S. Typhimurium* and *S. bongori* and, to a lesser degree, in *E. coli* in the absence of DksA (Figure 3(d)). qRT-PCR analysis confirmed these results and showed that in an *S. Typhimurium dksA* background, the expression of *pyrB* is 4-fold higher than in the wild-type (Figure 3(b)), indicating that DksA conservatively represses the expression of the pyrimidine biosynthesis genes in *Salmonella* and *E. coli*.

Collectively, these results show a conserved transcriptional regulation of different metabolic pathways by DksA in *E. coli* and *Salmonella spp.*, also under non-starved conditions.

### DksA is required for growth in minimal medium by *E. coli*, *S. bongori* and *S. Typhimurium*

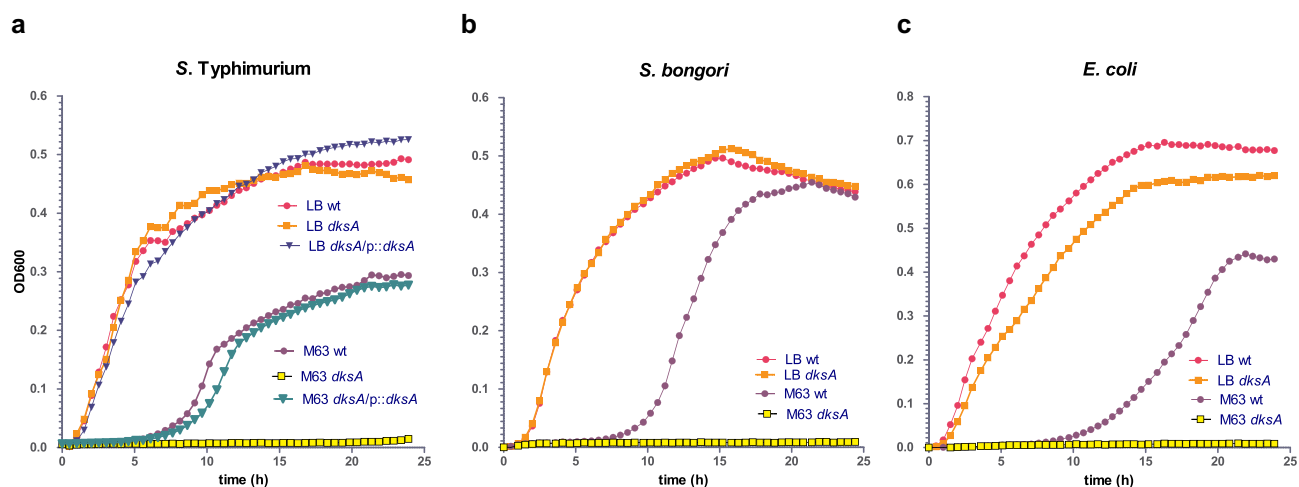
Previously we showed that DksA is required for the growth of *S. Typhimurium* in minimal medium.<sup>24</sup> The comparative RNA-seq results showing a common regulation of metabolic pathways and especially a conserved regulation of the TCA pathway, suggested that DksA may play a similar role also in *S. bongori* and *E. coli*. Therefore, the effect of DksA absence on bacterial growth was tested in all three species. These experiments showed that while DksA is not required for growth in rich medium, it

was absolutely essential for growth of all of these species in minimal medium. Complementation of *dksA* from a low-copy plasmid in *S. Typhimurium* restored the ability of the  $\Delta dksA$  strain to grow in minimal medium (Figure 4). These results indicated that DksA plays a conserved role as metabolic pathways regulator in both *E. coli* and *Salmonella spp.*

### DksA regulates the entire SPI-1 regulon in *Salmonella spp*

Many of the genes differentially expressed between the wild type and *dksA* mutant in both *S. bongori* (Fig. S3) and *S. Typhimurium* (Fig. S4), are involved in *Salmonella* infection and bacterial invasion of epithelial cells. This group includes virulence genes that are encoded in both *Salmonella* species, but absent in *E. coli* (e.g. SPI-1 genes) (Table S1D), or genes that are present in all three species, but are regulated by DksA only in *S. bongori* and *S. enterica* (e.g. type I fimbriae; see below).

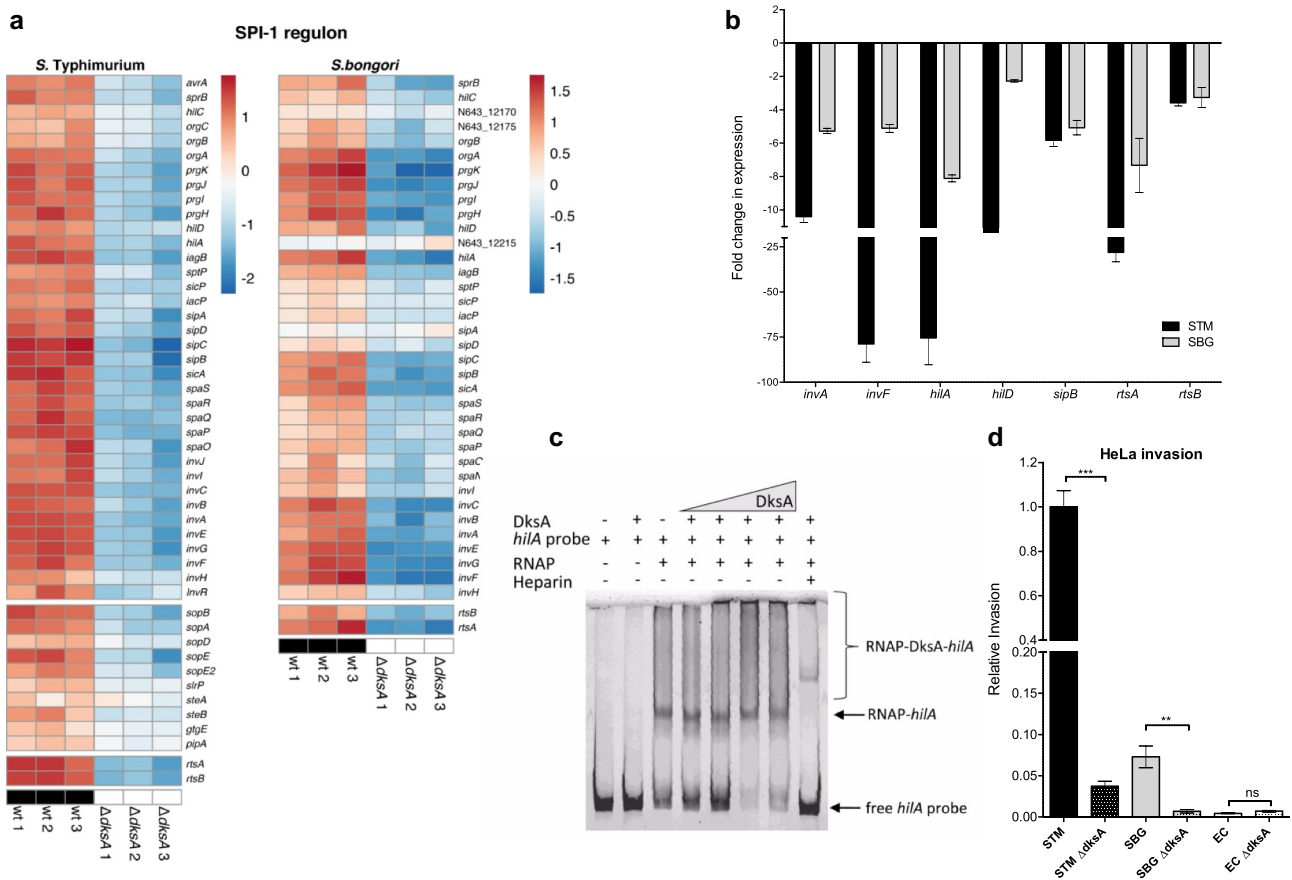
SPI-1 is a 40 kb genomic island that was inserted into the ancient *Salmonella* genome upon divergence from *E. coli* about 160 million years ago, between the core genes *fhlA* and *mutS*, a known hotspot for the gain and loss of horizontally acquired genes.<sup>31</sup> SPI-1 encodes the Type III secretion system (T3SS)-1 and a few of its associated effectors required for host cell invasion, intestinal



**Figure 4.** DksA is required for the growth of *E. coli*, *S. bongori* and *S. Typhimurium* in minimal medium. (a) The growth of *S. Typhimurium* SL1344, its derivative *dksA*-null mutant strain, and the *dksA* mutant harboring the *dksA* gene on pWSK29 was tested in LB or M63 minimal medium containing glycerol as a carbon source at 37°C, under aerobic growth conditions. The same analysis was performed with *S. bongori* strain SARC11 and its derivative *dksA*-null mutant strain (b) and with *E. coli* strain BW25113 and its derivative *dksA*-null mutant strain (c). Data represent the mean optical density at 600 nm over time of triplicates in one representative experiment.

colonization, and inflammation. Previously, we showed that DksA regulates some of the T3SS-1 genes and its associated effectors in *S. Typhimurium* and that in the absence of DksA, the invasion of *S. Typhimurium* into non-phagocytic cells is dramatically impaired.<sup>24</sup> Here, we were able to extend our previous findings and show using RNA-Seq that in *S. Typhimurium*, all of the SPI-1 encoded genes, associated effectors encoded outside of SPI-1 genes (like *sopA*, *sopB*, *sopE*, *sopE2*, *steB*, and others) and its related regulatory system *rtsAB* are all downregulated in the absence of DksA.

Moreover, similar results were also found in *S. bongori* (Figure 5(a)), indicating that SPI-1 regulation by DksA is conserved in both *Salmonella* species. qRT-PCR experiments have further confirmed these results and demonstrated that the expression of *invA*, *invF*, *hilA*, *hilD*, *sipB*, *rtsA*, and *rtsB* is significantly decreased in the *S. Typhimurium* and *S. bongori dksA* strains compared to the wild-type background. The most profound effect was found for *invF* and *hilA* that demonstrated more than a 75-fold decrease in expression in the absence of DksA in *S. Typhimurium* (Figure 5(b)).



**Figure 5.** DksA activates the expression of SPI-1 genes in *Salmonella* spp. (a) Heat map of RNA-Seq results showing the relative transcription of SPI-1 genes (top block), SPI-1 effector genes encoded outside of SPI-1 (middle block), and the *rtsAB* SPI-1 related regulators (bottom block) in three independent wildtype and  $\Delta dksA$  *S. Typhimurium* and *S. bongori* cultures. (b) The fold change in the expression of seven SPI-1 genes (*invA*, *invF*, *hilA*, *hilD*, *sipB*, *rtsA*, and *rtsB*) in a *dksA* mutant relative to the wildtype isogenic strain was determined using qRT-PCR. RNA was extracted from late logarithmic phase *S. Typhimurium* (STM), and *S. bongori* (SBG) cultures grown in LB broth at 37°C. The results show the mean value of 3–6 reactions from two independent RNA extractions, and the error bars indicate the SEM. (c) Gel mobility shift assay was performed by incubating 75 ng of a DNA probe corresponding to the regulatory region of *hilA* with increasing amounts of His-DksA (0.017 to 0.7  $\mu$ g) and a constant amount of holoenzyme RNA-polymerase (1 unit). Heparin (2.5  $\mu$ g) that prevents RNAP binding to DNA was added as a control to the reactions, as indicated. The DNA-protein complexes were resolved on 3.5% native acrylamide gel and stained using GelRed. (d) Bacterial invasion into epithelial HeLa cells was determined by the gentamicin protection assay. Invasion of all strains (relative to the *S. Typhimurium* WT background) was calculated as the ratio between the intracellular bacteria (CFU) recovered at 2 h p.i and the total number of CFU used to infect the cells. The mean of four independent infections with standard error of the mean are shown. *t*-test was used to determine statistical difference between the WT and the *dksA* backgrounds.



These results raised the prospect of direct regulation of *hilA* by DksA. To further test the possibility of a DksA complex binding at this promoter, we applied electrophoretic mobility shift assay (EMSA) and tested the potential binding of the *hilA* promoter region in the presence of an *E. coli* RNA polymerase holoenzyme and His-DksA. As shown in [Figure 5\(c\)](#), we found that in the presence of RNAP and increasing quantities of His-DksA, the amount of unbound *hilA* probe decreased. The addition of heparin, which occupies the DNA binding sites on RNAP,<sup>32</sup> eliminated most of the high molecular weight complexes and restored the appearance of the *hilA* unbound probe. These results support the possibility that DksA may bind at the *hilA* promoter region in conjunction with RNAP and suggest that the DksA regulation of SPI-1 genes is possibly mediated by the binding of an RNAP-DksA complex in the promoter region of the SPI-1 master regulator gene, *hilA*.

Since SPI-1 expression is absolutely required for *Salmonella* invasion into host cells, we next compared the contribution of DksA to *Salmonella* invasion into non-phagocytic cells. Previously we showed its role in *S. Typhimurium*,<sup>24</sup> but since our current RNA-seq analysis suggested a conserved role of DksA in SPI-1 expression across both *Salmonella* species, we seek out to test its effect also in *S. bongori*. As seen in [Figure 5\(d\)](#), and in agreement with the RNA-seq data, the absence of DksA significantly attenuated the ability of both *Salmonella* species to invade HeLa cells. These results indicate that the assimilation of SPI-1 under the DksA regulatory umbrella is common to both *S. enterica* and *S. bongori* and most likely evolved in their last common ancestor.

### **DksA regulates several SPI-2 genes under SPI-1 inducing conditions**

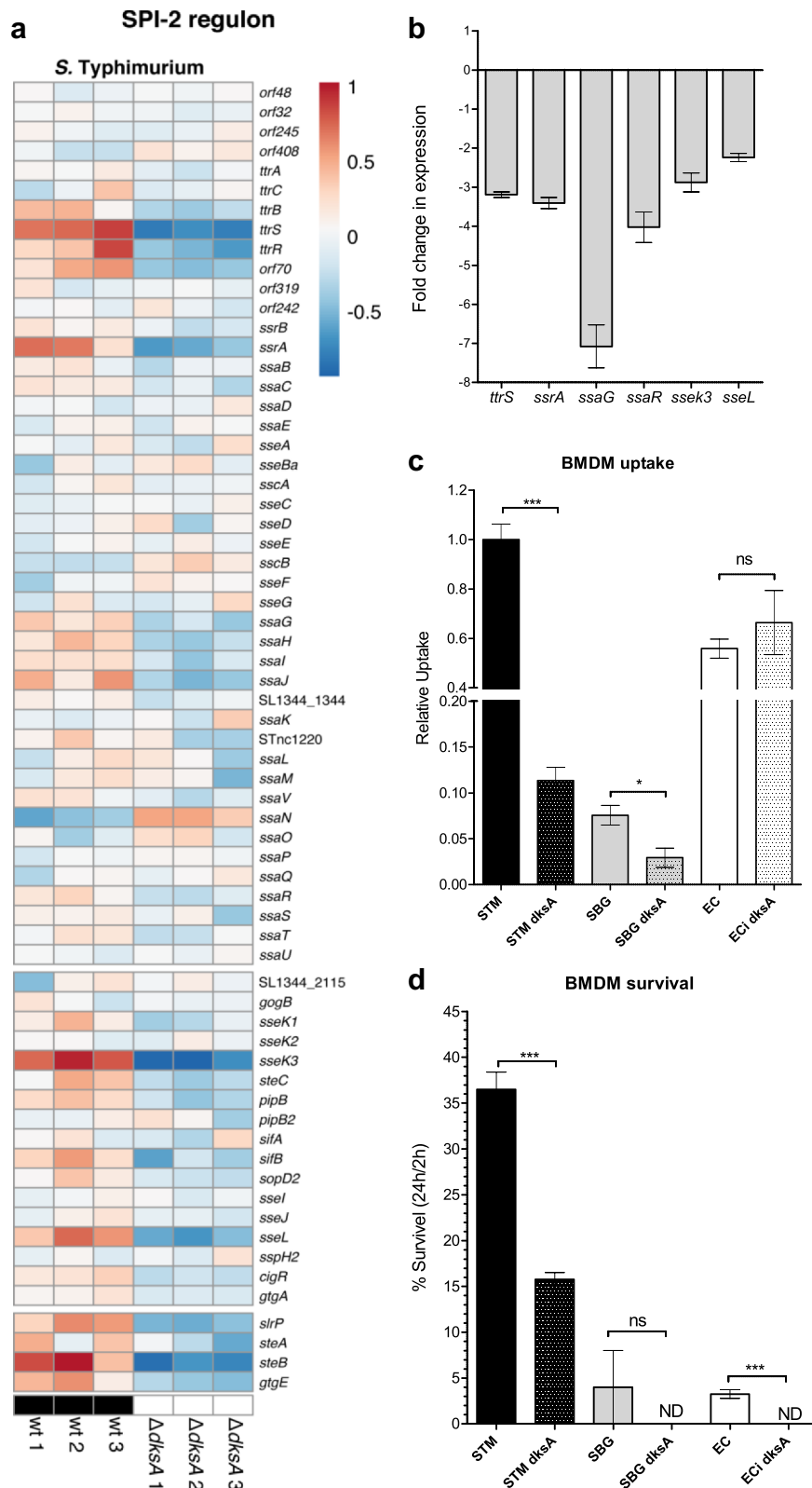
SPI-2 is 40 kb, integrated at the tDNA-Val locus, and contains a 25 kb segment encoding the T3SS-2 and a 15 kb section encoding the tetrathionate reductase gene clusters (*ttrABC*RS), involved in anaerobic respiration.<sup>31</sup> In contrast to the uniform regulation of SPI-1 by DksA, RNA-Seq showed that in *S. Typhimurium*, only a handful of SPI-2 genes were regulated by DksA under the experimental setting (late logarithmic growth

phase in LB), considered as SPI-1 inducing conditions. The genes *ttrB*, *ttrS*, *ttrR* and *orf70* encoded within the tetrathionate locus, the regulatory gene *ssrA*, two SPI-2 effector genes (*sseK3* and *sseL*), and four dual T3SS-1 and T3SS-2 translocated effector encoded genes (*slrP*, *steA*, *steB*, and *gtgE*) were significantly repressed in *S. Typhimurium* lacking DksA. Similarly, a moderate decrease in the expression of *ssaG*, *ssaH*, *ssaI*, and *ssaJ*, was identified under these conditions ([Figure 6\(a\)](#)). qRT-PCR analysis confirmed the RNA-Seq results and demonstrated 2 to 7-fold decrease in the expression of *ttrS*, *ssrA*, *ssaG*, *ssaR*, *sseK3*, and *sseL* ([Figure 6\(b\)](#)).

These results suggested that since DksA is involved in the regulation of at least a few SPI-2 genes, it may contribute to the intracellular survival of *Salmonella*. To test this possibility, the uptake and survival of the studied three species and their *dksA* mutant strains were used to infect bone marrow-derived macrophages (BMDMs). The uptake of both *S. Typhimurium* and *S. bongori dksA* mutants was reduced relative to their WT strains ([Figure 6\(c\)](#)), probably due to the contribution of T3SS-1 to *Salmonella* entry, even into phagocytic cells. In addition, a *S. Typhimurium dksA* mutant strain was significantly impaired in intracellular survival compared to the WT background ([Figure 6\(d\)](#)). These results are in agreement with a previous report by Henard and colleagues<sup>33</sup> and indicate that DksA is required for intracellular survival of *S. enterica* in macrophages, at least partly, due to its role in SPI-2 regulation. Noteworthy, the intracellular survival of *S. bongori* and *E. coli* in BMDM was very low to begin with (since they don't carry the SPI-2), however the lack of DksA in these species, even further reduced their viability to an undetected level. These results suggest additional intracellular role for DksA, which is SPI-2-independent, such as its previously reported role in *S. Typhimurium* tolerance to reactive oxygen and nitrogen species.<sup>33–35</sup>

### **DksA regulates SPIs 4, 5 and 11**

SPI-4 spans a 27 kb segment that was inserted adjacent to the tRNA-like gene *ssb*.<sup>36</sup> SPI-4 encodes a Type 1 secretion system and the major adhesin SiiE, required for intestinal epithelial cells attachment and invasion.<sup>37</sup> Like SPI-1, the expression of



**Figure 6.** DksA regulates several SPI-2 genes under SPI-1-induced conditions. (a) Heat map of RNA-Seq results showing the relative transcription of SPI-2 genes (top block), SPI-2 effector genes encoded outside of SPI-2 (middle block) and effectors known to be translocated by both T3SS-1 and T3SS-2 (bottom block) in three independent wildtype and  $\Delta dksA$  *S. Typhimurium* cultures, grown to late logarithmic phase in LB (considered as SPI-1 induced conditions). (b) The fold change in the expression of six SPI-2 genes (*ttrS*, *ssaA*, *ssaG*, *ssaR*, *sseK3*, and *sseL*) in a *dksA* mutant relative to the wildtype isogenic strain was determined using qRT-PCR. RNA was extracted from late logarithmic phase *S. Typhimurium* cultures grown in LB broth at 37°C. The results show the mean value of 3–6 reactions from two independent RNA extractions, and the error bars indicate the SEM. (c) Infection of BMDMs was determined by the gentamicin

SPI-4 genes was found by RNA-Seq to be significantly downregulated in the *dksA* background in both *S. Typhimurium* and *S. bongori* (Figure 7(a)). qRT-PCR further confirmed these results and showed a 28 to 147-fold decrease in the expression of *siiA*, *siiB*, and *siiC* in the *S. Typhimurium dksA* mutant compared to the wild type strain (Figure 7b).

SPI-5 corresponds to a small 7.6 kb island integrated adjacent to the tDNA-Ser (*rna 42*). SPI-5 encodes the T3SS-1 effector SopB that manipulates the host Rho-GTPase and is required for *Salmonella* invasion, membrane ruffling, and activation of pro-inflammatory response.<sup>38</sup> In addition, SPI-5 harbors the T3SS-2 effector PipB that contributes to intra-macrophage survival.<sup>39</sup> SPI-5 has a mosaic structure, and in *S. bongori*, only part of the SPI-5 genes are present, including *sopB*, but excluding *pipB*. In *S. Typhimurium*, most of the SPI-5 genes and especially *pipC* and *sopB*, were downregulated in the absence of DksA. At the same time, *orfX* demonstrated an opposite transcriptional pattern and was upregulated in the *dksA* background. Similar, but less pronounced trend in expression of SPI-5 genes (especially *pipC* and *pipD*), were also seen in *S. bongori* (Figure 7(c)). qRT-PCR confirmed these results and showed a 3- and a 7-fold decrease in the expression of *pipB* and *sopB*, respectively, and a 3-fold increase in the transcription of *orfX* in the absence of DksA in *S. Typhimurium* (Figure 7(d)).

SPI-11 encodes several genes, including *pagC*, *pagD*, and *msgA* belonging to the PhoPQ regulon, which is essential for *Salmonella* virulence and intracellular replication within macrophages.<sup>40</sup> In *S. Typhimurium*, both *pagC*, *pagD*, and *phoP* were found by RNA-Seq to be expressed at moderately lower levels in the absence of DksA (Figure 7(e)) and qRT-PCR (Figure 7(f)).

Collectively, these results indicated that multiple virulence genes and diverse pathogenicity islands that were acquired horizontally during *Salmonella* evolution were inserted under the preexisting DksA regulon.

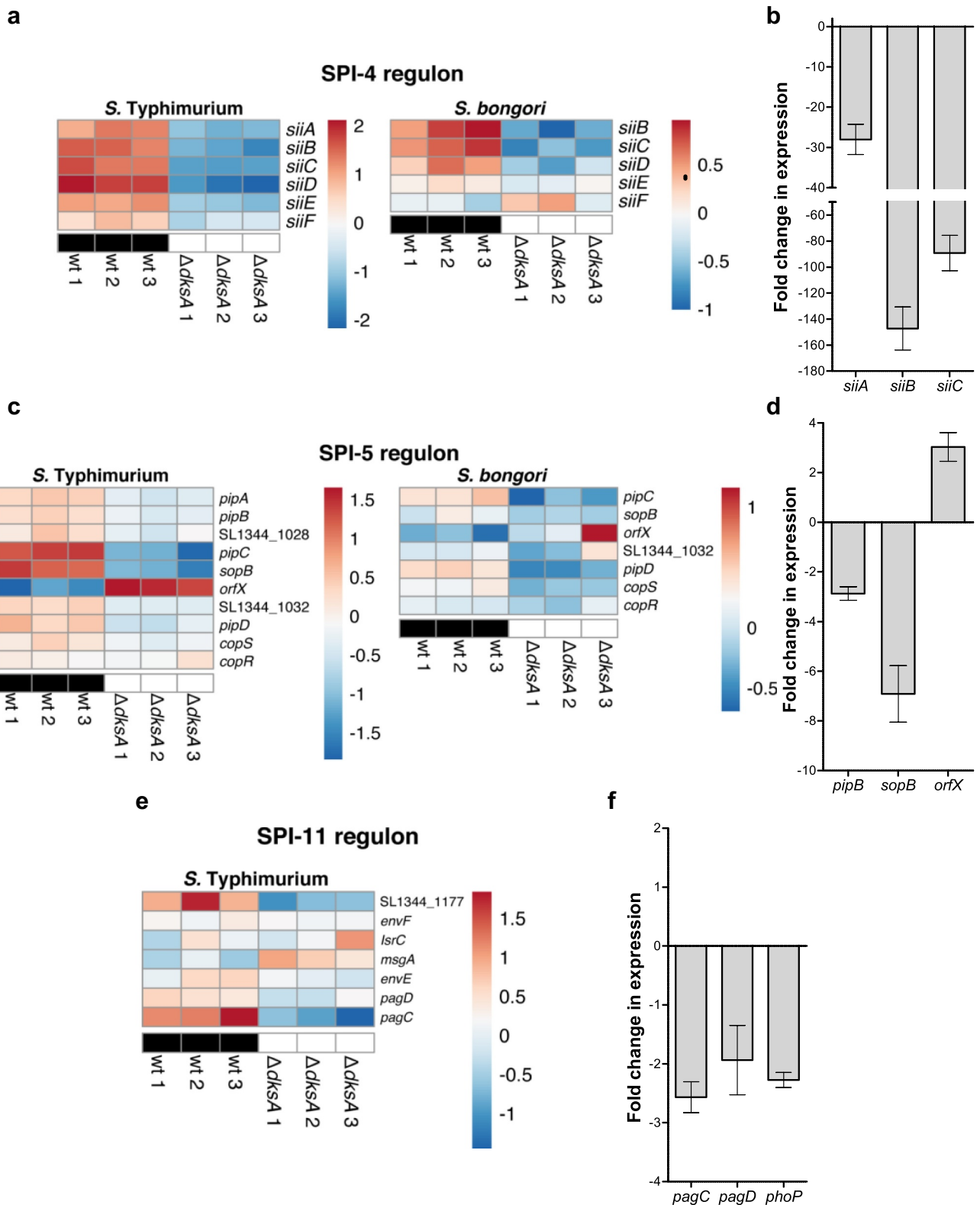
### ***DksA regulates the type I fimbria in S. Typhimurium but not in E. coli***

Type 1 fimbriae are known for their ability to mediate mannose-sensitive adhesion to host cells and are common colonization factors expressed by members of the Enterobacteriaceae family.<sup>41</sup> In *E. coli*, type 1 fimbriae are encoded by the *fim* cluster composed of a polycistronic operon of the seven structural genes (*fimAICDFGH*) and two monocistronic operons encoding the site-specific recombinases, FimB and FimE.<sup>42</sup> In *S. Typhimurium*, *fimA* expression is regulated transcriptionally by the adjacent regulatory proteins FimZ and FimY and by the relative concentrations of the rare tRNA-Arg (UCU), located adjacent to the *fim* cluster encoded by *argU* (*fimU*).<sup>43</sup> Our RNA-Seq analysis clearly showed that in *S. Typhimurium* (Figure 8(a)), but not in *E. coli* (data not shown), the *fim* regulon is positively regulated by DksA, and in the absence of DksA its expression is significantly decreased. Confirmatory qRT-PCR experiments further supported these results and showed that in *S. Typhimurium*, the expression of *fimA*, *fimD*, and *fimW* is reduced by 19, 5, and 3-fold, respectively, in the *dksA* mutant strain, compared to the wild-type (Figure 8(b)). Hence, these results indicate rewiring of the *fim* regulation between *E. coli* and *Salmonella*, while integrating the type I fimbriae genes transcription to the DksA regulon in *S. Typhimurium*.

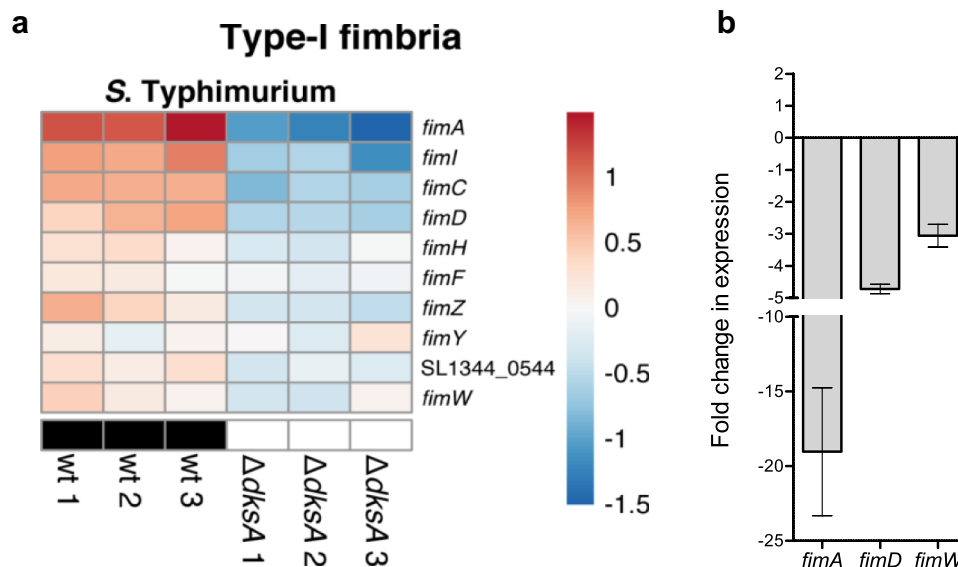
### ***DksA controls the lsr autoinducer-2 regulon in S. Typhimurium and in E. coli***

Population-dependent behavior is mediated in many bacteria species by a process known as quorum sensing. Global changes in gene expression in response to quorum sensing are directed by the synthesis, release, and detection of small signal molecules termed autoinducers. Different bacterial phenotypes are affected by quorum sensing, including motility, biofilm formation, bioluminescence, and virulence.<sup>44</sup> Autoinducer-2 (AI-2) is a universal signal molecule that could be

protection assay and is presented relative to *S. Typhimurium* SL1344. Uptake was calculated as the ratio between the intracellular bacteria (CFU) recovered at 2 h p.i and the total number of CFU used to infect the cells. (d) Bacterial survival was determined as the ratio between the intracellular bacterial load (CFU) at 24 h p.i and the number of recovered CFUs at 2 h p.i. The mean of four independent infections with standard error of the mean are shown. *t*-test was used to calculate the statistical difference between the WT and the *dksA* backgrounds.



**Figure 7.** DksA regulates the expression of SPI-4, 5 and 11 genes in *Salmonella* spp. (a) Heat map of RNA-Seq results showing the transcription of six SPI-4 genes in three independent wildtype and  $\Delta$ *dksA* *S. Typhimurium* and *S. bongori* cultures. (b) The fold change in the expression of three SPI-4 genes (*siiA*, *siiB*, and *siiC*) in a *dksA* mutant relative to the wildtype isogenic strain was determined using qRT-PCR. RNA was extracted from late logarithmic phase *S. Typhimurium* cultures grown in LB broth at 37°C. The chart bars show the mean value of 3–6 reactions from two independent RNA extractions  $\pm$  SEM. (c) Heat map of RNA-Seq results displaying the transcription of SPI-5 genes in three independent wildtype and  $\Delta$ *dksA* *S. Typhimurium* and *S. bongori* cultures. (d) The fold change in the expression of three SPI-5 genes (*pipB*, *sopB*, and *orfX*) in a *dksA* mutant relative to the wildtype isogenic strain was determined



**Figure 8.** DksA activates the type-I fimbria genes in *S. Typhimurium*. (a) Heat map of RNA-Seq results displaying the transcription of 10 type-I fimbria genes in three independent wildtype and  $\Delta dksA$  *S. Typhimurium* cultures. (b) The fold change in the expression of *fimA*, *fimD*, and *fimW* genes in a *dksA* mutant relative to the wildtype isogenic strain was determined using qRT-PCR. RNA was extracted from late logarithmic phase *S. Typhimurium* cultures grown in LB broth at 37°C.

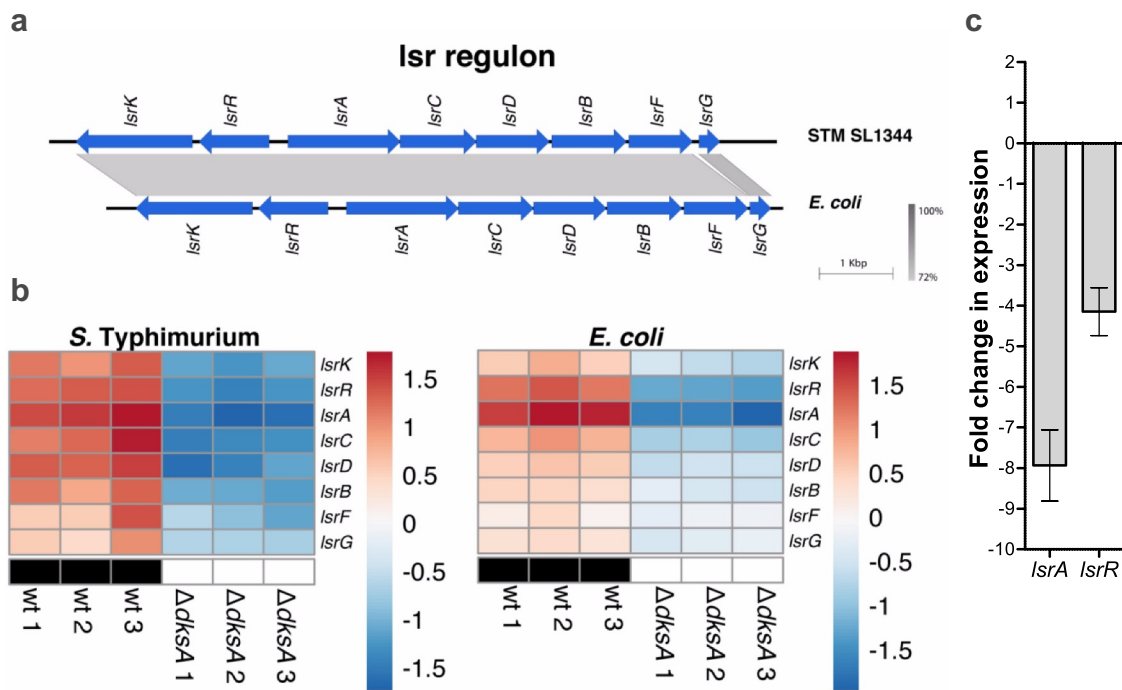
synthesized and recognized by many Gram-positive and Gram-negative bacteria and plays a role in interspecies communication.<sup>45</sup> In *E. coli* and *S. Typhimurium*, AI-2 is imported from the environment into the cell by the Lsr transporter system, encoded the genes *lsrA*, *lsrB*, *lsrC*, *lsrD*, *lsrF*, and *lsrG*. In addition, the adjacent and divergently transcribed genes *lsrR* and *lsrK* are responsible for the regulation of the *lsr* operon (Figure 9(a)).<sup>46</sup> Interestingly, RNA-Seq data showed that the entire *lsr* regulon was downregulated in the absence of DksA in *S. Typhimurium* and in *E. coli* (Figure 9(b)). qRT-PCR analysis further confirmed these results and showed a decrease of 8- and 4-fold in the expression of *lsrA* (that encodes an ATP-binding protein for the AI-2 ABC transporter complex) and *lsrR* (encoding for a transcriptional regulator of the *lsr* operon), respectively, in the *S. Typhimurium dksA* mutant strain in comparison to the wildtype (Figure 9(c)). These results show for the first time that the universal quorum-sensing autoinducer AI-2 system in *Salmonella* and in *E. coli* is under the positive regulation of DksA.

#### **DksA regulates the motility-chemotaxis regulon in *E. coli* and *Salmonella* spp. in an opposite directionality**

In *E. coli* and *Salmonella*, more than 50 genes are involved in the formation and function of the flagella, and their assembly is tightly controlled by a highly organized and hierarchical regulatory cascade. The flagellar, motility, and chemotaxis genes are all organized under one regulon that composes three ordered classes corresponding to classes I (early), II (middle), and III (late) regulatory phases.<sup>47</sup>

The RNA-Seq analysis demonstrated that the flagella-chemotaxis regulon in *E. coli* is repressed by DksA, as in the *dksA* mutant all the genes besides *fliY* (i.e. 50 out of 51 genes of this regulon) were upregulated (Figure 10(a)). Nonetheless, the expression of these genes in *S. bongori* and *S. Typhimurium* was oppositely regulated by DksA and the expression of many of them decreased in the absence of DksA, indicating that in the *Salmonella* species, they are under a positive regulation of DksA. An exception for this regulatory pattern in *S. Typhimurium* was observed for only a few genes in the regulon

using qRT-PCR. RNA was extracted from late logarithmic phase *S. Typhimurium* cultures grown in LB broth at 37°C. (e) Heat map of RNA-Seq results showing the transcription of seven SPI-11 genes in three independent wildtype and  $\Delta dksA$  *S. Typhimurium* cultures. (f) The fold change in the expression of *pagC*, *pagD*, and *phoP* in a *dksA* mutant relative to the wildtype isogenic strain was determined using qRT-PCR. RNA was extracted as above.



**Figure 9.** DksA activates the *lsr* autoinducer-2 regulon in *E. coli* and *S. Typhimurium*. (a) Genetic organization of the *lsr* locus in *S. Typhimurium* (STM) SL1344 (GenBank: FQ312003.1; position 4,302,044 to 4,311,611) and *E. coli* BW25113 (GenBank: CP009273.1; position 1,592,536 to 1,601,208) is shown. The gray regions indicate the degree of DNA similarity. (b) Heat map of RNA-Seq results showing the transcription of eight *lsr* genes in three independent wildtype and  $\Delta dksA$  *S. Typhimurium* and *E. coli* cultures. (c) The fold change in the expression of *lsrA* and *lsrR* genes in a *dksA* mutant relative to the wildtype isogenic strain was determined using qRT-PCR. RNA was extracted from late logarithmic phase *S. Typhimurium* cultures grown in LB broth at 37°C.

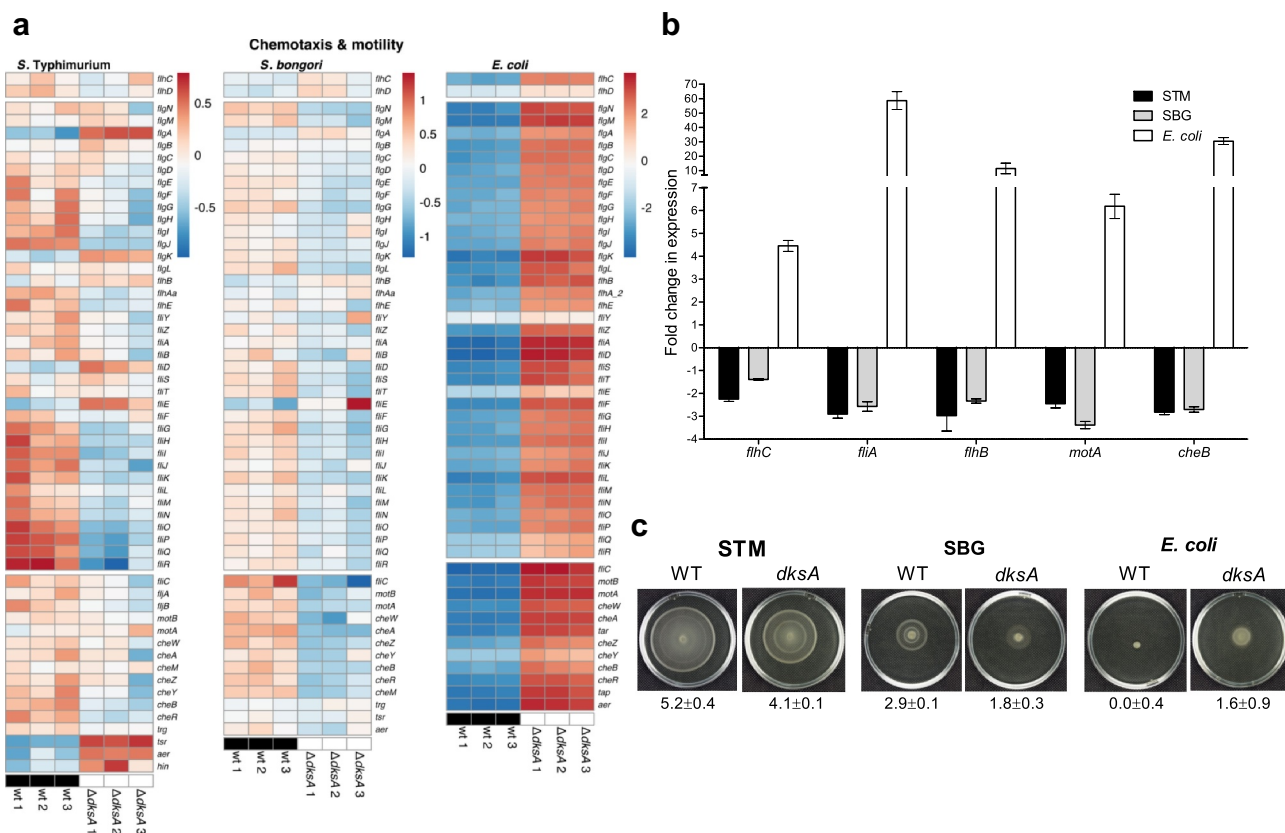
including *flgA*, *flgK*, *tsr*, *aer*, and *hin*. An independent qRT-PCR approach confirmed these results and demonstrated that *flhC* (Class I), *fliA* and *fliB* (class II), *motA*, and *cheB* (Class III) are downregulated in *S. Typhimurium* and *S. bongori*, but upregulated in *E. coli* in the absence of DksA (Figure 10(b)). In agreement with the expression results, motility assays on soft agar plates revealed that a *dksA* null deletion results in a moderate (20–40%), but statistically significant reduction in the motility of *S. Typhimurium* and *S. bongori*, but increased *E. coli* motility, in comparison to the wild-type strains (Figure 10(c) and S5). These data are consistent with an earlier report showing upregulation of genes involved in flagellum synthesis in a *dksA* *E. coli* K-12 strain MG1655,<sup>48</sup> and together indicate that during *Salmonella* speciation the directionality of the motility-chemotaxis regulation by DksA has been flipped and changed from a negative regulator in *E. coli* to an activator in *Salmonella* spp.

In Summary, our results show that DksA is a pleiotropic regulator that conservatively controls multiple ancestral metabolic and physiological

pathways in *E. coli* and in both *Salmonella* species. Throughout *Salmonella* evolution, rewiring of specific common pathways occurred and several key virulence pathways, which were horizontally acquired into the *Salmonella* genome, were inserted under the regulatory umbrella of DksA. As a result, DksA has maintained its role as a major metabolic coordinator, but further evolved as a key virulence *Salmonella* regulator.

## Discussion

Bacterial pathogens have adapted to utilize distinct metabolic and virulence pathways allowing them to colonize and compete with the microbiota within their host. Many of these fitness-specific traits have been gained via horizontal gene transfer or changed their ancestral function during evolution of a pathogenic lifestyle. Since these virulence factors are often carried on xenogeneic DNA elements, they must be appropriately assimilated in the pre-existing regulatory network of their bacterial carrier, to be expressed at the required time and place



**Figure 10.** DksA regulates the motility-chemotaxis regulon in *E. coli* and *Salmonella* spp. in an opposite manner. (a) Heat map based on RNA-Seq results showing the transcription of the motility-chemotaxis regulon in three independent wildtype and  $\Delta dksA$  cultures of *S. Typhimurium*, *S. bongori* and *E. coli*. Class I, II, and III genes are shown in the top, middle, and bottom blocks, respectively. (b) The fold change in the expression of *flhC* (class I), *flhA* and *flhB* (Class II), and *CheB* and *motA* (Class III) in a *dksA* mutant relative to the expression in the wildtype isogenic strain was determined using qRT-PCR. RNA was extracted from the late logarithmic phase of *S. Typhimurium* (STM), *S. bongori* (SBG), and *E. coli* cultures grown in LB broth at 37°C. (c) Motility of wildtype and  $\Delta dksA$  strains of *S. Typhimurium*, *S. bongori* and *E. coli* was examined on soft agar plates for 5 h at 37°C. An image of one representative plate is shown. The mean motility value (in cm) and the standard deviation (of five independent plates) are shown underneath each image.

during host infection and transmission, without causing intolerable metabolic burden.<sup>49</sup> Here, we used deep RNA-sequencing to investigate the adaptation of the DksA regulatory circuit during *S. enterica* evolution, from a nonpathogenic ancestor to a pathogen of warm-blooded animals.

RNA-Seq analysis of three bacterial species representing this evolutionary course demonstrated that under non-starved conditions, DksA affects a significant portion (15–25%) of the *E. coli*, *S. bongori*, and *S. Typhimurium* genes, indicating that DksA plays a key role as a transcriptional coordinator that goes beyond its role as a stringent response potentiator. DksA regulates a similar set of metabolic and physiological pathways in all three species. These pathways include biosynthesis of amino acids, secondary metabolites, and sulfur metabolism, the TCA

cycle, glycogen, pyrimidine biosynthesis and tRNA genes. Moreover, we showed that DksA is a positive regulator of quorum sensing and controls the expression of genes required for the production of the universal bacterial communication molecule autoinducer-2. Finally, we provide genome-scale evidence that during *Salmonella* evolution, multiple virulence pathways have been transcriptionally integrated into the DksA regulon.

DksA was previously shown to regulate pathogenicity and virulence-associated phenotypes in multiple Gram-negative animal and plant pathogens, including the expression of the T3SS in *Erwinia amylovora*<sup>50,51</sup> and the growth of *Xanthomonas citri* in its host plants.<sup>52</sup> In *Pseudomonas aeruginosa*, DksA was reported to coordinate quorum sensing, anaerobiosis, and

motility<sup>53,54</sup> and to affect the production of the cholera toxin and hemagglutinin protease in *Vibrio cholera*.<sup>55,56</sup> In *Haemophilus ducreyi*, DksA was also reported to regulate pathogenicity,<sup>57</sup> and the expression of T4SS in *Bartonella henselae*.<sup>58</sup> In *Legionella pneumophila*, DksA was shown to be involved in stationary-phase survival, flagellar gene activation, lysosome avoidance, and macrophage cytotoxicity,<sup>59</sup> and in *Campylobacter jejuni*, a *dksA* mutant strain was impaired in invading intestinal cells and manipulating the host immune response.<sup>60</sup> Furthermore, DksA was demonstrated to control the expression of the genes in the LEE pathogenicity island in Enterohaemorrhagic *E. coli*<sup>61</sup> and to be involved in virulence and intercellular spread of *Shigella flexneri*.<sup>62</sup> Finally, in *S. Typhimurium*, DksA was reported to play a role in resistance to reactive oxygen and nitrogen species,<sup>33,35</sup> and a *dksA* mutant strain was significantly impaired in host cells invasion<sup>24</sup> and attenuated in J774A.1 macrophage-like cells,<sup>63</sup> chicken<sup>64</sup> and mouse<sup>24,65</sup> infection models.

Łyżeń and colleagues have previously demonstrated that in the presence of ppGpp, DksA strongly represses the transcription of the *argX* promoter, which controls the expression of the four tRNA genes *argX*, *hisR*, *leuT*, and *proM*. However, in the absence of ppGpp, under non-starved rapid cellular growth, DksA can activate transcription from the *argX* promoter.<sup>25</sup> These results suggested that DksA might contribute to tRNA transcription regulation in *E. coli* either as a positive or negative regulator. Here, we showed that in *S. Typhimurium*, many of the genes organized in SPI-2, SPI-4, SPI-5, and in the *fim* cluster, which are all integrated into tDNA or tDNA-like sites are under the regulation of DksA. These results may suggest that the ancestral regulation of tRNA genes by DksA has evolved to control the expression of pathogenicity island genes, after their integration into tRNA loci.

Besides metabolic pathways, quorum sensing, and pathogenicity, another phenotype found to be under the DksA control is the motility and chemotaxis of *E. coli*, *S. bongori*, and *S. enterica*. We showed that, while in *E. coli* DksA acts as a repressor of this regulon, the regulatory activity of DksA has been inverted in *S. bongori* and *S. Typhimurium*, in which DksA positively regulates

many of the motility-chemotaxis genes. Previously, it was suggested that the directionality of DksA regulation is dependent on the precise promoter architecture of its target genes.<sup>20,21</sup> Here, we hypothesize that the observed change in motility regulation by DksA between *E. coli* and *Salmonella* has evolved to better synchronize flagellum-based motility and invasion in *Salmonella* spp. Like SPI-1- and SPI-4-dependent invasion, *Salmonella* motility is largely required for host colonization and full virulence.<sup>66,67</sup> Previously, we demonstrated that *dksA* is readily expressed within the host during intestinal colonization,<sup>24</sup> and a tight regulatory linkage between invasion and motility in *Salmonella* has been established by others.<sup>68,69</sup> Further studies have also demonstrated that flagellum-dependent motility drives *Salmonella* into a near-surface swimming mode that facilitates its invasion by scanning the surface of host cells and the selection of permissive entry sites.<sup>70,71</sup> Our current results propose that DksA is an additional regulatory tool used by *Salmonella* to synchronize motility and invasion into host cells by co-activation of SPI-1, SPI-4, assorted SPIs-2, 5, and 11 encoded genes, type I fimbria and motility.

Changes in the DksA regulatory setup may have evolved by adaptation of newly acquired promoters to facilitate direct binding of an RNAP-DksA complex. For example, our results support the possibility that a DksA-RNAP complex binds at the regulatory region of *hilA*, the SPI-1 master regulator, and by that mechanism may affect the transcription of the entire SPI-1 regulon. Nonetheless, additional experimental approaches, such as *in vitro* transcription, are needed to further confirm this possibility. Another indirect mechanism responsible for changes in the DksA regulon might be changes in the expression pattern of other global regulators, downstream to DksA. For example, we found that the lack DksA, leads to a significant increase in the expression of the flagellar sigma factor *fliA* (sigma 28) in *E. coli*, but not in *Salmonella* spp. (Figure 10 and Fig. S7A), explaining the increased expression of motility and chemotaxis genes in this species. In contrast, the lack of DksA resulted in a very prominent decrease in the expression of the stress response sigma factor, RpoS (sigma 38) in *E. coli*, while the expression of RpoS was not significantly affected in



*Salmonella* Typhimurium grown to the late logarithmic phase (Fig. S7). Furthermore, the expression of the alternative sigma factor *rpoE* (sigma 24) was also found to significantly decrease in the absence of DksA in both *Salmonella* species, but not in *E. coli* (Fig. S7A). Therefore, these differences can contribute to changes in the expression of RpoE- and RpoS-regulated genes in an indirect DksA-dependent manner.

To summarize, RNA-Seq combined with additional molecular approaches and phenotypic studies have demonstrated that DksA plays a pleiotropic role in controlling the transcription of numerous physiological and metabolic pathways. The regulation of these pathways by DksA is not limited to starvation and stress conditions as is currently accepted, but also occurs under non-starved growth conditions, in the presence of low concentrations of ppGpp. During *Salmonella* evolution and its adaptation from an environmental bacterium to a pathogen, DksA has evolved by regulatory rewiring to a key pathogenicity regulator that controls the expression of discrete master regulators and virulence gene clusters that were inserted into tDNA loci. This mechanism allows *Salmonella* to orchestrate the expression of a large number of horizontally acquired genes by a preexisting transcription factor, and synchronize metabolic, motility, quorum sensing and virulence phenotypes required for efficient infection and transmission in tandem. We suggest that the role of DksA as a global virulence coordinator is not unique to *Salmonella* and it functions by a similar mechanism in other Gram-negative pathogens that carry horizontally acquired virulence genes.

## Materials and methods

**Bacterial strains and growth conditions.** Bacterial strains and plasmids utilized in this study are listed in Table S3A. *S. Typhimurium* SL1344, *S. bongori* NCTC 12419 (also known as Salmonella Reference Collection C strain SARC11) and *E. coli* BW25113, and their isogenic *dksA* null mutant strains were routinely grown at 37°C in Lennox Luria-Bertani (LB; BD Difco) or in M63 minimal medium under aerobic conditions. When needed, 100 µg/ml ampicillin, 50 µg/ml kanamycin, and 25 µg/ml chloramphenicol were added to the media.

**Cloning and mutants construction.** All primers used in this study are listed in Table S3B. Oligonucleotides were purchased from IDT, and PCR was carried out using Phusion Hot Start Flex DNA Polymerase (Thermo). In-frame deletion of *dksA* in *S. bongori* SARC11 was constructed by the λ-red-recombination system in a three steps PCR method to produce an amplicon containing the Chloramphenicol resistance gene, as described in.<sup>72</sup> The resistance cassette was then eliminated from the genome by using a helper plasmid (pCP20) carrying the FLP recombinase.<sup>73</sup>

**RNA Sequencing.** Three independent cultures of wildtype and  $\Delta dksA$  strains of *S. Typhimurium* SL1344, *S. bongori* NCTC 12419, and *E. coli* BW25113 were grown in LB broth to the late logarithmic phase (OD 600 of ~1) by subculturing (1:100) of overnight cultures into fresh LB for 3 h at 37°C, under aerobic conditions. Total RNA from 18 bacterial cultures (3 species × 2 genetic backgrounds × triplicates) was stabilized by the RNeasy Protect Bacteria Reagent (QIAGEN) and extracted using the RNeasy mini kit (QIAGEN). Purified RNA was treated with an RNase-free DNase I followed by ethanol precipitation and sequenced by Vertis Biotechnologie AG (Germany). Ribosomal RNA molecules were depleted using a Vertis-developed protocol and fragmented using ultrasound (4 pulses of 30 sec each at 4°C). Oligonucleotide adapters were ligated to the 3' end of the RNA molecules, and first-strand cDNA synthesis was performed using M-MLV reverse transcriptase and the 3' adapter as a primer. Next, the first-strand cDNA was purified, and the 5' Illumina TruSeq sequencing adapter was ligated to the 3' end of the antisense cDNA. The resulting cDNA was PCR-amplified to about 10–20 ng/µl using a high fidelity DNA polymerase, purified using the Agencourt AMPure XP kit (Beckman Coulter Genomics) and analyzed by capillary electrophoresis. The primers used for PCR amplification were designed for TruSeq sequencing according to the Illumina instructions. The libraries pool was analyzed on a Shimadzu MultiNA microchip electrophoresis system and sequenced on an Illumina NextSeq 500 system, generating 259,345,328 single-end reads of 75 bp length. Quality control of the obtained reads using the Illumina tool Sequencing Analysis Viewer

showed that over 92% of the reads had quality score of > 30. All RNA-Seq reads were deposited at NCBI in the Sequence Read Archive (SRA) under study number SRP292670, bioproject PRJNA678618, and accession numbers SRR13065767 – SRR13065758 as detailed in Table S4.

**Transcriptome analysis.** The resulting reads were mapped to their correspondent genome with bowtie2 v2.2.9<sup>74</sup> and reads counts were done with FeatureCounts (version 1.5.0-p1). All statistical analysis was performed using the R (version 3.6.0) software and Bioconductor packages including DESeq2<sup>75</sup> and the SARTools package developed at PF2 – Institute Pasteur<sup>76</sup> using the default settings. Normalization and differential analysis were carried out according to the DESeq2 model and package using adjusted *P* value and the Wald test to infer the probability value.

To compare DEGs between *S. Typhimurium*, *S. bongori*, and *E. coli*, we created a dataset consisting of 2,896 orthologous core genes present in all three species (Table S2). Annotated genomes for *S. bongori* serovar 48z41 – strain RKS3044 (accession number NZ\_CP006692), *S. Typhimurium* strain SL1344 (accession number NC\_016810) and *E. coli* strain BW25113 (accession number NZ\_CP009273) were downloaded from PATRIC.<sup>77</sup> Proteinortho<sup>78</sup> was used to determine orthology using amino acid fasta files. Phyletic patterns created using the orthology mapping were used to estimate core genomes between three species. Unless otherwise specified, all orthologous genes were named as in *S. Typhimurium* SL1344 to avoid confusion over different annotations of the same gene. Differentially expressed genes (adjusted *P*-value <0.05 and fold change ≥2) of the complete transcriptomes were analyzed by KEGG Mapper,<sup>79</sup> using the corresponding organism databases. For genes involved in pathways of interest, the normalized reads were plotted in heatmaps using the R pheatmap package (Version 1.0.12).

**Reverse transcription real-time PCR (qRT-PCR).** Overnight bacterial cultures were subcultured (1:100) into fresh LB broth and grown to the late logarithmic phase under aerobic conditions for 3 h at 37°C. RNA was extracted using the QIAGEN RNA protect bacterial reagent and the RNeasy mini kit, according to the manufacturer's instructions, including an on-column DNase I digestion. Purified RNA was retreated with

DNase I (TURBO DNA-free kit, Invitrogen) according to the manufacturer's protocol. Up to 1 mg of DNase I-treated RNA was subjected to cDNA synthesis using the qScript cDNA synthesis kit (Quanta-bio). Real-time PCR and data analysis were performed as previously described<sup>80</sup> on a StepOnePlus Real-Time PCR System (Applied Biosystems). The *rpoD* gene was used as the endogenous normalization control. Fold-differences in gene transcription were calculated as  $2^{-\Delta\Delta Ct}$ .

**Construction of *S. Typhimurium* His-tagged DksA.** A 468 bp DNA fragment containing the *S. Typhimurium* SL1344 *dksA* gene was amplified by PCR using the primers *dksA*-NdeI-F and *dksA*-BamHI-R. The resulting PCR fragment was digested with BamHI and NdeI and cloned into pET-28a digested with the same enzymes, generating the construct pET-28a/*dksA*. This plasmid expresses full-length *S. Typhimurium* DksA fused to a 6× His tag on the N-terminus, with a predicted molecular mass of 18.8 kDa, under the control of the T7 promoter.

**Overexpression of His-tagged DksA and protein purification.** *E. coli* BL-21 (DE3) strain carrying pET-28a/*dksA* was grown overnight in LB medium containing 20 µg/ml Kanamycin at 37°C with vigorous aeration. The culture was diluted 1:15 into 3 ml of fresh LB and grown for 2 h. To induce expression of the recombinant protein, IPTG was added to 1 mM final concentration, and the culture was grown for an additional 4 h at 37°C and harvested by centrifugation. His-tagged DksA was purified using the MagListo His-tagged Protein Purification Kit (Bioneer) according to the manufacturer's instructions. Protein concentration was measured by the RC DC Protein Assay (Bio-Rad), which indicated 0.8 mg protein/ml. The purity of the eluted fractions was analyzed on a 15% SDS-polyacrylamide gel (Fig. S1) and stored at –80°C until use.

**Mobility shift assay.** Gel retardation assay was carried out according to.<sup>81</sup> A 1,100 bp DNA fragment corresponding to the regulatory region upstream from *hilA* was generated using the primers *hilA*\_prom\_Fw and *hilA*\_prom\_Rev listed in Table S3B. 75 ng of the DNA probe was incubated at 4°C for 60 min with 1 unit of *E. coli* RNAP holoenzyme (New-England Biolabs) and increasing amounts (0.017 to 0.7 µg) of purified His-DksA in the Binding buffer [35 mM Tris-Ac (pH 7.9), 70 mM KAc, 5 mM MgAc<sub>2</sub>, 20 mM NH<sub>4</sub>

Ac, 1 mM DTT]. As a negative control for the complex binding, heparin (at a final concentration of 0.15 mg/ml) was added to the binding reaction. Binding reactions were stopped by the addition of 3  $\mu$ l of loading dye [30% (v/v) glycerol and 0.25% (w/v) bromophenol blue] and immediately resolved on a 4% non-denaturing polyacrylamide gel in 0.5  $\times$  Tris-borate running buffer (pH 8.3) at 120 V. The gels were stained with Gelred (Biotium) and recoded by the Fusion Solo X imaging system (Vilber).

**Western blotting:** Bacterial cultures were grown in LB overnight to stationary phase, or diluted 1:100 and grown for additional 3 h to the late-logarithmic phase. The amount of total protein in each culture was measured using the BCA Protein Assay Kit (Pierce) according to manufacturer's protocol. One ml of each culture was centrifuged, and the pellets were resuspended in 400  $\mu$ l (for stationary phase cultures) or 100  $\mu$ l (late log. phase cultures) 1 $\times$  sodium dodecyl sulfate-polyacrylamide gel electrophoresis (SDS-PAGE) sample buffer. Boiled samples were normalized to equivalent amounts of proteins (12 and 73  $\mu$ g from stationary and late exponential phase, respectively), separated on 12% SDS-PAGE and transferred to a polyvinylidene fluoride (PVDF) membrane (Bio-Rad Laboratories). Blots were probed with a mouse anti-*E. coli* Sigma S (RpoS) antibody (BLG-663703; BioLegend, diluted 1:1,000). Goat anti-mouse antibody conjugated to horseradish peroxidase (ab6721; Abcam, diluted 1:10,000) was used as a secondary antibody, followed by detection with enhanced chemiluminescence reagents (Amersham Pharmacia). Ponceau-S (Sigma-Aldrich) staining of the membrane confirmed equal amount of proteins loading.

**Motility on soft agar:** Bacterial motility was determined as previously described.<sup>82</sup> Briefly, overnight bacterial cultures grown in LB broth at 37°C were diluted 1:100 into fresh LB and sub-cultured for 3 h at 37°C with shaking. 10  $\mu$ l aliquots of the subcultures were placed in the center of 0.3% agar LB plates and incubated for 5 hours at 37°C without being inverted.

**Infection of Bone Marrow Derived Macrophages (BMDMs):** BMDMs were isolated from 6–8 weeks-old femur of naïve white SWISS female mice. The femur bones were gently separated from the skin and mussels and rinsed with cold PBS supplemented with 1% penicillin-streptomycin. The ends of the bone were truncated and the bone marrow was flushed out using a 27 G syringe needle with cold BMDM

medium (49% DMEM high-glucose, 19.5% FBS, 29.5% CSF L-cells condition medium, 1% of 0.2 M L-Glutamate  $\times$ 100, 1% of 0.1 M pyrovate $\times$ 100, and 500  $\mu$ l 0.05 mM  $\beta$ -mercaptoethanol) supplemented with 1% penicillin-streptomycin. Extracted bone marrow was centrifuged at 50 g for 1 min at room temperature, the supernatant was collected and centrifuged at 125 g for 10 min.  $5 \times 10^6$  cells were plated in non-tissue culture petri dish 145/20 mm pre-filled with 20 ml of warm BMDM medium containing 1% penicillin-streptomycin. After 3 days, 10 ml of BMDM medium was added and incubated at 37°C / 5% CO<sub>2</sub> for additional four days. Then the medium was removed, cells were washed with ice-cold PBS without Mg<sup>2+</sup> and Ca<sup>2+</sup> (PBS<sup>-/-</sup>), incubated in 20 ml of ice-cold PBS <sup>-/-</sup> for 10 min at 4°C and counted.

For the infection and survival assays, 1 ml of BMDM cells ( $2.5 \times 10^5$  cell/ml) were distributed into 24 wells plate for O/N and incubated at 37°C / 5% CO<sub>2</sub>. Bacterial cultures were grown in 2 ml LB O/N at 37°C on a microbial culture roller drum. On the day of the infection, the O/N culture was diluted to an OD<sub>600</sub> of 0.2 in a final volume of 1.5 ml of PBS <sup>-/-</sup>. In order to prepare the bacteria for infection, PBS was replaced with BMDM media and re-diluted 1:50. 100  $\mu$ l of the diluted bacteria were added into each well. Immediately after the addition of the bacteria, the infected cells were centrifuged for 5 min at 195 g at room temperature to synchronize the infection. After 30 min, the cells were washed 3 times with PBS and replaced with 1 ml of BMDM media containing gentamicin (100  $\mu$ g/ml). The plate was incubated for one hour at 37°C/5% CO<sub>2</sub> atmosphere, and then washed three times with PBS that was finally replaced with 1 ml of BMDM media containing 10  $\mu$ g/ml gentamicin. The plates were incubated until 2 h (T1, for uptake) and 20 h (T2, for survival) post infection.

At the desired time points, BMDMs were washed 3 times with PBS and resuspended in 250  $\mu$ l of lysis buffer (1% Triton X-100, 0.1% SDS in PBS). The plate was incubated for 10 min under mild shaking. 50  $\mu$ l of serial dilutions were plated onto LB agar plates and CFUs were counted after overnight incubation at 37°C.

**Quantification of intracellular ppGpp in bacteria:** ppGpp concentration was determined using a liquid chromatography (LC) coupled with a tandem quadrupole mass spectrometer (MS/MS)

equipped with an electrospray interface (ESI; operating in positive ionization mode) at the Hannover Medical School Research Core Unit Metabolomics. This method is based on a previously published protocol<sup>83</sup> with a few modifications. Briefly, overnight bacterial cultures were diluted 1:100 into fresh LB medium and were grown for 3 h. 75  $\mu$ L of formic acid were added to 2 ml cultures (final formic acid concentration 1 M) and incubated on ice for 1 h. Two mL of ammonium acetate (pH 4.5) was then added and centrifuged at  $3000 \times g$  for 5 min at 4°C to remove cell debris, while the supernatants were collected. Solid-phase extraction was conducted using the OASIS WAX 1-cc Vac cartridges (Waters). Each cartridge was pretreated with 1 ml of methanol followed by 1 ml of 50 mM ammonium acetate (pH 4.5). After loading the sample, the columns were washed with 1 ml of 50 mM ammonium acetate and then with 1 ml methanol. Nucleotide pool was eluted with 1 ml of water/methanol/ammonium hydroxide solution, (70/20/10, v/v/v). The effluents were lyophilized in a Speed-Vac at 40°C and kept at -80°C until analysis. Dried samples were dissolved in 200  $\mu$ L water (HPLC grade) containing 200 nM of <sup>13</sup>C<sub>10</sub><sup>15</sup>N<sub>5</sub>-ppGpp as internal standard and analyzed using a LC-ESI-qMS/MS system (QTRAP5500).

Chromatographic separation was carried out on a Shimadzu-Nexera system (Shimadzu) using a Hypercarb-PGC column (30  $\times$  14.6 mm) with a 5  $\mu$ m particle size (ThermoScientific). A linear gradient of solvent A (10 mM ammonium acetate pH 10) and solvent B (acetonitrile) was applied. The starting conditions were 4% B. Within 8 min, the ratio of solution B was increased to 60% at a flow rate of 600  $\mu$ L/min. Mass spectrometric detection was performed with a QTRAP5500 tandem quadrupole mass spectrometer (Sciex). All system controls and data analyses were processed by Analyst software (version 1.7; Sciex). ppGpp was detected in positive multiple reaction monitoring (MRM) mode, using mass transition 604 (Q1 mass) to 152 (Q3 mass) for ppGpp. The isotopically labeled ppGpp was used as the internal standard. The detected mass transition was 619  $\rightarrow$  162.

For quantification, calibration curves were created by plotting peak area ratios of the analyte, and the internal standard versus the nominal concentration of the ten calibrators (range: 0.39–200

pmol/sample). The calibration curve was calculated using quadratic regression and 1/x weighing.

## Acknowledgments

We thank Prof. Orna Choder from the Hebrew University for sharing the *E. coli* BW25113 strains and Prof. Lionello Bossi for the kind gift of pSUB11. The work at the Gal-Mor laboratory was supported by grant numbers: I-41-416.6-2018 from the German-Israeli Foundation for Scientific Research and Development (GIF); A128055 from the Research Cooperation Lower Saxony – Israel (The Volkswagen Foundation); and 2616/18 from the joint ISF-Broad Institute program. The funders had no role in study design, data collection, and interpretation, or the decision to submit the work for publication.

## Disclosure statement

No potential conflict of interest was reported by the author(s).

## Funding

This work was supported by the German-Israeli Foundation for Scientific Research and Development [I-41-416.6-2018]; Israel Science Foundation [2616/18]; Research Cooperation Lower Saxony – Israel (The Volkswagen Foundation) [A128055].

## Data availability statement

The authors confirm that the data supporting the findings of this study are available within the article and its supplementary materials. The RNA-Seq data was deposited in the Sequence Read Archive (SRA; <https://www.ncbi.nlm.nih.gov/sra>) under the accession numbers indicated in Table S4.

## References

1. McQuiston JR, Herrera-Leon S, Wertheim BC, Doyle J, Fields PI, Tauxe RV, Logsdon JM. Molecular phylogeny of the salmonellae: relationships among salmonella species and subspecies determined from four housekeeping genes and evidence of lateral gene transfer events. *J Bacteriol.* 2008;190(21):7060–7067. doi:10.1128/JB.01552-07.
2. Ochman H, Wilson AC. Evolution in bacteria: evidence for a universal substitution rate in cellular genomes. *J Mol Evol.* 1987;26(1–2):74–86. doi:10.1007/BF02111283.
3. Baumler AJ. The record of horizontal gene transfer in Salmonella. *Trends Microbiol.* 1997;5(8):318–322. doi:10.1016/S0966-842X(97)01082-2.

4. Porwollik S, McClelland M. Lateral gene transfer in *Salmonella*. *Microbes Infect.* 2003;5(11):977–989. doi:10.1016/S1286-4579(03)00186-2.
5. Su LH, Chiu CH, Chu C, Ou JT. Antimicrobial resistance in nontyphoid *Salmonella* serotypes: a global challenge. *Clin Infect Dis.* 2004;39(4):546–551. doi:10.1086/422726.
6. Gal-Mor O. Persistent infection and long-term carriage of typhoidal and nontyphoidal salmonellae. *Clin Microbiol Rev.* 2019;32:e00088-18.
7. Crump JA, Luby SP, Mintz ED. The global burden of typhoid fever. *Bull World Health Organ.* 2004;82:346–353.
8. Havelaar AH, Kirk MD, Torgerson PR, Gibb HJ, Hald T, Lake RJ, Praet N, Bellinger DC, De Silva NR, Gargouri N, et al. World Health Organization global estimates and regional comparisons of the burden of foodborne disease in 2010. *PLoS Med.* 2015;12(12):e1001923. doi:10.1371/journal.pmed.1001923.
9. Groisman EA, Ochman H. How *Salmonella* became a pathogen. *Trends Microbiol.* 1997;5(9):343–349. doi:10.1016/S0966-842X(97)01099-8.
10. Ilyas B, Tsai CN, Coombes BK. Evolution of *Salmonella*-Host cell interactions through a dynamic bacterial genome. *Front Cell Infect Microbiol.* 2017;7:428. doi:10.3389/fcimb.2017.00428.
11. Gal-Mor O, Finlay BB. Pathogenicity islands: a molecular toolbox for bacterial virulence. *Cell Microbiol.* 2006;8(11):1707–1719. doi:10.1111/j.1462-5822.2006.00794.x.
12. Galan JE. *Salmonella* interactions with host cells: Type III secretion at work. *Annu Rev Cell Dev Biol.* 2001;17(1):53–86. doi:10.1146/annurev.cellbio.17.1.53.
13. Mills DM, Bajaj V, Lee CA. A 40 kb chromosomal fragment encoding *Salmonella typhimurium* invasion genes is absent from the corresponding region of the *Escherichia coli* K-12 chromosome. *Mol Microbiol.* 1995;15(4):749–759. doi:10.1111/j.1365-2958.1995.tb02382.x.
14. Ochman H, Soncini FC, Solomon F, Groisman EA. Identification of a pathogenicity island required for *Salmonella* survival in host cells. *Proc Natl Acad Sci U S A.* 1996;93(15):7800–7804. doi:10.1073/pnas.93.15.7800.
15. Shea JE, Hensel M, Gleeson C, Holden DW. Identification of a virulence locus encoding a second type III secretion system in *Salmonella typhimurium*. *Proc Natl Acad Sci U S A.* 1996;93(6):2593–2597. doi:10.1073/pnas.93.6.2593.
16. Haurlyuk V, Atkinson GC, Murakami KS, Tenson T, Gerdes K. Recent functional insights into the role of (p) ppGpp in bacterial physiology. *Nat Rev Microbiol.* 2015;13(5):298–309. doi:10.1038/nrmicro3448.
17. Gourse RL, Chen AY, Gopalkrishnan S, Sanchez-Vazquez P, Myers A, Ross W. Transcriptional responses to ppGpp and DksA. *Annu Rev Microbiol.* 2018;72(1):163–184. doi:10.1146/annurev-micro-090817-062444.
18. Perederina A, Svetlov V, Vassilyeva MN, Tahirov TH, Yokoyama S, Artsimovitch I, Vassilyev DG. Regulation through the Secondary Channel—Structural framework for ppGpp-DksA synergism during transcription. *Cell.* 2004;118(3):297–309. doi:10.1016/j.cell.2004.06.030.
19. Molodtsov V, Sineva E, Zhang L, Huang X, Cashel M, Ades SE, Murakami KS. Allosteric effector ppGpp potentiates the inhibition of transcript initiation by DksA. *Mol Cell.* 2018;69(5):828–39 e5. doi:10.1016/j.molcel.2018.01.035.
20. Paul BJ, Barker MM, Ross W, Schneider DA, Webb C, Foster JW, Gourse RL. DksA: a critical component of the transcription initiation machinery that potentiates the regulation of rRNA promoters by ppGpp and the initiating NTP. *Cell.* 2004;118(3):311–322. doi:10.1016/j.cell.2004.07.009.
21. Paul BJ, Berkmen MB, Gourse RL. DksA potentiates direct activation of amino acid promoters by ppGpp. *Proc Natl Acad Sci U S A.* 2005;102(22):7823–7828. doi:10.1073/pnas.0501170102.
22. Furman R, Sevostyanova A, Artsimovitch I. Transcription initiation factor DksA has diverse effects on RNA chain elongation. *Nucleic Acids Res.* 2012;40(8):3392–3402. doi:10.1093/nar/gkr1273.
23. Roghanian M, Zenkin N, Yuzenkova Y. Bacterial global regulators DksA/ppGpp increase fidelity of transcription. *Nucleic Acids Res.* 2015;43(3):1529–1536. doi:10.1093/nar/gkv003.
24. Azriel S, Goren A, Rahav G, and Gal-Mor O . The Stringent Response Regulator DksA Is Required for *Salmonella enterica* Serovar Typhimurium Growth in Minimal Medium, Motility, Biofilm Formation, and Intestinal Colonization. *Infect Immun.* 2016;84(1):375–384. doi:10.1128/IAI.01135-15.
25. Lyzen R, Maitra A, Milewska K, Kochanowska-Lyzen M, Hernandez VJ, Szalewska-Palasz A. The dual role of DksA protein in the regulation of *Escherichia coli* pArgX promoter. *Nucleic Acids Res.* 2016;44:10316–10325.
26. Lyzen R, Kochanowska M, Wegrzyn G, Szalewska-Palasz A. Transcription from bacteriophage lambda pR promoter is regulated independently and antagonistically by DksA and ppGpp. *Nucleic Acids Res.* 2009;37(20):6655–6664. doi:10.1093/nar/gkp676.
27. Aberg A, Shingler V, Balsalobre C. Regulation of the *fimB* promoter: a case of differential regulation by ppGpp and DksA in vivo. *Mol Microbiol.* 2008;67(6):1223–1241. doi:10.1111/j.1365-2958.2008.06115.x.
28. Neubauer P, Ahman M, Tornkvist M, Larsson G, Enfors SO. Response of guanosine tetraphosphate to glucose fluctuations in fed-batch cultivations of *Escherichia coli*. *J Biotechnol.* 1995;43(3):195–204. doi:10.1016/0168-1656(95)00130-1.
29. Yamamoto K, Matsumoto F, Oshima T, Fujita N, Ogasawara N, Ishihama A. Anaerobic regulation of citrate fermentation by CitAB in *Escherichia coli*. *Biosci Biotechnol Biochem.* 2008;72(11):3011–3014. doi:10.1271/bbb.80301.

30. Preiss J, Romeo T. Molecular biology and regulatory aspects of glycogen biosynthesis in bacteria. *Prog Nucleic Acid Res Mol Biol.* 1994;47:299–329.
31. Hensel M. Evolution of pathogenicity islands of *Salmonella enterica*. *Int J Med Microbiol.* 2004;294(2–3):95–102. doi:10.1016/j.ijmm.2004.06.025.
32. Pfeffer SR, Stahl SJ, Chamberlin MJ. Binding of *Escherichia coli* RNA polymerase to T7 DNA. Displacement of holoenzyme from promoter complexes by heparin. *J Biol Chem.* 1977;252(15):5403–5407. doi:10.1016/S0021-9258(19)63363-6.
33. Henard CA, Bourret TJ, Song M, Vazquez-Torres A. Control of redox balance by the stringent response regulatory protein promotes antioxidant defenses of *Salmonella*. *J Biol Chem.* 2010;285(47):36785–36793. doi:10.1074/jbc.M110.160960.
34. Crawford MA, Henard CA, Tapscott T, Porwollik S, McClelland M, Vazquez-Torres A. DksA-dependent transcriptional regulation in *Salmonella* experiencing nitrosative stress. *Front Microbiol.* 2016;7:444. doi:10.3389/fmicb.2016.00444.
35. Henard CA, and Vazquez-Torres A. DksA-dependent resistance of *Salmonella enterica* serovar Typhimurium against the antimicrobial activity of inducible nitric oxide synthase. *Infect Immun.* 2012;80(4):1373–1380. doi:10.1128/IAI.06316-11.
36. Wong KK, McClelland M, Stillwell LC, Sisk EC, Thurston SJ, Saffer JD. Identification and sequence analysis of a 27-Kilobase chromosomal fragment containing a *Salmonella* pathogenicity Island located at 92 minutes on the chromosome map of *Salmonella enterica* serovar typhimurium LT2. *Infect Immun.* 1998;66(7):3365–3371. doi:10.1128/IAI.66.7.3365-3371.1998.
37. Gerlach RG, Jackel D, Stecher B, Wagner C, Lupas A, Hardt WD, Hensel M. *Salmonella* pathogenicity Island 4 encodes a giant non-fimbrial adhesin and the cognate type 1 secretion system. *Cell Microbiol.* 2007;9(7):1834–1850. doi:10.1111/j.1462-5822.2007.00919.x.
38. Truong D, Boddy KC, Canadien V, Brabant D, Fairn GD, D'Costa VM, Coyaud E, Raught B, Pérez-Sala D, Park WS, et al. *Salmonella* exploits host Rho GTPase signalling pathways through the phosphatase activity of SopB. *Cell Microbiol.* 2018;20(10):e12938. doi:10.1111/cmi.12938.
39. Knodler LA, Celli J, Hardt WD, Vallance BA, Yip C, Finlay BB. *Salmonella* effectors within a single pathogenicity island are differentially expressed and translocated by separate type III secretion systems. *Mol Microbiol.* 2002;43(5):1089–1103. doi:10.1046/j.1365-2958.2002.02820.x.
40. Gunn JS, Alpuche-Aranda CM, Loomis WP, Belden WJ, Miller SI. Characterization of the *Salmonella typhimurium* pagC/pagD chromosomal region. *J Bacteriol.* 1995;177(17):5040–5047. doi:10.1128/jb.177.17.5040-5047.1995.
41. Buchanan K, Falkow S, Hull RA, Hull SI. Frequency among enterobacteriaceae of the DNA sequences encoding type 1 pili. *J Bacteriol.* 1985;162(2):799–803. doi:10.1128/jb.162.2.799-803.1985.
42. Freitag CS, Abraham JM, Clements JR, Eisenstein BL. Genetic analysis of the phase variation control of expression of type 1 fimbriae in *Escherichia coli*. *J Bacteriol.* 1985;162(2):668–675. doi:10.1128/jb.162.2.668-675.1985.
43. Tinker JK, Clegg S. Control of FimY translation and type 1 fimbrial production by the arginine tRNA encoded by fimU in *Salmonella enterica* serovar Typhimurium. *Mol Microbiol.* 2001;40(3):757–768. doi:10.1046/j.1365-2958.2001.02430.x.
44. Federle MJ, Bassler BL. Interspecies communication in bacteria. *J Clin Invest.* 2003;112(9):1291–1299. doi:10.1172/JCI20195.
45. De Keersmaecker SC, Sonck K, Vanderleyden J. Let LuxS speak up in AI-2 signaling. *Trends Microbiol.* 2006;14(3):114–119. doi:10.1016/j.tim.2006.01.003.
46. Diaz Z, Xavier KB, Miller ST, Valdivia RH. The crystal structure of the *Escherichia coli* autoinducer-2 processing protein LsrF. *PLoS One.* 2009;4(8):e6820. doi:10.1371/journal.pone.0006820.
47. Chilcott GS, Hughes KT. Coupling of flagellar gene expression to flagellar assembly in *Salmonella enterica* serovar Typhimurium and *Escherichia coli*. *Microbiol Mol Biol Rev.* 2000;64(4):694–708. doi:10.1128/MMBR.64.4.694-708.2000.
48. Aberg A, Fernandez-Vazquez J, Cabrer-Panes JD, Sanchez A, Balsalobre C. Similar and divergent effects of ppGpp and DksA deficiencies on transcription in *Escherichia coli*. *J Bacteriol.* 2009;191(10):3226–3236. doi:10.1128/JB.01410-08.
49. Perez JC, Groisman EA. Evolution of transcriptional regulatory circuits in bacteria. *Cell.* 2009;138(2):233–244. doi:10.1016/j.cell.2009.07.002.
50. Ancona V, Lee JH, Chatnaparat T, Oh J, Hong JJ, Zhao Y, Zhulin IB. The bacterial alarmone (p)ppGpp activates the type III secretion system in *Erwinia amylovora*. *J Bacteriol.* 2015;197(8):1433–1443. doi:10.1128/JB.02551-14.
51. Lee JH, Zhao Y. Integration of multiple stimuli-sensing systems to regulate HrpS and type III secretion system in *Erwinia amylovora*. *Mol Genet Genomics.* 2018;293(1):187–196. doi:10.1007/s00438-017-1376-3.
52. Zhang Y, Teper D, Xu J, Wang N. Stringent response regulators (p)ppGpp and DksA positively regulate virulence and host adaptation of *Xanthomonas citri*. *Mol Plant Pathol.* 2019;20(11):1550–1565. doi:10.1111/mpp.12865.
53. Jude F, Kohler T, Branny P, Perron K, Mayer MP, Comte R, Van Delden C. Posttranscriptional control of quorum-sensing-dependent virulence genes by DksA in *Pseudomonas aeruginosa*. *J Bacteriol.* 2003;185(12):3558–3566. doi:10.1128/JB.185.12.3558-3566.2003.
54. Min KB, Yoon SS. Transcriptome analysis reveals that the RNA polymerase-binding protein DksA1 has pleiotropic functions in *Pseudomonas aeruginosa*. *J Biol Chem.* 2020;295(12):3851–3864. doi:10.1074/jbc.RA119.011692.

55. Basu P, Pal RR, Dasgupta S, Bhadra RK. DksA-HapR-RpoS axis regulates haemagglutinin protease production in *Vibrio cholerae*. *Microbiology*. 2017;163(6):900–910. doi:10.1099/mic.0.000469.
56. Basu P, Bhadra RK. Post-transcriptional regulation of cholera toxin production in *Vibrio cholerae* by the stringent response regulator DksA. *Microbiology*. 2019;165(1):102–112. doi:10.1099/mic.0.000743.
57. Holley CL, Zhang X, Fortney KR, Ellinger S, Johnson P, Baker B, Liu Y, Janowicz DM, Katz BP, Munson RS, et al. DksA and (p)ppGpp have unique and overlapping contributions to haemophilus ducreyi pathogenesis in humans. *Infect Immun*. 2015;83(8):3281–3292. doi:10.1128/IAI.00692-15.
58. Quebatte M, Dick MS, Kaever V, Schmidt A, Dehio C. Dual input control: activation of the Bartonella henselae VirB/D4 type IV secretion system by the stringent sigma factor RpoH1 and the BatR/BatS two-component system. *Mol Microbiol*. 2013;90(4):756–775. doi:10.1111/mmi.12396.
59. Dalebroux ZD, Yagi BF, Sahr T, Buchrieser C, Swanson MS. Distinct roles of ppGpp and DksA in Legionella pneumophila differentiation. *Mol Microbiol*. 2010;76(1):200–219. doi:10.1111/j.1365-2958.2010.07094.x.
60. Yun J, Jeon B, Barton YW, Plummer P, Zhang Q, Ryu S. Role of the DksA-like protein in the pathogenesis and diverse metabolic activity of campylobacter jejuni. *J Bacteriol*. 2008;190(13):4512–4520. doi:10.1128/JB.00105-08.
61. Nakanishi N, Abe H, Ogura Y, Hayashi T, Tashiro K, Kuhara S, Sugimoto N, Tobe T. ppGpp with DksA controls gene expression in the locus of enterocyte effacement (LEE) pathogenicity island of enterohaemorrhagic Escherichia coli through activation of two virulence regulatory genes. *Mol Microbiol*. 2006;61(1):194–205. doi:10.1111/j.1365-2958.2006.05217.x.
62. Mogull SA, Runyen-Janecky LJ, Hong M, Payne SM, O'Brien AD. dksA is required for intercellular spread of Shigella flexneri via an RpoS-independent mechanism. *Infect Immun*. 2001;69(9):5742–5751. doi:10.1128/IAI.69.9.5742-5751.2001.
63. Tapscott T, Kim J-S, Crawford MA, Fitzsimmons L, Liu L, Jones-Carson J, Vázquez-Torres A. Guanosine tetraphosphate relieves the negative regulation of Salmonella pathogenicity island-2 gene transcription exerted by the AT-rich ssrA discriminator region. *Sci Rep*. 2018;8(1):9465. doi:10.1038/s41598-018-27780-9.
64. Turner AK, Lovell MA, Hulme SD, Zhang-Barber L, Barrow PA. Identification of Salmonella typhimurium genes required for colonization of the chicken alimentary tract and for virulence in newly hatched chicks. *Infect Immun*. 1998;66(5):2099–2106. doi:10.1128/IAI.66.5.2099-2106.1998.
65. Webb C, Moreno M, Wilmes-Riesenberg M, Curtiss R 3rd, Foster JW. Effects of DksA and ClpP protease on sigma S production and virulence in Salmonella typhimurium. *Mol Microbiol*. 1999;34(1):112–123. doi:10.1046/j.1365-2958.1999.01581.x.
66. Schmitt CK, Ikeda JS, Darnell SC, Watson PR, Bispham J, Wallis TS, Weinstein DL, Metcalf ES, and O'Brien AD. Absence of all components of the flagellar export and synthesis machinery differentially alters virulence of Salmonella enterica serovar typhimurium in models of typhoid fever, survival in macrophages, tissue culture invasiveness, and calf enterocolitis. *Infect Immun*. 2001;69(9):5619–5625. doi:10.1128/IAI.69.9.5619-5625.2001.
67. Stecher B, Hapfelmeier S, Muller C, Kremer M, Stallmach T, Hardt WD. Flagella and chemotaxis are required for efficient induction of salmonella enterica serovar typhimurium colitis in streptomycin-pretreated mice. *Infect Immun*. 2004;72(7):4138–4150. doi:10.1128/IAI.72.7.4138-4150.2004.
68. Ellermeier CD, Schlauch JM. RtsA and RtsB coordinately regulate expression of the invasion and flagellar genes in Salmonella enterica Serovar Typhimurium. *J Bacteriol*. 2003;185(17):5096–5108. doi:10.1128/JB.185.17.5096-5108.2003.
69. Singer HM, Kuhne C, Deditius JA, Hughes KT, Erhardt M. The Salmonella Spi1 virulence regulatory protein HilD directly activates transcription of the flagellar master operon flhDC. *J Bacteriol*. 2014;196(7):1448–1457. doi:10.1128/JB.01438-13.
70. Horstmann JA, Zschieschang E, Truschel T, De Diego J, Lunelli M, Rohde M, May, T, Strowig, T, Stradal, T, and Kolbe, M. Flagellin phase-dependent swimming on epithelial cell surfaces contributes to productive Salmonella gut colonisation. *Cell Microbiol*. 2017;19(8). doi: 10.1111/cmi.12739.
71. Misselwitz B, Barrett N, Kreibich S, Vonaesch P, Andritschke D, Rout S, Weidner K, Sormaz M, Songhet P, Horvath P, et al. Near surface swimming of Salmonella Typhimurium explains target-site selection and cooperative invasion. *PLoS Pathog*. 2012;8(7):e1002810. doi:10.1371/journal.ppat.1002810.
72. Serra-Moreno R, Acosta S, Hernalsteens JP, Jofre J, Muniesa M. Use of the lambda Red recombinase system to produce recombinant prophages carrying antibiotic resistance genes. *BMC Mol Biol*. 2006;7(1):31. doi:10.1186/1471-2199-7-31.
73. Datsenko KA, Wanner BL. One-step inactivation of chromosomal genes in Escherichia coli K-12 using PCR products. *Proc Natl Acad Sci U S A*. 2000;97(12):6640–6645. doi:10.1073/pnas.120163297.
74. Langmead B, Salzberg SL. Fast gapped-read alignment with Bowtie 2. *Nat Methods*. 2012;9(4):357–359. doi:10.1038/nmeth.1923.

75. Love MI, Huber W, Anders S. Moderated estimation of fold change and dispersion for RNA-seq data with DESeq2. *Genome Biol.* 2014;15(12):550. doi:10.1186/s13059-014-0550-8.
76. Varet H, Brillet-Gueguen L, Coppee JY, Dillies MA, Mills K. SARTools: a DESeq2- and EdgeR-Based R pipeline for comprehensive differential analysis of RNA-seq data. *PLoS One.* 2016;11(6):e0157022. doi:10.1371/journal.pone.0157022.
77. Wattam AR, Abraham D, Dalay O, Disz TL, Driscoll T, Gabbard JL, Gillespie JJ, Gough R, Hix D, Kenyon R, et al. PATRIC, the bacterial bioinformatics database and analysis resource. *Nucleic Acids Res.* 2014;42(D1):D581–91. doi:10.1093/nar/gkt1099.
78. Lechner M, Findeiss S, Steiner L, Marz M, Stadler PF, Prohaska SJ. Proteinortho: detection of (co-)orthologs in large-scale analysis. *BMC Bioinform.* 2011;12(1):124. doi:10.1186/1471-2105-12-124.
79. Kanehisa M, Sato Y. KEGG mapper for inferring cellular functions from protein sequences. *Protein Sci.* 2020;29(1):28–35. doi:10.1002/pro.3711.
80. Elhadad D, Desai P, Grassl GA, McClelland M, Rahav G, Gal-Mor O. Differences in host cell invasion and Salmonella pathogenicity Island 1 Expression between Salmonella enterica Serovar Paratyphi A and Nontyphoidal S. Typhimurium. *Infect Immun.* 2016;84(4):1150–1165. doi:10.1128/IAI.01461-15.
81. Del Peso Santos T, Shingler V. Inter-sigmulon communication through topological promoter coupling. *Nucleic Acids Res.* 2016;44(20):9638–9649. doi:10.1093/nar/gkw639.
82. Gal-Mor O, Suez J, Elhadad D, Porwollik S, Leshem E, Valinsky L, McClelland M, Schwartz E, Rahav G. Molecular and cellular characterization of a Salmonella enterica serovar Paratyphi a outbreak strain and the human immune response to infection. *Clin Vaccine Immunol.* 2012;19(2):146–156. doi:10.1128/CVI.05468-11.
83. Ihara Y, Ohta H, Masuda S. A highly sensitive quantification method for the accumulation of alarmone ppGpp in Arabidopsis thaliana using UPLC-ESI-qMS/MS. *J Plant Res.* 2015;128(3):511–518. doi:10.1007/s10265-015-0711-1.