

# UC San Diego

## UC San Diego Previously Published Works

### Title

Two key cathepsins, TgCPB and TgCPL, are targeted by the vinyl sulfone inhibitor K11777 in in vitro and in vivo models of toxoplasmosis.

### Permalink

<https://escholarship.org/uc/item/6jk468f6>

### Journal

PloS one, 13(3)

### ISSN

1932-6203

### Authors

Chaparro, Juan D  
Cheng, Timmy  
Tran, Uyen Phuong  
[et al.](#)

### Publication Date

2018

### DOI

10.1371/journal.pone.0193982

Peer reviewed

RESEARCH ARTICLE

# Two key cathepsins, TgCPB and TgCPL, are targeted by the vinyl sulfone inhibitor K11777 in *in vitro* and *in vivo* models of toxoplasmosis

Juan D. Chaparro<sup>1#a</sup>, Timmy Cheng<sup>2#b</sup>, Uyen Phuong Tran<sup>2#c</sup>, Rosa M. Andrade<sup>3</sup>, Sara B. T. Brenner<sup>2</sup>, Grace Hwang<sup>2#d</sup>, Shara Cohn<sup>2#e</sup>, Ken Hirata<sup>2</sup>, James H. McKerrow<sup>4</sup>, Sharon L. Reed<sup>2\*</sup>

**1** Department of Pediatrics, Division of Infectious Diseases, Rady Children's Hospital, University of California, San Diego, School of Medicine, La Jolla, California, United States of America, **2** Department of Pathology, University of California, San Diego School of Medicine, La Jolla, California, United States of America, **3** Department of Medicine, Division of Infectious Diseases, University of California, Irvine School of Medicine, Irvine, California, United States of America, **4** Department of Pharmacy, Skaggs School of Pharmacy and Pharmaceutical Science, University of California, San Diego, La Jolla, California, United States of America

<sup>#a</sup> Current address: Nationwide Children's Hospital, 700 Children's Dr., Columbus, Ohio, United States of America

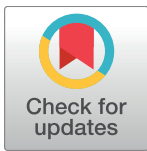
<sup>#b</sup> Current address: Department of Medicine, Division of Pulmonary Medicine and Critical Care, University of California Irvine, Irvine, California, United States of America

<sup>#c</sup> Current address: Department of Pathology, University of California Irvine School of Medicine, Irvine, California, United States of America

<sup>#d</sup> Current address: Illumina, Inc., San Diego, California, United States of America

<sup>#e</sup> Current address: Department of Anesthesiology, Stanford University School of Medicine, Stanford, California, United States of America

\* [slreed@ucsd.edu](mailto:slreed@ucsd.edu)



**OPEN ACCESS**

**Citation:** Chaparro JD, Cheng T, Tran UP, Andrade RM, Brenner SBT, Hwang G, et al. (2018) Two key cathepsins, TgCPB and TgCPL, are targeted by the vinyl sulfone inhibitor K11777 in *in vitro* and *in vivo* models of toxoplasmosis. PLoS ONE 13(3): e0193982. <https://doi.org/10.1371/journal.pone.0193982>

**Editor:** Marcelo U. Ferreira, University of Sao Paulo, BRAZIL

**Received:** August 9, 2017

**Accepted:** February 19, 2018

**Published:** March 22, 2018

**Copyright:** © 2018 Chaparro et al. This is an open access article distributed under the terms of the [Creative Commons Attribution License](https://creativecommons.org/licenses/by/4.0/), which permits unrestricted use, distribution, and reproduction in any medium, provided the original author and source are credited.

**Data Availability Statement:** All relevant data are within the paper and its Supporting Information files.

**Funding:** This work was supported by funds from NIAID grant AI41093 (to SLR), the University of California University-wide AIDS Research Program ID04-SD-079 (to SLR), the Rockefeller Brothers Fund (to SLR), Harold Amos Minority Medical Faculty Development Program (to RMA), UCSD Academic Senate Grant 07427A (to RMA), Robert

## Abstract

Although toxoplasmosis is one of the most common parasitic infections worldwide, therapeutic options remain limited. Cathepsins, proteases that play key roles in the pathogenesis of toxoplasmosis and many other protozoan infections, are important potential therapeutic targets. Because both TgCPB and TgCPL play a role in *T. gondii* invasion, we evaluated the efficacy of the potent, irreversible vinyl sulfone inhibitor, K11777 (*N*-methyl-piperazine-Phe-homoPhe-vinylsulfone-phenyl). The inhibitor's toxicity and pharmacokinetic profile have been well-studied because of its *in vitro* and *in vivo* activity against a number of parasites. We found that it inhibited both TgCPB (EC50 = 114 nM) and TgCPL (EC50 = 71 nM) *in vitro*. K11777 also inhibited invasion of human fibroblasts by RH tachyzoites by 71% ( $p = 0.003$ ) and intracellular replication by >99% ( $p < 0.0001$ ). *In vivo*, a single dose of K11777 led to 100% survival of chicken embryos in a model of acute toxoplasmosis ( $p = 0.015$  Cox regression analysis). Therefore, K11777 shows promise as a novel therapeutic agent in the treatment of toxoplasmosis, and may prove to be a broadly effective anti-parasitic agent.

Wood Johnson Foundation Grant RWJF 70642 (to RMA), and NIH 2T32A1007036-31A1 (to RMA). The funders had no role in study design, data collection and analysis, decision to publish, or preparation of the manuscript.

**Competing interests:** The authors have declared that no competing interests exist.

## Introduction

*Toxoplasma gondii* is an intracellular protozoan parasite recognized as a pathogen more than 100 years ago. Humans acquire the parasite mainly through ingestion of contaminated undercooked meat, food or water contaminated with feline feces, vertical transmission from mother to fetus, or through blood transfusions or organ transplants [1]. An estimated 22.5% of the population 12 years and older or 60,000,000 people in the US have been infected with toxoplasmosis, and the seroprevalence is markedly higher in developing countries [2,3]. Although acute infection of an immunocompetent host is usually clinically asymptomatic, it leads to life-long, latent infection. Furthermore, primary infection of the fetus (approximately 1 in 1000 live births in the US) can cause devastating and even fatal disease [4,5]. Additionally, reactivation of latent infection in immunosuppressed individuals, particularly AIDS patients, can manifest as *Toxoplasma* encephalitis, a uniformly fatal condition if left untreated [2].

The first line of therapy for toxoplasmosis includes a combination of pyrimethamine and sulfadiazine, a regimen more than 50 years old with frequent toxic side effects. Pyrimethamine, a folic acid antagonist, is considered the most effective anti-*Toxoplasma* agent, but it requires monitoring during therapy for bone marrow suppression and is contraindicated during pregnancy due to teratogenicity. Access to pyrimethamine may also be limited by recent significant increases in the retail price [6]. Sulfadiazine, which acts synergistically with pyrimethamine, is a major cause of drug reactions. This is particularly prevalent in the HIV-infected population, where up to 34% of patients receiving prophylactic trimethoprim-sulfamethoxazole experience fever and rash [7]. These percentages rise to as high as 50% in the setting of active AIDS and *Pneumocystis jirovecii* pneumonia [8]. These factors led the CDC to designate toxoplasmosis as one of the neglected parasitic infections in the US in 2014. Thus, drug development to treat toxoplasmosis is an important priority.

*T. gondii* tachyzoites can invade any nucleated cell in a process mediated by the sequential release of specialized secretory organelles in an apical complex: micronemes, rhoptries and dense granules. Many of these key proteins require proteolytic processing; more than half of microneme proteins and the majority of rhoptry proteins [9,10] are synthesized as preproproteins that undergo enzymatic maturation before storage and secretion.

Clan CA cathepsins, a subgroup of cysteine proteinases, are potential drug targets as they have been identified as important enzymes in survival of multiple protozoa. *Plasmodium falciparum* utilizes three cathepsin L-like proteinases to digest hemoglobin in the food vacuole [11], and the cathepsin B of *Trypanosoma brucei* is critical for iron acquisition by degrading host transferrin [12]. Unlike most protozoa, *T. gondii* only possesses a limited number of Clan CA family C1 cysteine proteinases: one cathepsin B (TgCPB) [13], one cathepsin L (TgCPL) [14], and three cathepsin C's (TgCPC1, C2 and C3) [15].

Cathepsins are important in invasion of host cells [13, 14, 16–21] and in maintenance of chronic infection by *T. gondii* [22]. TgCPL is required for the release of two key microneme proteins, TgM2AP and TgMIC3, which are required for invasion [16], and as a maturase for TgCPB, which is located in the same vacuolar compartment as TgCPL [21]. TgCPB has also been shown to play a role in invasion and replication of the organism in both *in vivo* and *in vitro* models [18]. Both TgCPB and TgCPL were upregulated in mice with chronic toxoplasmosis infection [23].

The vinyl sulfone inhibitor, K11777 (N-methyl-piperazine-phenylalanyl-homophenylalanyl-vinylsulfone phenyl), has activity against both protozoan cathepsin Bs (*Trypanosoma brucei*) [12], cathepsin Ls (*Trypanosoma cruzii*) [24], and cathepsins which are structurally cathepsin L, but have substrate specificities of cathepsin Bs (*E. histolytica*) [25]. K11777 is a well-tolerated, orally bioavailable compound that is currently in the late stages of pre-clinical

development for treatment of infection with *Trypanosoma cruzi* (McKerrow, personal communication). We now show that K11777 significantly blocks invasion and multiplication of *T. gondii* *in vitro*, and that a single dose dramatically prevents mortality in a chick model of toxoplasmosis.

## Materials and methods

### *Toxoplasma gondii* cultures

Primary human foreskin fibroblasts (HFF, HFF-1 SCRC-104I from ATCC, Manassas, VA) were cultured in Dulbecco's Modified Eagle's Medium (DMEM, Cellgro) containing 10% heat-inactivated fetal bovine serum (Hyclone, Thermo Fisher Scientific, Waltham, MA) and penicillin and streptomycin (50 µg/mL). *Toxoplasma gondii* RH (a kind gift from Dr. John Boothroyd) was maintained by serial passage in human foreskin fibroblasts (HFF) monolayers as previously described [15].

### Reagents

All reagents were obtained from Sigma (St. Louis, Mo.) unless otherwise noted. K11777 was made in its HCl salt form by Seres Laboratories, Inc. (Santa Rosa, CA), and stock solutions made at 20 mM or 100 mM in DMSO.

### *In vitro* invasion and replication assays

Human foreskin fibroblasts (HFF) were grown to near confluency in 8-well chamber slides in preparation for the invasion and replication assays (Labtek, Scotts Valley, CA). To assess the effect of K11777 on the ability of tachyzoites to invade, RH tachyzoites ( $5 \times 10^5$ ) were added to each well of confluent chamber slides in either media alone or with 20 µM K11777, and allowed to invade for 2 hours. The wells were fixed, stained with acridine orange, and the number of invaded fibroblasts determined in a minimum of 100 cells as previously described [13]. For inhibition of replication,  $2 \times 10^5$  RH tachyzoites were first allowed to invade each well of confluent chamber slides in complete media for two hours, the media was removed, and the slides were washed thoroughly with PBS to remove free tachyzoites. The wells were then replenished with either complete media alone or with complete media and K11777 at 20 µM and allowed to incubate for 24 hours total. The slides were fixed, stained with acridine orange, and the number of tachyzoites/vacuole were counted as previously described [13].

A comparison was performed of detection of parasite invasion by acridine orange staining with a modification of the red/green invasion assay [16, 26]. Extracellular parasites were stained with p30 mAb to the surface antigen, SAG1 [27], (Abcam, Cambridge, MA, 1:10 dilution), then permeabilized and incubated with rabbit anti-ROP13 Ab (1:2000 dilution, kind gift of Dr. Peter Bradley). Secondary antibodies included goat, anti-mouse AlexaFluor 594 (1:2000 dilution) and goat, anti-rabbit AlexaFluor 488 (1:500 dilution, Abcam, Cambridge, MA).

### Effect of K11777 on human foreskin fibroblasts (HFF)

We generated confluent monolayers of HFF host cells in clear bottom 96-well plates. These cells were treated with 10-fold dilutions of K11777 (2 mM–0.02 µM). After 1 or 7 days incubation, the resulting cytotoxicity was measured with the Cell Titer 96 Non-Radioactive Cell Proliferation Assay according to manufacturer's instructions (Promega, Madison, WI). The cell viability values were calculated relative to the untreated controls (defined as 100% survival)

using a multi-mode plate reader (SpectraMax i3X, Molecular Devices, SoftMax Pro 7.02) [28]. The EC<sub>50</sub> was calculated from the dose-response curve in GraphPad Prism.

## Production and inhibition of active recombinant *T. gondii* cathepsin B and L

Recombinant TgCPB and TgCPL proteins were expressed in *Pichia pastoris* under the control of the *Pichia* methanol-inducible, alcohol oxidase (AOX1) promoter and the yeast  $\alpha$ -factor secretion signal (Invitrogen) as previously described (S1 Table) [14]. Inhibition of recombinant TgCPB and TgCPL by K11777 was tested by incubating the recombinant proteinase with varying dilutions of K11777 at room temperature for 10 minutes and then measuring the cleavage and liberation of the fluorescent leaving group AMC from synthetic peptide substrates as described above. A dose-response curve was then created in GraphPad Prism to determine the EC<sub>50</sub> as previously described [28].

## *In vivo* model of K11777 activity against acute toxoplasmosis

Fourteen-day old pathogen-free fertilized chicken eggs (McIntyre Farms, Lakeside, CA) were inoculated with  $10^4$  RH tachyzoites suspended in either 50  $\mu$ L of cell culture medium alone or in medium with K11777 to achieve a concentration of 20  $\mu$ M in the estimated blood volume of a 14-day old embryo [29]. The tachyzoites were injected directly into the chorioallantoic vein using a 28-gauge needle as previously described [18]. Infection was allowed to proceed until death or day 7 post-inoculation (before hatching). Livers and brains were harvested from all embryos at 7 days post-infection or as soon as death occurred, as evidenced by lack of movement or decreased prominence of vasculature. One half of each organ was fixed in 4% paraformaldehyde for histopathology (hematoxylin/eosin staining and immunostaining for *T. gondii* with anti-*T. gondii* HRP antibody). The remaining half of each organ was used for real-time PCR.

## Ethics statement

As per Public Health Services policy, Institutional Animal Care and Use Committee oversight is not required for the chick embryo model of toxoplasmosis using unhatched eggs. Although avian species develop vertebrae in their development prior to hatching, the Office for Laboratory Animal Welfare has interpreted “live vertebrate animal” to apply to avians (e.g., chick embryos) only after hatching (approximately 21 days). The UCSD Institutional Animal Care and Use Committee agrees with these guidelines. Available from: <http://grants.nih.gov/grants/olaw/references/ilar91.htm>

## Quantification of *T. gondii* in chick model of acute toxoplasmosis

The single copy SAG1 gene [27] (GenBank accession no. X14080) was used as the reference gene to calculate parasite load in tissue samples relative to a standard curve [18]. The standard curve samples were obtained by adding  $10^7$  RH tachyzoites to 100 mg samples of uninfected brain or liver from 19-day old chick embryos (unhatched) and homogenizing the preparation with a cordless homogenizer (VWR) in kit lysis buffer. Total genomic DNA was extracted from 25  $\mu$ L aliquots using the DNeasy Kit according to the manufacturer's instructions (Qiagen, Germantown, MD). Extracted genomic DNA was eluted in 200  $\mu$ L of elution buffer and serially diluted ( $10^3$ – $10^5$ ), and the threshold cycle values determined for the standard curve. The plot of the serial dilutions vs. the threshold cycle was generated for each experiment by the StepOnePlus Real-Time PCR System (Applied Biosystems, Foster City, CA) and had an

average correlation coefficient ( $R^2$ ) of 0.993 and efficiency of 84.53%. Experimental tissue samples were prepared by weighing out 100 mg of tissue (liver or brain), which was homogenized and genomic DNA extracted as above. Two microliter aliquots of genomic DNA were used as template in technical triplicates with primers and probe sets (S1 Table) designed using the Integrated DNA Technologies website (<https://www.idtdna.com/site>) and MESA GREEN qPCR MasterMix Plus (AnaSpec Inc., Fremont, CA) on the StepOnePlus Real-Time PCR System (Applied Biosystems, Foster City, CA). Cycling conditions were 95°C for 10 min, followed by 40 cycles of 95°C for 15s, and 60°C for 1 min.

### Statistical analysis

Statistical analysis was performed using GraphPad Prism software 6.0 and IBM SPSS Statistics Version 21. Two-tailed independent samples T-tests were used to compare continuous variables ( $p < 0.05$ ), Chi-square analysis was utilized for comparing ordinal groups and survival analysis was performed using Cox regression analysis.

## Results

### Efficacy of K11777 against recombinant TgCPL and TgCPB

Recombinant TgCPL and TgCPB proteins were activated with DTT, and their baseline protease activity was compared to activity when logarithmic dilutions of K11777 were added to create dose-response curves. The resultant EC50 value of K11777 against TgCPL was 71nM and against TgCPB was 114nM.

### K11777 inhibits invasion and intracellular multiplication

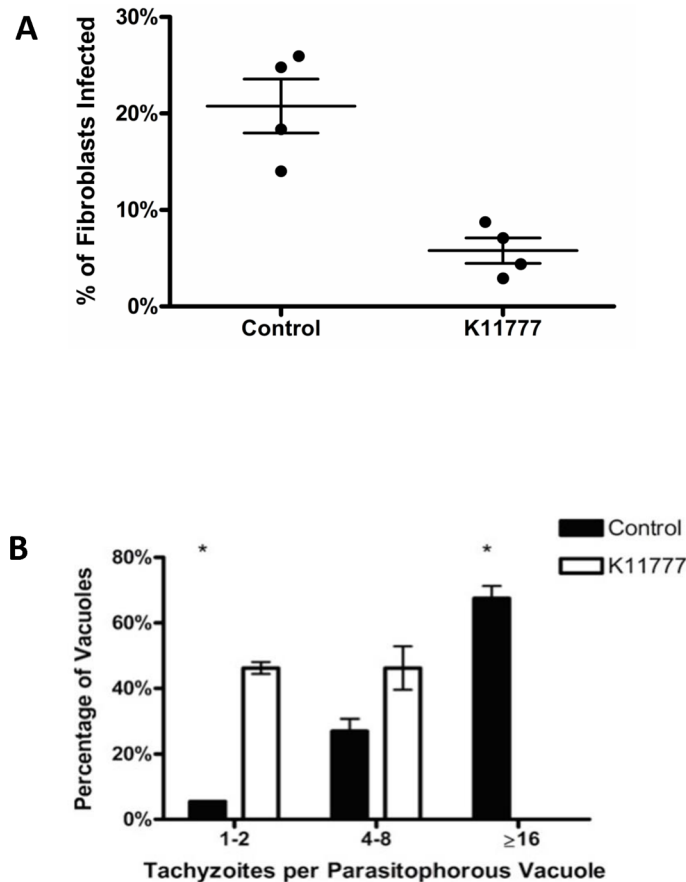
The addition of K11777 to cell culture medium at a concentration of 20 $\mu$ M led to a significant decrease in invasion during the two-hour invasion period (Fig 1A). The control wells had an average of 20.8% of fibroblasts infected, and the wells with K11777 had 5.8% of fibroblasts infected, representing a relative reduction of 71% ( $p = 0.003$ ). Equivalent results were found whether invasion assays were performed and analyzed by acridine orange staining or differential staining of internal and external tachyzoites in the red/green invasion assay [16, 26] (S1 Fig).

The rate of intracellular replication was also significantly inhibited by K11777 with a relative reduction of >99% of the number of cells with  $\geq 16$  tachyzoites/ vacuole in K11777 treated cells vs. control RH ( $p < 0.0001$ ) (Fig 1B). There was no significant difference in the number of cells containing 4–8 tachyzoites ( $p = 0.272$ ).

To confirm that K11777 did not affect the fibroblast cells, we measured the cytotoxicity of K11777 for confluent monolayers of HFF host cells in clear bottom 96-well plates incubated for 24 hrs with 10-fold dilutions of K1177 (2 mM–0.02  $\mu$ M). Cytotoxicity was measured by formazan uptake using the CellTiter96 Non-radioactive Cell Proliferation Assay (Promega, Madison WI) and compared to % survival of untreated controls [28]. The EC50 was 94  $\mu$ M at 24 hrs or 4.7-fold higher than the concentration used in the experiments.

### K11777 protects chick embryos from fatal *Toxoplasma* infection

Chick embryos were injected with  $10^4$  tachyzoites in growth media alone or with a single dose of K11777 for a final blood concentration of 20  $\mu$ M in the chick. Eggs were allowed to proceed to day 21 or until death. The survival curve of the two groups is displayed in Fig 2. All of the treated chick embryos survived until day 6 vs. only 2 of the controls ( $p = 0.015$  by Cox regression analysis).



**Fig 1.** (A) Effect of K11777 on tachyzoite invasion. The percentage of fibroblast cells invaded by RH strain tachyzoites after 2 hrs in complete media alone (Control) was compared to invasion in the presence of K11777 (20 $\mu$ M in complete media). K11777 significantly inhibited invasion of the fibroblasts (N = 8 for each treatment, p = 0.003). Error bars reflect SEM. (B) Effect of K11777 on intracellular tachyzoite replication. RH strain tachyzoites ( $2 \times 10^5$ ) were allowed to invade HFF in chamber wells for 2 hrs in media alone, the free tachyzoites washed away, and either media alone (control) or media with K11777 (20  $\mu$ M) was added for an additional 22 hrs. When the number of tachyzoites per parasitophorous vacuole was determined, the K11777 treated wells had significantly more parasitophorous vacuoles with only 1–2 tachyzoites and none with  $\geq 16$ / vacuole. (N = 8 for each treatment.) \* Significant at p<0.001 by Chi-square. Error bars reflect SEM.

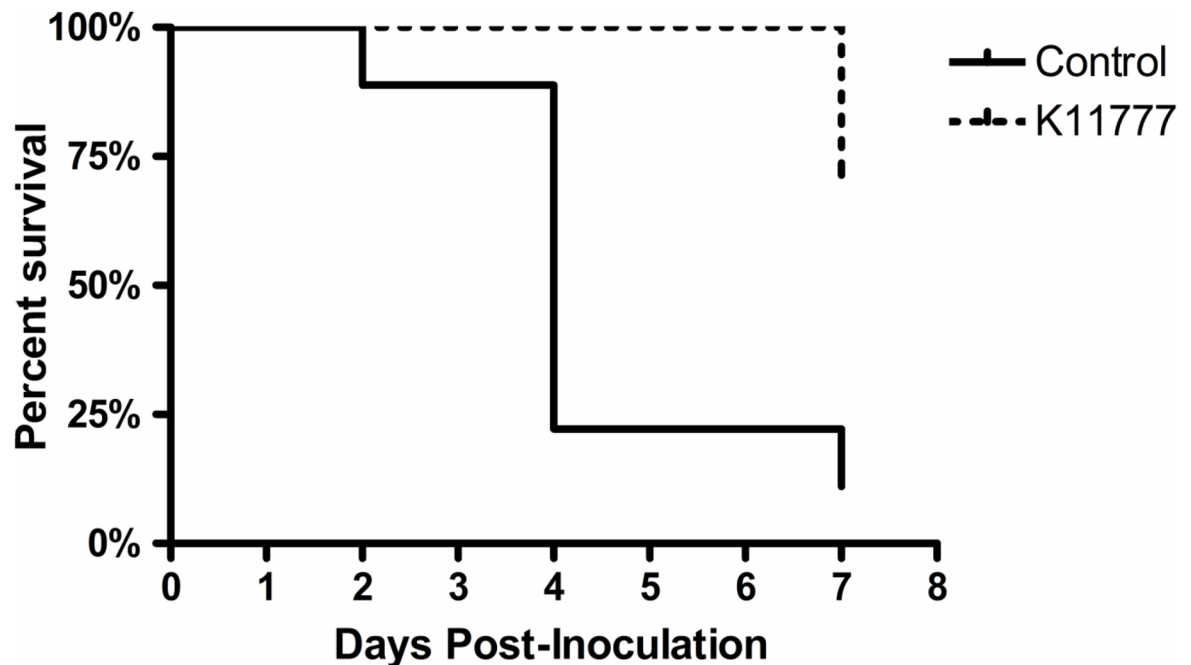
<https://doi.org/10.1371/journal.pone.0193982.g001>

Quantitative PCR of liver and brain tissue harvested from the chick embryos revealed a 3–4 log drop in parasite load in the treated embryos. The average number of *Toxoplasma* in brain tissue (100 mg) was  $8.53 \times 10^5$  in controls vs.  $9.92 \times 10^2$  in treated (p < 0.001, Fig 3A) and in liver (100 mg),  $4.12 \times 10^7$  in controls vs.  $1.98 \times 10^3$  in treated (p = 0.001, Fig 3B). These differences were highly significant and reflect a  $\geq 99.9\%$  reduction in parasite burden in the K11777 treated group.

## Discussion

*T. gondii*'s very limited repertoire of only five papain-like cathepsins, one cathepsin B, one cathepsin L, and three cathepsin Cs, is unique among parasites [15]. The role of TgCPL (CPL) in *T. gondii* biology and host-parasite interactions has been the best characterized. Carruther's group has shown that TgCPL is required for release of key microneme attachment proteins [16] and plays a role in the maturation of TgCPB [19]. Knock-outs of TgCPL in a cyst





**Fig 2. A single dose of K11777 protects chicken embryos in an *in vivo* model of toxoplasmosis.** Fourteen day old chick eggs ( $N = 10$ /treatment) were injected through the chorioallantoic vein with  $10^4$  RH tachyzoites in media alone (Control) or media containing K11777 for a final blood concentration of 20  $\mu$ M). The Kaplan-Meier Survival curve of the chick embryos ( $N = 10$  per group) showed that 100% of the chick embryos treated with a single dose of K11777 embryos survived until Day 6 vs. only 20% of the control embryos ( $p = 0.015$  by Cox regression analysis).

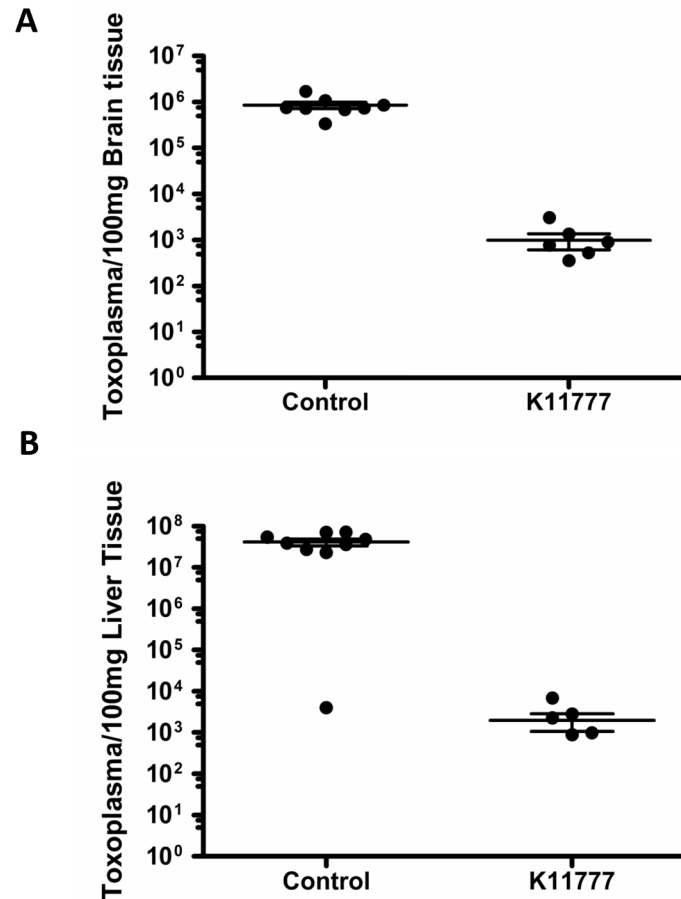
<https://doi.org/10.1371/journal.pone.0193982.g002>

producing strain, ME49, revealed a role of TgCPL in autophagy required for the maintenance of chronic infection [22].

The physiologic substrate(s) of TgCPB have not been definitively identified. We had earlier reported that TgCPB localized to the rhoptries and specific inhibitors of TgCPB decreased degradation of ROP2, a major rhoptry protein that is proteolytically processed [13]. This work predated the characterization of TgCPL, and with newer antibodies and organelle markers, Carruther's group reported that TgCPB co-localized with TgCPL in a new vacuole (VAC), which is proximal but not part of the rhoptries [19]. Both TgCPB and TgCPL are upregulated during chronic mouse infection [23], but knock-outs of the TgCPL or TgCPB genes are not lethal [21]. Thus, TgCPB may add cathepsin redundancy that is present in all higher eukaryotes.

Because both TgCPB and TgCPL play a role in invasion [13, 18–21], we looked for inhibitors of both cathepsins. We focused on the vinyl sulfone derived compound, K11777, because it has activity against both B and L type cathepsins in other parasites [24–25, 30–37] and has undergone pharmacology and toxicity testing in cell culture, mice, rats, dogs and non-human primates [30]. We found that K11777 was active against both active recombinant TgCPL ( $EC_{50} = 71$ nM) and TgCPB ( $EC_{50} = 114$ nM). *In vitro* experiments showed that K11777 (20  $\mu$ M) significantly blocks both invasion and intracellular multiplication (Fig 1). Most impressively, a single dose of K11777 (final blood concentration of 20  $\mu$ M) at the time of infection with tachyzoites prevented mortality in a chick embryo model of acute infection (Fig 2), resulting in a multi-log reduction in total parasite load (live and dead parasites) in the liver and brain (Fig 3).





**Fig 3.** (A) A single dose of K11777 reduces parasite load in the brain of chicken embryos. K11777 treated chicken embryos (N = 10) (final blood concentration 20  $\mu$ M) showed a 3-log reduction in parasite burden in brain tissue as measured by quantitative PCR compared to chicken embryos injected with parasites in media alone (N = 10) (Control). Error bars reflect SEM. (B) A single dose of K11777 reduces parasite load in the liver of chick embryos. K11777 treated chicken embryos (final blood concentration 20  $\mu$ M) showed a 4-log reduction in parasite burden in liver tissue as measured by quantitative PCR compared to chicken embryos injected with parasites in media alone (Control). Error bars reflect SEM.

<https://doi.org/10.1371/journal.pone.0193982.g003>

K11777 has undergone extensive toxicity and pharmacokinetic studies because of its promise as a new drug for Chagas' Disease [24, 30–31]. Although we used K11777 intravenously, the drug is orally bioavailable in rats (37%) and dogs (30%) [30]. Oral doses of 200 mg/kg in cynomolgus monkeys had a half-life of 5 hours and caused some elevation of liver function tests [30]. Subsequent studies in rats determined that elevation of liver function tests occurred only at doses greater than 150 mg/kg and were reversible. The estimated dose for humans is only 4 mg/kg, and the drug is in late stage preclinical studies for treatment of Chagas' Disease (JH McKerrow, personal communication). CNS penetration by K11777 has not been determined, but based on its structure, is unlikely. Optimization of the scaffold is ongoing, and further studies in mouse models with chronic infection must still be performed.

K11777 also shows promise as a broad-spectrum anti-parasitic agent. It was first identified during screening of cathepsin peptide inhibitors against, cruzain, a key cathepsin L of *T. cruzi* [30–31]. K11777 is also effective *in vitro* and *in vivo* in a number of parasites which all have a central cathepsin B or L linked to pathogenicity including schistosomiasis [32], amebiasis [33], *Trichomonas foetus* [34], *Leishmania tropica* [35], hookworm [36], and *Cryptosporidium*

*parvum* [37]. Our current findings demonstrate that TgCPB and TgCPL are valid drug targets in *Toxoplasma* and provide further support for the importance of developing K11777 as a novel, antiparasitic drug.

## Supporting information

**S1 Fig. Determination of *T. gondii* invasion with acridine orange (AO) staining compared to the red/ green invasion assay (RG).** Rh tachyzoites ( $2 \times 10^5$ ) were allowed to invade HFF in chamber slides for 2 hrs in complete medium (Control) or in the presence of K11777 (20  $\mu$ M). Invasion was compared by acridine orange staining or with mouse p30 Ab for external tachyzoites detected with Alexa 494 (red) or internal tachyzoites after permeabilization with rabbit anti-ROP 13 AB detected with Alexa 488 (green). Comparable invasion rates were observed with acridine orange staining and the red/green assay (N = 4 per condition,  $p > 0.05$ ). (TIF)

**S1 Table. List of primers used in experiments.** Refer to manuscript for details. (DOCX)

## Acknowledgments

We thank Drs. Peter Bradley, Vern Carruthers, John Boothroyd, Doron Greenbaum, Melissa Lodoen, and Jean Francois Debremetz for their gift of key reagents and Dr. Charles Davis for his helpful comments.

## Author Contributions

**Conceptualization:** Juan D. Chaparro, Timmy Cheng, Uyen Phuong Tran, Ken Hirata, James H. McKerrow, Sharon L. Reed.

**Data curation:** Timmy Cheng, Uyen Phuong Tran, Rosa M. Andrade, Sara B. T. Brenner, Shara Cohn, Ken Hirata, Sharon L. Reed.

**Formal analysis:** Juan D. Chaparro, Uyen Phuong Tran, Rosa M. Andrade, Sara B. T. Brenner, Ken Hirata, Sharon L. Reed.

**Funding acquisition:** James H. McKerrow, Sharon L. Reed.

**Investigation:** Juan D. Chaparro, Timmy Cheng, Uyen Phuong Tran, Rosa M. Andrade, Sara B. T. Brenner, Grace Hwang, Shara Cohn, Sharon L. Reed.

**Methodology:** Juan D. Chaparro, Timmy Cheng, Uyen Phuong Tran, Rosa M. Andrade, Sara B. T. Brenner, Grace Hwang, Shara Cohn, Ken Hirata, Sharon L. Reed.

**Project administration:** Ken Hirata, Sharon L. Reed.

**Resources:** James H. McKerrow, Sharon L. Reed.

**Supervision:** Sharon L. Reed.

**Writing – original draft:** Juan D. Chaparro, Timmy Cheng, Uyen Phuong Tran, Rosa M. Andrade, Sara B. T. Brenner, Grace Hwang, Ken Hirata, James H. McKerrow, Sharon L. Reed.

**Writing – review & editing:** Juan D. Chaparro, Timmy Cheng, Rosa M. Andrade, Sara B. T. Brenner, Grace Hwang, Shara Cohn, Ken Hirata, James H. McKerrow, Sharon L. Reed.

## References

1. Tenter AM, Heckeroth AR, Weiss LM. *Toxoplasma gondii*: from animals to humans. *Int J Parasitol*. 2000; 30:1217–1258. PMID: [11113252](#)
2. Jones JL, Kruszon-Moran D, Rivera HN, Price C, Wilkins PP. *Toxoplasma gondii* seroprevalence in the United States 2009–2010 and comparison with the past two decades. *Am J Trop Med Hyg*. 2014; 90:1135–1139. <https://doi.org/10.4269/ajtmh.14-0013> PMID: [24710615](#)
3. Toxoplasmosis: Epidemiology and risk factors. 2017. Available from: <https://www.cdc.gov/parasites/toxoplasmosis/epi.html>
4. Olariu TR, Remington JS, McLeod R, Alam A, Montoya JG. Severe congenital toxoplasmosis in the United States: clinical and serologic findings in untreated infants. *Pediatr Infect Dis J*. 2011; 30:1056–1061. <https://doi.org/10.1097/INF.0b013e3182343096> PMID: [21956696](#)
5. Hughes JM, Colley DG, Lopez A, Dietz VJ, Wilson M, Navin TR, Jones JL. Preventing congenital toxoplasmosis. *MMWR Recomm Rep*. 2000;57–75.
6. Pollack A. Drug goes from \$13.50 a tablet to \$750 overnight. *New York Times*. 20 Sept 2015. Available from: <https://www.nytimes.com/2015/09/21/business/a-huge-overnight-increase-in-a-drugs-price-raises-protests.html?mcubz=2>
7. Kennedy CA, Pimentel JA, Lewis DE, Anderson MD, Weiss PJ, Oldfield EC 3rd. Crossover of human immunodeficiency virus-infected patients from aerosolized pentamidine to trimethoprim-sulfamethoxazole: lack of hematologic toxicity and relationship of side effects to CD4+ lymphocyte count. *J Infect Dis*. 1993; 168:314–317. PMID: [8101551](#)
8. Jaffe HS, Abrams DI, Ammann AJ, Lewis BJ, Golden JA. Complications of co-trimoxazole in treatment of AIDS-associated *Pneumocystis carinii* pneumonia in homosexual men. *Lancet*. 1983; 2:1109–1111. PMID: [6138645](#)
9. Boothroyd JC, Dubremetz JF. Kiss and spit: the dual roles of *Toxoplasma* rhoptries. *Nat Rev Microbiol*. 2008; 6:79–88. <https://doi.org/10.1038/nrmicro1800> PMID: [18059289](#)
10. Bradley PJ, Sibley LD. Rhoptries: an arsenal of secreted virulence factors. *Curr Opin Microbiol*. 2007; 10:582–587. <https://doi.org/10.1016/j.mib.2007.09.013> PMID: [17997128](#)
11. Rosenthal PJ. Cysteine proteases of malaria parasites. *Int J Parasitol*. 2004; 34:1489–1499. <https://doi.org/10.1016/j.ijpara.2004.10.003> PMID: [15582526](#)
12. O'Brien TC, Mackey ZB, Fetter RD, Choe Y, O'Donoghue AJ, Zhou M, et al. A parasite cysteine protease is key to host protein degradation and iron acquisition. *J Biol Chem*. 2008; 283:28934–28943. <https://doi.org/10.1074/jbc.M805824200> PMID: [18701454](#)
13. Que X, Ngo H, Lawton J, Gray M, Liu Q, Engel J, et al. The cathepsin B of *Toxoplasma gondii*, toxopain-1, is critical for parasite invasion and rhoptry protein processing. *J Biol Chem*. 2002; 277:25791–25797. <https://doi.org/10.1074/jbc.M202659200> PMID: [12000756](#)
14. Huang R, Que X, Hirata K, Brinen LS, Lee JH, Hansell E, et al. The cathepsin L of *Toxoplasma gondii* (TgCPL) and its endogenous macromolecular inhibitor, toxostatin. *Mol Biochem Parasitol*. 2009; 164:86–94. <https://doi.org/10.1016/j.molbiopara.2008.11.012> PMID: [19111576](#)
15. Que X, Engel JC, Ferguson D, Wunderlich A, Tomavo S, Reed SL. Cathepsin Cs are key for the intracellular survival of the protozoan parasite, *Toxoplasma gondii*. *J Biol Chem*. 2007; 282:4994–5003. <https://doi.org/10.1074/jbc.M606764200> PMID: [17164247](#)
16. Teo CF, Zhou XW, Bogyo M, Carruthers VB. Cysteine protease inhibitors block *Toxoplasma gondii* microneme secretion and cell invasion. *Antimicrob Agents Chemother*. 2007; 51:679–688. <https://doi.org/10.1128/AAC.01059-06> PMID: [17145790](#)
17. Kim K. Role of proteases in host cell invasion by *Toxoplasma gondii* and other Apicomplexa. *Acta Trop*. 2004; 91:69–81. <https://doi.org/10.1016/j.actatropica.2003.11.016> PMID: [15158690](#)
18. Que X, Wunderlich A, Joiner KA, Reed SL. Toxopain-1 is critical for infection in a novel chicken embryo model of congenital toxoplasmosis. *Infect Immun*. 2004; 72:2915–2921. <https://doi.org/10.1128/IAI.72.5.2915-2921.2004> PMID: [15102804](#)
19. Parussini F, Coppens I, Shah PP, Diamond SL, Carruthers VB. Cathepsin L occupies a vacuolar compartment and is a protein maturase within the endo/exocytic system of *Toxoplasma gondii*. *Mol Microbio*. 2010; 76:1340–1357.
20. Larson ET, Parussini F, Huynh MH, Giebel JD, Kelley AM, Zhang L, et al. *Toxoplasma gondii* cathepsin L is the primary target of the invasion-inhibitory compound morpholinurea-leucyl-homophenyl-vinyl sulfone phenyl. *J Biol Chem*. 2009; 284:26839–26850. <https://doi.org/10.1074/jbc.M109.003780> PMID: [19596863](#)

21. Dou Z, Coppens I, Carruthers VB. Non-canonical maturation of two papain-family proteases in *Toxoplasma gondii*. *J Biol Chem*. 2013; 288:3523–3534. <https://doi.org/10.1074/jbc.M112.443697> PMID: 23250753
22. Christina MD, Dou Z, Lunghi M, Kannan G, Huynh MY, McGovern OL et al. *Toxoplasma* depends on lysosomal consumption of autophagosomes for persistent infection. *Nat Microbiol*. 2017; 2:1–7.
23. Pittman KJ, Aliota MT, Knoll LJ. Dual transcriptional profiling of mice and *Toxoplasma gondii* during acute and chronic infection. *BMC Genomics*. 2014; 15:806. <https://doi.org/10.1186/1471-2164-15-806> PMID: 25240600
24. Engel JC, Doyle PS, Hsieh I, McKerrow JH. Cysteine protease inhibitors cure an experimental *Trypanosoma cruzi* infection. *J Exp Med*. 1998; 188:725–734. PMID: 9705954
25. Que X, Brinen LS, Perkins P, Herdman S, Hirata K, Torian BE et al. Cysteine proteinases from distinct cellular compartments are recruited to phagocytic vesicles by *Entamoeba histolytica*. PMID: 11755183
26. Beck JR, Chen AL, Kim EW, Bradley PJ. RON5 is critical for organization and function of the *Toxoplasma* moving junction complex. *PLOS Pathogen*. 2014; 10:e1004025.
27. Burg JL, Perleman D, Kasper LH, Ware PL, Boothroyd JC. Molecular analysis of the gene encoding the major surface antigen of *Toxoplasma gondii*. *J Immunol*. 1988; 141:3584–3591. PMID: 3183382
28. Andrade RM, Chaparro JD, Capparelli E, Reed SL. Auranofin is highly efficacious against *Toxoplasma gondii* *in vitro* and in an *in vivo* experimental model of acute toxoplasmosis. *PLOS Negl Trop Dis*. 2014; 8(7):e2973.29. <https://doi.org/10.1371/journal.pntd.0002973> PMID: 25079790
29. Kind C. The development of the circulating blood volume of the chick embryo. *Anat Embryol (Berl)*. 1975; 147:127–132.
30. Sajid M, Robertson SA, Brinen LS, McKerrow JH. Cruzain: the path from target validation to the clinic. *Adv Exp Med Biol*. 2011; 712:100–115. [https://doi.org/10.1007/978-1-4419-8414-2\\_7](https://doi.org/10.1007/978-1-4419-8414-2_7) PMID: 21660661
31. Barr SC, Warner KL, Kornreic BG, Piscitelli J, Wolfe A, Benet L, et al. A cysteine protease inhibitor protects dogs from cardiac damage during infection by *Trypanosoma cruzi*. *Antimicrob Agents Chemother*. 2005; 49:5160–5161. <https://doi.org/10.1128/AAC.49.12.5160-5161.2005> PMID: 16304193
32. Abdulla MH, Lim KC, Sajid M, McKerrow JH, Caffrey CR. *Schistosomiasis mansoni*: novel chemotherapy using a cysteine protease inhibitor. *PLoS Med*. 2007; 4:e14. <https://doi.org/10.1371/journal.pmed.0040014> PMID: 17214506
33. Melendez-Lopez SG, Herdman S, Hirata K, Choi MH, Choe Y, Craik C, et al. Use of recombinant *Entamoeba histolytica* cysteine proteinase 1 to identify a potent inhibitor of amebic invasion in a human colonic model. *Eukaryot Cell*. 2007; 6:1130–1136. <https://doi.org/10.1128/EC.00094-07> PMID: 17513563
34. Cobo ER, Reed SL, Corbeil LB. Effect of vinyl sulfone inhibitors of cysteine proteinases on *Tritrichomonas foetus* infection. *Int J Antimicrob Agents*. 2012; 39:259–262. <https://doi.org/10.1016/j.ijantimicag.2011.09.026> PMID: 22104282
35. Mahmoudzadeh-Niknam H, McKerrow JH. *Leishmania tropica*: cysteine proteases are essential for growth and pathogenicity. *Exp Parasitol*. 2004; 106:158–163. <https://doi.org/10.1016/j.exppara.2004.03.005> PMID: 15172223
36. Vermeire JJ, Lantz LD, Caffrey CR. Cure of hookworm infection with a cysteine protease inhibitor. *PLoS Negl Trop Dis*. 2012; 6:e1680. <https://doi.org/10.1371/journal.pntd.0001680> PMID: 22802972
37. Ndao M, Nath-Chowdhury M, Sajid M, Marcus V, Mashiyama ST, Sakanari J et al. A cysteine protease inhibitor rescues mice from a lethal *Cryptosporidium parvum* infection. *Antimicrob Agents Chemother*. 2013; 57:6063–6073. <https://doi.org/10.1128/AAC.00734-13> PMID: 24060869