

UC Santa Barbara

Perspectives and Resources for GIScience Education

Title

Third International Symposium on GIS in Higher Education, Program flier

Permalink

<https://escholarship.org/uc/item/6j82p1j8>

Authors

Towson State University

National Center for Geographic Information and Analysis (UCSB)

Publication Date

1997-10-01

Third International Symposium on GIS in Higher Education

Building Foundations for Expanding GIS Education Locally and Globally



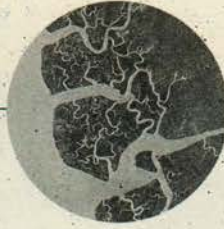
October 30 through
November 2, 1997

**Marriott Westfields
International Conference Center
Chantilly, Virginia, USA**

Organized by:
Towson University
National Center for Geographic Information and Analysis

Co-Sponsored by:
National Council for Geographic Education

**TOWSON
UNIVERSITY**



STEERING COMMITTEE

Karen K. Kemp
NCGIA and University of California-Santa Barbara
John M. Morgan III
Towson University
Steven Palladino
NCGIA and University of California- Santa Barbara

PROGRAM ADVISORY COMMITTEE

Sarah Bednarz
Texas A & M University
Pat Cuniff
Prince George's Community College
Bill Dakan
University of Louisville
William Dando
Indiana State University
Kenneth E. Foote
University of Texas, Austin
Michele Fulk
The IDRISI Project, Clark University
Peter Keller
University of Victoria (Canada)
Brian Lees
Australian National University
Susan M. Macey
Southwest Texas State University
Brian Mennecke
East Carolina University
Susan Nolen
Intergraph Corporation
Michael Phoenix
Environmental Systems Research Institute
Barbara Poore
FGDC, Washington, DC
Susan Radke
Berkeley Geo-Research Group
Alexander Simonov
Pushchino CNIT, Russia
Josef Strobl
University of Salzburg, Austria
David U. Unwin
Birkbeck College, London

Third International Symposium on GIS in Higher Education

Towson University and the National Center for Geographic Information and Analysis (NCGIA) invite you to participate in the **Third International Symposium on GIS in Higher Education (GISHE '97)**. This symposium follows a series of related workshops held during the 80's and in 1990 at Ohio State University, the first international symposium held in Tampa in 1991, and the second international symposium, held in Columbia, Maryland in 1996.

The theme for this symposium is "Building foundations for expanding GIS education locally and globally." The purpose of the symposium is to provide a forum for discussion of today's strategic issues in GIS in Higher Education. These issues include: intra-and interdisciplinary GIS education; GIS education and the internet; new technologies for teaching: multimedia, web browsers; funding and designing GIS laboratories; professional education; the role for the 2-year community and technical colleges; curricula for colleges; articulation of GIS education across the educational spectrum from elementary school to post graduate programs; international collaboration in GIS education; and preservice teacher education in GIS. In addition to paper sessions, demonstrations of multimedia, on-line courseware, and other computer-based materials will be scheduled throughout the program.

Special Events

K-12 Day.

Although the conference focus is higher education, K-12 teachers are invited to attend a special one-day workshop on Saturday, October 31 planned expressly for them. This special session will allow teachers to share their accomplishments in using and teaching GIS, to express their needs, and to interact with GIS educators at other teaching levels.

Demonstrations.

In addition to paper sessions, demonstrations of multimedia, on-line courseware, and other computer-based materials will be scheduled throughout the program.

Venue

The symposium will be held at the Marriott Westfields International Conference Center in Chantilly, Virginia, USA. This conference site is located seven miles south of Dulles International Airport and 35 minutes from Washington, DC. A complementary airport shuttle is available from Dulles Airport. Please ask to speak to the Bell Captain after your room reservation has been made to make your shuttlebus arrangements.

A limited number of hotel rooms have been reserved for this meeting at the special rate of \$142.00 (single) or \$162 (double). This rate includes round-trip transportation between Dulles Airport and the Conference Center. To make your reservation, please call the Conference Center directly at 800-635-5666 and mention GISHE '97 at the time of booking. Make your reservation as early as possible. Westfields will not guarantee room availability after October 2.

The Westfields has several amenities for conference guests including a spa, indoor lap pool, tennis courts, and golf course. The conference center concierge will be happy to provide you with information about local sites including the Sully Plantation, the Manassas Battlefield, historic Middleburg, Washington DC monuments, and many other locations.

Towson University will develop a list of attendees interested in sharing rooms at the conference. Please contact Janet Gaver at 410-830-4737 for additional information.

Additional accommodations are available at the Washington Dulles Airport Marriott (approximately six miles from the conference site) for \$114 (single) or \$124 (double). For reservations call 703-471-9500, or Marriott Worldwide Reservations at 800-228-9290.

Conference Structure

The conference will begin on the evening of Thursday, October 30 with an opening plenary session followed by a reception. Friday and Saturday will have a combination of plenaries and parallel sessions. Saturday's paper sessions will end with focus group discussions, followed by a brief plenary and a social event. The meeting will conclude on Sunday morning with a buffet brunch followed by an open discussion session at which plans for future research and activities will be formulated.

The Saturday evening social event will be a bus ride into Old Town Alexandria, Virginia for shopping, dining, and evening entertainment. Details will be provided upon arrival at the conference.

Exhibits

The conference will feature an exhibit area for commercial organizations offering products of interest to an international group of GIS educators. If you would like information about exhibiting at the conference, please contact:

Oliver Low
Towson University
Office of Business & Industry Outreach
8000 York Rd.
Baltimore, MD 21252

Phone: 410-830-4737 Fax: 410-830-3525
E-mail: jgaver@towson.edu

Registration Fees

The full registration fee includes entrance to all symposium sessions, continental breakfast on Friday and Saturday, lunch on Friday, and a buffet brunch on Sunday. A social event on Saturday evening is also planned and included in the registration fees.

Full Registration	\$345.00
Student Registration	\$245.00
Saturday Registration	\$ 70.00 *

*Special 1 day rate for K-12 teachers (does not include cost of social event).

To Register

Advance registration is required. Please complete the registration form and mail it with your charge card information of payment (payable to TOWSON UNIVERSITY) to:

Janet Gaver
Business and Industry Outreach
Towson University
8000 York Road
Towson, MD 21252 USA
Phone: 410-830-4737
E-mail: jgaver@towson.edu

You will receive **written confirmation** when your registration is received. Please feel free to photocopy the form for additional registrants. **FAX registration** is also available for MasterCard/Visa payments. Complete and sign the registration form and FAX it to 410-830-3525.

NOTE: The following program is preliminary. Changes are likely to be made for the final program.

Thursday, October 30

4:00 - 7:00 - Registration

7:00 - 8:00 - Opening Plenary

Welcome and Introductions

GISHE '97 Steering Committee

The current state of GIS in higher education

John M. Morgan III
Towson University

Strategic issues for GIS in higher education

Karen K. Kemp
University of California Santa Barbara

Richard Wright
San Diego State University

8:00 - 9:00 - Westfields Wellingtons Pub Reception

Friday, October 31

7:30 - 8:30 - Continental Breakfast

8:30 - 10:00 - Parallel Session F1

F1.1 - Using the Web in traditional university courses

Collaborative Curriculum Development in Geoprocessing Using Distance Learning and The Internet

Donald J. Leone
The University of Hartford
Daniel L. Civco
The University of Connecticut

Teaching GIS with ArcView and the World Wide Web at the United States Military Academy

Mike Hendricks
West Point Military Academy

The Analysis of the State of Vocational Training on Geoinformation Technologies in Siberia

Nikolay G. Markov
The Tomsk Polytechnical University, Tomsk, Russia

Beyond Posting Lecture Notes on the Web: Examples of Three GIS Internet Courseware Initiatives and Our Lessons Learned

C. Peter Keller, Rosaline R. Canessa and Trevor J. Davis
University of Victoria, Canada

Discussion: What are effective strategies for bringing the Web into GIS instruction?

F1.2 - Teaching GIS across the curriculum, I

GIS Education for Hydrology and Water Resources Engineers

Josef Fuerst, H.P. Nachtnebel and H. Holzmann
University of Agricultural Sciences, Vienna, Austria

Relieving stress with GIS: Integrating GIS with Stressed Stream Analysis

Karl Korfmacher
Denison University, Ohio

Incorporating GIS into the Professional Work of the Agricultural and Forestry Technicians: the Columella Project

Carlos Álvarez, Rafael Crecente and Urbano Fra
Campus Universitario, Spain

F1.3 - Community College Administrative GIS

Community College Administrative GIS: The First Step in a Community College GIS Enterprise

Randall E. Raymond
Urban Environmental Education in Detroit - Cass Technical High School
Freda L. Brown
Henry Ford Community College
Yichun Xie
Eastern Michigan University

Background on the project

Procedures and methodologies

An urban GIS model

Discussion: How can other colleges initiate similar programs?

10:00 - 10:30 - Break

10:30 - 12:00 - Parallel Session F2

F2.1 - GIS education and the Internet

GIS in the Virtual Geography Department Project

Kenneth E. Foote
University of Texas at Austin

Using the Web to Deliver Instructional Resources for GIS Teaching

X. Mara Chen
Salisbury State University, MD

Teaching GIS incorporating the Internet

Hui Xu
Frostburg State University, MD

Discussion: What sorts of materials should be created for inclusion in a GIS instructional materials clearinghouse on the Web?

F2.2 - Teaching GIS across the curriculum, II

Evaluation of a GIS-T Student Friendly Training Tool

Peter van der Waerden
Eindhoven University of Technology, The Netherlands
Antonio Nelson Rodrigues da Silva
Universidade de Sao Paulo, Brazil

Geographic Information Systems - Educating the Civil Engineering User

Wm. H. Sprinsky
Pennsylvania College of Technology

Teaching GIS for Coastal Zone Management

Malcolm C. Thomas
Pembrokeshire College, UK

Discussion: How can GIS be included as both a relevant tool and a useful science in courses across the curriculum?

F2.3 - GIS education in developing countries, I

GIS Education in Developing Countries : Ecuador

Jonathan Deckmyn, Kristof Scheldemans and Gwendolyn Verstraete
PROMAS - Universidad de Cuenca, Ecuador

Partnership in GIS Education: Building Capacity in a Disadvantaged Society

Tracey Morton
Vista University, Soweto, South Africa

GIS Education in India - Problems and Prospects

K.S. Gopalakrishnan
Madurai Kamaraj University, India

The Need for GIS Education in Mauritius

Jaishree Beedasy
University of Mauritius

12:00 - 1:30 - Conference Luncheon

1:30 - 3:00 - Parallel Session F3

F3.1 - Professional development and distance education

Perspectives on GIS Education for Professional Development

Sarah Cornelius and Ian Heywood
Manchester Metropolitan University, UK

Planning a GIS Certificate Program for Distance Delivery

David DiBiase
The Pennsylvania State University

Multimedia Learning for Professionals in Geographical Information: The Challenges for Courseware Development

Bruce Carlisle, Ian Heywood, Sarah Cornelius and Simon Kenton
Manchester Metropolitan University, UK
David Grimshaw
University of Leeds, UK

Multimedia Computer Based On-Line-Training in GIS and Remote Sensing

Yuxian Sun and Wolfgang Kainz
International Institute for Aerospace Survey and Earth Sciences (ITC), The Netherlands

Discussion: Can distance education satisfy the growing market for GIS professional development?

F3.2 - Education partnerships

It's Not Plows, Cows, and Sows Anymore: Developing GIS Educational Partnerships with the Cooperative Extension Service

Scott A. Samson
University of Kentucky

GIS Partnerships and Service Learning

Christopher Semerjian and Lewis Rogers
Gainesville College, GA

Bridging the Gap between GIS Employment Needs and GIS Education and Training

Don Samuelson and I-Shian Suen
Grays Harbor College, Aberdeen, WA

Precision Agriculture Education Network Between K-12, Community Colleges and Universities

Terry Brase
Hawkeye Community College, IA

Discussion: What can be done to encourage community partnerships for GIS education generally?

F3.3 - GIS education in developing countries, II

GIS Education for Developing Countries: Bringing about Desirable Change

Christine E. Dunn
University of Durham, UK

GIS Projects and GIS Education in Russian Higher School

Alexander V. Simonov
Pushchino Specialized Center for New Information Technologies, Russia
Alexander D. Ivannikov
Ministry for Education in the Russian Federation, Russia

Development of a Training Centre for Environmental GIS Applications in Polish Universities

J. Fürst
University of Agricultural Sciences, Vienna, Austria
S. Ignar
Agricultural University of Warsaw, Poland

Passport to the Future: The new GIS Program at the Faculty of Technology, University of Qatar

Steven Rose
University of Qatar, Qatar

Discussion: How can the needs of developing countries with regards to improving GIS education be addressed by programs and colleagues in developed countries?

3:00 - 3:30 - Break

3:30 - 5:00 - Parallel Session F4

F4.1 - Designing GIS courseware

The design and development of courseware on database design for international distance education

Koos Winnips, Yuxian Sun, and I. Wilbrink
*International Institute for Aerospace Survey and Earth Sciences (ITC),
The Netherlands*

The House Hunting Game: An Interactive Teaching Resource for Introducing Spatial Decision Making using GIS

Ian Heywood
Manchester Metropolitan University, UK
Roy Alexander
University College Chester, UK
John McKeown and John Castleford
University of Leicester, UK

The GIS Workbench: a Metaphor for Development of GIS Distance Education

Angelique Lansu and Rob Nadolski
Open University of The Netherlands
Truus Roesems
Catholic University of Leuven, Belgium

Demonstration of multimedia introductory practical: the DTM module

Truus Roesems
Catholic University of Leuven, Belgium
Angelique Lansu
Open University of The Netherlands

Discussion: How can these lessons in the design of GIS courseware be passed on to other GIS educators considering similar projects?

F4.2 - Foundations for GIS education, I

The Status of GIS Technology in Teacher Preparation Programs

Richard Audet
Roger Williams University, Bristol, RI
Sarah Witham Bednarz
Texas A&M University

Building Foundation for Spatial Analysis: The First Two Years

Shamim Naim
University of Wisconsin at Waukesha

GIS Education - Accessible to all Disciplines

Les Doak
Cypress College, CA

Discussion: What structural changes should be made to GIS education to address these issues?

F4.3 - GIS in developing countries, III

GIS Education in Developing Countries: The Lageop's Capacity-Building Effort

Jorge Xavier-da-Silva, Maria Lucia Lorini and Vanessa Guerra Persson
Universidade Federal do Rio de Janeiro, Brazil

GIS Education and Practice in China

Nan Liu
Hangzhou University, China

A Model GIS Laboratory for Higher Education in a Developing Country: The Example of the GIS Lab

Sylvester Abumere, Olusegan Areola and Bola Ayeni
University of Ibadan, Nigeria

The Geo Project: Introduction of GIS Culture in Higher Education: ICEGIS - Integrated Center of GIS Studies

Mirna Luiza Cortopassi Lobo
Federal University of Paraná, Brazil

Saturday, November 1

7:30 - 8:30 - Continental Breakfast

8:30 - 9:30 - Keynote Speaker and topic TBA

9:30 - 10:30 - Parallel Session S1

S1.1 Community College Panel Session

Promoting Community College GIS Workforce Relevant Course and Program Development

Denis E. Mudderman and William A. Dando
Indiana State University

S1.2 Demonstration

Learning with GIS - The Case of Urbanworld

Derek Thompson
University of Maryland

S1.3 Data Sources Panel Session

The Role of Geographic Data in GIS Education

Barbara Poore
Federal Geographic Data Committee
Joe Sewash
West Virginia University

10:30 - 11:00 - Break

11:00 - 12:30 - Parallel Session S2

S2.1 - GIS in Community Colleges

Relevance of Geographic Information Systems Technology in a Community College Curriculum

M. H. Akram, John Williams, and N. Browning
Glennville Community and Technical College, WV

NCGIA's Core Curriculum for Technical Programs

Stephen Palladino
University of California Santa Barbara

GIS in Community Colleges - Where We Stand

Michael Phoenix
ESRI, Redlands, CA

Discussion: What are the roles for community colleges in GIS education?

S2.2 - Foundations for GIS education, II

GIS Computer Laboratory Materials: Comparing Structural Approaches

Richard A. Scott
Rowan University, Glassboro, NJ

Identifying Key GIS Concepts - What the Books Tell Us

Susan M. Macey
Southwest Texas State University

What are beyond buffering and overlay when teaching GIS for Spatial Analysis?

David Wong
George Mason University, VA

Scale - The Key Spatial Concept in GIS Education

WeiHong Fan
The Richard Stockton College of New Jersey

Discussion: Do GIS curricula need to be redesigned to address these fundamental issues?

S2.3 - Teaching GIS in K-12, I

Mountains: Interdisciplinary Curriculum That Actively Involves Students in Problem-Solving and Construction of Knowledge About Their World

Rebecca R. Head
The University of Alabama

GIS Project Planning Considerations for Educators

Bob Sharpe
Wilfrid Laurier University, Canada

GIS Meets K-12 Environmental Education at NC State University

Hugh A. Devine
North Carolina State University

Discussion: How can the lessons from these projects be shared with other K-12 educators?

12:30 - 1:30 - Lunch on own

1:30 - 3:00 - Parallel Session S3

S3.1 - Education Programs of GIS Vendors

Intergraph's Education Programs

Susan Nolen
Huntsville, AL

ESRI's Education Programs

Michael Phoenix
Redlands, CA

The Idrisi Project

Michele Fulk
Clark University, MA

Discussion: How can the GIS vendor community best assist GIS educators?

S3.2 - Problem solving and projects for GIS learning

Teaching GIS Problem Solving with a Complex Site Allocation Case Study

David G. Goldsborough & M. de Bakker
Van Hall Instituut, The Netherlands

The Use of Project Oriented GIS Education and Training in an Urban Setting

Robert T. Aangeenbrug
University of South Florida

Preserving West Virginia's Heritage Using GIS: Fort Moore

J. M. Williams, C. E. Holt, and M. H. Akram
Glennville State College, WV

Discussion: How can other GIS educators initiate and share experiences with similar projects?

S3.3 - Teaching GIS in K-12, II

Enhancing General Professional Awareness of GIS by Improving Educational GIS Tools for Secondary School Teachers

Dominique Vanneste
Catholic University of Leuven, Belgium
Angelique Lansu
Open University of The Netherlands

The GeoSmart Project: Responding to the Need for a "Smart" Geography for Malaysia's New "Smart School" Initiative

Richard Dorall
University of Malaya, Malaysia

CD-ROM on Estonian Geography as a GIS-based Contribution to the "Tiger's Leap" Programme

Juri Roõsaare
University of Tartu, Estonia

Discussion: What can higher educators do to assist K-12 teachers integrate GIS into their curricula?

3:00 - 3:30 - Break

3:30 - 4:30 - Working Groups

Participants will form several small working groups to discuss issues raised in the discussion sessions and to draft summary statements.

4:30 - 5:30 - Working Group Reports

Working groups will report on their discussions and identify items for action and further development during Sunday's working sessions.

6:00 - 10:00 - Social Event (tentative)

Sunday, November 2

8:30 - 9:30 - Buffet Breakfast

9:30 - 12:00 - Closing Plenary and Working Groups

During this session, a conference summary and action statement will be drafted for post-conference distribution. Plans for action on the issues raised will be discussed.