

UC Irvine

UC Irvine Previously Published Works

Title

AN EXTREME STARBURST IN THE CORE OF A RICH GALAXY CLUSTER AT $z = 1.7$

Permalink

<https://escholarship.org/uc/item/6h94505s>

Journal

The Astrophysical Journal, 809(2)

ISSN

0004-637X

Authors

Webb, Tracy

Noble, Allison

DeGroot, Andrew

et al.

Publication Date

2015-08-20

DOI

10.1088/0004-637x/809/2/173

Copyright Information

This work is made available under the terms of a Creative Commons Attribution License, available at <https://creativecommons.org/licenses/by/4.0/>

Peer reviewed

AN EXTREME STARBURST IN CLOSE PROXIMITY TO THE CENTRAL GALAXY OF A RICH GALAXY CLUSTER AT $z = 1.7$

TRACY WEBB¹, ALLISON NOBLE², ANDREW DEGROOT³, GILLIAN WILSON³, ADAM MUZZIN⁴, NINA BONAVENTURA¹, MIKE COOPER⁵, ANNA DELAHAYE¹, RYAN FOLTZ³, CHRIS LIDMAN⁶, JASON SURACE⁷, H.K.C. YEE², SCOTT CHAPMAN^{4,8}, LORETTA DUNNE^{9,10}, JAMES GEACH¹¹, BRIAN HAYDEN¹², HENDRIK HILDEBRANDT¹³, JIASHENG HUANG^{14,15,16}, ALEXANDRA POPE¹⁷, MATTHEW W.L. SMITH¹⁸, SAUL PERLMUTTER^{12,19}, AND ALEX TUDORICA¹³

Draft version October 15, 2018

ABSTRACT

We have discovered an optically rich galaxy cluster at $z = 1.7089$ with star formation occurring in close proximity to the central galaxy. The system, SpARCS104922.6+564032.5, was detected within the *Spitzer* Adaptation of the red-sequence Cluster Survey, (SpARCS), and confirmed through Keck-MOSFIRE spectroscopy. The rest-frame optical richness of $N_{\text{gal}}(500\text{kpc}) = 30 \pm 8$ implies a total halo mass, within 500kpc, of $\sim 3.8 \pm 1.2 \times 10^{14} M_{\odot}$, comparable to other clusters at or above this redshift. There is a wealth of ancillary data available, including Canada-France-Hawaii Telescope optical, UKIRT-K, *Spitzer*-IRAC/MIPS, and *Herschel*-SPIRE. This work adds submillimeter imaging with the SCUBA2 camera on the James Clerk Maxwell Telescope and near-infrared imaging with the Hubble Space Telescope (HST). The mid/far-infrared (M/FIR) data detect an Ultra-luminous Infrared Galaxy spatially coincident with the central galaxy, with $L_{\text{IR}} = 6.2 \pm 0.9 \times 10^{12} L_{\odot}$. The detection of polycyclic aromatic hydrocarbons (PAHs) at $z = 1.7$ in a *Spitzer*-IRS spectrum of the source implies the FIR luminosity is dominated by star formation (an Active Galactic Nucleus contribution of 20%) with a rate of $\sim 860 \pm 130 M_{\odot} \text{ yr}^{-1}$. The optical source corresponding to the IR emission is likely a chain of > 10 individual clumps arranged as “beads on a string” over a linear scale of 66 kpc. Its morphology and proximity to the Brightest Cluster Galaxy imply a gas-rich interaction at the center of the cluster triggered the star formation. This system indicates that wet mergers may be an important process in forming the stellar mass of BCGs at early times.

Subject headings: galaxies: interactions, galaxies, starburst, galaxies: evolution, galaxies: clusters: general, infrared: galaxies

¹ Department of Physics, McGill University, 3600 rue University, Montréal, Québec, H3P 1T3, Canada

² Department of Astronomy & Astrophysics, University of Toronto, 50 St. George St., Toronto, ON, M5S 3H4, Canada

³ Department of Physics & Astronomy, University of California, Riverside, 900 University Avenue, Riverside, CA 92521, USA

⁴ Institute of Astronomy, University of Cambridge, Madingley Road, Cambridge, CB3 0HA, UK

⁵ center for Galaxy Evolution, Department of Physics and Astronomy, University of California, Irvine, 4129 Frederick Reines Hall, Irvine, CA 92697 USA

⁶ Australian Astronomical Observatory, P.O. Box 915, North Ryde, NSW 1670, Australia

⁷ Spitzer Space Science center, California Institute of Technology, Pasadena, CA 91125 USA

⁸ Department of Physics and Atmospheric Science, Dalhousie University, 6310 Coburg Road, Halifax, NS B3H 2R4, Canada

⁹ Department of Physics and Astronomy, University of Canterbury, Private Bag 4800, Christchurch 8140, New Zealand

¹⁰ Institute for Astronomy, University of Edinburgh, Royal Observatory, Blackford Hill, Edinburgh, EH9 3HJ, UK

¹¹ Center for Astrophysics Research, Science & Technology Research Institute, University of Hertfordshire, Hatfield AL10 9AB, UK

¹² Physics Division, Lawrence Berkeley National Laboratory, 1 Cyclotron Road, Berkeley, CA 94720, USA

¹³ Argelander-Institute für Astronomie, Auf dem Hugel 71, D-53121 Bonn, Germany

¹⁴ National Astronomical Observatories of China, Chinese Academy of Sciences, Beijing 100012, China

¹⁵ China-Chile Joint Center for Astronomy, Chinese Academy of Sciences, Camino El Observatorio, 1515, Las Condes, Santiago, Chile

¹⁶ Harvard-Smithsonian Center for Astrophysics, 60 Garden St., Cambridge, MA 02138, USA

¹⁷ Department of Astronomy, University of Massachusetts, 710 North Pleasant Street, Amherst, MA 011003, USA

1. INTRODUCTION

The most massive galaxies in the local universe reside at the centers of galaxy clusters. Often called Brightest Cluster Galaxies (BCGs), they exhibit, as a class, highly uniform properties such as luminosity, metallicity and surface brightness profiles, and are distinct from the general galaxy population (Oemler 1976; Dressler 1978; Schombert 1986). These facts suggest formation processes which are themselves distinct from those which dominate in massive galaxies elsewhere in the cluster or in the field. The mass growth of BCGs is likely linked to the overall physics of hierarchical structure formation on galaxy cluster scales, including the fundamental processes of gas cooling, star formation, energy feedback and galaxy mergers at the centers of giant dark matter halos.

Within the current suite of Semi-Analytic Models (SAMs) BCG evolution follows a relatively simple prescription (Kauffmann et al. 2000; Springel et al. 2001, 2005; De Lucia et al. 2004, 2006; Croton et al. 2006). At very early times ($z > 5$) cooling flows dominate the stellar mass assembly at the centers of clusters, but these are rapidly suppressed through active galactic nuclei (AGN) feedback (Bower et al. 2006; De Lucia & Blaizot 2007; Guo 2010). BCG growth then continues

¹⁸ School of Physics and Astronomy, Cardiff University, Queens Buildings, The Parade, Cardiff, Wales CF24 3AA, UK

¹⁹ Department of Physics, University of California Berkeley, 366 LeConte Hall MC 7300, Berkeley, CA 94720-7300, USA

over time through the accretion of smaller systems, with little additional star formation. In this picture most of the stellar mass is formed at very high redshifts ($z \sim 5$) within multiple galaxies through low levels of star formation, and the BCG slowly acquires its identity through the conglomeration of previously assembled pieces. This is supported by direct measurements of the mass growth of BCGs below $z \sim 1$ (Lidman et al. 2012, 2013).

Still, there are observational examples of moderate redshift BCGs ($z < 0.6$) that present signs of high star formation rates (SFRs) ($10\text{-}1000 M_{\odot}\text{yr}^{-1}$) and/or contain large amounts of molecular gas (Allen et al. 1992; McNamara et al. 1992; Jonhstone et al. 1998; Edge 2001; Wilman et al. 2006; Edwards et al. 2007; O’Dea et al. 2010; Hicks et al. 2010; Donahue et al. 2011; Rawle et al. 2012; McDonald et al. 2012). Such active BCGs are rare and have primarily been seen in X-ray-selected cool-core clusters. In many cases the SFRs are correlated with the gas cooling time. The paucity of these systems at low/moderate redshifts indicates that explosive star formation, fed by the cooling of halo gas, is not an important contributor to BCG mass growth, relative to the process of dry merging.

While it is established that a large fraction (50%; Lidman et al. 2013) of the stellar mass of BCGs is already in place at $z \sim 1$, it is not yet determined if this mass was assembled through processes similar to those at lower redshift (*i.e.*, dry merging) or if a different and perhaps more extreme phase of growth, such as that seen in some of the cool core clusters, becomes more common at earlier epochs. There are now several detections of clusters and massive groups at redshifts beyond $z \sim 1$ (Andreon et al. 2009; Muzzin et al. 2009; Wilson et al. 2009; Stanford et al. 2012; Zeimann et al. 2012; Gobat et al. 2013; Muzzin et al. 2013; Yuan et al. 2014; Bayliss et al. 2014; Tozzi et al. 2015) and these systems offer the opportunity to study the build-up of the central stellar mass in detail. Indeed many of these systems exhibit an increase in the star formation activity within several hundred kpc of their centers, compared to lower redshifts and, in some cases, the field (Tran et al. 2010; Brodwin et al. 2013; Alberts et al. 2014; Santos et al. 2015). While studies of their BCGs, in particular, have not been undertaken, these results indicate that the cores of galaxy clusters may be active places beyond $z \sim 1.5$.

Here we report the discovery of an optically rich cluster at $z = 1.7089$, that we label SpARCS104922.6+564032.5 (hereafter SpARCS1049+56). This system is distinguished by its extremely active BCG which is observed in an important phase of evolution. We appear to be witnessing the stellar mass build-up of the central BCG through a wet galaxy merger, a process which has, heretofore, not been thought to play an important role in BCG growth. In this paper we outline the discovery and characterization of this interesting system. In Section 2 we describe the data and observations; in Section 3 we present the analysis of the cluster and BCG properties; and in Section 4 we discuss the implication of these first results. We use standard cosmology throughout ($\Omega_{\text{o}} = 1$, $\Omega_{\Lambda} = 0.7$, $H_{\text{o}} = 75 \text{ km s}^{-1}\text{Mpc}^{-1}$), and AB magnitudes.

2. DATA AND OBSERVATIONS

The data used in this work were obtained with a broad range of facilities. Some were retrieved from public

archives while others were newly acquired by our team. Here we outline three categories of observations. In Section 2.1 we list the wide-field imaging associated with large surveys of the *Spitzer*- Wide-area InfraRed Extragalactic (SWIRE) Lockman field, where the cluster is located. In section 2.2 we describe follow-up imaging with SCUBA2 on the James Clerk Maxwell Telescope (JCMT) and WFC3 on the Hubble Space Telescope (HST) taken by our team subsequent to the cluster discovery (described in Section 3.1). These data are focused on the location of the cluster and do not cover the entire Lockman field. In Section 2.3 we present the spectroscopic observations obtained by others before the discovery of the cluster and by ourselves following the discovery with Keck-MOSFIRE.

2.1. Existing Wide-field Imaging of the Lockman-SWIRE Field

2.1.1. The *Spitzer* Adaptation of the Red-sequence Cluster Survey:

The cluster was detected within the *Spitzer* Adaptation of the red-sequence Cluster Survey (SpARCS) coverage of the Lockman Hole. SpARCS is a near-infrared survey for galaxy clusters beyond $z \sim 1$ (Muzzin et al. 2009; Wilson et al. 2009; Demarco et al. 2010). It combines deep z' -band imaging ($5\sigma z' = 24.2$ AB with the Canada-France-Hawaii Telescope; CFHT) with the SWIRE Survey (Lonsdale et al. 2003) at $3.6\mu\text{m}$, to identify overdensities of red-sequence galaxies at high redshift. A thorough discussion of the z' data analysis, $z' - 3.6\mu\text{m}$ cluster finding algorithm and the SpARCS cluster catalog will be presented in a future paper by A. Muzzin et al. (2015, in preparation), though we outline the method in Section 3.1.

2.1.2. The *Spitzer* Space Telescope:

The public SWIRE Legacy Survey consists of imaging at 3.6 , 4.5 , 5.8 and $8.0\mu\text{m}$ with IRAC and 24 , 70 , $160\mu\text{m}$ with MIPS (Lonsdale et al. 2003)²⁰. SpARCS1049+56 lies near the edge of the survey and is not covered by the SWIRE ancillary optical data for this field. Deeper ($\sim 2\mu\text{Jy}$) $3.6/4.5\mu\text{m}$ imaging of this area has been obtained during the warm-*Spitzer* mission by the *Spitzer* Extragalactic Representative Volume Survey (Mauduit et al. 2012), but it is not used here.

2.1.3. The *Herschel* Multi-tier Extragalactic Survey:

The Lockman-SWIRE field is also part of the *Herschel* Mid-Infrared Extragalactic Survey (HerMES; Oliver et al. 2012). The primary data for this survey are SPIRE $250/350/500\mu\text{m}$ imaging (Griffin et al. 2012), with additional PACS data taken in parallel mode. PACS data products have not yet been released by the HerMES team and therefore we downloaded the original data from the *Herschel* Science Archive. We produced maps at 100 and $160\mu\text{m}$ following the technique developed in Ibar et al. (2010).

2.1.4. The UK Infrared Deep Sky Survey:

²⁰ http://swire.ipac.caltech.edu/swire/astronomers/publications/SWIRE2_doc_083105.pdf

This field was imaged in the near-infrared as part of the UK Infrared Deep Sky Survey (UKIDSS). The UKIDSS project is defined in Lawrence et al (2007). UKIDSS uses the UKIRT Wide Field Camera (Casali et al, 2007). The photometric system is described in Hewett et al. (2006), and the calibration is described in Hodgkin et al. (2009). The pipeline processing and science archive are described in M. Irwin et al (in preparation) and Hambly et al (2008). The Lockman Hole is contained within the Deep Extragalactic Survey and reaches a depth of $K=21$. As it is located near the edge of the survey, SpARCS1049+56 is only covered by the K -band.

2.1.5. New CFHT Imaging of the Lockman Field

As part of SpARCS follow-up imaging, 35 square degrees overlapping the *Spitzer* Adaptation of the Red-sequence Cluster Survey Northern Fields were observed in the ugz' bands using MegaCam on the 3.6 m CFHT, including the Lockman field (A. Tudorica et al. in preparation). Exposure times were 4201, 2291, 3007, and 6001 s for the $urgz'$ filters respectively, and seeing averaged 0.8 arcsec. The data were reduced using the ELIXIR and THELI pipelines. The absolute photometric calibration is based on the SDSS DR10, which was used to determine the field-by-field zeropoint values. The 5σ limiting magnitudes are $u = 25.6\text{mag}$, $g = 25.3\text{mag}$, $r = 25.0\text{mag}$, $z' = 24.4\text{mag}$. For this work these data are used for display purposes only, in Figure 2.

2.2. New Imaging of SpARCS1049+56

2.2.1. JCMT SCUBA2 450/850 μm

We obtained 3 hours of integration in Band-1/2 weather with the new SCUBA2 bolometer array on the JCMT. SCUBA2 simultaneously observes at 450 μm and 850 μm with 8" and 15" FWHM beams respectively. We employed the simple Daisy scan strategy which provides uniform sensitivity over the center $\sim 3'$ area. The maps were produced using the standard SCUBA2 data reduction pipeline (DRP) (Jenness et al. 2011; Geach et al. 2013; Chapin et al. 2013) and beam-filtered to maximize sensitivity to point-sources. In the central region of each map (located at the cluster core) we reach an rms of ~ 8 mJy beam $^{-1}$ at 450 μm and ~ 1 mJy beam $^{-1}$ at 850 μm .

2.2.2. HST WFC3 Imaging

We obtained infrared imaging of the cluster center with the F160W and F105W filters in Cycle 22²¹. These observations were obtained over nine separate visits, with total exposure times of 9237s and 8543s in F160W and F105W respectively.

The data were processed using standard HST data reduction techniques, with some minor modifications. To combine and re-sample all images, we use the standard Space Telescope Science Institute (STScI) AstroDrizzle software from the DrizzlePac package²², using the "median" combine type with 0".09 pixels. The DrizzlePac

²¹ Based on observations made with the NASA/ESA Hubble Space Telescope, obtained [from the Data Archive] at the Space Telescope Science Institute, which is operated by the Association of Universities for Research in Astronomy, Inc., under NASA contract NAS 5-26555. These observations are associated with program # GO-13677 and # GO-13747

²² <http://drizzlepac.stsci.edu/>

software accounts for all distortion corrections, and also accounts for other instrument/detector specific calibrations, much of which is contained in the image data quality array. Cosmic rays are flagged and corrected in the up-the-ramp sampling, and our 3-dither pattern allows unflagged hot pixels or uncorrected cosmic rays to be found and masked by AstroDrizzle.

To align the images, we detect objects in each image with SEP²³, and then apply standard point-set registration techniques to shift and rotate the images. We also use SEP to perform spatially variable background subtraction, masking the bright objects in the image to avoid bias in this background estimate.

2.3. Spectroscopy

2.3.1. Keck-MOSFIRE Spectroscopy

H -band spectroscopy was obtained in 2013/14 using the near-infrared multi-object spectrograph MOSFIRE on the W.M. Keck I Telescope (McLean et al. 2012). The MOSFIRE H -band filter is centered at 1.632 μm , and has a spectral resolution $R = 3660$. This allows the resolved observation of $H\alpha$ and the $[\text{NII}]$ doublet, $\lambda\lambda 6583, 6548$ at the redshift of SpARCS1049+56. Four separate H -band masks were obtained with ~ 40 slits per mask. During observations, each individual exposure was 120s in length, with total integration times 45-60 minutes per mask. All observations were taken utilizing an ABBA dither pattern with a nod amplitude of 1".5 and standard 0".7 slit width.

We utilized the MOSFIRE data reduction pipeline (DRP v20140610) for the first step in data reduction. The DRP produces a two-dimensional spectrum and a corresponding sigma image from the raw flat and data frames for each object on the slit mask. All spectrum and sigma images are a sky-subtracted, wavelength calibrated, then registered to produce a stack of the A and B dither positions. All raw images were visually inspected for integrity before ingested into the DRP; any anomalous frames were thrown out. One step in the DRP involves interactively fitting the wavelength solution based on the sky lines during which we attempt to fit the wavelength solution to have a maximum residual difference of 0.2 pixels for any one skyline.

We then extracted one-dimensional spectra from the two-dimensional spectra and sigma images following the extraction method of Horne (1986). Full details will be present in a future paper by DeGroot et al. (2015, in preparation) but we give a brief outline here. Typical extraction routines simply sum the sky-subtracted image data from the two-dimensional spectrum over a range that encloses the object's spectrum in the spatial direction. Our extraction applies a non-uniform pixel weighting, nominally gaussian in shape, to the extraction sum which increases the signal-to-noise of the resulting one-dimensional spectra. Redshifts are determined from developed line fitting routines that simultaneously fit $H\alpha$ and $[\text{NII}]$ doublet emission lines as well as a linear continuum component via a Markov Chain Monte Carlo (MCMC) approach based on bayesian inference. Redshift errors are determined from the addition in quadrature of the random error from the MCMC fit and the

²³ <https://github.com/kbarbary/sep>

systematic error from the interactive wavelength fitting step of the DRP.

2.3.2. *Spitzer* IRS Spectroscopy

The position of the galaxy that we identify as the central BCG (Section 4.2) was serendipitously observed as part of an earlier *Spitzer*-IRS survey of Farrah et al. (2008) (see Section 3.3 for further discussion of the identification of the BCG with this observation). This program targeted infrared-bright systems ($S_{24\mu\text{m}} > 500\text{mJy}$) with infrared colors indicative of high-redshift galaxies. The data acquisition, reduction and analysis are described in Farrah et al., and we use these measurements in Section 3.3. We further downloaded the spectrum from the Cornell Atlas of *Spitzer* IRS Spectra (CASSIS) which has developed its own analysis pipeline (Lebouteiller et al 2011).

3. ANALYSIS

3.1. *Discovery and Confirmation of the $z = 1.7$ SpARCS1049+56 cluster*

The northern/equatorial SpARCS SWIRE images cover 9.8, 4.5, 11.6 and 9.4 deg^2 (for a total of $\sim 35 \text{ deg}^2$) over the ELAIS-N1, ELAIS-N2, Lockman and XMM-LSS multi-wavelength survey fields respectively (Muzzin et al. 2009). SpARCS1049+56 is located within the Lockman field (the largest single field) and is the second richest cluster detection above $z = 1.7$ within the 35 square degrees. Unfortunately, it lies close to a chip gap on the z' image and the outskirts of the northern half of the cluster lack coverage in this band.

The Keck-MOSFIRE spectroscopy confirms the presence of a galaxy over-density at $z = 1.7$. An average around the $z \sim 1.7$ peak produces a cluster redshift of $z = 1.7089$. In Figure 1 we show the distribution of 70 redshifts measured from four MOSFIRE masks of 146 independent slits, over a field-of-view of $\sim 6 \times 3$ arcmin, and in Figure 2 we show the physical locations of the galaxies with spectra. The distribution of confirmed cluster members (see discussion below) is spatially extended over several Mpcs, but this is, in part, a consequence of our observing constraints rather than a reflection of the true spatial distribution. The MOSFIRE design prohibits complete sampling of the core, due to a required minimum separation between slits, and thus the confirmed members are spatially spread out (Figure 2). Moreover, redshifts were obtained through the detection of H α and this could impose a radial bias in the redshift success, since completely passive galaxies (which may dominate within the core) will not show emission lines.

We estimate the cluster richness from the $3.6\mu\text{m}$ (rest-frame $\sim J$) data to be $N_{\text{gal}} = 30 \pm 8$. We use the following definition of N_{gal} : the number of background-subtracted galaxies within a 500kpc radius of the cluster center brighter than $M^* + 1$ based on a passive evolving luminosity function with $z_{\text{formation}} = 10$ (Muzzin et al. 2007). Applying the conversion of Andreon & Congdon (2014b) this richness yields a mass within 500 kpc of $(3.8 \pm 1.2) \times 10^{14} M_{\odot}$, where the uncertainty does not include redshift evolution in this relation. We note that in a richness-limited sample, such as this, there may be a bias toward systems with a high richness-to-mass relation. Confirmation of this mass will require a gravita-

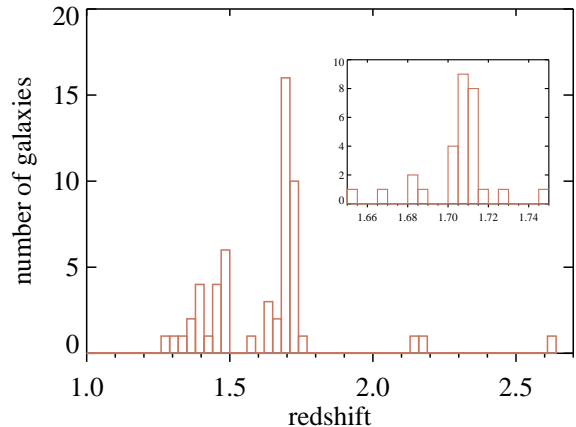


FIG. 1.— The distribution of redshifts from the Keck-MOSFIRE spectroscopy. The inset shows a zoom in on the redshift peak of $z = 1.7089$. A velocity cut of ± 1500 km/s of the mean cluster redshift results in 27 members within the 6×3 arcmin field of view of MOSFIRE.

tional lensing measurement or detection of the intracluster medium (ICM). Currently there is no X-ray coverage of this object, and it is not expected (given its estimated mass) to appear as an SZ decrement in the Planck all-sky map (Planck Collaboration et al. 2014).

We classify as cluster members galaxies which lie within ± 1500 km/s of the mean cluster redshift. This provides a sample of 27 cluster members within a cluster-centric radius of 1.8 Mpc. A standard biweight-mean yields a velocity dispersion of 430^{+80}_{-100} km/s. We use the model calibrated relation between cluster virial mass and velocity dispersion to convert this to a virial mass of $8 \pm 2 \times 10^{13} M_{\odot}$. However, Saro et al. (2013) have found that calculating the velocity dispersion using at least the brightest 30 red sequence galaxies within the virial radius is required to obtain the virial mass of a cluster to within 40%, whereas we have used 27 H α emitters over a wider area. This region of the spectrum is also plagued by sky lines and does not allow us to fully, or symmetrically sample the redshift distribution. We therefore attach an uncertainty of at least 40% to this mass, or $8 \pm 3 \times 10^{13} M_{\odot}$.

Although the mass is uncertain, we can add this system to the growing list of clusters and massive groups known around or above $z = 1.7$. The most massive published clusters are the Stanford et al. (2012) system at $z = 1.75$ (IDCSJ1426+3508) with seven spectroscopically confirmed members and X-ray and SZ detections that indicate a mass estimate of $M_{200} \sim 5 \times 10^{14} M_{\odot}$ (Brodwin et al. 2012), and the Tozzi et al. (2015) cluster with $M_{500} = 3.2^{+0.9}_{-0.6} \times 10^{14} M_{\odot}$. JKCS041 (Andreon et al. 2009, 2014a; Newman et al. 2014) lies at $z = 1.803$, with a mass constrained by optical richness and X-ray properties to be $1.6 \times 10^{14} M_{\odot}$. The Zeimann et al. (2012) system is at a slightly higher redshift of $z = 1.89$, but with no mass estimate reported. Finally, CL1449+0586 (Gobat et al. 2013) is confirmed at $z = 2.0$ with 26 spectroscopic members. Its X-ray flux indicates a mass of $5 \times 10^{13} M_{\odot}$. With a mass of $0.8\text{-}3.8 \times 10^{14} M_{\odot}$ SpARCS1049 is similar to these objects.

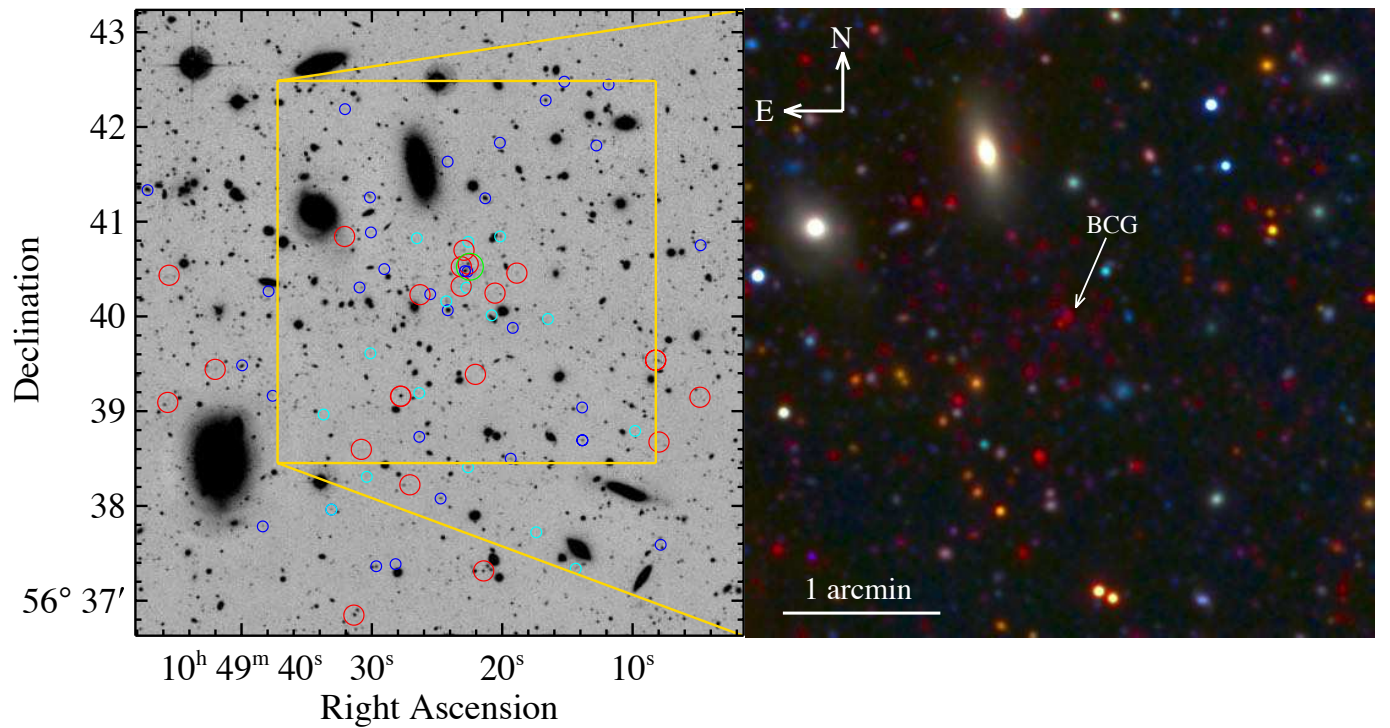


FIG. 2.— **Left:** The K -band image (greyscale) of the $\sim 6 \times 6$ arcmin region around SpARCS1049+56. Circles denote galaxies with spectroscopy from Keck-MOSFIRE. Large red circles indicate confirmed cluster members; smaller dark blue circles show foreground/background objects; and smaller cyan circles correspond to galaxies for which no redshift could be obtained. This latter group contains foreground/background systems as well as cluster members with no strong emission lines. The central green circle shows the location of the BCG, although the BCG itself is not easily visible in this image (as it is very faint and red). **Right:** The $ur3.6\mu m$ image of the cluster region with the location of the BCG again indicated.

3.2. The Galaxy Population and the Brightest Cluster Galaxy

Figure 3 presents the color-magnitude diagram for SpARCS1049+56 using HST-WFC3 NIR filters which bracket the 4000Å-break in the rest-frame. We show all objects detected in both filters within the central 40'' (~ 320 kpc) radius of the HST image. Orange stars show galaxies confirmed as foreground or background systems, with the largest star corresponding to a low-redshift line-of-sight companion to the BCG (J.S. Huang, private communication). Solid blue circles indicate cluster members confirmed through emission-line spectroscopy. Large open red circles correspond to galaxies for which a spectrum was obtained, but no redshift was determined, due to a lack of features. These include fore/background systems and cluster members with no strong emission lines in the H -band, and emission-line cluster galaxies whose $H\alpha$ line is masked by a sky-line.

An over-density of red-sequence galaxies is observed; this is expected since that is required for the initial cluster detection. We show the location of the red-sequence (black line) predicted for a single stellar population (SSP) formed at $z_{\text{form}} = 5$ (Bruzual & Charlot 2003). It is interesting to note that all of the galaxies with colors consistent with the red sequence do not show evidence of strong line emission, implying the Red Sequence is already old and passive in this system. Nor are the identified cluster members very blue, rather they clump just below the red-sequence in the approximate region of the “green-valley”. This might be explained by the two primary biases of the MOSFIRE spectroscopic observations. Targets were prioritized by $z' - 3.6\mu\text{m}$ color, to best select cluster members. This biases the spectroscopy toward red galaxies. However, redshifts required the detection of the $H\alpha$ emission line, thereby requiring star formation. This combined selection could tilt the confirmed members toward the reddest emission-line galaxies, or those in the green valley. Still, the presence of these systems may indicate that a significant fraction of the galaxies within SpARCS1049 are transitioning from a star-forming episode to passive red-sequence galaxies.

The BCG stands out clearly on the Red Sequence and is labeled in Figure 3 with the next brightest system almost a full magnitude fainter. $H\alpha$ was not observed for this galaxy, indicating it has a passively evolved stellar population (and see Section 3.3) with no measurable trace of star formation. However, the IRAC colors indicate, through the presence of the stellar photospheric feature at rest-frame $1.6\mu\text{m}$ (the stellar bump), a photometric redshift of $z = 1.7$.

3.3. Ultraluminous Infrared Emission Coincident with the Central Galaxy

The center of the cluster is coincident with a previously known Ultraluminous Infrared Galaxy at $z = 1.7$ in the Farrah et al.(2012) IRS study of extremely IR-bright high-redshift galaxies in SWIRE. The sample was defined by IRAC colors, to pre-select galaxies at $z \sim 1.7$, and bright MIPS- $24\mu\text{m}$ ($> 500\mu\text{Jy}$) emission. The target of the *Spitzer* spectroscopy was the BCG of the cluster and strong polycyclic aromatic hydrocarbon (PAH) features were detected, confirming a redshift of $z = 1.7$.

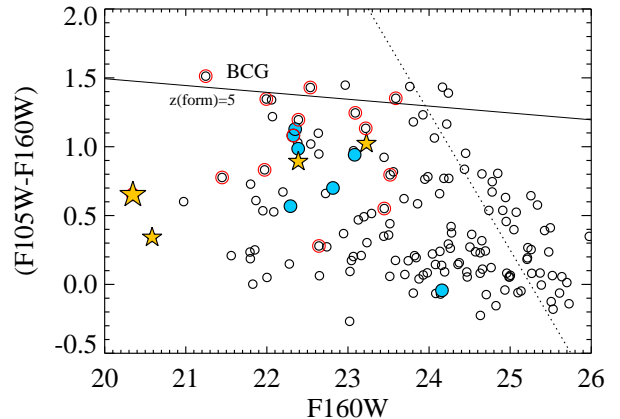


FIG. 3.— The HST NIR color-magnitude diagram, for all objects within 40'' of the cluster center. For clarity we do not include photometric uncertainties, but show the $\sim 5\sigma$ color-limit set by the F105W limit (diagonal dotted line); the same limit for F160W is ~ 25.5 mag. Small open circles correspond to all objects with photometric measurements in the inner 40'' radius of the HST image. Solid orange stars indicate confirmed non-cluster members (generally foreground), with the largest star corresponding to the bright blue line-of-sight companion to the BCG (J.S. Huang, private communication). Larger red circles highlight galaxies for which a spectrum was obtained, but no redshift was determined because of a lack of spectral features. These are a combination of fore/background galaxies, and galaxies within the cluster with no strong emission lines (passive systems). Finally, the large, solid blue circles indicate cluster members confirmed through emission-line redshifts. We also include a model of the Red Sequence for a formation redshift of $z_{\text{form}} = 5$. The identified BCG (labeled) stands out as the brightest galaxy on the red-sequence.

Two other bright galaxies can be seen within the MIPS $24\mu\text{m}$ beam, to the SE. Both of these galaxies have been spectroscopically confirmed to be foreground objects at $z = 0.64$ (J.S. Huang, private communication, the Multi-Mirror Telescope) and $z = 1.3$ (Keck-MOSFIRE), for the blue and red galaxy respectively. The detection of PAH lines at $z = 1.7$ therefore removes these two galaxies as candidates for the MIPS emission. Thus, the ground based-imaging leaves only the BCG as the candidate ID; although some diffuse emission is visible, no other source is seen within the 95% confidence region.

The deep HST imaging reveals a more complicated situation, however. In Figure 4 we show the two-color composite image of the central region using the F105W and F160W filters (rest-frame $\sim u'$ and r' , respectively). Here we see a long chain of small objects embedded within a diffuse filament or tidal-tail. The MIPS centroid is located directly on top of one of these objects (in the approximate center of the chain) and thus it seems likely that the MIPS emission is coming not from the BCG itself, but from an object, or set of objects, within $\sim 16\text{kpc}$ of the BCG. The details of this structure are discussed in the following section, but we note its morphology and the proximity to the BCG (possibly within its stellar envelope) suggest that the strong infrared emission is driven by an interaction with the central galaxy of the cluster.

3.3.1. Constraining the Infrared Spectral Energy Distribution

With such extensive multi-wavelength coverage of infrared-bright object, we are in a position to constrain its spectral energy distribution (SED) and derive sim-

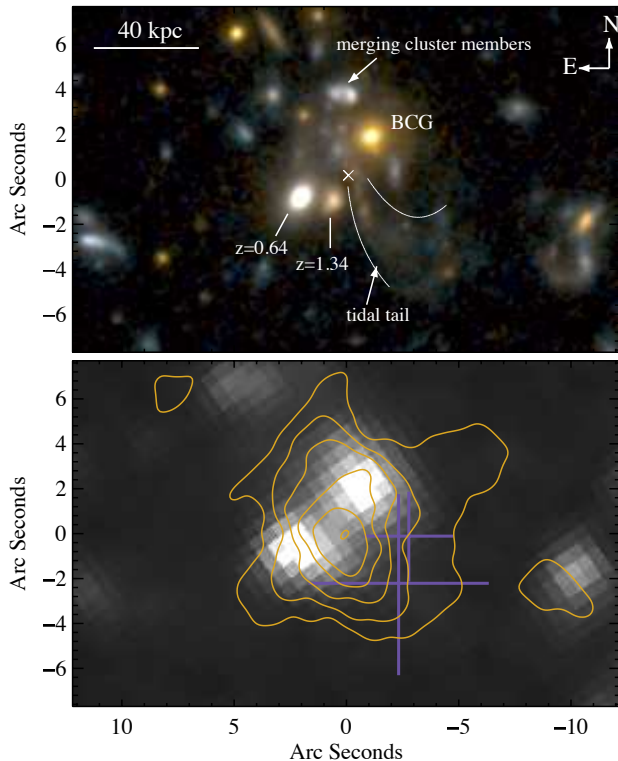


FIG. 4.— **Top:** the two-color (F160W, F105W) HST image of the central region of SpARCS1049, showing the complex morphology of the core. Diffuse emission in a tidal-tail shaped structure is visible, and embedded along its length are multiple clumps. The cross marks the centroid of the $24\mu\text{m}$ emission. **Bottom:** The $3.6\mu\text{m}$ image of the same region (greyscale) with MIPS flux contours overlaid (orange) to show the location of the $24\mu\text{m}$ centroid and the mild extension of the source in the N/S direction. The two purple crosses correspond to the $850\mu\text{m}$ (large) and $450\mu\text{m}$ (small) positions, where the size of the cross denotes $1/2$ the FWHM of the beams.

ple parameters from it. Flux measurements in the optical/NIR/MIR regimes are straightforward, however the large beam sizes of the *Herschel* instruments make confusion difficult to correct for in the crowded central regions of the cluster. We therefore explain our method in detail here.

The SPIRE data are publicly available and while there is emission coincident with BCG in the HerMES $250\mu\text{m}$ catalog (Wang et al. 2013), the increasing beam-size at 350 and $500\mu\text{m}$ results in a highly confused image of the cluster core. However, utilizing positional priors from less-confused wavelengths can reduce the amount of source blending in far-infrared photometry. In particular, Viero et al. (2013) developed a novel algorithm called SIMSTACK to stack SPIRE maps on prior positions from a user-defined catalog. SIMSTACK simultaneously stacks lists of potentially clustered populations,

which effectively allows for a deconvolution of fluxes from multiple sources within each SPIRE beam. We exploit the *Spitzer*-MIPS $24\mu\text{m}$ catalog from SWIRE for our positional priors.

As we are only interested in the flux of the infrared source, we alter the code slightly to suit our needs. We collect all $24\mu\text{m}$ sources within 90 arcsec of the BCG, which corresponds to $\sim 50, 30,$ and 15 independent beams at $250, 350,$ and $500\mu\text{m}$, respectively. We separate each source into individual lists, and simultaneously fit each list for the best value, yielding a flux of $46 \pm 6.2, 47 \pm 6.7,$ and 21 ± 9.4 for ascending SPIRE wavelengths, including the nominal confusion noise (Nguyen et al. 2010). We compare these fluxes to those derived from the HerMES XID catalog that uses the $250\mu\text{m}$ source positions (which have a FWHM beam ~ 3 times larger than $24\mu\text{m}$) as priors for 350 and $500\mu\text{m}$. While the individual SPIRE fluxes can differ by $2 - 3\sigma$ between the two methods, the resulting best fit SED (see Figure 5 and below), and subsequent infrared luminosity, are robust, differing only by 1.3% .

At $850\mu\text{m}$ we detect a point source at an offset of $4''$ from the BCG location with a significance of 4.2σ . A $450\mu\text{m}$ peak is detected at the same location at significance of 4.0σ (Figure 5). Both of these offsets are within the expected positional error radius for SCUBA2, given the signal-to-noise of the detection, and these measurements are included in Figure 5. No useful constraints are obtained from the MIPS 70 and $170\mu\text{m}$ imaging of SWIRE.

In Figure 5 we show the complete SED for the far-infrared source using all available data from 24 to $850\mu\text{m}$ (Table 2), including the IRS spectrum in cyan. The reduced IRS spectrum was obtained through the CASSIS. We have fit two sets of template SEDs to the data: we use the composite SED of Kirkpatrick et al. (2012) of star forming ULIRGs at $z \sim 2$, and the library of templates from Chary & Elbaz (2001). We fit only to the photometry, for consistency, but include a discussion of the information contained within the IRS spectrum below.

The Kirkpatrick SED is derived from infrared-luminous objects of similar luminosities to this source, at a similar redshift of $z \sim 2$. As there is only one spectrum, we fit for the amplitude and then integrate under the infrared portion ($8-1000\mu\text{m}$) of the SED to obtain the total infrared luminosity. Uncertainties on the luminosity are produced by fitting the extremes of the uncertainties/scatter on the composite template.

The Chary & Elbaz templates, on the other hand, are derived from local galaxy templates and thus may not be appropriate for galaxies at $z \sim 2$. Indeed, many studies have shown that using the CE01 SEDs to infer the L_{IR} from a single $24\mu\text{m}$ measurement over estimates the luminosity beyond $z = 1.5$ (Murphy et al. 2009; Nordon et al. 2012; Rodrghiego et al. 2010). As explored by (Elbaz et al. 2011), however, this discrepancy is reduced when one considers the full range of CE01 templates, rather than pre-selecting a single template based on the observed $24\mu\text{m}$ luminosity, and when fitting broader photometric coverage. We therefore adopt the following fitting method for these templates. We fit each available template (105 total variations) to the data (Pope et al. 2008). We calculate uncertainties on the infrared luminosities

using a Bayesian approach. We calculate the normalized chi-square probability distribution as a function of Chary & Elbaz template and amplitude, ranging from 0-50 in steps of 0.05. Each value in this grid corresponds to an infrared luminosity, which can then be weighted by the normalized chi-square probability. The final uncertainty is given by the standard deviation of the weighted mean of the infrared luminosity: $\sigma_{\text{LIR}} = \sqrt{\langle \text{LIR}^2 \rangle - \langle \text{LIR} \rangle^2}$.

In Table 2 we summarize the results of these fits. Formally, the best representation of the data is the CE01 SED. This fit produces $L_{\text{IR}} = 6.2 \pm 0.9 \times 10^{12} L_{\odot}$, with a $\chi_{\nu}^2 = 0.4$. We note the uncertainty on this value is small because only a small set of CE01 SEDs accurately represent the data. The Kirkpatrick model yields $L_{\text{IR}} = 4.1 \pm 1.5 \times 10^{12} L_{\odot}$, with $\chi_{\nu}^2 = 4.0$. As can be seen in Figure 5, the Kirkpatrick model over-predicts the amount of long-wavelength emission in the Rayleigh-Jeans tail. However, the integrated luminosities of the two fits are consistent with each other at a level of $\sim 1\sigma$.

The LIR emission can be converted to a SFR by applying the standard Kennicutt (1998) law, under the assumption that the dust is heated entirely by the stellar population with a Salpeter IMF, and these values are also included in Table 2. The CE01 fit yields a SFR of $1070 \pm 160 M_{\odot} \text{yr}^{-1}$, while the Kirkpatrick fit produces $690 \pm 260 M_{\odot} \text{yr}^{-1}$. These estimates are in agreement with the upper-limit on the SFR placed by Farrah et al. (2008) of $< 1200 M_{\odot} \text{yr}^{-1}$ from the non-detection of the $6.2 \mu\text{m}$ line.

If an AGN is contributing to the IR luminosity this estimate must be reduced, however the presence of the PAH features in the spectrum, and the turn-over of the IRAC fluxes (implying a lack of very hot dust), suggest that an AGN does not dominate the luminosity. To investigate this we decompose the IRS spectrum into a star forming and AGN components following the method of Pope et al. (2008). We find an AGN contribution to the MIR of 50%, corresponding to an AGN contribution to the FIR luminosity of $\sim 20\%$. We therefore apply this downward correction to the SFR. This yields, for the best-fit SED, a SFR of $860 \pm 130 M_{\odot} \text{yr}^{-1}$.

3.4. HST-revealed Beads on a String

Prior to the HST NIR data, the BCG was the best candidate for the $24\mu\text{m}$ emission as it appeared to be the only viable option within the search radius of the source; however, the high resolution of the HST image has revealed a very complex structure within the core of the cluster, and has detected numerous additional objects within the search area. A color zoom-in of the central region is shown in Figure 4. Here we see a chain of small clumps arranged as “beads on a string” and covering a linear area of roughly 66 kpc. The clumps are embedded within diffuse emission which has the morphology of a single large tidal tail. This tail appears to begin $1''$ east (8 kpc) of the BCG, within its stellar envelope, and forms a distinct backwards J-like structure, ending to the south-west of the BCG.

The morphology of this structure is reminiscent of interacting galaxies. In particular, it is similar to the long single tidal arms of the “shrimp” galaxies at $z \sim 1.4$ classified by Elmegreen et al. (2007) in the GEMS and

GOODS fields. These systems appear to be higher redshift analogs of merging systems such as M51 or the Antennae. They consist of a single large tail, defined by diffuse emission and composed of several distinct and regularly spaced clumps. The scale of the structure in SpARCS1049+56 is similar to these, with a linear extent of 66 kpc, a width of ~ 5 kpc and clump spacing ranging from 1 to 2 kpc. The mips $24\mu\text{m}$ emission peaks on one of the beads in the center of the tail and appears to be slightly extended along the direction of the tail (Figure 4)

4. DISCUSSION

4.1. Dissipative Merger Induced Formation of the BCG

The unique feature of this cluster is its extremely active and infrared-luminous central object. We conclude, based on the presence of PAH features and its NIR colors, that the IR emission is dominated by star formation rather than an AGN. The best SED fit yields $L_{\text{IR}} = 6.2 \pm 0.9 \times 10^{12} L_{\odot}$ and a corresponding AGN-corrected SFR of $860 \pm 130 M_{\odot} \text{yr}^{-1}$. In this respect the system is similar to the Phoenix BCG (McDonald et al. 2012) within a $z = 0.6$ SPT cluster, but SpARCS1049+56 is seen at a significantly earlier cosmological epoch. In both of these systems a substantial amount of gas is being delivered to the cluster center to fuel this intense starburst. In the case of the Phoenix the gas is deposited by a rapidly cooling intracluster medium (ICM) (McDonald et al. 2013). X-ray imaging of the Phoenix cluster indicates it has a cool core and deep optical and UV imaging and spectroscopy has revealed a network of large-scale gas filaments apparently streaming into the BCG (McDonald et al. 2013, 2014).

Although no X-ray information exists for SpARCS1049, the NIR (rest-frame UV and optical) data indicate a very different scenario. Rather than a spider-web arrangement of filaments, the HST imaging shows a single tidal tail, with clumps along its length. While this does not rule out the deposition of gas by a cooling flow, the morphology is more consistent with starbursts induced by gas-rich mergers.

Though the phenomenon of mergers producing “beads on a string” tidal tails is well-established to our knowledge (Elmegreen & Efremov 1996) SpARCS1049 is only the second example of such an event in the center of a galaxy cluster. Recently, a similar object was reported by Tremblay et al. (2014) in a lower-redshift ($z = 0.3$) strong-lensing cluster, SDSSJ1531+3414. This system is clearly associated with a major-merger consisting of the BCG and a massive companion. There are similarities between SpARCS1049 and SDSSJ1531+3414, namely the spacing of the beads ranges between 1 and 2.5 kpc and the linear extent is several tens of kpc long (66 kpc and 27 kpc respectively). However, there are some key differences as well. Firstly, a second massive galaxy, merging with the BCG is not obvious in SpARCS1049. The tidal tail appears to begin within the stellar envelope of the BCG with a smaller merging system that is spectroscopically confirmed to be within the cluster sitting at its tip. The tail may be associated with this system which itself is interacting with the BCG, but does not have a comparable mass. Secondly, although the rest-frame filters are necessarily different the beads/clumps of SpARCS1049 do not appear uniform in color, unlike

TABLE 1
LUMINOSITY AND STAR FORMATION RATE ESTIMATES FOR THE
INFRARED-BRIGHT CENTRAL GALAXY SYSTEM

Method/SED	χ^2_ν	L_{IR} ($10^{12} L_\odot$)	SFR ($M_\odot \text{ yr}^{-1}$)	AGN removed SFR ^a ($M_\odot \text{ yr}^{-1}$)
Chary & Elbaz	0.4	6.2 ± 0.9	1070 ± 160	856 ± 128
Kirkpatrick	4.0	4.1 ± 1.5	690 ± 290	552 ± 232
$6.2\mu\text{m}$ PAH ^b	< 1200	...

^aAssuming 20% of the FIR luminosity is produced by the AGN

^bFarrah et al. (2008)

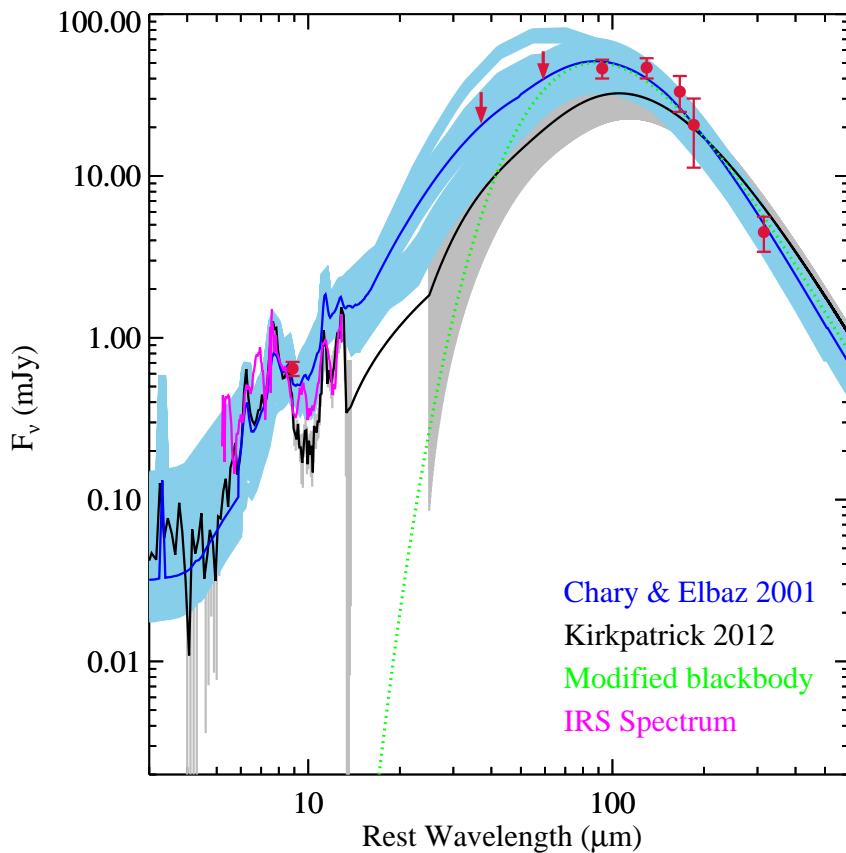


FIG. 5.— The infrared spectral energy distribution from the combined MIPS/IRS/SPIRE/SCUBA2 flux measurements. The photometric points are shown in dark red and the IRS spectrum in cyan. The red arrows show the 3σ limits of the PACS measurements. Overlaid (solid black line) is the infrared luminous template SED for $z \sim 2$ ULIRGs developed by Kirkpatrick et al. (2012), with the scatter in this SED denoted by the grey shading. The blue curve corresponds to the best-fit SED from the (Chary & Elbaz 2001) template library, with the blue shading showing the family of templates that produce a $<3\sigma$ fit. Both SEDs are scaled to best-fit the photometric points only; the fits do not include the IRS spectrum which is simply over-plotted as observed. The Chary & Elbaz SED (without the optical points) yields the lowest χ^2 and provides an infrared luminosity of $L_{\text{IR}} = 6.6 \times 10^{12} L_\odot$. The green dotted line shows a modified black body ($\beta = 1.7$) fit to the SPIRE and SCUBA2 photometry which provides yet another estimate of the infrared luminosity, that is independent of the assumed SED. The dust temperature is found to be $T = 44 \pm 5$ K and $L_{\text{IR}} \sim 4 \times 10^{12} L_\odot$, in good agreement with that of the full SED. The parameters of the template fits are listed in Table 1.

TABLE 2
INFRARED PHOTOMETRY MEASUREMENTS

$24\mu\text{m}$ (mJy)	$250\mu\text{m}$ (mJy)	$350\mu\text{m}$ (mJy)	$450\mu\text{m}$ (mJy)	$500\mu\text{m}$ (mJy)	$850\mu\text{m}$ (mJy)
0.645 ± 0.065	46.2 ± 6.2	46.8 ± 6.7	33.2 ± 8.3	20.7 ± 9.4	4.5 ± 1.1

those of SDSSJ1531+3414. The clumps near the BCG-end of the tail are blue and similar in color to the merging pair at the tip, while the extended end of the tail has a color more consistent with the BCG itself. Given that the MIPS emission is coincident with this second half of the tail, this may be due to extreme dust extinction in this region. Finally, the scale of the star formation in SpARCS1049+56 is extremely different. The total SFR of SDSSJ1531+3414 (determined from H α) is $5 M_{\odot}\text{yr}^{-1}$, approximately two orders of magnitude smaller than we measure for SpARCS1049.

Assuming that the stellar mass produced in the burst will eventually be incorporated into the BCG we can assess its importance through a rough estimate of the specific SFR. For this we simply use the total SFR as seen in the IR and the existing approximate mass of the BCG. To estimate the stellar mass we employ the color dependent rest-frame K mass-to-light ratio (M/L_K) calculated by Bell et al. (2003), using the F160W-F105W color as an approximate rest-frame $u-g$. This yields stellar mass of $3\pm 0.4\times 10^{11} M_{\odot}$, where the error reflects a 10% uncertainty in the photometry (corrected to a Salpeter IMF (Raue & Meyer 2012)). Note that in the rest-frame K galaxies have a weak dependence of M/L on color: an uncertainty in color of ± 0.5 would lead to an additional uncertainty of $\pm 0.5\times 10^{11} M_{\odot}$. Thus, although it is undergoing a very rapid starburst of $860 M_{\odot} \text{yr}^{-1}$, the specific SFR of the SpARCS1049+56 BCG is a moderate $\sim 3\text{-}5 \text{ Gyr}^{-1}$, in line with mass-extrapolated main sequence field galaxies at $z \sim 2$ (Daddi et al. 2007). This could imply that the mechanism of gas deposition is similar to that of the field at this redshift (major gas-rich mergers), or that galaxy self-regulation operates in the same way to limit the star formation efficiency, regardless of the fuelling process. Nevertheless, the inferred SFR of $860 M_{\odot} \text{yr}^{-1}$ would double the stellar mass of the galaxy within roughly 400 million years therefore necessitating a rapid quenching mechanism. This is a similar timescale to that expected for a cooling flow of 100-500 Myr (Sarazin et al. 1986), with subsequent shut-down by an emerging AGN, but is also consistent with the gas depletion timescales for ULIRG mergers (Kennicutt 1998).

Regardless of the central fueling mechanism, this is an optically rich cluster caught in the process of forming a large amount of stellar mass within the halo of its BCG. SpARCS1049+56 therefore offers a new opportunity to study the interplay between the global cluster physics, be it the cooling of the gas halo or the interaction between infalling galaxies and the ICM, and the evolution of the massive central galaxy within the system at a time when such processes may be more important to building clusters than today. The rapid growth of BCGs through large-scale cooling of the ICM is a key ingredient at early times in SAMs (e.g. De Lucia & Blaizot 2007), but the supporting observational evidence is slim, largely because of the dearth of high-redshift ($z > 1.5$) overdensities available for study. Evidence is mounting that growth of BCGs through dry mergers is an important process (e.g. Lidman et al. 2012), but these studies have been limited to $z \sim 1$. It may be that SpARCS1049+56 is the first example of a new process, wet mergers of gas-rich galaxies, occurring in the core of a $z \sim 1.7$ cluster.

5. CONCLUSIONS

This paper presents the discovery and first analysis of a rich galaxy cluster at $z = 1.708$ with a remarkable star-forming central galaxy. While much additional work must be done to characterize the cluster itself we can presently make the following conclusions.

1. We have spectroscopically confirmed, through the presence of 27 member galaxies, an over-density of galaxies at $z = 1.7089$.
2. The $3.6\mu\text{m}$ photometric richness is measured to be $N_{\text{gal}}=30\pm 8$. Applying standard, low-redshift, conversions, the mass (within 500kpc) of the cluster is estimated to be $\sim 3.8\pm 1.2\times 10^{14} M_{\odot}$. The velocity dispersion, calculated from all 27 members over within 1.8 Mpc of the BCG, is $430^{+80}_{-100} \text{ km/s}$, implying a lower mass of $8\pm 3\times 10^{13} M_{\odot}$.
3. The Brightest Cluster Galaxy is coincident with an Ultra-luminous Infrared Galaxy with an estimated luminosity of $L_{\text{IR}} = 6.2\pm 0.9\times 10^{12} L_{\odot}$. The presence of PAH lines in its infrared spectrum and its rest-frame NIR colours indicate this energy is dominated by star formation, with an AGN corrected rate of of $\sim 860\pm 130 M_{\odot} \text{yr}^{-1}$. This rate necessitates rapid gas deposition into the BCG system.
4. Deep HST NIR imaging has revealed complex morphology within the core. A 66 kpc diffuse structure, reminiscent of a tidal tail, appears to emanate from the BCG. This structure contains several (>10) clumps of objects along its length, aligned as ‘‘beads on a string’’. The MIPS emission is coincident with a set of red beads in the center of the tail.
5. The overall arrangement of the system suggests that the star formation is being driven by gas-rich galaxy-galaxy interaction, possibly involving the BCG. If so, this would be a new example of BCG mass growth through wet-mergers at high redshift.

Some of the data presented herein were obtained at the W.M. Keck Observatory, which is operated as a scientific partnership among the California Institute of Technology, the University of California and the National Aeronautics and Space Administration. The Observatory was made possible by the generous financial support of the W.M. Keck Foundation. The authors wish to recognize and acknowledge the very significant cultural role and reverence that the summit of Mauna Kea has always had within the indigenous Hawaiian community. We are most fortunate to have the opportunity to conduct observations from this mountain. This material is based upon work in part supported by the U.S. Department of Energy, Office of Science, Office of High Energy Physics, under contract number No. AC02-05CH11231. This work is based in part on observations made with the Spitzer Space Telescope, which is operated by the Jet Propulsion Laboratory, California Institute of Technology under a contract with NASA. LD acknowledges support from European Research Council Advanced Grant: cosmicism. TMAW acknowledges the support of an NSERC Discovery Grant. Financial support for this work was provided

by NASA through programs GO-13306, GO-13677, GO-13747, GO-13845 & GO-14327 from the Space Telescope Science Institute, which is operated by AURA, Inc., un-

der NASA contract NAS 5-26555.

Facilities: HST (WFC3), Spitzer, JCMT, Keck:I, Herschel, CFHT, UKIRT

REFERENCES

- Planck Collaboration, Ade, P.A.R. et al. 2014, *A&A*, 571, 29
 Allen, S.W. et al., 1992, *MNRAS*, 259, 67
 Alberts, S. et al. 2014, *MNRAS*, 437, 437
 Andreon, S., Maughan, B., Trinchieri, G., Kurk, J., 2009, *A&A*, 507, 147
 Andreon, S., Newman, A.B., Trinchieri, G., Raichoor, A., Ellis, R.S., Treu, T. 2014, *A&A*, 565, 120
 Andreon, S. & Congdon, P. 2014, *A&A*, 568, 23
 Bayliss, M.B. et al. 2014, *ApJ*, 794, 12
 Bell, E. 2003, *ApJ*, 586, 794
 Bell, E.F., McIntosh, D.H., Daniel, H., I., Katz, N., & Weinberg, M.D. 2003, *ApJS*, 149, 289
 Bower, R.G., Benson, A.J., Malbon, R., Helly, J.C., Frenk, C.S., Baugh, C.M., Cole, S., Lacey, C.G., 2006, *MNRAS*, 370, 645
 Brodwin, M. et al. 2012, *ApJ*, 753, 162
 Brodwin, M. et al. 2013, *ApJ*, 779, 138
 Bruzual, G. & Charlot, S., 2003, *MNRAS*, 344, 1000
 Capozzi D., Collins, C.A., Stott, J.P., Hilton, M., 2012, *MNRAS*, 419, 2821
 Chapin, E.L., Berry, D.S., Gibb, A.G., Jenness, T., Scott, D., Tilanus, R.P.J., Economou, F., Holland, W.S., 2013, *MNRAS*, 430, 2545
 Chary, R. & Elbaz, D., 2001, *ApJ*, 556, 562
 Croton, D.J. et al., 2006, *MNRAS*, 365, 11
 Daddi, E. et al., 2007, *ApJ*, 670, 156
 De Lucia, G., Kauffmann, G., White, S.D.M., 2004, *MNRAS*, 349, 1101
 De Lucia, G., Springel, V., White S.D.M., Croton, D., Kauffmann, G., 2006, *MNRAS*, 366, 499
 De Lucia, G. & Blaizot, J., 2007, *MNRAS*, 375, 2
 Donahue, M. et al., 2011, *ApJ*, 732, 40
 Demarco, R. et al., 2010, *ApJ*, 711, 1185
 Dressler, A., 1978, *ApJ*, 223, 765
 Edge, A.C. 2001, *MNRAS*, 328, 762
 Edwards, L.O.V., Hudson, M.J., Balogh, M.L., Smith, R.J. 2007, *MNRAS*, 379, 100
 Elbaz, D. et al. 2011, *A&A* 533, 119
 Elmegreen, B. & Efremov, Y.N. 1996, *ApJ*, 466, 802
 Elmegreen, D.M., Elmegreen, B.G., Fergusson, T., Mullan, B. 2007, *ApJ*, 663, 734
 Farrah, D. et al., 2008, *ApJ*, 677, 957
 Geach, J., et al., 2013, *MNRAS*, 432, 53
 Gobat, R. et al. 2013, *ApJ*, 776, 9
 Griffin, M.J. et al. 2010, *A&A*, 518, L3
 Guo, Q., 2011, *MNRAS*, 413, 101
 Hicks, A.K., Mushotzky, R., Donahue, M., 2010, *ApJ*, 719, 1844
 Horne, K. 1986, *PASP*, 98, 609
 Ibar, E. et al., 2010, *MNRAS*, 409, 38
 Jenness, T., Berry, D., Chapin, E., Economou, F., Gibb, A., Scott, D. 2011, *ASPC*, 442, 281
 Johnstone, R.M., Fabian, A.C., Taylor, G.B. 1998, *MNRAS*, 298, 854
 Kennicutt, R. 1998, *ApJ*, 498, 541
 Kauffmann G., Haehnelt M., 2000, *MNRAS*, 311, 576
 Kirkpatrick, A. et al., 2012, *ApJ*, 759, 139
 Leboutteiller, V., et al., 2011, *ApJS*, 196, 8.
 Lidman C. et al., 2012, *MNRAS*, 427, 550
 Lidman C. et al., 2013, *MNRAS*, 433, 825
 Lonsdale, C. et al. 2003, *PASP*, 115, 897
 Lonsdale, C.; Polletta, M., Surace, J.; Shupe, D., Fang, F., et al. 2004, *ApJS*, 154, 54
 Mana, A., Giannantonio, T., Weller, J., Hoyle, B., Huetsi, G., Sartoris, B., 2013, *MNRAS*, 434, 684
 Mauduit, J.C., et al., 2012, *PASP*, 124, 714
 McDonald, M. et al., 2012, *Nat*, 488, 349
 McDonald, M., Benson B., Veilleux S., Bautz M.W., Reichardt C.L., 2013, *ApJ*, L765
 McDonald M. et al., 2014, 784, 18
 McLean, I.S. et al., 2012, *SPIE*, 8446, 0J
 McNamara, B.R. & O'Connell, R.W. 1992, *ApJ*, 393
 Murphy, E.J., Chary, R.-R., Alexander, D.M., Magnelli, B., Morrison, G., Pope, A., Teplitz, H.I., 2009, *ApJ*, 698, 1380
 Muzzin, A., Yee, H.K.C., Hall, P.B., Lin, H., 2007, *ApJ*, 663, 150
 Muzzin, A. et al. 2008, *ApJ*, 686, 966
 Muzzin, A. et al. 2009, *ApJ*, 698, 1934
 Muzzin, A. et al. 2013, *ApJ*, 767, 39
 Nguyen, H. et al. 2010, *A&A*, 518, 5
 Newman, A.B., Ellis, R.S., Andreon, S., Treu, T., Raichoor, A., Trinchieri, G., 2014, *ApJ*, 788, 51
 Nordon, R. et al. 2012, *ApJ*, 75, 182
 O'Dea, K.P. et al., 2010, *ApJ*, 719, 1619
 Oliver, S. et al. 2012, *MNRAS*, 424, 1614
 Oemler, A., Jr. 1976, *ApJ*, 209, 693
 Pope, A. et al. 2008, *ApJ*, 675, 1171
 Popesso, P. Biviano, A., Bohringer, H., Romaniello, M. 2007, *A&A*, 464, 451
 Raue, M. & Meyer, M. 2012, *MNRAS*, 426, 1097
 Rawle, T.D. et al., 2012, *ApJ*, 747, 29
 Rodighiero, G. et al. 2010, *A&A*, 518, L25
 Santos, J.S. et al. 2015, *MNRAS*, 447, 65
 Sarazin, C.L., 1986, *RvMP*, 58, 1
 Saro, A., Mohr, J.J., Bazin, G., Dolag, K., 2013, *ApJ*, 772, 47
 Schombert, J.M., 1986, *ApJS*, 60, 603
 Springel V., White S.D.M., Tormen G., Kauffmann G., 2001, *MNRAS*, 328, 726
 Springel, V. et al., 2005, *Nat*, 435, 629
 Stanford, S., et al. 2012, *ApJ*, 753, 164
 Tran, K.-V. et al., 2010, *ApJ*, 719, L126
 Tremblay, G. et al., 2014, *ApJ*, 790, L26
 Tozzi, P. et al., 2015, *ApJ*, 799, 93
 Viero, M. et al. 2013, *ApJ*, 779, 32
 Wang, L. et al. 2013, arXiv 1312.0552
 Wen, Z.L., Han, J.L, Liu, F.S. , 2010, *MNRAS*, 407, 533
 Wen, Z.L., Han, J.L, Liu, F.S., 2012, *APJSS*, 199, 34
 Wilman, R.J., Edge, A.C., Swinbank, A.M., 2006, *MNRAS*, 371, 93
 Wilson, G. et al. 2009, *ApJ*, 698, 1943
 Yuan, T.-T., 2014, arXiv:1410.0690
 Zeimann, G.R., et al. 2012, *ApJ*, 756, 115