

UC Irvine

UC Irvine Previously Published Works

Title

Impact of TNF- α (rs1800629) and IL-6 (rs1800795) Polymorphisms on Cognitive Impairment in Asian Breast Cancer Patients

Permalink

<https://escholarship.org/uc/item/6qs935hs>

Journal

PLOS ONE, 11(10)

ISSN

1932-6203

Authors

Chae, Jung-woo
Ng, Terence
Yeo, Hui Ling
[et al.](#)

Publication Date

2016

DOI

10.1371/journal.pone.0164204

Copyright Information

This work is made available under the terms of a Creative Commons Attribution License, available at <https://creativecommons.org/licenses/by/4.0/>

Peer reviewed

RESEARCH ARTICLE

Impact of *TNF- α* (rs1800629) and *IL-6* (rs1800795) Polymorphisms on Cognitive Impairment in Asian Breast Cancer Patients

Jung-woo Chae¹✉, Terence Ng¹✉, Hui Ling Yeo¹, Maung Shwe¹, Yan Xiang Gan², Han Kiat Ho¹, Alexandre Chan^{1,2,3*}

1 Department of Pharmacy, National University of Singapore, Singapore, **2** Department of Pharmacy, National Cancer Centre Singapore, Singapore, **3** Duke-NUS Graduate Medical School Singapore, Singapore

✉ These authors contributed equally to this work.

* phaac@nus.edu.sg



OPEN ACCESS

Citation: Chae J-w, Ng T, Yeo HL, Shwe M, Gan YX, Ho HK, et al. (2016) Impact of *TNF- α* (rs1800629) and *IL-6* (rs1800795) Polymorphisms on Cognitive Impairment in Asian Breast Cancer Patients. PLoS ONE 11(10): e0164204. doi:10.1371/journal.pone.0164204

Editor: Juliet Spencer, University of San Francisco, UNITED STATES

Received: July 6, 2016

Accepted: September 21, 2016

Published: October 4, 2016

Copyright: © 2016 Chae et al. This is an open access article distributed under the terms of the [Creative Commons Attribution License](https://creativecommons.org/licenses/by/4.0/), which permits unrestricted use, distribution, and reproduction in any medium, provided the original author and source are credited.

Data Availability Statement: Data are available from the National Cancer Centre Singapore for researchers who meet the criteria for access to confidential data. Dr. Alexandre Chan (alexandre.chan@nccs.com.sg) is the person at the National Cancer Centre Singapore to whom requests for data could be sent.

Funding: This study was supported by research grants awarded by the National Medical Research Council Singapore (NMRC/CIRG/1386/2014) (http://www.nmrc.gov.sg/content/nmrc_internet/home.html) (Project investigator—AC). The funder

Abstract

Objective

Expression of pro-inflammatory cytokines is influenced by single nucleotide polymorphisms (SNPs) in the promoter regions of the pro-inflammatory cytokine genes, and cytokines are associated with the occurrence of post-chemotherapy cognitive impairment. Hence, the aim of this study was to evaluate the associations between two common pro-inflammatory cytokine gene polymorphisms namely, *IL6-174* (rs1800795 G>C) and *TNF-308* (rs1800629 G>A), and chemotherapy-associated cognitive impairment (CACI) among Asian early-stage breast cancer patients. In addition, the differential effect of these SNPs on plasma IL-6 and TNF- α levels, and the associations of plasma IL-6 and TNF- α levels with CACI were also assessed.

Methods

Asian early-stage breast cancer patients (Stage I to III) receiving chemotherapy were prospectively recruited from two cancer centers in Singapore. Patients' cognitive function was longitudinally assessed using the validated FACT-Cog (ver. 3) and an objective computerized battery, Headminder™ at three-time points. Plasma IL-6 and TNF- α levels were analyzed using the multiplex immunoassay, and genotyping was performed using Sanger sequencing. Regression analyses and generalized estimating equation were utilized for statistical analysis.

Results

A total of 125 patients were included (mean age: 50.3; Chinese: 80.8%; post-menopausal: 48.0%; 68.0% received anthracycline-based chemotherapy). 36.8% patients experienced self-perceived cognitive impairment, detected in memory (32.8%) and attention (34.2%) domains. Patients with higher levels of anxiety ($p < 0.001$) and insomnia ($p = 0.003$) also

had no role in study design, data collection and analysis, decision to publish, or preparation of the manuscript.

Competing Interests: The authors have declared that no competing interests exist.

reported more self-perceived cognitive impairment. Higher plasma concentrations of IL-6 were associated with greater severity of self-perceived cognitive impairment ($p = 0.001$). Polymorphisms of cytokine genes were not associated with expression of plasma cytokines.

Conclusion

Present findings further contribute to the growing evidence that supports the role of the pro-inflammatory cytokine IL-6 in the occurrence of cognitive impairment post-chemotherapy. However, genetic polymorphism of these cytokines did not play a major role to the cytokine fluctuations as well as cognitive impairment in this cohort. With an increasing evidence to support the cytokine hypothesis, future studies should investigate the role of anti-inflammatory agents in mitigating the cognitive impairment associated with chemotherapy.

Introduction

On the physiological level, inflammatory cytokines play important roles in the central nervous system (CNS) to modulate neuronal and glial cell functioning and neuronal repair [1–3]. However, the use of anticancer treatment coupled with patients' psychological distress could trigger the inflammation cascade, which could lead to cytokine dysregulation. In patients with cancer, such inflammation cascade is speculated to increase one's risk for subtle changes in cognition. This phenomenon is also known as cancer-associated cognitive impairment (CACI) or 'chemobrain' in the literature.

Evidence suggests that expression of pro-inflammatory cytokines is influenced by single nucleotide polymorphisms (SNPs) in the promoter regions of the pro-inflammatory cytokine genes. For example, the *TNF-308 G>A* (rs1800629) polymorphism has been associated with high transcriptional activity, which increases the secretion levels of $TNF-\alpha$, whereas the *IL6-174 G>C* (rs1800795) polymorphism has been reported to influence the expression of IL-6, with carriers of the G allele being associated with higher plasma concentrations of IL-6 [4–6]. Few studies have been performed to evaluate the association between these SNPs and cognitive impairment in cancer patients. One study reported that carriers of the G allele of *IL6-174 G>C* (rs1800795) were associated with poorer attention [7]. Another study suggested that carriers of high-expression alleles of *IL6-174* and *TNF-308* were associated with poorer memory in breast cancer patients [8]. Taken together, current findings suggest that host genetic factors could contribute to differential expression of the pro-inflammatory cytokines, which in turn translate to varying degrees of susceptibility to CACI among patients.

Singapore is a multiracial country with a majority population of Chinese, Malay and Indian, with English and Chinese being the most commonly spoken languages. As genetic polymorphisms are known to be demographic specific, it would be of great interest to determine the effect of these SNPs on cognitive function in the Singapore population, where information of such associations is sparse. (Fig 1) To the best of our knowledge, the association between these polymorphisms and cognitive function among Singapore multi-ethnic population are unknown. Hence, the aim of this study was to evaluate the associations between pro-inflammatory cytokine gene polymorphisms namely, *IL6-174* (rs1800795 G>C) and *TNF-308* (rs1800629 G>A), and CACI among early-stage breast cancer patients in Singapore. In addition, the differential effect of these SNPs on plasma IL-6 and $TNF-\alpha$ levels, and the associations of plasma IL-6 and $TNF-\alpha$ levels with CACI were also assessed.

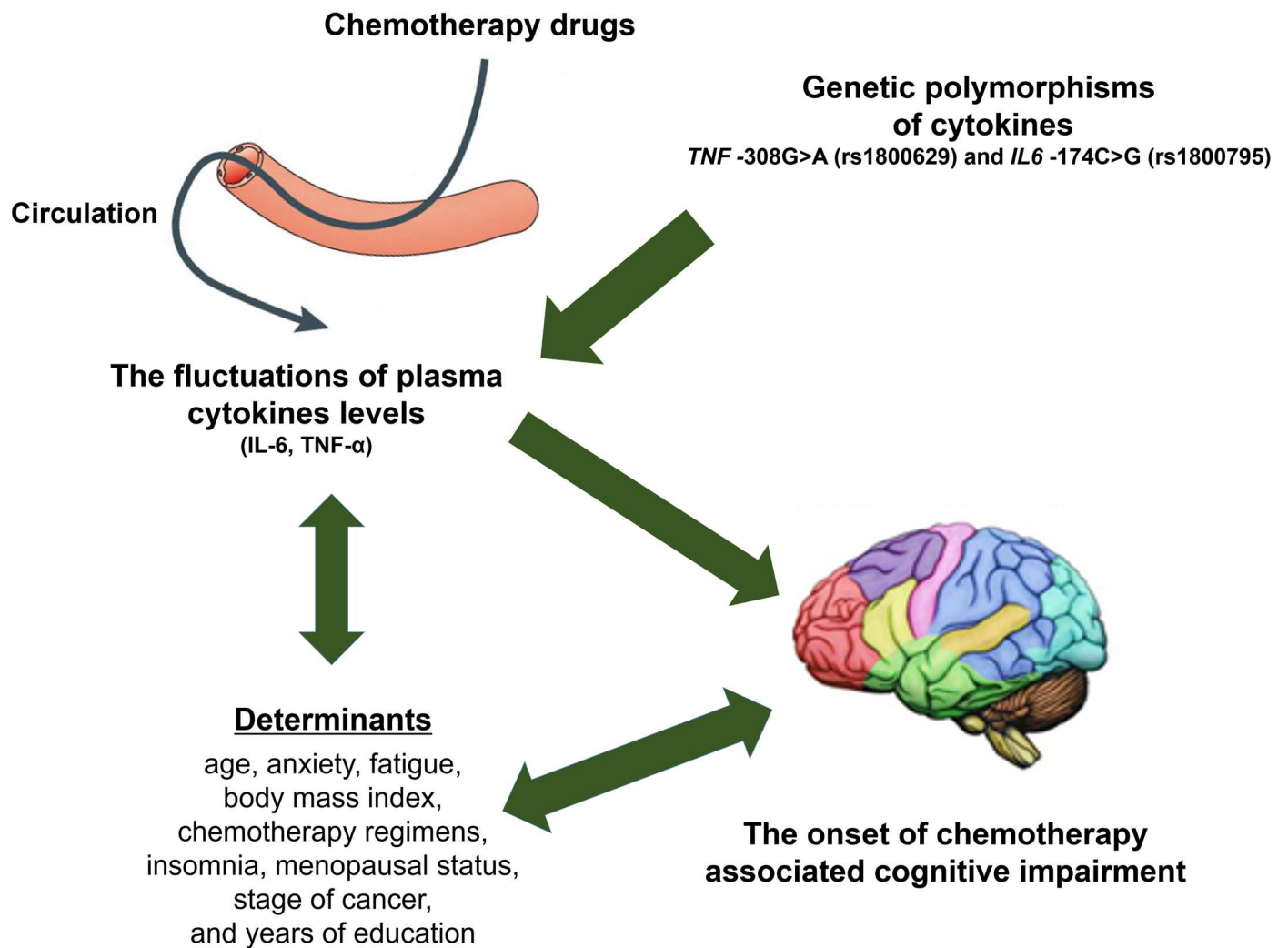


Fig 1. A conceptual framework including determinants that might affect cognitive impairment in chemotherapy-treated breast cancer patients. This study was performed to evaluate the downstream effects of *TNF*-308 and *IL6*-174 polymorphisms on the circulating TNF- α and IL-6 levels, and the occurrence of chemotherapy-associated cognitive impairment.

doi:10.1371/journal.pone.0164204.g001

Materials and Methods

Study design

Patients were recruited at the National Cancer Centre of Singapore (NCCS) and KK Women's and Children's Hospital (KKH) in Singapore. This was a prospective, longitudinal, cohort study approved by the SingHealth Centralized Institutional Review Board (IRB), and written informed consent was obtained from all participants.

Inclusion and exclusion criteria

Eligible patients fulfilled the following criteria: (i) at least 21 years of age diagnosed early-stage breast cancer (stages I to III) by a medical oncologist, (ii) scheduled to receive chemotherapy, either doxorubicin with cyclophosphamide (AC) or docetaxel with cyclophosphamide (TC),

(iii) had no prior chemotherapy and/or radiotherapy, (iv) had Eastern Cooperative Oncology Group (ECOG) score of 0 or 1, and (v) were fluent with either English or Chinese.

Patients were excluded if they were: (i) documented with brain metastasis and/or any neuropsychiatric disorders that might result in poor cognitive abilities, (ii) acute illness (e.g. fever), and (iii) physically or mentally incapable of giving written informed consent.

Brain imaging was performed for patients diagnosed with stage III breast cancer, and all study participants were confirmed by their treating medical oncologists for the absence of brain metastasis and leptomeningeal disease.

Study procedures

Data was collected at 3 independent time points: baseline (T1; before the initiation of chemotherapy), during chemotherapy (T2; 6 weeks after the initiation of treatment), and post-chemotherapy (T3; 12 weeks after the initiation of treatment).

Before the initiation of chemotherapy, clinical characteristics of participants (age, height/weight, race, marital status, education level, and occupation), medical information (cancer diagnosis, cancer stage, comorbidities, ECOG) and medical history (chemotherapy regimen, dose intensity, duration) were obtained from the electronic medical records and through interviews of participants. At each time point of data collection, patients completed two types of neuropsychological assessment tools using Headminder™ (provided by Headminder, Inc. to assess objective cognitive function) and FACT-Cog (to assess self-perceived cognitive function). Furthermore, health-related quality of life (HRQoL), anxiety, and fatigue were also assessed using patient reported outcome questionnaires [9–12]. All cognitive assessments were available in English or Chinese, and were administered by trained bilingual interviewers. For each time point, all assessments took roughly 40 minutes for participants to complete.

Cytokine analysis and Genotyping

At each time point, a 10-ml blood was collected from the volunteers prior to the receiving of chemotherapy, and stored in an ethylene diamine tetraacetic acid (EDTA) tube. Within 30 to 40 minutes of collection, the blood sample was centrifuged at 1,140 g (2,500 rpm) for 30 min. The plasma and buffy coat were subsequently stored aseptically at -80°C until analysis.

Prior to cytokine analysis, plasma samples were thawed and centrifuged at 10,000g for 10 min at 40°C . The plasma supernatant was used for detection of TNF- α and IL-6 by using the Bio-Plex pro™ Human cytokine 8-plex assay kit (Bio-rad). Samples were analyzed in triplicates and the assay was performed according to the manufacturer's instructions. The plate was assayed with the Bio-plex 200 multiplex reader and cytokine concentrations were calculated using the Bio-Plex Manager software v6.0 (Bio-rad).

Genomic DNA was isolated from the buffy coat via the QIAamp DNA Blood Mini Kit (Qia-gen). The section containing the polymorphisms of *IL6-174* (rs1800795 G>C) and *TNF-308* (rs1800629 G>A) was amplified by polymerase chain reaction (PCR) using specific and optimized primers. Primers utilized for PCR amplification were as follows: 5'-ATGCCAAAGTGTGAGTCACTA-3' (forward), 5'-TCGAGGGCAGAATGAGCCTC-3' (reverse) for *IL6-174* (rs1800795 G>C), and 5'-TCCTGCATCCTGTCTGGAA-3' (forward), 5'-CAGCGGAAA ACTTCCTTGGT-3' (reverse) for *TNF-308* (rs1800629 G>A). Genotyping was conducted by AITbiotech and they were blinded to all clinical outcomes.

Statistical Analysis

All statistical analyses were conducted using Stata Version 14 (StataCorp, 2015).

A simple Friedman test was utilized to evaluate the change in plasma cytokine levels over the three time points. Mann–Whitney U-test was used to compare the plasma cytokine levels between the genotype groups for *IL6-174* and *TNF-308* at each time point.

The association of cognitive impairment, as depicted by the global FACT-Cog score (self-perceived cognitive impairment) and the four Headminder™ cognitive domains (objective), with plasma cytokines concentrations during chemotherapy, was evaluated using the generalized estimating equation (GEE) model. For Headminder™, the reliable change index (RCI) was acquired considering the repeated normative mean and standard error of the difference for adjusting the practice effect. Participants were defined as having cognitive impairment in each individual computerized cognitive domain if the RCI was lower than -1.5. A best-fitted model was subsequently created to delineate the association between cognitive impairment and plasma cytokines concentrations after adjusting for documented clinically relevant variables. Clinical confounders that might influence cognitive function were also included a priori into the GEE model as fixed effects; these variables were age, anxiety, fatigue, body mass index (BMI), chemotherapy regimens group (AC versus TC), insomnia, menopausal status, stage of cancer and years of education. Selection of the appropriate correlation structures in the GEE model was conducted using the quasi-likelihood under the independence model criterion, the structure exhibiting the smallest criterion was considered to be the most desirable.

The genetic association between *IL6-174* (rs1800795 G>C) and *TNF-308* (rs1800629 G>A) polymorphisms with CACI was assessed using logistic regression. For FACT-Cog, the minimal clinically important difference (MCID) is defined based on the reduction of ≥ 10.6 points in the FACT-Cog total score during T2 or T3 compared with T1. Similar to the GEE model, variables that might influence cognitive impairment were also inserted a priori into the logistic regression model. Results were reported as odds ratios (ORs) and 95% confidence intervals (CIs). All statistical tests were two-sided, and $p < 0.025$ was considered statistically significant.

Results

Patient Demographics

Patients' demographics are summarized in [Table 1](#). Their mean age \pm SD was 50.3 ± 8.8 years. They were predominantly Chinese (80.8%), and majority (84.0%) received at least high school education and above. Most participants (93.6%) were ambulatory without restrictions on activities, as reflected by an Eastern Cooperative Oncology Group performance status of 0 (fully ambulatory) at baseline assessment. Eighty-five patients (68.0%) received an anthracycline-based chemotherapy regimen.

Occurrence of Objective and Self-Perceived Cognitive Impairment

Based on the MCID of FACT-Cog, 36.8% ($n = 46$) patients experienced self-perceived cognitive impairment. With regards to the Headminder™ cognitive domains, the most commonly affected domains were memory (32.8%, $n = 40$) and attention (34.2%, $n = 39$).

Genotype and Allele Frequencies

All 125 patients were genotyped for the *IL6-174* (rs1800795 G>C) and *TNF-308* (rs1800629 G>A) polymorphisms ([Table 2](#)). Genotype frequencies of *IL6-174* and *TNF-308* did not deviate from the Hardy–Weinberg equilibrium, respectively ($p = 0.80$, $p = 0.97$). The GG genotype of *IL6-174* and *TNF-308* constituted 97.6% and 83.2% of the observed genotypes, respectively. The C allele of *IL6-174* and the A allele of *TNF-308* accounted for approximately 1.2% and 8.8% of the observed alleles, respectively.

Table 1. Demographics and clinical information of the patients (N = 125).

		n (%)
Age, y, mean ± SD	50.26 ± 8.82	
Ethnicity	Chinese	101 (80.80)
	Malay	13 (10.40)
	Indian	7 (5.60)
	Others ^a	4 (3.20)
Education	Primary school	20 (16.00)
	Secondary school	58 (46.40)
	Pre-university	25 (20.00)
	Graduate/postgraduate	22 (17.60)
Marital status	Single	29 (23.20)
	Married	85 (68.00)
	Divorced	9 (7.20)
	Widowed	2 (1.60)
Working status	Currently working	69 (55.20)
	Currently not working	56 (44.80)
Cancer stage	1	22 (17.60)
	2	66 (52.80)
	3	37 (29.60)
ECOG performance status	0	117 (93.60)
	1	8 (6.40)
Menopausal status	Pre-menopausal	65 (52.00)
	Post-menopausal	60 (48.00)
Chemotherapy regimen	Doxorubicin-containing	85 (68.00)
	Docetaxel-containing	40 (32.00)
Behavior symptoms, mean ± SD		
Baseline fatigue (BFI total score) ^b	1.54 ± 1.76	
Baseline anxiety (BAI total score) ^c	6.94 ± 6.27	
Baseline insomnia score ^d	23.03 ± 27.70	

Abbreviation: ECOG, Ea Eastern Cooperative Oncology Group.

^aOthers includes 1 Burmese and 3 Filipinos.

^bBFI total score is 10 points.

^cBAI total score is 63 points.

^dInsomina subscale total score is 100 points.

doi:10.1371/journal.pone.0164204.t001

Trajectory of Plasma IL-6 and TNF-α Levels

Across the three-time points, there were significant changes in the plasma IL-6 and TNF-α concentrations ($p < 0.001$), with the highest plasma concentrations occurring at the end of chemotherapy (Table 3). Post-hoc analysis showed that the concentration of IL-6 was significantly higher at end of chemotherapy when compared to T2 and T1 ($p < 0.001$). However, post-hoc analysis of plasma TNF-α concentration across time did not achieve statistical significance at any specific time point.

A subgroup analysis was conducted to evaluate the changes in plasma IL-6 and TNF-α concentrations after stratifying for the *IL6-174* (rs1800795 G>C) and *TNF-308* (rs1800629 G>A) genotypes (Table 4). It was observed that there was a significant increase in plasma IL-6 concentration among patients who were carriers of the GG genotype of *IL6-174*, and pair-wise comparisons showed a higher IL-6 concentration at the end of chemotherapy than T2 and T1.

Table 2. Genotype and allele frequencies of the *IL6-174* (rs1800795) and *TNF-308* (rs1800629), (N = 125)

Genetic Variant	Genotype Frequency, n (%)			Allele Frequency n (%)	
	GG	GC	CC	G	C
<i>IL6-174 G>C</i> (rs1800795)					
Chinese	101 (82.8)	0 (0)	0 (0)	202 (81.8)	0 (0)
Malay	12 (9.8)	1 (33.3)	0 (0)	25 (10.1)	1 (33.3)
Indian	5 (4.1)	2 (66.7)	0 (0)	12 (4.9)	2 (66.7)
Others*	4 (4.3)	0 (0)	0 (0)	8 (3.2)	0 (0)
Total	122 (97.6)	3 (2.4)	0 (0)	247 (98.8)	3 (1.2)
<i>TNF-308 G>A</i> (rs1800629)					
Chinese	83 (79.8)	17 (85)	1 (100)	183 (80.3)	19 (86.4)
Malay	12 (11.5)	1 (5)	0 (0)	25 (10.9)	1 (4.5)
Indian	5 (4.8)	2 (10)	0 (0)	12 (5.3)	2 (9.1)
Others*	4 (3.8)	0 (0)	0 (0)	8 (3.5)	0 (0)
Total	104 (83.2)	20 (16)	1 (0.8)	228 (91.2)	22 (8.8)

* Others includes 1 Burmese and 3 Filipinos.

doi:10.1371/journal.pone.0164204.t002

After stratifying for the *TNF-308* genotype, significant increase of plasma *TNF-α* concentration from T1 to T3 was observed in both GG and GA genotype groups, however, post-hoc analysis did not identify any significant differences in *TNF-α* between any two time points.

Genetic Association of *IL6-174* and *TNF-308* Polymorphisms with CACI

For both self-perceived and objective cognitive impairment, no associations were established with *IL6-174* and *TNF-308* polymorphisms (S1 and S2 Tables).

Association of Plasma *IL-6* and *TNF-α* Levels with CACI

Higher plasma *IL-6* concentrations were strongly related to severity of self-perceived cognitive impairment ($p = 0.001$) (Table 5). Both anxiety and insomnia were also strong determinants of self-perceived cognitive impairment; patients with higher levels of anxiety and insomnia reported more cognitive impairment ($p < 0.001$, $p = 0.003$), respectively.

No associations were established between plasma *IL-6* levels and the cognitive domains of Headminder™. However, stage of breast cancer was associated with objective impairment in the domains of attention and processing speed ($p = 0.049$ and 0.041 , respectively). Patients who were older, with higher BMI and insomnia scores had significant association with poorer attention ($p = 0.032$, 0.008 , and 0.003 , respectively). Both fatigue and insomnia were also strong determinants of poorer memory ($p = 0.004$ and 0.035 , respectively).

In contrast to *IL-6*, plasma *TNF-α* levels were not associated with both self-perceived and objective cognitive impairment.

Table 3. Plasma *IL-6* and *TNF-α* concentrations across the three time-points, (N = 125).

Cytokines	Cytokine concentrations (pg/mL) Median (interquartile range)			p-value	Post hoc (p-value)*		
	T1	T2	T3		T2 vs. T1	T3 vs. T2	T3 vs. T1
IL-6	1.08 (0.00–2.84)	0.97 (0.00–3.31)	2.28* (0.00–5.43)	< 0.001	0.39	< 0.001	< 0.001
TNF-α	1.26 (0.00–3.66)	1.49 (0.00–3.54)	2.08 (0.56–3.66)	< 0.001	0.29	0.02	0.33

*p-value cut-off for post-hoc analysis: 0.0167.

doi:10.1371/journal.pone.0164204.t003

Table 4. Plasma IL-6 and TNF- α concentrations across the three time-points, after stratifying for the *IL6-174* and *TNF-308* genotypes (N = 125)

Cytokines	Cytokine concentrations (pg/mL) Median (interquartile range)			p-value	Post hoc (p-value)*		
	T1	T2	T3		T2 vs. T1	T3 vs. T2	T3 vs. T1
<i>IL6-174</i> Genotype							
<i>GG</i> (n = 122)	1.08 (0.00–2.84)	0.93 (0.00–3.29)	2.28 (0.00–5.43)	<0.001	0.47	0.001	<0.001
<i>GC</i> (n = 3)	0.50 (0.25–3.06)	1.09 (0.83–3.18)	2.49 (1.75–5.30)	0.05	0.29	0.11	0.11
<i>CC</i> (n = 0)	-	-	-	NA	NA	NA	NA
<i>TNF-308</i> Genotype							
<i>GG</i> (n = 104)	1.23 (0.00–3.52)	1.39 (0.00–3.65)	2.05 (0.57–3.66)	<0.001	0.18	0.32	0.02
<i>GA</i> (n = 20)	0.98 (0.00–4.50)	1.70 (0.00–2.63)	2.65 (0.22–3.22)	<0.001	0.44	0.57	0.85
<i>AA</i> (n = 1)	8.81	58.03	44.62	NA	NA	NA	NA

*p-value cut-off for post-hoc analysis: 0.0167. NA = Not applicable

doi:10.1371/journal.pone.0164204.t004

Discussion

This study evaluated the genetic associations of *IL6-174* (rs1800795 G>C) and *TNF-308* (rs1800629 G>A) with CACI and cytokine fluctuations within an Asian early-stage breast cancer population. Both *IL6-174* (rs1800795 G>C) and *TNF-308* (rs1800629 G>A) polymorphisms are highly monomorphic in the Singaporean population. In addition, plasma IL-6 and TNF- α concentrations did not differ significantly among the various genotypes, suggesting that both SNPs are not the main factors that drive the over-expression of plasma IL-6 and TNF- α concentrations after initiation of chemotherapy. Although we were unable to establish the genetic associations with cognitive impairment, we have observed that patients manifesting higher levels of IL-6 were associated with greater severity of self-perceived cognitive impairment.

Previous studies have evaluated the downstream effects of *TNF-308* G>A (rs1800629) and *IL6-174* G>C (rs1800795) cytokine gene polymorphisms on the expression of the cytokine levels, as well as the onset of various human illnesses. One study suggested that asthmatic patients

Table 5. Association of IL-6 concentrations with severity of self-perceived cognitive impairment (FACT-Cog) and the cognitive domains of Headminder™.

	FACT-Cog		Headminder™							
	Global score (n = 125)		Attention (n = 114)		Memory (n = 122)		Processing speed (n = 115)		Response speed (n = 122)	
	Coefficient (SE)	p-value	Coefficient (SE)	p-value	Coefficient (SE)	p-value	Coefficient (SE)	p-value	Coefficient (SE)	p-value
Constant	123.696 (11.080)	<0.001	-5.483 (1.916)	0.004	-1.518 (1.900)	0.425	-1.190 (3.624)	0.600	-1.850 (2.624)	0.481
IL-6	-0.036 (0.011)	0.001	0.004 (0.003)	0.177	-0.002 (0.004)	0.638	-0.015 (0.026)	0.560	0.002 (0.002)	0.298
Age	0.285 (0.165)	0.085	0.060 (0.028)	0.032	0.005 (0.028)	0.853	0.099 (0.056)	0.075	-0.028 (0.036)	0.435
Anxiety	-1.079 (0.131)	<0.001	-0.016 (0.028)	0.566	-0.037 (0.032)	0.253	-0.139 (0.084)	0.098	0.024 (0.033)	0.461
Fatigue	-0.381 (0.485)	0.423	-0.029 (0.101)	0.775	0.296 (0.103)	0.004	0.336 (0.213)	0.114	0.182 (0.118)	0.123
Body Mass Index	-0.102 (0.238)	0.670	0.104 (0.039)	0.008	0.018 (0.038)	0.640	0.011 (0.068)	0.868	0.182 (0.053)	0.883
Chemotherapy group	0.122 (2.563)	0.962	-0.809 (0.460)	0.079	0.039 (0.434)	0.928	-1.907 (0.990)	0.054	0.018 (0.569)	0.975
Insomnia	-0.090 (0.030)	0.003	0.019 (0.007)	0.003	-0.016 (0.007)	0.035	-0.014 (0.015)	0.350	-0.005 (0.008)	0.525
Menopausal status	0.340 (2.871)	0.906	-0.897 (0.501)	0.074	0.013 (0.488)	0.979	-0.433 (0.905)	0.632	0.067 (0.629)	0.916
Years of education	0.387 (0.312)	0.215	0.021 (0.050)	0.670	-0.056 (0.052)	0.280	-0.092 (0.097)	0.344	-0.006 (0.070)	0.930
Breast Cancer stage	0.573 (1.761)	0.745	-0.598 (0.304)	0.049	-0.177 (0.294)	0.548	-1.216 (0.596)	0.041	0.035 (0.377)	0.925

doi:10.1371/journal.pone.0164204.t005

who were carriers of the A allele (AA and AG genotypes) of the *TNF-308 G>A* (rs1800629) genetic polymorphism had significantly higher serum TNF- α levels, which was also significantly associated with metabolic syndrome [13]. Similar findings were also observed in other inflammatory conditions including depression and inflammatory bowel disease [14, 15]. On the contrary, current evidence to evaluate the impact of these polymorphisms on cognitive function is limited. One recent cross-sectional study has evaluated the associations between the two SNPs and memory complaint among breast cancer patients. It was found that the overall genetic risk index was associated with memory complaint, however, an examination of the individual contribution of each SNP did not identify any significant association with memory complaint [16]. This is in consistent with the current findings where no associations were established between the SNPs and cognitive impairment among chemotherapy receiving breast cancer patients.

In this study, the absence of association between the *TNF-308* (rs1800629 G>A) polymorphism and cognitive decline could be attributed to the low allele frequency of the *TNF-308 G/A* polymorphism in our study population, which comprises mainly of Chinese patients. The low frequency of the risk allele was also reported in other genetic association studies that were conducted in the Han Chinese populations [17, 18]. Nevertheless, it must be emphasized that the lack of association between *TNF-308 G/A* polymorphism and CACI impairment does not undermine the role of this polymorphism in influencing the expression of TNF- α . In our analysis, we have also observed that plasma TNF- α levels were much elevated (8.81 to 58.03 pg/ml) in one patient who was a homozygous carrier for the risk allele. This finding is similar to another study where the AA genotype frequency was approximately 0.8% ($n = 2$), and it was observed that TNF- α levels were highly elevated among patients whose genotype was homozygous recessive [19]. Similar to our findings, they were also unable to establish an association between the *TNF-308 G/A* polymorphism and disease status. Taken together, these findings suggest that *TNF-308 G/A* polymorphism is not the factor influencing circulating TNF- α levels in the majority of our local population, but this could be different in populations with a higher prevalence of the risk allele.

In contrast to the *TNF-308 G/A* polymorphism, the major allele of *IL6-174 G/C* polymorphism is associated with higher levels of IL-6 [20, 21]. Hence, one would expect to observe higher plasma IL-6 levels among patients who are carriers of the G allele, and the resultant increase in IL-6 levels would be associated with cognitive impairment. Even though the current study did observe an association between plasma IL-6 levels and self-perceived cognitive impairment, we did not observe a dose response change of plasma IL-6 levels for each addition of the minor allele due to the dominance of the GG genotype (98.8%) in the local population. Henceforth, the absence of association between the *IL6-174 G/C* polymorphism and cognitive impairment could be attributed largely to the monomorphic nature of the SNP in the local population.

Conversely, dysregulation of cytokines could be attributed to a number of conditions, such as the malignancy, the anticancer treatments, as well as the physical and psychological stressors [22, 23]. In particular, cell death and injury that are caused by chemotherapeutic agents, coupled with both intrinsic and extrinsic stressors, could lead to the peripheral activation of the inflammatory response. IL-6 and TNF- α are primary pro-inflammatory cytokines that could exhibit an acute phase response to tissue injury, infection, or inflammation [24]. The release of peripheral pro-inflammatory cytokines could perturb cytokine levels in the central nervous system, and leads to alterations in neuronal function. In the current study, plasma IL-6 levels were associated with self-perceived cognitive impairment. This finding is consistent with prior studies that have drawn an association between fluctuation in plasma IL-6 levels and self-perceived cognitive disturbances [25–27]. Although TNF- α was also reported to be associated with self-reported memory complaints at baseline and longitudinally among breast cancer patients, the current study failed to establish an association between plasma TNF- α levels and

cognitive impairment [28]. The inconsistency in results could be attributed to methodological differences. In a cohort study conducted by Ganz et al, the authors evaluated soluble TNF-receptor II levels at 3 months, 9 months and 15 months after completion of primary treatment, whereas the current study measured plasma TNF- α levels during chemotherapy. It must be emphasized that the biological activity of TNF- α could be limited by its relatively short half-life. Soluble TNF-receptors, on the other hand, have been shown to function as a buffer system to prolong the biological effects of TNF- α . As such, TNF-receptors could be more essential for monitoring inflammatory responses associated with TNF- α .

In line with other studies, cytokine levels (IL-6) were strongly associated with self-perceived cognitive impairment [29, 30]. Dysregulation of pro-inflammatory cytokines are often observed in patients who are experiencing stress-induced symptoms. In our study, we have also identified other stressors such as anxiety and insomnia that are contributing to self-perceived cognitive impairment. Hence, besides measuring how cognitive complaints could subtly impact daily life, self-perceived cognitive impairment is also useful to reflect the degree of emotional and physical symptoms that are experienced among patients [31]. On the other hand, cytokine levels were not associated with impairment in any Headminder™ domains, as objective neuropsychological testing merely captures the cognitive status of a patient at the point of testing [29]. In summary, in epidemiological studies that aim to evaluate the role of pro-inflammatory cytokines on cognitive impairment, it would be prudent to include both subjective and objective measures of cognition as both measures possess different significance.

There are a number of limitations in this study. A number of genetic variations associated with IL-6 and TNF- α were not evaluated in the current study. For example, the *IL6-634* SNP has been shown to be associated with higher circulating serum IL-6 levels [32]. It must be emphasized that the two selected SNPs in this study were based on the functional consequences such as fatigue, depression, and memory complaints that were previously established in the breast cancer population [8]. Higher levels of these cytokines were also strongly associated with cognitive impairment in chemotherapy-breast cancer patients [26, 27]. Hence, we selected these two candidate SNPs in order to establish genuine epidemiological association in our own population. Future studies should evaluate the impact of these other polymorphisms on circulating IL-6 and TNF- α levels, and the resultant association with CACI. Recent studies have also suggested that mitochondrial dysfunctions are correlated with oxidative stress and inflammation in cognitive disorders such as Alzheimer's disease. [33–37] Future studies should also evaluate how mitochondrial dysfunctions may contribute to CACI in patients with cancer.

Conclusion

Present findings further contribute to the growing evidence that supports the role of the pro-inflammatory cytokine IL-6 in the occurrence of cognitive impairment post-chemotherapy. However, genetic polymorphism of these cytokines did not play a major role to the cytokine fluctuations as well as cognitive impairment in this cohort. Currently, the lack of understanding of the biological mechanisms underpinning CACI remains the major impediment to the development of effective management strategies. With an increasing evidence to support the cytokine hypothesis, future studies should investigate the role of anti-inflammatory agents in mitigating the cognitive impairment associated with chemotherapy.

Supporting Information

S1 Table. Associations between the *IL6-174* and *TNF-308* gene polymorphisms and the cognitive domains of Headminder™ (DOCX)

S2 Table. Associations between the *IL6-174* and *TNF-308* gene polymorphisms and the cognitive domains of FACT-Cog (DOCX)

Acknowledgments

The authors acknowledge the contributions of all the study participants.

Author Contributions

Conceptualization: TN AC.

Data curation: TN MS YXG.

Formal analysis: JWC TN HLY AC.

Funding acquisition: AC.

Investigation: TN HLY MS YXG.

Methodology: TN HKH AC.

Project administration: MS YXG.

Resources: HKH AC.

Software: JWC TN.

Supervision: AC.

Validation: TN HLY.

Visualization: JWC TN AC.

Writing – original draft: JWC TN AC.

Writing – review & editing: JWC TN HKH AC.

References

1. Myers JS. The possible role of cytokines in chemotherapy-induced cognitive deficits. *Adv Exp Med Biol.* 2010; 678:119–23. Epub 2010/08/27. doi: [10.1007/978-1-4419-6306-2_15](https://doi.org/10.1007/978-1-4419-6306-2_15) PMID: [20738013](https://pubmed.ncbi.nlm.nih.gov/20738013/).
2. Lee BN, Dantzer R, Langley KE, Bennett GJ, Dougherty PM, Dunn AJ, et al. A cytokine-based neuroimmunologic mechanism of cancer-related symptoms. *Neuroimmunomodulation.* 2004; 11(5):279–92. Epub 2004/08/19. doi: [10.1159/00007940879408](https://doi.org/10.1159/00007940879408) [pii]. PMID: [15316238](https://pubmed.ncbi.nlm.nih.gov/15316238/).
3. Seruga B, Zhang H, Bernstein LJ, Tannock IF. Cytokines and their relationship to the symptoms and outcome of cancer. *Nat Rev Cancer.* 2008; 8(11):887–99. doi: [10.1038/nrc2507](https://doi.org/10.1038/nrc2507) PMID: [18846100](https://pubmed.ncbi.nlm.nih.gov/18846100/)
4. Kroeger KM, Carville KS, Abraham LJ. The -308 tumor necrosis factor-alpha promoter polymorphism effects transcription. *Mol Immunol.* 1997; 34(5):391–9. doi: [10.1016/s0161-5890\(97\)00052-7](https://doi.org/10.1016/s0161-5890(97)00052-7) PMID: [9293772](https://pubmed.ncbi.nlm.nih.gov/9293772/).
5. Fishman D, Faulds G, Jeffery R, Mohamed-Ali V, Yudkin JS, Humphries S, et al. The effect of novel polymorphisms in the interleukin-6 (IL-6) gene on IL-6 transcription and plasma IL-6 levels, and an association with systemic-onset juvenile chronic arthritis. *J Clin Invest.* 1998; 102(7):1369–76. doi: [10.1172/JCI2629](https://doi.org/10.1172/JCI2629) PMID: [9769329](https://pubmed.ncbi.nlm.nih.gov/9769329/); PubMed Central PMCID: [PMC508984](https://pubmed.ncbi.nlm.nih.gov/pmc/articles/PMC508984/).
6. Olomolaiye O, Wood NA, Bidwell JL. A novel NlaIII polymorphism in the human IL-6 promoter. *Eur J Immunogenet.* 1998; 25(2–3):267. doi: [10.1046/j.1365-2370.1998.00077.x](https://doi.org/10.1046/j.1365-2370.1998.00077.x) PMID: [9615916](https://pubmed.ncbi.nlm.nih.gov/9615916/).
7. Merriman JD, Aouizerat BE, Langford DJ, Cooper BA, Baggott CR, Cataldo JK, et al. Preliminary evidence of an association between an interleukin 6 promoter polymorphism and self-reported attentional function in oncology patients and their family caregivers. *Biol Res Nurs.* 2014; 16(2):152–9. doi: [10.1177/1099800413479441](https://doi.org/10.1177/1099800413479441) PMID: [23482714](https://pubmed.ncbi.nlm.nih.gov/23482714/); PubMed Central PMCID: [PMC4003494](https://pubmed.ncbi.nlm.nih.gov/pmc/articles/PMC4003494/).

8. Bower JE, Ganz PA, Irwin MR, Castellon S, Arevalo J, Cole SW. Cytokine genetic variations and fatigue among patients with breast cancer. *J Clin Oncol*. 2013; 31(13):1656–61. doi: [10.1200/JCO.2012.46.2143](https://doi.org/10.1200/JCO.2012.46.2143) PMID: [23530106](https://pubmed.ncbi.nlm.nih.gov/23530106/); PubMed Central PMCID: [PMC3635681](https://pubmed.ncbi.nlm.nih.gov/PMC3635681/).
9. Mendoza TR, Wang XS, Cleeland CS, Morrissey M, Johnson BA, Wendt JK, et al. The rapid assessment of fatigue severity in cancer patients: use of the Brief Fatigue Inventory. *Cancer*. 1999; 85(5):1186–96. doi: [10.1002/\(sici\)1097-0142\(19990301\)85:5%3C1186::aid-cnrcr24%3E3.0.co;2-n](https://doi.org/10.1002/(sici)1097-0142(19990301)85:5%3C1186::aid-cnrcr24%3E3.0.co;2-n) PMID: [10091805](https://pubmed.ncbi.nlm.nih.gov/10091805/).
10. Beck AT, Epstein N, Brown G, Steer RA. An inventory for measuring clinical anxiety: psychometric properties. *J Consult Clin Psychol*. 1988; 56(6):893–7. doi: [10.1037//0022-006x.56.6.893](https://doi.org/10.1037//0022-006x.56.6.893) PMID: [3204199](https://pubmed.ncbi.nlm.nih.gov/3204199/).
11. Luo N, Fones CS, Lim SE, Xie F, Thumboo J, Li SC. The European Organization for Research and Treatment of Cancer Quality of Life Questionnaire (EORTC QLQ-c30): validation of English version in Singapore. *Qual Life Res*. 2005; 14(4):1181–6. doi: [10.1007/s11136-004-4782-z](https://doi.org/10.1007/s11136-004-4782-z) PMID: [16041912](https://pubmed.ncbi.nlm.nih.gov/16041912/).
12. Erlanger DM, Kaushik T, Broshek D, Freeman J, Feldman D, Festa J. Development and validation of a web-based screening tool for monitoring cognitive status. *J Head Trauma Rehabil*. 2002; 17(5):458–76. doi: [10.1097/00001199-200210000-00007](https://doi.org/10.1097/00001199-200210000-00007) PMID: [12802255](https://pubmed.ncbi.nlm.nih.gov/12802255/).
13. Yang YH, Liu YQ, Zhang L, Li H, Li XB, Ouyang Q, et al. Genetic polymorphisms of the TNF-alpha-308G/A are associated with metabolic syndrome in asthmatic patients from Hebei province, China. *Int J Clin Exp Pathol*. 2015; 8(10):13739–46. PMID: [26722602](https://pubmed.ncbi.nlm.nih.gov/26722602/); PubMed Central PMCID: [PMC4680547](https://pubmed.ncbi.nlm.nih.gov/PMC4680547/).
14. Tartter M, Hammen C, Bower JE, Brennan PA, Cole S. Effects of chronic interpersonal stress exposure on depressive symptoms are moderated by genetic variation at IL6 and IL1β in youth. *Brain Behav Immun*. 2015; 46:104–11. doi: [10.1016/j.bbi.2015.01.003](https://doi.org/10.1016/j.bbi.2015.01.003) PMID: [25596176](https://pubmed.ncbi.nlm.nih.gov/25596176/)
15. Kim JM, Stewart R, Kim SY, Kang HJ, Jang JE, Kim SW, et al. A one year longitudinal study of cytokine genes and depression in breast cancer. *J Affect Disord*. 2013; 148(1):57–65. Epub 2013/01/02. S0165-0327(12)00815-4 [pii] doi: [10.1016/j.jad.2012.11.048](https://doi.org/10.1016/j.jad.2012.11.048) PMID: [23276701](https://pubmed.ncbi.nlm.nih.gov/23276701/).
16. Bower JE, Ganz PA, Irwin MR, Castellon S, Arevalo J, Cole SW. Cytokine genetic variations and fatigue among patients with breast cancer. *J Clin Oncol*. 2013; 31(13):1656–61. doi: [10.1200/JCO.2012.46.2143](https://doi.org/10.1200/JCO.2012.46.2143) PMID: [23530106](https://pubmed.ncbi.nlm.nih.gov/23530106/)
17. Chu H, Yang J, Mi S, Bhuyan SS, Li J, Zhong L, et al. Tumor necrosis factor-alpha G-308 A polymorphism and risk of coronary heart disease and myocardial infarction: A case-control study and meta-analysis. *J Cardiovasc Dis Res*. 2012; 3(2):84–90. doi: [10.4103/0975-3583.95359](https://doi.org/10.4103/0975-3583.95359) PMID: [22629023](https://pubmed.ncbi.nlm.nih.gov/22629023/); PubMed Central PMCID: [PMC3354475](https://pubmed.ncbi.nlm.nih.gov/PMC3354475/).
18. Liu HL, Lin YG, Wu J, Sun H, Gong ZC, Hu PC, et al. Impact of genetic polymorphisms of leptin and TNF-alpha on rosiglitazone response in Chinese patients with type 2 diabetes. *Eur J Clin Pharmacol*. 2008; 64(7):663–71. doi: [10.1007/s00228-008-0483-9](https://doi.org/10.1007/s00228-008-0483-9) PMID: [18438653](https://pubmed.ncbi.nlm.nih.gov/18438653/).
19. Yoon SZ, Jang IJ, Choi YJ, Kang MH, Lim HJ, Lim YJ, et al. Association between tumor necrosis factor alpha 308G/A polymorphism and increased proinflammatory cytokine release after cardiac surgery with cardiopulmonary bypass in the Korean population. *J Cardiothorac Vasc Anesth*. 2009; 23(5):646–50. doi: [10.1053/j.jvca.2009.03.004](https://doi.org/10.1053/j.jvca.2009.03.004) PMID: [19467887](https://pubmed.ncbi.nlm.nih.gov/19467887/)
20. Gao SP, Liang S, Pan M, Sun RL, Chen C, Luan H, et al. Interleukin-6 genotypes and serum levels in Chinese Hui population. *Int J Clin Exp Med*. 2014; 7(9):2851–7. Epub 2014/10/31. PMID: [25356148](https://pubmed.ncbi.nlm.nih.gov/25356148/); PubMed Central PMCID: [PMC4211798](https://pubmed.ncbi.nlm.nih.gov/PMC4211798/).
21. Han XM, Wang CH, Sima X, Liu SY. Interleukin-6 -174G/C polymorphism and the risk of Alzheimer's disease in Caucasians: a meta-analysis. *Neurosci Lett*. 2011; 504(1):4–8. doi: [10.1016/j.neulet.2011.06.055](https://doi.org/10.1016/j.neulet.2011.06.055) PMID: [21767605](https://pubmed.ncbi.nlm.nih.gov/21767605/).
22. Cheung YT, Lim SR, Ho HK, Chan A. Cytokines as mediators of chemotherapy-associated cognitive changes: current evidence, limitations and directions for future research. *PLoS One*. 2013; 8(12):e81234. doi: [10.1371/journal.pone.0081234](https://doi.org/10.1371/journal.pone.0081234) PMID: [24339912](https://pubmed.ncbi.nlm.nih.gov/24339912/)
23. Wang XM, Waliit B, Saligan L, Tiwari AF, Cheung CW, Zhang ZJ. Chemobrain: a critical review and causal hypothesis of link between cytokines and epigenetic reprogramming associated with chemotherapy. *Cytokine*. 2015; 72(1):86–96. doi: [10.1016/j.cyto.2014.12.006](https://doi.org/10.1016/j.cyto.2014.12.006) PMID: [25573802](https://pubmed.ncbi.nlm.nih.gov/25573802/)
24. Tarrant JM. Blood cytokines as biomarkers of in vivo toxicity in preclinical safety assessment: considerations for their use. *Toxicol Sci*. 2010; 117(1):4–16. doi: [10.1093/toxsci/ktq134](https://doi.org/10.1093/toxsci/ktq134) PMID: [20447938](https://pubmed.ncbi.nlm.nih.gov/20447938/)
25. Cheung YT, Ng T, Shwe M, Ho HK, Foo KM, Cham MT, et al. Association of proinflammatory cytokines and chemotherapy-associated cognitive impairment in breast cancer patients: a multi-centered, prospective, cohort study. *Ann Oncol*. 2015; 26(7):1446–51. doi: [10.1093/annonc/mdv206](https://doi.org/10.1093/annonc/mdv206) PMID: [25922060](https://pubmed.ncbi.nlm.nih.gov/25922060/); PubMed Central PMCID: [PMC4478978](https://pubmed.ncbi.nlm.nih.gov/PMC4478978/).
26. Kesler S, Janelins M, Koovakkattu D, Palesh O, Mustian K, Morrow G, et al. Reduced hippocampal volume and verbal memory performance associated with interleukin-6 and tumor necrosis factor-alpha

- levels in chemotherapy-treated breast cancer survivors. *Brain Behav Immun.* 2013; 30 Suppl:S109–16. doi: [10.1016/j.bbi.2012.05.017](https://doi.org/10.1016/j.bbi.2012.05.017) PMID: [22698992](https://pubmed.ncbi.nlm.nih.gov/22698992/); PubMed Central PMCID: [PMC3665606](https://pubmed.ncbi.nlm.nih.gov/PMC3665606/).
27. Janelins MC, Mustian KM, Palesh OG, Mohile SG, Peppone LJ, Sprod LK, et al. Differential expression of cytokines in breast cancer patients receiving different chemotherapies: implications for cognitive impairment research. *Support Care Cancer.* 2012; 20(4):831–9. doi: [10.1007/s00520-011-1158-0](https://doi.org/10.1007/s00520-011-1158-0) PMID: [21533812](https://pubmed.ncbi.nlm.nih.gov/21533812/); PubMed Central PMCID: [PMC3218259](https://pubmed.ncbi.nlm.nih.gov/PMC3218259/).
 28. Ganz PA, Bower JE, Kwan L, Castellon SA, Silverman DH, Geist C, et al. Does tumor necrosis factor-alpha (TNF- α) play a role in post-chemotherapy cerebral dysfunction? *Brain Behav Immun.* 2013; 30 (Supplement):S99–108.
 29. Castellon SA, Ganz PA, Bower JE, Petersen L, Abraham L, Greendale GA. Neurocognitive performance in breast cancer survivors exposed to adjuvant chemotherapy and tamoxifen. *J Clin Exp Neuropsychol.* 2004; 26(7):955–69. doi: [10.1080/13803390490510905](https://doi.org/10.1080/13803390490510905) PMID: [15742545](https://pubmed.ncbi.nlm.nih.gov/15742545/).
 30. Ng T, Teo SM, Yeo HL, Shwe M, Gan YX, Cheung YT, et al. Brain-derived neurotrophic factor genetic polymorphism (rs6265) is protective against chemotherapy-associated cognitive impairment in patients with early-stage breast cancer. *Neuro Oncol.* 2015. doi: [10.1093/neuonc/nov162](https://doi.org/10.1093/neuonc/nov162) PMID: [26289590](https://pubmed.ncbi.nlm.nih.gov/26289590/).
 31. Tannock IF, Ahles TA, Ganz PA, Van Dam FS. Cognitive impairment associated with chemotherapy for cancer: report of a workshop. *J Clin Oncol.* 2004; 22(11):2233–9. doi: [10.1200/JCO.2004.08.094](https://doi.org/10.1200/JCO.2004.08.094) PMID: [15169812](https://pubmed.ncbi.nlm.nih.gov/15169812/).
 32. Pan M, Gao SP, Jiang MH, Guo J, Zheng JG, Zhu JH. Interleukin 6 promoter polymorphisms in normal Han Chinese population: frequencies and effects on inflammatory markers. *J Investig Med.* 2011; 59 (2):272–6. doi: [10.231/JIM.0b013e318206ffad](https://doi.org/10.231/JIM.0b013e318206ffad) PMID: [21157373](https://pubmed.ncbi.nlm.nih.gov/21157373/).
 33. Lee JW, Park KD, Im JA, Kim MY, Lee DC. Mitochondrial DNA copy number in peripheral blood is associated with cognitive function in apparently healthy elderly women. *Clin Chim Acta.* 2010; 411(7–8):592–6. doi: [10.1016/j.cca.2010.01.024](https://doi.org/10.1016/j.cca.2010.01.024) PMID: [20114042](https://pubmed.ncbi.nlm.nih.gov/20114042/).
 34. Bhat AH, Dar KB, Anees S, Zargar MA, Masood A, Sofi MA, et al. Oxidative stress, mitochondrial dysfunction and neurodegenerative diseases; a mechanistic insight. *Biomed Pharmacother.* 2015; 74:101–10. doi: [10.1016/j.biopha.2015.07.025](https://doi.org/10.1016/j.biopha.2015.07.025) PMID: [26349970](https://pubmed.ncbi.nlm.nih.gov/26349970/).
 35. Delbarba A, Abate G, Prandelli C, Marziano M, Buizza L, Arce Varas N, et al. Mitochondrial Alterations in Peripheral Mononuclear Blood Cells from Alzheimer's Disease and Mild Cognitive Impairment Patients. *Oxid Med Cell Longev.* 2016; 2016:5923938. doi: [10.1155/2016/5923938](https://doi.org/10.1155/2016/5923938) PMID: [26881032](https://pubmed.ncbi.nlm.nih.gov/26881032/); PubMed Central PMCID: [PMC4736772](https://pubmed.ncbi.nlm.nih.gov/PMC4736772/).
 36. Billing-Ross P, Germain A, Ye K, Keinan A, Gu Z, Hanson MR. Mitochondrial DNA variants correlate with symptoms in myalgic encephalomyelitis/chronic fatigue syndrome. *J Transl Med.* 2016; 14:19. doi: [10.1186/s12967-016-0771-6](https://doi.org/10.1186/s12967-016-0771-6) PMID: [26791940](https://pubmed.ncbi.nlm.nih.gov/26791940/); PubMed Central PMCID: [PMC4719218](https://pubmed.ncbi.nlm.nih.gov/PMC4719218/).
 37. Myhill S, Booth NE, McLaren-Howard J. Chronic fatigue syndrome and mitochondrial dysfunction. *Int J Clin Exp Med.* 2009; 2(1):1–16. PMID: [19436827](https://pubmed.ncbi.nlm.nih.gov/19436827/); PubMed Central PMCID: [PMC32680051](https://pubmed.ncbi.nlm.nih.gov/PMC32680051/).