

# UC Irvine

## UC Irvine Previously Published Works

### Title

Dyslipidemia in retinal metabolic disorders

### Permalink

<https://escholarship.org/uc/item/6g2249rq>

### Journal

EMBO Molecular Medicine, 11(10)

### ISSN

1757-4676

### Authors

Fu, Zhongjie

Chen, Chuck T

Cagnone, Gael

et al.

### Publication Date

2019-10-01

### DOI



10.15252/emmm.201910473

### Copyright Information

This work is made available under the terms of a Creative Commons Attribution License, available at <https://creativecommons.org/licenses/by/4.0/>

Peer reviewed

# Dyslipidemia in retinal metabolic disorders

Zhongjie Fu<sup>1,2,\*</sup> , Chuck T Chen<sup>3</sup>, Gael Cagnone<sup>4,5</sup>, Emilie Heckel<sup>4,5</sup>, Ye Sun<sup>1</sup>, Bertan Cakir<sup>1</sup>, Yohei Tomita<sup>1</sup>, Shuo Huang<sup>1</sup>, Qian Li<sup>6</sup>, William Britton<sup>1</sup>, Steve S Cho<sup>1</sup>, Timothy S Kern<sup>7</sup>, Ann Hellström<sup>8</sup>, Jean-Sébastien Joyal<sup>4,5</sup> & Lois EH Smith<sup>1,\*\*</sup> 

## Abstract

The light-sensitive photoreceptors in the retina are extremely metabolically demanding and have the highest density of mitochondria of any cell in the body. Both physiological and pathological retinal vascular growth and regression are controlled by photoreceptor energy demands. It is critical to understand the energy demands of photoreceptors and fuel sources supplying them to understand neurovascular diseases. Retinas are very rich in lipids, which are continuously recycled as lipid-rich photoreceptor outer segments are shed and reformed and dietary intake of lipids modulates retinal lipid composition. Lipids (as well as glucose) are fuel substrates for photoreceptor mitochondria. Dyslipidemia contributes to the development and progression of retinal dysfunction in many eye diseases. Here, we review photoreceptor energy demands with a focus on lipid metabolism in retinal neurovascular disorders.

**Keywords** dyslipidemia; FGF21; photoreceptor; retinal metabolism;  $\beta$ -oxidation

**DOI** 10.15252/emmm.201910473 | Received 15 February 2019 | Revised 10 June 2019 | Accepted 15 August 2019 | Published online 5 September 2019

**EMBO Mol Med (2019) 11: e10473**

See the Glossary for abbreviations used in this article.

## Photoreceptor biology and retinal lipid use

### Energy demands of the retina

Vertebrate retinas are light-sensitive neural tissues. Rod and cone photoreceptors of the retina utilize photosensitive pigments to convert photons into electrical impulses (phototransduction; Arshavsky *et al*, 2002). The retina uses more energy in the dark than in light to maintain the “dark current”. In the light, there is an

ongoing outward potassium ( $K^+$ ) current through non-gated  $K^+$ -selective channels, which induces sodium ( $Na^+$ ) ion channel closure and hyperpolarization of photoreceptors. In the light, glutamate release is suppressed and neurons are excited, leading to phototransduction.

By contrast, in the dark, perpetually open ( $Na^+$ ) channels allow a steady flow of ions into the cell, thereby resulting in cellular depolarization (dark current) and glutamate release, which inhibits photoreceptor excitation (Stryer, 1991). More than half of photoreceptor energy (adenosine triphosphate, ATP) is used by  $Na^+/K^+$  ATPase ion pumps to maintain intracellular ion levels (Hagins *et al*, 1970; Okawa *et al*, 2008).

The replacement of shed photoreceptor outer segments is also energy intensive (Du *et al*, 2015; Ng *et al*, 2015). Photoreceptors maintain a consistent outer segment length by balancing disk shedding and assembly (Young, 1967; Young & Bok, 1969; LaVail, 1976). Continuous shedding of “used” outer segments containing lipids damaged by light and oxidation is critical for the maintenance of normal retinal function (Fliesler & Anderson, 1983) perhaps as a fuel source scavenged by retinal pigment epithelium (RPE). Other lipid fuel sources may be serum lipids processed by Müller glial cells, and lipids synthesized at a high rate in the inner segments (Wang *et al*, 2005; Kevany & Palczewski, 2010; Casson *et al*, 2013). The details of lipid processing in the retina are not fully defined; however, some lipids are used as fuel/energy sources while the others, which cannot be synthesized, are recycled (Chen & Anderson, 1993; Mukherjee *et al*, 2007).

### Fuel sources for the retina to make ATP

ATP, used to transfer energy, is generated via two metabolic pathways: glycolysis in the cytoplasm and oxidative phosphorylation (OXPHOS) in mitochondria. Glycolysis converts one glucose to two pyruvates (yielding 2 ATP). In the presence of oxygen, pyruvate is further converted to acetyl-CoA, which enters the Krebs cycle

1 Department of Ophthalmology, Harvard Medical School, Boston Children’s Hospital, Boston, MA, USA

2 Manton Center for Orphan Disease, Harvard Medical School, Boston Children’s Hospital, Boston, MA, USA

3 National Institute on Alcohol Abuse and Alcoholism, National Institutes of Health, Bethesda, MD, USA

4 Department of Pediatrics, Pharmacology and Ophthalmology, CHU Sainte-Justine Research Center, Université de Montréal, Montreal, QC, Canada

5 Department of Pharmacology and Therapeutics, University of Montreal, Montreal, QC, Canada

6 Beijing Tongren Eye Center, Beijing Tongren Hospital, Capital Medical University, Beijing, China

7 Center for Translational Vision Research, Gavin Herbert Eye Institute, Irvine, CA, USA

8 Section for Ophthalmology, Department of Clinical Neuroscience, Institute of Neuroscience and Physiology, Sahlgrenska Academy, University of Gothenburg, Göteborg, Sweden

\*Corresponding author. Tel: +1 617 919 2534; E-mail: zhongjie.fu@childrens.harvard.edu

\*\*Corresponding author. Tel: +1 617 919 2529; E-mail: lois.smith@childrens.harvard.edu

**Glossary****Autophagy**

A process induced under stress to process cellular wastes to reduce toxicity and provide fuel for mitochondria.

**Fatty acid  $\beta$ -oxidation**

The catabolic process that breaks down fatty acid molecules to generate acetyl-CoA, which in mitochondria enters the citric acid cycle for energy (ATP) production.  $\beta$ -oxidation occurs in the peroxisomes and mitochondria but in peroxisomes no ATP is produced.

**Glycolysis**

The process of breaking down glucose into pyruvic acid for energy production.

**Neovascularization**

Uncontrolled blood vessel growth in the eye. New vessels are often fragile and leaky, causing blindness in the late stage of neovascular retinal diseases.

**Oxidative phosphorylation**

The process to form ATP through the transfer of electrons from NADH or FADH<sub>2</sub> to oxygen by a series of electron carriers in the mitochondrial membrane.

**Photoreceptors**

A retinal neuronal cell that is capable of visual phototransduction, converting light signals to electric signals. They possess the highest density of mitochondria in the body.

**Retinal pigment epithelium**

The pigmented cell layer provides nutrients and clears wastes for photoreceptors.

(yielding 2 ATP) and forms electron donors for OXPHOS (yielding 34 ATP). However, when there is an oxygen shortage, pyruvate is converted into lactate. In the retina, even without oxygen deficits glucose is mostly metabolized through glycolysis rather than OXPHOS (called aerobic glycolysis or the Warburg effect). It has been shown that in pig retinal explants, only 20% of glucose is oxidized (Wang *et al*, 1997); despite access to oxygen, 80% is used for glycolysis, which provides intermediates for outer segment synthesis.

The remaining oxidation is of carbons derived from non-glucose sources such as lipids (Joyal *et al*, 2016). In rat and rabbit retinas, there is no difference in lactate production in darkness and in light, indicating that aerobic glycolysis is not required for the energy needed to maintain the dark current (Cohen & Noell, 1960; Winkler, 1981). The dark current is maintained with OXPHOS, using over 40% of retinal oxygen (Ames *et al*, 1992). The fuel source for OXPHOS was unknown for almost 60 years, as most glucose clearly is not metabolized through OXPHOS (Cohen & Noell, 1960). Recently, lipid oxidation (palmitic acid C16:0) was found to be used for energy production in photoreceptor mitochondria (Joyal *et al*, 2016). The major fatty acids of physiological importance in energy metabolism are those with a chain length  $\geq 16$  carbons. Fatty acid  $\beta$ -oxidation (OXPHOS) of one 16-carbon fatty acid produces 129 ATP, while full oxidation of glucose produces 38 ATP. Knowledge of the potential impact of other fatty acids on retinal metabolism is still limited.

**Cones versus rods in energy consumption and production**

Cones are more metabolically active than rods (Nikonov *et al*, 2006; Okawa *et al*, 2008). In darkness, cones and rods have comparable ATP expenditures, and similar dark currents. However, in the light, rod responses are suppressed, thereby reducing total retinal energy consumption by  $> 75\%$ . But cones do not saturate in bright light so the energy demand remains high. Even when cones are maximally bleached, they still have a baseline need that is more than 50% of the dark current (Nikonov *et al*, 2006).

It is essential to coordinately control the synaptic terminal ATP production and Ca<sup>2+</sup> concentration to regulate transient exocytosis and ensure recovery for the next action potential (Johnson *et al*, 2007). Cones increase ATP production by increasing the number of mitochondria (about twofold more than rods) and mitochondrial cristae surface membrane area (about threefold more than rods; Perkins *et al*, 2003). Cones lower Ca<sup>2+</sup> levels during light adaptation and increase their response kinetics by utilizing a low affinity/high turnover Na<sup>+</sup>-Ca<sup>2+</sup> exchanger, while rods use high affinity/low turnover plasma membrane Ca<sup>2+</sup> ATPase (Johnson *et al*, 2007). The knowledge of fuel use in cones and rods is still limited. Loss of hexokinase 2 (a key aerobic glycolysis enzyme) in rods inhibits rod function but not rod survival, while cone hexokinase 2 loss does not affect photoreceptor function (Petit *et al*, 2018), suggesting that aerobic glycolysis is not necessary for photoreceptor survival, but is a metabolic choice to maintain neuronal function.

**Peroxisome fatty acid  $\beta$ -oxidation**

Fatty acid degradation, through  $\beta$ -oxidation, takes place in both mitochondria and peroxisomes in mammals. Peroxisomal degradation breaks down long-chain fatty acids (producing no ATP), into shorter chain fatty acids that can be used by mitochondria for further oxidation to acetyl-CoA, which enters the Krebs cycle to produce ATP (Fig 1; Poirier *et al*, 2006; Schrader *et al*, 2015).

Very long-chain monocarboxylic ( $\geq 22$  carbons) and long-chain dicarboxylic fatty acids are oxidized only in peroxisomes (Poirier *et al*, 2006). In addition, polyunsaturated fatty acids are also oxidized faster in peroxisomes than in mitochondria (Hiltunen *et al*, 1986). Long-chain fatty acids (13–21 carbons) must first be conjugated to either coenzyme A (peroxisomes) or carnitine (mitochondria) outside the organelle and then imported into organelles by ABC class D transporters (peroxisomes) or carnitine-acylcarnitine translocases (mitochondria). Fatty acids are subsequently degraded by  $\beta$ -oxidation, which involves four enzymes and leads to the release of acetyl-CoA, FADH<sub>2</sub>, and NADH (Fig 1). Acetyl-CoA enters the Krebs cycle where it is oxidized into CO<sub>2</sub> and H<sub>2</sub>O, and generates additional FADH<sub>2</sub> and NADH. FADH<sub>2</sub> and NADH from  $\beta$ -oxidation and the Krebs cycle are then used for ATP production by the mitochondrial electron transport chain.

**Retinal lipid composition**

A rod photoreceptor has three functional domains: (i) synaptic terminal, (ii) inner segment, and (iii) outer segment (Fig 2A). One retinal lipid source comes from shed photoreceptor outer segments. Rod outer segments consist of stacks of photosensitive disks, which contain proteins (predominantly photosensitive

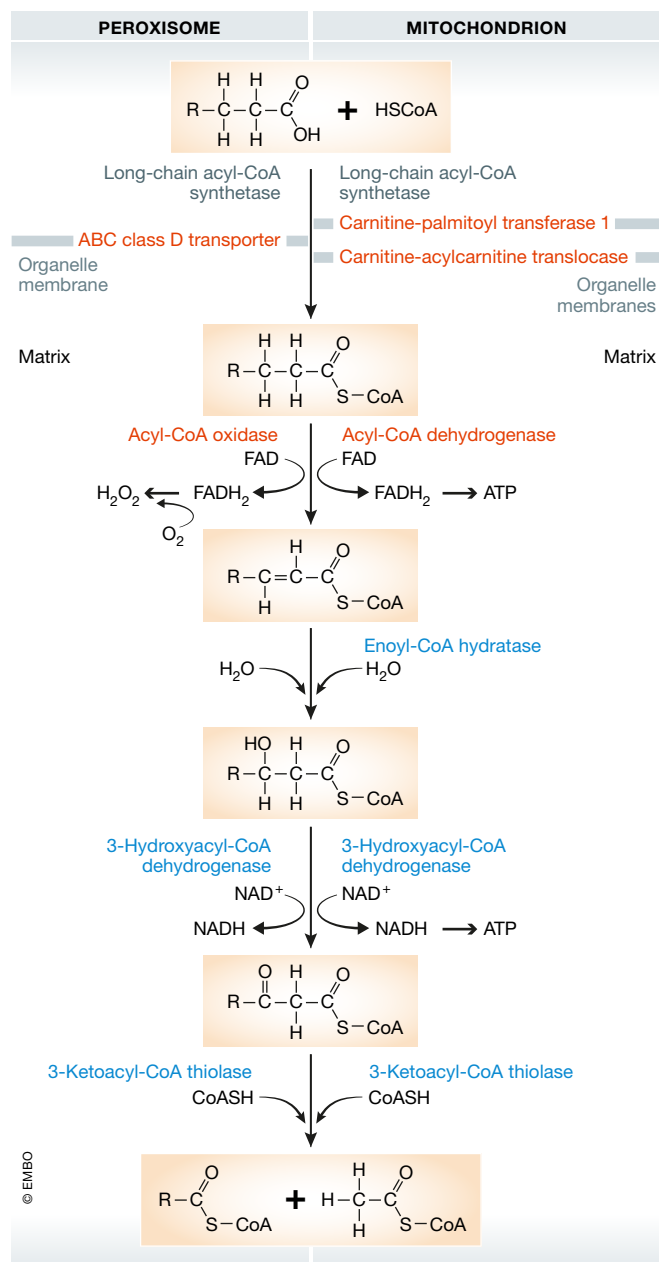


Figure 1.  $\beta$ -oxidation pathway in peroxisome and mitochondria.

pigments) and lipids (Fliesler & Anderson, 1983), predominantly phospholipids (90–95% of total lipids) and cholesterols (4–6%) (Daemen, 1973).

Phospholipids consist of a phosphate “head” with fatty acid “tails”, which can be cleaved to provide fatty acids. Retinal phospholipids contain an abundance of long-chain polyunsaturated fatty acid

(LCPUFA, ~45% of total phospholipids), saturated fatty acid (SFA, ~37% of total phospholipids), and monounsaturated fatty acid (MUFA, ~10% of total phospholipids; Schnebelen *et al*, 2009). While fatty acid composition analysis in the human retina is limited, the retina of a healthy senior is composed of 16.7%  $\omega$ -6 LCPUFA, 16.6%  $\omega$ -3 LCPUFA, 42.4% SFA, and 19.2% MUFA (Acar *et al*, 2012).

During postnatal development, rod lipid composition transitions from rich in saturated fatty acids to rich in unsaturated fatty acids (Scott *et al*, 1988). The increasing unsaturated lipid portion of the maturing retina is biased for selective accretion of docosahexaenoic acid (DHA) while arachidonic acid (AA) levels are reduced (Alessandri & Goustard-Langelier, 2001). Docosahexaenoic acid accounts for approximately 35% of total phospholipid FA in the retina and 50% in rod outer segments (Stinson *et al*, 1991), while AA accounts for approximately 8–10% of total phospholipid fatty acid in rod outer segments.

### Transcriptional control of retinal cell functions

The retina contains more than 10 different cell types that contribute uniquely to phototransduction (Fig 2B), requiring a highly individualized gene expression pattern. The emergence of single-cell transcriptomics (scRNAseq) provides insight into the metabolism of individual cells within the retina, which is likely to lead to a greater understanding of the cellular metabolic influences on neovascularization. scRNAseq examines the combinatorial expression of genes, which leads to the clustering of retinal cells according to their gene expression patterns (Fig 3A; Macosko *et al*, 2015). The scRNAseq approach is very efficient in discovering new retinal cell subtypes (Shekhar *et al*, 2016; Rheaume *et al*, 2018). Beside identity markers associated with specialized functions (like phototransduction in photoreceptors; Fig 3B), different retinal cells regulate specific metabolic genes at the transcriptional level to perform certain functions. However, caution is required when analyzing transcriptomic data from rod photoreceptors, as this cell type has low basal gene expression (Macosko *et al*, 2015), which is correlated with a uniquely closed chromatin architecture compared to cones (Hughes *et al*, 2017). Moreover, rods are very sensitive to single-cell dissociation since the end part of rod outer segments is buried in the RPE and may be separated from the main cell body during retinal digestion. Single-nucleus RNAseq may therefore be more suitable to assess the rod transcriptome *in situ* (Habib *et al*, 2017).

### Dyslipidemia in neurovascular retinopathies

Metabolic dysfunction and dyslipidemia produce deleterious effects on the eye (Folz & Trobe, 1991; Chang & Wu, 2013; Yonekawa *et al*, 2015). Dyslipidemia is characterized by an abnormal circulating lipid profile including triglycerides, cholesterol, low-density lipoproteins (LDL), high-density lipoproteins (HDL), or polyunsaturated fatty acids. In premature infants, high triglycerides are associated with increased severity of retinopathy of prematurity (ROP; Sinclair

Figure 2. Schematics of photoreceptor and retinal structure.

(A) Schematics of rod and cone structure. (B) Schematics of retinal neuronal and vascular arrangement. RPE, retinal pigment epithelium; OS/IS, outer segments/inner segments; ONL, outer nuclear layer; INL, inner nuclear layer; GCL, ganglion cell layer.

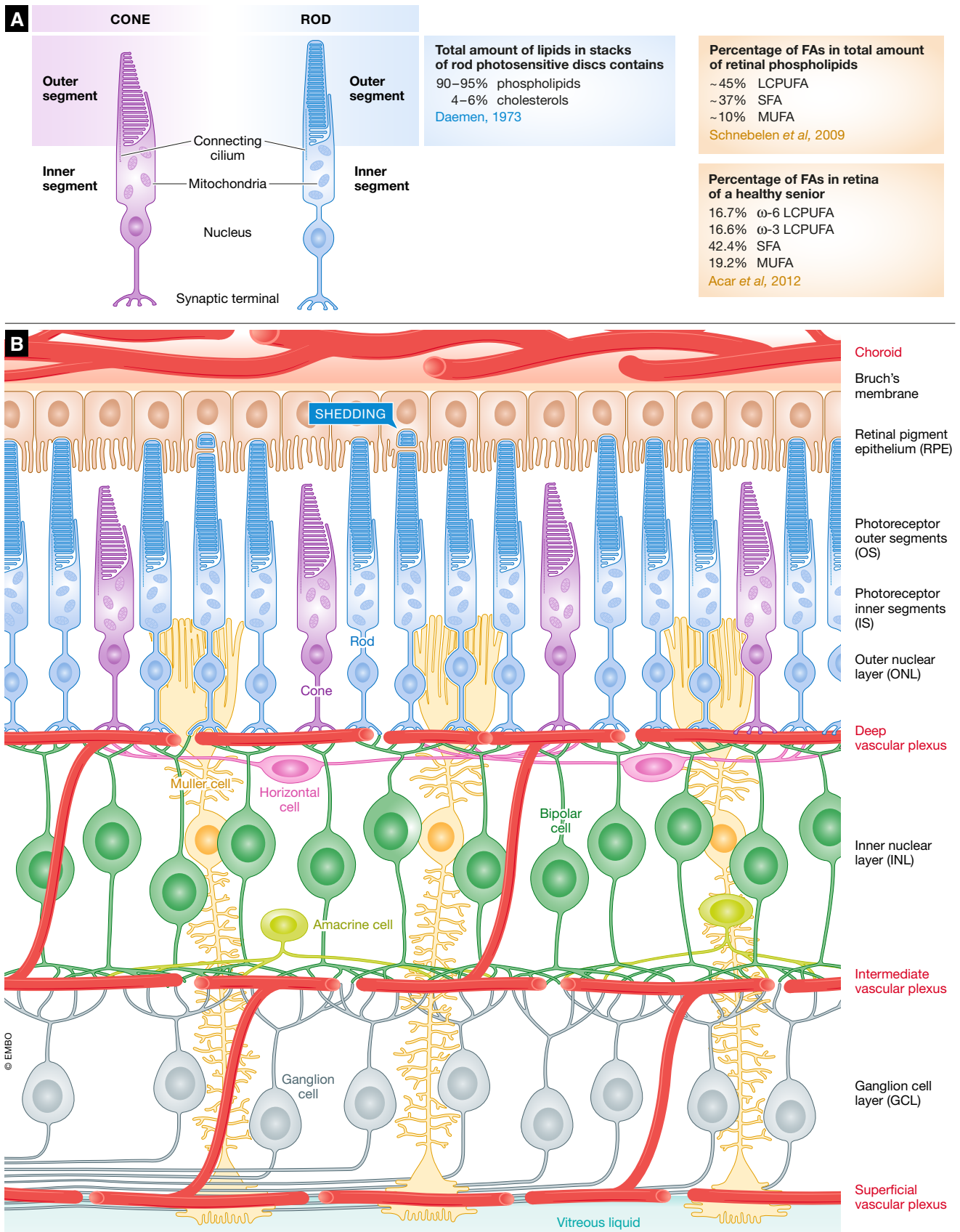
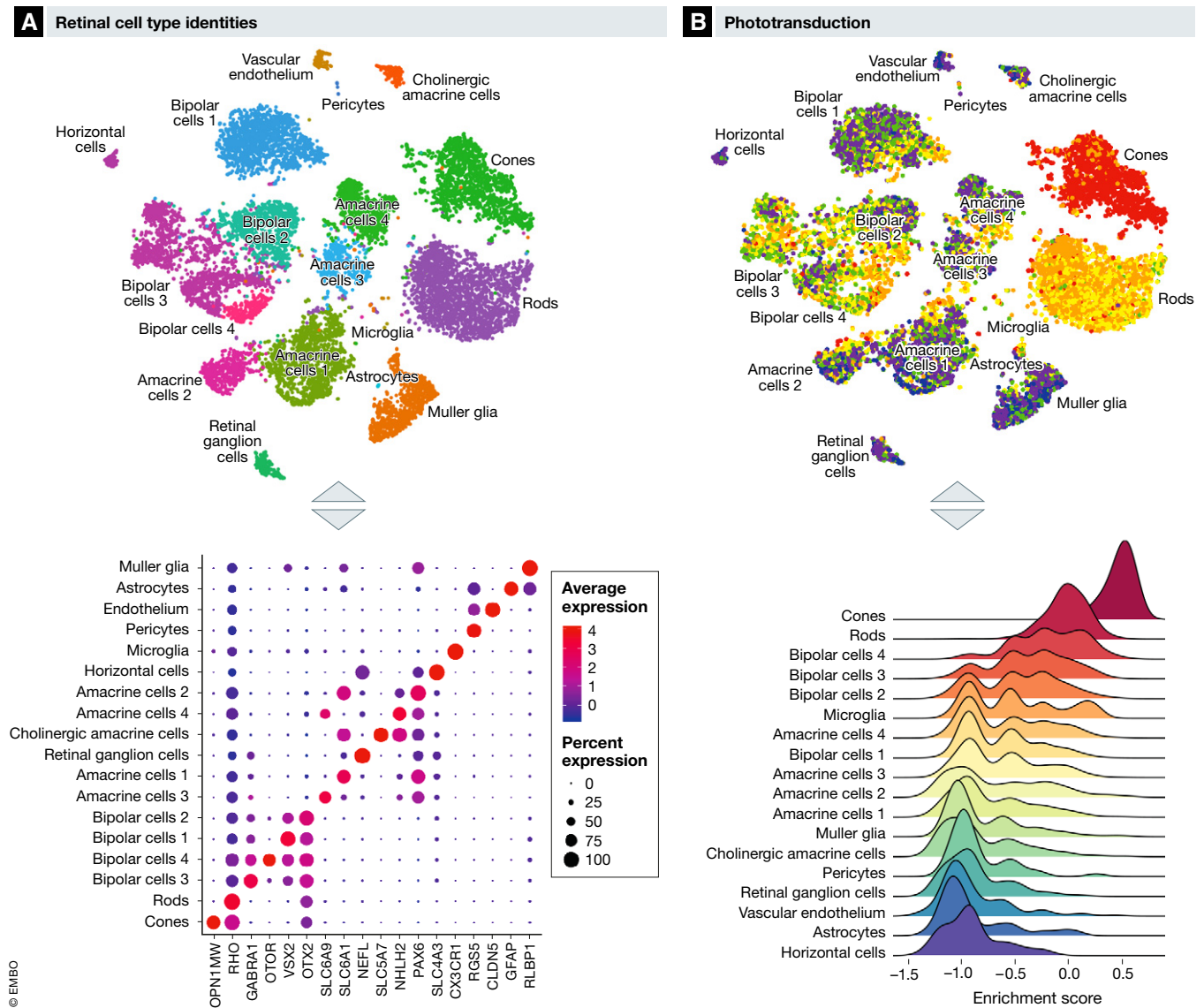


Figure 2.





**Figure 3. Cell-specific transcriptional regulation of retinal functions.**

Adapted from Macosko *et al*, Cell 2015. (A) Retinal cell types can be identified using single-cell RNAseq based on cell-specific expression of genes markers. OPN1MW, Opsin 1, medium wave sensitive; RHO, rhodopsin; GABRA1, gamma-aminobutyric acid type A receptor alpha1 subunit; OTOR, otoraplin; VSX2, visual system homeobox 2; OTX2, orthodenticle homeobox 2; SLC6A9, solute carrier family 6 member 9; SLC6A1, solute carrier family 6 member 1; NEFL, neurofilament light; SLC5A7, solute carrier family 5 member 7; NHLH2, nescient helix-loop-helix 2; PAX6, paired box 6; SLC4A3, solute carrier family 4 member 3; CX3CR1, C-X3-C motif chemokine receptor 1; RGS5, regulator of G protein signaling 5; CLDN5, claudin 5; GFAP, glial fibrillary acidic protein; RLBP1, retinaldehyde binding protein 1. (B) Transcriptomic enrichment for specific pathway such as the phototransduction pathways can be scored using gene set variation analysis based on highly variable genes between retinal cell types.

*et al*, 2018). The  $\omega$ -6 LCPUFA, arachidonic acid, level is also significantly lower in severe ROP in premature infants at postmenstrual age of 32 weeks (Lofqvist *et al*, 2018). Although the results from many studies exploring the associations between diabetic retinopathy (DR) and lipid abnormality are inconsistent, one study found that high circulating LDL cholesterol levels are a significant risk factor for diabetic macular edema and retinal hard exudates (Chang & Wu, 2013). In advanced age-related macular degeneration (AMD), high HDL cholesterol levels are implicated in the disease pathogenesis in European and Asian populations (Cougnaud-Gregoire *et al*, 2014; Fan *et al*, 2017). A recent European Eye Epidemiology

consortium study found that HDL is associated with an increased risk of AMD and drusen development, while triglycerides are associated with a decreased risk of AMD and drusen development. Variants in lipid genes and their association with cholesterol levels are unclear. The cholesteryl ester transfer protein risk variant (rs17231506) for AMD was associated with increased HDL cholesterol levels, but lipase C risk variants (rs2043085, rs2070895) were negatively linked with HDL cholesterol levels (Colijn *et al*, 2019). In retinitis pigmentosa (RP) versus control patients, decreased plasma  $\omega$ -3 and  $\omega$ -6 LCPUFA are found (Converse *et al*, 1983; Holman *et al*, 1994).

Dietary modulation of the lipid supply can positively influence diseases with pathological neovascularization such as ROP, AMD, and DR in patients and in animal models of retinopathy (Gong *et al*, 2017). Photoreceptor energy demands drive vessel growth (Sapieha, 2012; Joyal *et al*, 2016, 2018; Fu *et al*, 2018), while photoreceptor-derived oxidative stress and inflammation lead to retinal vascular damage or regression (Kern & Berkowitz, 2015; Sun *et al*, 2017). Retinal disorders such as ROP, DR, AMD, RP, and Zellweger spectrum disorder (ZSSD) are associated with disturbances in photoreceptor activity, which may further affect the blood supply and induce pathological vascular remodeling during disease progression.

### Retinopathy of prematurity

Retinopathy of prematurity is a leading cause of blindness in children worldwide (Hellstrom *et al*, 2013). After preterm birth, the immature retinal vasculature growth is suppressed, secondary to oxygen supplementation, loss of growth factors provided *in utero*, and metabolic dysregulation. As the neural retina slowly matures, metabolic demand increases, particularly in photoreceptors. The relatively avascular retina becomes hypoxic and deprived of nutrients, driving vascular growth factor expression and subsequent neovascularization. The onset of neovascular ROP at ~32 weeks postmenstrual age coincides with the rapid development and increased metabolic demand of rods (Fulton *et al*, 1999; Hansen *et al*, 2017). This observation is supported by rodent studies. In mice, hyperglycemia (a key risk factor for ROP) triggers photoreceptor metabolic alterations and delays retinal vascular development (Fu *et al*, 2018). In rats, early photoreceptor dysfunction also predicts subsequent neovascularization (Akula *et al*, 2010).

In premature infants, there is a ~44% decrease in DHA after preterm birth, and serum DHA levels remain low for at least 4 weeks (Lapillonne & Jensen, 2009; Martin *et al*, 2011). Severe ROP is reduced in premature infants (GA < 32 weeks) receiving  $\omega$ -3 LCPUFA versus parenteral soybean and olive oil supplementation (Pawlik *et al*, 2014). There is also an association between low serum levels of  $\omega$ -6 LCPUFA (AA) and later development of ROP (Lofqvist *et al*, 2018). In mice, dietary  $\omega$ -3 versus  $\omega$ -6 LCPUFA suppresses retinal neovascularization (Connor *et al*, 2007; Fu *et al*, 2017b). Further studies on the impact of DHA and AA and other lipids on photoreceptor function and metabolism are needed.

### Diabetic retinopathy

In addition to ROP, DR is also associated with abnormal energy metabolism. DR, a significant complication of diabetes, starts with vascular loss (non-proliferative DR), followed by neovascularization (proliferative DR). In DR, abnormalities in retinal neural responses occur early before vascular abnormalities are seen, suggesting that neuronal metabolic demands drive vessel growth (De Benedetto *et al*, 2014; Pescosolido *et al*, 2015). Mitochondrial dysfunction is accompanied by oxidative stress (Barot *et al*, 2011), which induces a wide range of microvascular abnormalities throughout the course of DR (Kowluru & Mishra, 2015). In diabetic mice, photoreceptors with their high density of mitochondria contribute to the majority of induced retinal oxidative stress and inflammation, which is associated with retinal vessel loss in DR (Du *et al*, 2013; Liu *et al*, 2016; Tonade *et al*, 2016).

There is clear evidence of neurovascular cross talk in DR. In patients with both proliferative DR and progressive photoreceptor

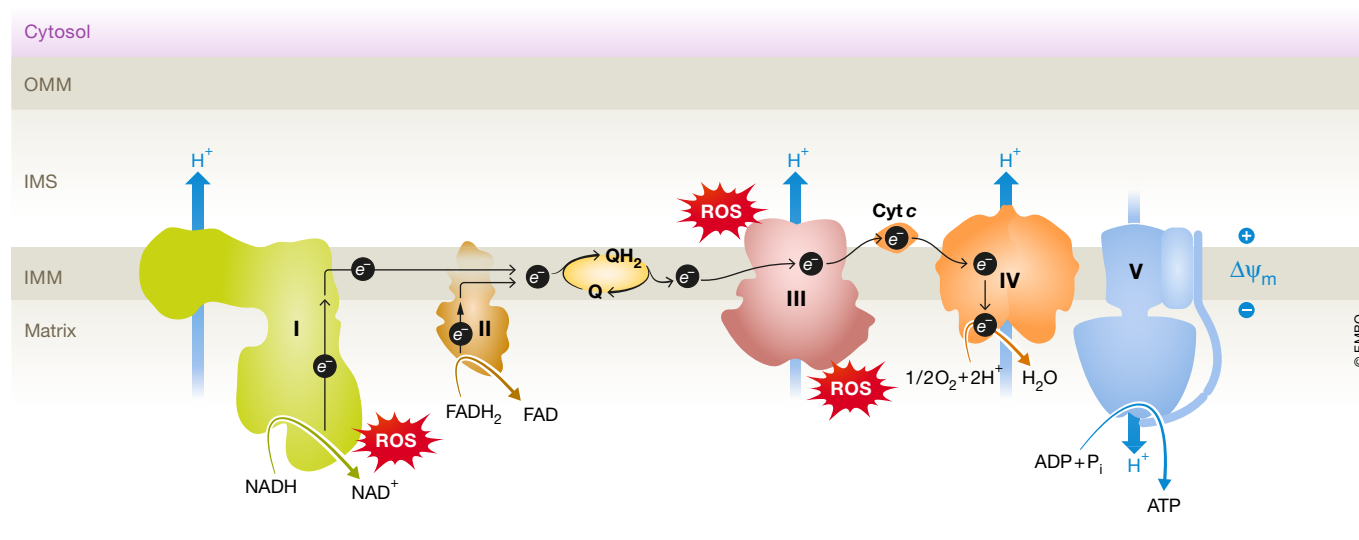
degeneration (RP), spontaneous neovascular regression occurs when photoreceptor loss from RP becomes clinically evident (Lahdenranta *et al*, 2001). As there is higher retinal energy consumption in darkness versus light, illuminating the retina with 507-nm light during sleep might reduce the risk of DR progression (Sivaprasad & Arden, 2016). In fact, exposure to a 505-nm light during sleep leads to the regression of macular edema and improved visual function in early DR patients (Arden *et al*, 2011). However, a recent multi-year phase 3 clinical trial (CLEOPATRA) of wearing a light mask at night in DR patients failed to support the hypothesis that decreasing energy needs for photoreceptor “dark current” would inhibit diabetic macular edema (Sivaprasad *et al*, 2018).

Dyslipidemia is associated with more retinal abnormalities and faster progression of DR (Sacks *et al*, 2014; Hammer & Busik, 2017). Increasing dietary PUFA versus saturated FA is associated with a reduced incidence and severity of DR (Sasaki *et al*, 2015). A Mediterranean diet with olive oil or nut supplements showed an additional 48% decrease in incidence of DR in type 2 diabetes when the diet also included  $\geq$  500 mg/day DHA plus eicosapentaenoic acids, or at least 2 weekly servings of oily fish (Sala-Vila *et al*, 2016). In murine models of early DR, fish oil and a  $\omega$ -3 LCPUFA-enriched diet preserve retinal neuronal function (Yee *et al*, 2010; Sapieha *et al*, 2012). Linoleic acid- versus saturated-fat-rich diets inhibit progression of diabetic microangiopathy (Houtsmuller *et al*, 1980). Not all lipids appear to affect DR. The absence of acid sphingomyelinase (ASM) in ASM<sup>-/-</sup> mice or inhibition of ASM activity by DHA inhibited the diabetes-induced degeneration of retinal capillaries (Opresanu *et al*, 2011). Studies show no association between total cholesterol or high-density lipoprotein and incidence of DR or macular edema in long-term type 1 diabetes (Klein *et al*, 2015). Taken together, these findings suggest a link between some aspects of dyslipidemia and DR progression. As such, dietary modulation of specific lipids may help prevent or treat DR.

### Age-related macular degeneration

The human macula, critical for central vision, consists of a small cone-dominated fovea surrounded by a rod-dominated parafovea. AMD particularly affects the macula and is the leading cause of legal blindness in the elderly. Clinically, AMD is classified as either dry or wet (neovascular) based on the absence or presence of pathologic blood vessels invading into the photoreceptor layer (Ambati & Fowler, 2012). Current treatments mainly target neovascular AMD; no drugs are approved by the U.S. Food and Drug Administration for dry AMD.

Mitochondrial morphological changes and dysfunction occur in degenerating macular cones and likely contribute to AMD progression (Barron *et al*, 2001; Litts *et al*, 2015). Mitochondrial abnormalities can cause overproduction of superoxide radicals, primarily in the electron transport chain (Fig 4; Selivanov *et al*, 2011). Oxidative stress causes damage to cell structures, lipids, proteins, and DNA, and particularly affects metabolically active neuronal cells, like photoreceptors. Photoreceptor loss is seen in AMD donor eyes (Curcio *et al*, 1996). In aging and in early AMD, there is a prominent decline in rod-mediated ERG sensitivity (Jackson *et al*, 2002). Additionally, cone dysfunction can predict early AMD and is a reliable measure of AMD progression (Hogg & Chakravarthy, 2006).



**Figure 4. Schematics of electron transport chain (ETC).**

The ETC passes electrons from NADH and FADH<sub>2</sub> to protein complexes (I to V) and mobile electron carriers coenzyme Q (CoQ) and cytochrome c (Cyt c). Oxygen (O<sub>2</sub>) is the final electron recipient. The transfer of electrons generates energy to pump protons (H<sup>+</sup>) from the mitochondrial matrix into the intermembrane space. An electrochemical proton gradient is created across the inner mitochondrial membrane, allowing the protons to pass through complex V (ATP synthase) to generate adenosine triphosphate (ATP) from adenosine diphosphate (ADP). Complex I, NADH coenzyme Q reductase, complex II, succinate dehydrogenase, complex III, cytochrome *bc*<sub>1</sub> complex, complex IV, cytochrome c oxidase. Complex I and complex III are the main sites for superoxide (ROS) formation.

As well as mitochondrial dysfunction, dyslipidemia is also implicated in dry AMD pathogenesis (Gong *et al*, 2017). The most established clinical hallmark of dry AMD is the formation of subretinal drusen, extracellular deposits rich in lipid and protein (Hageman *et al*, 2001). Although the exact mechanism of drusen formation is unclear, Bruch's membrane, found between the choriocapillaris and RPE, thickens due to accumulation of oxidized lipids, lipid-related molecules, and inflammatory debris preceding drusen formation. This slows down nutrient and waste transportation between RPE cells and choroidal vessels, leading to malfunction of RPE cells (Sarks *et al*, 2007; Curcio, 2018a,b).

Epidemiologic studies link increased HDL levels with AMD across different populations (Fan *et al*, 2017; Colijn *et al*, 2019). Genome-wide association studies also identify several HDL cholesterol genes associated with AMD susceptibility, including genes encoding ATP-binding cassette transporter A1 (*ABCA1*), cholesteryl ester transfer protein (*CETP*), apolipoprotein E (*APOE*), hepatic lipase C (*LIPC*), and lipoprotein lipase precursor (*LPL*) (Chen *et al*, 2010; Neale *et al*, 2010; Fritsche *et al*, 2013, 2016). Impaired *ABCA1*-mediated cholesterol efflux in mouse RPE cells or subretinal macrophages induces lipid accumulation and retinal degeneration (Lyssenko *et al*, 2018; Storti *et al*, 2019). ApoE is important for the transport of lipids across cell membranes and is highly expressed by RPE cells. ApoE-null mice exhibit raised serum triglycerides and cholesterol. Thickened Bruch's membrane, and accumulation of lipid deposits in the basal RPE and Bruch's membrane are seen in ApoE-null and genetically engineered ApoE-mutated mice (Malek *et al*, 2005; Edwards & Malek, 2007). However, how *CETP*, *LIPC*, and *LPL* link to AMD pathogenesis is still unclear.

High plasma levels of high-density lipoprotein cholesterol are associated with an increased risk for advanced AMD (Fan *et al*, 2017). A 42% decreased incidence of AMD is associated with high

plasma ω-3 LCPUFA levels in a large cohort study of US female health professionals (Christen *et al*, 2011). A 30% decrease in central geographic atrophy development and a 50% decrease in neovascular AMD development are found in participants with high versus low ω-3 LCPUFA intake in the Age-Related Eye Disease Study (AREDS) (Sangiovanni *et al*, 2009). There was no further reduced risk of progression to advanced AMD in participants with ω-3 LCPUFA supplementation in the AREDS2 study; however, the participants had a much higher baseline level of circulating ω-3 LCPUFA in comparison with those in the first AREDS (Souied *et al*, 2015). It also may be that other fats in fish (alone or in combination with DHA) are required to suppress AMD progression. In a Japanese population with a high baseline intake of fish oil, there was no significant association between serum ω-3 LCPUFA levels and AMD progression (Kabasawa *et al*, 2011). Dietary ω-3 LCPUFA inhibits neovascularization in a laser-induced wet AMD mouse model and in mice lacking the very low-density lipoprotein receptor (VLDLR) (Fu *et al*, 2017b). The lack of VLDLR promotes the development of neovascularization originating from the superficial retinal vasculature similar to some neovascularization seen in AMD. The lack of VLDLR leads to intracellular lipid and glucose insufficiency which drives neovascularization, including retinal angiomatous proliferation and choroidal neovascularization (Joyal *et al*, 2016). Therefore, both clinical and experimental investigations support the concept that dyslipidemia may be associated with AMD progression.

#### **Retinitis pigmentosa**

Retinitis pigmentosa is also associated with abnormal energy metabolism. There are ~60 genes (to date), mostly expressed in rods, which are involved in RP retinal degenerations (Ali *et al*, 2017). In RP, the initial loss of rods results in night blindness and



loss of peripheral vision; central (cone) vision is initially preserved but eventually central vision is also lost, secondary to a bystander effect (Punzo *et al*, 2009; Ait-Ali *et al*, 2015). In mouse models of RP, 34.9% of gene expression changes following cone loss are associated with cellular metabolism (Punzo *et al*, 2009), suggesting that improving fuel sources (perhaps such as lipids for FA  $\beta$ -oxidation) may improve cone metabolism. Mathematical models predict that preventing a 1–2% decrease in nutrients can permanently halt cone death even when 90% have already died (Camacho *et al*, 2016). Therefore, improving nutrient availability is a reasonable general approach to increase cone survival in RP. In RP patients, reduced ocular blood flow is also described as possibly associated with a decreased neuronal demand for nutrient supply (Falsini *et al*, 2011). Further studies are needed to establish the link between retinal vascular changes at different stages of RP.

### Zellweger syndrome spectrum disorders

Zellweger syndrome spectrum disorders (ZSSD), including Zellweger syndrome, neonatal adrenoleukodystrophy, and infantile Refsum disease (Smith *et al*, 2016), are caused by defects in any of the peroxisomal PEX genes (Crane, 2014), resulting in peroxisomal lipid metabolic dysfunction. As peroxisomes break down long-chain fatty acids to shorter length chains that can be used in mitochondria, deficits in PEX genes often also result in mitochondrial dysfunction. In ZSSD, the central nervous system is severely affected (Vamecq *et al*, 2014), producing unique ocular deficits including pigmentary retinopathy and optic atrophy, corneal opacification, cataract, and glaucoma (Folz & Trobe, 1991). In addition, attenuated retinal vasculature and macular edema are reported in infantile Refsum disease (Pakzad-Vaezi & Maberley, 2014).

Mitochondrial perturbation rapidly occurs following the loss of functional peroxisomes (Salpietro *et al*, 2015; Schrader *et al*, 2015). Very long-chain fatty acids (VLCFAs) accumulate in ZSSD; however, DHA (22:6 $\omega$ 3) is reduced in the plasma and brain (Poulos *et al*, 1986; Harding *et al*, 1999). Docosahexaenoic acid treatment maintains visual acuity and retinal function in patients with peroxisome biogenesis disorders (Noguer & Martinez, 2010). Over-accumulation of VLCFAs is also found in mouse models of peroxisomal biogenesis defects (Baes, 2000; Baes & Van Veldhoven, 2012). VLCFAs may affect membrane properties (Sassa & Kihara, 2014), and defects in the breakdown of VLCFAs may also cause substrate shortage for mitochondrial fatty acid  $\beta$ -oxidation.

### Pathways modifying metabolic lipid use

Peroxisome proliferator-activated receptor-alpha (PPAR $\alpha$ ) and PPAR $\gamma$  are nuclear receptors involved in modulating lipid metabolic homeostasis. PPAR $\alpha$  controls lipoprotein lipase expression and triglyceride metabolism, while PPAR $\gamma$  upregulates enzymes involved in steps of fatty acid metabolism like fatty acid entry into mitochondria and peroxisome (Gervois *et al*, 2000). Genetic deficiency of PPAR $\alpha$  in mice leads to a decrease in lipid transporters and retinal degeneration (Pearsall *et al*, 2017). PPAR $\gamma$  is required for  $\omega$ -3 LCPUFA-induced attenuation of mouse retinal neovascularization (Stahl *et al*, 2010). PPAR $\gamma$  coactivator- $\alpha$  (PGC-1 $\alpha$ ) regulates mitochondrial biogenesis and respiration (Alaynick, 2008). High-fat

diet-exposed mice are more likely to develop AMD-like phenotypes with lack of PGC-1 $\alpha$  (Zhang *et al*, 2018). PGC-1 $\alpha$  activation increases RPE metabolism and protects against oxidative damage (Satish *et al*, 2018). Therefore, PPAR $\alpha$ , PPAR $\gamma$ , and PGC-1 $\alpha$  may modulate retinal lipid metabolism and therefore be pathways to manipulate in disease treatment.

Cyclooxygenases (COX), lipoxygenases (LOX), and cytochromes P450 (CYP)-mediated LCPUFA metabolism is important in regulating ocular inflammation, particularly through the LOX and CYP pathways (Gong *et al*, 2017). Inhibiting COX does not affect proliferative retinopathy (Sapieha *et al*, 2011). LOX  $\omega$ -3 LCPUFA metabolites show anti-inflammatory and anti-angiogenic effects, while LOX  $\omega$ -6 LCPUFA metabolites are pro-inflammatory and pro-angiogenic (Sapieha *et al*, 2011). However, both CYP2C8  $\omega$ -3 and  $\omega$ -6 LCPUFA metabolites are pro-angiogenic and inhibition of CYP2C8 decreases ocular neovascularization (Shao *et al*, 2014; Gong *et al*, 2016a,b).

### Genetic association with retinopathies

Understanding genetic susceptibility to ocular disorders may help understand disease mechanisms. In premature infants, gene mutations in vascular endothelial growth factor (VEGF) and insulin growth factor 1 (IGF1) are associated with advanced ROP (Holmstrom *et al*, 2007). The association of VEGF and IGF1 with ROP is further identified clinically and in animal models (Hellstrom *et al*, 2013). Genetics in DR has been widely explored. Mutations in metabolic genes such as aldose reductase, endothelial nitric oxide synthase (eNOS), receptor for advanced glycosylation end product (RAGE), adiponectin, peroxisome proliferator-activated receptor  $\alpha$  and  $\gamma$ , and superoxide dismutase 2 (MnSOD), growth factors like VEGF, and erythropoietin (EPO), as well as inflammatory factors like complement factor H (CFH) and CFB, interleukin 6 and interleukin 10, have a positive association with DR (Hampton *et al*, 2015). Genome-wide association studies for diabetic macular edema identify a new associate single nucleotide polymorphism in rs1990145 on chromosome 2 (within the second intron of the mitochondrial ribosomal protein L19, *MRPL19*; Graham *et al*, 2018). The function of *MRPL19* is unclear but other MRP genes including *MRPL9* and *MRPL23* are associated with retinitis pigmentosa (Kenmochi *et al*, 2001). Increasing evidence suggests a potential role of noncoding RNAs in regulating retinal inflammation during DR development (Gong & Su, 2017).

Delayed rod-mediated dark adaption, the first functional biomarker for early AMD, is observed for both the age-related maculopathy susceptibility 2 (*ARMS2*) A69S variant and the *CFH* Y402H variant in AMD patients. In healthy participants with normal macular function, the *ARMS2* A69S variant also was associated with delayed rod-mediated dark adaption (Mullins *et al*, 2019). In three population-based studies, the Rotterdam Study, the Beaver Dam Eye Study, and the Blue Mountains Eye Study, single nucleotide polymorphisms in the genes *ARMS2*, *CFH*, and complement factor H-related 5 (*CFHR5*) significantly increase the risk of late AMD (Buitendijk *et al*, 2013). In AMD patients with *CFH* and *ARMS2* risk alleles, the treatment response to antioxidants is compromised (Awh *et al*, 2015). The *CFH* Y402H variant also seems to limit the effect of dietary DHA supplementation on CNV (Merle *et al*, 2015).

## Potential therapeutic targets

Anti-vascular endothelial growth factor (VEGF) agents are the primary treatment for pathological retinal vessel growth in eye diseases (Klufas & Chan, 2015; Bakri *et al*, 2019). However, anti-VEGF treatment is not always effective (Lux *et al*, 2007; Nigam *et al*, 2008) and may remain in systemic circulation up to a few months after a single intravitreal injection (Moorthy & Cheung, 2009; Ueta *et al*, 2009; Hapani *et al*, 2010; Bressler *et al*, 2012; Jalali *et al*, 2013; Avery *et al*, 2014). VEGF is an important growth factor to neurons and blood vessels. Therefore, inhibition of VEGF may affect normal neurovascular function.

Since photoreceptor metabolic needs drive neovascularization, improved retinal lipid metabolism might be another strategy to prevent or treat neurovascular retinal diseases. Increasing lipid  $\beta$ -oxidation by hormonal and transcriptional factor regulation, as well as dietary intervention, may protect retinal function and decrease the demand for neovessels. Targeting dysmetabolism-induced inflammatory responses may also suppress neovascularization.

### **Fibroblast growth factor (FGF21), lipid metabolism, and autophagy**

Since modulation of retinal metabolism may help restore energy homeostasis to prevent signaling for blood vessel recruitment and therefore prevent neovascularization, the end cause of neurovascular diseases, it is important to assess potential interventions that increase glucose uptake or increase fatty acid oxidation to improve energy homeostasis. A novel candidate for improved lipid metabolism is FGF21. FGF21 is a key metabolic regulator of lipid and glucose use (Kharitonov & Larsen, 2011; Lin *et al*, 2012; Markan *et al*, 2014). In type 2 diabetes, FGF21 decreases body weight and improves the lipid profile (Gaich *et al*, 2013; Talukdar *et al*, 2016). In obese type 2 diabetic mice, FGF21 lowers plasma triglycerides by lipoprotein catabolism in adipose tissue and maintains adipocyte phospholipid homeostasis (Foltz *et al*, 2012; Schlein *et al*, 2016; Ye *et al*, 2016; Stanislaus *et al*, 2017). FGF21 also increases lipid use in response to amino acid starvation (De Sousa-Coelho *et al*, 2013). FGF21 functions through modulating the activities of PPAR and PGC-1 $\alpha$ . FGF21 is crucial for PPAR $\alpha$  agonists to ameliorate metabolic disorders in obese mice (Goto *et al*, 2017). FGF21 regulates PPAR $\gamma$  activity and controls body fat (Dutchak *et al*, 2012). FGF21 also induces PGC-1 $\alpha$  to modulate glucose and fatty acid metabolism during starvation (Potthoff *et al*, 2009).

In diabetic mice with insulin deficiency, FGF21 enhances retinal antioxidant defense systems, reduces pro-inflammatory cytokines, restores disorganized cone photoreceptor segments, and improves retinal function (Fu *et al*, 2018). FGF21 also regulates adiponectin (APN) production and secretion, and APN is key in mediating FGF21 modulation of glucose and lipid metabolism in mice (Holland *et al*, 2013; Lin *et al*, 2013). FGF21, mediated by APN which is associated with a number of metabolic retinal disorders (Fu *et al*, 2016), inhibits ocular neovascularization in mice (Fu *et al*, 2017a). FGF21 also increases APN secretion to diminish accumulation of ceramides in obese animals (Holland *et al*, 2013). Ceramide contributes to the development of DR and thus, modulating ceramide pathway may protect against DR progression (Fox *et al*, 2006; Opreanu *et al*, 2011).

Autophagy is induced in under stress (nutrient starvation, infection, or excess reactive oxygen species and recycles cytosolic components to remove damaged and dysfunctional cellular

material to maintain cellular homeostasis, provide fuel, and recycle building blocks. In the retina, autophagy-related proteins are mostly located in cellular layers that are rich in mitochondria and have high energy needs (Mitter *et al*, 2012). In addition, autophagy also plays an important role in phototransduction and rod integrity (Rodriguez-Muela *et al*, 2012; Zhou *et al*, 2015). Aged mice with mutated autophagy genes have AMD-like RPE defects (Zhang *et al*, 2017). Autophagy defects are also reported in human cells from AMD patients (Golestaneh *et al*, 2017). Some of the defects associated with autophagy deficiency are lipofuscin accumulation, reduced mitochondrial activity, and higher levels of reactive oxygen species—all of which affect angiogenesis. FGF21 influences autophagy. In mice, FGF21 is induced in neurons with mitochondrial dysfunction (Restelli *et al*, 2018). FGF21, induced with fasting, dephosphorylates transcription factor EB to induce genes involved in autophagy and lipid metabolism (Chen *et al*, 2017). In monosodium L-glutamate-induced obese mice, modeling nonalcoholic fatty liver disease, FGF21 induces autophagy to correct metabolic parameters (decreases triglycerides, improves insulin sensitivity) (Zhu *et al*, 2016). Further exploration of FGF21 in retinal lipid metabolism and autophagy is of great interest to evaluate its impact on retinal neurovascular stability.

### **Fenofibrate (PPAR $\alpha$ agonist and CYP2C antagonist)**

Fenofibrate, a PPAR $\alpha$  agonist, increases fatty acid  $\beta$ -oxidation and improves mitochondrial function. Deficiency of PPAR $\alpha$  leads to shortage of retinal energy production and neurodegeneration (Pearsall *et al*, 2017). In two large-scale clinical trials, fenofibrate prevents the progression of DR. In the FIELD study, fenofibrate was found to reduce the need for laser-treatment of DR in type 2 diabetes patients by ~30% (Keech *et al*, 2007). In the ACCORD Eye study, fenofibrate was found to reduce DR progression by ~40% (ACCORD Study Group *et al*, 2010). Fenofibrate prevents pathological neovascularization in the rat OIR model by suppressing hypoxia-inducible factor and VEGF (Chen *et al*, 2013). Fenofibrate also reduces retinal vascular leakage in a murine diabetic model (Chen *et al*, 2013). Fenofibrate administration reduces retinal vascular leakage and downregulates VEGF production in the mouse model of type 1 diabetes (Chen *et al*, 2013). Fenofibrate is also a CYP2C antagonist (Schoonjans *et al*, 1996; Walsky *et al*, 2005). CYP2C metabolites from  $\omega$ -3 and  $\omega$ -6 LCPUFA show pro-angiogenic effects in mouse models of ROP and AMD (Shao *et al*, 2014; Gong *et al*, 2016a). Inhibition of CYP2C with fenofibrate decreases retinal neovascularization (Gong *et al*, 2016b). Therefore, fenofibrate is a potential candidate to treat neurovascular defects in retinal metabolic disorders.

### **Dietary $\omega$ -3 LCPUFA intervention**

The essential  $\omega$ -3 LCPUFA, DHA, influences neovascularization in retinopathy both in human patients and animal models. In AMD, increasing fish intake or  $\omega$ -3 LCPUFA supplementation (DHA, EPA) is associated with a decreased risk of AMD progression (Tan *et al*, 2009; Christen *et al*, 2011; Pinazo-Duran *et al*, 2014). In premature infants and diabetic patients, plasma  $\omega$ -3 LCPUFA levels correlate with circulating APN and dietary intake of  $\omega$ -3 LCPUFA modulates circulating APN levels (Ito *et al*, 2014; Fu *et al*, 2015). In type 2 diabetic patients on a “healthy” Mediterranean diet, additional dietary intake of fish is associated with a 48% decreased incidence of proliferative DR (Sala-Vila *et al*, 2016). In mouse models of proliferative ROP, DR, and AMD, dietary  $\omega$ -3 LCPUFA,

**Pending issues**

- Anti-VEGFA therapy affects neuronal function and has systematic effects as VEGFA is an important factor to promote neuronal function.
- Elucidate the link between photoreceptors and retinal vascular function.
- Identify the type of lipids as neuronal energy fuel sources.
- Explore potential therapeutic targets modulating lipid sensors.

mediated by APN, inhibits ocular neovascularization (Fu *et al*, 2015, 2017b).

**Free fatty acid receptor 1 (FFAR1)**

FFAR1, which is activated by medium- and long-chain fatty acids (Briscoe *et al*, 2003), governs glucose transport by regulating the expression of retinal GLUT1 (Joyal *et al*, 2016). In mice lacking VLDLR, a genetic deficiency in FFAR1 decreases retinal neovascularization, while FFAR agonist increases retinal neovascularization (Joyal *et al*, 2016). FFAR1 also mediates actions of nonenzymatically generated nitro-oxidative products, transarachidonic acids, and induces cerebral microvascular degeneration in rats (Honore *et al*, 2013). Targeting FFAR1 may prevent pathologic endothelial cell proliferation and degeneration.

**Conclusions and perspectives**

Generally, photoreceptor metabolism controls retinal neuronal and vascular development. Therefore, maintaining normal photoreceptor function will likely improve retinal vascular abnormalities in disease. As dyslipidemia contributes to disease progression in many retinal metabolic disorders, we may improve photoreceptor energy production by regulating lipid use and increasing lipid fuel sources, including those generated from autophagy. Targeting lipid metabolic modulation may improve neurovascular retinal function and decrease neovascularization.

**Acknowledgements**

LEHS is supported by NIH 1R24EY024868, EY017017-13S1, BCH IDDR (1U54HD090255); AH is supported by The Swedish Research Council (DNR# #2016-01131), Government grants under the ALF agreement ALFGGB-717971 and the Wallenberg Foundations and long-term support by De Blindas Vänner; ZF is supported by Blind Children's Center, Manton Center for Orphan Disease Research, Boston Children's Hospital OFD/BTREC/CTREC Faculty Career Development Grant; BC is supported by Deutsche Forschungsgemeinschaft (CA 1940/1-1); QL is supported by Beijing Municipal Natural Science Foundation (#7192039); YS is supported by Boston Children's Hospital OFD/BTREC/CTREC Faculty Career Development Grant, NIH R01EY030140 and BrightFocus Foundation NIH/R01EY029238; YT is supported by Manpei Suzuki Diabetes Foundation; CTC is supported by Intramural Research Program at the National Institute on Alcohol Abuse and Alcoholism; TSK is supported by NIH grants EY022938 and R24

EY024864, and BX003604 from the Department of Veterans Affairs, TSK is the recipient of a Research Career Scientist award from the Department of Veterans Affairs. J-SJ is supported by Burroughs Wellcome Fund Career Award for Medical Scientists, NSERC RGPIN-2016-06743, CIHR 390615, FRQS, and a CIHR New Investigator Award.<sup>†</sup>

**Conflict of interest**

The authors declare that they have no conflict of interest.

**References**

- Acar N, Berdeaux O, Gregoire S, Cabaret S, Martine L, Gain P, Thuret G, Creuzot-Garcher CP, Bron AM, Bretillon L (2012) Lipid composition of the human eye: are red blood cells a good mirror of retinal and optic nerve fatty acids? *PLoS One* 7: e35102
- ACCORD Study Group, ACCORD Eye Study Group, Chew EY, Ambrosius WT, Davis MD, Danis RP, Gangaputra S, Greven CM, Hubbard L, Esser BA *et al* (2010) Effects of medical therapies on retinopathy progression in type 2 diabetes. *N Engl J Med* 363: 233–244
- Ait-Ali N, Fridlich R, Millet-Puel G, Clerin E, Delalande F, Jaillard C, Blond F, Perrocheau L, Reichman S, Byrne LC *et al* (2015) Rod-derived cone viability factor promotes cone survival by stimulating aerobic glycolysis. *Cell* 161: 817–832
- Akula JD, Hansen RM, Tzekov R, Favazza TL, Vyhovsky TC, Benador IY, Mocko JA, McGee D, Kubota R, Fulton AB (2010) Visual cycle modulation in neurovascular retinopathy. *Exp Eye Res* 91: 153–161
- Alaynick WA (2008) Nuclear receptors, mitochondria and lipid metabolism. *Mitochondrion* 8: 329–337
- Alessandri JM, Goustard-Langelier B (2001) Alterations in fatty acid composition of tissue phospholipids in the developing retinal dystrophic rat. *Lipids* 36: 1141–1152
- Ali MU, Rahman MSU, Cao J, Yuan PX (2017) Genetic characterization and disease mechanism of retinitis pigmentosa: current scenario. *3 Biotech* 7: 251
- Ambati J, Fowler BJ (2012) Mechanisms of age-related macular degeneration. *Neuron* 75: 26–39
- Ames A III, Li YY, Heher EC, Kimble CR (1992) Energy metabolism of rabbit retina as related to function: high cost of Na<sup>+</sup> transport. *J Neurosci* 12: 840–853
- Arden GB, Jyothi S, Hogg CH, Lee YF, Sivaprasad S (2011) Regression of early diabetic macular oedema is associated with prevention of dark adaptation. *Eye (Lond)* 25: 1546–1554
- Arshavsky VY, Lamb TD, Pugh EN Jr (2002) G proteins and phototransduction. *Annu Rev Physiol* 64: 153–187
- Avery RL, Castellarin AA, Steinle NC, Dhoot DS, Pieramici DJ, See R, Couvillion S, Nasir MA, Rabena MD, Le K *et al* (2014) Systemic pharmacokinetics following intravitreal injections of ranibizumab, bevacizumab or aflibercept in patients with neovascular AMD. *Br J Ophthalmol* 98: 1636–1641
- Awh CC, Hawken S, Zanke BW (2015) Treatment response to antioxidants and zinc based on CFH and ARMS2 genetic risk allele number in the Age-Related Eye Disease Study. *Ophthalmology* 122: 162–169
- Baes M (2000) Mouse models for peroxisome biogenesis disorders. *Cell Biochem Biophys* 32: 229–237
- Baes M, Van Veldhoven PP (2012) Mouse models for peroxisome biogenesis defects and beta-oxidation enzyme deficiencies. *Biochem Biophys Acta* 1822: 1489–1500

<sup>†</sup>Correction added on 9 October 2019, after first online publication: the funding information has been updated.

- Bakri SJ, Thorne JE, Ho AC, Ehlers JP, Schoenberger SD, Yeh S, Kim SJ (2019) Safety and efficacy of anti-vascular endothelial growth factor therapies for neovascular age-related macular degeneration: a report by the American Academy of Ophthalmology. *Ophthalmology* 126: 55–63
- Barot M, Gokulgandhi MR, Mitra AK (2011) Mitochondrial dysfunction in retinal diseases. *Curr Eye Res* 36: 1069–1077
- Barron MJ, Johnson MA, Andrews RM, Clarke MP, Griffiths PG, Bristow E, He LP, Durham S, Turnbull DM (2001) Mitochondrial abnormalities in ageing macular photoreceptors. *Invest Ophthalmol Vis Sci* 42: 3016–3022
- Bressler NM, Boyer DS, Williams DF, Butler S, Francom SF, Brown B, Di Nucci F, Cramm T, Tuomi LL, Ianchulev T et al (2012) Cerebrovascular accidents in patients treated for choroidal neovascularization with ranibizumab in randomized controlled trials. *Retina* 32: 1821–1828
- Briscoe CP, Tadayon M, Andrews JL, Benson WG, Chambers JK, Eilert MM, Ellis C, Elshourbagy NA, Goetz AS, Minnick DT et al (2003) The orphan G protein-coupled receptor GPR40 is activated by medium and long chain fatty acids. *J Biol Chem* 278: 11303–11311
- Buitendijk GHS, Rochtchina E, Myers C, van Duijn CM, Lee KE, Klein BEK, Meuer SM, de Jong P, Holliday EG, Tan AG et al (2013) Prediction of age-related macular degeneration in the general population: the Three Continent AMD Consortium. *Ophthalmology* 120: 2644–2655
- Camacho ET, Punzo C, Wirkus SA (2016) Quantifying the metabolic contribution to photoreceptor death in retinitis pigmentosa via a mathematical model. *J Theor Biol* 408: 75–87
- Casson RJ, Chidlow G, Han G, Wood JP (2013) An explanation for the Warburg effect in the adult mammalian retina. *Clin Exp Ophthalmol* 41: 517
- Chang YC, Wu WC (2013) Dyslipidemia and diabetic retinopathy. *Rev Diabet Stud* 10: 121–132
- Chen H, Anderson RE (1993) Metabolism in frog retinal pigment epithelium of docosahexaenoic and arachidonic acids derived from rod outer segment membranes. *Exp Eye Res* 57: 369–377
- Chen W, Stambolian D, Edwards AO, Branham KE, Othman M, Jakobsdottir J, Tosakulwong N, Pericak-Vance MA, Campochiaro PA, Klein ML et al (2010) Genetic variants near TIMP3 and high-density lipoprotein-associated loci influence susceptibility to age-related macular degeneration. *Proc Natl Acad Sci USA* 107: 7401–7406
- Chen Y, Hu Y, Lin M, Jenkins AJ, Keech AC, Mott R, Lyons TJ, Ma JX (2013) Therapeutic effects of PPARalpha agonists on diabetic retinopathy in type 1 diabetes models. *Diabetes* 62: 261–272
- Chen L, Wang K, Long A, Jia L, Zhang Y, Deng H, Li Y, Han J, Wang Y (2017) Fasting-induced hormonal regulation of lysosomal function. *Cell Res* 27: 748–763
- Christen WG, Schaumberg DA, Glynn RJ, Buring JE (2011) Dietary omega-3 fatty acid and fish intake and incident age-related macular degeneration in women. *Arch Ophthalmol* 129: 921–929
- Cohen LH, Noell WK (1960) Glucose catabolism of rabbit retina before and after development of visual function. *J Neurochem* 5: 253–276
- Colijn JM, den Hollander AI, Demirkan A, Cougnard-Gregoire A, Verzijden T, Kersten E, Meester-Smoor MA, Merle BMJ, Papageorgiou G, Ahmad S et al (2019) Increased high-density lipoprotein levels associated with age-related macular degeneration: evidence from the EYE-RISK and European eye epidemiology consortia. *Ophthalmology* 126: 393–406
- Connor KM, SanGiovanni JP, Lofqvist C, Aderman CM, Chen J, Higuchi A, Hong S, Pravda EA, Majchrzak S, Carper D et al (2007) Increased dietary intake of omega-3 polyunsaturated fatty acids reduces pathological retinal angiogenesis. *Nat Med* 13: 868–873
- Converse CA, Hammer HM, Packard CJ, Shepherd J (1983) Plasma lipid abnormalities in retinitis pigmentosa and related conditions. *Trans Ophthalmol Soc U K* 103(Pt 5): 508–512
- Cougnard-Gregoire A, Delyfer MN, Korobelnik JF, Rougier MB, Le Goff M, Dartigues JF, Barberger-Gateau P, Delcourt C (2014) Elevated high-density lipoprotein cholesterol and age-related macular degeneration: the Alienor study. *PLoS One* 9: e90973
- Crane DI (2014) Revisiting the neuropathogenesis of Zellweger syndrome. *Neurochem Int* 69: 1–8
- Curcio CA, Medeiros NE, Millican CL (1996) Photoreceptor loss in age-related macular degeneration. *Invest Ophthalmol Vis Sci* 37: 1236–1249
- Curcio CA (2018a) Antecedents of soft drusen, the specific deposits of age-related macular degeneration, in the biology of human macula. *Invest Ophthalmol Vis Sci* 59: AMD182–AMD194
- Curcio CA (2018b) Soft drusen in age-related macular degeneration: biology and targeting via the oil spill strategies. *Invest Ophthalmol Vis Sci* 59: AMD160–AMD181
- Daemen FJ (1973) Vertebrate rod outer segment membranes. *Biochem Biophys Acta* 300: 255–288
- De Benedetto U, Querques G, Lattanzio R, Borrelli E, Triolo G, Maestranzi G, Calori G, Querques L, Bandello F (2014) Macular dysfunction is common in both type 1 and type 2 diabetic patients without macular edema. *Retina* 34: 2171–2177
- De Sousa-Coelho AL, Relat J, Hondares E, Perez-Marti A, Ribas F, Villarroya F, Marrero PF, Haro D (2013) FGF21 mediates the lipid metabolism response to amino acid starvation. *J Lipid Res* 54: 1786–1797
- Du Y, Veenstra A, Palczewski K, Kern TS (2013) Photoreceptor cells are major contributors to diabetes-induced oxidative stress and local inflammation in the retina. *Proc Natl Acad Sci USA* 110: 16586–16591
- Du J, Linton JD, Hurley JB (2015) Probing metabolism in the intact retina using stable isotope tracers. *Methods Enzymol* 561: 149–170
- Dutchak PA, Katafuchi T, Bookout AL, Choi JH, Yu RT, Mangelsdorf DJ, Kliewer SA (2012) Fibroblast growth factor-21 regulates PPARgamma activity and the antidiabetic actions of thiazolidinediones. *Cell* 148: 556–567
- Edwards AO, Malek G (2007) Molecular genetics of AMD and current animal models. *Angiogenesis* 10: 119–132
- Falsini B, Anselmi GM, Marangoni D, D'Esposito F, Fadda A, Di Renzo A, Campos EC, Riva CE (2011) Subfoveal choroidal blood flow and central retinal function in retinitis pigmentosa. *Invest Ophthalmol Vis Sci* 52: 1064–1069
- Fan Q, Maranville JC, Fritsche L, Sim X, Cheung CMG, Chen LJ, Gorski M, Yamashiro K, Ahn J, Laude A et al (2017) HDL-cholesterol levels and risk of age-related macular degeneration: a multiethnic genetic study using Mendelian randomization. *Int J Epidemiol* 46: 1891–1902
- Fliessler SJ, Anderson RE (1983) Chemistry and metabolism of lipids in the vertebrate retina. *Prog Lipid Res* 22: 79–131
- Foltz IN, Hu S, King C, Wu X, Yang C, Wang W, Weiszmann J, Stevens J, Chen JS, Nuanmanee N et al (2012) Treating diabetes and obesity with an FGF21-mimetic antibody activating the betaKlotho/FGFR1c receptor complex. *Sci Transl Med* 4: 162ra153
- Folz SJ, Trobe JD (1991) The peroxisome and the eye. *Surv Ophthalmol* 35: 353–368
- Fox TE, Han X, Kelly S, Merrill AH II, Martin RE, Anderson RE, Gardner TW, Kester M (2006) Diabetes alters sphingolipid metabolism in the retina: a potential mechanism of cell death in diabetic retinopathy. *Diabetes* 55: 3573–3580
- Fritsche LG, Chen W, Schu M, Yaspan BL, Yu Y, Thorleifsson G, Zack DJ, Arakawa S, Cipriani V, Ripke S et al (2013) Seven new loci associated with age-related macular degeneration. *Nat Genet* 45: 433–439.e431–432
- Fritsche LG, Igl W, Bailey JN, Grassmann F, Sengupta S, Bragg-Gresham JL, Burdon KP, Hebbbring SJ, Wen C, Gorski M et al (2016) A large genome-



- wide association study of age-related macular degeneration highlights contributions of rare and common variants. *Nat Genet* 48: 134–143
- Fu Z, Lofqvist CA, Shao Z, Sun Y, Joyal JS, Hurst CG, Cui RZ, Evans LP, Tian K, SanGiovanni JP et al (2015) Dietary omega-3 polyunsaturated fatty acids decrease retinal neovascularization by adipose-endoplasmic reticulum stress reduction to increase adiponectin. *Am J Clin Nutr* 101: 879–888
- Fu Z, Gong Y, Liegl R, Wang Z, Liu CH, Meng SS, Burnim SB, Saba NJ, Fredrick TW, Morss PC et al (2017a) FGF21 administration suppresses retinal and choroidal neovascularization in mice. *Cell Rep* 18: 1606–1613
- Fu Z, Liegl R, Wang Z, Gong Y, Liu CH, Sun Y, Cakir B, Burnim SB, Meng SS, Lofqvist C et al (2017b) Adiponectin mediates dietary omega-3 long-chain polyunsaturated fatty acid protection against choroidal neovascularization in mice. *Invest Ophthalmol Vis Sci* 58: 3862–3870
- Fu Z, Lofqvist CA, Liegl R, Wang Z, Sun Y, Gong Y, Liu CH, Meng SS, Burnim SB, Arellano I et al (2018) Photoreceptor glucose metabolism determines normal retinal vascular growth. *EMBO Mol Med* 10: 76–90
- Fu Z, Wang Z, Liu CH, Gong Y, Cakir B, Liegl R, Sun Y, Meng SS, Burnim SB, Arellano I et al (2018) Fibroblast growth factor 21 protects photoreceptor function in type 1 diabetic mice. *Diabetes* 67: 974–985
- Fulton AB, Dodge J, Hansen RM, Williams TP (1999) The rhodopsin content of human eyes. *Invest Ophthalmol Vis Sci* 40: 1878–1883
- Gaich G, Chien JY, Fu H, Glass LC, Deeg MA, Holland WL, Kharitonkov A, Bumol T, Schilke HK, Moller DE (2013) The effects of LY2405319, an FGF21 analog, in obese human subjects with type 2 diabetes. *Cell Metab* 18: 333–340
- Gervois P, Torra IP, Fruchart JC, Staels B (2000) Regulation of lipid and lipoprotein metabolism by PPAR activators. *Clin Chem Lab Med* 38: 3–11
- Golestaneh N, Chu Y, Xiao YY, Stoleru GL, Theos AC (2017) Dysfunctional autophagy in RPE, a contributing factor in age-related macular degeneration. *Cell Death Dis* 8: e2537
- Gong Y, Fu Z, Edin ML, Liu CH, Wang Z, Shao Z, Fredrick TW, Saba NJ, Morss PC, Burnim SB et al (2016a) Cytochrome P450 oxidase 2C inhibition adds to omega-3 long-chain polyunsaturated fatty acids protection against retinal and choroidal neovascularization. *Arterioscler Thromb Vasc Biol* 36: 1919–1927
- Gong Y, Shao Z, Fu Z, Edin ML, Sun Y, Liegl RG, Wang Z, Liu CH, Burnim SB, Meng SS et al (2016b) Fenofibrate inhibits cytochrome P450 epoxygenase 2C activity to suppress pathological ocular angiogenesis. *EBioMedicine* 13: 201–211
- Gong Q, Su G (2017) Roles of miRNAs and long noncoding RNAs in the progression of diabetic retinopathy. *Biosci Rep* 37
- Gong Y, Fu Z, Liegl R, Chen J, Hellstrom A, Smith LE (2017) omega-3 and omega-6 long-chain PUFAs and their enzymatic metabolites in neovascular eye diseases. *Am J Clin Nutr* 106: 16–26
- Goto T, Hirata M, Aoki Y, Iwase M, Takahashi H, Kim M, Li Y, Jheng HF, Nomura W, Takahashi N et al (2017) The hepatokine FGF21 is crucial for peroxisome proliferator-activated receptor- $\alpha$  agonist-induced amelioration of metabolic disorders in obese mice. *J Biol Chem* 292: 9175–9190
- Graham PS, Kaidonis G, Abhary S, Gillies MC, Daniell M, Essex RW, Chang JH, Lake SR, Pal B, Jenkins AJ et al (2018) Genome-wide association studies for diabetic macular edema and proliferative diabetic retinopathy. *BMC Med Genet* 19: 71
- Habib N, Avraham-Davidi I, Basu A, Burks T, Shekhar K, Hofree M, Choudhury SR, Aguet F, Gelfand E, Ardlie K et al (2017) Massively parallel single-nucleus RNA-seq with DroNc-seq. *Nat Methods* 14: 955–958
- Hageman GS, Luthert PJ, Victor Chong NH, Johnson LV, Anderson DH, Mullins RF (2001) An integrated hypothesis that considers drusen as biomarkers of immune-mediated processes at the RPE-Bruch's membrane interface in aging and age-related macular degeneration. *Prog Retin Eye Res* 20: 705–732
- Hagins WA, Penn RD, Yoshikami S (1970) Dark current and photocurrent in retinal rods. *Biophys J* 10: 380–412
- Hammer SS, Busik JV (2017) The role of dyslipidemia in diabetic retinopathy. *Vision Res* 139: 228–236
- Hampton BM, Schwartz SG, Brantley MA Jr, Flynn HW Jr (2015) Update on genetics and diabetic retinopathy. *Clin Ophthalmol* 9: 2175–2193
- Hansen RM, Moskowitz A, Akula JD, Fulton AB (2017) The neural retina in retinopathy of prematurity. *Prog Retin Eye Res* 56: 32–57
- Hapani S, Sher A, Chu D, Wu S (2010) Increased risk of serious hemorrhage with bevacizumab in cancer patients: a meta-analysis. *Oncology* 79: 27–38
- Harding CO, Gillingham MB, van Calcar SC, Wolff JA, Verhoeve JN, Mills MD (1999) Docosahexaenoic acid and retinal function in children with long-chain 3-hydroxyacyl-CoA dehydrogenase deficiency. *J Inher Metab Dis* 22: 276–280
- Hellstrom A, Smith LE, Dammann O (2013) Retinopathy of prematurity. *Lancet* 382: 1445–1457
- Hiltunen JK, Karki T, Hassinen IE, Osmundsen H (1986) beta-Oxidation of polyunsaturated fatty acids by rat liver peroxisomes. A role for 2,4-dienoyl-coenzyme A reductase in peroxisomal beta-oxidation. *J Biol Chem* 261: 16484–16493
- Hogg RE, Chakravarthy U (2006) Visual function and dysfunction in early and late age-related maculopathy. *Prog Retin Eye Res* 25: 249–276
- Holland WL, Adams AC, Brozinick JT, Bui HH, Miyauchi Y, Kusminski CM, Bauer SM, Wade M, Singhal E, Cheng CC et al (2013) An FGF21-adiponectin-ceramide axis controls energy expenditure and insulin action in mice. *Cell Metab* 17: 790–797
- Holman RT, Bibus DM, Jeffrey GH, Smethurst P, Crofts JW (1994) Abnormal plasma lipids of patients with Retinitis pigmentosa. *Lipids* 29: 61–65
- Holmstrom G, van Wijngaarden P, Coster DJ, Williams KA (2007) Genetic susceptibility to retinopathy of prematurity: the evidence from clinical and experimental animal studies. *Br J Ophthalmol* 91: 1704–1708
- Honore JC, Kooli A, Hamel D, Alquier T, Rivera JC, Quiniou C, Hou X, Kermorvant-Duchemin E, Hardy P, Poitout V et al (2013) Fatty acid receptor Gpr40 mediates neuromicrovascular degeneration induced by transarachidonic acids in rodents. *Arterioscler Thromb Vasc Biol* 33: 954–961
- Houtsmuller AJ, Zahn KJ, Henkes HE (1980) Unsaturated fats and progression of diabetic retinopathy. *Doc Ophthalmol* 48: 363–371
- Hughes AE, Enright JM, Myers CA, Shen SQ, Corbo JC (2017) Cell type-specific epigenomic analysis reveals a uniquely closed chromatin architecture in mouse rod photoreceptors. *Sci Rep* 7: 43184
- Ito R, Satoh-Asahara N, Yamakage H, Sasaki Y, Odori S, Kono S, Wada H, Suganami T, Ogawa Y, Hasegawa K et al (2014) An increase in the EPA/AA ratio is associated with improved arterial stiffness in obese patients with dyslipidemia. *J Atheroscler Thromb* 21: 248–260
- Jackson GR, Owsley C, Curcio CA (2002) Photoreceptor degeneration and dysfunction in aging and age-related maculopathy. *Ageing Res Rev* 1: 381–396
- Jalali S, Balakrishnan D, Zeynalova Z, Padhi TR, Rani PK (2013) Serious adverse events and visual outcomes of rescue therapy using adjunct bevacizumab to laser and surgery for retinopathy of prematurity. The Indian Twin Cities Retinopathy of Prematurity Screening database Report number 5. *Arch Dis Child Fetal Neonatal Ed* 98: F327–F333
- Johnson JE Jr, Perkins GA, Giddabasappa A, Chaney S, Xiao W, White AD, Brown JM, Waggoner J, Ellisman MH, Fox DA (2007) Spatiotemporal regulation of ATP and Ca<sup>2+</sup> dynamics in vertebrate rod and cone ribbon synapses. *Mol Vis* 13: 887–919

- Joyal JS, Sun Y, Gantner ML, Shao Z, Evans LP, Saba N, Fredrick T, Burnim S, Kim JS, Patel G et al (2016) Retinal lipid and glucose metabolism dictates angiogenesis through the lipid sensor Ffar1. *Nat Med* 22: 439–445
- Joyal JS, Gantner ML, Smith LEH (2018) Retinal energy demands control vascular supply of the retina in development and disease: the role of neuronal lipid and glucose metabolism. *Prog Retin Eye Res* 64: 131–156
- Kabasawa S, Mori K, Horie-Inoue K, Gehlbach PL, Inoue S, Awata T, Katayama S, Yoneya S (2011) Associations of cigarette smoking but not serum fatty acids with age-related macular degeneration in a Japanese population. *Ophthalmology* 118: 1082–1088
- Keech AC, Mitchell P, Summanen PA, O'Day J, Davis TM, Moffitt MS, Taskinen MR, Simes RJ, Tse D, Williamson E et al (2007) Effect of fenofibrate on the need for laser treatment for diabetic retinopathy (FIELD study): a randomised controlled trial. *Lancet* 370: 1687–1697
- Kenmochi N, Suzuki T, Uechi T, Magoori M, Kuniba M, Higa S, Watanabe K, Tanaka T (2001) The human mitochondrial ribosomal protein genes: mapping of 54 genes to the chromosomes and implications for human disorders. *Genomics* 77: 65–70
- Kern TS, Berkowitz BA (2015) Photoreceptors in diabetic retinopathy. *J Diabetes Invest* 6: 371–380
- Kevany BM, Palczewski K (2010) Phagocytosis of retinal rod and cone photoreceptors. *Physiology (Bethesda)* 25: 8–15
- Kharitonov A, Larsen P (2011) FGF21 reloaded: challenges of a rapidly growing field. *Trends Endocrinol Metab* 22: 81–86
- Klein BE, Myers CE, Howard KP, Klein R (2015) Serum lipids and proliferative diabetic retinopathy and macular edema in persons with long-term type 1 diabetes mellitus: the wisconsin epidemiologic study of diabetic retinopathy. *JAMA Ophthalmol* 133: 503–510
- Klufas MA, Chan RV (2015) Intravitreal anti-VEGF therapy as a treatment for retinopathy of prematurity: what we know after 7 years. *J Pediatr Ophthalmol Strabismus* 52: 77–84
- Kowluru RA, Mishra M (2015) Oxidative stress, mitochondrial damage and diabetic retinopathy. *Biochem Biophys Acta* 1852: 2474–2483
- Lahdenranta J, Pasqualini R, Schlingemann RO, Hagedorn M, Stallcup WB, Bucana CD, Sidman RL, Arap W (2001) An anti-angiogenic state in mice and humans with retinal photoreceptor cell degeneration. *Proc Natl Acad Sci USA* 98: 10368–10373
- Lapillonne A, Jensen CL (2009) Reevaluation of the DHA requirement for the premature infant. *Prostaglandins Leukot Essent Fatty Acids* 81: 143–150
- LaVail MM (1976) Rod outer segment disk shedding in rat retina: relationship to cyclic lighting. *Science* 194: 1071–1074
- Lin Z, Gong Q, Wu C, Yu J, Lu T, Pan X, Lin S, Li X (2012) Dynamic change of serum FGF21 levels in response to glucose challenge in human. *J Clin Endocrinol Metab* 97: E1224–E1228
- Lin Z, Tian H, Lam KS, Lin S, Hoo RC, Konishi M, Itoh N, Wang Y, Bornstein SR, Xu A et al (2013) Adiponectin mediates the metabolic effects of FGF21 on glucose homeostasis and insulin sensitivity in mice. *Cell Metab* 17: 779–789
- Litts KM, Messinger JD, Freund KB, Zhang Y, Curcio CA (2015) Inner segment remodeling and mitochondrial translocation in cone photoreceptors in age-related macular degeneration with outer retinal tubulation. *Invest Ophthalmol Vis Sci* 56: 2243–2253
- Liu H, Tang J, Du Y, Saadane A, Tonade D, Samuels I, Veenstra A, Palczewski K, Kern TS (2016) Photoreceptor cells influence retinal vascular degeneration in mouse models of retinal degeneration and diabetes. *Invest Ophthalmol Vis Sci* 57: 4272–4281
- Lofqvist CA, Najm S, Hellgren G, Engstrom E, Savman K, Nilsson AK, Andersson MX, Hard AL, Smith LEH, Hellstrom A (2018) Association of retinopathy of prematurity with low levels of arachidonic acid: a secondary analysis of a randomized clinical trial. *JAMA Ophthalmol* 136: 271–277
- Lux A, Llacer H, Heussen FM, Jousen AM (2007) Non-responders to bevacizumab (Avastin) therapy of choroidal neovascular lesions. *Br J Ophthalmol* 91: 1318–1322
- Lysenko NN, Haider N, Picataggi A, Cipollari E, Jiao W, Phillips MC, Rader DJ, Chavali VRM (2018) Directional ABCA1-mediated cholesterol efflux and apoB-lipoprotein secretion in the retinal pigment epithelium. *J Lipid Res* 59: 1927–1939
- Macosko EZ, Basu A, Satija R, Nemes J, Shekhar K, Goldman M, Tirosh I, Bialas AR, Kamitaki N, Martersteck EM et al (2015) Highly parallel genome-wide expression profiling of individual cells using nanoliter droplets. *Cell* 161: 1202–1214
- Malek G, Johnson LV, Mace BE, Saloupis P, Schmechel DE, Rickman DW, Toth CA, Sullivan PM, Bowes Rickman C (2005) Apolipoprotein E allele-dependent pathogenesis: a model for age-related retinal degeneration. *Proc Natl Acad Sci USA* 102: 11900–11905
- Markan KR, Naber MC, Ameka MK, Anderegg MD, Mangelsdorf DJ, Kliewer SA, Mohammadi M, Potthoff MJ (2014) Circulating FGF21 is liver derived and enhances glucose uptake during refeeding and overfeeding. *Diabetes* 63: 4057–4063
- Martin CR, Dasilva DA, Cluette-Brown JE, Dimonda C, Hamill A, Bhatta AQ, Coronel E, Wilschanski M, Stephens AJ, Driscoll DF et al (2011) Decreased postnatal docosahexaenoic and arachidonic acid blood levels in premature infants are associated with neonatal morbidities. *J Pediatr* 159: 743–749.e741–742
- Merle BM, Richard F, Benlian P, Puche N, Delcourt C, Souied EH (2015) CFH Y402H and ARMS2 A69S polymorphisms and oral supplementation with docosahexaenoic acid in neovascular age-related macular degeneration patients: the NAT2 study. *PLoS One* 10: e0130816
- Mitter SK, Rao HV, Qi X, Cai J, Sugrue A, Dunn WA Jr, Grant MB, Boulton ME (2012) Autophagy in the retina: a potential role in age-related macular degeneration. *Adv Exp Med Biol* 723: 83–90
- Moorthy S, Cheung N (2009) Cerebrovascular accidents and ranibizumab. *Ophthalmology* 116: 1834–1835; author reply 1835
- Mukherjee PK, Marcheselli VL, de Rivero Vaccari JC, Gordon WC, Jackson FE, Bazan NG (2007) Photoreceptor outer segment phagocytosis attenuates oxidative stress-induced apoptosis with concomitant neuroprotectin D1 synthesis. *Proc Natl Acad Sci USA* 104: 13158–13163
- Mullins RF, McGwin G Jr, Searcey K, Clark ME, Kennedy EL, Curcio CA, Stone EM, Owsley C (2019) The ARMS2 A69S polymorphism is associated with delayed rod-mediated dark adaptation in eyes at risk for incident age-related macular degeneration. *Ophthalmology* 126: 591–600
- Neale BM, Fagerness J, Reynolds R, Sobrin L, Parker M, Raychaudhuri S, Tan PL, Oh EC, Merriam JE, Souied E et al (2010) Genome-wide association study of advanced age-related macular degeneration identifies a role of the hepatic lipase gene (LIPC). *Proc Natl Acad Sci USA* 107: 7395–7400
- Ng SK, Wood JP, Chidlow G, Han G, Kittipassorn T, Peet DJ, Casson RJ (2015) Cancer-like metabolism of the mammalian retina. *Clin Exp Ophthalmol* 43: 367–376
- Nigam N, Hedaya J, Freeman WR (2008) Non-responders to bevacizumab (Avastin) therapy of choroidal neovascular lesions. *Br J Ophthalmol* 92: 864–865; author reply 865–866

- Nikonov SS, Kholodenko R, Lem J, Pugh EN Jr (2006) Physiological features of the S- and M-cone photoreceptors of wild-type mice from single-cell recordings. *J Gen Physiol* 127: 359–374
- Noguer MT, Martinez M (2010) Visual follow-up in peroxisomal-disorder patients treated with docosahexaenoic Acid ethyl ester. *Invest Ophthalmol Vis Sci* 51: 2277–2285
- Okawa H, Sampath AP, Laughlin SB, Fain GL (2008) ATP consumption by mammalian rod photoreceptors in darkness and in light. *Curr Biol* 18: 1917–1921
- Opreanu M, Tikhonenko M, Bozack S, Lydic TA, Reid GE, McSorley KM, Sochacki A, Perez GI, Esselman WJ, Kern T et al (2011) The unconventional role of acid sphingomyelinase in regulation of retinal microangiopathy in diabetic human and animal models. *Diabetes* 60: 2370–2378
- Pakzad-Vaezi KL, Maberley DA (2014) Infantile Refsum disease in a young adult: case presentation and brief review. *Retin Cases Brief Rep* 8: 56–59
- Pawlik D, Lauterbach R, Walczak M, Hurkala J, Sherman MP (2014) Fish-oil fat emulsion supplementation reduces the risk of retinopathy in very low birth weight infants: a prospective, randomized study. *JPEN J Parenter Enteral Nutr* 38: 711–716
- Pearsall EA, Cheng R, Zhou K, Takahashi Y, Matlock HG, Vadvalkar SS, Shin Y, Fredrick TW, Gantner ML, Meng S et al (2017) PPARalpha is essential for retinal lipid metabolism and neuronal survival. *BMC Biol* 15: 113
- Perkins GA, Ellisman MH, Fox DA (2003) Three-dimensional analysis of mouse rod and cone mitochondrial cristae architecture: bioenergetic and functional implications. *Mol Vis* 9: 60–73
- Pescosolido N, Barbato A, Stefanucci A, Buomprisco G (2015) Role of electrophysiology in the early diagnosis and follow-up of diabetic retinopathy. *J Diabetes Res* 2015: 319692
- Petit L, Ma S, Cipi J, Cheng SY, Zieger M, Hay N, Punzo C (2018) Aerobic glycolysis is essential for normal rod function and controls secondary cone death in retinitis pigmentosa. *Cell Rep* 23: 2629–2642
- Pinazo-Duran MD, Gomez-Ulla F, Arias L, Araiz J, Casaroli-Marano R, Gallego-Pinazo R, Garcia-Medina JJ, Lopez-Galvez MI, Manzanos L, Salas A et al (2014) Do nutritional supplements have a role in age macular degeneration prevention? *J Ophthalmol* 2014: 901686
- Poirier Y, Antonenkov VD, Glumoff T, Hiltunen JK (2006) Peroxisomal beta-oxidation—a metabolic pathway with multiple functions. *Biochem Biophys Acta* 1763: 1413–1426
- Potthoff MJ, Inagaki T, Satapati S, Ding X, He T, Goetz R, Mohammadi M, Finck BN, Mangelsdorf DJ, Kliewer SA et al (2009) FGF21 induces PGC-1alpha and regulates carbohydrate and fatty acid metabolism during the adaptive starvation response. *Proc Natl Acad Sci USA* 106: 10853–10858
- Poulos A, Singh H, Paton B, Sharp P, Derwas N (1986) Accumulation and defective beta-oxidation of very long chain fatty acids in Zellweger's syndrome, adrenoleukodystrophy and Refsum's disease variants. *Clin Genet* 29: 397–408
- Punzo C, Kornacker K, Cepko CL (2009) Stimulation of the insulin/mtOR pathway delays cone death in a mouse model of retinitis pigmentosa. *Nat Neurosci* 12: 44–52
- Restelli LM, Oettinghaus B, Halliday M, Agca C, Licci M, Sironi L, Savoia C, Hench J, Tolnay M, Neutzner A et al (2018) Neuronal mitochondrial dysfunction activates the integrated stress response to induce fibroblast growth factor 21. *Cell Rep* 24: 1407–1414
- Rheume BA, Jereen A, Bolisetty M, Sajid MS, Yang Y, Renna K, Sun L, Robson P, Trakhtenberg EF (2018) Single cell transcriptome profiling of retinal ganglion cells identifies cellular subtypes. *Nat Commun* 9: 2759
- Rodriguez-Muela N, Germain F, Marino G, Fitze PS, Boya P (2012) Autophagy promotes survival of retinal ganglion cells after optic nerve axotomy in mice. *Cell Death Differ* 19: 162–169
- Sacks FM, Hermans MP, Fioretto P, Valensi P, Davis T, Horton E, Wanner C, Al-Rubeaan K, Aronson R, Barzon I et al (2014) Association between plasma triglycerides and high-density lipoprotein cholesterol and microvascular kidney disease and retinopathy in type 2 diabetes mellitus: a global case-control study in 13 countries. *Circulation* 129: 999–1008
- Sala-Vila A, Diaz-Lopez A, Valls-Pedret C, Cofan M, Garcia-Layana A, Lamuela-Raventos RM, Castaner O, Zanon-Moreno V, Martinez-Gonzalez MA, Toledo E et al (2016) Dietary marine omega-3 fatty acids and incident sight-threatening retinopathy in middle-aged and older individuals with type 2 diabetes: prospective investigation from the PREDIMED trial. *JAMA Ophthalmol* 134: 1142–1149
- Salpietro V, Phadke R, Saggari A, Hargreaves IP, Yates R, Fokoloros C, Mankad K, Hertecant J, Ruggieri M, McCormick D et al (2015) Zellweger syndrome and secondary mitochondrial myopathy. *Eur J Pediatr* 174: 557–563
- Sangiovanni JP, Agron E, Meleth AD, Reed GF, Sperduto RD, Clemons TE, Chew EY (2009) {omega}-3 Long-chain polyunsaturated fatty acid intake and 12-y incidence of neovascular age-related macular degeneration and central geographic atrophy: AREDS report 30, a prospective cohort study from the Age-Related Eye Disease Study. *Am J Clin Nutr* 90: 1601–1607
- Sapieha P, Stahl A, Chen J, Seaward MR, Willett KL, Krah NM, Dennison RJ, Connor KM, Aderman CM, Liclican E et al (2011) 5-Lipoxygenase metabolite 4-HDHA is a mediator of the antiangiogenic effect of omega-3 polyunsaturated fatty acids. *Sci Transl Med* 3: 69ra12
- Sapieha P (2012) Eyeing central neurons in vascular growth and reparative angiogenesis. *Blood* 120: 2182–2194
- Sapieha P, Chen J, Stahl A, Seaward MR, Favazza TL, Juan AM, Hatton CJ, Joyal JS, Krah NM, Dennison RJ et al (2012) Omega-3 polyunsaturated fatty acids preserve retinal function in type 2 diabetic mice. *Nutr Diabetes* 2: e36
- Sarks S, Cherepanoff S, Killingsworth M, Sarks J (2007) Relationship of Basal laminar deposit and membranous debris to the clinical presentation of early age-related macular degeneration. *Invest Ophthalmol Vis Sci* 48: 968–977
- Sasaki M, Kawasaki R, Rogers S, Man RE, Itakura K, Xie J, Flood V, Tsubota K, Lamoureux E, Wang JJ (2015) The associations of dietary intake of polyunsaturated fatty acids with diabetic retinopathy in well-controlled diabetes. *Invest Ophthalmol Vis Sci* 56: 7473–7479
- Sassa T, Kihara A (2014) Metabolism of very long-chain Fatty acids: genes and pathophysiology. *Biomol Ther (Seoul)* 22: 83–92
- Satish S, Philipose H, Rosales MAB, Saint-Geniez M (2018) Pharmaceutical induction of PGC-1alpha promotes retinal pigment epithelial cell metabolism and protects against oxidative damage. *Oxid Med Cell Longev* 2018: 9248640
- Schlein C, Talukdar S, Heine M, Fischer AW, Krott LM, Nilsson SK, Brenner MB, Heeren J, Scheja L (2016) FGF21 lowers plasma triglycerides by accelerating lipoprotein catabolism in white and brown adipose tissues. *Cell Metab* 23: 441–453
- Schnebelen C, Viau S, Gregoire S, Joffre C, Creuzot-Garcher CP, Bron AM, Bretillon L, Acar N (2009) Nutrition for the eye: different susceptibility of the retina and the lacrimal gland to dietary omega-6 and omega-3 polyunsaturated fatty acid incorporation. *Ophthalmic Res* 41: 216–224
- Schoonjans K, Peinado-Onsurbe J, Lefebvre PP, Heyman RA, Briggs M, Deeb S, Staels B, Auwerx J (1996) PPARalpha and PPARGamma activators direct a distinct tissue-specific transcriptional response via a PPRE in the lipoprotein lipase gene. *EMBO J* 15: 5336–5348

- Schrader M, Costello J, Godinho LF, Islinger M (2015) Peroxisome-mitochondria interplay and disease. *J Inherit Metab Dis* 38: 681–702
- Scott BL, Racz E, Lolley RN, Bazan NG (1988) Developing rod photoreceptors from normal and mutant Rd mouse retinas: altered fatty acid composition early in development of the mutant. *J Neurosci Res* 20: 202–211
- Selivanov VA, Votyakova TV, Pivtoraiko VN, Zeak J, Sukhomlin T, Trucco M, Roca J, Cascante M (2011) Reactive oxygen species production by forward and reverse electron fluxes in the mitochondrial respiratory chain. *PLoS Comput Biol* 7: e1001115
- Shao Z, Fu Z, Stahl A, Joyal JS, Hatton C, Juan A, Hurst C, Evans L, Cui Z, Pei D et al (2014) Cytochrome P450 2C8 omega3-long-chain polyunsaturated fatty acid metabolites increase mouse retinal pathologic neovascularization—brief report. *Arterioscler Thromb Vasc Biol* 34: 581–586
- Shekhar K, Lapan SW, Whitney IE, Tran NM, Macosko EZ, Kowalczyk M, Adiconis X, Levin JZ, Nemes J, Goldman M et al (2016) Comprehensive classification of retinal bipolar neurons by single-cell transcriptomics. *Cell* 166: 1308–1323.e1330
- Sinclair R, Schindler T, Lui K, Bolisetty S (2018) Hypertriglyceridaemia in extremely preterm infants receiving parenteral lipid emulsions. *BMC Pediatr* 18: 348
- Sivaprasad S, Arden G (2016) Spare the rods and spoil the retina: revisited. *Eye (Lond)* 30: 189–192
- Sivaprasad S, Vasconcelos JC, Prevost AT, Holmes H, Hykin P, George S, Murphy C, Kelly J, Arden GB, CLEOPATRA Study Group (2018) Clinical efficacy and safety of a light mask for prevention of dark adaptation in treating and preventing progression of early diabetic macular oedema at 24 months (CLEOPATRA): a multicentre, phase 3, randomised controlled trial. *Lancet Diabetes Endocrinol* 6: 382–391
- Smith CE, Poulter JA, Levin AV, Capasso JE, Price S, Ben-Yosef T, Sharony R, Newman WG, Shore RC, Brookes SJ et al (2016) Spectrum of PEX1 and PEX6 variants in Heimler syndrome. *Eur J Hum Genet* 24: 1565–1571
- Souied EH, Aslam T, Garcia-Layana A, Holz FG, Leys A, Silva R, Delcourt C (2015) Omega-3 fatty acids and age-related macular degeneration. *Ophthalmic Res* 55: 62–69
- Stahl A, Sapieha P, Connor KM, Sangiovanni JP, Chen J, Aderman CM, Willett KL, Krah NM, Dennison RJ, Seaward MR et al (2010) Short communication: PPAR gamma mediates a direct antiangiogenic effect of omega 3-PUFAs in proliferative retinopathy. *Circ Res* 107: 495–500
- Stanislaus S, Hecht R, Yie J, Hager T, Hall M, Spahr C, Wang W, Weiszmann J, Li Y, Deng L et al (2017) A novel Fc-FGF21 with improved resistance to proteolysis, increased affinity toward beta-klotho, and enhanced efficacy in mice and cynomolgus monkeys. *Endocrinology* 158: 1314–1327
- Stinson AM, Wiegand RD, Anderson RE (1991) Fatty acid and molecular species compositions of phospholipids and diacylglycerols from rat retinal membranes. *Exp Eye Res* 52: 213–218
- Storti F, Klee K, Todorova V, Steiner R, Othman A, van der Velde-Visser S, Samardzija M, Meneau I, Barben M, Karademir D et al (2019) Impaired ABCA1/ABCG1-mediated lipid efflux in the mouse retinal pigment epithelium (RPE) leads to retinal degeneration. *eLife* 8: e45100
- Stryer L (1991) Visual excitation and recovery. *J Biol Chem* 266: 10711–10714
- Sun Y, Lin Z, Liu CH, Gong Y, Liegl R, Fredrick TW, Meng SS, Burnim SB, Wang Z, Akula JD et al (2017) Inflammatory signals from photoreceptor modulate pathological retinal angiogenesis via c-Fos. *J Exp Med* 214: 1753–1767
- Talukdar S, Zhou Y, Li D, Rossulek M, Dong J, Somayaji V, Weng Y, Clark R, Lanba A, Owen BM et al (2016) A long-acting FGF21 molecule, PF-05231023, decreases body weight and improves lipid profile in non-human primates and type 2 diabetic subjects. *Cell Metab* 23: 427–440
- Tan JS, Wang JJ, Flood V, Mitchell P (2009) Dietary fatty acids and the 10-year incidence of age-related macular degeneration: the Blue Mountains Eye Study. *Arch Ophthalmol* 127: 656–665
- Tonade D, Liu H, Kern TS (2016) Photoreceptor cells produce inflammatory mediators that contribute to endothelial cell death in diabetes. *Invest Ophthalmol Vis Sci* 57: 4264–4271
- Ueta T, Yanagi Y, Tamaki Y, Yamaguchi T (2009) Cerebrovascular accidents in ranibizumab. *Ophthalmology* 116: 362
- Vamecq J, Cherkaoui-Malki M, Andreoletti P, Latruffe N (2014) The human peroxisome in health and disease: the story of an oddity becoming a vital organelle. *Biochimie* 98: 4–15
- Walsky RL, Gaman EA, Obach RS (2005) Examination of 209 drugs for inhibition of cytochrome P450 2C8. *J Clin Pharmacol* 45: 68–78
- Wang L, Tornquist P, Bill A (1997) Glucose metabolism in pig outer retina in light and darkness. *Acta Physiol Scand* 160: 75–81
- Wang X, Iannaccone A, Jablonski MM (2005) Contribution of Muller cells toward the regulation of photoreceptor outer segment assembly. *Neuron Glia Biol* 1: 1–6
- Winkler BS (1981) Glycolytic and oxidative metabolism in relation to retinal function. *J Gen Physiol* 77: 667–692
- Ye M, Lu W, Wang X, Wang C, Abbruzzese JL, Liang G, Li X, Luo Y (2016) FGF21-FGFR1 coordinates phospholipid homeostasis, lipid droplet function, and ER stress in obesity. *Endocrinology* 157: 4754–4769
- Yee P, Weymouth AE, Fletcher EL, Vingrys AJ (2010) A role for omega-3 polyunsaturated fatty acid supplements in diabetic neuropathy. *Invest Ophthalmol Vis Sci* 51: 1755–1764
- Yonekawa Y, Miller JW, Kim IK (2015) Age-related macular degeneration: advances in management and diagnosis. *J Clin Med* 4: 343–359
- Young RW (1967) The renewal of photoreceptor cell outer segments. *J Cell Biol* 33: 61–72
- Young RW, Bok D (1969) Participation of the retinal pigment epithelium in the rod outer segment renewal process. *J Cell Biol* 42: 392–403
- Zhang Y, Cross SD, Stanton JB, Marmorstein AD, Le YZ, Marmorstein LY (2017) Early AMD-like defects in the RPE and retinal degeneration in aged mice with RPE-specific deletion of Atg5 or Atg7. *Mol Vis* 23: 228–241
- Zhang M, Chu Y, Mowery J, Konkel B, Galli S, Theos AC, Golestaneh N (2018) Pgc-1alpha repression and high-fat diet induce age-related macular degeneration-like phenotypes in mice. *Dis Model Mech* 11: dmm032698
- Zhou Z, Doggett TA, Sene A, Apte RS, Ferguson TA (2015) Autophagy supports survival and phototransduction protein levels in rod photoreceptors. *Cell Death Differ* 22: 488–498
- Zhu S, Wu Y, Ye X, Ma L, Qi J, Yu D, Wei Y, Lin G, Ren G, Li D (2016) FGF21 ameliorates nonalcoholic fatty liver disease by inducing autophagy. *Mol Cell Biochem* 420: 107–119



**License:** This is an open access article under the terms of the Creative Commons Attribution 4.0 License, which permits use, distribution and reproduction in any medium, provided the original work is properly cited.