

Lawrence Berkeley National Laboratory

LBL Publications

Title

Correction: Emergence of two distinct phase transitions in monolayer CoSe₂ on graphene

Permalink

<https://escholarship.org/uc/item/6cz5d49f>

Journal

Nano Convergence, 11(1)

ISSN

2196-5404

Authors

Rhee, Tae Gyu
Lam, Nguyen Huu
Kim, Yeong Gwang
[et al.](#)

Publication Date

2024-08-01

DOI

10.1186/s40580-024-00438-1

Copyright Information

This work is made available under the terms of a Creative Commons Attribution-NonCommercial-NoDerivatives License, available at <https://creativecommons.org/licenses/by-nc-nd/4.0/>

Peer reviewed

CORRECTION

Open Access



Correction: Emergence of two distinct phase transitions in monolayer CoSe₂ on graphene

Tae Gyu Rhee^{1,2†}, Nguyen Huu Lam^{3†}, Yeong Gwang Kim^{1,2}, Minseon Gu¹, Jinwoong Hwang^{4,5}, Aaron Bostwick⁵, Sung-Kwan Mo⁵, Seung-Hyun Chun⁶, Jungdae Kim^{3*}, Young Jun Chang^{1,2,7*} and Byoung Ki Choi^{1,5*} 

Correction to: *Nano Convergence* (2024) 11:21
<https://doi.org/10.1186/s40580-024-00427-4>

Following publication of the original article [1], the author identified an error in Graphical Abstract and updated Acknowledgment section.

In Graphical abstract, there is a type on the unit E_B (eV) which has been updated with this correction.

[†]Tae Gyu Rhee and Nguyen Huu Lam contributed equally to this work.

The original article can be found online at <https://doi.org/10.1186/s40580-024-00427-4>.

*Correspondence:

Jungdae Kim
kimjd@ulsan.ac.kr
Young Jun Chang
yjchang@uos.ac.kr
Byoung Ki Choi
bkchoi@lbl.gov

¹ Department of Physics, University of Seoul, Seoul 02504, Korea

² Department of Smart Cities, University of Seoul, Seoul 02504, Korea

³ Department of Physics, University of Ulsan, Ulsan 44610, Korea

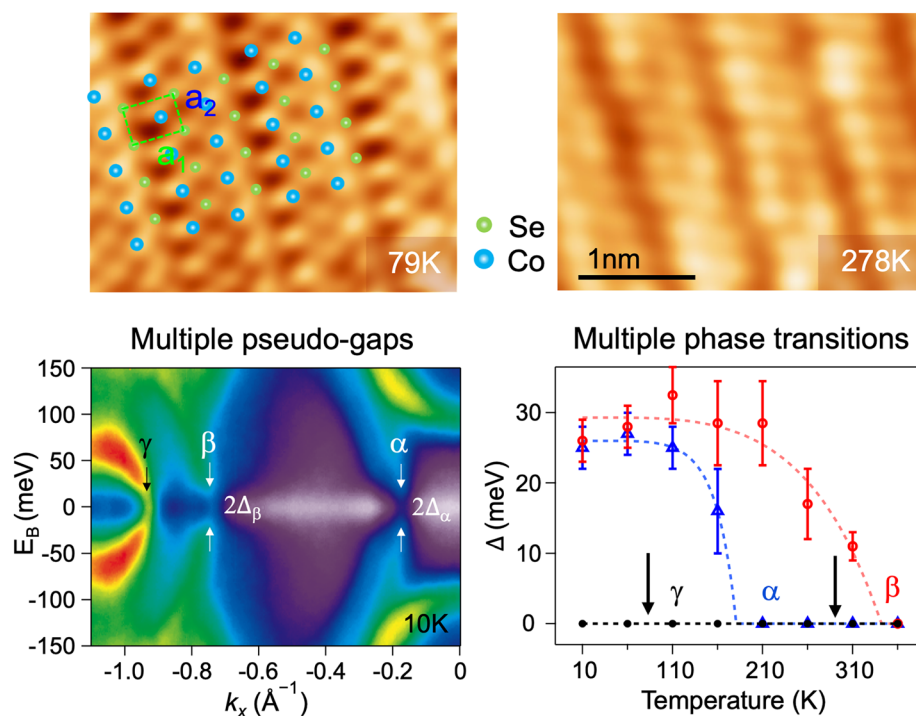
⁴ Department of Physics, Institute of Quantum Convergence Technology, Kangwon National University, Chuncheon 24341, Korea

⁵ Advanced Light Source, Lawrence Berkeley National Laboratory, Berkeley, CA 94720, USA

⁶ Department of Physics, Sejong University, Seoul 05006, Korea

⁷ Department of Intelligent Semiconductor Engineering, University of Seoul, Seoul 02504, Korea

Graphical abstract



Two different pseudo-gaps and corresponding phase transitions are observed in monolayer orthorhombic CoSe₂ grown on graphene substrates.

The work supported by MOLIT [Innovative Talent Education Program for Smart City] has been included in Acknowledgment statement.

Acknowledgments

This work is supported by National Research Foundation (NRF) grants funded by the Korean government (NRF-2019R1A6A1A11053838, NRF-2020R1A2C200373211, NRF-2021R1A6A3A14040322, RS-2023-00220471, RS-2023-00284081, RS-2023-00280346, RS-2023-00258359), [Innovative Talent Education Program for Smart City] by MOLIT, and Semiconductor R&D Support Project through the Gangwon Technopark (GWTP) funded by Gangwon Province (No. GWTP 2023-027). BKC was supported in part by an ALS Collaborative Postdoctoral Fellowship. This research used resources of the Advanced Light Source, which is a DOE Office of Science User Facility under contract no. DE-AC02-05CH11231. Experiments at PLS-II were supported in part by MSICT and POSTECH.

The original article has been corrected.

Published online: 31 August 2024

Reference

1. T.G. Rhee, N.H. Lam, Y.G. Kim, M. Gu, J. Hwang, A. Bostwick, S.K. Mo, S.H. Chun, J. Kim, Y.J. Chang, B.K. Choi, Emergence of two distinct phase transitions in monolayer CoSe₂ on graphene. *Nano Convergence* **11**, 21 (2024). <https://doi.org/10.1186/s40580-024-00427-4>

Publisher's Note

Springer Nature remains neutral with regard to jurisdictional claims in published maps and institutional affiliations.