

UC Irvine

UC Irvine Previously Published Works

Title

A remarkABL new fusion oncogene in T-cell ALL

Permalink

<https://escholarship.org/uc/item/6bv521sv>

Journal

Blood, 105(12)

ISSN

0006-4971 1528-0020

Author

Van Etten, R. A

Publication Date

2005-06-15

DOI

10.1182/blood-2005-03-1302

Peer reviewed

of Gaucher disease and as-yet unknown genetic risk factors for the development of gammopathies in some patients. The difficulties in determining the genetic and mechanistic bases for this association highlight the complexities of this “simple” Mendelian disorder. ■

REFERENCES

1. Elstein D, Klutstein MW, Lahad A, Abrahamov A, Hadas-Halpern I, Zimran A. Echocardiographic assessment of pulmonary hypertension in Gaucher's disease. *Lancet*. 1998;351:1544-1546.

2. Sidransky E. Gaucher disease and parkinsonism. *Mol Genet Metab*. 2005;84:302-304.

3. Shiran A, Brenner B, Laor A, Tatarsky I. Increased risk of cancer in patients with Gaucher disease. *Cancer*. 1993;72:219-224.

4. Allen MJ, Myer BJ, Khokher AM, Rushton N, Cox TM. Pro-inflammatory cytokines and the pathogenesis of Gaucher disease: increased release of interleukin-6 and interleukin-10. *QJM*. 1997;90:19-25.

5. Hideshima T, Bergsagel PL, Kuehl WM, Anderson KC. Advances in biology of multiple myeloma: clinical applications. *Blood*. 2004;104:607-618.

NEOPLASIA

Comment on De Keersmaecker et al, page 4849

A remark ABL new fusion oncogene in T-cell ALL

Richard A. Van Etten TUFTS-NEW ENGLAND MEDICAL CENTER

A novel fusion of *ABL1* to *EML1* adds to a growing list of chimeric ABL proteins in patients with acute T-cell lymphoblastic leukemia.

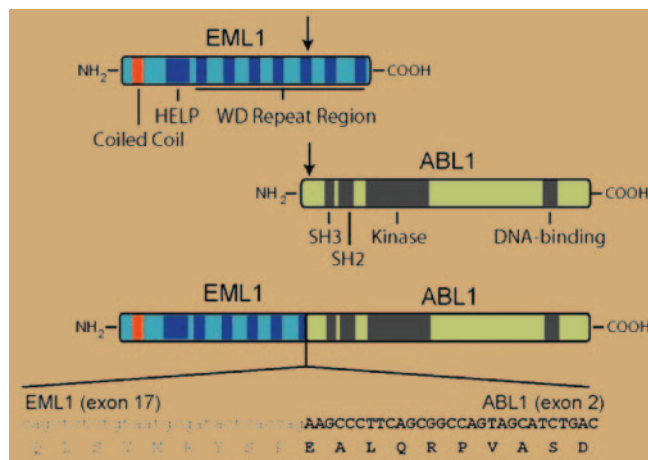
Until recently, our recognition of the involvement of the *ABL1* gene (which encodes the nonreceptor protein tyrosine kinase c-ABL1) in the pathogenesis of T-cell acute lymphoblastic leukemia (T-ALL) was limited to rare cases of Philadelphia chromosome-positive T-ALL, some of which likely represented lymphoid blast crisis of chronic myeloid leukemia. The first hint that *ABL1* might be involved more frequently in this disease came from a United Kingdom Medical Research Council study that used fluorescent in situ hybridization (FISH) with probes from the *ABL1* locus to analyze interphase nuclei from lymphoid leukemia blasts. The study was intended to detect cryptic *BCR-ABL1* fusion but instead found extrachromosomal amplification of the *ABL1* locus independent of *BCR* in 8 of 280 T-ALL samples.¹ The nature of the amplification was soon revealed when researchers from the University of Leuven in Belgium demonstrated that *ABL1* was fused to *NUP214* via episomal amplification in 5 of 90 patients with T-ALL.² This resulted in fusion of N-terminal sequences of the NUP214 protein, a ubiquitously expressed component of the nuclear pore complex, with the same 1104 C-terminal amino acids of c-ABL1 found in the BCR-ABL1 fusion protein. Like BCR-ABL1, the NUP214-ABL1 fusion is a constitutively active tyrosine kinase

with transforming activity in vitro. Collectively, these results suggested that *ABL1* might be involved in the pathogenesis of 5% to 6% of T-ALLs.

In the current issue of *Blood*, the Leuven group extends these results to identify a new *ABL1* fusion gene in T-ALL. A patient with T-ALL whose blasts lacked *ABL1* amplification but demonstrated a split in the hybridization signal between 5' and 3' *ABL1* probes was found to have cryptic t(9;14), leading to fusion of *ABL1* with *EML1* on chromosome 14. *EML1* encodes a protein with similarity to an echinoderm microtubule-associated protein (EML1), and the resulting 190-kDa echinoderm microtubule-associated protein-like 1-Abelson 1 (EML1-ABL1) fusion is a dysregulated tyrosine kinase that alleviates interleukin-3 dependence in Ba/F3 hematopoietic cells and constitutively activates extracellular signal-

related kinase (ERK), signal transducers and activators of transcription 5 (Stat5), and Src signaling pathways. As with BCR-ABL1, EML1-ABL1 kinase activity was dependent on a coiled-coil domain in the N-terminus, suggesting that oligomerization and autophosphorylation are necessary to overcome the autoinhibition of the ABL kinase domain.³ The leukemic cells from this patient exhibited ectopic expression of the homeobox transcription factor TLX1 and hemizygous deletion of the *CDKN2A* tumor suppressor gene. These alterations were also seen frequently in patients with *NUP214-ABL1* fusion² and provide more evidence that T-ALL can be divided into subgroups with distinct molecular pathogenesis.⁴ Interestingly, expression of *EML1* was not observed in other T-ALL blasts or cell lines, suggesting that the *EML1* promoter may be activated as a consequence of the translocation.

These findings have therapeutic implications, of course. The EML1-ABL1 fusion protein was inhibited by imatinib mesylate, the small molecule inhibitor of ABL kinase activity, with approximately the same sensitivity as BCR-ABL1, raising the possibility that patients with T-ALL with NUP214-ABL1 and EML1-ABL1 might respond clinically to imatinib treatment. In the previous study, imatinib was found to inhibit the growth of a T-ALL cell line with the NUP214-ABL1 fusion,² but the clinical utility of imatinib in these patients might be limited by rapid selection for resistance, as is observed in Philadelphia chromosome-positive patients with



In T-ALL with cryptic t(9;14), N-terminal sequences from the EML1 polypeptide, including a coiled-coil domain, are joined to the same C-terminal ABL sequences present in the more common BCR-ABL1 fusion protein. The resulting 190-kDa EML1-ABL1 fusion protein is a dysregulated tyrosine kinase that transforms Ba/F3 cells. For details, see the article beginning on page 4849.

B-ALL with amplification of *BCR-ABL1*.⁵ Patients with *ABL1* fusions from balanced translocations might fare better. Finally, the search for activated *ABL1* genes in T-ALL is not over. Although the FISH studies^{1,2} suggest that there are no other frequent *ABL1* amplifications in acute lymphoid leukemias, additional cryptic *ABL1* translocations will no doubt continue to pop up. In addition, point mutations in *ABL1* can also dysregulate c-ABL1 kinase activity and cause lymphoid leukemia in mouse models,⁶ but finding these cases will require direct exon sequencing of genomic DNA. ■

REFERENCES

1. Barber KE, Martineau M, Harewood L, et al. Amplification of the ABL gene in T-cell acute lymphoblastic leukemia. *Leukemia*. 2004;18:1153-1156.

2. Graux C, Cools J, Melotte C, et al. Fusion of NUP214 to ABL1 on amplified episomes in T-cell acute lymphoblastic leukemia. *Nat Genet*. 2004;36:1084-1089.

3. Smith KM, Yacobi R, Van Etten RA. Autoinhibition of Bcr-Abl through its SH3 domain. *Mol Cell*. 2003;12:27-37.

4. Ferrando AA, Neuberger DS, Staunton J, et al. Gene expression signatures define novel oncogenic pathways in T cell acute lymphoblastic leukemia. *Cancer Cell*. 2002;1:75-87.

5. Gorre ME, Mohammed M, Ellwood K, et al. Clinical resistance to STI-571 cancer therapy caused by BCR-ABL gene mutation or amplification. *Science*. 2001;293:876-880.

6. Van Etten RA, Debnath J, Zhou H, Casasnova JM. Introduction of a loss-of-function point mutation from the SH3 region of the *Caenorhabditis elegans* sem-5 gene activates the transforming ability of c-abl in vivo and abolishes binding of proline-rich ligands in vitro. *Oncogene*. 1995;10:1977-1988.

● ● ● TRANSPLANTATION

Comment on Tivol et al, page 4885

Chronic graft-versus-host disease: a breakdown of self-tolerance?

Allan D. Hess THE JOHNS HOPKINS UNIVERSITY

The immunologic response to foreign alloantigens in graft-versus-host disease can lead to the breakdown of self-tolerance precipitating autoimmunity.

Graft-versus-host disease (GVHD) is a major life-threatening complication of allogeneic bone marrow transplantation (BMT). Initially presenting as an acute inflammatory response, GVHD can evolve into a chronic disease that shares many characteristics with several autoimmune disorders. In this issue of *Blood*, innovative research by Tivol and colleagues reveals that immune tolerance to self-antigens is broken during GVHD with

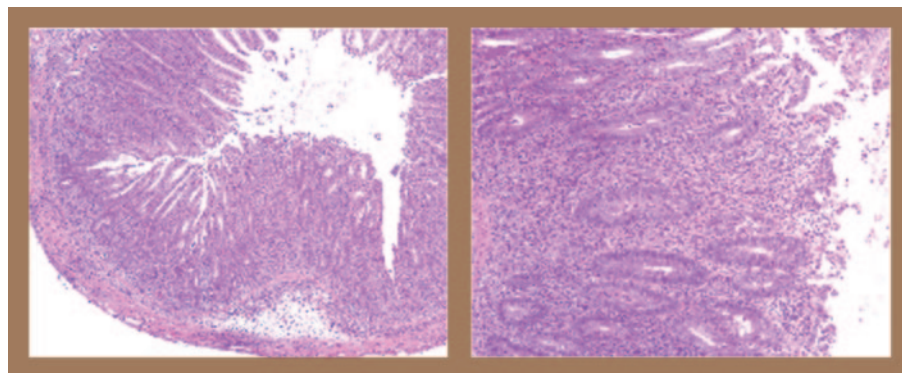
the emergence of autoreactive T cells capable of mediating disease.

During the past decade, considerable progress has been made in elucidating the pathophysiology of acute GVHD. Following allogeneic BMT, a graft-versus-host reaction is initiated when donor T cells transferred along with the bone marrow graft directly recognize alloantigens presented by the antigen-presenting cells (APCs) of the host. The acti-

vated donor antihost-specific T cells expand in the developing “cytokine storm,” resulting in tissue destruction that is normally limited to the skin, liver, and intestinal tract as the target organs.¹ Host APCs are also destroyed during the initial phases of acute GVHD.

The underlying immune mechanisms responsible for chronic GVHD, however, have remained controversial. Chronic GVHD usually develops after an episode of acute GVHD but may also occur de novo.² Comparatively, chronic GVHD has discrete clinical features resembling a variety of collagen vascular disorders, including Sjogren syndrome and scleroderma. These clinical manifestations led to the hypothesis that chronic GVHD is an autoimmune disorder. The detection of autoreactive T cells of donor origin (donor-antidonoreactivity) following allogeneic BMT in human and in murine systems further supported this premise.

In an elegant series of studies, Tivol et al confirm this hypothesis, providing direct evidence that CD4⁺ autoreactive T cells of donor origin emerge during GVHD. These cells, which recognize self (donor) major histocompatibility complex (MHC) class II antigens, target the colon when adoptively transferred into naive donor strain recipients. The pathologic damage is consistent with autoimmune colitis. Cells of the innate immune system (granulocytes) appear to play a significant role in this autoimmune process. Moreover, the studies by Tivol et al also reveal that there is a disparate requirement for host and donor APCs in acute and chronic GVHD. Although host APCs are required for the initiation of acute GVHD, donor APCs play a central role in both the progression of acute GVHD and the development of chronic GVHD. These APCs present both donor and host antigens to the engrafted donor T cells, allowing for the activation of alloreactive and autoreactive T cells. However, it remains unclear whether the autoreactive T cells arise due to thymic damage during acute GVHD (compromising negative selection) or due to the cross-presentation of self-antigens. Nevertheless, the research from Tivol et al provides not only important insights into some of the underlying immune mechanisms involved in acute and chronic GVHD, but also emphasizes the importance of establishing tolerance to both host and donor antigens after allogeneic BMT. ■



Colitis is characterized by extensive infiltration of T cells and granulocytes. See the complete figure in the article beginning on page 4885.



blood

2005 105: 4547-4548
doi:10.1182/blood-2005-03-1302

A remarkABL new fusion oncogene in T-cell ALL

Richard A. Van Etten

Updated information and services can be found at:

<http://www.bloodjournal.org/content/105/12/4547.full.html>

Articles on similar topics can be found in the following Blood collections

Information about reproducing this article in parts or in its entirety may be found online at:

http://www.bloodjournal.org/site/misc/rights.xhtml#repub_requests

Information about ordering reprints may be found online at:

<http://www.bloodjournal.org/site/misc/rights.xhtml#reprints>

Information about subscriptions and ASH membership may be found online at:

<http://www.bloodjournal.org/site/subscriptions/index.xhtml>