

# UCLA

## UCLA Previously Published Works

### Title

Low booster uptake in cancer patients despite health benefits.

### Permalink

<https://escholarship.org/uc/item/6bq886ht>

### Journal

iScience, 27(9)

### Authors

Figueiredo, Jane

Levy, Julia

Choi, So

et al.

### Publication Date

2024-09-20

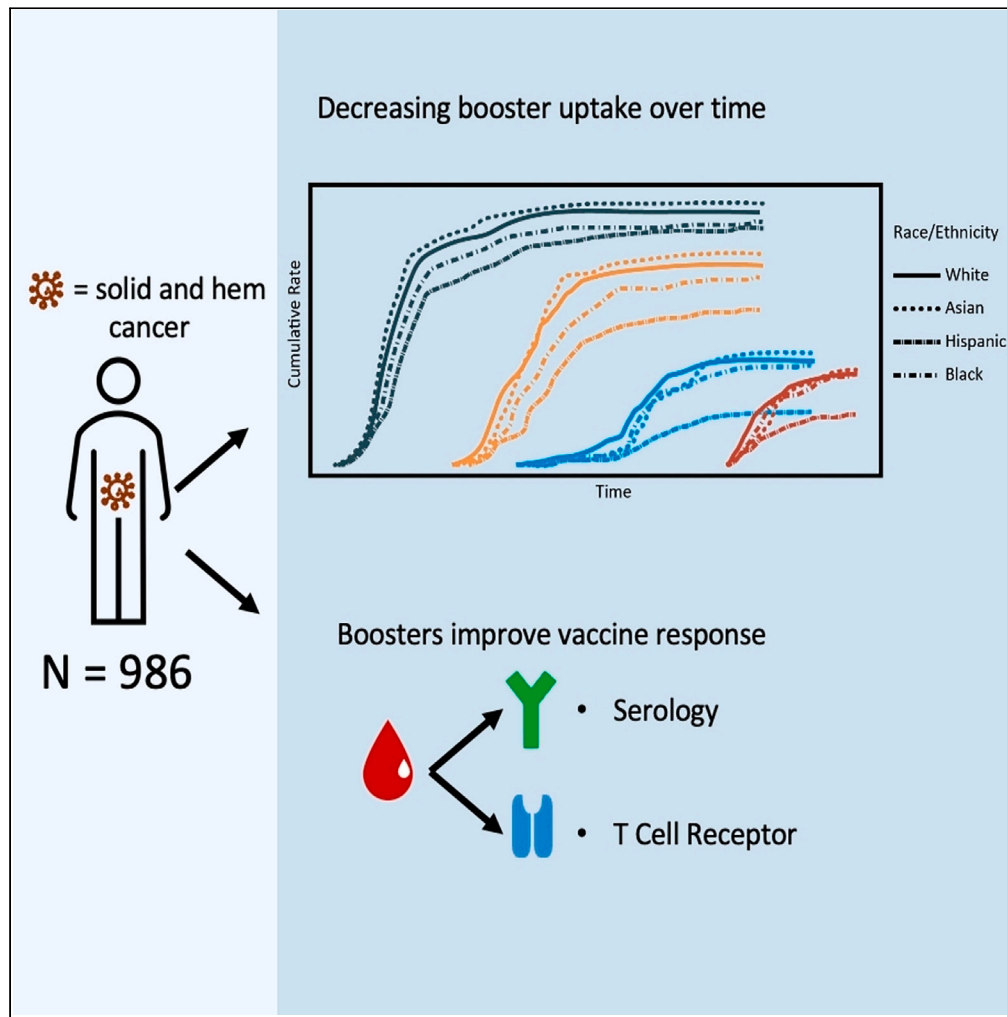
### DOI

10.1016/j.isci.2024.110596

Peer reviewed

Article

# Low booster uptake in cancer patients despite health benefits



Jane C. Figueiredo, Julia Levy, So Yung Choi, ..., Kimia Sobhani, Karen L. Reckamp, Akil A. Merchant

jane.figueiredo@cshs.org

**Highlights**

COVID-19 booster vaccinations help increase antibody levels

COVID-19 booster vaccinations help maintain T cell responses against SARS-CoV-2

Booster vaccinations reduced all-cause mortality in patients

A significant proportion of patients remain unboosted

Figueiredo et al., iScience 27, 110596  
September 20, 2024 © 2024  
Published by Elsevier Inc.  
<https://doi.org/10.1016/j.isci.2024.110596>



## Article

## Low booster uptake in cancer patients despite health benefits

Jane C. Figueiredo,<sup>1,2,10,\*</sup> Julia Levy,<sup>1</sup> So Yung Choi,<sup>3</sup> Alexander M. Xu,<sup>4</sup> Noah M. Merin,<sup>5</sup> Omid Hamid,<sup>1,6</sup> Tucker Lemos,<sup>5</sup> Nathalie Nguyen,<sup>1</sup> Maimoona Nadri,<sup>1</sup> Alma Gonzalez,<sup>1</sup> Simeon Mahov,<sup>5</sup> Justin M. Darrah,<sup>5</sup> Jun Gong,<sup>1</sup> Ronald L. Paquette,<sup>5</sup> Alain C. Mita,<sup>1</sup> Robert A. Vescio,<sup>5</sup> Sarah J. Salvy,<sup>7</sup> Inderjit Mehmi,<sup>6</sup> Andrew E. Hendifar,<sup>1</sup> Ronald Natale,<sup>1</sup> Warren G. Tourtellotte,<sup>8,9</sup> V. Krishnan Ramanujan,<sup>9</sup> Carissa A. Huynh,<sup>9</sup> Kimia Sobhani,<sup>9</sup> Karen L. Reckamp,<sup>1</sup> and Akil A. Merchant<sup>5</sup>

## SUMMARY

**Patients with cancer are at increased risk of death from COVID-19 and have reduced immune responses to SARS-CoV2 vaccines, necessitating regular boosters. We performed comprehensive chart reviews, surveys of patients attitudes, serology for SARS-CoV-2 antibodies and T cell receptor (TCR)  $\beta$  sequencing for cellular responses on a cohort of 982 cancer patients receiving active cancer therapy accrued between November-3-2020 and Mar-31-2023. We found that 92 · 3% of patients received the primer vaccine, 70 · 8% received one monovalent booster, but only 30 · 1% received a bivalent booster. Booster uptake was lower under age 50, and among African American or Hispanic patients. Nearly all patients seroconverted after 2+ booster vaccinations (>99%) and improved cellular responses, demonstrating that repeated boosters could overcome poor response to vaccination. Receipt of booster vaccinations was associated with a lower risk of all-cause mortality (HR = 0 · 61,  $p$  = 0 · 024). Booster uptake in high-risk cancer patients remains low and strategies to encourage booster uptake are needed.**

## INTRODUCTION

Effective vaccines were developed, tested, and issued emergency use authorization (EUA) by the U.S. Food and Drug Administration (FDA), European Medical Agency and other regulatory agencies around the world in record time. Immunocompromised individuals were prioritized in vaccine rollout strategies<sup>1</sup>; however, none of the Phase III clinical trials included patients with cancer, fueling concerns about potential side effects and the robustness of their post-vaccine immune responses.<sup>2</sup> Data quickly emerged to reassure patients that available vaccines were safe and effective,<sup>3</sup> and subsequent studies reported that over 90% of patients with cancer have received at least one COVID-19 vaccine.<sup>4</sup> However, it is unclear how many are following recommendations for additional doses or “boosters.”

Booster vaccinations have been reported to counteract waning immune responses to vaccination and natural infection in healthy populations.<sup>5</sup> Several studies of the Omicron (B.1.1.529) subvariants reported heightened capacity for immune evasion,<sup>6</sup> and reduced vaccine effectiveness for first-generation monovalent COVID-19 vaccines.<sup>7</sup> Other reports suggest that additional doses of the monovalent mRNA vaccines,<sup>8,9</sup> heterologous boosting,<sup>10,11</sup> and the bivalent mRNA vaccines provide additional immune protection to SARS-CoV-2 B.1.1.529 infection and severe COVID-19 illness.<sup>12</sup>

For patients with cancer, evidence suggests that primer vaccinations elicit lower antibody titers compared to healthy individuals, albeit dependent on disease state, co-morbidities, and anticancer treatment status.<sup>13–18</sup> Subsequent booster vaccinations have been reported to restore and increase antibody titers in patients similar to healthy controls,<sup>11,18,19</sup> except for patients receiving B cell-depleting therapies and chemotherapies.<sup>11,19</sup> However, even seronegative individuals appear capable of mounting T cell responses,<sup>14,20</sup> and some data suggest that T cell responses are more robust over time compared to antibody levels.<sup>21</sup>

<sup>1</sup>Department of Medicine, Samuel Oschin Comprehensive Cancer Institute, Cedars-Sinai Medical Center, Los Angeles, CA 90048, USA

<sup>2</sup>Department of Computational Biomedicine, Cedars-Sinai Medical Center, Los Angeles, CA 90048, USA

<sup>3</sup>BioStatistics Shared Resource, Cedars-Sinai Medical Center, Los Angeles, CA 90048, USA

<sup>4</sup>Department of Biomedical Sciences, Cedars-Sinai Medical Center, Los Angeles, CA 90048, USA

<sup>5</sup>Division of Hematology and Cellular Therapy, Department of Medicine, Samuel Oschin Comprehensive Cancer Institute, Cedars-Sinai Medical Center, Los Angeles, CA 90048, USA

<sup>6</sup>The Angeles Clinic and Research Institute, A Cedars-Sinai Affiliate, Los Angeles, CA 90025, USA

<sup>7</sup>Research Center for Health Equity, Department of Biomedical Sciences, Los Angeles, CA 90048, USA

<sup>8</sup>Department of Neurology, Neurological Surgery and Biomedical Sciences, Cedars-Sinai Medical Center, Los Angeles, CA 90048, USA

<sup>9</sup>Department of Pathology and Laboratory Medicine, Cedars-Sinai Medical Center, Los Angeles, CA 90048, USA

<sup>10</sup>Lead contact

\*Correspondence: [jane.figueiredo@cshs.org](mailto:jane.figueiredo@cshs.org)

<https://doi.org/10.1016/j.isci.2024.110596>



Changes in vaccine availability and the evolving nature of the science and public health recommendations for additional doses have likely impacted the psychosocial wellbeing of patients. During the pandemic, there was an increase in depression and anxiety rates among patients with cancer, which was exacerbated by social distancing.<sup>22</sup> Disruptions in cancer care services were also reported to contribute to higher levels of anxiety, loneliness, and social isolation among patients.<sup>22,23</sup>

There are unanswered questions about changes in the mental, social, and immunologic health of patients with cancer as we enter into the endemic phase of SARS-CoV-2. In this follow-up study from the SeroNet-CORALE cancer cohort study, we report on vaccine uptake patterns, and examine humoral and cellular immune responses, psychosocial health, and all-cause mortality.

## RESULTS

### Patient characteristics and attitudes on SARS-CoV-2 vaccines

We enrolled 986 patients with either solid (48 · 7%) or hematologic (51 · 3%) malignancies (median age = 63 · 0 [IQR, 52·0–70·0] years; 48 · 6% women, [Table 1](#); [Figure S1](#)). Less than 8% of patients refused vaccination, and <2 · 0% of survey responses reported being against vaccination at any time point during follow-up ([Figure S2](#)). Patients who agreed that vaccines may not be safe were less likely to be up-to-date with vaccinations at any time point (range: 11·8–40 · 0% v. 4·3–6·7%). Fear of adverse events has remained a common concern, but has decreased over time (46 · 2% from Jan to Aug–2021 v. 42 · 7% from Oct–2022 to Mar–2023).

### SARS-CoV-2 vaccine booster uptake

Following FDA EUA recommendations for the 1<sup>st</sup> monovalent booster in Aug–2021, a total of 698 patients (49 · 7% with solid tumors and 50 · 3% with hematologic malignancies) were boosted with a monovalent booster with a median time from first dose of 238 · 5 days (IQR = 207·2–280) days. Most patients received a homologous first booster (94 · 6% BNT/BNT-primed with BNT 1<sup>st</sup> monovalent booster; 93 · 6% m1273/m1273-primed with m1273 1<sup>st</sup> monovalent booster), but heterologous boosting became more frequent for subsequent doses (only 84 · 0% of patients receiving 2<sup>nd</sup> homologous booster which dropped to 62 · 5% for the 3<sup>rd</sup> booster).

Less than 35% of patients received two monovalent booster doses (median of 196 days from the 1<sup>st</sup> monovalent booster) and only 30 · 1% received at least one bivalent booster (95 · 6% after receiving at least one monovalent, [Figure 1A](#)). When we examined vaccine uptake by age groups and self-identified race and ethnicity, the lowest uptake was among patients under 50 years of age compared to those over age 70 ([Figure 1B](#)), and for individuals who self-identified as either Black or Hispanic compared to non-Hispanic White ([Figure 1C](#)).

### Humoral immune responses post-vaccination

For the primer series, median peak IgG(S-RBD) antibody levels post-vaccination (available in 44 · 4% of patients) differed by demographic and clinical characteristics. Peak antibody levels were highest in patients <50 years of age ( $p < 0 \cdot 001$ ), patients who self-identified as Hispanic ( $p = 0 \cdot 005$ ), patients with a prior SARS-CoV-2 infection ( $p < 0 \cdot 001$ ), and patients receiving B cell therapies ( $p < 0 \cdot 001$ , [Figure 2A](#)). 10 · 6% of patients (88 · 4% hematologic malignancies) did not seroconvert after priming.

Median peak IgG(S-RBD) levels increased with booster doses from 372 (IQR = 51–2,475) BAU/ml to 2,150 (IQR = 639–3,550) BAU/ml after one booster and to 3,550 (IQR = 1,324–3,550) BAU/ml after two boosters. Factors related to antibody levels after one booster dose were: race/ethnicity ( $p = 0 \cdot 001$ ), vaccine type ( $p = 0 \cdot 046$ ), prior SARS-CoV-2 infection ( $p < 0 \cdot 001$ ), ECOG status ( $p = 0 \cdot 022$ ), and chemotherapy use ( $p = 0 \cdot 023$ , [Figure 2B](#)). Among those with 2+ boosters, nearly all reached the threshold of IgG(S-RBD) antibody levels; male patients and those with a prior COVID infection had higher peak levels ([Figure 2C](#)). Rates of non-seroconversion after boosting were: 3 · 3% after one monovalent dose and 1 · 0% after two monovalent doses.

### Cellular immune responses post-vaccination

Following primer vaccination, clonal breadth was lower among the patients who received B cell therapy compared to those that did not ( $p = 0 \cdot 025$ ); and among those receiving BNT and Ad26 compared to m1273 ( $p < 0 \cdot 001$ , [Figure S4A](#)). In contrast, clonal depth response was lower not only in patients receiving B cell therapy ( $p < 0 \cdot 001$ ) and those receiving BNT and Ad26 ( $p = 0 \cdot 015$ ), but also in patients with hematological malignancies vs. solid tumors ( $p < 0 \cdot 001$ ), male patients vs. female ( $p < 0 \cdot 001$ ), by age ( $p = 0 \cdot 031$ ) and by race and ethnicity ( $p = 0 \cdot 034$ ). ([Figure S4B](#)). Upon receiving one monovalent booster, these significant differences were not observed, other than male patients continuing to have lower clonal depth compared to female patients ( $p = 0 \cdot 015$ ) ([Figures S4C](#) and [S4D](#)). Among patients who were seronegative after priming, 18 · 9% exhibited a T cell response using the T-detect metric. These patients were all hematologic malignancies with most receiving B cell targeted therapies. Among all patients after priming, we observed a modest correlation was between IgG(S) and breadth, and IgG(S) and depth [Spearman's rho = 0.602 and 0.595,  $p$  values <0.001, respectively].

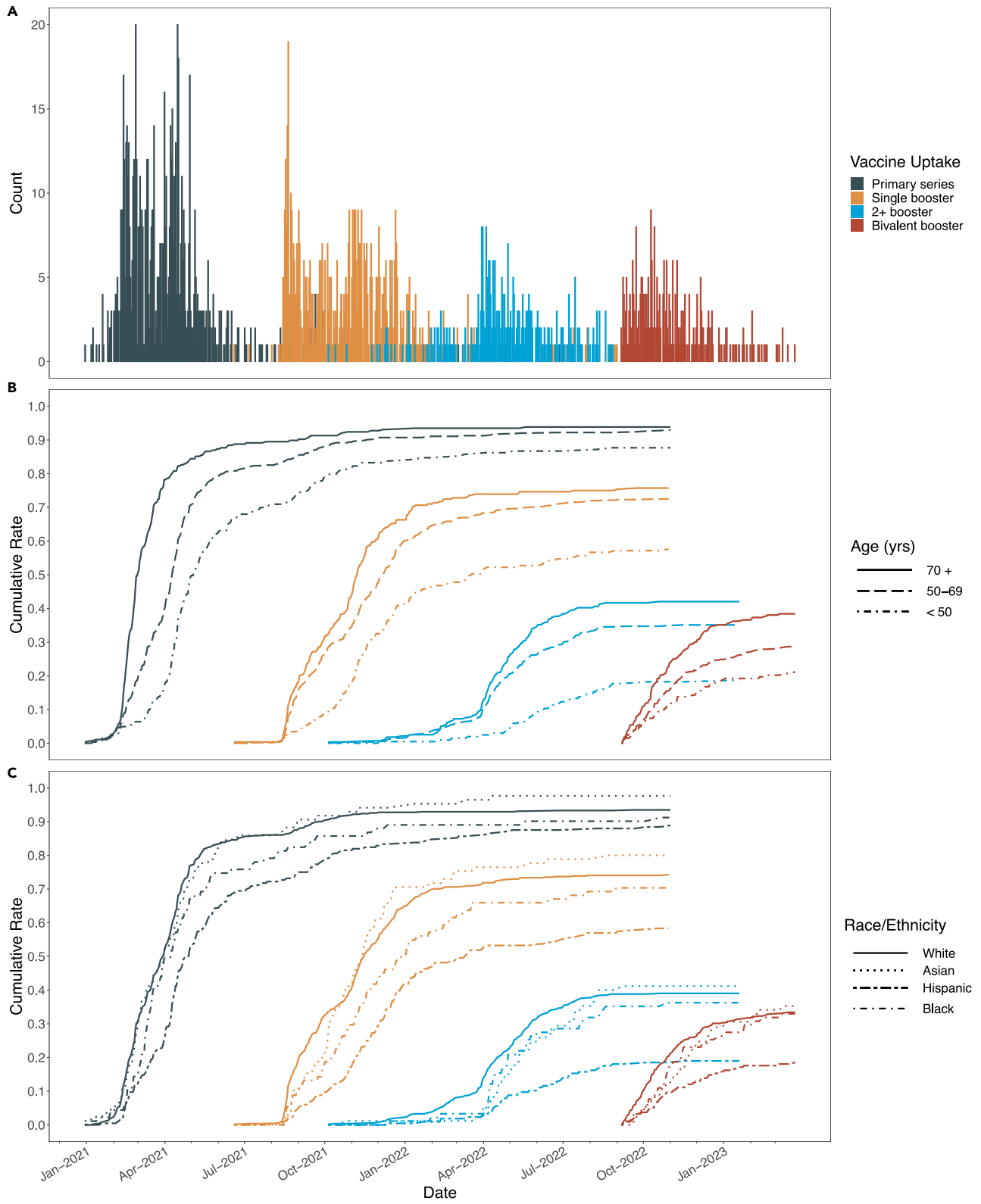
### Symptoms post-vaccination

Among vaccinated patients completing a post-vaccination survey, symptoms were highest for the second dose and lowest for the third dose. Symptoms included site pain (59 · 5%, 48 · 1%, 9 · 1%), fatigue (39 · 2%, 48 · 1%, 4 · 5%), headaches or dizziness (15 · 2%, 16 · 0%, 6 · 8%), fever (19 · 0%, 37 · 7%, 11 · 4%), and muscle aches (6 · 3%, 11 · 3%, 4 · 5%) after dose 1, 2, and 3, respectively ([Figure S3](#)). No serious toxicities attributable to vaccination were observed in the cohort.

**Table 1. Characteristics of the study cohort**

	Primer		1 <sup>st</sup> booster (monovalent)		≥2 <sup>ND</sup> booster (monovalent)		Bivalent booster	
	Solid (n = 444)	Hematologic (n = 466)	Solid (n = 347)	Hematologic (n = 351)	Solid (n = 156)	Hematologic (n = 181)	Solid (n = 152)	Hematologic (n = 145)
Vaccinated proportion (%)	92.5%	92.1%	78.2%	75.3%	45.0%	51.6%	31.7%	28.7%
Age at enrollment, median (IQR) years	64.0 (55.0, 72.0)	62.0 (51.0, 69.0)	65 (56.0, 73.0)	63.0 (53.0, 70.0)	66.0 (59.8, 74.0)	66.0 (56.0, 71.0)	66.5 (60.0, 74.0)	63.0 (54.0, 71.0)
Age at diagnosis, n	416	445	322	333	145	174	137	139
Age at diagnosis, median (IQR) years	62.0 (52.0, 70.0)	57.0 (47.0, 66.0)	62.0 (52.0, 70.0)	58.0 (50.0, 66.0)	64.0 (55.0, 72.0)	60.0 (52.0, 68.8)	64.0 (55.0, 72.0)	59.0 (51.0, 69.0)
Female sex (n, %)	243 (54.7%)	197 (42.3%)	196 (56.5%)	148 (42.2%)	92 (59.0%)	70 (38.7%)	93 (61.2%)	65 (44.8%)
<b>Race and ethnicity (n, %)</b>								
Non-Hispanic White	273 (62.0%)	235 (50.5%)	213 (61.9%)	193 (55.1%)	104 (67.1%)	111 (61.3%)	93 (61.6%)	90 (62.1%)
Hispanic	61 (13.9%)	126 (27.1%)	47 (13.7%)	75 (21.4%)	15 (9.7%)	24 (13.3%)	17 (11.3%)	22 (15.2%)
Non-Hispanic Black	29 (6.6%)	54 (11.6%)	22 (6.4%)	42 (12.0%)	7 (4.5%)	26 (14.4%)	14 (9.3%)	16 (11.0%)
Asian	44 (10.0%)	34 (7.3%)	37 (10.8%)	28 (8.0%)	19 (12.3%)	16 (8.8%)	14 (9.3%)	15 (10.3%)
Other	33 (7.5%)	16 (3.4%)	25 (7.3%)	12 (3.4%)	10 (6.5%)	4 (2.2%)	13 (8.6%)	2 (1.4%)
<b>Anti-cancer treatment<sup>a</sup> (n, %)</b>								
Chemotherapy	110 (24.8%)	119 (25.5%)	104 (30.0%)	106 (30.2%)	57 (36.5%)	44 (24.3%)	59 (38.8%)	48 (33.1%)
B-cell therapy	2 (0.5%)	148 (31.8%)	2 (0.6%)	132 (37.6%)	1 (0.6%)	67 (37.0%)	1 (0.7%)	64 (44.1%)
Immune checkpoint inhibitors	118 (26.6%)	7 (1.5%)	88 (25.4%)	5 (1.4%)	37 (23.7%)	3 (1.7%)	35 (23.0%)	0 (0.0%)
Targeted therapy	53 (11.9%)	115 (24.7%)	59 (17.0%)	103 (29.3%)	34 (21.8%)	58 (32.0%)	30 (19.7%)	60 (41.4%)
Hormonal therapy	35 (7.9%)	10 (2.1%)	31 (8.9%)	5 (1.4%)	19 (12.2%)	1 (0.6%)	17 (11.2%)	2 (1.4%)
Stem cell transplant (allogeneic)	0 (0.0%)	43 (9.2%)	0 (0.0%)	36 (10.3%)	0 (0.0%)	22 (12.2%)	0 (0.0%)	17 (11.7%)
Stem cell transplant (autologous)	0 (0.0%)	28 (6.0%)	0 (0.0%)	25 (7.1%)	0 (0.0%)	17 (9.4%)	0 (0.0%)	8 (5.5%)
<b>ECOG Status (n, %)</b>								
0–1	241 (93.8%)	289 (94.4%)	243 (95.3%)	267 (94.3%)	130 (94.9%)	163 (97.0%)	129 (94.2%)	129 (91.5%)
2–4	16 (6.2%)	17 (5.6%)	12 (4.7%)	16 (5.7%)	7 (5.1%)	5 (3.0%)	8 (5.8%)	12 (8.5%)
<b>Vaccine Type (n, %)</b>								
Ad26.COVS.2S	19 (4.3%)	18 (3.9%)	4 (1.2%)	3 (0.9%)	0 (0.0%)	1 (0.6%)	84 (55.3%)	84 (57.9%)
BNT162b2	224 (50.5%)	268 (57.5%)	166 (47.8%)	206 (58.7%)	68 (43.6%)	99 (55.0%)	68 (44.7%)	61 (42.1%)
mRNA-1273	201 (45.3%)	180 (38.6%)	177 (51.0%)	142 (40.5%)	88 (56.4%)	80 (44.4%)	40 (26.3%)	42 (29.0%)
Heterologous boosting (n, %)	–	–	29 (8.4%)	26 (7.4%)	26 (16.7%)	28 (15.6%)	39 (25.7%)	65 (44.8%)
SARS-CoV-2 infection prior to vaccination (n, %)	19 (4.3%)	32 (6.9%)	32 (9.2%)	51 (14.5%)	18 (11.5%)	38 (21.0%)	0 (0.0%)	1 (1.2%)
Serology available (n, %)	161 (36.3%)	243 (52.1%)	174 (50.1%)	215 (61.3%)	83 (53.2%)	120 (66.3%)	69 (45.4%)	84 (57.9%)
No seroconversion after vaccination	5 (3.1%)	38 (15.6%)	1 (0.6%)	12 (5.6%)	1 (1.2%)	1 (0.8%)	0 (0.0%)	1 (1.2%)

<sup>a</sup>Up to 3 months prior to the time point of vaccination indicated in the column.



**Figure 1. Dynamics of SARS-CoV-2 vaccine uptake after primer and booster vaccinations in patients with cancer**

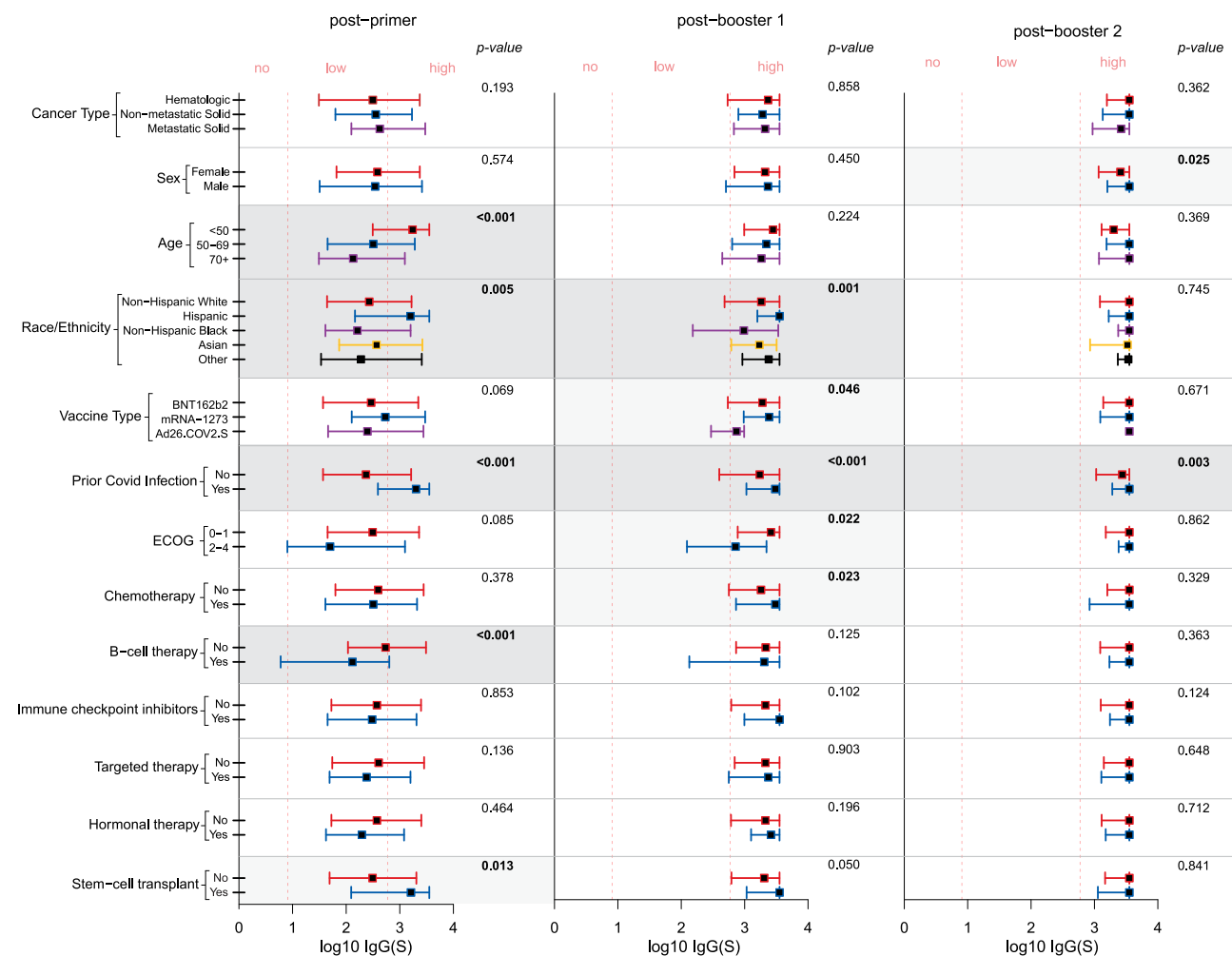
(A) Plot showing number of patients with cancer who received the primer series (dark blue), 1<sup>st</sup> booster (orange), 2<sup>nd</sup> or more boosters (light blue) and bivalent booster (red) over time.

(B) Plot showing cumulative number of patients with cancer who received the primer series (dark blue), 1<sup>st</sup> booster (orange), 2<sup>nd</sup> or more boosters (light blue) and bivalent booster (red) over time by age categories (<50, 50–59, 70+) (p-values for difference in vaccine uptake by age: <0.0001 (primer series), <0.0001 (1<sup>st</sup> booster), <0.0001 (2<sup>nd</sup>+ booster), <0.0001 (bivalent booster)).

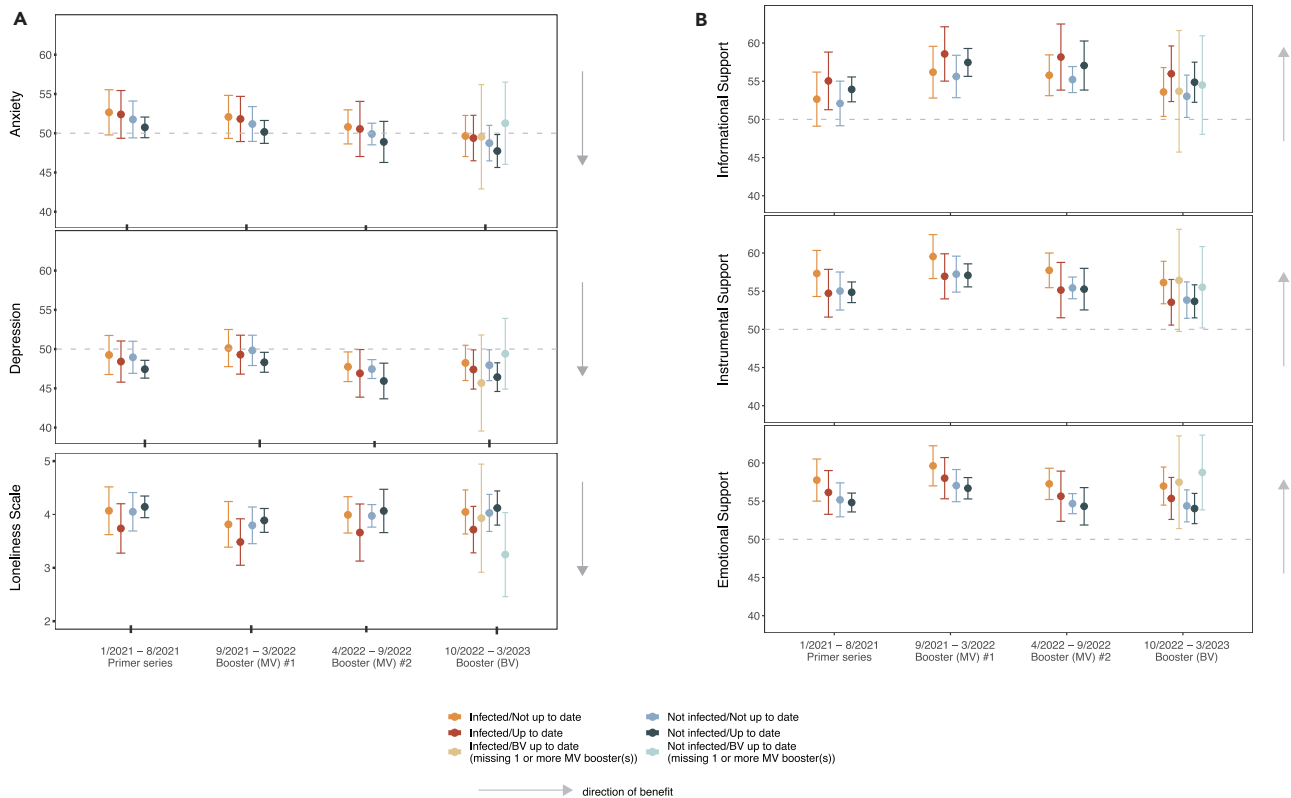
(C) Plot showing cumulative number of patients with cancer who received the primer series (dark blue), 1<sup>st</sup> booster (orange), 2<sup>nd</sup> or more boosters (light blue) and bivalent booster (red) over time by self-reported race and ethnicity (non-Hispanic White, non-Hispanic Black, Hispanic/Latino, Asian, Other) (p-value for difference in vaccine uptake by race and ethnicity: <0.0001 (primer series), <0.0001 (1<sup>st</sup> booster), <0.0001 (2<sup>nd</sup>+ booster), 0.0003 (bivalent booster)).

### Patient-reported outcomes

Self-reported anxiety levels decreased from 50 · 7 (SD = 9 · 4) during the period from Jan–2021 to Aug–2021 to 48 · 1 (SD = 8 · 5) from Oct–2022 to Mar–2023 in all patient groups regardless of their infection and vaccination status ( $p = 0 \cdot 007$ , Figure 3). Social support as measured by its three constructs—informational, instrumental and emotional—also improved over time (Jan–2021 to Aug–2021: mean T-scores = 53 · 9 [SD = 11 · 1], 54 · 7 [SD = 9 · 8], 54 · 9 [SD = 8 · 5] and Sept–2021 to Mar–2022: mean T-scores = 57 · 7 [SD = 10 · 3], 57 · 7 [SD = 8 · 1], 57 · 5 [SD = 7 · 7], respectively). Self-reported loneliness also decreased after the first booster was introduced (Jan–2021 to Aug–2021: 4 · 0 (SD = 1 · 4) and Sept–2021 to Mar–2022: 3 · 8 (SD = 1 · 5),  $p = 0 \cdot 042$ ). However, depression levels remained constant over time.



**Figure 2. Box and whisker plots showing peak IgG (S-RBD) antibody levels after primer ( $n = 404$ ), post-monovalent booster #1 ( $n = 389$ ) and post-monovalent booster #2 ( $n = 203$ ) among patients with cancer by selected clinical and vaccine characteristics**  
 $p$  values less than 0.05 are bolded.



**Figure 3. The profiles of the concentrator with the height of nanopillar is 25 UC, (a) heat flux, and (b) RHF**

Change in six self-reported HR-QOL measures over the course of the pandemic defined by four time periods: (1) Jan-2021 through Aug-2021 when the primer series was recommended/available; (2) Sept-2021 through Mar-2022 when the first monovalent (MV) booster was recommended/available; (3) April-2022 through Sept-2022 when the second MV booster was recommended/available; and (4) Oct-2022 through Mar-2023 when a bivalent booster was recommended/available.

(A) Show scores for anxiety, depression and loneliness; and (B) show scores for informational support, instrumental support and emotional support. Scores for anxiety, depression and support were converted to a T-score, which is used to compare sample scores versus the general population (mean = 50, SD = 10). Higher T-scores correspond to higher levels. For the loneliness scale, scores were summed and ranged from 3 (least) to 9 (most lonely). The arrow depicts the direction of benefit. For each of the four time periods, least-squares means and 95% confidence limits were plotted for patients separately by their infection and vaccination status at that time.

### Predictors of SARS-CoV-2 infection and all-cause mortality

Overall, 40.4% of patients in this patient cohort were infected either prior to (3.5%) or after (33.2%) vaccination including multiple infections. Multiple infections were reported by 19.2% of patients, and 3.7% of patients had infections both prior to and after vaccination. The majority of breakthrough infections were after Dec-2021 when Omicron became the dominant lineage in the county. In multivariable Cox model, B cell treatment (HR = 1.46, 95% CI = 1.17–1.82,  $p = 0.001$ ), ECOG status (HR = 0.69, 95% CI = 0.48–1.00,  $p = 0.0497$ ), and prior covid infection(s) (HR = 3.51, 95% CI = 2.85–4.34,  $p < 0.001$ ) were significant risk factors for infection (Table S1). Hospitalization and ICU admissions for COVID-19 after the emergence of Omicron were less common than before (27.9% v. 85.3% and 5.9% v. 19.2%, respectively).

In multivariable Cox model, increased all-cause mortality was associated with male sex (HR = 1.72, 95% CI = 1.14–2.57,  $p = 0.009$ ), receipt of chemotherapy (HR = 1.76, 95% CI = 1.18–2.63,  $p = 0.006$ ), ECOG status of 2–4 (HR = 2.27, 95% CI = 1.27–4.06,  $p = 0.006$ ) and not receiving a booster dose (HR = 0.61, 95% CI = 0.40–0.94,  $p = 0.024$ , Table 2). By cancer type, receiving a booster dose was significantly associated with reduced mortality in adjusted models for those with hematologic malignancies (HR = 0.48, 95% CI = 0.24–0.94,  $p = 0.032$ ), but not among individuals with solid malignancies (HR = 0.82, 95% CI = 0.45–1.51,  $p = 0.528$ ).

### DISCUSSION

In this cohort study, nearly all patients with cancer who received two or more boosters reached the threshold level indicative of seroconversion. Booster vaccinations did not appear to significantly reduce risk of infection and over 40% of patients in our cohort became infected with SARS-CoV-2 after vaccination, the majority after the emergence of Omicron. However, the likelihood of severe illness and COVID-related



**Table 2. Multivariable model for all-cause mortality among patients with cancer in this cohort**

Predictors	Hazard Ratio		
	Estimate	CI	p
<b>Age at enrollment (ref: &lt;50 years)</b>			
50-69 years old	1.46	0.79–2.68	0.225
70+ years old	1.19	0.61–2.31	0.610
Male (ref: female)	1.72	1.14–2.57	0.009
<b>Race/Ethnicity (ref: Non-Hispanic White)</b>			
Hispanic	0.88	0.51–1.53	0.653
Non-Hispanic Black	0.97	0.47–1.99	0.933
Asian	1.57	0.85–2.90	0.151
Mixed/Other	1.06	0.45–2.47	0.897
<b>Patient Type (ref: Non-metastatic Solid Tumor)</b>			
Hematologic Malignancy	0.93	0.41–2.11	0.865
Metastatic Solid Tumor	1.94	0.97–3.87	0.059
Chemotherapy (ref: none)	1.76	1.18–2.63	0.006
B-cell Treatment (ref: none)	0.95	0.50–1.81	0.882
Immune checkpoint inhibitors (ref: none)	1.07	0.63–1.81	0.807
Targeted Therapy (ref: none)	1.37	0.89–2.11	0.156
Hormonal Therapy (ref: none)	0.79	0.32–1.98	0.619
Stem Cell Transplant (ref: none)	0.82	0.38–1.78	0.618
<b>ECOG (ref: 0 or 1)</b>			
2–4	2.27	1.27–4.06	0.006
At least one booster vaccination (ref: none)	0.61	0.40–0.94	0.024
Any Covid Infection (ref: none)	1.53	1.00–2.35	0.052

death were exceedingly low. There was also a significantly reduced risk of all-cause mortality associated with booster vaccinations after adjustment for known demographic and clinical variables. Despite this evidence of protection, booster uptake was low in this cohort of patients, with 21 · 9% who remain unboosted with either a monovalent or bivalent booster. In particular, vaccine uptake differed significantly by race, ethnicity, and age group, with the lowest uptake among patients who identified as Hispanic or African American and those under age 50. Other studies have also noted disparities in vaccine uptake by race and ethnicity.<sup>24,25</sup>

Booster uptake did not appear to be linked to vaccine hesitancy in this cohort. In our first report early in the pandemic, we observed higher hesitancy related to vaccine safety and adverse events especially among female compared to male patients.<sup>26</sup> Other studies examining vaccine hesitancy among patients with cancer from 2020 to 2021 reported patients were concerned about vaccine safety, adverse effects, and efficacy due to the rapid development and novelty of mRNA vaccines,<sup>27,28</sup> with only 49% of patients reporting that they had discussed vaccination with their oncologist.<sup>28</sup> In this updated report, we show that patients remain concerned about vaccine safety, efficacy and occurrence of adverse events, but this proportion has decreased with time and the availability of booster vaccinations.

The importance of additional booster doses in maintaining immune protection against SARS-CoV-2 has been documented in this cohort and other studies.<sup>18,19,29</sup> Although vaccination is associated with robust serological response in most cancer patients following vaccination, the durability of this response is reduced in cancer patients.<sup>13</sup> Booster vaccinations appears to increase titers beyond levels initially elicited with the primer series, even among patients with initially low or no antibody titers after two vaccine doses in the primer series. Serial boosters may continue to strengthen and help maintain the humoral immune response in the vast majority of patients with cancer under active treatment. Still some patients, including those receiving anti-CD20 therapy, CD19-directed chimeric antigen receptor T cell therapy and ibrutinib,<sup>11,19,30</sup> may require alternative protective measures such as recombinant antibodies or high titer intravenous immunoglobulin.

In addition to the humoral cellular response, we measured the T cell response post-vaccination. While T cell receptor (TCR) response as measured by breadth/depth is influenced by HLA type,<sup>31</sup> the overall trends indicated that TCR response was correlated with humoral response, including for those with hematologic malignancies. Previous studies have shown T cell vaccination responses in 46–88% of patients with solid tumors and 45–75% of patients with hematological cancers.<sup>14,32</sup> In patients with cancer, reduced T cell responses to vaccination have been associated with Bruton tyrosine kinase inhibitors and steroid use.<sup>32,33</sup> Immune checkpoint inhibitors have been found to be associated with increased T cell immunity,<sup>34</sup> although it remains to be seen how other explicitly T cell-involved therapies and

malignancies such as bispecific T cell engagers for hematologic malignancies or T cell lymphomas interact with vaccination. In other studies comparing healthy patients and patients with inflammatory bowel disease (IBD), anti-TNF treatments significantly affected T cell responses while other IBD treatments targeting the immune system (anti-IL-23, steroids) did not.<sup>35–37</sup> Additional factors to consider for T cell immunity in patients with cancer are the effects of exhaustion or cancer-associated T cell anergy,<sup>38</sup> which can prevent existing clones from expanding. This phenomenon is reflected by differential clonal breadth versus depth responses, for instance in hematological cancers, where patients have similar clonal breadth response as solid tumor patients but poor clonal depth, indicating a lack of clonal expansion. In our data, older patients, male patients, and B cell therapy patients all exhibit this same disparity, which is abrogated in all groups after boosters, except in male patients. Thus, while boosters do not appear to significantly increase T cell immunity, they may address differences seen after primer series. Additional functional studies of T cells cancer patients after boosters are needed to better correlate TCR clonal studies with direct functional assays.

We also noted improvement in self-reported anxiety levels in patients in this cohort over the last two years of the pandemic regardless of their vaccine status or infection history. However, depression did not significantly change over time, and remained lower than the average cancer population. The World Health Organization reported that the COVID-19 pandemic triggered a 25% increase in the prevalence of anxiety and depression worldwide.<sup>39</sup> In patients with cancer, previous studies reported heightened anxiety and depression as a result of the uncertainty of the pandemic and associated delays in cancer diagnosis or treatment.<sup>22,23</sup> Patients also expressed fear and worry about the implications of their immunodeficiencies and the negative consequences of contracting COVID-19 infection.<sup>23</sup> Our data would suggest improvement in pandemic-induced anxiety, but further data are needed to confirm this observation.

We further evaluated changes in three types of social support among patients in this cohort: instrumental, emotional, and informational. We observed significant improvement in all three types of social support after the first booster was introduced in Aug–2021, but no substantive changes since that time. We also observed lower levels of loneliness once boosters were introduced compared to early in the pandemic. Other reports highlighted loneliness as a potential concern among immunocompromised patients who were more likely to practice recommended preventive social distancing measures than adults without cancer,<sup>40</sup> leading to increased social isolation.<sup>22</sup> However, in recent years as the COVID-19 shifted from pandemic to endemic, more guidance on vaccination schedules became available in addition to treatment options for illness, and accordingly greater reassurance that has increased social interactions.

In summary, this study provides evidence that booster vaccination improved immune responses and reduced risk of mortality in cancer patients. Additional doses of COVID-19 vaccines are recommended for immunocompromised individuals, but a substantial proportion of patients are not receiving boosters. Avoiding pandemic-fatigue and simplifying an immunization schedule may encourage more patients to keep up-to-date with vaccinations.

### Limitations of the study

Observational studies are subject to potential selection biases, missing data, and other unmeasured confounders. In this cohort study, we did not have complete serological or cellular immune data at all time points. Furthermore, patients who are seropositive would be expected to have a T cell response, but our finding of discordant results could suggest a limitation of the T detect assay. Notably, the percentage of discordance between serologic response and TCR response differed by race and ethnicity, suggesting that perhaps differences in HLA could play a part in this discordance. Ancestral diversity has been noted to be limited in published TCR sequencing studies in another publication.<sup>41,42</sup> Our sample size limitations also precluded analysis of certain subgroups of interest.

### STAR★METHODS

Detailed methods are provided in the online version of this paper and include the following:

- KEY RESOURCES TABLE
- RESOURCE AVAILABILITY
  - Lead contact
  - Materials availability
  - Data and code availability
- EXPERIMENTAL MODEL AND STUDY PARTICIPANT DETAILS
  - Cohort enrollment
  - Clinical data collection
  - Questionnaire data
- METHOD DETAILS
  - SARS-CoV-2 immunoglobulin G antibody testing
  - T-Cell Receptor (TCR) sequencing
- QUANTIFICATION AND STATISTICAL ANALYSIS
  - Statistical analysis

### SUPPLEMENTAL INFORMATION

Supplemental information can be found online at <https://doi.org/10.1016/j.isci.2024.110596>.

## ACKNOWLEDGMENTS

We sincerely appreciate all SeroNet-CORALE participants and study staff. This work was supported by the U.S. National Cancer Institute (U54CA260591) and by the Biobank and Biostatistics Shared Resource of Cedars-Sinai Cancer. We are also grateful to all the front-line healthcare workers in our healthcare system who continues to be dedicated to delivering the highest quality care for all patients.

## AUTHOR CONTRIBUTIONS

J.C.F., A.M., K.R., and N.M. were responsible for the conceptualization. K.R., R.V., J.D., J.G., N.N., A.G. W.T., M.N., J.L., N.M., O.M., R.N., I.M., A.H., A.M., R.P., and R.N. were responsible for patient recruitment. N.N., K.S., W.T., and S.C. were responsible for the sample preparation. S.S. and J.C.F. were responsible for the selection of surveys. S.C., J.C.F., E.K., K.S., T.L., S.M., and O.H. were responsible for the data analysis and data curation. J.C.F., A.M., S.C., N.M., and O.H. were responsible for interpreting findings. J.C.F., K.R., A.M. W.T., N.M., and O.H. were responsible for the overall supervision and funding acquisition. This work was supported by the Biobank and Biostatistics Shared Resources of Cedars-Sinai Cancer (S.C., V.K.R., C.H., W.T., and K.S.) All authors were responsible for reviewing and editing the final manuscript.

## DECLARATION OF INTERESTS

N.M. holds a consultant or advisory role at Amgen, Kite, Epizyme, TG Therapeutics, ADC Therapeutics, and has research funding from Miltenyi, Teva, and Amgen. J.G. holds a consultant or advisory role at EMD Serono; Elsevier; Exelixis; QED Therapeutics; Natera, Basilea, HaliuDx, Eisai, Janssen. O.H. has obtained consulting fees/support meetings/travel/Financial interests in Alkermes, Amgen, Bactonix, Beigene, Bioatla, BMS, Esai, Roche, Genentech, Georgiamune, GigaGen, Grit Bio, GSK, Idera, Immunocore, Incyte, Instilbio, IO Bio, Iovance, Janssen, KSQ, Merck Moderna, Novartis, Obsidian, Pfizer, Regeneron, Sanofi, Seattle Genetics, Tempus, Vial, Zelluna. K.R. holds a consultant or advisory role at Amgen, AstraZeneca, Blueprint, Boehringer Ingelheim, Daiichi Sankyo, EMD Soreno, Genentech, GSK, Janssen, Lilly, Merck KGA, Mirati, Seattle Genetics, Takeda. J.D. holds a consultant or advisory role Kite Pharma and Morphosys. R.V. is on the Speaker's Bureau for: Amgen, Bristol Myers Squibb, Glaxo Smith Klein, Janssen, Karyopharm, and Takeda Pharmaceuticals. A.M. holds a consultant or advisory role at Novartis and Morphosys and has research funding from Amgen and Pfizer.

Received: October 30, 2023

Revised: June 6, 2024

Accepted: July 24, 2024

Published: July 26, 2024

## REFERENCES

- Ribas, A., Sengupta, R., Locke, T., Zaidi, S.K., Campbell, K.M., Carethers, J.M., Jaffee, E.M., Wherry, E.J., Soria, J.C., and D'Souza, G.; AACR COVID-19 and Cancer Task Force (2021). Priority COVID-19 Vaccination for Patients with Cancer while Vaccine Supply Is Limited. *Cancer Discov.* 11, 233–236. <https://doi.org/10.1158/2159-8290.CD-20-1817>.
- Fendler, A., de Vries, E.G.E., GeurtsvanKessel, C.H., Haanen, J.B., Wörmann, B., Turajlic, S., and von Lilienfeld-Toal, M. (2022). COVID-19 vaccines in patients with cancer: immunogenicity, efficacy and safety. *Nat. Rev. Clin. Oncol.* 19, 385–401. <https://doi.org/10.1038/s41571-022-00610-8>.
- Tran, S., Truong, T.H., and Narendran, A. (2021). Evaluation of COVID-19 vaccine response in patients with cancer: An interim analysis. *Eur. J. Cancer* 159, 259–274. <https://doi.org/10.1016/j.ejca.2021.10.013>.
- Hirst, J., Mi, E., Copland, E., Patone, M., Coupland, C., and Hippisley-Cox, J. (2023). Uptake of COVID-19 vaccination in people with blood cancer: Population-level cohort study of 12 million patients in England. *Eur. J. Cancer* 183, 162–170. <https://doi.org/10.1016/j.ejca.2023.02.001>.
- Goldberg, Y., Mandel, M., Bar-On, Y.M., Bodenheimer, O., Freedman, L., Haas, E.J., Milo, R., Alroy-Preis, S., Ash, N., and Huppert, A. (2021). Waning Immunity after the BNT162b2 Vaccine in Israel. *N. Engl. J. Med.* 385, e85. <https://doi.org/10.1056/NEJMOa2114228>.
- Planas, D., Bruel, T., Staropoli, I., Guivel-Benhassine, F., Porrot, F., Maes, P., Grzelak, L., Prot, M., Mougari, S., Planchais, C., et al. (2023). Resistance of Omicron subvariants BA.2.75.2, BA.4.6, and BQ.1.1 to neutralizing antibodies. *Nat. Commun.* 14, 824. <https://doi.org/10.1038/s41467-023-36561-6>.
- Feikin, D.R., Higdon, M.M., Andrews, N., Collie, S., Deloria Knoll, M., Kwong, J.C., Link-Gelles, R., Pilishvili, T., and Patel, M.K. (2023). Assessing COVID-19 vaccine effectiveness against Omicron subvariants: Report from a meeting of the World Health Organization. *Vaccine* 41, 2329–2338. <https://doi.org/10.1016/j.vaccine.2023.02.020>.
- Rottenberg, Y., Grinshpun, A., Ben-Dov, I.Z., Oiknine Djian, E., Wolf, D.G., and Kadouri, L. (2022). Assessment of Response to a Third Dose of the SARS-CoV-2 BNT162b2 mRNA Vaccine in Patients With Solid Tumors Undergoing Active Treatment. *JAMA Oncol.* 8, 300–301. <https://doi.org/10.1001/jamaoncol.2021.6764>.
- Ligumsky, H., Dor, H., Etan, T., Golomb, I., Nikolaevski-Berlin, A., Greenberg, I., Halperin, T., Angel, Y., Henig, O., Spitzer, A., et al. (2022). Immunogenicity and safety of BNT162b2 mRNA vaccine booster in actively treated patients with cancer. *Lancet Oncol.* 23, 193–195. [https://doi.org/10.1016/S1470-2045\(21\)00715-4](https://doi.org/10.1016/S1470-2045(21)00715-4).
- Munro, A.P.S., Janani, L., Cornelius, V., Aley, P.K., Babbage, G., Baxter, D., Bula, M., Cathie, K., Chatterjee, K., Dodd, K., et al. (2021). Safety and immunogenicity of seven COVID-19 vaccines as a third dose (booster) following two doses of ChAdOx1 nCov-19 or BNT162b2 in the UK (COV-BOOST): a blinded, multicentre, randomised, controlled, phase 2 trial. *Lancet* 398, 2258–2276. [https://doi.org/10.1016/S0140-6736\(21\)02717-3](https://doi.org/10.1016/S0140-6736(21)02717-3).
- Debie, Y., Van Audenaerde, J.R.M., Vandamme, T., Croes, L., Teuwen, L.A., Verbruggen, L., Vanhoutte, G., Marcq, E., Verheggen, L., Le Blon, D., et al. (2023). Humoral and Cellular Immune Responses against SARS-CoV-2 after Third Dose BNT162b2 following Double-Dose Vaccination with BNT162b2 versus ChAdOx1 in Patients with Cancer. *Clin. Cancer Res.* 29, 635–646. <https://doi.org/10.1158/1078-0432.CCR-22-2185>.
- Lin, D.Y., Xu, Y., Gu, Y., Zeng, D., Wheeler, B., Young, H., Sunny, S.K., and Moore, Z. (2023). Effectiveness of Bivalent Boosters against Severe Omicron Infection. *N. Engl. J. Med.* 388, 764–766. <https://doi.org/10.1056/NEJMc2215471>.
- Figueiredo, J.C., Merin, N.M., Hamid, O., Choi, S.Y., Lemos, T., Cozen, W., Nguyen, N., Finster, L.J., Foley, J., Darrach, J., et al. (2021). Longitudinal SARS-CoV-2 mRNA Vaccine-Induced Humoral Immune Responses in Patients with Cancer. *Cancer Res.* 81, 6273–6280. <https://doi.org/10.1158/0008-5472.CAN-21-3554>.
- Monin, L., Laing, A.G., Muñoz-Ruiz, M., McKenzie, D.R., Del Molino Del Barrio, I., Alaguthurai, T., Domingo-Vila, C., Hayday,

- T.S., Graham, C., Seow, J., et al. (2021). Safety and immunogenicity of one versus two doses of the COVID-19 vaccine BNT162b2 for patients with cancer: interim analysis of a prospective observational study. *Lancet Oncol.* 22, 765–778. [https://doi.org/10.1016/S1470-2045\(21\)00213-8](https://doi.org/10.1016/S1470-2045(21)00213-8).
15. Goshen-Lago, T., Waldhorn, I., Holland, R., Szwarcwort-Cohen, M., Reiner-Benaim, A., Shachor-Meyouhas, Y., Hussein, K., Fahoum, L., Baruch, M., Peer, A., et al. (2021). Serologic Status and Toxic Effects of the SARS-CoV-2 BNT162b2 Vaccine in Patients Undergoing Treatment for Cancer. *JAMA Oncol.* 7, 1507–1513. <https://doi.org/10.1001/jamaoncol.2021.2675>.
  16. Massarweh, A., Eliakim-Raz, N., Stemmer, A., Levy-Barda, A., Yust-Katz, S., Zer, A., Benouaich-Amiel, A., Ben-Zvi, H., Moskovits, N., Brenner, B., et al. (2021). Evaluation of Seropositivity Following BNT162b2 Messenger RNA Vaccination for SARS-CoV-2 in Patients Undergoing Treatment for Cancer. *JAMA Oncol.* 7, 1133–1140. <https://doi.org/10.1001/jamaoncol.2021.2155>.
  17. Naranbhai, V., Perna, C.A., Gavralidis, A., St Denis, K.J., Lam, E.C., Spring, L.M., Isakoff, S.J., Farmer, J.R., Zubiri, L., Hobbs, G.S., et al. (2022). Immunogenicity and Reactogenicity of SARS-CoV-2 Vaccines in Patients With Cancer: The CANVAX Cohort Study. *J. Clin. Oncol.* 40, 12–23. <https://doi.org/10.1200/JCO.21.01891>.
  18. Valanparambil, R.M., Carlisle, J., Linderman, S.L., Akthar, A., Millett, R.L., Lai, L., Chang, A., McCook-Veal, A.A., Switchenko, J., Nasti, T.H., et al. (2022). Antibody Response to COVID-19 mRNA Vaccine in Patients With Lung Cancer After Primary Immunization and Booster: Reactivity to the SARS-CoV-2 WT Virus and Omicron Variant. *J. Clin. Oncol.* 40, 3808–3816. <https://doi.org/10.1200/JCO.21.02986>.
  19. Haggenburg, S., Hofsink, Q., Lissenberg-Witte, B.I., Broers, A.E.C., van Doesum, J.A., van Binnendijk, R.S., den Hartog, G., Bhoekhan, M.S., Haverkate, N.J.E., Burger, J.A., et al. (2022). Antibody Response in Immunocompromised Patients With Hematologic Cancers Who Received a 3-Dose mRNA-1273 Vaccination Schedule for COVID-19. *JAMA Oncol.* 8, 1477–1483. <https://doi.org/10.1001/jamaoncol.2022.3227>.
  20. Oosting, S.F., van der Veldt, A.A.M., GeurtsvanKessel, C.H., Fehrmann, R.S.N., van Binnendijk, R.S., Dingemans, A.M.C., Smit, E.F., Hiltermann, T.J.N., den Hartog, G., Jalving, M., et al. (2021). mRNA-1273 COVID-19 vaccination in patients receiving chemotherapy, immunotherapy, or chemoimmunotherapy for solid tumours: a prospective, multicentre, non-inferiority trial. *Lancet Oncol.* 22, 1681–1691. [https://doi.org/10.1016/S1470-2045\(21\)00574-X](https://doi.org/10.1016/S1470-2045(21)00574-X).
  21. McKenzie, D.R., Graham, R., Lechmere, T., Domingo-Vila, C., Alaguthurai, T., Arman, C., Pollock, E., Gousis, C., Kakkassery, H., Carpenter, E., et al. (2022). Boosting of Waned Humoral and Cellular Responses to SARS-CoV-2 Variants of Concern Among Patients with Cancer. *Cancer Res. Commun.* 2, 1449–1461. <https://doi.org/10.1158/2767-9764.CRC-22-0298>.
  22. Leach, C.R., Kirkland, E.G., Masters, M., Sloan, K., Rees-Punia, E., Patel, A.V., and Watson, L. (2021). Cancer survivor worries about treatment disruption and detrimental health outcomes due to the COVID-19 pandemic. *J. Psychosoc. Oncol.* 39, 347–365. <https://doi.org/10.1080/07347332.2021.1888184>.
  23. Košir, U., Loades, M., Wild, J., Wiedemann, M., Krajnc, A., Roskar, S., and Bowes, L. (2020). The impact of COVID-19 on the cancer care of adolescents and young adults and their well-being: Results from an online survey conducted in the early stages of the pandemic. *Cancer* 126, 4414–4422. <https://doi.org/10.1002/cncr.33098>.
  24. Na, L., Banks, S., and Wang, P.P. (2023). Racial and ethnic disparities in COVID-19 vaccine uptake: A mediation framework. *Vaccine* 41, 2404–2411. <https://doi.org/10.1016/j.vaccine.2023.02.079>.
  25. Cardona, S., Felipe, N., Fischer, K., Sehgal, N.J., and Schwartz, B.E. (2021). Vaccination Disparity: Quantifying Racial Inequity in COVID-19 Vaccine Administration in Maryland. *J. Urban Health* 98, 464–468. <https://doi.org/10.1007/s11524-021-00551-0>.
  26. Figueiredo, J.C., Ihenacho, U., Merin, N.M., Hamid, O., Darrah, J., Gong, J., Paquette, R., Mita, A.C., Vescio, R., Mehmi, I., et al. (2022). SARS-CoV-2 vaccine uptake, perspectives, and adverse reactions following vaccination in patients with cancer undergoing treatment. *Ann. Oncol.* 33, 109–111. <https://doi.org/10.1016/j.annonc.2021.10.004>.
  27. Marijanović, I., Kraljević, M., Buhovac, T., and Sokolović, E. (2021). Acceptance of COVID-19 Vaccination and Its Associated Factors Among Cancer Patients Attending the Oncology Clinic of University Clinical Hospital Mostar, Bosnia and Herzegovina: A Cross-Sectional Study. *Med Sci Monit* 27, e932788. <https://doi.org/10.12659/MSM.932788>.
  28. Souan, L., Sughayer, M.A., Abu Alhowh, M., Ammar, K., and Bader, S.A. (2022). An update on the impact of SARS-CoV-2 pandemic public awareness on cancer patients' COVID-19 vaccine compliance: Outcomes and recommendations. *Front. Public Health* 10, 923815. <https://doi.org/10.3389/fpubh.2022.923815>.
  29. Gounat, V., Ferré, V.M., Soussi, G., Charpentier, C., Flament, H., Fidouh, N., Collin, G., Namour, C., Assoun, S., Bizot, A., et al. (2022). Efficacy of Severe Acute Respiratory Syndrome Coronavirus-2 Vaccine in Patients With Thoracic Cancer: A Prospective Study Supporting a Third Dose in Patients With Minimal Serologic Response After Two Vaccine Doses. *J. Thorac. Oncol.* 17, 239–251. <https://doi.org/10.1016/j.jtho.2021.10.015>.
  30. Mairhofer, M., Kausche, L., Kaltenbrunner, S., Ghanem, R., Stegemann, M., Klein, K., Pammer, M., Rauscher, I., Salzer, H.J.F., Doppler, S., et al. (2021). Humoral and cellular immune responses in SARS-CoV-2 mRNA-vaccinated patients with cancer. *Cancer Cell* 39, 1171–1172. <https://doi.org/10.1016/j.ccell.2021.08.001>.
  31. Dalai, S.C., Dines, J.N., Snyder, T.M., Gittelman, R.M., Eerkes, T., Vaney, P., Howard, S., Akers, K., Skewis, L., Monteforte, A., et al. (2022). Clinical Validation of a Novel T-Cell Receptor Sequencing Assay for Identification of Recent or Prior Severe Acute Respiratory Syndrome Coronavirus 2 Infection. *Clin. Infect. Dis.* 75, 2079–2087. <https://doi.org/10.1093/cid/ciac353>.
  32. Ehmsen, S., Asmussen, A., Jeppesen, S.S., Nilsson, A.C., Østerlev, S., Vestergaard, H., Justesen, U.S., Johansen, I.S., Frederiksen, H., and Ditzel, H.J. (2021). Antibody and T cell immune responses following mRNA COVID-19 vaccination in patients with cancer. *Cancer Cell* 39, 1034–1036. <https://doi.org/10.1016/j.ccell.2021.07.016>.
  33. Fiorcari, S., Atene, C.G., Maffei, R., Mesini, N., Debbia, G., Colasante, C., Pozzi, S., Barbieri, E., Maccaferri, M., Leonardi, G., et al. (2023). Effects of the BNT162b2 mRNA COVID-19 vaccine in humoral and cellular immunity in patients with chronic lymphocytic leukemia. *Hematol. Oncol.* 41, 120–127. <https://doi.org/10.1002/hon.3077>.
  34. Yatim, N., Boussier, J., Tetu, P., Smith, N., Bruel, T., Charbit, B., Barnabei, L., Corneau, A., Da Meda, L., Allayous, C., et al. (2021). Immune checkpoint inhibitors increase T cell immunity during SARS-CoV-2 infection. *Sci. Adv.* 7, eabg4081. <https://doi.org/10.1126/sciadv.abg4081>.
  35. Li, D., Xu, A., Mengesha, E., Elyanow, R., Gittelman, R.M., Chapman, H., Protko, J.C., Frias, E.C., Stewart, J.L., Pozdnyakova, V., et al. (2022). The T-Cell Response to SARS-CoV-2 Vaccination in Inflammatory Bowel Disease is Augmented with Anti-TNF Therapy. *Inflamm. Bowel Dis.* 28, 1130–1133. <https://doi.org/10.1093/ibd/izac071>.
  36. Xu, A.M., Li, D., Ebinger, J.E., Mengesha, E., Elyanow, R., Gittelman, R.M., Chapman, H., Jung, S., Botwin, G.J., Pozdnyakova, V., et al. (2022). Differences in SARS-CoV-2 Vaccine Response Dynamics Between Class-I and Class-II-Specific T-Cell Receptors in Inflammatory Bowel Disease. *Front. Immunol.* 13, 880190. <https://doi.org/10.3389/fimmu.2022.880190>.
  37. Li, D., Pavlovitch-Bedzyk, A.J., Ebinger, J.E., Khan, A., Hamideh, M., Merchant, A., Figueiredo, J.C., Cheng, S., Davis, M.M., McGovern, D.P.B., et al. (2023). A Paratope-Enhanced Method to Determine Breadth and Depth TCR Clonal Metrics of the Private Human T-Cell Vaccine Response after SARS-CoV-2 Vaccination. *Int. J. Mol. Sci.* 24, 14223. <https://doi.org/10.3390/ijms241814223>.
  38. Schietinger, A., and Greenberg, P.D. (2014). Tolerance and exhaustion: defining mechanisms of T cell dysfunction. *Trends Immunol.* 35, 51–60. <https://doi.org/10.1016/j.it.2013.10.001>.
  39. Organization, W.H. (2022). COVID-19 pandemic triggers 25% increase in prevalence of anxiety and depression worldwide. <https://www.who.int/news/item/02-03-2022-covid-19-pandemic-triggers-25-increase-in-prevalence-of-anxiety-and-depression-worldwide>.
  40. Islam, J.Y., Camacho-Rivera, M., and Vidot, D.C. (2020). Examining COVID-19 Preventive Behaviors among Cancer Survivors in the United States: An Analysis of the COVID-19 Impact Survey. *Cancer Epidemiol. Biomarkers Prev.* 29, 2583–2590. <https://doi.org/10.1158/1055-9965.EPI-20-0801>.
  41. Huang, Y.N., Peng, K., Popejoy, A.B., Hu, J., Nowicki, T.S., Gold, S.M., Quintana-Murci, L., Fuentes-Guajardo, M., Shugart, M., Greiff, V., et al. (2021). Ancestral diversity is limited in published T cell receptor sequencing studies. *Immunity* 54, 2177–2179. <https://doi.org/10.1016/j.immuni.2021.09.015>.
  42. Elyanow, R., Snyder, T.M., Dalai, S.C., Gittelman, R.M., Boonyaratankornkit, J., Wald, A., Selke, S., Wener, M.H., Morishima, C., Greninger, A.L., et al. (2022). T cell receptor sequencing identifies prior SARS-CoV-2 infection and correlates with neutralizing antibodies and disease severity. *JCI Insight* 7, e150070. <https://doi.org/10.1172/jci.insight.150070>.

43. Hahn, E.A., Devellis, R.F., Bode, R.K., Garcia, S.F., Castel, L.D., Eisen, S.V., Bosworth, H.B., Heinemann, A.W., Rothrock, N., and Cella, D.; PROMIS Cooperative Group (2010). Measuring social health in the patient-reported outcomes measurement information system (PROMIS): item bank development and testing. *Qual. Life Res.* **19**, 1035–1044. <https://doi.org/10.1007/s11136-010-9654-0>.
44. Hughes, M.E., Waite, L.J., Hawkey, L.C., and Cacioppo, J.T. (2004). A Short Scale for Measuring Loneliness in Large Surveys: Results From Two Population-Based Studies. *Res. Aging* **26**, 655–672. <https://doi.org/10.1177/0164027504268574>.
45. Luo, Y., Hawkey, L.C., Waite, L.J., and Cacioppo, J.T. (2012). Loneliness, health, and mortality in old age: a national longitudinal study. *Soc. Sci. Med.* **74**, 907–914. <https://doi.org/10.1016/j.socscimed.2011.11.028>.
46. Kristiansen, P.A., Page, M., Bernasconi, V., Mattiuzzo, G., Dull, P., Makar, K., Plotkin, S., and Knezevic, I. (2021). WHO International Standard for anti-SARS-CoV-2 immunoglobulin. *Lancet* **397**, 1347–1348. [https://doi.org/10.1016/S0140-6736\(21\)00527-4](https://doi.org/10.1016/S0140-6736(21)00527-4).
47. Chew, K.L., Tan, S.S., Saw, S., Pajarillaga, A., Zaine, S., Khoo, C., Wang, W., Tambyah, P., Jureen, R., and Sethi, S.K. (2020). Clinical evaluation of serological IgG antibody response on the Abbott Architect for established SARS-CoV-2 infection. *Clin. Microbiol. Infect.* **26**, 1256.e9–1256.e11. <https://doi.org/10.1016/j.cmi.2020.05.036>.
48. SARS-CoV-2 IgG II Quant Assay User Manual (2000 (Abbott Laboratories Diagnostics Division)).
49. Carlson, C.S., Emerson, R.O., Sherwood, A.M., Desmarais, C., Chung, M.W., Parsons, J.M., Steen, M.S., LaMadrid-Herrmannsfeldt, M.A., Williamson, D.W., Livingston, R.J., et al. (2013). Using synthetic templates to design an unbiased multiplex PCR assay. *Nat. Commun.* **4**, 2680. <https://doi.org/10.1038/ncomms3680>.
50. Snyder, T.M., Gittelman, R.M., Klinger, M., May, D.H., Osborne, E.J., Taniguchi, R., Zahid, H.J., Kaplan, I.M., Dines, J.N., Noakes, M.T., et al. (2020). Magnitude and Dynamics of the T-Cell Response to SARS-CoV-2 Infection at Both Individual and Population Levels. Preprint at medRxiv. <https://doi.org/10.1101/2020.07.31.20165647>.

## STAR★METHODS

### KEY RESOURCES TABLE

REAGENT or RESOURCE	SOURCE	IDENTIFIER
<b>Biological samples</b>		
Plasma samples and buffy coat extracted from peripheral blood from 982 patients with cancer	SeroNet-CORALE Cancer Cohort	This paper (Table 1).
<b>Critical commercial assays</b>		
ARCH SARS-COV-2 IgG	Abbott Laboratories, Abbott Park, IL	US Product Number 06R8620
ADVISEDX SARS-COV-2 IgG II	Abbott Laboratories, Abbott Park, IL	US Product Number 06S6020
T cell receptor sequencing	Adaptive Biotechnologies, Seattle, WA	ImmunoSEQ Assay
<b>Deposited data</b>		
Raw dataset	This paper	ImmPort Shared Data <a href="https://www.immport.org/shared/home">https://www.immport.org/shared/home</a>
<b>Software and algorithms</b>		
R (version 4.0.2)	R Foundation for Statistical Computing	<a href="https://www.r-project.org">https://www.r-project.org</a>

## RESOURCE AVAILABILITY

### Lead contact

Further information should be directed to and will be fulfilled by the Lead Contact Jane Figueiredo ([jane.figueiredo@cshs.org](mailto:jane.figueiredo@cshs.org)).

### Materials availability

This study did not generate new unique reagents.

### Data and code availability

- De-identified human/patient standardized data are deposited in ImmPort Shared Data (<https://www.immport.org/shared/home>) and are publicly available as of the date of publication.
- Any additional information required to reanalyze the data reported in this paper is available from the [lead contact](#) upon request.
- This paper does not report original code.

## EXPERIMENTAL MODEL AND STUDY PARTICIPANT DETAILS

### Cohort enrollment

The U.S. National Cancer Institute-funded Serological Sciences Network (SeroNet)-Coronavirus Risk Associations and Longitudinal Evaluation (CORALE)<sup>13,26</sup> study is a longitudinal cohort including cancer patients over age 18 with histologically confirmed solid or hematological malignancies. Patients were recruited in the clinical setting from Nov-3-2020 to Mar-31-2023. Sex, race, ethnicity, and age are provided in Table 1. To focus on cancer patients with altered immunity, we over-sampled patients with B-cell/plasma cell malignancies (B-cell) and any cancer patient receiving immune checkpoint inhibitors (ICI). The study was approved by the institutional review board and all participants provided written informed consent.

### Clinical data collection

Electronic medical records were reviewed to extract clinical data including tumor type (ICD-10 codes) and anti-cancer treatment regimens and timing of administration relative to vaccination. Active anticancer treatment status was defined as any therapy within six months prior to and up to 14 days post-vaccination. For transplant recipients, patients within one year of autologous stem cell transplant or within two years of allogeneic stem cell transplant from vaccination were regarded as under active treatment. SARS-CoV-2 vaccination status, vaccine type and dates of administration were obtained from medical records and linkage to the California Immunization Registry. We use the date of Dec-25-2021 to define the timepoint when the Omicron SARS-CoV-2 lineage became dominant in the local catchment area. Primer vaccination was defined as receiving either one, two or three doses of mRNA vaccine [Pfizer-BioNtech BNT162b2 (BNT) or Moderna/NIH mRNA-1273 (m1273)] within 120 days, or one-dose of the Janssen Ad26.COVS.2 (Ad26). Booster vaccinations were defined as receipt of any type of mRNA vaccine or Ad26 after 120 days the first dose. In August and September 2022, bivalent versions (original and omicron

BA.4/BA.5 variant) of the vaccine from Pfizer and Moderna were authorized for use as booster doses in individuals aged 18 years of age or older in the U.S.

### Questionnaire data

Self-administered questionnaires were sent electronically to patients at the time of enrollment, following vaccinations, 6-month after enrollment and annually thereafter (Figure S2). Surveys included questions regarding medical history, lifestyle, vaccine attitudes and quality of life.

### Vaccine hesitancy

Perspectives and attitudes toward the vaccine were measured using a modified version of the World Health Organization (WHO) Vaccine Hesitancy Scale and Group-Based Medical Mistrust Scale. The resulting instrument had eight questions and participants were asked to indicate how strongly they agreed or disagreed with a statement using a five-point likert scale (Figure S2).

### Patient eported outcomes (PROs)

The Patient-Reported Outcomes Measurement Information System (PROMIS) short form measures were used to assess anxiety, depression, instrumental support, informational support, and emotional support. Items assessing emotional support inquired about whether respondents had a confidante or someone to talk about problems, or someone who made them feel appreciated.<sup>43</sup> Instrumental support items asked whether respondents had someone to help them take care of daily living tasks as needed, such as helping with chores, running errands, helping out when sick, or helping with transportation for medical care.<sup>43</sup> Items on informational support asked about whether respondents had someone who could give advice, provide suggestions, or give helpful information about life decisions.<sup>43</sup> Higher T scores indicated higher perceived depression, anxiety, emotional, instrumental, and informational social support.

### Loneliness

The UCLA 3-Item Loneliness Scale<sup>44</sup> was used to capture how often individuals felt that they “lack companionship”, were “left out”, and “isolated from others.” Responses to all items were averaged to create a composite loneliness score with higher values indicating greater loneliness.<sup>45</sup> This scale has been used in previous longitudinal studies and shows good internal consistency, as well as concurrent and discriminant validity.<sup>44</sup>

### Side effects

A self-administered symptoms questionnaire was given to patients after vaccine administrations (dose 1, 2 and 3) to collect occurrence and severity of injection site pain, headache, fatigue, fever, pain, redness, and/or swelling at the injection site (Figure S3).

## METHOD DETAILS

### SARS-CoV-2 immunoglobulin G antibody testing

Peripheral blood was collected from participants approximately every 3–6 months. Serological testing for antibodies to the receptor binding domain (RBD) of the S1 subunit of the viral spike protein [IgG(S-RBD)] and antibodies targeting the viral nucleocapsid protein (IgG(N)) was performed using the SARS-CoV-2 IgG II and SARS-CoV-2 IgG assays, respectively [Abbott Diagnostics (Illinois, U.S.)]. We present findings using the WHO unit (binding antibody unit per mL [BAU/ml]) based on the mathematical relationship of BAU/ml = 0.142\*AU/ml.<sup>46</sup> The minimal threshold for seroconversion was defined as IgG(S-RBD) = 7.1 BAU/ml.<sup>47</sup> Detectable antibody responses were classified as “low” (7.1–590.72 BAU/ml) and “high” ( $\geq 590.72$  BAU/ml). The 590.72 BAU/ml threshold was shown to correspond to a 0.95 probability of obtaining a PRNT ID50 at a 1:250 dilution and is a representative of a high titer and correlate of neutralization.<sup>48</sup> Values were cutoff at 25,000 AU/ml (3,550 BAU/ml).

### T-Cell Receptor (TCR) sequencing

Sequencing of human TCR $\beta$  chains was performed on DNA extracted from buffy coat specimens using the immunoSEQ Assay (Adaptive Biotechnologies, Seattle, WA). After bias-controlled multiplex PCR and high-throughput sequencing, the absolute abundance of unique TCR $\beta$  CDR3 regions and the corresponding T cell fractions by template count normalization are quantified.<sup>49</sup> SARS-CoV-2 spike or other non-spike SARS-CoV-2 protein specificities for CDR3s are assigned using reference lists generated by Adaptive Biotechnologies, which have been described previously.<sup>31</sup>

The primary metrics used to summarize SARS-CoV-2 TCR results are: T-detect, breadth and depth. T-detect is a binary variable analogous to seropositivity, with a threshold defined by Adaptive Biotechnologies. Clonal breadth is defined as the number of unique annotated rearrangements divided by the total number of unique productive rearrangements in each sample (\*1000 in all figures). Clonal depth is calculated by a formula described previously,<sup>50</sup> which can be interpreted as the relative number of clonal expansion generations across the TCRs, as normalized by the total number of TCRs in the sample (Figure S4).<sup>35</sup>

## QUANTIFICATION AND STATISTICAL ANALYSIS

### Statistical analysis

Time of vaccine uptake was visualized using cumulative incidence curve and compared by age and self-reported race/ethnicity categories using log rank tests. Patient demographic and clinical characteristics were summarized by cancer type (solid v. hematologic) using median and interquartile range (IQR) or mean and standard deviation (SD) for continuous variables and frequencies and percentages for categorical variables. Kruskal-Wallis or Wilcoxon Rank Sum tests were used to compare continuous variables and Chi-squared tests or Fisher's exact tests for categorical variables. Peak quantitative IgG(S-RBD) levels were compared across patients' characteristics using Kruskal-Wallis test at time of priming and boosting separately. Similarly, TCR depth and breadth were compared across patient characteristics at vaccine timepoints. The correlation between IgG levels and TCR depth and breadth were examined by calculating Spearman's rank correlation coefficient.

For PROs, scores were converted to a T-score, which is used to compare sample scores versus the general population (mean = 50, SD = 10). Higher T-scores correspond to higher levels (for example, greater anxiety). For the loneliness scale, scores were summed and ranged from 3 (least) to 9 (most lonely). Mixed models and least-squares means were used to compare constructs over the time course of vaccine recommendations adjusted for infection and status of vaccine uptake.

Primary clinical outcomes of interest were SARS-CoV-2 infection (at any timepoint, [Table S1](#)) and all-cause mortality ([Table 2](#)). Cox models with time dependent covariates were used to examine associations of selected predictors and SARS-CoV-2 infection and all-cause mortality. We focused on the following demographic and clinical predictors: age, sex, race and ethnicity, tumor type, treatment, ECOG status, booster vaccination status and infection status. For all-cause mortality, we excluded individuals who were never vaccinated (76 individuals) and who died within 120 days from the first vaccination (9 individuals).

$p$  value <0.05 was considered statistically significant. Statistical analysis was performed in R, version 4.2.2.