

Lawrence Berkeley National Laboratory

LBL Publications

Title

New physics in the visible final states of $B \rightarrow D(*)\tau\nu$

Permalink

<https://escholarship.org/uc/item/69s3f2d3>

Journal

Journal of High Energy Physics, 2017(1)

ISSN

1126-6708

Authors

Ligeti, Zoltan

Papucci, Michele

Robinson, Dean J

Publication Date

2017

DOI

10.1007/jhep01(2017)083

Peer reviewed

New physics in the visible final states of $B \rightarrow D^{(*)}\tau\nu$

Zoltan Ligeti,^{a,b} Michele Papucci^{a,b} and Dean J. Robinson^{a,b,c}

^a*Ernest Orlando Lawrence Berkeley National Laboratory, University of California, Berkeley, CA, 94720 U.S.A.*

^b*Berkeley Center for Theoretical Physics, Department of Physics, University of California, Berkeley, CA, 94720 U.S.A.*

^c*Physics Department, University of Cincinnati, Cincinnati, OH, 45221 U.S.A.*

E-mail: ligeti@berkeley.edu, mpapucci@lbl.gov, dean.robinson@uc.edu

ABSTRACT: We derive compact expressions for the helicity amplitudes of the many-body $B \rightarrow D^{(*)}(\rightarrow DY)\tau(\rightarrow X\nu)\nu$ decays, specifically for $X = \ell\nu$ or π and $Y = \pi$ or γ . We include contributions from all ten possible new physics four-Fermi operators with arbitrary couplings. Our results capture interference effects in the full phase space of the visible τ and D^* decay products which are missed in analyses that treat the τ or D^* or both as stable. The τ interference effects are sizable, formally of order m_τ/m_B for the standard model, and may be of order unity in the presence of new physics. Treating interference correctly is essential when considering kinematic distributions of the τ or D^* decay products, and when including experimentally unavoidable phase space cuts. Our amplitude-level results also allow for efficient exploration of new physics effects in the fully differential phase space, by enabling experiments to perform such studies on fully simulated Monte Carlo datasets via efficient event reweighing. As an example, we explore a class of new physics interactions that can fit the observed $R(D^{(*)})$ ratios, and show that analyses including more differential kinematic information can provide greater discriminating power for new physics, than single kinematic variables alone.

KEYWORDS: Beyond Standard Model, Heavy Quark Physics

ARXIV EPRINT: [1610.02045](https://arxiv.org/abs/1610.02045)

Contents

1	Introduction	1
2	Construction	3
2.1	Operator basis	3
2.2	Form factors	4
2.3	Helicity angles	6
2.4	Phase space	7
3	Amplitudes	8
3.1	Amplitude factorization and τ spinor basis	8
3.2	$B \rightarrow D\tau\nu_\tau$	10
3.3	$B \rightarrow D^*(\rightarrow D\pi)\tau\nu_\tau$	11
3.4	$\tau \rightarrow \ell\nu_\ell\bar{\nu}_\tau$ and $\tau \rightarrow \pi\bar{\nu}_\tau$	13
4	Applications	13
4.1	Monte Carlo strategy	13
4.2	Univariate versus bivariate analyses	14
5	Summary	19
A	Helicity angle expressions	20
B	$B \rightarrow D^*(\rightarrow D\gamma)\tau\nu_\tau$	22

1 Introduction

Over the past few years, the BaBar [1, 2], Belle [3–5] and LHCb [6] experiments have reported a persistent anomaly in the ratios

$$R(D^{(*)}) \equiv \frac{\Gamma[B \rightarrow D^{(*)}\tau\nu_\tau]}{\Gamma[B \rightarrow D^{(*)}\ell\nu]}, \quad \ell = \mu, e, \quad (1.1)$$

compared to the standard model (SM) expectations. The latter are fairly precise, because heavy quark symmetry [7–9] and data constrain the $B \rightarrow D^{(*)}$ form factors. The world averages for $R(D^{(*)})$ [10] show a tension with the SM at approximately the 4σ level, motivating consideration of possible new physics (NP) contributions to this signal.

Signatures of NP in $B \rightarrow X\tau\nu_\tau$ are of long-standing interest (see e.g. refs. [11–15]), and a large number of recent studies [1–6, 16–42] have examined possible beyond SM (BSM) origins for this anomaly. In many cases NP not only affects the $B \rightarrow D^{(*)}\tau\nu_\tau$ rates compared to SM expectations, but also modifies the differential phase space distributions

of the $B \rightarrow D^{(*)}\tau\nu_\tau$ process. Many studies have examined possible changes in the $q^2 \equiv (p_B - p_{D^{(*)}})^2$ invariant mass distribution, in order to assess the viability of NP models. An advantage of this observable, which is measured to moderate precision [2], is that interference effects arising from decays of the τ and the D^* are absent in $d\Gamma/dq^2$, provided there are no phase space cuts. In this case, one can treat the τ and D^* as stable particles in the $b \rightarrow c\tau\nu_\tau$ decay.

The experimental measurements of $R(D^{(*)})$ and other observables are, however, complicated by several considerations. First, prompt decay of both the τ and D^* means that the τ and D^* themselves are not external states. The non-negligible τ mass opens up significant contributions from both τ spin states, so that the consequent τ interference effects can be formally of order m_τ/m_B in the SM. Moreover, SM–NP interference that is chirally suppressed by m_τ/m_B when treating the τ as stable, can become $\mathcal{O}(1)$ once interference between τ spin states is included. Interference effects among the D^* spin states are typically always $\mathcal{O}(1)$. Second, the presence of multiple neutrinos in the final state reduces the overall number of experimentally accessible observables, preventing full reconstruction of the underlying $B \rightarrow D^{(*)}\tau\nu_\tau$ event. Once the full τ and D^* decay phase space is considered, which contains at least five final-state particles, kinematic observables other than q^2 become available to probe the NP structure, e.g., the charged lepton energy, E_ℓ , or the π – ℓ opening angle. Kinematic distributions of such observables are sensitive to these τ and D^* interference effects, as are their expectation values integrated over the full phase space. Third, experimentally unavoidable phase space cuts, including both missing mass and lepton momentum cuts used to reduce backgrounds, imply that interference effects between the τ and D^* spin states affect all pertinent measurements, including $d\Gamma/dq^2$. The experimental acceptances in the presence of NP may therefore differ from the SM ones used to extract $R(D^{(*)})$.

To properly capture all these effects, one must compute the matrix elements for the full $B \rightarrow D\tau(\rightarrow X\bar{\nu}_\tau)\nu_\tau$ and $B \rightarrow D^*(\rightarrow DY)\tau(\rightarrow X\bar{\nu}_\tau)\nu_\tau$ processes, treating both the τ and D^* as internal states. Computations of the corresponding full matrix elements for the SM only have long been available and implemented in prevalently used Monte Carlo generators, such as `EvtGen` [43, 44]. Computations for various parts of the full processes with NP are also available [22, 45–51], variously omitting the coherent D^* decays and interference effects, the τ decays and interference effects, the NP interference effects with the SM, or combinations thereof. In this work, we present a set of generalized NP helicity amplitudes, i.e., matrix elements carrying explicit quantum numbers and full differential phase space dependence, for the full $B \rightarrow D^{(*)}(\rightarrow DY)\tau(\rightarrow X\bar{\nu}_\tau)\nu_\tau$ processes, in particular for $X = \ell\nu$ or π and $Y = \pi$ or γ . We contemplate NP arising from all possible four-Fermi operators with $\bar{b}c\bar{\nu}\tau$ flavor structure. We include possible CP violating NP, which may introduce additional large interference effects, and right-handed neutrinos, should they be Dirac. (Some of these operators may also be constrained by other flavor-diagonal and flavor-changing processes in the neutrino sector, but the current limits do not significantly constrain the scale of these operators beyond what is probed in $B \rightarrow D^{(*)}\tau\nu_\tau$.) As such, this paper may be considered as an extension of ref. [14] to include all the effects mentioned above.

In practice, experiments measure $R(D^{(*)})$ via a simultaneous fit of the expected signal distribution plus irreducible backgrounds, where the normalizations of various background components are allowed to vary. Including NP contributions in this fit requires estimation of the efficiencies and acceptances for the SM+NP signal via Monte Carlo (MC) simulations. Given the level of accuracy required by the anticipated high luminosity future of both LHCb and Belle II, the MC datasets become impractically large once detector simulations are included. In order to explore and run fits over the full space of BSM scenarios within reasonable timescales, one requires an efficient means to compute event weights, with which the fully simulated MC sample can be reweighted. With judicious choices of spinor phase and basis conventions and phase space coordinates, the helicity amplitudes for the $B \rightarrow D\tau(\rightarrow X\bar{\nu}_\tau)\nu_\tau$ and $B \rightarrow D^*(\rightarrow DY)\tau(\rightarrow X\bar{\nu}_\tau)\nu_\tau$ processes can be expressed explicitly and compactly. Such explicit and compact expressions allow for very efficient computation of the relevant matrix elements required for reweighting the MC samples: the number of terms in the amplitude-level computation scales linearly as $\mathcal{O}(\sum_n m_n)$ for the inclusion of n NP currents, each with m_n internal quantum numbers, compared to $\mathcal{O}((\sum_n m_n)^2)$ for approaches that calculate the matrix element squared directly. A software package implementing these results, for use by experimental collaborations, is under preparation.¹

In section 2 we establish our notation and conventions. After deriving the amplitudes in section 3, we proceed to consider example applications of this efficient computational construction. We construct a MC method in section 4, in which MC data samples are reweighted with matrices of weights. This reweighting need only be performed once per sample, and the result can be used to generate data for any new physics model. Post-reweighting, for any set of NP four-Fermi couplings, the distributions of kinematic observables \mathcal{O}_i in b_i bins can be generated by a smaller set of only $\sum_i b_i$ linear operations. The general problem of reweighting a large MC dataset between different NP theories is thereby reduced to a much smaller set of linear operations. We use this strategy to efficiently generate 1D and 2D distributions in ten kinematic observables, including lepton and pion energies and opening angles, with and without phase space cuts, over a range of NP couplings. To demonstrate the usefulness of efficiently producing multidimensional distributions, we present a sample bivariate analysis that exhibits higher distinguishing power between SM and NP theories, compared to using only single kinematic distributions.

2 Construction

2.1 Operator basis

In addition to the SM four-Fermi interaction, we consider a complete set of four-Fermi NP operators mediating $\bar{b} \rightarrow \bar{c}\tau^+\nu_\tau$ decay, choosing an operator basis

$$\text{Vector:} \quad i2\sqrt{2}V_{cb}G_F\left(\frac{m_W}{\Lambda_V}\right)^2 \left[\bar{b}(\alpha_L^V\gamma^\mu P_L + \alpha_R^V\gamma^\mu P_R)c\right] \left[\bar{\nu}_\tau(\beta_L^V\gamma_\mu P_L + \beta_R^V\gamma_\mu P_R)\tau\right], \tag{2.1a}$$

¹Hammer: Helicity Amplitude Module for Matrix Element Reweighting [52].

$$\text{Scalar:} \quad -i2\sqrt{2}V_{cb}G_F\left(\frac{m_W}{\Lambda_S}\right)^2\left[\bar{b}(\alpha_L^S P_L + \alpha_R^S P_R)c\right]\left[\bar{\nu}_\tau(\beta_L^S P_R + \beta_R^S P_L)\tau\right], \quad (2.1b)$$

$$\begin{aligned} \text{Tensor:} \quad & -i2\sqrt{2}V_{cb}G_F\left(\frac{m_W}{\Lambda_T}\right)^2\left\{\left[\bar{b}(\alpha_R^T\sigma^{\mu\nu}P_R)c\right]\left[\bar{\nu}_\tau(\beta_L^T\sigma_{\mu\nu}P_R)\tau\right]\right. \\ & \left. + \left[\bar{b}(\alpha_L^T\sigma^{\mu\nu}P_L)c\right]\left[\bar{\nu}_\tau(\beta_R^T\sigma_{\mu\nu}P_L)\tau\right]\right\}. \quad (2.1c) \end{aligned}$$

Here we have classified each operator according to the Lorentz structure — scalar, vector, or tensor — of the contracted quark and lepton currents, $\bar{b}\Gamma c$ and $\bar{\nu}_\tau\Gamma\tau$. The CP conjugate operators for $b \rightarrow c\tau^-\bar{\nu}_\tau$ are obtained by complex conjugation. (We are careful to label the tau neutrino in $\bar{b} \rightarrow \bar{c}\tau^+\nu_\tau$ distinctly from the tau antineutrino in $\tau \rightarrow \bar{\nu}_\tau X$, and from the light lepton flavored neutrino for $X = \ell\nu_\ell$. Henceforth we drop all other bars and sign superscripts where the meaning is unambiguous.) We use the convention $\sigma^{\mu\nu} \equiv (i/2)[\gamma^\mu, \gamma^\nu]$.

NP couplings to the quark and lepton currents are denoted by α and β , respectively, normalized to $g_2V_{cb}/\sqrt{2}$ and $g_2/\sqrt{2}$, where g_2 is the SU(2) electroweak coupling and V_{cb} is the usual CKM element, while the scale of the operator is normalized to the W mass, m_W . If one views each operator as a tree-level exchange of a fictitious particle, then α and β correspond to its quark and lepton current couplings, respectively, and $\Lambda_{S,V,T}$ corresponds to the mediator mass. The NP couplings may be complex in general, admitting multiple sources of CP violation. We label the chirality of the leptonic β couplings according to the tau neutrino chirality, in order to easily distinguish between contributions involving left- and right-handed neutrinos, and hence contributions that do or do not interfere with the SM operator. Neglecting neutrino masses, β_L and β_R terms do not interfere. The chirality of the quark couplings $\alpha_{L,R}$ are defined by the chirality of the charm quark. The identity

$$\sigma^{\mu\nu}\gamma^5 \equiv \frac{i}{2}\epsilon^{\mu\nu\rho\sigma}\sigma_{\rho\sigma}, \quad (2.2)$$

with $\epsilon^{0123} = +1$, guarantees the absence of $\alpha_L^T\beta_L^T$ or $\alpha_R^T\beta_R^T$ terms, so that there are only two tensor operators. This yields a total of ten independent four-Fermi NP operators. Neutrino flavor-violating effects are GIM-suppressed and may be neglected. Finally, we assume in this paper that τ decays are described by the SM, supported by the good agreement of SM predictions with τ decay data [53].

2.2 Form factors

Lorentz symmetry ensures that for the $B \rightarrow D^{(*)}$ transitions, the scalar, pseudoscalar, vector, axial vector and tensor currents have one (zero), zero (one), two (one), zero (three) and one (three) independent form factors, respectively. We define

$$q^\mu \equiv p_B^\mu - p_{D^{(*)}}^\mu, \quad (2.3)$$

so that q^2 is the only unfixed Lorentz invariant in the $B \rightarrow D^{(*)}$ decay. Note $m_\tau^2 \leq q^2 \leq (m_B - m_{D^{(*)}})^2$, and that q^μ is equivalently the momentum flowing to the $\tau\nu_\tau$ pair. For

$\bar{B} \rightarrow D$ we adopt the following conventions and definitions for the form factors,

$$\langle D | \bar{c} b | \bar{B} \rangle \equiv f_S(q^2), \quad (2.4a)$$

$$\langle D | \bar{c} \gamma^\mu b | \bar{B} \rangle \equiv f_+(q^2) (p_B + p_D)^\mu + [f_0(q^2) - f_+(q^2)] \frac{m_B^2 - m_D^2}{q^2} q^\mu, \quad (2.4b)$$

$$\langle D | \bar{c} \sigma^{\mu\nu} b | \bar{B} \rangle \equiv i f_T(q^2) [(p_B + p_D)^\mu q^\nu - (p_B + p_D)^\nu q^\mu]. \quad (2.4c)$$

The pseudoscalar and axial vector currents $\langle D | \bar{c} \gamma^5 b | \bar{B} \rangle \equiv 0$ and $\langle D | \bar{c} \gamma^\mu \gamma^5 b | \bar{B} \rangle \equiv 0$, while the axial tensor current $\langle D | \bar{c} \sigma^{\mu\nu} \gamma^5 b | \bar{B} \rangle$ is fixed by the identity (2.2). Under these conventions, at leading order in $\Lambda_{\text{QCD}}/m_{b,c}$, these form factors are

$$f_S(q^2) = \xi(w) \frac{(m_B + m_D)^2 - q^2}{2\sqrt{m_D m_B}}, \quad (2.5a)$$

$$f_+(q^2) = \xi(w) \frac{m_B + m_D}{2\sqrt{m_D m_B}}, \quad (2.5b)$$

$$f_0(q^2) = \xi(w) \frac{(m_B + m_D)^2 - q^2}{2\sqrt{m_D m_B} (m_B + m_D)}, \quad (2.5c)$$

$$f_T(q^2) = \frac{\xi(w)}{2\sqrt{m_D m_B}}, \quad (2.5d)$$

where $\xi(w)$ is the Isgur-Wise function [7, 8]. These relations are understood for the value of the recoil parameter $w \equiv v_B \cdot v_{D^{(*)}} = (m_B^2 + m_{D^{(*)}}^2 - q^2)/(2m_B m_{D^{(*)}})$. Under CP conjugation, the form factors for the conjugate $B \rightarrow \bar{D}$ process are

$$\langle \bar{D} | \bar{b} c | B \rangle = f_S(q^2), \quad (2.6a)$$

$$\langle \bar{D} | \bar{b} \gamma^\mu c | B \rangle = -f_+(q^2) (p_B + p_D)^\mu - [f_0(q^2) - f_+(q^2)] \frac{m_B^2 - m_D^2}{q^2} q^\mu, \quad (2.6b)$$

$$\langle \bar{D} | \bar{b} \sigma^{\mu\nu} c | B \rangle = -i f_T(q^2) [(p_B + p_D)^\mu q^\nu - (p_B + p_D)^\nu q^\mu], \quad (2.6c)$$

noting in particular the sign change for the tensor and vector currents.

Similarly for $\bar{B} \rightarrow D^*$ we define

$$\langle D^* | \bar{c} \gamma^5 b | \bar{B} \rangle \equiv a_0(q^2) \varepsilon^* \cdot p_B, \quad (2.7a)$$

$$\langle D^* | \bar{c} \gamma^\mu b | \bar{B} \rangle \equiv -i g(q^2) \epsilon^{\mu\nu\rho\sigma} \varepsilon_\nu^* (p_B + p_{D^*})_\rho q_\sigma, \quad (2.7b)$$

$$\langle D^* | \bar{c} \gamma^\mu \gamma^5 b | \bar{B} \rangle \equiv \varepsilon^{*\mu} f(q^2) + a_+(q^2) \varepsilon^* \cdot p_B (p_B + p_{D^*})^\mu + a_-(q^2) \varepsilon^* \cdot p_B q^\mu, \quad (2.7c)$$

$$\begin{aligned} \langle D^* | \bar{c} \sigma^{\mu\nu} b | \bar{B} \rangle &\equiv -a_{T_+}(q^2) \epsilon^{\mu\nu\rho\sigma} \varepsilon_\rho^* (p_B + p_{D^*})_\sigma - a_{T_-}(q^2) \epsilon^{\mu\nu\rho\sigma} \varepsilon_\rho^* q_\sigma \\ &\quad - a_{T_0}(q^2) \varepsilon^* \cdot p_B \epsilon^{\mu\nu\rho\sigma} (p_B + p_{D^*})_\rho q_\sigma. \end{aligned} \quad (2.7d)$$

The matrix element of the scalar current vanishes, $\langle D^* | \bar{c} b | \bar{B} \rangle \equiv 0$, while the axial tensor current matrix element $\langle D^* | \bar{c} \sigma^{\mu\nu} \gamma^5 b | \bar{B} \rangle$ is fixed by the identity (2.2). At leading order in

$\Lambda_{\text{QCD}}/m_{b,c}$, these form factors are

$$a_0(q^2) = \xi(w) \sqrt{\frac{m_{D^*}}{m_B}}, \quad (2.8a)$$

$$a_+(q^2) = -a_-(q^2) = -g(q^2) = \frac{\xi(w)}{2\sqrt{m_{D^*}m_B}}, \quad (2.8b)$$

$$f(q^2) = -\xi(w) \frac{(m_B + m_{D^*})^2 - q^2}{2\sqrt{m_{D^*}m_B}}, \quad (2.8c)$$

$$a_{T_{\pm}}(q^2) = \pm \xi(w) \frac{m_B \pm m_{D^*}}{2\sqrt{m_{D^*}m_B}}, \quad (2.8d)$$

$$a_{T_0}(q^2) = 0, \quad (2.8e)$$

Under CP conjugation, the form factors for the conjugate $B \rightarrow \bar{D}^*$ process are

$$\langle \bar{D}^* | \bar{b} \gamma^5 c | B \rangle = a_0(q^2) \varepsilon^* \cdot p_B, \quad (2.9a)$$

$$\langle \bar{D}^* | \bar{b} \gamma^\mu c | B \rangle = ig(q^2) \epsilon^{\mu\nu\rho\sigma} \varepsilon_\nu^*(p_B + p_{D^*})_\rho q_\sigma, \quad (2.9b)$$

$$\langle \bar{D}^* | \bar{b} \gamma^\mu \gamma^5 c | B \rangle = \varepsilon^{*\mu} f(q^2) + a_+(q^2) \varepsilon^* \cdot p_B (p_B + p_{D^*})^\mu + a_-(q^2) \varepsilon^* \cdot p_B q^\mu, \quad (2.9c)$$

$$\begin{aligned} \langle \bar{D}^* | \bar{b} \sigma^{\mu\nu} c | B \rangle &= a_{T_+}(q^2) \epsilon^{\mu\nu\rho\sigma} \varepsilon_\rho^*(p_B + p_{D^*})_\sigma + a_{T_-}(q^2) \epsilon^{\mu\nu\rho\sigma} \varepsilon_\rho^* q_\sigma \\ &\quad + a_{T_0}(q^2) \varepsilon^* \cdot p_B \epsilon^{\mu\nu\rho\sigma} (p_B + p_{D^*})_\rho q_\sigma, \end{aligned} \quad (2.9d)$$

noting that the pseudoscalar and axial currents do not change sign.

2.3 Helicity angles

The helicity amplitudes are most simply expressed in terms of the (θ, ϕ) helicity angles for each vertex of the $B \rightarrow \bar{D}^{(*)}(\rightarrow \bar{D}Y)\tau^+(\rightarrow X\bar{\nu}_\tau)\nu_\tau$ amplitude.² That is, we factorize the phase space of the process into a series of rest frames in the (off-shell) cascade $B \rightarrow D^{(*)}(\rightarrow DY)\bar{W}(\rightarrow \nu_\tau\tau(\rightarrow \bar{\nu}_\tau W(\rightarrow X)))$ and so on. Here, for the purpose of defining helicity angles, we treat the $\tau\nu_\tau$ pair as originating from a fictitious \bar{W} particle in the $B \rightarrow D^{(*)}$ transition, with momentum q^μ . Similarly we define p^μ to be the momentum of the W^* in the τ decay, and $p^2 \in [0, m_\tau^2]$ neglecting the daughter charged lepton's mass. (Hereafter we always label the momenta of massive particles with the base symbol p and those of massless particles with the base symbol k .)

In figure 1 we show schematically the helicity angle definitions for $B \rightarrow D^{(*)}(\rightarrow DY)\bar{W}(\rightarrow \nu_\tau\tau(\rightarrow \bar{\nu}_\tau W(\rightarrow \ell\nu_\ell)))$, with $Y = \pi$ or γ . Explicit expressions for these helicity angles in terms of Lorentz invariant objects are provided in appendix A. The polar θ angles in figure 1 are well-defined rest frame by rest frame. The orientation of the azimuthal ϕ angles is, however, defined with respect to an arbitrary direction in the B rest frame, (θ^*, ϕ^*) , combined with a sequence of parent-daughter frame transformations. As the B is a spin-0 state, the (θ^*, ϕ^*) angles themselves are unphysical, and vanish from all

²Helicity angles and momenta are labelled according to the $\bar{b} \rightarrow \bar{c}$ process. Corresponding definitions for the conjugate process follow by replacing all particle labels with their antiparticles.

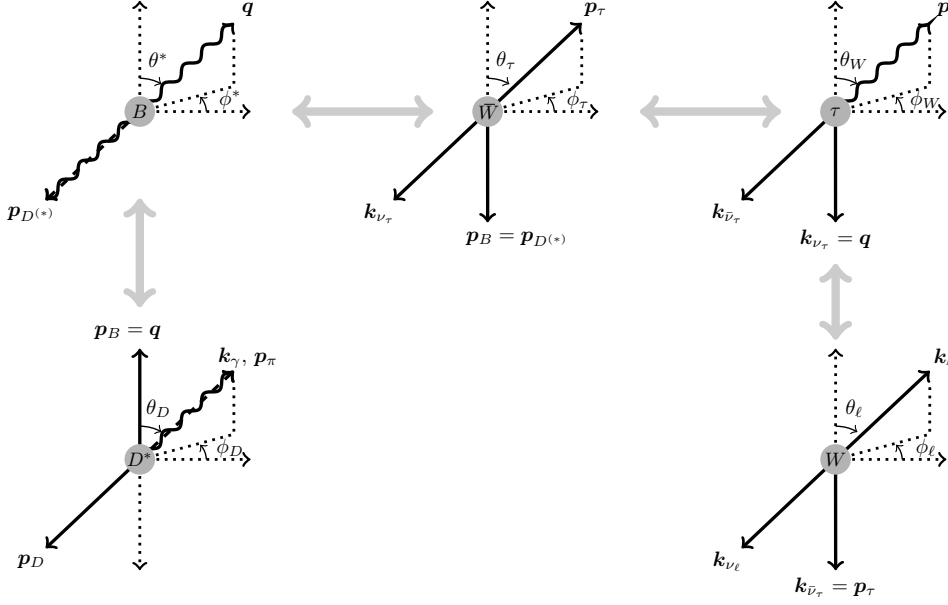


Figure 1. Helicity angle definitions with respect to spatial momenta (bold symbols) in the sequence of particle rest frames. Each subfigure is drawn in the rest frame of the particle denoted in the central grey disk. Transformations between frames are achieved by Euler rotations and Lorentz boosts, denoted by gray arrows (see text for details).

amplitudes, but we nonetheless keep these angles explicit in figure 1. In a parent rest frame with daughter polar coordinates (θ, ϕ) , the parent-daughter frame transformation is defined to be the sequential $z'y'z''$ Euler rotations $R_{z''}(\phi)R_{y'}(-\theta)R_z(-\phi)$, followed by a Lorentz boost along the z'' axis to the daughter frame. These Euler rotations transform to a frame in which the daughter momentum is aligned with the z'' axis, while preserving a line of nodes orthogonal to the plane of the daughter momentum and z axis. These conventions ensure that apart from the polar θ angles, only the relative twist angles $\phi_\tau - \phi_W$, $\phi_\ell - \phi_W$ and $\phi_D - \phi_\tau$ are physical.

2.4 Phase space

The phase space integration limits are $[0, \pi)$ and $[0, 2\pi)$ for each polar and azimuthal helicity angle. In these coordinates, the full phase space measure can be straightforwardly factorized into $B \rightarrow D^{(*)}\tau\nu_\tau$, $\tau \rightarrow X\nu_\tau$ and $D^* \rightarrow D\pi$, $D\gamma$ pieces. These are

$$\begin{aligned}
 d\mathcal{PS}_{B \rightarrow D^{(*)}\tau\nu_\tau} &= \frac{1}{1024\pi^5} \left(1 - \frac{m_\tau^2}{q^2}\right) \frac{|\mathbf{q}^*|}{m_B} d\Omega_\tau d\Omega^* dq^2, \\
 d\mathcal{PS}_{\tau \rightarrow \ell\nu_\ell\nu_\tau} &= \frac{1}{2048\pi^5} \left(1 - \frac{p^2}{m_\tau^2}\right) d\Omega_\ell d\Omega_W dp^2,
 \end{aligned} \tag{2.10}$$

while $d\mathcal{PS}_{\tau \rightarrow \pi\nu_\tau} = (1 - m_\pi^2/m_\tau^2)/(16\pi m_\tau)$, $d\mathcal{PS}_{D^* \rightarrow D\pi} = |\mathbf{p}_\pi^*|/(8\pi m_{D^*}^2)$ and $d\mathcal{PS}_{D^* \rightarrow D\gamma} = [1 - m_D^2/m_{D^*}^2]/(16\pi m_{D^*})$. Here the spatial momentum of the $\tau\nu_\tau$ pair in the B rest frame

and of the pion in the D^* rest frame are, respectively,

$$\begin{aligned}
 |\mathbf{q}^*| &= \frac{m_B}{2} \lambda(m_{D^{(*)}}/m_B, \sqrt{q^2}/m_B), \\
 |\mathbf{p}_\pi^*| &= \frac{m_{D^*}}{2} \lambda(m_D/m_{D^*}, m_\pi/m_{D^*}),
 \end{aligned}
 \tag{2.11}$$

with $\lambda(x, y) \equiv \sqrt{[1 - (x - y)^2][1 - (x + y)^2]}$ the usual phase space factor.

3 Amplitudes

The helicity amplitudes for the full $B \rightarrow D^{(*)}(\rightarrow DY)\tau(\rightarrow X\bar{\nu}_\tau)\nu_\tau$ process carry only quantum numbers of external particles (i.e., not the τ and D^* spins) corresponding to certain convenient basis choices for external spinors and polarization vectors. For $X = \ell\nu_\ell$, these are the spins $s_{\nu_\tau}, s_{\bar{\nu}_\tau}, s_\ell, s_{\nu_\ell} = -, +$ that label the helicity amplitudes below, and also the photon helicity $\kappa = \pm$ in the case of $D^* \rightarrow D\gamma$.

The azimuthal helicity angles arise as phases in the helicity amplitudes. These phases are odd under CP , along with those that occur in the NP α or β couplings. In the remainder of this paper, we shall consider explicit expressions for only the $\bar{b} \rightarrow \bar{c}$ process. Results for the CP conjugate $b \rightarrow c$ process are obtained by conjugation of all these phases, i.e.,

$$\mathcal{A}_{b \rightarrow c}^s(\theta, \phi; \alpha, \beta) = \mathcal{A}_{\bar{b} \rightarrow \bar{c}}^{\bar{s}}(\theta, -\phi; \alpha^*, \beta^*),
 \tag{3.1}$$

where s is the set of quantum numbers of all external states, and \bar{s} the corresponding CP conjugate, obtained by interchanging all spins and helicities with their conjugates.

Since we assume that τ decays are described by the SM, and we can neglect the light charged daughter lepton mass, it is always the case that $s_{\bar{\nu}_\tau} = +, s_\ell = +,$ and $s_{\nu_\ell} = -,$ such that our choice of spinor basis for massless states coincides with the usual helicity basis. We drop these quantum numbers from the amplitude labelling below, with the understanding that all other amplitudes are zero. For the SM, $s_{\nu_\tau} = -$ only. However, in the presence of NP currents involving left- (right-)handed ν_τ , associated with β_L (β_R) couplings, one may further have $s_{\nu_\tau} = -$ ($s_{\nu_\tau} = +$) contributions that do (do not) interfere with the SM.

3.1 Amplitude factorization and τ spinor basis

It is convenient to express the helicity amplitudes factorized into $B \rightarrow D^{(*)}(\rightarrow DY)\tau\nu_\tau$ and $\tau \rightarrow X\bar{\nu}_\tau$ pieces, not only for the sake of presentation, but also in order to enable the $B \rightarrow D^{(*)}(\rightarrow DY)\tau\nu_\tau$ results to be used modularly with respect to different choices of $\tau \rightarrow X\bar{\nu}_\tau$. To obtain the square of the polarized matrix elements, one sums over the internal τ spin, $s_\tau = 1, 2,$ ³ before squaring,

$$|\mathcal{M}|_{B \rightarrow D\tau(\rightarrow X\bar{\nu}_\tau)\nu_\tau}^2 = \sum_{s_{\nu_\tau}, s_{\bar{\nu}_\tau}, s_X, s_Y} \left| \sum_{s_\tau} [\mathcal{A}_{B \rightarrow D\tau\nu_\tau}]_{s_\tau}^{s_{\nu_\tau}} [\mathcal{A}_{\tau \rightarrow X\bar{\nu}_\tau}]_{s_\tau}^{s_{\bar{\nu}_\tau} s_X} \right|^2,
 \tag{3.2}$$

³For a massive fermion, we label spin states by 1 and 2 (see, e.g., p. 48 in ref. [54]).

and similarly for $B \rightarrow D^*(\rightarrow DY)\tau(\rightarrow X\bar{\nu}_\tau)\nu_\tau$. Here s_X (s_Y) is the set of quantum numbers of the X (Y) external state: $s_X = \{s_\ell, s_{\nu_\ell}\}$ for $X = \ell\nu_\ell$, $s_Y = \kappa$ for $Y = \gamma$ and s_X (s_Y) is empty for $X = \pi$ ($Y = \pi$). The fully differential decay rates are then

$$\begin{aligned}
 d\Gamma_{B \rightarrow D\tau(\rightarrow X\bar{\nu}_\tau)\nu_\tau} &= \frac{1}{2m_B} \frac{1}{2m_\tau\Gamma_\tau} |\mathcal{M}|_{B \rightarrow D\tau(\rightarrow X\bar{\nu}_\tau)\nu_\tau}^2 d\mathcal{P}\mathcal{S}_{B \rightarrow D\tau\nu_\tau} d\mathcal{P}\mathcal{S}_{\tau \rightarrow X\bar{\nu}_\tau}, \quad (3.3) \\
 d\Gamma_{B \rightarrow D^*(\rightarrow DY)\tau(\rightarrow X\bar{\nu}_\tau)\nu_\tau} &= \frac{1}{2m_B} \frac{1}{2m_\tau\Gamma_\tau} \frac{1}{2m_{D^*}\Gamma_{D^*}} |\mathcal{M}|_{B \rightarrow D^*(\rightarrow DY)\tau(\rightarrow X\bar{\nu}_\tau)\nu_\tau}^2 \\
 &\quad \times d\mathcal{P}\mathcal{S}_{B \rightarrow D^*\tau\nu_\tau} d\mathcal{P}\mathcal{S}_{\tau \rightarrow X\bar{\nu}_\tau} d\mathcal{P}\mathcal{S}_{D^* \rightarrow DY}, \quad (3.4)
 \end{aligned}$$

where we have included the factorized phase space measures (2.10) as well as τ and D^* propagators, using the narrow width approximation for both states.

In order to permit extension of the results below to any $\tau \rightarrow X\nu_\tau$ decay, we specify here our choice for the τ spinor basis and phase conventions. Calculation of the helicity amplitudes are achieved by decomposing momenta and spinors (or polarizations) of massive states onto a lightcone basis. For the τ , we choose the ν_τ momentum k_{ν_τ} as a null reference momentum. In the τ rest frame, using phase space coordinates as defined in figure 1, the Dirac spinor basis for the τ^+ is

$$\bar{v}^1(p_\tau; k_{\nu_\tau}) = h_1(s_{\nu_\tau})(\sqrt{m_\tau}, 0, 0, -\sqrt{m_\tau}), \quad \bar{v}^2(p_\tau; k_{\nu_\tau}) = h_2(s_{\nu_\tau})(0, \sqrt{m_\tau}, \sqrt{m_\tau}, 0), \quad (3.5)$$

for γ^μ in the Dirac basis and $\gamma^5 = \text{diag}\{-\mathbf{1}_2, \mathbf{1}_2\}$, $P_{R,L} \equiv (1 \pm \gamma^5)/2$. While the factorization (3.2) permits modularity under choices of $\tau \rightarrow X\nu_\tau$, it may also introduce unphysical manifestations of the azimuthal helicity angle ϕ_τ in each amplitude factor, which disappear under summation over s_τ . It is, however, far more computationally efficient to permit only physical phases — the relative azimuthal twist angles — to appear in each helicity amplitude factor. To ensure that ϕ_τ appears only in the physical combinations $\phi_D - \phi_\tau$ and $\phi_\tau - \phi_W$ in the $B \rightarrow D^{(*)}(\rightarrow DY)\tau\nu_\tau$ and $\tau \rightarrow X\nu_\tau$ helicity amplitudes, respectively, we introduced in eq. (3.5) an additional spinor phase function, $h_{s_\tau}(s_{\nu_\tau})$, defined with respect to s_{ν_τ} , such that

$$h_1(-) = 1 = h_2(+), \quad h_1(+)=e^{i\phi_\tau} \quad h_2(-)=e^{-i\phi_\tau}. \quad (3.6)$$

This additional phase factor in the τ^+ spinors is balanced by a cancelling phase factor $e^{\pm i\phi_\tau}$ in the corresponding $B \rightarrow D^{(*)}(\rightarrow DY)\tau\nu_\tau$ amplitudes. We emphasize that this is merely a bookkeeping device, that does not affect the physical phase structure of the full $B \rightarrow D^*(\rightarrow DY)\tau(\rightarrow X\bar{\nu}_\tau)\nu_\tau$ helicity amplitudes. Under this phase convention the $\tau \rightarrow X\bar{\nu}_\tau$ helicity amplitudes therefore carry s_{ν_τ} as a quantum number, even though ν_τ itself is not involved in the τ decay.

The quantum numbers in eq. (3.5) need only be matched with those in each of the $B \rightarrow D^{(*)}(\rightarrow DY)\tau\nu_\tau$ helicity amplitudes below to identify the corresponding τ spinor and phase to be used to compute the τ decay helicity amplitude of interest. We provide below explicit expressions for the $\tau \rightarrow \ell\nu_\ell\bar{\nu}_\tau$ and $\tau \rightarrow \pi\bar{\nu}_\tau$ amplitudes under these conventions.

3.2 $B \rightarrow D\tau\nu_\tau$

Let us now proceed to present the helicity amplitudes. For readability, we group terms by form factors. For $B \rightarrow D\tau\nu_\tau$, the helicity amplitudes $[\mathcal{A}_{B \rightarrow D\tau\nu_\tau}]_{s_\tau}^{s\nu_\tau} \equiv \mathcal{A}_{s_\tau}^{s\nu_\tau}$ are

$$\begin{aligned} \mathcal{A}_1^- = -i2\sqrt{2}V_{cb}G_F\sqrt{q^2 - m_\tau^2} & \left\{ \frac{1}{2}f_S(q^2)(\alpha_L^S + \alpha_R^S)\beta_L^S r_S^2 \right. \\ & + \frac{f_0(q^2)(-m_B^2 + m_D^2)m_\tau(1 + (\alpha_L^V + \alpha_R^V)\beta_L^V r_V^2)}{2q^2} \\ & + \frac{f_+(q^2)m_B m_\tau |\mathbf{q}^*|(1 + (\alpha_L^V + \alpha_R^V)\beta_L^V r_V^2) \cos(\theta_\tau)}{q^2} \\ & \left. - 4f_T(q^2)m_B |\mathbf{q}^*|\alpha_R^T \beta_L^T r_T^2 \cos(\theta_\tau) \right\}, \end{aligned} \quad (3.7a)$$

$$\begin{aligned} \mathcal{A}_2^- = -i2\sqrt{2}V_{cb}G_F\sqrt{q^2 - m_\tau^2} & \left\{ -\frac{f_+(q^2)m_B |\mathbf{q}^*|(1 + (\alpha_L^V + \alpha_R^V)\beta_L^V r_V^2) \sin(\theta_\tau)}{\sqrt{q^2}} \right. \\ & \left. + \frac{4f_T(q^2)m_B m_\tau |\mathbf{q}^*|\alpha_R^T \beta_L^T r_T^2 \sin(\theta_\tau)}{\sqrt{q^2}} \right\}, \end{aligned} \quad (3.7b)$$

$$\begin{aligned} \mathcal{A}_1^+ = -i2\sqrt{2}V_{cb}G_F\sqrt{q^2 - m_\tau^2} & \left\{ -\frac{f_+(q^2)m_B |\mathbf{q}^*|(\alpha_L^V + \alpha_R^V)\beta_R^V r_V^2 \sin(\theta_\tau)}{\sqrt{q^2}} \right. \\ & \left. + \frac{4f_T(q^2)m_B m_\tau |\mathbf{q}^*|\alpha_L^T \beta_R^T r_T^2 \sin(\theta_\tau)}{\sqrt{q^2}} \right\}, \end{aligned} \quad (3.7c)$$

$$\begin{aligned} \mathcal{A}_2^+ = -i2\sqrt{2}V_{cb}G_F\sqrt{q^2 - m_\tau^2} & \left\{ -\frac{1}{2}f_S(q^2)(\alpha_L^S + \alpha_R^S)\beta_R^S r_S^2 \right. \\ & + \frac{f_0(q^2)(m_B^2 - m_D^2)m_\tau(\alpha_L^V + \alpha_R^V)\beta_R^V r_V^2}{2q^2} \\ & - \frac{f_+(q^2)m_B m_\tau |\mathbf{q}^*|(\alpha_L^V + \alpha_R^V)\beta_R^V r_V^2 \cos(\theta_\tau)}{q^2} \\ & \left. + 4f_T(q^2)m_B |\mathbf{q}^*|\alpha_L^T \beta_R^T r_T^2 \cos(\theta_\tau) \right\}, \end{aligned} \quad (3.7d)$$

where $r_{V,S,T} \equiv m_W/\Lambda_{V,S,T}$.

Expressions for the SM helicity amplitudes may be read off taking all α 's or all β 's to zero. These SM results numerically match the output of `EvtGen`. In the SM, only \mathcal{A}_1^- and \mathcal{A}_2^- are non-zero, and contain terms that are all linear or zeroth order in m_τ , respectively. Interference effects arising from decay of the $s_\tau = 1, 2$ spin states to the same final state therefore enter at $\mathcal{O}(m_\tau/m_B)$ in the SM. When treating the τ as stable, interference terms for operators that respectively couple to $\bar{\nu}_{\tau L}\tau_L$ and $\bar{\nu}_{\tau L}\tau_R$, such as the $f_S f_+$ term between the NP scalar and SM vector operators within \mathcal{A}_1^- , are chirally suppressed as expected, entering only at order m_τ/m_B . However, interference between τ spin states can produce $\mathcal{O}(1)$ contributions to these terms, e.g. the $f_S f_+$ interference term between \mathcal{A}_1^- and \mathcal{A}_2^- . Similar conclusions follow for $B \rightarrow D^*\tau\nu_\tau$, below.

3.3 $B \rightarrow D^*(\rightarrow D\pi)\tau\nu_\tau$

The decay $D^* \rightarrow D\pi$ proceeds through the operator $\hat{g}_\pi D^{*\mu}(\pi\partial_\mu D - D\partial_\mu\pi)$, in which \hat{g}_π is the phenomenological coupling

$$\hat{g}_\pi = \left[\frac{6\pi m_{D^*}^2 \Gamma(D^* \rightarrow D\pi)}{|\mathbf{p}_\pi^*|^3} \right]^{1/2}, \quad (3.8)$$

with $\hat{g}_\pi = (m_{D^*}/f_\pi)g_\pi$ in the notation of ref. [9]. We define the functions

$$\Delta_\pm \equiv \sin\theta_D \left[\cos^2\frac{\theta_\tau}{2} e^{-i(\phi_D-\phi_\tau)} \pm \sin^2\frac{\theta_\tau}{2} e^{i(\phi_D-\phi_\tau)} \right], \quad (3.9a)$$

$$\Delta_0 \equiv \cos\theta_D \sin\theta_\tau, \quad (3.9b)$$

$$\Sigma_+ \equiv \cos\theta_D \cos\theta_\tau, \quad (3.9c)$$

$$\Sigma_-^R \equiv \sin\theta_D \sin\theta_\tau \cos(\phi_D - \phi_\tau), \quad (3.9d)$$

$$\Sigma_-^I \equiv \sin\theta_D \sin\theta_\tau \sin(\phi_D - \phi_\tau), \quad (3.9e)$$

$$\Sigma_0 \equiv \cos\theta_D. \quad (3.9f)$$

Under our phase and spinor conventions, the $s_\tau = 2$ ($s_\tau = 1$) helicity amplitudes are linear combinations of the Δ (Σ) functions exclusively. Each set of Δ or Σ functions is $L^2(\mathbb{C})$ orthogonal under integration over the angular phase space $d\Omega_D d\Omega_\tau$. The Δ functions are orthogonal with respect to Σ once one accounts for the additional $e^{\pm i\phi_\tau}$ phase that must occur in the integration measure, in accordance with our τ spinor phase conventions (3.5). (This phase is encoded in the $\tau \rightarrow X\bar{\nu}_\tau$ amplitudes below.) This Δ - Σ orthogonality corresponds to the absence of τ interference effects in the total rate under integration over the full angular phase space, i.e., no angular phase space cuts, as expected.

The helicity amplitudes $[\mathcal{A}_{B \rightarrow D^*(\rightarrow D\pi)\tau\nu_\tau}]_{s_\tau}^{s\nu_\tau} \equiv [\mathcal{A}^\pi]_{s_\tau}^{s\nu_\tau}$ are found to be

$$[\mathcal{A}^\pi]_1^- = -i2\sqrt{2}\hat{g}_\pi V_{cb}G_F |\mathbf{p}_\pi^*| \sqrt{q^2 - m_\tau^2} \left\{ \frac{a_0(q^2)m_B |\mathbf{q}^*| (\alpha_L^S - \alpha_R^S) \beta_L^S r_V^2 \Sigma_0}{m_{D^*}} \right. \quad (3.10a)$$

$$+ f(q^2)m_\tau (1 + (\alpha_L^V - \alpha_R^V)\beta_L^V r_V^2) \left[\frac{(-m_B^2 + m_{D^*}^2 + q^2)\Sigma_+}{2m_{D^*}q^2} + \frac{m_B |\mathbf{q}^*| \Sigma_0}{m_{D^*}q^2} - \frac{\Sigma_-^R}{\sqrt{q^2}} \right]$$

$$+ \frac{2ig(q^2)m_B m_\tau |\mathbf{q}^*| (1 + (\alpha_L^V + \alpha_R^V)\beta_L^V r_V^2)\Sigma_-^I}{\sqrt{q^2}} + \frac{a_-(q^2)m_B m_\tau |\mathbf{q}^*| (1 + (\alpha_L^V - \alpha_R^V)\beta_L^V r_V^2)\Sigma_0}{m_{D^*}}$$

$$- a_+(q^2)m_B m_\tau |\mathbf{q}^*| (1 + (\alpha_L^V - \alpha_R^V)\beta_L^V r_V^2) \left[\frac{2m_B |\mathbf{q}^*| \Sigma_+}{m_{D^*}q^2} + \frac{(-m_B^2 + m_{D^*}^2)\Sigma_0}{m_{D^*}q^2} \right]$$

$$+ \frac{8a_{T_0}(q^2)m_B^2 |\mathbf{q}^*|^2 \alpha_R^T \beta_L^T r_T^2 \Sigma_+}{m_{D^*}} - 2a_{T_-}(q^2)\alpha_R^T \beta_L^T r_T^2 \left[\frac{(-m_B^2 + m_{D^*}^2 + q^2)\Sigma_+}{m_{D^*}} - 2\sqrt{q^2}\Sigma_-^R \right]$$

$$+ 2a_{T_+}(q^2)\alpha_R^T \beta_L^T r_T^2 \left[\frac{(m_B^2 + 3m_{D^*}^2 - q^2)\Sigma_+}{m_{D^*}} + \frac{2(m_B^2 - m_{D^*}^2)\Sigma_-^R}{\sqrt{q^2}} + \frac{4im_B |\mathbf{q}^*| \Sigma_-^I}{\sqrt{q^2}} \right] \left. \right\}$$

$$[\mathcal{A}^\pi]_2^- = -i2\sqrt{2}\hat{g}_\pi V_{cb}G_F |\mathbf{p}_\pi^*| \sqrt{q^2 - m_\tau^2} \left\{ \quad (3.10b)$$

$$+ f(q^2)(-1 + (\alpha_R^V - \alpha_L^V)\beta_L^V r_V^2) \left[\frac{(-m_B^2 + m_{D^*}^2 + q^2)\Delta_0}{2m_{D^*}\sqrt{q^2}} + \Delta_- \right]$$

$$\begin{aligned}
 & -2g(q^2)m_B|\mathbf{q}^*|(1+(\alpha_L^V+\alpha_R^V)\beta_L^V r_V^2)\Delta_+ + \frac{2a_+(q^2)m_B^2|\mathbf{q}^*|^2(1+(\alpha_L^V-\alpha_R^V)\beta_L^V r_V^2)\Delta_0}{m_{D^*}\sqrt{q^2}} \\
 & - \frac{8a_{T_0}(q^2)m_B^2 m_\tau |\mathbf{q}^*|^2 \alpha_R^T \beta_L^T r_T^2 \Delta_0}{m_{D^*}\sqrt{q^2}} + 2a_{T_-}(q^2)m_\tau \alpha_R^T \beta_L^T r_T^2 \left[\frac{(-m_B^2+m_{D^*}^2+q^2)\Delta_0}{m_{D^*}\sqrt{q^2}} + 2\Delta_- \right] \\
 & - 2a_{T_+}(q^2)m_\tau \alpha_R^T \beta_L^T r_T^2 \left[\frac{4m_B|\mathbf{q}^*|\Delta_+}{q^2} + \frac{(m_B^2+3m_{D^*}^2-q^2)\Delta_0}{m_{D^*}\sqrt{q^2}} - \frac{2(m_B^2-m_{D^*}^2)\Delta_-}{q^2} \right] \Big\} \\
 [\mathcal{A}^\pi]_1^+ = & -i2\sqrt{2}\hat{g}_\pi V_{cb} G_F |\mathbf{p}_\pi^*| \sqrt{q^2-m_\tau^2} \left\{ \right. \tag{3.10c}
 \end{aligned}$$

$$\begin{aligned}
 & + f(q^2)(-\alpha_L^V+\alpha_R^V)\beta_R^V r_V^2 \left[\frac{(-m_B^2+m_{D^*}^2+q^2)\Delta_0}{2m_{D^*}\sqrt{q^2}} + \Delta^* \right] \\
 & + 2g(q^2)m_B|\mathbf{q}^*|(\alpha_L^V+\alpha_R^V)\beta_R^V r_V^2 \Delta_+^* + \frac{2a_+(q^2)m_B^2|\mathbf{q}^*|^2(\alpha_L^V-\alpha_R^V)\beta_R^V r_V^2 \Delta_0}{m_{D^*}\sqrt{q^2}} \\
 & + \frac{8a_{T_0}(q^2)m_B^2 m_\tau |\mathbf{q}^*|^2 \alpha_L^T \beta_R^T r_T^2 \Delta_0}{m_{D^*}\sqrt{q^2}} + 2a_{T_-}(q^2)m_\tau \alpha_L^T \beta_R^T r_T^2 \left[\frac{(m_B^2-m_{D^*}^2-q^2)\Delta_0}{m_{D^*}\sqrt{q^2}} - 2\Delta_-^* \right] \\
 & + 2a_{T_+}(q^2)m_\tau \alpha_L^T \beta_R^T r_T^2 \left[\frac{(m_B^2+3m_{D^*}^2-q^2)\Delta_0}{m_{D^*}\sqrt{q^2}} + \frac{4m_B|\mathbf{q}^*|\Delta_+^*}{q^2} - \frac{2(m_B^2-m_{D^*}^2)\Delta_-^*}{q^2} \right] \Big\} \\
 [\mathcal{A}^\pi]_2^+ = & -i2\sqrt{2}\hat{g}_\pi V_{cb} G_F |\mathbf{p}_\pi^*| \sqrt{q^2-m_\tau^2} \left\{ \frac{a_0(q^2)m_B|\mathbf{q}^*|(-\alpha_L^S+\alpha_R^S)\beta_R^S r_S^2 \Sigma_0}{m_{D^*}} \right. \tag{3.10d}
 \end{aligned}$$

$$\begin{aligned}
 & + f(q^2)m_\tau(-\alpha_L^V+\alpha_R^V)\beta_R^V r_V^2 \left[\frac{(-m_B^2+m_{D^*}^2+q^2)\Sigma_+}{2m_{D^*}q^2} + \frac{m_B|\mathbf{q}^*|\Sigma_0}{m_{D^*}q^2} - \frac{\Sigma_-^R}{\sqrt{q^2}} \right] \\
 & - \frac{2ig(q^2)m_B m_\tau |\mathbf{q}^*|(\alpha_L^V+\alpha_R^V)\beta_R^V r_V^2 \Sigma_-^I}{\sqrt{q^2}} + \frac{a_-(q^2)m_B m_\tau |\mathbf{q}^*|(-\alpha_L^V+\alpha_R^V)\beta_R^V r_V^2 \Sigma_0}{m_{D^*}} \\
 & + a_+(q^2)m_B m_\tau |\mathbf{q}^*|(\alpha_L^V-\alpha_R^V)\beta_R^V r_V^2 \left[\frac{2m_B|\mathbf{q}^*|\Sigma_+}{m_{D^*}q^2} + \frac{(-m_B^2+m_{D^*}^2)\Sigma_0}{m_{D^*}q^2} \right] \\
 & + \frac{8a_{T_0}(q^2)m_B^2|\mathbf{q}^*|^2 \alpha_L^T \beta_R^T r_T^2 \Sigma_+}{m_{D^*}} - 2a_{T_-}(q^2)\alpha_L^T \beta_R^T r_T^2 \left[\frac{(-m_B^2+m_{D^*}^2+q^2)\Sigma_+}{m_{D^*}} - 2\sqrt{q^2}\Sigma_-^R \right] \\
 & + 2a_{T_+}(q^2)\alpha_L^T \beta_R^T r_T^2 \left[\frac{(m_B^2+3m_{D^*}^2-q^2)\Sigma_+}{m_{D^*}} + \frac{2(m_B^2-m_{D^*}^2)\Sigma_-^R}{\sqrt{q^2}} - \frac{4im_B|\mathbf{q}^*|\Sigma_-^I}{\sqrt{q^2}} \right] \Big\},
 \end{aligned}$$

where again $r_{V,S,T} \equiv m_W/\Lambda_{V,S,T}$. Expressions for the SM helicity amplitudes may be read off taking all α 's or all β 's to zero. These SM results numerically match the output of **EvtGen**.

Note that orthogonality of the Δ and Σ functions permit us to read off from the amplitudes which square and cross-terms contribute under integration over full angular phase space, and which are absent. For instance, the $f(q^2)g(q^2)$ cross-term integrates to zero. However, in the presence of angular phase space cuts, such terms do contribute. D^* interference terms correspond to cross-terms within or between the Δ or Σ functions that contain orthogonal θ_D or ϕ_D dependence, and are typically $\mathcal{O}(1)$.

The decay $D^{*0} \rightarrow D^+\pi^-$ is kinematically forbidden, opening up a large $D^{*0} \rightarrow D^0\gamma$ branching ratio $\simeq 38\%$. This large branching ratio motivates consideration of the $B \rightarrow (D^* \rightarrow D\gamma)\tau\nu_\tau$ helicity amplitudes, too. We derive these amplitudes in appendix B.

3.4 $\tau \rightarrow \ell\nu_\ell\bar{\nu}_\tau$ and $\tau \rightarrow \pi\bar{\nu}_\tau$

Under the conventions of eq. (3.5), the helicity amplitudes $[\mathcal{A}_{\tau \rightarrow \ell\nu_\ell\bar{\nu}_\tau}]_{s_\tau}^{s_{\nu_\tau}} \equiv [\mathcal{B}^\ell]_{s_\tau}^{s_{\nu_\tau}}$ for $\tau \rightarrow \ell\nu_\ell\bar{\nu}_\tau$ are explicitly

$$[\mathcal{B}^\ell]_1^- = i2\sqrt{2}G_F\sqrt{m_\tau^2 - p^2} \left\{ m_\tau \cos\frac{\theta_W}{2} \sin\theta_\ell + 2e^{i(\phi_\ell - \phi_W)} \sqrt{p^2} \cos^2\frac{\theta_\ell}{2} \sin\frac{\theta_W}{2} \right\}, \quad (3.11a)$$

$$[\mathcal{B}^\ell]_2^- = -i2\sqrt{2}e^{-i(\phi_\tau - \phi_W)} G_F \sqrt{m_\tau^2 - p^2} \left\{ 2e^{i(\phi_\ell - \phi_W)} \sqrt{p^2} \cos^2\frac{\theta_\ell}{2} \cos\frac{\theta_W}{2} - m_\tau \sin\theta_\ell \sin\frac{\theta_W}{2} \right\}, \quad (3.11b)$$

and $[\mathcal{B}^\ell]_{1,2}^+ = e^{i(\phi_\tau - \phi_W)} [\mathcal{B}^\ell]_{1,2}^-$. Note the quantum number, s_{ν_τ} , belonging to the τ neutrino in the parent $B \rightarrow D^{(*)}\tau\nu_\tau$ process, is a consequence of our spinor phase conventions in eq. (3.5), which ensures that ϕ_τ appears only in the physical combination $\phi_\tau - \phi_W$.

For $\tau \rightarrow \pi\bar{\nu}_\tau$, we adopt definitions for the helicity angles by replacing the W with a pion in the τ decay within figure 1, and replacing $(\theta_W, \phi_W) \rightarrow (\theta_\pi, \phi_\pi)$ and $p^\mu \rightarrow p_\pi^\mu$. The helicity amplitudes $[\mathcal{A}_{\tau \rightarrow \pi\bar{\nu}_\tau}]_{s_\tau}^{s_{\nu_\tau}} \equiv [\mathcal{B}^\pi]_{s_\tau}^{s_{\nu_\tau}}$ are found to be

$$[\mathcal{B}^\pi]_1^- = -i2\sqrt{2}G_F f_\pi m_\tau \sqrt{m_\tau^2 - m_\pi^2} \cos\frac{\theta_\pi}{2}, \quad (3.12a)$$

$$[\mathcal{B}^\pi]_2^- = -i2\sqrt{2}G_F f_\pi m_\tau e^{-i(\phi_\tau - \phi_\pi)} \sqrt{m_\tau^2 - m_\pi^2} \sin\frac{\theta_\pi}{2}, \quad (3.12b)$$

and $[\mathcal{B}^\pi]_{1,2}^+ = e^{i(\phi_\tau - \phi_\pi)} [\mathcal{B}^\pi]_{1,2}^-$. Here $f_\pi = 93$ MeV is the pion decay constant.

4 Applications

The computation of the NP helicity amplitudes for $B \rightarrow D^{(*)}(\rightarrow DY)\tau(\rightarrow X\bar{\nu}_\tau)\nu_\tau$ decays permits us to efficiently reweigh large Monte Carlo samples to any theory generated by the NP operators (2.1). We may thereby access the full kinematic structure of the (visible) τ and D^* decay products, and explore the NP effects therein. To illustrate the potential usefulness and NP discrimination power of these results, in this section we provide a first exploration of such NP effects for $B \rightarrow D^*(\rightarrow D\pi)\tau(\rightarrow \ell\nu_\ell\bar{\nu}_\tau)\nu_\tau$, focusing on NP scenarios compatible with the $B \rightarrow D^{(*)}\tau\nu_\tau$ rate [26]. We include effects of q^2 , missing momentum, and lepton energy cuts in this analysis. However, background modelling, detector simulations, or $B \rightarrow D\tau\nu_\tau$ pollution, all of which are required for a realistic analysis, are deferred to a future study [52].

4.1 Monte Carlo strategy

In accordance with the results of section 3, the full $B \rightarrow D^*(\rightarrow D\pi)\tau(\rightarrow \ell\nu_\ell\bar{\nu}_\tau)\nu_\tau$ helicity amplitudes may be expressed in the linear form

$$[\mathcal{M}]_{s_{\bar{\nu}_\tau} s_\ell s_{\nu_\ell}}^{s_{\nu_\tau}} = \vec{v} \cdot [\vec{\mathcal{M}}_v]_{s_{\bar{\nu}_\tau} s_\ell s_{\nu_\ell}}^{s_{\nu_\tau}}, \quad (4.1)$$

where $\vec{\mathcal{M}}_v$ is a *vector of amplitudes* and the 11-dimensional vector \vec{v} is

$$\vec{v} = \left(1, \alpha_R^S \beta_L^S r_S^2, \alpha_R^S \beta_R^S r_S^2, \alpha_L^S \beta_L^S r_S^2, \alpha_L^S \beta_R^S r_S^2, \alpha_R^V \beta_L^V r_V^2, \right. \\ \left. \alpha_R^V \beta_R^V r_V^2, \alpha_L^V \beta_L^V r_V^2, \alpha_L^V \beta_R^V r_V^2, \alpha_R^T \beta_L^T r_T^2, \alpha_L^T \beta_R^T r_T^2 \right). \quad (4.2)$$

The first entry of $\vec{\mathcal{M}}_v$ corresponds to the SM contribution. By construction, $\vec{\mathcal{M}}_v$ is independent of the particular NP model, but depends only on phase space configuration. Our MC strategy is then as follows: (i) A large MC sample of pure phase space weighted events is created; (ii) For each event, the Hermitian matrix of weights $W_v \equiv \vec{\mathcal{M}}_v(\vec{\mathcal{M}}_v)^\dagger$ is computed from the results in section 3; (iii) These matrix weights are then either 1D, 2D or n D histogrammed with respect to a set of kinematic observables \mathcal{O}_i , or alternatively, the matrix weights are collated event-by-event with the observables \mathcal{O}_i ; (iv) After all reweighting, the histograms or weighted event sample corresponding to a particular NP point may be generated by contracting all matrix weights with the desired \vec{v} , i.e., via $\vec{v}^\dagger W_v \vec{v}$.

At present, step (i) is performed with `EvtGen` [43], while steps (ii) and (iii) are executed by our own `Python` code. In this strategy, reweighting of the MC sample into matrix weights, W_v , need be performed only once for any given choice of phase space cuts, while ranging over the multi-dimensional space of NP couplings is reduced to the highly efficient post-reweighting linear operation, $\vec{v}^\dagger W_v \vec{v}$. We therefore just use `Mathematica` for step (iv). The amplitude-level calculation of $\vec{\mathcal{M}}_v$ permits calculation of the 11×11 weight matrix, W_v , with roughly an order of magnitude fewer floating point operations than a direct amplitude-squared calculation, and therefore makes practical the reweighting of large MC samples for multiple cut choices.

We shall consider here an MC sample of 10 million events, reweighted once on the full phase space, and once with application of the phase space cuts, motivated by refs. [2, 3],

$$E_\ell > 400 \text{ MeV}, \quad m_{\text{miss}}^2 > 1.5 \text{ GeV}^2, \quad q^2 > 4 \text{ GeV}^2. \quad (4.3)$$

With three neutrinos in the final state, the remaining visible phase space for $B \rightarrow D^*(\rightarrow D\pi)\tau(\rightarrow \ell\nu_\ell\bar{\nu}_\tau)\nu_\tau$ is parametrized by seven independent parameters. In the B rest frame we compute an overcomplete set of ten observables, including

$$q^2, \quad E_{D^*}, \quad E_D, \quad E_\pi, \quad E_\ell, \quad \cos\theta_{D\pi}, \quad \cos\theta_{\pi\ell}, \quad \cos\theta_{D\ell}, \quad (4.4)$$

where $\cos\theta_{XY}$ is the opening angle between \mathbf{p}_X and \mathbf{p}_Y , as well as the normalized triple product and the missing invariant mass, respectively,

$$V_{D\pi\ell} \equiv \hat{\mathbf{p}}_D \cdot (\hat{\mathbf{p}}_\pi \times \hat{\mathbf{p}}_\ell), \quad \text{and} \quad m_{\text{miss}}^2 \equiv (k_{\nu_\tau} + k_{\bar{\nu}_\tau} + k_{\nu_\ell})^2. \quad (4.5)$$

To generate the $B \rightarrow D^*\tau\nu_\tau$ form factors (2.9), we use the ISGW2 parametrization [55, 56] for $f(q^2)$ as presently implemented in `EvtGen` [43, 44] and obtain the q^2 -dependence of the rest via the leading order HQET relations (2.8).

4.2 Univariate versus bivariate analyses

Various NP scenarios may produce $B \rightarrow D^{(*)}\tau\nu_\tau$ rates commensurate with the central values of current observations. In particular, leptoquark models with couplings

$$\alpha_R^T \beta_L^T r_T^2 = -0.38, \quad \alpha_R^T \beta_L^T r_T^2 = 0.05, \quad \{\alpha_R^T \beta_L^T r_T^2, \alpha_R^S \beta_L^S r_S^2\} = \{-0.04, 0.16\}, \quad (4.6)$$

can reproduce the central values of the observed $B \rightarrow D^{(*)}\tau\nu_\tau$ rates [26]. (In the notation of ref. [26], these values correspond to the Wilson coefficients $C_T = 0.52(\Lambda/1 \text{ TeV})^2$, $C_T = -0.07(\Lambda/1 \text{ TeV})^2$ and $C_{S_L}'' = -0.46(\Lambda/1 \text{ TeV})^2$, respectively.)

In this section, as an example, we focus on the NP model with $g_T \equiv \alpha_R^T \beta_L^T r_T^2 = -0.38$. In figures 2 and 3, we present the differential distributions for each of the ten kinematic observables (4.4)–(4.5) in the full and cut phase space, respectively, generated by ranging over $g_T \in [-0.76, 0]$, i.e., over a range spanning twice the best fit g_T value. We also show the distributions for $g_T = -0.38$ and the SM. While the q^2 distribution itself has some discriminating power between the SM and the NP along the g_T contour, other observables, in particular E_ℓ , $\cos \theta_{D_\ell}$, and $\cos \theta_{\pi\ell}$ may be just as, if not more, discriminating.

To explore this further, in figure 4 we present density plots of the doubly differential decay rates with respect to three pairs of kinematic observables,

$$\frac{1}{\Gamma} \frac{d^2\Gamma}{dq^2 dE_\ell}, \quad \frac{1}{\Gamma} \frac{d^2\Gamma}{dq^2 d\cos\theta_{\pi\ell}}, \quad \text{and} \quad \frac{1}{\Gamma} \frac{d^2\Gamma}{dE_\pi d\cos\theta_{\pi\ell}}, \quad (4.7)$$

for the SM (top row), $g_T = -0.38$ (middle row), and their difference (bottom row). In particular, the density plots for the difference of $d^2\Gamma/dq^2 dE_\ell$ and $d^2\Gamma/dq^2 d\cos\theta_{\pi\ell}$ have non-trivial level contours, suggesting that an analysis using both of these observables may have significantly more SM–NP discrimination power than q^2 or any other single kinematic observable. (A preliminary multivariate study of all ten observables with a boosted decision tree trained to discriminate the SM and the $g_T = -0.38$ model supports this claim [52].)

To roughly quantify the relative discrimination power of single and doubly differential distributions in the q^2 – E_ℓ space, we proceed to divide the MC sample into two bins — a “2-binning” — according to a partitioning in each of the one-dimensional q^2 and E_ℓ distributions as well as in the two-dimensional q^2 – E_ℓ parameter space. We choose these partitionings at intersection points of contours of the SM and $g_T = -0.38$ theories, to maximize their difference in each bin. From figures 2 and 4, this corresponds to 2-binning on either side of

$$q^2 \simeq 7.25 \text{ GeV}^2, \quad E_\ell \simeq 0.9 \text{ GeV}, \quad \text{and} \quad E_\ell \simeq 2.3 \text{ GeV} - 0.21 \text{ GeV}^{-1} q^2. \quad (4.8)$$

The latter partition is shown by a gray dashed line on the q^2 – E_ℓ difference plot in the bottom left panel in figure 4.

For each 2-binning, we define a discriminator,

$$\chi^2 \equiv \sum_{i,j=1,2} (n_i^{\text{H}} - n_i^{\text{T}}) \frac{1}{\sigma_{ij}^2} (n_j^{\text{H}} - n_j^{\text{T}}), \quad (4.9)$$

where $n_{1,2}$ are the two bin entries, T (H) labels the true (hypothesis) theory, and σ^2 is a 2×2 covariance matrix. An approximate covariance matrix for the three 2-binnings is constructed based on the distributions presented in ref. [3], measured in a signal-rich region approximated by the phase space cuts (4.3). We decompose the covariance matrix as

$$\sigma^2 = \sigma_{\text{data}}^2 + \sigma_{\text{bg}}^2 + \sigma_{\text{sys}}^2 + \sigma_{\text{shape}}^2, \quad (4.10)$$

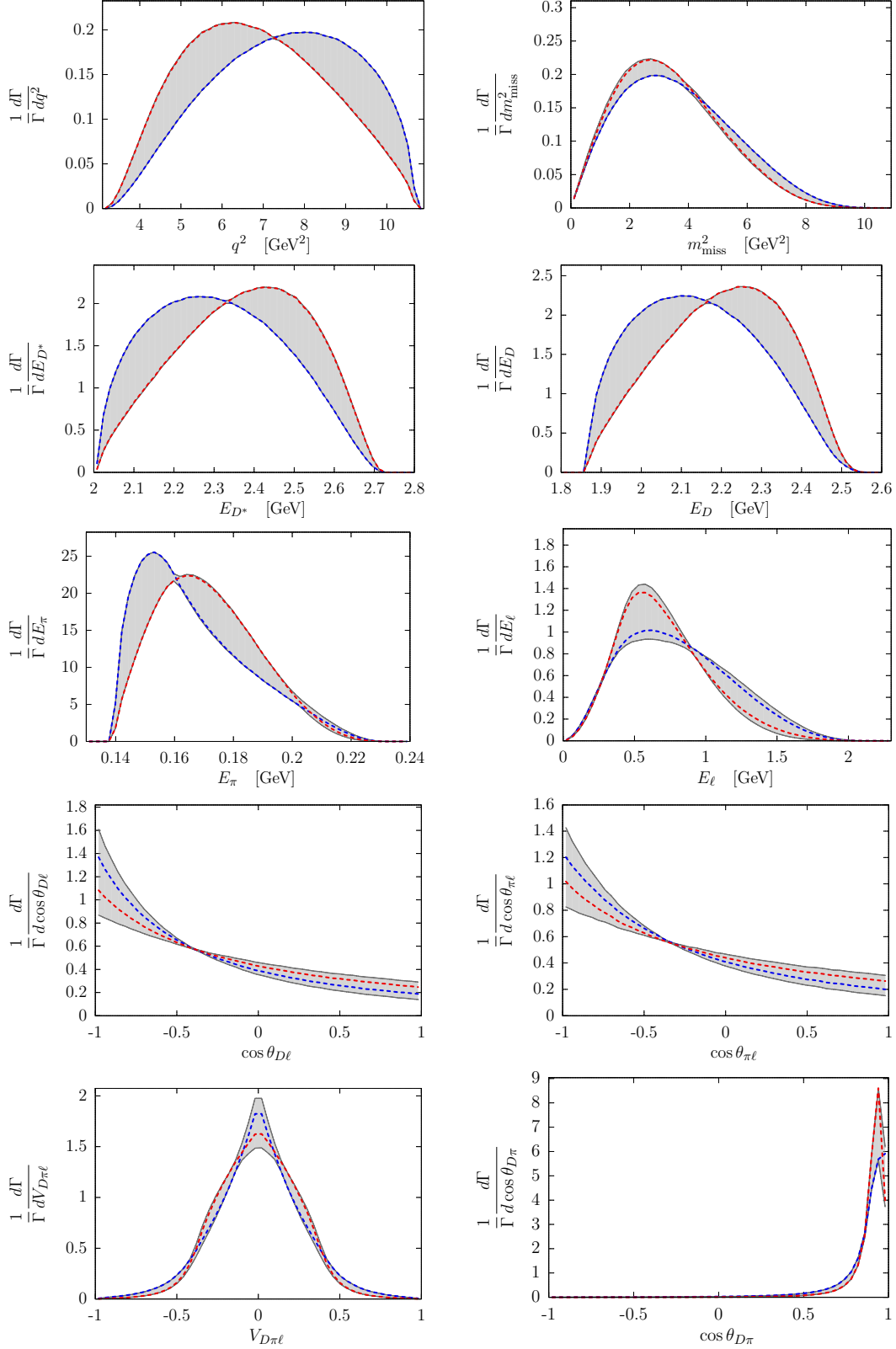


Figure 2. Kinematic distributions in the B rest frame for couplings ranging over $g_T \in [-0.76, 0]$ (gray regions) without phase space cuts. The blue (red) dashed curves show the SM ($g_T = -0.38$).

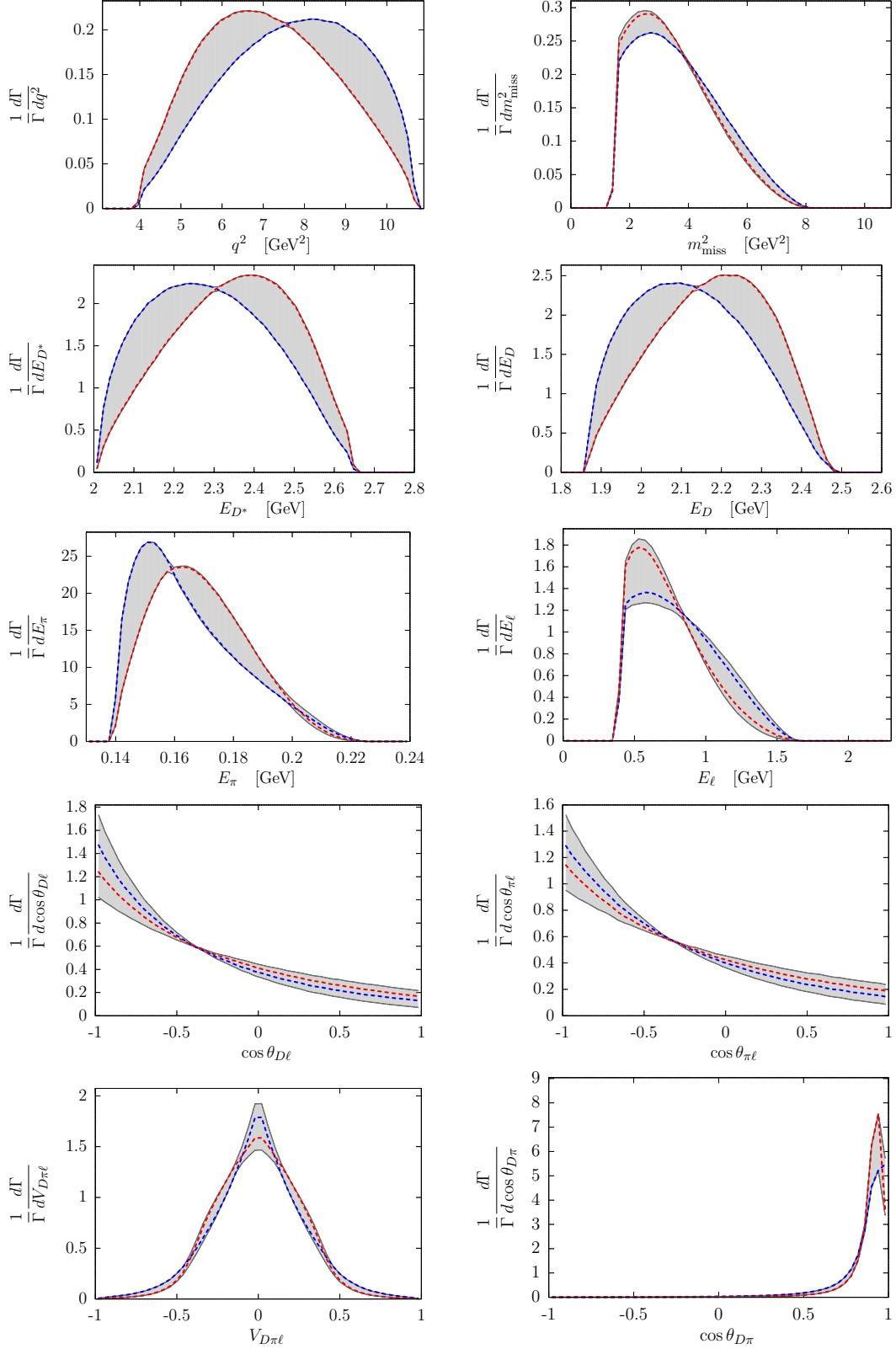


Figure 3. Kinematic distributions in the B rest frame for couplings ranging over $g_T \in [-0.76, 0]$ (gray regions) with phase space cuts (4.3). The blue (red) dashed curves show the SM ($g_T = -0.38$).

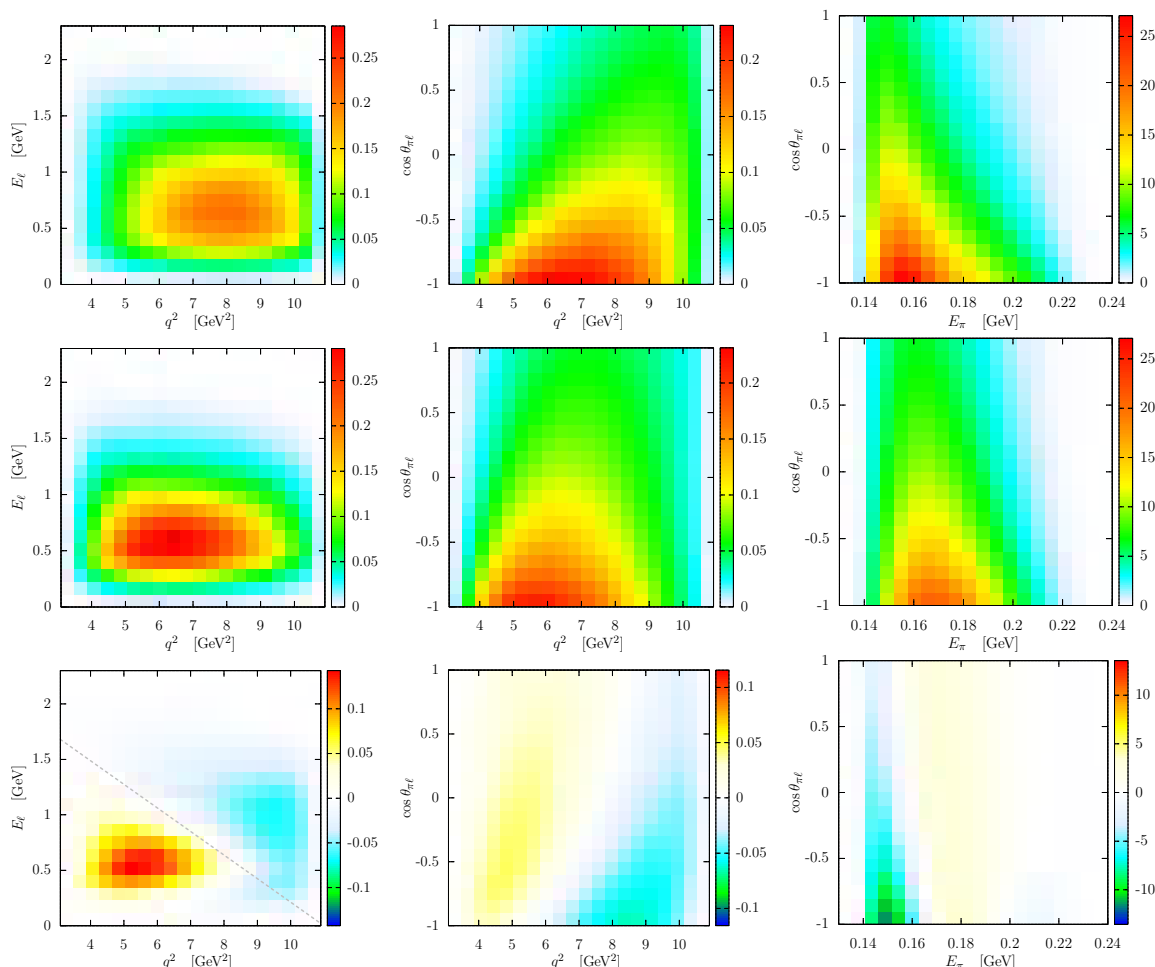


Figure 4. Density contours of $(1/\Gamma)d^2\Gamma/dx dy$ for three pairs of kinematic observables, for the SM (top row), $g_T = -0.38$ (middle row) and their difference (bottom row).

where we have suppressed the indices. The first term, σ_{data}^2 , corresponds to the Poisson error of the measured data in each bin, while σ_{bg}^2 corresponds to the error in the normalizations of the main background components, mainly the D^{**} backgrounds, which are fixed by data in different kinematic regions. Both terms therefore scale with the square root of the luminosity. Rescaling statistics to a initial benchmark luminosity of 5 ab^{-1} at Belle II implies $\sigma_{\text{data}} \simeq 10\%$ and $\sigma_{\text{bg}} \simeq 14\%$. While σ_{data} is uncorrelated by construction, we assume σ_{bg} is purely an error in overall normalization, and therefore fully correlated between the two bins. By looking at the systematic error breakdown in ref. [3], we divide the systematic components into a fully correlated systematic error σ_{sys} and a component σ_{shape} coming from D^{**} background shape variations of unknown correlation between the two bins. We conservatively assume that systematic errors remain the same in the future, therefore setting $\sigma_{\text{sys}} \sim 4\%$ and $\sigma_{\text{shape}} \sim 3\%$. We emphasize that translation of the χ^2 values, obtained from this approximate covariance matrix (4.10), into statistical confidence levels requires a more comprehensive treatment of backgrounds and their correlations than attempted here, beyond the scope of the present work. However, the relative size of χ^2 val-

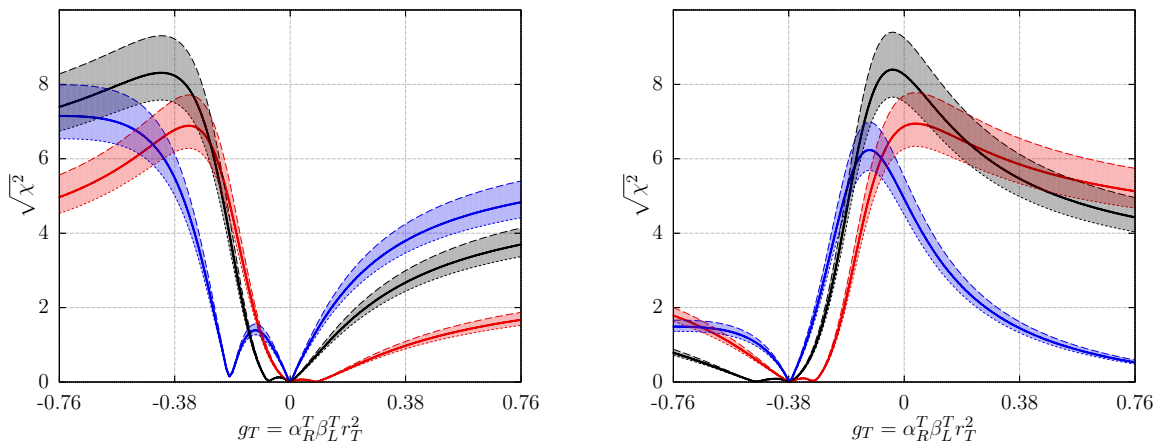


Figure 5. Approximate χ^2 bands, ranging over arbitrary systematic σ_{shape} (anti)correlations, for 2-binning in q^2 (red), E_ℓ (blue) and q^2-E_ℓ (black), according to the partitionings in eq. (4.8), for the true theory being the SM (left) and $g_T = -0.38$ (right). The phase space cuts in eq. (4.3) are applied, and statistics is rescaled to a future 5 ab^{-1} luminosity. Also shown for each 2-binning are contours for uncorrelated (solid), fully correlated (dashed) and fully anticorrelated (dotted) σ_{shape} . These χ^2 values are not statistical confidence levels; see text for details.

ues for different 2-binnings is less sensitive to background correlation effects, and therefore can be thought of as a proxy for the ratio of the actual χ^2 statistics.

As an example, we now suppose either the SM or the $g_T = -0.38$ model to be the true theory, and consider the space of hypotheses $g_T = [-0.76, 0.76]$. In figure 5 we show corresponding χ^2 bands for both theories, generated by ranging over arbitrary correlation for σ_{shape} , with phase space cuts (4.3). We see in figure 5 that the two-dimensional 2-binning for the SM ($g_T = -0.38$) true theory excludes the $g_T = -0.38$ (SM) hypothesis with greater confidence than either of the single observable 2-binnings alone. However, for g_T hypothesis ranges closer to the true theory values, the lepton energy E_ℓ 2-binning has greater distinguishing power. An optimized discrimination of these theories using a multivariate analysis will be studied elsewhere.

5 Summary

In this paper we have derived explicit and compact expressions for the $1 \rightarrow 4, 5$ and 6 body helicity amplitudes for $B \rightarrow D^{(*)}(\rightarrow DY)\tau(\rightarrow X\bar{\nu}_\tau)\nu_\tau$, with $Y = \pi$ or γ and $X = \ell\nu_\ell$ or π , including arbitrary NP contributions from the maximal set of ten four-Fermi operators. These results properly account for interference effects in the full phase space of the τ and D^* decay products. The former are formally $\mathcal{O}(m_\tau/m_B)$ in the SM, but can be $\mathcal{O}(1)$ in the presence of new physics, and the latter are typically $\mathcal{O}(1)$. While these effects are included in *EvtGen* for the SM, they are missing from previous NP analyses. This amplitude-level calculation also permits efficient computation of the event weights themselves, which in turn permits efficient reweighting of the large fully simulated MC datasets required for the high statistics analyses at Belle II and LHCb.

As an example, we have presented a preliminary exploration of kinematical effects in the phase space of $B \rightarrow D^{(*)}(\rightarrow D\pi)\tau(\rightarrow \ell\nu_\ell\bar{\nu}_\tau)\nu_\tau$ for a class of theories with a NP anti-symmetric tensor current. Our amplitude-level calculation makes it feasible to efficiently compute an event ‘weight matrix’ in the space of NP couplings, so that reweighting of the MC dataset need be performed only once per data sample. In this way, not only single but also multidimensional distributions can be rapidly computed for any NP theory. We find that bivariate analyses can exhibit greater discriminating power of the SM versus NP models.

Directions for future study include computing the analogous helicity amplitudes for $B \rightarrow D^{**}\tau\nu_\tau$ using recent form factor results [57], in order to examine the interference effects from the τ and D^{**} decays. One might also extend the bivariate analysis to consider the hadronic $\tau \rightarrow \pi\nu$ mode, given recent results using single kinematic variables [5]. Employment of a boosted decision tree to perform a complete multivariate analysis of the full phase space is also planned. A comprehensive treatment of backgrounds and detector effects will permit estimation of the corresponding statistical confidence levels and future NP exclusion limits achievable with such multivariate analyses at current and upcoming experiments. A software package, **Hammer** [52], is under development, which can be incorporated into existing software pipelines that account for these background and detector effects.

Acknowledgments

We thank Florian Bernlochner and Stephan Duell for helpful conversations and collaboration on **Hammer**, and Aneesh Manohar for comments on the manuscript. We thank the Aspen Center for Physics, supported by the NSF Grant No. PHY-1066293, for hospitality while parts of this work were completed. This work was supported in part by the Office of Science, Office of High Energy Physics, of the U.S. Department of Energy under contract DE-AC02-05CH11231, and by the National Science Foundation under grant No. PHY-1002399. This research used resources of the National Energy Research Scientific Computing Center, which is supported by the Office of Science of the U.S. Department of Energy under Contract No. DE-AC02-05CH11231. DR acknowledges support from the University of Cincinnati.

A Helicity angle expressions

In this appendix we provide expressions for the physical helicity angles in terms of Lorentz invariant combinations of particle momenta. The polar angles $\theta_{D,\tau,W,\ell} \in [0, \pi)$, so we need specify only the cosine of these angles,

$$\cos \theta_\tau = \frac{E_W^*}{|\mathbf{q}^*| k_{\nu_\tau} \cdot q p_B \cdot q} \left[p_B \cdot q k_{t\bar{n}} \cdot q - q^2 p_B \cdot k_{\nu_\tau} \right], \tag{A.1a}$$

$$\cos \theta_W = \frac{p_\tau \cdot k_{\bar{\nu}_\tau} p_\tau \cdot k_{\nu_\tau} - m_\tau^2 k_{\nu_\tau} \cdot k_{\bar{\nu}_\tau}}{p_\tau \cdot k_{\bar{\nu}_\tau} p_\tau \cdot k_{\nu_\tau}}, \tag{A.1b}$$

$$\cos \theta_\ell = \frac{2(k_\ell - k_{\nu_\ell}) \cdot k_{\bar{\nu}_\tau}}{m_\tau^2 - p_\ell^2}, \tag{A.1c}$$

and for $B \rightarrow D^* \tau \nu_\tau$ processes

$$\cos \theta_D \Big|_{D^* \rightarrow D\pi} = \frac{E_\pi^* (E_{D^*}^* E_W^* + |\mathbf{q}^*|^2) - m_{D^*} p_\pi \cdot q}{m_B |\mathbf{p}_\pi^*| |\mathbf{q}^*|}, \quad (\text{A.2a})$$

$$\cos \theta_D \Big|_{D^* \rightarrow D\gamma} = \frac{k_\gamma \cdot p_D p_{D^*} \cdot q - m_{D^*}^2 k_\gamma \cdot q}{m_B |\mathbf{q}^*| k_\gamma \cdot p_D}. \quad (\text{A.2b})$$

Note that $\cos \theta_W$ is defined with p dependence implicit, so that for $\tau \rightarrow \pi \bar{\nu}_\tau$ one need only replace $\theta_W \rightarrow \theta_\pi$ in eq. (A.1). In these expressions, the B rest frame energies

$$E_W^* = \frac{m_B^2 - m_{D^*}^2 + q^2}{2m_B}, \quad E_{D^*}^* = \frac{m_B^2 - q^2 + m_{D^*}^2}{2m_B}, \quad (\text{A.3})$$

and the D^* rest frame energy $E_\pi^* = (m_{D^*}^2 - m_D^2 + m_\pi^2)/2m_{D^*}$.

For the azimuthal angles, only the combinations $\phi_\tau - \phi_W$, $\phi_W - \phi_\ell$ and $\phi_D - \phi_\tau$ appear in the helicity amplitudes. We therefore provide direct expressions for the sine and cosine of these relative twist angles, rather than for the azimuthal helicity angles themselves. To keep expressions short, we express these twist angles iteratively in terms of trigonometric functions of the polar helicity angles.

$$\sin(\phi_\tau - \phi_W) = -\frac{\sqrt{q^2} \tan^2[\theta_W/2] \epsilon^{p_B p_{D^*} k_{\nu_\tau} k_{\bar{\nu}_\tau}}}{m_B m_\tau |\mathbf{q}^*| \sin \theta_\tau k_{\nu_\tau} \cdot k_{\bar{\nu}_\tau}}, \quad (\text{A.4a})$$

$$\begin{aligned} \cos(\phi_\tau - \phi_W) &= \frac{\sqrt{q^2} \csc \theta_\tau \csc \theta_W}{m_B m_\tau |\mathbf{q}^*| p_\tau \cdot k_{\bar{\nu}_\tau} p_\tau \cdot k_{\nu_\tau}} \left\{ p_\tau \cdot k_{\nu_\tau} [m_\tau^2 p_B \cdot k_{\bar{\nu}_\tau} - p_B \cdot p_\tau p_\tau \cdot k_{\bar{\nu}_\tau}] \right. \\ &\quad \left. - \cos \theta_W p_\tau \cdot k_{\bar{\nu}_\tau} [m_\tau^2 p_B \cdot k_{\nu_\tau} - p_B \cdot p_\tau p_\tau \cdot k_{\nu_\tau}] \right\}, \end{aligned} \quad (\text{A.4b})$$

$$\sin(\phi_\ell - \phi_W) = \frac{2 \tan[\theta_W/2] \epsilon^{k_\ell k_{\nu_\ell} k_{\nu_\tau} k_{\bar{\nu}_\tau}}}{m_\tau \sqrt{p^2} \sin \theta_\ell k_{\nu_\tau} \cdot k_{\bar{\nu}_\tau}}, \quad (\text{A.4c})$$

$$\begin{aligned} \cos(\phi_\ell - \phi_W) &= \frac{\csc \theta_\ell \csc \theta_W}{m_\tau \sqrt{p^2} p_\tau \cdot k_{\nu_\tau}} \left\{ m_\tau^2 [2 k_{\nu_\ell} \cdot k_{\nu_\tau} + (\cos \theta_\ell \cos \theta_W - 1) p_\tau \cdot k_{\nu_\tau}] \right. \\ &\quad \left. + (1 - \cos \theta_W)(1 + \cos \theta_\ell) p_\tau \cdot k_{\nu_\tau} p_\tau \cdot k_{\bar{\nu}_\tau} \right\}, \end{aligned} \quad (\text{A.4d})$$

with $\epsilon^{0123} = +1$, and for $B \rightarrow D^* \tau \nu_\tau$ processes

$$\sin(\phi_D - \phi_\tau) \Big|_{D^* \rightarrow D\pi} = \frac{\sqrt{q^2} \csc \theta_D \csc \theta_\tau \epsilon^{p_B p_D p_\pi k_{\nu_\tau}}}{m_B |\mathbf{p}_\pi^*| |\mathbf{q}^*| p_\tau \cdot k_{\nu_\tau}}, \quad (\text{A.5a})$$

$$\sin(\phi_D - \phi_\tau) \Big|_{D^* \rightarrow D\gamma} = \frac{m_{D^*} \sqrt{q^2} \csc \theta_D \csc \theta_\tau \epsilon^{p_B p_D k_\gamma k_{\nu_\tau}}}{m_B |\mathbf{q}^*| k_\gamma \cdot p_D p_\tau \cdot k_{\nu_\tau}}, \quad (\text{A.5b})$$

$$\begin{aligned} \cos(\phi_D - \phi_\tau) \Big|_{D^* \rightarrow D\pi} &= -\frac{\csc \theta_D \csc \theta_\tau}{m_{D^*} |\mathbf{p}_\pi^*| \sqrt{q^2} k_{\nu_\tau} \cdot q} \left\{ E_\pi^* [q^2 p_B \cdot k_{\nu_\tau} - q \cdot k_{\nu_\tau} p_B \cdot q] \right. \\ &\quad \left. + m_{D^*} [q \cdot k_{\nu_\tau} p_\pi \cdot q - q^2 p_\pi \cdot k_{\nu_\tau}] + |\mathbf{p}_\pi^*| \cos \theta_D \cos \theta_\tau p_{D^*} \cdot q k_{\nu_\tau} \cdot q \right\}, \end{aligned} \quad (\text{A.5c})$$

$$\begin{aligned}
 \cos(\phi_D - \phi_\tau) \Big|_{D^* \rightarrow D\gamma} &= \frac{\csc \theta_D \csc \theta_\tau}{m_{D^*} \sqrt{q^2} q \cdot k_{\nu_\tau} p_D \cdot k_\gamma} \left\{ m_{D^*}^2 [q^2 k_\gamma \cdot k_{\nu_\tau} - q \cdot k_\gamma q \cdot k_{\nu_\tau}] \right. \\
 &\quad + k_\gamma \cdot p_D q \cdot k_{\nu_\tau} \left[p_B \cdot q (1 + \cos \theta_D \cos \theta_\tau) \right. \\
 &\quad \left. \left. - (m_B^2 - m_{D^*}^2) \cos \theta_D \cos \theta_\tau \right] - q^2 p_B \cdot k_{\nu_\tau} k_\gamma \cdot p_D \right\}. \quad (\text{A.5d})
 \end{aligned}$$

B $B \rightarrow D^*(\rightarrow D\gamma)\tau\nu_\tau$

For $B \rightarrow D^*(\rightarrow D\gamma)\tau\nu_\tau$, the helicity amplitudes $[\mathcal{A}_{B \rightarrow D^*(\rightarrow D\gamma)\tau\nu_\tau}]_{s_\tau}^{\kappa s \nu_\tau} \equiv [\mathcal{A}^\gamma]_{s_\tau}^{\kappa s \nu_\tau}$ obey a parity relation

$$[\mathcal{A}^\gamma]_{s_\tau}^{\pm s \nu_\tau}(\theta_D) = [\mathcal{A}^\gamma]_{s_\tau}^{\mp s \nu_\tau}(\theta_D + \pi). \quad (\text{B.1})$$

Hence, one need only explicitly express half of the helicity amplitudes.

The decay $D^* \rightarrow D\gamma$ proceeds via the operator $(e\mu_a/4)\epsilon^{\mu\nu\rho\sigma}(\partial_\mu D_\nu^* - \partial_\nu D_\mu^*)F_{\rho\sigma}D$, in which, following the notation of ref. [9], μ_a is a magnetic moment such that

$$e\mu_a = \left[12\pi\Gamma(D^* \rightarrow D\gamma) \frac{8m_{D^*}^3}{(m_{D^*}^2 - m_D^2)^3} \right]^{1/2}. \quad (\text{B.2})$$

We define the functions

$$\Omega_\pm \equiv \sin^2 \frac{\theta_D}{2} \cos^2 \frac{\theta_\tau}{2} e^{-i(\phi_D - \phi_\tau)} \pm \cos^2 \frac{\theta_D}{2} \sin^2 \frac{\theta_\tau}{2} e^{i(\phi_D - \phi_\tau)}, \quad (\text{B.3a})$$

$$\Omega_0 \equiv \sin \theta_D \sin \theta_\tau, \quad (\text{B.3b})$$

$$\Xi_\pm \equiv \sin \theta_\tau \left[\cos^2 \frac{\theta_D}{2} e^{i(\phi_D - \phi_\tau)} \pm \sin^2 \frac{\theta_D}{2} e^{-i(\phi_D - \phi_\tau)} \right], \quad (\text{B.3c})$$

$$\Xi_0 \equiv \sin \theta_D \cos \theta_\tau, \quad (\text{B.3d})$$

$$\Xi_D \equiv \sin \theta_D. \quad (\text{B.3e})$$

The Ω and Ξ functions play the same role as Δ and Σ in the $D^* \rightarrow D\pi$ mode above. That is, the $s_\tau = 2$ ($s_\tau = 1$) helicity amplitudes are linear combinations of the Ω (Ξ) functions exclusively. Each set of Ω and Ξ functions is $L^2(\mathbb{C})$ orthogonal under integration over the angular phase space $d\Omega_D d\Omega_\tau$, while the Ω functions are orthogonal with respect to Σ with the inclusion of an additional $e^{\pm i\phi_\tau}$ phase in the integration measure, in accordance with our τ spinor phase conventions (3.5). One finds

$$\begin{aligned}
 [\mathcal{A}^\gamma]_1^{+-} &= -2iV_{cb}e\mu_a G_F(m_{D^*}^2 - m_D^2) \sqrt{q^2 - m_\tau^2} \left\{ \right. \\
 &\quad + \frac{ia_0(q^2)m_B|\mathbf{q}^*|(-\alpha_L^S + \alpha_R^S)\beta_L^S r_S^2 \Xi_D}{4m_{D^*}} \\
 &\quad + if(q^2)m_\tau(-1 + (\alpha_R^V - \alpha_L^V)\beta_L^V r_V^2) \left[\frac{(-m_B^2 + m_{D^*}^2 + q^2)\Xi_0}{8m_{D^*}q^2} + \frac{m_B|\mathbf{q}^*|\Xi_D}{4m_{D^*}q^2} + \frac{\Xi_-}{4\sqrt{q^2}} \right] \\
 &\quad \left. + \frac{ig(q^2)m_B m_\tau |\mathbf{q}^*|(1 + (\alpha_L^V + \alpha_R^V)\beta_L^V r_V^2)\Xi_+}{2\sqrt{q^2}} - \frac{ia_-(q^2)m_B m_\tau |\mathbf{q}^*|(1 + (\alpha_L^V - \alpha_R^V)\beta_L^V r_V^2)\Xi_D}{4m_{D^*}} \right\} \quad (\text{B.4a})
 \end{aligned}$$

$$\begin{aligned}
 & +ia_+(q^2)m_B m_\tau |\mathbf{q}^*| (1 + (\alpha_L^V - \alpha_R^V)\beta_L^V r_V^2) \left[\frac{m_B |\mathbf{q}^*| \Xi_0}{2m_{D^*} q^2} + \frac{(-m_B^2 + m_{D^*}^2)\Xi_D}{4m_{D^*} q^2} \right] \\
 & - \frac{2ia_{T_0}(q^2)m_B^2 |\mathbf{q}^*|^2 \alpha_R^T \beta_L^T r_T^2 \Xi_0}{m_{D^*}} + ia_{T_-}(q^2)\alpha_R^T \beta_L^T r_T^2 \left[\frac{(-m_B^2 + m_{D^*}^2 + q^2)\Xi_0}{2m_{D^*}} + \sqrt{q^2}\Xi_- \right] \\
 & + ia_{T_+}(q^2)\alpha_R^T \beta_L^T r_T^2 \left[\frac{2m_B |\mathbf{q}^*| \Xi_+}{\sqrt{q^2}} - \frac{(m_B^2 + 3m_{D^*}^2 - q^2)\Xi_0}{2m_{D^*}} + \frac{(m_B^2 - m_{D^*}^2)\Xi_-}{\sqrt{q^2}} \right] \Big\}
 \end{aligned}$$

$$[\mathcal{A}^\gamma]_2^{\pm -} = -2iV_{cb}e\mu_a G_F(m_{D^*}^2 - m_D^2)\sqrt{q^2 - m_\tau^2} \Big\{ \tag{B.4b}$$

$$\begin{aligned}
 & -if(q^2)(-1 + (\alpha_R^V - \alpha_L^V)\beta_L^V r_V^2) \left[\frac{\Omega_+}{2} + \frac{(-m_B^2 + m_{D^*}^2 + q^2)\Omega_0}{8m_{D^*}\sqrt{q^2}} \right] \\
 & + ig(q^2)m_B |\mathbf{q}^*| (1 + (\alpha_L^V + \alpha_R^V)\beta_L^V r_V^2)\Omega_- - \frac{ia_+(q^2)m_B^2 |\mathbf{q}^*|^2 (1 + (\alpha_L^V - \alpha_R^V)\beta_L^V r_V^2)\Omega_0}{2m_{D^*}\sqrt{q^2}} \\
 & + \frac{2ia_{T_0}(q^2)m_B^2 m_\tau |\mathbf{q}^*|^2 \alpha_R^T \beta_L^T r_T^2 \Omega_0}{m_{D^*}\sqrt{q^2}} - ia_{T_-}(q^2)m_\tau \alpha_R^T \beta_L^T r_T^2 \left[2\Omega_+ + \frac{(-m_B^2 + m_{D^*}^2 + q^2)\Omega_0}{2m_{D^*}\sqrt{q^2}} \right] \\
 & + ia_{T_+}(q^2)m_\tau \alpha_R^T \beta_L^T r_T^2 \left[-\frac{2(m_B^2 - m_{D^*}^2)\Omega_+}{q^2} + \frac{(m_B^2 + 3m_{D^*}^2 - q^2)\Omega_0}{2m_{D^*}\sqrt{q^2}} + \frac{4m_B |\mathbf{q}^*| \Omega_-}{q^2} \right] \Big\}
 \end{aligned}$$

$$[\mathcal{A}^\gamma]_1^{+ +} = -2iV_{cb}e\mu_a G_F(m_{D^*}^2 - m_D^2)\sqrt{q^2 - m_\tau^2} \Big\{ \tag{B.4c}$$

$$\begin{aligned}
 & +if(q^2)(-\alpha_L^V + \alpha_R^V)\beta_R^V r_V^2 \left[\frac{(-m_B^2 + m_{D^*}^2 + q^2)\Omega_0}{8m_{D^*}\sqrt{q^2}} + \frac{\Omega_+^*}{2} \right] \\
 & + ig(q^2)m_B |\mathbf{q}^*| (\alpha_L^V + \alpha_R^V)\beta_R^V r_V^2 \Omega_-^* + \frac{ia_+(q^2)m_B^2 |\mathbf{q}^*|^2 (\alpha_L^V - \alpha_R^V)\beta_R^V r_V^2 \Omega_0}{2m_{D^*}\sqrt{q^2}} \\
 & + \frac{2ia_{T_0}(q^2)m_B^2 m_\tau |\mathbf{q}^*|^2 \alpha_L^T \beta_R^T r_T^2 \Omega_0}{m_{D^*}\sqrt{q^2}} - ia_{T_-}(q^2)m_\tau \alpha_L^T \beta_R^T r_T^2 \left[\frac{(-m_B^2 + m_{D^*}^2 + q^2)\Omega_0}{2m_{D^*}\sqrt{q^2}} + 2\Omega_+^* \right] \\
 & + ia_{T_+}(q^2)m_\tau \alpha_L^T \beta_R^T r_T^2 \left[\frac{(m_B^2 + 3m_{D^*}^2 - q^2)\Omega_0}{2m_{D^*}\sqrt{q^2}} - \frac{2(m_B^2 - m_{D^*}^2)\Omega_+^*}{q^2} + \frac{4m_B |\mathbf{q}^*| \Omega_-^*}{q^2} \right] \Big\}
 \end{aligned}$$

$$[\mathcal{A}^\gamma]_2^{- +} = -2iV_{cb}e\mu_a G_F(m_{D^*}^2 - m_D^2)\sqrt{q^2 - m_\tau^2} \Big\{ \tag{B.4d}$$

$$\begin{aligned}
 & + \frac{ia_0(q^2)m_B |\mathbf{q}^*| (-\alpha_L^S + \alpha_R^S)\beta_R^S r_S^2 \Xi_D}{4m_{D^*}} \\
 & + if(q^2)m_\tau (-\alpha_L^V + \alpha_R^V)\beta_R^V r_V^2 \left[\frac{(-m_B^2 + m_{D^*}^2 + q^2)\Xi_0}{8m_{D^*} q^2} + \frac{m_B |\mathbf{q}^*| \Xi_D}{4m_{D^*} q^2} + \frac{\Xi_-^*}{4\sqrt{q^2}} \right] \\
 & - \frac{ig(q^2)m_B m_\tau |\mathbf{q}^*| (\alpha_L^V + \alpha_R^V)\beta_R^V r_V^2 \Xi_+^*}{2\sqrt{q^2}} + \frac{ia_-(q^2)m_B m_\tau |\mathbf{q}^*| (-\alpha_L^V + \alpha_R^V)\beta_R^V r_V^2 \Xi_D}{4m_{D^*}} \\
 & + ia_+(q^2)m_B m_\tau |\mathbf{q}^*| (\alpha_L^V - \alpha_R^V)\beta_R^V r_V^2 \left[\frac{m_B |\mathbf{q}^*| \Xi_0}{2m_{D^*} q^2} + \frac{(-m_B^2 + m_{D^*}^2)\Xi_D}{4m_{D^*} q^2} \right] \\
 & + \frac{2ia_{T_0}(q^2)m_B^2 |\mathbf{q}^*|^2 \alpha_L^T \beta_R^T r_T^2 \Xi_0}{m_{D^*}} - ia_{T_-}(q^2)\alpha_L^T \beta_R^T r_T^2 \left[\frac{(-m_B^2 + m_{D^*}^2 + q^2)\Xi_0}{2m_{D^*}} + \sqrt{q^2}\Xi_-^* \right] \\
 & + ia_{T_+}(q^2)\alpha_L^T \beta_R^T r_T^2 \left[\frac{(m_B^2 + 3m_{D^*}^2 - q^2)\Xi_0}{2m_{D^*}} - \frac{2m_B |\mathbf{q}^*| \Xi_+^*}{\sqrt{q^2}} + \frac{(-m_B^2 + m_{D^*}^2)\Xi_-^*}{\sqrt{q^2}} \right] \Big\},
 \end{aligned}$$

with $r_{V,S,T} \equiv m_W/\Lambda_{V,S,T}$. The four remaining helicity amplitudes $[\mathcal{A}^\gamma]_{s_\tau}^{--}$ and $[\mathcal{A}^\gamma]_{s_\tau}^{++}$ follow immediately from the parity relation (B.1).

Open Access. This article is distributed under the terms of the Creative Commons Attribution License ([CC-BY 4.0](https://creativecommons.org/licenses/by/4.0/)), which permits any use, distribution and reproduction in any medium, provided the original author(s) and source are credited.

References

- [1] BABAR collaboration, J.P. Lees et al., *Evidence for an excess of $\bar{B} \rightarrow D^{(*)}\tau^-\bar{\nu}_\tau$ decays*, *Phys. Rev. Lett.* **109** (2012) 101802 [[arXiv:1205.5442](https://arxiv.org/abs/1205.5442)] [[INSPIRE](#)].
- [2] BABAR collaboration, J.P. Lees et al., *Measurement of an Excess of $\bar{B} \rightarrow D^{(*)}\tau^-\bar{\nu}_\tau$ Decays and Implications for Charged Higgs Bosons*, *Phys. Rev. D* **88** (2013) 072012 [[arXiv:1303.0571](https://arxiv.org/abs/1303.0571)] [[INSPIRE](#)].
- [3] BELLE collaboration, M. Huschle et al., *Measurement of the branching ratio of $\bar{B} \rightarrow D^{(*)}\tau^-\bar{\nu}_\tau$ relative to $\bar{B} \rightarrow D^{(*)}\ell^-\bar{\nu}_\ell$ decays with hadronic tagging at Belle*, *Phys. Rev. D* **92** (2015) 072014 [[arXiv:1507.03233](https://arxiv.org/abs/1507.03233)] [[INSPIRE](#)].
- [4] BELLE collaboration, A. Abdesselam et al., *Measurement of the branching ratio of $\bar{B}^0 \rightarrow D^{*+}\tau^-\bar{\nu}_\tau$ relative to $\bar{B}^0 \rightarrow D^{*+}\ell^-\bar{\nu}_\ell$ decays with a semileptonic tagging method*, [arXiv:1603.06711](https://arxiv.org/abs/1603.06711) [[INSPIRE](#)].
- [5] BELLE collaboration, A. Abdesselam et al., *Measurement of the τ lepton polarization in the decay $\bar{B} \rightarrow D^*\tau^-\bar{\nu}_\tau$* , [arXiv:1608.06391](https://arxiv.org/abs/1608.06391) [[INSPIRE](#)].
- [6] LHCb collaboration, *Measurement of the ratio of branching fractions $\mathcal{B}(\bar{B}^0 \rightarrow D^{*+}\tau^-\bar{\nu}_\tau)/\mathcal{B}(\bar{B}^0 \rightarrow D^{*+}\mu^-\bar{\nu}_\mu)$* , *Phys. Rev. Lett.* **115** (2015) 111803 [[arXiv:1506.08614](https://arxiv.org/abs/1506.08614)] [[INSPIRE](#)].
- [7] N. Isgur and M.B. Wise, *Weak Decays of Heavy Mesons in the Static Quark Approximation*, *Phys. Lett. B* **232** (1989) 113 [[INSPIRE](#)].
- [8] N. Isgur and M.B. Wise, *Weak transition form factors between heavy mesons*, *Phys. Lett. B* **237** (1990) 527 [[INSPIRE](#)].
- [9] A.V. Manohar and M.B. Wise, *Heavy quark physics*, *Camb. Monogr. Part. Phys. Nucl. Phys. Cosmol.* **10** (2000) 1 [[INSPIRE](#)].
- [10] HEAVY FLAVOR AVERAGING GROUP (HFAG) collaboration, Y. Amhis et al., *Averages of b -hadron, c -hadron and τ -lepton properties as of summer 2014*, [arXiv:1412.7515](https://arxiv.org/abs/1412.7515) [[INSPIRE](#)].
- [11] P. Krawczyk and S. Pokorski, *Strongly Coupled Charged Scalar in B and t Decays*, *Phys. Rev. Lett.* **60** (1988) 182 [[INSPIRE](#)].
- [12] J. Kalinowski, *Semileptonic Decays of B Mesons into $\tau\nu_\tau$ in a Two Higgs Doublet Model*, *Phys. Lett. B* **245** (1990) 201 [[INSPIRE](#)].
- [13] W.-S. Hou, *Enhanced charged Higgs boson effects in $B^- \rightarrow \tau\bar{\nu}$, $\mu\bar{\nu}$ and $b \rightarrow \tau\bar{\nu} + X$* , *Phys. Rev. D* **48** (1993) 2342 [[INSPIRE](#)].
- [14] W.D. Goldberger, *Semileptonic B decays as a probe of new physics*, [hep-ph/9902311](https://arxiv.org/abs/hep-ph/9902311) [[INSPIRE](#)].
- [15] U. Nierste, S. Trine and S. Westhoff, *Charged-Higgs effects in a new $B \rightarrow D\tau\nu_\tau$ differential decay distribution*, *Phys. Rev. D* **78** (2008) 015006 [[arXiv:0801.4938](https://arxiv.org/abs/0801.4938)] [[INSPIRE](#)].

- [16] S. Fajfer, J.F. Kamenik and I. Nisandzic, *On the $B \rightarrow D^* \tau \bar{\nu}_\tau$ Sensitivity to New Physics*, *Phys. Rev. D* **85** (2012) 094025 [[arXiv:1203.2654](#)] [[INSPIRE](#)].
- [17] Y. Sakaki and H. Tanaka, *Constraints on the charged scalar effects using the forward-backward asymmetry on $\bar{B} \rightarrow D^{(*)} \tau \bar{\nu}_\tau$* , *Phys. Rev. D* **87** (2013) 054002 [[arXiv:1205.4908](#)] [[INSPIRE](#)].
- [18] S. Fajfer, J.F. Kamenik, I. Nisandzic and J. Zupan, *Implications of Lepton Flavor Universality Violations in B Decays*, *Phys. Rev. Lett.* **109** (2012) 161801 [[arXiv:1206.1872](#)] [[INSPIRE](#)].
- [19] A. Crivellin, C. Greub and A. Kokulu, *Explaining $B \rightarrow D \tau \nu$, $B \rightarrow D^* \tau \nu$ and $B \rightarrow \tau \nu$ in a 2HDM of type-III*, *Phys. Rev. D* **86** (2012) 054014 [[arXiv:1206.2634](#)] [[INSPIRE](#)].
- [20] A. Datta, M. Duraisamy and D. Ghosh, *Diagnosing New Physics in $b \rightarrow c \tau \nu_\tau$ decays in the light of the recent BaBar result*, *Phys. Rev. D* **86** (2012) 034027 [[arXiv:1206.3760](#)] [[INSPIRE](#)].
- [21] A. Celis, M. Jung, X.-Q. Li and A. Pich, *Sensitivity to charged scalars in $B \rightarrow D^{(*)} \tau \nu_\tau$ and $B \rightarrow \tau \nu_\tau$ decays*, *JHEP* **01** (2013) 054 [[arXiv:1210.8443](#)] [[INSPIRE](#)].
- [22] M. Tanaka and R. Watanabe, *New physics in the weak interaction of $\bar{B} \rightarrow D^{(*)} \tau \bar{\nu}$* , *Phys. Rev. D* **87** (2013) 034028 [[arXiv:1212.1878](#)] [[INSPIRE](#)].
- [23] P. Biancofiore, P. Colangelo and F. De Fazio, *On the anomalous enhancement observed in $B \rightarrow D^{(*)} \tau \bar{\nu}_\tau$ decays*, *Phys. Rev. D* **87** (2013) 074010 [[arXiv:1302.1042](#)] [[INSPIRE](#)].
- [24] Y. Sakaki, M. Tanaka, A. Tayduganov and R. Watanabe, *Testing leptoquark models in $\bar{B} \rightarrow D^{(*)} \tau \bar{\nu}$* , *Phys. Rev. D* **88** (2013) 094012 [[arXiv:1309.0301](#)] [[INSPIRE](#)].
- [25] L. Calibbi, A. Crivellin and T. Ota, *Effective Field Theory Approach to $b \rightarrow s \ell \ell'$, $B \rightarrow K^{(*)} \nu \bar{\nu}$ and $B \rightarrow D^{(*)} \tau \nu$ with Third Generation Couplings*, *Phys. Rev. Lett.* **115** (2015) 181801 [[arXiv:1506.02661](#)] [[INSPIRE](#)].
- [26] M. Freytsis, Z. Ligeti and J.T. Ruderman, *Flavor models for $\bar{B} \rightarrow D^{(*)} \tau \bar{\nu}$* , *Phys. Rev. D* **92** (2015) 054018 [[arXiv:1506.08896](#)] [[INSPIRE](#)].
- [27] E.C.F.S. Fortes and S. Nussinov, *Semitauponic B decay anomaly*, *Phys. Rev. D* **93** (2016) 014023 [[arXiv:1508.04463](#)] [[INSPIRE](#)].
- [28] C.S. Kim, Y.W. Yoon and X.-B. Yuan, *Exploring top quark FCNC within 2HDM type-III in association with flavor physics*, *JHEP* **12** (2015) 038 [[arXiv:1509.00491](#)] [[INSPIRE](#)].
- [29] B. Gripaios, M. Nardecchia and S.A. Renner, *Linear flavour violation and anomalies in B physics*, *JHEP* **06** (2016) 083 [[arXiv:1509.05020](#)] [[INSPIRE](#)].
- [30] S. Bhattacharya, S. Nandi and S.K. Patra, *Optimal-observable analysis of possible new physics in $B \rightarrow D^{(*)} \tau \nu_\tau$* , *Phys. Rev. D* **93** (2016) 034011 [[arXiv:1509.07259](#)] [[INSPIRE](#)].
- [31] M. Bauer and M. Neubert, *Minimal Leptoquark Explanation for the $R_{D^{(*)}}$, R_K and $(g-2)_g$ Anomalies*, *Phys. Rev. Lett.* **116** (2016) 141802 [[arXiv:1511.01900](#)] [[INSPIRE](#)].
- [32] C. Hati, G. Kumar and N. Mahajan, *$\bar{B} \rightarrow D^{(*)} \tau \bar{\nu}$ excesses in ALRSM constrained from B, D decays and $D^0 - \bar{D}^0$ mixing*, *JHEP* **01** (2016) 117 [[arXiv:1511.03290](#)] [[INSPIRE](#)].
- [33] S. Fajfer and N. Košnik, *Vector leptoquark resolution of R_K and $R_{D^{(*)}}$ puzzles*, *Phys. Lett. B* **755** (2016) 270 [[arXiv:1511.06024](#)] [[INSPIRE](#)].
- [34] R. Barbieri, G. Isidori, A. Pattori and F. Senia, *Anomalies in B-decays and U(2) flavour symmetry*, *Eur. Phys. J. C* **76** (2016) 67 [[arXiv:1512.01560](#)] [[INSPIRE](#)].

- [35] J.M. Cline, *Scalar doublet models confront τ and b anomalies*, *Phys. Rev. D* **93** (2016) 075017 [[arXiv:1512.02210](#)] [[INSPIRE](#)].
- [36] I. Doršner, S. Fajfer, A. Greljo, J.F. Kamenik and N. Košnik, *Physics of leptoquarks in precision experiments and at particle colliders*, *Phys. Rept.* **641** (2016) 1 [[arXiv:1603.04993](#)] [[INSPIRE](#)].
- [37] B. Dumont, K. Nishiwaki and R. Watanabe, *LHC constraints and prospects for S_1 scalar leptoquark explaining the $\bar{B} \rightarrow D^{(*)} \tau \bar{\nu}$ anomaly*, *Phys. Rev. D* **94** (2016) 034001 [[arXiv:1603.05248](#)] [[INSPIRE](#)].
- [38] S.M. Boucenna, A. Celis, J. Fuentes-Martin, A. Vicente and J. Virto, *Non-abelian gauge extensions for B -decay anomalies*, *Phys. Lett. B* **760** (2016) 214 [[arXiv:1604.03088](#)] [[INSPIRE](#)].
- [39] D. Das, C. Hati, G. Kumar and N. Mahajan, *Towards a unified explanation of $R_{D^{(*)}}$, R_K and $(g-2)_\mu$ anomalies in a left-right model with leptoquarks*, *Phys. Rev. D* **94** (2016) 055034 [[arXiv:1605.06313](#)] [[INSPIRE](#)].
- [40] S. Nandi, S.K. Patra and A. Soni, *Correlating new physics signals in $B \rightarrow D^{(*)} \tau \nu_\tau$ with $B \rightarrow \tau \nu_\tau$* , [arXiv:1605.07191](#) [[INSPIRE](#)].
- [41] X.-Q. Li, Y.-D. Yang and X. Zhang, *Revisiting the one leptoquark solution to the $R(D^{(*)})$ anomalies and its phenomenological implications*, *JHEP* **08** (2016) 054 [[arXiv:1605.09308](#)] [[INSPIRE](#)].
- [42] F. Feruglio, P. Paradisi and A. Pattori, *Revisiting Lepton Flavour Universality in B Decays*, [arXiv:1606.00524](#) [[INSPIRE](#)].
- [43] D.J. Lange, *The EvtGen particle decay simulation package*, *Nucl. Instrum. Meth. A* **462** (2001) 152 [[INSPIRE](#)].
- [44] A. Ryd et al., *EvtGen: A Monte Carlo Generator for B -Physics*, EVTGEN-V00-11-07 (2005) [[INSPIRE](#)].
- [45] M. Duraisamy and A. Datta, *The Full $B \rightarrow D^* \tau^- \bar{\nu}_\tau$ Angular Distribution and CP -violating Triple Products*, *JHEP* **09** (2013) 059 [[arXiv:1302.7031](#)] [[INSPIRE](#)].
- [46] K. Hagiwara, M.M. Nojiri and Y. Sakaki, *CP violation in $B \rightarrow D \tau \nu_\tau$ using multipion tau decays*, *Phys. Rev. D* **89** (2014) 094009 [[arXiv:1403.5892](#)] [[INSPIRE](#)].
- [47] D. Becirevic, S. Fajfer, I. Nisandzic and A. Tayduganov, *Angular distributions of $\bar{B} \rightarrow D^{(*)} \ell \bar{\nu}_\ell$ decays and search of New Physics*, [arXiv:1602.03030](#) [[INSPIRE](#)].
- [48] A.K. Alok, D. Kumar, S. Kumbhakar and S.U. Sankar, *D^* polarization as a probe to discriminate new physics in $B \rightarrow D^* \tau \bar{\nu}$* , [arXiv:1606.03164](#) [[INSPIRE](#)].
- [49] R. Alonso, A. Kobach and J. Martin Camalich, *New physics in the kinematic distributions of $\bar{B} \rightarrow D^{(*)} \tau^- (\rightarrow \ell^- \bar{\nu}_\ell \nu_\tau) \bar{\nu}_\tau$* , *Phys. Rev. D* **94** (2016) 094021 [[arXiv:1602.07671](#)] [[INSPIRE](#)].
- [50] M. Bordone, G. Isidori and D. van Dyk, *Impact of leptonic τ decays on the distribution of $B \rightarrow P \mu \bar{\nu}$ decays*, *Eur. Phys. J. C* **76** (2016) 360 [[arXiv:1602.06143](#)] [[INSPIRE](#)].
- [51] M.A. Ivanov, J.G. Körner and C.-T. Tran, *Analyzing new physics in the decays $\bar{B}^0 \rightarrow D^{(*)} \tau^- \bar{\nu}_\tau$ with form factors obtained from the covariant quark model*, *Phys. Rev. D* **94** (2016) 094028 [[arXiv:1607.02932](#)] [[INSPIRE](#)].
- [52] F. Bernlochner, S. Duell, Z. Ligeti, M. Papucci and D.J. Robinson, *Hammer: Helicity amplitude module for matrix element reweighting*, in preparation.

- [53] PARTICLE DATA GROUP collaboration, K.A. Olive et al., *Review of Particle Physics*, *Chin. Phys. C* **38** (2014) 090001 [INSPIRE].
- [54] M.E. Peskin and D.V. Schroeder, *An Introduction to quantum field theory*, Addison-Wesley, Reading U.S.A. (1995) [ISBN: 9780201503975]
<http://www.slac.stanford.edu/spires/find/books/www?cl=QC174.45%3AP4>.
- [55] D. Scora and N. Isgur, *Semileptonic meson decays in the quark model: An update*, *Phys. Rev. D* **52** (1995) 2783 [hep-ph/9503486] [INSPIRE].
- [56] N. Isgur, D. Scora, B. Grinstein and M.B. Wise, *Semileptonic B and D Decays in the Quark Model*, *Phys. Rev. D* **39** (1989) 799 [INSPIRE].
- [57] F.U. Bernlochner and Z. Ligeti, *Semileptonic $B_{(s)}$ decays to excited charmed mesons with e, μ, τ and searching for new physics with $R(D^{**})$* , [arXiv:1606.09300](https://arxiv.org/abs/1606.09300) [INSPIRE].