

# UC Davis

## UC Davis Previously Published Works

### Title

Phylogenetic and Biogeographic Patterns of *Vibrio parahaemolyticus* Strains from North America Inferred from Whole-Genome Sequence Data.

### Permalink

<https://escholarship.org/uc/item/69f060hw>

### Journal

Applied and Environmental Microbiology, 87(3)

### ISSN

0099-2240

### Authors

Miller, John J  
Weimer, Bart C  
Timme, Ruth  
[et al.](#)

### Publication Date

2021-01-15

### DOI

10.1128/aem.01403-20

Peer reviewed



# Phylogenetic and Biogeographic Patterns of *Vibrio parahaemolyticus* Strains from North America Inferred from Whole-Genome Sequence Data

John J. Miller,<sup>a,b</sup> Bart C. Weimer,<sup>c</sup>  Ruth Timme,<sup>d</sup> Catharina H. M. Lüdeke,<sup>e,f</sup> James B. Pettengill,<sup>a</sup> D. J. Darwin Bandoy,<sup>c</sup> Allison M. Weis,<sup>c</sup> James Kaufman,<sup>g</sup> B. Carol Huang,<sup>c</sup> Justin Payne,<sup>d</sup> Errol Strain,<sup>a</sup>  Jessica L. Jones<sup>e</sup>

<sup>a</sup>FDA, Biostatistics and Bioinformatics Staff, College Park, Maryland, USA

<sup>b</sup>Oak Ridge Institute for Science and Education, Oak Ridge, Tennessee, USA

<sup>c</sup>University of California—Davis, Institute for Veterinary Medicine, Davis, California, USA

<sup>d</sup>FDA, Division of Microbiology, College Park, Maryland, USA

<sup>e</sup>FDA, Division of Seafood Science and Technology, Gulf Coast Seafood Laboratory, Dauphin Island, Alabama, USA

<sup>f</sup>University of Hamburg, Hamburg School of Food Science, Hamburg, Germany

<sup>g</sup>IBM Research, Almaden, San Jose, California, USA

**ABSTRACT** *Vibrio parahaemolyticus* is the most common cause of seafood-borne illness reported in the United States. The draft genomes of 132 North American clinical and oyster *V. parahaemolyticus* isolates were sequenced to investigate their phylogenetic and biogeographic relationships. The majority of oyster isolate sequence types (STs) were from a single harvest location; however, four were identified from multiple locations. There was population structure along the Gulf and Atlantic Coasts of North America, with what seemed to be a hub of genetic variability along the Gulf Coast, with some of the same STs occurring along the Atlantic Coast and one shared between the coastal waters of the Gulf and those of Washington State. Phylogenetic analyses found nine well-supported clades. Two clades were composed of isolates from both clinical and oyster sources. Four were composed of isolates entirely from clinical sources, and three were entirely from oyster sources. Each single-source clade consisted of one ST. Some human isolates lack *tdh*, *trh*, and some type III secretion system (T3SS) genes, which are established virulence genes of *V. parahaemolyticus*. Thus, these genes are not essential for pathogenicity. However, isolates in the monophyletic groups from clinical sources were enriched in several categories of genes compared to those from monophyletic groups of oyster isolates. These functional categories include cell signaling, transport, and metabolism. The identification of genes in these functional categories provides a basis for future in-depth pathogenicity investigations of *V. parahaemolyticus*.

**IMPORTANCE** *Vibrio parahaemolyticus* is the most common cause of seafood-borne illness reported in the United States and is frequently associated with shellfish consumption. This study contributes to our knowledge of the biogeography and functional genomics of this species around North America. STs shared between the Gulf Coast and the Atlantic seaboard as well as Pacific waters suggest possible transport via oceanic currents or large shipping vessels. STs frequently isolated from humans but rarely, if ever, isolated from the environment are likely more competitive in the human gut than other STs. This could be due to additional functional capabilities in areas such as cell signaling, transport, and metabolism, which may give these isolates an advantage in novel nutrient-replete environments such as the human gut.

**KEYWORDS** *Vibrio parahaemolyticus*, MLST, phylogenetics, genomics, kSNP, cluster analysis

**Citation** Miller JJ, Weimer BC, Timme R, Lüdeke CHM, Pettengill JB, Bandoy DJD, Weis AM, Kaufman J, Huang BC, Payne J, Strain E, Jones JL. 2021. Phylogenetic and biogeographic patterns of *Vibrio parahaemolyticus* strains from North America inferred from whole-genome sequence data. *Appl Environ Microbiol* 87:e01403-20. <https://doi.org/10.1128/AEM.01403-20>.

**Editor** Johanna Björkroth, University of Helsinki

**Copyright** © 2021 American Society for Microbiology. All Rights Reserved.

Address correspondence to Jessica L. Jones, [Jessica.Jones@fda.hhs.gov](mailto:Jessica.Jones@fda.hhs.gov).

**Received** 12 June 2020

**Accepted** 4 November 2020

**Accepted manuscript posted online** 13 November 2020

**Published** 15 January 2021

*Vibrio parahaemolyticus* is a halophilic, Gram-negative bacterium that inhabits coastal estuarine environments (1). In the United States, *V. parahaemolyticus* is the leading cause of seafood-borne infections (2). The incidence of *V. parahaemolyticus* infection continues to increase in the United States and globally (3, 4). Consumption of raw or undercooked seafood harboring *V. parahaemolyticus* can result in mild to acute gastroenteritis, while contact with seawater containing this bacterium occasionally results in wound infections and, rarely, sepsis (5). The pathogenicity of this bacterium has historically been linked to the presence of two hemolysin genes: the thermostable direct hemolysin (*tdh*) and the *tdh*-related hemolysin (*trh*) (1). However, recent studies have shown that some strains produce cytotoxic and enterotoxic effects independent of their hemolysin production (6, 7). Also, some clinical isolates have been reported to lack one or both of the virulence markers *tdh* and *trh*, and phylogeny is independent of the genes (8–10). In light of this, type III secretion systems (T3SSs) have been investigated as potential pathogenicity factors for *V. parahaemolyticus* (11, 12). Among isolates that carry the hemolysin genes, certain serotypes (O3:K6 and O4:K12) and/or sequence types (STs) (ST3 and -36) are thought to be more virulent, as inferred by their illness incidences (13–15). In addition to the apparent divergence in the virulence potential of *V. parahaemolyticus* based on serotype or ST, there is a strong correlation with isolate/source location, suggesting that geography may play a role (16). For example, the majority of shellfish-associated *V. parahaemolyticus* illnesses in the United States have been from the Pacific Northwest and the Northeast Atlantic coasts (15, 17) rather than the Gulf Coast, which is also a major producer of commercial shellfish and where *V. parahaemolyticus* thrives (1, 18–20). Together, these data indicate that there is still much to be learned about the population dynamics and virulence potential of this species.

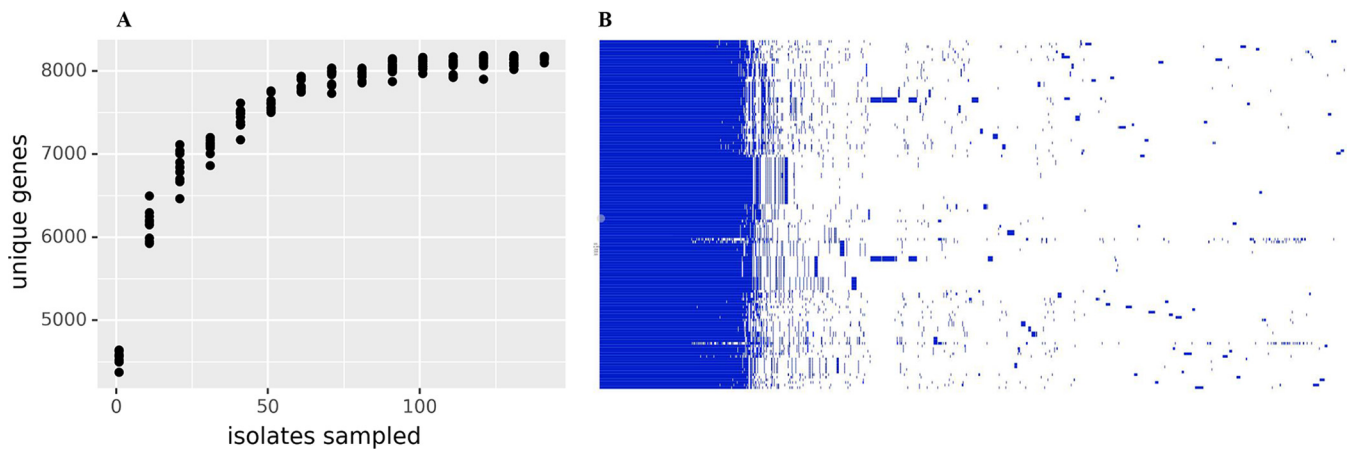
Previous investigations of *V. parahaemolyticus* utilizing multilocus sequence typing (MLST), pulsed-field gel electrophoresis (PFGE), and multiple-locus variable-number tandem-repeat analysis (MLVA) have indicated high genetic diversity (9, 21–24). However, the availability of whole-genome sequencing (WGS), more powerful computing, and better algorithms has made phylogenetic analysis based on the data collected from the entire genome possible. Also, genome sequencing has made *in silico* MLST analysis possible (25, 26). Previous sequencing of *V. parahaemolyticus* demonstrated substantial genetic similarity between disease-associated clinical and certain environmental isolates, even with relatively limited strain sets (15, 27). This suggests that sequencing additional genomes from diverse clinical and environmental *V. parahaemolyticus* isolates will provide information for further insight into the ability to transition from an environmental niche to a human pathogen (27).

In this study, we sequenced 132 *V. parahaemolyticus* genomes that are geographically representative of North America and diverse regarding serotype and ST. The draft genome data were used for phylogenetic analyses, including maximum likelihood analysis and whole-genome distance analysis (WGDA), which have been successfully applied to bacterial genomes, as well as *in silico* MLST (26, 28, 29). These analyses were used to infer biogeographical and phylogenetic relationships of *V. parahaemolyticus* as a means to understand the genomic variation within *V. parahaemolyticus*. In addition, the data were used to further investigate the differential virulence potentials of isolates.

## RESULTS

**Genome description.** Draft genomes were collected for 132 *V. parahaemolyticus* isolates from oysters collected from the coasts of North America and patients in the United States. Rarefaction analysis indicated that this population contains all the genes in *V. parahaemolyticus* as the asymptote occurs at a pangenome size of 8,191 genes, prior to sampling all 132 genomes (Fig. 1). The core genome consisted of 3,726 genes (see Fig. S1 in the supplemental material), with much of the pangenome being composed of genes from fewer than 24 isolates (18%).

**Population genetics and biogeography.** There were 61 STs identified from the 132 isolates (Table 1), of which 35 were represented by only one isolate and 21 were



**FIG 1** Genome gene discovery and pangenome. (A) To evaluate the completeness of the gene-finding effort, a rarefaction plot was constructed by listing the COG to which each *V. parahaemolyticus* isolate belonged, resampling the isolates with replacement using `random.randrange` in Python 3.6, and then listing and counting the unique COGs. This was done for increasing numbers of isolates. For each number of isolates, 10 replicates were done. The plot was constructed with Plotnine, `geom_point`. (B) The pangenome was constructed to demonstrate a core genome with a highly variable auxiliary genome.

associated with multiple serotypes. Five isolates could not be assigned sequence types by MLST due to *recA* or *pntA* genes that could not be typed. The three most frequent STs were ST36, ST1151, and ST3. Only two sequence types, ST775 and ST34, were collected from both oyster and clinical sources.

However, some geographic structure among the STs of oyster isolates is apparent. Most STs were isolated from only one site (Fig. 2A). Exceptions to this are ST676, which was isolated from Alabama and Virginia; ST23, which was isolated from Florida and Louisiana; ST32, which was isolated from Alabama, Louisiana, and New Jersey; and ST1152, which was isolated from Maine and Prince Edward Island (Canada). With the exception of Maine, all sites lacking a dominant ST were on the Gulf Coast.

To further test the hypothesis that there was geographically meaningful population structure among the oyster isolates, STRUCTURE was used and identified three supported clusters (Fig. 2B). One of these (cluster S1) included ST32 and ST34 isolates primarily from the Gulf Coast (Alabama, Louisiana, and Florida) but also had a representative isolate from New Jersey. Another cluster (S2) consisted of only ST676 isolates from both Alabama and Virginia. The third cluster (S3) included ST23, ST28, ST775, ST1153, and ST1148 isolates, which had representatives from several locations in the Southeast (Florida, Louisiana, and South Carolina) plus one from Washington.

**Phylogenetics and clustering.** When the early-diverging bipartitions of the likelihood tree are considered, 9 partitions are identified (Fig. 3). Of these, four (partitions 3, 4, 5, and 7) are composed of only clinical isolates, three (partitions 1, 2, and 6) are composed of only oyster isolates, and two (partitions 8 and 9) contain both clinical and oyster isolates. Seven of the identified bipartitions (1 to 7) consist of only one ST. STs that include multiple serotypes and are monophyletic in the likelihood tree are ST3, ST36, and ST636. Whole-genome distance analysis was also conducted and largely supported the likelihood analysis, as eight of the well-supported partitions in the likelihood tree were also found in the distance tree (Fig. S2 and Table S1), lending more support to these clades.

Two of the three clusters found by STRUCTURE analysis of the oyster isolates (Fig. 2B) were monophyletic based on the phylogenetic analysis. ST32 and ST34 isolates were clustered by STRUCTURE (Fig. 2, S1) and form a well-supported monophyletic clade in the likelihood tree (Fig. 3, partition 9). ST676 isolates (Fig. 2, S2) from two locations, Virginia and Alabama, form a monophyletic group (Fig. 3, partition 6). From the third STRUCTURE cluster (Fig. 2, S3), ST23, ST775, and ST1153 isolates are all part of a large partition (Fig. 3, partition 8) but do not form a monophyletic group. ST28 and ST1148 isolates, which were also part of cluster S3 by STRUCTURE, were not part of a

**TABLE 1** Metadata of the 132 *V. parahemolyticus* shotgun sequences

CFSAID	Strain ID	Source	State or province <sup>a</sup>	Date of isolation (day-mo-yr) <sup>b</sup>	Serotype	Sequence type	SRA accession no.	GenBank assembly ID	GenBank accession no.	BioSample accession no.	Coverage depth (%)	Total length (bp)	No. of contigs	No. of genes
CFSA011163	CDC_K4556-2	Clinical	LA	23-Oct-06	O1:Kuk	ST744	SRR1118644	GCA_001727365.1	MIS000000000	SAMN02368278	74	5,149,094	135	4,735
CFSA011164	CDC_K4557	Clinical	LA	19-Sep-06	O1:K33	ST799	SRR1840765	GCA_001727725.1	MISR000000000	SAMN02368279	35	5,074,019	94	4,619
CFSA011165	CDC_K4558-1	Clinical	LA	28-Aug-06	O3:K39	ST1143	SRR1118643	GCA_001727775.1	MIS500000000	SAMN02368280	34	5,032,007	120	4,611
CFSA011166	CDC_K4558-2	Clinical	LA	28-Aug-06	O3:Kuk	ST636	SRR1118642	GCA_001727745.1	MIS500000000	SAMN02368281	88	5,335,587	155	4,897
CFSA011167	CDC_K4588	Clinical	ME	26-Jul-06	O5:Kuk	ST746	SRR1118641	GCA_001727775.1	MISU000000000	SAMN02368282	57	5,014,336	118	4,610
CFSA011168	CDC_K4636	Clinical	NY	25-Sep-06	O10:Kuk	ST636	SRR1815538	GCA_001727805.1	MISV000000000	SAMN03358827	35	5,340,949	138	4,889
CFSA011169	CDC_K4637-1	Clinical	NY	1-Oct-06	O3:K6	ST3	SRR1815539	GCA_001727815.1	MISW000000000	SAMN03358828	59	5,163,379	150	4,755
CFSA011170	CDC_K4637-2	Clinical	NY	1-Oct-06	O3:K6	ST3	SRR1815540	GCA_001727825.1	MISX000000000	SAMN03358829	59	5,156,414	133	4,740
CFSA011171	CDC_K4638	Clinical	NY	25-Sep-06	O10:Kuk	ST809	SRR1118640	GCA_001727845.1	MISY000000000	SAMN02368283	47	5,077,332	96	4,619
CFSA011172	CDC_K4639-1	Clinical	NY	16-Oct-06	O4:K12	ST36	SRR1815541	GCA_001727895.1	MISZ000000000	SAMN03358830	61	5,092,291	122	4,654
CFSA011173	CDC_K4639-2	Clinical	NY	16-Oct-06	O4:Kuk	ST36	SRR1118639	GCA_001727885.1	MIT000000000	SAMN02368284	57	5,078,734	114	4,658
CFSA011175	CDC_K4762	Clinical	VA	15-Aug-06	O5:K17	ST674	SRR1118637	GCA_001727925.1	MITB000000000	SAMN02368286	78	5,103,196	108	4,676
CFSA011176	CDC_K4763	Clinical	VA	25-Aug-06	O5:Kuk	Untyped	SRR1840764	GCA_001727915.1	MITC000000000	SAMN02368287	43	5,287,071	129	4,843
CFSA011177	CDC_K4764-1	Clinical	VA	13-Oct-06	O8:K41	Untyped	SRR1815542	GCA_001727965.1	MITE000000000	SAMN03358831	43	5,276,586	114	4,813
CFSA011178	CDC_K4764-2	Clinical	VA	13-Oct-06	O8:K41	ST1156	SRR1118636	GCA_001727975.1	MITD000000000	SAMN02368288	52	5,033,430	111	4,616
CFSA011179	CDC_K4775	Clinical	GA	24-Feb-07	O3:K6	ST3	SRR1118635	GCA_001728005.1	MITF000000000	SAMN02368289	71	5,158,365	121	4,699
CFSA011180	CDC_K4842	Clinical	MD	16-Oct-06	O5:K47	ST1144	SRR1118634	GCA_001727995.1	MITG000000000	SAMN02368290	47	5,194,684	115	4,791
CFSA011181	CDC_K4857-1	Clinical	HI	28-Jan-07	O5:K17	ST79	SRR1118633	GCA_001728045.1	MITH000000000	SAMN02368291	37	5,038,683	103	4,569
CFSA011182	CDC_K4857-2	Clinical	HI	28-Jan-07	O5:Kuk	ST79	SRR1118632	GCA_001728065.1	MITJ000000000	SAMN02368292	47	5,039,775	108	4,592
CFSA011183	CDC_K4858	Clinical	HI	15-Sep-06	O4:K4	ST283	SRR1840763	GCA_001728085.1	MITK000000000	SAMN02368293	56	4,961,237	89	4,534
CFSA011184	CDC_K4859	Clinical	HI	15-Feb-07	O6:K18	Untyped	SRR1118631	GCA_001728095.1	MITL000000000	SAMN02368294	192	5,180,859	107	4,732
CFSA011185	CDC_K4981	Clinical	OK	12-Mar-07	O1:Kuk	ST748	SRR1118630	GCA_001728125.1	MITM000000000	SAMN02368295	118	4,928,549	135	4,500
CFSA011187	CDC_K5009-2	Clinical	MA	7-Aug-06	O4:K53	ST749	SRR1118629	GCA_001728135.1	MITN000000000	SAMN02368297	94	5,125,537	130	4,681
CFSA011188	CDC_K5010-1	Clinical	MA	16-Sep-06	O1:Kuk	ST3	SRR1118628	GCA_001728155.1	MITN000000000	SAMN02368298	59	5,122,961	146	4,694
CFSA011189	CDC_K5010-2	Clinical	MA	16-Sep-06	O1:Kuk	ST3	SRR1118627	GCA_001728175.1	MITN000000000	SAMN02368299	94	5,118,895	134	4,676
CFSA011190	CDC_K5058	Clinical	TX	15-May-07	O3:K6	ST775	SRR1057385	GCA_001728205.1	MITP000000000	SAMN02368300	60	5,114,568	84	4,620
CFSA011191	CDC_K5059-1	Clinical	TX	10-May-07	O5:Kuk	ST1147	SRR1840761	GCA_001728215.1	MITR000000000	SAMN02368301	83	4,959,751	80	4,543
CFSA011192	CDC_K5059-2	Clinical	TX	10-May-07	O5:Kuk	ST1147	SRR1057386	GCA_001728235.1	MITR000000000	SAMN02368302	458	4,953,954	123	4,513
CFSA011193	CDC_K5067	Clinical	SD	28-Apr-07	O1:K56	ST775	SRR1118626	GCA_001728255.1	MITS000000000	SAMN02368303	70	5,028,824	144	4,585
CFSA011194	CDC_K5073	Clinical	MD	10-Mar-07	O3:K56	ST750	SRR1118625	GCA_001728275.1	MITT000000000	SAMN02368304	85	5,082,152	117	4,604
CFSA011195	CDC_K5125	Clinical	MS	11-Jun-07	O3:Kuk	ST772	SRR1840760	GCA_001728295.1	MITU000000000	SAMN02368305	71	5,134,866	134	4,699
CFSA011196	CDC_K5126	Clinical	MS	21-May-07	O3:Kuk	ST1131	SRR1118624	GCA_001728325.1	MITV000000000	SAMN02368306	112	5,143,760	152	4,680
CFSA011197	CDC_K5276	Clinical	NY	20-Apr-07	O11:Kuk	ST631	SRR1118623	GCA_001728335.1	MITW000000000	SAMN02368307	86	5,168,475	136	4,774
CFSA011198	CDC_K5277	Clinical	WA	No date reported	O1:Kuk	ST65	SRR1118622	GCA_001728345.1	MITX000000000	SAMN02368308	71	5,165,700	109	4,699
CFSA011199	CDC_K5278	Clinical	WA	25-Jun-07	O4:K12	ST36	SRR1118621	GCA_001728405.1	MITY000000000	SAMN02368309	69	5,067,491	112	4,639
CFSA011200	CDC_K5279	Clinical	WA	No date reported	O1:Kuk	ST65	SRR1118620	GCA_001727655.1	MITZ000000000	SAMN02368310	76	5,172,883	93	4,683
CFSA011201	CDC_K5280	Clinical	WA	11-Jul-07	O4:K12	ST36	SRR1118619	GCA_001727625.1	MIIA000000000	SAMN02368311	87	5,083,288	110	4,662
CFSA011202	CDC_K5281	Clinical	WA	13-Jul-07	O4:K12	ST36	SRR1118618	GCA_001727575.1	MIUB000000000	SAMN02368312	102	5,077,351	115	4,661
CFSA011203	CDC_K5282	Clinical	HI	24-May-07	O5:Kuk	Untyped	SRR1118617	GCA_001727545.1	MIUC000000000	SAMN02368313	50	4,963,427	79	4,506
CFSA011204	CDC_K5306	Clinical	GA	23-Jul-07	O4:K9	ST34	SRR1118616	GCA_001727505.1	MIID000000000	SAMN02368314	122	5,045,861	117	4,636
CFSA011205	CDC_K5308	Clinical	AK	14-May-07	O4:K63	ST36	SRR1118615	GCA_001727485.1	MIIU000000000	SAMN02368315	138	5,095,192	142	4,669
CFSA011206	CDC_K5323-1	Clinical	VA	No date reported	O5:K17	ST674	SRR1118614	GCA_001727475.1	MIIUV000000000	SAMN02368316	30	5,220,531	98	4,795
CFSA011207	CDC_K5323-2	Clinical	VA	No date reported	O5:Kuk	ST674	SRR1118613	GCA_001727415.1	MIIUG000000000	SAMN02368317	57	5,207,450	84	4,779
CFSA011208	CDC_K5324-1	Clinical	VA	17-Jun-07	O1:K20	ST1132	SRR1118612	GCA_001727395.1	MIIUH000000000	SAMN02368318	56	5,272,305	294	4,941
CFSA011209	CDC_K5324-2	Clinical	VA	17-Jun-07	O1:K20	ST1132	SRR1118611	GCA_001727405.1	MIIUI000000000	SAMN02368319	70	5,060,178	174	4,654

(Continued on next page)

TABLE 1 (Continued)

CFSAN ID	Strain ID	Source	State or province <sup>a</sup>	Date of isolation (day-mo-yr) <sup>b</sup>	Serotype	Sequence type	SRA accession	GenBank assembly ID	GenBank accession no.	BioSample accession no.	Coverage depth (%)	Total length (bp)	No. of contigs	No. of genes
CFSAN011210	CDC_K5328	Clinical	IN	No date reported	O4:K12	ST36	SRR1118610	GCA_001727665.1	MIUJ000000000	SAMN02368320	85	5,090,169	118	4,661
CFSAN011211	CDC_K5330	Clinical	TX	23-Apr-07	O5:Kuk	ST11713	SRR1815543	GCA_001728375.1	MIUK000000000	SAMN03358832	43	5,168,109	142	4,757
CFSAN011212	CDC_K5331	Clinical	GA	8-Aug-07	O4:K8	ST265	SRR1118609	GCA_001728425.1	MIUL000000000	SAMN02368321	90	5,067,258	95	4,631
CFSAN011213	CDC_K5345-1	Clinical	IA	7-Aug-07	O4:K12	ST36	SRR1840759	GCA_001728465.1	MIUM000000000	SAMN02368322	49	5,148,490	112	4,719
CFSAN011214	CDC_K5345-2	Clinical	IA	7-Aug-07	O4:K12	ST36	SRR1118608	GCA_001728485.1	MIUW000000000	SAMN02368323	70	5,125,535	105	4,687
CFSAN011215	CDC_K5346	Clinical	PA	21-Aug-07	O4:K12	ST36	SRR1815544	GCA_001728415.1	MIUO000000000	SAMN03358833	53	5,087,978	126	4,661
CFSAN011216	CDC_K5428	Clinical	NV	6-Jul-07	O1:Kuk	ST199	SRR1815545	GCA_001727645.1	MIUP000000000	SAMN03358834	20	5,092,714	139	4,639
CFSAN011217	CDC_K5429	Clinical	NV	9-Aug-07	O4:K12	ST36	SRR1118607	GCA_001727585.1	MIUJ000000000	SAMN02368324	111	5,079,150	118	4,653
CFSAN011218	CDC_K5433	Clinical	WA	24-Jul-07	O4:Kuk	ST36	SRR1118606	GCA_001727385.1	MIUR000000000	SAMN02368325	47	5,073,057	118	4,635
CFSAN011219	CDC_K5435	Clinical	WA	11-Aug-07	O1:Kuk	ST65	SRR1118605	GCA_001727465.1	MIUS000000000	SAMN02368326	73	5,168,466	105	4,718
CFSAN011221	CDC_K5437	Clinical	WA	2-Sep-07	O4:Kuk	ST36	SRR1118604	GCA_001727565.1	MIUT000000000	SAMN02368328	122	5,068,632	126	4,636
CFSAN011222	CDC_K5438	Clinical	WA	9-Sep-07	O1:Kuk	ST65	SRR1118603	GCA_001727705.1	MIUU000000000	SAMN02368329	114	5,154,409	123	4,705
CFSAN011223	CDC_K5439	Clinical	WA	19-Sep-07	O4:K8	ST189	SRR1118602	GCA_001728495.1	MIUV000000000	SAMN02368330	36	5,031,538	106	4,616
CFSAN011224	CDC_K5456	Clinical	WA	No date reported	O4:Kuk	ST36	SRR1118601	GCA_001728545.1	MIUW000000000	SAMN02368331	119	5,080,809	114	4,656
CFSAN011225	CDC_K5457	Clinical	WA	7-Aug-07	O4:Kuk	ST36	SRR1118600	GCA_001728505.1	MIUX000000000	SAMN02368332	72	5,075,290	98	4,625
CFSAN011226	CDC_K5485	Clinical	NC	8-Jul-07	O6:K18	ST50	SRR1815546	GCA_001728565.1	MIUY000000000	SAMN03358835	23	5,151,277	128	4,719
CFSAN011227	CDC_K5512	Clinical	OK	14-Jun-07	O4:K12	ST36	SRR1118599	GCA_001728585.1	MIUZ000000000	SAMN02368333	92	5,082,991	122	4,670
CFSAN011228	CDC_K5528	Clinical	GA	6-Oct-07	O4:K68	ST3	SRR1118598	GCA_001728625.1	MIVA000000000	SAMN02368334	128	5,101,848	108	4,645
CFSAN011229	CDC_K5579	Clinical	IN	No date reported	O4:K63	ST43	SRR1118597	GCA_001728575.1	MVB000000000	SAMN02368335	107	5,072,634	169	4,659
CFSAN011230	CDC_K5582	Clinical	GA	10-Oct-07	O11:Kuk	ST631	SRR1840757	GCA_001728645.1	MIVC000000000	SAMN02368336	54	5,174,332	104	4,798
CFSAN011232	CDC_K5618	Clinical	NY	16-Aug-07	O10:Kuk	ST636	SRR1815547	GCA_001728655.1	MIVD000000000	SAMN03358836	25	5,107,768	147	4,668
CFSAN011233	CDC_K5620	Clinical	NY	23-Aug-07	O10:Kuk	ST636	SRR1815548	GCA_001728665.1	MIVE000000000	SAMN03358837	24	5,099,609	131	4,658
CFSAN011235	CDC_K5629	Clinical	GA	18-Nov-07	O4:K13	ST36	SRR1118596	GCA_001728695.1	MIVF000000000	SAMN02368339	106	5,077,945	119	4,659
CFSAN011236	CDC_K5635	Clinical	MD	3-Sep-07	O5:K30	ST753	SRR1118595	GCA_001728725.1	MIVG000000000	SAMN02368340	118	5,070,117	110	4,636
CFSAN011237	CDC_K5638	Clinical	MD	No date reported	O4:K12	ST36	SRR1815549	GCA_001728745.1	MIVH000000000	SAMN03358838	29	5,144,324	125	4,733
CFSAN011238	CDC_K5701	Clinical	OR	9-Sep-07	O1:Kuk	ST65	SRR1815550	GCA_001728755.1	MIVJ000000000	SAMN03358839	24	5,157,591	93	4,707
CFSAN011096	GCSL_R5	Oyster	TX	14-Mar-07	O10:Kuk	ST1133	SRR1815527	GCA_001726165.1	MIQI000000000	SAMN03358816	43	5,185,921	95	4,792
CFSAN011097	GCSL_R6	Oyster	TX	14-Mar-07	O10:Kuk	ST1133	SRR1118691	GCA_001726265.1	MIQJ000000000	SAMN02368223	80	5,087,599	107	4,659
CFSAN011098	GCSL_R7	Oyster	TX	14-Mar-07	O10:Kuk	ST1134	SRR1840772	GCA_001726195.1	MIQK000000000	SAMN02368224	44	5,052,796	138	4,640
CFSAN011099	GCSL_R8	Oyster	TX	14-Mar-07	O10:Kuk	ST1134	SRR1118690	GCA_001726185.1	MIQL000000000	SAMN02368225	52	5,200,929	119	4,807
CFSAN011100	GCSL_R10	Oyster	FL	19-Mar-07	O1:Kuk	ST313	SRR1815528	GCA_001726175.1	MIQM000000000	SAMN03358817	38	5,072,012	158	4,665
CFSAN011101	GCSL_R12	Oyster	LA	27-Mar-07	O4:K8	ST32	SRR1118689	GCA_001726245.1	MIQN000000000	SAMN02368226	43	5,051,895	116	4,618
CFSAN011102	GCSL_R13	Oyster	LA	27-Mar-07	O4:K10	ST732	SRR1118688	GCA_001726255.1	MIQO000000000	SAMN02368227	135	5,122,134	161	4,694
CFSAN011103	GCSL_R16	Oyster	FL	30-Apr-07	O4:K9	ST34	SRR1118687	GCA_001726345.1	MIQP000000000	SAMN02368228	56	5,051,817	114	4,638
CFSAN011104	GCSL_R17	Oyster	FL	30-Apr-07	O4:Kuk	ST536	SRR1118686	GCA_001726275.1	MIQQ000000000	SAMN02368229	60	5,010,966	100	4,576
CFSAN011105	GCSL_R21	Oyster	TX	4-May-07	O5:Kuk	ST12	SRR1118685	GCA_001726355.1	MIQR000000000	SAMN02368230	56	5,124,206	80	4,685
CFSAN011106	GCSL_R26	Oyster	NJ	16-Jun-07	O4:K8	ST32	SRR1118684	GCA_001726335.1	MIQS000000000	SAMN02368231	119	5,067,308	134	4,629
CFSAN011107	GCSL_R29	Oyster	FL	27-May-07	O11:Kuk	ST734	SRR1118683	GCA_001726325.1	MIQT000000000	SAMN02368232	40	4,946,371	104	4,525
CFSAN011108	GCSL_R30	Oyster	FL	27-May-07	O1:Kuk	ST23	SRR1118682	GCA_001726405.1	MIQU000000000	SAMN02368233	45	5,132,857	131	4,724
CFSAN011109	GCSL_R31	Oyster	LA	27-May-07	O1:Kuk	ST23	SRR1118681	GCA_001726415.1	MIQV000000000	SAMN02368234	102	5,126,812	132	4,710
CFSAN011110	GCSL_R32	Oyster	LA	30-May-07	O10:Kuk	ST1142	SRR1057384	GCA_001726445.1	MIQW000000000	SAMN02368235	27	5,059,594	105	4,607
CFSAN011111	GCSL_R33	Oyster	LA	30-May-07	O3:Kuk	ST28	SRR1118680	GCA_001726435.1	MIQX000000000	SAMN02368236	109	5,043,795	94	4,586
CFSAN011112	GCSL_R42	Oyster	WA	26-Jul-07	O10:Kuk	ST1155	SRR1815529	GCA_001726485.1	MIQY000000000	SAMN03358818	39	4,981,892	105	4,522
CFSAN011113	GCSL_R45	Oyster	WA	Jun/Jul-07 (exact date unknown)	O5:Kuk	ST61	SRR1118679	GCA_001726495.1	MIQZ000000000	SAMN02368237	130	4,973,945	101	4,533
CFSAN011114	GCSL_R47	Oyster	AL	20-Apr-07	O4:K8	ST32	SRR1118678	GCA_001726515.1	MIRA000000000	SAMN02368238	66	5,064,518	151	4,653

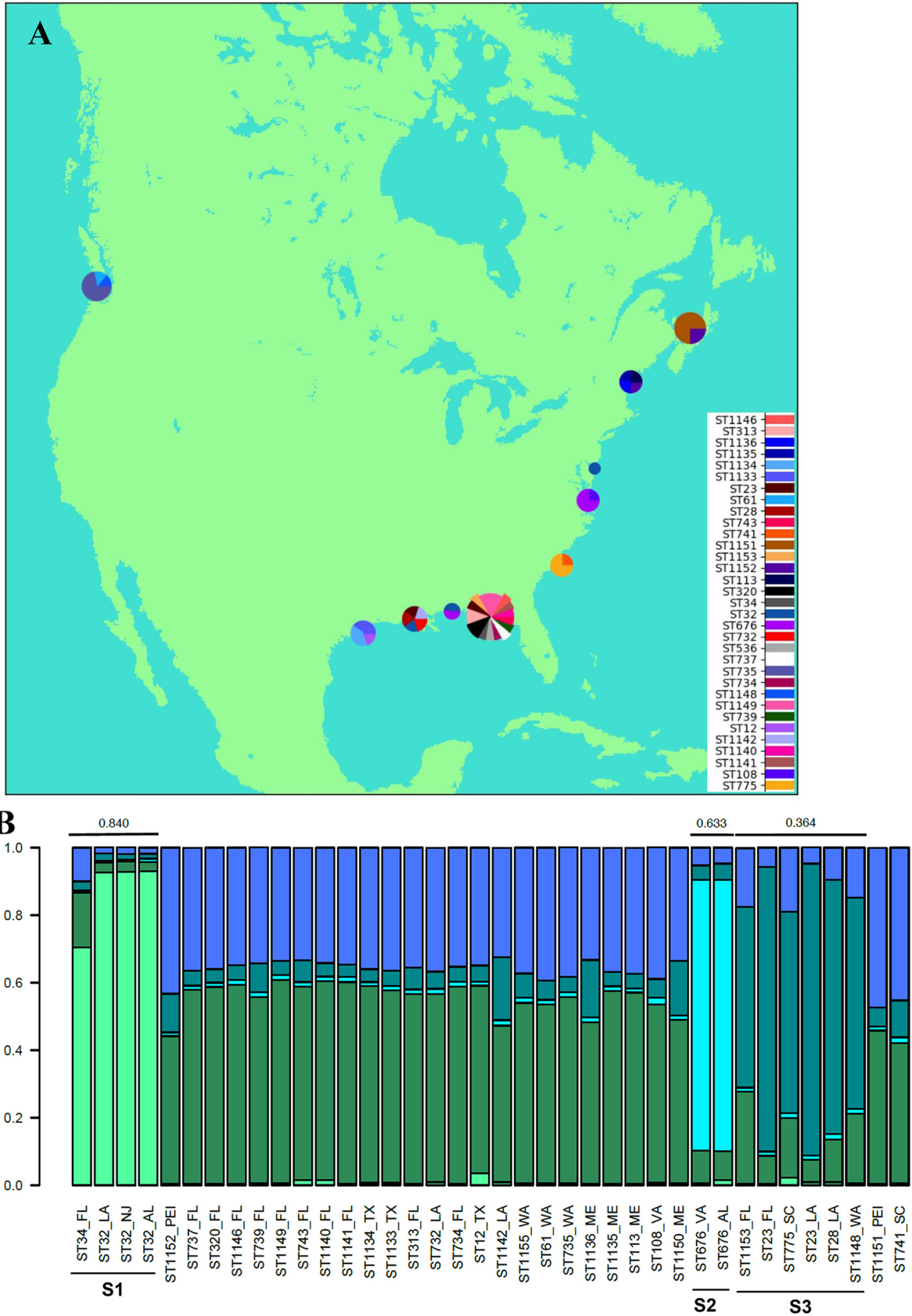
(Continued on next page)

TABLE 1 (Continued)

CFSA ID	Strain ID	Source	State or province <sup>a</sup>	Date of isolation (day-mo-yr) <sup>b</sup>	Serotype	Sequence type	SRA accession no.	GenBank assembly ID	GenBank accession no.	BioSample accession no.	Coverage depth (%)	Total length (bp)	No. of contigs	No. of genes
CFSAN011115	GCSL_R51	Oyster	AL	6-Jul-07	O8:Kuk	ST676	SRR1815530	GCA_001726535.1	MIRB000000000	SAMN03358819	34	5,049,334	105	4,632
CFSAN011116	GCSL_R52	Oyster	WA	13-Jul-07	O3:Kuk	ST735	SRR1118677	GCA_001726565.1	MIRC000000000	SAMN02368239	84	5,189,100	86	4,693
CFSAN011117	GCSL_R53	Oyster	WA	13-Jul-07	O3:Kuk	ST735	SRR1118676	GCA_001726575.1	MIRD000000000	SAMN02368240	68	5,191,609	101	4,715
CFSAN011118	GCSL_R54	Oyster	WA	13-Jul-07	O3:Kuk	ST735	SRR1118675	GCA_001726595.1	MIRE000000000	SAMN02368241	48	5,189,492	96	4,715
CFSAN011119	GCSL_R55	Oyster	WA	14-Jul-07	O3:Kuk	ST735	SRR1118674	GCA_001726615.1	MIRF000000000	SAMN02368242	62	5,191,687	100	4,718
CFSAN011120	GCSL_R56	Oyster	WA	14-Jul-07	O3:Kuk	ST735	SRR1118673	GCA_001726655.1	MIRG000000000	SAMN02368243	111	5,191,187	101	4,715
CFSAN011121	GCSL_R57	Oyster	WA	14-Jul-07	O3:Kuk	ST1148	SRR1118672	GCA_001726645.1	MIRH000000000	SAMN02368244	72	5,100,768	101	4,652
CFSAN011122	GCSL_R59	Oyster	ME	23-Jul-07	O5:Kuk	ST1135	SRR1815531	GCA_001726685.1	MIRI000000000	SAMN03358820	38	4,953,641	128	4,512
CFSAN011123	GCSL_R60	Oyster	ME	23-Jul-07	O10:Kuk	ST1135	SRR1118671	GCA_001726695.1	MIRJ000000000	SAMN02368245	77	5,264,840	126	4,802
CFSAN011125	GCSL_R62	Oyster	ME	23-Jul-07	O1:Kuk	ST1136	SRR1840771	GCA_001726725.1	MIRK000000000	SAMN02368247	34	5,176,254	126	4,777
CFSAN011126	GCSL_R63	Oyster	ME	23-Jul-07	O4:Kuk	Untyped	SRR1118669	GCA_001726735.1	MIRL000000000	SAMN02368248	44	5,125,149	102	4,684
CFSAN011128	GCSL_R65	Oyster	ME	23-Jul-07	O5:Kuk	ST1150	SRR1118668	GCA_001726755.1	MIRM000000000	SAMN02368250	46	5,065,957	111	4,652
CFSAN011129	GCSL_R74	Oyster	VA	23-Aug-07	O4:K34	ST108	SRR1118667	GCA_001726775.1	MIRN000000000	SAMN02368251	90	5,041,370	100	4,605
CFSAN011130	GCSL_R75	Oyster	VA	23-Aug-07	O8:Kuk	ST676	SRR1118666	GCA_001726805.1	MIRO000000000	SAMN02368252	84	5,014,250	87	4,578
CFSAN011131	GCSL_R76	Oyster	VA	23-Aug-07	O8:Kuk	ST676	SRR1118665	GCA_001726815.1	MIRP000000000	SAMN02368253	108	5,017,829	82	4,588
CFSAN011132	GCSL_R77	Oyster	VA	23-Aug-07	O8:Kuk	ST676	SRR1118664	GCA_001726845.1	MIRQ000000000	SAMN02368254	74	5,014,463	76	4,581
CFSAN011133	GCSL_R86	Oyster	FL	13-Aug-07	O6:Kuk	ST737	SRR1118663	GCA_001726885.1	MIRR000000000	SAMN02368255	70	4,894,547	116	4,454
CFSAN011134	GCSL_R87	Oyster	FL	13-Aug-07	O8:K70	ST320	SRR1118662	GCA_001726855.1	MIRS000000000	SAMN02368256	57	5,180,717	111	4,794
CFSAN011135	GCSL_R88	Oyster	FL	13-Aug-07	O8:K70	ST320	SRR1840769	GCA_001726895.1	MIRT000000000	SAMN02368257	34	5,184,181	90	4,781
CFSAN011137	GCSL_R95	Oyster	PEI	31-Jul-07	O3:K5	ST1151	SRR1118660	GCA_001726915.1	MIRU000000000	SAMN02368259	44	5,123,173	103	4,657
CFSAN011138	GCSL_R96	Oyster	PEI	31-Jul-07	O11:Kuk	ST1152	SRR1815532	GCA_001726935.1	MIRV000000000	SAMN03358821	41	4,931,576	111	4,466
CFSAN011140	GCSL_R98	Oyster	PEI	31-Jul-07	O3:K5	ST1151	SRR1815533	GCA_001726965.1	MIRW000000000	SAMN03358822	41	5,125,449	102	4,676
CFSAN011141	GCSL_R99	Oyster	PEI	31-Jul-07	O3:K5	ST1151	SRR1118658	GCA_001726985.1	MIRX000000000	SAMN02368261	74	5,120,561	96	4,647
CFSAN011143	GCSL_R108	Oyster	PEI	31-Jul-07	O3:K5	ST1151	SRR1815534	GCA_001726975.1	MIRY000000000	SAMN03358823	68	5,156,159	93	4,700
CFSAN011144	GCSL_R109	Oyster	PEI	31-Jul-07	O3:K5	ST1151	SRR1840768	GCA_001727025.1	MIRZ000000000	SAMN02368263	34	5,124,297	93	4,665
CFSAN011145	GCSL_R110	Oyster	PEI	31-Jul-07	O3:K5	ST1151	SRR1815535	GCA_001727055.1	MISA000000000	SAMN03358824	54	5,123,801	96	4,673
CFSAN011147	GCSL_R125	Oyster	PEI	31-Jul-07	O11:Kuk	ST1152	SRR1118656	GCA_001727065.1	MISB000000000	SAMN02368264	102	4,925,276	95	4,459
CFSAN011148	GCSL_R126	Oyster	FL	14-Oct-07	O11:Kuk	ST739	SRR1118655	GCA_001727045.1	MISC000000000	SAMN02368265	138	5,078,459	150	4,628
CFSAN011149	GCSL_R129	Oyster	FL	1-Oct-07	O4:K42	ST1146	SRR1118654	GCA_001727105.1	MISD000000000	SAMN02368266	103	5,138,446	115	4,714
CFSAN011150	GCSL_R130	Oyster	FL	1-Oct-07	O11:Kuk	ST1153	SRR1118653	GCA_001727115.1	MISE000000000	SAMN02368267	71	4,897,642	115	4,452
CFSAN011151	GCSL_R131	Oyster	FL	1-Oct-07	O4:K37	ST1140	SRR1118652	GCA_001975475.1	MUCG000000000	SAMN02368268	76	5,057,199	108	4,594
CFSAN011152	GCSL_R135	Oyster	SC	21-Nov-07	O3:Kuk	ST741	SRR1840766	GCA_001727125.1	MISF000000000	SAMN02368269	41	5,140,538	132	4,688
CFSAN011153	GCSL_R136	Oyster	SC	21-Nov-07	O1:K20	ST775	SRR1118651	GCA_001727185.1	MISH000000000	SAMN02368271	78	5,098,402	139	4,651
CFSAN011154	GCSL_R137	Oyster	SC	21-Nov-07	O1:K20	ST775	SRR1118650	GCA_001727195.1	MISJ000000000	SAMN02368272	71	5,107,378	127	4,638
CFSAN011155	GCSL_R138	Oyster	SC	21-Nov-07	O1:K20	ST775	SRR1118649	GCA_001727205.1	MISK000000000	SAMN02368273	65	5,108,840	148	4,657
CFSAN011156	GCSL_R143	Oyster	FL	Nov-07 (exact date unknown)	O5:Kuk	ST743	SRR1118648	GCA_001727265.1	MISL000000000	SAMN02368274	280	4,947,784	148	4,510
CFSAN011157	GCSL_R144	Oyster	FL	Nov-07 (exact date unknown)	O5:Kuk	ST1149	SRR1815536	GCA_001727275.1	MISM000000000	SAMN03358825	48	5,085,869	181	4,641
CFSAN011158	GCSL_R145	Oyster	FL	Nov-07 (exact date unknown)	O5:Kuk	ST1149	SRR1118647	GCA_001727295.1	MISN000000000	SAMN02368275	64	5,074,938	156	4,624
CFSAN011159	GCSL_R146	Oyster	FL	Nov-07 (exact date unknown)	O5:Kuk	ST1149	SRR1815537	GCA_001727245.1	MISO000000000	SAMN03358826	50	5,084,933	172	4,649
CFSAN011160	GCSL_R149	Oyster	FL	19-Mar-07	O1:Kuk	ST313	SRR1118646	GCA_001727305.1	MISP000000000	SAMN02368276	61	5,067,880	152	4,641
CFSAN011161	GCSL_R150	Oyster	FL	19-Mar-07	O1:Kuk	ST313	SRR1118645	GCA_001727345.1	MISP000000000	SAMN02368277	25	5,066,369	149	4,663

<sup>a</sup>The state for oyster isolates is the state where the product was harvested; for clinical isolates, this is the state that reported the isolate/illness. PEI, Prince Edward Island.

<sup>b</sup>The date for oyster isolates is the date of harvest of the product; for clinical isolates, this is the date of isolation from the patient.



**FIG 2** Geographic distribution of *V. parahaemolyticus* isolates from oysters. (A) Geographic distribution of the identified STs. The map was constructed using Python 2.7 with the help of Basemap from mpl\_toolkits.basemap and inset\_axes from mpl\_toolkits.axes\_grid1. (Continued on next page)



well-supported clade with those STs in either the likelihood or whole-genome distance analysis trees (Fig. 3; Table S1).

Comparison of the genomes using k-mer-based pairwise distance emphasized the higher diversity among the *V. parahaemolyticus* isolates (Fig. 4A) than what is commonly seen in other bacterial species. This analysis also enabled the differentiation of related groups that were distributed spatiotemporally, suggesting that they are phylogenetically linked. Further analysis with population partitioning using nucleotide k-mers (PopPUNK) identified five primary clusters, each containing isolates of a single ST (Fig. 4B): ST36 (17 isolates), ST1151 (6 isolates), ST3 (6 isolates), ST735 (5 isolates), and ST65 (5 isolates). Some smaller genomic clusters of four or fewer isolates also containing a single ST (ST676 and -775) were identified. Interestingly, PopPUNK clusters 1, 3, and 5 were composed of the same STs (ST36, -3, and -65) as the monophyletic clades of clinical isolates by the likelihood analysis (Fig. 3, partitions 4, 3, and 5, respectively) but were spatiotemporally separate in this analysis. PopPUNK clusters 2 and 4 and one of the smaller clusters (<5 isolates) were composed of ST1151, -735, and -676 found in the monophyletic clades of oyster isolates in the likelihood analysis (Fig. 3, partitions 2, 4, and 6; Table S1).

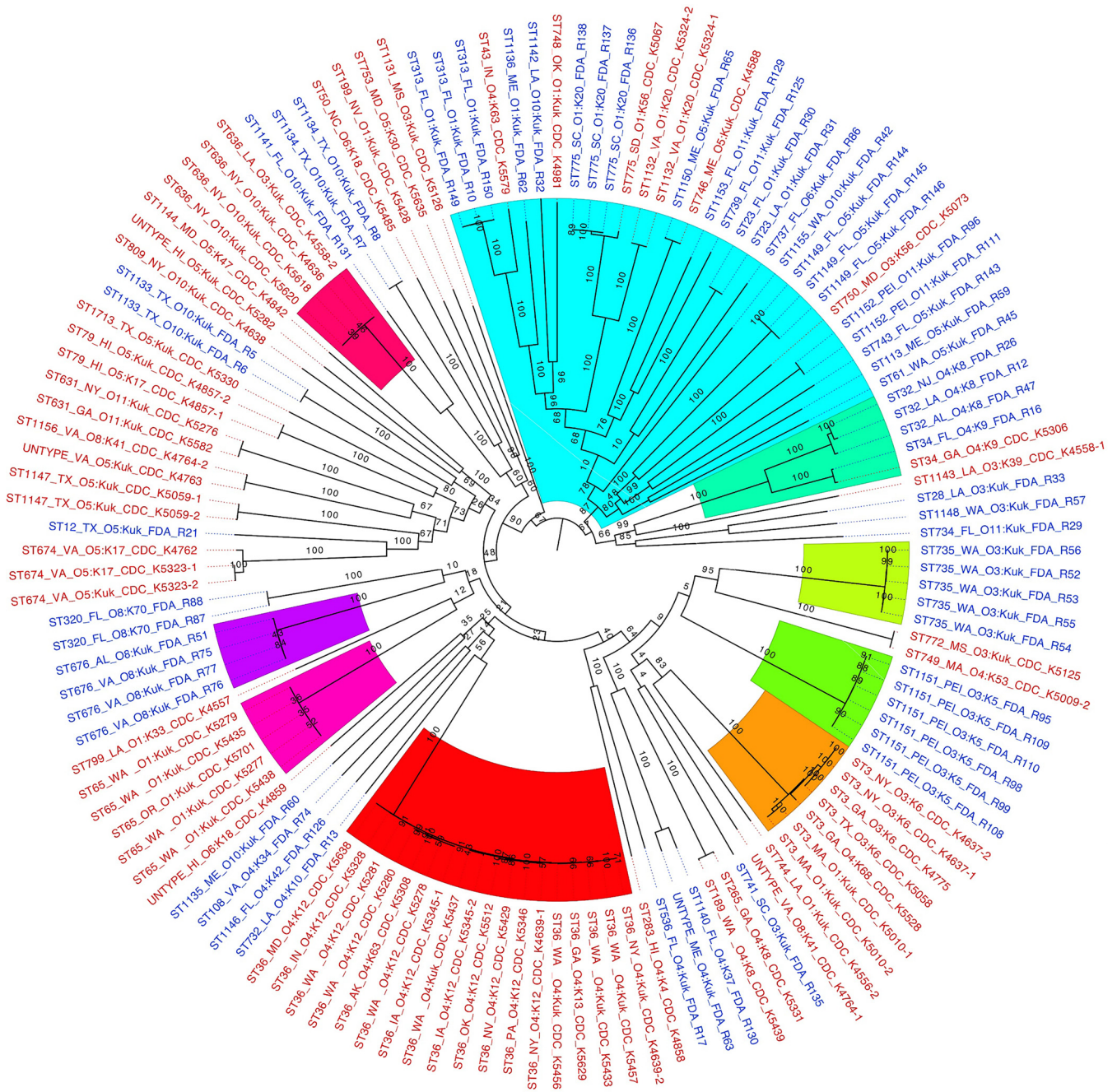
**Potential pathogenicity genes.** To visualize a potential pattern between T3SS and TDH family genes and pathogenicity, a heat map was constructed with the isolates sorted by the total number of T3SS and TDH family genes that each possesses (Fig. 5). In most cases, when PCR detected both *tdh* and *trh*, InterPro annotated the two genes as *tdh*. However, there were two instances (ST636\_CDC\_K4558-2 and ST772\_CDC\_K5125) where PCR did not detect either *tdh* or *trh* but two *tdh*-related genes were found in the genomic sequence. In addition, there were some instances where PCR detected *trh* and multiple instances of *tdh*-related genes were found in the genomic sequence: two in some isolates (ST775\_FDA\_R137, ST1134\_FDA\_R7, and ST1134\_FDA\_R8) and, surprisingly, even three for some ST3 isolates (CDC\_K5528, CDC\_5010-1, CDC\_5010-2, and CDC\_4637-2). Isolates from both humans and oysters were among those predicted to have two *tdh*-related genes.

Twenty-six T3SS genes were present in all 132 draft genomes (Fig. 5). There were also several genes found in only some genomes: the T3SS inner membrane P protein was found in 102 isolates, and the T3SS ATPase (Flil), the T3SS FHIPEP sorting domain, and the T3SS substrate exporter were found in 91 isolates. There were 11 isolates that had either additional T3SS genes or extra copies of some T3SS genes: the 7 ST3 isolates, which comprise a monophyletic clade; CDC\_K5439, CDC\_K5331, and FDA\_R130, which cluster near the ST3 isolate clade; and the relatively unrelated isolate FDA\_R125 (Fig. 3). There were 5 T3SS genes that were possessed by only these 11 isolates: the injected virulence protein YopP/YopJ, a putative T3SS apparatus protein, the putative T3SS protein Spa33, the putative T3SS system EscC protein, and the putative T3SS system lipoprotein precursor EprK. The same 11 isolates had second copies of two genes: the T3SS host injection protein YopB and the inner membrane channel protein LcrD/HrcV/EscV/SsaV.

Due to the variation in copy number within the T3SS and *tdh* gene groups, annotations that were prevalent in isolates within monophyletic clades of clinical isolates (ST3, ST36, and ST65) (Fig. 3, partitions 3, 4, and 5) relative to monophyletic clades of oyster isolates (ST676, ST735, and ST1151) (Fig. 3, partitions 6, 1, and 2) were examined, omitting isolates from mixed clades (Fig. 6). While some analyses strictly control for phylogeny, we wanted to be able to determine if gene abundances were consistent within the clades and not only across clades (or isolation source). In some cases, genes

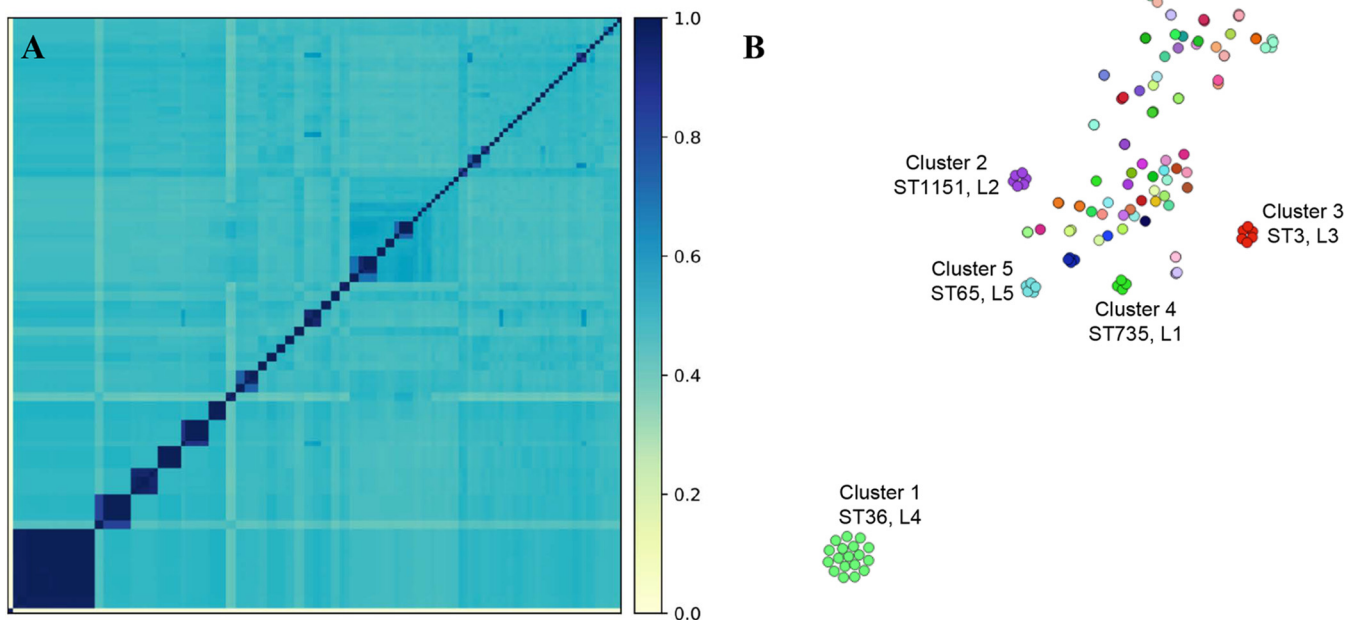
#### FIG 2 Legend (Continued)

inset\_locator. Pie charts were added at approximate locations of collection sites as demonstrated at <http://www.geophysique.be/2010/11/15/matplotlib-basemap-tutorial-05-adding-some-pie-charts/>. The size of each pie chart is proportional to the total number of isolates from that location. Pie slices are proportional to the number of times that an ST was isolated at each site. (B) Genetic/geographic structure among the oyster isolates. STRUCTURE was used with MLST genes and geographic locations as priors. The maximum value of  $\ln P(D)$  corresponded to a k value of 5, which was the lowest k value for which the members within each cluster with an  $F_{st}$  value of >0.2 shared genes. Graphs were created in R version 3.2.2 using the default plotting functions.



**FIG 3** Likelihood tree demonstrating the phylogenetic relatedness of the 132 *V. parahaemolyticus* isolates. The phylogenetic relationships between isolates from clinical and oyster sources were based on a core genome of 3,726 genes. The likelihood tree was created with RAxML using the GTRCAT model with 100 bootstrap replicates based on the core genome. The 12 largest supported (bootstrap values of >70) clades are colored. Clinical isolates are labeled in red, and oyster isolates are labeled in blue. Clusters identified by STRUCTURE are identified by "SX," where "X" is the cluster number provided in the STRUCTURE analysis.

with an annotation were abundant, with all isolates having more than 15 genes with the annotation: major facilitator superfamily (MFS) transporters, EAL domains, and acyl-CoA *N*-acyltransferases. In other cases, the overall numbers were low, with all isolates having at least 1 but fewer than 10 genes: thiamine diphosphate-binding, RmlC-like cupin, integrase/recombinase N-terminal, flavin mononucleotide (FMN)-binding split barrel, and 3-keto-5-aminohexanoate cleavage enzymes. With other annotations, some isolates had none, and others had one or two: pyridoxamine 5-phosphate oxidase, FMN dependent; DUF2787; and glycosyltransferase family 11 (GT11). It was also



**FIG 4** *Vibrio parahaemolyticus* genome relatedness using whole-genome distance comparisons. (A) Genome distance using k-mers with an all-against-all comparison. (B) Genomically related isolate network using PopPUNK to demonstrate specific genomic clusters that are epidemiologically related within a cluster but genetically distinct between the groups. Colors represent the same genomic group. The distance between groups indicates relatedness as determined using whole-genome distance. Clusters are labeled with the unique cluster identification from this analysis (clusters 1 to 5), the ST that comprises the cluster, and the likelihood tree partition to which the isolates belong ("LX," where "X" is the partition number in Fig. 3).

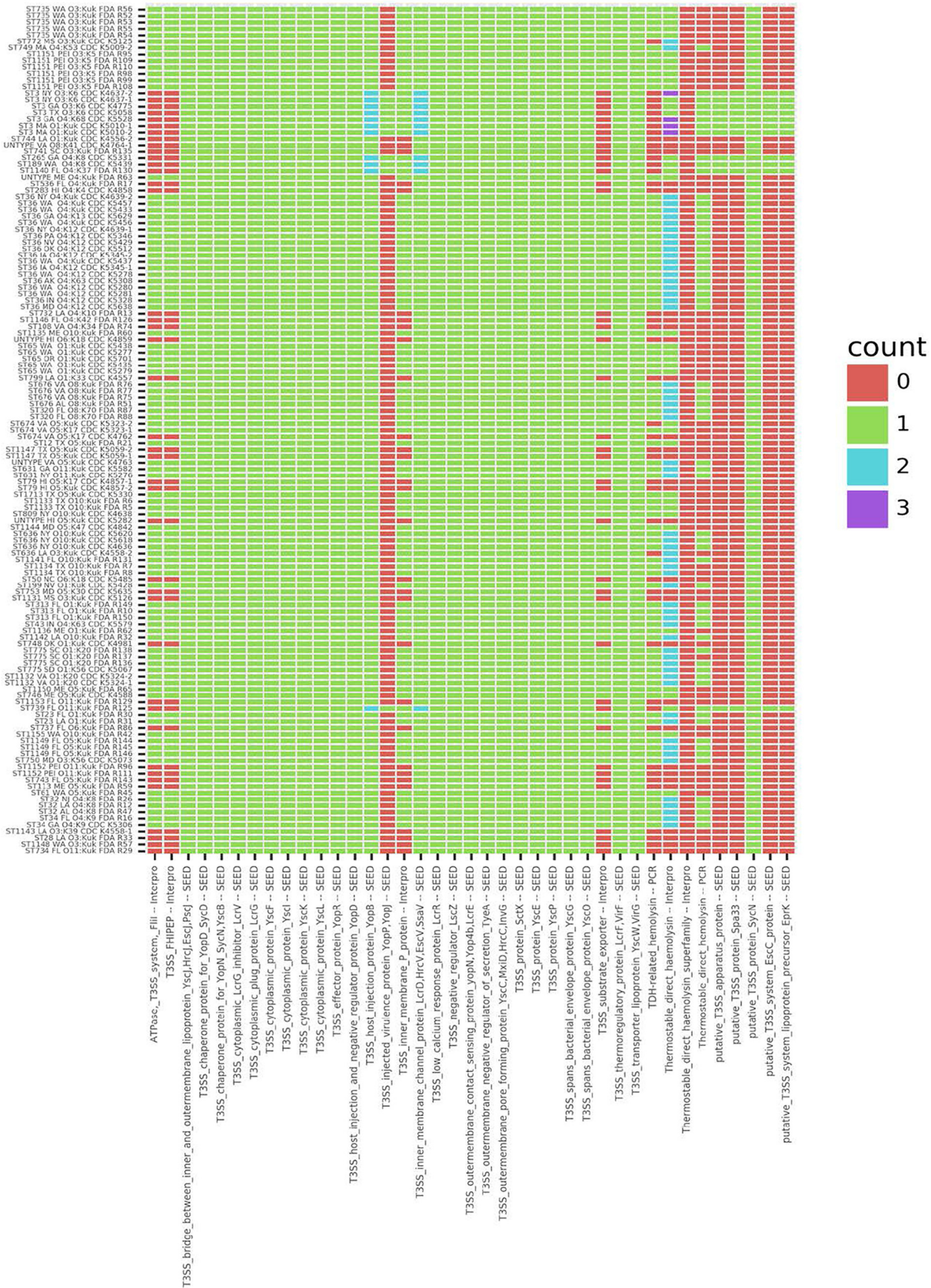
variable as to how differentiated the clinical isolates were from the oyster isolates for all annotations (Fig. 6), the difference in numbers was statistically significant, and it was generally apparent that clinical isolates had more than oyster isolates.

## DISCUSSION

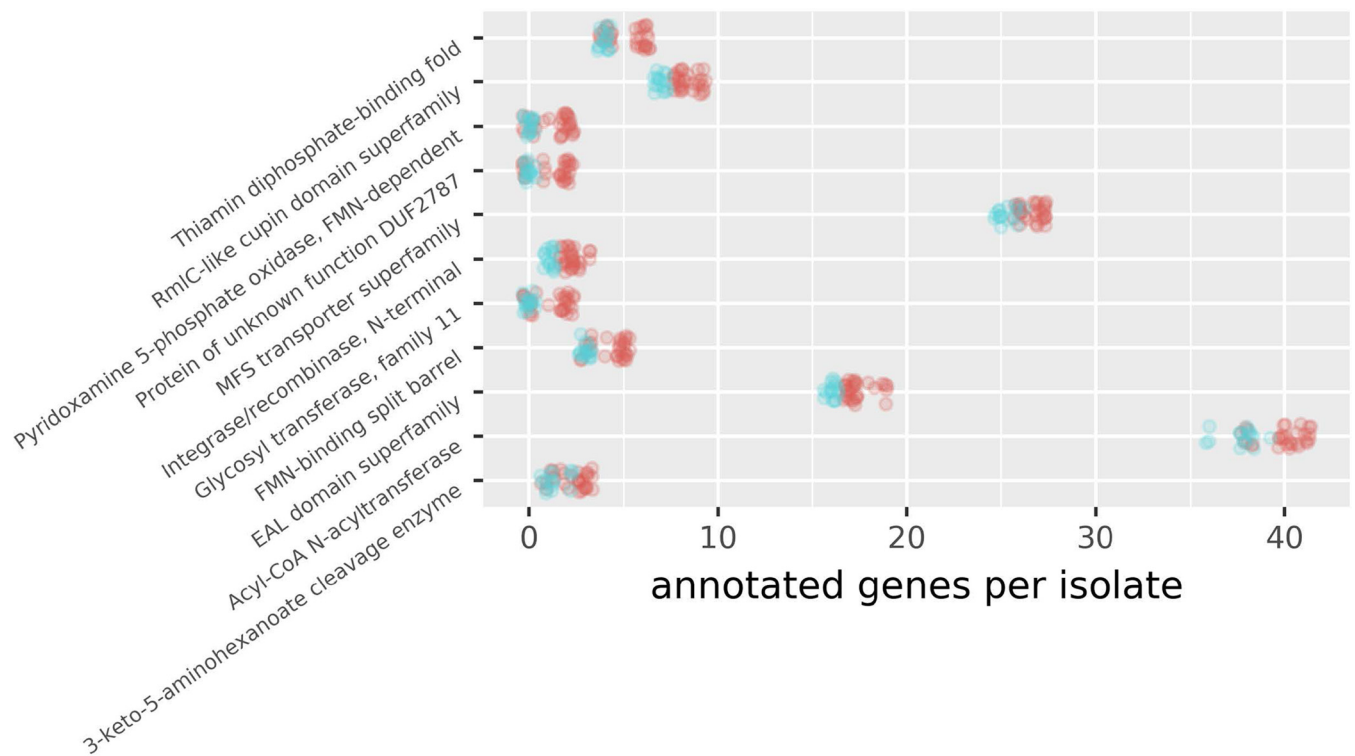
**Population and genetic continuity in the Gulf and East Coasts.** As reported in a previous study using a subset of these isolates, ST36 and ST3 are the most frequent STs in this isolate collection. Both ST36 and ST3 were comprised only of clinical isolates collected on various dates and from multiple regions with O4:K12/O4:Kut and pandemic-related serotypes, respectively, as previously described for these STs (9, 24). However, these data show high diversity regarding the residual STs of the isolates tested regardless of the method of analysis used (likelihood or genome distance).

STRUCTURE identified three clusters with  $F_{st}$  values indicative of population structure along the Gulf Coast and Atlantic Coast of North America and even including one isolate from the Pacific Coast, consistent with the results of others (30, 31). Phylogenetic support was lacking for one of these clusters detected with STRUCTURE. This is not surprising as MLST alleles represent a small portion of each genome and probably should not be used for phylogenetic purposes when larger data sets are available. However, the incongruence between the phylogenetic results and the MLST results could be indicative of horizontal gene transfer between phylogenetically distant strains (32). Indeed, genomic recombination and horizontal gene transfer were inferred using genomic distance analysis by the presence of multiple clusters (i.e., colored dots adjacent to one another and not forming a distinctive monochromatic group). The precise mechanism, as well as the selection pressure, that results in limiting the genotype diversity has not been identified thus far, although seroconversion has been investigated (33), and is a question that requires additional examination.

Oceanic currents, as well as shipping vessels, could play a role in the distribution, diversity, and genetics of *V. parahaemolyticus* (34, 35). The highest-diversity site was on the Gulf Coast side of Florida, probably influenced by the Yucatan and Loop currents and their small offshoots, which could be carrying organisms picked up by the



**FIG 5** Heat map of counts for SEED and InterProScan annotations. Counts of annotations for SEED T3SS genes and InterProScan annotations for TDH genes and PCR results for *tdh* and *trh* are shown. Per-isolate counts for T3SS and TDH annotated clusters along with (Continued on next page)



**FIG 6** Jitter plot with numbers of genes in monophyletic groups. Annotation groups with statistically significant differences between clinical and oyster isolates ( $P$  values of  $<0.01$  after Benjamini-Hochberg adjustment [75]) were included. Genes enriched in isolates from monophyletic groups of human isolates relative to monophyletic groups of environmental isolates were found by counting the number of gene clusters that each isolate was in for each annotation. Isolate counts for each annotation for monophyletic human versus environmental isolates were then compared using Kruskal-Wallis tests. The jitter plot was illustrated with Plotnine, `geom_jitter`. Red indicates clinical isolates, and blue indicates oyster isolates.

Caribbean current from Caribbean islands and the northern coast of South America. Alabama seems to have much lower diversity, but there were only two isolates represented by two STs, so the detected diversity was as high as it could have been. The other Gulf Coast sites also have high diversity relative to most non-Gulf sites and could be influenced by the complex offshoots of the Loop and Mexican currents. STs found on both the Gulf and East Coasts could be an indication of connectivity due to the Florida current and the Gulf Stream. The only other site without a clear majority sequence type is Maine, which is near the convergence of the Gulf Stream and the Labrador current, presenting two possible sources of *V. parahaemolyticus* and a more variable environment that prevents one ST from dominating. The isolate with ST1148 could have been introduced to the Pacific Coast via ballast water, as has been previously suggested for *V. parahaemolyticus* (35).

**Gene content and pathogenicity.** There was good general agreement between previous PCR detections of *tdh*-related genes and the genomic results. In most cases where there was PCR detection, *tdh*-related genes were annotated within the genomes, and when both *tdh* and *trh* were detected via PCR, multiple copies of *tdh*-related genes were found in the proteins predicted by InterPro. The few cases where more genes were annotated from the genomic data than were detected via PCR could be due to a single set of primers amplifying in two places or gene sequence diversity. The use of multiple techniques largely validated but also complemented one another. The two approaches together provide multiple lines of evidence for the existence of clinical isolates lacking any *tdh* or *trh* gene and showing that while these bacteria may

**FIG 5** Legend (Continued)

previous PCR results for TDH and TRH, included for comparison, were visualized within a heat map created with Plotnine, `geom_tile`. For ease of visualization, isolates are listed in the order of phylogeny based on the likelihood tree (i.e., isolates at the top are in partition 1 of Fig. 3).

use these genes during the infection process, they are not required or predictive of pathogenicity.

In addition to the hemolysins, T3SS genes are potentially associated with virulence, perhaps by targeting the cytoskeleton, as do many T3SS effectors. Eleven of our isolates, including all ST3 isolates, contained YopP/YopJ, which is involved in inducing apoptosis (36). Thus, these isolates have an additional weapon that they can use to acquire resources from eukaryotic cells. This, however, does not explain why ST36 and ST65 are so frequently isolated from humans, as these two genotypes lacked the YopP/YopJ gene. While the T3SS may be an important tool in the arsenal of *V. parahaemolyticus*, it does not explain the pattern of pathogenicity observed in this set of isolates.

The monophyletic clusters of clinical isolates (ST3-ST36-ST65) tend to have additional genes with specific annotations compared to isolates within monophyletic groups of environmental isolates. These groups of genes can be broadly grouped functionally into DNA handling, metabolic, and signaling. One of these annotations is for integrase/recombinase, N terminal. The ST3-ST36-ST65 isolates could use additional integrase capacity to acquire genes that could be used in the infection process (37). These isolates are also enriched in genes involved in sensing the environment, signal transduction, and gene expression. Bacteria that tend to thrive in nutrient-enriched environments typically have more genes related to gene expression and signal transduction. EAL domain proteins are involved in the synthesis of cyclic diguanylate used in intracellular signaling, which could be useful in transmitting intracellular signals related to changes in the extracellular milieu (38). Proteins of this type could help these genotypes quickly take advantage of new resources not only in the ocean but also when they find themselves in an unexpected environment, like a human. The ST3-ST36-ST65 isolates also tend to have more MFS transporters. These proteins act as antiporters and symporters that link the transport of ions with the transport of other ions or small organic solutes (39) and thus could help in nutrient absorption. Better nutrient absorption would make more-rapid growth possible.

After detecting a change in their surroundings, the ST3-ST36-ST65 isolates could use genes of metabolic function, in which they tend to be enriched, to support enhanced growth. Some genes involved in carbohydrate metabolism may have direct effects on their pathogenicity. As one example, RmlC-like cupin domains play a role in the synthesis of L-rhamnose that may be involved in bacterial pathogenesis (40). Glycosyltransferase family 11 (GT11) is a galactoside 2-L-fucosyltransferase, which transfers fucose from guanosine-diphosphate fucose to a substrate (41), homologs of which are involved in antigen synthesis in other bacterial species (42, 43). Thus, GT11 could be important in the interaction of *V. parahaemolyticus* with a human host.

The ST3-ST36-ST65 isolates also appear to be enriched in genes related to the processing of metabolites. Acyl-CoA *N*-acyltransferases function in the synthesis of fatty acids using acetyl-CoA and another lipid as the substrates and in the production of ATP from amino acids (44, 45). Both functions could be beneficial to *V. parahaemolyticus* during periods of low-nutrient stress, such as in coastal estuarine habitats. Other marine organisms use acyltransferases and similar proteins to store fatty acids and wax esters for use during periods of stress or dormancy (46, 47). Such a gene could be used by *V. parahaemolyticus* to rapidly incorporate environmental lipids for more rapid growth or to store them for use in times of stress (48). While there is much to be studied about how these genes enriched in the ST3-ST36-ST65 clade could contribute to environmental survival, transmissibility, and pathogenicity, it is clear that there are many potential benefits.

**Rare in the marine environment but common in outbreaks.** It is surprising that ST3, ST36, and ST65, each of which forms a monophyletic clade, were prevalent among clinical isolates but were not recovered from oysters in this study. While seafood-associated outbreaks could be expected to be caused by genetically homogeneous organisms (49), even with the bias in favor of sampling from clinical sources, enough samples were taken from the environment that if ST3, ST36, and ST65 were common in the

environment, these STs would be represented by at least a few oyster isolates. However, previous work has found ST3 and ST36 isolates in the environment (15), but that study was focused on an area where these STs were strongly predominant in patients. They may become abundant in marine environments only under specific conditions, remaining in unidentified oceanic reservoirs otherwise. The enhanced lipid storage capability, inferred from the possession of extra copies of acyl-CoA *N*-acyltransferase genes, of ST3-ST36-ST65 isolates may enable them to spend more time as dormant cells (50, 51) in marine habitats and be numerically inferior to other genotypes of this bacterium, making them more difficult to detect. In contrast, they seem to have some relative advantages in associating with humans. For example, they may be able to take advantage of the more-nutrient-replete conditions of the human intestine more quickly due to their enhanced transport and signaling systems as well as additional metabolic genes that allow them to outcompete other genotypes under these conditions.

**Conclusions.** This study used whole-genome sequencing of 132 *V. parahaemolyticus* isolates to understand the distribution and genetics of this pathogen along coasts of North America. Using *in silico* MLST from the draft genomes, a hub of genetic diversity along the Gulf and southern Atlantic Coasts as well as lower diversity along the northern portions of the Atlantic and Pacific Coasts were identified. In addition, the data show that the results of MLST methods, which use only a small portion of the genome, are generally consistent with the results of a core genome maximum likelihood phylogeny and that the results of distance phylogenetic methods, when applied to the same genomic data, are broadly consistent with the results of the maximum likelihood analysis. These results indicate that when time, sequencing capacity, or computational capacity is limited, biologists can use faster and more affordable methods and still obtain informative, but not comprehensive, results.

Additionally, this study looked for pathogenicity genes. The *tdh*, *trh*, and T3SS genes, while present in many of our isolates, do not explain the apparent differences in pathogenicity. Instead, the isolates from monophyletic clades consisting of only human isolates were enriched in genes having to do with signal transduction, nutrient absorption, energy transduction, and energy storage. This is consistent with a model in which these strains can store energy efficiently for periods of dormancy and then quickly respond to periods of high levels of nutrients by growing quickly and outcompeting other strains of the same bacterial species. Thus, it is possible that the strains most frequently isolated from humans are difficult to detect in marine habitats because they are more likely than other strains to be in a dormant state, but when levels of nutrients become especially high, as in a human intestine, they are able to outcompete their competitors. Further experimental work is needed to elucidate the ability of strains to persist and proliferate under various conditions in relation to the genes possessed and the ecological factors that vary with geography. This experimental work should include gene expression profiling, as pathogenicity could be influenced by gene expression as well as gene content.

## MATERIALS AND METHODS

**Bacterial strains.** The 61 oyster and 71 clinical well-characterized isolates used in this study (Table 1) were collected from 2006 to 2007 in the United States and Canada (10, 23). These isolates were selected to be representative of the geographic diversity of North America for both environmental (oyster) and patient isolates over a given period to avoid the introduction of broad temporal variation. The isolates were stored at  $-80^{\circ}\text{C}$  until analysis.

**Genomic DNA extraction.** All isolates were grown in Trypticase soy agar (TSA; Thermo Fisher Scientific, Waltham, MA) overnight at  $37^{\circ}\text{C}$ . High-molecular-weight DNA was extracted using the QIAamp DNA minikit (Qiagen, Valencia, CA). The integrity of high-molecular-weight DNA was determined using a 2200 TapeStation with genomic DNA ScreenTape (Agilent Technologies, Santa Clara, CA) as previously described (52).

**Whole-genome sequencing, assembly, and annotation.** Sequencing was conducted by the Weimer laboratory at the University of California—Davis through the 100K Pathogen Genome Project (<http://www.genomes4health.org/>) (53) as previously described (54). DNA was fragmented using the Covaris (Woburn, MA) E220 ultrasonicator. Fragmented DNA ( $1\ \mu\text{g}$ ) was used to construct sequencing libraries using the HTP library preparation kit (Kapa Biosystems, Wilmington, MA), on a Bravo NGS

workstation (Agilent Technologies). Fragmented double-stranded DNA (dsDNA) molecules were end repaired (5'), adenylated (3'), and then ligated with dsDNA adapters using the NEXTflex-96 DNA barcode (Bioo Scientific, Austin, TX). The size distributions of amplified libraries were confirmed using the 2100 bioanalyzer with a high-sensitivity DNA kit (Agilent Technologies). Finally, the indexed libraries were quantified with a quantitative PCR (qPCR)-based library quantification kit (Kapa Biosystems) prior to pooling for sequencing on the Illumina HiSeq 2000 platform with PE100 plus index reads (Illumina, San Diego, CA). The genomic sequences were *de novo* assembled using SPAdes version 3.1.1 software (55) with a k-mer length of 32. The draft genomes were annotated using the NCBI Prokaryotic Genomes Automatic Annotation Pipeline (PGAAP) ([www.ncbi.nlm.nih.gov/genomes/static/Pipeline.html](http://www.ncbi.nlm.nih.gov/genomes/static/Pipeline.html)).

**Pangenome analysis.** The pangenome was determined as described previously by Bandy and Weimer (56). Briefly, the genome sequences were assembled using Shovill (<https://github.com/tseemann/shovill>), annotated using Prokka (57), and used as the data input for pangenome analysis using Roary (58). Assembled genomes were variant called using Snippy (<https://github.com/tseemann/snippy>). Gene presence/absence was visualized using Phandango (59) with the associated metadata. Gene associations, metadata, and phenotypes were associated using Scoary (60).

**Population genetics and biogeography.** Genomes were analyzed for MLST sequence types (STs) based on the allele types of the housekeeping genes *dnaE*, *gyrB*, *dtdS*, *recA*, *pyrC*, *pntA*, and *tnaA* through the MLST database for *V. parahaemolyticus* at <http://pubmlst.org/vparahaemolyticus/> (21). STRUCTURE, which is a method for inferring population structure without incorporating any *a priori* information as to membership (61, 62), was run using the MLST alleles from oyster isolates as the input and the geographic collection sites as priors. The burn-in consisted of 30,000 Markov chain Monte Carlo (MCMC) iterations followed by 60,000 additional repetitions that were utilized. Values for k from 2 to 16 were tested. The highest  $\ln P(D)$  value corresponded to a k value of 5. This k value resulted in all well-supported clusters ( $F_{st} > 0.2$ ) sharing alleles, so it was used because there is no genetic basis in this data set for clustering isolates lacking shared alleles.

**Phylogenetics.** For the likelihood tree, nucleotide sequences from each cluster of orthologous groups (COG) in the core genome were aligned using MAFFT (version 7.427) with “—adjustdirection” to find reverse complements of genes when necessary to ensure that genes were oriented in the same direction (63). The alignments were then concatenated with a custom Python script. The best likelihood tree as well as the 100 bootstrap trees were found using raxmlHPC-PTHREADS (version 8.2.9) rapid bootstrapping with a general time reversal rate categories (GTRCAT) model of nucleotide substitution and rate heterogeneity (64).

For the distance tree, the assembly of paired-end reads was done with ABySS 1.5.2 using a k value of 64 (65) and as used previously (28, 29). Pairwise distances were determined using the Meier-Kolthoff method as reported previously (66) and implemented locally using PanCake (29). A distance tree was inferred using Mega7 with neighbor joining (67, 68) and visualized using MATLAB software (MathWorks, Natick, MA, USA).

Genome variation was determined using total genomic distance with a k-mer (31-mer) approach as a method to use the entire genome to determine relatedness between isolates as previously described (56). Population partitioning using nucleotide k-mers (PopPUNK) was used to determine related genomic clusters based on the whole-genome distance of the *Vibrio* isolates used in this study. PopPUNK uses genomic distance with variable-length k-mer comparisons, enabling the analysis of divergence in core and accessory gene contents within the same analysis to visualize a network-like vision of genome diversity (69).

**Ortholog discovery and annotation.** Open reading frames were found using Prodigal 2.6.3 (70). The core genome was identified by first running all-against-all pairwise reciprocal BLAST (71), finding pairwise reciprocal best hits (PRBHs) requiring an E value of  $<1 \times 10^{-45}$  and a length of at least 80 nucleotides, and then grouping these into COGs (72). COGs were found with a custom Python script that first identified preclusters from a sorted list of all PRBHs by clustering pairs sharing the first element and then recursively looked for and grouped preclusters that overlapped by at least two gene identifications. Clusters overlapping by only one gene identification remained as separate clusters. In these cases, one was removed, with a preference for keeping the larger cluster. The core genome was then assembled from COGs containing every isolate exactly once.

COGs were annotated by BLAST comparisons to isolates AQ3810 and RIMD\_2210633 (downloaded from <https://theseed.org> [73]) and with InterProScan (74) using the RESTful Web service and Python 3.6. The InterPro annotations (identifiers starting with “IPR”) were used. In both cases, annotations with E values of  $<1 \times 10^{-45}$  were accepted. For T3SS genes, SEED annotations were preferentially used over InterPro annotations because they were presumed to be more species specific and refined, but if InterPro annotated a gene as being T3SS related, it was used unless the SEED annotation indicated that it was flagellar. TDH family gene clusters were annotated with InterPro.

**Data availability.** All accession numbers and associated metadata are provided in Table 1.

## SUPPLEMENTAL MATERIAL

Supplemental material is available online only.

**SUPPLEMENTAL FILE 1**, PDF file, 1 MB.

## ACKNOWLEDGMENTS

This project was supported in part by an appointment of C. H. M. Lüdeke and J. J. Miller to the Research Participation Program at the Center for Food Safety and Applied



Nutrition administered by the Oak Ridge Institute for Science and Education through an interagency agreement between the U.S. Department of Energy and the U.S. Food and Drug Administration.

## REFERENCES

- Jones JL. 2014. *Vibrio*: introduction, including *Vibrio parahaemolyticus*, *Vibrio vulnificus*, and other *Vibrio* species, p 691–698. In Batt CA, Tortorello ML (ed), *Encyclopedia of food microbiology*, vol 3. Elsevier Academic Press, San Diego, CA.
- Iwamoto M, Ayers T, Mahon BE, Swerdlow DL. 2010. Epidemiology of sea-food-associated infections in the United States. *Clin Microbiol Rev* 23:399–411. <https://doi.org/10.1128/CMR.00059-09>.
- Baker-Austin C, Trinanés JA, Taylor NGH, Hartnell R, Siitonen A, Martínez-Urtaza J. 2013. Emerging *Vibrio* risk at high latitudes in response to ocean warming. *Nat Clim Chang* 3:73–77. <https://doi.org/10.1038/nclimate1628>.
- CDC. 2016. Foodborne Diseases Active Surveillance Network (FoodNet): FoodNet surveillance report for 2014 (final report). US Department of Health and Human Services, CDC, Atlanta, GA.
- Powell JL. 1999. *Vibrio* species. *Clin Lab Med* 19:537–552. [https://doi.org/10.1016/S0272-2712\(18\)30103-3](https://doi.org/10.1016/S0272-2712(18)30103-3).
- Lynch T, Livingstone S, Buenaventura E, Lutter E, Fedwick J, Buret AG, Graham D, DeVinney R. 2005. *Vibrio parahaemolyticus* disruption of epithelial cell tight junctions occurs independently of toxin production. *Infect Immun* 73:1275–1283. <https://doi.org/10.1128/IAI.73.3.1275-1283.2005>.
- Park KS, Ono T, Rokuda M, Jang MH, Iida T, Honda T. 2004. Cytotoxicity and enterotoxicity of the thermostable direct hemolysin-deletion mutants of *Vibrio parahaemolyticus*. *Microbiol Immunol* 48:313–318. <https://doi.org/10.1111/j.1348-0421.2004.tb03512.x>.
- Broberg CA, Zhang L, Gonzalez H, Laskowski-Arce MA, Orth K. 2010. A *Vibrio* effector protein is an inositol phosphatase and disrupts host cell membrane integrity. *Science* 329:1660–1662. <https://doi.org/10.1126/science.1192850>.
- Jesser KJ, Valdivia-Granda W, Jones JL, Noble RT. 2019. Clustering of *Vibrio parahaemolyticus* isolates using MLST and whole-genome phylogenetics and protein motif fingerprinting. *Front Public Health* 7:66. <https://doi.org/10.3389/fpubh.2019.00066>.
- Jones JL, Ludeke CH, Bowers JC, Garrett N, Fischer M, Parsons MB, Bopp CA, DePaola A. 2012. Biochemical, serological, and virulence characterization of clinical and oyster *Vibrio parahaemolyticus* isolates. *J Clin Microbiol* 50:2343–2352. <https://doi.org/10.1128/JCM.00196-12>.
- Burdette DL, Yarbrough ML, Orth K. 2009. Not without cause: *Vibrio parahaemolyticus* induces acute autophagy and cell death. *Autophagy* 5:100–102. <https://doi.org/10.4161/auto.5.1.7264>.
- Caburlo G, Lleo MM, Hilton T, Huq A, Colwell RR, Kaper JB. 2010. Effect on human cells of environmental *Vibrio parahaemolyticus* strains carrying type III secretion system 2. *Infect Immun* 78:3280–3287. <https://doi.org/10.1128/IAI.00050-10>.
- Chiou CS, Hsu SY, Chiu SI, Wang TK, Chao CS. 2000. *Vibrio parahaemolyticus* serovar O3:K6 as cause of unusually high incidence of food-borne disease outbreaks in Taiwan from 1996 to 1999. *J Clin Microbiol* 38:4621–4625. <https://doi.org/10.1128/JCM.38.12.4621-4625.2000>.
- Newton AE, Garrett N, Stroika SG, Halpin JL, Turnsek M, Mody RK, Centers for Disease Control and Prevention. 2014. Increase in *Vibrio parahaemolyticus* infections associated with consumption of Atlantic Coast shellfish—2013. *MMWR Morb Mortal Wkly Rep* 63:335–336.
- Turner JW, Paranjpye RN, Landis ED, Biryukov SV, Gonzalez-Escalona N, Nilsson WB, Strom MS. 2013. Population structure of clinical and environmental *Vibrio parahaemolyticus* from the Pacific Northwest coast of the United States. *PLoS One* 8:e55726. <https://doi.org/10.1371/journal.pone.0055726>.
- CDC. 2016. Cholera and other *Vibrio* illness surveillance (COVIS), summary data, 2014. CDC, Atlanta, GA. <https://www.cdc.gov/nationalsurveillance/pdfs/covis-annual-summary-2014-508c.pdf>. Accessed 27 October 2020.
- Xu F, Ilyas S, Hall JA, Jones SH, Cooper VS, Whistler CA. 2015. Genetic characterization of clinical and environmental *Vibrio parahaemolyticus* from the Northeast USA reveals emerging resident and non-indigenous pathogen lineages. *Front Microbiol* 6:272. <https://doi.org/10.3389/fmicb.2015.00272>.
- DePaola A, Jones JL, Woods J, Burkhardt W, III, Calci KR, Krantz JA, Bowers JC, Kasturi K, Byars RH, Jacobs E, Williams-Hill D, Nabe K. 2010. Bacterial and viral pathogens in live oysters: 2007 United States market survey. *Appl Environ Microbiol* 76:2754–2768. <https://doi.org/10.1128/AEM.02590-09>.
- DePaola A, Nordstrom JL, Bowers JC, Wells JG, Cook DW. 2003. Seasonal abundance of total and pathogenic *Vibrio parahaemolyticus* in Alabama oysters. *Appl Environ Microbiol* 69:1521–1526. <https://doi.org/10.1128/AEM.69.3.1521-1526.2003>.
- Johnson CN, Flowers AR, Noriega NF, III, Zimmerman AM, Bowers JC, DePaola A, Grimes DJ. 2010. Relationships between environmental factors and pathogenic vibrios in the Northern Gulf of Mexico. *Appl Environ Microbiol* 76:7076–7084. <https://doi.org/10.1128/AEM.00697-10>.
- González-Escalona N, Martínez-Urtaza J, Romero J, Espejo RT, Jaykus L-A, DePaola A. 2008. Determination of molecular phylogenetics of *Vibrio parahaemolyticus* strains by multilocus sequence typing. *J Bacteriol* 190:2831–2840. <https://doi.org/10.1128/JB.01808-07>.
- Harth-Chu E, Espejo RT, Christen R, Guzman CA, Hofle MG. 2009. Multiple-locus variable-number tandem-repeat analysis for clonal identification of *Vibrio parahaemolyticus* isolates by using capillary electrophoresis. *Appl Environ Microbiol* 75:4079–4088. <https://doi.org/10.1128/AEM.02729-08>.
- Ludeke CH, Fischer M, LaFon P, Cooper K, Jones JL. 2014. Suitability of the molecular subtyping methods intergenic spacer region, direct genome restriction analysis, and pulsed-field gel electrophoresis for clinical and environmental *Vibrio parahaemolyticus* isolates. *Foodborne Pathog Dis* 11:520–528. <https://doi.org/10.1089/fpd.2013.1728>.
- Lüdeke CHM, Kong N, Weimer BC, Fischer M, Jones JL. 2015. Complete genome sequences of a clinical isolate and an environmental isolate of *Vibrio parahaemolyticus*. *Genome Announc* 3:e00216-15. <https://doi.org/10.1128/genomeA.00216-15>.
- Haendiges J, Timme R, Allard M, Myers RA, Payne J, Brown EW, Evans P, Gonzalez-Escalona N. 2014. Draft genome sequences of clinical *Vibrio parahaemolyticus* strains isolated in Maryland (2010 to 2013). *Genome Announc* 2:e00776-14. <https://doi.org/10.1128/genomeA.00776-14>.
- Haendiges J, Timme R, Allard MW, Myers RA, Brown EW, Gonzalez-Escalona N. 2015. Characterization of *Vibrio parahaemolyticus* clinical strains from Maryland (2012–2013) and comparisons to a locally and globally diverse *V. parahaemolyticus* strains by whole-genome sequence analysis. *Front Microbiol* 6:125. <https://doi.org/10.3389/fmicb.2015.00125>.
- Hazen TH, Lafon PC, Garrett NM, Lowe TM, Silberger DJ, Rowe LA, Frace M, Parsons MB, Bopp CA, Rasko DA, Sobecky PA. 2015. Insights into the environmental reservoir of pathogenic *Vibrio parahaemolyticus* using comparative genomics. *Front Microbiol* 6:204. <https://doi.org/10.3389/fmicb.2015.00204>.
- Taff CC, Weis AM, Wheeler S, Hinton MG, Weimer BC, Barker CM, Jones M, Logsdon R, Smith WA, Boyce WM, Townsend AK. 2016. Influence of host ecology and behavior on *Campylobacter jejuni* prevalence and environmental contamination risk in a synanthropic wild bird species. *Appl Environ Microbiol* 82:4811–4820. <https://doi.org/10.1128/AEM.01456-16>.
- Weis AM, Storey DB, Taff CC, Townsend AK, Huang BC, Kong NT, Clothier KA, Spinner A, Byrne BA, Weimer BC. 2016. Genomic comparison of *Campylobacter* spp. and their potential for zoonotic transmission between birds, primates, and livestock. *Appl Environ Microbiol* 82:7165–7175. <https://doi.org/10.1128/AEM.01746-16>.
- Cui Y, Yang X, Didelot X, Guo C, Li D, Yan Y, Zhang Y, Yuan Y, Yang H, Wang J, Wang J, Song Y, Zhou D, Falush D, Yang R. 2015. Epidemic clones, oceanic gene pools, and Eco-LD in the free living marine pathogen *Vibrio parahaemolyticus*. *Mol Biol Evol* 32:1396–1410. <https://doi.org/10.1093/molbev/msv009>.
- Yang C, Pei X, Wu Y, Yan L, Yan Y, Song Y, Coyle NM, Martínez-Urtaza J, Quince C, Hu Q, Jiang M, Feil E, Yang D, Song Y, Zhou D, Yang R, Falush D, Cui Y. 2019. Recent mixing of *Vibrio parahaemolyticus* populations. *ISME J* 13:2578–2588. <https://doi.org/10.1038/s41396-019-0461-5>.
- Maiden MCJ. 2006. Multilocus sequence typing of bacteria. *Annu Rev Microbiol* 60:561–588. <https://doi.org/10.1146/annurev.micro.59.030804.121325>.
- Chen Y, Stine OC, Badger JH, Gil AI, Nair GB, Nishibuchi M, Fouts DE. 2011. Comparative genomic analysis of *Vibrio parahaemolyticus*: serotype conversion and virulence. *BMC Genomics* 12:294. <https://doi.org/10.1186/1471-2164-12-294>.
- Raszl SM, Froelich BA, Vieira CRW, Blackwood AD, Noble RT. 2016. *Vibrio parahaemolyticus* and *Vibrio vulnificus* in South America: water, seafood

- and human infections. *J Appl Microbiol* 121:1201–1222. <https://doi.org/10.1111/jam.13246>.
35. Gonzalez-Escalona N, Gavilan RG, Brown EW, Martinez-Urtaza J. 2015. Transoceanic spreading of pathogenic strains of *Vibrio parahaemolyticus* with distinctive genetic signatures in the *recA* gene. *PLoS One* 10: e0117485. <https://doi.org/10.1371/journal.pone.0117485>.
  36. Cornelis GR. 2000. Molecular and cell biology aspects of plague. *Proc Natl Acad Sci U S A* 97:8778–8783. <https://doi.org/10.1073/pnas.97.16.8778>.
  37. Canchaya C, Fournous G, Chibani-Chennoufi S, Dillmann ML, Brussow H. 2003. Phage as agents of lateral gene transfer. *Curr Opin Microbiol* 6:417–424. [https://doi.org/10.1016/S1369-5274\(03\)00086-9](https://doi.org/10.1016/S1369-5274(03)00086-9).
  38. Lauro FM, McDougald D, Thomas T, Williams TJ, Egan S, Rice S, DeMaere MZ, Ting L, Ertan H, Johnson J, Ferriera S, Lapidus A, Anderson I, Kyripides N, Munk AC, Detter C, Han CS, Brown MV, Robb FT, Kjelleberg S, Cavicchioli R. 2009. The genomic basis of trophic strategy in marine bacteria. *Proc Natl Acad Sci U S A* 106:15527–15533. <https://doi.org/10.1073/pnas.0903507106>.
  39. Pao SS, Paulsen IT, Saier MH, Jr. 1998. Major facilitator superfamily. *Microbiol Mol Biol Rev* 62:1–34. <https://doi.org/10.1128/MMBR.62.1.1-34.1998>.
  40. Giraud MF, Naismith JH. 2000. The rhamnose pathway. *Curr Opin Struct Biol* 10:687–696. [https://doi.org/10.1016/S0959-440X\(00\)00145-7](https://doi.org/10.1016/S0959-440X(00)00145-7).
  41. Ma B, Simala-Grant JL, Taylor DE. 2006. Fucosylation in prokaryotes and eukaryotes. *Glycobiology* 16:158R–184R. <https://doi.org/10.1093/glycob/cwk040>.
  42. Wang G, Boulton PG, Chan NWC, Palcic MM, Taylor DE. 1999. Novel *Helicobacter pylori* alpha1,2-fucosyltransferase, a key enzyme in the synthesis of Lewis antigens. *Microbiology* 145(Part 11):3245–3253. <https://doi.org/10.1099/00221287-145-11-3245>.
  43. Zhang H, Kaur I, Niesel DW, Seetharamaiah GS, Peterson JW, Prabhakar BS, Klimpel GR. 1997. Lipoprotein from *Yersinia enterocolitica* contains epitopes that cross-react with the human thyrotropin receptor. *J Immunol* 158:1976–1983.
  44. Ganesan B, Dobrowolski P, Weimer BC. 2006. Identification of the leucine-to-2-methylbutyric acid catabolic pathway of *Lactococcus lactis*. *Appl Environ Microbiol* 72:4264–4273. <https://doi.org/10.1128/AEM.00448-06>.
  45. Rottig A, Steinbuchel A. 2013. Acyltransferases in bacteria. *Microbiol Mol Biol Rev* 77:277–321. <https://doi.org/10.1128/MMBR.00010-13>.
  46. Daniel J, Deb C, Dubey VS, Sirakova TD, Abomoelak B, Morbidoni HR, Kolattukudy PE. 2004. Induction of a novel class of diacylglycerol acyltransferases and triacylglycerol accumulation in *Mycobacterium tuberculosis* as it goes into a dormancy-like state in culture. *J Bacteriol* 186:5017–5030. <https://doi.org/10.1128/JB.186.15.5017-5030.2004>.
  47. Rontani JF, Bonin PC, Volkman JK. 1999. Production of wax esters during aerobic growth of marine bacteria on isoprenoid compounds. *Appl Environ Microbiol* 65:221–230. <https://doi.org/10.1128/AEM.65.1.221-230.1999>.
  48. Wong HC, Wang P. 2004. Induction of viable but nonculturable state in *Vibrio parahaemolyticus* and its susceptibility to environmental stresses. *J Appl Microbiol* 96:359–366. <https://doi.org/10.1046/j.1365-2672.2004.02166.x>.
  49. McLaughlin JB, DePaola A, Bopp CA, Martinek KA, Napolillini NP, Allison CG, Murray SL, Thompson EC, Bird MM, Middaugh JP. 2005. Outbreak of *Vibrio parahaemolyticus* gastroenteritis associated with Alaskan oysters. *N Engl J Med* 353:1463–1470. <https://doi.org/10.1056/NEJMoa051594>.
  50. Daniel J, Maamar H, Deb C, Sirakova TD, Kolattukudy PE. 2011. *Mycobacterium tuberculosis* uses host triacylglycerol to accumulate lipid droplets and acquires a dormancy-like phenotype in lipid-loaded macrophages. *PLoS Pathog* 7:e1002093. <https://doi.org/10.1371/journal.ppat.1002093>.
  51. Gengenbacher M, Kaufmann SHE. 2012. *Mycobacterium tuberculosis*: success through dormancy. *FEMS Microbiol Rev* 36:514–532. <https://doi.org/10.1111/j.1574-6976.2012.00331.x>.
  52. Jeannotte R, Lee E, Kong N, Ng W, Weimer BC. 2014. High-throughput analysis of foodborne bacterial genomic DNA using Agilent 2200 TapeStation and genomic DNA ScreenTape system. Agilent Technologies, Santa Clara, CA.
  53. Weimer BC. 2017. 100K Pathogen Genome Project. *Genome Announc* 5: e00594-17. <https://doi.org/10.1128/genomeA.00594-17>.
  54. Kong N, Davis M, Arabyan N, Huang BC, Weis AM, Chen P, Thao K, Ng W, Chin N, Foutouhi S, Foutouhi A, Kaufman J, Xie Y, Storey DB, Weimer BC. 2017. Draft genome sequences of 1,183 *Salmonella* strains from the 100K Pathogen Genome Project. *Genome Announc* 5:e00518-17. <https://doi.org/10.1128/genomeA.00518-17>.
  55. Nurk S, Bankevich A, Antipov D, Gurevich AA, Korobeynikov A, Lapidus A, Pribelski AD, Pyshkin A, Sirotkin A, Sirotkin Y, Stepanauskas R, Clingenpeel SR, Woyke T, McLean JS, Lasken R, Tesler G, Alekseyev MA, Pevzner PA. 2013. Assembling single-cell genomes and mini-metagenomes from chimeric MDA products. *J Comput Biol* 20:714–737. <https://doi.org/10.1089/cmb.2013.0084>.
  56. Bandy DJDR, Weimer BC. 2019. Biological machine learning combined with bacterial population genomics reveals common and rare allelic variants of genes to cause disease. *bioRxiv* 739540. <https://doi.org/10.1101/739540>.
  57. Seemann T. 2014. Prokka: rapid prokaryotic genome annotation. *Bioinformatics* 30:2068–2069. <https://doi.org/10.1093/bioinformatics/btu153>.
  58. Page AJ, Cummins CA, Hunt M, Wong VK, Reuter S, Holden MT, Fookes M, Falush D, Keane JA, Parkhill J. 2015. Roary: rapid large-scale prokaryote pan genome analysis. *Bioinformatics* 31:3691–3693. <https://doi.org/10.1093/bioinformatics/btv421>.
  59. Hadfield J, Croucher NJ, Goater RJ, Abudahab K, Aanensen DM, Harris SR. 2018. Phandango: an interactive viewer for bacterial population genomics. *Bioinformatics* 34:292–293. <https://doi.org/10.1093/bioinformatics/btx610>.
  60. Brynildsrud O, Bohlin J, Scheffer L, Eldholm V. 2016. Rapid scoring of genes in microbial pan-genome-wide association studies with Scoary. *Genome Biol* 17:238. <https://doi.org/10.1186/s13059-016-1108-8>.
  61. Falush D, Stephens M, Pritchard JK. 2007. Inference of population structure using multilocus genotype data: dominant markers and null alleles. *Mol Ecol Notes* 7:574–578. <https://doi.org/10.1111/j.1471-8286.2007.01758.x>.
  62. Pritchard JK, Stephens M, Donnelly P. 2000. Inference of population structure using multilocus genotype data. *Genetics* 155:945–959.
  63. Katoh K, Asimenos G, Toh H. 2009. Multiple alignment of DNA sequences with MAFFT, p 39–64. *In* Posada D (ed), *Bioinformatics for DNA sequence analysis*, 1st ed. Humana Press, Totowa, NJ.
  64. Stamatakis A. 2014. RAxML version 8: a tool for phylogenetic analysis and post-analysis of large phylogenies. *Bioinformatics* 30:1312–1313. <https://doi.org/10.1093/bioinformatics/btu033>.
  65. Simpson JT, Wong K, Jackman SD, Schein JE, Jones SJ, Birol I. 2009. ABySS: a parallel assembler for short read sequence data. *Genome Res* 19:1117–1123. <https://doi.org/10.1101/gr.089532.108>.
  66. Meier-Kolthoff JP, Auch AF, Klenk HP, Goker M. 2013. Genome sequence-based species delimitation with confidence intervals and improved distance functions. *BMC Bioinformatics* 14:60. <https://doi.org/10.1186/1471-2105-14-60>.
  67. Kumar S, Stecher G, Tamura K. 2016. MEGA7: Molecular Evolutionary Genetics Analysis version 7.0 for bigger datasets. *Mol Biol Evol* 33:1870–1874. <https://doi.org/10.1093/molbev/msw054>.
  68. Saitou N, Nei M. 1987. The neighbor-joining method: a new method for reconstructing phylogenetic trees. *Mol Biol Evol* 4:406–425. <https://doi.org/10.1093/oxfordjournals.molbev.a040454>.
  69. Lees JA, Harris SR, Tonkin-Hill G, Gladstone RA, Lo SW, Weiser JN, Corander J, Bentley SD, Croucher NJ. 2019. Fast and flexible bacterial genomic epidemiology with PopPUNK. *Genome Res* 29:304–316. <https://doi.org/10.1101/gr.241455.118>.
  70. Hyatt D, Chen GL, Locascio PF, Land ML, Larimer FW, Hauser LJ. 2010. Prodigal: prokaryotic gene recognition and translation initiation site identification. *BMC Bioinformatics* 11:119. <https://doi.org/10.1186/1471-2105-11-119>.
  71. Altschul SF, Madden TL, Schaffer AA, Zhang J, Zhang Z, Miller W, Lipman DJ. 1997. Gapped BLAST and PSI-BLAST: a new generation of protein database search programs. *Nucleic Acids Res* 25:3389–3402. <https://doi.org/10.1093/nar/25.17.3389>.
  72. Tatusov RL, Koonin EV, Lipman DJ. 1997. A genomic perspective on protein families. *Science* 278:631–637. <https://doi.org/10.1126/science.278.5338.631>.
  73. Overbeek R, Begley T, Butler RM, Choudhuri JV, Chuang HY, Cohoon M, de Crecy-Lagard V, Diaz N, Disz T, Edwards R, Fonstein M, Frank ED, Gerdes S, Glass EM, Goesmann A, Hanson A, Iwata-Reuyl D, Jensen R, Jamshidi N, Krause L, Kubal M, Larsen N, Linke B, McHardy AC, Meyer F, Newweger H, Olsen G, Olson R, Osterman A, Portnoy V, Pusch GD, Rodionov DA, Ruckert C, Steiner J, Stevens R, Thiele I, Vassieva O, Ye Y, Zagnitko O, Vonstein V. 2005. The subsystems approach to genome annotation and its use in the project to annotate 1000 genomes. *Nucleic Acids Res* 33:5691–5702. <https://doi.org/10.1093/nar/gki866>.
  74. Jones P, Binns D, Chang HY, Fraser M, Li W, McAnulla C, McWilliam H, Maslen J, Mitchell A, Nuka G, Pesseat S, Quinn AF, Sangrador-Vegas A, Scheremetjew M, Yong SY, Lopez R, Hunter S. 2014. InterProScan 5: genome-scale protein function classification. *Bioinformatics* 30:1236–1240. <https://doi.org/10.1093/bioinformatics/btu031>.
  75. Benjamini Y, Hochberg Y. 1995. Controlling the false discovery rate: a practical and powerful approach to multiple testing. *J R Stat Soc Series B Stat Methodol* 57:289–300.