

# UCLA

## UCLA Previously Published Works

### Title

Phenotypic and functional characterization of corneal endothelial cells during in vitro expansion

### Permalink

<https://escholarship.org/uc/item/6962h6x7>

### Journal

Scientific Reports, 10(1)

### ISSN

2045-2322

### Authors

Frausto, Ricardo F

Swamy, Vinay S

Peh, Gary SL

et al.

### Publication Date

2020

### DOI

10.1038/s41598-020-64311-x

### Copyright Information

This work is made available under the terms of a Creative Commons Attribution License, available at <https://creativecommons.org/licenses/by/4.0/>

Peer reviewed



OPEN

# Phenotypic and functional characterization of corneal endothelial cells during *in vitro* expansion

Ricardo F. Frausto<sup>1</sup>, Vinay S. Swamy<sup>1</sup>, Gary S. L. Peh<sup>2</sup>, Payton M. Boere<sup>1</sup>, E. Maryam Hanser<sup>1</sup>, Doug. D. Chung<sup>1</sup>, Benjamin L. George<sup>2</sup>, Marco Morselli<sup>3,4</sup>, Liyo Kao<sup>5</sup>, Rustam Azimov<sup>5</sup>, Jessica Wu<sup>1</sup>, Matteo Pellegrini<sup>3,4,6,7</sup>, Ira Kurtz<sup>5,8</sup>, Jodhbir S. Mehta<sup>2</sup> & Anthony J. Aldave<sup>1</sup>✉

The advent of cell culture-based methods for the establishment and expansion of human corneal endothelial cells (CEnC) has provided a source of transplantable corneal endothelium, with a significant potential to challenge the one donor-one recipient paradigm. However, concerns over cell identity remain, and a comprehensive characterization of the cultured CEnC across serial passages has not been performed. To this end, we compared two established CEnC culture methods by assessing the transcriptomic changes that occur during *in vitro* expansion. In confluent monolayers, low mitogenic culture conditions preserved corneal endothelial cell state identity better than culture in high mitogenic conditions. Expansion by continuous passaging induced replicative cell senescence. Transcriptomic analysis of the senescent phenotype identified a cell senescence signature distinct for CEnC. We identified activation of both classic and new cell signaling pathways that may be targeted to prevent senescence, a significant barrier to realizing the potential clinical utility of *in vitro* expansion.

The corneal endothelium is a neuroectoderm-derived tissue that is located on the posterior surface of the cornea and is a semipermeable monolayer of mitotically inactive (i.e., quiescent) cells. A critical functional property of the corneal endothelium is to maintain the corneal stroma in a relatively dehydrated state. This process ensures that the collagen fibers of the stroma retain an ultrastructural organization essential for corneal transparency. The pump-leak hypothesis is believed to best explain the role that the endothelium plays in maintaining a relatively dehydrated stroma. Passive movement of water from the aqueous humor to the stroma (i.e., leak) and active transport of solutes (i.e., pump) in the opposite direction are regulated by the corneal endothelial cell (CEnC) barrier formation (i.e., tight junctions, cell adhesion) and expression of solute transporters (e.g., Na/K ATPases, SLC4A11)<sup>1</sup>. Mutations in genes encoding solute transporters (e.g., *SLC4A11*) or other essential endothelial cell functions (e.g., *ZEB1*, *TCF4*) lead to stromal edema and loss of corneal clarity<sup>2–5</sup>. In general, loss of barrier integrity, dysfunction of solute transporters or a significant decrease in CEnC density leads to the loss of corneal clarity that necessitates corneal transplantation. Endothelial cell failure constitutes the primary indication for corneal transplantation both worldwide and in the U.S., serving as the indication for 55% of all keratoplasty procedures performed in the US in 2018<sup>6</sup>. While endothelial keratoplasty represents a significant advance in the surgical management of corneal endothelial dysfunction, a variety of associated intraoperative and postoperative complications, in addition to the low rates of donor corneal recovery and the lack of adequately trained surgeons in the majority of countries, have significantly limited the impact of endothelial keratoplasty on visual impairment due to corneal endothelial dysfunction worldwide<sup>7–9</sup>.

<sup>1</sup>Stein Eye Institute, David Geffen School of Medicine at UCLA, Los Angeles, California, USA. <sup>2</sup>Tissue Engineering and Stem Cell Group, Singapore Eye Research Institute, Singapore, Singapore. <sup>3</sup>Department of Molecular, Cell and Developmental Biology, UCLA, Los Angeles, California, USA. <sup>4</sup>Institute for Quantitative and Computational Biology, UCLA, Los Angeles, California, USA. <sup>5</sup>Division of Nephrology, David Geffen School of Medicine at UCLA, Los Angeles, California, USA. <sup>6</sup>Molecular Biology Institute, UCLA, Los Angeles, California, USA. <sup>7</sup>Jonsson Comprehensive Cancer Center, UCLA, Los Angeles, California, USA. <sup>8</sup>Brain Research Institute, UCLA, Los Angeles, California, USA. ✉e-mail: [aldave@jsei.ucla.edu](mailto:aldave@jsei.ucla.edu)

The worldwide shortage of donor corneal tissue for the treatment of corneal endothelial dysfunction necessitates the development of viable alternatives to the paradigm of one donor cornea being used for only one recipient<sup>10–12</sup>. The *in vitro* generation of stem cell-derived corneal endothelial-like cells<sup>13</sup>, immortalized CEnC lines<sup>14,15</sup> and expansion of primary CEnC from cadaveric donor corneal tissue<sup>10,16,17</sup> have challenged the one donor-one recipient paradigm of corneal transplantation. Nevertheless, *in vitro* culture poses its own challenges, including unwanted changes in cell phenotype (e.g., endothelial to fibroblastic) and progression towards replicative senescence that limits cell numbers<sup>11,18</sup>. In addition, the quality of the donor tissue from which the CEnC are derived is critical in the successful establishment of an *in vitro* CEnC culture. Donor age significantly impacts culture success rate, with the optimal age being less than 40 years old. Reduced success rates from older donors are correlated with an appearance of senescence-associated markers *ex vivo*<sup>19</sup>, and this is believed to significantly limit re-entry into the cell cycle even in the presence of potent mitogenic factors. While senescence is generally an irreversible cell state<sup>20</sup>, CEnC from younger donors are characterized by a quiescent cell state (G1 cell cycle arrest), which is a reversible mitotic arrest that enables these cells to undergo mitogen-induced cell cycle re-entry<sup>21</sup>. Donor age and other factors (e.g., days in preservation medium, donor medical history, cell count) dictate the success of establishing *in vitro* cultures<sup>11</sup>. This makes identifying an optimal *in vitro* culture protocol essential for ensuring consistent establishment and expansion of CEnC.

To achieve this goal, we assessed two previously reported methods for establishing cultures of primary CEnC, one with a relatively high mitogenic environment and the other with reduced mitogenic conditions<sup>22,23</sup> by using a multipronged approach. CEnC require dissociation and growth in mitogen-rich medium to overcome mitotic block and to initiate cell division<sup>24</sup>. However, prolonged exposure to mitogen-rich conditions leads to a fibroblastic phenotype. Change to a low mitogenic environment facilitates re-establishment/maintenance of the contact inhibited quiescent CEnC phenotype<sup>22,25</sup>. Because the mitogen-rich approach is the classic method for *in vitro* expansion of CEnC, we chose to compare it to the recently described “dual media” approach. We determined the impact of *in vitro* expansion on CEnC gene expression by performing a transcriptomics analysis, and identified gene expression features of replicative senescence. In addition, we performed a variety of assays to determine the impact of these two methods on essential CEnC functions. We identified new potential targets for suppressing cellular senescence, and confirmed that a relatively low mitogenic environment is better at maintaining the CEnC phenotype *in vitro*<sup>22</sup>. These findings form the basis for continued development of *in vitro* culture and expansion of primary CEnC for their eventual use in cell replacement therapy for the management of corneal endothelial loss or dysfunction.

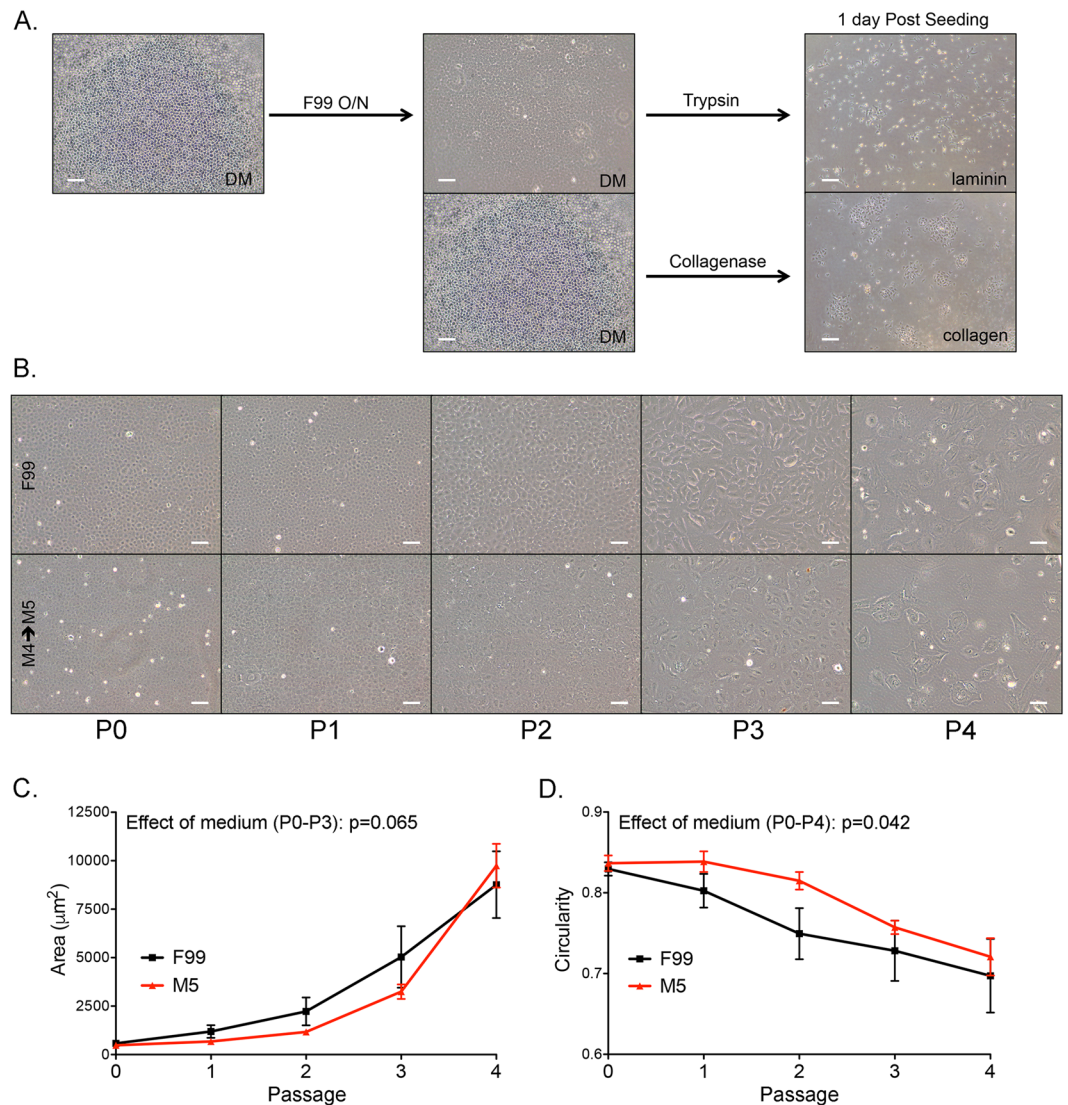
## Results

***In vitro* expansion of CEnC induces senescence-associated morphogenesis.** The morphogenic effects of culture in high mitogenic (F99) and low mitogenic (M5) conditions on primary CEnC were examined (Fig. 1). Phase contrast images were acquired at each passage when confluent monolayers were established (Fig. 1B and Supplementary Fig. S1). Morphometric analysis was performed at each passage (Fig. 1C). Up to passage 3, the area occupied by each cell was greater in F99, compared with cells in M5, but the effect of medium on the curves was not statistically significant ( $p = 0.065$ ). Cell circularity, which measures the degree to which a cell shape resembles a circle (1.0 is a perfect circle), was greater at all passages for cells in M5 medium, compared with cells in F99. The effect of medium on the curves for circularity was statistically significant ( $p = 0.042$ ). As the value approaches 0, cell shape is increasingly irregular and/or elongated.

**A low mitogenic environment maintains a robust CEnC-specific gene expression profile in primary CEnC.** To examine the ability of the cultured cells to maintain a CEnC-specific gene expression profile in low- or high-mitogenic environments, we compared the expression of 97 genes, previously identified as specific to *ex vivo* corneal endothelium (evCEnC), in primary CEnC in M5 versus F99 at each passage (Fig. 2)<sup>26</sup>. At P0, the cells in M5 expressed 83 of the 97 (85.6%) evCEnC-specific genes, while cells in F99 expressed 76 (78.4%) (Fig. 2A). By P4, the percentages decreased to 75.3% (73/97) in cells cultured in M5, and 66% (64/97) in cells cultured in F99 (Fig. 2A). We examined the 97 evCEnC-specific genes in the passaged cells to identify those that may be suitable positive selection markers for assessing the quality of CEnC cultures using the following criteria: 1) expression in 2 or more sequential passages, starting with P0; 2) decreasing expression over increasing passages (Fig. 2B); and 3) encoding a cell surface protein. Only *TMEM178A* demonstrated these characteristics (Fig. 2C), and its expression was validated by qPCR at P0 and P3 (Fig. 2D).

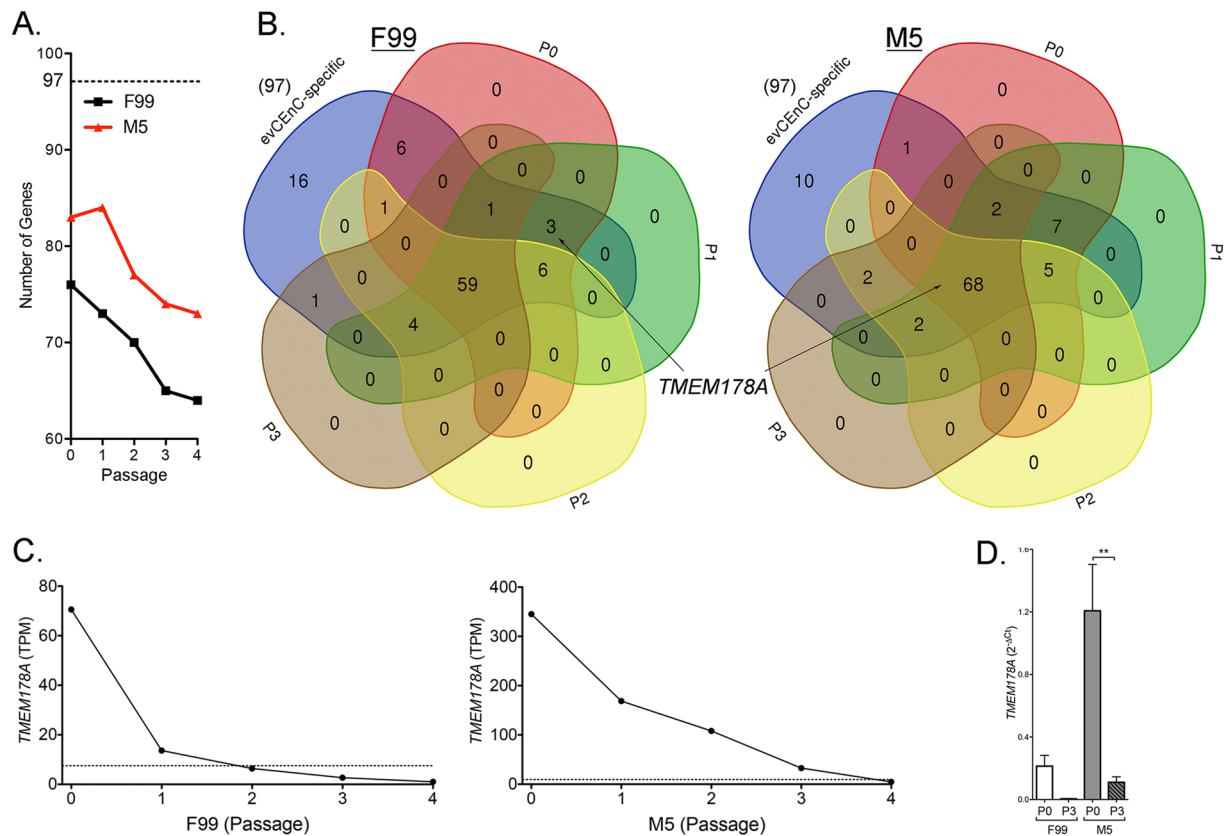
An analysis of the expression of genes purported to be markers for CEnC identity and/or to determine the quality of CEnC in culture revealed that many were neither specific nor highly expressed in corneal endothelium (e.g., *ATP1A1*, *TJP1*, *VIM*, *PRDX6*, *SLC3A2*), or did not correlate well with other quality metrics, such as cell morphology (e.g., *ALCAM1*, *ERBB2*, *CD248*, *SLC25A11*) (Supplementary Fig. S2). We should note that our data represents transcript abundance, and these markers may prove to be adequate based on protein abundance, which was not determined for the majority of the reported markers in this study. Based on transcript abundance, *SLC4A11* and *CD44* may represent the optimal markers for selection of high quality cultured CEnC, with *SLC4A11* classified as a positive selection marker and *CD44* classified as a negative selection marker (Fig. 3). *SLC4A11* and *CD44* transcript abundances at P0 and P3 in CEnC cultured in both F99 and M5 was determined by RNA-seq and validated by both qPCR and a Western assay (Fig. 3A). Expression of *SLC4A11*, which was high in evCEnC, decreased with increasing passage, while expression of *CD44*, which was high in evCEpC, increased with increasing passage (Fig. 3B).

**Low mitogenic conditions establish a robust functional barrier in CEnC.** To determine the impact of cell culture conditions on the establishment of a functional barrier, we measured resistance of the CEnC to an electrical current (Fig. 4). Initially, we measured barrier function of cells isolated/grown using unmodified protocols for



**Figure 1.** M5 medium delays morphologic features associated with a senescent phenotype. **(A)** Protocols for the isolation and culture of primary CEnC in high (F99) and low (M5) mitogenic conditions were compared. Images show cells 1-day after seeding (right panel). **(B)** Images show confluent CEnC cultures at five passages using two culture methods (F99 or M5). **(C)** Line graph shows mean cell area ( $\mu\text{m}^2$ ) at each passage. **(D)** Line graph shows mean circularity at each passage. Data in **(C,D)** are represented as the mean  $\pm$  SEM ( $n = 6$ ). Statistical comparisons were performed using two-way ANOVA, with passage and medium defining the variables for this comparison. Scale bars, 100  $\mu\text{m}$ .

each of the two methods employed in this study (Tryp-LN-F99 and ColA-ColIV-M4M5). CEnC cultured using the ColA-ColIV-M4M5 method demonstrated markedly greater impedance compared with CEnC cultured using the Tryp-LN-F99 method (Fig. 4A). Impedance data was then used to model cell-cell ( $R_b$ ) and cell-substrate ( $\alpha$ ) interactions, which demonstrated that both contribute to the greater barrier function observed in cells cultured using the ColA-ColIV-M4M5 method. To identify a potential effect of the dissociation enzymes (trypsin and collagenase A) on the establishment of a functional barrier, we modified the isolation/growth protocols to exchange one enzyme for the other. Exchanging the enzymes did not have a marked effect on the establishment of a functional barrier, with the cells cultured using the protocol containing ColIV-M4M5 establishing a more robust functional barrier compared with cultures established with the protocol containing LN-F99 (Fig. 4B). To determine the contribution, if any, of the substrate (laminin or collagen) to which the cells adhere, or of the media (F99 or M5) in which the cells are cultured, we exchanged the substrates for each other and used F99 and M5 for each (Fig. 4C). Due to the limitation in the number of replicates we could assay, we chose trypsin (Tryp) as the dissociation enzyme, since use of either trypsin or collagenase A did not make a significant difference on establishment of a functional barrier. While only marginal differences in the electrical impedance were observed up to approximately 48 hours between Tryp-LN-M4M5 and Tryp-ColIV-M4M5, after that time point the cells that were cultured using the Tryp-LN-M4M5 method demonstrated a progressively weakening barrier. Additionally, the cells that were cultured using the Tryp-LN-M4M5 method demonstrated a marked decrease in cell-cell and cell-substrate adhesion after 48 hours. We observed a markedly weaker barrier



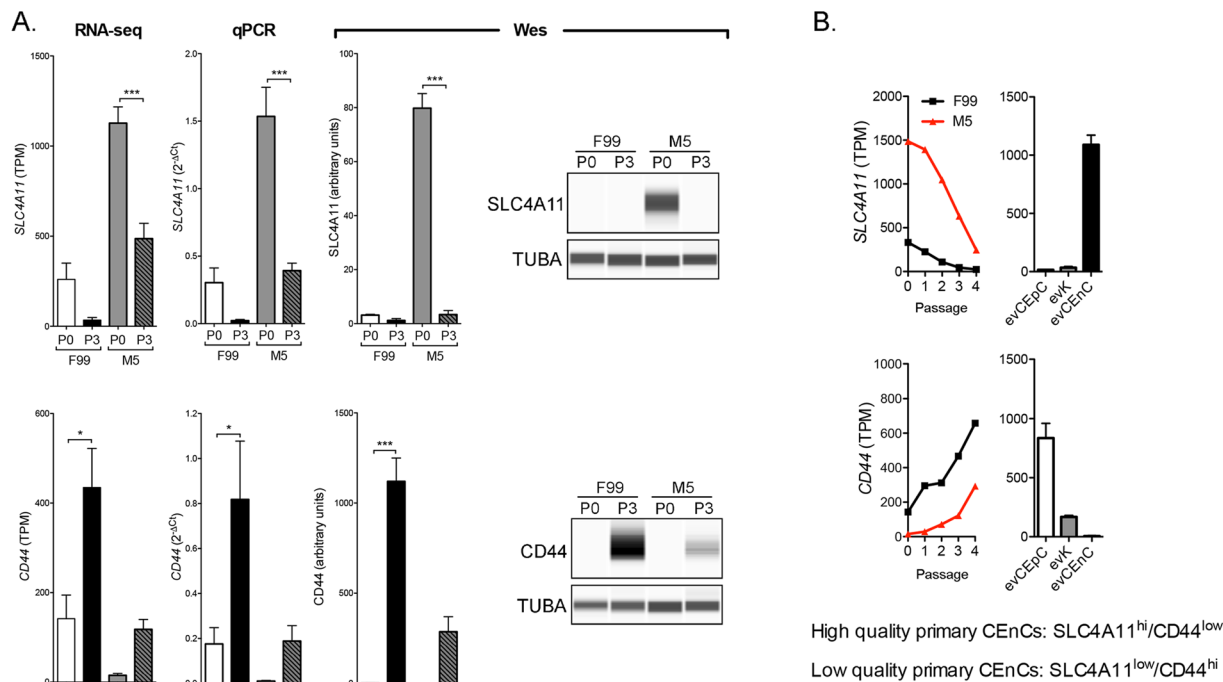
**Figure 2.** M5 medium maintains CEnC-specific gene expression in cultured CEnC. **(A)** Line graph shows the number of evCEnC-specific genes expressed in CEnC cultured in either F99 or M5 medium. Dashed line represents the number (97) of evCEnC-specific genes identified in a previous study. **(B)** Venn diagrams demonstrating the expression of evCEnC-specific genes at passages P0-P3 (P4 not shown due to difficulty visualizing Venn diagrams of greater than 5 sets). *TMEM178A* was identified as a cell surface marker expressed in early passages (at least P0 and P1) in CEnC cultured in either F99 or M5. **(C)** Line graphs show expression pattern of *TMEM178A* in CEnC cultured in F99 or M5. Gene was considered expressed if TPM value was greater than 7.5 (dashed line). **(D)** Bar graph shows *TMEM178A* transcript abundances in P0 and P3 CEnC using qPCR. Data in **(D)** are represented as the mean ± SEM (n = 4). Statistical comparisons were performed using one-way ANOVA with post-hoc Tukey test. \*\*P < 0.01.

for cells cultured in F99 (Tryp-LN-F99 or Tryp-ColIV-F99) compared with Tryp-ColIV-M4M5 for the entire duration of the experiment.

To determine whether the differences observed in barrier function between the two culturing methods (F99 versus M5) could be explained by differences in barrier-associated proteins or in the organization of the adhesive interactions between cells, we examined the expression and localization of the cadherin protein CDH2. While *CDH2* transcript levels measured by qPCR were significantly ( $p < 0.01$ ) lower in cells cultured in M5, the *CDH2* protein levels were not different (Fig. 4D). However, the organization of the adhesive interaction between cells was markedly different between cells grown in F99 and M5 (Fig. 4E). In F99, the cell-cell interactions appeared diffuse and frayed, although these features were not consistent for all cell-cell interactions, and lacked features of a well-formed lateral membrane. In contrast, the cells grown in M5 appeared to have consistent cell-cell interactions with what appears as prominent lateral membranes, which give the image the impression of depth.

### A strong functional barrier in primary CEnC is associated with robust expression of adhesion and glycolyx proteins.

To determine the extent to which barrier-associated proteins may be involved in the more robust establishment of a functional barrier of CEnC in M5 media, we examined several proteins associated with either cell-cell adhesion or glycolyx formation (Fig. 5). We first measured the expression of genes that encode adhesion-associated proteins (CLDN11, AJAP1, TMEM204 and TMEM178A), and quantified protein levels for each (Fig. 5A). The expression of each of the four genes was higher in CEnC cultured in M5 compared to F99, reaching statistical significance ( $p < 0.05$ ) for all four when measured at the transcript level by qPCR, and for two (CLDN11 and TMEM178A) when measured at the protein level ( $p < 0.01$ ). We then measured the expression of genes that encode glycolyx-associated proteins (APOE, MYOC, DCN, LUM and APOD), and quantified protein levels for each (Fig. 5B). Significantly ( $p < 0.05$ ) higher transcript levels were observed for all five genes in CEnC cultured in M5, but only two of the proteins (MYOC and APOD) demonstrated significantly higher levels. The APOE ( $p = 0.05$ ) and LUM ( $p = 0.14$ ) proteins were markedly higher in M5, but did not achieve statistical



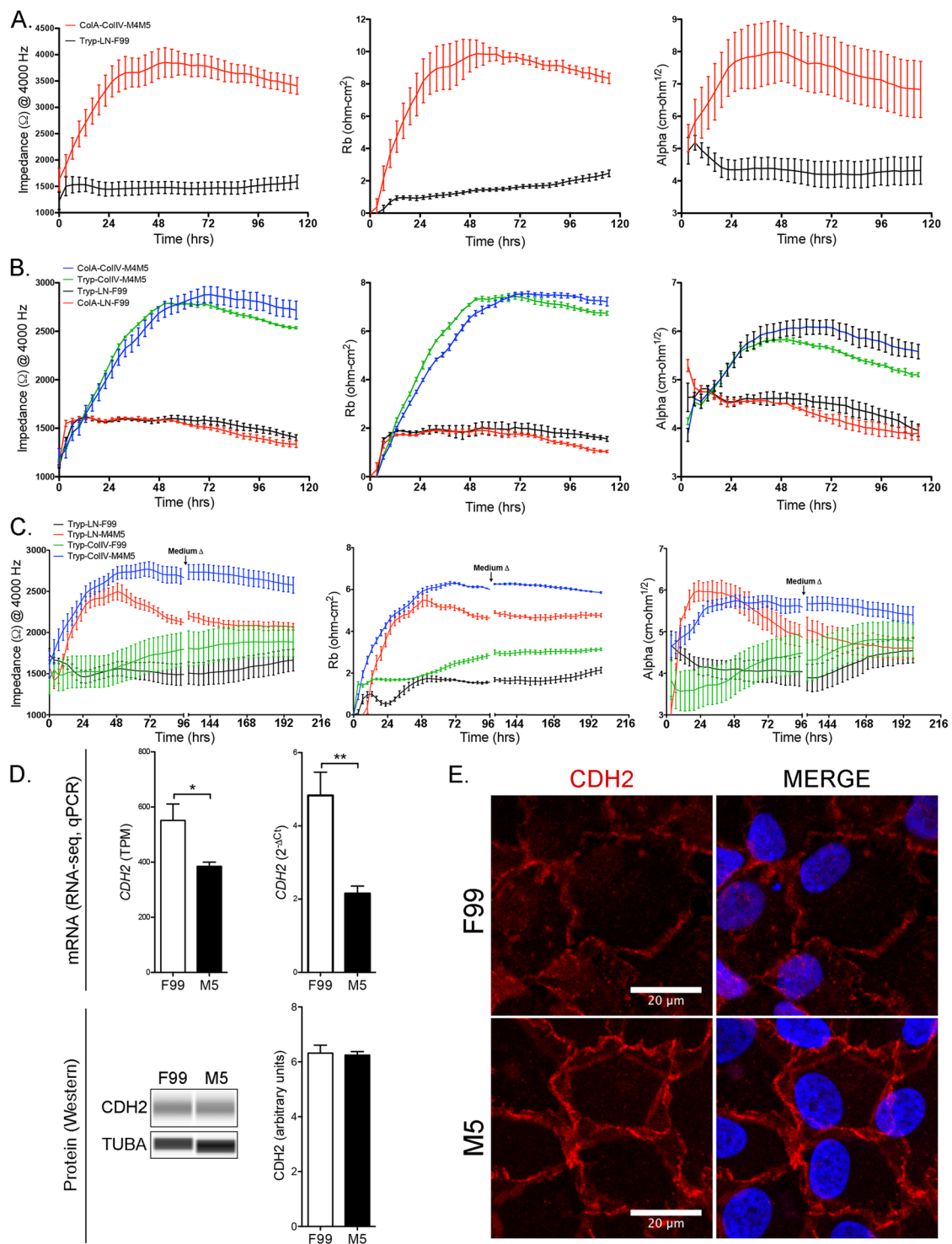
**Figure 3.** SLC4A11 and CD44 as cell surface markers for the selection of high quality cultured CEnC. Assessment of previously published markers and results obtained in this study provide evidence that SLC4A11 and CD44 represent the most informative markers for the selection of high quality cultured cells, and represent a minimum for selection. **(A)** Bar graphs show transcript (RNA-seq and qPCR) abundance of *SLC4A11* and *CD44* in P0 and P3 CEnC cultured in F99 and M5. Detection and quantification of SLC4A11 and CD44 was performed using a Western assay (Wes). Bar graphs show protein quantification. **(B)** Line graphs show *SLC4A11* and *CD44* transcript quantities in CEnC at each passage (P0–P4). Bar graphs show transcript abundance in the three main cell types of the cornea ((epithelial cells (evCEpC), keratocytes (evK) and endothelial cells (evCEnC)). Data in bar graphs in **(A)** are represented as the mean  $\pm$  SEM ( $n = 7$ , RNA-seq;  $n = 4$ , qPCR;  $n = 3$ , Wes). Data in line graphs are represented as the mean TPM at each passage ( $n = 7$ ). Data in bar graphs in **(B)** are represented as the mean TPM,  $\pm$  SEM ( $n = 3$ ). Statistical comparisons were performed using one-way ANOVA with post-hoc Tukey test. \* $P < 0.05$ ; \*\*\* $P < 0.001$ .

significance. DCN did not demonstrate a difference in protein levels between the two media. Of note, APOD is known to exist in three forms (pre-modified, post-modified, and complexed), each of progressively greater molecular weight, all of which demonstrated significantly ( $p < 0.05$ ) higher expression in M5 compared with F99.

**Robust CEnC pump function is established by culture in low mitogenic conditions.** The SLC4A4, SLC4A11 and SLC16A1 transporters are highly expressed in *in vivo* corneal endothelium, and play a prominent role in maintaining the solute gradients necessary for regulation of water transport from the stroma to the anterior chamber. To determine the level of expression and functional capacity of each in F99 and M5 media, we measured transcript levels by RNA-seq and qPCR, protein levels by Western, and transporter activity with a fluorescence-based transporter assay (Fig. 6). *SLC4A11* demonstrated significantly higher ( $p < 0.01$ ) and *SLC4A4* demonstrated non-significantly ( $p = 0.081$ ) higher transcript levels in M5 medium, while the proteins encoded by all three genes demonstrated significantly ( $p < 0.05$ ) higher levels in M5 compared with F99 (Fig. 6A).

To assess transporter function, we assayed for intracellular proton concentration (i.e.,  $pH_i$ ) over time, including after changes in buffer perfusion, since each of the transporters transfer protons across the plasma membrane (Fig. 6B). Traces showing intracellular pH demonstrate sensitivity to buffer changes for each transporter. Qualitatively, the rate of change in intracellular proton concentration mediated by SLC4A4 and SLC4A11 following a change in buffer appears greater in M5 compared with F99 medium. In contrast, the rate of change in intracellular proton concentration mediated by SLC16A1 following a change in buffer appears greater in F99 compared with M5 medium. Quantitatively, and as an indirect measure of transporter activity, we calculated the change in intracellular proton concentration over time ( $d[H_i]/dt$ ) for each of the assays, and observed significantly ( $p < 0.01$ ) higher SLC4A4 and SLC4A11 and significantly ( $p < 0.01$ ) lower activity for SLC16A1 for cells cultured in M5.

**Low mitogenic conditions cause decreased cell migration capacity.** We measured cell migration using a non-wounding method (Fig. 7). Phase contrast imaging of cell migration demonstrated significantly ( $p < 0.001$ ) less gap closure for CEnC in M5 compared with F99 medium (Fig. 7A,B). We observed that cells cultured in M5, while possessing lower migration capacity, also appear to markedly cover the gap primarily by



**Figure 4.** Cultured CENc establish and maintain robust barrier function in M5 medium. **(A)** Line graph shows electrical impedance ( $\Omega$  at 4000 Hz) for P0 CENc monolayers established in F99 and M5 media. The contribution of cell-cell adhesion to the resistance of electrical current was modeled from impedance data and given as  $R_b$  ( $\Omega \cdot \text{cm}^2$ ). The contribution of cell-substrate adhesion to resistance of electrical current was modeled from impedance data and given as  $\alpha$  ( $\Omega^{1/2} \cdot \text{cm}$ ). **(B)** Line graph shows electrical impedance for CENc monolayers established from cells dissociated with trypsin (Tryp) or collagenase (ColA), and each cultured in F99 and M5 medium. The contribution of cell-cell ( $R_b$ ) and cell-substrate ( $\alpha$ ) to electrical resistance were modeled from the impedance data. **(C)** Line graph shows electrical impedance for CENc monolayers established from cells dissociated with trypsin (Tryp), seeded on either laminin (LN) or collagen (ColIV), and cultured in either F99 and M5 medium. The contribution of cell-cell ( $R_b$ ) and cell-substrate ( $\alpha$ ) to electrical resistance was modeled from the impedance data. **(D)** Bar graphs show abundance of *CDH2*, a contributor to cell-cell adhesion, in CENc cultured in F99 and M5 (top panel). Western results for *CDH2* protein and

bar graph shows protein quantification (bottom panel). TUBA was used as a loading control in the Western. (E) Immunofluorescence results show localization of CDH2 protein in CEnC cultured in F99 and M5. Red, Alexafluor 594; blue, DAPI. Data in line graphs are represented as the mean  $\pm$  SD ( $n = 4$ ), and data in bar graphs are represented as the mean  $\pm$  SEM ( $n = 7$ , RNA-seq;  $n = 4$ , qPCR;  $n = 3$ , Wes). Statistical comparisons were performed using an unpaired t-test. \* $P < 0.05$ ; \*\* $P < 0.01$ .

increasing the cell size rather than by migration (Fig. 7C). We calculated the ratio of the area occupied by the cells that “migrated” into the gap versus cells more distant from the gap, and which have not substantially changed their size compared with prior to when migration was initiated (Fig. 7D). Cell size for cells cultured in M5 and occupying any portion of the gap cover a significantly ( $p < 0.05$ ) larger area compared with cells cultured in F99.

**CEnC grown in a low-mitogenic environment possess a robust cellular respiration phenotype.** We performed bioinformatics analyses using differentially expressed genes to determine the biological characteristics of cells cultured with F99 and M5. We identified the genes that were significantly differentially expressed in cells at each passage between the two growth conditions (Supplementary Table S1). With progressive passaging, the number of genes showing differential expression (M5 compared to F99 at each passage) decreased for cells in each media condition, with the transcriptomes of the cells grown in F99 and cells grown in M5 becoming increasingly more similar (Supplementary Fig. S3). As the gene expression difference was greatest at P0 (between F99 and M5), we performed bioinformatics analyses on the data set obtained at P0. The genes upregulated in cells with each media at P0 were subsequently analyzed to identify gene ontology (GO) and pathway terms enriched in our data sets (Supplementary Table S2). GO terms significantly ( $q$ -value  $< 0.05$ ) enriched in the F99 (P0) upregulated genes data set were associated with cell differentiation and tissue development (e.g., developmental process, system development, and multicellular organism development) (Table 1). In addition, significantly enriched pathway terms were associated with cell state transitions (e.g., TGF-beta signaling pathway and epithelial to mesenchymal transition in colorectal cancer) and cell senescence (e.g., senescence and autophagy in cancer). The significantly enriched GO terms in the M5 (P0) upregulated genes data set were associated with cellular respiration (e.g., oxidoreductase activity and electron transfer activity) and lipid metabolism (e.g., lipid oxidation and fatty acid oxidation). Similarly, pathway terms enriched in this data set were also associated with cellular respiration (e.g., electron transport chain (OXPHOS system in mitochondria)) and lipid metabolism (e.g., fatty acid metabolism). GO and pathway enrichment results were similar for the other passages within the same media group (Supplementary Table S2).

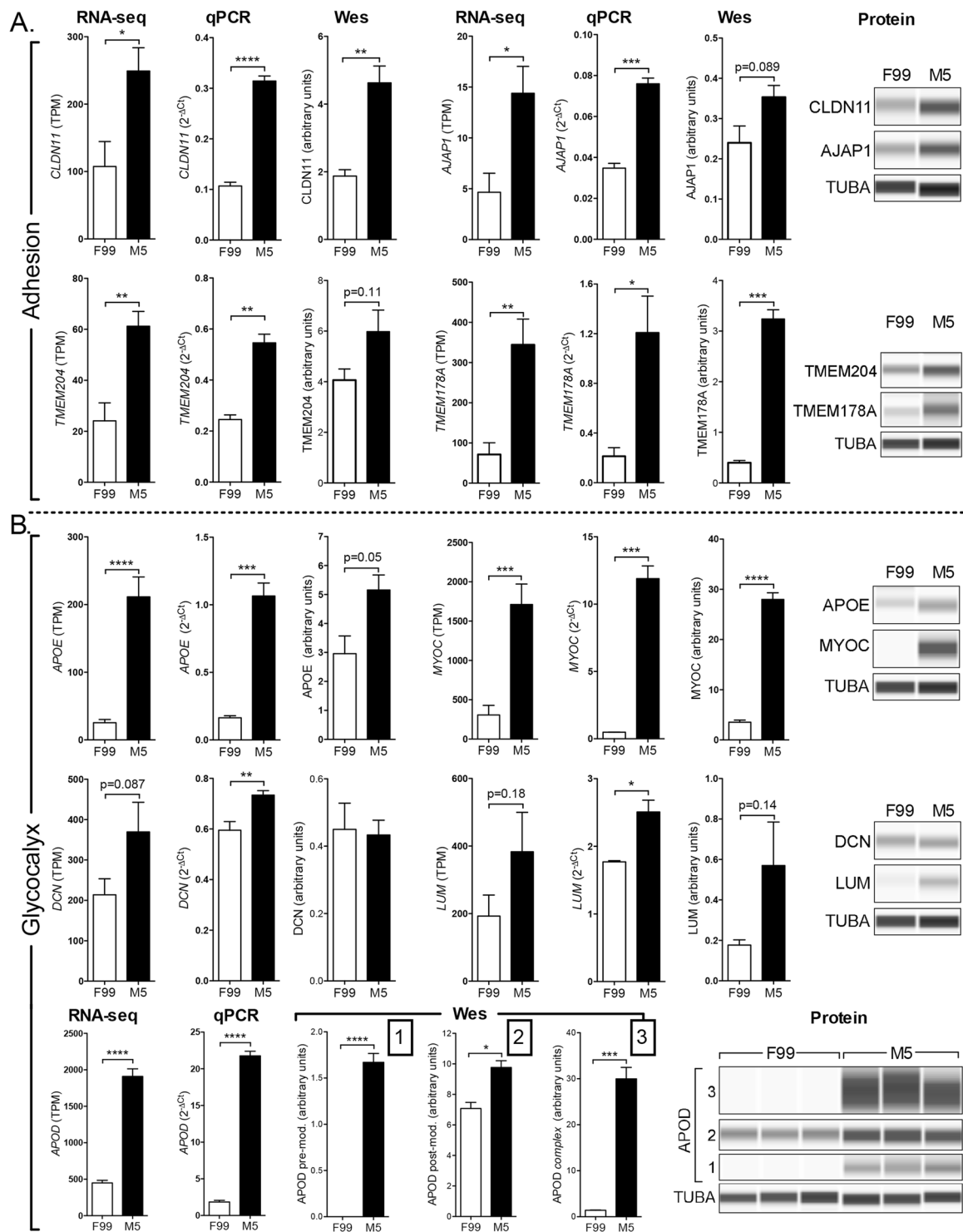
**Senescence of primary CEnC is not dependent on mitogen concentration.** To determine whether the observed senescent-associated morphogenic changes coincide with gene expression changes, we assessed the expression changes for genes previously associated with cell senescence (Supplementary Table S3). Many of these genes demonstrated marked expression changes and trends in expression that are consistent with the senescent phenotype observed for many distinct cell systems. To determine the functional consequences of changes in gene expression, we identified genes that were significantly differentially expressed at each passage (P0 was the reference), and for each medium (Supplementary Table S4). Passage 3 and 4 showed the greatest number of differentially expressed genes (Supplementary Fig. S3), which coincided with marked changes in morphometric measures. We subsequently performed GO and pathway analysis to determine the GO and pathway terms enriched in this data set (Supplementary Table S5). GO terms significantly ( $q$ -value  $< 0.05$ ) enriched in the F99 (P3 and P4) differentially expressed genes data set were associated with cell senescence-associated GO terms (e.g., mitotic cell cycle, response to stress and MAPK cascade), and enriched pathway terms were also associated with senescence (e.g., p53 signaling pathway and cellular senescence) (Table 2). Similarly, the significantly enriched GO and pathway terms in the M5 (P3 and P4) differentially expressed genes data set were also associated with cellular senescence, but showed significant enrichment for pathway terms associated with cellular energy processing (e.g., oxidative phosphorylation and the citric acid (TCA) cycle and respiratory electron transport).

The gene ontology and pathway analyses described above identified biological features in CEnC as a consequence of differentially expressed genes. However, these analyses are performed in the absence of the known direction of differential expression (i.e., downregulated and upregulated) for each gene. To utilize the direction of differential gene expression for the purpose of informing not only pathway enrichment, but also pathway activation state, we used the Ingenuity Pathway Analysis software (Supplementary Table S6). Significantly activated ( $z$ -score  $> 1$ ) pathways in all (P3 (F99 and M5) and P4 (F99 and M5)) data sets were associated with an immune-like response (Table 3). Significantly deactivated ( $z$ -score  $< -1.0$ ) pathways for all data sets were generally associated with metabolic pathways, which included pathways associated with lipid metabolism, nucleotide biosynthesis, glycolysis and cellular respiration.

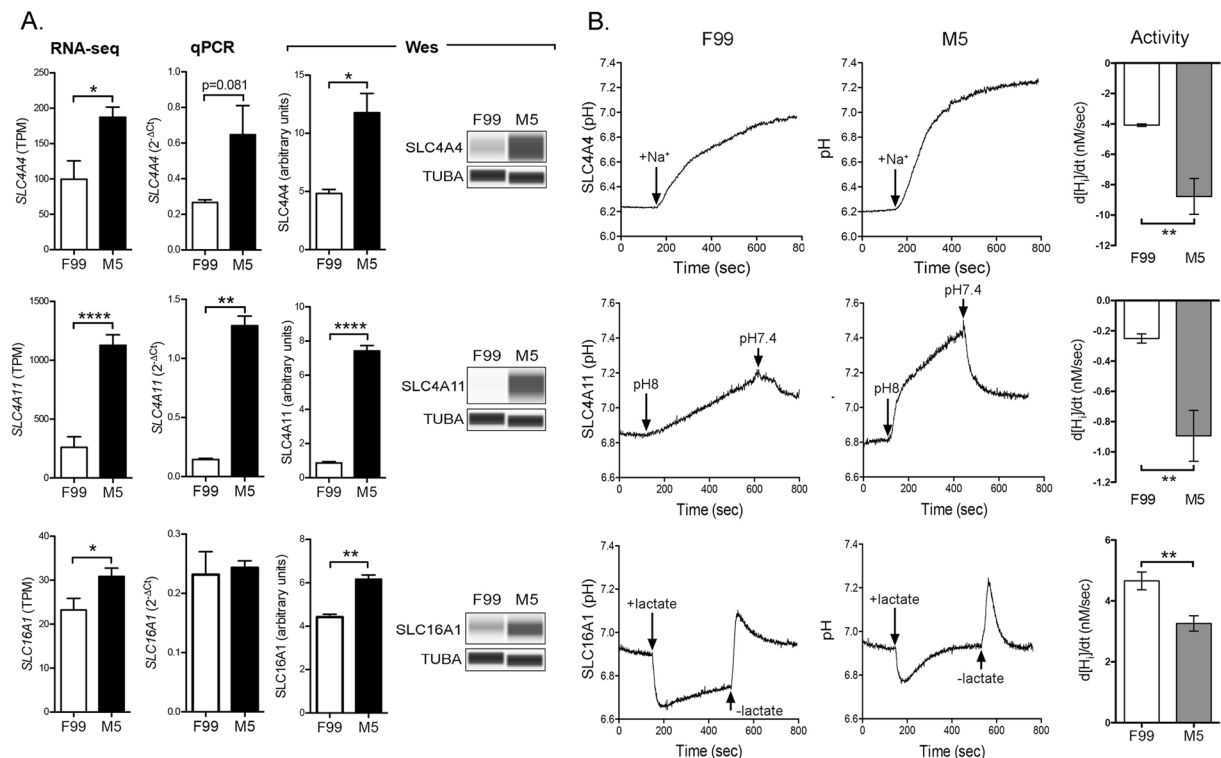
Cell senescence is characterized by an irreversible cell cycle arrest. To determine the impact of passaging (i.e., expansion) on the cell cycle, we examined the intra-media data sets by focusing on the predicted activation state (as predicted by IPA software) of cell cycle functions (Supplementary Table S7). Generally, this analysis demonstrated activation ( $z$ -score  $> 0.5$ ) of cell senescence-associated functions (e.g., senescence of cells) and deactivation ( $z$ -score  $< -1.0$ ) of cell cycle functions that have a positive effect on the cell cycle (e.g., mitosis and cell and cell cycle progression) (Table 4).

**Senescence of primary CEnC involves the activation of the p53 and p38-MAPK pathways.** To determine whether senescence of primary CEnC involves activation of the p53 and p38-MAPK pathways and regulation of the cell cycle, we examined expression and activation of genes/proteins known to regulate cell cycle arrest due to senescence (Fig. 8). Expression of the genes that encode p53 (TP53) or p38-MAPK (MAPK14) was





**Figure 5.** M5 medium increases the expression of barrier-associated genes and proteins. **(A)** Bar graphs show the expression levels (RNA-seq and qPCR) of genes associated with cell adhesion (*CLDN11*, *AJAP1*, *TMEM204* and *TMEM178A*) in P0 CEnC. Detection and quantification of the proteins encoded by these genes were performed using a Western assay (Wes). **(B)** Bar graphs show the expression levels (RNA-seq and qPCR) of genes associated with the glycocalyx (*APOE*, *MYOC*, *DCN*, *LUM* and *APOD*). Detection and quantification of the proteins encoded by these genes were performed using a Western assay (Wes). Three forms of APOD were observed, and each was quantified and graphed. The protein forms observed were a pre-modified form (1), a post-modified form (2) and a high molecular weight complex form (3). TUBA was used as a loading control in the Westerns. Data in bar graphs are represented as the mean  $\pm$  SEM ( $n = 7$ , RNA-seq;  $n = 4$ , qPCR;  $n = 3$ , Wes). Statistical comparisons were performed using an unpaired t-test. \* $P < 0.05$ ; \*\* $P < 0.01$ ; \*\*\* $P < 0.001$ ; \*\*\*\* $P < 0.0001$ .



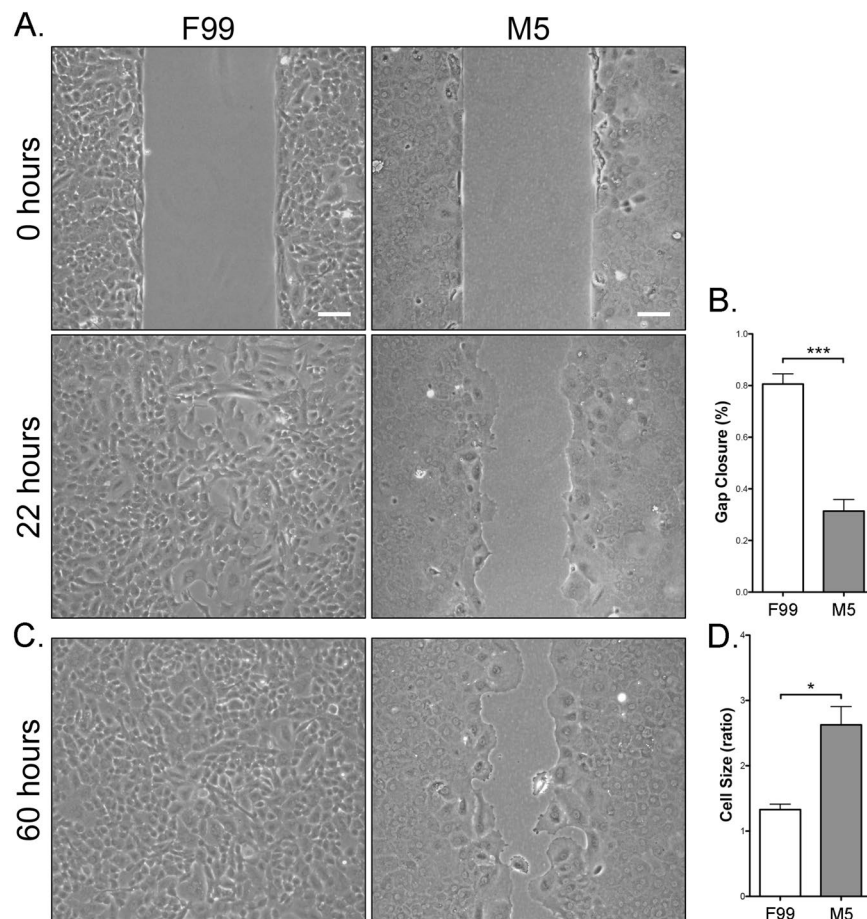
**Figure 6.** SLC4A4 and SLC4A11 transporter activity is increased in M5 medium. **(A)** Bar graphs show transcript abundances (RNA-seq and qPCR) in P0 CEnC for genes that encode membrane bound transporters (*SLC4A4*, *SLC4A11* and *SLC16A1*). Detection and quantification of the encoded proteins was performed using a Western assay (Wes). **(B)** Traces show change in pH levels before and after perfusion with buffer containing indicated substrate specified for the transporter (SLC4A4, Na<sup>+</sup>; SLC4A11, H<sup>+</sup>; SLC16A1, lactate). Arrows indicate time at which buffer was changed. Bar graphs show the rate of change in intracellular proton concentration [Hi], which was calculated as a proxy for transporter activity. Data in bar graphs are represented as the mean ± SEM (n = 7, RNA-seq; n = 4, qPCR; n = 3, Wes; n = 6, transporter activity). Statistical comparisons were performed using the unpaired t-test. \*P < 0.05; \*\*P < 0.01; \*\*\*\*P < 0.0001.

not markedly different between P0 and P3 CEnC. Phosphorylation of p53 and p38-MAPK is a hallmark of cellular senescence in many cell types and tissues, and using Western analysis we detected phosphorylation of both proteins at P3 in both low and high mitogenic conditions, compared with phosphorylation at P0 ( $p < 0.05$ ). In addition, significant ( $p < 0.05$ ) differential gene expression of the senescence markers *LMNB1*, *GADD45A* and *CD44* was observed at P3 in either F99 or M5 or both, a result consistent with cell senescence (Fig. 8B; see Fig. 3A for *CD44* expression). We also observed significantly increased expression of the CD44 protein at P3, which was consistent with *CD44* transcript levels (Fig. 3A).

The cell cycle includes various phases (G1, S, G2 and M) that involve cyclin and cyclin-dependent kinases (CDK) (Fig. 8C). In the absence of inhibitors of the CDK, cell cycle progression is dependent on the availability and interaction of cyclins and CDK. However, two classes of inhibitors, INK4 and KIP/CIP, are able to inhibit cell cycle progression via interaction of the cyclin-dependent kinase inhibitors p21<sup>CIP1</sup> (CDKN1A) and p16<sup>INK4</sup> (CDKN2A) with the cyclin/CDK complexes, an interaction that ultimately blocks the complexes' downstream actions and results in cell cycle arrest. While transcript quantification demonstrated a significant increase in gene expression in P3 cells only for CDKN2A, the expression of the encoded proteins were either significantly ( $p < 0.05$ ; CDKN1A, CDK4) or markedly (CDKN2A, CDK4 and CDK6) increased in P3 cells cultured in F99 and M5 (Fig. 8D,E). Marked increases in protein expression of both p21<sup>CIP1</sup> (CDKN1A) and p16<sup>INK4</sup> (CDKN2A), which are upregulated in senescent cells, were observed in P3 CEnC cultured in F99 or M5 (Fig. 8D). In addition, accumulation of CDK4 and CDK6, CDK important in progression through G1/S of the cell cycle, was observed in P3 cells cultured in F99 and M5 (Fig. 8E). As an increase in cyclin D, in conjunction with increases in p16<sup>INK4</sup> (CDKN2A), CDK4 and CDK6, is a hallmark of G1 cell cycle arrest, we measured the expression of the four cyclins (cyclins A, B, D and E). A marked and progressive increase in cyclin D was observed in cells cultured in both F99 and M5, in contrast to the expression of the other three cyclins, which was unchanged through P4 (Fig. 8F).

## Discussion

Corneal clarity depends on the corneal endothelium, and disease or injury to this tissue causes loss of visual acuity that may necessitate corneal transplantation. The development and widespread adoption of endothelial keratoplasty techniques has significantly improved outcomes of the surgical management of corneal endothelial cell dysfunction although postoperative complications remain<sup>7–9</sup>. However, the current paradigm of one donor



**Figure 7.** CEnC cultured in M5 medium possess attenuated migration capacity. **(A)** Phase contrast images show initial gap (0 hours) and gap closure (22 hours) of P0 CEnC cultured in F99 and M5. **(B)** Bar graph shows quantification of gap closure at 22 hours as a percent of the initial gap. **(C)** Phase contrast images show gap closure at 60 hours. **(D)** Bar graph shows the ratio of the mean area at 60 hours of the cells near or populating the gap divided by the mean area of the cells not near the gap. Data in bar graphs are represented as the mean  $\pm$  SEM ( $n = 4$ ). Statistical comparisons were performed using one-way ANOVA with post-hoc Tukey test. \* $P < 0.05$ ; \*\*\* $P < 0.001$ . Scale bars, 100  $\mu\text{m}$ .

cornea for one recipient requires cornea donation, recovery and utilization rates that are present in only a few countries in the world that are able to meet the domestic need for transplantable corneas. Based on data obtained between August 2012 and August 2013, an estimated 12.7 million people were waiting for a corneal transplant, with only 1 cornea available for every 70 needed<sup>27</sup>. Thus, in an effort to achieve sufficient cell numbers of transplantable high quality CEnC to challenge the one donor-one recipient paradigm, scientists and clinicians have developed various methods for the isolation and *in vitro* culturing of CEnC<sup>11</sup>. The purpose of this study was to compare the cell profiles of cultured CEnC between two established culturing protocols across serial passages by using several metrics to assess the identity (e.g., morphology, biomarker expression) and function (e.g., transcellular resistance, intracellular proton concentration) of cultured CEnC. However, due to the scope and limitations of this study, future additional functional studies to validate our findings and a comprehensive investigation of the effects of *in vitro* expansion on the CEnC transcriptome are still needed. Keeping the scope and limitations of this study in mind, the transcriptomic work performed as part of this study may be used as one of the criteria for assessing the quality and viability of *in vitro* expanded CEnC for use in cell-replacement therapy. In particular, because cell senescence is a feature of primary cell culture, it is necessary to identify the potential signaling and metabolic pathways involved in CEnC senescence prior to developing strategies to target these pathways and delay senescence, thereby producing a larger number of therapeutically suitable cells.

In 1978, the first human CEnC cultures were described, but given a lack of human-specific protocols, the researchers used culture conditions optimized for growth of rabbit CEnC<sup>28</sup>. Over the next decade, techniques for the isolation of human CEnC and growth media for the *in vitro* culture of human CEnC were optimized. In 1989, Engelmann *et al.* determined that a 1:1 mixture of M199 and F12 media was the optimal base medium for culture of primary CEnC<sup>29</sup>. Two decades later, the formulation of the medium was modified to induce cell cycle re-entry (due to relatively mitogen-rich conditions) and establishment of contact inhibition, leading to quiescence, a non-proliferative cell state that characterize CEnC *in vivo*<sup>15</sup>. We started culturing primary CEnC

Source	Term Name	Term ID	FDR p-value
<b>F99 Passage 0</b>			
GO:BP	developmental process	GO:0032502	4.2E-18
GO:BP	system development	GO:0048731	1.3E-16
GO:BP	multicellular organism development	GO:0007275	1.1E-15
GO:BP	anatomical structure morphogenesis	GO:0009653	3.6E-15
GO:BP	tissue development	GO:0009888	2.1E-14
GO:BP	cellular developmental process	GO:0048869	7.8E-14
GO:BP	cell differentiation	GO:0030154	2.3E-13
GO:BP	cell development	GO:0048468	3.6E-09
GO:BP	tube development	GO:0035295	3.8E-09
GO:BP	blood vessel development	GO:0001568	4.4E-09
GO:BP	circulatory system development	GO:0072359	4.6E-09
GO:BP	regulation of cell differentiation	GO:0045595	6.0E-09
GO:BP	nervous system development	GO:0007399	1.0E-07
GO:BP	epithelium development	GO:0060429	3.7E-07
KEGG	TGF-beta signaling pathway	KEGG:04350	3.2E-02
WP	miR-509-3p alteration of YAP1/ECM axis	WP:WP3967	5.1E-04
WP	Epithelial to mesenchymal transition in colorectal cancer	WP:WP4239	2.1E-02
WP	Senescence and Autophagy in Cancer	WP:WP615	3.2E-02
<b>M5 Passage 0</b>			
GO:MF	oxidoreductase activity	GO:0016491	1.0E-18
GO:MF	electron transfer activity	GO:0009055	7.9E-16
GO:MF	proton transmembrane transporter activity	GO:0015078	1.3E-12
GO:MF	cytochrome-c oxidase activity	GO:0004129	2.3E-07
GO:MF	NADH dehydrogenase activity	GO:0003954	3.4E-07
GO:BP	oxidative phosphorylation	GO:0006119	4.9E-29
GO:BP	cellular respiration	GO:0045333	5.1E-25
GO:BP	lipid oxidation	GO:0034440	4.0E-05
GO:BP	fatty acid oxidation	GO:0019395	2.1E-04
GO:BP	lipid catabolic process	GO:0016042	9.2E-04
GO:BP	fatty acid metabolic process	GO:0006631	1.1E-03
GO:CC	mitochondrial part	GO:0044429	1.6E-47
GO:CC	mitochondrion	GO:0005739	3.8E-37
KEGG	Oxidative phosphorylation	KEGG:00190	1.5E-31
KEGG	Citrate cycle (TCA cycle)	KEGG:00020	7.0E-05
KEGG	Fatty acid metabolism	KEGG:01212	1.6E-03
WP	Electron Transport Chain (OXPHOS system in mitochondria)	WP:WP111	2.3E-38
WP	Fatty Acid Beta Oxidation	WP:WP143	2.2E-04

**Table 1.** Gene ontology and pathway enrichment analysis of the P0 inter-media comparison. Note: See Fig. S3A for complete set of inter-media comparisons. FDR, false discovery rate; GO, gene ontology; BP, biological process; MF, molecular function; CC, cellular component; KEGG, Kyoto encyclopedia of genes and genomes; WP, WikiPathways.

in 2011, and chose the medium formulation described by Valtink *et al.* as it was at the time the most effective formulation for the culture of both primary and immortalized CEnC. Nevertheless, about 40% (3/7 at P0 in this study) of the cultures we established did not possess CEnC-like morphology, and were generally characterized by a mixture of morphologies (some resembling fibroblasts), an observation consistent with previous findings by the developers of the formulation (R. Faragher, personal communication, March 2017). In 2015, Peh *et al.* described a novel approach to *in vitro* culturing of CEnC in which cell proliferation was accomplished by growth in a

Source	Term Name	Term ID	FDR p-value
<b>F99 Passage 3</b>			
GO:BP	system development	GO:0048731	5.1E-06
GO:BP	animal organ development	GO:0048513	1.2E-05
GO:BP	cellular response to stress	GO:0033554	3.4E-04
GO:BP	mitotic cell cycle	GO:0000278	2.9E-03
GO:BP	response to stress	GO:0006950	3.6E-03
GO:BP	regulation of mitotic cell cycle	GO:0007346	1.4E-02
GO:BP	cell differentiation	GO:0030154	2.0E-02
GO:BP	MAPK cascade	GO:0000165	4.0E-02
GO:CC	vesicle	GO:0031982	6.3E-09
GO:CC	endomembrane system	GO:0012505	1.1E-08
KEGG	p53 signaling pathway	KEGG:04115	4.4E-04
KEGG	Focal adhesion	KEGG:04510	1.1E-02
KEGG	Apelin signaling pathway	KEGG:04371	3.3E-02
KEGG	Cellular senescence	KEGG:04218	4.8E-02
REAC	Senescence-Associated Secretory Phenotype (SASP)	REAC:R-HSA-2559582	3.0E-02
REAC	Cell Cycle, Mitotic	REAC:R-HSA-69278	4.2E-02
WP	Wnt Signaling	WP:WP428	1.1E-02
<b>F99 Passage 4</b>			
GO:MF	cyclin-dependent protein serine/threonine kinase inhibitor activity	GO:0004861	3.6E-03
GO:BP	nervous system development	GO:0007399	1.0E-08
GO:BP	response to oxidative stress	GO:0006979	1.2E-07
GO:BP	regulation of programmed cell death	GO:0043067	7.1E-07
GO:BP	apoptotic process	GO:0006915	1.1E-06
GO:BP	cell differentiation	GO:0030154	2.2E-06
GO:BP	mitotic cell cycle	GO:0000278	1.3E-05
GO:BP	aging	GO:0007568	2.4E-02
GO:BP	MAPK cascade	GO:0000165	4.5E-02
GO:CC	vesicle	GO:0031982	1.8E-15
GO:CC	endomembrane system	GO:0012505	3.9E-15
KEGG	Focal adhesion	KEGG:04510	1.0E-06
KEGG	p53 signaling pathway	KEGG:04115	5.8E-05
KEGG	Cellular senescence	KEGG:04218	4.2E-03
KEGG	PI3K-Akt signaling pathway	KEGG:04151	8.5E-03
REAC	Developmental Biology	REAC:R-HSA-1266738	1.5E-02
REAC	Cell Cycle, Mitotic	REAC:R-HSA-69278	3.5E-02
<b>M5 Passage 3</b>			
GO:MF	growth factor binding	GO:0019838	9.6E-04
GO:MF	cyclin-dependent protein serine/threonine kinase regulator activity	GO:0016538	3.2E-03
GO:BP	cell cycle	GO:0007049	1.7E-11
GO:BP	regulation of programmed cell death	GO:0043067	8.0E-07
GO:BP	cell cycle phase transition	GO:0044770	2.4E-06
GO:BP	cell differentiation	GO:0030154	2.0E-05
GO:BP	programmed cell death	GO:0012501	5.2E-05
GO:BP	MAPK cascade	GO:0000165	9.8E-05
GO:BP	response to oxidative stress	GO:0006979	2.1E-04
GO:BP	aging	GO:0007568	1.4E-02
GO:CC	vesicle	GO:0031982	2.2E-18
GO:CC	endomembrane system	GO:0012505	2.8E-08
KEGG	Cell cycle	KEGG:04110	2.9E-06
KEGG	p53 signaling pathway	KEGG:04115	1.1E-03
KEGG	Focal adhesion	KEGG:04510	1.6E-03
KEGG	MAPK signaling pathway	KEGG:04010	3.6E-03
REAC	Cell Cycle, Mitotic	REAC:R-HSA-69278	3.9E-06
Continued			

Source	Term Name	Term ID	FDR p-value
<i>M5 Passage 4</i>			
GO:MF	cyclin-dependent protein serine/threonine kinase regulator activity	GO:0016538	3.6E-02
GO:BP	cell division	GO:0051301	2.1E-09
GO:BP	mitotic cell cycle	GO:0000278	1.8E-08
GO:BP	positive regulation of cell death	GO:0010942	4.2E-08
GO:BP	response to oxidative stress	GO:0006979	5.3E-06
GO:BP	cellular response to stress	GO:0033554	7.3E-06
GO:BP	regulation of MAPK cascade	GO:0043408	6.8E-05
GO:BP	electron transport chain	GO:0022900	3.7E-04
GO:BP	exocytosis	GO:0006887	1.4E-03
GO:BP	secretion by cell	GO:0032940	5.8E-03
GO:CC	vesicle	GO:0031982	5.7E-21
KEGG	Focal adhesion	KEGG:04510	2.6E-05
KEGG	MAPK signaling pathway	KEGG:04010	1.0E-03
KEGG	p53 signaling pathway	KEGG:04115	1.5E-03
KEGG	Oxidative phosphorylation	KEGG:00190	3.8E-02
REAC	The citric acid (TCA) cycle and respiratory electron transport	REAC:R-HSA-1428517	2.2E-04
WP	Electron Transport Chain (OXPHOS system in mitochondria)	WP:WP111	6.3E-03

**Table 2.** Gene ontology and pathway enrichment analysis of the P3 and P4 intra-media comparisons. Note: Note: See Fig. S3B for complete set of intra-media comparisons. FDR, false discovery rate; GO, gene ontology; BP, biological process; MF, molecular function; CC, cellular component; KEGG, Kyoto encyclopedia of genes and genomes; REAC, REACTOME; WP, WikiPathways.

mitogenic-rich medium, followed by maintenance in a medium with reduced mitogens<sup>22</sup>. Coincidentally, a recent report independently demonstrated the superiority of the dual media approach<sup>25</sup>. Taken together, these studies indicated that the low mitogenic medium established cultures with better morphology, marker expression and function compared with growth in a mitogen-rich medium alone. Herein, we compared the two culture methods published by Valtnik *et al.* and Peh *et al.* using extensive bioinformatics analyses and additional functional techniques to determine which method performs best in maintaining the CEnC phenotype throughout *in vitro* expansion.

Cell morphology is an initial metric for assessing the quality of CEnC cultures. We observed that the low mitogenic environment was better at maintaining a CEnC-like morphology, but continued passaging caused a distinct morphogenic transformation consistent with cellular senescence. This change in morphology correlated with a progressive loss of CEnC identity as defined by the expression of evCEnC-specific genes. Temporal changes in evCEnC-specific gene expression as a consequence of passaging allowed us to identify a novel cell surface marker, encoded by *TMEM178A*, as a potential positive selection marker for high quality cultured CEnC. In addition, after a reassessment of reported selection markers, we propose SLC4A11 (positive), *TMEM178A* (positive) and CD44 (negative) as the minimum for selection of high quality *in vitro* CEnC<sup>25,26,30–35</sup>. SLC4A11 is a highly expressed transporter protein in the corneal endothelium that plays a significant role in CEnC function, and biallelic mutation of this protein leads to congenital hereditary endothelial dystrophy<sup>2,36,37</sup>. Conversely, CD44 is not expressed in the corneal endothelium, and its expression correlates with a senescent phenotype in vascular and corneal endothelial cells<sup>38,39</sup>.

A prominent barrier to expansion of CEnC *in vitro* for use in a cell-based therapy is the limited proliferative capacity of primary CEnC. *In vivo*, CEnC are in a state of cellular quiescence, which in this cell type is specifically a cell cycle arrest at the G1 phase that is established by contact-inhibition, maintained by TGF $\beta$ 2, and regulated by p27<sup>KIP1</sup><sup>40</sup>. However, *in vivo* CEnC have been shown to express senescent markers in older donors, which is postulated to contribute to the lower proliferative capacity of primary CEnC isolated from older donors compared with those from younger donors. Nevertheless, CEnC are able to re-engage the cell cycle by loosening of cell-cell contacts and/or exposure to potent mitogenic factors. As with most primary cells, primary CEnC have a limited life span under proliferative (i.e., passaging and growth in mitogen-rich) conditions. This limitation is caused by cellular senescence of CEnC (*in vitro* and *ex vivo*), and may be, in part, a consequence of oxidative stress<sup>41</sup>. This is supported by our observations in late passage CEnC (P3 and/or P4) that p38MAPK was phosphorylated (stress response), that expression of p16<sup>INK4</sup> (gene and protein) was increased, and that the set of differentially expressed genes was enriched for genes implicated in oxidative stress-associated pathways (e.g., NRF2-mediated oxidative stress response, DNA damage checkpoint regulation). In addition, there is also an apparent repression of oxidative phosphorylation (i.e., mitochondrial activity), which was observed in our pathway analysis. Moreover, we also identified enrichment for genes associated with p53 signaling, an observation made previously<sup>18</sup>, and this coincided with phosphorylation of p53 and increased expression of p21<sup>CIP1</sup> (CDKN1A) (gene and protein) in senescent CEnC (i.e., P3 and P4). Cell senescence in primary CEnC in this study was also associated with increased expression of CDK4 and CDK6 proteins (but not gene expression), and increased *cyclin*

<b>Ingenuity Canonical Pathways</b>	<b>z-score</b>
<b>F99 Passage 3</b>	
NRF2-mediated Oxidative Stress Response	3.36
IL-8 Signaling	2.89
Apelin Endothelial Signaling Pathway	2.71
Cell Cycle: G2/M DNA Damage Checkpoint Regulation	2.65
Chemokine Signaling	2.33
IL-3 Signaling	2.33
ERK/MAPK Signaling	1.90
VEGF Family Ligand-Receptor Interactions	1.89
IL-6 Signaling	1.89
IGF-1 Signaling	1.67
Acute Phase Response Signaling	1.67
JAK/Stat Signaling	1.41
p53 Signaling	1.13
FGF Signaling	1.00
Estrogen-mediated S-phase Entry	-1.00
Cyclins and Cell Cycle Regulation	-1.13
RhoGDI Signaling	-1.41
LXR/RXR Activation	-2.24
<b>F99 Passage 4</b>	
Cell Cycle: G2/M DNA Damage Checkpoint Regulation	3.46
NRF2-mediated Oxidative Stress Response	3.27
IL-8 Signaling	3.09
Chemokine Signaling	2.89
p53 Signaling	2.83
UVC-Induced MAPK Signaling	2.33
IGF-1 Signaling	1.41
Inflammasome pathway	1.34
Apelin Endothelial Signaling Pathway	1.28
IL-6 Signaling	1.21
IL-1 Signaling	1.13
HGF Signaling	1.00
JAK/Stat Signaling	1.00
Estrogen-mediated S-phase Entry	-1.13
Chondroitin Sulfate Degradation (Metazoa)	-1.34
Pyrimidine Deoxyribonucleotides De Novo Biosynthesis I	-1.34
NER Pathway	-1.90
LXR/RXR Activation	-3.00
<b>M5 Passage 3</b>	
NRF2-mediated Oxidative Stress Response	3.27
Cell Cycle: G2/M DNA Damage Checkpoint Regulation	3.16
Chemokine Signaling	2.71
IL-8 Signaling	2.69
Acute Phase Response Signaling	2.50
IL-6 Signaling	2.32
TGF- $\beta$ Signaling	2.11
Inflammasome pathway	2.00
IL-1 Signaling	1.89
JAK/Stat Signaling	1.51
p53 Signaling	1.39
p38 MAPK Signaling	1.00
Glycolysis I	-1.00
Fatty Acid $\beta$ -oxidation I	-1.00
Estrogen Biosynthesis	-1.00
Continued	

Ingenuity Canonical Pathways	z-score
Pyrimidine Deoxyribonucleotides De Novo Biosynthesis I	-2.00
NER Pathway	-2.33
LXR/RXR Activation	-3.00
<b>M5 Passage 4</b>	
NRF2-mediated Oxidative Stress Response	4.60
IL-8 Signaling	3.51
Chemokine Signaling	3.00
IL-6 Signaling	2.84
Cell Cycle: G2/M DNA Damage Checkpoint Regulation	2.67
Inflammasome pathway	2.24
p53 Signaling	2.07
IL-1 Signaling	1.90
Acute Phase Response Signaling	1.88
p38 MAPK Signaling	1.70
JAK/Stat Signaling	1.41
IGF-1 Signaling	1.34
Fatty Acid $\beta$ -oxidation I	-1.63
Acetyl-CoA Biosynthesis I (Pyruvate Dehydrogenase Complex)	-2.00
Cholesterol Biosynthesis I	-2.00
Superpathway of Cholesterol Biosynthesis	-2.45
TCA Cycle II (Eukaryotic)	-2.65
Oxidative Phosphorylation	-5.11

**Table 3.** Activation state of Ingenuity canonical pathways in P3 and P4 intra-media comparisons. Notes: (1) See Fig. S3B for complete set of intra-media comparisons. (2) A positive z-score denotes activation and a negative z-score denotes deactivation.

D (*CCND1*) gene expression. Taken together, this represents a gene/protein expression profile consistent with senescence-induced G1 cell cycle arrest. Overall, activation of the p38MAPK and p53 pathways did not appear significantly influenced by growth in a low- or high-mitogenic environment.

Achieving and maintaining characteristic CEnC functional properties is essential for the clinical utility of *in vitro* CEnC in management of CEnC dysfunction. The corneal endothelium is a monolayer mosaic of CEnC, and its primary function is to maintain the corneal stroma in a partially dehydrated state to preserve its optical clarity. It does this by establishing a robust barrier conferred by cell-cell and cell-substrate interactions, which allow for passive leak of water into the stroma, but not most solutes<sup>42</sup>. Through the combined action of various solute transporters, unidirectional translocation of water from the stroma into the aqueous humor occurs<sup>43</sup>. Taken together, this describes the “pump-leak” hypothesis of water homeostasis in the cornea. We demonstrated that a low mitogenic environment combined with culture on collagen represented better *in vitro* conditions for establishing a robust CEnC barrier (as measured by electrical impedance) compared with a high mitogenic environment and culture on laminin. In addition, our results prove that mitogenic conditions have the greatest impact on barrier function, while coating matrix and dissociation enzyme showed some and little impact on barrier function, respectively. Recent studies showed that collagen, compared with various other extracellular matrix proteins, including laminin, and low mitogen-containing media were optimal for establishing robust barrier function in a CEnC line<sup>44</sup> and primary CEnC<sup>25</sup>. Detection of CDH2, a CEnC-specific marker, in CEnC cultures in low mitogenic conditions demonstrated that cell adhesions (cell-cell and cell-substrate) are considerably more complex, and showed striking resemblance to the organization of adhesions in *ex vivo* human corneas<sup>45</sup>. We also demonstrated that this increase in barrier function is associated with an increase in adhesion/glycocalyx-associated protein expression. To our knowledge, this represents the first report implicating glycocalyx proteins in corneal endothelial biology. Although some of the barrier-associated proteins we examined in this study have been associated with the glycocalyx of the vascular endothelium<sup>46,47</sup>, it remains to be determined if the increase in glycocalyx-associated proteins coincides with the formation of a glycocalyx in corneal endothelium either *in vitro* or *in vivo*. However, early reports suggested that the human corneal endothelium may possess a glycocalyx-like layer composed of polysaccharides, glycosaminoglycans and other, as yet, unidentified molecules<sup>48–51</sup>. We also showed that at least two transporters critical for CEnC function (SLC4A4 and SLC4A11) are expressed at significantly higher levels and show increased transporter activity in low mitogenic conditions compared with high mitogenic conditions. As such, CEnC expanded in mitogenic-rich medium and maintained in low mitogenic conditions show functional features consistent with the CEnC requirement for regulating water homeostasis in the cornea. These results are consistent with previous studies demonstrating an intact pump function (i.e., prevention/mitigation of edema) in *in vitro* expanded corneal endothelial cells in an animal model of bullous keratopathy<sup>17,52</sup>.

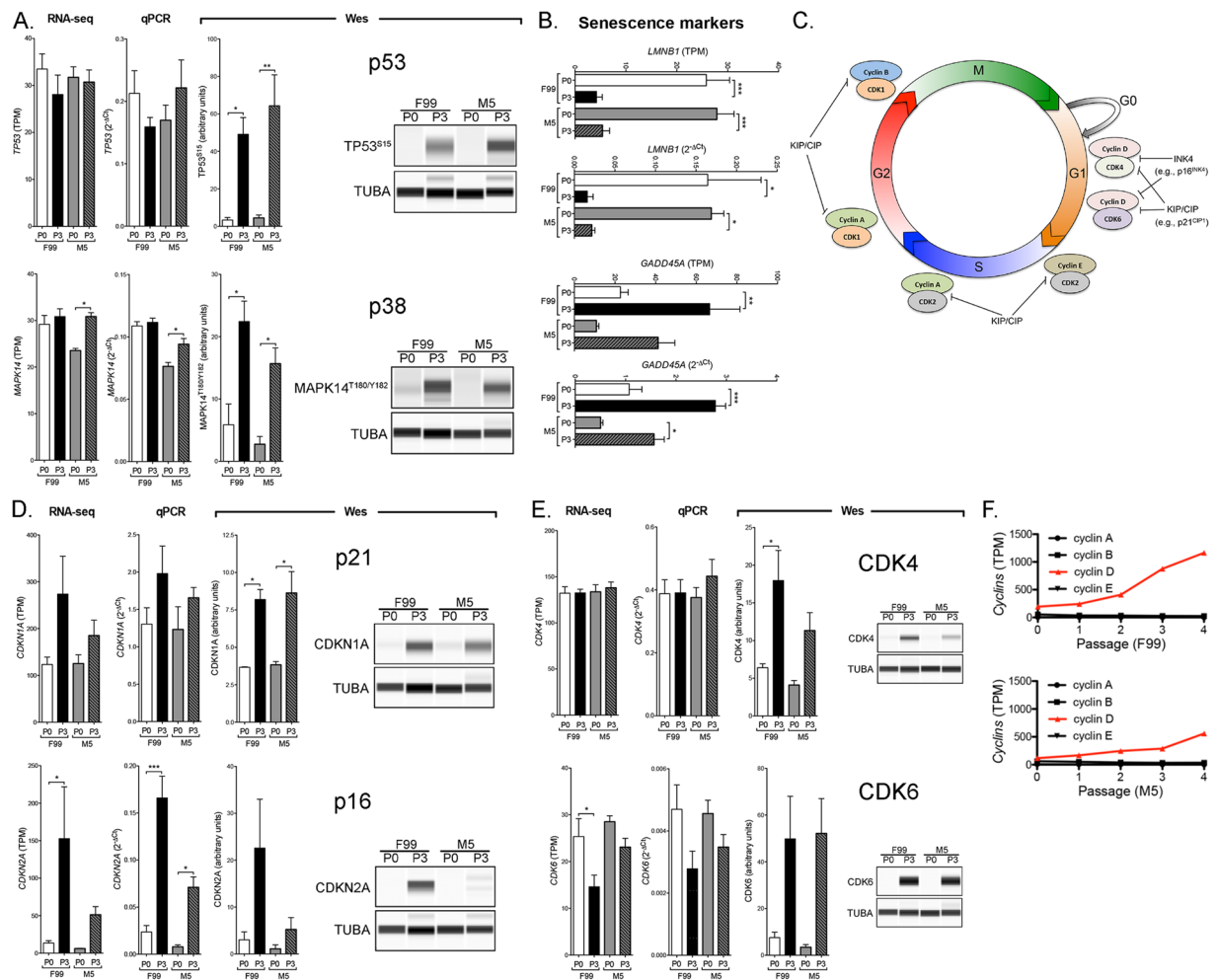


Function Annotation	z-score
<b>F99 Passage 3</b>	
Senescence of cells	0.99
Replicative senescence of cells	0.60
Cell cycle progression	-0.86
Re-entry into interphase	-1.34
Mitosis	-1.72
Initiation of interphase	-1.73
<b>F99 Passage 4</b>	
Senescence of tumor cell lines	1.51
G1 phase	1.35
Senescence of cells	0.69
M phase	-0.53
M phase of cervical cancer cell lines	-0.79
M phase of tumor cell lines	-1.30
<b>M5 Passage 3</b>	
Senescence of cells	1.14
G1 phase	0.90
Cell cycle progression	-0.81
M phase	-1.19
Mitosis	-1.69
Segregation of chromosomes	-2.13
<b>M5 Passage 4</b>	
G1 phase	2.24
Senescence of cells	1.70
Cell cycle progression	-0.88
Cytokinesis	-1.06
M phase	-1.18
Segregation of chromosomes	-1.69

**Table 4.** Activation state of cell cycle functions in P0 and P4 intra-media comparisons. Notes: (1) See Fig. S3B for complete set of intra-media comparisons. (2) A positive z-score denotes activation and a negative z-score denotes deactivation.

A long known characteristic of *in vivo* CEnC is that when mild cell loss occurs, the vacated area is covered by migration and increase in size of adjacent cells<sup>53</sup>. To determine if this phenomenon is recapitulated *in vitro*, we performed a non-wounding cell migration assay. Cells in a high mitogenic environment migrated and/or proliferated (not distinguished in our study) to cover the gap with no significant increase in cell size. In contrast, CEnC in low mitogenic conditions behaved in a manner consistent with their behavior *in vivo*, so that these cells showed low migration capacity, but a significant propensity to increase cell size to cover the gap. In addition, these results are consistent with the differences observed for cell barrier formation, because increased cell-cell adhesion is antithetical to robust cell migration (and also to robust cell proliferation capacity).

In summary, we provide evidence that CEnC proliferation in a high mitogenic medium, followed by maintenance of contact-inhibition of confluent monolayers in a low mitogenic medium, supports establishment of CEnC in which *in vivo* function is significantly recapitulated and permits sufficient expansion of CEnC to significantly challenge the “one donor-one recipient” paradigm. In our current study, we can theoretically achieve a 1:5–1:15 donor:recipient ratio (donor:recipient, 1:5 (P0) or 1:15 (P1) – at approximately 3000 cells/mm<sup>2</sup>), as these are the passages at which the cells possess the most robust CEnC phenotype as determined by gene (or marker) expression and cell morphology. Maintaining the CEnC morphologic and functional phenotype at higher passage numbers remains an active area of research. Also, while we examined cell function at an early passage (typically at P0), we recognize that functional analysis of cells will need to be performed at later passages to ensure viability as a therapeutic modality. The progression to senescence *in vitro* remains a significant barrier to the expansion of cultured CEnC. Identification of oxidative stress as a component of CEnC senescence has prompted investigators to add ascorbic acid as a supplement to early media formulations (added to F99 and M4) to reduce/inhibit oxidant-induced stress/apoptosis<sup>54,55</sup> and to use p38MAPK inhibitors to delay the onset of senescence, but this approach has shown mixed results<sup>18,56,57</sup>. In addition, senescent CEnC *in vitro* are characterized by the Senescence-Associated Secretory Phenotype (SASP), which includes the secretion of immune-regulating factors (cytokines, chemokines and growth factors) that have been demonstrated to support tumorigenesis in adjacent epithelial tissues<sup>58–61</sup>. As a remedy to senescence, we identify both classical and novel pathways associated with CEnC senescence that can be manipulated experimentally to potentially achieve significant CEnC expansion with minimal senescence. In addition, we identified which previously reported markers represent the optimal markers for selection of high quality cultured CEnC, and propose *TMEM178A* as a novel positive selection marker. We propose that because senescent CEnC can be present in cultured CEnC preparations and that senescent cells may



**Figure 8.** Cellular senescence of cultured CEnC is associated with activation of p53 and p38-MAPK pathways. (A) Bar graphs show *TP53* and *MAPK14* transcript levels in P0 and P3 CEnC using RNA-seq and validated by qPCR. Bar graphs show the quantification of TP53 and MAPK14 phosphorylation in P0 and P3 CEnC, and Western results show phosphorylation of TP53 at Serine 15 and MAPK14 at Threonine 180 and Tyrosine 182 in CEnC at P0 and P3, cultured in either F99 or M5. (B) Bar graphs show the transcript abundances of *LMNB1* and *GADD45A*, and validated using qPCR. (C) Diagram of the cell cycle including factors that positively (cyclins and CDK) and negatively (INK4 and KIP/CIP) regulate cell cycle progression. (D,E) Bar graphs show: *CDKN1A*, *CDKN2A*, *CDK4* and *CDK6* transcript levels in P0 and P3 CEnC using RNA-seq and validated by qPCR; the quantification of the proteins encoded by these genes in P0 and P3 CEnC. The p21<sup>CIP1</sup> (*CDKN1A*) and p16<sup>INK4</sup> (*CDKN2A*) are inhibitors of cyclin-dependent kinases, and are classically associated with cellular senescence. Western results show increased expression of *CDKN1A* (p21<sup>CIP1</sup>) and *CDKN2A* (p16<sup>INK4</sup>) concomitant with increased expression of the *CDK4* and *CDK6* in CEnC at P3, cultured in either F99 or M5. (F) Line graphs show the transcript abundances of the cyclins at each passage in CEnC cultured in F99 or M5. TUBA was used as a loading control in the Westerns. Data in bar graphs are represented as the mean  $\pm$  SEM (n = 7, RNA-seq; n = 4, qPCR; n = 3, Wes). Statistical comparisons were performed using one-way ANOVA with post-hoc Tukey test. \*P < 0.05; \*\*P < 0.01; \*\*\*P < 0.001.

support tumorigenesis, a Descemet membrane biomimetic carrier is preferred to injection of a suspension of cells, to both maximize cell count and minimize their tumorigenic potential<sup>62–64</sup>. In conclusion, while additional changes to the dual media method may improve the culturing of CEnC *in vitro*, we provide evidence that this method is preferred to continuous culture in mitogen-rich media.

While the findings in our study represent a significant advance in the field of regenerative science, and specifically in the area of cell-based therapies to ameliorate corneal endothelial disease, our study has several limitations. The functional assays we performed (barrier, transport and migration) were performed in early passage cells (P0) comparing F99 with M5. In order to determine if the reduction of proteins important in CEnC function (e.g., SLC4A11) or increase of proteins associated with senescence represent a change detrimental to CEnC function, functional assays should be performed comparing early (P0, P1) with late (P3, P4) passage cells. Additionally, while the strength of our study is the comprehensive bioinformatics analyses that implicate many molecules and pathways, we did not validate novel pathways as part of this study, with the exception of the classic p53 and

p38-MAPK pathways. To this end, this study forms the basis for researchers in regenerative medicine to use our findings to investigate novel interventions with the hope of delaying endothelial cell senescence and increasing expansion of cells for cell-based therapies.

## Methods

**Statement on the use of tissue from human subjects.** Cadaveric corneal tissue was obtained from the Saving Sight eye bank and the Eversight network of eye banks in the United States (U.S.). Tissue that could not be placed for transplantation or that was deemed unsuitable for transplantation by eye bank medical staff was subsequently made available for research purposes. Donor tissue procurement and processing adhered to the guidelines set by the Eye Bank Association of America, including obtaining informed consent, with oversight by the U.S. Food and Drug Administration. In addition, we attest that corneal tissue was not procured from prisoners.

**Primary corneal endothelial cell cultures.** Characteristics of corneas used in this study are described in Supplementary Table S8 (14 donors, 28 corneas). Criteria used for selection of high quality donor corneal tissue were: (1) donor younger than 40 years (mean: 17.6; range: 2–35); (2) no donor history of diabetes or corneal disease; (3) endothelial cell density greater than 2300 cells/mm<sup>2</sup> (mean: 3019; range: 2387–3436); (4) death to preservation less than 12 hours, if body not cooled, or less than 24 hours, if body cooled; and (4) death to culture less than 15 days (mean: 6; range: 2–14). Descemet membrane with attached endothelium was stripped from the stroma using the method commonly employed in preparation of the donor cornea for Descemet membrane endothelial keratoplasty. Seven independent CEnC cultures were established using two previously described protocols with minor modifications<sup>22,23</sup>. One method utilizes trypsin for dissociation of endothelial cells from Descemet membrane, followed by seeding on laminin coated cell culture plastic, and culturing in a 1:1 mixture of F12-Ham's and M199 (F99) medium (supplements: fetal bovine serum, human recombinant insulin, ascorbic acid, penicillin/streptomycin, and recombinant human bFGF). The second method utilizes collagenase A for dissociation of endothelial cells from Descemet membrane. This is followed by seeding on collagen IV coated cell culture plastic, and culturing initially in Endothelial SFM (M5) (supplements: fetal bovine serum, penicillin/streptomycin, and amphotericin-B) followed by culturing in a 1:1 mixture of F12-Ham's and M199 (M4) medium (supplements: fetal bovine serum, L-ascorbic acid-2-phosphate, penicillin/streptomycin, insulin-transferrin-selenium, amphotericin-B, and recombinant human bFGF). When cells reach confluence, the medium is changed back to M5 medium for establishment and maintenance of the CEnC phenotype. Cell passaging is performed with TrypLE Select (Thermo Fisher Scientific). Cells isolated using each protocol are referred to as F99 cells or M5 (M4/M5 or dual media) cells to indicate the method used to establish the cultures. The specific corneas used for each of the seven cultures are noted in Supplementary Table S8. Two donors (2 pair of corneas) were used for each culture, with equal distribution of tissues so that each donor is represented in both the F99 and M5 conditions.

**Total RNA isolation.** Primary CEnC were lysed in TRI Reagent (Thermo Fisher) and total RNA was prepared as per the manufacturer's instructions. RNA preparations were subsequently purified using the RNeasy Clean-Up Kit (Qiagen, Valencia, CA). The quality of the total RNA was assessed with both the Agilent 2100 Electrophoresis Bioanalyzer System (Agilent Technologies, Inc., Santa Clara, CA) and the Agilent TapeStation 2200 (Agilent Technologies, Inc.).

**RNA-sequencing and data processing.** RNA was isolated and RNA-seq libraries were prepared using the KAPA mRNA HyperPrep Kit with an automated liquid handler (Janus G3 – PerkinElmer) according to the manufacturer's instructions. Library preparation was performed at the UCLA Institute for Quantitative and Computational Biology. DNA libraries were submitted to the UCLA Technology Center for Genomics and Bioinformatics for sequencing, which was performed on the Illumina HiSeq. 3000 platform. All RNA-seq data were single-end 50 base reads. Reads were aligned to the human GRCh38.p12 genome, and transcripts were quantified using the kallisto (v0.44.0) program<sup>65</sup> with the Ensembl Annotation Release version 92. Quantities were given in transcripts per million (TPM), and differential gene expression analysis was performed with the Sleuth (v0.30.0) R-package<sup>66</sup>. Differential expression was tested using a likelihood ratio test (negative binomial test), and corrected for multiple testing using the Benjamini-Hochberg correction. Given the sporadic availability of donor corneas, each of the seven cultures was established as an individual batch. To account for batch effects in the data, we included batch number (i.e., culture number) as a covariate in the model used to test for differential expression. The following thresholds defined differential expression: fold change >1.5, TPM > 11.25 and q-value < 0.05. Of note, our background threshold was 7.5 TPM, and thus the TPM threshold of 11.25 represents a 1.5 fold change increase above the background threshold. With the goal of achieving a balance between Type I and Type II errors, the background threshold was selected to retain genes with low expression (e.g., *ZEB1* with a TPM of ~25), but was sufficiently robust to exclude many genes with low (<7.5 TPM) abundance values. RNA-seq data generated from *ex vivo* corneal cell types were obtained from the GEO DataSets database (accession GSE121922). RNA-seq data generated for this study were submitted to GEO DataSets and assigned accession number GSE132204.

**Gene ontology and pathway analysis.** Gene ontology (GO) and pathway analysis on gene symbols only was performed using the web-based tool gProfiler (version: e94\_eg41\_p11\_04285a3)<sup>67</sup>. The three main GO categories are Molecular Function (MF), Biological Process (BP) and Cellular Component (CC) (data version: release/2018-12-28). Databases used for pathway analysis were Kyoto Encyclopedia of Genes and Genomes (KEGG) pathways (version: KEGG FTP Release 2019-01-07), REACTOME (REAC) pathways (classes: 2019-1-24), and WikiPathways (WP)(version: 20190110). The g:SCS method for computing multiple testing correction was used for selecting significantly enriched GO terms and pathways identified by gProfiler. Ingenuity Pathway

Analysis software (Qiagen; build: 486617M) was used to determine the pathways enriched and activated in our lists of differentially expressed genes.

**Quantitative PCR.** Quantitative polymerase chain reaction (qPCR) was performed to validate gene transcript abundances observed by RNA-seq. Total RNA (100 ng) was subjected to first-strand cDNA synthesis using the SuperScript III First-Strand Synthesis kit (Thermo Fisher Scientific) with oligo-dT primers. Reactions were performed on the LightCycler 480 System (Roche) using the KAPA SYBR FAST qPCR Kit (Roche) and gene-specific oligonucleotide primers obtained from the Harvard Primer Bank database<sup>68–70</sup> or designed using the NCBI Primer-BLAST tool (Supplementary Table S9). Relative transcript abundances were calculated in comparison with the housekeeping gene *RAB7* using the comparative Ct ( $2^{-\Delta Ct}$ ) method<sup>71</sup>. Transcript quantities were graphed as  $2^{-\Delta Ct}$ .

**Capillary-based, automated protein immunodetection assay.** Cells were lysed with RIPA buffer and whole-cell lysates were prepared and processed for protein detection using the Wes separation 12–230 kDa capillary cartridges (Protein Simple). Separation and detection were performed as per the manufacturer's instructions. Quantification and data analysis were performed using the Compass for SW software (version 3.1.7; build ID: 1205). Primary antibodies are listed in Supplementary Table S10. Uncropped Westerns are in Supplementary Information (Supplementary Figs. S4 and S5).

**Morphometric analysis.** At each passage, we acquired phase contrast images of confluent monolayers established in either F99 or M5. Image acquisition was performed with the Leica DMIL LED inverted microscope (Leica Microsystems), the N PLAN L 20×/0.35 PH1 objective, and the SPOT Insight color camera (Diagnostic Instruments, Inc.). Images were captured with the SPOT software (version 4.6). Image analysis was performed using ImageJ 1.51 h (National Institutes of Health). We created regions of interest (ROI) by outlining the periphery of at least 20 representative cells using the freehand tool. ImageJ output the values for area ( $\mu\text{m}^2$ ) and circularity (ratio) for the selected ROI.

**Cell barrier assay.** The electrode array 8W10E + ECIS (Applied BioPhysics) was stabilized with F99 or M5 medium. The array surface was coated with  $40 \mu\text{g}/\text{cm}^2$  chondroitin sulfate A (Sigma-Aldrich) and  $400 \text{ ng}/\text{cm}^2$  laminin (Sigma-Aldrich) in phosphate-buffered saline (PBS) for two hours (for F99 cells) or with  $7.5 \mu\text{g}/\text{cm}^2$  collagen IV (Sigma-Aldrich) in 1x HEPES for 30 min (for M5 cells). Cells were seeded at a density to achieve 100% confluence shortly after seeding, and were incubated in the arrays at room temperature for one hour to facilitate even distribution. After seeding and preliminary cell attachment, arrays were positioned into a 16-well array station and connected to the ECIS Z $\theta$  instrument to measure electric impedance ( $\Omega$  at 4000 Hz) for 4 days. Cell-cell ( $R_b$ ,  $\Omega \bullet \text{cm}^2$ ) and cell-substrate ( $\alpha$ ,  $\Omega^{1/2} \bullet \text{cm}$ ) adhesion were modeled from the electric impedance data obtained at 4000 Hz<sup>72</sup>.

**Transporter assays.** Lactate (SLC16A1), bicarbonate (SLC4A4) and proton (SLC4A11) transport were monitored by measuring free  $\text{H}^+$  concentration ( $\text{pH}_i$ ) with a microscope fluorometer<sup>73</sup> using the fluorescence-based (dual-excitation 500 nm and 440 nm) ratiometric pH indicator BCECF (Thermo Fisher Scientific), which was pre-loaded into the cells prior to substrate exposure.

**SLC16A1 transporter.** BCECF loading was performed in lactate-free solution (20 mM Na gluconate, 120 mM NaCl, 1 mM  $\text{CaCl}_2$ , 1 mM  $\text{MgCl}_2$ , 2.5 mM  $\text{K}_2\text{HPO}_4$ , 5 mM dextrose and 5 mM HEPES, pH 7.4). Fluorescence was monitored until a stable  $\text{pH}_i$  was achieved. Subsequently, the lactate-free buffer was replaced by perfusion with lactate-containing solution (20 mM Na lactate in place of 20 mM Na gluconate) for about 200 seconds and then switched back to the lactate-free solution.

**SLC4A4 transporter.** BCEFC loading was performed in bicarbonate-free solution (140 mM TMAcL, 2.5 mM  $\text{K}_2\text{HPO}_4$ , 1 mM  $\text{CaCl}_2$ , 1 mM  $\text{MgCl}_2$ , 5 mM Dextrose and 5 mM HEPES, pH 7.4). After  $\text{pH}_i$  stabilization was attained, the solution was replaced by perfusion with a solution containing tetramethylammonium bicarbonate (115 mM TMAcL and 25 mM TMAHCO<sub>3</sub> in place of 140 mM TMAcL and 5 mM HEPES). Perfusion was performed for about 200 seconds and then switched to a solution containing sodium bicarbonate (115 mM NaCl, 2.5 mM  $\text{K}_2\text{HPO}_4$ , 1 mM  $\text{CaCl}_2$ , 1 mM  $\text{MgCl}_2$ , 5 mM Dextrose and 25 mM NaHCO<sub>3</sub>, pH 7.4), and fluorescence was monitored for an additional 400–600 seconds.

**SLC4A11 transporter.** BCECF loading was performed in HEPES buffer (110 mM KCl, 35 mM TMAcL and 5 mM HEPES, pH 7.4). Once  $\text{pH}_i$  stabilized, a second HEPES buffer (110 mM KCl, 35 mM TMAcL and 5 mM HEPES pH 6.2) was replaced by perfusion and  $\text{pH}_i$  was monitored for approximately 800 seconds.

**Cell migration assay.** A non-wounding method to assess cell migration was used. Two-well silicone inserts (ibidi GmbH), each creating a 500  $\mu\text{m}$  gap, were placed onto cell culture treated plastic. Wells were coated as described above for F99 and M5 cells. After cell isolation was performed, cells were seeded into each well and allowed to grow to confluence. Cell migration was initiated by removing the insert and was monitored for up to 60 hours by phase-contrast microscopy. Images were acquired using the Leica DMIL LED inverted microscope (Leica Microsystems) and the N PLAN L 20×/0.35 PH1 objective. Image capture was performed with the Leica DFC3000 G monochrome camera controlled with the Leica Application Suite X software (version 3.0.3.16319).

Gap closure was measured at 22 hours and cell size was measured at 60 hours using ImageJ 1.51 h software (National Institutes of Health).

Received: 20 November 2019; Accepted: 14 February 2020;

Published online: 04 May 2020

## References

- Gottsch, J. D. *et al.* Serial analysis of gene expression in the corneal endothelium of Fuchs' dystrophy. *Invest. Ophthalmol. Vis. Sci.* **44**, 594–599 (2003).
- Vithana, E. N. *et al.* Mutations in sodium-borate cotransporter SLC4A11 cause recessive congenital hereditary endothelial dystrophy (CHED2). *Nat. Genet.* **38**, 755–757 (2006).
- Krafchak, C. M. *et al.* Mutations in TCF8 cause posterior polymorphous corneal dystrophy and ectopic expression of COL4A3 by corneal endothelial cells. *Am. J. Hum. Genet.* **77**, 694–708 (2005).
- Baratz, K. H. *et al.* E2-2 protein and Fuchs's corneal dystrophy. *N. Engl. J. Med.* **363**, 1016–1024 (2010).
- Wieben, E. D. *et al.* A common trinucleotide repeat expansion within the transcription factor 4 (TCF4, E2-2) gene predicts Fuchs corneal dystrophy. *PLoS One* **7**, e49083 (2012).
- 2018 Eye Banking Statistical Report. 99 (Eye Bank Association of America, 2018).
- Deng, S. X., Sanchez, P. J. & Chen, L. Clinical outcomes of Descemet membrane endothelial keratoplasty using eye bank-prepared tissues. *Am. J. Ophthalmol.* **159**, 590–596 (2015).
- Lass, J. H. *et al.* Corneal Endothelial Cell Loss 3 Years After Successful Descemet Stripping Automated Endothelial Keratoplasty in the Cornea Preservation Time Study: A Randomized Clinical Trial. *JAMA Ophthalmol* **135**, 1394–1400 (2017).
- Van den Bogerd, B., Dhubhghail, S. N., Koppen, C., Tassignon, M. J. & Zakaria, N. A review of the evidence for *in vivo* corneal endothelial regeneration. *Surv. Ophthalmol.* **63**, 149–165 (2018).
- Okumura, N., Kinoshita, S. & Koizumi, N. Cell-based approach for treatment of corneal endothelial dysfunction. *Cornea* **33**(Suppl 11), S37–41 (2014).
- Soh, Y. Q., Peh, G. S. L. & Mehta, J. S. Translational issues for human corneal endothelial tissue engineering. *J. Tissue Eng. Regen. Med.* **11**, 2425–2442 (2017).
- Mehta, J. S., Kocaba, V. & Soh, Y. Q. The future of keratoplasty: cell-based therapy, regenerative medicine, bioengineering keratoplasty, gene therapy. *Curr. Opin. Ophthalmol.* **30**, 286–291 (2019).
- Yamashita, K. *et al.* Corneal Endothelial Regeneration Using Mesenchymal Stem Cells Derived from Human Umbilical Cord. *Stem Cells Dev* **27**, 1097–1108 (2018).
- Schmedt, T. *et al.* Telomerase immortalization of human corneal endothelial cells yields functional hexagonal monolayers. *PLoS One* **7**, e51427 (2012).
- Valtink, M., Gruschwitz, R., Funk, R. H. & Engelmann, K. Two clonal cell lines of immortalized human corneal endothelial cells show either differentiated or precursor cell characteristics. *Cells Tissues Organs* **187**, 286–294 (2008).
- Parekh, M., Ferrari, S., Sheridan, C., Kaye, S. & Ahmad, S. Concise Review: An Update on the Culture of Human Corneal Endothelial Cells for Transplantation. *Stem Cells Transl Med* **5**, 258–264 (2016).
- Peh, G. S. L. *et al.* Functional Evaluation of Two Corneal Endothelial Cell-Based Therapies: Tissue-Engineered Construct and Cell Injection. *Sci. Rep.* **9**, 6087 (2019).
- Sheerin, A. N. *et al.* Characterization of cellular senescence mechanisms in human corneal endothelial cells. *Aging Cell* **11**, 234–240 (2012).
- Mimura, T. & Joyce, N. C. Replication competence and senescence in central and peripheral human corneal endothelium. *Invest. Ophthalmol. Vis. Sci.* **47**, 1387–1396 (2006).
- Campisi, J. Aging, cellular senescence, and cancer. *Annu. Rev. Physiol.* **75**, 685–705 (2013).
- Joyce, N. C. Cell cycle status in human corneal endothelium. *Exp. Eye Res.* **81**, 629–638 (2005).
- Peh, G. S. *et al.* Propagation of human corneal endothelial cells: a novel dual media approach. *Cell Transplant.* **24**, 287–304 (2015).
- Bednarz, J., Rodokanaki-von Schrenck, A. & Engelmann, K. Different characteristics of endothelial cells from central and peripheral human cornea in primary culture and after subculture. *In Vitro Cell. Dev. Biol. Anim.* **34**, 149–153 (1998).
- Zhu, Y. T., Chen, H. C., Chen, S. Y. & Tseng, S. C. Nuclear p120 catenin unlocks mitotic block of contact-inhibited human corneal endothelial monolayers without disrupting adherent junctions. *J. Cell Sci.* **125**, 3636–3648 (2012).
- Bartakova, A., Kuzmenko, O., Alvarez-Delfin, K., Kunzevitzky, N. J. & Goldberg, J. L. A Cell Culture Approach to Optimized Human Corneal Endothelial Cell Function. *Invest. Ophthalmol. Vis. Sci.* **59**, 1617–1629 (2018).
- Frausto, R. F., Le, D. J. & Aldave, A. J. Transcriptomic Analysis of Cultured Corneal Endothelial Cells as a Validation for Their Use in Cell Replacement Therapy. *Cell Transplant.* **25**, 1159–1176 (2016).
- Gain, P. *et al.* Global Survey of Corneal Transplantation and Eye Banking. *JAMA Ophthalmol* **134**, 167–173 (2016).
- Jumblatt, M. M., Maurice, D. M. & McCulley, J. P. Transplantation of tissue-cultured corneal endothelium. *Invest. Ophthalmol. Vis. Sci.* **17**, 1135–1141 (1978).
- Engelmann, K. & Friedl, P. Optimization of culture conditions for human corneal endothelial cells. *In Vitro Cell Dev Biol* **25**, 1065–1072 (1989).
- Cheong, Y. K. *et al.* Identification of cell surface markers glypican-4 and CD200 that differentiate human corneal endothelium from stromal fibroblasts. *Invest. Ophthalmol. Vis. Sci.* **54**, 4538–4547 (2013).
- Chng, Z. *et al.* High throughput gene expression analysis identifies reliable expression markers of human corneal endothelial cells. *PLoS One* **8**, e67546 (2013).
- Ding, V., Chin, A., Peh, G., Mehta, J. S. & Choo, A. Generation of novel monoclonal antibodies for the enrichment and characterization of human corneal endothelial cells (hCENC) necessary for the treatment of corneal endothelial blindness. *MAbs* **6**, 1439–1452 (2014).
- Okumura, N. *et al.* Cell surface markers of functional phenotypic corneal endothelial cells. *Invest. Ophthalmol. Vis. Sci.* **55**, 7610–7618 (2014).
- Yoshihara, M. *et al.* Discovery of molecular markers to discriminate corneal endothelial cells in the human body. *PLoS One* **10**, e0117581 (2015).
- Toda, M. *et al.* Production of Homogeneous Cultured Human Corneal Endothelial Cells Indispensable for Innovative Cell Therapy. *Invest. Ophthalmol. Vis. Sci.* **58**, 2011–2020 (2017).
- Aldave, A. J., Han, J. & Frausto, R. F. Genetics of the corneal endothelial dystrophies: an evidence-based review. *Clin. Genet.* **84**, 109–119 (2013).
- Jiao, X. *et al.* Autosomal recessive corneal endothelial dystrophy (CHED2) is associated with mutations in SLC4A11. *J. Med. Genet.* **44**, 64–68 (2007).
- Mun, G. I. & Boo, Y. C. Identification of CD44 as a senescence-induced cell adhesion gene responsible for the enhanced monocyte recruitment to senescent endothelial cells. *Am. J. Physiol. Heart Circ. Physiol.* **298**, H2102–2111 (2010).
- Ueno, M. *et al.* Concomitant Evaluation of a Panel of Exosome Proteins and MiRs for Qualification of Cultured Human Corneal Endothelial Cells. *Invest. Ophthalmol. Vis. Sci.* **57**, 4393–4402 (2016).

40. Joyce, N. C. Proliferative capacity of the corneal endothelium. *Prog. Retin. Eye Res.* **22**, 359–389 (2003).
41. Joyce, N. C., Zhu, C. C. & Harris, D. L. Relationship among oxidative stress, DNA damage, and proliferative capacity in human corneal endothelium. *Invest. Ophthalmol. Vis. Sci.* **50**, 2116–2122 (2009).
42. Srinivas, S. P. Dynamic regulation of barrier integrity of the corneal endothelium. *Optom. Vis. Sci.* **87**, E239–254 (2010).
43. Bonanno, J. A. Molecular mechanisms underlying the corneal endothelial pump. *Exp. Eye Res.* **95**, 2–7 (2012).
44. Santander-Garcia, D. *et al.* A human cellular system for analyzing signaling during corneal endothelial barrier dysfunction. *Exp. Eye Res.* **153**, 8–13 (2016).
45. He, Z. *et al.* 3D map of the human corneal endothelial cell. *Sci. Rep.* **6**, 29047 (2016).
46. Friden, V. *et al.* The glomerular endothelial cell coat is essential for glomerular filtration. *Kidney Int.* **79**, 1322–1330 (2011).
47. Reitsma, S., Slaaf, D. W., Vink, H., van Zandvoort, M. A. & oude Egbrink, M. G. The endothelial glycocalyx: composition, functions, and visualization. *Pflugers Arch.* **454**, 345–359 (2007).
48. Hornung, M. & Wollensak, J. [Proof of glycosaminoglycans in the corneal endothelium]. *Albrecht Von Graefes Arch. Klin. Exp. Ophthalmol.* **211**, 67–84 (1979).
49. Schroder, H. D. & Sperling, S. Polysaccharide coating of human corneal endothelium. *Acta Ophthalmol. (Copenh.)* **55**, 819–826 (1977).
50. Sperling, S. & Jacobsen, S. R. The surface coat on human corneal endothelium. *Acta Ophthalmol. (Copenh.)* **58**, 96–102 (1980).
51. Jacobsen, S. R. & Sperling, S. Scanning electron microscopic observations of a mucopolysaccharide coating on human corneal endothelium. *Acta Ophthalmol. (Copenh.)* **56**, 161–167 (1978).
52. Peh, G. S. L. *et al.* Regulatory Compliant Tissue-Engineered Human Corneal Endothelial Grafts Restore Corneal Function of Rabbits with Bullous Keratopathy. *Sci. Rep.* **7**, 14149 (2017).
53. Sherrard, E. S. The corneal endothelium *in vivo*: its response to mild trauma. *Exp. Eye Res.* **22**, 347–357 (1976).
54. Serbecic, N. & Beutelspacher, S. C. Vitamins inhibit oxidant-induced apoptosis of corneal endothelial cells. *Jpn. J. Ophthalmol.* **49**, 355–362 (2005).
55. Shima, N., Kimoto, M., Yamaguchi, M. & Yamagami, S. Increased proliferation and replicative lifespan of isolated human corneal endothelial cells with L-ascorbic acid 2-phosphate. *Invest. Ophthalmol. Vis. Sci.* **52**, 8711–8717 (2011).
56. Nakahara, M., Okumura, N., Nakano, S. & Koizumi, N. Effect of a p38 Mitogen-Activated Protein Kinase Inhibitor on Corneal Endothelial Cell Proliferation. *Invest. Ophthalmol. Vis. Sci.* **59**, 4218–4227 (2018).
57. Hongo, A., Okumura, N., Nakahara, M., Kay, E. P. & Koizumi, N. The Effect of a p38 Mitogen-Activated Protein Kinase Inhibitor on Cellular Senescence of Cultivated Human Corneal Endothelial Cells. *Invest. Ophthalmol. Vis. Sci.* **58**, 3325–3334 (2017).
58. Lau, L. & David, G. Pro- and Anti-Tumorigenic Functions of the Senescence-Associated Secretory Phenotype. *Expert Opin. Ther. Targets* (2019).
59. Laberge, R. M. *et al.* mTOR regulates the pro-tumorigenic senescence-associated secretory phenotype by promoting IL1A translation. *Nat. Cell Biol.* **17**, 1049–1061 (2015).
60. Lopes-Paciencia, S. *et al.* The senescence-associated secretory phenotype and its regulation. *Cytokine* **117**, 15–22 (2019).
61. Georgilis, A. *et al.* PTBP1-Mediated Alternative Splicing Regulates the Inflammatory Secretome and the Pro-tumorigenic Effects of Senescent Cells. *Cancer Cell* **34**, 85–102 e109 (2018).
62. Kinoshita, S. *et al.* Injection of Cultured Cells with a ROCK Inhibitor for Bullous Keratopathy. *N. Engl. J. Med.* **378**, 995–1003 (2018).
63. Gutermuth, A. *et al.* Descemet's Membrane Biomimetic Microtopography Differentiates Human Mesenchymal Stem Cells Into Corneal Endothelial-Like Cells. *Cornea* **38**, 110–119 (2019).
64. Teichmann, J. *et al.* Tissue engineering of the corneal endothelium: a review of carrier materials. *J. Funct. Biomater.* **4**, 178–208 (2013).
65. Bray, N. L., Pimentel, H., Melsted, P. & Pachter, L. Near-optimal probabilistic RNA-seq quantification. *Nat. Biotechnol.* **34**, 525–527 (2016).
66. Pimentel, H., Bray, N. L., Puente, S., Melsted, P. & Pachter, L. Differential analysis of RNA-seq incorporating quantification uncertainty. *Nat. Methods* **14**, 687–690 (2017).
67. Raudvere, U. *et al.* g:Profiler: a web server for functional enrichment analysis and conversions of gene lists (2019 update). *Nucleic Acids Res.* **47**, W191–W198 (2019).
68. Spandidos, A. *et al.* A comprehensive collection of experimentally validated primers for Polymerase Chain Reaction quantitation of murine transcript abundance. *BMC Genomics* **9**, 633 (2008).
69. Spandidos, A., Wang, X., Wang, H. & Seed, B. PrimerBank: a resource of human and mouse PCR primer pairs for gene expression detection and quantification. *Nucleic Acids Res.* **38**, D792–799 (2010).
70. Wang, X. & Seed, B. A PCR primer bank for quantitative gene expression analysis. *Nucleic Acids Res.* **31**, e154 (2003).
71. Livak, K. J. & Schmittgen, T. D. Analysis of relative gene expression data using real-time quantitative PCR and the 2<sup>(-Delta Delta C(T))</sup> Method. *Methods* **25**, 402–408 (2001).
72. Stolwijk, J. A., Matrougui, K., Renken, C. W. & Trebak, M. Impedance analysis of GPCR-mediated changes in endothelial barrier function: overview and fundamental considerations for stable and reproducible measurements. *Pflugers Arch.* **467**, 2193–2218 (2015).
73. Kao, L. *et al.* Multifunctional ion transport properties of human SLC4A11: comparison of the SLC4A11-B and SLC4A11-C variants. *Am. J. Physiol. Cell Physiol.* **311**, C820–C830 (2016).

## Acknowledgements

Support provided by National Eye Institute Grants R01 EY022082 (A.J.A.), P30 EY000331 (core grant), the Walton Li Chair in Cornea and Uveitis (A.J.A.), Eye Bank Association of America Richard Lindstrom Research Grant (A.J.A.), the Stotter Revocable Trust (SEI Cornea Division), an unrestricted grant from Research to Prevent Blindness (A.J.A.), National Institute of Diabetes and Digestive and Kidney Diseases 1R01 DK077162 (I.K.), the Allan Smidt Charitable Fund (I.K.), Ralph Block Family Foundation (I.K.), and U.S. Department of Energy Office of Science, Office of Biological and Environmental Research Program DE-FC02-02ER63421 (M.M.).

## Author contributions

R.F.F. conceptualized the study, wrote and revised the manuscript, performed experiments/assays, analyzed data, interpreted results and prepared figures/tables. V.S.S. performed computation-based data analysis and generated lists of differentially expressed genes. R.F.F. performed bioinformatics analysis. G.S.L.P. and B.L.G. demonstrated and advised on the dual-media approach to *in vitro* culture of corneal endothelial cells. P.M.B. performed morphometric and cell migration analysis. P.M.B. and J.W. performed qPCR validation of selected transcripts. E.M.H. performed capillary-based western assay for some selected proteins. M.M. performed library preparation for RNA-seq. L.K. and R.A. performed transporter assays. R.F.F., M.P., I.K., J.S.M. and A.J.A. supervised the study. M.M., I.K. and A.J.A. obtained funding for study. A.J.A. and D.D.C. performed extensive review and revision of the manuscript. All authors reviewed and approved the final manuscript.

## Competing interests

The authors declare no competing interests.

## Additional information

**Supplementary information** is available for this paper at <https://doi.org/10.1038/s41598-020-64311-x>.

**Correspondence** and requests for materials should be addressed to A.J.A.

**Reprints and permissions information** is available at [www.nature.com/reprints](http://www.nature.com/reprints).

**Publisher's note** Springer Nature remains neutral with regard to jurisdictional claims in published maps and institutional affiliations.



**Open Access** This article is licensed under a Creative Commons Attribution 4.0 International License, which permits use, sharing, adaptation, distribution and reproduction in any medium or format, as long as you give appropriate credit to the original author(s) and the source, provide a link to the Creative Commons license, and indicate if changes were made. The images or other third party material in this article are included in the article's Creative Commons license, unless indicated otherwise in a credit line to the material. If material is not included in the article's Creative Commons license and your intended use is not permitted by statutory regulation or exceeds the permitted use, you will need to obtain permission directly from the copyright holder. To view a copy of this license, visit <http://creativecommons.org/licenses/by/4.0/>.

© The Author(s) 2020