

# UCLA

## UCLA Previously Published Works

### Title

Your Path to Transplant: A randomized controlled trial of a tailored expert system intervention to increase knowledge, attitudes, and pursuit of kidney transplant

### Permalink

<https://escholarship.org/uc/item/68j7m237>

### Journal

American Journal of Transplantation, 21(3)

### ISSN

1600-6135

### Authors

Waterman, Amy D  
Peipert, John D  
Cui, Yujie  
[et al.](#)

### Publication Date

2021-03-01

### DOI

10.1111/ajt.16262

Peer reviewed

1  
2  
3 **Your Path to Transplant: A Randomized Controlled Trial of a Tailored Expert System**  
4 **Intervention to Increase Knowledge, Attitudes and Pursuit of Kidney Transplant**  
5

6  
7 Amy D. Waterman, PhD<sup>1,2</sup>  
8 [awaterman@mednet.ucla.edu](mailto:awaterman@mednet.ucla.edu)  
9 <https://orcid.org/0000-0002-7799-0060>  
10

11 John D. Peipert, PhD<sup>3,4</sup>  
12 [john.peipert@northwestern.edu](mailto:john.peipert@northwestern.edu)  
13 <https://orcid.org/0000-0001-5762-7881>  
14

15 Yujie Cui, MS<sup>2</sup>  
16 [ycui@terasaki.org](mailto:ycui@terasaki.org)  
17 <https://orcid.org/0000-0002-4961-9045>  
18

19 Jennifer L. Beaumont, MS<sup>2</sup>  
20 [jbeaumont@terasaki.org](mailto:jbeaumont@terasaki.org)  
21 <https://orcid.org/0000-0002-1484-260X>  
22

23 Andrea Paiva, PhD<sup>5</sup>  
24 [apaiva@uri.edu](mailto:apaiva@uri.edu)  
25 <https://orcid.org/0000-0002-9217-9081>  
26

27 Amanda F. Lipsey, MFA<sup>1,2</sup>  
28 [alipsey@mednet.ucla.edu](mailto:alipsey@mednet.ucla.edu)  
29 <https://orcid.org/0000-0003-0172-4476>  
30

31 Crystal S. Anderson, MPH<sup>1</sup>  
32 [csanderson417@gmail.com](mailto:csanderson417@gmail.com)  
33 <https://orcid.org/0000-0003-3819-2098>  
34

35 Mark L. Robbins, PhD<sup>5</sup>  
36 [markrobb@uri.edu](mailto:markrobb@uri.edu)  
37 <https://orcid.org/0000-0003-3745-0518>  
38

39  
40  
41  
42  
43  
44  
45 <sup>1</sup> Division of Nephrology, David Geffen School of Medicine, University of California Los  
46 Angeles, Los Angeles, California

47  
48 <sup>2</sup> Terasaki Institute of Biomedical Innovation, Los Angeles, California  
49

50  
51 <sup>3</sup> Department of Medical Social Sciences, Feinberg School of Medicine, Northwestern  
52 University  
53

54 <sup>4</sup> Northwestern University Transplant Outcomes Research Collaborative, Comprehensive  
55 Transplant Center, Feinberg School of Medicine, Chicago, IL  
56

1  
2  
3  
4 <sup>5</sup> Department of Psychology, The University of Rhode Island, Kingston, RI  
5  
6  
7  
8

9 *Corresponding author:* Amy D. Waterman, PhD, Terasaki Research Institute, 1018 Westwood  
10 Blvd, Los Angeles, CA 90024, Email: [awaterman@mednet.ucla.edu](mailto:awaterman@mednet.ucla.edu)  
11

12 Abstract word count: (200-word limit) 180  
13

14 Text word count: (4000-word limit) 3518  
15

16  
17 Short title: Individually Tailored Education  
18

19 Prepared for: *American Journal of Transplantation*  
20

21 Abbreviations:  
22

23  
24 CKD: Chronic kidney disease  
25

26 DDKT: Deceased donor kidney transplant  
27

28 ESKD: End-stage kidney disease  
29

30 KT: Kidney Transplant  
31

32 LDKT: Living donor kidney transplant  
33

34 OPTN: Organ Procurement Transplantation Network  
35

36 RCT: Randomized controlled trial  
37

38 SOC: Standard of care  
39

40 UCLA-KPTP: University of California, Los Angeles Kidney and Pancreas Transplant Program  
41

42 YPT: Your Path to Transplant  
43  
44  
45  
46  
47  
48  
49  
50  
51  
52  
53  
54  
55  
56  
57  
58  
59  
60

## ABSTRACT

Individually tailoring education over time may help more patients, especially racial/ethnic minorities, get wait-listed and pursue deceased and living donor kidney transplant (DDKT and LDKT, respectively). We enrolled 802 patients pursuing transplant evaluation at the University of California, Los Angeles Transplant Program into a randomized education trial. We compared the effectiveness of Your Path to Transplant (YPT), an individually tailored coaching and education program delivered at four time points, with standard of care (SOC) education on improving readiness to pursue DDKT and LDKT, transplant knowledge, taking 15 small transplant-related actions, and pursuing transplant (waitlisting or LDKT rates) over 8 months. Survey outcomes were collected prior to evaluation and at 4- and 8-months. Time to waitlisting or LDKT was assessed with at least 18 months of follow-up. At 8 months, compared to SOC, the YPT group demonstrated increased LDKT readiness (47% vs 33%,  $p = 0.003$ ) and transplant knowledge (effect size [ES]=0.41,  $p < 0.001$ ). Transplant pursuit was higher in the YPT group (HR: 1.44, 95% CI: 1.15-1.79,  $p = 0.002$ ). A focused, coordinated education effort can improve transplant-seeking behaviors and wait-listing rates.

ClinicalTrials.gov registration: NCT02181114

## KEYWORDS

Your Path to Transplant (YPT), computer tailored education, randomized control trial, kidney transplant, living kidney donor transplant education

## INTRODUCTION

End-stage kidney disease (ESKD) is becoming the new epidemic of our time (1). Approximately 15% of Americans have chronic kidney disease (CKD), with more than 700,000 people in ESKD, requiring either ongoing dialysis or kidney transplant (KT)(2). Compared to transplant, dialysis is associated with a significantly shorter life expectancy and poorer health-related quality of life (3-5). Living donor kidney transplant (LDKT) is associated with better post-transplant survival rates than deceased donor kidney transplant (DDKT) (6, 7). While the overall number of KTs performed each year increases, LDKTs comprise a declining share of these transplants (7).

Black and Hispanic patients are less likely than White patients to be waitlisted for DDKT or receive LDKTs, even though Black and Hispanic patients have higher rates of ESKD (7). In 2014, while White patients had 11.4% cumulative incidence of LDKT, Black and Hispanic patients only had 2.9% and 5.9% incidence, respectively (8).

Research has identified key modifiable factors that are associated with successful waitlisting, evaluation, and receipt of LDKT. The quality and applicability of education received about transplant and LDKT has been shown in multiple studies to be critical to preparing a patient to pursue KT and LDKT (9, 10). Examining the characteristics of patients who receive LDKTs, multiple studies (11-15) have shown that patients who complete evaluation and receive a LDKT are more likely to have received better education within dialysis centers (16), greater knowledge about transplant, and greater readiness to pursue LDKT (13). Targeted education for patients of racial and ethnic minorities and low socioeconomic status (SES) has also been shown to be beneficial, particularly when the education is culturally sensitive, in their own language, subsidizes transplant costs, and addresses barriers more common to these communities including

1  
2  
3 low health literacy, transportation challenges, and cultural norms (17-20). However, the impact  
4 of educational interventions varies, with some failing to show improvements in knowledge or  
5  
6 pursuit of transplant (21, 22).  
7  
8

9  
10 Best practices for the design of transplant education recommend honoring the patient's  
11 stage of readiness for transplant and delivering modular, culturally sensitive, health literate  
12 education over longer time periods (10). Computer-tailored interventions (CTIs) have the ability  
13  
14 to create tailored feedback based on an individual patient's specific level of readiness,  
15  
16 knowledge gaps, self-efficacy challenges, and socioeconomic derailleurs and detect changes over  
17  
18 time (23). In a longitudinal, randomized controlled trial (RCT) at the University of California,  
19  
20 Los Angeles Kidney and Pancreas Transplant Program (UCLA-KPTP), we compared the  
21  
22 effectiveness of a new CTI for transplant, *Your Path to Transplant* (YPT), with standard of care  
23  
24 (SOC) education. We assessed: (1) YPT's effectiveness for improving patients' transplant  
25  
26 knowledge, attitudes toward transplant, readiness to pursue transplant, completion of 15  
27  
28 transplant action-steps, and successful pursuit of transplant (waitlisted or **LDKT**).  
29  
30  
31  
32  
33  
34

## 35 **METHODS**

### 36 **Randomized Controlled Trial (RCT) Design**

37  
38 This study was a prospective, parallel arm RCT with two follow-up time points  
39  
40 conducted among 802 non-Hispanic Black, Hispanic (any race), and non-Hispanic White ESKD  
41  
42 patients presenting for transplant evaluation at UCLA-KPTP. Enrolled patients were  
43  
44 electronically randomized, stratified by race/ethnicity, with equal allocation to two treatment  
45  
46 arms: the YPT intervention and SOC. All patients were surveyed prior to presenting at the  
47  
48 transplant center (baseline), and at 4- and 8-months post-baseline.  
49  
50  
51  
52  
53  
54  
55  
56  
57  
58  
59  
60

1  
2  
3 The study protocol was approved by the University of California, Los Angeles's  
4 Institutional Review Board (#14-000382) and registered at ClinicalTrials.gov (#NCT02181114).  
5  
6  
7 The full details of the protocol have been published (23).  
8  
9

### 10 **Setting and Participants**

11  
12 Inclusion criteria for the RCT were: 1) presentation for KT evaluation at UCLA; 2) self-  
13 identification as White, Black, or Hispanic (any race). Patients were excluded if they were: 1)  
14 under age 18; 2) unable to speak or read English; 3) previously deemed ineligible at UCLA for  
15 KT; 4) on the waitlist at another center; 5) pursuing multi-organ transplant; or 6) without a  
16 working telephone. Patients were asked to give verbal informed consent to participate and have  
17 their electronic medical records reviewed.  
18  
19  
20  
21  
22  
23  
24  
25

### 26 **Standard of Care (SOC) Arm**

27  
28 The SOC arm consisted of UCLA-KPTP education provided during a 3-hour transplant  
29 education session for patients and their family and friends, transplant coordinator  
30 communications, and self-study afterwards. The session outlined recipient and donor evaluation,  
31 surgery, and recovery processes.  
32  
33  
34  
35  
36  
37

### 38 **Your Path to Transplant (YPT) Arm**

39  
40 YPT is a computer-tailored intervention that provides patients with telephonic coaching,  
41 feedback reports, access to community resources to overcome SES barriers, and video and print  
42 KT education resources tailored uniquely to them after a computerized patient assessment. At 4  
43 time points, patients completed a screening to determine their current level of readiness to pursue  
44 DDKT and LDKT, transplant knowledge, socioeconomic barriers to transplant, and plan to take  
45 specific actions towards pursuing transplant and LDKT. Individual feedback reports were  
46 generated by the computer based on this screening that supported a patient at each unique level  
47  
48  
49  
50  
51  
52  
53  
54  
55  
56  
57  
58  
59  
60

1  
2  
3 of transplant readiness, answered their specific knowledge gaps, and suggested how best to begin  
4 taking small transplant actions reported to be of interest to the patient. Patients were also  
5 provided referrals to community resources that might overcome SES barriers that might derail  
6 patients from transplantation, videos and print brochures from the Explore Transplant education  
7 program (24). Coaches emphasized the content and recommendations generated within the  
8 report and brainstormed with the patient on any transplant actions of interest to them and SES  
9 barriers identified. Each new screening at different time points updated the computerized patient  
10 assessment and generated a new tailored report. YPT patients received educational resources and  
11 coaching at 4 time points: a few weeks before and during transplant evaluation, and 4 and  
12 8 months after baseline (Figure 1). Across all these time points, YPT patients received  
13 approximately 75 additional minutes of education compared to the SOC patients over an 8-  
14 month period. The YPT-generated coaching was delivered in person during evaluation and by  
15 telephone by a diverse racial/ethnic group of trained social work and public health coaches  
16 overseen by a clinical psychologist. Coaches were not matched by race/ethnicity to the patients  
17 they were coaching.

### 38 **Measures**

39  
40 The primary study outcome was patients' readiness to pursue LDKT and DDKT. To  
41 assess transplant readiness, patients were asked how ready they were to get a DDKT or LDKT  
42 and were scored as being in one of five stages (e.g., precontemplation, contemplation,  
43 preparation, action, maintenance) using our validated DDKT and LDKT stage of readiness  
44 measurement tools (25, 26) (Table 1). To assess transplant knowledge patients were asked 11  
45 true/false and 8 multiple choice questions to determine their level of knowledge (14), producing  
46 a knowledge T-score (mean=50, SD=10) (15), with higher scores indicating greater knowledge.  
47  
48  
49  
50  
51  
52  
53  
54  
55  
56  
57  
58  
59  
60



1  
2  
3 To assess ongoing progress toward transplant, patients were asked whether they had “Already  
4 done,” “Are planning to do,” or “Don’t plan to do” 15 transplant-related action-steps (25, 26).  
5  
6 Examples of action-steps included “Share educational materials about deceased donation with  
7  
8 people in your life” or “Ask potential donors to be tested.” Patients who said they had not  
9  
10 “Already done” the action at baseline but had done so at a later survey time point were counted  
11  
12 as having newly taken that step, with the total number of new steps taken calculated. Finally,  
13  
14 pursuit of transplant (i.e., waitlisted for DDKT or received LDKT) was assessed via medical  
15  
16 record review and linkage to the Scientific Registry for Transplant Recipients (SRTR) 18 months  
17  
18 after enrollment of the last patient.  
19  
20  
21  
22  
23

24 Additionally, the pre-intervention survey assessed basic patient demographic and clinical  
25  
26 characteristics and level of SES barriers using the Kidney Transplant Derailers Index  
27  
28 (KTDI)(27). We also asked patients whether they had previously read transplant brochures,  
29  
30 watched transplant videos, or visited transplant websites.  
31  
32

### 33 **Statistical Analyses**

34  
35 Details of the power analysis and rationale for the patient sample size recruited for this  
36  
37 RCT have been published (23). All statistical tests employ an intent-to-treat (ITT) approach  
38  
39 wherein subjects maintain their assignment to the study arm to which they were originally  
40  
41 randomized regardless of whether they completed the planned interventions (28). To compare  
42  
43 baseline characteristics between patients who dropped out of the study to those who did not,  
44  
45 independent samples *t*-tests or nonparametric Kruskal-Wallis tests were used for continuous  
46  
47 variables and chi-square or Fisher’s exact tests were used for categorical variables.  
48  
49  
50

51 To evaluate differences between groups on the primary endpoint, DDKT and LDKT  
52  
53 readiness levels were each first collapsed to a binary classification of Action versus all earlier  
54  
55  
56  
57

1  
2  
3 stages of readiness. This binary outcome was then assessed in a mixed effect logistic regression  
4  
5 model using R package lme4 (29). Maximum likelihood-based mixed effects models use all  
6  
7 available data for each patient and provide valid estimates under the assumption that missing  
8  
9 data are missing at random, conditional on the observed data. Intervention group, time, and the  
10  
11 interaction between group and time were included in the model as fixed effects, along with  
12  
13 random intercept and slope (time) terms at the patient level. The interaction between group and  
14  
15 time represents the primary test of whether the changes in readiness over time differ between the  
16  
17 two groups.  
18  
19  
20

21  
22 For the secondary endpoints, to test whether YPT patients showed increased knowledge  
23  
24 scores compared to the SOC, a linear mixed effect model was fit using similar specifications of  
25  
26 fixed and random effects as the model used for readiness. Effect sizes ( $ES = \text{mean difference} /$   
27  
28  $\text{baseline standard deviation}$ ) were calculated to provide a standardized, unitless measure of the  
29  
30 magnitude of differences, which can be interpreted with the following cut-offs:  $0.20 \leq ES < 0.50$   
31  
32  $= \text{small}$ ;  $0.50 \leq ES < 0.80 = \text{medium}$ ;  $\geq 0.80 = \text{large}$ . For the number of new steps taken,  
33  
34 differences between the study arms in the count of new steps was analyzed with a Poisson  
35  
36 model.  
37  
38  
39

40 Pursuit of transplant was analyzed as time to event, defined as being placed on the  
41  
42 deceased donor waiting list or receiving a LDKT. The time (in months) was calculated between  
43  
44 the baseline survey date and date listed in SRTR, or date that patient received an LDKT. **Patients**  
45  
46 **who were not listed or transplanted were censored on November 30, 2018—18 months after the**  
47  
48 **last patient was enrolled in the study.** We also examined time to LDKT, specifically. Kaplan-  
49  
50 Meier curves were stratified by study arm and differences assessed using the log-rank test. **Cox**  
51  
52 **proportional hazards models, adjusted for the randomization stratification factor – race/ethnicity,**  
53  
54  
55  
56  
57  
58  
59  
60

1  
2  
3 were also fit and hazards ratios estimated. The proportional hazards assumption was evaluated  
4  
5 using statistical tests and graphical diagnostics based on the scaled Schoenfeld residuals.  
6

7  
8 Since this study was powered only to detect a main effect of intervention, interaction tests  
9  
10 by race/ethnicity are considered exploratory. No adjustments for multiple comparisons were  
11  
12 applied. All analyses were conducted in R version 3.5.1 (R Core Team)(30) and SAS version 9.4  
13  
14 (Cary, NC).

## 15 16 17 RESULTS

### 18 19 Participants

20  
21 Study enrollment took place from May 2014 to May 2017, with follow-up for final  
22  
23 pursuit of transplant outcomes through November 2018. Compared to those who consented  
24  
25 (33%), those who declined participation were more likely to be Hispanic (Table S1). Of the 802  
26  
27 eligible patients who completed the baseline survey, 407 were allocated to the YPT group and  
28  
29 395 to the SOC group. Characteristics of the sample are listed in Table 2. Before joining the  
30  
31 study, most participants read transplant brochures (62.8%), browsed websites about transplant  
32  
33 (53.5%), or talked to doctors and other medical staff about transplant (87.4%), but few had  
34  
35 watched videos about transplant (26.8%).  
36  
37  
38  
39

40 A CONSORT diagram with reasons for drop-out at each time point is displayed in Figure  
41  
42 2. Patients who completed the 8-month survey were more likely to be in the SOC arm ( $p=0.009$ ),  
43  
44 have polycystic kidney disease as their etiology for ESKD ( $p = 0.016$ ), and not yet be on dialysis  
45  
46 ( $p = 0.013$ ). There were no differences in study drop-out between race/ethnicity groups (Tables  
47  
48 S2-S3).  
49  
50

### 51 Primary Outcome: Transplant Readiness

52  
53  
54  
55  
56  
57  
58  
59  
60

1  
2  
3 At baseline, 67.5% of patients reported being in the Action stage of readiness for DDKT  
4 and 44.5% in the Action stage for LDKT. Significantly higher proportions of YPT patients  
5 reported being in Action for DDKT compared to the SOC group at 4 months (82.8% vs. 72.5%,  
6 p = 0.004), but this difference was not as large at 8 months (84.0% vs. 76.4.0%, p = 0.066). In  
7 the mixed effects longitudinal model, the odds ratio [OR] for the comparison at 8 months was  
8 3.16 (95% confidence interval [CI]: 0.92, 5.39; p-value = 0.019). A higher proportion of YPT  
9 patients reported being in Action for LDKT compared to SOC patients at 4 months (59.3% vs.  
10 50.2%, p = 0.036), with a larger difference at 8 months (67.0% vs. 44.1%, p < 0.001; mixed  
11 model OR: 3.77, 95% CI: 1.04, 6.50; p = 0.005). The effect of YPT on LDKT readiness differed  
12 by race/ethnicity in the model (interaction p=0.039). However, this interaction between treatment  
13 and race/ethnicity was not observed for DDKT readiness (interaction p=0.087).

### 24 Secondary Outcome: Transplant Knowledge

25 At baseline, mean transplant knowledge T-score was 52.1 (SD=9.7). Compared to the  
26 SOC arm, a larger increase in transplant knowledge was observed for the YPT group over time  
27 (Figure 3; interaction p < 0.001). The difference between YPT and SOC was 1.5 points (ES =  
28 0.15, p = 0.082) at 4 months and 4.1 points (ES = 0.42, p < 0.001) at 8 months. Race did not  
29 interact with treatment, indicating the effect of study arm on transplant knowledge after baseline  
30 did not differ substantially by race/ethnicity group (interaction p=0.70).

### 31 Secondary Outcome: New Steps toward LDKT and DDKT

32 At baseline, patients had taken a median of 1.0 steps towards LDKT (IQR = 4.0) and 2.0  
33 steps towards DDKT (SD=3.0). Overall, the most common steps already taken at baseline were  
34 calling the transplant center to pursue evaluation, talking to people they trust about whether to  
35 get a living donor transplant, and making a list of people who might be living donors.  
36  
37  
38  
39  
40  
41  
42  
43  
44  
45  
46  
47  
48  
49  
50  
51  
52  
53  
54  
55  
56  
57  
58  
59  
60

1  
2  
3 By the end of the study, YPT patients had taken a median of 3.0 (IQR = 3.0) new steps  
4 towards LDKT, compared to a median of 2.0 (IQR = 3.0) new steps in the SOC arm (RR: 1.12,  
5 95% CI: 1.01 - 1.24, p=0.034). In addition to total new steps taken, YPT patients were more  
6 likely to take almost every individual new step towards LDKT and DDKT in comparison with  
7 the SOC arm (Table 3). Specifically, more YPT patients shared their need for a living donor with  
8 a large community (43.6% vs. 27.1%, p=0.001), shared educational materials about living  
9 donation with others in their life (86.0% vs. 67.0%, p<0.001), asked another person to tell others  
10 of their need for a living donor (63.8% vs. 49.3%, p=0.009), and asked potential donors to be  
11 tested (70.7% vs. 53.7%).

12  
13  
14  
15  
16  
17  
18  
19  
20  
21  
22  
23  
24 There was also a significant difference between groups in number of new steps taken  
25 towards DDKT (RR = 1.13, 95% CI: 1.05 – 1.22, p=0.002) with a median of 5.0 (IQR = 3.0)  
26 new steps taken for the YPT arm and 4.0 (IQR = 3.0) for the SOC arm. More YPT patients  
27 shared educational materials about DDKT with people in their life (87.9% vs. 67.3%, p<0.001)  
28 and talked to people they trust about whether to get a DDKT (87.2% vs. 67.6%, p<0.001). No  
29  
30  
31  
32  
33  
34  
35  
36  
37  
38  
39  
40  
41  
42  
43  
44  
45  
46  
47  
48  
49  
50  
51  
52  
53  
54  
55  
56  
57  
58  
59  
60  
**heterogeneity** of intervention effect was observed for race (**interaction p=0.67**).

### Final Outcome – Transplant Pursuit

After a minimum of 18 months follow-up, 323 patients total (40.2%) were either  
waitlisted for DDKT or received a LDKT (**57.0% YPT vs 43.0% SOC**), with those receiving the  
YPT intervention faring better (Figure 4, log-rank p = 0.003; **HR: 1.39, 95% CI: 1.12 – 1.74**).  
This benefit **was unchanged** after adjusting for race/ethnicity (HR: 1.44, 95% CI: 1.15 - 1.79; p =  
0.002). No statistically significant interaction was observed between race/ethnicity and  
intervention group (**p>0.2**).

1  
2  
3       **During** the same follow-up period, 95 patients (11.8%) received an LDKT, with 53  
4  
5 (13.0%) in the YPT condition and 42 (10.6%) in the SOC condition (Figure 5, log-rank  $p =$   
6  
7 0.42). **There** was no evidence that the YPT intervention had an effect on LDKT rates (HR: 1.23,  
8  
9 95% CI: 0.81 – 1.85;  $p=0.329$ ). **No** interaction was observed between race/ethnicity and  
10  
11 intervention groups in receipt of LDKT (**interaction  $p=0.943$** ).

12  
13  
14       Evaluation of YPT. Over 95% of participants found the coaches and print materials  
15  
16 helpful and easy to understand. There was no difference between race/ethnicity groups in  
17  
18 evaluation ratings.  
19

## 20 21 **DISCUSSION**

22  
23       For patients presenting for transplant evaluation, the road to successful kidney  
24  
25 transplantation can be long and challenging. A recent study found that the average time to  
26  
27 complete evaluation and get waitlisted was 226 days (31). This is the first examination of the  
28  
29 effectiveness of an individually tailored education and coaching program, *Your Path to*  
30  
31 *Transplant*, being delivered over 8 months during pursuit of evaluation. This study found that  
32  
33 kidney patients who received YPT were more likely to increase their transplant knowledge,  
34  
35 increase their readiness to pursue DDKT and LDKT, take more steps toward DDKT and LDKT,  
36  
37 and be listed for transplant than patients who received only traditional SOC education. While  
38  
39 YPT patients also were more likely to share their interest with people about LDKT and solicit  
40  
41 living donors, there were no differences in actual LDKT rates by education condition after 18  
42  
43 months.  
44  
45  
46  
47  
48

49       This is one of the longest and most comprehensive educational interventions ever to  
50  
51 occur within a transplant center. While similar transplant educational studies vary in duration  
52  
53 from one day to 18 months (17, 22, 24, 32-34), most commonly, they involve interventions  
54  
55  
56  
57  
58  
59  
60

1  
2  
3 occurring on evaluation day or during a single clinical visit with supplemental information  
4 provided afterwards for additional self-study (35, 36). Multiple studies now support expanding  
5 the length of interventions, involving living donors, and including multiple resources within  
6 interventions like videos, print materials, and coaching (17, 24, 32).  
7  
8  
9  
10  
11

12 As part of their conversations, YPT coaches spent considerable time attempting to  
13 overcome commonly reported SES barriers to transplant (17-19). For example, during the  
14 coaching sessions, they provided information about low-cost or free transportation to the  
15 transplant center, dental care, and child care services, and discussed practical topics like where to  
16 park at the center and which bus route would help patients most easily get to the transplant  
17 center. Similarly, Basu et al., found that 4% of patient navigator encounters addressed  
18 transportation challenges (37).  
19  
20  
21  
22  
23  
24  
25  
26  
27

28 In examining other interventions shown to increase transplant-seeking behaviors in  
29 racial/ethnic minorities, patient-level interventions using patient navigators (37, 38), home-based  
30 education with a minority health educator (17, 39), culturally targeted websites (33, 40), and  
31 culturally congruent transplant programs (41) have been found to be effective. At the patient and  
32 family level, discussions between participants and social workers (36), web-based education (33,  
33 42), home-based educational meetings with patients (43), and meetings using technology to seek  
34 donors (44), and involving a patient's social network, including potential living donors (45) have  
35 proven effectiveness. At the provider and system level, research has found that transplant  
36 facilities with specifically tailored toolkits to coordinate patient care (46, 47), and risk-based  
37 approaches identifying patients in need of targeted care (48, 49) were more successful.  
38 Interventions including multiple levels of the socioecological model may be needed, perhaps in  
39 combination (50-52).  
40  
41  
42  
43  
44  
45  
46  
47  
48  
49  
50  
51  
52  
53  
54  
55  
56  
57  
58  
59  
60

1  
2  
3  
4  
5  
6  
7  
8  
9  
10  
11  
12  
13  
14  
15  
16  
17  
18  
19  
20  
21  
22  
23  
24  
25  
26  
27  
28  
29  
30  
31  
32  
33  
34  
35  
36  
37

Finally, this study has several limitations. First, the RCT was conducted in a single, high-volume transplant center in an urban area and, thus, may be limited in generalizability. Selection bias also potentially threatens generalizability of the study, as 21.6% (536 out of 2483) of pre-randomized patients declined to participate in the study, with a lower proportion of Hispanic patients providing consent. Over time, nearly 20% of patients could not complete all time points because they either died or became ineligible for transplant. Of the 80% that remained eligible for transplant over the entire 8-month time period, 36% were lost to follow-up by the 8-month visit, with a higher drop-out rate in the YPT group compared to SOC, potentially biasing our conclusions. If all patients still eligible for transplant but lost to follow-up were considered to be “not taking actions” towards LDKT, we find that patients in the YPT arm were still more likely to be taking actions than SOC (YPT: 130/325=40% vs SOC: 101/325=31%,  $p=0.017$ ). Finally, it is possible that some of YPT’s treatment effect was diluted by patients who did not read the tailored education reports or watch the videos on their own at home. Since telephonic coaching sessions reviewed the content from these materials, even patients using the materials on their own but less often would still have some exposure to the intervention.

38  
39  
40  
41  
42  
43  
44  
45  
46  
47  
48  
49  
50  
51  
52  
53  
54  
55  
56  
57

YPT provides an innovative option for supporting a racially and ethnically diverse ESKD patient population facing the many challenges of transplant evaluation and finding a living donor. This study revealed that it is possible to improve transplant patients’ knowledge, pursuit of transplant, and wait-listing rates if a focused, coordinated education effort honoring patients’ readiness and motivation to pursue DDKT and LDKT, addressing their unique SES barriers, and supporting them in taking critical transplant actions over time can be implemented. These individually tailored strategies could be embedded within traditional education programs at transplant centers to **meet** patients’ educational needs.



## Acknowledgements

Funding for this study was provided by the National Institutes of Health (R01DK088711; T32DK104687).

## Disclosure

Dr. Amy D. Waterman, PhD owns the intellectual property to the transplant education product *Explore Transplant* and has licensed it at no-cost to a nonprofit, Health Literacy Media (HLM), who retains all revenue as to their sales. She serves as an unpaid consultant to HLM to ensure the accuracy of educational content. All other authors declare that they have no competing interests.

## REFERENCES

1. Barnieh L, Collister D, Manns B, Lam NN, Shojai S, Lorenzetti D et al. A Scoping Review for Strategies to Increase Living Kidney Donation. *Clin J Am Soc Nephrol* 2017.
2. Saran R, Robinson B, Abbott KC, Bragg-Gresham J, Chen X, Gipson D et al. US Renal Data System 2019 Annual Data Report: Epidemiology of Kidney Disease in the United States. *Am J Kidney Dis* 2020;75(1s1):A6-a7.
3. Neipp M, Karavul B, Jackobs S, Meyer zu Vilsendorf A, Richter N, Becker T et al. Quality of life in adult transplant recipients more than 15 years after kidney transplantation. *Transplantation* 2006;81(12):1640-1644.
4. United States Renal Data System. 2018 USRDS annual data report: Epidemiology of kidney disease in the United States. Bethesda, MD: National Institutes of Health, National Institute of Diabetes and Digestive and Kidney Diseases; 2018.
5. Kovacs AZ, Molnar MZ, Szeifert L, Ambrus C, Molnar-Varga M, Szentkiralyi A et al. Sleep disorders, depressive symptoms and health-related quality of life—a cross-sectional comparison between kidney transplant recipients and waitlisted patients on maintenance dialysis. *Nephrol Dial Transplant* 2011;26(3):1058-1065.
6. de Groot IB, Veen JIE, van der Boog PJM, van Dijk S, Stiggelbout AM, Marang-van de Mheen PJ et al. Difference in quality of life, fatigue and societal participation between living and deceased donor kidney transplant recipients. *Clin Transplant* 2013;27(4):E415-E423.
7. Hart A, Smith JM, Skeans MA, Gustafson SK, Wilk AR, Castro S et al. OPTN/SRTR 2017 Annual Data Report: Kidney. 2019;19(S2):19-123.

- 1  
2  
3 8. Purnell TS, Luo X, Cooper LA, Massie AB, Kucirka LM, Henderson ML et al.  
4 Association of Race and Ethnicity With Live Donor Kidney Transplantation in the United States  
5 From 1995 to 2014. *Jama* 2018;319(1):49-61.
- 6 9. Segev DL. Innovative strategies in living donor kidney transplantation. *Nature Reviews*  
7 *Nephrology* 2012;8:332.
- 8 10. Waterman AD, Robbins ML, Peipert JD. Educating Prospective Kidney Transplant  
9 Recipients and Living Donors about Living Donation: Practical and Theoretical  
10 Recommendations for Increasing Living Donation Rates. *Curr Transplant Rep* 2016;3(1):1-9.
- 11 11. Waterman AD, Hyland SS, Stanley SL, Barrett AC, Millinger R. Improving education  
12 increases dialysis patients' pursuit of transplant: Explore Transplant RCT findings. In: *American*  
13 *Transplant Congress; 2009 May 30-June 3; Boston, MA: American Journal of Transplantation;*  
14 *2009. p. 360.*
- 15 12. Dageforde LA, Box A, Feurer ID, Cavanaugh KL. Understanding Patient Barriers to  
16 Kidney Transplant Evaluation. *Transplantation* 2015.
- 17 13. Waterman AD, Peipert JD, Hyland SS, McCabe MS, Schenk EA, Liu J. Modifiable  
18 patient characteristics and racial disparities in evaluation completion and living donor transplant.  
19 *Clin J Am Soc Nephrol* 2013;8(6):995-1002.
- 20 14. Patzer RE, Perryman JP, Pastan S, Amaral S, Gazmararian JA, Klein M et al. Impact of a  
21 patient education program on disparities in kidney transplant evaluation. *Clin J Am Soc Nephrol*  
22 *2012;7(4):648-655.*
- 23 15. Lockwood MB, Saunders MR, Nass R, McGivern CL, Cunningham PN, Chon WJ et al.  
24 Patient-Reported Barriers to the Prekidney Transplant Evaluation in an At-Risk Population in the  
25 United States. *Prog Transplant* 2017;27(2):131-138.
- 26 16. Waterman AD, Peipert JD, Xiao H, Goalby CJ, Kawakita S, Cui Y et al. Education  
27 Strategies in Dialysis Centers Associated with Increased Transplant Wait-listing Rates.  
28 *Transplantation* 2019.
- 29 17. Rodrigue JR, Paek MJ, Egbuna O, Waterman AD, Schold JD, Pavlakis M et al. Making  
30 house calls increases living donor inquiries and evaluations for blacks on the kidney transplant  
31 waiting list. *Transplantation* 2014;98(9):979-986.
- 32 18. Gordon EJ, Reddy E, Gil S, Feinglass J, Rodde J, Abecassis MM et al. Culturally  
33 competent transplant program improves Hispanics' knowledge and attitudes about live kidney  
34 donation and transplant. *Progress in transplantation* 2014;24:56-68.
- 35 19. Sieverdes JC, Price M, Ruggiero KJ, Baliga PK, Chavin KD, Brunner-Jackson B et al.  
36 Design and approach of the Living Organ Video Educated Donors (LOVED) program to  
37 promote living kidney donation in African Americans. *Contemp Clin Trials* 2017.
- 38 20. Purnell TS, Hall YN, Boulware LE. Understanding and overcoming barriers to living  
39 kidney donation among racial and ethnic minorities in the United States. *Advances in chronic*  
40 *kidney disease* 2012;19(4):244-251.
- 41 21. Vilme H, Davenport CA, Pendergast J, Boulware LE. Trends in African Americans'  
42 Attitudes and Behaviors About Living Donor Kidney Transplantation. *Progress in*  
43 *Transplantation* 2018:1526924818800036.
- 44 22. Weng FL, Peipert JD, Holland BK, Brown DR, Waterman AD. A Clustered Randomized  
45 Trial of an Educational Intervention During Transplant Evaluation to Increase Knowledge of  
46 Living Donor Kidney Transplant. *Prog Transplant* 2017;27(4):377-385.
- 47  
48  
49  
50  
51  
52  
53  
54  
55  
56  
57  
58  
59  
60

23. Waterman AD, Robbins ML, Paiva AL, Peipert JD, Kynard-Amerson CS, Goalby C et al. Your path to transplant: a randomized controlled trial of a tailored computer education intervention to increase living donor kidney transplant. *BMC Nephrol* 2014;15(166).
24. Waterman AD, Peipert JD. An Explore Transplant Group Randomized Controlled Education Trial to Increase Dialysis Patients' Decision-Making and Pursuit of Transplantation. *Progress in Transplantation* 2018;28(2):174-183.
25. Waterman A, Robbins M, Paiva A, Hyland SS. Kidney patients' intention to receive a deceased donor transplant: Development of stage of change, decisional balance, and self-efficacy measures *Journal of Health Psychology* 2010;15(3):436-445.
26. Waterman AD, Robbins ML, Paiva AL, Peipert JD, Davis LA, Hyland SS et al. Measuring kidney patients' motivation to pursue living donor kidney transplant: development of stage of change, decisional balance and self-efficacy measures. *J Health Psychol* 2015;20(2):210-221.
27. Peipert JD, Beaumont JL, Robbins M, Paiva A, Anderson C, Waterman A. Development and Validation of a Socioeconomic Kidney Transplant Derailers Index (KTDI). *Am J Transplant* 2017;17(suppl 3).
28. Piantadosi S. *Clinical Trials: A Methodological Perspective*. 2nd ed. Hoboken, NJ: Wiley, 2005.
29. Bates D, Mächler M, Bolker B, Walker S. Fitting Linear Mixed-Effects Models Using lme4. *2015* 2015;67(1):48.
30. Team RC. R: A language and environment for statistical computing. R Foundation for Statistical Computing. 2017; Available from: <https://www.R-project.org/>
31. Formica RN, Jr., Barrantes F, Asch WS, Bia MJ, Coca S, Kalyesubula R et al. A One-Day Centralized Work-up for Kidney Transplant Recipient Candidates: A Quality Improvement Report. *American Journal of Kidney Diseases* 2012;60(2):288-294.
32. Patzer RE, McPherson L, Basu M, Mohan S, Wolf M, Chiles M et al. Effect of the iChoose Kidney Decision Aid in Improving Knowledge about Treatment Options among Transplant Candidates: a Randomized Controlled Trial. *Am J Transplant* 2018.
33. Gordon EJ, Feinglass J, Carney P, Vera K, Olivero M, Black A et al. A Website Intervention to Increase Knowledge About Living Kidney Donation and Transplantation Among Hispanic/Latino Dialysis Patients. *Prog Transplant* 2016;26(1):82-91.
34. Strigo TS, Ephraim PL, Pounds I, Hill-Briggs F, Darrell L, Ellis M et al. The TALKS study to improve communication, logistical, and financial barriers to live donor kidney transplantation in African Americans: protocol of a randomized clinical trial. *BMC Nephrol* 2015;16(1):160.
35. Waterman AD, Peipert JD, Goalby CJ, Dinkel KM, Xiao H, Lentine KL. Assessing Transplant Education Practices in Dialysis Centers: Comparing Educator Reported and Medicare Data. *Clin J Am Soc Nephrol* 2015;10(9):1617-1625.
36. Boulware LE, Hill-Briggs F, Kraus ES, Melancon JK, Falcone B, Ephraim PL et al. Effectiveness of educational and social worker interventions to activate patients' discussion and pursuit of preemptive living donor kidney transplantation: a randomized controlled trial. *Am J Kidney Dis* 2013;61(3):476-486.
37. Basu M, Petgrave-Nelson L, Smith KD, Perryman JP, Clark K, Pastan SO et al. Transplant Center Patient Navigator and Access to Transplantation among High-Risk Population: A Randomized, Controlled Trial. *Clin J Am Soc Nephrol* 2018;13(4):620-627.

- 1  
2  
3 38. Sullivan C, Leon JB, Sayre SS, Marbury M, Ivers M, Pencak JA et al. Impact of  
4 Navigators on Completion of Steps in the Kidney Transplant Process: A Randomized, Controlled  
5 Trial. *Clin J Am Soc Nephrol* 2012.
- 6 39. Rodrigue JR, Cornell DL, Kaplan B, Howard RJ. A randomized trial of a home-based  
7 educational approach to increase live donor kidney transplantation: effects in blacks and whites.  
8 *American Journal of Kidney Diseases* 2008;51(4):663-670.
- 9 40. Gordon EJ, Feinglass J, Carney P, Vera K, Olivero M, Black A et al. A Culturally  
10 Targeted Website for Hispanics/Latinos About Living Kidney Donation and Transplantation: A  
11 Randomized Controlled Trial of Increased Knowledge. *Transplantation* 2016;100(5):1149-1160.
- 12 41. Gordon EJ, Lee J, Kang R, Ladner DP, Skaro AI, Holl JL et al. Hispanic/Latino  
13 Disparities in Living Donor Kidney Transplantation: Role of a Culturally Competent Transplant  
14 Program. *Transplant Direct* 2015;1(8):e29.
- 15 42. Gordon EJ, Sohn MW, Chang CH, McNatt G, Vera K, Beauvais N et al. Effect of a  
16 Mobile Web App on Kidney Transplant Candidates' Knowledge About Increased Risk Donor  
17 Kidneys: A Randomized Controlled Trial. *Transplantation* 2016.
- 18 43. Massey EK. Recommendations on how to improve medication adherence studies in the  
19 field of transplantation. *Transplantation* 2016;100(1):12-13.
- 20 44. Cameron AM. Social Media and Organ Donation: The Facebook Effect. *The Journal of*  
21 *legal medicine* 2015;36(1):39-44.
- 22 45. Ismail SY, Luchtenburg AE, Timman R, Zuidema WC, Boonstra C, Weimar W et al.  
23 Home-based family intervention increases knowledge, communication and living donation rates:  
24 a randomized controlled trial. *Am J Transplant* 2014;14(8):1862-1869.
- 25 46. Taji L, Battistella M, Grill AK, Cunningham J, Hemmelgarn BL, Quinn KM et al.  
26 Medications Used Routinely in Primary Care to be Dose-Adjusted or Avoided in People With  
27 Chronic Kidney Disease: Results of a Modified Delphi Study. *Ann Pharmacother*  
28 2020:1060028019897371.
- 29 47. Haley WE, Beckrich AL, Sayre J, McNeil R, Fumo P, Rao VM et al. Improving care  
30 coordination between nephrology and primary care: a quality improvement initiative using the  
31 renal physicians association toolkit. *American Journal of Kidney Diseases* 2015;65(1):67-79.
- 32 48. Smekal MD, Tam-Tham H, Finlay J, Donald M, Thomas C, Weaver RG et al. Patient and  
33 provider experience and perspectives of a risk-based approach to multidisciplinary chronic  
34 kidney disease care: a mixed methods study. *BMC nephrology* 2019;20(1):110.
- 35 49. Smekal MD, Tam-Tham H, Finlay J, Donald M, Benterud E, Thomas C et al. Perceived  
36 benefits and challenges of a risk-based approach to multidisciplinary chronic kidney disease  
37 care: a qualitative descriptive study. *Canadian journal of kidney health and disease*  
38 2018;5:2054358118763809.
- 39 50. Patzer RE, McPherson L, Redmond N, DuBay D, Zayas C, Hartmann E et al. A  
40 Culturally Sensitive Web-based Intervention to Improve Living Donor Kidney Transplant  
41 Among African Americans. *Kidney Int Rep* 2019;4(9):1285-1295.
- 42 51. Hamoda RE, Gander JC, McPherson LJ, Arriola KJ, Cobb L, Pastan SO et al. Process  
43 evaluation of the RaDIANT community study: a dialysis facility-level intervention to increase  
44 referral for kidney transplantation. *BMC Nephrol* 2018;19(1):13.
- 45 52. Mucsi I, Novak M, Toews D, Waterman A. Explore Transplant Ontario: Adapting the  
46 Explore Transplant Education Program to Facilitate Informed Decision Making About Kidney  
47 Transplantation. *Canadian journal of kidney health and disease* 2018;5:2054358118789369-  
48 2054358118789369.
- 49  
50  
51  
52  
53  
54  
55  
56  
57  
58  
59  
60

Table 1: DDKT and LDKT Stages of Readiness Measurement

<b>DDKT Survey Question</b>	<b>Stage of Readiness</b>
I am not considering getting a DDKT in the next six months	Precontemplation
I am considering getting a DDKT in the next six months	Contemplation
I am preparing to get a DDKT in the next 30 days	Preparation
I am undergoing evaluation to get a DDKT	Action
I am listed and waiting to get a DDKT	Maintenance
<b>LDKT Survey Question</b>	<b>Stage of Readiness</b>
I am not considering taking actions in the next six months to pursue LDKT	Precontemplation
I am considering taking actions in the next 30 days to pursue LDKT	Contemplation
I am preparing to take actions in the next 30 days to pursue LDKT	Preparation
I am taking actions to pursue LDKT	Action

CONFIDENTIAL

Table 2. Baseline patient characteristics overall and by randomized group

	Overall ( N=802 )	YPT ( N= 407 )	SOC ( N= 395 )
<b>Age, mean (SD)</b>	53.0 (13.1)	52.7 (13.0)	53.2 (13.3)
<b>Sex, n (%)</b>			
Men	486 (60.6)	239 (58.7)	247 (62.5)
Women	316 (39.4)	168 (41.3)	148 (37.5)
<b>Race/ethnicity, n (%)</b>			
Non-Hispanic Black	200 (24.9)	108 (26.5)	92 (23.3)
Hispanic	313 (39.0)	155 (38.0)	158 (40.0)
Non-Hispanic White	279 (34.7)	138 (33.8)	141 (35.7)
Other	11 (1.4)	7 (1.7)	4 (1.0)
<b>Comorbidities, n (%)</b>			
Diabetes	350 (43.6)	157 (38.6)	193 (48.9)
Hypertension	661 (82.4)	337 (82.8)	324 (82.0)
Polycystic kidney disease	89 (11.1)	44 (10.8)	45 (11.4)
<b>Insurance, n (%)</b>			
Medicare	122 (15.3)	56 (13.9)	66 (16.8)
Medicaid	221 (27.7)	119 (29.5)	102 (26.0)
Private Insurance (i.e. HMO, PPO)	427 (53.6)	221 (54.7)	206 (52.4)
Don't know	7 (0.9)	2 (0.5)	5 (1.3)
Other insurance	20 (2.5)	6 (1.5)	14 (3.6)
<b>On dialysis, n (%)</b>	560 (69.8)	275 (67.6)	285 (72.2)
<b>Education, n (%)</b>			
8th grade or less	19 (2.4)	6 (1.5)	13 (3.3)
Some high school	56 (7.0)	23 (5.7)	33 (8.4)
High School Diploma or GED	197 (24.6)	101 (24.8)	96 (24.3)
Some college or vocational school	253 (31.6)	129 (31.7)	124 (31.4)
College or vocational school degree	182 (22.7)	100 (24.6)	82 (20.8)
Some professional or graduate school	21 (2.6)	10 (2.5)	11 (2.8)
Professional or graduate degree	74 (9.2)	38 (9.3)	36 (9.1)
<b>Transplant Education, n (%)</b>			
Read brochures about transplants	504 (62.8)	258 (63.4)	246 (62.3)
Watched videos	215 (26.8)	111 (27.3)	104 (26.3)
Browsed Internet websites	429 (53.5)	222 (54.5)	207 (52.4)
Talked to doctors and other medical staff	701 (87.4)	357 (87.7)	344 (87.1)

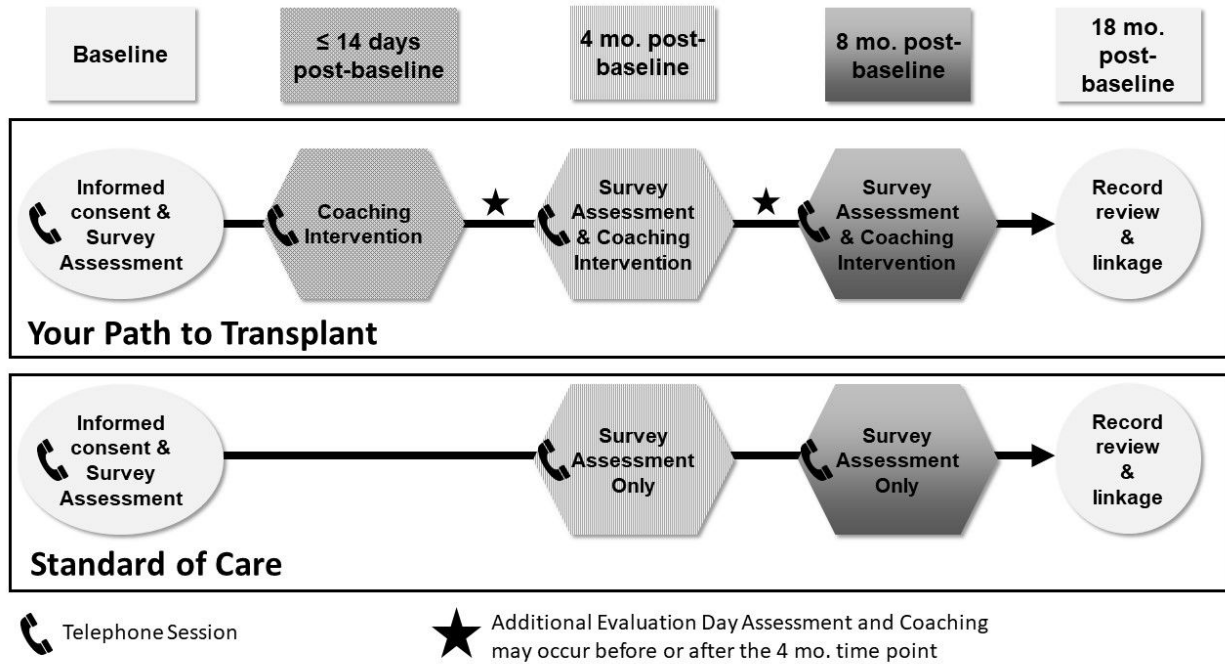


Table 3. New steps towards LDKT and DDKT over the 8-month study period by randomized group

	Total N*	YPT N (%)	SOC N (%)	p-value
<b>Steps toward LDKT</b>				
Share education materials about living donation with people in your life	342	135 (86.0%)	124 (67.0%)	<0.001
Generally, talk to people you trust about whether to get a living donor transplant	270	109 (86.5%)	108 (75.0%)	0.026
Make a list of people who might be a living donor for you	280	87 (70.7%)	93 (59.2%)	0.062
Ask another person to tell others about your need for a living donor transplant	353	97 (63.8%)	99 (49.3%)	0.009
Ask potential donors to be tested	358	111 (70.7%)	108 (53.7%)	0.002
Give potential living donors the transplant center phone number	417	134 (69.4%)	129 (57.6%)	0.017
Share my need for a living donor with a large community (e.g., Facebook, Twitter, etc.)?	397	78 (43.6%)	59 (27.1%)	0.001
<b>Steps toward DDKT</b>				
Read information/watch videos about getting on the deceased donor waiting list	419	179 (88.6%)	157 (72.4%)	<0.001
Share educational materials about deceased donation with people in your life	387	160 (87.9%)	138 (67.3%)	<0.001
Generally, talk to people you trust about whether to get a deceased donor transplant	348	150 (87.2%)	119 (67.6%)	<0.001
Call the transplant center to pursue evaluation	219	97 (93.3%)	101 (87.8%)	0.256
Complete and mail back the transplant center's new patient medical forms	451	208 (95.9%)	207 (88.5%)	0.007
Invite someone to come to evaluation with you	286	125 (94.7%)	135 (87.7%)	0.063
Come to the transplant center to complete medical tests	499	232 (93.5%)	206 (82.1%)	<0.001
Follow-up with transplant coordinator until transplant evaluation is complete	462	178 (79.1%)	162 (68.4%)	0.012

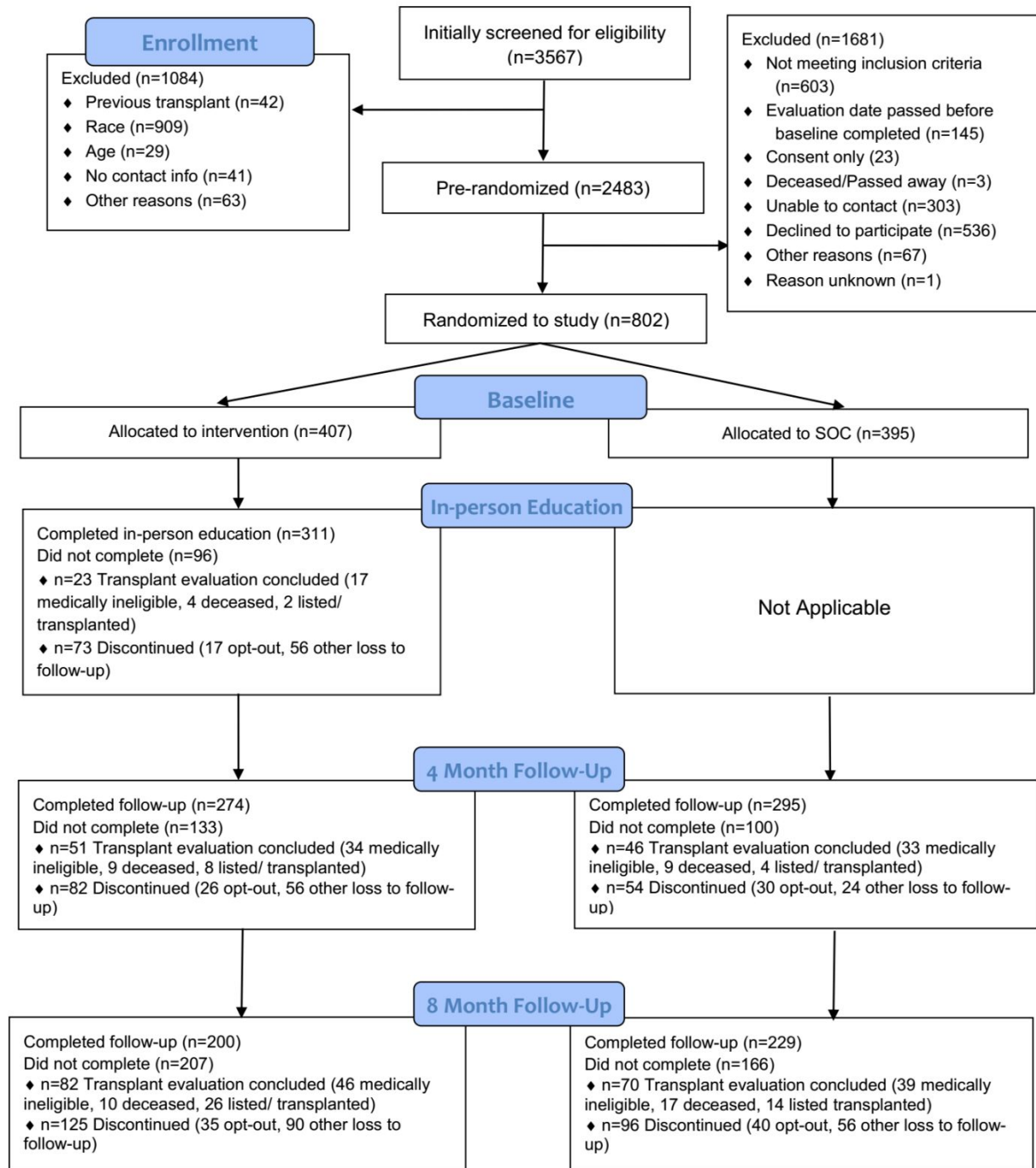
\*Total sample size not already doing step at baseline.

Figure 1. Study design

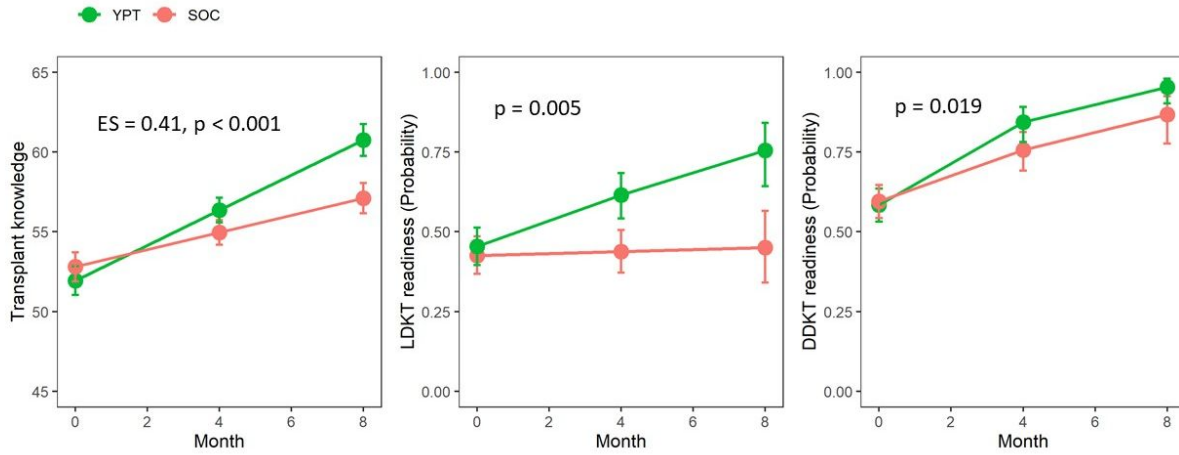


CONFIDENTIAL



**Figure 2. Your Path to Transplant Trial CONSORT Flowchart**

**Figure 3. Transplant knowledge and readiness over time (mixed effect model predicted means and 95% confidence intervals)**



Effect size and p-values are for comparison between YPT and SOC at month 8.

CONFIDENTIAL

Figure 4: Waitlisting rate by randomized group

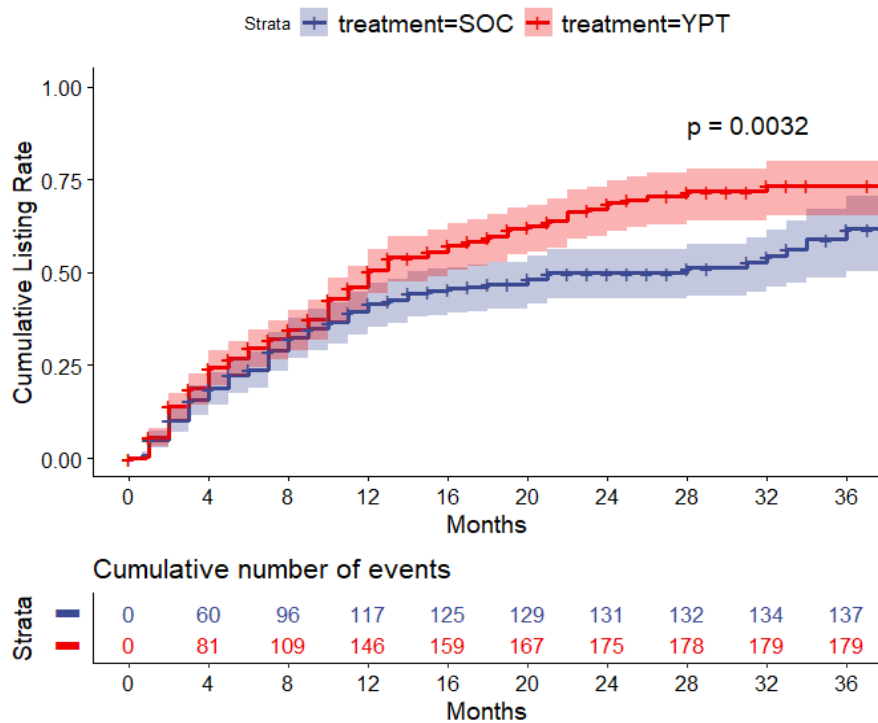
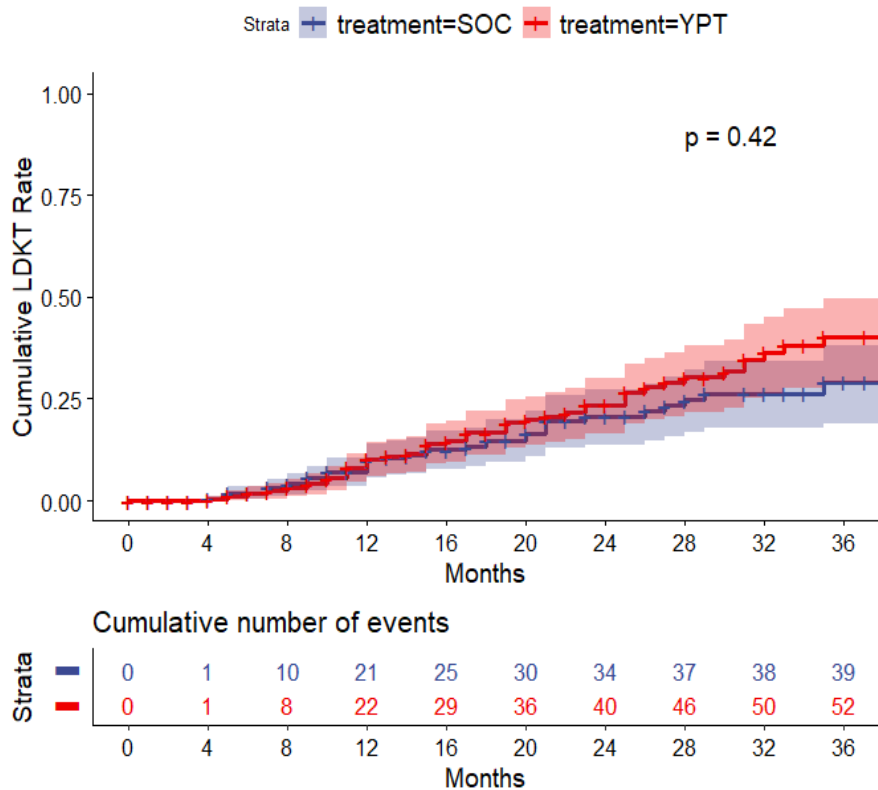


Figure 5: LDKT rate by randomized group



1  
2  
3 **Your Path to Transplant: A Randomized Controlled Trial of a Tailored Expert System**  
4 **Intervention to Increase Knowledge, Attitudes and Pursuit of Kidney Transplant**  
5

6  
7 Amy D. Waterman, PhD<sup>1,2</sup>  
8 [awaterman@mednet.ucla.edu](mailto:awaterman@mednet.ucla.edu)  
9 <https://orcid.org/0000-0002-7799-0060>  
10

11 John D. Peipert, PhD<sup>3,4</sup>  
12 [john.peipert@northwestern.edu](mailto:john.peipert@northwestern.edu)  
13 <https://orcid.org/0000-0001-5762-7881>  
14

15 Yujie Cui, MS<sup>2</sup>  
16 [ycui@terasaki.org](mailto:ycui@terasaki.org)  
17 <https://orcid.org/0000-0002-4961-9045>  
18

19 Jennifer L. Beaumont, MS<sup>2</sup>  
20 [jbeaumont@terasaki.org](mailto:jbeaumont@terasaki.org)  
21 <https://orcid.org/0000-0002-1484-260X>  
22

23 Andrea Paiva, PhD<sup>5</sup>  
24 [apaiva@uri.edu](mailto:apaiva@uri.edu)  
25 <https://orcid.org/0000-0002-9217-9081>  
26

27 Amanda F. Lipsey, MFA<sup>1,2</sup>  
28 [alipsey@mednet.ucla.edu](mailto:alipsey@mednet.ucla.edu)  
29 <https://orcid.org/0000-0003-0172-4476>  
30

31 Crystal S. Anderson, MPH<sup>1</sup>  
32 [csanderson417@gmail.com](mailto:csanderson417@gmail.com)  
33 <https://orcid.org/0000-0003-3819-2098>  
34

35 Mark L. Robbins, PhD<sup>5</sup>  
36 [markrobb@uri.edu](mailto:markrobb@uri.edu)  
37 <https://orcid.org/0000-0003-3745-0518>  
38

39  
40  
41  
42  
43  
44  
45 <sup>1</sup> Division of Nephrology, David Geffen School of Medicine, University of California Los  
46 Angeles, Los Angeles, California

47  
48 <sup>2</sup> Terasaki Institute of Biomedical Innovation, Los Angeles, California  
49

50  
51 <sup>3</sup> Department of Medical Social Sciences, Feinberg School of Medicine, Northwestern  
52 University  
53

54 <sup>4</sup> Northwestern University Transplant Outcomes Research Collaborative, Comprehensive  
55 Transplant Center, Feinberg School of Medicine, Chicago, IL  
56

1  
2  
3  
4 <sup>5</sup> Department of Psychology, The University of Rhode Island, Kingston, RI  
5  
6  
7  
8

9 *Corresponding author:* Amy D. Waterman, PhD, Terasaki Research Institute, 1018 Westwood  
10 Blvd, Los Angeles, CA 90024, Email: [awaterman@mednet.ucla.edu](mailto:awaterman@mednet.ucla.edu)  
11

12 Abstract word count: (200-word limit) 180  
13

14 Text word count: (4000-word limit) 3518  
15

16 Short title: Individually Tailored Education  
17

18 Prepared for: *American Journal of Transplantation*  
19

20 Abbreviations:  
21

22 CKD: Chronic kidney disease  
23

24 DDKT: Deceased donor kidney transplant  
25

26 ESKD: End-stage kidney disease  
27

28 KT: Kidney Transplant  
29

30 LDKT: Living donor kidney transplant  
31

32 OPTN: Organ Procurement Transplantation Network  
33

34 RCT: Randomized controlled trial  
35

36 SOC: Standard of care  
37

38 UCLA-KPTP: University of California, Los Angeles Kidney and Pancreas Transplant Program  
39

40 YPT: Your Path to Transplant  
41  
42  
43  
44  
45  
46  
47  
48  
49  
50  
51  
52  
53  
54  
55  
56  
57  
58  
59  
60

**ABSTRACT**

Individually tailoring education over time may help more patients, especially racial/ethnic minorities, get wait-listed and pursue deceased and living donor kidney transplant (DDKT and LDKT, respectively). We enrolled 802 patients pursuing transplant evaluation at the University of California, Los Angeles Transplant Program into a randomized education trial. We compared the effectiveness of Your Path to Transplant (YPT), an individually tailored coaching and education program delivered at four time points, with standard of care (SOC) education on improving readiness to pursue DDKT and LDKT, transplant knowledge, taking 15 small transplant-related actions, and pursuing transplant (waitlisting or LDKT rates) over 8 months. Survey outcomes were collected prior to evaluation and at 4- and 8-months. Time to waitlisting or LDKT was assessed with at least 18 months of follow-up. At 8 months, compared to SOC, the YPT group demonstrated increased LDKT readiness (47% vs 33%,  $p = 0.003$ ) and transplant knowledge (effect size [ES]=0.41,  $p < 0.001$ ). Transplant pursuit was higher in the YPT group (HR: 1.44, 95% CI: 1.15-1.79,  $p = 0.002$ ). A focused, coordinated education effort can improve transplant-seeking behaviors and wait-listing rates.

ClinicalTrials.gov registration: NCT02181114

**KEYWORDS**

Your Path to Transplant (YPT), computer tailored education, randomized control trial, kidney transplant, living kidney donor transplant education

## INTRODUCTION

End-stage kidney disease (ESKD) is becoming the new epidemic of our time (1). Approximately 15% of Americans have chronic kidney disease (CKD), with more than 700,000 people in ESKD, requiring either ongoing dialysis or kidney transplant (KT)(2). Compared to transplant, dialysis is associated with a significantly shorter life expectancy and poorer health-related quality of life (3-5). Living donor kidney transplant (LDKT) is associated with better post-transplant survival rates than deceased donor kidney transplant (DDKT) (6, 7). While the overall number of KTs performed each year increases, LDKTs comprise a declining share of these transplants (7).

Black and Hispanic patients are less likely than White patients to be waitlisted for DDKT or receive LDKTs, even though Black and Hispanic patients have higher rates of ESKD (7). In 2014, while White patients had 11.4% cumulative incidence of LDKT, Black and Hispanic patients only had 2.9% and 5.9% incidence, respectively (8).

Research has identified key modifiable factors that are associated with successful waitlisting, evaluation, and receipt of LDKT. The quality and applicability of education received about transplant and LDKT has been shown in multiple studies to be critical to preparing a patient to pursue KT and LDKT (9, 10). Examining the characteristics of patients who receive LDKTs, multiple studies (11-15) have shown that patients who complete evaluation and receive a LDKT are more likely to have received better education within dialysis centers (16), greater knowledge about transplant, and greater readiness to pursue LDKT (13). Targeted education for patients of racial and ethnic minorities and low socioeconomic status (SES) has also been shown to be beneficial, particularly when the education is culturally sensitive, in their own language, subsidizes transplant costs, and addresses barriers more common to these communities including

1  
2  
3 low health literacy, transportation challenges, and cultural norms (17-20). However, the impact  
4 of educational interventions varies, with some failing to show improvements in knowledge or  
5  
6 pursuit of transplant (21, 22).  
7  
8

9  
10 Best practices for the design of transplant education recommend honoring the patient's  
11 stage of readiness for transplant and delivering modular, culturally sensitive, health literate  
12 education over longer time periods (10). Computer-tailored interventions (CTIs) have the ability  
13  
14 to create tailored feedback based on an individual patient's specific level of readiness,  
15  
16 knowledge gaps, self-efficacy challenges, and socioeconomic derailers and detect changes over  
17  
18 time (23). In a longitudinal, randomized controlled trial (RCT) at the University of California,  
19  
20 Los Angeles Kidney and Pancreas Transplant Program (UCLA-KPTP), we compared the  
21  
22 effectiveness of a new CTI for transplant, *Your Path to Transplant* (YPT), with standard of care  
23  
24 (SOC) education. We assessed: (1) YPT's effectiveness for improving patients' transplant  
25  
26 knowledge, attitudes toward transplant, readiness to pursue transplant, completion of 15  
27  
28 transplant action-steps, and successful pursuit of transplant (waitlisted or LDKT).  
29  
30  
31  
32  
33  
34

## 35 **METHODS**

### 36 **Randomized Controlled Trial (RCT) Design**

37  
38 This study was a prospective, parallel arm RCT with two follow-up time points  
39  
40 conducted among 802 non-Hispanic Black, Hispanic (any race), and non-Hispanic White ESKD  
41  
42 patients presenting for transplant evaluation at UCLA-KPTP. Enrolled patients were  
43  
44 electronically randomized, stratified by race/ethnicity, with equal allocation to two treatment  
45  
46 arms: the YPT intervention and SOC. All patients were surveyed prior to presenting at the  
47  
48 transplant center (baseline), and at 4- and 8-months post-baseline.  
49  
50  
51  
52  
53  
54  
55  
56  
57  
58  
59  
60



1  
2  
3 The study protocol was approved by the University of California, Los Angeles's  
4  
5 Institutional Review Board (#14-000382) and registered at ClinicalTrials.gov (#NCT02181114).  
6  
7  
8 The full details of the protocol have been published (23).  
9

### 10 **Setting and Participants**

11  
12 Inclusion criteria for the RCT were: 1) presentation for KT evaluation at UCLA; 2) self-  
13  
14 identification as White, Black, or Hispanic (any race). Patients were excluded if they were: 1)  
15  
16 under age 18; 2) unable to speak or read English; 3) previously deemed ineligible at UCLA for  
17  
18 KT; 4) on the waitlist at another center; 5) pursuing multi-organ transplant; or 6) without a  
19  
20 working telephone. Patients were asked to give verbal informed consent to participate and have  
21  
22 their electronic medical records reviewed.  
23  
24  
25

### 26 **Standard of Care (SOC) Arm**

27  
28 The SOC arm consisted of UCLA-KPTP education provided during a 3-hour transplant  
29  
30 education session for patients and their family and friends, transplant coordinator  
31  
32 communications, and self-study afterwards. The session outlined recipient and donor evaluation,  
33  
34 surgery, and recovery processes.  
35  
36  
37

### 38 **Your Path to Transplant (YPT) Arm**

39  
40 YPT is a computer-tailored intervention that provides patients with telephonic coaching,  
41  
42 feedback reports, access to community resources to overcome SES barriers, and video and print  
43  
44 KT education resources tailored uniquely to them after a computerized patient assessment. At 4  
45  
46 time points, patients completed a screening to determine their current level of readiness to pursue  
47  
48 DDKT and LDKT, transplant knowledge, socioeconomic barriers to transplant, and plan to take  
49  
50 specific actions towards pursuing transplant and LDKT. Individual feedback reports were  
51  
52 generated by the computer based on this screening that supported a patient at each unique level  
53  
54  
55  
56  
57  
58  
59  
60

1  
2  
3 of transplant readiness, answered their specific knowledge gaps, and suggested how best to begin  
4 taking small transplant actions reported to be of interest to the patient. Patients were also  
5 provided referrals to community resources that might overcome SES barriers that might derail  
6 patients from transplantation, videos and print brochures from the Explore Transplant education  
7 program (24). Coaches emphasized the content and recommendations generated within the  
8 report and brainstormed with the patient on any transplant actions of interest to them and SES  
9 barriers identified. Each new screening at different time points updated the computerized patient  
10 assessment and generated a new tailored report. YPT patients received educational resources and  
11 coaching at 4 time points: a few weeks before and during transplant evaluation, and 4 and  
12 8 months after baseline (Figure 1). Across all these time points, YPT patients received  
13 approximately 75 additional minutes of education compared to the SOC patients over an 8-  
14 month period. The YPT-generated coaching was delivered in person during evaluation and by  
15 telephone by a diverse racial/ethnic group of trained social work and public health coaches  
16 overseen by a clinical psychologist. Coaches were not matched by race/ethnicity to the patients  
17 they were coaching.

### 37 **Measures**

38  
39  
40 The primary study outcome was patients' readiness to pursue LDKT and DDKT. To  
41 assess transplant readiness, patients were asked how ready they were to get a DDKT or LDKT  
42 and were scored as being in one of five stages (e.g., precontemplation, contemplation,  
43 preparation, action, maintenance) using our validated DDKT and LDKT stage of readiness  
44 measurement tools (25, 26) (Table 1). To assess transplant knowledge patients were asked 11  
45 true/false and 8 multiple choice questions to determine their level of knowledge (14), producing  
46 a knowledge T-score (mean=50, SD=10) (15), with higher scores indicating greater knowledge.  
47  
48  
49  
50  
51  
52  
53  
54  
55  
56  
57  
58  
59  
60

1  
2  
3 To assess ongoing progress toward transplant, patients were asked whether they had “Already  
4 done,” “Are planning to do,” or “Don’t plan to do” 15 transplant-related action-steps (25, 26).  
5  
6 Examples of action-steps included “Share educational materials about deceased donation with  
7  
8 people in your life” or “Ask potential donors to be tested.” Patients who said they had not  
9  
10 “Already done” the action at baseline but had done so at a later survey time point were counted  
11  
12 as having newly taken that step, with the total number of new steps taken calculated. Finally,  
13  
14 pursuit of transplant (i.e., waitlisted for DDKT or received LDKT) was assessed via medical  
15  
16 record review and linkage to the Scientific Registry for Transplant Recipients (SRTR) 18 months  
17  
18 after enrollment of the last patient.  
19  
20  
21  
22  
23

24 Additionally, the pre-intervention survey assessed basic patient demographic and clinical  
25  
26 characteristics and level of SES barriers using the Kidney Transplant Derailers Index  
27  
28 (KTDI)(27). We also asked patients whether they had previously read transplant brochures,  
29  
30 watched transplant videos, or visited transplant websites.  
31  
32

### 33 **Statistical Analyses**

34  
35 Details of the power analysis and rationale for the patient sample size recruited for this  
36  
37 RCT have been published (23). All statistical tests employ an intent-to-treat (ITT) approach  
38  
39 wherein subjects maintain their assignment to the study arm to which they were originally  
40  
41 randomized regardless of whether they completed the planned interventions (28). To compare  
42  
43 baseline characteristics between patients who dropped out of the study to those who did not,  
44  
45 independent samples *t*-tests or nonparametric Kruskal-Wallis tests were used for continuous  
46  
47 variables and chi-square or Fisher’s exact tests were used for categorical variables.  
48  
49  
50

51 To evaluate differences between groups on the primary endpoint, DDKT and LDKT  
52  
53 readiness levels were each first collapsed to a binary classification of Action versus all earlier  
54  
55  
56  
57

1  
2  
3 stages of readiness. This binary outcome was then assessed in a mixed effect logistic regression  
4  
5 model using R package lme4 (29). Maximum likelihood-based mixed effects models use all  
6  
7 available data for each patient and provide valid estimates under the assumption that missing  
8  
9 data are missing at random, conditional on the observed data. Intervention group, time, and the  
10  
11 interaction between group and time were included in the model as fixed effects, along with  
12  
13 random intercept and slope (time) terms at the patient level. The interaction between group and  
14  
15 time represents the primary test of whether the changes in readiness over time differ between the  
16  
17 two groups.  
18  
19  
20

21 For the secondary endpoints, to test whether YPT patients showed increased knowledge  
22  
23 scores compared to the SOC, a linear mixed effect model was fit using similar specifications of  
24  
25 fixed and random effects as the model used for readiness. Effect sizes (ES = mean difference /  
26  
27 baseline standard deviation) were calculated to provide a standardized, unitless measure of the  
28  
29 magnitude of differences, which can be interpreted with the following cut-offs:  $0.20 \leq ES < 0.50$   
30  
31 = small;  $0.50 \leq ES < 0.80$  = medium;  $\geq 0.80$  = large. For the number of new steps taken,  
32  
33 differences between the study arms in the count of new steps was analyzed with a Poisson  
34  
35 model.  
36  
37  
38  
39

40 Pursuit of transplant was analyzed as time to event, defined as being placed on the  
41  
42 deceased donor waiting list or receiving a LDKT. The time (in months) was calculated between  
43  
44 the baseline survey date and date listed in SRTR, or date that patient received an LDKT. Patients  
45  
46 who were not listed or transplanted were censored on November 30, 2018—18 months after the  
47  
48 last patient was enrolled in the study. We also examined time to LDKT, specifically. Kaplan-  
49  
50 Meier curves were stratified by study arm and differences assessed using the log-rank test. Cox  
51  
52 proportional hazards models, adjusted for the randomization stratification factor – race/ethnicity,  
53  
54  
55  
56  
57  
58  
59  
60

1  
2  
3 were also fit and hazards ratios estimated. The proportional hazards assumption was evaluated  
4  
5 using statistical tests and graphical diagnostics based on the scaled Schoenfeld residuals.  
6

7  
8 Since this study was powered only to detect a main effect of intervention, interaction tests  
9  
10 by race/ethnicity are considered exploratory. No adjustments for multiple comparisons were  
11  
12 applied. All analyses were conducted in R version 3.5.1 (R Core Team)(30) and SAS version 9.4  
13  
14 (Cary, NC).

## 15 16 17 **RESULTS**

### 18 19 **Participants**

20  
21 Study enrollment took place from May 2014 to May 2017, with follow-up for final  
22  
23 pursuit of transplant outcomes through November 2018. Compared to those who consented  
24  
25 (33%), those who declined participation were more likely to be Hispanic (Table S1). Of the 802  
26  
27 eligible patients who completed the baseline survey, 407 were allocated to the YPT group and  
28  
29 395 to the SOC group. Characteristics of the sample are listed in Table 2. Before joining the  
30  
31 study, most participants read transplant brochures (62.8%), browsed websites about transplant  
32  
33 (53.5%), or talked to doctors and other medical staff about transplant (87.4%), but few had  
34  
35 watched videos about transplant (26.8%).  
36  
37  
38  
39

40 A CONSORT diagram with reasons for drop-out at each time point is displayed in Figure  
41  
42 2. Patients who completed the 8-month survey were more likely to be in the SOC arm ( $p=0.009$ ),  
43  
44 have polycystic kidney disease as their etiology for ESKD ( $p = 0.016$ ), and not yet be on dialysis  
45  
46 ( $p = 0.013$ ). There were no differences in study drop-out between race/ethnicity groups (Tables  
47  
48 S2-S3).  
49  
50

### 51 **Primary Outcome: Transplant Readiness**

52  
53  
54  
55  
56  
57

1  
2  
3 At baseline, 67.5% of patients reported being in the Action stage of readiness for DDKT  
4 and 44.5% in the Action stage for LDKT. Significantly higher proportions of YPT patients  
5 reported being in Action for DDKT compared to the SOC group at 4 months (82.8% vs. 72.5%,  
6  $p = 0.004$ ), but this difference was not as large at 8 months (84.0% vs. 76.4.0%,  $p = 0.066$ ). In  
7 the mixed effects longitudinal model, the odds ratio [OR] for the comparison at 8 months was  
8 3.16 (95% confidence interval [CI]: 0.92, 5.39;  $p$ -value = 0.019). A higher proportion of YPT  
9 patients reported being in Action for LDKT compared to SOC patients at 4 months (59.3% vs.  
10 50.2%,  $p = 0.036$ ), with a larger difference at 8 months (67.0% vs. 44.1%,  $p < 0.001$ ; mixed  
11 model OR: 3.77, 95% CI: 1.04, 6.50;  $p = 0.005$ ). The effect of YPT on LDKT readiness differed  
12 by race/ethnicity in the model (interaction  $p=0.039$ ). However, this interaction between treatment  
13 and race/ethnicity was not observed for DDKT readiness (interaction  $p=0.087$ ).

### 24 25 26 27 28 **Secondary Outcome: Transplant Knowledge**

29  
30  
31 At baseline, mean transplant knowledge T-score was 52.1 (SD=9.7). Compared to the  
32 SOC arm, a larger increase in transplant knowledge was observed for the YPT group over time  
33 (Figure 3; interaction  $p < 0.001$ ). The difference between YPT and SOC was 1.5 points (ES =  
34 0.15,  $p = 0.082$ ) at 4 months and 4.1 points (ES = 0.42,  $p < 0.001$ ) at 8 months. Race did not  
35 interact with treatment, indicating the effect of study arm on transplant knowledge after baseline  
36 did not differ substantially by race/ethnicity group (interaction  $p=0.70$ ).

### 37 38 39 40 41 42 43 **Secondary Outcome: New Steps toward LDKT and DDKT**

44  
45  
46 At baseline, patients had taken a median of 1.0 steps towards LDKT (IQR = 4.0) and 2.0  
47 steps towards DDKT (SD=3.0). Overall, the most common steps already taken at baseline were  
48 calling the transplant center to pursue evaluation, talking to people they trust about whether to  
49 get a living donor transplant, and making a list of people who might be living donors.  
50  
51  
52  
53  
54  
55  
56  
57

1  
2  
3 By the end of the study, YPT patients had taken a median of 3.0 (IQR = 3.0) new steps  
4 towards LDKT, compared to a median of 2.0 (IQR = 3.0) new steps in the SOC arm (RR: 1.12,  
5 95% CI: 1.01 - 1.24, p=0.034). In addition to total new steps taken, YPT patients were more  
6 likely to take almost every individual new step towards LDKT and DDKT in comparison with  
7 the SOC arm (Table 3). Specifically, more YPT patients shared their need for a living donor with  
8 a large community (43.6% vs. 27.1%, p=0.001), shared educational materials about living  
9 donation with others in their life (86.0% vs. 67.0%, p<0.001), asked another person to tell others  
10 of their need for a living donor (63.8% vs. 49.3%, p=0.009), and asked potential donors to be  
11 tested (70.7% vs. 53.7%).  
12  
13  
14  
15  
16  
17  
18  
19  
20  
21  
22  
23

24 There was also a significant difference between groups in number of new steps taken  
25 towards DDKT (RR = 1.13, 95% CI: 1.05 – 1.22, p=0.002) with a median of 5.0 (IQR = 3.0)  
26 new steps taken for the YPT arm and 4.0 (IQR = 3.0) for the SOC arm. More YPT patients  
27 shared educational materials about DDKT with people in their life (87.9% vs. 67.3%, p<0.001)  
28 and talked to people they trust about whether to get a DDKT (87.2% vs. 67.6%, p<0.001). No  
29 heterogeneity of intervention effect was observed for race (interaction p=0.67).  
30  
31  
32  
33  
34  
35  
36  
37

### 38 **Final Outcome – Transplant Pursuit**

39  
40 After a minimum of 18 months follow-up, 323 patients total (40.2%) were either  
41 waitlisted for DDKT or received a LDKT (57.0% YPT vs 43.0% SOC), with those receiving the  
42 YPT intervention faring better (Figure 4, log-rank p = 0.003; HR: 1.39, 95% CI: 1.12 – 1.74).  
43  
44 This benefit was unchanged after adjusting for race/ethnicity (HR: 1.44, 95% CI: 1.15 - 1.79; p =  
45 0.002). No statistically significant interaction was observed between race/ethnicity and  
46 intervention group (p>0.2).  
47  
48  
49  
50  
51  
52  
53  
54  
55  
56  
57  
58  
59  
60

1  
2  
3 During the same follow-up period, 95 patients (11.8%) received an LDKT, with 53  
4 (13.0%) in the YPT condition and 42 (10.6%) in the SOC condition (Figure 5, log-rank  $p =$   
5  
6 0.42). There was no evidence that the YPT intervention had an effect on LDKT rates (HR: 1.23,  
7  
8 95% CI: 0.81 – 1.85;  $p=0.329$ ). No interaction was observed between race/ethnicity and  
9  
10 intervention groups in receipt of LDKT (interaction  $p=0.943$ ).  
11  
12  
13

14 Evaluation of YPT. Over 95% of participants found the coaches and print materials  
15  
16 helpful and easy to understand. There was no difference between race/ethnicity groups in  
17  
18 evaluation ratings.  
19  
20

## 21 **DISCUSSION**

22  
23 For patients presenting for transplant evaluation, the road to successful kidney  
24  
25 transplantation can be long and challenging. A recent study found that the average time to  
26  
27 complete evaluation and get waitlisted was 226 days (31). This is the first examination of the  
28  
29 effectiveness of an individually tailored education and coaching program, *Your Path to*  
30  
31 *Transplant*, being delivered over 8 months during pursuit of evaluation. This study found that  
32  
33 kidney patients who received YPT were more likely to increase their transplant knowledge,  
34  
35 increase their readiness to pursue DDKT and LDKT, take more steps toward DDKT and LDKT,  
36  
37 and be listed for transplant than patients who received only traditional SOC education. While  
38  
39 YPT patients also were more likely to share their interest with people about LDKT and solicit  
40  
41 living donors, there were no differences in actual LDKT rates by education condition after 18  
42  
43 months.  
44  
45  
46  
47  
48

49 This is one of the longest and most comprehensive educational interventions ever to  
50  
51 occur within a transplant center. While similar transplant educational studies vary in duration  
52  
53 from one day to 18 months (17, 22, 24, 32-34), most commonly, they involve interventions  
54  
55  
56  
57



1  
2  
3 occurring on evaluation day or during a single clinical visit with supplemental information  
4 provided afterwards for additional self-study (35, 36). Multiple studies now support expanding  
5 the length of interventions, involving living donors, and including multiple resources within  
6 interventions like videos, print materials, and coaching (17, 24, 32).  
7  
8  
9  
10  
11

12 As part of their conversations, YPT coaches spent considerable time attempting to  
13 overcome commonly reported SES barriers to transplant (17-19). For example, during the  
14 coaching sessions, they provided information about low-cost or free transportation to the  
15 transplant center, dental care, and child care services, and discussed practical topics like where to  
16 park at the center and which bus route would help patients most easily get to the transplant  
17 center. Similarly, Basu et al., found that 4% of patient navigator encounters addressed  
18 transportation challenges (37).  
19  
20  
21  
22  
23  
24  
25  
26  
27

28 In examining other interventions shown to increase transplant-seeking behaviors in  
29 racial/ethnic minorities, patient-level interventions using patient navigators (37, 38), home-based  
30 education with a minority health educator (17, 39), culturally targeted websites (33, 40), and  
31 culturally congruent transplant programs (41) have been found to be effective. At the patient and  
32 family level, discussions between participants and social workers (36), web-based education (33,  
33 42), home-based educational meetings with patients (43), and meetings using technology to seek  
34 donors (44), and involving a patient's social network, including potential living donors (45) have  
35 proven effectiveness. At the provider and system level, research has found that transplant  
36 facilities with specifically tailored toolkits to coordinate patient care (46, 47), and risk-based  
37 approaches identifying patients in need of targeted care (48, 49) were more successful.  
38  
39  
40  
41  
42  
43  
44  
45  
46  
47  
48  
49  
50  
51 Interventions including multiple levels of the socioecological model may be needed, perhaps in  
52 combination (50-52).  
53  
54  
55  
56  
57  
58  
59  
60

1  
2  
3 Finally, this study has several limitations. First, the RCT was conducted in a single, high-  
4 volume transplant center in an urban area and, thus, may be limited in generalizability. Selection  
5 bias also potentially threatens generalizability of the study, as 21.6% (536 out of 2483) of pre-  
6 randomized patients declined to participate in the study, with a lower proportion of Hispanic  
7 patients providing consent. Over time, nearly 20% of patients could not complete all time points  
8 because they either died or became ineligible for transplant. Of the 80% that remained eligible  
9 for transplant over the entire 8- month time period, 36% were lost to follow-up by the 8-month  
10 visit, with a higher drop-out rate in the YPT group compared to SOC, potentially biasing our  
11 conclusions. If all patients still eligible for transplant but lost to follow-up were considered to be  
12 “not taking actions” towards LDKT, we find that patients in the YPT arm were still more likely  
13 to be taking actions than SOC (YPT: 130/325=40% vs SOC: 101/325=31%, p=0.017). Finally, it  
14 is possible that some of YPT’s treatment effect was diluted by patients who did not read the  
15 tailored education reports or watch the videos on their own at home. Since telephonic coaching  
16 sessions reviewed the content from these materials, even patients using the materials on their  
17 own but less often would still have some exposure to the intervention.  
18  
19  
20  
21  
22  
23  
24  
25  
26  
27  
28  
29  
30  
31  
32  
33  
34  
35  
36

37 YPT provides an innovative option for supporting a racially and ethnically diverse ESKD  
38 patient population facing the many challenges of transplant evaluation and finding a living  
39 donor. This study revealed that it is possible to improve transplant patients’ knowledge, pursuit  
40 of transplant, and wait-listing rates if a focused, coordinated education effort honoring patients’  
41 readiness and motivation to pursue DDKT and LDKT, addressing their unique SES barriers, and  
42 supporting them in taking critical transplant actions over time can be implemented. These  
43 individually tailored strategies could be embedded within traditional education programs at  
44 transplant centers to meet patients’ educational needs.  
45  
46  
47  
48  
49  
50  
51  
52  
53  
54  
55  
56  
57  
58  
59  
60

## Acknowledgements

Funding for this study was provided by the National Institutes of Health (R01DK088711; T32DK104687).

## Disclosure

Dr. Amy D. Waterman, PhD owns the intellectual property to the transplant education product *Explore Transplant* and has licensed it at no-cost to a nonprofit, Health Literacy Media (HLM), who retains all revenue as to their sales. She serves as an unpaid consultant to HLM to ensure the accuracy of educational content. All other authors declare that they have no competing interests.

## REFERENCES

1. Barnieh L, Collister D, Manns B, Lam NN, Shojai S, Lorenzetti D et al. A Scoping Review for Strategies to Increase Living Kidney Donation. *Clin J Am Soc Nephrol* 2017.
2. Saran R, Robinson B, Abbott KC, Bragg-Gresham J, Chen X, Gipson D et al. US Renal Data System 2019 Annual Data Report: Epidemiology of Kidney Disease in the United States. *Am J Kidney Dis* 2020;75(1s1):A6-a7.
3. Neipp M, Karavul B, Jackobs S, Meyer zu Vilsendorf A, Richter N, Becker T et al. Quality of life in adult transplant recipients more than 15 years after kidney transplantation. *Transplantation* 2006;81(12):1640-1644.
4. United States Renal Data System. 2018 USRDS annual data report: Epidemiology of kidney disease in the United States. Bethesda, MD: National Institutes of Health, National Institute of Diabetes and Digestive and Kidney Diseases; 2018.
5. Kovacs AZ, Molnar MZ, Szeifert L, Ambrus C, Molnar-Varga M, Szentkiralyi A et al. Sleep disorders, depressive symptoms and health-related quality of life—a cross-sectional comparison between kidney transplant recipients and waitlisted patients on maintenance dialysis. *Nephrol Dial Transplant* 2011;26(3):1058-1065.
6. de Groot IB, Veen JIE, van der Boog PJM, van Dijk S, Stiggelbout AM, Marang-van de Mheen PJ et al. Difference in quality of life, fatigue and societal participation between living and deceased donor kidney transplant recipients. *Clin Transplant* 2013;27(4):E415-E423.
7. Hart A, Smith JM, Skeans MA, Gustafson SK, Wilk AR, Castro S et al. OPTN/SRTR 2017 Annual Data Report: Kidney. 2019;19(S2):19-123.

- 1  
2  
3 8. Purnell TS, Luo X, Cooper LA, Massie AB, Kucirka LM, Henderson ML et al.  
4 Association of Race and Ethnicity With Live Donor Kidney Transplantation in the United States  
5 From 1995 to 2014. *Jama* 2018;319(1):49-61.
- 6 9. Segev DL. Innovative strategies in living donor kidney transplantation. *Nature Reviews*  
7 *Nephrology* 2012;8:332.
- 8 10. Waterman AD, Robbins ML, Peipert JD. Educating Prospective Kidney Transplant  
9 Recipients and Living Donors about Living Donation: Practical and Theoretical  
10 Recommendations for Increasing Living Donation Rates. *Curr Transplant Rep* 2016;3(1):1-9.
- 11 11. Waterman AD, Hyland SS, Stanley SL, Barrett AC, Millinger R. Improving education  
12 increases dialysis patients' pursuit of transplant: Explore Transplant RCT findings. In: *American*  
13 *Transplant Congress*; 2009 May 30-June 3; Boston, MA: American Journal of Transplantation;  
14 2009. p. 360.
- 15 12. Dageforde LA, Box A, Feurer ID, Cavanaugh KL. Understanding Patient Barriers to  
16 Kidney Transplant Evaluation. *Transplantation* 2015.
- 17 13. Waterman AD, Peipert JD, Hyland SS, McCabe MS, Schenk EA, Liu J. Modifiable  
18 patient characteristics and racial disparities in evaluation completion and living donor transplant.  
19 *Clin J Am Soc Nephrol* 2013;8(6):995-1002.
- 20 14. Patzer RE, Perryman JP, Pastan S, Amaral S, Gazmararian JA, Klein M et al. Impact of a  
21 patient education program on disparities in kidney transplant evaluation. *Clin J Am Soc Nephrol*  
22 2012;7(4):648-655.
- 23 15. Lockwood MB, Saunders MR, Nass R, McGivern CL, Cunningham PN, Chon WJ et al.  
24 Patient-Reported Barriers to the Prekidney Transplant Evaluation in an At-Risk Population in the  
25 United States. *Prog Transplant* 2017;27(2):131-138.
- 26 16. Waterman AD, Peipert JD, Xiao H, Goalby CJ, Kawakita S, Cui Y et al. Education  
27 Strategies in Dialysis Centers Associated with Increased Transplant Wait-listing Rates.  
28 *Transplantation* 2019.
- 29 17. Rodrigue JR, Paek MJ, Egbuna O, Waterman AD, Schold JD, Pavlakis M et al. Making  
30 house calls increases living donor inquiries and evaluations for blacks on the kidney transplant  
31 waiting list. *Transplantation* 2014;98(9):979-986.
- 32 18. Gordon EJ, Reddy E, Gil S, Feinglass J, Rodde J, Abecassis MM et al. Culturally  
33 competent transplant program improves Hispanics' knowledge and attitudes about live kidney  
34 donation and transplant. *Progress in transplantation* 2014;24:56-68.
- 35 19. Sieverdes JC, Price M, Ruggiero KJ, Baliga PK, Chavin KD, Brunner-Jackson B et al.  
36 Design and approach of the Living Organ Video Educated Donors (LOVED) program to  
37 promote living kidney donation in African Americans. *Contemp Clin Trials* 2017.
- 38 20. Purnell TS, Hall YN, Boulware LE. Understanding and overcoming barriers to living  
39 kidney donation among racial and ethnic minorities in the United States. *Advances in chronic*  
40 *kidney disease* 2012;19(4):244-251.
- 41 21. Vilme H, Davenport CA, Pendergast J, Boulware LE. Trends in African Americans'  
42 Attitudes and Behaviors About Living Donor Kidney Transplantation. *Progress in*  
43 *Transplantation* 2018:1526924818800036.
- 44 22. Weng FL, Peipert JD, Holland BK, Brown DR, Waterman AD. A Clustered Randomized  
45 Trial of an Educational Intervention During Transplant Evaluation to Increase Knowledge of  
46 Living Donor Kidney Transplant. *Prog Transplant* 2017;27(4):377-385.
- 47  
48  
49  
50  
51  
52  
53  
54  
55  
56  
57  
58  
59  
60

23. Waterman AD, Robbins ML, Paiva AL, Peipert JD, Kynard-Amerson CS, Goalby C et al. Your path to transplant: a randomized controlled trial of a tailored computer education intervention to increase living donor kidney transplant. *BMC Nephrol* 2014;15(166).
24. Waterman AD, Peipert JD. An Explore Transplant Group Randomized Controlled Education Trial to Increase Dialysis Patients' Decision-Making and Pursuit of Transplantation. *Progress in Transplantation* 2018;28(2):174-183.
25. Waterman A, Robbins M, Paiva A, Hyland SS. Kidney patients' intention to receive a deceased donor transplant: Development of stage of change, decisional balance, and self-efficacy measures *Journal of Health Psychology* 2010;15(3):436-445.
26. Waterman AD, Robbins ML, Paiva AL, Peipert JD, Davis LA, Hyland SS et al. Measuring kidney patients' motivation to pursue living donor kidney transplant: development of stage of change, decisional balance and self-efficacy measures. *J Health Psychol* 2015;20(2):210-221.
27. Peipert JD, Beaumont JL, Robbins M, Paiva A, Anderson C, Waterman A. Development and Validation of a Socioeconomic Kidney Transplant Derailers Index (KTDI). *Am J Transplant* 2017;17(suppl 3).
28. Piantadosi S. *Clinical Trials: A Methodological Perspective*. 2nd ed. Hoboken, NJ: Wiley, 2005.
29. Bates D, Mächler M, Bolker B, Walker S. Fitting Linear Mixed-Effects Models Using lme4. *2015* 2015;67(1):48.
30. Team RC. R: A language and environment for statistical computing. R Foundation for Statistical Computing. 2017; Available from: <https://www.R-project.org/>
31. Formica RN, Jr., Barrantes F, Asch WS, Bia MJ, Coca S, Kalyesubula R et al. A One-Day Centralized Work-up for Kidney Transplant Recipient Candidates: A Quality Improvement Report. *American Journal of Kidney Diseases* 2012;60(2):288-294.
32. Patzer RE, McPherson L, Basu M, Mohan S, Wolf M, Chiles M et al. Effect of the iChoose Kidney Decision Aid in Improving Knowledge about Treatment Options among Transplant Candidates: a Randomized Controlled Trial. *Am J Transplant* 2018.
33. Gordon EJ, Feinglass J, Carney P, Vera K, Olivero M, Black A et al. A Website Intervention to Increase Knowledge About Living Kidney Donation and Transplantation Among Hispanic/Latino Dialysis Patients. *Prog Transplant* 2016;26(1):82-91.
34. Strigo TS, Ephraim PL, Pounds I, Hill-Briggs F, Darrell L, Ellis M et al. The TALKS study to improve communication, logistical, and financial barriers to live donor kidney transplantation in African Americans: protocol of a randomized clinical trial. *BMC Nephrol* 2015;16(1):160.
35. Waterman AD, Peipert JD, Goalby CJ, Dinkel KM, Xiao H, Lentine KL. Assessing Transplant Education Practices in Dialysis Centers: Comparing Educator Reported and Medicare Data. *Clin J Am Soc Nephrol* 2015;10(9):1617-1625.
36. Boulware LE, Hill-Briggs F, Kraus ES, Melancon JK, Falcone B, Ephraim PL et al. Effectiveness of educational and social worker interventions to activate patients' discussion and pursuit of preemptive living donor kidney transplantation: a randomized controlled trial. *Am J Kidney Dis* 2013;61(3):476-486.
37. Basu M, Petgrave-Nelson L, Smith KD, Perryman JP, Clark K, Pastan SO et al. Transplant Center Patient Navigator and Access to Transplantation among High-Risk Population: A Randomized, Controlled Trial. *Clin J Am Soc Nephrol* 2018;13(4):620-627.

- 1  
2  
3 38. Sullivan C, Leon JB, Sayre SS, Marbury M, Ivers M, Pencak JA et al. Impact of  
4 Navigators on Completion of Steps in the Kidney Transplant Process: A Randomized, Controlled  
5 Trial. *Clin J Am Soc Nephrol* 2012.
- 6 39. Rodrigue JR, Cornell DL, Kaplan B, Howard RJ. A randomized trial of a home-based  
7 educational approach to increase live donor kidney transplantation: effects in blacks and whites.  
8 *American Journal of Kidney Diseases* 2008;51(4):663-670.
- 9 40. Gordon EJ, Feinglass J, Carney P, Vera K, Olivero M, Black A et al. A Culturally  
10 Targeted Website for Hispanics/Latinos About Living Kidney Donation and Transplantation: A  
11 Randomized Controlled Trial of Increased Knowledge. *Transplantation* 2016;100(5):1149-1160.
- 12 41. Gordon EJ, Lee J, Kang R, Ladner DP, Skaro AI, Holl JL et al. Hispanic/Latino  
13 Disparities in Living Donor Kidney Transplantation: Role of a Culturally Competent Transplant  
14 Program. *Transplant Direct* 2015;1(8):e29.
- 15 42. Gordon EJ, Sohn MW, Chang CH, McNatt G, Vera K, Beauvais N et al. Effect of a  
16 Mobile Web App on Kidney Transplant Candidates' Knowledge About Increased Risk Donor  
17 Kidneys: A Randomized Controlled Trial. *Transplantation* 2016.
- 18 43. Massey EK. Recommendations on how to improve medication adherence studies in the  
19 field of transplantation. *Transplantation* 2016;100(1):12-13.
- 20 44. Cameron AM. Social Media and Organ Donation: The Facebook Effect. *The Journal of*  
21 *legal medicine* 2015;36(1):39-44.
- 22 45. Ismail SY, Luchtenburg AE, Timman R, Zuidema WC, Boonstra C, Weimar W et al.  
23 Home-based family intervention increases knowledge, communication and living donation rates:  
24 a randomized controlled trial. *Am J Transplant* 2014;14(8):1862-1869.
- 25 46. Taji L, Battistella M, Grill AK, Cunningham J, Hemmelgarn BL, Quinn KM et al.  
26 Medications Used Routinely in Primary Care to be Dose-Adjusted or Avoided in People With  
27 Chronic Kidney Disease: Results of a Modified Delphi Study. *Ann Pharmacother*  
28 2020:1060028019897371.
- 29 47. Haley WE, Beckrich AL, Sayre J, McNeil R, Fumo P, Rao VM et al. Improving care  
30 coordination between nephrology and primary care: a quality improvement initiative using the  
31 renal physicians association toolkit. *American Journal of Kidney Diseases* 2015;65(1):67-79.
- 32 48. Smekal MD, Tam-Tham H, Finlay J, Donald M, Thomas C, Weaver RG et al. Patient and  
33 provider experience and perspectives of a risk-based approach to multidisciplinary chronic  
34 kidney disease care: a mixed methods study. *BMC nephrology* 2019;20(1):110.
- 35 49. Smekal MD, Tam-Tham H, Finlay J, Donald M, Benterud E, Thomas C et al. Perceived  
36 benefits and challenges of a risk-based approach to multidisciplinary chronic kidney disease  
37 care: a qualitative descriptive study. *Canadian journal of kidney health and disease*  
38 2018;5:2054358118763809.
- 39 50. Patzer RE, McPherson L, Redmond N, DuBay D, Zayas C, Hartmann E et al. A  
40 Culturally Sensitive Web-based Intervention to Improve Living Donor Kidney Transplant  
41 Among African Americans. *Kidney Int Rep* 2019;4(9):1285-1295.
- 42 51. Hamoda RE, Gander JC, McPherson LJ, Arriola KJ, Cobb L, Pastan SO et al. Process  
43 evaluation of the RaDIANT community study: a dialysis facility-level intervention to increase  
44 referral for kidney transplantation. *BMC Nephrol* 2018;19(1):13.
- 45 52. Mucsi I, Novak M, Toews D, Waterman A. Explore Transplant Ontario: Adapting the  
46 Explore Transplant Education Program to Facilitate Informed Decision Making About Kidney  
47 Transplantation. *Canadian journal of kidney health and disease* 2018;5:2054358118789369-  
48 2054358118789369.
- 49  
50  
51  
52  
53  
54  
55  
56  
57  
58  
59  
60



Table 1: DDKT and LDKT Stages of Readiness Measurement

<b>DDKT Survey Question</b>	<b>Stage of Readiness</b>
I am not considering getting a DDKT in the next six months	Precontemplation
I am considering getting a DDKT in the next six months	Contemplation
I am preparing to get a DDKT in the next 30 days	Preparation
I am undergoing evaluation to get a DDKT	Action
I am listed and waiting to get a DDKT	Maintenance
<b>LDKT Survey Question</b>	<b>Stage of Readiness</b>
I am not considering taking actions in the next six months to pursue LDKT	Precontemplation
I am considering taking actions in the next 30 days to pursue LDKT	Contemplation
I am preparing to take actions in the next 30 days to pursue LDKT	Preparation
I am taking actions to pursue LDKT	Action

CONFIDENTIAL

Table 2. Baseline patient characteristics overall and by randomized group

	Overall ( N=802 )	YPT ( N= 407 )	SOC ( N= 395 )
<b>Age, mean (SD)</b>	53.0 (13.1)	52.7 (13.0)	53.2 (13.3)
<b>Sex, n (%)</b>			
Men	486 (60.6)	239 (58.7)	247 (62.5)
Women	316 (39.4)	168 (41.3)	148 (37.5)
<b>Race/ethnicity, n (%)</b>			
Non-Hispanic Black	200 (24.9)	108 (26.5)	92 (23.3)
Hispanic	313 (39.0)	155 (38.0)	158 (40.0)
Non-Hispanic White	279 (34.7)	138 (33.8)	141 (35.7)
Other	11 (1.4)	7 (1.7)	4 (1.0)
<b>Comorbidities, n (%)</b>			
Diabetes	350 (43.6)	157 (38.6)	193 (48.9)
Hypertension	661 (82.4)	337 (82.8)	324 (82.0)
Polycystic kidney disease	89 (11.1)	44 (10.8)	45 (11.4)
<b>Insurance, n (%)</b>			
Medicare	122 (15.3)	56 (13.9)	66 (16.8)
Medicaid	221 (27.7)	119 (29.5)	102 (26.0)
Private Insurance (i.e. HMO, PPO)	427 (53.6)	221 (54.7)	206 (52.4)
Don't know	7 (0.9)	2 (0.5)	5 (1.3)
Other insurance	20 (2.5)	6 (1.5)	14 (3.6)
<b>On dialysis, n (%)</b>	560 (69.8)	275 (67.6)	285 (72.2)
<b>Education, n (%)</b>			
8th grade or less	19 (2.4)	6 (1.5)	13 (3.3)
Some high school	56 (7.0)	23 (5.7)	33 (8.4)
High School Diploma or GED	197 (24.6)	101 (24.8)	96 (24.3)
Some college or vocational school	253 (31.6)	129 (31.7)	124 (31.4)
College or vocational school degree	182 (22.7)	100 (24.6)	82 (20.8)
Some professional or graduate school	21 (2.6)	10 (2.5)	11 (2.8)
Professional or graduate degree	74 (9.2)	38 (9.3)	36 (9.1)
<b>Transplant Education, n (%)</b>			
Read brochures about transplants	504 (62.8)	258 (63.4)	246 (62.3)
Watched videos	215 (26.8)	111 (27.3)	104 (26.3)
Browsed Internet websites	429 (53.5)	222 (54.5)	207 (52.4)
Talked to doctors and other medical staff	701 (87.4)	357 (87.7)	344 (87.1)

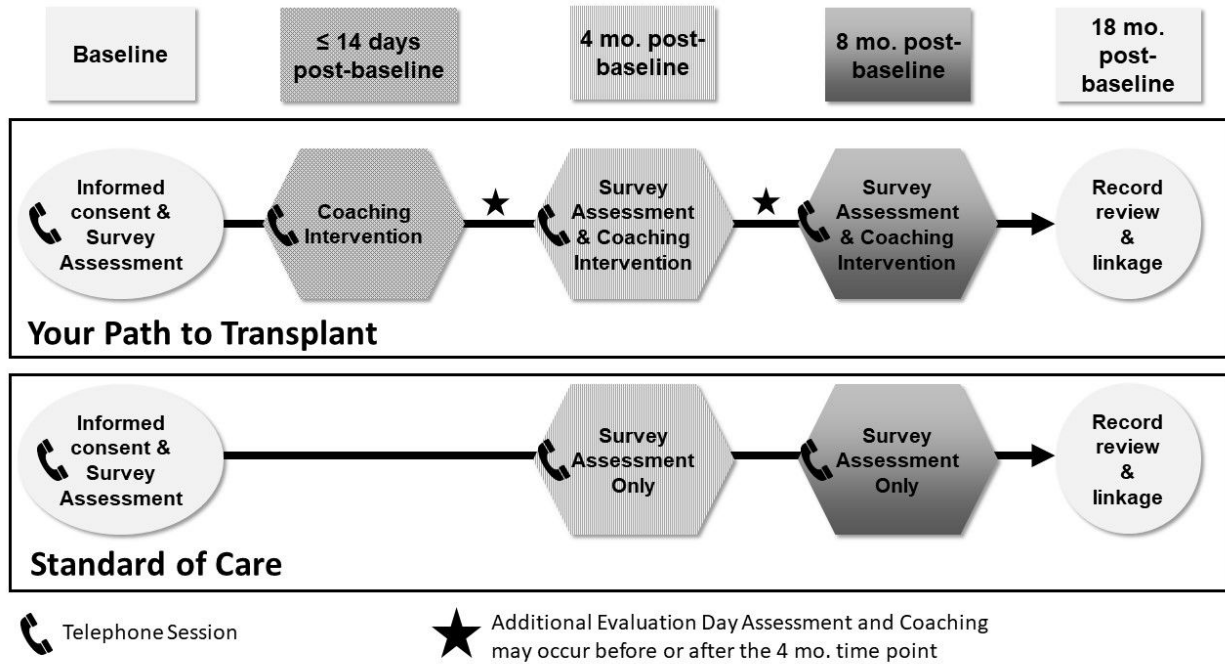


Table 3. New steps towards LDKT and DDKT over the 8-month study period by randomized group

	Total N*	YPT N (%)	SOC N (%)	p-value
<b>Steps toward LDKT</b>				
Share education materials about living donation with people in your life	342	135 (86.0%)	124 (67.0%)	<0.001
Generally, talk to people you trust about whether to get a living donor transplant	270	109 (86.5%)	108 (75.0%)	0.026
Make a list of people who might be a living donor for you	280	87 (70.7%)	93 (59.2%)	0.062
Ask another person to tell others about your need for a living donor transplant	353	97 (63.8%)	99 (49.3%)	0.009
Ask potential donors to be tested	358	111 (70.7%)	108 (53.7%)	0.002
Give potential living donors the transplant center phone number	417	134 (69.4%)	129 (57.6%)	0.017
Share my need for a living donor with a large community (e.g., Facebook, Twitter, etc.)?	397	78 (43.6%)	59 (27.1%)	0.001
<b>Steps toward DDKT</b>				
Read information/watch videos about getting on the deceased donor waiting list	419	179 (88.6%)	157 (72.4%)	<0.001
Share educational materials about deceased donation with people in your life	387	160 (87.9%)	138 (67.3%)	<0.001
Generally, talk to people you trust about whether to get a deceased donor transplant	348	150 (87.2%)	119 (67.6%)	<0.001
Call the transplant center to pursue evaluation	219	97 (93.3%)	101 (87.8%)	0.256
Complete and mail back the transplant center's new patient medical forms	451	208 (95.9%)	207 (88.5%)	0.007
Invite someone to come to evaluation with you	286	125 (94.7%)	135 (87.7%)	0.063
Come to the transplant center to complete medical tests	499	232 (93.5%)	206 (82.1%)	<0.001
Follow-up with transplant coordinator until transplant evaluation is complete	462	178 (79.1%)	162 (68.4%)	0.012

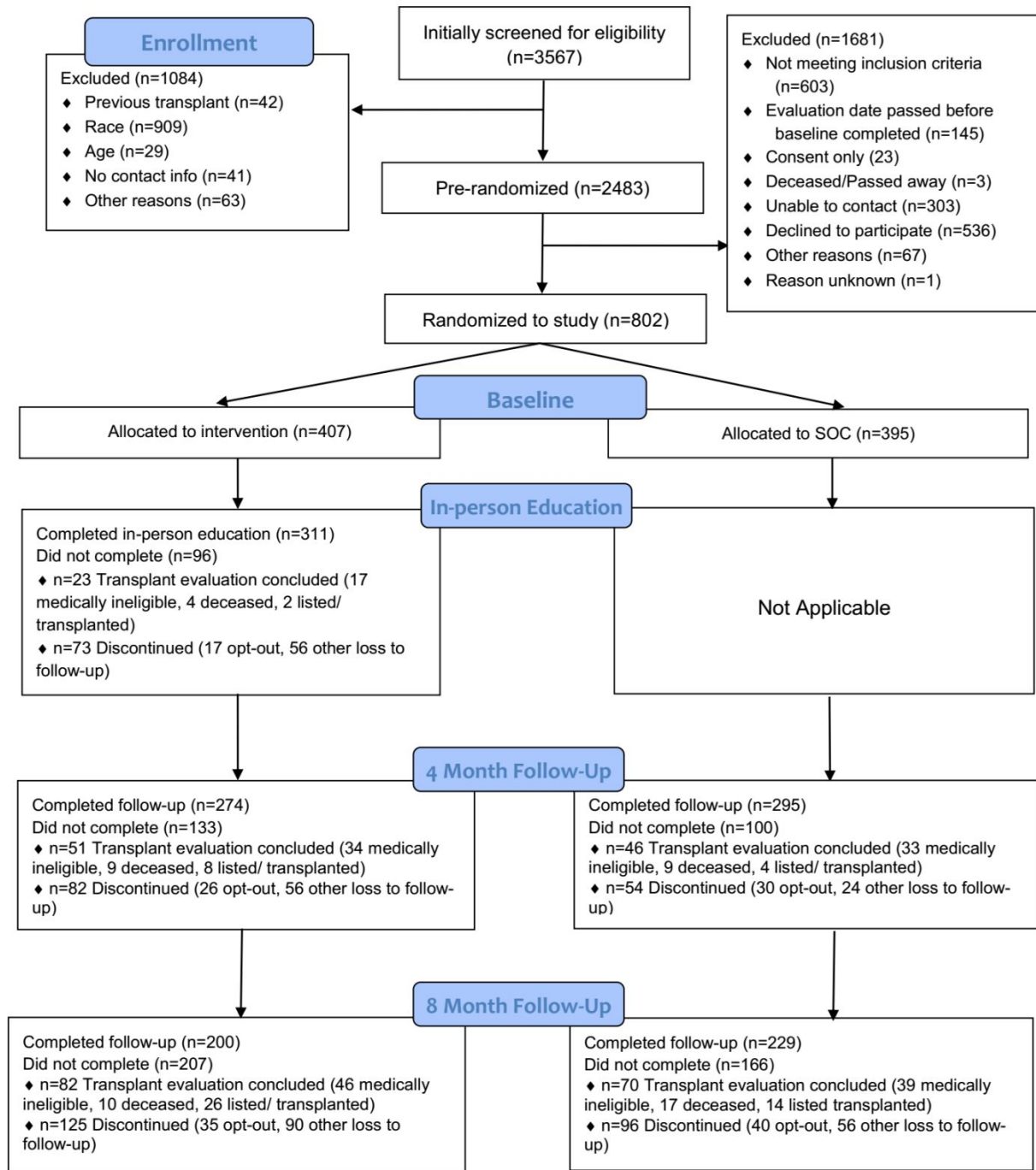
\*Total sample size not already doing step at baseline.

Figure 1. Study design

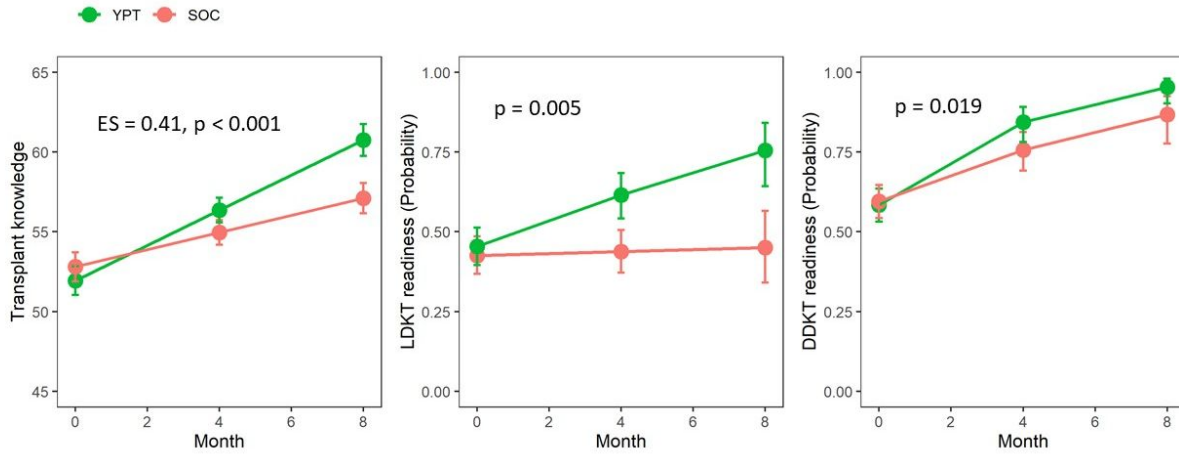


CONFIDENTIAL

**Figure 2. Your Path to Transplant Trial CONSORT Flowchart**



**Figure 3. Transplant knowledge and readiness over time (mixed effect model predicted means and 95% confidence intervals)**



Effect size and p-values are for comparison between YPT and SOC at month 8.

CONFIDENTIAL

Figure 4: Waitlisting rate by randomized group

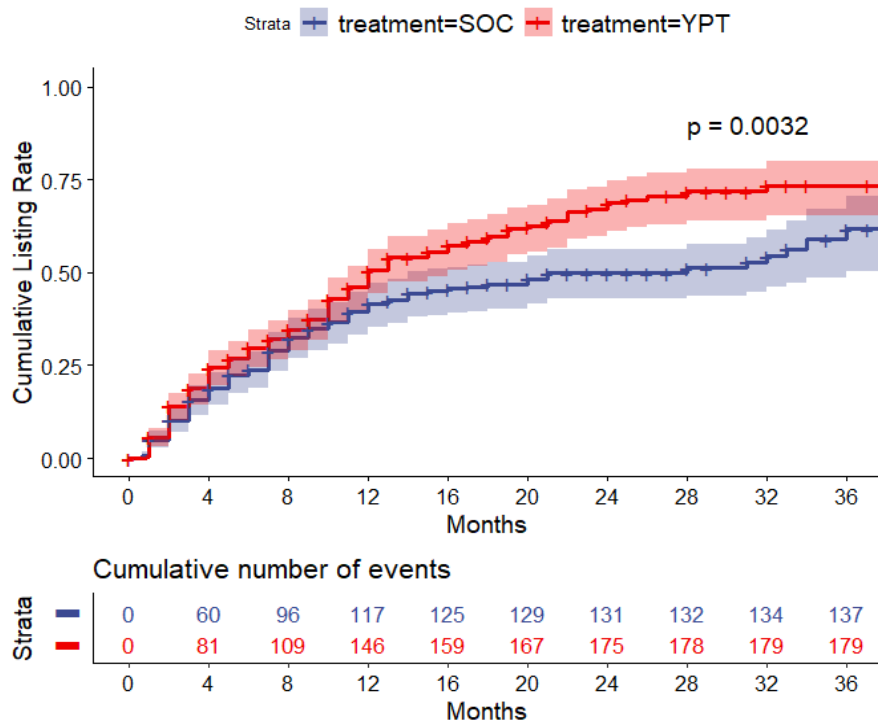
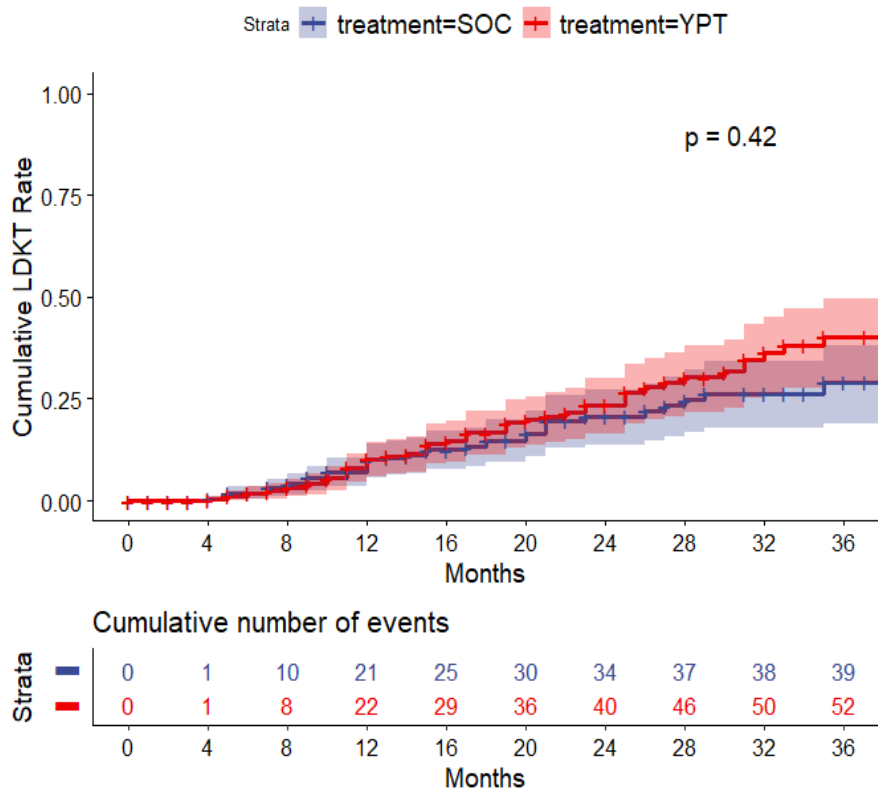


Figure 5: LDKT rate by randomized group



**Table S1. Comparison between patients consented vs. declined to join the study (N = 2483)**

	<b>Consented</b>	<b>Declined</b>
	N = 815	N = 1668
<b>Age, years (mean (SD))</b>	52.9 (13.1)	53.8 (13.3)
<b>Male, n (%)</b>	496 (60.9)	1075 (64.7)
<b>Race/ethnicity, n (%)</b>		
Hispanic (any race)	244 (29.9)	692 (43.5)
Non-Hispanic Black	208 (25.5)	246 (15.5)
Non-Hispanic White	349 (42.8)	507 (31.9)
Other	6 ( 0.7)	62 ( 3.9)
Unknown	8 ( 1.0)	83 ( 5.2)

CONFIDENTIAL

**Table S2: Patient Characteristics between dropouts and non-dropouts at 4 months (N=803)**

	Drop out (n = 238)	Did not drop out (n = 565)	p value*
<b>Age</b>	54.68 (13.1)	52.24 (13.1)	0.016
<b>Female</b>	97 (41)	219 (39)	0.621
<b>Race/ethnicity (%)</b>			0.604
Black	60 (25)	140 (25)	
Hispanic	88 (37)	225 (41)	
White	89 (38)	190 (34)	
<b>Comorbidities</b>			
HBP (%)	187 (79)	474 (84)	0.156
Diabetes (%)	107 (45)	243 (43)	0.102
PKD (%)	16 (7)	73 (13)	0.004
<b>Private Insurance (%)</b>	114 (48)	314 (56)	0.063
<b>Dialysis (%)</b>	182 (77)	378 (67)	0.007
<b>Education (%)</b>			0.655
8th grade or less	6 (3)	13 (2)	
Some high school	16 (7)	40 (7)	
High school diploma or GED	64 (27)	133 (24)	
Some college or vocational school	80 (34)	173 (31)	
College or vocational school degree	46 (19)	136 (24)	
Some professional or graduate school	4 (2)	17 (3)	
Professional or graduate degree	21 (9)	53 (9)	
<b>Employment (%)</b>			0.115
Full-time	34 (15)	120 (21)	
Part-time	11 (5)	15 (3)	
Employment of others in household	8 (3)	42 (7)	
Retirement savings/pension	25 (11)	58 (10)	
Social security	57 (25)	110 (20)	
Unemployment	3 (1)	9 (2)	
Welfare/TANF	4 (2)	8 (1)	
Disability due to kidney disease	53 (23)	123 (22)	
Disability due to other causes	34 (15)	76 (14)	
<b>Health (1-5)</b>			0.665
Good, very good or excellent (3-5)	122 (51)	302 (53)	
Poor or fair (1-2)	115 (49)	263 (47)	
<b>Treatment group, n (%)</b>			0.01
YPT	138 (58)	270 (48)	
SOC	100 (42)	295 (52)	

\*t-test for continuous variables and Fisher's exact test or Chi-square test for categorical variables

**Table S3: Patient Characteristics between dropouts and non-dropouts at 8 months (N=802)**

	Drop out (n = 376)	Did not drop out (n = 427)	p value*
<b>Age</b>	53.43 (13.8)	52.55 (12.5)	0.195
<b>Female</b>	150 (40)	166 (39)	0.801
<b>Race/ethnicity (%)</b>			0.889
Black	97 (26)	103 (25)	
Hispanic	145 (39)	168 (40)	
White	131 (35)	148 (35)	
<b>Comorbidities</b>			
HBP (%)	300 (80)	361 (85)	0.061
Diabetes (%)	168 (45)	182 (43)	0.409
PKD (%)	30 (8)	59 (14)	0.021
<b>Private Insurance (%)</b>	188 (50)	240 (56)	0.099
<b>Dialysis (%)</b>	280 (75)	280 (66)	0.006
<b>Education (%)</b>			0.337
8th grade or less	10 (3)	9 (2)	
Some high school	29 (8)	27 (6)	
High school diploma or GED	102 (27)	95 (22)	
Some college or vocational school	109 (29)	144 (34)	
College or vocational school degree	77 (21)	105 (25)	
Some professional or graduate school	9 (2)	12 (3)	
Professional or graduate degree	39 (10)	35 (8)	
<b>Employment (%)</b>			0.375
Full-time	59 (16)	95 (22)	
Part-time	15 (4)	11 (3)	
Employment of others in household	19 (5)	31 (7)	
Retirement savings/pension	41 (11)	42 (10)	
Social security	85 (23)	82 (19)	
Unemployment	6 (2)	6 (1)	
Welfare/TANF	6 (2)	6 (1)	
Disability due to kidney disease	83 (23)	93 (22)	
Disability due to other causes	51 (14)	59 (14)	
<b>Health (1-5)</b>			0.096
Good, very good or excellent (3-5)	186 (50)	238 (56)	
Poor or fair (1-2)	189 (50)	189 (44)	
<b>Treatment group, n (%)</b>			0.009
YPT	210 (56)	198 (46)	
SOC	166 (44)	229 (54)	

\*t-test for continuous variables and Fisher's exact test or Chi-square test for categorical variables