

UC Davis

UC Davis Previously Published Works

Title

Correction to: The LsVe1L allele provides a molecular marker for resistance to *Verticillium dahliae* race 1 in lettuce.

Permalink

<https://escholarship.org/uc/item/66h671rk>

Journal

BMC plant biology, 19(1)

ISSN

1471-2229

Authors

Inderbitzin, Patrik
Christopoulou, Marilena
Lavelle, Dean
et al.

Publication Date

2019-08-01

DOI

10.1186/s12870-019-1966-9

Copyright Information

This work is made available under the terms of a Creative Commons Attribution License, available at <https://creativecommons.org/licenses/by/4.0/>

Peer reviewed

CORRECTION

Open Access



Correction to: The *LsVe1L* allele provides a molecular marker for resistance to *Verticillium dahliae* race 1 in lettuce

Patrik Inderbitzin^{1,2†}, Marilena Christopoulou^{3†}, Dean Lavelle³, Sebastian Reyes-Chin-Wo³, Richard W. Michelmore^{3,4}, Krishna V. Subbarao^{1*} and Ivan Simko^{5*}

Correction to: BMC Plant Biol (2019) 19:305
<https://doi.org/10.1186/s12870-019-1905-9>

Following publication of the original article [1], the author reported a processing error in Fig. 5. This has been corrected in the original article.

The correct version of Fig. 5 is also shown in this correction.

In the Additional file 7, the sequence data for LsVe3L and LsVe4L were swapped. The correct Additional file 7 is shown in the Additional file section below.

Additional file

Additional file 7: Nucleotide sequences of six LsVe alleles from cultivars La Brillante (L) and Salinas (S). (DOCX 17.8 kb)

Author details

¹Department of Plant Pathology, University of California, Davis, CA 95616, USA. ²Present address: Indigo Ag, Charlestown, MA 02129, USA. ³Genome Center, University of California, Davis, CA 95616, USA. ⁴Departments of Plant Sciences, Molecular & Cellular Biology, Medical Microbiology & Immunology, University of California, Davis, CA 95616, USA. ⁵United States Department of Agriculture, Agricultural Research Service, Crop Improvement and Protection Research Unit, Salinas, CA 93905, USA.

Published online: 26 August 2019

Reference

1. Inderbitzin P, et al. The *LsVe1L* allele provides a molecular marker for resistance to *Verticillium dahliae* race 1 in lettuce. *BMC Plant Biol.* 2019; 19:305. <https://doi.org/10.1186/s12870-019-1905-9>.

* Correspondence: kvsbarao@ucdavis.edu; Ivan.Simko@ars.usda.gov

[†]Patrik Inderbitzin and Marilena Christopoulou contributed equally to this work.

¹Department of Plant Pathology, University of California, Davis, CA 95616, USA

⁵United States Department of Agriculture, Agricultural Research Service, Crop Improvement and Protection Research Unit, Salinas, CA 93905, USA

Full list of author information is available at the end of the article



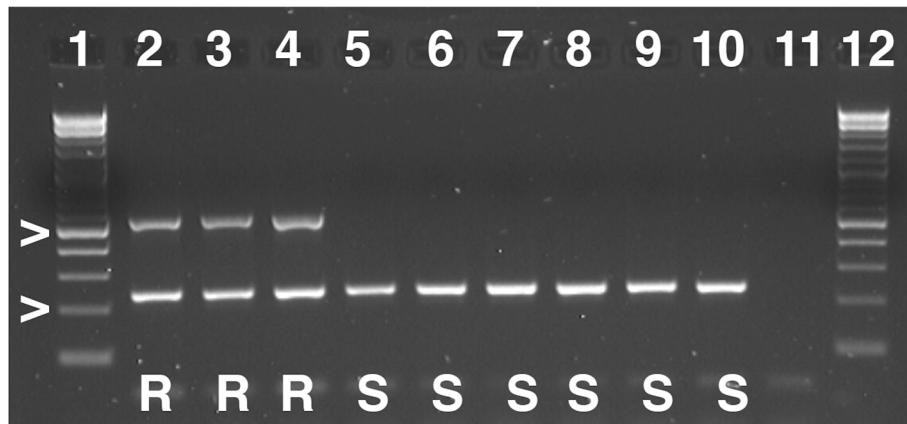


Fig. 5 *LsVe1L* specific PCR assay is allele-specific. Shown are results of *LsVe1L*-specific PCR assays with selected lettuce accessions with known *LsVe* genotypes and resistance phenotypes. Resistance (R) and susceptibility (S) is indicated by capital letters for each accession. In all cases, the outcomes of the PCR assays were as expected from genome sequencing. Amplicon sizes are indicated by > and correspond to 200 and 500 bp. Lane numbers are: 1. 2-log ladder, 2. cultivar Balady Banha (*Ve* genotype: *LsVe1L*, *LsVe3L*, *LsVe4L*), 3. cultivar Lolla Rossa (*LsVe1L*, *LsVe3L*, *LsVe4L*), 4. cultivar Plymouth (*LsVe1L*, *LsVe3L*, *LsVe4L*), 5. cultivar Cobham Green (*LsVe3L*, *LsVe4L*, *LsVe1S*, *LsVe2S*), 6. cultivar Lee Tal (*LsVe4L*, *LsVe1S*, *LsVe2S*), 7. cultivar Margarita (*LsVe4L*, *LsVe1S*, *LsVe2S*), 8. cultivar Anuenue (*LsVe2S*, *LsVe3S*), 9. cultivar Blonde Lente a Monter (*LsVe1S*, *LsVe2S*, *LsVe3S*), 10. cultivar Primus (*LsVe1S*, *LsVe2S*, *LsVe3S*), 11. negative control, and 12. 2-log ladder. PCR conditions are described in Table 4