

UCSF

UC San Francisco Previously Published Works

Title

Neuronal energy-sensing pathway promotes energy balance by modulating disease tolerance

Permalink

<https://escholarship.org/uc/item/66f73464>

Journal

Proceedings of the National Academy of Sciences of the United States of America, 113(23)

ISSN

0027-8424

Authors

Shen, Run
Wang, Biao
Giribaldi, Maria G
et al.

Publication Date

2016-06-07

DOI

10.1073/pnas.1606106113

Copyright Information

This work is made available under the terms of a Creative Commons Attribution-NonCommercial-ShareAlike License, available at <https://creativecommons.org/licenses/by-nc-sa/4.0/>

Peer reviewed

Neuronal energy-sensing pathway promotes energy balance by modulating disease tolerance

Run Shen^{a,b}, Biao Wang^{a,1}, Maria G. Giribaldi^c, Janelle Ayres^c, John B. Thomas^b, and Marc Montminy^{a,2}

^aClayton Foundation Laboratories for Peptide Biology, The Salk Institute for Biological Studies, La Jolla, CA 92037; ^bMolecular Neurobiology Laboratory, The Salk Institute for Biological Studies, La Jolla, CA 92037; and ^cNomis Foundation Laboratories for Immunobiology and Microbial Pathogenesis, The Salk Institute for Biological Studies, La Jolla, CA 92037

Contributed by Marc Montminy, April 18, 2016 (sent for review March 1, 2016; reviewed by Ethan Bier and Jongkyeong Chung)

The starvation-inducible coactivator cAMP response element binding protein (CREB)–cAMP-regulated transcription coactivator (Crtc) has been shown to promote starvation resistance in *Drosophila* by up-regulating CREB target gene expression in neurons, although the underlying mechanism is unclear. We found that Crtc and its binding partner CREB enhance energy homeostasis by stimulating the expression of short neuropeptide F (sNPF), an ortholog of mammalian neuropeptide Y, which we show here is a direct target of CREB and Crtc. Neuronal sNPF was found to promote energy homeostasis via gut enterocyte sNPF receptors, which appear to maintain gut epithelial integrity. Loss of Crtc–sNPF signaling disrupted epithelial tight junctions, allowing resident gut flora to promote chronic increases in antimicrobial peptide (AMP) gene expression that compromised energy balance. Growth on germ-free food reduced AMP gene expression and rescued starvation sensitivity in Crtc mutant flies. Overexpression of Crtc or sNPF in neurons of wild-type flies dampens the gut immune response and enhances starvation resistance. Our results reveal a previously unidentified tolerance defense strategy involving a brain–gut pathway that maintains homeostasis through its effects on epithelial integrity.

CREB | CRTX | sNPF | cAMP | transcription

When faced with a pathogen, a host can use two defense strategies to survive infection: resistance and tolerance (1–3). Resistance mechanisms are a function of the immune system, which works to kill pathogens. Tolerance mechanisms reduce the negative impact of infection on host health without directly affecting pathogen levels. Although typically beneficial to the host, activation of the immune system comes at the expense of energy stores, and overactivation can lead to physiological damage in the form of metabolic disruption. Indeed, genetic mutations that increase resistance also affect tolerance (4).

Hosts have likely evolved tolerance mechanisms that maintain triglyceride stores, in part, by modulating resistance (1, 2). The tight junction protein big bang (Bbg) protects against bacterial infection, for example, by maintaining epithelial integrity in the gut; loss of Bbg expression triggers immune system activation and decreases survival. Indeed, persistent up-regulation of the immune response appears to decrease lifespan, in part, by interfering with insulin signaling and thereby reducing energy stores (5).

In *Drosophila*, bacterial infection stimulates the production of antimicrobial peptides (AMPs) in response to activation of the NF- κ B-like pathways Imd and Toll (6). AMP expression is also up-regulated in hemocytes during fasting, albeit to a far lower level; it requires the forkhead box transcription factor FoxO (7, 8). Enhancing FOXO activity promotes longevity, in part, by increasing pathogen resistance (9, 10). However, dysregulated FOXO activation during pathogenic infections increases mortality, despite control of pathogen burden (11), due to the depletion of energy stores.

The *Drosophila* cAMP-regulated transcription coactivator (Crtc) is expressed primarily in neurons, where it protects against starvation and oxidative stress (12). Under basal conditions, Crtc, like its mammalian homologs, is phosphorylated by salt-inducible kinases and sequestered in the cytoplasm via interactions with

14-3-3 proteins (12, 13). In response to starvation or oxidative stress, Crtc undergoes dephosphorylation and nuclear translocation, where it associates with cAMP response element binding protein (CREB) over relevant promoters (14). Crtc mutant flies have reduced triglyceride and glycogen stores, and they are short-lived, although the underlying mechanism is unclear. Here, we reveal an unexpected role of the neuronal CREB/CRTC pathway in maintaining gut homeostasis by stimulating neuropeptide Y (NPY)-like signaling. Our results may provide insight into the treatment of stress-related gastrointestinal disorders.

Results

Crtc Suppresses Inflammation. Although their food intake is comparable to controls, Crtc mutant flies have lower glycogen and lipid stores, and they are starvation-sensitive (12). In gene profiling studies, we noticed that the expression of *unpaired 3* (*upd3*), which encodes a mammalian IL-6 homolog (15), was increased in Crtc mutant flies, whereas other members of the UPD/JAK/STAT pathway (*upd*, *upd2*, or *Stat92*) were not (Fig. 1A). Pointing to activation of the Imd pathway in Crtc flies, mRNA amounts of the stress peptide turandot A (TotA) and for the AMPs dipterin (Dipt) and attacin (Att) were also up-regulated.

Using promoter-driven GFP reporter transgenes to identify tissues in which Upd3 and Dipt transcriptional activities were elevated, we found that Upd3-GFP⁺ and Dipt-GFP⁺ cells were localized primarily in the midgut and proventriculus of Crtc mutant, but not control, flies, respectively (Fig. 1B), whereas other tissues were unremarkable.

The induction of Upd3 in gut enterocytes often signals increases in stress due to bacterial infection or oxidative damage (16). Indeed,

Significance

The *Drosophila* coactivator cAMP-regulated transcription coactivator (Crtc) functions in neurons to promote energy balance. We found that Crtc and its binding partner cAMP response element binding protein (CREB) maintain metabolic homeostasis by stimulating the expression of the neuropeptide-Y-like neuropeptide short neuropeptide F (sNPF). Loss of sNPF disrupted gut epithelial integrity and increased immune response gene expression, leading to decreases in triglyceride and glycogen stores. Conversely, overexpression of Crtc or sNPF in neurons of wild-type flies attenuated the immune response and enhanced starvation resistance. By enhancing gut barrier integrity, the CREB/CRTC pathway maintains energy homeostasis in response to stress.

Author contributions: R.S., B.W., M.G.G., J.A., J.B.T., and M.M. designed research; R.S., B.W., and M.G.G. performed research; R.S., B.W., M.G.G., J.A., J.B.T., and M.M. analyzed data; and R.S., J.A., J.B.T., and M.M. wrote the paper.

Reviewers: E.B., University of California, San Diego; and J.C., Seoul National University. The authors declare no conflict of interest.

¹Present address: Cardiovascular Research Institute, Department of Physiology, University of California, San Francisco, CA 94158.

²To whom correspondence should be addressed. Email: montminy@salk.edu.

This article contains supporting information online at www.pnas.org/lookup/suppl/doi:10.1073/pnas.1606106113/-DCSupplemental.

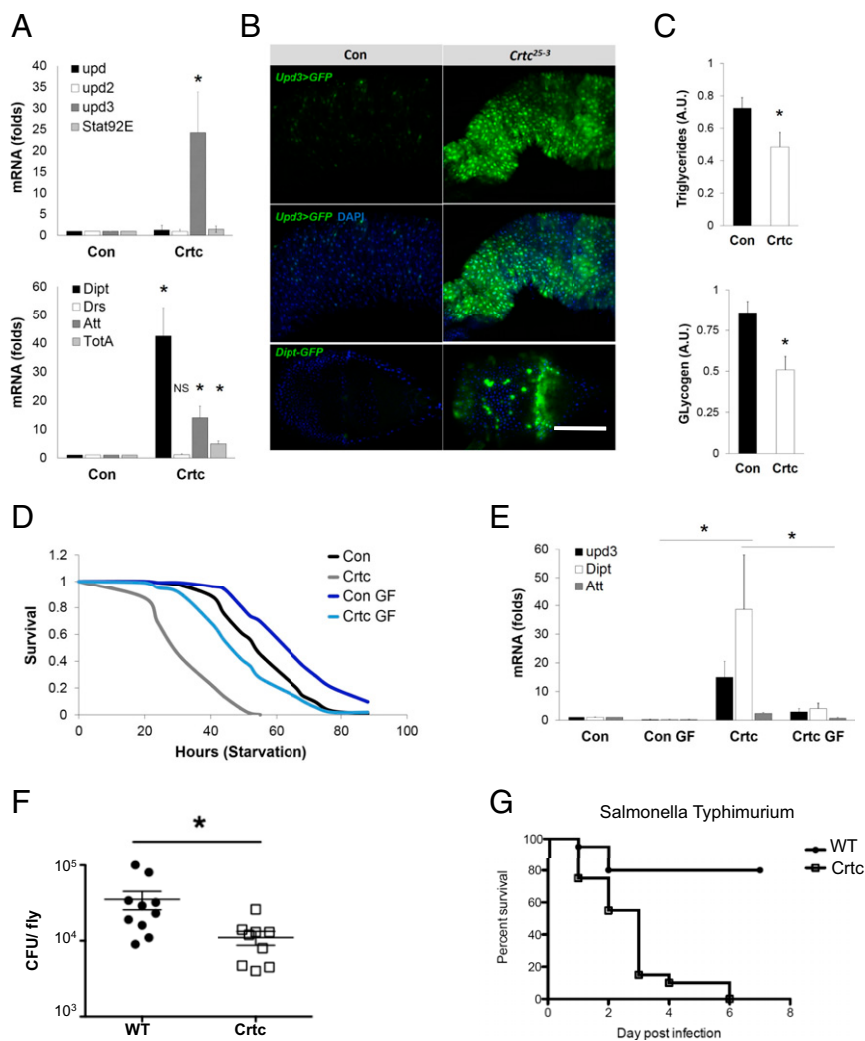


Fig. 1. Increased gut inflammation in *Crtc* mutant *Drosophila*. (A) qPCR analysis of *upd* family (Top) and AMP (Bottom) gene expression in 7- to 10-d-old control (Con) (*w*; *Crtc*^{25-3/+}) and mutant (*w*; *Crtc*²⁵⁻³) whole flies. (B) *Upd3-GAL4;UAS-GFP*, *Dipt-GFP* reporters in control and mutant flies. Top, GFP channel only. Middle and Bottom show GFP and DAPI. (Scale bar, 50 μ m.) Genotypes are as follows: Con (*w*; *Upd3-GAL4 UAS-GFP;Crtc*^{25-3/+}), *Crtc*²⁵⁻³ (*w*; *Upd3-GAL4 UAS-GFP;Crtc*²⁵⁻³), Con (*w*; *Dipt-GFP;Crtc*^{25-3/+}), and *Crtc*²⁵⁻³ (*w*; *Upd3-GAL4 UAS-GFP;Crtc*²⁵⁻³). (C) Quantitation of triglyceride and glycogen amounts in control and *Crtc*²⁵⁻³ mutant flies. A.U., arbitrary units. (D) Survival of flies subjected to starvation in controls (*w*; *Crtc*^{25-3/+}) and mutants (*w*; *Crtc*²⁵⁻³) (log-rank, $P < 0.01$). Effect of growth on germ-free (GF) food in control and *Crtc*²⁵⁻³ mutant flies is shown. (E) AMP mRNA amounts in wild-type and *Crtc* mutant flies maintained on normal or germ-free food. Effect of *Salmonella typhimurium* injection on pathogen levels (F) at 48 h postinfection (cfu) and survival (G) of wild-type and *Crtc* mutant flies. For survival, $*P < 0.0001$; for the CFUs, $*P = 0.0101$ (data are mean \pm SD).

Upd3 has been shown to promote enterocyte turnover by increasing compensatory intestinal stem cell (ISC) proliferation. Using phospho-Ser10-histone 3 immunostaining as a marker for ISC activity, we found that numbers of mitoses in the midgut were increased more than 10-fold in *Crtc* mutants relative to controls (Fig. S1A). Collectively, these results indicate that *Crtc* suppresses *Upd3* and *Imd* pathways in the gut.

Epithelial integrity appears critical for innate immune homeostasis (17). Intestinal barrier dysfunction promotes increases in AMP gene expression that interfere with insulin signaling and reduce energy stores (5). Having seen that *Upd3* is up-regulated in *Crtc* mutant flies, we wondered whether gut permeability is correspondingly affected. In transmission electron microscopy studies, electron densities at apical cell-cell junctions were reduced in *Crtc* mutant midgut relative to controls (Fig. S1B). Intestinal permeability was also increased in dye-based (Smurf) assays (Fig. S1C). As a result, amounts of active, phosphorylated AKT were decreased in *Crtc* flies, and these *Crtc* flies had lower

amounts of triglyceride and glycogen relative to controls (Fig. 1C and Fig. S1D).

In many organisms, commensal bacteria promote nutrient absorption and contribute to immune homeostasis (18). The intestinal epithelium provides an important physical barrier that permits growth of these commensals without triggering overactivation of the immune system. Based on the loss of barrier integrity in *Crtc* mutant flies, we examined whether gut microbiota ecology was affected. In line with this notion, populations of the commensal bacteria *Acetobacter* sp. and *Lactobacillus* sp. were increased in *Crtc* mutants (Fig. S1E). We considered that the up-regulation of immune response genes in *Crtc* mutants may reflect these increases in resident bacteria. In that event, elimination of these microbes would rescue starvation sensitivity. To test this idea, we cultured *Crtc* mutant flies either under germ-free conditions or on normal medium. Germ-free growth not only reduced immune gene expression in *Crtc* mutant flies but also increased triglyceride stores and enhanced starvation resistance (Fig. 1D and E and Fig. S1F).

To determine whether the activation of the Imd pathway in *Crtc* mutant flies enhances their resistance to gram-negative infection, we challenged them with the intracellular pathogen *Salmonella*. In keeping with the associated increases in AMP expression, *Crtc* mutant flies had reduced bacterial counts relative to control flies (Fig. 1*F*). Despite their ability to control the infection, however, *Salmonella*-infected *Crtc* mutants died more rapidly than infected wild-type flies, demonstrating that there were tradeoffs between the heightened resistance response and tolerance defenses (Fig. 1*G*). These data suggest that an over-exuberant response to infection compromised survival of *Crtc* mutant flies relative to controls.

Creb Phenocopies the Metabolic Effects of *Crtc*. CRTCs have been found to mediate induction of cellular genes by binding to CREB over relevant promoters (14). *Drosophila* has a single CREB

homolog, CrebB, which appears to function in a variety of settings, including learning and memory, circadian rhythmicity, and sleep (19, 20). To date, there exists a single mutant allele of CrebB, *CrebB*^{S162}, which expresses truncated CrebB polypeptides of unknown activity (20). To obtain well-characterized *CrebB* mutations and to circumvent the lethality associated with the *CrebB*^{S162} chromosome, we generated a series of *CrebB* deletions by P-element-mediated imprecise excision. One of these deletions, *CrebB*^{Δ400}, is a fully viable null allele that removes both the activation and leucine-zipper DNA-binding domains (Fig. 2*A*). CrebB mRNA and protein amounts are not detectable in *CrebB*^{Δ400} mutants (Fig. 2*B* and *C*). Consistent with the absence of CrebB, CREB reporter gene activity is nearly eliminated in *CrebB*^{Δ400} flies (Fig. 2*D*).

We examined metabolic effects of CrebB. Similar to *Crtc* mutants, *CrebB*^{Δ400} flies had reduced glycogen and lipid stores (Fig. 2*E*), and they were sensitive to starvation (Fig. 2*F*). Moreover, proinflammatory

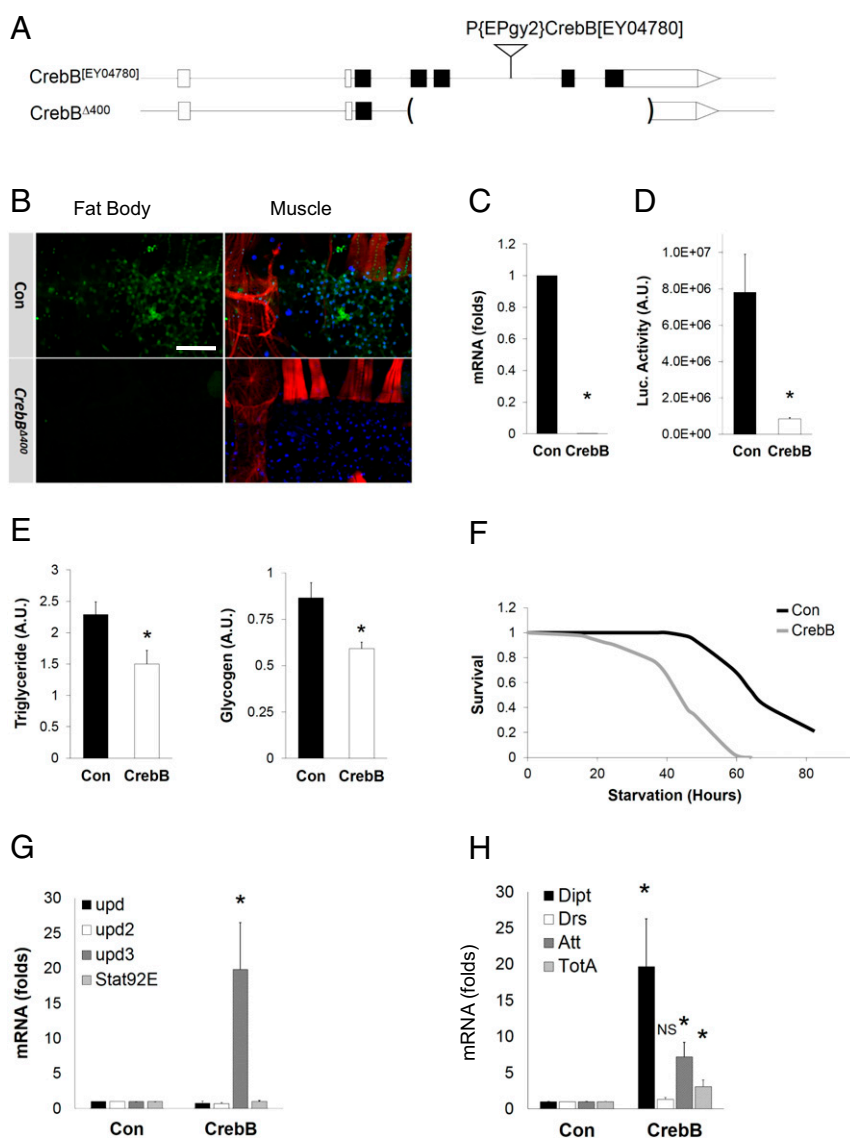


Fig. 2. Creb phenocopies effects of *Crtc* on energy balance and inflammation. (A) *CrebB*^{EY04780} and *CrebB*^{Δ400} genomic loci. The insertion P{EPgy2}CrebB[EY04780] was used to delete activation and DNA-binding domain sequences in the CrebB gene. (B) Immunofluorescence analysis of CrebB expression (green) in control and *CrebB* mutant (*w, CrebB*^{Δ400}) muscle (red, phalloidin) and fat body. (Scale bar, 50 μm.) (C) qPCR analysis of *CrebB* mRNA amounts in *CrebB* mutants (*w, CrebB*^{Δ400}). (D) CRE-luciferase activity in controls (*w, CrebB*^{Δ400/+}) and *CrebB* mutants (*w, CrebB*^{Δ400}). (E) Relative triglyceride and glycogen stores in control (*w, CrebB*^{Δ400/+}) and *CrebB* mutant (*w, CrebB*^{Δ400}) flies. (F) Survival of control and *CrebB* mutant flies on starvation medium ($n = 100$; log-rank, $P < 0.01$). (G and H) qPCR analysis of mRNA amounts for *upd3* and AMPs. NS, not significant. * $P < 0.05$ [Student's *t* test (C–E, G, and H) or log-rank test (F)]. Data (C, D, G, and H) are from three independent experiments (data are mean \pm SD).

gene expression was up-regulated in *CrebB^{Δ400}* mutant flies compared with controls (Fig. 2 G and H).

Short Neuropeptide F Is a Direct Target of CrebB and Crtc. Having seen that panneuronal expression of fly *Crtc* fully rescues starvation sensitivity in *Crtc* mutants (12), we tested whether specific neuronal types could mediate effects of *Crtc* in this setting. Using the *GAL4/upstream activation sequence (UAS)* system to express *Crtc* in discrete neuronal subsets, we found that supplying *Crtc* function to the large class of peptidergic neurons (21) was sufficient

to rescue starvation sensitivity in *Crtc* mutant flies (Fig. S2A). Of the roughly 60 neuropeptide-encoding genes in the *Drosophila* genome, we noted several whose expression appeared to be *Crtc*-dependent. In particular, the promoter for *short neuropeptide F (sNPF)* contains a cAMP response element (CRE) that is fully conserved across all *Drosophila* species (Fig. S2B). A member of the NPY family of neuropeptides, sNPF has been shown to function in energy-driven behavior (22).

In transient transfection assays, overexpression of *Crtc* increased the activity of a wild-type, but not a CRE-mutant, sNPF

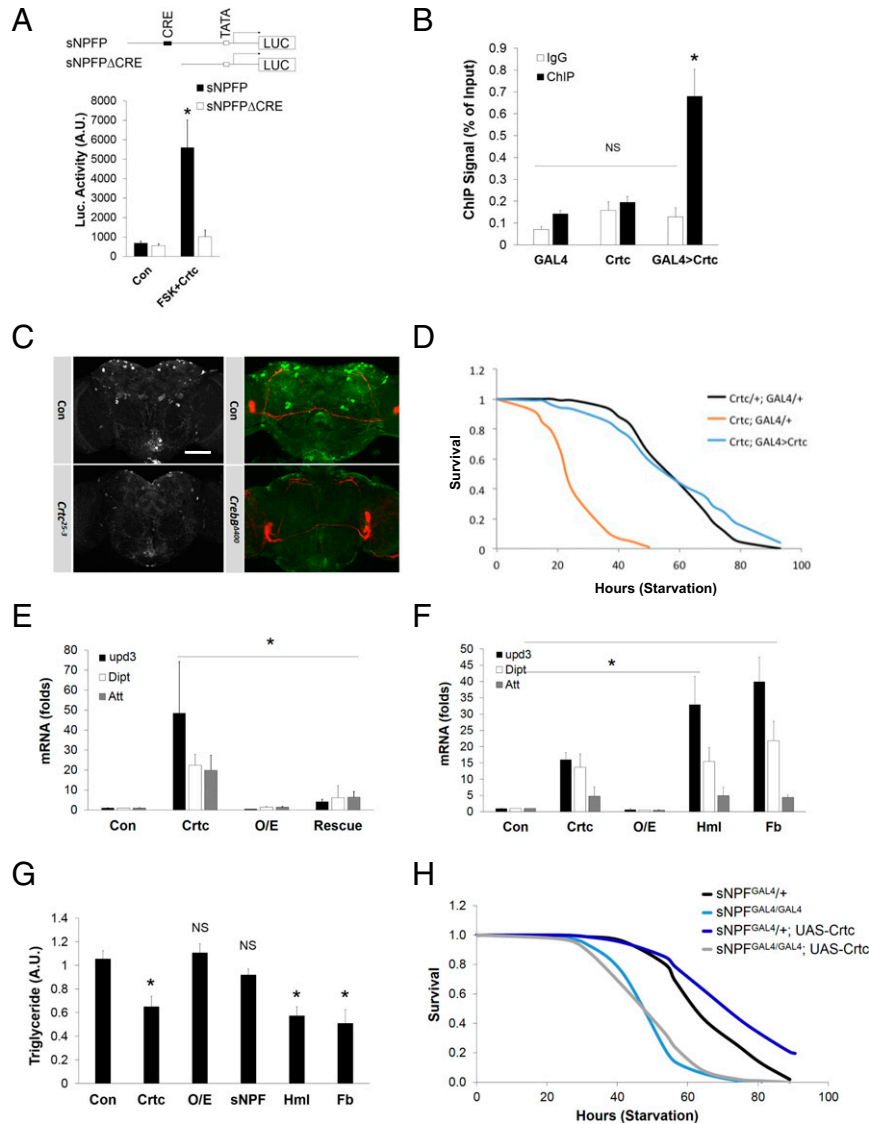


Fig. 3. CREB/Crtc pathway promotes gut homeostasis by stimulating neuronal sNPF expression. (A) Relative activity of wild-type (sNPF) and CRE mutant (sNPF Δ CRE) sNPF reporters in S2 cells. The effect of exposure to forskolin (FSK) and *Crtc* overexpression is shown. (B) ChIP assay showing recruitment of GFP-tagged *Crtc* to the sNPF promoter in sNPF neurons. Genotypes are GAL4 (sNPF-GAL4/+), *Crtc* (UAS-GFP::Crtc/+), and GAL4 > *Crtc* (sNPF-GAL4/UAS-GFP::Crtc). (C) Immunohistochemical analysis of sNPF staining in control (*w*; *Crtc*^{25-3/+}) and *Crtc* mutant (*w*; *Crtc*²⁵⁻³) flies, or in control (*w* *CrebB* ^{Δ 400/+}) and *CrebB* mutant (*w* *CrebB* ^{Δ 400}) flies. (Scale bar, 50 μ m.) (D) Effect of *Crtc* or sNPF reexpression in sNPF neurons on starvation sensitivity of *Crtc* mutant flies. Genotypes are *Crtc*^{+/+}; GAL4/+ (*w*; *Crtc*²⁵⁻³ sNPF-GAL4/+), *Crtc*; sNPF-Gal4 (*w*; *Crtc*²⁵⁻³ sNPF-GAL4/*Crtc*²⁵⁻³), *Crtc*; sNPF > *Crtc* (*w*; *Crtc*²⁵⁻³ UAS-*Crtc*/*Crtc*²⁵⁻³ sNPF-GAL4), and *Crtc*; sNPF > sNPF (*w*; *Crtc*²⁵⁻³ UAS-sNPF/*Crtc*²⁵⁻³ sNPF-GAL4) (log-rank, $P < 0.01$). (E and F) Relative mRNA amounts for inflammatory genes in control and *Crtc* mutant flies following *Crtc* reexpression in sNPF neurons (sNPF-GAL4; Rescue) (E) vs. hemocyte (Hml) or fat body (Fb) driver (F). Effect of *Crtc* overexpression (O/E) in control flies is also indicated. * $P < 0.05$. Genotypes are Con (*w*; *Crtc*²⁵⁻³ UAS-*Crtc*/+), *Crtc* (*w*; *Crtc*²⁵⁻³ UAS-*Crtc*/*Crtc*²⁵⁻³), O/E (*w*; *Crtc*²⁵⁻³ UAS-*Crtc*/sNPF-GAL4), Rescue (*w*; *Crtc*²⁵⁻³ UAS-*Crtc*/*Crtc*²⁵⁻³ sNPF-GAL4), Hml (*w*; *Crtc*²⁵⁻³ UAS-*Crtc*/*Crtc*²⁵⁻³ hml Δ -GAL4), and Fb (*w*; Fb-GAL4/+; *Crtc*²⁵⁻³/UAS-*Crtc*, *Crtc*²⁵⁻³). (G) Effect of sNPF reexpression from sNPF, Hml, or Fb drivers on triglyceride levels in *Crtc* mutants or control flies. * $P < 0.05$ [Student's *t* test (B, and E–G) or log-rank test (D)]. Data are from three independent experiments (for B and E–G, data are SEM \pm SD). (H) Effect of *Crtc* overexpression in sNPF neurons on starvation sensitivity in control and sNPF mutant flies. Genotypes are sNPF^{GAL4/+} (*yw*; sNPF^{NP6301/+}), sNPF^{GAL4} (*yw*; sNPF^{NP6301}), sNPF^{GAL4/+}; UAS-*Crtc* (*yw*; sNPF^{NP6301/+}; UAS-*Crtc*/+), and sNPF^{GAL4}; UAS-*Crtc* (*yw*; sNPF^{NP6301}; UAS-*Crtc*/+). (log-rank, $P < 0.01$).

reporter in S2 cells exposed to cAMP agonist (Fig. 3A). We also performed ChIP studies to determine if *Crtc* directly regulates sNPF transcription. Using the GAL4/UAS system to target expression of epitope-tagged *Crtc* to sNPF neurons, we observed robust recruitment of *Crtc* to the sNPF promoter relative to controls (Fig. 3B). Consistent with the role of *CrebB* and *Crtc* in stimulating sNPF gene expression, protein amounts for sNPF, detected by immunohistochemical staining, were substantially reduced in adult *CrebB* and *Crtc* mutant brains (Fig. 3C).

We used the GAL4/UAS system in *Crtc* mutant flies to evaluate whether this coactivator is required specifically within sNPF neurons to regulate inflammation and starvation sensitivity. Supporting this idea, expression of *Crtc* under control of a *sNPF-GAL4* driver reduced AMP gene expression and restored phospho-AKT amounts, thereby increasing triglyceride stores (Fig. 3D–G and Fig. S1D); however, *Crtc* expression in other classes of neurons or in other tissues did not. Additionally, melanization, a characteristic feature of the *Drosophila* immune response, was evident in the posterior midgut and hindgut of *Crtc* mutants (Fig. S2C); reexpression of *Crtc* in sNPF neurons, but

not in other tissues, rescued the melanization phenotype (Fig. S2D). Indeed, overexpression of *Crtc* in sNPF neurons of wild-type flies further enhanced their starvation resistance (Fig. 3H). Collectively, these results indicate that *Crtc* functions in some or all of the sNPF neurons to regulate starvation sensitivity and gut immunity.

sNPF Inhibits Inflammation. To determine whether sNPF itself mediates the effects of *Crtc* on inflammation and energy metabolism, we evaluated starvation resistance and gut inflammation in *sNPF* mutants using two alleles: a P-element insertion (*sNPF^{NP6301}*) and a *sNPF* partial deletion (*sNPF^{Δ119}*; Fig. S3A). Both *sNPF* mutant alleles act as strong loss-of-function alleles and show similar phenotypes. sNPF peptide is greatly reduced in either of the *sNPF* mutants by immunohistochemical analysis (Fig. S3B).

mRNA amounts for proinflammatory genes (*upd3*, *Dipt*, *Att*, and *TotA*) were increased in *sNPF* mutants relative to controls (Fig. 4B). Similar to *Crtc* mutant flies, *upd3-lacZ* reporter activity was elevated in *sNPF* mutant midguts (Fig. S3C). *Dipt-lacZ* expression in the proventriculus of *sNPF* mutants was also substantially up-regulated, whereas *Drs-GFP* reporter activity was not (Fig. S3C).

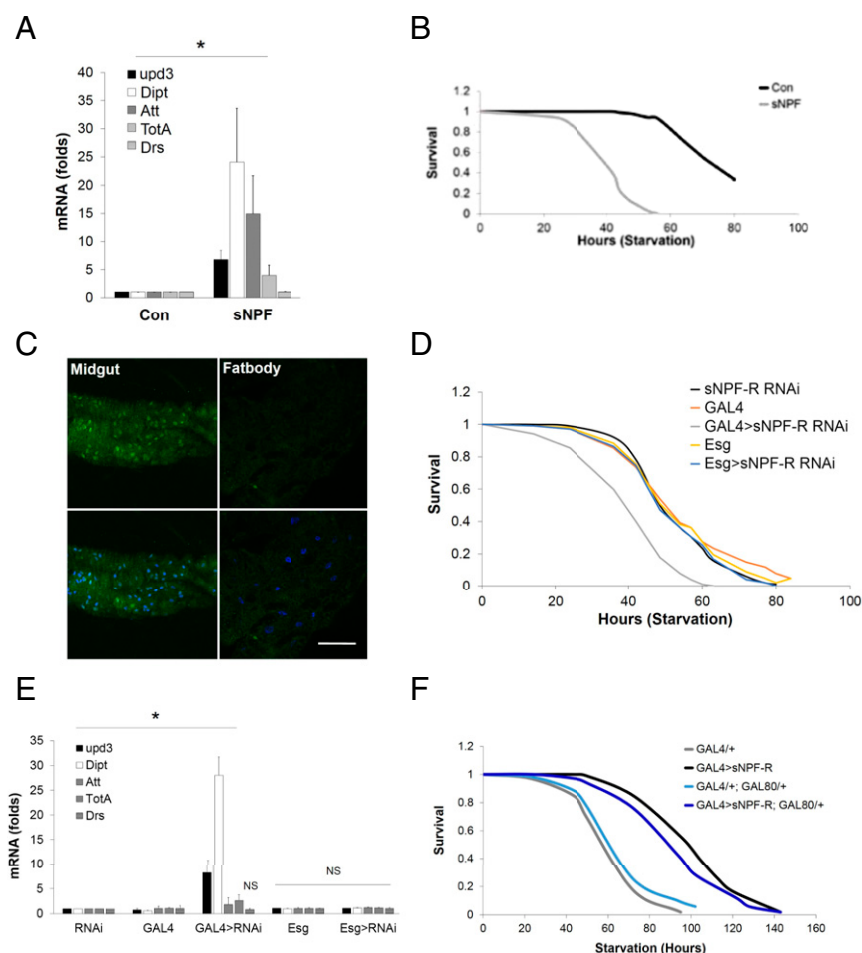


Fig. 4. sNPF suppresses the gut immune response. (A) Starvation sensitivity of control and sNPF mutant (*sNPF^{NP6301}*) flies ($n = 100$). (B) Relative mRNA amounts for proinflammatory genes in control and *sNPF^{NP6301}* mutant flies ($n = 3$). (C) Immunofluorescence analysis of UAS-GFP reporter expression in the midgut and fat body of sNPF-R promoter-GAL4 flies. (Scale bar, 50 μm .) Starvation sensitivity (D) and immune response gene expression (E) in flies depleted of sNPF-R with gut-specific GAL4 drivers are shown. Genotypes are as follows: sNPF-R RNAi (*UAS-Dicer2*, *UAS-sNPF-R RNAi*/+), GAL4 (*Myo1A-Gal4*/+), GAL4 > sNPF-R RNAi (*Myo1A-GAL4*/+; *UAS-Dicer2*, *UAS-sNPF RNAi*/+), escargot (*Esg-Gal4*/+), and *Esg > sNPF-R RNAi* (*Esg-GAL4*/+; *UAS-Dicer2*, *UAS-sNPF RNAi*/+). (F) Effect of *sNPF-R* overexpression using a *sNPF-R-GAL4* driver on starvation sensitivity. The effect of blocking sNPF-R expression in neuronal tissues using *elav-GAL80* is indicated. Genotypes are GAL4/+ (*sNPF-R-GAL4*/+); GAL4 > sNPF-R (*sNPF-R-GAL4/UAS-sNPF-R*); GAL4/+; GAL80/+ (*elav-GAL80*; *sNPF-R-GAL4*/+); and GAL4 > sNPF-R; GAL80/+ (*elav-GAL80*; *sNPF-R-GAL4/UAS-sNPF-R*) (log-rank, $P < 0.01$). * $P < 0.05$ [Student's *t* test (B and E) or log-rank test (A, D, and F)]. Data for B and E are from three independent experiments (data are mean \pm SD).

In line with these increases in immune gene expression, *sNPF* mutant flies have lower triglycerides, and they are more sensitive to starvation compared with controls (Fig. 4A and Fig. S3 D and E). Consistent with a role for neuronal sNPF, blocking synaptic release in the sNPF neurons with tetanus toxin increased starvation sensitivity in wild-type flies (Fig. S3F).

Having seen that *Crtc* overexpression in sNPF neurons enhances starvation resistance in wild-type flies, we wondered whether these effects are indeed dependent on sNPF itself. By contrast with its salutary effects in a wild-type background, *Crtc* overexpression in *sNPF* mutant flies failed to promote starvation resistance (Fig. 3H). Taken together, these results demonstrate the importance of sNPF in mediating metabolic effects of *Crtc*.

Enterocyte sNPF Receptors Mediate Effects of Neuronal sNPF. To determine the mechanism by which sNPF mediates effects of *Crtc* on starvation resistance, we evaluated sNPF receptor (sNPF-R) expression in tissues from adult flies. mRNA amounts for sNPF-R were detected in the head and at fivefold higher levels in the midgut (Fig. S4A). Similarly, UAS-GFP reporter expression was observed in enterocytes of transgenic flies expressing a sNPF-R promoter-GAL4 driver (Fig. 4C). Indeed, midgut sNPF-R expression was significantly increased in *Crtc* flies, likely reflecting the compensatory receptor up-regulation that often accompanies decreases in ligand binding (Fig. S4B).

We tested the importance of sNPF-R in mediating effects of *Crtc* in the gut. Similar to disruption of sNPF, RNAi-mediated knockdown of sNPF-R with the enterocyte-specific GAL4 driver *Myo1A-GAL4* (23) decreased fly starvation resistance compared with controls (Fig. 4D). By contrast, knockdown of sNPF-R in ISCs and enteroblasts (EBs) with an *Esg-GAL4* driver (24) did not modulate starvation resistance. Indeed, knockdown of sNPF-R in enterocytes, but not ISCs or EBs, also up-regulated inflammatory peptide expression while decreasing energy stores (Fig. 4E and Fig. S4C). Conversely, overexpression of sNPF-R from its own promoter-driven GAL4 (*sNPF-R-GAL4*) increased starvation resistance in a wild-type background (Fig. 4F). *sNPF-R-GAL4* drives expression in both the gut and nervous system. To determine in which tissue sNPF-R functions to increase starvation resistance, we blocked sNPF-R overexpression specifically in neuronal tissues by coexpression of the GAL80 repressor with *elav-GAL80*. The inclusion of *elav-GAL80* did not attenuate sNPF-R effects on starvation resistance, indicating that the expression of sNPF-R specifically in the gut is required for metabolic effects (Fig. 4F). Collectively, these results demonstrate that enterocyte sNPF-R is required for salutary effects of *Crtc* on innate immunity and energy balance.

Discussion

Disruptions in energy balance are a component of the collateral damage associated with mounting an immune response. In addition to regulating the magnitude of an immune response, energy allocation must be properly regulated to minimize physiological damage during infection. We found that *Drosophila* sNPF, a mammalian NPY homolog, is regulated by *CrebB/Crtc* within the CNS, where it promotes energy balance by maintaining epithelial integrity and thereby attenuating overexuberant immune activation in the gut. The effects of sNPF were unexpected, given its role in food-seeking behavior (25). Indeed, food intake appears comparable between *Crtc* mutants and control flies (12).

The effects of sNPF are mediated by enterocyte sNPF-Rs, suggesting that the sNPF brain-gut signal is released by a subset of the sNPF⁺ neurons that directly innervate the gut (26). Although neuronal activity is known to contribute to energy homeostasis, our results suggest that the modulation of the gut immune system by *CrebB/Crtc* is a critical component in this process.

Epithelial tissues are typically colonized by both commensal and invasive microbes. sNPF appears to be actively expressed and released from the CNS in times of stress, providing nonautonomous control of gut immunity from the brain. Based on its widespread expression in the midgut, sNPF-R may provide ubiquitous attenuation of the innate immune response. Consistent with our observations in *Drosophila*, activation of the NPY receptor ortholog (NPR-1) in *Caenorhabditis elegans* also down-regulates inflammatory gene expression (27). Our studies extend these findings by showing how a neuronal fasting-inducible pathway modulates energy balance via its effects on the gut immune system.

Following their activation, sNPF-Rs appear to promote energy balance by enhancing epithelial integrity. Although the mechanism underlying these effects is unclear, we note that disruption of the tight junction protein Bbg in flies also causes constitutive up-regulation of innate immunity genes (17). Future studies should reveal whether sNPF-R modulates the activity of Bbg or related proteins in enterocytes.

In mammals, inflammatory bowel diseases, such as ulcerative colitis, are often associated with profound weight loss, due, in part, to the chronic activation of the immune system. By reducing inflammatory gene expression and enhancing energy homeostasis, gut neuropeptides, such as NPY, may provide therapeutic benefit in this setting.

Methods

Fly Stocks. All *Drosophila melanogaster* lines were maintained at 25 °C on standard food medium. *GMR19H06-GAL4 (sNPF-Gal4)* (28), *GMR66A02-GAL4 (sNPF-R-GAL4)* (28), *UAS-CD8::GFP* (29), *Dipt-LacZ* (30), *Drs-GFP* (31), *r4-GAL4* (32), and *Fb-gal4* (33) lines were obtained from the Bloomington *Drosophila* Stock Center. *CRE-luc* reporter flies (20) and *Upd3-Gal4* (15), *UAS-GFP*, *Dipt-GFP* (34), and *Crtc²⁵⁻³* (12) lines have been described previously. The *sNPF^{NP6301}* line was purchased from the *Drosophila* Genetic Resource Center. The sNPF RNAi lines were purchased from the Vienna *Drosophila* Resource Center stock center.

Generation of *Creb* and *sNPF* Deletion Alleles. *CrebB* deletion alleles were generated by mobilization of the P{EPgy2}insertion EY04780 with a Δ 2-3 source of transposase (35). Potential deletions were screened by PCR. The *CrebB^{Δ400}* deletion line has an ~3.5-kb deletion that removes sequences encoding the CREB leucine zipper-DNA binding domain. The *CrebB^{Δ400}* deletion break points were confirmed by sequencing.

sNPF deletion was generated using clustered regularly interspaced short palindromic repeats (CRISPRs) (36). Briefly, two pairs of chi-RNA targeting sequences were selected using CRISPR Resource (www.genome-engineering.org/crispr), sNPF-E2s, TACAGTTCCCATCAACGCG, sNPF-E2as, CGCGTTGATGG-GAAACTGTAC, sNPF-E5s, TGGCAATGACAATGGCAGCT, sNPF-E5as, and AGCTGCCATTGCATTGCCAC. The sequences were cloned into pU6-BbsI-chiRNA. Targeting DNAs were used with phsp70-Cas9 to inject fly embryos. Positive deletions were selected by PCR and confirmed with sequencing.

Cultivation of Bacterial Flora. Five third-instar larvae were collected, washed twice in PBS, and sterilized in 75% (vol/vol) ethanol for 2 min to eliminate bacteria on the larval surface. The larvae were then washed with sterile PBS and homogenized in 100 μ L of sterile PBS. Ten microliters of the homogenate was diluted in sterile PBS and spread on LB plates. The plates were incubated at 25 °C for 3 d.

Salmonella Injections. *Salmonella typhimurium* (a gift from D. Monack, Stanford University, Stanford, CA) was grown overnight in LB media shaking at 37 °C. Cultures were diluted, and 1,000 cfu was injected into male 5- to 7-d-old flies. Flies were anesthetized with CO₂ and injected with 50 nL of culture using a picospritzer and pulled glass needle. Flies were injected in the anterior abdomen on the ventrolateral surface. Flies were then placed in vials containing molasses medium and incubated at 29 °C, 65% humidity. The number of dead flies was counted daily. Using Prism (GraphPad) software, Kaplan–Meier survival curves were generated, and statistical analysis was done using log-rank analysis. Survival was tested at least three times and gave similar results for each trial. For cfu determination, infected flies were homogenized in PBS supplemented with 1% Triton X-100 and serially diluted. Dilutions were plated on LB agar plates and incubated overnight. The data were plotted using Prism software for three independent experiments. The *P* value was determined with a nonparametric two-tailed *t* test.

Cell Culture, Transfection, and Luciferase Assay. *Drosophila* S2 cells were maintained as previously described (12), and 1.5-kb and 0.7-kb sNPF promoter fragments were cloned into a pGL3 vector. Transfections were performed as reported (12). After 2–3 d infection, cells were collected for protein or RNA analysis.

Starvation and Oxidative Stress. Starvation and oxidative stress assays have been described (12).

Tissue Staining. Primary and secondary antibodies were used as indicated: anti-LacZ (41-1a; 1:100) from the Developmental Studies Hybridoma Bank, rabbit anti-pH 3 (1:1,000; Cell Signaling), mouse anti-GFP (1:1,000; Life Technologies), Alexa Fluor 488- and 568-conjugated antibodies (1:1,000; Life Technologies), rabbit anticaudal (Paul McDonald, University of Texas at Austin, Austin), rabbit anti-sNPF (Jan Veenstra, Université de Bordeaux, Bordeaux, France and Kweon Yu, Korea Research Institute of Bioscience and Biotechnology, Daejeon, South Korea), and mouse anti-CrebB (Jerry Yin, University of Wisconsin, Madison, WI). Tissues were counterstained with DAPI. Msn-lacZ activity was detected in transgenic flies by X-Gal (5-bromo-4-chloro-3-indolyl- β -D-galactopyranoside) staining. Images from staining are representative of three independent experiments.

Quantitative PCR. RNA was isolated from antennae of 10 female flies for each sample. The RNeasy kit (QIAGEN) was used to isolate RNA, and reverse transcription was performed using the Retroscript kit (Ambion) with random decamers. cDNA was subjected to quantitative PCR (qPCR) analysis using SYBR green detection on a Light Cycler 480 II thermocycler (Roche). All values are the average of four replicates, each measured in triplicate and normalized to rp49 mRNA.

qPCR Primers.

The following qPCR primers were used in this study:

upd-Forward (Fw) CTC CAC ACG CAC AAC TAC AAG

upd-Reverse (Re) GAT ACG CAA AGC TGG CCA CG

upd2-Forward (F) CGGAACATCACGATGAGCGAAT

upd2-Reverse (R) TCGGCGAGAACTGTACTCG

upd3-Fw GTC TGA ATC TCA CTA GCA AAC

upd3-Re AGG TCC CAG TGC AAC TTG ATG

Stat92e-F CTGGGCATTCAACAATCCAC

qStat92e-R GTATTGCGCGTAACGAACCC

Creb-Fw TCC CTG ATG CAA TTG GAT CC

- Ayres JS, Schneider DS (2012) Tolerance of infections. *Annu Rev Immunol* 30:271–294.
- Schneider DS, Ayres JS (2008) Two ways to survive infection: What resistance and tolerance can teach us about treating infectious diseases. *Nat Rev Immunol* 8(11):889–895.
- Medzhitov R, Schneider DS, Soares MP (2012) Disease tolerance as a defense strategy. *Science* 335(6071):936–941.
- Räberg L, Sim D, Read AF (2007) Disentangling genetic variation for resistance and tolerance to infectious diseases in animals. *Science* 318(5851):812–814.
- Rera M, Clark RI, Walker DW (2012) Intestinal barrier dysfunction links metabolic and inflammatory markers of aging to death in *Drosophila*. *Proc Natl Acad Sci USA* 109(52):21528–21533.
- Hoffmann JA (2003) The immune response of *Drosophila*. *Nature* 426(6962):33–38.
- Shim J, Mukherjee T, Banerjee U (2012) Direct sensing of systemic and nutritional signals by haematopoietic progenitors in *Drosophila*. *Nat Cell Biol* 14(4):394–400.
- Becker T, et al. (2010) FOXO-dependent regulation of innate immune homeostasis. *Nature* 463(7279):369–373.
- Hwangbo DS, Gershman B, Tu M-P, Palmer M, Tatar M (2004) *Drosophila* dFOXO controls lifespan and regulates insulin signalling in brain and fat body. *Nature* 429(6991):562–566.
- Giannakou ME, et al. (2004) Long-lived *Drosophila* with overexpressed dFOXO in adult fat body. *Science* 305(5682):361.
- Dionne MS, Pham LN, Shirasu-Hiza M, Schneider DS (2006) Akt and FOXO dysregulation contribute to infection-induced wasting in *Drosophila*. *Curr Biol* 16(20):1977–1985.
- Wang B, et al. (2008) The insulin-regulated CREB coactivator TORC promotes stress resistance in *Drosophila*. *Cell Metab* 7(5):434–444.
- Choi S, Kim W, Chung J (2011) *Drosophila* salt-inducible kinase (SIK) regulates starvation resistance through cAMP-response element-binding protein (CREB)-regulated transcription coactivator (CRTC). *J Biol Chem* 286(4):2658–2664.
- Altarejos JY, Montminy M (2011) CREB and the CRTC co-activators: Sensors for hormonal and metabolic signals. *Nat Rev Mol Cell Biol* 12(3):141–151.
- Agaisse H, Petersen U-M, Boutros M, Mathey-Prevot B, Perrimon N (2003) Signaling role of hemocytes in *Drosophila* JAK/STAT-dependent response to septic injury. *Dev Cell* 5(3):441–450.
- Jiang H, et al. (2009) Cytokine/Jak/Stat signaling mediates regeneration and homeostasis in the *Drosophila* midgut. *Cell* 137(7):1343–1355.
- Bonnay F, et al. (2013) big bang gene modulates gut immune tolerance in *Drosophila*. *Proc Natl Acad Sci USA* 110(8):2957–2962.
- Kuraishi T, Hori A, Kurata S (2013) Host-microbe interactions in the gut of *Drosophila melanogaster*. *Front Physiol* 4:375.
- Yin JCP, et al. (1994) Induction of a dominant negative CREB transgene specifically blocks long-term memory in *Drosophila*. *Cell* 79(1):49–58.
- Belvin MP, Zhou H, Yin JCP (1999) The *Drosophila* dCREB2 gene affects the circadian clock. *Neuron* 22(4):777–787.
- Wegener C, Herbert H, Kahnt J, Bender M, Rhea JM (2011) Deficiency of prohormone convertase dPC2 (AMONTILLADO) results in impaired production of bioactive neuropeptide hormones in *Drosophila*. *J Neurochem* 118(4):581–595.
- Root CM, Ko KI, Jafari A, Wang JW (2011) Presynaptic facilitation by neuropeptide signaling mediates odor-driven food search. *Cell* 145(1):133–144.
- Adipianakis Y, Rahme LG (2011) *Drosophila melanogaster* as a model for human intestinal infection and pathology. *Dis Model Mech* 4(1):21–30.
- Amcheslavsky A, Jiang J, Ip YT (2009) Tissue damage-induced intestinal stem cell division in *Drosophila*. *Cell Stem Cell* 4(1):49–61.
- Nassel DR, Enell LE, Santos JG, Wegener C, Johard HA (2008) A large population of diverse neurons in the *Drosophila* central nervous system expresses short neuropeptide F, suggesting multiple distributed peptide functions. *BMC Neurosci* 9:90.
- Veenstra JA, Agrícola H-J, Sellami A (2008) Regulatory peptides in fruit fly midgut. *Cell Tissue Res* 334(3):499–516.
- Styer KL, et al. (2008) Innate immunity in *Caenorhabditis elegans* is regulated by neurons expressing NPR-1/GPCR. *Science* 322(5900):460–464.
- Manning L, et al. (2012) A resource for manipulating gene expression and analyzing cis-regulatory modules in the *Drosophila* CNS. *Cell Reports* 2(4):1002–1013.
- Lee T, Luo L (1999) Mosaic analysis with a repressible cell marker for studies of gene function in neuronal morphogenesis. *Neuron* 22(3):451–461.

30. Reichhart JM, et al. (1992) Insect immunity: Developmental and inducible activity of the *Drosophila* dipteracin promoter. *EMBO J* 11(4):1469–1477.
31. Ferrandon D, et al. (1998) A drosomycin-GFP reporter transgene reveals a local immune response in *Drosophila* that is not dependent on the Toll pathway. *EMBO J* 17(5):1217–1227.
32. Lee G, Park JH (2004) Hemolymph sugar homeostasis and starvation-induced hyperactivity affected by genetic manipulations of the adipokinetic hormone-encoding gene in *Drosophila melanogaster*. *Genetics* 167(1):311–323.
33. Grönke S, et al. (2003) Control of fat storage by a *Drosophila* PAT domain protein. *Curr Biol* 13(7):603–606.
34. Tzou P, et al. (2000) Tissue-specific inducible expression of antimicrobial peptide genes in *Drosophila* surface epithelia. *Immunity* 13(5):737–748.
35. Robertson HM, et al. (1988) A stable genomic source of P element transposase in *Drosophila melanogaster*. *Genetics* 118(3):461–470.
36. Gratz SJ, et al. (2013) Genome engineering of *Drosophila* with the CRISPR RNA-guided Cas9 nuclease. *Genetics* 194(4):1029–1035.