

UC San Diego

UC San Diego Previously Published Works

Title

Combining schizophrenia and depression polygenic risk scores improves the genetic prediction of lithium response in bipolar disorder patients

Permalink

<https://escholarship.org/uc/item/5wj6h885>

Journal

Translational Psychiatry, 11(1)

ISSN

2158-3188

Authors

Schubert, Klaus Oliver
Thalamuthu, Anbupalam
Amare, Azmeraw T
[et al.](#)

Publication Date

2021

DOI

10.1038/s41398-021-01702-2

Copyright Information

This work is made available under the terms of a Creative Commons Attribution License, available at <https://creativecommons.org/licenses/by/4.0/>

Peer reviewed

ARTICLE OPEN



Combining schizophrenia and depression polygenic risk scores improves the genetic prediction of lithium response in bipolar disorder patients

Klaus Oliver Schubert^{1,2,77}, Anbupalam Thalamuthu^{3,77}, Azmeraw T. Amare^{1,77}, Joseph Frank⁴, Fabian Streit⁴, Mazda Adl⁵, Nirmala Akula⁶, Kazufumi Akiyama⁷, Raffaella Ardau⁸, Bárbara Arias⁹, Jean-Michel Aubry¹⁰, Lena Backlund¹¹, Abesh Kumar Bhattacharjee¹², Frank Bellivier¹³, Antonio Benabarre¹⁴, Susanne Bengesser¹⁵, Joanna M. Biernacka¹⁶, Armin Birner¹⁵, Cynthia Marie-Claire¹³, Micah Cearns¹, Pablo Cervantes¹⁷, Hsi-Chung Chen¹⁸, Caterina Chillotti⁸, Sven Cichon^{19,20}, Scott R. Clark¹, Cristiana Cruceanu²¹, Piotr M. Czerski²², Nina Dalkner¹⁵, Alexandre Dayer¹⁰, Franziska Degenhardt²⁰, Maria Del Zompo²³, J. Raymond DePaulo²⁴, Bruno Étain¹³, Peter Falkai²⁵, Andreas J. Forstner^{19,20,26}, Louise Frisen¹¹, Mark A. Frye¹⁶, Janice M. Fullerton^{27,28}, Sébastien Gard²⁹, Julie S. Garnham³⁰, Fernando S. Goes²⁴, Maria Grigoriou-Serbanescu³¹, Paul Grof³², Ryota Hashimoto^{33,34}, Joanna Hauser²², Urs Heilbronner³⁵, Stefan Herms^{19,20}, Per Hoffmann^{19,20}, Liping Hou⁶, Yi-Hsiang Hsu^{36,37}, Stephane Jamain³⁸, Esther Jiménez¹⁴, Jean-Pierre Kahn³⁹, Layla Kassem⁶, Po-Hsiu Kuo⁴⁰, Tadafumi Kato⁴¹, John Kelsoe¹², Sarah Kittel-Schneider⁴², Ewa Ferencztajn-Rochowiak⁴³, Barbara König⁴⁴, Ichiro Kusumi⁴⁵, Gonzalo Laje⁶, Mikael Landén^{46,47}, Catharina Lavebratt¹¹, Marion Leboyer⁴⁸, Susan G. Leckband⁴⁹, Mario Maj⁵⁰, Major Depressive Disorder Working Group of the Psychiatric Genomics Consortium, Mirko Manchia^{51,52}, Lina Martinsson⁵³, Michael J. McCarthy^{12,54}, Susan McElroy⁵⁵, Francesc Colom^{56,57}, Marina Mitjans^{58,59,60}, Francis M. Mondimore²⁴, Palmiero Monteleone⁶¹, Caroline M. Nievergelt¹², Markus M. Nöthen²⁰, Tomas Novák⁶², Claire O'Donovan³⁰, Norio Ozaki⁶³, Urban Ösby⁶⁴, Sergi Papiol^{25,35}, Andrea Pfennig⁶⁵, Claudia Pisanu²³, James B. Potash²⁴, Andreas Reif⁴², Eva Reininghaus¹⁵, Guy A. Rouleau⁶⁶, Janusz K. Rybakowski⁴³, Martin Schalling¹¹, Peter R. Schofield^{27,28}, Barbara W. Schweizer²⁴, Giovanni Severino²³, Tatyana Shekhtman¹², Paul D. Shilling¹², Katutaka Shimoda⁶⁷, Christian Simhandl⁶⁸, Claire M. Slaney³⁰, Alessio Squassina²³, Thomas Stamm⁵, Pavla Stopkova⁶², Fasil Tekola-Ayele⁶⁹, Alfonso Tortorella⁷⁰, Gustavo Turecki²¹, Julia Veeh⁴², Eduard Vieta¹⁴, Stephanie H. Witt⁴, Gloria Roberts⁷¹, Peter P. Zandi⁷², Martin Alda³⁰, Michael Bauer⁶⁵, Francis J. McMahon⁶, Philip B. Mitchell⁷¹, Thomas G. Schulze^{4,6,24,35,73}, Marcella Rietschel⁴ and Bernhard T. Baune^{74,75,76}✉

© The Author(s) 2021

Lithium is the gold standard therapy for Bipolar Disorder (BD) but its effectiveness differs widely between individuals. The molecular mechanisms underlying treatment response heterogeneity are not well understood, and personalized treatment in BD remains elusive. Genetic analyses of the lithium treatment response phenotype may generate novel molecular insights into lithium's therapeutic mechanisms and lead to testable hypotheses to improve BD management and outcomes. We used fixed effect meta-analysis techniques to develop meta-analytic polygenic risk scores (MET-PRS) from combinations of highly correlated psychiatric traits, namely schizophrenia (SCZ), major depression (MD) and bipolar disorder (BD). We compared the effects of cross-disorder MET-PRS and single genetic trait PRS on lithium response. For the PRS analyses, we included clinical data on lithium treatment response and genetic information for $n = 2283$ BD cases from the International Consortium on Lithium Genetics (ConLi⁺Gen; www.ConLiGen.org). Higher SCZ and MD PRSs were associated with poorer lithium treatment response whereas BD-PRS had no association with treatment outcome. The combined MET2-PRS comprising of SCZ and MD variants (MET2-PRS) and a model using SCZ and MD-PRS sequentially improved response prediction, compared to single-disorder PRS or to a combined score using all three traits (MET3-PRS). Patients in the highest decile for MET2-PRS loading had 2.5 times higher odds of being classified as poor responders than patients with the lowest decile MET2-PRS scores. An exploratory functional pathway analysis of top MET2-PRS variants was conducted. Findings may inform the development of future testing strategies for personalized lithium prescribing in BD.

Translational Psychiatry (2021) 2021:100–108; <https://doi.org/10.1038/s41398-021-01702-2>

A full list of author affiliations appears at the end of the paper.

Received: 19 September 2021 Revised: 8 October 2021 Accepted: 22 October 2021

Published online: 29 November 2021

INTRODUCTION

Bipolar affective disorder (BD) is a severe and often chronic psychiatric illness, characterized by recurrent dysregulation of mood with alternating episodes of mania and depression. BD affects an estimated 48.8 million people globally and is associated with an early disease onset accounting for 9.9 million years of life lived with disability worldwide [1]. All-cause mortality and risk of suicide [2] are substantially increased in people with the disorder. Both genetic and environmental factors have been identified that contribute to the pathogenesis of BD [3] but the underlying molecular biology remains poorly understood, largely due to substantial genetic and clinical heterogeneity.

Lithium occupies a status as the ‘gold standard’ treatment amongst the mood-stabilizing medicines used for acute and maintenance therapy in BD [4–6]. It possesses strong anti-manic properties [7, 8] and is protective against further episodes of both manic and depressive polarity, making it more effective in preventing re-hospitalizations than other BD medicines [9]. Furthermore, lithium has proven anti-suicidal properties [10]. Lithium is recommended as a first-line option for anti-manic and maintenance treatment by several clinical practice guidelines [11–14]. However, lithium therapy comes with several caveats. First, the therapeutic response to lithium in BD is highly heterogeneous. In acute mania, about 65% of patients respond at least partially to lithium monotherapy while 35% are refractory [15, 16]. In maintenance treatment, an excellent long-term response is reported only for ~30% of patients, whereas 30% have intermediate outcomes and 30% respond poorly [17]. Second, lithium is toxic at excessive doses and plasma levels need to be carefully monitored for the duration of treatment [18]. Third, lithium has long-term adverse effects including suppression of thyroid function and is associated with an elevated risk of renal failure [5].

To facilitate more personalized prescribing of lithium or alternative BD medicines, there is a need to define clinical and biological markers that could stratify BD patients into treatment response groups, ensuring that lithium is recommended at the earliest opportunity to patients most likely to respond, and is avoided in those who will likely derive no clinical benefits. Certain clinical factors (e.g. absence of physical co-morbidity [19, 20]; manic index episode [19]; family history of favourable lithium treatment [21] are associated with better treatment response, but none of these variables are sufficient to guide lithium prescribing on an individual basis. Among biological markers, both individual genetic variants (i.e. single nucleotide polymorphisms, SNPs [17] and the cumulative burden of many genetic variants (i.e. polygenic risk scores, PRS) have been identified that differentiate lithium response groups. We recently reported that BD patients with high genetic loading for schizophrenia, as calculated by PRS analysis, are less likely to have favourable lithium treatment outcomes than BD patients with low schizophrenia PRS [22]. Similarly, patients with high loadings for major depression (MDD) PRS were less likely to respond well to lithium than those with low MDD-PRS loading [23].

From these findings, several new research questions arise. First, does a combination of highly correlated genetic traits improve the predictive accuracy of the PRS approach? Previous studies have demonstrated that SCZ, BD, and MDD show substantial genetic overlap [24–26] and share biological pathways involved in disease pathophysiology [24, 25, 27]. The generation of multi-trait genomic risk scores from these genetically related disorders (SCZ, MDD, and BD) has been shown to improve diagnostic prediction accuracy [28], and therefore may be an avenue towards better translation of genetic findings into practice [29]. Second, while high SCZ and MDD-PRS were independently shown to predict poorer overall treatment response [22], other genomic signatures could predict better response, or different forms of response (e.g. level of agitation, depression, or cognition); hence, various combinations of PRS might help stratify or refine the response prediction. Third, related traits that are enriched with

variants that predict the same direction of response (i.e. high load = poor response) might share certain key genetic variants, which influence response, enabling their molecular dissection.

In the current study, we investigated the contribution of variants from three genome-wide association studies (GWAS) in SCZ, MDD, and BD to lithium response in BD patients, and examined whether PRSs that are derived from cross-disorder meta-analysis of individual disorder GWAS improve genetic prediction. Further, we explored the relative individual contribution of disease-specific PRS to the combined PRS and investigated whether these were characterized by overlapping or divergent sets of genetic variants. Finally, to derive insights into molecular pathways that might influence lithium pharmacodynamics in BD, we conducted a pathway analysis of the top SNPs from the combined PRS analysis.

METHODS

Discovery GWAS summary datasets

The GWAS summary statistics for SCZ, MDD, and BD were each obtained from the Psychiatric Genetics Consortium (PGC; <http://www.med.unc.edu/pgc/>). The SCZ dataset included 36,989 patients with SCZ and 113,075 healthy controls, including a subset of individuals with East Asian ancestry [26]. The MDD dataset was produced from a meta-analysis of seven cohorts (deCODE, Generation Scotland, GERA, iPSYCH, UK Biobank, PGC29 and 23andMe) containing 135,458 MD cases and 344,901 healthy controls [30]. The BD dataset was obtained from Stahl et al., 2019 [31], and the discovery sample was produced from a meta-analysis of 19,112 BD cases and 31,356 healthy controls after excluding 1242 individuals (1240 cases, 2 controls) who constituted the ConLi⁺Gen cohorts in the original data. Cross-disorder meta-analysis of the above summary statistics was performed using METACARPA [32], which accounts for unknown sample overlaps across the studies. If the summary statistics of multiple GWAS involve overlapping samples then the beta values across the GWAS are expected to be correlated (these correlations are functions of overlapping sample sizes) and failure to account these correlations would inflate the fixed effect inverse variance weighted meta-analysis beta values [33]. When the exact number of samples overlapping across the studies are unknown, the correlations among betas can be empirically estimated. In a p-value based meta-analysis, the correlations between summary statistics were estimated using tetrachoric coefficients of truncated GWAS z-statistics instead of the Pearson correlations [34]. METACARPA uses this correlation matrix of beta values to account for the covariance between the GWAS beta values and implements computed meta-analysis statistics using Lin and Sullivan’s [33] method. The meta-summary statistics of MD, SCZ, and BD (MET3) and MD and SCZ (MET2) and Wald p-values produced METACARPA were employed for PRS calculation.

Target study sample

For the PRS analysis, clinical data on lithium treatment response and genetic information were obtained from the International Consortium on Lithium Genetics (ConLi⁺Gen; www.ConLiGen.org). A sample of $n = 2283$ BD patients with complete phenotype information was included in the analysis [23].

Target outcome

Lithium treatment response was assessed using the validated “Retrospective Criteria of Long-Term Treatment Response in Research Subjects with Bipolar Disorder” scale (the *Alda* scale) [35–37]. The instrument quantifies symptom improvement in BD with lithium over the course of treatment. Global improvement is rated with an “A” score (range 0–10), which is then weighted against five criteria (*Alda B* score) that assess the quality of evidence for the response score [17], to arrive at a total *Alda* score. For dichotomized assessment of treatment response, patients with a total score of 7 or higher were categorized as “good responders”, and the remainder were categorized as poor responders [17, 37]. For continuous assessment of treatment response, total *Alda* scores were used [38].

Genotyping, quality control, and imputation

Genotyping and imputation in the ConLi⁺Gen cohorts have been described in detail elsewhere [17]. Briefly, genotyping across multiple

cohorts was performed using several commercial SNP arrays (Affymetrix 6.0, Human610/660 W, HumanOmniExpress, HumanOmni1-Quad, HumanOmni2.5). The 1000 Genomes reference panel was used to impute additional genotypes as implemented in SHAPEIT2 [39] and minimac2 [40]. Quality control filters for the SNPs, including minor allele frequency (MAF) < 0.01, imputation quality score R-square < 0.6 and Hardy-Weinberg test of equilibrium for genotype frequencies (HWE) p -value $\leq 1e-6$, were applied to the imputed data of each cohort. From the imputed dosage score, genotype calls for the filtered SNPs were derived and common sets of SNPs across the cohorts were merged using PLINK [41]. Merged genotype data from all the cohorts underwent additional post-merge quality control, and were used for creating PRSs.

Polygenic Risk Score (PRS) analysis

The posterior effect sizes of GWAS and meta-analysis summary statistics were first obtained using the software PRS-CS [32]. PRS-CS uses the Bayesian regression framework to obtain the posterior effect sizes of the GWAS summary statistics with continuous shrinkage priors on the effect sizes and utilizing the linkage disequilibrium (LD) among the SNPs [42]. This approach results in a pruned set of posterior effect sizes for the summary statistics without the need to threshold the p -values for PRS calculation. For the current analysis, the precomputed LD pattern of the 1000 Genomes European reference panel and the default priors for the effect sizes were used. The PRS scores were generated using PLINK based on the posterior effect sizes instead of the actual effect sizes of the GWAS and meta-analysis.

Statistical analysis

To assess the association of PRSs of individual traits (SCZ, BD, and MD), the cross-disorder meta-summary PRSs of SCZ, MD and BD (MET3), and SCZ and MD (MET2) with lithium treatment response, a binary logistic regression model was applied for the binary outcome (lithium response versus non-response). For association with *Alda total*, a tobit analysis model (censored regression) was used to account for the floor effect at zero. We used the following covariates for analysis: age, gender, 4 ethnicity principal components (PCs), site, and SNP chip type. The proportion of phenotypic variance explained by PRSs (partial R^2) was calculated using the Nagelkerke method, as implemented in R package *rsq* [43]. R (version 4.0.0) [44] was used for data manipulations and statistical analyses. We also examined the joint effect of MDD-PRS and SCZ-PRS in a multivariate regression model with all the relevant covariates for comparison with MET2-PRS. The incremental R^2 for the two PRS scores was computed as the difference in R^2 of the models fit with and without the two PRS scores.

For all PRSs, we divided the study sample into deciles, ranging from the lowest polygenic load (1st decile, reference group) to the highest polygenic load (10th decile). Then, we compared lithium response rates in BD patients in the higher polygenic load deciles (2nd–10th deciles) with patients in the lowest polygenic load decile (1st decile).

We performed a power analysis for each PRS using the R package *avengeme* [45] with the input parameters heritability on liability, the number of independent SNPs, disease prevalence, and proportion of null markers. Heritability and prevalence for schizophrenia and bipolar disorder were obtained from Table 1 in Wray et al., 2010 [46]; the number of independent SNPs as produced by the PRS-CS package and the proportion of null markers were set as 90%.

Table 1. Characteristics of the patient sample.

Characteristic	Lithium responders (Alda Total Score ≥ 7)	Lithium non-responders (Alda Total Score ≤ 6)
<i>N</i> (%)	637 (27.9)	1646 (72.1)
Female <i>N</i> (%)	352 (55.3)	950 (57.7)
Age mean (SD)	50.23 (14.71)	45.92 (13.47)
Alda A mean (SD)	9.23 (0.79)	5.07 (2.7)
Alda B mean (SD)	1.14 (0.94)	3.04 (1.61)

SD standard deviation.

Functional analyses

To explore the biological context and potential mechanistic underpinnings of the SNPs discovered from the cross-disorder meta-analyses, we performed pathway analyses using Qiagen's Ingenuity Pathway Analysis (IPA®, QIAGEN Redwood City, CA, USA, www.qiagen.com/ingenuity). To prepare the input genes for IPA®, we followed a two-step approach: first, all SNPs from the MET2-PRS that showed associations with both SCZ and MDD at meta-analysis threshold $p < 5 \times 10^{-8}$ were selected; second, SNPs from step 1 were mapped to their hosting genes using ANNOVAR software [47]. For intergenic SNPs, ANNOVAR provides distance to the nearest upstream and downstream gene. The SNPs were mapped to the closest genes using this distance (range: 0-796688 BP). This final list of mapped genes was entered into IPA® (content version: 52912811, 2020).

IPA compares the proportion of input genes mapping to a biological pathway to the reference gene list from the ingenuity databases. Molecule relationships previously experimentally observed in human, mouse, rat, and uncategorized species were included. The significance of the over-represented canonical pathways and functional networks is determined using the right-tailed Fisher's exact test and later adjusted for multiple testing using the Benjamini-Hochberg (BH) method. Significant results are determined at BH adjusted p -value < 0.01.

RESULTS

Sample

Details of the ConLi+Gen sample of patients with BD have been published previously [17]. For the current analyses, genetic and clinical data from $n = 2283$ patients were used (57% females). 27.9% of patients were classified as excellent lithium responders (Alda Total Score ≥ 7), whereas 72.1% were classified as non-responders (Alda Total Score ≤ 6) (Table 1).

Associations of individual and combined SCZ, MDD, and BD-PRS with lithium treatment response

The dichotomous lithium treatment response outcome (*Alda total* ≥ 7 , indicating excellent vs non-responders) was significantly associated with SCZ-PRS ($p = 0.0005$) and MDD-PRS ($p = 0.009$), but not with BD-PRS ($p = 0.24$) (Fig. 1, Supplementary Table 1). Power analyses for each PRS indicated that the sample sizes required for the training dataset for 80% power were similar for schizophrenia ($n = 5537$) and bipolar disorder ($n = 5741$), suggesting that the observed lack of association between BD-PRS and lithium response may not be due to lack of power.

Significant associations were also shown for MET3-PRS (comprised of SCZ, MDD, and BD; $p = 0.004$) and MET2-PRS (comprised

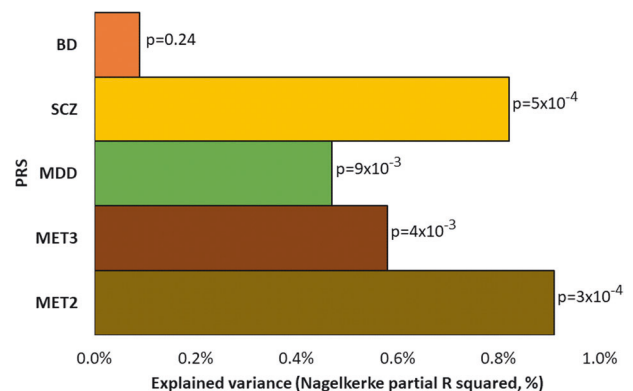


Fig. 1 The associations of polygenic risk scores (PRS) for bipolar disorder (BD), schizophrenia (SCZ), major depression (MDD), meta-SCZ/MDD/BD (MET3), and meta-SCZ/MDD (MET2) with dichotomous lithium treatment response (Alda total ≥ 7). The x-axis refers to the percentage of explained variance in treatment response to lithium accounted for by the PRS (Nagelkerke partial R^2). The y-axis plots the PRS for BD, SCZ, MDD, MET3, and MET2. Each bar is labelled with the p -values for the association between the PRS and lithium treatment response.

of SCZ and MDD; $p = 0.0003$). Each of these associations remained significant after adjustment for multiple testing (p -threshold = $0.05/5 = 0.01$). The proportion of phenotype variance explained by MET2-PRS (partial $R^2 = 0.91\%$) was higher than for SCZ-PRS (partial $R^2 = 0.82\%$), MDD-PRS (partial $R^2 = 0.47\%$), and MET3-PRS (partial $R^2 = 0.58\%$) (Fig. 1, Supplementary Table 1).

We also examined the joint effect of MDD-PRS and SCZ-PRS in a multivariate regression model with all the relevant covariates for comparison with MET2-PRS. The incremental R^2 for the two PRS scores was found to be 0.92%, similar to MET2-PRS R^2 . The joint p -value for the two scores was $p = 0.0002$, again similar to the MET2-PRS p -value (supplementary Table 1).

The continuous lithium response outcome *Alda total*, using a tobit regression model, was significantly associated with SCZ-PRS ($p = 0.0095$), MD-PRS ($p = 0.0029$), MET3-PRS (0.0044), and MET2-PRS ($p = 0.0003$). BD-PRS was not associated with *Alda total* (Supplementary Table 2). PRS beta values for all associations were negative, indicating a consistent direction of effect of PRS for SCZ, MDD, MET3, and MET2 on lithium response as measured by *Alda total*.

To further evaluate the impact of the individual and combined PRS on lithium treatment response, we divided the study population into deciles based on their polygenic loading. Samples were grouped based on the deciles for PRS for BD, SCZ, MDD, MET3, and MET2 ($n = 228$ in each decile group). Decile group 1 (reference group) contained individuals with the lowest genetic loading for the respective PRS, whereas decile group 10 represented those with the highest loading.

Individuals with higher polygenic loading for any of the tested PRS except BD-PRS were at increased risk of experiencing a poor therapeutic response to lithium (Fig. 2). Compared to the low PRS (1st decile) reference groups, odds ratios (ORs) for poor response were significantly different ($p < 0.05$) for SCZ-PRS (8th decile: OR = 2.16, $p = 0.001$; 9th decile: OR 1.63, $p = 0.04$; 10th decile: OR = 1.87, $p = 0.04$), MDD-PRS (8th decile: OR = 1.61, $p = 0.04$), MET3-PRS (10th decile: OR = 1.92, $p = 0.03$), and MET2-PRS (4th decile: OR = 1.61, $p = 0.03$; 10th decile: OR = 2.54, $p = 0.002$). (Fig. 2, Supplementary Table 3).

Pearson correlations between disease-specific and meta-PRS were calculated. As shown in Supplementary Table 4, the correlation between SCZ-PRS and MET2-PRS was $r = 0.83$, whereas MDD-PRS and MET2-PRS had a correlation of $r = 0.6$.

Exploratory functional analysis of top SCZ-MDD-PRS (MET2) variants

Eight thousands six hundred nineteen SNPs from the MDD and SCZ meta-analysis in METACARPA (MET2) at $p \leq 5 \times 10^{-8}$ and in consistent direction in both GWAS studies were selected to explore the biological context of overlapping risk alleles (Supplementary Table 5). Of note, a PRS calculated from these selected 8619 SNPs was not by itself associated with lithium response (data not shown). By mapping SNPs to hosting- and nearby genes (distance to nearest gene is shown in Supplementary Table 5), we derived a list of 270 genes (Supplementary Table 6). 106 (41%) of these genes intersected with SCZ genes (GWAS p -value $\leq 5 \times 10^{-8}$); 73 (29%) intersected with MDD genes (GWAS p -value $\leq 5 \times 10^{-8}$); 37 (14%) intersected with both SCZ and MDD genes (Supplementary Table 6). Of the 270 MET2 genes, IPA® could unequivocally identify 256 genes in its database for enrichment and pathway analysis (Supplementary Table 7).

IPA® examined six categories of enrichment in which genes from the MET2 list were over-represented, including: *top canonical pathways*; *upstream regulators*; *diseases & disorders*; *molecular & cellular functions*; *physiological system functions*; and *networks* (Supplementary Table 8). The majority of these associations were driven by genes involved in histone biology (e.g. H4C1, H4C2, H4C3, H4C4, H4C8, H4C11, H4C12, H4C13; H3C2, H3C3, H3C8, H3C10, H3C11, H3C12; H1-1, H1-2, H1-4, H1-5, H1-6). Over-representation of MET2 genes was found for IPA® *disease-related pathways* in endocrine system disorders, gastrointestinal disease, immunological disease, metabolic disease, and organismal injury and abnormalities (Supplementary Table 8). Associations with the first three disease categories (endocrine, gastrointestinal, and immunological) was most strongly driven by MET2 genes over-represented in IPA®-defined genesets relating to insulin-dependent diabetes mellitus, diabetes mellitus, and glucose metabolism disorder (Supplementary Table 9).

IPA® also calculated *networks* of the functionally most connected MET2 genes. Network 1 (IPA® score 67) was annotated to *endocrine system disorders, gastrointestinal disease, and immunological disease*, and identified H4 clustered histone 1 (H4C1), histone h3, and E3 ubiquitin-protein ligase (RBX1) as nodes with the highest number of network connections (Fig. 3, Supplementary Table 8). Network 2 (IPA® score 39) was annotated with *cell*

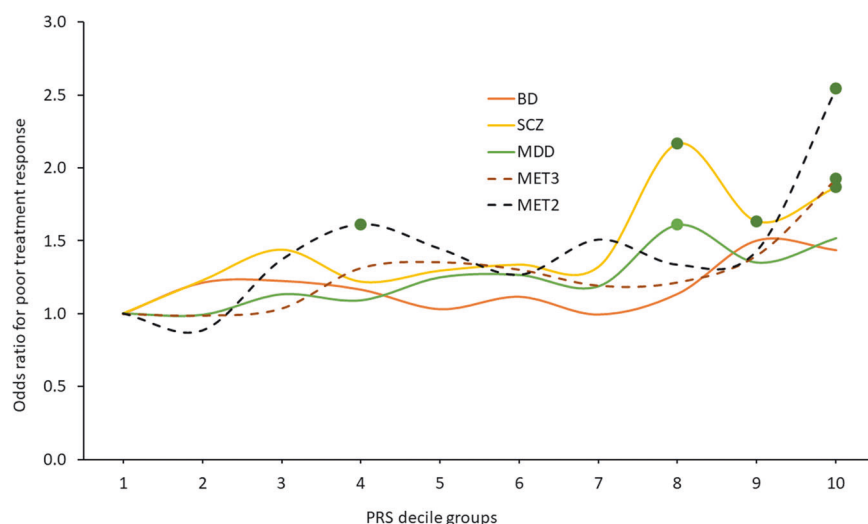


Fig. 2 Odds ratios (ORs) for unfavourable treatment response to lithium (*Alda* score ≤ 6) in patients with BD. ORs are derived by comparing patients with higher polygenic loads (PRS deciles 2–10) for BD (orange line), SCZ (yellow line), MDD (green line), meta-(SCZ/MDD/BD) (MET3, maroon dashed line), and meta-(SCZ/MDD) (MET2, brown dotted line) with patients with the lowest respective polygenic loads (PRS 1st decile). Dots indicate $p < 0.05$. Analyses were adjusted for gender, age, 4 PCs, site, and SNP chip type.

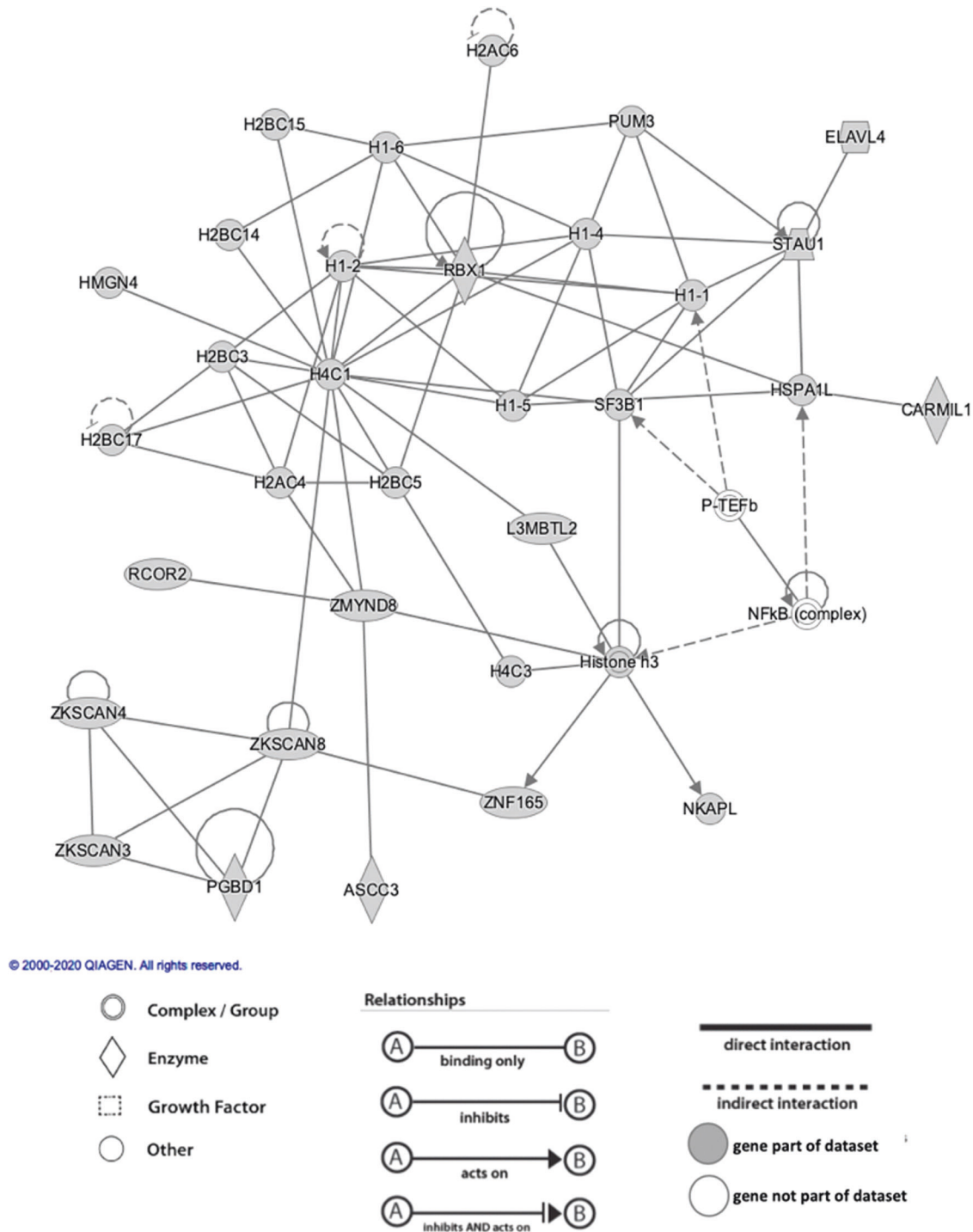


Fig. 3 IPA® top network of MET2 genes associated with SCZ and MDD at $p < 5 \times 10^{-8}$. Annotated network functions include endocrine system disorders, gastrointestinal disease, immunological disease. H4 clustered histone 1 (H4C1), histone H3, and E3 ubiquitin-protein ligase (RBX1) are identified as nodes with most network interactions.

cycle, cellular assembly and organization, and DNA replication, recombination, and repair. Adenosine triphosphate (ATP), estrogen receptor, and EP300 (encoding p300, a histone acetyltransferase) were identified as nodes with most network interactions (Supplementary Fig. 1). Networks 3, 4, and 5 (each with IPA® score 32), respectively, identified tumor necrosis factor (TNF), extracellular-signal-regulated kinases (ERK1/2), and heat shock protein family D member 1 (HSPD1) as most highly connected nodes (Supplementary Figs. 2–4).

DISCUSSION

To our knowledge, this is the first study analysing both individual and shared contributions of polygenic risk scores (PRS) for SCZ, MDD, and BD to the therapeutic response to lithium in individuals with bipolar disorder. Placing continuous shrinkage (CS) priors on SNP effect sizes for calculating PRS [42], we found that high genetic loadings for SCZ and MDD but not BD reduce patients' likelihood of optimal clinical lithium response. We also found that a combined PRS derived from GWAS meta-analysis of MDD and

SCZ (MET2-PRS) improves genetic response prediction, compared with individual disorder PRS and with a combined PRS comprising SCZ, MDD, and BD (MET3). The 228 patients with the highest MET2 loading in our cohort (top 10%) had 2.5 times greater odds of experiencing a poor clinical response to lithium, compared to the 228 patients with the lowest loading (bottom 10%). Exploratory bioinformatic pathway analysis (IPA®) of the genes containing MET2 variants most strongly associated with both MDD and SCZ ($p < 5 \times 10^{-8}$) implicated histone biology and genesets relating to metabolic disorders such as diabetes mellitus.

Our finding of negative associations between high loadings of SCZ-PRS and MDD-PRS with poor lithium response confirms our previous studies investigating these psychiatric traits in the ConLi+Gen cohort [22, 23]. Results are consistent with the clinical observation of poorer lithium response in BD patients who have a family history of SCZ, as opposed to a family history of BD [36], and support the idea that better lithium responsiveness is associated with a 'core' bipolar phenotype in the form of manic depression [5]. The specificity of SCZ- and MDD-PRS but not BD-PRS in predicting response is noteworthy, especially on the background of an 80% overlap in our study between SCZ-PRS and BD-PRS contrasting a 13% overlap between SCZ-PRS and MDD-PRS. Findings suggest that the genetic variants which relate to lithium responsiveness are operating independently to the risk of BD. How such trait-specificity is explained needs to be explored in future research. For example, there could be shared and separate sets of SCZ and MDD-risk alleles influencing lithium treatment response that are not contained within the BD-PRS. Alternatively, certain variants within the BD-PRS could be protective against the negative impact of shared SCZ and MDD-risk alleles.

The superior performance of MET2 in predicting lithium response, as compared to individual disorders, is consistent with previous work showing that multi-trait genomic risk scores can improve prediction accuracy [28]. It is notable that MET3, showing a 96% overlap with MET2, was not superior to PRS derived for individual diseases. Therefore, for genetic prediction of clinical outcomes, our study encourages a workflow that assesses single-trait associations first, and in a second step considers combined PRS using significantly associated traits only, irrespective of a priori single PRS correlations.

Our exploratory IPA® pathway analysis of top variants associated with both SCZ and MDD within the MET2-PRS proposes several overlapping biological mechanisms in these disorders. Some of these shared SCZ-MDD pathways may, in turn, play a role in lithium response. For example, the high prevalence of histone genes within our SCZ-MDD gene set may support findings from in vitro, animal and human studies demonstrating an influence of lithium on gene expression through epigenetic mechanisms including histone modification (for review, see ref. [48]) and the recent notion of epigenetic signatures as a potential molecular predictor of lithium response in BD [49]. Studies have shown that lithium treatment increases acetylation and methylation of histone H3 in rat hippocampus [50], and that it suppresses histone deacetylases (HDACs) [51]. Similarly, the high prevalence of genes within MET2 linked to diabetes mellitus and glucose metabolism echoes clinical-epidemiological studies showing that BD patients with comorbid diabetes mellitus or insulin resistance have poorer responses to lithium [20].

Our study has a number of limitations. First, the variance in lithium response that can be explained by the PRS method remains small (partial $R^2 = 0.91\%$), and it is unlikely that PRSs as stand-alone biological markers can be translated into clinical practice. However, genetic scores might be used in concert with other biological parameters and with clinical patient characteristics to form predictive algorithms of lithium treatment response. Machine-learning approaches to generate such multivariate algorithms have recently shown promise [52]. Second, our study used a lithium response measure (the Alda scale) focusing on long-term protection from manic and depressive relapses. Other

forms of response to lithium (e.g. reduction of agitation in acute mania, reduction in overall suicidality) are less well captured by the Alda scale but are clinically important. Third, SZ-PRS and MDD-PRS are more statistically powerful than BD-PRS as they have been calculated on larger populations. This might partly explain the low contribution of BD-PRS in discriminating responders and non-responders, even though our power analysis indicated that the patient numbers required for each PRS are similar and were sufficient in our study. Forth, our functional analysis of top MET2 variants is only exploratory, as a direct association of these variants to lithium response (in addition to their association with SCZ and MDD) cannot be demonstrated through the methods employed in this study. Further, we chose a heuristic p -value cut-off for inclusion of MET2 variants into our bioinformatic pathways analysis, which employed the traditional threshold for genome-wide significance ($p < 5 \times 10^{-8}$). More generous cut-offs, resulting in larger gene lists for input into IPA® analysis may have identified different or additional functional links to MET2 genes.

CONCLUSIONS

The application of multi-trait genomic risk scores revealed that a meta-PRS generated from a meta-GWAS of SCZ- and MDD-risk alleles (MET2-PRS), but not including BD-risk alleles, improves genetic prediction accuracy of the lithium response phenotype in BD compared to single-disorder PRS. High MET2-PRS loading is associated with poorer lithium response. Multi-trait PRS may inform the development of future biological testing strategies for personalized lithium prescribing in BD and may assist in the search for central therapeutic molecular mechanisms of this important drug.

REFERENCES

- Ferrari AJ, Stockings E, Khoo JP, Erskine HE, Degenhardt L, Vos T, et al. The prevalence and burden of bipolar disorder: findings from the Global Burden of Disease Study 2013. *Bipolar Disord.* 2016;18:440–50.
- Chesney E, Goodwin GM, Fazel S. Risks of all-cause and suicide mortality in mental disorders: a meta-review. *World Psychiatry.* 2014;13:153–60.
- Grande I, Berk M, Birmaher B, Vieta E. Bipolar disorder. *Lancet.* 2016;387:1561–72.
- Miura T, Noma H, Furukawa TA, Mitsuyasu H, Tanaka S, Stockton S, et al. Comparative efficacy and tolerability of pharmacological treatments in the maintenance treatment of bipolar disorder: a systematic review and network meta-analysis. *Lancet Psychiatry.* 2014;1:351–9.
- Malhi GS, Tanius M, Das P, Berk M. The science and practice of lithium therapy. *Aust NZ J Psychiatry.* 2012;46:192–211.
- Malhi GS, Adams D, Berk M. Is lithium in a class of its own? A brief profile of its clinical use. *Aust NZ J Psychiatry.* 2009;43:1096–104.
- Yildiz A, Vieta E, Leucht S, Baldessarini RJ. Efficacy of antimanic treatments: meta-analysis of randomized, controlled trials. *Neuropsychopharmacology.* 2011;36:375–89.
- Cipriani A, Barbui C, Salanti G, Rendell J, Brown R, Stockton S, et al. Comparative efficacy and acceptability of antimanic drugs in acute mania: a multiple-treatments meta-analysis. *Lancet.* 2011;378:1306–15.
- Joas E, Karanti A, Song J, Goodwin GM, Lichtenstein P, Landén M. Pharmacological treatment and risk of psychiatric hospital admission in bipolar disorder. *Br J Psychiatry.* 2017;210:197–202.
- Tondo L, Hennen J, Baldessarini RJ. Lower suicide risk with long-term lithium treatment in major affective illness: a meta-analysis. *Acta Psychiatr Scand.* 2001;104:163–72.
- NICE. Bipolar Disorder: The Management of Bipolar Disorder in Adults, Children and Adolescents, in Primary and Secondary Care. Leicester (UK): NICE; 2006.
- Yatham LN, Kennedy SH, Parikh SV, Schaffer A, Beaulieu S, Alda M, et al. Canadian Network for Mood and Anxiety Treatments (CANMAT) and International Society for Bipolar Disorders (ISBD) collaborative update of CANMAT guidelines for the management of patients with bipolar disorder: update 2013. *Bipolar Disord.* 2013;15:1–44.
- Malhi GS, Bassett D, Boyce P, Bryant R, Fitzgerald PB, Fritz K, et al. Royal Australian and New Zealand College of Psychiatrists clinical practice guidelines for mood disorders. *Aust NZ J Psychiatry.* 2015;49:1087–206.
- Goodwin GM, Haddad PM, Ferrier IN, Aronson JK, Barnes T, Cipriani A, et al. Evidence-based guidelines for treating bipolar disorder: revised third edition recommendations from the British Association for Psychopharmacology. *J Psychopharmacol.* 2016;30:495–553.

15. Miller F, Tanenbaum JH, Griffin A, Ritvo E. Prediction of treatment response in bipolar, manic disorder. *J Affect Disord.* 1991;21:75–77.
16. Machado-Vieira R, Luckenbaugh DA, Soeiro-de-Souza MG, Marca G, Henter ID, Busnello JV, et al. Early improvement with lithium in classic mania and its association with later response. *J Affect Disord.* 2013;144:160–4.
17. Hou L, Heilbronner U, Degenhardt F, Adli M, Akiyama K, Akula N, et al. Genetic variants associated with response to lithium treatment in bipolar disorder: a genome-wide association study. *Lancet.* 2016;387:1085–93.
18. Schubert KO, Wisdom A. Should the Australian Therapeutic Goods Administration recommend rapid dosing of lithium carbonate in acute mania? *Aust NZ J Psychiatry.* 2017. <https://pubmed.ncbi.nlm.nih.gov/29216733/>.
19. Kessing LV, Hellmund G, Andersen PK. Predictors of excellent response to lithium: results from a nationwide register-based study. *Int Clin Psychopharmacol.* 2011;26:323–8.
20. Calkin CV, Ruzickova M, Uher R, Hajek T, Slaney CM, Garnham JS, et al. Insulin resistance and outcome in bipolar disorder. *Br J Psychiatry.* 2015;206:52–57.
21. Grof P, Duffy A, Cavazzoni P, Grof E, Garnham J, MacDougall M, et al. Is response to prophylactic lithium a familial trait? *J Clin Psychiatry.* 2002;63:942–7.
22. International Consortium on Lithium Genetics, Amare AT, Schubert KO, Hou L, Clark SR, Papiol S, et al. Association of polygenic score for schizophrenia and HLA antigen and inflammation genes with response to lithium in bipolar affective disorder: a genome-wide association study. *JAMA Psychiatry.* 2018;75:65–74.
23. Amare AT, Schubert KO, Hou L, Clark SR, Papiol S, Cearnas M, et al. Association of polygenic score for major depression with response to lithium in patients with bipolar disorder. *Mol Psychiatry.* 2020. <https://pubmed.ncbi.nlm.nih.gov/32203155/>.
24. Cross-Disorder Group of the Psychiatric Genomics Consortium. et al. Genetic relationship between five psychiatric disorders estimated from genome-wide SNPs. *Nat Genet.* 2013;45:984–94.
25. Brainstorm Consortium, et al. Analysis of shared heritability in common disorders of the brain. *Science.* 2018;360. <https://pubmed.ncbi.nlm.nih.gov/29930110/>.
26. Schizophrenia Working Group of the Psychiatric Genomics C. Biological insights from 108 schizophrenia-associated genetic loci. *Nature.* 2014;511:421–7.
27. Gandal MJ, Haney JR, Parikshak NN, Leppa V, Ramaswami G, Hartl C, et al. Shared molecular neuropathology across major psychiatric disorders parallels polygenic overlap. *Science.* 2018;359:693–7.
28. Maier R, Moser G, Chen G-B, Ripke S, Cross-Disorder Working Group of the Psychiatric Genomics Consortium, Coryell W, et al. Joint analysis of psychiatric disorders increases accuracy of risk prediction for schizophrenia, bipolar disorder, and major depressive disorder. *Am J Hum Genet.* 2015;96:283–94.
29. van Rheenen W, Peyrot WJ, Schork AJ, Lee SH, Wray NR. Genetic correlations of polygenic disease traits: from theory to practice. *Nat Rev Genet.* 2019;20:567–81.
30. Wray NR, Ripke S, Mattheisen M, Trzaskowski M, Byrne EM, Abdellaoui A, et al. Genome-wide association analyses identify 44 risk variants and refine the genetic architecture of major depression. *Nat Genet.* 2018;50:668–81.
31. Stahl EA, Breen G, Forstner AJ, McQuillin A, Ripke S, Trubetskoy V, et al. Genome-wide association study identifies 30 loci associated with bipolar disorder. *Nat Genet.* 2019;51:793–803.
32. Southam L, Gilly A, Süveges D, Farmaki A-E, Schwartztruber J, Tachmazidou I, et al. Whole genome sequencing and imputation in isolated populations identify genetic associations with medically-relevant complex traits. *Nat Commun.* 2017;8:15606.
33. Lin DY, Sullivan PF. Meta-analysis of genome-wide association studies with overlapping subjects. *Am J Hum Genet.* 2009;85:862–72.
34. Province MA, Borecki IB. A correlated meta-analysis strategy for data mining “OMIC” scans. *Pac Symp Biocomput.* 2013:236–46. <https://pubmed.ncbi.nlm.nih.gov/23424128/>.
35. Duffy A, Alda M, Milin R, Grof P. A consecutive series of treated affected offspring of parents with bipolar disorder: is response associated with the clinical profile? *Can J Psychiatry.* 2007;52:369–76.
36. Garnham J, Munro A, Slaney C, Macdougall M, Passmore M, Duffy A, et al. Prophylactic treatment response in bipolar disorder: results of a naturalistic observation study. *J Affect Disord.* 2007;104:185–90.
37. Manchia M, Adli M, Akula N, Ardu R, Aubry J-M, Backlund L, et al. Assessment of response to lithium maintenance treatment in bipolar disorder: A Consortium on Lithium Genetics (ConLiGen) Report. *PLoS ONE.* 2013;8:e65636.
38. Scott J, Etain B, Manchia M, Brichant-Petitjean C, Geoffroy PA, Schulze T, et al. An examination of the quality and performance of the Alda scale for classifying lithium response phenotypes. *Bipolar Disord.* 2019. <https://pubmed.ncbi.nlm.nih.gov/31466131/>.
39. Delaneau O, Zagury JF, Marchini J. Improved whole-chromosome phasing for disease and population genetic studies. *Nat Methods.* 2013;10:5–6.
40. Fuchsberger C, Abecasis GR, Hinds DA. minimac2: faster genotype imputation. *Bioinformatics.* 2015;31:782–4.
41. Chang CC, Chow CC, Tellier LC, Vattikuti S, Purcell SM, Lee JJ, et al. Second-generation PLINK: rising to the challenge of larger and richer datasets. *Giga-science.* 2015;4:7.
42. Ge T, Chen CY, Ni Y, Feng YA, Smoller JW. Polygenic prediction via Bayesian regression and continuous shrinkage priors. *Nat Commun.* 2019;10:1776.
43. rsq: R-Squared and Related Measures. R package version 2.0. <https://CRAN.R-project.org/package=rsq>, 2020.
44. Team RC. R: A language and environment for statistical computing. Vienna: R Foundation for Statistical Computing; 2019.
45. Dudbridge F. Power and predictive accuracy of polygenic risk scores. *PLoS Genet.* 2013;9:e1003348.
46. Wray NR, Yang J, Goddard ME, Visscher PM. The genetic interpretation of area under the ROC curve in genomic profiling. *PLoS Genet.* 2010;6:e1000864.
47. Wang K, Li M, Hakonarson H. ANNOVAR: functional annotation of genetic variants from high-throughput sequencing data. *Nucleic Acids Res.* 2010;38:e164.
48. Gardea-Resendez M, Kucuker MU, Blacker CJ, Ho AM-C, Croarkin PE, Frye MA, et al. Dissecting the epigenetic changes induced by non-antipsychotic mood stabilizers on schizophrenia and affective disorders: a systematic review. *Front Pharmacol.* 2020;11:467.
49. Marie-Claire C, Lejeune FX, Mundwiler E, Ulveling D, Moszer I, Bellivier F, et al. A DNA methylation signature discriminates between excellent and non-response to lithium in patients with bipolar disorder type 1. *Sci Rep.* 2020;10:12239.
50. Lee RS, Pirooznia M, Guintivano J, Ly M, Ewald ER, Tamashiro KL, et al. Search for common targets of lithium and valproic acid identifies novel epigenetic effects of lithium on the rat leptin receptor gene. *Transl Psychiatry.* 2015;5:e600.
51. Ookubo M, Kanai H, Aoki H, Yamada N. Antidepressants and mood stabilizers effects on histone deacetylase expression in C57BL/6 mice: brain region specific changes. *J Psychiatr Res.* 2013;47:1204–14.
52. Nunes A, Ardu R, Berghöfer A, Bocchetta A, Chillotti C, Deiana V, et al. Prediction of lithium response using clinical data. *Acta Psychiatr Scand.* 2020;141:131–41.

AUTHOR CONTRIBUTIONS

KOS, AT, ATA, JF, FS, MR, and BTB designed the study. KOS, AT, ATA, and BB conducted the analyses and drafted the manuscript. MA, NA, KA, RA, BA, J-MA, LB, AKB, FB, AB, SB, JMB, AB, CM-C, MC, PC, H-C-C, CC, SC, SRC, CC, PMC, ND, AD, FD MDZ, JRD, BE, PF, AJF, LF, MAF, JMF, SG, JSG, FSG, MG-S, PG, RH, JH, UH, SH, PH, LH, Y-HH, SJ, EJ, J-PK, LK, P-HK, TK, JK, SK-S, EF-R, BK, IK, GL, ML, CL, ML, SGL, MM, MM, LM, MJM, SM, FC, MM, FMM, PM, CMN, MMN, TN, CO'D, NO, UO, SP, AP, CP, JBP, JBP, AR, ER, GAR, JKR, MS, PRS, BWS, GS, TS, PDS, KS, CS, CMS, AS, TS, PS, FT-A, AT, GT, JV, EV, SHW, GR, PPZ, MA, MB, FJM, PBM, and TGS contributed data, reviewed the manuscript, and made critical contributions to the revisions.

FUNDING

The study was supported by the German Federal Ministry of Education and Research (BMBF) through ERA-NET NEURON grants “SynSchiz—Linking synaptic dysfunction to disease mechanisms in schizophrenia—a multilevel investigation” (01EW1810 to MR) and “Impact of Early life MetaBolic and psychosocial strEss on susceptibility to mental Disorders; from converging epigenetic signatures to novel targets for therapeutic intervention” (01EW1904 to MR); and by the German Research Foundation (DFG grants FOR2107; R1908/11-2 to MR; WI 3439/3-2 to SHW). ATA is supported by 2019–2021 National Alliance for Research on Schizophrenia and Depression (NARSAD) Young Investigator Grant from the Brain & Behaviour Research Foundation (BBRF) and National Health and Medical Research Council (NHMRC) Emerging Leadership Investigator Grant 2021 – 2008000. Open Access funding enabled and organized by Projekt DEAL.

COMPETING INTERESTS

ATA is supported by 2019–2021 National Alliance for Research on Schizophrenia and Depression (NARSAD) Young Investigator Grant from the Brain & Behaviour Research Foundation (BBRF). EV has received grants and served as consultant, advisor or CME speaker for the following entities: AB-Biotics, Allergan, Angelini, AstraZeneca, Bristol-Myers Squibb, Dainippon Sumitomo Pharma, Farindustria, Ferrer, Forest Research Institute, Gedeon Richter, Glaxo-Smith-Kline, Janssen, Lundbeck, Otsuka, Pfizer, Roche, Sanofi-Aventis, Servier, Shire, Sunovion, Takeda, the Brain and Behaviour Foundation, the Spanish Ministry of Science and Innovation (CIBERSAM), and the Stanley Medical Research Institute. MB has received grants from the Deutsche Forschungsgemeinschaft (DFG), and Bundesministeriums für Bildung und Forschung (BMBF), and served as consultant, advisor or CME speaker for the following entities: Allergan, Aristo, Janssen, Lilly, Lundbeck, neuraxpharm, Otsuka, Sandoz, Servier, and Sunovion outside the submitted work. SK-S has received grants and served as consultant, advisor or speaker for the following entities: Medice Arzneimittel Pütter GmbH and Shire. BB has received grants and served as consultant, advisor or CME speaker for the following entities: AstraZeneca, Bristol-Myers Squibb, Janssen, Lundbeck, Otsuka, Servier, the National Health and Medical Research Council, the Fay

Fuller Foundation, the James and Diana Ramsay Foundation. TK received honoraria for lectures, manuscripts, and/or consultancy, from Kyowa HAKKO Kirin Co., Ltd., Eli Lilly Japan K.K., Otsuka Pharmaceutical Co., Ltd., GlaxoSmithKline K.K., Taisho Toyama Pharmaceutical Co., Ltd., Dainippon Sumitomo Pharma Co., Ltd., Meiji Seika Pharma Co., Ltd., Pfizer Japan Inc., Mochida Pharmaceutical Co., Ltd., Shionogi & Co., Ltd., Janssen Pharmaceutical K.K., Janssen Asia Pacific, Yoshitomyakuhin, Astellas Pharma Inc., Wako Pure Chemical Industries, Ltd., Wiley Publishing Japan, Nippon Boehringer Ingelheim Co. Ltd., Kanae Foundation for the Promotion of Medical Science, MSD K.K., Kyowa Pharmaceutical Industry Co., Ltd. and Takeda Pharmaceutical Co., Ltd. TK also received a research grant from Takeda Pharmaceutical Co., Ltd. PF has received grants and served as consultant, advisor or CME speaker for the following entities Abbott, GlaxoSmithKline, Janssen, Essex, Lundbeck, Otsuka, Gedeon Richter, Servier and Takeda as well as the German Ministry of Science and the German Ministry of Health. ER has received grants and served as consultant, advisor or CME speaker for the following entities: Janssen and Institut Allergosan. ML declares that, over the past 36 months, he has received lecture honoraria from Lundbeck and served as a scientific consultant for EPID Research Oy; no other equity ownership, profit-sharing agreements, royalties, or patent. KA has received consulting honoraria from Taisho Toyama Pharmaceutical Co., Ltd. The remaining authors declare no competing interests.

ADDITIONAL INFORMATION

Supplementary information The online version contains supplementary material available at <https://doi.org/10.1038/s41398-021-01702-2>.

Correspondence and requests for materials should be addressed to Bernhard T. Baune.

Reprints and permission information is available at <http://www.nature.com/reprints>

Publisher's note Springer Nature remains neutral with regard to jurisdictional claims in published maps and institutional affiliations.



Open Access This article is licensed under a Creative Commons Attribution 4.0 International License, which permits use, sharing, adaptation, distribution and reproduction in any medium or format, as long as you give appropriate credit to the original author(s) and the source, provide a link to the Creative Commons license, and indicate if changes were made. The images or other third party material in this article are included in the article's Creative Commons license, unless indicated otherwise in a credit line to the material. If material is not included in the article's Creative Commons license and your intended use is not permitted by statutory regulation or exceeds the permitted use, you will need to obtain permission directly from the copyright holder. To view a copy of this license, visit <http://creativecommons.org/licenses/by/4.0/>.

© The Author(s) 2021

¹Discipline of Psychiatry, School of Medicine, University of Adelaide, Adelaide, SA, Australia. ²Northern Adelaide Local Health Network, Mental Health Services, Adelaide, SA, Australia. ³Centre for Healthy Brain Ageing (CHEBA), School of Psychiatry, University of New South Wales, Sydney, NSW, Australia. ⁴Department of Genetic Epidemiology in Psychiatry, Central Institute of Mental Health, Medical Faculty Mannheim, University of Heidelberg, Mannheim, Germany. ⁵Department of Psychiatry and Psychotherapy, Charité—Universitätsmedizin Berlin, Campus Charité Mitte, Berlin, Germany. ⁶Intramural Research Program, National Institute of Mental Health, National Institutes of Health, US Department of Health & Human Services, Bethesda, MD, USA. ⁷Department of Biological Psychiatry and Neuroscience, Dokkyo Medical University School of Medicine, Mibu, Tochigi, Japan. ⁸Unit of Clinical Pharmacology, Hospital University Agency of Cagliari, Cagliari, Italy. ⁹Unitat de Zoologia i Antropologia Biològica (Dpt. Biologia Evolutiva, Ecologia i Ciències Ambientals), Facultat de Biologia and Institut de Biomedicina (IBUB), University of Barcelona, CIBERSAM, Barcelona, Spain. ¹⁰Department of Psychiatry, Mood Disorders Unit, HUG—Geneva University Hospitals, Geneva, Switzerland. ¹¹Department of Molecular Medicine and Surgery, Karolinska Institute, Stockholm, Sweden, and Center for Molecular Medicine, Karolinska University Hospital, Stockholm, Sweden. ¹²Department of Psychiatry, University of California San Diego, San Diego, CA, USA. ¹³INSERM UMR-S 1144, Université Paris Diderot, Département de Psychiatrie et de Médecine Addictologique, AP-HP, Groupe Hospitalier Saint-Louis-Lariboisière-F. Widal, Paris, France. ¹⁴Bipolar Disorder Program, Institute of Neuroscience, Hospital Clinic, University of Barcelona, IDIBAPS, CIBERSAM, Barcelona, Catalonia, Spain. ¹⁵Department of Psychiatry and Psychotherapeutic Medicine, Research Unit for bipolar affective disorder, Medical University of Graz, Graz, Austria. ¹⁶Department of Psychiatry and Psychology, Mayo Clinic, Rochester, MN, USA. ¹⁷The Neuromodulation Unit, McGill University Health Centre, Montreal, QC, Canada. ¹⁸Department of Psychiatry & Center of Sleep Disorders, National Taiwan University Hospital, Taipei, Taiwan. ¹⁹Human Genomics Research Group, Department of Biomedicine, University Hospital Basel, Basel, Switzerland. ²⁰Institute of Human Genetics, University of Bonn and Department of Genomics, Life & Brain Center, Bonn, Germany. ²¹Douglas Mental Health University Institute, McGill University, Montreal, QC, Canada. ²²Psychiatric Genetic Unit, Poznan University of Medical Sciences, Poznan, Poland. ²³Department of Biomedical Sciences, University of Cagliari, Cagliari, Italy. ²⁴Department of Psychiatry and Behavioral Sciences, Johns Hopkins University, Baltimore, MD, USA. ²⁵Department of Psychiatry and Psychotherapy, Ludwig-Maximilians-University Munich, Munich, Germany. ²⁶Department of Psychiatry (UPK), University of Basel, Basel, Switzerland. ²⁷Neuroscience Research Australia, Sydney, NSW, Australia. ²⁸School of Medical Sciences, University of New South Wales, Sydney, NSW, Australia. ²⁹Service de psychiatrie, Hôpital Charles Perrens, Bordeaux, France. ³⁰Department of Psychiatry, Dalhousie University, Halifax, NS, Canada. ³¹Biometric Psychiatric Genetics Research Unit, Alexandru Obregia Clinical Psychiatric Hospital, Bucharest, Romania. ³²Mood Disorders Center of Ottawa, Ottawa, ON, Canada. ³³Molecular Research Center for Children's Mental Development, United Graduate School of Child Development, Osaka University, Osaka, Japan. ³⁴Department of Psychiatry, Osaka University Graduate School of Medicine, Osaka, Japan. ³⁵Institute of Psychiatric Phenomics and Genomics (IPPG), University Hospital, LMU Munich, Munich, Germany. ³⁶HSL Institute for Aging Research, Harvard Medical School, Boston, MA, USA. ³⁷Program for Quantitative Genomics, Harvard School of Public Health, Boston, MA, USA. ³⁸Univ Paris Est Créteil, INSERM, IMRB, Translational Neuropsychiatry, Fondation FondaMental, Créteil, France. ³⁹Service de Psychiatrie et Psychologie Clinique, Centre Psychothérapique de Nancy—Université de Lorraine, Nancy, France. ⁴⁰Department of Public Health & Institute of Epidemiology and Preventive Medicine, College of Public Health, National Taiwan University, Taipei, Taiwan. ⁴¹Department of Psychiatry & Behavioral Science, Juntendo University, Graduate School of Medicine, Tokyo, Japan. ⁴²Department of Psychiatry, Psychosomatic Medicine and Psychotherapy, University Hospital Frankfurt, Frankfurt, Germany. ⁴³Department of Adult Psychiatry, Poznan University of Medical Sciences, Poznan, Poland. ⁴⁴Department of Psychiatry and Psychotherapeutic Medicine, Landesklinikum Neunkirchen, Neunkirchen, Austria. ⁴⁵Department of Psychiatry, Hokkaido University Graduate School of Medicine, Sapporo, Japan. ⁴⁶Institute of Neuroscience and Physiology, the Sahlgrenska Academy at the Gothenburg University, Gothenburg, Sweden. ⁴⁷Department of Medical Epidemiology and Biostatistics, Karolinska Institutet, Stockholm, Sweden. ⁴⁸Inserm U955, Translational Neuro-Psychiatry laboratory, Université Paris Est Créteil (UPEC), AP-HP, Department of Psychiatry and Addictology of Mondor University Hospital, AP-HP, Fondation FondaMental, Créteil, France. ⁴⁹Office of Mental Health, VA San Diego Healthcare System, San Diego, CA, USA. ⁵⁰Department of Psychiatry, University of Campania "Luigi Vanvitelli", Naples, Italy. ⁵¹Section of Psychiatry, Department of Medical Sciences and Public Health, University of Cagliari, Cagliari, Italy. ⁵²Department of Pharmacology, Dalhousie University, Halifax, NS, Canada. ⁵³Department of Clinical Neurosciences, Karolinska Institutet, Stockholm, Sweden. ⁵⁴Department of Psychiatry, VA San Diego Healthcare System, San Diego, CA, USA. ⁵⁵Department of Psychiatry, Lindner Center of Hope / University of Cincinnati, Mason, OH, USA. ⁵⁶Mental Health Research Group, IMIM-Hospital del Mar, Barcelona, Catalonia, Spain. ⁵⁷Centro de Investigación Biomédica en Red de Salud Mental (CIBERSAM), Instituto de Salud Carlos III, Madrid, Spain. ⁵⁸Departament de Genètica, Microbiologia i Estadística, Facultat de Biologia, Universitat de Barcelona, Barcelona, Spain. ⁵⁹Institut de Biomedicina de la Universitat de Barcelona (IBUB), Barcelona, Spain. ⁶⁰Centro de Investigación Biomédica en Salud Mental (CIBERSAM), Madrid, Spain. ⁶¹Department of Medicine, Surgery and Dentistry "Scuola Medica Salernitana", University of Salerno, Salerno, Italy. ⁶²National Institute of Mental Health, Klecany, Czech Republic. ⁶³Department of Psychiatry & Department of Child and Adolescent Psychiatry, Nagoya University Graduate School of Medicine, Nagoya, Japan. ⁶⁴Department of Neurobiology, Care Sciences, and Society, Karolinska Institutet and Center for Molecular Medicine, Karolinska University Hospital, Stockholm, Sweden. ⁶⁵Department of Psychiatry and Psychotherapy, University Hospital Carl Gustav Carus, Medical Faculty, Technische Universität Dresden, Dresden, Germany. ⁶⁶Montreal Neurological Institute and Hospital, McGill University, Montreal, QC, Canada. ⁶⁷Department of Psychiatry, Dokkyo Medical University School of Medicine, Mibu, Tochigi, Japan. ⁶⁸Bipolar Center Wiener Neustadt, Sigmund Freud University, Medical Faculty, Vienna, Austria. ⁶⁹Epidemiology Branch, Division of Intramural Population Health Research, Eunice Kennedy Shriver National Institute of Child Health and Human Development, National Institutes of Health, Bethesda, MD, USA. ⁷⁰Department of Psychiatry, University of Perugia, Perugia, Italy. ⁷¹School of Psychiatry, University of New South Wales, Sydney,

Australia. ⁷²Department of Mental Health, Johns Hopkins Bloomberg School of Public Health, Baltimore, MD, USA. ⁷³Department of Psychiatry and Psychotherapy, University Medical Center (UMG), Georg-August University Göttingen, Göttingen, Germany. ⁷⁴Department of Psychiatry and Psychotherapy, University of Münster, Münster, Germany. ⁷⁵Department of Psychiatry, Melbourne Medical School, University of Melbourne, Parkville, VIC, Australia. ⁷⁶The Florey Institute of Neuroscience and Mental Health, The University of Melbourne, Parkville, VIC, Australia. ⁷⁷These authors contributed equally: Klaus Oliver Schubert, Anbupalam Thalamuthu, Azmeraw T. Amare. ⁷⁸A list of members and their affiliations appears in the Supplementary Information. [✉]email: Bernhard.Baune@ukmuenster.de