

# UC Irvine

## UC Irvine Previously Published Works

### Title

Outcomes of ischaemic mitral regurgitation in anterior versus inferior ST elevation myocardial infarction

### Permalink

<https://escholarship.org/uc/item/5wd427b2>

### Journal

Open Heart, 3(2)

### ISSN

2398-595X

### Authors

Mentias, Amgad  
Raza, Mohammad Q  
Barakat, Amr F  
et al.

### Publication Date

2016-11-01

### DOI

10.1136/openhrt-2016-000493

Peer reviewed

# openheart Outcomes of ischaemic mitral regurgitation in anterior versus inferior ST elevation myocardial infarction

Amgad Mentias, Mohammad Q Raza, Amr F Barakat, Elizabeth Hill, Dalia Youssef, Amar Krishnaswamy, Milind Y Desai, Brian Griffin, Stephen Ellis, Venu Menon, E Murat Tuzcu, Samir R Kapadia

**To cite:** Mentias A, Raza MQ, Barakat AF, *et al.* Outcomes of ischaemic mitral regurgitation in anterior versus inferior ST elevation myocardial infarction. *Open Heart* 2016;**3**:e000493. doi:10.1136/openhrt-2016-000493

Received 3 July 2016  
Revised 15 August 2016  
Accepted 22 August 2016

## ABSTRACT

**Background:** Ischaemic mitral regurgitation (IMR) is a detrimental complication of ST elevation myocardial infarction (STEMI).

**Objective:** We sought to determine patient characteristics and outcomes of patients with IMR with focus on anterior or inferior location of STEMI.

**Methods:** All patients presenting with STEMI complicated by IMR to our centre who underwent primary percutaneous coronary intervention within the first 12 hours of presentation from 1995 to 2014 were included. IMR was graded from 1+ to 4+ within 3 days of index myocardial infarction by echocardiography, divided into 2 groups based on infarct location and outcomes were compared.

**Results:** Overall, 805 patients were included. There were 302 (17.8%) patients with mitral regurgitation (MR) out of the 1700 patients with anterior STEMI while 503 (21.8%) had MR out of the 2305 patients with inferior STEMI. There was no significant difference between both groups in comorbidities, clinical presentation or door-to-balloon time (DBT; median 104 vs 106 min,  $p=0.5$ ). 30-day and 1-year mortality were higher in anterior STEMI compared with inferior STEMI (14.9% vs 6.8% and 26.4% vs 14.3%, respectively,  $p<0.001$  both), as well as 5-year mortality (39.7% vs 24.8%,  $p<0.01$ ). When analysis was performed for each grade of IMR, anterior was associated with worse outcomes in every grade. On multivariate cox survival analysis, after adjustment for age, gender, comorbidities, grade of IMR, ejection fraction and DBT, anterior STEMI was still associated with worse outcomes (HR 1.62 (95% CI 1.23 to 2.12),  $p<0.001$ ).

**Conclusions:** Although IMR occurs more frequently with inferior infarction, outcomes are worse following anterior infarction.

## INTRODUCTION

Ischaemic mitral regurgitation (IMR) in the setting of acute myocardial infarction (MI) is a well-recognised clinical entity and its presence has been associated with worse clinical outcomes.<sup>1–8</sup> Effects of IMR on outcomes have been evaluated in prior studies.

## KEY QUESTIONS

### What is already known about this subject?

▶ In patients with myocardial infarction, ischaemic mitral regurgitation (IMR) is associated with worse outcomes. However, most of the data about prognosis of IMR are from studies with thrombolytics as the main method of revascularisation, or late percutaneous coronary intervention (PCI). Further, none of the studies in the past compared prognosis of IMR based on infarction location.

### What does this study add?

▶ Although IMR is more severe and more common in inferior ST elevation myocardial infarction (STEMI), in an era of timed primary PCI within 12 hours of onset of chest pain, it is associated with worse prognosis with anterior STEMI compared with inferior STEMI after adjusting for all known variables.

### How might this impact on clinical practice?

▶ This will help with risk stratification of patients presenting with acute STEMI. It will also help in deciding trial designs in the future to adjust for such worse prognosis.

However, the comparison was mainly between grades of severity of IMR. Patients in these studies were from a wide spectrum of presentations, including ST elevation myocardial infarction (STEMI), non-STEMI or all acute coronary syndromes. Time of evaluation for IMR was also variable ranging between few days after the infarction to few weeks. Furthermore, intervention was not uniform in most of studied patients, ranging from thrombolysis, late percutaneous coronary intervention (PCI), primary PCI (PPCI) to no intervention.<sup>1–27</sup>

On the other hand, it is also widely recognised that the mechanism producing IMR is different in anterior compared with inferior STEMI.<sup>28</sup> IMR occurs with a higher incidence



CrossMark

Heart and Vascular Institute,  
Cleveland Clinic, Cleveland,  
Ohio, USA

**Correspondence to**  
Dr Samir R Kapadia;  
kapadis@ccf.org

and is more severe in inferior STEMI despite greater left ventricular (LV) remodelling and global LV dysfunction in anterior STEMI. This is likely due to the increased tethering force of the posteromedial papillary muscle near the site of the infarction in inferior STEMI.<sup>29–32</sup> In this study, we evaluate the incidence and impact of IMR based on index infarction location (anterior vs inferior) in an all-comers population of STEMI patients all treated with PPCI within 12 hours of presentation.

## METHODS

### Patient population

In this observational study, we included all patients who presented to the Cleveland Clinic from January 1995 to December 2014 with acute STEMI complicated with IMR who underwent PPCI within the first 12 hours of presentation. We included patients with inferior STEMI, including inferolateral, inferoposterior and inferoposterolateral STEMI. We also included patient with anterior STEMI, including anteroseptal, anterolateral and strict anterior STEMI. ST elevation was defined as the presence of  $\geq 1$  mm ST segment elevation in two or more anatomical contiguous leads. All procedures and data collection were approved and monitored by the Cleveland Clinic Institutional Review Board (IRB) with waiver of individual informed consent.

### Echocardiography data

The diagnosis of IMR was based on a comprehensive two-dimensional (2D) echocardiograms performed within 3 days of admission to the hospital with the MI. All images were reviewed and read by experienced cardiologists in the imaging section of our institution. LV ejection fraction was measured by modified Simpson's method, and severity of IMR was graded from 1+ to 4+ (mild, moderate, moderately severe and severe) summing all criteria of severity according to the American Society of Echocardiography guidelines.<sup>33</sup> IMR was defined as new or worsening degree of mitral regurgitation (MR) compared with an echocardiogram prior to the MI. If there was no previous echocardiogram, the MR was considered ischaemic if the mechanism identified in the echocardiogram was ischaemic in nature. These mechanisms included restricted motion of a valve leaflet due to wall motion abnormality, papillary muscle dysfunction or papillary muscle rupture.

We divided the patients who had any degree of IMR at time of presentation into two groups—anterior and inferior STEMI. Baseline demographic characteristics, clinical presentation, procedural details, and short-term and long-term outcomes were compared. We then performed analysis for each grade of IMR between anterior and inferior STEMI.

### Follow-up and outcomes

The date of the STEMI presentation and PPCI at our institution was defined as the beginning of the

observational period for the patient. Follow-up was ascertained by chart review and we recorded the date at which events occurred. Mortality data were obtained from medical records or from US Social Security Death Index database (last inquiry in October 2015). Primary outcome was 30-day and 1-year all-cause mortality.

### Statistical analysis

Continuous variables are expressed as mean $\pm$ SD, or median and IQRs for skewed distributions, and compared using the Student's t-test or analysis of variance (for normally distributed variables) or the Mann-Whitney test (for non-normally distributed variables). Categorical data are expressed as percentage and compared using  $\chi^2$  test or Fisher's exact test, as appropriate. To assess outcomes, multivariate Cox proportional hazards analysis was performed to assess independent predictors of outcome (using a p value cut-off of  $<0.05$  for statistical significance). Univariable analysis was performed initially for available variables to test association with mortality and factors with  $p<0.2$  were considered for the multivariate cox analysis. Clinical factors known to be associated with mortality or worse outcomes were included in the multivariate model regardless of the univariate analysis results. HRs with 95% CIs were calculated and reported. Cumulative proportion of events as a function over time was obtained by the Kaplan-Meier method to do the survival analysis. Statistical analysis was performed using JMP pro V.10.0.

## RESULTS

### Baseline characteristics and clinical presentation

There were 302 (17.8%) patients with IMR out of the 1700 patients with anterior STEMI while 503 (21.8%) had IMR out of the 2305 patients with inferior STEMI. Baseline characteristics of the patients in the two groups are shown in [table 1](#). There was no significant difference between both groups at baseline regarding risk factors and different comorbidities. Distribution of grades of MR was similar between both groups. Clinical presentation in the two groups is shown in [table 1](#). There was no difference between the two groups regarding medications, baseline haemoglobin, peak CK level, peak Creatine Kinase Myocardial Band (CK-MB) level, functional status (New York Heart Association (NYHA) class) or clinical shock on presentation.

### Echocardiography data

Echocardiography parameters for the study population are presented in [table 2](#). Patients with anterior STEMI had significantly lower ejection fraction compared with patients with inferior STEMI ( $36\pm 14\%$  vs  $44\pm 12\%$ ,  $p<0.001$ ). There was no significant difference between the two groups regarding LV dimensions; however, left atrium was more dilated in the anterior STEMI group. There was no difference in right ventricular systolic pressure, or severity of tricuspid regurgitation (TR). Majority

**Table 1** Baseline characteristics, clinical presentation and medications in patients IMR and anterior or inferior STEMI

Variable	Anterior STEMI	Inferior STEMI	p Value
Number	302	503	<0.01
Grades of MR	1+57%	1+50.7%	0.5
	2+30.5%	2+33.4%	
	3+11.3%	3+11.3%	
	4+1.3%	4+4.6%	
Age (year)	66.6±13	65±12.6	0.8
Sex (male, %)	53.6%	60.2%	0.7
Diabetes mellitus	30.8%	27.8%	0.4
Hypertension	74.6%	73.6%	0.8
Renal impairment	10.6%	7.6%	0.2
Atrial fibrillation	21.5%	25.8%	0.2
COPD	9.5%	11.3%	0.5
PAD	9.6%	10.2%	0.8
BMI (kg/m <sup>2</sup> )	27.8±6	28.3±6	0.3
Obese (BMI>30 kg/m <sup>2</sup> )	28%	30.1%	0.5
Stroke	11.7%	8.6%	0.2
Current smoker	28.5%	27.4%	0.7
Prior MI	35.3%	35.8%	0.9
History of CABG	10.3%	19.3%	0.007*
Heart rate	85±17	79±19	0.07
Systolic blood pressure	122±27	123±24	0.4
NYHA	I 60.3%	I 62.2%	0.1
	II 6.6%	II 2.8%	
	III 6.3%	III 5.7%	
	IV 26.8%	IV 29.3%	
Shock	15.9%	11.1%	0.06
IABP	27.5%	17.3%	0.0009*
Number of diseased vessels	1=56.5%	1=60.7%	0.2
	2=24.3%	2=19%	
	3=19.3%	3=20.4%	
HB at baseline: median (IQR)	13 (12–15)	13.6 (11.7–14.8)	0.9
Anaemia (HB<12)	25%	27.7%	0.5
Peak of total CK: median (IQR)	1319 (5 022 947)	1417 (6 702 633)	0.9
Peak of CK-MB: median (IQR)	136 (39 306)	139 (57 281)	0.9
ACE inhibitor (before admission)	12.3%	16.8%	0.1
Aspirin (before admission)	83.2%	84.5%	0.7
β-blocker (before admission)	27.1%	29.7%	0.5

\*values have reached statistical significance.

BMI, body mass index; CABG, coronary artery bypass graft; COPD, chronic obstructive pulmonary disease; HB, haemoglobin; IABP, intra-aortic balloon pump; IMR, ischaemic mitral regurgitation; MI, myocardial infarction; MR, mitral regurgitation; NYHA, New York Heart Association class; PAD, peripheral arterial disease; STEMI, ST elevation myocardial infarction.

of the patients in anterior STEMI had a centrally directed MR jet followed by anteriorly, while in inferior STEMI majority had posteriorly directed jet followed by centrally.

### Coronary intervention

Procedural details of the two groups are shown in [table 3](#). There were no differences between the two groups in door-to-balloon time (DBT; median, 104 vs 106 min in anterior vs inferior STEMI,  $p=0.5$ ), type of intervention, radial access, number of diseased vessels on coronary angiogram, glycoprotein IIb/IIIa use, blood transfusion, puncture site complications or acute kidney injury. Median length of hospital stay was longer for anterior STEMI compared with inferior. However, there

was no difference between both groups regarding medical therapy on discharge ([table 3](#)).

### Short-term and long-term outcomes

Mean follow-up was  $5.9\pm 2.1$  years. At 5 years, 40 patients (8%) and 31 patients (10%) were lost to follow-up in the inferior and anterior STEMI groups, respectively. Thirty-day, 1-year and 5-year mortality rates were higher in group 1 (anterior STEMI) compared with group 2 (inferior STEMI; 14.9% vs 6.8%, 26.4% vs 14.3% and 39.7% vs 24.8%, respectively,  $p<0.001$  for all). When the analysis was performed for each grade of IMR between anterior and inferior STEMI, anterior was associated with worse outcomes on every grade of IMR compared with inferior STEMI ([figure 1](#)). Kaplan-Meier curves showing long-term

**Table 2** Echocardiographic characteristics of study population

Variable	Anterior STEMI	Inferior STEMI	p Value
Ejection fraction (%)	36.3±14	44.6±12.3	<0.01
End diastolic volume (mL)	154±27	150±22	0.1
End systolic volume (mL)	87±12.2	82±15.5	0.01
LVID diastolic (cm)	4.7±0.8	4.7±0.7	0.4
LVID systolic (cm)	3.1±0.9	3.3±0.8	0.08
LA diameter (cm)	4.5±0.5	3.8±0.7	0.03
Direction of jet			
Posteriorly	3.4	70.9	<0.001
Anteriorly	7.8	2.2	
Central	88.8	26.9	
RVSP (mm Hg)	33±11	31±10	0.3
Tricuspid regurgitation			
Trivial	69.2	70.3	0.2
1+	18.7	18.6	
2+	9.4	7.7	
3+	2.2	2.6	
4+	0.6	0.8	

LA, left atrial; LVID, left ventricular internal dimension; RVSP, right ventricular systolic pressure; STEMI, ST elevation myocardial infarction.

survival for the two groups are shown in [figure 2](#). Multivariate Cox survival analysis for predictors of long-term mortality is shown in [table 4](#) and [figure 3](#). After adjusting for age, gender, comorbidities, ejection fraction, grade of IMR and DBT, anterior STEMI was associated with worse outcomes (HR 1.62 (95% CI 1.23 to 2.12),  $p<0.001$ ).

## DISCUSSION

In this study, we demonstrate that overall incidence of IMR by transthoracic 2D echocardiography in patients presenting with acute STEMI who undergo PPCI is 17.8% in anterior STEMI compared with 21.8% in inferior STEMI. We also demonstrate that most common direction of jet in anterior STEMI is central while in inferior STEMI is posterior then central. In addition, IMR in anterior STEMI is associated with worse short-term and long-term outcomes than inferior STEMI across all grades of MR even after adjusting for age, gender, comorbidities, grade of IMR, ejection fraction and DBT.

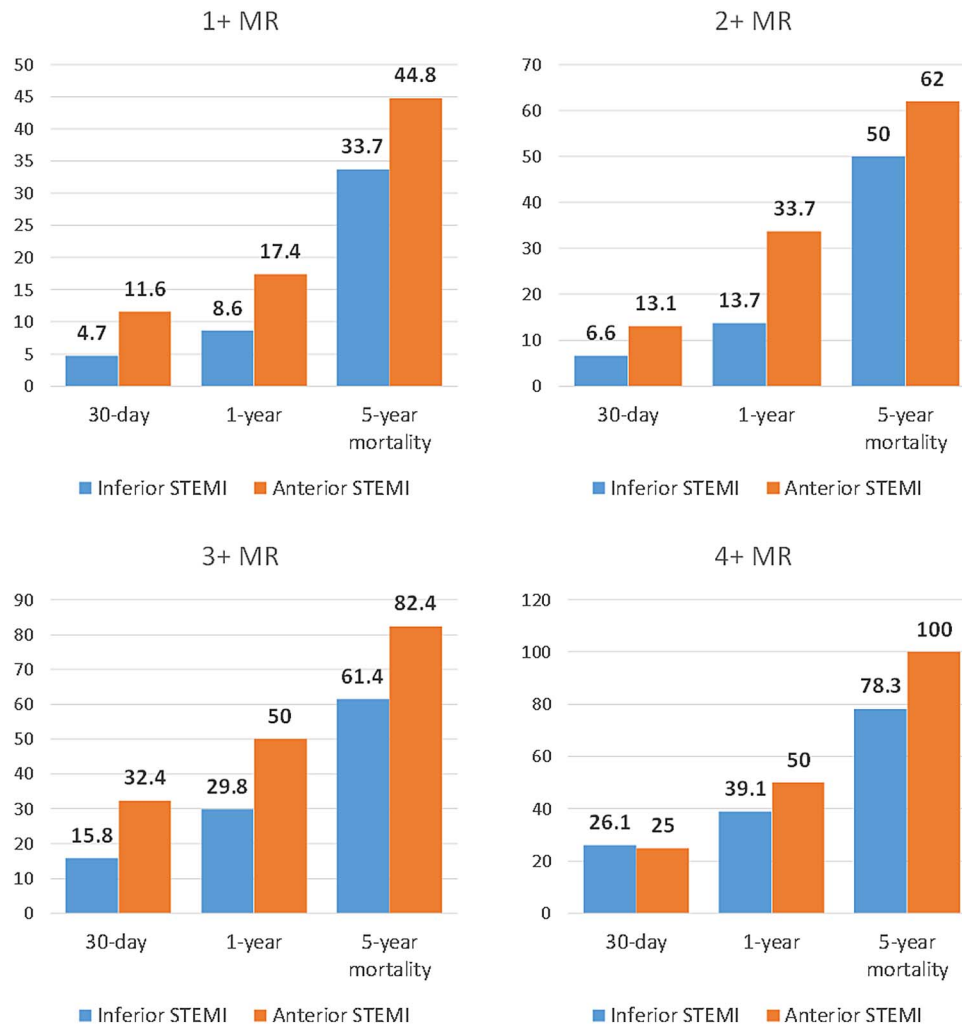
Higher incidence of IMR in inferior than anterior STEMI was shown in previous studies;<sup>8 20 28 32</sup> however, overall numbers in these studies were much higher. This could be explained by the fact that in these studies, many of the patients got thrombolytic therapy or late PCI rather than PPCI, and it has been previously

**Table 3** Procedural details, medications and clinical outcomes for patients with ischaemic MR presenting with anterior and inferior STEMI

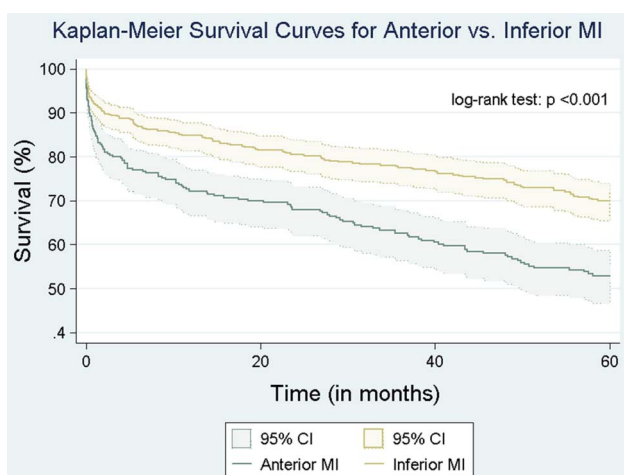
Variable	Anterior STEMI	Inferior STEMI	p Value
Intervention	Plain old ballon angioplasty (POBA) 29.5%	POBA 22%	0.02*
	Bare metal stent (BMS) 49.7%	BMS 59.3%	
	Drug eluting stent (DES) 21.8%	DES 18.2%	
DBT: median (IQR)	104 (37 184)	106 (40 168)	0.5
Radial access	0.3%	0.3%	0.8
GP IIB/IIIA inhibitors	67.8%	72.3%	0.2
TIMI III result	87.2%	91.3%	0.07
Residual stenosis >90%	6.7%	5%	0.4
Blood transfusion	24.2%	20.1%	0.2
RP bleed	1.3%	0.4%	0.2
Haematoma	5.7%	3.8%	0.2
Pseudoaneurysm	1.8%	0.9%	0.3
AV fistula	0.4%	0.4%	0.9
Acute kidney injury	10.1%	8.9%	0.6
Emergency CABG	2.7%	3%	0.8
LOS (days): median (IQR)	5.3 (3.3–10.2)	4 (3–8.6)	0.005*
Aspirin (ASA) at discharge	97.5%	98.2%	0.3
Statin at discharge	88.2%	87.6%	0.4
β-blocker at discharge	79.5%	78.8%	0.7
ACE inhibitors at discharge	71.2%	68%	0.1
30-day mortality	14.9%	6.8%	0.001*
1-year mortality	26.4%	14.3%	<0.0001*
3-year mortality	39.7%	24.8%	<0.0001*

\*values have reached statistical significance

ASA, Aspirin; AV, arteriovenous; BMS, Bare metal stent; CABG, coronary artery bypass graft; DBT, door-to-balloon time; DES, Drug eluting stent; GP, glycoprotein; LOS, length of hospital stay; MR, mitral regurgitation; POBA, Plain old ballon angioplasty; RP, retroperitoneal; STEMI, ST elevation myocardial infarction; TIMI, Thrombolysis in Myocardial Infarction.



**Figure 1** Thirty-day, 1-year and 5-year mortality rates in anterior versus inferior STEMI across different grades of MR. MR, mitral regurgitation; STEMI, ST elevation myocardial infarction.



**Figure 2** Kaplan-Meier curve showing long-term survival in patients with ischaemic MR presenting with anterior STEMI and inferior STEMI. MI, myocardial infarction; MR, mitral regurgitation; STEMI, ST elevation myocardial infarction.

reported that PPCI lowers the incidence of MR in STEMI patients.<sup>21</sup> Also, patients with trace MR were not included in our study; had these been included, this might have increased our reported incidence.

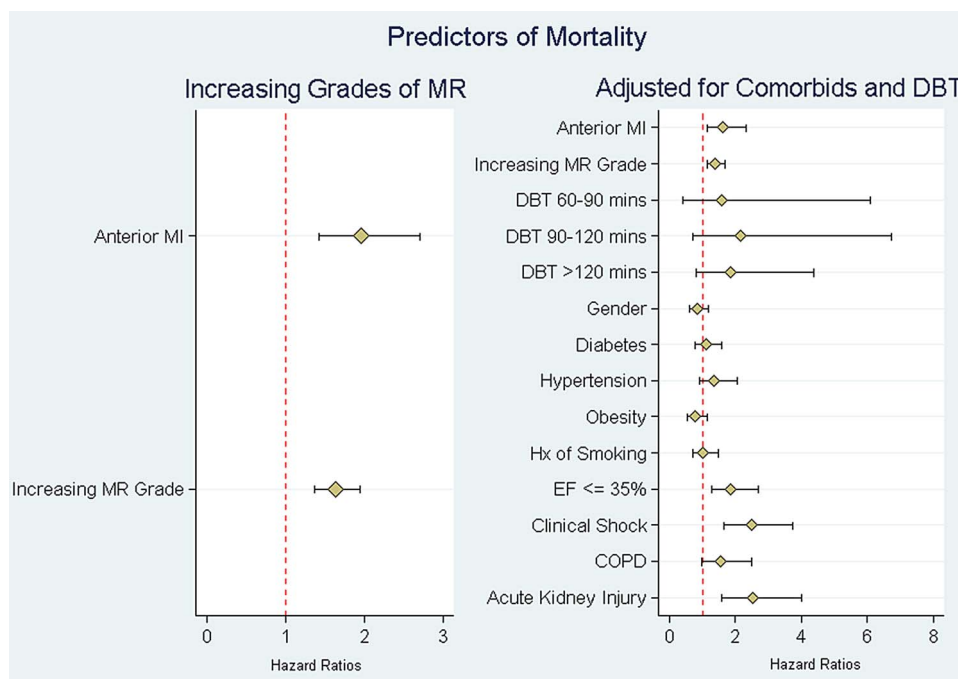
It is known that there are two major types of mitral valve apparatus changes that can happen after acute MI, the first is the asymmetric remodelling, where posterior tethering of both mitral leaflets occurs, resulting in posterior bending of the posterior leaflet with over-ride of the anterior leaflet, the resulting IMR jet is usually directed posteriorly. The second is the symmetric remodelling where there is apical tethering of both leaflets with restricted motion of anterior leaflet resulting in apical tenting with apically displaced coaptation line. This results in centrally directed IMR jet. The former occurs mostly in inferior MI while the latter occurs more commonly in anterior MI.<sup>34 35</sup> This is similar to what was found regarding direction of IMR jet our study.

MI can cause MR by different mechanisms such as changes in LV geometry, mitral valve annulus dilation,

**Table 4** Multivariate analysis with proportional hazards of 1-year mortality. Predictors of mortality by location of STEMI adjusted for comorbidities and DBT

Variable	HR	SE	Z value	p Value	95% CI
Anterior STEMI	1.62	0.22	3.49	<0.001	1.23 to 2.12
Rising grade of IMR	1.39	0.10	4.53	<0.001	1.21 to 1.61
DBT (compared with 60 min)					
60–90 min	1.57	0.83		0.40	0.56 to 4.41
90–120 min	2.15	0.95		0.08	0.91 to 5.12
>120 min	1.86	0.62		0.06	0.97 to 3.57
Male gender	0.84	0.11	−1.31	0.189	0.65 to 1.09
Diabetes mellitus	1.10	0.16	0.69	0.493	0.84 to 1.46
Hypertension	1.35	0.22	1.86	0.062	0.98 to 1.85
Obesity	0.77	0.12	−1.69	0.090	0.58 to 1.04
Smoking	1.02	0.14	0.17	0.866	0.77 to 1.35
Ejection fraction ≤35%	1.84	0.27	4.21	<0.001	1.38 to 2.45
Clinical shock	2.48	0.39	5.69	<0.001	1.81 to 3.38
COPD	1.56	0.29	2.41	0.016	1.09 to 2.23
Acute kidney injury	2.52	0.45	5.15	<0.001	1.77 to 3.58

COPD, chronic obstructive pulmonary disease; DBT, door-to-balloon time; IMR, ischaemic mitral regurgitation; STEMI, ST elevation myocardial infarction.

**Figure 3** Multivariate Cox survival analysis with predictors of mortality after adjusting for comorbidities and DBT. COPD, chronic obstructive pulmonary disease; DBT, door-to-balloon time; EF, ejection fraction; MI, myocardial infarction; MR, mitral regurgitation; STEMI, ST elevation myocardial infarction.

LV dysfunction reducing systolic closing pressure, or functional disruption of the posteromedial papillary muscle by displacement increasing tethering forces (tenting). The interplay between these different factors determines the severity of the MR.<sup>29–32 36 37</sup> Inferior MI causes distortion to the mitral valve apparatus more frequently resulting in incompetent valve compared with anterior STEMI. Anterior MI causes MR due to apical tethering of the valve, a mechanism that requires LV dilation. Therefore, MR in anterior STEMI is frequently

associated with more dysfunctional LV compared with inferior STEMI. Further, while apical tethering of the leaflets and Mitral valve (MV) annular deformation and dilation are seen in inferior and anterior MI, it has been shown that the severity of these deformities is greater in patients with anterior MI.<sup>38 39</sup> This is an important distinction as the systolic tenting area of the mitral valve, mitral annular area and spherical index are all independent determinants of regurgitant orifice area.<sup>40</sup> Whether it is these differences that result in the

difference in outcomes between both types of STEMI is not known, but our novel finding here that IMR has worse outcomes with anterior compared with inferior STEMI may provide a rationale to explore these mechanistic differences in future studies.

Associations of increased 30-day mortality<sup>10</sup> and 1-year mortality<sup>1 3–5 10 23</sup> with IMR have been previously reported. Comparisons were carried out between two groups (non-significant vs significant IMR) or three groups (no MR, mild MR and moderate/severe MR). Our study is the first to compare between IMR regarding index STEMI location. This might be because of the large sample size of our study which provided enough power to perform this comparison. Outcomes of anterior STEMI overall is known to be worse than inferior STEMI, but in our study, there was no difference between both groups in all risk factors, clinical presentation, comorbidities and coronary intervention. Even after adjusting for known factors associated with more mortality, still IMR in anterior STEMI showed worse prognosis.

To the best of our knowledge, our study is the first to date to compare outcomes of IMR by STEMI location in a large population of patients >800 patients who underwent PPCI within the first 12 hours of presentation and had a mean follow-up of 5.9 years.

### Study limitations

As with any retrospective, single-centre analysis, our study may be limited by selection bias and the results might not be generalisable to other centres or hospitals. A second limitation is that our patient population spans a 20-year period, over which advances in coronary intervention and cardiac care were tremendous. A third limitation is that we did not have grades of MR in follow-up echocardiography, as several studies before reported that the severity of MR changes over time in the subacute phase of the MI.<sup>17 24</sup> In addition, we did not have data on clinical follow-up such as heart failure readmissions, or number of patients who received surgical intervention for the MR in follow-up, and this might have affected noticed outcomes. Another limitation is that patients who presented with STEMI and died before performing an echocardiogram were not accounted for and the presence of IMR in these patients was not known.

### CONCLUSION

IMR occurs more commonly with inferior compared with anterior STEMI. However, IMR with anterior had much worse outcomes in every grade of regurgitation compared with inferior STEMI.

**Competing interests** None declared.

**Ethics approval** Institutional Review Board (IRB) of Cleveland Clinic.

**Provenance and peer review** Not commissioned; externally peer reviewed.

**Data sharing statement** No additional data are available.

**Open Access** This is an Open Access article distributed in accordance with the Creative Commons Attribution Non Commercial (CC BY-NC 4.0) license, which permits others to distribute, remix, adapt, build upon this work non-commercially, and license their derivative works on different terms, provided the original work is properly cited and the use is non-commercial. See: <http://creativecommons.org/licenses/by-nc/4.0/>

### REFERENCES

1. Barzilai B, Davis VG, Stone PH, *et al.* Prognostic significance of mitral regurgitation in acute myocardial infarction. The MILIS Study Group. *Am J Cardiol* 1990;65:1169–75.
2. Aronson D, Goldsher N, Zukermann R, *et al.* Ischemic mitral regurgitation and risk of heart failure after myocardial infarction. *Arch Intern Med* 2006;166:2362–8.
3. Lehmann KG, Francis CK, Dodge HT. Mitral regurgitation in early myocardial infarction. Incidence, clinical detection, and prognostic implications. TIMI Study Group. *Ann Intern Med* 1992;117:10–17.
4. Feinberg MS, Schwammenthal E, Shlizerman L, *et al.* Prognostic significance of mild mitral regurgitation by color Doppler echocardiography in acute myocardial infarction. *Am J Cardiol* 2000;86:903–7.
5. Hillis GS, Møller JE, Pellikka PA, *et al.* Prognostic significance of echocardiographically defined mitral regurgitation early after acute myocardial infarction. *Am Heart J* 2005;150:1268–75.
6. Bursi F, Enriquez-Sarano M, Nkomo VT, *et al.* Heart failure and death after myocardial infarction in the community: the emerging role of mitral regurgitation. *Circulation* 2005;111:295–301.
7. Lamas GA, Mitchell GF, Flaker GC, *et al.* Clinical significance of mitral regurgitation after acute myocardial infarction. Survival and ventricular enlargement investigators. *Circulation* 1997;96:827–33.
8. Grigioni F, Enriquez-Sarano M, Zehr KJ, *et al.* Ischemic mitral regurgitation: long-term outcome and prognostic implications with quantitative Doppler assessment. *Circulation* 2001;103:1759–64.
9. Lehmann KG, Francis CK, Sheehan FH, *et al.* Effect of thrombolysis on acute mitral regurgitation during evolving myocardial infarction. Experience from the Thrombolysis in Myocardial Infarction (TIMI) Trial. *J Am Coll Cardiol* 1993;22:714–19.
10. Pellizzon GG, Grines CL, Cox DA, *et al.* Importance of mitral regurgitation in patients undergoing percutaneous coronary intervention for acute myocardial infarction: the Controlled Abciximab and Device Investigation to Lower Late Angioplasty Complications (CADILLAC) trial. *J Am Coll Cardiol* 2004;43:1368–74.
11. Wita K, Berger-Kuczka A, Filipecki A, *et al.* Predictive value of ischemic mitral regurgitation during the acute phase of ST elevation myocardial infarction treated with primary coronary intervention for left ventricular remodeling in long-term follow-up. *Coron Artery Dis* 2010;21:325–9.
12. Tcheng JE, Jackman JD, Nelson CL, *et al.* Outcome of patients sustaining acute ischemic mitral regurgitation during myocardial infarction. *Ann Intern Med* 1992;117:18–24.
13. De Servi S, Vaccari L, Assandri J, *et al.* Clinical significance of mitral regurgitation in patients with recent myocardial infarction. *Eur Heart J* 1988;9(Suppl F):5–9.
14. Hickey MS, Smith LR, Muhlbauer LH, *et al.* Current prognosis of ischemic mitral regurgitation. Implications for future management. *Circulation* 1988;78:151–9.
15. Chung SY, Lin FC, Chua S, *et al.* Clinical profile and outcome of first acute myocardial infarction with ischemic mitral regurgitation. *Chang Gung Med J* 2008;31:268–75.
16. Barra S, Providência R, Paiva L, *et al.* Mitral regurgitation during a myocardial infarction—new predictors and prognostic significance at two years of follow-up. *Acute Card Care* 2012;14:27–33.
17. Amigoni M, Meris A, Thune JJ, *et al.* Mitral regurgitation in myocardial infarction complicated by heart failure, left ventricular dysfunction, or both: prognostic significance and relation to ventricular size and function. *Eur Heart J* 2007;28:326–33.
18. Li S, Barywani S, Fu M. Prognostic significance of mitral regurgitation in long-term all-cause mortality in patients aged ≥80 years with acute coronary syndrome. *Int J Cardiol* 2014;176:340–5.
19. Perez de Isla L, Zamorano J, Quezada M, *et al.* Prognostic significance of functional mitral regurgitation after a first non-ST-segment elevation acute coronary syndrome. *Eur Heart J* 2006;27:2655–60.
20. Leor J, Feinberg MS, Vered Z, *et al.* Effect of thrombolytic therapy on the evolution of significant mitral regurgitation in patients with a first inferior myocardial infarction. *J Am Coll Cardiol* 1993;21:1661–6.
21. Chua S, Hung J, Chung S-Y, *et al.* Primary percutaneous coronary intervention lowers the incidence of ischemic mitral regurgitation in



- patients with acute ST-elevated myocardial infarction. *Circ J* 2010;74:2386–92.
22. Poh K-K, Lee GK, Lee L-C, *et al*. Reperfusion therapies reduce ischemic mitral regurgitation following inferoposterior ST-segment elevation myocardial infarction. *Coron Artery Dis* 2012;23:555–9.
  23. Engström AE, Vis MM, Bouma BJ, *et al*. Mitral regurgitation is an independent predictor of 1-year mortality in ST-elevation myocardial infarction patients presenting in cardiogenic shock on admission. *Acute Card Care* 2010;12:51–7.
  24. López-Pérez M, Estévez-Loureiro R, López-Sainz A, *et al*. Long-term prognostic value of mitral regurgitation in patients with ST-segment elevation myocardial infarction treated by primary percutaneous coronary intervention. *Am J Cardiol* 2014;113: 907–12.
  25. MacHaalany J, Bertrand OF, O'Connor K, *et al*. Predictors and prognosis of early ischemic mitral regurgitation in the era of primary percutaneous coronary revascularisation. *Cardiovasc Ultrasound* 2014;12:14.
  26. Carrabba N, Parodi G, Valenti R, *et al*. Clinical implications of early mitral regurgitation in patients with reperfused acute myocardial infarction. *J Card Fail* 2008;14:48–54.
  27. Uddin AM, Henry TD, Hodges JS, *et al*. The prognostic role of mitral regurgitation after primary percutaneous coronary intervention for acute ST-elevation myocardial infarction. *Catheter Cardiovasc Interv* 2012;80:779–86.
  28. Izumi S, Miyatake K, Beppu S, *et al*. Mechanism of mitral regurgitation in patients with myocardial infarction: a study using real-time two-dimensional Doppler flow imaging and echocardiography. *Circulation* 1987;76:777–85.
  29. Ragosta M. What to do about ischemic mitral regurgitation? *JACC Cardiovasc Interv* 2015;8:364–6.
  30. Silbiger JJ. Mechanistic insights into ischemic mitral regurgitation: echocardiographic and surgical implications. *J Am Soc Echocardiogr* 2011;24:707–19.
  31. Kalra K, Wang Q, McIver BV, *et al*. Temporal changes in interpapillary muscle dynamics as an active indicator of mitral valve and left ventricular interaction in ischemic mitral regurgitation. *J Am Coll Cardiol* 2014;64:1867–79.
  32. Kumanohoso T, Otsuji Y, Yoshifuku S, *et al*. Mechanism of higher incidence of ischemic mitral regurgitation in patients with inferior myocardial infarction: quantitative analysis of left ventricular and mitral valve geometry in 103 patients with prior myocardial infarction. *J Thorac Cardiovasc Surg* 2003;125:135–43.
  33. Zoghbi WA, Enriquez-Sarano M, Foster E, *et al*. Recommendations for evaluation of the severity of native valvular regurgitation with two-dimensional and Doppler echocardiography. *J Am Soc Echocardiogr* 2003;16:777–802.
  34. Agricola E, Oppizzi M, Maisano F, *et al*. Echocardiographic classification of chronic ischemic mitral regurgitation caused by restricted motion according to tethering pattern. *Eur J Echocardiogr* 2004;5:326–34.
  35. Agricola E, Oppizzi M, Pisani M, *et al*. Ischemic mitral regurgitation: mechanisms and echocardiographic classification. *Eur J Echocardiogr* 2007;9:207–21.
  36. Yosefy C, Beerli R, Guerrero JL, *et al*. Mitral regurgitation after anteroapical myocardial infarction: new mechanistic insights. *Circulation* 2011;123:1529–36.
  37. Golba K, Mokrzycki K, Drozd J, *et al*. Mechanisms of functional mitral regurgitation in ischemic cardiomyopathy determined by transesophageal echocardiography (from the Surgical Treatment for Ischemic Heart Failure Trial). *Am J Cardiol* 2013;112:1812–18.
  38. Watanabe N, Ogasawara Y, Yamaura Y, *et al*. Geometric differences of the mitral valve tenting between anterior and inferior myocardial infarction with significant ischemic mitral regurgitation: quantitation by novel software system with transthoracic real-time three-dimensional echocardiography. *J Am Soc Echocardiogr* 2006;19:71–5.
  39. Watanabe N, Ogasawara Y, Yamaura Y, *et al*. Mitral annulus flattens in ischemic mitral regurgitation: geometric differences between inferior and anterior myocardial infarction: a real-time 3-dimensional echocardiographic study. *Circulation* 2005;112: 1458–62.
  40. Song JM, Qin JX, Kongsarepong V, *et al*. Determinants of ischemic mitral regurgitation in patients with chronic anterior wall myocardial infarction: a real time three-dimensional echocardiography study. *Echocardiography* 2006;23:650–7.