

UC Davis

UC Davis Previously Published Works

Title

Evolutionary loss of melanogenesis in the tunicate *Molgula occulta*

Permalink

<https://escholarship.org/uc/item/5vz9z45q>

Journal

EvoDevo, 8(1)

ISSN

2041-9139

Authors

Racioppi, Claudia
Valoroso, Maria Carmen
Coppola, Ugo
et al.

Publication Date

2017-12-01

DOI

10.1186/s13227-017-0074-x


Peer reviewed

RESEARCH

Open Access



Evolutionary loss of melanogenesis in the tunicate *Molgula occulta*

Claudia Racioppi^{1,2,3}, Maria Carmen Valoroso^{1,8}, Ugo Coppola¹, Elijah K. Lowe^{1,3,4,5}, C. Titus Brown^{3,5,6}, Billie J. Swalla^{3,4,5}, Lionel Christiaen^{2,3}, Alberto Stolfi^{2,3,7*} and Filomena Ristoratore^{1*} 

Abstract

Background: Analyzing close species with diverse developmental modes is instrumental for investigating the evolutionary significance of physiological, anatomical and behavioral features at a molecular level. Many examples of trait loss are known in metazoan populations living in dark environments. Tunicates are the closest living relatives of vertebrates and typically present a lifecycle with distinct motile larval and sessile adult stages. The nervous system of the motile larva contains melanized cells associated with geotactic and light-sensing organs. It has been suggested that these are homologous to vertebrate neural crest-derived melanocytes. Probably due to ecological adaptation to distinct habitats, several species of tunicates in the Molgulidae family have tailless (anural) larvae that fail to develop sensory organ-associated melanocytes. Here we studied the evolution of *Tyrosinase* family genes, indispensable for melanogenesis, in the anural, unpigmented *Molgula occulta* and in the tailed, pigmented *Molgula oculata* by using phylogenetic, developmental and molecular approaches.

Results: We performed an evolutionary reconstruction of the tunicate *Tyrosinase* gene family: in particular, we found that *M. oculata* possesses genes predicted to encode one Tyrosinase (Tyr) and three Tyrosinase-related proteins (Tytps) while *M. occulta* has only *Tyr* and *Tytp.a* pseudogenes that are not likely to encode functional proteins. Analysis of *Tyr* sequences from various *M. occulta* individuals indicates that different alleles independently acquired frameshifting short indels and/or larger mobile genetic element insertions, resulting in pseudogenization of the *Tyr* locus. In *M. oculata*, *Tyr* is expressed in presumptive pigment cell precursors as in the model tunicate *Ciona robusta*. Furthermore, a *M. oculata* *Tyr* reporter gene construct was active in the pigment cell precursors of *C. robusta* embryos, hinting at conservation of the regulatory network underlying *Tyr* expression in tunicates. In contrast, we did not observe any expression of the *Tyr* pseudogene in *M. occulta* embryos. Similarly, *M. occulta* *Tyr* allele expression was not rescued in pigmented interspecific *M. occulta* × *M. oculata* hybrid embryos, suggesting deleterious mutations also to its *cis*-regulatory sequences. However, *in situ* hybridization for transcripts from the *M. occulta* *Tytp.a* pseudogene revealed its expression in vestigial pigment cell precursors in this species.

Conclusions: We reveal a complex evolutionary history of the melanogenesis pathway in tunicates, characterized by distinct gene duplication and loss events. Our expression and molecular data support a tight correlation between pseudogenization of *Tyrosinase* family members and the absence of pigmentation in the immotile larvae of *M. occulta*. These results suggest that relaxation of purifying selection has resulted in the loss of sensory organ-associated melanocytes and core genes in the melanogenesis biosynthetic pathway in *M. occulta*.

Keywords: Pigmentation, Tyrosinase evolution, Transposable elements, Pseudogenes, Phylogeny

*Correspondence: alberto.stolfi@biosci.gatech.edu;
filomena.ristoratore@szn.it

¹ Biology and Evolution of Marine organisms, Stazione Zoologica Anton Dohrn, Villa Comunale, 80121 Naples, Italy

² Center for Developmental Genetics, Department of Biology, New York University, New York, NY, USA

Full list of author information is available at the end of the article



Background

Closely related species with different modes of development are attractive systems to investigate the molecular bases of evolutionary changes. The evolutionary loss of physiological, anatomical and behavioral traits by cave-dwelling animals is one noteworthy example [1]. For instance, several studies have revealed convergent or parallel evolution of loss of pigmentation, eyes and various behavioral adaptations in various populations of the Mexican cave tetra (*Astyanax mexicanus*), which have evolved in parallel from surface-dwelling populations [2–4]. Insights into similar processes in cave-dwelling crustaceans are beginning to emerge [5].

Tunicates are the sister group to the vertebrates and are characterized by a life cycle with distinct motile larval and sessile adult stages [6, 7]. The tailed, tadpole-type larva of a typical tunicate consists of a head containing a brain, and a tail containing a dorsal nerve cord and a notochord flanked by striated muscle cells. Larvae swim by alternated left–right contractions of the tail muscles, which are controlled by a minimal central nervous system containing only 177 neurons [8]. Inside the brain, two sensory organs containing a single melanocyte each are generally present: the otolith, for gravity perception, and the ocellus, for the detection of light [9, 10]. These two distinct pigment cells develop from a single bilateral pair of cells along the neural plate borders [11] and are proposed to be homologous to pigment cells of the dorsal ocelli in amphioxus [12, 13] and to neural crest-derived melanocytes in vertebrates [14, 15]. Pigmentation in tunicates depends critically on the activity of melanogenic enzymes Tyrosinase (Tyr) and Tyrosinase-related proteins (Tyrps) [16, 17], as is the case in vertebrates [18].

Despite the deeply conserved body plan of the swimming tunicate larva, some species instead develop a tailless (anural) larva which is immotile [19–21]. About 20 tunicate species have been shown to exhibit anural development, and almost all of these species are members of the family Molgulidae, in which tail loss has occurred independently multiple times [21, 22]. The ecological significance of these losses is still not clear, although it has been suggested that this could be related to the habitats to which these species are adapted, notably sand flats and rocky shores at higher latitudes [22].

Anural tunicate larvae have conspicuously lost most of those features more directly associated with swimming. For instance, they have lost the ability to generate differentiated tail muscles [23–28], and produce rounded larvae without the characteristic elongated, striated tail muscles typical of most tunicate larvae. The anural species *Molgula occulta* has lost genes important for muscle function such as *Muscle actin*, which has become

pseudogenized by deletions, insertions and codon substitutions in coding and noncoding regions, resulting in truncated proteins and/or reduced transcriptional activity [29, 30]. However, tail muscles are still specified in anural embryos, which express the same regulatory cascade for myogenesis in tailed species [31, 32]. Similarly, anural embryos also specify notochord cells, but these later fail to undergo proper morphogenesis by convergent extension [33].

In contrast the loss of functional muscles and notochord, the loss of differentiated neural structures in anural larvae has not been studied in detail. The most obvious evolutionary loss of a neural structure is that of the sensory pigment cells, or melanocytes. While tunicate larvae generally possess both an ocellus and otolith, most molgulids have only an otolith. They have lost the ocellus and, concomitantly, the ability to respond to light [34]. In *Molgula* species with anural larvae, there has been a more complete loss of pigmentation, as even the otolith is missing [19] or vestigial [26]. This has been postulated to be due the lack of adaptive value of the otolith for such anural larvae, which do not swim and therefore do not need to sense their orientation in the water column as swimming, tailed larvae do [22].

Here we describe the development of sensory pigment cells in the embryos of *Molgula oculata*, and the molecular basis of pigmentation loss in the closely related, anural and unpigmented species *M. occulta*. We found that inactivated *Tyrosinase* (*Tyr*) and *Tyrosinase-related protein* (*Tyrp*) genes are present in the genome of *M. occulta*, but are not likely to produce functional enzymes. While *Tyr* transcripts were not detected in *M. occulta* embryos, transcription of a *Tyrp* gene was observed in vestigial pigment cells. Surprisingly, more than two distinct *Tyrosinase* alleles with different inactivating mutations were cloned from a sampling of *M. occulta* individuals, suggesting parallel loss of pigmentation by independent loss-of-function mutations *Tyrosinase* within the same population.

Results

Tyrosinase family enzymes in *Molgula*

The melanogenic toolkit of tunicates and vertebrates revolves around *Tyrosinase* family gene members, which encode the rate-limiting enzymes that catalyze the final steps in melanin biosynthesis [16]. In *Ciona* spp., the family is comprised by *Tyrosinase* (*Tyr*), *Tyrosinase-related protein a* (*Tyrp.a*) and *Tyrosinase-related protein b* (*Tyrp.b*). We searched for orthologs of these genes by performing tBlastn [35] on the recently published genomes of tailless, unpigmented species *Molgula occulta* and the closely related, tailed, pigmented species

Molgula oculata [36], using the *Ciona robusta* (formerly known as *Ciona intestinalis* type A) [37] and *Halocynthia roretzi* [38] orthologs as query sequences.

We found partial sequences for one *Tyr* (*Mooccu.Tyr*) and one *Tyrp* (*Mooccu.Tyrp.a*) ortholog in the genome of *M. occulta*. In contrast, we were able to identify a single *Tyr* ortholog (*Moocul.Tyr*) and at least four distinct *Tyrp* paralogs in the genome of the *M. oculata* (*Moocul.Tyrp.a*, *Moocul.Tyrp.b*, *Moocul.Tyrp.c* and *Moocul.Tyrp.d*). Previously, phylogenetic analyses had shown that *Ciona Tyrp.a* and *Tyrp.b* are the result of a tunicate-specific

independent duplication of an ancestral *Tyrp* gene, equally related to the vertebrate paralogs *Tyrp1* and *Tyrp2* (*Dopachrome tautomerase*) [16]. An ascidian phylogenetic tree encompassing *C. robusta*, *Ciona savignyi* and *Phallusia mammillata* for Phlebobranchia, *Halocynthia roretzi*, *Botryllus schlosseri*, *M. occulta*, *M. oculata* and *M. occidentalis* for Stolidobranchia sequences does not support one-to-one orthology between any of the *Ciona* and *Molgula Tyrp* genes (Fig. 1), suggesting that a single ancestral *Tyrp* gene likely underwent independent duplications in different tunicate clades.

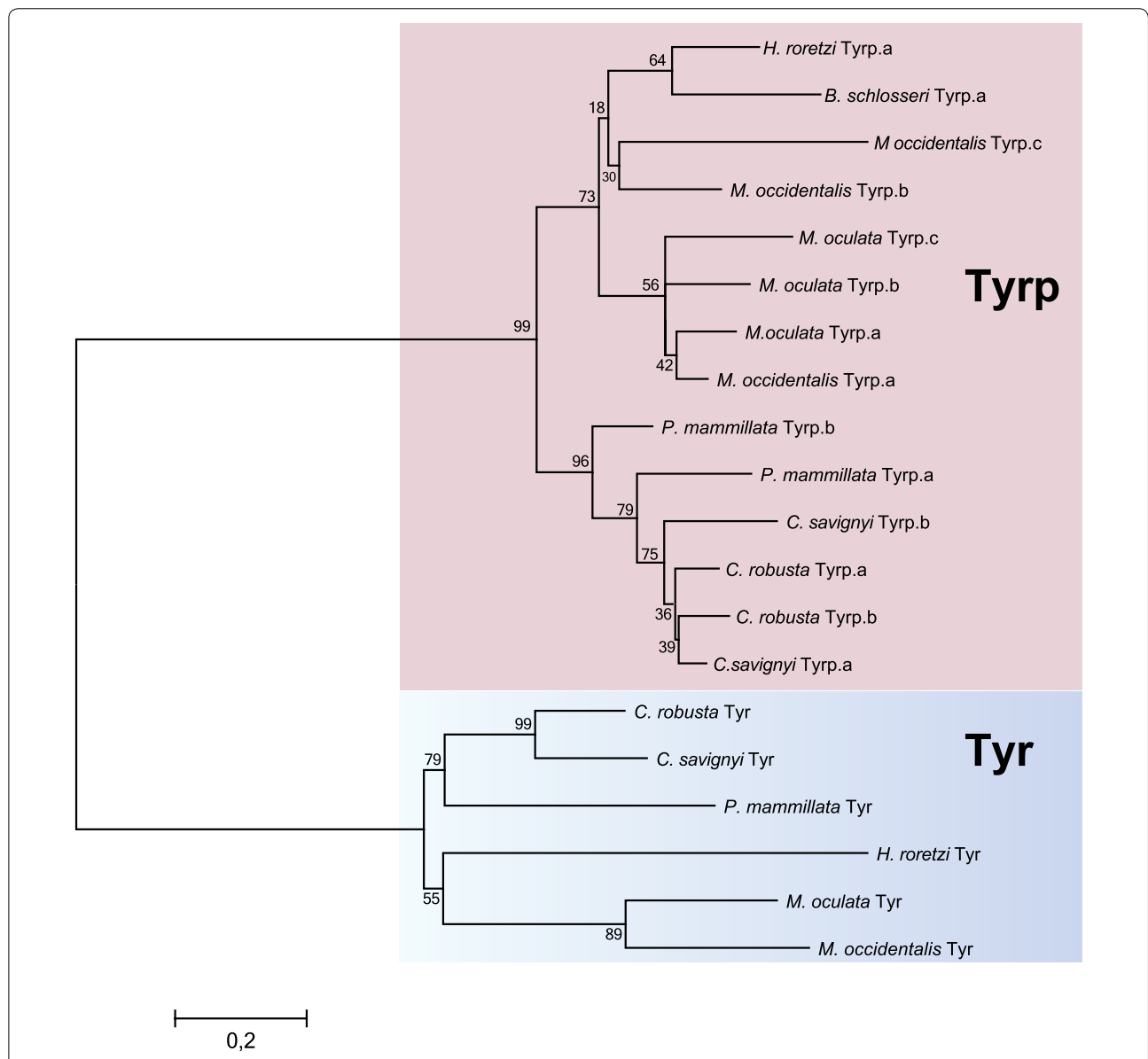


Fig. 1 Tyrosinase family evolution in tunicates. Maximum likelihood phylogeny of Tyrosinase members available in databases: The numbers at the branches represent the replicates come out employing ML method. Two distinct colored boxes have been used to highlight Tyr (blue box) and Tyrp (pink box) protein classes

We also searched for *Tyr* and *Tyrp* mRNA transcripts in the transcriptomes obtained from embryos of both species at three different developmental stages (late gastrula, neurula and tailbud) [39]. Sequences from all *Tyr* family genes from *M. oculata* were identified in the corresponding transcriptome, suggesting that all these genes are expressed during embryogenesis of pigmented *Molgula* species. By contrast, only *Mooccu.Tyrp.a* was present in the *M. occulta* embryonic transcriptome, hinting at the possibility that the melanogenic toolkit is only partially deployed during the development of this species' unpigmented, anural larvae. Furthermore, *Mooccu.Tyr* transcripts were undetectable by RNAseq profiling of interspecies hybrid embryos, resulting from fertilization of *M. oculata* eggs with *M. occulta* sperm [39]. While 70–215 RNAseq reads could be mapped to the *M. oculata Tyr* allele in hybrid embryos at each developmental stage, only one or two reads mapped to *M. occulta Tyr* alleles at any stage (see Table in Additional file 1). Thus, even in embryos actively transcribing the *M. oculata Tyr* allele at high levels, the *M. occulta* allele is largely transcriptionally inactive. Taken together, these data indicate that the *M. occulta Tyr* gene is transcriptionally silent during embryonic development. Since hybrid embryos have pigmented cells [33], our data also indicate that this rescue of melanization in the interspecific hybrids is due entirely to the *M. oculata Tyrosinase* allele.

Pigment cell marker expression in *Molgula* embryos

We next sought to determine the spatiotemporal expression pattern of selected *M. occulta* and *M. oculata Tyrosinase* family genes, by whole-mount mRNA in situ hybridization on embryos at different developmental stages (Fig. 2). In the larvae of *M. occulta*, bilateral *Mooccu.Tyrp.a* expression was detected in embryos starting at 10 h post-fertilization (hpf), which is around the time they are hatching (Fig. 2a). Their number and location in the embryo suggest they correspond to vestigial pigment cell precursors (a9.49 lineage in *Ciona robusta*, Fig. 2b). In contrast, *Mooccu.Tyr* is absent from the transcriptome (see above) [39]. Indeed, mRNA in situ hybridization using a riboprobe prepared from a genomic clone of the *Mooccu.Tyr* locus (see below) showed no transcriptional activity of this sequence during development nor in hatched larvae (Fig. 2d, e). This further confirms the complete loss of transcriptional activity of this gene in *M. occulta* as suggested by the RNAseq data. Taken together, these data suggest that, although unpigmented *M. occulta* specify vestigial pigment cell precursors that transcribe *Mooccu.Tyrp.a*, the rate-limiting melanogenic gene *Mooccu.Tyr* is not expressed in these cells.

To verify whether the *Tyrosinase* ortholog is expressed in the a9.49 lineage cells of the pigmented species *M.*

oculata, we performed in situ hybridization on embryos of this species. At 7 hpf, corresponding to neurula stage, *Moocul.Tyr* is expressed in two cells in the neural plate borders corresponding to the pigment cell precursors (Fig. 2c). Later in development at 10 hpf, *Moocul.Tyr* is expressed around the melanizing otolith (see Figure in Additional file 1). We also isolated an intergenic sequence of ~1.3 kbp upstream of the coding ATG in the *Moocul.Tyr* gene and cloned this region in a reporter construct containing GFP (*Moocul.Tyr > GFP*). This reporter was tested by electroporation into the pigmented embryos of the distantly related *Molgula occidentalis*, the only *Molgula* species that can be easily transfected with plasmid DNA, and in *C. robusta*. In both species, GFP expression was detected in four cells corresponding to the putative pigment cell lineage in the central nervous system of the tailbud embryo (Fig. 3).

The four cells seen in transgenic *Ciona* and *M. occidentalis* embryos expressing *M. oculata Tyr > GFP* reporter are the presumptive ocellus and otolith pigment cells along with their more anterior sister cells that express *Tyr* transiently [40], all converged to form a single row at the midline of the embryo. As mentioned previously, tailed *Molgula* species like *M. oculata* and *M. occidentalis* lack an ocellus and only produce an otolith pigment cell. However, from these data we conclude that in *Molgula* and *Ciona*, both presumptive ocellus and otolith pigment cells are specified early and express *Tyr/Tyrp.a*. Thus, the gene regulatory network for pigment cell specification and *Tyr* activation appears to be conserved between *Molgula* and *Ciona*, but ocellus differentiation in *Molgula* is somehow suppressed after pigment cell specification.

Tyrosinase family pseudogenes in *M. occulta*

The lack of melanin production in *M. occulta* pigment cell lineage hinted at the possibility that one or more *Tyrosinase* family genes have become inactivated in this species, through mutations to coding and/or noncoding sequences. While *Mooccu.Tyr* does not appear to be expressed, transcripts for *Mooccu.Tyrp.a* are still detected. However, this does not necessarily indicate the presence of functional Tyrp.a protein. A precedent for this has been found in the *Muscle actin* genes of *M. occulta*, which have been inactivated by mutations that affect both their cis-regulatory and protein-coding sequences [30].

The alignment of the *M. occulta* and *M. oculata Tyrp.a* sequences from the assembled genomes [36] revealed the presence of a 4-bp insertion in *Mooccu.Tyrp.a*, resulting in a frameshift and a premature stop codon in the middle of the gene, right at the start of the conserved Tyrosinase domain which contains the active site of the enzyme (Fig. 4a). This indicates that *Mooccu.Tyrp.a* transcripts do not code for a full-length, functional enzyme.

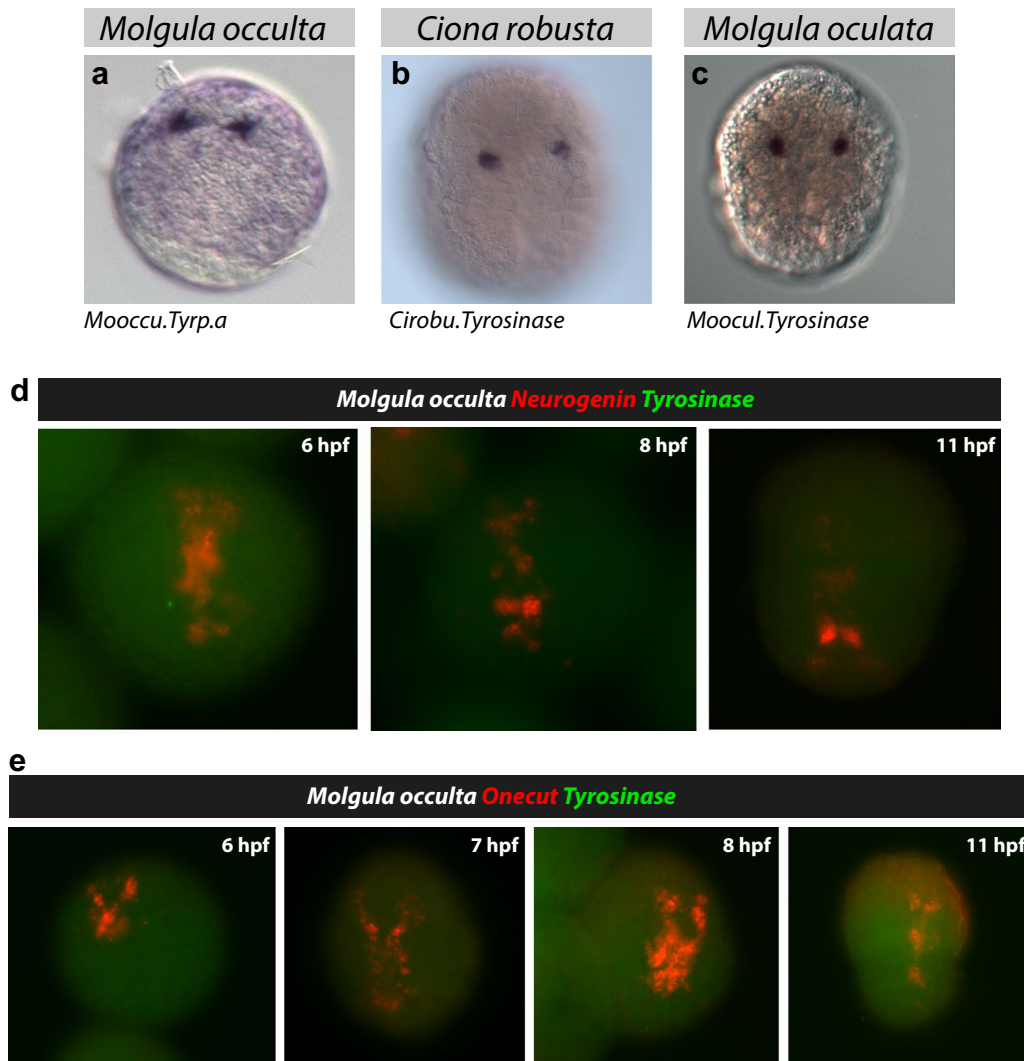


Fig. 2 Expression of *Tyrosinase* genes during tunicate embryogenesis. The whole-mount in situ hybridization experiments show the localization of *Tyrosinase* gene expression in pigment cell precursors of three tunicates: *Mooccu.Tyrp.a* in *Molgula occulta* hatched larva (a), *Cirobu.Tyr* in *Ciona robusta* neurula (b), *Moocul.Tyr* in *Molgula oculata* neurula embryos (c). Double in situ hybridization of *M. occulta* *Tyrosinase* and either *Neurogenin* (d) or *Onecut* (e), showing lack of *Tyrosinase* expression in the developing central nervous system of embryos and larvae at various stages

We also identified a scaffold from the available genome assembly that includes part of the *Mooccu.Tyr* gene, with an assembly gap in the middle of the protein-coding region. To circumvent this assembly problem and analyze the *Mooccu.Tyr* gene in greater detail, we sought to clone this sequence from genomic DNA extracted from several individuals. To this end, we extracted the genomic DNA from ten individuals and amplified the region from each sample by PCR. This resulted unexpectedly in some individuals carrying *Tyr* alleles of different lengths, suggesting the presence of one or more structural variants of the same *Tyr* gene in the population. Each unique PCR product was purified and cloned into plasmids. When

the resulting clones were sequenced, we identified three distinct *Mooccu.Tyr* alleles (Fig. 4b). In the portion of the coding sequence analyzed, one of the alleles (NP2) has a 5-bp frameshifting insertion that results in a premature stop codon, in the beginning of the conserved Tyrosinase domain and enzyme active site (Fig. 4b). The two other alleles (NP1 and NY1) each have a large, ~460-bp insertions with terminal inverted repeats, bearing the hallmarks of a transposable element. These large insertions have several in-frame stop codons. Curiously, NP1 and NY1 have the same element, but in opposite orientations, suggesting one configuration might be derived from the other by a re-transposition event (see Additional file 2).

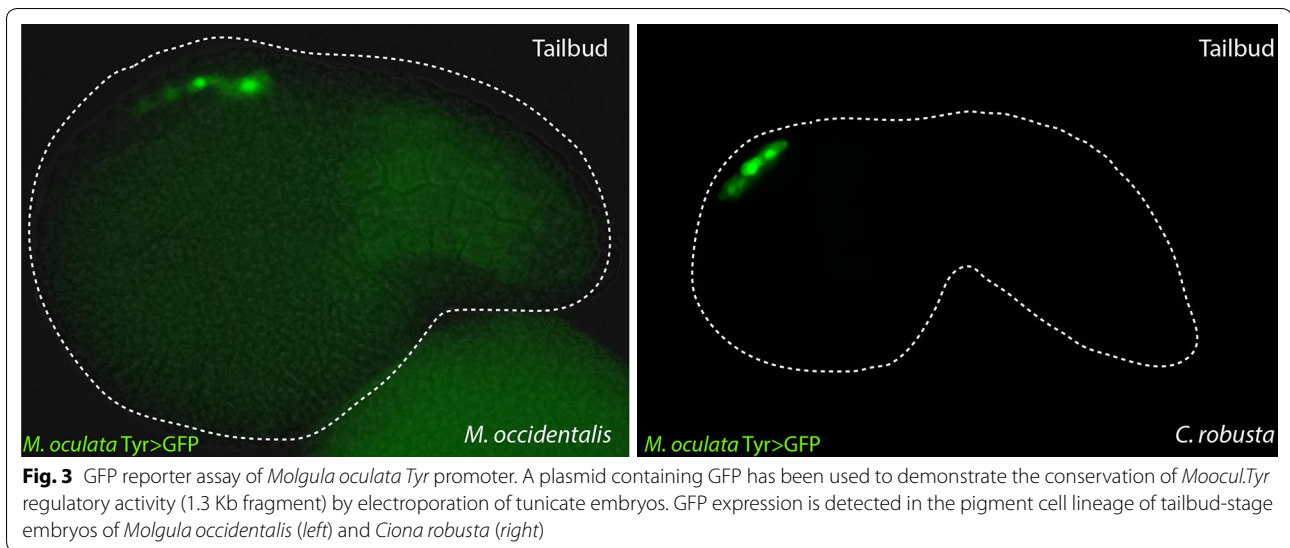


Fig. 3 GFP reporter assay of *Molgula oculata* *Tyr* promoter. A plasmid containing GFP has been used to demonstrate the conservation of *Moocul.Tyr* regulatory activity (1.3 Kb fragment) by electroporation of tunicate embryos. GFP expression is detected in the pigment cell lineage of tailbud-stage embryos of *Molgula occidentalis* (left) and *Ciona robusta* (right)

NP1 and NY1 also have a shorter frameshifting insertion downstream of the transposable element, also in the beginning of the Tyrosinase domain, distinct from that of NP2, suggesting a possible independent origin from the functional common ancestor (Fig. 4b).

Discussion

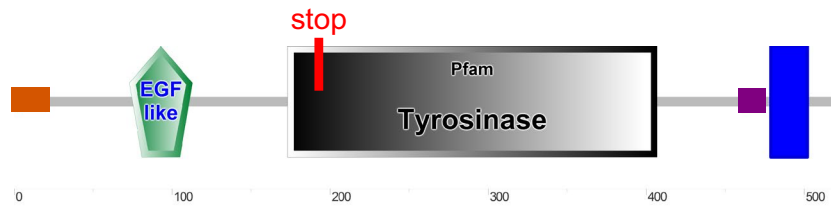
Melanocytes and related pigment cells share some basic characteristics: Melanin pigments are synthesized by Tyrosinase and Tyrosinase-related enzymes [41] and stored in melanosomes, which are tissue-specific lysosome-related organelles distributed in the cell by a regulated vesicular trafficking system. Loss of pigmentation in humans and other vertebrates can be caused by mutations in *Tyrosinase* itself, or other genes encoding proteins important for substrate and/or pigment transport and storage [42, 43]. Our phylogenetic survey pointed at a complex evolutionary history for Tyrosinase family in ascidians, with a pattern influenced by duplications and losses (Fig. 1). In particular, we discovered a different number of *Tyrp* paralogs in *Molgula* spp., suggesting the occurrence of many duplicative events in distinct tunicate clades followed, in some cases, by gene losses. It would be interesting to comprehend the evolutionary and functional relevance of these genomic events. It has been recently showed that tunicate melanocyte specification depends on the FGF/MAPK/Ets pathway, which renders the lineage competent to respond to a Wnt signal [44]. Characterization of the transcriptional response to FGF signaling in the pigment cell lineage has allowed us to identify its molecular mechanisms underlying pigment cell fate choice and, more broadly, anterior–posterior patterning of *Ciona* central nervous system [40]. It will

be interesting to assess how these events are regulated in *Molgula* species, given that only one pigment cell (the otolith) differentiates.

It was previously suggested that Tyrosinase activity is present in *M. occulta* juveniles, in spite of a lack of discernible pigmentation in juveniles or adults [45]. Here we show that genes coding for key enzymatic components of the melanogenesis pathway, namely *Tyrosinase* and *Tyrp.a*, have been mutated in *M. occulta* and are highly unlikely to code for functional enzymes, calling into question how Tyrosinase enzyme activity could be maintained in this species. Furthermore, assembled genome sequences of three *Molgula* species have not uncovered any cryptic *Tyr* paralogs that could compensate for these loss-of-function mutations. In *Ciona*, a single *Tyr* gene is necessary for melanogenesis and sensory organs are unpigmented in larvae carrying *Tyr* loss-of-function mutations [17]. Our results suggest that the loss of this melanogenic toolkit underlies lack of pigmentation in *M. occulta* and contradicts the alternate hypothesis that the toolkit is present, but the pigment cells are not specified [45].

The identification of three distinct, inactivated alleles of *Moocul.Tyr* in such a small sample of individuals from the same population suggests pigmentation loss in this species has occurred through accumulation of deleterious mutations, which would indicate a relaxation of the purifying selection that maintains a functional melanogenesis toolkit in species with swimming larvae. This agrees with the suggestion that the ability to detect larval orientation by means of the pigmented otolith is of little adaptive value to the immotile larvae of *M. occulta* [22]. Since melanin appears to be present only in the

Tyrp.a



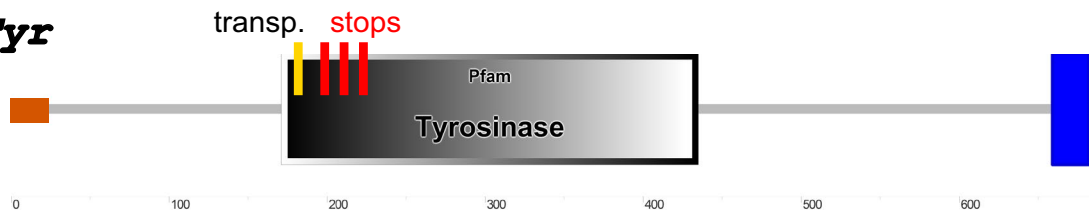
PREMATURE STOP CODON **FRAME-SHIFTING INSERTION**

```

P S Q P N Y V D V T I Y D L F V
Mo.ocul cccttcacaaccaattacgctcgatgtgacgatttatgatctgtttgta
Mo.occu cccaagaaccaatctacgtggacgtcaccatttacgatcttttcgtg
***. . ***** .***** **.* ** *****.***** **.*.
P K K P I Y V D V T I Y D L F V

W T H Y Y S V R D T L L G G G
Mo.ocul tggacgcattactacag----cgtgcgagacactttattgggaggcgga
Mo.occu tggacgcagtattacagtggtcgtccgtgacagtttattaggtggagga
***** **.****** *** ** ***** *****.* ** ** **
W T Q Y Y S V R P STOP
    
```

Tyr



FRAME-SHIFTING INSERTION **PREMATURE STOP CODON** **TRANSP.ELEMENT**

```

H Y Y S S R D N L E F S D K
Mo.ocul -----cactattactctt-caagagataatcttgaattttcagata-----aag
NY1 nnnnnnnntgtggtattactcttccaagagacaatctcgagttttcagatga-----gg
NP1 nnnnnnnntgtggtattactcttccaagagacaatctcgagttttcagatga-----gg
NP2 -----aattattactctt-cacgagacaatctcgagttttcatataatgatg
. ***** ** ****.******.*.***** ** * *

D L A N L V T S K S R L P T K K M L S D
Mo.ocul atttggctaacttggtgacatcaaaaagtcgacttcctacaagaaaatggtatccgatt
NY1 atttggatgacttcatgacaacaaaaaatcaacttcgcgacaaggaaatgctatcataat
NP1 atttggatgacttcatgacaacaaaaaatcaac-tccgacaaggaaatg-----
NP2 atttggatgacttcaagacaacaaaaaatcaacttcgcgac-----aaatgctatcaaaat
**** * *.***** .***** *****.*.* ** ** *****
    
```

Fig. 4 Tyrosinase family pseudogenization in *Molgula occulta*. The figure points out the presence of premature stop codons (red) and frameshift insertions (magenta) in genomic sequences of *Tyrp.a* (a) and *Tyr* (b). A reconstruction of the active site of the proteins has been obtained using the SMART Web site [58]. Certain *Mooccu.Tyr* alleles are characterized by the presence of transposable elements (yellow) inserted just upstream of the active site (b)

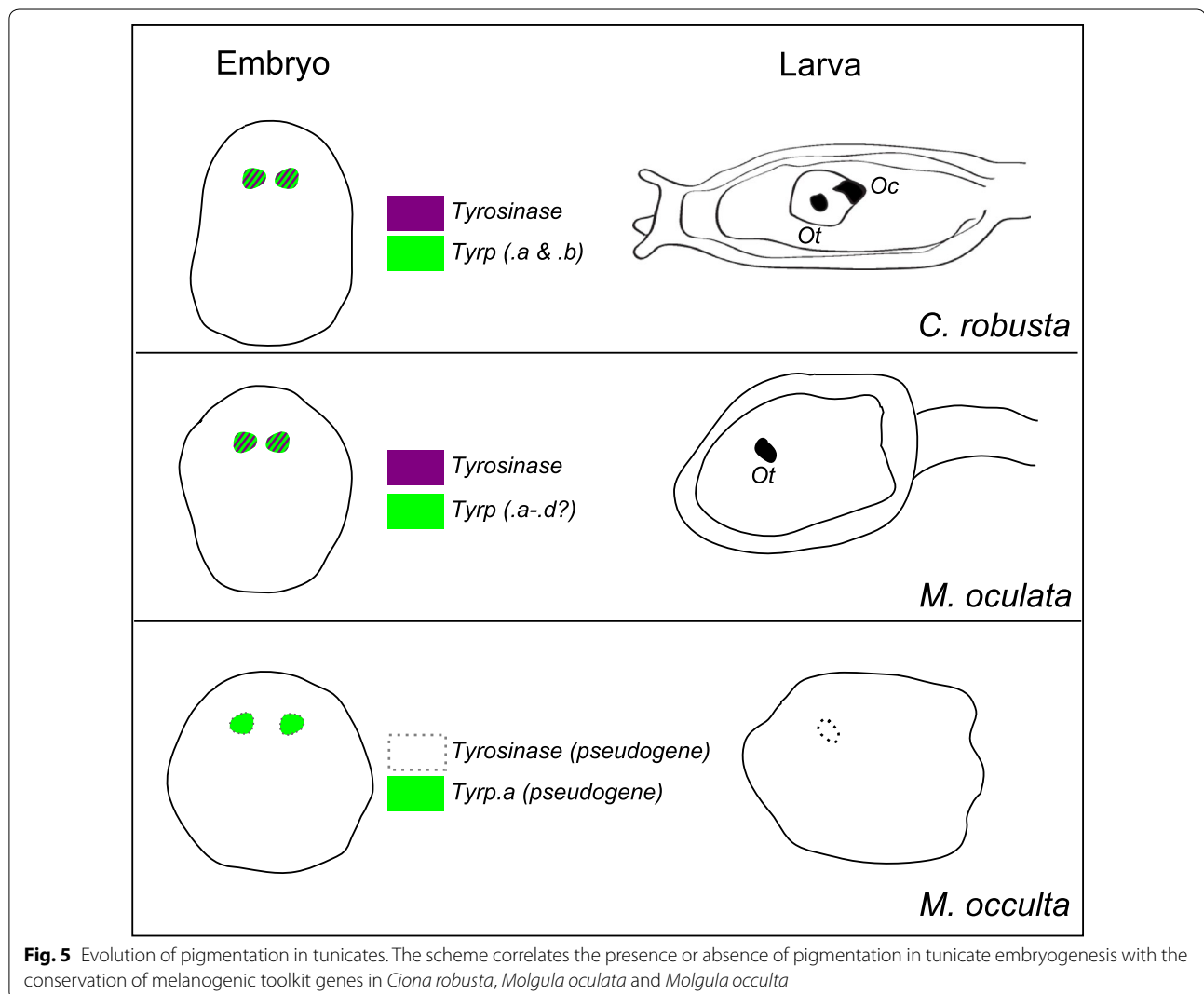
otolith, and no other larval or adult tissue, the melanogenesis toolkit would have been dispensable for species with anural larvae such as *M. occulta*.

Furthermore, *Mooccu.Tyrp.a* is predicted to code for a truncated protein, but is still transcribed in the pigment cell lineage, indicating that it still retains functional *cis*-regulatory sequences. This is in contrast to *Mooccu.Tyr*, which is not expressed (even in interspecific hybrids) and thus is likely to bear inactivating mutations in its *cis*-regulatory sequences as well (Fig. 5). This diversity of mutations suggests that loss of melanogenesis pathway genes is still an ongoing process in *M. occulta* populations. Loss of pigmentation in different populations of *Astyanax* cavefish can occur through independent mutations in the same gene [4]. In contrast, loss of pigmentation in the cave crustacean *Asellus aquaticus* can occur through mutations in different genes in the same population [5].

Our discovery of pigment loss in *M. occulta* through independent mutations in the *same* gene in the *same* population is thus a distinct variation on this theme. It will be interesting to understand how population structure and the genetic architecture of pigmentation in *Molgula* may have contributed to this.

Conclusions

This study shed light on the molecular mechanisms underlying loss of pigmentation in the annual larvae of *Molgula occulta* (Fig. 5). Our data point to a role of independent mutations in at least two *Tyrosinase* family genes in the same population. These mutations are highly likely to result in enzymatically inactive Tyr and Tyrp proteins, which would explain pigment loss in *M. occulta*, even though we show this species still specifies pigment cell precursors like its pigmented relatives. The identification



of several seemingly independent loss-of-function *Tyr* mutations in the *M. occulta* population suggests a relaxation of purifying selection may have contributed to loss of pigment cells in this species.

Methods

Phylogenetic analysis

In phylogenetic reconstruction, we employed sequences that have been retrieved from the NCBI (<http://www.ncbi.nlm.nih.gov>), Ensembl (<http://www.ensembl.org/index.html>) and Aniseed (<http://www.aniseed.cnrs.fr/>) [46] databases excluding uninformative proteins (see Additional file 3). *Ciona robusta* Tyr and Tyrp.a were the initial query sequences used for TBLASTN [35] in other tunicates, and reciprocal blasts were performed on every genome/transcriptome [36, 46, 47]. The protein set was aligned by ClustalW with default parameters [48]. The phylogenetic tree inference was computed employing the maximum likelihood estimation (MLE) using MEGA6 with the WAG + γ + I matrix [49], in order to improve sensitiveness in our analysis. We assessed the robustness of tree topologies with 1000 bootstrap replicates, and the numbers at the branches indicate replicates obtained using the maximum likelihood estimation method (Fig. 1). The graphical representation of trees was constructed using Dendroscope [50].

M. occulta × *M. oculata* hybrid embryo transcriptome analysis

Reads from RNAseq of *M. occulta* × *M. oculata* hybrid embryos from three different stages, gastrula, neurula and tailbud [39], were mapped to the three *M. occulta* Tyr allele sequences cloned, or the *M. oculata* Tyr transcript sequence, using Salmon v0.6.0 [51].

Molecular cloning

Putative orthologs of *Ciona robusta* and *Halocynthia roretzi* protein-coding genes were initially identified by TBLASTN. Identified sequences were aligned to each other to support orthology relationships within *Molgula* and then queried by BLASTP against the NCBI nonredundant protein sequence database to further support orthology relationships to well-known tunicate and vertebrate proteins. The cDNAs were cloned by RT-PCR, and the template cDNA libraries were prepared from total RNA extracted from embryos of various stages. Upstream regulatory sequences were cloned by PCR from genomic DNA (see Additional file 4). For PCRs, we used Phusion high-fidelity polymerase (New England Biolabs, Ipswich, MA) or Pfx Platinum polymerase (Thermo Fisher). Genes are named according to the proposed unified nomenclature system for tunicate genetic elements [52]. For genotyping NY1 Tyr allele, primers

Moocc.genTyr1 FW and Moocc.genTyr1 REV were used. For genotyping NP1 and NP2 Tyr alleles, primers Moocc.genTyr2 FW and Moocc.genTyr2 REV were used. All the employed oligos are listed in Additional file 5.

In situ hybridization

In situ hybridization assays were performed as previously described, with modifications [53–55]. Embryos were fixed in MEM-3.2 to 4% paraformaldehyde buffers for at least 2 h. Pre-hybridization proteinase K concentrations ranged from 0.25 (110 cell stage) to 1 (tailbud) and 5 μ g/ml (larvae) for *Molgula* spp. embryos. The *Ciona robusta* Tyr and Tyrp.a probe was synthesized from template plasmid from the Gene Collection Release 1 [56].

Probe for fluorescent mRNA in situ hybridization of *M. occulta* Tyr was prepared from genomic clone NY1, since this gene is not transcriptionally active, and thus, no cDNA could be cloned. Probes for fluorescent mRNA in situ hybridization of *M. occulta* *Neurogenin* and *One-cut* were prepared from cDNA (Additional file 4). Double- and single-color fluorescent in situ hybridization was performed as previously described [53, 55].

Sample collection and electroporation of plasmid DNA into embryos

Gravid adults of *M. oculata* and *M. occulta* were collected at the Station Biologique in Roscoff, France, during August (the only time of year when gravid animals can be found). Gonads were dissected to obtain gametes from both species. Gametes were fertilized with conspecific sperm, and embryos were allowed to develop to the appropriate stage and were then dechorionated as described previously [36]. *M. occidentalis* gravid adults were obtained from Gulf Specimen Marine Lab. Animal handling and electroporation were carried out as described in Stolfi et al. [36]. *C. robusta* (*intestinalis* ‘Type A’) adults were collected in San Diego, CA (M-Rep), and in the gulf of Taranto, Italy. Electroporation has been carried out as described [57].

Additional files

Additional file 1. Figure A: Whole-mount in situ hybridization of Moocul. Tyr in *Molgula oculata* showing gene expression in one pigment cell. Table: RNAseq read counts from interspecific (*M. occulta* × *M. oculata*) embryos mapped to putative parental alleles, showing expression of *M. oculata* allele but not *M. occulta*.

Additional file 2. Inverted transposable elements in *M. occulta* Tyrosinase alleles NP1 and NY1.

Additional file 3. Database of protein sequences used in phylogenetic survey in Fig. 1, obtained from public databases (NCBI, Ensembl, Aniseed).

Additional file 4. Database of cloned sequences that have been used for in situ hybridizations and electroporation experiments.

Additional file 5. Database of entire oligo set employed for cloning DNA used in our work.

Authors' contributions

CR collected and fixed samples, CR, MV, UC performed in situ hybridization analysis, AS, MV, UC performed genomic and transgenic analysis, EL and TB performed bioinformatics analysis, LC, BS, MR conceived the experiments, collected and analyzed data, and CR, AS, UC and FR wrote the manuscript. All the authors critically read the manuscript. All authors read and approved the final manuscript

Author details

¹ Biology and Evolution of Marine organisms, Stazione Zoologica Anton Dohrn, Villa Comunale, 80121 Naples, Italy. ² Center for Developmental Genetics, Department of Biology, New York University, New York, NY, USA. ³ Station Biologique de Roscoff, Roscoff, France. ⁴ Department of Biology, University of Washington, Seattle, WA, USA. ⁵ Friday Harbor Laboratories, University of Washington, Friday Harbor, WA, USA. ⁶ Population Health and Reproduction, UC Davis School of Veterinary Medicine, Davis, CA, USA. ⁷ Present Address: School of Biological Sciences, Georgia Institute of Technology, Atlanta, GA, USA. ⁸ Present Address: Department of Biology, University of Naples Federico II, Naples, Italy.

Acknowledgements

We thank the Station Biologique faculty and staff, especially Stéphane Hourdez, Sophie Booker, and Xavier Bailly for their help in carrying out our studies at Roscoff. We thank Daniel J. Richter for comments and advice on the manuscript.

Competing interests

The authors declare that they have no competing interests.

Availability of data and materials

All data generated or analyzed during this study are included in this published article (and its additional files).

Funding

The work has been supported by ASSEMBLE MARINE for MoEvoDevo project. CR has been supported by a long-term fellowship ALTF 1608-2014 from EMBO and by a travel grant from the Boehringer Ingelheim Fonds and ASSEMBLE (Association of European Marine Biological Laboratories). AS is supported by NIH award K99 HD084814. UC is supported by a Ph.D. Open University fellowship from SZN. This material is also based in part upon collaborative work by BJS, CTB and EKL supported by the National Science Foundation under Cooperative Agreement No. DBI-0939454 BEACON, A Center for the Study of Evolution in Action. Any opinions, findings, and conclusions or recommendations expressed in this material are those of the author(s) and do not necessarily reflect the views of the National Science Foundation.

Publisher's Note

Springer Nature remains neutral with regard to jurisdictional claims in published maps and institutional affiliations.

Received: 12 May 2017 Accepted: 8 July 2017

Published online: 18 July 2017

References

- Retaux S, Casane D. Evolution of eye development in the darkness of caves: adaptation, drift, or both? *EvoDevo*. 2013;4(1):26.
- Kowalko JE, Rohner N, Rompani SB, Peterson BK, Linden TA, Yoshizawa M, Kay EH, Weber J, Hoekstra HE, Jeffery WR, et al. Loss of schooling behavior in cavefish through sight-dependent and sight-independent mechanisms. *Curr Biol*. 2013;23(19):1874–83.
- McGaugh SE, Gross JB, Aken B, Blin M, Borowsky R, Chalopin D, Hinaux H, Jeffery WR, Keene A, Ma L, et al. The cavefish genome reveals candidate genes for eye loss. *Nat Commun*. 2014;5:5307.
- Protas ME, Hersey C, Kochanek D, Zhou Y, Wilkens H, Jeffery WR, Zon LI, Borowsky R, Tabin CJ. Genetic analysis of cavefish reveals molecular convergence in the evolution of albinism. *Nat Genet*. 2006;38(1):107–11.
- Protas ME, Trontelj P, Patel NH. Genetic basis of eye and pigment loss in the cave crustacean, *Asellus aquaticus*. *Proc Natl Acad Sci USA*. 2011;108(14):5702–7.
- Jeffery AK, Swalla BJ. Tunicates. In: Gilbert SF, Raunio AM, editors. *Embryology, constructing the organism*. London: Elsevier; 1997.
- Satoh N. *Developmental biology of ascidians*. Cambridge: Cambridge University Press; 1994.
- Ryan K, Lu Z, Meinertzhagen IA. The CNS connectome of a tadpole larva of *Ciona intestinalis* (L) highlights sidedness in the brain of a chordate sibling. *Elife*. 2016;5:1.
- Dilly PN. Studies on the receptors in the cerebral vesicle of the ascidian tadpole. I. The otolith. *Q J Microsc Sci*. 1962;103:393–8.
- Tsuda M, Sakurai D, Goda M. Direct evidence for the role of pigment cells in the brain of ascidian larvae by laser ablation. *J Exp Biol*. 2003;206(8):1409–17.
- Nishida H. Cell lineage analysis in ascidian embryos by intracellular injection of a tracer enzyme. III. Up to the tissue restricted stage. *Dev Biol*. 1987;121(2):526–41.
- Stolfi A, Ryan K, Meinertzhagen IA, Christaen L. Migratory neuronal progenitors arise from the neural plate borders in tunicates. *Nature*. 2015;527(7578):371–4.
- Yu JK, Meulemans D, McKeown SJ, Bronner-Fraser M. Insights from the amphioxus genome on the origin of vertebrate neural crest. *Genome Res*. 2008;18(7):1127–32.
- Abitua PB, Wagner E, Navarrete IA, Levine M. Identification of a rudimentary neural crest in a non-vertebrate chordate. *Nature*. 2012;492(7427):104–7.
- Wada H, Holland PW, Sato S, Yamamoto H, Satoh N. Neural tube is partially dorsalized by overexpression of Hrpax-37: the ascidian homologue of Pax-3 and Pax-7. *Dev Biol*. 1997;187(2):240–52.
- Esposito R, D'Aniello S, Squarzone P, Pezzotti MR, Ristoratore F, Spagnuolo A. New insights into the evolution of metazoan tyrosinase gene family. *PLOS ONE*. 2012;7(4):e35731.
- Jiang D, Tresser JW, Horie T, Tsuda M, Smith WC. Pigmentation in the sensory organs of the ascidian larva is essential for normal behavior. *J Exp Biol*. 2005;208(3):433–8.
- Tief K, Hahne M, Schmidt A, Beermann F. Tyrosinase, the key enzyme in melanin synthesis, is expressed in murine brain. *Eur J Biochem*. 1996;241(1):12–6.
- Berrill NJ. Studies in tunicate development. Part II. Abbreviation of development in the Molgulidae. *Philos Trans R Soc B Biol Sci*. 1931;219:281–346.
- Lacaze-Duthiers H. *Histoire des ascidies simples des cotes de France: 2: Etudes des especes*; 1874.
- Jeffery WR, Swalla BJ. The myoplasm of ascidian eggs: a localized cytoskeletal domain with multiple roles in embryonic development. *Semin Cell Biol*. 1990;1(5):373–81.
- Huber JL, da Silva KB, Bates WR, Swalla BJ. The evolution of anural larvae in molgulid ascidians. *Semin Cell Dev Biol*. 2000;11(6):419–26.
- Bates WR. Direct development in the Ascidian *Molgula-retortiformis* (Verrill, 1871). *Biol Bull*. 1995;188(1):16–22.
- Bates WR, Mallett JE. Ultrastructural and histochemical study of anural development in the ascidian *Molgula-pacifica* (Huntsman). *Roux Arch Dev Biol*. 1991;200(4):193–201.
- Swalla BJ, Jeffery WR. Modification of the myoplasm in eggs of anural ascidians. *Am Zool*. 1990;30(4):A42.
- Swalla BJ, Jeffery WR. Vestigial brain melanocyte development during embryogenesis of an anural ascidian. *Dev Growth Differ*. 1992;34(1):17–25.
- Tagawa K, Jeffery WR, Satoh N. The recently-described ascidian species *Molgula tectiformis* is a direct developer. *Zool Sci*. 1997;14(2):297–303.
- Whittaker JR. Development of vestigial tail muscle acetylcholinesterase in embryos of an anural ascidian species. *Biol Bull*. 1979;156(3):393–407.
- Jeffery WR, Swalla BJ, Ewing N, Kusakabe T. Evolution of the ascidian anural larva: evidence from embryos and molecules. *Mol Biol Evol*. 1999;16(5):646–54.
- Kusakabe T, Swalla BJ, Satoh N, Jeffery WR. Mechanism of an evolutionary change in muscle cell differentiation in ascidians with different modes of development. *Dev Biol*. 1996;174(2):379–92.

31. Gyoja F, Satou Y, Shin-i T, Kohara Y, Swalla BJ, Satoh N. Analysis of large scale expression sequenced tags (ESTs) from the anural ascidian, *Molgula tectiformis*. *Dev Biol*. 2007;307(2):460–82.
32. Takada N, Satoh N, Swalla BJ. Expression of Tbx6, a muscle lineage T-box gene, in the tailless embryo of the ascidian *Molgula tectiformis*. *Dev Genes Evol*. 2002;212(7):354–6.
33. Swalla BJ, Jeffery WR. Interspecific hybridization between an anural and urodele ascidian: differential expression of urodele features suggests multiple mechanisms control anural development. *Dev Biol*. 1990;142(2):319–34.
34. Grave C. *Molgula citrina* (Alder and Hancock). Activities and structure of the free-swimming larva. *J Morphol*. 1926;42:453–71.
35. Gertz EM, Yu YK, Agarwala R, Schaffer AA, Altschul SF. Composition-based statistics and translated nucleotide searches: improving the TBLASTN module of BLAST. *BMC Biol*. 2006;4:41.
36. Stolfi A, Lowe EK, Racioppi C, Ristoratore F, Brown CT, Swalla BJ, Christiaen L. Divergent mechanisms regulate conserved cardiopharyngeal development and gene expression in distantly related ascidians. *eLife*. 2014. doi:10.7554/eLife.03728.
37. Brunetti R, Gissi C, Pennati R, Caicci F, Gasparini F, Manni L. Morphological evidence that the molecularly determined *Ciona intestinalis* type A and type B are different species: *Ciona robusta* and *Ciona intestinalis*. *J Zool Syst Evol Res*. 2015;53(3):186–93.
38. Sato S, Masuya H, Numakunai T, Satoh N, Ikeo K, Gojobori T, Tamura K, Ide H, Takeuchi T, Yamamoto H. Ascidian tyrosinase gene: its unique structure and expression in the developing brain. *Dev Dyn*. 1997;208(3):363–74.
39. Lowe E, Swalla BJ, Brown CT. Evaluating a lightweight transcriptome assembly pipeline on two closely related ascidian species. *PeerJ Prepr*. 2014;2:e505v1.
40. Racioppi C, Kamal AK, Razy-Krajka F, Gambardella G, Zanetti L, di Bernardo D, Sanges R, Christiaen LA, Ristoratore F. Fibroblast growth factor signaling controls nervous system patterning and pigment cell formation in *Ciona intestinalis*. *Nat Commun*. 2014;5:4830.
41. Kobayashi T, Urabe K, Winder A, Jimenez-Cervantes C, Imokawa G, Brewington T, Solano F, Garcia-Borrón JC, Hearing VJ. Tyrosinase related protein 1 (TRP1) functions as a DHICA oxidase in melanin biosynthesis. *EMBO J*. 1994;13(24):5818–25.
42. Loftus SK, Larson DM, Baxter LL, Antonellis A, Chen Y, Wu X, Jiang Y, Bittner M, Hammer JA 3rd, Pavan WJ. Mutation of melanosome protein RAB38 in chocolate mice. *Proc Natl Acad Sci USA*. 2002;99(7):4471–6.
43. Oiso N, Riddle SR, Serikawa T, Kuramoto T, Spritz RA. The rat Ruby (R) locus is Rab38: identical mutations in Fawn-hooded and Tester-Moriyama rats derived from an ancestral Long Evans rat sub-strain. *Mamm Genome*. 2004;15(4):307–14.
44. Squarzoni P, Parveen F, Zanetti L, Ristoratore F, Spagnuolo A. FGF/MAPK/ Ets signaling renders pigment cell precursors competent to respond to Wnt signal by directly controlling Ci-Tcf transcription. *Development*. 2011;138(7):1421–32.
45. Jeffery WR. Evolution and development of brain sensory organs in molluscid ascidians. *Evol Dev*. 2004;6(3):170–9.
46. Brozovic M, Martin C, Dantec C, Dauga D, Mendez M, Simion P, Percher M, Laporte B, Scornavacca C, Di Gregorio A. ANISEED 2015: a digital framework for the comparative developmental biology of ascidians. *Nucleic Acids Res*. 2015;44:D808–18.
47. Dehal P, Satou Y, Campbell RK, Chapman J, Degnan B, De Tomaso A, Davidson B, Di Gregorio A, Gelpke M, Goodstein DM. The draft genome of *Ciona intestinalis*: insights into chordate and vertebrate origins. *Science*. 2002;298(5601):2157.
48. Thompson JD, Higgins DG, Gibson TJ. CLUSTAL W: improving the sensitivity of progressive multiple sequence alignment through sequence weighting, position-specific gap penalties and weight matrix choice. *Nucleic Acids Res*. 1994;22(22):4673–80.
49. Tamura K, Stecher G, Peterson D, Filipski A, Kumar S. MEGA6: molecular evolutionary genetics analysis version 6.0. *Mol Biol Evol*. 2013;30(12):2725–9.
50. Huson DH, Scornavacca C. Dendroscope 3: an interactive tool for rooted phylogenetic trees and networks. *Syst Biol*. 2012;61(6):1061–7.
51. Patro R, Duggal G, Love MI, Irizarry RA, Kingsford C. Salmon provides fast and bias-aware quantification of transcript expression. *Nat Methods*. 2017;4:417–9.
52. Stolfi A, Sasakura Y, Chalopin D, Satou Y, Christiaen L, Dantec C, Endo T, Naville M, Nishida H, Swalla BJ, et al. Guidelines for the nomenclature of genetic elements in tunicate genomes. *Genesis*. 2015;53(1):1–14.
53. Beh J, Shi W, Levine M, Davidson B, Christiaen L. FoxF is essential for FGF-induced migration of heart progenitor cells in the ascidian *Ciona intestinalis*. *Development*. 2007;134(18):3297–305.
54. Christiaen L, Wagner E, Shi W, Levine M. Whole-mount in situ hybridization on sea squirt (*Ciona intestinalis*) embryos. *Cold Spring Harb Protoc*. 2009;2009(12):pdb prot5348.
55. Ikuta T, Saiga H. Dynamic change in the expression of developmental genes in the ascidian central nervous system: revisit to the tripartite model and the origin of the midbrain-hindbrain boundary region. *Dev Biol*. 2007;312(2):631–43.
56. Satou Y, Yamada L, Mochizuki Y, Takatori N, Kawashima T, Sasaki A, Hamaguchi M, Awazu S, Yagi K, Sasakura Y, et al. A cDNA resource from the basal chordate *Ciona intestinalis*. *Genesis*. 2002;33(4):153–4.
57. Christiaen L, Wagner E, Shi W, Levine L. Electroporation of transgenic DNAs in the sea squirt *Ciona*. *Cold Spring Harb Protoc*. 2009;12:pdb. prot5345.
58. Letunic I, Doerks T, Bork P. SMART: recent updates, new developments and status in 2015. *Nucleic Acids Res*. 2014;43(D1):D257–60.

Submit your next manuscript to BioMed Central and we will help you at every step:

- We accept pre-submission inquiries
- Our selector tool helps you to find the most relevant journal
- We provide round the clock customer support
- Convenient online submission
- Thorough peer review
- Inclusion in PubMed and all major indexing services
- Maximum visibility for your research

Submit your manuscript at
www.biomedcentral.com/submit

