

# UC Riverside

## UC Riverside Previously Published Works

### Title

The global abundance of tree palms

### Permalink

<https://escholarship.org/uc/item/5v24z3r1>

### Journal

Global Ecology and Biogeography, 29(9)

### ISSN

0960-7447

### Authors

Muscarella, Robert  
Emilio, Thaise  
Phillips, Oliver L  
et al.

### Publication Date

2020-09-01

### DOI

10.1111/geb.13123

Peer reviewed



## RESEARCH PAPER

Global Ecology  
and BiogeographyA Journal of  
Macroecology

WILEY

# The global abundance of tree palms

Robert Muscarella<sup>1,2</sup> | Thaise Emilio<sup>3,4</sup> | Oliver L. Phillips<sup>5</sup> | Simon L. Lewis<sup>5,6</sup> | Ferry Slik<sup>7</sup> | William J. Baker<sup>4</sup> | Thomas L. P. Couvreur<sup>8</sup> | Wolf L. Eiserhardt<sup>2,4</sup> | Jens-Christian Svenning<sup>2,9</sup> | Kofi Affum-Baffoe<sup>10</sup> | Shin-Ichiro Aiba<sup>11</sup> | Everton C. de Almeida<sup>12</sup> | Samuel S. de Almeida<sup>13</sup> | Edmar Almeida de Oliveira<sup>14</sup> | Esteban Álvarez-Dávila<sup>15</sup> | Luciana F. Alves<sup>16</sup> | Carlos Mariano Alvez-Valles<sup>17</sup> | Fabrício Alvim Carvalho<sup>18</sup> | Fernando Alzate Guarín<sup>19</sup> | Ana Andrade<sup>20</sup> | Luis E. O. C. Aragão<sup>21,22</sup> | Alejandro Araujo Murakami<sup>23</sup> | Luzmila Arroyo<sup>24</sup> | Peter S. Ashton<sup>25</sup> | Gerardo A. Aymard Corredor<sup>26,27</sup> | Timothy R. Baker<sup>5</sup> | Plinio Barbosa de Camargo<sup>28</sup> | Jos Barlow<sup>29</sup> | Jean-François Bastin<sup>30</sup> | Natacha Nssi Bengone<sup>31</sup> | Erika Berenguer<sup>29,32</sup> | Nicholas Berry<sup>33</sup> | Lilian Blanc<sup>34,35</sup> | Katrin Böhning-Gaese<sup>36,37</sup> | Damien Bonal<sup>38</sup> | Frans Bongers<sup>39</sup> | Matt Bradford<sup>40</sup> | Fabian Brambach<sup>41</sup> | Francis Q. Brearley<sup>42</sup> | Steven W. Brewer<sup>43</sup> | Jose L. C. Camargo<sup>20</sup> | David G. Campbell<sup>44</sup> | Carolina V. Castilho<sup>45</sup> | Wendeson Castro<sup>46</sup> | Damien Catchpole<sup>47</sup> | Carlos E. Cerón Martínez<sup>48</sup> | Shengbin Chen<sup>49,50</sup> | Phourin Chhang<sup>51</sup> | Percival Cho<sup>52</sup> | Wanlop Chutipong<sup>53</sup> | Connie Clark<sup>54</sup> | Murray Collins<sup>55</sup> | James A. Comiskey<sup>56,57</sup> | Massiel Nataly Corrales Medina<sup>58</sup> | Flávia R. C. Costa<sup>59</sup> | Heike Culmsee<sup>60</sup> | Heriberto David-Higuita<sup>61</sup> | Priya Davidar<sup>62</sup> | Jhon del Aguila-Pasquel<sup>63</sup> | Géraldine Derroire<sup>64</sup> | Anthony Di Fiore<sup>65</sup> | Tran Van Do<sup>66</sup> | Jean-Louis Doucet<sup>67</sup> | Aurélie Dourdain<sup>64</sup> | Donald R. Drake<sup>68</sup> | Andreas Ensslin<sup>69</sup> | Terry Erwin<sup>70</sup> | Corneille E. N. Ewango<sup>71</sup> | Robert M. Ewers<sup>72</sup> | Sophie Fauset<sup>73</sup> | Ted R. Feldpausch<sup>74</sup> | Joice Ferreira<sup>75</sup> | Leandro Valle Ferreira<sup>76</sup> | Markus Fischer<sup>69</sup> | Janet Franklin<sup>77</sup> | Gabriella M. Fredriksson<sup>78</sup> | Thomas W. Gillespie<sup>79</sup> | Martin Gilpin<sup>5</sup> | Christelle Gonmadje<sup>80,81</sup> | Arachchige Upali Nimal Gunatilleke<sup>82</sup> | Khalid Rehman Hakeem<sup>83</sup> | Jefferson S. Hall<sup>84</sup> | Keith C. Hamer<sup>85</sup> | David J. Harris<sup>86</sup> | Rhett D. Harrison<sup>87</sup> | Andrew Hector<sup>88</sup> | Andreas Hemp<sup>89</sup> | Bruno Herault<sup>90,91</sup> | Carlos Gabriel Hidalgo Pizango<sup>63</sup> | Eurídice N. Honorio Coronado<sup>63</sup> | Wannes Hubau<sup>5,92</sup> | Mohammad Shah Hussain<sup>93</sup> | Faridah-Hanum Ibrahim<sup>94</sup> | Nobuo Imai<sup>95</sup> | Carlos A. Joly<sup>3</sup> | Shijo Joseph<sup>96</sup> | Anitha K<sup>97</sup> | Kuswata Kartawinata<sup>98,99</sup> | Justin Kassi<sup>100</sup> | Timothy J. Killeen<sup>23</sup> |

Robert Muscarella and Thaise Emilio are joint first author.

This is an open access article under the terms of the Creative Commons Attribution License, which permits use, distribution and reproduction in any medium, provided the original work is properly cited.

© 2020 The Authors. Global Ecology and Biogeography published by John Wiley & Sons Ltd

Kanehiro Kitayama<sup>101</sup> | Bente Bang Klitgård<sup>102</sup> | Robert Kooyman<sup>103,104</sup> |  
 Nicolas Labrière<sup>105</sup> | Eileen Larney<sup>106,107</sup> | Yves Laumonier<sup>108</sup> | Susan G. Laurance<sup>109</sup> |  
 William F. Laurance<sup>109</sup> | Michael J. Lawes<sup>110</sup> | Aurora Levesley<sup>5</sup> | Janvier Lisingo<sup>111</sup> |  
 Thomas Lovejoy<sup>112</sup> | Jon C. Lovett<sup>5,113</sup> | Xinghui Lu<sup>114</sup> | Anne Mette Lykke<sup>115</sup> |  
 William E. Magnusson<sup>59</sup> | Ni Putu Diana Mahayani<sup>116</sup> | Yadvinder Malhi<sup>32</sup> |  
 Asyraf Mansor<sup>117,118</sup> | Jose Luis Marcelo Peña<sup>119,120</sup> | Ben H. Marimon-Junior<sup>121</sup> |  
 Andrew R. Marshall<sup>122,123,124</sup> | Karina Melgaco<sup>5</sup> | Casimiro Mendoza Bautista<sup>125</sup> |  
 Vianet Mihindou<sup>126,127</sup> | Jérôme Millet<sup>128</sup> | William Milliken<sup>129</sup> | D. Mohandass<sup>130</sup> |  
 Abel Lorenzo Monteagudo Mendoza<sup>131</sup> | Badru Mugerwa<sup>132</sup> | Hidetoshi Nagamasu<sup>133</sup> |  
 Laszlo Nagy<sup>3</sup> | Naret Seuaturien<sup>134</sup> | Marcelo T. Nascimento<sup>135</sup> | David A. Neill<sup>136</sup> |  
 Luiz Menini Neto<sup>137</sup> | Rueben Nilus<sup>138</sup> | Mario Percy Núñez Vargas<sup>131</sup> |  
 Eddy Nurtjahya<sup>139</sup> | R. Nazaré O. de Araújo<sup>140</sup> | Onrizal Onrizal<sup>141</sup>  |  
 Walter A. Palacios<sup>142</sup> | Sonia Palacios-Ramos<sup>143</sup> | Marc Parren<sup>39</sup> | Ekananda Paudel<sup>144</sup> |  
 Paulo S. Morandi<sup>145</sup> | R. Toby Pennington<sup>86,146</sup> | Georgia Pickavance<sup>5</sup> |  
 John J. Pipoly III<sup>147</sup> | Nigel C. A. Pitman<sup>148</sup> | Erny Poedjirahajoe<sup>116</sup> | Lourens Poorter<sup>39</sup>  |  
 John R. Poulsen<sup>54</sup>  | P. Rama Chandra Prasad<sup>149</sup> | Adriana Prieto<sup>150</sup> |  
 Jean-Philippe Puyravaud<sup>62</sup> | Lan Qie<sup>151</sup> | Carlos A. Quesada<sup>152</sup> | Hirma Ramírez-Angulo<sup>153</sup> |  
 Jean Claude Razafimahaimodison<sup>154</sup> | Jan Meindert Reitsma<sup>155</sup> | Edilson J. Requena-Rojas<sup>156</sup> |  
 Zorayda Restrepo Correa<sup>157</sup> | Carlos Reynel Rodriguez<sup>143</sup> | Anand Roopsind<sup>158</sup> |  
 Francesco Rovero<sup>159,160</sup>  | Andes Rozak<sup>161</sup> | Agustín Rudas Lleras<sup>150</sup> |  
 Ervan Rutishauser<sup>162</sup> | Gemma Rutten<sup>69</sup> | Ruwan Punchi-Manage<sup>163</sup> |  
 Rafael P. Salomão<sup>13,164</sup> | Hoang Van Sam<sup>165</sup> | Swapan Kumar Sarker<sup>166</sup> |  
 Manichanh Satdichanh<sup>167,168</sup> | Juliana Schietti<sup>152</sup> | Christine B. Schmitt<sup>169,170</sup> |  
 Beatriz Schwantes Marimon<sup>121</sup> | Feyera Senbeta<sup>171</sup> | Lila Nath Sharma<sup>172</sup> |  
 Douglas Sheil<sup>173</sup> | Rodrigo Sierra<sup>174</sup> | Javier E. Silva-Espejo<sup>175</sup> | Marcos Silveira<sup>176</sup> |  
 Bonaventure Sonké<sup>177</sup> | Marc K. Steininger<sup>178</sup> | Robert Steinmetz<sup>134</sup>  |  
 Tariq Stévant<sup>179</sup> | Raman Sukumar<sup>180,181</sup> | Aisha Sultana<sup>93</sup> | Terry C. H. Sunderland<sup>182,183</sup> |  
 Hebbalalu Satyanarayana Suresh<sup>180,181</sup> | Jianwei Tang<sup>184</sup> | Edmund Tanner<sup>185</sup> |  
 Hans ter Steege<sup>186,187</sup> | John W. Terborgh<sup>188,189</sup> | Ida Theilade<sup>190</sup> |  
 Jonathan Timberlake<sup>191</sup> | Armando Torres-Lezama<sup>192</sup> | Peter Umunay<sup>193</sup> |  
 María Uriarte<sup>194</sup> | Luis Valenzuela Gamarra<sup>195</sup> | Martin van de Bult<sup>196</sup> |  
 Peter van der Hout<sup>197</sup> | Rodolfo Vasquez Martinez<sup>198</sup> | Ima Célia Guimarães Vieira<sup>13</sup> |  
 Simone A. Vieira<sup>199</sup> | Emilio Vilanova<sup>200</sup> | Jeanneth Villalobos Cayo<sup>201</sup> |  
 Ophelia Wang<sup>202</sup> | Campbell O. Webb<sup>203</sup> | Edward L. Webb<sup>204</sup> | Lee White<sup>126,205,206</sup> |  
 Timothy J. S. Whitfeld<sup>207</sup> | Serge Wich<sup>208,209</sup> | Simon Willcock<sup>210</sup> | Susan K. Wiser<sup>211</sup> |  
 Kenneth R. Young<sup>212</sup> | Rahmad Zakaria<sup>117</sup> | Runguo Zang<sup>213</sup> | Charles E. Zartman<sup>59</sup> |  
 Irié Casimir Zo-Bi<sup>91</sup> | Henrik Balslev<sup>2</sup>

<sup>1</sup>Department of Plant Ecology and Evolution, Evolutionary Biology Centre, Uppsala University, Uppsala, Sweden

<sup>2</sup>Section for Ecoinformatics and Biodiversity, Department of Biology, Aarhus University, Aarhus, Denmark

- <sup>3</sup>Department of Plant Biology, Institute of Biology, University of Campinas (UNICAMP), Campinas, Brazil
- <sup>4</sup>Comparative Plant and Fungal Biology Department, Royal Botanic Gardens Kew, Richmond, UK
- <sup>5</sup>School of Geography, University of Leeds, Leeds, UK
- <sup>6</sup>Department of Geography, University College London, London, UK
- <sup>7</sup>Department of Environmental and Life Sciences, Faculty of Science, Universiti Brunei Darussalam, Gadong, Brunei Darussalam
- <sup>8</sup>IRD, DIADE, University of Montpellier, Montpellier, France
- <sup>9</sup>Center for Biodiversity Dynamics in a Changing World (BIOCHANGE), Department of Biology, Aarhus University, Aarhus, Denmark
- <sup>10</sup>Ghana Forestry Commission, Kumasi, Ghana
- <sup>11</sup>Faculty of Environmental Earth Science, Hokkaido University Sapporo, Sapporo, Japan
- <sup>12</sup>Instituto de Biodiversidade e Floresta, Universidade Federal do Oeste do Pará, Santarém, Brazil
- <sup>13</sup>Museu Paraense Emílio Goeldi, Belém, Brazil
- <sup>14</sup>Campus de Nova Xavantina, Universidade do Estado de Mato Grosso, Nova Xavantina, Brazil
- <sup>15</sup>Escuela de Ciencias Ambientales, Universidad Nacional Abierta y a Distancia, Bogotá, Colombia
- <sup>16</sup>Center for Tropical Research, Institute of the Environment and Sustainability, University of California, Los Angeles, CA, USA
- <sup>17</sup>Instituto Veterinario de Investigaciones Tropicales y de Altura (IVITA), Estación Experimental Pucallpa, Universidad Nacional Mayor de San Marcos (UNMSM), Lima, Peru
- <sup>18</sup>Departamento de Botânica, Instituto de Ciências Biológicas, Universidade Federal de Juiz de Fora, Juiz de Fora, Brazil
- <sup>19</sup>Instituto de Biología, Universidad de Antioquia, Medellín, Colombia
- <sup>20</sup>Biological Dynamics of Forest Fragments Project (BDFFP), National Institute for Amazonian Research (INPA) and Smithsonian Tropical Research Institute, Manaus, Brazil
- <sup>21</sup>Remote Sensing Division, National Institute for Space Research, São José dos Campos, Brazil
- <sup>22</sup>College of Life and Environmental Sciences, University of Exeter, Exeter, UK
- <sup>23</sup>Museo de Historia Natural Noel Kempff Mercado, Universidad Autónoma Gabriel René Moreno, Santa Cruz, Bolivia
- <sup>24</sup>Biology Career, Gabriel René Moreno Autonomous University, Santa Cruz, Bolivia
- <sup>25</sup>Department of Organismal and Evolutionary Biology, Harvard University, Cambridge, MA, USA
- <sup>26</sup>Compensation International Progress S.A., Bogotá, Colombia
- <sup>27</sup>UNELLEZ-Guanare, Programa de Ciencias del Agro y el Mar, Herbario Universitario (PORT), Mesa de Cavacas, Venezuela
- <sup>28</sup>Ecology Isotope Lab, Center for Nuclear Energy in Agriculture, São Paulo, Brazil
- <sup>29</sup>Lancaster Environment Centre, Lancaster University, Lancaster, UK
- <sup>30</sup>Department of Environmental Systems Science, Institute of Integrative Biology, ETH Zürich, Zürich, Switzerland
- <sup>31</sup>National Agency of National Parks of Gabon, ANPN, Libreville, Gabon
- <sup>32</sup>Environmental Change Institute, School of Geography and the Environment, University of Oxford, Oxford, UK
- <sup>33</sup>Forest and Landscape Ecology, The Landscapes and Livelihoods Group, Edinburgh, UK
- <sup>34</sup>UR Forest & Societies, CIRAD, Montpellier, France
- <sup>35</sup>Forest & Societies, University of Montpellier, Montpellier, France
- <sup>36</sup>Senckenberg Biodiversity and Climate Research Centre, Frankfurt am Main, Germany
- <sup>37</sup>Institute of Ecology, Evolution & Diversity, Goethe University, Frankfurt, Frankfurt am Main, Germany
- <sup>38</sup>Université de Lorraine, AgroParisTech, INRAE, UMR Silva, Nancy, France
- <sup>39</sup>Forest Ecology and Forest Management, Wageningen University & Research, Wageningen, the Netherlands
- <sup>40</sup>CSIRO Land and Water, Atherton, QLD, Australia
- <sup>41</sup>Biodiversity, Macroecology and Biogeography, University of Goettingen, Goettingen, Germany
- <sup>42</sup>School of Science and the Environment, Manchester Metropolitan University, Manchester, UK
- <sup>43</sup>Wild Earth Allies, Chevy Chase, MD, USA
- <sup>44</sup>Department of Biology, Grinnell College, Grinnell, IA, USA
- <sup>45</sup>Embrapa Roraima & Programa de Pós-graduação em Recursos Naturais, Universidade Federal de Roraima, Boa Vista, Brazil
- <sup>46</sup>Amazonia Green Landscape Protection and Governance Programme, SOS Amazônia, 61 Pará St., Rio Branco, AC 69905-082, Brazil
- <sup>47</sup>School of Technology, Environments and Design, University of Tasmania, Hobart, TAS, Australia
- <sup>48</sup>Herbario Alfredo Paredes (QAP), Universidad Central del Ecuador, Quito, Ecuador
- <sup>49</sup>College of Ecology and Environment, Chengdu University of Technology, Chengdu, China
- <sup>50</sup>State Key Laboratory of Geohazard Prevention and Geoenvironment Protection, Chengdu University of Technology, Chengdu, China
- <sup>51</sup>Forestry Administration, Phnom Penh, Cambodia
- <sup>52</sup>Forest Department, Belmopan, Belize
- <sup>53</sup>Conservation Ecology Program, Pilot Plant Development and Training Institute, King Mongkut's Institute of Technology Thonburi, Bangkok, Thailand
- <sup>54</sup>Nicholas School of the Environment, Duke University, Durham, NC, USA

- <sup>55</sup>School of Geosciences, University of Edinburgh, Edinburgh, UK
- <sup>56</sup>Inventory and Monitoring Division, National Park Service, Frederickburg, VA, USA
- <sup>57</sup>Smithsonian Institution, Washington, DC, USA
- <sup>58</sup>Universidad Nacional de San Agustín de Arequipa, Arequipa, Peru
- <sup>59</sup>Biodiversity Department, National Institute for Amazonian Research (INPA), Manaus, Brazil
- <sup>60</sup>DBU Natural Heritage, German Federal Foundation for the Environment, Osnabrück, Germany
- <sup>61</sup>Herbario Universidad de Antioquia (HUA), Universidad de Antioquia, Medellín, Colombia
- <sup>62</sup>Sigur Nature Trust, Chadapatti Masinagudi PO, Nilgiris, India
- <sup>63</sup>Instituto de Investigaciones de la Amazonía Peruana (IIAP), Iquitos, Peru
- <sup>64</sup>Cirad, UMR EcoFoG, (AgroParisTech, CNRS, INRAE, Université de la Guyane, Université des Antilles), Kourou, French Guiana
- <sup>65</sup>Department of Anthropology, University of Texas at Austin, Austin, TX, USA
- <sup>66</sup>Silviculture Research Institute, Vietnamese Academy of Forest Sciences, Hanoi, Vietnam
- <sup>67</sup>Gembloux Agro-Bio Tech, Liège University, Gembloux, Belgium
- <sup>68</sup>Botany Department, University of Hawai'i at Mānoa, Honolulu, HI, USA
- <sup>69</sup>Institute of Plant Sciences, University of Bern, Bern, Switzerland
- <sup>70</sup>Department of Entomology, Smithsonian Institution, Washington, DC, USA
- <sup>71</sup>Faculty of Renewable Natural Resources Management & Faculty of Science, University of Kisangani, Kisangani, Democratic Republic of the Congo
- <sup>72</sup>Department of Life Sciences, Imperial College London, Ascot, UK
- <sup>73</sup>School of Geography, Earth and Environmental Sciences, University of Plymouth, Plymouth, UK
- <sup>74</sup>Geography, College of Life and Environmental Sciences, University of Exeter, Exeter, UK
- <sup>75</sup>EMBRAPA, Amazônia Oriental, Belém, Brazil
- <sup>76</sup>Coordenação de Botânica, Museu Paraense Emílio Goeldi, Belém, Brazil
- <sup>77</sup>Department of Botany and Plant Sciences, University of California – Riverside, Riverside, CA, USA
- <sup>78</sup>Pro Natura Foundation, Balikpapan, Indonesia
- <sup>79</sup>Department of Geography, University of California, Los Angeles, Los Angeles, CA, USA
- <sup>80</sup>Department of Plant Biology, University of Yaoundé, Yaoundé, Cameroon
- <sup>81</sup>National Herbarium, Yaoundé, Cameroon
- <sup>82</sup>University of Peradeniya, Peradeniya, Sri Lanka
- <sup>83</sup>Department of Biological Sciences, Faculty of Science, King Abdulaziz University, Jeddah, Saudi Arabia
- <sup>84</sup>Forest GEO, Smithsonian Tropical Research Institute, Panama City, Panama
- <sup>85</sup>School of Biology, University of Leeds, Leeds, UK
- <sup>86</sup>Royal Botanic Garden Edinburgh, Edinburgh, UK
- <sup>87</sup>World Agroforestry, East and Southern Africa Region, Lusaka, Zambia
- <sup>88</sup>Department of Plant Sciences, University of Oxford, Oxford, UK
- <sup>89</sup>Department of Plant Systematics, University of Bayreuth, Bayreuth, Germany
- <sup>90</sup>Centre International de Recherche en Agronomie pour le Développement, Montpellier, France
- <sup>91</sup>Département Eaux, Forêts et Environnement, Institut National Polytechnique Félix Houphouët-Boigny, Yamoussoukro, Ivory Coast
- <sup>92</sup>Service of Wood Biology, Royal Museum for Central Africa, Tervuren, Belgium
- <sup>93</sup>Biodiversity Parks Programme, Centre for Environmental Management of Degraded Ecosystems, University of Delhi, Delhi, India
- <sup>94</sup>Institut Ekosains Borneo, Universiti Putra Malaysia Bintulu Campus, Bintulu, Sarawak, Malaysia
- <sup>95</sup>Department of Forest Science, Tokyo University of Agriculture, Tokyo, Japan
- <sup>96</sup>Department of Remote Sensing and GIS, School of Environment, Kerala University of Fisheries and Ocean Studies, Kochi, India
- <sup>97</sup>Rainforest Traditions, Kochi, India
- <sup>98</sup>Integrative Research Center, The Field Museum of Natural History, Chicago, IL, USA
- <sup>99</sup>Herbarium Bogoriense, Research Center for Biology, Indonesian Institute of Sciences, Cibinong, Indonesia
- <sup>100</sup>Laboratoire de Botanique, UFR Biosciences, Université Félix Houphouët-Boigny, Abidjan, Ivory Coast
- <sup>101</sup>Graduate School of Agriculture, Kyoto University, Kyoto, Japan
- <sup>102</sup>Department for Identification & Naming, Royal Botanic Gardens Kew, Richmond, UK
- <sup>103</sup>Department of Biological Sciences, Macquarie University, North Ryde, NSW, Australia
- <sup>104</sup>National Herbarium of New South Wales, Royal Botanic Gardens, Sydney, NSW, Australia
- <sup>105</sup>Laboratoire Évolution et Diversité Biologique, CNRS, Toulouse, France
- <sup>106</sup>TEAM, Ranomafana, Thailand
- <sup>107</sup>Conservation Programmes, Zoological Society of London, Kanchanaburi, Thailand
- <sup>108</sup>UR<sup>105</sup> Forêts et Sociétés, CIRAD, Montpellier, France

- <sup>109</sup>Centre for Tropical Environmental and Sustainability Science, and College of Science and Engineering, James Cook University, Cairns, QLD, Australia
- <sup>110</sup>School of Life Sciences, University of KwaZulu-Natal, Scottsville, South Africa
- <sup>111</sup>Laboratory of Ecology and Forest Management, Department of Ecology and Plant Resource Management, Kisangani University, Kisangani, Democratic Republic of the Congo
- <sup>112</sup>Environmental Science and Policy, George Mason University, Washington, DC, USA
- <sup>113</sup>Natural Capital and Plant Health, Royal Botanic Gardens Kew, Richmond, UK
- <sup>114</sup>College of Agronomy, Liaocheng University, Liaocheng, China
- <sup>115</sup>Plant and Insect Ecology, Department of Bioscience, Aarhus University, Silkeborg, Denmark
- <sup>116</sup>Faculty of Forestry, Universitas Gadjah Mada, Yogyakarta, Indonesia
- <sup>117</sup>School of Biological Sciences, Universiti Sains Malaysia, George Town, Malaysia
- <sup>118</sup>Centre for Marine and Coastal Studies, Universiti Sains Malaysia, George Town, Malaysia
- <sup>119</sup>Departamento de Manejo Forestal, Herbario MOL-Forestales, Universidad Nacional Agraria La Molina, Lima, Peru
- <sup>120</sup>Departamento de Ciências Florestais, Escola Superior de Agricultura Luiz de Queiroz, Universidade de São Paulo, São Paulo, Brazil
- <sup>121</sup>Postgraduate Program in Ecology and Conservation, UNEMAT State University of Mato Grosso, Nova Xavantina, Brazil
- <sup>122</sup>Tropical Forests and People Research Centre, University of the Sunshine Coast, Sippy Downs, QLD, Australia
- <sup>123</sup>Department of Environment and Geography, University of York, York, UK
- <sup>124</sup>Flamingo Land, North Yorkshire, UK
- <sup>125</sup>Departamento Cochabamba, Escuela de Ciencias Forestales de la Universidad Mayor de San Simón, Cochabamba, Bolivia
- <sup>126</sup>Agence Nationale des Parcs Nationaux, Libreville, Gabon
- <sup>127</sup>Ministère de la Forêt et de l'Environnement, Libreville, Gabon
- <sup>128</sup>National Botanical Conservatories Division, French Agency for Biodiversity, Vincennes, France
- <sup>129</sup>Natural Capital and Plant Health, Royal Botanic Gardens Kew, Richmond, United Kingdom
- <sup>130</sup>Novel Research Academy, Puducherry, India
- <sup>131</sup>Universidad Nacional de San Antonio Abad del Cusco, Cusco, Peru
- <sup>132</sup>Institute of Tropical Forest Conservation, Mbarara University of Science and Technology, Kabale, Uganda
- <sup>133</sup>The Kyoto University Museum, Kyoto University, Kyoto, Japan
- <sup>134</sup>WWF Thailand, Bangkok, Thailand
- <sup>135</sup>Laboratório de Ciências Ambientais, Centro de Biociências e Biotecnologia, Universidade Estadual do Norte Fluminense Darcy Ribeiro (UENF), Campos dos Goytacazes, Brazil
- <sup>136</sup>Universidad Estatal Amazónica, Puyo, Ecuador
- <sup>137</sup>Departamento de Botânica, Instituto de Ciências Biológicas, Universidade Federal de Juiz de Fora, Juiz de Fora, Brazil
- <sup>138</sup>Forest Research Centre, Sabah Forestry Department, Sandakan, Malaysia
- <sup>139</sup>Department of Biology, Universitas Bangka Belitung, Merawang, Indonesia
- <sup>140</sup>Instituto Nacional de Pesquisas da Amazônia, Manaus, Brazil
- <sup>141</sup>Faculty of Forestry, Universitas Sumatera Utara, Medan, Indonesia
- <sup>142</sup>Herbario Nacional del Ecuador, Universidad Técnica del Norte, Quito, Ecuador
- <sup>143</sup>Facultad de Ciencias Forestales, Universidad Nacional Agraria La Molina, Lima, Peru
- <sup>144</sup>Nepal Academy of Science and Technology, Lalitpur, Nepal
- <sup>145</sup>Departamento de Ciências Biológicas, Universidade do Estado de Mato Grosso, Nova Xavantina, Brazil
- <sup>146</sup>Department of Geography, University of Exeter, Exeter, UK
- <sup>147</sup>Broward County Parks and Recreation Division, Oakland Park, FL, USA
- <sup>148</sup>Field Museum, Chicago, IL, USA
- <sup>149</sup>Lab for Spatial Informatics, International Institute of Information Technology, Hyderabad, India
- <sup>150</sup>Instituto de Ciencias Naturales, Universidad Nacional de Colombia, Bogotá, Colombia
- <sup>151</sup>School of Life Sciences, University of Lincoln, Lincoln, UK
- <sup>152</sup>INPA (Instituto Nacional de Pesquisas da Amazônia), Manaus, Brazil
- <sup>153</sup>INDEFOR, Universidad de Los Andes, Mérida, Venezuela
- <sup>154</sup>Centre ValBio Ranomafana CP 312 Fianarantsoa & Science Faculty, University of Fianarantsoa, Fianarantsoa, Madagascar
- <sup>155</sup>Bureau Waardenburg BV, Culemborg, the Netherlands
- <sup>156</sup>Laboratorio de Dendrocronología, Universidad Continental, Huancayo, Peru
- <sup>157</sup>Ecosystems Services and Climate Change (SECC) Group, COL-TREE Corporation, Medellín, Colombia
- <sup>158</sup>Biology Department, Boise State University, Boise, ID, USA
- <sup>159</sup>Department of Biology, University of Florence, Florence, Italy
- <sup>160</sup>Tropical Biodiversity Section, MUSE, Museo delle Scienze, Trento, Italy

- <sup>161</sup>Research Center for Plant Conservation and Botanic Gardens, Cibodas Botanic Gardens, Indonesian Institute of Sciences (LIPI), Cianjur, Indonesia
- <sup>162</sup>Smithsonian Tropical Research Institute, Balboa, Panama
- <sup>163</sup>Department of Statistics and Computer Science, Faculty of Science, University of Peradeniya, Peradeniya, Sri Lanka
- <sup>164</sup>CAPES, Universidade Federal Rural da Amazônia-UFRA, Belém, Brazil
- <sup>165</sup>Vietnam National University of Forestry, Hanoi, Vietnam
- <sup>166</sup>Department of Forestry & Environmental Science, Shahjalal University of Science & Technology, Sylhet, Bangladesh
- <sup>167</sup>Key Laboratory of Plant Diversity and Biogeography of East Asia, Kunming Institute of Botany, Chinese Academy of Sciences, Kunming, China
- <sup>168</sup>World Agroforestry Centre, Kunming, China
- <sup>169</sup>Center for Development Research (ZEF), University of Bonn, Bonn, Germany
- <sup>170</sup>Chair of Nature Conservation and Landscape Ecology, University of Freiburg, Freiburg, Germany
- <sup>171</sup>College of Development Studies, Addis Ababa University, Addis Ababa, Ethiopia
- <sup>172</sup>ForestAction Nepal, Kathmandu, Nepal
- <sup>173</sup>Faculty of Environmental Sciences and Natural Resource Management, Norwegian University of Life Sciences, Ås, Norway
- <sup>174</sup>GeoS, Cedar Park, TX, USA
- <sup>175</sup>Departamento de Biología, Universidad de La Serena, La Serena, Chile
- <sup>176</sup>Centro de Ciências Biológicas e da Natureza, Universidade Federal do Acre, Rio Branco, Brazil
- <sup>177</sup>Plant Systematic and Ecology Laboratory, Department of Biology, Higher Teachers' Training College, University of Yaoundé, Yaoundé, Cameroon
- <sup>178</sup>Department of Geographical Sciences, University of Maryland, College Park, MD, USA
- <sup>179</sup>Africa and Madagascar Department, Missouri Botanical Garden, St. Louis, MO, USA
- <sup>180</sup>Centre for Ecological Sciences, Indian Institute of Science, Bangalore, India
- <sup>181</sup>Divecha Center for Climate Change, Indian Institute of Science, Bangalore, India
- <sup>182</sup>Faculty of Forestry, University of British Columbia, Vancouver, BC, Canada
- <sup>183</sup>Centre for International Forestry Research (CIFOR), Bogor, Indonesia
- <sup>184</sup>Key Laboratory of Tropical Plant Resources and Sustainable Use, Xishuangbanna Tropical Botanical Garden, Chinese Academy of Sciences, Menglun, China
- <sup>185</sup>Department of Plant Sciences, University of Cambridge, Cambridge, UK
- <sup>186</sup>Naturalis Biodiversity Center, Leiden, the Netherlands
- <sup>187</sup>Systems Ecology, Vrije University, Amsterdam, the Netherlands
- <sup>188</sup>Department of Biology and Florida Museum of Natural History, University of Florida, Gainesville, FL, USA
- <sup>189</sup>College of Science and Engineering, James Cook University, Cairns, QLD, Australia
- <sup>190</sup>Department of Food and Resource Economics, University of Copenhagen, Copenhagen, Denmark
- <sup>191</sup>Warren Lane, East Dean, East Sussex, UK
- <sup>192</sup>INDEFOR, Facultad de Ciencias Forestales y Ambientales, Universidad de Los Andes, Mérida, Venezuela
- <sup>193</sup>School of Forestry and Environmental Studies, Yale University, New Haven, CT, USA
- <sup>194</sup>Department of Ecology, Evolution and Environmental Biology, Columbia University, New York, NY, USA
- <sup>195</sup>Investigación Botánica y Ecología, Jardín Botánico de Missouri, Oxapampa, Peru
- <sup>196</sup>Doi Tung Development Project, Social Development Department, Chiang Rai, Thailand
- <sup>197</sup>Van der Hout Forestry Consulting, Rotterdam, the Netherlands
- <sup>198</sup>Herbario Selva Central Oxapampa, Oxapampa, Peru
- <sup>199</sup>Núcleo de Estudos e Pesquisas Ambientais (NEPAM), University of Campinas (UNICAMP), Campinas, Brazil
- <sup>200</sup>Department of Environmental Science, Policy, and Management, University of California, Berkeley, CA, USA
- <sup>201</sup>Herbario del Sur de Bolivia, Universidad Mayor Real and Pontifical de San Francisco Xavier de Chuquisaca, Sucre, Bolivia
- <sup>202</sup>School of Earth and Sustainability, Northern Arizona University, Flagstaff, AZ, USA
- <sup>203</sup>UA Museum of the North, University of Alaska, Fairbanks, AK, USA
- <sup>204</sup>Department of Biological Sciences, National University of Singapore, Singapore, Singapore
- <sup>205</sup>Institut de Recherche en Ecologie Tropicale, Libreville, Gabon
- <sup>206</sup>School of Natural Sciences, University of Stirling, Stirling, UK
- <sup>207</sup>Bell Museum, University of Minnesota, St. Paul, MN, USA
- <sup>208</sup>School of Natural Sciences and Psychology, Liverpool John Moores University, Liverpool, UK
- <sup>209</sup>Institute for Biodiversity and Ecosystem Dynamics, University of Amsterdam, Amsterdam, the Netherlands
- <sup>210</sup>School of Natural Sciences, Bangor University, Bangor, UK
- <sup>211</sup>Manaaki Whenua, Landcare Research, Lincoln, New Zealand
- <sup>212</sup>Department of Geography and the Environment, University of Texas at Austin, Austin, TX, USA
- <sup>213</sup>Key Laboratory of Forest Ecology and Environment of State Forestry Administration, Institute of Forest Ecology, Environment and Protection, Chinese Academy of Forestry, Beijing, China

**Correspondence**

Robert Muscarella, Department of Plant Ecology and Evolution, Evolutionary Biology Centre, Uppsala University, Kåbovägen 4, house 7, SE-752 36, Uppsala, Sweden.  
Email: bob.muscarella@gmail.com

**Funding information**

Natur og Univers, Det Frie Forskningsråd, Grant/Award Number: 4181-00158; H2020 Marie Skłodowska-Curie Actions, Grant/Award Number: 706011; Brazilian National Research Council, Grant/Award Number: CNPq/PELD 403710/2012-0 and Universal 459941/2014-3; Natural Environment Research Council, Grant/Award Number: NE/N012542/1; H2020 European Research Council, Grant/Award Number: 291585; Vetenskapsrådet, Grant/Award Number: 2019-03758; Coordenação de Aperfeiçoamento de Pessoal de Nível Superior, Grant/Award Number: Finance Code 001; Fundação de Amparo à Pesquisa do Estado de São Paulo, Grant/Award Number: 2003/12595-7 and 2012/51509-8; Villum Fonden, Grant/Award Number: 00025354 and 16549

Editor: Melodie McGeoch

**Abstract**

**Aim:** Palms are an iconic, diverse and often abundant component of tropical ecosystems that provide many ecosystem services. Being monocots, tree palms are evolutionarily, morphologically and physiologically distinct from other trees, and these differences have important consequences for ecosystem services (e.g., carbon sequestration and storage) and in terms of responses to climate change. We quantified global patterns of tree palm relative abundance to help improve understanding of tropical forests and reduce uncertainty about these ecosystems under climate change.

**Location:** Tropical and subtropical moist forests.

**Time period:** Current.

**Major taxa studied:** Palms (Arecaceae).

**Methods:** We assembled a pantropical dataset of 2,548 forest plots (covering 1,191 ha) and quantified tree palm (i.e.,  $\geq 10$  cm diameter at breast height) abundance relative to co-occurring non-palm trees. We compared the relative abundance of tree palms across biogeographical realms and tested for associations with palaeoclimate stability, current climate, edaphic conditions and metrics of forest structure.

**Results:** On average, the relative abundance of tree palms was more than five times larger between Neotropical locations and other biogeographical realms. Tree palms were absent in most locations outside the Neotropics but present in >80% of Neotropical locations. The relative abundance of tree palms was more strongly associated with local conditions (e.g., higher mean annual precipitation, lower soil fertility, shallower water table and lower plot mean wood density) than metrics of long-term climate stability. Life-form diversity also influenced the patterns; palm assemblages outside the Neotropics comprise many non-tree (e.g., climbing) palms. Finally, we show that tree palms can influence estimates of above-ground biomass, but the magnitude and direction of the effect require additional work.

**Conclusions:** Tree palms are not only quintessentially tropical, but they are also overwhelmingly Neotropical. Future work to understand the contributions of tree palms to biomass estimates and carbon cycling will be particularly crucial in Neotropical forests.

**KEYWORDS**

above-ground biomass, abundance patterns, Arecaceae, local abiotic conditions, Neotropics, pantropical biogeography, tropical rainforest, wood density

**1 | INTRODUCTION**

Palms (Arecaceae/Palmae) are an iconic and diverse group (>2,500 recognized species worldwide) that have long delivered a wide range of provisioning services to humankind (Cámara-Leret et al., 2017; Eiserhardt, Svenning, Kissling, & Balslev, 2011; Levis et al., 2017; Tomlinson, 2006). Many palms are considered ecological keystone species because large numbers of animals depend on their fruit and flower resources (Onstein et al., 2017). In some areas, palms are also remarkably abundant. For instance, six of the 10 most common tree species in the Amazon rain forest are palms (ter Steege et al., 2013).

Given the morphological and physiological distinctiveness of palms (which are monocots; Renninger & Phillips, 2016), palm abundance can have important consequences for tropical forest ecosystem function, including carbon sequestration. However, we currently lack a quantitative analysis of the biogeographical patterns and conditions associated with palm abundance.

As a family, palms exhibit a variety of growth forms, ranging from small shrubs to lianas and large trees. Based on available data (Kissling et al., 2019), c. 40% of palm species are capable of growing stems  $\geq 10$  cm in diameter at 1.3 m above the ground (here defined as “tree palms”). Tree palms have often been pooled with non-palm



trees in forest inventory plots that are commonly used to measure terrestrial carbon stocks and parameterize vegetation models (Phillips et al., 2013). This raises several issues. First, biomass estimates are typically based on allometric equations developed for non-monocot trees (e.g., Chave et al., 2014; Feldpausch et al., 2012). These equations tend to perform poorly for palms because they lack secondary growth, which decouples diameter–height relationships (Goodman et al., 2013). Second, physiological and morphological differences between tree palms and other trees suggest the potential for large differences in terms of the responses of tree palms to drivers of environmental change compared with non-palm trees (Emilio et al., 2014; Renninger & Phillips, 2016). From an ecosystem functioning perspective, these issues are clearly most crucial in areas where palms account for a relatively high proportion of forest biomass, such as some swamp forests (Dargie et al., 2017). Here, we provide the first global analysis of tree palm abundance relative to other co-occurring trees to help reduce uncertainty about tropical ecosystem function.

Patterns of tree palm abundance may be associated with variation in contemporary ecological conditions that favour the establishment and persistence of palms over other types of trees (the contemporary conditions hypothesis). Most existing evidence for palm abundance distributions along contemporary environmental gradients comes from studies in Amazonian forests, where palms tend to be more abundant in areas with ample soil moisture and relatively high soil fertility (Castilho et al., 2006; Costa, Guillaumet, Lima, & Pereira, 2009; Emilio et al., 2014; Kahn & Mejia, 1990; Schiatti et al., 2014; Svenning, 1999, 2001). Palm root architecture is the most likely explanation for the observed patterns in relationship to hydrological and soil properties for at least two reasons. First, palms tend to have dense, superficial root systems that may provide them with better anchorage compared with relatively deep-rooted trees in dynamic fluvial systems. In an Ecuadorian forest, for example, Gale and Barford (1999) found that uprooting was c. 50% higher for dicotyledonous trees than for the dominant palm, *Iriartea deltoidea*. Second, higher investment in root biomass towards the soil surface might be beneficial in terms of competition for nutrients but could represent a limitation for growth in regions where plants must rely on seasonal access to deeper water. In these conditions, high annual precipitation and low precipitation seasonality should maximize the advantages of shallow root systems, and therefore, promote relative abundance of palms (Eiserhardt et al., 2011).

However, local edaphic conditions in the Amazon region are also correlated with longer-term landscape evolution (Higgins et al., 2011; Hoorn et al., 2010) and forest stem turnover rates, which may also affect palm abundance indirectly (e.g., Emilio et al., 2014). For instance, several studies have shown that at least some palm species can be successful in relatively dynamic forests by capitalizing on high-resource conditions after disturbance (Eiserhardt et al., 2011; Emilio et al., 2014; Salm, 2005). Additionally, some palms are resilient to certain types of disturbance, including hurricanes and blowdowns (Lugo & Scatena, 1996) and, in some cases, fire. As a result, we might expect tree palm relative abundance to exhibit a positive association

with contemporary rates of forest turnover. In general, the extent to which relatively local ecological factors can help to explain biogeographical scale variation in tree palm abundance remains unknown. In summary, under the contemporary conditions hypothesis, we expect significant associations between local ecological conditions and tree palm relative abundance. In particular, we expect higher tree palm relative abundance in areas with higher annual and dry season rainfall, more fertile soils with shallower depth to the water table, and faster stem turnover rates.

It is also possible that patterns of palm abundance are associated with historical distributions of conditions that allowed the persistence of palm species and populations over long time periods (the climate stability hypothesis). Previous work on macroecological patterns of palm diversity provides context for hypotheses about historical drivers of tree palm abundance at biogeographical scales (Eiserhardt et al., 2011; Kissling, Eiserhardt, et al., 2012; Svenning, Borchsenius, Bjorholm, & Balslev, 2008). For example, Kissling, Eiserhardt, et al. (2012) reported that the extent of tropical rain forest biome in different biogeographical realms during the Cenozoic period (based on palaeoclimate reconstructions) was positively associated with current palm diversity. Relatively low palm species richness in Africa has been attributed to extinctions during rain forest contraction (Faye et al., 2016; Kissling, Eiserhardt, et al., 2012). However, Baker and Couvreur (2013) argued that higher speciation rates outside Africa (as opposed to higher extinction rates in Africa) might better explain contemporary richness patterns. In Madagascar, Rakotoarivivo et al. (2013) reported higher palm diversity in areas that had higher precipitation during the Last Glacial Maximum (LGM; 21,000 years ago) compared with present-day precipitation. In general, palaeoclimatic variability could also be associated with spatial variation of palm abundance. For example, larger areas with more stable tropical climates could facilitate larger populations of palms, which could also be associated with higher diversification rates (Blach-Overgaard, Kissling, Dransfield, Balslev, & Svenning, 2013; Couvreur et al., 2015; Kisel, McInnes, Toomey, & Orme, 2011; Rakotoarivivo et al., 2013; Rosenzweig, 1995). Therefore, under the climate stability hypothesis, we expect a positive association between metrics of long-term climatic stability and tree palm relative abundance.

In this study, we use a large pantropical dataset of forest plots to quantify global-scale variation in tree palm abundance (quantified as the basal area and the number of stems) relative to co-occurring trees. We examine spatial patterns of tree palm relative abundance across major biogeographical realms, in addition to correlations with abiotic and biotic variables in light of the contemporary conditions and climate stability hypotheses outlined above. As a step towards assessing the potential ecosystem-level consequences of tree palm relative abundance patterns, we estimate the amount of error introduced to standard calculations of above-ground biomass (AGB) when tree palms are pooled with other trees versus treated separately. Finally, in light of the broad range of palm growth forms, we assess how the diameter size threshold commonly used in forest inventory plots (10 cm) affects inferences of tree palm relative abundance in different biogeographical realms. Our overarching aim is

to develop a quantitative understanding of patterns and drivers of tree palm relative abundance across broad geographical and environmental scales that can help us to gain a better understanding of this important and unique group and to reduce uncertainty about tropical ecosystem functioning and dynamics.

## 2 | METHODS

### 2.1 | Forest inventory data

Our analysis is based primarily on data from ForestPlots.net (Lewis et al., 2009; Lewis et al., 2013; Lopez-Gonzalez et al., 2009; Lopez-Gonzalez, Lewis, Burkitt, & Phillips, 2011; Malhi et al., 2002), which integrates data from research plot networks active in the Neotropics (RAINFOR and PPBio), Africa (AfriTRON) and Southeast Asia (T-FORCES), in addition to other networks and researchers, and also uses the pan-tropical Gentry 0.1-ha transect dataset (Phillips & Miller, 2002) and the database compiled by Slik et al. (2018).

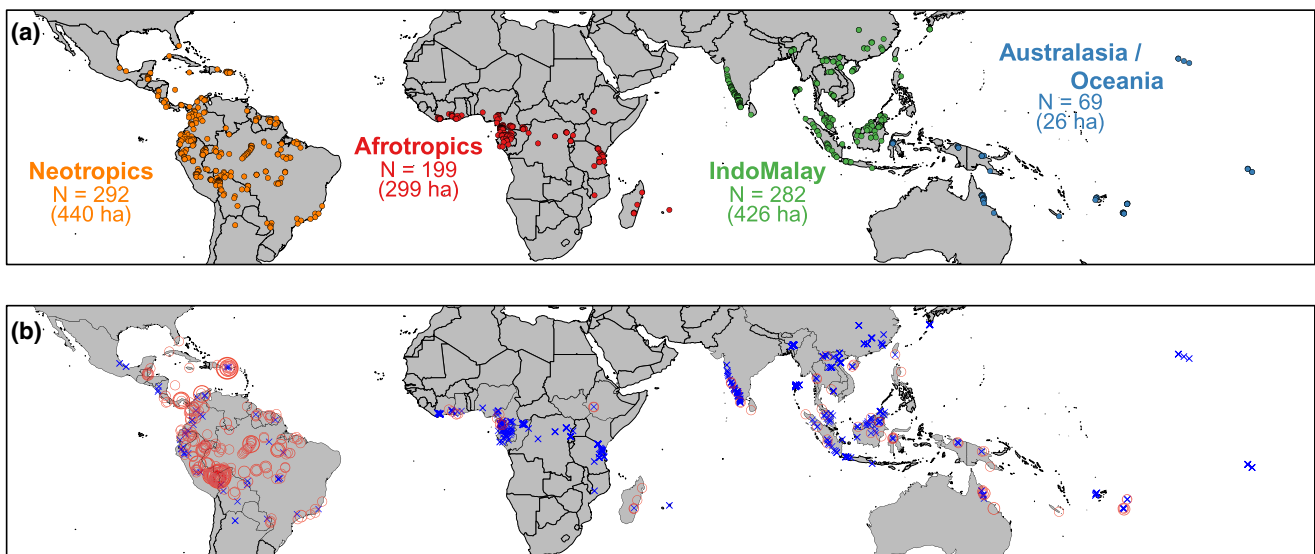
We assembled data for 2,624 individual forest plots located in the subtropical and tropical moist broadleaf forest biomes as defined by Olson et al. (2004). A list of publications associated with data used in this paper is found in the Supporting Information Appendix S1. In each plot, all individual stems with a diameter of  $\geq 10$  cm in diameter at breast height (d.b.h., 1.3 m above the ground) were identified and measured for d.b.h. Our analyses focus on arborescent palms that reach  $\geq 10$  cm d.b.h. (henceforth, “tree palms”), because smaller-diameter stems are excluded in the standard protocol of most forest inventories. Although palms occur in a wide range of tropical ecosystems (including rain forests, savannas and dry forests), we focused on moist forests because this biome houses

the greatest palm diversity and it is where the majority of plots in our dataset are located. We restricted our analyses further to plots reported as “old-growth”, “primary” or “undisturbed” by the original data collectors and excluded 57 plots described as swamps or “monodominant” palm forests. We analysed a total of 2,548 plots (covering a total of 1,191 ha; Supporting Information Appendix S2). To reduce spatial autocorrelation, we pooled data from plots within the same 10 km  $\times$  10 km grid cell; hereafter, we refer to these as aggregated plots as “locations”. After aggregation, our dataset included 842 locations (Figure 1a). The area sampled per location ranged from 0.1 to 51.8 ha (median  $\pm$  SD = 0.4  $\pm$  3.5 ha), with 95% of the locations sampled were  $\geq 0.1$  ha. We assigned each location to one of the biogeographical realms defined by Olson et al. (2004), but we combined locations in Oceania with Australasia because of their strong historical connection (Muellner, Pannell, Coleman, & Chase, 2008) and their relatively low sample sizes ( $n = 32$  and 37, respectively).

For each location, we calculated the relative basal area ( $BA_{\text{palm}}$ ) and the relative abundance ( $RA_{\text{palm}}$ ) of tree palms as the sum of the tree palm basal area or number of tree palm individuals divided by the total basal area or total number of stems. These relative metrics of tree palm abundance reduce variation caused by differences in sample area and stem density across locations. Results based on  $BA_{\text{palm}}$  and  $RA_{\text{palm}}$  were highly correlated, and we present and discuss  $BA_{\text{palm}}$  results in the main text (results based on  $RA_{\text{palm}}$  are provided in the Supporting Information Figure S4).

### 2.2 | Environmental variables

To address our hypothesis about the link between long-term climatic stability and tree palm abundance (the climate-stability hypothesis),



**FIGURE 1** (a) Locations of study plots coloured to reflect four biogeographical realms. The total number of locations is given along with the total area (in hectares) sampled in each realm. (b) Tree palm relative basal area ( $BA_{\text{palm}}$ ) in each location defined as palms that reach 10 cm diameter at breast height (d.b.h.), and thus, are included in typical forest inventory plots. Locations without tree palms present are shown as blue crosses. Red circles represent plots with tree palms present, and circle size is proportional to the  $BA_{\text{palm}}$  at that location [Colour figure can be viewed at [wileyonlinelibrary.com](http://wileyonlinelibrary.com)]

we used several variables that are likely to have had major impacts on the distributions of palms and their habitats (e.g., Melo, Freitas, Bacon, & Collevatti, 2018). Specifically, we calculated the absolute difference (or “anomaly”) between the LGM (21,000 years ago) and modern climatological averages (1979–2013), for both the mean annual precipitation (in millimetres per year) and the precipitation in the driest quarter (in millimetres per quarter) using 30 arc s (c. 1 km<sup>2</sup>) resolution data from CHELSA (Karger et al., 2017). We used LGM variables based on data from the Palaeoclimate Modelling Intercomparison Project (PMIP3) and output from the Community Climate System Model (CCSM4) (Karger et al., 2017).

We used several datasets to address our hypothesis about contemporary ecological controls on tree palm relative abundance (the contemporary conditions hypothesis). For contemporary climate, we extracted the mean annual precipitation (in millimetres per year) and precipitation in the driest quarter (in millimetres per quarter) for each location from the 30 arc s (c. 1 km<sup>2</sup>) resolution CHELSA dataset (Karger et al., 2017). For edaphic conditions, we extracted cation exchange capacity (CEC; a general proxy for soil fertility; cmol<sup>+</sup> kg<sup>-1</sup>) at 250 m resolution from the SoilGrids website (<https://soilgrids.org/>). We focused on CEC because prior work has shown associations between forest composition (including palm diversity) and soil fertility (Muscarella et al., 2019). We extracted the depth to the water table (in metres) from the 30 arc s (c. 1 km<sup>2</sup>) resolution database of Fan, Li, and Miguez-Macho (2013). We examined how conditions at the study locations reflect the range of conditions in their respective biogeographical realms by sampling each variable at 10,000 random points in each realm (Supporting Information Figure S1). We extracted values for the predictor variables listed above based on the mean latitude and longitude of plots in each location.

We calculated two proxies for turnover rates in each location. First, because forests with faster turnover rates tend to have shorter canopies (Feldpausch et al., 2011), we estimated the maximal canopy height for each location based on the tree inventory data. More specifically, given that most plots do not include measured data on tree height, we used the “BIOMASS” package (Réjou-Méchain, Tanguy, Pioniot, Chave, & Hérault, 2017) to estimate the height of each individual tree based on its diameter using the geographically based allometric equation of Chave et al. (2014). We used the 95th percentile of estimated tree height in each location as a metric of maximal canopy height (comparable results were obtained when using the 99th percentile). Second, we calculated the basal area-weighted mean (CWM) wood density for each location by matching wood density data from the global wood density database (Chave et al., 2009; Zanne et al., 2009) with the relative basal area of each species in each location. The CWM wood density reflects life-history strategies of trees, and stands with lower values of CWM wood density tend to have more rapid turnover rates (Chave et al., 2009; Phillips et al., 2004, 2019). Given that we were interested in the relationship between local environmental conditions and palm relative abundance patterns, we excluded palms when calculating CWM wood density. However, note that CWM wood density values per location were highly correlated whether or not palms were included

(Pearson's  $r = .98$ ). Species-level mean wood density values were available for 51% of the individual stems [representing 61% of the total basal area (BA)], genus-level mean values were used for 37% of the individuals (30% of the total BA), family-level mean values were used for 9% of the individuals (6% of the total BA), and we excluded the remaining 3% of individuals (representing 3% of the total BA) that were not identified to the family level. The computed CWM wood density values were highly correlated with CWM wood density values computed based only on species-level data (Pearson's  $r = .87$ ), genus-level data (Pearson's  $r = .99$ ) or family-level data (Pearson's  $r = .99$ ).

### 2.3 | Statistical analyses

As a first step to assess general patterns of tree palm occurrence, we used  $t$  tests to compare each environmental covariate described above between locations with and without tree palms, separately for each realm. We  $\log_{10}$ -transformed all covariates before analysis, except for CWM wood density.

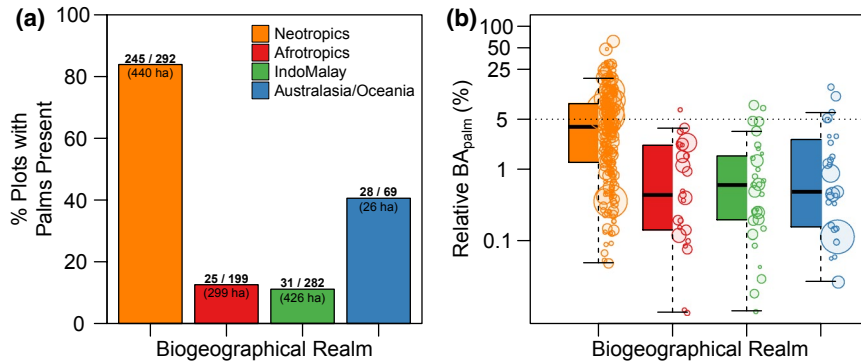
In order to assess associations between tree palm abundance and covariates, we fitted a Bayesian zero-inflated version of the beta regression (BeZI; Ospina & Ferrari, 2010), because our response variable of interest ( $BA_{\text{palm}}$ ) is a proportion, and tree palms were absent from many (61%) locations. We modelled  $BA_{\text{palm}}$  at each location,  $i$ , using a beta-distributed random variable  $y_i \sim \text{BeZI}(p_0, \mu, \phi)$ , which represents a mixture of beta and Bernoulli distributions defined as:

$$\text{BeZI}(p_0, \mu, \phi) = \begin{cases} p_0, & y=0 \\ (1-p_0)f(y; \mu, \phi), & y \in (0,1) \end{cases}$$

The parameter  $p_0$  is the probability of tree palms being absent from a location, and  $f(y; \mu, \phi)$  is the beta density function of  $BA_{\text{palm}}$  at locations where tree palms are present:  $\mu$  is the expected value and  $\phi$  is a precision parameter (Ospina & Ferrari, 2010). For both components of the model (occurrence and relative basal area), we modelled the relationship between the response variable,  $y$ , at each location,  $i$ , including biogeographical realm as a random grouping variable,  $e_i$ . We used the following model:

$$y_i \sim \beta_0 + \beta_1 \text{MAP}_{|\text{LGM} - \text{curr}|_i} + \beta_2 \text{DRY}_{|\text{LGM} - \text{curr}|_i} + \beta_3 \text{MAP}_{\text{curr}_i} + \beta_4 \text{DRY}_{\text{curr}_i} + \beta_5 \text{CEC}_i + \beta_6 \text{WTD}_i + \beta_7 \text{CH}_i + \beta_8 \text{WD}_i + \beta_9 \text{Area}_i + e_i$$

Where  $y$  is palm occurrence (for the Bernoulli part of the model) and  $BA_{\text{palm}}$  (for the beta part of the model),  $\beta_0$  is the intercept, and the terms  $\text{MAP}_{|\text{LGM} - \text{curr}|_i}$  and  $\text{DRY}_{|\text{LGM} - \text{curr}|_i}$  correspond to the anomalies between the LGM and contemporary mean annual and dry quarter precipitation, respectively;  $\text{MAP}_{\text{curr}_i}$  and  $\text{DRY}_{\text{curr}_i}$  represent current climatological means for mean annual and dry quarter precipitation;  $\text{CEC}_i$ ,  $\text{WTD}_i$ ,  $\text{CH}_i$  and  $\text{WD}_i$  correspond to cation exchange capacity, water table depth, canopy height and CWM wood density, respectively; and  $\text{Area}_i$  corresponds to the sum of



**FIGURE 2** (a) Percentage of locations in each realm where tree palms ( $\geq 10$  cm diameter at breast height) are present. Text on bars shows the number of locations with tree palms, total number of locations and total area (in hectares) sampled. (b) Relative basal area of tree palms ( $BA_{\text{palm}}$ , as a percentage, shown on a  $\log_{10}$  scale) in each realm among locations where at least one tree palm was present. Circles show data for individual locations, with the size being proportional to the location sample area. The dotted horizontal line is a reference line delineating 5% relative tree palm basal area. In boxplots, the bold horizontal line indicates the median; top and bottom edges of the boxes reflect the first and third quartiles, respectively; and whiskers extend to the most extreme data point that is not  $> 1.5$  times the interquartile range. Circles show the values for individual locations [Colour figure can be viewed at [wileyonlinelibrary.com](http://wileyonlinelibrary.com)]

area sampled in component plots at location  $i$ . We included the area term to account for possible correlation between the area sampled and  $BA_{\text{palm}}$ . Before fitting the model, we centred and scaled each predictor variable by subtracting its mean and dividing it by its standard deviation. This procedure facilitates model convergence and allows for the direct comparison of relative effect sizes across predictor variables (Gelman & Hill, 2006). The majority of model covariates were little correlated (Pearson's  $|r| < .3$ ), but historical climate anomalies and current climate conditions were moderately correlated (Pearson's  $r = .47$ – $.71$ ; Supporting Information Table S1). Nonetheless, models fitted separately with either historical climate anomalies or current climate conditions gave similar estimates for all parameters, and we report results from the full model. We fitted models using STAN (Stan Development Team, 2016) via the “brms” R package (Bürkner, 2017) and with default (uninformative) priors (see model code in the Supporting Information Appendix S3). We used four chains with 1,000 burn-in samples and 1,000 sampling iterations per chain. All parameters had  $\hat{R}$  values  $< 1.1$ , indicating successful convergence. Plots showing posterior distributions, trace plots and a posterior predictive check are provided in the Supporting Information (Figures S5 and S6). We computed  $R^2$  of the model using the “add\_ic” function of the “brms” R package (Bürkner, 2017). To evaluate spatial autocorrelation, we computed Moran's  $I$  for model residuals using geographical coordinates of locations. Observed and expected values did not differ significantly ( $p = .83$ ), indicating a lack of spatial autocorrelation among residuals. All analyses were conducted in R v.3.5.1 (R Development Core Team 2019).

## 2.4 | Implications for above-ground biomass estimates

To quantify the magnitude of error introduced to estimations of AGB if tree palms are pooled with other trees, we first used

the geographically based allometric equation (i.e. using the environmental factor,  $E$ ) of Chave et al. (2014), implemented in the BIOMASS R package (Réjou-Méchain et al., 2017) to estimate the total AGB for each location (including tree palms and non-palm trees):  $AGB_{\text{Chave-only}}$ . Ideally, we could compare these estimates with values where tree palm biomass was calculated using species-specific allometric equations developed specifically for palms that include information on plant height (Feldpausch et al., 2012; Marshall et al., 2012). Unfortunately, allometric equations have not yet been developed for most palm species, and most ground-based forest inventory datasets do not include height measurements. As an alternative, we calculated tree palm AGB using the family-level allometric equation (based on diameter only) from the study by Goodman et al. (2013). We then added this value of tree palm AGB to non-palm tree AGB calculated with the method of Chave et al. (2014) described above to arrive at a hybrid estimate of AGB for each location:  $AGB_{\text{Goodman+Chave}}$ . We report the ratio of  $AGB_{\text{Goodman+Chave}}$  to  $AGB_{\text{Chave-only}}$  as a step towards quantifying the error in AGB estimates introduced by palms.

## 2.5 | Effect of size threshold on tree palm abundance

To examine how the 10 cm d.b.h. threshold (commonly used by forest inventories) could affect conclusions about palm abundance patterns, we analysed separately Alwyn Gentry's transect data (Phillips & Miller, 2002), which includes all woody stems  $\geq 2.5$  cm d.b.h. in 144 locations (0.1 ha each) distributed globally throughout the (sub) tropical moist broadleaf biome (Supporting Information Figure S2). For each transect, we compared  $BA_{\text{palm}}$  (and  $RA_{\text{palm}}$ ) based on the full dataset (i.e., all stems  $\geq 2.5$  cm d.b.h.,  $n = 80,712$  individual stems) and a subset of the data using a  $\geq 10$  cm d.b.h. threshold ( $n = 16,665$  individual stems).

### 3 | RESULTS

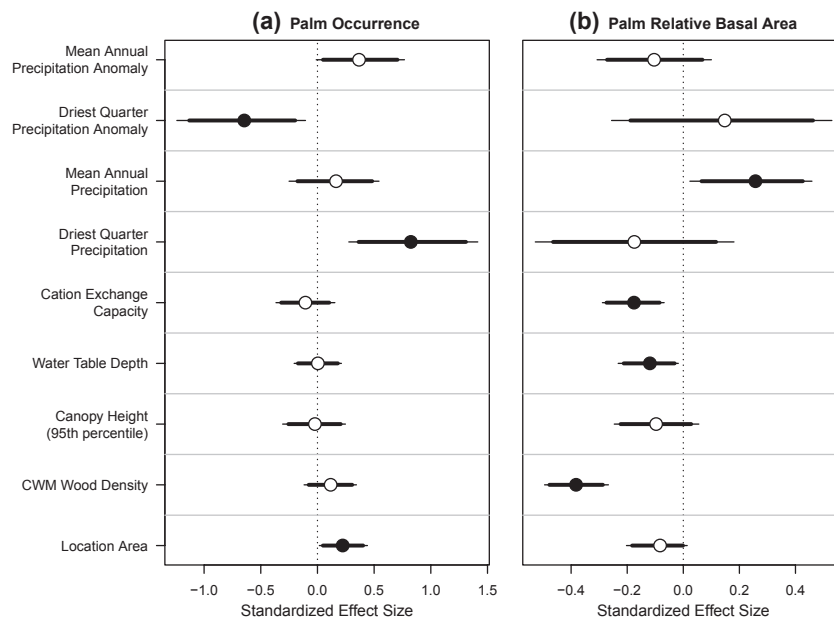
Across all 842 locations, tree palms ( $\geq 10$  cm d.b.h.) accounted for a total of 20,029 out of 661,194 individual stems (3%). The majority of tree palms (95%) belonged to 126 species and 71 genera (representing *c.* 5 and *c.* 39% of globally accepted palm species and genera, respectively). The remaining 5% of tree palm individuals in our dataset were identified to genus only. Across all locations, tree palms accounted for *c.* 1.4% of the total basal area sampled.

We found a striking pattern across biogeographical realms in terms of tree palm occurrence, relative basal area and relative abundance (Figures 1b and 2). The proportion of locations where tree palms were recorded was, by far, highest in the Neotropics (84%) compared with any other realm (41% in Australasia/Oceania, 13% in Afrotropics and 11% in IndoMalaya; Figure 2a). On average, locations in the Neotropics had higher  $BA_{\text{palm}}$  (5.5%) and  $RA_{\text{palm}}$  (8.4%) than locations in all other realms (mean of  $BA_{\text{palm}}$  across other realms ranged from .15 to .84%; Figure 2b). In other words, palms represent <5% of the total basal area for trees  $\geq 10$  cm d.b.h. in 99% of the sampled locations outside of the Neotropics. Nonetheless, especially within the Neotropics,  $BA_{\text{palm}}$  was highly variable, ranging globally from 0 to 60%.

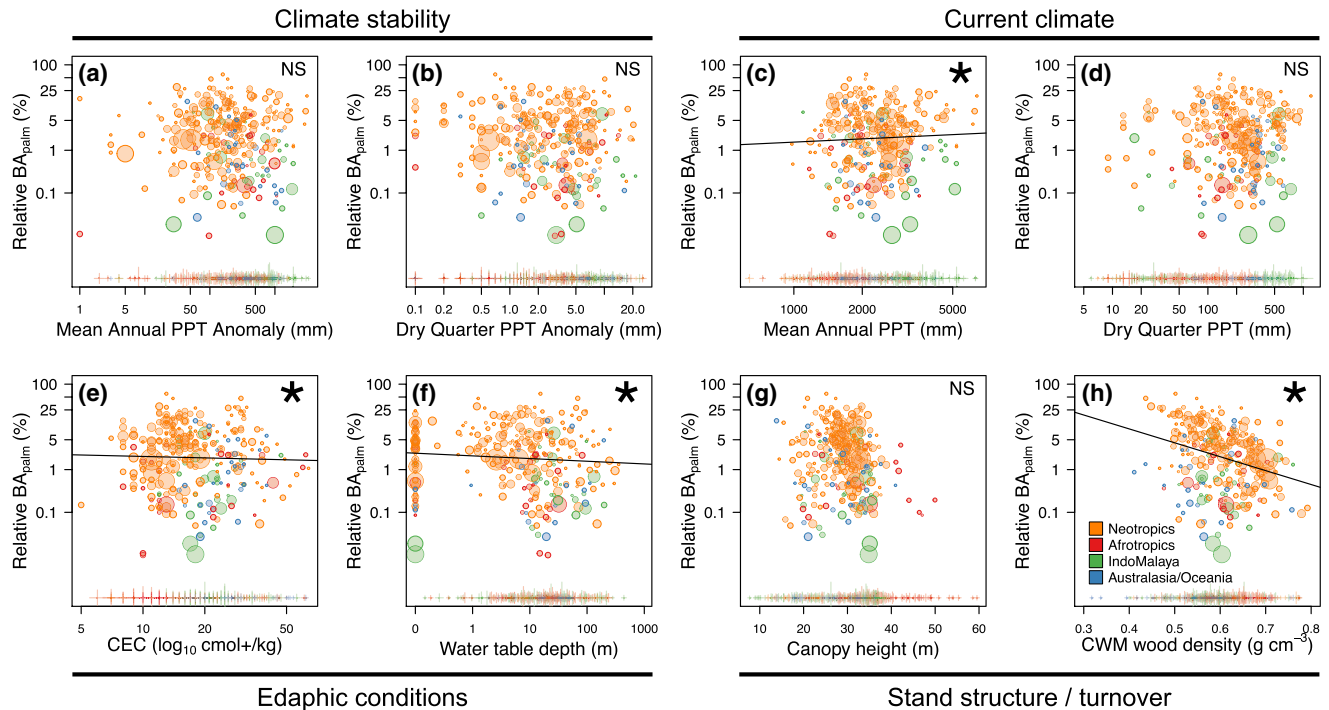
### 3.1 | Tree palm occurrence, abundance and environmental conditions

Based on *t* tests, there were some significant differences in environmental variables between locations where tree palms were present versus those where they were absent, but these were not always consistent or significant across realms (Supporting Information Figure S3). For example, soil fertility (CEC) and palm occurrence were negatively associated among Neotropical locations and positively associated among Afrotropical locations. Palms were more likely to occur in locations with shallower water tables in Neotropical locations and deeper water tables in IndoMalayan locations. Notably, tree palm occurrence was associated with higher dry season rainfall in all realms, although the relationship was not statistically significant in Australasia/Oceania. Results from the occurrence component of our zero-inflated model were consistent, in part, with results from the *t* tests (Figure 3a). Specifically, palms were more likely to occur in locations with higher precipitation in the driest quarter and in locations with smaller anomalies between historical and contemporary dry season precipitation. Palms also tended to be recorded in locations with larger total area sampled.

In contrast, palm relative basal area ( $BA_{\text{palm}}$ ) was not significantly associated with either palaeoclimate stability or current



**FIGURE 3** Standardized effect size (estimated coefficients) with 95 and 90% credible intervals (thinner and thicker lines, respectively) for variables explaining (a) palm occurrence and (b) relative palm basal area ( $BA_{\text{palm}}$ ). For visualization, estimated coefficients in (a) were multiplied by minus one to allow a more intuitive interpretation (i.e., meaning that they correspond to the probability of palms being present rather than absent). Points represent median values of posterior distributions and are filled when 95% credible intervals do not overlap zero. See the Supporting Information Figure S5 for full posterior parameter distributions. The mean annual precipitation anomaly and the driest quarter precipitation anomaly refer to the absolute difference between the Last Glacial Maximum (21,000 years ago) and modern climatological averages (1979–2013) for each of those climate variables, respectively. The CWM wood density refers to the basal area-weighted mean wood density value among non-palm trees recorded in each location



**FIGURE 4** Bivariate plots of tree palm relative basal area ( $BA_{\text{palm}}$ , as a percentage, shown on a  $\log_{10}$  scale) versus environmental covariates for locations in four biogeographical realms. The tick marks along the x axis represent locations without tree palms recorded; symbol size is proportional to the sample area of the location. Covariates with significant effects (i.e., 95% credible intervals did not overlap zero) are indicated with an asterisk (\*), and fitted slopes are shown; covariates with non-significant effects are indicated with NS. Mean annual precipitation anomaly and driest quarter precipitation anomaly refer to the absolute difference between the Last Glacial Maximum (21,000 years ago) and modern climatological averages (1979–2013) for each of those climate variables, respectively. The CWM wood density refers to the basal area-weighted mean wood density value among non-palm trees recorded in each location [Colour figure can be viewed at [wileyonlinelibrary.com](http://wileyonlinelibrary.com)]

precipitation in the driest quarter (Figures 3b and 4). However,  $BA_{\text{palm}}$  was positively associated with current mean annual precipitation (Figures 3b and 4c). There were also significant negative associations between  $BA_{\text{palm}}$  and CEC (soil fertility), depth to water table and CWM wood density (Figures 3b and 4e–h). The relationships between  $BA_{\text{palm}}$  and canopy height and area sampled were not statistically significant. Together, these results indicated that tree palms accounted for a greater proportion of total basal area in locations with lower soil fertility, closer access to groundwater and lower CWM wood density. The  $R^2$  of the full model was .26 [95% credible intervals (CIs) = .21–.32; Supporting Information Tables S2–3].

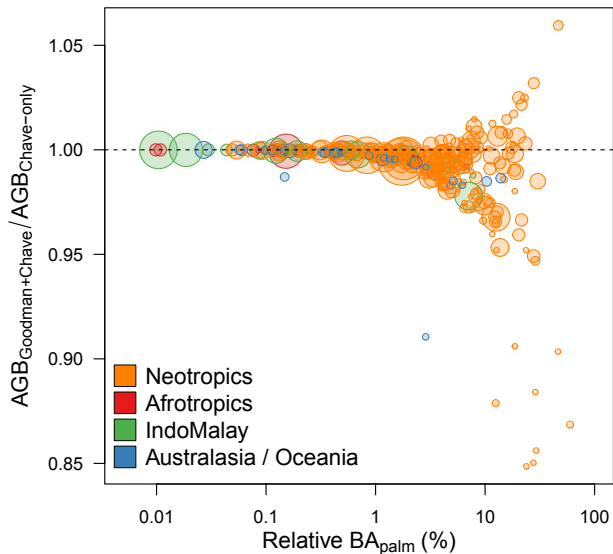
### 3.2 | Implications for above-ground biomass estimates

As expected, the difference in AGB estimated by the two methods ( $AGB_{\text{Goodman+Chave}}$  versus  $AGB_{\text{Chave-only}}$ ) increased with  $BA_{\text{palm}}$  (Figure 5). However, the direction and magnitude of the change in AGB predictions were not consistent. For example, where palms accounted for >10% of total basal area, the ratio of AGB calculated using the two methods ranged from 0.84 to 1.05. Notably, for non-Neotropical locations with  $BA_{\text{palm}} > 1\%$ , values of

$AGB_{\text{Chave-only}}$  were always higher than those of  $AGB_{\text{Goodman+Chave}}$  (Figure 5).

### 3.3 | Effect of size threshold

In total, 116 of the 144 Gentry transects considered included at least one palm. Across all transects and using a 2.5 cm d.b.h. threshold, 4,502 palm individuals (from 177 species) accounted for 5.5% of the total individuals (80,712) and 2.8% of the total basal area. When using a 10 cm d.b.h. threshold, there were 880 palm individuals (from 76 species) that accounted for 5.3% of the total individuals (16,665) and 2.5% of the total basal area. Among Neotropical transects, changing the size threshold from 2.5 to 10 cm d.b.h. caused palm relative basal area ( $BA_{\text{palm}}$ ) to increase or decrease in 60 and 40% of the transects, respectively (Figure 6). In the other realms, however,  $BA_{\text{palm}}$  increased in 16 out of 17 transects (94%) when stems down to 2.5 cm d.b.h. were included. In fact, outside of the Neotropics, 53% of the transects with at least one palm present at the 2.5 cm d.b.h. threshold had no palms recorded above the 10 cm d.b.h. threshold. These results indicate that the majority of palm abundance in locations outside the Neotropics occurs in the 2.5–10 cm d.b.h. size class. The different d.b.h. thresholds changed the value of  $BA_{\text{palm}}$  in each transect by  $\leq 14\%$  (Figure 6).



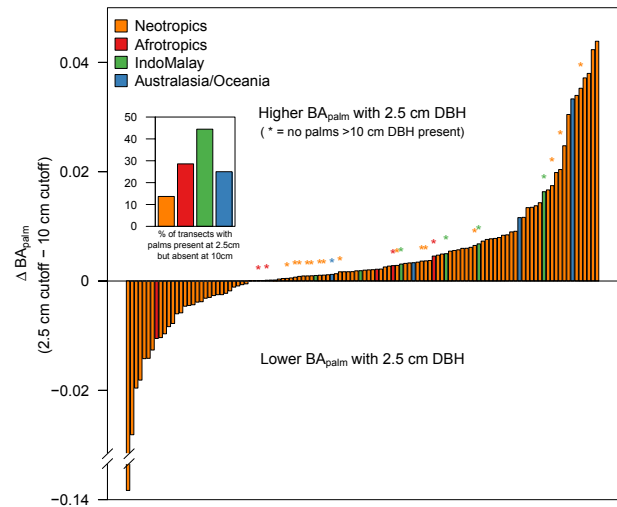
**FIGURE 5** Palm relative basal area ( $BA_{\text{palm}}$ , as a percentage, shown on a  $\log_{10}$  scale) versus the ratio of estimated total above-ground biomass (AGB) in each location calculated using the family-level (diameter-only) equation from Goodman et al. (2013) for palms and the equation from Chave et al. (2014) for trees ( $AGB_{\text{Goodman+Chave}}$ ) versus total AGB when palms are treated as trees using the equations of Chave et al. (2014) ( $AGB_{\text{Chave-only}}$ ). Values on the y axis less than one indicate that using the equation from Goodman et al. (2013) for palms leads to a decrease of the estimated plot-level biomass, and vice versa [Colour figure can be viewed at [wileyonlinelibrary.com](http://wileyonlinelibrary.com)]

## 4 | DISCUSSION

### 4.1 | Patterns and drivers of tree palm abundance and diversity

Tree palms were clearly most abundant in Neotropical forests, where they composed  $\leq 60\%$  of the total forest basal area and stem abundance. We consider these figures to be conservative estimates because we did not consider areas of tree palm monodominance, which will require a separate and focused treatment. Reinforcing prior work (e.g., Dransfield et al., 2008; Moore, 1973; ter Steege et al., 2013, 2019), tree palms are particularly abundant components of forests in western Amazonia, which is also a hotspot of palm diversity (Svenning et al., 2008). In contrast, tree palms play a relatively minor role in terms of abundance in other biogeographical realms, especially the Afrotropics and IndoMalaya [with notable exceptions of tree palm monodominance in some swamps of these regions (Dargie et al., 2017)]. Tree palms do, however, reach relatively high levels of relative abundance in some plots in Madagascar and on the northeast coast of Australia ( $\leq 14\%$  of the total basal area), but these locations were exceptional in comparison to most locations in those realms.

In our study, local conditions, including current climate, edaphic properties and proxies for turnover rates, were more strongly related to tree palm abundance within biogeographical realms than our metrics of palaeoclimate stability. In particular, tree palms had



**FIGURE 6** Effect of size threshold on palm abundance. Difference of  $BA_{\text{palm}}$  (as a percentage) for 116 Gentry transects when using a 2.5 versus 10 cm diameter at breast height (d.b.h.) size threshold. Each bar represents one transect where at least one palm was present. Positive values indicate that  $BA_{\text{palm}}$  was higher when stems down to 2.5 cm d.b.h. were included, and vice versa. Asterisks indicate transects where palms were recorded in the 2.5 cm d.b.h. data but absent from the 10 cm d.b.h. data. The inset shows the percentage of transects where palms were present with a 2.5 cm d.b.h. threshold and absent at the 10 cm d.b.h. threshold [Colour figure can be viewed at [wileyonlinelibrary.com](http://wileyonlinelibrary.com)]

greater relative abundance in locations with higher mean annual rainfall, lower soil fertility, shallower water tables and lighter CWM wood density. These results are broadly consistent with a number of previous studies at smaller spatial scales that have linked spatial distributions of palms to hydrology, edaphic conditions and stand turnover rates (Costa et al., 2009; Eiserhardt et al., 2011; Emilio et al., 2014; Svenning, 2001).

Our finding that palms were relatively more abundant in locations with low soil fertility, shallow water tables and lighter CWM wood density might reflect related underlying processes. For instance, Schietti et al. (2014) reported a strong relationship between water table depth and palm community composition in forests of central Brazilian Amazonia. Likewise, Castilho et al. (2006) found greater palm biomass in sites with poorly drained, sand-rich soils. Quesada et al. (2012) reported that forests with lighter CWM wood density are associated with shorter stem residency times, and palms may be more likely to be abundant at sites that face more severe or frequent disturbances. In fact, some areas regularly exposed to wind disturbance, for example, show high levels of tree palm abundance (e.g., Caribbean islands, east coast of Australia). Emilio et al. (2014) linked palm abundance in Amazonian forests with aspects of soil structure and suggested that edaphic properties, such as soil depth and texture, might affect plant composition and abundance indirectly by influencing stem turnover rates. Additionally, CWM wood density is geographically structured in our dataset; locations in western Amazonia tend to have lighter CWM wood density than locations in eastern Amazonia,

potentially reflecting gradients in drought and nutrient stress (ter Steege et al., 2006).

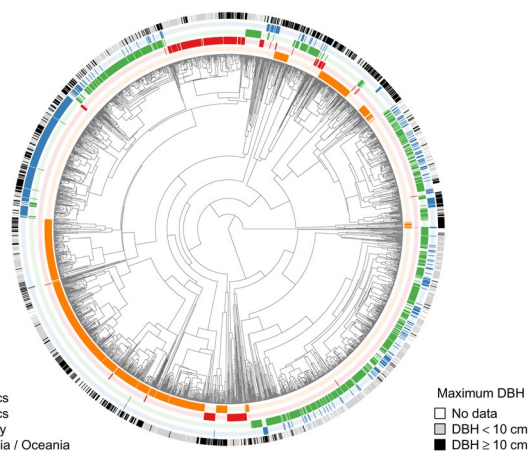
We hypothesized that long-term climatic conditions could also influence current patterns of tree palm abundance based on the climatic sensitivity of palms (Reichgelt, West, & Greenwood, 2018; Tomlinson, 2006). In some respects, our results are broadly similar to global patterns of palm diversity (i.e., high diversity and relative abundance of tree palms in the Neotropics but not the Afrotropics). However, variation of tree palm relative abundance within realms was not significantly related to the anomaly of either mean annual precipitation or dry season precipitation between the LGM (21,000 years ago) and the current period. It appears that local environmental heterogeneity mediates palm relative abundance more strongly within biogeographical realms, whereas legacy effects of palaeoclimate might be more apparent at larger scales. Interestingly, palaeoclimate stability (anomaly of dry quarter precipitation) was (negatively) associated with palm occurrence. We might generally expect abundance to exhibit less coupling to historical legacies than diversity, given that species present in a locality have the potential to respond in a relatively rapid manner to current environmental conditions through population growth. In other words, processes governing abundance are likely to occur along shorter time-scales than processes affecting species richness (i.e., speciation, extinction, immigration).

In this study, we were unable to assess the role of several potentially important drivers of palm abundance directly. First, humans have affected tropical landscapes for millennia (Roberts, Hunt, Arroyo-Kalin, Evans, & Boivin, 2017) and, especially given the many

uses of palms (Cámara-Leret et al., 2017), past and recent human activity could influence observed contemporary patterns of palm abundance. Levis et al. (2017) showed that domesticated tree species, including several tree palms, were more abundant in forests near archaeological sites in Amazon forests, suggesting long-term human impacts on the composition and structure of tropical forests. In contrast, Piperno, McMichael, and Bush (2019) reported a lack of evidence for ancient human impacts on palm abundance in Amazonian *terra firme* forests. Humans have clearly impacted forests in other biogeographical realms also (Hunt & Rabett, 2014; Malhi, Adu-Bredu, Asare, Lewis, & Mayaux, 2013; Roberts et al., 2017), but we do not expect human activity to have altered the broad biogeographical patterns we report. The degree to which human activities have impacted populations of palms and other trees requires more study.

Second, we cannot rule out the possibility that the historical presence or absence of certain palm lineages influences patterns of palm abundance. Palms display strong spatial phylogenetic structure (Kissling, Baker, et al., 2012; Figure 7), showing that different regions are characterized by different lineages. If certain lineages have a particular tendency to evolve highly abundant tree palms, this could drive patterns like the ones observed here. For example, the palm tribes Euterpeae, Iriarteae and Cocoseae, which include the most abundant palms in Amazonia (ter Steege et al., 2013), are absent outside the Neotropics (except for a few Attaleinae species in South Africa and Madagascar, which, interestingly, are not particularly abundant there). Also, non-human animal seed dispersers influence palm diversification and diversity via eco-evolutionary interactions (Onstein et al., 2017), and these mutualisms could also potentially influence contemporary palm abundance patterns. For instance, Onstein et al. (2018) argued that palms with megafaunal fruits (some of which could also be large tree palms) may have reduced abundance and increased extinctions owing to the extinction of their megafaunal dispersers (also see Doughty et al., 2016). Quantifying these effects will require additional phylogenetic analyses, which will be attempted soon, once a comprehensive species-level phylogeny of the palm family is available.

Finally, our dataset does not include swamp habitats, and some tree palms are known for forming monodominant stands, especially in swampy conditions associated with large carbon pools. For example, palm swamps in the Congo basin, Amazonia and southeast Asia cover millions of hectares and store huge amounts of biomass both above and below ground (Dargie et al., 2017; Kahn & Mejia, 1990). Better understanding of these unique habitats requires additional work; recent progress has been made using various remote sensing techniques (e.g., Dargie et al., 2017).



**FIGURE 7** Phylogeny of palms (Faurby, Eiserhardt, Baker, & Svenning, 2016) showing the presence (in bold colour) or absence (in faint colour) for each species in each biogeographical realm based on the world checklist of palms (WCSP, 2017) in the “level 3” geographical units defined by the International Working Group on Taxonomic Databases (TDWG; Brummitt, 2001) and biogeographical realms defined by Olson et al. (2004). The outermost ring is black for species known to reach a maximal diameter at breast height (d.b.h.)  $\geq 10$  cm (“tree palms” in this study), grey for species with maximal d.b.h.  $< 10$  cm, and white for species for which maximum d.b.h. information was not available (28%) (Kissling et al., 2019) [Colour figure can be viewed at [wileyonlinelibrary.com](http://wileyonlinelibrary.com)]

## 4.2 | Implications for above-ground biomass estimates

One motivation for our study was to gain a better understanding of the potential error introduced to estimates of AGB when tree palms



are pooled with other trees. Specifically, standard allometric equations generated for trees that estimate AGB from stem diameter perform in a relative poor manner when estimating biomass for palms because, unlike other trees, growth in diameter and growth in height of palms are largely decoupled. The magnitude of error this introduces clearly depends, in part, on tree palm relative abundance. In our dataset, pooling tree palms with other trees added error to AGB estimates, but the direction of the error was not consistent. Pooling palms with dicots most often led to an overestimation of AGB [compared with estimates based on using the family-level model from the study by Goodman et al. (2013) for palms and the dicot models of Chave et al. (2014) for non-palm trees]. Variation in the magnitude and direction of these estimates emerged, in part, from the geographical variation in the equation of Chave et al. (2014). The differences in AGB estimates between the two methods used here ( $AGB_{\text{Goodman+Chave}}$  and  $AGB_{\text{Chave-only}}$ ) were <1% in >90% of locations where  $BA_{\text{palm}}$  was <5%, indicating that error from palms is probably negligible when palms are minor components of the total forest basal area. However, the difference between the two methods increases with  $BA_{\text{palm}}$ , and the difference ranged from -15 to 6% in our dataset. Future analyses using data on stem height are needed to refine these estimates, and additional species- and region-specific palm allometric models will be important to improve AGB estimates in many Neotropical forests where tree palms are abundant. Fortunately, increasingly available remote sensing data on canopy height (e.g., NASA GEDI) will improve this situation when paired with appropriate ground-based data. Additionally, recent advances in remote sensing to identify palms (Tagle Casapia et al., 2020) will also help to identify areas where attention to palm abundance is important to reduce the error in biomass estimates.

### 4.3 | Palm life-forms and the effect of size threshold

To some extent, the patterns we report reflect these differences in palm life diversity across biogeographical realms. For example, clades that assume a climbing form (e.g., rattans in the subfamily Calamoideae) constitute a major component of palm diversity in the IndoMalayan and Australasian biogeographical realms (Couvreur et al., 2015). In the Neotropics, in contrast, many abundant palm species grow as large canopy trees (e.g., *Astrocaryum chambira*, *Euterpe precatoria*, *Iriartea deltoidea*, *Oenocarpus bataua*), which are among the hyperdominant species of Amazonia (ter Steege et al., 2013). Meanwhile, understorey species also make up a large portion of palm diversity in the Neotropical, IndoMalayan and Australasian biogeographical realms (e.g., *Bactris* and *Geonoma* species in Amazonia; *Dyopsis* in Madagascar; *Pinanga* and *Licuala* in IndoMalaya; *Pritchardia* in parts of Oceania).

Contrasting patterns of life-form diversity influence the patterns of abundance we report, because the forest inventory datasets we used only include trees with a large diameter (e.g., 10 cm). On the one hand, plots censused with this size threshold are adequate for quantifying important forest properties (Bastin et al., 2018; Lutz et al., 2018; Slik et al., 2013; Stephenson et al., 2014). For example,

Lutz et al. (2018) showed that half the above-ground living biomass in a global dataset of forest plots was stored in the largest trees, which made up 1% of the total stems. On the other hand, major components of biodiversity are neglected by using a size threshold of 10 cm d.b.h., because a substantial amount of tropical rain forest diversity exists as understorey and slender climbing plants (Cicuzza et al., 2013; Hubau et al., 2019). For palms, we estimate that c. 40% of all species reach a diameter of 10 cm (Kissling et al., 2019; Figure 7). The plot dataset we analysed included a total of 126 palm species, which represent c. 5% of the total known palm species and nearly 20% of the species known to reach 10 cm d.b.h. Meanwhile, lowering the diameter cut-off for the Gentry transect dataset from 10 to 2.5 cm resulted in the inclusion of 51 additional palm species despite containing < 25% the number of palm individuals.

Our analysis of the Gentry transect data provides additional confirmation that biogeographical differences in palm life-form diversity can affect the perception of palm abundance. For example, small-diameter climbing palms are diverse and more common in IndoMalaya compared with arborescent palms (Couvreur et al., 2015). In fact, many IndoMalayan palm species (e.g., rattans) are unlikely to reach even the 2.5 cm d.b.h. used by Gentry; a major part of palm diversity in the IndoMalayan realm is contributed by the subfamily Calamoideae, which comprises mostly climbers. Notably, acaulescent (or stemless) palms can also be common in Neotropical forests. Overall, a comprehensive understanding of the abundance of palms across the entire phylogenetic tree will require additional data that include small size classes and different life-forms.

We propose several additional potential reasons for generally low tree palm abundance in the Afrotropics and IndoMalaya in addition to the differences in life-forms described above. The first reason may be related to the generally tall forest canopies in these realms, especially IndoMalaya, compared with the Neotropics (Banin et al., 2014). These conditions may favour the evolution of alternative life-forms, including climbers (Couvreur et al., 2015). In fact, Couvreur et al. (2015) reported a link between diversification of the climbing life-form in palms and forest canopy height. Additional synthetic work integrating abundance patterns with evolutionary drivers of palm life-form variation could be a fruitful research avenue. Second, for IndoMalaya, we note that dry quarter precipitation is greater in locations with palms than in locations where palms were absent (Supporting Information Figure S2d). On average, locations in this realm without palms have only c. 50 mm rain during the driest quarter, whereas sites with palms have >100 mm. It is possible that the minimum monthly rainfall generally limits palm occurrence in many areas that have months of rainfall <100 mm, which includes much of mainland Southeast Asia.

### 4.4 | Conclusions and future directions

The results of our analysis of tree palm abundance show that tree palms are not only quintessentially tropical, but also overwhelmingly Neotropical. Although palaeoclimatic conditions appear to have a strong influence on global palm diversity, tree palm relative abundance

was more strongly related to current ecological conditions, and tree palm abundance patterns might be particularly sensitive to future climate change. Future research should focus on specific drivers (and interactions among drivers) linked to tree palm abundance within biogeographical realms. We suggest that stronger consideration of the influence of palms can reduce uncertainty in biomass estimates. Especially in the Neotropics, improvement of our understanding of carbon cycling will require additional fieldwork to measure palm height and develop new allometric equations for palms. High tree palm relative abundance in locations with low average wood density (presumably, high-turnover forests) might also dramatically impact field estimates of forest productivity, because measurements of palm height growth are typically neglected. We also show that understanding the general patterns of abundance across the entire palm family will require additional work to understand macroevolutionary drivers of palm life-form diversity. Finally, our study illustrates the synergistic research potential of large data-sharing networks such as RAINFOR in South America and AfriTRON in Africa (Hubau et al., 2013; Lewis et al., 2013, Lopez-Gonzalez et al., 2009; Lopez-Gonzalez et al., 2011). Besides storage and organization of data to facilitate research, these networks strengthen the entire research chain (seeking field funding, fieldwork, developing protocols, allometries, collaborations, training, database design and quality control). Networks such as these are essential for conducting broad-scale and data-rich analyses. As development of these networks continues, it will be especially useful if they are even denser than today and even more balanced in terms of biomes, biogeographical realms and natural and disturbed sites.

## ACKNOWLEDGMENTS

This study would not have been possible without the ambitious and dedicated work of many colleagues, including Emmanuel Akampulira, Miguel N. Alexiades, William Balée, Olaf Banki, Serge K. Begne, Desmo Betian, Wemo Betian, Michael I. Bird, Neil M. Bird, George A. Blackburn, Rene Boot, Roel J. W. Brienen, Foster Brown, Ezequiel Chavez, Eric Chezeaux, Manoela F. F. Da Silva, Douglas C. Daly, Kyle G. Dexter, Luisa Fernanda Duque, Jose Farreras, Nina Farwig, Toby Gardner, Alwyn Gentry, Francisco Gómez, Rachel Graham, René Guillén Villaroel, Olivier J. Hardy, Terese Hart, Miriam van Heist, Mireille Breuer Ndoundou Hockemba, Kathryn Brun-Jeffery, Valerie Kapos, Jeanette Kemp, Miguel Leal, Eddie Lenza, Antonio S. Lima, Maurício Lima Dan, Pedro Lisboa, Jon Lloyd, Jhon Mario Lopez, Ubirajara N. Maciel, Jean-Remy Makana, Antti Marjokorpi, Toby Marthews, Emanuel H. Martin, James Franklin Maxwell, Irina Mendoza Polo, Edi Mirmanto, Kazuki Miyamoto, Franklin Molina, Sam Moore, Pantaleo K. T. Munishi, Helen Murphy, David M. Newbery, Vojtech Novotny, Navendu Page, Karla Pedra de Abreu, Maria C. Peñuela-Mora, Ghilleen T. Prance, John Proctor, Wilfredo Ramirez Salas, Adela Reatigui Ismodes, Eliana Riascos, Terhi Riutta, Nelson A. Rosa, Philippe Saner, Lars Schmidt, Marcela Serna, Michael Swaine, James Taplin, Peguy Tchouto, Johan van Valkenburg, Peter van de Meer, Cesar Velasquez, Jason Vleminckx, George Weiblen and Roderick Zagt. We also depend on the centuries of work completed by palm taxonomists. W.L.E.'s contribution was supported by a research grant (00025354) from VILLUM FONDEN. J.C.S.

considers this work a contribution to his VILLUM Investigator project "Biodiversity Dynamics in a Changing World" funded by VILLUM FONDEN (grant 16549). R.M. was supported by Vetenskapsrådet (2019-03758). This work was supported by the Danish Council for Independent Research Natural Sciences (grant 4181-00158) to H.B., the European Union's Horizon 2020 research and innovation program under the Marie Skłodowska-Curie grant agreement No. 706011, and Coordenação de Aperfeiçoamento de Pessoal de Nível Superior—Brasil (CAPES)—Finance Code 001. This paper is a product of the RAINFOR, AfriTRON and T-FORCES networks and other partner networks in ForestPlots.net, which together support long-term forest science and monitoring across tropical countries. These initiatives have been supported by numerous people and grants since their inception. We are particularly indebted to >1,400 field assistants for their help in establishing and maintaining the plots, in addition to hundreds of rural communities and institutions. Collection and management of data analysed here from the RAINFOR, AfriTRON and T-FORCES networks have been supported by multiple grants, most notably the European Research Council (ERC Advanced Grant 291585, "T-FORCES"), the Gordon and Betty Moore Foundation (#1656, "RAINFOR"), the David and Lucile Packard Foundation, the European Union's Fifth, Sixth, and Seventh Framework Programme (EVK2-CT-1999-00023, "CARBONSINK-LBA"; 283080, "GEOCARBON"; and 282664, "AMAZALERT"), the Natural Environment Research Council (NERC grants: NE/D005590/1, "TROBIT"; NE/F005806/1, "AMAZONICA"; E/M0022021/1, "PPFOR"; NERC Urgency Grants and NERC New Investigators Grants), the NERC/State of São Paulo Research Foundation (FAPESP) consortium grants "BIO-RED" (NE/N012542/1, 2012/51872-5) and "ECOFOR" (NE/K016431/1, 2012/51509-8), the Royal Society (University Research Fellowships and Global Challenges Awards "FORAMA", ICA/R1/180100), the National Geographic Society, the Centre for International Forestry (CIFOR), Gabon's National Parks Agency (ANPN) and Colombia's Colciencias. We thank the National Council for Science and Technology Development of Brazil (CNPq) for support to the Cerrado/Amazonia Transition Long-Term Ecology Project (PELD/403725/2012-7), the PPBio Phytogeography of Amazonia/Cerrado Transition project (CNPq/PPBio/457602/2012-0), PVE grants, and Productivity Grants to several colleagues. Atlantic Forest plots in Brazil were supported by the State of São Paulo Research Foundation (FAPESP 2003/12595-7 and 2012/51509-8, BIOTA/FAPESP Program) and by the Brazilian National Research Council (CNPq/PELD 403710/2012-0; Universal 459941/2014-3) under COTEC/IF 41.065/2005 and IBAMA/CGEN 093/2005 permits. Some of the data were provided by the Tropical Ecology Assessment and Monitoring (TEAM) Network, a collaboration between Conservation International, the Smithsonian Institution and the Wildlife Conservation Society, and partially funded by these institutions, the Gordon and Betty Moore Foundation and other donors. RAPELD plots in Brazil were supported by the Program for Biodiversity Research (PPBio), the National Institute for Amazonian Biodiversity (INCT-CENBAM) and BDFPP (INPA-STRI). Grant USM-RUI-1001/PBIOLOGI/8011031 also supported fieldwork. This is publication 788 of the BDFPP Technical Series and is an outcome of the ForestPlots.net approved research project #2, "Global Patterns

of Palm Abundance". We acknowledge the support of the European Space Agency. We thank several anonymous reviewers and the editor for help improving our manuscript.

## CONFLICT OF INTEREST


The authors have no conflict of interest to declare.

## DATA AVAILABILITY STATEMENT

Raw data are available from ForestPlots.net and through contact with the authors. Restrictions apply to the availability of these data, which were used under licence for this study. Summarized data to replicate the main analyses presented in the paper are provided in the Supporting Information.

## ORCID

Robert Muscarella  <https://orcid.org/0000-0003-3039-1076>

Edmar Almeida de Oliveira  <https://orcid.org/0000-0002-6446-3376>

Jean-François Bastin  <https://orcid.org/0000-0003-2602-7247>

James A. Comiskey  <https://orcid.org/0000-0001-6710-1269>

Tran Van Do  <https://orcid.org/0000-0001-9059-5842>

Khalid Rehman Hakeem  <https://orcid.org/0000-0001-7824-4695>

Andreas Hemp  <https://orcid.org/0000-0002-5369-2122>

Bruno Herault  <https://orcid.org/0000-0002-6950-7286>

Onrizal Onrizal  <https://orcid.org/0000-0003-1899-2397>

Lourens Poorter  <https://orcid.org/0000-0003-1391-4875>

John R. Poulsen  <https://orcid.org/0000-0002-1532-9808>

Francesco Rovero  <https://orcid.org/0000-0001-6688-1494>

Robert Steinmetz  <https://orcid.org/0000-0001-6860-8715>

## REFERENCES

- Baker, W. J., & Couvreur, T. L. P. (2013). Global biogeography and diversification of palms sheds light on the evolution of tropical lineages. II. Diversification history and origin of regional assemblages. *Journal of Biogeography*, *40*, 286–298. <https://doi.org/10.1111/j.1365-2699.2012.02794.x>
- Banin, L., Lewis, S. L., Lopez-Gonzalez, G., Baker, T. R., Quesada, C. A., Chao, K.-J., ... Phillips, O. L. (2014). Tropical forest wood production: A cross-continental comparison. *Journal of Ecology*, *102*, 1025–1037. <https://doi.org/10.1111/1365-2745.12263>
- Bastin, J.-F., Rutishauser, E., Kellner, J. R., Saatchi, S., Pélissier, R., Hérault, B., ... Zebaze, D. (2018). Pan-tropical prediction of forest structure from the largest trees. *Global Ecology and Biogeography*, *27*, 1366–1383. <https://doi.org/10.1111/geb.12803>
- Blach-Overgaard, A., Kissling, W. D., Dransfield, J., Balslev, H., & Svenning, J.-C. (2013). Multimillion-year climatic effects on palm species diversity in Africa. *Ecology*, *94*, 2426–2435. <https://doi.org/10.1890/12-1577.1>
- Brummitt, R. K. (2001). *World geographical scheme for recording plant distributions*. Pittsburgh, PA: Hunt Institute for Botanical Documentation and Carnegie Mellon University.
- Bürkner, P.-C. (2017). brms: An R package for Bayesian multilevel models using Stan. *Journal of Statistical Software*, *80*, 1–28.
- Cámara-Leret, R., Faurby, S., Macía, M. J., Balslev, H., Gödel, B., Svenning, J.-C., ... Salsis-Lagoudakis, C. H. (2017). Fundamental species traits explain provisioning services of tropical American palms. *Nature Plants*, *3*, 16220. <https://doi.org/10.1038/nplants.2016.220>
- Chave, J., Coomes, D., Jansen, S., Lewis, S. L., Swenson, N. G., & Zanne, A. E. (2009). Towards a worldwide wood economics spectrum. *Ecology Letters*, *12*, 351–366. <https://doi.org/10.1111/j.1461-0248.2009.01285.x>
- Chave, J., Réjou-Méchain, M., Búrquez, A., Chidumayo, E., Colgan, M. S., Delitti, W. B. C., ... Vieilledent, G. (2014). Improved allometric models to estimate the aboveground biomass of tropical trees. *Global Change Biology*, *20*, 3177–3190. <https://doi.org/10.1111/gcb.12629>
- Cicuzza, D., Krömer, T., Poulsen, A. D., Abrahamczyk, S., Delhotal, T., Piedra, H. M., & Kessler, M. (2013). A transcontinental comparison of the diversity and composition of tropical forest understory herb assemblages. *Biodiversity and Conservation*, *22*, 755–772. <https://doi.org/10.1007/s10531-013-0447-y>
- Costa, F. R. C., Guillaumet, J.-L., Lima, A. P., & Pereira, O. S. (2009). Gradients within gradients: The mesoscale distribution patterns of palms in a central Amazonian forest. *Journal of Vegetation Science*, *20*, 69–78. <https://doi.org/10.1111/j.1654-1103.2009.05314.x>
- Couvreur, T. L. P., Kissling, W. D., Condamine, F. L., Svenning, J.-C., Rowe, N. P., & Baker, W. J. (2015). Global diversification of a tropical plant growth form: Environmental correlates and historical contingencies in climbing palms. *Frontiers in Genetics*, *5*, 452. <https://doi.org/10.3389/fgene.2014.00452>
- Dargie, G. C., Lewis, S. L., Lawson, I. T., Mitchard, E. T. A., Page, S. E., Bocko, Y. E., & Ifo, S. A. (2017). Age, extent and carbon storage of the central Congo Basin peatland complex. *Nature*, *542*, 86–90. <https://doi.org/10.1038/nature21048>
- de Castilho, C. V., Magnusson, W. E., de Araújo, R. N. O., Luizão, R. C. C., Luizão, F. J., Lima, A. P., & Higuchi, N. (2006). Variation in aboveground tree live biomass in a central Amazonian forest: Effects of soil and topography. *Forest Ecology and Management*, *234*, 85–96. <https://doi.org/10.1016/j.foreco.2006.06.024>
- Doughty, C. E., Wolf, A., Morueta-Holme, N., Jørgensen, P. M., Sandel, B., Violle, C., ... Galetti, M. (2016). Megafauna extinction, tree species range reduction, and carbon storage in Amazonian forests. *Ecography*, *39*, 194–203. <https://doi.org/10.1111/ecog.01587>
- Dransfield, J., Uhl, N. W., Asmussen, C. B., Baker, W. J., Harley, M. M., & Lewis, C. E. (2008). *Genera Palmarum: The evolution and classification of palms*. Royal Botanic Gardens, Kew: Kew Publishing.
- Eiserhardt, W. L., Svenning, J.-C., Kissling, W. D., & Balslev, H. (2011). Geographical ecology of the palms (Arecaceae): Determinants of diversity and distributions across spatial scales. *Annals of Botany*, *108*, 1391–1416. <https://doi.org/10.1093/aob/mcr146>
- Emilio, T., Quesada, C. A., Costa, F. R. C., Magnusson, W. E., Schiatti, J., Feldpausch, T. R., ... Phillips, O. L. (2014). Soil physical conditions limit palm and tree basal area in Amazonian forests. *Plant Ecology & Diversity*, *7*, 215–229. <https://doi.org/10.1080/17550874.2013.772257>
- Fan, Y., Li, H., & Miguez-Macho, G. (2013). Global patterns of groundwater table depth. *Science*, *339*, 940–943. <https://doi.org/10.1126/science.1229881>
- Faurby, S., Eiserhardt, W. L., Baker, W. J., & Svenning, J.-C. (2016). An all-evidence species-level supertree for the palms (Arecaceae). *Molecular Phylogenetics and Evolution*, *100*, 57–69. <https://doi.org/10.1016/j.ympev.2016.03.002>
- Faye, A., Pintaud, J.-C., Baker, W. J., Vigouroux, Y., Sonke, B., & Couvreur, T. L. P. (2016). Phylogenetics and diversification history of African rattans (Calamoideae, Ancistrophyllinae). *Botanical Journal of the Linnean Society*, *182*, 256–271. <https://doi.org/10.1111/boj.12454>
- Feldpausch, T. R., Banin, L., Phillips, O. L., Baker, T. R., Lewis, S. L., Quesada, C. A., ... Lloyd, J. (2011). Height-diameter allometry of tropical forest trees. *Biogeosciences*, *8*, 1081–1106. <https://doi.org/10.5194/bg-8-1081-2011>
- Feldpausch, T. R., Lloyd, J., Lewis, S. L., Brienen, R. J. W., Gloor, M., Monteagudo Mendoza, A., ... Phillips, O. L. (2012). Tree height integrated into pantropical forest biomass estimates. *Biogeosciences*, *9*, 3381–3403. <https://doi.org/10.5194/bg-9-3381-2012>
- Gale, N., & Barfod, A. S. (1999). Canopy tree mode of death in a western Ecuadorian rain forest. *Journal of Tropical Ecology*, *15*, 415–436. <https://doi.org/10.1017/S0266467499000929>

- Gelman, A., & Hill, J. (2006). *Data analysis using regression and multilevel/hierarchical models*. Cambridge University Press.
- Goodman, R. C., Phillips, O. L., del Castillo Torres, D., Freitas, L., Cortese, S. T., Monteagudo, A., & Baker, T. R. (2013). Amazon palm biomass and allometry. *Forest Ecology and Management*, 310, 994–1004. <https://doi.org/10.1016/j.foreco.2013.09.045>
- Higgins, M. A., Ruokolainen, K., Tuomisto, H., Llerena, N., Cardenas, G., Phillips, O. L., ... Räsänen, M. (2011). Geological control of floristic composition in Amazonian forests. *Journal of Biogeography*, 38, 2136–2149. <https://doi.org/10.1111/j.1365-2699.2011.02585.x>
- Hoorn, C., Wesselingh, F. P., ter Steege, H., Bermudez, M. A., Mora, A., Sevink, J., ... Antonelli, A. (2010). Amazonia through time: Andean uplift, climate change, landscape evolution, and biodiversity. *Science*, 330(6006), 927–931. <https://doi.org/10.1126/science.1194585>
- Hubau, W., De Mil, T., Van den Bulcke, J., Phillips, O. L., Angoboy Ilondea, B., Van Acker, J., ... Beekman, H. (2019). The persistence of carbon in the African forest understory. *Nature Plants*, 5, 133–140. <https://doi.org/10.1038/s41477-018-0316-5>
- Hubau, W., Lewis, S. L., Phillips, O. L., Affum-Baffoe, K., Beekman, H., ... Zemagho, L. (2020). Asynchronous carbon sink saturation in African and Amazonian tropical forests. *Nature*, 579(7797), 80–87. <https://doi.org/10.1038/s41586-020-2035-0>
- Hunt, C. O., & Rabett, R. J. (2014). Holocene landscape intervention and plant food production strategies in island and mainland Southeast Asia. *Journal of Archaeological Science*, 51, 22–33. <https://doi.org/10.1016/j.jas.2013.12.011>
- Kahn, F., & Mejia, K. (1990). Palm communities in wetland forest ecosystems of Peruvian Amazonia. *Forest Ecology and Management*, 33, 169–179. [https://doi.org/10.1016/0378-1127\(90\)90191-D](https://doi.org/10.1016/0378-1127(90)90191-D)
- Karger, D. N., Conrad, O., Böhner, J., Kawohl, T., Kreft, H., Soria-Auza, R. W., ... Kessler, M. (2017). Climatologies at high resolution for the Earth's land surface areas. *Scientific Data*, 4, 170122. <https://doi.org/10.1038/sdata.2017.122>
- Kisel, Y., McInnes, L., Toomey, N. H., & Orme, C. D. L. (2011). How diversification rates and diversity limits combine to create large-scale species–area relationships. *Philosophical Transactions of the Royal Society B: Biological Sciences*, 366(1577), 2514–2525. <https://doi.org/10.1098/rstb.2011.0022>
- Kissling, W. D., Baker, W. J., Balslev, H., Barfod, A. S., Borchsenius, F., Dransfield, J., ... Svenning, J.-C. (2012). Quaternary and pre-Quaternary historical legacies in the global distribution of a major tropical plant lineage. *Global Ecology and Biogeography*, 21, 909–921. <https://doi.org/10.1111/j.1466-8238.2011.00728.x>
- Kissling, W. D., Balslev, H., Baker, W. J., Dransfield, J., Gödel, B., Lim, J. Y., ... Svenning, J.-C. (2019). PalmTraits 1.0, a species-level functional trait database of palms worldwide. *Scientific Data*, 6, 178. <https://doi.org/10.1038/s41597-019-0189-0>
- Kissling, W. D., Eiserhardt, W. L., Baker, W. J., Borchsenius, F., Couvreur, T. L. P., Balslev, H., & Svenning, J.-C. (2012). Cenozoic imprints on the phylogenetic structure of palm species assemblages worldwide. *Proceedings of the National Academy of Sciences USA*, 109, 7379–7384. <https://doi.org/10.1073/pnas.1120467109>
- Levis, C., Costa, F. R. C., Bongers, F., Peña-Claros, M., Clement, C. R., Junqueira, A. B., ... ter Steege, H. (2017). Persistent effects of pre-Columbian plant domestication on Amazonian forest composition. *Science*, 355(6328), 925–931. <https://doi.org/10.1126/science.aal0157>
- Lewis, S. L., Lopez-Gonzalez, G., Sonké, B., Affum-Baffoe, K., Baker, T. R., ... Wöll, H. (2009). Increasing carbon storage in intact African tropical forests. *Nature*, 457(7232), 1003–1006. <https://doi.org/10.1038/nature07771>
- Lewis, S. L., Lopez-Gonzalez, G., Sonké, B., Affum-Baffoe, K., Baker, T. R., ... Wöll, H. (2009). Increasing carbon storage in intact African tropical forests. *Nature*, 457(7232), 1003–1006. <https://doi.org/10.1038/nature07771>
- Lewis, S. L., Sonké, B., Sunderland, T., Begne, S. K., Lopez-Gonzalez, G., van der Heijden, G. M. F., ... Zemagho, L. (2013). Above-ground biomass and structure of 260 African tropical forests. *Philosophical Transactions of the Royal Society B: Biological Sciences*, 368(1625), 20120295. <https://doi.org/10.1098/rstb.2012.0295>
- Lopez-Gonzalez, G., Lewis, S. L., Burkitt, M., Baker, T. R., & Phillips, O. L. (2009). ForestPlots.net Database. Retrieved from [www.forestplots.net](http://www.forestplots.net)
- Lopez-Gonzalez, G., Lewis, S. L., Burkitt, M., & Phillips, O. L. (2011). ForestPlots.net: A web application and research tool to manage and analyse tropical forest plot data. *Journal of Vegetation Science*, 22, 610–613. <https://doi.org/10.1111/j.1654-1103.2011.01312.x>
- Lugo, A. E., & Scatena, F. N. (1996). Background and catastrophic tree mortality in tropical moist, wet, and rain forests. *Biotropica*, 28, 585–599. <https://doi.org/10.2307/2389099>
- Lutz, J. A., Furniss, T. J., Johnson, D. J., Davies, S. J., Allen, D., Alonso, A., ... Zimmerman, J. K. (2018). Global importance of large-diameter trees. *Global Ecology and Biogeography*, 27, 849–864. <https://doi.org/10.1111/geb.12747>
- Malhi, Y., Adu-Bredu, S., Asare, R. A., Lewis, S. L., & Mayaux, P. (2013). African rainforests: Past, present and future. *Philosophical Transactions of the Royal Society B: Biological Sciences*, 368(1625), 20120312. <https://doi.org/10.1098/rstb.2012.0312>
- Malhi, Y., Phillips, O. L., Lloyd, J., Baker, T., Wright, J., Almeida, S., ... Vinceti, B. (2002). An international network to monitor the structure, composition and dynamics of Amazonian forests (RAINFOR). *Journal of Vegetation Science*, 13(3), 439–450. <https://doi.org/10.1111/j.1654-1103.2002.tb02068.x>
- Marshall, A. R., Willcock, S., Platts, P. J., Lovett, J. C., Balmford, A., Burgess, N. D., ... Lewis, S. L. (2012). Measuring and modelling above-ground carbon and tree allometry along a tropical elevation gradient. *Biological Conservation*, 154, 20–33. <https://doi.org/10.1016/j.biocon.2012.03.017>
- Melo, W. A., Freitas, C. G., Bacon, C. D., & Collevatti, R. G. (2018). The road to evolutionary success: Insights from the demographic history of an Amazonian palm. *Heredity*, 121, 183–195. <https://doi.org/10.1038/s41437-018-0074-1>
- Moore, H. E. (1973). Palms in the tropical forest ecosystems of Africa and South America. In B. J. Meggers, E. S. Ayensu, & W. D. Duckworth (Eds.), *Tropical forest ecosystems in Africa and South America: A comparative review* (pp. 63–88). Washington, DC: Smithsonian Institution Press.
- Muellner, A. N., Pannell, C. M., Coleman, A., & Chase, M. W. (2008). The origin and evolution of Indomalayan, Australasian and Pacific island biotas: Insights from Aglaieae (Meliaceae, Sapindales). *Journal of Biogeography*, 35, 1769–1789. <https://doi.org/10.1111/j.1365-2699.2008.01935.x>
- Muscarella, R., Bacon, C. D., Faurby, S., Antonelli, A., Munch Kristiansen, S., Svenning, J.-C., & Balslev, H. (2019). Soil fertility and flood regime are correlated with phylogenetic structure of Amazonian palm communities. *Annals of Botany*, 123, 641–655. <https://doi.org/10.1093/aob/mcy196>
- Olson, D. M., Dinerstein, E., Wikramanayake, E. D., Burgess, N. D., Powell, G. V. N., Underwood, E. C., ... Kassem, K. R. (2004). Terrestrial ecoregions of the world: A new map of life on Earth. *BioScience*, 51, 933–938. [https://doi.org/10.1641/0006-3568\(2001\)051\[0933:TEOTWA\]2.0.CO;2](https://doi.org/10.1641/0006-3568(2001)051[0933:TEOTWA]2.0.CO;2)
- Onstein, R. E., Baker, W. J., Couvreur, T. L. P., Faurby, S., Herrera-Alsina, L., Svenning, J.-C., & Kissling, W. D. (2018). To adapt or go extinct? The fate of megafaunal palm fruits under past global change. *Proceedings of the Royal Society B: Biological Sciences*, 285(1880), 20180882. <https://doi.org/10.1098/rspb.2018.0882>
- Onstein, R. E., Baker, W. J., Couvreur, T. L. P., Faurby, S., Svenning, J.-C., & Kissling, W. D. (2017). Frugivory-related traits promote speciation of tropical palms. *Nature Ecology & Evolution*, 1, 1903–1911. <https://doi.org/10.1038/s41559-017-0348-7>
- Ospina, R., & Ferrari, S. L. P. (2010). Inflated beta distributions. *Statistical Papers*, 51, 111–126. <https://doi.org/10.1007/s00362-008-0125-4>

- Phillips, O. L., Baker, T. R., Arroyo, L., Higuchi, N., Killeen, T. J., Laurance, W. F., ... Vinceti, B. (2004). Pattern and process in Amazon tree turnover, 1976–2001. *Philosophical Transactions of the Royal Society B: Biological Sciences*, 359(1443), 381–407.
- Phillips, O. L., Higuchi, N., Vieira, S., Baker, T. R., Chao, K.-J., & Lewis, S. L. (2013). Changes in Amazonian forest biomass, dynamics, and composition, 1980–2002. *Amazonia and Global Change, Geophysical Monograph Series*, 186, 373–387. <https://doi.org/10.1029/2008GM000779>
- Phillips, O. L., & Miller, J. S. (2002). *Global patterns of plant diversity: Alwyn H. Gentry's forest transect data set*. St. Louis, MO: Missouri Botanical Press.
- Phillips, O. L., Sullivan, M. J. P., Baker, T. R., Monteagudo Mendoza, A., Vargas, P. N., & Vásquez, R. (2019). Species matter: Wood density influences tropical forest biomass at multiple scales. *Surveys in Geophysics*, 40, 913–935. <https://doi.org/10.1007/s10712-019-09540-0>
- Piperno, D. R., McMichael, C. N. H., & Bush, M. B. (2019). Finding forest management in prehistoric Amazonia. *Anthropocene*, 26, 100211. <https://doi.org/10.1016/j.anecene.2019.100211>
- Quesada, C. A., Phillips, O. L., Schwarz, M., Czimczik, C. I., Baker, T. R., Patiño, S., ... Lloyd, J. (2012). Basin-wide variations in Amazon forest structure and function are mediated by both soils and climate. *Biogeosciences*, 9, 2203–2246. <https://doi.org/10.5194/bg-9-2203-2012>
- R Development Core Team (2019). *R: A language and environment for statistical computing*. Vienna, Austria: R Foundation for Statistical Computing. <https://www.r-project.org/>
- Rakotoarinivo, M., Blach-Overgaard, A., Baker William, J., Dransfield, J., Moat, J., & Svenning, J.-C. (2013). Palaeo-precipitation is a major determinant of palm species richness patterns across Madagascar: A tropical biodiversity hotspot. *Proceedings of the Royal Society B: Biological Sciences*, 280(1757), 20123048.
- Reichgelt, T., West, C. K., & Greenwood, D. R. (2018). The relation between global palm distribution and climate. *Scientific Reports*, 8(4721), 1–11. <https://doi.org/10.1038/s41598-018-23147-2>
- Réjou-Méchain, M., Tanguy, A., Pioniot, C., Chave, J., & Hérault, B. (2017). Biomass: An R package for estimating above-ground biomass and its uncertainty in tropical forests. *Methods in Ecology and Evolution*, 8, 1163–1167.
- Renninger, H. J., & Phillips, N. G. (2016). Palm physiology and distribution in response to global environmental change. In G. Goldstein & L. Santiago (Eds.), *Tropical tree physiology* (pp. 67–101). Cham, Switzerland: Springer.
- Roberts, P., Hunt, C., Arroyo-Kalin, M., Evans, D., & Boivin, N. (2017). The deep human prehistory of global tropical forests and its relevance for modern conservation. *Nature Plants*, 3, 17093. <https://doi.org/10.1038/nplants.2017.93>
- Rosenzweig, M. L. (1995). *Species diversity in space and time*. Cambridge, UK: Cambridge University Press.
- Salm, R. (2005). The importance of forest disturbance for the recruitment of the large arborescent palm *Attalea maripa* in a seasonally-dry Amazonian forest. *Biota Neotropica*, 5, 35–41. <https://doi.org/10.1590/S1676-06032005000100004>
- Schiatti, J., Emilio, T., Rennó, C. D., Drucker, D. P., Costa, F. R. C., Nogueira, A., ... Magnusson, W. E. (2014). Vertical distance from drainage drives floristic composition changes in an Amazonian rainforest. *Plant Ecology & Diversity*, 7, 241–253. <https://doi.org/10.1080/17550874.2013.783642>
- Slik, J. W. F., Franklin, J., Arroyo-Rodríguez, V., Field, R., Aguilar, S., Aguirre, N., ... Zang, R. (2018). Phylogenetic classification of the world's tropical forests. *Proceedings of the National Academy of Sciences of the United States of America*, 115, 1837–1842. <https://doi.org/10.1073/pnas.1714977115>
- Slik, J. W. F., Paoli, G., McGuire, K., Amaral, I., Barroso, J., Bastian, M., ... Zweifel, N. (2013). Large trees drive forest aboveground biomass variation in moist lowland forests across the tropics. *Global Ecology and Biogeography*, 22, 1261–1271. <https://doi.org/10.1111/geb.12092>
- Stan Development Team. (2016). RStan: the R interface to Stan. R package version 2.14.1. Retrieved from <http://mc-stan.org/>
- Stephenson, N. L., Das, A. J., Condit, R., Russo, S. E., Baker, P. J., Beckman, N. G., ... Zavala, M. A. (2014). Rate of tree carbon accumulation increases continuously with tree size. *Nature*, 507, 90–93. <https://doi.org/10.1038/nature12914>
- Svenning, J. C. (1999). Microhabitat specialization in a species-rich palm community in Amazonian Ecuador. *Journal of Ecology*, 87, 55–65. <https://doi.org/10.1046/j.1365-2745.1999.00329.x>
- Svenning, J.-C. (2001). On the role of microenvironmental heterogeneity in the ecology and diversification of neotropical rain forest palms (Arecaceae). *The Botanical Review*, 67, 1–53. <https://doi.org/10.1007/BF02857848>
- Svenning, J.-C., Borchsenius, F., Bjorholm, S., & Balslev, H. (2008). High tropical net diversification drives the New World latitudinal gradient in palm (Arecaceae) species richness. *Journal of Biogeography*, 35, 394–406. <https://doi.org/10.1111/j.1365-2699.2007.01841.x>
- Tagle Casapia, X., Falen, L., Bartholomeus, H., Cárdenas, R., Flores, G., Herold, M., ... Baker, T. R. (2020). Identifying and quantifying the abundance of economically important palms in tropical moist forest using UAV imagery. *Remote Sensing*, 12, 9. <https://doi.org/10.3390/rs12010009>
- ter Steege, H., Henkel, T. W., Helal, N., Marimon, B. S., Marimon-Junior, B. H., Huth, A., ... Melgaço, K. (2019). Rarity of monodominance in hyperdiverse Amazonian forests. *Scientific Reports*, 9, 13822. <https://doi.org/10.1038/s41598-019-50323-9>
- ter Steege, H., Pitman, N. C. A., Phillips, O. L., Chave, J., Sabatier, D., Duque, A., ... Vásquez, R. (2006). Continental-scale patterns of canopy tree composition and function across Amazonia. *Nature*, 443(7110), 444–447. <https://doi.org/10.1038/nature05134>
- ter Steege, H., Pitman, N. C. A., Sabatier, D., Baraloto, C., Salomao, R. P., Guevara, J. E., ... Silman, M. R. (2013). Hyperdominance in the Amazonian tree flora. *Science*, 342(6156), 1243092–1243092-9. <https://doi.org/10.1126/science.1243092>
- Tomlinson, P. B. (2006). The uniqueness of palms. *Botanical Journal of the Linnean Society*, 151, 5–14.
- WCSP. (2017). World checklist of selected plant families. Facilitated by the Royal Botanic Gardens, Kew. Retrieved from <http://wcsp.science.kew.org/>
- Zanne, A. E., Lopez-Gonzalez, G., Coomes, D. A., Ilic, J., Jansen, S., Lewis, S. L., ... Chave, J. (2009). Data from: Towards a worldwide wood economics spectrum. *Dryad Digital Repository*. <https://doi.org/10.5061/dryad.234>

## BIOSKETCH

Our group represents a broad range of researchers and land managers interested in the composition and dynamics of tropical forests worldwide. All authors are responsible for long-term field data-collection efforts, which are crucial for global syntheses.

## SUPPORTING INFORMATION

Additional supporting information may be found online in the Supporting Information section.

**How to cite this article:** Muscarella R, Emilio T, Phillips OL, et al. The global abundance of tree palms. *Global Ecol Biogeogr*. 2020;29:1495–1514. <https://doi.org/10.1111/geb.13123>