

UC San Diego

UC San Diego Previously Published Works

Title

Biomimetic nanoparticle technology for cardiovascular disease detection and treatment

Permalink

<https://escholarship.org/uc/item/5t24p0gr>

Journal

Nanoscale Horizons, 5(1)

ISSN

2055-6756

Authors

Park, Joon Ho
Dehaini, Diana
Zhou, Jiarong
et al.

Publication Date

2020

DOI

10.1039/c9nh00291j

Peer reviewed



HHS Public Access

Author manuscript

Nanoscale Horiz. Author manuscript; available in PMC 2021 January 01.

Published in final edited form as:

Nanoscale Horiz. 2020 January 1; 5(1): 25–42. doi:10.1039/c9nh00291j.

Biomimetic nanoparticle technology for cardiovascular disease detection and treatment

Joon Ho Park[†], Diana Dehaini[†], Jiarong Zhou, Maya Holay, Ronnie H. Fang^{*}, Liangfang Zhang^{*}

Department of NanoEngineering, Chemical Engineering Program, and Moores Cancer Center, University of California San Diego, La Jolla, CA 92093, USA.

Abstract

Cardiovascular disease (CVD), which encompasses a number of conditions that can affect the heart and blood vessels, presents a major challenge for modern-day healthcare. Nearly one in three people has some form of CVD, with many suffering from multiple or intertwined conditions that can ultimately lead to traumatic events such as a heart attack or stroke. While the knowledge obtained in the past century regarding the cardiovascular system has paved the way for the development of life-prolonging drugs and treatment modalities, CVD remains one of the leading causes of death in developed countries. More recently, researchers have explored the application of nanotechnology to improve upon current clinical paradigms for the management of CVD. Nanoscale delivery systems have many advantages, including the ability to target diseased sites, improve drug bioavailability, and carry various functional payloads. In this review, we cover the different ways in which nanoparticle technology can be applied towards CVD diagnostics and treatments. The development of novel biomimetic platforms with enhanced functionalities is discussed in detail.

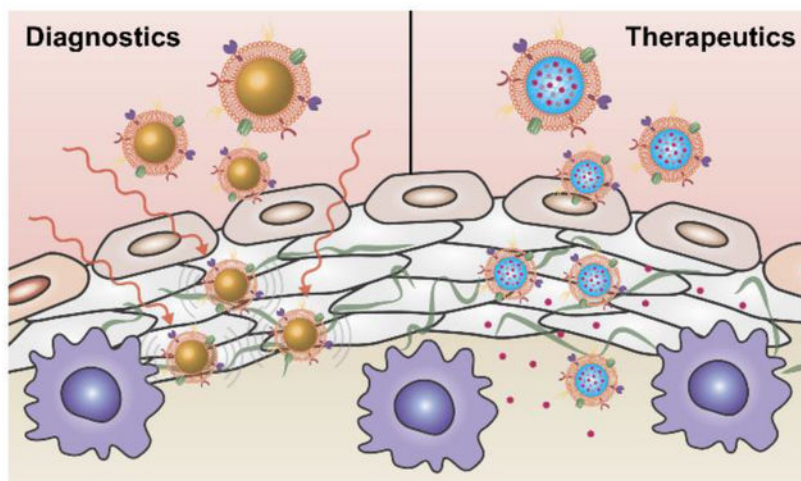
Graphical Abstract

^{*}Corresponding authors: rhfang@ucsd.edu, zhang@ucsd.edu.

[†]These authors contributed equally to this work.

Conflicts of interest

There are no conflicts to declare.



Biomimetic nanoparticle technology has the potential to significantly improve the clinical management of cardiovascular disease.

1. Introduction

Cardiovascular disease (CVD) encompasses a number of conditions that afflict the heart and vasculature.¹ These can include those that affect the blood vessels, such as coronary artery, peripheral artery, or cerebrovascular disease, as well as heart-related conditions that can lead to high blood pressure, irregular heartbeat, or chest pain caused by reduced blood flow, among many others. Oftentimes, the underlying cause is the buildup of atherosclerotic plaque, which results in the narrowing of blood vessels and restricts blood flow.² Some risk factors for atherosclerosis include high cholesterol, high blood pressure, diabetes, smoking, and poor diet.^{3, 4} If left untreated, chronic types of CVD can precipitate into a single traumatic event, such as a myocardial infarction or stroke, both of which are associated with high mortality rates.⁵⁻⁸ In developed countries, CVD represents the leading cause of death, and it is responsible for almost one third of all deaths worldwide.⁹ In the United States, more than 30% of the population suffers from some form of CVD.¹⁰ Despite advances in healthcare technology and reduced mortality rates, the total number of deaths is expected to increase into the future,¹¹ highlighting the need for continued technological innovation with respect to the clinical management of CVD.

It is believed that a majority of the deaths resulting from CVD are completely preventable, oftentimes by basic modifications in lifestyle habits.¹²⁻¹⁴ While this underlines the importance of improved education and large-scale prevention initiatives, it also stresses the importance of having effective means for detecting signs of disease in the clinic, particularly at an early stage.^{15, 16} Currently, simple functional and laboratory tests can be used to identify broad changes in physiological parameters and blood chemistry, which can oftentimes provide some rough indicators regarding the risk of CVD development.¹⁷ Patients exhibiting overt symptoms can be subjected to additional tests and various forms of imaging.^{18, 19} More invasive techniques may be applied for definitive diagnosis, although they can carry significant risks that must be carefully weighed.²⁰ Overall, there is a strong

need for more reliable diagnostics and safe, noninvasive imaging modalities that can be used as screening tools to provide accurate information about CVD development over time.

The type of treatment for CVD largely depends on the stage of the disease, particularly for those conditions that have pathogenesis spanning across decades.^{21–24} As some forms of CVD progress, they can start to significantly affect quality of life, at which point invasive surgery is oftentimes indicated.²⁵ During a traumatic event such as a heart attack or stroke, immediate treatment in the form of thrombolytics can be given to help dissolve the blood clots that are often the underlying cause.^{26, 27} In some cases, endovascular removal of the clot may also be indicated.²⁸ Despite advances in cardiovascular medicine, a majority of treatment options still seek to manage symptoms rather than address the underlying cause of disease.

Nanotechnology has been widely applied to the medical field, enabling researchers to design novel diagnostic and therapeutic platforms that can outperform traditional modalities.^{29–32} In particular, nanoparticle-based delivery systems have had a major impact on the clinical management of cancer, with a number of nanoformulations having been approved for use in human patients.³³ Their advantages include the ability to enhance bioavailability by prolonging blood residence, deliver a wide range of payloads, and sustain release of therapeutic agents over time. Significant efforts have also been placed on developing actively targeted formulations, which can more accurately localize to disease sites.^{34–36} Many of these design principles are now being leveraged by researchers working in other fields, including CVD, where they also have the potential to bring about significant improvements.^{37, 38} More recently, the application of biomimetic nanotechnology has become increasingly popular as a means of streamlining the creation of highly functional nanoparticle platforms.^{39, 40} In particular, these nanoparticles excel at performing in complex biological environments.⁴¹ In this review, we first provide a brief overview of the current clinical management of CVD. Then, the various ways in which nanotechnology has been applied towards CVD diagnosis and treatment will be discussed. Finally, novel biomimetic platforms for CVD management will be covered (Fig. 1).

2. Current clinical management

2.1 Diagnostics

2.1.1 Diagnostic assays—Current clinically used analytical techniques allow for quantification of a wide range of different parameters, including routine blood cell counts and biochemistry, as well as levels of more specialized markers that can be used for disease diagnosis. The biomarkers and assays relevant to CVD detection can be categorized by tying them to their respective pathological processes.⁴² Especially, since levels of lipids and lipoproteins are well-established markers of an abnormal cardiovascular state, blood panels often look closely at levels of cholesterol, low-density lipoprotein (LDL), high-density lipoprotein (HDL), and lipoproteins. Other biomarkers such as C-reactive protein, interleukin 6, fibrinogen, monocyte chemotactic protein-1, and tumor necrosis factor alpha are tied to inflammation in CVD. Autoantibodies have also been implicated in the atherogenesis process and have been proposed as potential biomarkers for CVD.⁴³ Although numerous biomarkers have been researched and used for the diagnosis of CVD, current

techniques often require costly and time-consuming bloodwork tests.⁴⁴ Other than relying on bloodwork, other noninvasive techniques such as electrocardiography can be used to detect certain conditions such as arrhythmias that can be highly related to deteriorating cardiovascular health.⁴⁵

2.1.2 Imaging—The ability to visualize disease development is oftentimes an essential tool employed by clinicians in the management of CVD. Ultrasound is one of the most widely used techniques for imaging various cardiovascular conditions. Echocardiograms and vascular ultrasounds can be used to identify the locations of clots or abnormal circulation.⁴⁶ For more detailed imaging, methods such as computed tomography (CT), single-photon emission CT (SPECT), coronary angiography (CA), positron emission tomography (PET), and magnetic resonance imaging (MRI) may be required to provide sufficient information for diagnosis.¹⁵ SPECT is a technique whereby gamma rays are used to image and recreate three-dimensional images of organs.⁴⁷ Radioisotopes, which can sometimes be used to label materials that exhibit specificity for CVD disease sites, are used in this imaging method.⁴⁸ Diagnosis by coronary CT angiography is relatively safe compared with CA, which represents the current gold standard for diagnosing coronary artery disease.⁴⁹ CA requires catheterization, whereby contrast dyes are directly injected into the coronary artery, while CT angiography only requires intravenous administration of the contrast agent; in both cases, imaging is done by an X-ray instrument. Although costly, PET can be used to image atherosclerotic plaque inflammation by detecting pairs of gamma rays emitted by tracers such as [¹⁸F]-fluorodeoxyglucose.⁵⁰ In order to benefit from multiple modalities at once, techniques such as SPECT-CT and PET-CT are increasingly being employed.⁵¹ Depending on the type of CVD, there are also instances where MRI technology can be used for diagnosis and to determine the proper course of treatment.⁵² Delayed enhancement MRI, for example, can help distinguish between healthy and diseased heart tissue, which is helpful for evaluation after a myocardial infarction. However, many patients, particularly the elderly, cannot be subjected to MRI due to the presence of implants such as hearing aids, pacemakers, and metal joint or bone replacements.⁵³ Although there have been significant advancements in the imaging of CVD, patients still often must be administered a significant amount of contrast agent, and results are generally subject to interpretation, which can lead to misdiagnosis.^{54, 55}

2.2 Treatments

2.2.1 Therapeutic drugs—Anticoagulants, also known as blood thinners, are used to decrease blood clotting.⁵⁶ Although these drugs do not dissolve existing blood clots, they can inhibit formation of new clots or prevent existing clots from growing. Commonly used drugs include rivaroxaban, heparin, and warfarin.^{57–59} Antiplatelet agents such as aspirin and clopidogrel work by preventing platelets from aggregating and are commonly used for blood clot prevention.⁶⁰ In contrast to anticoagulants, thrombolytics, also referred to as clot busters, work by directly dissolving a thrombus.⁶¹ These drugs are commonly indicated in the event of a traumatic event, such as myocardial infarction or ischemic stroke, and are used to help restore blood flow. Although they can be effective, thrombolytics may greatly effect hemostasis, resulting in some significant side effects.⁶²

Instead of treating blood clots, drugs such as captopril and ramipril can reduce the load on blood vessels.⁶³ These belong to the class of angiotensin-converting enzyme inhibitors that work by decreasing angiotensin II levels. Their use leads to expansion of blood vessels, reduced blood pressure, and easier blood flow. Another similar strategy involves blocking of the angiotensin II receptor rather than reducing the levels of angiotensin II.⁶⁴ Drugs such as candesartan and losartan act in this way and prevent angiotensin II from interacting with blood vessels. Angiotensin-converting enzyme inhibitors and angiotensin II receptor blockers are generally used to manage CVD that are associated with high blood pressure. Vasodilators such as nitroglycerin, isosorbide dinitrate, nesiritide, and nitrates are currently being used in the clinic in various forms.^{65, 66} Another way of lowering blood pressure is to induce diuresis,⁶⁷ promoting the body to excrete fluids and sodium. Using diuretic drugs to reduce excess liquid can help lower blood pressure and relieve the heart's workload. Not only do they help to address high blood pressure, but these drugs can also help patients to reduce swelling in other parts of their bodies.

Sometimes, drugs are used to directly affect the heart. For example, calcium channel blockers interfere with the flux of calcium into cardiac myocytes, which can reduce heart rate or the strength at which the heart pumps.⁶⁸ Drugs such as amlodipine, diltiazem, felodipine, nifedipine, nisoldipine, and verapamil are approved for treating hypertension and have proven to be effective for angina pectoris and cardiac arrhythmias. Beta-blockers, also known as beta-adrenergic blocking agents, can reduce heart rate as well as cardiac output.⁶⁹ Calcium channel blockers and beta-blockers can be combined for chronic stable angina pectoris therapy.⁷⁰ In conditions such as acute myocardial infarction or arrhythmia, digoxin, also known as digitalis, can help patients to restore their heart function by increasing the force of contraction.⁷¹ Digoxin acts by blocking atrioventricular conduction and can slow down certain types of arrhythmia, especially atrial fibrillation.⁷²

Some other commonly used strategies for CVD include use of cholesterol-lowering drugs such as statins, nicotinic acids, and cholesterol absorption inhibitors.⁷³ The latter two are mostly used when patients are not responding well to statins, including when potency is lacking or when side effects are present. High levels of LDL cholesterol are characteristic of hypercholesterolemia, a common cause of myocardial infarction. Therefore, statin drugs such as atorvastatin and rosuvastatin are often prescribed to lower the chance of heart attack and stroke.

2.2.2 Surgery—No matter how many preventative drugs and strategies are used, physical interventions are often needed to treat the growth of a clot, development of atherosclerosis, or other cardiovascular conditions. Stents are commonly used to keep arteries open after angioplasty procedures, using a strong material often in combination with immunosuppressive and anti-clotting drugs.⁷⁴ Their use can become necessary when there is significant arterial blockage, a specific region has had severe cardiovascular damage, or an aneurysm has likelihood to burst. Stents can be made of many materials, and those used clinically include metallic, plastic, and coated or drug-eluting variants. These devices have greatly improved survival rates from CVD events. Drug-eluting stents, which typically dispense sirolimus or paclitaxel, promote immunosuppression and acceptance of foreign material, while also reducing lumen diameter by preventing cell overgrowth.⁷⁵ Patients with

severe coronary heart disease may receive coronary artery bypass graft surgery to improve blood flow to the heart.⁷⁶ The surgery involves grafting or connecting healthy arteries or veins to bypass the blocked area of the coronary artery, thus creating a new path for blood flow. Both angioplasty and bypass surgeries can be indicated in emergency situations, such as during myocardial infarction.⁷⁷ Additionally, endovascular thrombectomy procedures that involve physical clot disruption and retrieval can lead to high rates of recanalization and good patient outcomes in many cases.⁷⁸

3. Nanoparticles for CVD

3.1 Introduction

Nanotechnology has been increasingly used over the past several decades for medical applications.³¹ Currently, there are a number of clinically approved nanoformulations, such as Doxil, a liposomal version of doxorubicin, and Abraxane, an albumin-based version of paclitaxel.^{79, 80} Nanoparticles, which range from a few nanometers to several hundred nanometers in size, can be fabricated using a variety of different materials, including polymers, lipids, metals, and inorganic compounds, which have been covered in-depth in previous reviews.^{32, 81–83} A major reason for their appeal is that, at their nanoscale dimensions, these particles exhibit unique properties that are not observed at other size scales.⁸⁴ Traditionally, nanoparticles have been employed as drug carriers for anticancer therapies due to their ability to be passively targeted via the enhanced permeation and retention effect, which takes advantage of the inherent disorder associated with tumor vasculature.⁸⁵ Beyond their targeting capabilities, nanoparticles are also adept at loading payloads with varying properties, and this can be done by encapsulation within the nanomaterial matrix or by surface attachment.^{86, 87} Depending on the specific platform, it is even possible to load both hydrophilic and hydrophobic payloads within the same nanocarrier.⁸⁸ By modulating the material properties, sophisticated time-dependent release strategies can be established. Instead of relying on encapsulated cargoes, the nanomaterial itself can at times also act as the functional component, which is the case for certain metallic or inorganic materials that have unique optical and photothermal conversion properties.⁸⁹

Due to their small size, nanoparticles have a particularly high surface area to volume ratio. With regards to medical applications, this property provides a number of opportunities as well as challenges.⁹⁰ One hurdle that must be overcome when introducing foreign nanomaterials into the body is immune clearance, whereby interactions with various proteins and cells can significantly compromise performance and efficacy.⁹¹ In order to prevent unwanted nonspecific interactions, different synthetic strategies have been developed in order to better shield nanoparticles from their surrounding environments. This includes the use of polyethylene glycol (PEG), which provides a hydration layer around the nanoparticles and sterically hinders protein adsorption and cellular engagement.^{92, 93} PEGylation and coating with other synthetic materials, such as zwitterionic polymers,⁹⁴ have been used as effective means of enhancing nanoparticle half-life in plasma. Besides stealth polymer coatings, other ligands can also be introduced onto the surface of nanoparticles to further enhance functionality.⁹⁵ While surface functionalization can be used for therapeutic and imaging payloads, it is most commonly reserved for targeting moieties that can help to

further improve localization to a site of interest.³⁵ Examples of commonly used ligands include small molecules such as folate, or biomolecules such as small peptides, antibodies, and aptamers, all of which can be used to enhance nanoparticle specificity. Translational efforts for targeted nanoformulations are well underway, and some have recently been evaluated in clinical settings.⁹⁶ In this section, we discuss the various CVD-related applications that can benefit from nanoparticle technology.

3.2 Diagnostics

3.2.1 Blood tests and sensors—The cardiac troponin complex consists of three regulatory proteins, of which troponin I (cTnI) and troponin T (cTnT) are released into the bloodstream when cardiomyocytes are damaged.⁹⁷ Since both cTnI and cTnT are undetectable in healthy patients, they represent good biomarkers for the diagnosis of acute myocardial infarction.⁹⁸ In efforts to improve the detection of CVD biomarkers such as troponins, nanoparticle-based diagnostics are being developed. In particular, many of these new platforms have been based on electrochemical immunosensors, which are relatively simple and low-cost compared to other systems.⁹⁹ Owing to their ease of miniaturization and their specificity, these sensors are well-suited for point-of-care applications. In terms of their construction, electrochemical immunosensors consist of a bioreceptor element, which can comprise of antibodies responsible for specifically detecting the target antigen, and a transducer that converts the binding events into electrical signals.¹⁰⁰ Along these lines, an amperometric sensor, which detects changes in electrical currents caused by oxidation or reduction in biochemical reactions, was developed for the detection of cTnT using an ionic organic molecule, (*E*)-4-[(4-decyloxyphenyl)diazanyl]-1-methylpyridinium iodide, and chitosan-stabilized gold nanoparticles.¹⁰¹ In this case, the organic molecule acted as a redox probe, while monoclonal anti-cTnT antibodies were immobilized onto the gold nanoparticles to detect cTnT in the sample. The signal decrease was shown to be proportional to cTnT concentration, thus allowing for quantification of the analyte.

Other types of biosensors for CVD detection include those based on electrochemical impedance, where changes at the electrode caused by interactions with charged antigens are detected.¹⁰⁰ In one study, gold nanoparticles were deposited onto a glassy carbon electrode, and a recognition peptide (CFYSHSFHENWPS), which has high affinity towards cTnI, was further assembled onto the nanoparticles.¹⁰² The charge transfer resistance of the biosensor was proportional to the concentration of cTnI, which allowed for detection of the analyte in a quantitative and label-free fashion, even with real serum samples. Potentiometric sensors, which detect analyte concentration by measuring electrical potential differences between a working electrode and a reference electrode,¹⁰³ have also been developed for CVD diagnosis.¹⁰⁴ Using a molecular imprinting technique, an artificial anti-cTnT antibody was synthesized and attached onto the surface of multiwalled carbon nanotubes for use as the recognition element. The resulting sensor was able to specifically detect cTnT in serum samples. Interaction of analytes with electrodes also cause changes in conductance, which can be detected by conductometric sensors.¹⁰⁵ Various antibodies against biomarkers for CVD, including myoglobin, cTnI, creatine kinase-MB, and b-type natriuretic peptide, have been used to create single site-specific polyaniline nanowire biosensors.¹⁰⁶ In each case, the

measured signal from the sensor showed a linear correlation with biomarker concentration, enabling detection within a few minutes.

3.2.2 Imaging—Traditionally, imaging technology utilizing gold nanoparticles has mostly been developed for cancer-related applications.¹⁰⁷ Harnessing their favorable biocompatibility and versatility, gold nanoparticles have more recently been applied to the cardiovascular field. Photoacoustic imaging, in which gold nanoparticles can be employed, relies on the thermal expansion of contrast agents or tissues when pulsed laser beams are absorbed.¹⁰⁸ This pulsed expansion generates acoustic signals, which are then picked up by an ultrasound transducer. This imaging modality has been applied to visualize atherosclerotic plaque using gold nanoshells designed to target vascular cell adhesion molecule 1, which enabled their accumulation in disease-prone regions of the vasculature.¹⁰⁹ With a pulse width of 10 ns at a repetition rate of 20 Hz, sub-millimeter imaging resolution could be achieved. Photoacoustic imaging can also be combined with ultrasound imaging techniques to provide better assessments of atherosclerotic plaque. In an example, gold nanorods have been used for combinatorial intravascular photoacoustic and ultrasound imaging of atherosclerotic plaques *ex vivo*.¹¹⁰ The photoacoustic modality could be used to detect lipid-rich regions, which are closely related to the progression of atherosclerosis, while the ultrasound imaging helped to provide structural information. Optical coherence tomography (OCT) is another cardiovascular imaging technique that has utilized gold nanoparticles. In the technique, infrared signal from a broadband coherent light source is directed to the target tissue, and an image is constructed based on the backscattered light.¹¹¹ Gold nanoparticles can be used as a powerful signal enhancer since they exhibit a high backscattering coefficient.¹¹² In particular, there have been reports demonstrating the potency of gold nanoshells as a contrast agent in cardiovascular OCT, whereby they could promote detection of individual cells in biocompatible fluids.¹¹³ CT imaging is a powerful noninvasive imaging technique which reconstructs cross-sectional images of an object from X-ray signals obtained at different angles.¹¹⁴ Because gold has a high atomic number and high mass absorption coefficient, gold nanoparticles are highly attractive for CT applications and could potentially outperform traditional iodine-based contrast agents.¹¹⁵ Along these lines, gold nanoparticles have been used to label monocytes, which were then recruited to atherosclerotic plaques *in vivo*.¹¹⁶ The delivery of the nanoparticles helped to greatly increase X-ray attenuation in the aorta, yielding better sensitivity in measuring monocyte accumulation in sites of atherosclerosis.

MRI is a noninvasive technique that can provide detailed information about vasculature that is crucial for effective diagnosis of CVD.¹¹⁷ Gadolinium (Gd) is used as a T_1 -weighted contrast agent in MRI to generate positive signal due to its high paramagnetism. Commercially, Gd diethylenetriaminepentaacetic acid (Gd-DTPA) has been approved by the United States Food and Drug Administration since 1988.¹¹⁸ In order to better image and diagnose atherosclerotic plaques using MRI, Gd-DTPA has been encapsulated within poly(lactic-co-glycolic acid) (PLGA) or polylactide-PEG nanoparticles to allow for longer circulation and better atherosclerotic plaque accumulation by various targeting mechanisms.¹¹⁹ The payload was encapsulated inside of the polymeric nanoparticles without compromising its ability to create contrast in a manner comparable to free Gd-DTPA, and

the resulting formulations exhibited minimal toxicity. In another study, a Gd-based contrast agent was loaded into an HDL nanocarrier.¹²⁰ This platform exploited the ability of HDL with a methionine oxidation in apolipoprotein A-I to be taken up by macrophages, which are often concentrated in atherosclerotic plaques.

Superparamagnetic iron oxide nanoparticles have been widely used as MRI contrast agents.¹²¹ Unlike Gd, which is a T_1 contrast agent, iron oxide nanoparticles act as T_2 -weighted contrast agents that generate negative signal. The nanoparticles also hold certain advantages over Gd, particularly with regards to safety. In order to capture the effect of both T_1 and T_2 contrast agents, dual-modal systems have been proposed. Core-shell $\text{Fe}_3\text{O}_4/\text{Gd}_2\text{O}_3$ nanocubes have been synthesized and reported to enhance the contrast between positive and negative signals to overcome the risk of generating pseudo-positive and pseudo-negative signals *in vivo*.¹²² It was revealed that the longitudinal relaxivity of the nanoparticles was about twofold that of Gd_2O_3 and their transverse relaxivity was also about twofold compared with Fe_3O_4 . In another dual-modal imaging platform using iron oxide nanoparticles, the fluorescent dye Cy5.5 was conjugated onto the surface of dimercaptosuccinic acid-coated Fe_3O_4 nanoparticles for concurrent near-infrared fluorescence imaging and MRI.¹²³ Further functionalization with antibody against profilin-1 resulted in effective targeting of atherosclerotic plaque in the carotid artery and enabled *in vivo* imaging. The coating of iron oxide with other materials such as gold is a strategy that can be used to protect against oxidation and provide ease of functionalization.¹²⁴ In order to target CD163, which is upregulated in macrophages around atherosclerotic plaques, gold-coated iron oxide nanoparticles have been decorated with antibodies against the surface marker. *In vivo* testing revealed that the anti-CD163-functionalized nanoparticles accumulated in the site of atherosclerotic lesions, allowing for their detection by MRI. Another targeted nanoplatform took advantage of the fact that apoptotic cells at the site of atherosclerosis have phosphatidylserine exposed on their surfaces, unlike healthy cells in which the lipid is located in the inner leaflet of the plasma membrane (Fig. 2).¹²⁵ Annexin V is a well-known protein that can specifically bind to phosphatidylserine, and decoration of $^{99\text{m}}\text{Tc}$ -labeled ultrasmall iron oxide nanoparticles with the ligand enabled the targeting of apoptotic macrophages for dual-modal SPECT/MRI detection of vulnerable plaques.

Aside from the more prominent materials described above, other types of nanomaterials have been employed for CVD diagnostics. Carbon nanotubes, which possess unique mechanical and electrical properties, have been widely applied to many other fields, including electronics and tissue engineering.^{126, 127} For imaging purposes, it has been demonstrated that functionalized multiwalled carbon nanotubes can be used as contrast agents for ultrasonography. In an example, the nanotubes were oxidized and then functionalized by 1,3-dipolar cycloaddition of azomethine ylides for biocompatibility.¹²⁸ The highly echogenic property of these nanostructures allowed them to generate ultrasound signal comparable to that of a commercially available contrast agent, sulfur hexafluoride, without causing any toxicity. In an *ex vivo* experiment, the platform could be used to image a pig heart, as well as the liver and bladder. While surface modification is the most common method for introducing targeting functionality onto nanoformulations, there are examples in which the nanoparticle itself can exhibit affinity towards specific cell populations. Other than HDL-based nanocarriers, polyglucose nanoparticles have been designed to act as

glycogen biomimetics capable of targeting macrophages.¹²⁹ In order to use this platform for PET, it was labeled with the isotope ¹⁸F. The size of the nanoparticles was optimized to accelerate renal excretion for rapid clearance from blood, thus improving target-to-background ratios. When administered *in vivo*, the particles were preferentially taken up by macrophages, leading to enrichment in inflamed cardiovascular tissue and better PET signal.

3.3 Therapeutics

3.3.1 Targeted drug delivery—Chronic inflammation like what is found in advanced atherosclerotic lesions generally requires medical intervention in order to be resolved. The proresolving action of annexin A1, a glucocorticoid-regulated protein, is mediated through its receptor *N*-formyl peptide receptor 2, and a short peptide fragment from the amino-terminal end of the protein has been loaded into collagen IV-targeted nanoparticles.¹³⁰ Administration of the formulation decreased lesional collagenase activity, oxidative stress, and plaque necrosis in an animal model of atherosclerosis. In a similar approach, the anti-inflammatory cytokine interleukin 10 was loaded into polymeric nanoparticles capable of controlled release and atherosclerotic plaque targeting.¹³¹ The formulation was fabricated by a nanoprecipitation process using a chip-based device that enabled the activity of the cytokine to be retained even after exposure to organic solvents. The nanoformulation proved to be more effective than the native cytokine, preventing formation of vulnerable plaque in advanced lesions by increasing the thickness of the fibrous cap while reducing the size of the necrotic cores.

Reactive oxygen species (ROS), along with the associated oxidative stress, are another key player in the pathogenesis of atherosclerosis.¹³² In an effort to develop an antioxidative nanotherapeutic, tempol and phenylboronic acid pinacol ester were covalently conjugated onto cyclic polysaccharide β -cyclodextrin and processed into nanoparticle form.¹³³ Tempol acted as a superoxide dismutase mimetic agent and phenylboronic acid pinacol ester provided hydrogen peroxide-eliminating function. Intravenous administration of the nanoparticles resulted in their accumulation at atherosclerotic lesions of apolipoprotein E (ApoE)-deficient mice by passive targeting. This not only inhibited the development of atherosclerosis, but also helped to stabilize the plaques, which exhibited fewer cholesterol crystals, a smaller necrotic core, thicker fibrous caps, a lower number of macrophages, and a reduced amount of matrix metalloproteinase-9.

As discussed in previous sections, statins can be used to control a variety of CVD by lowering LDL cholesterol levels.¹³⁴ In one study, pitavastatin was incorporated into PLGA nanoparticles that were then taken up by Ly-6G⁻CD11b⁺ monocytes after intravenous administration and subsequently delivered into atherosclerotic plaques.¹³⁵ Adoptive transfer of CCR2^{+/+}Ly-6C^{high} inflammatory macrophages into ApoE knockout mice infused with angiotensin II was employed to promote plaque destabilization. It was found that administration of the pitavastatin-loaded nanoparticles reduced plaque destabilization and rupture by inhibiting the secretion of monocyte chemoattractant protein-1 and matrix metalloproteinase-9. In the same study, plasmids with the 7ND gene, a deletion mutant of monocyte chemoattractant protein-1, were loaded into the nanoparticles for gene therapy. 7ND transfection inhibited plaque destabilization and rupture, although it did not decrease

the size of the plaque. In another study, simvastatin was encapsulated in reconstituted HDL nanoparticles, which enabled more specific delivery to atherosclerotic plaques (Fig. 3).¹³⁶ The simvastatin-loaded HDL nanoparticles were used to treat ApoE knockout mice and showed accumulation in lesion sites, which led to progress inhibition of plaques at low dosages and decreased inflammation at higher dosages. In a follow-up work, it was shown that inhibition of macrophage proliferation using this formulation was a major contributor to the reduced inflammation observed in the atherosclerotic plaques.¹³⁷

Because macrophages play a major role in the inflammatory response during atherogenesis,¹³⁸ the cells represent an attractive target for atherosclerosis treatments. In order to lower macrophage levels in atherosclerotic lesions, the synthetic liver X receptor agonist GW3965 has been used.¹³⁹ Liver X receptors are responsible for reverse cholesterol transport and their activation can also reduce the expression of proinflammatory genes. GW3965 was incorporated into collagen IV-targeting nanoparticles for atherosclerotic plaque targeting. *In vitro* studies showed that the nanoparticles effectively upregulated liver X receptor target genes and downregulated proinflammatory mediators in macrophages. *In vivo* study in a mouse model of atherosclerosis showed that the nanoparticles could be successfully delivered to lesion sites, resulting in the reduction of macrophage levels without increasing hepatic lipid biosynthesis or hyperlipidemia. Macrophages can also be targeted using sugar-based amphiphilic macromolecules, which can be designed to stop macrophages from ingesting oxidized lipids by blocking the scavenger receptors on their surfaces.¹⁴⁰ Nanoparticles with narrow size distributions were prepared with amphiphilic macromolecule shells and mucic acid-based cores by a flash nanoprecipitation method. When the lead formulation was injected intravenously into ApoE knockout mice, the nanoparticles accumulated in lipid-rich lesions and were able to reduce neointimal hyperplasia, lipid burden, and cholesterol clefts. Polarities of monocytes and macrophages can be shifted towards less inflammatory phenotypes if induced by peroxisome proliferator-activated receptor- γ .¹⁴¹ To utilize this trait, pioglitazone, an agonist of the receptor, was used to modulate the phenotypes of the relevant cells around atherosclerotic plaques in order to inhibit plaque ruptures.¹⁴² The molecule was loaded into PLGA nanoparticles, which were then intravenously injected into angiotensin II-infused ApoE knockout mice fed a high-fat diet. The pioglitazone-loaded nanoparticles not only regulated inflammatory cytokine expression, but also downregulated the production of extracellular matrix metalloproteinase inducer, inhibiting macrophage activation and ultimately decreasing atherosclerotic plaque rupture. Another factor that activates macrophages in atherosclerotic plaques is CD40 signaling mediated by CD4⁺ T lymphocytes.¹⁴³ Blocking the interaction between CD40 and tumor necrosis factor receptor-associated factor 6 can reduce inflammatory responses in atherosclerosis. A lipophilic small-molecule SMI 6877002, which performs this inhibitory action, was encapsulated in reconstituted HDL, and the anti-inflammatory effect of the resulting formulation was evaluated by PET imaging in ApoE knockout mice and in nonhuman primates.¹⁴⁴ It was shown that the nanoformulation successfully reduced inflammation in atherosclerotic plaques by hindering monocyte migration.

3.3.2 Clot dissolution—In the case of acute thrombotic events that result in ischemia, tissue plasminogen activator (tPA) is often used for clot dissolution.⁶¹ However, without any

targeting strategies, this treatment is susceptible to off-target drug action that can cause risk of hemorrhaging. Overall, there has been increasing interest in the targeted delivery of thrombolytic agents using nanoparticles, which can lead to the development of safer and less invasive treatments.¹⁴⁵ Along these lines, thrombus targeting functionality has been added to polysaccharide-poly(isobutylcyanoacrylate) nanoparticles by attaching them with fucoidan, which shows high affinity towards the P-selectin expressed on activated platelets.¹⁴⁶ The nanoparticles were loaded with tPA and delivered to the site of a thrombus by targeting the resident activated platelets. C57BL/6 mice with FeCl₃-induced thrombosis were treated with the nanoparticles, and the status of the thrombus was monitored using fluorescence imaging. In the end, specific accumulation of the tPA-loaded nanoparticles was confirmed, as well as the thrombus-reducing ability of the formulation. Streptokinase, another thrombolytic drug, has been encapsulated in nanovesicles that allow protection against its off-target effects while in circulation.¹⁴⁷ The nanovesicles specifically targeted thrombi by binding to integrin GPIIb-IIIa and P-selectin found on activated platelets. After binding, the vesicles were destabilized by phospholipase-A2 secreted from the clot, and the streptokinase was effectively released. In a murine carotid artery thrombosis model, the nanoparticle was able to target the thrombus without causing off-target hemorrhagic side effects. Apart from using thrombolytic drugs, other types of strategies have been explored for addressing thrombosis. For example, PLGA nanocarriers incorporated with small Fe₃O₄ nanoparticles and perfluorohexane were functionalized with the CREKA peptide for noninvasive thrombus imaging and physical thrombolysis.¹⁴⁸ The Fe₃O₄ payload allowed for imaging using MRI or photoacoustic imaging, the perfluorohexane exhibited thrombolytic activity through a liquid-to-gas phase transition when triggered by ultrasound, and CREKA acted as a targeting moiety that binds specifically to fibrin.

3.3.3 Stent materials—Nanoparticles have also been utilized in large devices used in CVD treatment such as stents, which are used to support or recanalize arteries narrowed by disease.¹⁴⁹ Nanoparticle technology can be used to further improve upon current platforms by providing desirable features, such as enhanced biocompatibility and controlled drug-elution. Sirolimus-loaded polylactide nanoparticles have been used for this purpose, and stents coated with the particles were proven to be effective at inhibiting proliferation of smooth muscle cells while promoting proliferation of endothelial cells *in vitro*.¹⁵⁰ Inhibiting overgrowth of smooth muscle cells can help to prevent in-stent restenosis, and faster establishment of endothelial cells can decrease the risk of in-stent thrombosis. In order to closely monitor stents and the potential inflammation caused by them long-term, smart-stents have been designed.¹⁵¹ A multifunctional bioresorbable electronic stent was shown to be capable of flow sensing, temperature monitoring, data storage, wireless power/data transmission, inflammation suppression, localized drug delivery, and hyperthermia therapy. Various nanomaterials, including ceria nanoparticles for catalytic ROS scavenging and mesoporous silica-coated gold nanorods for photothermal therapy, were integrated for their therapeutic effects, which were demonstrated under *in vivo*, *ex vivo*, and *in vitro* settings.

4. Biomimetic nanotechnologies for CVD

4.1 Introduction

Through the enhancement of bioavailability, better targeting, prolonged release, and other unique properties, nanoparticle technology has the potential to significantly improve CVD diagnosis and treatment. However, there are some challenges inherently associated with the use of purely synthetic platforms that may ultimately hinder their utility. For example, despite efforts to hide nanoparticles from immune detection, it has been demonstrated that antibodies directed against these nanocarriers can still be generated, which can greatly affect *in vivo* performance over multiple administrations.^{152, 153} And while single ligand targeting approaches can be highly effective, they oftentimes do not accurately recapitulate the complex, multimodal interactions that naturally occur within the body.¹⁵⁴ The identification of these ligands can also involve an extensive discovery phase that requires significant time and effort.¹⁵⁵ It should be noted that achieving stoichiometric control of surface functionalization inherently becomes more difficult as an increasing number of unique ligands are introduced. To address these concerns, there has been a noticeable shift towards the use of biomimetic design principles when developing nanoformulations.^{40, 156} In short, this type of approach takes inspiration from nature, whether it be from a functional perspective or through the direct use of naturally occurring biological material. By leveraging fine-tuned functions and designs that have been honed over the course of evolution, researchers are able to bypass some of the limitations facing traditional nanoparticle platforms and can identify novel ways to approach critical challenges in the field of nanomedicine.

Biomimetic nanotechnology can take on many different forms, but a significant portion of it centers around the mimicry of cells, which are one of the fundamental units of biology.^{157, 158} The advantage of doing such is evident when one considers that many of the properties, including long circulation and specific targeting, that are highly desirable for nanoparticle platforms are inherent to certain types of living cells. One approach is physical mimicry, such as when nanodelivery vehicles have been designed to mimic the shape or stiffness characteristics of red blood cells (RBCs) to improve blood residence.¹⁵⁹ More often, researchers take advantage of cell-derived ligands that perform specific functions, whether it be for targeting or signal transduction.¹⁵⁶ These include proteins, lipids, and carbohydrates, as well as their derivatives, that are generally found on the membrane surface of cells. This approach bypasses the need to identify novel ligands for achieving functions that already exist in nature. It should be noted that some widely used ligands in traditional nanomedicine, including the RGD peptide motif,¹⁶⁰ can be found in natural systems, further supporting the utility of biomimicry. Naturally occurring biomolecules have also been used as a means of decreasing nonspecific interactions. One example is glycolipids, which can be used to functionalize nanoparticle surfaces in a manner similar to PEGylation.¹⁶¹

A more recently developed biomimetic functionalization method directly uses cell membrane as a coating material around synthetic nanoparticulate cores.¹⁶² The result is a cell membrane-coated nanoparticle that has unique functionalities derived from the source cell. Cell membrane coating is a purely function-driven approach for nanoparticle

modification, and design choices are made by identifying the desirable properties exhibited by specific cell populations found within the body. Unlike traditional surface coatings that work by hiding nanoparticles from the immune system, the cell membrane coating can act as a camouflaging layer that actively suppresses nonspecific clearance.^{163, 164} The result is a nanoparticle that can circulate for extended periods of time within the bloodstream, making it highly useful for certain drug delivery applications.^{165, 166} Several methods have also been developed to introduce additional functionality onto the surface of these RBC membrane-coated nanoparticles (RBC-NPs) in a nondestructive manner, including a lipid-insertion technique that anchors ligands using a polymer tether.^{167, 168}

While RBC-NPs are well-suited for applications that require long circulation and RBC-specific interactions,^{169–172} nanoparticles derived from other cell types excel in different areas.^{173–176} One key advantage of membrane coating nanotechnology is that it provides a facile means of introducing multimodal functionality that would be difficult to replicate using traditional synthetic techniques.^{177, 178} The characteristic of biomimetic nanoparticles that is perhaps the most relevant to CVD diagnostics and treatment is their biointerfacing capability.^{41, 179} The natural interactions between cells and various disease substrates can be leveraged to create targeted nanoformulations that better localize to disease sites. For example, cancer cell membrane-coated nanoparticles have been demonstrated to homotypically bind with tumors of the same cellular origin.^{180–182} A number of other cell types, including white blood cells, platelets, and stem cells, have all been used to source membrane with tumor-targeting specificities.^{183–185} In many types of CVD, platelets represent an important cell type that is heavily implicated in disease pathogenesis.¹⁸⁶ Platelets are responsible for hemostasis, and their aggregation at sites of injury can greatly exacerbate disease development or lead to acute traumatic events. They are also important modulators of immunity, propagating inflammatory responses that are a hallmark atherosclerosis.¹⁸⁷ It should therefore come as no surprise that platelet mimicry has been a widely utilized strategy in the design of nanoformulations for CVD. In this section, we will discuss the development and applications of these and other biomimetic platforms (Table 1).

4.2 Diagnostics

Biomimetic diagnostic tools can facilitate identification of existing or impending inflammation due to CVD, as well as direct reperfusion efforts in response to a thrombotic event. Early stage biomimetic diagnostic tools focused on attaching naturally occurring targeting moieties onto nanoparticle platforms. For example, PLGA nanoparticle cores with a shell made up of HDL have been fabricated.¹⁸⁸ Since HDL is known to target macrophages in atherosclerotic lesions, the nanoparticles were able to accumulate at the disease site and deliver a fluorescent dye payload for visualization. Furthermore, due to the biocompatible nature of both HDL and PLGA, the formulation demonstrated no cellular cytotoxicity, highlighting its safety. Another natural targeting moiety that has been utilized for nanoparticle-based detection of CVD-related inflammation is sialyl Lewis X, a target of P-selectin, which was conjugated to polymersomes along with an antibody targeted against intercellular adhesion molecule 1 (ICAM-1).¹⁸⁹ Polymersomes, made up of block copolymers, are analogs of liposomes but benefit from thicker membranes and can better maintain structural integrity during ligand conjugation. Various immune cells, including

leukocytes, leverage interactions with P-selectin and ICAM-1 to localize to sites of inflammation. It was demonstrated that the dual-functionalized nanoformulation exhibited cell-like properties that enabled preferential accumulation to inflamed tissue for delivery of a diagnostic imaging payload.

As the field has developed, more complex and multifunctional biomimetic platforms have taken advantage of cell membrane mimicry in order to improve circulation time and homing capabilities. In one example, rhodamine-labeled lipid films were rehydrated with mouse macrophage proteins capable of targeting activated endothelia through CD11a and CD18, which both bind to ICAM-1.¹⁹⁰ These hybrid liposomal nanostructures demonstrated a 4.4-fold increase in accumulation at the target site as compared to bare liposomes. When the rhodamine on the lipid surface was replaced with a Gd-labeled lipid, the platform showed promise for use in MRI applications. In another example, RBC membranes were loaded with indocyanine green, a near-infrared imaging agent, as well as tPA for dissolving clots through the conversion of plasminogen to plasmin.¹⁹¹ Here, the cell membrane acted to prolong the circulation of the formulation through immunomodulatory markers on the surface, while the tPA targeted clots via favorable fibrin binding. *In vitro* blood clot localization studies demonstrated significantly higher accumulation of the tPA-conjugated formulation when compared to unconjugated formulations, suggesting future utility of the platform for ischemic stroke applications.

Another common biomimetic strategy used in disease detection is platelet membrane mimicry. Platelet-mimicking nanoparticles have already shown promise in other related fields, including cancer detection. For example, platelet membrane-coated magnetic nanoparticles have been fabricated that can preferentially accumulate in tumor tissue due to their ability to adhere to disrupted vasculature.¹⁹² The particles provided ample contrast during MRI, demonstrating potential for noninvasive and nontoxic tumor imaging. In another example, gold nanoparticles were biosynthesized *in situ* inside of living platelets.¹⁹³ The final size of the nanoparticles was approximately 5 nm, and they were distributed within the cytoplasm of the cells. Due to the X-ray attenuating properties of the gold, the platform could have utility for use as a CT contrast agent. With its natural targeting functionality and excellent biocompatibility, platelet membrane can potentially be employed for the modification of a wide range of imaging modalities that have already been used with other types of cell membrane coatings.¹⁶²

In the case of CVD imaging, nanoscale platelet mimics have been used to rapidly home payloads to thrombus sites. In an example, dye-labeled platelet membrane-derived nanobubbles were fabricated using DiO-incorporated platelet membrane ghosts sonicated with sulfur hexafluoride gas (Fig. 4).¹⁹⁴ Using multimodal optical fluorescence imaging, the membrane-functionalized nanobubbles showed significant accumulation at the site of brain ischemia within 10 minutes of injection, providing fast and accurate detection. In addition, accumulation after 40 minutes provided enough acoustic scattering for detection via ultrasound imaging. Besides responding to a thrombotic event, such as a heart attack or stroke, platelet mimicry has also been leveraged for the early detection of atherosclerosis. Platelet membrane-coated nanoparticles (PNPs) were fabricated with PLGA as the core material, which allowed the targeted delivery of various diagnostic payloads to

atherosclerotic lesions.¹⁹⁵ After demonstrating significant *in vitro* binding to foam cells, collagen, and activated endothelium, *in vivo* studies verified the accumulation of the nanoparticles to arterial plaque in regions staining positive for type IV collagen, ICAM-1, and CD68. The natural targeting property of the formulation enabled binding to not only preexisting plaque within the body, but also to regions susceptible to future plaque formation. When introducing a Gd-based payload into the particles for live MRI imaging, significant contrast was generated in the aortic arch of a mouse with atherosclerosis.

4.3 Therapeutics

4.3.1 Fluid mechanics-enabled therapeutics—A major underlying driver of many CVD is the buildup atherosclerotic plaque in the vasculature. At these narrowed blood vessels, platelets can be activated locally due to high shear stress.^{196–198} This natural phenomenon has inspired researchers to engineer biomimetic nanotherapeutics that are capable of responding to high fluidic shear stress at obstructed blood vessels.^{199, 200} A shear-activated nanotherapeutic was fabricated by spray-drying a solution of PLGA nanoparticles to produce microaggregates. Under normal physiological flow, the complexes were shown to be fairly stable, but when exposed to high shear stress, the microaggregates broke apart into individual nanoparticulates. The smaller nanoparticles experience a lower drag force that enables them to remain adhered to the blood vessel at the site of dispersion. Leveraging this property, it was demonstrated that the shear-activated formulation could preferentially target blood clots and sites of plaque buildup for drug delivery. When tested in an arterial thrombus mouse model, a tPA-conjugated formulation significantly delayed thrombosis. In a mouse pulmonary embolism model, the nanoformulation was able to rescue 85% of treated mice, whereas all of the other control mice died within 45 minutes.

In a similar context, nanoparticles have been adsorbed onto carrier RBCs to extend drug circulation and for stimuli-responsive release.²⁰¹ The adsorbed nanoparticles were also released through a high shear stress mechanism at the site of a thrombus. While the flexibility of the RBCs enabled them to stably migrate through narrow openings, the drug-loaded nanoparticles were desorbed and released during the associated deformations. Other biomimetic platforms that leverage the unique fluid mechanics at narrowed vessels have also been reported. Tobacco mosaic viruses have been shown to exhibit preferential thrombus homing abilities due to their unique elongated shape.²⁰² Their rod-like structure experiences a lateral torque in linear laminar flow that favors accumulation at narrow vessel walls through hydrodynamic migration.²⁰³ This effect has been used to facilitate delivery of streptokinase²⁰⁴ and tPA²⁰⁵ for thrombolytic therapies.

4.3.2 Platelet mimetics—Given the pivotal role of platelets in CVD and their natural interactions with the associated disease substrates, many researchers have attempted to mimic platelet binding mechanisms for targeted drug delivery. In one example, PLGA nanoparticles were conjugated via carbodiimide chemistry with glycocalicin, the external fraction of platelet GPIIb/IIIa.²⁰⁶ The biomimetic platform was able to interact with damaged endothelial cells through P-selectin and the subendothelium through von Willebrand factor (vWF). Conjugated nanoparticles adhered significantly better on P-selection and vWF-coated surfaces when subjected to shear stress for 30 minutes when compared to

unconjugated control particles. This effect was almost completely abrogated when the binding sites of the conjugated nanoparticles were blocked with anti-GPIb antibodies. Improving on single-ligand targeted platforms, multimodal platelet-like nanoparticles have also been reported.²⁰⁷ Through functionalizing a flexible nanoparticle with multiple binding peptides, it was shown that the biophysical structure and the biochemical interactions of natural platelets could be replicated onto a nanoparticle. Along the same lines of multivalent functionality, entire fractions of leukocyte proteins have been purified and incorporated into liposomes for targeted delivery to inflamed tissues²⁰⁸ and for theranostic applications.¹⁹⁰

Interestingly, live stem cells have been bestowed with platelet-like targeting capabilities through the modification of their cell membrane with platelet-derived nanovesicles.²⁰⁹ To accomplish this, platelet vesicles were first derived through a process involving freeze-thaw lysis and sonication. They were then fused onto the surface of cardiac stem cells in the presence of PEG, which enabled the modified cells to display the myocardial infarction homing ability of platelets due to the presence of the GPIb α glycoprotein. In a rat ischemia/reperfusion model, the platelet vesicle-modified stem cells were able to retain much better in the heart. The higher retention directly translated into increased cardiomyocyte growth, improved blood flow, and increased vessel density at the injury site. Similar results were obtained in a more clinically relevant porcine model of acute injury.

4.3.3 Platelet membrane-coated nanoparticles—Another type of platelet-mimetic system utilizes the entire plasma membrane of platelets as a coating material for synthetic nanoparticulate cores.^{179, 210} With the plethora of functional proteins present on platelet membrane, these PNPs possess many platelet-like properties, including enhanced immunocompatibility and the ability to bind to sites of cardiovascular damage (Fig. 5). To fabricate these biomimetic nanoparticles, platelet membrane was derived from whole platelets through a repeated freeze-thaw process and then subsequently fused onto polymeric nanoparticle cores through sonication. When the resulting PNPs were examined for the presence of 15 different immunomodulatory and adhesion proteins through western blot analysis, all were found to be present on the nanoparticles. In rats with angioplasty-induced arterial denudation, the nanoparticles preferentially bound to the damaged artery as compared to a control artery. Docetaxel-loaded PNPs were used as treatment in a rat coronary restenosis model, and the formulation was able to significantly inhibit neointima growth. Treated mice had arterial cross-sections that displayed parameters similar to those from uninjured rats, whereas all of the other control formulations had minimal effects in preventing cell proliferation.

Building on the PNP concept, other researchers have used platelet membrane to coat urokinase plasminogen activator-loaded gold nanorods for pulmonary thrombus treatment,²¹¹ endothelium-protective epigenetic inhibitor-loaded dendritic nanoclusters for anti-restenosis therapy,²¹² and rapamycin-loaded PLGA nanoparticles for halting atherosclerotic plaque progression.²¹³ Additionally, platelet membrane has been used in the fabrication bio-nanobubbles with a sulfur hexafluoride gaseous core for recanalization after acute ischemic stroke.¹⁹⁴ Apart from their native platelet-derived functionality, PNPs can be further improved with other targeting ligands. In one example, prostaglandin E2-conjugated platelet membrane was used to functionalize PLGA cores loaded with stem cell secretions for

targeted heart repair.²¹⁴ The formulation enabled dual targeting, whereby the platelet membrane provided affinity towards sites of vasculature injury and the prostaglandin E2 enabled localization to injured cardiomyocytes. Interestingly, researchers have also leveraged the natural binding affinity of PNPs in order to eradicate blood clots while treating multiple myeloma.²¹⁵ Because treatment of multiple myeloma with immunomodulatory drugs can cause thrombus complications, a PNP co-encapsulated with bortezomib, a proteasome inhibitor, and tPA was developed to eradicate tumors while simultaneously promoting clot dissolution.

4.3.4 Other cell membrane-coated nanoparticles—Membrane from other source cells have been derived and used to coat nanoparticles for the development of CVD therapeutics. With their long circulation time and role in oxygen delivery, RBC-NPs for ischemic stroke treatment²¹⁶ and for theranostic applications¹⁹¹ have been reported. In the former example, a dextran polymeric core was conjugated with boronic ester to create an ROS-bioresponsive particle. The nanoparticle was further functionalized with RBC membrane to prolong circulation. Finally, SHp, a stroke-homing peptide, was inserted onto the membrane surface to enable active targeting. The SHp-functionalized RBC-NP formulation was capable of targeting ischemic neuron cells in brain tissue for the delivery of a neuroprotective agent. When tested *in vivo*, the targeted RBC-NPs showed a marked increase in accumulation within ischemic rat brains. Using a middle cerebral artery occlusion rat model, animals treated with the nanoformulation had significantly better outcomes as indicated by a smaller infarct size and lower neurological scores. Besides RBC-NPs, leukocyte membrane-coated nanoparticles have demonstrated the ability to preferentially target inflamed endothelium,²¹⁷ and treatment of mice with severe hindlimb ischemia using vascular endothelial growth factor-loaded, CXCR4-engineered stem cell membrane-coated nanoparticles has been shown to significantly improve blood reperfusion, muscle restoration, and limb salvage.²¹⁸ Novel hybrid membrane-coated nanoparticles that combine the functionalities from multiple source cells into a single nanocarrier have also been applied for atherosclerosis targeting,²¹⁹ and further exploration along these lines could yield platforms with interesting properties and enhanced utility for CVD applications.

5. Conclusion and outlook

As modern medicine has prolonged human life expectancy, diseases that correlate with longevity like CVD have risen to the forefront. As it currently represents the number one cause of death worldwide, significant efforts have been placed on finding ways to more effectively manage CVD in the clinic. Along these lines, nanoparticle technology, which has proven to be useful in other areas of medicine, is being actively applied towards the development of improved diagnostic and therapeutic modalities. The benefits of nanodelivery include the ability to better encapsulate functional payloads such as drugs and imaging agents, target these payloads to disease sites, and release them over time as necessary. More recently, the rational application of biomimetic principles in the design process for new nanoformulations has become increasingly commonplace. The resulting platforms have proven to be highly functional, are oftentimes easy to develop and fabricate, and have unique features that make them well-suited for CVD applications. Among these

technologies, cell membrane coating has emerged an effective means of introducing biomimetic functionality onto synthetic nanoparticles. Cell membrane-coated nanoparticles can inherently participate in multivalent interactions with their surroundings, making them adept at navigating the complex biological environments that exist *in vivo*.

Looking forward, there are many opportunities for future development along the lines of biomimetic nanotechnology for CVD. As we better understand the various phenotypic changes associated with disease pathogenesis, it will be possible to generate nanodelivery vehicles that can target specific disease stages. Environmental sensitivity can also be engineered into these platforms such that payload release is triggered by disease-associated markers.²²⁰ In the case of cell membrane-coated nanoparticles, additional cell types that are relevant to CVD pathogenesis can be used to source the membrane coating. This can be combined with novel nanoparticulate cores in order to generate unique formulations that are custom-tailored for specific applications. Newly discovered bioactive compounds or diagnostic markers can be combined with biomimetic nanotechnology to increase their utility. For example, miRNA-based therapies have shown the potential to reverse atherosclerosis and could greatly benefit from the protection afforded by nanoencapsulation.²²¹ With better targeting specificity, synergistic treatments that work by targeting different cell subsets can be explored. Biomimetic functionalization will also help to improve the performance of novel nanoimaging agents that are being developed by prolonging circulation or improving localization to disease sites. Regarding clinical translation, there are some significant hurdles that will need to be overcome, including achieving large-scale production under good manufacturing practice standards. Because many of these emerging technologies combine both synthetic and cell-derived components, new translational avenues will also need to be established in cooperation with regulatory agencies. Overall, the future prospects for biomimetic platforms for the management of CVD are bright, and continued development along these lines will undoubtedly yield new and exciting solutions for addressing this major global health threat.

Acknowledgements

This work is supported by the National Institutes of Health under Award Number R01CA200574.

References

1. Mensah GA and Brown DW, Health Aff. (Millwood), 2007, 26, 38–48. [PubMed: 17211012]
2. Ross R, Engl N. J. Med, 1986, 314, 488–500.
3. Hackam DG and Anand SS, JAMA, J. Am. Med. Assoc, 2003, 290, 932–940.
4. Vogel RA, Clin. Cardiol, 1997, 20, 426–432. [PubMed: 9134272]
5. O’Leary DH, Polak JF, Kronmal RA, Manolio TA, Burke GL, Wolfson SK and C. H. S. C. R. Grp, N. Engl. J. Med, 1999, 340, 14–22. [PubMed: 9878640]
6. Amarenco P, Cohen A, Tzourio C, Bertrand B, Hommel M, Besson G, Chauvel C, Touboul PJ and Bousser MG, N. Engl. J. Med, 1994, 331, 1474–1479. [PubMed: 7969297]
7. De Luca G, Suryapranata H, Ottervanger JP and Antman EM, Circulation, 2004, 109, 1223–1225. [PubMed: 15007008]
8. Silver FL, Norris JW, Lewis AJ and Hachinski VC, Stroke, 1984, 15, 492–496. [PubMed: 6729878]
9. Murray CJ and Lopez AD, N. Engl. J. Med, 2013, 369, 448–457. [PubMed: 23902484]

10. Benjamin EJ, Blaha MJ, Chiuve SE, Cushman M, Das SR, Deo R, de Ferranti SD, Floyd J, Fornage M, Gillespie C, Isasi CR, Jimenez MC, Jordan LC, Judd SE, Lackland D, Lichtman JH, Lisabeth L, Liu S, Longenecker CT, Mackey RH, Matsushita K, Mozaffarian D, Mussolino ME, Nasir K, Neumar RW, Palaniappan L, Pandey DK, Thiagarajan RR, Reeves MJ, Ritchey M, Rodriguez CJ, Roth GA, Rosamond WD, Sasson C, Towfighi A, Tsao CW, Turner MB, Virani SS, Voeks JH, Willey JZ, Wilkins JT, Wu JH, Alger HM, Wong SS, Muntner P, C. American Heart Association Statistics and S. Stroke Statistics, *Circulation*, 2017, 135, e146–e603. [PubMed: 28122885]
11. Roth GA, Forouzanfar MH, Moran AE, Barber R, Nguyen G, Feigin VL, Naghavi M, Mensah GA and Murray CJ, *N. Engl. J. Med.*, 2015, 372, 1333–1341. [PubMed: 25830423]
12. Stewart J, Manmathan G and Wilkinson P, *JRSM Cardiovasc. Dis*, 2017, 6, 2048004016687211. [PubMed: 28286646]
13. Pearson TA, Blair SN, Daniels SR, Eckel RH, Fair JM, Fortmann SP, Franklin BA, Goldstein LB, Greenland P, Grundy SM, Hong Y, Miller NH, Lauer RM, Ockene IS, Sacco RL, Sallis JF Jr., Smith SC Jr., Stone NJ and Taubert KA, *Circulation*, 2002, 106, 388–391. [PubMed: 12119259]
14. Archer E and Blair SN, *Prog. Cardiovasc. Dis*, 2011, 53, 387–396. [PubMed: 21545924]
15. Sanz J and Fayad ZA, *Nature*, 2008, 451, 953–957. [PubMed: 18288186]
16. Celermajer DS, Chow CK, Marijon E, Anstey NM and Woo KS, *J. Am. Coll. Cardiol*, 2012, 60, 1207–1216. [PubMed: 22858388]
17. Gillum RF, *Bull. W. H. O.*, 1988, 66, 249–258. [PubMed: 3293829]
18. Mastouri R, Sawada SG and Mahenthiran J, *Expert Rev. Cardiovasc. Ther.*, 2010, 8, 77–91. [PubMed: 20030023]
19. Escolar E, Weigold G, Fuisz A and Weissman NJ, *CMAJ*, 2006, 174, 487–495. [PubMed: 16477061]
20. Tavakol M, Ashraf S and Brener SJ, *Glob. J. Health Sci*, 2012, 4, 65–93. [PubMed: 22980117]
21. Crowther MA, *Hematology Am. Soc. Hematol. Educ. Program*, 2005, 2005, 436–441.
22. Gebbers JO, *Ger. Med. Sci.*, 2007, 5, Doc04. [PubMed: 19675712]
23. Anand SS and Yusuf S, *JAMA, J. Am. Med. Assoc.*, 1999, 282, 2058–2067.
24. Ettehad D, Emdin CA, Kiran A, Anderson SG, Callender T, Emberson J, Chalmers J, Rodgers A and Rahimi K, *Lancet*, 2016, 387, 957–967. [PubMed: 26724178]
25. King SB 3rd, Marshall JJ and Tummala PE, *Annu. Rev. Med.*, 2010, 61, 199–213. [PubMed: 19824825]
26. Bivard A, Lin L and Parsons MW, *J. Stroke*, 2013, 15, 90–98. [PubMed: 24324944]
27. Bizjak ED and Mauro VF, *Ann. Pharmacother*, 1998, 32, 769–784. [PubMed: 9681094]
28. Ciccone A, Valvassori L, Nichelatti M, Sgoifo A, Ponzio M, Sterzi R, Boccardi E and Investigators SE, *N. Engl. J. Med.*, 2013, 368, 904–913. [PubMed: 23387822]
29. Wang AZ, Langer R and Farokhzad OC, *Annu. Rev. Med.*, 2012, 63, 185–198. [PubMed: 21888516]
30. Farokhzad OC and Langer R, *ACS Nano*, 2009, 3, 16–20. [PubMed: 19206243]
31. Shi J, Kantoff PW, Wooster R and Farokhzad OC, *Nat. Rev. Cancer*, 2017, 17, 20–37. [PubMed: 27834398]
32. Hosoyama K, Ahumada M, Goel K, Ruel M, Suuronen EJ and Alarcon EI, *Biotechnol. Adv*, 2019, 37, 444–458. [PubMed: 30797094]
33. Zhang L, Gu FX, Chan JM, Wang AZ, Langer RS and Farokhzad OC, *Clin. Pharmacol. Ther.* (Hoboken, NJ, U. S.), 2008, 83, 761–769.
34. Brannon-Peppas L and Blanchette JO, *Adv. Drug Delivery Rev*, 2004, 56, 1649–1659.
35. Singh R and Lillard JW Jr., *Exp. Mol. Pathol*, 2009, 86, 215–223. [PubMed: 19186176]
36. Byrne JD, Betancourt T and Brannon-Peppas L, *Adv. Drug Delivery Rev*, 2008, 60, 1615–1626.
37. Martin Gimenez VM, Kassuha DE and Manucha W, *Ther. Adv. Cardiovasc. Dis*, 2017, 11, 133–142. [PubMed: 28198204]
38. Gupta P, Garcia E, Sarkar A, Kapoor S, Rafiq K, Chand HS and Jayant RD, *Cardiovasc. Hematol. Disord.: Drug Targets*, 2019, 19, 33–44. [PubMed: 29737265]

39. Fang RH, Hu CMJ and Zhang LF, *Expert Opin. Biol. Ther.*, 2012, 12, 385–389. [PubMed: 22332936]
40. Yoo JW, Irvine DJ, Discher DE and Mitragotri S, *Nat. Rev. Drug Discov.*, 2011, 10, 521–535. [PubMed: 21720407]
41. Kroll AV, Fang RH and Zhang L, *Bioconjugate Chem.*, 2017, 28, 23–32.
42. Dhingra R and Vasan RS, *Trends Cardiovasc. Med.*, 2017, 27, 123–133. [PubMed: 27576060]
43. Lopez-Mejias R, Genre F, Gonzalez-Juanatey C and Gonzalez-Gay MA, *Vasa*, 2014, 43, 83–85. [PubMed: 24627313]
44. Qureshi A, Gurbuz Y and Niazi JH, *Sens. Actuators B Chem.*, 2012, 171, 62–76.
45. Martis RJ, Acharya UR and Adeli H, *Comput. Biol. Med.*, 2014, 48, 133–149. [PubMed: 24681634]
46. Kovell LC, Ali MT, Hays AG, Metkus TS, Madrazo JA, Corretti MC, Mayer SA, Abraham TP, Shapiro EP and Mukherjee M, *Am. J. Cardiol.*, 2018, 122, 1443–1450. [PubMed: 30115421]
47. Greenwood JP, Herzog BA, Brown JM, Everett CC, Nixon J, Bijsterveld P, Maredia N, Motwani M, Dickinson CJ, Ball SG and Plein S, *Ann. Intern. Med.*, 2016, 165, 1–9. [PubMed: 27158921]
48. Riemann B, Schafers M, Law MP, Wichter T and Schober O, *Nuklearmedizin*, 2003, 42, 4–9. [PubMed: 12601447]
49. Gorenai V, Schonermark MP and Hagen A, *GMS Health Technol. Assess.*, 2012, 8, Doc02. [PubMed: 22536300]
50. Rudd JH, Warburton EA, Fryer TD, Jones HA, Clark JC, Antoun N, Johnstrom P, Davenport AP, Kirkpatrick PJ, Arch BN, Pickard JD and Weissberg PL, *Circulation*, 2002, 105, 2708–2711. [PubMed: 12057982]
51. Marti-Bonmati L, Sopena R, Bartumeus P and Sopena P, *Contrast Media Mol. Imaging*, 2010, 5, 180–189. [PubMed: 20812286]
52. Saeed M, Van TA, Krug R, Hettis SW and Wilson MW, *Cardiovasc. Diagn. Ther.*, 2015, 5, 290–310. [PubMed: 26331113]
53. Kalin R and Stanton MS, *Pacing Clin. Electrophysiol.*, 2005, 28, 326–328. [PubMed: 15826268]
54. Lindner JR, *Nat. Rev. Cardiol.*, 2009, 6, 475–481. [PubMed: 19506587]
55. Osborn EA and Jaffer FA, *JACC Cardiovasc. Imaging*, 2013, 6, 1327–1341. [PubMed: 24332285]
56. Lesko LJ, *Clin. Pharmacol. Ther. (Hoboken, NJ, U. S.)*, 2016, 100, 126–128.
57. Patel MR, Mahaffey KW, Garg J, Pan G, Singer DE, Hacke W, Breithardt G, Halperin JL, Hankey GJ, Piccini JP, Becker RC, Nessel CC, Paolini JF, Berkowitz SD, Fox KA, Califf RM and Investigators RA, *N. Engl. J. Med.*, 2011, 365, 883–891. [PubMed: 21830957]
58. Nieuwenhuis HK, Albada J, Banga JD and Sixma JJ, *Blood*, 1991, 78, 2337–2343. [PubMed: 1657248]
59. Mueck W, Lensing AW, Agnelli G, Decousus H, Prandoni P and Misselwitz F, *Clin. Pharmacokinet.*, 2011, 50, 675–686. [PubMed: 21895039]
60. Ussia GP, Scarabelli M, Mule M, Barbanti M, Sarkar K, Cammalleri V, Imme S, Aruta P, Pistrutto AM, Gulino S, Deste W, Capodanno D and Tamburino C, *Am. J. Cardiol.*, 2011, 108, 1772–1776. [PubMed: 21907949]
61. El-Sherbiny IM, Elkholi IE and Yacoub MH, *Glob. Cardiol. Sci. Pract.*, 2014, 2014, 336–349. [PubMed: 25780787]
62. Nazari J, Davison R, Kaplan K and Fintel D, *Med. Toxicol. Adverse Drug Exper.*, 1987, 2, 274–286. [PubMed: 3306267]
63. McFarlane SI, Kumar A and Sowers JR, *Am. J. Cardiol.*, 2003, 91, 30h–37h.
64. Kjeldsen SE, Stalhammar J, Hasvold P, Bodegard J, Olsson U and Russell D, *J. Hum. Hypertens.*, 2010, 24, 263–273. [PubMed: 19890371]
65. Warren SE and Francis GS, *Am. J. Med.*, 1978, 65, 53–62. [PubMed: 99032]
66. Majure DT, Hallaux M, Yeghiazarians Y and Boyle AJ, *J. Crit. Care*, 2012, 27, 532.e9–532.e13.
67. Chang TI, Evans G, Cheung AK, Cushman WC, Diamond MJ, Dwyer JP, Huan Y, Kitzman D, Kostis JB, Oparil S, Rastogi A, Roumie CL, Sahay R, Stafford RS, Taylor AA, Wright JT Jr., Chertow GM and Group SSR, *Hypertension*, 2016, 67, 550–555. [PubMed: 26865200]

68. Abernethy DR and Schwartz JB, *N. Engl. J. Med.*, 1999, 341, 1447–1457. [PubMed: 10547409]
69. Kotecha D, Flather MD, Altman DG, Holmes J, Rosano G, Wikstrand J, Packer M, Coats AJS, Manzano L, Bohm M, van Veldhuisen DJ, Andersson B, Wedel H, von Lueder TG, Rigby AS, Hjalmarson A, Kjekshus J, Cleland JGF and Beta-Blockers G in Heart Failure Collaborative, *J. Am. Coll. Cardiol.*, 2017, 69, 2885–2896. [PubMed: 28467883]
70. Leon MB, Rosing DR, Bonow RO and Epstein SE, *Am. J. Cardiol.*, 1985, 55, 69B–80B.
71. Feng XY, Li WM and Liu RY, *Biomed. Res. (Aligarh, India)*, 2017, 28, 7473–7479.
72. Eisen A, Ruff CT, Braunwald E, Hamershock RA, Lewis BS, Hassager C, Chao TF, Le Heuzey JY, Mercuri M, Rutman H, Antman EM and Giugliano RP, *J. Am. Heart Assoc.*, 2017, 6, e006035. [PubMed: 28666993]
73. Schmitz G and Langmann T, *Vasc. Pharmacol.*, 2006, 44, 75–89.
74. Serruys PW, Kutryk MJ and Ong AT, *N. Engl. J. Med.*, 2006, 354, 483–495. [PubMed: 16452560]
75. Migliorini A, Moschi G, Vergara R, Parodi G, Carrabba N and Antoniucci D, *Catheter. Cardiovasc. Interv.*, 2006, 67, 344–348. [PubMed: 16489559]
76. Serruys PW, Morice MC, Kappetein AP, Colombo A, Holmes DR, Mack MJ, Stahle E, Feldman TE, van den Brand M, Bass EJ, Van Dyck N, Leadley K, Dawkins KD, Mohr FW and Investigators S, *N. Engl. J. Med.*, 2009, 360, 961–972. [PubMed: 19228612]
77. Iannone LA, Anderson SM and Phillips SJ, *Tex. Heart Inst. J.*, 1993, 20, 99–104. [PubMed: 8334373]
78. Evans MRB, White P, Cowley P and Werring DJ, *Pract. Neurol.*, 2017, 17, 252–265. [PubMed: 28647705]
79. Barenholz Y, *J. Controlled Release*, 2012, 160, 117–134.
80. Green MR, Manikhas GM, Orlov S, Afanasyev B, Makhson AM, Bhar P and Hawkins MJ, *Ann. Oncol.*, 2006, 17, 1263–1268. [PubMed: 16740598]
81. Tran S, DeGiovanni PJ, Piel B and Rai P, *Clin. Transl. Med.*, 2017, 6, 44. [PubMed: 29230567]
82. Barreto JA, O'Malley W, Kubeil M, Graham B, Stephan H and Spiccia L, *Adv. Mater. (Weinheim, Ger.)*, 2011, 23, H18–H40.
83. Xie J, Lee S and Chen X, *Adv. Drug Deliv. Rev.*, 2010, 62, 1064–1079. [PubMed: 20691229]
84. Doane TL and Burda C, *Chem. Soc. Rev.*, 2012, 41, 2885–2911. [PubMed: 22286540]
85. Maeda H, Wu J, Sawa T, Matsumura Y and Hori K, *J. Controlled Release*, 2000, 65, 271–284.
86. Mout R, Moyano DF, Rana S and Rotello VM, *Chem. Soc. Rev.*, 2012, 41, 2539–2544. [PubMed: 22310807]
87. Kumari A, Singla R, Guliani A and Yadav SK, *EXCLI J.*, 2014, 13, 265–286. [PubMed: 26417260]
88. Fang RH and Zhang LF, *Sci. Signaling*, 2014, 7, pe13.
89. Smith BR and Gambhir SS, *Chem. Rev. (Washington, DC, U. S.)*, 2017, 117, 901–986.
90. Zhuang J, Fang RH and Zhang L, *Small Methods*, 2017, 1, 1700147. [PubMed: 30310860]
91. Longmire M, Choyke PL and Kobayashi H, *Nanomedicine (London, U. K.)*, 2008, 3, 703–717.
92. Suk JS, Xu QG, Kim N, Hanes J and Ensign LM, *Adv. Drug Delivery Rev.*, 2016, 99, 28–51.
93. Jokerst JV, Lobovkina T, Zare RN and Gambhir SS, *Nanomedicine (London, U. K.)*, 2011, 6, 715–728.
94. Zhang L, Cao Z, Li Y, Ella-Menye JR, Bai T and Jiang S, *ACS Nano*, 2012, 6, 6681–6686. [PubMed: 22830983]
95. Sperling RA and Parak WJ, *Philos. Trans. R. Soc., A*, 2010, 368, 1333–1383.
96. Von Hoff DD, Mita MM, Ramanathan RK, Weiss GJ, Mita AC, LoRusso PM, Burris HA 3rd, Hart LL, Low SC, Parsons DM, Zale SE, Summa JM, Youssoufian H and Sachdev JC, *Clin. Cancer Res.*, 2016, 22, 3157–3163. [PubMed: 26847057]
97. Sharma S, Jackson PG and Makan J, *J. Clin. Pathol.*, 2004, 57, 1025–1026. [PubMed: 15452153]
98. Abdorahim M, Rabiee M, Alhosseini SN, Tahriri M, Yazdanpanah S, Alavi SH and Tayebi L, *TrAC, Trends Anal. Chem.*, 2016, 82, 337–347.
99. Diaz-Gonzalez M, Munoz-Berbel X, Jimenez-Jorquera C, Baldi A and Fernandez-Sanchez C, *Electroanalysis*, 2014, 26, 1154–1170.
100. Xu Q and Davis JJ, *Electroanalysis*, 2014, 26, 1249–1258.

101. Brondani D, Piovesan JV, Westphal E, Gallardo H, Fireman Dutra RA, Spinelli A and Vieira IC, *Analyst*, 2014, 139, 5200–5208. [PubMed: 25222288]
102. Wang B, Jing R, Qi HL, Gao Q and Zhang CX, *J. Electroanal. Chem*, 2016, 781, 212–217.
103. Kimmel DW, LeBlanc G, Meschievitz ME and Cliffel DE, *Anal. Chem. (Washington, DC, U. S.)*, 2012, 84, 685–707.
104. Moreira FTC, Dutra RAF, Noronha JPC, Cunha AL and Sales MGF, *Biosens. Bioelectron*, 2011, 28, 243–250. [PubMed: 21816602]
105. Mikkelsen SR and Rechnitz GA, *Anal. Chem. (Washington, DC, U. S.)*, 1989, 61, 1737–1742.
106. Lee I, Luo X, Huang J, Cui XT and Yun M, *Biosensors*, 2012, 2, 205–220. [PubMed: 25585711]
107. Singh P, Pandit S, Mokkapatil V, Garg A, Ravikumar V and Mijakovic I, *Int. J. Mol. Sci*, 2018, 19, 1979.
108. Lemaster JE and Jokerst JV, *Wiley Interdiscip. Rev.: Nanomed. Nanobiotechnol*, 2017, 9, e1404.
109. Rouleau L, Berti R, Ng VW, Matteau-Pelletier C, Lam T, Saboural P, Kakkar AK, Lesage F, Rheaume E and Tardif JC, *Contrast Media Mol. Imaging*, 2013, 8, 27–39. [PubMed: 23109390]
110. Wang B, Su JL, Amirian J, Litovsky SH, Smalling R and Emelianov S, *Opt. Express*, 2010, 18, 4889–4897. [PubMed: 20389501]
111. Adhi M and Duker JS, *Curr. Opin. Ophthalmol*, 2013, 24, 213–221. [PubMed: 23429598]
112. Hu J, Rivero F, Torres RA, Loro Ramirez H, Rodriguez EM, Alfonso F, Garcia Sole J and Jaque D, *J. Biophotonics*, 2017, 10, 674–682. [PubMed: 27273138]
113. Hu J, Sanz-Rodriguez F, Rivero F, Rodriguez EM, Torres RA, Ortgies DH, Sole JG, Alfonso F and Jaque D, *Nano Res*, 2018, 11, 676–685.
114. Ginat DT and Gupta R, *Annu. Rev. Biomed. Eng*, 2014, 16, 431–453. [PubMed: 25014788]
115. Cole LE, Ross RD, Tilley JMR, Vargo-Gogola T and Roeder RK, *Nanomedicine (London, U. K.)*, 2015, 10, 321–341.
116. Chhour P, Naha PC, O'Neill SM, Litt HI, Reilly MP, Ferrari VA and Cormode DP, *Biomaterials*, 2016, 87, 93–103. [PubMed: 26914700]
117. Salerno M and Kramer CM, *Expert Opin. Med. Diagn*, 2009, 3, 673–687. [PubMed: 21113233]
118. Runge VM, Carollo BR, Wolf CR, Nelson KL and Gelblum DY, *Radiographics*, 1989, 9, 929–958. [PubMed: 2678298]
119. Doiron AL, Chu K, Ali A and Brannon-Peppas L, *Proc. Natl. Acad. Sci. U. S. A*, 2008, 105, 17232–17237. [PubMed: 18796605]
120. Sigalov AB, *Contrast Media Mol. Imaging*, 2014, 9, 372–382. [PubMed: 24729189]
121. Shen Z, Wu A and Chen X, *Mol. Pharmaceutics*, 2017, 14, 1352–1364.
122. Li FF, Zhi DB, Luo YF, Zhang JQ, Nan X, Zhang YJ, Zhou W, Qiu BS, Wen LP and Liang GL, *Nanoscale*, 2016, 8, 12826–12833. [PubMed: 27297334]
123. Wang YB, Chen JW, Yang B, Qiao HY, Gao L, Su T, Ma S, Zhang XT, Li XJ, Liu G, Cao JB, Chen XY, Chen YD and Cao F, *Theranostics*, 2016, 6, 272–286. [PubMed: 26877785]
124. Tarin C, Carril M, Martin-Ventura JL, Markuerkiaga I, Padro D, Llamas-Granda P, Moreno JA, Garcia I, Genicio N, Plaza-Garcia S, Blanco-Colio LM, Penades S and Egido J, *Sci. Rep*, 2015, 5, 17135. [PubMed: 26616677]
125. Cheng DF, Li X, Zhang CF, Tan H, Wang C, Pang LF and Shi HC, *ACS Appl. Mater. Interfaces*, 2015, 7, 2847–2855. [PubMed: 25569777]
126. Harrison BS and Atala A, *Biomaterials*, 2007, 28, 344–353. [PubMed: 16934866]
127. Baughman RH, Zakhidov AA and de Heer WA, *Science*, 2002, 297, 787–792. [PubMed: 12161643]
128. Delogu LG, Vidili G, Venturelli E, Menard-Moyon C, Zoroddu MA, Pilo G, Nicolussi P, Ligios C, Bedognetti D, Sgarrella F, Manetti R and Bianco A, *Proc. Natl. Acad. Sci. U. S. A*, 2012, 109, 16612–16617. [PubMed: 23012426]
129. Keliher EJ, Ye YX, Wojtkiewicz GR, Aguirre AD, Tricot B, Senders ML, Groenen H, Fay F, Perez-Medina C, Calcagno C, Carlucci G, Reiner T, Sun Y, Courties G, Iwamoto Y, Kim HY, Wang C, Chen JW, Swirski FK, Wey HY, Hooker J, Fayad ZA, Mulder WJ, Weissleder R and Nahrendorf M, *Nat. Commun*, 2017, 8, 14064. [PubMed: 28091604]

130. Fredman G, Kamaly N, Spolitu S, Milton J, Ghorpade D, Chiasson R, Kuriakose G, Perretti M, Farokhzad O and Tabas I, *Sci. Transl. Med.*, 2015, 7, 275ra20.
131. Kamaly N, Fredman G, Fojas JJ, Subramanian M, Choi WI, Zepeda K, Vilos C, Yu M, Gadde S, Wu J, Milton J, Carvalho Leitao R, Rosa Fernandes L, Hasan M, Gao H, Nguyen V, Harris J, Tabas I and Farokhzad OC, *ACS Nano*, 2016, 10, 5280–5292. [PubMed: 27100066]
132. Goncharov NV, Avdonin PV, Nadeev AD, Zharkikh IL and Jenkins RO, *Curr. Pharm. Des.*, 2015, 21, 1134–1146. [PubMed: 25312724]
133. Wang Y, Li L, Zhao W, Dou Y, An H, Tao H, Xu X, Jia Y, Lu S, Zhang J and Hu H, *ACS Nano*, 2018, 12, 8943–8960. [PubMed: 30114351]
134. Ridker PM and Cook NR, *Lancet*, 2013, 382, 1762–1765. [PubMed: 24268611]
135. Katsuki S, Matoba T, Nakashiro S, Sato K, Koga J, Nakano K, Nakano Y, Egusa S, Sunagawa K and Egashira K, *Circulation*, 2014, 129, 896–906. [PubMed: 24305567]
136. Duivenvoorden R, Tang J, Cormode DP, Mieszawska AJ, Izquierdo-Garcia D, Ozcan C, Otten MJ, Zaidi N, Lobatto ME, van Rijs SM, Priem B, Kuan EL, Martel C, Hewing B, Sager H, Nahrendorf M, Randolph GJ, Stroes ES, Fuster V, Fisher EA, Fayad ZA and Mulder WJ, *Nat. Commun.*, 2014, 5, 3065. [PubMed: 24445279]
137. Tang J, Lobatto ME, Hassing L, van der Staay S, van Rijs SM, Calcagno C, Braza MS, Baxter S, Fay F, Sanchez-Gaytan BL, Duivenvoorden R, Sager H, Astudillo YM, Leong W, Ramachandran S, Storm G, Perez-Medina C, Reiner T, Cormode DP, Strijkers GJ, Stroes ES, Swirski FK, Nahrendorf M, Fisher EA, Fayad ZA and Mulder WJ, *Sci. Adv.*, 2015, 1, e1400223. [PubMed: 26295063]
138. Moore KJ, Sheedy FJ and Fisher EA, *Nat. Rev. Immunol.*, 2013, 13, 709–721. [PubMed: 23995626]
139. Yu M, Amengual J, Menon A, Kamaly N, Zhou F, Xu XD, Saw PE, Lee SJ, Si K, Ortega CA, Choi WI, Lee IH, Bdour Y, Shi JJ, Mahmoudi M, Jon S, Fisher EA and Farokhzad OC, *Adv. Healthcare Mater.*, 2017, 6, 1700313.
140. Lewis DR, Petersen LK, York AW, Zablocki KR, Joseph LB, Kholodovych V, Prud'homme RK, Uhrich KE and Moghe PV, *Proc. Natl. Acad. Sci. U. S. A.*, 2015, 112, 2693–2698. [PubMed: 25691739]
141. Kapadia R, Yi JH and Vemuganti R, *Front. Biosci.*, 2008, 13, 1813–1826. [PubMed: 17981670]
142. Nakashiro S, Matoba T, Umezu R, Koga J, Tokutome M, Katsuki S, Nakano K, Sunagawa K and Egashira K, *Arterioscler., Thromb., Vasc. Biol.*, 2016, 36, 491–500. [PubMed: 26821947]
143. Michel NA, Zirluk A and Wolf D, *Front. Cardiovasc. Med.*, 2017, 4, 40. [PubMed: 28676852]
144. Lameijer M, Binderup T, van Leent MMT, Senders ML, Fay F, Malkus J, Sanchez-Gaytan BL, Teunissen AJP, Karakatsanis N, Robson P, Zhou XX, Ye YX, Wojtkiewicz G, Tang J, Seijkens TTP, Kroon J, Stroes ESG, Kjaer A, Ochando J, Reiner T, Perez-Medina C, Calcagno C, Fischer EA, Zhang B, Temel RE, Swirski FK, Nahrendorf M, Fayad ZA, Lutgens E, Mulder WJM and Duivenvoorden R, *Nat. Biomed. Eng.*, 2018, 2, 279–292. [PubMed: 30936448]
145. Bonaventura A, Montecucco F and Dallegri F, *Expert Opin. Biol. Ther.*, 2016, 16, 1323–1340. [PubMed: 27548625]
146. Juenet M, Aid-Launais R, Li B, Berger A, Aerts J, Ollivier V, Nicoletti A, Letourneur D and Chauvierre C, *Biomaterials*, 2018, 156, 204–216. [PubMed: 29216534]
147. Pawlowski CL, Li W, Sun M, Ravichandran K, Hickman D, Kos C, Kaur G and Sen Gupta A, *Biomaterials*, 2017, 128, 94–108. [PubMed: 28314136]
148. Zhong Y, Zhang Y, Xu J, Zhou J, Liu J, Ye M, Zhang L, Qiao B, Wang Z.-g., Ran H.-t. and Guo D, *ACS Nano*, 2019, 13, 3387–3403. [PubMed: 30855938]
149. Yin RX, Yang DZ and Wu JZ, *Theranostics*, 2014, 4, 175–200. [PubMed: 24465275]
150. Zhao J, Mo Z, Guo F, Shi D, Han QQ and Liu Q, *J. Biomed. Mater. Res., Part B*, 2018, 106, 88–95.
151. Son D, Lee J, Lee DJ, Ghaffari R, Yun S, Kim SJ, Lee JE, Cho HR, Yoon S, Yang S, Lee S, Qiao S, Ling D, Shin S, Song JK, Kim J, Kim T, Lee H, Kim J, Soh M, Lee N, Hwang CS, Nam S, Lu N, Hyeon T, Choi SH and Kim DH, *ACS Nano*, 2015, 9, 5937–5946. [PubMed: 25905457]

152. Ishida T, Harada M, Wang XY, Ichihara M, Irimura K and Kiwada H, *J. Controlled Release*, 2005, 105, 305–317.
153. Ishida T and Kiwada H, *Int. J. Pharm. (Amsterdam, Neth.)*, 2008, 354, 56–62.
154. Zhang XQ, Xu X, Bertrand N, Pridgen E, Swami A and Farokhzad OC, *Adv. Drug Delivery Rev.*, 2012, 64, 1363–1384.
155. Wang AZ, Gu F, Zhang L, Chan JM, Radovic-Moreno A, Shaikh MR and Farokhzad OC, *Expert Opin. Biol. Ther.*, 2008, 8, 1063–1070. [PubMed: 18613759]
156. Dehaini D, Fang RH and Zhang L, *Bioeng. Transl. Med.*, 2016, 1, 30–46. [PubMed: 29313005]
157. Fang RH, Jiang Y, Fang JC and Zhang L, *Biomaterials*, 2017, 128, 69–83. [PubMed: 28292726]
158. Hu CM, Fang RH and Zhang L, *Adv. Healthcare Mater.*, 2012, 1, 537–547.
159. Modery-Pawlowski CL, Tian LL, Pan V and Sen Gupta A, *Biomacromolecules*, 2013, 14, 939–948. [PubMed: 23452431]
160. Kapp TG, Rechenmacher F, Neubauer S, Maltsev OV, Cavalcanti-Adam EA, Zarka R, Reuning U, Notni J, Wester HJ, Mas-Moruno C, Spatz J, Geiger B and Kessler H, *Sci. Rep.*, 2017, 7, 39805. [PubMed: 28074920]
161. Zhang T, She Z, Huang Z, Li J, Luo X and Deng Y, *Asian J. Pharm. Sci. (Amsterdam, Neth.)*, 2014, 9, 75–81.
162. Fang RH, Kroll AV, Gao W and Zhang L, *Adv. Mater. (Weinheim, Ger.)*, 2018, 30, 1706759.
163. Hu CM, Zhang L, Aryal S, Cheung C, Fang RH and Zhang L, *Proc. Natl. Acad. Sci. U. S. A.*, 2011, 108, 10980–10985. [PubMed: 21690347]
164. Hu CM, Fang RH, Luk BT, Chen KN, Carpenter C, Gao W, Zhang K and Zhang L, *Nanoscale*, 2013, 5, 2664–2668. [PubMed: 23462967]
165. Luk BT, Fang RH, Hu CM, Copp JA, Thamphiwatana S, Dehaini D, Gao W, Zhang K, Li S and Zhang L, *Theranostics*, 2016, 6, 1004–1011. [PubMed: 27217833]
166. Piao JG, Wang LM, Gao F, You YZ, Xiong YJ and Yang LH, *ACS Nano*, 2014, 8, 10414–10425. [PubMed: 25286086]
167. Chai Z, Hu X, Wei X, Zhan C, Lu L, Jiang K, Su B, Ruan H, Ran D, Fang RH, Zhang L and Lu W, *J. Controlled Release*, 2017, 264, 102–111.
168. Fang RH, Hu CM, Chen KN, Luk BT, Carpenter CW, Gao W, Li S, Zhang DE, Lu W and Zhang L, *Nanoscale*, 2013, 5, 8884–8888. [PubMed: 23907698]
169. Fang RH, Luk BT, Hu CM and Zhang L, *Adv. Drug Delivery Rev.*, 2015, 90, 69–80.
170. Hu CM, Fang RH, Copp J, Luk BT and Zhang L, *Nat. Nanotechnol.*, 2013, 8, 336–340. [PubMed: 23584215]
171. Copp JA, Fang RH, Luk BT, Hu CMJ, Gao WW, Zhang K and Zhang LF, *Proc. Natl. Acad. Sci. U. S. A.*, 2014, 111, 13481–13486. [PubMed: 25197051]
172. Pang ZQ, Hu CMJ, Fang RH, Luk BT, Gao WW, Wang F, Chuluun E, Angsantikul P, Thamphiwatana S, Lu WY, Jiang XG and Zhang LF, *ACS Nano*, 2015, 9, 6450–6458. [PubMed: 26053868]
173. Wei XL, Zhang G, Ran DN, Krishnan N, Fang RH, Gao WW, Spector SA and Zhang LF, *Adv. Mater. (Weinheim, Ger.)*, 2018, 30, 1802233.
174. Thamphiwatana S, Angsantikul P, Escajadillo T, Zhang Q, Olson J, Luk BT, Zhang S, Fang RH, Gao W, Nizet V and Zhang L, *Proc. Natl. Acad. Sci. U. S. A.*, 2017, 114, 11488–11493. [PubMed: 29073076]
175. Zhang Q, Dehaini D, Zhang Y, Zhou J, Chen X, Zhang L, Fang RH, Gao W and Zhang L, *Nat. Nanotechnol.*, 2018, 13, 1182–1190. [PubMed: 30177807]
176. Wei XL, Gao J, Fang RH, Luk BT, Kroll AV, Dehaini D, Zhou JR, Kim HW, Gao WW, Lu WY and Zhang LF, *Biomaterials*, 2016, 111, 116–123. [PubMed: 27728811]
177. Wei X, Gao J, Wang F, Ying M, Angsantikul P, Kroll AV, Zhou J, Gao W, Lu W, Fang RH and Zhang L, *Adv. Mater. (Weinheim, Ger.)*, 2017, 29, 1701644.
178. Angsantikul P, Fang RH and Zhang LF, *Bioconjugate Chem.*, 2018, 29, 604–612.

179. Hu CM, Fang RH, Wang KC, Luk BT, Thamphiwatana S, Dehaini D, Nguyen P, Angsantikul P, Wen CH, Kroll AV, Carpenter C, Ramesh M, Qu V, Patel SH, Zhu J, Shi W, Hofman FM, Chen TC, Gao W, Zhang K, Chien S and Zhang L, *Nature*, 2015, 526, 118–121. [PubMed: 26374997]
180. Fang RH, Hu CM, Luk BT, Gao W, Copp JA, Tai Y, O'Connor DE and Zhang L, *Nano Lett*, 2014, 14, 2181–2188. [PubMed: 24673373]
181. Rao L, Bu LL, Cai B, Xu JH, Li A, Zhang WF, Sun ZJ, Guo SS, Liu W, Wang TH and Zhao XZ, *Adv. Mater. (Weinheim, Ger.)*, 2016, 28, 3460–3466.
182. Zhu JY, Zheng DW, Zhang MK, Yu WY, Qiu WX, Hu JJ, Feng J and Zhang XZ, *Nano Lett*, 2016, 16, 5895–5901. [PubMed: 27513184]
183. Hu Q, Sun W, Qian C, Wang C, Bomba HN and Gu Z, *Adv. Mater. (Weinheim, Ger.)*, 2015, 27, 7043–7050.
184. Xuan M, Shao J, Dai L, He Q and Li J, *Adv. Healthcare Mater*, 2015, 4, 1645–1652.
185. Gao C, Lin Z, Jurado-Sanchez B, Lin X, Wu Z and He Q, *Small*, 2016, 12, 4056–4062. [PubMed: 27337109]
186. Willoughby S, Holmes A and Loscalzo J, *Eur. J. Cardiovasc. Nurs*, 2002, 1, 273–288. [PubMed: 14622657]
187. Nording HM, Seizer P and Langer HF, *Front. Immunol*, 2015, 6, 98. [PubMed: 25798138]
188. Sanchez-Gaytan BL, Fay F, Lobatto ME, Tang J, Ouimet M, Kim Y, van der Staay SE, van Rijs SM, Priem B, Zhang L, Fisher EA, Moore KJ, Langer R, Fayad ZA and Mulder WJ, *Bioconjugate Chem*, 2015, 26, 443–451.
189. Robbins GP, Saunders RL, Haun JB, Rawson J, Therien MJ and Hammer DA, *Langmuir*, 2010, 26, 14089–14096. [PubMed: 20704280]
190. Martinez JO, Molinaro R, Hartman KA, Boada C, Sukhovshin R, De Rosa E, Kirui D, Zhang SR, Evangelopoulos M, Carter AM, Bibb JA, Cooke JP and Tasciotti E, *Theranostics*, 2018, 8, 1131–1145. [PubMed: 29464004]
191. Vankayala R, Corber SR, Mac JT, Rao MP, Shafie M and Anvari B, *Macromol. Biosci*, 2018, 18, 1700379.
192. Rao L, Bu LL, Meng QF, Cai B, Deng WW, Li A, Li KY, Guo SS, Zhang WF, Liu W, Sun ZJ and Zhao XZ, *Adv. Funct. Mater*, 2017, 27, 1604774.
193. Jin J, Liu T, Li M, Yuan C, Liu Y, Tang J, Feng Z, Zhou Y, Yang F and Gu N, *Colloids Surf., B*, 2018, 163, 385–393.
194. Li M, Liu Y, Chen J, Liu T, Gu Z, Zhang J, Gu X, Teng G, Yang F and Gu N, *Theranostics*, 2018, 8, 4870–4883. [PubMed: 30429874]
195. Wei X, Ying M, Dehaini D, Su Y, Kroll AV, Zhou J, Gao W, Fang RH, Chien S and Zhang L, *ACS Nano*, 2018, 12, 109–116. [PubMed: 29216423]
196. Ikeda Y, Handa M, Kawano K, Kamata T, Murata M, Araki Y, Anbo H, Kawai Y, Watanabe K, Itagaki I and et al., *J. Clin. Invest*, 1991, 87, 1234–1240. [PubMed: 2010539]
197. Nesbitt WS, Westein E, Tovar-Lopez FJ, Tolouei E, Mitchell A, Fu J, Carberry J, Fouras A and Jackson SP, *Nat. Med*, 2009, 15, 665–673. [PubMed: 19465929]
198. Ruggeri ZM, Orje JN, Habermann R, Federici AB and Reininger AJ, *Blood*, 2006, 108, 1903–1910. [PubMed: 16772609]
199. Korin N, Kanapathipillai M, Matthews BD, Crescente M, Brill A, Mammoto T, Ghosh K, Jurek S, Bencherif SA, Bhatta D, Coskun AU, Feldman CL, Wagner DD and Ingber DE, *Science*, 2012, 337, 738–742. [PubMed: 22767894]
200. Korin N, Kanapathipillai M and Ingber DE, *Isr. J. Chem*, 2013, 53, 610–615.
201. Chen C, Li S, Liu K, Ma G and Yan X, *Small*, 2016, 12, 4719–4725. [PubMed: 27043722]
202. Wen AM, Wang Y, Jiang K, Hsu GC, Gao H, Lee KL, Yang AC, Yu X, Simon DI and Steinmetz NF, *J. Mater. Chem. B*, 2015, 3, 6037–6045. [PubMed: 26509036]
203. Lee SY, Ferrari M and Decuzzi P, *Nanotechnology*, 2009, 20, 495101. [PubMed: 19904027]
204. Pitek AS, Wang Y, Gulati S, Gao H, Stewart PL, Simon DI and Steinmetz NF, *Mol. Pharmaceutics*, 2017, 14, 3815–3823.
205. Pitek AS, Park J, Wang Y, Gao H, Hu H, Simon DI and Steinmetz NF, *Nanoscale*, 2018, 10, 16547–16555. [PubMed: 30137088]

206. Kona S, Dong JF, Liu Y, Tan J and Nguyen KT, *Int. J. Pharm. (Amsterdam, Neth.)*, 2012, 423, 516–524.
207. Anselmo AC, Modery-Pawłowski CL, Menegatti S, Kumar S, Vogus DR, Tian LL, Chen M, Squires TM, Sen Gupta A and Mitragotri S, *ACS Nano*, 2014, 8, 11243–11253. [PubMed: 25318048]
208. Molinaro R, Corbo C, Martinez JO, Taraballi F, Evangelopoulos M, Minardi S, Yazdi IK, Zhao P, De Rosa E, Sherman MB, De Vita A, Toledano Furman NE, Wang X, Parodi A and Tasciotti E, *Nat. Mater.*, 2016, 15, 1037–1046. [PubMed: 27213956]
209. Tang J, Su T, Huang K, Dinh PU, Wang Z, Vandergriff A, Hensley MT, Cores J, Allen T, Li T, Sproul E, Mihalko E, Lobo LJ, Ruterbories L, Lynch A, Brown A, Caranasos TG, Shen D, Stouffer GA, Gu Z, Zhang J and Cheng K, *Nat. Biomed. Eng.*, 2018, 2, 17–26. [PubMed: 29862136]
210. Farokhzad OC, *Nature*, 2015, 526, 47–48. [PubMed: 26375011]
211. Yang T, Ding X, Dong L, Hong C, Ye J, Xiao Y, Wang X and Xin H, *ACS Biomater. Sci. Eng.*, 2018, 4, 4219–4224.
212. Wang B, Chen G, Urabe G, Xie R, Wang Y, Shi X, Guo LW, Gong S and Kent KC, *Biomaterials*, 2018, 178, 293–301. [PubMed: 29958152]
213. Song Y, Huang Z, Liu X, Pang Z, Chen J, Yang H, Zhang N, Cao Z, Liu M, Cao J, Li C, Yang X, Gong H, Qian J and Ge J, *Nanomedicine (N. Y., NY, U. S.)*, 2019, 15, 13–24.
214. Su T, Huang K, Ma H, Liang H, Dinh P-U, Chen J, Shen D, Allen TA, Qiao L, Li Z, Hu S, Cores J, Frame BN, Young AT, Yin Q, Liu J, Qian L, Caranasos TG, Brudno Y, Ligler FS and Cheng K, *Adv. Funct. Mater.*, 2019, 29, 1803567.
215. Hu Q, Qian C, Sun W, Wang J, Chen Z, Bomba HN, Xin H, Shen Q and Gu Z, *Adv. Mater. (Weinheim, Ger.)*, 2016, 28, 9573–9580.
216. Lv W, Xu J, Wang X, Li X, Xu Q and Xin H, *ACS Nano*, 2018, 12, 5417–5426. [PubMed: 29869497]
217. Parodi A, Quattrocchi N, van de Ven AL, Chiappini C, Evangelopoulos M, Martinez JO, Brown BS, Khaled SZ, Yazdi IK, Enzo MV, Isenhardt L, Ferrari M and Tasciotti E, *Nat. Nanotechnol.*, 2013, 8, 61–68. [PubMed: 23241654]
218. Bose RJ, Kim BJ, Arai Y, Han IB, Moon JJ, Paulmurugan R, Park H and Lee SH, *Biomaterials*, 2018, 185, 360–370. [PubMed: 30273835]
219. Dehaini D, Wei X, Fang RH, Masson S, Angsantikul P, Luk BT, Zhang Y, Ying M, Jiang Y, Kroll AV, Gao W and Zhang L, *Adv. Mater. (Weinheim, Ger.)*, 2017, 29, 1606209.
220. Kim CS, Duncan B, Creran B and Rotello VM, *Nano Today*, 2013, 8, 439–447. [PubMed: 24159362]
221. Nouraei N and Mowla SJ, *Front. Genet.*, 2015, 6, 232. [PubMed: 26175755]

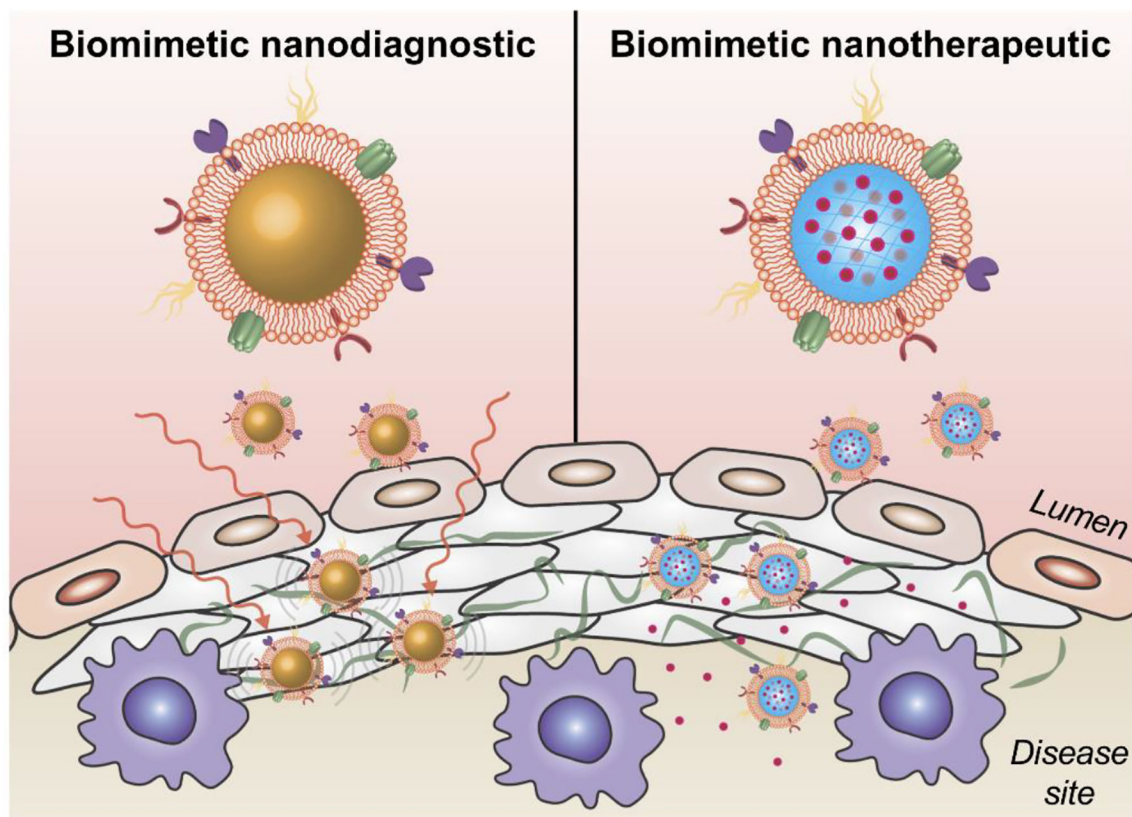


Figure 1. Biomimetic nanotechnology for cardiovascular disease (CVD) management. Nanoparticle delivery platforms designed based on biomimetic principles can more readily be targeted to disease sites within the cardiovascular system. When combined with the advantages of traditional nanodelivery systems, the enhanced localization of imaging and drug payloads afforded by biomimetic nanotechnology can ultimately enable the development of more effective diagnostic and therapeutic modalities for CVD, respectively.

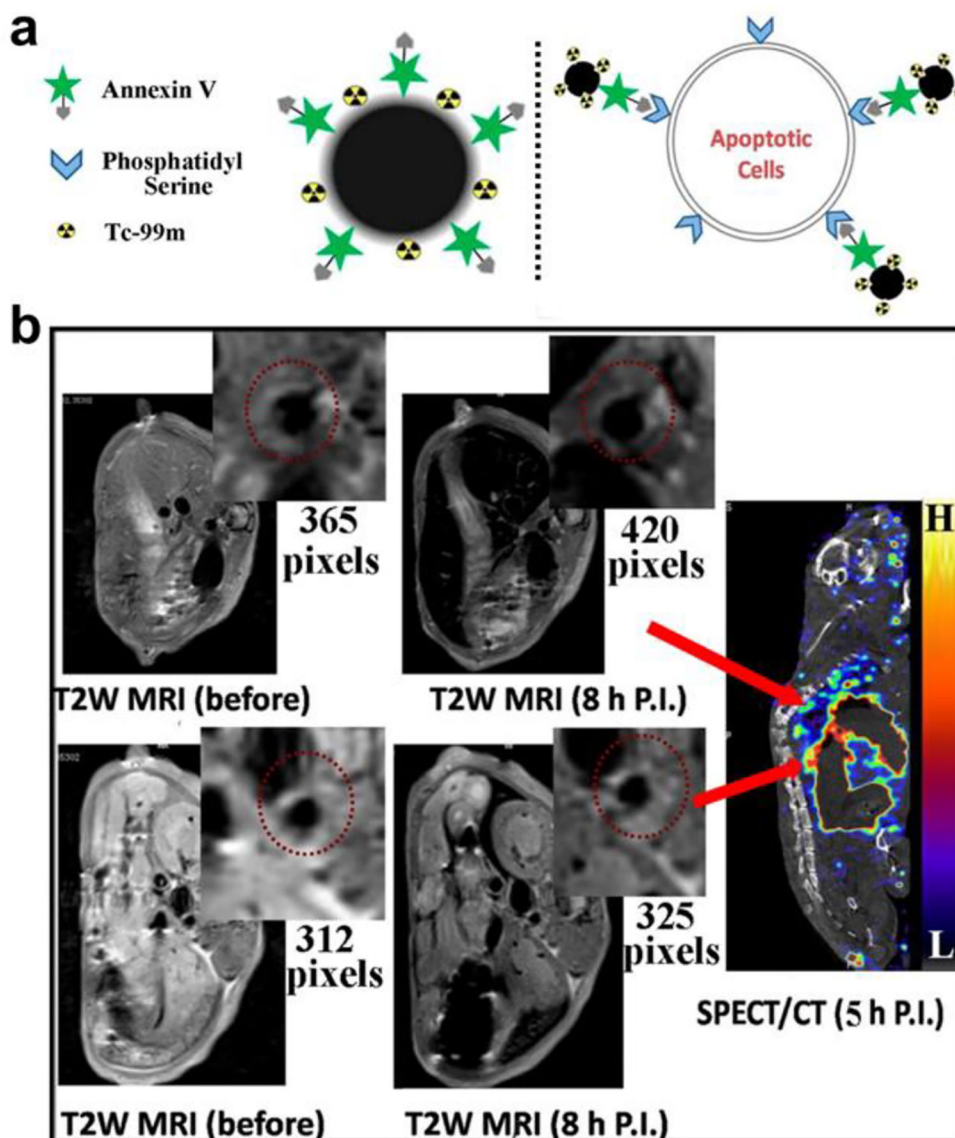


Figure 2. Nanoparticle-based diagnostic for CVD. (a) An ultrasmall iron oxide nanoparticle functionalized with a ^{99m}Tc label and annexin V can target apoptotic cells at the site of atherosclerosis, which present phosphatidylserine on their surfaces, for dual-modality imaging. (b) When the nanoimaging agent was administered into mice with atherosclerosis, plaques could readily be detected by both MRI and SPECT. Adapted with permission.¹²⁵ Copyright 2015, American Chemical Society.

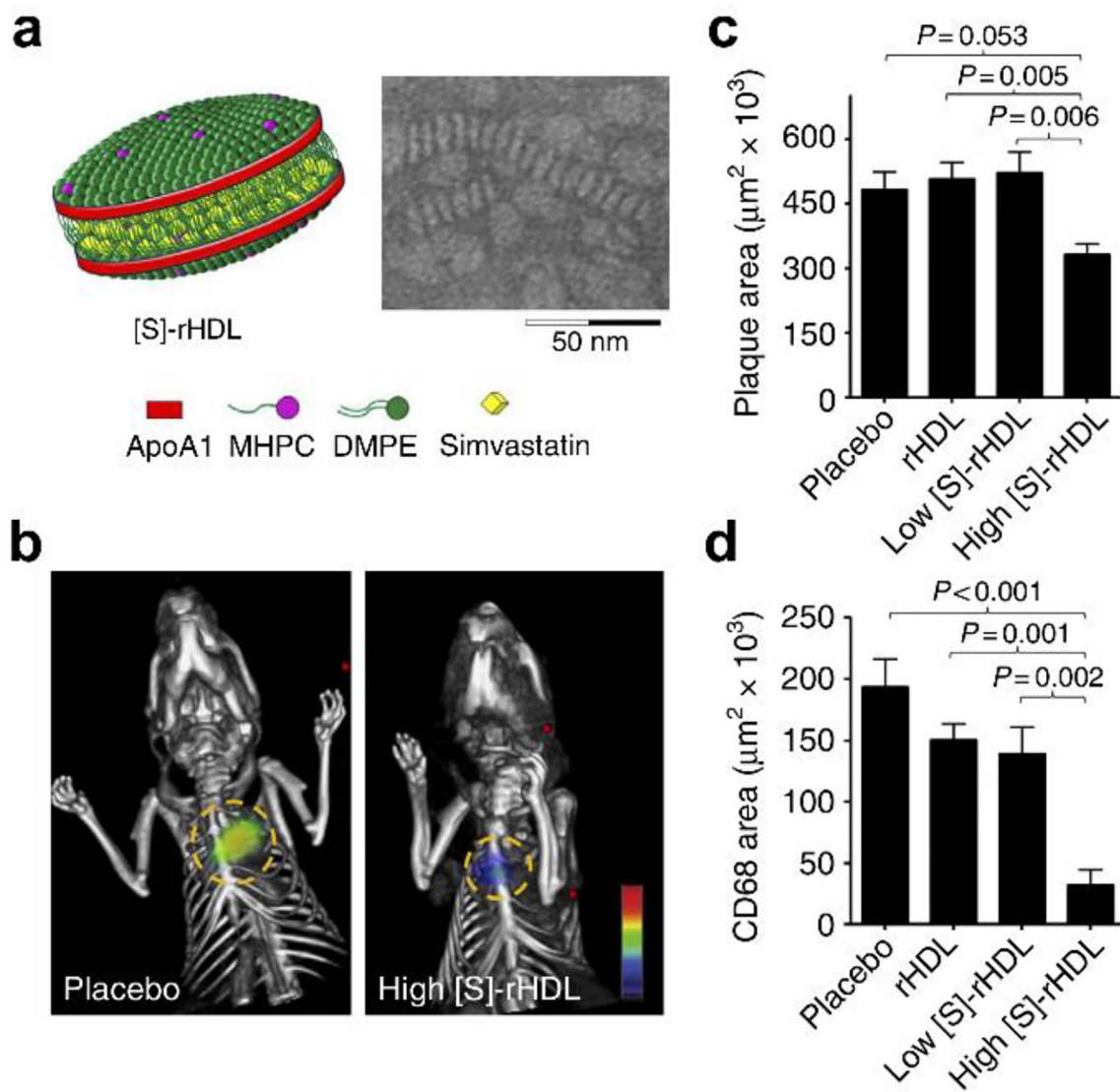


Figure 3. Nanoparticle-based therapeutic for CVD. (a) Schematic representation of a reconstituted high-density lipoprotein (HDL) nanoparticle loaded with simvastatin ([S]-rHDL), along with an accompanying transmission electron micrograph. (b) Fluorescence molecular tomography/CT imaging of protease activity demonstrated that atherosclerotic mice treated with a high dose of [S]-rHDL had significantly reduced inflammation levels. (c,d) Quantification of mean plaque area (c) and plaque macrophage content (d) demonstrated the benefits of treatment with [S]-rHDL. Adapted with permission.¹³⁶ Copyright 2014, Springer Nature.

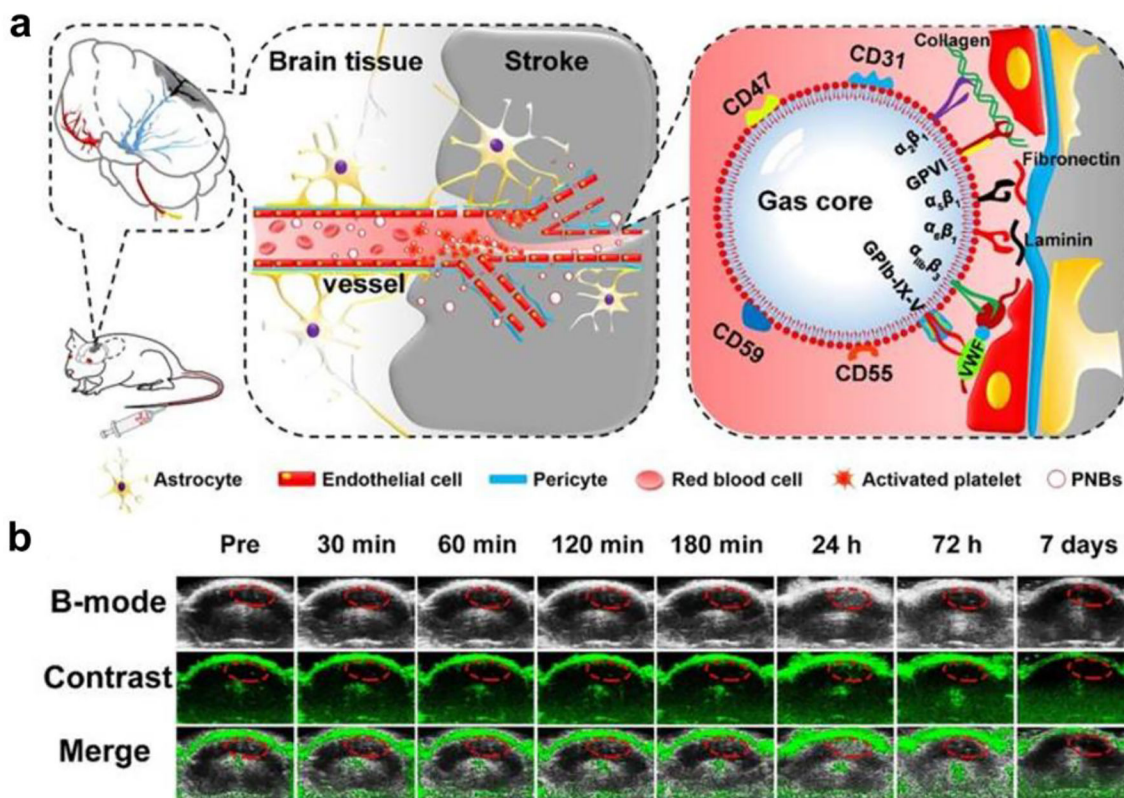


Figure 4. Biomimetic nanoparticle-based diagnostic for CVD. (a) Platelet-functionalized nanobubbles (PNBs) can be used to target stroke lesions via a number of natural biological interactions for imaging purposes. (b) Real-time contrast-enhanced ultrasound imaging in mice administered with the PNB formulation could be used to identify the region of a stroke. Adapted with permission.¹⁹⁴ Copyright 2018, Ivyspring International Publisher.

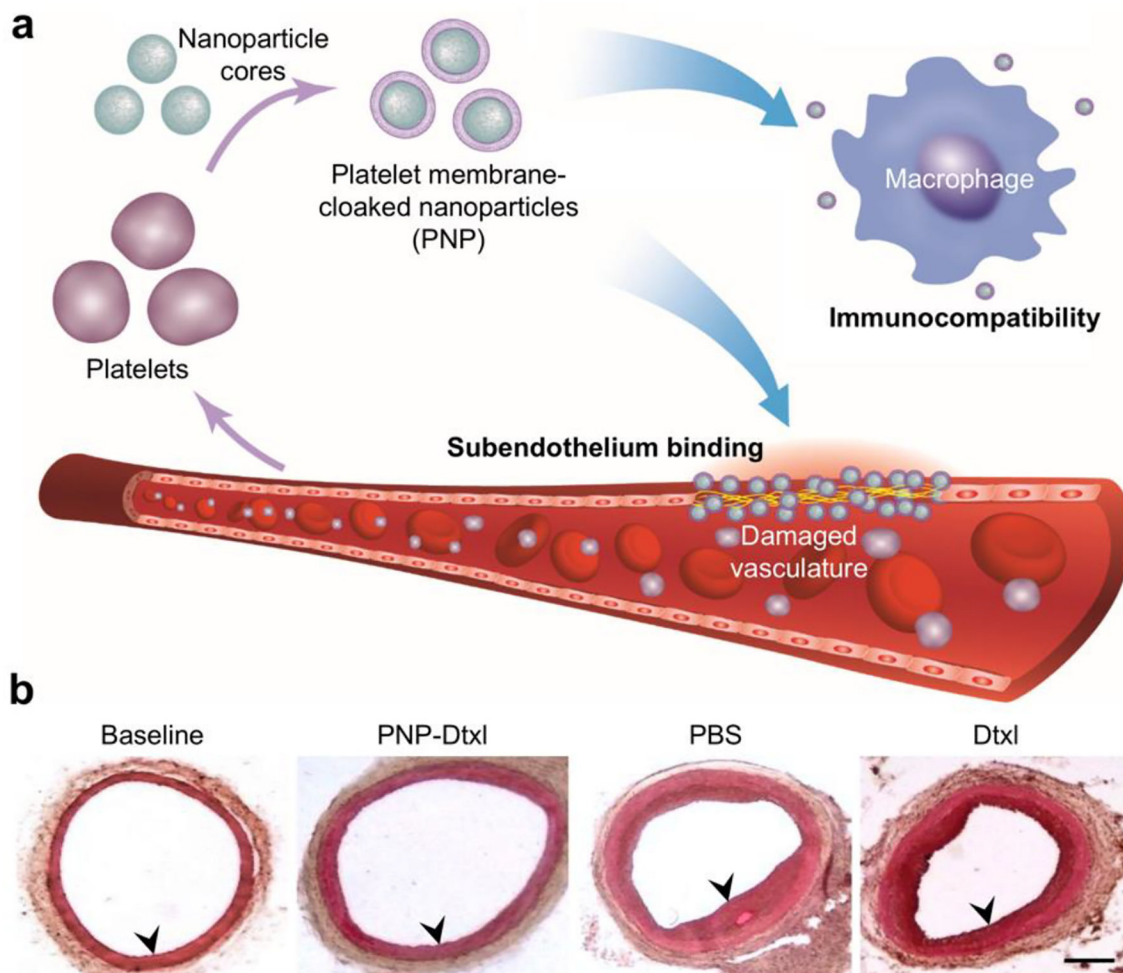


Figure 5. Biomimetic nanoparticle-based therapeutic for CVD. (a) Platelet membrane-coated nanoparticles (PNPs) take on many of the properties of whole platelets, including their immunocompatibility and ability to bind to damaged vasculature. (b) When used to treat rats in a coronary restenosis model, PNPs loaded with docetaxel (Dtxl) had a profound impact on the neointimal growth within the affected vessels. Adapted with permission.¹⁷⁹ Copyright 2015, Springer Nature.

Table 1.

Biomimetic approaches for the design of CVD nanomedicine.

Design approach	Description	Representative example(s)
Single-ligand modification	Nanoparticles modified with biomimetic functionality through the inclusion of naturally occurring biomolecules.	<ul style="list-style-type: none"> • PLGA nanoparticle with an HDL shell.¹⁸⁸ • Sialyl Lewis X-conjugated polymersome.¹⁸⁹ • Glycocalicin-conjugated PLGA nanoparticle.²⁰⁶
Natural carrier	Naturally existing nanostructures or their derivatives.	<ul style="list-style-type: none"> • Tobacco mosaic virus.²⁰² • RBC membrane vesicle.¹⁹¹
Synthetic/natural hybrid	Naturally occurring nanomaterials are combined with synthetic materials into a single hybrid nanostructure.	<ul style="list-style-type: none"> • Platelet membrane-coated nanoparticle.^{179, 211–213} • RBC membrane-coated nanoparticle.^{191, 216} • Leukocyte-like liposome.^{190, 208}
Modified live cell	Live cells modified with natural nanomaterials to provide enhanced functionality.	<ul style="list-style-type: none"> • Stem cell modified with platelet-derived nanovesicles.²⁰⁹
Stress-sensitivity	Nanoparticles designed to respond to physical cues such as shear stress.	<ul style="list-style-type: none"> • PLGA nanoparticle microaggregate.^{199, 200} • Nanoparticle-adsorbed carrier RBC.²⁰¹