

UCLA

UCLA Previously Published Works

Title

Primary, Adaptive, and Acquired Resistance to Cancer Immunotherapy

Permalink

<https://escholarship.org/uc/item/5st231s3>

Journal

Cell, 168(4)

ISSN

0092-8674

Authors

Sharma, Padmanee
Hu-Lieskovan, Siwen
Wargo, Jennifer A
et al.

Publication Date

2017-02-01

DOI

10.1016/j.cell.2017.01.017

Peer reviewed

Primary, Adaptive, and Acquired Resistance to Cancer Immunotherapy

Padmanee Sharma,^{1,*} Siwen Hu-Lieskovan,² Jennifer A. Wargo,³ and Antoni Ribas^{2,*}

¹Department of Genitourinary Medical Oncology and Immunology, The University of Texas MD Anderson Cancer Center, Houston, TX 77030, USA

²Department of Medicine, Division of Hematology-Oncology, University of California, Los Angeles and the Jonsson Comprehensive Cancer Center, Los Angeles, CA 90095, USA

³Department of Melanoma Medical Oncology, The University of Texas MD Anderson Cancer Center, Houston, TX 77030, USA

*Correspondence: padsharma@mdanderson.org (P.S.), aribas@mednet.ucla.edu (A.R.)

<http://dx.doi.org/10.1016/j.cell.2017.01.017>

SUMMARY

Cancer immunotherapy can induce long lasting responses in patients with metastatic cancers of a wide range of histologies. Broadening the clinical applicability of these treatments requires an improved understanding of the mechanisms limiting cancer immunotherapy. The interactions between the immune system and cancer cells are continuous, dynamic, and evolving from the initial establishment of a cancer cell to the development of metastatic disease, which is dependent on immune evasion. As the molecular mechanisms of resistance to immunotherapy are elucidated, actionable strategies to prevent or treat them may be derived to improve clinical outcomes for patients.

Introduction

Metastatic cancers remain an incurable disease for the great majority of patients, as the intrinsic genomic instability common to all cancers facilitates the escape from cytotoxic or targeted therapies. The recent breakthroughs in the understanding of tumor immune biology and the development of newer generation of cancer immunotherapies have opened a brand new chapter in the war against cancer. This change in landscape is based on the discovery of cancer immune checkpoints and the success of checkpoint inhibitors, as well as the advances in technology to generate genetically modified immune cells (Miller and Sadelain, 2015). The focus of treatment has shifted from the tumor itself to the host's immune system, to mobilize immune cells to recognize and eventually eliminate the cancer cells. A hallmark of immunotherapy is the durability of responses, most likely due to the memory of the adaptive immune system, which translates into long-term survival for a subset of patients.

Early efforts to harness the immune system in cancer control, pioneered by Dr. William B. Coley in the 1890s (Coley, 1910), were overlooked due to the lack of consistency in response and were soon overwhelmed by the development of more effective treatments such as radiotherapy and chemotherapy. However, investigations continued to unravel and elucidate the interactions between the immune system and cancer cells. The concept of cancer immunosurveillance, which was proposed by Paul Ehrlich (Ehrlich, 1956) and enriched by Burnet and Thomas (Burnet, 1971) in the 1950s, stated that the emergence of malignant cells is a frequent event but is suppressed by the host's natural immunity, that cancer develops when this immunity is weakened, and that lymphocytes are responsible for this process. Finally, the cancer immune-editing concept was eluci-

dated by Schreiber and colleagues in 2002 (Dunn et al., 2002), recognizing a dual role of the host's immunity, both as an extrinsic tumor suppressor and a facilitator of tumor growth and progression, acting across three sequential phases—elimination, equilibrium and escape—through constant interactions between tumor cells, immune cells, and the tumor microenvironment. Importantly, host immune responses and tumor genomics are tightly related, as illustrated by the notion that neoantigens arising from genomic mutations may shape immune responses (Schumacher and Schreiber, 2015); however, these responses may prove ineffective against a heterogeneous and evolving tumor microenvironment.

The process of T cell activation involves antigen presentation by the major histocompatibility complex (MHC) molecules on the antigen-presenting cells (APCs) to the corresponding T cell receptor (TCR) on naive T cells. The interaction of costimulatory molecules CD28 and B7 is required for full activation, which is tightly regulated by inhibitory checkpoints to avoid collateral damage and autoimmunity. The CTLA-4 receptor on activated effector T cells and regulatory T cells (Tregs) was discovered in the 1980s (Brunet et al., 1987). Seminal work by James Allison and colleagues showed that CTLA-4 competes with CD28 for B7 ligands and inhibits proliferation and IL-2 secretion by T cells (Krummel and Allison, 1995) and that CTLA-4 blocking antibodies could treat tumors in immune competent animal models (Leach et al., 1996). Subsequent clinical testing resulted in the approval of ipilimumab for treatment of advanced melanoma in 2011, the first in class CTLA-4 checkpoint inhibitor approved by the US Food and Drug Administration (FDA) (Hodi et al., 2010; Robert et al., 2011). Pooled data from clinical trials of ipilimumab confirmed durable clinical responses, depicted by a plateau in the survival curve beginning around year 3, that lasted

Table 1. Terminology for Different Resistance Mechanisms to Immunotherapy

Term	Description
primary resistance	A clinical scenario where a cancer does not respond to an immunotherapy strategy. The mechanistic basis of lack of response to immunotherapy may include adaptive immune resistance.
adaptive immune resistance	A mechanism of resistance where a cancer is recognized by the immune system but it protects itself by adapting to the immune attack. Given the evolving nature of the immune/cancer cell interaction, this could clinically manifest as primary resistance, mixed responses or acquired resistance.
acquired resistance	A clinical scenario in which a cancer initially responded to immunotherapy but after a period of time it relapsed and progressed.

10 years or more in a subset of approximately 21% of patients (Schadendorf et al., 2015). In 2015, ipilimumab was also approved by the FDA as adjuvant therapy for locally advanced melanoma. Due to enhanced immune responses, possibly during early stages of T cell activation, significant immune-related toxicities have been observed, but most can be managed by systemic steroid therapy.

Another checkpoint receptor expressed by activated T cells, programmed death 1 (PD-1), was cloned in 1992 (Ishida et al., 1992), and subsequently its ligand PD-L1 was characterized (Dong et al., 1999; Freeman et al., 2000). PD-L1 expression can be constitutive or induced in many tumors to evade immune attack. Since PD-L1 expression can be induced by IFN γ , which is expressed during an active anti-tumor immune response, it has been referred to as a mechanism of adaptive immune resistance (Table 1). Antibodies blocking the PD-1 and PD-L1 inhibitory axis can unleash activated tumor-reactive T cells and have been shown in clinical trials to induce durable anti-tumor responses in increasing numbers of tumor histologies, including the tumor types that are not traditionally considered immunotherapy sensitive (Okazaki et al., 2013; Zou et al., 2016). This led to the approval of two anti-PD1 antibodies (pembrolizumab and nivolumab) and one anti-PD-L1 antibody (atezolimumab) for the treatment of advanced melanoma, non-small-cell lung cancer, renal cell carcinoma, head and neck squamous carcinoma, Hodgkin's lymphoma, and bladder cancer. Currently there are over ten anti-PD-1 and anti-PD-L1 antibodies in various stages of clinical testing in many different tumor types. Interestingly, there have been thousands of patients receiving PD-1 blockade therapy thus far, with similar immune related toxicities as observed for anti-CTLA-4 but with generally lower frequency, possibly because the PD-1 and PD-L1 checkpoint may act later in the T cell response, resulting in a more restricted T cell reactivity toward tumor cells, with the majority of patients tolerating treatment well (Larkin et al., 2015b). Due to the non-overlapping mechanism of action of anti-CTLA4 and anti-PD1 antibodies (Das et al., 2015; Gubin et al., 2014), clinical testing of the combination of these two classes of checkpoint inhibitors showed improved clinical response (up to 60%) in melanoma at the expense of significantly increased frequency of toxicities (Larkin et al., 2015a). The combination of CTLA4 and PD-1 and PD-L1 checkpoint blockade has been approved as front line therapy for advanced melanoma patients and is being tested in other tumor types with different dose levels and intervals of anti-CTLA4 to reduce toxicity.

Cell-based immunotherapy was pioneered by many investigators, including Alex Fefer, Phil Greenberg, Zelig Eshhar, Steven

Rosenberg, and colleagues in the 1980s, inspired by the correlation of the number of tumor infiltrating lymphocytes (TILs) and survival in some cancers. This process required TILs to be isolated from the patient's surgical specimen, expanded in vitro, and re-infused back to the lymphocyte-depleted patient. In these studies, sufficient TILs could not be isolated or expanded from tumors of approximately 50%–60% of patients, which limited the number of patients who could be treated. For patients who could be treated with the expanded TILs, the reported response rate was 50% for melanoma, including 20% complete responses, and 95% of these complete responders had more than 5 years of survival (Rosenberg et al., 2011). This approach, however, requires large surgical samples, experienced academic centers, and tumors enriched with anti-tumor T cells, which is a rare event for most tumor types. The recent advance of gene transfer technologies and T cell engineering has enabled more versatile approaches, including adoptive cell transfer (ACT) of the patient's peripheral T cells that are genetically modified to target cancer specific antigens, via physiological TCRs or chimeric antigen receptors (CARs) (Sadelain, 2016; Yang and Rosenberg, 2016). TCRs are usually cloned from TILs that are reactive to specific cancer antigens with no or very limited expression in normal adult tissue but are widely expressed by cancer cells. Such TCRs recognize tumor antigen presented in the context of the MHC. Clinical success has been documented (Yee et al., 2015). The TCR approach allows intracellular antigen targets but is MHC restricted and can be subject to treatment failure for tumors that have downregulated their MHC surface expression. CAR technology was first developed by Eshhar et al., 1993, who genetically engineered T cells with chimeric genes, linking single chain antibodies (scFv) targeting tumor cell surface antigens to intracellular signaling adaptors for TCR: in the first generation, to the T cell specific activating ζ chain of the CD3 complex. Subsequent modification with co-stimulatory molecules CD28 (second generation) and 4-1BB (third generation) has enabled the expansion of T cells while retaining function upon repeated antigen exposure. CAR T cells do not require MHC restriction and can be engineered to enhance T cell function. Recent clinical success with CD19 targeting CAR to treat CD19+ B cell malignancy has shown great success, with a remarkable 90% complete remission in a cohort of 30 patients with relapsed or refractory pediatric acute lymphoblastic leukemia (ALL), and two thirds of these patients remained in remission after 6 months (Maude et al., 2014). The biggest challenge facing the field of ACT is the identification of target tumor antigens that are not expressed by normal tissues, both to maximize specificity and efficacy and to minimize toxicity (Fesnak

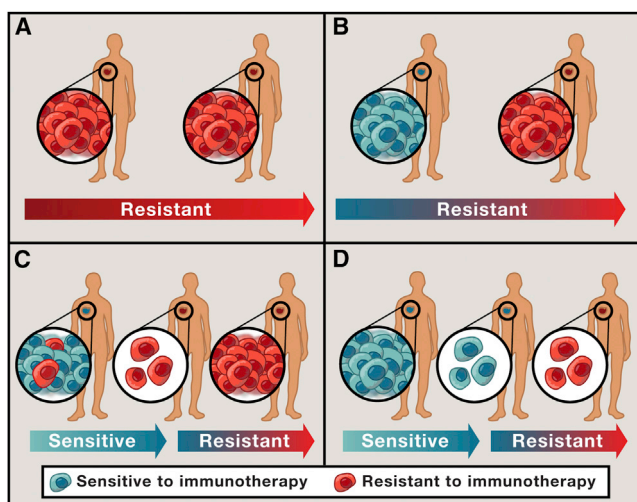


Figure 1. Clinical Scenarios of Primary, Adaptive, and Acquired Resistance to Immunotherapy

- (A) Patient's tumor is resistant to immunotherapy with no active immune response.
 (B) Patient's tumor is resistant to immunotherapy; active anti-tumor immune response, but turned off by checkpoints or other adaptive resistance mechanisms.
 (C) Patient has an initial response to immunotherapy but later progressed; heterogeneous population and selection of resistant clones that were present before treatment started.
 (D) Patient has an initial response to immunotherapy but later progressed; true acquired resistance during the immunotherapy.

et al., 2016). A commonly seen toxicity in ACT therapy is cytokine release syndrome, which can be life-threatening and requires prompt management with steroids and IL-6 receptor antibody (tocilizumab).

Despite the unprecedented durable response rates observed with cancer immunotherapies, the majority of patients do not benefit from the treatment (primary resistance), and some responders relapse after a period of response (acquired resistance). Several common cancer types have shown very low frequency of response (breast, prostate, and colon cancers), and heterogeneous responses have been seen even between distinct tumors within the same patient (Figure 1). For the purposes of this review, we have categorized primary, adaptive, and acquired resistance as described in Table 1, in keeping with the most typical conceptualization for practicing clinicians. However, in considering resistance mechanisms to immune-based therapies, it is important to remember that the immune response is dynamic and constantly evolving in each patient, either as a result of the patient's own environmental and genetic factors or as a result of treatment interventions, including surgery, chemotherapy, radiation therapy, and immunotherapy. Anti-tumor immune responses that are ongoing throughout the course of a patient's disease may be affected by many of these factors, and the establishment of resistance mechanisms relevant to immunotherapeutic failure may pre-date immunotherapy challenge. Without recourse to detailed immune and tumor characterization, these resistance mechanisms can be divided, clinically, into those that prevent a patient from ever responding

Table 2. Mechanisms of Primary and Adaptive Resistance to Immunotherapy

	Mechanism	Examples
tumor cell intrinsic	absence of antigenic proteins	low mutational burden lack of viral antigens lack of cancer-testis antigens overlapping surface proteins
	absence of antigen presentation	deletion in TAP deletion in B2M silenced HLA
	genetic T cell exclusion	MAPK oncogenic signaling stabilized b-catenin mesenchymal transcriptome oncogenic PD-L1 expression
	insensitivity to T cells	mutations in interferon gamma pathway signaling
tumor cell extrinsic	absence of T cells	lack of T cells with tumor antigen-specific TCRs
	inhibitory immune checkpoints	VISTA, LAG-3, TIM-3
	immunosuppressive cells	TAMs, Tregs

to an immunotherapy or those that facilitate relapse after an initial response. Thus, although resistance to immunotherapies may manifest at different times, in many cases, similar or overlapping mechanisms enable tumor cells to evade anti-tumor immune responses. We discuss known resistance mechanisms and provide rationale for combination therapies to overcome resistance.

Primary and Adaptive Resistance to Immunotherapy

Patients who have primary resistance to checkpoint inhibitors do not respond to the initial therapy. Ongoing studies indicate that both tumor-cell-intrinsic and tumor-cell-extrinsic factors contribute to the resistance mechanisms (Table 2). The most straightforward reason why a tumor would not respond to immune checkpoint therapy or ACT is lack of recognition by T cells because of absence of tumor antigens (Gubin et al., 2014). Alternatively, cancer cells may have tumor antigens but develop mechanisms to avoid presenting them on the surface restricted by MHC, due to alterations in the antigen-presenting machinery (such as proteasome subunits or transporters associated with antigen processing), beta-2-microglobulin (B2M), or MHC itself (Marincola et al., 2000; Sucker et al., 2014). B2M is required for HLA class I folding and transport to the cell surface, and its genetic deficiency leads to lack of CD8 T cell recognition (Figures 2 and 3).

Tumor-Cell-Intrinsic Factors for Primary and Adaptive Resistance

Tumor-cell-intrinsic factors that contribute to immunotherapy resistance include expression or repression of certain genes and pathways in tumor cells that prevent immune cell infiltration or function within the tumor microenvironment. These mechanisms may exist at the time of initial presentation, highlighting primary resistance mechanisms, or these mechanisms may

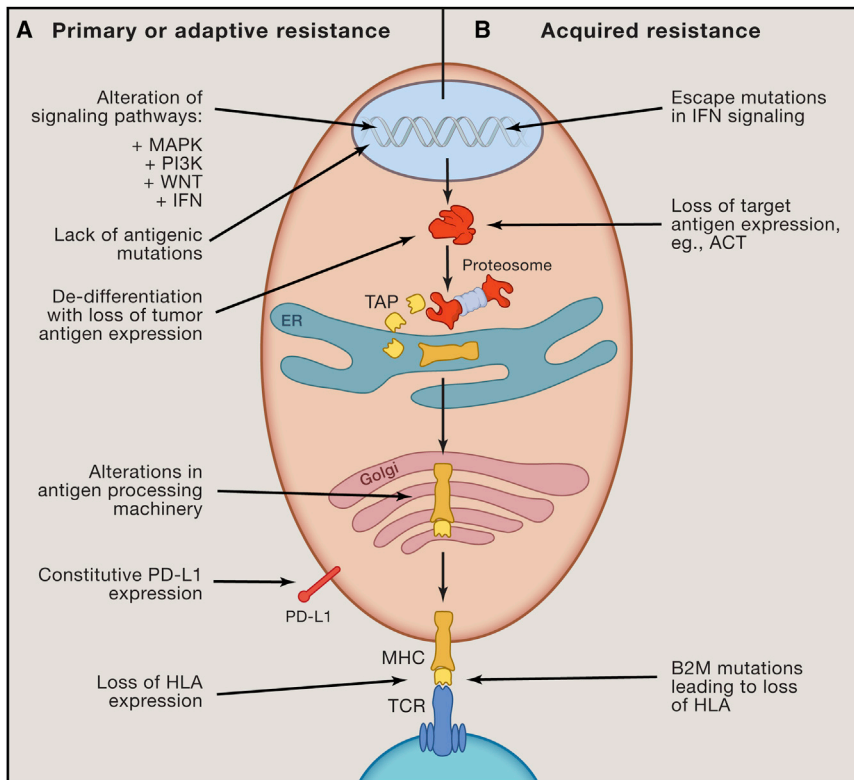


Figure 2. Known Intrinsic Mechanisms of Resistance to Immunotherapy

(A) Intrinsic factors that lead to primary or adaptive resistance including lack of antigenic mutations, loss of tumor antigen expression, loss of HLA expression, alterations in antigen processing machinery, alterations of several signaling pathways (MAPK, PI3K, WNT, IFN), and constitutive PD-L1 expression.

(B) Intrinsic factors that are associated with acquired resistance of cancer, including loss of target antigen, HLA, and altered interferon signaling, as well as loss of T cell functionality.

that attracts CD103⁺ DCs. In addition, murine tumors lacking β -catenin responded effectively to immune checkpoint therapy whereas β -catenin-positive tumors did not. Non-T-cell-inflamed human melanoma tumors, which lacked T cells and CD103⁺ DCs in the tumor microenvironment, had significantly higher expression of tumor intrinsic β -catenin signaling genes.

Cancer cells that constitutively express immunosuppressive cell surface ligands like PD-L1 may actively inhibit anti-tumor T cell responses. A genetic amplification of a locus in chromosome 9 that contains the genes for the two ligands of PD-1 (PD-L1 and PD-L2) and the interferon gamma

receptor signaling molecule Janus kinase 2 (JAK2) is termed the PDJ amplicon (Ansell et al., 2015; Green et al., 2010; Rooney et al., 2015). PDJ is amplified in the malignant Reed-Sternberg cells in Hodgkin's disease, and anti-PD-1 therapy results in objective responses in over 80% of patients with chemotherapy-refractory Hodgkin's disease (Ansell et al., 2015). Other mechanisms that have been described as leading to constitutive PD-L1 expression by cancer cells include PTEN deletions or PI3K and/or AKT mutations (Lastwika et al., 2016; Parsa et al., 2007), EGFR mutations (Akbay et al., 2013), MYC overexpression (Casey et al., 2016), CDK5 disruption (Dorand et al., 2016), and an increase in PD-L1 transcripts stabilized by truncation of the 3' UTR of this gene (Kataoka et al., 2016). It is currently unclear whether constitutive PD-L1 expression resulting from these oncogenic signaling processes results in decreased or increased likelihood of responding to anti-PD-1 and PD-L1 therapy, but it may indeed result in lack of response to other cancer immunotherapy strategies by actively inhibiting anti-tumor T cells.

The potential of oncogenic signaling pathways to induce T cell exclusion from cancers has also been described through the stabilization of β -catenin resulting in constitutive WNT signaling (Spranger et al., 2015). In a murine model, tumors with elevated β -catenin lacked a subset of dendritic cells (DCs) known as CD103⁺ DCs, due to decreased expression of CCL4, a chemokine

evolve later, highlighting adaptive resistance mechanisms. Multiple tumor-intrinsic mechanisms have recently been identified and include (1) signaling through the mitogen-activated protein kinase (MAPK) pathway and/or loss of PTEN expression, which enhances PI3K signaling, (2) expression of the WNT/ β -catenin signaling pathway, (3) loss of interferon-gamma (IFN γ) signaling pathways, and (4) lack of T cell responses as result of loss of tumor antigen expression.

Oncogenic signaling through the MAPK pathway results in the production of VEGF and IL-8, among many other secreted proteins, which have known inhibitory effects on T cell recruitment and function (Liu et al., 2013). Similarly, loss of PTEN, which enhances PI3K signaling and is a common phenomenon across several cancers, including 30% of melanomas, was found to be associated with resistance to immune checkpoint therapy (Peng et al., 2016). PTEN loss in tumors of the Cancer Genome Atlas (TCGA) melanoma dataset correlated with significantly decreased gene expression of IFN γ , granzyme B, and CD8⁺ T cell infiltration; importantly, the frequency of PTEN deletions and mutations was higher in non-T-cell-inflamed tumors as compared to T-cell-inflamed tumors. In a murine model, PTEN-knockout tumors were less susceptible to adoptive cell therapy than PTEN-expressing tumors.

The interferon-gamma pathway is emerging as a key player in primary, adaptive, and acquired resistance to checkpoint blockade therapy (Gao et al., 2016; Pardoll, 2012; Ribas, 2015; Shin et al., 2016; Zaretsky et al., 2016). It has both favorable and detrimental effects on anti-tumor immune responses. Interferon-gamma produced by tumor-specific T cells that have recognized their cognate antigen on cancer cells or APCs induces an effective anti-tumor immune response through (1) enhanced tumor antigen presentation that occurs as a result of increased expression of proteins, such as MHC molecules, involved in antigen presentation, (2) recruitment of other immune

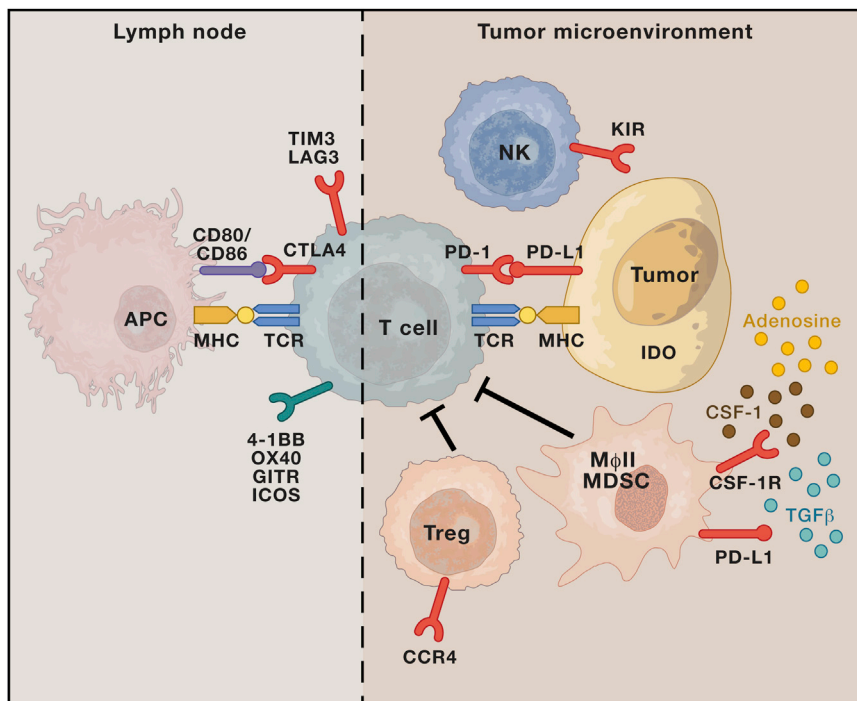


Figure 3. Known Extrinsic Mechanisms of Resistance to Immunotherapy

This includes CTLA-4, PD1, and other immune checkpoints, T cell exhaustion and phenotype change, immune suppressive cell populations (Tregs, MDSC, type II macrophages), and cytokine and metabolite release in the tumor microenvironment (CSF-1, tryptophan metabolites, TGF- β , adenosine). Abbreviations are as follows: APC, antigen-presenting cells; MHC, major histocompatibility complex; TCR, T cell receptor; Treg, regulatory T cell; MDSC, myeloid-derived suppressor cell; M ϕ II, type II macrophage.

who did not respond to anti-PD-1 therapy, termed innate anti-PD-1 resistance signature, or IPRES (Hugo et al., 2016). These genes that lead to lack of response are related to mesenchymal transformation, stemness, and wound healing and are preferentially expressed by cancers that seldom respond to PD-1 blockade therapy, such as pancreatic cancer.

Epigenetic modification of the DNA in cancer cells may lead to changes in gene expression of immune-related genes, which can impact antigen processing,

cells, and (3) direct anti-proliferative and pro-apoptotic effects on tumor cells (Platanias, 2005). But continuous interferon-gamma exposure can lead to immunoediting of cancer cells, resulting in immune escape (Benci et al., 2016; Shankaran et al., 2001). One mechanism by which cancer cells could escape the effects of interferon gamma is by downregulating or mutating molecules involved in the interferon gamma signaling pathway, which goes through the interferon gamma receptor chains JAK1 and/or JAK2 and the signal transducer and activators of transcription (STATs) (Darnell et al., 1994). In cell line and animal models, mutations or epigenetic silencing of molecules in the interferon receptor signaling pathway results in loss of the anti-tumor effects of interferon gamma (Dunn et al., 2005; Kaplan et al., 1998). Analysis of tumors in patients who did not respond to therapy with the anti-CTLA-4 antibody ipilimumab revealed an enriched frequency of mutations in the interferon gamma pathway genes interferon gamma receptor 1 and 2 (IFNGR1 and IFNGR2), JAK2, and interferon regulatory factor 1 (IRF1) (Gao et al., 2016). Any of these mutations would prevent signaling in response to interferon gamma and give an advantage to the tumor cells escaping from T cells, thereby resulting in primary resistance to anti-CTLA-4 therapy. Mutations in this pathway would additionally result in lack of PD-L1 expression upon interferon gamma exposure, thereby resulting in cancer cells that would be genetically negative for inducible PD-L1 expression. In such a scenario, blocking PD-L1 or PD-1 with therapeutic antibodies would not be useful, and these would be patients who are primary resistant to anti-PD-1 therapy (Shin and Ribas, 2015; Shin et al., 2016).

An additional cancer-cell-intrinsic mechanism of primary resistance to immunotherapy is expression of a certain set of genes that were found to be enriched in tumors from patients

processing, presentation, and immune evasion (Karpf and Jones, 2002; Kim and Bae, 2011). Therefore, demethylating agents may enable re-expression of immune related genes, with potential for therapeutic impact, especially in the setting of combination treatment with immunotherapy. (Héninger et al., 2015). Histone deacetylase inhibitors led to increased expression of MHC and tumor-associated antigens, which synergized with ACT therapy to improve anti-tumor responses in a murine melanoma model (Vo et al., 2009). Similarly, in a lymphoma model, hypomethylating agents were found to increase CD80 expression on tumor cells, with concomitant increase in tumor-infiltrating CD8⁺ T cells (Wang et al., 2013). These pre-clinical data indicate the potential to reverse the epigenetic changes in cancer cells, which may enable enhanced immune recognition and response to immunotherapy.

Tumor-Cell-Extrinsic Factors for Primary and Adaptive Resistance

Tumor-cell-extrinsic mechanisms that lead to primary and/or adaptive resistance involve components other than tumor cells within the tumor microenvironment, including Tregs, myeloid derived suppressor cells (MDSCs), M2 macrophages, and other inhibitory immune checkpoints, which may all contribute to inhibition of anti-tumor immune responses.

Tregs, which can be identified by expression of the FoxP3 transcription factor, have a central role in maintaining self-tolerance (Rudensky, 2011). The existence of suppressor T cells that could downregulate immune responses of antigen-specific T cells was first identified nearly four decades ago in thymectomized, lethally irradiated, bone-marrow-reconstituted mice (Gershon and Kondo, 1970). Tregs are known to suppress effector T cell (Teff) responses by secretion of certain

inhibitory cytokines, such as IL-10, IL-35, and TGF- β , or by direct cell contact (Oida et al., 2003; Sakaguchi et al., 2008; Sundstedt et al., 2003). Published data indicate that many human tumors are infiltrated by Tregs (Chaudhary and Elkord, 2016; Ormandy et al., 2005; Woo et al., 2002). A vast number of murine studies have shown that the depletion of Treg cells from the tumor microenvironment can enhance or restore anti-tumor immunity (Linehan and Goedegebuure, 2005; Viehl et al., 2006). In murine models, response to anti-CTLA-4 therapy was shown to be associated with an increase in the ratio of Teffs to Tregs (Quezada et al., 2006). This shift in the ratio of Teffs to Tregs was found to be a result of both an increase in Teffs and depletion of Tregs in a murine tumor model (Simpson et al., 2013). These data suggest that tumors for which immunotherapy is unable to increase Teffs and/or deplete Tregs to increase the ratio of Teffs to Tregs are likely to be resistant to treatment, either initially or during the relapsed disease setting. However, it is possible that tumor-infiltrating Tregs may co-exist with other immune cells, indicating a potentially immune-responsive tumor. A retrospective study of patients treated with anti-CTLA-4 reported that a high baseline expression of FoxP3⁺ Tregs in the tumor was associated with better clinical outcomes (Hamid et al., 2011). Additional studies are ongoing to determine the impact of tumor-infiltrating Tregs on clinical outcomes for patients who receive treatment with immunotherapy agents.

Myeloid-derived suppressor cells (MDSCs) have emerged as major regulators of immune responses in various pathological conditions, including cancer. MDSCs were initially defined in murine models and were characterized by the expression of CD11b (CR3A or integrin α M) and Gr-1 markers (Bronte et al., 1998; Talmadge and Gabrilovich, 2013). Human MDSCs express markers such as CD11b⁺ and CD33⁺ but are mostly negative for HLA-DR and lineage-specific antigens (Lin), including CD3, CD19, and CD57. Monocytic MDSCs are HLA-DR⁻, CD11b⁺, CD33⁺ and CD14⁺ and granulocytic MDSCs are HLA-DR⁻, CD11b⁺, CD33⁺, CD15⁺; however, mature monocytes express HLA-DR (Wesolowski et al., 2013). MDSCs have been implicated in promoting angiogenesis, tumor cell invasion, and metastases (Yang et al., 2004; Yang et al., 2008). Furthermore, clinical findings have shown that the presence of MDSCs correlates with reduced survival in human cancers, including breast cancer and colorectal cancer (Solito et al., 2011). Reports suggest that the presence of MDSCs in the tumor microenvironment correlates with decreased efficacy of immunotherapies, including immune checkpoint therapy (Meyer et al., 2014), adoptive T cell therapy (Kodumudi et al., 2012), and DC vaccination (Laborde et al., 2014). Therefore, eradicating or reprogramming MDSCs could enhance clinical responses to immunotherapy. Indeed, in melanoma, breast cancer, and head and neck murine tumor models, selective inactivation of macrophage PI3K γ synergized with immune checkpoint inhibitors to promote tumor regression and increase survival (De Henau et al., 2016; Kaneda et al., 2016). In one study, the investigators demonstrated that mice lacking PI3K γ or tumor-bearing mice treated with PI3K γ inhibitors (TG100-115 or IPI-549) had reduced tumor growth, which was associated with enhanced expression of pro-inflammatory cytokines and inhibition of immune-suppressive factors in the tu-

mors (Kaneda et al., 2016). Moreover, genes and proteins associated with immune activation were upregulated in macrophages that were treated with PI3K γ inhibitors or those from mice lacking PI3K γ . These data established PI3K γ as a molecular switch that regulates macrophage function. The investigators also demonstrated that a PI3K γ inhibitor (TG100-115) plus anti-PD-1 led to improved tumor rejection and survival of tumor-bearing mice (Kaneda et al., 2016). In a second study, tumor-bearing mice treated with triple-combination therapy, a PI3K γ inhibitor (IPI-549) plus anti-CTLA-4 and anti-PD-1, had improved tumor regression and long-term survival as compared to dual therapy with anti-CTLA-4 plus anti-PD-1 (De Henau et al., 2016). These pre-clinical studies highlight inhibitors of PI3K γ as a therapeutic potential for combination strategies with immune checkpoint therapy in cancer patients.

Tumor-associated macrophages (TAMs) are another subset of cells that seem to affect responses to immunotherapy. TAMs include both M1 macrophages, which are involved in promoting anti-tumor immunity, and the M2 macrophages, which possess pro-tumorigenic properties (Chanmee et al., 2014). M1 and M2 macrophages can be distinguished based on the differential expression of transcription factors and surface molecules and the disparities in their cytokine profile and metabolism (Biswas and Mantovani, 2010; Hu et al., 2016). Clinical studies have shown an association between higher frequencies of TAMs and poor prognosis in human cancers (Hu et al., 2016). In a chemically induced mouse model of lung adenocarcinoma, depletion of TAMs reduced tumor growth as a result of downregulation of M2 and/or TAM recruitment, possibly due to the inactivation of CCL2 and/or CCR2 signaling (Fritz et al., 2014). Likewise, depletion of M2 macrophages in various murine tumor models, including cutaneous T cell lymphoma (Wu et al., 2014), colon cancer, lung cancer, breast cancer (Luo et al., 2006), and melanoma (Ries et al., 2014; Ruffell et al., 2014; Tham et al., 2015), have shown similar results. Several reports have discussed the role of macrophages in mediating therapeutic resistance in cancer (De Palma and Lewis, 2013; Ruffell et al., 2014; Ruffell and Coussens, 2015). Reports suggest that macrophages can directly suppress T cell responses through programmed death-ligand 1 (PD-L1) in hepatocellular carcinoma (Kuang et al., 2009) and B7-H4 in ovarian carcinoma (Kryczek et al., 2006). To overcome the potential resistance mechanism of macrophages, investigators tested blockade of CSF-1R, a receptor for macrophage-colony stimulating growth factor, in a murine model of pancreatic cancer and demonstrated decreased frequencies of TAMs, with subsequent increase in interferon production and restrained tumor progression. Importantly, neither PD-1 nor CTLA-4 blockade could significantly reduce tumor growth in the murine model, results that were similar to findings from single agent studies in patients with pancreatic cancer (Le et al., 2013; Zhu et al., 2014). However, CSF1R blockade in combination with either an antibody against PD-1 or CTLA-4, in addition to gemcitabine, led to improved tumor regression (Zhu et al., 2014). These data suggest that CSF-1R blockade induced reduction of TAMs, which enabled response to immune checkpoint therapy. Similarly, in a melanoma model, CSF-1R inhibitor was shown to synergize with ACT therapy (Mok et al., 2014). Several early phase clinical trials

are underway to test the combination of CSF-1R inhibition with checkpoint inhibitors (Table 3).

The immune response is dynamic and signals that enhance anti-tumor immune responses also tend to turn on inhibitory genes and pathways in order to tightly regulate the immune response. For example, initial T cell activation, via TCR signaling and CD28 co-stimulation, eventually leads to increased expression of the inhibitory CTLA-4 immune checkpoint (Leach et al., 1996). Similarly, effector T cell responses such as increased IFN γ production leads to increased expression of the PD-L1 protein on multiple cell types, including tumor cells, T cells and macrophages, which can engage the PD-1 receptor on T cells to suppress anti-tumor immunity (Chen, 2004; Dong et al., 2002). Apart from this, IFN γ may additionally promote the expression of immunosuppressive molecules such as indoleamine-2, 3-deoxygenase (IDO), a tryptophan-metabolizing enzyme that can contribute to peripheral tolerance and can have a direct negative effect on effector T cell function (Gajewski et al., 2013). Similarly, carcinoembryonic antigen cell adhesion molecule-1 (CEACAM1), seems to be another inhibitory molecule that is induced by IFN γ (Takahashi et al., 1993), (Gray-Owen and Blumberg, 2006). Therapeutic antibodies blocking CEACAM1 (Ortenberg et al., 2012) and TIM-3 have resulted in enhanced anti-tumor immune responses (Pardoll, 2012; Sakuishi et al., 2010). A recent study in an immunocompetent mouse model of lung adenocarcinoma demonstrated that recurrent tumors after anti-PD-1 treatment were due to increased expression of TIM-3 on T cells. Notably, anti-PD-1 plus anti-TIM-3 led to improved responses in the tumor bearing mice. Similarly, two lung cancer patients who developed recurrent disease after anti-PD-1 treatment were found to have increased TIM-3 expression on T cells (Koyama et al., 2016).

Immune suppressive cytokines are often released by tumor or macrophages for local suppression of anti-tumor immune responses. Transforming growth factor β (TGF- β) is a cytokine that plays important roles in angiogenesis and immunosuppression by stimulating Tregs (Lebrun, 2012). Increased levels of TGF- β are associated with poor prognosis in multiple tumor types (Lin and Zhao, 2015; Massagué, 2008). Preclinical models have shown synergy combining TGF- β receptor kinase inhibitor with anti-CTLA-4, which led to anti-tumor responses in a melanoma model (BRAF^{V600E}PTEN^{-/-}) (Hanks et al., 2014). Another pre-clinical study consisting of radiation therapy combined with TGF- β inhibition also demonstrated anti-tumor responses (Vanpouille-Box et al., 2015). Adenosine was shown to inhibit T cell proliferation and cytotoxic function via the A2A receptor on T cells (Zhang et al., 2004) as well as to promote metastasis via the A2B receptor on tumor cells (Mittal et al., 2016). In addition, CD73 is the enzyme that dephosphorylates adenosine monophosphate (AMP) to form adenosine, thus also suppressing immune function and promoting tumor cell metastasis (Stagg et al., 2010), and also stimulates angiogenesis (Allard et al., 2014). High expression of CD73 is associated with poor prognosis in different cancer types (Leclerc et al., 2016; Loi et al., 2013; Turcotte et al., 2015). CD73 is also a potential biomarker for anti-PD-1 therapy, with high expression limiting anti-PD-1 efficacy, which can be rescued by concomitant A2A blockade (Beavis et al., 2015).

Specific chemokines and chemokine receptors are important for trafficking of MDSCs and Tregs to the tumor. For example, tumors secrete ligands CCL5, CCL7, and CXCL8, bind to their receptors CCR1 or CXCR2 expressed on subtypes of MDSCs (Highfill et al., 2014), and attract MDSCs in the tumor microenvironment. Inhibitors of these chemokine receptors could abrogate immune evasion and improve anti-tumor T cell responses. CCR4 is highly expressed by Tregs in the blood and tumors (Sugiyama et al., 2013), and anti-CCR4 inhibits Treg recruitment as well as promotes antibody-dependent cell-mediated cytotoxicity (ADCC), further reducing the Treg population (Chang et al., 2012). CXCR4 is a receptor for the chemokine CXCL12, which has been shown to promote an immunosuppressive tumor microenvironment through several mechanisms, including Treg localization (Gil et al., 2014).

Acquired Resistance to Immunotherapy

A hallmark of cancer immunotherapy has been the induction of long lasting tumor responses. However, with higher activity and broader use of immunotherapies, the denominator of patients with a tumor response has increased and the chances of finding patients who responded for a period of time and then progressed, termed acquired resistance, increases. It is becoming clear that approximately one fourth to one third of patients with metastatic melanoma who have objective responses to checkpoint blockade therapy with anti-CTLA-4 or anti-PD-1 will relapse over time, even despite receiving continued therapy (Schachter et al., 2016). The potential mechanisms of relapse include loss of T cell function, lack of T cell recognition by down-regulation of tumor antigen presentation, and development of escape mutation variants in the cancer (Figures 2 and 3). There is evidence that each of these mechanisms can lead to acquired resistance to checkpoint inhibitor therapy or ACT.

If the anti-tumor T cells change their functional phenotype and stop exerting their cytotoxic activity, then a patient who responded to immunotherapy may develop a tumor relapse even if everything else continues to be the same. Acquired resistance to TCR-engineered ACT is rather frequent, with high initial anti-tumor response followed by a high frequency of tumor relapses within months. This has been evident with the ACT of T cells expressing TCRs to melanosomal antigens (MART-1, gp100) and to cancer testis antigens (NY ESO-1) (Chodon et al., 2014; Morgan et al., 2006; Robbins et al., 2011). By studying how the TCR transgenic T cells change their functionality after ACT to humans, it has been reported that the initial highly cytolytic profile when administered shifts over time to a Th2-type cytokine release and lack of cytotoxic functions in late time points when recovered from patients at the time of tumor relapse (Ma et al., 2013; Ma et al., 2011).

It was already well documented by the 1990s that some patients who initially respond to cancer immunotherapies with IL-2 or TIL ACT might develop acquired resistance through loss of the shared component of all HLA class I molecules, B2M, which leads to absence of surface expression of HLA class I (D'Urso et al., 1991; Restifo et al., 1996). B2M is required for HLA class I folding and transport to the cell surface, and its genetic deficiency would lead to lack of CD8 T cell recognition. This mechanism of acquired resistance has also been

Table 3. Examples of Combination Therapies Being Developed to Overcome Resistance to Cancer Immunotherapy

Broad Approach	Specific Approach	Examples in Clinical Testing
combination checkpoint blockade	anti-PD-1/L1 plus anti-CTLA4	Durvalumab + tremelimumab Nivolumab + ipilimumab Pembrolizumab + ipilimumab
	anti-PD-1 plus anti-PD-L1	MEDI0680 + durvalumab PDR001 + FAZ053
	anti-PD-1/L1 plus anti-TIM 3	Nivolumab + TSR022 PDR001 + MBG453
	anti-PD-1/L1 plus anti-LAG 3	Nivolumab + BMS 986016 PDR001 + LAG525 Pembrolizumab + IMP321 REGN2810 + REGN3767
checkpoint blockade plus immune-stimulatory agents	anti-PD-1/L1 plus anti-41BB/CD137	Avelumab + utomilumab Nivolumab + urelumab Pembrolizumab + utomilumab
	anti-CTLA4 plus anti-OX40	Atezolimumab + MOXR0916 ± bevacizumab
	anti-PD-1/L1 plus anti-OX40	Avelumab + PF-04518600
	anti-CTLA4 plus Anti-PD-1/L1 plus anti-OX40	Durvalumab + MEDI0562
	anti-41BB/CD137 plus anti-OX40	Pembrolizumab + GSK3174998 Tremelimumab + durvalumab + MEDI6469 Tremelimumab + MEDI0562 Utomilumab + PF-04518600
	anti-CTLA4 plus anti-CD40	Atezolimumab + RO7009789
checkpoint blockade plus metabolic modulators	anti-PD-1/L1 plus anti-CD40	Tremelimumab + CP870893
	anti-PD-1/L1 plus anti-GITR	Nivolumab + BMS986156 PDR001 + GWN323
	anti-PD-1/L1 plus anti-ICOS	Nivolumab + JTX-2011
	anti-CTLA-4 plus IDO inhibitors	Atezolizumab + GDC0919
	anti-PD-1/L1 plus IDO inhibitors	Ipilimumab + epacadostat Ipilimumab + indoximid Nivolumab + BMS986205 Pembrolizumab+ epacadostat
	anti-PD-1/L1 plus A2AR inhibitors or anti-CD73	Atezolizumab + CPI-444 Durvalumab + MEDI9447 PDR001+ PBF509
checkpoint blockade plus other immune modulators	anti-PD-1/L1 plus TGFβ inhibitors	Nivolumab + LY2157299 PDR001 + NIS793
	anti-PD-1/L1 plus CXCR4 inhibitors	Nivolumab + ulocuplumab Durvalumab + LY2510924
	anti-PD-1/L1 plus CCR4 inhibitors	Nivolumab + mogamulizumab
	anti-PD-1/L1 plus anti-CD27	Nivolumab + varlilumab Atezolizumab + varlilumab
	anti-PD-1/L1 plus CD122-biased cytokine	Nivolumab + NKTR-214
	anti-PD-1/L1 plus yeast-derived soluble β-glucan	Pembrolizumab + Imprime PGG
	anti-PD-1/L1 plus anti- TRAIL-DR5	Nivolumab + DS-8273a
	anti-PD-1/L1 plus glutaminase inhibitor	Nivolumab + CB839
checkpoint blockade plus macrophage inhibitors	anti-PD-1/L1 plus IAP inhibitor	PDR001 + LCL161
	anti-CTLA4 plus CSF1R inhibitors	Durvalumab + Pexidartinib (PLX3397)
	anti-PD-1/L1 plus CSF1R inhibitors	Durvalumab + LY3022855 Nivolumab + FPA008 Pembrolizumab + Pexidartinib PDR001 + BLZ945 Tremelimumab + LY3022855

(Continued on next page)

Table 3. Continued

Broad Approach	Specific Approach	Examples in Clinical Testing
checkpoint blockade plus injectable therapies	anti-CTLA-4 plus oncolytic viruses anti-PD-1/L1 plus oncolytic viruses	Ipilimumab + Talimogene Laherparepvec Nivolumab + Talimogene Laherparepvec Pembrolizumab + DNX2401 Pembrolizumab + Talimogene Laherparepvec
	anti-CTLA4 plus TLR agonists anti-PD-1/L1 plus TLR agonists	Ipilimumab + MGN1703 Pembrolizumab + CMP001 Pembrolizumab + SD101 Tremelimumab + PF-3512676
checkpoint blockade plus cancer vaccines	anti-CTLA4 plus DC vaccine anti-PD-1/L1 plus DC vaccine anti-PD-1/L1 plus peptide vaccine anti-PD-1/L1 plus neoantigen vaccine	Durvalumab + ADXS11-001 Durvalumab + TPIV200/huFR-1 Ipilimumab + GVAX Nivolumab + GVAX + CRS207 Nivolumab + CIMAvax Nivolumab+ CV301 Nivolumab + NEO-PV-01 Nivolumab + Viagenpumatumucel-L (HS-110) Pembrolizumab + ADXS31-142 Durvalumab ± tremelimumab + IMCgp100
checkpoint blockade plus adoptive cell transfer (ACT)	anti-CTLA4 plus ACT anti-PD-1/L1 plus ACT anti-PD-1/L1 plus anti-CD137 plus ACT	Atezolimumab + KTE-C19 Ipilimumab + NYESO TCR ACT Nivolumab + NYESO TCR ACT Nivolumab + urelumab + TIL ACT Pembrolizumab + TIL ACT Ipilimumab + modified CD8 T cell ACT Pembrolizumab + modified CD8 T cell ACT
checkpoint blockade plus targeted therapies	anti-CTLA4 plus BRAF+MEK inhibitors	Atezolizumab + bevacizumab versus sunitinib
	anti-CTLA4 plus VEGF inhibitors	Atezolizumab + trametinib
	anti-PD-1/L1 plus BRAF+MEK inhibitors	Atezolizumab + vemurafenib ± cobimetinib
	anti-PD-1/L1 plus EGFR inhibitors	Durvalumab + ensartinib (ALK inhibitor)
	anti-PD-1/L1 plus VEGF inhibitors	Durvalumab + gefitinib
	anti-PD-1/L1 plus PI3K delta inhibitor	Durvalumab + trametinib ± dabrafenib Ipilimumab + bevacizumab Ipilimumab + dabrafenib ± trametinib Ipilimumab + vemurafenib Nivolumab + sunitinib or pazopanib Nivolumab + trametinib ± dabrafenib PDR001 + sorafenib Pembrolizumab + dabrafenib + trametinib Pembrolizumab + lenalidomide Pembrolizumab + nintedanib Pidilizumab + lenalidomide Tremelimumab + sunitinib Nivolumab + SYM004
	anti-PD-1/L1 plus PARP inhibitors	Atezolizumab + Veliparib Durvalumab + olaparib BGB-A317 + BGB-290
	anti-PD-1/L1 plus mTOR inhibitor	PDR001 + everolimus
	anti-PD-1/L1 plus pan RAF inhibitor	PDR001 + LXH254
	anti-PD-1/L1 plus glutaminase inhibitor	Nivolumab + CB839
checkpoint blockade plus radiation therapy (RT)	anti-CTLA4 plus RT anti-PD-1/L1 plus RT anti-CTLA4 plus Anti-PD-1/L1 plus RT	Atezolizumab + stereotactic radiation therapy Pembrolizumab + cisplatin/radiotherapy Pembrolizumab + stereotactic body radiotherapy Pembrolizumab + hypofractionated radiotherapy

(Continued on next page)

Table 3. Continued

Broad Approach	Specific Approach	Examples in Clinical Testing
checkpoint blockade plus chemotherapy	anti-CTLA4 plus chemotherapy anti-PD-1/L1 plus chemotherapy anti-CTLA4 plus Anti-PD-1/L1 plus chemotherapy	Atezolizumab + carboplatin/paclitaxel Atezolizumab + carboplatin/gemcitabine Durvalumab + paclitaxel Ipilimumab + carboplatin/paclitaxel Ipilimumab + dacarbazine Nivolumab + platinum doublets Pembrolizumab + carbo/paclitaxel or carbo/pemetrexed
checkpoint blockade plus epigenetic modifications	anti-PD-1/L1 plus histone deacetylase inhibitors anti-PD-1/L1 plus hypomethylating agents	Azacitidine + entinostat followed by nivolumab Atezolizumab + azacitidine Nivolumab + RRX001 Pembrolizumab + CC486 Pembrolizumab + CC486 + romidepsin Pembrolizumab + romidepsin Pembrolizumab + vorinostat + tamoxifen PDR001 + panobinostat
checkpoint blockade plus NK activation	anti-CTLA4 plus anti-KIR anti-PD-1/L1 plus anti-KIR	Ipilimumab + lirilumab Nivolumab + lirilumab

documented in a case of late acquired resistance to anti-PD-1 therapy, where the resistant cells had a new and homozygous truncating mutation in B2M, leading to lack of surface expression of HLA class I (Zaretsky et al., 2016). In two other cases of tumor relapse, there were copy-number-neutral loss-of-function mutations in *JAK1* or *JAK2*, concurrent with loss of heterozygosity due to deletion of the wild-type allele, which were absent in the baseline biopsies. These mutations allowed the cancer cells to escape from the anti-proliferative effects of interferon gamma (Zaretsky et al., 2016). Additional evidence of loss of antigen-presenting machinery leading to acquired resistance to cancer immunotherapy is provided by a case of a patient with metastatic colorectal carcinoma who responded to TIL ACT. The therapeutic TIL recognized mutated *KRAS G12D* presented by HLA-C*08:02, resulting in an objective tumor response for 9 months, followed by an isolated relapse in a lesion that had lost HLA-C*08:02 in chromosome 6 (Tran et al., 2016). Therefore, acquired resistance to anti-PD-1 therapy and ACT could be mediated through genetic mechanisms that altered antigen-presenting machinery and interferon gamma signaling.

Because anti-tumor T cells are specific for cancer cells that express their cognate antigen, it is possible that cancers may develop acquired resistance through decreased expression or mutations in these tumor antigens. Data suggest that anti-tumor T cells turned on by checkpoint blockade therapy primarily recognize mutational neoantigens (Schumacher and Schreiber, 2015; van Rooij et al., 2013). Therefore, genetic deletions, mutations, or epigenetic changes that would lead to loss of expression of these mutational neoantigens presented by MHC molecules might result in acquired resistance to checkpoint blockade therapy. However, thus far there has not been evidence of such mechanisms in the clinic. CAR T cells are also antigen-specific, but they rely on the whole protein expression on the cancer cell surface. In some cases of patients with ALL who responded initially to CD19 CAR T cell ACT, it has been documented that the epitope in the CD19 protein sequence that is recognized by the CAR can be selectively deleted at pro-

gression (Ruella et al., 2016) and that preexisting alternatively spliced CD19 isoforms might predispose to acquired resistance (Sotillo et al., 2015). Therefore, there is evidence from the clinic that loss of the target of the anti-tumor T cells can result in progression to cancer immunotherapy.

This yin and yang of the immune response, which results in immune editing and eventually immune escape, is clearly a factor as we administer immunotherapeutic agents and attempt to drive anti-tumor immune responses, which may encounter a multitude of inhibitory pathways, either during initial treatment or at the time of relapsed disease. Additional inhibitory immune checkpoints that are often expressed in the tumor microenvironment include LAG-3, TIGIT, VISTA, and many more that are being identified in ongoing studies (Topalian et al., 2015). Several clinical trials are currently underway to test antibodies against these inhibitory pathways, both as monotherapy and combination therapy strategies (Anderson et al., 2016; Sharma and Allison, 2015). To date, the combination of anti-CTLA-4 (ipilimumab) plus anti-PD-1 (nivolumab) has demonstrated improved clinical outcomes as compared to monotherapy, and this combination was recently FDA-approved for patients with metastatic melanoma (Larkin et al., 2015a). We will need data from ongoing and future clinical trials to determine whether combination therapies targeting other inhibitory pathways, either as doublets or triplets in concurrent or sequential treatment strategies, will effectively overcome the resistance mechanisms that act to regulate immune responses and provide additional clinical benefit.

Monitoring Resistance Mechanisms

There are significant efforts underway to identify reliable predictive biomarkers of response and resistance to checkpoint inhibitors in baseline tumor biopsies in patients on immune checkpoint blockade. To date, the best predictive biomarkers identified include total tumor mutational load (Roszik et al., 2016; Snyder et al., 2014), as well as markers of an effective immune infiltrate within a tumor signifying a “hot” tumor

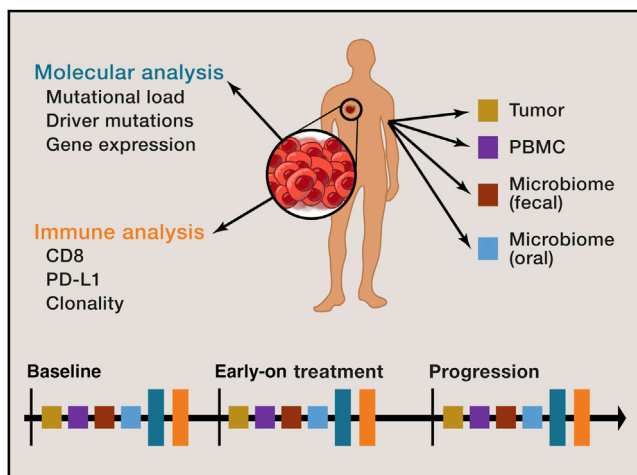


Figure 4. Schema for Analysis of Baseline and Longitudinal Tumor, Blood, and Other Samples

(A) Baseline assessment of the tumor microenvironment typically involves molecular analysis for mutational load, driver mutations, and gene expression, with immune profiling including analysis of CD8+ T cells, PD-L1 expression, and T cell clonality.

(B) Longitudinal evaluation of fresh serial human specimens (tumor, blood, serum, and microbiome) during treatment (at pre-treatment, early-on-treatment, and progression time points) allows for deep analysis to unveil potential mechanisms of therapeutic resistance.

microenvironment, typified by an increased number of CD8+ cytotoxic T lymphocytes in proximity to PD-L1-positive cells (Taube et al., 2014; Tumei et al., 2014). Mutational load is highly relevant, given that tumors with a higher mutational load exhibit higher levels of neoantigens capable of inducing anti-tumor immune responses, translating into a higher likelihood of response to immune checkpoint blockade across several cancer types (Rizvi et al., 2015; Snyder et al., 2014; Van Allen et al., 2015). In addition to genomic markers and immune regulatory gene expression profiles (Hugo et al., 2016), immune markers in pre-treatment biopsies, including the density and distribution of CD8+ T lymphocytes, PD-L1 expression, and T cell clonality (Taube et al., 2014; Tumei et al., 2014), have also been associated with differential responses to immune checkpoint blockade, although significant limitations exist when each of these biomarkers is assessed in isolation. Integrative approaches incorporating analysis of several of these features have also been developed, such as the cancer immunogram, which incorporates analysis of seven distinct features within the tumor microenvironment: tumor sensitivity to immune effectors, tumor foreignness, general immune status, immune cell infiltration, absence of checkpoint molecule expression, absence of soluble inhibitors such as interleukin-1 and interleukin-6, and absence of inhibitory tumor metabolism (Blank et al., 2016). These efforts are critical and will ultimately contribute to more personalized treatment strategies for cancer immunotherapy.

An emerging strategy in elucidating mechanisms of response and resistance to immune checkpoint blockade involves the assessment of longitudinal tumor samples throughout the course of treatment. This approach is powerful because it transcends conventional analysis of static time points and seeks to

identify superior predictive biomarkers by assessing dynamic responses to cancer treatment. Such an approach has been employed to better understand response and resistance to immune checkpoint blockade (Chen et al., 2016; Hugo et al., 2016; Madore et al., 2015; Tumei et al., 2014) and has yielded important information that would not have been elucidated through analysis of static unpaired biopsies. A key example is in a recent report describing immune markers in longitudinal tumor samples of patients on immune checkpoint blockade, demonstrating that although pre-treatment markers were largely non-predictive, immune markers in early-on-treatment samples were highly predictive of treatment response (Chen et al., 2016). In addition to this, resistance mechanisms were identified via pairwise comparison of gene expression profiles in pre- to on-treatment tumor samples of responders versus non-responders, including defects in interferon signaling as well as antigen processing and presentation (Chen et al., 2016). This approach is currently under-utilized but is gaining traction in light of advantages over assessment of static baseline biomarkers (Figure 4), as well as an increasing need to better understand responses to a growing number of immunotherapeutic approaches. However nuances exist with regard to immune monitoring in the tumor microenvironment (Wargo et al., 2016), and an appreciation of the importance of concurrent monitoring in the peripheral blood is growing, though the ideal assays to perform are still being elucidated.

Overcoming Resistance to Immunotherapy

On the basis of insights gained (Hugo et al., 2016; Snyder et al., 2014; Van Allen et al., 2015), efforts are currently underway to derive actionable strategies to combat therapeutic resistance to immunotherapy. This includes fundamental efforts to transform immunologically “cold” tumors into “hot” tumors through the use of several approaches (Corrales et al., 2015; Holmgaard et al., 2013; Tang et al., 2016) and also involves tactics to either enhance endogenous T cell function (Gubin et al., 2014; Hodi et al., 2010; Miller et al., 2002; Redmond et al., 2007; Ribas et al., 2015; Weber et al., 2015) or to adoptively transfer antigen-specific T lymphocytes via ex vivo expansion of tumor-infiltrating lymphocytes (Rosenberg et al., 2011) or via administration of antigen-specific engineered T cells (via transduction with CARs or TCRs) (Beatty et al., 2014; Kalos et al., 2011).

Though some of these approaches involve treatment with drugs as monotherapy (including monoclonal antibodies), the majority of contemporary approaches focus on combination strategies in an effort to overcome resistance associated with treatment with single-pronged efforts (Table 3) (Hicklin et al., 1998; Moon et al., 2014; Ninomiya et al., 2015). A prime example of enhanced efficacy with combination therapy is the use of combined therapy with blocking antibodies against two key immune checkpoints, CTLA-4 and PD-1, which results in significantly higher response rates to therapy and improved survival in patients with metastatic melanoma (Larkin et al., 2015a; Postow et al., 2015; Wolchok et al., 2013). The rationale for this combination approach is several fold, as blocking several checkpoints on anergized tumor-specific T cells has been shown to be more efficacious (Berrien-Elliott et al., 2013; Curran et al., 2010; Redmond et al., 2014; Spranger et al., 2014) and CTLA-4 blockade may itself facilitate the conversion of a tumor

microenvironment from “cold” to “hot” (Simpson et al., 2013). Indeed, each of these checkpoint inhibitors has been shown to have both overlapping and unique effects on tumor-specific T cells (Gubin et al., 2014), substantiating the use of these in combination. Numerous other strategies combining immune modulation of the tumor microenvironment with immune checkpoint inhibitor therapy are currently being tested in clinical trials (Puzanov et al., 2016) (NCT02263508, NCT02626000, NCT02565992, NCT02043665, NCT02501473). Vaccine strategies against identified neoantigen epitopes are also being combined with immunotherapeutic approaches, though mature data are not available regarding efficacy.

Another combination strategy with strong clinical and pre-clinical rationale involves the use of molecularly targeted therapy in conjunction with immunotherapy. The most extensively studied cancer type treated with this strategy is melanoma, though the concept is now being widely extended across solid and liquid tumors. The rationale for combining these treatments is that treatment with molecularly targeted therapy can have a substantial effect on anti-tumor immunity and potential synergy when used with immunotherapy (Homet Moreno et al., 2015; Hu-Lieskovan et al., 2015; Koya et al., 2012). Perhaps most illustrative of this is oncogenic BRAF in melanoma. Though treatment with BRAF-targeted therapy alone provides limited durable disease control (Chapman et al., 2011; Hauschild et al., 2012), it is associated with favorable effects in the tumor microenvironment, including increased antigen (Boni et al., 2010) and HLA expression (Bradley et al., 2015), increased T cell infiltrate, reduced immunosuppressive cytokines (Frederick et al., 2013; Wilmott et al., 2012), and improved T cell function (Comin-Anduix et al., 2010). Thus, treatment with molecularly targeted therapy may indeed help convert a “cold” microenvironment to a “hot” one, with resultant increased expression of PD-L1 via the phenomenon of adaptive resistance (Taube et al., 2012), further supporting a multi-modality treatment approach. Emerging strategies to enhance responses to immunotherapy are being developed based on novel insights into T cell and overall immune function. Examples of this include insights into metabolic reprogramming of T cells to enhance therapeutic responses (Buck et al., 2016; Chang and Pearce, 2016) and via modulation of the gut microbiome to augment responses to cancer immunotherapy (Sivan et al., 2015; Vétizou et al., 2015).

Complexities exist when attempting to validate these combination strategies given that the extent of possible combinations far outnumbers the human and technical resources available. There is an urgent need to test these combinations in appropriate pre-clinical models and expedite clinical translation through novel approaches to clinical trial design. In addition, we need to have a deep understanding of the kinetics of the immune response to each of these agents in isolation as well as in combination in order to narrow the search space of biologically promising and optimal combination strategies. Immune responses to targeted agents may be short-lived (Cooper et al., 2014), thus proper timing and sequence of therapy must be strongly considered.

Conclusions

Great advances have occurred in the field of cancer immunotherapy as a result of elegant research work conducted to eluci-

date the mechanisms that regulate anti-tumor T cell responses, including eventual translation of these concepts to the clinic. This has allowed the rational design and clinical development of treatment strategies that might result in tumor regression and long-term survival for patients with metastatic cancer. However, the benefit, to date, has been limited to a minority of patients with certain cancer types. In addition, as a result of more successful immunotherapy treatments, we now have a significant subset of patients who initially respond but eventually relapse. Bringing clinical benefit to the majority of patients requires a complete understanding of the mechanisms that would lead to an effective anti-tumor response and the different tumor-cell-intrinsic and -extrinsic factors that would result in primary, adaptive, and acquired resistance to immunotherapy. Elucidation of these mechanisms will reveal important clues as to the next steps that need to be taken to potentially overcome resistance to immunotherapy.

ACKNOWLEDGMENTS

This research was supported by the Parker Institute for Cancer Immunotherapy, NIH/NCI grants R01 CA1633793 (P.S.), R35 CA197633, and P01 CA168585 (A.R.), Cancer Prevention Research in Texas (CPRIT) grant RP120108 (P.S.), the Ressler Family Fund, the Garcia-Corsini Family Fund, the Samuels Family Fund, and the Grimaldi Family Fund (A.R.), and a Stand Up To Cancer-Cancer Research Institute Cancer Immunology Dream Team Translational Research Grant (SU2C-AACR-DT1012; P.S. and A.R.). S.H.-L. was supported by a Career Development Award from the American Society of Clinical Oncology (ASCO), a Tower Cancer Research Foundation Grant, a Dr. Charles Coltman Fellowship Award from the Hope Foundation, and a UCLA KL2 Award.

REFERENCES

- Akbar, E.A., Koyama, S., Carretero, J., Altabef, A., Tchaicha, J.H., Christensen, C.L., Mikse, O.R., Cherniack, A.D., Beauchamp, E.M., Pugh, T.J., et al. (2013). Activation of the PD-1 pathway contributes to immune escape in EGFR-driven lung tumors. *Cancer Discov.* 3, 1355–1363.
- Allard, B., Turcotte, M., Spring, K., Pommey, S., Royal, I., and Stagg, J. (2014). Anti-CD73 therapy impairs tumor angiogenesis. *Int. J. Cancer* 134, 1466–1473.
- Anderson, A.C., Joller, N., and Kuchroo, V.K. (2016). Lag-3, Tim-3, and TIGIT: Co-inhibitory Receptors with Specialized Functions in Immune Regulation. *Immunity* 44, 989–1004.
- Ansell, S.M., Lesokhin, A.M., Borrello, I., Halwani, A., Scott, E.C., Gutierrez, M., Schuster, S.J., Millenson, M.M., Cattry, D., Freeman, G.J., et al. (2015). PD-1 blockade with nivolumab in relapsed or refractory Hodgkin's lymphoma. *N. Engl. J. Med.* 372, 311–319.
- Beatty, G.L., Haas, A.R., Maus, M.V., Torigian, D.A., Soulen, M.C., Plesa, G., Chew, A., Zhao, Y., Levine, B.L., Albelda, S.M., et al. (2014). Mesothelin-specific chimeric antigen receptor mRNA-engineered T cells induce anti-tumor activity in solid malignancies. *Cancer Immunol. Res.* 2, 112–120.
- Beavis, P.A., Slaney, C.Y., Milenkovski, N., Henderson, M.A., Loi, S., Stagg, J., Kershaw, M.H., and Darcy, P.K. (2015). CD73: A potential biomarker for anti-PD-1 therapy. *Oncimmunology* 4, e1046675.
- Benci, J.L., Xu, B., Qiu, Y., Wu, T.J., Dada, H., Twyman-Saint Victor, C., Cucolo, L., Lee, D.S., Pauken, K.E., Huang, A.C., et al. (2016). Tumor interferon signaling regulates a multigenic resistance program to immune checkpoint blockade. *Cell* 167, 1540–1554.
- Berrien-Elliott, M.M., Jackson, S.R., Meyer, J.M., Rouskey, C.J., Nguyen, T.L., Yagita, H., Greenberg, P.D., DiPaolo, R.J., and Teague, R.M. (2013). Durable adoptive immunotherapy for leukemia produced by manipulation of multiple regulatory pathways of CD8+ T-cell tolerance. *Cancer Res.* 73, 605–616.

- Biswas, S.K., and Mantovani, A. (2010). Macrophage plasticity and interaction with lymphocyte subsets: cancer as a paradigm. *Nat. Immunol.* *11*, 889–896.
- Blank, C.U., Haanen, J.B., Ribas, A., and Schumacher, T.N. (2016). Cancer immunology. The “cancer immunogram.” *Science* *352*, 658–660.
- Boni, A., Cogdill, A.P., Dang, P., Udayakumar, D., Njauw, C.N., Sloss, C.M., Ferrone, C.R., Flaherty, K.T., Lawrence, D.P., Fisher, D.E., et al. (2010). Selective BRAFV600E inhibition enhances T-cell recognition of melanoma without affecting lymphocyte function. *Cancer Res.* *70*, 5213–5219.
- Bradley, S.D., Chen, Z., Melendez, B., Talukder, A., Khalili, J.S., Rodriguez-Cruz, T., Liu, S., Whittington, M., Deng, W., Li, F., et al. (2015). BRAFV600E co-opts a conserved MHC class I internalization pathway to diminish antigen presentation and CD8+ T-cell recognition of melanoma. *Cancer Immunol. Res.* *3*, 602–609.
- Bronte, V., Wang, M., Overwijk, W.W., Surman, D.R., Pericle, F., Rosenberg, S.A., and Restifo, N.P. (1998). Apoptotic death of CD8+ T lymphocytes after immunization: induction of a suppressive population of Mac-1+/Gr-1+ cells. *J. Immunol.* *161*, 5313–5320.
- Brunet, J.F., Denizot, F., Luciani, M.F., Roux-Dosseto, M., Suzan, M., Mattei, M.G., and Golstein, P. (1987). A new member of the immunoglobulin superfamily—CTLA-4. *Nature* *328*, 267–270.
- Buck, M.D., O’Sullivan, D., Klein Geltink, R.I., Curtis, J.D., Chang, C.H., Sanin, D.E., Qiu, J., Kretz, O., Braas, D., van der Windt, G.J., et al. (2016). Mitochondrial Dynamics Controls T Cell Fate through Metabolic Programming. *Cell* *166*, 63–76.
- Burnet, F.M. (1971). Immunological surveillance in neoplasia. *Transplant. Rev.* *7*, 3–25.
- Casey, S.C., Tong, L., Li, Y., Do, R., Walz, S., Fitzgerald, K.N., Gouw, A.M., Baylot, V., Gütgemann, I., Eilers, M., and Felsner, D.W. (2016). MYC regulates the antitumor immune response through CD47 and PD-L1. *Science* *352*, 227–231.
- Chang, C.H., and Pearce, E.L. (2016). Emerging concepts of T cell metabolism as a target of immunotherapy. *Nat. Immunol.* *17*, 364–368.
- Chang, D.-K., Sui, J., Geng, S., Muvaffak, A., Bai, M., Fuhlbrigge, R.C., Lo, A., Yammanuru, A., Hubbard, L., Sheehan, J., et al. (2012). Humanization of an anti-CCR4 antibody that kills cutaneous T-cell lymphoma cells and abrogates suppression by T-regulatory cells. *Mol. Cancer Ther.* *11*, 2451–2461.
- Chanmee, T., Ontong, P., Konno, K., and Itano, N. (2014). Tumor-associated macrophages as major players in the tumor microenvironment. *Cancers (Basel)* *6*, 1670–1690.
- Chapman, P.B., Hauschild, A., Robert, C., Haanen, J.B., Ascierto, P., Larkin, J., Dummer, R., Garbe, C., Testori, A., Maio, M., et al.; BRIM-3 Study Group (2011). Improved survival with vemurafenib in melanoma with BRAF V600E mutation. *N. Engl. J. Med.* *364*, 2507–2516.
- Chaudhary, B., and Elkord, E. (2016). Regulatory T Cells in the Tumor Microenvironment and Cancer Progression: Role and Therapeutic Targeting. *Vaccines (Basel)* *4*.
- Chen, L. (2004). Co-inhibitory molecules of the B7-CD28 family in the control of T-cell immunity. *Nat. Rev. Immunol.* *4*, 336–347.
- Chen, P.L., Roh, W., Reuben, A., Cooper, Z.A., Spencer, C.N., Prieto, P.A., Miller, J.P., Bassett, R.L., Gopalakrishnan, V., Wani, K., et al. (2016). Analysis of Immune Signatures in Longitudinal Tumor Samples Yields Insight into Biomarkers of Response and Mechanisms of Resistance to Immune Checkpoint Blockade. *Cancer Discov.* *6*, 827–837.
- Chodon, T., Comin-Anduix, B., Chmielowski, B., Koya, R.C., Wu, Z., Auerbach, M., Ng, C., Avramis, E., Seja, E., Villanueva, A., et al. (2014). Adoptive transfer of MART-1 T-cell receptor transgenic lymphocytes and dendritic cell vaccination in patients with metastatic melanoma. *Clin. Cancer Res.* *20*, 2457–2465.
- Coley, W.B. (1910). The treatment of inoperable sarcoma by bacterial toxins (the mixed toxins of the *Streptococcus erysipelas* and the *Bacillus prodigiosus*). *Proc. R. Soc. Med. 3(Surg Sect)*, 1–48.
- Comin-Anduix, B., Chodon, T., Sazegar, H., Matsunaga, D., Mock, S., Jalil, J., Escuin-Ordinas, H., Chmielowski, B., Koya, R.C., and Ribas, A. (2010). The oncogenic BRAF kinase inhibitor PLX4032/RG7204 does not affect the viability or function of human lymphocytes across a wide range of concentrations. *Clin. Cancer Res.* *16*, 6040–6048.
- Cooper, Z.A., Juneja, V.R., Sage, P.T., Frederick, D.T., Piris, A., Mitra, D., Lo, J.A., Hodi, F.S., Freeman, G.J., Bosenberg, M.W., et al. (2014). Response to BRAF inhibition in melanoma is enhanced when combined with immune checkpoint blockade. *Cancer Immunol. Res.* *2*, 643–654.
- Corrales, L., Glickman, L.H., McWhirter, S.M., Kanne, D.B., Sivick, K.E., Katibah, G.E., Woo, S.R., Lemmens, E., Banda, T., Leong, J.J., et al. (2015). Direct activation of STING in the tumor microenvironment leads to potent and systemic tumor regression and immunity. *Cell Rep.* *11*, 1018–1030.
- Curran, M.A., Montalvo, W., Yagita, H., and Allison, J.P. (2010). PD-1 and CTLA-4 combination blockade expands infiltrating T cells and reduces regulatory T and myeloid cells within B16 melanoma tumors. *Proc. Natl. Acad. Sci. USA* *107*, 4275–4280.
- D’Urso, C.M., Wang, Z.G., Cao, Y., Tataka, R., Zeff, R.A., and Ferrone, S. (1991). Lack of HLA class I antigen expression by cultured melanoma cells FO-1 due to a defect in B2m gene expression. *J. Clin. Invest.* *87*, 284–292.
- Darnell, J.E., Jr., Kerr, I.M., and Stark, G.R. (1994). Jak-STAT pathways and transcriptional activation in response to IFNs and other extracellular signaling proteins. *Science* *264*, 1415–1421.
- Das, R., Verma, R., Sznol, M., Boddupalli, C.S., Gettinger, S.N., Kluger, H., Callahan, M., Wolchok, J.D., Halaban, R., Dhodapkar, M.V., and Dhodapkar, K.M. (2015). Combination therapy with anti-CTLA-4 and anti-PD-1 leads to distinct immunologic changes in vivo. *J. Immunol.* *194*, 950–959.
- De Henau, O., Rausch, M., Winkler, D., Campesato, L.F., Liu, C., Cymerman, D.H., Budhu, S., Ghosh, A., Pink, M., Tchaicha, J., et al. (2016). Overcoming resistance to checkpoint blockade therapy by targeting PI3K γ in myeloid cells. *Nature* *539*, 443–447.
- De Palma, M., and Lewis, C.E. (2013). Macrophage regulation of tumor responses to anticancer therapies. *Cancer Cell* *23*, 277–286.
- Dong, H., Zhu, G., Tamada, K., and Chen, L. (1999). B7-H1, a third member of the B7 family, co-stimulates T-cell proliferation and interleukin-10 secretion. *Nat. Med.* *5*, 1365–1369.
- Dong, H., Strome, S.E., Salomao, D.R., Tamura, H., Hirano, F., Flies, D.B., Roche, P.C., Lu, J., Zhu, G., Tamada, K., et al. (2002). Tumor-associated B7-H1 promotes T-cell apoptosis: a potential mechanism of immune evasion. *Nat. Med.* *8*, 793–800.
- Dorand, R.D., Nthale, J., Myers, J.T., Barkauskas, D.S., Avril, S., Chirieleison, S.M., Pareek, T.K., Abbott, D.W., Stearns, D.S., Letterio, J.J., et al. (2016). Cdk5 disruption attenuates tumor PD-L1 expression and promotes antitumor immunity. *Science* *353*, 399–403.
- Dunn, G.P., Bruce, A.T., Ikeda, H., Old, L.J., and Schreiber, R.D. (2002). Cancer immunoeediting: from immunosurveillance to tumor escape. *Nat. Immunol.* *3*, 991–998.
- Dunn, G.P., Bruce, A.T., Sheehan, K.C., Shankaran, V., Uppaluri, R., Bui, J.D., Diamond, M.S., Koebel, C.M., Arthur, C., White, J.M., and Schreiber, R.D. (2005). A critical function for type I interferons in cancer immunoeediting. *Nat. Immunol.* *6*, 722–729.
- Ehrlich, P. (1956). *Collected Papers in Four Volumes Including A Complete Bibliography* (Pergamon Press).
- Eshhar, Z., Waks, T., Gross, G., and Schindler, D.G. (1993). Specific activation and targeting of cytotoxic lymphocytes through chimeric single chains consisting of antibody-binding domains and the gamma or zeta subunits of the immunoglobulin and T-cell receptors. *Proc. Natl. Acad. Sci. USA* *90*, 720–724.
- Fesnak, A.D., June, C.H., and Levine, B.L. (2016). Engineered T cells: the promise and challenges of cancer immunotherapy. *Nat. Rev. Cancer* *16*, 566–581.
- Frederick, D.T., Piris, A., Cogdill, A.P., Cooper, Z.A., Lezcano, C., Ferrone, C.R., Mitra, D., Boni, A., Newton, L.P., Liu, C., et al. (2013). BRAF inhibition is associated with enhanced melanoma antigen expression and a more favorable tumor microenvironment in patients with metastatic melanoma. *Clin. Cancer Res.* *19*, 1225–1231.

- Freeman, G.J., Long, A.J., Iwai, Y., Bourque, K., Chernova, T., Nishimura, H., Fitz, L.J., Malenkovich, N., Okazaki, T., Byrne, M.C., et al. (2000). Engagement of the PD-1 immunoinhibitory receptor by a novel B7 family member leads to negative regulation of lymphocyte activation. *J. Exp. Med.* *192*, 1027–1034.
- Fritz, J.M., Tennis, M.A., Orlicky, D.J., Lin, H., Ju, C., Redente, E.F., Choo, K.S., Staab, T.A., Bouchard, R.J., Merrick, D.T., et al. (2014). Depletion of tumor-associated macrophages slows the growth of chemically induced mouse lung adenocarcinomas. *Front. Immunol.* *5*, 587.
- Gajewski, T.F., Schreiber, H., and Fu, Y.X. (2013). Innate and adaptive immune cells in the tumor microenvironment. *Nat. Immunol.* *14*, 1014–1022.
- Gao, J., Shi, L.Z., Zhao, H., Chen, J., Xiong, L., He, Q., Chen, T., Roszik, J., Bernatchez, C., Woodman, S.E., et al. (2016). Loss of IFN- γ pathway genes in tumor cells as a mechanism of resistance to anti-CTLA-4 therapy. *Cell* *167*, 397–404.
- Gershon, R.K., and Kondo, K. (1970). Cell interactions in the induction of tolerance: the role of thymic lymphocytes. *Immunology* *18*, 723–737.
- Gil, M., Komorowski, M.P., Seshadri, M., Rokita, H., McGray, A.J., Opyrchal, M., Odunsi, K.O., and Kozbor, D. (2014). CXCL12/CXCR4 blockade by oncolytic virotherapy inhibits ovarian cancer growth by decreasing immunosuppression and targeting cancer-initiating cells. *J. Immunol.* *193*, 5327–5337.
- Gray-Owen, S.D., and Blumberg, R.S. (2006). CEACAM1: contact-dependent control of immunity. *Nat. Rev. Immunol.* *6*, 433–446.
- Green, M.R., Monti, S., Rodig, S.J., Juszczynski, P., Currie, T., O'Donnell, E., Chapuy, B., Takeyama, K., Neuberger, D., Golub, T.R., et al. (2010). Integrative analysis reveals selective 9p24.1 amplification, increased PD-1 ligand expression, and further induction via JAK2 in nodular sclerosing Hodgkin lymphoma and primary mediastinal large B-cell lymphoma. *Blood* *116*, 3268–3277.
- Gubin, M.M., Zhang, X., Schuster, H., Caron, E., Ward, J.P., Noguchi, T., Ivanova, Y., Hundal, J., Arthur, C.D., Krebber, W.J., et al. (2014). Checkpoint blockade cancer immunotherapy targets tumour-specific mutant antigens. *Nature* *515*, 577–581.
- Hamid, O., Schmidt, H., Nissan, A., Ridolfi, L., Aamdal, S., Hansson, J., Guida, M., Hyams, D.M., Gómez, H., Bastholt, L., et al. (2011). A prospective phase II trial exploring the association between tumor microenvironment biomarkers and clinical activity of ipilimumab in advanced melanoma. *J. Transl. Med.* *9*, 204.
- Hanks, B.A., Holtzhausen, A., Evans, K., Heid, M., and Globe, G.C. (2014). Combinatorial TGF- β signaling blockade and anti-CTLA-4 antibody immunotherapy in a murine BRAFV600E-PTEN-/-transgenic model of melanoma. *ASCO Annual Meeting Proceedings*.
- Hauschild, A., Grob, J.J., Demidov, L.V., Jouary, T., Gutzmer, R., Millward, M., Rutkowski, P., Blank, C.U., Miller, W.H., Jr., Kaempgen, E., et al. (2012). Dabrafenib in BRAF-mutated metastatic melanoma: a multicentre, open-label, phase 3 randomised controlled trial. *Lancet* *380*, 358–365.
- Héninger, E., Krueger, T.E., and Lang, J.M. (2015). Augmenting antitumor immune responses with epigenetic modifying agents. *Front. Immunol.* *6*, 29.
- Hicklin, D.J., Wang, Z., Arienti, F., Rivoltini, L., Parmiani, G., and Ferrone, S. (1998). beta2-Microglobulin mutations, HLA class I antigen loss, and tumor progression in melanoma. *J. Clin. Invest.* *101*, 2720–2729.
- Highfill, S.L., Cui, Y., Giles, A.J., Smith, J.P., Zhang, H., Morse, E., Kaplan, R.N., and Mackall, C.L. (2014). Disruption of CXCR2-mediated MDSC tumor trafficking enhances anti-PD1 efficacy. *Sci. Transl. Med.* *6*.
- Hodi, F.S., O'Day, S.J., McDermott, D.F., Weber, R.W., Sosman, J.A., Haanen, J.B., Gonzalez, R., Robert, C., Schadendorf, D., Hassel, J.C., et al. (2010). Improved survival with ipilimumab in patients with metastatic melanoma. *N. Engl. J. Med.* *363*, 711–723.
- Holmgaard, R.B., Zamarin, D., Munn, D.H., Wolchok, J.D., and Allison, J.P. (2013). Indoleamine 2,3-dioxygenase is a critical resistance mechanism in anti-tumor T cell immunotherapy targeting CTLA-4. *J. Exp. Med.* *210*, 1389–1402.
- Homet Moreno, B., Mok, S., Comin-Anduix, B., Hu-Lieskovan, S., and Ribas, A. (2015). Combined treatment with dabrafenib and trametinib with immunostimulating antibodies for BRAF mutant melanoma. *Oncolmunology* *5*, e1052212.
- Hu, W., Li, X., Zhang, C., Yang, Y., Jiang, J., and Wu, C. (2016). Tumor-associated macrophages in cancers. *Clin. Transl. Oncol.* *18*, 251–258.
- Hu-Lieskovan, S., Mok, S., Homet Moreno, B., Tsoi, J., Robert, L., Goedert, L., Pinheiro, E.M., Koya, R.C., Graeber, T.G., Comin-Anduix, B., and Ribas, A. (2015). Improved antitumor activity of immunotherapy with BRAF and MEK inhibitors in BRAF(V600E) melanoma. *Sci. Transl. Med.* *7*, 279ra41.
- Hugo, W., Zaretsky, J.M., Sun, L., Song, C., Moreno, B.H., Hu-Lieskovan, S., Berent-Maoz, B., Pang, J., Chmielowski, B., Cherry, G., et al. (2016). Genomic and Transcriptomic Features of Response to Anti-PD-1 Therapy in Metastatic Melanoma. *Cell* *165*, 35–44.
- Ishida, Y., Agata, Y., Shibahara, K., and Honjo, T. (1992). Induced expression of PD-1, a novel member of the immunoglobulin gene superfamily, upon programmed cell death. *EMBO J.* *11*, 3887–3895.
- Kalos, M., Levine, B.L., Porter, D.L., Katz, S., Grupp, S.A., Bagg, A., and June, C.H. (2011). T cells with chimeric antigen receptors have potent antitumor effects and can establish memory in patients with advanced leukemia. *Sci. Transl. Med.* *3*, 95ra73.
- Kaneda, M.M., Messer, K.S., Ralainirina, N., Li, H., Leem, C.J., Gorjestani, S., Woo, G., Nguyen, A.V., Figueiredo, C.C., Foubert, P., et al. (2016). PI3K γ is a molecular switch that controls immune suppression. *Nature* *539*, 437–442.
- Kaplan, M.H., Wurster, A.L., and Grusby, M.J. (1998). A signal transducer and activator of transcription (Stat)4-independent pathway for the development of T helper type 1 cells. *J. Exp. Med.* *188*, 1191–1196.
- Karpf, A.R., and Jones, D.A. (2002). Reactivating the expression of methylation silenced genes in human cancer. *Oncogene* *21*, 5496–5503.
- Kataoka, K., Shiraishi, Y., Takeda, Y., Sakata, S., Matsumoto, M., Nagano, S., Maeda, T., Nagata, Y., Kitanaka, A., Mizuno, S., et al. (2016). Aberrant PD-L1 expression through 3'-UTR disruption in multiple cancers. *Nature* *534*, 402–406.
- Kim, H.J., and Bae, S.C. (2011). Histone deacetylase inhibitors: molecular mechanisms of action and clinical trials as anti-cancer drugs. *Am. J. Transl. Res.* *3*, 166–179.
- Kodumudi, K.N., Weber, A., Sarnaik, A.A., and Pilon-Thomas, S. (2012). Blockade of myeloid-derived suppressor cells after induction of lymphopenia improves adoptive T cell therapy in a murine model of melanoma. *J. Immunol.* *189*, 5147–5154.
- Koya, R.C., Mok, S., Otte, N., Blacketer, K.J., Comin-Anduix, B., Tumei, P.C., Minasian, A., Graham, N.A., Graeber, T.G., Chodon, T., and Ribas, A. (2012). BRAF inhibitor vemurafenib improves the antitumor activity of adoptive cell immunotherapy. *Cancer Res.* *72*, 3928–3937.
- Koyama, S., Akbay, E.A., Li, Y.Y., Herter-Sprie, G.S., Buczkowski, K.A., Richards, W.G., Gandhi, L., Redig, A.J., Rodig, S.J., Asahina, H., et al. (2016). Adaptive resistance to therapeutic PD-1 blockade is associated with upregulation of alternative immune checkpoints. *Nat. Commun.* *7*, 10501.
- Krummel, M.F., and Allison, J.P. (1995). CD28 and CTLA-4 have opposing effects on the response of T cells to stimulation. *J. Exp. Med.* *182*, 459–465.
- Kryczek, I., Zou, L., Rodriguez, P., Zhu, G., Wei, S., Mottram, P., Brumlik, M., Cheng, P., Curiel, T., Myers, L., et al. (2006). B7-H4 expression identifies a novel suppressive macrophage population in human ovarian carcinoma. *J. Exp. Med.* *203*, 871–881.
- Kuang, D.M., Zhao, Q., Peng, C., Xu, J., Zhang, J.P., Wu, C., and Zheng, L. (2009). Activated monocytes in peritumoral stroma of hepatocellular carcinoma foster immune privilege and disease progression through PD-L1. *J. Exp. Med.* *206*, 1327–1337.
- Laborde, R.R., Lin, Y., Gustafson, M.P., Bulur, P.A., and Dietz, A.B. (2014). Cancer Vaccines in the World of Immune Suppressive Monocytes (CD14+) HLA-DR(lo/neg) Cells: The Gateway to Improved Responses. *Front. Immunol.* *5*, 147.
- Larkin, J., Chiarion-Sileni, V., Gonzalez, R., Grob, J.J., Cowey, C.L., Lao, C.D., Schadendorf, D., Dummer, R., Smylie, M., Rutkowski, P., et al. (2015a). Combined Nivolumab and Ipilimumab or Monotherapy in Untreated Melanoma. *N. Engl. J. Med.* *373*, 23–34.

- Larkin, J., Lao, C.D., Urba, W.J., McDermott, D.F., Horak, C., Jiang, J., and Wolchok, J.D. (2015b). Efficacy and safety of nivolumab in patients with BRAF V600 mutant and BRAF wild-type advanced melanoma: a pooled analysis of 4 clinical trials. *JAMA Oncol.* *1*, 433–440.
- Lastwika, K.J., Wilson, W., 3rd, Li, Q.K., Norris, J., Xu, H., Ghazarian, S.R., Kitagawa, H., Kawabata, S., Taube, J.M., Yao, S., et al. (2016). Control of PD-L1 expression by oncogenic activation of the AKT-mTOR pathway in non-small cell lung cancer. *Cancer Res.* *76*, 227–238.
- Le, D.T., Lutz, E., Uram, J.N., Sugar, E.A., Onners, B., Solt, S., Zheng, L., Diaz, L.A., Jr., Donehower, R.C., Jaffee, E.M., and Laheru, D.A. (2013). Evaluation of ipilimumab in combination with allogeneic pancreatic tumor cells transfected with a GM-CSF gene in previously treated pancreatic cancer. *J. Immunother.* *36*, 382–389.
- Leach, D.R., Krummel, M.F., and Allison, J.P. (1996). Enhancement of anti-tumor immunity by CTLA-4 blockade. *Science* *271*, 1734–1736.
- Lebrun, J.-J. (2012). The dual role of TGF β in human cancer: from tumor suppression to cancer metastasis. *ISRN Mol. Biol.* *2012*, 381428.
- Leclerc, B.G., Charlebois, R., Chouinard, G., Allard, B., Pommey, S., Saad, F., and Stagg, J. (2016). CD73 expression is an independent prognostic factor in prostate cancer. *Clin. Cancer Res.* *22*, 158–166.
- Lin, R.L., and Zhao, L.J. (2015). Mechanistic basis and clinical relevance of the role of transforming growth factor- β in cancer. *Cancer Biol. Med.* *12*, 385–393.
- Linehan, D.C., and Goedegebuure, P.S. (2005). CD25+ CD4+ regulatory T-cells in cancer. *Immunol. Res.* *32*, 155–168.
- Liu, C., Peng, W., Xu, C., Lou, Y., Zhang, M., Wargo, J.A., Chen, J.Q., Li, H.S., Watowich, S.S., Yang, Y., et al. (2013). BRAF inhibition increases tumor infiltration by T cells and enhances the antitumor activity of adoptive immunotherapy in mice. *Clin. Cancer Res.* *19*, 393–403.
- Loi, S., Pommey, S., Haibe-Kains, B., Beavis, P.A., Darcy, P.K., Smyth, M.J., and Stagg, J. (2013). CD73 promotes anthracycline resistance and poor prognosis in triple negative breast cancer. *Proc. Natl. Acad. Sci. USA* *110*, 11091–11096.
- Luo, Y., Zhou, H., Krueger, J., Kaplan, C., Lee, S.H., Dolman, C., Markowitz, D., Wu, W., Liu, C., Reisfeld, R.A., and Xiang, R. (2006). Targeting tumor-associated macrophages as a novel strategy against breast cancer. *J. Clin. Invest.* *116*, 2132–2141.
- Ma, C., Fan, R., Ahmad, H., Shi, Q., Comin-Anduix, B., Chodon, T., Koya, R.C., Liu, C.C., Kwong, G.A., Radu, C.G., et al. (2011). A clinical microchip for evaluation of single immune cells reveals high functional heterogeneity in phenotypically similar T cells. *Nat. Med.* *17*, 738–743.
- Ma, C., Cheung, A.F., Chodon, T., Koya, R.C., Wu, Z., Ng, C., Avramis, E., Cochran, A.J., Witte, O.N., Baltimore, D., et al. (2013). Multifunctional T-cell analyses to study response and progression in adoptive cell transfer immunotherapy. *Cancer Discov.* *3*, 418–429.
- Madore, J., Vilain, R.E., Menzies, A.M., Kakavand, H., Wilmott, J.S., Hyman, J., Yearley, J.H., Kefford, R.F., Thompson, J.F., Long, G.V., et al. (2015). PD-L1 expression in melanoma shows marked heterogeneity within and between patients: implications for anti-PD-1/PD-L1 clinical trials. *Pigment Cell Melanoma Res.* *28*, 245–253.
- Marincola, F.M., Jaffee, E.M., Hicklin, D.J., and Ferrone, S. (2000). Escape of human solid tumors from T-cell recognition: molecular mechanisms and functional significance. *Adv. Immunol.* *74*, 181–273.
- Massagué, J. (2008). TGF β in Cancer. *Cell* *134*, 215–230.
- Maude, S.L., Frey, N., Shaw, P.A., Aplenc, R., Barrett, D.M., Bunin, N.J., Chew, A., Gonzalez, V.E., Zheng, Z., Lacey, S.F., et al. (2014). Chimeric antigen receptor T cells for sustained remissions in leukemia. *N. Engl. J. Med.* *371*, 1507–1517.
- Meyer, C., Cagnon, L., Costa-Nunes, C.M., Baumgaertner, P., Montandon, N., Leyvraz, L., Michielin, O., Romano, E., and Speiser, D.E. (2014). Frequencies of circulating MDSC correlate with clinical outcome of melanoma patients treated with ipilimumab. *Cancer Immunol. Immunother.* *63*, 247–257.
- Miller, J.F., and Sadelain, M. (2015). The journey from discoveries in fundamental immunology to cancer immunotherapy. *Cancer Cell* *27*, 439–449.
- Miller, R.E., Jones, J., Le, T., Whitmore, J., Boiani, N., Gliniak, B., and Lynch, D.H. (2002). 4-1BB-specific monoclonal antibody promotes the generation of tumor-specific immune responses by direct activation of CD8 T cells in a CD40-dependent manner. *J. Immunol.* *169*, 1792–1800.
- Mittal, D., Sinha, D., Barkauskas, D., Young, A., Kalimutho, M., Stannard, K., Caramia, F., Haibe-Kains, B., Stagg, J., and Khanna, K.K. (2016). Adenosine 2B receptor expression on cancer cells promotes metastasis. *Cancer Res.* *76*.
- Mok, S., Koya, R.C., Tsui, C., Xu, J., Robert, L., Wu, L., Graeber, T.G., West, B.L., Bollag, G., and Ribas, A. (2014). Inhibition of CSF-1 receptor improves the antitumor efficacy of adoptive cell transfer immunotherapy. *Cancer Res.* *74*, 153–161.
- Moon, E.K., Wang, L.C., Dolfi, D.V., Wilson, C.B., Ranganathan, R., Sun, J., Kapoor, V., Scholler, J., Pure, E., Milone, M.C., et al. (2014). Multifactorial T-cell hypofunction that is reversible can limit the efficacy of chimeric antigen receptor-transduced human T cells in solid tumors. *Clin. Cancer Res.* *20*, 4262–4273.
- Morgan, R.A., Dudley, M.E., Wunderlich, J.R., Hughes, M.S., Yang, J.C., Sherry, R.M., Royal, R.E., Topalian, S.L., Kammula, U.S., Restifo, N.P., et al. (2006). Cancer regression in patients after transfer of genetically engineered lymphocytes. *Science* *314*, 126–129.
- Ninomiya, S., Narala, N., Huye, L., Yagyu, S., Savoldo, B., Dotti, G., Heslop, H.E., Brenner, M.K., Rooney, C.M., and Ramos, C.A. (2015). Tumor indoleamine 2,3-dioxygenase (IDO) inhibits CD19-CAR T cells and is downregulated by lymphodepleting drugs. *Blood* *125*, 3905–3916.
- Oida, T., Zhang, X., Goto, M., Hachimura, S., Totsuka, M., Kaminogawa, S., and Weiner, H.L. (2003). CD4+CD25- T cells that express latency-associated peptide on the surface suppress CD4+CD45RBhigh-induced colitis by a TGF- β -dependent mechanism. *J. Immunol.* *170*, 2516–2522.
- Okazaki, T., Chikuma, S., Iwai, Y., Fagarasan, S., and Honjo, T. (2013). A rheostat for immune responses: the unique properties of PD-1 and their advantages for clinical application. *Nat. Immunol.* *14*, 1212–1218.
- Ormandy, L.A., Hilleman, T., Wedemeyer, H., Manns, M.P., Greten, T.F., and Korangy, F. (2005). Increased populations of regulatory T cells in peripheral blood of patients with hepatocellular carcinoma. *Cancer Res.* *65*, 2457–2464.
- Ortenberg, R., Sapir, Y., Raz, L., Hershkovitz, L., Ben Arav, A., Sapoznik, S., Barshack, I., Avivi, C., Berkun, Y., Besser, M.J., et al. (2012). Novel immunotherapy for malignant melanoma with a monoclonal antibody that blocks CEACAM1 homophilic interactions. *Mol. Cancer Ther.* *11*, 1300–1310.
- Pardoll, D.M. (2012). The blockade of immune checkpoints in cancer immunotherapy. *Nat. Rev. Cancer* *12*, 252–264.
- Parsa, A.T., Waldron, J.S., Panner, A., Crane, C.A., Parney, I.F., Barry, J.J., Cachola, K.E., Murray, J.C., Tihan, T., Jensen, M.C., et al. (2007). Loss of tumor suppressor PTEN function increases B7-H1 expression and immunoresistance in glioma. *Nat. Med.* *13*, 84–88.
- Peng, W., Chen, J.Q., Liu, C., Malu, S., Creasy, C., Tetzlaff, M.T., Xu, C., McKenzie, J.A., Zhang, C., Liang, X., et al. (2016). Loss of PTEN promotes resistance to T cell-mediated immunotherapy. *Cancer Discov.* *6*, 202–216.
- Platanias, L.C. (2005). Mechanisms of type-I- and type-II-interferon-mediated signalling. *Nat. Rev. Immunol.* *5*, 375–386.
- Postow, M.A., Chesney, J., Pavlick, A.C., Robert, C., Grossmann, K., McDermott, D., Linette, G.P., Meyer, N., Giguere, J.K., Agarwala, S.S., et al. (2015). Nivolumab and ipilimumab versus ipilimumab in untreated melanoma. *N. Engl. J. Med.* *372*, 2006–2017.
- Puzanov, I., Milhem, M.M., Minor, D., Hamid, O., Li, A., Chen, L., Chastain, M., Gorski, K.S., Anderson, A., Chou, J., et al. (2016). Talmogene Lahereparepvec in Combination With Ipilimumab in Previously Untreated, Unresectable Stage IIIB-IV Melanoma. *J. Clin. Oncol.* *34*, 2619–2626.
- Quezada, S.A., Peggs, K.S., Curran, M.A., and Allison, J.P. (2006). CTLA4 blockade and GM-CSF combination immunotherapy alters the intratumor balance of effector and regulatory T cells. *J. Clin. Invest.* *116*, 1935–1945.
- Redmond, W.L., Gough, M.J., Charbonneau, B., Ratliff, T.L., and Weinberg, A.D. (2007). Defects in the acquisition of CD8 T cell effector function after

- priming with tumor or soluble antigen can be overcome by the addition of an OX40 agonist. *J. Immunol.* **179**, 7244–7253.
- Redmond, W.L., Linch, S.N., and Kasiewicz, M.J. (2014). Combined targeting of costimulatory (OX40) and coinhibitory (CTLA-4) pathways elicits potent effector T cells capable of driving robust antitumor immunity. *Cancer Immunol. Res.* **2**, 142–153.
- Restifo, N.P., Marincola, F.M., Kawakami, Y., Taubenberger, J., Yannelli, J.R., and Rosenberg, S.A. (1996). Loss of functional beta 2-microglobulin in metastatic melanomas from five patients receiving immunotherapy. *J. Natl. Cancer Inst.* **88**, 100–108.
- Ribas, A. (2015). Adaptive Immune Resistance: How Cancer Protects from Immune Attack. *Cancer Discov.* **5**, 915–919.
- Ribas, A., Puzanov, I., Dummer, R., Schadendorf, D., Hamid, O., Robert, C., Hodi, F.S., Schachter, J., Pavlick, A.C., Lewis, K.D., et al. (2015). Pembrolizumab versus investigator-choice chemotherapy for ipilimumab-refractory melanoma (KEYNOTE-002): a randomised, controlled, phase 2 trial. *Lancet Oncol.* **16**, 908–918.
- Ries, C.H., Cannarile, M.A., Hoves, S., Benz, J., Wartha, K., Runza, V., Rey-Giraud, F., Pradel, L.P., Feuerhake, F., Klaman, I., et al. (2014). Targeting tumor-associated macrophages with anti-CSF-1R antibody reveals a strategy for cancer therapy. *Cancer Cell* **25**, 846–859.
- Rizvi, N.A., Hellmann, M.D., Snyder, A., Kvistborg, P., Makarov, V., Havel, J.J., Lee, W., Yuan, J., Wong, P., Ho, T.S., et al. (2015). Cancer immunology. Mutational landscape determines sensitivity to PD-1 blockade in non-small cell lung cancer. *Science* **348**, 124–128.
- Robbins, P.F., Morgan, R.A., Feldman, S.A., Yang, J.C., Sherry, R.M., Dudley, M.E., Wunderlich, J.R., Nahvi, A.V., Helman, L.J., Mackall, C.L., et al. (2011). Tumor regression in patients with metastatic synovial cell sarcoma and melanoma using genetically engineered lymphocytes reactive with NY-ESO-1. *J. Clin. Oncol.* **29**, 917–924.
- Robert, C., Thomas, L., Bondarenko, I., O'Day, S., Weber, J., Garbe, C., Lebbe, C., Baurain, J.F., Testori, A., Grob, J.J., et al. (2011). Ipilimumab plus dacarbazine for previously untreated metastatic melanoma. *N. Engl. J. Med.* **364**, 2517–2526.
- Rooney, M.S., Shukla, S.A., Wu, C.J., Getz, G., and Hacohen, N. (2015). Molecular and genetic properties of tumors associated with local immune cytolytic activity. *Cell* **160**, 48–61.
- Rosenberg, S.A., Yang, J.C., Sherry, R.M., Kammula, U.S., Hughes, M.S., Phan, G.Q., Citrin, D.E., Restifo, N.P., Robbins, P.F., Wunderlich, J.R., et al. (2011). Durable complete responses in heavily pretreated patients with metastatic melanoma using T-cell transfer immunotherapy. *Clin. Cancer Res.* **17**, 4550–4557.
- Roszik, J., Haydu, L.E., Hess, K.R., Oba, J., Joon, A.Y., Siroy, A.E., Karpinets, T.V., Stingo, F.C., Baladandayuthapani, V., Tetzlaff, M.T., et al. (2016). Novel algorithmic approach predicts tumor mutation load and correlates with immunotherapy clinical outcomes using a defined gene mutation set. *BMC Med.* **14**, 168.
- Rudensky, A.Y. (2011). Regulatory T cells and Foxp3. *Immunol. Rev.* **241**, 260–268.
- Ruella, M., Barrett, D.M., Kenderian, S.S., Shestova, O., Hofmann, T.J., Perazzelli, J., Klichinsky, M., Aikawa, V., Nazimuddin, F., Kozlowski, M., et al. (2016). Dual CD19 and CD123 targeting prevents antigen-loss relapses after CD19-directed immunotherapies. *J. Clin. Invest.* **126**, 3814–3826.
- Ruffell, B., and Coussens, L.M. (2015). Macrophages and therapeutic resistance in cancer. *Cancer Cell* **27**, 462–472.
- Ruffell, B., Chang-Strachan, D., Chan, V., Rosenbusch, A., Ho, C.M., Pryer, N., Daniel, D., Hwang, E.S., Rugo, H.S., and Coussens, L.M. (2014). Macrophage IL-10 blocks CD8+ T cell-dependent responses to chemotherapy by suppressing IL-12 expression in intratumoral dendritic cells. *Cancer Cell* **26**, 623–637.
- Sadelain, M. (2016). Chimeric antigen receptors: driving immunology towards synthetic biology. *Curr. Opin. Immunol.* **41**, 68–76.
- Sakaguchi, S., Yamaguchi, T., Nomura, T., and Ono, M. (2008). Regulatory T cells and immune tolerance. *Cell* **133**, 775–787.
- Sakuishi, K., Apetoh, L., Sullivan, J.M., Blazar, B.R., Kuchroo, V.K., and Anderson, A.C. (2010). Targeting Tim-3 and PD-1 pathways to reverse T cell exhaustion and restore anti-tumor immunity. *J. Exp. Med.* **207**, 2187–2194.
- Schachter, J. R.A., Long GV, Arance A, Grob JJ, Mortier L, Daud A, Carlino MS, McNeil CM, Lotem M, Larkin J, Lorigan P, Neyns B, Blank CU, Petrella TM, Hamid O, Zhou H, Ebbinghaus S, Ibrahim N, Robert C (2016). Pembrolizumab versus ipilimumab for advanced melanoma: final overall survival analysis of KEYNOTE-006. *Clin Oncol* **34** (suppl; abstr 9504).
- Schadendorf, D., Hodi, F.S., Robert, C., Weber, J.S., Margolin, K., Hamid, O., Patt, D., Chen, T.-T., Berman, D.M., and Wolchok, J.D. (2015). Pooled analysis of long-term survival data from phase II and phase III trials of ipilimumab in unresectable or metastatic melanoma. *J. Clin. Oncol.* **33**.
- Schumacher, T.N., and Schreiber, R.D. (2015). Neoantigens in cancer immunotherapy. *Science* **348**, 69–74.
- Shankaran, V., Ikeda, H., Bruce, A.T., White, J.M., Swanson, P.E., Old, L.J., and Schreiber, R.D. (2001). IFN γ and lymphocytes prevent primary tumour development and shape tumour immunogenicity. *Nature* **410**, 1107–1111.
- Sharma, P., and Allison, J.P. (2015). Immune checkpoint targeting in cancer therapy: toward combination strategies with curative potential. *Cell* **161**, 205–214.
- Shin, D.S., and Ribas, A. (2015). The evolution of checkpoint blockade as a cancer therapy: what's here, what's next? *Curr. Opin. Immunol.* **33**, 23–35.
- Shin, D.S., Zaretsky, J.M., Escuin-Ordinas, H., Garcia-Diaz, A., Hu-Lieskovan, S., Kalbasi, A., Grasso, C.S., Hugo, W., Sandoval, S., Torrejon, D.Y., et al. (2016). Primary Resistance to PD-1 Blockade Mediated by JAK(1/2) Mutations. *Cancer Discov.*
- Simpson, T.R., Li, F., Montalvo-Ortiz, W., Sepulveda, M.A., Bergerhoff, K., Arce, F., Roddie, C., Henry, J.Y., Yagita, H., Wolchok, J.D., et al. (2013). Fc-dependent depletion of tumor-infiltrating regulatory T cells co-defines the efficacy of anti-CTLA-4 therapy against melanoma. *J. Exp. Med.* **210**, 1695–1710.
- Sivan, A., Corrales, L., Hubert, N., Williams, J.B., Aquino-Michaels, K., Earley, Z.M., Benyamin, F.W., Lei, Y.M., Jabri, B., Alegre, M.L., et al. (2015). Commensal bifidobacterium promotes antitumor immunity and facilitates anti-PD-L1 efficacy. *Science* **350**, 1084–1089.
- Snyder, A., Makarov, V., Merghoub, T., Yuan, J., Zaretsky, J.M., Desrichard, A., Walsh, L.A., Postow, M.A., Wong, P., Ho, T.S., et al. (2014). Genetic basis for clinical response to CTLA-4 blockade in melanoma. *N. Engl. J. Med.* **371**, 2189–2199.
- Solito, S., Falisi, E., Diaz-Montero, C.M., Doni, A., Pinton, L., Rosato, A., Francescato, S., Basso, G., Zanovello, P., Onicescu, G., et al. (2011). A human promyelocytic-like population is responsible for the immune suppression mediated by myeloid-derived suppressor cells. *Blood* **118**, 2254–2265.
- Sotillo, E., Barrett, D.M., Black, K.L., Bagashev, A., Oldridge, D., Wu, G., Sussman, R., Lanauze, C., Ruella, M., Gazzara, M.R., et al. (2015). Convergence of Acquired Mutations and Alternative Splicing of CD19 Enables Resistance to CART-19 Immunotherapy. *Cancer Discov.* **5**, 1282–1295.
- Spranger, S., Koblisch, H.K., Horton, B., Scherle, P.A., Newton, R., and Gajewski, T.F. (2014). Mechanism of tumor rejection with doublets of CTLA-4, PD-1/PD-L1, or IDO blockade involves restored IL-2 production and proliferation of CD8(+) T cells directly within the tumor microenvironment. *J. Immunother. Cancer* **2**, 3.
- Spranger, S., Bao, R., and Gajewski, T.F. (2015). Melanoma-intrinsic β -catenin signalling prevents anti-tumour immunity. *Nature* **523**, 231–235.
- Stagg, J., Divisekera, U., McLaughlin, N., Sharkey, J., Pommey, S., Denoyer, D., Dwyer, K.M., and Smyth, M.J. (2010). Anti-CD73 antibody therapy inhibits breast tumor growth and metastasis. *Proc. Natl. Acad. Sci. USA* **107**, 1547–1552.
- Sucker, A., Zhao, F., Real, B., Heeke, C., Bielefeld, N., Mabetan, S., Horn, S., Moll, I., Maltaner, R., Horn, P.A., et al. (2014). Genetic evolution of T-cell

- resistance in the course of melanoma progression. *Clin. Cancer Res.* 20, 6593–6604.
- Sugiyama, D., Nishikawa, H., Maeda, Y., Nishioka, M., Tanemura, A., Katayama, I., Ezoe, S., Kanakura, Y., Sato, E., Fukumori, Y., et al. (2013). Anti-CCR4 mAb selectively depletes effector-type FoxP3+CD4+ regulatory T cells, evoking antitumor immune responses in humans. *Proc. Natl. Acad. Sci. USA* 110, 17945–17950.
- Sundstedt, A., O'Neill, E.J., Nicolson, K.S., and Wraith, D.C. (2003). Role for IL-10 in suppression mediated by peptide-induced regulatory T cells in vivo. *J. Immunol.* 170, 1240–1248.
- Takahashi, H., Okai, Y., Paxton, R.J., Hefta, L.J., and Shively, J.E. (1993). Differential regulation of carcinoembryonic antigen and biliary glycoprotein by gamma-interferon. *Cancer Res.* 53, 1612–1619.
- Talmadge, J.E., and Gabrilovich, D.I. (2013). History of myeloid-derived suppressor cells. *Nat. Rev. Cancer* 13, 739–752.
- Tang, D.Y., Ellis, R.A., and Lovat, P.E. (2016). Prognostic Impact of Autophagy Biomarkers for Cutaneous Melanoma. *Front. Oncol.* 6, 236.
- Taube, J.M., Anders, R.A., Young, G.D., Xu, H., Sharma, R., McMiller, T.L., Chen, S., Klein, A.P., Pardoll, D.M., Topalian, S.L., and Chen, L. (2012). Colocalization of inflammatory response with B7-h1 expression in human melanocytic lesions supports an adaptive resistance mechanism of immune escape. *Sci. Transl. Med.* 4, 127ra37.
- Taube, J.M., Klein, A., Brahmer, J.R., Xu, H., Pan, X., Kim, J.H., Chen, L., Pardoll, D.M., Topalian, S.L., and Anders, R.A. (2014). Association of PD-1, PD-1 ligands, and other features of the tumor immune microenvironment with response to anti-PD-1 therapy. *Clin. Cancer Res.* 20, 5064–5074.
- Tham, M., Khoo, K., Yeo, K.P., Kato, M., Prevost-Blondel, A., Angeli, V., and Abastado, J.P. (2015). Macrophage depletion reduces postsurgical tumor recurrence and metastatic growth in a spontaneous murine model of melanoma. *Oncotarget* 6, 22857–22868.
- Topalian, S.L., Drake, C.G., and Pardoll, D.M. (2015). Immune checkpoint blockade: a common denominator approach to cancer therapy. *Cancer Cell* 27, 450–461.
- Tran, E., Robbins, P.F., Lu, Y.C., Prickett, T.D., Gartner, J.J., Jia, L., Pasetto, A., Zheng, Z., Ray, S., Groh, E.M., et al. (2016). T-Cell Transfer Therapy Targeting Mutant KRAS in Cancer. *N. Engl. J. Med.* 375, 2255–2262.
- Tumeh, P.C., Harview, C.L., Yearley, J.H., Shintaku, I.P., Taylor, E.J., Robert, L., Chmielowski, B., Spasic, M., Henry, G., Ciobanu, V., et al. (2014). PD-1 blockade induces responses by inhibiting adaptive immune resistance. *Nature* 515, 568–571.
- Turcotte, M., Spring, K., Pommey, S., Chouinard, G., Cousineau, I., George, J., Chen, G.M., Gendoo, D.M., Haibe-Kains, B., Karn, T., et al. (2015). CD73 is associated with poor prognosis in high-grade serous ovarian cancer. *Cancer Res.* 75, 4494–4503.
- Van Allen, E.M., Miao, D., Schilling, B., Shukla, S.A., Blank, C., Zimmer, L., Sucker, A., Hillen, U., Geukes Foppen, M.H., Goldinger, S.M., et al. (2015). Genomic correlates of response to CTLA-4 blockade in metastatic melanoma. *Science* 350, 207–211.
- van Rooij, N., van Buuren, M.M., Philips, D., Velds, A., Toebes, M., Heemskerk, B., van Dijk, L.J., Behjati, S., Hilkmann, H., El Atmioui, D., et al. (2013). Tumor exome analysis reveals neoantigen-specific T-cell reactivity in an ipilimumab-responsive melanoma. *J. Clin. Oncol.* 31, e439–e442.
- Vanpouille-Box, C., Diamond, J.M., Pilonis, K.A., Zavadil, J., Babb, J.S., Formenti, S.C., Barcellos-Hoff, M.H., and Demaria, S. (2015). TGF β is a master regulator of radiation therapy-induced antitumor immunity. *Cancer Res.* 75, 2232–2242.
- Vétizou, M., Pitt, J.M., Daillère, R., Lepage, P., Waldschmitt, N., Flament, C., Rusakiewicz, S., Routy, B., Roberti, M.P., Duong, C.P., et al. (2015). Anticancer immunotherapy by CTLA-4 blockade relies on the gut microbiota. *Science* 350, 1079–1084.
- Viehl, C.T., Moore, T.T., Liyanage, U.K., Frey, D.M., Ehlers, J.P., Eberlein, T.J., Goedegebuure, P.S., and Linehan, D.C. (2006). Depletion of CD4+CD25+ regulatory T cells promotes a tumor-specific immune response in pancreas cancer-bearing mice. *Ann. Surg. Oncol.* 13, 1252–1258.
- Vo, D.D., Prins, R.M., Begley, J.L., Donahue, T.R., Morris, L.F., Bruhn, K.W., de la Rocha, P., Yang, M.-Y., Mok, S., Garban, H.J., et al. (2009). Enhanced anti-tumor activity induced by adoptive T-cell transfer and adjunctive use of the histone deacetylase inhibitor LAQ824. *Cancer Res.* 69, 8693–8699.
- Wang, L.X., Mei, Z.Y., Zhou, J.H., Yao, Y.S., Li, Y.H., Xu, Y.H., Li, J.X., Gao, X.N., Zhou, M.H., Jiang, M.M., et al. (2013). Low dose decitabine treatment induces CD80 expression in cancer cells and stimulates tumor specific cytotoxic T lymphocyte responses. *PLoS ONE* 8, e62924.
- Wargo, J.A., Reddy, S.M., Reuben, A., and Sharma, P. (2016). Monitoring immune responses in the tumor microenvironment. *Curr. Opin. Immunol.* 41, 23–31.
- Weber, J.S., D'Angelo, S.P., Minor, D., Hodi, F.S., Gutzmer, R., Neyns, B., Hoeller, C., Khushalani, N.I., Miller, W.H., Jr., Lao, C.D., et al. (2015). Nivolumab versus chemotherapy in patients with advanced melanoma who progressed after anti-CTLA-4 treatment (CheckMate 037): a randomised, controlled, open-label, phase 3 trial. *Lancet Oncol.* 16, 375–384.
- Wesolowski, R., Markowitz, J., and Carson, W.E., 3rd. (2013). Myeloid derived suppressor cells - a new therapeutic target in the treatment of cancer. *J. Immunother. Cancer* 7, 10.
- Wilmott, J.S., Long, G.V., Howle, J.R., Haydu, L.E., Sharma, R.N., Thompson, J.F., Kefferd, R.F., Hersey, P., and Scolyer, R.A. (2012). Selective BRAF inhibitors induce marked T-cell infiltration into human metastatic melanoma. *Clin. Cancer Res.* 18, 1386–1394.
- Wolchok, J.D., Kluger, H., Callahan, M.K., Postow, M.A., Rizvi, N.A., Lesokhin, A.M., Segal, N.H., Ariyan, C.E., Gordon, R.-A., Reed, K., et al. (2013). Nivolumab plus ipilimumab in advanced melanoma. *N. Engl. J. Med.* 369, 122–133.
- Woo, E.Y., Yeh, H., Chu, C.S., Schlienger, K., Carroll, R.G., Riley, J.L., Kaiser, L.R., and June, C.H. (2002). Cutting edge: Regulatory T cells from lung cancer patients directly inhibit autologous T cell proliferation. *J. Immunol.* 168, 4272–4276.
- Wu, X., Schulte, B.C., Zhou, Y., Haribhai, D., Mackinnon, A.C., Plaza, J.A., Williams, C.B., and Hwang, S.T. (2014). Depletion of M2-like tumor-associated macrophages delays cutaneous T-cell lymphoma development in vivo. *J. Invest. Dermatol.* 134, 2814–2822.
- Yang, J.C., and Rosenberg, S.A. (2016). Chapter Seven—Adoptive T-Cell Therapy for Cancer. In *Advances in Immunology*, D.S. Robert, ed. (Academic Press), pp. 279–294.
- Yang, L., DeBusk, L.M., Fukuda, K., Fingleton, B., Green-Jarvis, B., Shyr, Y., Matrisian, L.M., Carbone, D.P., and Lin, P.C. (2004). Expansion of myeloid immune suppressor Gr+CD11b+ cells in tumor-bearing host directly promotes tumor angiogenesis. *Cancer Cell* 6, 409–421.
- Yang, L., Huang, J., Ren, X., Gorska, A.E., Chytil, A., Aakre, M., Carbone, D.P., Matrisian, L.M., Richmond, A., Lin, P.C., and Moses, H.L. (2008). Abrogation of TGF beta signaling in mammary carcinomas recruits Gr-1+CD11b+ myeloid cells that promote metastasis. *Cancer Cell* 13, 23–35.
- Yee, C., Lizee, G., and Schueneman, A.J. (2015). Endogenous T-Cell Therapy: Clinical Experience. *Cancer J.* 21, 492–500.
- Zaretsky, J.M., Garcia-Diaz, A., Shin, D.S., Escuin-Ordinas, H., Hugo, W., Hu-Lieskovan, S., Torrejon, D.Y., Abril-Rodriguez, G., Sandoval, S., Barthly, L., et al. (2016). Mutations Associated with Acquired Resistance to PD-1 Blockade in Melanoma. *N. Engl. J. Med.* 375, 819–829.
- Zhang, H., Conrad, D.M., Butler, J.J., Zhao, C., Blay, J., and Hoskin, D.W. (2004). Adenosine acts through A2 receptors to inhibit IL-2-induced tyrosine phosphorylation of STAT5 in T lymphocytes: role of cyclic adenosine 3',5'-monophosphate and phosphatases. *J. Immunol.* 173, 932–944.
- Zhu, Y., Knolhoff, B.L., Meyer, M.A., Nywening, T.M., West, B.L., Luo, J., Wang-Gillam, A., Goedegebuure, S.P., Linehan, D.C., and DeNardo, D.G. (2014). CSF1/CSF1R blockade reprograms tumor-infiltrating macrophages and improves response to T-cell checkpoint immunotherapy in pancreatic cancer models. *Cancer Res.* 74, 5057–5069.
- Zou, W., Wolchok, J.D., and Chen, L. (2016). PD-L1 (B7-H1) and PD-1 pathway blockade for cancer therapy: Mechanisms, response biomarkers, and combinations. *Sci. Transl. Med.* 8.