

# UC Davis

## UC Davis Previously Published Works

### Title

Isolation, culture, and functional analysis of hepatocytes from mice with fatty liver disease.

### Permalink

<https://escholarship.org/uc/item/5rx9r5zx>

### Journal

STAR Protocols, 1(3)

### Authors

Jung, Yunshin

Zhao, Meng

Svensson, Katrin

### Publication Date

2020-12-18

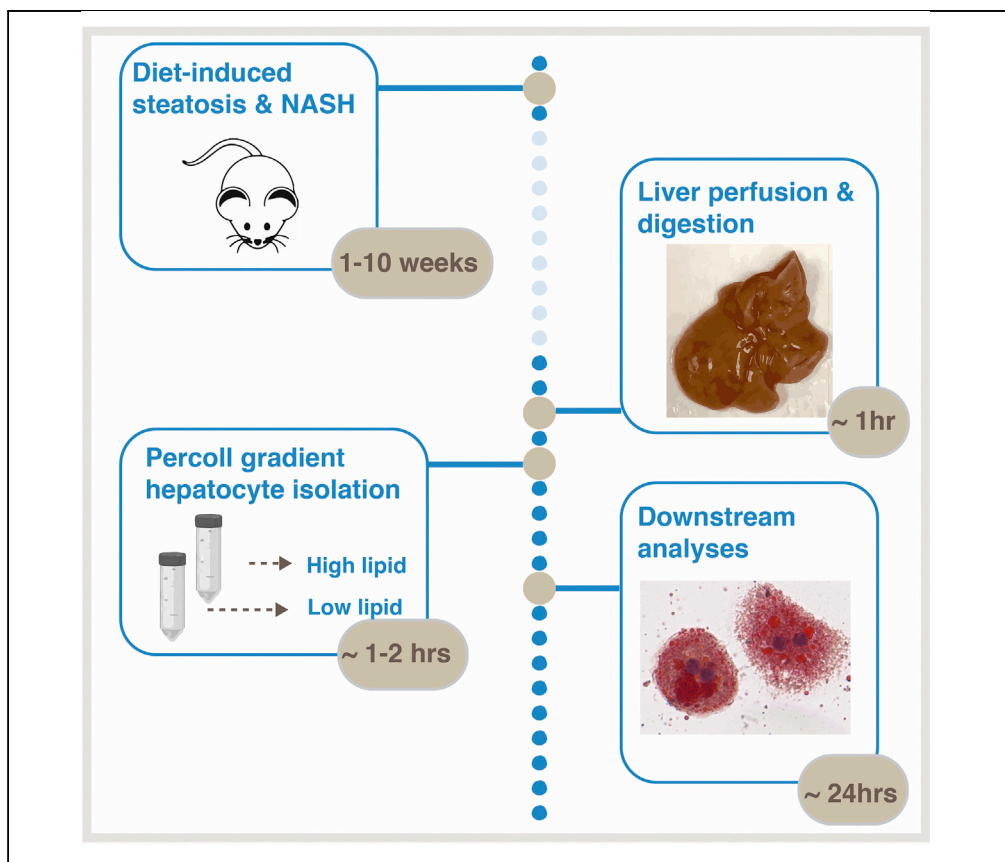
### DOI

10.1016/j.xpro.2020.100222

Peer reviewed

## Protocol

# Isolation, culture, and functional analysis of hepatocytes from mice with fatty liver disease



Yunshin Jung, Meng Zhao, Katrin J. Svensson

katrinjs@stanford.edu

### HIGHLIGHTS

This protocol describes the isolation of hepatocytes from mice with fatty liver disease

Percoll gradient centrifugation enables density-based hepatocyte isolation

Examples of heterogeneity in hepatocyte lipid content are presented

We present a protocol for isolating hepatocytes from mice with established non-alcoholic fatty liver disease. This protocol consists of liver perfusion using a peristaltic pump, followed by a modified 25% and 90% Percoll gradient centrifugation protocol to capture lipid-laden hepatocytes that are usually lost using traditional isolation protocols. This protocol enables simultaneous isolation of normal and lipid-filled hepatocytes. Lipid-filled hepatocytes can be used in cell culture systems to study drug metabolism, hepatotoxicity, or glucose and lipid metabolism.

Jung et al., STAR Protocols 1, 100222

December 18, 2020 © 2020

The Author(s).

[https://doi.org/10.1016/](https://doi.org/10.1016/j.xpro.2020.100222)

[j.xpro.2020.100222](https://doi.org/10.1016/j.xpro.2020.100222)



## Protocol

## Isolation, culture, and functional analysis of hepatocytes from mice with fatty liver disease

Yunshin Jung,<sup>1,2,3</sup> Meng Zhao,<sup>1,2</sup> and Katrin J. Svensson<sup>1,2,3,4,\*</sup><sup>1</sup>Department of Pathology, Stanford University School of Medicine, Stanford, CA 94305, USA<sup>2</sup>Stanford Diabetes Research Center, Stanford University School of Medicine, Stanford, CA 94305, USA<sup>3</sup>Technical Contact<sup>4</sup>Lead Contact\*Correspondence: [katrinjs@stanford.edu](mailto:katrinjs@stanford.edu)  
<https://doi.org/10.1016/j.xpro.2020.100222>

## SUMMARY

We present a protocol for isolating hepatocytes from mice with established non-alcoholic fatty liver disease. This protocol consists of liver perfusion using a peristaltic pump, followed by a modified 25% and 90% Percoll gradient centrifugation protocol to capture lipid-laden hepatocytes that are usually lost using traditional isolation protocols. This protocol enables simultaneous isolation of normal and lipid-filled hepatocytes. Lipid-filled hepatocytes can be used in cell culture systems to study drug metabolism, hepatotoxicity, or glucose and lipid metabolism.

For complete details on the use and execution of this protocol, please refer to Sharabi et al. (2017) and Kegel et al. (2016).

## BEFORE YOU BEGIN

This protocol will isolate viable hepatocytes from healthy murine livers, as well as from mice with established non-alcoholic steatohepatitis. This protocol has been modified based on previous work to enable isolation of lipid-filled hepatocytes (Berry and Friend, 1969; Kremer et al., 1986; Pertoft, 2000; Gonçalves et al., 2007; Li et al., 2010; Kegel et al., 2016; Sharabi et al., 2017).

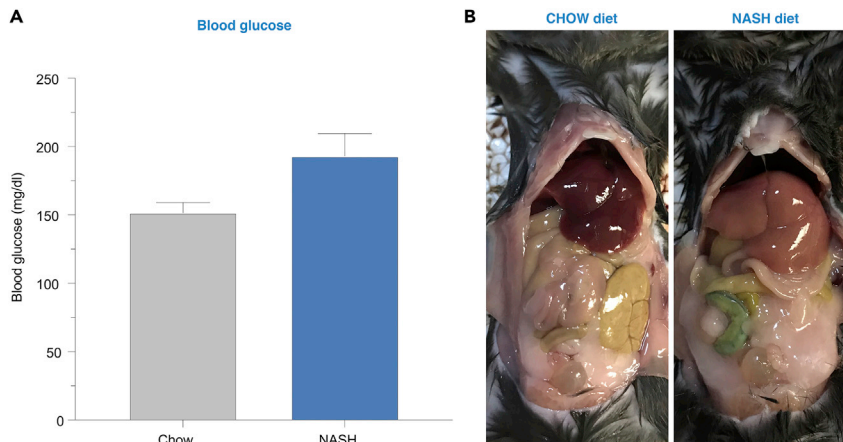
**Note:** This protocol can be used to isolate hepatocytes from mice with different genetic backgrounds and mutations to facilitate the investigation of gene function in liver disease.

## Induction of diet-induced NASH in mice

⌚ Timing: 1–10 weeks

1. All animal procedures need to be approved by the Institutional Animal Care and Use Committee. All experiments in this protocol were approved by the Stanford Animal Care and Use Committee protocol #32982.
2. House 6–8 week old male or female C57BL/6 mice in a cage of 4–5 mice per cage in a temperature-controlled (20°C–22°C) room on a 12-h light/dark cycle.
3. Feed mice with either a chow diet or with a diet to induce non-alcoholic steatohepatitis, hereafter referred to as NASH diet (Research Diets). The NASH diet consists of 40% kcal fat (palm oil), 20% kcal fructose, and 2% cholesterol and has previously been shown to induce clinical, biochemical, and histological features of fatty liver disease in animals (Radhakrishnan et al., 2020).
4. Hepatic lipid accumulation can be seen at the cellular level after a week of feeding, while whole-body changes such as body weight and blood glucose are typically seen starting at 6 weeks on





**Figure 1. Induction of diet-induced non-alcoholic steatohepatitis (NASH) in mice**

(A) Typical non-fasting blood glucose levels in C57BL/6 mice fed chow diet or NASH-diet for 6 weeks.

(B) C57BL/6 mice fed chow diet (left) or NASH-diet (right) for 6 weeks. Livers from NASH mice are pale and of increased size.

this diet. Measure body weights and non-fasted glucose levels using a glucometer weekly. At 6 weeks and beyond, NASH diet-fed mice are expected to demonstrate significantly higher body weights, higher blood glucose levels, and enlarged and pale livers (Figure 1) compared to chow-fed mice.

**Note:** C57BL/6 mice are suitable for inducing NASH with this diet, but other strains such as 129Sv can be used as well, but the exact time of feeding might have to be optimized (Fengler et al., 2016).

## KEY RESOURCES TABLE

REAGENT or RESOURCE	SOURCE	IDENTIFIER
Chemicals, peptides, and recombinant proteins		
HBSS buffer	Gibco	Cat# 14175-095
Potassium chloride	Sigma	Cat# P5405
Sodium bicarbonate	Sigma	Cat# S6297
UltraPure 0.5 M EDTA, pH 8.0	Invitrogen	Cat# 15575-038
Williams E media	Quality Biological	Cat# 112-033-101
Corning regular fetal bovine serum	Corning	Cat# 35-010-CV
DMEM high glucose	Sigma	Cat# D6429
HEPES buffered saline	Sigma-Aldrich	Cat# 51558
Sodium pyruvate	Thermo Fisher	Cat# 11360070
Dexamethasone	Sigma	Cat# D1756
Insulin, human recombinant	Millipore Sigma	Cat# 91077C
Penicillin/streptomycin	Gibco	Cat# 15140-122
Collagenase IV	Sigma	Cat# C5138
PBS	Gibco	Cat# 10010-023
10× PBS	Gibco	Cat# 70011044
Percoll	Sigma	Cat# P1644

(Continued on next page)

### Continued

REAGENT or RESOURCE	SOURCE	IDENTIFIER
Ethanol	Fisher Scientific	Cat# 22-032-601
BSA	Sigma	Cat# A7906
Glutamax	Thermo Fisher	Cat# 35050061
Oil red O solution	Sigma	Cat# O1391
Isopropanol	Fisher Chemical	Cat# BP2632-4
Formalin	SIP Brand	Cat# C4320
Rat tail Collagen I	Corning	Cat# 354236
Trypan blue stain (0.4%)	Invitrogen	Cat# T10282
Experimental models: organisms/strains		
C57BL/6 mice, 6 weeks old male or female	Jackson Laboratory	Cat #000664
Other		
Blood glucose meter	OneTouch UltraMini meter	N/A
Blood glucose strips	GenUltimate	Cat# 100-50
Rodent NASH diet	Research Diets	Cat# D09100310
70 $\mu$ m cell strainer	BD Falcon	Cat# 352350
25G $\times$ 7/8 needle	BD	Cat# 305124
Petri dish Fisherbrand	Fisher Scientific	Cat# FB0875713
Fisherbrand variable-flow peristaltic pump	Fisher Scientific	Cat# 13-876-2
Perfusion tubing connectors 3/32 inch polypropylene coupler	United States Plastic Corp	Cat# 65600
Perfusion tubing 1/32 inch ID $\times$ 3/32 inch OD silicone	United States Plastic Corp	Cat# 57286
Benchtop centrifuge	N/A	N/A
Biosafety cabinet	N/A	N/A
Surgical scissors and tweezers	Roboz	N/A
Water bath	N/A	N/A
Corning Costar flat-bottomed cell culture plates	Fisher Scientific	Cat# 07-200-82
Countess II FL automated cell counter	Life Technology	Cat# AMQAF1000
Millex-GS syringe filter unit, 0.22 $\mu$ m	Millipore Sigma	Cat# SLGSV255F
BD syringes without needle, 50 mL	Fisher Scientific	Cat# BD309653

## MATERIALS AND EQUIPMENT

Prepare all buffers and media according to the tables and keep on ice until use. Refer to the [Key Resources Table](#) and [Materials and Equipment](#) for a complete list of materials, equipment, and recipes.

**△ CRITICAL:** Prepare the digestion buffer the day of isolation. Avoid repeated freeze-thaws of the digestion buffer. Pre-warm the perfusion and digestion buffer to 42°C before starting the isolation procedure. Keep the plating media on ice.

### Perfusion buffer

Reagent	Stock concentration	Final concentration	Amount
HBSS	1 $\times$	1 $\times$	500 mL
KCl	w/v	0.4 g/L	0.2 g
Sodium Bicarbonate	w/v	2.1 g/L	1.05 g
EDTA	n/a	0.2 g/L	0.1 g
Total			500 mL

Adjust pH to 7.4, sterilize using a 0.22  $\mu\text{m}$  filter, store at 4°C for up to 2 months. Adjust the pH to 7.4 after the solution has reached 42°C if needed.

#### Digestion buffer

Reagent	Stock concentration	Final concentration	Amount
DMEM high glucose	1×	1×	89 mL
Penicillin/Streptomycin	100×	1% (v/v)	1 mL
Collagenase IV	n/a	1 mg/mL	100 mg
HEPES	10 g/L	10 $\mu\text{g}/\text{mL}$	100 $\mu\text{L}$
FBS	n/a	10% (v/v)	10 mL
Total			100 mL

Adjust pH to 7.4, always prepare freshly, do not store.

#### 90% Percoll media

Reagent	Stock concentration	Final concentration	Amount
Percoll	n/a	n/a	9 mL
10× PBS	10×	1×	1 mL
Resuspended hepatocytes			10 mL
Total			20 mL

Prepare at 20°C–24°C in a sterile environment, always prepare freshly, do not store.

#### 25% Percoll media

Reagent	Stock concentration	Final concentration	Amount
Percoll	n/a	n/a	2.5 mL
10× PBS	10×	1×	1 mL
ddH <sub>2</sub> O	n/a	n/a	6.5 mL
Resuspended hepatocytes			10 mL
Total			20 mL

Prepare at 20°C–24°C in a sterile environment, always prepare freshly, do not store.

#### Plating media

Reagent	Stock concentration	Final concentration	Amount
Williams E media	1×	1×	425 mL
Glutamax	200 mM	2 mM	5 mL
Penicillin/Streptomycin	50×	2% (v/v)	10 mL
Sodium Pyruvate	100 mM	2 mM	10 mL
Dexamethasone	1 mM	1 $\mu\text{M}$	500 $\mu\text{L}$
Insulin	1 mM	0.1 $\mu\text{M}$	50 $\mu\text{L}$
FBS	n/a	10% (v/v)	50 mL
Total			500 mL

Prepare in a sterile environment, adjust pH to 7.4, store at 4°C for up to 1 week.

### Maintenance media

Reagent	Stock concentration	Final concentration	Amount
Williams E media	1×	1×	475 mL
Glutamax	200 mM	2 mM	5 mL
Penicillin/Streptomycin	50×	2% (v/v)	10 mL
Sodium Pyruvate	100 mM	2 mM	10 mL
Dexamethasone	1 mM	0.1 μM	50 μL
Insulin	1 μM	0.1 nM	50 μL
BSA	n/a	0.2% (w/v)	1 g
Total			500 mL

Prepare in sterile environment, adjust pH to 7.4, store at 4°C for up to 1 week.

### STEP-BY-STEP METHOD DETAILS

#### Day of isolation: preparation of buffers and setup of perfusion pump

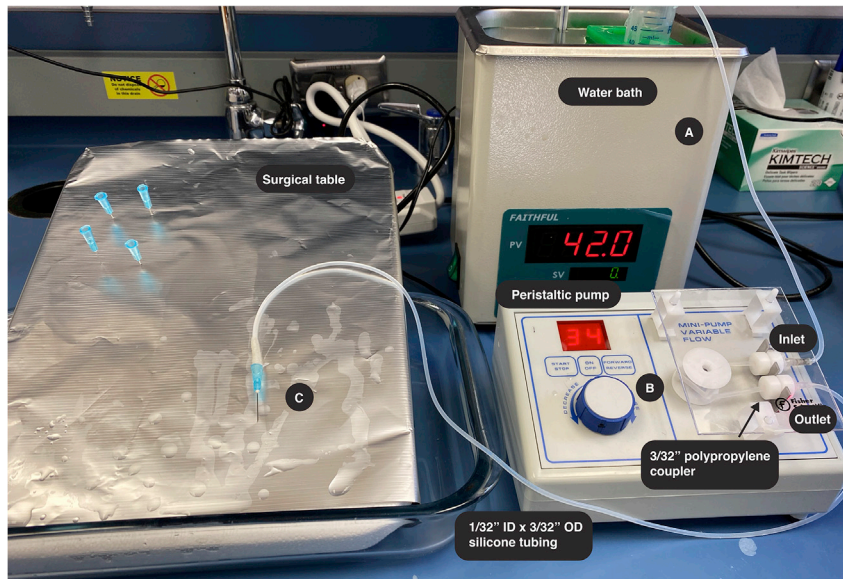
⌚ Timing: 1.5 h

This step includes the preparation of buffers and preparation of the perfusion pump. The perfusion system includes a water bath and a peristaltic pump with adjustable speed. The required volumes for hepatocyte isolation from one mouse are described in the table.

#### One digestion reaction

Buffers/Media	Needed for	Total amount
Perfusion Buffer	Liver Perfusion	~ 40 mL
Digestion Buffer	Liver Perfusion	~ 30 mL
Plating Media	Liver Perfusion Hepatocyte isolation Plating	~320 mL
90% Percoll Media	Hepatocyte isolation	20 mL
25% Percoll Media	Hepatocyte isolation	20 mL

1. Prepare the perfusion buffer, digestion buffer, plating media, Percoll media, and maintenance media prior to the isolation. Place perfusion buffer and digestion buffer sufficient for one digestion reaction in two separate 50 mL tubes in a 42°C water bath for at least 30 min prior to the isolation. 40 mL perfusion buffer and 30 mL digestion buffer are sufficient for isolation of hepatocytes from one mouse.
2. Set up the perfusion pump by mounting the peristaltic pump with a long 1/32" ID × 3/32" OD silicone tubing immersed in a water bath. The tubing will be connected to the pump with a 3/32" Polypropylene coupler (Figure 2A).
3. Place the inlet tubing into a 50 mL tube with perfusion buffer in the 42°C water bath.
4. Set the perfusion pump speed at 1–2 mL/min. Note that the settings will vary depending on the instrument used (Figure 2B).
5. Place the surgical table at an angle in a waterproof container in close proximity to the perfusion pump.
6. Assemble the outlet catheter by attaching a 25G 7/8 needle to the outlet tubing (Figure 2C).
7. Rinse the pump with 10 mL 70% EtOH and 10 mL water.
8. Run the pump with perfusion buffer for 5 min to ensure an even flow rate.



**Figure 2. Overview of the setup of the peristaltic perfusion pump, tubes, syringes, and water bath**

The perfusion pump system includes a water bath (A) and a peristaltic pump with adjustable speed (B). The inlet tubing is placed into a 50 mL tube in the 42°C water bath containing the perfusion buffer (A). The silicone tubing is connected to the peristaltic pump using a polypropylene coupler. A 25G 7/8 needle is attached to the outlet tubing used to cannulate the inferior vena cava (C).

△ **CRITICAL:** Prepare the digestion buffer 1 h prior to the isolation and place in a 42°C water bath. The water bath should not be above 42°C as that can inactivate the collagenase in the digestion buffer. The hepatocyte culture media can be made in advance and kept in 4°C for up to a month.

△ **CRITICAL:** The exit temperature (the fluid that will enter into the inferior vena cava) should be ~ 37°C. The temperature of the solution gradually cools as it is passing through the tubing. By maintaining the buffers in the water bath at 42°C, the exit temperature will be ~37°C after passing through the perfusion tubing. The length of tubing and the flow rate will affect this temperature loss, so it is advised to measure that the exit temperature is ~37°C before starting the perfusion procedure.

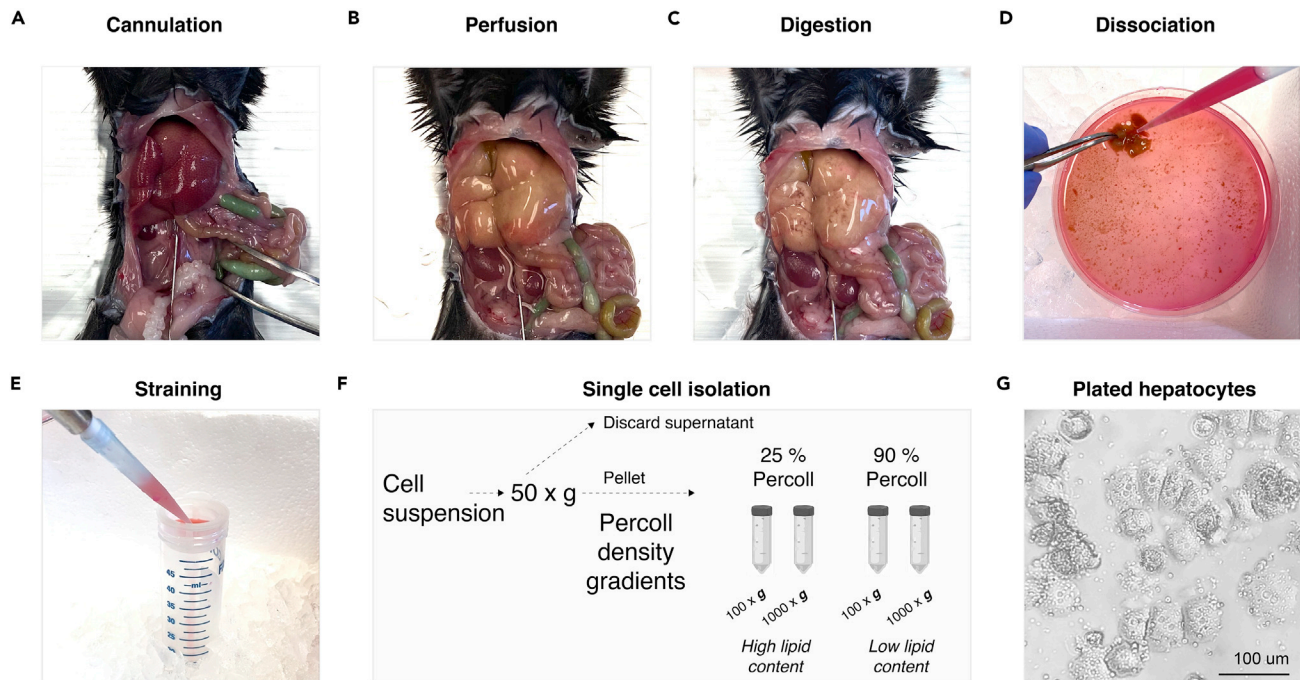
### Liver perfusion and enzymatic dissociation of liver cells

⌚ **Timing:** 0.5–1 h

This step will perfuse the liver followed by enzymatical digestion using collagenase IV to dissociate the liver cells into a single-cell suspension.

9. Euthanize the mouse by CO<sub>2</sub> asphyxiation and clean the abdominal area with 70% EtOH.
10. Make an incision in the abdominal area to expose the liver, inferior vena cava, and portal vein.
11. Place the catheter into inferior vena cava (Figure 3A).
12. Start the perfusion pump with perfusion buffer at a rate of 2 mL/min. Ensure the correct flow rate by measuring the outlet volume as a fraction of time.
13. After 2 min, cut the hepatic portal vein to clear the liver from blood.
14. Continue the perfusion for an additional 10 min. This step will use 25 mL perfusion buffer in total. Successful perfusion will result in a pale, enlarged liver (Figure 3B).





**Figure 3. Step-by-step illustration of isolation of viable hepatocytes from diet-induced NASH mice**

- (A) Placement of the catheter into inferior vena cava (step 11).  
 (B) Liver perfusion resulting in a pale, enlarged liver (step 14).  
 (C) Result after digestion using collagenase solution (step 17).  
 (D) Addition of plating medium and dislodging of the cells from the liver (step 18).  
 (E) Passing the cell suspension through a 70 µm strainer (step 19).  
 (F) Schematic illustration of centrifugation steps to isolate hepatocytes. Cell pellets will be collected after 100 × g and 1,000 × g for 10 min using 25% and 90% Percoll gradients (steps 20–25).  
 (G) Plated hepatocytes 24 h after isolation under a phase-contrast microscope. Scale bar denotes 100 µm.

15. When 2–5 mL is left of the perfusion buffer, add the digestion buffer to the 50 mL tube without stopping the pump.
16. Digest for 10–20 min at 2 mL/min. This will use 20–30 mL digestion buffer in total.
17. When visible tissue dissociation is seen, carefully remove the liver including the gall bladder and place in a 10 cm petri dish kept on ice (Figure 3C).
18. Add 10 mL cold plating medium to the dish. Without puncturing the gall bladder, dissociate the liver cells by gently swirling the liver in cold plating media. Use a pipette with a 1,000 µL tip to generate a homogenous cell suspension (Figure 3D).
19. Transfer the cell suspension to a 70 µm strainer placed on a 50 mL tube on ice (Figure 3E). Wash the plate with an additional 10 mL plating medium and transfer to the 50 mL tube.

△ **CRITICAL:** The exact time for optimal liver digestion will vary slightly between mice. Signs of underdigestion include inability to mechanically dissociate the liver into a single-cell suspension. Signs of overdigestion include complete digestion of the liver into a homogenous solution before transfer to the petri dish. Digestion is considered successful when the liver can readily be transferred to the petri dish, and the cell solution is homogenous without visible liver pieces after mechanical dissociation and can easily be passed through the 70 µm strainer.

### Single-cell hepatocyte isolation using Percoll gradient centrifugation

⌚ Timing: 4–6 h

This step will separate viable hepatocytes with different sizes of lipids from dead hepatocytes and other non-parenchymal cell types in the cell suspension using Percoll gradient centrifugation. The Percoll media is composed of colloidal silica and has been extensively used for the isolation of cells and organelles (Kreamer et al., 1986; Pertoft, 2000). The density of the Percoll solution is dependent on its concentration, the total g-force, and the centrifugation time, which will affect the gradient formation. Depending on the requirements, conditions such as centrifugal force, centrifugation time, and Percoll density gradient composition can be modified.

20. Centrifuge the strained cells at  $50 \times g$  for 5 min at  $20^{\circ}\text{C}$ – $24^{\circ}\text{C}$  to separate hepatocytes from non-parenchymal cells. Hepatocytes will pellet at  $50 \times g$ .
21. Discard the supernatant.
22. Resuspend the pellet in 20 mL plating media and wash the cells twice at  $50 \times g$  for 5 min.
23. Resuspend the pellet in 40 mL plating media. Divide the solution into four tubes with 10 mL solution in each tube.
24. Prepare two sets of Percoll/hepatocyte mix for a total of 4 tubes with either 25% or 90% Percoll by adding 10 mL of  $20^{\circ}\text{C}$ – $24^{\circ}\text{C}$  90% Percoll media to two of the tubes and 25% Percoll media to the remaining tubes. The final volume of the Percoll/hepatocyte mix will be 20 mL.
25. Centrifuge one set of tubes (25% and 90% Percoll/hepatocytes) at  $100 \times g$  and the other set of tubes (25% and 90% Percoll/hepatocytes) at  $1,000 \times g$ . Centrifuging cells at  $1,000 \times g$  is predicted to sediment cells with higher lipid content compared with  $100 \times g$ . This step will isolate viable non-lipid-filled and lipid-filled hepatocytes (Figure 3F).
26. Resuspend the pellets in 20 mL plating media and spin at  $50 \times g$  for 4 min twice to remove the Percoll media.
27. Resuspend the final hepatocyte pellets in 1 mL media and measure cell number and viability using trypan blue and a manual or automatic hemocytometer.
28. Seed cells into collagen coated plates. Plate  $4 \times 10^5$  viable cells in 6-well plates or  $2 \times 10^5$  cells in 12-well plates and place plates in a  $37^{\circ}\text{C}$  incubator with 5%  $\text{CO}_2$  for 3–4 h.
29. After 3–4 h, wash once with PBS to remove dead cells, replace with maintenance medium (Figure 3G). Experiments can start the same or next day.

**Note:** Keep the Percoll medium at  $20^{\circ}\text{C}$ – $24^{\circ}\text{C}$  to maintain the pH between 8.5–9.5.

**Note:** Depending on the degree of hepatic steatosis, differences in cell numbers from the different Percoll gradient fractions can vary between isolations. When isolating cells from NASH mice, the largest number of hepatocytes will be collected from the 25% Percoll density gradient, while the lowest number of hepatocytes will be obtained from the 90% Percoll density gradient.

**Optional:** If complete removal of erythrocytes is desired, spin the hepatocyte pellet at  $20 \times g$  for 3 min after step 20 and remove the supernatant.

**Optional:** If non-parenchymal cells are desired, collect the supernatant from step 21 and spin the supernatant solution at  $650 \times g$  to pellet non-parenchymal cells such as stellate cells, endothelial cells, and Kupffer cells.

**Optional:** If the cells will be analyzed with single-cell RNA sequencing or RNA sequencing, continue directly from step 27 without plating the cells.

**Pause Point:** It is necessary to complete the whole procedure without pause to maintain cell viability.

### Functional characterization of hepatocytes from NASH mice

⌚ Timing: 2–4 h

This step will functionally characterize the hepatocytes using oil red O staining. Alternative analyses include drug testing, lipogenesis, and gene expression analyses. The protocol here uses hepatocytes plated in a 12-well plate.

#### Oil red O working solution (sufficient for one 12 well plate)

Reagent	Stock concentration	Final concentration	Amount
Oil red O	n/a	n/a	4.2 mL
ddH <sub>2</sub> O	n/a	n/a	2.8 mL
Total			7 mL

Prepare the solution 10 min before use.

30. Prepare 7 mL oil red O Solution by mixing oil red O with H<sub>2</sub>O at a 3:2 ratio. 7 mL is sufficient for one 12-well plate when using 500  $\mu$ L per well.
31. Gently wash the cells twice with 1 mL PBS.
32. Add 0.5 mL per well of 3% Formalin diluted in PBS and incubate for 0.5–1 h at 20°C–24°C.
33. Discard the formalin and wash the cells twice with 1 mL ddH<sub>2</sub>O.
34. Add 0.5 mL 60% isopropanol and incubate for 5 min.
35. Discard the isopropanol and apply the oil red O Working Solution. Rotate the plate to ensure even distribution and incubate for 10–20 min at 20°C–24°C.
36. Discard the oil red O solution and wash the cells 2–5 times with ddH<sub>2</sub>O until clear.
37. Add 1 mL ddH<sub>2</sub>O and view red lipid droplets under a microscope using a 40 $\times$  objective.

**Optional:** For nuclei staining, add Hematoxylin after step 36 and incubate for 1 minute. After discarding Hematoxylin, wash the cells 2–5 times with ddH<sub>2</sub>O until clear. Nuclei should appear blue under the microscope.

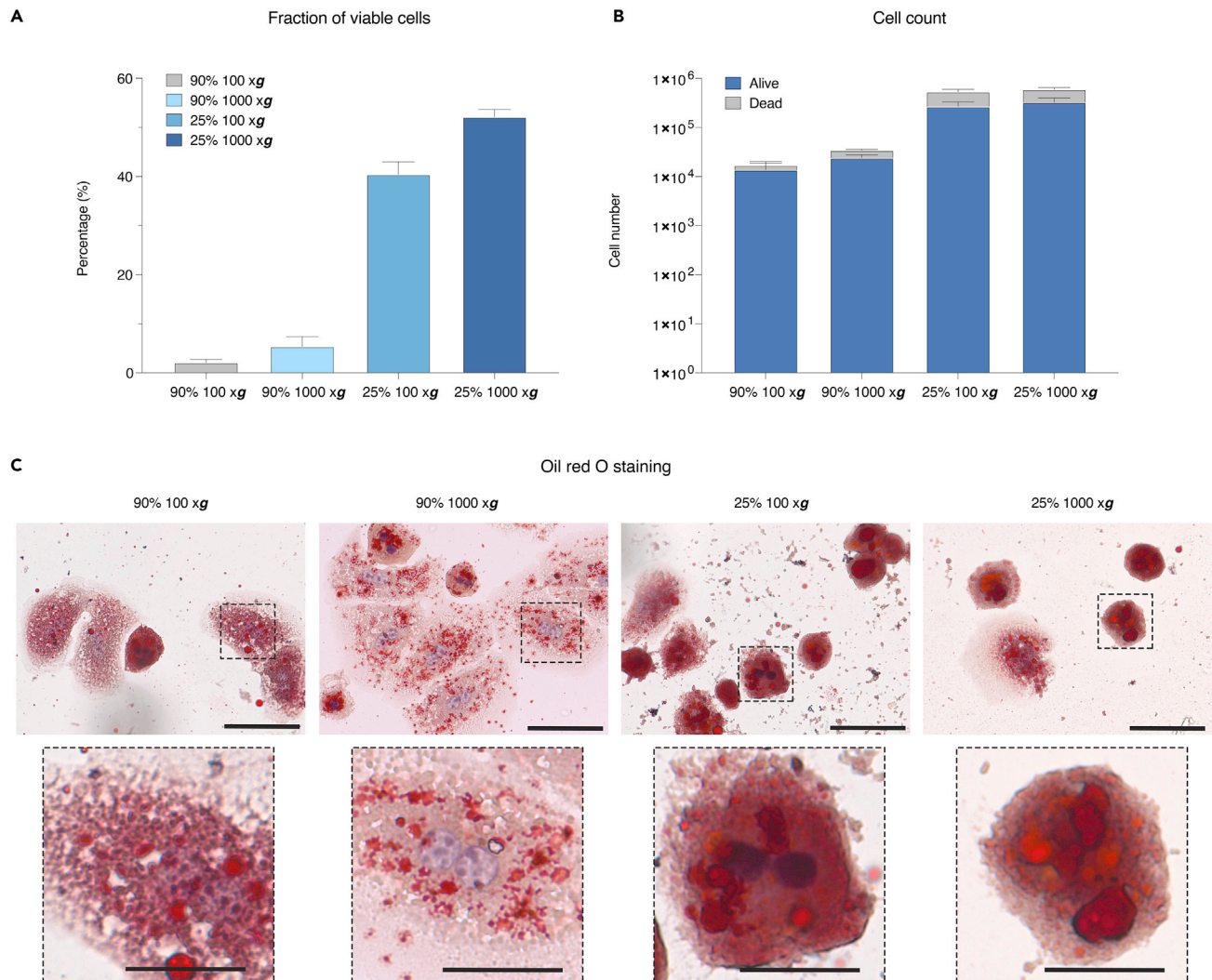
**Note:** Stained cells can be stored in 4°C for up to 1 week. Keep the cells immersed in water to avoid drying.

**⚠ CRITICAL:** Do not store the mixed oil red O solution for more than 2 h. Reusing the oil red O Working Solution is not recommended as it can result in poor staining quality.

### EXPECTED OUTCOMES

The estimated yield is  $\sim$  1–2 million hepatocytes from one liver isolated from 6–9 weeks diet-induced NASH with a viability ranging from 50%–90% (Figure 4A). This can be compared to the yield from one mouse liver isolated from chow-fed mice which is  $\sim$  5–20 million cells. Typically, shorter time on NASH diet will result in a higher cell number and viability. Furthermore, with less severe liver steatosis, a higher number of hepatocytes will be obtained from the 90% Percoll gradient, while more severe steatosis will result in a larger fraction of hepatocytes isolated from the 25% Percoll gradient.

A frequently observed outcome from a hepatocyte isolation from different Percoll fractions is shown in the graph expressed as viable/dead cells from each Percoll fraction (Figure 4B). Accordingly, measuring the lipid content by oil red O staining shows increased lipid staining in the 25% Percoll gradient compared to 90%, demonstrating successful isolation of lipid-deficient and lipid-filled hepatocytes (Figure 4C).



**Figure 4. A frequently observed outcome: number of hepatocytes isolated from different Percoll fractions, and the corresponding lipid content as measured by oil red O staining**

(A) Viable hepatocyte populations from a representative isolation. The cell numbers from each Percoll gradient were measured using trypan blue and a manual hemocytometer. Values are expressed as a percentage of viable cells.

(B) Hepatocyte cell numbers from a representative isolation. The cell numbers and viability from each Percoll gradient was measured using trypan blue and a manual hemocytometer.

(C) Lipid staining using oil red O in hepatocytes from 90% and 25% Percoll gradients at 100 × g or 1,000 × g. Microscope images show results from a representative isolation using a 60× objective. Mayer's hematoxylin solution is used as counterstain. Scale bar denotes 100 μm in the original image and 35 μm in the magnified image.

## LIMITATIONS

One distinct disadvantage of this method is the yield of viable lipid-filled hepatocytes that can be obtained in comparison to a typical hepatocyte isolation from healthy livers. Thus, the degree of NASH-induction might have to be optimized to achieve the highest yield while inducing a sufficient degree of steatosis. Additionally, cells from NASH mice are more sensitive to overdigestion. Therefore, careful observation of the timing of digestion is essential, as this otherwise can result in large variability between preparations.

Another disadvantage of culturing primary hepatocytes is the short time frame by which experiments have to be concluded (Shulman and Nahmias, 2013). Typically, primary hepatocytes will lose their

functional features within 24–48 h after plating, leading to a dramatic drop in typical hepatocyte genes such as *albumin*, while fibroblast markers such as *afp* are increased, indicating a loss of cell characteristics. This limits the number and types of downstream functional assays that can be performed. However, multiple types of analyses can be performed within this time frame which might have useful applications, such as drug metabolism assays, hepatotoxicity assays, or glucose and lipid metabolic assays. Alternatively, for long-term functional analyses, our isolation method could be used in conjunction with the 5C small molecule inhibitor cocktail for the preservation of hepatocyte-specific functions and differentiation (Xiang et al., 2019).

## TROUBLESHOOTING

### Problem 1

Failure to cannulate inferior vena cava (step 11).

#### Potential solution

If the catheter insertion into inferior vena cava is unsuccessful, the catheter can be inserted into the hepatic portal vein. Proceed with the perfusion according to the protocol, but instead cut the inferior vena cava to release excess blood.

### Problem 2

Low cell viability or small cell pellets (step 27).

#### Potential solution

Low cell viability or small cell pellets can be due to either incomplete digestion or overdigestion.

Poor perfusion can result in incomplete digestion and low recovery of cells. This will lead to the inability to mechanically dissociate the liver into a single-cell suspension. To solve this problem, ensure that the perfusion using perfusion buffer results in a pale, slightly swollen liver before introducing the digestion buffer. Excessive perfusion and digestion will lead to overdigestion and should be avoided to prevent cell death. If overdigestion is seen, lower the speed of perfusion and digestion from 2 mL/min to 1 mL/min.

The time of digestion will depend on the specific collagenase activity in the digestion buffer. Due to lot-to-lot variability in collagenase activity, optimization is warranted when using a new lot.

### Problem 3

Low cell recovery during Percoll gradient cell isolation even after successful perfusion (step 25).

#### Potential solution

This problem might occur when the temperature of the Percoll solution is incorrect or when too many cells are added to the gradient. Keep the Percoll medium at 20°C–24°C to maintain accurate density and to keep the pH between 8.5–9.5. The volume of the density gradient is optimized for one murine liver per gradient. If more cells are needed, several livers can be pooled together. If pooling livers from several mice, increase the volume of media and gradient media accordingly.

## RESOURCE AVAILABILITY

### Lead contact

Further information and requests for resources and reagents should be directed to and will be fulfilled by the Lead Contact, Dr. Katrin J. Svensson ([katrinjs@stanford.edu](mailto:katrinjs@stanford.edu)).

### Materials availability

This study did not generate any unique materials or reagents.

### Data and code availability

This study did not generate any unique datasets or code.

### ACKNOWLEDGMENTS

This work was supported by the NIH grants DK125260 and DK111916, the Jacob Churg Foundation, and the McCormick and Gabilan Award (K.J.S.). This work was supported by the Stanford Diabetes Research Center (NIH grant P30DK116074).

### AUTHOR CONTRIBUTIONS

Conceptualization, Y.J. and K.J.S.; Investigation, Y.J., M.Z., and K.J.S.; Writing – Original Draft, Y.J. and K.J.S.; Writing – Review & Editing, Y.J., M.Z., and K.J.S.; Funding Acquisition, K.J.S.; Supervision, K.J.S.

### DECLARATION OF INTERESTS

The authors declare no competing interests.

### REFERENCES

- Berry, M.N., and Friend, D.S. (1969). High-yield preparation of isolated rat liver parenchymal cells: a biochemical and fine structural study. *J. Cell Biol.* 43, 506–520.
- Fengler, V.H.I., Macheiner, T., Kessler, S.M., Czepukojc, B., Gemperlein, K., Müller, R., Kiemer, A.K., Magnes, C., Haybaeck, J., Lackner, C., et al. (2016). Susceptibility of different mouse wild type strains to develop diet-induced NAFLD/AFLD-associated liver disease. *PLoS One* 11, e0155163.
- Gonçalves, L.A., Vigário, A.M., and Penha-Gonçalves, C. (2007). Improved isolation of murine hepatocytes for in vitro malaria liver stage studies. *Malar. J.* 6, 169.
- Kegel, V., Deharde, D., Pfeiffer, E., Zeilinger, K., Seehofer, D., and Damm, G. (2016). Protocol for isolation of primary human hepatocytes and corresponding major populations of non-parenchymal liver cells. *J. Vis. Exp.* 109, e53069.
- Kreamer, B.L., Staecker, J.L., Sawada, N., Sattler, G.L., Hsia, M.T., and Pitot, H.C. (1986). Use of a low-speed, iso-density Percoll centrifugation method to increase the viability of isolated rat hepatocyte preparations. *In Vitro Cell Dev. Biol.* 22, 201–211.
- Li, W.-C., Ralphs, K.L., and Tosh, D. (2010). Isolation and culture of adult mouse hepatocytes. *Methods Mol. Biol.* 633, 185–196.
- Pertoft, H. (2000). Fractionation of cells and subcellular particles with Percoll. *J. Biochem. Biophys. Methods* 44, 1–30.
- Radhakrishnan, S., Ke, J.-Y., and Pellizzon, M.A. (2020). Targeted nutrient modifications in purified diets differentially affect nonalcoholic fatty liver disease and metabolic disease development in rodent models. *Curr. Dev. Nutr.* 4, nzaa078.
- Sharabi, K., Lin, H., Tavares, C.D.J., Dominy, J.E., Camporez, J.P., Perry, R.J., Schilling, R., Rines, A.K., Lee, J., Hickey, M., et al. (2017). Selective chemical inhibition of PGC-1 $\alpha$  gluconeogenic activity ameliorates type 2 diabetes. *Cell* 169, 148–160.e15.
- Shulman, M., and Nahmias, Y. (2013). Long-term culture and coculture of primary rat and human hepatocytes. *Methods Mol. Biol.* 945, 287–302.
- Xiang, C., Du, Y., Meng, G., Soon Yi, L., Sun, S., Song, N., Zhang, X., Xiao, Y., Wang, J., Yi, Z., et al. (2019). Long-term functional maintenance of primary human hepatocytes in vitro. *Science* 364, 399–402.