

# UCSF

## UC San Francisco Previously Published Works

### Title

Newborn metabolic vulnerability profile identifies preterm infants at risk for mortality and morbidity.

### Permalink

<https://escholarship.org/uc/item/5r81p9z0>

### Journal

Pediatric research, 89(6)

### ISSN

0031-3998

### Authors

Oltman, Scott P  
Rogers, Elizabeth E  
Baer, Rebecca J  
[et al.](#)

### Publication Date

2021-05-01

### DOI

10.1038/s41390-020-01148-0

Peer reviewed



Published in final edited form as:

*Pediatr Res.* 2021 May ; 89(6): 1405–1413. doi:10.1038/s41390-020-01148-0.

## Newborn metabolic vulnerability profile identifies preterm infants at risk for mortality and morbidity: a retrospective cohort study

Scott P. Oltman, MS<sup>a,b</sup>, Elizabeth E. Rogers, MD<sup>c</sup>, Rebecca J. Baer, MPH<sup>a,d</sup>, Elizabeth A. Jasper, MPH<sup>e</sup>, James G. Anderson, MD<sup>c</sup>, Martina A. Steurer, MD<sup>b,c</sup>, Matthew S. Pantell, MD<sup>c</sup>, Mark A. Petersen, MD<sup>c</sup>, J. Colin Partridge, MPH, MD<sup>c</sup>, Deborah Karasek, PhD<sup>a,f</sup>, Kharah M. Ross, PhD<sup>g</sup>, Sky K. Feuer, PhD<sup>a,f</sup>, Linda S. Franck, RN, PhD<sup>a,h</sup>, Larry Rand, MD<sup>a,f</sup>, John M. Dagle, MD, PhD<sup>i</sup>, Kelli K. Ryckman, PhD<sup>e,i</sup>, Laura L. Jelliffe-Pawlowski, PhD<sup>a,b</sup>

<sup>a</sup>California Preterm Birth Initiative, University of California San Francisco, San Francisco, California

<sup>b</sup>Department of Epidemiology & Biostatistics, University of California San Francisco, San Francisco, California

<sup>c</sup>Department of Pediatrics, University of California San Francisco, San Francisco, California

<sup>d</sup>Department of Pediatrics, University of California San Diego, La Jolla, CA

<sup>e</sup>Department of Epidemiology, University of Iowa, Iowa City, IA

<sup>f</sup>Department of Obstetrics, Gynecology, & Reproductive Sciences, University of California San Francisco, San Francisco, California

<sup>g</sup>Owerko Centre, Alberta Children's Hospital Research Institute, University of Calgary, Calgary, Alberta

<sup>h</sup>School of Nursing, University of California San Francisco, San Francisco California

<sup>i</sup>Department of Pediatric, University of Iowa, Iowa City, IA

### Abstract

**Background:** Identifying preterm infants at risk for mortality or major morbidity traditionally relies on gestational age, birthweight, and other clinical characteristics that offer underwhelming utility. We sought to determine whether a newborn metabolic vulnerability profile at birth can be used to evaluate risk for neonatal mortality and major morbidity in preterm infants.

**Methods:** This was a population-based retrospective cohort study of preterm infants born between 2005 and 2011 in California. We created a newborn metabolic vulnerability profile

---

**Address correspondence to:** Scott Oltman, UCSF Department of Epidemiology, 550 16<sup>th</sup> Street, 3<sup>rd</sup> Floor, San Francisco, CA 94158 [Scott.Oltman@ucsf.edu], 630-815-3847.

**Author's Contributions:** Scott Oltman, Elizabeth Rogers, Rebecca Baer, Kelli Ryckman, and Laura Jelliffe contributed to the conception and design, acquisition of data, or analysis and interpretation of data. All authors contributed to drafting the manuscript or revising it critically for important intellectual content. All authors also gave final approval of the version to be published.

**Disclosure Statement:** No authors have any financial ties to products in the study or potential/perceived conflicts of interest.

wherein maternal/infant characteristics along with routine newborn screening metabolites were evaluated for their association with neonatal mortality or major morbidity.

**Results:** 9,639 (9.2%) preterm infants experienced mortality or at least one complication. Six characteristics and 19 metabolites were included in the final metabolic vulnerability model. The model demonstrated exceptional performance for the composite outcome of mortality or any major morbidity (AUC 0.923 (95% CI: 0.917–0.929)). Performance was maintained across mortality and morbidity subgroups (AUCs 0.893–0.979).

**Conclusion:** Metabolites measured as part of routine newborn screening can be used to create a metabolic vulnerability profile. These findings lay the foundation for targeted clinical monitoring and further investigation of biological pathways that may increase the risk of neonatal death or major complications in infants born preterm.

---

## Introduction

In the United States, approximately 1 out of every 10 live born infants is delivered preterm (before 37 weeks)(1), and globally, the burden of preterm births stands at nearly 15 million per year(2). Preterm birth and related complications are the leading cause of death for children under 5 years of age(3–5), and neonatal deaths, specifically, account for 46% of mortality in this age group(5).

Beyond mortality, preterm infants are also at an increased risk for numerous complications including patent ductus arteriosus (PDA), respiratory distress syndrome (RDS), intraventricular hemorrhage (IVH), periventricular leukomalacia (PVL), bronchopulmonary dysplasia (BPD), retinopathy of prematurity (ROP), necrotizing enterocolitis (NEC), jaundice, infections, sepsis, and longer term, cerebral palsy and neurodevelopmental disability(6–11). Cumulatively, these conditions result in increased health care resource utilization for infants born preterm costing at least 26.2 billion dollars each year in the United States(12). Additionally, infants continue to survive at increased frequency at lower gestational ages (GA) and birthweights (BW) due primarily to improvements in resuscitation and early neonatal care, which leads to reduced mortality but increased morbidity amongst extremely preterm infants(13–18). The convergence of human loss and economic cost have made the use of novel strategies – beyond insufficient models relying solely on gestational age, birthweight, and other common characteristics – to inform risk, minimize complications, and gain insight into underlying dysfunctional biological processes an increasingly critical priority(19, 20).

Routine newborn screening (NBS) is typically utilized for identifying infants at risk for rare metabolic disorders, but has also begun to shed light on the contribution of metabolomics in evaluating the complications associated with prematurity(21). For example, Ryckman *et al.* demonstrated associations between amino acid concentrations and RDS, as well as PDA in preterm infants(22). Fell *et al.* established associations between NBS metabolites and sepsis(23). Our group has previously demonstrated strong associations between measured NBS metabolites and persistent pulmonary hypertension, hyperbilirubinemia, NEC, and survival in extremely preterm (<26 GA weeks) infants(24–27). Further understanding of

how metabolic dysfunction in preterm infants contributes to the development of common complications could direct preventative treatments in the future.

The primary objective of this study was to develop a metabolic vulnerability profile for neonatal mortality and major morbidity in preterm infants using metabolites measured as part of routine NBS and common maternal/infant characteristics. We also evaluated whether a newborn metabolic vulnerability profile could be applied effectively to specific major morbidities (RDS, BPD, NEC, IVH, PVL, ROP, and PDA) in preterm infants. To our knowledge, this is the first study to evaluate the efficacy of creating a newborn metabolic vulnerability profile that's applicable to multiple neonatal outcomes.

## Methods

This population-based retrospective cohort study included all infants born in California between 2005 and 2011. Birth and outcomes data were obtained through the California Office of Statewide Health Planning and Development (OSHPD). This database maintains maternal admission and discharge records up to one year prior to birth and maternal and infant admission and discharge records up to one year after birth including birth certificate and death certificates. Metabolic data were collected as a part of routine newborn screening conducted by the California Department of Public Health. This program requires all newborns to have a heel-stick bloodspot taken between 12 hours and 7 days after delivery and has been described in extensive detail elsewhere(28, 29). The newborn screening data was linked to the OSHPD data using common variables.

After linkage, 2,664,595 infants remained eligible for analysis. Exclusion criteria included term birth (  $\geq 37$  GA weeks), birthweight outside of four standard deviations from the mean for gestational age and sex(30), non-singleton birth, incomplete metabolic data measured by newborn screening, and blood spot collection after 48 hours. The final study sample consisted of 104,907 preterm infants. The cohort was split into gestational age groups (the full cohort, infants born at 32–36 weeks GA, and infants born at  $<32$  weeks GA) and each group was randomly divided into a training set (2/3 of sample) and a validation set (1/3 of sample). Randomization was performed after stratification in order to ensure stratum likeness between training and validation groups (Supplemental Figure 1).

Outcomes in our study were identified using the *International Classification of Diseases 9th revision (ICD-9)* diagnostic codes, linked infant death records, and hospital discharge status. Our primary outcome was a composite measure that included infant death and major preterm morbidity. Infant death included neonatal death (within 28 days of birth) and one year mortality. Preterm morbidities included: RDS (ICD-9 code 769.0), PDA (747.0), ROP (362.2), IVH (772.1), BPD (770.7), NEC (777.5), and PVL (779.7)]. We are confident that all deaths were captured given the linkage to death certificates and that ICD-9 codes captured ~90% of all outcomes associated with preterm birth. Explanatory variables evaluated included infant and maternal characteristics from birth certificate and hospital discharge records as well as routine metabolites and clinical factors measured as part of NBS. Specific characteristics evaluated included infant gestational age at birth, birthweight, sex, small for gestational age (SGA), administration of total parenteral nutrition (TPN,

defined as receiving TPN prior to blood spot collection), age at NBS collection, cesarean delivery, Medi-Cal status (California's Medicaid), adequacy of prenatal care(31, 32), maternal race/ethnicity, maternal education, maternal age, gestational diabetes, and gestational hypertension. Variables were selected based on occurrence before NBS, availability, and previous or suspected relationship with the primary or secondary outcomes. Metabolites included from NBS consisted of 12 amino acids, 26 acylcarnitines, and free carnitine measured by standardized tandem mass spectrometry (MS/MS); two hormones measured by high-performance liquid chromatography; and one enzyme measured with a fluorometric enzyme assay(28) (see Table 1 for complete list).

## Statistical Analyses

In order to reduce skewness and minimize the influence of outliers, all metabolites were natural log transformed from their raw concentrations. Standardized growth curves by gestational age and sex were used to determine the 10<sup>th</sup> percentile cutoff to create SGA(30). Crude analyses to compare infants with any mortality or major morbidity to healthy infants relied on t-tests and  $\chi^2$  tests for continuous and categorical variables, respectively.

Multivariable logistic regression utilizing stepwise selection in the training dataset was used to create a metabolic vulnerability model for the composite outcome of mortality or any major morbidity. Any variable that met a Bonferonni corrected p-value threshold of <0.000781 was permitted to enter the model with entry order determined by greatest significance and a p-value of <0.05 required to remain in the model. Age at NBS collection and TPN were included into the model a-priori as they are known to affect the concentration of metabolites(33–35). The established model was then applied and tuned to mortality (neonatal and 1 year) and to each major morbidity (RDS, PDA, ROP, IVH, BPD, NEC, PVL) in the training and validation subsets with further evaluation of performance in preterm infants born at <32 and 32–36 weeks in the validation sample. Model performance was assessed using area under the curve (AUC) from a receiver operating characteristic (ROC) curve wherein variable importance was evaluated using odds ratios (ORs) with 95% confidence intervals (95% CI) and standardized beta coefficients. Multicollinearity between metabolites was examined by calculating Pearson correlation coefficients ( < 0.8 considered strong collinearity) and by assessing the tolerance and variable inflation factors within the multivariable model (<0.1 and > 10 considered strong multicollinearity, respectfully).

All analyses were performed using SAS 9.4 (SAS institute, Cary, NC). Methods and protocols for the study were approved by the Committee for the Protection of Human Subjects within the Health and Human Services Agency of the State of California and the Institutional Review Board of the University of California, San Francisco.

## Results

Within our population, 9,639 (9.2%) of infants with preterm birth experienced either mortality or at least one major complication. Training and validation samples had similar variable distributions. In univariable analysis, 13 of 14 infant and maternal characteristics as well as all 42 metabolites exhibited significant differences in preterm infants with mortality or major morbidity compared to those without (Supplemental Table 1; Table 1). Among

characteristics, gestational age, birthweight, SGA, cesarean delivery, and TPN were all highly associated with mortality or major morbidity. Metabolites strongly associated with mortality or major morbidity included high levels of 17-hydroxyprogesterone, leucine/isoleucine, phenylalanine, valine, and acylcarnitine C-5 and low levels of TSH and acylcarnitines C-12, C-14, C-16, and C-18:1 (Table 1).

The final multivariable metabolic vulnerability model for the composite outcome of any mortality or major morbidity included 6 characteristics (infant sex, cesarean delivery, maternal education, maternal race/ethnicity, gestational age, & birthweight) and 19 metabolites (three enzymes & hormones [17-hydroxyprogesterone, TSH, & GALT], seven amino acids [5-oxoproline, glycine, leucine/isoleucine, ornithine, phenylalanine, proline, & tyrosine], and nine acylcarnitines [C-2, C-3, C-4, C-5, C-10, C-12, C-12:1, C-16:1, & C-18:2]). The variables most strongly associated with any mortality or major morbidity included cesarean delivery (OR: 1.79; 95% CI: 1.66–1.93), gestational age (OR: 0.75; 95% CI: 0.73–0.77), birthweight (OR: 0.94; 95% CI: 0.93–0.95), 17-hydroxyprogesterone (OR: 1.61; 95% CI: 1.52–1.70), TSH (OR: 0.62; 95% CI: 0.59–0.65), ornithine (OR: 0.36; 95% CI: 0.32–0.42), phenylalanine (OR: 11.19; 95% CI: 9.03–13.87), tyrosine (OR: 0.53; 95% CI: 0.49–0.57), C-3 (OR: 1.42; 95% CI: 1.26–1.60), and C-12 (OR: 0.68; 95% CI: 0.64–0.73) (Table 2).

Overall, the metabolic vulnerability profile demonstrated exceptional performance in the validation sample (AUC 0.923 (0.917–0.929); Table 3), and at a probability cut point of 0.5, had 52.2% (95% CI: 50.5–53.9%) sensitivity, 98.4% (95% CI: 98.4–98.5%) specificity, 76.7% (95% CI: 74.9–78.5%) positive predictive value, and 95.3% (95.1–95.5%) negative predictive value (Supplemental Table 2). The model also displayed robust performance when tuned to and evaluated by mortality and major complication subgroups (AUCs 0.893–0.977 across training and validation samples, Supplemental Tables 3 & 4). Performance was maintained in groupings by gestational weeks at birth (<32 and 32–36 weeks, AUCs 0.682–0.929) with generally stronger performance observed in late preterm infants (Table 3 and Supplemental Figure 2). Models relying solely on the metabolic portion of the final model outperformed those relying only on characteristics for all outcomes except ROP and PVL (Table 4). Finally, the model remained robust when stratified by TPN (No TPN: AUC 0.880 (95% CI: 0.872–0.889); with TPN: AUC 0.821 (95% CI: 0.811–0.832)).

The importance of individual variables fluctuated within gestational age stratifications and by outcome (Figure 1). Birthweight was the only variable with ubiquitous importance across gestational age groups and outcomes as larger infants were less likely to experience morbidity or mortality. Older gestational age was also generally protective against morbidities and mortality. Female sex was associated with lower risk of mortality and most morbidities, and delivering via cesarean section was associated with increased risk of mortality, RDS, PDA, and ROP but decreased risk of IVH. Infants born between 32 and 36 weeks were at increased risk of mortality or morbidity if they had increased concentrations of phenylalanine, glycine, 17-OHP, proline, C-4, and C-5, and decreased concentrations of TSH, GALT, 5-oxoproline, ornithine, tyrosine, C-2, and C-12. For infants born before 32 weeks, increased risk for morbidity or mortality was associated with increased

concentrations of 17-OHP, glycine, proline, and C-4 as well as decreased concentrations of TSH, GALT, 5-oxoproline, ornithine, and C-2 (Figure 1).

## Discussion

Our study examined the relationship between initial metabolic profile and mortality and major morbidity in preterm infants. We built a newborn metabolic vulnerability profile that was able to identify preterm infants more likely to experience at least one of these outcomes, and that outperformed models based only on clinical characteristics like GA and BW. Furthermore, we identified metabolic markers that may be especially useful for follow-up investigation into etiologic drivers of mortality and of specific complications. This information has the potential to be used for targeted long-term clinical monitoring and interventions that are specific to a newborn's metabolic profile to improve both survival rates and long term health outcomes for this highly vulnerable population.

It is well known that preterm infants are at increased risk for mortality and major morbidity compared to their term counterparts(36, 37). Even within preterm cohorts, there are infants who thrive and those who do not(13, 14, 25, 38, 39). These differences are often not explained by gestational age, birth weight, or other characteristics of the mother or infant alone(13, 14, 19, 25, 38, 39). Our study found that metabolic profile as measured by NBS can help identify preterm infants at more or less risk for mortality or major morbidity. Further, our study demonstrated that a metabolic vulnerability profile can identify distinct metabolic pathways associated with specific outcomes.

To our knowledge, no other published study has investigated building a model to assess the potential comprehensive metabolic vulnerability of preterm infants. There have, however, been a handful of studies showing associations between metabolite and specific outcomes. Our previous work within this dataset has revealed links between metabolite concentrations and survival, persistent pulmonary hypertension, hyperbilirubinemia, and NEC(24–27). Other studies have demonstrated relationships between metabolites and PDA, RDS, sepsis, and childhood wheezing(22, 23, 40). Combined, this evidence suggests that while the degree of association of particular metabolites fluctuates between complications, there are underlying dysfunctional metabolic patterns that are shared.

Our findings make it clear that NBS metabolites provide additional utility beyond gestational age and birthweight. While older gestational age and increased birthweight were consistently associated with decreased risk for morbidity or mortality, the metabolic-only model generally outperformed the clinical characteristics model (GA and BW included) across groups. Gestational age and birthweight's association with morbidity and mortality is overwhelmingly supported by previous research(13, 14, 39, 41), and a relationship between metabolic patterns, gestational age, and birthweight has also been well demonstrated(42–47). Nevertheless, the role of these two variables as confounders doesn't sufficiently explain our results, which supports the concept that preterm infants who suffer complications have metabolic patterns distinct from their preterm peers who also have immature metabolic processes.

In addition to the identification capacity of NBS metabolites demonstrated by the present study, the observed metabolite patterns appear to point to several potentially important etiologic pathways that could prove important for further clinical and investigative follow-up aimed at preventing mortality or major morbidity in infants born preterm. For example, in the present study elevated levels of TSH, a hormone indicative of thyroid function, were found to be associated with a lower risk of morbidity and mortality. This finding is supported by other studies examining TSH levels in preterm infants(48, 49) wherein it has been as suggested that higher TSH levels may be related to a greater production of surfactant, which has been shown to be crucial in preventing or minimizing the severity of RDS(50–52). TSH and thyroid hormones are important in normal neonatal physiology, influencing everything from metabolic homeostasis to proper neurodevelopment (53, 54). The importance of TSH in multiple physiologic pathways likely explains the significant role that TSH played in our metabolic vulnerability model and in observed patterning across outcomes.

The confluence of raised concentrations of phenylalanine and lower levels of tyrosine being associated with increased risk of morbidity and mortality in our model may suggest a dysfunction in the biosynthesis of tyrosine from phenylalanine by phenylalanine hydroxylase (PAH) in these infants. In order to function properly, PAH relies on the cofactor tetrahydrobiopterin (BH<sub>4</sub>), but BH<sub>4</sub> becomes depleted in situations of high oxidative stress due to inflammation and immune activation(55, 56). Oxidative stress, in particular has been implicated in a number of neonatal outcomes including IVH, BPD, and RDS(57–59).

Lower levels of the amino acid ornithine were also associated with increased risk of preterm complications. Ornithine, citrulline and arginine are all important intermediates within the urea cycle, which has been connected to neonatal outcomes including NEC and persistent pulmonary hypertension(26, 60–62). It's hypothesized that reduced levels of urea cycle enzymatic activity, especially in carbamoyl-phosphate synthetase (responsible for catalyzing the rate dependent step) results in diminished concentrations of citrulline, arginine, and ornithine. Without these intermediates, ammonia can begin to accumulate and precipitate nervous and respiratory sequelae and potentially death(61, 63, 64).

Another significant metabolic pattern demonstrated within this study was the relevance of short-chain acylcarnitines to the measured infant outcomes. Specifically, high levels of C-2 were generally associated with lower risk of morbidity and mortality while high levels of C-3, C-4, and C-5 were consistently associated with higher risk. Acylcarnitines are heavily involved in the process of shuttling fatty acids across the mitochondrial membrane in order to be utilized in  $\beta$ -oxidation. Therefore, abnormal levels of acylcarnitines may suggest systemic dysfunction of fatty acid oxidation(65, 66).

Several strengths and limitations exist within our study. An important asset was that our sample was derived from an extensive and diverse population-based data set, minimizing the potential for significant selection bias. Furthermore, we split our data into training and validation sets to ensure our model was not over-fitted. These analyses, however, were performed on a retrospective data set, which limited the potential variables to what was available in records or could be captured by ICD-9 codes. This may have restricted our



ability to sufficiently control for confounding. For example, we were unable to capture antenatal corticosteroid use, which is well known to help prevent RDS, IVH, and mortality(67–69). Using ICD-9 codes also likely hindered our ability to precisely capture diagnoses as criteria for diagnosis varies between hospitals and providers, though our rates of morbidity are similar to other studies (13). This diagnostic error would have biased our study toward the null as it is non-differential, meaning our metabolic associations would likely have been more significant in an unbiased situation. Finally, temporality of association between metabolites and any given outcome is difficult to evaluate since newborn screening is often administered during or after complications are diagnosed, which prevented us from being able to make any causal assertions.

Validating the model in external population-based data sets should be the primary focus of future studies. The state of California is exceptionally diverse, with the majority of infants in our study population of Hispanic descent. External generalizability, therefore, would be enhanced by future testing in unique populations. Additionally, it would be useful to examine the study's identified metabolic pathways in more detail (e.g. TSH, phenylalanine, ornithine, & acylcarnitines) to determine explicit etiologies resulting in morbidity or mortality. Given that newborn screening is limited to measuring metabolites at one point in time, with a significant delay between testing and results, it would be advantageous to develop point of care technology that could assess metabolic changes over time and deliver expedited results for potential real-time clinical decision-making. Models may also be improved by employing techniques such as untargeted metabolomics and machine learning with expanded sets of metabolites. Finally, we limited our study to a subset of major morbidities associated with preterm birth, but given the significant associations of metabolites shown here, investigations into additional morbidities are justified.

In our population-based retrospective cohort analysis, we built a newborn metabolic vulnerability profile that demonstrated excellent performance. Utilizing this profile for precision clinical monitoring, targeted investigation of etiologic pathways, and development of specific interventions could lead to reductions in mortality as well as the incidence and severity of major morbidities associated with preterm birth.

## Supplementary Material

Refer to Web version on PubMed Central for supplementary material.

## Acknowledgements:

Data from the California Prenatal and Newborn Screening Programs were obtained through the California Biobank Program (Screening Information System request no. 476). Data were obtained with an agreement that the California Department of Public Health is not responsible for the results or conclusions drawn by the authors of this publication.

**Funding:** This work was supported by the California Preterm Birth Initiative within the University of California, San Francisco (UCSF).

Consent Statement: The State of California granted a waiver of consent for this study.

## References

1. Martin JA, Hamilton BE, Osterman MJK, Driscoll AK, Drake P 2018 Births: Final Data for 2016. *Natl Vital Stat Rep* 67:1–55.
2. Chawanpaiboon S, et al. 2018 Global, regional, and national estimates of levels of preterm birth in 2014: a systematic review and modelling analysis. *Lancet Glob Health*.
3. Liu L, et al. 2016 Global, regional, and national causes of under-5 mortality in 2000–15: an updated systematic analysis with implications for the Sustainable Development Goals. *Lancet* 388:3027–3035. [PubMed: 27839855]
4. Liu L, et al. 2015 Global, regional, and national causes of child mortality in 2000–13, with projections to inform post-2015 priorities: an updated systematic analysis. *Lancet* 385:430–440. [PubMed: 25280870]
5. 2017 Levels & Trends in Child Mortality: Report 2017. UN Inter-Agency Group for Child Mortality Estimation, New York.
6. Benitz WE, Committee on F, Newborn AAoP 2016 Patent Ductus Arteriosus in Preterm Infants. *Pediatrics* 137.
7. Platt MJ 2014 Outcomes in preterm infants. *Public Health* 128:399–403. [PubMed: 24794180]
8. Huang J, et al. 2017 Association between perinatal hypoxic-ischemia and periventricular leukomalacia in preterm infants: A systematic review and meta-analysis. *PLoS One* 12:e0184993. [PubMed: 28931047]
9. Wang LW, Lin YC, Wang ST, Huang CC, on behalf of the Taiwan Premature Infant Developmental Collaborative Study G 2018 Identifying Risk Factors Shared by Bronchopulmonary Dysplasia, Severe Retinopathy, and Cystic Periventricular Leukomalacia in Very Preterm Infants for Targeted Intervention. *Neonatology* 114:17–24. [PubMed: 29621770]
10. Saigal S, Doyle LW 2008 An overview of mortality and sequelae of preterm birth from infancy to adulthood. *Lancet* 371:261–269. [PubMed: 18207020]
11. Mwaniki MK, Atieno M, Lawn JE, Newton CR 2012 Long-term neurodevelopmental outcomes after intrauterine and neonatal insults: a systematic review. *Lancet* 379:445–452. [PubMed: 22244654]
12. Purisch SE, Gyamfi-Bannerman C 2017 Epidemiology of preterm birth. *Semin Perinatol* 41:387–391. [PubMed: 28865982]
13. Ancel PY, et al. 2015 Survival and morbidity of preterm children born at 22 through 34 weeks' gestation in France in 2011: results of the EPIPAGE-2 cohort study. *JAMA Pediatr* 169:230–238. [PubMed: 25621457]
14. Anderson JG, et al. 2016 Survival and Major Morbidity of Extremely Preterm Infants: A Population-Based Study. *Pediatrics* 138.
15. Hintz SR, et al. 2005 Changes in mortality and morbidities among infants born at less than 25 weeks during the post-surfactant era. *Arch Dis Child Fetal Neonatal Ed* 90:F128–133. [PubMed: 15724036]
16. Kyser KL, Morriss FH Jr., Bell EF, Klein JM, Dagle JM 2012 Improving survival of extremely preterm infants born between 22 and 25 weeks of gestation. *Obstet Gynecol* 119:795–800. [PubMed: 22433343]
17. Rysavy MA, et al. 2015 Between-hospital variation in treatment and outcomes in extremely preterm infants. *N Engl J Med* 372:1801–1811. [PubMed: 25946279]
18. Younge N, et al. 2017 Survival and Neurodevelopmental Outcomes among Periviable Infants. *N Engl J Med* 376:617–628. [PubMed: 28199816]
19. Tyson JE, et al. 2008 Intensive care for extreme prematurity--moving beyond gestational age. *N Engl J Med* 358:1672–1681. [PubMed: 18420500]
20. Lawn JE, et al. 2014 Every Newborn: progress, priorities, and potential beyond survival. *Lancet* 384:189–205. [PubMed: 24853593]
21. Bennett MJ 2014 Newborn screening for metabolic diseases: saving children's lives and improving outcomes. *Clin Biochem* 47:693–694. [PubMed: 24886768]

22. Ryckman KK, et al. 2013 Association of amino acids with common complications of prematurity. *Pediatr Res* 73:700–705. [PubMed: 23481552]
23. Fell DB, et al. 2017 Using newborn screening analytes to identify cases of neonatal sepsis. *Sci Rep* 7:18020. [PubMed: 29269842]
24. McCarthy ME, et al. 2018 Newborn Metabolic Profile Associated with Hyperbilirubinemia With and Without Kernicterus. *Clin Transl Sci*.
25. Oltman SP, et al. 2018 Initial Metabolic Profiles Are Associated with 7-Day Survival among Infants Born at 22–25 Weeks of Gestation. *J Pediatr* 198:194–200 e193. [PubMed: 29661562]
26. Steurer MA, et al. 2018 Altered metabolites in newborns with persistent pulmonary hypertension. *Pediatr Res* 84:272–278. [PubMed: 29895840]
27. Sylvester KG, et al. 2016 Acylcarnitine Profiles Reflect Metabolic Vulnerability for Necrotizing Enterocolitis in Newborns Born Premature. *J Pediatr*.
28. Feuchtbauer L, Carter J, Dowray S, Currier RJ, Lorey F 2012 Birth prevalence of disorders detectable through newborn screening by race/ethnicity. *Genet Med* 14:937–945. [PubMed: 22766612]
29. Jelliffe-Pawlowski LL, Norton ME, Baer RJ, Santos N, Rutherford GW 2016 Gestational dating by metabolic profile at birth: a California cohort study. *Am J Obstet Gynecol* 214:511 e511–513. [PubMed: 26688490]
30. Talge NM, Mudd LM, Sikorskii A, Basso O 2014 United States birth weight reference corrected for implausible gestational age estimates. *Pediatrics* 133:844–853. [PubMed: 24777216]
31. Kotelchuck M 1994 The Adequacy of Prenatal Care Utilization Index: its US distribution and association with low birthweight. *Am J Public Health* 84:1486–1489. [PubMed: 8092377]
32. Kotelchuck M 1994 An evaluation of the Kessner Adequacy of Prenatal Care Index and a proposed Adequacy of Prenatal Care Utilization Index. *Am J Public Health* 84:1414–1420. [PubMed: 8092364]
33. Lin HJ, et al. 2011 Extremely high phenylalanine levels in a newborn on parenteral nutrition: phenylketonuria in the neonatal intensive care unit. *J Perinatol* 31:507–510. [PubMed: 21712831]
34. Morris M, et al. 2014 Reduction in newborn screening metabolic false-positive results following a new collection protocol. *Genet Med* 16:477–483. [PubMed: 24177054]
35. Ryckman KK, Berberich SL, Shchelochkov OA, Cook DE, Murray JC 2013 Clinical and environmental influences on metabolic biomarkers collected for newborn screening. *Clin Biochem* 46:133–138. [PubMed: 23010448]
36. Natarajan G, Shankaran S 2016 Short- and Long-Term Outcomes of Moderate and Late Preterm Infants. *Am J Perinatol* 33:305–317. [PubMed: 26788789]
37. Patel RM 2016 Short- and Long-Term Outcomes for Extremely Preterm Infants. *Am J Perinatol* 33:318–328. [PubMed: 26799967]
38. Baer RJ, et al. 2016 Population-based risks of mortality and preterm morbidity by gestational age and birth weight. *J Perinatol* 36:1008–1013. [PubMed: 27467566]
39. Horbar JD, et al. 2012 Mortality and neonatal morbidity among infants 501 to 1500 grams from 2000 to 2009. *Pediatrics* 129:1019–1026.
40. Donovan BM, et al. 2018 Association of newborn screening metabolites with risk of wheezing in childhood. *Pediatr Res* 84:619–624. [PubMed: 29892036]
41. Costeloe KL, et al. 2012 Short term outcomes after extreme preterm birth in England: comparison of two birth cohorts in 1995 and 2006 (the EPICure studies). *BMJ* 345:e7976. [PubMed: 23212881]
42. Jelliffe-Pawlowski LL, Norton ME, Baer RJ, Santos N, Rutherford GW 2015 Gestational dating by metabolic profile at birth: A California cohort study. *Am J Obstet Gynecol*.
43. Ryckman KK, Berberich SL, Dagle JM 2016 Predicting gestational age using neonatal metabolic markers. *Am J Obstet Gynecol* 214:515 e511–513. [PubMed: 26645954]
44. Wilson K, et al. 2016 Accurate prediction of gestational age using newborn screening analyte data. *Am J Obstet Gynecol* 214:513 e511–519. [PubMed: 26519781]
45. Atzori L, et al. 2011 1H NMR-based metabolomic analysis of urine from preterm and term neonates. *Front Biosci (Elite Ed)* 3:1005–1012. [PubMed: 21622109]

46. Wilson K, et al. 2014 Metabolomics of prematurity: analysis of patterns of amino acids, enzymes, and endocrine markers by categories of gestational age. *Pediatr Res* 75:367–373. [PubMed: 24216540]
47. Clark RH, Kelleher AS, Chace DH, Spitzer AR 2014 Gestational age and age at sampling influence metabolic profiles in premature infants. *Pediatrics* 134:e37–46. [PubMed: 24913786]
48. Ryckman KK, Spracklen CN, Dagle JM, Murray JC 2014 Maternal factors and complications of preterm birth associated with neonatal thyroid stimulating hormone. *J Pediatr Endocrinol Metab* 27:929–938. [PubMed: 24854527]
49. Kantor MJ, Leef KH, Bartoshesky L, Getchell J, Paul DA 2003 Admission thyroid evaluation in very-low-birth-weight infants: association with death and severe intraventricular hemorrhage. *Thyroid* 13:965–969. [PubMed: 14611706]
50. Redding RA, Pereira C 1974 Thyroid function in respiratory distress syndrome (RDS) of the newborn. *Pediatrics* 54:423–428. [PubMed: 4479315]
51. Hitchcock KR 1980 Lung development and the pulmonary surfactant system: hormonal influences. *Anat. Rec.* 198:13–34. [PubMed: 6257147]
52. Cuestas RA, Lindall A, Engel RR 1976 Low thyroid hormones and respiratory-distress syndrome of the newborn. *Studies on cord blood. N Engl J Med* 295:297–302. [PubMed: 934210]
53. Panicker V 2011 Genetics of thyroid function and disease. *Clin Biochem Rev* 32:165–175. [PubMed: 22147956]
54. Simpson J, et al. 2005 Serum thyroid hormones in preterm infants and relationships to indices of severity of intercurrent illness. *J Clin Endocrinol Metab* 90:1271–1279. [PubMed: 15613404]
55. Thony B, Auerbach G, Blau N 2000 Tetrahydrobiopterin biosynthesis, regeneration and functions. *Biochem. J.* 347 Pt 1:1–16. [PubMed: 10727395]
56. Ploder M, et al. 2008 Serum phenylalanine in patients post trauma and with sepsis correlate to neopterin concentrations. *Amino Acids* 35:303–307. [PubMed: 18163176]
57. Gitto E, Pellegrino S, D'Arrigo S, Barberi I, Reiter RJ 2009 Oxidative stress in resuscitation and in ventilation of newborns. *Eur Respir J* 34:1461–1469. [PubMed: 19948912]
58. Tataranno ML, Perrone S, Buonocore G 2015 Plasma Biomarkers of Oxidative Stress in Neonatal Brain Injury. *Clin Perinatol* 42:529–539. [PubMed: 26250915]
59. Vento M, et al. 2009 Preterm resuscitation with low oxygen causes less oxidative stress, inflammation, and chronic lung disease. *Pediatrics* 124:e439–449. [PubMed: 19661049]
60. Becker RM, et al. 2000 Reduced serum amino acid concentrations in infants with necrotizing enterocolitis. *J Pediatr* 137:785–793. [PubMed: 11113834]
61. Pearson DL, et al. 2001 Neonatal pulmonary hypertension--urea-cycle intermediates, nitric oxide production, and carbamoyl-phosphate synthetase function. *N Engl J Med* 344:1832–1838. [PubMed: 11407344]
62. Celik IH, Demirel G, Canpolat FE, Dilmen U 2013 Reduced plasma citrulline levels in low birth weight infants with necrotizing enterocolitis. *J Clin Lab Anal* 27:328–332. [PubMed: 23852794]
63. Hediger N, Landolt MA, Diez-Fernandez C, Huemer M, Haberle J 2018 The impact of ammonia levels and dialysis on outcome in 202 patients with neonatal onset urea cycle disorders. *J Inher Metab Dis* 41:689–698. [PubMed: 29520739]
64. Ruder J, Legacy J, Russo G, Davis R 2014 Neonatal citrullinemia: novel, reversible neuroimaging findings correlated with ammonia level changes. *Pediatr Neurol* 51:553–556. [PubMed: 25266618]
65. Longo N, Frigeni M, Pasquali M 2016 Carnitine transport and fatty acid oxidation. *Biochim. Biophys. Acta.* 1863:2422–2435. [PubMed: 26828774]
66. Sauer SW, Okun JG, Hoffmann GF, Koelker S, Morath MA 2008 Impact of short- and medium-chain organic acids, acylcarnitines, and acyl-CoAs on mitochondrial energy metabolism. *Biochim. Biophys. Acta.* 1777:1276–1282. [PubMed: 18582432]
67. Deshmukh M, Patole S 2017 Antenatal corticosteroids for neonates born before 25 Weeks-A systematic review and meta-analysis. *PLoS One* 12:e0176090. [PubMed: 28486556]
68. Travers CP, et al. 2017 Exposure to any antenatal corticosteroids and outcomes in preterm infants by gestational age: prospective cohort study. *BMJ* 356:j1039. [PubMed: 28351838]

69. Travers CP, et al. 2018 Mortality and pulmonary outcomes of extremely preterm infants exposed to antenatal corticosteroids. *Am J Obstet Gynecol* 218:130 e131–130 e113. [PubMed: 29138031]

Author Manuscript

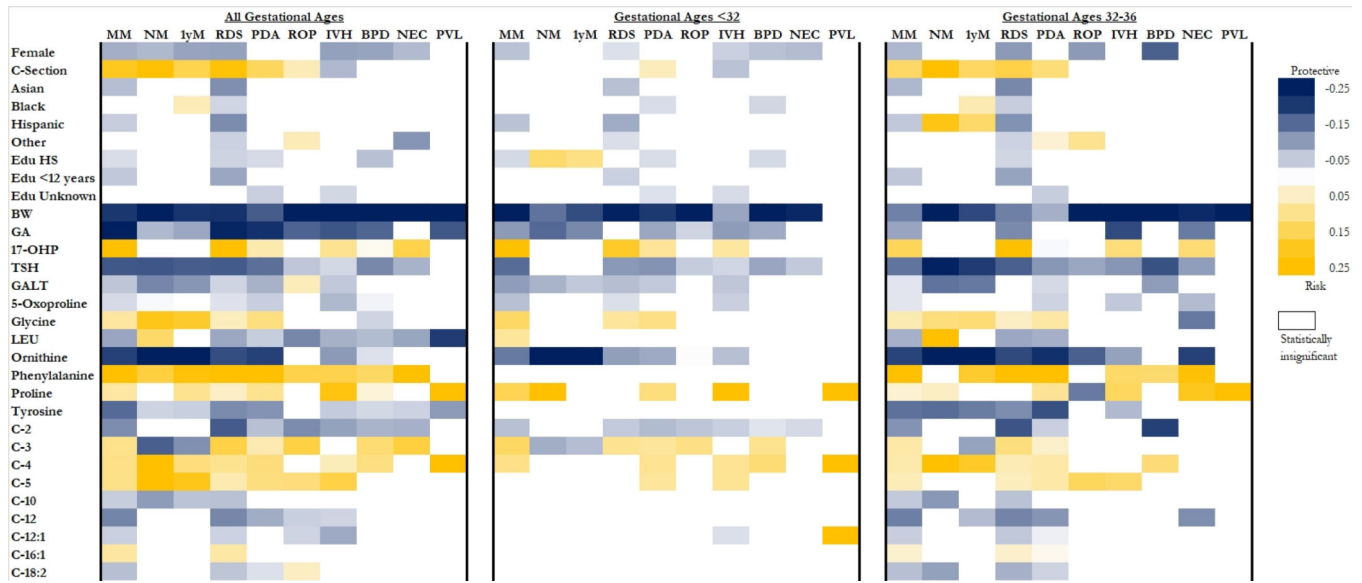
Author Manuscript

Author Manuscript

Author Manuscript

**Impact:**

- We built a newborn metabolic vulnerability profile that could identify preterm infants at risk for major morbidity and mortality.
- Identifying high risk infants by this method is novel to the field and outperforms models currently in use that rely primarily on infant characteristics.
- Utilizing the newborn metabolic vulnerability profile for precision clinical monitoring and targeted investigation of etiologic pathways could lead to reductions in the incidence and severity of major morbidities associated with preterm birth.



**Figure 1.** Reference for race/ethnicity is white and the reference for education is >12 years. For continuous variables, risk/protective effect corresponds to increasing amounts of the variable. MM: any mortality or morbidity; NM: neonatal mortality; 1-yr M: 1-year mortality; RDS: respiratory distress syndrome; PDA: patent ductus arteriosus; ROP: retinopathy of prematurity; IVH: intraventricular hemorrhage; BPD: bronchopulmonary dysplasia; NEC: necrotizing enterocolitis; PVL periventricular leukomalacia; BW: birthweight; GA: gestational age; Edu: education; HS: high school; GALT: galactose-1-phosphate uridyl transferase; TSH: thyroid stimulating hormone; 17-OHP: 17 hydroxyprogesterone; LEU: leucine/isoleucine ratio

**Table 1.**

Crude analysis of maternal demographics, infant characteristics, and metabolites for infants with a morbidity or mortality and those without in the training sample.

Variable	Morbidity or Mortality	No Morbidity or Mortality	OR (95% CI)	P-Value
	n = 6,404	n = 63,534		
<b>Characteristics</b>				
Gestational Age (weeks)	31.3 (3.7)	35.3 (1.2)	0.48 (0.48–0.49)	<0.0001
Birthweight (per 100g)	17.9 (8.1)	28.3 (5.2)	0.77 (0.76–0.77)	<0.0001
Age at Collection (hours)	31.0 (9.5)	29.0 (8.6)	1.03 (1.02–1.03)	<0.0001
Female	2667 (41.65)	28951 (45.57)	0.85 (0.81–0.90)	<0.0001
TPN	3513 (54.86)	2774 (4.37)	26.61 (25.00–28.32)	<0.0001
Small for GA	802 (12.52)	3784 (5.96)	2.26 (2.09–2.45)	<0.0001
Cesarean delivery	3823 (59.7)	19316 (30.4)	3.39 (3.22–3.57)	<0.0001
Medi-Cal	3153 (49.23)	31638 (49.8)	0.98 (0.93–1.03)	0.3912
Prenatal Care				<0.0001
Adequate or adequate plus	4932 (77.01)	49843 (78.45)	Reference	
Intermediate	555 (8.67)	4089 (6.44)	1.37 (1.25–1.51)	
Inadequate	676 (10.56)	7728 (12.16)	0.88 (0.81–0.96)	
Unknown	241 (3.76)	1874 (2.95)	1.30 (1.13–1.49)	
Maternal Race				<0.0001
White non-Hispanic	1366 (21.33)	12932 (20.35)	Reference	
Black	389 (6.07)	2724 (4.29)	1.35 (1.20–1.52)	
Hispanic	3357 (52.42)	34429 (54.19)	0.92 (0.86–0.99)	
Asian	816 (12.74)	9425 (14.83)	0.82 (0.75–0.90)	
Other	476 (7.43)	4024 (6.33)	1.12 (1.00–1.25)	
Maternal education				<0.0001
<12 years	1884 (29.42)	20605 (32.43)	0.88 (0.83–0.94)	
12 years	1486 (23.2)	14427 (22.71)	1.00 (0.93–1.06)	
>12 years	2714 (42.38)	26224 (41.28)	Reference	
unknown	320 (5)	2278 (3.59)	1.36 (1.20–1.54)	
Maternal age				<0.0001
<18 years	247 (3.86)	2497 (3.93)	1.02 (0.90–1.17)	
18–34 years	4659 (72.75)	48229 (75.91)	Reference	
>34 years	1498 (23.39)	12808 (20.16)	1.21 (1.14–1.29)	
Gestational diabetes	741 (11.57)	6400 (10.07)	1.17 (1.08–1.27)	0.0002
Gestational hypertension	1088 (16.99)	6583 (10.36)	1.77 (1.65–1.90)	<0.0001
<b>Enzymes &amp; Hormones</b>				
17 Hydroxyprogesterone	4.27 (0.9)	3.33 (0.65)	6.00 (5.76–6.25)	<0.0001
TSH	0.74 (0.96)	1.47 (0.61)	0.24 (0.23–0.25)	<0.0001
GALT	5.43 (0.28)	5.5 (0.23)	0.37 (0.33–0.41)	<0.0001
<b>Amino Acids</b>				
5-Oxoproline	3.37 (0.61)	3.54 (0.55)	0.65 (0.62–0.68)	<0.0001



Variable	Morbidity or Mortality	No Morbidity or Mortality	OR (95% CI)	P-Value
	n = 6,404	n = 63,534		
Alanine	5.5 (0.42)	5.48 (0.33)	1.19 (1.10–1.28)	<0.0001
Arginine	2.66 (0.92)	2.15 (0.68)	2.62 (2.53–2.72)	<0.0001
Citrulline	2.75 (0.38)	2.71 (0.28)	1.66 (1.52–1.81)	<0.0001
Glycine	6.29 (0.33)	6.35 (0.28)	0.50 (0.46–0.55)	<0.0001
Leucine/Isoleucine	4.94 (0.49)	4.65 (0.28)	12.13 (11.24–13.09)	<0.0001
Methionine	3.55 (0.63)	3.34 (0.33)	3.92 (3.68–4.17)	<0.0001
Ornithine	4.69 (0.52)	4.58 (0.35)	2.23 (2.09–2.39)	<0.0001
Phenylalanine	4.37 (0.32)	4.15 (0.23)	25.55 (23.05–28.31)	<0.0001
Proline	5.24 (0.49)	5.19 (0.34)	1.50 (1.40–1.61)	<0.0001
Tyrosine	4.54 (0.65)	4.66 (0.42)	0.56 (0.53–0.59)	<0.0001
Valine	4.87 (0.46)	4.67 (0.31)	6.42 (5.94–6.94)	<0.0001
<b>Carnitines</b>				
Free Carnitine	3.77 (0.46)	3.57 (0.41)	3.01 (2.83–3.21)	<0.0001
C-2	3.17 (0.37)	3.2 (0.31)	0.76 (0.70–0.83)	<0.0001
C-3	0.89 (0.43)	0.69 (0.4)	3.29 (3.08–3.50)	<0.0001
C-3DC	-2.57 (0.42)	-2.38 (0.39)	0.29 (0.27–0.31)	<0.0001
C-4	-1.01 (0.51)	-1.33 (0.5)	3.96 (3.75–4.19)	<0.0001
C-5	-1.37 (0.61)	-1.97 (0.54)	10.18 (9.60–10.80)	<0.0001
C-5:1	-3.61 (0.86)	-3.78 (0.88)	1.25 (1.21–1.29)	<0.0001
C-5DC	-2.17 (0.48)	-2.06 (0.45)	0.59 (0.56–0.63)	<0.0001
C-5OH	-1.66 (0.51)	-1.72 (0.51)	1.34 (1.27–1.42)	<0.0001
C-6	-3 (0.83)	-2.83 (0.79)	0.79 (0.77–0.81)	<0.0001
C-8	-2.87 (0.77)	-2.73 (0.73)	0.79 (0.77–0.82)	<0.0001
C-8:1	-2.45 (0.77)	-2.29 (0.62)	0.71 (0.68–0.73)	<0.0001
C-10	-3.06 (0.78)	-2.48 (0.66)	0.40 (0.39–0.41)	<0.0001
C-10:1	-3.1 (0.82)	-2.96 (0.7)	0.79 (0.76–0.82)	<0.0001
C-12	-2.43 (0.75)	-1.8 (0.57)	0.24 (0.24–0.26)	<0.0001
C-12:1	-3.24 (0.85)	-2.59 (0.83)	0.48 (0.47–0.49)	<0.0001
C-14	-1.71 (0.47)	-1.44 (0.39)	0.23 (0.21–0.24)	<0.0001
C-14:1	-2.36 (0.59)	-1.98 (0.55)	0.36 (0.35–0.38)	<0.0001
C-14OH	-4.05 (0.83)	-3.74 (0.84)	0.67 (0.65–0.69)	<0.0001
C-16	0.68 (0.47)	0.98 (0.34)	0.12 (0.11–0.13)	<0.0001
C-16:1	-1.77 (0.52)	-1.53 (0.46)	0.39 (0.37–0.41)	<0.0001
C-16OH	-3.73 (0.82)	-3.57 (0.81)	0.79 (0.77–0.81)	<0.0001
C-18	-0.29 (0.37)	-0.23 (0.35)	0.61 (0.57–0.66)	<0.0001
C-18:1	-0.05 (0.37)	0.11 (0.32)	0.25 (0.23–0.27)	<0.0001
C-18:1OH	-4.02 (0.81)	-3.89 (0.83)	0.83 (0.81–0.86)	<0.0001
C-18:2	-1.34 (0.63)	-1.6 (0.51)	2.74 (2.60–2.89)	<0.0001
C-18OH	-4.38 (0.79)	-4.19 (0.83)	0.75 (0.73–0.78)	<0.0001

TPN: total parenteral nutrition; NBS: newborn screening; GALT: galactose-1-phosphate uridyl transferase; TSH: thyroid stimulating hormone. Continuous variables described using mean and SD and ORs by per unit increase. Categorical variables described using frequencies and proportions. T-tests and  $\chi^2$  tests for continuous and categorical variables respectively

Author Manuscript

Author Manuscript

Author Manuscript

Author Manuscript

**Table 2.**

Multivariable logistic regression model for any mortality or morbidity adjusted for total parenteral nutrition and age at NBS collection.

Variable	Any Morbidity or Mortality	No Morbidity or Mortality	Parameter Estimate (Std Error)	OR (95% CI)	Standardized Estimate
Female	2,667 (41.65)	28,951 (45.57)	-0.31 (0.04)	0.74 (0.68–0.80)	-0.084
C-Section	3,823 (59.70)	19,316 (30.40)	0.58 (0.04)	1.79 (1.66–1.93)	0.151
Race/Ethnicity					
White non-Hispanic	1,366 (21.33)	12,932 (20.35)	Ref	Ref	Ref
Asian	816 (12.74)	9,425 (14.83)	-0.35 (0.06)	0.71 (0.62–0.80)	-0.068
Black	389 (6.07)	2,724 (4.29)	-0.13 (0.09)	0.87 (0.73–1.05)	-0.015
Hispanic	3,357 (52.42)	34,429 (54.19)	-0.18 (0.05)	0.83 (0.75–0.92)	-0.051
Other	476 (7.43)	4,024 (6.33)	-0.12 (0.09)	0.89 (0.75–1.05)	-0.017
Education (years)					
<12	1884 (29.42)	20,605 (32.43)	-0.22 (0.05)	0.80 (0.73–0.89)	-0.057
High School	1,486 (23.20)	14,427 (22.71)	-0.15 (0.05)	0.87 (0.78–0.96)	-0.034
>12	2,714 (42.38)	26,224 (41.28)	Ref	Ref	Ref
Unknown	320 (5.00)	2,278 (3.59)	-0.02 (0.10)	0.98 (0.81–1.19)	-0.002
Birthweight (per 100g)	17.9 (8.10)	28.3 (5.20)	-0.06 (0.01)	0.94 (0.93–0.95)	-0.216
Gestational age (weeks)	31.3 (3.70)	35.3 (1.20)	-0.29 (0.01)	0.75 (0.73–0.77)	-0.311
17 Hydroxyprogesterone	4.27 (0.90)	3.33 (0.65)	0.47 (0.03)	1.61 (1.52–1.70)	0.191
TSH	0.74 (0.96)	1.47 (0.61)	-0.48 (0.04)	0.62 (0.59–0.65)	-0.179
GALT	5.43 (0.28)	5.50 (0.23)	-0.47 (0.08)	0.63 (0.53–0.74)	-0.060
5-Oxoproline	3.37 (0.61)	3.54 (0.55)	-0.12 (0.03)	0.89 (0.83–0.95)	-0.037
Glycine	6.29 (0.33)	6.35 (0.28)	0.41 (0.09)	1.51 (1.27–1.78)	0.064
Leucine/Isoleucine	4.94 (0.49)	4.65 (0.28)	-0.54 (0.11)	0.59 (0.48–0.72)	-0.093
Ornithine	4.69 (0.52)	4.58 (0.35)	-1.01 (0.07)	0.36 (0.32–0.42)	-0.205
Phenylalanine	4.37 (0.32)	4.15 (0.23)	2.42 (0.11)	11.19 (9.03–13.87)	0.330
Proline	5.24 (0.49)	5.19 (0.34)	0.31 (0.07)	1.37 (1.19–1.57)	0.062
Tyrosine	4.54 (0.65)	4.66 (0.42)	-0.64 (0.04)	0.53 (0.49–0.57)	-0.159
C-2	3.17 (0.37)	3.20 (0.31)	-0.71 (0.08)	0.49 (0.42–0.58)	-0.121
C-3	0.89 (0.43)	0.69 (0.40)	0.35 (0.06)	1.42 (1.26–1.60)	0.078
C-4	-1.01 (0.51)	-1.33 (0.50)	0.29 (0.05)	1.33 (1.22–1.45)	0.081
C-5	-1.37 (0.61)	-1.97 (0.54)	0.25 (0.05)	1.29 (1.17–1.41)	0.079
C-10	-3.06 (0.78)	-2.48 (0.66)	-0.13 (0.03)	0.87 (0.83–0.92)	-0.051
C-12	-2.43 (0.75)	-1.80 (0.57)	-0.38 (0.03)	0.68 (0.64–0.73)	-0.130
C-12:1	-3.24 (0.85)	-2.59 (0.83)	-0.10 (0.03)	0.90 (0.86–0.95)	-0.048
C-16:1	-1.77 (0.52)	-1.53 (0.46)	0.25 (0.05)	1.28 (1.17–1.42)	0.064
C-18:2	-1.34 (0.63)	-1.60 (0.51)	-0.23 (0.04)	0.80 (0.74–0.86)	-0.066

All metabolites are natural log transformed. Original units – umol/L

GALT: galactose-1-phosphate uridyl transferase; TSH: thyroid stimulating hormone; OR: Odds Ratio; CI: confidence interval.

All variables have model p-value of <0.001

Continuous variables described using mean and SD and ORs by per unit increase. Categorical variables described using frequencies and proportions. T-tests and  $\chi^2$  tests for continuous and categorical variables respectively

Author Manuscript

Author Manuscript

Author Manuscript

Author Manuscript

**Table 3.** Performance of the full model stratified by gestational age categories for individual outcomes within the validation population.

Model	All Gestational Ages (n=34,969)		Gestational ages <32 (n=1,924)		Gestational ages 32–36 (n=33,045)	
	n (%)	AUC (95% CI)	n (%)	AUC (95% CI)	n (%)	AUC (95% CI)
Morbidity or Mortality	3,235 (9.25)	0.923 (0.917–0.929)	1,485 (77.18)	0.841 (0.819–0.862)	1,769 (5.35)	0.881 (0.871–0.891)
Neonatal Mortality	157 (0.45) *	0.948 (0.928–0.967)	104 (5.56) *	0.843 (0.803–0.883)	67 (0.20) *	0.872 (0.819–0.924)
1-Year Mortality	266 (0.76)	0.913 (0.893–0.934)	159 (8.26)	0.830 (0.797–0.864)	120 (0.36)	0.815 (0.767–0.863)
RDS	2,367 (6.77)	0.954 (0.950–0.958)	1,243 (64.60)	0.787 (0.766–0.809)	1,165 (3.53)	0.928 (0.919–0.936)
PDA	1,367 (3.91)	0.893 (0.882–0.904)	767 (39.86)	0.783 (0.762–0.803)	578 (1.75)	0.814 (0.794–0.835)
ROP	616 (1.76)	0.977 (0.971–0.984)	592 (30.77)	0.756 (0.734–0.779)	69 (0.21)	0.929 (0.894–0.964)
IVH	554 (1.58)	0.953 (0.944–0.963)	431 (22.40)	0.741 (0.715–0.767)	131 (0.40)	0.878 (0.841–0.916)
BPD	423 (1.21)	0.953 (0.941–0.966)	366 (19.02)	0.806 (0.784–0.828)	66 (0.20)	0.815 (0.756–0.874)
NEC	182 (0.52)	0.952 (0.939–0.964)	150 (7.80)	0.694 (0.655–0.734)	62 (0.19)	0.908 (0.863–0.954)
PVL	36 (0.10)	0.938 (0.887–0.989)	32 (1.66)	0.682 (0.602–0.762)	9 (0.03)	0.844 (0.691–0.997)

\* Full sample n=34,860, n=32,992, & n=1,869 for gestational age categories respectively. AUC: area under the curve; RDS: respiratory distress syndrome; PDA: patent ductus arteriosus; ROP: retinopathy of prematurity; IVH: intraventricular hemorrhage; BPD: bronchopulmonary dysplasia; NEC: necrotizing enterocolitis; PVL: periventricular leukomalacia

**Table 4.**

Performance of the full model as compared to a model using only metabolites and a model using only characteristics in the validation population

Model	n (%)	AUC (95% CI)		
		Full	Metabolites	Characteristics
Morbidity or Mortality	3,235 (9.25)	0.923 (0.917–0.929)	0.911 (0.905–0.917)	0.871 (0.863–0.879)
Neonatal Mortality	157 (0.45)*	0.948 (0.928–0.967)	0.938 (0.917–0.958)	0.900 (0.871–0.930)
1-Year Mortality	266 (0.76)	0.913 (0.893–0.934)	0.907 (0.887–0.928)	0.873 (0.847–0.898)
RDS	2,367 (6.77)	0.954 (0.950–0.958)	0.943 (0.938–0.948)	0.904 (0.897–0.911)
PDA	1,367 (3.91)	0.893 (0.882–0.904)	0.877 (0.865–0.889)	0.853 (0.839–0.866)
ROP	616 (1.76)	0.977 (0.971–0.984)	0.964 (0.957–0.972)	0.977 (0.971–0.984)
IVH	554 (1.58)	0.953 (0.944–0.963)	0.945 (0.935–0.954)	0.943 (0.931–0.955)
BPD	423 (1.21)	0.953 (0.941–0.966)	0.949 (0.937–0.961)	0.947 (0.933–0.961)
NEC	182 (0.52)	0.952 (0.939–0.964)	0.944 (0.929–0.959)	0.931 (0.910–0.952)
PVL	36 (0.10)	0.938 (0.887–0.989)	0.934 (0.883–0.985)	0.942 (0.903–0.982)

\* Full n=34,860 (other deaths not included)

AUC: area under the curve; RDS: respiratory distress syndrome; PDA: patent ductus arteriosus; ROP: retinopathy of prematurity; IVH: intraventricular hemorrhage; BPD: bronchopulmonary dysplasia; NEC: necrotizing enterocolitis; PVL periventricular leukomalacia