

UCSF

UC San Francisco Previously Published Works

Title

Brg1 promotes both tumor-suppressive and oncogenic activities at distinct stages of pancreatic cancer formation.

Permalink

<https://escholarship.org/uc/item/5qk3g42m>

Journal

Genes & development, 29(6)

ISSN

0890-9369

Authors

Roy, Nilotpal
Malik, Shivani
Villanueva, Karina E
[et al.](#)

Publication Date

2015-03-01

DOI

10.1101/gad.256628.114

Copyright Information

This work is made available under the terms of a Creative Commons Attribution-NonCommercial License, available at <https://creativecommons.org/licenses/by-nc/4.0/>

Peer reviewed

Brg1 promotes both tumor-suppressive and oncogenic activities at distinct stages of pancreatic cancer formation

Nilotpal Roy,^{1,6} Shivani Malik,^{2,6} Karina E. Villanueva,¹ Atsushi Urano,¹ Xinyuan Lu,² Guido Von Figura,³ E. Scott Seeley,⁴ David W. Dawson,⁵ Eric A. Collisson,² and Matthias Hebrok¹

¹Diabetes Center, Department of Medicine, University of California at San Francisco, San Francisco, California 94143, USA; ²Department of Medicine/Hematology and Oncology, University of California at San Francisco, San Francisco, California 94143, USA; ³II. Medizinische Klinik und Poliklinik, Klinikum Rechts der Isar der Technischen Universität München, 81675 Munich, Germany; ⁴Department of Pathology, University of California at San Francisco, San Francisco, California 94143, USA; ⁵Department of Pathology and Laboratory Medicine, University of California at Los Angeles, Los Angeles, California 90095, USA

Pancreatic ductal adenocarcinoma (PDA) develops predominantly through pancreatic intraepithelial neoplasia (PanIN) and intraductal papillary mucinous neoplasm (IPMN) precursor lesions. Pancreatic acinar cells are reprogrammed to a “ductal-like” state during PanIN-PDA formation. Here, we demonstrate a parallel mechanism operative in mature duct cells during which functional cells undergo “ductal retrogression” to form IPMN-PDA. We further identify critical antagonistic roles for Brahma-related gene 1 (Brg1), a catalytic subunit of the SWI/SNF complexes, during IPMN-PDA development. In mature duct cells, Brg1 inhibits the dedifferentiation that precedes neoplastic transformation, thus attenuating tumor initiation. In contrast, Brg1 promotes tumorigenesis in full-blown PDA by supporting a mesenchymal-like transcriptional landscape. We further show that JQ1, a drug that is currently being tested in clinical trials for hematological malignancies, impairs PDA tumorigenesis by both mimicking some and inhibiting other Brg1-mediated functions. In summary, our study demonstrates the context-dependent roles of Brg1 and points to potential therapeutic treatment options based on epigenetic regulation in PDA.

[*Keywords:* Brg1; IPMN; dedifferentiation; pancreatic cancer; Kras; EMT]

Supplemental material is available for this article.

Received November 30, 2014; revised version accepted February 13, 2015.

Pancreatic ductal adenocarcinoma (PDA) is a deadly malignancy with a 5-year survival rate of 6% (Siegel et al. 2014). Untargeted polychemotherapy is the current standard of care but is too toxic for many patients to tolerate (Conroy et al. 2011; Ryan et al. 2014). Several novel chemotherapy and immunotherapy clinical trials are currently in progress, but conclusive evidence regarding their effectiveness has not been established. A better characterization of the molecular pathogenesis of this disease is thus essential to identify novel therapeutic approaches and the patients most likely to benefit from them.

Oncogenic KRAS drives PDA development, which progresses through histologically and prognostically distinct precursor lesions (Hezel et al. 2006). These lesions also appear to have distinct cells of origin. Pancreatic intraepithelial neoplasia (PanIN) lesions likely derive from exocrine acinar cells (Kopp et al. 2012), whereas pancreatic duct cells (PDCs) serve as the progenitor cells for intraduc-

tal papillary mucinous neoplasia (IPMN) (von Figura et al. 2014). Prognostically, PanIN-derived PDA is an aggressive disease associated with an average survival of 6 mo after diagnosis, usually due to late diagnosis. In contrast, IPMN-derived PDA is more indolent, with a 5-year survival after surgical resection approaching 50% (Poultsides et al. 2010; Mino-Kenudson et al. 2011; Matthaei et al. 2012). Thus, understanding the key differences in signals that regulate PanIN and IPMN formation is essential for prognostic and predictive biomarker development schemes that will in turn lead toward personalized therapy.

Loss of cellular identity, defined by decreased differentiation markers and inappropriate expression of progenitor markers, is a characteristic of PDA (Stanger and Hebrok 2013). Acinar–ductal metaplasia (ADM), a process in which acinar cells undergo dedifferentiation toward a duct-like state, precedes PanIN and PDA formation

⁶These authors contributed equally to this work.

Corresponding author: mhebrok@diabetes.ucsf.edu

Article is online at <http://www.genesdev.org/cgi/doi/10.1101/gad.256628.114>.

© 2015 Roy et al. This article is distributed exclusively by Cold Spring Harbor Laboratory Press for the first six months after the full-issue publication date (see <http://genesdev.cshlp.org/site/misc/terms.xhtml>). After six months, it is available under a Creative Commons License (Attribution-NonCommercial 4.0 International), as described at <http://creativecommons.org/licenses/by-nc/4.0/>.

(Guerra et al. 2007; Zhu et al. 2007; De La O et al. 2008; Habbe et al. 2008). In contrast, IPMN lesions appear to arise from pancreatic duct but not acinar cells. We showed previously that the Brahma-related gene 1 (*Brg1*; human gene name *SMARCA4*), encoding the catalytic subunit of the SWI/SNF complex in the context of oncogenic *Kras*, leads to IPMN lesions and PDA (von Figura et al. 2014). Interestingly, *Brg1* expression is higher in IPMN-associated PDA compared with IPMN in matched patient samples, suggesting that *Brg1* may serve distinct, stage-specific roles in the pathogenesis of PDA (von Figura et al. 2014). To address this possibility, we compared and characterized the role of *Brg1* at the “early” preinvasive stage of the cancer (IPMN) and the “late” PDA stage emanating from the very same precursor lesion.

We found that PDCs, like their acinar counterparts, also undergo a dedifferentiation step to form IPMN. We further show that *Brg1* has antithetical functions during progression of IPMN to PDA. While the protein functions as a tumor suppressor early in the disease by inhibiting dedifferentiation of PDCs, it promotes late stage PDA progression at least in part by induction of epithelial-to-mesenchymal transition (EMT). Thus, *Brg1* has bipolar contextual roles both preventing and promoting pancreatic tumorigenesis in a stage-dependent manner. Several of these malignant attributes can be successfully therapeutically addressed by epigenomic intervention with the BRD4 inhibitor JQ1, opening a new treatment paradigm in PDA. Therefore, the contextual functions of *Brg1* in PDA of both preventing and promoting tumorigenesis can be therapeutically exploited in select patient subsets with this deadly disease.

Results

Loss of Brg1 promotes dedifferentiation of PDCs in the context of oncogenic Kras

Distinct PanIN and IPMN lesions can both progress to PDA (Hezel et al. 2006). We showed previously that *Brg1* differentially regulates the development of these precancerous lesions (von Figura et al. 2014). Loss of *Brg1* in conjunction with oncogenic *Kras* inhibits formation of PanIN from pancreatic acinar cells. In contrast, depletion of *Brg1* in PDCs expressing oncogenic *Kras* promotes IPMN formation. To investigate why PDCs are sensitive to IPMN formation upon *Brg1* elimination, we developed an in vitro model system using primary PDCs. PDCs were isolated from genetically modified mouse models (GEMM) carrying *Lox-stop-Lox Kras^{G12D}* (*LSLKras^{G12D}*) and floxed alleles of *Brg1* (*Brg1^{fl/fl}*) following a previously published protocol (Reichert et al. 2013a,b). PDCs were isolated from 6- to 8-wk-old mice by DBA lectin sorting and cultured for 1 wk (Supplemental Fig. 1A,B). This protocol allows for the isolation and cultivation of a pure population of duct cells, as demonstrated by high expression of duct marker cytokeratin 19 and the absence of the acinar cell marker amylase or endocrine marker insulin (Supplemental Fig. 1C). One week after isolation, cells were infected with Cre recombinase-expressing adenovirus to initiate

genetic recombination of the loxP sites at the *Kras* (activation of oncogenic *Kras* expression through elimination of the floxed stop allele) and *Brg1* (elimination through recombination of *Brg1* exons 2 and 3, *Brg1^{fl/fl}*) loci (Supplemental Fig. 1D,E). Adenoviruses expressing RFP were used as a control to monitor transfection efficiency.

To determine whether duct cells lose their cellular identity while progressing toward IPMN, we first investigated the effects of oncogenic *Kras* on duct cell differentiation. With the exception of *Krt19* (cytokeratin 19), oncogenic *Kras* does not alter the expression of mature duct cell markers, including *Krt7* (cytokeratin 7), *Hnf6* (ONECUT homeobox 1), *Cftr* (cystic fibrosis transmembrane conductance regulator), *Tcf2* (HNF1 homeobox B), *Sox9* (SRY sex-determining region box 9), and *FoxA2* (Forkhead box A2) (Fig. 1A). While the expression of *Pdx1* (pancreatic and duodenal homeobox 1), a marker normally expressed in duct progenitors and only at a low level in mature PDCs, was unaltered, another progenitor marker, *Hnf4a* (hepatocyte nuclear factor 4 α), was up-regulated. As expected, *Lox2* (lysyl oxidase 2), a gene known to be transcriptionally repressed by oncogenic *Kras* signaling, was significantly down-regulated (Gazin et al. 2007). In contrast, *Brg1* deletion in the presence of wild-type *Kras* led to a dramatic decrease in the majority of the mature duct cell markers (*FoxA2* expression appeared unaffected) (Fig. 1B), while the expression of the progenitor marker *Pdx1* or *Hnf4a* was unchanged or even reduced. These findings suggest that loss of *Brg1* degrades mature duct cell identity, as evidenced by attenuation of mature duct cell markers. Interestingly, concomitant activation of oncogenic *Kras* together with *Brg1* elimination leads to a more pronounced dedifferentiated state. The transcriptional profile of *Kras^{G12D}*; *Brg1^{fl/fl}* PDCs revealed down-regulation of mature duct cell markers accompanied by enhanced expression of progenitor markers (Fig. 1C). Thus, simultaneous loss of *Brg1* and activation of *Kras^{G12D}* collaborates to erode the mature ductal state and promote the inappropriate activation of progenitor factors.

Pdx1 serves as an essential transcription factor in normal pancreas development during embryogenesis (Reichert and Rustgi 2011; Stanger and Hebrok 2013). It is ubiquitously expressed in the early epithelial cells of the developing pancreas, but its high expression is restricted to the pancreatic islet cells in the adult organ. Up-regulation of *Pdx1* expression is observed during dedifferentiation of pancreatic exocrine cells upon injury as well as in pancreatic preinvasive lesions (Sharma et al. 1999; Park et al. 2011). Since *Pdx1* was the unique progenitor marker up-regulated in *Kras^{G12D}*; *Brg1^{fl/fl}* PDCs, we questioned whether *Pdx1^{high}* cells were those to have undergone dedifferentiation. A previous study has shown an inverse correlation between expression of *Pdx1* and the cell surface marker *Sca1* (also known as Ly6a [lymphocyte antigen 6 complex, locus A]) in pancreatic adenocarcinoma cells (Ischenko et al. 2014), providing a means to sort and compare PDCs based on their *Pdx1* expression levels by using antibodies directed against *Sca1* (Fig. 1D; Ischenko et al. 2014). *Kras^{G12D}* PDCs showed a bell-shaped curve when assayed for *Sca1* expression, with the

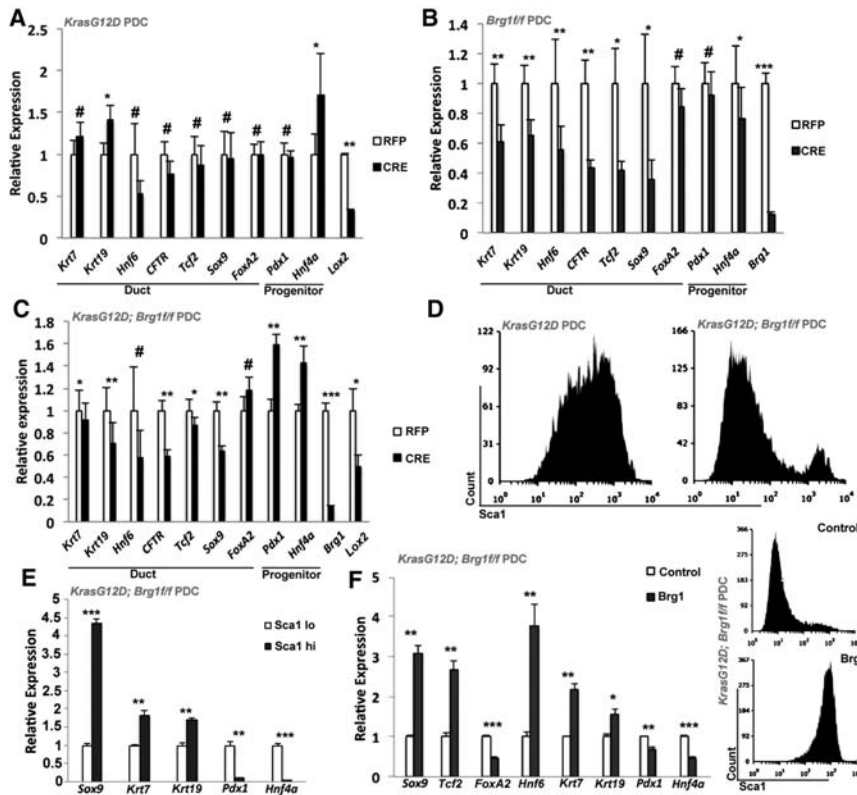


Figure 1. PDCs expressing oncogenic *Kras* and loss of *Brg1* undergo dedifferentiation. Quantitative PCR analysis of duct cell differentiation markers in PDCs isolated from *LSL-Kras^{G12D}* mice (A), *Brg1^{fl/fl}* mice (B), and *LSL-Kras^{G12D}; Brg1^{fl/fl}* mice (C) infected with adenovirus expressing either RFP or Cre recombinase. (D) FACS analysis of *Kras^{G12D}* and *Kras^{G12D}; Brg1^{fl/fl}* PDCs using the Sca1 antibody. (E) Quantitative PCR analysis of duct cell differentiation markers in PDCs sorted from *Kras^{G12D}; Brg1^{fl/fl}* PDCs based on Sca1 expression. (F, left) Quantitative PCR analysis of duct cell differentiation markers in *Kras^{G12D}; Brg1^{fl/fl}* PDCs with ectopic *Brg1* expression. (Right) FACS analysis of Sca1 in *Kras^{G12D}; Brg1^{fl/fl}* PDCs expressing empty vector or vector expressing wild-type *Brg1*.

majority of the cells marked by high levels of Sca1/lower levels of Pdx1 expression (Fig. 1D; Supplemental Fig. 2A). In contrast, depletion of *Brg1* in the context of oncogenic *Kras* resulted in the vast majority of the cells assuming a Sca1^{low}/Pdx1^{high} phenotype (Fig. 1D,E). Differential expression of Sca1 and, by extrapolation, Pdx1 in *Brg1* intact and depleted PDC lines expressing oncogenic *Kras* reflects the differentiation status of these cells and supports our prior observations (Fig. 1A–C). For example, we detected only a very small number of Sca1^{low}/Pdx1^{high} cells in *Kras^{G12D}* PDCs, and these cells did not demonstrate any decrease in the expression of matured duct markers (Supplemental Fig. 2A,B). In contrast, Sca1^{low}/Pdx1^{high} cells from *Kras^{G12D}; Brg1*-depleted PDCs displayed not only an increase in the progenitor markers *Pdx1* and *Hnf4a* but also reduced expression of the mature duct markers *Krt7*, *Krt19*, and *Sox9* (Fig. 1E). Thus, Sca1^{low} cells marked by loss of *Brg1* in the context of oncogenic *Kras* cannot sustain mature duct cell identity. The critical role for *Brg1* in maintaining this duct differentiation state is further highlighted by the observation that the small population of Sca1^{high}/Pdx1^{low} *Kras^{G12D}; Brg1^{fl/fl}* PDCs have escaped Cre recombination of the *Brg1* locus and therefore continued *Brg1* expression (Supplemental Fig. 2C). Furthermore, forced re-expression of *Brg1* (Supplemental Fig. 2D) in *Kras^{G12D}; Brg1^{fl/fl}* PDCs reduced progenitor markers but increased expression of duct markers and Sca1 (Fig. 1F), reaffirming the concept that reactivation of *Brg1* in PDCs restores their mature identity and differentiation state. Collectively, these data show that *Brg1* ac-

tively maintains ductal identity even in the presence of *Kras^{G12D}* expression, thus playing a tumor-suppressive role (Shain et al. 2012).

Immortalized PDCs give rise to IPMN lesions in vivo

Based on our previously published work on *Ptf1aCre; Kras^{G12D}; Brg1^{fl/fl}* (PKB) mice (von Figura et al. 2014) and our above-described findings in duct cells, we hypothesized that the *Kras^{G12D}; Brg1^{fl/fl}* PDCs serve as the progenitors for IPMN lesions. To test the tumorigenic potential of PDCs, we established immortalized PDC lines from both *Kras^{G12D}* and *Kras^{G12D}; Brg1^{fl/fl}* mice by adenoviral infection of Cre recombinase followed by serial passaging. These cell lines exhibit extremely low population doubling times compared with wild-type PDCs (Supplemental Fig. 3A). When grown in three-dimensional (3D) cultures, wild-type PDCs form small spheres. The appearance of these spheres is similar to those from *Kras^{G12D}* PDCs, although the latter are more proliferative and thus significantly larger than their wild-type counterparts (Supplemental Fig. 3B). In contrast, *Kras^{G12D}; Brg1^{fl/fl}* PDCs form *Krt19*-positive irregular cystic structures displaying prominent protrusions that are morphologically distinct from those generated by both the wild-type and *Kras^{G12D}* PDCs (Supplemental Fig. 3B,C). Orthotopic transplantation into the pancreata of immune-deficient mice was used to assess their tumor-forming capacities in vivo. Six weeks after transplantation, *Kras^{G12D}; Brg1^{fl/fl}* PDCs did form *Krt19*- and mucin-positive cysts harboring

high levels of Ki67-positive cells reminiscent of IPMN lesions (Supplemental Fig. 3D,E). In contrast, *Kras*^{G12D} PDCs developed either cystic structures that were mostly Ki67- and mucin-negative (Supplemental Fig. 3E) or Ki67-positive sporadic PanIN lesions but no IPMN. Thus, Brg1 loss in the context of oncogenic *Kras* is required for PDCs to develop into IPMN lesions upon transplantation.

We next used the previously characterized PKB mice (von Figura et al. 2014) to evaluate the phenomenon of ductal dedifferentiation in vivo. PKB mice express Cre recombinase shortly after the onset of pancreas formation. PKB mice harbor IPMN lesions at 3 wk of age that progress to PDA by 9 wk. In order to better characterize the early stages of IPMN-derived PDA, we analyzed mice at 3, 6, and 9 wk of age. PKB mice displayed the expected loss of Brg1 expression in the IPMN structures that developed by 3 wk. The lesions were Krt19-positive but had low expression levels of the critical duct marker Sox9. Consistent with our observations in PDCs, these lesions express the progenitor markers Pdx1 and Hnf4a (Fig. 2A). Duct cells were isolated via DBA lectin staining from IPMN mice (Supplemental Fig. 4), and expression of mature duct and progenitor markers was compared with those in control mice. Quantitative PCR of transcripts isolated from IPMN lesions confirmed the “dedifferentiation” gene expression profile in 3- and 6-wk-old PKB mice (Fig. 2B). Thus, our data strongly suggest that duct-to-IPMN progression requires an intermediary step during

which functional duct cells undergo a transcriptional shift toward a more plastic state susceptible for neoplastic transformation.

Ectopic expression of Sox9 in PDCs stabilizes the mature ductal cell identity and reduces IPMN occurrence

We next investigated how loss of Brg1 contributes to ductal dedifferentiation. Brg1 is an essential component of the SWI/SNF chromatin remodeling complexes known to regulate expression of target genes (Trotter and Archer 2008), and our prior work has demonstrated direct binding of Brg1 to Sox9 regulatory elements (von Figura et al. 2014). Overexpression of Brg1 increased Sox9 expression, raising the possibility that Sox9 might be involved in regulating the expression of mature duct and progenitor markers. To test this hypothesis, we isolated PDCs from *Kras*^{G12D}; *Brg1*^{fl/fl}; *Sox9*^{OE} mice that permit simultaneous, adenoviral Cre-dependent expression of both oncogenic *Kras* and a Sox9-HA fusion protein in the context of Brg1 elimination. Notably, activation of Sox9 not only reduced the expression of progenitor markers *Pdx1* and *Hnf4a* but, with the exception of *Krt19*, also restored the levels of mature duct cell markers (Fig. 3A). Thus, overexpression of Sox9 not only blocked duct dedifferentiation but also inhibited up-regulation of progenitor markers caused by Brg1 loss/oncogenic *Kras*, effectively rescuing duct cells from the dedifferentiation process

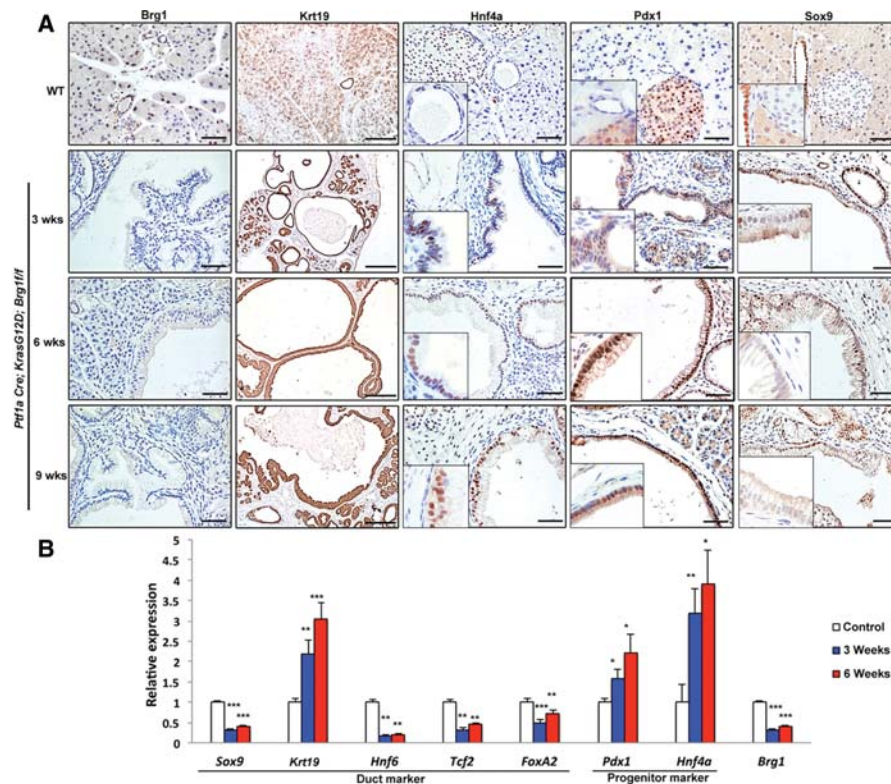


Figure 2. PDCs undergo dedifferentiation en route to IPMN formation. (A) Brg1, Krt19, Hnf4a, Pdx1, and Sox9 immunohistochemistry analysis of either control or 3-, 6-, and 9-wk-old PKB animals. Bars: Brg1, Hnf4a, Pdx1, and Sox9, 100 μ m; Krt19, 250 μ m. (B) Quantitative PCR analysis of duct cell differentiation markers in DBA lectin-sorted PDCs from either control or 3- and 6-wk-old PKB mice.

that would otherwise follow *Kras*^{G12D} activation with *Brg1* loss.

To test whether ectopic Sox9 expression has similar effects on duct cell identity in vivo, we used the *Hnf1bCre-ER* mouse model system to manipulate Sox9, *Brg1*, and *Kras* specifically in adult PDCs. Tamoxifen treatment in *Hnf1bCre-ER; Kras*^{G12D}; *Brg1*^{f/f} control mice did not result in the formation of any detectable duct abnormalities (Fig. 3B). As described previously (von Figura et al. 2014), elimination of *Brg1* in the context of oncogenic *Kras* in *Hnf1bCre-ER; Kras*^{G12D}; *Brg1*^{f/f} mice promotes duct atypia, a precursor lesion for IPMN lesions, and occasional occurrence of IPMN. In contrast, constitutive up-regulation of Sox9 in *Hnf1bCre-ER; Kras*^{G12D}; *Brg1*^{f/f}; *Sox9OE* mice blocked increased *Pdx1* expression and prevented any duct atypia or IPMN in these animals (Fig. 3C). Thus, overexpression of Sox9 can compensate for the loss of ductal *Brg1* and interferes with the dedifferentiation process and subsequent IPMN formation even in the context of oncogenic *Kras*.

Kras^{G12D} *Brg1*^{f/f} PDCs display a transcriptome signature distinct from *Kras*^{G12D} PDCs

To gain mechanistic insights into how oncogenic *Kras* and loss of *Brg1* function compromise the duct differentia-

tion state, we sequenced RNA isolated from wild-type, *Kras*^{G12D}, and *Kras*^{G12D}; *Brg1*^{f/f} PDCs 7 d after adenoviral infection (Fig. 4A). By initially focusing on the expression of genes involved in pancreatic organogenesis, we observed significant up-regulation of progenitor and down-regulation of ductal markers in *Kras*^{G12D}; *Brg1*^{f/f} PDCs as compared with wild-type PDCs (Fig. 4B). Next, we performed a global analysis of gene expression changes in *Kras*^{G12D} PDCs in the presence and absence of *Brg1* compared with wild-type PDCs. Using a false discovery rate (FDR) set at 0.05, we found 607 genes to be differentially expressed in *Kras*^{G12D} PDCs when compared with wild-type PDCs and 898 genes to be differentially expressed in *Kras*^{G12D}; *Brg1*^{f/f} PDCs compared with controls (Fig. 4C). A total of 351 genes were common among the differentially expressed genes between *Kras*^{G12D} and *Kras*^{G12D}; *Brg1*^{f/f} PDCs. Pathway analysis with the software program Panther 9.0 (Mi et al. 2013) revealed that the majority of signaling cascades in which at least five or more genes were differentially expressed was shared between *Kras*^{G12D} and *Kras*^{G12D}; *Brg1*^{f/f} PDCs, including the Wnt, Tgf, Egf, Fgf, and apoptosis pathways. However, we identified at least five pathways that were uniquely activated in *Kras*^{G12D}; *Brg1*^{f/f} PDCs—DNA replication, PI3K signaling, p53 signaling, and IGF-PKB prominent among them (Fig. 4C). A detailed analysis of the expression levels

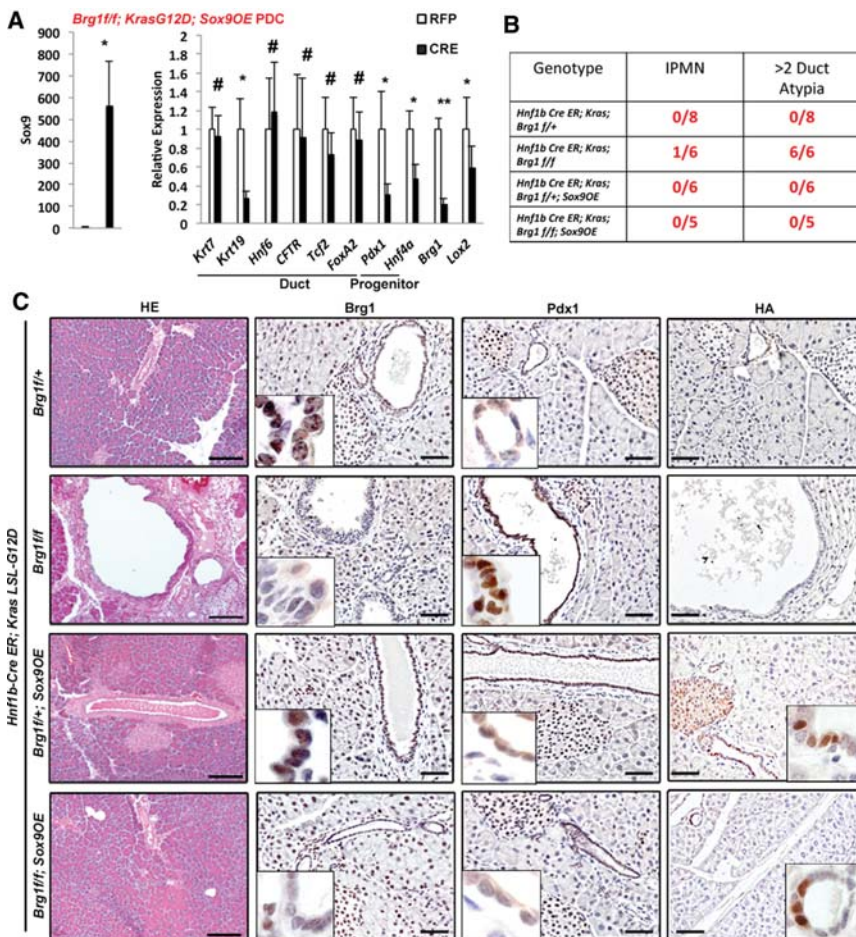


Figure 3. Ectopic expression of Sox9 in PDCs leads to changes in cellular identity and reduced IPMN occurrence. (A) Quantitative PCR analysis of duct cell differentiation markers in PDCs isolated from *LSL-Kras*^{G12D}; *Brg1*^{f/f}; *Sox9OE* mice infected with adenovirus expressing either RFP or Cre recombinase. (B) Analysis of IPMN or duct atypia occurrence for the indicated genotypes. (C) H&E, *Brg1*, *Pdx1*, and HA immunohistochemistry analysis of *Hnf1bCreER; LSL-Kras*^{G12D}; *Brg1*^{f/f}; *Hnf1bCreER; LSL-Kras*^{G12D}; *Brg1*^{f/f}; *Hnf1bCreER; LSL-Kras*^{G12D}; *Brg1*^{f/f}; *Sox9OE*, or *Hnf1bCreER; LSL-Kras*^{G12D}; *Brg1*^{f/f}; *Sox9OE* mice 4 wk after tamoxifen administration. Bars: H&E, 250 μm; HA, *Brg1*, and *Pdx1*, 50 μm.

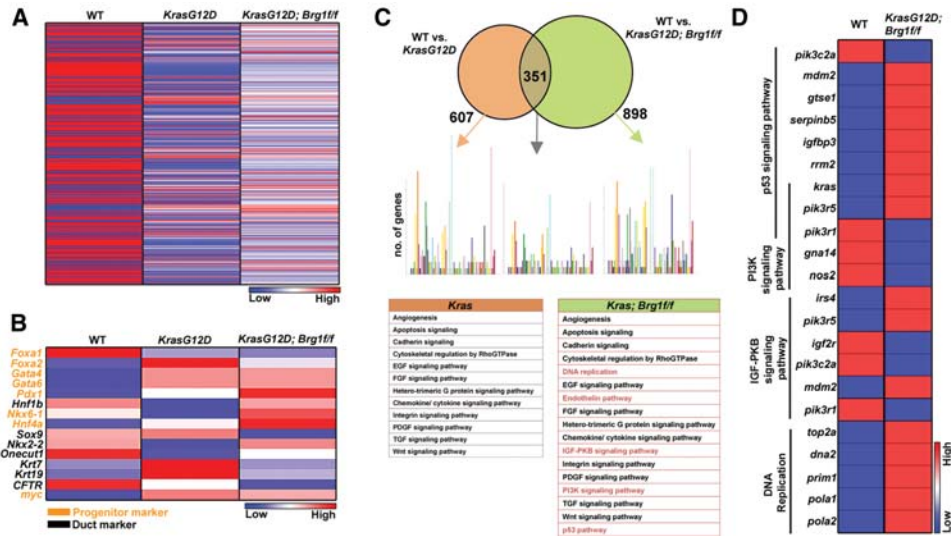


Figure 4. *Kras*^{G12D}; *Brg1*^{ff} PDCs have a distinct transcriptome signature. (A) Heat map showing differential expression signature between wild-type, *Kras*^{G12D}, and *Kras*^{G12D}; *Brg1*^{ff} PDCs. (B) Heat map showing expression of genes implicated in pancreas development between wild-type, *Kras*^{G12D}, and *Kras*^{G12D}; *Brg1*^{ff} PDCs. (C) Pathway enrichment analysis for differentially expressed genes between wild-type PDCs and *Kras*^{G12D} or *Kras*^{G12D}; *Brg1*^{ff} PDCs. Uniquely activated pathways are marked in red. Each colored bar represents the number of genes that belong to a particular pathway. (D) Heat map demonstrating expression of genes that belong to the indicated pathways between wild-type and *Kras*^{G12D}; *Brg1*^{ff} PDCs.

of all of the genes belonging to these pathways revealed several intriguing features (Fig. 4D). *Mdm2*, a known inhibitor of p53, was significantly increased in *Kras*^{G12D}; *Brg1*^{ff} PDCs, suggesting defects in cell cycle regulation. In support of this notion, deletion of *Brg1* in the pancreas epithelium of transgenic mouse models expressing oncogenic *Kras* exhibited reduced p53 expression (von Figura et al. 2014). In addition, *Kras*^{G12D}; *Brg1*^{ff} PDCs presented with up-regulation of genes that promote DNA replication. This finding is interesting given the prior observation that increased DNA replication may promote duct cell dedifferentiation into a progenitor-like state (Inada et al. 2008). Last, amplification of the PI3K signaling pathway in the setting of oncogenic *Kras*, an expression profile that we observed in *Kras*^{G12D}; *Brg1*^{ff} PDCs, has been shown previously to induce dedifferentiation of duct cells (Watanabe et al. 2008). Thus, in summary, our RNA sequencing results indicate that loss of *Brg1* in PDCs expressing oncogenic *Kras* provide a permissive environment through regulation of several critical pathways that may promote cellular dedifferentiation as an initial neoplastic event.

Re-expression of *Brg1* in *Brg1*-deficient cancer cell lines enhances tumorigenicity

As *Brg1* re-expression reverses the dedifferentiation state in *Kras*^{G12D}; *Brg1*^{ff} PDCs (Fig. 1F) via redirecting cells toward a mature duct state, we reasoned that re-expression of *Brg1* may reduce tumorigenicity in established cancer cells. To test this hypothesis, we ectopically re-expressed *Brg1* (“*Brg1* put back”) in PDA cell lines derived from the *Kras*^{G12D}; *Brg1*^{ff} mice using a retroviral *Brg1*-Flag con-

struct (Fig. 5A; Sif et al. 2001). Somewhat unexpectedly, re-expression of *Brg1* increased anchorage-independent growth in both the IPMN-PDA-derived tumor cell lines and immortalized *Kras*^{G12D}; *Brg1*^{ff} PDCs (Fig. 5B). Similar results were obtained when *Brg1* was ectopically expressed in a human PDA line, Tu8988T, a cell line lacking *Brg1* protein (Fig. 5C; Elsasser et al. 1992; Hoffman et al. 2014). Thus, reinstatement of *Brg1* expression in pancreatic duct and cancer cells carrying oncogenic *Kras* is not growth inhibitory and appears to paradoxically support tumor maintenance.

To evaluate the consequences of *Brg1* re-expression in vivo, we performed subcutaneous injection of the control and *Brg1* “put back” cancer lines into immune-compromised NOD *scid* γ (NSG) mice. We again observed a significant increase in tumor burden in mice injected with *Brg1* “put back” compared with control cells expressing empty vector (Fig. 5D,E). *Brg1*-overexpressing tumors retained high levels of *Brg1* (Supplemental Fig. 5A) and expressed less *Pdx1* and *Hnf4a* (Supplemental Fig. 5B,C). However, these tumors displayed higher proliferative indexes marked by Ki67-positive cells and contained more smooth muscle actin (SMA)-positive stroma, a negative prognostic factor for survival of pancreatic cancer patients (Fig. 5F; Supplemental Fig. 5D,E; Fujita et al. 2010; Sinn et al. 2014). No dramatic differences were found in cleaved caspase 3-positive cells undergoing apoptosis between the control and *Brg1* “put back” tumors (Fig. 5F; Supplemental Fig. 5F). Also, *Brg1*-overexpressing tumors were poorly differentiated, further pointing toward their increased aggressiveness (Supplemental Fig. 5G). Thus, our cell culture and in vivo findings support the notion of *Brg1* playing antagonistic roles during IPMN-PDA formation, changing from a tumor suppressor in mature duct cells

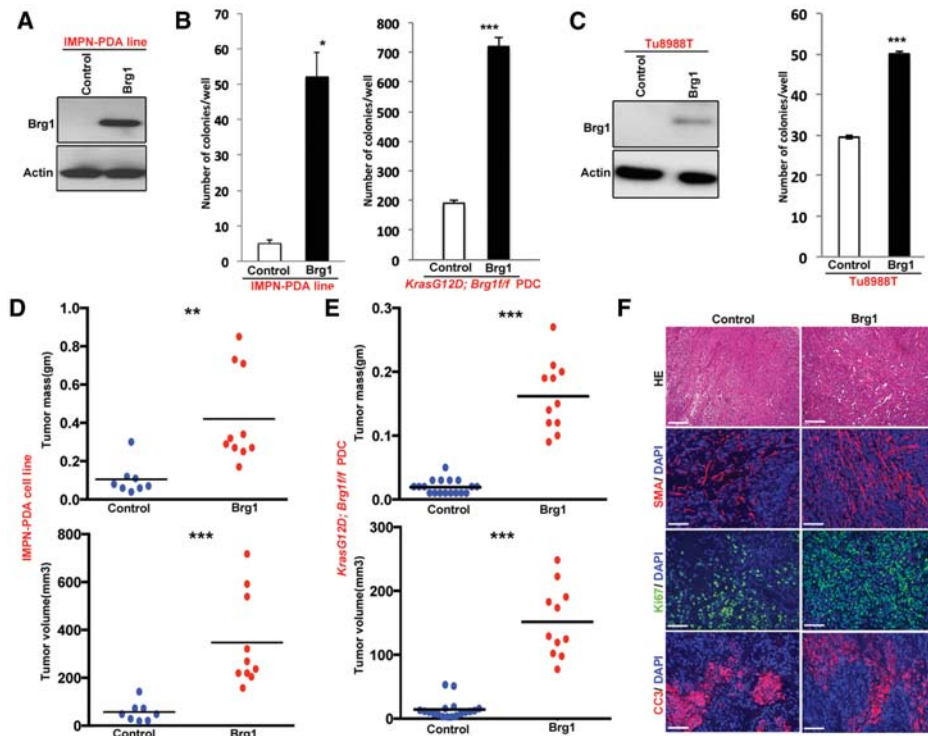


Figure 5. Re-expression of Brg1 in *Kras*^{G12D}; *Brg1*^{fl/fl} PDCs and IPMN-derived PDA tumor cells enhances their tumorigenic properties. (A) Western blot showing ectopic expression of Brg1 in IPMN-derived PDA. (B) Brg1 put backs in *Kras*^{G12D}; *Brg1*^{fl/fl} PDCs and IPMN-derived PDA show increased anchorage-independent growth compared with Brg1-null cells. (C, left) Western blot depicting ectopic expression of Brg1 in the Brg1-null human PDA cell line Tu8988T. (Right) Soft agar colony formation assay showing that Brg1-null human PDA cell line Tu8988T forms more colonies on soft agar upon ectopic expression of Brg1. Brg1 put backs in IPMN-derived PDA lines (D) and *Kras*^{G12D}; *Brg1*^{fl/fl} PDCs (E) were subcutaneously injected into NOD *scid*^y (NSG) mice and monitored for tumor growth. Mice were sacrificed 4 wk after inoculation, and tumors were excised. Tumor mass and volume are significantly higher in Brg1 put backs. (F) Costaining of Ki67, smooth muscle actin (SMA), cleaved caspase 3, and DAPI of tumors obtained in D. Bars: H&E, 250 μ m; Ki67, cleaved caspase 3, and SMA, 100 μ m.

to an oncogene during later stages of neoplasia. To correlate this observation with the human disease condition, we analyzed the Brg1 expression status in low-grade IPMN, high-grade IPMN, and IPMN-derived PDA patient samples. Notably, we found that Brg1 expression is higher in PDA compared with its precursor IPMN lesions (Supplemental Fig. 6).

Re-expression of Brg1 induces an EMT-like phenotype

We next analyzed how re-expression of Brg1 contributed to the enhanced tumorigenicity of established tumor lines. Of note, in addition to the increase in SMA expression (Fig. 5), we observed that re-expressing Brg1 in a *Kras*^{G12D}; *Brg1*^{fl/fl} IPMN-derived PDA cell line changed the cellular appearance toward a more elongated and spindle-shaped form, a characteristic of EMT (Fig. 6A). In order to confirm whether Brg1 re-expression conferred more mesenchymal features, we investigated the protein levels of epithelial (E-cadherin) and mesenchymal (vimentin) markers in the control and Brg1 “put back” cells. Consistent with the morphological changes, Brg1-expressing mouse and human cancer cells showed decreased E-cadherin protein levels and increased vimentin expression

(Fig. 6B). RNA sequencing of control and Brg1 “put back” lines also revealed that the Brg1-re-expressing cell line adopted an overall transcriptional profile consistent with increased EMT, including enhanced gene expression of several mesenchymal genes and down-regulation of epithelial genes (Fig. 6C). Notably, this transcriptional analysis revealed *Hmga2* (high mobility group AT-hook 2) as a significantly up-regulated gene in Brg1 “put back” (Fig. 6B,C). *Hmga2*, an architectural protein that maintains chromatin structure, has previously been shown to induce EMT in pancreatic cancer, and our prior work demonstrated that Brg1 binds to the *Hmga2* promoter and regulates the histone H3K4 methylation levels to activate its transcription (von Figura et al. 2014). Furthermore, tumors derived from Brg1 “put back” IPMN-PDA cells exhibit increased *Hmga2* level (Supplemental Fig. 7). We further looked at *SMARCA4* and *HMGA2* expression in a previously published human data set (Collisson et al. 2011) consisting of several human pancreatic cancer cell lines (Fig. 6D). In agreement with the results obtained from murine cells, there was a strong positive correlation between *SMARCA4* and *HMGA2* expression (Pearson correlation = 0.52, $P = 0.03$) across 16 out of 20 cell lines in the data set, while four cell lines did not show a positive

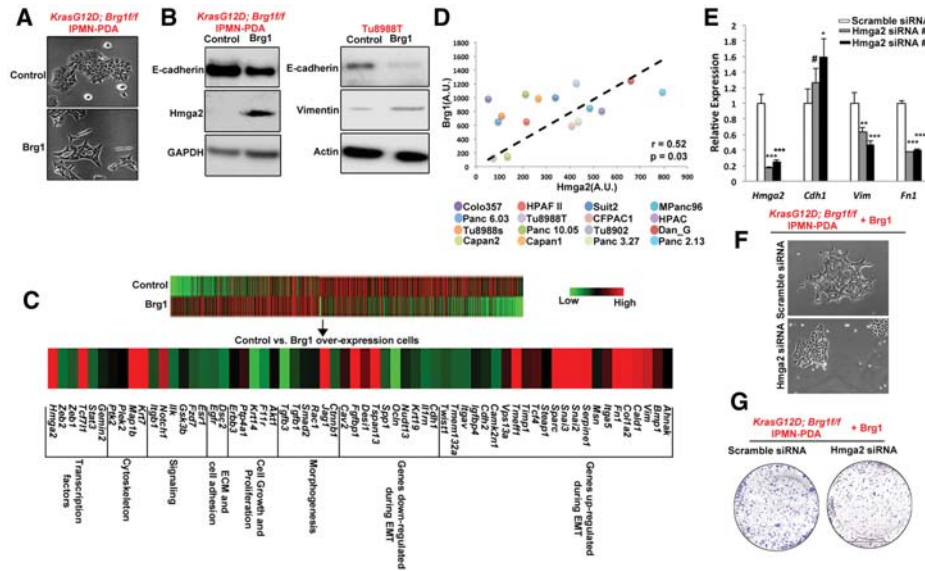


Figure 6. Re-expression of Brg1 induces a mesenchymal phenotype in mouse and human Brg1-deficient pancreatic cancer cell lines. (A) Bright-field images of IPMN-derived *Kras*^{G12D}; *Brg1*^{fl/fl} PDA cells expressing a control empty vector and Brg1 put back. (B) Brg1 put backs in *Kras*^{G12D}; *Brg1*^{fl/fl} in IPMN-derived PDA lines and Tu8988T were probed for epithelial marker E-cadherin, EMT regulator Hmga2, and mesenchymal marker vimentin. (C) Heat map showing an induction of a pronounced mesenchymal gene signature in Brg1-over-expressing IPMN-derived *Kras*^{G12D}; *Brg1*^{fl/fl} PDA cells. (D) Correlation between expression of Brg1 and Hmga2 in human pancreatic cancer cell lines. Plots show signal intensities as measured by Affymetrix chip. Spearman correlation coefficient is shown. (E) Quantitative PCR analysis of *Hmga2*, *Cdh1* (E-cadherin), *Vimentin*, and *Fn1* (fibronectin). (F,G) Bright-field images (F) and crystal violet staining (G) in scrambled siRNA or Hmga2 siRNA transfected IPMN-derived *Kras*^{G12D}; *Brg1*^{fl/fl} PDA cells expressing wild-type Brg1. Lower levels of crystal violet in Hmga2 siRNA transfected cells indicate reduced proliferative capacity.

correlation (MiaPaCa2, HupT3, SW1990, and Panc1). To further confirm the role of Hmga2 as a critical mediator of the aggressive cancer phenotype, we reduced Hmga2 expression by two independent siRNAs in *Kras*^{G12D}; *Brg1*^{fl/fl} IPMN-PDA cell lines with ectopic Brg1 expression. Attenuated Hmga2 level resulted in decreased expression of mesenchymal markers vimentin/fibronectin and increased expression of the epithelial marker E-cadherin (Fig. 6E). Hmga2-depleted cells also presented with a more epithelial-like morphology (Fig. 6F) and impaired growth potential when compared with control cells expressing Hmga2 (Fig. 6G). Thus, our data indicate that re-expression of Brg1 in pancreatic cancer cell lines promotes EMT, likely through activation of *Hmga2* expression.

An epigenomic approach to PDA treatment

Whereas current targeted therapeutic approaches focus on directly targeting oncogenes or their downstream effectors, our findings suggest that an alternative or complementary approach might be to interfere with the increase of progenitor markers in PDA tumors. Our data point to up-regulation of *Pdx1* and *Hnf4a* as the critical markers of the ductal dedifferentiation step during the transition of duct cells towards neoplasia. However, while reintroduction of Brg1 did block expression of these progenitor markers in PDA cells, ectopic expression of Brg1 also induced an EMT phenotype, which may be in part due to up-regulation of *Hmga2*. Therefore, we reasoned

that simultaneously reversing the dedifferentiation process and interfering with HMGA2-mediated EMT might provide a unique therapeutic opportunity. In other words, our aim was to explore whether combined down-regulation of *Pdx1* and *Hnf4a* coupled with *Hmga2* repression could be used to reduce tumor progression. Fortunately, JQ1, a drug in clinical trial for hematological malignancies (Filippakopoulos et al. 2010; Delmore et al. 2011), has been shown recently to decrease tumorigenicity of pancreatic cancer cells through *Hmga2* repression (Sahai et al. 2014). Furthermore, JQ1 targets the BET family of transcription factors and disrupts the interaction between them and acetylated H3K27 (H3K27ac) to favor a more repressive gene expression profile (De Raedt et al. 2014). This activity is similar to that of Brg1, which promotes a repressive gene expression pattern by reducing H3K27ac levels (Zhang et al. 2014) as shown here for a predicted distal enhancer element of *Pdx1* (Fig. 7A; <http://www.dcode.org>). JQ1-treated *Kras*^{G12D}; *Brg1*^{fl/fl} PDCs displayed increased expression of mature duct markers and attenuated expression of progenitor markers (Fig. 7B), suggesting a return to a more mature state. However, in IPMN-derived PDA cancer cells, JQ1 was able to reduce the expression of *Pdx1* and *Hnf4a* but unable to increase the expression of mature duct markers such as Sox9 (Fig. 7C). Nonetheless and as expected, JQ1 treatment did reduce expression of *Hmga2* in PDCs expressing oncogenic *Kras* independently of Brg1 (Fig. 7D). Furthermore, JQ1 resulted in reduced soft agar colony formation (Fig. 7E) and slowed the growth of IPMN-PDA tumor cell lines implanted

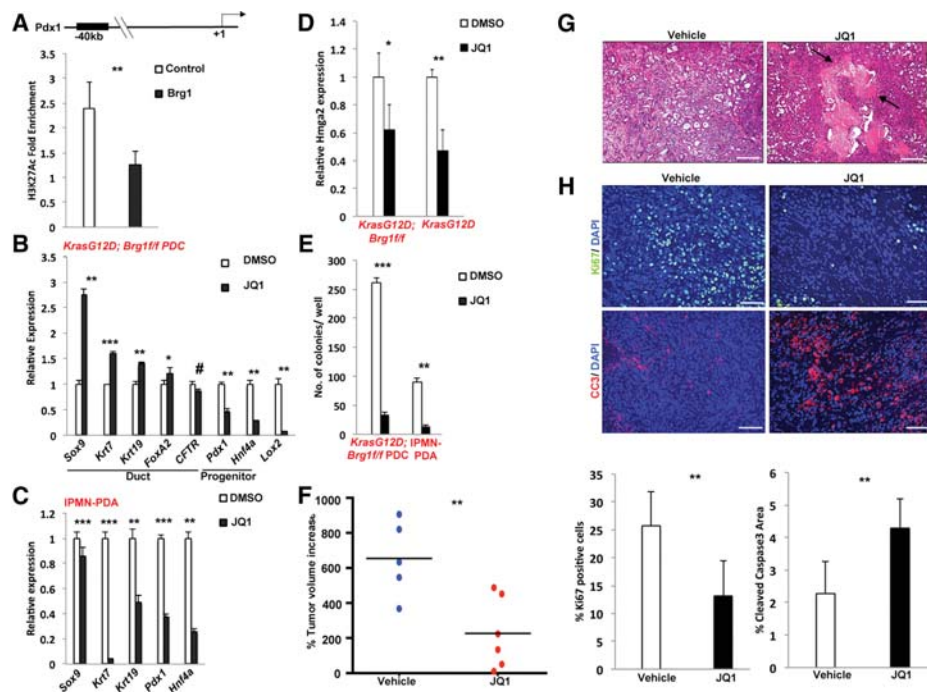


Figure 7. JQ1 can be exploited for the treatment of duct-derived pancreatic cancer. (A) Chromatin immunoprecipitation (ChIP) analysis of H3K27ac enrichment on the indicated promoter regions. Values are expressed as fold enrichment over IgG control. (B) Quantitative PCR analysis of duct cell differentiation markers in *Kras*^{G12D}; *Brg1*^{fl/fl} PDCs treated with DMSO or JQ1. (C) Quantitative PCR analysis of duct cell differentiation markers in IPMN-derived PDA cell line treated with DMSO or JQ1. (D) Quantitative PCR analysis of Hmga2 expression in DMSO- or JQ1-treated *Kras*^{G12D} or *Kras*^{G12D}; *Brg1*^{fl/fl} PDCs. (E) Quantitation of soft agar assay of *Kras*^{G12D}; *Brg1*^{fl/fl} PDCs or IPMN-derived PDA cell lines treated with DMSO or JQ1. (F) NSG mice were subcutaneously injected with an IPMN-PDA cell line. Once the tumor reached 100 mm³, mice were randomized and treated with JQ1 or vehicle. The graph shows the percent change in tumor volume at the study end point. (G) H&E stainings of vehicle- or JQ1-treated tumors. Arrows point to necrotic lesions. Bar, 250 μ m. (H, top) Costaining of Ki67, cleaved caspase 3, and DAPI of tumors treated with vehicle or JQ1. Bar, 100 μ m. (Bottom) Percentage of Ki67-positive or cleaved caspase 3-positive cells in vehicle- or JQ1-treated tumors. Ten random fields from three mice in each group were chosen for quantification.

subcutaneously into immune-deficient mice (Fig. 7F). The reduction in tumor progression was associated with abundant necrosis (Fig. 7G), reduced proliferation, and increased apoptosis (Fig. 7H). Thus, our data implicate JQ1 as a promising therapeutic agent for PDA through its dual activities on inhibiting Hmga2-mediated EMT and the expression of progenitor markers.

Discussion

Brg1 is historically known for its tumor-suppressive functions, and, recently, the role of SWI/SNF complex mutations has come into the spotlight for numerous malignancies (Kadoch et al. 2013; Shain and Pollack 2013; Helming et al. 2014). However, a number of recent reports have associated Brg1 with oncogenic properties. For example, Brg1 has been shown to be required for leukemia maintenance (Buscarlet et al. 2014), and elevated Brg1 expression is observed in gastric carcinoma, melanoma, and prostate cancer (Sentani et al. 2001; Sun et al. 2007; Lin et al. 2010). Our previous work also demonstrated that there are cellular context-dependent roles of Brg1. For example, ablation of Brg1 in pancreatic acinar cells inhibits Kras-driven PanIN formation (von Figura et al. 2014), like-

ly because Brg1 plays a critical role in oncogenic Kras-driven acinar ductal dedifferentiation (Supplemental Fig. 8). Here, we reconcile these apparently opposing roles of Brg1 in tumor formation in a Kras-driven PDA model. We demonstrate that duct cells, like acinar cells, undergo a previously unappreciated dedifferentiation event en route to IPMN formation. In mature duct cells, Brg1 inhibits this dedifferentiation event and thus IPMN formation through regulation of genes that sustain duct cell identity, including Sox9. In marked contrast, reactivation of Brg1 promotes cancer properties in established tumor cells both in vitro and in vivo. These discrepant functions emphasize the contextual dependence of Brg1 activities in PDA. It should be noted that such context-dependent regulation of PDA is not uncommon. For example, TGF- β acts as a tumor suppressor during initiation of PDA but promotes tumorigenesis in an established state of the tumor (Bardeesy et al. 2006; Ijichi et al. 2006; Izeradjene et al. 2007; Melisi et al. 2008; Yang et al. 2010; Ostapoff et al. 2014). Similarly, while low levels of Wnt aids in oncogenic Kras-driven PanIN formation, high levels of the signaling pathway prevent Kras^{G12D}-driven ADM and PanIN formation (Morris et al. 2010; Zhang et al. 2013). Thus, Brg1 joins a growing list of factors whose effects

on pancreatic cancer formation depends on the timing and differentiation state of the cells in which they are active.

We showed previously that acinar cells undergo a dedifferentiation step to assume a duct-like state during PanIN-to-PDA progression (Kopp et al. 2012). Here we observed that duct cells similarly and transiently pass through a dedifferentiation step to occupy a less mature state, a process that is inhibited by Brg1. Duct dedifferentiation appears to require two distinct processes. On the one hand, the expression of factors maintaining duct identity (e.g., Sox9 and Krt7) needs to be reduced. On the other hand, progenitor factors normally expressed at a very low level in mature duct cells (including Pdx1 and Hnf4a) are reactivated. Our studies reveal important synergistic functions between oncogenic Kras and the loss of Brg1 in permitting duct dedifferentiation and thus initiation of IPMN. Neither oncogenic Kras nor Brg1 elimination by itself appears to be sufficient to drive IPMN formation from duct cells. In contrast, simultaneous loss of Brg1 with ectopic expression of oncogenic Kras promotes a dramatic change in duct identity, resulting in neoplastic transformation. Pdx1 re-expression caused by Brg1 loss/expression of oncogenic Kras emerges as a critical factor for this process. Thus, changes in the epigenetic state in the context of the Kras oncogene activation initiate duct-derived IPMN lesions. Of note, our results do show that a very small population of Pdx1^{high} cells exists in *Kras*^{G12D} PDCs, indicating that the oncogene by itself is able to compromise cellular identity even in the presence of Brg1. Single-cell analysis would have to be used in future studies to determine whether oncogenic Kras compromises the epigenetic state in a subset of duct cells.

At the onset of our studies, we hypothesized that redifferentiation of cancer cells toward the cell of origin would interfere with tumor progression. Considering our data that Brg1 sustains the identity of primary duct cells, we reasoned that Brg1 re-expression in PDA cells would have beneficial effects. Somewhat surprisingly, Brg1 reactivation promoted tumor formation, pointing to a switch from a tumor suppressor to an oncogene in cells that have undergone neoplastic transformation. Brg1 interacts with different coactivators (such as histone acetyltransferase CBP/p300) and corepressors (e.g., mSin3a histone deacetylase complex) to alter gene expression (Pal et al. 2003; Naidu et al. 2009). This plasticity in Brg1 interaction might promote distinct roles commensurate with a particular developmental or disease state. Additionally, SWI/SNF complexes can use either Brg1 or Brm as the ATPase catalytic subunit, further diversifying its regulatory role in transcription. Interestingly, Brg1- or Brm-containing complexes exhibit antagonistic function during osteoblast differentiation (Flowers et al. 2009), raising the possibility that these distinct complexes regulate diverse processes during disease progression. To determine the mechanism underlying the disparate roles of Brg1 in initiation and maintenance of PDA, we performed deep sequencing analysis of IPMN-derived PDA cells expressing ectopic Brg1. Brg1 overexpression did reactivate expression of mature duct markers, but the expression of the progenitor markers Pdx1 and Hnf4a, while reduced, remained signif-

icantly above what is found in wild-type duct cells. Thus, Brg1 put back initiates but does not complete redifferentiation of cancer cells to duct cells.

Our gene expression analysis further revealed a transition to a mesenchymal-like state in duct-derived cancer cells. One of the up-regulated genes was *Hmga2*, a transcription factor known to induce EMT and metastasis in gastric, mammary, and pancreatic cancer (Thuault et al. 2008; Watanabe et al. 2009; Zha et al. 2013). In a recent study, Munshi and colleagues (Sahai et al. 2014) showed that the BET bromodomain inhibitor JQ1 suppresses *Hmga2* expression in pancreatic cancer cell lines, and we observed the same response in *Kras*^{G12D}; *Brg1*^{fl/fl} PDC lines. Notably, reactivation of Brg1 up-regulates *Hmga2* expression, raising the question of whether combining redifferentiation toward a mature duct state with inhibition of the mesenchymal phenotype would be efficient in reducing tumor progression. JQ1, a drug currently tested in clinical trials for hematologic malignancies, has previously been shown to block *Hmga2* expression. In addition, our data demonstrate that JQ1 reduces the expression of *Pdx1* and *Hnf4a*, progenitor markers that become up-regulated during IPMN development. Moreover, JQ1 treatment reduced the tumorigenicity of *Kras*^{G12D}; *Brg1*^{fl/fl} PDCs and IPMN-derived murine cancer cell lines both in vitro and in vivo. Therefore, it is tempting to speculate that blocking EMT through *Hmga2* inhibition and reversing inappropriate duct dedifferentiation through reduction of *Pdx1/Hnf4a* expression work in tandem to elicit these effects. Notably, *Pdx1* and *Hnf4a* are also up-regulated during PanIN-derived PDA. Future experiments should address the specific contributions of Brd4 and other JQ1 targets on the progression of both PanIN- and IPMN-derived PDA.

There are conflicting reports regarding the correlation of Brg1 expression and overall survival in pancreatic cancer. Several studies, including ours, have shown that low Brg1 expression is correlated with poor prognosis (Dal Molin et al. 2012; von Figura et al. 2014). However, contrasting reports also exist demonstrating high Brg1 association with reduced overall survival (Liu et al. 2014). It is important to consider that the above-mentioned clinical specimens are all PDA samples without any knowledge of the preinvasive lesions from which these tumors have originated; for example, duct or acinar cells. It is highly plausible that the cellular origin of the PDA plays a decisive role in the outcome of Brg1 association with prognosis. Brg1 has dichotomous function for PanIN- and IPMN-derived PDA (von Figura et al. 2014). Therefore, the prognostic implications of Brg1 expression levels may actually depend on the preinvasive lesion that gave rise to the PDA being evaluated. Indeed, for PanIN-derived PDA, low Brg1 expression is associated with poor prognosis (von Figura et al. 2014). In contrast, high Brg1 expression is found in IPMN-PDA. Furthermore, the stage of the disease is important for the outcome of these analyses. For example, one study showed that high Brg1 expression was only associated with stage IV PDA samples (Numata et al. 2013). Recently, SWI/SNF targeted therapeutic strategies for cancer have been gaining momentum (Helming et al.

2014). However, our results show that it may be critical to define the stage and origin of the PDA when exploring this chemotherapeutic route. A recent report further demonstrated that high Brg1 expression is associated with gemcitabine resistance, a property also exhibited by increased expression of Hmga2 (Liu et al. 2014). Therefore, specific targeting of the Brg1–Hmga2 axis may be beneficial to reduce EMT-related tumor aggressiveness and also sensitize resistant tumors to chemotherapy. As JQ1 treatment had only a cytostatic effect in our tumor model, combining JQ1 with a cytotoxic chemotherapy regimen might be a promising approach for PDA patients.

In summary, our findings point to Brg1 as a context-dependent mediator of Kras-driven pancreatic tumorigenesis. Support for this concept comes from the opposing roles of Brg1 during the initiation of IPMN and the progression of IPMN-derived PDA. Future studies are needed to clarify how Brg1-regulated epigenetic and genetic changes contribute to such stage-specific effects. Deciphering the temporal activities of the SWI/SNF complex should provide important insights into their potential as therapeutic targets in numerous human malignancies.

Materials and methods

Mouse lines

The following mice strains were used: *Ptf1a-Cre* (gift of Christopher Wright, Vanderbilt University, Nashville, TN), *Hnf1b-Cre^{ERT2}* (gift of Jorge Ferrer, Imperial College, London, UK), *Kras^{G12D}* (gift of Dave Tuveson, Cold Spring Harbor Laboratory), *Brg1^{fllox}* (gift of David Reisman, University of Florida, with permission of Pierre Chambon), and *Sox9^{OE}* mice. Mice were crossed on a mixed background. Tamoxifen citrate (TEVA Pharmaceuticals) was administered by oral gavage at a dose of 10 mg per gavage three times a week for 1 wk. The University of California at San Francisco Institutional Animal Care and Use Committee (IACUC) approved all mouse experiments.

Immunohistochemistry and immunofluorescence

Mouse tissue was fixed overnight in Z-FIX (Anatech, catalog no. 174) at 4°C with gentle shaking, washed with PBS for 30 min at room temperature, embedded in paraffin, and cut into sections. Antigen retrieval was performed by boiling in antigen retrieval Citra solution (Biogenex, catalog no. HK086-9K). Blocking was performed using either 5% BSA in PBS or by blocking solution provided in MOM kit (Vector Laboratories, catalog no. BMK-2202). For primary antibodies, incubation was performed overnight at 4°C in a humidified chamber; secondary antibody incubation was for 1 h at room temperature. For immunohistochemistry, slides were developed using the ABC kit (Vector Laboratories, catalog no. PK-6100) and DAB kit (Vector Laboratories, catalog no. SK-4100) or the Envision kit (DAKO, catalog no. K-4011) or MOM kit (Vector Laboratories) and counterstained with hematoxylin. For immunofluorescence, slides were mounted with DAPI hard set (Vector Laboratories, catalog no. H-1500). Primary antibodies used in this study were rabbit anti-Brg1 (Santa Cruz Biotechnology, catalog no. sc-10768), rabbit anti-Krt19 (Epitomics, catalog no. AC-0073), rabbit anti-Sox9 (Sigma, catalog no. HPA001758), mouse anti-Ki-67 (BD Pharmingen, catalog no. 550609), Armenian hamster anti-Mucin1 (Neomarkers, catalog no. HM-1630), rabbit anti-Mucin2 (Santa Cruz Biotechnology,

catalog no. sc-15334), rabbit anti-cleaved caspase 3 (Cell Signaling, catalog no. 9661), rabbit anti-Pdx1 (Millipore, catalog no. 07-696), rat HA (Roche, catalog no. 1867423), rabbit anti-Hnf4a (Santa Cruz Biotechnology, catalog no. sc-8987), and mouse anti-SMA (Sigma, catalog no. A5228).

RNA deep sequencing

Eight-hundred nanograms of total RNA isolated from the control and Brg1-expressing IPMN-derived PDA lines was used to generate libraries with the Illumina TruSeq RNA sample version 2 preparation kit (catalog no. RS-122-2001). Each library was diluted to ~10 nM prior to loading and sequenced using a HiSeq 2000 instrument generating paired 100-base-pair reads. Reads were then mapped to the mouse genome (NCBI37/mm9) using TopHat version 2 (Trapnell et al. 2009) with default parameters. Transcript assembly and differential expression analysis was performed using Cufflinks and Cuffdiff using default parameters.

3D duct cell culture

3D culture of PDCs was performed using a previously published protocol (Reichert et al. 2013a). Briefly, chamber slides were coated with collagen type I. Cells were mixed with collagen and placed on the top layer. PDC full medium was replaced every 2 d.

Drug treatment

JQ1 was a kind gift from Dr. Mike Kagey and Dr. Steven Landau, Tensha Therapeutics. JQ1 dissolved in DMSO was used to treat cells at a concentration of 1 μ M. DMSO vehicle was used as a control.

Once tumors were ~100–150 mm³ in volume, mice were randomized and treated with either vehicle (10% hydroxypropyl β cyclodextrin; Sigma, catalog no. C0926) or JQ1 dissolved in vehicle. Fifty micrograms of JQ1 per kilogram of body weight was intraperitoneally injected 5 d a week (Monday–Friday).

Isolation and culture of duct cells

PDCs were isolated following a previously published protocol (Reichert et al. 2013a). Briefly, pancreas was harvested in ice-cold HBSS buffer. Next, pancreas was digested with collagenase type V and trypsinized for 5 min, and trypsinization was stopped using soy trypsin inhibitor. Cells were filtered using a 40- μ m cell strainer. Next, cells were centrifuged, stained with DBA lectin FITC, and pulled down with anti-FITC microbeads using a mini-MACS separation unit. Cells were grown on collagen-coated plates in PDC medium.

Statistical analysis

To determine the *P*-values for all the experiments performed, Student's *t*-test was performed. A *P*-value of <0.05 was assumed as statistically significant. *P* < 0.05, *P* < 0.01, and *P* < 0.001 are represented with single, double, and triple asterisks. *P* > 0.05 is represented by a number sign. Population doubling times for cell lines were calculated by the exponential growth function in GraphPad Prism. All statistical analyses were performed with either GraphPad Prism (version 4.0c) or Microsoft Excel.

Cell culture

Human cells (Tu8988T) were cultured in DMEM + 10% FBS. Mouse cells were isolated from PDA mice as described previously (von Figura et al. 2014) and cultured in DMEM + 10% FBS.

Acknowledgments

We thank Dr. Christopher Wright for sharing the *Ptf1a-Cre* mice, Dr. David Tuveson for the *Kras^{G12D}* mice, and Dr. Pierre Chambon and Dr. David Reisman for the *Brg1^{f/f}* mice. We also thank Dr. Sapna Puri and Dr. Julia Carnevale for critical reading of the manuscript, Debbie Ngow for tissue processing, and all of the Hebrok/Collisson laboratory members for their helpful discussion. This work was supported by National Institutes of Health (NIH)/National Cancer Institute (NCI) grants R01CA172045 and R01CA112537 to M.H., and NIH/NCI grants R01CA178015 and K08CA137153 to E.A.C. E.S.S. is funded by the 2011 Pancreatic Cancer Action Network-American Association for Cancer Research Pathway to Leadership Award. N.R. is supported by a Basic Science Post-doctoral Fellowship from the American Association of Cancer Research. A.U. is supported by a fellowship from Daichi Sankyo.

References

- Bardeesy N, Cheng KH, Berger JH, Chu GC, Pahler J, Olson P, Hezel AF, Horner J, Lauwers GY, Hanahan D, et al. 2006. Smad4 is dispensable for normal pancreas development yet critical in progression and tumor biology of pancreas cancer. *Genes Dev* **20**: 3130–3146.
- Buscarlet M, Krasteva V, Ho L, Simon C, Hebert J, Wilhelm B, Crabtree GR, Sauvageau G, Thibault P, Lessard JA. 2014. Essential role of BRG, the ATPase subunit of BAF chromatin remodeling complexes, in leukemia maintenance. *Blood* **123**: 1720–1728.
- Collisson EA, Sadanandam A, Olson P, Gibb WJ, Truitt M, Gu S, Cooc J, Weinkle J, Kim GE, Jakkula L, et al. 2011. Subtypes of pancreatic ductal adenocarcinoma and their differing responses to therapy. *Nat Med* **17**: 500–503.
- Conroy T, Desseigne F, Ychou M, Bouche O, Guimbaud R, Becouarn Y, Adenis A, Raoul JL, Gourgou-Bourgade S, de la Fouchardiere C, et al. 2011. FOLFIRINOX versus gemcitabine for metastatic pancreatic cancer. *N Engl J Med* **364**: 1817–1825.
- Dal Molin M, Hong SM, Hebbar S, Sharma R, Scrimieri F, de Wilde RF, Mayo SC, Goggins M, Wolfgang CL, Schulick RD, et al. 2012. Loss of expression of the SWI/SNF chromatin remodeling subunit BRG1/SMARCA4 is frequently observed in intraductal papillary mucinous neoplasms of the pancreas. *Hum Pathol* **43**: 585–591.
- De La O JP, Emerson LL, Goodman JL, Froebe SC, Illum BE, Curtis AB, Murtaugh LC. 2008. Notch and Kras reprogram pancreatic acinar cells to ductal intraepithelial neoplasia. *Proc Natl Acad Sci* **105**: 18907–18912.
- Delmore JE, Issa GC, Lemieux ME, Rahl PB, Shi J, Jacobs HM, Kastritis E, Gilpatrick T, Paranal RM, Qi J, et al. 2011. BET bromodomain inhibition as a therapeutic strategy to target c-Myc. *Cell* **146**: 904–917.
- De Raedt T, Beert E, Pasmant E, Luscan A, Brems H, Ortonne N, Helin K, Hornick JL, Mautner V, Kehrer-Sawatzki H, et al. 2014. PRC2 loss amplifies Ras-driven transcription and confers sensitivity to BRD4-based therapies. *Nature* **514**: 247–251.
- Elsasser HP, Lehr U, Agricola B, Kern HF. 1992. Establishment and characterisation of two cell lines with different grade of differentiation derived from one primary human pancreatic adenocarcinoma. *Virchows Arch B Cell Pathol Incl Mol Pathol* **61**: 295–306.
- Filippakopoulos P, Qi J, Picaud S, Shen Y, Smith WB, Fedorov O, Morse EM, Keates T, Hickman TT, Felletar I, et al. 2010. Selective inhibition of BET bromodomains. *Nature* **468**: 1067–1073.
- Flowers S, Nagl NG Jr, Beck GR Jr, Moran E. 2009. Antagonistic roles for BRM and BRG1 SWI/SNF complexes in differentiation. *J Biol Chem* **284**: 10067–10075.
- Fujita H, Ohuchida K, Mizumoto K, Nakata K, Yu J, Kayashima T, Cui L, Manabe T, Ohtsuka T, Tanaka M. 2010. α -Smooth muscle actin expressing stroma promotes an aggressive tumor biology in pancreatic ductal adenocarcinoma. *Pancreas* **39**: 1254–1262.
- Gazin C, Wajapeyee N, Gobeil S, Virbasius CM, Green MR. 2007. An elaborate pathway required for Ras-mediated epigenetic silencing. *Nature* **449**: 1073–1077.
- Guerra C, Schuhmacher AJ, Canamero M, Grippo PJ, Verdaguier L, Perez-Gallego L, Dubus P, Sandgren EP, Barbacid M. 2007. Chronic pancreatitis is essential for induction of pancreatic ductal adenocarcinoma by K-Ras oncogenes in adult mice. *Cancer Cell* **11**: 291–302.
- Habbe N, Shi G, Meguid RA, Fendrich V, Esni F, Chen H, Feldmann G, Stoffers DA, Konieczny SF, Leach SD, et al. 2008. Spontaneous induction of murine pancreatic intraepithelial neoplasia (mPanIN) by acinar cell targeting of oncogenic Kras in adult mice. *Proc Natl Acad Sci* **105**: 18913–18918.
- Helming KC, Wang X, Roberts CW. 2014. Vulnerabilities of mutant SWI/SNF complexes in cancer. *Cancer Cell* **26**: 309–317.
- Hezel AF, Kimmelman AC, Stanger BZ, Bardeesy N, Depinho RA. 2006. Genetics and biology of pancreatic ductal adenocarcinoma. *Genes Dev* **20**: 1218–1249.
- Hoffman GR, Rahal R, Buxton F, Xiang K, McAllister G, Frias E, Bagdasarian L, Huber J, Lindeman A, Chen D, et al. 2014. Functional epigenetics approach identifies BRM/SMARCA2 as a critical synthetic lethal target in BRG1-deficient cancers. *Proc Natl Acad Sci* **111**: 3128–3133.
- Iijichi H, Chytil A, Gorska AE, Aakre ME, Fujitani Y, Fujitani S, Wright CV, Moses HL. 2006. Aggressive pancreatic ductal adenocarcinoma in mice caused by pancreas-specific blockade of transforming growth factor- β signaling in cooperation with active Kras expression. *Genes Dev* **20**: 3147–3160.
- Inada A, Nienaber C, Katsuta H, Fujitani Y, Levine J, Morita R, Sharma A, Bonner-Weir S. 2008. Carbonic anhydrase II-positive pancreatic cells are progenitors for both endocrine and exocrine pancreas after birth. *Proc Natl Acad Sci* **105**: 19915–19919.
- Ischenko I, Petrenko O, Hayman MJ. 2014. Analysis of the tumor-initiating and metastatic capacity of PDX1-positive cells from the adult pancreas. *Proc Natl Acad Sci* **111**: 3466–3471.
- Izeradjene K, Combs C, Best M, Gopinathan A, Wagner A, Grady WM, Deng CX, Hruban RH, Adsay NV, Tuveson DA, et al. 2007. Kras(G12D) and Smad4/Dpc4 haploinsufficiency cooperate to induce mucinous cystic neoplasms and invasive adenocarcinoma of the pancreas. *Cancer Cell* **11**: 229–243.
- Kadoch C, Hargreaves DC, Hodges C, Elias L, Ho L, Ranish J, Crabtree GR. 2013. Proteomic and bioinformatic analysis of mammalian SWI/SNF complexes identifies extensive roles in human malignancy. *Nat Genet* **45**: 592–601.
- Kopp JL, von Figura G, Mayes E, Liu FF, Dubois CL, Morris JP, Pan FC, Akiyama H, Wright CVE, Jensen K, et al. 2012. Identification of Sox9-dependent acinar-to-ductal reprogramming as the principal mechanism for initiation of pancreatic ductal adenocarcinoma. *Cancer Cell* **22**: 737–750.
- Lin H, Wong RP, Martinka M, Li G. 2010. BRG1 expression is increased in human cutaneous melanoma. *Br J Dermatol* **163**: 502–510.

- Liu X, Tian X, Wang F, Ma Y, Kornmann M, Yang Y. 2014. BRG1 promotes chemoresistance of pancreatic cancer cells through crosstalk with Akt signalling. *Eur J Cancer* **50**: 2251–2262.
- Matthaei H, Norris AL, Tsiatis AC, Olinio K, Hong SM, dal Molin M, Goggins MG, Canto M, Horton KM, Jackson KD, et al. 2012. Clinicopathological characteristics and molecular analyses of multifocal intraductal papillary mucinous neoplasms of the pancreas. *Ann Surg* **255**: 326–333.
- Melisi D, Ishiyama S, Sclabas GM, Fleming JB, Xia Q, Tortora G, Abbruzzese JL, Chiao PJ. 2008. LY2109761, a novel transforming growth factor β receptor type I and type II dual inhibitor, as a therapeutic approach to suppressing pancreatic cancer metastasis. *Mol Cancer Ther* **7**: 829–840.
- Mi H, Muruganujan A, Thomas PD. 2013. PANTHER in 2013: modeling the evolution of gene function, and other gene attributes, in the context of phylogenetic trees. *Nucleic Acids Res* **41**: D377–D386.
- Mino-Kenudson M, Fernandez-del Castillo C, Baba Y, Valsangkar NP, Liss AS, Hsu M, Correa-Gallego C, Ingkakul T, Perez Johnston R, Turner BC, et al. 2011. Prognosis of invasive intraductal papillary mucinous neoplasm depends on histological and precursor epithelial subtypes. *Gut* **60**: 1712–1720.
- Morris JP IV, Wang SC, Hebrok M. 2010. KRAS, Hedgehog, Wnt and the twisted developmental biology of pancreatic ductal adenocarcinoma. *Nat Rev Cancer* **10**: 683–695.
- Naidu SR, Love IM, Imbalzano AN, Grossman SR, Androphy EJ. 2009. The SWI/SNF chromatin remodeling subunit BRG1 is a critical regulator of p53 necessary for proliferation of malignant cells. *Oncogene* **28**: 2492–2501.
- Numata M, Morinaga S, Watanabe T, Tamagawa H, Yamamoto N, Shiozawa M, Nakamura Y, Kameda Y, Okawa S, Rino Y, et al. 2013. The clinical significance of SWI/SNF complex in pancreatic cancer. *Int J Oncol* **42**: 403–410.
- Ostapoff KT, Cenik BK, Wang M, Ye R, Xu X, Nugent D, Hagoopian MM, Topalovski M, Rivera LB, Carroll KD, et al. 2014. Neutralizing murine TGF β R2 promotes a differentiated tumor cell phenotype and inhibits pancreatic cancer metastasis. *Cancer Res* **74**: 4996–5007.
- Pal S, Yun R, Datta A, Lacomis L, Erdjument-Bromage H, Kumar J, Tempst P, Sif S. 2003. mSin3A/histone deacetylase 2- and PRMT5-containing Brg1 complex is involved in transcriptional repression of the Myc target gene cad. *Mol Cell Biol* **23**: 7475–7487.
- Park JY, Hong SM, Klimstra DS, Goggins MG, Maitra A, Hruban RH. 2011. Pdx1 expression in pancreatic precursor lesions and neoplasms. *Appl Immunohistochem Mol Morphol* **19**: 444–449.
- Poultides GA, Reddy S, Cameron JL, Hruban RH, Pawlik TM, Ahuja N, Jain A, Edil BH, Iacobuzio-Donahue CA, Schulick RD, et al. 2010. Histopathologic basis for the favorable survival after resection of intraductal papillary mucinous neoplasm-associated invasive adenocarcinoma of the pancreas. *Ann Surg* **251**: 470–476.
- Reichert M, Rustgi AK. 2011. Pancreatic ductal cells in development, regeneration, and neoplasia. *J Clin Invest* **121**: 4572–4578.
- Reichert M, Takano S, Heeg S, Bakir B, Botta GP, Rustgi AK. 2013a. Isolation, culture and genetic manipulation of mouse pancreatic ductal cells. *Nat Protoc* **8**: 1354–1365.
- Reichert M, Takano S, von Burstin J, Kim SB, Lee JS, Ihida-Stansbury K, Hahn C, Heeg S, Schneider G, Rhim AD, et al. 2013b. The Prrx1 homeodomain transcription factor plays a central role in pancreatic regeneration and carcinogenesis. *Genes Dev* **27**: 288–300.
- Ryan DP, Hong TS, Bardeesy N. 2014. Pancreatic adenocarcinoma. *N Engl J Med* **371**: 1039–1049.
- Sahai V, Kumar K, Knab LM, Chow CR, Raza SS, Bentrem DJ, Ebine K, Munshi HG. 2014. BET bromodomain inhibitors block growth of pancreatic cancer cells in three-dimensional collagen. *Mol Cancer Ther* **13**: 1907–1917.
- Sentani K, Oue N, Kondo H, Kuraoka K, Motoshita J, Ito R, Yokozaki H, Yasui W. 2001. Increased expression but not genetic alteration of BRG1, a component of the SWI/SNF complex, is associated with the advanced stage of human gastric carcinomas. *Pathobiology* **69**: 315–320.
- Shain AH, Pollack JR. 2013. The spectrum of SWI/SNF mutations, ubiquitous in human cancers. *PLoS One* **8**: e55119.
- Shain AH, Giacomini CP, Matsukuma K, Karikari CA, Bashyam MD, Hidalgo M, Maitra A, Pollack JR. 2012. Convergent structural alterations define SWI/SNF/Sucrose NonFermentable (SWI/SNF) chromatin remodeler as a central tumor suppressive complex in pancreatic cancer. *Proc Natl Acad Sci* **109**: E252–E259.
- Sharma A, Zangen DH, Reitz P, Taneja M, Lissauer ME, Miller CP, Weir GC, Habener JF, Bonner-Weir S. 1999. The homeodomain protein IDX-1 increases after an early burst of proliferation during pancreatic regeneration. *Diabetes* **48**: 507–513.
- Siegel R, Ma J, Zou Z, Jemal A. 2014. Cancer statistics, 2014. *CA Cancer J Clin* **64**: 9–29.
- Sif S, Saurin AJ, Imbalzano AN, Kingston RE. 2001. Purification and characterization of mSin3A-containing Brg1 and hBrm chromatin remodeling complexes. *Genes Dev* **15**: 603–618.
- Sinn M, Denkert C, Striefler JK, Pelzer U, Stieler JM, Bahra M, Lohneis P, Dorken B, Oettle H, Riess H, et al. 2014. α -Smooth muscle actin expression and desmoplastic stromal reaction in pancreatic cancer: results from the CONKO-001 study. *Br J Cancer* **111**: 1917–1923.
- Stanger BZ, Hebrok M. 2013. Control of cell identity in pancreas development and regeneration. *Gastroenterology* **144**: 1170–1179.
- Sun A, Tawfik O, Gayed B, Thrasher JB, Hoestje S, Li C, Li B. 2007. Aberrant expression of SWI/SNF catalytic subunits BRG1/BRM is associated with tumor development and increased invasiveness in prostate cancers. *Prostate* **67**: 203–213.
- Thuault S, Tan EJ, Peinado H, Cano A, Heldin CH, Moustakas A. 2008. HMG2 and Smads co-regulate SNAIL1 expression during induction of epithelial-to-mesenchymal transition. *J Biol Chem* **283**: 33437–33446.
- Trapnell C, Pachter L, Salzberg SL. 2009. TopHat: discovering splice junctions with RNA-seq. *Bioinformatics* **25**: 1105–1111.
- Trotter KW, Archer TK. 2008. The BRG1 transcriptional coregulator. *Nucl Recept Signal* **6**: e004.
- von Figura G, Fukuda A, Roy N, Liku ME, Morris Iv JP, Kim GE, Russ HA, Firpo MA, Mulvihill SJ, Dawson DW, et al. 2014. The chromatin regulator Brg1 suppresses formation of intraductal papillary mucinous neoplasm and pancreatic ductal adenocarcinoma. *Nat Cell Biol* **16**: 255–267.
- Watanabe H, Saito H, Ueda J, Evers BM. 2008. Regulation of pancreatic duct cell differentiation by phosphatidylinositol-3 kinase. *Biochem Biophys Res Commun* **370**: 33–37.
- Watanabe S, Ueda Y, Akaboshi S, Hino Y, Sekita Y, Nakao M. 2009. HMG2 maintains oncogenic RAS-induced epithelial-mesenchymal transition in human pancreatic cancer cells. *Am J Pathol* **174**: 854–868.
- Yang L, Pang Y, Moses HL. 2010. TGF- β and immune cells: an important regulatory axis in the tumor microenvironment and progression. *Trends Immunol* **31**: 220–227.

- Zha L, Zhang J, Tang W, Zhang N, He M, Guo Y, Wang Z. 2013. HMGA2 elicits EMT by activating the Wnt/ β -catenin pathway in gastric cancer. *Dig Dis Sci* **58**: 724–733.
- Zhang Y, Morris JP IV, Yan W, Schofield HK, Gurney A, Simeone DM, Millar SE, Hoey T, Hebrok M, Pasca di Magliano M. 2013. Canonical wnt signaling is required for pancreatic carcinogenesis. *Cancer Res* **73**: 4909–4922.
- Zhang X, Li B, Li W, Ma L, Zheng D, Li L, Yang W, Chu M, Chen W, Mailman RB, et al. 2014. Transcriptional repression by the BRG1–SWI/SNF complex affects the pluripotency of human embryonic stem cells. *Stem Cell Reports* **3**: 460–474.
- Zhu L, Shi G, Schmidt CM, Hruban RH, Konieczny SF. 2007. Acinar cells contribute to the molecular heterogeneity of pancreatic intraepithelial neoplasia. *Am J Pathol* **171**: 263–273.