

UC Davis

UC Davis Previously Published Works

Title

Complete genome sequence of Spirosoma linguale type strain (1T)

Permalink

<https://escholarship.org/uc/item/5pg186v8>

Journal

Environmental Microbiome, 2(2)

ISSN

2524-6372

Authors

Lail, Kathleen

Sikorski, Johannes

Saunders, Elizabeth

et al.

Publication Date

2010-03-01

DOI

10.4056/sigs.741334

Copyright Information

This work is made available under the terms of a Creative Commons Attribution License, available at <https://creativecommons.org/licenses/by/4.0/>

Peer reviewed

Complete genome sequence of *Spirosoma linguale* type strain (1^T)

Kathleen Lail¹, Johannes Sikorski², Elizabeth Saunders³, Alla Lapidus¹, Tijana Glavina Del Rio¹, Alex Copeland¹, Hope Tice¹, Jan-Fang Cheng¹, Susan Lucas¹, Matt Nolan¹, David Bruce^{1,3}, Lynne Goodwin^{1,3}, Sam Pitluck¹, Natalia Ivanova¹, Konstantinos Mavromatis¹, Galina Ovchinnikova¹, Amrita Pati¹, Amy Chen⁴, Krishna Palaniappan⁴, Miriam Land^{1,5}, Loren Hauser^{1,5}, Yun-Juan Chang^{1,5}, Cynthia D. Jeffries^{1,5}, Patrick Chain^{1,6}, Thomas Brettin^{1,3}, John C. Detter^{1,3}, Andrea Schütze², Manfred Rohde⁷, Brian J. Tindall², Markus Göker², Jim Bristow¹, Jonathan A. Eisen^{1,8}, Victor Markowitz⁴, Philip Hugenholtz¹, Nikos C. Kyrpides^{1*}, Hans-Peter Klenk², and Feng Chen¹

¹ DOE Joint Genome Institute, Walnut Creek, California, USA

² DSMZ – German Collection of Microorganisms and Cell Cultures GmbH, Braunschweig, Germany

³ Los Alamos National Laboratory, Bioscience Division, Los Alamos, New Mexico, USA

⁴ Biological Data Management and Technology Center, Lawrence Berkeley National Laboratory, Berkeley, California, USA

⁵ Oak Ridge National Laboratory, Oak Ridge, Tennessee, USA

⁶ Lawrence Livermore National Laboratory, Livermore, California, USA

⁷ HZI – Helmholtz Centre for Infection Research, Braunschweig, Germany

⁸ University of California Davis Genome Center, Davis, California, USA

*Corresponding author: Nikos C. Kyrpides

Keywords: psychroactive, oligotrophic, aerobic, ringlike morphology, non-pathogenic, free-living, *Cytophagaceae*, GEBA

Spirosoma linguale Migula 1894 is the type species of the genus. *S. linguale* is a free-living and non-pathogenic organism, known for its peculiar ringlike and horseshoe-shaped cell morphology. Here we describe the features of this organism, together with the complete genome sequence and annotation. This is only the third completed genome sequence of a member of the family *Cytophagaceae*. The 8,491,258 bp long genome with its eight plasmids, 7,069 protein-coding and 60 RNA genes is part of the *Genomic Encyclopedia of Bacteria and Archaea* project.

Introduction

Strain 1^T (= DSM 74 = ATCC 33905 = LMG 10896) is the type strain of the species *Spirosoma linguale*, which is the type species of the genus *Spirosoma*. The genus currently consists of five species [1]. Strain 1^T is reported to be isolated from a laboratory water bath (websites of DSMZ and ATCC), however, a proper reference could not be identified. Another strain of *S. linguale* was isolated from fresh water from deep wells in Long Beach, California, USA [2]. Other strains from the genus *Spirosoma* were isolated from high arctic permafrost soil in Norway [3], soil from a ginseng field in Pocheon province, South Korea [4], and

fresh water from the Woopo wetlands, South Korea [5]. This would allow the hypothesis that *S. linguale* is a free-living species with a worldwide distribution. The genus name *Spirosoma* derives from ‘spira’ from Latin meaning coil combined with ‘soma’, Latin for ‘body’, resulting in ‘coiled body’ [1]. *Spirosoma* was the first genus in the family *Spirillaceae* in Migula’s “System der Bakterien” [6]. The species name is effectively published by Migula in 1894 [7] and validly published by Skerman in 1980 [8]. Various taxonomic treatments have placed this organism either in the family “*Flexibacteraceae*” or the family *Cyto*

phagaceae. This would appear to be due to a number of nomenclatural problems. The family “*Flexibacteriaceae*” as outlined in TOBA 7.7 would include *Cytophaga hutchinsonii*, which is the type species of the genus *Cytophaga*, which, in turn is the type of the family *Cytophagaceae*, a name that may not be replaced by the family name “*Flexibacteriaceae*” as long as *Cytophaga hutchinsonii* is one of the included species. However, the topology of the 16S rDNA based dendrogram indicates that it may be possible to define a second family, including the genus *Spirosoma*, but excluding *Cytophaga hutchinsonii*. At the same time, the family *Cytophagaceae* may be defined to exclude the type species of the genus *Flexibacter* and members of the genus *Spirosoma*. It should also be remembered that the genus *Spirosoma* is the type of the family *Spirosomaceae* Larkin and Borrall 1978. At present the higher taxonomic ranks of this group of organisms lacks formal modern descriptions and circumscriptions making it difficult to make definitive state-

ments that would hold over the next few years. Here we present a summary classification and a set of features for *S. linguale* 1^T, together with the description of the complete genomic sequencing and annotation.

Classification and features

Uncultured clone sequences in Genbank showed 96% or less sequence identity to the 16S gene sequence (AM000023) of strain *S. linguale* 1^T. No reasonable sequence similarity (>87%) to any metagenomic survey were reported from the NCBI BLAST server (October 2009).

Figure 1 shows the phylogenetic neighborhood of for *S. linguale* 1^T in a 16S rRNA based tree. The sequences of the four identical 16S rRNA gene copies in the genome of *S. linguale* 1^T are also identical with the previously published 16S rRNA sequence generated from LMG 10896 (AM000023).

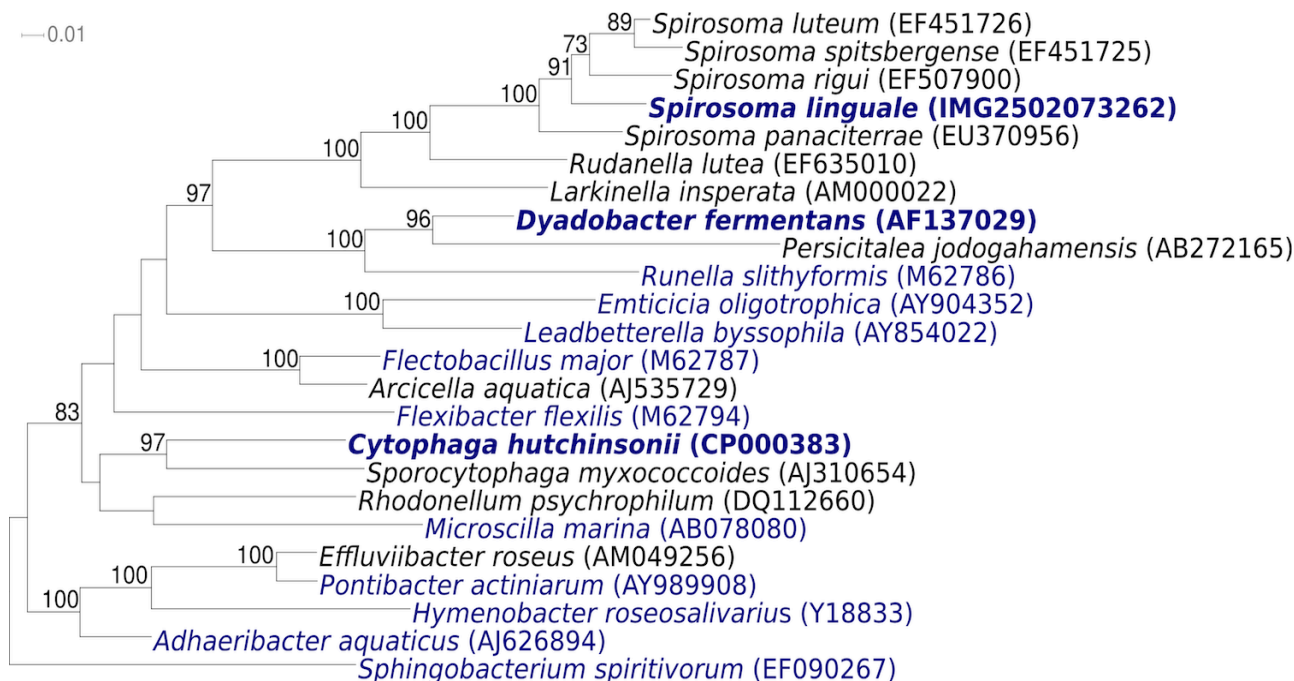


Figure 1. Phylogenetic tree highlighting the position of *S. linguale* 1^T and the type strains of the other species within the genus relative to the other type strains within the family *Cytophagaceae*. The tree was inferred from 1,320 aligned characters [9,10] of the 16S rRNA gene sequence under the maximum likelihood criterion [11] and rooted with the type strain of the family *Sphingobacteriaceae*. The branches are scaled in terms of the expected number of substitutions per site. Numbers above branches are support values from 1,000 bootstrap replicates if larger than 60%. Lineages with type strain genome sequencing projects registered in GOLD [12] are shown in blue, published genomes such as the one of *Dyadobacter fermentans* [13] in bold.

On TGEY medium [14], strain *S. linguale* 1^T forms mucoid, opaque, and smooth colonies with a yellowish nondiffusible pigment [15]. The colony size is 2-4 mm, circular, with entire margins and convex elevation. In broth, growth is aerobic (Table 1) with even turbidity and flaky sediment [15]. The Gram-negative cells have round ends and show

vibroid, horseshoe, and ring-like shapes, as well as coils and spiral forms [Figure 2 and ref. 15]. The cell width is 0.5 – 1.0 μm, and the outer ring diameter is 1.5–3.0 μm. The cell length is 2.0–5.0 μm [22]. Reports on filaments are conflicting [15,22].

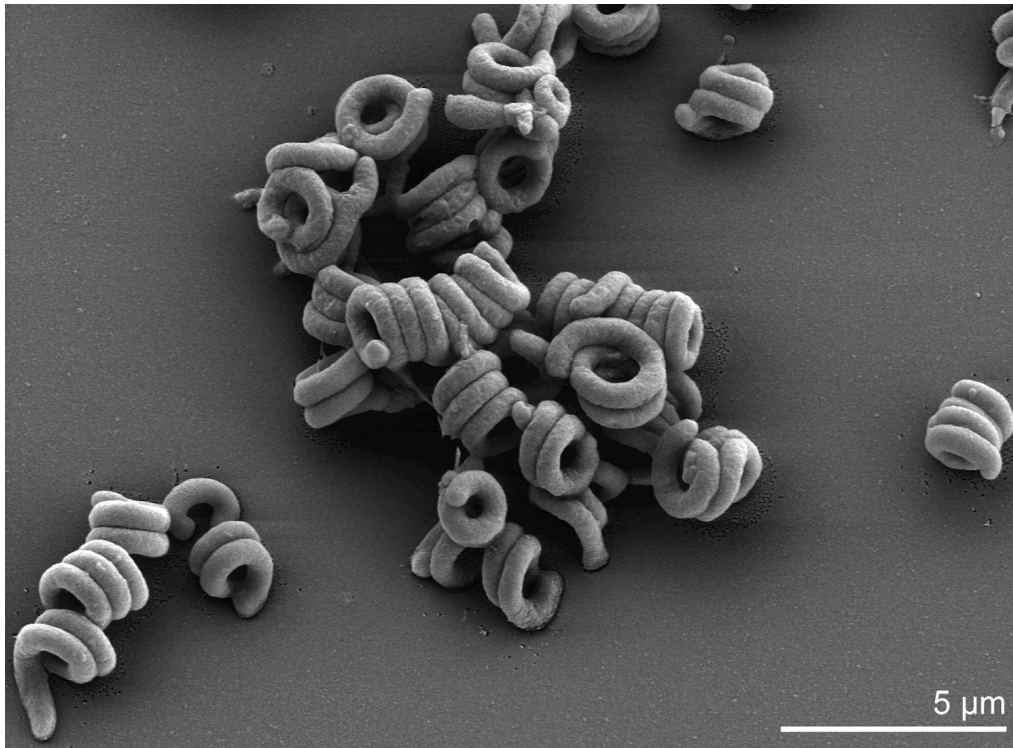


Figure 2. Scanning electron micrograph of *S. linguale* 1^T

Strain *S. linguale* 1^T produces oxidatively acid from arabinose, ribose, xylose, rhamnose, fructose, galactose, glucose, mannose, α-methyl-D-glucoside, salicin, cellobiose, lactose, maltose, melibiose, sucrose, trehalose, raffinose, dextrin and inulin, but not from sorbose, glycerol, erythritol, dulcitol, mannitol, and sorbitol [22]. On the enzymatic level, strain *S. linguale* 1^T is positive for oxidase, catalase, ONPG-reaction, and, albeit weakly, for phosphatase, but negative for urease, lecithinase, lysine decarboxylase, phenylalanine deaminase, and hemolysin, indole, methyl red, Voges-Proskauer, NO₃ reduction and H₂S reactions [22]. Strain *S. linguale* 1^T hydrolyzes esculin, tributyrin, gelatin, and, less well, starch and casein, but not cellulose and chitin [22]. It utilizes for growth on basal medium [25] glycerol phosphate, succinate, tartrate, and malonate as single carbon source, but not acetate, benzoate, citrate, formate, methylamine, propionate, and methanol

[22]. Strain *S. linguale* 1^T grows well on nutrient agar, nutrient agar + 5% sucrose, *Microcycclus-Spirosoma* agar, and yeast extract tryptone agar, weakly on peptonized milk agar, blood, and chocolate, and not on eosin methylene blue agar, phenol red mannitol salt agar, phenyl ethyl alcohol agar, trypticase soy agar (TSA), TSA + 3% glucose, TSA + 3% sucrose, McConkey, bismuth sulfide agar, and *Salmonella-Shigella* agar [22]. Strain *S. linguale* 1^T is susceptible to actinomycin D (100 μg/ml), ampicillin (10 μg), aureomycin (15 μg), carbenicillin (50 μg), erythromycin (15 μg), furadantin/macrodantin (300 μg), gentamicin (10 μg), kanamycin (30 μg), mitomycin C (1 μg/ml), neomycin (30 μg), penicillin G (10 units), streptomycin (10 μg), sulfamethoxazole/trimethoprim (25 μg), sulfathiazole (300 μg), and tetracycline (30 μg), but resistant to colistin (10 μg), polymixin B (300 units), and triple sulfa (1 mg) [22].

Table 1. Classification and general features of *S. linguale* 1^T according to the MIGS recommendations [16]

MIGS ID	Property	Term	Evidence code
		Domain <i>Bacteria</i>	TAS [17]
		Phylum <i>Bacteroidetes</i>	TAS [18,19]
		Class <i>Sphingobacteria</i>	TAS [18,20]
	Current classification	Order <i>Sphingobacteriales</i>	TAS [18,20]
		Family <i>Cytophagaceae</i>	TAS [8,21]
		Genus <i>Spirosoma</i>	TAS [3,7,8]
		Species <i>Spirosoma linguale</i>	TAS [7]
		Type strain 1	TAS [7,8]
	Gram stain	negative	TAS [15]
	Cell shape	vibroid, horseshoe, and ring-like shapes; spiral form	TAS [15]
	Motility	non-motile	TAS [15]
	Sporulation	nonsporulating	NAS
	Temperature range	5°C–39°C	TAS [5]
	Optimum temperature	20°C–30°C	TAS [5]
	Salinity	0-1.25% (w/v)	TAS [5]
MIGS-22	Oxygen requirement	aerobic	TAS [15]
	Carbon source	glycerol phosphate, succinate, tartrate, malonate	TAS [22]
	Energy source	carbohydrates	TAS [22]
MIGS-6	Habitat	Laboratory water bath	NAS
MIGS-15	Biotic relationship	free-living	NAS
MIGS-14	Pathogenicity	not reported	NAS
	Biosafety level	1	TAS [23]
	Isolation	not reported	NAS
MIGS-4	Geographic location	Germany	NAS
MIGS-5	Sample collection time	not reported	
MIGS-4.1	Latitude	not reported	
MIGS-4.2	Longitude	not reported	
MIGS-4.3	Depth	not reported	
MIGS-4.4	Altitude	not reported	

Evidence codes - IDA: Inferred from Direct Assay (first time in publication); TAS: Traceable Author Statement (i.e., a direct report exists in the literature); NAS: Non-traceable Author Statement (i.e., not directly observed for the living, isolated sample, but based on a generally accepted property for the species, or anecdotal evidence). These evidence codes are from of the Gene Ontology project [24]. If the evidence code is IDA, then the property was directly observed for a live isolate by one of the authors, or an expert mentioned in the acknowledgements.

Chemotaxonomy

Earlier studies report C_{16:1} to be the dominant fatty acid (47.9%), followed by iso-C_{17:0} (20.1%), C_{16:0} (14.2%), iso-C_{15:0} (11.0%) and iso-C_{13:0} (3.4%). Anteiso and hydroxy fatty acids are each below 2.1% [26]. The fatty acids comprise a complex mixture of straight chain saturated and unsaturated fatty acids, together with iso-branched and 3-hydroxylated iso-branched fatty acids. The fatty

acids comprise iso-C_{13:0} (2.2%), iso-C_{15:0} (9.3%), iso-C_{15:0} 3-OH (3.4%), anteiso-C_{15:0} (2.6%), C_{16:0} (3.6%), C_{16:0} 3-OH (2.2%), C_{16:1} ω 5c (22.2%), C_{17:0} 2-OH (1.0%), iso-C_{17:0} 3-OH (8.6%), iso-C_{13:0} (2.2%), C_{17:1} ω 9c (1.2%) and C_{16:1} ω 7c and/or iso-C_{15:0} 2-OH (42.4%). The polar lipids comprise phosphatidylethanolamine and a number of lipids and amino lipids that were not further characte-

rized. The fatty acid pattern is typical of the evolutionary group currently defined as the phylum *Bacteroidetes*. Furthermore the presence of phosphatidylethanolamine as the predominant/sole diglyceride based phospholipid is also typical of the vast majority of the phylum *Bacteroidetes*. Limited detailed studies indicate that this phospholipid contains both saturated and unsaturated straight chain fatty acids. Hydroxylated fatty acids are not present in this compound. In contrast, the limited studies on the amino lipids of *Flavobacterium johnsoniae* indicate that they are amino acid based, with a 3-OH fatty acid in amide linkage with a free amino group of the amino acid. The 3-OH fatty acid is further esterified with either a non-hydroxylated fatty acid, or with a second hydroxylated fatty acid. The presence of lipids that did not stain further running in proximity with the major aminolipid may also be indicative of capnines. The failure to resolve the fatty acids reported by the MIDI Sherlock MIS system as “summed feature 4” C_{16:1ω7c}/iso C_{15:0} 2-OH is problematic for genomics, since it either indicates that

two mechanisms of introducing double bonds into fatty acids are present (C_{16:1ω5c} and C_{16:1ω7c}) or a fatty acid 2-hydroxylase is present. Furthermore, the distribution of 3-OH and 2-OH fatty acids among the amino- and non-staining lipids may also be characteristic. The main isoprenoid quinone is MK-7 (91.5%), followed by MK-8 (7.2%) and MK-6 (1.3%) [26].

Genome sequencing and annotation

Genome project history

This organism was selected for sequencing on the basis of its phylogenetic position, and is part of the *Genomic Encyclopedia of Bacteria and Archaea* project. The genome project is deposited in the Genome OnLine Database [12] and the complete genome sequence is deposited in GenBank. Sequencing, finishing and annotation were performed by the DOE Joint Genome Institute (JGI). A summary of the project information is shown in Table 2.

Table 2. Genome sequencing project information

MIGS ID	Property	Term
MIGS-31	Finishing quality	Finished
MIGS-28	Libraries used	Two Sanger libraries: 8kb pMCL200 and fosmid pcc1Fos One 454 pyrosequence and one Solexa standard library
MIGS-29	Sequencing platforms	ABI3730, 454 GS FLX, Illumina GA
MIGS-31.2	Sequencing coverage	10.1× Sanger; 18.4× pyrosequence
MIGS-30	Assemblers	Newbler 1.1.02.15, phrap
MIGS-32	Gene calling method	Prodigal, GenePRIMP
	INSDC ID	CP001769 (chromosome) CP001770-77 (plasmids)
	Genbank Date of Release	January 13, 2010
	GOLD ID	Gc01186
	NCBI project ID	28817
	Database: IMG-GEBA	2501939635
MIGS-13	Source material identifier	DSM 74
	Project relevance	Tree of Life, GEBA

Growth conditions and DNA isolation

S. linguale 1^T, DSM 74, was grown in DSMZ medium 7 [27] at 28°C. DNA was isolated from 0.5-1 g of cell paste using Qiagen Genomic 500 DNA Kit (Qiagen, Hilden, Germany) with cell lysis modification st/L [28] and one hour incubation at 37°C.

Genome sequencing and assembly

The genome was sequenced using a combination of Sanger and 454 sequencing platforms. All general aspects of library construction and sequencing can be found at <http://www.jgi.doe.gov/>. 454 Pyrosequencing reads were assembled using the Newbler assembler version 1.1.02.15 (Roche).

Large Newbler contigs were broken into 9,401 overlapping fragments of 1,000 bp and entered into assembly as pseudo-reads. The sequences were assigned quality scores based on Newbler consensus q-scores with modifications to account for overlap redundancy and to adjust inflated q-scores. A hybrid 454/Sanger assembly was made using the parallel phrap assembler (High Performance Software, LLC). Possible mis-assemblies were corrected with Dupfinisher [29] or transposon bombing of bridging clones (Epicentre Biotechnologies, Madison, WI). Gaps between contigs were closed by editing in Consed, custom primer walk or PCR amplification. A total of 974 Sanger finishing reads were produced to close gaps, to resolve repetitive regions, and to raise the quality of the finished sequence. Illumina reads were used to improve the final consensus quality using an in-house developed tool (the Polisher). The error rate of the completed genome sequence is less than 1 in 100,000. Together all sequence types provided 28.5× coverage of the genome. The final assembly contains 87,186 Sanger and 666,973 pyrosequence reads.

Genome annotation

Genes were identified using [Prodigal](#) [30] as part of the Oak Ridge National Laboratory genome annotation pipeline, followed by a round of manual curation using the JGI [GenePRIMP](#) pipeline [31]. The predicted CDSs were translated and used to search the National Center for Biotechnology Information (NCBI) nonredundant database, UniProt, TIGRFam, Pfam, PRIAM, KEGG, COG, and InterPro databases. Additional gene prediction analysis and manual functional annotation was performed within the Integrated Microbial Genomes Expert Review (IMG-ER) platform [32].

Genome properties

The genome consists of a 8,078,757 bp long chromosome and eight plasmids with 6,072 to 189,452 bp length (Table 3 and Figure 3). Of the 7,129 genes predicted, 7,069 were protein-coding genes, and 60 RNAs; 131 pseudogenes were also identified. The majority of the protein-coding genes (61.5%) were assigned with a putative function while those remaining were annotated as hypothetical proteins. The distribution of genes into COGs functional categories is presented in Table 4.

Table 3. Genome Statistics

Attribute	Value	% of Total
Genome size (bp)	8,491,258	100.00%
DNA coding region (bp)	7,518,086	88.54%
DNA G+C content (bp)	4,258,276	50.15%
Number of replicons	9	
Extrachromosomal elements	8	
Total genes	7,129	100.00%
RNA genes	60	0.84%
rRNA operons	4	
Protein-coding genes	7,069	99.16%
Pseudo genes	131	1.84%
Genes with function prediction	4,386	61.52%
Genes in paralog clusters	1,713	2.71%
Genes assigned to COGs	4,306	60.40%
Genes assigned Pfam domains	4,519	63.39%
Genes with signal peptides	2,271	41.86%
Genes with transmembrane helices	1,606	22.53%
CRISPR repeats	2	

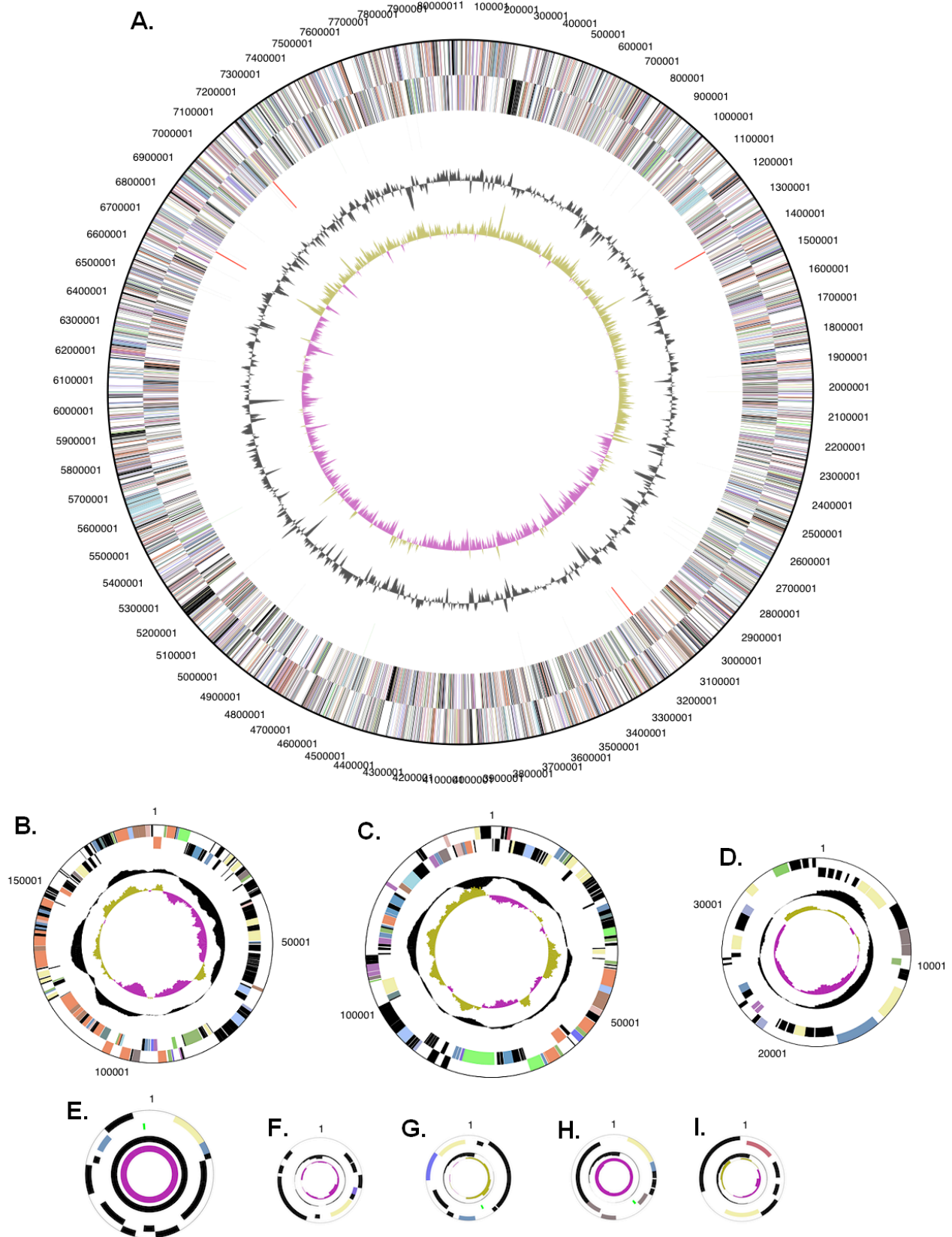


Figure 3. Graphical circular map of the chromosome (A) and the eight plasmids: pSLIN01 (B), pSLIN02 (C), pSLIN03 (D), pSLIN04 (E), pSLIN05 (Fs), pSLIN06 (G), pSLIN07 (H), pSLIN08 (I). Plasmids not drawn to scale. From outside to the center: Genes on forward strand (color by COG categories), Genes on reverse strand (color by COG categories), RNA genes (tRNAs green, rRNAs red, other RNAs black), GC content, GC skew.

Table 4. Number of genes associated with the general COG functional categories

Code	Value	%age	Description
J	173	2.4	Translation, ribosomal structure and biogenesis
A	1	0.0	RNA processing and modification
K	398	6.6	Transcription
L	251	3.6	Replication, recombination and repair
B	1	0.0	Chromatin structure and dynamics
D	32	0.5	Cell cycle control, mitosis and meiosis
Y	0	0.0	Nuclear structure
V	161	2.3	Defense mechanisms
T	380	5.4	Signal transduction mechanisms
M	411	5.8	Cell wall/membrane biogenesis
N	14	0.2	Cell motility
Z	0	0.0	Cytoskeleton
W	0	0.0	Extracellular structures
U	68	1.0	Intracellular trafficking and secretion
O	161	2.3	Posttranslational modification, protein turnover, chaperones
C	223	3.2	Energy production and conversion
G	383	5.4	Carbohydrate transport and metabolism
E	297	4.2	Amino acid transport and metabolism
F	80	1.1	Nucleotide transport and metabolism
H	174	2.5	Coenzyme transport and metabolism
I	162	2.3	Lipid transport and metabolism
P	277	3.9	Inorganic ion transport and metabolism
Q	121	1.7	Secondary metabolites biosynthesis, transport and catabolism
R	611	8.6	General function prediction only
S	424	6.0	Function unknown
-	2,823	39.9	Not in COGs

Acknowledgements

We would like to gratefully acknowledge the help of Susanne Schneider (DSMZ) for DNA extraction and quality analysis. This work was performed under the auspices of the US Department of Energy's Office of Science, Biological and Environmental Research Program, and by the University of California, Lawrence Berkeley National Laboratory under contract No. DE-

AC02-05CH11231, Lawrence Livermore National Laboratory under Contract No. DE-AC52-07NA27344, Los Alamos National Laboratory under contract No. DE-AC02-06NA25396, and Oak Ridge National Laboratory under contract DE-AC05-00OR22725, as well as German Research Foundation (DFG) INST 599/1-1 and SI 1352/1-2.

References

- Euzéby JP. List of bacterial names with standing in nomenclature: A folder available on the Internet. *Int J Syst Bacteriol* 1997; **47**:590-592. [PubMed doi:10.1099/00207713-47-2-590](https://pubmed.ncbi.nlm.nih.gov/101099/00207713-47-2-590/)
- Raj HD. A new species - *Microcyclus flavus*. *Int J Syst Bacteriol* 1970; **20**:61-81. [doi:10.1099/00207713-20-1-61](https://pubmed.ncbi.nlm.nih.gov/101099/00207713-20-1-61/)
- Finstler KW, Herbert RA, Lomstein BA. *Spirosoma spitsbergense* sp. nov. and *Spirosoma luteum* sp. nov., isolated from a high Arctic permafrost soil, and emended description of the genus *Spirosoma*. *Int J Syst Evol Microbiol* 2009; **59**:839-844. [PubMed doi:10.1099/ijs.0.002725-0](https://pubmed.ncbi.nlm.nih.gov/101099/ijs.0.002725-0/)
- Ten LN, Xu JL, Jin FX, Im WT, Oh HM, Lee ST. *Spirosoma panaciterrae* sp. nov., isolated from soil. *Int J Syst Evol Microbiol* 2009; **59**:331-335. [PubMed doi:10.1099/ijs.0.002436-0](https://pubmed.ncbi.nlm.nih.gov/101099/ijs.0.002436-0/)
- Baik KS, Kim MS, Park SC, Lee DW, Lee SD, Ka JO, Choi SK, Seong CN. *Spirosoma rigui* sp. nov., isolated from fresh water. *Int J Syst Evol Microbiol* 2007; **57**:2870-2873. [PubMed doi:10.1099/ijs.0.65302-0](https://pubmed.ncbi.nlm.nih.gov/101099/ijs.0.65302-0/)

6. Migula W. 1900. *System der Bakterien*, Vol 2. Gustav Fischer, Jena.
7. Migula W. Über ein neues System der Bakterien. *Arb Bakteriol Inst Karlsruhe* 1894; **1**:235-238.
8. Skerman VBD, McGowan V, Sneath PHA. Approved Lists of Bacterial Names. *Int J Syst Bacteriol* 1980; **30**:225-420. [doi:10.1099/00207713-30-1-225](https://doi.org/10.1099/00207713-30-1-225)
9. Castresana J. Selection of conserved blocks from multiple alignments for their use in phylogenetic analysis. *Mol Biol Evol* 2000; **17**:540-552. [PubMed](https://pubmed.ncbi.nlm.nih.gov/11211111/)
10. Lee C, Grasso C, Sharlow MF. Multiple sequence alignment using partial order graphs. *Bioinformatics* 2002; **18**:452-464. [PubMed](https://pubmed.ncbi.nlm.nih.gov/12111111/) [doi:10.1093/bioinformatics/18.3.452](https://doi.org/10.1093/bioinformatics/18.3.452)
11. Stamatakis A, Hoover P, Rougemont J. A Rapid Bootstrap Algorithm for the RAxML Web Servers. *Syst Biol* 2008; **57**:758-771. [PubMed](https://pubmed.ncbi.nlm.nih.gov/18111111/) [doi:10.1080/10635150802429642](https://doi.org/10.1080/10635150802429642)
12. Liolios K, Chen IM, Mavromatis K, Tavernarakis N, Hugenholtz P, Markowitz VM, Kyrpides NC. The Genomes On Line Database (GOLD) in 2009: status of genomic and metagenomic projects and their associated metadata. *Nucleic Acids Res* 2010; **38**:D346-D354. [PubMed](https://pubmed.ncbi.nlm.nih.gov/20111111/) [doi:10.1093/nar/gkp848](https://doi.org/10.1093/nar/gkp848)
13. Lang E, Lapidus A, Chertkov O, Brettin T, Detter JC, Han C, Copeland A, Glavina Del Rio T, Nolan M, Chen F, et al. Complete genome sequence of *Dyadobacter fermentans* type strain (NS114^T). *Stand Genomic Sci* 2009; **1**:133-140. [PubMed](https://pubmed.ncbi.nlm.nih.gov/21111111/) [doi:10.4056/sigs.19262](https://doi.org/10.4056/sigs.19262)
14. Raj HD. 1981. The genus *Microcycilus* and related bacteria, p. 630-44. In: Starr MP, Stolp H, Trüper HG, Balows A, HG Schlegel (eds), *The Prokaryotes*. A handbook on habitats, isolation and identification of bacteria, Vol 1. Springer, New York.
15. Raj HD, Maloy SR. Proposal of *Cyclobacterium marinus* gen. nov., comb. nov. for a marine bacterium previously assigned to the genus *Flectobacillus*. *Int J Syst Bacteriol* 1990; **40**:337-347. [PubMed](https://pubmed.ncbi.nlm.nih.gov/22111111/) [doi:10.1099/00207713-40-4-337](https://doi.org/10.1099/00207713-40-4-337)
16. Field D, Garrity G, Gray T, Morrison N, Selengut J, Sterk P, Tatusova T, Thomson N, Allen MJ, Angiuoli SV, et al. The minimum information about a genome sequence (MIGS) specification. *Nat Biotechnol* 2008; **26**:541-547. [PubMed](https://pubmed.ncbi.nlm.nih.gov/23111111/) [doi:10.1038/nbt1360](https://doi.org/10.1038/nbt1360)
17. Woese CR, Kandler O, Wheelis ML. Towards a natural system of organisms: proposal for the domains *Archaea*, *Bacteria*, and *Eucarya*. *Proc Natl Acad Sci USA* 1990; **87**:4576-4579. [PubMed](https://pubmed.ncbi.nlm.nih.gov/24111111/) [doi:10.1073/pnas.87.12.4576](https://doi.org/10.1073/pnas.87.12.4576)
18. Garrity GM, Lilburn TG, Cole JR, Harrison SH, Euzéby J, Tindall BJ. Taxonomic outline of the *Bacteria* and *Archaea*, Release 7.7 March 6, 2007. Part 11 - The *Bacteria*: Phyla "*Planctomycetes*", "*Chlamydiae*", "*Spirochaetes*", "*Fibrobacteres*", "*Acidobacteria*", "*Bacteroidetes*", "*Fusobacteria*", "*Verrucomicrobia*", "*Dictyoglomi*", "*Gemmatimonadetes*", and "*Lentisphaerae*". <http://www.taxonomicoutline.org>.
19. Woese CR, Stackebrandt E, Macke TJ, Fox GE. A phylogenetic definition of the major eubacterial taxa. *Syst Appl Microbiol* 1985; **6**:143-151. [PubMed](https://pubmed.ncbi.nlm.nih.gov/25111111/)
20. Garrity GM, Holt JG. In: Garrity GM, Boone DR, Castenholz RW (2001) Taxonomic Outline of the *Archaea* and *Bacteria*. *Bergey's Manual of Systematic Bacteriology* 155-166.
21. Stanier RY. Studies on the *Cytophagas*. *J Bacteriol* 1940; **40**:619-635. [PubMed](https://pubmed.ncbi.nlm.nih.gov/26111111/)
22. Larkin JM, Williams PM, Taylor R. Taxonomy of the genus *Microcycilus* Orskov 1928: reintroduction and emendation of the genus *Spirosoma* Migula 1894 and proposal of a new genus, *Flectobacillus*. *Int J Syst Bacteriol* 1977; **27**:147-156. [PubMed](https://pubmed.ncbi.nlm.nih.gov/27111111/) [doi:10.1099/00207713-27-2-147](https://doi.org/10.1099/00207713-27-2-147)
23. Classification of *Bacteria* and *Archaea* in risk groups. [www.baua.de TRBA 466](http://www.baua.de/TRBA/466).
24. Ashburner M, Ball CA, Blake JA, Botstein D, Butler H, Cherry JM, Davis AP, Dolinski K, Dwight SS, Eppig JT, et al. Gene Ontology: tool for the unification of biology. *Nat Genet* 2000; **25**:25-29. [PubMed](https://pubmed.ncbi.nlm.nih.gov/28111111/) [doi:10.1038/75556](https://doi.org/10.1038/75556)
25. Gordon RE, Mihm JM. A comparative study of some strains received as nocardiae. *J Bacteriol* 1957; **73**:15-27. [PubMed](https://pubmed.ncbi.nlm.nih.gov/29111111/)
26. Urakami T, Komagata K. Methanol-utilizing *Ancylobacter* strains and comparison of their cellular fatty acid compositions and quinone systems with those of *Spirosoma*, *Flectobacillus*, and *Runella* species. *Int J Syst Bacteriol* 1986; **36**:415-421. [PubMed](https://pubmed.ncbi.nlm.nih.gov/30111111/) [doi:10.1099/00207713-36-3-415](https://doi.org/10.1099/00207713-36-3-415)
27. List of growth media used at DSMZ: http://www.dsmz.de/microorganisms/media_list.php
28. Wu D, Hugenholtz P, Mavromatis K, Pukall R, Dalin E, Ivanova NN, Kunin V, Goodwin L, Wu

- M, Tindall BJ, et al. A phylogeny-driven genomic encyclopedia of *Bacteria* and *Archaea*. *Nature* 2009; **462**:1056-1060. [PubMed](#) [doi:10.1038/nature08656](https://doi.org/10.1038/nature08656)
29. Sims D, Brettin T, Detter J, Han C, Lapidus A, Copeland A, Glavina Del Rio T, Nolan M, Chen F, Lucas S, et al. Complete genome sequence of *Kytococcus sedentarius* type strain (541^T). *Stand Genomic Sci* 2009; **1**:12-20. [doi:10.4056/sigs.761](https://doi.org/10.4056/sigs.761)
30. Hyatt D, Chen GL, Locascio PF, Land ML, Larimer FW, Hauser LJ. Prodigal Prokaryotic Dynamic Programming Genefinding Algorithm. *BMC Bioinformatics* 2010; **11**:119. [PubMed](#) [doi:10.1186/1471-2105-11-119](https://doi.org/10.1186/1471-2105-11-119)
31. Pati A, Ivanova N, Mikhailova N, Ovchinnikova G, Hooper SD, Lykidis A, Kyrpides NC. GenePRIMP: A Gene Prediction Improvement Pipeline for microbial genomes. *Nat Methods* (in press).
32. Markowitz VM, Mavromatis K, Ivanova NN, Chen IMA, Chu K, Kyrpides NC. Expert Review of Functional Annotations for Microbial Genomes. *Bioinformatics* 2009; **25**:2271-2278. [PubMed](#) [doi:10.1093/bioinformatics/btp393](https://doi.org/10.1093/bioinformatics/btp393)