

Lawrence Berkeley National Laboratory

Lawrence Berkeley National Laboratory

Title

Autophosphorylation of the DNA-dependent protein kinase catalytic subunit is required for rejoining of DNA double-strand breaks

Permalink

<https://escholarship.org/uc/item/5mr058nf>

Authors

Chan, Doug W.
Chen, Benjamin Ping-Chi
Yang, Shun-Jen
et al.

Publication Date

2002-06-05

Peer reviewed

**AUTOPHOSPHORYLATION OF THE DNA-DEPENDENT
PROTEIN KINASE CATALYTIC SUBUNIT IS REQUIRED
FOR REJOINING OF DNA DOUBLE-STRAND BREAKS**

Doug W. Chan^{1,2}, Benjamin Ping-Chi Chen¹, Shun-Jen Yang¹, Sheela Singh³, Michael B. Murphy^{1,4}, Akihiro Kurimasa¹, Priscilla K. Cooper¹, Michael D. Story³, Jun Qin², and David J. Chen^{1,5}

¹Life Sciences Division, Lawrence Berkeley National Laboratory, 1 Cyclotron Road MS74-157, Berkeley, CA 94720

²Verna and Marrs McLean Department of Biochemistry and Molecular Biology, and Department of Molecular and Cellular Biology, Baylor College of Medicine, One Baylor Plaza, Houston, TX 77030

³Department of Experimental Radiotherapy, M.D. Anderson Cancer Center, University of Texas, Houston, TX 77030

⁴Present Address: Joint Genome Institute, 2800 Mitchell Drive, Walnut Creek, CA 94598

D.W.C. and B.P.C. contributed equally to this work.

⁵To whom correspondence should be addressed:

David J. Chen
Life Sciences Division
Lawrence Berkeley National Laboratory
1 Cyclotron Road, MS 74-157
Berkeley, CA
94720

Phone: 510-495-2861

Fax: 510-486-6816

Email: djchen@lbl.gov

Abbreviated title: IR induced phosphorylation of DNA-PKcs

Key words: nonhomologous end-joining; DNA damage response; autophosphorylation; DNA-PK; DNA-PKcs; Ku; radiation sensitivity; ionizing radiation

Abstract

Nonhomologous end-joining (NHEJ) is one of the pathways that mediate the repair of DNA double-strand breaks (DSBs) in mammalian cells. The DNA-dependent protein kinase (DNA-PK) complex plays important roles in this pathway, since mammalian cell lines that lack components of the complex are radiation sensitive and are defective in rejoining DSBs. DNA-PK is a serine/threonine protein kinase that is activated by DNA ends *in vitro* and that consists of the DNA-binding and regulatory subunit, Ku, and the catalytic subunit, DNA-PKcs. DNA-PK kinase activity is required for the repair of DNA DSBs *in vivo*, however, the molecular basis of this requirement is unknown. Here we report that DNA-PKcs is autophosphorylated at Thr2609 *in vitro* and that this site is phosphorylated *in vivo* in a Ku-dependent manner in response to ionizing radiation. We demonstrate that DNA-PKcs that is phosphorylated at Thr2609 colocalizes after ionizing radiation with both 53BP1, a DNA damage response protein that is believed to localize to sites of DNA damage, and γ -H2AX, a phosphorylated form of histone H2AX that is associated with chromatin surrounding DSBs almost immediately after irradiation. Furthermore, mutation of Thr2609 to Ala in mammalian cells leads to radiation sensitivity and impaired DSB rejoining. These findings establish that Ku-dependent phosphorylation of DNA-PKcs at Thr2609 is required for the repair of DSBs by the NHEJ pathway.

Introduction

The repair of DNA double-strand breaks (DSBs) in the genome is critical for the survival of cells exposed to ionizing radiation (IR) (van Gent *et al.* 2001). Homologous recombination (HR) and nonhomologous end-joining (NHEJ) are the two principal pathways that mediate the repair of DNA DSBs in eukaryotes. HR requires the presence of a homologous chromosome or sister chromatid and is mediated by the gene products of the *Saccharomyces cerevisiae* RAD52 epistasis group or their homologs in other eukaryotic cells (Haber 2000) but NHEJ does not depend on the presence of homologous DNA sequences and requires both the DNA-dependent protein kinase (DNA-PK) complex and the XRCC4/DNA ligase IV complex (Critchlow and Jackson 1998).

DNA-PK is comprised of the Ku heterodimer (which consists of the Ku70 and Ku80 subunits) and the catalytic subunit (DNA-PKcs) (Smith and Jackson 1999). DNA-PKcs is a member of the phosphatidylinositol-3 (PI-3) like kinase family that includes ATM (ataxia-telangiectasia mutated) and ATR (ATM-Rad3-related) (Durocher and Jackson 2001). Ku binds to DNA ends with very high affinity and is thought to function as the DNA-binding and regulatory subunit that stimulates DNA-PKcs kinase activity (Gottlieb and Jackson 1993; Dynan and Yoo 1998). Although the biochemical properties of DNA-PK have been extensively studied *in vitro*, it is still not clear how it functions *in vivo* in the context of NHEJ. Complementation of a hamster cell line (V3) that is defective for DNA-PKcs with a wild-type human *DNA-PKcs* cDNA rescued its radiation sensitivity and restored its DSB rejoining capacity. However, a

kinase dead form of DNA-PKcs failed to rescue either defect, thus demonstrating that the kinase activity of DNA-PK is required for the repair of DSBs by the NHEJ pathway (Kurimasa et al. 1999).

Neither the mechanism by which DNA-PK becomes activated in response to DNA damage nor its physiological targets are known. Possible targets of DNA-PK include the Wrrn helicase (Yannone et al. 2001) and DNA-PKcs itself (Chan and Lees-Miller 1996), but the significance of phosphorylation of these putative targets is not known. Here we report evidence that DNA-PKcs is regulated by autophosphorylation of Thr2609 in response to IR. By virtue of colocalization with γ -H2AX and 53BP1, we demonstrate that phosphorylated DNA-PKcs is localized to sites of DNA DSBs. Furthermore, cellular studies revealed that an Ala substitution at position 2609 significantly reduces both DSB rejoining and cell survival. Thus, autophosphorylation of DNA-PKcs at Thr2609 is an important event in the repair of DSBs by the NHEJ pathway.

Results and Discussion

We previously demonstrated that DNA-PK is capable of autophosphorylating Ku70, Ku80, and DNA-PKcs *in vitro*. Autophosphorylation of DNA-PKcs results in dissociation from Ku and loss of kinase activity and thus has been hypothesized to be an important regulatory mechanism (Chan and Lees-Miller 1996). To investigate the biological significance of DNA-PKcs autophosphorylation, we first identified *in vitro* autophosphorylation sites by mass spectrometry. Highly purified DNA-PKcs and Ku were incubated in the presence of sheared calf thymus DNA and low concentrations of ATP (50 μ M) to allow for the autophosphorylation of the most preferred sites. Phosphorylated DNA-PKcs was analyzed by mass spectrometry and Thr2609 was unambiguously identified as a site of autophosphorylation (Fig. 1a). Thr2609 lies in a region of DNA-PKcs that is not conserved among the various members of the PI-3 kinase family. However, Thr2609 is conserved in all known DNA-PKcs homologues (Fig.1b), suggesting that phosphorylation of DNA-PKcs at this residue may be evolutionarily conserved. We designed a 13 residue peptide corresponding to this conserved sequence but containing a phospho-threonine at the 2609 position, used it to raise a rabbit polyclonal antibody, and then affinity purified an antibody recognizing the phosphorylated Thr2609 (pT2609Ab). To confirm the specificity of the pT2609Ab, we expressed and purified GST DNA-PKcs fragments spanning residues 2500 to 2700 that contained the wild-type sequence or with an Alanine point mutant at position 2609. The GST fragments were *in vitro* phosphorylated with purified DNA-PK and analyzed by western blotting with the pT2609Ab (Fig 2a, top panel) or against GST (Fig 2a,

bottom panel). The pT2609Ab cross-reacted with the phosphorylated wild-type GST fragment and not with the fragment containing the T2609A mutation (Fig. 2A, top panel). Furthermore, immunoblotting with the pT2609Ab of unphosphorylated DNA-PKcs at 100 fold molar excess (relative to an amount of phosphorylated DNA-PKcs that was readily detectable) did not produce any detectable signal (Fig. 2b, compare lanes 2 and 9).

Exponentially growing HeLa cells were treated with ionizing radiation (IR) and analyzed with the pT2609Ab to investigate Thr2609 phosphorylation *in vivo* (Fig. 2c and d). Phosphorylation of Thr2609 is inducible with IR and can be detected as early as 10 minutes after treatment with 10 Gy (Fig. 2c). At this dose, the phosphorylation of Thr2609 reaches a maximum after 30 min and persists for up to 4 hours, becoming undetectable by 6 hrs post-IR at this dose (Fig. 2c). It has been previously demonstrated that DNA-PK functions in the initial fast phase of the biphasic repair of DSBs, such that within the first hour following damage, approximately 80% of DSBs are rejoined in a DNA-PK dependent manner (DiBiase et al. 2000). The kinetics of Thr2609 phosphorylation that we have observed (Fig. 2a) correlate very closely with the model proposed by DiBiase et al. (2000) and suggest that phosphorylation of this site in response to DNA damage could be pertinent to rejoining of DSBs. Phosphorylation of Thr2609 is also dependent on dose and can be induced with 2 Gy; at 10 Gy, detection with the pT2609Ab reached saturation (Fig. 2b). Since phosphorylation of Thr2609 can be observed with a dose as low as 2 Gy, these results suggest that phosphorylation of DNA-PKcs is very sensitive to the presence of DSBs in the genome. We have also observed phosphorylation of Thr2609

in response to IR in a lymphoblastoid cell line (Jurkat), a glioma cell line (M059K) and in primary human fibroblasts (data not shown), thus this event appears to be a general phenomenon that is not cell-type specific.

The activity of the PI-3 kinase family members including DNA-PK can be inhibited by wortmannin (Sarkaria *et al.* 1998). Treatment of HeLa cells with 20 μ M wortmannin did not alter the DNA-PKcs proteins levels (Fig. 3a, bottom panel), however the wortmannin treatment resulted in a significant decrease in the phosphorylation of Thr2609 after 10 Gy IR (Fig. 3a, top panel), suggesting that phosphorylation of Thr2609 in response to DNA damage is mediated by a PI-3 kinase. It has been previously shown that 20 μ M wortmannin inhibits DNA-PK-mediated repair of DNA DSBs and increases the sensitivity to radiation (Chernikova *et al.* 1999; DiBiase *et al.* 2000). However, at this concentration it may also inhibit ATM, another PI-3 kinase that is also activated by ionizing radiation (Banin *et al.* 1998; Canman *et al.* 1998). To distinguish between these possibilities, a human A-T cell line that was complemented with vector (Fig. 3b, lanes 1 and 2) or with full length wild-type ATM cDNA (Fig. 3b, lanes 3 and 4) was treated with 10 Gy IR and analyzed using the pT2609Ab (Fig. 3b, top panel) and an anti-DNA-PKcs monoclonal antibody (Fig. 3b, bottom panel). IR-induced phosphorylation of DNA-PKcs at Thr2609 was observed in both cell lines (Fig. 3b), although the extent of phosphorylation is somewhat reduced in the vector complemented cells. This result establishes that phosphorylation of DNA-PKcs at Thr2609 in response to damage does not require ATM and that

Thr2609 of DNA-PKcs is therefore unlikely to be a direct target for the ATM kinase. However, an indirect contribution of ATM-dependent signaling cannot be ruled out.

In vitro, Ku stimulates the kinase activity of DNA-PKcs (Dvir et al. 1992; Gottlieb and Jackson 1993). However, the role of Ku in activating DNA-PKcs *in vivo* is not known. Several studies have suggested that DNA-PKcs by itself is capable of binding to DNA ends (Cary et al. 1997; Yaneva et al. 1997) and that it possesses kinase activity in the absence of Ku (Yaneva et al. 1997; Hammarsten and Chu 1998). To address the issue of a requirement for Ku in phosphorylation of DNA-PKcs at Thr2609, we used small RNA interference (siRNA) to reduce the levels of Ku in HeLa cells (Elbashir et al. 2001). Transient transfection of HeLa cells with a 21 bp siRNA that is specific to Ku80 reduced the Ku80 protein level to approximately 50% of that in the mock-transfected cells (Fig. 3c and 3d) without affecting the DNA-PKcs protein level (Fig. 3c). Strikingly, these Ku80 knockdown cells showed an approximately 80% reduction in DNA-PKcs Thr2609 phosphorylation in response to 10 Gy of IR (Fig. 3c and 3e). The decrease in Ku80 protein does not have a global effect on the DNA damage response pathway, because phosphorylation of the structural maintenance of chromosomes protein 1 (SMC1) at Ser966, a site that is phosphorylated by ATM in response to IR (Kim et al. 2002; Yazdi et al. 2002), is normal in Ku80 knockdown cells (Fig. 3c). These results support an *in vivo* requirement for Ku in the activation of DNA-PKcs kinase. Taken together with the fact that Thr2609 was initially identified as a target for autophosphorylation of DNA-PKcs *in vitro* and that *in vivo* its phosphorylation is wortmannin sensitive but does not require ATM, the phosphorylation of

Thr2609 in DNA-PKcs in response to DNA damage is most likely mediated by DNA-PKcs itself is strongly supported.

Current models for the function of DNA-PK in NHEJ imply that it must be located at the site of the DSB (Smith and Jackson 1999), although it has been difficult to show this directly because of the high levels of DNA-PK in mammalian cells. However, if IR-induced phosphorylation of DNA-PKcs has functional significance, the phosphorylated DNA-PKcs should localize to sites of DSB. To test this prediction, we examined DNA-PKcs localization in the cell by immunofluorescence microscopy. As expected, immunostaining of DNA-PKcs in primary human fibroblasts with the specific monoclonal antibody (25-4) produced very strong signals throughout the nucleus in both unirradiated and irradiated cells (Fig. 4a, red). In contrast, immunostaining with the pT2609Ab revealed both increased signal and formation of foci in response to exposure to 5 Gy IR (Fig. 4a, green), confirming that phosphorylation of Thr2609 is inducible by DNA damage. We also examined immunostaining with both antibodies in two human glioma cell lines that differ in their DNA-PKcs status (Lees-Miller et al. 1995). In the DNA-PKcs-deficient M059J cells, no signal was detectable with either antibody at 30 min after exposure to 5 Gy IR (Fig. 4b), confirming the lack of DNA-PKcs proteins in this cell line. In contrast, immunostaining with the 25-4 monoclonal antibody in the DNA-PKcs proficient M059K cell line produced intense signal throughout the nucleus. More importantly, staining with the pT2609Ab again clearly revealed foci formation in response to DNA damage (Fig. 4b). The lack of detectable foci in M059J cells confirms the specificity of the pT2609Ab and

demonstrates that the foci observed with this antibody in DNA-PKcs proficient cells do indeed correspond to the phosphorylated form of DNA-PKcs.

To address whether phosphorylated DNA-PKcs is associated with DSBs after IR, we examined its possible colocalization with the phosphorylated histone H2AX (γ -H2AX) and the p53 binding protein 1 (53BP1). γ -H2AX foci have been previously shown to form almost immediately after exposure to IR and localize at sites of DNA strand breaks (Rogakou *et al.* 1999; Paull *et al.* 2000). 53BP1 has also been shown to localize to sites of damage by virtue of its colocalization with γ -H2AX and is proposed to play important roles in the ATM-mediated DNA damage-signaling pathway (Rappold *et al.* 2001). Primary human fibroblasts were treated with IR, incubated for 30 min after IR, and then fixed and stained with both pT2609Ab and either antibodies to γ -H2AX Ab (Fig. 4c) or 53BP1 (Fig. 4d). All three antibodies revealed formation of IR-induced foci, and the merged images demonstrate strong co-localization of DNA-PKcs phosphorylated at Thr2609 with both γ -H2AX and 53BP1 (Fig. 4c and d, respectively). These results provide the first evidence that DNA-PKcs is indeed localized to sites of DSBs in the cell and thus is at the right location to play a direct role in DSB repair.

To directly investigate the biological significance of DNA-PKcs phosphorylation at Thr2609 in relation to rejoining of DSBs, we expressed wild type or mutant (T2609A) DNA-PKcs in the V3 CHO cell line that is defective in DNA-PKcs (Kurimasa *et al.* 1999). Stable V3 cell lines expressing either wild type (V3-F18) or T2609A mutant proteins (V3-T2609A1) were

isolated. The V3 cell line transfected with the vector alone (V3-JM) contained undetectable levels of DNA-PKcs protein, whereas the V3-F18 and mutant V3-T2609A1 cells showed similar levels of expression of the DNA-PKcs protein (Fig. 5a). The radiation sensitivity and DNA DSB rejoining capacity of these stably transfected cell lines was investigated.

The radiation sensitivity of these cell lines was examined by assaying for their colony forming ability after IR. As we previously demonstrated, complementation of V3 cells by expression of wild-type human DNA-PKcs substantially increased their radioresistance (Fig. 5b), resulting in survival levels comparable to those of wild-type CHO cells (Kurimasa *et al.* 1999). In contrast, although expression of the T2609A mutant protein improved the survival of the V3-T2609A1 cell line, it is significantly lower than what was observed for V3-F18. The dose of IR required for 10% survival of the V3-JM, V3-T2609A1, and V3-F18 cell lines was 1.2 Gy, 2.4 Gy and 5 Gy, respectively (Fig. 5b). Thus, the D_{10} value is approximately four-fold higher for V3-F18 compared to the V3-JM non-complemented cells (that is 5 Gy/1.2 Gy), whereas resistance at the 10% survival level was increased by only two-fold in the V3-T2609A1 cells (5 Gy/2.4 Gy). Therefore phosphorylation of Thr2609 is important for cell viability in response to IR.

In addition, the FAR (Fraction of Activity Released) assay was utilized to evaluate the ability of each of the three cell lines to rejoin DSBs induced by IR. The FAR assay uses pulsed field gel electrophoresis to indirectly measure the intactness of DNA in cells after gentle lysis in agarose plugs by quantifying the amount of DNA released from the wells immediately after IR

exposure as a function of dose or after a period of incubation to allow repair after a given dose (Story et al. 1994). The V3-F18 and the parental AA8 CHO cell lines showed comparable DSB rejoining capacities (Fig. 5c, open and closed circles, respectively). In contrast, the V3-JM and the V3-T2609A1 cells were significantly more defective in the rejoining of DNA DSBs at 4 hrs after irradiation (Fig. 5c), consistent with our previous observations (Kurimasa et al. 1999) and with the hypothesis that DNA-PKcs plays an important role in repair of DSBs. Together, these results provide compelling evidence that phosphorylation of DNA-PKcs at Thr2609 is important for rejoining of DSBs and for cell survival in response to DNA damage caused by IR

Three large PI-3 like protein kinases, ATM, ATR and DNA-PKcs, play important roles in the maintenance of the human genome (Critchlow and Jackson 1998). ATM and ATR have been firmly established as central players in the activation of checkpoint pathways that relay the DNA damage signal to downstream effectors through phosphorylation (Zhou and Elledge 2000).

Many of the components of these pathways have been elucidated. In contrast, DNA-PKcs kinase activity does not appear to function in the checkpoint pathways but instead to function in the repair process itself. In comparison to ATM and ATR, very little is known about the mechanism of DNA-PK action in response to DNA damage. Our findings that DNA-PKcs autophosphorylation at Thr2609 in response to IR establishes its role in DSB repair.

Additionally, determining that phosphorylation is detectable within 10 min after IR, and that the phosphorylated protein is found in association with γ -H2AX and 53BP1 proteins in the vicinity of DSBs in the cell at early times after IR provide important clues to this mechanism. While the

precise role of Thr2609 phosphorylation is not known, possibilities include regulation of the kinase activity of DNA-PKcs or in mediating the protein-protein interactions for recruitment of other repair factors that coordinate DSB rejoining by NHEJ. Both hypotheses are consistent with our previous observations from *in vitro* studies that DNA-PKcs phosphorylation results in its dissociation from Ku and loss of its kinase activity (Chan and Lees-Miller 1996). Future research to identify possible additional sites of phosphorylation in DNA-PKcs, additional DNA-PK substrates, and proteins that interact with DNA-PKcs in response to DNA damage will aid in elucidating the molecular mechanism of the DNA-PK dependent NHEJ pathway.

Methods

Identification of DNA-PKcs autophosphorylation site

Purified human DNA-PKcs and Ku were autophosphorylated as previously described (Chan and Lees-Miller, 1996) with the following changes; 50 μ M ATP was used instead of 250 μ M. The phosphorylated DNA-PKcs band was excised and analyzed by mass spectrometry as previously described (Zhang et al. 1998).

Antibodies

pT2609Ab polyclonal antibodies were prepared by immunizing New Zealand white rabbits with KLH-conjugated phosphopeptide TPMFVET[PO₃]QASQGT. The phosphospecific antibodies were affinity purified through a phosphopeptide-conjugated Sepharose CL-4B column. Eluted IgGs were then passed through the corresponding unphosphorylated peptide column to deplete any IgGs that were not specific to pThr2609. DNA-PKcs 25-4 monoclonal antibody was purchased from NeoMarkers. 53BP1 monoclonal antibody was a generous gift from Dr. Junjie Chen.

Cell extracts and western blot analysis

Nuclear extracts (P10) were prepared as described (Lees-Miller et al. 1990), 20-60 μ g of each sample was analyzed by western blotting as described (Chan et al. 1996). For analysis of the V3

cell lines, the DNA-cellulose pull-down method of Finnie *et al.* (1995) was used to first concentrate DNA-PKcs onto the cellulose and then subjected to SDS-PAGE for western blotting.

Immunofluorescence

Immunofluorescence was performed as previously described in (Burma *et al.* 2001).

Site-directed mutagenesis and isolation of the mutant cell lines.

A 3kb Hind III fragment of DNA-PKcs cDNA covering Thr2609 was used as the template for generating the T2609A mutation of DNA-PKcs cDNA. Site-directed mutagenesis was performed using the Quik Change site-directed mutagenesis kit (Stratagene) and the forward (tccgatgtttgtggaggaccagg-cctcccagggc) and reverse (gccctgggaggcctggtcctccacaaacatcgga) primers. The mutated DNA-PKcs cDNA fragment was assembled back into the full length DNA-PKcs cDNA as described previously (Kurimasa *et al.* 1999). T2609A DNA-PKcs expression plasmid together with pSV2neo plasmid were transfected into the V3 cell line. Forty-eight hours after transfection, cells were replated on selection medium containing 400 µg/mL of G418 for 10 days. Individual colonies were isolated and further characterized for expression.

Cell survival and DNA DSB repair assays

Colony formation and FAR assays were performed as previously described (Kurimasa et al. 1999).

Ku80 RNAi

The siRNA sequence [UAC AAA CAU GGU UAU CAC CdTdT] that corresponds to nucleotides 139-159 of Ku80 cDNA was purchased from Dharmacon Research Inc. and prepared according to manufacturer's directions. Transfection of HeLa cells was performed as described in Elbashir et al. (2001).

Acknowledgments

We thank Dr. Junjie Chen for 53BP1 monoclonal antibodies, Dr. Yossi Shiloh for A-T cells, and Drs. Patricai Ouiment and Parvin Yazdi for discussion and critical reading of the manuscript.

This work was supported by the US Department of Energy under contract DE-AC03-76SF00098 and by NIH grants CA50519 and AG917709 to DJC and CA92584 to JQ. DWC is supported by postdoctoral fellowships from the Canadian Institutes of Health Research (CIHR) and the Alberta Heritage Foundation for Medical Research (AHFMR). JQ is a recipient of a career development award from the Department of Defense Breast Cancer Research Program (DAMD17-00-1-0146).

References

- Banin, S., L. Moyal, S. Shieh, Y. Taya, C.W. Anderson, L. Chessa, N.I. Smorodinsky, C. Prives, Y. Reiss, Y. Shiloh, and Y. Ziv. 1998. Enhanced phosphorylation of p53 by ATM in response to DNA damage. *Science* **281**: 1674-7.
- Burma, S., B.P. Chen, M. Murphy, A. Kurimasa, and D.J. Chen. 2001. ATM phosphorylates histone H2AX in response to DNA double-strand breaks. *J Biol Chem* **276**: 42462-7.
- Canman, C.E., D.S. Lim, K.A. Cimprich, Y. Taya, K. Tamai, K. Sakaguchi, E. Appella, M.B. Kastan, and J.D. Siliciano. 1998. Activation of the ATM kinase by ionizing radiation and phosphorylation of p53. *Science* **281**: 1677-9.
- Cary, R.B., S.R. Peterson, J. Wang, D.G. Bear, E.M. Bradbury, and D.J. Chen. 1997. DNA looping by Ku and the DNA-dependent protein kinase. *Proc Natl Acad Sci U S A* **94**: 4267-72.
- Chan, D.W. and S.P. Lees-Miller. 1996. The DNA-dependent protein kinase is inactivated by autophosphorylation of the catalytic subunit. *J Biol Chem* **271**: 8936-41.
- Chan, D.W., C.H. Mody, N.S. Ting, and S.P. Lees-Miller. 1996. Purification and characterization of the double-stranded DNA-activated protein kinase, DNA-PK, from human placenta. *Biochem Cell Biol* **74**: 67-73.
- Chernikova, S.B., R.L. Wells, and M.M. Elkind. 1999. Wortmannin sensitizes mammalian cells to radiation by inhibiting the DNA-dependent protein kinase-mediated rejoining of double-strand breaks. *Radiat Res* **151**: 159-66.

- Critchlow, S.E. and S.P. Jackson. 1998. DNA end-joining: from yeast to man. *Trends Biochem Sci* **23**: 394-8.
- DiBiase, S.J., Z.C. Zeng, R. Chen, T. Hyslop, W.J. Curran, Jr., and G. Iliakis. 2000. DNA-dependent protein kinase stimulates an independently active, nonhomologous, end-joining apparatus. *Cancer Res* **60**: 1245-53.
- Durocher, D. and S.P. Jackson. 2001. DNA-PK, ATM and ATR as sensors of DNA damage: variations on a theme? *Curr Opin Cell Biol* **13**: 225-31.
- Dvir, A., S.R. Peterson, M.W. Knuth, H. Lu, and W.S. Dynan. 1992. Ku autoantigen is the regulatory component of a template-associated protein kinase that phosphorylates RNA polymerase II. *Proc Natl Acad Sci U S A* **89**: 11920-4.
- Dynan, W.S. and S. Yoo. 1998. Interaction of Ku protein and DNA-dependent protein kinase catalytic subunit with nucleic acids. *Nucleic Acids Res* **26**: 1551-9.
- Elbashir, S.M., J. Harborth, W. Lendeckel, A. Yalcin, K. Weber, and T. Tuschl. 2001. Duplexes of 21-nucleotide RNAs mediate RNA interference in cultured mammalian cells. *Nature* **411**: 494-8.
- Gottlieb, T.M. and S.P. Jackson. 1993. The DNA-dependent protein kinase: requirement for DNA ends and association with Ku antigen. *Cell* **72**: 131-42.
- Haber, J.E. 2000. Partners and pathways repairing a double-strand break. *Trends Genet* **16**: 259-64.

- Hammarsten, O. and G. Chu. 1998. DNA-dependent protein kinase: DNA binding and activation in the absence of Ku. *Proc Natl Acad Sci U S A* **95**: 525-30.
- Kim, S.T., B. Xu, and M.B. Kastan. 2002. Involvement of the cohesin protein, Smc1, in Atm-dependent and independent responses to DNA damage. *Genes Dev* **16**: 560-70.
- Kurimasa, A., S. Kumano, N.V. Boubnov, M.D. Story, C.S. Tung, S.R. Peterson, and D.J. Chen. 1999. Requirement for the kinase activity of human DNA-dependent protein kinase catalytic subunit in DNA strand break rejoining. *Mol Cell Biol* **19**: 3877-84.
- Lees-Miller, S.P., Y.R. Chen, and C.W. Anderson. 1990. Human cells contain a DNA-activated protein kinase that phosphorylates simian virus 40 T antigen, mouse p53, and the human Ku autoantigen. *Mol Cell Biol* **10**: 6472-81.
- Lees-Miller, S.P., R. Godbout, D.W. Chan, M. Weinfeld, R.S. Day, 3rd, G.M. Barron, and J. Allalunis-Turner. 1995. Absence of p350 subunit of DNA-activated protein kinase from a radiosensitive human cell line. *Science* **267**: 1183-5.
- Paull, T.T., E.P. Rogakou, V. Yamazaki, C.U. Kirchgessner, M. Gellert, and W.M. Bonner. 2000. A critical role for histone H2AX in recruitment of repair factors to nuclear foci after DNA damage. *Curr Biol* **10**: 886-95.
- Rappold, I., K. Iwabuchi, T. Date, and J. Chen. 2001. Tumor suppressor p53 binding protein 1 (53BP1) is involved in DNA damage-signaling pathways. *J Cell Biol* **153**: 613-20.
- Rogakou, E.P., C. Boon, C. Redon, and W.M. Bonner. 1999. Megabase chromatin domains involved in DNA double-strand breaks in vivo. *J Cell Biol* **146**: 905-16.

Sarkaria, J.N., R.S. Tibbetts, E.C. Busby, A.P. Kennedy, D.E. Hill, and R.T. Abraham. 1998.

Inhibition of phosphoinositide 3-kinase related kinases by the radiosensitizing agent wortmannin. *Cancer Res* **58**: 4375-82.

Smith, G.C. and S.P. Jackson. 1999. The DNA-dependent protein kinase. *Genes Dev* **13**: 916-34.

Story, M.D., E.A. Mendoza, R.E. Meyn, and P.J. Tofilon. 1994. Pulsed-field gel electrophoretic analysis of DNA double-strand breaks in mammalian cells using photostimulable storage phosphor imaging. *Int J Radiat Biol* **65**: 523-8.

van Gent, D.C., J.H. Hoeijmakers, and R. Kanaar. 2001. Chromosomal stability and the DNA double-stranded break connection. *Nat Rev Genet* **2**: 196-206.

Yaneva, M., T. Kowalewski, and M.R. Lieber. 1997. Interaction of DNA-dependent protein kinase with DNA and with Ku: biochemical and atomic-force microscopy studies. *Embo J* **16**: 5098-112.

Yannone, S.M., S. Roy, D.W. Chan, M.B. Murphy, S. Huang, J. Campisi, and D.J. Chen. 2001. Werner syndrome protein is regulated and phosphorylated by DNA- dependent protein kinase. *J Biol Chem* **276**: 38242-8.

Yazdi, P.T., Y. Wang, S. Zhao, N. Patel, E.Y. Lee, and J. Qin. 2002. SMC1 is a downstream effector in the ATM/NBS1 branch of the human S- phase checkpoint. *Genes Dev* **16**: 571-82.

Zhang, X., C.J. Herring, P.R. Romano, J. Szczepanowska, H. Brzeska, A.G. Hinnebusch, and J.

Qin. 1998. Identification of phosphorylation sites in proteins separated by polyacrylamide

gel electrophoresis. *Anal Chem* **70**: 2050-9.

Zhou, B.B. and S.J. Elledge. 2000. The DNA damage response: putting checkpoints in

perspective. *Nature* **408**: 433-9.

Figure legends

Figure 1. DNA-PKcs phosphorylation of Thr2609. (a) Mass spectrometry identification of the DNA-PKcs *in vitro* autophosphorylation site. MS spectra of the identified phosphopeptide; the underlined T corresponds to Thr2609 and is the site of phosphorylation. (b) Alignment of human DNA-PKcs Thr2609 with DNA-PKcs sequences available in the NCBI database.

Figure 2. Characterization of Thr2609 phosphorylation. (a) Specificity of pT2609 Ab. GST fragments spanning amino acids 2500-2700 that contain either the wild-type DNA-PKcs sequence or a T2609A point mutation were *in vitro* phosphorylated with purified DNA-PK and analyzed with the pT2609Ab (top panel) and anti-GST (bottom panel) to show equal loading. (b) pT2609Ab does not recognize unphosphorylated DNA-PKcs. Western blotting with pT2609Ab (top panel) and 25-4 DNA-PKcs monoclonal antibody (bottom panel) with mock or autophosphorylated DNA-PKcs (lanes 1 and 2, respectively) and with purified, unphosphorylated DNA-PKcs (lanes 3 to 9) at the indicated molar ratios relative to the amount of protein in lanes 1 and 2. (c) Kinetics of Thr2609 phosphorylation *in vivo*. HeLa cells were either mock treated or irradiated with 10 Gy and allowed to recover for the indicated times. Nuclear extracts were western blotted with pT2609Ab (top panel) and then blots were stripped and reprobed with the 25-4 DNA-PKcs monoclonal antibody (bottom panel). (d) Dose

dependence of Thr2609 phosphorylation. HeLa cells were irradiated with the indicated dose of IR and allowed to recover for 30 min. Nuclear extracts were first analyzed by western blot with pT2609Ab (top panel) and then with 25-4 monoclonal to show equal loading (bottom panel).

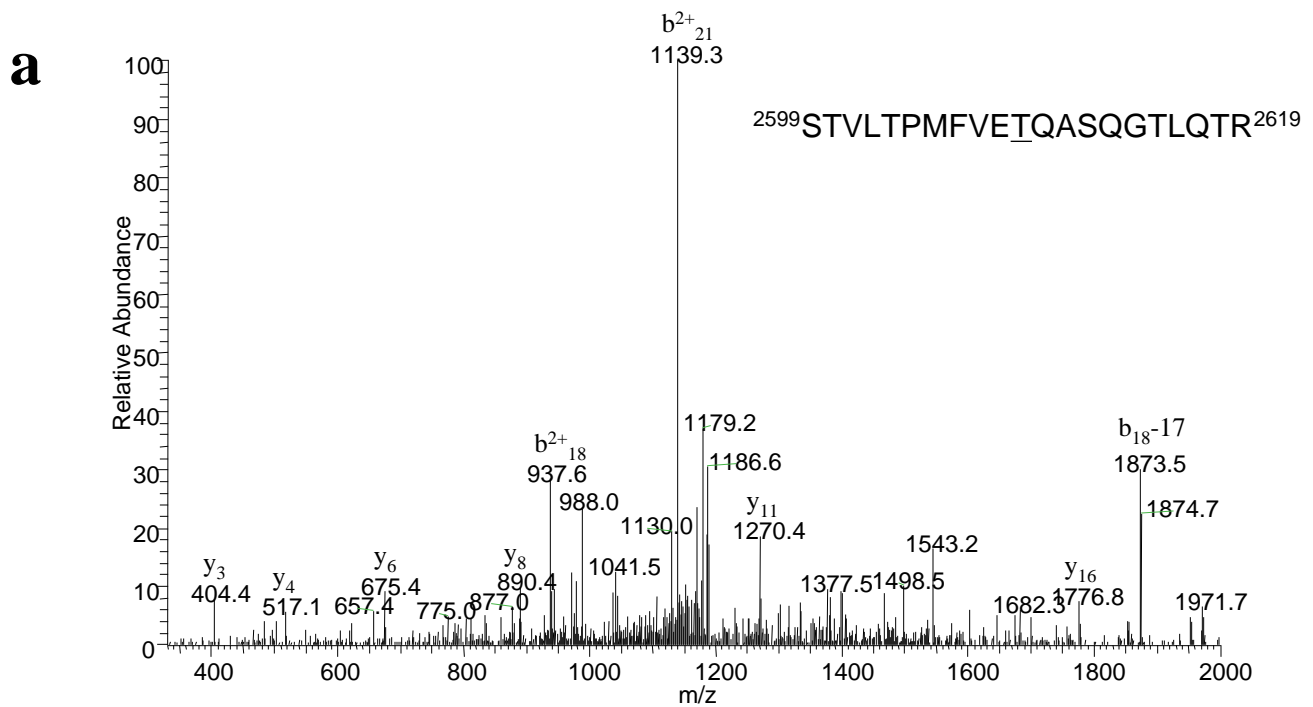
Figure 3. Characterization of Thr2609 phosphorylation *in vivo*. (a) Inhibition of Thr2609 phosphorylation by wortmannin. HeLa cells were pre-incubated with DMSO (lanes 1 and 2) or 20 μ M wortmannin (lane 3) for 30 min before treatment with 10 Gy of IR (lanes 2 & 3). Nuclear extracts were prepared 30 min after IR and subsequently analyzed for Thr2609 phosphorylation (top panel) and with 25-4 monoclonal (bottom panel). (b) Phosphorylation of Thr2609 is ATM-independent. A-T cells (FT169) complemented with vector (lanes 1 and 2) or full length wild-type ATM cDNA (lanes 3 and 4) were treated with 10 Gy of IR. Nuclear extracts were analyzed for Thr2609 phosphorylation (top panel) and DNA-PKcs levels (bottom panel). (c) Phosphorylation of Thr2609 is Ku-dependent. HeLa cells were mock transfected (lanes 1 and 2) or transfected with a Ku80 siRNA (lanes 3) for 96 hrs prior to irradiation with 10 Gy of IR. Nuclear extracts were analyzed by western blotting with the indicated antibodies. (d) Quantification of Ku80 western signal from (c). Values reported are relative to the signal observed in lane 1 and assigned an arbitrary value of 1. (e) Quantification of pT2609Ab signal from (c). Values reported are relative to the signal observed in lane 1.

Figure 4. Phosphorylated DNA-PKcs forms foci in response to IR. (a) DNA-damage induced pT2609 foci. Primary human fibroblasts were mock treated or irradiated with 5 Gy of IR (as

indicated) and allowed to recover for 30 min before fixation and staining with 25-4 monoclonal to DNA-PKcs (red) and pT2609Ab (green). (b) pT2609 foci are absent in DNA-PKcs deficient cells. The DNA-PKcs deficient (M059J) and the DNA-PKcs proficient (M059K) cell lines were irradiated with 5 Gy and allowed to recover for 30 min before immunostaining with 25-4 monoclonal (red) and pT2609Ab (green) antibodies. (c) Colocalization of phosphorylated DNA-PKcs with γ -H2AX. Human primary fibroblasts were irradiated with 1 Gy, fixed at 30 min after IR, and stained with pT2609Ab (green) and monoclonal antibody against phosphoSer139 of histone H2AX (red) (Upstate Biotech). The two images were merged and colocalization of pT2609 and γ -H2AX foci are depicted as yellow. (d) Colocalization of phosphorylated DNA-PKcs with 53BP1. The experiments were conducted as in (c) but using 53BP1 monoclonal (red).

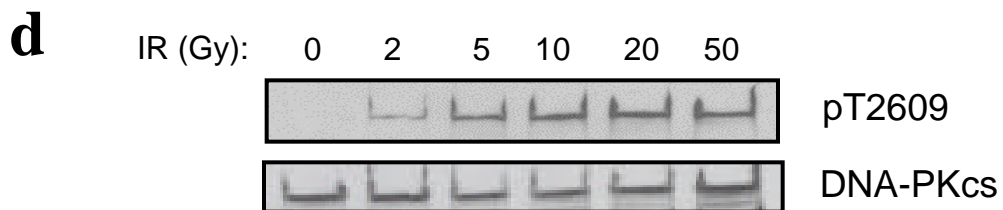
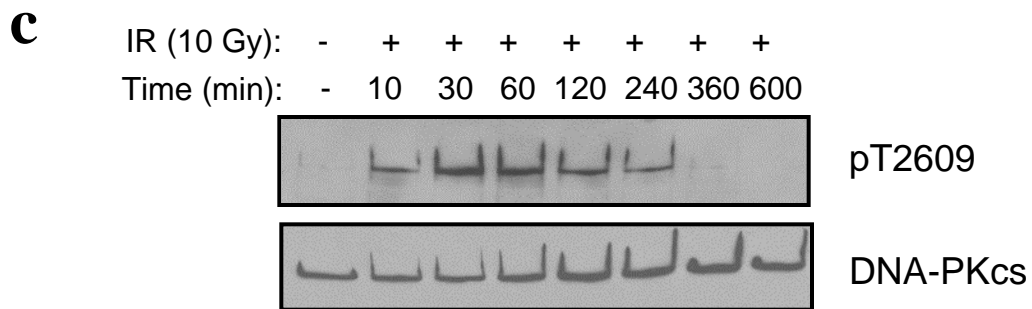
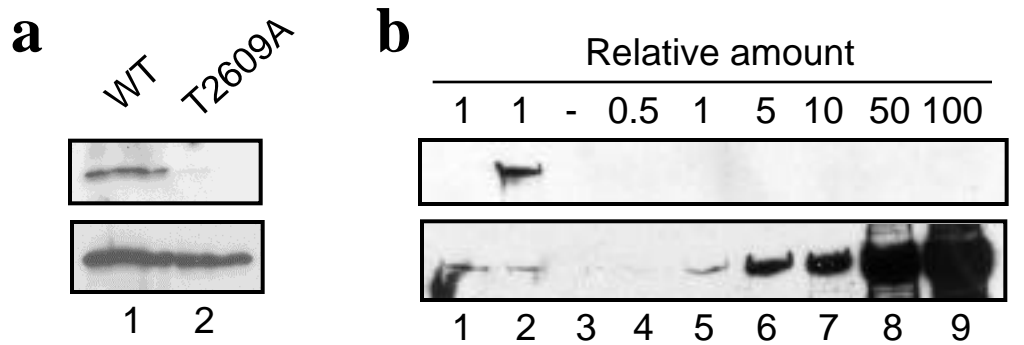
Figure 5. Phosphorylation of Thr2609 is required for DSB repair. (a) Protein expression levels in V3 complemented cells. Nuclear extracts prepared from V3 transfected with vector alone (V3-JM), full length wild-type DNA-PKcs (V3-F18) or DNA-PKcs containing the T2609A point mutant (V3-T2609A1) were analyzed for DNA-PKcs protein expression levels (top panel). Hamster Werner proteins were analyzed to demonstrate equal sample loading (bottom panel). (b) The colony formation assay was performed to compare radiation sensitivity of the three transfected V3 cell lines. V3-JM, V3-F18 and V3-T2609A1 were irradiated at the indicated doses and plated for analysis of survival and colony-forming ability. (c) FAR assay to measure the presence of DNA DSBs. The V3-JM, V3-F18, V3-T2609A1 cell lines and the parental CHO

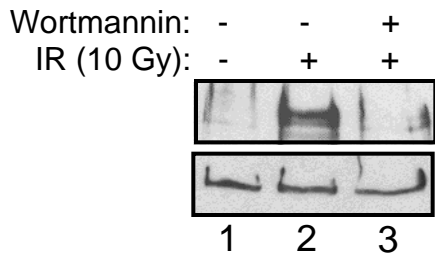
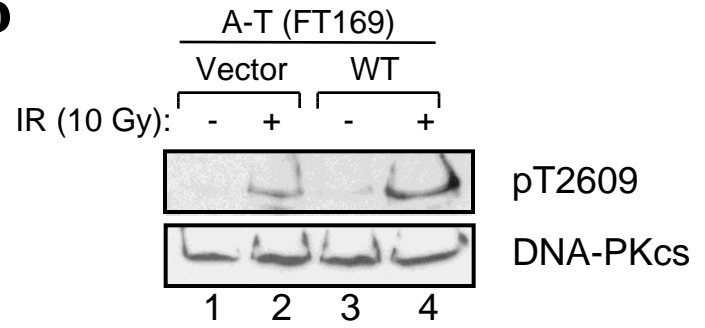
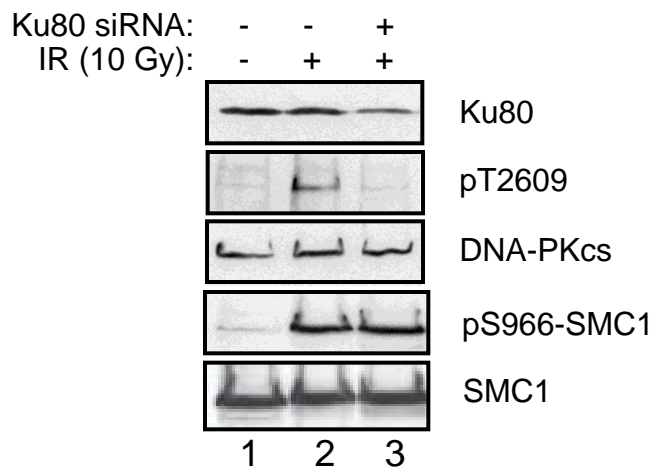
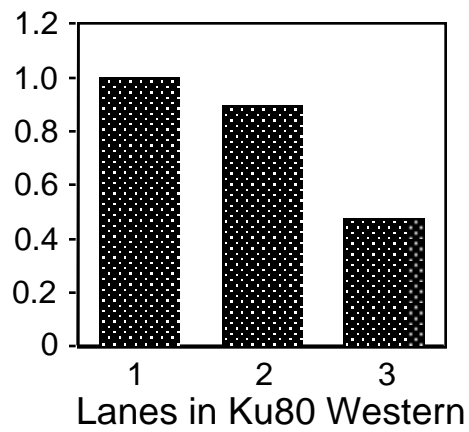
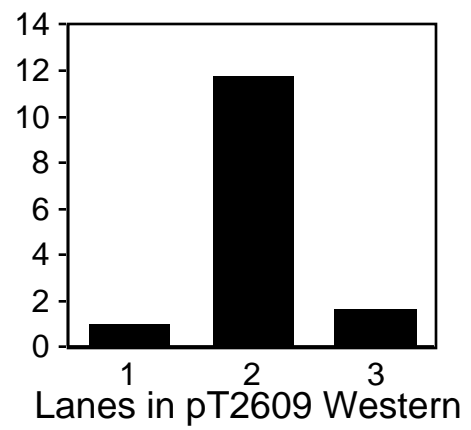
cell line (AA8) were irradiated at the indicated dose and analyzed for the presence of DSBs by the FAR assay. The greater the percentage of DNA retained, the fewer the number of DSBs remained.

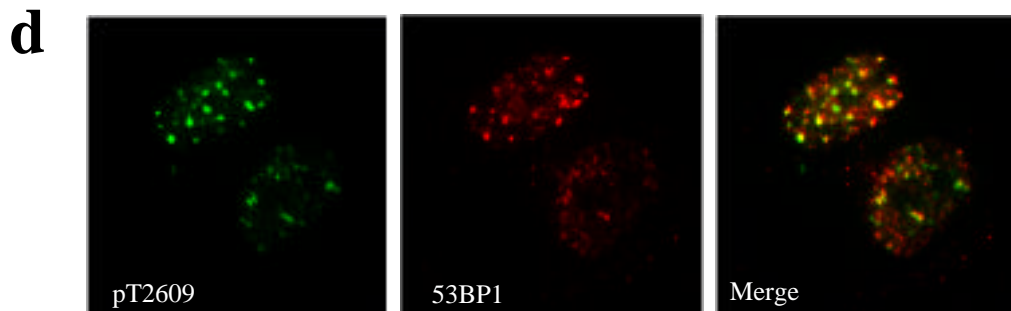
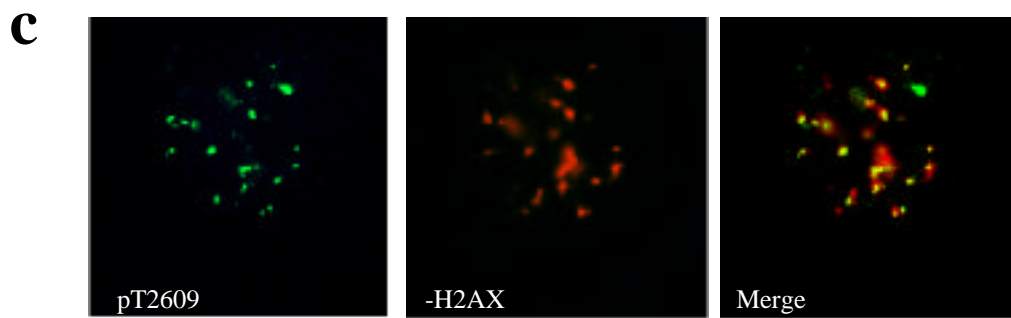
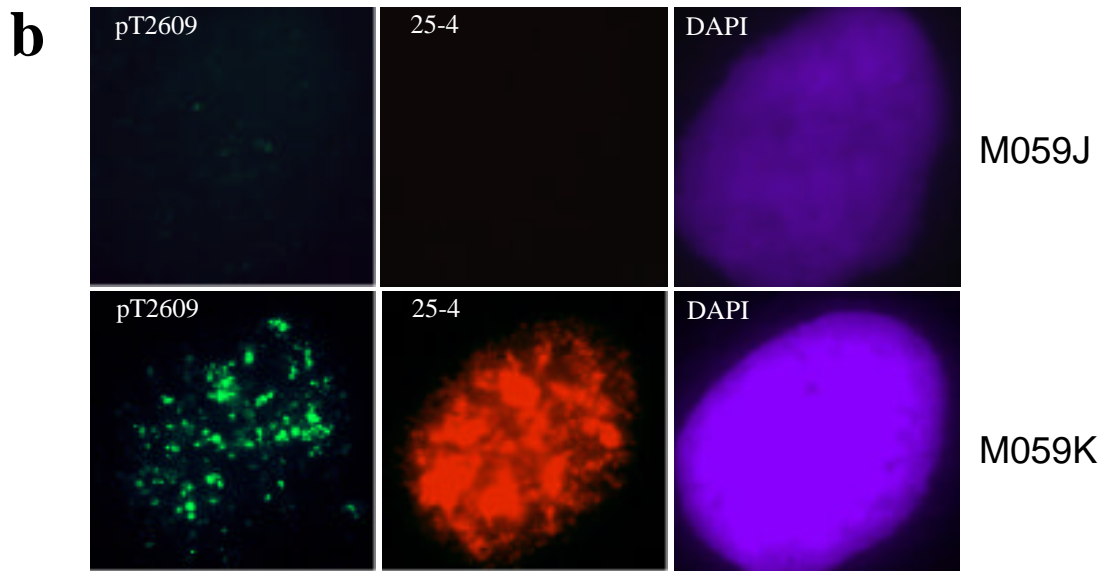
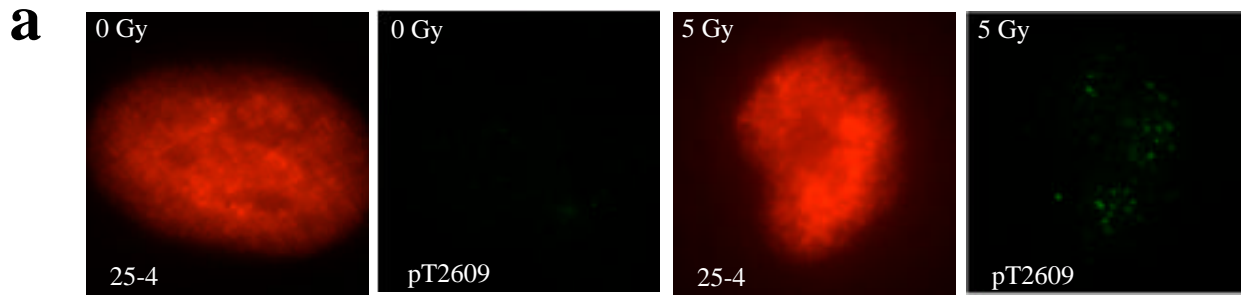


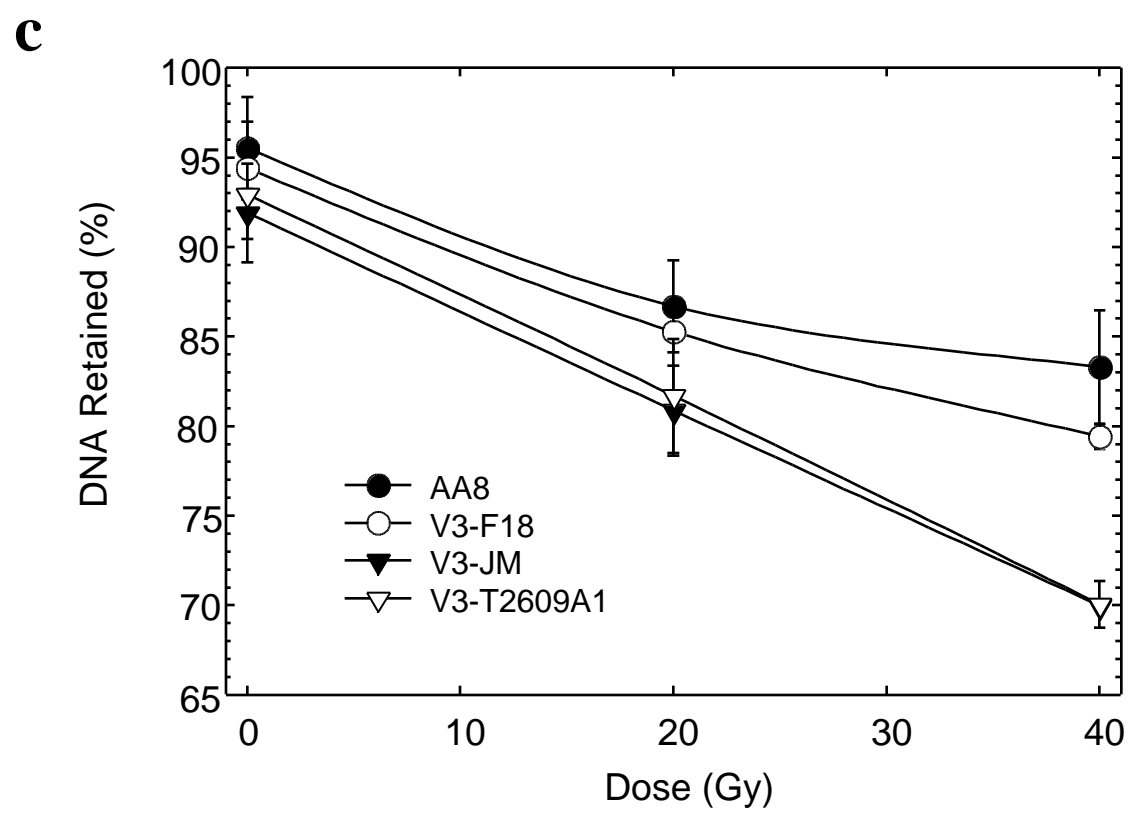
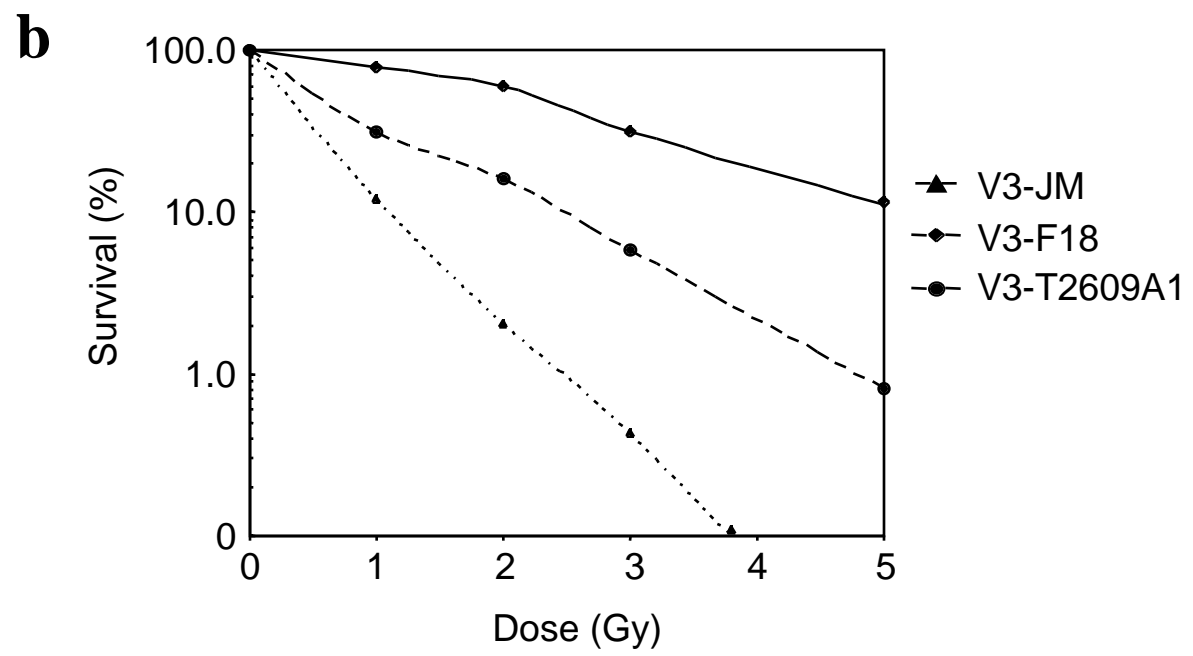
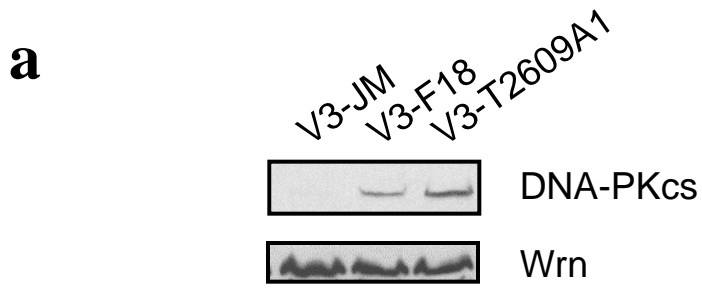
b

Human	2599STVLTPMFVETQASQGT LQTR2619
Dog	2611STVLTPMFI ETQASQST LQTR2631
Horse	2573STVLTPMFI ETQASQSALQTR2593
Mouse	2595STVLTPMFI ETQASPSI LHTQ2615
Xenopus	2621SSVLTPMFVETQLSQSMQRSR2641
Chi cken	2598STMLTPMFVETQASQSTNRNS2608



a**b****c****d****e**





Nucl. Ku80 DNA-PKcs
Ext. IP IP

