

UC Merced

Journal of California and Great Basin Anthropology

Title

Front Cover

Permalink

<https://escholarship.org/uc/item/5mn5z4nn>

Journal

Journal of California and Great Basin Anthropology, 23(2)

ISSN

0191-3557

Publication Date

2001

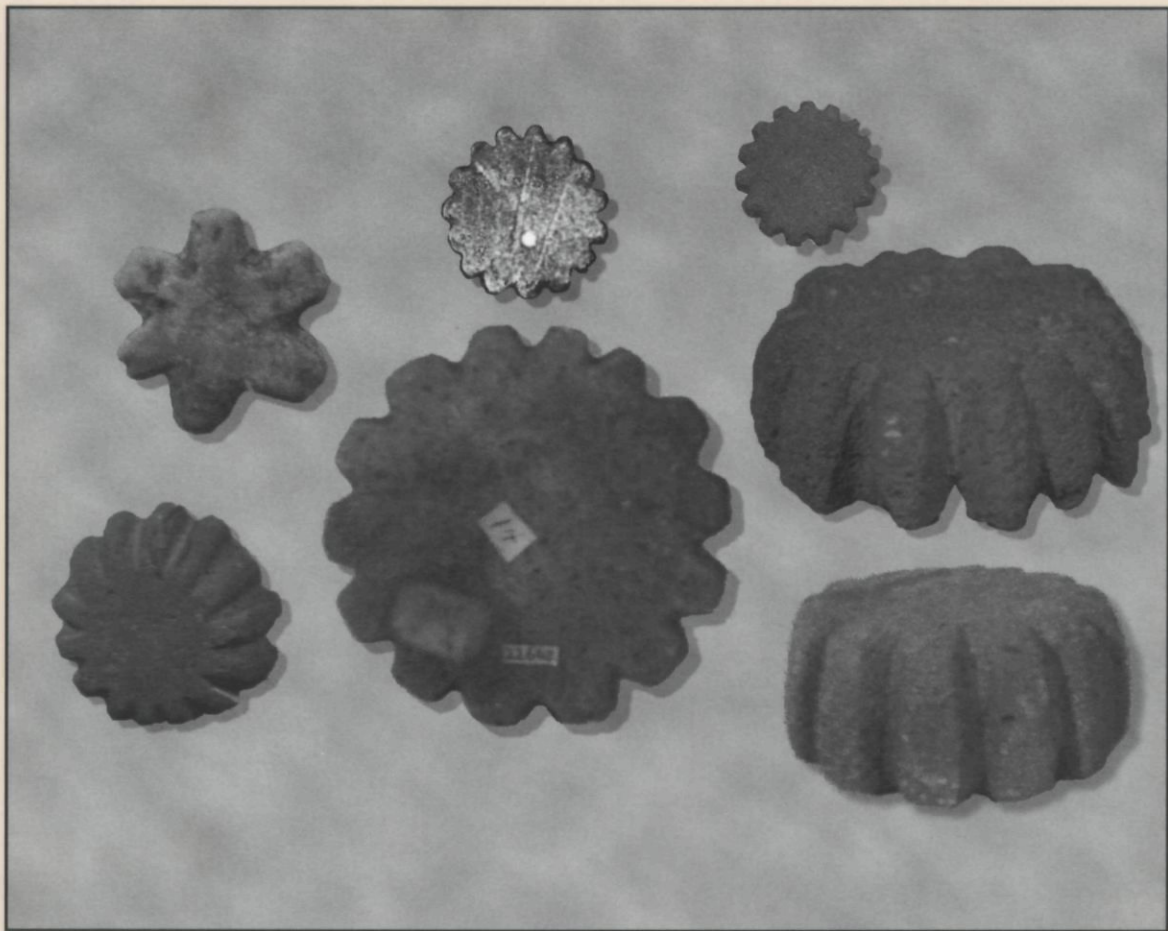
Copyright Information

Copyright 2001 by the author(s). All rights reserved unless otherwise indicated. Contact the author(s) for any necessary permissions. Learn more at

<https://escholarship.org/terms>

Journal of California and Great Basin Anthropology

Vol. 23, No. 2, 2001



ISSN: 0191-3557

Journal of California and Great Basin Anthropology

**Volume 23 • Number 2
July 2001**

**Editor
Paul Apodaca, PhD**

**Department of Sociology • Chapman University
Orange, California**



**Published by
Malki Museum Press
Morongo Indian Reservation
Banning, California**

**ISSN: 0191-3557
Copyright © 2001 by Malki Museum, Inc.**



Journal of California and Great Basin Anthropology
ISSN 0191-3557

Editor: Paul Apodaca, Department of Sociology, Chapman University, Orange, CA 92866

Associate Editors: Paula Apodaca, Christina Montoya, Chapman University

Reviews Editor: *California*: Glenn J. Farris

Circulation Management: Deborah Dozier, Palomar College.

The *Journal of California and Great Basin Anthropology* is published twice yearly by Malki Museum, Inc., Morongo Indian Reservation, Banning, CA, under auspices of the Malki Museum Press Editorial Board, and in cooperation with the Department of Sociology, Chapman University, Orange, where the editorial offices are located. The publisher, Malki Museum, Inc., is a nonprofit educational institution incorporated by the State of California. Opinions expressed herein are those of the authors and not necessarily those of the editor or the Malki Museum Press Editorial Board.

The *Journal of California and Great Basin Anthropology* gratefully acknowledges support from Wilkinson College of Letters and Sciences, the Department of Sociology, and the Office of the Provost, Chapman University, Orange; Douglas Westfall and The Paragon Agency, Orange.

Copyright 2001, Malki Museum, Inc.
Printed in the United States of America

Malki Museum Press Editorial Board:

Katherine Siva Saubel, Chairman, Founder and Native Scholar; Lowell John Bean; Thomas Blackburn; Margaret Langdon; Robert Levi II; Pamela Munro; Ernest H. Siva; Sylvia Vane; Paul Apodaca; Deborah Dozier; Eric Elliott; Pat Murkland, Judyth Reed, Cynn Gamble, Joel Martin.

Submissions of articles for consideration should contain an original and four hard copies and an electronic form in Word format with illustrations scanned at 300 dpi TIFF grayscale. All articles and reports will be reviewed by the editorial staff and no fewer than two anonymous referees. Authors may reproduce, at their expense, up to 100 copies of each contribution published by the *Journal*. Reprints may be given away or used as class handouts, but may not be sold. Authors wishing to reprint articles, reports, or reviews published in the *Journal* in other publications must first obtain permission.

Subscribers must keep Malki Museum Press informed of any address change and are responsible for non-delivery caused by failure to submit a change of address.

Address all correspondence to:

Journal of California and Great Basin Anthropology
Malki Museum, Inc.
P.O. Box 578
Banning, CA 92220