

UCLA

UCLA Previously Published Works

Title

Psychological interventions for depression and anxiety in pregnant Latina and Black women in the United States: A systematic review

Permalink

<https://escholarship.org/uc/item/5fw1v3fb>

Journal

Clinical Psychology & Psychotherapy, 27(2)

ISSN

1063-3995

Authors

Ponting, Carolyn
Mahrer, Nicole E
Zelcer, Hannah
[et al.](#)

Publication Date

2020-03-01

DOI

10.1002/cpp.2424

Peer reviewed

COMPREHENSIVE REVIEW

Psychological interventions for depression and anxiety in pregnant Latina and Black women in the United States: A systematic review

Carolyn Ponting¹  | Nicole E. Mahrer^{1,2} | Hannah Zelcer¹ |
Christine Dunkel Schetter¹ | Denise A. Chavira¹

¹Department of Psychology, University of California, Los Angeles, California, USA

²Department of Psychology, University of La Verne, La Verne, California, USA

Correspondence

Carolyn Ponting, Department of Psychology, University of California, 1183C Franz Hall, 502 Portola Plaza, Los Angeles, CA 90095.
Email: cponting@ucla.edu

Funding information

National Institute of Mental Health, Grant/Award Number: NIH 5T32MH015750-38

Black women and Latinas have more symptoms of depression and anxiety during pregnancy than do their non-Latina White counterparts. Although effective interventions targeting internalizing disorders in pregnancy are available, they are primarily tested with White women. This article reviews randomized controlled trials and non-randomized studies to better understand the effectiveness of psychological interventions for anxiety and depression during pregnancy in Latinas and Black women. Additionally, this review summarizes important characteristics of interventions such as intervention format, treatment modality, and the use of cultural adaptations. Literature searches of relevant research citation databases produced 68 studies; 13 of which were included in the final review. Most studies were excluded because their samples were not majority Latina or Black women or because they did not test an intervention. Of the included studies, three interventions outperformed a control group condition and showed statistically significant reductions in depressive symptoms. An additional two studies showed reductions in depressive symptoms from pretreatment to post-treatment using non-controlled designs. The remaining eight studies (seven randomized and one non-randomized) did not show significant intervention effects. Cognitive behavioral therapy was the modality with most evidence for reducing depressive symptoms in pregnant Black and Latina women. No intervention was found to reduce anxiety symptoms, although only two of the 13 measured anxiety as an outcome. Five studies made cultural adaptations to their treatment protocols. Future studies should strive to better understand the importance of cultural modifications to improve engagement and clinical outcomes with pregnant women receiving treatment for anxiety and depression.

KEYWORDS

anxiety, Blacks/African Americans, depression, Latinos/Latinas, pregnancy, treatment

1 | INTRODUCTION

Prevalence rates of depression during pregnancy range from 12% to 27%. Rates of anxiety during pregnancy are similar, affecting 9% to 22% of women (Mahaffey & Lobel, 2018). Variability in these rates

often depends on whether the data are taken from epidemiological or high-risk samples. A diagnosis of depression (Grote et al., 2010) or anxiety (Ding et al., 2014) during the prenatal period increases risk for complications during delivery, such as preterm birth and low birthweight, and is a robust predictor of postpartum depression

(Coelho, Murray, Royal-Lawson, & Cooper, 2011; Robertson, Grace, Wallington, & Stewart, 2004). Black women and Latinas in the United States have higher rates of depression (e.g., Rich-Edwards et al., 2006) and anxiety (Collins & David, 2005) during pregnancy than do their non-Latina White counterparts. Immigrant Black and Latina women are at especially high risk for internalizing distress during pregnancy due to a host of social stressors such as separation from extended families and lack of familiarity with medical systems of the countries they have immigrated to (Edge, Baker, & Rogers, 2004; Fung & Dennis, 2010). Black women and Latinas are also disproportionately exposed to financial and cultural stressors (e.g., poverty and discrimination), which invoke additional risk for clinical distress (Rosenthal & Lobel, 2011).

Data indicate disparities in mental health service utilization during the perinatal period; rates of services use in Latinas and Black women are 5% and 4%, respectively, and the rate of service use in White women is 10%, a statistically significant difference (Kozhimannil, Trinacty, Busch, Huskamp, & Adams, 2011). Black women and Latinas are at a greater disadvantage than White women when it comes to treating their depression and anxiety during pregnancy because they are less likely to attend perinatal medical appointments than White women, where symptoms are often first detected (Kozhimannil et al., 2011; Lucero, Beckstrand, Callister, & Sanchez Birkhead, 2012). Even when Latinas and Black women initiate mental health treatment, they are less likely to receive continued care (Kozhimannil et al., 2011). System level barriers include infrequent screening for anxiety and depression by obstetrics providers during pregnancy (Goodman & Tyer-Viola, 2010), which is even more pronounced in under-resourced clinics, which are often attended by Black women and Latinas. Other barriers that disproportionately affect ethno-racial women include difficulties accessing transportation and childcare, unmet or unrealistic expectations about treatment outcome, stigma, and healthcare mistrust (Levy & O'Hara, 2010). A challenge unique to pregnant women with depression and anxiety more broadly is that psychiatric care is often declined or delayed due to the potential adverse effects of psychotropic medications for mother and fetus (Schofield & Kapoor, 2019). Psychological interventions fare better in terms of safety and acceptability during pregnancy (Goodman, 2009), yet it is relatively uncommon for women with internalizing distress to receive psychotherapy during this time (Ko, Farr, Dietz, & Robbins, 2012).

Most existing interventions for internalizing distress have been examined during the postpartum period (Mahaffey & Lobel, 2018). However, a growing body of literature shows that psychological interventions can successfully reduce depressive symptoms during pregnancy for women considered high risk (i.e., elevated symptoms but below clinical levels; Bledsoe & Grote, 2006; Dennis & Hodnett, 2007; Werner, Miller, Osborne, Kuzava, & Monk, 2015) and clinically impacted (van Ravesteyn, Lambregtse - van den Berg, Hoogendijk, & Kamperman, 2017). The evidence for treating anxiety during pregnancy is much more sparse, and existing interventions to treat prenatal anxiety require more rigorous evaluation (Loughnan et al., 2018). Importantly, the vast majority of

intervention trials for prenatal depression and anxiety have been tested with non-Latina White women (Nillni, Mehralizade, Mayer, & Milanovic, 2018). The lack of representation of ethno-racial minority women in clinical trials during pregnancy makes it difficult to ascertain whether these interventions are efficacious for Black and Latina women.

1.1 | Evidence for psychological interventions for depression and anxiety in pregnancy

Meta-analytic findings show that the most effective psychological intervention modalities for depression during pregnancy are cognitive behavioral therapy (CBT) and interpersonal therapy (IPT; Curry et al., 2019; Dennis & Hodnett, 2007; van Ravesteyn, van den Lambregtse Berg, Hoogendijk, & Kamperman, 2017). There is less of an evidence base for prenatal anxiety, and CBT delivered in a group setting is the only modality with any research support (Nillni et al., 2018). CBT conceptualizes depression and anxiety as caused and maintained by maladaptive patterns of thinking, emotional responses, and behavior and targets thoughts and activities in order to improve mood. IPT, on the other hand, conceptualizes depression as caused and maintained in large part by interpersonal dysfunction; thus, it targets interpersonal functioning and social support. Both CBT and IPT are time-limited interventions and are most often delivered in person by a therapist (Sockol, Epperson, & Barber, 2011). However, despite the success of these evidence-based interventions at reducing depression and the emerging support for anxiety reduction during the perinatal period (e.g., Goodman et al., 2014), their efficacy with ethno-racial minority women is mixed (Nillni et al., 2018). Nillni et al. (2018) report that although several pilot studies for pregnant ethno-racial minority women have shown that psychotherapies such as CBT and IPT successfully reduce depressive symptoms, larger scale randomized controlled trials (RCTs) often report null findings. Findings that have indicated no intervention effect are often attributed to worse treatment engagement of minority women when compared with White women (Grote, Zuckoff, Swartz, Bledsoe, & Geibel, 2007), but it is possible that other factors are at play.

Taken together, findings suggest that pregnant Latinas and Black women appear to utilize and benefit from interventions to treat internalizing distress less often than pregnant White women, indicating a potential mental healthcare disparity. The present study systematically reviewed the treatment outcome literature with pregnant Latina and Black women in order to better understand mental healthcare and treatment disparities in this group. This systematic review examined (a) outcomes of psychological interventions for anxiety and depression during the prenatal period in Latina and Black women; (b) treatment characteristics (i.e., treatment modality, format, context of delivery, and provider type) of effective interventions with pregnant Latina and Black women; and (c) types of cultural adaptations used to tailor interventions to meet the needs of ethnic/racial minority women. Given that treatment during pregnancy is uniquely positioned to create

positive intergenerational change at a particularly sensitive developmental period (Stewart, 2011), a better understanding of the evidence for treating Black and Latina women prenatally is critical to addressing service gaps for these women and their infants.

2 | METHODS

2.1 | Protocol and registration

The review was preregistered with PROSPERO, the International Prospective Register of Ongoing Systematic Reviews (ID: CRD42018106228), and can be found at https://www.crd.york.ac.uk/PROSPERO/display_record.php?RecordID=106228.

2.2 | Eligibility criteria (inclusion/exclusion criteria)

The following criteria had to be met for inclusion in the review: Studies were published in peer reviewed journals or as a doctoral thesis and tested the effect of a psychological intervention on depressive or anxious symptoms during pregnancy. Psychological interventions were inclusive of manualized psychoeducational strategies, CBT, interpersonal psychotherapy, psychodynamic therapy, acceptance and commitment therapy, and mindfulness training delivered during the prenatal period via telephone, home or clinic visits, or individual or group sessions by a health professional or lay person (Dennis & Hodnett, 2007). Unstructured interventions (e.g., providing social support) were excluded from the review because of the difficulties replicating their delivery and ascertaining fidelity of delivery—of concern when assessing the evidence for a particular intervention modality (Chambless & Ollendick, 2001). Studies also had to measure depression and anxiety symptoms as an outcome using standardized depression and anxiety instruments (e.g., Edinburgh Postnatal Depression Scale; Cox, Holden, & Sagovsky, 1987).

Additionally, in order for a study to be eligible for inclusion, study participants had to be (a) pregnant women, (b) 18 years or older, and (c) residing in the United States. Further, a majority of the sample (75% or more) had to identify as Latina/Hispanic or Black/African American. This threshold was chosen based on previous reviews and meta-analyses (Huey & Polo, 2008; Pina, Polo, & Huey, 2019) where a 3:1 ratio of ethnic minority participants to White participants was identified as providing sufficient representation to suggest that observed treatment effects are in fact applicable to minorities. However, studies were also included if they had fewer than 75% of Latina or Black women but provided a separate analysis with a subset of ethnic/racial minority participants. Inclusion was constrained to women living in the United States in order to more easily interpret results based on common system level factors (e.g., perinatal healthcare policies) and specific sociocultural experiences related to being Latina or Black in the United States that may impact anxiety and depression in this population.

2.3 | Search strategy

The following databases were searched: Cumulative Index to Nursing and Allied Health Literature (CINAHL®), PubMed®, PsycINFO®, Web of Science®, and ProQuest Dissertation and Theses AI® using the following search terms: (prenatal OR antenatal OR pregnancy) AND (intervention OR treatment OR therapy) AND (postpartum depression OR depression OR anxiety), AND (African-American OR Black OR Latino(a) OR Hispanic OR minority); see Figure A1 for exact search syntax. Reference sections of the articles that met inclusion criteria were also examined. No date restrictions were placed on database searches, and unpublished studies were not considered due to the increased likelihood that identified studies would introduce greater methodological weakness (Copeland, Gallo, & Alolabi, 2019) in a review that was already inclusive of non-randomized trials. Database searches were conducted from June 2018 to September 2018, by authors C. P. and H. Z., with consultation as needed from N. M. and D. C. In total, searches produced 503 studies, with 363 remaining once duplicates were removed. Duplicates were identified using Mendeley's duplication feature and manually checked by the authors. Abstracts and titles were subsequently screened using inclusion criteria, eliminating 296 articles, most often because the studies did not test an intervention ($n = 243$; of note, search terms did not include design specifications such as "RCT"). Of the 67 articles remaining, methods sections were examined to further assess inclusion criteria (e.g., intervention was delivered during pregnancy). An additional 56 articles were excluded (see Figure 1 for detailed information about exclusion), leaving 13 studies that met all inclusion criteria and were included in the final review.

2.4 | Data extraction

Data were extracted from the 13 articles independently by two members of the research team, who conferred to check for accuracy. Variables extracted from each study were intervention characteristics (i.e., intervention format, treatment modality, provider type, number of sessions, setting, and fidelity indices); participant demographics (i.e., race/ethnicity, language spoken, U.S. vs. foreign born, and indicators of income); the perinatal period during intervention delivery; type of study design (e.g., RCT, pre-post design, and study sample); the use of a control group and what kind, if applicable; attrition rates; outcomes pertaining to depression or anxiety; and the use of intervention cultural adaptations.

2.5 | Data quality assessment

The methodological biases of the studies in this review were assessed using the Cochrane risk of bias assessment. The risk of bias tool is recommended over the use of other quality scales (e.g., Outcome Reporting Bias in Trials II; GRADE rating of quality



PRISMA 2009 Flow Diagram

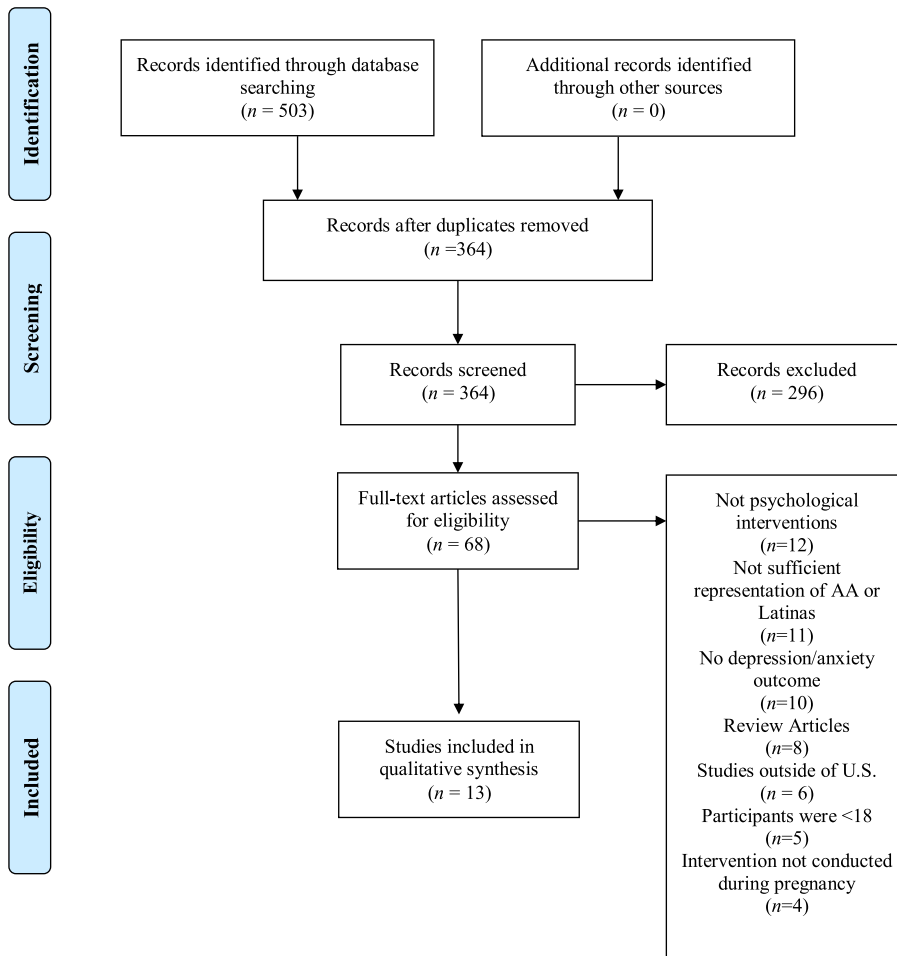


FIGURE 1 PRISMA flow diagram of study inclusion. Abbreviation: AA, African American [Colour figure can be viewed at wileyonlinelibrary.com]

evidence; see Page, McKenzie, & Higgins, 2018 for extensive list) due to the assessment of different aspects of biases in trial conduct. Specifically, six categories of bias are assessed: (a) selection bias, (b) performance bias, (c) detection bias, (d) attrition bias, (e) reporting bias, and (f) baseline imbalance. In addition, the tool requires that researchers provide evidence (e.g., direct quotes from the article) that support each judgement of bias, increasing transparency (Higgins et al., 2011). Studies were coded as having a high risk of bias, low risk of bias, or an unclear risk of bias by the first author, who was not blind to study authors, place of publication, or results. Studies rated as “low risk of bias” on four of the six categories were considered to have an overall low risk of bias; studies with two or three categories rated as “low risk of bias” were considered to have an overall medium risk of bias; and studies with one or fewer categories rated as “low risk of bias” were considered to have an overall high risk of bias. Documentation supporting bias ratings is available upon request.

3 | RESULTS

Of the 13 studies that met the inclusion criteria, 10 were RCTs and three of these studies were self-described as pilot studies. Only one RCT used an active control group, which consisted of a social support intervention in addition to regular prenatal care (Field, Diego, Delgado, & Medina, 2013). Three other studies were non-randomized pre-post designs (one did not use a comparison group, one used a comparison group similar in demographic characteristics, and one study used a treatment as usual comparison group).

Sample sizes in the studies ranged from 13 to 913, and the combined sample size of included studies totaled 1,971 women, whose outcomes are included in this review. Among the 13 studies, four tested interventions in Black-only samples, three in Latina-only samples, three with a combination of Latina and Black women, and three with a combination of Black and White women. Women across all

studies were considered low income, and most Latinas were of Mexican origin. Most studies required women to have elevated symptoms of depression (Crockett, Zlotnick, Davis, Payne, & Washington, 2008; Grote et al., 2009; Jesse et al., 2015; Le, Perry, & Stuart, 2011; Muñoz et al., 2007; Sampson, Villarreal, & Rubin, 2016) or meet a clinically significant cut-off for depression (Field et al., 2013a; Jesse et al., 2010; Lenze & Potts, 2017; McKee, Zayas, Fletcher, Boyd, & Nam, 2006). None of the 13 eligible studies required women to meet any anxiety symptom cut-off. In addition, only two studies measured anxiety as a secondary outcome (Field et al., 2013a; Lenze & Potts, 2017). For detailed sociodemographic information about included participants, see Table 1.

3.1 | Intervention characteristics

A variety of psychological interventions to reduce perinatal depressive symptoms among Black women and Latinas emerged as part of this review. The most common treatment modality was CBT (El-Mohandes et al., 2008; Jesse et al., 2010; Jesse et al., 2015; Le et al., 2011; Muñoz et al., 2007; Sampson et al., 2016), followed by IPT (Crockett et al., 2008; Field et al., 2013a; Grote et al., 2009; Lenze & Potts, 2017). CBT+ social support (McKee et al., 2006), behavioral activation (Kieffer et al., 2013), and mindfulness (Zhang & Emory, 2015) were also examined. Of the six interventions that included Latina participants, four of them gave the option for the delivery of the intervention to be in Spanish (Kieffer et al., 2013; Le et al., 2011; McKee et al., 2006; Muñoz et al., 2007).

Interventionists were primarily master's or PhD level therapists (Crockett et al., 2008; El-Mohandes et al., 2008; Field et al., 2013a; Grote et al., 2009; Jesse et al., 2010; Jesse et al., 2015; Lenze & Potts, 2018; McKee et al., 2006; Muñoz et al., 2007; Zhang & Emory, 2015), followed by community health workers (Kieffer et al., 2013) or community caseworkers (Sampson et al., 2016). Only one study relied on trained bachelor's level study staff (Le et al., 2011). Most often, interventions were delivered in group format (Crockett et al., 2008; El-Mohandes et al., 2008; Field et al., 2013a; Jesse et al., 2015; Le et al., 2011; Zhang & Emory, 2015), although some studies provided a combination of group and individual sessions (Kieffer et al., 2013; Muñoz et al., 2007) or individual sessions only (Grote et al., 2009; Lenze & Potts, 2017; McKee et al., 2006; Sampson et al., 2016). Jesse et al. (2010) allowed women to choose whether they wanted to complete the intervention individually or in a group.

3.2 | Treatment response

Treatment response was determined by evaluating clinical outcomes for depression or anxiety (which was a secondary outcome in two studies). Outcomes are reported first for RCTs and then for non-randomized intervention studies. For additional intervention characteristics as well as their clinical outcomes, see Table 2.

3.2.1 | Randomized controlled trials

Depression

Of the 10 RCTs, two studies reported statistically significant reductions in depressive symptoms when compared with a control group receiving prenatal care as usual. The first study used a CBT group intervention led by master's level therapists (El-Mohades et al., 2008), and the second study used a combined (i.e., group and individual sessions) behavioral activation intervention delivered by community health workers (Kieffer et al., 2013). One study using IPT led by master's and doctoral level therapists outperformed enhanced usual prenatal care (Grote et al., 2009). Four studies found that the tested intervention reduced depressive symptoms from baseline to post-treatment; however, these interventions did not outperform prenatal care as usual (Field et al., 2013a; Le et al., 2011; Lenze & Potts, 2017; McKee et al., 2006). Three studies found no effect of the intervention on depressive symptoms (Crockett et al., 2008; Muñoz et al., 2007; Zhang & Emory, 2015). Although randomized trials demonstrated that CBT and IPT approaches were effective, it is notable that there were more CBT and IPT interventions that did not outperform standard care than those that did.

Of the three efficacious interventions, only two examined long-term benefits. Grote et al. (2009) reported significant reductions in depressive symptoms that were maintained from immediate post-intervention to 6-month postpartum. However, Kieffer et al. (2013) reported that the intervention effect did not extend into the early postpartum period (6-week postpartum) and thus was only significant immediately post-treatment (in late pregnancy).

Anxiety

Of the 10 RCTs, only two measured anxiety symptoms as an outcome. Of those, one study showed a significant reduction in anxiety symptoms from pretreatment to post-treatment (Field et al., 2013a); however, this was not different from the active control condition.

3.2.2 | Non-randomized trials

Depression

Of the three non-randomized trials included in this review, two studies reported statistically significant reductions in depressive symptoms from pretreatment to post-treatment. Both studies tested a CBT intervention, although the method of delivery differed by study. The first was led by mental health and perinatal professionals (e.g., marriage and family therapists, licenced clinical social workers, and midwife; Jesse et al., 2010), whereas the second study was led by community caseworkers (Sampson et al., 2016). Jesse et al. (2015) found significant reductions in depressive symptoms in Black women only when they were considered high risk for depression (as opposed to low or moderate risk), demonstrating a moderating effect of depressive symptom severity. Jesse et al. (2010, 2015) reported significant reductions in depressive

TABLE 1 Sociodemographic characteristics of study samples

Publication	Study sample	Nativity	Age		Language	Weeks of gestation	Socio-economic status
			M	(SD)			
Crockett et al. (2008)	n = 36 AA/B	100% U.S. born	23.4	(4.98)	English	24–31	All participants received public assistance
El-Mohandes et al. (2008)	n = 913 AA/B	100% U.S. born	24.6 ^a		English	≤28	75% of sample was on Medicaid
Field, Diego, Delgado, and Medina (2013a)	n = 38 AA/Bn = 5 L/Hn = 1 W	Not reported	24.90	(5.40)	English	20–24	State low income, no additional data provided
Grote et al. (2009)	n = 33 AA/Bn = 2 L/Hn = 15 Wn = 3 Biracial	Not reported	24.6	(5.46)	English	10–32	Annual income: 58.5% <\$10,000, 26.4% \$10,000–\$20,000, 15.1% >\$20,000
Jesse et al. (2010)	n = 21 AA/Bn = 5 W	100% U.S. born	24.69	(5.33)	English	6–30	State low income, no additional data provided
Jesse et al. (2015)	n = 99 AA/Bn = 47 W	Not reported	25.05	(5.49)	English, Spanish	6–30	38.4% Employed, 61.6% unemployed, 82.2% Medicaid recipient, 4.8% Medicare recipient
Kieffer et al. (2013)	n = 275 L/H	97% foreign born	34%	over 30 years	Spanish	<20	State low income, no additional data provided
Le et al. (2011)	n = 217 L/H	100% foreign born	25.41	(4.59)	Spanish	≤24	90% of the households had an annual income under \$30,000
Lenze and Potts (2017)	n = 33 AA/Bn = 7 Wn = 2 Other	Not reported	26.64	(5.89)	English	12–30	Annual income: 40% <\$10,000; 20% \$10,001–\$20,000; 5% \$20,001–\$30,000; 12.5% \$30,001–\$60,000; 2.5% >\$60,001
McKee et al. (2006)	n = 43 AA/Bn = 57 L/H	23% foreign born	24.7	(5.6)	English, Spanish	<32 weeks	State low income, no additional data provided
Muñoz et al. (2007)	n = 41 L/H	76% foreign born	24.9	(4.54)	English, Spanish	12–32	Mean annual income \$19,773.2
Sampson et al. (2016)	n = 13 AA/B	Not reported	24.0	(5.0)	English	≥12	100% unemployed, mean monthly income \$1,153
Zhang and Emory (2015)	n = 65 AA/B	100% U.S. born	25.3	(4.6)	English	6–30	Monthly income: 32.3% <\$249, 30.8% \$250–499, 29.2% \$500–\$999, 7.7% >\$999

Abbreviations: AA/B, African American/Black; L/H, Latina/Hispanic; W, non-Hispanic/Latina White.

^aThe standard error, and not the SD, was reported.

TABLE 2 Design, measurement, and results of reviewed studies

Publication	Intervention	Control group	Results: Main effects	Cultural factors addressed
Randomized controlled trials	(a) format, (b) treatment modality, (c) number of sessions, M session attendance, (d) provider (and provider education), and (e) setting			
Crockett et al. (2008)	(a) Group, + 1 in home one-on-one booster session postpartum (b) IPT (c) Four 90-min sessions + 1 50-min booster, (M = 4.58) session (d) Community therapists (PhD or MEd in counselling) (e) Not reported, not at participant home	Prenatal TAU	Women in the intervention and control groups showed no significant differences in depression scores (EPDS) 4-week post-intake (during pregnancy), 2 weeks after delivery, or 3-month postpartum.	No
El-Mohandes et al. (2008)	(a) Group, (two optional individual booster sessions) (b) CBT (c) 8 sessions, (M = 4) (d) Master's level counselors (e) Clinic based	Prenatal TAU	Women in the intervention group were more likely to resolve their depression (e.g., no longer show clinical elevations; Hopkins Symptom Checklist) in the postpartum period as compared with women in control group	Not reported
Field et al. (2013a)	(a) Group (b) IPT (c) Twelve 60-min sessions, (M = 11.7) (d) Therapist (education not known) (e) Not reported	Peer support: 20-min group session, 1 per week for 12 weeks	Women in both the intervention and active control groups showed significant reductions in depression (CES-D) and anxiety symptoms (STAI) from the first to the last session of treatment (during pregnancy). IPT did not outperform the active control condition.	Not reported
Grote et al. (2009)	(a) Individual (b) IPT (c) 8 sessions (d) Master's and doctoral level therapists (e) OBGYN office	Enhanced prenatal care (with referrals for mental health services)	Women in the intervention group showed significantly greater reductions in depressive symptoms (EPDS) between baseline and post-intervention, and between baseline and 6-month postpartum, as compared with women in the control group.	Yes: Use of therapists trained in cultural competence with experience working with poor racial-ethnic minority groups, culturally relevant pictures, stories from the participants' cultural background to reinforce treatment goals, culturally sensitive psychoeducation about depression, and use of cultural resources (e.g., spirituality and familism).

(Continues)

TABLE 2 (Continued)

Publication	Intervention	Control group	Results: Main effects	Cultural factors addressed
Kieffer et al. (2013)	(a) Individual and group (2 individual home visits, 9 meetings during pregnancy; 2 individual home visits, 1 group meeting postpartum) (b) "Healthy lifestyle intervention" – Prenatal and postnatal care, behavioral activation, and psychoeducation (c) 14 sessions, (M = 10.5) (d) Community health workers/"women's health advocates," education not reported (e) Community partner settings (e.g., community health and social services)	Healthy pregnancy education— Four group meetings; 3 during pregnancy and 1 postpartum.	Women in the intervention group, but not in the control group, showed significant reductions in depressive symptoms (CES-D) between baseline and follow-up (during pregnancy). The significant intervention effect did not extend into the early postpartum period.	No
Le et al. (2011)	(a) Group (b) CBT (c) 8 weeks, 2-hr sessions, 3 individual booster sessions postpartum, (M = 4) (d) Bachelor's level study staff (e) Clinic	Prenatal TAU	Women in both the intervention and control groups showed significant decreases in depressive symptoms (BDI-II) from pretreatment to post-treatment. The cumulative incidence of major depressive episodes was not significantly different between the intervention (7.8%) and control (9.6%) groups.	Yes: Incorporation of healthy management of reality and developmental/parenting issues for the unique needs of the predominantly Central American families such as immigration stressors.
Lenz and Potts (2017)	(a) Individual (b) IPT (c) 9 sessions (1 ethnographic introductory session + 8 IPT sessions); plus maintenance treatment session if participant finish all 9 sessions (d) Clinical psychologists, master's level clinicians (e) Research clinic, participant homes, or other community locations	Enhanced prenatal care (with referrals for mental health services and brief case management)	Women in both the intervention and enhanced prenatal care groups showed significant decreases in depressive symptoms (EDS) from baseline to 37–39 weeks gestation; 58% of women assigned to brief-IPT and 67% of the women in enhanced prenatal care reported clinically significant improvement in depressive symptoms. There were no differences in improvement between groups. Additionally, women in both the intervention and enhanced prenatal care groups did not show significant	Not reported

(Continues)

TABLE 2 (Continued)

Publication	Control group	Results: Main effects	Cultural factors addressed
<p>McKee et al. (2006)</p>	<p>Prenatal TAU</p>	<p>reductions in anxiety symptoms (STAI-Brief). Women in both the intervention and control groups showed significant reductions in depressive symptoms (BDI-II) from third trimester to 3-month postpartum. There was no significant difference depressive symptom reduction for women in the control compared with the intervention group.</p>	<p>Not reported</p>
<p>Muñoz et al. (2007)</p>	<p>Prenatal TAU</p>	<p>Women in the intervention and controls groups showed no significant differences in major depressive episode incidence (Maternal Mood Screener) from pre- to post-intervention.</p>	<p>Yes: Reinforced values (e.g., collectivism and familism) fostered new outlets of support in a foreign context, validated cultural values and beliefs regarding pregnancy and motherhood, and validated the role of religion and spirituality healing, discussions of discrimination, and racism.</p>
<p>Zhang and Emory (2015)</p>	<p>Prenatal TAU</p>	<p>Women receiving the intervention did not show significant reductions in depressive symptoms (BDI-II) from pre to immediate post-intervention. 4-week post intervention, participating in more intervention sessions was associated with fewer depressive symptoms.</p>	<p>Not reported</p>
<p>Non-randomized trials</p>			
<p>Jesse et al. (2010)</p>	<p>Not applicable</p>	<p>Women who received intervention showed a 65% rate of "recovery" in the sixth intervention week and an 81% rate of "recovery" at 1-month post-intervention (13/16 EPDS <10). Women had significantly lower depressive symptoms post-treatment, and maintained their improvement over time.</p>	<p>Yes: Use of colourful and attractive graphics, real-world examples, and culturally relevant guided visualization and inspirational literature/affirmations</p>

(Continues)

TABLE 2 (Continued)

Publication	Intervention	Control group	Results: Main effects	Cultural factors addressed
Jesse et al. (2015)	(a) format, (b) treatment modality, (c) number of sessions, M session attendance, (d) provider (and provider education), and (e) setting (a) Group (b) CBT (c) 6 weeks, 2-hr session, (M = 6) (d) Master's and doctoral trained mental health professionals, resource mom (co-facilitated the group, offered weekly booster session telephone calls, and provided case management services) (e) Prenatal clinic	TAU	African-American women at high risk for depression in the intervention group showed significantly greater decreases in their mean depressive symptom scores at post-intervention and follow-up compared with women in the control group. African-American women at low-moderate risk for depression in the intervention group showed mean reductions in depressive symptom scores at post-intervention and follow-up equivalent to those in the control group.	Yes: First chapter of manual addressed depression in women of colour, translated into Spanish for Spanish-speaking participants. Inclusion of non-denominational spiritual-related resources, use of personal check-ins, and emphasis on confidentiality
Sampson et al. (2016)	(a) Individual (b) CBT (problem-solving therapy + 1 session motivational interviewing) (c) 5 sessions, 1-2 hr (d) Community caseworkers, 1 with an associate's degree and 1 who was a licenced professional counsellor (e) Home based	Not applicable	Women receiving the intervention showed significant reduction in depressive symptoms pre- to post-intervention (EPDS and PHQ-9).	No

Abbreviations: CBT, cognitive behavioral therapy; IPT, interpersonal therapy; TAU, treatment as usual; EPDS, Edinburgh Postnatal Depression Scale; CES-D, Centre for Epidemiologic Studies Depression Scale; STAI, State-Trait Anxiety Inventory; BDI-II, Beck Depression Inventory; II; EDS, Edinburgh Depression Scale; PHQ-9, Patient Health Questionnaire-9 item.

symptoms that continued from immediate post-intervention to 6-month post-treatment. Importantly, the lack of randomization in the aforementioned studies limits our ability to confidently attribute symptom change to the intervention.

Anxiety

There were no non-randomized trials that examined anxiety as an outcome.

3.3 | Attrition and attendance

Attrition ranged from 8% to 45% but was low overall (mean attrition = 17%). Most studies kept attrition rates below 10% (Crockett et al., 2008; Field et al., 2013a; Jesse et al., 2010; Le et al., 2011; Lenze & Potts, 2017; Muñoz et al., 2007 & Sampson et al., 2016), and only two studies had attrition rates larger than 30% (McKee et al., 2006; Zhang & Emory, 2015). Intervention duration ranged from four to 14 sessions, with a modal intervention length of eight sessions. Across studies, pregnant women attended about six sessions on average ($M = 6.21$). For additional information about average session length by study (when reported), see Table 1.

3.4 | Cultural adaptations

Only a minority of studies (five of 13) included cultural adaptations to their treatment protocols (Grote et al., 2009; Jesse et al., 2010; Jesse et al., 2015; Le et al., 2011; Muñoz et al., 2007) (El-Mohandes et al., 2008; Field et al., 2013a; Kieffer et al., 2013; Lenze & Potts, 2017; McKee et al., 2006; Zhang & Emory, 2015). Those interventions that did include adaptations were CBT protocols and used focus groups with stakeholders (both clients and providers) to inform the adaptation process. As an example, in a sample of Latinas of primarily Mexican origin, Muñoz et al. (2007) attempted to improve cultural fit of the intervention by reinforcing values, such as collectivism and familism; fostering new outlets of support in a foreign context; validating cultural values regarding pregnancy, motherhood, religion, and spirituality; and providing women with an opportunity to discuss their frustrations with discrimination and racism. In another study, Le et al. (2011) incorporated parenting issues of particular salience to Central American families (e.g., immigration stressors) and linguistic changes relevant for the population. Finally, in a sample of rural Black women, adaptations included adjustments to the reading level of intervention materials, adding colourful and attractive graphics, assigning brief homework assignments using real-world examples, and using guided visualization and inspirational literature and affirmations (Jesse et al., 2010, 2015). The RCTs that used cultural adaptations (Grote et al., 2009; Le et al., 2011; Muñoz et al., 2007) were not more likely to be effective than the RCTs without adaptations; of the three RCTs that outperformed a control condition and significantly reduced depressive symptoms, only one had been culturally adapted (Grote et al., 2009).

3.5 | Data quality

Included studies were of mixed methodological bias. Although most studies used random sequence generation ($n = 8$) to avoid selection bias, fewer studies described allocation concealment in detail ($n = 4$). Further, most studies did not blind study personnel to intervention condition. Finally, it was not possible for the authors to assess selective reporting with certainty, as only five studies had preregistered their trials and thus had predefined variables of interest. For a summary of bias estimates by study, see Table A1.¹

4 | DISCUSSION

This review is the first to assess the efficacy of interventions for anxiety and depression during pregnancy among the two largest minority groups in the United States (U.S. Census Bureau, 2018). Overall, findings suggest that most treatment outcome studies with pregnant Latina and Black women are limited and often do not result in favourable outcomes for depression. Although CBT is the treatment modality most often tested for depression with pregnant ethno-racial minority women, methodological limitations and a preponderance of nonsignificant findings (i.e., lack of favourable support for interventions) preclude us from naming CBT an efficacious intervention in this group of women. Indeed, for Black and Latina women, only behavioral activation had unanimously favourable research support, but this was based on just one randomized trial. All other modalities (i.e., IPT and mindfulness) had more limited support.

These findings are particularly concerning in the context of recent data from the U.S. Preventive Services Taskforce, which reviewed data from 17 RCTs of pregnant women primarily identifying as White from the United States and Europe and found that both CBT and IPT had a small yet favourable effect on perinatal depression symptoms (O'Connor et al., 2019). In another study, the pooled relative risk score for depression remission, usually defined as the "proportion below a specified cut point on a depression symptom scale," across 11,869 women receiving CBT and living in North America, Europe, and Australia was calculated at 1.34 (O'Connor, Rossom, Henninger, Groom, & Burda, 2016), indicating a clear benefit of treatment. CBT also has been established as the intervention with the most evidence for treating prenatal anxiety in the U.S. and Europe, inclusive primarily of non-Latina White women (Austin et al., 2008; Lilliecreutz, Josefsson, & Sydsjö, 2010; Thomas, Komiti, & Judd, 2014). In light of these findings, this review identifies an important treatment gap and suggests an urgent need to investigate why these interventions fall short when being used with pregnant women of colour with internalizing distress.

Strikingly, in the current review with Black women and Latinas only two interventions measured anxiety as an outcome, and neither of these studies found that the intervention outperformed a control condition in reducing anxiety symptoms. Anxiety during pregnancy

¹Support for bias judgments will be provided upon request.

has garnered increased attention due to its associations with adverse birth outcomes (Dunkel Schetter & Tanner, 2012) and subsequent postpartum depression (Heron, O'Connor, Evans, Golding, & Glover, 2004). Yet detection and management of clinically significant anxiety is restricted due to a lack of valid screeners during pregnancy (Misri, Abizadeh, Sanders, & Swift, 2015) and physicians' uncertainty about appropriate treatment (Leddy, Lawrence, & Schulkin, 2011), which is understandable given the state of the evidence. This is of particular concern for Latinas and Black women who not only experience higher rates of anxiety during pregnancy than their non-Latina White counterparts (Collins & David, 2005) but also have access to poorer quality obstetric and gynecologic care (McKenney, Martinez, & Yee, 2018). Interestingly, mind-body therapies (e.g., yoga and tai chi), which were not part of this review, have received more attention as treatments for anxiety than psychological interventions and show favourable effects on symptomatology in pregnancy (Davis, Goodman, Leiferman, Taylor, & Dimidjian, 2015; Field et al., 2013b; Satyapriya, Nagarathna, Padmalatha, & Nagendra, 2013), including among primarily Black women (Jallo, Ruiz, Elswick, & French, 2014). However, systematic reviews of mind-body interventions and other complementary and alternative therapies have cautioned against drawing conclusions about these therapies given concerns about adequate power, randomization, and the measurement of anxiety (Beddoe & Lee, 2008; Hall, Beattie, Lau, East, & Anne Biro, 2016; Marc et al., 2011). Thus, well-designed studies examining psychological and mind-body interventions (i.e., non-pharmacological interventions) to reduce prenatal anxiety are critically needed.

It is possible that the lack of significant findings supporting psychological interventions for Black women and Latinas with anxiety and depressive symptoms relates to the level of clinical risk of participants included in the intervention trials. In general, effects of preventive interventions for depression tend to be modified by risk level, such that stronger effects are seen for participants with higher baseline symptomology (Barrera, Torres, & Muñoz, 2007). Consistent with this pattern, Jesse et al. (2015) reported greater improvement for pregnant Black women with higher baseline depressive symptoms, and other authors have suggested that better treatment effects would have emerged with more severely depressed women (Le et al., 2011; McKee et al., 2008). Interestingly, findings are mixed regarding severity as a moderator of depression treatment outcome in samples of primarily non-Latina White women. Although some researchers report that women with higher baseline depressive symptoms improve less (Sockol et al., 2011), others report that women "at risk" for depression show greater symptom improvement post-treatment (Bittner et al., 2014; Dennis & Hodnett, 2007). There is a need to test psychological interventions with clinically depressed women to better elucidate whether available intervention modalities are unable to resolve depression for pregnant ethno-racial minorities, or whether effects are simply difficult to detect in a prevention context.

Despite findings suggesting that cultural adaptations can improve clinical outcomes in ethnic minority adults with depression and anxiety (van Loon, van Schaik, Dekker, & Beekman, 2013), it is

of interest that only five (of 13) of the interventions included in this review incorporated such adaptations. Adaptations varied from surface-level modifications of intervention materials (e.g., language and photos) to reinforcement of traditional values or incorporation of culturally salient topics (e.g., coping with discrimination). In our review, two of the five effective interventions used cultural adaptations to improve fit for the respective racial and ethnic minority women. Importantly, RCTs with cultural adaptations reported less attrition on average compared with RCTs without adaptations (10% vs. 19.9%). Future studies should strive to better understand the importance of cultural modifications to improve engagement and clinical outcomes with pregnant women receiving treatment for anxiety and depression.

Findings from this systematic review should be considered in light of several limitations. First, the selection criteria, which required a minimum of 75% ethnic minority participants, limited the number of studies eligible for our systematic review. This decision was based on previous studies, which have argued that a 3:1 ratio of ethnic minority participants to White participants provides strongest evidence of treatment effectiveness for the participating minority groups (Huey & Polo, 2008). A less conservative inclusion criteria of 50% would have added an additional six RCTs—four IPT (Spinelli et al., 2013; Spinelli & Endicott, 2003; Zlotnick, Miller, Pearlstein, Howard, & Sweeney, 2006; Zlotnick, Tzilos, Miller, Seifer, & Stout, 2016), one CBT (O'Mahen, Himle, Fedock, Henshaw, & Flynn, 2013), and one family systems therapy (Heinicke et al., 1999)—of which one CBT (O'Mahen et al., 2013) and two IPT interventions significantly reduced depressive symptoms and outperformed control conditions (Spinelli & Endicott, 2003; Zlotnick et al., 2016). Had these studies been included, our conclusions would have remained largely the same—that there are few efficacious trials that include Latinas and Black women and that although CBT and IPT are the intervention modalities that have garnered most support, neither have sufficient support to be considered well established, or in other words, "gold standard" treatments for pregnant ethnic minority women.

This review was restricted to studies conducted in the United States in order to more confidently make comparisons across studies and are not generalizable to ethno-racial minority women living in other countries. Ethnic/racial minority status is differentially associated with depressive symptoms across countries, in part because of the variance in risk factors such as ethnic discrimination encountered in these countries (Missinne & Bracke, 2012). Further, given that heterogeneity in prenatal health systems across countries would change the level of care afforded to women randomized to the prenatal care "as usual" control conditions, our focus on one national context, although regionally diverse, allows us to draw conclusions and make suggestions under a more homogenous social and structural backdrop.

Finally, our results regarding the evidence base for interventions in the prenatal period for Latinas and Black women are confounded by socio-economic status (SES). Because all women enrolled in included studies were considered to be low income, we were not able to test the relative impact of race/ethnicity versus SES on

intervention response. It is notable that by including studies of low-income pregnant women with a greater proportion of White women (i.e., 26–50%), the number of effective RCTs would have doubled (i.e., from three to six), suggesting that interventions tested with greater numbers of White women showed better treatment response. Greater representation of Latinas and Black women from diverse SES backgrounds in clinical trials is necessary to elucidate the role of SES as a potential moderator of treatment outcomes. Until recently, few NIMH-funded trials of psychological interventions have included meaningful numbers of ethnic minorities (Mak, Law, Alvidrez, & Pérez-Stable, 2007). As a result, the field is at a disadvantage when it comes to creating an evidence base for ethno-racial minority women during an already understudied time in the life course—pregnancy (Mendle, Eisenlohr-Moul, & Kiesner, 2016).

Depression and anxiety often persist from pregnancy to the postpartum period when left untreated (Heron et al., 2004). Treating anxiety and depression during pregnancy is optimal, as it can reduce adverse intergenerational outcomes via multiple pathways including improving parenting behaviors (Feldman et al., 2009) and reducing physiological stress responses in mothers and their infants (Urizar & Muñoz, 2011). This review finds that for pregnant Latinas and Black women, CBT, behavioral activation, and IPT are promising interventions for depression, although they require additional research support. Addressing this gap in the field may help to improve physical and psychological health outcomes for ethno-racial minority pregnant women who are known to experience significant mental health disparities.

ACKNOWLEDGEMENTS

This work was made possible by the National Institute of Mental Health (NIH 5T32MH015750-38).

ORCID

Carolyn Ponting  <https://orcid.org/0000-0002-5074-736X>

REFERENCES

- Austin, M.-P., Frilingos, M., Lumley, J., Hadzi-Pavlovic, D., Roncolato, W., Acland, S., ... Parker, G. (2008). Brief antenatal cognitive behaviour therapy group intervention for the prevention of postnatal depression and anxiety: A randomised controlled trial. *Journal of Affective Disorders*, 105(1–3), 35–44. <https://doi.org/10.1016/j.jad.2007.04.001>
- Barrera, A. Z., Torres, L. D., & Muñoz, R. F. (2007). Prevention of depression: The state of the science at the beginning of the 21st century. *International Review of Psychiatry*, 19(6), 655–670. <https://doi.org/10.1080/09540260701797894>
- Beddoe, A. E., & Lee, K. A. (2008). Mind–body interventions during pregnancy. *JOGNN*, 37, 165–175. <https://doi.org/10.1111/j.1552-6909.2008.00218>
- Bittner, A., Peukert, J., Zimmermann, C., Junge-Hoffmeister, J., Parker, L. S., Stöbel-Richter, Y., & Weidner, K. (2014). Early intervention in pregnant women with elevated anxiety and depressive symptoms. *The Journal of Perinatal & Neonatal Nursing*, 28(3), 185–195. <https://doi.org/10.1097/JPN.0000000000000027>
- Bledsoe, S. E., & Grote, N. K. (2006). Treating depression during pregnancy and the postpartum: A preliminary meta-analysis. *Research on Social Work Practice*, 16(2), 109–120. <https://doi.org/10.1177/1049731505282202>
- Chambless, D. L., & Ollendick, T. H. (2001). Empirically supported psychological interventions: Controversies and evidence. *Annual Review of Psychology*, 52(1), 685–716. <https://doi.org/10.1146/annurev.psych.52.1.685>
- Coelho, H. F., Murray, L., Royal-Lawson, M., & Cooper, P. J. (2011). Antenatal anxiety disorder as a predictor of postnatal depression: A longitudinal study. *Journal of Affective Disorders*, 129(1–3), 348–353. <https://doi.org/10.1016/J.JAD.2010.08.002>
- Collins, J. W., & David, R. J. (2005). Pregnancy outcome of Mexican-American women: The effect of generational residence in the United States. *Obstetrical & Gynecological Survey*, 60(3), 147–148. <https://doi.org/10.1097/01.ogx.0000154429.92315.3c>
- Copeland, A., Gallo, L., & Alolabi, N. (2019). The surgeon's guide to systematic review and meta-analysis. In *Evidence-based surgery* (pp. 145–157). Cham: Springer International Publishing. https://doi.org/10.1007/978-3-030-05120-4_15
- Cox, J. L., Holden, J. M., & Sagovsky, R. (1987). Edinburgh Postnatal Depression Scale (EPDS). *British Journal of Psychiatry*, 150, 782–786. <https://doi.org/10.1192/bjp.150.6.782>
- Crockett, K., Zlotnick, C., Davis, M., Payne, N., & Washington, R. (2008). A depression preventive intervention for rural low-income African-American pregnant women at risk for postpartum depression. *Archives of Women's Mental Health*, 11(5–6), 319–325. <https://doi.org/https://doi.org/10.1007/s00737-008-0036-3>
- Curry, S. J., Krist, A. H., Owens, D. K., Barry, M. J., Caughey, A. B., Davidson, K. W., ... Wong, J. B. (2019). Interventions to prevent perinatal depression. *JAMA*, 321(6), 580–587. <https://doi.org/10.1001/jama.2019.0007>
- Davis, K., Goodman, S. H., Leiferman, J., Taylor, M., & Dimidjian, S. (2015). A randomized controlled trial of yoga for pregnant women with symptoms of depression and anxiety. *Complementary Therapies in Clinical Practice*, 21(3), 166–172. <https://doi.org/10.1016/J.JCTCP.2015.06.005>
- Dennis, C. L., & Hodnett, E. D. (2007). Psychosocial and psychological interventions for treating postpartum depression. *Cochrane Database of Systematic Reviews*, 4, CD006116. <https://doi.org/10.1002/14651858.CD006116.pub2>
- Dennis, C. L., & Hodnett, E. D. (2007). Psychosocial and psychological interventions for treating postpartum depression (Review). *Cochrane Database of Systematic Reviews*. <https://doi.org/10.1002/14651858.CD006116.pub2>
- Ding, X. X., Wu, Y. L., Xu, S. J., Zhu, R. P., Jia, X. M., Zhang, S. F., ... Tao, F. B. (2014). Maternal anxiety during pregnancy and adverse birth outcomes: A systematic review and meta-analysis of prospective cohort studies. *Journal of Affective Disorders*, 159, 103–110. <https://doi.org/10.1016/j.jad.2014.02.027>
- Dunkel Schetter, C., & Tanner, L. (2012). Anxiety, depression and stress in pregnancy: Implications for mothers, children, research, and practice. *Current Opinion in Psychiatry*, 25, 141–148. <https://doi.org/10.1097/YCO.0b013e3283503680>
- Edge, D., Baker, D., & Rogers, A. (2004). Perinatal depression among Black Caribbean women. *Health & Social Care in the Community*, 12(5), 430–438. <https://doi.org/10.1111/j.1365-2524.2004.00513.x>
- El-Mohandes, A. A., Kiely, M., Joseph, J. G., Subramanian, S., Johnson, A. A., Blake, S. M., ... El-Khorazaty, M. N. (2008). An intervention to improve postpartum outcomes in African-American mothers: A randomized controlled trial. *Obstetrics and gynecology*, 112(3), 611–620. <https://doi.org/10.1097/AOG.0b013e3181834b10>
- Feldman, R., Granat, A., Pariente, C., Kanety, H., Kuint, J., & Gilboa-Schechtman, E. (2009). Maternal depression and anxiety across the postpartum year and infant social engagement, fear regulation, and stress reactivity. *Journal of the American Academy of Child & Adolescent Psychiatry*, 48(9), 919–927. <https://doi.org/10.1097/CHI.0b013e3181b21651>
- Field, T., Diego, M., Delgado, J., & Medina, L. (2013a). Peer support and interpersonal psychotherapy groups experienced decreased prenatal

- depression, anxiety and cortisol. *Early Human Development*, 89(9), 621–624. <https://doi.org/10.1016/j.earlhumdev.2013.04.006>
- Field, T., Diego, M., Delgado, J., & Medina, L. (2013b). Tai chi/yoga reduces prenatal depression, anxiety and sleep disturbances. *Complementary Therapies in Clinical Practice*, 19(1), 6–10. <https://doi.org/10.1016/j.ctcp.2012.10.001>
- Fung, K., & Dennis, C. L. (2010). Postpartum depression among immigrant women. *Current Opinion in Psychiatry*, 23(4), 342–348. <https://doi.org/10.1097/YCO.0b013e32833ad721>
- Goodman, J. H. (2009). Women's attitudes, preferences, and perceived barriers to treatment for perinatal depression. *Birth*, 36(1), 60–69. <https://doi.org/10.1111/j.1523-536X.2008.00296>
- Goodman, J. H., Guarino, A., Chenausky, K., Klein, L., Prager, J., Petersen, R., ... Freeman, M. (2014). CALM pregnancy: Results of a pilot study of mindfulness-based cognitive therapy for perinatal anxiety. *Archives of Women's Mental Health*, 17(5), 373–387. <https://doi.org/10.1007/s00737-013-0402-7>
- Goodman, J. H., & Tyer-Viola, L. (2010). Detection, treatment, and referral of perinatal depression and anxiety by obstetrical providers. *Journal of Women's Health*, 19(3), 477–490. <https://doi.org/10.1089/jwh.2008.1352>
- Grote, N. K., Bridge, J. A., Gavin, A. R., Melville, J. L., Iyengar, S., & Katon, W. J. (2010). A meta-analysis of depression during pregnancy and the risk of preterm birth, low birth weight, and intrauterine growth restriction. *Archives of General Psychiatry*, 67(10), 1012–1024. <https://doi.org/10.1001/archgenpsychiatry.2010.111>
- Grote, N. K., Swartz, H. A., Geibel, S. L., Zuckoff, A., Houck, P. R., & Frank, E. (2009). A randomized controlled trial of culturally relevant, brief interpersonal psychotherapy for perinatal depression. *Psychiatric Services*, 60(3), 313–321. <https://doi.org/https://doi.org/10.1176/appi.ps.60.3.313>
- Grote, N. K., Zuckoff, A., Swartz, H., Bledsoe, S. E., & Geibel, S. (2007). Engaging women who are depressed and economically disadvantaged in mental health treatment. Retrieved from <https://academic.oup.com/sw/article-abstract/52/4/295/1911779>
- Hall, H. G., Beattie, J., Lau, R., East, C., & Anne Biro, M. (2016). Mindfulness and perinatal mental health: A systematic review. *Women and Birth*, 29(1), 62–71. <https://doi.org/10.1016/J.WOMBI.2015.08.006>
- Heinicke, C. M., Fineman, N. R., Ruth, G., Recchia, S. L., Guthrie, D., & Rodning, C. (1999). Relationship-based intervention with at-risk mothers: Outcome in the first year of life. *Infant Mental Health Journal*, 20(4), 349–374. [https://doi.org/10.1002/\(SICI\)1097-0355\(199924\)20:4<349::AID-IMHJ1>3.0.CO;2-X](https://doi.org/10.1002/(SICI)1097-0355(199924)20:4<349::AID-IMHJ1>3.0.CO;2-X)
- Heron, J., O'Connor, T. G., Evans, J., Golding, J., & Glover, V. (2004). The course of anxiety and depression through pregnancy and the postpartum in a community sample. *Journal of Affective Disorders*, 80(1), 65–73. <https://doi.org/10.1016/j.jad.2003.08.004>
- Higgins, J. P., Altman, D. G., Gøtzsche, P. C., Jüni, P., Moher, D., Oxman, A. D., ... Sterne, J. A. (2011). The Cochrane Collaboration's tool for assessing risk of bias in randomised trials. *Bmj*, 343, d5928. <https://doi.org/10.1136/bmj.d5928>
- Huey, S. J., & Polo, A. J. (2008). Evidence-based psychosocial treatments for ethnic minority youth. *Journal of Clinical Child and Adolescent Psychology*, 37, 262–301. <https://doi.org/10.1080/15374410701820174>
- Jallo, N., Ruiz, R. J., Elswick, R. K., & French, E. (2014). Guided imagery for stress and symptom management in pregnant African American women. *Evidence-Based Complementary and Alternative Medicine: ECAM*, 2014, 840923–840913. <https://doi.org/10.1155/2014/840923>
- Jesse, D. E., Blanchard, A., Bunch, S., Dolbier, C., Hodgson, J., & Swanson, M. S. (2010). A pilot study to reduce risk for antepartum depression among women in a public health prenatal clinic. *Issues in Mental Health Nursing*, 31(5), 355–364. <https://doi.org/https://doi.org/10.3109/01612840903427831>
- Jesse, D. E., Gaynes, B. N., Feldhousen, E. B., Newton, E. R., Bunch, S., & Hollon, S. D. (2015). Performance of a culturally tailored cognitive-behavioral intervention integrated in a public health setting to reduce risk of antepartum depression: A randomized controlled trial. *Journal of Midwifery & Women's Health*, 60(5), 578–592. <https://doi.org/10.1111/jmwh.12308>
- Kieffer, E. C., Caldwell, C. H., Welmerink, D. B., Welch, K. B., Sinco, B. R., & Guzmán, J. R. (2013). Effect of the healthy MOMs lifestyle intervention on reducing depressive symptoms among pregnant Latinas. *American Journal of Community Psychology*, 51(1-2), 76–89. <https://doi.org/10.1007/s10464-012-9523-9>
- Ko, J. Y., Farr, S. L., Dietz, P. M., & Robbins, C. L. (2012). Depression and treatment among U.S. pregnant and nonpregnant women of reproductive age, 2005–2009. *Journal of Womens Health*, 21(8), 830–836. <https://doi.org/10.1089/jwh.2011.3466>
- Kozhimannil, K. B., Trinacty, C. M., Busch, A. B., Huskamp, H. A., & Adams, A. S. (2011). Racial and ethnic disparities in postpartum depression care among low-income women. *Psychiatric Services*, 62(6), 619–625. https://doi.org/10.1176/ps.62.6.pss6206_0619
- Le, H. N., Perry, D. F., & Stuart, E. A. (2011). Randomized controlled trial of a preventive intervention for perinatal depression in high-risk Latinas. *Journal of Consulting and Clinical Psychology*, 79(2), 135–141. <https://doi.org/https://doi.org/10.1037/a0022492>
- Leddy, M. A., Lawrence, H., & Schulkin, J. (2011). Obstetrician-gynecologists and women's mental health: Findings of the Collaborative Ambulatory Research Network 2005–2009. *Obstetrical & Gynecological Survey*, 66(5), 316–323. <https://doi.org/10.1097/OGX.0b013e31822785ee>
- Lenze, S. N., & Potts, M. A. (2017). Brief interpersonal psychotherapy for depression during pregnancy in a low-income population: A randomized controlled trial. *Journal of Affective Disorders*, 210, 151–157. <https://doi.org/10.1016/j.jad.2016.12.029>
- Levy, L. B., & O'Hara, M. W. (2010). Psychotherapeutic interventions for depressed, low-income women: A review of the literature. *Clinical Psychology Review*, 30(8), 934–950. <https://doi.org/10.1016/j.cpr.2010.06.006>
- Lilliecreutz, C., Josefsson, A., & Sydsjö, G. (2010). An open trial with cognitive behavioral therapy for blood- and injection phobia in pregnant women—A group intervention program. *Archives of Women's Mental Health*, 13(3), 259–265. <https://doi.org/10.1007/s00737-009-0126->
- van Loon, A., van Schaik, A., Dekker, J., & Beekman, A. (2013). Bridging the gap for ethnic minority adult outpatients with depression and anxiety disorders by culturally adapted treatments. *Journal of Affective Disorders*, 147(1–3), 9–16. <https://doi.org/10.1016/J.JAD.2012.12.014>
- Loughnan, S. A., Wallace, M., Joubert, A. E., Haskelberg, H., Andrews, G., & Newby, J. M. (2018). A systematic review of psychological treatments for clinical anxiety during the perinatal period. *Archives of Women's Mental Health*, 21(5), 481–490. <https://doi.org/10.1007/s00737-018-0812-7>
- Lucero, N. B., Beckstrand, R. L., Callister, L. C., & Sanchez Birkhead, A. C. (2012). Prevalence of postpartum depression among Hispanic immigrant women. *Journal of the American Academy of Nurse Practitioners*, 24(12), 726–734. <https://doi.org/10.1111/j.1745-7599.2012.00744.x>
- Mahaffey, B. L., & Lobel, M. (2018). Mental health and emotional distress during pregnancy. In T. A. Revenson, & R. A. R. Gurung (Eds.), *The new handbook of health psychology*. NY: Taylor & Francis/Routledge.
- Mak, W. W. S., Law, R. W., Alvidrez, J., & Pérez-Stable, E. J. (2007). Gender and ethnic diversity in NIMH-funded clinical trials: Review of a decade of published research. *Administration and Policy in Mental Health and Mental Health Services Research*, 34(6), 497–503. <https://doi.org/10.1007/s10488-007-0133-z>
- Marc I, Toureche N, Ernst E, Ed, H., Blanchet C, Dodin S, & Mm, N. (2011). Mind-body interventions during pregnancy for preventing or treating women's anxiety. Retrieved from <http://www.thecochranelibrary.com>

- McKee, M. D., Zayas, L. H., Fletcher, J., Boyd, R. C., & Nam, S. H. (2006). Results of an intervention to reduce perinatal depression among low-income minority women in community primary care. *Journal of Social Service Research*, 32(4), 63–81. https://doi.org/10.1300/J079v32n04_04
- McKenney, K. M., Martinez, N. G., & Yee, L. M. (2018). Patient navigation across the spectrum of women's health care in the United States. *American Journal of Obstetrics and Gynecology*, 218(3), 280–286. <https://doi.org/10.1016/j.ajog.2017.08.009>
- Mendle, J., Eisenlohr-Moul, T., & Kiesner, J. (2016). From menarche to menopause. *Clinical Psychological Science*, 4(5), 859–866. <https://doi.org/10.1177/2167702616650424>
- Misri, S., Abizadeh, J., Sanders, S., & Swift, E. (2015). Perinatal generalized anxiety disorder: Assessment and treatment. *Journal of Women's Health*, 24(9), 762–779. <https://doi.org/10.1089/jwh.2014.5150>
- Missinne, S., & Bracke, P. (2012). Depressive symptoms among immigrants and ethnic minorities: A population based study in 23 European countries. *Social Psychiatry and Psychiatric Epidemiology*, 47(1), 97–109. <https://doi.org/10.1007/s00127-010-0321-0>
- Muñoz, R. F., Le, H. N., Ippen, C. G., Díaz, M. A., Urizar, G. G., Soto, J., ... Lieberman, A. F. (2007). Prevention of postpartum depression in low-income women: Development of the mamás y bebés/mothers and babies course. *Cognitive and Behavioral Practice*, 14, 70–83. <https://doi.org/10.1016/j.cbpra.2006.04.021>
- Nilini, Y. I., Mehralzade, A., Mayer, L., & Milanovic, S. (2018). Treatment of depression, anxiety, and trauma-related disorders during the perinatal period: A systematic review. *Clinical Psychology Review*, 66, 136–148. <https://doi.org/10.1016/j.cpr.2018.06.004>
- O'Connor, E., Rossom, R. C., Henninger, M., Groom, H. C., & Burda, B. U. (2016). Primary care screening for and treatment of depression in pregnant and postpartum women: Evidence report and systematic review for the US Preventive Services Task Force. *JAMA - Journal of the American Medical Association*, 315, 388–406. <https://doi.org/10.1001/jama.2015.18948>
- O'Connor, E., Senger, C. A., Henninger, M., Gaynes, B. N., Coppola, E., & Weyrich, M. S. (2019). Interventions to prevent perinatal depression: A systematic evidence review for the U.S. Preventive Services Task Force. Agency for Healthcare Research and Quality (US). Retrieved from <http://www.ncbi.nlm.nih.gov/pubmed/30807060>
- O'Mahen, H., Himle, J. A., Fedock, G., Henshaw, E., & Flynn, H. (2013). A pilot randomized controlled trial of cognitive behavioral therapy for perinatal depression adapted for women with low incomes. *Depression and Anxiety*, 30(7), 679–687. <https://doi.org/10.1002/da.22050>
- Page, M. J., McKenzie, J. E., & Higgins, J. P. (2018). Tools for assessing risk of reporting biases in studies and syntheses of studies: A systematic review. *BMJ Open*, 8(3), e019703. <https://doi.org/10.1136/bmjopen-2017-019703>
- Pina, A. A., Polo, A. J., & Huey, S. J. (2019). Evidence-based psychosocial interventions for ethnic minority youth: The 10-year update. *Journal of Clinical Child & Adolescent Psychology*, 48(2), 179–202. <https://doi.org/10.1080/15374416.2019.1567350>
- van Ravesteyn, L. M., van den Lambregtse Berg, M. P., Hoogendijk, W. J. G., & Kamperman, A. M. (2017). Interventions to treat mental disorders during pregnancy: A systematic review and multiple treatment meta-analysis. *PLOS ONE*, 12(3), e0173397. <https://doi.org/10.1371/journal.pone.0173397>
- Rich-Edwards, J. W., Kleinman, K., Abrams, A., Harlow, B. L., McLaughlin, T. J., Joffe, H., & Gillman, M. W. (2006). Sociodemographic predictors of antenatal and postpartum depressive symptoms among women in a medical group practice. *Journal of Epidemiology and Community Health*, 60, 221–227. <https://doi.org/10.1136/jech.2005.039370>
- Robertson, E., Grace, S., Wallington, T., & Stewart, D. E. (2004). Antenatal risk factors for postpartum depression: A synthesis of recent literature. *General Hospital Psychiatry*, 26(4), 289–295. <https://doi.org/10.1016/j.genhosppsych.2004.02.006>
- Rosenthal, L., & Lobel, M. (2011). Explaining racial disparities in adverse birth outcomes: Unique sources of stress for Black American women. *Social Science & Medicine*, 72(6), 977–983. <https://doi.org/10.1016/j.socscimed.2011.01.013>
- Sampson, M., Villarreal, Y., & Rubin, A. (2016). A problem-solving therapy intervention for low-income, pregnant women at risk for postpartum depression. *Research on Social Work Practice*, 26(3), 236–242. <https://doi.org/10.1177/1049731514551143>
- Satyapriya, M., Nagarathna, R., Padmalatha, V., & Nagendra, H. R. (2013). Effect of integrated yoga on anxiety, depression & well being in normal pregnancy. *Complementary Therapies in Clinical Practice*, 19(4), 230–236. <https://doi.org/10.1016/J.CTCP.2013.06.003>
- Schofield, Z., & Kapoor, D. (2019). Pre-existing mental health disorders and pregnancy. *Obstetrics, Gynaecology & Reproductive Medicine*, 29(3), 74–79. <https://doi.org/10.1016/J.OGRM.2019.01.005>
- Sockol, L. E., Epperson, C. N., & Barber, J. P. (2011). A meta-analysis of treatments for perinatal depression. *Clinical Psychology Review*, 31(5), 839–849. <https://doi.org/10.1016/j.cpr.2011.03.009>
- Spinelli, M. G., & Endicott, J. (2003). Controlled clinical trial of interpersonal psychotherapy versus parenting education program for depressed pregnant women. *American Journal of Psychiatry*, 160(3), 555–562. <https://doi.org/10.1176/appi.ajp.160.3.555>
- Spinelli, M. G., Endicott, J., Leon, A. C., Goetz, R. R., Kalish, R. B., Brustman, L. E., ... Schulick, J. L. (2013). A controlled clinical treatment trial of interpersonal psychotherapy for depressed pregnant women at 3 New York City sites. *The Journal of Clinical Psychiatry*, 74(4), 393–399. <https://doi.org/10.4088/JCP.12m07909>
- Thomas, N., Komiti, A., & Judd, F. (2014). Pilot early intervention antenatal group program for pregnant women with anxiety and depression. *Archives of Women's Mental Health*, 17(6), 503–509. <https://doi.org/10.1007/s00737-014-0447-2>
- Urizar, G. G., & Muñoz, R. F. (2011). Impact of a prenatal cognitive-behavioral stress management intervention on salivary cortisol levels in low-income mothers and their infants. *Psychoneuroendocrinology*, 36(10), 1480–1494. <https://doi.org/https://doi.org/10.1016/j.psyneuen.2011.04.002>
- U.S. Census Bureau (2018). *Population estimates: Race and Hispanic origin*. Washington, DC: U.S. Government Printing Office.
- Werner, E., Miller, M., Osborne, L. M., Kuzava, S., & Monk, C. (2015). Preventing postpartum depression: Review and recommendations. *Archives of Women's Mental Health*, 18(1), 41–60. <https://doi.org/10.1007/s00737-014-0475-y>
- Zhang, H., & Emory, E. K. (2015). A mindfulness-based intervention for pregnant African-American women. *Mindfulness*, 6(3), 663–674. <https://doi.org/10.1007/s12671-014-0304-4>
- Zlotnick, C., Miller, I. W., Pearlstein, T., Howard, M., & Sweeney, P. (2006). A preventive intervention for pregnant women on public assistance at risk for postpartum depression. *American Journal of Psychiatry*, 163(8), 1443–1445. <https://doi.org/10.1176/ajp.2006.163.8.1443>
- Zlotnick, C., Tzilos, G., Miller, I., Seifer, R., & Stout, R. (2016). Randomized controlled trial to prevent postpartum depression in mothers on public assistance. *Journal of Affective Disorders*, 189, 263–268. <https://doi.org/10.1016/j.jad.2015.09>

How to cite this article: Ponting C, Mahrer NE, Zelcer H, Dunkel Schetter C, Chavira DA. Psychological interventions for depression and anxiety in pregnant Latina and Black women in the United States: A systematic review. *Clin Psychol Psychother*. 2020;1–17. <https://doi.org/10.1002/cpp.2424>

APPENDIX A

ProQuest Dissertation and Theses AI:

ab((pregnancy) AND (intervention) AND (postpartum depression OR depression OR anxiety) , AND (African Americans OR Hispanic Americans)) OR ab((prenatal OR antenatal OR pregnancy) AND (intervention OR treatment OR therapy) AND (postpartum depression OR depression OR anxiety) , AND (African-American OR Black OR Latino OR Hispanic OR minority))

Web of Science:

(TS= (prenatal OR antenatal OR pregnancy) AND TI= (intervention OR treatment OR therapy) AND TS=(postpartum depression OR depression or anxiety) AND TS=(African-American OR Black OR Latino OR Hispanic OR minority))

PubMed:

("Pregnant Women"[Mesh]) OR "Pregnancy"[Mesh]) AND "Psychotherapy"[Mesh]) AND "Depression"[Mesh]) OR "Anxiety"[Mesh]) AND "African Americans"[Mesh]) OR "Hispanic Americans"[Mesh]) OR "Minority Groups"[Mesh])) AND ((prenatal OR antenatal OR pregnancy) AND (intervention OR treatment OR therapy) AND (postpartum depression OR depression or anxiety) , AND (African-American OR Black OR Latino(a) OR Hispanic OR minority))

CINAHL:

(prenatal OR antenatal OR pregnancy) AND (intervention OR treatment OR therapy) AND (postpartum depression OR depression or anxiety) , AND (African-American OR Black OR Latino(a) OR Hispanic OR minority) OR (MH "Expectant Mothers") AND (MH "Intervention Trials") AND (MH "Depression") AND (MH "Anxiety") AND (MH "Depression, Postpartum") AND (MH "Blacks") AND (MH "Hispanics") AND (MH "Minority Groups")

PSYCH INFO:

(MAINSUBJECT.EXACT("Pregnancy") OR MAINSUBJECT.EXACT("Antepartum Period") AND MAINSUBJECT.EXACT("Treatment") OR MAINSUBJECT.EXACT("Clinical Trials") AND MAINSUBJECT.EXACT("Depression (Emotion)") OR MAINSUBJECT.EXACT("Anxiety") AND MAINSUBJECT.EXACT("Blacks") OR MAINSUBJECT.EXACT("Latinos/Latinas") OR MAINSUBJECT.EXACT("Minority Groups")) AND ((prenatal OR antenatal OR pregnancy) AND (intervention OR treatment OR therapy) AND (postpartum depression OR depression OR anxiety) , AND (African-American OR Black OR Latino OR Hispanic OR minority))

ProQuest Dissertation and Theses AI:

ab((pregnancy) AND (intervention) AND (postpartum depression OR depression OR anxiety) , AND (African Americans OR Hispanic Americans)) OR ab((prenatal OR antenatal OR pregnancy) AND (intervention OR treatment OR therapy) AND (postpartum depression OR depression OR anxiety) , AND (African-American OR Black OR Latino OR Hispanic OR minority))

Web of Science:

(TS = (prenatal OR antenatal OR pregnancy) AND TI = (intervention OR treatment OR therapy) AND TS = (postpartum depression OR depression or anxiety) AND TS = (African-American OR Black OR Latino OR Hispanic OR minority))

PubMed:

("Pregnant Women" [Mesh]) OR "Pregnancy" [Mesh]) AND "Psychotherapy" [Mesh]) AND "Depression" [Mesh]) OR "Anxiety" [Mesh]) AND "African Americans" [Mesh]) OR "Hispanic Americans" [Mesh])

FIGURE A1 Review search syntax

OR "Minority Groups" [Mesh])) AND ((prenatal OR antenatal OR pregnancy) AND (intervention OR treatment OR therapy) AND (postpartum depression OR depression or anxiety) , AND (African-American OR Black OR Latino(a) OR Hispanic OR minority))

CINAHL:

(prenatal OR antenatal OR pregnancy) AND (intervention OR treatment OR therapy) AND (postpartum depression OR depression or anxiety) , AND (African-American OR Black OR Latino(a) OR Hispanic OR minority) OR (MH "Expectant Mothers") AND (MH "Intervention Trials") AND (MH "Depression") AND (MH "Anxiety") AND (MH "Depression, Postpartum") AND (MH "Blacks") AND (MH "Hispanics") AND (MH "Minority Groups")

PSYCH INFO:

(MAINSUBJECT.EXACT("Pregnancy") OR MAINSUBJECT.EXACT("Antepartum Period") AND MAINSUBJECT.EXACT("Treatment") OR MAINSUBJECT.EXACT("Clinical Trials") AND MAINSUBJECT.EXACT("Depression (Emotion)") OR MAINSUBJECT.EXACT("Anxiety") AND

MAINSUBJECT.EXACT("Blacks") OR MAINSUBJECT.EXACT("Latinos/Latinas") OR MAINSUBJECT.EXACT("Minority Groups") AND ((prenatal OR antenatal OR pregnancy) AND (intervention OR treat-

ment OR therapy) AND (postpartum depression OR depression OR anxiety), AND (African-American OR Black OR Latino OR Hispanic OR minority))

TABLE A1 Assessment of study bias

	Random sequence generation (selection bias)	Allocation concealment (selection bias)	Blinding of participants and personnel (performance bias)	Blinding of outcome assessment (detection bias)	Incomplete outcome data (attrition bias)	Selective reporting (reporting bias)	Other (Baseline Imbalance)	Overall Bias
Crocket et al. (2008)	⊕	∅	⊗	⊗	⊕	∅	⊕	Medium
El-Mohandes et al. (2008)	⊕	⊕	⊗	⊕	∅	⊕	⊕	Low
Field et al. (2013a)	⊕	∅	⊕	⊕	⊕	∅	⊗	Low
Grote et al. (2009)	⊗	⊗	⊗	⊗	∅	∅	∅	High
Jesse et al. (2010)	⊗	⊗	⊗	∅	∅	⊕	⊕	Medium
Jesse et al. (2015)	⊕	∅	⊗	⊗	⊗	⊕	⊕	Medium
Keiffer et al. (2013)	⊕	⊕	⊗	⊕	⊕	∅	⊕	Low
Le et al. (2011)	⊕	⊕	⊕	⊗	∅	∅	⊕	Low
Lenze and Potts (2017)	⊕	⊕	⊕	∅	⊕	⊕	⊕	Low
McKee et al. (2006)	⊕	∅	∅	⊕	⊗	∅	∅	Medium
Muñoz et al. (2007)	⊕	⊕	⊗	∅	⊕	∅	⊕	Low
Sampson et al. (2016)	⊗	⊗	⊗	∅	⊕	⊕	⊕	Medium
Zhang and Emory (2015)	⊕	∅	⊗	∅	⊗	∅	⊗	High

Note. ⊕ indicates low risk of bias, ∅ indicates unclear risk of bias, and ⊗ indicates high risk of bias.