

Lawrence Berkeley National Laboratory

Lawrence Berkeley National Laboratory

Title

Coupled thermal-hydrological-mechanical analyses of the Yucca Mountain Drift Scale Test - Comparison of field measurements to predictions of four different numerical models

Permalink

<https://escholarship.org/uc/item/5db1x0m5>

Authors

Rutqvist, J.

Barr, D.

Datta, R.

et al.

Publication Date

2004-08-30

Peer reviewed

*To be submitted to Int J Rock Mech & Min Sci
DECOVALEX III Special Issue*

**Coupled thermal-hydrological-mechanical analyses of the Yucca
Mountain Drift Scale Test – Comparison of field measurements to predictions of four
different numerical models**

Version 3 September 3, 2004

J. Rutqvist¹, D. Barr², R. Datta³, A. Gens⁴, A. Millard⁵, S. Olivella⁴, C.-F. Tsang¹, and Y. Tsang¹

¹Earth Sciences Division, Lawrence Berkeley National Laboratory (LBNL), Berkeley, CA 947 20, USA

²Office of Repository Development, U.S. Dept. of Energy, POB 30307, N. Las Vegas, NV 890 36, USA

³Bechtel SAIC Company, 1180 Town Center Dr., Las Vegas, NV 89144, USA

⁴Geotechnical Engineering Department, Technical University of Catalunya, Jordi Girona 1-3, Edificio D-2, 08034 Barcelona, Spain

⁵Commissariat a l'Energie Atomique, Saclay, Gif/Yvette 91191, France

ABSTRACT

The Yucca Mountain Drift Scale Test (DST) is a multiyear, large-scale underground heater test designed to study coupled thermal-hydrological-mechanical-chemical behavior in unsaturated fractured and welded tuff. As part of the international cooperative code-comparison project DECOVALEX, four research teams used four different numerical models to simulate and predict coupled thermal-hydrological-mechanical (THM) processes at the DST. The simulated processes included above-boiling temperature changes, liquid and vapor water movements, rock-mass stress and displacement, and THM-induced changes in fracture permeability. Model predictions were evaluated by comparison to measurements of temperature, water saturation, displacement, and air permeability. The generally good agreement between simulated and measured THM data shows that adopted continuum model approaches are adequate for simulating relevant coupled THM processes at the DST. Moreover, TM-induced rock-mass deformations were reasonably well predicted using elastic models, although some individual displacements appeared to be better captured using an elasto-plastic model. It is concluded that fracture closure/opening caused by change in normal stress across fractures is the dominant mechanism for TM-induced changes in intrinsic fracture permeability at the DST, whereas fracture shear dilation appears to be less significant. This indicates that TM-induced changes in intrinsic permeability at the DST, which are within one order of magnitude, tend to be reversible.

1 INTRODUCTION

The Yucca Mountain Drift Scale Test (DST) is a multiyear, large-scale underground heating test within the US Department of Energy's program for the site characterization at Yucca Mountain, Nevada. The test is designed to study coupled thermal-hydrological-mechanical-chemical (THMC) behavior in unsaturated fractured and welded tuff. As part of the international cooperative project DECOVALEX III (DEvelopment of COupled models and their VALidation against EXperiments, project phase III), four research teams used four different numerical models to simulate and predict coupled thermal-hydrological-mechanical (THM) processes at the DST (Table 1). The simulated THM processes included temperature changes, liquid and vapor water movements, rock stress and displacements, and THM-induced changes in fracture permeability. The predicted THM responses were compared to *in situ* measurements of temperature, water saturation (estimated through geophysical measurements), rock-mass displacements, and changes in air permeability.

This paper compiles simulation results on coupled THM processes by the four research teams, with intercomparison to measured data at the DST. The DST and the four numerical models are only briefly described in this paper. More comprehensive descriptions of experimental data and model approaches used by the individual research teams can be found in several papers [6, 7, 8, 9, 10] in a recent issue (on coupled THMC processes) of Elsevier's Geo-Engineering Book Series. Additional results by two of the research teams, as well as results on coupled thermal-hydrological-chemical analyses, are presented in three companion papers in this issue of the journal [11, 12, 13]. A comprehensive presentation of the DST and experimental data can be found in a Yucca Mountain Project report [14].

2 THE YUCCA MOUNTAIN DRIFT SCALE TEST

The Drift Scale Test (DST) is carried out at Yucca Mountain, Nevada, in a side alcove of an underground tunnel, the Exploratory Studies Facility (ESF), at a depth of about 250 m in the so called middle nonlithophysal zone (Tptpmn) of the Topopah Spring Tuff formation. The DST centers around a heated drift, 5 m in diameter and 50 m long (Fig. 1). Heating is provided by floor heaters along a 47.5 m long section of the heated drift, as well as by 50 rod heaters, referred to as “wing heaters,” which are placed into horizontal boreholes emanating from the spring line of heated drift (Fig. 1). The dimensions of the heated drift are similar to the current design of waste emplacement drifts for a proposed repository at Yucca Mountain.

Measurements at the DST include laboratory and field characterization of the rock massif surrounding the heated drift—denoted the “DST test block.” Preheat laboratory characterization included measurements of thermal, hydrological, and mechanical properties, mineral-petrology studies, and pore-water chemical and isotopic analysis from rock cores. Preheat field characterization of the DST test block involved rock-mass classification, fracture mapping, video logging of boreholes, geophysical measurements, and air-permeability testing.

After activation of the heaters, passive monitoring and active testing were conducted during the heating phase and are still ongoing as part of the subsequent cooling phase. The DST test block has been instrumented with thousands of sensors to monitor the thermal, mechanical, hydrological, and chemical processes on at least an hourly basis [14]. In Fig. 1, the instrumented boreholes are color-coded according to their functions. For the purposes of studying THM processes, the focus is on boreholes designed to measure thermal (yellow), hydrological (blue), and mechanical (green) responses. Radial arrays of 20 m long boreholes emanating from the heated drift monitor the

temperature evolution, as do longitudinal boreholes parallel to the heated drift. Temperature sensors in each borehole are installed at approximately 30 cm intervals. Most boreholes labeled as “hydrology” in Fig. 1 originate from the observation drift. These are clusters of 40 m long boreholes forming vertical fans that bracket the heated drift and the wing heaters. These boreholes are used for periodic active air-injection testing to track changes in permeability of the fracture system. Deformation of the rock mass is being monitored with an array of multiple-point borehole extensometer (MPBX) systems. In the radial MPBX boreholes, four anchors attach to the borehole wall at a distance of about 1, 2, 4, and 15 m from the drift wall. The displacements of each anchor, relative to the drift wall, are continuously monitored.

The heaters of the DST were activated on December 3, 1997. The heating phase continued for approximately four years, until January 14, 2002, when heater power was turned off. Currently, the DST is in the midst of a four-year period of natural cooling.

3 COMPUTATIONAL MODELS

Computational models for simulating coupled THM processes at the DST are briefly presented in this section. First, computational models and experiences in previously published thermal-hydrological (TH) and TM analyses of the DST are reviewed in Section 3.1. These TH and TM analyses provided guidance for the research teams of the DECOVALEX III project in developing appropriate coupled THM models of the DST. The four computational models used for development of coupled THM model results compiled in this paper are briefly described in Section 3.2.

3.1 Previous coupled TH and TM analyses of the DST

Pre-test predictions of coupled TH and TM processes at the DST have been conducted as a part of the Yucca Mountain site characterization project. These predictions include three-dimensional simulations of TH processes conducted by the Lawrence Berkeley National Laboratory using the TOUGH2 code [15, 16] and by the Lawrence Livermore National Laboratory using the NUFT code [17]. Coupled TM processes have been simulated by the Sandia National Laboratories using the JAS-3D code [18, 19] and by the Lawrence Livermore National Laboratory using the 3-DEC code [20]. However, no fully coupled THM analysis of the DST was performed until recently, when Rutqvist et al. [3, 4] applied a model for the analysis of coupled THM processes under multiphase flow conditions.

In a pre-test prediction of coupled TH processes at the DST, Birkholtzer and Tsang [15, 16] developed a three-dimensional numerical model based on previous experiences in simulating the Yucca Mountain Single Heater Test (SHT) in the same formation [21]. An overlapping continuum model, or more specifically, a dual-permeability model (DKM), was used to model fracture and matrix interactions with multiphase, multicomponent fluid flow and heat transfer. Use of an overlapping continuum model adds to the complexity of the numerical model, but offers the possibility of realistically partitioning flow between rock matrix and fractures. Comparison to field observations of temperature and water saturation (estimated through geophysical methods) showed that the continuum approach and the DKM model are adequate for simulating coupled TH processes at the DST.

In a pre-test prediction of coupled TM processes at the DST, Francis et al. [18, 19] applied a ubiquitously fractured continuum model approach that was also based on previous experiences in

modeling the SHT [22]. The TM analyses of the DST and SHT, showed that rock-mass deformations in the Tptpmn unit were reasonably well captured with the continuum approach and linear-elastic or nonlinear-elastic mechanical model [19, 20, and 22]. Furthermore, a comparison between simulation results of a discrete-fracture model and a continuum model by Blair [20] showed minor differences regarding mechanical displacements. This indicates the dominance of thermo-elastic expansion of the rock matrix, although locally a small slip may occur on fracture planes.

3.2 Justification for continuum based models of the DST

One significant finding from previous TH and TM analyses of the DST described above, as well as preliminary THM analysis by Rutqvist and Tsang [4], is that a continuum approach is sufficient to simulate the main coupled THM processes at the DST. A continuum approach is appropriate in this case because the volcanic tuff formation, in which the DST is located, is intensively fractured, with a mean fracture spacing less than 0.3 m. Fracture mapping along the ESF displays three dominant fracture sets [23]:

- 1) One prominent vertical, southeast trending
- 2) One less prominent vertical, southwest trending
- 3) One less prominent subhorizontal

with the southeast trending fracture set being roughly parallel to the heated drift. In addition, a set of randomly oriented fractures accounts for about 30% of the mapped fractures. The average spacing for mapped fractures with traces longer than 1.0 m is about 0.3 to 0.4 m. However, detailed cell mapping of small-scale fractures has shown that about 80% of the fractures at the site are less than 1.0 m, and therefore the fracture spacing (counting all fractures) would be less than 0.3 m. Moreover, air-permeability tests conducted in short-interval (0.3 m) packed-off borehole sections show that hydraulic conducting fractures exist at least every 0.3 m [24]. This evidence of a highly fractured rock justifies the use of a continuum modeling approach. Furthermore, important interactions

between fracture and matrix fluid flow can be readily simulated using a continuum model, such as the above-mentioned DKM approach. Consequently, the four computational models applied within the DECOVALEX III project for analysis of coupled THM processes at the DST are all continuum-based.

3.3 Computational models for coupled THM analysis within DECOVALEX III

The codes and basic approaches used by the four research teams (Table 1) within the DECOVALEX III project are presented in Table 2. The LBNL and UPC teams performed coupled THM analyses that included modeling of two-phase fluid flow (gas and liquid), heat transfer (conduction and convection), and mechanical stress and strain. LBNL used the above-mentioned DKM approach for simulation of TH processes, whereas UPC used an equivalent continuum model. CEA and CNWRA did not simulate fluid flow and heat transfer, but performed TM analyses in which the measured temperature field was imported to the numerical models. The measured temperature from the several hundred sensors in the DST test block was interpolated into a three-dimensional temperature field, which in turn was interpolated to nodal points in the numerical mesh of the CEA and CNWRA models. For simulation of rock-mechanical behavior, LBNL and UPC used elastic models, whereas CEA and CNWRA applied various elasto-plastic models. TM-induced permeability changes were modeled by three of the four teams: LBNL, UPC, and CNWRA. LBNL and CNWRA correlated permeability to fracture aperture in orthogonal fracture sets, where the fracture aperture is controlled by fracture normal stress. UPC correlated permeability to porosity, where porosity is controlled by volumetric strain.

In general, all teams discretized the DST test area into two-dimensional vertical cross sections through the center of the heated drift (Fig. 2). A two-dimensional geometry was deemed sufficient for predicting TM-induced rock displacements and permeability changes at selected monitoring

boreholes in the vertical x-z plane. However, note that the temperature in the heated drift may be overestimated in a two-dimensional model as a result of *in situ* three-dimensional out-of plane heat loss and heat loss through a bulkhead at the entrance of the heated drift. UPC therefore reduced the simulated heat power to be 70% of the actual heat power. LBNL did not reduce the simulated heat power, but found a good agreement with the measured temperature if loss of heat and vapor through the bulkhead was explicitly simulated. To simulate the bulkhead, LBNL added an extra grid element with properties corresponding to a heat-loss coefficient of 0.4375 W/°K, determined through model calibration against early temperature data.

Table 3 presents the model dimensions and boundary conditions used by each team and Table 4 presents initial conditions. Model dimensions, boundary and initial conditions were assigned by each individual team based on site information. The lateral and vertical dimensions of the models (L_x , L_{z1} , and L_{z2}) used by each team vary from a few hundred to thousand meters. However, considering the limited extent of the heated rock volume during the four-year heating period, the boundaries of all four models are considered to be sufficiently far away from the drift to avoid adverse boundary effects on the simulated near field THM responses. The initial stress field varies somewhat among the research teams (Table 4). In general at Yucca Mountain, the maximum principal stress is vertical, with its magnitude approximated by the weight of the overburden rock mass. Considering the depth of the DST, ground surface topography, densities of the overlying rock units, the vertical stress should be in the range of 4 to 6 MPa. The horizontal stresses are more uncertain because only a limited number of stress measurements have been conducted in the Tptpmn rock unit. The horizontal stresses at Yucca Mountain have been estimated to be about half of the vertical, but the ratio of horizontal to vertical stress could vary from 0.3 to 1.0 [25]. Recent stress measurements around the ESF confirm that horizontal stresses are lower than the vertical ones, and indicates a minimum

horizontal stress around 2 MPa and maximum horizontal stress of about 2.5 to 4 MPa [26]. Because the thermal and mechanical responses at the DST are caused by thermally induced stresses, which are independent of the initial stresses, the initial stress may have little effect on the simulation results. However, as will be discussed in Section 6, the magnitude of initial horizontal stress does affect the potential for developing tensile failure and shear slip in regions of thermal stress relief away from the heated drift.

Table 5 presents material properties adopted by each research team. The respective research team derived material properties suitable for their respective modeling approach using site data from Yucca Mountain project reports (e.g., [29] for mechanical properties). In Table 5, hydrologic and thermal properties are marked N/A for CEA and CNWRA, since these research teams did not calculate thermal and hydrological processes. The hydrologic properties used by LBNL include water-retention and relative-permeability functions representing fractured and matrix continua, whereas UPC uses equivalent continuum properties representing a composite effect of matrix and fractures. The rock-mechanical properties include rock-mass deformability and strength. The Young's modulus adopted for the fractured rock mass by LBNL and CNWRA is about 50% of the values of intact rock, whereas UPC and CEA used intact-rock values. Strength properties used in the elasto-plastic ubiquitous joint models used by CEA and CNWRA are also listed. However, the most important parameters for simulation of THM responses at the DST are coefficient of thermal expansion and parameters defining the relationship between fracture normal stress and permeability. LBNL, CNWRA, and CEA adopted temperature dependent thermal expansion coefficients representing values determined from intact core samples (Fig. 3). UPC used a constant value, which on the average is about twice the thermal expansion adopted by the other teams.

The permeability changes at the DST were predicted by LBNL, CNWRA, and UPC, using individually derived stress-versus-permeability functions. LBNL derived a stress-versus-permeability function based on a conceptual model of highly fractured rock containing three orthogonal fracture sets (see the schematic cubic block model for LBNL in Fig. 4). Fracture apertures for each set were calculated using an exponential function [3]:

$$b = b_r + b_{\max} \exp(-a\sigma_n) \quad (1)$$

where b_r is the residual aperture at high compressive normal stress σ_n , and b_{\max} and a are empirical parameters that were determined by calibration against various field experiments at Yucca Mountain [30]. Applying a parallel plate flow model to Equation (1), the permeability correction factor, F_k , in each fracture set is calculated according to [30]:

$$F_k = \left(\frac{b}{b_i}\right)^3 = \left(1 + \frac{b_{\max}}{b_i} [\exp(-a\sigma_n) - \exp(-a\sigma_{ni})]\right)^3 \quad (2)$$

where b_i is the initial aperture and σ_{ni} is the initial normal stress across each fracture set. In the analysis presented here, a b_{\max} of 150 μm and $a = 0.6 \text{ MPa}^{-1}$ are adopted.

CNWRA used a similar approach to that of LBNL, but the model contains only two orthogonal fracture sets (see schematic of fractured rock model for CNWRA in Fig. 4). A deformation-permeability relationship based on Bandis [31] hyperbolic fracture normal closure model was extended to include corrections for shear dilation according to [10]:

$$F_k = \left(\frac{b}{b_i}\right)^3 = \left(\frac{d}{c(c\sigma_n + 1)b_i} - \frac{e_{f_{tp}} + e_{f_{sp}} \tan \psi_f}{\phi_{fi}}\right)^3 \quad (3)$$

where c is a constant that can be derived from initial values of normal stress and aperture, and d is the reciprocal of initial fracture normal stiffness [10]. In Equation (3), $e_{f_{tp}}$ and $e_{f_{sp}}$ are tensile and shear plastic strains, ϕ_{fi} is initial fracture porosity, and ψ_f is the dilation angle. For the Tptpmn unit

surrounding the DST, an initial normal stiffness of 201 GPa/m and an initial fracture porosity of 0.01 was adopted.

UPC applied an empirical permeability-versus-porosity relationship,

$$k = k_i \exp(-\gamma(\phi_i - \phi)) \quad (4)$$

where k_i and ϕ_i are initial values of permeability and porosity, and γ is an empirical constant [8]. The current porosity is calculated from the volumetric strain assuming incompressible grains. For an elastic material, this corresponds to a stress-versus-permeability function controlled by changes in mean stress, $\Delta\sigma_m$, as:

$$F_k = \exp(-A\Delta\sigma_m) \quad (5)$$

where A can be derived from initial porosity, bulk modulus, and γ . For the results presented in this paper, the adopted material parameters, including $\gamma = 1,000$, corresponds to $A \approx 1.306 \cdot 10^{-7} \text{ Pa}^{-1}$.

The main difference between the three stress-versus-permeability models are illustrated in Fig. 4. LBNL and CNWRA calculate changes in permeability based on the normal stress for a number of orthogonal fracture sets, whereas UPC calculates changes in permeability based on changes in mean stress. Thus, changes calculated by LBNL and CNWRA can be anisotropic, depending on normal stress across different fracture sets, whereas UPC calculates isotropic changes in permeability controlled by changes in mean stress. Fig. 4 compares the stress-permeability-functions of the three research teams, for a special case of isotropic changes in stress. For an isotropic stress change, the various functions show some similarity, although there are differences in slope and residual permeability.

4 ESSENTIAL THM RESPONSES DURING THE HEATING TEST

A solid understanding of the essential coupled THM responses at the DST has been gained through extensive field monitoring and by the several independent numerical analyses compiled in this paper. The coupled THM responses at the DST are driven by changes in rock temperature during the four year heating period and the following natural cooling period. Before the heat is turned on, the system stays at a temperature of about 24°C, with liquid water saturation in the rock matrix of about 90%. After the heater is turned on, the temperature at the drift wall rises to the boiling point (about 94°C) within three months (Fig. 5). After a short halt in the temperature rise, while liquid water in the rock matrix is vaporized, the temperature continues to rise at a relatively slower rate. During the test, the thermal input was manually reduced with time to limit the rising temperature at the drift wall to about 200°C (Fig. 5). Nevertheless, high (above boiling) temperature at the DST induces strongly coupled THM processes, especially in the vicinity of the drift and wing heaters.

Fig. 6a through f present simulated results after one year of heating, illustrating the main coupled THM processes at the DST. Fig. 6a shows that after one year of heating, the temperature has risen above the boiling point around the heated drift and near the wing heaters. High temperature induces evaporation of liquid matrix water and drying near the heat source (Fig. 6b and c, dryout zone). The evaporated water is transported as vapor away from the heat source in the permeable fracture system toward cooler regions, where it is condensed to liquid water (Fig. 6b, dark zone). As a result, a dryout zone is created near the heat source, and a condensation zone moves progressively away from the heat source. At the same time, high temperature gives rise to thermal expansion of the rock matrix, with associated TM-induced displacements and stresses (Fig. 6d and e). At one year, the maximum calculated displacement is greater than 4 mm at a distance of 5 to 10 m above drift (Fig. 6d). Near the heat source, the horizontal compressive stress increases strongly, with a maximum increase at the

drift wall and near the wing heaters (Fig. 6e). Such an increase in compressive stress tends to tighten fractures to smaller aperture, leading to a decrease in fracture permeability. Away from the heat source, however, the horizontal stress decreases slightly (Fig. 6e, top). This decrease in horizontal stress unloads pre-existing vertical fractures that open to greater apertures, leading to an increase in air permeability in this area.

Fig. 6f presents the calculated THM-induced changes in air permeability in the fracture system.

These changes are caused by the combined effect of TH-induced changes in fracture moisture content shown in Fig. 6b and TM-induced changes in fracture aperture shown in Fig. 6e. Near the heat source, permeability decreases mainly because of fracture closure, but is also affected by TH-induced wetting and drying. Away from the heat source, a zone of increased permeability has developed as a result of the opening of vertical fractures (Fig. 6f, near borehole section 74:4). The analyses by LBNL and CNWRA indicate that fracture closure/opening by changes in stress normal to fractures is the dominant mechanism for permeability changes at the DST [9,10]. This indicates that permeability changes caused by shear slip are small compared to changes by normal stress. However, both CNWRA and CEA simulation results indicate that shear slip can be initiated along pre-existing fractures after a few years of heating, especially around the drift and in the zone of stress reduction about 15 m above the drift (see zone of horizontal stress reduction in Fig. 6e). The issue of potential inelastic (irreversible) changes in permeability caused by such fracture shear slip is discussed in Section 6.

5 COMPARISON OF MODEL PREDICTIONS AND FIELD DATA

This section provides comparison of simulated and measured THM responses in the DST test block. Simulated and measured rock temperatures are first compared in Section 5.1, since temperature change is the driving force behind the coupled THM processes at the DST. Section 5.2 and 5.3

provides comparison of simulated and measured displacements and changes in air permeability, respectively.

5.1 Rock temperature

Fig. 7 shows simulated and measured temperature evolution at the drift wall, and Fig. 8 presents simulated and measured temperature profiles along a vertical borehole emanating from the crown of the heated drift. The figures show reasonable excellent agreement between simulated and measured temperature for LBNL and a reasonably good agreement for UPC. The difference in simulated temperature between LBNL and UPC can be explained by their respective approaches of simulating out of plane and bulkhead heat loss. As described in Section 3.3, UPC reduced the heat power input to their two-dimensional model simulation to about 70% of the actual heat power. (The actual heat power per meter drift applied to two-dimensional models is the total power shown in Fig. 5, divided by the length of the heated drift). Although this approach results in an overall reasonable agreement with measured temperature, it overestimates the heat loss during the first year and underestimates the heat loss towards the end of the heating period. The excellent agreement achieved by LBNL between simulated and measured temperature throughout the four-year heating period shows that the explicit simulation of the bulkhead with an additional element provides an accurate representation of heat loss. It correctly simulates heat loss as being proportional to the thermal gradient across the bulkhead, rather than being proportional to the heating power. CEA and CNWRA are not included in Fig. 7 and 8, since these research teams did not perform a temperature simulation, but imported the measured temperature into their models (described in Section 3.3). The temperature distributions in the CEA and CNWRA models are represented by the measured data in Fig. 7 and 8.

5.2 Rock displacements

The research teams were asked to predict the time evolution of rock-mass incremental displacements along extensometer boreholes (shown in Fig. 6e) for a borehole array located at $y = 21$ m (i.e. close to the middle of the axial extension of the drift). Sensitivity analyses showed that displacement magnitudes are mainly dependent on the coefficient of thermal expansion, whereas the rock-mass deformation modulus has a smaller impact. As described in Section 3.3, the thermal expansion coefficient adopted by LBNL, CEA, and CNWRA are similar with intact-rock values determined on core samples. The UPC team used a thermal expansion coefficient that on average was twice the value of any other team and consequently calculated displacement values about twice as large. Because the thermal expansion coefficient adopted by the UPC team is twice as high as any other team (and twice as high as the thermal expansion of intact rock), an intercomparison is not meaningful, and therefore, UPC's displacement results is excluded in the following detailed comparison.

Fig. 9 shows a comparison between simulated and measured results for extensometer boreholes 155 and 156, the two extensometers having the most complete set of measured data (see location of these boreholes in Fig. 6e). In general, the displacements predicted by LBNL, CEA, and CNWRA are consistent, with larger incremental displacement for anchors located farther away from the drift wall. As long as the simulated mechanical responses are elastic, the simulated displacements along borehole 155 are very close to these measured for anchors 3 and 4, whereas the displacement for anchors 1 and 2 is underpredicted (Fig. 9a through d). The CEA's elasto-plastic ubiquitous joint model overpredicts displacements, especially in anchors 3 and 4 (Fig. 9c and d). The results for borehole 156 shows excellent predictions of displacement in anchor 3, whereas the displacements in

anchors 2 and 4 are generally underpredicted. Most notably, the CEA's elasto-plastic ubiquitous joint model provides the best prediction for anchor 4 of borehole 156, both in trends and magnitude.

Fig. 10 presents a comparison of calculated and measured displacements at the end of the heating period as a function of distance from the borehole collar (drift wall). In Fig. 10a, the shaded area represents the range of the field data available from all inclined boreholes (BH147, 148, 154, 155, 178, 179 shown in Fig. 6e) and all upper vertical boreholes (BH 149, 156, 180 shown in Fig. 6e) located in three borehole arrays at $y = 41.1, 21.0,$ and 13.7 m. All these arrays are located within the axial extension of the heated drift, with the one at 41.1 m being farthest out, located about 4.6 m from the end of the heated drift. In general, Fig. 10 shows that the calculated displacements are generally within the range of the field data, except in areas close to the drift wall. Near the drift wall, there appears to be an additional shift in the displacement field. The CEA's elasto-plastic ubiquitous joint model overpredicts the displacements in the 60° inclined boreholes possibly because of an overprediction of near-wall inelastic deformation (Fig. 10a). The CNWRA model underpredicts the displacements in upper vertical boreholes (Fig. 10b).

5.3 Fracture permeability

The research teams were asked to predict the evolution of fracture permeability at specific borehole locations where air-injection tests are conducted at regular time intervals of about three months. In this paper, three borehole sections—denoted as 76:4, 74:4 and 76:1, located in a borehole array at $y = 30.2$ m—are selected for a detailed comparison of simulated and measured evolution of fracture permeability (see borehole locations in Fig. 6f). These borehole sections were selected for comparison because they represent characteristic responses of fracture permeability at various locations around the heated drift: near the heat source (Section 76:4), far above the heat source (Section 74:4), and far on the side of the heat source (Section 76:1).

As discussed in Section 4, changes in air permeability are caused by the combined effect of TH-induced changes in fracture moisture content (Fig. 6b) and TM-induced changes in fracture aperture (Fig. 6d). TH-induced changes in fracture moisture content cannot be directly measured, since the moisture in the fracture system is only a small fraction of the total moisture content of the fracture-matrix system. However, the extent of the dryout zone at the DST is estimated by geophysical methods that include ground penetrating radar, electric resistivity tomography, and neutron logs [14]. A comparison of those geophysical data with the results by LBNL and UPC indicates that the extent of the dryout zone is controlled by the boiling temperature isotherm, and is well captured in the numerical results. TM-induced changes in fracture permeability are controlled by thermal stress and the adopted stress-versus-permeability relationship. The calculated thermal stress is in turn a function of calculated temperature changes, the thermal expansion coefficient, and the modulus of rock-mass deformation. A direct comparison of the thermal stresses calculated by different teams was not performed. However, based on the thermal expansion coefficient and Young's modulus adopted by each team (Table 5), the thermal stress should be roughly a factor of four higher for UPC compared to LBNL and CNWRA. Such difference in the calculated thermal stress impacts the time evolution of TM-induced changes in fracture permeability.

Sensitivity studies by LBNL, UPC, and CNWRA show that the stress-versus-permeability relationship is the most important parameter for predicting the evolution of the fracture permeability. Obviously, if a more sensitive relationship between stress and permeability is adopted in the analysis, stronger changes in permeability will be predicted. It was also shown, by LBNL and CNWRA, that the permeability changes in vertical and horizontal fractures can be very different in some areas

around the drift. In general, though, the permeability changes more in vertical fractures than in horizontal, because vertical fractures are exposed to greater TM-induced stress changes.

Fig. 11 presents a comparison of measured and simulated fracture permeability (airflow permeability in the fracture system) for the three borehole sections. In this comparison, the mean permeability calculated by each research team is compared to the measured results. For LBNL and CNWRA, the mean permeability correction factor is represented by the geometric mean of permeability correction factors for directional permeability change factors. That is:

$$F_k = \sqrt[3]{F_{kx} \cdot F_{ky} \cdot F_{kz}} \quad (6)$$

where F_{kx} , F_{ky} , F_{kz} are permeability correction factors for permeability in x, y, and z directions. In general, the simulated results are in good agreement with the measured results for all teams in Section 76:4 (near heat source) and 76:1 (on the side of the heat source), whereas only LBNL has a good agreement with the results at 74:4.

At 76:4, all teams correctly predict a decrease in air permeability during the first two years. This decrease in air permeability is the combined effect of TM-induced fracture closure and TH-induced condensation in the fracture system. The analyses by LBNL and CNWRA show that TM-induced decrease in intrinsic permeability occur both in vertical and horizontal fractures. Therefore, the measured decrease is also well captured using the mean stress based model by UPC. After about two years of heating, the measured air permeability appears to recover somewhat. LBNL and UPC capture this partial recovery of air permeability as a result of drying of the fracture system around borehole 76:4. CNWRA, on the other hand, does not capture such recovery because they did not account for TH-induced changes in moisture content within their analysis.

At 76:1, LBNL and UPC predict a slow gradual reduction in air-permeability with time. CNWRA predicted a slight increase during the first year, and thereafter a slight fluctuation between 1 and 1.2, until the end of the heating. The simulated results are roughly similar to the measured, with better agreement achieved by LBNL and UPC. The analyses by CNWRA and LBNL showed that at this location the intrinsic permeability of vertical fractures decreases, while the intrinsic permeability of horizontal fractures slightly increases. In the field, the net effect is a slight decrease in air permeability.

For Section 74:4, measured air permeability increases during the first two years and then gradually decreases. Only LBNL appeared to be able to correctly simulate the magnitude of the increasing permeability during the first two years. The LBNL and CNWRA analyses showed that at 74:4, an increasing permeability can be explained by a reduction in horizontal stress that tends to increase the aperture of vertical fractures. In LBNL's simulation, the increasing permeability of the vertical fractures is sufficiently large to induce a net increase in mean permeability. In CNWRA's simulation, on the other hand, increasing permeability in the vertical fractures was completely offset by a decreasing permeability in horizontal fractures. For CNWRA, the simulated mean permeability did not match with measured results in 74:4, but the measured permeability changes closely matched calculated changes in permeability of the vertical fracture set. This is not unreasonable, considering that fractures oriented perpendicular to the borehole (i.e., subvertical fractures) may be the dominant conduits during the air-injection permeability testing. However, a good match to measured data in 74:4 can probably not be achieved with a mean stress based stress-versus-permeability function as the one used by UPC. Generally, the mean stress increases throughout the DST test block during heating and it may not be possible to achieve an increasing permeability such as the one measured in

74:4. Thus, only a stress-versus-permeability function controlled by changes in fracture normal stress can match the observed permeability increase in Section 74:4.

Fig. 12 shows a comparison of TM-induced changes in intrinsic permeability (i.e. excluding TH-induced changes for LBNL and UPC) at borehole 76:4. The differences between calculated TM-induced permeability correction factors, calculated by each team in Fig. 12, roughly correspond to differences in each team's relationship between stress and permeability under isotropic stress change, shown in Fig. 4. For example, in Fig. 4 LBNL has the greater residual permeability, leading to a slightly higher permeability at the end of the heating phase in Fig. 12. The strongest reduction in TM-induced changes in permeability, calculated by UPC at the end of the heating, can be explained by the functions shown in Fig. 4, and the fact that UPC calculated a much higher thermal stress. Nevertheless, the correlation between Fig. 4 and 12 illustrates the importance of the stress-versus-permeability function for predicting THM-induced changes in permeability at the DST.

6 DISCUSSION

For the performance assessment of a nuclear waste repository, long term effects of relatively short-term coupled THM processes may be most relevant. Potential long-term effects of coupled THM processes are irreversible changes in hydrological properties remaining after temperature decay and thermal stress relief. Irreversible changes in fracture permeability could occur as a result of fracture shear dilation or crushing of fracture surface asperities during peak thermal stress. For example, if shear strength of fractures are exceeded, fractures may shear under dilation, leading to a permanent increase in fracture aperture and thereby an irreversible increase in fracture permeability. As discussed in Section 5, comparison of simulated and measured displacements indicates that some local displacements are affected by inelastic rock-mass responses such as shear slip along fractures. Moreover, CNWRA and CEA found that inelastic mechanical responses may occur, in some cases

near the drift wall and in some cases away from the drift wall, in the zone of stress reduction about 15 m above the heated drift. The inelastic mechanical responses in this zone occurred because the *in situ* horizontal stress was reduced to zero from a relatively low initial horizontal stress. Thus, pre-existing vertical fractures were completely unloaded, resulting in a loss of fracture shear strength and associated fracture shear slip.

For the performance assessment of a nuclear waste repository, the question is, how much does permeability change as a result of these inelastic deformations, and further, how large are the irreversible changes in permeability? CNWRA calculated changes in permeability caused by the shear slip (represented by plastic shear strain in Equation 3) and found that these permeability changes would be relatively small. CNWRA concluded that permeability changes around the heated drift is still dominated by changes in fracture aperture caused by the changes in normal stress across fractures [10]. This conclusion is also supported by the results of the LBNL team, which found good agreement between simulated and measured permeability changes using an model elastic (reversible) model. Moreover, from air-permeability measurements in 46 borehole sections around the DST, there are no signs of widespread increases in permeability that could indicate significant shear slip dilation. The measurements show that TM-induced changes in intrinsic permeability at the DST is within one order of magnitude, with the strongest changes occurring as a decrease in permeability at maximum thermal stress at the end of the heating period. Current trends in measured data, two years into the cooling phase, indicate that permeability recovers toward the initial preheating permeability. This indicates that the TM- induced changes in intrinsic permeability at the DST tend to be reversible.

7 CONCLUSIONS

This paper presents analyses of the coupled THM processes at the Yucca Mountain Drift Scale Test by four research teams using four different numerical models. The generally good agreement between simulated and measured temperature, displacement, and changes in air permeability shows that the numerical models and underlying conceptual models are adequate for simulating coupled THM processes at the DST. From the analyses and discussions presented in this paper, the following specific conclusions can be drawn:

- A continuum model approach is adequate for simulating relevant coupled THM processes at the DST.
- TM-induced rock deformations are generally well simulated using an elastic model, although some individual displacements appear to be captured using an elasto-plastic model.
- The highest potential for inelastic deformation in the form of fracture shear slip occurs near the drift wall and in a zone of thermal stress decrease located more than 15 m above the heated drift.
- Despite potential shear slip along fractures, fracture closure/opening caused by change in normal stress across fractures is the dominant mechanism for TM-induced changes in intrinsic fracture permeability, whereas fracture shear dilation appears to be less significant at the DST.

The last conclusion, made from the analysis of the heating phase at the DST, indicates that TM-induced changes in permeability at the DST, which are within one order of magnitude, tend to be reversible.

Acknowledgements

The paper was prepared through financial support by: The Director, Office of Civilian Radioactive Waste Management, U.S. Department of Energy, through Memorandum Purchase Order QA-B004220RB3X between Bechtel SAIC Company, LLC and the Ernest Orlando Lawrence Berkeley

National Laboratory (Berkeley Lab), provided to Berkeley Lab through the U.S. Department of Energy Contract No. DE-AC03-76SF00098; the ENRESA (Empresa Nacional de Residuos, S.A.); the IRSN (Institut de Radioprotection et de Sûreté Nucléaire).

REFERENCES

- [1] Verpeaux P, Millard A, Charras T, Combescure A. A modern approach of large computer codes for structural analysis. Proc. SmiRT conf., Los Angeles, USA. 1989.
- [2] Itasca Consulting Group. FLAC—Fast Lagrangian Analysis of Continua, version 4.0. Minneapolis, Minesota Itasca Consulting Group, Inc, 2000.
- [3] Rutqvist J, Wu YS, Tsang CF, Bodvarsson G. A Modeling Approach for Analysis of Coupled Multiphase Fluid Flow, Heat Transfer, and Deformation in Fractured Porous Rock *Int J Rock mech Min Sc* 2002;39:429-442.
- [4] Rutqvist J, Tsang CF. TOUGH-FLAC: A numerical simulator for analysis of coupled thermal-hydrologic-mechanical processes in fractured and porous geological media under multi-phase flow conditions. Proceedings of the TOUGH symposium 2003, Lawrence Berkeley National Laboratory, Berkeley, May 12–14, 2003.
- [5] Olivella S, Gens A, Carrera J, Alonso EE. Numerical formulation for a simulator (CODE_BRIGHT) for the coupled analysis of saline media. *Engineering Computations* 1995;13:87–112.
- [6] Datta R, Barr D, Boyle W. Measuring Thermal, Hydrological, Mechanical, and Chemical Responses in the Yucca Mountain Drift Scale Test. In: Stephansson O, Hudson JA, Jing L, editors. *Coupled T-H-M-C Processes in Geo-Systems: Fundamentals, Modelling, Experiments and Applications*. Elsevier Geo-Engineering Book Series, Oxford (in press), 2004.
- [7] Millard A, Rutqvist J. Comparative Analyses of Predicted and Measured Displacements during the Heating Phase of the Yucca Mountain Drift Scale Test. In: Stephansson O, Hudson JA, Jing L, editors. *Coupled T-H-M-C Processes in Geo-Systems: Fundamentals, Modelling, Experiments and Applications*. Elsevier Geo-Engineering Book Series, Oxford (in press), 2004.
- [8] Olivella S, Gens A, Gonzalez C. THM Analysis of a Heating Test in a Fractured Tuff. In: Stephansson O, Hudson JA, Jing L, editors. *Coupled T-H-M-C Processes in Geo-Systems: Fundamentals, Modelling, Experiments and Applications*. Elsevier Geo-Engineering Book Series, Oxford (in press), 2004.
- [9] Rutqvist J, Tsang CF, Tsang Y. Analysis of Stress- and Moisture-Induced Changes in Fractured Rock Permeability at the Yucca Mountain Drift Scale Test. In: Stephansson O, Hudson JA, Jing L, editors. *Coupled T-H-M-C Processes in Geo-Systems: Fundamentals, Modelling, Experiments and Applications*. Elsevier Geo-Engineering Book Series, Oxford (in press), 2004.
- [10] Hsiung SM, Chowdhury AH, Nataraja MS. Thermal-Mechanical Modeling of a Large-Scale Heater Test. In: Stephansson O, Hudson JA, Jing L, editors. *Coupled T-H-M-C Processes in Geo-Systems: Fundamentals, Modelling, Experiments and Applications*. Elsevier Geo-Engineering Book Series, Oxford (in press), 2004.
- [11] Olivella S, Gens A, Gonzalez C. Analyses of thermal-hydrological-mechanical processes in a field thermal test in fractured tuff. *Int J Rock mech Min Sc* 2005;this volume.
- [12] Green R, Hsiung S, Painter S, Chowdhury A, Nataraja M. Modeling the thermal-hydrological and thermal-mechanical responses in the Yucca Mountain Drift Scale Test. *Int J Rock mech Min Sc* 2005;this volume.

- [13] Sonnenthal E, Ito A, Yui M, Sugita Y, Kawakami S. (JNC) + DOE contribution on THC? Coupled Thermo-Hydro-Chemical Simulation of Drift Scale Test at Yucca Mountain. Int J Rock mech Min Sc 2005;this volume.
- [14] Wagner R. Thermal Testing Measurements Report. ANL-NBS-HS-000041 REV 00. Las Vegas, Nevada: Bechtel SAIC Company. ACC: MOL.20021004.0314, 2002.
- [15] Birkholzer JT, Tsang YW. Pretest Analysis of the Thermal-Hydrological Conditions of the ESF Drift Scale Test. Milestone SP9322M4. Berkeley, California: Lawrence Berkeley National Laboratory. ACC: MOL.19971201.0810, 1997.
- [16] Birkholzer JT, Tsang YW. Modeling of thermal-hydrologic processes in a large-scale underground heater test in partially saturated tuff. Water Resources Research 2000;36(6): 1431–1447.
- [17] Buscheck TA, Shaffer RJ and Nitao JJ. Pretest thermal-hydrological analysis of the Drift-Scale Thermal Test at Yucca Mountain. ACC: MOL.19980507.0359, CRWMS M&O, Las Vegas, Nevada, 1997.
- [18] Francis ND, Sobolik SR, Ho CK, Eaton RR, Preece D. Pre-experiment thermal-hydrological-mechanical analyses for the ESF heated drift experiment. SLTR97-0002 CRWMS M&O, Las Vegas, Nevada, 1997.
- [19] Sobolik SR, Finley RE, Ballard S. Thermal-Mechanical Measurements in the Drift Scale Test, Yucca Mountain, Nevada. In: Amadei B, Kranz RL, Scott GA, Smeallie PH, editors. Rock Mechanics for Industry, Proceedings of the 37th U.S. Rock Mechanics Symposium, Vail, Colorado, USA, 6-9 June, 1999. Brookfield, Vermont: A.A. Balkema, 1999;2, p. 735-742.
- [20] Blair SC. Coupled Thermal-Hydrologic-Mechanical Effects on Permeability Analysis and Models Report. ANL-NBS-HS-000037 REV 00. Bechtel SAIC Company, Las Vegas, Nevada, 2001.
- [21] Tsang YW, Birkholzer JT. Predictions and Observations of the Thermal-Hydrological Conditions in the Single Heater Test. Journal of Contaminant Hydrology 1999;38(1-3): 385–425.
- [22] Sobolik SR, Finley RE, Ballard S. Post-Test Comparison of Thermal Mechanical Measurements vs. Analyses for the In-Situ Single Heater Test, Yucca Mountain, Nevada. Int J Rock mech Min Sc 1998;35(4–5):649.
- [23] Nieder-Westermann G.H. Geology of the exploratory studies facility Topopah Spring loop. BAB000000-01717-0200-00002 REV01. CRWMS M&O (Civilian Radioactive Waste Management System Management & Operating Contractor), Las Vegas, Nevada, 1998.
- [24] Wang J, Cook P, Trautz R, Flexser S, Hu Q, Salve R, Hudson D, Conrad M, Tsang Y, Williams K, Sol, W, Turin J. *In-situ field testing of processes ANL-NBS-HS-000005 REV01*. Las Vegas, Nevada: Bechtel SAIC Company, 2001.
- [25] Kessel D, Hayes L, Gilstrap OJ. Yucca Mountain Site Geotechnical Report. B00000000-01717-5705-00043 REV 01. Two volumes. ACC: MOL.19971017.0736; MOL.19971017.0737, CRWMS M&O (Civilian Radioactive Waste Management System Management & Operating Contractor) Las Vegas, Nevada, 1997.
- [26] Lee MY, Haimson BC. Initial stress in the exploratory studies facility Yucca Mountain, Nevada. In: Amadei B, Kranz RL, Scott GA, Smeallie PH, editors. Rock Mechanics for Industry, Proceedings of the 37th U.S. Rock Mechanics Symposium, Vail, Colorado, USA, 6-9 June, 1999. Brookfield, Vermont: A.A. Balkema, 1999;2, p. 743–750.
- [27] van Genuchten MT. A closed-form equation for predicting the hydraulic conductivity of unsaturated soils. Soil Sci Soc Am J 1980;44:892–898.

- [28] Corey AT. The interrelation between oil and gas relative permeabilities. *Producers Monthly* November 1954: 38-41.
- [29] CRWMS M&O (Civilian Radioactive Waste Management System Management & Operating Contractor). *TBV-332/TBD-325 Resolution Analysis: Geotechnical Rock Properties*. B00000000-01717-5705-00134 REV 00. Las Vegas, Nevada, 1999.
- [30] Rutqvist J and Tsang CF. Analysis of thermal-hydrologic-mechanical behavior near an emplacement drift at Yucca Mountain. *Journal of Contaminant Hydrology*. 2003;62–63:637–652
- [31] Bandis S, Lumsden AC, Barton NR. Fundamentals of rock joint deformation. *Int J Rock Mech Min Sci & Geomech Abstr* 1983;20:249-268.

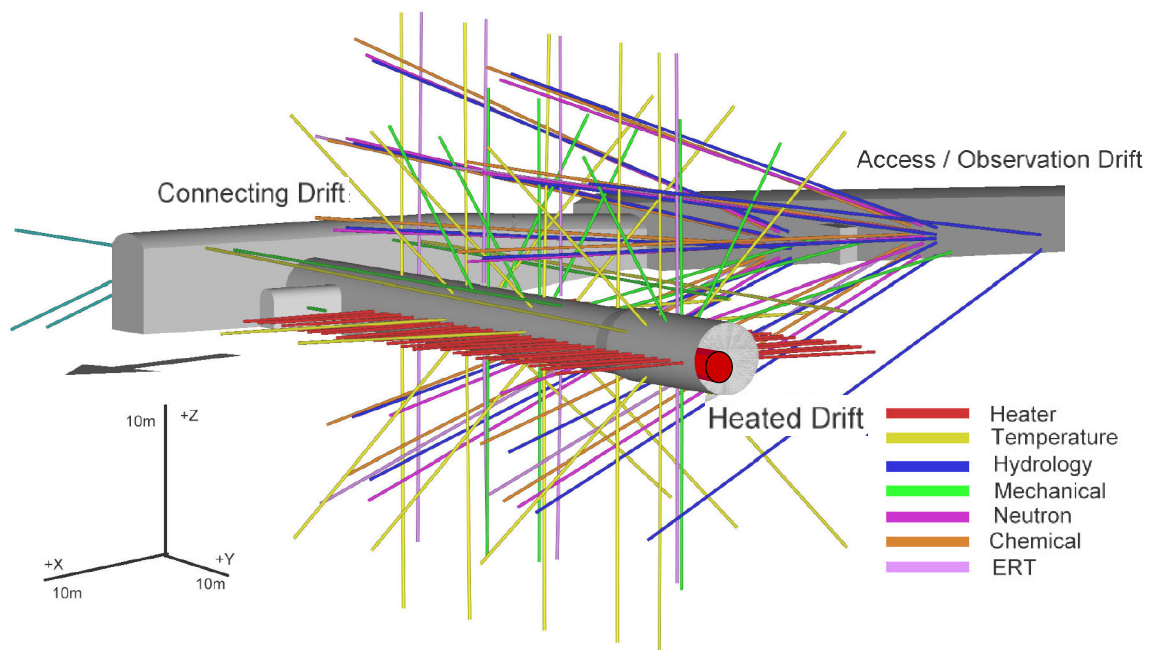


Fig. 1. Three-dimensional view of the Yucca Mountain Drift Scale Test. The color-coded lines indicate boreholes for various measurements of thermally driven THMC responses.

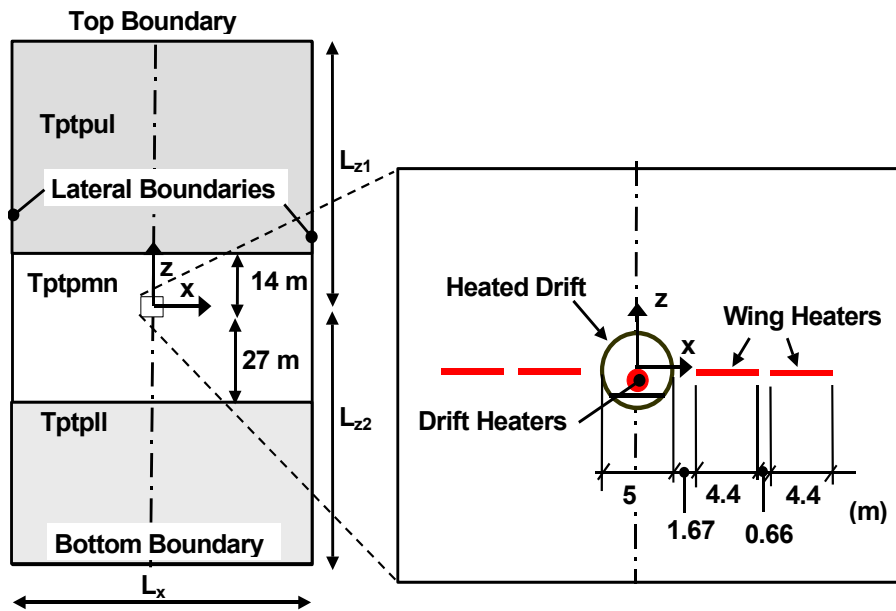


Fig. 2. Geometry of two-dimensional models for simulation of coupled THM processes at the DST (See Table 2 for model dimensions and boundary conditions used by each research team.)

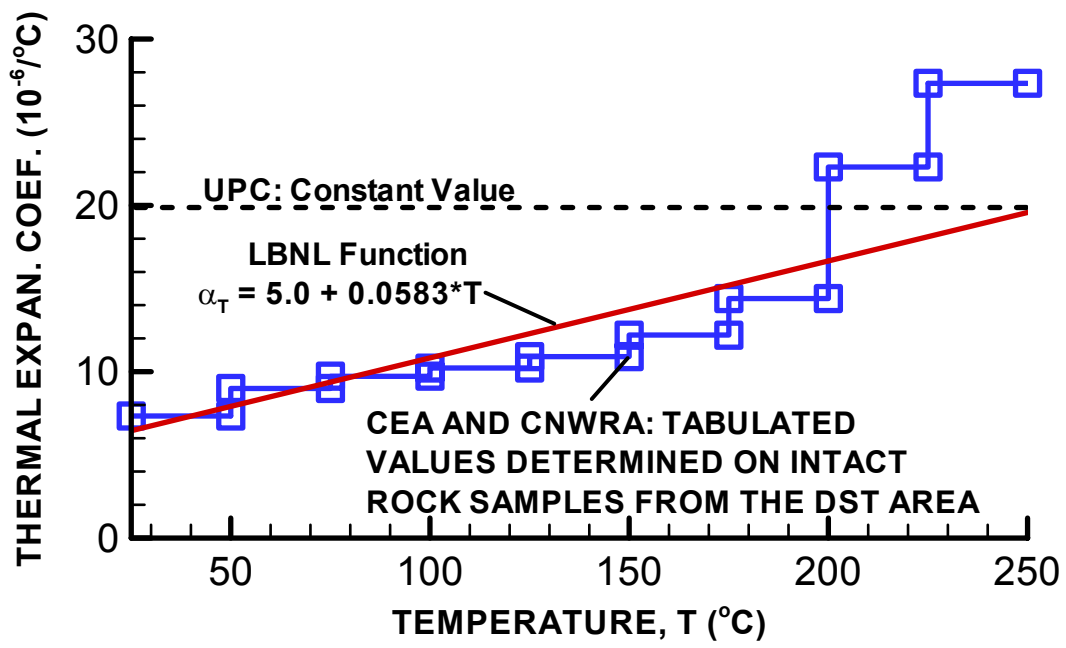


Fig. 3. Thermal expansion coefficient adopted by different research teams, with comparison to values determined on intact rock samples from the DST test block.

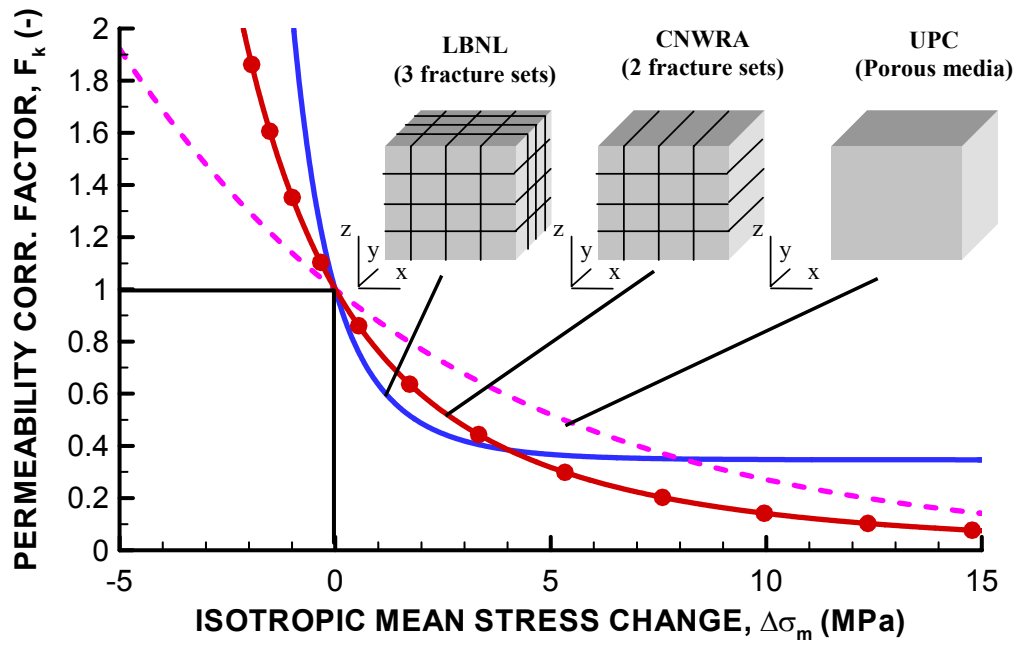
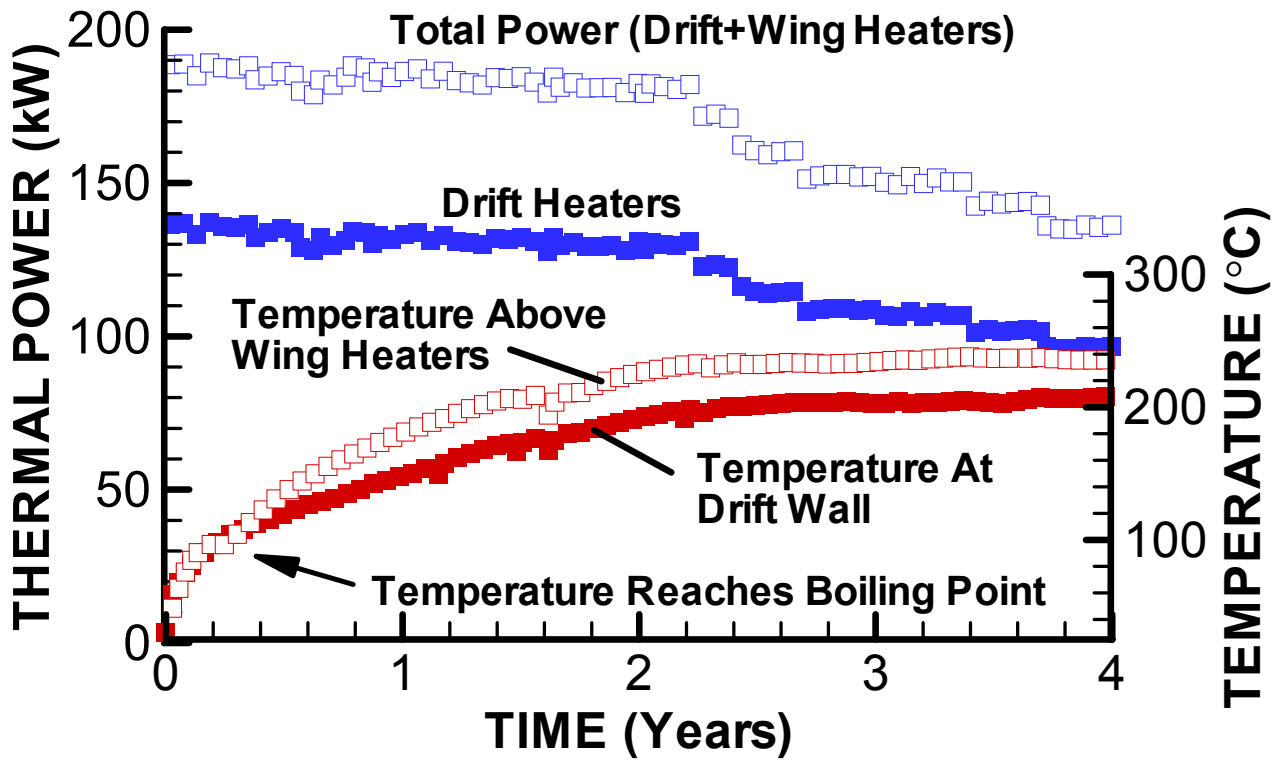
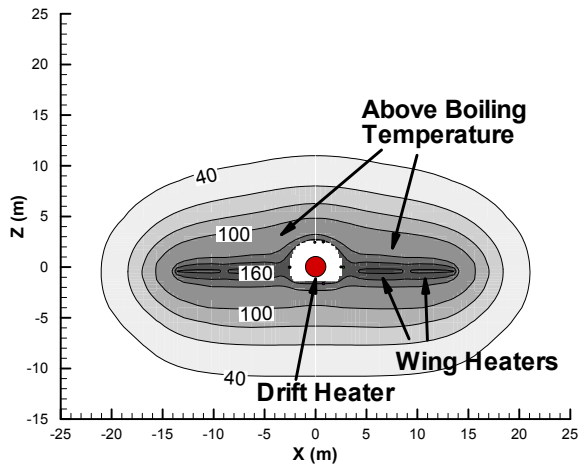


Fig. 4. Permeability correction factor $F_k = k/k_i$ as a result of isotropic changes in stress for stress-versus-permeability models of LBNL, CNWRA, and UPC.

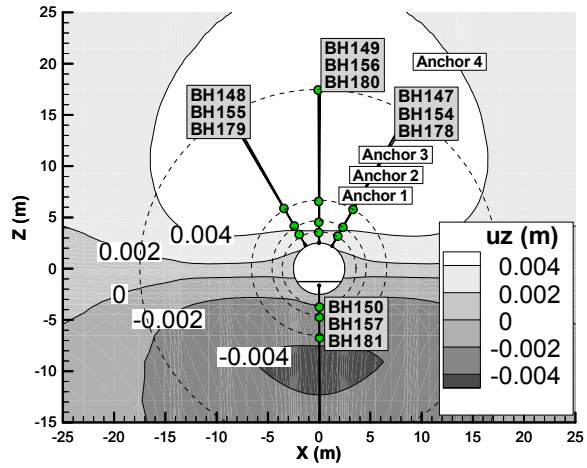


F

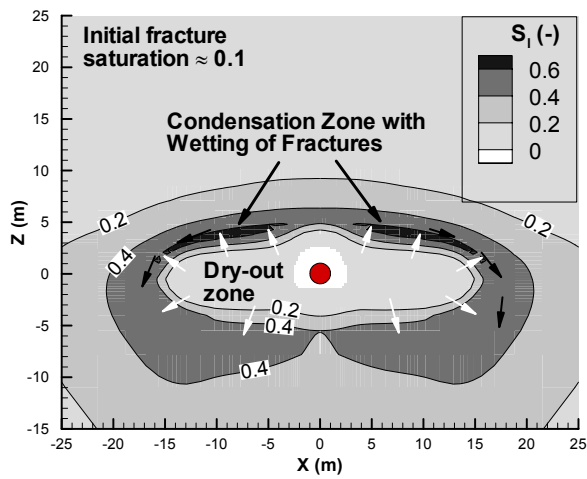
fig. 5. Thermal power and measured temperature at the drift wall and at a monitoring point located above the wing heater at a horizontal distance of 10 m from the center of the drift.



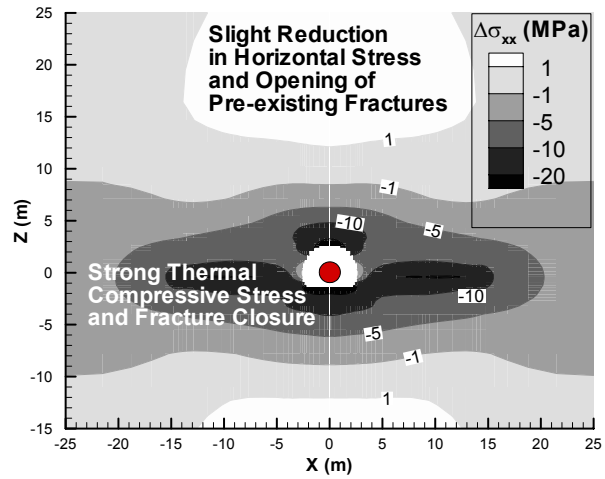
(a) Temperature



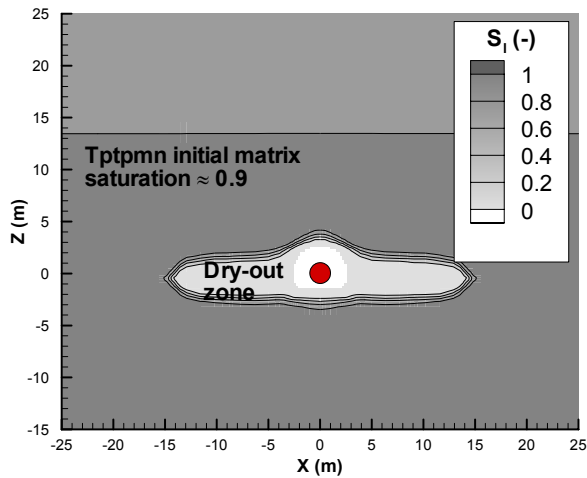
(d) Thermal stress



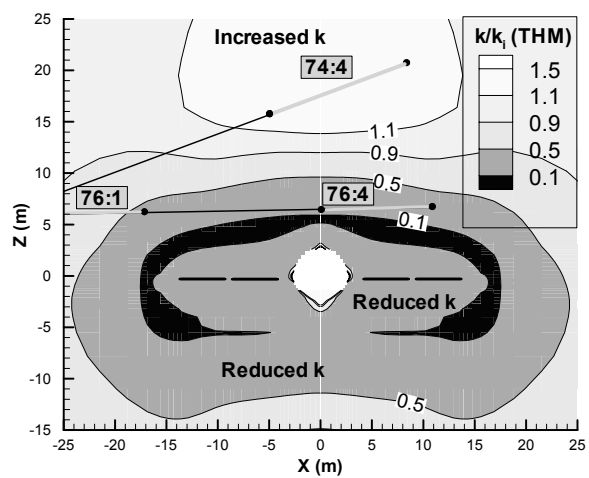
(b) Fracture saturation



(e) Displacement



(c) Matrix saturation



(f) Permeability correction factor

Fig. 6. Calculated distribution of (a) temperature, (b) liquid saturation in fractures, (c) liquid saturation in rock matrix, (d) thermally induced horizontal stress, (e) thermally induced vertical displacement, (f) thermally induced vertical displacement and THM-induced changes in fracture permeability after one year of heating (LBNL simulation).

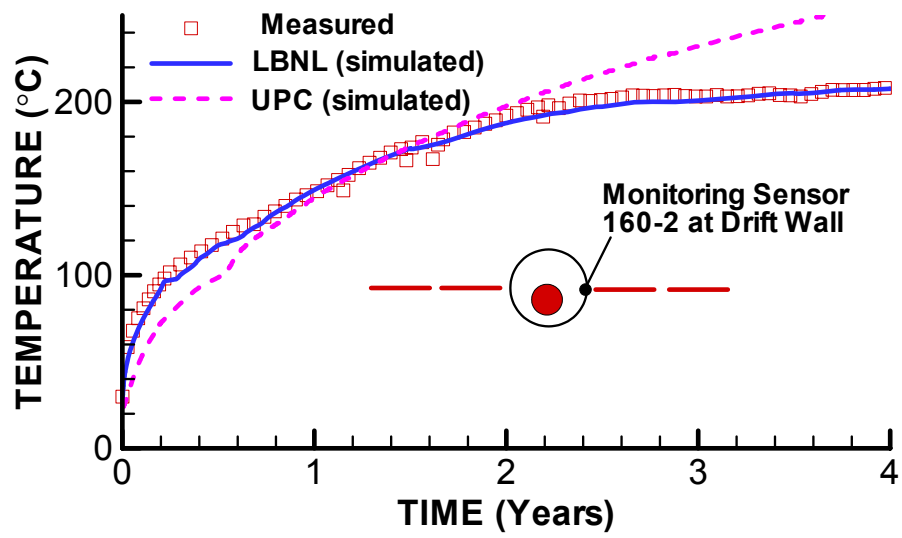


Fig. 7. Comparison of evolution of simulated and measured temperature at the drift wall.

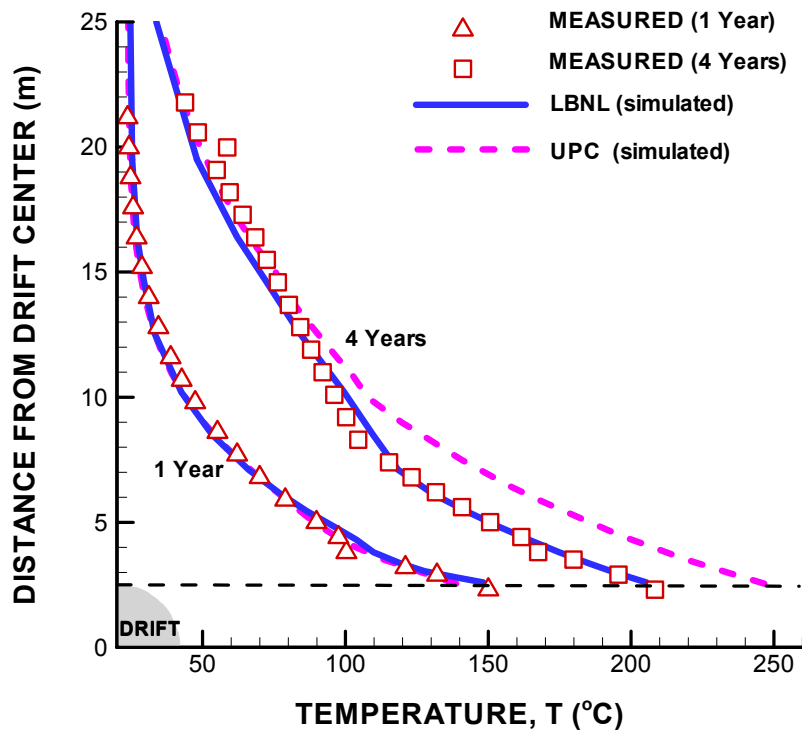


Fig. 8. Measured and simulated temperature profile along borehole 158 extending upward from the crown of the drift.

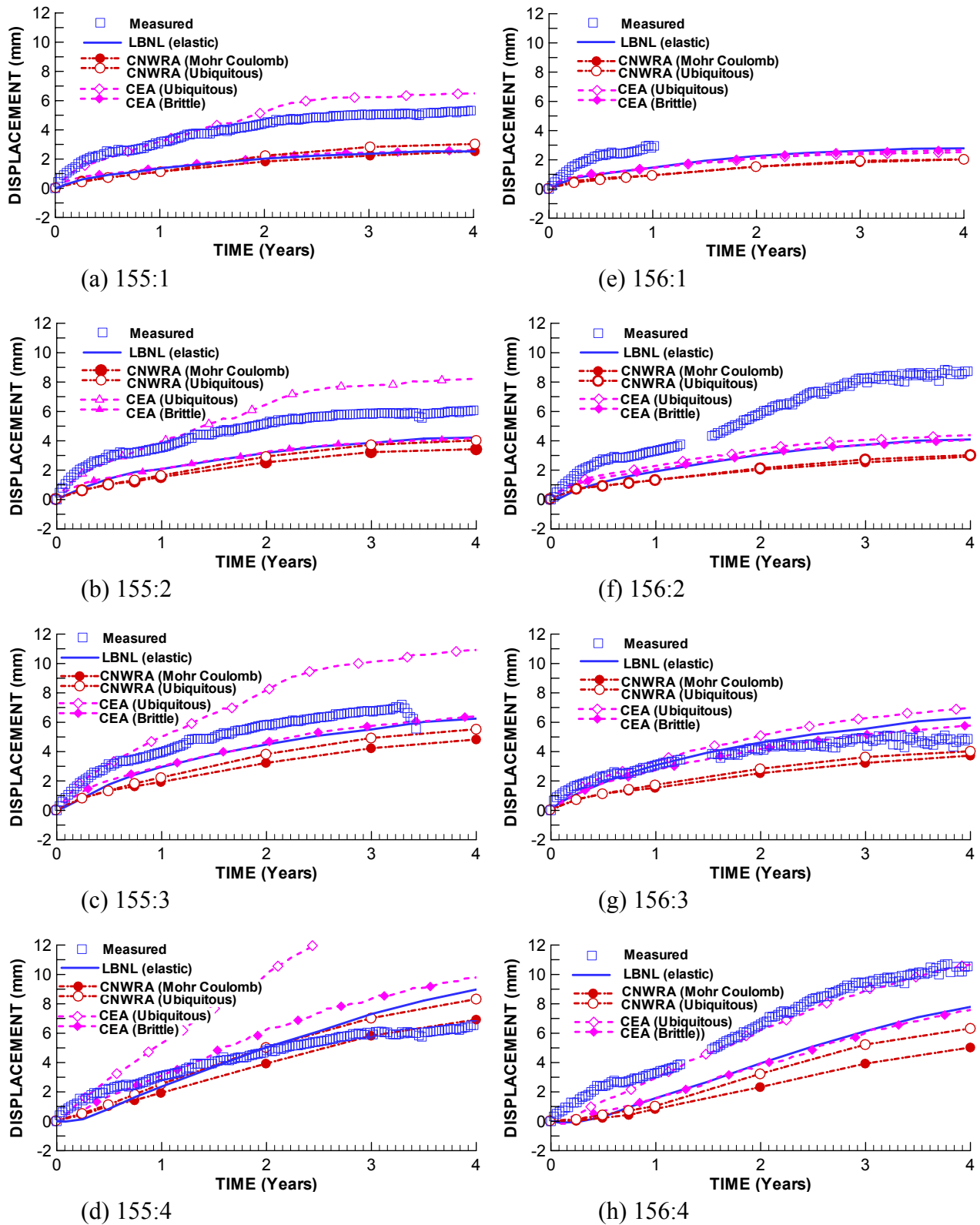


Fig. 9. Measured and simulated displacements in extensometer anchors 1, 2, 3 and 4 in borehole 155 and 156.

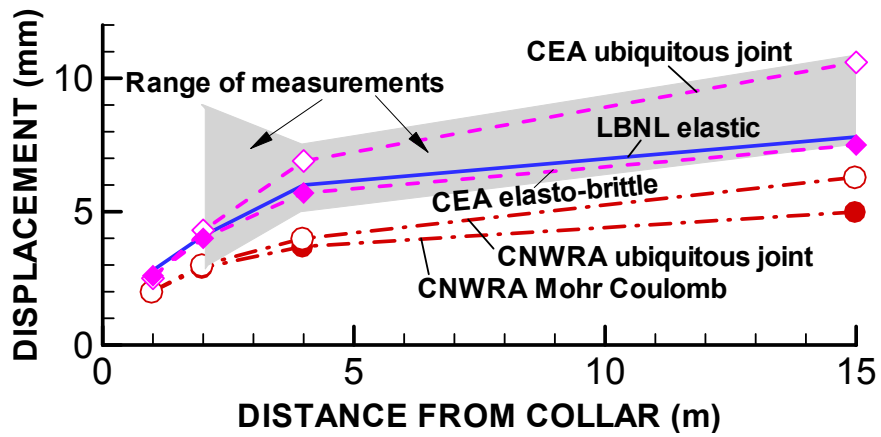
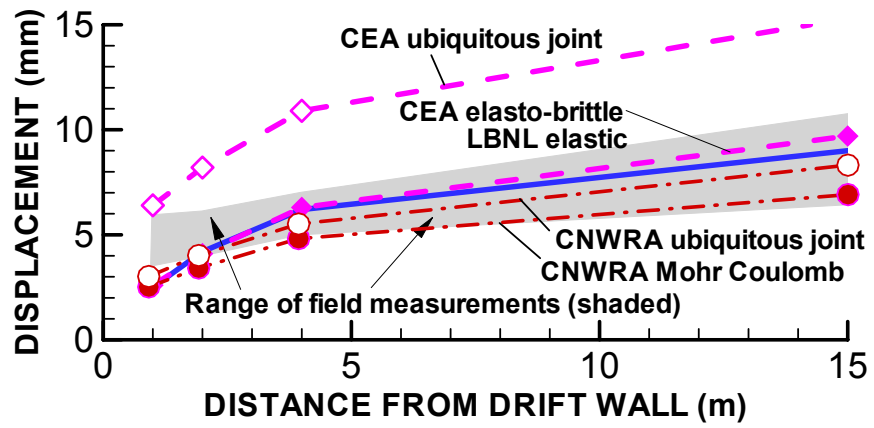
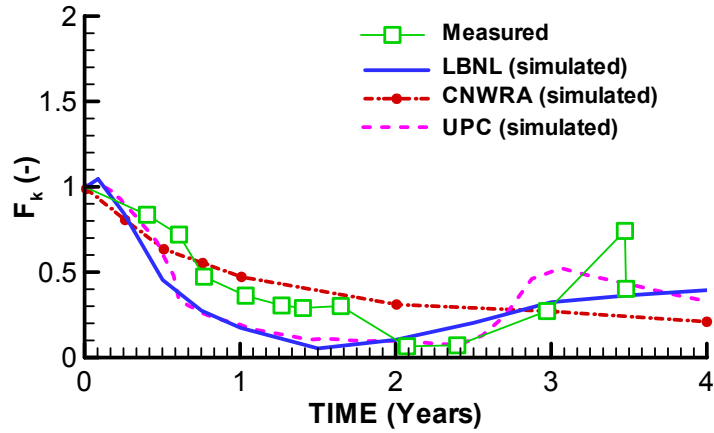
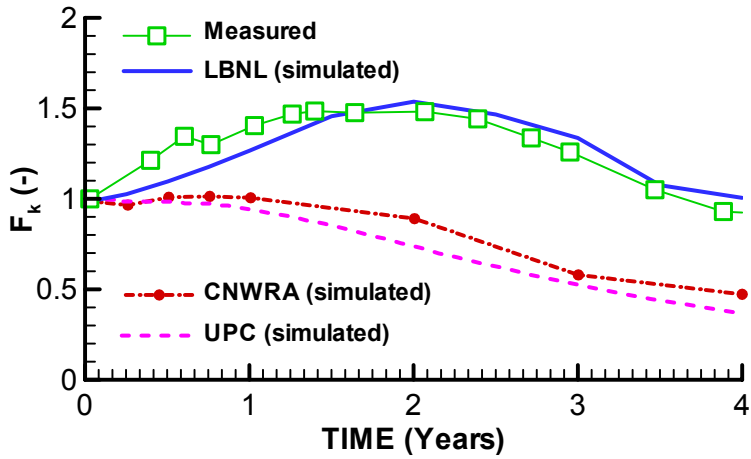


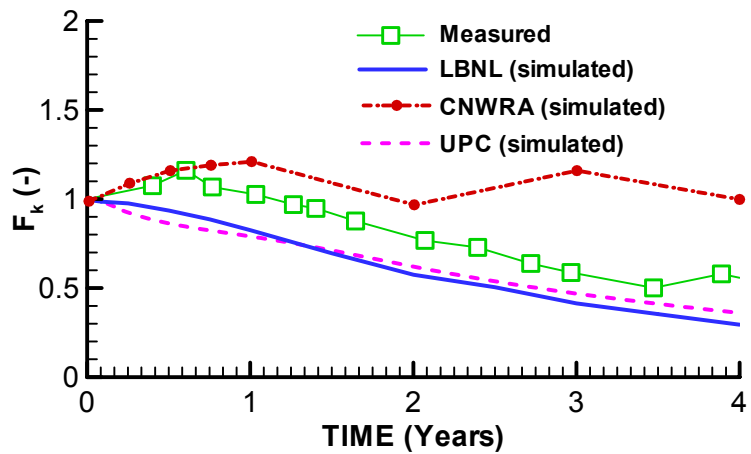
Fig. 10. Comparison of model predictions and ranges of measured displacements after 4 years of heating.



(a) Section 76:4



(b) Section 74:4



(c) Section 76:1

Fig. 11. Measured and simulated evolution of permeability correction factor ($F_k = k/k_i$) for three different borehole sections.

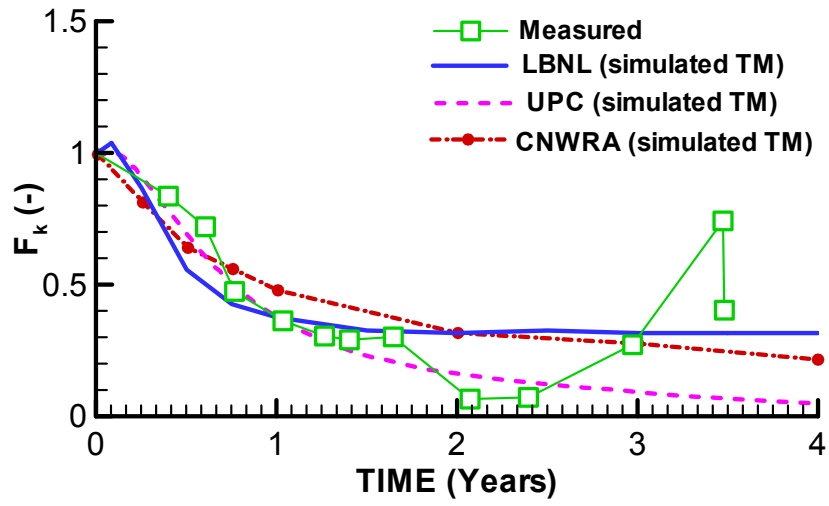


Fig. 12. Measured and simulated evolution of TM-induced permeability correction factor ($F_k = k/k_i$) at 76:4.

Table 1. Research teams and numerical models applied within the DECOVALEX III project for analysis of coupled THM processes at the DST.

Acronym	Affiliation	Computer Code
CEA	Commissariat a l'Energie Atomique, France	CASTEM2000 [1]
CNWRA	Center for Nuclear Regulatory Analyses, USA	FLAC [2]
LBNL	Lawrence Berkeley National Laboratory, USA	TOUGH-FLAC [3, 4]
UPC	Technical University of Catalunya, Spain	CODE_BRIGHT [5]

Table 2. The codes and basic modeling approaches used by each research team for modeling of coupled THM processes at the Yucca Mountain DST.

Team	Numerical simulator	Couplings considered	Mechanical model	Hydraulic model	Hydromechanical model
LBL	TOUGH-FLAC	THM	Elastic	Dual permeability model with interacting matrix and fracture continua.	Permeability correlated to fracture aperture (and normal stress) assuming three orthogonal fractures sets
UPC	CODE-BRIGHT	THM	Elastic	Single continuum model ¹ with continuum equivalent properties	Permeability correlated to porosity (and volumetric strain)
CEA	CASTEM	TM with measured temperature	Elasto-brittle or elasto-plastic ubiquitous joint model	N/A	N/A
CNWRA	FLAC	TM with measured temperature	Elasto-plastic Mohr-Columb or ubiquitous joint model	N/A ²	Permeability correlated to fracture aperture (and normal stress and plastic strain) assuming two orthogonal fracture sets

¹UPC also applied a dual-continuum model for separate TH analysis [6].

²CNWRA also applied a dual-continuum model for separate TH analysis [7].

Table 3. Model dimensions and boundary conditions (see also Figure 2).

Team	Model dimensions			Boundary conditions		
	L_x (m)	L_{z1} (m)	L_{z2} (m)	Top	Bottom	Lateral
LBNL	200	100	150	$T = 22.8^\circ\text{C}$ $\sigma_z = \sigma_v = 3.61 \text{ MPa}$ $P_g = 0.085 \text{ MPa}$ $S_{lm} = 0.70$ $S_{lf} = 0.082$	$T = 28.0^\circ\text{C}$ $P_g = 0.085 \text{ MPa}$ $S_{lm} = 0.92$ $S_{lf} = 0.071$	$\sigma_x = \sigma_H = \sigma_v \cdot 0.6 =$ $[3.61 + 2,200 \cdot 9.81 \cdot$ $(z-100)] \cdot 0.6 \text{ MPa}$ $q_{wx} = 0$ $q_{tx} = 0$
UPC	180	100	150	$T = 24^\circ\text{C}$ $P_g = 0.1 \text{ MPa}$ $q_{lz} = 0.36 \text{ mm/year}$ $\sigma_z = \sigma_v = 8 \text{ MPa}$	$T = 24^\circ\text{C}$ $P_g = 0.1 \text{ MPa}$ $P_1 = -0.3 \text{ MPa}$ $u_z = 0$	$T = 24^\circ\text{C}$ $P_g = 0.1 \text{ MPa}$ $q_{wx} = 0$ $u_x = 0$
CEA	570	150	150	$\sigma_z = \sigma_v = 1.3 \text{ MPa}$	$u_z = 0$	$u_x = 0$
CNWRA	1,000	240	500	$\sigma_z = \sigma_v = 0 \text{ MPa}$ (ground)	$u_z = 0$	$u_x = 0$

Table 4. Initial conditions at the level of the drift.

	Stress	Temperature	Gas pressure	Saturation
LBNL	$\sigma_z \approx 5.8$ MPa $\sigma_y \approx 2.9$ MPa $\sigma_x \approx 3.4$ MPa	$T \approx 24^\circ\text{C}$	$P_g \approx 0.09$ MPa	$S_{lm} \approx 0.9$ $S_{lf} \approx 0.09$
UPC	$\sigma_z \approx 10.2$ MPa $\sigma_y \approx 5.5$ MPa $\sigma_x \approx 5.5$ MPa	$T = 24^\circ\text{C}$	$P_g = 0.1$ MPa	$S_l \approx 0.9$
CEA	$\sigma_z \approx 5.8$ MPa $\sigma_y \approx 2.9$ MPa $\sigma_x \approx 1.7$ MPa	$T = 24^\circ\text{C}$ (measured)	N/A	N/A
CNWRA	$\sigma_z \approx 5.2$ MPa $\sigma_y \approx 1.5$ MPa $\sigma_x \approx 1.5$ MPa	$T = 24^\circ\text{C}$ (measured)	N/A	N/A

Table 5. Material properties

Property	LBNL	UPC	CEA	CNWRA
Permeability	$k_m = 1.24 \cdot 10^{-13} \text{ m}^2$ $k_f = 1.0 \cdot 10^{-13} \text{ m}^2$	$k = 1.0 \cdot 10^{-13} \text{ m}^2$	N/A	N/A
Porosity	$n_m = 0.11$ $n_f = 0.263\text{E-}3$	$n = 0.11$	N/A	N/A
Parameters for water retention and liquid relative permeability for van Genuchten-Mualem model [27].	$P_{0m} = 1/\alpha_m = 0.444 \text{ MPa}$ $m_m = 0.247$ $P_{0f} = 1/\alpha_f = 0.01027 \text{ MPa}$ $m_f = 0.492$ $s_{lm} = 0.18$ $s_{lrf} = 0.01$	$P_0 = 1/\alpha = 0.444 \text{ MPa}$ $m = 0.247$ $s_{lr} = 0.18$ $m(k_{lr}) = 0.04$	N/A	N/A
Gas relative permeability	Corey [28] function with $S_{gr} = 1$	$k_{rg} = S_g^{0.8}$	N/A	N/A
Rock grain density	2,530 kg/m ³	2,510 kg/m ³	N/A	N/A
Rock grain specific heat	953 J/kg K	865 J/kg K	N/A	N/A
Dry thermal conductivity	1.67 W/m K	1.67 W/m K	N/A	N/A
Wet thermal conductivity	2.0 W/m K	2.0 W/m K	N/A	N/A
Young's Modulus	14.8 GPa	36.8 GPa	32.9 GPa	12.02 GPa
Poisson's ratio	0.21	0.2	0.21	0.21
Thermal Expan. Coeff.	Figure 3	Figure 3	Figure 3	Figure 3
Stress-versus-permeability function	Equation (2) and Figure 4	Equation (5) and Figure 4	N/A	Equation (3) and Figure 4
Strength parameters for ubiquitous joints in elasto-plastic models	N/A	N/A	$\phi_j = 30^\circ$ $C_j = 0$ $d_j = 10^\circ$ $\sigma_{Tj} = 3.95 \text{ MPa}$	$\phi_j = 41^\circ$ $C_j = 0.1 \text{ MPa}$ $d_j = 20.5^\circ$ $\sigma_{Tj} = 1.36 \text{ MPa}$