

**UCLA**  
**Contemporary Music Score Collection**

**Title**

Wi(th-e)Red Tree

**Permalink**

<https://escholarship.org/uc/item/5bw9h11b>

**Author**

Diba, Pedram

**Publication Date**

2020

Pedram Diba

# Wi(th-e)Red Tree

(For Wind Symphony)

(2019)





# Instruments:

4 flutes

2 oboes

3 Bb clarinets

1 bass clarinet

1 soprano saxophone

1 alto saxophone

1 tenor saxophone

1 baritone saxophone

1 bass saxophone

2 bassoons

4 horns

3 trumpets

3 trombones (2 tenor and 1 bass)

1 tuba

timpani

5 percussionists

I: vibraphone, whip, piano, and suspended cymbal

II: tam-tam, crotales, and temple blocks

III: bass drum, string drum, suspended cymbal, and glockenspiel

IV: snare drum, 1 medium size tom, piano, flexatone, and suspended cymbal

V: tubular bells, and tam-tam

1 harp

1 piano

1 double bass

# Performance Notes:

Half Sharp: This means the note should be a bit lower than the actual sharp.  
Example: G half sharp is a tone half way in between G natural and G sharp



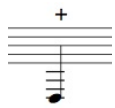
Half flat: This means the note should be a bit higher than the actual flat.  
Example: E half flat is a tone in between E natural and E flat



Arrows indicate gradual shift from one form of playing to another



The occasional plus signs (+) on the low notes of the piano part indicate muting.  
It requires from the pianist to press down on the bottom end of the string while playing the note to create a percussive effect



The letter M on a note indicates playing any multiphonic on the given fundamental



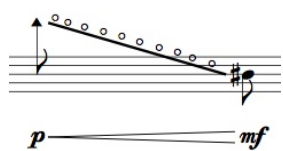
The beaming on top of a note indicates a fast bisbigliando



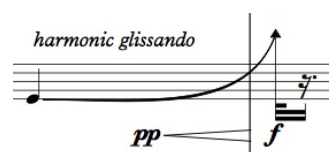
The beaming with rhythm on top of a note indicates a bisbigliando with the rhythm of the beaming



Harmonic glissando in horns and trombones to or from highest partial possible



Harmonic glissando in the bass clarinet in exponential manner



# Wi(th-e)Red Tree

Pedram Diba

4/4  $\text{♩} = 40$  5/4 4/4 2/4 4/4

Flute 1  
Flute 2  
Flute 3  
Flute 4  
Oboe 1  
Oboe 2  
Clarinet in B♭ 1  
Clarinet in B♭ 2  
Clarinet in B♭ 3  
Bass Clarinet in B♭  
Soprano Saxophone  
Alto Saxophone  
Tenor Saxophone  
Baritone Saxophone  
Bass Saxophone  
Bassoon 1  
Bassoon 2  
Horn in F 1  
Horn in F 2  
Horn in F 3  
Horn in F 4  
Trumpet in C 1  
Trumpet in C 2  
Trumpet in C 3  
Trombone 1  
Trombone 2  
Bass Trombone  
Tuba

4/4  $\text{♩} = 40$  5/4 4/4 2/4 4/4

Timpani

Percussion I (piano)  
Tam-tam  
Bass Drum  
Snare Drum  
Tubular Bells

Harp

Piano

Contrabass

soft timpani mallet;  
gently rub the lowest strings  
to create a fabric of sound

start when the conductor enters  
the stage;  
soft mallets

metal brush;  
circular motion

quasi bisbigliando;  
rapidly  
play muddy and cloudy to  
create a unified fabric of sound

sul tasto

*ppppp*, *ppp*, *n*, *p*

7

4/4 2/4 5/4 2/4

Fl. 1

Fl. 2

Fl. 3 air; white noise *PPP*

Fl. 4 air; white noise *PPP*

Cl. 1 *n* *PPP* *n* *PPP*

Cl. 2 *n* *PPP* *n* *PPP*

Cl. 3 air; white noise sh. *PPP*

B. Cl. *n* *PPP* *n* *PPP*

Hn. 1

Hn. 2

Hn. 3 *n* *PPP* *n* *PPP* *n*

Hn. 4 *n* *PPP* *n* *pp* *n*

C Tpt. 1 *pp*

C Tpt. 2 air; white noise *PPP*

C Tpt. 3 air; white noise *PPP*

Tbn. 1 *mp*

Tbn. 2 *mp*

B. Tbn. mute lip vib. *ppppp* *ppp* *ppppp* lip vib. *ppppp* *ppp* senza mute lip vib. *pp*

Tba. *n* *ppp* *n* *ppp* *n* *pp*

4/4 2/4 5/4 2/4

Timp. soft mallets *n* *ppp*

Percussion 1 (piano) start rolling on the strings *mp*

T. t. *p*

B. D. *p*

S. D.

Tub. B.

Hp.

Pno. gradually add notes to create a cluster *mf*

Cb. *p* *ord.*



4

2/4      4/8      3/8      4/8

♩ = 100

Fl. 1  
 air; white noise  
*ppp* → *f* → *ppp* → *fff* → *gliss.* → *ord.* → *p*

Fl. 2  
 air; white noise  
*ppp* → *f* → *ppp* → *fff* → *gliss.* → *ord.* → *p*

Fl. 3  
 air; white noise  
*p* → *f* → *ppp* → *fff* → *gliss.* → *ord.* → *ppp*

Fl. 4  
 air; white noise  
*p* → *f* → *ppp* → *fff* → *gliss.* → *ord.* → *p*

Cl. 1  
*f* → *p*

Cl. 2  
*f* → *p*

Cl. 3  
*f* → *pp* → *f* → *p*

B. Cl.  
*f* → *pp* → *harmonic glissando* → *gliss.* → *f*

Sop. Sax.  
 air; white noise  
*ff* → *p* → *mf*

Alto Sax.  
 air; white noise  
*ff* → *p* → *mf*

Ten. Sax.  
 air; white noise  
*ff* → *p* → *mf*

Bari. Sax.  
 bisb.  
*mf* → *pp*

Bass Sax.  
 bisb.  
*mf* → *pp*

Hn. 1  
 air; white noise  
*p* → *f* → *mf* → *mp* → *p* → *mp* → *ppp*

Hn. 2  
 air; white noise  
*p* → *f* → *mf* → *mp* → *p* → *mp* → *ppp*

Hn. 3  
 4. air; white noise  
*ppp* → *f* → *mf* → *mp* → *p* → *mp*

Hn. 4  
 air; white noise  
*ppp* → *f* → *mf* → *lip vib.* → *mp* → *p* → *mp*

C Tpt. 1  
*f* → *mp* → *p* → *mp*

C Tpt. 2  
*f* → *mp* → *p* → *mp*

Tbn. 1  
 slide vib.  
*ppp* → *f* → *mf* → *mp* → *p* → *mf*

Tbn. 2  
 slide vib.  
*ppp* → *f* → *mf* → *mp* → *p* → *mf*

B. Tbn.  
 slide vib.  
*f* → *mf* → *mp*

Tba.  
*f* → *mf* → *mp*

Timp.  
 2/4      4/8      3/8      4/8  
 ♩ = 100  
*f* → *mf* → *mp* → *ppp*

Percussion 1 (piano)  
 Whip  
*f*

T.-t.  
 choke  
*f* → *l.v.* → *f*

B. D.  
 bass drum; super ball mallet  
 string drum  
*ppp* → *mf* → *ppp* → *mf*

S. D.  
*ppp* → *mf* → *pp* → *mf* → *pp* → *mf* → *ppp*

Tub. B.  
*f* → *mp* → *ff*

Hp.  
*f* → *l.v.* → *ppp*

Pno.  
 sempre pedale; unless specified  
*f* → *l.v.* → *muted* → *ff* → *ord.* → *p* → *mf*

Cb.  
 sul pont.  
*f* → *pizz.* → *pizz.* → *ord. arco* → *mf* → *mp*

4/8

Fl. 1 *f* *mp* *ppp*

Fl. 2 *mp* *ppp* *p* *mp* *ppp*

Fl. 3 *p* *mp* *p* *ppp*

Fl. 4 *mp* *ppp*

Cl. 1 *f* *mp* *p* *mp* *ppp*

Cl. 2 *mp* *p* *p* *mp* *ppp* *ppp*

Cl. 3 *f* *mp* *ppp*

B. Cl.

Sop. Sax. *mp*

Alto Sax. *mp*

Ten. Sax. *mp*

Bsn. 1 *mp* 5

Bsn. 2 *mp* 5

Hn. 1 *p* *ppp*

Hn. 3 *p* *ppp*

Hn. 4 *p* *ppp*

C. Tpt. 1 *p* *ppp*

C. Tpt. 2 *mp* *p* *ppp*

C. Tpt. 3 *p* *ppp*

Tbn. 1 *p* *mf* *p* *pp* *mp* *ppp* *ppp* *p* *mp* *p*

Tbn. 2 *p* *mf* *p* *pp* *mp* *ppp* *ppp* *p* *mp* *p*

B. Tbn. *mp* *ppp*

Tba. *p* *ppp*

4/8

Timp.

Vib.

Crot.

Cym. *mp*

S. D. *To Tom-t.* *n*

Tub. B.

Hp. *mp* *ppp*

Pno. *p* *ppp* 3

Cb. *p* *ppp*

22

Fl. 1  
Fl. 2  
Fl. 3  
Fl. 4

Ob. 1  
*mp*  
*p*

Ob. 2  
*mp*  
*p*

Cl. 1  
Cl. 2  
Cl. 3  
B. Cl.

Sop. Sax.  
*p*

Alto Sax.  
*p*

Ten. Sax.  
*p*

Bari. Sax.  
Bass Sax.

Bsn. 1  
*p*

Bsn. 2  
*p*

Hn. 1  
Hn. 2  
Hn. 3  
Hn. 4

C Tpt. 1  
C Tpt. 2  
C Tpt. 3

Tbn. 1  
*f* *p* *mp* *p* *mp* *p* *f* *p*

Tbn. 2  
*f* *p* *mp* *pp* *mp* *p* *f* *p*

B. Tbn.  
*p* *f* *ppp* *p* *f* *p*

Tba.

Timp.

Vib.  
Crot.

Cym.  
S. D.

Tub. B.  
Hp.

Pno.

Cb.  
*pp*

This page of a musical score covers measures 28 to 48. The instruments listed on the left include Flutes (Fl. 1-4), Oboes (Ob. 1-2), Clarinets (Cl. 1-3), Bass Clarinet (B. Cl.), Saxophones (Sop. Sax., Alto Sax., Ten. Sax., Bari. Sax., Bass Sax.), Bsn. 1-2, Horns (Hn. 1-4), Trumpets (C Tpt. 1-3, B. Tbn.), Trombones (Tbn. 1-2, B. Tbn., Tba.), Timpani (Timp.), Vibraphone (Vib.), Crotales (Crot.), Cymbals (Cym.), Snare Drum (S. D.), Tubas (Tub. B.), Harp (Hp.), Piano (Pno.), and Cello (Cb.).

Measures 28-48 feature complex rhythmic patterns, including triplets and septuplets. The woodwinds and strings play intricate melodic lines, while the brass section provides harmonic support with dynamic markings of *f* and *p*. The percussion section includes a prominent cymbal pattern and a tam-tam effect. The piano part features a complex rhythmic figure with a septuplet in measure 48. The cello part is marked *mp*.

33 **4/8** **2/2** **3/8**

Fl. 1 *f*

Fl. 2 *f*

Fl. 3 *f*

Fl. 4 *f*

Ob. 1 *mf* *p*

Ob. 2 *mf* *p*

Cl. 1

Cl. 2

Cl. 3

B. Cl.

Sop. Sax. *mf* *p*

Alto Sax. *mf* *p*

Ten. Sax. *mf* *p*

Bsn. 1 *mf* *p*

Bsn. 2 *mf* *p*

Hn. 1 *mp* *ppp*

Hn. 2 *mp* *ppp*

Hn. 3 *mp* *ppp*

Tbn. 1 *mf* *ppp*

Tbn. 2 *mf* *ppp*

B. Tbn. *mf* *ppp*

**4/8** **2/2** **3/8**

Timp.

Vib. *f*

T. - t. *mf*

Cym. *n*

S. D.

Tub. B.

Hp. *f*

Pno. *f*

Cb. *f*

38

Fl. 1, Fl. 2, Fl. 3, Fl. 4

Ob. 1, Ob. 2

Cl. 1, Cl. 2, Cl. 3

Sop. Sax., Alto Sax., Ten. Sax., Bari. Sax.

Bsn. 1, Bsn. 2

Hn. 1, Hn. 2, Hn. 3, Hn. 4

C Tpt. 1, C Tpt. 2, C Tpt. 3

Tbn. 1, Tbn. 2, B. Tbn., Tba.

Timp.

Vib.

T. c.

Hp.

Pno.

Cb.

**2/2** **4/8**

*f*, *mp*, *p*, *ff*, *pp*, *l.v.*



46 **2/8** **4/8** **3/8** **4/8**

Fl. 1  
Fl. 2  
Fl. 3  
Fl. 4  
Ob. 1  
Ob. 2  
Sop. Sax.  
Alto Sax.  
Ten. Sax.  
Bsn. 1  
Bsn. 2

Hn. 1  
Hn. 2  
Hn. 3  
C Tpt. 1  
C Tpt. 2  
Tbn. 1  
Tbn. 2  
B. Tbn.

Timp.  
Vib.  
T.-t.  
B. D.  
Tom-toms  
Tub. B.  
Hp.  
Pno.  
Cb.

1  
p  
T2  
p  
rip  
senza mute  
rip  
p  
p  
mf  
mf  
p  
f  
ff  
f  
ff  
f  
mp



12

$\text{♩} = 120$

**4/8** **6/8** **4/8**

Fl. 1 *f* *mp* *mp*

Fl. 2 *f* *mp*

Fl. 3 *f* *mp* *mp*

Fl. 4 *mp*

Ob. 1

Ob. 2

Cl. 1

Cl. 2 *f*

Cl. 3 *f* *harmonic glissando* *gliss*

B. Cl. *f* *mp* *mp*

Sop. Sax. *f* *mp*

Alto Sax. *f* *mp*

Ten. Sax. *f* *mp*

Bsn. 1

Bsn. 2

Hn. 1 *ff* *mp*

Hn. 2 *ff* *mp*

Hn. 3 *ff*

C.Tpt. 1, 2 *ff*

Tbn. 1 *ff*

Tbn. 2 *ff*

B. Tbn.

Tba. *f* *p*

$\text{♩} = 120$

**4/8** **6/8** **4/8**

Timp. *f* *mp* *pp*

Vib. *mp* *sempre pedale; unless specified*

Crot. *f*

B. D.

Cym. *f* Snare Drum *mf* *with snare* *ppp*

T.-t. *f*

Hp. *f* *mp*

Pno. *ff* *mp* *una corda*

Cb. *ff* *p*

53 **4/8**

Fl. 1  
Fl. 2  
Fl. 3  
Fl. 4  
Ob. 1  
Ob. 2  
Cl. 1  
Cl. 2  
Cl. 3  
B. Cl.  
Sop. Sax.  
Alto Sax.  
Ten. Sax.  
Bari. Sax.  
Bass Sax.  
Bsn. 1  
Bsn. 2  
Hn. 1  
Hn. 2  
Hn. 3  
Hn. 4  
C Tpt. 1  
C Tpt. 2  
C Tpt. 3  
Tbn. 1  
Tbn. 2  
B. Tbn.  
Tba.

**4/8**

Timp.  
Vib.  
T. Bl.  
S. D.  
Hp.  
Pno.  
Cb.

This page of a musical score contains measures 59 through 68. The score is for an orchestra and includes parts for woodwinds, brass, strings, and percussion. The time signature changes from 6/8 at measure 59 to 4/8 at measure 65, and returns to 6/8 at measure 68. The score features complex rhythmic patterns, often using triplets and sixteenth notes. Dynamic markings include *mf*, *ppp*, *pp*, *mp*, *f*, *ff*, *p*, *mp*, *p*, and *subito*. The woodwind section (Flutes 1-4, Oboes 1-2, Clarinets 1-3, Bass Clarinet, Soprano Saxophone, Alto Saxophone, Bassoons 1-2) plays rapid sixteenth-note passages, often with triplet markings. The brass section (Horns 1-4, Trumpets 1-3, Trombones 1-3, Tubas) provides harmonic support and dynamic contrast, with some parts featuring *f* and *ff* markings. The strings are divided into Violins (Vib), Violas (T.v.), Cellos (C.), and Double Basses (Cb.). The piano part (Pno.) plays a complex rhythmic accompaniment with many triplet markings. The percussion section includes Timpani, Crotales, Glockenspiel, Piano (with coin on strings), Tubular Bells, and Xylophone. The score is meticulously notated with stems, beams, and various articulation marks.

65

Fl. 1 *pp* *p* *mf* *ppp* *p* *ff*  
air; white noise  
bend exponentially

Fl. 2 *pp* *p* *mf* *ppp* *p* *ff*  
air; white noise  
bend exponentially

Fl. 3 *pp* *p* *mf* *ppp* *p* *ff*  
air; white noise  
bend exponentially

Fl. 4

Ob. 1 *pp*

Ob. 2

Cl. 1 *p* *mf* *ppp* *p* *mf* *ppp*

Cl. 2 *p* *mf* *ppp* *p* *mf* *ppp*

Cl. 3 *p* *mf* *ppp* *p* *mf* *ppp*

B. Cl.

Sop. Sax. *pp* *mp* *ppp*

Alto Sax. *pp* *mp* *ppp*

Ten. Sax. *pp* *mp* *ppp*

Hn. 1 *p* *ff*  
air; white noise  
mouth- piece backwards

Hn. 2 *p* *ff*  
air; white noise  
mouth- piece backwards

Hn. 3 *p* *ff*  
air; white noise  
mouth- piece backwards

Hn. 4 *p* *ff*  
air; white noise  
mouth- piece backwards

Tbn. 1 *f* *p* *f* *p* *f* *p*

Tbn. 2 *f* *p* *f* *p* *f* *p*

B. Tbn. *f* *p*

Tba.

Timp.

Vib. *mp*

Crot.

Glock. Bass Drum *p* *fp* *ff*  
metal brush  
soft mallet

Pno.

Tub. B. *mp*

Hp.

Pno.

Cb.

70 **3** **6**

Fl. 1 *f* *a* *a* *a* *a*

Fl. 2 *f* *a* *a* *a* *a*

Fl. 3 *f* *a* *a* *a* *a*

Fl. 4 *f* *a* *a* *a* *a*

Ob. 1 *f*

Ob. 2 *f*

Cl. 1 *f*

Cl. 2 *f*

B. Cl. *f*

Sop. Sax. *mf* play legato in a descending pattern ad lib. at a moderate tempo

Alto Sax. *mf* play legato in a descending pattern ad lib. at a moderate tempo

Ten. Sax. *mf* play legato in a descending pattern ad lib. at a moderate tempo

Hn. 1 *f*

Hn. 2 *f*

Hn. 3 *f*

C.Tpt. 1 *p* *mf* *p*

C.Tpt. 2 *p*

C.Tpt. 3

Tbn. 1 *ff* *mf subito*

Tbn. 2 *ff* *mf subito*

B. Tbn. *ff* *mf subito*

Timp. **3** **6**

Vib. *ff*

Crot. *f* Tam-tam

B. D. *f* soft mallets *pp*

Tub. B. *ff*

Hp. *pp* play fast and irregular with an overall ascending pattern *f* *mp*

Pno. *pp* play fast and irregular with an overall ascending pattern *f* *mp*

Cb. *f*

74

Fl. 1 *half tone-half air*

Fl. 2 *half tone-half air*

Fl. 3 *half tone-half air*

Fl. 4 *half tone-half air*

Ob. 1 *mf p pp*

Ob. 2 *mf p pp*

Cl. 1 *ppp*

Cl. 2 *ppp*

Cl. 3 *pp*

B. Cl. *ppp*

Sop. Sax. *pp ppp*

Alto Sax. *pp ppp*

Ten. Sax. *pp ppp*

Hn. 1 *ppp*

Hn. 2 *ppp*

Hn. 3 *ppp*

Hn. 4

C.Tpt. 1

C.Tpt. 2 *mf p*

C.Tpt. 3 *p mf p*

Tbn. 1 *ppp pp*

Tbn. 2 *ppp*

B. Tbn. *ppp*

Tba.

Timp.

Vib.

T.-t.

B. D.

Pno.

Tub. B.

Hp.

Pno.

Cb.

77

Fl. 1 *mp* *ff* *f* *mf*

Fl. 2 *mp* *ff* *f* *mf*

Fl. 3 *mp* *ff* *f* *mf*

Fl. 4 *mp* *ff* *f* *mf*

Ob. 1

Ob. 2

Cl. 1

Cl. 2 *mf* *pp* *p* *f* *p*

Cl. 3 *mf* *pp*

B. Cl.

Sop. Sax.

Alto Sax.

Ten. Sax.

Hn. 1

Hn. 2

Hn. 3

Hn. 4

C. Tpt. 1

C. Tpt. 2

C. Tpt. 3

Tbn. 1 *p* *pp*

Tbn. 2 *pp* *p* *pp*

B. Tbn.

Tba.

Timp.

Vib.

T.-t.

B. D.

Pno.

Tub. B.

Hp. *pp*

Pno. *pp*

Cb.

*air*

*slow slide vib.; gradually speed up and narrow vib.*

*fast narrow vib.*

80

Fl. 1 *mp* *p*

Fl. 2 *mp* *p*

Fl. 3 *mp* *p*

Fl. 4 *mp* *p*

Ob. 1

Ob. 2

Cl. 1 *f* *pp* *f* *pp* *f* *pp* *f* *pp*

Cl. 2 *f* *p* *f* *p* *f* *p* *f* *pp* *mp* *fp*

Cl. 3 *f* *mp* *f* *mp* *f* *mp* *f* *mp*

B. Cl.

Sop. Sax.

Alto Sax.

Ten. Sax.

Bari. Sax.

Bass Sax.

4/8

air

*p*

*mp* 12

*p*

*mp* 5

Hn. 1

Hn. 2

Hn. 3

Hn. 4

C Tpt. 1

C Tpt. 2

C Tpt. 3

Tbn. 1

Tbn. 2

B. Tbn.

Tba.

air; white noise  
mouth- piece backwards

*p*

air; white noise  
mouth- piece backwards

*p*

air; white noise  
mouth- piece backwards

*p*

air; white noise  
mouth- piece backwards

*p*

air

*mp*

air

*mp*

air

*mp*

4/8

Timp.

Vib.

T. t.

B. D.

Pno.

Tub. B.

Hp.

Pno.

Cb.

Tam-tam

scrape with  
triangle beater

metal brush;  
rub skin

*p*

*ppp*

*ppp* *n*

*mp*



83

Fl. 1 *f* → tone *pp* slow wide vib.

Fl. 2 *f* → tone *pp* slow wide vib.

Fl. 3 *f* → tone *pp* slow wide vib.

Fl. 4 *f* → tone

Ob. 1 *mf*

Ob. 2 *mf*

Cl. 1 *f*

Cl. 2 *f*

B. Cl. *f*

Sop. Sax. *f*

Alto Sax. *f*

Ten. Sax. *f*

Bari. Sax. *ff* air; white noise *mp*

Bass Sax. *ff* air; white noise *mp*

Hn. 1 *f*

Hn. 2 *f*

Hn. 3 *f*

Hn. 4 *f*

C.Tpt. 1 *ff* air; machine gun tonguing *mp*

C.Tpt. 2 *ff* air; machine gun tonguing *mp*

C.Tpt. 3 *ff* air; machine gun tonguing *mp*

Tbn. 1 *ff* air; machine gun tonguing *mp*

Tbn. 2 *ff* air; machine gun tonguing *mp*

B. Tbn. *ff* air; machine gun tonguing *mp*

Timp.

Whip *f* Whip

T.-t. *mf* l.v.

B. D. *f*

Hp.

Pno. *f* l.v. *pp* quasi bisbigliando; rapidly play muddy and cloudy to create a unified fabric of sound

Cb. *ff*

88

Fl. 1, Fl. 2, Fl. 3, Fl. 4, Ob. 1, Ob. 2, Cl. 1, Cl. 2, Cl. 3, B. Cl., Sop. Sax., Alto Sax., Ten. Sax., Bari. Sax., Bass Sax., Hn. 1, Hn. 2, Hn. 3, Hn. 4, C.Tpt. 1, C.Tpt. 2, C.Tpt. 3, Tbn. 1, Tbn. 2, B. Tbn., Timp., Whip, T.-t., B. D., Pno., Tub. B., Hp., Pno., Cb.

slow wide vib. *pp*

slow wide vib. *pp*

slow wide vib. *pp*

*f* *pp* *f* *pp* *f* *mp* *f*

*f* *pp* *f* *pp* *f* *mp* *f*

*f* *mp* *f* *mp* *f* *mp* *f* *mp* *f* *mp* *f* *pp* *f*

*mp* *f*

air; white noise *ff*

air; white noise *ff*

air; white noise mouth-piece backwards *p* *f*

air; white noise mouth-piece backwards *p* *f*

air; white noise mouth-piece backwards *p* *f*

air; white noise mouth-piece backwards *p* *f*

air; machine gun tonguing *ff*

air; machine gun tonguing *ff*

air; machine gun tonguing *ff*

air; machine gun tonguing *ff*

air; machine gun tonguing *ff*

air; machine gun tonguing *ff*

scrape with triangle beater *p* *mf* l.v.

metal brish; rub skin *p* *f*

*ppp* *n* *mf*

*ppp* *n* *f* l.v. + *ff*

*mp* *ff* I

Fl. 1

Fl. 2

Fl. 3

Fl. 4

Ob. 1

Ob. 2

Cl. 1

Cl. 2

Cl. 3

B. Cl.

Sop. Sax.

Alto Sax.

Ten. Sax.

Bari. Sax.

Bass Sax.

Hn. 1

Hn. 2

Hn. 3

Hn. 4

C.Tpt. 1

C.Tpt.

C.Tpt. 3

Tbn. 1

Tbn. 2

B. Tbn.

Tba.

Timp.

Whip

T.-t.

B. D.

Pno.

Tub. B.

Hp.

Pno.

Cb.

quasi bisbigliando;  
 rapidly  
 play muddy and cloudy to  
 create a unified fabric of sound

Pno.

Cb.

98 **8/8** **4/8** **6/8** **4/8**

Fl. 1 *f*

Fl. 2 *f*

Fl. 3 *f*

Fl. 4 *f*

Ob. 1 *mf*

Ob. 2 *mf* bend

Cl. 1 *pp* *f* *mp* *f*

Cl. 2 *pp* *f*

Cl. 3 *mp* *f* *p* *f*

B. Cl. *pp* harmonic glissando

Sop. Sax. *pp*

Alto Sax. *pp*

Ten. Sax. *pp*

Bass Sax. *f* *pp*

Hn. 1 *mp* *f* *mp* *mf* *mp* *f* *mp*

Hn. 2 *mp* *f* *mp* *f* *mf* *mp* *f*

Hn. 3 *p* *f* *p* *p* *f* *p*

Hn. 4 *p* *f* *p* *f* *p*

C Tpt. 1 *f* *p* *f* *p*

C Tpt. 2 *p* *f* *p*

Tbn. 1 *p* *f* *mf* *mp* *ff* *p* *f* *mf* *mp*

Tbn. 2 *mp* *f* *mp* *mf* *mp* *ff* *mp* *f* *mf* *mp*

B. Tbn. *mp* *f* *mp* *p* *ff* *mp* *f* *mp*

Tba. *f*

Timp. *f* *f* *f* *f*

Vibraphone *f* 1.v.

T. t. Crotales *f*

B. D. Glockenspiel *f*

Hp. *f* 1.v.

Pno. *f* 1.v.

Cb. *f* *mp* *f* *mp* *pp* IV

102

4/8 6/8 4/8

Fl. 1 *f* *mp* *mp*

Fl. 2 *f* *mp* *mp*

Fl. 3 *f* *mp* *mp*

Fl. 4 *f* *mp* *mp*

Cl. 1 *mp*

Cl. 2 *mp*

Cl. 3 *f* *mp*

B. Cl. *f* *mp* *mp* *mp*

Sop. Sax. *f*

Alto Sax. *p* *f p subito* *f* *f* *f* *mp subito* *f*

Bari. Sax. *f*

Bass Sax. *ff* *mp* *f*

Bsn. 1 *f* *mf* *ff* *mf* *p* *p*

Bsn. 2 *ff* *f* *mp* *f*

Hn. 1 *f* *mf* *p* *f*

Hn. 2 *p* *f*

Hn. 3 *p* *f*

Hn. 4 *f* *ff* *mp*

C Tpt. 1

C Tpt. 2 *f*

C Tpt. 3

Tbn. 1 *ff* *mf* *subito* *f* *p* *mf*

Tbn. 2 *ff* *mf* *subito* *f* *p* *mf*

B. Tbn. *ff* *f* *p* *mf*

4/8 6/8 4/8

Timp. *p* *f* *mp* *pp*

Crot. 1.v.

Glock. 1.v. Bass Drum *f* *p*

Tub. B. 1.v. *f* 1.v. *f*

Hp. *ff* *mf* 1.v. *mp* *play ad lib. rapidly*

Pno. *ff* *mf* 1.v. *mp* *play ad lib. rapidly* *con pedale* *ff* *8<sup>va</sup>*

Cb. *ff*

Fl. 1

Fl. 2

Fl. 3

Fl. 4

Ob. 1

Ob. 2

Cl. 1

Cl. 2

Cl. 3

B. Cl.

Sop. Sax.

Alto Sax.

Ten. Sax.

Bari. Sax.

Bass Sax.

Bsn. 1

Bsn. 2

Hn. 1

Hn. 2

Hn. 3

Hn. 4

C Tpt. 1

C Tpt. 2

C Tpt. 3

Tbn. 1

Tbn. 2

B. Tbn.

Timp.

Vib.

Crot.

B. D.

Hp.

Pno.

Cb.

mp

pp

p

f

bend

air; white noise

mouth- piece backwards

metal brush; rub skin

8

♩=80

4/8

112

Fl. 1 *f* *p*

Fl. 2 *f* *p*

Fl. 3 *f* *p*

Fl. 4 *f* *p*

Ob. 1

Ob. 2

Cl. 1

Cl. 2 *ppp* *f* *ppp* *ppp* *f*

Cl. 3 *ppp* *f* *ppp*

B. Cl.

Sop. Sax.

Alto Sax.

Ten. Sax. *f* *ppp* *f*

Bari. Sax.

Bass Sax.

Bsn. 1

Bsn. 2

Hn. 1 *f*

Hn. 2 *f*

Hn. 3 *f*

Hn. 4 *f*

C.Tpt. 1 *f*

C.Tpt. 2 *f*

C.Tpt. 3 *f*

Tbn. 1 *ppp* *mp*

Tbn. 2

B. Tbn.

Tba.

♩=80

4/8

Timp.

Whip *f*

Crot.

B. D. *mf* *ff*

Hp.

Pno.

Cb. *ppp* *mp*

118

Fl. 1  
Fl. 2  
Fl. 3  
Fl. 4  
Ob. 1  
Ob. 2  
Cl. 1  
Cl. 2  
Cl. 3  
B. Cl.  
Sop. Sax.  
Alto Sax.  
Ten. Sax.  
Bari. Sax.  
Bass Sax.  
Hn. 1  
Hn. 2  
Hn. 3  
Hn. 4  
C.Tpt. 1  
C.Tpt. 2  
C.Tpt. 3  
Tbn. 1  
Tbn. 2  
B. Tbn.  
Tbn.  
Timp.  
Whip  
Crot.  
B. D.  
Pno.  
Tub. B.  
Hp.  
Pno.  
Cb.



124

Fl. 1

Fl. 2

Fl. 3

Fl. 4

Ob. 1

Ob. 2

Cl. 1

Cl. 2

Cl. 3

B. Cl.

Sop. Sax.

Alto Sax.

Ten. Sax.

Bari. Sax.

Bass Sax.

Bsn. 1

Bsn. 2

Hn. 1

Hn. 2

Hn. 3

Hn. 4

C Tpt. 1

C Tpt. 2

C Tpt. 3

Tbn. 1

Tbn. 2

B. Tbn.

Tba.

Timp.

Whip

Crot.

B. D.

Pno.

Tub. B.

Hp.

Pno.

Cb.

ord.

f

**♩ = 120** **5/8** **4/8**

Fl. 1 *f* *f* *mp*

Fl. 2 *f* *f* *mp*

Fl. 3 *f* *mp*

Fl. 4 *f* *f* *mp* bend

Ob. 1 *f* *mp* bend

Ob. 2 *ff*

Cl. 1 *f* *mp*

Cl. 2 *f* *mp*

Cl. 3 *ff*

B. Cl. *f* *p*

Sop. Sax. *f* *mp* bend

Alto Sax. *f* *mp* bend

Hn. 1 *f*

Hn. 2 *f*

Hn. 3 *f* *p*

Hn. 4

C.Tpt. 1

C.Tpt. 2

C.Tpt. 3

Tbn. 1 *p* *f*

Tbn. 2 *f* *mp* *f*

B. Tbn. *f* *mp* *pp*

Tba.

**♩ = 120** **5/8** **4/8**

Timp. *p* *f* *mp* *ppp*

Vibraphone *mp* *pp*

Crot.

B. D. *pp* *f* *pp*

Cym. *pp* *f* l.v.

Tub. B.

Hp. *ff* *mp* *pp* with an irregular rhythm; moderately fast

Pno. *fff* *con pedale* *p* *f* *p* *pp* with an irregular rhythm; moderately fast

Cb. *fff* *p* *ppp* ord.

135

Fl. 1

Fl. 2

Fl. 3

Fl. 4

Ob. 1

Ob. 2

Cl. 1

Cl. 2

Cl. 3

B. Cl.

Sop. Sax.

Alto Sax.

Ten. Sax.

Bari. Sax.

Bass Sax.

Bsn. 1

Bsn. 2

Hn. 1

Hn. 2

Hn. 3

Hn. 4

Tbn. 1

Tbn. 2

B. Tbn.

Tba.

Timp.

Vib.

Crot.

B. D.

Cym.

Tub. B.

Hp.

Pno.

Cb.

*ppp*

*p*

*mp*

4/4





Accel. .... 2/4 4/8 =100

145

Fl. 1: air; white noise → tone; *ppp* → *f* → *mf*

Fl. 2: air; white noise → tone; *f* → *mf*

Fl. 3: *f* → *mf*

Fl. 4: *f* → *n*

Ob. 1: *mf* 3

Ob. 2: *mf*

Cl. 1: *ppp* → *mf* → *p* → *mf*

Cl. 2: *n* *p* → *mf* → *p* → *mf*

Cl. 3: *n* *p* → *mf* → *p* → *mf*

B. Cl.: *f*

Sop. Sax.: *mf*

Alto Sax.: *mf*

Ten. Sax.: *mf*

Bari. Sax.: air; white noise; *ppp* → *f*

Bass Sax.: air; white noise; *ppp* → *f*

Bsn. 1: *mf* 7

Bsn. 2: *mf*

Hn. 1: air; white noise; mouth- piece backwards; *ppp* → *f*

Hn. 2: bend; *p* → *f*

Hn. 3: air; white noise; mouth- piece backwards; *f*

Hn. 4: *f*

C.Tpt. 1: *mf* → *mp* → *pp* → *mp*

C.Tpt. 2: *f*

Tbn. 1: *ppp* → *mf* → *mp* → *pp* → *mp*

Tbn. 2: *ppp* → *mf* → *mp* → *pp* → *mp*

B. Tbn.: *ppp* → *mf* → *mp* → *pp* → *mp*

Tba.: *mf* → *ppp*

2/4 Accel. .... 4/8 =100

6 8 4 8

Timp.: *mf*

Vib.: *p* → *mf* → *p* → *mf* → *p*

Crot.: *pp* → *mp*

Flexatone: *p* → *mf*

Cym.: *ppp* → *mf* → *p*

Tubular Bells: *ppp* → *mf* → *p* → *mf* → *p*

T-t.: *mf*

Hp.: *ff*

Pno.: *f* → *ff* → *p* → *mf* → *p* → *pp*

Cb.: *f* → *mf* → *p* → *pp*

Annotations: *ff*, *f subito*, *bisbigliando with irregular pattern*, *sul pont.*

4/8

222

Fl. 1, Fl. 2, Fl. 3, Fl. 4, Ob. 1, Ob. 2, Cl. 1, Cl. 2, Cl. 3, B. Cl., Sop. Sax., Alto Sax., Ten. Sax., Bari. Sax., Bass Sax., Bsn. 1, Bsn. 2, Hn. 1, Hn. 2, Hn. 3, Hn. 4, C.Tpt. 1, C.Tpt. 2, C.Tpt. 3, Tbn. 1, Tbn. 2, B.Tbn., Tbn.

pp, mp, p, mf

4/8

222

Timp., Vib., Cro., B. D., Cym., Tub. B., Hp., Pno., Cb.

ff, mp, ord., mf

154

2/8 3/8 4/8

Fl. 1 *mp* *p* *pp* *p* *pp* *pp* *p*

Fl. 2 *p* *pp* *p* *pp* *pp* *p*

Fl. 3 *p* *pp* *p* *pp* *pp* *p*

Fl. 4 *pp* *p* *pp* *pp* *p* *pp*

Ob. 1 *mp*

Ob. 2 *mp*

Cl. 1 *p* *pp* *pp*

Cl. 2 *p* *pp* *pp* *p*

Cl. 3 *mf* *p* *pp* *p*

B. Cl. *p* *pp* *pp* *p*

Sop. Sax. *ppp* *mp*

Alto Sax. *ppp* *mp*

Ten. Sax. *ppp* *mp*

Bsn. 1 *ppp* *mp*

Bsn. 2 *ppp* *mp*

Hn. 1 *pp* *mf* *p*

Hn. 2 *pp* *mf* *mp* *ppp*

Hn. 3 *mf* *ppp*

Hn. 4 *mf* *p*

C.Tpt. 1 *pp* *mf* *mp*

C.Tpt. 2 *pp* *mf* *mp*

C.Tpt. 3 *pp* *mf* *mp*

Tbn. 1 *p* *f* *p* *ppp*

Tbn. 2 *f* *p* *f* *ppp*

B. Tbn. *p* *f* *p* *ppp*

Tba. *ppp*

Timp. *mp* *mf* *p* *ppp*

Vib. *mp* *f* *l.v.*

T.-t. *pp* *mf* *mp*

B. D. *pp* *mf* *mp*

Cym. *p* *mf* *mp*

Tub. B. *mp* *f* *l.v.*

Hp. *f* *mp* *pp*

Pno. *mp* *ff* *mp* *l.v.*

Cb. *ff* *mp*



159

Fl. 1 *pp* *p* *f*

Fl. 2 *pp* *p* *f*

Fl. 3 *pp* *p* *f*

Fl. 4 *p* *f*

Ob. 1 → air

Ob. 2 → air

Cl. 1 *p* *pp* *pp* *p*

Cl. 2 *pp* *pp* *p*

Cl. 3 *pp* *pp* *p*

B. Cl. *pp* *pp* *p* *pp* *pp* *f* harmonic glissando

Sop. Sax. → air

Alto Sax. → air

Ten. Sax. → air

Bsn. 1 → air

Bsn. 2 → air

Hn. 1 *pp* *f*

Hn. 2 *pp* *f*

Hn. 3 *p* *f*  
air; white noise  
mouth-piece backwards

Hn. 4 *p* *f*  
air; white noise  
mouth-piece backwards

C Tpt. 1 *p* *f*  
air; white noise

C Tpt. 2 *p* *f*  
air; white noise

C Tpt. 3 *p* *f*  
air; white noise

Tbn. 1 *p* *f*  
air; white noise

Tbn. 2 *p* *f*  
air; white noise

B. Tbn. *p* *f*  
air; white noise

Timp. *p* *f*

Vib. *pp* *ff* Lv.

T.-t. Crotales *mf* Lv.

B. D. metal brush; rub skin *p* *ff* soft mallet *mp* 7 7

Cym.

Tub. B.

Hp. *ff* Lv.

Pno. *pp* *ff* Lv.

Ch. *pp* *ff* IV

2 4

8 8





Fl. 1, Fl. 2, Fl. 3, Fl. 4, Ob. 1, Ob. 2, Cl. 1, Cl. 2, Cl. 3, B. Cl., Sop. Sax., Alto Sax., Ten. Sax., Bsn. 1, Bsn. 2, Hn. 1, Hn. 2, Hn. 3, Hn. 4, C.Tpt. 1, C.Tpt. 2, C.Tpt. 3, Tbn. 1, Tbn. 2, B. Tbn., Tba.

musical notation for woodwinds and brass instruments, including dynamics like *f*, *ppp*, *mf*, and *pp*.



Whip, Vibraphone, Tam-tam, B. D., Cym., Tub. B., Hp., Pno., Cb.

musical notation for percussion and keyboard instruments, including dynamics like *f*, *mp*, *ff*, and *mf*.

metal brush; rub skin  
drum stick; rim  
Whip  
Vibraphone  
Tam-tam  
L.v.  
L.v.  
L.v.  
L.v.  
L.v.  
L.v.

176

Fl. 1 *half tone-half air* *mp*

Fl. 2 *half tone-half air* *mp*

Fl. 3 *half tone-half air* *mp*

Fl. 4 *half tone-half air* *mp*

Ob. 1 *mf* *p* *pp*

Ob. 2 *mf* *p* *pp*

Cl. 1

Cl. 2

Cl. 3 *pp* *mf* *pp*

B. Cl.

Sop. Sax. *ppp*

Alto Sax. *ppp*

Ten. Sax. *ppp*

Bari. Sax.

Bass Sax.

Bsn. 1

Bsn. 2

Hn. 1

Hn. 2

Hn. 3

Hn. 4

C Tpt. 1

C Tpt. 2

C Tpt. 3 *mf* *p*

Tbn. 1

Tbn. 2

B. Tbn.

Tba.

Timp.

Vib.

T. t.

B. D.

Cym.

Tub. B.

Hp.

Pno.

Cb.

179

Fl. 1 *ff* *f* *mf* *mp* *p* *air*

Fl. 2 *ff* *f* *mf* *mp* *p* *air*

Fl. 3 *ff* *f* *mf* *mp* *p* *air*

Fl. 4 *ff* *f* *mf* *mp* *p* *air*

Ob. 1

Ob. 2

Cl. 1 *f* *pp*

Cl. 2 *mf* *pp* *p* *f* *p* *f* *p*

Cl. 3 *f* *mp* *f*

B. Cl.

Sop. Sax.

Alto Sax.

Ten. Sax.

Bari. Sax.

Bass Sax.

Bsn. 1

Bsn. 2

Hn. 1

Hn. 2

Hn. 3

Hn. 4

C Tpt. 1

C Tpt. 2

C Tpt. 3

Tbn. 1 *mp*

Tbn. 2 *mp*

B. Tbn.

Tba.

Timp.

Vib.

T.-t.

B. D.

Cym.

Tub. B.

Hp.

Pno.

Cb.

182 **4/8** *air* *tone* *slow wide vib.*

Fl. 1 *p* *f* *pp*

Fl. 2 *p* *f* *pp*

Fl. 3 *mp* *f* *pp*

Fl. 4 *p* *f*

Ob. 1 *mf*

Ob. 2 *mf*

Cl. 1 *f* *pp* *f* *mp* *f*

Cl. 2 *f* *pp* *mp* *fp* *f*

Cl. 3 *f* *mp* *f* *mp* *f*

B. Cl. *mp* *f*

Sop. Sax. **[REDACTED]**

Alto Sax. **[REDACTED]**

Ten. Sax. **[REDACTED]**

Bari. Sax. **[REDACTED]**

Bass Sax. *f* *pp*

Bsn. 1 *f* *pp*

Bsn. 2 *f* *pp*

Hn. 1 *air; white noise* *mouth- piece backwards* *p* *f*

Hn. 2 *air; white noise* *mouth- piece backwards* *p* *f*

Hn. 3 *air; white noise* *mouth- piece backwards* *p* *f*

Hn. 4 *air; white noise* *mouth- piece backwards* *p* *f*

C.Tpt. 1 *mute* *f* *pp*

C.Tpt. 2 *mute* *f* *pp*

C.Tpt. 3 *mute* *f* *pp*

Tbn. 1 *f* *pp*

Tbn. 2 *f* *pp*

B. Tbn. *f* *pp*

Tba. *f* *pp*

**4/8** *mf*

Timp. **[REDACTED]**

Vib. *Whip* *f*

T.-t. *mp*

B. D. *mf*

Cym. **[REDACTED]**

Tub. B. **[REDACTED]**

Hp. *mf*

Pno. *ff*

Cb. *pizz.* *arco* *f* *p*

188

Fl. 1 *pp* *n* *pp* slow wide vib.

Fl. 2 *pp* *n* *pp* slow wide vib.

Fl. 3 *mp* *n* *f* *pp* slow wide vib.

Fl. 4 *mp* *f*

Ob. 1 *mf*

Ob. 2 *mf*

Cl. 1 *f* *pp* *f* *pp* *f* *mp* *f*

Cl. 2 *f* *pp* *f* *pp* *f* *mp* *f*

Cl. 3 *f* *mp* *f* *f* *mp* *f* *f* *mp* *f* *pp* *f*

B. Cl. *f*

Sop. Sax.

Alto Sax.

Ten. Sax.

Bari. Sax.

Bass Sax. *mf*

Bsn. 1 *mf*

Bsn. 2 *mf*

Hn. 1 *p* *f* air; white noise mouth-piece backwards

Hn. 2 *p* *f* air; white noise mouth-piece backwards

Hn. 3 *p* *f* air; white noise mouth-piece backwards

Hn. 4 *mf*

C. Tpt. 1 *mf*

C. Tpt. 2 *mf*

C. Tpt. 3 *mf*

Tbn. 1 *mf*

Tbn. 2 *mf*

B. Tbn. *mf*

Tba. *mf*

Timp.

Vibraphone

Vib. *mp* *f*

T.-t. *mf*

B. D. *mf* *p*

Cym. *mf*

Tub. B.

Hp. *p* *ff* *mf*

Pno. *ff*

Cb. *ff*





Fl. 1, Fl. 2, Fl. 3, Fl. 4, Ob. 1, Ob. 2, Cl. 1, Cl. 2, Cl. 3, B. Cl., Sop. Sax., Alto Sax., Ten. Sax., Bari. Sax., Bass Sax., Bsn. 1, Bsn. 2

Hn. 1, Hn. 2, Hn. 3, Hn. 4, C.Tpt. 1, C.Tpt. 2, C.Tpt. 3, Tbn. 1, Tbn. 2, B. Tbn., Tba.

Timp., Vib., T. c., B. D., Cym., Tub. B., Hp., Pno., Cb.

Fl. 1 *f*

Fl. 2 *f*

Fl. 3 *f*

Fl. 4 *f*

Ob. 1

Ob. 2

Cl. 1 *mf*

Cl. 2 *mf*

Cl. 3 *mf*

B. Cl.

Sop. Sax.

Alto Sax. *mf*

Ten. Sax. *mf*

Bari. Sax.

Bass Sax.

Bsn. 1 *mf* *p* *mf* *p* *mf* *p*

Bsn. 2 *p* *mf* *p* *mf* *p*

Hn. 1

Hn. 2

Hn. 3

Hn. 4

C. Tpt. 1 *mf*

C. Tpt. 2 *mf*

C. Tpt. 3 *mf*

Tbn. 1

Tbn. 2

B. Tbn.

Tba.

Timp. *f*

Vib.

Crot.

B. D. *mf*

Cym. *pp* *n*

Tub. B.

Hp. *ff*

Pno. *ff*

Cb. *ff* *f subito*

metal brush; rub skin *p*

211

Fl. 1 *ff* *air* *f* ord. *mp*

Fl. 2 *ff* *air* *f* ord. *mp*

Fl. 3 *ff* *air* *f* ord. *mp*

Fl. 4 *ff* *air* *f* ord. *mp*

Ob. 1 *mp*

Ob. 2 *mp*

Cl. 1 *f* *mp*

Cl. 2 *f* *mp*

Cl. 3 *f* *mp*

B. Cl. *f* *mp*

Sop. Sax. *f* *mp* *f* *mp* *f* *mp*

Alto Sax. *p* *f p subito* *f* *f* *mp* *f*

Ten. Sax. *f* *mp* *f* *mp* *f* *mp*

Bari. Sax. *f* *ppp*

Bass Sax. *f* *ppp*

Bsn. 1 *f* *ppp*

Bsn. 2 *f* *ppp*

Hn. 1 *p* *mf* *p* *mf* *p* *mf* *p* *mf*

Hn. 2 *p* *mf* *p* *mf* *p* *mf* *p* *mf*

Hn. 3 *f* *mf* *p* *mf* *p* *mf* *p* *mf*

Hn. 4 *mf* *p* *mf* *p* *mf* *p* *mf* *p* *mf*

C.Tpt. 1 *mf* *p* *mf* *p* *mf* *p* *mf* *p* *mf*

C.Tpt. 2 *ff* *mf* *p* *mf* *p* *mf* *p* *mf* *p* *mf*

C.Tpt. 3 *mf* *p* *mf* *p* *mf* *p* *mf* *p* *mf*

Tbn. 1 *ff* *f* *mf*

Tbn. 2 *ff* *f* *mf*

B. Tbn. *ff* *f* *mf*

Tba. *ff* *f* *mf*

3 4 6 4

♩=120

Timp. *mf* *pp*

Vib.

Crot.

string drum

B. D. *p* *f* *mf* *p*

Cym. *ppp* *f* *mf* *p*

Tub. B. *f* *mf* *p*

Hp. *ff* *f*

Pno. *ff* *f* *mf*

Cb. *ff* *f* *mf* *p*

*sul pont.*

♩=80

222

217

Fl. 1 *f* *mp*

Fl. 2 *f* *mp*

Fl. 3 *f* *mp*

Fl. 4 *f* *mp*

Ob. 1

Ob. 2

Cl. 1 *p*

Cl. 2 *p*

Cl. 3 *p*

B. Cl. *p*

Sop. Sax. *mp*

Alto Sax. *mp* *subito* *f* *mp*

Ten. Sax. *mp*

Bari. Sax.

Bass Sax.

Bsn. 1

Bsn. 2

Hn. 1 *mf* *p* air; white noise mouth-piece backwards

Hn. 2 *p* *mf* *p* air; white noise mouth-piece backwards

Hn. 3 *p* *pp*

Hn. 4 *mf* *p* *pp*

C Tpt. 1 *p* *pp* senza mute

C Tpt. 2 *mf* *p* *pp* senza mute

C Tpt. 3 *pp* senza mute

Tbn. 1 *pp* *mp* *ppp*

Tbn. 2 *pp* *mp* *ppp*

B. Tbn. *ppp* *p* *ppp*

Tba. *ppp* *p* *ppp*

♩=80

222

Timp. *ppp*

Vib. *mp* l.v.

Crot.

B. D. *p* *f* metal brush; rub skin soft mallet *mp*

Cym. *pp* *mp* choke *p*

Tub. B. *mp* l.v. *pp*

Hp.

Pno. *mp*

Cb. *ff* *ppp* *mp* ord.

223

4/8

223

Fl. 1, Fl. 2, Fl. 3, Fl. 4, Ob. 1, Ob. 2, Cl. 1, Cl. 2, Cl. 3, B. Cl., Sop. Sax., Alto Sax., Ten. Sax., Bari. Sax., Bass Sax., Bsn. 1, Bsn. 2, Hn. 1, Hn. 2, Hn. 3, Hn. 4, C Tpt. 1, C Tpt. 2, C Tpt. 3, Tbn. 1, Tbn. 2, B. Tbn., Tba.

224

4/8

224

Timp., Vib., Crot., B. D., Cym., Tubular Bells, T.-t., Hp., Pno., Cb.

♩=120

2/8 1/8 4/8

Fl. 1, Fl. 2, Fl. 3, Fl. 4, Ob. 1, Ob. 2, Cl. 1, Cl. 2, Cl. 3, B. Cl., Sop. Sax., Alto Sax., Ten. Sax., Bari. Sax., Bass Sax., Bsn. 1, Bsn. 2, Hn. 1, Hn. 2, Hn. 3, Hn. 4, C.Tpt. 1, C.Tpt. 2, C.Tpt. 3, Tbn. 1, Tbn. 2, B. Tbn., Tba., Timp., Vib., Crot., B. D., Cym., Tub. B., Hp., Pno., Cb.

*f*, *mp subito*, *f*, *mf*, *p*, *ff*, *mf*, *pp*, *pp*, *mp*, *ff*, *1/2 pedal*

Bass Drum drum stick on rim string drum

l.v. Tam-tam l.v. Crotales

♩=100

Fl. 1, Fl. 2, Fl. 3, Fl. 4, Ob. 1, Ob. 2, Cl. 1, Cl. 2, Cl. 3, B. Cl., Sop. Sax., Alto Sax., Ten. Sax., Bari. Sax., Bass Sax., Bsn. 1, Bsn. 2

Musical notation for woodwinds and saxophones, including dynamics like *f*, *mp*, *mf*, *p*, and *subito*. Includes fingerings and slurs.

Hn. 1, Hn. 2, Hn. 3, Hn. 4, C.Tpt. 1, C.Tpt. 2, C.Tpt. 3, Tbn. 1, Tbn. 2, B. Tbn., Tba., Timp.

Musical notation for brass instruments and timpani, including dynamics like *mf*, *p*, and *ff*.

♩=100

Vib., Croc., B. D., Cym., Tub. B., Hp., Pno., Cb.

Musical notation for percussion and keyboard instruments, including performance instructions like "damp", "choke", "fast bisbiliando with irregular pattern", "sul pont.", "Bass Drum drum stick on rim", and "string drum".

♩ = 120

4/8

Fl. 1, Fl. 2, Fl. 3, Fl. 4, Cl. 1, Cl. 2, Cl. 3, B. Cl., Sop. Sax., Alto Sax., Ten. Sax., Bari. Sax., Bass Sax., Hn. 1, Hn. 2, Hn. 3, Hn. 4, C.Tpt. 1, C.Tpt. 2, C.Tpt. 3, Tbn. 1, Tbn. 2, B. Tbn., Tba.

♩ = 120

4/8

Timp., Vib., T.-t., B. D., Cym., Tub. B., Hp., Pno., Cb.

1/2 pedal



♩=100

♩=120

243

7 7 7 7 7

7 7 7 7 7

2/8

4/8

Fl. 1 *f*

Fl. 2 *f*

Fl. 3 *f*

Fl. 4

Ob. 1 *mp*

Ob. 2 *mp*

Cl. 1 *f*

Cl. 2 *f*

Cl. 3 *f*

B. Cl. *f* *p* *f* *p*

Sop. Sax. *mp*

Alto Sax. *mp*

Ten. Sax. *mp*

Bari. Sax.

Bass Sax.

Ban. 1 *mp*

Ban. 2 *mp*

Hn. 1

Hn. 2

Hn. 3

Hn. 4

C.Tpt. 1 *mf*

C.Tpt. 2

C.Tpt. 3 *mf*

Tbn. 1 *mf*

Tbn. 2 *mf*

B. Tbn.

Tba.

♩=100

♩=120

2/8

4/8

Timp.

Vib. *mf*

Crot. *mf*

B. D. *mf*

Cym. *ff*

Tub. B. *mf*

Hp. *mf*

Pno. *ff*

Cb. *ff*

damp

choke

fast bisbiliando with irregular pattern

1/2 pedal

Bass Drum drum stick on rim

string drum

Tam-tam

l.v.

damp

1/2 pedal

ff

damp  
mf  
choke  
mf  
choke  
ff  
damp  
mf  
damp  
pizz.  
ff

252

Fl. 1

Fl. 2

Fl. 3

Fl. 4

Ob. 1

Ob. 2

Cl. 1

Cl. 2

Cl. 3

B. Cl.

Sop. Sax.

Alto Sax.

Ten. Sax.

Bari. Sax.

Bass Sax.

Bsn. 1

Bsn. 2

Hn. 1

Hn. 2

Hn. 3

Hn. 4

C Tpt. 1

C Tpt. 2

C Tpt. 3

Tbn. 1

Tbn. 2

B. Tbn.

Tba.

Timp.

Cym.

Crot.

B. D.

Cym.

Tub. B.

Hp.

Pno.

Cb.

*mp*

*pp*

*p*

*mp*

*pp*

*f*

choke

Tam-tam

*pp*

*pp*

Snare Drum rim shot

*mf*

*pizz.*

*ff*

259 rit. ----- ♩=75

222

Fl. 1

Fl. 2

Fl. 3

Fl. 4

Ob. 1

Ob. 2

Cl. 1

Cl. 2

Cl. 3

B. Cl.

Sop. Sax.

Alto Sax.

Ten. Sax.

Bari. Sax.

Bass Sax.

Bsn. 1

Bsn. 2

Hn. 1

Hn. 2

Hn. 3

Hn. 4

C Tpt. 1

C Tpt. 2

C Tpt. 3

Tbn. 1

Tbn. 2

B. Tbn.

Tba.

rit. ----- ♩=75

222

Timp.

Cym.

T. c.

B. D.

S. D.

Tub. B.

Hp.

Pno.

Cb.

choke

f

l.v.

ff

T