

# UC San Diego

## UC San Diego Previously Published Works

### Title

Defects in translation-dependent quality control pathways lead to convergent molecular and neurodevelopmental pathology

### Permalink

<https://escholarship.org/uc/item/59f380pj>

### Authors

Terrey, Markus  
Adamson, Scott I  
Chuang, Jeffrey H  
[et al.](#)

### Publication Date

2021

### DOI

10.7554/elife.66904

### Copyright Information

This work is made available under the terms of a Creative Commons Attribution License, available at <https://creativecommons.org/licenses/by/4.0/>

Peer reviewed

# Defects in translation-dependent quality control pathways lead to convergent molecular and neurodevelopmental pathology

Markus Terrey<sup>1,2</sup>, Scott I Adamson<sup>3,4</sup>, Jeffrey H Chuang<sup>3,4</sup>, Susan L Ackerman<sup>1\*</sup>

<sup>1</sup>Howard Hughes Medical Institute, Department of Cellular and Molecular Medicine, Section of Neurobiology, Division of Biological Sciences, University of California San Diego, La Jolla, United States; <sup>2</sup>Graduate School of Biomedical Sciences and Engineering, University of Maine, Orono, United States; <sup>3</sup>The Jackson Laboratory for Genomic Medicine, Farmington, United States; <sup>4</sup>Department of Genetics and Genome Sciences, Institute for Systems Genomics, UConn Health, Farmington, United States

**Abstract** Translation-dependent quality control pathways such as no-go decay (NGD), non-stop decay (NSD), and nonsense-mediated decay (NMD) govern protein synthesis and proteostasis by resolving non-translating ribosomes and preventing the production of potentially toxic peptides derived from faulty and aberrant mRNAs. However, how translation is altered and the in vivo defects that arise in the absence of these pathways are poorly understood. Here, we show that the NGD/NSD factors *Pelo* and *Hbs1l* are critical in mice for cerebellar neurogenesis but expendable for survival of these neurons after development. Analysis of mutant mouse embryonic fibroblasts revealed translational pauses, alteration of signaling pathways, and translational reprogramming. Similar effects on signaling pathways, including mTOR activation, the translome and mouse cerebellar development were observed upon deletion of the NMD factor *Upf2*. Our data reveal that these quality control pathways that function to mitigate errors at distinct steps in translation can evoke similar cellular responses.

\*For correspondence: sackerman@ucsd.edu

**Competing interests:** The authors declare that no competing interests exist.

**Funding:** See page 30

**Received:** 26 January 2021

**Accepted:** 05 April 2021

**Published:** 26 April 2021

**Reviewing editor:** Mary E Hatten, The Rockefeller University, United States

© Copyright Terrey et al. This article is distributed under the terms of the [Creative Commons Attribution License](https://creativecommons.org/licenses/by/4.0/), which permits unrestricted use and redistribution provided that the original author and source are credited.

## Introduction

Regulation of gene expression is essential for cell growth and development. Although epigenetic mechanisms and transcriptional regulation are initial steps in gene expression, translation and its regulation have emerged as major hubs to control the production of functional proteins. In fact, translation is intricately coordinated with the degradation of faulty mRNAs and their resulting peptide products to balance gene expression and proteostasis (*Collart and Weiss, 2020*). Numerous studies have revealed that mRNA levels show limited correlation with protein levels, particularly when cells undergo dynamic transitions (*Abreua R de et al., 2009; Kristensen et al., 2013; Liu et al., 2016; Maier et al., 2009*). Indeed, post-transcriptional mechanisms, such as translation, play vital roles in rapidly altering gene expression and the signaling pathways that mediate cell identity and cell fate changes necessary for mammalian development (*Blair et al., 2017; Blanco et al., 2016; Fujii et al., 2017; Gabut et al., 2020; Kong and Lasko, 2012; Rodrigues et al., 2020; Signer et al., 2014; Tahmasebi et al., 2019*).

The process of translation is highly organized, and ribosomes need to accurately perform the steps of translation initiation, elongation and termination. However, multiple factors can perturb translation including secondary structures of mRNAs, amino acid limitations, tRNA deficiencies, rare

codons, interactions of nascent peptides with the ribosome, chemically damaged mRNAs, and cleaved or aberrant mRNAs (Brandman and Hegde, 2016; Brule and Grayhack, 2017; Buhr et al., 2016; Drummond and Wilke, 2008; Hu et al., 2009; Simms et al., 2014; Spencer et al., 2012; Thommen et al., 2017; Wolf and Grayhack, 2015; Yu et al., 2015). In turn, these defects may trigger translation-dependent quality control pathways including non-stop decay (NSD), no-go decay (NGD), or nonsense-mediated mRNA decay (NMD) to release ribosomes, eliminate potentially toxic or faulty peptide products, and co-translationally decay problematic or aberrant mRNAs (Collart and Weiss, 2020).

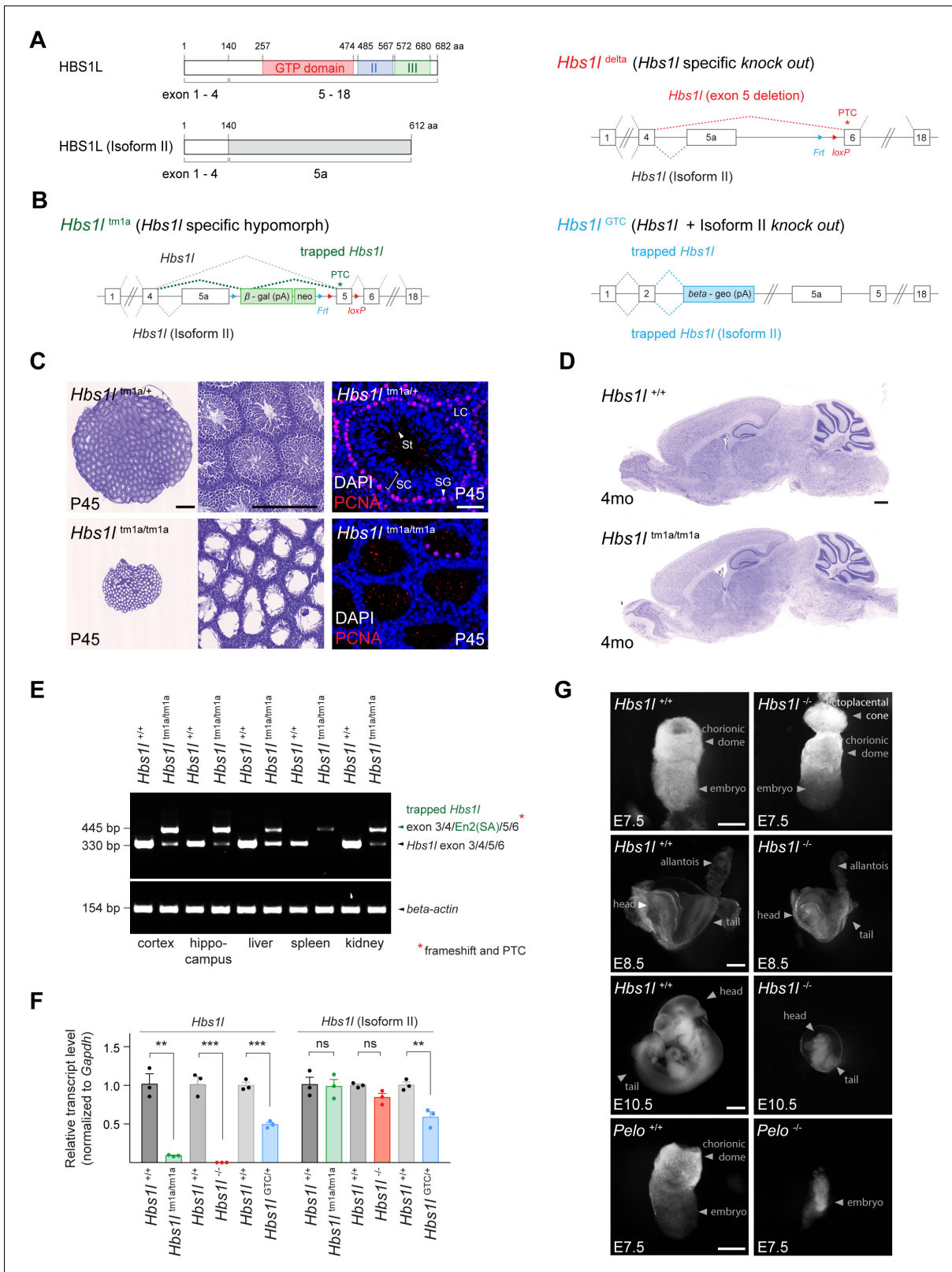
NSD rescues stalled ribosomes at the ends of truncated mRNAs that lack a stop codon and those in the 3'UTR of mRNAs that were not recycled at canonical stop codons (D'Orazio et al., 2019; Guydosh and Green, 2014; Mills et al., 2017; Young et al., 2015). Resolution of these stalled elongation complexes is mediated by Dom34 (yeast; PELO in mammals), and this activity is promoted in the presence of its binding partner Hbs1 (HBS1L in mammals) (Ikeuchi et al., 2016; Pisareva et al., 2011; Shoemaker et al., 2010; Shoemaker and Green, 2011; Tsuboi et al., 2012). In contrast, NGD resolves stalled ribosomes that are due to secondary mRNA structures, amino acid starvation or tRNA deficiency (Ikeuchi et al., 2019; Inada, 2020; Ishimura et al., 2014; Simms et al., 2017b). Defects in the resolution of stalled elongation complexes may trigger endonucleolytic cleavage of mRNAs resulting in 5'RNA intermediates that lack a stop codon and in turn, may be NSD substrates (D'Orazio et al., 2019; Doma and Parker, 2006; Glover et al., 2020; Guydosh and Green, 2017; Inada, 2020). Unlike NSD or NGD that utilize specialized termination factors (e.g. Dom34:Hbs1, GTPBP1, or GTPBP2 Ishimura et al., 2014; Terrey et al., 2020), NMD relies on the canonical termination factors eRF1 and eRF3 (Dever and Green, 2012; Simms et al., 2017a). UPF proteins (UPF1, UPF2, and UPF3) are critical in eliminating mRNAs that contain premature stop codons or retained introns, thus preventing generation of their potentially faulty protein products (Karousis and Mühlemann, 2019; Lykke-Andersen and Bennett, 2014; Raimondeau et al., 2018).

Defects in translation and translation-dependent quality control pathways impair cellular homeostasis and have been linked to proteotoxicity, changes in synaptic function, and neurodegeneration (Choe et al., 2016; Chu et al., 2009; Huang et al., 2018; Ishimura et al., 2014; Johnson et al., 2019; Kapur et al., 2020; Martin et al., 2020; Notaras et al., 2020; Terrey et al., 2020; Yonashiro et al., 2016). Here, we demonstrate that the ribosome rescue factors *Pelo* and *Hbs1l*, which are implicated in NSD and NGD, are critical for embryonic and brain development, but dispensable for neuronal survival in the adult brain. Our analysis of *Pelo*- and *Hbs1l*-deficient fibroblasts reveals translational reprogramming of multiple pathways. Inhibition of NMD via deletion of *Upf2* resulted in strikingly similar effects on the transcriptome, signaling pathways, and neurogenesis. Our data reveal that defects in translation-dependent quality control pathways, which mitigate errors in translation to prevent the production of defective peptide products from aberrant mRNAs, can trigger similar cellular responses and neurodevelopmental abnormalities.

## Results

### *Hbs1l* is required for embryogenesis

Multiple neurological abnormalities, including defects in motor control, were recently described in a patient with biallelic mutations in *Hbs1l* (O'Connell et al., 2019). Alternative splicing of *Hbs1l* produces transcripts that encode two distinct proteins (Figure 1A). Levels of full length *Hbs1l* (*Hbs1l*-V1 and Hbs1 in human and yeast, respectively) were dramatically decreased in *Hbs1l* patient fibroblasts (O'Connell et al., 2019). The levels of the shorter isoform II (*Hbs1l*-V3 in human), which is encoded by the first 4 exons of full-length *Hbs1l* and a unique last exon ('exon 5a') located between exon 4 and exon 5 of the *Hbs1l* locus, were relatively unaffected in the *Hbs1l* patient fibroblasts (O'Connell et al., 2019). In contrast to the translation-dependent quality control function of *Hbs1l*, previous studies suggest that isoform II of *Hbs1l* is likely an ortholog of the *Saccharomyces cerevisiae* protein SKI7 (Brunkard and Baker, 2018; Kalisiak et al., 2017; Marshall et al., 2018), which is involved in global mRNA turnover (Kalisiak et al., 2017). Although an additional splice variant (*Hbs1l*-V2 in human) which lacks the third coding exon is annotated in the human transcriptome (Mills et al., 2016; O'Connell et al., 2019), this splice variant is not annotated in mice, and we were unable to detect it by RT-PCR.



**Figure 1.** *Hbs1l* is required for embryogenesis. (A) Domain structure of HBS1L and isoform II and the exons encoding the two splice variants. (B) Design of *Hbs1l* loss-of-function alleles that target *Hbs1l* and isoform II. *Hbs1l*<sup>tm1a</sup> allele, *Hbs1l* specific gene trap (hypomorph); *Hbs1l*<sup>delta</sup> allele, *Hbs1l* specific deletion of exon 5 (*Hbs1l*, knock out); and *Hbs1l*<sup>GTC</sup> allele, *Hbs1l* gene trap to target *Hbs1l* and isoform II (knock out). (C) Cresyl violet-stained cross-sections of testis from P45 control (*Hbs1l*<sup>tm1a/+</sup>) and *Hbs1l*<sup>tm1a/tm1a</sup> mice. Immunofluorescence was performed with antibodies to proliferating cell Figure 1 continued on next page



Figure 1 continued

nuclear antigen (PCNA, red) and sections were counterstained with DAPI. (D) Cresyl violet-stained sagittal brain section from 4-month-old control (*Hbs1l*<sup>+/+</sup>) and *Hbs1l*<sup>tm1a/tm1a</sup> mice. (E) Splicing analysis of correctly spliced *Hbs1l* and trapped *Hbs1l* transcripts in various tissues from 4-month-old control (*Hbs1l*<sup>+/+</sup>) and *Hbs1l*<sup>tm1a/tm1a</sup> mice.  $\beta$ -actin was used as an input control. (F) Quantitative RT-PCR analysis of *Hbs1l* and isoform II using cDNA from E8.5 embryos. Data were normalized to *Gapdh* and the fold change in gene expression is relative to that of controls (*Hbs1l*<sup>+/+</sup>) from each cross. Data represent mean + SEM. (G) Bright field images of control (*Hbs1l*<sup>+/+</sup> and *Pelo*<sup>+/+</sup>), *Hbs1l*<sup>-/-</sup> and *Pelo*<sup>-/-</sup> embryos at E7.5, E8.5, and E10.5. Scale bars: 500  $\mu$ m and 200  $\mu$ m (higher magnification), 50  $\mu$ m (immunofluorescence image) (C); 500  $\mu$ m (D); 100  $\mu$ m (E7.5), 200  $\mu$ m (E8.5), and 2 mm (E10.5) (G). PTC, premature termination codon; Frt, flippase-mediated recombination site; loxP, Cre recombinase-mediated recombination site; En2(SA), splice acceptor of mouse *Engrailed-2* exon 2; SC, spermatocytes; SG, spermatogonia; St, spermatids; LC, Leydig cells. t-tests were corrected for multiple comparisons using Holm-Sidak method (F). ns, not significant; \*\* $p \leq 0.01$ ; \*\*\* $p \leq 0.001$ . The online version of this article includes the following source data for figure 1:

**Source data 1.** *Hbs1l* is required for embryogenesis.

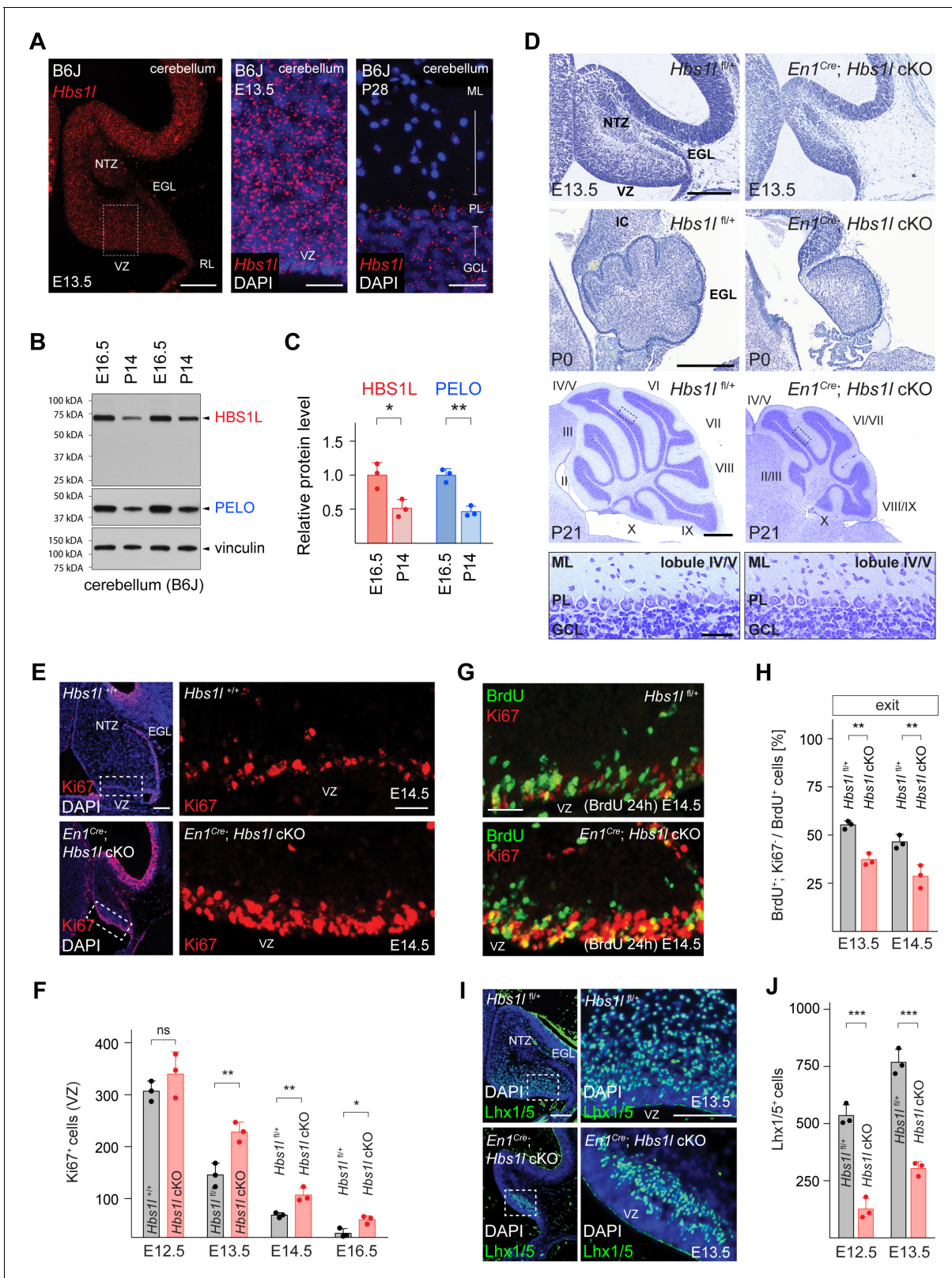
To study the neurological function of *Hbs1l* in mice, we first examined an *Hbs1l* allele (*Hbs1l*<sup>tm1a</sup>) with a gene trap cassette inserted between 'exon 5a' and exon 5 (Figure 1B). As previously reported, homozygous *Hbs1l*<sup>tm1a/tm1a</sup> mice were viable, but male mice were infertile (O'Connell et al., 2019). Histological analysis of the *Hbs1l*<sup>tm1a/tm1a</sup> testis at postnatal day P45 revealed a dramatic loss of mitotically active (PCNA<sup>+</sup>) spermatogonia, as well as spermatocytes and spermatids that normally differentiate from these cells (Figure 1C). However, no overt defects were observed in the *Hbs1l*<sup>tm1a/tm1a</sup> brain (Figure 1D).

Residual levels of *Hbs1l* were still present in various tissues from *Hbs1l*<sup>tm1a/tm1a</sup> mice (O'Connell et al., 2019). In agreement, *Hbs1l* transcripts spliced into the gene trap cassette in all tested tissues; however, correctly spliced *Hbs1l* transcripts were still detected in several tissues (Figure 1E). Thus, to completely eliminate expression of *Hbs1l*, we ubiquitously deleted exon five in *Hbs1l*<sup>tm1a</sup> mice to generate *Hbs1l*<sup>-/-</sup> mice (Figure 1B). In contrast to embryonic day (E) 8.5 *Hbs1l*<sup>tm1a/tm1a</sup> embryos, which still expressed 9% of the wild-type levels of *Hbs1l* mRNA, expression of *Hbs1l* was not detected in E8.5 *Hbs1l*<sup>-/-</sup> embryos (Figure 1F). Expression of *Hbs1l* isoform II was not significantly changed in homozygous embryos of either allele, as predicted (Figure 1F). In contrast to hypomorphic *Hbs1l*<sup>tm1a/tm1a</sup> mice, *Hbs1l*<sup>-/-</sup> embryos failed to develop after E8.5 and could not be recovered at E11.5 from heterozygous matings (Figure 1G, Supplementary file 1). These results demonstrate that *Hbs1l* is necessary for embryonic development; however, embryos lacking *Hbs1l* develop longer than embryos deficient for *Pelo*, the binding partner of HBS1L, which die by E7.5 (Adham et al., 2003; Figure 1G).

To determine if isoform II of *Hbs1l* is also necessary for embryonic viability, we utilized an additional allele (*Hbs1l*<sup>GTC</sup>) with a gene trap cassette located in intron 2 (Figure 1B). Expression of *Hbs1l* and isoform II transcripts in E8.5 heterozygous *Hbs1l*<sup>GTC/+</sup> embryos was reduced by 51% and 41%, respectively (Figure 1F). Homozygous *Hbs1l*<sup>GTC/GTC</sup> embryos were not recovered at E6.5 from heterozygous matings (Supplementary file 1) demonstrating that they died even before *Pelo*<sup>-/-</sup> or *Hbs1l*<sup>-/-</sup> embryos. The early embryonic lethality of *Hbs1l*<sup>GTC/GTC</sup> embryos suggests that the *Hbs1l* isoforms are likely functionally distinct, and that their loss causes additive or synergistic defects during embryogenesis.

## ***Hbs1l* is required for cerebellar development**

Consistent with transcriptome data from a brain RNA sequencing database (Zhang et al., 2014), we observed expression of *Hbs1l* in multiple cell types of the brain (Figure 2A). Expression of HBS1L and its binding partner PELO was observed throughout and after cerebellar development (Figure 2A,B and C). However, levels of HBS1L and PELO decreased in the postnatal (P)14 cerebellum after the completion of development, a similar decrease was observed in the whole brain (Figure 2B and C, Figure 2—figure supplement 1A). To begin to investigate the role of *Hbs1l* in the brain, we deleted this gene in the developing cerebellum and midbrain by crossing the floxed allele to *En1*<sup>Cre</sup> mice (Kimmel et al., 2000). Differences in cerebellar size between mutant and control embryos were already apparent by E13.5 (Figure 2D). Although the trilaminar structure of the cerebellum appeared normal in *En1*<sup>Cre</sup>; *Hbs1l* cKO mice at postnatal day P21, cerebellar foliation was delayed in P0 mutant mice, and secondary fissures failed to form compared to control mice (Figure 2D). Consistent with previous studies no cerebellar abnormalities were observed in *En1*<sup>Cre</sup>



**Figure 2.** *Hbs1l* is required for cerebellar development. (A) In situ hybridization of *Hbs1l* mRNA (red) on cerebellar sections from E13.5 and P28 control (B6J) mice. Sections were counterstained with DAPI. (B) Western blot analysis using cerebellar lysates from B6J mice. Vinculin was used as a loading control. (C) The relative protein levels of HBS1L and PELO were normalized to levels of vinculin and protein levels are relative to those of E16.5 B6J cerebella. (D) Parasagittal (E13.5) and sagittal (P0 and P21) cerebellar sections from control (*Hbs1l*<sup>fl/fl</sup>) and *En1*<sup>Cre</sup>; *Hbs1l* cKO mice stained with cresyl violet

Figure 2 continued on next page

Figure 2 continued

violet. Higher magnification images of lobules IV/V at P21 are shown below each genotype. Cerebellar lobules are indicated by Roman numerals. (E) Immunofluorescence using antibodies to Ki67 (red) on cerebellar section from E14.5 control (*Hbs11<sup>+/+</sup>*) and *En1<sup>Cre</sup>; Hbs11* cKO embryos. Sections were counterstained with DAPI and higher magnification images of boxed area are shown. (F) Number of cerebellar VZ-progenitors (Ki67<sup>+</sup> cells) from control (*Hbs11<sup>+/+</sup>* or *Hbs11<sup>fl/+</sup>*) and *En1<sup>Cre</sup>; Hbs11* cKO embryos. Data represent mean + SD. (G) Immunofluorescence using antibodies to BrdU (green) and Ki67 (red) on cerebellar sections from E14.5 control (*Hbs11<sup>fl/+</sup>*) and *En1<sup>Cre</sup>; Hbs11* cKO embryos to determine the fraction of cells that exited the cell cycle. Embryos were injected with BrdU 24 hr prior to harvest. (H) Percentage of cerebellar VZ-progenitors that exited the cell cycle (BrdU<sup>+</sup>, Ki67<sup>-</sup> cells). Data represent mean + SD. (I) Immunofluorescence using antibodies to Lhx1/5 on cerebellar sections from E13.5 control (*Hbs11<sup>+/+</sup>*) and *En1<sup>Cre</sup>; Hbs11* cKO embryos. Sections were counterstained with DAPI and higher magnification images of boxed areas are shown. (J) Number of cerebellar Purkinje cell precursors (Lhx1/5<sup>+</sup> cells). Data represent mean + SD. Scale bars: 100  $\mu$ m and 20  $\mu$ m (higher magnifications) (A); 200  $\mu$ m (E13.5 and P0), 500  $\mu$ m and 50  $\mu$ m (higher magnification) (P21) (D); 100  $\mu$ m and 20  $\mu$ m (higher magnification) (E); 20  $\mu$ m (G); 100  $\mu$ m and 50  $\mu$ m (higher magnification) (I). VZ, ventricular zone; NTZ, nuclear transitory zone; RL, rhombic lip; EGL, external granule cell layer; ML, molecular cell layer; PL, Purkinje cell layer; GCL, granule cell layer; IC, inferior colliculus. t-tests were corrected for multiple comparisons using Holm-Sidak method (C, F, H, J). ns, not significant; \* $p \leq 0.05$ ; \*\* $p \leq 0.01$ ; \*\*\* $p \leq 0.001$ .

The online version of this article includes the following source data and figure supplement(s) for figure 2:

**Source data 1.** *Hbs11* is required for cerebellar development.

**Figure supplement 1.** *Hbs11* is required for the development of multiple cerebellar lineages.

**Figure supplement 1—source data 1.** *Hbs11* is required for the development of multiple cerebellar lineages.

**Figure supplement 2.** *Hbs11<sup>-/-</sup>*-mediated cerebellar defects are independent of the B6J-associated mutation in *n-Tr20*.

**Figure supplement 2—source data 1.** *Hbs11<sup>-/-</sup>*-mediated cerebellar defects are independent of the B6J-associated mutation in *n-Tr20*.

mice (Dong and Kwan, 2020; Guo et al., 2010; Li et al., 2002; Sgaier et al., 2007; Tripathi et al., 2008).

Lineage-restricted GABAergic precursors are generated beginning at ~E10.5 from progenitors in the ventricular zone (VZ) of the developing cerebellum (Ju et al., 2016; Leto et al., 2012). The pool of progenitors declines as progenitors either exit the cell cycle to generate precursors or retract from the VZ to form a secondary germinal zone in the prospective white matter to transition from neurogenesis to gliogenesis (Leto et al., 2012; Vong et al., 2015; Wizeman et al., 2019). Immunofluorescence with antibodies to the cell-cycle-associated protein Ki67 demonstrated a loss of progenitors between E12.5 to E16.5 in both the control and *En1<sup>Cre</sup>; Hbs11* cKO cerebella. However, the number of progenitors remained higher in *En1<sup>Cre</sup>; Hbs11* cKO compared to control cerebella (Figure 2E and F), suggesting that *Hbs11*-deficient progenitors may aberrantly proliferate. In agreement, we observed a higher fraction of VZ-progenitors in S-phase in the E12.5 and E13.5 mutant cerebella by pulse labeling with BrdU for 30 min and performing co-immunofluorescence with BrdU and Ki67 antibodies (Figure 2—figure supplement 1B and C). Immunofluorescence with antibodies to the M-Phase marker phospho-histone 3 (pH3) and the general cell cycle marker PCNA demonstrated an increase of VZ-progenitors in M-phase in the mutant cerebellum (Figure 2—figure supplement 1D).

To test if *Hbs11*-deficient progenitors are able to exit the cell cycle, which is necessary to generate lineage-restricted precursors, we labeled control and mutant embryos at E12.5 or E13.5 with BrdU and then determined the fraction of BrdU<sup>+</sup> cells that had left the cell cycle (do not express Ki67) 24 hr after labeling. Fewer VZ-progenitors exited the cell cycle in *En1<sup>Cre</sup>; Hbs11* cKO relative to control cerebella (Figure 2G and H). Concordantly, the number of VZ-derived Lhx1/5<sup>+</sup> Purkinje cells and Pax2<sup>+</sup> interneuron precursors was reduced to ~32% and ~34% in *En1<sup>Cre</sup>; Hbs11* cKO between E12.5 to E16.5 compared to control cerebella (Figure 2I and J, Figure 2—figure supplement 1E and F), suggesting that *Hbs11*-deficient VZ-progenitors remain proliferative at the expense of differentiation.

Cerebellar glutamatergic precursors are generated beginning at ~E10.5 from the rhombic lip (RL), a germinal zone located in the caudal region of the cerebellar primordia. Between E10.5–12.5 the RL gives rise to Tbr1<sup>+</sup> cells that migrate subpially to take up residence in the nuclear transitory zone and will develop into deep cerebellar neurons (Fink et al., 2006). Following Tbr1<sup>+</sup> cell production, proliferating granule cell precursors emerge from the RL and form the external granule cell layer (EGL) (Chung et al., 2010). As observed for VZ-derived neuronal precursors, deletion of *Hbs11* also decreased progeny generated from the RL. Immunofluorescence with antibodies to Tbr1, revealed fewer Tbr1<sup>+</sup> cells in the E14.5 mutant cerebella compared to controls (Figure 2—figure



**supplement 1G**). In addition, the EGL of *En1<sup>Cre</sup>; Hbs1l* cKO at E13.5 to E16.5 contained only ~45% of the granule cell precursors compared to controls (**Figure 2—figure supplement 1H and I**).

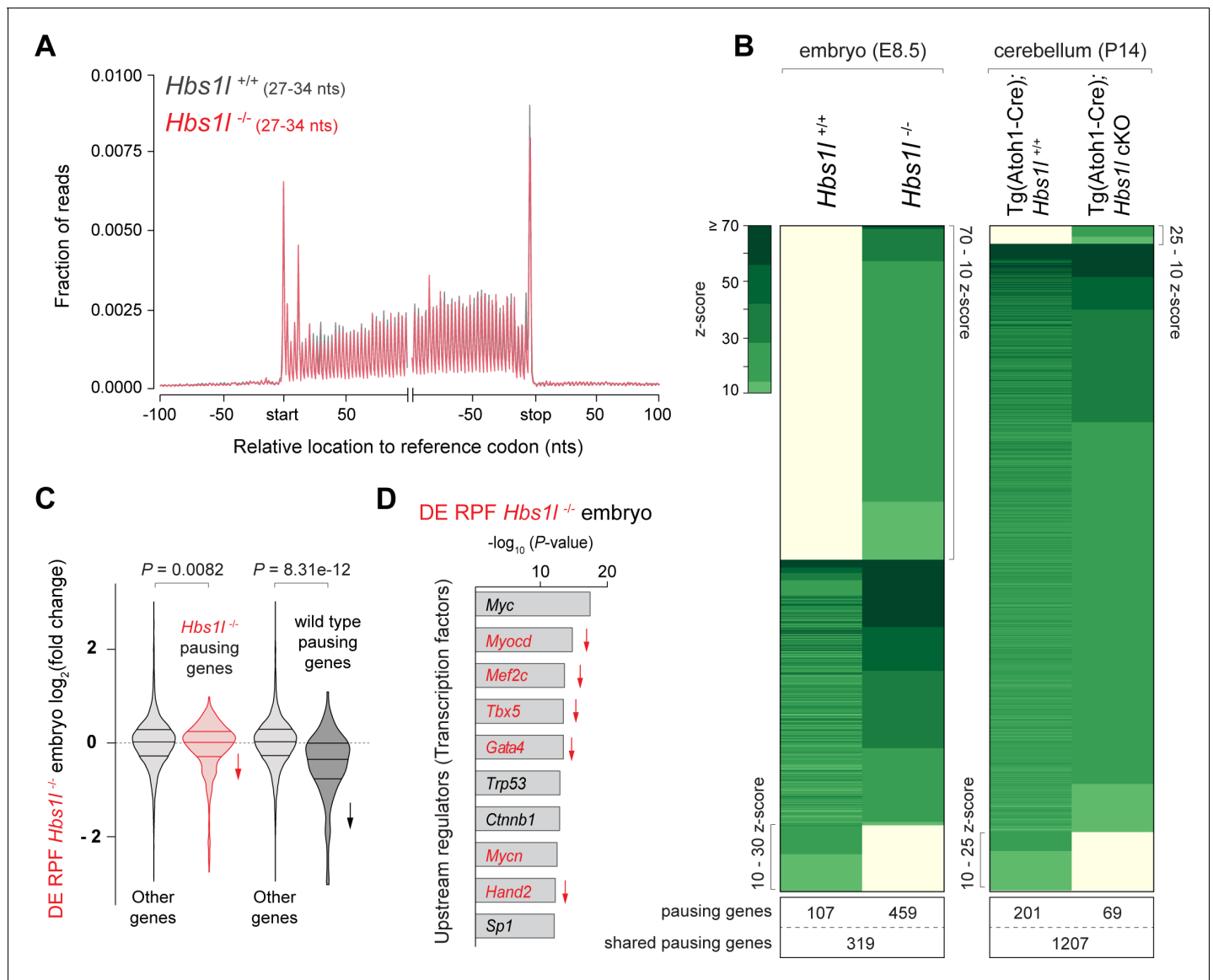
Granule cell precursors that derive from the RL continue to proliferate in the EGL to generate additional precursors that exit the cell cycle postnatally prior to migrating to the internal granule cell layer (IGL). To determine if the decrease in granule cell precursors was due to a failure of progenitors in the RL to generate sufficient numbers of granule cell precursors, or a failure of granule cell precursors to proliferate, we labeled E12.5 and E13.5 wild type and mutant embryos with BrdU and then determined the number of BrdU<sup>+</sup> cells in the EGL 24 hr after labeling. Fewer BrdU<sup>+</sup> cells were present in the *En1<sup>Cre</sup>; Hbs1l* cKO EGL compared to that of controls indicating that the mutant rhombic lip generates fewer granule cell precursors (**Figure 2—figure supplement 1J and K**). However, cell cycle exit of these precursors did not vary between mutant and control cells (**Figure 2—figure supplement 1L**). Furthermore, no difference in proliferation (S- and M-phase) was observed when granule cell precursors were analyzed at E16.5 or P5 (**Figure 2—figure supplement 1M and N**). Together, these data suggest that while *Hbs1l* is required for the initial production of granule cell precursors, it is dispensable for the subsequent cell cycle progression of these precursors in the EGL. In agreement, genetic ablation of *Hbs1l* by Tg(*Atoh1-Cre*) which specifically deletes in cerebellar granule cell precursors in the EGL beginning at ~E16.5 (**Lorenz et al., 2011; Pan et al., 2009; Qiu et al., 2010; Wojcinski et al., 2019**), did not impair development of these cells (**Figure 2—figure supplement 2A**).

*Hbs1l* was also required for gliogenesis in the developing cerebellum. Cerebellar gliogenesis starts at ~E18 and continues during postnatal development during which time progenitors that have retracted from the VZ switch from a neurogenic to gliogenic fate and produce oligodendrocytes and astrocytes (**Götz and Huttner, 2005; Vong et al., 2015**). Immunofluorescence with antibodies to Olig2, a marker of oligodendroglial progenitors which give rise to oligodendrocytes and astrocytes (**Chung et al., 2013; Tatsumi et al., 2018**), revealed the number of these cells was reduced in P5 *En1<sup>Cre</sup>; Hbs1l* cKO cerebella (**Figure 2—figure supplement 1O**). Together these data indicate that *Hbs1l* is required for the generation of multiple cell types in the developing cerebellum.

We have previously identified a mutation in the common C57BL/6J (B6J) strain that partially disrupts processing of the brain-specific arginine tRNA, *n-Tr20* (*n-Tr20<sup>B6J/B6J</sup>*; *n-Tr20* is also known as *n-TRtct5*). This processing defect in turn reduces the pool of available tRNA<sup>Arg</sup><sub>UCU</sub>, leading to ribosome pausing at the A-site at AGA codons in cerebellar mRNAs (**Ishimura et al., 2014**). *Hbs1l* cKO mice were generated with the B6J-associated mutation in *n-Tr20*. To test if the *n-Tr20* deficiency influenced the developmental defects observed in the absence of *Hbs1l*, we either restored *n-Tr20* to wild type levels or completely deleted *n-Tr20* in *Hbs1l* cKO mice. Wild-type expression of the tRNA (*n-Tr20<sup>B6N/B6N</sup>*) did not rescue defects in *En1<sup>Cre</sup>; Hbs1l* cKO cerebella, nor did complete loss of *n-Tr20* (*n-Tr20<sup>-/-</sup>*) cause developmental defects in Tg(*Atoh1-Cre*); *Hbs1l* cKO cerebella (**Figure 2—figure supplement 2A**). In addition, neither loss of *Hbs1l* or *Pelo* affected cell survival of terminally differentiated granule cells in 9-month-old mice even in the presence of the *n-Tr20* deficiency (**Figure 2—figure supplement 2B,C,D and E**), indicating that *Hbs1l* and *Pelo* do not respond to AGA pausing.

## Ribosome pausing correlates with pathology in *Hbs1l*-deficient mice

To determine if the developmental defects that occur upon loss of *Hbs1l* are accompanied by alterations in translation elongation, we performed ribosome profiling on wild type and *Hbs1l<sup>-/-</sup>* embryos at E8.5. Ribosome protected fragments (RPF) mapped primarily to the protein coding sequence of genes in both wild-type and mutant embryos (**Figure 3A**). Using the previously described methodology (**Ishimura et al., 2014**), we found a total of ~1300 sites with significant (z-score  $\geq 10$ ) increases in local ribosome occupancy ('ribosome pauses') in wild-type and mutant embryos (**Figure 3B, Supplementary file 2**). About 40% of the ribosome pauses, which mapped to 319 genes, were shared between genotypes suggesting they occurred independently of the loss of *Hbs1l*. Ten percent of ribosome pauses (mapped to 107 genes) were found only in wild-type embryos. The ribosome density derived from the total number of ribosome-protected fragments (RPF) serves as proxy for gene expression at the level of the translome. Differential expression analysis of the translome (DE RPF, **Supplementary file 3**) indicated translation of genes with wild type-specific pauses was decreased in mutant embryos (**Figure 3C**), which may contribute to the apparent specificity of these pauses to wild-type embryos. Strikingly, 50% of ribosome pauses (mapped to 459 genes) were



**Figure 3.** Ribosome pausing correlates with pathology in *Hbs1l*-deficient mice. (A) Metagenes profiles of RPFs from E8.5 control (*Hbs1l*<sup>+/+</sup>, gray traces) and *Hbs1l*<sup>-/-</sup> (red traces) embryos. (B) Analysis of significantly increased local ribosome occupancy (z-score  $\geq 10$ , pause site detected in all three replicates) from E8.5 wild type (*Hbs1l*<sup>+/+</sup>) and *Hbs1l*<sup>-/-</sup> embryos (left) or P14 control (Tg(Atoh1-Cre); *Hbs1l*<sup>+/+</sup>) and Tg(Atoh1-Cre); *Hbs1l* cKO cerebella (right). The number of genes that pause sites map to is shown below for each genotype. (C) All translated genes (DE RPF *Hbs1l*<sup>-/-</sup>) from E8.5 *Hbs1l*<sup>-/-</sup> embryos were compared to the translation of genes which contained pauses specific to either *Hbs1l*<sup>-/-</sup> or wild-type embryos. Downward direction of arrows indicates significant reduction in translation of pausing genes in E8.5 *Hbs1l*<sup>-/-</sup> embryos relative to wild-type embryos. (D) Identification of upstream regulators using Ingenuity Pathway Analysis (IPA) of differentially translated genes of E8.5 *Hbs1l*<sup>-/-</sup> embryos (DE RPF *Hbs1l*<sup>-/-</sup>). Transcription factors that are involved in heart development are shown in red. Downward direction of arrows indicates predicted activity (downregulation) of transcription factors. RPFs, ribosome-protected fragments; nts, nucleotides. Wilcoxon rank-sum test was used to determine statistical significance (C). The online version of this article includes the following figure supplement(s) for figure 3:

**Figure supplement 1.** *Hbs1l* deficiency in embryos alters translation of pathways associated with heart function.

uniquely observed in *Hbs1l*<sup>-/-</sup> embryos and like other pauses, occurred primarily in protein coding sequences (**Supplementary file 2**). Similar to the metagenes analysis (**Figure 3A**), we didn't observe genotype-dependent differences in the ribosome occupancy in different gene regions (i.e. untranslated 5' or 3' region). Only 9% of genes associated with *Hbs1l*<sup>-/-</sup>-specific ribosome pauses were differentially translated in *Hbs1l*<sup>-/-</sup> embryos (DE RPF *Hbs1l*<sup>-/-</sup>) and translation of 26 genes and 15 genes was decreased and increased, respectively (**Figure 3—figure supplement 1A**).

Loss of *Hbs1l* did not affect survival of granule cells (**Figure 2—figure supplement 2B and C**), which constitute the vast majority of the cellular content of the cerebellum. Thus, to determine if elongation defects correlate with pathogenesis in *Hbs1l* mutant tissues, we also performed ribosome profiling on the cerebellum of P14 control and Tg(*Atoh1*-Cre); *Hbs1l* cKO mice (**Supplementary file 2**). We observed more ribosome pausing sites (~2700) in the cerebellum than in embryos, likely due to the higher amount of input RNA and sequencing depth. Consistent with the lack of a genetic interaction between the *Hbs1l* and the *n-Tr20* mutation, no significant increase in ribosome occupancy on A-site AGA codons was observed in *Hbs1l*<sup>-/-</sup> cerebella (**Supplementary file 4**). Unlike the high percentage of pauses that were unique to *Hbs1l*<sup>-/-</sup> embryos, only 2% of ribosome pauses (mapped to 69 genes) were unique to the mutant cerebellum (**Figure 3B**). In addition, the z-scores ('pause scores') for *Hbs1l*-specific pauses were significantly higher in mutant embryos than the mutant cerebellum (**Figure 3—figure supplement 1B**).

Mutant embryos also exhibited larger changes in the translome (DE RPF) than the mutant cerebellum (**Figure 3—figure supplement 1C**), indicating that defects in translation also correlate with pathology. Kyoto Encyclopedia of Genes and Genomes (KEGG) and Ingenuity Pathway Analysis (IPA) of differentially translated genes (DE RPF *Hbs1l*<sup>-/-</sup>, adj.  $p \leq 0.05$ ) in *Hbs1l*<sup>-/-</sup> embryos revealed that downregulated genes were significantly enriched for heart/cardiac muscle contraction and calcium signaling (**Figure 3—figure supplement 1D and E**). In agreement, upstream regulator analysis predicted downregulation of multiple transcription factors required for heart development (*Cui et al., 2018; Molkentin et al., 1997; Muñoz-Martín et al., 2019; Steimle and Moskowitz, 2017; Figure 3D*). Together these data suggest that HBS1L deficiency may cause defects in the embryonic heart, one of the first organs to begin developing in the mouse embryo.

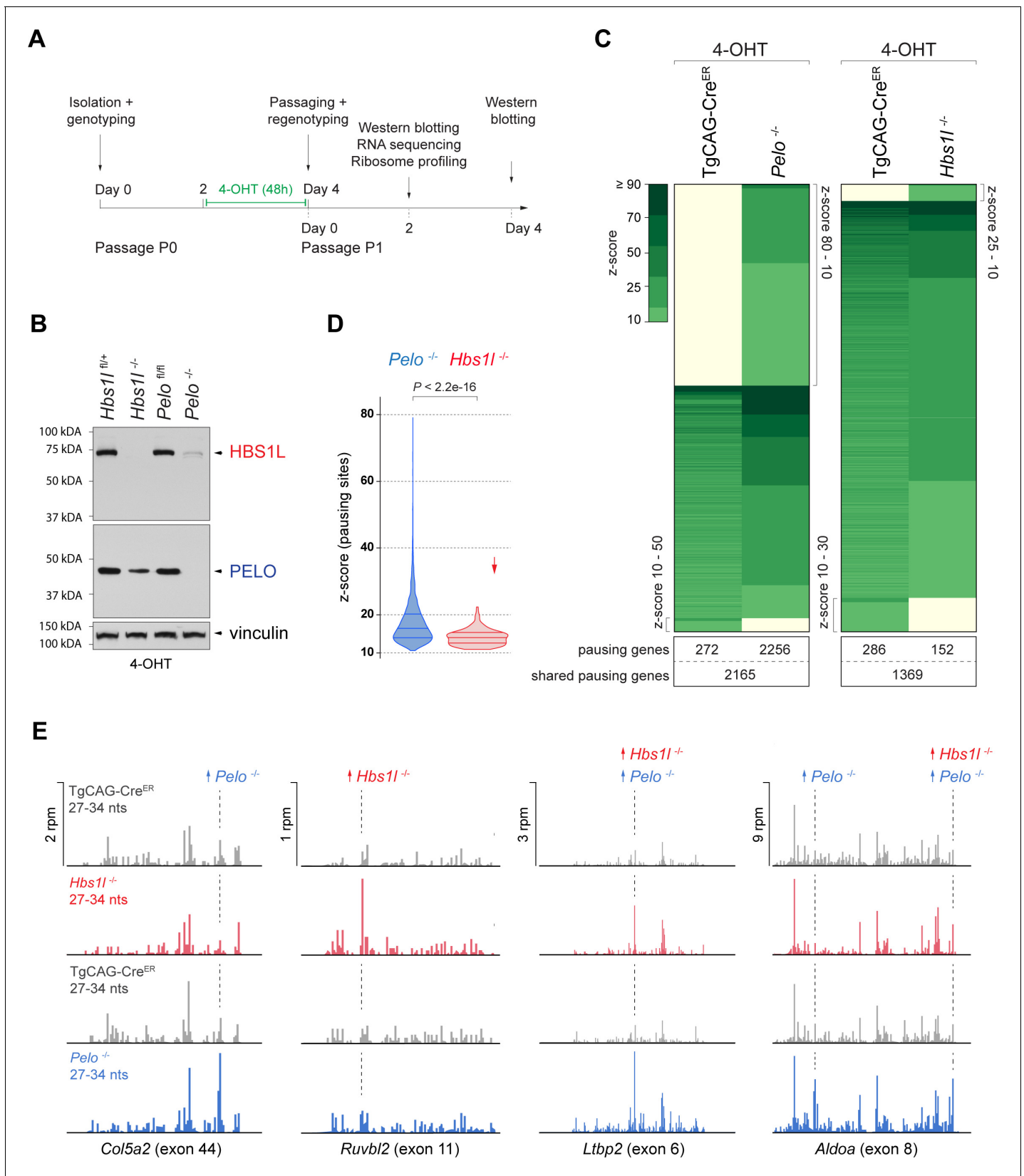
### Loss of *Pelo/Hbs1l* alters translation regulation and reprograms the translome

Our embryonic data suggested that defects in translation modulate the translome. Because *Pelo*<sup>-/-</sup> embryos could not be profiled due to their early embryonic lethality, we conditionally deleted *Pelo* or *Hbs1l* in primary mouse embryonic fibroblasts (MEFs) using a tamoxifen-inducible Cre transgene (TgCAG-Cre<sup>ER</sup>) to compare changes in translation upon loss of *Pelo* and *Hbs1l* (**Figure 4A**). Consistent with previous studies (*Juszkiewicz et al., 2020; O'Connell et al., 2019*), deletion of *Hbs1l* was accompanied by decreased levels of PELO protein, but not its mRNA (**Figure 4B, Figure 4—figure supplement 1A,B and C**). In addition, we found deletion of *Pelo* also led to the loss of HBS1L without altering *Hbs1l* mRNA levels, suggesting degradation of PELO or HBS1L protein occurs in the absence of either interacting partner (**Figure 4B, Figure 4—figure supplement 1A,B and C**).

To analyze defects in translation elongation, we performed ribosome profiling of tamoxifen-treated control (TgCAG-Cre<sup>ER</sup>), *Pelo*<sup>-/-</sup> (TgCAG-Cre<sup>ER</sup>; *Pelo* cKO), and *Hbs1l*<sup>-/-</sup> (TgCAG-Cre<sup>ER</sup>; *Hbs1l* cKO) cells. Analyzing the ribosome occupancy in *Pelo*<sup>-/-</sup> and control cells revealed ~10,000 sites with significant (z-score  $\geq 10$ ) increases in local ribosome occupancy which mapped to 4693 genes (**Figure 4C, Supplementary file 2**). One percent of these ribosome pauses were only observed in control cells ('control-pauses'), 57% were shared between control and *Pelo*<sup>-/-</sup> cells, and 42% were specific to *Pelo*<sup>-/-</sup> cells ('*Pelo*<sup>-/-</sup>-pauses'). In contrast, analysis of *Hbs1l*<sup>-/-</sup> and control cells revealed fewer ribosome pauses (~4200 - mapping to 1807 genes) and only 5% were specific to *Hbs1l*<sup>-/-</sup> cells ('*Hbs1l*<sup>-/-</sup>-pauses') (**Figure 4C**). In addition to the fewer ribosome pause sites, the z-scores ('pause scores') for *Hbs1l*<sup>-/-</sup>-pauses were also significantly lower than those of *Pelo*<sup>-/-</sup>-pauses (**Figure 4D**). Approximately 80% of the *Hbs1l*<sup>-/-</sup>-pausing genes also had pauses in *Pelo*<sup>-/-</sup> cells; however, only 30% of the ribosome pauses occurred at the same pause site (**Figure 4E, Supplementary file 2**). Together, these data suggest that the loss of *Pelo* or *Hbs1l* leads to translation elongation defects, but particularly severe defects are observed in the absence of *Pelo*.

The Dom34:Hbs1 complex has been implicated in multiple translation-dependent quality control pathways including non-stop decay (NSD) (*Collart and Weiss, 2020; Simms et al., 2017a*). This pathway rescues ribosomes stalled at the ends of truncated mRNAs, ribosomes in polyA-sequences on prematurely polyadenylated mRNAs that lack a termination codon, or ribosomes in the 3'UTR of mRNAs that were not recycled at canonical stop codons (*Arribere and Fire, 2018; D'Orazio et al., 2019; Guydosh and Green, 2014; Mills et al., 2017; Young et al., 2015*). Examination of *Pelo*<sup>-/-</sup>- and *Hbs1l*<sup>-/-</sup>-pauses revealed that ~92% of pauses mapped to the protein-coding region of transcripts (**Supplementary file 5**). The remaining local increases in ribosome occupancy were similarly





**Figure 4.** Loss of *Pelo* induces greater defects in translation elongation than loss of *Hbs1l*. (A) Experimental strategy for in vitro studies using tamoxifen (4-OHT) treatment of primary mouse embryonic fibroblasts (MEFs). (B) Western blot analysis of HBS1L and PELO using MEF lysates from tamoxifen-treated control (*Hbs1l<sup>fl/fl</sup>* or *Pelo<sup>fl/fl</sup>*), *Hbs1l<sup>-/-</sup>* and *Pelo<sup>-/-</sup>* cells. Vinculin was used as a loading control. (C) Analysis of significantly increased local pausing sites in *Pelo<sup>-/-</sup>* and *Hbs1l<sup>-/-</sup>* cells. (D) Violin plots showing the distribution of z-scores for pausing sites in *Pelo<sup>-/-</sup>* (blue) and *Hbs1l<sup>-/-</sup>* (red) cells. (E) RNA-seq tracks showing increased local pausing sites in *Pelo<sup>-/-</sup>* (blue) and *Hbs1l<sup>-/-</sup>* (red) cells for *Col5a2* (exon 44), *Ruvbl2* (exon 11), *Ltp2* (exon 6), and *Aldoa* (exon 8). Figure 4 continued on next page

## Figure 4 continued

ribosome occupancy (z-score  $\geq 10$ , pause site detected in all three replicates) from tamoxifen-treated control (TgCAG-Cre<sup>ER</sup>) and *Pelo*<sup>-/-</sup> (left), or control and *Hbs1*<sup>-/-</sup> cells (right). The number of genes that pause sites map to is shown below for each genotype. (D) Comparison of the z-scores ('pause score') for pauses observed in *Pelo*<sup>-/-</sup> (blue) and *Hbs1*<sup>-/-</sup> (red) cells. Downward direction of the arrow indicates significant lower pause scores of *Hbs1*<sup>-/-</sup>-compared to *Pelo*<sup>-/-</sup>-specific pauses. (E) Examples of mapped footprints (27–34 nucleotides) on genes from tamoxifen-treated control (TgCAG-Cre<sup>ER</sup>, gray) and *Pelo*<sup>-/-</sup> (blue), or control and *Hbs1*<sup>-/-</sup> (red) cells. Upward direction of arrows indicates significant increase in local ribosome occupancy and the dashed line indicates the pause site. 4-OHT, 4-hydroxytamoxifen; nts, nucleotides; rpm, reads per million. Wilcoxon rank-sum test was used to determine statistical significance (D).

The online version of this article includes the following source data and figure supplement(s) for figure 4:

**Figure supplement 1.** Loss of *Hbs1* and *Pelo* control protein levels of their respective binding partner.

**Figure supplement 1—source data 1.** Loss of *Hbs1* and *Pelo* control protein levels of their respective binding partner.

split between the 5' and 3'UTRs. Although the frequency of pauses in the 3'UTR was similar for mutant-specific, control-specific and shared pauses, the frequency of control-specific pauses that mapped to the 5'UTR was increased and those in the coding region were decreased (**Figure 4—figure supplement 1D**). Thus, consistent with our observations in *Hbs1*<sup>-/-</sup> embryos, these data suggest that neither loss of *Hbs1* nor *Pelo* in MEFs led to enrichment of ribosomes in the 5' or 3'UTR.

We also searched for RPFs containing untemplated stretches of adenosines (A) at the 3' end indicative of ribosomes extending into the poly(A) tail of premature polyadenylated mRNAs. Ribosomes did not protect more than 15 consecutive A's (**Figure 4—figure supplement 1E**) suggesting that like in yeast, the poly(A) tract does not extend beyond the P-site of the ribosome (**Guydosh and Green, 2014**). Interestingly, we observed a significantly higher fraction of these 3' end A reads in *Pelo*<sup>-/-</sup> compared to control cells (**Figure 4—figure supplement 1F**), supporting a role for *Pelo* in rescuing ribosomes in polyA tails (**D'Orazio et al., 2019; Guydosh and Green, 2017; Guydosh and Green, 2014**). However, the fraction of those reads did not significantly increase in *Hbs1*<sup>-/-</sup> MEFs (**Figure 4—figure supplement 1F**), *Hbs1*<sup>-/-</sup> embryos (Student's t-test,  $p=0.4621$ ) or *Hbs1*<sup>-/-</sup> cerebella (Student's t-test,  $p=0.3269$ ).

In addition to NSD, Dom34:Hbs1 is implicated in ribosome rescue during No-Go decay (NGD), a quality control pathway in which ribosome stalling is evoked due to stretches of rare codons, secondary mRNA structures, amino acid starvation, or tRNA deficiency. NGD may trigger endonucleolytic cleavage of mRNAs due to ribosome collision, leading to 5'RNA intermediates that lack a stop codon and are then targeted by Dom34:Hbs1 via NSD (**D'Orazio et al., 2019; Doma and Parker, 2006; Glover et al., 2020**). Studies in *Drosophila* and *C. elegans* revealed that RNA intermediates that converge onto NSD may also be generated through additional mechanisms including RNA interference (RNAi) and nonsense-mediated decay (NMD) (**Arribere and Fire, 2018; Hashimoto et al., 2017**).

To determine if loss of *Pelo* or *Hbs1* alters the frequency of ribosome pauses that are associated with potential targets such as NMD targets, we mapped pauses to unique coding transcripts, which is generally difficult due to the short nature of RPFs. Indeed, only a fraction (~30%) of *Pelo*<sup>-/-</sup> and *Hbs1*<sup>-/-</sup>-pauses could be assigned to unique coding transcripts (1518 and 95, respectively) (**Supplementary file 5**). Of these transcripts, ~8% were classified as NMD transcripts and ~92% were protein-coding transcripts. A similar percentage of pauses mapping to NMD transcripts (~6.5%) was observed when we analyzed transcripts that contained ribosome pauses shared between either control and *Pelo*<sup>-/-</sup> cells, control and *Hbs1*<sup>-/-</sup> cells, or control-specific pausing transcripts (**Figure 4—figure supplement 1G**). In addition, transcriptome analysis of MEFs revealed that NMD transcripts represented ~6% of expressed transcripts (**Supplementary file 7**). These data suggest that loss of *Pelo* or *Hbs1* did not lead to enrichment of ribosome pauses on transcripts predicted to undergo NMD.

Our observation that ribosome pausing is more dramatic in *Pelo*<sup>-/-</sup> than *Hbs1*<sup>-/-</sup> cells correlates with the earlier lethality of *Pelo*<sup>-/-</sup> embryos. To get a broader perspective of whether the loss of *Pelo* impacts other aspects of translation more than the *Hbs1* deficiency, we analyzed at first the translational efficiency (TE, **Supplementary file 6**) of genes by normalizing the abundance of ribosomal footprint reads to that of the RNA sequencing reads. In *Pelo*<sup>-/-</sup> cells about 35% (4884) of genes displayed significant (adj.  $p \leq 0.05$ ) alterations in TE compared to control cells. The TE of 57% of these genes was increased and for 43% it was decreased. In contrast, the TE of only 4% of genes (314,

60% up- and 40% downregulated) was significantly changed in *Hbs1l*<sup>-/-</sup> cells and genes with differential translational efficiency showed only a moderate correlation between *Hbs1l*<sup>-/-</sup> and *Pelo*<sup>-/-</sup> cells (Pearson's correlation,  $r = 0.3739$ ). The TE of *Pelo*<sup>-/-</sup>-specific pausing genes increased, but this effect was less for *Hbs1l*<sup>-/-</sup>-specific pausing genes (**Figure 5—figure supplement 1A**), suggesting that elongation defects may be more dramatic in *Pelo*<sup>-/-</sup> cells as a result of the increase in translation of these genes.

In addition to its greater impact on the TE of genes, the loss of *Pelo* also had a stronger impact on gene translation in general as evidenced by the differential expression of ribosome-protected fragments (DE RPF, **Supplementary file 3; Figure 5—figure supplement 1B**). While *Hbs1l* deficiency altered translation of 26% (3445) of genes, the loss of *Pelo* affected translation of 34% (4965) of genes and led to significantly greater fold changes in gene expression in *Pelo*<sup>-/-</sup> cells (Wilcoxon test,  $p < 2.2 \times 10^{-16}$ ). However, differentially translated genes between *Pelo*<sup>-/-</sup> (DE RPF *Pelo*<sup>-/-</sup>) and *Hbs1l*<sup>-/-</sup> (DE RPF *Hbs1l*<sup>-/-</sup>) cells were strongly correlated (**Figure 5—figure supplement 1C**), indicating that, although loss of *Hbs1l* may lead to smaller alterations in translation, most of the changes occur in the same direction.

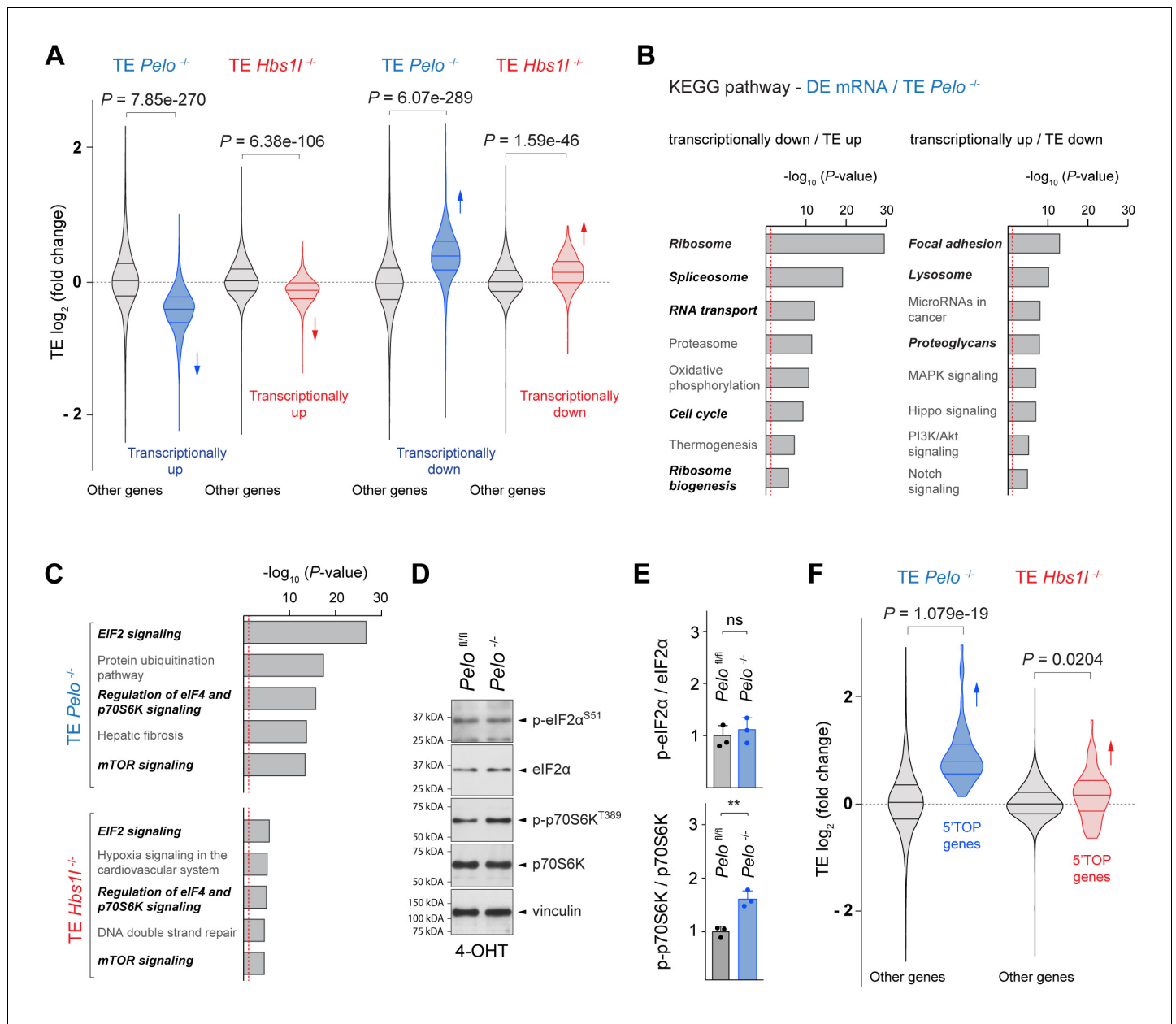
In addition, 20% (1060) and 2% (70) of the differentially translated genes in *Pelo*<sup>-/-</sup> and *Hbs1l*<sup>-/-</sup> cells also contained ribosome pauses specifically found in *Pelo*<sup>-/-</sup> and *Hbs1l*<sup>-/-</sup> cells, respectively, and translation of these pausing genes was both increased and decreased (**Figure 5—figure supplement 1B**). However, changes in expression were under 2-fold for the majority of *Pelo*<sup>-/-</sup>- and *Hbs1l*<sup>-/-</sup>-pausing genes (88% of *Pelo*<sup>-/-</sup>- and 93% of *Hbs1l*<sup>-/-</sup>-pausing genes) and these changes were significantly lower compared to those in genes without mutant-specific pauses (**Figure 5—figure supplement 1B and D**). Thus, similar to *Hbs1l*<sup>-/-</sup> embryos, these data suggest that most of the translational changes in gene expression are not due to an increase in the ribosome occupancy but are likely a response to changes in mRNA expression and/or translation regulation.

Interestingly, we observed an opposing relationship between transcriptional expression changes (DE mRNA) and changes in translational efficiency (TE) of many genes in *Pelo*<sup>-/-</sup> and *Hbs1l*<sup>-/-</sup> cells (**Figure 5A**). KEGG pathway analysis of genes with this opposing behavior revealed enrichment of several pathways (ribosome, ribosome biogenesis, RNA transport, spliceosome, cell cycle, and lysosome) that overlapped with those of differently translated genes (DE RPF) (**Figure 5B, Figure 5—figure supplement 1E**), suggesting that expression of genes in these pathways is translationally regulated, perhaps to restore homeostasis between the transcriptome and translatoome.

To identify signaling pathways that might control these changes in translation regulation upon loss of *Pelo/Hbs1l*, we performed IPA analysis on differentially transcribed (DE mRNA) genes and genes with altered translation efficiency (TE). EIF2 and mTOR/p70S6K signaling, both of which are known to regulate translation, were highly enriched in *Pelo*<sup>-/-</sup> cells but less enriched in *Hbs1l*<sup>-/-</sup> cells (**Figure 5C, Figure 5—figure supplement 1F**). Phosphorylation of eIF2 $\alpha$  decreases translation initiation, while the activity of mTOR, in particular mTORC1 (mechanistic target of rapamycin complex 1), increases translation initiation and elongation. About 50% of the differentially regulated genes identified by IPA overlapped between the two pathways and therefore, we assessed the phosphorylation status of p-eIF2 $\alpha$ <sup>S51</sup> and p-p70S6<sup>T389</sup>, a known target of mTORC1, to determine if one or both signaling pathways were affected. Levels of p-eIF2 $\alpha$ <sup>S51</sup> in *Pelo*<sup>-/-</sup> cells were unchanged from those of control cells (**Figure 5D and E**). However, levels of p-p70S6<sup>T389</sup> were significantly increased in *Pelo*<sup>-/-</sup> cells, indicating activation of mTOR signaling (**Figure 5D and E**). In agreement, the TE of genes that are known to be translationally regulated by mTORC1 via their 5' terminal oligopyrimidine motifs (5'TOP) (Yamashita et al., 2008) was significantly increased in *Pelo*<sup>-/-</sup> and *Hbs1l*<sup>-/-</sup> cells, although this increase was less pronounced in the latter (**Figure 5F**). Activation of mTORC1 may underlie some of the observed gene expression changes (DE RPF) given its role as a positive regulator for ribosome biogenesis and translation of ribosomal genes and a negative regulator of lysosomal biogenesis and autophagy (Kim et al., 2011; Mayer and Grummt, 2006; Puertollano, 2014; Rabanal-Ruiz et al., 2018; Rocznik-Ferguson et al., 2012), which parallels the directionality of the changes in these pathways (**Figure 5—figure supplement 1E**).

## Convergent modulation of the translatoome in cells with defects in translation-dependent quality control pathways

Our findings suggest that translational reprogramming occurs upon loss of *Pelo/Hbs1l*. However, whether these changes are unique to *Pelo/Hbs1l* or reflect a more general cellular response upon



**Figure 5.** *Pelo/Hbs11* deficiency alters translation regulation and reprograms the translatoe. (A) Translational efficiency (TE) of genes that are transcriptionally upregulated or downregulated was compared to the remaining ('other') genes from  $Pelo^{-/-}$  (blue) and  $Hbs11^{-/-}$  (red) MEFs, respectively. Downward direction of arrows indicates significant decrease in translational efficiency of transcriptionally upregulated genes in  $Pelo^{-/-}$  and  $Hbs11^{-/-}$  MEFs. Upward direction of arrows indicates significant increase in translational efficiency of transcriptionally downregulated genes in  $Pelo^{-/-}$  and  $Hbs11^{-/-}$  MEFs. (B) KEGG pathway analysis of genes from  $Pelo^{-/-}$  MEFs in which the translational efficiency (TE  $Pelo^{-/-}$ , adj.  $p \leq 0.05$ ) is opposite to their transcriptional expression (DE mRNA  $Pelo^{-/-}$ ,  $q$ -value  $\leq 0.05$ ). Italicized pathways indicate pathways that overlapped with enriched pathways of differentially translated genes in  $Pelo^{-/-}$  MEFs (DE RPF  $Pelo^{-/-}$ , adj.  $p \leq 0.05$ ) (Figure 5—figure supplement 1E). The red dashed line indicates the significance threshold ( $p = 0.05$ ). (C) Ingenuity pathway analysis (IPA) of genes with differential translational efficiency from  $Pelo^{-/-}$  (TE  $Pelo^{-/-}$ ) and  $Hbs11^{-/-}$  (TE  $Hbs11^{-/-}$ ) MEFs. EIF2 and mTOR/p70S6K signaling are in italics. The red dashed line indicates the significance threshold ( $p = 0.05$ ). (D) Western blot analysis of p-eIF2 $\alpha^{S51}$  and p-p70S6K $T389$  using lysates of tamoxifen-treated control ( $Pelo^{fl/fl}$ ) and  $Pelo^{-/-}$  MEFs at Day 2 (Passage P1). Vinculin was used as a loading control. (E) Levels of p-eIF2 $\alpha^{S51}$  or p-p70S6K $T389$  were normalized to total level of eIF2 $\alpha$  or p70S6K, and phosphorylation levels are relative to those of control ( $Pelo^{fl/fl}$ ). Data represent mean + SD. (F) Translational efficiency (TE) of genes with translational regulation by mTOR via their 5'TOP motif was compared to the remaining ('other') genes from  $Pelo^{-/-}$  (blue) and  $Hbs11^{-/-}$  (red) MEFs. Upward direction of arrows indicates significant increase in translational efficiency of 5'TOP genes. 4-OHT, 4-hydroxytamoxifen; 5'TOP, 5'terminal oligopyrimidine motif. Student's t-test (E); Wilcoxon rank-sum test was used to determine statistical significance (A, F). ns, not significant; \*\* $p \leq 0.01$ .

The online version of this article includes the following source data and figure supplement(s) for figure 5:

Figure 5 continued on next page

Figure 5 continued

**Source data 1.** *Pelo/Hbs1l* deficiency alters translation regulation and reprograms the translato-

**Figure supplement 1.** *Pelo/Hbs1l* deficiency alters translational gene expression of multiple pathways.

impairment of translation-dependent quality control pathways is unclear. To investigate this possibility, we conditionally deleted the core NMD component, *Upf2*, in MEFs (Lelivelt and Culbertson, 1999; Serin et al., 2001). In contrast to NGD and NSD that resolve ribosomes on mRNAs impeding translation elongation, nonsense-mediated decay (NMD) targets aberrant mRNAs (e.g. mRNAs containing a premature termination codon) for degradation during translation (Karousis and Mühlemann, 2019; Schuller and Green, 2018). Consistent with the function of *Upf2* in NMD, about 20% and 13% of upregulated transcripts (DE mRNA *Upf2*, *q*-value  $\leq 0.05$ ) were NMD transcripts or transcripts with retained introns, respectively (Figure 6—figure supplement 1A, Supplementary file 7). Although the accumulation of these transcripts was specific to *Upf2*<sup>-/-</sup> cells (Figure 6—figure supplement 1A and B), we observed an inverse relationship between transcriptional gene expression changes (DE mRNA *Upf2*) and changes in translational efficiency (TE *Upf2*) in *Upf2*<sup>-/-</sup> cells as we did in *Pelo*<sup>-/-</sup> and *Hbs1l*<sup>-/-</sup> cells (Figure 6A). Surprisingly, IPA analysis on differentially transcribed (DE mRNA *Upf2*<sup>-/-</sup>) genes and genes with altered translation efficiency (TE *Upf2*<sup>-/-</sup>) revealed enrichment for EIF2 and mTOR signaling in *Upf2*<sup>-/-</sup> as observed in *Pelo*<sup>-/-</sup> and *Hbs1l*<sup>-/-</sup> cells (Figure 6B and C). Western blot analysis revealed the level of p-eIF2 $\alpha$ <sup>S51</sup> in *Upf2*<sup>-/-</sup> cells was unchanged from that of controls, but p-p70S6<sup>T389</sup> levels and translation of 5'TOP genes were significantly increased (Figure 6C,D and E), indicating that mTORC1 is activated in *Upf2*<sup>-/-</sup> cells. Although translation of ribosomal genes was increased, transcriptional levels of ribosomal genes were decreased in *Upf2*<sup>-/-</sup> similar to *Pelo*<sup>-/-</sup> cells (Figure 6F), further supporting that mTORC1 activation may be a general response in an attempt to restore cellular homeostasis in *Upf2*<sup>-/-</sup> and *Pelo*<sup>-/-</sup> cells.

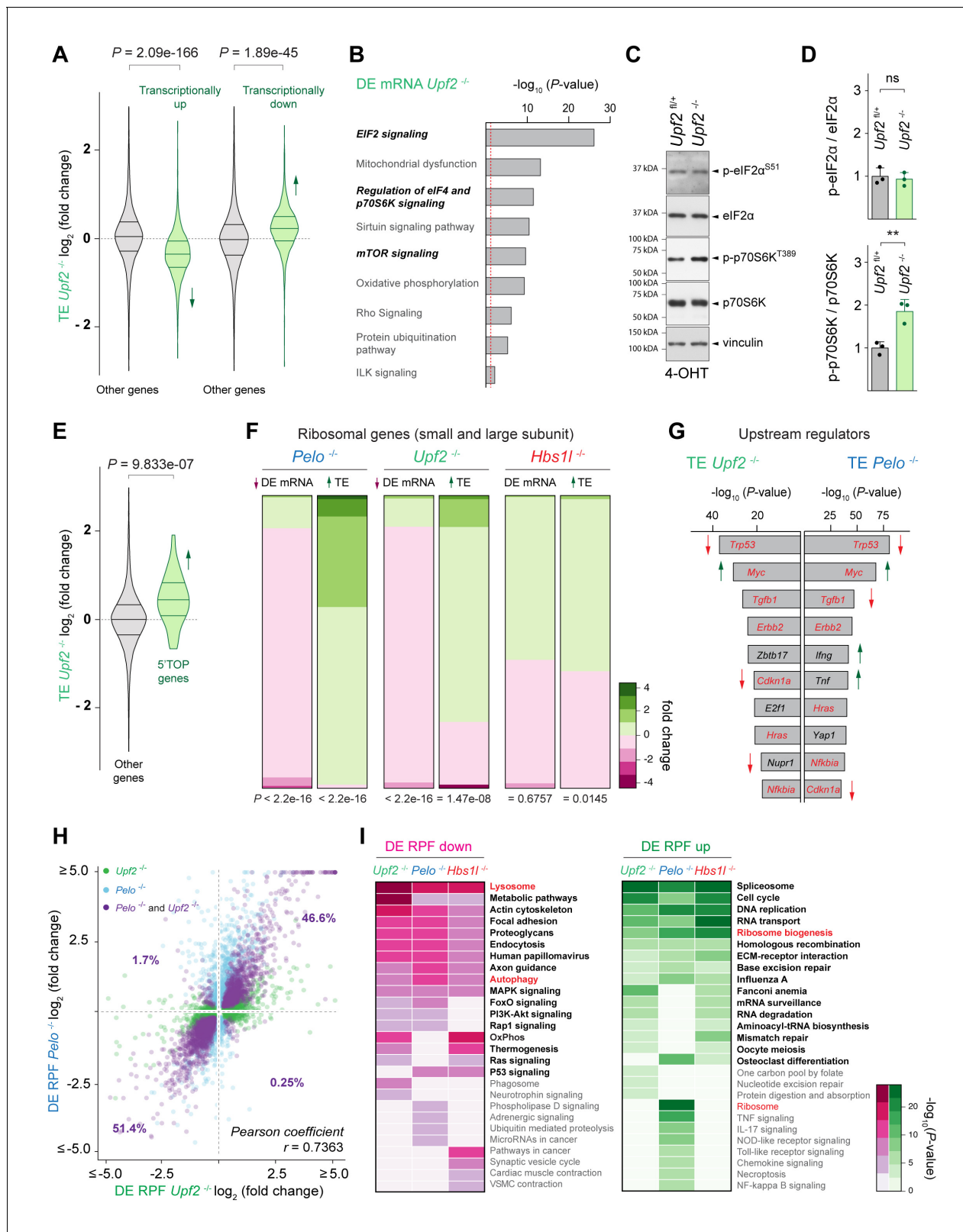
Surprisingly, most of the top upstream regulators predicted by IPA analysis that may govern the observed gene expression changes were shared between *Upf2*<sup>-/-</sup> and *Pelo*<sup>-/-</sup> cells and included *Trp53*, *Myc*, *Tgfb1*, *Errb2*, *Cdkn1a*, *Hras*, and *Nfkb1a* (Figure 6G). In agreement, genes with differential translational efficiency were strongly correlated between *Upf2*<sup>-/-</sup> and *Pelo*<sup>-/-</sup> cells (Pearson's correlation,  $r = 0.6576$ ). Furthermore, differentially translated genes in *Upf2*<sup>-/-</sup> (32% of genes, DE RPF *Upf2*<sup>-/-</sup>) and *Pelo*<sup>-/-</sup> (34% of genes, DE RPF *Pelo*<sup>-/-</sup>) cells also showed a strong linear correlation (Figure 6H), indicating that defects in these quality control pathways may not only lead to similar changes in translation regulation (TE) but also in global gene translation (DE RPF). Consistent with the similar changes in translation, KEGG pathway analysis of differentially translated genes (DE RPF, adj.  $p \leq 0.05$ ) revealed similar enrichment of multiple pathways in *Upf2*<sup>-/-</sup>, *Pelo*<sup>-/-</sup>, and *Hbs1l*<sup>-/-</sup> cells (Figure 6I).

In contrast with the many ribosome pauses we observed specifically in *Pelo*<sup>-/-</sup> cells, only 4% of all ribosome pausing events observed in *Upf2*<sup>-/-</sup> and control cells were uniquely found in *Upf2*<sup>-/-</sup> cells (Figure 6—figure supplement 1D). Although only a small fraction (8%) of *Pelo*- and *Hbs1l*-specific pausing transcripts corresponded to NMD transcripts, we considered the possibility that some of the protein-coding transcripts with ribosome pauses in *Pelo*<sup>-/-</sup> and *Hbs1l*<sup>-/-</sup> cells may also be NMD sensitive given that 5–10% of mRNAs without premature termination codons are thought to be degraded by the NMD pathway (He et al., 2003; Jaffrey and Wilkinson, 2018; Lelivelt and Culbertson, 1999; Mendell et al., 2004). However, upregulation of these protein-coding pausing transcripts was not observed in *Upf2*<sup>-/-</sup> cells (Figure 6—figure supplement 1E), suggesting that these pausing transcripts are not NMD sensitive. Together, these findings suggest that while *Pelo/Hbs1l* and *Upf2* largely function in distinct quality control pathways, disruption of either pathway results in similar translational gene expression changes.

## Deletion of *Upf2* or *Pelo* cause similar cerebellar developmental defects

Intrigued by the similar changes in translation upon impairment of *Upf2* and *Pelo/Hbs1l* in MEFs, we conditionally deleted *Upf2* during cerebellar development to determine if phenotypic similarities exist upon loss of these different translation-dependent quality control pathways. Surprisingly, deletion of *Upf2* (*En1*<sup>Cre</sup>; *Upf2* cKO) or *Pelo* (*En1*<sup>Cre</sup>; *Pelo* cKO) using *En1*<sup>Cre</sup> resulted in largely indistinguishable defects with a grossly hypoplastic cerebellum and regions of the midbrain (superior and





**Figure 6.** Defects in different translation-dependent quality control pathways similarly alter translation regulation and the transcriptome. (A) Translational efficiency (TE) of genes that are transcriptionally upregulated or downregulated was compared to the remaining ('other') genes from  $Upf2^{-/-}$  (green) MEFs. Downward direction of the arrow indicates significant decrease in translational efficiency of transcriptionally upregulated genes in  $Upf2^{-/-}$  MEFs. Upward direction of the arrow indicates significant increase in translational efficiency of transcriptionally downregulated genes in  $Upf2^{-/-}$  MEFs. (B) Figure 6 continued on next page



Figure 6 continued

Ingenuity pathway analysis (IPA) of differentially transcribed genes from *Upf2*<sup>-/-</sup> MEFs (DE mRNA *Upf2*<sup>-/-</sup>). EIF2 and mTOR/p70S6K signaling are in italics. The red dashed line indicates the significance threshold ( $p=0.05$ ). (C) Western blot analysis of p-eIF2 $\alpha$ <sup>S51</sup> and p-p70S6K<sup>T389</sup> of lysates from tamoxifen-treated control (*Upf2*<sup>fl/+</sup>) and *Upf2*<sup>-/-</sup> MEFs at Day 2 (Passage P1). Vinculin was used as a loading control. (D) Levels of p-eIF2 $\alpha$ <sup>S51</sup> or p-p70S6K<sup>T389</sup> were normalized to total level of eIF2 $\alpha$  or p70S6K, and phosphorylation levels are relative to those of control (*Upf2*<sup>fl/+</sup>) MEFs. Data represent mean + SD. (E) Translational efficiency (TE) of genes whose translation is regulated by mTOR via their 5'TOP motif was compared to the remaining ('other') genes from *Upf2*<sup>-/-</sup> (green) MEFs. Upward direction of the arrow indicates significant increase in translational efficiency of 5'TOP genes. (F) Differential transcription (DE mRNA) or translational efficiency (TE) of ribosomal protein genes (small and large ribosomal subunit) was compared to the remaining ('other') genes from *Pelo*<sup>-/-</sup> (blue), *Upf2*<sup>-/-</sup> (green), and *Hbs1*<sup>-/-</sup> (red) MEFs. Up- and downward direction of arrows indicates significant up- and downregulation of ribosomal protein genes, respectively. The heatmap indicates the gene expression changes of ribosomal protein genes. (G) Identification of upstream regulators of genes with differential translational efficiency in *Upf2*<sup>-/-</sup> (TE *Upf2*<sup>-/-</sup>) and *Pelo*<sup>-/-</sup> (TE *Pelo*<sup>-/-</sup>) MEFs. Top ten transcription factors are shown. Those enriched in both *Upf2*<sup>-/-</sup> and *Pelo*<sup>-/-</sup> MEFs and shown in red. Up- or downward direction of arrows indicates predicted up- or downregulation of transcription factors, respectively. (H) Differentially translated genes in *Upf2*<sup>-/-</sup> MEFs (DE RPF *Upf2*<sup>-/-</sup>, adj.  $p \leq 0.05$ , x-axis, green) were plotted against genes that are differentially translated in *Pelo*<sup>-/-</sup> MEFs (DE RPF *Pelo*<sup>-/-</sup>, adj.  $p \leq 0.05$ , y-axis, blue). Genes whose translation was significantly different in both *Upf2*<sup>-/-</sup> and *Pelo*<sup>-/-</sup> MEFs are shown in purple. (I) KEGG pathway analysis of differentially translated (up- and downregulated) genes (DE RPF, adj.  $p \leq 0.05$ ) in *Upf2*<sup>-/-</sup> (green), *Pelo*<sup>-/-</sup> (blue) and *Hbs1*<sup>-/-</sup> (red) MEFs. Significantly ( $p \leq 0.05$ ) enriched pathways are shown and pathways in bold indicate pathways that are shared between any of the mutant MEFs. Pathways known to be positively or negatively regulated by mTORC1 are in red. 4-OHT, 4-hydroxytamoxifen; 5'TOP, 5'terminal oligopyrimidine motif. Student's t-test (D); Wilcoxon rank-sum test was used to determine statistical significance (A, E, F); Pearson coefficient (r) was determined to analyze linearity of gene expression changes (H). ns, not significant; \*\* $p \leq 0.01$ .

The online version of this article includes the following source data and figure supplement(s) for figure 6:

**Source data 1.** Defects in different translation-dependent quality control pathways similarly alter translation regulation and the translatome.

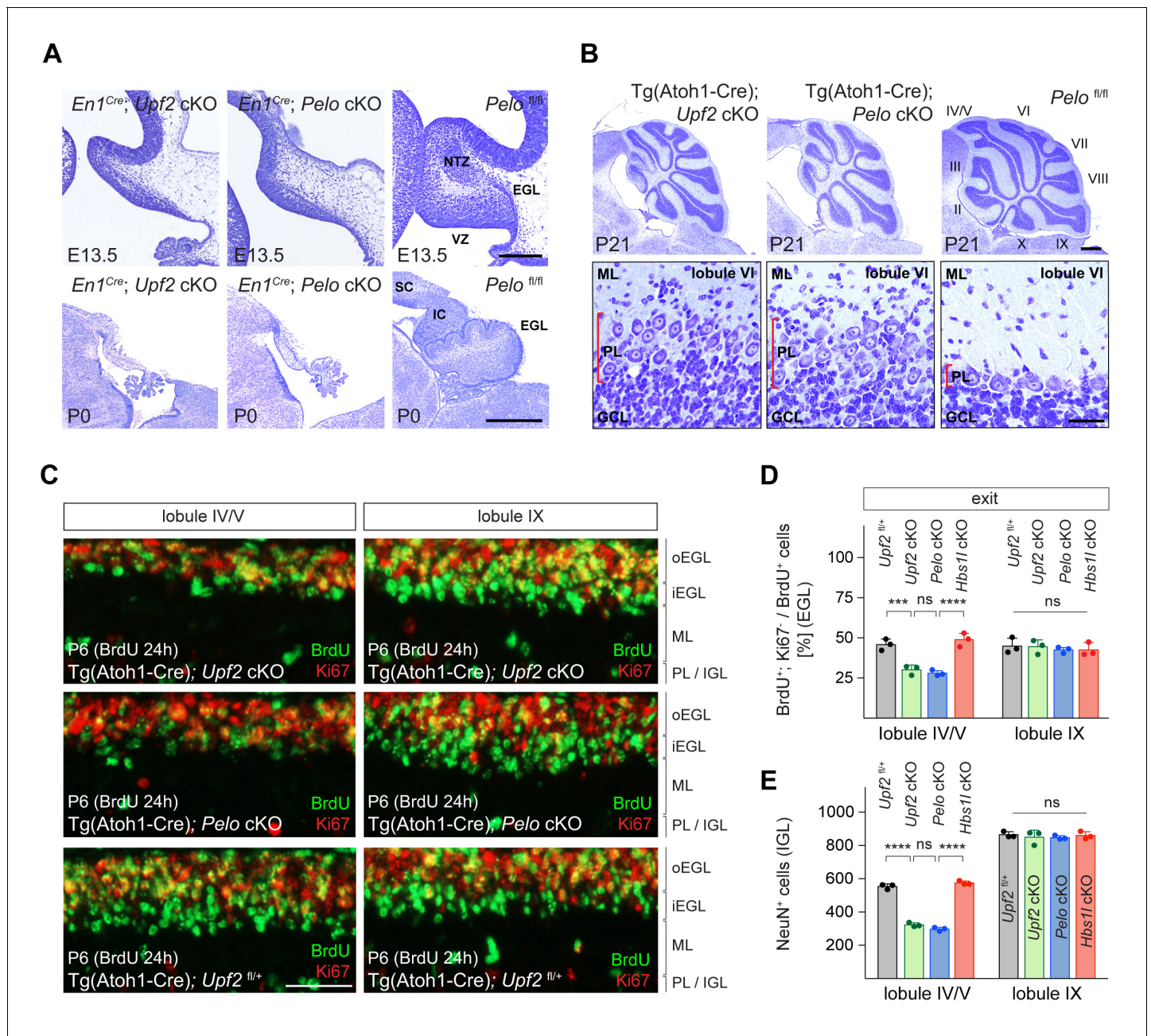
**Figure supplement 1.** Loss of *Upf2* leads to an increase of NMD targets.

inferior colliculus) being nearly absent unlike in *En1*<sup>Cre</sup>; *Hbs1* cKO mice (**Figures 7A** and **2D**). Both *Upf2* and *Pelo* mutant pups died shortly after birth, perhaps due to *En1*<sup>Cre</sup> deletion of these genes in other cell types (**Britz et al., 2015; Kimmel et al., 2000; Sapir et al., 2004; Sgaier et al., 2007; Wurst et al., 1994**).

Similar neurogenesis defects were observed in the *Upf2* and *Pelo* mutant cerebellum. The fraction of ventricular zone (VZ) progenitors that remained in the cell cycle was higher in E13.5 *Upf2*- or *Pelo*-deficient cerebella compared to controls (**Figure 7—figure supplement 1A and B**), indicating that like *Hbs1*, loss of *Upf2* or *Pelo* impairs cell cycle exit of VZ-progenitors. Inversely, the number of VZ-derived precursors, for example Purkinje cells (Lhx1/5<sup>+</sup> cells) and Pax2<sup>+</sup> interneurons were reduced by ~83% and ~90% in the *En1*<sup>Cre</sup>; *Upf2* cKO and *En1*<sup>Cre</sup>; *Pelo* cKO cerebellum (**Figure 7—figure supplement 1C,D,E and F**). Glutamatergic deep cerebellar neurons (Tbr1<sup>+</sup>) were nearly absent in the E13.5 *En1*<sup>Cre</sup>; *Upf2* cKO and *En1*<sup>Cre</sup>; *Pelo* cKO cerebellum (**Figure 7—figure supplement 1G and H**). In addition, the EGL was missing in *En1*<sup>Cre</sup>; *Upf2* cKO and *En1*<sup>Cre</sup>; *Pelo* cKO cerebella at both E13.5 and P0 (**Figure 7A, Figure 7—figure supplement 1I**), indicating that neurogenesis defects are particularly more severe in the absence of *Upf2* or *Pelo* relative to those observed upon *Hbs1* loss.

Thus, we considered that in addition to cell cycle exit abnormalities, cell death might also contribute to impaired cerebellar development. Indeed, the number of apoptotic cells (Casp3<sup>+</sup> cells) was significantly increased in the *En1*<sup>Cre</sup>; *Upf2* cKO and *En1*<sup>Cre</sup>; *Pelo* cKO cerebellum compared to that of controls or *En1*<sup>Cre</sup>; *Hbs1* cKO embryos, and apoptotic cells were observed in both the ventricular zone and the prospective white matter where progenitor-derived progeny reside (**Figure 7—figure supplement 1J and K**). Together, these data suggest that defects in cell cycle exit and increased cell death likely impair cerebellar development in *Upf2* and *Pelo* mutant mice. To determine if loss of *Upf2* or *Pelo* also increased mTORC1 signaling in the developing cerebellum as it did in MEFs, we analyzed levels of p-S6<sup>S240/244</sup>, a known downstream target of mTORC1. In agreement, levels of p-S6<sup>S240/244</sup> were significantly increased in the *En1*<sup>Cre</sup>; *Upf2* cKO and *En1*<sup>Cre</sup>; *Pelo* cKO cerebellum, including the VZ (**Figure 7—figure supplement 1L and M**).

Because loss of *Upf2* or *Pelo* severely impaired early granule cell neurogenesis, we investigated if these genes are also required later in the development of these cells. Conditional deletion of either *Upf2* or *Pelo* using Tg(*Atoh1*-Cre) resulted in abnormalities of the anterior lobes of the cerebellum in P21 mice (**Figure 7B**). These lobes were reduced in length and Purkinje cells failed to form a monolayer. In contrast, the posterior lobes appeared unaffected, possibly due to the anterior-to-posterior



**Figure 7.** Loss of *Upf2* and *Pello* cause similar cerebellar developmental defects. (A) Parasagittal (E13.5) and sagittal (P0) cerebellar sections of control (*Pelo<sup>fl/fl</sup>*), *En1<sup>Cre</sup>; Upf2 cKO* and *En1<sup>Cre</sup>; Pello cKO* mice stained with cresyl violet. (B) Sagittal cerebellar sections of P21 control (*Pelo<sup>fl/fl</sup>*), *Tg(Atoh1-Cre); Upf2 cKO* and *Tg(Atoh1-Cre); Pello cKO* mice stained with cresyl violet. Higher magnification images of lobule VI are shown below for each genotype. Cerebellar lobules are indicated by Roman numerals. (C) Immunofluorescence with antibodies to BrdU (green) and Ki67 (red) on sections of P6 control (*Tg(Atoh1-Cre); Upf2<sup>fl/+</sup>*), *Tg(Atoh1-Cre); Upf2 cKO* and *Tg(Atoh1-Cre); Pello cKO* cerebellum. Mice were injected with BrdU 24 hr prior to harvest to determine the fraction of granule cell precursors in the EGL that exited the cell cycle. Images are shown for anterior (IV/V) and posterior (IX) lobules. (D) Quantification of the fraction of granule cell precursors in the EGL (lobules IV/V and IX) that exited the cell cycle (BrdU<sup>+</sup>, Ki67<sup>+</sup> cells) of control (*Tg(Atoh1-Cre); Upf2<sup>fl/+</sup>*), *Tg(Atoh1-Cre); Upf2 cKO*, *Tg(Atoh1-Cre); Pello cKO* and *Tg(Atoh1-Cre); Hbs1l cKO* mice. Data represent mean + SD. (E) Quantification of terminally differentiated granule cells (NeuN<sup>+</sup> cells) in the IGL in lobules IV/V and IX of control (*Tg(Atoh1-Cre); Upf2<sup>fl/+</sup>*), *Tg(Atoh1-Cre); Upf2 cKO*, *Tg(Atoh1-Cre); Pello cKO* and *Tg(Atoh1-Cre); Hbs1l cKO* mice. Data represent mean + SD. Scale bars: 200  $\mu$ m (E13.5) and 500  $\mu$ m (P0) (A); 500  $\mu$ m and 20  $\mu$ m (higher magnification) (B); 50  $\mu$ m (C). VZ, ventricular zone; EGL, external granule cell layer; NTZ, nuclear transitory zone; SC, superior colliculus; IC, inferior colliculus; ML, molecular cell layer; PL, Purkinje cell layer; GCL, granule cell layer; oEGL, outer external granule cell layer; iEGL, inner external granule cell layer; IGL, internal granule cell layer. Two-way ANOVA was corrected for multiple comparisons using Tukey method (D, E). ns, not significant; \*\*\* $p \leq 0.001$ ; \*\*\*\* $p \leq 0.0001$ .

Figure 7 continued on next page

Figure 7 continued

The online version of this article includes the following source data and figure supplement(s) for figure 7:

**Source data 1.** Loss of *Upf2* and *Pelo* cause similar cerebellar developmental defects.

**Figure supplement 1.** *Upf2* and *Pelo* are required for the development of multiple cerebellar linages.

**Figure supplement 1—source data 1.** *Upf2* and *Pelo* are required for the development of multiple cerebellar linages.

gradient of *Cre* expression in granule cell precursors in the developing cerebellum (Pan et al., 2009; Qiu et al., 2010; Wojcinski et al., 2019).

During postnatal cerebellar development, granule cell precursors in the outer region of the EGL (oEGL) exit the cell cycle and transiently reside in the inner EGL (iEGL) before migrating to the internal granule cell layer (IGL). To determine if granule cell precursors in postnatal Tg(Atoh1-Cre); *Upf2* cKO or Tg(Atoh1-Cre); *Pelo* cKO cerebellum properly exited the cell cycle, we labeled granule cell precursors with BrdU to determine the fraction of precursors that exited the cell cycle twenty-four hours later (BrdU<sup>+</sup>; Ki67<sup>-</sup> cells). In P6 control cerebella, BrdU-labeled granule cell precursors that were negative for Ki67 formed a distinct layer on the ventral surface of the EGL consistent with the appearance and location of the iEGL (Legué et al., 2016; Figure 7C). However, no clear separation between the oEGL and iEGL was observed in the anterior lobes in Tg(Atoh1-Cre); *Upf2* cKO or Tg(Atoh1-Cre); *Pelo* cKO cerebella (Figure 7C), and the fraction of granule cell precursors that exited the cell cycle (BrdU<sup>+</sup>; Ki67<sup>-</sup> cells) in these lobes, but not posterior lobes, was significantly lower compared to control or Tg(Atoh1-Cre); *Hbs1l* cKO cerebella (Figure 7D). Correspondingly, the number of terminally differentiated granule cells in the IGL (NeuN<sup>+</sup> cells) of the anterior, but not posterior, lobes was reduced by ~45% in P6 Tg(Atoh1-Cre); *Upf2* cKO or Tg(Atoh1-Cre); *Pelo* cKO cerebella (Figure 7E), indicating that both of these genes are necessary for differentiation of granule cell precursors.

## Discussion

Translation-dependent quality control pathways govern protein synthesis and proteostasis by degrading aberrant mRNAs that result in potentially toxic peptide products. However, little is known about the in vivo defects or how translation is altered in the absence of these pathways. To interrogate these questions, we investigated the translational and phenotypic alterations from different translation-dependent quality control pathways including the NSD/NGD (*Pelo/Hbs1l*) and the NMD (*Upf2*) pathways.

Here, we show that *Pelo* and *Hbs1l* are both critical for mouse embryonic and cerebellar development but dispensable for granule cells after cerebellar development. In addition, loss of *Pelo* or *Hbs1l* locally increase the ribosome occupancy ('ribosome pauses') of genes. Interestingly, the number and strength of these pauses were higher in E8.5 *Hbs1l*<sup>-/-</sup> embryos, just prior to the time when these embryos cease developing, compared to the postnatal cerebellum, where loss of *Hbs1l* had no effect on cerebellar granule cells. Together these data suggest that this translation-dependent quality control pathway may be needed in cell- and/or tissue-specific manner.

In agreement with the differential severity between *Pelo*<sup>-/-</sup> and *Hbs1l*<sup>-/-</sup>-mediated defects during embryonic and cerebellar development, pauses were stronger and more frequent in *Pelo*<sup>-/-</sup> MEFs and coincided with greater changes in gene expression than in *Hbs1l*<sup>-/-</sup> MEFs. Loss of *Pelo* induced greater translation elongation defects compared to its binding partner *Hbs1l*, which may be in part be influenced by differences in gene expression and translational efficiency between *Pelo*- and *Hbs1l*-deficient cells. However, additional factors may also play a role. For example, while deletion of either *Pelo* or *Hbs1l* led to a reduction of their respective binding partners, the kinetics of this decrease upon deletion of *Pelo* or *Hbs1l* is unknown and may not be equal. In addition, Dom34 (*Pelo*) promotes dissociation of ribosomes by Rli1 (*Abce1*) and this activity increased in the presence of Hbs1 (*Hbs1l*) (Pisareva et al., 2011; Shoemaker and Green, 2011). Hence, we cannot rule out a scenario in which the remaining levels of PELO in *Hbs1l*<sup>-/-</sup> cells might be able to mitigate and/or delay elongation defects even in the absence of *Hbs1l*.

Most of the ribosome pauses in *Pelo*- and *Hbs1l*-deficient tissues or cells were located in the coding sequence. Although these pauses with a footprint length of 27–34 nucleotides could indicate



ribosomes that paused during translation, phenotypes in *Hbs1l* and *Pelo* mutant mice were not dependent on the B6J-associated mutation in *n-Tr20* that introduces genome-wide AGA pausing within mRNAs. Instead, these pauses may reflect pausing of the 'trailing' ribosomes upstream of the 'lead' ribosome that reached the 3' end of truncated mRNAs (Guydosh et al., 2017; Guydosh and Green, 2014). Footprints of the 'lead' ribosome have been analyzed on an exosome-deficient background (Arribere and Fire, 2018; D'Orazio et al., 2019; Glover et al., 2020; Guydosh and Green, 2014), and their short length of 15–18 nucleotides makes it difficult to uniquely map these footprints in mammals with their larger genomes. Regardless, recent biochemical studies have demonstrated that the *Pelo/Hbs1l* complex rescues trapped ribosomes near the 3' end of truncated mRNAs but is not necessary for the resolution of internally stalled ribosomes within the mRNA (Juszkiewicz et al., 2020), which is consistent with early biochemical and structural studies demonstrating that Dom34: Hbs1 preferentially rescues ribosomes arrested at sites of truncation (Hilal et al., 2016; Pisareva et al., 2011; Shoemaker and Green, 2011).

RNA intermediates that converge on *Pelo/Hbs1l* may derive from endonucleolytic cleavage for example during NMD, RNAi, or NGD (Arribere and Fire, 2018; D'Orazio et al., 2019; Doma and Parker, 2006; Eberle et al., 2009; Hashimoto et al., 2017). However, most of the *Pelo*<sup>-/-</sup> and *Hbs1l*<sup>-/-</sup>-pausing transcripts were not NMD sensitive, suggesting that if pausing occurred on truncated mRNAs, many of the RNA intermediates likely derived from additional mechanisms. Endonucleolytic cleavage of mRNAs may occur upon persistent ribosome collision during NGD (D'Orazio et al., 2019; Doma and Parker, 2006; Shoemaker and Green, 2012). Intriguingly, widespread ribosome collision has been observed under normal conditions and may represent 10% of the pool of translating ribosomes (Arpat et al., 2020; Diamant et al., 2018; Han et al., 2020; Meydan and Guydosh, 2020). Numerous human mRNAs are subject to repeated, co-translational endonucleolytic cleavage and occur independent of NMD-associated nucleases (Ibrahim et al., 2018). Because translation changes during development and varies between cell types (Blair et al., 2017; Buszczak et al., 2014; Castelo-Szekely et al., 2017; Gonzalez et al., 2014; Sudmant et al., 2018), RNA intermediates that are generated during translation may also vary and thereby, could introduce a need for quality control pathways in a tissue- and/or cell-type-specific manner.

We also observed that loss of *Pelo/Hbs1l* was associated with the activation of mTORC1 signaling. mTORC1 activation was previously observed in *Hbs1l* patient derived fibroblasts (O'Connell et al., 2019) and upon deletion of *Pelo* during epidermal development (Liakath-Ali et al., 2018). Interestingly, inhibition of translation/mTORC1 partially prevented *Pelo*<sup>-/-</sup>-mediated epidermal defects (Liakath-Ali et al., 2018). How mTORC1 responds to loss of *Pelo/Hbs1l* is unknown. Multiple mTOR-dependent phosphorylation sites on the surface of the ribosome have been observed, suggesting that mTORC1 and/or mTORC1-associated kinases interact with the ribosomes and might provide a mechanism to detect changes in translation elongation (Jiang et al., 2016). However, changes in levels of ribosomal mRNAs and/or impaired ribosomal biogenesis also activate mTORC1 signaling (Liu et al., 2014). Indeed, deletion of *Pelo/Hbs1l* led to decreased transcript levels but increased translation of ribosomal genes. Thus, mTORC1 may be activated to compensate for decreases in expression of these genes rather than directly sensing defects in translation elongation. To test whether mTORC1 activation was specific to *Pelo/Hbs1l* deficiency or was generally associated with defects in translation-dependent quality control pathways, we examined MEFs deficient for *Upf2*, an essential component of the NMD pathway. Loss of *Upf2* also led to decreased expression and increased translation of ribosomal genes and mTORC1 activation, supporting that changes in mTORC1 signaling are not a direct consequence of the elongation defects, but likely occurs as a compensatory response.

In general, impairment of either translation-dependent quality control pathway led to strikingly similar alterations in gene expression with *Pelo* and *Upf2* showing the most changes compared to *Hbs1l*. Reminiscent of these changes, loss of *Pelo* or *Upf2* had remarkably similar effects on multiple cerebellar neuronal populations during early embryonic and late postnatal neurogenesis, causing comparable morphological defects in the cerebellum (e.g. inhibition of differentiation and an increase in cell death). Growing evidence highlights the role of mTOR in the decision of stem cells to self-renew or differentiate (Meng et al., 2018; Xiang et al., 2011). However, increased mTOR activity generally reduces self-renewal and promotes differentiation of neuronal stem/progenitor cells (Hartman et al., 2013; LiCausi and Hartman, 2018; Magri et al., 2011; Way et al., 2009), suggesting that other molecular changes contributed to the observed defects in neurogenesis.

The similarities in gene expression and developmental alterations in mice deficient for these translation-dependent quality control pathways suggest a convergence of molecular and cellular pathology. In fact, several changes in gene expression and signaling pathways were altered in the same direction in mutant cells. Thus, phenotypic changes could be due to either a change in a single molecular pathway or interactions of multiple pathways. For example, *Myc* activation was predicted as an upstream regulator of gene expression in both *Pelo*<sup>-/-</sup> and *Upf2*<sup>-/-</sup> but less in *Hbs1*<sup>-/-</sup> MEFs. *Myc* functions as a switch between proliferation and differentiation during cerebellar development (Knoepfler et al., 2002; Ma et al., 2015; Wey et al., 2010), in which loss of *Myc* allows precursors to exit the cell cycle and undergo differentiation, while maintained *Myc* expression retains cells in the proliferation cycle. Intriguingly, previous studies revealed that depletion of NMD factors inhibited differentiation of embryonic stem cells, which coincided with sustained *Myc* expression and its downregulation released the differentiation blockage in NMD-deficient cells (Li et al., 2015).

How different translation-dependent quality control pathways can lead to similar changes in translation and cellular defects is unclear. Recent studies in yeast demonstrated that impairment of these quality control mechanisms (*Hbs1*, *Dom34*, *Upf1*, *Upf2*, *Ski7* and *Ski8*) caused protein aggregation (Jamar et al., 2018). Protein misfolding occurred co-translationally on highly translated genes and the aggregated proteins overlapped between the different mutant strains. These data suggest that increased translation and protein aggregation may be common properties among different quality control mutants (Jamar et al., 2018). Perhaps, regardless of specific targets of various quality control pathways, defects in protein folding, clearance of defective peptide products, and/or defects in mRNA decay may trigger similar cellular responses leading to similar phenotypes.

## Materials and methods

### Key resources table

Reagent type (species) or resource	Designation	Source or reference	Identifiers	Additional information
Strain, strain background (mouse)	<i>Hbs1</i> <sup>IGTC</sup>	This study (see Materials and methods)	MMRRC #007694-UCD; RRID:MMRRC007694-UCD	International Gene Trap Consortium, IGTC, cell line ID: XE494
Strain, strain background (mouse)	<i>Hbs1</i> <sup>tm1a</sup> (C57BL/6N-A <sup>tm1Brd</sup> <i>Hbs1</i> <sup>tm1a(KOMP)Wtsj</sup> )	Skarnes et al., 2011	MMRRC #048037-UCD, RRID:MMRRC048037-UCD	
Strain, strain background (mouse)	B6N.129S4-Gt(ROSA)26Sor <sup>tm1(FLP1)Dym/J</sup>	The Jackson Laboratory	JAX:016226; RRID:IMSRJAX:016226	
Strain, strain background (mouse)	B6N.Cg-Edil3Tg(Sox2-Cre)1Amc/J	The Jackson Laboratory	JAX:014094; RRID:IMSRJAX:014094	
Strain, strain background (mouse)	B6.FVB-Tg(Ella-Cre)C5379Lmgd/J	The Jackson Laboratory	JAX:003724; RRID:IMSRJAX:003724	
Strain, strain background (mouse)	En1 <sup>tm2(Cre)Wrst/J</sup>	The Jackson Laboratory	JAX:007916; RRID:IMSRJAX:007916	
Strain, strain background (mouse)	B6.Cg-Tg(Atoh1-Cre)1Bfri/J	The Jackson Laboratory	JAX:011104; RRID:IMSRJAX:011104	
Strain, strain background (mouse)	B6.Cg-Tg(CAG-Cre/Esr1*)5Amc/J		JAX:004682; RRID:IMSRJAX:004682	
Strain, strain background (mouse)	B6.Tg(Gabra6-Cre)B1Lfr	Fünfschilling and Reichardt, 2002	N/A	
Strain, strain background (mouse)	B6J- <i>Pelo</i> <sup>fl/fl</sup>	This study (see Materials and methods)	N/A	
Strain, strain background (mouse)	<i>Upf2</i> <sup>fl/fl</sup>	Weischenfeldt et al., 2008	N/A	
Strain, strain background (mouse)	B6J.B6N <sup>n-Tr20</sup>	Ishimura et al., 2014	N/A	

Continued on next page

Continued

Reagent type (species) or resource	Designation	Source or reference	Identifiers	Additional information
Strain, strain background (mouse)	B6J-n-Tr20 <sup>-/-</sup>	<i>Ishimura et al., 2016</i>	N/A	
Antibody	Anti-phospho-eIF2alpha <sup>S51</sup> (Rabbit polyclonal)	Cell Signaling Technology	CST #9721; RRID:AB_330951	WB (1:1000)
Antibody	Anti-eIF2alpha (Rabbit polyclonal)	Cell Signaling Technology	CST #9722; RRID:AB_2230924	WB (1:2000)
Antibody	Anti-phospho-p70S6K <sup>T389</sup> (Rabbit monoclonal)	Cell Signaling Technology	CST #9234; RRID:AB_2269803	WB (1:1000)
Antibody	Anti-p70S6K (Rabbit monoclonal)	Cell Signaling Technology	CST #2708; RRID:AB_390722	WB (1:1000)
Antibody	Anti-phospho-S6 <sup>S240/244</sup> (Rabbit monoclonal)	Cell Signaling Technology	CST #5364; RRID:AB_10694233	IF (1:1000)
Antibody	Anti-cleaved caspase 3 (Rabbit polyclonal)	Cell Signaling Technology	CST #9661; RRID:AB_2341188	IF (1:100)
Antibody	Anti-BrdU (Mouse monoclonal)	Dako/Agilent	M0744; RRID:AB_10013660	IF (1:50)
Antibody	Anti-Hbs1l (Rabbit polyclonal)	Proteintech	#10359-1-AP; RRID:AB_2114730	WB (1:1000)
Antibody	Anti-Pelo (Rabbit polyclonal)	Proteintech	#10582-1-AP; RRID:AB_2236833	WB (1:2000)
Antibody	Anti-Vinculin (Mouse monoclonal)	Sigma-Aldrich	V9131; RRID:AB_477629	WB (1:20,000)
Antibody	Anti-GAPDH (Rabbit monoclonal)	Cell Signaling Technology	CST #2118; RRID:AB_561053	WB (1:10,000)
Antibody	Anti-Ki67 (Rabbit Polyclonal)	Abcam	ab15580; RRID:AB_443209	IF (1:100)
Antibody	Anti-Olig2 (Rabbit monoclonal)	Abcam	ab109186; RRID:AB_10861310	IF (1:200)
Antibody	Anti-Lhx1/5 (Mouse monoclonal)	DSHB	#4F2-c; RRID:AB_531784	IF (1:100)
Antibody	Anti-NeuN (Mouse monoclonal)	Millipore	MAB377; RRID:AB_2298772	IF (1:500)
Antibody	Anti-Tbr1 (Rabbit polyclonal)	Millipore	AB9616; RRID:AB_2200223	IF (1:1000)
Antibody	Anti-Pax2 (Rabbit polyclonal)	Thermo Fisher Scientific	#71-6000; RRID:AB_2533990	IF (1:50)
Antibody	Anti-pH3 (Rabbit polyclonal)	Upstate, Millipore	#06-570; RRID:AB_310177	IF (1:1000)
Antibody	Anti-PCNA (Mouse monoclonal)	Invitrogen, Thermo Fisher Scientific	MA5-11358; RRID:AB_10982348	IF (1:100)
Chemical compound, drug	DNase I	Worthington	LS002139	
Chemical compound, drug	Bromodeoxyuridine (BrdU)	Sigma-Aldrich	B9285	
Chemical compound, drug	5-Bromo-4-chloro-3-indolyl-β-D-galactopyranoside (X-Gal)	Sigma-Aldrich	B4252	

Continued on next page



Continued

Reagent type (species) or resource	Designation	Source or reference	Identifiers	Additional information
Chemical compound, drug	Z-4-hydroxytamoxifen (4OHT)	Sigma-Aldrich	H7905	
Commercial assay or kit	RNAscope Multiplex Fluorescent Reagent Kit v2	Advanced Cell Diagnostics	#323100	
Commercial assay or kit	KAPA Stranded mRNA-seq. Kit	Roche	KR0960	
Commercial assay or kit	iQ SYBR Green Supermix	Bio-Rad	#1708880	
Commercial assay or kit	SuperScript III First-Strand Synthesis System	Invitrogen	#18080051	
Commercial assay or kit	DNA-free DNA Removal Kit	Life Technologies	AM1906	
Commercial assay or kit	TSA Plus Cyanine 3	PerkinElmer	NEL744001KT	
Other	RNA-seq. and ribosome profiling data	This study (see Materials and methods)	GSE162556	Deposited Data
Sequence-based reagent	Hbs1l GTC (Genotyping)	This study (see Materials and methods)	N/A	Common Forward:5'AGTCCAGGT GTTTCCTCACG3'; Wild type Reverse:5'CCCTGGCCT ATTTTTGGTTT3'; GTC Reverse:5'TGTCCTCC AGTCTCTCCAC3'
Sequence-based reagent	Hbs1l cKO (Genotyping)	This study (see Materials and methods)	N/A	Forward I: 5'CATGGCCT CCTATGGGTTGA3'; Forward II: 5'GCCTACA GTGAGCACAGAGT3'; Reverse: 5'TAGGTGCTG GGATTTGAACC3'
Sequence-based reagent	Pelo cKO (Genotyping)	This study (see Materials and methods)	N/A	Forward:5'TGTAAC GAACCCTGCAGTATCT3'; Reverse I: 5'GTGGAGCATGAAA TGAAATTCGG3'; Reverse II: 5'ATCCAA GGCTTTTACTTCGCC3'
Sequence-based reagent	RNAscope probe Hbs1l-C2	Advanced Cell Diagnostics	#527471-C2	
Sequence-based reagent	Hbs1l Exon 3–6 (RT-PCR)	This study (see Materials and methods)	N/A	Forward Primer:5'GAAATTGACC AAGCTCGCCTGTA3'; Reverse Primer:5'CTCAGAAGTT AAGCCAGGCACT3'
Sequence-based reagent	$\beta$ -actin (RT-PCR)	Terrey et al., 2020	N/A	Forward Primer:5'GGCTGT ATTCCCCTCCATCG3'; Reverse Primer:5'CCAGTTGG TAACAATGCCATGT3'
Sequence-based reagent	Hbs1l Isoform I (quantitative RT-PCR)	This study (see Materials and methods)	N/A	Forward Primer:5'AGACCAT GGGATTTGAAGTGC3'; Reverse Primer:5'CCGGTCT CAGGAATGTTAGGA3'

Continued on next page

Continued

Reagent type (species) or resource	Designation	Source or reference	Identifiers	Additional information
Sequence-based reagent	<i>Hbs1l</i> Isoform II (quantitative RT-PCR)	This study (see Materials and methods)	N/A	Forward Primer:5'TGAAGTTGAA CAAAGTGCCAAG 3'; Reverse Primer:5'CTGCTTC CTCTGTGTTCTC3'
Sequence-based reagent	<i>Pelo</i> (quantitative RT-PCR)	This study (see Materials and methods)	N/A	Forward Primer:5'CCCCAGG AAACGGAAAGGC3'; Reverse Primer:5'ACGCACTTTA CAACCTCGAAG3'
Sequence-based reagent	<i>Gapdh</i> (quantitative RT-PCR)	<b>Ishimura et al., 2016</b>	N/A	Forward Primer: 5'CATTGTCA TACCAGGAAATG3'; Reverse Primer: 5'GGAGAAACC TGCCAAGTATG3'
Software, algorithm	Image J	NIH	RRID:SCR_003070; <a href="https://imagej.nih.gov/ij">https://imagej.nih.gov/ij</a>	
Software, algorithm	GraphPad Prism 7	GraphPad Prism	RRID:SCR_002798	
Software, algorithm	Pause site identification algorithm	<b>Ishimura et al., 2014</b>	N/A	
Software, algorithm	biomaRt version 2.42.1	<b>Durinck et al., 2005</b>	RRID:SCR_019214; <a href="https://bioconductor.org/packages/release/bioc/html/biomaRt.html">https://bioconductor.org/packages/release/bioc/html/biomaRt.html</a>	
Software, algorithm	ShinyGO v0.61 (KEGG pathway)	<b>Ge et al., 2020</b>	RRID:SCR_019213; <a href="http://bioinformatics.sdstate.edu/go">http://bioinformatics.sdstate.edu/go</a>	
Software, algorithm	Ingenuity Pathway Analysis (IPA)	QIAGEN Inc	RRID:SCR_008653; <a href="https://www.qiagenbioinformatics.com/products/ingenuity-pathway-analysis">https://www.qiagenbioinformatics.com/products/ingenuity-pathway-analysis</a>	
Software, algorithm	DESeq2 v1.26.0	<b>Love et al., 2014</b>	RRID:SCR_015687; <a href="https://bioconductor.org/packages/release/bioc/html/DESeq2.html">https://bioconductor.org/packages/release/bioc/html/DESeq2.html</a>	
Software, algorithm	ensemldb v2.6.8	<b>Rainer et al., 2019</b>	RRID:SCR_019103; <a href="https://www.bioconductor.org/packages/release/bioc/html/ensemldb.html">https://www.bioconductor.org/packages/release/bioc/html/ensemldb.html</a>	
Software, algorithm	riborex v2.3.4	<b>Li et al., 2017</b>	RRID:SCR_019104; <a href="https://github.com/smithlabcode/riborex">https://github.com/smithlabcode/riborex</a>	
Software, algorithm	RiboWaltz v1.0.1	<b>Lauria et al., 2018</b>	RRID:SCR_016948; <a href="https://github.com/LabTranslationalArchitectomics/RiboWaltz">https://github.com/LabTranslationalArchitectomics/RiboWaltz</a>	
Software, algorithm	bowtie2 v 2.2.3	<b>Langmead and Salzberg, 2012</b>	RRID:SCR_005476; <a href="http://bowtie-bio.sourceforge.net/bowtie2/index.shtml">http://bowtie-bio.sourceforge.net/bowtie2/index.shtml</a>	
Software, algorithm	fastx_trimmer	Hannon Lab	<a href="http://hannonlab.cshl.edu/fastx_toolkit/">http://hannonlab.cshl.edu/fastx_toolkit/</a>	
Software, algorithm	fastx_clipper	Hannon Lab	<a href="http://hannonlab.cshl.edu/fastx_toolkit/">http://hannonlab.cshl.edu/fastx_toolkit/</a>	

Continued on next page

Continued

Reagent type (species) or resource	Designation	Source or reference	Identifiers	Additional information
Software, algorithm	hisat2 v2.1.0	<i>Kim et al., 2019</i>	RRID:SCR_015530; <a href="https://daehwankimlab.github.io/hisat2/">https://daehwankimlab.github.io/hisat2/</a>	
Software, algorithm	featureCounts	<i>Liao et al., 2014</i>	RRID:SCR_012919; <a href="http://bioinf.wehi.edu.au/featureCounts">http://bioinf.wehi.edu.au/featureCounts</a>	
Software, algorithm	sleuth v0.30.0	<i>Pimentel et al., 2017</i>	RRID:SCR_016883; <a href="https://pachterlab.github.io/sleuth/about">https://pachterlab.github.io/sleuth/about</a>	
Software, algorithm	kallisto v0.42.4	<i>Bray et al., 2016</i>	RRID:SCR_016582; <a href="https://pachterlab.github.io/kallisto/about">https://pachterlab.github.io/kallisto/about</a>	

## Mouse strains

Generation of *Hbs1*<sup>GTC</sup> mice was performed by injection of targeted ES cells (International Gene Trap Consortium, IGTC, cell line ID: XE494) into C57BL/6J (B6J) blastocysts. B6N-*Hbs1*<sup>tm1a</sup> (C57BL/6N-A<sup>tm1Brd</sup>*Hbs1*<sup>tm1a(KOMP)Wtsi</sup>, MMRRC:048037) mice were produced at the Wellcome Trust Sanger Institute Mouse Genetics Project as part of the International Mouse Phenotype Consortium (IMPC). In order to generate the conditional *Hbs1* knock out allele, heterozygous B6N-*Hbs1*<sup>tm1a/+</sup> mice were crossed to B6N.129S4-Gt(ROSA)26Sor<sup>tm1(FLP1)Dym/J</sup> (The Jackson Laboratory, #016226, MGI:5425632) to remove the gene trap cassette and generate B6N-*Hbs1*<sup>fl/+</sup> mice. Generation of the constitutive B6N-*Hbs1*<sup>+/-</sup> knock out allele was accomplished by crossing homozygous B6N-*Hbs1*<sup>fl/fl</sup> mice to B6N.Cg-Edil3Tg(Sox2-Cre)1Amc/J mice (The Jackson Laboratory, #014094, MGI:4943744). The B6N-*Hbs1*<sup>+/-</sup> or B6N-*Hbs1*<sup>fl/fl</sup> mice were backcrossed to congenic B6N.B6J<sup>n-Tr20</sup> mice (n = 2 backcross generations) to introduce the B6J-associated *n-Tr20* mutation. The conditional knock out *Pelo* allele was generated by placing the 5'loxP site 117 bp upstream of exon 2 and the 3'loxP site 302 bp downstream of exon2. Targeted B6J ES cells were injected into B6J blastocysts to generate heterozygous B6J-*Pelo*<sup>fl/+</sup> mice. Generation of the ubiquitous B6J-*Pelo*<sup>+/-</sup> knock out allele was accomplished by crossing homozygous B6J-*Pelo*<sup>fl/fl</sup> mice to B6.FVB-Tg(Ella-Cre)C5379Lmgd/J mice (The Jackson Laboratory, #003724, MGI:2174520). The conditional *Upf2* knock out allele (*Upf2*<sup>fl/fl</sup> mice) was kindly provided from Drs. Bo Torben Porse and Miles Wilkinson. Genotyping primers are listed below and for the conditional knock out alleles of *Hbs1* and *Pelo*, genotyping primers were multiplexed to simultaneously detect the wild type, flox (fl) and delta (-) allele. Genotyping for the conditional knock out allele of *Upf2*, was performed as previously described (*Weischenfeldt et al., 2008*).

*Hbs1* common Forward: 5'AGTCCAGGTGTTTCCTCACG3'  
*Hbs1* wild type Reverse: 5'CCCTGGCCTATTTTTGGTTT3'  
*Hbs1* GTC Reverse: 5'TGTCCTCCAGTCTCCTCCAC3'  
*Hbs1* cKO Forward I: 5'CATGGCCTCCTATGGGTTGA3'  
*Hbs1* cKO Forward II: 5'GCCTACAGTGAGCACAGAGT3'  
*Hbs1* cKO Reverse: 5'TAGGTGCTGGGATTTGAACC3'  
*Pelo* cKO Forward: 5'TGTAAGTGAACCCTGCAGTATCT3'  
*Pelo* cKO Reverse I: 5'GTGGAGCATGAAATGAAATTCGG3'  
*Pelo* cKO Reverse II: 5'ATCCAAGGCTTTTACTTCGCC3'

For conditional knock out experiments, the following *Cre*-lines were used and the *Cre* allele was maternally inherited to generate mutant mice (F<sub>2</sub> generation): *En1*<sup>tm2(Cre)Wrst/J</sup> (*En1*<sup>Cre</sup>, The Jackson Laboratory, #007916, MGI:3815003), B6.Cg-Tg(Atoh1-Cre)1Bfri/J (Tg(Atoh1-Cre), The Jackson Laboratory, #011104, MGI:4415810) and B6.Tg(Gabra6-Cre)B1Lfr (Tg(Gabra6-Cre), MGI:4358481, *Fünfschilling and Reichardt, 2002*). In order to avoid the introduction of the B6J-associated *n-Tr20* mutation in *En1*<sup>Cre</sup>; *Hbs1* cKO mice, *En1*<sup>tm2(Cre)Wrst/J</sup> mice were backcrossed to congenic B6J.B6N<sup>n-Tr20</sup> mice (*Ishimura et al., 2016*) to generate *En1*<sup>tm2(Cre)Wrst/J</sup> mice that no longer carry the mutation. Subsequently, B6J.B6N<sup>n-Tr20</sup>; *En1*<sup>Cre</sup> mice were intercrossed with B6N-*Hbs1*<sup>+/-</sup> to produce F1 mice,

then these mice were crossed to B6N-*Hbs1*<sup>fl/fl</sup> mice to generate *En1*<sup>Cre</sup>; *Hbs1* cKO; *n-Tr20*<sup>B6N/B6N</sup> without the B6J-associated tRNA mutation. To generate Tg(*Atoh1*-Cre); *Hbs1* cKO mice lacking *n-Tr20*, B6.Cg-Tg(*Atoh1*-Cre)1Bfri/J, B6N-*Hbs1*<sup>fl/fl</sup>, and B6N-*Hbs1*<sup>fl/fl</sup> mice were crossed to B6J-*n-Tr20*<sup>-/-</sup> mice. Subsequently, these strains were intercrossed to generate Tg(*Atoh1*-Cre); *Hbs1* cKO; *n-Tr20*<sup>-/-</sup> mice. For BrdU experiments, pregnant females or pups were injected with BrdU (0.05 mg/g, Sigma-Aldrich, B9285) and collected 30 min (S-phase analysis) or 24 hr (cell cycle exit analysis) post injection. For the isolation of MEFs or embryos, the day that a vaginal plug was detected was defined as embryonic day 0.5 (E0.5).

For conditional knock out experiments in primary mouse embryonic fibroblasts (MEFs), we crossed mice to the tamoxifen inducible Cre-line B6.Cg-Tg(CAG-Cre/*Esr1*<sup>\*</sup>)5Amc/J (CAG-Cre<sup>ER</sup>, The Jackson Laboratory, #004682, MGI:2680708). The Cre allele was paternally inherited to generate embryos (F<sub>2</sub> generation) because Cre-mediated recombination ('leaky Cre expression') was occasionally observed even in the absence of tamoxifen (4-OHT) treatment of MEFs when the Cre allele was maternally inherited (F<sub>2</sub> generation).

All experiments and quantifications were performed with at least three mice/embryos of each genotype and time point using mice of either sex (embryos were not sexed). The Jackson Laboratory Animal Care and Use Committee and The University of California San Diego Animal Care and Use Committee approved all mouse protocols.

### Strain abbreviation

For conditional knock out (cKO) experiments, animals were given a simplified abbreviation throughout the article. The complete genotype is shown below.

Abbreviation	Genotype
<i>En1</i> <sup>Cre</sup> , <i>Hbs1</i> cKO	<i>En1</i> <sup>Cre/+</sup> ; <i>Hbs1</i> <sup>fl/-</sup> ; <i>n-Tr20</i> <sup>B6J/B6J</sup>
<i>En1</i> <sup>Cre</sup> , <i>Pelo</i> cKO	<i>En1</i> <sup>Cre/+</sup> ; <i>Pelo</i> <sup>fl/fl</sup> ; <i>n-Tr20</i> <sup>B6J/B6J</sup>
<i>En1</i> <sup>Cre</sup> , <i>Upf2</i> cKO	<i>En1</i> <sup>Cre/+</sup> ; <i>Upf2</i> <sup>fl/fl</sup> ; <i>n-Tr20</i> <sup>B6J/B6J</sup>
Tg( <i>Atoh1</i> -Cre), <i>Hbs1</i> cKO	Tg( <i>Atoh1</i> -Cre); <i>Hbs1</i> <sup>fl/-</sup> ; <i>n-Tr20</i> <sup>B6J/B6J</sup>
Tg( <i>Atoh1</i> -Cre), <i>Pelo</i> cKO	Tg( <i>Atoh1</i> -Cre); <i>Pelo</i> <sup>fl/fl</sup> ; <i>n-Tr20</i> <sup>B6J/B6J</sup>
Tg( <i>Atoh1</i> -Cre), <i>Upf2</i> cKO	Tg( <i>Atoh1</i> -Cre); <i>Upf2</i> <sup>fl/fl</sup> ; <i>n-Tr20</i> <sup>B6J/B6J</sup>
Tg( <i>Gabra6</i> -Cre), <i>Hbs1</i> cKO	Tg( <i>Gabra6</i> -Cre); <i>Hbs1</i> <sup>fl/-</sup> ; <i>n-Tr20</i> <sup>B6J/B6J</sup>
Tg( <i>Gabra6</i> -Cre), <i>Pelo</i> cKO	Tg( <i>Gabra6</i> -Cre); <i>Pelo</i> <sup>fl/-</sup> ; <i>n-Tr20</i> <sup>B6J/B6J</sup>
TgCAG-Cre <sup>ER</sup> (control MEFs)	Tg(CAG-Cre/ <i>Esr1</i> ); <i>n-Tr20</i> <sup>B6J/B6J</sup>
TgCAG-Cre <sup>ER</sup> , <i>Hbs1</i> cKO ( <i>Hbs1</i> <sup>-/-</sup> MEFs)	Tg(CAG-Cre/ <i>Esr1</i> ); <i>Hbs1</i> <sup>fl/-</sup> ; <i>n-Tr20</i> <sup>B6J/B6J</sup>
TgCAG-Cre <sup>ER</sup> , <i>Pelo</i> cKO ( <i>Pelo</i> <sup>-/-</sup> MEFs)	Tg(CAG-Cre/ <i>Esr1</i> ); <i>Pelo</i> <sup>fl/fl</sup> ; <i>n-Tr20</i> <sup>B6J/B6J</sup>
TgCAG-Cre <sup>ER</sup> , <i>Upf2</i> cKO ( <i>Upf2</i> <sup>-/-</sup> MEFs)	Tg(CAG-Cre/ <i>Esr1</i> ); <i>Upf2</i> <sup>fl/fl</sup> ; <i>n-Tr20</i> <sup>B6J/B6J</sup>

### Cell culture

Primary mouse embryonic fibroblasts (MEFs) were isolated on embryonic day E13.0 and prepared by standard procedures (Nagy et al., 2014). MEFs were maintained in Dulbecco's modified Eagle's medium (Gibco, #41965039) with GlutaMAX (Gibco, #35050061), PSN (Gibco, # 15640055), and 10% embryonic stem cell fetal bovine serum (Gibco, #10439024) at 37°C in 5% CO<sub>2</sub>. Two days post-isolation (Passage P0), the cell culture media was replaced with fresh media and supplemented with 1 μM 4-OHT (4-hydroxytamoxifen, Sigma, H7904) for both control and mutant cells. After 48 hr, cells were washed, trypsinized, and seeded on a 10 cm dish (Passage P1). For RNA sequencing and ribosome footprint profiling experiments, cells were collected 48 hr (Passage P1, Day 2) later when cells reached ~80% confluency. For western blotting experiments, cells of Passage P1 were collected 48 hr (Day 2) and 96 hr (Day 4) post-seeding.

## Histology and immunofluorescence

Anesthetized mice were transcardially perfused with 4% paraformaldehyde (PFA, for immunofluorescence and histology), Bouins fixative (for histology) or 10% neutral buffered formalin (NBF, for in situ hybridization). Tissues were post-fixed overnight and embedded in paraffin. For histological analysis, sections were deparaffinized, rehydrated, and were stained with cresyl violet according to standard procedures. Histological slides were imaged using a digital slide scanner (Hamamatsu).

All quantifications were performed with three mice or embryos of each genotype and time point using animals of either sex (embryos were not sexed). For cell quantification in embryos at E12.5 to E16.5 and pups at P5 (Olig2<sup>+</sup> cells), cells were counted from the entire section and values were averaged from three parasagittal (embryos) or sagittal (pups) sections (spaced 35  $\mu\text{m}$  apart) per mouse. For the analysis of granule cell precursors or granule cells in P5 or P6 pups, the total number of cells was determined within lobule IV/V or IX, and values were averaged from three sagittal sections (spaced 50  $\mu\text{m}$  apart) per mouse. For the analysis of granule cells in adult mice (35 weeks of age), granule cells were counted in a 0.025 mm<sup>2</sup> area of lobule IX and values were averaged from three midline sections per mouse spaced 100  $\mu\text{m}$  apart.

For immunofluorescence, antigen retrieval on deparaffinized PFA-fixed sections was performed by microwaving sections in 0.01M sodium citrate buffer (pH 6.0, 0.05% Tween-20) for three times with 3 min each or three times for 3 min, followed by two times for 9 min. PFA-fixed sections were incubated with the following primary antibodies overnight at 4°C: rabbit anti-cleaved caspase 3 (Cell signaling, #9661, 1:100), mouse anti-BrdU (Dako, M0744, 1:50), rabbit anti-Ki67 (Abcam, ab15580, 1:100), mouse anti-Lhx1/5 (DSHB, 4F2-c, 1:100), mouse anti-NeuN (Millipore, MAB377, 1:500), mouse anti-PCNA (Invitrogen, MA5-11358, 1:100), rabbit anti-p-S6<sup>240/244</sup> (Cell Signaling, #5364, 1:1000), rabbit anti-Pax2 (ThermoFisher, 71–6000, 1:50), rabbit anti-Olig2 (Abcam, ab109186, 1:200), rabbit anti-Tbr1 (Chemicon, AB9616, 1:1000), and rabbit anti-pH3 (Upstate, 06–570, 1:1000). Immunofluorescence with antibodies to BrdU was performed on sections treated with DNase I (5mU/ $\mu\text{l}$ , Worthington, LS002139) for 45 min at 37°C after antigen retrieval. Detection of primary antibodies was performed with goat anti-mouse Alexa Fluor-488 or –555, goat anti-rabbit Alexa Fluor-488 or –555, and donkey anti-rabbit Alexa Fluor-555 secondary antibodies (Invitrogen). Sections were counterstained with DAPI and Sudan Black to quench autofluorescence.

For immunofluorescence quantification, the fluorescence intensity was measured in an area of 60  $\times$  125  $\mu\text{m}$  using ImageJ, averaged from three sections (spaced 35  $\mu\text{m}$  apart) per embryo and expressed as the fold change relative to control.

## RNAscope (in situ hybridization)

In situ hybridization of *Hbs1l-C2* probes (ACD, #527471-C2) was performed with the ACD RNAscope Multiplex Fluorescent Reagent Kit v2 (ACD, #323100) using the manufacturer's protocol. Briefly, deparaffinized NBF-fixed sections were treated for 15 min with Target Retrieval Reagent at 100°C and subsequently, treated with Protease Plus for 20 min (E13.5 embryos) or 30 min (P28 mice) at 40°C. RNAscope probes were hybridized for 2 hr; TSA Plus Cyanine 3 (PerkinElmer, 1:1,500) was used as a secondary fluorophore for *Hbs1l-C2* probes.

## Reverse transcription and quantitative PCR (qPCR) analysis

Whole mouse embryos, primary mouse embryonic fibroblasts, or adult mouse tissues were isolated and immediately frozen in liquid nitrogen. Total RNA was extracted with Trizol reagent (Life Technologies). cDNA synthesis was performed on DNase-treated (DNA-free DNA Removal Kit, Life Technologies AM1906) total RNA using oligo(dT) primers and SuperScript III First-Strand Synthesis System (Life Technologies). Quantitative RT-PCR reactions were performed using iQ SYBR Green Supermix (Bio-Rad) and an CFX96 Real-Time PCR Detection System (Bio-Rad). Expression levels of  $\beta$ -actin were used as input control for semi-quantitative RT-PCR. For quantitative RT-PCR (qPCR) analysis, expression levels of the genes of interest were normalized to *Gapdh* using the 2<sup>- $\Delta\Delta\text{CT}$</sup>  method (Livak and Schmittgen, 2001) and expressed as the fold change + standard error of the mean (SEM) relative to control.

Semi-quantitative RT-PCR Primers (F, Forward; R, Reverse):

*Hbs1l* Exon 3 F: 5'GAAATTGACCAAGCTCGCTGTA3'  
*Hbs1l* Exon 6 R: 5'CTCAGAAGTTAAGCCAGGCACT3'

$\beta$ -actin F: 5'GGCTGTATTCCCCTCCATCG3'  
 $\beta$ -actin R: 5'CCAGTTGGTAACAATGCCATGT3'

Quantitative RT-PCR Primers (F, Forward; R, Reverse):

*Hbs1l* F: 5'AGACCATGGGATTTGAAGTGC3'  
*Hbs1l* R: 5'CCGGTCTCAGGAATGTTAGGA3'  
*Hbs1l II* F: 5'TGAAGTTGAACAAAGTGCCAAG3'  
*Hbs1l II* R: 5'CTGCTTCCTCTGTGTTCCCTC3'  
*Pelo* F: 5'CCCCAGGAAACGGAAAGGC3'  
*Pelo* R: 5'ACGCACTTTACAACCTCGAAG3'  
*Gapdh* F: 5'CATTGTCATACCAGGAAATG3',  
*Gapdh* R: 5'GGAGAAACCTGCCAAGTATG3'

## Western blotting

MEFs or tissues were immediately frozen in liquid nitrogen. Proteins were extracted by homogenizing frozen tissue or cell samples in five volumes of RIPA buffer with cOmplete Mini, EDTA-free Protease inhibitor Cocktail (Roche), sonicating tissues two times for 10 s (Branson, 35% amplitude) or triturating cells 10 times using a 26G needle. Lysates were incubated for 30 min at 4°C, centrifuged at 16,000xg for 25 min, and 25  $\mu$ g of whole protein lysate were resolved on SDS-PAGE gels prior to transfer to PVDF membranes (GE Healthcare Life Sciences, #10600023) using a tank blotting apparatus (BioRad).

For detection of phosphoproteins, frozen tissue samples were homogenized in 5 volumes of homogenization buffer (50 mM Hepes/KOH, pH 7.5, 140 mM potassium acetate, 4 mM magnesium acetate, 2.5 mM dithiothreitol, 0.32M sucrose, 1 mM EDTA, 2 mM EGTA) (Carnevali *et al.*, 2004), supplemented with phosphatase and protease inhibitors (PhosStop and cOmplete Mini, EDTA-free Protease inhibitor Cocktail, Roche). Frozen cell samples were homogenized by using a 26G needle (five times) in homogenization buffer (see above). Lysate samples were immediately centrifuged at 12,000xg for 7 min and whole protein lysate were resolved on SDS-PAGE gels prior to transfer to PVDF membranes.

After blocking in 5% nonfat dry milk (Cell Signaling, #9999S), blots were probed with primary antibodies at 4°C overnight: rabbit anti-phospho-eIF2 $\alpha$ <sup>S51</sup> (Cell Signaling, #9721, 1:1000), rabbit anti-eIF2 $\alpha$  (Cell Signaling, #9722, 1:2000), rabbit anti-Hbs1l (Proteintech, 10359-1-AP, 1:1000), rabbit anti-Pelo (Proteintech, 10582-1-AP, 1:2000), rabbit anti-GAPDH (Cell Signaling, #2118, 1:10,000), rabbit anti-phospho-p70S6K<sup>T389</sup> (Cell Signaling, #9234, 1:1000), rabbit anti-phospho-p70S6K (Cell Signaling, #2708, 1:1000), mouse anti-vinculin (Sigma, V-9131, 1:20,000). Primary antibodies were detected by incubation with HRP-conjugated secondary antibodies for 2 hr at room temperature: goat anti-rabbit IgG (BioRad, #170-6515) or goat anti-mouse IgG (BioRad, #170-6516). Signals were detected with SuperSignal West Pico Chemiluminescent substrate (ThermoScientific, #34080) or Pro-Signal Femto ECL Reagent (Genesee Scientific, #20-302).

## RNA sequencing library construction

For RNA sequencing of primary mouse embryonic fibroblasts (MEFs), one 10 cm dish of tamoxifen (4-OHT) treated MEFs at Day 2 (Passage P1) from TgCAG-Cre<sup>ER</sup> (control), TgCAG-Cre<sup>ER</sup>; *Hbs1l* cKO (*Hbs1l*<sup>-/-</sup>), TgCAG-Cre<sup>ER</sup>; *Pelo* cKO (*Pelo*<sup>-/-</sup>) and TgCAG-Cre<sup>ER</sup>; *Upf2* cKO (*Upf2*<sup>-/-</sup>) were collected. One 10 cm dish from one individual embryo was used as one biological replicate, and either two (*Pelo*) or three (control, *Hbs1*, *Upf2*) biological replicates were used per genotype. Two micrograms of DNase-treated (DNA-free DNA Removal Kit, Life Technologies AM1906) total RNA were used for the RNA library construction, performed as per the manufacturer's protocol (KAPA Stranded mRNA-Seq Kit, KR0960) and the adapter ligation was performed for 3 hr at room temperature. Library quality and concentration was assessed using D1000 screen tape on the Agilent TapeStation and Qubit 2.0 Fluorometer. All libraries were pooled, and the pool of libraries was sequenced on two lanes using HiSeq4000 (PE100).

## Analysis of RNA sequencing data

Reads were quantified using kallisto version 0.42.4 (Bray *et al.*, 2016) and pseudo-aligned to a Genecode M24 transcriptome reference with parameters  $-\text{bias}$  and  $-\text{b}$  100. Differential expression was



performed using sleuth version 0.30.0 (Pimentel et al., 2017). Pairwise comparisons were performed to identify differentially expressed transcripts and genes: TgCAG-Cre<sup>ER</sup> vs. TgCAG-Cre<sup>ER</sup>; *Pelo* cKO, TgCAG-Cre<sup>ER</sup> vs. TgCAG-Cre<sup>ER</sup>; *Hbs1l* cKO, and TgCAG-Cre<sup>ER</sup> vs. TgCAG-Cre<sup>ER</sup>; *Upf2* cKO. We used functions within sleuth to perform differential transcript and gene expression. Briefly, we fit null models and models corresponding to the genotype of the samples for each transcript and performed Wald tests on the models for each transcript to identify differentially expressed transcripts. Differential gene expression was performed by aggregating transcript expression on Ensembl gene identifiers. Multiple hypotheses testing was corrected using Benjamini-Hochberg correction, referred to as q-value. Transcript biotypes were identified using biomaRt version 2.42.1 (Durinck et al., 2005). For downstream TE analysis, mapping to mm10 using a Gencode M24 transcript annotation was performed using hisat2 version 2.1.0 (Kim et al., 2019) using default parameters.

## Ribosome profiling library construction

Ribosome profiling libraries were generated as previously described (Ingolia et al., 2012; Ishimura et al., 2014) with some modifications. Cerebella were dissected and immediately frozen in liquid nitrogen. One cerebellum from P14 mice was used for each biological replicate, and three biological replicates were prepared for each control (Tg(Atoh1-Cre); *Hbs1l*<sup>+/+</sup>) and mutant (Tg(Atoh1-Cre); *Hbs1l* cKO) genotype. For profiling of mouse embryos, embryos from timed mating were dissected at embryonic day E8.5, frozen in a drop of nuclease free water on dry ice, and then flash frozen in liquid nitrogen. Five embryos were pooled for each biological replicate, and three biological replicates were prepared for each control (*Hbs1l*<sup>+/+</sup>) and mutant (*Hbs1l*<sup>-/-</sup>) genotype. For profiling of primary mouse embryonic fibroblasts (MEFs), tamoxifen (4-OHT) treated MEFs at Day 2 (Passage P1) from TgCAG-Cre<sup>ER</sup> (control), TgCAG-Cre<sup>ER</sup>; *Hbs1l* cKO (*Hbs1l*<sup>-/-</sup>), TgCAG-Cre<sup>ER</sup>; *Pelo* cKO (*Pelo*<sup>-/-</sup>) and TgCAG-Cre<sup>ER</sup>; *Upf2* cKO (*Upf2*<sup>-/-</sup>) were collected. Two 10 cm dishes from one individual embryo were pooled as one biological replicate, and three biological replicates (three individual embryos) were used for each genotype. The tissue and embryo homogenization were performed with a mixer mill (Retsch MM400) in lysis buffer (20 mM Tris-Cl, pH 8.0, 150 mM NaCl, 5 mM MgCl<sub>2</sub>, 1 mM DTT, 100 µg/ml CHX, 1% (v/v) TritonX-100, 25units/ml Turbo DNase I). The cell homogenization was performed by triturating the cells in lysis buffer (20 mM Tris-Cl, pH 8.0, 150 mM NaCl, 5 mM MgCl<sub>2</sub>, 1 mM DTT, 100 µg/ml CHX, 1% (v/v) TritonX-100, 25units/ml Turbo DNase I) ten times through a 26G needle. RNase I-treated lysates were overlaid on top of a sucrose cushion in 5 ml Beckman Ultraclear tubes and centrifuged in an SW55Ti rotor for 4 hr at 4°C at 46,700 rpm. Pellets were resuspended and RNA was extracted using the miRNeasy kit (Qiagen) according to manufacturer's instructions. 26–34 nts (cerebella samples) or 15–34 nts (embryo and MEF samples) RNA fragments were purified by electrophoresis on a denaturing 15% gel. Linker addition, cDNA generation (first-strand synthesis was performed at 50°C for 1 hr), circularization, rRNA depletion, and amplification of cDNAs with indexing primers were performed. Library quality and concentration was assessed using high sensitivity D1000 screen tape on the Agilent TapeStation and Qubit 2.0 Fluorometer. All libraries were pooled as set of six samples consisting of three control and mutant samples. Libraries were run on HiSeq4000 (SR75) and either three lanes (cerebella samples) or two lanes (embryo and MEF samples) per set of samples were sequenced.

## Analysis of ribosome profiling data

Reads were clipped to remove adaptor sequences (CTGTAGGCACCATCAAT) using fastx\_clipper and trimmed so that reads start on the second base using fastx\_trimmer ([http://hannonlab.cshl.edu/fastx\\_toolkit/](http://hannonlab.cshl.edu/fastx_toolkit/)). Reads containing ribosomal RNAs, snoRNAs, and tRNAs were then filtered out by mapping to a ribosomal RNA reference using bowtie2 version 2.2.3 using parameters -L 13 (Langmead and Salzberg, 2012). Remaining reads were mapped to an mm10 mouse reference using a Gencode M24 annotation, or a Gencode M24 protein-coding transcript reference using hisat2 version 2.1.0 (Kim et al., 2019). Ribosomal A-sites were identified using RiboWaltz version 1.0.1 (Lauria et al., 2018), and reads with lengths of 27–34 nucleotides were retained for further analysis.

To identify potential codon bias in the A-site, observed/expected reads were calculated for each transcript with alignments with the expected reads being the read density expected at a given site with a given codon, assuming that reads are uniformly distributed across the coding part of the

transcript. Differences in codon usage were then tested with a student's t-test followed by Benjamini-Hochberg multiple hypothesis testing correction.

Pauses were identified using previous methodology (Ishimura *et al.*, 2014). Reads with lengths of 27–34 nucleotides were analyzed using a 0.5 reads/codon threshold in all samples to analyze pausing on transcripts. Additionally, pauses with P-sites nearby start and stop codons (P-sites at the –3, 0, 1, 2, 3, and 4 positions for start codons and P-sites at the –1 and –2 positions for stop codons) in any isoform of the gene were excluded from the analysis. To identify pauses overlapping start and stop codons in other isoforms, we used ensemblldb v.2.6.8 (Rainer *et al.*, 2019) to map transcript coordinates back to the genome and analyzed whether pauses with identical genome coordinates overlapped start/stop codons.

To extend this approach to identify pauses at the gene level, we removed start/stop overlapping pauses (in any gene-matched transcript) and collapsed pauses based on the genomic location of the A-site, which was also identified with ensemblldb v.2.6.8. Mean pause score across transcripts of genomically identical pauses for each sample was the reported pause score (excluding transcripts without a reported pause in a sample). If genomically identical pauses were in multiple transcript regions (i.e. 3'UTR or CDS depending on the isoform), all were reported.

Pauses were further filtered such that the pause locus appeared in all three replicates of the genotype and thereby, pauses that were only detected in one or two of three replicates of the genotype were removed from the analysis. Pauses were compared between the 4-OHT-treated knock out (TgCAG-Cre<sup>ER</sup>; *Hbs1l* cKO, TgCAG-Cre<sup>ER</sup>; *Pelo* cKO and TgCAG-Cre<sup>ER</sup>; *Upf2* cKO) and the control (TgCAG-Cre<sup>ER</sup>) sample that each mutant sample was pooled with for sequencing.

To identify ribosome footprint reads with 3'end As (untemplated reads), we extracted at first reads from a genome mapped bam file with six or more As at the 3'end of the read (3'end As were soft-clipped). Mapped reads were only considered if the 3'end A reads were not matching the reference sequence, while all unmapped reads with six or more As at the 3' end were considered. Afterwards, the 3'end As were then removed from these untemplated reads and they were mapped back to the transcriptome using parameters described above for ribosome footprint profiling mapping to the transcriptome. Only the untemplated reads that mapped after the removal of the 3'end As were considered as ribosome footprints that may derive from ribosomes translating premature polyadenylated transcripts.

For differential RPF and differential TE analysis, genome mapped reads were quantified using featureCounts (Liao *et al.*, 2014) with footprints overlapping CDS features. For TE analysis specifically, RNA-Seq read pairs overlapping gene exon features were also quantified using featureCounts. Differential RPF analysis was performed using DESeq2 (v1.26.0) (Love *et al.*, 2014) comparing 4-OHT-treated knock out (TgCAG-Cre<sup>ER</sup>; *Hbs1l* cKO, TgCAG-Cre<sup>ER</sup>; *Pelo* cKO and TgCAG-Cre<sup>ER</sup>; *Upf2* cKO) to control (TgCAG-Cre<sup>ER</sup>) cells using default parameters. Histone mRNAs were removed from the analysis by removing gene names with the prefixes 'Hist', 'H1f', 'H2a', 'H2b', 'H3', and 'H4'. TE was quantified and tested for using riborex version 2.3.4 using the DESeq2 engine (Li *et al.*, 2017).

## Pathway analysis

Data were analyzed using Ingenuity Pathway Analysis (IPA, QIAGEN Inc, <https://www.qiagenbioinformatics.com/products/ingenuity-pathway-analysis>).

Kyoto Encyclopedia of Genes and Genomes (KEGG) pathway analysis was performed using the ShinyGO v0.61 bioinformatics web server (<http://bioinformatics.sdstate.edu/go>) (Ge *et al.*, 2020) by uploading the gene lists from our RNA sequencing or ribosome profiling analysis. Pathway enrichment terms with a *P*-value cutoff (FDR)  $\leq 0.05$  were considered enriched.

## Statistics

For quantification of protein expression, RNA expression (quantitative RT-PCR), fluorescence intensity or histological quantifications, *p*-values were computed in GraphPad Prism using either student's t-test, multiple t-tests, one-way ANOVA, or two-way ANOVA and statistical tests were corrected for multiple comparisons as indicated in the figure legends. All quantifications were performed with at least three mice/embryos of each genotype and time point using mice of either sex (embryos were not sexed).

## Acknowledgements

We thank T Jucius and A Kano for technical assistance, Drs. Bo Torben Porse and Miles Wilkinson for providing the *Upf2<sup>fl/fl</sup>* mice, the IGM Genomics Center at the University of California San Diego (UCSD) for support with sequencing and the UCSD School of Medicine Microcopy Core for providing access to microscopy equipment (Grant P30 NS047101). This work was supported in part by NIH R01 NS094637 (SLA). SLA is an investigator of the Howard Hughes Medical Institute.

---

## Additional information

### Funding

Funder	Grant reference number	Author
National Institute of Neurological Disorders and Stroke	NS094637	Susan L Ackerman
Howard Hughes Medical Institute		Susan L Ackerman

The funders had no role in study design, data collection and interpretation, or the decision to submit the work for publication.

### Author contributions

Markus Terrey, Conceptualization, Formal analysis, Investigation, Visualization, Methodology, Writing - original draft, Writing - review and editing; Scott I Adamson, Formal analysis, Investigation, Visualization, Methodology, Writing - review and editing; Jeffrey H Chuang, Formal analysis, Supervision, Investigation, Writing - review and editing; Susan L Ackerman, Conceptualization, Supervision, Funding acquisition, Investigation, Methodology, Writing - original draft, Project administration, Writing - review and editing

### Author ORCIDs

Markus Terrey  <https://orcid.org/0000-0002-7359-4810>

Susan L Ackerman  <https://orcid.org/0000-0002-6740-593X>

### Ethics

Animal experimentation: Animal Protocol number S15286.

### Decision letter and Author response

Decision letter <https://doi.org/10.7554/eLife.66904.sa1>

Author response <https://doi.org/10.7554/eLife.66904.sa2>

---

## Additional files

### Supplementary files

- Supplementary file 1. Embryonic lethality.
- Supplementary file 2. Locus specific pausing genome level.
- Supplementary file 3. DE RPF footprints.
- Supplementary file 4. A-site pausing.
- Supplementary file 5. Locus-specific pausing transcript level.
- Supplementary file 6. TE MEFs.
- Supplementary file 7. DE mRNA MEFs.
- Transparent reporting form

**Data availability**

Sequencing data have been deposited in GEO under accession code GSE162556.

The following dataset was generated:

Author(s)	Year	Dataset title	Dataset URL	Database and Identifier
Ackerman SL, Terrey M, Adamson SI, Chuang JH	2021	Mutations in distinct translation-dependent quality control pathways lead to convergent molecular pathogenesis and neurodevelopmental defects.	<a href="https://www.ncbi.nlm.nih.gov/geo/query/acc.cgi?acc=GSE162556">https://www.ncbi.nlm.nih.gov/geo/query/acc.cgi?acc=GSE162556</a>	NCBI Gene Expression Omnibus, GSE162556

**References**

- Abreu R de S**, Penalva LO, Marcotteb EM, Vogel C. 2009. Global signatures of protein and mRNA expression levels. *Energy Conversion and Management* **5**:1512–1526. DOI: <https://doi.org/10.1039/b908315d>
- Adham IM**, Sallam MA, Steding G, Korabiowska M, Brinck U, Hoyer-Fender S, Oh C, Engel W. 2003. Disruption of the pelota gene causes early embryonic lethality and defects in cell cycle progression. *Molecular and Cellular Biology* **23**:1470–1476. DOI: <https://doi.org/10.1128/MCB.23.4.1470-1476.2003>, PMID: 12556505
- Arpat AB**, Liechti A, De Matos M, Dreos R, Janich P, Gatfield D. 2020. Transcriptome-wide sites of collided ribosomes reveal principles of translational pausing. *Genome Research* **30**:985–999. DOI: <https://doi.org/10.1101/gr.257741.119>
- Arribere JA**, Fire AZ. 2018. Nonsense mRNA suppression via nonstop decay. *eLife* **7**:e33292. DOI: <https://doi.org/10.7554/eLife.33292>, PMID: 29309033
- Blair JD**, Hockemeyer D, Doudna JA, Bateup HS, Floor SN. 2017. Widespread translational remodeling during human neuronal differentiation. *Cell Reports* **21**:2005–2016. DOI: <https://doi.org/10.1016/j.celrep.2017.10.095>, PMID: 29141229
- Blanco S**, Bandiera R, Popis M, Hussain S, Lombard P, Aleksic J, Sajini A, Tanna H, Cortés-Garrido R, Gkatza N, Dietmann S, Frye M. 2016. Stem cell function and stress response are controlled by protein synthesis. *Nature* **534**:335–340. DOI: <https://doi.org/10.1038/nature18282>, PMID: 27306184
- Brandman O**, Hegde RS. 2016. Ribosome-associated protein quality control. *Nature Structural & Molecular Biology* **23**:7–15. DOI: <https://doi.org/10.1038/nsmb.3147>, PMID: 26733220
- Bray NL**, Pimentel H, Melsted P, Pachter L. 2016. Near-optimal probabilistic RNA-seq quantification. *Nature Biotechnology* **34**:525–527. DOI: <https://doi.org/10.1038/nbt.3519>, PMID: 27043002
- Britz O**, Zhang J, Grossmann KS, Dyck J, Kim JC, Dymecki S, Gosgnach S, Goulding M. 2015. A genetically defined asymmetry underlies the inhibitory control of flexor–extensor locomotor movements. *eLife* **4**:e04718. DOI: <https://doi.org/10.7554/eLife.04718>
- Brule CE**, Grayhack EJ. 2017. Synonymous codons: choose wisely for expression. *Trends in Genetics* **33**:283–297. DOI: <https://doi.org/10.1016/j.tig.2017.02.001>, PMID: 28292534
- Brunkard JO**, Baker B. 2018. A Two-Headed monster to avert disaster: Hbs1/SKI7 is alternatively spliced to build eukaryotic RNA surveillance complexes. *Frontiers in Plant Science* **9**:1–17. DOI: <https://doi.org/10.3389/fpls.2018.01333>, PMID: 30258456
- Buhr F**, Jha S, Thommen M, Mittelstaet J, Kutz F, Schwalbe H, Rodnina MV, Komar AA. 2016. Synonymous codons direct cotranslational folding toward different protein conformations. *Molecular Cell* **61**:341–351. DOI: <https://doi.org/10.1016/j.molcel.2016.01.008>, PMID: 26849192
- Buszczak M**, Signer RA, Morrison SJ. 2014. Cellular differences in protein synthesis regulate tissue homeostasis. *Cell* **159**:242–251. DOI: <https://doi.org/10.1016/j.cell.2014.09.016>, PMID: 25303523
- Carnevali LS**, Pereira CM, Longo BM, Jaqueta CB, Avedissian M, Mello LE, Castilho BA. 2004. Phosphorylation of translation initiation factor eIF2alpha in the brain during pilocarpine-induced status epilepticus in mice. *Neuroscience Letters* **357**:191–194. DOI: <https://doi.org/10.1016/j.neulet.2003.12.093>, PMID: 15003282
- Castelo-Szekely V**, Arpat AB, Janich P, Gatfield D. 2017. Translational contributions to tissue specificity in rhythmic and constitutive gene expression. *Genome Biology* **18**:1–17. DOI: <https://doi.org/10.1186/s13059-017-1222-2>, PMID: 28622766
- Choe YJ**, Park SH, Hassemer T, Körner R, Vincenz-Donnelly L, Hayer-Hartl M, Hartl FU. 2016. Failure of RQC machinery causes protein aggregation and proteotoxic stress. *Nature* **531**:191–195. DOI: <https://doi.org/10.1038/nature16973>, PMID: 26934223
- Chu J**, Hong NA, Masuda CA, Jenkins BV, Nelms KA, Goodnow CC, Glynne RJ, Wu H, Maslah E, Joazeiro CA, Kay SA. 2009. A mouse forward genetics screen identifies LISTERIN as an E3 ubiquitin ligase involved in neurodegeneration. *PNAS* **106**:2097–2103. DOI: <https://doi.org/10.1073/pnas.0812819106>, PMID: 19196968
- Chung SH**, Kim CT, Jung YH, Lee NS, Jeong YG. 2010. Early cerebellar granule cell migration in the mouse embryonic development. *Anatomy & Cell Biology* **43**:86. DOI: <https://doi.org/10.5115/acb.2010.43.1.86>, PMID: 21190009

- Chung SH**, Guo F, Jiang P, Pleasure DE, Deng W. 2013. Olig2/Plp-positive progenitor cells give rise to Bergmann glia in the cerebellum. *Cell Death & Disease* **4**:e546. DOI: <https://doi.org/10.1038/cddis.2013.74>, PMID: 23492777
- Collart MA**, Weiss B. 2020. Ribosome pausing, a dangerous necessity for co-translational events. *Nucleic Acids Research* **48**:1043–1055. DOI: <https://doi.org/10.1093/nar/gkz763>
- Cui M**, Wang Z, Bassel-Duby R, Olson EN. 2018. Genetic and epigenetic regulation of cardiomyocytes in development, regeneration and disease. *Development* **145**:dev171983. DOI: <https://doi.org/10.1242/dev.171983>
- D’Orazio KN**, Wu CC, Sinha N, Loll-Krippléber R, Brown GW, Green R. 2019. The endonuclease Cue2 cleaves mRNAs at stalled ribosomes during no go decay. *eLife* **8**:e49117. DOI: <https://doi.org/10.7554/eLife.49117>, PMID: 31219035
- Dever TE**, Green R. 2012. Phases of translation in eukaryotes. *Cold Spring Harb Perspect Biol* **4**:1–16.
- Diament A**, Feldman A, Schochet E, Kupiec M, Arava Y, Tuller T. 2018. The extent of ribosome queuing in budding yeast. *PLOS Computational Biology* **14**:e1005951–21. DOI: <https://doi.org/10.1371/journal.pcbi.1005951>
- Doma MK**, Parker R. 2006. Endonucleolytic cleavage of eukaryotic mRNAs with stalls in translation elongation. *Nature* **440**:561–564. DOI: <https://doi.org/10.1038/nature04530>, PMID: 16554824
- Dong X**, Kwan KM. 2020. Yin yang 1 is critical for mid-hindbrain neuroepithelium development and involved in cerebellar agenesis. *Molecular Brain* **13**:1–18. DOI: <https://doi.org/10.1186/s13041-020-00643-z>, PMID: 32703236
- Drummond DA**, Wilke CO. 2008. Mistranslation-induced protein misfolding as a dominant constraint on coding-sequence evolution. *Cell* **134**:341–352. DOI: <https://doi.org/10.1016/j.cell.2008.05.042>, PMID: 18662548
- Durinck S**, Moreau Y, Kasprzyk A, Davis S, De Moor B, Brazma A, Huber W. 2005. BioMart and bioconductor: a powerful link between biological databases and microarray data analysis. *Bioinformatics* **21**:3439–3440. DOI: <https://doi.org/10.1093/bioinformatics/bti525>, PMID: 16082012
- Eberle AB**, Lykke-Andersen S, Mühlemann O, Jensen TH. 2009. SMG6 promotes endonucleolytic cleavage of nonsense mRNA in human cells. *Nature Structural & Molecular Biology* **16**:49–55. DOI: <https://doi.org/10.1038/nsmb.1530>, PMID: 19060897
- Fink AJ**, Englund C, Daza RA, Pham D, Lau C, Nivison M, Kowalczyk T, Hevner RF. 2006. Development of the deep cerebellar nuclei: transcription factors and cell migration from the rhombic lip. *Journal of Neuroscience* **26**:3066–3076. DOI: <https://doi.org/10.1523/JNEUROSCI.5203-05.2006>, PMID: 16540585
- Fujii K**, Shi Z, Zhulyn O, Denans N, Barna M. 2017. Pervasive translational regulation of the cell signalling circuitry underlies mammalian development. *Nature Communications* **8**:1–13. DOI: <https://doi.org/10.1038/ncomms14443>
- Fünfschilling U**, Reichardt LF. 2002. Cre-mediated recombination in rhombic lip derivatives. *Genesis* **33**:160–169. DOI: <https://doi.org/10.1002/gene.10104>, PMID: 12203913
- Gabut M**, Bourdelais F, Durand S. 2020. Ribosome and translational control in stem cells. *Cells* **9**:497. DOI: <https://doi.org/10.3390/cells9020497>
- Ge SX**, Jung D, Yao R. 2020. ShinyGO: a graphical gene-set enrichment tool for animals and plants. *Bioinformatics* **36**:2628–2629. DOI: <https://doi.org/10.1093/bioinformatics/btz931>, PMID: 31882993
- Glover ML**, Burroughs AM, Monem PC, Egelhofer TA, Pule MN, Aravind L, Arribere JA. 2020. NONU-1 encodes a conserved endonuclease required for mRNA translation surveillance. *Cell Reports* **30**:4321–4331. DOI: <https://doi.org/10.1016/j.celrep.2020.03.023>, PMID: 32234470
- Gonzalez C**, Sims JS, Hornstein N, Mela A, Garcia F, Lei L, Gass DA, Amendolara B, Bruce JN, Canoll P, Sims PA. 2014. Ribosome profiling reveals a cell-type-specific translational landscape in brain tumors. *Journal of Neuroscience* **34**:10924–10936. DOI: <https://doi.org/10.1523/JNEUROSCI.0084-14.2014>, PMID: 25122893
- Götz M**, Huttner WB. 2005. The cell biology of neurogenesis. *Nature Reviews Molecular Cell Biology* **6**:777–788. DOI: <https://doi.org/10.1038/nrm1739>, PMID: 16314867
- Guo Q**, Li K, Sunmonu NA, Li JY. 2010. Fgf8b-containing spliceforms, but not Fgf8a, are essential for Fgf8 function during development of the midbrain and cerebellum. *Developmental Biology* **338**:183–192. DOI: <https://doi.org/10.1016/j.ydbio.2009.11.034>, PMID: 19968985
- Guydosh NR**, Kimmig P, Walter P, Green R. 2017. Regulated Ire1-dependent mRNA decay requires no-go mRNA degradation to maintain endoplasmic reticulum homeostasis in *S. pombe*. *eLife* **6**:e29216. DOI: <https://doi.org/10.7554/eLife.29216>, PMID: 28945192
- Guydosh NR**, Green R. 2014. Dom34 rescues ribosomes in 3′ untranslated regions. *Cell* **156**:950–962. DOI: <https://doi.org/10.1016/j.cell.2014.02.006>, PMID: 24581494
- Guydosh NR**, Green R. 2017. Translation of poly(A) tails leads to precise mRNA cleavage. *RNA* **23**:749–761. DOI: <https://doi.org/10.1261/rna.060418.116>, PMID: 28193672
- Han P**, Shichino Y, Schneider-Poetsch T, Mito M, Hashimoto S, Udagawa T, Kohno K, Yoshida M, Mishima Y, Inada T, Iwasaki S. 2020. Genome-wide survey of ribosome collision. *Cell Reports* **31**:107610. DOI: <https://doi.org/10.1016/j.celrep.2020.107610>, PMID: 32375038
- Hartman NW**, Lin TV, Zhang L, Paquelet GE, Feliciano DM, Bordey A. 2013. mTORC1 targets the translational repressor 4E-BP2, but not S6 kinase 1/2, to regulate neural stem cell self-renewal in vivo. *Cell Reports* **5**:433–444. DOI: <https://doi.org/10.1016/j.celrep.2013.09.017>, PMID: 24139800
- Hashimoto Y**, Takahashi M, Sakota E, Nakamura Y. 2017. Nonstop-mRNA decay machinery is involved in the clearance of mRNA 5′-fragments produced by RNAi and NMD in *Drosophila Melanogaster* cells. *Biochemical*



- and *Biophysical Research Communications* **484**:1–7. DOI: <https://doi.org/10.1016/j.bbrc.2017.01.092>, PMID: 28115162
- He F, Li X, Spatrick P, Casillo R, Dong S, Jacobson A. 2003. Genome-wide analysis of mRNAs regulated by the nonsense-mediated and 5' to 3' mRNA decay pathways in yeast. *Molecular Cell* **12**:1439–1452. DOI: [https://doi.org/10.1016/S1097-2765\(03\)00446-5](https://doi.org/10.1016/S1097-2765(03)00446-5), PMID: 14690598
- Hilal T, Yamamoto H, Loerke J, Bürger J, Mielke T, Spahn CMT. 2016. Structural insights into ribosomal rescue by Dom34 and Hbs1 at near-atomic resolution. *Nature Communications* **7**:1–8. DOI: <https://doi.org/10.1038/ncomms13521>
- Hu W, Sweet TJ, Chamnongpol S, Baker KE, Collier J. 2009. Co-translational mRNA decay in *Saccharomyces cerevisiae*. *Nature* **461**:225–229. DOI: <https://doi.org/10.1038/nature08265>, PMID: 19701183
- Huang L, Shum EY, Jones SH, Lou CH, Dumdie J, Kim H, Roberts AJ, Jolly LA, Espinoza JL, Skarbrevik DM, Phan MH, Cook-Andersen H, Swerdlow NR, Geicz J, Wilkinson MF. 2018. A Upf3b-mutant mouse model with behavioral and neurogenesis defects. *Molecular Psychiatry* **23**:1773–1786. DOI: <https://doi.org/10.1038/mp.2017.173>, PMID: 28948974
- Ibrahim F, Maragkakis M, Alexiou P, Mourelatos Z. 2018. Ribothrypsis, a novel process of canonical mRNA decay, mediates ribosome-phased mRNA endonucleolysis. *Nature Structural & Molecular Biology* **25**:302–310. DOI: <https://doi.org/10.1038/s41594-018-0042-8>, PMID: 29507394
- Ikeuchi K, Yazaki E, Kudo K, Inada T. 2016. Conserved functions of human pelota in mRNA quality control of nonstop mRNA. *FEBS Letters* **590**:3254–3263. DOI: <https://doi.org/10.1002/1873-3468.12366>, PMID: 27543824
- Ikeuchi K, Tesina P, Matsuo Y, Sugiyama T, Cheng J, Saeki Y, Tanaka K, Becker T, Beckmann R, Inada T. 2019. Collided ribosomes form a unique structural interface to induce Hel2-driven quality control pathways. *The EMBO Journal* **38**:1–21. DOI: <https://doi.org/10.15252/embj.2018100276>
- Inada T. 2020. Quality controls induced by aberrant translation. *Nucleic Acids Research* **48**:1084–1096. DOI: <https://doi.org/10.1093/nar/gkz1201>, PMID: 31950154
- Ingolia NT, Brar GA, Rouskin S, McGeachy AM, Weissman JS. 2012. The ribosome profiling strategy for monitoring translation in vivo by deep sequencing of ribosome-protected mRNA fragments. *Nature Protocols* **7**:1534–1550. DOI: <https://doi.org/10.1038/nprot.2012.086>, PMID: 22836135
- Ishimura R, Nagy G, Dotu I, Zhou H, Yang XL, Schimmel P, Senju S, Nishimura Y, Ackerman SL. 2014. RNA function. ribosome stalling induced by mutation of a CNS-specific tRNA causes neurodegeneration. *Science* **345**:455–459. DOI: <https://doi.org/10.1126/science.1249749>, PMID: 25061210
- Ishimura R, Nagy G, Dotu I, Chuang JH, Ackerman SL. 2016. Activation of GCN2 kinase by ribosome stalling links translation elongation with translation initiation. *eLife* **5**:e14295. DOI: <https://doi.org/10.7554/eLife.14295>, PMID: 27085088
- Jaffrey SR, Wilkinson MF. 2018. Nonsense-mediated RNA decay in the brain: emerging modulator of neural development and disease. *Nature Reviews Neuroscience* **19**:715–728. DOI: <https://doi.org/10.1038/s41583-018-0079-z>
- Jamar NH, Kritsiligkou P, Grant CM. 2018. Loss of mRNA surveillance pathways results in widespread protein aggregation. *Scientific Reports* **8**:1–10. DOI: <https://doi.org/10.1038/s41598-018-22183-2>, PMID: 29497115
- Jiang X, Feng S, Chen Y, Feng Y, Deng H. 2016. Proteomic analysis of mTOR inhibition-mediated phosphorylation changes in ribosomal proteins and eukaryotic translation initiation factors. *Protein & Cell* **7**:533–537. DOI: <https://doi.org/10.1007/s13238-016-0279-0>, PMID: 27278278
- Johnson JL, Stoica L, Liu Y, Zhu PJ, Bhattacharya A, Buffington SA, Huq R, Eissa NT, Larsson O, Porse BT, Domingo D, Nawaz U, Carroll R, Jolly L, Scerri TS, Kim HG, Brignell A, Coleman MJ, Braden R, Kini U, et al. 2019. Inhibition of Upf2-Dependent Nonsense-Mediated decay leads to behavioral and neurophysiological abnormalities by activating the immune response. *Neuron* **104**:665–679. DOI: <https://doi.org/10.1016/j.neuron.2019.08.027>, PMID: 31585809
- Ju J, Liu Q, Zhang Y, Liu Y, Jiang M, Zhang L, He X, Peng C, Zheng T, Lu QR, Li H. 2016. Olig2 regulates Purkinje cell generation in the early developing mouse cerebellum. *Scientific Reports* **6**:1–11. DOI: <https://doi.org/10.1038/srep30711>
- Juzzkiewicz S, Speldewinde SH, Wan L, Svejstrup JQ, Hegde RS. 2020. The ASC-1 complex disassembles collided ribosomes. *Molecular Cell* **79**:603–614. DOI: <https://doi.org/10.1016/j.molcel.2020.06.006>, PMID: 32579943
- Kalisiak K, Kuliński TM, Tomecki R, Cysewski D, Pietras Z, Chlebowski A, Kowalska K, Dziembowski A. 2017. A short splicing isoform of HBS1L links the cytoplasmic exosome and SKI complexes in humans. *Nucleic Acids Research* **45**:2068–2080. DOI: <https://doi.org/10.1093/nar/gkw862>, PMID: 28204585
- Kapur M, Ganguly A, Nagy G, Adamson SI, Chuang JH, Frankel WN, Ackerman SL. 2020. Expression of the neuronal tRNA n-Tr20 regulates synaptic transmission and seizure susceptibility. *Neuron* **108**:193–208. DOI: <https://doi.org/10.1016/j.neuron.2020.07.023>, PMID: 32853550
- Karousis ED, Mühlemann O. 2019. Nonsense-Mediated mRNA decay begins where translation ends. *Cold Spring Harbor Perspectives in Biology* **11**:a032862. DOI: <https://doi.org/10.1101/cshperspect.a032862>, PMID: 29891560
- Kim J, Kundu M, Viollet B, Guan KL. 2011. AMPK and mTOR regulate autophagy through direct phosphorylation of Ulk1. *Nature Cell Biology* **13**:132–141. DOI: <https://doi.org/10.1038/ncb2152>, PMID: 21258367
- Kim D, Paggi JM, Park C, Bennett C, Salzberg SL. 2019. Graph-based genome alignment and genotyping with HISAT2 and HISAT-genotype. *Nature Biotechnology* **37**:907–915. DOI: <https://doi.org/10.1038/s41587-019-0201-4>, PMID: 31375807

- Kimmel RA**, Turnbull DH, Blanquet V, Wurst W, Loomis CA, Joyner AL. 2000. Two lineage boundaries coordinate vertebrate apical ectodermal ridge formation. *Genes & Development* **14**:1377–1389. PMID: 10837030
- Knoepfler PS**, Cheng PF, Eisenman RN. 2002. N-myc is essential during neurogenesis for the rapid expansion of progenitor cell populations and the inhibition of neuronal differentiation. *Genes & Development* **16**:2699–2712. DOI: <https://doi.org/10.1101/gad.1021202>, PMID: 12381668
- Kong J**, Lasko P. 2012. Translational control in cellular and developmental processes. *Nature Reviews Genetics* **13**:383–394. DOI: <https://doi.org/10.1038/nrg3184>, PMID: 22568971
- Kristensen AR**, Gsponer J, Foster LJ. 2013. Protein synthesis rate is the predominant regulator of protein expression during differentiation. *Molecular Systems Biology* **9**:689. DOI: <https://doi.org/10.1038/msb.2013.47>, PMID: 24045637
- Langmead B**, Salzberg SL. 2012. Fast gapped-read alignment with bowtie 2. *Nature Methods* **9**:357–359. DOI: <https://doi.org/10.1038/nmeth.1923>, PMID: 22388286
- Lauria F**, Tebaldi T, Bernabò P, Groen EJN, Gillingwater TH, Viero G. 2018. riboWaltz: optimization of ribosome P-site positioning in ribosome profiling data. *PLOS Computational Biology* **14**:e1006169. DOI: <https://doi.org/10.1371/journal.pcbi.1006169>, PMID: 30102689
- Legué E**, Gottshall JL, Jaumouillé E, Roselló-Díez A, Shi W, Barraza LH, Washington S, Grant RL, Joyner AL. 2016. Differential timing of granule cell production during cerebellum development underlies generation of the foliation pattern. *Neural Development* **11**:1–14. DOI: <https://doi.org/10.1186/s13064-016-0072-z>
- Lelivelt MJ**, Culbertson MR. 1999. Yeast UPF proteins required for RNA surveillance affect global expression of the yeast transcriptome. *Molecular and Cellular Biology* **19**:6710–6719. DOI: <https://doi.org/10.1128/MCB.19.10.6710>, PMID: 10490610
- Leto K**, Rolando C, Rossi F. 2012. The genesis of cerebellar GABAergic neurons: fate potential and specification mechanisms. *Frontiers in Neuroanatomy* **6**:1–10. DOI: <https://doi.org/10.3389/fnana.2012.00006>, PMID: 22363268
- Li JY**, Lao Z, Joyner AL. 2002. Changing requirements for Gbx2 in development of the cerebellum and maintenance of the mid/hindbrain organizer. *Neuron* **36**:31–43. DOI: [https://doi.org/10.1016/s0896-6273\(02\)00935-2](https://doi.org/10.1016/s0896-6273(02)00935-2), PMID: 12367504
- Li T**, Shi Y, Wang P, Guachalla LM, Sun B, Joerss T, Chen YS, Groth M, Krueger A, Platzer M, Yang YG, Rudolph KL, Wang ZQ. 2015. Smg6/Est1 licenses embryonic stem cell differentiation via nonsense-mediated mRNA decay. *The EMBO Journal* **34**:1630–1647. DOI: <https://doi.org/10.15252/embj.201489947>, PMID: 25770585
- Li W**, Wang W, Uren PJ, Penalva LOF, Smith AD. 2017. Riborex: fast and flexible identification of differential translation from Ribo-seq data. *Bioinformatics* **33**:1735–1737. DOI: <https://doi.org/10.1093/bioinformatics/btx047>, PMID: 28158331
- Liakath-Ali K**, Mills EW, Sequeira I, Lichtenberger BM, Pisco AO, Sipilä KH, Mishra A, Yoshikawa H, Wu CC, Ly T, Lamond AI, Adham IM, Green R, Watt FM. 2018. An evolutionarily conserved ribosome-rescue pathway maintains epidermal homeostasis. *Nature* **556**:376–380. DOI: <https://doi.org/10.1038/s41586-018-0032-3>, PMID: 29643507
- Liao Y**, Smyth GK, Shi W. 2014. featureCounts: an efficient general purpose program for assigning sequence reads to genomic features. *Bioinformatics* **30**:923–930. DOI: <https://doi.org/10.1093/bioinformatics/btt656>, PMID: 24227677
- LiCausi F**, Hartman NW. 2018. Role of mTOR complexes in neurogenesis. *International Journal of Molecular Sciences* **19**:1544. DOI: <https://doi.org/10.3390/ijms19051544>, PMID: 29789464
- Liu R**, Iadevaia V, Averous J, Taylor PM, Zhang Z, Proud CG. 2014. Impairing the production of ribosomal RNA activates mammalian target of rapamycin complex 1 signalling and downstream translation factors. *Nucleic Acids Research* **42**:5083–5096. DOI: <https://doi.org/10.1093/nar/gku130>, PMID: 24526220
- Liu Y**, Beyer A, Aebersold R. 2016. On the dependency of cellular protein levels on mRNA abundance. *Cell* **165**:535–550. DOI: <https://doi.org/10.1016/j.cell.2016.03.014>, PMID: 27104977
- Livak KJ**, Schmittgen TD. 2001. Analysis of relative gene expression data using real-time quantitative PCR and the 2<sup>-</sup>(Delta delta C(T)) Method. *Methods* **25**:402–408. DOI: <https://doi.org/10.1006/meth.2001.1262>, PMID: 11846609
- Lorenz A**, Deutschmann M, Ahlfeld J, Prix C, Koch A, Smits R, Fodde R, Kretschmar HA, Schüller U. 2011. Severe alterations of cerebellar cortical development after constitutive activation of Wnt signaling in granule neuron precursors. *Molecular and Cellular Biology* **31**:3326–3338. DOI: <https://doi.org/10.1128/MCB.05718-11>, PMID: 21690300
- Love MI**, Huber W, Anders S. 2014. Moderated estimation of fold change and dispersion for RNA-seq data with DESeq2. *Genome Biology* **15**:1–21. DOI: <https://doi.org/10.1186/s13059-014-0550-8>
- Lykke-Andersen J**, Bennett EJ. 2014. Protecting the proteome: Eukaryotic cotranslational quality control pathways. *Journal of Cell Biology* **204**:467–476. DOI: <https://doi.org/10.1083/jcb.201311103>, PMID: 24535822
- Ma M**, Wu W, Li Q, Li J, Sheng Z, Shi J, Zhang M, Yang H, Wang Z, Sun R, Fei J. 2015. N-myc is a key switch regulating the proliferation cycle of postnatal cerebellar granule cell progenitors. *Scientific Reports* **5**:1–13. DOI: <https://doi.org/10.1038/srep12740>
- Magri L**, Cambiaghi M, Cominelli M, Alfaro-Cervello C, Cursi M, Pala M, Bulfone A, Garcia-Verdugo JM, Leocani L, Minicucci F, Poliani PL, Galli R. 2011. Sustained activation of mTOR pathway in embryonic neural stem cells leads to development of tuberous sclerosis complex-associated lesions. *Cell Stem Cell* **9**:447–462. DOI: <https://doi.org/10.1016/j.stem.2011.09.008>, PMID: 22056141
- Maier T**, Güell M, Serrano L. 2009. Correlation of mRNA and protein in complex biological samples. *FEBS Letters* **583**:3966–3973. DOI: <https://doi.org/10.1016/j.febslet.2009.10.036>, PMID: 19850042

- Marshall AN**, Han J, Kim M, van Hoof A. 2018. Conservation of mRNA quality control factor Ski7 and its diversification through changes in alternative splicing and gene duplication. *PNAS* **115**:E6808–E6816. DOI: <https://doi.org/10.1073/pnas.1801997115>, PMID: 29967155
- Martin PB**, Kigoshi-Tansho Y, Sher RB, Ravenscroft G, Stauffer JE, Kumar R, Yonashiro R, Müller T, Griffith C, Allen W, Pehlivan D, Harel T, Zenker M, Howting D, Schanze D, Faqeih EA, Almontashiri NAM, Maroofian R, Houlden H, Mazaheri N, et al. 2020. NEMF mutations that impair ribosome-associated quality control are associated with neuromuscular disease. *Nature Communications* **11**:1–12. DOI: <https://doi.org/10.1038/s41467-020-18327-6>
- Mayer C**, Grummt I. 2006. Ribosome biogenesis and cell growth: mTOR coordinates transcription by all three classes of nuclear RNA polymerases. *Oncogene* **25**:6384–6391. DOI: <https://doi.org/10.1038/sj.onc.1209883>, PMID: 17041624
- Mendell JT**, Sharifi NA, Meyers JL, Martinez-Murillo F, Dietz HC. 2004. Nonsense surveillance regulates expression of diverse classes of mammalian transcripts and mutates genomic noise. *Nature Genetics* **36**:1073–1078. DOI: <https://doi.org/10.1038/ng1429>, PMID: 15448691
- Meng D**, Frank AR, Jewell JL. 2018. mTOR signaling in stem and progenitor cells. *Development* **145**:dev152595. DOI: <https://doi.org/10.1242/dev.152595>, PMID: 29311260
- Meydan S**, Guydosh NR. 2020. Disome and trisome profiling reveal genome-wide targets of ribosome quality control. *Molecular Cell* **79**:588–602. DOI: <https://doi.org/10.1016/j.molcel.2020.06.010>, PMID: 32615089
- Mills EW**, Wangen J, Green R, Ingolia NT. 2016. Dynamic regulation of a ribosome rescue pathway in erythroid cells and platelets. *Cell Reports* **17**:1–10. DOI: <https://doi.org/10.1016/j.celrep.2016.08.088>, PMID: 27681415
- Mills EW**, Green R, Ingolia NT. 2017. Slowed decay of mRNAs enhances platelet specific translation. *Blood* **129**:e38–e48. DOI: <https://doi.org/10.1182/blood-2016-08-736108>, PMID: 28213379
- Molkentin JD**, Lin Q, Duncan SA, Olson EN. 1997. Requirement of the transcription factor GATA4 for heart tube formation and ventral morphogenesis. *Genes & Development* **11**:1061–1072. DOI: <https://doi.org/10.1101/gad.11.8.1061>, PMID: 9136933
- Muñoz-Martín N**, Sierra R, Schimmang T, Villa Del Campo C, Torres M. 2019. Myc is dispensable for cardiomyocyte development but rescues Mycn-deficient hearts through functional replacement and cell competition. *Development* **146**:dev170753. DOI: <https://doi.org/10.1242/dev.170753>, PMID: 30642836
- Nagy A**, Gertsenstein M, Vintersten K, Behringer R. 2014. Manipulating the mouse embryo - A laboratory manual. Cold Spring Harb Lab Press 4th.
- Notaras M**, Allen M, Longo F, Volk N, Toth M, Li Jeon N, Klann E, Colak D. 2020. UPF2 leads to degradation of dendritically targeted mRNAs to regulate synaptic plasticity and cognitive function. *Molecular Psychiatry* **25**:3360–3379. DOI: <https://doi.org/10.1038/s41380-019-0547-5>, PMID: 31636381
- O’Connell AE**, Gerashchenko MV, O’Donohue MF, Rosen SM, Huntzinger E, Gleeson D, Galli A, Ryder E, Cao S, Murphy Q, Kazerounian S, Morton SU, Schmitz-Abe K, Gladyshev VN, Gleizes PE, Séraphin B, Agrawal PB. 2019. Mammalian Hbs1L deficiency causes congenital anomalies and developmental delay associated with Pelota depletion and 80S monosome accumulation. *PLOS Genetics* **15**:e1007917. DOI: <https://doi.org/10.1371/journal.pgen.1007917>, PMID: 30707697
- Pan N**, Jahan I, Lee JE, Fritzsche B. 2009. Defects in the cerebella of conditional Neurod1 null mice correlate with effective Tg(Atoh1-cre) recombination and granule cell requirements for Neurod1 for differentiation. *Cell and Tissue Research* **337**:407–428. DOI: <https://doi.org/10.1007/s00441-009-0826-6>, PMID: 19609565
- Pimentel H**, Bray NL, Puente S, Melsted P, Pachter L. 2017. Differential analysis of RNA-seq incorporating quantification uncertainty. *Nature Methods* **14**:687–690. DOI: <https://doi.org/10.1038/nmeth.4324>, PMID: 28581496
- Pisareva VP**, Skabkin MA, Hellen CU, Pestova TV, Pisarev AV. 2011. Dissociation by Pelota, Hbs1 and ABCE1 of mammalian vacant 80S ribosomes and stalled elongation complexes. *The EMBO Journal* **30**:1804–1817. DOI: <https://doi.org/10.1038/emboj.2011.93>, PMID: 21448132
- Puertollano R**. 2014. mTOR and lysosome regulation. *F1000Prime Reports* **6**:1–7. DOI: <https://doi.org/10.12703/P6-52>
- Qiu Z**, Cang Y, Goff SP. 2010. Abl family tyrosine kinases are essential for basement membrane integrity and cortical lamination in the cerebellum. *Journal of Neuroscience* **30**:14430–14439. DOI: <https://doi.org/10.1523/JNEUROSCI.2861-10.2010>, PMID: 20980600
- Rabanal-Ruiz Y**, Korolchuk VI, Viktor Korolchuk. 2018. mTORC1 and nutrient homeostasis: the central role of the lysosome. *International Journal of Molecular Sciences* **19**:818. DOI: <https://doi.org/10.3390/ijms19030818>
- Raimondeau E**, Bufton JC, Schaffitzel C. 2018. New insights into the interplay between the translation machinery and nonsense-mediated mRNA decay factors. *Biochemical Society Transactions* **46**:503–512. DOI: <https://doi.org/10.1042/BST20170427>, PMID: 29626148
- Rainer J**, Gatto L, Weichenberger CX. 2019. EnsemblDb: an R package to create and use Ensembl-based annotation resources. *Bioinformatics* **35**:3151–3153. DOI: <https://doi.org/10.1093/bioinformatics/btz031>, PMID: 30689724
- Roczniak-Ferguson A**, Petit CS, Froehlich F, Qian S, Ky J, Angarola B, Walther TC, Ferguson SM. 2012. The transcription factor TFEB links mTORC1 signaling to transcriptional control of lysosome homeostasis. *Science Signaling* **5**:ra42. DOI: <https://doi.org/10.1126/scisignal.2002790>, PMID: 22692423
- Rodrigues DC**, Muftuev M, Weatheritt RJ, Djuric U, Ha KCH, Ross PJ, Wei W, Piekna A, Sartori MA, Byres L, Mok RSF, Zaslavsky K, Pasceri P, Diamandis P, Morris G, Blencowe BJ, Ellis J. 2020. Shifts in ribosome engagement impact key gene sets in neurodevelopment and ubiquitination in Rett syndrome. *Cell Reports* **30**:4179–4196. DOI: <https://doi.org/10.1016/j.celrep.2020.02.107>, PMID: 32209477

- Sapir T, Geiman EJ, Wang Z, Velasquez T, Mitsui S, Yoshihara Y, Frank E, Alvarez FJ, Goulding M. 2004. Pax6 and engrailed 1 regulate two distinct aspects of rensshaw cell development. *Journal of Neuroscience* **24**:1255–1264. DOI: <https://doi.org/10.1523/JNEUROSCI.3187-03.2004>, PMID: 14762144
- Schuller AP, Green R. 2018. Roadblocks and resolutions in eukaryotic translation. *Nature Reviews Molecular Cell Biology* **19**:526–541. DOI: <https://doi.org/10.1038/s41580-018-0011-4>, PMID: 29760421
- Serin G, Gersappe A, Black JD, Aronoff R, Maquat LE. 2001. Identification and characterization of human orthologues to *Saccharomyces cerevisiae* Upf2 protein and Upf3 protein (*Caenorhabditis elegans* SMG-4). *Molecular and Cellular Biology* **21**:209–223. DOI: <https://doi.org/10.1128/MCB.21.1.209-223.2001>, PMID: 11113196
- Sgaier SK, Lao Z, Villanueva MP, Berenshteyn F, Stephen D, Turnbull RK, Joyner AL. 2007. Genetic subdivision of the tectum and cerebellum into functionally related regions based on differential sensitivity to engrailed proteins. *Development* **134**:2325–2335. DOI: <https://doi.org/10.1242/dev.000620>, PMID: 17537797
- Shoemaker CJ, Eylar DE, Green R. 2010. Dom34:Hbs1 promotes subunit dissociation and peptidyl-tRNA drop-off to initiate no-go decay. *Science* **330**:369–372. DOI: <https://doi.org/10.1126/science.1192430>
- Shoemaker CJ, Green R. 2011. Kinetic analysis reveals the ordered coupling of translation termination and ribosome recycling in yeast. *PNAS* **108**:E1392–E1398. DOI: <https://doi.org/10.1073/pnas.1113956108>, PMID: 22143755
- Shoemaker CJ, Green R. 2012. Translation drives mRNA quality control. *Nature Structural & Molecular Biology* **19**:594–601. DOI: <https://doi.org/10.1038/nsmb.2301>, PMID: 22664987
- Signer RA, Magee JA, Salic A, Morrison SJ. 2014. Haematopoietic stem cells require a highly regulated protein synthesis rate. *Nature* **509**:49–54. DOI: <https://doi.org/10.1038/nature13035>, PMID: 24670665
- Simms CL, Hudson BH, Mosior JW, Rangwala AS, Zaher HS. 2014. An active role for the ribosome in determining the fate of oxidized mRNA. *Cell Reports* **9**:1256–1264. DOI: <https://doi.org/10.1016/j.celrep.2014.10.042>, PMID: 25456128
- Simms CL, Thomas EN, Zaher HS. 2017a. Ribosome-based quality control of mRNA and nascent peptides. *Wiley Interdisciplinary Reviews: RNA* **8**:e1366. DOI: <https://doi.org/10.1002/wrna.1366>
- Simms CL, Yan LL, Zaher HS. 2017b. Ribosome collision is critical for quality control during no-go decay. *Molecular Cell* **68**:361–373. DOI: <https://doi.org/10.1016/j.molcel.2017.08.019>, PMID: 28943311
- Skarnes WC, Rosen B, West AP, Koutsourakis M, Bushell W, Iyer V, Mujica AO, Thomas M, Harrow J, Cox T, Jackson D, Severin J, Biggs P, Fu J, Nefedov M, de Jong PJ, Stewart AF, Bradley A. 2011. A conditional knockout resource for the genome-wide study of mouse gene function. *Nature* **474**:337–342. DOI: <https://doi.org/10.1038/nature10163>, PMID: 21677750
- Spencer PS, Siller E, Anderson JF, Barral JM. 2012. Silent substitutions predictably alter translation elongation rates and protein folding efficiencies. *Journal of Molecular Biology* **422**:328–335. DOI: <https://doi.org/10.1016/j.jmb.2012.06.010>, PMID: 22705285
- Steimle JD, Moskowitz IP. 2017. TBX5: a key regulator of heart development. *Current Topics in Developmental Biology* **122**:195–221. DOI: <https://doi.org/10.1016/bs.ctdb.2016.08.008>, PMID: 28057264
- Sudmant PH, Lee H, Dominguez D, Heiman M, Burge CB. 2018. Widespread accumulation of ribosome-associated isolated 3' UTRs in neuronal cell populations of the aging brain. *Cell Reports* **25**:2447–2456. DOI: <https://doi.org/10.1016/j.celrep.2018.10.094>, PMID: 30485811
- Tahmasebi S, Amiri M, Sonenberg N. 2019. Translational control in stem cells. *Frontiers in Genetics* **9**:1–9. DOI: <https://doi.org/10.3389/fgene.2018.00709>
- Tatsumi K, Isonishi A, Yamasaki M, Kawabe Y, Morita-Takemura S, Nakahara K, Terada Y, Shinjo T, Okuda H, Tanaka T, Wanaka A. 2018. Olig2-lineage astrocytes: A distinct subtype of astrocytes that differs from GFAP astrocytes. *Frontiers in Neuroanatomy* **12**:1–17. DOI: <https://doi.org/10.3389/fnana.2018.00008>, PMID: 29497365
- Terrey M, Adamson SI, Gibson AL, Deng T, Ishimura R, Chuang JH, Ackerman SL. 2020. GTPBP1 resolves paused ribosomes to maintain neuronal homeostasis. *eLife* **9**:e62731. DOI: <https://doi.org/10.7554/eLife.62731>, PMID: 33186095
- Thommen M, Holtkamp W, Rodnina MV. 2017. Co-translational protein folding: Progress and methods. *Current Opinion in Structural Biology* **42**:83–89. DOI: <https://doi.org/10.1016/j.sbi.2016.11.020>, PMID: 27940242
- Tripathi PP, Di Giovannantonio LG, Viegi A, Wurst W, Simeone A, Bozzi Y. 2008. Serotonin hyperinnervation abolishes seizure susceptibility in Otx2 conditional mutant mice. *Journal of Neuroscience* **28**:9271–9276. DOI: <https://doi.org/10.1523/JNEUROSCI.2208-08.2008>, PMID: 18784307
- Tsuboi T, Kuroha K, Kudo K, Makino S, Inoue E, Kashima I, Inada T. 2012. Dom34:hbs1 plays a general role in quality-control systems by dissociation of a stalled ribosome at the 3' end of aberrant mRNA. *Molecular Cell* **46**:518–529. DOI: <https://doi.org/10.1016/j.molcel.2012.03.013>, PMID: 22503425
- Vong KI, Leung CK, Behringer RR, Kwan KM. 2015. Sox9 is critical for suppression of neurogenesis but not initiation of gliogenesis in the cerebellum. *Molecular Brain* **8**:25. DOI: <https://doi.org/10.1186/s13041-015-0115-0>, PMID: 25888505
- Way SW, McKenna J, Mietzsch U, Reith RM, Wu HC, Gambello MJ. 2009. Loss of Tsc2 in radial glia models the brain pathology of tuberous sclerosis complex in the mouse. *Human Molecular Genetics* **18**:1252–1265. DOI: <https://doi.org/10.1093/hmg/ddp025>, PMID: 19150975
- Weischenfeldt J, Damgaard I, Bryder D, Theilgaard-Mönch K, Thoren LA, Nielsen FC, Jacobsen SE, Nerlov C, Porse BT. 2008. NMD is essential for hematopoietic stem and progenitor cells and for eliminating by-products of programmed DNA rearrangements. *Genes & Development* **22**:1381–1396. DOI: <https://doi.org/10.1101/gad.468808>, PMID: 18483223



- Wey A**, Martinez Cerdeno V, Pleasure D, Knoepfler PS. 2010. C- and N-myc regulate neural precursor cell fate, cell cycle, and metabolism to direct cerebellar development. *The Cerebellum* **9**:537–547. DOI: <https://doi.org/10.1007/s12311-010-0190-9>, PMID: 20658325
- Wizeman JW**, Guo Q, Wilion EM, Li JY. 2019. Specification of diverse cell types during early neurogenesis of the mouse cerebellum. *eLife* **8**:e42388. DOI: <https://doi.org/10.7554/eLife.42388>, PMID: 30735127
- Wojcinski A**, Morabito M, Lawton AK, Stephen DN, Joyner AL. 2019. Genetic deletion of genes in the cerebellar rhombic lip lineage can stimulate compensation through adaptive reprogramming of ventricular zone-derived progenitors. *Neural Development* **14**:1–15. DOI: <https://doi.org/10.1186/s13064-019-0128-y>, PMID: 30764875
- Wolf AS**, Grayhack EJ. 2015. Asc1, homolog of human RACK1, prevents frameshifting in yeast by ribosomes stalled at CGA Codon repeats. *RNA* **21**:935–945. DOI: <https://doi.org/10.1261/rna.049080.114>, PMID: 25792604
- Wurst W**, Auerbach AB, Joyner AL. 1994. Multiple developmental defects in Engrailed-1 mutant mice: an early mid-hindbrain deletion and patterning defects in forelimbs and sternum. *Development* **120**:2065–2075. PMID: 7925010
- Xiang X**, Zhao J, Xu G, Li Y, Zhang W. 2011. mTOR and the differentiation of mesenchymal stem cells. *Acta Biochimica Et Biophysica Sinica* **43**:501–510. DOI: <https://doi.org/10.1093/abbs/gmr041>, PMID: 21642276
- Yamashita R**, Suzuki Y, Takeuchi N, Wakaguri H, Ueda T, Sugano S, Nakai K. 2008. Comprehensive detection of human terminal oligo-pyrimidine (TOP) genes and analysis of their characteristics. *Nucleic Acids Research* **36**:3707–3715. DOI: <https://doi.org/10.1093/nar/gkn248>, PMID: 18480124
- Yonashiro R**, Tahara EB, Bengtson MH, Khokhrina M, Lorenz H, Chen KC, Kigoshi-Tansho Y, Savas JN, Yates JR, Kay SA, Craig EA, Mogk A, Bukau B, Joazeiro CA. 2016. The Rqc2/Tae2 subunit of the ribosome-associated quality control (RQC) complex marks ribosome-stalled nascent polypeptide chains for aggregation. *eLife* **5**:e11794. DOI: <https://doi.org/10.7554/eLife.11794>, PMID: 26943317
- Young DJ**, Guydosh NR, Zhang F, Hinnebusch AG, Green R. 2015. Rli1/ABCE1 recycles terminating ribosomes and controls translation reinitiation in 3'UTRs in vivo. *Cell* **162**:872–884. DOI: <https://doi.org/10.1016/j.cell.2015.07.041>, PMID: 26276635
- Yu CH**, Dang Y, Zhou Z, Wu C, Zhao F, Sachs MS, Liu Y. 2015. Codon usage influences the local rate of translation elongation to regulate co-translational protein folding. *Molecular Cell* **59**:744–754. DOI: <https://doi.org/10.1016/j.molcel.2015.07.018>, PMID: 26321254
- Zhang Y**, Chen K, Sloan SA, Bennett ML, Scholze AR, O'Keefe S, Phatnani HP, Guarnieri P, Caneda C, Ruderis N, Deng S, Liddelov SA, Zhang C, Daneman R, Maniatis T, Barres BA, Wu JQ. 2014. An RNA-sequencing transcriptome and splicing database of glia, neurons, and vascular cells of the cerebral cortex. *Journal of Neuroscience* **34**:11929–11947. DOI: <https://doi.org/10.1523/JNEUROSCI.1860-14.2014>, PMID: 25186741