

UC Merced

Proceedings of the Annual Meeting of the Cognitive Science Society

Title

Using Counterfactual Tasks to Evaluate the Generality of Analogical Reasoning in Large Language Models

Permalink

<https://escholarship.org/uc/item/58d9s666>

Journal

Proceedings of the Annual Meeting of the Cognitive Science Society, 46(0)

Authors

Lewis, Martha

Mitchell, Melanie

Publication Date

2024

Peer reviewed

Using Counterfactual Tasks to Evaluate the Generality of Analogical Reasoning in Large Language Models

Martha Lewis (martha.lewis@bristol.ac.uk)

School of Engineering Mathematics and Technology, University of Bristol, Bristol BS8 1TW, UK
Santa Fe Institute, 1399 Hyde Park Road, Santa Fe, NM 87501, USA

Melanie Mitchell (mm@santafe.edu)

Santa Fe Institute, 1399 Hyde Park Road, Santa Fe, NM 87501, USA

Abstract

Large language models (LLMs) have performed well on several reasoning benchmarks, including ones that test analogical reasoning abilities. However, it has been debated whether they are actually performing humanlike abstract reasoning or instead employing less general processes that rely on similarity to what has been seen in their training data. Here we investigate the generality of analogy-making abilities previously claimed for LLMs (Webb, Holyoak, & Lu, 2023). We take one set of analogy problems used to evaluate LLMs and create a set of “counterfactual” variants—versions that test the same abstract reasoning abilities but that are likely dissimilar from any pre-training data. We test humans and three GPT models on both the original and counterfactual problems, and show that, while the performance of humans remains high for all the problems, the GPT models’ performance declines sharply on the counterfactual set. This work provides evidence that, despite previously reported successes of LLMs on analogical reasoning, these models lack the robustness and generality of human analogy-making.

Keywords: Analogy; Reasoning; Letter-String Analogies; Large Language Models

Introduction

The degree to which pre-trained large language models (LLMs) can reason—deductively, inductively, analogically, or otherwise—remains a subject of debate in the AI and cognitive science communities. Many studies have shown that LLMs perform well on certain reasoning benchmarks (Huang & Chang, 2022; Wei, Tay, et al., 2022; Wei, Wang, et al., 2022). However, other studies have questioned the extent to which these systems are able to reason abstractly, as opposed to relying on “approximate retrieval” from encoded training data (Kambhampati, 2023), a process which yields “narrow, non-transferable procedures for task solving” (Wu et al., 2023). Several groups have shown that LLMs’ performance on reasoning tasks degrades, in some cases quite dramatically, on versions of the tasks that are likely to be rare in or outside of the LLMs’ training data (Dziri et al., 2023; McCoy, Yao, Friedman, Hardy, & Griffiths, 2023; Razeghi, Logan IV, Gardner, & Singh, 2022; Wu et al., 2023). In particular, Wu et al. (2023) proposed evaluating the robustness and generality of LLMs’ reasoning ability by testing them not only on *default tasks* that are likely similar to ones seen in training data, but also on *counterfactual tasks*, ones that “deviate from the default, generally assumed conditions for these tasks” and are unlikely to resemble those in training data. If an LLM is using general abstract reasoning procedures, it

should perform comparably on both default and counterfactual tasks; if it is using procedures that rely on similarity to training data, the performance should drop substantially on the counterfactual versions.

Here we use this counterfactual-task approach to evaluate the claim that LLMs have general abilities for abstract analogical reasoning. In particular, we focus on the results reported by Webb et al. (2023) on the abilities of GPT-3 to solve letter-string analogy problems. We develop a set of counterfactual variants on the letter-string analogy problems used by Webb et al., in which similar problems are posed with nonstandard alphabets—ones that are either permuted to various degrees, or that are composed of non-letter symbols. We argue that a system able to reason by analogy in a general way would have comparable performance on the original and counterfactual versions of these problems. We test both humans and different GPT models, and show that while humans exhibit high performance on both the original and counterfactual problems, the performance of all GPT models we tested degrades on the counterfactual versions. These results provide evidence that LLMs’ analogical reasoning still lacks the robustness and generality exhibited by humans.

Background and Related Work

Letter-string analogies were proposed by Hofstadter (1985) as an idealized domain in which processes underlying human analogy-making could be investigated. One example problem is the following:

$a b c d \rightarrow a b c e ; i j k l \rightarrow ?$

Here, $a b c d \rightarrow a b c e$ is called the “source transformation” and $i j k l$ is called the “target.” The solver’s task is to generate a new string that transforms the target analogously to the source transformation. There is no single “correct” answer to such problems, but there is typically general agreement in how humans answer them. For example, for the problem above, most people answer $i j k m$, and answers that deviate from this tend to do so in particular ways (Mitchell, 1993).

In addition to the work of Hofstadter and Mitchell (1994) on creating computer models of analogy-making using this domain, letter-string analogies have been used to isolate the neural correlates of analogy formation (Long et al., 2015; Geake & Hansen, 2010), and as a model of higher-order analogy retrieval (Dekel, Burns, & Goldwater, 2023). Webb et al.

(2023) compared the ability of GPT-3 with that of humans on several analogical reasoning domains, including letter-string analogies. On the letter-string domain, they found that in most cases GPT-3’s performance exceeded the average performance of the human participants, where performance is measured as fraction of “correct” answers on a given set of letter-string problems. As we mentioned above, such problems do not have a single correct answer, but Webb et al. used their intuitions to decide which answer displays abstract analogical reasoning and thus should be considered “correct.” In this paper we will use their definition of correctness.

Hodel and West (2023) tested GPT-3 with two types of counterfactual variations on the letter-string analogy problems used by Webb et al.: ones that include larger intervals between letters, and ones with randomly shuffled alphabets. They found that GPT-3 performed poorly on both variations. Here we experiment with similar, but more systematic variations, and we compare the performance of three different GPT models with that of humans on these variations.

Original Analogy Problems

Webb et al. (2023) proposed a set of problem types involving different types of transformations and different levels of generalization, on which they tested humans and GPT-3. The transformation types are given below:

1. Extend sequence: $a\ b\ c\ d \rightarrow a\ b\ c\ d\ e$
2. Successor: $a\ b\ c\ d \rightarrow a\ b\ c\ e$
3. Predecessor: $b\ c\ d\ e \rightarrow a\ c\ d\ e$
4. Remove redundant letter: $a\ b\ b\ c\ d \rightarrow a\ b\ c\ d$
5. Fix alphabetic sequence: $a\ b\ c\ w\ e \rightarrow a\ b\ c\ d\ e$
6. Sort: $a\ d\ c\ b\ e \rightarrow a\ b\ c\ d\ e$

Each type of transformation can be paired with a simple target (e.g., $i\ j\ k\ l$) or with generalized targets that feature grouping, numbers instead of letters, and other generalizations.

Webb et al. generated 100 problems for each problem type and presented these to GPT-3 (text-davinci-003). Webb et al. also tested 57 UCLA undergraduates on the same problems. The human participants exhibited a large variance in accuracy, but on average, Webb et al. found that GPT-3 outperformed the human participants on most problem types.

We focus here on problems with simple targets (i.e., no numbers, grouping, etc. in the target string). Webb et al. called this the “zero generalization setting”; it is the setting in which both humans and GPT-3 performed best. Extending to different generalization types is a topic for future work.

Counterfactual Analogy Problems

To create our dataset of counterfactual problems, we did the following. First, we generated permuted alphabets, in which we reorder n letters, where n can be 2, 5, 10, or 20. For

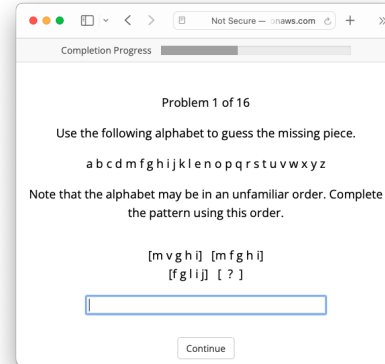


Figure 1: Example analogy problem with permuted alphabet, in format seen by human participants.

each of the four values of n , we generated seven distinct alphabets with n randomly chosen letters reordered. Then, for each alphabet, we created 10 different analogy problems for each of Webb et al.’s six transformation types. This results in $7 \times 10 \times 6 = 420$ analogy problems for each value of n . We added to this 420 problems using the non-permuted ($n = 0$) alphabet, spread evenly over the six transformation types. Figure 1 gives an example of a Fix Alphabetic Sequence problem using an alphabet with two letters (e and m) reordered.

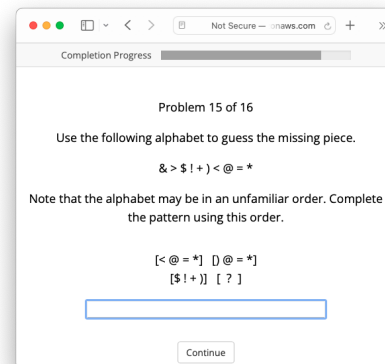


Figure 2: Example analogy problem with symbolic alphabet.

As a final set of counterfactual problems, we generated two non-letter symbol alphabets and used them to create 10 problems each for the Successor and Predecessor problem types, for a total of 40 unique non-letter symbol problems. Figure 2 gives an example of a Predecessor problem using a symbol alphabet. Our dataset of counterfactual problems, along with code for generating them, is available at <https://github.com/marthaflinderslewis/counterfactual.analogy>.

Human Study Methods

In order to assess humans’ abilities on the original and counterfactual letter-string problems, we collected data from 136 participants on Prolific Academic.¹ Participants were screened to have English as a first language, to currently be living in the UK, the USA, Australia, New Zealand, Canada, or Ireland, and to have a 100% approval rate on Prolific.

Each participant was asked to solve 14 letter-string analogy problems: one problem from each of the six transformation types for each of two (randomly chosen) alphabets (chosen from alphabets with $n \in \{0, 2, 5, 10, 20\}$), as well as one Successor and one Predecessor problem for a randomly chosen symbol alphabet. Figures 1–2 show the format on which the problems appeared on the participants’ screens.

In addition to the 14 problems, participants were also given two attention-check questions at random points during the experiment, with a warning that if the attention checks were failed, then payment (\$7 for the experiment) would be withheld. Figure 3 gives an example of an attention check. Two of the 136 participants’ submissions were rejected due to failed attention checks. As in Webb et al. (2023), as part of the initial instructions participants were given a simple example problem to complete and then were shown the solution.

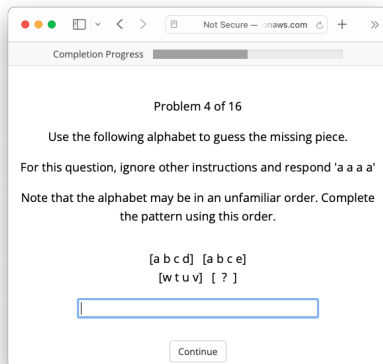


Figure 3: Example attention check.

GPT Study Methods

We evaluated the performance of three LLMs—GPT-3 (text-davinci-003), GPT-3.5 (gpt-3.5-turbo-0613), and GPT-4 (gpt-4-turbo-0613)—on the same problems given to humans. Following Webb et al. (2023), all GPT experiments were done with temperature set to zero. GPT-3.5 and GPT-4 require a slightly different input to GPT-3. GPT-3 takes in a single prompt, whereas GPT-3.5 and GPT-4 take in a list of messages that define the role of the system, input from a ‘user’ role, and optionally some dialogue with simulated responses from the model given under the role ‘assistant’.

¹<https://www.prolific.com/academic-researchers>

Baseline In the baseline setting, we evaluated the performance of GPT-3, GPT-3.5 and GPT-4 on the zero-generalization problems provided by Webb et al. (2023). For GPT-3.5 and GPT-4, our system and user prompts have the following format:

System: You are able to solve letter-string analogies.

User: Let’s try to complete the pattern:\n\n[a b c d] [a b c e]\n[i j k l] [

The user prompt is identical to the prompt Webb et al. gave to GPT-3; the \n character signifies a line break to the model. In this and all other experiments, we tested GPT-3 with a concatenation of the system and user prompts. Following Webb et al., in our experiments all GPT model responses were truncated at the point where a closing bracket was generated.

Counterfactual Comprehension Check For problems involving permuted alphabets, we follow Wu et al. (2023) by providing counterfactual comprehension checks (CCCs) to check that the models understand the task proposed. We use two CCCs: firstly, given an alphabet and a sample letter (or symbol) from that alphabet, give the successor of that letter. Secondly, we use the same format but ask for the predecessor of the letter. We ensure that we do not ask for the successor of the last letter in the alphabet or the predecessor of the first.

The prompts for these checks have the following format:

System: You are able to solve simple letter-based problems.

User: Use this fictional alphabet: [a u c ...]. \nWhat is the next letter after a?\n\nThe next letter after a is:

System: You are able to solve simple letter-based problems.

User: Use this fictional alphabet: [a u c ...]. \nWhat is the letter before c?\n\nThe letter before c is:

Counterfactual Analogy Problems To evaluate the performance of GPT models, we tested several prompt formats, including one similar to instructions given in our human study. These prompts are given in full in our preprint, available at <https://arxiv.org/abs/2402.08955>. The best performance across models was achieved with the prompt format used in Hodel and West (2023):

System: You are able to solve letter-string analogies.

User: Use this fictional alphabet: [a u c d e f g h i j k l m n o p q r s t b v w x y z]. \nLet’s try to complete the pattern:\n[a u c d] [a u c e]\n[i j k l] [

The results we report here for our tests of the GPT models all use this prompt. Note that in our studies, the “fictional alphabet” part of the prompt and the alphabet listing was included even for problems using the non-permuted ($n = 0$) alphabet.

Results

Human Experiments Figure 4 compares our behavioral data with that of Webb et al. The participants in our study achieved higher average accuracy than those of Webb et al. (abbreviated as “Webb” in the figure). We do see a similar pattern of performance between our participants and theirs.

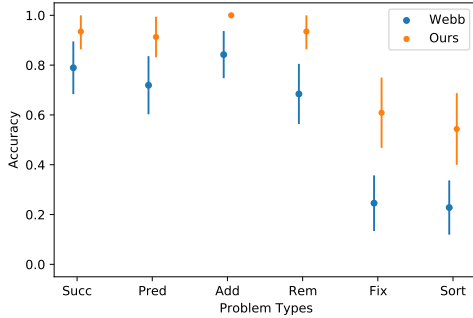


Figure 4: Human performance across problem types in the zero-generalization setting on unpermuted alphabets (Ours, orange; Webb et al., blue). Data points represent the average of 46 samples for our data, and 57 samples for Webb et al.’s. Bars give 95% binomial confidence intervals.

Baseline. The baseline setting looks at the performance of different GPT models on the zero-generalization problems designed by Webb et al. Figure 5 shows GPT-3 data from Webb et al. (“GPT-3_Webb”) compared with data from our computational experiments with all three models. Our results are similar to those of Webb et al., with notable differences on the Predecessor and Fix Alphabet problems for GPT-3, differences on Remove Redundant, Fix Alphabet, and Sort for GPT-3.5, and on Remove Redundant and Sort for GPT-4.

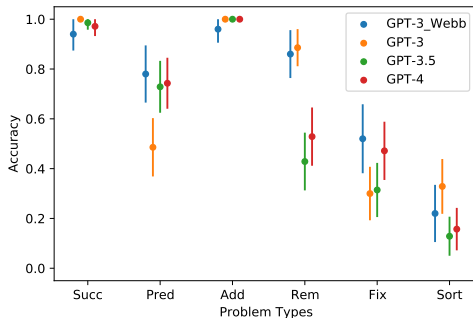


Figure 5: Comparison of GPT computational results with Webb et al. (2023) in the zero-generalization setting. Points represent accuracy and bars represent 95% binomial confidence intervals. Each data point represents the average of 70 samples for our data and 100 samples for Webb et al.’s data.

Counterfactual Comprehension Check For the non-permuted alphabet, each permuted alphabet, and for the two

symbol alphabets, we performed the Successor and Predecessor CCCs on each letter (or symbol) as described above. Results for these CCCs on are reported in Table 1. We see that accuracy is generally high, indicating that the models generally understand the concept of a permuted alphabet and what “successor” and “predecessor” mean in the new ordering. One exception is the ability of GPT-3.5 to understand “predecessor” in alphabets with two or five letters permuted.

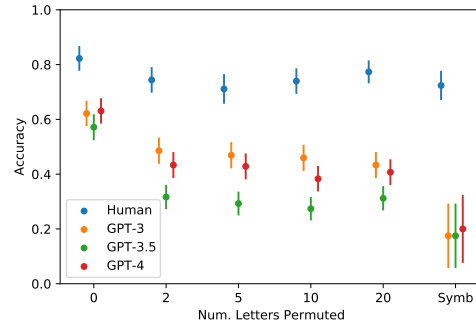


Figure 6: Accuracy of humans, GPT-3, 3.5, and 4. GPT data uses the prompt from Hodel and West (2023). Points represent average accuracy across all problem types, for each alphabet type. Number of samples for human data for each n permuted: $n = 0$: 276, $n = 2$: 336, $n = 5$: 270, $n = 10$: 342, $n = 20$: 384, and Symb: 268. Number of samples for GPT data are 420 for alphabets with $n = 0$ –20, and 40 for Symb. Bars give 95% binomial confidence intervals.

Counterfactual Analogy Problems: Comparisons Between Humans and GPT Models Table 2 gives the mean accuracy and 95% binomial confidence intervals for humans and GPT models across all alphabets and problem types. It is clear that average human performance on these problems is significantly higher than that of any of the GPT models.

Figure 6 shows the performance of human participants and GPT models, averaged across problem types for each kind of alphabet. We again see that human performance is significantly above the performance of each GPT model, across all types of alphabets, and, most notably, stays relatively constant across alphabets with different numbers of letter permutations. In contrast, the GPT models show a more dramatic drop for the counterfactual problems.

Figure 7 breaks down performance over each problem type by alphabet. We again see a clear difference between human and GPT performance across all problem types (with the exception of Add Letter and in the case of GPT-3, Remove Redundant), and we see that while human performance does not substantially decrease over types of alphabet, the GPT models typically experience such decreases.

Summary of Results

We see a number of phenomena here. The performance of our human participants on Webb et al.’s original problems

Table 1: Accuracy on our counterfactual comprehension check for different GPT models across alphabets with different numbers n of permuted letters and symbol alphabets. Columns labelled U give performance for successor and predecessor tests on pairs of letters that were unpermuted. Columns labelled P give performance for pairs of letters that include at least one permuted letter. Total number of letter pairs tested are given in the table.

		$n = 0$		$n = 2$		$n = 5$		$n = 10$		$n = 20$		Symbol
		U	P	U	P	U	P	U	P	U	U	
Succ	GPT-3	1.00	0.82	1.00	0.76	1.00	0.85	1.00	0.84	1.00	1.00	
	GPT-3.5	1.00	0.89	0.99	0.95	1.00	0.99	0.98	0.98	1.00	0.94	
	GPT-4	1.00	1.00	1.00	1.00	1.00	0.99	1.00	1.00	1.00	1.00	
Total items		175	28	147	62	113	111	64	164	11	18	
Pred	GPT-3.5	1.00	0.49	1.00	0.72	1.00	0.92	1.00	0.87	1.00	0.94	
	GPT-4	1.00	0.93	1.00	0.97	0.99	1.00	1.00	0.98	1.00	1.00	
	Total items	175	28	147	60	115	109	66	163	12	18	

Table 2: Accuracies and binomial confidence intervals across all alphabets and problem types for humans and GPT models in our studies. The means and confidence intervals are over 1,876 samples for humans and 6,840 for each GPT model.

	Accuracy	95% Binomial Conf.
Humans	0.753	[0.734, 0.773]
GPT-3	0.488	[0.467, 0.509]
GPT-3.5	0.350	[0.330, 0.370]
GPT-4	0.452	[0.431, 0.473]

was higher than that of participants in Webb et al.’s experiments (Figure 4). This may be due to differences in experimental protocols or in the participant pools. Our computational data collected from GPT models is roughly similar to that of Webb et al., but differs slightly when we look at performance at the problem-type level (Figure 5). In contrast to Webb et al., we find that performance by GPT models on the original problems is generally lower than average human performance. And for our counterfactual problems, unlike humans, GPT models exhibit a decrease in performance going from a standard alphabet to permuted alphabets, and another sharp decrease going from alphabetic sequences to symbolic sequences (Figure 6). This implies that GPT models are substantially less robust than humans on letter-string analogy problems involving sequences unlikely to be in their training data, which challenges the claim that these models are performing a general kind of analogical reasoning when solving these problems.

Error analysis

A crucial aspect of letter-string analogy problems is that they do not necessarily have a “correct” answer, although, as we mentioned above, humans generally agree on what are the “best” rules describing letter-string transformations in this domain. However, there are other rules that can be inferred from a given pair of letter strings. We therefore examined the “incorrect” answers of humans and of GPT-3 and 4 to ascertain whether the kinds of errors made are similar.

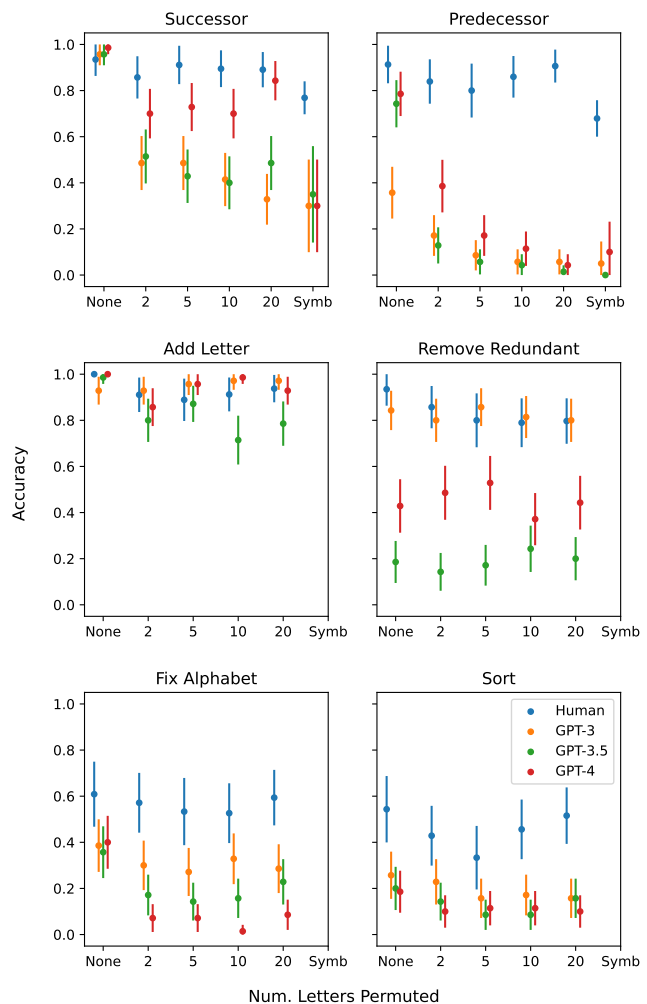


Figure 7: Performance of humans and GPT models across task types and alphabets. Data points are averages and bars are binomial confidence intervals. For every problem type, the number of samples for each n permuted and for symbol alphabets are as in Figure 6.

For both GPT-3 and GPT-4, we randomly selected five incorrect answers from each problem type and alphabet, giving a sample of approximately 160 incorrect responses per GPT model. This number can be lower if there were fewer than 5 incorrect responses for a problem type and alphabet. For humans, we selected 184 incorrect answers.

By manually examining these selections, we identified four broad categories of errors: 1) **Alternate rule formation**, where the answer given is consistent with an alternative rule. For example, if we have source transformation [a b c d] [a b c e] with target [i j k l], then according to the Successor rule the answer [i j k m] is correct. However, the answer [i j k e] is consistent with the rule “Replace the last letter with ‘e’”. 2) **Incorrect rule use**, in which the answer given is clearly related to the target letter string, and some kind of rule has been applied, but the rule is inconsistent with the example pair. For example, for [a b c d] [a b c e] with [i j k l], the response [i j k l m] is given. 3) **Wrong**, in which the answer given is inconsistent with the expected answer, but related to the target letter string. We could not discern any clear misunderstanding or alternate rule use. For example, for [a b c d] [a b c e] with [i j k l], the response [i j k q] is given. 4) **Completely Wrong**, in which the answer given is inconsistent with the expected answer, and unrelated to the target letter string. Again, we could not discern any clear misunderstanding or alternate rule use. For example, for [a b c d] [a b c e] with [i j k l], the response [z y x b] is given. Table 3 gives percentages for each error type for humans and for each model. We see that in humans a large percentage (38.59%) of errors stem from using alternate rules. This is also seen in GPT-4 to a lesser extent (22%), but much less in GPT-3 (5.81%). We also see a difference in the percentage of incorrect rules applied, with GPT 3 and 4 both having over 30% of errors in this category and humans having around 15% of errors in this category. GPT models also have a higher percentage in the Wrong category, and for each of the models this category is the largest across the errors they made. Humans have a larger percentage of errors in the Completely Wrong category than do GPT-3 and 4 however. Across these four broad categories GPT-3 and 4 make different patterns of errors than humans.

Table 3: % error types across GPT-3, GPT-4, and Human

	Alt rule	Incorrect Rule	Wrong	Completely Wrong
GPT-3	5.81%	30.97%	55.48%	7.74%
GPT-4	22.00%	32.67%	42.67%	2.67%
Human	38.59%	14.67%	34.24%	12.50%

We can further look at the kinds of alternative rules that are used by humans and by GPT. Both humans and GPT models developed ‘literal’ interpretations of rules. As well as literal rules, humans found alternative rules for the Fix Alphabet problem type: they would interpret the changed letter as being moved a certain number of steps in the alphabet, and would move an equivalent letter in the prompt the same way.

We find that GPT-4 gives the same kind of literal responses that humans do, but does not use alternative rules other than literal responses. GPT-3 has a limited number of errors in this category. In summary, within the “Alternative Rule” category, the GPT models found literal rules in the same way humans did, but did not find more inventive alternative rules.

Breaking down the Incorrect Rule category, we see more differences between human and GPT behavior. Human responses in this category are mostly where one of the rules has been applied in an incorrect situation, for example Add Letter has been applied instead of Successor. GPT-3 and -4 errors include adding two letters instead of one; continuing the alphabet; reversing the target; shifting the target; using an unpermuted alphabet instead of the one given; and repeating the target. Very few humans made any of these mistakes. Out of the incorrect responses, the types of response made by humans and GPT models are very different.

Discussion

Our aim was to assess the performance of LLMs in “counterfactual” situations unlikely to resemble those seen in training data. We have shown that while humans are able to maintain a strong level of performance in letter-string analogy problems over unfamiliar alphabets, the performance of GPT models is not only weaker than humans on the Roman alphabet in its usual order, but that performance drops further when the alphabet is presented in an unfamiliar order or with non-letter symbols. This implies that the ability of GPT to solve this kind of analogy problem zero-shot, as claimed by Webb et al., may be more due to the presence of similar kinds of sequence examples in the training data, rather than an ability to reason by abstract analogy when solving these problems.

We further see that the models GPT-3.5 and GPT-4 are no better than GPT-3 at solving these analogy problems. GPT-3.5 and 4 have been trained to chat like a human, and this training objective may have reduced the ability to solve letter-string analogies. In follow-up work, Webb, Holyoak, and Lu (2024) show that a more recent version of GPT-4—augmented with the abilities to generate and execute code—shows improved performance on some letter-string analogies with permuted alphabets, particularly those that involve counting. Investigating the robustness of these augmented models on analogical reasoning is a topic for future research.

Conclusions

We have shown that, contra Webb et al. (2023), GPT models perform worse than humans, on average, in solving letter-string analogy tasks using the normal alphabet. Moreover, when such tasks are presented with counterfactual alphabets, these models display drops in accuracy that are not seen in humans, and the kinds of mistakes that these models make are different from the kinds of mistakes that humans make. These results imply that GPT models are still lacking the kind of abstract reasoning needed for human-like fluid intelligence.

Acknowledgments This material is based in part upon work supported by the National Science Foundation under Grant No. 2139983. Any opinions, findings, and conclusions or recommendations expressed in this material are those of the authors and do not necessarily reflect the views of the National Science Foundation. This work has also been supported by the Templeton World Charity Foundation, Inc. (funder DOI 501100011730) under the grant <https://doi.org/10.54224/20650>.

References

- Dekel, S., Burns, B., & Goldwater, M. (2023). Leaping across the mental canyon: Higher-order long-distance analogical retrieval. *Journal of Cognitive Psychology*, 35(8), 856–875.
- Dziri, N., Lu, X., Sclar, M., Li, X. L., Jian, L., Lin, B. Y., ... Choi, Y. (2023). Faith and fate: Limits of transformers on compositionality. In *Proceedings of the Thirty-seventh Annual Conference on Neural Information Processing Systems (NeurIPS)*.
- Geake, J. G., & Hansen, P. C. (2010). Functional neural correlates of fluid and crystallized analogizing. *NeuroImage*, 49(4), 3489–3497.
- Hodel, D., & West, J. (2023). Response: Emergent analogical reasoning in large language models. *arXiv preprint arXiv:2308.16118*.
- Hofstadter, D. R. (1985). *Metamagical Themas: Questing for the Essence of Mind and Pattern*. In (chap. 24). New York, NY: Basic Books.
- Hofstadter, D. R., & Mitchell, M. (1994). The Copycat project: A model of mental fluidity and analogy-making. In K. J. Holyoak & J. A. Barnden (Eds.), *Advances in Connectionist and Neural Computation Theory* (Vol. 2, pp. 31–112). Ablex, Norwood, NJ.
- Huang, J., & Chang, K. C.-C. (2022). Towards reasoning in large language models: A survey. *arXiv preprint arXiv:2212.10403*.
- Kambhampati, S. (2023). Can LLMs really reason and plan? *Communications of the ACM*. (<https://cacm.acm.org/blogs/blog-cacm/276268-can-llms-really-reason-and-plan/fulltext>)
- Long, C., Li, J., Chen, A., Qiu, J., Chen, J., & Li, H. (2015). Event-related potential responses to letter-string comparison analogies. *Experimental Brain Research*, 233, 1563–1573.
- McCoy, R. T., Yao, S., Friedman, D., Hardy, M., & Griffiths, T. L. (2023). Embers of autoregression: Understanding large language models through the problem they are trained to solve. *arXiv preprint arXiv:2309.13638*.
- Mitchell, M. (1993). *Analogy-Making As Perception: A Computer Model*. In (chap. 5). Cambridge, MA: MIT Press.
- Razeghi, Y., Logan IV, R. L., Gardner, M., & Singh, S. (2022). Impact of pretraining term frequencies on few-shot numerical reasoning. In *Findings of the Association for Computational Linguistics: EMNLP 2022* (pp. 840–854).
- Webb, T., Holyoak, K. J., & Lu, H. (2023). Emergent analogical reasoning in large language models. *Nature Human Behaviour*, 7(9), 1526–1541.
- Webb, T., Holyoak, K. J., & Lu, H. (2024). Evidence from counterfactual tasks supports emergent analogical reasoning in large language models. *arXiv preprint arXiv:2404.13070*.
- Wei, J., Tay, Y., Bommasani, R., Raffel, C., Zoph, B., Borgeaud, S., ... Fedus, W. (2022). Emergent abilities of large language models. *Transactions on Machine Learning Research*.
- Wei, J., Wang, X., Schuurmans, D., Bosma, M., Ichter, B., Xia, F., ... Zhou, D. (2022). Chain-of-thought prompting elicits reasoning in large language models. *Advances in Neural Information Processing Systems*, 35, 24824–24837.
- Wu, Z., Qiu, L., Ross, A., Akyürek, E., Chen, B., Wang, B., ... Kim, Y. (2023). Reasoning or reciting? Exploring the capabilities and limitations of language models through counterfactual tasks. *arXiv preprint arXiv:2307.02477*.