

UCLA

UCLA Previously Published Works

Title

NALIRIFOX versus nab-paclitaxel and gemcitabine in treatment-naive patients with metastatic pancreatic ductal adenocarcinoma (NAPOLI 3): a randomised, open-label, phase 3 trial.

Permalink

<https://escholarship.org/uc/item/54g69911>

Journal

The Lancet, 402(10409)

Authors

Wainberg, Zev

Melisi, Davide

Macarulla, Teresa

et al.

Publication Date

2023-10-07

DOI

10.1016/S0140-6736(23)01366-1

Peer reviewed



HHS Public Access

Author manuscript

Lancet. Author manuscript; available in PMC 2024 December 23.

Published in final edited form as:

Lancet. 2023 October 07; 402(10409): 1272–1281. doi:10.1016/S0140-6736(23)01366-1.

This is an Open Access article under the CC BY-NC-ND 4.0 license.

Correspondence to: Zev A Wainberg, David Geffen School of Medicine, University of California Los Angeles, Los Angeles, CA 90404, USA, zwainberg@mednet.ucla.edu.

Contributors

All authors meet the International Committee of Medical Journal Editors criteria for authorship of this Article, take responsibility for the integrity of the work, were involved in drafting, revising, and critical review of the manuscript, and approved the final version for submission. All authors conceived and designed the study, carried out the research, and analysed the data. ZAW, ZX, and HC accessed and verified the underlying data. All authors had full access to the data, final responsibility to submit for publication, and vouch for the accuracy and completeness of the data and fidelity of the trial to the protocol.

Declaration of interests

ZAW has received grants or contracts from Arcus and Bristol Myers Squibb, consulting fees from Amgen, Arcus, Astellas, AstraZeneca, Bayer, Bristol Myers Squibb, Daiichi Sankyo, Gilead, Ipsen, Merck Sharp & Dohme, and Seagen, support for attending meetings or travel from Amgen, Bayer, and Merck Sharp & Dohme, and has participated on a data safety monitoring board or advisory board for Mirati and Pfizer. DM has received grants or contracts from Celgene, Evotec, Incyte, iOnctura, Roche, and Servier, consultancy fees from Incyte, iOnctura, IQVIA, Merck Sharp & Dohme, Servier, and Taiho Pharmaceutical, and has participated on a data safety monitoring board or advisory board for Incyte, Servier, Taiho Pharmaceutical, and Terumo. TM has received grants or contracts (personal) from Merck Sharp & Dohme, Novocure, QED Therapeutics, Roche, Sanofi-Aventis, Servier, and Zymeworks, and received grants or contracts to their institution from AbbVie Farmaceutica, Ability Pharmaceuticals, Agios Pharmaceuticals, Amgen, Aslan Pharmaceuticals, AstraZeneca, Basilea Pharmaceutica International, Bayer, BeiGene, BioKeralt Research Institute, BioLineRx, Blueprint Medicines, Boston Biomedical, Bristol Myers Squibb, Cantargia, Celgene, Eisai, Eli Lilly and Company, Erytech Pharma, FibroGen, Halozyme, Incyte, Ipsen, Loxo Oncology, MedImmune, Merck Sharp & Dohme, Nelum, Novartis, Novocure, OncoMed Pharmaceuticals, QED Therapeutics, Roche, VCN Biosciences, and Zymeworks, payment or honoraria from Janssen and Lilly, support for attending meetings or travel from AstraZeneca, Incyte, Merck Sharp & Dohme, Sanofi, and Servier, and has participated on a data safety monitoring board or advisory board for Ability Pharmaceuticals, AstraZeneca, Basilea Pharma, Baxter, BioLineRX, Celgene, Eisai, Incyte, and Ipsen. RPC has received consulting fees from AstraZeneca, Bayer, Bristol Myers Squibb, Celgene, Eisai, Eli Lilly and Company, Ipsen, Servier, and Roche, honoraria from Astellas, AstraZeneca, Bristol Myers Squibb, Eli Lilly and Company, Roche, and Servier, payment or honoraria from Astellas, AstraZeneca, Bristol Myers Squibb, Eli Lilly and Company, Roche, and Servier, and support for attending meetings or travel from Bristol Myers Squibb, Eli Lilly and Company, Roche, and Servier. SRC has received grants or contracts from AstraZeneca, Exact Sciences, Merck Sharp & Dohme, QED Therapeutics, TerSera Therapeutics, and Zymeworks (personal) and Ipsen (institution), payment or honoraria from Bristol Myers Squibb, Janssen, and Natra (speaker's bureau) and has participated on a data safety monitoring board or advisory board for Daiichi Sankyo. CDLF has received consultancy fees from Bristol Myers Squibb, Daiichi Sankyo, Eisai, Ipsen, Merck Sharp & Dohme, Pierre Fabre Oncologie, and Roche, and support for attending meetings or travel from Merck Sharp & Dohme, Pierre Fabre Oncologie, and Roche. AD has received support for attending meetings or travel from Juniper Biologics. TOG has received grants or contracts from German Research Foundation and Incyte, consulting fees from Amgen, AstraZeneca, Bayer, Boehringer Ingelheim, Bristol Myers Squibb, Daiichi Sankyo, Deciphera, Eli Lilly and Company, Foundation Medicine, MCI, Merck Sharp & Dohme, Novartis, Roche, Sanofi Aventis, and Servier, payment or honoraria from Amgen, Bristol Myers Squibb, Eli Lilly and Company, Merck Sharp & Dohme, Novartis, Roche, Sanofi Aventis, and Servier, has received payment for an expert testimony for Bundesinstitut für Arzneimittel und Medizinprodukte and Daiichi Sankyo, participated on a data safety monitoring board or advisory board for Bayer, Bristol Myers Squibb, Daiichi Sankyo, Eli Lilly and Company, Foundation Medicine, MCI, Merck Sharp & Dohme, Novartis, Roche, Sanofi Aventis, and Servier, and has had a leadership or fiduciary role in board, society, committee, or advocacy group with Arbeitsgemeinschaft Internistische Onkologie. EVC has received grants or contracts from Amgen, Bayer, Boehringer Ingelheim, Bristol Myers Squibb, Eli Lilly and Company, Ipsen, Merck Sharp & Dohme, Merck KGaA, Novartis, Roche, and Servier, and consulting fees from AbbVie, ALX, Amgen, Array, Astellas, AstraZeneca, Bayer, Beigene, Boehringer Ingelheim, Bristol Myers Squibb, Daiichi Sankyo, Eli Lilly and Company, GlaxoSmithKline, Incyte, Ipsen, Merck Sharp & Dohme, Merck KGaA, Mirati, Novartis, Nordic, Pierre Fabre Oncologie, Pfizer, Roche, Seagen, Servier, Takeda, Terumo, Taiho Pharmaceutical, and Zymeworks. ASP has received research funding (personal) from Buzzard Pharmaceuticals, and research funding (institution) from AstraZeneca, Bayer, BioNTech, Bristol Myers Squibb, Camurus, Deciphera, Eli Lilly and Company, Exelixis, G1 Therapeutics, Gilead Sciences, Gritstone Bio, Hutchinson MediPharma, Incyte, Innovative Cellular Therapeutics, Inspira, Ipsen, ITM Oncologics, Merck Sharp & Dohme, Novartis, NuCana, Relay Therapeutics, Regenxbio, Seagen, SOTIO Biotech, Taiho Pharmaceutical, Tempus, TransThera Biosciences, and Zentalis Pharmaceuticals, had a consulting or advisory role at AADI Bioscience, Advanced Accelerator Applications, Amgen, Astellas, AstraZeneca, Bristol Myers Squibb, Eisai, EMD Serono, Exelixis, Hutchison MediPharma, Incyte, Ipsen, Eli Lilly and Company, Mirati Therapeutics, Novartis, Pfizer, QED Therapeutics, Servier, and Stromatis Pharma, received payment or honoraria from Cardinal Health (honoraria), Ideo Oncology (speaker's bureau), received support for attending meetings or travel from AADI Bioscience, Camurus, Mirati Therapeutics, NuCana, and Pfizer and has stock or stock options in Actinium, Alexion Pharmaceuticals, Aptose Biosciences, and Lynx Health. TB-S has received research funding (institution) from Agios, Arcus, Arys, Atreca, Bayer, Boston Biomedical, Bristol Myers Squibb Eisai, Celgene, Eli Lilly and Company, Ipsen, Clovis, Seagen, Genentech, Novartis, Mirati Therapeutics, Merus, Abgenomics, Incyte, and Pfizer, received royalties from UpToDate, received consultancy fees from Stemline, AbbVie, Aptitude Health, AstraZeneca, Beigene, Blueprint Medicines, Boehringer Ingelheim, Caladrius Biosciences, Celularity, Daiichi Sankyo, Deciphera, Exact Science, Exelixis, Foundation Medicine, GlaxoSmithKline, Illumina, Janssen, Kanaph, MJH Life Sciences, Natera, Sanofi, Sobi, Treos Bio, and Zai Labs (personal), and Arcus, Bayer, Eisai, Genentech, Incyte, Ipsen, Merck Sharp & Dohme, Merck KGA, Merus, Pfizer, Seagen, and Servier (institution), received patents WO/2018/183488 and WO/

NALIRIFOX versus nab-paclitaxel and gemcitabine in treatment-naive patients with metastatic pancreatic ductal adenocarcinoma (NAPOLI 3): a randomised, open-label, phase 3 trial

Zev A Wainberg, MD,

David Geffen School of Medicine, University of California Los Angeles, Los Angeles, CA, USA

Davide Melisi, MD,

Università degli studi di Verona and Azienda Ospedaliera Universitaria Integrata Verona, Verona, Italy

Teresa Macarulla, MD,

Vall d'Hebron University Hospital and Vall d'Hebron Institute of Oncology (VHIO), Barcelona, Spain

Roberto Pazo Cid, MD,

Hospital Universitario Miguel Servet, Zaragoza, Spain

Sreenivasa R Chandana, MD,

Cancer and Hematology Centers of Western Michigan, Grand Rapids, MI, USA

Christelle De La Fouchardière, MD,

Centre Léon Bérard, Lyon, France

Andrew Dean, MD,

St John of God Subiaco Hospital, Subiaco, WA, Australia

Igor Kiss, MD,

Masaryk Memorial Cancer Institute, Brno, Czech Republic

Woo Jin Lee, MD,

National Cancer Center, Goyang, South Korea

2019/055687, and has participated on a data safety monitoring board or advisory board for 1Globe, AstraZeneca, Artiva, Eisai, Exelixis, Fibrogen, Immuneering, Imugene, Merck, PanCan, Replimune, Sun Biopharma, Suzhou Kintor, The Valley Hospital, and Xilis. SP has participated on a data safety monitoring board or advisory board for, Askgene Pharma, Boehringer Ingelheim, Ipsen, Janssen, Novartis, and Zymeworks. RAH has received honoraria from Eisai, and participated on a data safety monitoring board or advisory Board at Beigene and Ipsen. ZX, HC, and FB are employed at Ipsen and have stock or stock options in Ipsen. EMO has received grants or contracts from AstraZeneca, Arcus, BioNTech, Elicio, Genentech/Roche, NIH/NCI, Parker Institute, and Pertzye, consulting fees from AstraZeneca, Astellas, Autem, BioNTech, BioSapien, Boehringer Ingelheim, Bristol Myers Squibb, Fibrogen, Ipsen, Merck, Sharp & Dohme, Merus, Neogene, Novartis, Novocure, Tempus, and Thetis (personal), Agios, Eisai, and Genentech/Roche (spouse), has had an uncompensated leadership or fiduciary role in board, society, committee, or advocacy groups with Avner Foundation, National Pancreas Foundation, and Pancreas Cancer Action Network, and has received other financial or non-financial interests from American Association of Cancer Research and American Society of Clinical Oncology. IK and WJL declare no competing interests.

For the plain language summary see **Online** for appendix 1

See **Online** for appendix 2

For the **protocol** see <https://s3.eu-west-2.amazonaws.com/ox.files/Protocol.pdf>

Thorsten O Goetze, MD,
Krankenhaus Nordwest, Frankfurt am Main, Germany

Eric Van Cutsem, MD,
University Hospitals Gasthuisberg Leuven and KU Leuven, Leuven, Belgium

A Scott Paulson, MD,
Texas Oncology-Baylor Charles A Sammons Cancer Center, Dallas, TX, USA

Tanios Bekaii-Saab, MD,
Mayo Clinic, Scottsdale, AZ, USA

Shubham Pant, MD,
MD Anderson Cancer Center, Houston, TX, USA

Richard A Hubner, MD,
The Christie NHS Foundation Trust, and Division of Cancer Sciences, University of Manchester,
Manchester, UK

Zhimin Xiao, MD,
Ipsen, Cambridge, MA, USA

Huanyu Chen, PhD,
Ipsen, Cambridge, MA, USA

Fawzi Benzaghrou, MD,
Ipsen, Cambridge, MA, USA

Eileen M O'Reilly, MD
Memorial Sloan Kettering Cancer Center, New York, NY, USA

Summary

Background—Pancreatic ductal adenocarcinoma remains one of the most lethal malignancies, with few treatment options. NAPOLI 3 aimed to compare the efficacy and safety of NALIRIFOX versus nab-paclitaxel and gemcitabine as first-line therapy for metastatic pancreatic ductal adenocarcinoma (mPDAC).

Methods—NAPOLI 3 was a randomised, open-label, phase 3 study conducted at 187 community and academic sites in 18 countries worldwide across Europe, North America, South America, Asia, and Australia. Patients with mPDAC and Eastern Cooperative Oncology Group performance status score 0 or 1 were randomly assigned (1:1) to receive NALIRIFOX (liposomal irinotecan 50 mg/m², oxaliplatin 60 mg/m², leucovorin 400 mg/m², and fluorouracil 2400 mg/m², administered sequentially as a continuous intravenous infusion over 46 h) on days 1 and 15 of a 28-day cycle or nab-paclitaxel 125 mg/m² and gemcitabine 1000 mg/m², administered intravenously, on days 1, 8, and 15 of a 28-day cycle. Balanced block randomisation was stratified by geographical region, performance status, and liver metastases, managed through an interactive web response system. The primary endpoint was overall survival in the intention-to-treat population, evaluated when at least 543 events were observed across the two treatment groups. Safety was evaluated in all patients who received at least one dose of study treatment. This completed trial is registered with [ClinicalTrials.gov](https://clinicaltrials.gov/ct2/show/study/NCT04083235), [NCT04083235](https://clinicaltrials.gov/ct2/show/study/NCT04083235).

Findings—Between Feb 19, 2020 and Aug 17, 2021, 770 patients were randomly assigned (NALIRIFOX, 383; nab-paclitaxel–gemcitabine, 387; median follow-up 16·1 months [IQR 13·4–19·1]). Median overall survival was 11·1 months (95% CI 10·0–12·1) with NALIRIFOX versus 9·2 months (8·3–10·6) with nab-paclitaxel–gemcitabine (hazard ratio 0·83; 95% CI 0·70–0·99; $p=0·036$). Grade 3 or higher treatment-emergent adverse events occurred in 322 (87%) of 370 patients receiving NALIRIFOX and 326 (86%) of 379 patients receiving nab-paclitaxel–gemcitabine; treatment-related deaths occurred in six (2%) patients in the NALIRIFOX group and eight (2%) patients in the nab-paclitaxel–gemcitabine group.

Interpretation—Our findings support use of the NALIRIFOX regimen as a possible reference regimen for first-line treatment of mPDAC.

Funding—Ipsen.

Introduction

Pancreatic ductal adenocarcinoma remains one of the most lethal malignancies, with an estimated 5-year survival of only 3% for patients diagnosed with metastatic disease.^{1,2} In the past decade, two combination chemotherapy regimens, a quadruplet of fluorouracil, leucovorin, irinotecan, and oxaliplatin (FOLFIRINOX) and a doublet, nab-paclitaxel and gemcitabine, have emerged as first-line standard of care.^{3–5} However, these regimens have never been compared directly leaving uncertainty about the optimal treatment regimen. With the exception of microsatellite instability-high pancreatic cancer, immune checkpoint inhibitors have demonstrated only partial benefits, and although there has been much interest in using genomic profiling to improve outcomes, relatively few patients are eligible to receive molecularly targeted agents.^{6–8} The poor prognosis and low number of treatment options available for most patients highlight the need for further research to compare efficacious and tolerable new treatment approaches, and to maximise the benefits of cytotoxic chemotherapy regimens.

Irinotecan is a topoisomerase I inhibitor acting mainly via its active metabolite, SN-38.⁹ Liposomal irinotecan (ONIVYDE, ONIVYDE pegylated liposomal; historical names include nal-IRI, MM 398, or PEP02; Ipsen, Cambridge, MA, USA) is a liposomal formulation that encapsulates irinotecan in a lipid bilayer vesicle. Encapsulation allows irinotecan to remain in circulation for longer than unencapsulated (free) irinotecan before conversion to SN-38. Thus, at equivalent doses, liposomal irinotecan demonstrates higher and sustained intratumoural levels of irinotecan and SN-38 relative to free irinotecan.^{10,11} Data from a pilot study of liposomal irinotecan in patients ($n=13$) with refractory advanced solid tumours reported five-fold higher levels of SN-38 in tumour biopsy samples than in plasma 72 h after dosing, suggesting local metabolic activation of irinotecan to SN-38.¹²

In the phase 3 NAPOLI 1 trial, liposomal irinotecan in combination with fluorouracil and leucovorin significantly prolonged overall survival versus fluorouracil and leucovorin in patients with metastatic pancreatic ductal adenocarcinoma whose disease had progressed following gemcitabine-based therapy.¹³ A phase 1/2 trial (NCT02551991) demonstrated promising antitumour activity with liposomal irinotecan in combination with fluorouracil, leucovorin, and oxaliplatin (NALIRIFOX) in treatment-naïve patients with metastatic

pancreatic ductal adenocarcinoma. Median progression-free survival was 9.2 months (95% CI 7.69–11.96) and overall survival was 12.6 months (8.74–18.69).¹⁴

Building on these findings, the phase 3 NAPOLI 3 study (NCT04083235) aimed to compare NALIRIFOX with nab-paclitaxel and gemcitabine in patients with metastatic pancreatic ductal adenocarcinoma not previously treated in the metastatic setting.

Methods

Study design and participants

NAPOLI 3 was a randomised, open-label, phase 3 study conducted at 187 community and academic centres in 18 countries worldwide across Europe, North America, South America, Asia, and Australia (appendix 2 p 16). The study was performed in accordance with the Declaration of Helsinki and the International Conference on Harmonisation Consolidated Guideline on Good Clinical Practice and the requirements of the US Food and Drug Administration or local regulatory authorities regarding the conduct of human clinical trials. The protocol was approved by the local institutional review board and independent ethics committees of the participating centres. Protocol amendments made after the study started are described in the protocol.

Eligible participants were aged 18 years or older with histologically or cytologically (according to the eighth edition of the American Joint Committee on Cancer staging manual)¹⁵ confirmed pancreatic ductal adenocarcinoma previously untreated in the metastatic setting. Patients who received previous treatment for pancreatic ductal adenocarcinoma with chemotherapy in the adjuvant setting were excluded; however, those who had received their last dose of adjuvant therapy more than 12 months before study entry and who had no persistent treatment-related toxicity were eligible. Patients had to have one or more metastatic tumours measurable with CT or MRI according to Response Evaluation Criteria in Solid Tumours (RECIST) version 1.1¹⁶ and an Eastern Cooperative Oncology Group performance status score of 0 or 1. The initial diagnosis of metastatic disease must have occurred within the 6 weeks before screening. Full eligibility criteria are provided in appendix 2 (pp 10–12). Patients provided written informed consent at screening.

Randomisation and masking

In this open-label NAPOLI 3 study, patients were randomly assigned (1:1) to receive NALIRIFOX or nab-paclitaxel and gemcitabine, stratified by geographical region (North America *vs* east Asia *vs* the rest of the world), performance status (Eastern Cooperative Oncology Group performance status score of 0 *vs* 1), and liver metastases (yes *vs* no). The randomisation scheme was prepared using block randomisation via a third party, and randomisation was performed by a third party by means of an integrated interactive voice response or web response system.

Procedures

Patients received NALIRIFOX (liposomal irinotecan 50 mg/m², oxaliplatin 60 mg/m², leucovorin 400 mg/m², and fluorouracil 2400 mg/m², administered sequentially as a

continuous intravenous infusion over 46 h) on days 1 and 15 of a 28-day cycle, or nab-paclitaxel 125 mg/m² and gemcitabine 1000 mg/m², administered intravenously, on days 1, 8, and 15 of a 28-day cycle.

Tumour evaluations were performed by CT or MRI at screening (baseline) and every 8 weeks until progressive disease using RECIST version 1.1. In patients without disease progression at the time of treatment discontinuation, tumour evaluations were performed every 8 weeks during follow-up until progressive disease, or until the start of another anticancer treatment, whichever came first.

Treatment continued until radiologically determined disease progression (as per RECIST version 1.1)¹⁶ or unacceptable toxicity as assessed by individual investigators. Patients completed a 30-day follow-up assessment after permanent discontinuation of study treatment, then entered long-term follow-up (every 2 months) during which survival status was monitored until death, loss to follow-up, withdrawal of consent, or study closure, whichever occurred first. Details are in appendix 2 (p 13). Full details of study procedures and schedules can be found in the protocol.

Outcomes

The primary outcome was overall survival for NALIRIFOX versus nab-paclitaxel and gemcitabine, defined as the number of months from randomisation to the date of death owing to any cause. Secondary outcomes were progression-free survival (time from randomisation to first documented disease progression using RECIST version 1.1 by investigator review or death due to any cause, whichever occurred first) and overall response rate (proportion of patients with a best overall response of partial or complete response) classified using RECIST version 1.1 by investigator review. Details of the per-protocol study endpoints are in appendix 2 (pp 13–14). Adverse events were recorded and coded using the Medical Dictionary for Regulatory Activities (version 25.0), and severity was graded according to the National Cancer Institute Common Terminology Criteria for Adverse Events (version 5.0).¹⁷

Statistical analysis

The primary endpoint of overall survival was evaluated when at least 543 events were observed across the two treatment groups to provide at least 90% power to detect a hazard ratio (HR) of 0.75 with an overall two-sided type one error level of 0.05. The planned sample size was 750 patients and could be increased if a review of accumulating overall survival events suggested that timing of the final analysis be extended. Assuming median overall survival was 12 months in the NALIRIFOX group and 9 months in the nab-paclitaxel and gemcitabine group,^{3,4,13} a total of 543 events were needed to detect an HR of 0.75 with 90% power at a two-sided alpha level of 5%. The Hwang-Shih-DeCani method was used to control the type I error and was utilised with respective two-sided alpha allocations of 0.006 (HR<0.931) and 0.048 (HR<0.844) in the interim and final analyses. No pre-assigned definitions of minimal clinically relevant difference were applied. If the primary overall survival endpoint was statistically significant, secondary endpoints were

tested in a hierarchical approach in the order of progression-free survival followed by overall response rate. Further details are in appendix 2 (pp 14–15).

Efficacy was assessed in all randomly assigned patients according to the intention-to-treat principle. Safety was assessed in all patients who received at least one dose of treatment. An independent data monitoring committee was established for this study. For time-to-event endpoints including overall survival and progression-free survival, the stratified log-rank test was used to assess between-group differences. Kaplan-Meier methods were used to estimate median (95% CI) survival and HRs (95% CI) were estimated using stratified Cox proportional hazard models. Prespecified sensitivity analyses were conducted for overall survival and progression-free survival, including subgroup analyses according to a priori stratification factors and other prognostic variables. For the overall survival analysis, patients without a recorded date of death were censored according to the last recorded date alive. For the progression-free survival analysis, patients without a recorded death or progression were censored on the date of the last evaluable tumour assessment. Overall response rate by RECIST version 1.1 according to investigator review and accompanying 95% CIs was calculated and compared between treatment groups using the Cochran–Mantel–Haenszel method, adjusted for randomisation stratification factors. Analyses were performed using SAS version 9.3 or higher. The trial was registered with ClinicalTrials.gov, [NCT04083235](https://clinicaltrials.gov/ct2/show/study/NCT04083235) and EudraCT, 2018–003585-14.

Role of the funding source

The funder of the study participated in study design, data collection, data analysis, data interpretation, and review and approval of the manuscript.

Results

Between Feb 19, 2020 and Aug 17, 2021, 770 patients were randomly allocated to receive NALIRIFOX (383 patients) or nab-paclitaxel and gemcitabine (387 patients) and comprised the intention-to-treat population (figure 1, table 1). A summary of major protocol deviations in the intention-to-treat population is in appendix 2 (p 23). The safety population comprised 749 patients (NALIRIFOX, 370 patients; nab-paclitaxel and gemcitabine, 379 patients) who had received at least one dose of any study medication. At the data cutoff (July 23, 2022), 44 patients (12%) in the NALIRIFOX group and seven (2%) in the nab-paclitaxel and gemcitabine group were still receiving the trial regimen. The most common reason for discontinuation of treatment was disease progression in 184 patients (48%) in the NALIRIFOX group and 177 patients (46%) in the nab-paclitaxel and gemcitabine group.

The survival analysis was based on 544 deaths over a median follow-up of 16.1 months (IQR 13.4–19.1). Median overall survival was 11.1 months (95% CI 10.0–12.1) in the NALIRIFOX group and 9.2 months (8.3–10.6) in the nab-paclitaxel and gemcitabine group (HR 0.83 [95% CI 0.70–0.99]; $p=0.036$; figure 2, table 2). Overall survival at 12 months was 45.6% (40.5–50.5) in the NALIRIFOX group and 39.5% (34.6–44.4) in the nab-paclitaxel and gemcitabine group. Overall survival at 18 months was 26.2% (20.9–31.7) for NALIRIFOX and 19.3% (14.8–24.2) for nab-paclitaxel and gemcitabine.

Median progression-free survival was 7.4 (95% CI 6.0–7.7) months in the NALIRIFOX group and 5.6 [5.3–5.8] months in the nab-paclitaxel and gemcitabine group (HR 0.69 [0.58–0.83]; $p < 0.0001$; figure 2, table 2). Progression-free survival rates at 12 months were 27.4% (22.3–32.7) in the NALIRIFOX group and 13.9% (9.7–18.9) in the nab-paclitaxel and gemcitabine group. Progression-free survival rates at 18 months were 11.4% in the NALIRIFOX group and 3.6% in the nab-paclitaxel and gemcitabine group.

Overall survival and progression-free survival benefits with NALIRIFOX versus nab-paclitaxel and gemcitabine were generally consistent across prespecified subgroups (figure 3).

160 (42%) of 383 participants in the NALIRIFOX group had an objective response, as did 140 (36%) of 387 in the nab-paclitaxel and gemcitabine group ($p = 0.11$; table 2). The median duration of response was 7.3 months (95% CI 5.8–7.6) in the NALIRIFOX group and 5.0 months (3.8–5.6) in the nab-paclitaxel and gemcitabine group (HR 0.67 [95% CI 0.48–0.93]; table 2).

Overall, 187 (51%) of 370 patients in the NALIRIFOX group and 206 (54%) of 379 patients in the nab-paclitaxel and gemcitabine group received subsequent systemic anticancer therapy (appendix 2 p 24). The most common subsequent therapies (appendix 2 p 25) were gemcitabine-based (153 [41%] patients) in the NALIRIFOX group and fluorouracil-based (134 [35%] patients) in the nab-paclitaxel and gemcitabine group. In a pre-planned sensitivity analysis for overall survival (censored at the time of subsequent therapy initiation or last known date of being alive, whichever occurred first), median overall survival was longer for the NALIRIFOX group than for the nab-paclitaxel and gemcitabine group (15.1 months for the NALIRIFOX group vs 9.2 months for the nab-paclitaxel and gemcitabine group; HR 0.71 [95% CI 0.56–0.90]; nominal $p = 0.0048$). A pre-planned sensitivity analysis of overall survival in the per-protocol population (patients who had no major protocol deviations [appendix 2 p 26]; NALIRIFOX, $n = 363$; nab-paclitaxel and gemcitabine, $n = 372$) demonstrated a median overall survival of 11.5 months (10.2–12.3) in the NALIRIFOX group versus 9.3 months (8.5–10.7) in the nab-paclitaxel and gemcitabine group (HR 0.82 [0.69–0.97]; nominal $p = 0.022$).

Among the 749 patients who received study treatment, the median duration of treatment was 24.3 weeks (IQR 8.4–42.1; median of 5.0 treatment cycles) in the NALIRIFOX group and 17.6 weeks (8.1–30.1; median of 4.0 treatment cycles) in the nab-paclitaxel and gemcitabine group (table 3). Dose reductions per NAPOLI 3 protocol were required in 220 (60%) of 370 patients who received NALIRIFOX and 204 (54%) of 379 patients who received nab-paclitaxel and gemcitabine (table 3).

Treatment-emergent adverse events occurred in 369 (>99%) of 370 patients who received NALIRIFOX and 376 (99%) of 379 patients who received nab-paclitaxel and gemcitabine (table 3). The most common grade 3–4 treatment-emergent adverse events were neutropenia, diarrhoea, and hypokalaemia in the NALIRIFOX group and neutropenia, anaemia, and peripheral neuropathy in the nab-paclitaxel and gemcitabine group (table 3). Treatment-related treatment-emergent adverse events leading to death occurred in six (2%) of 370

patients in the NALIRIFOX group and eight (2%) of 379 patients in the nab-paclitaxel and gemcitabine group. Additional information related to adverse events, including serious treatment-emergent adverse events, is in appendix 2 (pp 28–46).

Discussion

In the NAPOLI 3 trial, the NALIRIFOX regimen demonstrated statistically significant and clinically meaningful improvements in overall survival and progression-free survival compared with nab-paclitaxel and gemcitabine in patients with metastatic pancreatic ductal adenocarcinoma who had not previously received treatment in the metastatic setting. The observed improvements in overall survival and progression-free survival were generally consistent regardless of baseline Eastern Cooperative Oncology Group performance status score (0 or 1), region (North America or the rest of the world), or presence of liver metastasis based on prespecified subgroup analyses. The improvement in overall survival is unlikely to be attributable to differences in subsequent therapy because similar proportions of patients received subsequent therapy in each treatment group (51% in the NALIRIFOX group and 54% in the nab-paclitaxel and gemcitabine group).

No unexpected safety concerns were identified with the use of NALIRIFOX as first-line therapy in NAPOLI 3. Patients remained on NALIRIFOX for a median of 6 weeks longer (1.5 treatment cycles) than those receiving nab-paclitaxel and gemcitabine, indicating that NALIRIFOX was relatively well tolerated. Furthermore, the rates of grade 3–4 peripheral neuropathy were lower in the NALIRIFOX group than in the nab-paclitaxel and gemcitabine group (3.2% vs 5.8%). Similar to the previous phase 1/2 study,¹⁴ the most frequent grade 3–4 treatment-emergent adverse events in the NALIRIFOX group included neutropenia and hypokalaemia, and gastrointestinal disorders such as diarrhoea and nausea. However, rates of haematological grade 3–4 treatment-emergent adverse events including neutropenia, anaemia, and thrombocytopenia were lower with NALIRIFOX (a quadruplet combination therapy) than with nab-paclitaxel and gemcitabine group (a doublet combination therapy). The safety profile of NALIRIFOX could be related to several factors. One possibility is the use of lower doses of oxaliplatin, which help to reduce toxicities such as in cumulative peripheral neuropathy. Additional factors that include the use of the liposomal formulation of irinotecan, which was designed to maximise tumour exposure while minimising systemic toxicity, might also play a role.¹⁸

Although direct comparisons are not possible, it is important to consider the NAPOLI 3 results (n=770) within the context of the phase 3 PRODIGE 4/ACCORD 11 trial (n=342),³ which compared FOLFIRINOX with gemcitabine alone and led to its use as a first-line treatment for metastatic pancreatic ductal adenocarcinoma. Enrolment in PRODIGE 4 was limited to patients aged 75 years or younger and was exclusively in France, whereas NAPOLI 3 had no age restrictions and was a global trial, with a mixture of community and academic sites. In the PRODIGE trial, FOLFIRINOX demonstrated superiority over gemcitabine alone (median overall survival 11.1 months [95% CI 9.0–13.1] vs 6.8 months [5.5–7.6]).³ Indeed, NAPOLI 3 is the only study that has demonstrated superiority of quadruplet therapy (using liposomal irinotecan) over doublet therapy with nab-paclitaxel and gemcitabine. The median progression-free survival was 7.4 months (95% CI 6.0–7.7)

and the overall response rate per investigator was 41·8% for NALIRIFOX in NAPOLI 3, and 6·4 (5·5–7·2) months and 31·6%, respectively, for FOLFIRINOX in PRODIGE.³ In NAPOLI 3, rates of grade 3–4 peripheral sensory neuropathy and neutropenia with NALIRIFOX were lower than those reported for FOLFIRINOX (3·5% vs 9·0% and 23·8% vs 45·7%, respectively), probably owing to a lower cumulative dose of oxaliplatin with the NALIRIFOX regimen,³ which was selected based on review of dose-limiting toxicities in the previous phase 1/2 dose expansion and dose exploration study.¹⁴

Compared with other cancers, there have been only small improvements in survival rates in patients with pancreatic ductal adenocarcinoma over the past 30 years. Early-stage disease is undetectable in patients without symptoms, and effective screening methods are not yet available. Decisions about first-line therapy for patients with metastatic pancreatic ductal adenocarcinoma are limited by differing toxicity profiles and a lack of direct comparisons, as well as factors such as performance status, genetic alterations (eg, defective mismatch repair or homologous recombination deficiency), age, and underlying comorbidities. In NAPOLI 3, NALIRIFOX demonstrated lower rates of haematological treatment-emergent adverse events than nab-paclitaxel and gemcitabine. In addition, the cost of treatment and its impact on health-related quality of life are important factors in treatment decision making. Future research will be conducted to evaluate cost implications, and analyses of patient-reported quality of life outcomes from NAPOLI 3 are ongoing. Furthermore, ongoing genomic profiling evaluations on tissue and serum collected in the NAPOLI 3 trial might answer additional questions that could inform patient selection, such as whether patients with *BRCA*-mutated pancreatic cancer could have benefited from platinum exposure in the NALIRIFOX group.

Strengths of the NAPOLI 3 study include the large sample size, randomised design, and the global recruitment of patients from academic and community sites in North and South America, eastern and western Europe, Asia, and Australia. Limitations of the study include the following: the open-label study design and associated potential for outcome bias; the requirement for measurable disease and an Eastern Cooperative Oncology Group performance status score of 0 or 1 at screening; and the absence of somatic or germline profiling information.

Supplementary Material

Refer to Web version on PubMed Central for supplementary material.

Acknowledgments

The authors thank all patients involved in the study, as well as their caregivers, care team, investigators, and research staff in participating institutions. The authors thank Kirsty Walters and Emma Bolton of Oxford PharmaGenesis, Oxford, UK for providing medical writing support, which was sponsored by Ipsen in accordance with Good Publication Practice guidelines.

Data sharing

Qualified researchers can request access to patient-level study data that underlie the results reported in this publication. Additional relevant study documents, including the clinical

study report, study protocol with any amendments, annotated case report form, statistical analysis plan, and data set specifications can also be made available. Patient-level data will be anonymised, and study documents will be redacted to protect the privacy of study participants. When applicable, data from eligible studies are available 6 months after the studied medicine and indication have been approved in the USA and EU or after the primary manuscript describing the results has been accepted for publication, whichever is later. Further details on Ipsen's sharing criteria, eligible studies, and process for sharing are available online at <https://vivli.org/members/ourmembers/>. Any requests should be submitted to <https://vivli.org> for assessment by an independent scientific review board.

References

1. Rawla P, Sunkara T, Gaduputi V. Epidemiology of pancreatic cancer: global trends, etiology and risk factors. *World J Oncol* 2019; 10: 10–27. [PubMed: 30834048]
2. National Institutes of Health Surveillance. National Cancer Institute. Epidemiology and end results program. Cancer stat facts: pancreatic cancer. <https://seer.cancer.gov/statfacts/html/pancreas.html> (accessed March 1, 2023).
3. Conroy T, Desseigne F, Ychou M, et al. FOLFIRINOX versus gemcitabine for metastatic pancreatic cancer. *N Engl J Med* 2011; 364: 1817–25. [PubMed: 21561347]
4. Von Hoff DD, Ervin T, Arena FP, et al. Increased survival in pancreatic cancer with nab-paclitaxel plus gemcitabine. *N Engl J Med* 2013; 369: 1691–703. [PubMed: 24131140]
5. Goldstein D, El Maraghi RH, Hammel P, et al. Updated survival from a randomized phase III trial (MPACT) of nab-paclitaxel plus gemcitabine versus gemcitabine alone for patients (pts) with metastatic adenocarcinoma of the pancreas. *J Clin Oncol* 2014; 32 (suppl): 178.
6. De Dosso S, Siebenhüner AR, Winder T, et al. Treatment landscape of metastatic pancreatic cancer. *Cancer Treat Rev* 2021; 96: 102180. [PubMed: 33812339]
7. Wainberg ZA, Hochster HS, Kim EJ, et al. Open-label, phase I study of nivolumab combined with nab-paclitaxel plus gemcitabine in advanced pancreatic cancer. *Clin Cancer Res* 2020; 26: 4814–22. [PubMed: 32554514]
8. O'Reilly EM, Oh DY, Dhani N, et al. Durvalumab with or without tremelimumab for patients with metastatic pancreatic ductal adenocarcinoma: a phase 2 randomized clinical trial. *JAMA Oncol* 2019; 5: 1431–38. [PubMed: 31318392]
9. de Man FM, Goey AKL, van Schaik RHN, Mathijssen RHJ, Bins S. Individualization of irinotecan treatment: a review of pharmacokinetics, pharmacodynamics, and pharmacogenetics. *Clin Pharmacokinet* 2018; 57: 1229–54. [PubMed: 29520731]
10. Biopharmaceuticals Ipsen. Prescribing information: ONIVYDE™ (irinotecan liposome injection), for intravenous use. February, 2017. https://www.ipsen.com/websites/Ipsen_Online/wp-content/uploads/sites/9/2019/01/21083350/ONIVYDE_USPI.pdf (accessed March 1, 2023).
11. Drummond DC, Noble CO, Guo Z, Hong K, Park JW, Kirpotin DB. Development of a highly active nanoliposomal irinotecan using a novel intraliposomal stabilization strategy. *Cancer Res* 2006; 66: 3271–77. [PubMed: 16540680]
12. Ramanathan RK, Korn RL, Sachdev JC, et al. 261 Lesion characterization with ferumoxytol MRI in patients with advanced solid tumors and correlation with treatment response to MM-398, nanoliposomal irinotecan (nal-IRI). *Eur J Cancer* 2014; 50: 87.
13. Wang-Gillam A, Li CP, Bodoky G, et al. Nanoliposomal irinotecan with fluorouracil and folinic acid in metastatic pancreatic cancer after previous gemcitabine-based therapy (NAPOLI-1): a global, randomised, open-label, phase 3 trial. *Lancet* 2016; 387: 545–57. [PubMed: 26615328]
14. Wainberg ZA, Bekaii-Saab T, Boland PM, et al. First-line liposomal irinotecan with oxaliplatin, 5-fluorouracil and leucovorin (NALIRIFOX) in pancreatic ductal adenocarcinoma: A phase I/II study. *Eur J Cancer* 2021; 151: 14–24. [PubMed: 33957442]
15. Amin MB, Edge SB, Greene FL, et al. *AJCC Cancer Staging Manual*, 8th edn. New York, NY: Springer Cham, 2017.

16. Eisenhauer EA, Therasse P, Bogaerts J, et al. New Response Evaluation Criteria in Solid Tumours: revised RECIST guideline (version 1.1). *Eur J Cancer* 2009; 45: 228–47. [PubMed: 19097774]
17. National Cancer Institute. Division of Cancer Treatment & Diagnosis. Common Terminology Criteria for Adverse Events (CTCAE) v5.0. https://ctep.cancer.gov/protocoldevelopment/electronic_applications/ctc.htm#ctc_50 (accessed March 1, 2023).
18. Carnevale J, Ko AH. MM-398 (nanoliposomal irinotecan): emergence of a novel therapy for the treatment of advanced pancreatic cancer. *Future Oncol* 2016; 12: 453–64. [PubMed: 26685802]

Research in context

Evidence before this study

Evidence around these trials was gathered from clinical guidelines and clinical experience; therefore no systematic search was undertaken. In the past decade, two combination chemotherapy regimens, fluorouracil, leucovorin, irinotecan, and oxaliplatin (FOLFIRINOX) and nab-paclitaxel and gemcitabine, have emerged as first-line standard of care for patients with metastatic pancreatic ductal adenocarcinoma. In phase 3 trials, FOLFIRINOX and nab-paclitaxel and gemcitabine have each been compared with gemcitabine alone, but the two regimens have never been compared head to head, leaving uncertainty about the optimal first-line treatment option. Liposomal irinotecan is a liposomal formulation that encapsulates irinotecan, a topoisomerase I inhibitor, in a lipid bilayer vesicle. Encapsulation allows irinotecan to remain in circulation for longer than unencapsulated (free) irinotecan before conversion to its active metabolite, SN-38. Thus, at equivalent doses, liposomal irinotecan demonstrates higher and sustained intratumoural levels of irinotecan and SN-38 relative to free irinotecan. In a phase 1/2 trial ([NCT02551991](#)) liposomal irinotecan in combination with fluorouracil, leucovorin, and oxaliplatin (NALIRIFOX), demonstrated promising antitumour activity in treatment-naïve patients with metastatic pancreatic ductal adenocarcinoma.

Added value of this study

To our knowledge, NAPOLI 3 is the first phase 3 trial, performed in community and academic centres worldwide, to compare two combination chemotherapy regimens head to head in patients with pancreatic ductal adenocarcinoma who have not previously received treatment for metastatic disease. Before NAPOLI 3, decisions as to the optimal combination chemotherapy regimen for most patients were based on cross-trial comparisons. As well as comparing with a standard-of-care regimen, NAPOLI 3 had fewer restrictions on eligibility than most phase 3 pancreatic cancer trials, for example no upper age restrictions and no exclusion for patients with clinical ascites. Before NAPOLI 3, the last trial to meet the primary endpoint of overall survival in patients with metastatic pancreatic ductal adenocarcinoma was the MPACT trial in 2013, which led to the approval of first-line nab-paclitaxel and gemcitabine with a median overall survival of 8.5 months. The NALIRIFOX regimen provides a new reference standard on which to base further improvements in the future.

Implications of all the available evidence

The findings of this study support the use of the NALIRIFOX regimen as a new possible standard of care and reference regimen for the first-line treatment of patients with metastatic pancreatic ductal adenocarcinoma.

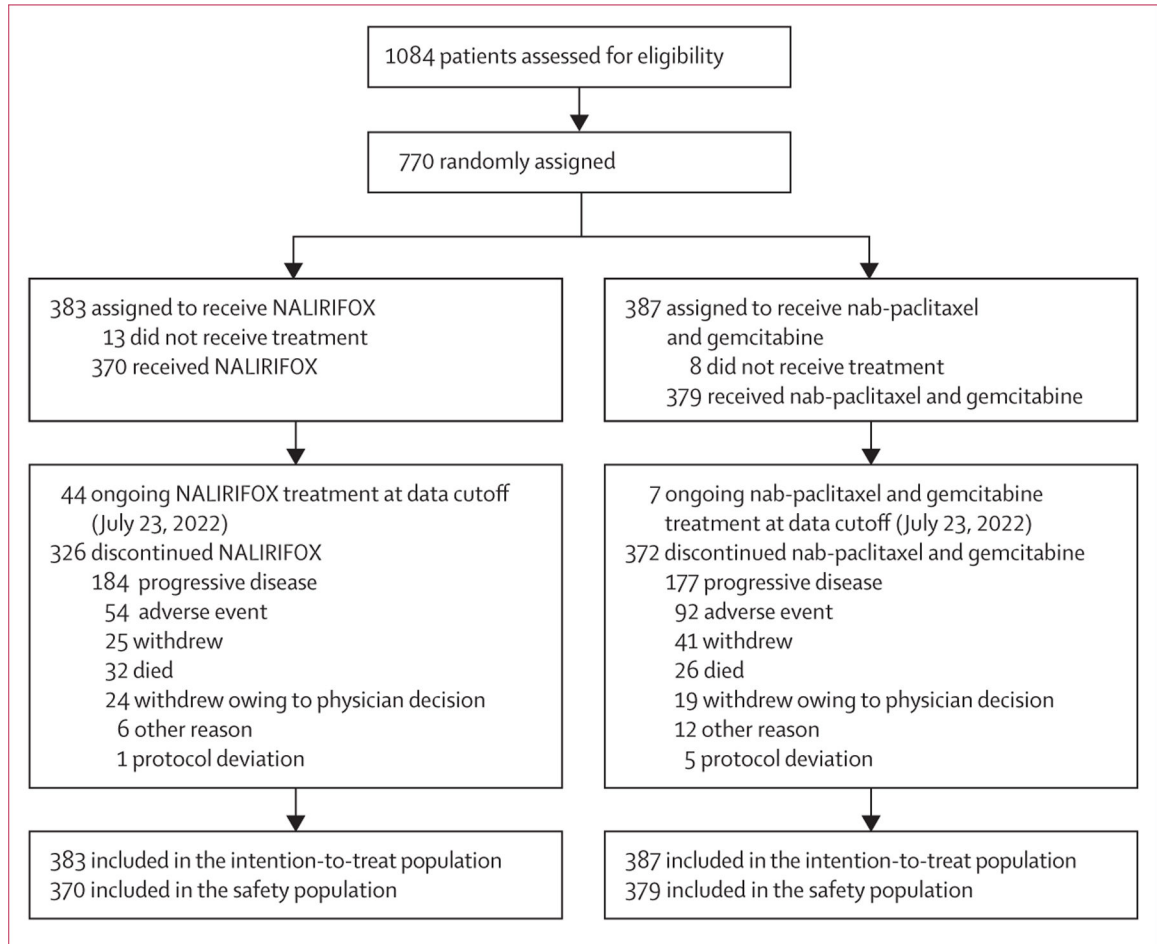


Figure 1: Trial profile

NALIRIFOX=liposomal irinotecan in combination with fluorouracil, leucovorin, and oxaliplatin.

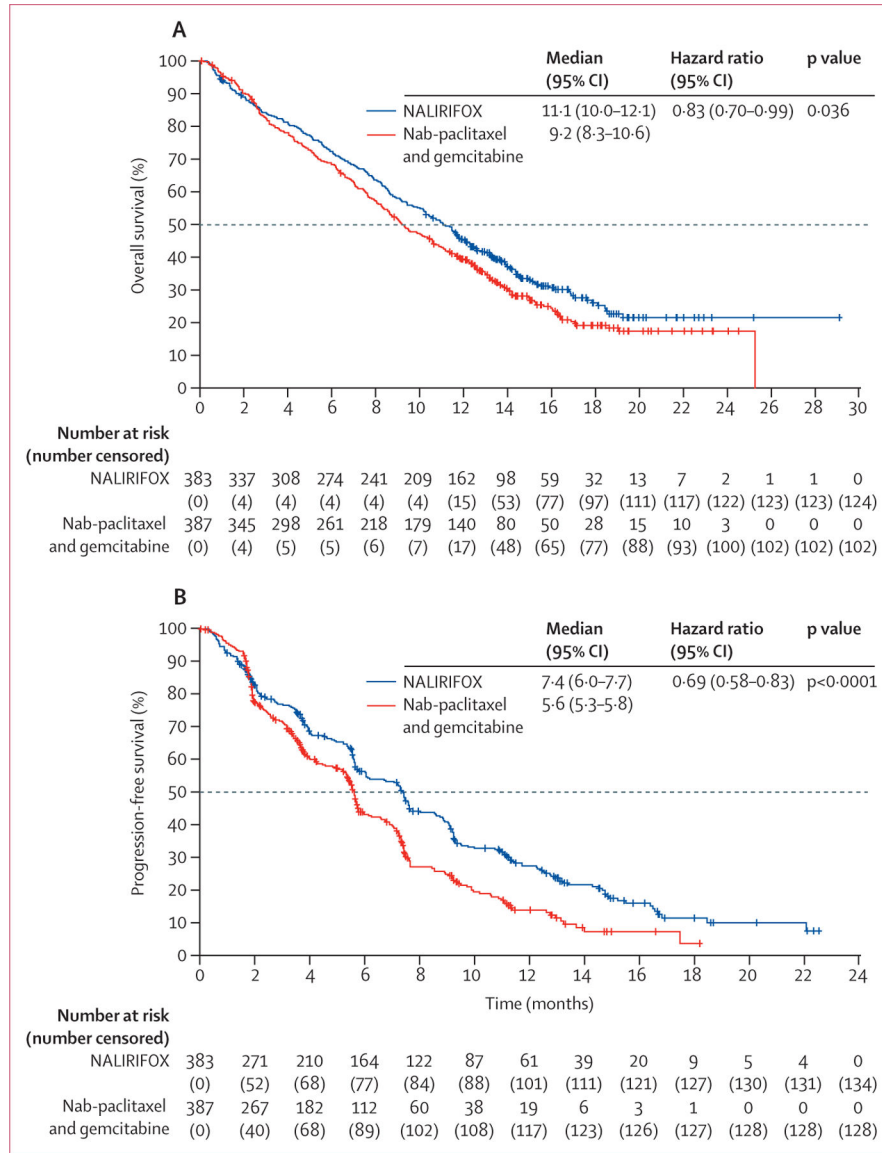


Figure 2: Kaplan–Meier estimates of overall survival (A) and progression-free survival (B) NALIRIFOX=liposomal irinotecan in combination with fluorouracil, leucovorin, and oxaliplatin.

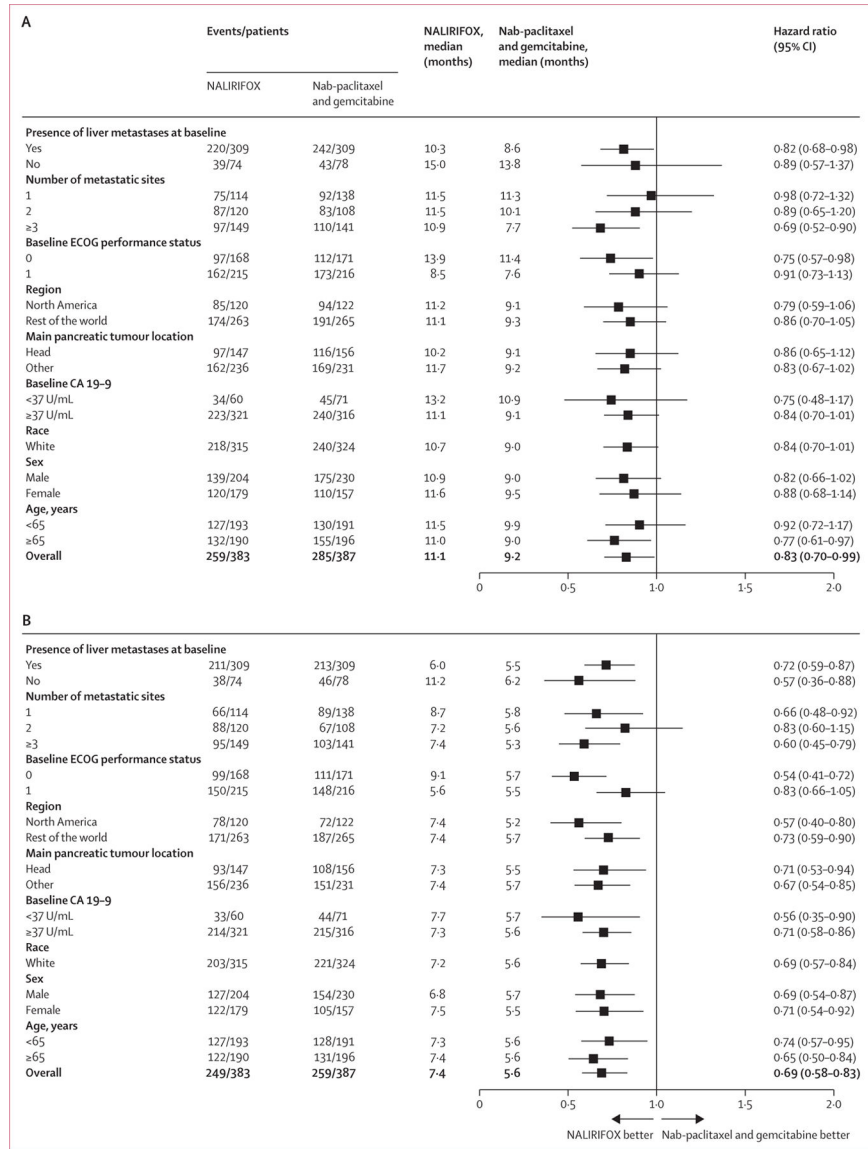


Figure 3: Forest plot of overall survival (A) and progression-free survival (B) in selected subgroups
 The overall hazard ratio is based on stratified analysis and subgroup hazard ratios are based on unstratified analyses. CA=carbohydrate antigen. ECOG=Eastern Cooperative Oncology Group. NALIRIFOX=liposomal irinotecan in combination with fluorouracil, leucovorin, and oxaliplatin.

Table 1:

Baseline characteristics

	NALIRIFOX (n=383)	Nab-paclitaxel and gemcitabine (n=387)
Age, years		
Mean (SD)	62.8 (9.7)	64.0 (8.3)
Median (range; IQR)	64.0 (20–85; 57–70)	65.0 (36–82; 59–70)
Sex		
Female	179 (47%)	157 (41%)
Male	204 (53%)	230 (59%)
Race		
White	315 (82%)	324 (84%)
Asian	20 (5%)	18 (5%)
Black or African American	12 (3%)	7 (2%)
Other	7 (2%)	6 (2%)
Multiple	3 (1%)	0
American Indian or Alaska Native	0	2 (1%)
Native Hawaiian or other Pacific Islander	0	1 (<1%)
Not reported	26 (7%)	29 (7%)
ECOG performance status score		
0	160 (42%)	168 (43%)
1	222 (58%)	219 (57%)
2	1 (<1%)*	0
Metastatic sites		
1	114 (30%)	138 (36%)
2	120 (31%)	108 (28%)
3	149 (39%)	141 (36%)
Liver metastases	307 (80%)	311 (80%)
Geographical region		
North America	120 (31%)	122 (32%)
East Asia	11 (3%)	11 (3%)
Rest of the world	252 (66%)	254 (66%)
Main pancreatic tumour location		
Head	147 (38%)	156 (40%)
Other [†]	236 (62%)	231 (60%)
Baseline CA 19–9 [‡]		
<37 U/mL	60 (16%)	71 (18%)
37 U/mL	321 (84%)	316 (82%)
Median (range; IQR)	1856.0 (0.6–8000.0; 178.0–8000.0)	1544.0 (0.6–8000.0; 93.7–8000.0)
Any previous anti-cancer therapy		
Chemotherapy	22 (6%)	27 (7%)
Radiotherapy	14 (4%)	16 (4%)
Surgical procedure	10 (3%)	6 (2%)
	18 (5%)	25 (7%)

	NALIRIFOX (n=383)	Nab-paclitaxel and gemcitabine (n=387)
Time from diagnosis of metastatic disease at study entry to randomisation, weeks		
Mean (SD)	3.6 (2%)	3.9 (2%)
Median (range; IQR)	3.0 (0.6–9.1; 2.1–4.7)	3.6 (0.4–10.9; 2.4–5.1)

Data are n (%), unless otherwise stated. Data are based on the intention-to-treat population. CA=carbohydrate antigen. ECOG=Eastern Cooperative Oncology Group. NALIRIFOX=liposomal irinotecan in combination with fluorouracil, leucovorin, and oxaliplatin.

* One patient was considered to have an ECOG performance status score of 2 after randomisation and continued to receive treatment.

† Body, tail, or unknown location.

‡ Baseline values were missing for two patients (1%) in the NALIRIFOX arm. The upper limit of detection was 8000 U/mL.

Author Manuscript

Author Manuscript

Author Manuscript

Author Manuscript

Table 2:

Overall survival, progression-free survival, and response rates

	NALIRIFOX (n=383)	Nab-paclitaxel and gemcitabine (n=387)	Effect size (95% CI)	p value
Overall survival				
Median overall survival, months (95% CI)	11.1 (10.0–12.1) [*]	9.2 (8.3–10.6) [*]	HR 0.83 (0.70–0.99) [†]	0.036
Survival rate, % (95% CI)				
6 months	72.4 (67.6–76.6)	68.4 (63.5–72.8)
12 months	45.6 (40.5–50.5)	39.5 (34.6–44.4)
18 months	26.2 (20.9–31.7)	19.3 (14.8–24.2)
Progression-free survival				
Median progression-free survival, months (95% CI)	7.4 (6.0–7.7) [*]	5.6 (5.3–5.8) [*]	HR 0.69 (0.58–0.83) [†]	<0.0001
Progression-free survival rate, % (95% CI)				
6 months	56.4 (50.7–61.6)	43.2 (37.6–48.6)
12 months	27.4 (22.3–32.7)	13.9 (9.7–18.9)
18 months	11.4 (7.1–16.9)	3.6 (0.5–12.3)
Response according to investigator assessment				
Overall response				
Number of patients with overall response	160	140	..	
Rate of overall response (investigator review), % (95% CI)	41.8 (36.8–46.9) [‡]	36.2 (31.4–41.2) [‡]	OR 1.26 (0.95–1.69) [§]	0.11
Median duration of response, months (95% CI) [¶]	7.3 (5.8–7.6) [*]	5.0 (3.8–5.6) [*]	HR 0.67 (0.48–0.93) [†]	..
Best overall response, n (%)				
Complete response	1 (<1%)	1 (<1%)
Partial response	159 (42%)	139 (36%)
Stable disease	99 (26%)	101 (26%)
Progressive disease	38 (10%)	56 (15%)
Not evaluable ^{//}	86 (23%)	90 (23%)

Data are based on the intention-to-treat population. NALIRIFOX=liposomal irinotecan in combination with fluorouracil, leucovorin, and oxaliplatin. HR=hazard ratio. OR=odds ratio.

^{*} Kaplan-Meier estimate.

[†] HRs and 95% CIs are based on a stratified Cox proportional hazards regression model, stratified by baseline Eastern Cooperative Oncology Group performance status, region, and liver metastases per interactive web response system; reference is nab-paclitaxel and gemcitabine.

[‡] 95% CIs are calculated using the Clopper–Pearson method.

[§] ORs, 95% CIs, and p values are obtained using the Cochran–Mantel–Haenszel method, adjusted by baseline Eastern Cooperative Oncology Group performance status, region, and liver metastases per interactive web response system; reference is nab-paclitaxel and gemcitabine.

[¶] Duration of response was limited to responders.

^{//} Included are 68 patients (18%) in the NALIRIFOX group and 64 (17%) in the nab-paclitaxel and gemcitabine group who did not have an assessment after the baseline visit.

Table 3:

Duration of treatment, exposure, and overview of TEAEs in the safety population.

	NALIRIFOX (n=370)	Nab-paclitaxel and gemcitabine (n=379)
Median duration of treatment, weeks	24.3 (0.4–100.9; 8.4–42.1)	17.6 (0.7–81.7; 8.1–30.1)
Median number of treatment cycles	5.0 (1–24; 2–10)	4.0 (1–20; 2–7)
Any dose reductions	220 (60%)	204 (54%)
TEAEs		
Any TEAE	369 (>99%)	376 (99%)
Any treatment-related TEAE	352 (95%)	352 (93%)
Grade 3 TEAE	322 (87%)	326 (86%)
Grade 3 treatment-related TEAE	262 (71%)	258 (68%)
Any TEAE leading to discontinuation	118 (32%)	112 (30%)
Any treatment-related TEAE leading to discontinuation	94 (25%)	88 (23%)
Any TEAE leading to dose reduction	208 (56%)	190 (50%)
Any treatment-related TEAE leading to dose reduction	198 (54%)	184 (49%)
Any serious TEAEs	201 (54%)	195 (52%)
Any treatment-related serious TEAEs	98 (27%)	72 (19%)
TEAEs leading to death	22 (6%)	23 (6%)
Treatment-related TEAEs leading to death	6 (2%)	8 (2%)
TEAEs of grade 3–4 occurring in 5% of patients in either treatment arm		
Diarrhoea	75 (20%)	17 (5%)
Nausea	44 (12%)	10 (3%)
Vomiting	26 (7%)	8 (2%)
Decreased appetite	32 (9%)	10 (3%)
Hypokalaemia	56 (15%)	15 (4%)
Fatigue	23 (6%)	20 (5%)
Asthenia	33 (9%)	19 (5%)
Neutropenia	52 (14%)	93 (25%)
Neutrophil count decreased	36 (10%)	51 (14%)
Anaemia	39 (11%)	66 (17%)
Peripheral neuropathy	12 (3%)	22 (6%)
Increased γ -glutamyltransferase	23 (6%)	21 (6%)

Data are median (range; IQR) or n (%). NALIRIFOX=liposomal irinotecan in combination with fluorouracil, leucovorin, and oxaliplatin. TEAE=treatment-emergent adverse event.