

UCLA

UCLA Previously Published Works

Title

Mechanisms of Linezolid Resistance among Coagulase-Negative Staphylococci Determined by Whole-Genome Sequencing

Permalink

<https://escholarship.org/uc/item/50f3d8ph>

Journal

mBio, 5(3)

ISSN

2161-2129

Authors

Tewhey, Ryan
Gu, Bing
Kelesidis, Theodoros
et al.

Publication Date

2014-07-01

DOI

10.1128/mbio.00894-14

Peer reviewed

Mechanisms of Linezolid Resistance among Coagulase-Negative Staphylococci Determined by Whole-Genome Sequencing

Ryan Tewhey,^{a,b} Bing Gu,^c Theodoros Kelesidis,^d Carmen Charlton,^{e,f} April Bobenchik,^e Janet Hindler,^e Nicholas J. Schork,^g Romney M. Humphries^e

Department of Organismic and Evolutionary Biology, Harvard University, Cambridge, Massachusetts, USA^a; The Broad Institute of Massachusetts Institute of Technology and Harvard, Cambridge, Massachusetts, USA^b; Department of Laboratory Medicine, the First Affiliated Hospital of Nanjing Medical University, Nanjing, China^c; UCLA David Geffen School of Medicine, Division of Infectious Diseases, Los Angeles, California, USA^d; UCLA David Geffen School of Medicine, Department of Pathology and Laboratory Medicine, Los Angeles, California, USA^e; Alberta Health Services, Edmonton, Alberta, Canada^f; Scripps Translational Research Institute, the Scripps Research Institute, San Diego, California, USA^g

ABSTRACT Linezolid resistance is uncommon among staphylococci, but approximately 2% of clinical isolates of coagulase-negative staphylococci (CoNS) may exhibit resistance to linezolid (MIC, ≥ 8 $\mu\text{g/ml}$). We performed whole-genome sequencing (WGS) to characterize the resistance mechanisms and genetic backgrounds of 28 linezolid-resistant CoNS (21 *Staphylococcus epidermidis* isolates and 7 *Staphylococcus haemolyticus* isolates) obtained from blood cultures at a large teaching health system in California between 2007 and 2012. The following well-characterized mutations associated with linezolid resistance were identified in the 23S rRNA: G2576U, G2447U, and U2504A, along with the mutation C2534U. Mutations in the L3 and L4 riboproteins, at sites previously associated with linezolid resistance, were also identified in 20 isolates. The majority of isolates harbored more than one mutation in the 23S rRNA and L3 and L4 genes. In addition, the *cf*r methylase gene was found in almost half (48%) of *S. epidermidis* isolates. *cf*r had been only rarely identified in staphylococci in the United States prior to this study. Isolates of the same sequence type were identified with unique mutations associated with linezolid resistance, suggesting independent acquisition of linezolid resistance in each isolate.

IMPORTANCE Linezolid is one of a limited number of antimicrobials available to treat drug-resistant Gram-positive bacteria, but resistance has begun to emerge. We evaluated the genomes of 28 linezolid-resistant staphylococci isolated from patients. Multiple mutations in the rRNA and associated proteins previously associated with linezolid resistance were found in the isolates investigated, underscoring the multifocal nature of resistance to linezolid in *Staphylococcus*. Importantly, almost half the *S. epidermidis* isolates studied harbored a plasmid-borne *cf*r RNA methylase gene, suggesting that the incidence of *cf*r may be higher in the United States than previously documented. This finding has important implications for infection control practices in the United States. Further, *cf*r is commonly detected in bacteria isolated from livestock, where the use of phenicols, lincosamides, and pleuromutilins in veterinary medicine may provide selective pressure and lead to maintenance of this gene in animal bacteria.

Received 30 January 2014 Accepted 27 March 2014 Published 13 May 2014

Citation Tewhey R, Gu B, Kelesidis T, Charlton C, Bobenchik A, Hindler J, Schork NJ, Humphries RM. 2014. Mechanisms of linezolid resistance among coagulase-negative staphylococci determined by whole-genome sequencing. *mBio* 5(3):e00894-14. doi:10.1128/mBio.00894-14.

Editor Karen Bush, Indiana University Bloomington

Copyright © 2014 Tewhey et al. This is an open-access article distributed under the terms of the [Creative Commons Attribution-Noncommercial-ShareAlike 3.0 Unported license](https://creativecommons.org/licenses/by-nc-sa/4.0/), which permits unrestricted noncommercial use, distribution, and reproduction in any medium, provided the original author and source are credited.

Address correspondence to Romney M. Humphries, rhumphries@mednet.ucla.edu.

Linezolid is an oxazolidinone with activity against Gram-positive pathogens, including methicillin-resistant *Staphylococcus aureus* (MRSA) and methicillin-resistant coagulase-negative staphylococci (CoNS) (1). Fourteen years after its approval for clinical use in the United States, linezolid remains highly active against clinical isolates of *S. aureus* and CoNS, with >99% and 98% susceptibility reported from surveillance studies, respectively (2). Nonetheless, linezolid-resistant staphylococci have been reported worldwide (2).

Linezolid exerts bacteriostatic activity via protein synthesis inhibition, by reversibly binding and blocking the ribosomal peptidyl transferase center (PTC) (3). Modification of the ribosome at the PTC, commonly by mutation of the V domain of the 23S rRNA, is associated with resistance in clinical isolates of staphylo-

cocci (4, 5). The most common mutation at this site is G2576U (2, 6, 7). Other mutations, such as G2447U, C2461U, U2500A, G2534U, G2603U, and U2504A, have also been identified in linezolid-resistant staphylococci (2). A dosage effect has been described for mutations in the 23S rRNA, whereby the number of mutated rRNA copies is directly related to linezolid MIC (8). Linezolid resistance has also been associated with mutations in the ribosomal L3 and L4 proteins (3). In addition, acquisition of the 23S rRNA methyltransferase gene *cf*r can also provide resistance via modification of A2503 in domain V of the 23S rRNA, thereby impeding binding of linezolid along with the phenicol, lincosamide, pleuromutilin, and streptogramin A and the 16-member ring macrolides to the ribosome (9–11). Isolates that carry *cf*r may test linezolid susceptible (12) or resistant.

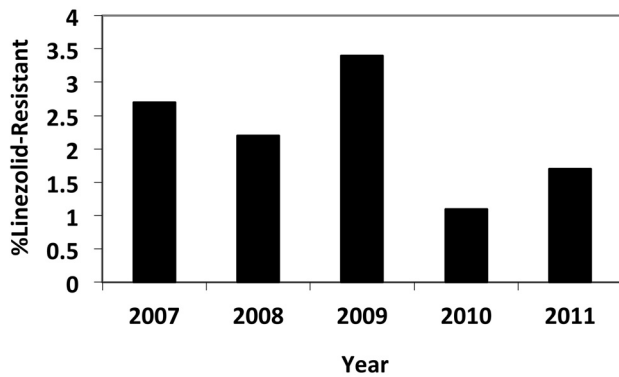


FIG 1 Incidence of linezolid resistance among clinically significant coagulase-negative staphylococci isolated from blood. Data represent one isolate per patient.

In this study, we investigated the incidence of linezolid resistance among CoNS isolated from blood at a large tertiary-care hospital and an acute-care hospital in the United States. A collection of linezolid-resistant CoNS (LRCoNS) from 28 patients were evaluated for mechanisms of linezolid resistance and evidence of clonal spread.

RESULTS

Characterization of LRCoNS isolated from blood over a 5-year period. During the study period of 2007 to 2012, we identified 47 patients with LRCoNS isolated from blood cultures, yielding an annual incidence of linezolid resistance between 1.2 and 3.2% (Fig. 1). No temporal trend was noted. Twenty-eight LRCoNS were available for further characterization, and chart reviews were performed for these patients. Twenty-one isolates (75%) were identified as *Staphylococcus epidermidis* and 7 (25%) as *Staphylococcus haemolyticus*.

The median patient age was 65 years (range, 17 to 97), and 21 (75%) were female. Prior infection with a multidrug-resistant organism (e.g., MRSA, extended-spectrum-beta-lactamase-expressing *Enterobacteriaceae*, or vancomycin-resistant *Enterococcus*) was noted in 25 (89%) patients. Comorbidities included renal disease ($n = 8$; 29%), diabetes ($n = 6$; 21.4%), organ transplantation ($n = 5$; 17.9%), and liver disease ($n = 3$; 10.7%). All patients except for one (patient 17) were hospitalized, with a mean duration of 38.5 days (range, 0 to 135 days) prior to the isolation of LRCoNS (Table 1). For six patients, LRCoNS was isolated on the first day of hospitalization (Table 1). Linezolid was administered to 27 patients (96.4%) in the 3 months prior to isolation of LRCoNS (Table 1), with a mean treatment duration of 16 days

TABLE 1 Linezolid use and linezolid MICs

Case	Date LRCoNS was isolated (mo/yr)	Linezolid MIC ($\mu\text{g/ml}$)	Hospital day LRCoNS was isolated	No. of days of prior linezolid exposure
<i>S. epidermidis</i>				
1	1/2010	128	19	8
2	2/2011	256	7	7
3	3/2011	>256	37	9
4	6/2011	32	120	28
5	7/2011	8	1	20
6	9/2011	128	1	6
7	5/2007	16	20	6
13	11/2007	8	12	17
14	4/2008	>256	1	14
15	6/2008	>256	Outpatient	14
17	6/2008	32	84	24
18	8/2008	32	5	24
19	8/2008	32	135	7
20	10/2008	128	23	21
21	11/2008	32	97	22
22	11/2008	16	21	80
23	12/2008	>256	41	19
25	9/2009	>256	19	3
26	10/2009	64	64	31
27	9/2009	32	25	9
28	10/2009	128	9	3
<i>S. haemolyticus</i>				
8	5/2007	64	64	42
9	4/2007	64	32	9
10	10/2007	64	1	17
11	10/2007	64	1	0
12	10/2007	128	57	30
16	7/2008	64	1	ND ^a
24	7/2009	64	123	23
Avg (SD)			38.5 (41.7)	16 (10)

^a ND, no data.

(range, 0 to 42 days). Patient 13 (Table 1) had no documented exposure to linezolid. In all cases, linezolid use was parenteral.

Genetic backgrounds of LRCoNS. Six MLST sequence types (ST) were identified for the *S. epidermidis* isolates, including ST5 (4 isolates), ST23 (9 isolates), ST24 (1 isolate), ST185 (1 isolate), ST186 (5 isolates), and one 186-like ST (1 isolate) (Fig. 2A). Evaluation of the WGS data showed fine-resolution heterogeneity within sequence types; isolates within the same sequence type had an average of 33 single-nucleotide variants (SNVs) relative to other isolates in that ST (range, 12 to 52 SNVs). In contrast, across sequence types, isolates differed by an average of 6,229 SNVs (range, 10 to 8,812) (Fig. 2A). Isolates in ST5 were all recovered from patients in the same calendar year, whereas ST23 was isolated over a 3- to 5-year period (Table 2). However, no given ST predominated in any given study year (Table 2).

As no MLST database exists at present for *S. haemolyticus*, isolates were evaluated by WGS data alone, which indicated that all seven of the *S. haemolyticus* isolates were nearly identical (Fig. 2B). These isolates were predominantly isolated in 2007 (Table 2), with one isolate recovered in 2008 and one isolate recovered in 2009.

Resistance mechanism of LRCoNS isolates. WGS was used to evaluate the putative resistance mechanisms present in the 28 LRCoNS isolates. Polymorphisms to the domain V region of 23S rRNA were identified in 14 (62%) of *S. epidermidis* and 7 (100%) of *S. haemolyticus* isolates. The polymorphisms identified included G2576U (9/28 isolates; 32%), G2447U (8/28 isolates; 28%) and U2504A (7/28 isolates; 25%); these polymorphisms have all been clearly associated with linezolid resistance (3). The mutation C2534U was also identified in 68% of the isolates studied (19/28 isolates; 68%). While C2534U has been reported by others in linezolid-resistant staphylococci (3), the role of this polymorphism in linezolid resistance is not well characterized, and it is typically found in isolates that harbor other mutations, either in the V domain or to the L3 and L4 ribosomal proteins, as was the case in our study (Table 2). All *S. haemolyticus* isolates harbored all 4 23S mutations (G2576U, G2447U, U2504A, and C2534U) in all copies of the 23S rRNA (Table 2). Only three *S. epidermidis* isolates harbored 23S rRNA mutations known to be associated with linezolid resistance: isolates 19 and 22 had the G2576U mutation in all copies of the 23S rRNA, and isolate 15 had the G2447U mutation in all copies. In contrast, 20 to 100% of 23S rRNA copies harbored the C2534U mutation in 12 *S. epidermidis* isolates with this mutation (Table 2).

rplC, *rplD*, and *rplV* sequences were investigated for predicted mutations in L3, L4, and L22 ribosomal proteins, respectively. Alterations to L3 and/or L4 were identified in all but 2 *S. epidermidis* isolates but in only one *S. haemolyticus* isolate (Table 2). Only synonymous mutations were identified in *rplV* among the isolates investigated (data not shown). Single-nucleotide variants predicted to encode the following mutations were identified in *rplC* (Table 2): H146Q (10 isolates), V154L (11 isolates), A157R (12 isolates), D159L (7 isolates), and G139R (1 isolate). Two mutations were identified in *rplD*: insertion of an asparagine at position 71 (11 isolates) and K68N (1 isolate) (Table 2). These sites are in close proximity to the linezolid binding site in the ribosome, and mutations at these sites have been described in other studies of linezolid-resistant staphylococci (3). However, site-directed mutagenesis experiments have not been performed that conclusively attribute linezolid resistance to these mutations.

The presence of a *cfr* gene was found in 10 *S. epidermidis* iso-

lates (Table 2). Evaluation of WGS data indicated the *cfr* gene was present on two different plasmids in our sample collection, a large (17-kb) plasmid with 70% homology to the *cfr*-carrying plasmid, pSCFS1, identified in *Staphylococcus sciuri* (13), and a small (2.8- to 3.8-kb) plasmid with homology to the *cfr*-carrying plasmid identified in *Staphylococcus cohnii* (14). The large plasmid was >99.9% identical between isolates 8, 15, 21, 23, and 31, and the small plasmid was 100% identical between isolates 3, 4, 17, 26, and 28. The large plasmid was identified only in ST23, and each isolate was estimated to have 2 to 10 copies of the plasmid per cell, based on WGS read coverage data. In contrast, the small plasmid was found in ST5, ST24, and ST186 (Table 2). The copy number of the small plasmid was estimated to be 1 to 4, based on coverage data. We cannot exclude the possibility of a chromosomal integration of this plasmid in isolate 2 from the WGS data, as it carries multiple transposases complicating *de novo* assembly, and integration of the *cfr* plasmid in *S. aureus* has been reported (15). Regardless, linezolid MICs were significantly higher for isolates that harbored *cfr* than for those that did not carry this gene (Table 2) (modal MIC, >256 $\mu\text{g}/\text{ml}$ versus 64 $\mu\text{g}/\text{ml}$; $P < 0.01$). Interestingly, linezolid MICs were also significantly higher among isolates that carried the small *cfr* plasmid than among those that carried the large *cfr* plasmid (modal MIC, >256 $\mu\text{g}/\text{ml}$ versus 128 $\mu\text{g}/\text{ml}$; $P < 0.001$). All isolates with the small *cfr* plasmid also harbored ribosomal mutations putatively associated with linezolid resistance: C2534T, an asparagine inserted at position 71 in L4, and the mutations V154L and A157R in L3. The mutation H146Q in L3 was additionally present in four of these isolates (Table 2). These same ribosomal mutations were identified in five *S. epidermidis* isolates in the absence of *cfr* (isolates 1, 4, 21, 26 and 27) (Table 2), and lower linezolid MICs were noted in these isolates (modal MIC, 32 versus >256 $\mu\text{g}/\text{ml}$; $P < 0.001$). These findings reinforce the additive nature of resistance to linezolid, via these three mechanisms.

Isolates 13, 18, and 28, all of ST23, carried *cfr* on the large plasmid and harbored identical alterations to the 23S, L3, and L4 genes (Table 2). No epidemiological link could be found between the three patients from whom these isolates were recovered. The patients were located at two different facilities, our acute-care hospital and our tertiary-care facility. Interestingly, linezolid MICs for these isolates were 32, 8, and 128 $\mu\text{g}/\text{ml}$, respectively. No mutations in or proximal to the *cfr* gene were identified in isolates 13 or 18 compared to isolate 28, nor was there an obvious difference in plasmid copy number between the isolates, suggesting that additional factors may impact linezolid MIC in these isolates. Evaluation of the WGS data did not reveal any apparent differences at the level that might result in these disparate MICs. All MICs for these isolates were confirmed in duplicate.

All seven of the *S. haemolyticus* isolates were nearly identical, based on WGS data, with the core genes having between 7 and 36 SNVs during cross-comparisons. All isolates harbored identical mutations associated with linezolid resistance. Five of the isolates were recovered in 2007, with three (patients 10, 11, and 12) isolated over an 11-day time period. All five patients were at the same facility but in different wards of the hospital. The sixth and seventh *S. haemolyticus* isolates (from patients 16 and 24) were isolated one and two years later, respectively, at the acute-care hospital.

No chromosomal mutations in efflux genes capable of exporting linezolid or their upstream regions were identified in any of the isolates investigated. Others have reported such mutations as-

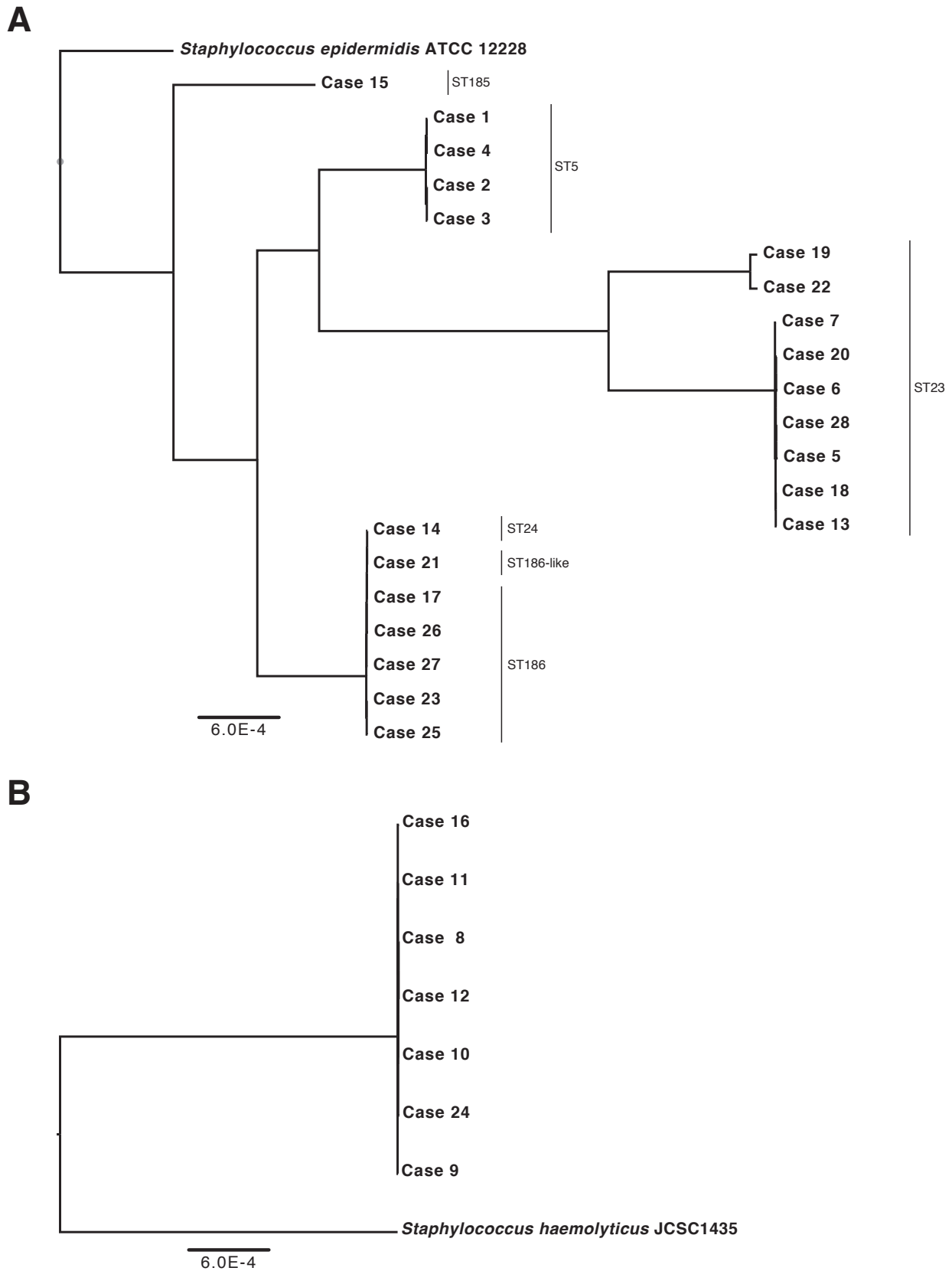


FIG 2 Dendrogram of WGS results for 21 linezolid-resistant *S. epidermidis* isolates (A) and 7 linezolid-resistant *S. haemolyticus* isolates (B). Phylogenetic trees were constructed by aligning the core coding genome of both the *S. epidermidis* and *S. haemolyticus* isolates separately.

TABLE 2 Genetic characteristics of LRCoNS ($n = 28$)

Case	Species	ST	<i>cfr</i>	<i>cfr</i> plasmid	% of 23S rRNA copies harboring SNV				L3 mutation(s)	L4 mutation	Linezolid MIC ($\mu\text{g/ml}$) ^a
					G2576U	C2534U	G2447U	U2504A			
1	<i>S. epidermidis</i>	5			0	20	0	0	H146Q, V154L, A157R	71 N	128
2		5	Present	Small ^b	0	20	0	0	H146Q, V154L, A157R	71 N	256
3		5	Present	Small	0	20	0	0	H146Q, V154L, A157R	71 N	>256
4		5			0	20	0	0	H146Q, V154L, A157R	71 N	32
6		23	Present	Large ^c	0	0	0	0	D159L		128
7		23			0	0	0	0	D159L	K68N	16
19		23			100	100	0	0			32
20		23	Present	Large	0	0	0	0	D159L		128
5		23			0	0	0	0	D159L		8
13		23	Present	Large	0	0	0	0	D159L		8
18		23	Present	Large	0	0	0	0	D159L		32
28		23	Present	Large	0	0	0	0	D159L		128
22		23			100	0	0	0			16
14		24	Present	Small	0	40	0	0	H146Q, V154L, A157R	71 N	>256
15		185			0	0	100	0	A157R		>256
27		186			0	40	0	0	H146Q, V154L, A157R	71 N	32
23		186	Present	Small	0	40	0	0	V154L, A157R	71 N	>256
17		186			0	40	0	0	H146Q, V154L, A157R	71 N	32
25		186	Present	Small	0	40	0	0	H146Q, V154L, A157R	71 N	>256
26		186			0	40	0	0	H146Q, V154L, A157R	71 N	64
21		186-like			0	40	0	0	H146Q, V154L, A157R	71 N	32
8	<i>S. haemolyticus</i>				100	100	100	100			64
10					100	100	100	100			64
24					100	100	100	100			64
11					100	100	100	100			64
12					100	100	100	100			128
16					100	100	100	100	G139R		64
9					100	100	100	100			64

^a Determined by broth microdilution.

^b Small (2.8- to 3.8-kb) plasmid with homology to the *cfr*-carrying plasmid identified in *Staphylococcus cohnii* (14).

^c Large (17-kb) plasmid with 70% homology to the *cfr*-carrying plasmid pSCFS1, identified in *Staphylococcus sciuri* (13).

sociated with increased expression and linezolid resistance, in *Streptococcus pneumoniae* (16) and *S. aureus* (17). The presence of *vgaA* and *vgaB* was investigated in the whole-genome data, and two isolates (19 and 22) harbored *vgaB*.

DISCUSSION

CoNS are common causes of various types of infections, including bloodstream infections, some of which are health care associated (18, 19). Increasing antibiotic resistance, in *S. epidermidis* and *S. haemolyticus* in particular, has led to limited therapeutic options for treatment of infections caused by these organisms (20). In addition, *S. haemolyticus* can frequently be non-vancomycin susceptible, further limiting available treatments. We identified an overall 1.2 to 3.2% annual incidence of linezolid resistance in blood isolates of CoNS. This incidence rate parallels that reported by surveillance studies in the United States (21–24). Importantly, linezolid resistance may emerge in CoNS after only short treat-

ment courses with linezolid, in the range of days. In contrast, linezolid resistance in *S. aureus* occurs only after months of therapy (2). In our study, patients were exposed to linezolid for an average of 16.9 days prior to the isolation of a resistant isolate (Table 1). This rapid acquisition of linezolid resistance may relate to the highly plastic nature of the *S. epidermidis* genome, which is driven largely by insertion sequences and other mobile genetic elements (25). Over the 5-year study period, the laboratory identified only a single linezolid-resistant *S. aureus* isolate (data not shown).

Linezolid-resistant isolates of the same ST with identical linezolid resistance mechanisms (i.e., isolates 13, 18, and 28) were isolated from patients over a 3-year period and across two geographically distant hospitals, indicating that LRCoNS may persist within and across the health care system for extended periods of time. Such persistence of LRCoNS has been reported by others (21, 26). As infection control practices for MRSA, such as contact

precautions, are not used for CoNS, even MDR isolates, LRCoNS may go unnoticed in various health care settings.

Unlike prior studies, where ST2 was predominant among linezolid-resistant *S. epidermidis* strains (27), 42% of the linezolid-resistant *S. epidermidis* isolates investigated herein were ST23, and no isolates were ST2 (Table 2). The majority of isolates investigated harbored one or more SNVs in the domain V region of the 23S rRNA. The most common mutation identified was C2534T, which has been observed in other LRCoNS in the United States (27) and is not clearly associated with linezolid resistance. In contrast, only two *S. epidermidis* isolates harbored the G2576T mutation, which is frequently reported among linezolid-resistant staphylococci (2). Interestingly, mutations in the 23S rRNA were more frequent among *S. haemolyticus* isolates than *S. epidermidis* isolates, in terms of both the number of SNVs identified and the percentage of copies affected (Table 2). 23S rRNA mutations in domain V are known to confer growth defects in other Gram-positive bacteria, and it is possible that these mutations are less costly, from a fitness perspective, to *S. haemolyticus* than *S. epidermidis*. Alternatively, one or more of the 4 mutations in the 23S rRNA identified in the *S. haemolyticus* isolates here may compensate for growth defects caused by others. However, as the *S. haemolyticus* isolates in this study appear to be a single clone, this finding needs to be validated across a larger number of isolates. Nonetheless, the fact that an *S. haemolyticus* strain was isolated 2 years after the cluster of isolates identified in 2007 suggests persistence of the clone and stable incorporation of linezolid resistance determinants over extended periods of time. In contrast, nearly all (19/21 isolates) *S. epidermidis* isolates harbored one or more mutations in the L3 and/or L4 proteins, whereas only one *S. haemolyticus* isolate harbored an L3 mutation (Table 2). An L3 mutation was shown to compensate for growth defects associated with 23S mutations in *Streptococcus pneumoniae* (28). As only 2 *S. epidermidis* isolates harbored 23S mutations in the absence of an L3 mutation, this may similarly indicate a cost disadvantage to 23S mutations in *S. epidermidis*. Importantly, others have shown that linezolid-susceptible *S. epidermidis* isolates do not exhibit L3/L4 mutations, suggesting that the observed alterations are not naturally occurring polymorphisms and may not provide any additional benefits in this highly variable bacterium (27).

While mutations in the 23S rRNA are the most common mechanism of resistance, mutations in the L3 and L4 proteins are increasingly associated with linezolid resistance. In this study, we identified several strains with mutations in the ribosomal proteins putatively associated with linezolid resistance; two linezolid-resistant isolates harbored only a mutation in L3 and/or L4. Isolate 7 harbored a single L3 mutation, D159L, and isolate 9 harbored mutations only in L3 (D159L) and L4 (K68N). While the linezolid MICs for these isolates were low, 8 and 16 $\mu\text{g/ml}$, respectively (Table 2), compared to other LRCoNS investigated herein, L3 and L4 mutations in the absence of mutations of the primary target site of linezolid (23S V domain) may confer resistance.

Unlike a prior study, where *cfr* was not identified in 40 linezolid-resistant *S. epidermidis* isolates obtained in the United States between 2004 and 2007 (27), nearly half (48%) of the *S. epidermidis* isolates investigated in our study harbored a *cfr* gene. This was an important finding, in the context that only a single other *cfr*-positive strain (an *S. aureus* isolate) has been identified to our knowledge in the same geographical area as our study (29). *cfr* has been identified in a number of both Gram-positive and Gram-

negative bacteria isolated from clinical, veterinary, and environmental Gram-positive and Gram-negative bacteria (30). This spread is attributed to the low fitness cost of the gene in Gram-positive bacteria, coupled with not only selective pressure of antimicrobials used in human medicine but also the use of phenicols, lincosamides, and pleuromutilins in veterinary medicine. Animal isolates of *Staphylococcus* may be an important reservoir of *cfr*. *cfr* was associated with the highest linezolid MICs, with the exception of isolates 13 and 18, which had linezolid MICs of 8 and 32 $\mu\text{g/ml}$, respectively (Table 2). These two isolates also had only one ribosomal mutation, D159L, in L3. Indeed, only two *S. epidermidis* isolates without *cfr*, isolates 1 and 15, had a linezolid MIC of $>64 \mu\text{g/ml}$. Isolate 1 had mutations in both L3 (H146Q, V154L, and A157R) and L4 (71N), along with the C2534U mutation in the 23S rRNA. This combination of mutations was found in 5 other isolates in our study and was associated with linezolid MICs ranging from 32 to 64 $\mu\text{g/ml}$ in these other isolates (Table 1). Similarly, others have reported such mutations in *S. epidermidis* in isolates with linezolid MICs of 16 $\mu\text{g/ml}$ by (31), and thus it is unclear why isolate 1 had a much higher MIC. In contrast, isolate 15 harbored a 23S G2447U mutation and L3_{A157R}. These two mutations were detected previously in *S. epidermidis* strain 1653059, which similarly has a documented linezolid MIC of 256 $\mu\text{g/ml}$ (32). Both mutations are thought to directly interfere with the key bases of the PTC that are targeted by linezolid.

Not all clonal isolates harbored identical mutations associated with linezolid resistance; for instance, ST23 isolates harbored 4 different ribosome-associated SNVs, plus *cfr* in only selected isolates (Table 2). This suggests the occurrence of independent mutational events, presumably following exposure to linezolid, rather than a single mutation event and subsequent spread throughout our health system that was maintained by widespread linezolid consumption in the environment.

In conclusion, we describe clinical and microbiological data for a series of LRCoNS from a tertiary-care and an acute-care center. These data contribute to the expanding knowledge of oxazolidone resistance mechanisms and incidence of linezolid resistance among CoNS. Furthermore, these findings underscore the need to develop strategies to prevent the emergence of linezolid resistance.

MATERIALS AND METHODS

Bacterial isolates and patient characteristics. Linezolid-resistant coagulase-negative staphylococci (LRCoNS) were identified through retrospective review of laboratory records between January 2007 and January 2012 for CoNS isolated from blood with a linezolid MIC of $\geq 8 \mu\text{g/ml}$. Linezolid susceptibility testing was routinely performed by the clinical laboratory on CoNS isolated from patients with ≥ 2 blood culture sets or upon physician request for CoNS isolated from a single blood culture set. Incidence of LRCoNS in blood cultures was calculated using the total number of single-patient CoNS bloodstream isolates with susceptibility test results as the denominator. Isolates were stored at room temperature on tryptic soy agar slants (BD, Sparks, MD) with mineral oil overlay for up to 2 years. All isolates were subcultured twice on sheep blood agar (BD) prior to testing in this study. Patient medical records were reviewed to determine patient demographics and linezolid exposures. This study was approved by the UCLA Institutional Review Board with exemption of informed consent, as this was a review of existing data.

Bacterial identification and antimicrobial susceptibility testing. Isolates were identified to the species level using Vitek2 GP cards (bioMérieux, Durham, NC).

Antimicrobial susceptibility testing was performed at the time of CoNS isolation from blood cultures by the reference broth microdilution

(BMD) method using panels prepared in house according to Clinical and Laboratory Standards Institute (CLSI) standards (33). All MICs were confirmed following storage using BMD with 2-fold dilutions of linezolid at concentrations ranging from 1 to 256 $\mu\text{g/ml}$. Linezolid resistance was defined as an MIC of $\geq 8 \mu\text{g/ml}$. Quality control was assessed using the strains *S. aureus* ATCC 29213 and *Enterococcus faecalis* ATCC 29212 (33).

Whole-genome sequencing. DNA preparation and sequencing were performed as previously described (34). Briefly, DNA was isolated from overnight cultures in tryptic soy broth (BD, Franklin Lakes, NJ) and extracted with a BIOstic DNA isolation kit (MO BIO Laboratories, Carlsbad, CA). Genomic DNA was sheared to an average size of 300 bp using a Covaris S2 instrument (Covaris, Woburn, MA). Illumina library creation was performed using a NEBNext master mix set (New England Biolabs, Ipswich, MA) with “bead carryover” between reactions as previously described (35). Equimolar concentrations of uniquely bar-coded samples were pooled and size selected on a 2% NuSieve GTG agarose gel (Lonza, Rockland, ME) followed by 4 cycles of PCR enrichment with Phusion polymerase. Library quantification was performed using a Qubit fluorometer (Life Technologies, Carlsbad, CA) and a Bioanalyzer 2100 instrument (Agilent Technologies, Santa Clara, CA) prior to sequencing on an Illumina HiSeq 2000 sequencer with v3 chemistry using 100-bp paired-end reads at a raw cluster density of $\sim 550,000$ clusters/ mm^2 .

Approximately 500 Mb of sequence data was obtained for each isolate. To determine the presence and absence of genes, *de novo* assembly was performed using the overlap consensus assembler Edena v3 using an overlap of 65 and a coverage cutoff at contig ends of 10 reads or greater (36). Assembled contigs are available upon request.

Identification of *cfr* was performed with BLAT by aligning the Cfr protein (accession no. A5HBL2) to the six *de novo* contigs, that were frame translated. For the identification of point mutations and small indels, reads were mapped with Stampy (37) using either *S. epidermidis* ATCC 12228 or *S. haemolyticus* JCSC 1435 as a reference. Mutations in *rplC*, *rplD*, and *rplV* were determined using SAMtools and custom Perl scripts, as previously described (34). For mutations in the 23S subunit, allele counts were summed across the five copies found in ATCC 12228. Copy number was estimated by calculating $5 \cdot A / (A + B)$ and rounding to the nearest integer, where *A* and *B* represent the number of reads corresponding to the alternate and reference allele, respectively. For the purpose of these calculations, the 23S operon copy number was assumed to be 5, although some strains of *S. epidermidis* may harbor 6 copies of the operon (38). Throughout the study, the numbering convention for the 23S mutations was based on *Escherichia coli* numbering, whereas L3 and L4 mutations were based on staphylococcal numbering.

Phylogenetic tree reconstruction. Phylogenetic trees were constructed by aligning the core coding genome of both the *S. epidermidis* and *S. haemolyticus* isolates separately. The annotated reference genomes *S. epidermidis* ATCC 12228 and *S. haemolyticus* JCSC 1435 were used as the starting seed for each respective species. Coding sequences were aligned to each of the draft assemblies using BWASW (39). Alignments were accepted if the gene was nonrepetitive (mapping score greater than or equal to 125) and had a sequence identity of $>90\%$. A total of 2,093 genes in the *S. epidermidis* and 2,219 in the *S. haemolyticus* met this criterion. Acceptable genes were concatenated end to end, producing a single continuous sequence for each isolate. Concatenated sequences were then aligned against each other using Fast statistical analysis (FSA), resulting in a multiple sequence alignment of the core genome (40). Phylogenetic trees were estimated using RAXML using 100 bootstraps and final trees drawn in FigTree (41).

Strain typing. *S. epidermidis* multilocus sequence typing (MLST) was performed by mapping all reported sequences deposited at <http://sepidermidis.mlst.net/> against the *de novo* contigs. Perfect matches were identified, and profiles were queried against the existing database for sequence type identification. The single *S. epidermidis* isolate labeled 186-like aligned with six of the seven loci of 186 in the database.

Nucleotide sequence accession number. Raw reads for all genomes have been deposited in the NCBI Sequence Read Archive, under accession number SRP039360.

REFERENCES

- Shinabarger D. 1999. Mechanism of action of the oxazolidinone antibacterial agents. *Expert Opin. Investig. Drugs* 8:1195–1202. <http://dx.doi.org/10.1517/13543784.8.8.1195>.
- Gu B, Kelesidis T, Tsiodras S, Hindler J, Humphries RM. 2013. The emerging problem of linezolid-resistant *Staphylococcus*. *J. Antimicrob. Chemother.* 68:4–11. <http://dx.doi.org/10.1093/jac/dks354>.
- Long KS, Vester B. 2012. Resistance to linezolid caused by modifications at its binding site on the ribosome. *Antimicrob. Agents Chemother.* 56:603–612. <http://dx.doi.org/10.1128/AAC.05702-11>.
- Tsiodras S, Gold HS, Sakoulas G, Eliopoulos GM, Wennersten C, Venkataraman L, Moellering RC, Ferraro MJ. 2001. Linezolid resistance in a clinical isolate of *Staphylococcus aureus*. *Lancet* 358:207–208. [http://dx.doi.org/10.1016/S0140-6736\(01\)05410-1](http://dx.doi.org/10.1016/S0140-6736(01)05410-1).
- Mazzariol A, Lo Cascio G, Kocsis E, Maccacaro L, Fontana R, Cornaglia G. 2012. Outbreak of linezolid-resistant *Staphylococcus haemolyticus* in an Italian intensive care unit. *Eur. J. Clin. Microbiol. Infect. Dis.* 31:523–527. <http://dx.doi.org/10.1007/s10096-011-1343-6>.
- Mendes RE, Deshpande LM, Farrell DJ, Spanu T, Fadda G, Jones RN. 2010. Assessment of linezolid resistance mechanisms among *Staphylococcus epidermidis* causing bacteraemia in Rome, Italy. *J. Antimicrob. Chemother.* 65:2329–2335. <http://dx.doi.org/10.1093/jac/dkq331>.
- Gales AC, Sader HS, Andrade SS, Lutz L, Machado A, Barth AL. 2006. Emergence of linezolid-resistant *Staphylococcus aureus* during treatment of pulmonary infection in a patient with cystic fibrosis. *Int. J. Antimicrob. Agents* 27:300–302. <http://dx.doi.org/10.1016/j.ijantimicag.2005.11.008>.
- Besier S, Ludwig A, Zander J, Brade V, Wichelhaus TA. 2008. Linezolid resistance in *Staphylococcus aureus*: gene dosage effect, stability, fitness costs, and cross-resistances. *Antimicrob. Agents Chemother.* 52:1570–1572. <http://dx.doi.org/10.1128/AAC.01098-07>.
- Toh SM, Xiong L, Arias CA, Villegas MV, Lolans K, Quinn J, Mankin AS. 2007. Acquisition of a natural resistance gene renders a clinical strain of methicillin-resistant *Staphylococcus aureus* resistant to the synthetic antibiotic linezolid. *Mol. Microbiol.* 64:1506–1514. <http://dx.doi.org/10.1111/j.1365-2958.2007.05744.x>.
- Kehrenberg C, Schwarz S, Jacobsen L, Hansen LH, Vester B. 2005. A new mechanism for chloramphenicol, florfenicol and clindamycin resistance: methylation of 23S ribosomal RNA at A2503. *Mol. Microbiol.* 57:1064–1073. <http://dx.doi.org/10.1111/j.1365-2958.2005.04754.x>.
- Smith LK, Mankin AS. 2008. Transcriptional and translational control of the *mlr* operon, which confers resistance to seven classes of protein synthesis inhibitors. *Antimicrob. Agents Chemother.* 52:1703–1712. <http://dx.doi.org/10.1128/AAC.01583-07>.
- Flamm RK, Farrell DJ, Mendes RE, Ross JE, Sader HS, Jones RN. 2012. LEADER surveillance program results for 2010: an activity and spectrum analysis of linezolid using 6801 clinical isolates from the United States (61 medical centers). *Diagn. Microbiol. Infect. Dis.* 74:54–61. <http://dx.doi.org/10.1016/j.diagmicrobio.2012.05.012>.
- Schwarz S, Werckenthin C, Kehrenberg C. 2000. Identification of a plasmid-borne chloramphenicol-florfenicol resistance gene in *Staphylococcus sciuri*. *Antimicrob. Agents Chemother.* 44:2530–2533. <http://dx.doi.org/10.1128/AAC.44.9.2530-2533.2000>.
- Mendes RE, Deshpande L, Rodriguez-Noriega E, Ross JE, Jones RN, Morfin-Otero R. 2010. First report of *Staphylococcal* clinical isolates in Mexico with linezolid resistance caused by *cfr*: evidence of *in vivo* *cfr* mobilization. *J. Clin. Microbiol.* 48:3041–3043. <http://dx.doi.org/10.1128/JCM.00880-10>.
- Locke JB, Rahawi S, Lamarre J, Mankin AS, Shaw KJ. 2012. Genetic environment and stability of *cfr* in methicillin-resistant *Staphylococcus aureus* CM05. *Antimicrob. Agents Chemother.* 56:332–340. <http://dx.doi.org/10.1128/AAC.05420-11>.
- Feng J, Lupien A, Gingras H, Wasserscheid J, Dewar K, Légaré D, Ouellette M. 2009. Genome sequencing of linezolid-resistant *Streptococcus pneumoniae* mutants reveals novel mechanisms of resistance. *Genome Res.* 19:1214–1223. <http://dx.doi.org/10.1101/gr.089342.108>.
- Floyd JL, Smith KP, Kumar SH, Floyd JT, Varela MF. 2010. LmrS is a multidrug efflux pump of the major facilitator superfamily from *Staphy-*

- lococcus aureus*. Antimicrob. Agents Chemother. 54:5406–5412. <http://dx.doi.org/10.1128/AAC.00580-10>.
18. Calderón-Jaimes E, Espinosa de los Monteros LE, Avila-Beltrán R. 2002. Epidemiology of drug resistance: the case of *Staphylococcus aureus* and coagulase-negative staphylococci infections. Salud Publica Mex. 44: 108–112. <http://dx.doi.org/10.1590/S0036-36342002000200004>.
 19. Potoski BA, Adams J, Clarke L, Shutt K, Linden PK, Baxter C, Pasculle AW, Capitano B, Peleg AY, Szabo D, Paterson DL. 2006. Epidemiological profile of linezolid-resistant coagulase-negative staphylococci. Clin. Infect. Dis. 43:165–171. <http://dx.doi.org/10.1086/505114>.
 20. Tegnell A, Grabowska K, Jacobsson A, Andersson M, Giesecke J, Ohman L. 2003. Study of developed resistance due to antibiotic treatment of coagulase-negative staphylococci. Microb. Drug Resist. 9:1–6. <http://dx.doi.org/10.1089/10766290322541838>.
 21. Farrell DJ, Mendes RE, Ross JE, Jones RN. 2009. Linezolid surveillance program results for 2008 (LEADER Program for 2008). Diagn. Microbiol. Infect. Dis. 65:392–403. <http://dx.doi.org/10.1016/j.diagmicrobio.2009.10.011>.
 22. Farrell DJ, Mendes RE, Ross JE, Sader HS, Jones RN. 2011. LEADER Program results for 2009: an activity and spectrum analysis of linezolid using 6,414 clinical isolates from 56 medical centers in the United States. Antimicrob. Agents Chemother. 55:3684–3690. <http://dx.doi.org/10.1128/AAC.01729-10>.
 23. Jones RN, Ross JE, Castanheira M, Mendes RE. 2008. United States resistance surveillance results for linezolid (LEADER Program for 2007). Diagn. Microbiol. Infect. Dis. 62:416–426. <http://dx.doi.org/10.1016/j.diagmicrobio.2008.10.010>.
 24. Pillar CM, Draghi DC, Sheehan DJ, Sahm DF. 2008. Prevalence of multidrug-resistant, methicillin-resistant *Staphylococcus aureus* in the United States: findings of the stratified analysis of the 2004 to 2005 LEADER Surveillance Programs. Diagn. Microbiol. Infect. Dis. 60: 221–224. <http://dx.doi.org/10.1016/j.diagmicrobio.2007.08.007>.
 25. Schoenfelder SM, Lange C, Eckart M, Hennig S, Kozytska S, Ziebuhr W. 2010. Success through diversity—how *Staphylococcus epidermidis* establishes as a nosocomial pathogen. Int. J. Med. Microbiol. 300:380–386. <http://dx.doi.org/10.1016/j.ijmm.2010.04.011>.
 26. Liakopoulos A, Spiliopoulou I, Damani A, Kanellopoulou M, Schoina S, Papafragas E, Marangos M, Fligou F, Zakyntinos E, Makris D, Protonotariou E, Tsiapara F, Filos K, Diza E, Anastassiou ED, Petinaki E. 2010. Dissemination of two international linezolid-resistant *Staphylococcus epidermidis* clones in Greek hospitals. J. Antimicrob. Chemother. 65:1070–1071. <http://dx.doi.org/10.1093/jac/dkq065>.
 27. Wong A, Reddy SP, Smyth DS, Agüero-Rosenfeld ME, Sakoulas G, Robinson DA. 2010. Polyphyletic emergence of linezolid-resistant staphylococci in the United States. Antimicrob. Agents Chemother. 54: 742–748. <http://dx.doi.org/10.1128/AAC.00621-09>.
 28. Billal DS, Feng J, Leprohon P, Légaré D, Ouellette M. 2011. Whole genome analysis of linezolid resistance in *Streptococcus pneumoniae* reveals resistance and compensatory mutations. BMC Genomics 12:512. <http://dx.doi.org/10.1186/1471-2164-12-512>.
 29. Flamm RK, Mendes RE, Ross JE, Sader HS, Jones RN. 2013. Linezolid surveillance results for the United States: LEADER surveillance program 2011. Antimicrob. Agents Chemother. 57:1077–1081. <http://dx.doi.org/10.1128/AAC.02112-12>.
 30. Shen J, Wang Y, Schwarz S. 2013. Presence and dissemination of the multiresistance gene *cf* in Gram-positive and gram-negative bacteria. J. Antimicrob. Chemother. 68:1697–1706. <http://dx.doi.org/10.1093/jac/dkt092>.
 31. Mendes RE, Deshpande LM, Costello AJ, Farrell DJ. 2012. Molecular epidemiology of *Staphylococcus epidermidis* clinical isolates from U.S. hospitals. Antimicrob. Agents Chemother. 56:4656–4661. <http://dx.doi.org/10.1128/AAC.00279-12>.
 32. Locke JB, Hilgers M, Shaw KJ. 2009. Mutations in ribosomal protein L3 are associated with oxazolidinone resistance in staphylococci of clinical origin. Antimicrob. Agents Chemother. 53:5275–5278. <http://dx.doi.org/10.1128/AAC.01032-09>.
 33. Clinical and Laboratory Standards Institute. 2012. Methods for dilution antimicrobial susceptibility tests for Bacteria that grow aerobically; approved standard, 9th ed. Clinical and Laboratory Standards Institute, Wayne, PA.
 34. Humphries RM, Kelesidis T, Tewhey R, Rose WE, Schork N, Nizet V, Sakoulas G. 2012. Genotypic and phenotypic evaluation of the evolution of high-level daptomycin nonsusceptibility in vancomycin-resistant *Enterococcus faecium*. Antimicrob. Agents Chemother. 56:6051–6053. <http://dx.doi.org/10.1128/AAC.01318-12>.
 35. Fisher S, Barry A, Abreu J, Minie B, Nolan J, Delorey TM, Young G, Fennell TJ, Allen A, Ambrogio L, Berlin AM, Blumenstiel B, Cibulskis K, Friedrich D, Johnson R, Juhn F, Reilly B, Shammas R, Stalker J, Sykes SM, Thompson J, Walsh J, Zimmer A, Zwirko Z, Gabriel S, Nicol R, Nusbaum C. 2011. A scalable, fully automated process for construction of sequence-ready human exome targeted capture libraries. Genome Biol. 12:R1. <http://dx.doi.org/10.1186/gb-2011-12-S1-P1>.
 36. Hernandez D, François P, Farinelli L, Osterás M, Schrenzel J. 2008. De novo bacterial genome sequencing: millions of very short reads assembled on a desktop computer. Genome Res. 18:802–809. <http://dx.doi.org/10.1101/gr.072033.107>.
 37. Lunter G, Goodson M. 2011. Stampy: a statistical algorithm for sensitive and fast mapping of Illumina sequence reads. Genome Res. 21:936–939. <http://dx.doi.org/10.1101/gr.111120.110>.
 38. Liakopoulos A, Neocleous C, Klapsa D, Kanellopoulou M, Spiliopoulou I, Mathiopoulos KD, Papafragas E, Petinaki E. 2009. A T2504A mutation in the 23S rRNA gene responsible for high-level resistance to linezolid of *Staphylococcus epidermidis*. J. Antimicrob. Chemother. 64:206–207. <http://dx.doi.org/10.1093/jac/dkp167>.
 39. Li H, Durbin R. 2009. Fast and accurate short read alignment with Burrows-Wheeler transform. Bioinformatics 25:1754–1760. <http://dx.doi.org/10.1093/bioinformatics/btp324>.
 40. Bradley RK, Roberts A, Smoot M, Juvekar S, Do J, Dewey C, Holmes I, Pachter L. 2009. Fast statistical alignment. PLoS Comput. Biol. 5:e1000392. <http://dx.doi.org/10.1371/journal.pcbi.1000392>.
 41. Stamatakis A, Ludwig T, Meier H. 2005. RAXML-III: a fast program for maximum likelihood-based inference of large phylogenetic trees. Bioinformatics 21:456–463. <http://dx.doi.org/10.1093/bioinformatics/bti191>.