

# UCLA

## UCLA Previously Published Works

### Title

A nonsynonymous mutation in PLCG2 reduces the risk of Alzheimer's disease, dementia with Lewy bodies and frontotemporal dementia, and increases the likelihood of longevity

### Permalink

<https://escholarship.org/uc/item/4w15z00t>

### Journal

Acta Neuropathologica, 138(2)

### ISSN

0001-6322

### Authors

van der Lee, Sven J  
Conway, Olivia J  
Jansen, Iris  
[et al.](#)

### Publication Date

2019-08-01

### DOI

10.1007/s00401-019-02026-8

Peer reviewed



# A nonsynonymous mutation in *PLCG2* reduces the risk of Alzheimer's disease, dementia with Lewy bodies and frontotemporal dementia, and increases the likelihood of longevity

Sven J. van der Lee<sup>1,2</sup> · Olivia J. Conway<sup>3</sup> · Iris Jansen<sup>1,4</sup> · Minerva M. Carrasquillo<sup>3</sup> · Luca Kleineidam<sup>5,6,7</sup> · Erik van den Akker<sup>8,9</sup> · Isabel Hernández<sup>10,11</sup> · Kristel R. van Eijk<sup>12</sup> · Najada Stringa<sup>13</sup> · Jason A. Chen<sup>14</sup> · Anna Zettergren<sup>15</sup> · Till F. M. Andlauer<sup>16,17,18</sup> · Monica Diez-Fairen<sup>19,20</sup> · Javier Simon-Sanchez<sup>21,22</sup> · Alberto Lleó<sup>11,23</sup> · Henrik Zetterberg<sup>24,25,26</sup> · Marianne Nygaard<sup>27</sup> · Cornelis Blauwendraat<sup>28</sup> · Jeanne E. Savage<sup>4</sup> · Jonas Mengel-From<sup>29</sup> · Sonia Moreno-Grau<sup>10</sup> · Michael Wagner<sup>5,6</sup> · Juan Fortea<sup>11,23</sup> · Michael J. Keogh<sup>30,31</sup> · Kaj Blennow<sup>24,25</sup> · Ingmar Skoog<sup>15</sup> · Manuel A. Friese<sup>18,32</sup> · Olga Pletnikova<sup>33</sup> · Miren Zulaica<sup>11,34</sup> · Carmen Lage<sup>11,35,36</sup> · Itziar de Rojas<sup>10,11</sup> · Steffi Riedel-Heller<sup>37</sup> · Ignacio Illán-Gala<sup>11,23</sup> · Wei Wei<sup>31</sup> · Bernard Jeune<sup>29</sup> · Adelina Orellana<sup>10,11</sup> · Florian Then Bergh<sup>18,38</sup> · Xue Wang<sup>3</sup> · Marc Hulsman<sup>1,2,9</sup> · Nina Beker<sup>1</sup> · Niccolo Tesi<sup>1,2,9</sup> · Christopher M. Morris<sup>39</sup> · Begoña Indakoetxea<sup>11,34,40</sup> · Lyduine E. Collij<sup>41</sup> · Martin Scherer<sup>42</sup> · Estrella Morenas-Rodríguez<sup>11,23</sup> · James W. Ironside<sup>43</sup> · Bart N. M. van Berckel<sup>41</sup> · Daniel Alcolea<sup>11,23</sup> · Heinz Wiendl<sup>18,44</sup> · Samantha L. Strickland<sup>3</sup> · Pau Pastor<sup>19,20</sup> · Eloy Rodríguez Rodríguez<sup>11,35,36</sup> · DESGESCO (Dementia Genetics Spanish Consortium), EADB (Alzheimer Disease European DNA biobank) · EADB (Alzheimer Disease European DNA biobank) · IFGC (International FTD-Genomics Consortium), IPDGC (The International Parkinson Disease Genomics Consortium) · IPDGC (The International Parkinson Disease Genomics Consortium) · RiMod-FTD (Risk and Modifying factors in Fronto-Temporal Dementia) · Netherlands Brain Bank (NBB) · Bradley F. Boeve<sup>45</sup> · Ronald C. Petersen<sup>45</sup> · Tanis J. Ferman<sup>46</sup> · Jay A. van Gerpen<sup>47</sup> · Marcel J. T. Reinders<sup>64</sup> · Ryan J. Uitti<sup>47</sup> · Lluís Tàrraga<sup>10,11</sup> · Wolfgang Maier<sup>5,6</sup> · Oriol Dols-Icardo<sup>11,23</sup> · Amit Kawalia<sup>7</sup> · Maria Carolina Dalmasso<sup>7,48</sup> · Mercè Boada<sup>10,11</sup> · Uwe K. Zettl<sup>18,49</sup> · Natasja M. van Schoor<sup>13</sup> · Marian Beekman<sup>8</sup> · Mariet Allen<sup>3</sup> · Eliezer Masliah<sup>50</sup> · Adolfo López de Munain<sup>11,34,51</sup> · Alexander Pantelyat<sup>52</sup> · Zbigniew K. Wszolek<sup>47</sup> · Owen A. Ross<sup>3</sup> · Dennis W. Dickson<sup>3</sup> · Neill R. Graff-Radford<sup>47</sup> · David Knopman<sup>45</sup> · Rosa Rademakers<sup>3</sup> · Afina W. Lemstra<sup>1</sup> · Yolande A. L. Pijnenburg<sup>1</sup> · Philip Scheltens<sup>1</sup> · Thomas Gasser<sup>53</sup> · Patrick F Chinnery<sup>31,54</sup> · Bernhard Hemmer<sup>17,18,55</sup> · Martijn A. Huisman<sup>13,56</sup> · Juan Troncoso<sup>33</sup> · Fermin Moreno<sup>11,34,40</sup> · Ellen A. Nohr<sup>57</sup> · Thorkild I. A. Sørensen<sup>58,59,60</sup> · Peter Heutink<sup>21,22</sup> · Pascual Sánchez-Juan<sup>11,35,36</sup> · Danielle Posthuma<sup>2,4</sup> · The GIFT (Genetic Investigation in Frontotemporal Dementia and Alzheimer's Disease) Study Group · Jordi Clarimón<sup>11,23</sup> · Kaare Christensen<sup>27,61,62</sup> · Nilüfer Ertekin-Taner<sup>3,47</sup> · Sonja W. Schulz<sup>28,52</sup> · Alfredo Ramirez<sup>5,7</sup> · Agustín Ruiz<sup>10,11</sup> · Eline Slagboom<sup>8,63</sup> · Wiesje M. van der Flier<sup>1</sup> · Henne Holstege<sup>1,2</sup>

Received: 23 March 2019 / Revised: 3 May 2019 / Accepted: 5 May 2019 / Published online: 26 May 2019  
© The Author(s) 2019

## Abstract

The genetic variant rs72824905-G (minor allele) in the *PLCG2* gene was previously associated with a reduced Alzheimer's disease risk (AD). The role of *PLCG2* in immune system signaling suggests it may also protect against other neurodegenerative diseases and possibly associates with longevity. We studied the effect of the rs72824905-G on seven neurodegenerative diseases and longevity, using 53,627 patients, 3,516 long-lived individuals and 149,290 study-matched controls. We replicated the association of rs72824905-G with reduced AD risk and we found an association with reduced risk of dementia with Lewy bodies (DLB) and frontotemporal dementia (FTD). We did not find evidence for an effect on Parkinson's disease

**Electronic supplementary material** The online version of this article (<https://doi.org/10.1007/s00401-019-02026-8>) contains supplementary material, which is available to authorized users.

Extended author information available on the last page of the article

(PD), amyotrophic lateral sclerosis (ALS) and multiple sclerosis (MS) risks, despite adequate sample sizes. Conversely, the rs72824905-G allele was associated with *increased* likelihood of longevity. By-proxy analyses in the UK Biobank supported the associations with both dementia and longevity. Concluding, rs72824905-G has a protective effect against multiple neurodegenerative diseases indicating shared aspects of disease etiology. Our findings merit studying the PLC $\gamma$ 2 pathway as drug-target.

**Keywords** Alzheimer's disease · Frontotemporal dementia · Dementia with Lewy bodies · Progressive supranuclear palsy · Parkinson's disease · Amyotrophic lateral sclerosis · Multiple sclerosis · Neurodegenerative disease · Longevity · PLCG2 · Phospholipase C Gamma 2

## Introduction

The protein product of the phospholipase C $\gamma$ 2 (*PLCG2*) gene is involved in the transmembrane transduction of immune signals [30, 42, 45] that determine the fate and function of various immune cell types, both in the periphery and the brain [42, 45]. It is known that gain-of-function mutations in the *PLCG2* gene cause autoimmune disorders [40, 46, 58, 59] and resistance to treatment of chronic lymphocytic leukemia [56].

In 2017, a genome-wide association (GWA) study of Alzheimer's disease (AD) showed that the rare nonsynonymous variant in the *PLCG2* gene (rs72824905-G; p.Pro522Arg; NC\_000016.9:g.81942028C > G) reduced AD risk (OR = 0.68,  $p = 5.4 \times 10^{-10}$ ) [47]. In both mouse and human brain tissues, *PLCG2* has been shown to be over-expressed > 6-log fold in microglia compared to other brain cells [12]. Further, *PLCG2* has higher expression levels in pathologically affected brain regions of AD patients, which seems to be driven by microgliosis [7]. Since microglia are the brain's immune cells, these findings suggest an important role for *PLCG2* in the neural immune response. Next to *PLCG2*, GWA studies of AD identified additional immune- and microglia-related genes that associate with AD, e.g. the triggering receptor expressed on myeloid cells 2 (*TREM2*) gene and pathway analysis based on these same GWA studies indicate that the immune system plays a key role in the development of AD [47]. Likewise, human genetic studies imply the immune system plays a role in other neurodegenerative diseases such as frontotemporal dementia (FTD) [3], Parkinson's disease (PD) [13], and multiple sclerosis (MS) [17, 20, 41]. We reasoned that next to AD, *PLCG2*-related immune signaling may be involved in the etiology of these other neurodegenerative diseases. This led us to question whether the rs72824905-G variant in *PLCG2* is also associated with a reduced risk of other neurodegenerative diseases.

Here, we tested whether rs72824905-G protects against other neurodegenerative diseases. We first tested whether rs72824905-G associates with reduced risk of AD, FTD, dementia with Lewy bodies (DLB), progressive supranuclear palsy (PSP), PD, amyotrophic lateral sclerosis (ALS) and MS. Since a reduced risk of neurodegenerative diseases

could lead to an increased likelihood to survive to old age, we tested whether rs72824905-G associated with longevity.

## Materials and methods

### Study populations and genotyping

We present a short description of 16 cohorts, often including multiple sites or studies, which contributed to this manuscript in Suppl. Table 1, Online Resource. Studies were approved by corresponding ethics committees and informed consent was obtained for all participants (Suppl. Table 1, Online Resource). Study characteristics (age, percentage female, apolipoprotein E (APOE) status and age) are described in Suppl. Table 2, Online Resource. In most cohorts, the average age of the controls was lower than that of cases (Suppl. Fig 3, Online Resource). We determined rs72824905-G genotypes (NC\_000016.9:g.81942028C > G, p.Pro522Arg) using direct genotyping with a variety of genotyping arrays or TaqMan genotyping. If direct genotyping was not available, we used imputation to 1000 Genomes phase I version 3 [15] or the Haplotype Reference Consortium (HRC) reference panels [37]. Details on genotyping or imputation by study can be found in Suppl. Table 3, Online Resource. We studied participants from European descent.

### Study populations of AD, FTD, DLB and PSP patients

We compared rs72824905-G genotypes in a total of 4,985 AD patients and 9,238 controls from eight cohorts. All samples were independent from Sims et al. [47], but include the samples from Conway et al. [7]. We compared in total 2,437 FTD patients with 10,647 controls from four studies and two consortia. Further, we studied 1446 DLB patients with 5509 controls from five cohorts and 882 PSP patients with 3187 controls from five cohorts. Details on sample size by cohort and which cohort contributed to which analysis can be found in Suppl. Table 2, Online Resource.

## Study populations of ALS, PD and MS patients

To study the association of rs72824905-G with ALS, PD and MS, we obtained summary statistics from existing GWAS meta-analyses, see Suppl. Table 1, 2, 3, Online Resource, for study descriptions. We present results of a combined total of 28,448 PD patients that were compared with 108,438 controls: data from 27,595 PD patients and 106,951 controls from the International Parkinson Disease Genomics Consortium (IPDGC) [39] were combined with data from 853 PD patients and 1,487 controls from the Mayo Clinic. Furthermore, we studied 10,953 ALS patients and 20,673 controls, which represents the subset of the data presented by van Rheenen et al. [54], for which rs72824905-G was imputed with sufficient quality (imputation quality > 0.3). Last, we studied 4476 MS patients and 5714 controls which were previously described by Dankowski et al. [8].

## Study populations of longevity

We investigated the association of rs72824905-G with longevity in five different cohorts; in total, we compared 3516 individuals who reached at least 90 years with 9677 control individuals who died before age 90 years or were last screened before 90 years (Suppl. Table 1–3, Online Resource). The data from Tesi et al. [51] were included in this study. A subset of 1136 Dutch long-lived individuals for whom follow-up data until death were available [22] was included. In this subset, we compared the survival of carriers of rs72824905-G with non-carriers.

## Studies of dementia and longevity by-proxy in the UK Biobank

The UK Biobank is a study of genetic and health of a half million people from the United Kingdom [49]. Information from parents or first-degree relatives can be used as a proxy-phenotype for the participants [34]. In this study, we used maternal and paternal history of Alzheimer's/dementia as proxy for dementia [34, 36] and the reported age of the parents (at completing the survey or death) as proxy phenotype for longevity [44]. In the UK Biobank, the rs72824905-G variant was imputed using the available genotyping arrays and the HRC-reference panel as previously described [25]. The maternal and paternal by-proxy phenotypes were analyzed separately using the genotypes of the participants and the results were meta-analyzed.

We compared rs72824905-G genotypes of 32,262 participants whose mother was reported to have dementia with the genotypes of 346,999 participants whose mothers did not have dementia. Likewise, we compared 16,968 participants whose father had dementia with 358,468 whose fathers did not have dementia.

For the analysis of longevity-by-proxy, we chose the age of 90 years as a cut-off for the minimum age reached by the parents. By principle, phenotype by-proxy analyses suffer from dilution effect [34, 36]; therefore, a more extreme parental age cut-off of 95 years was also studied. In this analysis, we compared 35,256 UK Biobank participants who had a mother who reached at least 90 years (7790 mothers reached the age of 95 years) with 342,810 participants whose mother did not reach 90 years of age. Likewise, we compared 17,558 UK Biobank participants with a father who reached at least 90 years (3,043 fathers reached the age of 95 years) with 353,100 participants whose father did not reach 90 years of age.

## Statistical analysis

R (version 3.5.1) was used for all analysis [50]. Logistic regression models were fitted within studies to assess the association of rs72824905-G with AD, FTD, DLB, and PSP patients, and long-lived individuals, compared to controls. For each study, we calculated the odds ratio's (OR) and 95% confidence intervals (CI). We accounted for population substructure by adjusting for principal components or by comparing cases and controls from the same study or country of origin. We meta-analyzed the effect estimates (log(OR)) from the studies using inverse-variance fixed-effect meta-analyses (R-package 'rmeta' v3.0). The fraction of variance that is due to heterogeneity was estimated by the  $I^2$  statistic [21]. We visualized survival of rs72824905-G carriers compared to non-carriers using Kaplan–Meier curves. Differences in survival were tested using a Cox proportional hazards model correcting for (age at inclusion, sex and relatedness).

For MS, the results originate from a single study, which used ancestry principal components (PCs) to adjust for population stratification [8]. The statistical methods of the GWAS meta-analyses of ALS and PD were previously described [39, 54]. In short, individual cohorts calculated logistic regression models and then summary statistics of cohorts were combined using inverse-variance fixed-effect meta-analyses. PCs were used to adjust for population stratification. Analysis in the UK Biobank were performed using logistic regression models adjusted for genotyping array and the first 12 PCs. Effect estimates of the paternal and maternal analysis were combined using inverse-variance fixed-effect meta-analysis (R-package 'rmeta' v3.0). We reported two-sided  $p$  values and considered  $p$  values < 0.05 as significant;  $p$  values are not corrected for multiple testing.

## Power analysis

For all diseases studied, we performed power analysis using the online tool Genetic Association Study (GAS) power

Calculator implementing the methods described in Skol et al. [48]. We calculated power of our analysis to attain a  $p$  value of 0.05 and used the total number of cases and controls from our analysis. We assumed an additive model, a minor allele frequency of 0.009 and a disease frequency of 0.01 for all diseases (higher disease frequency assumption would lead to higher power estimates). We report the power for an OR between 1 and 2. This corresponds to protective OR (the inverse OR = 1/OR) between 0.50 and 1.

## Results

An overview of study sample, contributing studies, corrections applied by study and counts of carriers split by case–control status is shown in Table 1.

### Association with brain diseases

We replicated the association of rs72824905-G in *PLCG2* with a reduced AD risk (OR = 0.57,  $p = 6.0 \times 10^{-4}$ ,  $I^2 = 0\%$ ). In addition, we found that rs72824905-G associated with a reduced risk of both DLB (OR = 0.54,  $p = 0.045$ ,  $I^2 = 0\%$ ) and FTD (OR = 0.61,  $p = 0.011$ ,  $I^2 = 0\%$ ). In contrast, we found no evidence that rs72824905-G is associated with PSP (OR = 1.46,  $p = 0.19$ ,  $I^2 = 0\%$ ), ALS (OR = 1.07,  $p = 0.52$ ,  $I^2 = 0\%$ ), PD (OR = 1.18,  $p = 0.10$ ,  $I^2 = 0\%$ ) and MS (OR = 0.99,  $p = 0.95$ ). The association of rs72824905-G with these seven brain diseases is shown in Fig. 1. In Suppl. Figs. 2–7, Online Resource, we show the association estimates for each study separately in the meta-analyses for AD, DLB, FTD, PSP, ALS and PD (the MS study consisted of a single study).

### Association with longevity

In line with a reduced risk of neurodegenerative diseases, we found that rs72824905-G associated with a 1.49 (95% CI 1.12–1.98) increased likelihood ( $p = 6.3 \times 10^{-3}$ ,  $I^2 = 0\%$ ) to reach the age of 90 years. Although no heterogeneity was observed between studies, it is of interest that a cohort of centenarians who were selected based on being 100 years old and cognitively healthy (description of ‘100-plus Study’ in Suppl. Table 1, Online Resource) was most enriched with rs72824905-G (OR = 2.36, 95% CI 1.34–4.15,  $p = 2.8 \times 10^{-3}$ ) (Suppl. Fig 8, Online Resource). Next, we tested whether carrying the rs72824905-G variant was associated with longer survival after the age of 90 years in 1,136 Dutch long-lived individuals of which 96.3% were followed until death [median age at inclusion 93.2, IQR 91.6–95.0 years, 63% female; mean survival after inclusion was 3.3 years; inter quartile range (IQR) 1.4–5.8 years]. We found that 28 carriers survived a median of 4.7 years

(IQR = 1.9–7.4) while 1108 non-carriers survived a median of 3.3 years (IQR = 1.4–5.8) (Suppl. Fig 9, Online Resource). However, the difference was not significant (HR 0.75, 95% CI 0.51–1.09,  $p = 0.078$ ), likely due to the low number of rs72824905-G carriers in the analysis, as a consequence of variant rareness (MAF ~ 1%).

### Association with by-proxy dementia and longevity

In line with the protection against AD, the by-proxy analysis showed that *PLCG2* variant carriers had a reduced risk of having a parent with dementia, OR = 0.88 (0.81–0.95,  $p = 1.9 \times 10^{-3}$ ) (Fig. 2). Next, we tested the association of rs72824905-G with longevity-by-proxy. Carriers of the rs72824905-G variant did not have an increased likelihood of having a parent who reached 90 years of age compared to non-carriers (OR = 1.05,  $p = 0.24$ ). However, carriers did have an increased likelihood of having a parent who reached 95 years (OR = 1.19,  $p = 2.1 \times 10^{-2}$ ). The threshold of 95 years was chosen as too few parents reached the age of 100 years.

### Power analysis

Power analysis (Suppl. Fig 10, Online Resource) showed that the PD, MS and ALS analysis had adequate statistical power (power > 0.8) to detect a protective association ( $p = 0.05$ ) with an OR ~ 0.68 (the OR for AD reported in Sims et al. [47]). The PSP analysis had the lowest statistical power (0.32 at the expected OR = 0.67).

## Discussion

A recent study showed the protective effect against AD risk of the p.Pro552Arg nonsynonymous amino acid change in *PLCG2* (rs72824905-G) [47]. We replicated this protective effect in independent AD patients and controls. Additionally, we found that the variant also protected against FTD and DLB, but *not* against ALS, PD and MS. The analysis of PSP was inconclusive because of insufficient power. We also found that rs72824905-G associated with increased likelihood of longevity, which is according to expectations, since overall dementia is the leading cause of death at older age [1]. Indeed, the strongest effect of *PLCG2* variant was observed in cognitively healthy centenarians, individuals where an absence of dementia and extreme longevity is combined. Our findings were supported by analyses of by-proxy phenotypes for dementia and longevity in the UK Biobank. Taken together, the association of the rs72824905-G variant with a decreased risk of multiple dementia types and the increased risk of longevity warrants thorough investigation

**Table 1** Study sample description

Trait	Consortium or combined cohort name	Studies/sites included	Corrections	Cases			Controls		
				N	N-carriers	MAF	N	N-carriers	MAF
AD	Amsterdam UMC	ADC, NBB, LASA	PC1-3	1893	24	0.63	2571	64	1.24
	Brain compendium	Keogh et al. [29]	None	277	0	0	362	6	0.83
	Mayo Clinic	Conway et al. [7]	None	1477	19	0.64	1487	29	0.98
	NDRU cohort	NDRU cohort	None	527	7	0.66	343	8	1.17
	Spanish cohorts	Valdecilla Cohort, Fundació ACE, Oviedo, Sant Pau (SPIN cohort), San Sebastian	None	23	0	0	746	10	0.67
	Swedish studies	GBC Studies, Clinical AD cohort sweden.	None	564	6	0.53	3480	61	0.88
	UCLA/UCSF GIFT	Chen et al. [6]	None	224	0	0	249	10	2.01
	Combined AD			4985	56	0.56	9238	188	1.02
DLB	Amsterdam UMC	ADC, NBB, LASA	PC1-3	189	2	0.53	2571	64	1.24
	Brain compendium	Keogh et al. [29]	None	97	1	0.52	362	6	0.83
	Mayo Clinic	Conway et al. [7]	None	306	2	0.33	1487	29	0.98
	NDRU cohort	NDRU cohort	None	622	8	0.64	343	8	1.17
	Spanish cohorts	Valdecilla Cohort, Fundació ACE, Oviedo, Sant Pau (SPIN cohort), San Sebastian	None	232	3	0.65	746	10	0.67
	Combined DLB			1446	16	0.55	5509	117	1.06
FTD	Amsterdam UMC	ADC, NBB, LASA	PC1-3	231	1	0.22	2571	64	1.24
	Brain compendium	Keogh et al. [29]	None	93	2	1.08	362	6	0.83
	IFGC	Ferrari et al. [11]	None	1360	22	0.81	5059	118	1.17
	RiMoD-FTD (Consortium)		None	255	3	0.59	1660	38	1.17
	Spanish cohorts	Valdecilla Cohort, Fundació ACE, Oviedo, Sant Pau (SPIN cohort), San Sebastian	None	366	1	0.14	746	10	0.67
	UCLA/UCSF GIFT	Chen et al. [6]	None	132	2	0.76	249	10	2.01
PSP	Brain compendium	Keogh et al. [29]	None	17	1	2.94	362	6	0.83
	Mayo Clinic	Conway et al. [7]	None	231	9	1.95	1487	29	0.98
	NDRU cohort	NDRU cohort	None	613	11	0.9	343	8	1.17
	UCLA/UCSF GIFT	Chen et al. [6]	None	12	0	0	249	10	2.01
	Combined PSP			873	21	1.20	2441	53	1.09
	IPDGC	Nalls et al. [39]	≥3PCs	27,595	340 <sup>a</sup>	0.81 <sup>a</sup>	106,951	391 <sup>a</sup>	0.81 <sup>a</sup>
PD	Mayo Clinic	Conway et al. [7]	None	853	18	1.06	1487	29	0.98
	KKNMS	Dankowski et al. [3]	PC1 and 2	4476	82	0.92	5714	107	0.94
MS	Project MinE	Van Rheenen et al. [8]	PC1-4	10,953	214	0.98	20,673	385	0.93
longevity	AgeCoDe	AgeCoDe	None	462	14	1.52	861	19	1.12
	Amsterdam UMC	100-Plus Study, LASA, NBB	PC1-3	293	16	2.73	2571	64	1.24
	Danish studies	Multiple Danish studies	None	853	10	0.59	2793	33	0.59
	Leiden Longevity Study	LLS, GEHA-NL	None	1138	28	1.23	743	11	0.74
	GBC Studies	GBC Studies	None	770	16	1.04	2709	45	0.83
	Combined longevity			3516	84	1.19	9677	172	0.89

Consortium or combined cohort name corresponds to the name used in the figures of this manuscript. Studies/sites included or reference to cohort shows the studies combined to form one site (if more than one). Additional information on studies included can be found in supplementary Table 2. If studies/sites include a reference, the exact methods described in the reference were used to obtain the genotypes and association results

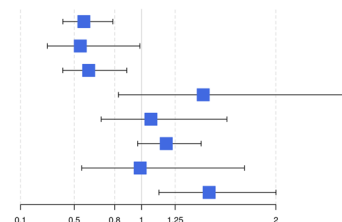
AD Alzheimer's disease, FTD frontotemporal dementia, DLB dementia with Lewy bodies, PSP progressive supranuclear palsy, PD Parkinson's Disease, ALS Amyotrophic Lateral Sclerosis, MS multiple sclerosis, MAF Minor allele frequency, ADC Amsterdam Dementia Cohort, NBB Netherlands Brain Bank, LASA Longitudinal Aging Study Amsterdam, GEHA Genetics of Healthy Ageing Study, NL, AgeCoDe German Study on Ageing, Cognition and Dementia in Primary Care Patients, GBC Gothenburg Birth Cohort Studies, IFGC International FTD-Genomics Consortium, IPDGC The International Parkinson Disease Genomics Consortium, KKNMS German Competence Network Multiple Sclerosis, LLS Leiden Longevity study, RiMoD-FTD Risk and modifying factors in Frontotemporal Dementia, UCLA/UCSF Genetic Investigation in Frontotemporal Dementia and Alzheimer's Disease (GIFT) Study

<sup>a</sup>The number of carriers and minor allele frequency were calculated in a subset of 21092 cases and 23896 controls. No combined estimate of

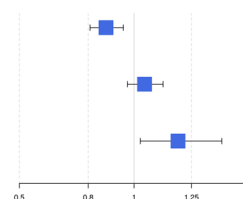
**Table 1** (continued)

MAF can be given

Association with:	N-cases	N-controls	Odds-ratio	P-value
Alzheimer's disease (AD)	4,985	8,492	0.57 [0.41-0.78]	0.00063*
Dementia with Lewy-bodies (DLB)	1,446	5,286	0.54 [0.30-0.99]	0.045*
Frontotemporal dementia (FTD)	2,437	10,647	0.61 [0.41-0.89]	0.011*
Progressive supranuclear palsy (PSP)	882	3,187	1.46 [0.83-2.58]	0.19
Amyotrophic lateral sclerosis (ALS)	10,953	20,673	1.07 [0.87-1.33]	0.52
Parkinson's disease (PD)	28,448	108,438	1.18 [0.97-1.44]	0.10
Multiple sclerosis (MS)	4,476	5,714	0.99 [0.74-1.32]	0.95
Reaching the age of >90 years	3,516	9,677	1.50 [1.13-2.00]	0.0051*

**Fig. 1** Association results of rs72824905-G with seven brain diseases and longevity. \**P* values < 0.05. Numbers (*N*) of cases (patients or long-lived individuals) and controls studied. The figure shows the odds-ratio (box) of the rs72824905-G with the 95% confidence intervals (whiskers)

Association with:	Comparing:	Odds-ratio	P-value
Parental dementia	16,968 father cases vs. 358,468 father controls + 32,262 mother cases vs. 346,999 mothers controls	0.88 [0.81-0.95]	0.0018*
Parental age >90 years	17,558 father's age =90 years vs. 353,100 father age <90 years + 35,256 mother's aged =90 years vs. 342,810 mother's aged <90 years	1.05 [0.97-1.13]	0.24
Parental age >95 years	3043 father's age =95 years vs. 353,100 father's age <90 years + 7790 mother's aged =95 years vs. 342,810 mother's aged <90 years	1.19 [1.03-1.38]	0.021*

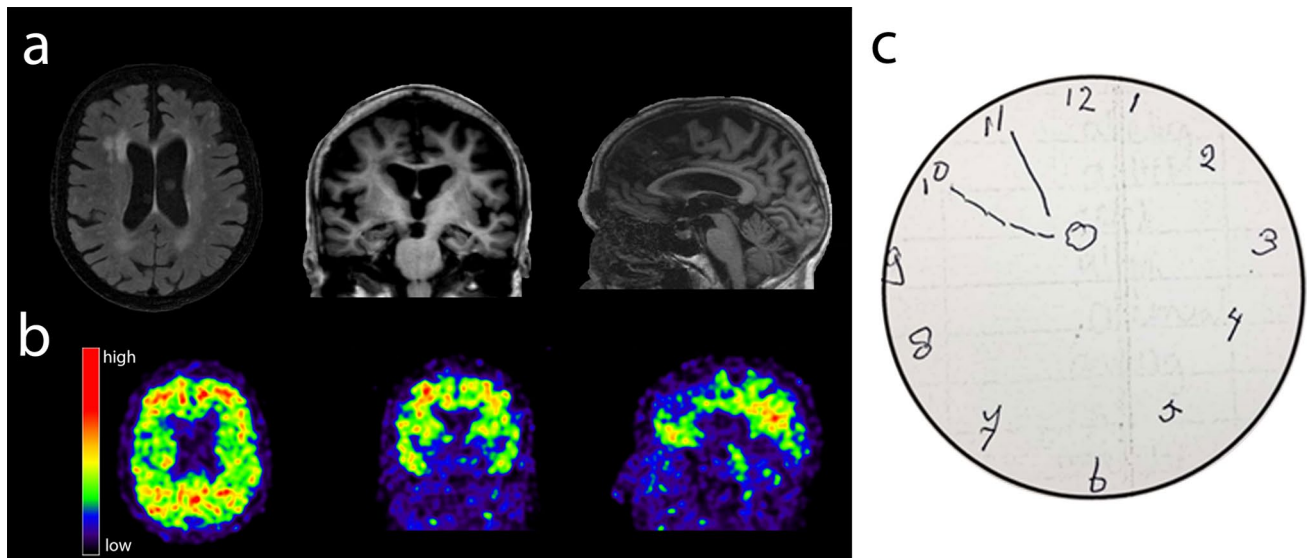
**Fig. 2** Association results of rs72824905-G with dementia by-proxy and longevity by-proxy analysis in the UK Biobank. \**P* values < 0.05. The figure shows the odds-ratio (box) of the rs72824905-G with the 95% confidence intervals (whiskers)

of the molecular mechanisms underlying this protective effect.

Thus far, the common *APOE*  $\epsilon$ 4 allele and the rare *TREM2*.R47H variant are strong genetic risk factors shared across AD, FTD and DLB (not *TREM2* [55]). [2, 11, 18, 27, 47] The *HLA*-locus and the microtubule-associated protein tau (*MAPT*) loci (not individual variants) also have (suggestive) effects on the risks of AD, FTD and DLB [3, 11, 18, 43]. The *APOE* gene has been implied in a multitude of pathways [52], *TREM2* and *HLA* are involved in immunity [2], and *MAPT* encodes the tau protein. These shared genetic risk factors indicate a partial overlap in AD, DLB and FTD etiology. It is of interest that, like the *PLCG2* variant, *APOE* and the *HLA-DR* locus were also associated with longevity [4, 10, 28, 38]. A possible explanation is that *APOE*, *PLCG2* and *HLA* are involved in the processing of accumulated aging-associated proteins [9]. In line with this hypothesis, rs72824905-G is associated with reduced pTau<sub>181</sub> in the CSF of memory clinic patients with pathologic A $\beta$ <sub>1-42</sub> CSF levels (L. Kleineidam et al. submitted). It is well known that having a dementia-associated neurodegenerative disease is associated with shorter life-span [57]. Conversely, resilience to diseases is associated with a longer life-span [24]. It is likely that the association of rs72824905-G with longevity is due to the protection against dementia-associated neurodegenerative diseases. However, with the available data we

cannot exclude that rs72824905-G has an independent effect of rs72824905-G on the risk of longevity and/or the risk of maintaining cognitive health. In line with this observation, we anecdote one cognitively healthy centenarian who is homozygous for the *APOE*  $\epsilon$ 4 risk allele, but also carried the rs72824905-G allele. On MRI scan and amyloid scan (PiB-PET), this person has some global atrophy and only amyloid- $\beta$  positivity in the precuneus and in the frontal lobes (Fig. 3). At the age of 90 years, the dementia risk for homozygous carriers of the *APOE*  $\epsilon$ 4 genotype is approximately 80% [53] and virtually all are amyloid positive by age 90 [26]. The literature reports only a handful of centenarians who are homozygous for the *APOE*  $\epsilon$ 4 allele [14, 16, 23]. It is unknown if these individuals were cognitively healthy. This case shows that cognitively healthy aging in the presence of the *APOE*  $\epsilon$ 4 $\epsilon$ 4 genotype is possible, likely due to the protective effect of other genetic variants, such as the rs72824905-G variant in *PLCG2* [26, 53].

The mechanism that explains the protective effect of rs72824905-G variant in the *PLCG2* gene is currently unclear. We find that the associations of the rs72824905-G variant with disease risk differ between diseases that have overlapping pathological features. For example, we observe that carrying the rs72824905-G variant is protective against DLB, but not against PD, while a common characteristic for both diseases is the presence of  $\alpha$ -synuclein-positive Lewy



**Fig. 3** MRI scan and PiB-PET scan, of a 102-year-old centenarian carrying the homozygote *APOE*  $\epsilon 4$  genotype as well as the rs72824905-G allele in *PLCG2*. MRI scan (Titan 3T MR scanner) shows some hippocampal atrophy (MTA grade 2), some global cortical atrophy (GCA-scale grade 1), but pronounced posterior cortical atrophy (grade 2), moderate white matter hyperintensities (Fazekas grade 2), no lacunar infarcts or microbleeds. PET-PiB (scan after admission of 396 MBq C-11 PIB, 20-min image starting 90 min after

administration): Abnormal retention in the posterior cingulate/precuneus and frontal lobes. Neuropsychological testing around time of scanning showed average performance on global cognitive functioning/MMSE, memory, attention, working memory, fluency and visuospatial tests compared to the cohort of cognitively healthy centenarians. The result of the clock drawing test is shown. The patient was asked to draw a clock and put the time at 10 before 11

bodies. The same holds for pathologies associated with the FTD-ALS and PSP spectrum of diseases (e.g. TDP-43, FUS inclusions as well as aggregations of tau). The observation that our results do not point to a single pathological condition does not preclude that *PLCG2* is involved in a single biological process. In fact, determining the involvement of the *PLCG2*-related pathway might be an asset in pathological classifications of diseases, e.g. differentiating between DLB and PD. Thus far, only one publication investigated the functional effect of the rs72824905-G variant in in vitro experiments [35]. The authors suggest that in the mouse and human brain, PLC $\gamma$ 2 is expressed in microglia [12]. They show that PLC $\gamma$ 2 mRNA co-localized with microglia-specific markers in healthy brain tissue and is expressed in microglia near amyloid- $\beta$  plaques in an APP mouse model [35]. Furthermore, functional characterization of PLC $\gamma$ 2 with the p.Pro552Arg amino acid substitution suggested only a slight increase in activity compared to wild-type PLC $\gamma$ 2 [35]. While additional functional experiments will be needed to confirm these findings, these experiments suggest that the functional changes induced by the PLC $\gamma$ 2 p.Pro552Arg genetic variant may be subtle and, therefore, difficult to pinpoint. This is according to expectations, as major changes to the immune system will most likely be harmful. Indeed, known germline mutations in *PLCG2* cause the immune disorders PLAID (*PLCG2*-associated antibody deficiency and immune dysregulation) and APLAID (autoinflammatory

PLAID) [40, 46, 59] while somatic variants in PLC $\gamma$ 2 are associated with resistance to treatment of leukemia [56] (reviewed in Koss et al. [32]). The mutations that cause PLAID and APLAID contribute to a strong hyperactivation of PLC $\gamma$ 2 upon activation. In the case of APLAID (caused by a p.Ser707Tyr substitution), the auto-inflammation has been suggested to be partially driven by PLC $\gamma$ 2-dependent activation of the pyrin (PYD)-domain-containing protein 3 (*NLRP3*) inflammasome [5]. The potential of *PLCG2* to activate the inflammasome is further supported by in vitro experiments [31]. The *NLRP3* inflammasome is a crucial signaling node in microglia that ultimately controls the maturation of pro-inflammatory interleukin (IL)-1 $\beta$  and IL-18 [19] and has been linked to a multitude of neurodegenerative diseases [60]. Although functional studies will need to elucidate the effects of the rs72824905-G on PLC $\gamma$ 2 function, we speculate that subtle changes in the *NLRP3* inflammasome activation may explain its protective effect.

### Strengths and weaknesses

The most important strength of our study is that we investigated the effect of the rs72824905-G variant in seven neurological diseases in more than 53,000 patients and almost 150,000 controls. The AD cases and controls studied here were all independent from the AD patients and controls in which the protective effect of rs72824905-G was first



identified [47], but includes the samples used in Conway et al. [7] and Tesi et al. [51]. This report offers a robust replication of the protection against AD. Some may argue that the protective effect observed in FTD and DLB cases is driven by misclassified AD cases. However, the effect size of rs72824905-G in these cases is very similar to the protective effect in AD, which makes it unlikely that the effect can be ascribed purely to misclassified AD. Moreover, the age of the controls was mostly younger than that of cases, making the protection from dementia not a longevity effect.

The large numbers under study were necessary because rs72824905-G has a minor allele frequency (MAF) ~1% in European ancestry populations, which makes it a relatively rare genetic variant. Therefore, we ensured that our samples provided adequate statistical power to observe a similar protective effect of rs72824905-G against other neurodegenerative diseases. Despite the large sample sizes, we found no evidence for this effect in our sample of PD, ALS and MS, which makes it unlikely that larger meta-analyses will observe an association between rs72824905-G and these three diseases. An association of rs72824905-G with an increased risk of PSP has been reported previously [7]. In our analysis, which includes additional PSP cases, we were not able to replicate this finding. Larger studies are needed to determine the association with PSP. Including as large as possible samples came with the consequence that we were not able to correct for population stratification using ancestry principal components in all studies. Therefore, we used PCs were possible and further matching cases and controls by study or country of origin. Finally, we indicate that the identified effects need to be replicated in other ethnicities in which rs72824905-G occurs. We note that in some ethnicities rs72824905-G plays no role as the frequency is very low in African (MAF=0.0012) and African-American populations (MAF=0.0004), and is not observed in East Asian [7, 33].

## Conclusions

Our study shows that the rs72824905-G allele in *PLCG2* associates with a decreased risk for AD, FTD, DLB and concurrently with an increased chance of longevity. The protective effect of the rs72824905-G allele was not observed in ALS, PD and MS cases, which suggests that *PLCG2*-associated processes overlap in the etiology of AD, FTD and DLB, but not in the etiologies of ALS, PD and MS (PSP too little power). Explaining the protective effect of the *PLCG2* protein on brain immune function may contribute to the design of successful therapeutic intervention strategies applicable to those at risk for neurodegenerative diseases.

**Acknowledgements** The following studies and consortia have contributed to this manuscript. Amsterdam dementia Cohort (ADC): Research

of the Alzheimer center Amsterdam is part of the neurodegeneration research program of Amsterdam Neuroscience. The Alzheimer Center Amsterdam is supported by Stichting Alzheimer Nederland and Stichting VUmc fonds. The clinical database structure was developed with funding from Stichting Dioraphte. Genotyping of the Dutch case-control samples was performed in the context of EADB (European Alzheimer DNA biobank) funded by the JPco-fuND FP-829-029 (ZonMW projectnumber 733051061). 100-Plus study: We are grateful for the collaborative efforts of all participating centenarians and their family members and/or relations. This work was supported by Stichting Alzheimer Nederland (WE09.2014-03), Stichting Dioraphte, horstingstuit foundation, Memorabel (ZonMW projectnumber 733050814) and Stichting VUmc Fonds. Genotyping of the 100-Plus Study was performed in the context of EADB (European Alzheimer DNA biobank) funded by the JPco-fuND FP-829-029 (ZonMW projectnumber 733051061). German Study on Ageing, Cognition and Dementia in Primary Care Patients (AgeCoDe): This study/publication is part of the German Research Network on Dementia (KND), the German Research Network on Degenerative Dementia (KNDD; German Study on Ageing, Cognition and Dementia in Primary Care Patients; AgeCoDe), and the Health Service Research Initiative (Study on Needs, health service use, costs and health-related quality of life in a large sample of oldest-old primary care patients (85+; AgeQualiDe)) and was funded by the German Federal Ministry of Education and Research (grants KND: 01GI0102, 01GI0420, 01GI0422, 01GI0423, 01GI0429, 01GI0431, 01GI0433, 01GI0434; grants KNDD: 01GI0710, 01GI0711, 01GI0712, 01GI0713, 01GI0714, 01GI0715, 01GI0716; grants Health Service Research Initiative: 01GY1322A, 01GY1322B, 01GY1322C, 01GY1322D, 01GY1322E, 01GY1322F, 01GY1322G). Alfredo Ramirez was partly supported by the ADAPTED consortium: Alzheimer's disease Apolipoprotein Pathology for Treatment Elucidation and Development, which has received funding from the Innovative Medicines Initiative 2 Joint Undertaking under grant agreement No 115975. Brain compendium: This work was funded by the UK Medical Research Council (13044). P.F.C. is a Wellcome Trust principal Fellow (212219/Z/18/Z) and a UK NIHR Senior Investigator, who receives support from the Medical Research Council Mitochondrial Biology Unit (MC\_UU\_00015/9), and the National Institute for Health Research (NIHR) Biomedical Research Centre based at Cambridge University Hospitals NHS Foundation Trust and the University of Cambridge. The views expressed are those of the author(s) and not necessarily those of the NHS, the NIHR, or the Department of Health. Clinical AD, Sweden: We would like to thank UCL Genomics for performing the genotyping analyses. Danish data: The studies behind the Danish long-lived cases received funding from The National Program for Research Infrastructure 2007 (grant no. 09-063256), the Danish Agency for Science Technology and Innovation, the Velux Foundation, the US National Institute of Health (P01 AG08761), the Danish Agency for Science, Technology and Innovation/The Danish Council for Independent Research (grant no. 11-107308), the European Union's Seventh Framework Programme (FP7/2007-2011) under grant agreement no. 259679, the INTERREG 4 A programme Syddanmark-Schleswig-K.E.R.N. (by EU funds from the European Regional Development Fund), the CERA Foundation (Lyon), the AXA Research Fund, Paris, and The Health Foundation (Helsefonden), Copenhagen, Denmark. The GOYA study was conducted as part of the activities of the Danish Obesity Research Centre (DanORC, [www.danorc.dk](http://www.danorc.dk)) and The MRC centre for Causal Analyses in Translational Epidemiology (MRC CAiTE). The genotyping for GOYA was funded by the Wellcome Trust (WT 084762). GOYA is a nested study within The Danish National Birth Cohort which was established with major funding from the Danish National Research Foundation. Additional support for this cohort has been obtained from the Pharmacy Foundation, the Egmont Foundation, The March of Dimes Birth Defects Foundation, the Augustinus Foundation, and the Health Foundation. Fundació ACE (FACE): We would like to thank patients and controls who participated in this project. We are indebted

to Trinitat Port-Carbó and her family for their support of Fundació ACE research programs. Fundació ACE collaborates with the Centro de Investigación Biomédica en Red sobre Enfermedades Neurodegenerativas (CIBERNED, Spain) and is one of the participating centers of the Dementia Genetics Spanish Consortium (DEGESCO). Agustín Ruiz has received support from the EU/EFPIA Innovative Medicines Initiative Joint Undertaking ADAPTED Grant No. 115975 and by grants PI13/02434 and PI16/01861. Acción Estratégica en Salud, integrated in the Spanish National R + D + I Plan and financed by ISCIII (Instituto de Salud Carlos III)-Subdirección General de Evaluación and the Fondo Europeo de Desarrollo Regional (FEDER- “Una manera de Hacer Europa”), by Fundación bancaria “La Caixa” and Grifols SA (GR@ACE project). Genetics of Healthy Ageing Study (GEHA – NL): The work described in this paper was funded mainly by the EU GEHA Project contract no. LSHM-CT-2004-503-270. Gothenburg Birth Cohort (GBC) Studies: We would like to thank UCL Genomics for performing the genotyping analyses. The studies were supported by The Stena Foundation, The Swedish Research Council (2015-02830, 2013-8717), The Swedish Research Council for Health, Working Life and Welfare (2013-1202, 2005-0762, 2008-1210, 2013-2300, 2013-2496, 2013-0475), The Brain Foundation, Sahlgrenska University Hospital (ALF), The Alzheimer’s Association (IIRG-03-6168), The Alzheimer’s Association Zenith Award (ZEN-01-3151), Eivind och Elsa K:son Sylvans Stiftelse, The Swedish Alzheimer Foundation. International FTD-Genomics Consortium (IFGC): International FTD-Genomics Consortium (IFGC): The authors thank the IFGC for providing relevant data to support the analyses presented in this manuscript. Further acknowledgments for IFGC (<https://ifgcsite.wordpress.com/>), e.g. full members list and affiliations, are found in the online supplementary files. IPDGC (The International Parkinson Disease Genomics Consortium): We also would like to thank all members of the International Parkinson Disease Genomics Consortium (IPDGC). See for a complete overview of members, acknowledgements and funding <http://pdgenetics.org/partners>. Kompetenznetz Multiple Sklerose (KKNMS): This work was supported by the German Ministry for Education and Research (BMBF) as part of the “German Competence Network Multiple Sclerosis” (KKNMS) (grant nos. 01GI0916 and 01GI0917) and the Munich Cluster for Systems Neurology (SyNergy). TA was supported by the BMBF through the Integrated Network IntegraMent, under the auspices of the e:Med Programme (01ZX1614J). BH was supported by the EU Horizon 2020 project MultipleMS.Longitudinal Aging Study Amsterdam (LASA) is largely supported by a grant from the Netherlands Ministry of Health, Welfare and Sports, Directorate of Long-Term Care. The authors are grateful to all LASA participants, the fieldwork team and all researchers for their ongoing commitment to the study. Leiden Longevity Study: This study was supported by a grant from the Innovation-Oriented Research Program on Genomics (SenterNovem IGE05007), the Centre for Medical Systems Biology, and the Netherlands Consortium for Healthy Ageing (Grant 050-060-810), all in the framework of the Netherlands Genomics Initiative/Netherlands Organization for Scientific Research (NWO) and by Unilever Colworth.Maria Carolina Dalmaso: Georg Forster Research Award (Alexander von Humboldt Foundation). Mayo Clinic AD, DLB, PD, PSP: We thank the patients and their families for their participation, without whom these studies would not have been possible. Funding for this work was supported by National Institute on Aging [RF AG051504 to NET.; U01 AG046139 to NET]; and National Institute of Neurological Disorders and Stroke [R01 NS080820 to NET; P50 NS072187]. The Mayo Clinic is a Lewy Body Dementia Association (LBDA) Research Center of Excellence, American Parkinson Disease Association (APDA) Information and Referral Center and Center for Advanced Research, NINDS Tau Center without Walls (U54-NS100693) and is supported by Mayo Clinic AD and related dementias genetics program, The Little Family Foundation, the Mangurian Foundation for Lewy body research and NINDS R01 NS078086 (to OAR). The PD program at the Mayo Clinic Florida is also supported by the Mayo Clinic Center

for Regenerative Medicine, Mayo Clinic Center for Individualized Medicine, Mayo Clinic Neuroscience Focused Research Team (Cecilia and Dan Carmichael Family Foundation, and the James C. and Sarah K. Kennedy Fund for Neurodegenerative Disease Research at Mayo Clinic in Florida), the gift from Carl Edward Bolch, Jr., and Susan Bass Bolch, and The Sol Goldman Charitable Trust. Samples included in this study are from the brain bank at Mayo Clinic in Jacksonville which is supported by CurePSPISociety for Progressive Supranuclear Palsy and the Tau Consortium. NDRU cohort: We would like to thank the NIH Neuro Brain Bank for contributing tissue samples; this study was supported in part by grants from the National Institutes of Health: U19-AG03365, P50 NS38377, and P50-AG005146. Tissue samples for genotyping were provided by the Johns Hopkins Morris K. Udall Center of Excellence for Parkinson’s Disease Research (NIH P50 NS38377) and the Johns Hopkins Alzheimer’s Disease Research Center. We are grateful for the support of the entire BIOCARD study team at Johns Hopkins University. Additionally, we acknowledge the contributions of the Geriatric Psychiatry Branch (GPB) in the intramural program of NIMH who initiated the BIOCARD study. We would like to thank the NIA Baltimore Longitudinal Study of Aging for contributing tissue samples to the Johns Hopkins Alzheimer’s Disease Research Center. DNA panels from the NINDS Human Genetics Resource Center DNA and Cell Line Repository (<http://ccr.coriell.org/ninds>) were used in this study, as well as clinical data. We thank the following brain banks for providing brain tissues: Banner Sun Health Research Institute, New York Brain Bank, Newcastle Brain Tissue Resource, Human Brain and Spinal Fluid Resource Center, Netherlands Brain Bank Amsterdam, Mount Sinai Brain Bank, Harvard Brain Bank, Duke University Brain Bank, Virginia Commonwealth University Brain Bank, and the Georgetown University Brain Bank. We also thank the following research centers for providing patient samples: University of Michigan, University College London Institute of Neurology, University of Maryland, University of California – San Diego, and University of Miami. We are grateful to members of the North American Brain Expression Consortium for contributing DNA samples. The authors thank the patients and families who have donated DNA samples and brain tissue for scientific research. The research was supported in part by the Intramural Research Program of the NIH National Institute of Neurological Disorders and Stroke and the National Institute on Aging (project numbers: ZIA-NS003154, Z01-AG000949).” Oviedo: This work was partly supported by Grant from Fondo de Investigaciones Sanitarias-Fondos FEDER European Union to Victoria Alvarez PI15/00878. Pascual Sánchez-Juan: Pascual Sánchez-Juan is supported by CIBERNED and Carlos III Institute of Health, Spain (PI08/0139, PI12/02288, and PI16/01652), jointly funded by Fondo Europeo de Desarrollo Regional (FEDER), Unión Europea, “Una manera de hacer Europa”. Project MinE: The ProjectMinE study was supported by the ALS Foundation Netherlands and the MND association (UK) (Project MinE, [www.projectmine.com](http://www.projectmine.com)). Risk and modifying factors in Fronto Temporal Dementia (RiMoD-FTD): follows: The SPIN cohort: We are indebted to patients and their families for their participation in the “Sant Pau Initiative on Neurodegeneration cohort”, at the Sant Pau Hospital (Barcelona). This is a multimodal research cohort for biomarker discovery and validation that is partially funded by Generalitat de Catalunya (2017 SGR 547 to JC), as well as from the Institute of Health Carlos III-Subdirección General de Evaluación and the Fondo Europeo de Desarrollo Regional (FEDER- “Una manera de Hacer Europa”) (grants PI11/02526, PI14/01126, and PI17/01019 to JF; PI17/01895 to AL), and the Centro de Investigación Biomédica en Red Enfermedades Neurodegenerativas programme (Program 1, Alzheimer Disease to AL). We would also like to thank the Fundació Bancària Obra Social La Caixa (DABNI project) to JF and AL; and Fundacion BBVA (to AL), for their support in funding this follow-up study. San Sebastian: We would like to thank patients and control volunteers who participated in this study. We thank Ana Gorostidi for his work at the Biodonostia HRI Genomics Platform. This work was partly supported

by CIBERNED. Adolfo López de Munain is supported by Fundación Salud 2000 (PI2013156) and Diputación Foral de Gipuzkoa (Exp. 114/17). UK Biobank analysis: This work was funded by The Netherlands Organization for Scientific Research (NWO VICI 453-14-005). The analyses were carried out on the Genetic Cluster Computer, which is financed by the Netherlands Scientific Organization (NWO: 480-05-003), by the VU University, Amsterdam, The Netherlands, and by the Dutch Brain Foundation, and is hosted by the Dutch National Computing and Networking Services SurfSARA. This research has been conducted using the UK Biobank resource under application number 16406. We are grateful to the numerous participants, researchers, and staff who collected and contributed to the data.

**Data availability statement** The authors declare that the data supporting the findings of this study are available within the paper and its online Resource.

**Author contributions** SvdL and HH had full access to the meta-analysis results and wrote the draft of the manuscript. SvdL, OJC, MMC, LK, EBvdA, NS, JAC, AZ, TFMA, MD-F, JS-S, HZ, MN, CB, JES, JM-F, SM-G, MJK, KB, CL, IdR, WW, BJ, XW, NB, NT, JEC, SLS, AK, MCD, MA, NE-T, SWS and Aru analyzed parts of the data. MJTR provided compute for this study. MCD compiled demographic information of all Spanish cohorts. SvdL, EBvdA, NS, MD-F, JS-S, SM-G, CL, IdR, WW, BJ, NB, NT, NE-T, SWS, Aru, IJ, IH, AL, MW, JF, IS, MAF, OP, MZ, SR-H, II-G, AO, FTB, MH, CM, BI, MS, EM-R, JWI, MNMvB, DA, HW, ERR, BFB, RCP, TJJ, JAvG, MJU, LT, WM, OD-I, MBo, MB, EM, ALdM, AP, ZKW, OAR, DWD, NRG-R, DK, RR, AWL, YALP, PS, TG, PFC, BH, JT, FM, EAN, TIAS, PS-J, DP, GC, JC, KC, AR, WMvdF and HH contributed to data collection. JT and OP contributed to neuropathological diagnoses. MW, IS, SR-H, II-G, MS, HW, LT, WM, MBo, MB, ZKW, AWL, PS, TG, PFC, BH, MAH, TIAS, PH, JC, KC, NE-T, SWS, AR, Aru, ES, WMvdF and HH secured funding for their respective studies. MMC, MW, SR-H, MH, JEC, MS, MNMvB, HW, WM, NMvS, PS, TG, PFC, BH, MAH, EAN, PH, NE-T, SWS, AR, ES, WMvdF and HH supervised their respective studies. HH was responsible for the overall study supervision. All authors critically revised the manuscript for important intellectual content and approved the final manuscript.

**Funding statement** No funding was received specifically for this study. The studies and consortia all have their respective funding sources described in the acknowledgement section.

**Open Access** This article is distributed under the terms of the Creative Commons Attribution 4.0 International License (<http://creativecommons.org/licenses/by/4.0/>), which permits unrestricted use, distribution, and reproduction in any medium, provided you give appropriate credit to the original author(s) and the source, provide a link to the Creative Commons license, and indicate if changes were made.

## References

- Alzheimer's A (2016) 2016 Alzheimer's disease facts and figures. *Alzheimers Dement* 12:459–509
- Borroni B, Ferrari F, Galimberti D, Nacmias B, Barone C, Bag-noli S et al (2014) Heterozygous TREM2 mutations in frontotem-poral dementia. *Neurobiol Aging* 35(934):e937-910. <https://doi.org/10.1016/j.neurobiolaging.2013.09.017>
- Broce I, Karch CM, Wen N, Fan CC, Wang YP, Tan CH et al (2018) Immune-related genetic enrichment in frontotemporal dementia: an analysis of genome-wide association studies. *Plos Med*. <https://doi.org/10.1371/journal.pmed.1002487>
- Broer L, Buchman AS, Deelen J, Evans DS, Faul JD, Lunetta KL et al (2015) GWAS of longevity in CHARGE consortium confirms APOE and FOXO3 candidacy. *J Gerontol A Biol Sci Med Sci* 70:110–118. <https://doi.org/10.1093/gerona/glu166>
- Chae JJ, Park YH, Park C, Hwang IY, Hoffmann P, Kehrl JH et al (2015) Connecting two pathways through Ca<sup>2+</sup> signaling: NLRP3 inflammasome activation induced by a hypermorphic PLCG2 mutation. *Arthritis Rheumatol* 67:563–567. <https://doi.org/10.1002/art.38961>
- Chen JA, Wang Q, Davis-Turak J, Li Y, Karydas AM, Hsu SC et al (2015) A multiancestral genome-wide exome array study of Alzheimer disease, frontotemporal dementia, and progres-sive supranuclear palsy. *JAMA Neurol* 72:414–422. <https://doi.org/10.1001/jamaneurol.2014.4040>
- Conway OJ, Carrasquillo MM, Wang X, Bredenberg JM, Reddy JS, Strickland SL et al (2018) ABI3 and PLCG2 missense vari-ants as risk factors for neurodegenerative diseases in Caucasians and African Americans. *Mol Neurodegener* 13:53. <https://doi.org/10.1186/s13024-018-0289-x>
- Dankowski T, Buck D, Andlauer TF, Antony G, Bayas A, Bech-mann L et al (2015) Successful replication of GWAS hits for mul-tiple sclerosis in 10,000 germans using the exome array. *Genet Epidemiol* 39:601–608. <https://doi.org/10.1002/gepi.21933>
- Deane R, Sagare A, Hamm K, Parisi M, Lane S, Finn MB et al (2008) apoE isoform-specific disruption of amyloid beta peptide clearance from mouse brain. *J Clin Invest* 118:4002–4013. <https://doi.org/10.1172/JCI36663>
- Deelen J, Beekman M, Uh HW, Broer L, Ayers KL, Tan Q et al (2014) Genome-wide association meta-analysis of human longev-ity identifies a novel locus conferring survival beyond 90 years of age. *Hum Mol Genet* 23:4420–4432. <https://doi.org/10.1093/hmg/ddu139>
- Ferrari R, Wang Y, Vandrovcova J, Guelfi S, Witeolar A, Karch CM et al (2017) Genetic architecture of sporadic frontotem-poral dementia and overlap with Alzheimer's and Parkinson's dis-eases. *J Neurol Neurosurg Psychiatry* 88:152–164. <https://doi.org/10.1136/jnnp-2016-314411>
- Friedman BA, Srinivasan K, Ayalon G, Meilandt WJ, Lin H, Huntley MA et al (2018) Diverse brain myeloid expression profiles reveal distinct microglial activation states and aspects of Alzheimer's disease not evident in mouse models. *Cell Rep* 22:832–847. <https://doi.org/10.1016/j.celrep.2017.12.066>
- Gagliano SA, Pouget JG, Hardy J, Knight J, Barnes MR, Ryten M et al (2016) Genomics implicates adaptive and innate immunity in Alzheimer's and Parkinson's diseases. *Ann Clin Transl Neur* 3:924–933. <https://doi.org/10.1002/acn3.369>
- Garatachea N, Marin PJ, Santos-Lozano A, Sanchis-Gomar F, Emanuele E, Lucia A (2015) The ApoE gene is related with exceptional longevity: a systematic review and meta-analysis. *Rejuvenation Res* 18:3–13. <https://doi.org/10.1089/rej.2014.1605>
- Genomes Project C, Auton A, Brooks LD, Durbin RM, Garrison EP, Kang HM, et al (2015) A global reference for human genetic variation. *Nature* 526:68–74. <https://doi.org/10.1038/nature15393>
- Gerdes LU, Jeune B, Ranberg KA, Nybo H, Vaupel JW (2000) Estimation of apolipoprotein E genotype-specific relative mor-tality risks from the distribution of genotypes in centenarians and middle-aged men: apolipoprotein E gene is a “frailty gene,” not a “longevity gene”. *Genet Epidemiol* 19:202–210. [https://doi.org/10.1002/1098-2272\(200010\)19:3%3c202::AID-GEPI2%3e3.0.CO;2-Q](https://doi.org/10.1002/1098-2272(200010)19:3%3c202::AID-GEPI2%3e3.0.CO;2-Q)
- Glass CK, Saijo K, Winner B, Marchetto MC, Gage FH (2010) Mechanisms underlying inflammation in neurodegeneration. *Cell* 140:918–934. <https://doi.org/10.1016/j.cell.2010.02.016>
- Guerreiro R, Ross OA, Kun-Rodrigues C, Hernandez DG, Orme T, Eicher JD et al (2018) Investigating the genetic architecture

- of dementia with Lewy bodies: a two-stage genome-wide association study. *Lancet Neurol* 17:64–74. [https://doi.org/10.1016/S1474-4422\(17\)30400-3](https://doi.org/10.1016/S1474-4422(17)30400-3)
19. He Y, Hara H, Nunez G (2016) Mechanism and regulation of NLRP3 inflammasome activation. *Trends Biochem Sci* 41:1012–1021. <https://doi.org/10.1016/j.tibs.2016.09.002>
  20. Hemmer B, Kerschensteiner M, Korn T (2015) Role of the innate and adaptive immune responses in the course of multiple sclerosis. *Lancet Neurol* 14:406–419. [https://doi.org/10.1016/S1474-4422\(14\)70305-9](https://doi.org/10.1016/S1474-4422(14)70305-9)
  21. Higgins JP, Thompson SG (2002) Quantifying heterogeneity in a meta-analysis. *Stat Med* 21:1539–1558. <https://doi.org/10.1002/sim.1186>
  22. Holstege H, Beker N, Dijkstra T, Pieterse K, Wemmenhove E, Schouten K et al (2018) The 100-plus Study of cognitively healthy centenarians: rationale, design and cohort description. *Eur J Epidemiol*. <https://doi.org/10.1007/s10654-018-0451-3>
  23. Ishioka YL, Gondo Y, Fuku N, Inagaki H, Masui Y, Takayama M (2016) Effects of the APOE epsilon4 allele and education on cognitive function in Japanese centenarians. *Age (Dordr)* 38:495–503. <https://doi.org/10.1007/s11357-016-9944-8>
  24. Ismail K, Nussbaum L, Sebastiani P, Andersen S, Perls T, Barzilai N et al (2016) Compression of morbidity is observed across cohorts with exceptional longevity. *J Am Geriatr Soc* 64:1583–1591. <https://doi.org/10.1111/jgs.14222>
  25. Jansen IE (2017) Genetic meta-analysis identifies 9 novel loci and functional pathways for Alzheimers disease risk. *Biorxiv* 1:258533
  26. Jansen WJ, Ossenkoppele R, Knol DL, Tijms BM, Scheltens P, Verhey FRJ et al (2015) Prevalence of cerebral amyloid pathology in persons without dementia: a meta-analysis. *J Am Med Assoc* 313:1924–1938. <https://doi.org/10.1001/jama.2015.4668>
  27. Jonsson T, Stefansson H, Steinberg S, Jonsdottir I, Jonsson PV, Snaedal J et al (2013) Variant of TREM2 associated with the risk of Alzheimer's disease. *N Engl J Med* 368:107–116. <https://doi.org/10.1056/NEJMoal211103>
  28. Joshi PK, Pirastu N, Kentistou KA, Fischer K, Hofer E, Schraut KE et al (2017) Genome-wide meta-analysis associates HLA-DQA1/DRB1 and LPA and lifestyle factors with human longevity. *Nat Commun* 8:910. <https://doi.org/10.1038/s41467-017-00934-5>
  29. Keogh MJ, Wei W, Wilson I, Coxhead J, Ryan S, Rollinson S et al (2017) Genetic compendium of 1511 human brains available through the UK Medical Research Council Brain Banks Network Resource. *Genome Res* 27:165–173. <https://doi.org/10.1101/gr.210609.116>
  30. Kim D, Jun KS, Lee SB, Kang NG, Min DS, Kim YH et al (1997) Phospholipase C isozymes selectively couple to specific neurotransmitter receptors. *Nature* 389:290–293. <https://doi.org/10.1038/38508>
  31. Kleindam L, Chouraki V, Próchnicki T, van der Lee S, Madrid-Márquez L, Wagner-Thelen H et al (2018) PLCG2 protective variant p.P522R modulates Tau pathology and disease progression in patients with mild cognitive impairment. *Lancet*. <https://ssrn.com/abstract=3307649>
  32. Koss H, Bunney TD, Behjati S, Katan M (2014) Dysfunction of phospholipase Cgamma in immune disorders and cancer. *Trends Biochem Sci* 39:603–611. <https://doi.org/10.1016/j.tibs.2014.09.004>
  33. Lek M, Karczewski KJ, Minikel EV, Samocha KE, Banks E, Fennell T et al (2016) Analysis of protein-coding genetic variation in 60,706 humans. *Nature* 536:285–291. <https://doi.org/10.1038/nature19057>
  34. Liu JZ, Erlich Y, Pickrell JK (2017) Case-control association mapping by proxy using family history of disease. *Nat Genet* 49:325–331. <https://doi.org/10.1038/ng.3766>
  35. Magno L, Lessard CB, Martins M, Lang V, Cruz P, Asi Y et al (2019) Alzheimer's disease phospholipase C-gamma-2 (PLCG2) protective variant is a functional hypermorph. *Alzheimers Res Ther* 11:16. <https://doi.org/10.1186/s13195-019-0469-0>
  36. Marioni RE, Harris SE, Zhang Q, McRae AF, Hagenaars SP, Hill WD et al (2018) GWAS on family history of Alzheimer's disease. *Transl Psychiatry* 8:99. <https://doi.org/10.1038/s41398-018-0150-6>
  37. McCarthy S, Das S, Kretzschmar W, Delaneau O, Wood AR, Teumer A et al (2016) A reference panel of 64,976 haplotypes for genotype imputation. *Nat Genet* 48:1279–1283. <https://doi.org/10.1038/ng.3643>
  38. McDaid AF, Joshi PK, Porcu E, Komljenovic A, Li H, Sorrentino V et al (2017) Bayesian association scan reveals loci associated with human lifespan and linked biomarkers. *Nat Commun*. <https://doi.org/10.1038/ncomms15842>
  39. Nalls MA (2018) Parkinson's disease genetics: identifying novel risk loci, providing causal insights and improving estimates of heritable risk. *BioRxiv*. <https://doi.org/10.1101/388165>
  40. Ombrello MJ, Remmers EF, Sun G, Freeman AF, Datta S, Torabi-Parizi P et al (2012) Cold urticaria, immunodeficiency, and autoimmunity related to PLCG2 deletions. *N Engl J Med* 366:330–338. <https://doi.org/10.1056/NEJMoal102140>
  41. Patsopoulos NA (2018) Genetics of multiple sclerosis: an overview and new directions. *Cold Spring Harb Perspect Med* 8:45. <https://doi.org/10.1101/cshperspect.a028951>
  42. Patterson RL, van Rossum DB, Ford DL, Hurt KJ, Bae SS, Suh PG et al (2002) Phospholipase C-gamma is required for agonist-induced Ca<sup>2+</sup> entry. *Cell* 111:529–541
  43. Peuralinna T, Myllykangas L, Oinas M, Nalls MA, Keage HA, Isoviita VM et al (2015) Genome-wide association study of neocortical Lewy-related pathology. *Ann Clin Transl Neurol* 2:920–931. <https://doi.org/10.1002/acn3.231>
  44. Pilling LC, Kuo CL, Sicinski K, Tamosauskaite J, Kuchel GA, Harries LW et al (2017) Human longevity: 25 genetic loci associated in 389,166 UK biobank participants. *Aging (Albany NY)* 9:2504–2520. <https://doi.org/10.18632/aging.101334>
  45. Rhee SG (2001) Regulation of phosphoinositide-specific phospholipase C. *Annu Rev Biochem* 70:281–312. <https://doi.org/10.1146/annurev.biochem.70.1.281>
  46. Schade A, Walliser C, Wist M, Haas J, Vatter P, Kraus JM et al (2016) Cool-temperature-mediated activation of phospholipase C-gamma2 in the human hereditary disease PLAID. *Cell Signal* 28:1237–1251. <https://doi.org/10.1016/j.cellsig.2016.05.010>
  47. Sims R, van der Lee SJ, Naj AC, Bellenguez C, Badarinarayan N, Jakobsdottir J et al (2017) Rare coding variants in PLCG2, ABI3, and TREM2 implicate microglial-mediated innate immunity in Alzheimer's disease. *Nat Genet* 49:1373–1384. <https://doi.org/10.1038/ng.3916>
  48. Skol AD, Scott LJ, Abecasis GR, Boehnke M (2006) Joint analysis is more efficient than replication-based analysis for two-stage genome-wide association studies. *Nat Genet* 38:209–213. <https://doi.org/10.1038/ng1706>
  49. Sudlow C, Gallacher J, Allen N, Beral V, Burton P, Danesh J et al (2015) UK biobank: an open access resource for identifying the causes of a wide range of complex diseases of middle and old age. *Plos Med* 12:e1001779. <https://doi.org/10.1371/journal.pmed.1001779>
  50. Team RC (2018) R: a language and environment for statistical computing. R Foundation for Statistical Computing, Vienna
  51. Tesi N, van der Lee SJ, Hulsman M, Jansen IE, Stringa N, van Schoor N et al (2018) Centenarian controls increase variant effect sizes by an average twofold in an extreme case-extreme control analysis of Alzheimer's disease. *Eur J Hum Genet*. <https://doi.org/10.1038/s41431-018-0273-5>

52. Tudorache IF, Trusca VG, Gafencu AV (2017) Apolipoprotein E—a multifunctional protein with implications in various pathologies as a result of its structural features. *Comput Struct Biotechnol J* 15:359–365. <https://doi.org/10.1016/j.csbj.2017.05.003>
53. van der Lee SJ, Wolters FJ, Ikram MK, Hofman A, Ikram MA, Amin N et al (2018) The effect of APOE and other common genetic variants on the onset of Alzheimer’s disease and dementia: a community-based cohort study. *Lancet Neurol* 17:434–444. [https://doi.org/10.1016/S1474-4422\(18\)30053-X](https://doi.org/10.1016/S1474-4422(18)30053-X)
54. van Rheenen W, Shatunov A, Dekker AM, McLaughlin RL, Diekstra FP, Pulit SL et al (2016) Genome-wide association analyses identify new risk variants and the genetic architecture of amyotrophic lateral sclerosis. *Nat Genet* 48:1043. <https://doi.org/10.1038/ng.3622>
55. Walton RL, Soto-Ortolaza AI, Murray ME, Lorenzo-Betancor O, Ogaki K, Heckman MG et al (2016) TREM2 p.R47H substitution is not associated with dementia with Lewy bodies. *Neurol Genet* 2:85. <https://doi.org/10.1212/nxg.0000000000000085>
56. Woyach JA, Furman RR, Liu TM, Ozer HG, Zapatka M, Ruppert AS et al (2014) Resistance mechanisms for the Bruton’s tyrosine kinase inhibitor ibrutinib. *N Engl J Med* 370:2286–2294. <https://doi.org/10.1056/NEJMoa1400029>
57. Xie J, Brayne C, Matthews FE, Medical Research Council Cognitive F, Ageing Study c (2008) Survival times in people with dementia: analysis from population based cohort study with 14 year follow-up. *BMJ* 336:258–262. <https://doi.org/10.1136/bmj.39433.616678.25>
58. Yu P, Constien R, Dear N, Katan M, Hanke P, Bunney TD et al (2005) Autoimmunity and inflammation due to a gain-of-function mutation in phospholipase C gamma 2 that specifically increases external Ca<sup>2+</sup> entry. *Immunity* 22:451–465. <https://doi.org/10.1016/j.immuni.2005.01.016>
59. Zhou Q, Lee GS, Brady J, Datta S, Katan M, Sheikh A et al (2012) A hypermorphic missense mutation in PLCG2, encoding phospholipase Cgamma2, causes a dominantly inherited autoinflammatory disease with immunodeficiency. *Am J Hum Genet* 91:713–720. <https://doi.org/10.1016/j.ajhg.2012.08.006>
60. Zhou K, Shi L, Wang Y, Chen S, Zhang J (2016) Recent Advances of the NLRP3 Inflammasome in Central Nervous System Disorders. *J Immunol Res* 2016:9238290. <https://doi.org/10.1155/2016/9238290>

**Publisher’s Note** Springer Nature remains neutral with regard to jurisdictional claims in published maps and institutional affiliations.

## Affiliations

Sven J. van der Lee<sup>1,2</sup>  · Olivia J. Conway<sup>3</sup> · Iris Jansen<sup>1,4</sup> · Minerva M. Carrasquillo<sup>3</sup> · Luca Kleineidam<sup>5,6,7</sup> · Erik van den Akker<sup>8,9</sup> · Isabel Hernández<sup>10,11</sup> · Kristel R. van Eijk<sup>12</sup> · Najada Stringa<sup>13</sup> · Jason A. Chen<sup>14</sup> · Anna Zettergren<sup>15</sup> · Till F. M. Andlauer<sup>16,17,18</sup>  · Monica Diez-Fairen<sup>19,20</sup> · Javier Simon-Sanchez<sup>21,22</sup> · Alberto Lleó<sup>11,23</sup> · Henrik Zetterberg<sup>24,25,26</sup> · Marianne Nygaard<sup>27</sup> · Cornelis Blauwendraat<sup>28</sup> · Jeanne E. Savage<sup>4</sup> · Jonas Mengel-From<sup>29</sup> · Sonia Moreno-Grau<sup>10</sup> · Michael Wagner<sup>5,6</sup> · Juan Fortea<sup>11,23</sup> · Michael J. Keogh<sup>30,31</sup> · Kaj Blennow<sup>24,25</sup> · Ingmar Skoog<sup>15</sup> · Manuel A. Friese<sup>18,32</sup> · Olga Pletnikova<sup>33</sup> · Miren Zulaica<sup>11,34</sup> · Carmen Lage<sup>11,35,36</sup> · Itziar de Rojas<sup>10,11</sup> · Steffi Riedel-Heller<sup>37</sup> · Ignacio Illán-Gala<sup>11,23</sup> · Wei Wei<sup>31</sup> · Bernard Jeune<sup>29</sup> · Adelina Orellana<sup>10,11</sup> · Florian Then Bergh<sup>18,38</sup> · Xue Wang<sup>3</sup> · Marc Hulsman<sup>1,2,9</sup> · Nina Beker<sup>1</sup> · Niccolo Tesi<sup>1,2,9</sup>  · Christopher M. Morris<sup>39</sup> · Begoña Indakoetxea<sup>11,34,40</sup> · Lyduine E. Collij<sup>41</sup> · Martin Scherer<sup>42</sup> · Estrella Morenas-Rodríguez<sup>11,23</sup> · James W. Ironside<sup>43</sup> · Bart N. M. van Berckel<sup>41</sup> · Daniel Alcolea<sup>11,23</sup> · Heinz Wiendl<sup>18,44</sup> · Samantha L. Strickland<sup>3</sup> · Pau Pastor<sup>19,20</sup> · Eloy Rodríguez Rodríguez<sup>11,35,36</sup> · DESGESCO (Dementia Genetics Spanish Consortium), EADB (Alzheimer Disease European DNA biobank) · EADB (Alzheimer Disease European DNA biobank) · IFGC (International FTD-Genomics Consortium), IPDGC (The International Parkinson Disease Genomics Consortium) · IPDGC (The International Parkinson Disease Genomics Consortium) · RiMod-FTD (Risk and Modifying factors in Fronto-Temporal Dementia) · Netherlands Brain Bank (NBB) · Bradley F. Boeve<sup>45</sup> · Ronald C. Petersen<sup>45</sup> · Tanis J. Ferman<sup>46</sup> · Jay A. van Gerpen<sup>47</sup> · Marcel J. T. Reinders<sup>64</sup> · Ryan J. Uitti<sup>47</sup> · Lluís Tárraga<sup>10,11</sup> · Wolfgang Maier<sup>5,6</sup> · Oriol Dols-Icardo<sup>11,23</sup> · Amit Kawalia<sup>7</sup> · Maria Carolina Dalmaso<sup>7,48</sup> · Mercè Boada<sup>10,11</sup> · Uwe K. Zettl<sup>18,49</sup> · Natasja M. van Schoor<sup>13</sup> · Marian Beekman<sup>8</sup> · Mariet Allen<sup>3</sup> · Eliezer Masliah<sup>50</sup> · Adolfo López de Munain<sup>11,34,51</sup> · Alexander Pantelyat<sup>52</sup> · Zbigniew K. Wszolek<sup>47</sup> · Owen A. Ross<sup>3</sup> · Dennis W. Dickson<sup>3</sup> · Neill R. Graff-Radford<sup>47</sup> · David Knopman<sup>45</sup> · Rosa Rademakers<sup>3</sup> · Afina W. Lemstra<sup>1</sup> · Yolande A. L. Pijnenburg<sup>1</sup> · Philip Scheltens<sup>1</sup>  · Thomas Gasser<sup>53</sup> · Patrick F Chinnery<sup>31,54</sup> · Bernhard Hemmer<sup>17,18,55</sup> · Martijn A. Huisman<sup>13,56</sup> · Juan Troncoso<sup>33</sup> · Fermin Moreno<sup>11,34,40</sup> · Ellen A. Nohr<sup>57</sup> · Thorkild I. A. Sørensen<sup>58,59,60</sup> · Peter Heutink<sup>21,22</sup> · Pascual Sánchez-Juan<sup>11,35,36</sup> · Danielle Posthuma<sup>2,4</sup> · The GIFT (Genetic Investigation in Frontotemporal Dementia and Alzheimer’s Disease) Study Group · Jordi Clarimón<sup>11,23</sup> · Kaare Christensen<sup>27,61,62</sup> · Nilüfer Ertekin-Taner<sup>3,47</sup> · Sonja W. Scholz<sup>28,52</sup> · Alfredo Ramirez<sup>5,7</sup> · Agustín Ruiz<sup>10,11</sup> · Eline Slagboom<sup>8,63</sup> · Wiesje M. van der Flier<sup>1</sup> · Henne Holstege<sup>1,2</sup> 

✉ Sven J. van der Lee  
s.j.vanderlee@amsterdamumc.nl

✉ Henne Holstege  
h.holstege@amsterdamumc.nl

<sup>1</sup> Alzheimer Center Amsterdam, Department of Neurology, Amsterdam Neuroscience, Vrije Universiteit Amsterdam, Amsterdam UMC, Amsterdam, The Netherlands

<sup>2</sup> Department of Clinical Genetics, Vrije Universiteit Amsterdam, Amsterdam UMC, Amsterdam, The Netherlands

- 3 Department of Neuroscience, Mayo Clinic Florida, Jacksonville, FL 32224, USA
- 4 Department of Complex Trait Genetics, Center for Neurogenomics and Cognitive Research, Amsterdam Neuroscience, Vrije Universiteit Amsterdam, Amsterdam UMC, Amsterdam, The Netherlands
- 5 Department for Neurodegenerative Diseases and Geriatric Psychiatry, University of Bonn, Bonn, Germany
- 6 DZNE, German Center for Neurodegenerative Diseases, Bonn, Germany
- 7 Division of Neurogenetics and Molecular Psychiatry, Department of Psychiatry and Psychotherapy, Faculty of Medicine, University Hospital Cologne, Cologne, Germany
- 8 Molecular Epidemiology, Leiden University Medical Center, Leiden, The Netherlands
- 9 Pattern Recognition and Bioinformatics, Delft University of Technology, Delft, The Netherlands
- 10 Research Center and Memory Clinic, Fundació ACE, Institut Català de Neurociències Aplicades, Universitat Internacional de Catalunya, Barcelona, Spain
- 11 Centro de Investigación Biomedica en Red en Enfermedades Neurodegenerativas (CIBERNED), Madrid, Spain
- 12 Department of Neurology, Brain Center Rudolf Magnus, University Medical Center Utrecht, Utrecht, The Netherlands
- 13 Amsterdam UMC-Vrije Universiteit Amsterdam, Department of Epidemiology and Biostatistics, Amsterdam Public Health Research Institute, Amsterdam, The Netherlands
- 14 Interdepartmental Program in Bioinformatics, University of California, Los Angeles, USA
- 15 Neuropsychiatric Epidemiology Unit, Department of Psychiatry and Neurochemistry, Institute of Neuroscience and Physiology, Sahlgrenska Academy, Centre for Ageing and Health (AgeCap) at the University of Gothenburg, Gothenburg, Sweden
- 16 Max Planck Institute of Psychiatry, Munich, Germany
- 17 Department of Neurology, Klinikum rechts der Isar, Technical University of Munich, Munich, Germany
- 18 German Competence Network Multiple Sclerosis (KKNMS), Munich, Germany
- 19 Movement Disorders and Memory Unit, Department of Neurology, University Hospital Mutua de Terrassa, Barcelona, Spain
- 20 Fundacio per la Recerca Biomedica I Social Mutua Terrassa, Terrassa, Barcelona, Spain
- 21 German Center for Neurodegenerative Diseases (DZNE)-Tübingen, Tübingen, Germany
- 22 Hertie Institute for Clinical Brain Research, University of Tübingen, Tübingen, Germany
- 23 Memory Unit, Department of Neurology, IIB Sant Pau, Hospital de la Santa Creu i Sant Pau, Universitat Autònoma de Barcelona, Barcelona, Spain
- 24 Clinical Neurochemistry Laboratory, Sahlgrenska University Hospital, Mölndal, Sweden
- 25 Department of Psychiatry and Neurochemistry, Institute of Neuroscience and Physiology, Sahlgrenska Academy at the University of Gothenburg, Gothenburg, Sweden
- 26 Department of Molecular Neuroscience, UCL Institute of Neurology, Queen Square, London, UK
- 27 The Danish Aging Research Center, Epidemiology, Biostatistics and Biodemography, Department of Public Health, University of Southern Denmark, Odense, Denmark
- 28 Neurodegenerative Diseases Research Unit, National Institute of Neurological Disorders and Stroke, Bethesda, MD 20892-3707, USA
- 29 Epidemiology, Biostatistics and Biodemography, Department of Public Health, University of Southern Denmark, Odense, Denmark
- 30 Institute of Genetic Medicine, Newcastle University, Newcastle upon Tyne NE1 3BZ, UK
- 31 Department of Clinical Neurosciences, University of Cambridge, Cambridge CB2 0QQ, UK
- 32 Institut für Neuroimmunologie und Multiple Sklerose (INIMS), Universitätsklinikum Hamburg-Eppendorf, Hamburg, Germany
- 33 Department of Pathology (Neuropathology), Johns Hopkins University Medical Center, Baltimore, MD, USA
- 34 Instituto Bionostia, San Sebastian, Spain
- 35 University Hospital “Marques de Valdecilla”, Santander, Spain
- 36 IDIVAL, Santander, Spain
- 37 Institute of Social Medicine, Occupational Health and Public Health (ISAP), University of Leipzig, Leipzig, Germany
- 38 Department of Neurology, University of Leipzig, Leipzig, Germany
- 39 Newcastle Brain Tissue Resource, Edwardson Building, Institute of Neuroscience, Newcastle University, Newcastle upon Tyne NE4 5PL, UK
- 40 Cognitive Disorders Unit, Department of Neurology, Hospital Universitario San Sebastian, San Sebastian, Spain
- 41 Department of Radiology and Nuclear Medicine, Amsterdam Neuroscience, Vrije Universiteit Amsterdam, Amsterdam UMC, Amsterdam, The Netherlands
- 42 Department of Primary Medical Care, Center for Psychosocial Medicine, University Medical Center, Hamburg-Eppendorf, Germany
- 43 Centre for Clinical Brain Sciences, University of Edinburgh, Edinburgh EH4 2XU, UK
- 44 Department of Neurology, Klinik für Neurologie mit Institut für Translationale Neurologie, University of Münster, Münster, Germany
- 45 Department of Neurology, Mayo Clinic Minnesota, Rochester, MN 55905, USA
- 46 Department of Psychiatry and Psychology, Mayo Clinic Florida, Jacksonville, FL 32224, USA
- 47 Department of Neurology, Mayo Clinic Florida, Jacksonville, FL 32224, USA

- <sup>48</sup> Fundación Instituto Leloir-IIBBA-CONICET, Buenos Aires, Argentina
- <sup>49</sup> Department of Neurology, University of Rostock, Rostock, Germany
- <sup>50</sup> Laboratory of Neurogenetics, National Institute on Aging, National Institutes of Health, Bethesda, MD, USA
- <sup>51</sup> Department of Neurology, Hospital Universitario San Sebastian, San Sebastian, Spain
- <sup>52</sup> Department of Neurology, Johns Hopkins University Medical Center, Baltimore, MD 21287, USA
- <sup>53</sup> Center of Neurology, Department of Neurodegenerative diseases, Hertie-Institute for Clinical Brain Research, University of Tuebingen, Tuebingen, Germany
- <sup>54</sup> MRC Mitochondrial Biology Unit, University of Cambridge, Cambridge CB2 0QQ, UK
- <sup>55</sup> Munich Cluster for Systems Neurology (SyNergy), Munich, Germany
- <sup>56</sup> Department of Sociology, VU University, Amsterdam, The Netherlands
- <sup>57</sup> Research Unit of Gynecology and Obstetrics, Department of Clinical Research, University of Southern Denmark, Odense, Denmark
- <sup>58</sup> Novo Nordisk Foundation Center for Basic Metabolic Research, Section of Metabolic Genetics, Copenhagen, Denmark
- <sup>59</sup> Department of Public Health, Section of Epidemiology, Faculty of Health and Medical Sciences, University of Copenhagen, Copenhagen, Denmark
- <sup>60</sup> MRC Integrative Epidemiology Unit, Bristol University, Bristol, UK
- <sup>61</sup> Clinical Biochemistry and Pharmacology, Odense University Hospital, Odense, Denmark
- <sup>62</sup> Department of Clinical Genetics, Odense University Hospital, Odense, Denmark
- <sup>63</sup> Dutch Society for Research on Ageing, Leiden, The Netherlands
- <sup>64</sup> Delft Bioinformatics Lab, Delft University of Technology, Delft, The Netherlands