

UCLA

UCLA Previously Published Works

Title

Pelagiella exigua
, an early Cambrian stem gastropod with chaetae: lophotrochozoan heritage and
conchiferan novelty

Permalink

<https://escholarship.org/uc/item/4n38f2wm>

Journal

Palaeontology, 63(4)

ISSN

0031-0239 1475-4983

Authors

Thomas, Roger D. K
Runnegar, Bruce
Matt, Kerry

Publication Date

2020-03-16

DOI

10.1111/pala.12476

Data Availability

The data associated with this publication are available at:
<https://doi.org/10.5061/dryad.5tb2rbp0q>

Peer reviewed



PELAGIELLA EXIGUA, AN EARLY CAMBRIAN STEM GASTROPOD WITH CHAETAE: LOPHOTROCHOZOAN HERITAGE AND CONCHIFERAN NOVELTY

by ROGER D. K. THOMAS¹ , BRUCE RUNNEGAR² and KERRY MATT³

¹Department of Earth & Environment, Franklin & Marshall College, PO Box 3003, Lancaster, PA 17604-3003, USA; roger.thomas@fandm.edu

²Department of Earth, Planetary, & Space Sciences & Molecular Biology Institute, University of California, Los Angeles, CA 90095-1567, USA

³391 Redwood Drive, Lancaster, PA 17603-4232, USA

Typescript received 8 October 2018; accepted in revised form 4 December 2019

Abstract: Exceptionally well-preserved impressions of two bundles of bristles protrude from the apertures of small, spiral shells of *Pelagiella exigua*, recovered from the Kinzers Formation (Cambrian, Stage 4, ‘*Olenellus* Zone’, c. 512 Ma) of Pennsylvania. These impressions are inferred to represent clusters of chitinous chaetae, comparable to those borne by annelid parapodia and some larval brachiopods. They provide an affirmative test in the early metazoan fossil record of the inference, from phylogenetic analyses of living taxa, that chitinous chaetae are a shared early attribute of the Lophotrochozoa. Shells of *Pelagiella* exhibit logarithmic spiral growth, microstructural fabrics, distinctive external sculptures and muscle scars characteristic of molluscs. Hence, *Pelagiella* has been regarded as a stem mollusc, a helcionelloid expressing partial torsion, an untorted paragastropod, or a fully torted basal member of the gastropod crown group. The inference that its chaeta-bearing

appendages were anterior–lateral, based on their probable functions, prompts a new reconstruction of the anatomy of *Pelagiella*, with a mainly anterior mantle cavity. Under this hypothesis, two lateral–dorsal grooves, uniquely preserved in *Pelagiella atlantoides*, are interpreted as sites of attachment for a long left ctenidium and a short one, anteriorly on the right. The orientation of *Pelagiella* and the asymmetry of its gills, comparable to features of several living vetigastropods, nominate it as the earliest fossil mollusc known to exhibit evidence of the developmental torsion characteristic of gastropods. This key adaptation facilitated an evolutionary radiation, slow at first and rapid during the Ordovician, that gave rise to the remarkable diversification of the Gastropoda.

Key words: *Pelagiella*, gastropod, chaetae, Lophotrochozoa, developmental torsion, Cambrian.

DEXTRALLY coiled pelagiellids, globally distributed in early to mid-Cambrian assemblages of small shelly fossils, are among the best known of the early conchiferans. Their tiny shells (mostly 1–2 mm across, but *Pelagiella atlantoides* (Matthew, 1895a) reached 9 mm) expand asymmetrically away from the plane of the first whorl, down the spiral axis, then back upward to establish an adult form that is almost planispiral, with a depressed apex (Fig. 1). They have been treated implicitly or explicitly as stem group conchiferans (Peel 1991; Wagner 2002; Frýda *et al.* 2008; Zhao *et al.* 2017), as untorted helcionelloids (Runnegar 1981; regarded at that time as monoplacophorans) and explicitly as gastropods presumed to have undergone torsion during their development (Pojeta & Runnegar 1976; Parkhaev 2001a, 2008; Landing *et al.* 2002). Recently, together with the

aldanellids, they have been linked erroneously to the Hyolitha (Dzik & Mazurek 2013).

In this paper, we report the discovery, in the Kinzers Formation of south-eastern Pennsylvania, of numerous specimens of *Pelagiella exigua* Resser & Howell, 1938 with associated impressions of two clusters of chaetae (Fig. 2). The occurrence of a pair of chaeta-bearing appendages, inferred to have extended from the anterior body wall or foot of the animal, is unique among molluscs, living and extinct. Moreover, chitinous chaetae, characteristic of annelids and brachiopods, have been cited as a homologous feature of lophotrochozoans, so the occurrence in the fossil record of an early conchiferan with chaetae has phylogenetic implications. We document the new material in detail, assessing its implications for the anatomy of *Pelagiella*, its likely mode of

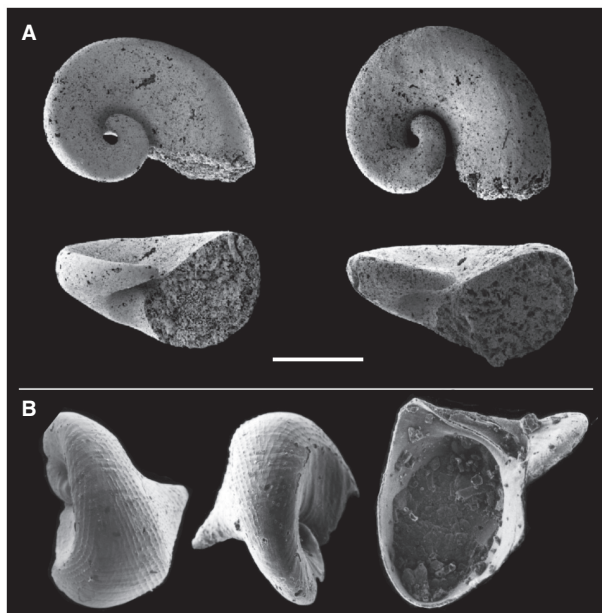


FIG. 1. SEM images illustrating shell forms of *Pelagiella* spp. A, steinkerns (natural internal moulds) of *Pelagiella* sp., from limestone at Thomasville, Pennsylvania, assigned to the basal Kinzers Formation by Gohn (1976) or to the uppermost Vintage Formation by Brezinski *et al.* (2013); PMU 25156, 25157, apical and apertural views; comparable in size and shape with shells of *P. exigua* flattened in shale of the Emigsville Member described in this paper, with which they may be conspecific (see Systematic Palaeontology); image courtesy of Skovsted & Peel (2010, fig. 2, 8–11), with permission of The Paleontological Society. B, shells of *Pelagiella subangulata* (Tate, 1892), NMVP 120790, oblique right anterior dorsal and oblique left posterior dorsal views, and SAMP 29038, apertural view, illustrating extreme development of the protruding 'auricle' on the left, abapical side of the aperture; Parara Limestone, Cambrian Stage 3, Ardrossan, South Australia; image from Runnegar (1990, figs 167A–B, 168A), with permission of the Association of Australasian Palaeontologists. Scale bar represents about 0.5 mm.

life, and its potential role in the emergence of the Gastropoda.

Lophotrochozoans are protostomes, united as a clade by the results of molecular phylogenetic analyses (Halanych *et al.* 1995; Kocot *et al.* 2011). Their shared morphological characters are limited mainly to features of their embryos and larvae (Halanych 2004). Phylogenetic studies recognize a subsidiary trochozoan clade, including annelids, brachiopods and molluscs (Dunn *et al.* 2008; Laumer *et al.* 2015), in which chitinous chaetae appear to be a common ancestral character (Dunn *et al.* 2008; Giribet, 2008; Schiemann *et al.* 2017). In the Mollusca, chaetae may have been lost among taxa assigned to the Aculifera and, once or repeatedly, in diversification of the Conchifera (Zakrzewski 2011) during the Cambrian

Explosion (535–515 Ma). Alternatively, chaetae may have been retained by the aculiferans, if the chitinous cores of their calcareous sclerites are indeed homologous with chaetae (Scheltema 1993; Vinther 2015), but generally not in the Conchifera.

Relationships among the molluscan classes have yet to be fully resolved, probably in part because their evolutionary radiation was so rapid (Runnegar & Pojeta 1974; Sigwart & Lindberg 2015; Vinther 2015; Wanninger & Wollesen 2019). The advent of molecular phylogenetics raised the hope that these long-standing difficulties would be overcome. Recently, a near-consensus emerged on the view, anticipated by Scheltema (1993), that the molluscs evolved to constitute two major clades, the Aculifera and the Conchifera (Kocot *et al.* 2011; Smith *et al.* 2011; Vinther 2014). Subsequently, very different phylogenetic relationships have been inferred from comparison of numerous published molluscan trees (Sigwart & Lindberg 2015), and from time-calibrated phylogenetic analysis of a more broadly representative molluscan data set (Stöger *et al.* 2013) that posits gastropods as the sister group of a clade including bivalves and Serialia (= Monoplacophora + Polyplacophora). From a different perspective, privileging the hypothesis that a U-shaped gut may be homologous among lophotrochozoans, Budd & Jackson (2016) have revived the link between gastropods and cephalopods, as *Cyrtosoma*. However, the relationships proposed by these authors differ from both the phylogeny proposed by Stöger *et al.* (2013) and from the *Cyrtosoma*–*Diasoma* dichotomy as it was defined by Runnegar & Pojeta (1974).

We have framed our assessment of *Pelagiella* in terms of the Aculifera–Conchifera paradigm, which has been widely adopted (Wollesen *et al.* 2018; Kocot *et al.* 2019; Wanninger & Wollesen 2019). If this view is largely correct, the diversification of molluscan taxa reflects the adoption of markedly different modes of skeletal evolution and development characterizing the two major clades. Among early fossil molluscs, stem group aculiferans, almost certainly including *Calvapilosa* (Vinther *et al.* 2017) and more controversially *Halkieria* (Vinther & Nielsen 2005; Caron *et al.* 2006), *Sinosachites* (Vinther 2009) and *Orthrozanclus* (Conway Morris & Caron 2007; Zhao *et al.* 2017), evolved scleritomes consisting of discrete, more or less varied and integrated elements, secreted across a broad mantle field. In contrast, mostly diminutive cap or cone shaped small shelly fossils, including *Pelagiella*, represent continuous, logarithmically expanding, univalve or bivalve skeletons of organisms from which the familiar shell bearing classes of the Conchifera are inferred to have evolved (Pojeta & Runnegar 1976; Bengtson 1992; Runnegar 1996; Vendrasco 2012). Now, we show that *Pelagiella* was both an innovator in the

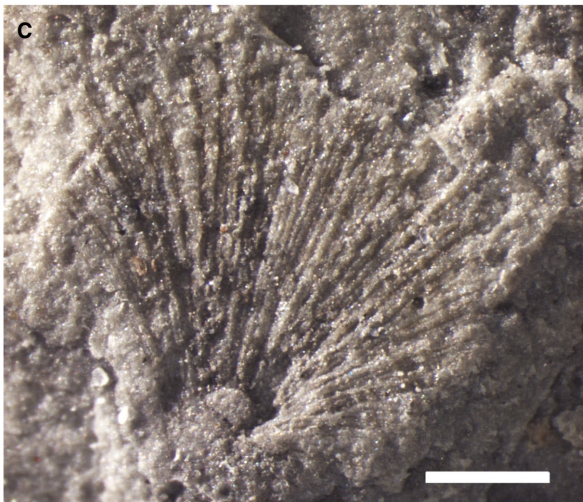
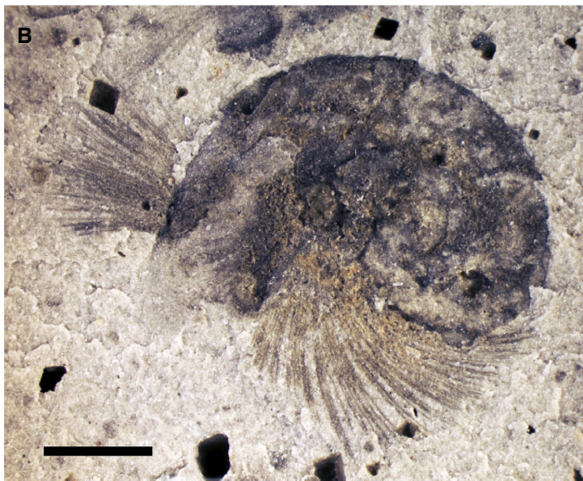
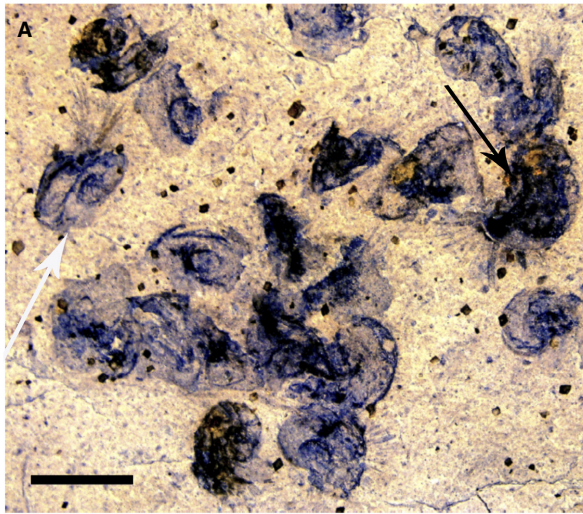


FIG. 2. Contrast-enhanced photographs of fossil shells of *Pelagiella exigua* with chaetae preserved. A, death assemblage, about 20 shells lying at various angles to the surface of a bedding plane; shells empty at time of burial (grey, white arrow) are completely flattened; those partially filled by sediment and organic material (brown, iron oxides, black arrow) include partial internal moulds; note several clusters of chaetae, USNM 617253p. B, partial internal mould of a shell with two sets of asymmetrically disposed anterior-lateral chaetae, USNM 617253cp, #12. C, a chaetal cluster of *Pelagiella exigua*; impressions of chaetae, preserved in three dimensions in fine siltstone, converging downward to a common point of attachment of the bundle in the body wall or foot; when extended, the chaetae thus formed a broad, funnel-shaped hemiconical array, USNM 617254p. Scale bars represent: 2 mm (A); 0.5 mm (B, C).

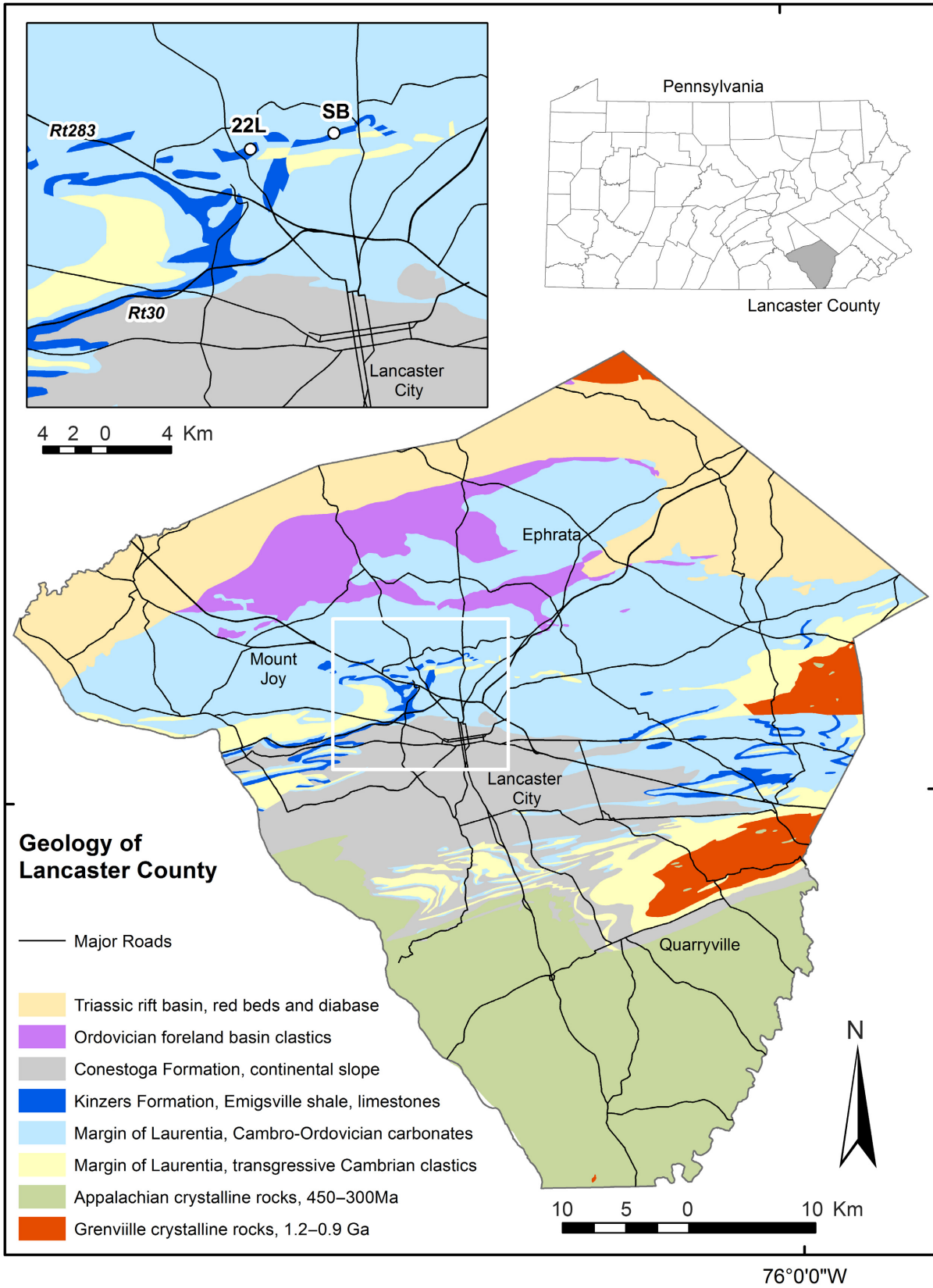
FAUNAL, STRATIGRAPHICAL AND PALAEOENVIRONMENTAL CONTEXT

Olenellid trilobites and associated early Cambrian shelly fossils have been known from the Kinzers Formation of Lancaster and York counties, Pennsylvania, USA, for well over 100 years (Walcott 1896, 1910). Discovery of antennae attached to the type specimen of *Olenellus getzi* Dunbar, 1925 and later recovery of algae, parts of lightly sclerotized exoskeletons of arthropods (notably *Anomalocaris* and *Tuzoia*) and other soft-bodied organisms (Resser 1929; Resser & Howell 1938), as well as novel echinoderms (Foerste 1938; Durham 1966; Sprinkle 1973), confirmed the modest but significant role of Kinzers Lagerstätten and associated faunas in documenting the sequential development of the ‘Cambrian Explosion’ of metazoans (Holmes *et al.* 2018).

The Kinzers Formation accumulated during the second cycle of early Cambrian transgression of the Iapetus Ocean onto Laurentia. Paralleling the regional strike of the Appalachians (Fig. 3), it consists largely of limestone, inferred from widespread submarine debris flows to have accumulated in outer shelf and deeper water periplatform environments (Gohn 1976; Brezinski *et al.* 2013). At its base, a stratigraphically distinctive shale defined as the Emigsville Member persists for 40 km along strike (Taylor & Durika 1990). It is in this shale that the relatively diverse fauna associated with the Kinzers Formation (Campbell & Kauffman 1969; Briggs 1978, 1979; Whittington & Briggs 1985) almost entirely occurs.

Three facies of the Emigsville shale, broadly distributed along a north-west–south-east onshore–offshore gradient of carbonate/clastic accumulation and inferred depth of the seafloor, were differentiated by Skinner (2005) into: (1) impure carbonate; (2) massive pelitic; and (3) fine pelitic facies. The first consists primarily of relatively thickly bedded calcareous pelite and siltstone, with abundant skeletal allochems (commonly leached) and burrows

differentiation of these classes and, given its chaetae, the bearer of a deeply rooted feature of its lophotrochozoan ancestry.



recording extensive bioturbation. The latter two facies are differentiated by greater bed thickness and more silt in facies (2), compared with the predominance of fine lamination, limited bioturbation, and common occurrence of diagenetic euhedral pyrite in facies (3). The former presence of pyrite, now oxidized as goethite or entirely leached away, is commonly represented by cubic voids, typically 60–200 μm on a side (Fig. 2A, B). This implies preservation of organic matter and reducing conditions within the sediment, but not necessarily on the surface of the sea floor. Rhythmically bedded sediments of facies (3) were further differentiated by Skinner (2005) as fine and shelly tempestite taphofacies, set apart from occasional mat-grounds.

Deposition of the Kinzers Formation as a whole has been characterized as basinal (Gohn 1976). However, neither the fine clastic sediments interpreted as tempestites by (Skinner 2005), nor the diverse shelly faunas preserved at some localities, suggest that the basal Emigsville shale was deposited off the continental shelf.

Kinzers Lagerstätten, where lightly sclerotized and soft parts are preserved, occur in the pelitic facies (2) and (3). No one factor facilitating special preservation has left a definitive signature on these facies. Authigenic pyrite, fine-scale graded beds, and trilobites preserved in full articulation at some horizons implicate anoxia, burial by sudden influxes of sediment, or possibly local, ephemeral excursions of salinity (Skinner 2005) or magnesium-enriched brine (Johnston *et al.* 2009; Powell 2009). However, the recurrence of distinctive associations of bottom-dwelling organisms in Emigsville faunas and the lack of evidence of long-distance transport reflect an environment that was not generally inhospitable to life on the sea floor.

Pelagiella, including the new material described in this paper, most commonly occurs in the Fine Pelitic facies of the Emigsville shale (Skinner 2005), in association with brachiopods and hyoliths, but not together with algae or taxa dependent on special preservation.

Modern systematic work, notably that of Lieberman (1999), Vannier *et al.* (2007) and Pates & Daley (2019), has enhanced our knowledge of the Emigsville fauna. Nonetheless, the age of the Kinzers Formation is still not well constrained, being determined by its fauna to lie within the classic *Olenellus*–*Bonnia* Zone (Brezinski *et al.* 2013). Since strata well above and below the Emigsville

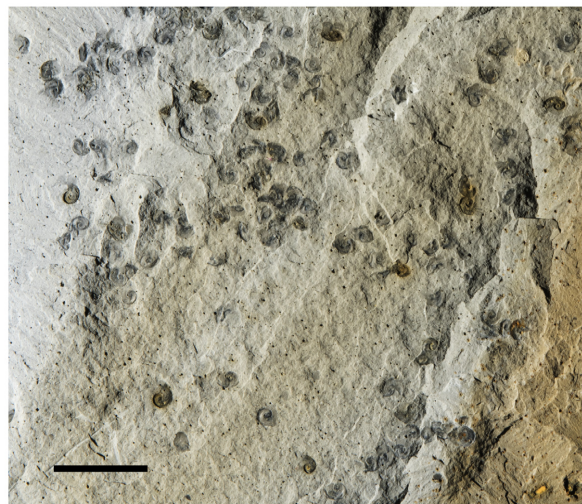


FIG. 4. Bedding plane surface showing a broad scatter of shells of *Pelagiella exigua*. Over 100 shells (some beyond field of view) occur here in varied states of preservation. They range from partially lithified internal moulds to flattened ‘ghosts’ of shells, all but lost to solution and diagenesis, USNM 617253p. Scale bar represents 1 cm.

Member also yield *Olenellus*, it may be inferred that the age of the Emigsville fauna is late Dyeran (Cambrian Series 2, Stage 4, *c.* 512 Ma; Holmes *et al.* 2018). Hence the age of this fauna lies between those of strata yielding the Chenjiang fauna in China (Series 2, Stage 3, Qiongzhusian *c.* 518 Ma; Zhao *et al.* 2015) and the Burgess Shale in Canada (Series 3, Drumian, *c.* 505 Ma; Holmes *et al.* 2018). The Emigsville shale shares both its preservation of soft-bodied fossils and many characteristic taxa with these better known biotas (Gaines 2014; Holmes *et al.* 2018).

MATERIAL, PROVENANCE, METHODS AND ARCHIVING OF SPECIMENS

Specimens of shale and very fine siltstone bearing *Pelagiella exigua* Resser & Howell, 1938 with associated impressions of paired clusters of chaetae were obtained from a temporary excavation in the Emigsville Member of the Kinzers Formation, at the intersection of Settlers Bend and Buch Avenue (Fig. 3; 40.09495°N, 76.3217967°W), in Manheim Township, 6 km north of

FIG. 3. Geology of Lancaster County, showing outcrop trend of the Kinzers Formation along strike of the Appalachian fold belt in south-east Pennsylvania. The Emigsville Member (shale and fine siltstone) occurs at the base of the Kinzers Formation on both sides of the Susquehanna River (south-west border of the county), from Thomasville, west of York (22 km off this map to the west), to Kinzers, 21 km east of Lancaster (city). Inset map shows sites in Manheim Township (SB) and East Petersburg (22L) where *Pelagiella exigua* has been found with clusters of chaetae preserved. Localities in Lancaster County yielding fossils exhibiting special preservation are all within 6–8 km west, north-west and north of the city of Lancaster. Source of geological map data: Pennsylvania Geological Survey.

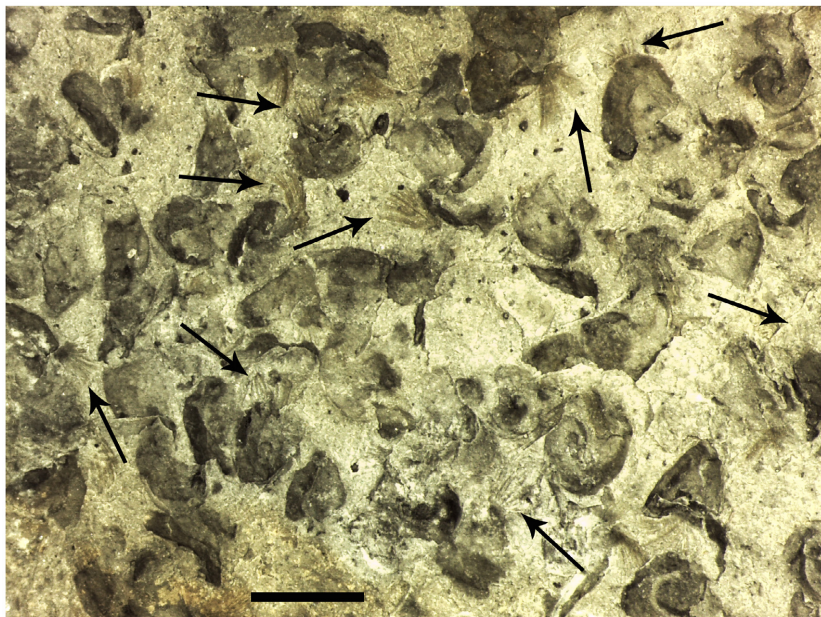


FIG. 5. Colour and contrast enhanced photograph of a coquina of shells of *Pelagiella exigua*, preserved as internal and external moulds. Numerous clusters of extended chaetae (arrows) are also preserved, USNM 617254p. Scale bar represents 2 mm.

Lancaster, Pennsylvania. Over 100 recognizable shells of *P. exigua* occur on a single 10 × 8 cm part-and-counterpart slab (USNM 617253p, 617253cp; Fig. 4). A smaller piece of shale (USNM 617254p, cp, part and counterpart) preserves a coquina of shells, now external and internal moulds (Fig. 5). The shells have been studied by light microscopy, without special preparation. Photographs of the slab and counterpart were taken with a Nikon D750 and of the coquina with a Leica M 80 HD microscope and camera at Franklin & Marshall College. High-resolution photographs of individual shells and their chaetae were taken using a Leica MZ16 microscope at Yale University. SEM images of chaetae aligned in the form of a three-dimensional cluster were acquired by a Philips XL 30 environmental scanning electron microscope (ESEM), also at Yale University. The specimens have been deposited, with permission of the owners of the property from which they came, in the collection of the Department of Paleobiology at the US National Museum of Natural History, in Washington DC.

Institutional abbreviations. NMNS, North Museum of Nature and Science, Lancaster, Pennsylvania, USA; NMVP, Museum of Victoria, Melbourne, Australia; PMU, Museum of Evolution, Uppsala University, Sweden; SAMP, South Australian Museum, Adelaide, Australia; USNM, US National Museum of Natural History (Smithsonian Institution), USA.

PRESERVATION AND TAPHONOMY

The newly described specimens of *Pelagiella exigua* occur in two distinct associations. In one case, more than 100

shells are scattered across a single bedding plane, on part and counterpart surfaces of a 10 × 8 cm slab of shale (USNM 617253p, cp; Fig. 4). The shells are similar in size, a little more or less than 2 mm in diameter. The shells were compacted during early diagenesis and subsequently dissolved. Their preservation varies from partial internal moulds with some three-dimensional relief to flattened composite moulds. These represent two to four originally separated inner and outer surfaces, in a plane where all preserved features are superimposed (Figs 2A, B; 6). Some are no more than flattened ‘ghosts’ representing little more than outline shapes of the shells (Figs 2A, 4).

Skinner (2005) likewise observed partial steinkerns inside shells of *Pelagiella* from the Emigsville Member of the Kinzers Formation. Using energy dispersive spectroscopy (EDS), he showed them to consist largely of pyrite (since oxidized to goethite), phosphate and aluminosilicates. He inferred this mineralization to represent partial replacement of soft tissues, mediated by microbial action. Differences in preservation among our specimens, in close proximity to one another, are here inferred to record variation in the extent to which decaying tissue promoted early mineralization within the shells.

The shells occur in a variety of orientations. On the counterpart surface, 11 of them have apertures clearly facing to the right; in 20 cases they spiral to the left. Many shells show by their roughly triangular cross-sections (Fig. 6A) that they were embedded at an angle in very soft sediment. Most of the animals were lying on their sides (Fig. 6B, C, D). These observations imply that the organisms were buried suddenly and not in a consistent in life orientation.

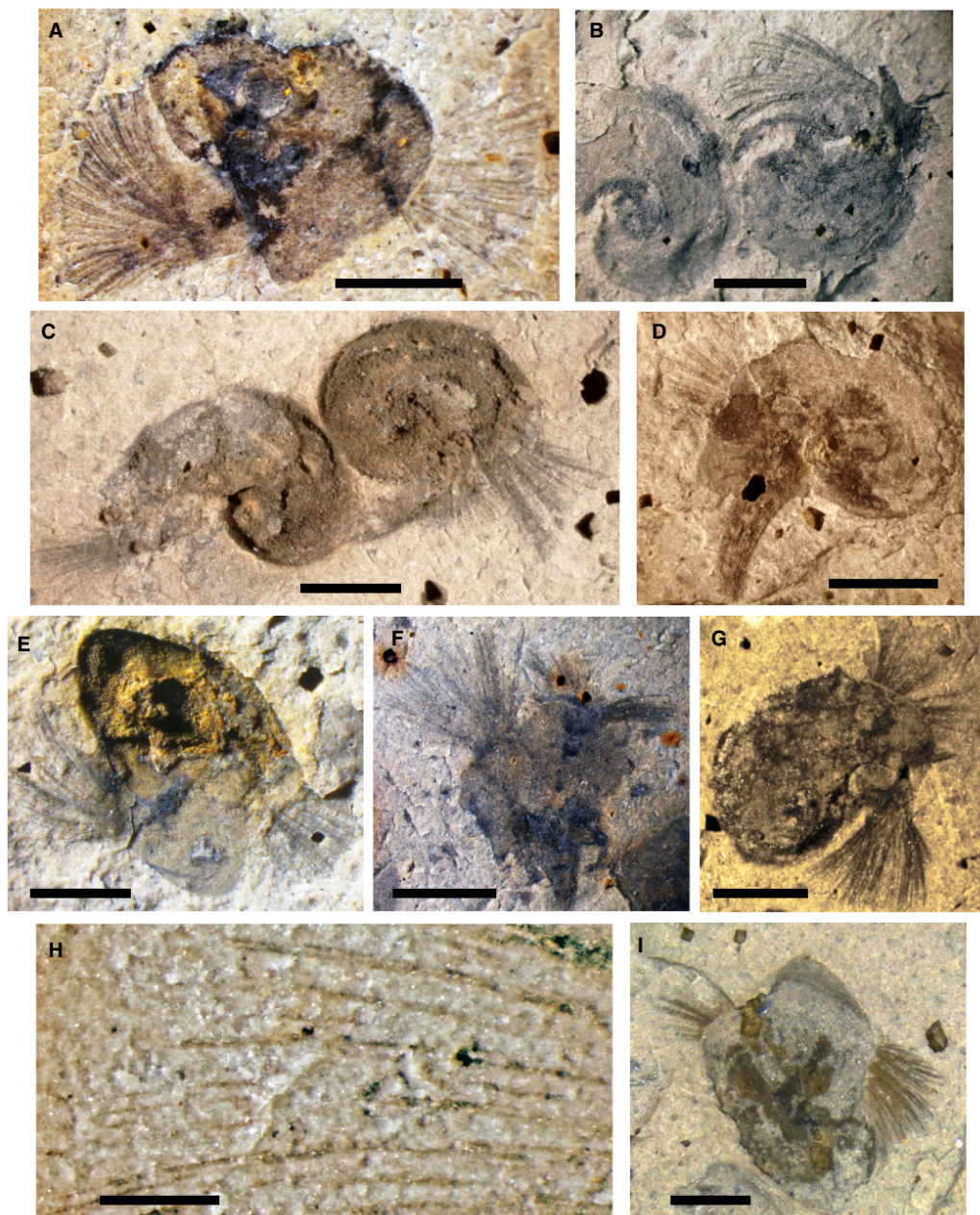


FIG. 6. Shells of *Pelagiella exigua* with chaetae in different states of preservation, buried at various angles to the surface of the sea floor. A, anterior view of a compressed internal mould, with clusters of chaetae fully extended from the auricle (flange on the right, anatomically the left side of body) and from the anterior-lateral margin of the flat, apical side of shell, USNM 617253p, #29. B, umbilical surfaces of two shells, one with right-side cluster of chaetae extended, left-side cluster apposed, USNM 617253cp, #5, #6. C, two shells less compressed due to early lithification of partial steinkerns; left, umbilical view with left-hand cluster of chaetae partly apposed; right, apical view, with right-hand cluster of chaetae fully extended, USNM 617253cp, #25, #26. D, umbilical, under surface of shell with right-side chaetae extended and left-side cluster tightly apposed but not withdrawn into shell, USNM 617253cp, #8. E, anterior-apical view of shell with a substantial ferruginous steinkern and both sets of chaetae extended, USNM 617253p, #62. F, left cluster of chaetae emerging from auricle of a shell crushed from posterior to anterior; right cluster partially extended, tightly apposed to the right, USNM 617253p, #59. G, oblique posterior view of a flattened shell with left cluster of chaetae emerging anterior of auricle and right cluster extended anterior of the umbilicus, USNM 617253p, #28. H, extended chaetae showing variable, slight ferruginous mineralization, USNM 617253cp, #5 (Fig. 6B, detail). I, ventral view showing anterior margin of the shell, chaetae emerging from auricle (anatomical left) on the right and anterior of umbilicus on left, USNM 617253p, #91. Scale bars represent: 1 mm (A–G, I); 0.5 mm (H).

More than a third of the shells on the slab are accompanied by impressions of one or two clusters of fine, straight or gently curved bristles (Figs 2B, 6). These extend 0.5–0.8 mm outward from what are inferred to have been the anterior left lateral and the right anterior margins of the shell (Figs 2B, 6A, D, G, I; for discussion of our revised orientation of *Pelagiella*, see below). The bristles in some clusters are tightly apposed (Fig. 6D), but in most cases they splay as broad fans (Figs 2A, 6), flattened in two dimensions. From their clustered associations, their dimensions, and the modest flexibility indicated by their variable curvature (conjunct within a cluster), we infer these bristles to have been chaetae.

Preservation of these impressions, some of which are stained by iron oxides, may have been enabled by inhibition of bacterial decomposition by clay (McMahon *et al.* 2016), or by rapid preservation of silica-cement, if the high silica saturation state of the Ediacaran ocean (Tarhan *et al.* 2016) persisted through the early Cambrian. Subsequently, the chaetae may have been filled or replaced by pyrite framboids during diagenesis, like those of polychaete annelids in the Burgess Shale (Smith 2014).

The smaller piece of shale (USNM 617254p, cp), represents a different association. It displays a dense aggregate of moulds of shells, swept together at all angles and less flattened (Fig. 5). Many of these shells are also accompanied by impressions of chaetae. Two of these clusters of chaetae are preserved in three-dimensions, showing their arcuate proximal attachment around a semicircular node at the base (Figs 2C, 7).

The preservation of monospecific assemblages of similarly sized shells of *Pelagiella exigua*, many with associated impressions of chaetae, implies that the organisms were alive or very recently dead when they were buried. These animals may have been swept up from the surface of algal/bacterial mats (Pojeta & Runnegar 1976), they may have fallen from life on the surfaces of algal fronds (Parkhaev 2008), or if they were pelagic (Dzik & Mazurek 2013) they could simply have sunk through the water column in conjunction with the event that killed them. This last alternative is unlikely, given both the size and shell thickness of these organisms and the global absence of *Pelagiella* from pelagic faunas in deep ocean sedimentary rocks.

Faced with adverse conditions, animals with protective shells generally withdraw into them. Some environmental insults cause organs to contract violently and become contorted. However, these organisms appear have been induced to relax following their demise, causing their chaetae to be extended to varying degrees postmortem. Asphyxia resulting from hypoxia (Yoann *et al.* 2019) or high concentrations of Mg^{++} ions (Acosta-Salmón & Davis 2007) can bring about this kind of relaxation, so either of these factors (see above) could have been involved here.

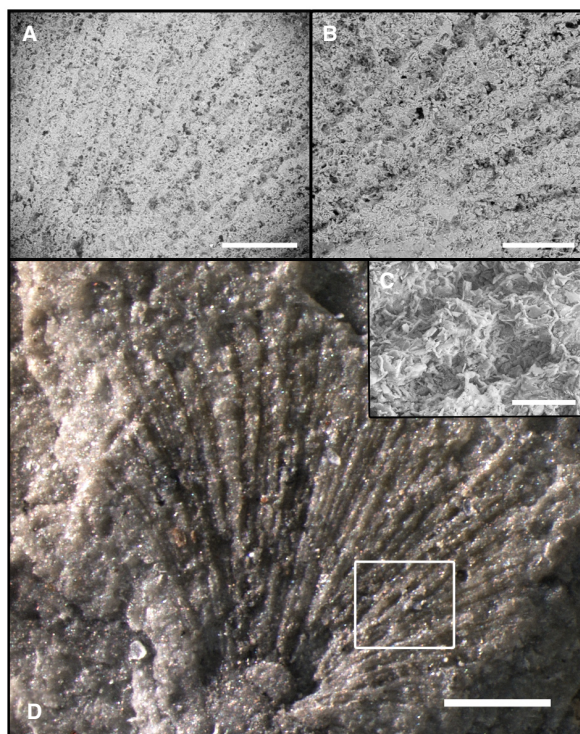


FIG. 7. Cluster of chaetae of *Pelagiella exigua* converging on basal node of attachment of the array, USNM 617254p. A–C, SEM images at successively higher resolutions show preservation of chaetae as grooves (i.e. moulds) in very fine siltstone and clay from which the original organic material has been dissolved away. D, photograph of the entire chaetal organ (Fig. 2C) showing the area enlarged as A–C outlined in white. All photographs by J. Vinther. Scale bars represent: 100 μm (A); 50 μm (B); 20 μm (C); 0.5 mm (D).

FORM, DISPOSITION AND POTENTIAL OPERATIONS OF THE CHAETAE

The impressions of bristles emerging in clusters from the apertures of shells of *Pelagiella exigua*, interpreted here as chaetae, rarely cross and they do not branch (Figs 2B, 6A–I, 7). The chaetae are 5–10 μm wide and up to 1.3 mm long (Fig. 2C; obscured proximally within most compressed shells). As many as 50 chaetae occur in each cluster. The clusters emerge in various directions, depending partly on the orientation of shells relative to their flattening in the shale. Generally, the cluster on the apical side of the shell (anatomical right in our new reconstruction, see below) emerges perpendicular to the inferred margin of the aperture, whereas that on the umbilical side (anatomical left) radiates obliquely from its anterior mid-section (Figs 2B, 6D, G).

For example (Fig. 2B), chaetae aligned perpendicular to the periphery of the whorl project from underneath the laterally compressed shell, whereas chaetae on the left-

hand side of the animal appear where they emerged, preserved in the plane of compression. The orientation of chaetae on the umbilical side of this individual, parallel to the surface of the shell, is inferred to be a result of rotation during compaction. In some specimens (Fig. 6C, D), the clusters of chaetae are more or less tightly apposed, showing that they were extensible and could be retracted, although possibly not all the way back into the shell.

If *P. exigua* were benthic and lived with its tangential aperture parallel to the substrate, like modern gastropods with capacious apertures, the chaetae must have projected outward rather than downward from the visceral mass or foot. In flattened specimens with the best organized arrays, the chaetae of each cluster appear to converge toward points well within the interior of the body whorl. Numerous specimens with two discrete clusters of chaetae still in place suggest singular sites of attachment, on either side of the body (Figs 2C, 6). A few *in situ* clusters are somewhat disordered, with chaetae misaligned and crossing one another (Fig. 6F). These are thought to reflect post-mortem disaggregation.

A remarkably preserved, isolated three-dimensional array of chaetae documents the proximal configuration of the clusters (Figs 2C, 7), otherwise hidden within the compressed shells. The chaetae converge on a basal node, potentially a mould replacing the muscle mass by which they were articulated. The funnel-shape of this disjunct cluster and its basal node imply that in life the chaetae were extended as shallow hemiconical arrays, rather than as planar fans.

The states of preservation of the chaetae show them to have been stiff but slightly flexible in life (Figs 2B, 6). The consistent form, disposition and orientations of the clusters of chaetae with respect to the shells indicate that they were features of the shell maker, not those of an adventitious occupant of dead shells. These structures were comparable in form and inferred stiffness/flexibility with chitinous chaetae of living brachiopods (Lüter 2000) and many polychaete annelids (Hausen 2005).

Given these comparisons, the chaetae of *Pelagiella exigua* might be expected to have been deployed along the mantle margin, as in adult brachiopods, or anchored in follicles of parapodia-like appendages, as in polychaetes. Insertion along the mantle margin is ruled out by the configuration of the chaetae as clusters that converge toward points of attachment well inside the shell. Furthermore, significant masses of protractor and retractor muscles would have been required, as in polychaete parapodia, to operate numerous chaetae as components of an array that was large in size relative to that of the animal.

The clusters of chaetae might have been deployed by parapodia-like appendages analogous to the epipodial tentacles of vetigastropods (Haszprunar *et al.* 2017). More

probably, given their inferred points of convergence, they were attached further back on the left and right sides of the foot. Protraction of the foot might have allowed the arrays to protrude a considerable distance beyond the shell. Retraction could have withdrawn them well into the mantle cavity, forming a fringe of chaetae extending around much of the shell's aperture. On the other hand, the asymmetric alignment of the chaetal appendages relative to the anterior–posterior axis of the animal (Figs 2B, 6A, D, E, G) suggests that they could have been independently protruded and retracted.

Taken together, these observations and inferences lead to the conclusion that *Pelagiella exigua* was equipped with a pair of anterior–lateral, muscular, parapodia-like appendages, arising from the body wall or the foot, each bearing a cluster of chaetae that could be extended as a hemiconical array and to some degree retracted.

PHYLOGENETIC AND FUNCTIONAL IMPLICATIONS OF THE CHAETAE

Chitinous chaetae, canonical features of annelids and brachiopods, are not known as such in other living lophotrochozoans. However, mopaliid chitons, juvenile octopods and bryozoans employ chitinous materials with ultrastructural similarities to those of chaetae (Fig. 8, CMTs; Brocco *et al.* 1974; Gordon 1975; Leise & Cloney 1982; Giribet 2008) and chitin is an essential component of the organic matrix of mollusc and brachiopod shells (Zhao *et al.* 2018). Well-preserved fossil chaetae are known from Cambrian polychaete annelids (Conway Morris 1979; Eibye-Jacobsen 2004) and brachiopods (Topper *et al.* 2015). Among small carbonaceous fossils from the late Cambrian of Baltica, Slater *et al.* (2017) recognized isolated strap-shaped chaetae, with bifid and serrated tips, like brush chaetae of modern annelids. The chaetae of *P. exigua* are similar in size to these fossils, but dissimilar in form, comparable to the ‘indeterminate spinose elements’ reported in the same assemblages.

The capacity to synthesize chitin predates the common ancestor of animals and fungi, and chitin synthases belonging to a monophyletic gene family (Fig. 8, LCSs) are widely distributed among the lophotrochozoan phyla. The genome of the limpet *Lottia gigantea* (Gray *in* Sowerby, 1834) codes for nine chitin synthases belonging to four paralogous groups that also occur in annelids (Zakrzewski *et al.* 2014). Bivalves, a chiton and a brachiopod are also known to express some members of these groups. Most of these chitinases have a common N-terminal myosin motor domain that interacts with the actin cytoskeleton to deliver the enzyme to sites of secretion. In both annelids and brachiopods, synthesis occurs in chaetoblasts of the chaetal follicles, development being

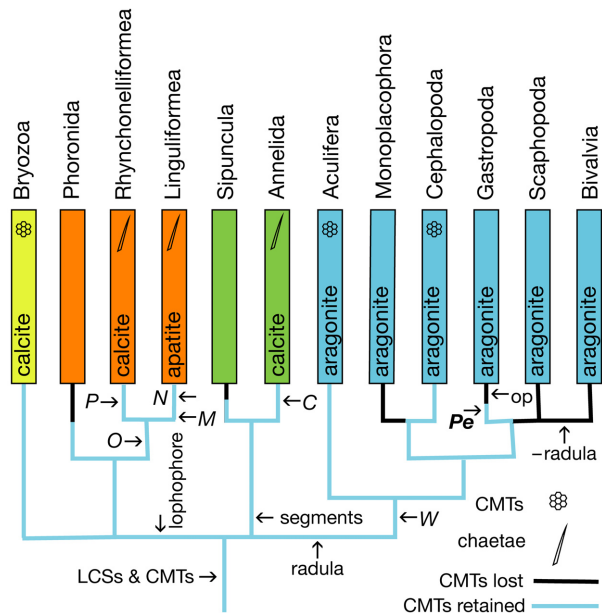


FIG. 8. Phylogenetic tree representing likely relationships of some lophotrochozoan higher taxa and the inheritance pathways for the subsets that retain or have lost (black) the ability to secrete chitinous microfibrillar tubules (CMTs), the structural component of chaetae (LCSs) and other similarly derived products. Coloured rectangular bars represent crown groups (orange, Brachiozoa; yellow, Bryozoa; green, Annelida; blue, Mollusca); mineral names refer to the primary skeletal biomineral of each clade. Stem taxa in addition to *Pelagiella* (*Pe*) that have preserved evidence of chaetae or CMTs are indicated by: *C*, *Canada* (Butterfield 1990); *M*, *Mickwitzia* (Butler *et al.* 2015); *N*, *Micromitra* and *Paterina* (Topper *et al.* 2015); *O*, *Oymurania* (Kouchinsky & Bengtson 2017); *P*, *Plaesiomys* (Jin & Copper, 2010); *W*, *Wiwaxia* (Smith 2014). Other abbreviations: LCSs, lophotrochozoan chitin synthases (Zakrzewski *et al.* 2014); CMTs, chitinous microfibrillar tubules (Tilic *et al.* 2015); *op*, operculum. Tree based largely on phylogenetic analyses of Kocot *et al.* (2011) and Smith *et al.* (2011, 2013) (molluscs) and Sperling *et al.* (2011) (lophotrochozoans). The unresolved quadri-chotomy linking higher level clades reflects uncertain relationships amongst them (e.g. Stöger *et al.* 2013; Budd & Jackson 2016; Kocot *et al.* 2017).

controlled by the expression of particular Hox and homeodomain genes (Zakrzewski 2011; Schiemann *et al.* 2017). Thus, the genetic underpinnings required for chitin synthesis and chaetal construction were present in the common ancestor of annelids, brachiopods and molluscs.

Up to now, only two of these phyla have been known to express the capacity to construct chaetae as such. In the Mollusca, this capacity would appear also to have been retained if the uncalcified dermal sclerites of the putative stem group mollusc *Wiwaxia* are indeed homologous with chaetae (Butterfield 1990, 2003; Vinther & Nielsen 2005; Smith 2014; but see Chen *et al.* 2015) and if the calcareous sclerites of the aculiferans are also

homologous with chaetae (Scheltema 1993; Smith 2014). Among the conchiferans, the corresponding genes may be employed mainly in producing chitin for the organic matrix of calcareous shells and gastropod opercula (Poulicek 1983; Weiss *et al.* 2013). These inferences are all contested. The issue turns on whether structures composed of chitin that have evolved in different anatomical settings are regarded as being homologous, or as being independent, convergent applications of the same molecular and tissue-building toolkit. In fact, processes that are homologous at one level of pattern formation may be expressed independently at different levels or sites of anatomical deployment. Here, this issue does not arise, as we present direct evidence of the occurrence of chaetae as such in the stem group gastropod *Pelagiella*.

Chaetae may have sensory, locomotory, feeding or protective functions (Rouse & Pleijel 2001; Merz & Woodin 2006; Topper *et al.* 2015). *Pelagiella exigua* had two sets of chaetae, long, slender and apparently flexible, like capillary chaetae of annelids (Merz & Woodin 2006), but stiff enough to have been articulated as cohesive parts of the appendages to which they were attached. Chaetae employed by annelids in swimming, often jointed and with lateral flanges, are typically deployed along the length of the body. The two arcuate chaetal arrays of *P. exigua* appear neither to be appropriate in form nor were they anatomically well deployed to serve this purpose.

Given the widely gaping, angular aperture of its shell, it is unlikely that *Pelagiella* had an operculum. Consequently, *P. exigua* might have benefited from a protective screen, excluding interlopers and coarse sediment, as in some brachiopods (Rudwick 1970). But the form, flexibility and occurrence in clusters of the chaetae (Figs 2B, 6) indicates an active function, not the passive role of a rigid fence or grating. Tactile sensation, observed as a function of chitinous hairs of living chitons (e.g. *Mopalia muscosa* (Gould, 1846)), has been inferred for the radial arrays of exceptionally long chaetae of the Cambrian brachiopod *Micromitra burgessensis* Resser, 1938 (Topper *et al.* 2015). This purpose seems less likely to have been well served by the two integrated clusters of chaetae wielded by *P. exigua* than it would have been by more broadly distributed exploratory sensors.

Hence, in part by exclusion, but directly on account of the fact that the chaetal arrays appear to have faced outward and forward, it seems most likely that *P. exigua* employed its chaetal appendages primarily in food gathering. If these snails lived on the surface of the sea floor or in large numbers on seaweed, both consistent with their palaeoecology and modes of preservation (Parkhaev 2008), they may have deployed their chaetae like the cephalic cages of flabelligerid annelids to trap and harvest small organisms and flocculent or floating detritus

(Jumars *et al.* 2015, appendix A). The extended chaetal arrays of *P. exigua* are remarkably similar in form to arrays of hairs borne by the second maxillae of present-day calanoid copepods studied experimentally by Koehl (1995). Although larger ($\times 5$, linear dimensions), the chaetal arrays of *P. exigua* could likewise have operated as leaky sieves, at Reynolds numbers greater than 1, in ‘fling and squeeze’ trapping of food particles. For explanation of these evocative terms and the process they invoke, see Koehl (1995). Alternatively, in environments featuring high concentrations of dissolved nutrients (Ridgwell & Arndt 2014) and intermittent deprivation of oxygen, the large surfaces of the chaetal arrays might even have been employed in bacterial farming, like that increasingly recognized in the deep ocean today. Finally, if *P. exigua* were mobile on the seafloor, its chaetal arrays could have served as whisk-brooms, stirring up detritus and meiofaunal organisms to be sorted by epipodial or cephalic tentacles before being passed to the mouth. This mode of feeding is common among annelids, and not dissimilar to that of gastropods adapted to suspension or selective deposit feeding (Lopez & Levinton 1987; Jumars *et al.* 2015, appendix A).

SYSTEMATIC RELATIONSHIPS OF *PELAGIELLA*: ALTERNATIVE HYPOTHESES

There has never been any real doubt that *Pelagiella* was a mollusc. But disagreement persists over whether it was a helcionelloid expressing partial torsion, hence a stem group gastropod (Runnegar 1981), a divergent, untorted paragastropod (Linsley & Kier 1984), an untorted, endogastric relative of helcionelloids (Peel 1991), or a fully torted stem, or even crown group, gastropod (Parkhaev 2001a, 2007a; Landing *et al.* 2002). Resolution of this issue depends on indirect evidence of the disposition of soft parts of the animal that are not preserved and their orientation in relation to its shell.

Initially, real but misleading points of comparison led Matthew (1895b) to interpret the type species on which he defined *Pelagiella* as a swimming heteropod. The shell of *P. atlantoides* has a widely gaping aperture that is unusually thickened (‘gerontically’) around part of its margin. From these features of derived and geologically much younger pelagic gastropods, *Pelagiella* gained its inappropriate name.

In an influential paper, Knight (1952) sought to locate the origin of torsion among Cambrian helcionelloids. Acknowledging limited evidence, he reconstructed the anatomy of *Coreospira* and *Oelandia* as fully torted gastropods. But he remained uncertain to the end that *Pelagiella* was a gastropod (Knight *et al.* 1960), citing in

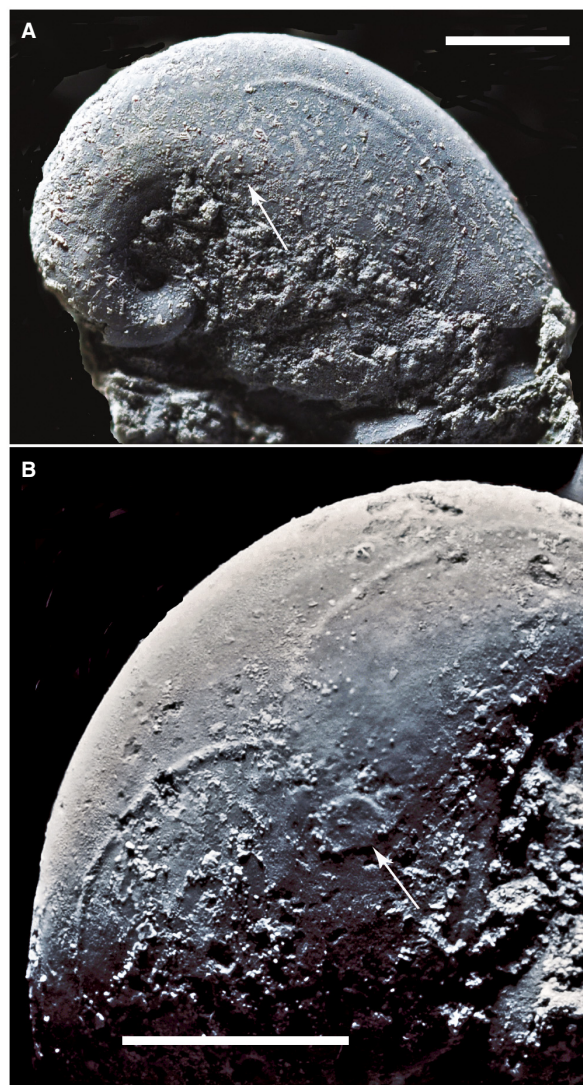


FIG. 9. Steinkern of *Pelagiella atlantoides* (Matthew, 1895a) showing muscle scars and arcuate ridges, reflecting grooves on the interior surface of the shell, inferred to have been associated with attachment of gills to the mantle. A, right, apical side of shell with the apex depressed, showing a single groove extending anteriorly from the vicinity of the pedal retractor muscle scar (arrow). B, left, umbilical side of the shell, showing grooves extending both anteriorly and posteriorly away from the pedal muscle scar (arrow). USNM 298724, Hanford Brook Formation, *Protolenus elegans* Zone, basal Cambrian Stage 5, St John, New Brunswick, Canada. Photographs by J. Vinther. Scale bars represent 2.0 mm.

particular the unusual shape and thickened margin of its aperture. In his view (Knight 1952, fig. 1), ‘*Pelagiella* and its allies’ constituted a distinct, untorted lineage established just prior to the emergence of the Gastropoda.

Runnegar & Pojeta (1974; Pojeta & Runnegar 1976) rejected this analysis, interpreting all bilaterally symmetrical helcionelloids as untorted monoplacophorans. They

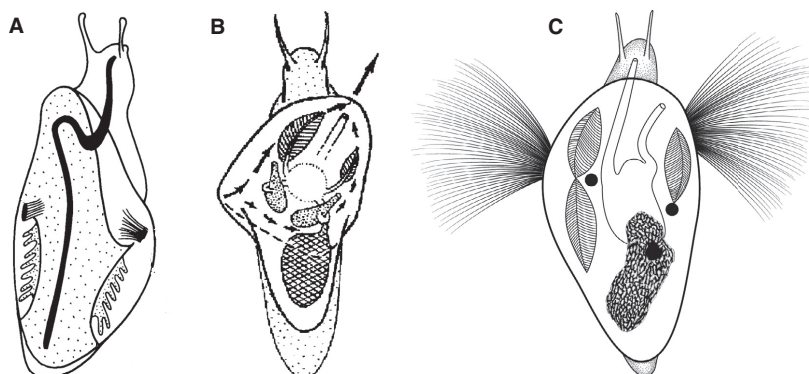


FIG. 10. Alternative reconstructions of *Pelagiella*. A, as a helcionelloid ‘monoplacophoran’, slightly torted with the two pedal muscle scars offset by 10° , the shell’s apex oriented anteriorly, and paired gills in the posterior mantle cavity (Runnegar 1981, fig. 5B). B, as a helcionelloid gastropod, with the shell’s apex oriented posteriorly, a reduced right gill, and an inhalant current drawn in through a strong deflection in the aperture (auricle) as seen in *Pelagiella subangulata*; the posterior organ shown represents a large mass of gonad, inferred by Parkhaev (2001a, fig. 3g) to have been present by comparison with the anatomy of living vetigastropods. C, our interpretation, as a stem group gastropod with paired chaeta-bearing appendages and asymmetrically developed anterior gills; these are inferred to have been attached to the mantle where it was anchored in fine grooves on the interior shell surface (Fig. 9); the asymmetric ctenidia and left/right offset of pedal muscles are consistent with full torsion and asymmetry of helical shell coiling; the posterior organ shown here represents digestive gland, based on phosphatized branching tubules, mainly to the right and behind the gut, preserved in *Costipelagiella* sp. (Bischoff 1990).

supposed, citing consistent dextral coiling of their helical shells, that *Aldanella* and *Pelagiella* were among the earliest known gastropods. Later, Runnegar (1981) recognized left and right muscle scars, offset by about 10° along the anterior–posterior axis of a remarkably well preserved steinkern of *Pelagiella atlantoides* (Fig. 9). From associated ridges interpreted as traces of mantle attachment to the shell, he inferred that space occupied by the mantle cavity was incompatible with 180° of torsion. Hence, he treated *Pelagiella* as a helcionelloid that was slightly torted (Fig. 10A).

Meanwhile, Linsley (1977) had argued that the shape of the aperture of *Pelagiella*, elongated perpendicular to the coiling axis of its shell (Fig. 1), is uncharacteristic of gastropods. To Linsley & Kier (1984), this implied a body plan calling for assignment of the pelagiellids to an extinct class of early untorted molluscs, which they established as the Paragastropoda. Peel (1991) also doubted that *Pelagiella* was a gastropod, despite supposing that its shell coiling was endogastric. He assigned it, with *Aldanella*, to an early branch off the conchiferan stem, close to the Helcionelloida.

A cladistic analysis of early Palaeozoic gastropods by Wagner (2002), based entirely on external shell characters (i.e. without reference to infrequently preserved muscle attachment scars), endorsed the suspicion expressed by Linsley & Kier (1984) that the taxon Paragastropoda is not monophyletic. In this analysis, pelagiellids appeared as the sister group of onychochiloid gastropods, with which they were erroneously supposed by Dzik (1994) to share similar protoconchs. These taxa were next most closely linked, as

also by Pojeta & Runnegar (1976) and by Peel (1991), to the helcionelloids. Wagner (2002) considered all these taxa to have been untorted, conventionally assuming the origin of torsion to have coincided with the emergence of an apertural sinus or slit required to accommodate the sanitary requirements of a post-torsional mantle cavity.

In contrast, building on mainly stratigraphical studies of Rozanov & Missarzhevsky (1966), Russian scholars now assign *Pelagiella* and all other helcionelloids to the gastropod subclass Archaeobranchia (Parkhaev 2000, 2001a, 2017). They suppose that all these early molluscs, most of them bilaterally symmetrical and some with uniquely specialized shell forms (e.g. *Latouchella*, *Yochelcionella*) underwent full developmental torsion. This view is based largely on presumed endogastric coiling, the disposition of retractor muscle scars inferred from microstructural fabrics observed in some taxa, and an anterior mantle cavity based on reconstructions of the circulation of respiratory currents (Fig. 10B; Golikov & Starobogatov 1975; Parkhaev 2000, 2008).

The pelagielloids Aldanella and Pelagiella were not hyoliths

Dzik & Mazurek (2013) argued that *Aldanella* and other pelagielloids should tentatively be assigned to the Hyolitha. They cited the supposed sharing of a ‘mucro’ by specimens of *Aldanella attleborensis* Shaler & Foerste, 1888 from Siberia, a few steinkerns of *Pelagiella*, and larval shells of certain hyoliths (Dzik 1978). Except in chitons, where a mucro represents the node that was calcified as a whole,

prior to the onset of marginal accretion of a shell plate, this feature is variably expressed and rarely recognized. Where it is distinctive, it may represent a discrete stage of larval shell development as Dzik (1994) suggested, but no other author has reported a mucro in a pelagielloid.

Dzik & Mazurek (2013) also argued that the shell microstructure of pelagielloids, lacking nacre, is uncharacteristic of early molluscs and comparable to that of hyoliths. However, Kouchinsky (2000), Vendrasco *et al.* (2010) and Moore & Porter (2018) recognized two laminae, originally composed of aragonite needles oriented in perpendicular directions, that constitute a plesiomorphic grade of evolutionary advance in skeleton formation common to the earliest conchiferan molluscs and hyoliths. Furthermore, Runnegar (1990) reported a laminated microstructure, now thought originally to have been nacreous, in a South Australian species of *Pelagiella*.

Dzik & Mazurek (2013) also illustrated a single specimen of *A. attleborensis* inside which three or four short phosphatized rods are preserved at high angles to one another. Citing our conference abstracts reporting chaetae of *Pelagiella* (Thomas *et al.* 2010a, b), they interpreted these rods as fragments of chaetae. The rods are of about the right diameter, but they cannot be distinguished with certainty from tubular algal filaments commonly assigned to *Girvanella* (C. B. de Wet, pers. comm.) Moreover, it is hard to see how flexible chitinous chaetae might have been transformed to short, brittle fragments prior to lithification. *Aldanella* might have had chaeta-bearing appendages like those of *Pelagiella*, but this evidence is at best inconclusive. Chaetae have not, in any case, been reported as features of hyoliths.

The arguments advanced by Dzik & Mazurek (2013) were intended to exclude pelagielloids from the Mollusca. But they overlooked or dismissed evidence of helical shells, muscle scars, shell microstructure and external sculpture that is consistent with reconstruction of *Pelagiella* as a stem group gastropod. Pelagielloids exhibit none of the distinctive characters of hyoliths. With straight, conical shells, guts like those of sipunculid worms (Devaere *et al.* 2014), and new evidence of an organ interpreted as a suspension-feeding lophophore (Moysiuk *et al.* 2017), the hyoliths appear to have been lophophorates. We see no reason to reject the well established view that *Pelagiella* is an early conchiferan mollusc.

SOFT-PART ANATOMY OF *PELAGIELLA*

More is known about the soft-parts of *Pelagiella* than most fossil gastropods without living counterparts (Runnegar 1981; Bischoff 1990; Parkhaev 2001a). Our discovery of two sets of chitinous chaetae adds to this body of evidence, which may be used to test previous

reconstructions of its anatomy (Fig. 10A, B) and to prompt consideration of a new one (Fig. 10C).

Muscle scars and their implications

Patches of polygonal impressions and other features interpreted as muscle scars have been reported from phosphatic internal moulds of several species of *Pelagiella*. Some of these reports may represent evidence of muscle attachment, but they are all equivocal. Landing *et al.* (2002) figured an internal mould, designated as *Pelagiella* sp. from Morocco, bearing a kidney-shaped feature on its umbilical surface. They interpreted this as the attachment scar for a large columellar retractor muscle, comparable to that of the abalone, *Haliotis*. However, this feature lacks evidence of a muscle track, scalloped edges, or imprints of myostracal prisms that would confirm it to be a muscle attachment scar.

Isakar & Peel (2007) likewise inferred the occurrence of a columellar muscle in *Aldanella*. They reported a spiral groove on the apical surface and a weakly defined spiral ridge on the umbilical surface of a steinkern of *Aldanella kunda* Opik, 1926 from Cambrian Series 1 strata in Estonia. These features appear to be comparable to a pair of deeply pitted circum-umbilical grooves on the apical and umbilical margins of steinkerns of two species of *Pelagiella*, interpreted by MacKinnon (1985; see also Runnegar & Jell 1976, fig. 7D, F) as impressions of narrow ridges serving as sites of muscle attachment. These features are better placed, adjacent to the axis of the shell, to be interpreted as traces of attachment for columellar muscles than that figured by Landing *et al.* (2002).

Evidence of a single pair of retractor muscles preserved on a topotype steinkern of *P. atlantoides* (Fig. 9) is less ambiguous. The two scars have the elevation and sharp edges of muscle scars observed on internal moulds of fossil bivalves where their interpretation is unequivocal. Associated with these scars on both sides of the steinkern are fine, gracefully curved ridges, reflecting grooves on the interior surface of the shell. In each case these turn inward toward the muscle scars (Fig. 9), as would be expected if they represent lines of attachment of the mantle to the shell, at its junction with the visceral mass (Runnegar 1981). Since pedal retractor muscles extend into the foot from the visceral mass, the dorsal margin of the mantle cavity was limited ventrally by their presence, and its floor curved down to encompass them. In addition, these arcuate grooves may record the presence of left and right ctenidia, each having their efferent membranes attached ventrally to the mantle at its junction with the viscera, as in living vetigastropods such as *Pleurotomaria* and *Scissurella* (Yonge 1947). If so, this implies that development of the ctenidium on the apical (right) side

of the animal was reduced relative to that on the umbilical (left) side.

These observations suggest that *Pelagiella* had an extensible foot, differentiated from the visceral mass as in most multispiral crown group gastropods. This feature may already have been present, prior to both torsion and spiral coiling of the shell, among the helcionelloids. Whether or not in *Pelagiella* the foot terminated anteriorly in a well-developed head, with cephalic tentacles and other sensory organs such as those especially characteristic of vetigastropods (Haszprunar *et al.* 2017), is so far unknown.

Unique preservation of digestive gland

Two remarkable specimens of *Costipelagiella* sp. have parts of a phosphatized digestive gland preserved within the last whorl of the shell (Bischoff 1990). In most living gastropods, the left lobe of the digestive gland is generally larger than that on the right (Fretter & Graham 1962). However, among living vetigastropods such as *Haliotis* (Wood & Buxton 1996) and the scissurellids (Montouchet 1972), the digestive gland occurs on the right-hand side of the animal. The disposition of the digestive gland observed in Bischoff's specimens is thus consistent with space made available by reduction in size of the right ctenidium in these taxa and our reoriented reconstruction of the anatomy of *Pelagiella* (Fig. 10C). However, in his figures and reconstruction (Bischoff 1990), the gland appears to occupy much of the last whorl of the shell, more space than would be expected even if it constitutes both the midgut and foregut portions of the gland.

Untorted or torted during development? What do the chaetae tell us?

The paired clusters of chaetae of *Pelagiella exigua* need to have been deployed anterolaterally, not posteriorly, to have functioned effectively in any likely role. Hence, the disposition of the chaetal appendages establishes the animal's anterior–posterior polarity in relation to its shell (Fig. 10C). This inference implies that *Pelagiella*'s shell coiling was endogastric (Fig. 11), as in gastropods.

Runnegar (1981) thought that the mantle cavity of *P. atlantoides* (Figs 9, 10C) extended along the whole length of the foot, as in chitons and monoplacophorans, rather than being confined to the anterior region of the body as in gastropods. Furthermore, he took asymmetric dextral coiling and its anatomical consequences to indicate that *Pelagiella* was an exogastric helcionelloid, exhibiting about 10° of partial torsion. So, he reconstructed it as a transitional form with a limited developmental twist: counterclockwise

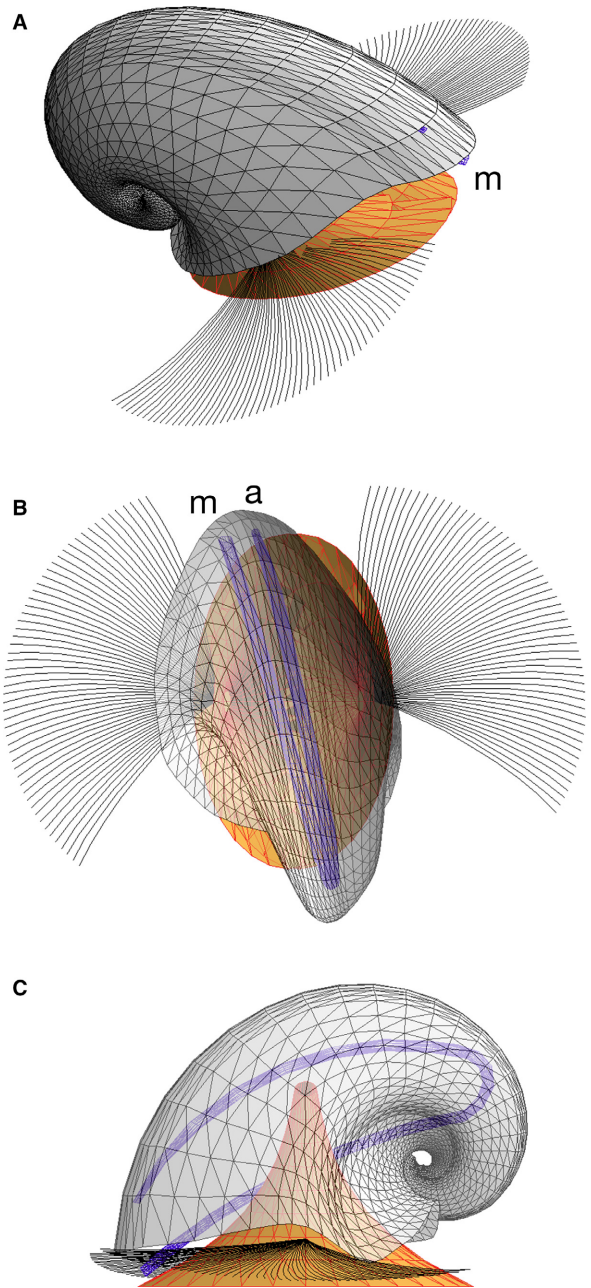


FIG. 11. Model reconstructions of *Pelagiella* expressing torsion, with its chaetal arrays extended. A, right anterior lateral view, showing the apical surface of the shell and the anterior lobe of the foot (orange). B, posterior dorsal view, with the shell's auricle (modestly developed here) on the left and diagrammatic representation of the gut (purple) running from the mouth (m) to the anus (a). C, left lateral, abapical view, showing the muscle mass of the foot extending upward to one of two pedal retractors and the gut running from the mouth to the anus, above and to the right of it. Whether the broadly hemiconical arrays of chaetae were extended convex-down or convex-up in life is uncertain. Models developed by BR, using Aldus Super 3D 2.5 software (Silicon Beach Software).

as in gastropod torsion, a mantle cavity extending along the entire right-hand side (his orientation) of the body, and paired posterior ctenidia (Fig. 10A). He suggested that the helically coiled shell evolved to lower the animal's centre of gravity and that partial torsion was required to balance the shell at an angle over the body axis, in accord with Linsley's (1977) 'third law' of gastropod shell form. However, the adaptive function invoked to have required partial torsion cannot be sustained, as the stabilizing role of gravitational force is insignificant at the scale of a 2 mm organism living in seawater. Linsley (1977) specified that his 'laws' applied only to marine prosobranchs greater than 10 mm in length, noting the role of surface tension at smaller scales. Likewise, forces exerted by muscles (Lai *et al.* 2010) and adhesion or friction retarding locomotion over a layer of mucus (Denny 1980) are large relative to that of gravity at this scale.

In his reconstruction of *Pelagiella* as an archaeobranchian gastropod (Fig. 10B), Parkhaev (2001a, 2008) assumed the animal to have undergone full torsion in its development. This reconstruction is based primarily on supposed directions of flow of respiratory currents through the anterior mantle cavity, a single inhalant current entering the mantle cavity in the region of the auricle observed in some species on the umbilical side of the shell (Fig. 1B). The right ctenidium is shown reduced in size relative to that on the left. A large mass of gonad is associated with the small digestive gland shown on the right side, but not on the left. The latter features of Parkhaev's reconstruction are not based on observational evidence of fossils; they were inferred explicitly from the anatomies of living gastropods (Parkhaev 2001a). Here, and elsewhere in his accounts of *Pelagiella* and the helcionelloids as archaeobranchians, Parkhaev (2000, 2001a, 2008, 2017) has to a large extent conceived them anatomically as they ought to have been if they were in fact gastropods.

Our inference that the chaeta-bearing appendages of *Pelagiella* were necessarily anteroventral leads to a reconstruction such that the shell was endogastric, with its rapidly expanding aperture growing forward away from its apex (Fig. 10C). Asymmetry of the gills is based on the curved grooves on the interior of the shell of *P. atlantoides* (see above). This asymmetry is inferred to have arisen from the combined effects of torsion and reallocation of space in the mantle cavity due to dextral coiling of the shell (Yonge 1947; Page 2006). It is consistent with the hypothesis that *Pelagiella* was a gastropod, with an extended left gill comparable to those of *Littorina* and the trochid *Monodonta* (Fretter & Graham 1962), and a reduced right gill as in many living vetigastropods.

Our reconstruction of *Pelagiella* as a gastropod that underwent torsion, leading to asymmetric development of its ctenidia, is consistent in these respects with that of

Parkhaev (2001a, 2008). However, we regard the curvilinear grooves tracing attachment of the gills as evidence that he lacked. In our reconstruction, the main inhalant respiratory current is thought to have entered the mantle cavity along the left-lateral margin of the aperture, at a sinus (even a prominent auricle in some species, Fig. 1B) that gives the aperture of *Pelagiella* its unusual shape. This current passed either through the cluster of chaetae or adjacent to the auricle, where a sinus has sometimes been recognized. Likewise, another respiratory current is inferred to have entered the mantle cavity through or adjacent to the cluster of chaetae on the right. Circulation of these respiratory currents passed up through the gills and forward, above and between them on both sides of the viscera, passing the anus to exit right of the head, as Parkhaev (2001a, 2008) suggested (Fig. 10B).

The evidence now available (shell and body orientation, chaetae and the disposition of soft parts) constitutes the basis for our interpretation of *Pelagiella* as a gastropod, with a dextrally coiled, anteriorly expanding shell, that underwent full torsion during its development (Fig. 10C). This is consistent with prior proposals that *Aldanella* (Pojeta & Runnegar 1976), which appeared stratigraphically earlier, and the pelagiellids (Golubev 1976; Parkhaev 2001a, 2008) may have been torted gastropods. However, this argument does not apply to helcionelloids in general. These lack evidence of derived characters associated with torsion. We interpret the helcionelloids as paraphyletic stem group conchiferans (Fig. 12), not crown group gastropods as Parkhaev (2001a, 2007a, 2008) implied by assigning them all to the gastropod class Archaeobranchia.

DISCUSSION

Newly elucidated, *Pelagiella* remains an enigma. On the one hand, we infer that it expresses torsion, the canonical derived character of crown group gastropods. On the other, it bears chaetae, a plesiomorphic lophotrochozoan character linking molluscs to their common ancestry with annelids and brachiopods (Fig. 8). Our evidence from the fossil record provides an affirmative test of this hypothesis, which until now has been based on phylogenetic analyses of molecular and morphological data drawn from living organisms (Peterson & Eernisse 2001; Giribet 2008). Moreover, it extends its embrace to include the gastropods, amongst which chaetae have not so far been recognized in any living or extinct taxon.

If the occurrence of chaetae in *Pelagiella* represents retention of a plesiomorphic character, transmitted by direct descent from an ancestral homologue, chaetae must have been retained by at least some helcionelloids (Fig. 12). A gradational series of shell forms can be recognized from helcionelloids such as *Latouchella*, through

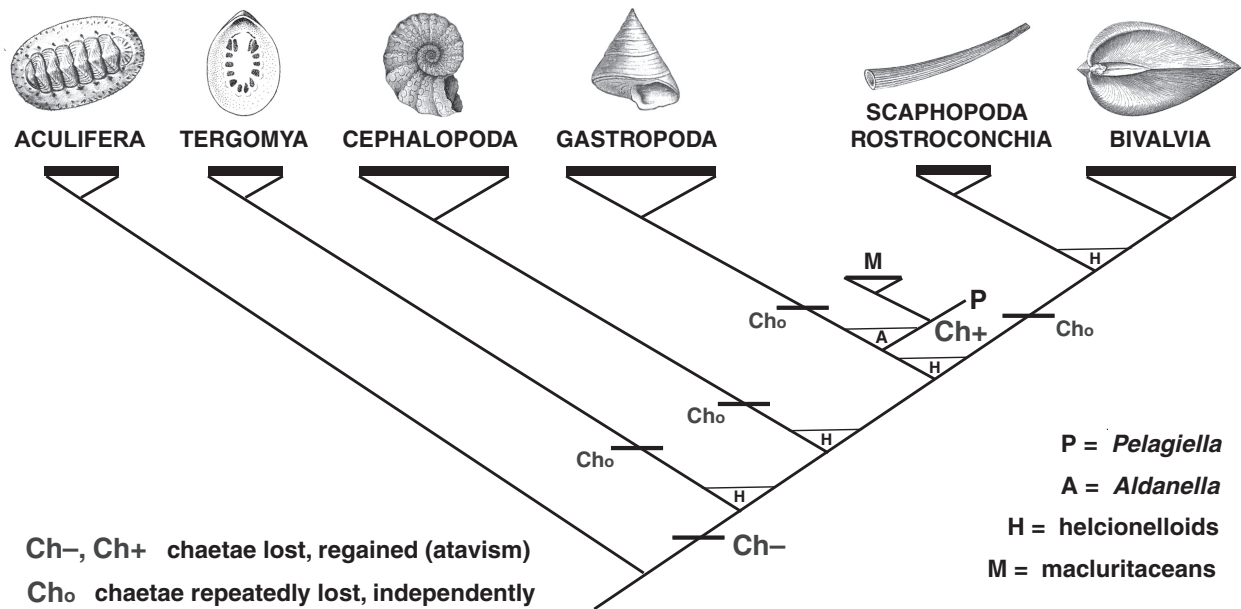


FIG. 12. Inferred evolution of *Pelagiella* in relation to its presumed emergence from the helcionelloids. This scenario posits two alternative hypotheses: (1) chaetae were retained by at least some helcionelloids and passed directly on to *Pelagiella*, potentially also to macluritaceans; in this case, they were lost independently in Tergomya, Cephalopoda, Gastropoda, and in Scaphopoda + Bivalvia; (2) chaeta were lost among the earliest conchiferans and later reactivated (atavistic) before or after the branch giving rise to *Pelagiella* and possibly also the macluritaceans.

Archaeospira, to *Pelagiella*. Hence chaetae could have been passed directly on to *Pelagiella* and perhaps even to the sedentary Ordovician macluritaceans, whose means of feeding are as yet unknown. But we have at present no evidence of intermediary chaeta-bearing helcionelloids or taxa linking the pelagielloids to any later descendants.

If chaetae are plesiomorphic for lophotrochozoans (Dunn *et al.* 2008; Giribet, 2008; Zakrzewski 2011), this implies the retention of chaetae in at least the line leading ultimately to the Gastropoda and their loss in all other conchiferan clades, as well as in lineages leading to the Sipuncula and Phoronida. Alternatively, chaetae may have re-emerged in the Pelagiellida, having been lost in the stem of Conchifera (Fig. 12). Living cephalopods generally lack chaetae. But in juvenile octopods, tufts of bristles known as Kölliker's organs are remarkably similar to annelid chaetae, both in form and in their development from basal chaetoblasts with microvillae (Brocco *et al.* 1974). It has been suggested that Kölliker's organs may be plesiomorphic in origin (Giribet 2008), hence exemplifying atavism (see Hall 1984; Raff 1996, pp. 386–389), although this case has been attributed to convergence by Hausen (2005). The same inferences potentially apply to the re-emergence of chaetae in *Pelagiella*. In each case, a lost feature with a complex pattern of development reappears in a later clade after supposedly irrevocable loss. Neither hypothesis is evidently more parsimonious than the other. One involves multiple losses of a functionally significant character state; the other

calls for reintroduction of a complex pattern. While direct descent can be corroborated by future discovery of intermediary taxa bearing chaetae, neither hypothesis can at this time be falsified. In fact, the difference between genomic atavism, achieved by reactivation of an inherited but suppressed developmental process, and evolutionary convergence achieved by deployment of the same developmental processes in a new context (the deep homology of Shubin *et al.* 2009) may be moot. They are effectively indistinguishable here.

By far more remarkable than the reappearance of chaetae in larval octopods is the fact that spicules of a present-day larval solenogaster share relatively complex patterns of serial and transverse organization with those of sclerites of *Halkieria* and *Wiwaxia*. Scheltema & Ivanov (2002) proposed that these similarities arose from a shared, genetically based process of skeletogenesis, although they did not go so far as to identify the patterns as being homologous. These authors also noted the co-occurrence in a mollusc, the vermiform multiplacophoran *Acaenoplax*, of features typical of molluscs and annelids, described in detail by Sutton *et al.* (2004). In the context of these observations, the hypothesis that the chaetae of *Pelagiella* arose as an atavistic revival of a pattern forming process that was suppressed in other conchiferan lineages does not seem implausible.

In lophotrochozoan taxa where chaetae and comparable features thought to be homologous with them occur

(Fig. 8), they develop in different anatomical and functional contexts. It is hard to see the evolution of these chitinous components in distantly related clades as outcomes of classical homology, as records of direct evolutionary continuity of form, *in situ*. Rather, they presumably represent the repeated emergence of chitinous novelties in different anatomical circumstances, employing homologous patterns of molecular development regulated by co-opted Hox and other genes, as now documented by Schiemann *et al.* (2017) in brachiopods and annelids. In some cases, as apparently in *Pelagiella*, annelids and brachiopods, this deep homology involves more complete replication of a common molecular 'toolkit' than others.

Torsion and the time and pattern of emergence of the Gastropoda

If *Pelagiella* underwent torsion in its development, the emergence in the early Cambrian of this most fundamental of gastropod characters supports the hypothesis that some of the earliest molluscs were already gastropods, as has been inferred from the shapes of their shells (Pojeta & Runnegar 1976). The widely accepted notion that torsion and specialized modifications of the shell's aperture which serve to improve adult sanitation evolved simultaneously during the latest Cambrian rests on the assumption that the latter adaptations were essential to accommodate torsion. Rather, it is more likely that torsion was acquired first, as a key adaptation that enabled a stem gastropod to inhabit a tightly coiled spiral shell. We suggest that the earliest gastropods did not diversify rapidly at first on account of collateral limitations arising from torsion. Later, in association with evolution to larger body sizes in the early Ordovician, gastropods with shells bearing sinuses and slits evolved, resolving these circulatory difficulties. At that time they diversified rapidly, establishing the extant clades and thereby also the gastropod crown group (Wagner 2002).

Whether or not *Pelagiella* and its near relatives constitute an immediate sister group of crown group gastropods remains to be determined. Given a shell form that Linsley & Kier (1984) found hard to accommodate in the Gastropoda, and now the discovery that it had a pair of chaeta-bearing appendages, *Pelagiella* is more derived in its character states than *Aldanella*, especially if the chaetae of *Pelagiella* were atavistic and unique to its family. Hence, it appears that *Aldanella*, stratigraphically earlier in its first occurrence and closer to typical gastropods in its shell form, is a more basal member of the clade and probably closer to the root stock from which crown group gastropods ultimately evolved.

Gene regulatory mechanisms characteristic of bilaterians are inferred to have emerged long before they were

widely exploited in the divergence of crown group metazoan phyla (Erwin *et al.* 2011). The evolution of thermoregulatory or behaviourally advantageous feathers among theropod dinosaurs was an early precursor to the later emergence of winged birds, the prior adaptation being repurposed to serve a new function (Prum & Brush 2002). Likewise, among the earliest conchiferans, it now appears that torsion emerged as a key developmental innovation that only considerably later facilitated the evolutionary radiation of crown group gastropods.

CONCLUSIONS

The unusual form of the shell of *Pelagiella* sets it apart from most gastropods. This arises from peripheral expansion of its large and angular aperture, which is often variable in shape. It may be explained by the discovery that this small animal was equipped with two clusters of proportionately large chaetae, comparable in form and stiffness to capillary chaetae of annelids, and up to half or more as long as the shell. These clusters of chaetae could apparently be extended as a pair of broad, forward and laterally directed, hemiconical arrays that were probably employed in feeding, either on bacteria-rich mat-grounds or on the surfaces of algal thalli. Chitinous chaetae are here recognized for the first time as such among conchiferans. This evidence from the fossil record is consistent with genomic data that group molluscs with annelids and brachiopods in the Lophotrochozoa. It also supports the hypothesis that chitinous chaetae constitute a deep homology of this clade.

The disposition of its chaeta-bearing appendages prompts a new reconstruction of the anatomy of *Pelagiella*. A long left ctenidium extended far back in the mantle cavity and a much shorter one was present on the right. This anatomical asymmetry, comparable to that of well-known living vetigastropods, implies that *Pelagiella* underwent torsion during the course of its development. On this basis, we recognize *Pelagiella* as the earliest confirmed stem gastropod.

SYSTEMATIC PALAEOLOGY

Phylum MOLLUSCA Cuvier, 1797

Subphylum CONCHIFERA Gegenbaur, 1878

Total group GASTROPODA Cuvier, 1797

Order PELAGIELLIDA (or PELAGIELLIFORMES) MacKinnon, 1985

Superfamily PELAGIELLOIDEA Knight, 1956 (as Pelagiellacea)

Remarks. The diagnosis of this superfamily by Knight *et al.* (1960) is obsolete and largely erroneous in light of

subsequent discoveries and practice. As originally defined, it included only the family Pelagiellidae. Subsequently, it has become customary to include the Aldanellidae in the same superfamily and order (e.g. Rozanov & Missarzhevsky 1966; Linsley & Kier 1984; Parkhaev & Karlova 2011; Bouchet *et al.* 2017) based on their shared antiquity, dextrally coiled teloconchs, short uncoiled embryonic shell, and lack of an apertural sinus or slit such as is associated with torsion in archaeogastropods (Wagner 2002).

Whether or not this grouping is appropriate, it is likely that both pelagiellids and aldanellids are stem gastropods (rather than stem members of another extant class) and are therefore crown conchiferans (*contra* Gubanov & Peel 2000). They lived after the last common ancestor of the Gastropoda and Bivalvia, which must have existed prior to the first appearance of *Aldanella attleborensis* Shaler & Foerste, 1888 in Stage 2 of the Terranuevian, *c.* 527 Ma (Betts *et al.* 2018), and prior to the latest common ancestor of the gastropod crown group as defined by the divergence of archaeogastropods (Patellogastropoda + Vetigastropoda ± Neritomorpha) and apogastropods (Caenogastropoda + Heterobranchia ± Neritomorpha) in the latest Cambrian or earliest Ordovician (Wagner 2002; Frýda 2012; Zapata *et al.* 2014).

On the basis of evidence presented in this paper, the Pelagielloidea includes at least one family, the Pelagiellidae, in which torsion and a single pair of pedal retractor muscles may already have appeared. Although in this respect the Pelagiellida may represent a crownward plesion of the gastropod stem, the first appearance of the family in the Fortunian (*c.* 530 Ma) is well separated from the presumed time of origin of the crown group (*c.* 485 Ma). Other basal crown characters, including an operculum and an apertural sinus or slit, appear to have been acquired during this interval.

Family PELAGIELLIDAE Knight, 1956

Diagnosis. Knight *et al.* (1960) cited that of the superfamily (see above).

Revised diagnosis. Dextrally coiled univalves having a high rate of whorl expansion and a tangential, oval to more or less triangular aperture, the long axis of which is oblique to the coiling axis. Depending on the shape of the growing edge of the aperture, the shell may be smoothly rounded or it may have flat to concave apical and adapical whorl profiles. Growth increments may be embayed on either side of the aperture, generating shallow sinuses. In some taxa, that on the left-hand side of the animal may be more or less greatly expanded, constituting an auricle (Fig. 1B). There is no slit, sinus or peripheral band (*sensu* Wagner 2002) of the archaeogastropod type.

External ornament varies from fine to distinct growth lines, through coarse divaricate spiral ribs to angular and steeply pitched comarginal plicae. Some otherwise smooth species have a prominent spiral ridge on the apical surface of the shell (Runnegar 1990, fig. 169H–J), but this varies significantly within populations and through ontogeny. The shells were originally aragonitic and are typically recrystallized to sparry calcite. Their microstructure, where known, consists of a thick inner layer of comarginal fibres oriented in chevron-like patterns and an outer layer of spirally oriented subhorizontal fibres or fibre bundles (Runnegar 1990; Vendrasco *et al.* 2010). An innermost layer of foliated aragonite has been reported from two species (Runnegar 1990; Li *et al.* 2017).

A topotype of *P. atlantoides*, the type species of *Pelagiella*, has a single pair of pedal muscle insertions on the left and right sides of the presumed mantle cavity. This is demarcated by three arcuate grooves that may represent sites of attachment of the mantle to the visceral mass (Figs 8, 9A; Runnegar 1981) or, alternatively, the lines of insertion of efferent membranes of the gills (Fig. 9C). Phosphatized soft parts found within two shells of *Costipelagiella* sp. exhibit an imbricate branching pattern consistent with Bischoff's (1990) interpretation that they represent a diverticulated digestive (midgut) gland. Also, as reported here, *Pelagiella exigua* had two sets of stiff but flexible chitinous chaetae that protruded laterally beneath the left and right anterior eaves of the shell.

Remarks. The disposition of chaetae of *Pelagiella exigua* suggests that the mantle cavity extended from beneath the spire towards the far end of the aperture on both sides of the body. If the animal underwent torsion in its development, the mantle cavity would have been continuous across the distal midline of the body (Fig. 9C). Alternatively, if the position of the visceral mass was that inferred by Runnegar (1981) from the muscle attachment scars (Fig. 9A), the mantle cavity would have been limited to the lateral flanks of the animal. There is no direct evidence for or against the existence of a post-larval operculum. However, the possibility that the chaetae could not be withdrawn entirely within the shell makes it unlikely that one was present. The small size of the embryonic shell and absence of a discontinuity of shell growth differentiating protoconch I and protoconch II suggest lecithotrophy and the absence of a free-living larval stage.

Although other early Cambrian genera, such as *Archaeospira* Yu, 1979 (Qian & Bengtson 1989) and *Xinjiniispira* Yu & Rong, 1991 (Claybourn *et al.* 2019), might plausibly be referred to the Pelagiellidae, we confine discussion here to widely acknowledged members of the family: *Pelagiella* (Matthew 1895b); *Parapelagiella* and *Proecyliopecter* (Kobayashi 1939); and *Cambretina* and *Costipelagiella* (Horný 1964). The last two genera were based on single

specimens from the same locality in the Czech Republic. Their co-occurrence has since been confirmed by Kouchinsky *et al.* (2011), who recovered both in the same sample from northern Siberia.

Costipelagiella was named for angular costae, comarginal or nearly so, that differentiate it from *Pelagiella*, most species of which have fine, comarginal growth lines. The shell sculpture of *Costipelagiella* stands largely alone in defining the taxon. The plication is often recognizable on steinkerns, but some plicate species have smooth interiors. Skovsted (2006) found internal moulds of *C. nevadense* to be indistinguishable from similarly preserved steinkerns of *Pelagiella*. Consequently, Kouchinsky *et al.* (2011, 2015) tentatively proposed the synonymy of *Costipelagiella* with *Pelagiella*.

Cambretina is readily separated from the type species of *Pelagiella*, *P. atlantoides*, in that it has a prominent auricle (Kouchinsky *et al.* 2011, fig. 9) that may be expressed as an angular ridge on internal moulds (Runnegar 1990, fig. 168J). However, Siberian specimens of *Cambretina* share a striking auricle and interlocking divaricate ribs with the widespread early Cambrian species *Pelagiella subangulata* (Tate, 1892) (Runnegar 1990; Kouchinsky *et al.* 2011; Claybourn *et al.* 2019). This implies either that *Cambretina* should be synonymized with *Pelagiella*, as Kouchinsky *et al.* (2011) proposed, or that *P. angulata* should be referred to *Cambretina*.

The type species of *Parapelagiella*, *Pelagiella hinomotoensis* Kobayashi, 1933, is bilaterally symmetrical, as are the species with which Kobayashi compared it. Thus, *Parapelagiella* is not synonymous with or closely related to *Pelagiella*.

Syntypes associated with the figured specimens of *Platyceras chronus* Walcott, 1905 (Walcott 1913, pl. 5, fig. 9a–b), the type species of *Proeccyliopectus*, lack the angular spiral ridge that is so evident in Walcott's drawings and essential to Kobayashi's definition of *Proeccyliopectus* (Kobayashi 1939). Similar variability in this feature is seen in *Pelagiella subangulata* (Runnegar 1990; Parkhaev 2001b), so *Proeccyliopectus* is best considered a junior synonym of *Pelagiella*, as has been assumed for many years (Knight *et al.* 1960).

Genus PELAGIELLA Matthew, 1895b

Type species. *Cyrtolites atlantoides* Matthew, 1895a by monotypy. Misspelling of genus name as *Cyrtolithes* corrected, per Matthew (1895b).

Type horizon and locality. *Protolenus elegans* Zone, Somerset Street Member, Hanford Brook Formation, St Martins, New Brunswick, Canada; latest Series 2 or

earliest Series 3, Cambrian Stage 5 (Westrop & Landing 2000; Palacios *et al.* 2017).

Diagnosis. Matthew (1895b) based this genus solely on the type species, characterizing it as follows. 'Shell a discoid spiral of a few whorls, flattened, lenticular, whorls somewhat angulated at the outer edge, slightly flattened on the upper side, somewhat tumid on the lower. Lips of the aperture, both upper and lower, arched forward in the middle. Spire sunken.'

Amended diagnosis. As for the family if *Cambretina* and *Costipelagiella* were to be subsumed into *Pelagiella*; otherwise, those pelagiellids that lack a prominent auricle or striking shell sculpture in the form of either comarginal plicae or divaricate spiral ribs and nodes.

Remarks. Initially supposing the shell of the type species to have been planispiral, Matthew (1895a) described it as a bellerophonitid in the genus *Cyrtolites*. Subsequently, recognizing its helical form from a larger and more complete internal mould, he set up a new genus. Observing a recurved 'peculiar lip' extending along part of the margin of the aperture, Matthew (1895b, pl. 6, fig. 6a–c) inferred this gerontic thickening of the shell to have been formed as a labrum or varix, at the termination of its growth. This led him to suppose that the shell had been that of a free floating heteropod, and to assign its now misleading name, *Pelagiella*. Matthew's illustration, showing a furrow parallel to the shell margin, indicates that he observed an embayment on the inside of the shell margin, in the region of the left-lateral protrusion of the shell (often referred to as a sinus, also as an auricle), comparable to that seen in *P. subangulata* (Fig. 1B). In that species, a similar protrusion/sinus also appears on the right, but it is less strongly developed. The expression of these sinuses, and especially that of the auricle on the left, is very variable, within and between species.

Prior reports that individuals within species of *Pelagiella* are either dextrally or sinistrally coiled (e.g. Knight *et al.* 1960) are now known to be incorrect. They are uniformly dextral, apart from rare individual specimens regarded as chiral aberrations (Wotte 2006; Parkhaev 2007b). The sinistral specimen assigned to *Pelagiella* (?) *reversa* by Kobayashi (1935) and later established as the type species of *Protoscaevogyra* Kobayashi 1939 is probably an onychochiloid (Runnegar 1981).

Distribution. Twenty or more species of *Pelagiella* have been described, many of them in need of further study and reassessment. They are globally distributed (including

Antarctica), often represented by large populations of notably variable individuals. They range in age from Cambrian Series 2, beginning of Stage 3, (Kouchinsky *et al.* 2017) to the early Furongian Series, late Paibian (Barnes *et al.* 1962).

Pelagiella exigua Resser & Howell, 1938

Figures 2, 4, 5, 6, 7, 13

LSID. urn:lsid:zoobank.org:act:EBF3A682-007B-4BBB-9E8E-2EFB97659C83

Lectotype. USNM 90777A (Resser & Howell 1938, pl. 2, fig. 2), here designated.

Kinzers Formation, Emigsville Member, Cambrian Series 2, Stage 4. USNM locality 22L (Smithsonian file), 0.65 km south-east of the centre of East Petersburg, PA, USA. (40.0939763°N, 76.3471265°W).

Cotype. USNM 90777A (Resser & Howell, 1938, pl. 2, fig. 3).

Topotypes. NMNS, P-M-31a-f, 31h, 31j-o, 31q-r, from USNM locality 22L, immediately south-west of the intersection of Miller Road and Lake Drive (Fig. 3; 40.0939763°N, 76.3471265°W) in East Petersburg.

Newly referred material. USNM 617253p, 617253cp and USNM 617254p, 617254cp; Kinzers Formation, Emigsville Member, Cambrian Series 2, Stage 4. Locality SB, 223 Settlers Bend, at intersection with Buch Avenue, Manheim Township, about 6 km north of Lancaster, PA. (40.09495°N, 76.3217967°W). This is 2.3 km east of the type locality.

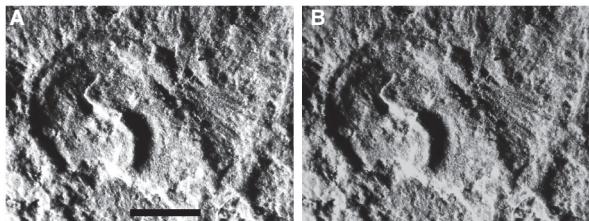


FIG. 13. A poorly preserved topotype specimen of *Pelagiella exigua* Resser & Howell, 1938 with a cluster of chaetae (impressions) associated with its aperture, NMNS, P-M-31m. Emigsville Member of the Kinzers Formation, East Petersburg, Pennsylvania. USNM (Smithsonian file) locality 22L. A–B, contrast enhanced (two versions) photograph. Note cubic hollows representing the former presence of associated euhedral pyrite, as also at the new Settlers Bend locality. Scale bar represents 1 mm.

Original diagnosis. ‘These tiny gastropods consist of simple whorls that expand rather rapidly.’ (Resser & Howell 1938).

Amended diagnosis. Whorl profile with a distinct angular bend between the periphery of apical surface of the shell and a depressed spire. Two clusters each of up to 50 chaetae, fan-like as compressed in the bedding plane and oriented obliquely forward, project far beyond the left and right margins of the aperture.

Description. Dextrally coiled helical shells of 1.5–2.5 whorls, with anterior–posterior dimensions and breadths, including chaetae, of about 2 mm. Their whorl profile was approximately triangular, expanding rapidly from a weakly concave (depressed) apical region (Fig. 6E), generating the relatively very large aperture typical of the genus. Evidence of the shape of the aperture is limited to a distinct angular bend between the apical and peripheral surfaces of the shell (Fig. 6D, E), also seen in the lectotype (Resser & Howell 1938, pl. 2, fig. 3). No indication of any sinus or auricle is preserved in our material, the types of Resser & Howell (1938), or topotypes we have examined. But, since the shells have been dissolved away and preserved as composite internal and external moulds that have been severely compressed, these and other morphological details of the shell are very imperfectly known. However, associated with the apertures of shells in our new assemblage from Settlers Bend are two clusters of anterior/lateral chaetae (Figs 2B, 6), shown by three-dimensional preservation of two of their bases (Figs 2C, 7) to have been expandable in life as conical arrays.

Remarks. Resser & Howell (1938) based *Pelagiella exigua* on two specimens from USNM locality 22L in the Emigsville Member of the Kinzers Formation, in East Petersburg, Pennsylvania. They assigned a single number, USNM 90777, to ‘a fairly well preserved example’ and an ‘impression’. The original description of this species is inadequate to distinguish it from others in the genus, and no such comparisons were made by its authors. Our observations of new material indicate the occurrence in this species of a pair of clusters of chaetae, not so far recorded in any species of *Pelagiella*. Our material is not from the type locality of *P. exigua*. It is from a site in Manheim Township that is close to the same horizon in the Emigsville Member of the Kinzers Formation, about 2.3 km along strike. On this account, it seemed likely but not certain that our new material is conspecific with *P. exigua*. Now we have recognized a single topotype specimen of *P. exigua* (NMNS, P-M-31 m) from locality 22L (East Petersburg), that also has chaetae preserved (Fig. 13). Thus, the identity of species found at the two localities is confirmed.

P. exigua differs from the type species of *Pelagiella* in that none of the known material shows evidence of gerontic thickening of the shell margin, the rounded

whorl profile, or the much greater size achieved by *P. atlantoides* (Matthew).

Pelagiella exigua may be differentiable on shell characters from *P. primaeva* (Billings 1871), which occurs in strata of similar age in the northern Appalachians. Topotype specimens of *P. primaeva* that we have studied (BR) show it to have a flat upper whorl profile. This is consistent with the original description, ‘inner whorl scarcely elevated above the outer’ of Billings (1871, p. 220), and stands in contrast with the distinctly depressed spire of *P. exigua*. But no shell surfaces or impressions of *P. exigua* are available to compare its ornament with the reticulated pattern of fine striae and growth lines that is characteristic of *P. primaeva* (Walcott 1886). Now, however, *P. exigua* differs from *P. primaeva*, and from all other described species of *Pelagiella*, in that it is known to have had a pair of chaeta-bearing appendages.

Phosphatic steinkerns of *Pelagiella* sp. (Fig. 1A) have been described from beds transitional between the underlying Vintage Formation and the Kinzers Formation in a quarry near Thomasville, about 50 km west-south-west of Lancaster (Skovsted & Peel 2010).

These steinkerns have a prominent, near right-angle bend between the apical and peripheral surfaces of the whorl, like that observed on the lectotype of *P. exigua*, and the spire is deeply depressed (Fig. 1A). Skovsted & Peel (2010) noted similarity in form between these steinkerns and *P. primaeva*. However, they opted to leave them in open nomenclature, citing the difficulty of assigning steinkerns to species of *Pelagiella*. It seems likely that these steinkerns may be conspecific with *P. exigua*, a hypothesis that can be tested by finding well preserved steinkerns of *P. exigua* or evidence of chaetae in association with shells of *Pelagiella* at Thomasville.

Our recognition of paired clusters of chaetae as a so far unique, evolutionarily significant character of *P. exigua* should not be taken to imply that this feature did not occur in other species of *Pelagiella*. We advance the hypothesis that paired clusters of chaetae are likely to have been present in other species of *Pelagiella*. If this inference is correct, the singular occurrence of chaetae in *P. exigua* is an outcome of taphonomic processes unique to fossil Lagerstätten such as horizons within the Emigsville Member of the Kinzers Formation (Holmes *et al.* 2018), where preservation of refractory organic tissues such as chaetae was facilitated.

It is notable that sites of attachment of the clusters of chaetae observed in *P. exigua* coincide with left-lateral protrusion of the shell margin (the auricle) and a less clearly demarcated sinus on the right-hand side of the body in species such as *P. subangulata*. This prompts the further hypothesis that these aspects of the shell relate to functioning of the chaetae, which appears to have been

accompanied by widely varying degrees of modification of the apertural margin, among individuals and species of *Pelagiella*, at their sites of operation.

Acknowledgements. We are grateful to J. Vinther for substantial collaboration in early work on this project, making key observations, taking most of the photographs, and sharing his ideas. We warmly thank C. de Wet, D. Erwin, D. Lindberg, A. Nützel, J. Peel, K. Peterson, J. Pojeta, M. Smith and P. Wagner for fruitful discussion and/or constructive comments on draft manuscripts; D. E. G. Briggs for making photographic equipment at Yale University available for our use; A. P. de Wet for drafting Fig. 3; M. Coppolino for drawing Fig. 9C; R. Secor for assistance with computer graphics; and Mr P. J. Mehta and Dr P. Mehta for permission to study fossils collected on their property and to deposit them at the US National Museum of Natural History. We warmly thank G. Budd, M. Sutton, G. Vermeij, an additional reviewer, and especially J. Sigwart for detailed editorial recommendations that have led to very substantial improvements in this paper. R. D. K. Thomas is grateful to Franklin & Marshall College for direct and indirect financial support of this work. He dedicates his contribution to this paper to the memories of J. Pojeta, R. M. Linsley and E. L. Yochelson.

Author contributions. RDKT did most of the research and wrote the original manuscript. BR provided valuable information and advice throughout the enterprise, collaborating extensively in shaping key illustrations and the final drafts. KM found the new fossils, made them available for study, and contributed his insights on their occurrence in the field and potential significance.

DATA ARCHIVING STATEMENT

Keys identifying individual numbered specimens on the part-and-counterpart slab USNM 617253p and 617253cp and some additional photographs are available in the Dryad Digital Depository: <https://doi.org/10.5061/dryad.5tb2rbp0q>.

This published work has been registered in ZooBank: <http://zoobank.org/References/7804929D-2EF1-4396-A206-3F614DE6B65A>

Editor. Julia Sigwart

REFERENCES

- ACOSTA-SALMÓN, H. and DAVIS, M. 2007. Inducing relaxation in the queen conch *Strombus gigas* (L.) for cultured pearl production. *Aquaculture*, **262**, 73–77.
- BARNES, H., CHRISTIANSEN, R. L. and BYE, F. M. 1962. Cambrian Cararra Formation, Bonanza King Formation and Dunderberg Shale east of Yucca Flat, Nye County, Nevada. *US Geological Survey Professional Paper*, **460-D**, 27–31.
- BENGTSON, S. 1992. The cap-shaped Cambrian fossil *Maihanella* and the relationship between coeloscleritophorans and molluscs. *Lethaia*, **25**, 401–420.

- BETTS, H. C., PUTTICK, M. N., CLARK, J. W., WILLIAMS, T. A., DONOGHUE, P. C. J. and PISANI, D. 2018. Integrated genomic and fossil evidence illuminates life's early evolution and eukaryote origin. *Nature Ecology & Evolution*, **2**, 1556–1562.
- BILLINGS, E. 1871. On some new species of Palaeozoic fossils. *Canadian Naturalist & Quarterly Journal of Science*, 2nd Series, **6**, 213–222.
- BISCHOFF, G. C. O. 1990. Phosphatised soft parts in *Costipelagiella* n. sp. A (Mollusca, Pelagiellidae) from the Cambrian of New South Wales, Australia. *Senckenbergiana Lethaea*, **70**, 51–67.
- BOUCHET, P., ROCROI, J.-P., HAUSDORF, B., KAIM, A., KANO, Y., NÜTZEL, A., PARKHAEV, P., SCHRÖDL, M. and STRONG, E. E. 2017. Revised classification, nomenclator and typification of gastropod and monoplacophoran families. *Malacologia*, **61** (1–2), 1–526.
- BREZINSKI, D. K., TAYLOR, J. F. and REPETSKI, J. E. 2013. Sequential development of platform to off-platform facies of the Great American Bank in the central Appalachians. 383–420. In DERBY, J. R., FRITZ, R. D., LONGACRE, S. A., MORGAN, W. A. and STERNBACH, C. A. (eds). *The great American carbonate bank: The geology and economic resources of the Cambrian–Ordovician Sauk megasequence of Laurentia*. American Association of Petroleum Geologists, Memoir, **98**.
- BRIGGS, D. E. G. 1978. A new trilobite-like arthropod from the Lower Cambrian Kinzers Formation, Pennsylvania. *Journal of Paleontology*, **52**, 132–140.
- 1979. *Anomalocaris*, the largest known Cambrian arthropod. *Palaentology*, **22**, 631–664.
- BROCCO, S. L., O'CLAIR, R. M. and CLONEY, R. A. 1974. Cephalopod integument: the ultrastructure of Kölliker's organs and their relationship to setae. *Cell & Tissue Research*, **151**, 293–308.
- BUDD, G. E. and JACKSON, I. S. C. 2016. Ecological innovations in the Cambrian and the origins of the crown group phyla. *Philosophical Transactions of the Royal Society B*, **371**, 20150287.
- BUTLER, A. D., STRENG, M., HOLMER, L. E. and BABCOCK, L. E. 2015. Exceptionally preserved *Mickwitzia* from the Indian Springs Lagerstätte (Cambrian Stage 3), Nevada. *Journal of Paleontology*, **89**, 933–955.
- BUTTERFIELD, N. J. 1990. A reassessment of the enigmatic Burgess Shale fossil *Wiwaxia corrugata* (Matthew) and its relationship to the polychaete *Canadia spinosa* Walcott. *Paleobiology*, **16**, 287–303.
- 2003. Exceptional fossil preservation and the Cambrian Explosion. *Integrative & Comparative Biology*, **43**, 166–177.
- CAMPBELL, L. D. and KAUFFMAN, M. E. 1969. *Olenellus* fauna of the Kinzers Formation, southeastern Pennsylvania. *Proceedings of the Pennsylvania Academy of Science*, **43**, 172–176.
- CARON, J.-B., SCHELTEMA, A., SCHANDER, C. and RUDKIN, D. 2006. A soft-bodied mollusc with radula from the Middle Cambrian Burgess Shale. *Nature*, **442**, 159–163.
- CHEN, C., COPLEY, J. T., LINSE, K., ROGERS, A. D. and SIGWART, J. 2015. How the mollusc got its scales: convergent evolution of the molluscan scleritome. *Biological Journal of the Linnean Society*, **114**, 949–954.
- CLAYBOURN, T. M., JACQUET, S. M., SKOVSTED, C. B., TOPPER, T. P., HOLMER, L. E. and BROCK, G. A. 2019. Mollusks from the upper Shackleton Limestone (Cambrian Series 2), Central Transantarctic Mountains, East Antarctica. *Journal of Paleontology*, **93**, 437–459.
- CONWAY MORRIS, S. 1979. Middle Cambrian polychaetes from the Burgess Shale of British Columbia. *Philosophical Transactions of the Royal Society B*, **285**, 227–274.
- and CARON, J.-B. 2007. Halwaxiids and the early evolution of the lophotrochozoans. *Science*, **315**, 1255–1258.
- CUVIER, G. 1797. *Tableau élémentaire de l'histoire naturelle des animaux*. 1–710. Baudouin, Imprimeur du Corps législatif de l'Institut national, Paris.
- DENNY, M. 1980. The role of gastropod pedal mucus in locomotion. *Nature*, **285**, 160–161.
- DEVAERE, L., CLAUSEN, S., ÁLVARO, J. J., PEEL, J. S. and VACHARD, D. 2014. Terreneuvian orthothecid (*Hyo-litha*) digestive tracts from northern Montagne Noire, France; taphonomic, ontogenetic and phylogenetic implications. *PLoS One*, **9**, e88583.
- DUNBAR, C. O. 1925. Antennae in *Olenellus getzi*, n. sp. *American Journal of Science*, Series 5, **9**, 303–308.
- DUNN, C. W., HEJNOL, A., MATUS, D. Q., PANG, K., BROWNE, W. E., SMITH, S. A., SEAVER, S., ROUSE, G. W., OBST, M., EDGEcombe, G. D., SØRENSEN, M. V., HADDOCK, S. H. D., SCHMIDT-RHAESA, A., OKUSU, A., KRISTENSEN, R. M., WHEELER, W. C., MARTINDALE, M. Q. and GIRIBET, G. 2008. Broad phylogenomic sampling improves resolution of the animal tree of life. *Nature*, **452**, 745–749.
- DURHAM, J. W. 1966. *Camptostroma*, an early Cambrian supposed scyphozoan, referable to Echinodermata. *Journal of Paleontology*, **40**, 1216–1220.
- DZIK, J. 1978. Larval development of hyolithids. *Lethaia*, **11**, 293–299.
- 1994. Evolution of 'small shelly fossils' assemblages of the early Paleozoic. *Acta Palaeontologica Polonica*, **39**, 247–313.
- and MAZUREK, D. 2013. Affinities of the alleged earliest Cambrian gastropod *Aldanella*. *Canadian Journal of Zoology*, **91**, 914–923.
- EIBYE-JACOBSEN, D. 2004. A reevaluation of *Wiwaxia* and the polychaetes of the Burgess Shale. *Lethaia*, **37**, 317–335.
- ERWIN, D. H., LAFLAMME, M., TWEEDT, S. M., SPERLING, E. A., PISANI, D. and PETERSON, K. J. 2011. The Cambrian conundrum: early divergence and later ecological success in the early history of animals. *Science*, **334**, 1091–1097.
- FOERSTE, A. F. 1938. Echinodermata. 212–213. In RESSER, C. E. and HOWELL, B. F. (eds). *Lower Cambrian Olenellus zone of the Appalachians*. Geological Society of America Bulletin, **49**, 195–248.
- FRETTER, V. and GRAHAM, A. 1962. *British prosobranch molluscs: Their functional anatomy and ecology*. Ray Society, London, Publication, **144**, 755 pp.
- FRÝDA, J. 2012. Phylogeny of Palaeozoic gastropods inferred from their ontogeny. 395–435. In TALENT, J. A. (ed.) *Earth and life*. Springer.
- NÜTZEL, A. and WAGNER, P. J. 2008. Paleozoic Gastropoda. 237–268. In PONDER, W. F. and LINDBERG, D. R. (eds). *Phylogeny and evolution of the Mollusca*. University of California Press.

- GAINES, R. R. 2014. Burgess Shale-type preservation and its distribution in time and space. 123–146. In LAFLAMME, M., SCHIFFBAUER, J. D. and DARROCH, S. A. F. (eds). *Reading and writing of the fossil record: preservational pathways to exceptional fossilization*. Paleontological Society Papers, 20.
- GEGENBAUR, C. 1878. *Grundriss der vergleichenden Anatomie. Zweite verbesserte Auflage*. W. Engelmann, Leipzig.
- GIRIBET, G. 2008. Assembling the lophotrochozoan (=spiralian) tree of life. *Philosophical Transactions of the Royal Society B*, 363, 1513–1522.
- GOHN, G. S. 1976. Sedimentology, stratigraphy, and paleogeography of lower Paleozoic carbonate rocks, Conestoga Valley, southeastern Pennsylvania. Unpublished PhD thesis, University of Delaware, Newark, 314 pp.
- GOLIKOV, A. N. and STAROBOGATOV, YA. 1975. Systematics of prosobranch gastropods. *Malacologia*, 15, 185–232.
- GOLUBEV, S. N. 1976. Ontogenetic changes and evolutionary trends in early Cambrian spiral gastropods of the superfamily Pelagiellacea. *Paleontological Journal [Paleontologicheskii Zhurnal]*, 10, 143–149.
- GORDON, D. P. 1975. The resemblance of bryozoan gizzard teeth to “annelid-like” setae. *Acta Zoologica*, 56, 283–289.
- GOULD, A. A. 1846. Descriptions of new shells, collected by the United States Exploring Expedition: *Chiton muscosus*. *Proceedings of the Boston Society of Natural History*, 2, 145.
- GUBANOV, A. P. and PEEL, J. S. 2000. Cambrian monoplacophoran molluscs (Class Helcionelloida). *American Malacological Bulletin*, 15, 139–145.
- HALANYCH, K. M. 2004. The new view of animal phylogeny. *Annual Review of Ecology, Evolution, & Systematics*, 35, 229–256.
- BACHELLER, J. D., AGUINALDO, A. M., LIVA, S. M., HILLIS, D. M. and LAKE, J. A. 1995. Evidence from 18S ribosomal DNA that the lophophorates are protostome animals. *Science*, 267, 1641–1643.
- HALL, B. K. 1984. Developmental mechanisms underlying the formation of atavisms. *Biological Reviews*, 59, 89–124.
- HASZPRUNAR, G., KUNZE, T., WARÉN, A. and HEß, M. 2017. A reconsideration of epipodial and cephalic appendages in basal gastropods: homologies, modules and evolutionary scenarios. *Journal of Molluscan Studies*, 83, 363–383.
- HAUSEN, H. 2005. Chaetae and chaetogenesis in polychaetes (Annelida). *Hydrobiologia*, 535, 37–52.
- HOLMES, J. D., GARCIA-BELLIDO, D. C. and LEE, M. S. Y. 2018. Comparisons between Cambrian Lagerstätten assemblages using multivariate, parsimony and Bayesian methods. *Gondwana Research*, 55, 30–41.
- HORNÝ, R. J. 1964. The Middle Cambrian Pelagiellacea of Bohemia (Mollusca). *Sborník Národního Muzea v Praze*, 20 (B), 133–140.
- ISAKAR, M. and PEEL, J. S. 2007. Lower Cambrian helcionelloid molluscs from Estonia. *GFF*, 129, 253–262.
- JIN, J. and COPPER, P. 2010. Microbially mediated phosphatization of intracrystalline soft tissue in Late Ordovician brachiopod *Plaesiomys*, Anticosti Island, eastern Canada. *Special Papers in Palaeontology*, 84, 161–175.
- JOHNSTON, P. A., JOHNSTON, K. J., COLLOM, C. J., POWELL, W. G. and POLLOCK, R. J. 2009. Palaeontology and depositional environments of ancient brine seeps in the Middle Cambrian Burgess Shale at The Monarch, British Columbia, Canada. *Palaeogeography, Palaeoclimatology, Palaeoecology*, 277, 86–105.
- JUMARS, P. A., DORGAN, K. M. and LINDSAY, S. M. 2015. Diet of worms emended: an update of polychaete feeding guilds. *Annual Review of Marine Science*, 7, 497–520.
- KNIGHT, J. B. 1952. Primitive fossil gastropods and their bearing on gastropod classification. *Smithsonian Miscellaneous Collections*, 117 (13), 1–56.
- 1956. New families of gastropods. *Journal of the Washington Academy of Science*, 46, 41–42.
- BATTEN, R. L., YOCHELSON, E. L. and COX, L. R. 1960. Paleozoic and Mesozoic Caenogastropoda and Opisthobranchia. 310–324. In MOORE, R. C. (ed.) *Treatise on Invertebrate Paleontology. Part I. Mollusca 1*. University of Kansas Press & Geological Society of America.
- KOBAYASHI, T. 1933. Upper Cambrian of the Wuhutsui Basin, Liaotung, with special reference to the limit of the Chaumitian (or upper Cambrian) of Eastern Asia, and its subdivision. *Japanese Journal of Geology & Geography*, 11, 55–155.
- 1935. The Cambro-Ordovician formations and faunas of south Chosen. Palaeontology. Part 3. Cambrian faunas of south Chosen with a special study of the Cambrian trilobite genera and families. *Journal of the Faculty of Science, Imperial University of Tokyo. Section II, Geology, Mineralogy, Geography, Seismology*, 4 (2), 49–344.
- 1939. Restudy of Lorenz’s *Raphistoma bröggeri* from Shantung with a note on *Pelagiella*. 283–288. In YABE, H. (ed.) *Jubilee publication in commemoration of Professor H. Yabe, M.I.A., 60th birthday*. Tōhoku Teikoku Daigaku (Tohoku Imperial University, Sendai, Japan).
- KOCOT, K. M., CANNON, J. T., TODT, C., CITARELLA, M. R., KOHN, A. B., MEYER, A., SANTOS, S. R., SCHANDER, C., MOROZ, L. L., LIEB, B. and HALANYCH, K. M. 2011. Phylogenomics reveals deep molluscan relationships. *Nature*, 477, 452–456.
- STRUCK, T. H., MERKEL, J., WAITS, D. S., TODT, C., BRANNOCK, P. M., WEESE, D. A., CANNON, J. T., MOROZ, L. L., LIEB, B. and HALANYCH, K. M. 2017. Phylogenomics of Lophotrochozoa with consideration of systematic error. *Systematic Biology*, 66, 256–282.
- TODT, C., MIKKELSEN, N. T. and HALANYCH, K. M. 2019. Phylogenomics of Aplacophora (Mollusca, Aculifera) and a solenogaster without a foot. *Proceedings of the Royal Society B*, 286, 20190115.
- KOEHL, M. A. R. 1995. Fluid flow through hair-bearing appendages: feeding, smelling and swimming at low and intermediate Reynolds numbers. *Symposia of the Society for Experimental Biology*, 49, 157–182.
- KOUCHINSKY, A. 2000. Shell microstructures in Early Cambrian molluscs. *Acta Palaeontologica Polonica*, 45, 119–150.
- and BENGTON, S. 2017. X-ray tomographic microscopy tightens affinity of the early Cambrian *Oymurania* to the brachiopod stem group. *Acta Palaeontologica Polonica*, 62, 39–43.

- — — CLAUSEN, S., GUBANOV, A., MALINKY, J. M. and PEEL, J. S. 2011. A middle Cambrian fauna of skeletal fossils from the Kuonamka Formation, northern Siberia. *Alcheringa*, **35**, 123–189.
- — — and VENDRASCO M. J. 2015. An early Cambrian fauna of skeletal fossils from the Emyaksin Formation, northern Siberia. *Acta Palaeontologica Polonica*, **60**, 421–512.
- — — LANDING, E., STEINER, M., VENDRASCO, M. and ZIEGLER, K. 2017. Terreneuvian stratigraphy and faunas from the Anabar Uplift, Siberia. *Acta Palaeontologica Polonica*, **62**, 311–440.
- LAI, J. H., DEL ALAMO, J. C., RODRÍGUEZ-RODRÍGUEZ, J. and LASHERAS, J. C. 2010. The mechanics of the adhesive locomotion of terrestrial gastropods. *Journal of Experimental Biology*, **213**, 3920–3933.
- LANDING, E., GEYER, G. and BARTOWSKI, K. E. 2002. Latest Early Cambrian small shelly fossils, trilobites, and Hatch Hill dysaerobic interval on the Québec continental slope. *Journal of Paleontology*, **76**, 287–305.
- LAUMER, C. E., BEKKOUCHE, N., KERBL, A., GOETZ, F., NEVES, R. C., SØRENSEN, M. V., KRISTENSEN, R. M., HEJNOL, A., DUNN, C. W., GIRIBET, G. and WORSAAE, K. 2015. Spiralian phylogeny informs the evolution of microscopic lineages. *Current Biology*, **25**, 2000–2006.
- LEISE, E. M. and CLONEY, R. A. 1982. Chiton integument: ultrastructure of the sensory hairs of *Mopalia muscosa* (Mollusca: Polyplacophora). *Cell & Tissue Research*, **223**, 43–59.
- LI, L., ZHANG, X., YUN, H. and LI, G. 2017. Complex hierarchical microstructures of Cambrian mollusk *Pelagiella*: insight into early biomineralization and evolution. *Scientific Reports*, **7**, 1935.
- LIEBERMAN, B. S. 1999. Systematic revision of the Olenelloidea (Trilobita, Cambrian). *Bulletin of the Peabody Museum of Natural History, Yale University*, **35**, 1–150.
- LINSLEY, R. M. 1977. Some “laws” of gastropod form. *Paleobiology*, **3**, 196–206.
- and KIER, W. M. 1984. The Paragastropoda: a proposal for a new class of Paleozoic Mollusca. *Malacologia*, **25**, 241–254.
- LOPEZ, G. R. and LEVINTON, J. S. 1987. Ecology of deposit-feeding animals in marine sediments. *Quarterly Review of Biology*, **62**, 235–260.
- LÜTER, C. 2000. Ultrastructure of larval and adult Brachiopoda. *Zoologischer Anzeiger*, **239**, 75–90.
- MACKINNON, D. I. 1985. New Zealand late Middle Cambrian molluscs and the origin of Rostroconchia and Bivalvia. *Alcheringa*, **9**, 65–81.
- MATTHEW, G. F. 1895a. Illustrations of the fauna of the St. John Group, No. VIII. *Transactions of the Royal Society of Canada*, **11** (for 1894), 85–129.
- 1895b. The *Protolenus* fauna. *Transactions of the New York Academy of Sciences*, **14**, 101–153.
- McMAHON, S., ANDERSON, R. P., SAUPE, E. E. and BRIGGS, D. E. G. 2016. Experimental evidence that clay inhibits bacterial decomposers: implications for preservation of organic fossils. *Geology*, **44**, 867–870.
- MERZ, R. A. and WOODIN, S. A. 2006. Polychaete chaetae: function, fossils, and phylogeny. *Integrative & Comparative Biology*, **46**, 481–496.
- MONTOUCHET, P. C. 1972. Three new species of Scissurellidae (Gastropoda, Prosobranchia) from the coast of Brazil. *Boletim do Instituto Oceanográfico Sao Paulo*, **21**, 1–13.
- MOORE, J. L. and PORTER, S. M. 2018. Plywood-like shell microstructures in hyoliths from the middle Cambrian (Drumian) Gowers Formation, Georgina Basin, Australia. *Palaeontology*, **61**, 441–467.
- MOYSIUK, J., SMITH, M. R. and CARON, J.-B. 2017. Hyoliths are Palaeozoic lophophorates. *Nature*, **541**, 394–397.
- OPIK, A. A. 1926. Über den estländischen Blauen Ton. *Publications of the Geological Institute, University of Tartu*, **6**, 39–46.
- PAGE, L. R. 2006. Modern insights on gastropod development: reevaluation of the evolution of a novel body plan. *Integrative & Comparative Biology*, **46**, 134–143.
- PALACIOS, T., JENSEN, S., BARR, S. M., WHITE, C. E. and MILLER, R. F. 2017. Acritarchs from the Hanford Brook Formation, New Brunswick, Canada: new biochronological constraints on the *Protolenus elegans* Zone and the Cambrian Series 2–3 transition. *Geological Magazine*, **154**, 571–590.
- PARKHAEV, P. Yu. 2000. The functional morphology of the Cambrian univalved mollusks — helcionellids. 1. *Paleontological Journal [Paleontologicheskii Zhurnal]*, **34**, 392–399.
- 2001a. The functional morphology of the Cambrian univalved mollusks — helcionellids. 2. *Paleontological Journal*, **35**, 470–475.
- 2001b. Molluscs and siphonoconchs. 133–210. In ALEXANDER, E. M., JAGO, J. B., ROZANOV, A. Yu. and ZHURAVLEV, A. Yu. (eds). *The Cambrian biostratigraphy of the Stansbury Basin, South Australia*. Transactions, Palaeontological Institute, **282**, IAPC Nauka/Interperiodica, Moscow.
- 2007a. The Cambrian ‘basement’ of gastropod evolution. 415–421. In VICKERS-RICH, P. and KOMAROWER, P. (eds). *The rise and fall of the Ediacaran biota*. Geological Society, London, Special Publications, **286**.
- 2007b. Shell chirality in Cambrian gastropods and sinistral members of the genus *Aldanella* Vostokova, 1962. *Paleontological Journal*, **41**, 233–240.
- 2008. Origin and the early evolution of the phylum Mollusca. 33–69. In PONDER, W. F. and LINDBERG, D. R. (eds). *Phylogeny and evolution of the Mollusca*. University of California Press.
- 2017. On the position of Cambrian archaeobranchians in the system of the class Gastropoda. *Paleontological Journal*, **51**, 453–463.
- and KARLOVA, G. A. 2011. Taxonomic revision and evolution of Cambrian mollusks of the genus *Aldanella* Vostokova, 1962 (Gastropoda: Archaeobranchia). *Paleontological Journal*, **45**, 1145–1205.
- PATES, S. and DALEY, A. C. 2019. The Kinzers Formation (Pennsylvania, USA): the most diverse assemblage of Cambrian Stage 4 radiodonts. *Geological Magazine*, **156**, 1233–1246.
- PEEL, J. S. 1991. The classes Tergomya and Helcionelloida, and early molluscan evolution. *Grønlands Geologiske Undersøgelse Bulletin*, **161**, 11–65.
- PETERSON, K. J. and EERNISSE, D. 2001. Animal phylogeny and the ancestry of bilaterians: inferences from

- SCHRÖDL, M. 2013. The continuing debate on deep molluscan phylogeny: evidence for Serialia (Mollusca, Monoplacophora + Polyplacophora). *BioMed Research International*, **2013**, 407072.
- SUTTON, M. D., BRIGGS, D. E. G., SIVETER, D. J. and SIVETER, D. J. 2004. Computer reconstruction and analysis of the vermiform mollusc *Acaeonoplax hayae* from the Herefordshire Lagerstätte (Silurian, England), and implications for molluscan phylogeny. *Palaeontology*, **47**, 293–318.
- TARHAN, L. G., HOOD, A. v. S., DROSER, M. L., GEHLING, J. G. and BRIGGS, D. E. G. 2016. Exceptional preservation of soft-bodied Ediacaran biota promoted by silica-rich oceans. *Geology*, **44**, 951–954.
- TATE, R. 1892. The Cambrian fossils of South Australia. *Transactions of the Royal Society of South Australia*, **15**, 183–189.
- TAYLOR, J. F. and DURIKA, N. J. 1990. Lithofacies, trilobite faunas, and correlation of the Kinzers, Ledger and Conestoga formations in the Conestoga Valley. *Guidebook for the Annual Field Conference of Pennsylvania Geologists*, **55**, 136–155.
- THOMAS, R. D. K., VINTHER, J. and MATT, K. 2010a. Structure and evolutionary implications of finely preserved chaetae associated with *Pelagiella*, a stem-group gastropod from the Kinzers Formation (Early Cambrian) at Lancaster, Pennsylvania. *International Palaeontological Congress 3, London UK, Program & Abstracts*, 375.
- 2010b. Paired chaetae associated with spiral shells of the late Early Cambrian mollusc *Pelagiella* from the Kinzers Formation: taphonomy functional morphology and potential evolutionary relationships. *Geological Society of America, Abstracts with Programs*, **42** (5), 633.
- TILIC, E., LEHRKE, J. and BARTOLOMAEUS, T. 2015. Homology and evolution of the chaetae in Echiura (Annelida). *PLoS One*, **10** (3), e0120002.
- TOPPER, T. P., STROTZ, L. C., HOLMER, L. E., ZHANG, Z., TAIT, N. N. and CARON, J.-B. 2015. Competition and mimicry: the curious case of chaetae in brachiopods from the middle Cambrian Burgess Shale. *BMC Evolutionary Biology*, **15**, 42.
- VANNIER, J., CARON, J.-B., YUAN, J.-L., BRIGGS, D. E. G., COLLINS, D., ZHAO, Y.-L. and ZHU, M.-Y. 2007. *Tuzoia*: morphology and lifestyle of a large bivalved arthropod of the Cambrian seas. *Journal of Paleontology*, **81**, 445–471.
- VENDRASCO, M. J. 2012. Early evolution of molluscs. 1–43. In FYODOROV, A. and YAKOVLEV, H. (eds). *Mollusks: Morphology, behavior and ecology*. Nova Science, New York.
- PORTER, S. M., KOUCHINSKY, A., LI, G. and FERNANDEZ, C. Z. 2010. New data on molluscs and their shell microstructures from the Middle Cambrian Gowers Formation, Australia. *Palaeontology*, **53**, 97–135.
- VINTHER, J. 2009. The canal system in sclerites of Lower Cambrian *Sinosachites* (Halkieriidae: Sachtitida): significance for the molluscan affinities of the sachtitids. *Palaeontology*, **52**, 689–712.
- 2014. A molecular palaeobiological perspective on aculiferan evolution. *Journal of Natural History*, **48**, 45–48.
- 2015. The origins of molluscs. *Palaeontology*, **58**, 19–34.
- and NIELSEN, C. 2005. The Early Cambrian *Halkieria* is a mollusc. *Zoologica Scripta*, **34**, 81–89.
- PARRY, L., BRIGGS, D. E. G. and VAN ROY, P. 2017. Ancestral morphology of crown group molluscs revealed by a new Ordovician stem aculiferan. *Nature*, **542**, 471–474.
- WAGNER, P. J. 2002. Phylogenetic relationships of the earliest anisostrophically coiled gastropods. *Smithsonian Contributions to Paleobiology*, **88**, 1–152.
- WALCOTT, C. D. 1886. Second contribution to the studies of the Cambrian faunas of North America. *US Geological Survey Bulletin*, **30**, 1–369.
- 1896. The Cambrian rocks of Pennsylvania. *US Geological Survey Bulletin*, **134**, 1–41.
- 1905. Cambrian faunas of China. *Proceedings of the US National Museum*, **29** (1415), 1–106.
- 1910. *Olenellus* and other genera of the Mesonacidae. *Smithsonian Miscellaneous Collections*, **53**, 231–423.
- 1913. The Cambrian faunas of China. Research in China 3. *Carnegie Institution of Washington Publication*, **54**, 1–277.
- WANNINGER, A. and WOLLESEN, T. 2019. The evolution of molluscs. *Biological Reviews*, **94**, 102–115.
- WEISS, I. M., LÜKE, F., EICHNER, N., GUTH, C. and CLAUSEN-SCHAUMANN, H. 2013. On the function of chitin synthase extracellular domains in biomineralization. *Journal of Structural Biology*, **183**, 216–225.
- WESTROP, S. R. and LANDING, E. 2000. Lower Cambrian (Branchian) trilobites and biostratigraphy of the Hanford Brook Formation, southern New Brunswick. *Journal of Paleontology*, **74**, 858–878.
- WHITTINGTON, H. B. and BRIGGS, D. E. G. 1985. *Anomalocaris*, the largest Cambrian animal, Burgess Shale, British Columbia. *Philosophical Transactions of the Royal Society B*, **309**, 569–609.
- WOLLESEN, T., RODRÍGUEZ MONJE, S. V., LUIZ DE OLIVEIRA, A. and WANNINGER, A. 2018. Staggered Hox expression is more widespread among molluscs than previously appreciated. *Proceedings of the Royal Society B*, **285**, 20181513.
- WOOD, A. D. and BUXTON, C. D. 1996. Aspects of the biology of the abalone *Haliotis midae* (Linné, 1758) on the east coast of South Africa. 2. Reproduction. *South African Journal of Marine Science*, **17**, 69–78.
- WOTTE, T. 2006. New Middle Cambrian molluscs from the Láncara Formation in the Cantabrian Mountains (north-western Spain). *Revista Española de Paleontología*, **21**, 145–158.
- YOANN, T., FLYE-SAINTE-MARIE, J., CHABOT, D., AGUIRRE-VELARDE, A., MARQUES, G. M. and PECQUIRIE, L. 2019. Effects of hypoxia on metabolic functions in marine organisms: observed patterns and modelling assumptions within the context of Dynamic Energy Budget (DEB) theory. *Journal of Sea Research*, **143**, 231–242.
- YONGE, C. M. 1947. The pallial organs in the aspidobranch Gastropoda and their evolution throughout the Mollusca. *Philosophical Transactions of the Royal Society B*, **232**, 443–518.
- YU, W. 1979. Earliest Cambrian monoplacophorans and gastropods from Western Hubei with their biostratigraphical

- significance. *Acta Palaeontologica Sinica*, **18**, 233–270 [in Chinese with English summary]
- and RONG, Z.-Q. 1991. Lower Cambrian gastropods from Fangcheng County, Henan. *Acta Micropalaeontologica Sinica*, **3**, 339–345.
- ZAKRZEWSKI, A.-C. 2011. Molecular characterization of chaetae formation in Annelida and other Lophotrochozoa. Unpublished PhD thesis, Freie Universität Berlin, 126 pp.
- WEIGERT, A., HELM, C., ADAMSKI, M., ADAMSKA, M., BLEIDOM, C., RAIBLE, F. and HAUSEN, H. 2014. Early divergence, broad distribution, and high diversity of animal chitin synthases. *Genome Biology & Evolution*, **6**, 316–325.
- ZAPATA, F., WILSON, N. G., HOWISON, M., ANDRADE, S. C. S., JÖRGER, K. M., SCHRÖDL, M., GOETZ, F. E., GIRIBET, G. and DUNN, C. W. 2014. Phylogenomic analyses of deep gastropod relationships reject Orthogastropoda. *Proceedings of the Royal Society B*, **281**, 20141739.
- ZHAO, F. C., SMITH, M. R., YIN, Z.-J., ZENG, H., HU, S.-X., LI, G.-X. and ZHU, M.-Y. 2015. First report of *Wiwaxia* from the Cambrian Chengjiang Lagerstätte. *Geological Magazine*, **152**, 378–382.
- — — — — LI, G. and ZHU, M. 2017. *Orthrozanclus elongata* n. sp. and the significance of sclerite-covered taxa for early trochozoan evolution. *Scientific Reports*, **7**, 16232.
- ZHAO, R., TAKEUCHI, T., LUO, Y.-J., ISHIKAWA, A., KOBAYASHI, T., KOYANAGI, R., VILLARBRIONES, A., YAMADA, L., SAWADA, H., IWANAGA, S., NAGAI, K., SATO, N. and ENDO, K. 2018. Dual gene repertoires for larval and adult shells reveal molecules essential for molluscan shell formation. *Molecular Biology & Evolution*, **35**, 2751–2761.