

# UC Berkeley

## UC Berkeley Previously Published Works

### Title

Procedural complexity independent of P2Y12 reaction unit (PRU) values is associated with acute in situ thrombosis in Pipeline flow diversion of cerebral aneurysms

### Permalink

<https://escholarship.org/uc/item/4mw2h4rh>

### Journal

Stroke and Vascular Neurology, 3(3)

### ISSN

2059-8688

### Authors

Jiang, Bowen  
Bender, Matthew T  
Westbroek, Erick M  
[et al.](#)

### Publication Date

2018-09-01

### DOI

10.1136/svn-2018-000150

### Copyright Information

This work is made available under the terms of a Creative Commons Attribution License, available at <https://creativecommons.org/licenses/by/4.0/>

Peer reviewed

# Procedural complexity independent of P2Y12 reaction unit (PRU) values is associated with acute in situ thrombosis in Pipeline flow diversion of cerebral aneurysms

Bowen Jiang,<sup>1</sup> Matthew T Bender,<sup>1</sup> Erick M Westbroek,<sup>1</sup> Jessica K Campos,<sup>1</sup> Li-Mei Lin,<sup>2</sup> Risheng Xu,<sup>1</sup> Rafael J Tamargo,<sup>1</sup> Judy Huang,<sup>1</sup> Geoffrey P Colby,<sup>3</sup> Alexander L Coon<sup>1</sup>

**To cite:** Jiang B, Bender MT, Westbroek EM, *et al.* Procedural complexity independent of P2Y12 reaction unit (PRU) values is associated with acute in situ thrombosis in Pipeline flow diversion of cerebral aneurysms. *Stroke and Vascular Neurology* 2018;**3**: e000150. doi:10.1136/svn-2018-000150

Received 21 February 2018  
Accepted 24 February 2018  
Published Online First  
21 April 2018



<sup>1</sup>Department of Neurosurgery, Johns Hopkins University School of Medicine, Baltimore, Maryland, USA

<sup>2</sup>Department of Neurosurgery, University of California, Irvine School of Medicine, Orange, California, USA

<sup>3</sup>Department of Neurosurgery, University of California, Los Angeles, Los Angeles, California, USA

## Correspondence to

Dr Alexander L Coon;  
acon2@jhmi.edu

## ABSTRACT

**Background** Acute in situ thrombosis is an ischaemic phenomenon during Pipeline embolisation device (PED) procedures with potentially high morbidity and mortality. There is controversy regarding the role of platelet function testing with P2Y12 assay as a predictor of intraprocedural thromboembolic events. There is limited knowledge on whether procedural complexity influences these events.

**Methods** Data were collected retrospectively on 742 consecutive PED cases at a single institution. Patients with intraprocedural acute thrombosis were compared with patients without these events.

**Results** A cohort of 37 PED cases with acute in situ thrombosis (mean age 53.8 years, mean aneurysm size 8.4 mm) was matched with a cohort of 705 PED cases without intraprocedural thromboembolic events (mean age 56.4 years, mean aneurysm size 6.9 mm). All patients with in situ thrombosis received intra-arterial and/or intravenous abciximab. The two groups were evenly matched in patient demographics, previous treatment/subarachnoid hemorrhage (SAH) and aneurysm location. There was no statistical difference in postprocedural P2Y12 reaction unit (PRU) values between the two groups, with a mean of 156 in the in situ thrombosis group vs 148 in the control group ( $p=0.5894$ ). Presence of cervical carotid tortuosity, high cavernous internal carotid artery grade, need for multiple PED and vasospasm were not significantly different between the two groups. The in situ thrombosis group had statistically significant longer fluoroscopy time (60.4 vs 38.4 min,  $p<0.0001$ ), higher radiation exposure (3476 vs 2160 mGy,  $p<0.0001$ ), higher rates of adjunctive coiling (24.3% vs 8.37%,  $p=0.0010$ ) and higher utilisation of balloon angioplasty (37.8% vs 12.2%,  $p<0.0001$ ). Clinically, the in situ thrombosis cohort had higher incidence of major and minor stroke, intracerebral haemorrhage and length of stay.

**Conclusions** Predictors of procedural complexity (higher radiation exposure, longer fluoroscopy time, adjunctive coiling and need for balloon angioplasty) are associated with acute thrombotic events during PED placement, independent of PRU values.

## INTRODUCTION

The Pipeline embolisation device (PED; Medtronic Neurovascular, Irvine, California, USA) has been increasingly used for flow diversion of cerebral aneurysms.<sup>1–8</sup> Thromboembolic events are known risks of Pipeline flow diversion, with reported rates of 4%–20%.<sup>9–10</sup> Due to the higher metal density of flow diverters compared with the traditional intracranial stents, dual antiplatelet therapy is routinely prescribed to mitigate the ischaemic risk during PED treatments. Adjunct preprocedural platelet inhibition testing has been proposed to assist with thromboembolic risk stratification. Several reports have suggested that clopidogrel hyporesponders (P2Y12 reaction unit (PRU)>200) are at higher risk for ischaemic complications and thus advocate for the titration of antiplatelet agents periprocedurally.<sup>9–16</sup> However, multiple prospective studies of PED have demonstrated low ischaemic complications despite not using a titration strategy, and others have argued that the benefits of platelet function testing (PFT) prior to flow diversion are unproven.<sup>1–17–23</sup> There is limited knowledge on what other factors may predispose acute ischaemic events intraprocedurally. In this study, we aimed to evaluate the role of procedural complexity on in situ thrombosis during PED placement in a single-centre series of patients.

## METHODS

### Patient selection

This study was an institutional-based retrospective cohort from a prospectively collected institutional review board (IRB)-approved database of intracranial aneurysms treated with PED and PED Flex at a single institution in the USA (The Johns Hopkins Medical

Institute, Baltimore, Maryland) from April 2011 to August 2017.

### Data collection

Patient demographics, aneurysm locations and postprocedural PRU values were matched between two cohorts, one with in situ thrombosis during PED deployment and one without. Indicators of procedural complexity included the following: (1) need for balloon angioplasty; (2) increased radiation exposure; (3) need for adjunctive coiling; (4) more than one PED used; (5) prolonged fluoroscopy time; and (6) cervical and cavernous internal carotid vessel tortuosity as previously defined.<sup>24</sup> These indicators of procedural complexity were compared between the two cohorts, and statistical analysis was performed using  $X^2$  contingency tables. Clinical outcomes such as incidence of ischaemic stroke, intracerebral haemorrhage and length of stay were also collected. Data were presented as counts, percentages and means. When means were presented, SEM was used to assess sample distribution.

### Endovascular procedure

All patients were treated preoperatively with daily aspirin 325 mg and clopidogrel 75 mg. Preprocedural antiplatelet regimen titration was not done. Patients who underwent multistage procedures and experienced in situ thrombosis after the first stage were transitioned to prasugrel 5 mg for 7 days prior to the second stage of the procedure. Assessment of P2Y<sub>12</sub> response (VerifyNow, Accometrics, San Diego, California, USA) was performed routinely on either postoperative day 0 or day 1. In cases where patients were found to have low PRU values (<30) and clinical signs of coagulopathy, medication changes were made postprocedurally; no action was taken for patients with elevated PRU values (>200). PED procedures were performed as previously described.<sup>2, 3, 25–27</sup> Briefly, a triaxial system (long guide sheath, distal intracranial catheter, microcatheter) was used through an 8F short sheath femoral access. Systemic anticoagulation was administered with initial intravenous heparin bolus of 5000 units followed by 1000 units per subsequent hour. Control digital subtraction angiogram (DSA) was performed immediately after deployment and at 5 and 10 min after deployment to confirm vessel wall apposition and parent vessel patency, and to rule out acute intraluminal thrombus.

If acute thrombus formation was noted on DSA, intra-arterial (IA) abciximab bolus of either 5 mg (for minor thrombosis) or 0.125 mg/kg (for major thrombosis) based on ideal body weight was directly infused through the triaxial system. Abciximab, a GPIIb/IIIa inhibitor, was chosen over eptifibatid and tirofiban for its  $\alpha_v\beta_3$  and  $\alpha_m\beta_2$  integrin receptor binding properties and its robust usage in the endovascular coiling and cardiac percutaneous coronary intervention literature. Concurrently, either 1000 units or 2000 units of intravenous heparin were administered based on the patient's weight. Control DSA was performed at 5 min intervals after IA abciximab

bolus. If significant thrombus persisted, additional 5 mg or 0.125 mg/kg IA abciximab bolus was repeated for a maximum of two additional times. In cases with complete recanalisation after IA abciximab treatment, intravenous abciximab was not used postprocedure. If residual thrombus was present after the IA bolus, then intravenous abciximab infusion at a rate of 0.125  $\mu\text{g}/\text{kg}/\text{min}$  was initiated immediately and continued for 12 hours postprocedure.

After each case, DynaCT without contrast was performed. The femoral arterial sheath was removed the following day. For those patients without medical or logistical contraindications, daily prasugrel (Effient) 5 mg or 10 mg (based on body mass index) was initiated and clopidogrel was discontinued. Patients were seen in follow-up at 1 month, 6 months and 12 months. Follow-up cerebral angiography was performed at 6 months and 12 months.

### RESULTS

During the study period of April 2011–August 2017, a total of 742 consecutive PED/PED Flex cases were performed by the senior authors (ALC and GPC). Of these 742 cases, 37 were identified to have acute in situ thrombosis intraprocedurally and treated with abciximab. The remaining 705 cases did not have acute ischaemic intraprocedural complications.

#### Patient characteristics and PRU values

The mean age of the patients was 53.8 years in the in situ thrombosis group and 56.4 years in the control group (table 1). The two groups were evenly matched in gender (83.8% vs 80.4% female,  $p=0.2535$ ), history of subarachnoid haemorrhage (21.6% vs 15%,  $p=0.2788$ ) and previous aneurysm treatments (24.3% vs 19.4%,  $p=0.4657$ ). Postprocedural P2Y<sub>12</sub> test results (PRU) were available in 70.3% of the cases with in situ thrombosis (26/37) and 59.3% of cases in the control group (418/705). There was no statistical difference between the average PRU values of the two groups ( $156.1\pm 61$  vs  $148.2\pm 74$ ,  $p=0.5894$ ).

#### Aneurysm characteristics

The mean aneurysm size was  $8.41\pm 6.19$  mm in the in situ thrombosis group compared with  $6.85\pm 5.55$  mm in the control group ( $p=0.0952$ ) (table 2). Anterior circulation aneurysms accounted for most of the cases in both groups (91.9% vs 92.5%,  $p=0.9184$ ). Of the aneurysms in the anterior circulation, there was no significant difference between the two groups in the number of aneurysms beyond the internal carotid artery (ICA), such as aneurysms of the anterior cerebral artery or the middle cerebral artery (18.9% vs 18.3%,  $p=0.3173$ ). Posterior circulation aneurysms accounted for 8.1% of the cases with in situ thrombosis and 7.7% of the cases in the control group ( $p=0.9204$ ).

#### Procedural complexity

Significant cervical ICA tortuosity defined as a 90° turn, hairpin turn or corkscrew loop was encountered in 38.2%

**Table 1** Patient characteristics and P2Y12 assay

|                                | In situ thrombosis | Control       | P values |
|--------------------------------|--------------------|---------------|----------|
| Total cases                    | 37                 | 705           | –        |
| Age (years)                    | 53.8               | 56.4          | 0.2325   |
| Female sex                     | 83.8% (n=31)       | 80.4% (n=567) | 0.2535   |
| Remote subarachnoid hemorrhage | 21.6% (n=8)        | 15.0% (n=106) | 0.2788   |
| Previously treated             | 24.3% (n=9)        | 19.4% (n=137) | 0.4657   |
| Clip                           | 0                  | 33            | –        |
| Coil                           | 5                  | 82            | –        |
| Flow diversion                 | 3                  | 18            | –        |
| Multiple treatments            | 1                  | 4             | –        |
| P2Y12 available                | 70.3% (n=26)       | 59.3% (n=418) | –        |
| Average P2Y12                  | 156.1±61           | 148.2±74      | 0.5894   |

**Table 2** Aneurysm characteristics and location

|  | In situ thrombosis | Control     | P values |
|--|--------------------|-------------|----------|
| Size (average) (mm)                            | 8.41±6.19          | 6.85±5.55   | 0.0952   |
| Anterior circulation                           | 34 (91.9%)         | 652 (92.5%) | 0.9184   |
| Internal carotid                               | 27 (72.9%)         | 522 (74.0%) | 0.8851   |
| Cervical                                       | 0                  | 16          | –        |
| Petrous  | 0                  | 6           | –        |
| Cavernous                                      | 7                  | 66          | –        |
| Clinoidal                                      | 0                  | 22          | –        |
| Ophthalmic                                     | 3                  | 125         | –        |
| Paraophthalmic                                 | 8                  | 177         | –        |
| Posterior communicating/<br>Anterior choroidal | 7                  | 94          | –        |
| Superior hypophyseal                           | 1                  | 7           | –        |
| Termination                                    | 1                  | 9           | –        |
| Beyond ICA                                     | 7 (18.9%)          | 129 (18.3%) | 0.3173   |
| Anterior communicating                         | 1                  | 50          | –        |
| A1-2   | 2                  | 32          | –        |
| A2-3   | 1                  | 11          | –        |
| M1   | 0                  | 10          | –        |
| M2   | 1                  | 4           | –        |
| Bifurcation                                    | 2                  | 22          | –        |
| Posterior circulation                          | 3 (8.1%)           | 54 (7.7%)   | 0.9204   |
| Basilar  | 2                  | 12          | –        |
| Superior cerebellar artery                     | 1                  | 1           | –        |
| Posterior cerebral artery                      | 0                  | 6           | –        |
| Vertebral                                      | 0                  | 26          | –        |
| Posterior inferior cerebellar artery           | 0                  | 9           | –        |

ICA, internal carotid artery.

of the anterior circulation cases with in situ thrombosis compared with 32.4% of the anterior circulation control cases (table 3). The cavernous carotid grade was also assigned for each case according to a previously published classification system.<sup>24</sup> There was no statistical difference between the two groups in terms of cavernous carotid grade, with both groups having 50% of cases with grade 1 genu. Figure 1 illustrates a control case and figure 2 illustrates an in situ thrombosis case with procedural complexity. Cases in the in situ thrombosis group had a mean fluoroscopy time of 60.4±37 min compared with 38.4±25 min in the control group (p<0.0001). Similarly, the radiation dosage in the in situ thrombosis group was 3476±1855 mGy compared with 2160±1321 mGy in the control group (p<0.0001). There was no significant difference in the use of verapamil infusion (18.9% vs 12.8%, p=0.2792) between the two groups. The in situ thrombosis group required balloon angioplasty in 14/37 cases (37.8%) compared with 86/705 (12.2%) in the control group (p<0.0001). Although the in situ thrombosis group had 18.9% of cases that used more than one PED (compared with 13.9% in the control), this difference was not statistically significant (p=0.3933). Adjunctive coiling was performed in 24.3% of the cases in the in situ thrombosis group compared with 8.37% in the control group, which did achieve statistical significance (p=0.001).

### Clinical outcomes

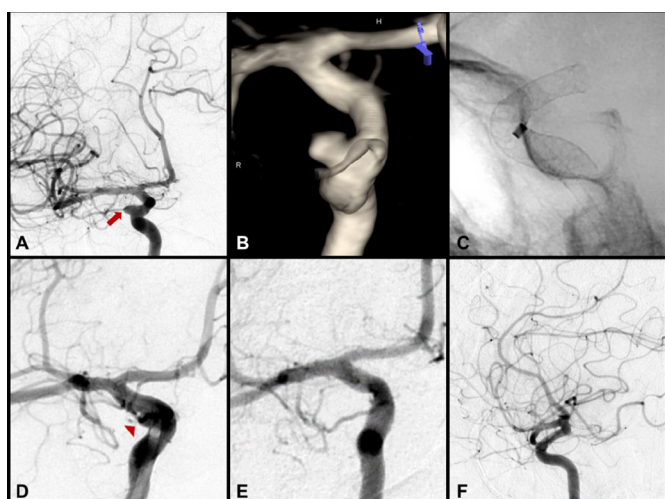
There was no statistically significant mortality difference between the two groups (2.7% vs 0.99%, p=0.3262) (table 4). The average length of stay was 5.62±8.05 days for patients with in situ thrombosis compared with 2.23±3.97 days for the control patients (p<0.0001); 94.3% of the control group patients were discharged to home compared with 72.9% of patients with intraprocedural thromboembolic complications (p<0.0001). The in situ thrombosis group had higher rates of transient neurological deficit (8.11% vs 2.41%, p=0.0370), major stroke as defined by NIHSS>4 (10.8% vs 1.2%, p<0.0001), minor stroke as defined by NIHSS<4

**Table 3** Procedural complexity comparison between the two groups

|   | In situ thrombosis | Control       | P values |
|---|--------------------|---------------|----------|
| Cervical carotid tortuosity (of anterior circulation cases)             | 38.2% (n=13)       | 32.4% (n=211) | 0.4765   |
| Cavernous internal carotid artery grade (of anterior circulation cases) |                    |               |          |
| I   | 50% (n=17)         | 50% (n=326)   | 1.000    |
| II  | 29.4% (n=10)       | 18.7% (n=122) | 0.1228   |
| III   | 11.8% (n=4)        | 21.9% (n=143) | 0.1589   |
| IV  | 8.82% (n=3)        | 9.36% (n=61)  | 0.9171   |
| Multiple Pipeline embolisation devices                                  | 18.9% (n=7)        | 13.9% (n=98)  | 0.3933   |
| Adjunct coiling   | 24.3% (n=9)        | 8.37% (n=59)  | 0.0010   |
| Fluoroscopy time (min)  | 60.4±37            | 38.4±25       | <0.0001  |
| Radiation exposure (mGy)  | 3476±1855          | 2160±1321     | <0.0001  |
| Verapamil infusion  | 18.9% (n=7)        | 12.8% (n=90)  | 0.2792   |
| Balloon angioplasty   | 37.8% (n=14)       | 12.2% (n=86)  | <0.0001  |

(2.7% vs 0.85%,  $p<0.0001$ ) and intracerebral haemorrhage (2.7% vs 0.99%,  $p<0.0001$ ). Iatrogenic vessel injury and dissection was only seen in 3/705 (0.43%) of the

control cases but occurred in 1/37 (2.7%) of the in situ thrombosis group ( $p<0.0001$ ).

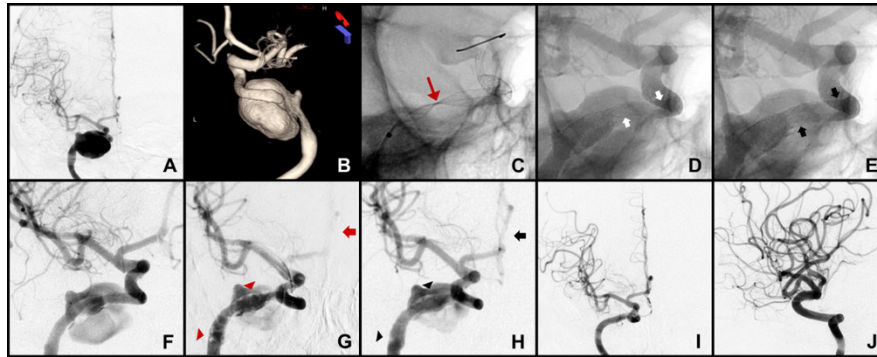


**Figure 1** Standard, low-complexity example of Pipeline embolisation device (PED) treatment of an incidental 4 mm right-sided internal carotid artery (ICA) ophthalmic segment aneurysm. (A) Pre-embolisation digital subtraction angiogram (transorbital oblique view) of the right ICA and (B) three-dimensional rotational reconstructed image demonstrating the saccular right-sided ophthalmic segment ICA aneurysm, measuring 4.3 mm x 3.7 mm with a 3.5 mm neck (red arrow). (C) Single-shot fluoroscopy, lateral view, immediately following deployment of a single 4.75 mm x 16 mm PED across the neck of the aneurysm. (D) The right ICA injection, transorbital oblique view, confirmed a patent parent vessel and distal vasculature without evidence of thrombosis. This procedure was of low complexity, with 15.8 min of total fluoroscopy time, 827 mGy of radiation exposure and without significant vessel tortuosity or need for coils. Despite a postoperative P2Y12 reaction unit value of 297, the case concluded without thrombotic complication. (E-F) At 12-month follow-up there was complete occlusion of the aneurysm (E, transorbital oblique view; F, lateral view).

## DISCUSSION

The flow-diverting PED, due to its bimetallic construct and 30% porosity, has increased thrombogenic properties compared with other traditional intracranial stents. Acute in situ thromboembolic complications during PED placement have potentially devastating neurological consequences. Recent studies on risk stratification have focused on clopidogrel responsiveness, with some studies suggesting using the P2Y12 assay for antiplatelet regimen titration prior to treatment.<sup>9-16</sup> In the current study of 742 consecutive PED cases, acute in situ thrombosis was seen in 37 instances (5%) despite no significant difference in postprocedural day 0 or day 1 PRU values. Indicators of procedural complexity such as prolonged fluoroscopy time, need for balloon angioplasty, increased radiation dose and need for adjunctive coiling were strongly associated with in situ thrombosis. These results suggest that PED can be safely placed without preprocedural titration of antiplatelet therapy and argue for procedural complexity as a risk factor for intraprocedural thromboembolic events.

The role of PFT in thromboembolic risk stratification remains a controversial topic in the flow diversion literature. Delgado Almandoz *et al* reported increased complications with preprocedural PRU values >240 and <60 in a cohort of 44 patients.<sup>12-13</sup> A recent retrospective, multicentred study of 402 patients by Adeeb *et al*<sup>28</sup> defined clopidogrel non-responders as having a PRU value >208 and concluded that the rate of thromboembolic complications in PED cases for this group was 17.4% vs 5.6% for the clopidogrel responders (PRU<208). In contrast, many authors have raised concerns regarding the variability in PFT values and the morbidity of haemorrhagic complications due to escalating antiplatelet regimen.<sup>18-23</sup> In the Pipeline for Uncoilable or Failed



**Figure 2** High-complexity example of Pipeline embolisation device (PED) treatment of a giant 25 mm right-sided petrocavernous internal carotid artery (ICA) cerebral aneurysm. (A) Right ICA digital subtraction angiogram (DSA; anteroposterior (AP) view) and (B) three-dimensional rotational reconstructed image demonstrating the right-sided 25 mm petrocavernous ICA aneurysm. Treatment of this aneurysm required complex PED deployment. (C) Twisting of the PED (red arrow) during initial deployment of a 5.0 mm × 30 mm device. Despite multiple manipulations, the twist was unable to be corrected and this device was removed without incident. An intracranial exchange was performed to establish a neutral microcatheter for subsequent PED deployment. Two telescoping PEDs (5.0 mm × 30 mm and 5.0 mm × 18 mm) were subsequently deployed. (D–E) Balloon angioplasty (D, pre; E, post) was used to improve wall apposition and device opening where the vessel was flattened from the mass effect of the aneurysm (white arrows in D). (E) Following angioplasty, the PED was widely open and well apposed (black arrows). (F) Post-PED implantation DSA demonstrating good anterograde flow in the parent vessel. The procedure was performed with 152 min of fluoroscopy time and 6109 mGy of radiation exposure, with a P2Y12 reaction unit value of 125. The patient awoke from the procedure in good condition. Shortly afterwards, the patient experienced a decline in mental status and decreased movement in the left upper extremity. Following a CT head that was negative for haemorrhage, the patient was brought back emergently for angiography. (G) DSA demonstrated multifocal platelet plugs (red arrowheads) in the Pipeline construct and reduced flow in the right anterior cerebral artery (red arrow). (H) An intra-arterial abciximab bolus was given with significant reduction in platelet plugging (black arrowheads) and improved anterograde flow (black arrow). The patient returned to her neurological baseline by the time of discharge. (I, AP; J, lateral) 12-month follow-up angiography demonstrated complete aneurysm occlusion and vessel remodelling with no evidence of in-stent stenosis or thrombosis.

Aneurysms trial, ischaemic complication rates were 2.8% despite 107 patients receiving PED without preprocedural PFT.<sup>29</sup> Commentaries by Chandra<sup>18</sup> and Gandhi<sup>21</sup> have stated that there is insufficient evidence to justify routine PFT prior to neurointerventional procedures,<sup>22</sup> while several retrospective studies have concluded PFT does not result in improvement of clinical outcomes.<sup>19,23</sup> Within our institution, Bender *et al*<sup>30</sup> evaluated a series

of 52 patients with PRU>200 undergoing PED treatment for intracranial aneurysms and found the rate of thromboembolic complications was only 4%, which was not significantly different from overall rates of cerebral ischaemic complications in the reported literature. Furthermore, the current study of 742 PED cases demonstrates no significant difference in postprocedural PRU levels between a cohort with in situ thrombosis (37 cases)

**Table 4** Procedural outcomes

|                                    | In situ thrombosis | Control       | P values |
|------------------------------------|--------------------|---------------|----------|
| Length of stay                     | 5.62±8.05 days     | 2.23±3.97     | <0.0001  |
| Discharge to home                  | 72.9% (n=27)       | 94.3% (n=665) | <0.0001  |
| Mortality                          | 2.7% (n=1)         | 0.99% (n=7)   | 0.3262   |
| Transient deficit                  | 8.11% (n=3)        | 2.41% (n=17)  | 0.0370   |
| Major stroke (NIH Stroke Scale>4)  | 10.8% (n=4)        | 1.42% (n=10)  | <0.0001  |
| Minor stroke (NIH Stroke Scale<4)  | 2.7% (n=1)         | 0.85% (n=6)   | <0.0001  |
| Dependent intracerebral hemorrhage | 2.7% (n=1)         | 0.99% (n=7)   | <0.0001  |
| Remote intracerebral hemorrhage    | 2.7% (n=1)         | 0.14% (n=1)   | <0.0001  |
| Cranial nerve palsy                | 0% (n=0)           | 1.27% (n=9)   | <0.0001  |
| Iatrogenic dissection              | 2.7% (n=1)         | 0.43% (n=3)   | <0.0001  |

and a control cohort (705 cases, of which 418 had PRU checked). The heterogeneous consensus regarding PFT points to the need to explore other factors involved in thromboembolic risk stratification.

Longer fluoroscopy time, corresponding to higher radiation doses, is a proxy indicator of case complexity and technical challenges. Notably, the in situ thrombosis group required balloon angioplasty in 37.8% of cases compared with 12.2% in the control group. Since achieving satisfactory flow diversion is dependent on optimal device to parent wall apposition, in situ vessel anatomy and need for postdeployment processing are significant contributors to procedural complexity. In terms of patient selection, we often elect to avoid PED placement in patients with significant intracranial atherosclerotic disease in close proximity to the aneurysm to avoid the potential for atherosclerosis-induced malapposition and in situ thrombosis. Additionally, it is not surprising that the use of adjunctive coiling was associated with acute in situ thrombosis. Aneurysms treated with single-stage PED and coiling tend to be more morphologically irregular and the procedure itself more involved, in some cases requiring bifemoral access. Cervical ICA tortuosity, cavernous carotid grade and aneurysm size were not statistically different between the two groups in the current study, likely secondary to small sample size in the in situ thrombosis group and improved deployment of PED Flex in tortuous anatomy. Furthermore, these data suggest that procedural complexity is not simply limited to difficult access or aneurysm size. Intuitively, complexity leads to prolonged catheter time and endovascular manipulation, with the resultant platelet aggregation and activation leading to increased thromboembolic events.

Our findings are corroborated in the published literature. Raychev *et al.*<sup>31</sup> identified procedural complexity as a strong predictor of thrombotic complications during the perioperative period. In this retrospective study of 48 cases, univariate analysis showed ADP inhibition less than 49% was associated with increased risk of thrombotic complications. However, on multivariate analysis, procedural complexity as evidenced by fluoroscopy time exceeding 52 min was the only factor associated with thrombotic complications, which occurred in 6/48 cases (13%). Tan *et al.* reported similar findings in their study of 74 PED patients, 6.8% of whom had thromboembolic complications. Symptomatic strokes were seen in 23.8% of cases with procedural time longer than 116 min compared with 0% of cases with procedural time shorter than 116 min. Preprocedural PRU value >208, although trending towards significance, was not a statistically significant risk factor for symptomatic thromboembolic complications.<sup>16</sup>

The limitations of this study include its retrospective and non-randomised nature. Because of the retrospective design, there is potential for inherent confounders and bias. The cause of in situ thrombosis is likely multifactorial and there may be other risks factors that were not evaluated in this study. The small sample size in the in situ

thrombosis group also limits the statistical significance of various anatomical features of procedural complexity. Finally, postprocedural PRU value was not available for all patients.

## CONCLUSION

In this large single-institution study, predictors of procedural complexity (higher radiation exposure, longer fluoroscopy time and need for balloon angioplasty) are associated with acute ischaemic events during PED placement. Postprocedural PRU values were not significantly different between the two groups. The authors continue to advocate for PED procedures without preprocedural titration of dual antiplatelet therapy.

**Contributors** BJ, GPC, L-ML, MTB, EMW and JKC drafted the manuscript and critically revised the manuscript for important intellectual content. MTB, JKC, RX and BJ assisted with the data collection and analysis. GPC and ALC performed treatment procedures and assisted in critically revising the manuscript. ALC, JH and RJT crucially reviewed the important intellectual content of the manuscript. ALC performed treatment procedures and critically revised the important intellectual content. All authors read and approved the final manuscript.

**Funding** This research received no specific grant from any funding agency in the public, commercial or not-for-profit sectors.

**Competing interests** ALC is a proctor for the Woven EndoBridge (WEB) device (Sequent Medical, Aliso Viejo, California), a proctor for the Surpass device (Stryker Neurovascular, Fremont, California) and a consultant for Stryker Neurovascular, a proctor for the Pipeline embolisation device (Medtronic Neurovascular, Irvine, California) and a consultant for Medtronic, and a proctor for the FRED device (MicroVention, Tustin, California) and a consultant for MicroVention. GPC is a proctor for the Pipeline embolisation device and consultant for Stryker Neurovascular. L-ML is a proctor for the Pipeline embolisation device (Medtronic Neurovascular, Irvine, California), a consultant for MicroVention and participates in clinical trial for Stryker.

**Patient consent** Not required.

**Ethics approval** Hopkins IRB.

**Provenance and peer review** Not commissioned; internally peer reviewed.

**Data sharing statement** There are no additional unpublished data from this study.

**Open access** This is an open access article distributed in accordance with the Creative Commons Attribution Non Commercial (CC BY-NC 4.0) license, which permits others to distribute, remix, adapt, build upon this work non-commercially, and license their derivative works on different terms, provided the original work is properly cited and the use is non-commercial. See: <http://creativecommons.org/licenses/by-nc/4.0/>

© Article author(s) (or their employer(s) unless otherwise stated in the text of the article) 2018. All rights reserved. No commercial use is permitted unless otherwise expressly granted.

## REFERENCES

1. Becske T, Brinjikij W, Potts MB, *et al.* Long-term clinical and angiographic outcomes following pipeline embolization device treatment of complex internal carotid artery aneurysms: five-year results of the pipeline for uncoilable or failed aneurysms trial. *Neurosurgery* 2017;80:40–8.
2. Colby GP, Lin LM, Caplan JM, *et al.* Immediate procedural outcomes in 44 consecutive Pipeline Flex cases: the first North American single-center series. *J Neurointerv Surg* 2016;8:702–9.
3. Colby GP, Lin LM, Gomez JF, *et al.* Immediate procedural outcomes in 35 consecutive pipeline embolization cases: a single-center, single-user experience. *J Neurointerv Surg* 2013;5:237–46.
4. Kallmes DF, Hanel R, Lopes D, *et al.* International retrospective study of the pipeline embolization device: a multicenter aneurysm treatment study. *AJNR Am J Neuroradiol* 2015;36:108–15.
5. Rajah G, Narayanan S, Rangel-Castilla L. Update on flow diverters for the endovascular management of cerebral aneurysms. *Neurosurg Focus* 2017;42:E2.

6. Colby GP, Bender MT, Lin LM, *et al.* Declining complication rates with flow diversion of anterior circulation aneurysms after introduction of the pipeline flex: analysis of a single-institution series of 568 cases. *J Neurosurg* 2018;7:1–7.
7. Jiang B, Paff M, Colby GP, *et al.* Cerebral aneurysm treatment: modern neurovascular techniques. *Stroke Vasc Neurol* 2016;1:93–100.
8. Jiang B, Bender MT, Hasjim B, *et al.* Aneurysm treatment practice patterns for newly appointed dual-trained cerebrovascular/endovascular neurosurgeons: Comparison of open surgical to neuroendovascular procedures in the first 2 years of academic practice. *Surg Neurol Int* 2017;8:154.
9. Yang H, Li Y, Jiang Y. Insufficient platelet inhibition and thromboembolic complications in patients with intracranial aneurysms after stent placement. *J Neurosurg* 2016;125:247–53.
10. Adeeb N, Griessenauer CJ, Moore JM, *et al.* Ischemic stroke after treatment of intraprocedural thrombosis during stent-assisted coiling and flow diversion. *Stroke* 2017;48:1098–100.
11. Daou B, Starke RM, Chalouhi N, *et al.* P2Y12 reaction units: effect on hemorrhagic and thromboembolic complications in patients with cerebral aneurysms treated with the pipeline embolization device. *Neurosurgery* 2016;78:27–33.
12. Delgado Almandoz JE, Crandall BM, Scholz JM, *et al.* Pre-procedure P2Y12 reaction units value predicts perioperative thromboembolic and hemorrhagic complications in patients with cerebral aneurysms treated with the pipeline embolization device. *J Neurointerv Surg* 2013;5(Suppl 3):iii3–10.
13. Delgado Almandoz JE, Crandall BM, Scholz JM, *et al.* Last-recorded P2Y12 reaction units value is strongly associated with thromboembolic and hemorrhagic complications occurring up to 6 months after treatment in patients with cerebral aneurysms treated with the pipeline embolization device. *AJNR Am J Neuroradiol* 2014;35:128–35.
14. Kayan Y, Delgado Almandoz JE, Fease JL, *et al.* Efficacy of a two-test protocol for achieving a therapeutic response to clopidogrel prior to elective endovascular intracranial aneurysm treatment and an 'induced' postoperative hyper-response. *J Neurointerv Surg* 2017;9:792–6.
15. Oran I, Cinar C, Bozkaya H, *et al.* Tailoring platelet inhibition according to multiple electrode aggregometry decreases the rate of thrombotic complications after intracranial flow-diverting stent implantation. *J Neurointerv Surg* 2015;7:357–62.
16. Tan LA, Keigher KM, Munich SA, *et al.* Thromboembolic complications with Pipeline Embolization Device placement: impact of procedure time, number of stents and pre-procedure P2Y12 reaction unit (PRU) value. *J Neurointerv Surg* 2015;7:217–21.
17. Bender MT, Lin L-M, Colby GP, *et al.* P2Y12 hyporesponse (PRU>200) is not associated with increased thromboembolic complications in anterior circulation Pipeline. *J Neurointerv Surg* 2017;9:978–81.
18. Chandra RV. Point of care platelet function testing in routine neurointerventional care is unjustified. *J Neurointerv Surg* 2013;5:280–2.
19. Faught RW, Satti SR, Hurst RW, *et al.* Heterogeneous practice patterns regarding antiplatelet medications for neuroendovascular stenting in the USA: a multicenter survey. *J Neurointerv Surg* 2014;6:774–9.
20. Flechtenmacher N, Kämmerer F, Dittmer R, *et al.* Clopidogrel resistance in neurovascular stenting: correlations between light transmission aggregometry, verifynow, and the multiplate. *AJNR Am J Neuroradiol* 2015;36:1953–8.
21. Gandhi CD, Bulsara KR, Fifi J, *et al.* Platelet function inhibitors and platelet function testing in neurointerventional procedures. *J Neurointerv Surg* 2014;6:567–77.
22. Taylor LI, Dickerson JC, Dambrino RJ, *et al.* Platelet testing in flow diversion: a review of the evidence. *Neurosurg Focus* 2017;42:E5.
23. Brinjikji W, Lanzino G, Cloft HJ, *et al.* Platelet testing is associated with worse clinical outcomes for patients treated with the pipeline embolization device. *AJNR Am J Neuroradiol* 2015;36:2090–5.
24. Lin LM, Colby GP, Jiang B, *et al.* Classification of cavernous internal carotid artery tortuosity: a predictor of procedural complexity in Pipeline embolization. *J Neurointerv Surg* 2015;7:628–33.
25. Colby GP, Lin LM, Huang J, *et al.* Utilization of the navien distal intracranial catheter in 78 cases of anterior circulation aneurysm treatment with the pipeline embolization device. *J Neurointerv Surg* 2013;5(Suppl 3):iii16–21.
26. Lin LM, Bender MT, Colby GP, *et al.* Use of a next-generation multi-durometer long guide sheath for triaxial access in flow diversion: experience in 95 consecutive cases. *J Neurointerv Surg* 2018;10:137–42.
27. Colby GP, Lin LM, Xu R, *et al.* Utilization of a novel, multi-durometer intracranial distal access catheter: nuances and experience in 110 consecutive cases of aneurysm flow diversion. *Interv Neurol* 2017;6(1-2):90–104.
28. Adeeb N, Griessenauer CJ, Foreman PM, *et al.* Use of platelet function testing before pipeline embolization device placement: a multicenter cohort study. *Stroke* 2017;48:1322–30.
29. Becske T, Kallmes DF, Saatci I, *et al.* Pipeline for uncoilable or failed aneurysms: results from a multicenter clinical trial. *Radiology* 2013;267:858–68.
30. Bender MT, Lin LM, Colby GP, *et al.* P2Y12 hyporesponse (PRU>200) is not associated with increased thromboembolic complications in anterior circulation Pipeline. *J Neurointerv Surg* 2017;9.
31. Raychev R, Tateshima S, Vinuela F, *et al.* Predictors of thrombotic complications and mass effect exacerbation after pipeline embolization: The significance of adenosine diphosphate inhibition, fluoroscopy time, and aneurysm size. *Interv Neuroradiol* 2016;22:34–41.