

UCSF

UC San Francisco Previously Published Works

Title

Microbowls with Controlled Concavity for Accurate Microscale Mass Spectrometry

Permalink

<https://escholarship.org/uc/item/4mt5m354>

Journal

Advanced Materials, 34(12)

ISSN

0935-9648

Authors

Xu, Linfeng
Li, Xiangpeng
Li, Wenzong
et al.

Publication Date

2022-03-01

DOI

10.1002/adma.202108194

Peer reviewed

Microbowls with Controlled Concavity for Accurate Microscale Mass Spectrometry

Linfeng Xu, Xiangpeng Li, Wenzong Li, Kai-chun Chang, Hyunjun Yang, Nannan Tao, Pengfei Zhang, Emory M. Payne, Cyrus Modavi, Jacqueline Humphries, Chia-Wei Lu, and Adam R. Abate*

Patterned surfaces can enhance the sensitivity of laser desorption ionization mass spectrometry by segregating and concentrating analytes, but their fabrication can be challenging. Here, a simple method to fabricate substrates patterned with micrometer-scale wells that yield more accurate and sensitive mass spectrometry measurements compared to flat surfaces is described. The wells can also concentrate and localize cells and beads for cell-based assays.

1. Introduction

Matrix-assisted laser desorption ionization (MALDI) is a form of soft-ionization mass spectrometry (MS) commonly used in biological research for proteomics and metabolomics.^[1–3] The ability to rapidly process multiple samples in parallel without auto-feeders makes it suited to high-throughput and single-cell applications.^[4–6] Key to the method are the matrices or engineered substrates that facilitate the generation of ionic species using

energy from a laser.^[7,8] The properties of the substrates, including their chemistry, conductivity, and micropatterning impact sample ionization efficiency and, thus, measurement sensitivity.^[8–11] For example, micrometer-scale wells are useful for segregating samples of distinct compositions so they can be separately analyzed.^[12–14] Well arrays are also compatible with active^[15,16] or passive loading techniques,^[12,17] to simplify the preparation of samples for analysis. However, MALDI-MS requires samples to be dried prior to analysis. When droplets are dried on flat surfaces, they tend to distribute their analytes about the perimeter due to the coffee ring effect.^[18,19] Similar processes occur in cylindrical wells, leading to precipitation along the periphery^[20,21] where the signal is inhibited due to laser occlusion by the walls. The result in both cases is lowered sensitivity and increased measurement variability due to inhomogeneity of the sample spots.^[18,22]

Bowl-shaped wells with curved bases are advantageous because, upon drying, precipitated analytes concentrate at the center in a more uniform fashion,^[23] where they are efficiently ionized.^[24] These wells, however, are difficult to fabricate, requiring micromachining, subtractive etching methods, embossing of plastics or specialized deposition methods.^[23,25–28] Additive fabrication approaches are superior because they use photolithographic techniques that are simple, inexpensive, and ubiquitous. However, photolithographic fabrication of wells with controlled curvature is challenging, requiring complex mask and lens systems to modulate light intensity with micrometer resolution across the array.^[29,30] Consequently, simpler but inferior methods with stamping or backfilling of sharp features with polymer are more common, even though they are tedious and provide limited control.^[6,31–33] A superior approach would use simple photolithographic techniques without sacrificing control over well shape and curvature.

In this paper, we describe a simple method to photolithographically fabricate wells with controlled curvature in SU8. This photoresist has several properties useful for mass spectrometry, including chemical robustness, precision control of surface features, and scalable fabrication. Using the approach, we fabricate curved-bottom wells at a density of 100 000 per square centimeter on a glass slide. To demonstrate the utility of these wells, we show they yield enhanced sensitivity in microscale mass spectrometry compared to cylindrical wells. Several approaches, such as the AnchorChip^[34] and the μ Focus plate,^[35] use surface rather than physical modification to control drying and enhance MALDI MS, but do not

L. Xu, X. Li, K.-c. Chang, P. Zhang, C. Modavi, A. R. Abate
Department of Bioengineering and Therapeutic Sciences
University of California, San Francisco
San Francisco, CA 94158, USA
E-mail: adam@abatelab.org


W. Li, J. Humphries, C.-W. Lu
Amyris Inc.
5885 Hollis St #100, Emeryville, CA 94608, USA

H. Yang
Institute for Neurodegenerative Diseases
Weill Institute for Neurosciences
University of California
San Francisco, CA 94158, USA

N. Tao
Bruker Nano Surfaces
San Jose, CA 95134, USA

E. M. Payne
Department of Chemistry
University of Michigan
Ann Arbor, MI 48104, USA

A. R. Abate
Chan Zuckerberg Biohub
San Francisco, CA 94158, USA

 The ORCID identification number(s) for the author(s) of this article can be found under <https://doi.org/10.1002/adma.202108194>.

© 2022 The Authors. Advanced Materials published by Wiley-VCH GmbH. This is an open access article under the terms of the Creative Commons Attribution License, which permits use, distribution and reproduction in any medium, provided the original work is properly cited.

DOI: 10.1002/adma.202108194

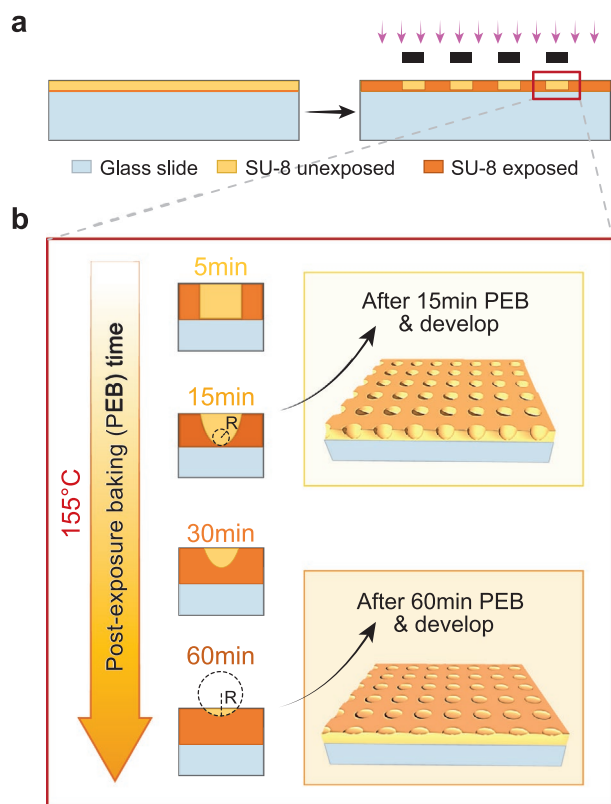


Figure 1. Overview of the fabrication process of microwells. a) Spin coat SU 8 on top of a glass slide and then transfer patterns of microwells from the mask to SU 8 by UV exposure. b) By controlling the PEB time at escalated temperature, the curvature of the profile of the microwells can be adjusted accordingly.

achieve the sample density of our microbowls, thereby limiting throughput. Additionally, we show that the curved profiles generate a gravity well that efficiently aggregates cells. The simplicity and control of our approach should make it valuable for single- and multi-cell MALDI-MS and for aggregating cells in organoid, embryoid, and cell–cell interaction studies.

2. Results and Discussion

2.1. Microbowls with Controlled Curvature

SU-8 is composed of bisphenol epoxy resin and the dissolved salt of the photoinitiator triarylsulfonium/hexafluoroantimonate. Upon exposure to ultraviolet (UV) light (Figure 1a), the photoinitiator degrades into hexafluoroantimonic acid, which protonates the bisphenol epoxides such that, when heated, they crosslink into a durable polymeric material.^[36,37] The final structure of the crosslinked network thus depends on the concentration of activated hexafluoroantimonic acid in the SU-8. Since this acid is a dissolved small molecule, it can diffuse post-exposure into unexposed regions, crosslinking them, and thereby allowing transformation of wells with vertical walls and flat bases into ones with sloped walls and curved bases (Figure 1b). Because the final shape depends on the diffusion profile of the acid, it can be controlled by the time

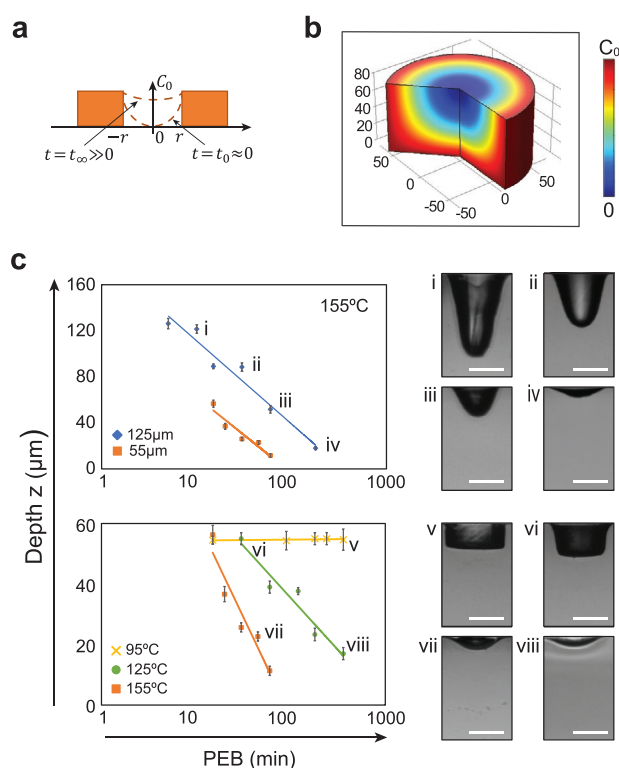


Figure 2. Prediction and validation of relationships between the profile of the microwells with PEB time. a) Profile of the microwell changes with PEB time. At time zero, few photoinitiators diffuse into the unexposed microwell, and the profile of the microwell is still close to a cylinder shape. At time infinity, as the concentration of photoinitiators in the unexposed microwell reaches the exposed part of the SU 8, C_0 , the profile of the microwell will be a shallow curve with large curvature. b) COMSOL simulation result based on Fick's diffusion law. c) Experimental validation of the proposed theory based on the diffusion of photoinitiators. The top graph shows the depth of the microwell versus PEB time when PEB temperature is set to be 155 °C. Blue diamonds and orange squares are measurements from the microwells when the SU 8 layer is 125 and 55 μm respectively. The bottom graph shows how the depth of the microwell changes with PEB time when the thickness of SU 8 layer is fixed to 55 μm . Yellow cross, green dots, and orange squares are measurements from the microwells at different PEB temperature 95 °C, 125 °C and 155 °C respectively. Error bars show the standard deviation of five measurements. All scale bars are 50 μm and fit lines natural logarithms.

and temperature over which the substrate is incubated prior to solvent development, which removes the uncrosslinked SU-8 and halts fabrication (Figure 2a,b).

To investigate this, we vary the time and temperature of the post-exposure bake (PEB) and thickness of the SU-8 layer and measure the resultant well profiles. When we fix temperature at 155 °C and vary the thickness of the SU-8 layer, the well depth follows a log-time relationship (Figure 2c, upper). Alternatively, when we fix thickness to 55 μm and change temperature, the slope changes, indicating that the SU-8 liquifies above a threshold temperature. At 95 °C (yellow crosses and fit line), the wells do not change appreciably over the PEB, indicating that the SU-8 remains solid and diffusion of the photoacid is minimal; this is the PEB temperature recommended by the manufacturer to maintain sharp features. By contrast, when we increase PEB temperature to 125 °C (green

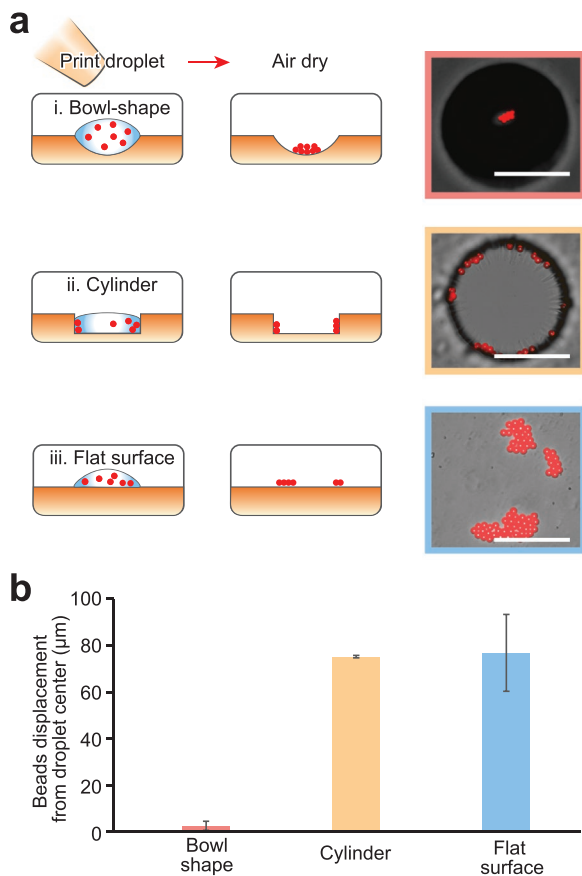


Figure 3. Drying patterns of microbeads on substrates with different morphology. a) Droplets containing microbeads are inkjet printed on three types of substrate: i) microbowls, ii) cylindrical wells and iii) flat surface from left top to bottom. The right panels show the distribution of microbeads after drying. b) Average displacement of microbeads after drying to the center of the droplet original printed droplet. Scale bars: 100 μm. The error bars are standard deviations of ten measurements.

circles and fit line) or 155 °C, the wells become rounded, with the change occurring faster at higher temperature than at lower (Figure 2c, lower, orange and green). Moreover, because microbowl depth depends on temperature and PEB time, which can be finely tuned and kept constant across the substrate, the microbowls are uniform in shape and depth (Figure S1, Supporting Information).

Because the drying pattern of samples can influence the signal sensitivity and variation of MALDI MS, we investigate how the morphology of the surface and the shape of the microwells influence drying and the resultant analyte deposition. Using an inkjet printer, we print arrays of water droplets containing 5 μm fluorescent polystyrene beads (0.05% w/v) onto an SU-8 substrate patterned with microbowls, cylindrical microwells, or as a flat surface (Methods in the Supporting Information, Figure 3a). The 500 pL droplets dry within 10 min at room temperature, leaving behind the beads. To characterize the drying behavior, we measure the final displacement of the beads from the printed droplet's center (Figure 3b, and Figure S2, Supporting Information). For the flat surface, the beads tend to deposit at the periphery of the original droplets

likely due to the coffee ring effect (Figure 3a-iii, and Video S1, Supporting Information). For cylindrical wells, the beads tend to also deposit at the periphery (Figure 3a-ii, Video S2, Supporting Information). By contrast, for microbowls, the beads tend to deposit at the center, indicating suppression of the coffee ring effect^[38] (Figure 3a-i, and Video S3, Supporting Information). This is beneficial because deposition at the periphery tends to dilute analyte concentration, reducing signal intensity and interfering with reproducible laser scanning since the precipitated analyte position varies from well to well.^[24] By contrast, with microbowls, the analytes are always at the center and maximally concentrated.

An important application of wells with controlled curvature is microscale mass spectrometry (μ MS), a technique allowing high-density analysis of thousands of samples in parallel. In the technique, samples are confined in wells where they can be energized with the ionizing laser of MALDI MS. The curvature of the wells is important because MALDI MS requires that the samples be desiccated prior to deposition of matrix. Microbowls tend to precipitate analytes at the center, localizing and concentrating them in a laser-accessible region. The result is of higher sensitivity and reduced measurement error compared to cylindrical wells. To illustrate this, we fabricate 10 000 microbowls above a conductive glass substrate. To load the wells, we use a commercial droplet dispenser (for continuous reagents), or printed droplet microfluidics (PDM, for suspensions), which overcomes Poisson loading (Methods in the Supporting Information), although other picoliter dispensers are applicable.^[39,40] We fabricate the wells with a depth of 15.1 ± 2.3 μm (Figure S1, Supporting Information) to allow MALDI-MS analysis which has specific requirements on sample depth. The microbowls are compatible with standard MALDI MS prepared by desiccating the samples on the surface, then spray coating with matrix (Methods in the Supporting Information).^[41] We add the matrix after droplet printing, because the requisite solvent is incompatible with water droplets; however, matrix can also be added with oil compatible printers.^[42] We load the wells with rows of droplets (100 μm in diameter) containing 0, 10, 100 and 500 ng mL⁻¹ naringenin in DI water, respectively (Figure 4a). After printing, we place the sample in a desiccator to dry (Figure 4b). We mount the dried substrate onto the requisite MALDI-MS imaging adapter, coat with matrix, and analyze with the instrument (Figure 4b–d, Methods in the Supporting Information). For comparison, we repeat this process for the flat surfaces and cylindrical wells (Figure 4c,d). Comparison of the substrates in fluorescence mode shows that while microbowls precipitate analytes at the center and distribute matrix evenly across the whole well, cylindrical wells distribute them on the perimeter and matrix forms random patterns on the flat surface (Figures 4b,c). We determine the limits of quantification (LoQ)^[43] of naringenin are 34.98 ng mL⁻¹, 55.59 ng mL⁻¹ and 228.79 ng mL⁻¹ for microbowls, flat surface and cylindrical wells, respectively (Figure 4e, and Figure S3 and Method, Supporting Information). Because the analyte is distributed over a larger area in cylindrical wells, it is diluted while also being less accessible to the matrix and laser, resulting in lowered and noisier signals compared to microbowls. For the flat surface, due to the coffee ring effect, analytes also distribute unevenly. In addition, matrix tends to dry unevenly due to

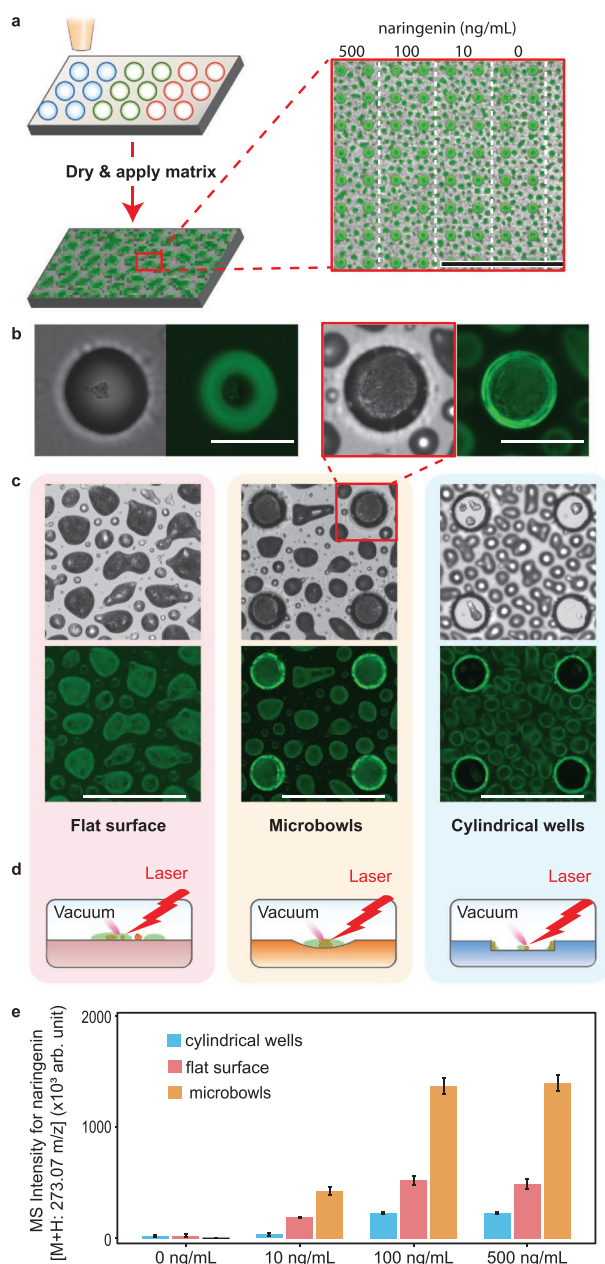


Figure 4. Microbowls concentrate analytes, enhancing MS signal. a) Droplets containing different concentrations of naringenin are printed on substrates with different morphology. After the droplets are dried at room temperature, matrix solutions are applied. Inset shows an array of microbowls printed with different concentrations of naringenin. Scale bar: 1 mm. b) Combined image of transillumination and GFP epifluorescence channels of a dried droplet in a microbowl before (left two images) and after matrix coating (right two images). Scale bars: 100 μm . c) Printed substrates after spray-coating of matrix, with transillumination and GFP epifluorescence images of the flat surface (light red), microbowls (light yellow) and cylindrical wells (light blue). Scale bars: 300 μm . d) Illustrations of ionizing laser and substrate geometry. e) Sums of naringenin peak amplitude in MS signal for flat surface, microbowls, and cylindrical wells. The error bars show the standard deviation of six samples.

the lack of pinning features, resulting in significantly noisier and reduced signals compared to microbowls (Figure 4e, and

Figure S3, Supporting Information). The mass spectrum of the naked substrate coated with matrix has a peak that overlaps with that of naringenin, resulting in a nonzero background for the 0 ng mL^{-1} naringenin droplets. The amplitude of this peak is slightly smaller for microbowls than flat surfaces (Figure 4e), likely due to the more even distribution of matrix in the microbowls and their distinct laser-surface geometry, which can affect ionized plume formation.^[44,45] To characterize the impact of microbowl depth, we repeat these experiments with different depths (15 and 50 μm) and find that shallower wells yield an enhanced signal (Figure S4, Supporting Information). This is likely due to the dependence of the MALDI signal on sample location, which must be matched with the focal plane of the ionizing laser (Methods in the Supporting Information).

To determine whether these properties extend to the detection of other molecules, we use microbowls to quantify triacetic acid lactone (TAL) and two small peptides and observe similar enhancements (Figure S5 and Methods, Supporting Information). Thus, due to their even distribution of matrix and analyte concentrating power, microbowls yield increased and more uniform signals than other common substrate geometries.

Mass spectrometry allows label-free quantitation of a broad range of analytes, making it ideal for characterizing samples of unknown composition. An especially important area in which this is useful is the analysis of microbes engineered to express exogenous metabolisms, including for biocircuitry and bioproduction. Libraries of microbes engineered to express millions of exogenous pathways can be efficiently generated with genetic methods, but testing each variant for the phenotype of interest is laborious, requiring isolation, cultivation, and analysis in separate wells of microtiter plates. μMS is a significant advance because it allows parallel analysis of tens of thousands of variants per square centimeter of the substrate, reducing the scanning time and volume of reagents consumed. The key to such screens is accurately characterizing the metabolisms of the variants, which requires an accurate and sensitive measurement of metabolites. Because microbowls enhance μMS signals, they are an invaluable feature of such microbial screens. To illustrate this, we use the approach to analyze two yeast strains engineered to produce naringenin, a chemical that has been shown to have a range of potential therapeutic uses,^[46] low producer and high producer strains. Because a single yeast cell does not produce sufficient material for μMS analysis, we pre-culture the strains in microfluidic droplets, generating colonies comprising thousands of genetically identical cells (Figure 5a, Steps 1 and 2). To induce production of naringenin, introducing medium is added to the culture droplets by merger, which has the inducer required to activate compound production (Method in the Supporting Information). The colonies are cultured for another week before being dispensed to the microbowls using PDM. PDM ensures that every well is loaded with a colony and to pattern them on the substrate so that we can directly compare the production of naringenin for the two strains (Figure 5b). The substrate is then processed through μMS using the standard workflow, removing the printing oil, drying the samples in a desiccator, applying the matrix, and scanning (Figure 5a Step 5, and 5c). By eye there is a clear difference between the two strains according to the printing grid (Figure 5c). To quantify this difference, we measure the

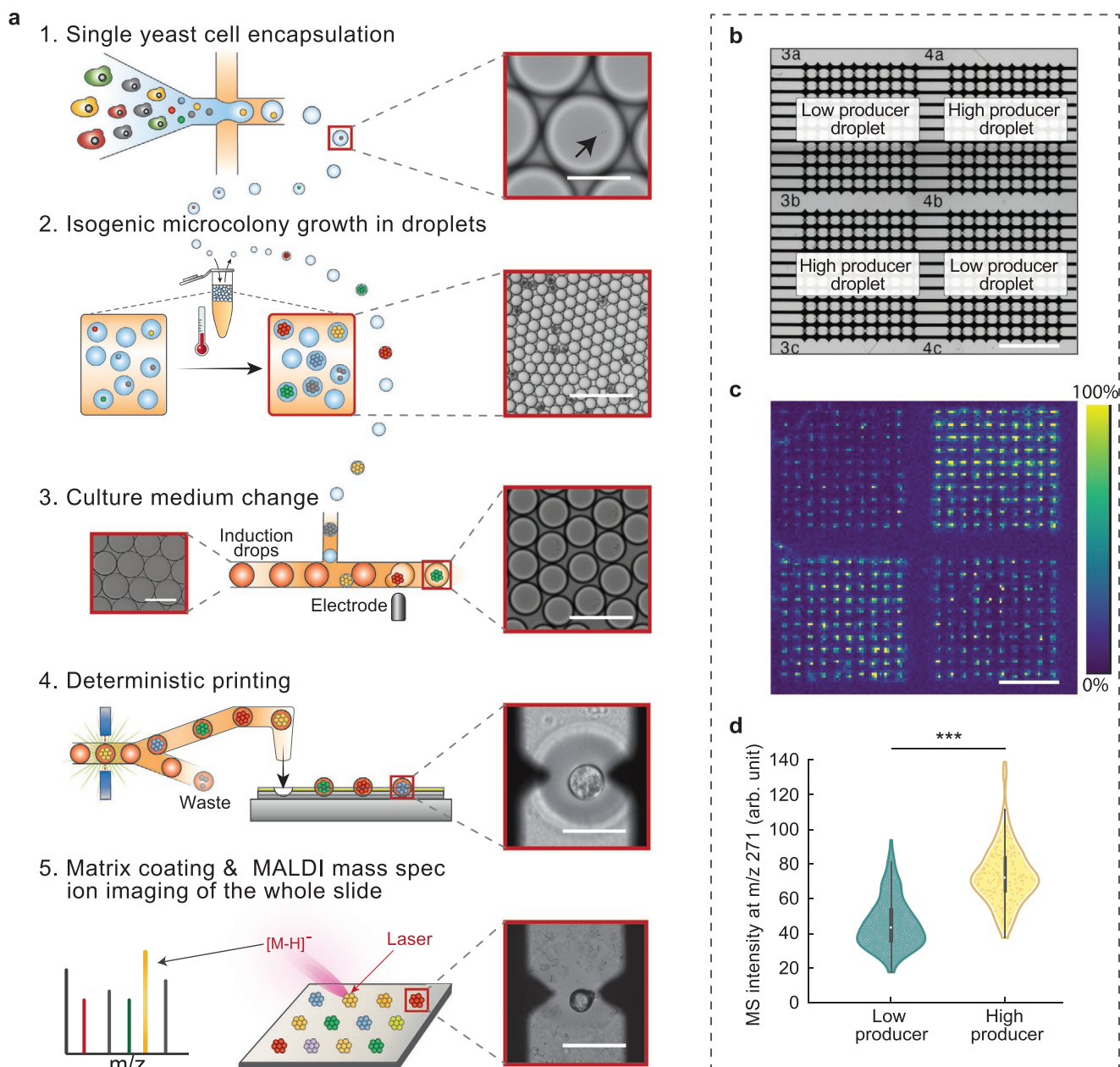


Figure 5. Microscale mass spectrometry measurement of two yeast strains engineered to produce different amounts of naringenin. The two strains are prepared and printed separately using the same protocol. a) Step 1, genes of interest are integrated into yeast, which are individually encapsulated in droplets containing culture medium. Inset shows a droplet containing a single yeast cell. Scale bar: 40 μm . Step 2, droplets are incubated to form isogenic microcolonies. Inset shows droplets containing the yeast microcolonies. Scale bar: 200 μm . Step 3, after incubation, each droplet is merged with another larger droplet containing a culture medium that is suitable for Naringenin production (pathway expression inducing medium). The left inset shows the media droplets; scale bar: 100 μm . The right inset shows the merged droplets with scale bar 200 μm . Step 4, droplets containing isogenic microcolonies of yeast are printed into microbowls at defined positions. The inset shows a droplet within a microbowl immediately after printing; scale bar: 100 μm . Step 5, after the matrix is sprayed, MALDI MS ion imaging is performed. The inset shows a dried droplet containing a microcolony in a microwell; scale bar: 100 μm . b) Bright-field transillumination image showing the layout of printed strains within the microbowl array. Scale bar: 1 mm. c) MALDI MS ion image showing the MS signal for naringenin. Scale bar: 1 mm. d) Violin plot comparing the MS signal of Naringenin from microwells printed with high producers and low producers, respectively. The error bars show the standard deviation of 200 samples.***Populations are significantly different ($p < 0.001$).

intensity distribution for the centers of the wells, finding that, indeed, the high producer is more efficient at making this

molecule than the low producer (Figure 5d). Using recently described approaches, cells with desired properties can be

recovered from the array and sequenced.^[12] Additionally, we demonstrate differentiation of yeast strains engineered to produce varying levels of TAL, whereby coculturing those two strains of yeast in droplets we also have verified there is no cross-contamination of TAL (Figure S6, Supporting Information). These results show that μ MS with microbowls can sensitively quantify the bioproduction of exogenous molecules in a label-free fashion appropriate for high throughput screening.

2.2. Microbowls Efficiently Aggregate Cells for Interaction Studies

Interaction studies are essential for characterizing cooperative phenotypes between cells, which are important in applications like T cell killing of cancer cells and cultivation of wild microbes. Performing such studies requires that the interacting cells be brought together and monitored. Common cylindrical

wells are poorly suited to this, because the flat bottoms do not force cells together, while the vertical walls occlude visualization near the edges. Microbowls afford an effective alternative, providing a gravity well that draws cells to the center where they are visible. To demonstrate the utility of microwells for cell interaction studies, we use them to observe interactions between killer T cells (NK92) and cancer cells (K562). We load the cells in the wells randomly by sedimentation at an average of one cell per well, yielding $\approx 36\%$ of wells containing one of each cell type. For comparison, we repeat the process with cylindrical wells. As expected, we find that cells in microbowls reliably contact at the centers, where they interact and are easily imaged (Figure 6c,d, NK92 cells are labeled green and K562 cells are labeled red). By contrast, with cylindrical wells, the cells are randomly distributed and do not reliably interact (Figure 6f,g). Consequently, while we observe robust killing of K562 cells in microbowls, we do not in cylinders (Figure 6e,h). These results demonstrate that microbowls ensure cell contact in interaction assays, which can impact observations. After culturing cells in microbowls, we also have tested single-cell MS using microbowls (Figure S7, Supporting Information). However, in order to keep the right osmosis pressure for the cells during droplet printing, we have to use PBS solution to encapsulate the single cell but the high salt concentration produces a significant background noise, which prevents the detection of the signals from the single cell. We expect that with the built-in HPLC function in the DESI MS instrument, it should be solved in the future.

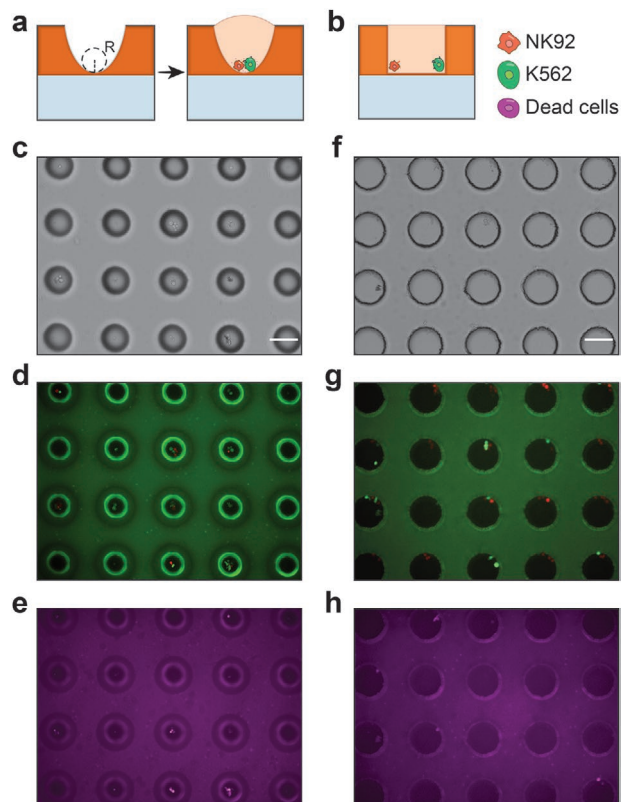


Figure 6. Cell interaction study with microbowls and cylinders. Killer T cells (NK92) and cancer cells (K562) are loaded in wells with random sedimentation; upon contact, the killer T cells induce apoptosis of the cancer cells. a) Deep microbowls with high curvature gravitationally position the cells at the bottom, where they contact, and the T cells reliably induce apoptosis of the cancer cells. b) By contrast, flat bottom cylindrical wells lack gravitational positioning and, thus, the cells tend to distribute randomly in the wells, often not contacting or interacting; consequently, cancer cell killing is not reliably observed. c–e) Transillumination image (c), combined GFP and RFP epifluorescence images (d), and Cy5 epifluorescence image (e) of the microbowls. The NK92, K562 and dead cells are stained with Calcein red-orange, Calcein green, and 7AAD dyes, respectively (Method). f–h) Similar images for the cylindrical wells. All scale bars are 100 μ m.

3. Conclusions

We describe a simple and controlled method to fabricate microbowl arrays. Our approach generates bowls with a range of shapes, sizes, and vertical profiles by controlling post-exposure bake time and temperature. The microbowls are useful for numerous applications, especially for enhancing the sensitivity of microscale mass spectrometry. In addition, the wells can be loaded via active printing or passive Laplace guidance techniques,^[15,17,39] automating preparation of thousands of samples for analysis. The planar grid is compatible with spatial indexing to allow integration of imaging, μ MS, and sequencing.^[15,12] The sensitivity enhancement of μ MS achieved with microbowls is useful for characterizing engineered metabolisms for biocircuits and biomolecule production. These screens can be used to optimize pathways or enzymes to enhance production of target analytes, or detect novel products through metabolic biosensing.^[47,48] In addition, as we have shown, they provide a gravity well by which to bring cells into contact to ensure interaction, which is important for functional screens of B and T cells that comprise cell therapies. When combined with printed droplet microfluidics, every well can be loaded with an exact number of different cell types, allowing tens of thousands of interaction studies per square centimeter of the slide. Similar methods are useful for aggregating cells of different types into seeds that can form spheroids, organoids, and embryoids, but with higher efficiency and control compared to existing techniques. Thus, while simple, microbowls provide a valuable platform for studies

involving the functional and multiomic analysis of single cells and multi-cell consortia.

Supporting Information

Supporting Information is available from the Wiley Online Library or from the author.

Acknowledgements

This work was supported by the Chan Zuckerberg Biohub, the National Institutes of Health (NIH) (Grant Nos. R01-EB019453-02 and R01-HG008978-01), Office of the Director of National Intelligence (ODNI) (IARPA FELIX Contract No. N66001-18-C-4507), United States Department of Defense, Defense Advanced Research Projects Agency (DARPA) (Agreement No. W911NF1920013. The content of the information does not necessarily reflect the position or the policy of the Government, and no official endorsement should be inferred), and funded in part by federal funds from the Virology Surveillance and Diagnosis Branch, Influenza Division, Centers for Disease Control and Prevention, under BAA 75D301-19-R-67835 (Topic #6). The authors thank Kirsten Benjamin, John Hung, Yue Yang, Matthew Rienzo, Adam Navidi, Michael Leavell for helpful discussion, and Mona Elbadawi and Carol Tran for strain analysis.

Conflict of Interest

The authors declare no conflict of interest.

Author Contributions

L.X. conceptualized the project and designed the experiments. X.L. prepared the mammalian cells. W. L., J. H., C. L. prepared the yeast cells. L.X., K. C., P. Z. performed the droplet and cell printing. L. X., N. T., H. Y. performed the MALDI MS imaging, L.X. K. C., E. P., A. A. analyzed and interpreted the obtained data. L. X., C. M., A. A. wrote the manuscript. All authors read and agreed to the final work.

Data Availability Statement

The data that support the findings of this study are available from the corresponding author upon reasonable request.

Keywords

mass spectrometry imaging, microbowls, microwell arrays

Received: October 12, 2021

Revised: December 15, 2021

Published online: February 10, 2022

[1] D. C. Castro, Y. R. Xie, S. S. Rubakhin, E. V. Romanova, J. V. Sweedler, *Nat. Methods* **2021**, *18*, 1233.

[2] R. Kaufmann, *J. Biotechnol.* **1995**, *41*, 155.

[3] M. Kompauer, S. Heiles, B. Spengler, *Nat. Methods* **2017**, *14*, 90.

- [4] Z. Yuan, Q. Zhou, L. Cai, L. Pan, W. Sun, S. Qumu, S. Yu, J. Feng, H. Zhao, Y. Zheng, M. Shi, S. Li, Y. Chen, X. Zhang, M. Q. Zhang, *Nat. Methods* **2021**, *18*, 1223.
- [5] A. J. Ibáñez, S. R. Fagerer, A. M. Schmidt, P. L. Urban, K. Jefimovs, P. Geiger, R. Dechant, M. Heinemann, R. Zenobi, *Proc. Natl. Acad. Sci. USA* **2013**, *110*, 8790.
- [6] T. Si, B. Li, T. J. Comi, Y. Wu, P. Hu, Y. Wu, Y. Min, D. A. Mitchell, H. Zhao, J. V. Sweedler, *J. Am. Chem. Soc.* **2017**, *139*, 12466.
- [7] S. M. A. B. Batoy, E. Akhmetova, S. Miladinovic, J. Smeal, C. L. Wilkins, *Appl. Spectrosc. Rev.* **2008**, *43*, 485.
- [8] H. Togashi, Y. Kobayashi, *Rapid Commun. Mass Spectrom.* **2009**, *23*, 2952.
- [9] M. Benz, A. Asperger, M. Hamster, A. Welle, S. Heissler, P. A. Levkin, *Nat. Commun.* **2020**, *11*, 5391.
- [10] J. Bai, Y. H. Liu, D. M. Lubman, D. Siemieniak, *Rapid Commun. Mass Spectrom.* **1994**, *8*, 687.
- [11] F. Fournelle, E. Yang, M. Dufresne, P. Chaurand, *Anal. Chem.* **2020**, *92*, 5158.
- [12] J. C. Love, J. L. Ronan, G. M. Grotenbreg, A. G. van der Veen, H. L. Ploegh, *Nat. Biotechnol.* **2006**, *24*, 703.
- [13] F. Khan, R. Zhang, A. Unciti-Broceta, J. J. Díaz-Mochón, M. Bradley, *Adv. Mater.* **2007**, *19*, 3524.
- [14] M.-H. Kang, J. Park, S. Kang, S. Jeon, M. Lee, J.-Y. Shim, J. Lee, T. J. Jeon, M. K. Ahn, S. M. Lee, O. Kwon, B. H. Kim, J. R. Meyerson, M. J. Lee, K.-I. Lim, S.-H. Roh, W. C. Lee, J. Park, *Adv. Mater.* **2021**, *33*, 2102991.
- [15] R. H. Cole, S.-Y. Tang, C. A. Siltanen, P. Shahi, J. Q. Zhang, S. Poust, Z. J. Gartner, A. R. Abate, *Proc. Natl. Acad. Sci. USA* **2017**, *114*, 8728.
- [16] P. Zhang, A. R. Abate, *Adv. Mater.* **2020**, *32*, 2005346.
- [17] A. Kulesa, J. Kehe, J. E. Hurtado, P. Tawde, P. C. Blainey, *Proc. Natl. Acad. Sci. USA* **2018**, *115*, 6685.
- [18] J.-B. Hu, Y.-C. Chen, P. L. Urban, *Anal. Chim. Acta* **2013**, *766*, 77.
- [19] Y.-H. Lai, Y.-H. Cai, H. Lee, Y.-M. Ou, C.-H. Hsiao, C.-W. Tsao, H.-T. Chang, Y.-S. Wang, *J. Am. Soc. Mass Spectrom.* **2016**, *27*, 1314.
- [20] B. Rieger, L. R. van den Doel, L. J. van Vliet, *Phys. Rev. E* **2003**, *68*, 036312.
- [21] W. Sun, F. Yang, *Langmuir* **2015**, *31*, 4024.
- [22] G. McCombie, R. Knochenmuss, *J. Am. Soc. Mass Spectrom.* **2006**, *17*, 737.
- [23] W. Li, M. Khan, H. Li, L. Lin, S. Mao, J.-M. Lin, *Chem. Commun.* **2019**, *55*, 2166.
- [24] O. Kudina, B. Eral, F. Mugele, *Anal. Chem.* **2016**, *88*, 4669.
- [25] Y. Xu, F. Xie, T. Qiu, L. Xie, W. Xing, J. Cheng, *Biomicrofluidics* **2012**, *6*, 016504.
- [26] M. Nikkhah, J. S. Strobl, V. Srinivasaraghavan, M. Agah, *IEEE Sens. J.* **2013**, *13*, 1125.
- [27] T. Liu, C.-C. Chien, L. Parkinson, B. Thierry, *ACS Appl. Mater. Interfaces* **2014**, *6*, 8090.
- [28] Z. Li, X. Guo, L. Sun, J. Xu, W. Liu, T. Li, J. Wang, *Biotechnol. Bioeng.* **2020**, *117*, 1092.
- [29] L. Zhou, X.-X. Dong, G.-C. Lv, J. Chen, S. Shen, *Opt. Commun.* **2015**, *342*, 167.
- [30] K. Zhong, Y. Gao, F. Li, Z. Zhang, N. Luo, *Optik* **2014**, *125*, 2413.
- [31] E. J. Vrij, S. Espinoza, M. Heilig, A. Kolew, M. Schneider, C. A. van Bitterswijk, R. K. Truckenmüller, N. C. Rivron, *Lab Chip* **2016**, *16*, 734.
- [32] J. Y. Park, C. M. Hwang, S.-H. Lee, *Biomed. Microdevices* **2009**, *11*, 129.
- [33] G. S. Jeong, J. H. Song, A. R. Kang, Y. Jun, J. H. Kim, J. Y. Chang, S.-H. Lee, *Adv. Healthcare Mater.* **2013**, *2*, 119.
- [34] X. Zhang, L. Shi, S. Shu, Y. Wang, K. Zhao, N. Xu, S. Liu, P. Roepstorff, *Proteomics* **2007**, *7*, 2340.
- [35] H. Wang, C.-H. Wong, A. Chin, A. Taguchi, A. Taylor, S. Hanash, S. Sekiya, H. Takahashi, M. Murase, S. Kajihara, S. Iwamoto, K. Tanaka, *Nat. Protoc.* **2011**, *6*, 253.

- [36] H. Lorenz, M. Despont, N. Fahrni, N. LaBianca, P. Renaud, P. Vettiger, *J. Micromech. Microeng.* **1997**, *7*, 121.
- [37] K. V. Nemani, K. L. Moodie, J. B. Brennick, A. Su, B. Gimi, *Mater. Sci. Eng., C* **2013**, *33*, 4453.
- [38] P. J. Yunker, T. Still, M. A. Lohr, A. G. Yodh, *Nature* **2011**, *476*, 308.
- [39] M. Singh, H. M. Haverinen, P. Dhagat, G. E. Jabbour, *Adv. Mater.* **2010**, *22*, 673.
- [40] A. Ovsianikov, M. Gruene, M. Pflaum, L. Koch, F. Maiorana, M. Wilhelmi, A. Haverich, B. Chichkov, *Biofabrication* **2010**, *2*, 014104.
- [41] D. Tsvirkun, A. Grichine, A. Duperray, C. Misbah, L. Bureau, *Sci. Rep.* **2017**, *7*, 45036.
- [42] D. Haidas, S. Bachler, M. Köhler, L. M. Blank, R. Zenobi, P. S. Dittrich, *Anal. Chem.* **2019**, *91*, 2066.
- [43] D. A. Armbruster, T. Pry, *Clin. Biochem. Rev.* **2008**, *29*, S49.
- [44] R. Knochenmuss, L. V. Zhigilei, *Anal. Bioanal. Chem.* **2012**, *402*, 2511.
- [45] M. Karas, M. Glückmann, J. Schäfer, *J. Mass Spectrom.* **2000**, *35*, 1.
- [46] C. M. Palmer, K. K. Miller, A. Nguyen, H. S. Alper, *Metab. Eng.* **2020**, *57*, 174.
- [47] J. Nielsen, *Appl. Microbiol. Biotechnol.* **2001**, *55*, 263.
- [48] L. Xu, K.-C. Chang, E. M. Payne, C. Modavi, L. Liu, C. M. Palmer, N. Tao, H. S. Alper, R. T. Kennedy, D. S. Cornett, A. R. Abate, *Nat. Commun.* **2021**, *12*, 6803.