

UC San Diego

UC San Diego Previously Published Works

Title

Multimodal imaging of the self-regulating developing brain

Permalink

<https://escholarship.org/uc/item/4j1562fv>

Journal

Proceedings of the National Academy of Sciences of the United States of America, 109(48)

ISSN

0027-8424

Authors

Fjell, Anders M
Walhovd, Kristine Beate
Brown, Timothy T
et al.

Publication Date

2012-11-27

DOI

10.1073/pnas.1208243109

Peer reviewed

Multimodal imaging of the self-regulating developing brain

Anders M. Fjell^{a,1}, Kristine Beate Walhovd^a, Timothy T. Brown^{b,c}, Joshua M. Kuperman^{b,d}, Yoonho Chung^{b,e}, Donald J. Hagler, Jr.^{b,d}, Vijay Venkatraman^b, J. Cooper Roddey^b, Matthew Erhart^{b,d}, Connor McCabe^e, Natacha Akshoomoff^{e,f}, David G. Amaral^g, Cinnamon S. Bloss^h, Ondrej Libiger^h, Burcu F. Darst^h, Nicholas J. Schork^h, B. J. Caseyⁱ, Linda Chang^j, Thomas M. Ernst^j, Jeffrey R. Gruen^k, Walter E. Kaufmann^{l,m}, Tal Kenetⁿ, Jean Frazier^o, Sarah S. Murray^h, Elizabeth R. Sowell^{p,q}, Peter van Zijl^r, Stewart Mostofsky^l, Terry L. Jernigan^{d,e,f,s}, and Anders M. Dale^{b,c,d,f,s} for the Pediatric Imaging, Neurocognition, and Genetics Study²

^aDepartment of Psychology, University of Oslo, 0373 Oslo, Norway; ^bMultimodal Imaging Laboratory, Departments of ^cNeurosciences, ^dRadiology, ^ePsychiatry, and ^fCognitive Science, and ^gCenter for Human Development, University of California at San Diego, La Jolla, CA 92037; ^hDepartment of Psychiatry and Behavioral Sciences, University of California, Davis, CA 95817; ⁱScripps Genomic Medicine, Scripps Translational Science Institute and Scripps Health, La Jolla, CA 92037; ^jSackler Institute for Developmental Psychobiology, Weill Cornell Medical College, New York, NY 10065; ^kDepartment of Medicine, University of Hawaii and Queen's Medical Center, Honolulu, HI 96813; ^lDepartments of Pediatrics and Genetics, Yale University School of Medicine, New Haven, CT 06520; ^mKennedy Krieger Institute and ⁿF. M. Kirby Research Center, Kennedy Krieger Institute and Department of Radiology, Johns Hopkins University School of Medicine, Baltimore, MD 21205; ^oChildren's Hospital Boston, Harvard Medical School, Boston, MA 02115; ^pDepartment of Neurology and Athinoula A. Martinos Center for Biomedical Imaging, Massachusetts General Hospital, Charlestown, MA 02129; ^qDepartment of Psychiatry, University of Massachusetts Medical School, Boston, MA 01655; ^rDepartment of Pediatrics, University of Southern California, Los Angeles, CA 90027; and ^sDevelopmental Cognitive Neuroimaging Laboratory, Children's Hospital, Los Angeles, CA 90027

Edited by Michael I. Posner, University of Oregon, Eugene, OR, and approved October 3, 2012 (received for review May 16, 2012)

Self-regulation refers to the ability to control behavior, cognition, and emotions, and self-regulation failure is related to a range of neuropsychiatric problems. It is poorly understood how structural maturation of the brain brings about the gradual improvement in self-regulation during childhood. In a large-scale multicenter effort, 735 children (4–21 y) underwent structural MRI for quantification of cortical thickness and surface area and diffusion tensor imaging for quantification of the quality of major fiber connections. Brain development was related to a standardized measure of cognitive control (the flanker task from the National Institutes of Health Toolbox), a critical component of self-regulation. Ability to inhibit responses and impose cognitive control increased rapidly during preteen years. Surface area of the anterior cingulate cortex accounted for a significant proportion of the variance in cognitive performance. This finding is intriguing, because characteristics of the anterior cingulum are shown to be related to impulse, attention, and executive problems in neurodevelopmental disorders, indicating a neural foundation for self-regulation abilities along a continuum from normality to pathology. The relationship was strongest in the younger children. Properties of large-fiber connections added to the picture by explaining additional variance in cognitive control. Although cognitive control was related to surface area of the anterior cingulate independently of basic processes of mental speed, the relationship between white matter quality and cognitive control could be fully accounted for by speed. The results underscore the need for integration of different aspects of brain maturation to understand the foundations of cognitive development.

executive function | cognitive conflict | inhibition | morphometry

Self-regulation enables people to make plans, choose from alternatives, control impulses, inhibit thoughts, and regulate social behavior (updated reviews in refs. 1 and 2). Several neuropsychiatric conditions and problems have been related to deficiencies in self-regulation [e.g., Attention Deficit Hyperactivity Disorder (3), addiction (4), risk behavior (5), conduct problems (6), and poor school and academic performance (7, 8)]. Although development of self-regulation in children is the result of a dynamic interaction between maturation and learning, we have scarce knowledge about the role played by structural brain characteristics in this process. Recent reports indicate that adjustment problems in childhood psychopathology are related to structural brain characteristics (9–13), but the brain basis for development of self-regulation in normal children is less well-understood. Thus, the purpose of the

present paper was to use multimodal neuroimaging to map the structural brain characteristics related to self-regulation and cognitive control in a large sample of 735 children between 4 and 21 y of age.

Self-regulation is closely tied to the concepts of cognitive control, attention, and executive functions (14). The ability to handle response conflict in pure cognitive tasks has been shown to correlate with parents' reports of their children's behavioral control (e.g., to delay actions and avoid lying, cheating, or other antisocial behavior) (6, 15). Executive attention and effortful control have been related to academic outcome, aspects of social adjustment (16), and inhibitory control to early arithmetic competency (17). More specifically, lower performance on the flanker task (see below) has been related to poorer social behavior, increased rates of peer rejection and more disturbing behavior in the classroom (18), dimensions of school competence (19), and parent-reported temperamental effortful control (20). This finding makes it possible to study the neural foundation of self-regulation by using validated cognitive tasks with a high degree of experimental control. Evidence has converged on an executive attention network, with the anterior cingulate being the central structure, as the major network responsible for resolving cognitive conflicts (21, 22). Of special interest for the current investigation is that this network seems less differentiated from other attention networks in infancy and young childhood. The work by Posner (22) suggests that the

Author contributions: A.M.F., K.B.W., T.T.B., N.A., D.G.A., C.S.B., N.J.S., B.J.C., L.C., T.M.E., J.R.G., W.E.K., T.K., J.F., S.S.M., E.R.S., P.v.Z., S.M., T.L.J., and A.M.D. designed research; A.M.F., K.B.W., T.T.B., C.M., N.A., D.G.A., C.S.B., B.F.D., N.J.S., B.J.C., L.C., T.M.E., J.R.G., W.E.K., T.K., J.F., S.S.M., E.R.S., P.v.Z., S.M., T.L.J., and A.M.D. performed research; P.I.N.G.S. contributed new reagents/analytic tools; A.M.F., K.B.W., D.J.H., V.V., J.C.R., O.L., Y.C., M.E., J.M.K., and A.M.D. analyzed data; K.B.W. and A.M.F. wrote the paper; and P.I.N.G.S. provided phenotype and genotype data.

Conflict of interest statement: A.M.D. is a founder of and holds equity interest in CorTechs Labs, La Jolla, CA and serves on its scientific advisory board. The terms of this arrangement have been reviewed and approved by the University of California, San Diego, in accordance with its conflict of interest policies.

This article is a PNAS Direct Submission.

¹To whom correspondence should be addressed. E-mail: andersmf@psykologi.uio.no.

²Data used in preparation of this study were obtained from the Pediatric Imaging, Neurocognition, and Genetics Study (PING) database. As such, the investigators within PING contributed to the design and implementation of PING and/or provided data but did not participate in the analysis or writing of this report. A complete listing of PING investigators can be found in the Supporting Information.

This article contains supporting information online at www.pnas.org/lookup/suppl/doi:10.1073/pnas.1208243109/-DCSupplemental.

anterior cingulate cannot exercise full control of other networks until longer connections form during childhood. Thus, differentiation of cognitive control networks is obtained through maturation of major white matter (WM) tracts, which is measurable by diffusion tensor imaging (DTI) (23–27), and therefore, gradually, an adult organization of cognitive control and self-regulation emerges. Thus, to be able to understand the structural foundation for self-regulation and cognitive control during development, it is necessary to map structural maturation of the anterior cingulate especially but also, long-distance projection fibers constituting the major WM tracts of the brain.

Strikingly, in addition to their presumed critical role in the development of cognitive control in normal children (28), structural differences in prefrontal and cingulate cortices have repeatedly been identified in children with a range of different psychopathological conditions related to self-regulation and attention, including Attention Deficit Hyperactivity Disorder, conduct disorder, and prenatal substance exposure (10–13, 29–34). Thus, at the neuroanatomical level, there seems to be a link between brain areas involved in cognitive control and inhibition tasks and brain areas associated with regulatory problems in different neurodevelopmental conditions. At the cognitive level, there seems to be a relation between performance on cognitive control tasks and reported daily life behavior. On this background, the purpose of the present study was to conduct a detailed mapping of the relationship between cognitive control, as indexed by performance on a well-validated version of the classical Eriksen flanker task (35), implemented as part of the National Institute of Health toolbox for Assessment of Neurological and Behavioral Function (36, 37) and MRI measures of brain structure (*Materials and Methods*). This mapping allowed us to test the combined influence of cortical and WM maturation on performance of the anterior cingulate control network. We hypothesized that cortical thickness and surface area of prefrontal regions, especially the anterior cingulate, would be related to cognitive control. Cortical thickness is the distance from the gray matter/WM boundary (i.e., the WM surface) to the outer surface of the brain (i.e., the pial surface), likely partly reflecting the number of cells within cortical columns (38). Cortical area for a participant describes the 2D extent of the cortex compared with a standard brain, and it seems more closely related to the number of cortical columns (38). Area and thickness are genetically unrelated (39) but often confounded in measures of cortical volume, which is the product of the two. In addition to cortical thickness and area, we hypothesized relationships between microstructure of major WM tracts and cognitive control. More specifically, we expected high fractional anisotropy (FA) and low apparent diffusion coefficient (ADC), both indications of WM tract maturation and integrity, to be related to cognitive performance.

Results

Flanker Task Performance. Age relationships were analyzed with a nonparametric correlation (Spearman ρ) in cases where substantial nonlinearity was observed; otherwise, a parametric correlation was used (Pearson r). The task used was a version of the flanker task, and the participants were to indicate which direction an arrow presented on a computer screen pointed (*Materials and Methods*). In the congruent condition, the target arrow was surrounded by arrows pointing in the same direction, whereas in the incongruent condition, the surrounding arrows pointed in the opposite direction. Mean reaction time (RT) in the congruent condition was 789 ms (SD = 217) vs. 906 ms (SD = 293) in the incongruent condition ($t = 20.83, P < 10^{-75}$), and both were negatively related to age (Spearman ρ , congruent RT = $-0.53, P < 10^{-53}$; incongruent RT = $-0.61, P < 10^{-76}$). Mean incongruence effect (cognitive conflict) on RT was 14.8% and negatively related to age (Pearson $r = -0.33, P < 10^{-19}$). RT in each condition as well as the incongruence effects were plotted as a function of age, and smoothing spline (40) was used to estimate age trends (Fig. 1). RT decreased rapidly in the first part of the age range, plateauing at about 12–13 y in the congruent condition and about 14–15 y in the incongruent condition. The cognitive conflict effect followed the same basic age trajectory. Perfect accuracy was used as inclusion criterion, and therefore, it could not be analyzed (*Materials and Methods*).

Cortical Surface Area. First, RT in the incongruent condition was regressed on cortical area point by point on the surface without anatomical constraints by general linear models, with genetic ancestry factor (GAF) (*Materials and Methods*), scanner, sex, age, and RT in the congruent condition included as covariates of no interest. This analysis was run in the full sample and the young (age ≤ 12 y) and older (age > 12 y) age ranges separately. A cluster of negative effects covering the entire right anterior cingulate was found for the young group (cluster size = 2,077 mm², clusterwise $P = 0.019$, corrected) (Fig. 2) but not for the older group or the total sample. For comparison purposes, the same analyses were run for RT from the congruent and incongruent conditions without congruent RT as a covariate. No relationships survived corrections for multiple comparisons.

To illustrate the strength of the relationship, surface area of the right caudal anterior cingulate was extracted as a region of interest following the borders of the effect in Fig. 2 (i.e., in a completely data-driven way) and regressed on incongruent RT, with GAF, scanner, sex, and age included as covariates separately for the younger and older parts of the sample by multiple linear regression analysis. Partial β was -0.23 ($P < 0.05$) for the younger sample compared with -0.02 [not significant (n.s.)] for the older sample. With RT from the congruent condition included as an additional covariate, the corresponding partial β values for incongruent RT were -0.32 ($P < 0.05$) for the younger group and -0.01 (n.s.) for

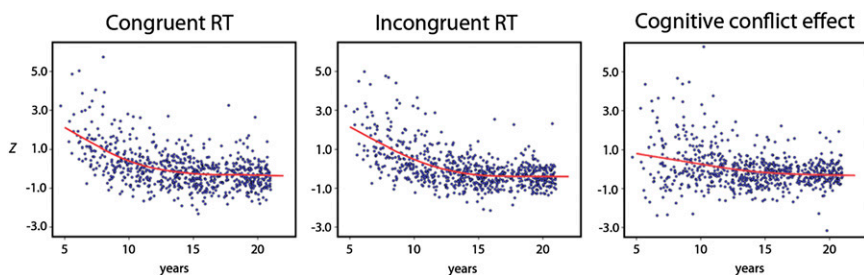


Fig. 1. Cognitive performance and age. RT in z scores, corrected for sex, site, and GAF, plotted as a function of age for congruent (*Left*) and incongruent (*Center*) stimuli as well as the cognitive conflict effects operationalized as the percentage of slowing of RT for incongruent relative to congruent stimuli (*Right*). The red lines represent the smoothing spline function, with the harshness of the smoothing parameter chosen to minimize Bayesian information Criteria (BIC) (40).

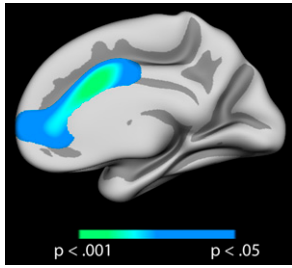


Fig. 2. Cortical surface area and cognitive conflict. Relationship between incongruent RT and local cortical surface area in the participants 12 y or younger corrected for age, sex, scanner, GAF, and congruent RT. The analyses were unbiased, with no anatomical constraints imposed. The effect was corrected for multiple comparisons by *z* Monte Carlo simulations and thresholded at $P < 0.05$.

the older participants. RT from the congruent condition did not contribute significantly. Additional analyses showed relationships of marginally less strength in the left hemisphere (partial $\beta = -0.24$ vs. -0.02 in the young and older groups, respectively, with congruent RT as a covariate). The same type of analysis was done for thickness of the right caudal anterior cingulate to test whether the observed effects were specific to area. Although thickness did not survive permutation testing, a significant relationship was found (partial $\beta = 0.11$, $P < 0.05$). When congruent RT was added as a covariate, this relationship ceased to be significant (partial $\beta = 0.09$, n.s.). Adding household income as a proxy for socioeconomic status as an additional covariate did not affect any of the reported relationships. There were no effects of sex on RT, but a positive significant effect on anterior cingulate surface area for boys (partial $\beta = 0.18$, $P < 0.10^{-6}$) was found.

The relationship between right anterior cingulate surface area and incongruent RT was plotted as a continuous function of age. The relationship was strongest for the youngest part of the sample, and it decreased linearly in strength with age (Fig. 3).

DTI. The relationships between RT in the incongruent condition and the ADC and FA in the 14 major tracts were tested by multiple regressions, with GAF, scanner, sex, and age included as covariates (Fig. 4). Significant positive RT relationships with forceps major were seen for both ADC ($\beta = 0.18$, $P < 0.014$, corrected for the number of comparisons) and FA ($\beta = -0.20$, $P < 0.0014$, corrected). ADC and FA are related to WM integrity, and lower ADC and higher FA indicate more mature WM tracts. Adding socioeconomic status as an additional covariate did not affect the relationships. Sex had no effect on the DTI measures. Forceps major represents the posterior, occipital portion of the corpus callosum. The exact delineation of the tract will vary somewhat between individuals, which is illustrated in Fig. 4.

Analyses run separately for the youngest and oldest parts of the sample did not yield significant results for either ADC or FA. In contrast to the cortical results, where a linear reduction in strength of the relationship with age was seen, the relationship between ADC/FA and cognition was strongest around 6–10 and above 16 y, with correlations not significant in the middle part of the age range (Fig. 3). The coefficient strength at different ages was generally not very different and should be interpreted with caution.

The analyses were rerun with congruent RT as an additional covariate. Neither of the RT measures was uniquely related to the DTI variables for any of the tracts. To test to what degree the different DTI parameters were complementary in explaining RT incongruent, analyses were run where RT incongruent was the dependent variable, and DTI parameters were included pairwise as simultaneous predictors [ADC and FA, ADC and transverse diffusion coefficient (TDC), ADC and longitudinal diffusion coefficient (LDC), FA and TDC, and FA and LDC]. In no cases did

a DTI parameter explain unique variance when it was entered simultaneously with FA, whereas the opposite was true in most instances. When FA and ADC in forceps major were entered, FA was still significantly related to incongruent RT ($\beta = -0.11$, $P < 0.01$), whereas ADC ceased to be significant. The same was true when FA was entered with TDC ($\beta = -0.12$, $P < 0.005$) and LDC (forceps major FA $\beta = -0.14$, $P < 0.00005$). LDC and TDC did not explain any additional variance to FA. In forceps major, both ADC and TDC explained unique variance in incongruent RT (ADC $\beta = 0.53$, $P < 0.005$; TDC $\beta = -0.43$, $P < 0.02$), and the same was seen when ADC was entered with LDC (ADC $\beta = 0.22$, $P < 0.00002$; LDC $\beta = -0.15$, $P < 0.005$).

Multimodal Analysis. A final multiple regression analysis was run, with RT from the incongruent condition as the dependent variable and FA in forceps major and the area of the right caudal anterior cingulate as joint predictors, with GAF, scanner and site, sex, and age included as covariates of no interest. In this analysis, both cortical area ($\beta = -0.10$, $P < 0.002$) and FA ($\beta = -0.13$, $P < 0.00005$) contributed significantly to explain RT.

Discussion

The present study represents a major multicenter initiative to understand the relationship between cognitive control and brain structure in development. Cognitive control performance showed a protracted developmental trajectory, and it was related to individual variability in brain structure. Interestingly, the relationships between the brain measures and cognitive function were very different for cortex and WM in terms of specificity and how the relationships varied with age. The results underscore the need for integration of different aspects of brain maturation to understand the structural foundations of cognitive development. Furthermore, the data indicate that brain–cognition relationships are not constant across development. Finally, the present results show that large multicenter collaborative studies are feasible in neurodevelopmental research, yielding extended possibilities to increase sample size and statistical power. Albeit cross-sectional and hence, not well-suited to investigate change per se, the present study is based on a very large sample, and it should be well-suited to

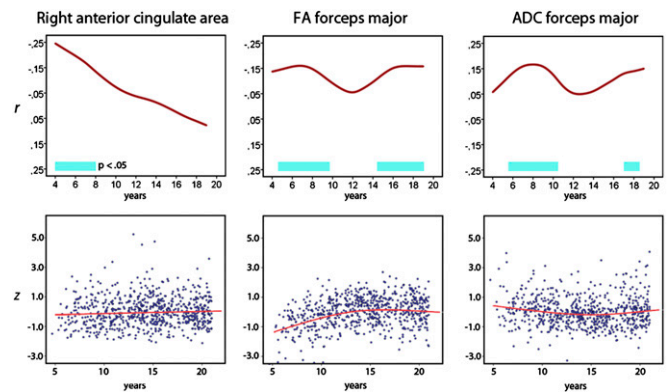


Fig. 3. Age relationships. (Upper) Correlations between incongruent RT and area of the right caudal anterior cingulate (Left), FA (Center), and ADC (Right) in forceps major. Correlations were calculated in 5-y age bins, with a moving time window of 1 y and the results smoothed (smoothing spline). *P* values are from the nonsmoothed correlations. Age, sex, scanner, and GAF were regressed out from all variables in addition to RT from the congruent condition for the area correlations. (Lower) Relationships between age and the imaging variables residualized for GAF, scanner, and sex. The age trajectory is estimated with smoothing spline (see above). Age did not correlate with right caudal anterior cingulate surface area (Pearson $r = 0.06$, $P = 0.10$), whereas the correlations for FA and ADC were significant (Spearman $\rho = 0.25$, $P < 0.10^{-10}$ and Spearman $\rho = -0.08$, $P < 0.05$, respectively).

Reinvestment Act (*SI Text*). The human research protections programs and institutional review boards at the universities participating in the PING project approved all experimental and consenting procedures, and all participants or their legal guardian gave informed consent. Participants were screened for history of major developmental, psychiatric, or neurological disorders, brain injury, or other medical conditions that affect development. The sample used for the present analyses included participants registered and processed at the University of California at San Diego by February 12, 2012. Only participants with cortical and subcortical segmentations that passed quality check who were not twins or triplets and met the flanker task performance criteria (see below) were included. The final sample consisted of 735 children ages 4.7–21 y (mean = 14.3 y, SD = 4.2, 354 girls). Of these children, 684 children had usable DTI scans. A GAF was calculated as a proportion of European, African, Native American, East Asian, Central Asian, and Oceanic decent based on genotype analysis, or when missing ($n = 38$), values from self-report were used to predict GAF. Each of nine US sites (Weil Cornell Medical College, University of California at Davis, University of Hawaii, Kennedy Krieger Institute, Massachusetts General Hospital, University of California at Los Angeles, University of California at San Diego, University of Massachusetts Medical School, and Yale University) contributed to the sample.

Cognitive Task. A modified version of the Eriksen flanker task (35) included in the National Institutes of Health Toolbox Cognitive Function Battery was used (37) (*SI Text*). This well-validated task is suitable to induce response conflict, reflecting more complex cognitive processing, including inhibitory processes and generally, more top-down and controlled attention (74). The participants are required to press a button to indicate to which direction a target arrow points. The target is surrounded by arrows (flankers) that point in the same (congruent) or opposite (incongruent) direction of the target. After a practice block, 20 trials (13 congruent and 7 incongruent) were presented; 75 of 836 participants were excluded, because they did not meet performance criteria of accuracy and RT (26 participants were excluded because of the additional exclusion criteria described above).

Imaging Data Acquisition and Processing. Across nine sites and 12 3T scanners, a standardized multiple-modality high-resolution structural MRI protocol was implemented involving 3D T1-weighted volumes and a set of diffusion-

weighted scans (*SI Text*). Acquisition protocols were identical or nearly identical across all sites. Image postprocessing and analysis were performed using a fully automated set of tools available in the FreeSurfer software suite (<http://surfer.nmr.mgh.harvard.edu/>) (75–81) as well as an atlas-based method for delineating and labeling WM fiber tracts (82). Continuous maps of cortical surface area were obtained by computing the area of each triangle of a standardized tessellation mapped to each subject's native space using a spherical atlas registration procedure (76) (*SI Text*).

Statistical Analyses. Scanner, age, sex, and GAF were included as covariates in all analyses of brain–cognition relationships. All analyses were run for the whole age range and the youngest (age ≤ 12 y) and oldest (age > 12 y) parts of the sample separately because of substantial nonlinearity in RT across age. Developmental trajectories were estimated by use of a nonparametric approach, the smoothing spline (*SI Text*) (40), without any restrictions on the shape of the curve. To show effect sizes in regions and tracts, Pearson correlation were used for approximate linear relationships, and Spearman ρ was used for nonlinear relationships. Relationships between RT and cortical thickness and areal were tested vertexwise by general linear models. z Monte Carlo simulations, as implemented in FreeSurfer (83, 84), were used for multiple comparison corrections across space and synthesized with a cluster-forming threshold of $P < 0.05$ (two-sided). The results were thresholded at $P < 0.05$, corrected. FA and ADC in 14 tracts of interest were tested by multiple regression analyses, and P values were Bonferroni-corrected by a factor of 28 (14 tracts \times 2 metrics). Additional analyses were run with LDC and TDC.

ACKNOWLEDGMENTS. The authors gratefully thank the children, adolescents, adults, and parents who participated in the research. Data collection and sharing for this project were funded by the PING Study (National Institutes of Health Grant RC2DA029475). PING is funded by the National Institute on Drug Abuse and the Eunice Kennedy Shriver National Institute of Child Health & Human Development. PING data are disseminated by the PING Coordinating Center at the Center for Human Development, University of California at San Diego. Additional support was received from the Norwegian Research Council (A.M.F. and K.B.W.), the European Research Council (A.M.F.), and National Institutes of Health Grant P41 EB015909.

- Heatherington TF, Wagner DD (2011) Cognitive neuroscience of self-regulation failure. *Trends Cogn Sci* 15(3):132–139.
- Hofmann W, Schmeichel BJ, Baddeley AD (2012) Executive functions and self-regulation. *Trends Cogn Sci* 16(3):174–180.
- Willcutt EG, Doyle AE, Nigg JT, Faraone SV, Pennington BF (2005) Validity of the executive function theory of attention-deficit/hyperactivity disorder: A meta-analytic review. *Biol Psychiatry* 57(11):1336–1346.
- Goldstein RZ, Volkow ND (2011) Dysfunction of the prefrontal cortex in addiction: Neuroimaging findings and clinical implications. *Nat Rev Neurosci* 12(11):652–669.
- Quinn PD, Fromme K (2010) Self-regulation as a protective factor against risky drinking and sexual behavior. *Psychol Addict Behav* 24(3):376–385.
- Rothbart MK, Sheese BE, Rueda MR, Posner MI (2011) Developing mechanisms of self-regulation in early life. *Emot Rev* 32(2):207–213.
- Diamond A, Barnett WS, Thomas J, Munro S (2007) Preschool program improves cognitive control. *Science* 318(5855):1387–1388.
- Duckworth AL, Seligman ME (2005) Self-discipline outdoes IQ in predicting academic performance of adolescents. *Psychol Sci* 16(12):939–944.
- Pavuluri MN, et al. (2009) Diffusion tensor imaging study of white matter fiber tracts in pediatric bipolar disorder and attention-deficit/hyperactivity disorder. *Biol Psychiatry* 65(7):586–593.
- Shaw P, et al. (2007) Attention-deficit/hyperactivity disorder is characterized by a delay in cortical maturation. *Proc Natl Acad Sci USA* 104(49):19649–19654.
- Shaw P, et al. (2011) Cortical development in typically developing children with symptoms of hyperactivity and impulsivity: Support for a dimensional view of attention deficit hyperactivity disorder. *Am J Psychiatry* 168(2):143–151.
- De Brito SA, et al. (2009) Size matters: Increased grey matter in boys with conduct problems and callous-unemotional traits. *Brain* 132(Pt 4):843–852.
- Huebner T, et al. (2008) Morphometric brain abnormalities in boys with conduct disorder. *J Am Acad Child Adolesc Psychiatry* 47(5):540–547.
- Eisenberg N, Smith CL, Spinrad TL (2011) Effortful control: Relations with emotion regulation, adjustment, and socialization in childhood. *Handbook of Self-Regulation. Research, Theory and Applications*, eds Vohs KD, Baumeister RF (Guilford, New York), 2nd Ed, pp 263–283.
- Posner MI, Rothbart MK, Sheese BE, Tang Y (2007) The anterior cingulate gyrus and the mechanism of self-regulation. *Cogn Affect Behav Neurosci* 7(4):391–395.
- Checa P, Rodriguez-Bailon R, Rueda MR (2008) Neurocognitive and temperamental systems of self-regulation and early adolescents' school competence. *Mind. Brain and Education* 2(4):177–187.
- Espy KA, et al. (2004) The contribution of executive functions to emergent mathematical skills in preschool children. *Dev Neuropsychol* 26(1):465–486.
- Rueda MR, Checa P, Rothbart MK (2010) Contributions of attentional control to social emotional and academic development. *Early Educ Dev* 21(5):744–764.
- Checa P, Rueda MR (2011) Behavioral and brain measures of executive attention and school competence in late childhood. *Dev Neuropsychol* 36(8):1018–1032.
- Simonds J, Kieras JE, Rueda MR, Rothbart MK (2007) Effortful control, executive attention, and emotional regulation in 7–10-year-old children. *Cogn Dev* 22:474–488.
- Fair DA, et al. (2009) Functional brain networks develop from a “local to distributed” organization. *PLoS Comput Biol* 5(5):e1000381.
- Posner MI (2012) Imaging attention networks. *Neuroimage* 61(2):450–456.
- Faria AV, et al. (2010) Atlas-based analysis of neurodevelopment from infancy to adulthood using diffusion tensor imaging and applications for automated abnormality detection. *Neuroimage* 52(2):415–428.
- Lebel C, Beaulieu C (2011) Longitudinal development of human brain wiring continues from childhood into adulthood. *J Neurosci* 31(30):10937–10947.
- Lebel C, Walker L, Leemans A, Phillips L, Beaulieu C (2008) Microstructural maturation of the human brain from childhood to adulthood. *Neuroimage* 40(3):1044–1055.
- Westlye LT, et al. (2010) Life-span changes of the human brain white matter: Diffusion tensor imaging (DTI) and volumetry. *Cereb Cortex* 20(9):2055–2068.
- Tamnes CK, et al. (2010) Brain maturation in adolescence and young adulthood: Regional age-related changes in cortical thickness and white matter volume and microstructure. *Cereb Cortex* 20(3):534–548.
- Casey BJ, et al. (1997) The role of the anterior cingulate in automatic and controlled processes: A developmental neuroanatomical study. *Dev Psychobiol* 30(1):61–69.
- Rubia K (2011) “Cool” inferior frontostriatal dysfunction in attention-deficit/hyperactivity disorder versus “hot” ventromedial orbitofrontal-limbic dysfunction in conduct disorder: A review. *Biol Psychiatry* 69(12):e69–e87.
- Walhovd KB, Fjell AM (2007) White matter volume predicts reaction time instability. *Neuropsychologia* 45(10):2277–2284.
- Walhovd KB, et al. (2010) White matter characteristics and cognition in prenatally opiate- and polysubstance-exposed children: A diffusion tensor imaging study. *AJNR Am J Neuroradiol* 31(5):894–900.
- Walhovd KB, Tamnes CK, Ostby Y, Due-Tønnessen P, Fjell AM (2012) Normal variation in behavioral adjustment relates to regional differences in cortical thickness in children. *Eur Child Adolesc Psychiatry* 21(3):133–140.
- Walhovd KB, et al. (2007) Volumetric cerebral characteristics of children exposed to opiates and other substances in utero. *Neuroimage* 36(4):1331–1344.
- Bush G (2011) Cingulate, frontal, and parietal cortical dysfunction in attention-deficit/hyperactivity disorder. *Biol Psychiatry* 69(12):1160–1167.
- Eriksen BA, Eriksen CW (1974) Effects of noise letters upon the identification of a target letter in a nonsearch task. *Percept Psychophys* 16:143–149.

36. Gershon RC, et al. (2010) Assessment of neurological and behavioural function: The NIH Toolbox. *Lancet Neurol* 9(2):138–139.
37. Zelazo PD, et al. Measuring executive function and attention. National Institutes of Health toolbox cognitive function battery validation for children between 3 and 15 years. *Monogr Soc Res Child Dev*, in press.
38. Rakic P (1995) A small step for the cell, a giant leap for mankind: A hypothesis of neocortical expansion during evolution. *Trends Neurosci* 18(9):383–388.
39. Panizzon MS, et al. (2009) Distinct genetic influences on cortical surface area and cortical thickness. *Cereb Cortex* 19(11):2728–2735.
40. Fjell AM, et al. (2010) When does brain aging accelerate? Dangers of quadratic fits in cross-sectional studies. *Neuroimage* 50(4):1376–1383.
41. Berger A, Kofman O, Livneh U, Henik A (2007) Multidisciplinary perspectives on attention and the development of self-regulation. *Prog Neurobiol* 82(5):256–286.
42. Davidson MC, Amso D, Anderson LC, Diamond A (2006) Development of cognitive control and executive functions from 4 to 13 years: Evidence from manipulations of memory, inhibition, and task switching. *Neuropsychologia* 44(11):2037–2078.
43. Luna B (2009) Developmental changes in cognitive control through adolescence. *Adv Child Dev Behav* 37:233–278.
44. Luna B, Padmanabhan A, O’Hearn K (2010) What has fMRI told us about the development of cognitive control through adolescence? *Brain Cogn* 72(1):101–113.
45. Ridderinkhof KR, van der Molen MW, Band GP, Bashore TR (1997) Sources of interference from irrelevant information: A developmental study. *J Exp Child Psychol* 65(3):315–341.
46. Tamnes CK, et al. (2010) Neuroanatomical correlates of executive functions in children and adolescents: A magnetic resonance imaging (MRI) study of cortical thickness. *Neuropsychologia* 48(9):2496–2508.
47. Anderson P (2002) Assessment and development of executive function (EF) during childhood. *Child Neuropsychol* 8(2):71–82.
48. Bush G, Luu P, Posner MI (2000) Cognitive and emotional influences in anterior cingulate cortex. *Trends Cogn Sci* 4(6):215–222.
49. Casey BJ, et al. (2000) Dissociation of response conflict, attentional selection, and expectancy with functional magnetic resonance imaging. *Proc Natl Acad Sci USA* 97(15):8728–8733.
50. Makris N, et al. (2010) Anterior cingulate volumetric alterations in treatment-naïve adults with ADHD: A pilot study. *J Atten Disord* 13(4):407–413.
51. Makris N, et al. (2007) Cortical thinning of the attention and executive function networks in adults with attention-deficit/hyperactivity disorder. *Cereb Cortex* 17(6):1364–1375.
52. Westlye LT, Grydeland H, Walhovd KB, Fjell AM (2011) Associations between regional cortical thickness and attentional networks as measured by the attention network test. *Cereb Cortex* 21(2):345–356.
53. Penke L, et al. (2010) A general factor of brain white matter integrity predicts information processing speed in healthy older people. *J Neurosci* 30(22):7569–7574.
54. Tamnes CK, et al. (2011) The brain dynamics of intellectual development: Waxing and waning white and gray matter. *Neuropsychologia* 49(13):3605–3611.
55. Tamnes CK, et al. (2010) Intellectual abilities and white matter microstructure in development: A diffusion tensor imaging study. *Hum Brain Mapp* 31(10):1609–1625.
56. Schmithorst VJ, Wilke M, Dardzinski BJ, Holland SK (2005) Cognitive functions correlate with white matter architecture in a normal pediatric population: A diffusion tensor MRI study. *Hum Brain Mapp* 26(2):139–147.
57. Westlye LT, Walhovd KB, Bjørnerud A, Due-Tønnessen P, Fjell AM (2009) Error-related negativity is mediated by fractional anisotropy in the posterior cingulate gyrus—a study combining diffusion tensor imaging and electrophysiology in healthy adults. *Cereb Cortex* 19(2):293–304.
58. Schmithorst VJ, Yuan W (2010) White matter development during adolescence as shown by diffusion MRI. *Brain Cogn* 72(1):16–25.
59. Olson EA, et al. (2009) White matter integrity predicts delay discounting behavior in 9- to 23-year-olds: A diffusion tensor imaging study. *J Cogn Neurosci* 21(7):1406–1421.
60. Vestergaard M, et al. (2011) White matter microstructure in superior longitudinal fasciculus associated with spatial working memory performance in children. *J Cogn Neurosci* 23(9):2135–2146.
61. Madden DJ, et al. (2004) Diffusion tensor imaging of adult age differences in cerebral white matter: Relation to response time. *Neuroimage* 21(3):1174–1181.
62. Madden DJ, et al. (2009) Cerebral white matter integrity mediates adult age differences in cognitive performance. *J Cogn Neurosci* 21(2):289–302.
63. Vernooij MW, et al. (2009) White matter microstructural integrity and cognitive function in a general elderly population. *Arch Gen Psychiatry* 66(5):545–553.
64. Deary IJ, et al. (2006) White matter integrity and cognition in childhood and old age. *Neurology* 66(4):505–512.
65. Correia S, et al. (2008) Quantitative tractography metrics of white matter integrity in diffusion-tensor MRI. *Neuroimage* 42(2):568–581.
66. Turken A, et al. (2008) Cognitive processing speed and the structure of white matter pathways: Convergent evidence from normal variation and lesion studies. *Neuroimage* 42(2):1032–1044.
67. Kennedy KM, Raz N (2009) Aging white matter and cognition: Differential effects of regional variations in diffusion properties on memory, executive functions, and speed. *Neuropsychologia* 47(3):916–927.
68. Bucur B, et al. (2008) Age-related slowing of memory retrieval: Contributions of perceptual speed and cerebral white matter integrity. *Neurobiol Aging* 29(7):1070–1079.
69. Grieve SM, Williams LM, Paul RH, Clark CR, Gordon E (2007) Cognitive aging, executive function, and fractional anisotropy: A diffusion tensor MR imaging study. *AJNR Am J Neuroradiol* 28(2):226–235.
70. Schulte T, Sullivan EV, Müller-Oehring EM, Adalsteinsson E, Pfefferbaum A (2005) Corpus callosum microstructural integrity influences interhemispheric processing: A diffusion tensor imaging study. *Cereb Cortex* 15(9):1384–1392.
71. O’Sullivan M, et al. (2001) Evidence for cortical “disconnection” as a mechanism of age-related cognitive decline. *Neurology* 57(4):632–638.
72. Shaw P, et al. (2006) Intellectual ability and cortical development in children and adolescents. *Nature* 440(7084):676–679.
73. Østby Y, Tamnes CK, Fjell AM, Walhovd KB (2011) Morphometry and connectivity of the fronto-parietal verbal working memory network in development. *Neuropsychologia* 49(14):3854–3862.
74. Botvinick MM, Braver TS, Barch DM, Carter CS, Cohen JD (2001) Conflict monitoring and cognitive control. *Psychol Rev* 108(3):624–652.
75. Dale AM, Fischl B, Sereno MI (1999) Cortical surface-based analysis. I. Segmentation and surface reconstruction. *Neuroimage* 9(2):179–194.
76. Fischl B, Sereno MI, Dale AM (1999) Cortical surface-based analysis. II: Inflation, flattening, and a surface-based coordinate system. *Neuroimage* 9(2):195–207.
77. Fischl B, et al. (2004) Sequence-independent segmentation of magnetic resonance images. *Neuroimage* 23(Suppl 1):569–584.
78. Fischl B, et al. (2004) Automatically parcellating the human cerebral cortex. *Cereb Cortex* 14(1):11–22.
79. Fischl B, Dale AM (2000) Measuring the thickness of the human cerebral cortex from magnetic resonance images. *Proc Natl Acad Sci USA* 97(20):11050–11055.
80. Jovicich J, et al. (2006) Reliability in multi-site structural MRI studies: Effects of gradient non-linearity correction on phantom and human data. *Neuroimage* 30(2):436–443.
81. Holland D, Dale AM; Alzheimer’s Disease Neuroimaging Initiative (2011) Nonlinear registration of longitudinal images and measurement of change in regions of interest. *Med Image Anal* 15(4):489–497.
82. Hagler DJ, Jr., et al. (2009) Automated white-matter tractography using a probabilistic diffusion tensor atlas: Application to temporal lobe epilepsy. *Hum Brain Mapp* 30(5):1535–1547.
83. Hagler DJ, Jr., Saygin AP, Sereno MI (2006) Smoothing and cluster thresholding for cortical surface-based group analysis of fMRI data. *Neuroimage* 33(4):1093–1103.
84. Hayasaka S, Nichols TE (2003) Validating cluster size inference: Random field and permutation methods. *Neuroimage* 20(4):2343–2356.