

UC San Diego

UC San Diego Previously Published Works

Title

The Compositional Effect of Rigorous Teacher Evaluation on Workforce Quality

Permalink

<https://escholarship.org/uc/item/4hh6r911>

Journal

Education Finance and Policy, 16(1)

ISSN

1557-3060

Authors

Cullen, Julie Berry

Koedel, Cory

Parsons, Eric

Publication Date

2021

DOI

10.1162/edfp_a_00292

Peer reviewed

The Compositional Effect of Rigorous Teacher Evaluation on Workforce Quality

Julie Berry Cullen
Cory Koedel
Eric Parsons

October 2016

Improving public sector workforce quality is challenging in sectors such as education where worker productivity is difficult to assess and manager incentives are muted by political and bureaucratic constraints. In this paper, we study how providing information to principals about teacher effectiveness and encouraging them to use the information in personnel decisions affects the composition of teacher turnovers. Our setting is the Houston Independent School District, which recently implemented a rigorous teacher evaluation system. Prior to the new system teacher effectiveness was negatively correlated with district exit and we show that the policy significantly strengthened this relationship, primarily by increasing the relative likelihood of exit for teachers in the bottom quintile of the quality distribution. Low-performing teachers working in low-achieving schools were especially likely to leave. However, despite the success, the implied change to the quality of the workforce overall is too small to have a detectable impact on student achievement.

Acknowledgements

Cullen is in the department of economics at the University of California, San Diego. Koedel is in the department of economics and Truman School of Public Affairs, and Parsons is in the department of economics, at the University of Missouri, Columbia. The authors gratefully acknowledge financial support from the Laura and John Arnold Foundation and the National Center for Analysis of Longitudinal Data in Education Research (CALDER) funded through grant #R305C120008 to American Institutes for Research from the Institute of Education Sciences, U.S. Department of Education; research support from the Houston Education Research Consortium, in particular Shauna Dunn, Holly Heard, Dara Shifrer, and Ruth Turley; and research assistance from Li Tan. The authors also thank Tom Dee and seminar participants at the Center for Education Policy Analysis at Stanford University for helpful comments. The views expressed here are those of the authors and should not be attributed to their institutions, data providers, or the funders. Any and all errors are attributable to the authors.

1. Introduction

Government agencies that provide services, such as education and health, are settings where it is difficult to observe both inputs and outputs. These are also sectors where there are ongoing concerns about efficiency and equity. In elementary and secondary education, efforts to improve the effectiveness of schools have ranged from increases in resources via school finance reforms, to increased competition via school choice, to performance standards via school accountability. The success of any of these depends on the quality and commitment of the workforce.

Recent research provides powerful evidence confirming that high-quality teachers are of great value to students (Chetty, Friedman, and Rockoff, 2014a/b; Hanushek, 2011; Hanushek and Rivkin, 2010). A challenge facing school administrators and principals in managing the teacher workforce is that teacher effectiveness is not easy to measure and is not strongly correlated with observable characteristics. In this type of setting, improved information about quality can lead to more productive personnel policies. Given the two-sided nature of matches, better information may also have equity implications because low-achieving schools struggle to attract and retain good teachers (Bates, 2015; Clotfelter, Ladd, Vigdor, and Wheeler, 2006).

In this paper, we study the impact of introducing a rigorous teacher evaluation system on the level and distribution of teacher quality. The context for our study is the Houston Independent School District (HISD), which is the seventh largest school district in the United States. The new evaluation system was phased in from 2011 to 2013 and is centered on a standardized method for annually evaluating teachers. The objective is to generate teacher performance data that empower principals to exit ineffective and retain effective teachers at higher rates, as well as improve ongoing skill development. Recognizing that teacher hiring and

development also play a role in overall policy efficacy, we focus on how the policy impacted patterns of attrition by teacher effectiveness.

The empirical analyses rely on administrative data tracking teachers for three years before to three years after the reform. In order to classify teachers by quality, we construct and validate proxies for value added to student achievement. Then, using difference-in-differences and event-study analyses, we show that the relationships between teacher quality and both school and district exit became more negative in the post-policy period. The key driver is an increase in the relative likelihood of exit from the district of teachers in the bottom quintile of the quality distribution, concentrated in low-achieving schools.

As far as impacts on student achievement through the turnover channel, there are two important issues to consider. First, overall turnover sharply increased after the reform, though it is unclear what share of this level shift is attributable to the reform. Second, while we document non-negligible changes to the composition of teacher exits implying an improvement in workforce quality, differential turnover would have to be much more highly targeted to have a detectable impact on student achievement. We demonstrate this point in illustrative models that relate observed school-by-grade-specific exits of teachers to student achievement gains.

Our study contributes in a number of ways to the few existing studies of policies that are designed to improve workforce quality by providing better information on teacher effectiveness. In contrast to the rigid rules that characterize the high-profile IMPACT program in Washington DC, which is studied by Dee and Wyckoff (2015), HISD principals have flexibility in how to act on the new performance information.¹ The presumption is that they know their own schools best and should be able to leverage their local knowledge. One way to view the HISD system is as a

¹ Using a regression discontinuity design, Dee and Wyckoff (2015) find that dismissal threats induce voluntary exit and raise the performance of low performing teachers who remain.

scaled up version of the experimental pilot interventions studied by Sartain and Steinberg (forthcoming) and Rockoff, Staiger, Kane, and Taylor (2012), with the added feature of a district-wide emphasis on tying personnel decisions more closely to quality.² Beyond differences in the setting in terms of discretion and scale, we also examine the distributional impacts that can arise when an entire school system is treated.

2. Policy background

HISD has implemented several policies designed to raise staff quality and effort over the past decade. First, a merit pay program (ASPIRE) was introduced in 2006-07 to reward teachers and administrators for raising student achievement. Then, four years later, the district began phased development and implementation of the Effective Teachers Initiative (ETI). This comprehensive reform effort is designed to improve teacher quality through more effective recruitment at the front end, individualized professional development in the middle, and targeted retention and exit on the back end.

The cornerstone of the ETI reform is the implementation of a rigorous teacher evaluation system intended to provide more informative reviews of teacher performance. The system was designed by the district during the 2010-11 school year with input from stakeholders and formally approved by the school board in spring 2011. The new appraisals involve three components: instructional practice, professional expectations, and student performance. Scores on the first two components are based on principal observations and reviews conducted inside and outside the classroom. For instructional practice, a teacher's skills are evaluated using well-

² In their New York City experiment, Rockoff et al. (2012) provided principals with improved information on teacher performance and found that after providing the information, lower-performing teachers were more likely to exit. Sartain and Steinberg (forthcoming) study a pilot program in Chicago which teachers were more rigorously evaluated in classroom observations and found that while there was no main effect on teacher exits, the pilot increased exits for low-rated and non-tenured teachers.

defined rubrics that cover setting student expectations, lesson planning, and classroom management. For the professional expectations component, teachers are evaluated relative to a set of objective measures of compliance with policies, interactions with colleagues, and participation in professional development. The student performance scores are based on estimates of the teacher's impact on student learning. Teachers are scored on a scale from 1 to 4 on each component, and these are then averaged to deliver a summary rating.

The initial step in transitioning to the new system was ensuring that all teachers were assigned ratings in 2010-11. Prior to the 2010-11 school year, ratings for almost one in three teachers were not recorded with the district. Further, ratings were high and did not meaningfully differentiate teachers (Weisberg et al., 2009). The 2010-11 ratings were based on at least two classroom observations and, though not formally scored under the new system, these observations were conducted in an environment where differentiating teachers by quality was a leading district concern and most principals had already received training. In the following year, 2011-12, teachers were scored under the two new observational components: instructional practice and professional expectations. Due to delays in approving student performance metrics for teachers, the student performance measures were not formally incorporated until 2012-13. Despite this, principals already had access to test-based performance measures for a subset of teachers, as the SAS Institute has provided proprietary teacher-level value-added estimates (EVAAS® scores) to HISD for many years as key inputs to the merit pay system. Thus, the shift in teacher evaluation occurred informally in 2010-11, and at that point principals already had much of the information that was to be formally incorporated over the next two years.

A side effect of the phased implementation is that the official ratings for teachers changed significantly from 2011-12 to 2012-13.³ When only the observational components were included, the majority of teachers were labeled effective, with 0.5% ineffective, 10.0% needing improvement, 57.6% effective, and 31.9% highly effective. Once student performance was explicitly factored in, these shares changed to 6.0%, 27.7%, 39.7%, and 26.6%, respectively. The downward shift is due to the fact that the student performance measures are relative, so that some teachers will necessarily be deemed ineffective, while the other criteria are absolute.

The districtwide emphasis on tying personnel decisions more closely to quality was made explicit in retention objectives set for district administrators at the onset of the ETI.⁴ A notable feature of the new system, which is still in effect today, is that principals are the primary agents of policy implementation and are given substantial autonomy in translating the information provided by the assessments into personnel decisions. Further, principals have significant latitude in exiting teachers since, unlike many districts, teachers at HISD do not have tenure and most teachers are on one-year contracts.

We examine how the introduction of ETI has affected teacher turnover patterns in ways that are related to teacher quality. It is important to recognize that the initiative included other relevant bundled interventions. For example, in the same year as the assessment system was being developed, the district initiated an early notification program to encourage schools to identify next-year vacancies earlier in the calendar year (during the prior spring), which may have allowed for easier teacher transfers between schools. As with other rigorous appraisal

³ Unfortunately we do not have access to personnel evaluations for 2010-11 (or prior years) to document any initial shifts.

⁴ Selective retention has continued to be a focus of district policy, as indicated in reports from the superintendent such as the one submitted for the Board of Education meeting on 12.11.2014, retrieved by the authors online on 06.21.2016 at: http://www.houstonisd.org/cms/lib2/TX01001591/Centricity/Domain/7949/121114_EVAAS_TeacherRetention_SA T-ACT.pdf.

systems, teachers are provided regular feedback on progress and opportunities for development to address their specific needs. Over time, new leadership roles were established for effective teachers to mentor others, and the merit pay system was adjusted to improve alignment with the new assessment system. Associated changes in the work environment and career opportunities could alter the relative attractiveness of teaching in the district and of teaching in more and less advantaged schools. Any impacts on turnover of existing teachers reflect both demand-side and supply-side responses to the initiative as a whole.

Of course, turnover is also only one channel through which the new human capital policies could affect the quality of the workforce. Additional objectives were to improve the quality of incoming teachers and to raise the quality of incumbent teachers. Though our study is silent on progress on these objectives, turnover is arguably the lever that principals can affect most, particularly in the short run.

3. Data and summary statistics

We aim to estimate the effects of the new human capital policies on turnover for teachers of differing effectiveness, across low- and high-achieving schools. We have access to detailed school, teacher, and student administrative data files for school years 2007-08 through 2013-14. These data allow us to measure teacher turnover through 2012-13 (where 2013-14 data are used to measure turnover for 2012-13 teachers), leaving us with a six-year panel centered around 2010-11, which is the first year the human capital policies began to take force.

3.1 Measuring school disadvantage and selecting analysis schools

We begin with a sample of 201 traditional public schools in HISD that were operational during our sample period and serve students in grades 3 to 8, which are the grade levels for which we are able to construct measures of teacher quality consistently over the course of our

data panel (see below).⁵ As a summary measure of each school’s context we use the achievement level, which is defined as the average of students’ math and reading scores on statewide exams, standardized within grade and year, and taken over the pre-policy years 2007-08 to 2009-10. We divide schools into three groups based on pre-policy achievement levels: low (bottom quintile), middle (quintiles 2-4), and high (top quintile).

After classifying schools by achievement, we exclude an additional set of schools due to a concurrent intervention conducted in HISD as described by Fryer (2014). Fryer (2014) led an intervention starting in 2010-11—the year that the more rigorous evaluation policies were initiated—that introduced a bundle of best practices from effective charter schools in 15 traditional elementary and middle schools. The onset of the intervention included changes to teaching and leadership personnel. To avoid contamination, we drop the schools where Fryer intervened from our analytic sample. Consistent with his description, all but one of these schools are in the bottom quintile of achievement. We assign schools to quintiles prior to dropping these schools so that our school groupings are unconditional. This allows for straightforward interpretation, with the practical consequence that our sample size of bottom quintile schools is reduced.⁶

Table 1 shows summary statistics for the schools included in our analysis, broken down by achievement group. The top panel shows differences in the characteristics of the student bodies served across these schools. Beyond the construct-driven differences in achievement, low-achieving schools serve a disproportionate share of black students and students with English

⁵ We exclude the few schools from which less than five teacher-year observations are available for these grades, where a teacher-year observation requires an EVAAS® score. These cases are most likely due to errors in the school code assigned to the teacher.

⁶ In the appendix (Appendix Table A.4) we show that our main findings are qualitatively similar if we include these schools in the analytic sample.

as a second language, while high-achieving schools serve markedly fewer economically disadvantaged students.

3.2 Measuring teacher turnover and selecting analysis teachers

In addition to measuring school exits, we decompose school exits into exits from the district and transfers to other schools within the district. A complication we face is that the staffing data provided to us in 2013-14 include only teachers. In all previous years the staffing data include all positions. For consistency, throughout our analysis we identify a teacher as having exited the school at the conclusion of year t if the teacher is not observed teaching in the school in year $t+1$. Thus, we code switches to non-teaching positions (e.g., school leadership) as exits. In the appendix, we confirm that our results are substantively the same if we exclude the last year of data and code position changes as non-exits.⁷

We define teacher turnover by looking forward in the data one year. A benefit of using a single-year measure instead of a multi-year measure is that we can calculate turnover for more years. That said, the limitation of the single-year exit measures is that they are noisy and overstate exit rates. It has been well documented that teachers – particularly young teachers – move in and out of the workforce (Grissom and Reininger, 2012). We therefore test robustness to using alternative two-year definitions for campus and district exit, where a teacher is classified as having exited if she is also not present in year $t+2$.

The middle panel of Table 1 shows single-year turnover rates for math teachers in grades 3-8 in the pre-policy period. Pre-policy turnover is 13.7% at low- and middle-achieving schools, versus 12.1% at high-achieving schools. The difference is driven primarily by a lower rate of

⁷ More specifically, while the overall exit rates that we estimate annually decline slightly if we re-code position changes as non-exits (on the order of 1-2 percentage points), the cross-year and pre-post comparative results are qualitatively unaffected. See Appendix Table A.1.

within-district transfer from high-achieving schools. Unsurprisingly, two-year exit rates (not shown) indicate marginally lower turnover by approximately 0.4 percentage points, or 3 percent.⁸

3.3 Measuring teacher quality

Critical to our analysis is being able to measure teacher effectiveness in a comparable way over the full sample period. While teacher experience and education levels might be candidates, the literature has consistently shown that these observable characteristics explain little of the variation in student learning and are not consistently linked to teacher quality (Aaronson, Barrow, and Sander, 2007; Hanushek and Rivkin, 2006; Harris and Sass, 2011). We also have scores from principal appraisals for the components that were part of the official evaluation system in 2011-12 and 2012-13, but not only are these unavailable in prior years, the observational components are difficult to compare across campuses with differentially challenging environments and map much more weakly to student learning (Kane et al., 2013; Steinberg and Garrett, 2016; Whitehurst, Chingos, and Lindquist, 2014).

For these reasons, we construct quality measures derived from the value-added estimates that have been provided to principals for teachers in tested grades and subjects for many years at HISD. These teacher-specific EVAAS® scores are single-year measures of student test score growth produced using a propriety method developed by the SAS Institute. Although the technical estimation details differ from standard value-added models, conceptually they are similar (Ballou, Sanders, and Wright, 2004). Teachers' EVAAS® scores are estimated from regressions of student achievement on a set of indicators for each teacher the student had in the current and prior two years, as well as indicators for subject, grade, and year. These scores are

⁸ The pre-policy turnover statistics in Table 1 are similar to turnover statistics provided for grade 4 to 5 teachers in New York City by Ronfeldt, Loeb, and Wyckoff (2013).

available to us back to the 2006-07 school year, and we restrict our analysis to teachers in grades 3-8 who have been assigned math or reading EVAAS® scores.

Because the single-year estimates are quite noisy,⁹ we construct a more informative measure of teacher effectiveness by combining multiple years of teachers' scores per the following regression based on Chetty, Friedman, and Rockoff (2014a):

$$V_{ikt} = \delta_0 + \mathbf{V}_{ikt-} \boldsymbol{\delta}_1 + \eta_{ikt} \quad (1)$$

In equation (1), V_{ikt} is teacher i 's EVAAS® score in subject k and year t , \mathbf{V}_{ikt-} is a vector of teacher i 's EVAAS® scores in the same subject in years prior to year t , and η_{ikt} is an idiosyncratic error term. The EVAAS® scores are normalized by subject and year. The fitted values from the regression, $\hat{V}_{ikt} = \hat{\delta}_0 + \mathbf{V}_{ikt-} \hat{\boldsymbol{\delta}}_1$, are jackknifed quality measures where a value of one, for example, implies that the teacher is one standard deviation above average in the true distribution for teachers in the district.¹⁰ Because not all teachers have a complete panel of prior scores to be used in the estimation of equation (1), separate regression models are estimated for all possible combinations as in Chetty, Friedman, and Rockoff (2014a). We do require, though, that the teacher have a time t EVAAS® score to be included in the sample, which ensures the individual is teaching the relevant subject contemporaneously. An implication of including only scores from years prior to t as explanatory variables is that first-year teachers are necessarily excluded from the sample. However, our reliance on prior-year performance guards against

⁹ Brehm, Imberman, and Lovenheim (2015) show that relative rankings of teachers under the merit pay system based on EVAAS® estimates vary greatly from year to year.

¹⁰ The jackknifed quality measures are not renormalized to have a standard deviation of one, and in fact have a standard deviation less than one. Theoretically, a one-unit change in the jackknifed measures corresponds to a one standard deviation change in the distribution of teacher quality (see, e.g., Chetty, Friedman, Rockoff, 2014b).

survivor bias, since otherwise teachers who persist would be more likely to have quality measures available.¹¹

It is important to demonstrate that our measures meaningfully capture teacher effectiveness in raising student achievement. Recent studies show that conceptually similar jackknifed measures based on value-added are forecast-unbiased estimates of teacher quality in other contexts (see Bacher-Hicks, Kane, and Staiger, 2014; Chetty, Friedman, and Rockoff, 2014a). Adopting their methods, we test whether our measures have the same property by examining whether changes in teacher quality at the school-by-grade level caused by staffing changes accurately predict changes in student test scores, as would be expected if the measures are unbiased. For example, if a teacher with high measured effectiveness moves to a new school and/or a different grade, test scores for students in the new school-by-grade combination should increase in the year after the change. Moreover, if the quality metric is properly scaled, the magnitude of the change in teacher quality should predict the magnitude of the change in student achievement.

We implement the forecasting test by estimating the following regression model, weighted by time t school-by-grade enrollment:

$$\Delta \bar{A}_{sgkt} = \gamma_0 + \Delta \bar{V}_{sgkt}' \gamma_1 + \Delta \bar{X}_{sgt} \gamma_2 + \phi_t + \varepsilon_{ikt} \quad (2)$$

The dependent variable, $\Delta \bar{A}_{sgkt}$, is the change in the average test score on the statewide exam (standardized by grade and year) between years t and $t-1$ for school s and grade g in subject k .

Only students taught by a teacher with an available effectiveness measure at time t are included

¹¹ Note that our jackknifed measures rely on more observations for years that are later in the panel, so it may seem that a relative reduction in noise could confound our estimated relationships over time. Not only have we empirically confirmed that our results are robust to restricting the backward-looking windows to be comparable across years, but the implicit shrinkage is also a theoretical argument against this concern (Jacob and Lefgren, 2008).

in the regression and used to calculate \bar{A}_{sgkt} . In addition to year effects, the control set includes $\Delta\hat{V}'_{sgkt}$, which is the change in average measured teacher quality, and $\Delta\bar{X}_{sgt}$, which captures the change in student demographics between years t and $t-1$.

For the purposes of the validation exercise, we make adjustments to the way teacher quality is measured, which is why the variable is denoted with a prime in equation (2). First, we rescale teachers' EVAAS® scores to student exam score units. This permits one-to-one forecasting between the teacher quality metrics and the dependent variable. Then, we calculate leave-two-year-out jackknife estimates, where neither the time t nor the $t-1$ teacher scores are included in V_{ikt} . This is important to remove the influence of the mechanical correlation between the change in average student test scores between those two periods and the estimation error in the annual teacher scores. We conduct the test for both purely backward looking quality measures and, to increase precision, for measures that also allow post-period performance data to inform the current-year quality measure (as in Chetty, Friedman, and Rockoff 2014a).¹²

We test the null hypothesis $\gamma_1 = 1$ separately for math and reading and report the results in Table 2. With the caveat that our tests are less powerful than in previous studies that exploit larger datasets, our findings are consistent with the jackknifed quality measures being forecast unbiased predictors of future student achievement. Specifically, we cannot reject that the coefficient on the change in teacher quality is unity in any of the models. Yet, the larger standard errors in the reading regressions leave open the possibility of non-negligible bias and suggest more individual-level prediction errors. For these reasons our reading-based teacher quality estimates are less informative, which is consistent with findings in previous research (Backes et

¹² Jackknifing based on pre- and post-period data is not a problem for this exercise because the internally valid estimates of forecasting bias can still be obtained even if survivors are over-sampled.

al., 2016; Lefgren and Sims, 2012). Thus, we choose to present results restricted to teachers for whom we can observe effectiveness in teaching math in the main text, and present selected results for reading in the appendix. The reading results are very similar to the math results (see Appendix Tables A.2 and A.3).

The bottom panel of Table 1 shows how math teacher quality is distributed across schools in the pre-policy period. In addition to our measure of effectiveness, where the numbers reported are in standard deviations of the teacher distribution, we also include other observable teacher characteristics. Based on our measure, Table 1 shows that teacher quality is not evenly distributed across the district. More low-quality teachers and fewer high-quality teachers are found at low-achieving schools. Low-achieving schools also employ teachers with less experience, but teachers at these schools tend to be more educated. A simple regression of our jackknifed quality measure in math on teacher experience and indicators for education levels using the pre-policy data yields an R-squared of just 0.01.

Finally, it is important to note that our quality measures are not directly available to school principals. Instead, principals have access to year-by-year EVAAS® scores and observational assessments, in addition to other indicators of quality that we do not observe. In 2012-13, the first year that all components of the assessment were formally scored, our measure of quality explains approximately 24 percent of the variation in overall appraisal ratings among our sample of teachers with EVAAS® scores. It explains 13, 4, and 23 percent of the instructional practice, professionalism, and student learning components, respectively, where the student learning component is a categorical rating based on the contemporaneous EVAAS® score and at least one other student-learning measure that is determined in collaboration between the teacher and principal. One reason that the correlation with the classroom-observation

component is not higher is that scores on these types of best practices metrics have been shown to be sensitive to the composition of students in the classroom (Steinberg and Garrett, 2016; Whitehurst, Chingos, and Lindquist, 2014). By building our program evaluation around our validated but unobserved jackknife measures, we can determine whether teacher and principal responses to the new system are affecting workforce quality in a way that is likely to have direct implications for student achievement.

4. Empirical strategy

To estimate effects on turnover, we estimate difference-in-differences models of the following form, specified as linear probability models:

$$Y_{ist} = \delta_0 + \delta_1 Post_t + \delta_2 Q_{it} + \delta_3 Post_t \times Q_{it} + \mathbf{X}_{st}\boldsymbol{\beta} + \phi_s + \varepsilon_{ist} \quad (3)$$

In equation (3), Y_{ist} is a binary variable indicating whether teacher i at school s exits the school (or exits the district or transfers to another school) at the conclusion of year t . $Post_t$ is an indicator set to one for 2010-11 and later years. Q_{it} is our measure of teacher quality. In some variants of the model we include Q_{it} as a continuous variable, and in others we divide teachers into quality quintiles and include a vector of indicator variables for the quintile assignments. Shrinkage is implicit in the jackknifing procedure and thus our estimates will not be affected by attenuation bias from using a generated regressor as would be the case with a standard linear predictor (Jacob and Lefgren, 2008). The \mathbf{X} -vector contains teacher characteristics that might have independent effects on turnover, such as race, gender, experience, and education. Our findings are not sensitive to which subset of these characteristics we include in the regressions, nor are they sensitive to omitting the \mathbf{X} -vector entirely. Finally, ϕ_s is a school fixed effect to allow for fixed school attributes that affect teacher attrition rates, and ε_{ist} is an error term. Throughout we report standard errors clustered at the school level.

The objective of the model is to identify shifts in the relationship between teacher quality and exit. We also report estimates of δ_1 to give a sense of how the overall teacher exit rate is changing over time. To the extent that these changes can be attributed to policy implementation, they are indications of the policy impact on the *extensive margin*. Of course, it is difficult to rule out that other time-varying factors are at play when estimating these simple differences. Thus, we emphasize estimates of δ_3 , which is the coefficient on the interaction between the post-reform indicator and teacher quality. This parameter provides an indication of the policy impact on the *intensive margin* – that is, on a per-exit basis it provides a measure of how workforce quality is changing due to push and pull factors associated with the reform. Since a primary goal was to increase exit of ineffective teachers and increase retention of effective teachers, we would expect to find a negative coefficient on the interaction.

A necessary condition for identifying the policy impact on relative exit rates is that pre-policy trends in exit rates between teachers of different levels of quality are the same. To explore the validity of the design, as well as to provide evidence on the time pattern of any responses, we also estimate event time models. For these time-disaggregated models, we include a full set of year effects and year effects interacted with teacher quality.

In addition to estimating average impacts, we also study heterogeneity across schools to shed light on distributional effects. For these models, we add interactions between the time and quality variables with indicators for schools that are low (bottom-quintile) and high (top-quintile) achieving based on pre-period achievement. Principals at low-achieving schools might have benefited more from the information provided by the new system, but might also have less capacity to respond. Demand for effective teachers likely increased system-wide, opening up the

possibility for the best teachers to trade-up in terms of school environment and making retention tougher at the bottom (Bates, 2015).

5. Effects of the reform on turnover

5.1 Descriptive analysis

We begin by visually documenting trends in exit and turnover rates in Figure 1. The figure shows district-wide trends for our three different mobility measures: school exit, district exit, and school transfer. The former is the sum of the two latter measures. School years in the figure, and in all figures and tables to follow, are identified by the spring year – e.g., the 2010-11 school year is labeled as 2011. The figure shows that turnover by all three measures began to rise at the conclusion of the 2010-11 school year. Of total school exits, roughly half of the observed increase is attributable to an increase in district exits, and half is due to an increase in within-district school transfers.

Figure 2 provides similar information but divides teachers into groups based on our measure of quality. Teachers are assigned to the following groups based on their placement in the quality distribution each year: bottom quintile (least effective), middle quintiles (quintiles 2-3-4), and top quintile (most effective). Panels A, B, and C report differences in the rates of school exit, district exit, and school transfers across teacher quality groups. It is visually apparent that the school exit rate increased more quickly in the post-policy period for the least effective teachers relative to other teachers, driven primarily by district exits. Although instances of school transfers are higher in the post-policy years overall (Figure 1), no systematic change in the relationship between teacher quality and school switching is apparent in Figure 2.

5.2 Estimation results

We estimate the models described in Section 4 to assess the significance and robustness

of the patterns illustrated in Figures 1 and 2. First, Table 3 shows results from equation (3) where we enter the teacher-quality measure into the regressions linearly. We report results for the full specification, which is our preferred model, but in unreported results our estimates are very similar if we use sparser variants of the model that exclude teacher characteristics and even school fixed effects. For each turnover outcome, we present models that aggregate the pre- and post-policy time periods and models that fully disaggregate years. All control variables except for the post-period indicator (or year indicators) are mean-centered in the regressions, including the school indicator variables, so that the intercept can be interpreted as the exit rate at the mean values of all covariates.¹³

The general patterns from Figures 1 and 2 are reflected in the model estimates and confirmed to be statistically significant in Table 3. For example, in the model of district exits, our estimate in column (2a) implies that a teacher who is one standard deviation above average in the quality distribution is an additional 6.3 percentage points less likely to exit the district during the post-policy relative to the pre-policy period. The estimated impact is attenuated for the inclusive school exit outcome in column (1a) since, as suggested by Figure 2 and shown in column (3a), there is no change in the relationship between school switching and teacher quality.

The event time models in the table are useful for two reasons. First, they document that there were no pre-trends in turnover by quality (i.e., the coefficients on the interactions between teacher quality and the 2009 and 2010 indicators, which are estimated relative to the holdout year 2008, are small and statistically insignificant). Moreover, though the causal impact on overall turnover rates is not well identified by our model, the pre-period trend is in the opposite direction

¹³ The mean-centering does not affect model fit or the coefficients on the key parameters interacting time with teacher quality. It is used only to improve interpretability of the results with regard to the overall exit rate (Dalal and Zickar, 2012).

of what we see in the post period. A second benefit of the disaggregated models is that, in principle, they allow us to test how impacts evolve over time. We do tend to find the largest and most statistically significant impacts in the final year, but are unfortunately not well enough powered to differentiate these from the estimates for the other reform years.

Next, in Table 4 we show results from models where we replace the linear quality measures in equation (3) with indicators for teachers' quality-quintile groups. The indicator identifying teachers in the middle quintiles (2-3-4) is omitted for comparison. We do not show the intercept coefficients and interactions to preserve space. Consistent with what we show in Figure 2, Table 4 confirms that the post-policy period is marked by a large and statistically significant increase in the likelihood of school and district exit for low-performing teachers relative to middle and high performing teachers. Between these two latter groups, there is no divergence in exit rates.

Table 5 reports on the robustness of our findings to two adjustments to the analysis. First, in the left panel, we consider the sensitivity of our results to using a 2-year exit measure for school and district exits. That is, rather than coding exits based on looking forward just one year in the data, we look forward two years to determine whether the exiting teacher remained either (a) out of the school or (b) out of the district. When we make this definitional change, we are no longer able to examine outcomes for the 2013 teacher cohort. Thus, we report results from models covering the 2008-2012 cohorts using the one-year and two-year exit definitions, which are otherwise comparable to the results we show in Table 3. Although the overall exit levels are slightly lower with the two-year definition, the patterns in our estimates are very similar using either measure.

In the right panel of Table 5 we return to using our full dataset and single-year exit measures and replicate the analysis in Table 3 (columns 1a, 2a, and 3a) after restricting the models to include only schools that did not experience a principal change. Changes in leadership are one mechanism by which the new evaluation system could influence the workforce. Approximately 38 percent of schools in our analytic sample retained the same principal over the course of the full data panel (this number is in line with data on principal tenure in Texas as reported by Branch, Hanushek, and Rivkin, 2012). The results are generally similar to what we report in Table 3, which suggests that principal changes are not a critical mediator of our findings.

Table 6 shows results from models run separately for teachers by experience level. We divide teachers into three groups based on experience: ≤ 5 years, 6-20 years, and more than 20 years, and run the model for each turnover outcome separately for each group. Overall exit rates increased for all experience groups and although noisily estimated, the pre-post change in the relationship between quality and exit/transfer is similar across experience groups. The consistency by experience is surely facilitated in part by the absence of tenure at HISD and the fact that teachers are primarily on 1-year contracts. This result would be unlikely to generalize to districts with strong tenure protections (Sartain and Steinberg, forthcoming).

Finally, in Table 7 we estimate models that are otherwise the same as those shown in Table 3, but we replace our jackknifed teacher quality measures with single-year EVAAS® scores. For ease of interpretation, we do not alter the analytic sample in Table 7 (although in principle using single-year EVAAS® scores would allow us to include novice teachers and, more generally, teachers new to teaching mathematics in grades 3-8). The results clearly show that turnover in the post period aligns much more strongly with our jackknifed quality measures

– which are unobserved by principals and district officials, at least directly – than with the noisier current-year EVAAS® scores, which are observed. This result is consistent with the interpretation that personnel decisions under the reform are being made based on a totality of evidence that is superior to the single-year, noisy quality information embodied by the annual EVAAS® measures, as intended in a combined-measure evaluation system.

6. Heterogeneity in effects across schools

6.1 Descriptive analysis

In Figure 3, we replicate the information shown in Figure 1, but separately for each school type. Recall that we divide schools into three groups based on their pre-policy location in the distribution of average achievement in math and reading: bottom quintile (low-achieving), middle quintiles (quintiles 2-3-4), and top quintile (high-achieving). The figure shows that while exit rates increased across all three groups in the post-period (which is consistent with Figure 1), there has been a disproportionate increase at the lowest-achieving schools.

Figure 4 further divides teachers by quality within the same school groups. Reading across a row in Figure 4 holds the school-achievement group fixed, and reading down a column holds the teacher quality group fixed. Although the graphs in the figure cut the data thinly, and therefore noise is an issue, they suggest several interesting patterns. For instance, the first row of graphs shows school-exit, district-exit, and school-transfer patterns at low-achieving schools, by teacher type. The clear bars across the first row illustrate that low-performing teachers at low-achieving schools were much more likely to exit the district in the post-policy period relative to the pre-policy period. However, when looking at rates of school exit (black bars), the relative difference shrinks because school-transfer rates (gray bars) climb for middle- and high-performing teachers at low-achieving schools. Bates (2015) suggests a potential mechanism –

namely, more effective teachers under the new system have more prominent signals of their ability than had previously been the case, and can leverage these signals into more desirable teaching positions. In the absence of true compensating wage differentials, as is typical in the public education context, teachers will prefer positions that are more desirable along non-pecuniary dimensions (Greenberg and McCall, 1974).¹⁴

Turning to middle-achieving schools, although the difference in district exit rates between low- and high-performing teachers is smaller than for low-achieving schools, it is similarly signed and there is not an offsetting school-changer effect. For high-achieving schools, there is no clear visual change in the relationship between exit and teacher quality between the pre- and post-policy periods. If anything, the differences look stronger for middle- and high-performing teachers owing to the lower pre-period exit rates of these teachers from high-achieving schools.

6.2 Estimation results

As discussed in Section 4, we add interaction terms to equation (3) to test whether the patterns suggested by Figures 3 and 4 are statistically significant in our difference-in-differences specification. Table 8 presents results from models that use the linear quality measures, like in Table 3, but with the added interactions for school type. The heterogeneity parameters of interest interact the post-policy indicator with teacher quality and school type, where bottom- and top-quintile schools are included in the model and compared to the holdout group of middle-quintile schools. The bottom two rows of Table 8 show coefficient estimates and standard errors for these triple interactions.

¹⁴ Teachers may prefer to work in higher-achieving schools for a variety of reasons. Survey evidence suggests that while teachers do prefer to work with higher-SES students, perhaps because this requires less effort, simple non-pecuniary benefits that are correlated with student SES, like better administrative support and shorter commute times, are more important in pushing teachers toward high-SES schools (Horng, 2009).

To interpret the findings in Table 8, first note that the post-policy effect on the relationship between each measure of turnover and teacher quality for middle-achieving schools is shown in row 4. By virtue of their omission from the model as the holdout group, the double interaction of quality and the post-period indicator is the effect for these schools. For school and district exits, the estimates in Table 8 for middle-quintile schools are similar to, albeit slightly larger than, the analogous global estimates shown in Table 3. They imply a workforce improving change in the composition of exiters. Also as in Table 3, there is no systematic impact on the relationship between school transfers and teacher quality for middle-quintile schools.

For bottom quintile schools, the triple interaction coefficients in the second-to-last row of Table 8 indicate the quality effect at these schools relative to middle quintile schools. Although the estimates are noisy and merely suggestive, they imply that some of the positive effect on workforce quality for bottom-quintile schools is dulled by a positive relationship between teacher quality and school transfers among teachers at these schools. For top-quintile schools, the triple-interaction estimates indicate that the net effect of the policies is essentially null. More specifically, the triple-interaction terms in the final row of Table 8 more than offset the baseline effects in row 4.

In results that we do not report for brevity, we also estimate similar models that additionally divide teachers into quintile groups and use these groups in place of the linear quality measures, so that these models have interactions across school and teacher groupings akin to what we show visually in Figure 4. Although the coefficients are signed in directions consistent with what would be expected based on results from the linear quality models in Table 8, we lack statistical power to draw further inference from the binned interactions.

7. Discussion and interpretation

Given that we measure teacher quality in terms of effectiveness and validate the predictive power of our measures, it is reasonable to expect that gains in student learning would align with the change in the quality composition of exiters. However, whether or not gains are realized also depends on any impacts on the quality of teacher entrants and on effort among teachers who remain (Rothstein, 2015). Inference is further clouded by the high turnover rates at HISD post-ETI. Since turnover increases as much as it does, to the extent that this turnover is attributed to the policy and adversely affects achievement, it could imply net losses for students.

In order to gauge how the turnover aspects of the policy might be expected to affect student achievement, we estimate models of changes in school-by-grade achievement of the following form:

$$\Delta \bar{A}_{sgt} = \beta_0 + \Delta \bar{X}_{sgt} \beta_1 + \Delta TO_{sgt} \beta_2 + [BQ_{sgt} \beta_3 + MQ_{sgt} \beta_4 + TQ_{sgt} \beta_5 + UK_{sgt} \beta_6] + \gamma_s + \tau_t + u_{sgt} \quad (4)$$

In equation (4), $\Delta \bar{A}_{sgt}$ is the difference in average test scores across student cohorts in school s and grade g from period $t-1$ to t .¹⁵ The focal explanatory variables are (a) the change in the level of teacher turnover the two cohorts were exposed to, ΔTO_{sgt} , and (b) the share of teachers exiting between years by quality groups denoted by BQ_{sgt} , MQ_{sgt} , TQ_{sgt} , and UK_{sgt} for bottom-quintile, middle-quintiles, top-quintile, and unknown teacher quality, respectively. We include the unknown category to account for teachers without jackknifed quality measures, which makes these four categories exhaustive. The turnover variables are scaled by teachers' instructional percentages in the given subject prior to exit. For example, if a teacher provides one-fourth of the mathematics instruction for a school-by-grade cell, exits the school between years $t-1$ and t , and

¹⁵ Each observation is weighted by time t school-by-grade student enrollment, and standard errors are clustered at the school-by-grade level.

is a bottom quintile teacher, then BQ_{sgt} is coded as 0.25 (assuming no other bottom quintile teachers in the school-by-grade cell exit at the same time). The vector $\Delta\bar{X}_{sgt}$ captures changes in student demographic characteristics across cohorts corresponding to the test-score comparison, while γ_s and τ_t are school and year fixed effects, respectively. This model is similar to the model estimated by Adnot et al. (2016) except we control not only for the level of teacher turnover across cohorts, which captures changes in the composition of teachers, but also for changes in exposure to turnover, which captures differential disruption.

The results of estimating this model are shown in Table 9. While the results should be viewed cautiously because they rely on realized differences in turnover across grades, they seem quite plausible. The estimated coefficient on the change in turnover implies that there is a disruption effect (Hanushek, Rivkin and Schiman, 2016; Ronfeldt, Loeb, and Wyckoff, 2013), which we estimate to be 0.088 student-level standard deviations for a school-by-grade cell that experiences 100 percent turnover. The estimated coefficients on the exit shares of bottom, middle, and high quality teachers of 0.172, 0.066, and -0.169, respectively, align closely with the average jackknifed effectiveness measures for each group, which are -0.132, 0.012, and 0.175, respectively (converted to student standard deviation units).

Taking the estimates in Table 9 at face value, we can combine them with results from our earlier analysis to conduct a back-of-the-envelope calculation of the overall achievement effect of the compositional change in exits. Figure 5 re-packages our results from above in a way that is better suited to illustrate the total achievement effect. The figure shows model-based estimates of the compositional shifts in quality for school and district exiters due to the new evaluation system, taking the district exit rate in the pre- and post-policy periods as given. The figure highlights a clear shift toward more low-performing teacher exits, although there are still many

middle- and high-performing teachers who exit. Combining the information in Figure 5 with our estimates of the impact of exits by teachers of different qualities from Table 9, the expected average change in achievement *per turnover* increases very little from the pre- to post-policy period – just 0.007 and 0.005 student standard deviations for school and district exiters, respectively.¹⁶ Moreover, these compositional estimates do not account for the negative general disruption effect of turnovers.

While our analysis up to this point consistently points toward a compositional change in turnovers that is directionally in line with improved student achievement, we conclude that exits are not targeted well enough to induce meaningful achievement gains.

8. Conclusion

We study the effects on workforce composition of the introduction of a new, more-rigorous teacher evaluation system in the Houston Independent School District. The new system has clearly affected the composition of exiting teachers, primarily by increasing the exit rate among low performers relative to higher-performing teachers. Policy activity along this dimension has been concentrated at low-achieving schools within the district; at high-achieving schools, there is little indication that the nature of personnel decisions changed in the post-policy years.

Our analysis illustrates the potential for more rigorous teacher evaluations to improve student outcomes via better-informed personnel decisions, but also highlights a critical challenge associated with improving workforce quality via selective attrition. In short, in the system we

¹⁶ The figure is constructed using estimates from Table 4 for the relative changes in teacher exit by quality group. The compositional change estimates are mechanically dependent on the total district exit rate in the pre- and post-policy periods, where it is unclear how much of the shift is causally attributable to the policy. However, qualitatively our estimates of the per-turnover effect on achievement are unaffected by reasonable adjustments to the baseline rate. For example, if we impose that the total exit rate increased by half of the observed rate from the pre- to post-policy period in our calculations, the achievement effect sizes increase but remain small, at around 0.010 student standard deviations.

study there are simply too many poorly targeted exits in the post-policy period (by middle- and top-performing teachers) for the net policy effect on achievement to be meaningful.

Stepping back from our narrow policy context, a possible complementary intervention in such a situation would be to offer more competitive wages that better reflect the large differences in teacher quality documented here and elsewhere to stem the tide of higher-quality teacher exits, as argued in Rothstein (2015). Although HISD has attempted to better align pay with productivity via the aforementioned APSIRE program, that program has faced challenges and our results are consistent with the difficulty the district has faced in better aligning compensation to productivity (Brehm, Imberman, and Lovenheim, 2015; Shifrer, Turley, and Heard, 2013). There are also other ways that the new system is designed to improve instruction and student outcomes about which our study is silent – notably via recruitment and greater improvement among incumbent teachers – but on the dimension of selective attrition, the compositional effects have not been large enough to measurably improve student achievement.

References

- Aaronson, Daniel, Lisa Barrow and William Sander. 2007. Teachers and Student Achievement in the Chicago Public High Schools. *Journal of Labor Economics* 25(1), 95-135.
- Adnot, Melinda, Thomas Dee, Veronica Katz and James Wyckoff. 2016. Teacher Turnover, Teacher Quality, and Student Achievement in DCPS. NBER Working Paper No. 21922.
- Bacher-Hicks, Andrew, Thomas J. Kane and Douglas O. Staiger. 2014. Validating Teacher Effect Estimates Using Changes in Teacher Assignments in Los Angeles. NBER Working Paper No. 20657.
- Backes, Ben, James Cowan, Dan Goldhaber, Cory Koedel, Luke Miller and Zeyu Xu. 2016. The Common Core Conundrum: To What Extent Should We Worry that Changes to Assessments and Standards Will Affect Test-Based Measures of Teacher Performance. CALDER Working Paper No. 152.
- Ballou, Dale, William Sanders and Paul Wright. 2004. Controlling for Student Background in Value-Added Assessment of Teachers. *Journal of Educational and Behavioral Statistics* 29(1), 37-65.
- Bates, Michael. 2015. Public and Private Learning in the Market for Teachers: Evidence from the Adoption of Value-Added Measures. Unpublished manuscript.
- Branch, Gregory F., Eric A. Hanushek and Steven G. Rivkin. 2012. Estimating the Effect of Leaders on Public Sector Productivity: The Case of School Principals. NBER Working Paper No. 17803.
- Brehm, Margaret, Scott A. Imberman and Michael F. Lovenhiem. 2015. Achievement Effects of Individual Performance Incentives in a Teacher Merit Pay Tournament. NBER Working Paper No. 21598.
- Chetty, Raj, John N. Friedman and Jonah E. Rockoff. 2014a. Measuring the Impacts of Teachers I: Evaluating Bias in Teacher Value-Added Estimates. *American Economic Review* 104(9), 2593-2632.
- Chetty, Raj, John N. Friedman and Jonah E. Rockoff. 2014b. Measuring the Impacts of Teachers II: Teacher Value-Added and Student Outcomes in Adulthood. *American Economic Review* 104(9), 2633-79.
- Clotfelter, Charles T., Helen F. Ladd, Jacob L. Vigdor and Justin Wheeler. 2006. High-poverty Schools and the Distribution of Teachers and Principals. *North Carolina Law Review* 85: 1345-1379.

- Dalal, Dev K., and Michael J. Zickar. 2012. Some Common Myths about Centering Predictor Variables in Moderated Multiple Regression and Polynomial Regression. *Organizational Research and Methods* 15(3), 339-362.
- Dee, Thomas and James Wyckoff. 2015. Incentives, Selection, and Teacher Performance: Evidence from IMPACT. *Journal of Policy Analysis and Management* 34(2), 267-297.
- Fryer, Roland G. 2014. Injecting Charter School Best Practices into Traditional Public Schools: Evidence from Field Experiments. *Quarterly Journal of Economics* 129(3), 1355-1407.
- Greenberg, David, and John McCall. 1974. Teacher Mobility and Allocation. *Journal of Human Resources* 9(4), 480-502.
- Grissom, Jason A. and Michelle Reininger. 2012. Who Comes Back? A Longitudinal Analysis of the Re-Entry Behavior of Exiting Teachers. *Education Finance and Policy* 7(4): 425-454.
- Hanushek, Eric A. 2011. The Economic Value of Higher Teacher Quality. *Economics of Education Review* 30(3), 266-479.
- Hanushek, Eric A., and Steven G. Rivkin. 2006. "Teacher Quality." In *Handbook of the Economics of Education* Vol. 1, ed. Eric A. Hanushek and Finis Welch, 1051-78. Amsterdam: North-Holland.
- Hanushek, Eric A. and Steven G. Rivkin. 2010. Generalizations about Using Value-Added Measures of Teacher Quality. *American Economic Review* 100(2), 267-271.
- Hanushek, Eric A., Steven G. Rivkin and Jeffrey C. Schiman. 2016. Dynamic Effects of Teacher Turnover on the Quality of Instruction. NBER Working Paper No. 22472.
- Harris, Douglas N. and Tim R. Sass. 2011. Teacher Training, Teacher Quality and Student Achievement. *Journal of Public Economics* 95(7-8), 798-812.
- Horng, Eileen Lai. 2009. Teacher Tradeoffs: Disentangling Teachers' Preferences for Working Conditions and Student Demographics. *American Educational Research Journal* 46(3), 690-717.
- Jacob, Brian and Lars Lefgren. 2008. Can Principals Identify Effective Teachers? Evidence on Subjective Performance Evaluation in Education. *Journal of Labor Economics* 26(1), 101-136.
- Kane, Thomas J., Daniel F. McCaffrey, Trey Miller and Douglas O. Staiger. 2013. Have We Identified Effective Teachers? Validating Measures of Effective Teaching Using Random Assignment. Seattle, WA: Bill and Melinda Gates Foundation.
- Lefgren, Lars and David P. Sims. 2012. Using Subject Test Scores Efficiently to Predict Teacher Value-Added. *Educational Evaluation and Policy Analysis* 34(1), 109-121.

Rockoff, Jonah E., Douglas O. Staiger, Thomas J. Kane and Eric S. Taylor. 2012. Information and Employee Evaluation: Evidence from a Randomized Intervention in Public Schools. *American Economic Review* 102(7), 3184-3213.

Ronfeldt, Matthew, Susanna Loeb and James Wyckoff. 2013. How Teacher Turnover Harms Student Achievement. *American Educational Research Journal* 50(1), 4-36.

Rothstein, Jesse. 2015. Teacher Quality Policy When Supply Matters. *American Economic Review* 105(1), 100-130.

Sartain, Lauren and Matthew P. Steinberg (forthcoming). Teachers' Labor Market Responses to Performance Evaluation Reform: Experimental Evidence from Chicago Public Schools. *Journal of Human Resources*.

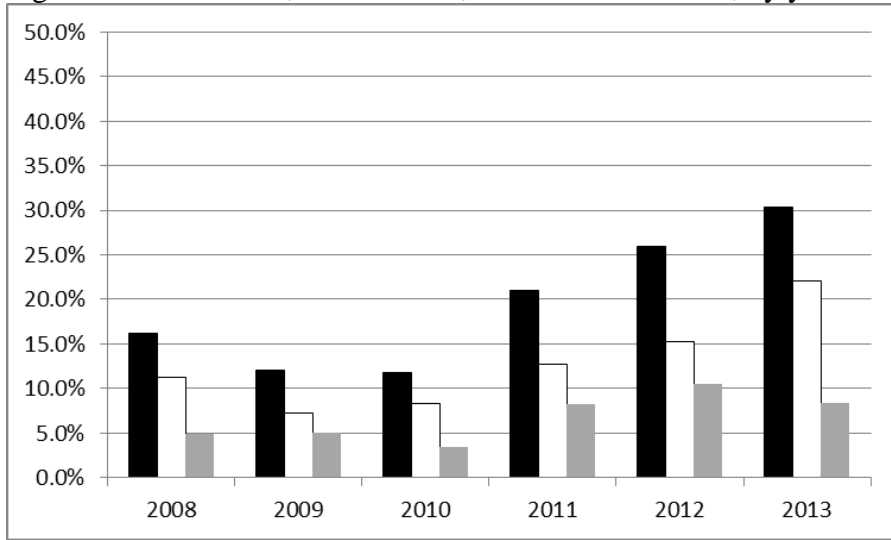
Shifrer, Dara, Ruth Lopez Turley and Holly Heard. 2013. Houston Independent School District's ASPIRE Program: Estimated Effects of Receiving Financial Awards. Policy Report. Houston Educational Research Consortium.

Steinberg, Matthew P. and Rachel Garret. 2016. Classroom Composition and Measured Teacher Performance: What do Teacher Observation Scores Really Measure? *Educational Evaluation and Policy Analysis* 38(2), 293-317.

Weisberg, Daniel, Susan Sexton, Jennifer Mulhern and David Keeling. 2009. The Widget Effect: Our National Failure to Acknowledge and Act on Differences in Teacher Effectiveness. New York: The New Teacher Project.

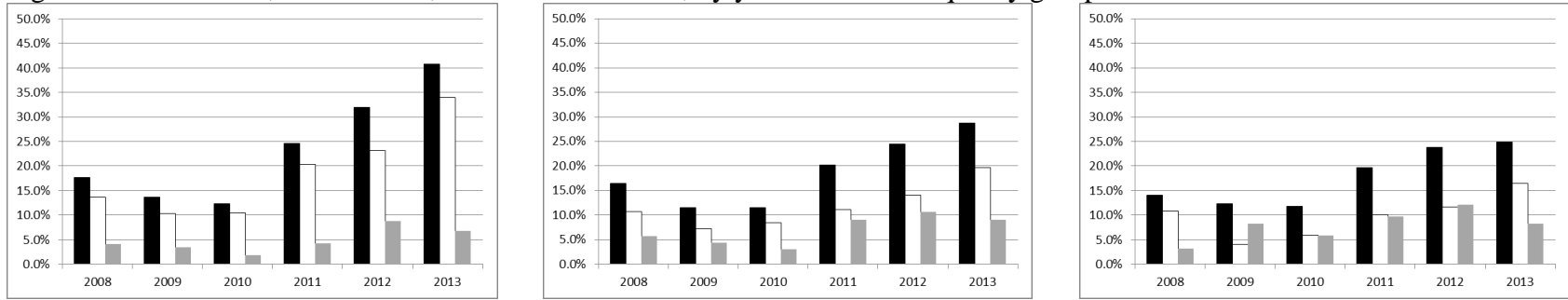
Whitehurst, Grover J., Matthew M. Chingos, and Katharine M. Lindquist. 2014. Evaluating Teachers with Classroom Observations: Lessons Learned in Four Districts. Washington, DC: Brown Center on Education Policy at Brookings.

Figure 1. School exits, district exits, and school transfers, by year.



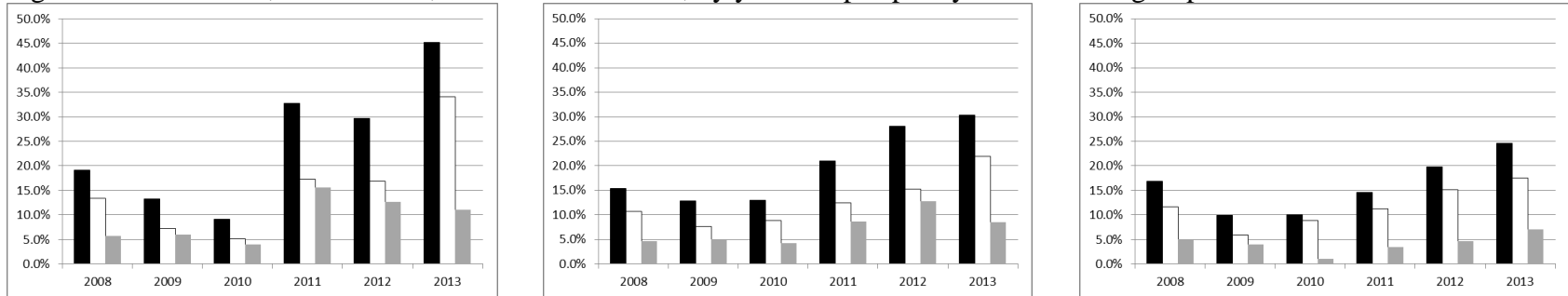
Notes: Black bars: school exits; Clear bars: district exits; Gray bars: school transfers. School exits are the sum of district exits and school transfers.

Figure 2. School exits, district exits, and school transfers, by year and teacher-quality group.



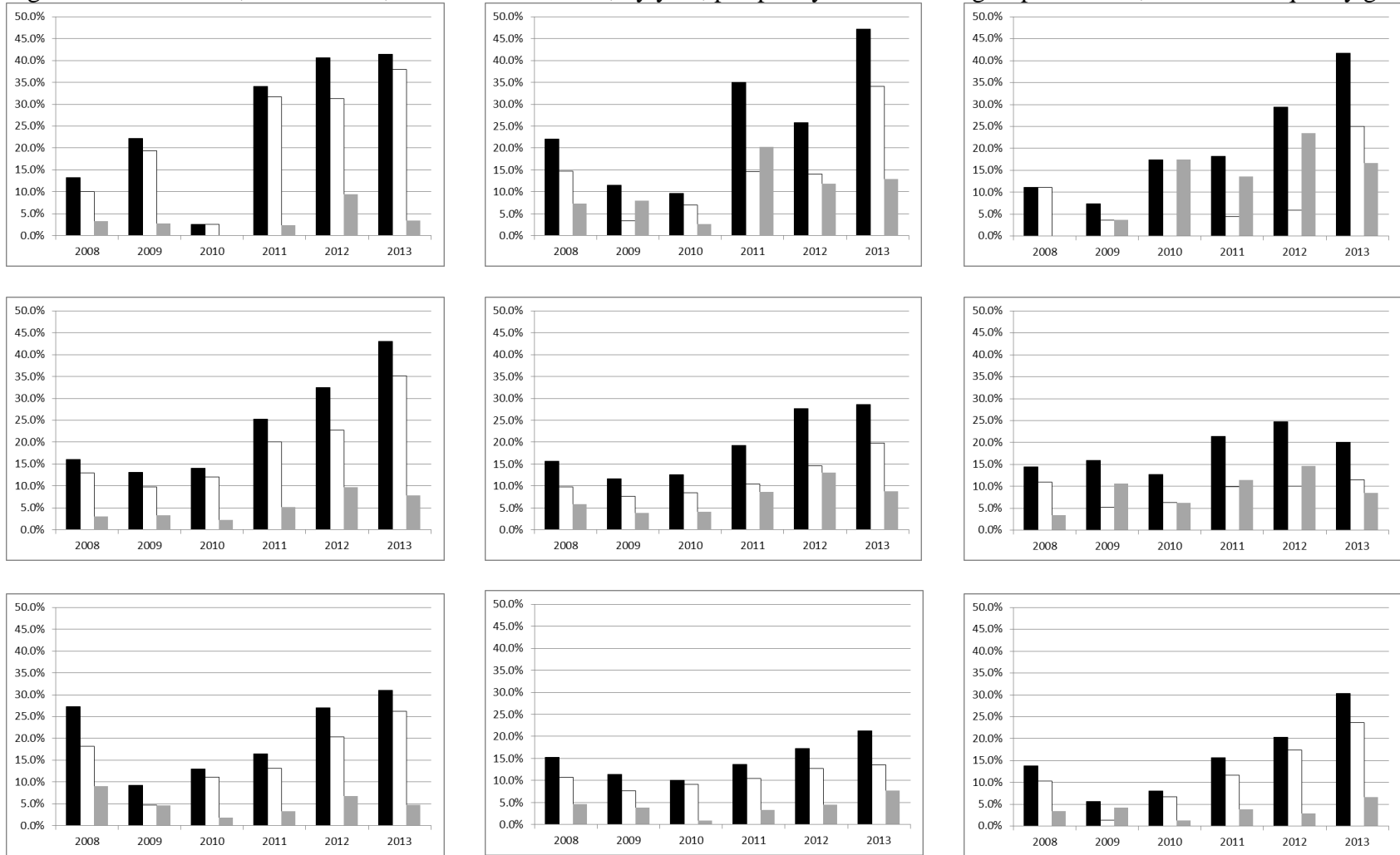
Notes: Black bars: school exits; Clear bars: district exits; Gray bars: school transfers. School exits are the sum of district exits and school transfers. From left to right, the graphs show turnovers for bottom-quintile, middle-quintiles (2-3-4), and top-quintile teachers in the quality distribution.

Figure 3. School exits, district exits, and school transfers, by year and pre-policy achievement group of school.



Notes: Black bars: school exits; Clear bars: district exits; Gray bars: school transfers. School exits are the sum of district exits and school transfers. From left to right, the graphs show turnovers at bottom-quintile, middle-quintiles (2-3-4), and top-quintile schools in the pre-policy (average of reading and math) achievement distribution.

Figure 4. School exits, district exits, and school transfers, by year, pre-policy achievement group of school, and teacher-quality group.



Notes: Black bars: school exits; Clear bars: district exits; Gray bars: school transfers. School exits are the sum of district exits and school transfers. Row 1: bottom-quintile schools; Row 2: middle-quintiles schools; Row 3: top-quintile schools; Column 1: bottom-quintile teachers; Column 2: middle-quintiles teachers; Column 3: top-quintile teachers.

Figure 5. School and district exits, by teacher-quality group in the pre- and post-policy periods.

School exits:



District exits:



Notes: Black: bottom-quintile teachers; Clear: middle-quintiles teachers (quintiles 2-3-4); Gray: top-quintile teachers. The figures are derived from model-based estimates of the proportions of exiting teachers by quality-quintile group in the pre- and post-policy periods, for school and district exiters, taking the pre- and post-policy total exit rates as given.

Table 1. Summary statistics for pre-policy years 2007-08 through 2009-10.

	Schools by achievement level		
	Low	Middle	High
<i>Student characteristics</i>			
Average achievement z-scores	-0.295	-0.061	0.484
Percent free lunch	55.3%	57.6%	33.4%
Percent reduced price lunch	8.8%	11.0%	11.0%
Percent black	40.8%	20.7%	20.1%
Percent Hispanic	56.9%	75.3%	47.2%
Percent ESL	16.7%	8.1%	4.8%
Number of grade 3-8 students tested	25,125	86,628	44,560
<i>Math teacher turnover</i>			
Exited the school in t+1	13.7%	13.7%	12.1%
Exited the district in t+1	8.5%	9.0%	8.8%
Transferred to another school in t+1	5.2%	4.7%	3.3%
<i>Math teacher characteristics</i>			
Jackknifed quality measure	-0.012	0.047	0.098
Percent bottom quintile	21.5%	21.4%	14.5%
Percent top quintile	14.1%	21.2%	21.0%
Years of experience	9.9	10.7	12.0
Percent with 1 to 5 years experience	34.6%	33.5%	30.6%
Percent with master's degree	34.6%	30.5%	28.5%
Percent with doctoral degree	2.5%	1.4%	1.3%
Number of teacher-years	483	2508	970

Notes: The columns present summary statistics for analysis schools divided into three groups based on pre-policy achievement levels, averaged across reading and math: bottom quintile, middle three quintiles, and top quintile. The bottom-quintile sample is smaller because treated schools in Fryer's 2014 study are omitted and also because low-achieving schools have lower enrollment on average. School exits are the sum of district exits and school transfers. As described in the text, our analytic dataset excludes first-year teachers and correspondingly these teachers are also excluded from the teacher summary statistics.

Table 2. Test for bias in jackknifed teacher quality measures.

	$\hat{\gamma}_1$	P-value ($H_0: \gamma_1=1$)	Number of school- grade-year cells
	(1)	(2)	(3)
<i>Backward looking</i>			
Grades 4-8, math	0.833 (0.106)	0.12	2612
Grades 4-8, reading	0.946 (0.163)	0.74	2630
<i>Backward and forward looking</i>			
Grades 4-8, math	0.999 (0.077)	0.99	3413
Grades 4-8, reading	0.974 (0.131)	0.85	3423

Notes: Coefficients and standard errors as estimated by equation (2) in the main text are reported in column (1). Column (2) reports p-values from tests of the null hypothesis of forecast-unbiasedness, and column (3) reports the number of school-by-grade-by-year cells used in the regressions. The backward-looking measures include only teacher scores from year $t-2$ and earlier. The backward and forward-looking measures also include scores from year $t+1$ and later.

Table 3. Impacts of the new evaluation system on turnover, by linear math teacher quality.

	Dependent variable is an indicator for:					
	School exit		District exit		School transfer	
	(1a)	(1b)	(2a)	(2b)	(3a)	(3b)
Intercept	0.125 (0.006)**	0.148 (0.011)**	0.085 (0.004)**	0.105 (0.009)**	0.040 (0.004)**	0.043 (0.007)**
Intercept*POST	0.137 (0.012)**		0.083 (0.008)**		0.054 (0.008)**	
Intercept*2009		-0.031 (0.015)**		-0.035 (0.012)**		0.003 (0.011)
Intercept*2010		-0.035 (0.015)**		-0.026 (0.012)**		-0.009 (0.009)
Intercept*2011		0.062 (0.019)**		0.025 (0.014)*		0.037 (0.013)**
Intercept*2012		0.119 (0.018)**		0.050 (0.013)**		0.069 (0.013)**
Intercept*2013		0.172 (0.019)**		0.123 (0.017)**		0.049 (0.012)**
Teacher quality	-0.008 (0.015)	-0.025 (0.032)	-0.034 (0.012)**	-0.029 (0.027)	0.026 (0.009)**	0.004 (0.017)
Teacher quality*POST	-0.061 (0.021)**		-0.063 (0.019)**		0.002 (0.016)	
Teacher quality*2009		0.024 (0.036)		-0.009 (0.030)		0.033 (0.024)
Teacher quality*2010		0.024 (0.037)		-0.002 (0.031)		0.027 (0.023)
Teacher quality*2011		-0.001 (0.039)		-0.042 (0.034)		0.040 (0.028)
Teacher quality*2012		-0.020 (0.044)		-0.047 (0.038)		0.027 (0.032)
Teacher quality*2013		-0.074 (0.043)*		-0.090 (0.038)**		0.016 (0.022)
Teacher characteristics	X	X	X	X	X	X
School fixed effects	X	X	X	X	X	X
R-squared	0.101	0.108	0.081	0.089	0.078	0.080
N (Teacher-year)	7800	7800	7800	7800	7800	7800

Notes: ** Denotes statistical significance at the 5 percent level; * Denotes statistical significance at the 10 percent level. Standard errors clustered by school are reported in parentheses. Observations for teachers during the 2011, 2012, and 2013 school years are coded as “POST” in columns 1a, 2a, and 3a. In these columns, the parameters for the variables interacted with POST are estimated relative to the pre-period years. In columns 1b, 2b, and 3b, the year-specific parameters are estimated relative to 2008, which is the first year of our data panel. All variables in the regressions other than the post indicator (or year indicators) are mean-centered so the intercept can be interpreted as the exit rate at the mean values of all covariates. The coefficients for all variables other than the teacher quality measures and the intercept, both interacted with time, are excluded for brevity.

Table 4. Impacts of the new evaluation system on turnover, by math teacher quality quintile.

	Dependent variable is an indicator for:					
	School exit		District exit		School transfer	
	(1a)	(1b)	(2a)	(2b)	(3a)	(3b)
Bottom quintile	0.012 (0.015)	0.012 0.030	0.027 (0.013)**	0.033 (0.024)	-0.015 (0.008)*	-0.021 (0.017)
Top quintile	0.006 (0.015)	-0.012 (0.025)	-0.009 (0.011)	0.010 (0.023)	0.015 (0.010)	-0.023 (0.015)
Bottom quintile*POST	0.076 (0.023)**		0.089 (0.022)**		-0.013 (0.013)	
Top quintile*POST	-0.007 (0.023)		0.003 (0.020)		-0.010 (0.016)	
Bottom quintile*2009		0.000 (0.038)		-0.010 (0.032)		0.010 (0.022)
Bottom quintile*2010		0.000 (0.037)		-0.007 (0.032)		0.007 (0.020)
Bottom quintile*2011		0.050 (0.038)		0.068 (0.034)**		-0.018 (0.022)
Bottom quintile*2012		0.074 (0.045)		0.070 (0.039)*		0.004 (0.028)
Bottom quintile*2013		0.109 (0.051)**		0.114 (0.047)**		-0.005 (0.025)
Top quintile*2009		0.032 (0.036)		-0.030 (0.027)		0.062 (0.026)**
Top quintile*2010		0.023 (0.033)		-0.026 (0.028)		0.049 (0.022)**
Top quintile*2011		0.023 (0.036)		-0.006 (0.032)		0.029 (0.025)
Top quintile*2012		0.028 (0.036)		-0.010 (0.033)		0.038 (0.027)
Top quintile*2013		-0.014 (0.045)		-0.032 (0.041)		0.018 (0.027)
Teacher characteristics	X	X	X	X	X	X
School fixed effects	X	X	X	X	X	X
R-squared	0.102	0.110	0.083	0.092	0.078	0.081
N (Teacher-year)	7800	7800	7800	7800	7800	7800

Notes: The specifications are the same as in Table 3, other than that indicators for the top and bottom quintiles replace the continuous quality variable. The omitted group includes teachers in quality quintiles 2, 3, and 4. See notes to Table 3.

Table 5. Tests for robustness of impacts of the new evaluation system on turnover, by linear math teacher quality.

	1-year exit definition 2008-2012 cohorts		2-year exit definition 2008-2012 cohorts		No principal change 1-year exit definition 2008-2013 cohorts		
	School exit (1a)	District exit (2a)	School exit (1b)	District exit (2b)	School exit (3)	District exit (4)	School transfer (5)
Intercept	0.128 (0.005)**	0.086 (0.003)**	0.124 (0.005)**	0.079 (0.003)**	0.104 (0.006)**	0.077 (0.005)**	0.027 (0.005)**
Intercept*POST	0.113 (0.013)**	0.058 (0.009)**	0.112 (0.013)**	0.051 (0.008)**	0.102 (0.013)**	0.064 (0.010)**	0.038 (0.010)**
Teacher quality	-0.008 (0.015)	-0.031 (0.012)**	-0.011 (0.015)	-0.031 (0.012)**	-0.004 (0.021)	-0.033 (0.018)*	0.029 (0.011)**
Teacher quality* POST	-0.037 (0.024)	-0.046 (0.020)**	-0.034 (0.024)	-0.041 (0.019)**	-0.069 (0.028)**	-0.048 (0.023)**	-0.021 (0.021)
Teacher characteristics	X	X	X	X	X	X	X
School fixed effects	X	X	X	X	X	X	X
R-squared	0.097	0.078	0.098	0.077	0.085	0.073	0.067
N (Teacher-year)	6656	6656	6656	6656	3054	3054	3054

Notes: The estimates in this table are comparable to estimates in Table 3 and the notes to Table 3 apply. In the left panel, we examine teacher cohorts in 2008-12 only, for whom we can define exits looking forward both 1 and 2 years in the data, to examine the sensitivity of our findings to the exit definition holding all else equal. In the right panel, we return to using our primary single-year exit definition and 2008-13 cohorts, but restrict the sample to include only schools in which there was not a principal change over the course of the data panel.

Table 6. Impacts of the new evaluation system on turnover by teacher experience and linear math teacher quality.

	School exit			District exit			School transfer		
	Exp ≤ 5 (1a)	5 < Exp ≤ 20 (1b)	Exp > 20 (1c)	Exp ≤ 5 (2a)	5 < Exp ≤ 20 (2b)	Exp > 20 (2c)	Exp ≤ 5 (3a)	5 < Exp ≤ 20 (3b)	Exp > 20 (3c)
Intercept	0.187 (0.009)**	0.102 (0.007)**	0.084 (0.013)**	0.133 (0.008)**	0.062 (0.005)**	0.074 (0.012)**	0.054 (0.007)**	0.040 (0.005)**	0.010 (0.006)*
Intercept*POST	0.136 (0.021)**	0.132 (0.013)**	0.158 (0.027)**	0.081 (0.017)**	0.072 (0.010)**	0.115 (0.025)**	0.054 (0.015)**	0.060 (0.010)**	0.043 (0.012)**
Teacher quality	-0.008 (0.030)	-0.012 (0.020)	0.045 (0.034)	-0.039 (0.025)	-0.043 (0.014)**	0.042 (0.034)	0.031 (0.019)*	0.031 (0.014)**	0.004 (0.017)
Teacher quality*POST	-0.077 (0.050)	-0.054 (0.029)*	-0.101 (0.056)*	-0.065 (0.042)	-0.054 (0.023)**	-0.109 (0.055)**	-0.012 (0.032)	0.000 (0.023)	0.008 (0.023)
Teacher characteristics	X	X	X	X	X	X	X	X	X
School fixed effects	X	X	X	X	X	X	X	X	X
R-squared	0.153	0.118	0.246	0.138	0.093	0.208	0.116	0.110	0.279
N (Teacher-year)	2409	4174	1217	2409	4174	1217	2409	4174	1217

Notes: The estimates in this table are comparable to estimates in Table 3 and the notes to Table 3 apply. Each column reports results from a separate regression estimated for teachers by experience group, where teachers are divided into three groups: ≤ 5 years, 6-20 years, and more than 20 years experience.

Table 7. Impacts of the new evaluation system on turnover, by linear math teacher quality and using current-year EVAAS® scores in place of jackknifed measures.

	School exit (1)	District exit (2)	School transfer (3)
Intercept	0.125 (0.006)**	0.085 (0.004)**	0.040 (0.004)**
Intercept*POST	0.136 (0.011)**	0.082 (0.008)**	0.054 (0.008)**
Current-year EVAAS	-0.015 (0.006)**	-0.015 (0.005)**	0.000 (0.004)
Current-year EVAAS*POST	-0.021 (0.010)**	-0.023 (0.008)**	0.002 (0.006)
Teacher characteristics	X	X	X
School fixed effects	X	X	X
R-squared	0.103	0.079	0.077
N (Teacher-year)	7800	7800	7800

Notes: The estimates in this table are comparable to estimates in Table 3 and the notes to Table 3 apply. The specification is the same as in Table 3 but replaces the jackknifed quality measure with the current-year EVAAS® score.

Table 8. Heterogeneous impacts of the new evaluation system on turnover by school type and linear math teacher quality.

	School exit (1)	District exit (2)	School transfer (3)
Intercept	0.126 (0.005)**	0.085 (0.004)**	0.041 (0.004)**
Quality	-0.006 (0.018)	-0.035 (0.014)**	0.029 (0.011)**
Intercept*POST	0.138 (0.011)**	0.083 (0.008)**	0.054 (0.007)**
Quality*POST	-0.081 (0.026)**	-0.078 (0.022)**	-0.003 (0.021)
Bottom quintile school *POST	0.094 (0.035)**	0.051 (0.026)**	0.043 (0.025)*
Top quintile school*POST	-0.070 (0.023)**	-0.020 (0.018)	-0.050 (0.014)**
Bottom quintile school*Teacher quality	0.003 (0.046)	-0.014 (0.033)	0.017 (0.031)
Top quintile school*Teacher quality	-0.025 (0.037)	0.010 (0.029)	-0.035 (0.020)*
Bottom quintile school*quality* POST	-0.029 (0.056)	-0.076 (0.066)	0.047 (0.057)
Top quintile school*quality* POST	0.127 (0.051)**	0.094 (0.044)**	0.034 (0.033)
Teacher characteristics	X	X	X
School fixed effects	X	X	X
R-squared	0.105	0.084	0.082
N (Teacher year)	7800	7800	7800

Notes: ** Denotes statistical significance at the 5 percent level; * Denotes statistical significance at the 10 percent level. Standard errors clustered by school are reported in parentheses. The omitted school type is from the middle quintiles (2-3-4) of the achievement distribution. Observations for teachers during the 2011, 2012, and 2013 school years are coded as "POST."

Table 9. Estimated effects of turnover on student achievement.

Dependent variable: Difference in average test scores across cohorts within a school-grade	
Δ Turnover	-0.088 (0.025)**
Share bottom-quintile exit	0.172 (0.055)**
Share middle-quintiles exit	0.066 (0.035)*
Share top-quintile exit	-0.169 (0.061)**
Share unknown-quality exit	0.137 (0.056)**
School-grade characteristics	X
School fixed effects	X
R-squared	0.093
N (School-grade-year)	2824

Notes: ** Denotes statistical significance at the 5 percent level; * Denotes statistical significance at the 10 percent level. Standard errors clustered by school are reported in parentheses. The turnover shares are scaled by teachers' instructional percentages in the given subject prior to exit. The quality groupings, inclusive of the unknown quality group (i.e., teachers without jackknifed quality measures), are exhaustive.

Appendix A. Supplementary tables

Appendix Table A.1 shows results comparable to our main results in Table 3 but restricted to data from teaching cohorts between 2008 and 2012. For these cohorts, we can estimate models of exit where (a) moves to non-teaching positions are treated as exits and (b) moves to non-teaching positions are not treated as exits. Because of the data limitation described in the text, for the 2013 cohort we must code moves to non-teaching positions as exits (they are unobserved). For consistency, we code moves to non-teaching positions as exits throughout our analysis.

Appendix Table A.1 shows that this data limitation has no bearing on our findings, as results using both coding schemes are very similar for the 2008-2012 cohorts, for whom we can analyze the data both ways. This can be seen by comparing the a and b columns for each type of turnover below. Note that the overall quality coefficients for the post-policy period are lower than in Table 3 because the policy impacts were highest in 2013, which is excluded from these models.

Appendix Table A.1. Turnover models with linear math teacher quality. Standard versus alternative exit definitions for teachers in 2008-2012.

	Dependent variable is an indicator for:					
	School exit		District exit		School transfer	
	(1a)	(1b)	(2a)	(2b)	(3a)	(3b)
Intercept	0.125 (0.005)**	0.119 (0.005)**	0.085 (0.004)**	0.071 (0.003)**	0.040 (0.004)**	0.047 (0.004)**
Intercept*POST	0.113 (0.013)**	0.110 (0.013)**	0.058 (0.009)**	0.050 (0.008)**	0.055 (0.009)**	0.063 (0.010)**
Teacher quality	-0.008 (0.015)	-0.005 (0.015)	-0.031 (0.012)**	-0.032 (0.011)**	0.024 (0.009)**	0.025 (0.010)**
Teacher quality*POST	-0.037 (0.024)	-0.034 (0.024)	-0.046 (0.020)**	-0.047 (0.019)**	0.010 (0.018)	0.011 (0.018)
Alternative exit definition		X		X		X
Teacher characteristics	X	X	X	X	X	X
School fixed effects	X	X	X	X	X	X
R-Squared	0.097	0.099	0.078	0.084	0.089	0.088
N (Teacher-year)	6656	6656	6656	6656	6656	6656

Notes: Standard errors clustered by school are reported in parentheses. Observations for teachers during the 2011 and 2012 school years are coded as "POST". The parameters for the variables interacted with POST are estimated relative to the pre-period years. All variables in the regressions other than the post indicator (or year indicators) are mean-centered so the intercept can be interpreted as the exit rate at the mean values of all covariates. The coefficients for all variables other than the teacher quality measures and the intercept, both interacted with time, are excluded for brevity.

Appendix Table A.2 replicates our main findings from Table 3 but using teacher quality measures based on student test-score growth in reading instead of math. The results are qualitatively similar to what we show for math. Note that there is substantial overlap in the reading and math teacher samples (that is, there are many teachers who are responsible for student instruction in math and reading – e.g., self-contained elementary teachers).

Appendix Table A.2. Impacts of the new evaluation system on turnover, by linear reading teacher quality.

	Dependent variable is an indicator for:					
	School exit		District exit		School transfer	
	(1a)	(1b)	(2a)	(2b)	(3a)	(3b)
Intercept	0.124 (0.005)**	0.146 (0.010)**	0.087 (0.004)**	0.108 (0.009)**	0.040 (0.004)**	0.037 (0.007)**
Intercept*POST	0.127 (0.011)**		0.079 (0.008)**		0.048 (0.007)**	
Intercept*2009		-0.015 (0.015)		-0.029 (0.012)**		0.014 (0.010)
Intercept*2010		-0.049 (0.014)**		-0.034 (0.012)**		-0.015 (0.008)*
Intercept*2011		0.051 (0.018)**		0.028 (0.013)**		0.024 (0.012)*
Intercept*2012		0.106 (0.018)**		0.038 (0.014)**		0.068 (0.013)**
Intercept*2013		0.176 (0.020)**		0.119 (0.017)**		0.057 (0.011)**
Teacher quality	0.013 (0.018)	0.039 (0.042)	0.001 (0.015)	0.042 (0.032)	0.012 (0.011)	-0.003 (0.023)
Teacher quality*POST	-0.080 (0.030)**		-0.109 (0.027)**		0.029 (0.018)	
Teacher quality*2009		-0.029 (0.052)		-0.059 (0.037)		0.030 (0.033)
Teacher quality*2010		-0.027 (0.048)		-0.043 (0.039)		0.015 (0.028)
Teacher quality*2011		-0.075 (0.055)		-0.115 (0.044)**		0.040 (0.027)
Teacher quality*2012		-0.059 (0.063)		-0.119 (0.050)**		0.060 (0.045)
Teacher quality*2013		-0.163 (0.063)**		-0.223 (0.053)**		0.060 (0.036)*
Teacher characteristics	X	X	X	X	X	X
School fixed effects	X	X	X	X	X	X
R-squared	0.096	0.106	0.076	0.088	0.080	0.084
N (Teacher-year)	7863	7863	7863	7863	7863	7863

Notes: The estimates in this table are comparable to estimates in Table 3 and the notes to Table 3 apply.

Appendix Table A.3 replicates our main findings from Table 4 but using teacher quality measures based on student test-score growth in reading instead of math. The results are qualitatively similar to what we show for math, although in the reading models there is some evidence that top-quintile teacher exit rates declined in the post-policy period. Note that there is substantial overlap in the reading and math teacher samples (that is, there are many teachers who are responsible for student instruction in math and reading – e.g., self-contained elementary teachers).

Appendix Table A.3. Impacts of the new evaluation system on turnover, by reading teacher quality quintile.

	School exit		District exit		School transfer	
	(1a)	(1b)	(2a)	(2b)	(3a)	(3b)
Bottom quintile	-0.021 (0.015)	-0.043 (0.025)*	-0.018 (0.014)	-0.039 (0.021)*	-0.003 (0.008)	-0.004 (0.015)
Top quintile	0.014 (0.015)	-0.002 (0.031)	-0.005 (0.011)	-0.003 (0.024)	0.020 (0.008)**	0.001 (0.014)
Bottom quintile*POST	0.054 (0.026)**		0.073 (0.024)**		-0.019 (0.015)	
Top quintile*POST	-0.039 (0.024)		-0.046 (0.019)**		0.008 (0.015)	
Bottom quintile*2009		0.043 (0.037)		0.042 (0.030)		0.001 (0.022)
Bottom quintile*2010		0.023 (0.030)		0.021 (0.027)		0.002 (0.015)
Bottom quintile*2011		0.060 (0.040)		0.075 (0.037)**		-0.015 (0.021)
Bottom quintile*2012		0.072 (0.040)*		0.108 (0.036)**		-0.036 (0.024)
Bottom quintile*2013		0.099 (0.045)**		0.100 (0.041)**		-0.001 (0.028)
Top quintile*2009		0.045 (0.044)		0.014 (0.031)		0.031 (0.023)
Top quintile*2010		0.006 (0.034)		-0.019 (0.029)		0.025 (0.020)
Top quintile*2011		-0.018 (0.041)		-0.036 (0.032)		0.018 (0.023)
Top quintile*2012		0.001 (0.044)		-0.020 (0.035)		0.021 (0.027)
Top quintile*2013		-0.052 (0.049)		-0.098 (0.037)**		0.046 (0.028)*
Teacher characteristics	X	X	X	X	X	X
School fixed effects	X	X	X	X	X	X
R-squared	0.096	0.106	0.080	0.089	0.081	0.085
N (Teacher-year)	7863	7863	7863	7863	7863	7863

Notes: The estimates in this table are comparable to estimates in Table 4 and the notes to Table 4 apply.

Appendix Table A.4 replicates our main findings from Table 3 for math but adds the schools where Fryer (2014) intervened back into the sample. The results are very similar to what we report in Table 3, which is expected because the Fryer schools make up a small fraction of district schools.

Appendix Table A.4. Impacts of the new evaluation system on turnover, by linear math teacher quality, including Fryer schools.

	Dependent variable is an indicator for:					
	School exit		District exit		School transfer	
	(1a)	(1b)	(2a)	(2b)	(3a)	(3b)
Intercept	0.127 (0.006)**	0.144 (0.011)**	0.085 (0.004)**	0.102 (0.009)**	0.043 (0.004)**	0.042 (0.007)**
Intercept*POST	0.147 (0.011)**		0.092 (0.008)**		0.055 (0.008)**	
Intercept*2009		-0.029 (0.014)**		-0.033 (0.011)**		0.004 (0.010)
Intercept*2010		-0.021 (0.015)		-0.019 (0.012)		-0.002 (0.010)
Intercept*2011		0.076 (0.019)**		0.034 (0.013)**		0.042 (0.013)**
Intercept*2012		0.139 (0.019)**		0.067 (0.014)**		0.072 (0.012)**
Intercept*2013		0.186 (0.019)**		0.132 (0.017)**		0.054 (0.012)**
Teacher quality	-0.008 (0.015)	-0.017 (0.032)	-0.031 (0.011)**	-0.021 (0.027)	0.023 (0.009)**	0.004 (0.017)
Teacher quality*POST	-0.056 (0.021)**		-0.070 (0.018)**		0.014 (0.016)	
Teacher quality*2009		0.013 (0.035)		-0.016 (0.029)		0.029 (0.023)
Teacher quality*2010		0.011 (0.041)		-0.009 (0.032)		0.020 (0.023)
Teacher quality*2011		-0.024 (0.039)		-0.061 (0.033)*		0.037 (0.027)
Teacher quality*2012		-0.020 (0.043)		-0.057 (0.036)		0.037 (0.031)
Teacher quality*2013		-0.069 (0.042)		-0.101 (0.037)**		0.032 (0.023)
Teacher characteristics	X	X	X	X	X	X
School fixed effects	X	X	X	X	X	X
R-squared	0.108	0.114	0.086	0.094	0.082	0.083
N (Teacher-year)	8335	8335	8335	8335	8335	8335

Notes: The estimates in this table are comparable to estimates in Table 3 and the notes to Table 3 apply.