

UC San Diego

UC San Diego Previously Published Works

Title

Instability of a planar fluid interface under a tangential electric field in a stagnation point flow

Permalink

<https://escholarship.org/uc/item/4g3358gm>

Authors

Firouznia, Mohammadhossein
Miksis, Michael J
Vlahovska, Petia M
et al.

Publication Date

2022-01-25

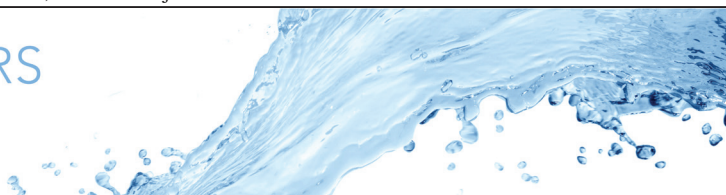
DOI

10.1017/jfm.2021.967

Copyright Information

This work is made available under the terms of a Creative Commons Attribution License, available at <https://creativecommons.org/licenses/by/4.0/>

Peer reviewed



Instability of a planar fluid interface under a tangential electric field in a stagnation point flow

Mohammadhossein Firouznia¹, Michael J. Miksis², Petia M. Vlahovska² and David Saintillan^{1,†}

¹Department of Mechanical and Aerospace Engineering, University of California San Diego, 9500 Gilman Drive, La Jolla, CA 92093, USA

²Engineering Sciences and Applied Mathematics, Northwestern University, 2145 Sheridan Road, Evanston, IL 60208, USA

(Received 26 April 2021; revised 19 August 2021; accepted 27 October 2021)

The interface between two immiscible fluids can become unstable under the effect of an imposed tangential electric field along with a stagnation point flow. This canonical situation, which arises in a wide range of electrohydrodynamic systems including at the equator of electrified droplets, can result in unstable interface deflections where the perturbed interface gets drawn along the extensional axis of the flow while experiencing strong charge build-up. Here, we present analytical and numerical analyses of the stability of a planar interface separating two immiscible fluid layers subject to a tangential electric field and a stagnation point flow. The interfacial charge dynamics is captured by a conservation equation accounting for Ohmic conduction, advection by the flow and finite charge relaxation. Using this model, we perform a local linear stability analysis in the vicinity of the stagnation point to study the behaviour of the system in terms of the relevant dimensionless groups of the problem. The local theory is complemented with a numerical normal-mode linear stability analysis based on the full system of equations and boundary conditions using the boundary element method. Our analysis demonstrates the subtle interplay of charge convection and conduction in the dynamics of the system, which oppose one another in the dominant unstable eigenmode. Finally, numerical simulations of the full nonlinear problem demonstrate how the coupling of flow and interfacial charge dynamics can give rise to nonlinear phenomena such as tip formation and the growth of charge density shocks.

Key words: electrohydrodynamic effects

† Email address for correspondence: dstn@ucsd.edu

1. Introduction

A century ago, Zeleny (1917) photographed instabilities of electrified interfaces, sparking interest into understanding the phenomenon. The mechanisms of interface destabilization by electric fields have been studied in the pioneering works of Taylor (1964), Taylor & McEwan (1965) and Melcher and coworkers (Melcher & Schwarz 1968; Melcher & Smith 1969), followed by an extensive body of research aimed at gaining more detailed fundamental understanding and at exploiting electrohydrodynamic (EHD) instabilities in novel applications (Melcher & Taylor 1969; Saville 1997; Griffing *et al.* 2006; Barrero & Loscertales 2007; Fernández de La Mora 2007; Wu & Russel 2009; Basaran, Gao & Bhat 2013; Ganan-Calvo *et al.* 2018; Papageorgiou 2019; Vlahovska 2019).

Interfaces polarize in applied electric fields. Free charges brought by conduction accumulate at the boundary between phases and the electric field acting on this induced charge creates shear stresses that drag the fluids into motion (Melcher & Taylor 1969). In the case of a drop in a uniform electric field, the classic small-deformation analysis by Taylor (1966) showed that the resulting EHD flow consists of two toroidal vortices inside and a stresslet-quadrupole flow outside the drop. Depending on the electric properties of the fluids, the surface flow is directed either to the poles or to the equator. The latter case is shown in figure 1(a). In strong fields, however, this flow undergoes a plethora of instabilities that may result in drop breakup (Taylor 1964; Torza, Cox & Mason 1971; Sherwood 1988; Lac & Homsy 2007; Karyappa, Deshmukh & Thaokar 2014). Droplet disintegration can proceed in various patterns depending on fluid properties. In the case of the pole-convergent flow, the drop can develop conical tips that emit jets, which subsequently break up into droplets (Collins *et al.* 2008, 2013; Mohamed *et al.* 2016; Sengupta, Walker & Khair 2017). In the case of the equator-converging flow, the drop either dimples at the poles and breaks into a torus, or deforms into a pancake-like lenticular shape with a sharp edge emitting rings encircling the drop (Brosseau & Vlahovska 2017; Wagoner *et al.* 2020).

While EHD streaming from Taylor cones has been extensively studied (Collins *et al.* 2008, 2013; Herrada *et al.* 2012; Ganan-Calvo *et al.* 2016), the mechanisms underlying the equatorial streaming remain an open question. Noting the similarity between the EHD tip streaming and the tip streaming in flow focusing (Barrero & Loscertales 2007; Ganan-Calvo & Montanero 2009; Anna 2016), Brosseau & Vlahovska (2017) speculated, in the original paper that reported the phenomenon, that the EHD equatorial streaming arises from an interfacial instability due to a convergent flow (Pozrikidis & Blyth 2004; Blyth & Pozrikidis 2005; Tseng & Prosperetti 2015). Near a stagnation point, a perturbation of the interface may get drawn by the flow and grow into a fluid filament if viscous stresses overcome interfacial tension. Unlike flow focusing, however, EHD streaming involves both flow and electric field. In EHD tip streaming, the electric field is initially normal to the interface at the stagnation point, while in EHD equatorial streaming, the applied field is parallel to the interface at the stagnation line.

In this work, we analyse the effect of an electric field on the convergent flow instability in a configuration mimicking the EHD equatorial streaming as depicted in figure 1(b). We develop a two-dimensional model to study the dynamics of a system of two superimposed layers of fluids subject to a tangential electric field and a stagnation point flow. The convergent flow and the electric field are assumed to be independently applied, unlike the equatorial EHD instability, where the flow is generated by the electric field. Despite this simplification, the analysis provides valuable insights into mechanisms responsible for the EHD equatorial streaming such as the evolution of the convergent line instability and the emergence of charge shocks. We present the governing equations in § 2 and

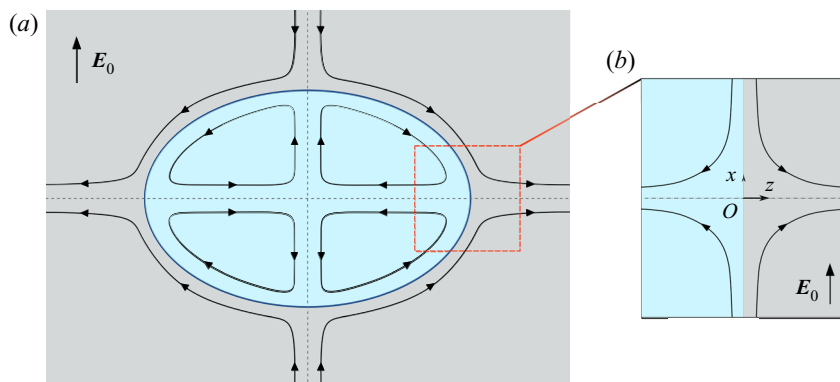


Figure 1. An oblate drop under a uniform electric field. (a) The quadrupolar EHD flow from the poles to the equator. (b) Convergent streamlines and tangential electric field in the vicinity of the stagnation line.

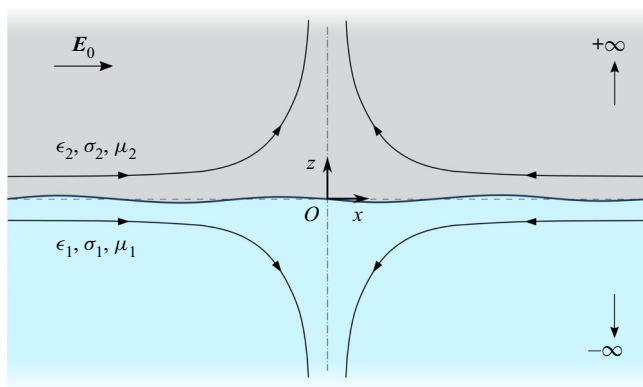


Figure 2. Problem definition. Two immiscible fluid layers are subject to a tangential electric field E_0 and to a planar extensional flow $u^\infty(x)$, with a stagnation point located at the origin O on the interface.

their non-dimensionalization in § 3. We develop a local linear stability theory in § 4. To supplement our theory, we employ the boundary element method, outlined in § 5, to perform numerical simulations as well as a numerical linear stability analysis. We compare the results from the local theory, numerical linear stability analysis and transient simulations in § 6. Finally, we conclude and discuss potential extensions of this work in § 7.

2. Problem definition and governing equations

We study EHD instabilities that arise at the interface S between two immiscible fluids under the combined effects of a tangential electric field E_0 and of an imposed stagnation point flow $u^\infty(x)$, to be specified more precisely later. The two layers are labelled 1 and 2 as depicted in figure 2, with fluid 1 occupying the lower half-space. The applied electric field is uniform along the x direction, and the stagnation point is located on the interface at the origin O of the coordinate system. At equilibrium, the interface is uncharged and flat and coincides with the plane $z = 0$, and we consider two-dimensional dynamics in the (x, z) plane. The shape of the deformed interface is parametrized as $z = \xi(x, t)$, and has unit normal \mathbf{n} pointing from fluid 1 into fluid 2.

Both fluids are leaky dielectrics with electric conductivity σ , electric permittivity ϵ and dynamic viscosity μ . While we formulate the governing equations to allow for distinct viscosities, all the results presented in §6 are for equiviscous fluids. Under the Taylor–Melcher leaky dielectric model (Melcher & Taylor 1969), any net charge in the system occurs at the location of the interface while the bulk of the fluids remains electroneutral. The Taylor–Melcher leaky dielectric model can be formally derived from more detailed electrokinetic models based on the Poisson–Nernst–Planck equations in the limit of strong electric fields and under the assumption of thin Debye layers (Schnitzer & Yariv 2015; Mori & Young 2018). As an example, these assumptions are valid for millimetre-sized drops of leaky dielectric liquids subject to electric fields of magnitude $E_0 \sim 10^3 \text{ V cm}^{-1}$ according to Saville (1997). Under these assumptions, the electric potential is harmonic in both fluids:

$$\nabla^2 \phi = 0, \quad \mathbf{x} \in V_{1,2}. \tag{2.1}$$

Far from the interface, the electric field $\mathbf{E} = -\nabla\phi$ tends to the applied uniform field:

$$\mathbf{E} \rightarrow \mathbf{E}_0 = E_0 \hat{\mathbf{e}}_x, \quad \text{as } z \rightarrow \pm\infty. \tag{2.2}$$

Across the interface, its tangential component is continuous while a jump can arise in the normal direction due to the mismatch in electrical properties:

$$\mathbf{n} \times \llbracket \mathbf{E} \rrbracket = \mathbf{0}, \quad \mathbf{x} \in S. \tag{2.3}$$

We have introduced the notation $\llbracket \mathcal{F} \rrbracket = \mathcal{F}_2 - \mathcal{F}_1$ for the jump of any variable \mathcal{F} defined on both sides of the interface. A surface charge density develops at the interface following Gauss’s law:

$$q(\mathbf{x}, t) = \mathbf{n} \cdot \llbracket \epsilon \mathbf{E} \rrbracket, \quad \mathbf{x} \in S. \tag{2.4}$$

This surface charge density satisfies a conservation equation accounting for finite charge relaxation, Ohmic conduction from the bulk and charge convection by the flow:

$$\partial_t q + \mathbf{n} \cdot \llbracket \sigma \mathbf{E} \rrbracket + \nabla_s \cdot (q\mathbf{u}) = 0, \quad \mathbf{x} \in S, \tag{2.5}$$

where $\nabla_s = (\mathbf{I} - \mathbf{nn}) \cdot \nabla$ is the surface gradient operator and \mathbf{u} is the total fluid velocity.

Neglecting the effects of inertia and gravity, the velocity field and its corresponding pressure field satisfy the Stokes equations in both fluids:

$$-\nabla p + \mu \nabla^2 \mathbf{u} = \mathbf{0}, \quad \nabla \cdot \mathbf{u} = 0, \quad \mathbf{x} \in V_{1,2}. \tag{2.6a,b}$$

The velocity vector is continuous across the interface and approaches the applied flow far from the interface:

$$\llbracket \mathbf{u} \rrbracket = \mathbf{0}, \quad \mathbf{x} \in S, \tag{2.7}$$

and

$$\mathbf{u}(\mathbf{x}) \rightarrow \mathbf{u}^\infty(\mathbf{x}), \quad \text{as } z \rightarrow \pm\infty. \tag{2.8}$$

In the absence of Marangoni effects, the jump in hydrodynamic and electric tractions across the interface is balanced by capillary forces:

$$\llbracket \mathbf{f}^H \rrbracket + \llbracket \mathbf{f}^E \rrbracket = \gamma (\nabla_s \cdot \mathbf{n}) \mathbf{n}, \quad \mathbf{x} \in S, \tag{2.9}$$

Instability of a planar fluid interface

with uniform surface tension γ . Hydrodynamic and electric tractions are expressed in terms of the Newtonian and Maxwell stress tensors, respectively:

$$\mathbf{f}^H = \mathbf{n} \cdot \mathbf{T}^H, \quad \mathbf{T}^H = -p\mathbf{I} + \mu(\nabla\mathbf{u} + \nabla\mathbf{u}^T), \quad (2.10)$$

$$\mathbf{f}^E = \mathbf{n} \cdot \mathbf{T}^E, \quad \mathbf{T}^E = \epsilon(\mathbf{E}\mathbf{E} - \frac{1}{2}E^2\mathbf{I}). \quad (2.11)$$

Finally, the interface evolves and deforms under the local velocity field as a material surface. Defining the function $g(\mathbf{x}, t) = z - \xi(x, t)$, the kinematic boundary condition reads

$$\frac{Dg}{Dt} = 0, \quad \mathbf{x} \in S, \quad (2.12)$$

leading to the condition

$$\partial_t \xi = -u\partial_x \xi + v, \quad (2.13)$$

where $\mathbf{u} = (u, v)$ are the velocity components. We also note that the surface normal is given by $\mathbf{n} = \nabla g / |\nabla g|$.

Our focus is on analysing the stability of the interface near a stagnation point, and to this end we choose the background flow $\mathbf{u}^\infty = (u^\infty, v^\infty)$ to be extensional along the z direction, compressional along the x direction and with a stagnation point at the origin. The strength of the background flow is characterized by the local strain rate at the stagnation point, which is denoted by $A = \partial_z v^\infty$, where $A > 0$. Three different types of background flows are used in this study and are illustrated in [figure 3](#). The first type, depicted in [figure 3\(a\)](#), is simply the linear flow $\mathbf{u}^\infty = (-Ax, Az)$, which is used in the development of the local linear theory of § 4. The numerical scheme of § 5, however, requires periodicity in the x direction, and for this reason we also consider two periodic flow fields. The first one is the Taylor–Green vortex (Taylor & Green 1937) shown in [figure 3\(b\)](#) and defined as

$$u^\infty = U^\infty \cos\left(ax - \frac{\pi}{2}\right) \sin\left(bz - \frac{\pi}{2}\right), \quad (2.14)$$

$$v^\infty = V^\infty \sin\left(ax - \frac{\pi}{2}\right) \cos\left(bz - \frac{\pi}{2}\right), \quad (2.15)$$

where

$$U^\infty a + V^\infty b = 0, \quad a = b = \frac{2\pi}{L_p}. \quad (2.16)$$

The local strain rate at the stagnation point is then simply given by

$$A = \partial_z v^\infty(0, 0) = V^\infty b. \quad (2.17)$$

We also consider a second background flow shown in [figure 3\(c\)](#) and induced by a periodic array of anti-parallel point forces separated by distances L_p and d along the x and z directions, respectively:

$$\mathbf{u}^\infty = \frac{1}{4\pi} [\mathbf{G}^P(x, x_0^u) \cdot \mathbf{m} - \mathbf{G}^P(x, x_0^l) \cdot \mathbf{m}], \quad (2.18)$$

where $\mathbf{m} = m\hat{\mathbf{e}}_z$ is the strength of the point forces, x_0^u and x_0^l are the locations of upper and lower point forces, respectively, and \mathbf{G}^P is the singly periodic Green's function for the

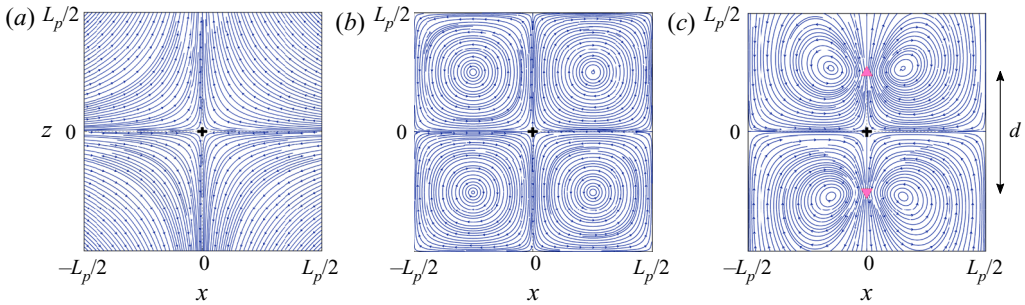


Figure 3. Streamlines of the various background flows used in this study. (a) Linear planar extensional flow, (b) periodic Taylor–Green vortex and (c) periodic array of anti-parallel point forces separated by d and L_p along the z and x directions, respectively. The origin is marked with a ‘+’, the positions of the point forces are marked with triangles and the interface is located at $z = 0$.

Stokes equations (Pozrikidis 1992). The local strain rate at the stagnation point is given by

$$A = \partial_z v^\infty(0, 0) = \frac{1}{8\pi} \left(\frac{mk_p^2 d}{\cosh(k_p d/2) - 1} \right), \quad (2.19)$$

where $k_p = 2\pi/L_p$ is the wavenumber associated with the unit cell. In obtaining (2.19), it is assumed that $x_0^u = x_0^l = 0$ and $z_0^u = -z_0^l = d/2$. Our numerical calculations produce identical linear stability results for a given local strain rate under the two periodic flow fields described by (2.15) and (2.18). In all transient nonlinear simulations, we use the periodic array of point forces as background flow.

3. Non-dimensionalization

For the system presented above, dimensional analysis yields six non-dimensional groups, three of which characterize the mismatch in physical properties between the two layers:

$$\lambda = \frac{\mu_1}{\mu_2}, \quad R = \frac{\sigma_2}{\sigma_1}, \quad Q = \frac{\epsilon_1}{\epsilon_2}. \quad (3.1a-c)$$

The other three parameters can be obtained as ratios of characteristic time scales in the problem. First, we note that free charges in the bulk fluids relax on a conduction time scale defined as

$$\tau_c = \frac{\epsilon}{\sigma}. \quad (3.2)$$

Note that the product $RQ = \tau_{c,1}/\tau_{c,2}$ is the ratio of the charge relaxation time scales in the two liquid phases, and characterizes their responses to conduction. For instance, $RQ > 1$ when the lower layer is less conductive. The time scale for the deformed interface to relax to its flat configuration under capillary effects can be defined as

$$\tau_\gamma = \frac{\mu_2(1 + \lambda)}{k\gamma}, \quad (3.3)$$

where k^{-1} is the characteristic length scale associated with the deformation. In our periodic simulations and analysis, we use the length scale $k_p^{-1} = L_p/2\pi$ based on the periodicity of the base flow, whereas k is the wavenumber of the plane wave in the local stability theory of § 4. The accumulation of free charges on the interface creates an electric

force that can drive the fluid into motion. The time scale for deformations under this EHD flow is inversely proportional to the magnitude of electric tractions on the interface:

$$\tau_{EHD} = \frac{\mu_2(1 + \lambda)}{\epsilon_2 E_0^2}. \quad (3.4)$$

Finally, the characteristic time scale associated with the background flow is given by the inverse of the applied strain rate at the stagnation point:

$$\tau_f = A^{-1}. \quad (3.5)$$

Taking ratios of these time scales yields the three remaining dimensionless groups, which we define as

$$Ca_E = \frac{\tau_\gamma}{\tau_{EHD}} = \frac{\epsilon_2 E_0^2}{\gamma k}, \quad Re_E = \frac{\tau_{c,2}}{\tau_{EHD}} = \frac{\epsilon_2^2 E_0^2}{\mu_2(1 + \lambda)\sigma_2}, \quad \hat{A} = \frac{\tau_{c,2}}{\tau_f} = \frac{\epsilon_2 A}{\sigma_2}. \quad (3.6a-c)$$

The electric capillary number Ca_E compares electric with capillary forces, while the electric Reynolds number Re_E characterizes the importance of charge convection versus conduction, the two mechanisms responsible for the evolution of the interfacial charge distribution. Finally, \hat{A} is the dimensionless strain rate of the applied flow.

We scale the governing equations and boundary conditions using time scale $\tau_{c,2}$, length scale k^{-1} , pressure scale $\epsilon_2 E_0^2$, velocity scale $(\tau_{EHD} k)^{-1}$ and characteristic electric potential $E_0 k^{-1}$. The dimensionless Stokes equations read

$$\nabla^2 \mathbf{u} - (1 + \lambda) \nabla p = \mathbf{0}, \quad \mathbf{x} \in V_2, \quad (3.7)$$

$$\nabla^2 \mathbf{u} - (1 + \lambda^{-1}) \nabla p = \mathbf{0}, \quad \mathbf{x} \in V_1. \quad (3.8)$$

The charge conservation equation (2.5) becomes

$$\partial_t q + \mathbf{n} \cdot [\mathbf{E}_2 - R^{-1} \mathbf{E}_1] + Re_E \nabla_s \cdot (q \mathbf{u}) = 0, \quad \mathbf{x} \in S, \quad (3.9)$$

where

$$q = \mathbf{n} \cdot [\mathbf{E}_2 - Q \mathbf{E}_1]. \quad (3.10)$$

The stress balance at the interface is written

$$\begin{aligned} & \mathbf{n} \cdot [-p_2 \mathbf{I} + (1 + \lambda)^{-1} (\nabla \mathbf{u}_2 + \nabla \mathbf{u}_2^T) + p_1 \mathbf{I} - (1 + \lambda^{-1})^{-1} (\nabla \mathbf{u}_1 + \nabla \mathbf{u}_1^T)] \\ & + \mathbf{n} \cdot [(\mathbf{E}_2 \mathbf{E}_2 - \frac{1}{2} E_2^2 \mathbf{I}) - Q(\mathbf{E}_1 \mathbf{E}_1 - \frac{1}{2} E_1^2 \mathbf{I})] = Ca_E^{-1} (\nabla_s \cdot \mathbf{n}) \mathbf{n}, \quad \mathbf{x} \in S. \end{aligned} \quad (3.11)$$

Finally, the kinematic boundary condition becomes

$$\partial_t \xi = Re_E (-u \partial_x \xi + v), \quad \text{for } \mathbf{x} \in S. \quad (3.12)$$

The remaining governing equations and boundary conditions in (2.1)–(2.3), (2.7) and (2.8) remain unchanged in their non-dimensional form, and hence are not repeated here. In the remainder of the paper, all equations and variables are presented in non-dimensional form.

4. Local linear stability theory

We first perform a linear stability analysis in the vicinity of the stagnation point, in the spirit of Tseng & Prosperetti (2015) who, following an approach previously proposed by Pozrikidis & Blyth (2004), considered a similar problem with inertia but no electric field. In the base state (subscript 0), the interface is flat and uncharged: $\xi_0(x) = 0$, $q_0(x) = 0$. The applied electric field generates a potential $\varphi_0(x, z) = -x$ and results in a pressure jump $[[p_0]] = (Q - 1)/2$ across the interface. The base flow is taken to be the planar extensional flow $\mathbf{u}_0 = \mathbf{u}^\infty = (\hat{A}/Re_E)(-x, z)$, which we represent in terms of the streamfunction $\psi_0(x, z) = -(\hat{A}/Re_E)xz$ with the convention $(u, v) = (\partial_z\psi, -\partial_x\psi)$. The base state variables are perturbed as

$$\varphi = \varphi_0 + \varepsilon\tilde{\varphi}, \quad \psi = \psi_0 + \varepsilon\tilde{\psi}, \quad p = p_0 + \varepsilon\tilde{p}, \quad q = \varepsilon\tilde{q}, \quad \xi = \varepsilon\tilde{\xi}. \quad (4.1a-e)$$

We substitute these expressions into the governing equations and boundary conditions and linearize with respect to ε . Following Tseng & Prosperetti (2015), we neglect all terms in the linearization that have non-constant coefficients, which restricts our analysis to the neighbourhood of the stagnation point at $(0, 0)$; the consequences of this approximation are discussed in § 6. The governing equations for the potential and streamfunction in the two regions are

$$\nabla^2\tilde{\varphi} = 0, \quad \nabla^4\tilde{\psi} = 0, \quad (4.2a,b)$$

with jump conditions $[[\tilde{\varphi}]] = [[\tilde{\psi}]] = [[\partial_z\tilde{\psi}]] = 0$ at the location of the linearized interface $z = 0$. The charge conservation equation and Gauss's law read

$$\partial_i\tilde{q} - \hat{A}\tilde{q} = \partial_z(\tilde{\varphi}_2 - R^{-1}\tilde{\varphi}_1) + (1 - R^{-1})\partial_x\tilde{\xi}, \quad (4.3)$$

$$\tilde{q} = \partial_z(Q\tilde{\varphi}_1 - \tilde{\varphi}_2) + (Q - 1)\partial_x\tilde{\xi}, \quad (4.4)$$

while the kinematic and dynamic boundary conditions yield

$$\partial_i\tilde{\xi} = Re_E\partial_x\tilde{\psi}_2 + \hat{A}\tilde{\xi}, \quad (4.5)$$

$$Ca_E^{-1}\partial_{xx}\tilde{\xi} = \tilde{p}_2 - \tilde{p}_1 + (Q - 1)\partial_x\tilde{\varphi}_2 - 2\left(\frac{1 - \lambda}{1 + \lambda}\right)\partial_{xz}\tilde{\psi}_2, \quad (4.6)$$

$$(1 + \lambda)\tilde{q} = (1 - \lambda)[\partial_{xx}\tilde{\psi}_2 + 4\hat{A}Re_E^{-1}\partial_x\tilde{\xi}] + \partial_{zz}(\lambda\tilde{\psi}_1 - \tilde{\psi}_2). \quad (4.7)$$

Equations (4.2a,b)–(4.7) form a system of homogeneous constant-coefficient linear partial differential equations. Recall from § 3 that in the present non-dimensionalization lengths have been scaled by k^{-1} , where k is the wavenumber of the perturbation. We therefore seek normal-mode solutions of the form $\tilde{\varphi}(x, z, t) = \hat{\varphi}(z)\exp(ix + st)$, with similar expressions for all the variables. Equation (4.2a,b), along with the decay properties as $z \rightarrow \pm\infty$, leads to

$$\hat{\varphi}_i = A_i e^{(-1)^{i-1}z}, \quad \hat{\psi}_i = (B_i + C_i z)e^{(-1)^{i-1}z} \quad \text{for } i = 1, 2. \quad (4.8a,b)$$

Applying the boundary conditions yields an algebraic system for the unknown coefficients. Setting its determinant to zero provides the dispersion relation for the growth rate s :

$$s = \hat{A} - Re_E \left[\frac{1}{2Ca_E} - \frac{(Q - 1)}{2} \left\{ \frac{R - 1 - (s - \hat{A})(Q - 1)R}{R + 1 + (s - \hat{A})(Q + 1)R} \right\} \right], \quad (4.9)$$

where the dependence on wavenumber k is implicit via the electric capillary number defined in (3.6a–c). The first term on the right-hand side of (4.9) shows that the

background flow is destabilizing when $\hat{A} > 0$, i.e. when the interface is aligned with the compressional axis (Tseng & Prosperetti 2015). The second and third terms describe the effects of capillary and electric stresses, respectively. A more detailed discussion of this dispersion relation is deferred to § 6.

5. Boundary element method and numerical stability

We complement the local linear analysis of § 4 with numerical simulations and a numerical stability analysis. We first present in § 5.1 a numerical method for the nonlinear solution of the system of governing equations (3.7)–(3.11) based on the boundary integral equations for the Laplace and Stokes equations in a periodic domain of period L_p along the x direction. These simulations will provide insight into the dynamics of the system far from its base state. The methodology is similar to that of Firouznia & Saintillan (2021), and implements adaptive grid refinement to handle large local deformations and charge gradients in the nonlinear regime of growth. Subsequently in § 5.2, we utilize the same boundary element method to perform a numerical normal-mode linear stability analysis by computing the Jacobian of the dynamical system and solving for its eigenspectrum to identify fundamental modes of instability.

5.1. Boundary element method

We formulate the electric problem using the boundary integral equation for Laplace’s equation (Sherwood 1988; Baygeants, Rivette & Stone 1998; Lac & Homsy 2007):

$$\varphi_{1,2}(\mathbf{x}_0) = -\mathbf{x}_0 \cdot \mathbf{E}_0 - \int_S \mathbf{n}(\mathbf{x}) \cdot \llbracket \nabla \varphi(\mathbf{x}) \rrbracket \mathcal{G}^P(\mathbf{x}_0; \mathbf{x}) d\mathbf{l}(\mathbf{x}), \quad \text{for } \mathbf{x}_0 \in V, S, \quad (5.1)$$

where the evaluation point \mathbf{x}_0 can be anywhere in space whereas \mathbf{x} denotes the integration point on the interface. The periodic Green’s function for Laplace’s equation, $\mathcal{G}^P(\mathbf{x}_0; \mathbf{x})$, represents the potential due to a periodic array of point sources with period L_p along the x axis (Pozrikidis 2002). Taking the gradient of (5.1) with respect to \mathbf{x}_0 and using Gauss’s law (3.10), we can derive an integral equation for the jump in the normal electric field across the interface:

$$\int_S \llbracket E^n(\mathbf{x}) \rrbracket [\mathbf{n}(\mathbf{x}_0) \cdot \nabla_0 \mathcal{G}^P] d\mathbf{l}(\mathbf{x}) - \frac{1+Q}{2(1-Q)} \llbracket E^n(\mathbf{x}_0) \rrbracket = E_0^n(\mathbf{x}_0) - \frac{q(\mathbf{x}_0)}{1-Q}, \quad \text{for } \mathbf{x}_0 \in S. \quad (5.2)$$

Given the charge distribution q , (5.2) can be used to solve for $\llbracket E^n \rrbracket$, from which we obtain E_1^n and E_2^n as

$$E_1^n = \frac{q - \llbracket E^n \rrbracket}{1-Q}, \quad E_2^n = \frac{q - Q \llbracket E^n \rrbracket}{1-Q}. \quad (5.3a,b)$$

The tangential electric field $E^t = -\nabla_s \varphi$ can then also be obtained by differentiating the electric potential in (5.1) in the direction tangential to the interface.

Similarly, the flow problem can be formulated in boundary integral form as (Rallison & Acrivos 1978; Pozrikidis 1992)

$$\begin{aligned} \mathbf{u}(\mathbf{x}_0) = & \frac{2}{1+\lambda} \mathbf{u}^\infty(\mathbf{x}_0) - \frac{1}{2\pi} \int_S \llbracket f^H(\mathbf{x}) \rrbracket \cdot \mathbf{G}^P(\mathbf{x}; \mathbf{x}_0) d\mathbf{l}(\mathbf{x}) \\ & + \frac{1-\lambda}{2\pi(1+\lambda)} \int_S \mathbf{u}(\mathbf{x}) \cdot \mathbf{T}^P(\mathbf{x}; \mathbf{x}_0) \cdot \mathbf{n}(\mathbf{x}) d\mathbf{l}(\mathbf{x}), \quad \text{for } \mathbf{x}_0 \in S, \end{aligned} \quad (5.4)$$

where the hydrodynamic traction jump $[[f^H]]$ is obtained from the dynamic boundary condition (2.9). Here, \mathbf{G}^P is the singly periodic Green's function capturing the flow due to a periodic array of point forces separated by the distance L_p along the x direction, and \mathbf{T}^P is the corresponding stress tensor (Pozrikidis 1992). Note that, in the results shown below, we choose $\lambda = 1$ and therefore the double-layer potential vanishes in (5.4). The single-layer potential exhibits a logarithmic singularity when \mathbf{x} approaches \mathbf{x}_0 , which we isolate and treat separately with a quadrature designed for singular integrands (Stroud & Secrest 1966). Gauss–Legendre quadrature with six base points is used for non-singular elements.

The numerical algorithm for transient nonlinear simulations follows Firouznia & Saintillan (2021) and Das & Saintillan (2017b) and can be summarized as follows. At $t = 0$, the periodic flat interface is discretized into N elements using N grid points with locations $\mathbf{x}_i(t)$ that move with the normal component of the interfacial velocity to satisfy the kinematic boundary condition. The interface shape is reconstructed using cubic splines based on the grid point locations, which allows for an accurate and convenient determination of geometric properties such as the normal and tangential vectors and surface curvature, and for the accurate evaluation of surface integrals. Considering the high order of accuracy of cubic spline interpolations with a reasonable grid resolution, the most challenging errors are those incurred in the numerical integration, especially in the treatment of the singular terms. The asymptotic rate of convergence of our method is found to be between 1.5 and 2. More details on error analysis are presented in § 6.1.

At every time iteration, we perform the following steps:

- (i) Given the current charge distribution $q(\mathbf{x})$ and shape of the interface, compute $[[E^n(\mathbf{x})]]$ by numerically inverting (5.2) using a GMRES solver (Saad & Schultz 1986; Frayssé *et al.* 2005). From $[[E^n(\mathbf{x})]]$, obtain E_1^n and E_2^n via (5.3a,b).
- (ii) Determine the potential φ along the interface by evaluating (5.1).
- (iii) Differentiate the surface potential numerically along the interface in order to obtain the tangential electric field $\mathbf{E}^t = -\nabla_s \varphi$.
- (iv) Knowing both components of the electric field, determine the jump in the electric traction $[[f^E]]$ and use it to obtain $[[f^H]]$ using (2.9).
- (v) Solve for the interfacial velocity using the Stokes boundary integral equation (5.4).
- (vi) Compute $\partial_t q$ via (2.5) and update the charge distribution using a second-order Runge–Kutta scheme.
- (vii) Update the position of the interface by advecting the grid with the normal component of the interfacial velocity: $\dot{\mathbf{x}}_i(t) = (\mathbf{u} \cdot \mathbf{n})\mathbf{n}$. Refine the grid locally if either the curvature of the interface, magnitude of charge gradient, or length of the element exceeds a certain threshold. Typical grids used in the simulations have $N \sim 1000$ elements.

5.2. Numerical linear stability analysis

We also perform a numerical normal-mode linear stability analysis based on the full system of equations and boundary conditions, following a method proposed by Pozrikidis (2012) for the stability of pendant drops. We analyse the stability of the base state of a flat interface with zero charge, which allows us to parametrize the interface as $z = \xi(x, t)$. The system of governing equations can be viewed as a dynamical system for the surface charge density $q(x, t)$ and interface deflection $\xi(x, t)$, which evolve according to (3.9) and (3.12),

or

$$\partial_t \begin{bmatrix} q(x, t) \\ \xi(x, t) \end{bmatrix} = \begin{bmatrix} -\mathbf{n} \cdot [\mathbf{E}_2 - R^{-1}\mathbf{E}_1] - Re_E \nabla_s \cdot (q\mathbf{u}) \\ Re_E(-u\partial_x \xi + v) \end{bmatrix} = \begin{bmatrix} \mathcal{Q}(q, \xi) \\ \mathcal{Z}(q, \xi) \end{bmatrix}, \quad (5.5)$$

where the electric field \mathbf{E} and velocity \mathbf{u} are solutions of the boundary integral equations (5.2) and (5.4). The right-hand side in (5.5) is evaluated on the interface. It can be viewed as a nonlinear functional of the two variables (q, ξ) and can be calculated numerically using the algorithm of § 5.1. The flat configuration with zero charge, given by $q(x, t) = \xi(x, t) = 0$, is an equilibrium solution.

The numerical linear stability analysis is performed in a periodic domain of period L_p . After spatial discretization of the unit period using N grid points, the dynamical system (5.5) yields a system of coupled ordinary differential equations of the form

$$\partial_t \mathbf{Y} = \mathbf{J}(\mathbf{Y}), \quad (5.6)$$

where \mathbf{Y} and \mathbf{J} are vectors of length $2N$ containing the values of the variables at the grid points:

$$\mathbf{Y} = (q^1, q^2, \dots, q^N, \xi^1, \xi^2, \dots, \xi^N) \quad (5.7)$$

and

$$\mathbf{J} = (\mathcal{Q}^1, \mathcal{Q}^2, \dots, \mathcal{Q}^N, \mathcal{Z}^1, \mathcal{Z}^2, \dots, \mathcal{Z}^N). \quad (5.8)$$

The linear stability of the equilibrium solution $\mathbf{Y} = \mathbf{0}$ is studied by perturbing the system as $\mathbf{Y}(t) = \varepsilon \hat{\mathbf{Y}} e^{st}$. At linear order in $\varepsilon \ll 1$, we obtain a linear eigenvalue problem

$$\mathcal{J} \cdot \hat{\mathbf{Y}} = s \hat{\mathbf{Y}}, \quad (5.9)$$

where

$$\mathcal{J}_{ik} = \frac{\partial J_k}{\partial Y_i}(\mathbf{Y} = \mathbf{0}) \quad (5.10)$$

is the Jacobian of the system. The components of the Jacobian are calculated numerically using a second-order central finite difference scheme:

$$\mathcal{J}_{ik} \approx \frac{J_k(+\delta Y_i) - J_k(-\delta Y_i)}{2\delta Y_i}, \quad (5.11)$$

where each variable Y_i is successively perturbed by a small amount $\pm\delta Y_i$ (corresponding to a small perturbation of charge $\pm\delta q$ for $i = 1, \dots, N$ or of shape $\pm\delta \xi$ for $i = N + 1, \dots, 2N$), and where $J_k(\pm\delta Y_i)$ at the numerator is obtained using the boundary integral method. Once \mathcal{J} is known, its eigenvalues s provide the growth rates of the perturbation, while its eigenvectors $\hat{\mathbf{Y}}$ capture the corresponding eigenmodes of charge and shape.

6. Results and discussion

We present results on the stability of the system by comparing predictions from the local linear theory (LT) of § 4 and from the numerical linear stability analysis (Num-LSA) of § 5.2. Nonlinear dynamics is also explored in transient simulations (TS) using the boundary element method of § 5.1. We discuss our results in the following order. First, we analyse the behaviour of the system subject to a tangential electric field in the absence of any background flow in § 6.1. Next, in § 6.2, we study the effect of an extensional background flow when there is no electric field. Finally, we characterize in § 6.3 the interplay between the electric field and the flow when both are applied to the system simultaneously.

6.1. Effect of tangential electric field

We first consider the case where a tangential electric field is applied to the interface in the absence of any background flow. In this case, results from the LT and Num-LSA are expected to match, as the approximations of the LT only affect terms involving the applied flow. Since the base flow is stationary and the interfacial charge is zero in the equilibrium state, the effects of charge convection only arise at quadratic order and therefore have no effect on the linear stability. The growth rate predicted by LT in this case is given by

$$s = -Re_E \left[\frac{1}{2Ca_E} - \frac{(Q - 1)}{2} \left\{ \frac{R - 1 - s(Q - 1)R}{R + 1 + s(Q + 1)R} \right\} \right]. \tag{6.1}$$

Note that the dependence on wavenumber k is through the electric capillary number, with $Ca_E^{-1} \propto k$. Equation (6.1) is consistent with the results of Melcher & Schwarz (1968) in the limit of zero inertia.

In the limit of instantaneous charge relaxation (i.e. considering only Ohmic terms in (2.5)), the growth rate further simplifies to

$$s = -Re_E \left[\frac{1}{2Ca_E} - \frac{(Q - 1)(R - 1)}{2(R + 1)} \right]. \tag{6.2}$$

The first term on the right-hand side is always negative and captures the stabilizing effect of capillary stresses. It is proportional to k , indicating that surface tension preferentially stabilizes high wavenumbers. The last term in (6.2) captures the effect of electric stresses and can be of either sign. For the system to be electrically unstable, the following condition must be met:

$$(Q - 1)(R - 1) > 0, \tag{6.3}$$

which means either $R > 1, Q > 1$ or $R < 1, Q < 1$. Setting $s = 0$ in (6.2) also provides a critical electric capillary number for instability:

$$Ca_{E,c} = \frac{R + 1}{(Q - 1)(R - 1)}. \tag{6.4}$$

The system is unstable for $Ca_E \geq Ca_{E,c}$ (long waves), and it is stable otherwise. The maximum growth rate is reached at zero wavenumber or under vanishing surface tension ($Ca_E \rightarrow \infty$) and is given by

$$s_{max} = Re_E \frac{(Q - 1)(R - 1)}{2(R + 1)}. \tag{6.5}$$

In the case of finite charge relaxation, the dispersion relation (6.1) is a quadratic equation for the growth rate s . The roots can be shown to be imaginary only when

$$(QR - 1)(Q - 1) < 0, \tag{6.6}$$

which is incompatible with the condition of (6.3) for instability, so that the growth rate is always real in electrically unstable systems.

Figure 4(a,b) shows the dominant unstable modes of deformation and charge distribution obtained via Num-LSA. It is evident that all the modes are sinusoidal as expected in the absence of flow, and the fastest-growing mode, $\hat{\xi}_1$, has the largest possible wavelength permitted by the computational domain. This is indeed expected based on LT. For comparison, we also calculate the growth rate of various eigenmodes numerically by performing short-time TS. The growth rate s obtained from LT, Num-LSA and TS

Instability of a planar fluid interface

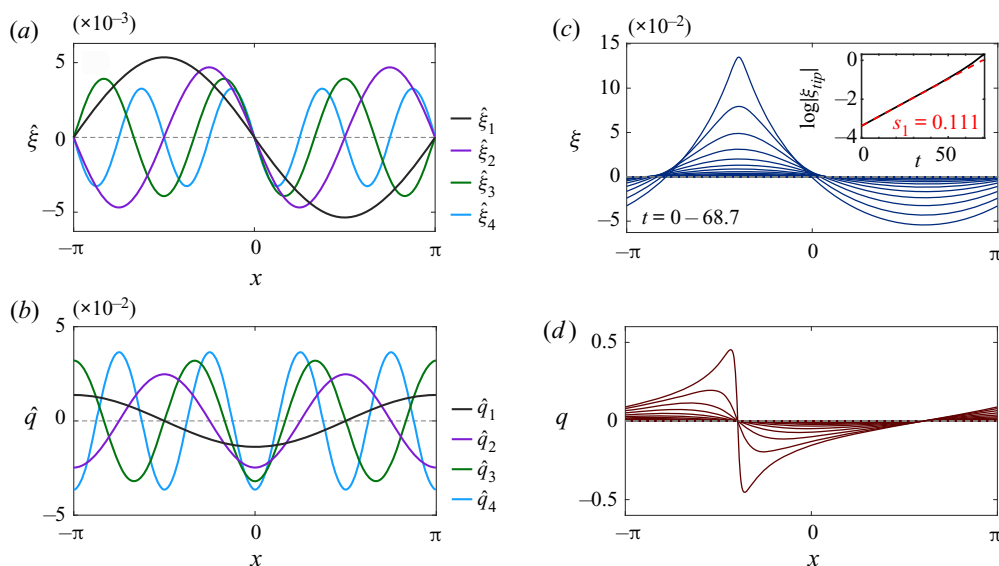


Figure 4. Effect of tangential electric field. Dominant eigenmodes of (a) deformation $\hat{\xi}$ and (b) interfacial charge \hat{q} , obtained via Num-LSA for $(R, Q, \lambda, Re_E, Ca_E) = (2, 3, 1, 1, 15.92)$. The corresponding growth rate values are $(s_1, s_2, s_3, s_4) = (0.111, 0.098, 0.085, 0.073)$. (c, d) Time evolution of the interface shape and charge distribution in a TS with an initial condition given $(\hat{\xi}_1, \hat{q}_1)$. Inset: black curve shows the location of the tip of the interface (maximum deflection) over time while the red line shows the growth rate predicted by Num-LSA. Also see supplementary movie.

is plotted as a function of electric capillary number Ca_E in figure 5. The results from Num-LSA and TS are in close agreement with those predicted by (6.1), which provides validation of our numerical schemes. The numerical error $\mathcal{E} = |(s - s_{LT})/s_{LT}|$ decays with the grid size N at a rate between 1.5 and 2 according to the inset of figure 5. Consequently, we dwell on numerical errors of $O(10^{-5})$ with a grid size $N \sim 1000$.

The nonlinear evolution of the interface shape and charge distribution is illustrated in figure 4(c, d) (also see supplementary movie available at <https://doi.org/10.1017/jfm.2021.967>), showing a representative TS where the interface shape and charge distribution were initially perturbed by the dominant unstable eigenmode with a small amplitude. At short times, the sinusoidal modes amplify as the surface deflection grows and charge is brought to the interface via Ohmic conduction. As nonlinear effects become significant, the interface deflection becomes asymmetric. Electric stresses on the interface drive a flow which tends to further sweep opposite charges towards the interface tip, leading to the development of sharp charge gradients and of a pointed tip with high curvature. The tip grows unboundedly with an increasing curvature until it eventually causes our numerical method to break down. One should note that the eigenmodes have up-down mirror symmetry, meaning that both $(\hat{\xi}, \hat{q})$ and $(-\hat{\xi}, -\hat{q})$ have identical growth rates and exhibit similar dynamics at short times. This is in contrast to the nonlinear regime of evolution where the shape and charge distributions become asymmetric as evident in figure 4.

6.2. Effect of stagnation point flow

Next, we consider the stability of the interface under the applied flow only, with no electric field. Since there is no applied electric field, the interfacial charge remains zero and the

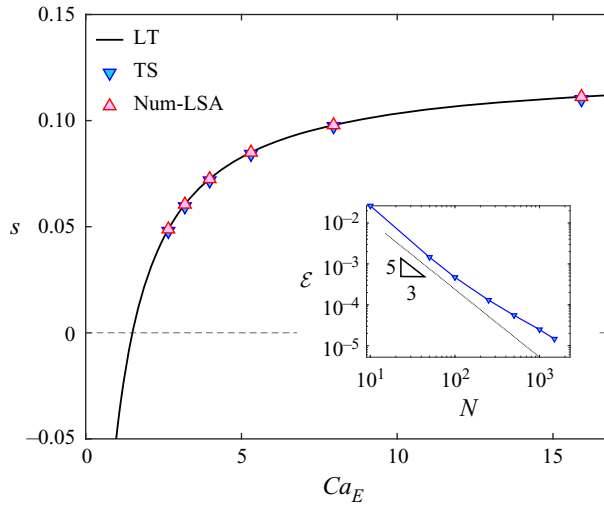


Figure 5. Growth rate s as a function of Ca_E obtained by Num-LSA, LT and TS for $(R, Q, \lambda, Re_E) = (2, 3, 1, 1)$. Inset shows the decay of the numerical error \mathcal{E} with the grid size N for $Ca_E = 7.96$.

fate of the system is entirely determined by the balance of viscous and capillary stresses. Consequently, the only two time scales in the problem are τ_γ and τ_f , previously defined in (3.3) and (3.5), respectively. The LT yields the following expression for the growth rate:

$$s_{LT}^* = 1 - \frac{1}{2Ca}, \tag{6.7}$$

where s_{LT}^* has been scaled by τ_f^{-1} instead of $\tau_{c,2}^{-1}$, and where $Ca = \tau_\gamma/\tau_f$ is the viscous capillary number and remains proportional to k_p^{-1} . This result is consistent with the analysis of Tseng & Prosperetti (2015) in the limit of zero inertia.

Figure 6(a) shows the most unstable modes of deformation obtained via Num-LSA. The modes are clearly non-sinusoidal in this case, with deflections from the flat base state occurring primarily in the neighbourhood of the stagnation point. The dominant mode $\hat{\xi}_1$ resembles a Gaussian centred around the origin, and higher-order modes involve shapes with increasing numbers of oscillations, all concentrated near $x = 0$. Since the modes are non-sinusoidal, the growth rate of the fastest-growing mode differs from the local prediction of (6.7). This is confirmed in figure 6(c) where the growth rates from LT and Num-LSA are compared as a function of Ca . Both methods provide similar growth rates at high capillary numbers (long wavelengths), but their predictions diverge at small values of Ca : while the local theory shows a stabilization of the system below a critical capillary number, the numerical stability analysis predicts that the system is always unstable.

The nonlinear evolution of the interface shape is illustrated in figure 6(b) (also see supplementary movie), showing a transient simulation in which the interface shape was perturbed at $t = 0$ by the dominant unstable eigenmode of shape. The interface deflection increases with time, and as nonlinear effects become significant the dimple in the interface narrows while the curvature at the tip increases, leading to an increase in capillary stresses which tend to resist further deformation. As shown in the inset of figure 6(b), this causes the interface deflection to saturate and reach a steady profile where capillary stresses balance viscous stresses arising from the applied flow. This is unlike the case of figure 4 for the electric field only, where the tip deformation did not saturate.

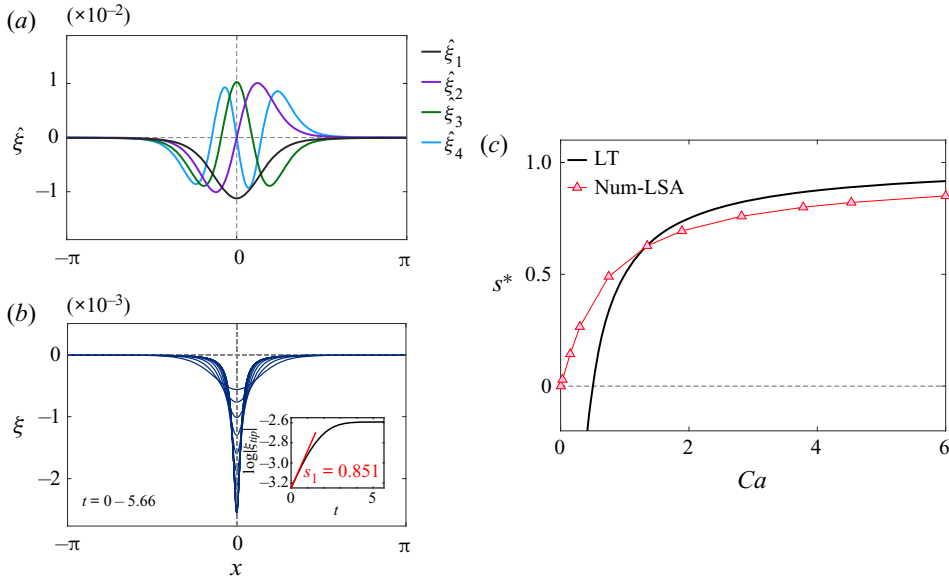


Figure 6. Effect of applied stagnation point flow. (a) Dominant eigenmodes of deformation $\hat{\xi}$ obtained via Num-LSA for a system with $(\lambda, Ca) = (1, 6)$. The corresponding growth rates are $(s_1^*, s_2^*, s_3^*, s_4^*) = (0.851, 0.650, 0.517, 0.393)$. (b) Time evolution of the interface shape in a TS with an initial condition given by $\hat{\xi}_1$. Inset: black line shows the location of the tip of the interface (maximum deflection) over time while the red curve shows the growth rate predicted by Num-LSA. Also see supplementary movie. (c) Growth rate s^* as a function of Ca obtained via Num-LSA and LT.

6.3. Combined effects of electric field and flow

We now turn to the general case where the system is subject to both a tangential electric field and a stagnation point flow. In this case, the LT with finite charge relaxation and charge convection by the flow yields the dispersion relation of (4.9), with sinusoidal eigenmodes for all perturbation variables. It is clear, from the form of (4.9), that the applied flow and electric field contribute additively to the growth rate: the presence of the base flow simply shifts the growth rate of (6.2) for the electric problem by an amount of \hat{A} . In particular, an external flow with $\hat{A} > 0$ always has a destabilizing effect under the local theory approximations. If charge convection is neglected in the theory, the effect of the background flow only affects the dynamics of the system through the kinematic boundary condition and the dispersion relation reduces to

$$s_{LT} = \hat{A} - Re_E \left[\frac{1}{2Ca_E} - \frac{(Q-1)}{2} \left\{ \frac{R-1-s_{LT}(Q-1)R}{R+1+s_{LT}(Q+1)R} \right\} \right]. \quad (6.8)$$

As we show in figure 8 and discuss further below, this approximation results in a decrease in growth rate when compared with (4.9), suggesting that charge convection is destabilizing under the local theory.

The Num-LSA and TS, however, paint a more complex picture. Recall that, in these two cases, the electric capillary number Ca_E is defined based on $k_p = 2\pi L_p^{-1}$, where L_p is the size of the periodic domain and sets the largest possible length scale for the unstable eigenmodes. The dominant eigenmodes of shape and charge obtained by Num-LSA for a representative case are plotted in figure 7(a,b). Similar to the case of § 6.2 with flow only, all the modes are non-sinusoidal and exhibit strong variations near the stagnation point. This is true especially of the eigenmodes of charge, which display shock-like structures at

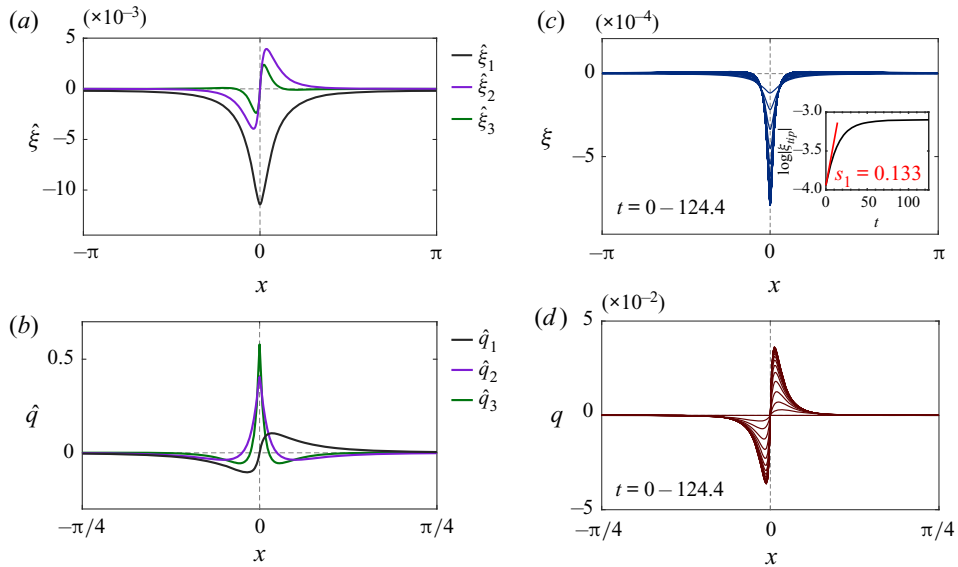


Figure 7. Combined effects of electric field and flow. (a, b) Dominant eigenmodes of deformation $\hat{\xi}$ and interfacial charge \hat{q} for a system with $(R, Q, \lambda, Ca_E, Re_E, \hat{A}) = (2, 3, 1, 15.92, 1, 0.177)$. (c, d) Time evolution of the interface shape and charge distribution in a TS with initial condition given by $(\hat{\xi}_1, \hat{q}_1)$. Inset in (c): black line shows the location of the tip of the interface (maximum deflection) over time while the red curve shows the growth rate predicted by Num-LSA. Also see supplementary movie. Note that (b) and (c) only show one quarter of the total domain, as interfacial charge variations are strongly localized near the origin.

$x = 0$. These shocks result from the advection by the applied flow of surface charges of opposite sign on each side of the stagnation point. They are reminiscent of the nonlinear shapes of figure 4, but are even more strongly concentrated near the origin (note the different scales in figure 7a,b). Note that the charge conservation equation (2.5) does not account for surface diffusion of charge, which, if included, may regularize the profiles. These sharp gradients seen in the linear eigenmodes are yet further amplified in the nonlinear regime, as we show by performing TS with a condition given by the first unstable eigenmode with a small amplitude. The evolution of the shape and charge profiles is shown in figure 7(c,d) (also see supplementary movie): the interface deflection sharpens rapidly as charges accumulate on each side of the stagnation point, leading ultimately to failure of our numerical method. The emergence of shocks in the charge distribution has also been observed in related configurations, such as in liquid drops under applied electric fields (Lanauze, Walker & Khair 2015; Das & Saintillan 2017a,b). There, the quadrupolar Taylor flow generated by tangential electric stresses at the drop interface sweeps surface charges from the poles towards the equator, resulting in sharp gradients at that location.

To further understand the interaction between the background flow and the electric field, we study the behaviour of the system as a function of local strain rate \hat{A} in figure 8, in a case where the interface is electrically unstable. As already discussed above, the LT predicts that the applied flow is always destabilizing, especially in the presence of charge convection. The behaviour is more complex according to the Num-LSA, showing that the background flow in fact has a stabilizing effect for $0 < \hat{A} < \hat{A}_c$ ($\hat{A}_c \approx 0.118$), as the growth rate decreases from its value at $\hat{A} = 0$. Beyond $\hat{A} \geq \hat{A}_c$, the background flow becomes destabilizing even in the presence of charge convection. However, the growth rate is always smaller when charge convection is included in the model. Interestingly, the growth rates

Instability of a planar fluid interface

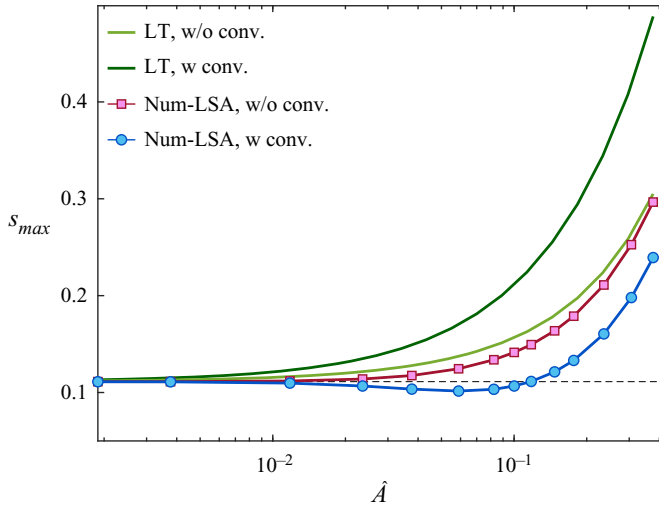


Figure 8. Maximum growth rate as a function of local strain rate \hat{A} in a system with $(R, Q, \lambda, Re_E, Ca_E) = (2, 3, 1, 1, 15.92)$. The blue and red curves show results of Num-LSA with and without charge convection, respectively, while the light and dark green curves show the predictions of LT with and without charge convection, respectively.

predicted by LT and Num-LSA are in close agreement in the absence of charge convection. We discuss in § 6.4 the mechanism for these trends, which involves the subtle interplay of convection with Ohmic conduction.

The effect of the conductivity ratio R and permittivity ratio Q on the stability of the system is studied in figure 9. Although both LT and Num-LSA yield qualitatively similar trends with respect to R and Q , the maximum growth rates obtained by the two methods differ significantly, and predict opposite effects of charge convection as already observed in figure 8. Another significant difference is that according to LT the interface is only unstable above critical values of $R, Q \sim O(1)$, whereas it is unstable for all values of R and Q according to the numerical stability. The evident discrepancy between the results of the two methods is attributed to the local approximation made in LT, where linear terms in x were neglected in the charge conservation equation. As demonstrated by Num-LSA, these coupling terms with non-constant coefficients result in very efficient charge transport towards the stagnation point, leading to strongly localized eigenmodes unlike the Fourier modes assumed by LT.

6.4. Mechanisms of charge transport in the dominant mode of instability

In order to explain the non-monotonic role of charge convection seen in figure 9, we further analyse the various mechanisms of charge transport in the dominant mode of instability. We define the Ohmic and convective fluxes as

$$\dot{q}_{ohm} = \mathbf{n} \cdot [R^{-1} \mathbf{E}_1 - \mathbf{E}_2], \tag{6.9}$$

$$\dot{q}_{conv} = -Re_E \nabla_s \cdot (\mathbf{q}\mathbf{u}), \tag{6.10}$$

so that the charge conservation equation reads $\partial_t q = \dot{q}_{ohm} + \dot{q}_{conv}$. Figure 10(a) shows the profiles of \dot{q}_{ohm} and \dot{q}_{conv} for the most unstable eigenmode in a system with $(R, Q, Ca_E, Re_E, \hat{A}) = (2, 3, 15.92, 1, 0.177)$. It is evident that Ohmic conduction and charge convection oppose each other in the dominant mode as they have opposite signs

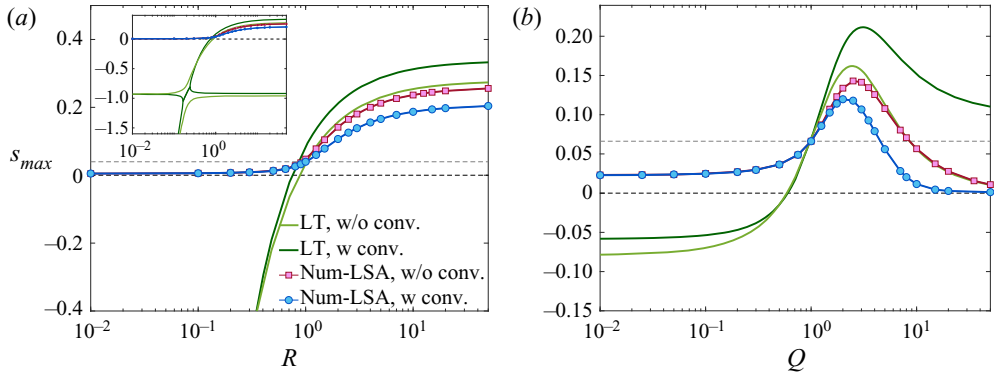


Figure 9. Maximum growth rate as a function of (a) conductivity ratio R with $Q = 3$ and (b) permittivity ratio Q with $R = 2$. The remaining parameters are $(\lambda, Re_E, Ca_E, \hat{A}) = (1, 1, 15.92, 0.1)$ in both cases. Inset in (a) shows a longer range for the vertical axis, highlighting additional stable eigenmodes.

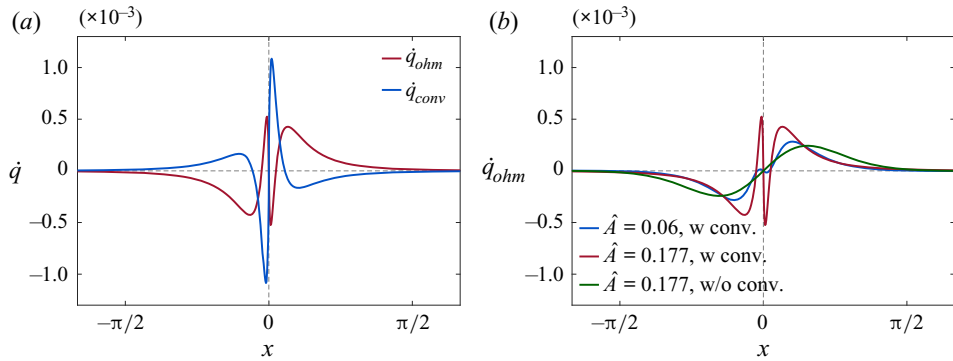


Figure 10. (a) Ohmic flux and convective flux, defined in (6.9) and (6.10), in the dominant mode of instability for a system with $(R, Q, Ca_E, Re_E, \hat{A}) = (2, 3, 15.92, 1, 0.177)$. (b) Ohmic flux in the dominant mode of instability for two different values of \hat{A} , with and without charge convection.

over most of the domain. According to figure 10(a), charge convection is dominant in the vicinity of the stagnation point, whereas conduction takes over further away from the origin. Close to the stagnation point, \hat{q}_{ohm} exhibits oscillations, which are stronger with increasing \hat{A} as shown in figure 10(b) but are suppressed when charge convection is neglected.

To elucidate the underlying mechanisms for this behaviour, we analyse the respective roles of interface deflections and charge perturbations in driving Ohmic currents in the dominant eigenmode. Recall that the eigenmodes obtained by Num-LSA involve perturbations in both shape $\hat{\xi}$ and charge \hat{q} . Here we estimate the Ohmic current induced by these eigenmodes in the linear regime:

$$\hat{q}_{ohm} = R^{-1} \hat{E}_1^n - \hat{E}_2^n. \tag{6.11}$$

To express \hat{E}_1^n and \hat{E}_2^n in terms of $(\hat{q}, \hat{\xi})$, we linearize the boundary integral equation (5.2) to find

$$-\frac{1+Q}{2(1-Q)}(\hat{E}_2^n - \hat{E}_1^n) = \hat{n}_x - \frac{\hat{q}}{1-Q}, \tag{6.12}$$

Instability of a planar fluid interface

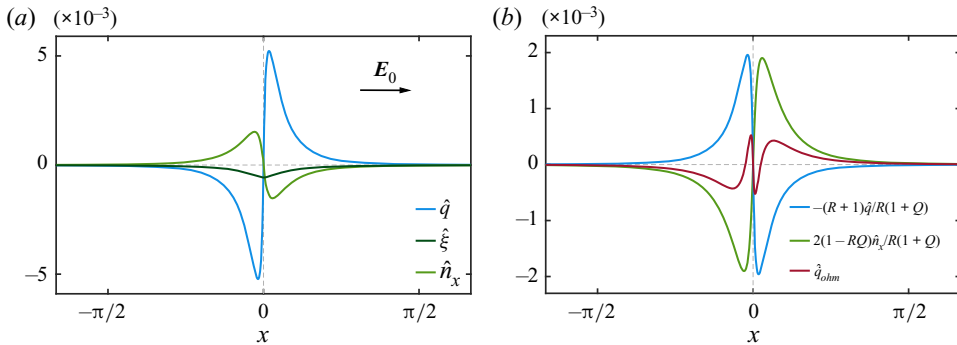


Figure 11. (a) Eigenmodes of charge \hat{q} , interfacial deflection $\hat{\xi}$ and horizontal component of the unit normal vector \hat{n}_x in the dominant mode of instability for a system with $(R, Q, \lambda, Re_E, \hat{A}, Ca_E) = (2, 3, 1, 1, 0.177, 15.92)$. (b) Resulting Ohmic currents induced by perturbations in the charge distribution (blue), interfacial shape (green) and their net distribution (red); see (6.14) for details.

where $\hat{n}_x = \partial_x \hat{\xi}$ is the x component of the surface normal. Gauss's law also provides

$$\hat{E}_2^n - Q\hat{E}_1^n = \hat{q}. \quad (6.13)$$

Eliminating \hat{E}_1^n and \hat{E}_2^n using (6.12) and (6.13) yields the following expression for the charge conduction flux:

$$\hat{q}_{ohm} = 2 \frac{(1-RQ)}{R(1+Q)} \hat{n}_x - \frac{R+1}{R(1+Q)} \hat{q}, \quad (6.14)$$

which captures the conduction response of the system to small perturbations. The first term on the right-hand side represents the Ohmic flux induced by perturbing the shape while the second term is the flux induced by the charge perturbation. Figure 11 shows the profile of the perturbation in the dominant eigenmode along with the resulting Ohmic fluxes for the same set of parameters as used in figure 10. It is evident from figure 11(b) that the Ohmic currents induced by the applied deformation and charge distribution have opposite signs over the entire domain, and thus work against each other. This explains the oscillations in \hat{q}_{ohm} observed near the stagnation point in figure 10(a), and it is this complex Ohmic response that opposes charge convection in the dominant eigenmode, leading to the stabilizing effect of convection seen in figures 8 and 9. One should note that this behaviour is independent of the sign of $(1-RQ)$ since there is no preferred order to the arrangement of the fluid layers in the linear regime. In other words, two systems characterized by RQ and $(RQ)^{-1}$ are dynamically equivalent.

7. Conclusions

We have presented a theoretical and numerical model in two dimensions to study the dynamics of an interface separating two immiscible fluid layers subject to a tangential electric field and a stagnation point flow. We performed a local linear stability analysis in the vicinity of the stagnation point, which was able to recover the previous results of Melcher & Schwarz (1968) in the absence of the background flow, and of Tseng & Prosperetti (2015) in the absence of the electric field and in the limit of zero inertia. Our local theory was complemented by a numerical analysis using the boundary element method, which was also used to perform a numerical normal-mode linear stability

analysis based on the complete Melcher–Taylor leaky dielectric model including charge convection. Our results show that charge convection plays a significant role in determining the dynamics of the system by altering the dominant unstable mode, in which it was shown to have a stabilizing effect. Further, we explored the dynamics of the system far from equilibrium using transient nonlinear numerical simulations and demonstrated how the coupling of flow and interfacial charge dynamics in the dominant unstable mode gives rise to strongly nonlinear effects such as the formation of high-curvature tips and of charge density shocks.





In this study, the convergent flow and the electric field were assumed to be independently applied. This differs from the case of the equatorial EHD instability in drops (Brosseau & Vlahovska 2017; Wagoner *et al.* 2020), where the flow is also generated by the electric field. In spite of this simplification, our analysis provides valuable insights into the underlying mechanisms responsible for the EHD equatorial streaming such as the evolution of the convergent line instability and the emergence of strong charge gradients. A more detailed discussion of the relevance of the present work to describe equatorial instabilities in liquid drops is provided in [Appendix A](#). Extensions of the present study could include considering the effect of the viscosity contrast ($\lambda \neq 1$) and of equilibrium surface curvature on the behaviour of the system. Further attempts to improve the accuracy of the numerical simulations may involve implementation of shock-capturing schemes for the solution of the charge conservation equation, as well as surface reparametrization schemes for handling extreme local deformations.

Supplementary movies. Supplementary movies are available at <https://doi.org/10.1017/jfm.2021.967>.

Funding. The authors gratefully acknowledge funding from National Science Foundation grants CBET-1704996 (P.V. and M.M.) and CBET-1705377 (D.S.).

Declaration of interest. The authors report no conflict of interest.

Author ORCIDs.

-  Mohammadhossein Firouznia <https://orcid.org/0000-0002-5358-8675>;
-  Michael J. Miksis <https://orcid.org/0000-0002-4048-9192>;
-  Petia M. Vlahovska <https://orcid.org/0000-0001-7549-930X>;
-  David Saintillan <https://orcid.org/0000-0001-9948-708X>.

Appendix A. Relevance to the equatorial streaming instability

Brosseau & Vlahovska (2017) reported streaming from the equator of a drop placed in a uniform electric field. In the experimental system, $RQ > 1$ and the EHD flow driven by electric shear stresses on the drop interface converges at the equator (see [figure 1](#)). At the equator the applied electric field is also parallel to the drop interface. Thus, the configuration resembles the set-up considered in our theoretical study. Here, we use the LT and Num-LSA analyses to gain insight into the interface destabilization at the stagnation line of the EHD flow.

The LT of a fluid interface subject to a convergent flow predicts that the interface is always unstable (Tseng & Prosperetti 2015). However, the LT for a fluid interface subjected to a tangentially applied DC uniform field is stable for the experimental conditions according to (6.1). In the experiments the streaming was only observed at sufficiently high electric fields, $Ca_E \sim O(1)$, which is likely due to the competition of the destabilizing and stabilizing actions of the field-driven flow and of the electric field.

[Figure 12](#) shows the theoretical prediction for the growth rate of the instability. The strain rate of the convergent flow can be estimated from the EHD flow at the equator of the

Instability of a planar fluid interface

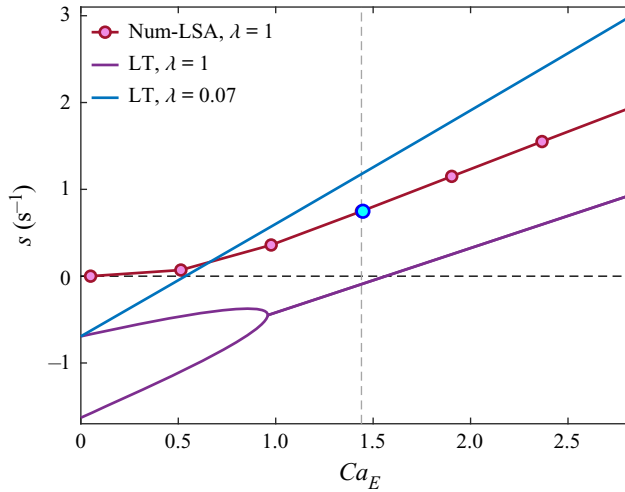


Figure 12. Growth rate s as a function of Ca_E obtained via Num-LSA and LT for a system with $(R, Q) = (31.4, 0.6)$ characteristic of the EHD flow in a droplet. Here Re_E and \hat{A} are linearly proportional to Ca_E in that case, and the blue marker $(\lambda, Re_E, \hat{A}, Ca_E) = (1, 4.37, 1.19, 1.45)$ is the reference point based on the experiments. Purple and blue lines show the predictions by LT for $\lambda = 1$ and 0.07 , respectively.

drop based on Taylor's classic solution (Taylor 1966):

$$A = \frac{9 R(Q - 1)}{5 (2R + 1)^2} \tau_{EHD}^{-1} \quad \text{with} \quad \tau_{EHD} = \frac{\mu_2(1 + \lambda)}{\epsilon_2 E_0^2}, \quad (\text{A1})$$

where fluids 1 and 2 represent the drop and the suspending liquid, respectively. We obtain $A \approx 2.22 \text{ s}^{-1}$ using the experimental parameters for a drop of silicone oil ($\rho_1 = 960 \text{ kg m}^{-3}$, $\epsilon_1/\epsilon_0 = 2.8$, $\sigma_1 = 1.4 \times 10^{-12} \text{ S m}$, $\mu_1 = 0.048 \text{ Pa s}$) suspended in castor oil ($\rho_2 = 961 \text{ kg m}^{-3}$, $\epsilon_2/\epsilon_0 = 4.6$, $\sigma_2 = 4.4 \times 10^{-11} \text{ S m}$, $\mu_2 = 0.69 \text{ Pa s}$) under an electric field of $E_0 = 4 \text{ kV cm}^{-1}$ and a surface tension $\gamma = 4.5 \text{ mN m}^{-1}$. The LT does predict a threshold Ca_E , which increases with viscosity ratio. According to the Num-LSA, which can be only performed for $\lambda = 1$, the interface is always unstable. However, the growth rate is vanishingly small at low Ca_E and the instability may not develop on the time scale of the experiment, which is of the order of 1 s. Indeed, only above $Ca_E \sim 1$ does the instability grow at rate faster than 1 s^{-1} . Increasing the viscosity ratio further slows down the growth of the instability, and suggests that streaming would not be observed for viscosity ratios greater than one, in qualitative agreement with the experiment. Finally, we note that while the present study focuses on planar interfaces, the equatorial streaming instability in drops occurs on a curved surface and the effects of base-state interfacial curvature on the instability remain unknown.

REFERENCES

- ANNA, S.L. 2016 Droplets and bubbles in microfluidic devices. *Annu. Rev. Fluid Mech.* **48**, 285–309.
 BARRERO, A. & LOSCERTALES, I.G. 2007 Micro- and nanoparticles via capillary flows. *Annu. Rev. Fluid Mech.* **39**, 89–106.
 BASARAN, O.A., GAO, H. & BHAT, P.P. 2013 Nonstandard inkjets. *Annu. Rev. Fluid Mech.* **45**, 85–113.
 BAYGENTS, J.C., RIVETTE, N.J. & STONE, H.A. 1998 Electrohydrodynamic deformation and interaction of drop pairs. *J. Fluid Mech.* **368**, 359–375.

- BLYTH, M.G. & POZRIKIDIS, C. 2005 Stagnation-point flow against a liquid film on a plane wall. *Acta Mech.* **180**, 203–219.
- BROSSEAU, Q. & VLAHOVSKA, P.M. 2017 Streaming from the equator of a drop in an external electric field. *Phys. Rev. Lett.* **119**, 034501.
- COLLINS, R.T., JONES, J.J., HARRIS, M.T. & BASARAN, O.A. 2008 Electrohydrodynamic tip streaming and emission of charged drops from liquid cones. *Nat. Phys.* **4**, 149–154.
- COLLINS, R.T., SAMBATH, K., HARRIS, M.T. & BASARAN, O.A. 2013 Universal scaling laws for the disintegration of electrified drops. *Proc. Natl Acad. Sci. USA* **110**, 4905–4910.
- DAS, D. & SAINTILLAN, D. 2017a Electrohydrodynamics of viscous drops in strong electric fields: numerical simulations. *J. Fluid Mech.* **829**, 127–152.
- DAS, D. & SAINTILLAN, D. 2017b A nonlinear small-deformation theory for transient droplet electrohydrodynamics. *J. Fluid Mech.* **810**, 225–253.
- FERNÁNDEZ DE LA MORA, J. 2007 The fluid dynamics of Taylor cones. *Annu. Rev. Fluid Mech.* **39**, 217–243.
- FIROUZANIA, M. & SAINTILLAN, D. 2021 Electrohydrodynamic instabilities in freely suspended viscous films under normal electric fields. *Phys. Rev. Fluids* **6**, 103703.
- FRAYSSÉ, V., GIRAUD, L., GRATTON, S. & LANGOU, J. 2005 Algorithm 842: a set of GMRES routines for real and complex arithmetics on high performance computers. *ACM Trans. Math. Softw.* **31**, 228–238.
- GANAN-CALVO, A.M., LÓPEZ-HERRERA, J.M., HERRADA, M.A., RAMOS, A. & MONTANERO, J.M. 2018 Review on the physics of electrospray: from electrokinetics to the operating conditions of single and coaxial Taylor cone-jets, and AC electrospray. *J. Aerosol Sci.* **125**, 32–56.
- GANAN-CALVO, A.M., LÓPEZ-HERRERA, J.M., REBOLLO-MUNOZ, N. & MONTANERO, J.M. 2016 The onset of electrospray: the universal scaling laws of the first ejection. *Sci. Rep.* **6**, 32357.
- GANAN-CALVO, A.M. & MONTANERO, J.M. 2009 Revision of capillary cone-jet physics: electrospray and flow focusing. *Phys. Rev. E* **79**, 066305.
- GRIFFING, E.M., BANKOFF, S.G., MIKSYS, M.J. & SCHLUTER, R.A. 2006 Electrohydrodynamics of thin flowing films. *J. Fluid Engng* **128**, 276–283.
- HERRADA, M.A., LÓPEZ-HERRERA, J.M., GAÑÁN CALVO, A.M., VEGA, E.J., MONTANERO, J.M. & POPINET, S. 2012 Numerical simulation of electrospray in the cone-jet mode. *Phys. Rev. E* **86**, 026305.
- KARYAPPA, R.B., DESHMUKH, S.D. & THAOKAR, R.M. 2014 Breakup of a conducting drop in a uniform electric field. *J. Fluid Mech.* **754**, 550–589.
- LAC, E. & HOMSY, G.M. 2007 Axisymmetric deformation and stability of a viscous drop in a steady electric field. *J. Fluid Mech.* **590**, 239.
- LANAUZE, A., WALKER, L.M. & KHAIR, A.S. 2015 Nonlinear electrohydrodynamics of slightly deformed oblate drops. *J. Fluid Mech.* **774**, 245–266.
- MELCHER, J.R. & SCHWARZ, W.J. 1968 Interfacial relaxation overstability in a tangential electric field. *Phys. Fluids* **11**, 2604–2616.
- MELCHER, J.R. & SMITH, C.V. 1969 Electrohydrodynamic charge relaxation and interfacial perpendicular-field instability. *Phys. Fluids* **12**, 778–790.
- MELCHER, J.R. & TAYLOR, G.I. 1969 Electrohydrodynamics: a review of the role of interfacial shear stresses. *Annu. Rev. Fluid Mech.* **1**, 111–146.
- MOHAMED, A.S., LOPEZ-HERRERA, J.M., HERRADA, M.A., MODESTO-LOPEZ, L.B. & GANAN-CALVO, A.M. 2016 Effect of a surrounding liquid environment on the electrical disruption of pendant droplets. *Langmuir* **32**, 6815–6824.
- MORI, Y. & YOUNG, Y.-N. 2018 From electrodiffusion theory to the electrohydrodynamics of leaky dielectrics through the weak electrolyte limit. *J. Fluid Mech.* **855**, 67–130.
- PAPAGEORGIOU, D.T. 2019 Film flows in the presence of electric fields. *Annu. Rev. Fluid Mech.* **51**, 155–187.
- POZRIKIDIS, C. 1992 *Boundary Integral and Singularity Methods for Linearized Viscous Flow*. Cambridge University Press.
- POZRIKIDIS, C. 2002 *A Practical Guide to Boundary Element Methods with the Software Library BEMLIB*. CRC Press.
- POZRIKIDIS, C. 2012 Stability of sessile and pendant liquid drops. *J. Engng Maths* **72**, 1–20.
- POZRIKIDIS, C. & BLYTH, M.G. 2004 Effect of stretching on interfacial stability. *Acta Mech.* **170**, 149–162.
- RALLISON, J.M. & ACRIVOS, A. 1978 A numerical study of the deformation and burst of a viscous drop in an extensional flow. *J. Fluid Mech.* **89**, 191–200.
- SAAD, Y. & SCHULTZ, M.H. 1986 GMRES: a generalized minimal residual algorithm for solving nonsymmetric linear systems. *SIAM J. Sci. Comput.* **7**, 856–869.

Instability of a planar fluid interface

- SAVILLE, D.A. 1997 Electrohydrodynamics: the Taylor–Melcher leaky dielectric model. *Annu. Rev. Fluid Mech.* **29**, 27–64.
- SCHNITZER, O. & YARIV, E. 2015 The Taylor–Melcher leaky dielectric model as a macroscale electrokinetic description. *J. Fluid Mech.* **773**, 1–33.
- SENGUPTA, R., WALKER, L.M. & KHAIR, A.S. 2017 The role of surface charge convection in the electrohydrodynamics and breakup of prolate drops. *J. Fluid Mech.* **833**, 29–53.
- SHERWOOD, J.D. 1988 Breakup of fluid droplets in electric and magnetic fields. *J. Fluid Mech.* **188**, 133–146.
- STROUD, A.H. & SECREST, D. 1966 *Gaussian Quadrature Formulas*. Prentice-Hall.
- TAYLOR, G.I. 1964 Disintegration of water drops in an electric field. *Proc. R. Soc. Lond. A* **280**, 383–397.
- TAYLOR, G.I. 1966 Studies in electrohydrodynamics. I. Circulation produced in a drop by an electric field. *Proc. R. Soc. Lond. A* **291**, 159–166.
- TAYLOR, G.I. & GREEN, A.E. 1937 Mechanism of the production of small eddies from large ones. *Proc. R. Soc. Lond. A* **158**, 499–521.
- TAYLOR, G.I. & MCEWAN, A.D. 1965 The stability of a horizontal fluid interface in a vertical electric field. *J. Fluid Mech.* **22**, 1–15.
- TORZA, S., COX, R.G. & MASON, S.G. 1971 Electrohydrodynamic deformation and burst of liquid drops. *Phil. Trans. R. Soc. A* **269**, 295–319.
- TSENG, Y.-H. & PROSPERETTI, A. 2015 Local interfacial stability near a zero vorticity point. *J. Fluid Mech.* **776**, 5.
- VLAHOVSKA, P.M. 2019 Electrohydrodynamics of drops and vesicles. *Annu. Rev. Fluid Mech.* **51**, 305–330.
- WAGONER, B.W., VLAHOVSKA, P.M., HARRIS, M.T. & BASARAN, O.A. 2020 Electric-field-induced transitions from spherical to discocyte and lens-shaped drops. *J. Fluid Mech.* **904**, R4.
- WU, N. & RUSSEL, W.B. 2009 Micro- and nano-patterns created via electrohydrodynamic instabilities. *Nano Today* **4**, 180–192.
- ZELENY, J. 1917 Instability of electrified liquid surfaces. *Phys. Rev.* **10**, 1–6.