

UCSF

UC San Francisco Previously Published Works

Title

T1p and T2 relaxation times predict progression of knee osteoarthritis

Permalink

<https://escholarship.org/uc/item/4fv1h4kr>

Journal

Osteoarthritis and Cartilage, 21(1)

ISSN

1063-4584

Authors

Prasad, AP
Nardo, L
Schooler, J
[et al.](#)

Publication Date

2013

DOI

10.1016/j.joca.2012.09.011

Peer reviewed

Published in final edited form as:

Osteoarthritis Cartilage. 2013 January ; 21(1): 69–76. doi:10.1016/j.joca.2012.09.011.

T_{1ρ} and T₂ relaxation times predict progression of knee osteoarthritis

A.P. Prasad^a, L. Nardo^a, J. Schooler, G.B. Joseph, and T.M. Link^{*}

Musculoskeletal and Quantitative Imaging Research Group, Department of Radiology and Biomedical Imaging, University of California San Francisco, CA, USA

SUMMARY

Objective—To evaluate whether T₂ and T_{1ρ} relaxation times of knee cartilage determined with 3T magnetic resonance imaging (MRI) at baseline predict longitudinal progression of cartilage degenerative changes.

Methods—Quantitative analysis of cartilage was performed using 3T MRI with both T₂ and T_{1ρ} mapping techniques in 55 subjects without evidence of severe osteoarthritis (OA) [Kellgren–Lawrence (KL) score of 0–3] at baseline. Morphological abnormalities of cartilage, menisci, ligaments and bone marrow were analyzed on sagittal fat-saturated intermediate-weighted fast spin echo (FSE) sequences. Progression of degenerative changes was analyzed over a period of 2 years. Progression was detected in 27 subjects while in 28 subjects no changes were found. Differences between T₂ and T_{1ρ} relaxation times in these two cohorts were compared using one-way analysis of variance (ANOVA) and t tests.

Results—Baseline T₂ and T_{1ρ} values were significantly higher in the progression cohort in all compartments ($P < 0.05$) except the lateral tibia (LT) for T₂ and the medial tibia (MT) for T_{1ρ}. Progression of cartilage degenerative disease was most pronounced at the medial femoral condyles and at the femoro-patellar joint; differences between the two cohorts for T₂ and T_{1ρ} were also most significant in these compartments.

Conclusions—T₂ and T_{1ρ} measurements were significantly higher at baseline in individuals that showed progression of cartilage abnormalities over a period of 2 years and may therefore serve as potential predictors for progression of degenerative cartilage abnormalities in knee OA.

Keywords

Osteoarthritis; T₂; T_{1ρ}; Progression; Magnetic resonance imaging

© 2012 Osteoarthritis Research Society International. Published by Elsevier Ltd. All rights reserved.

*Address correspondence and reprint requests to: T.M. Link, Department of Radiology and Biomedical Imaging, University of California San Francisco, 400 Parnassus Ave., A 367, Box 0628, San Francisco, CA 94143-0628, USA. Tel: 1-415-353-8940; Fax: 1-415-476-8550. aprasad@Princeton.edu (A.P. Prasad), Lorenzo.Nardo@ucsf.edu (L. Nardo), Joseph.Schooler@ucsf.edu (J. Schooler), Gabby.Joseph@ucsf.edu (G.B. Joseph), tmlink@radiology.ucsf.edu, Thomas.Link@ucsf.edu (T.M. Link).

^aEqual contribution first authors.

Author contributions

Guarantors of integrity of entire study, TML, LN and AP; study concepts/study design or data acquisition or data analysis/interpretation, all authors; manuscript drafting or manuscript revision for important intellectual content, all authors; manuscript final version approval, all authors; literature research, LN and AP; statistical analysis, AP and TML.

Conflict of interest

None.

Introduction

Knee osteoarthritis (OA) is traditionally characterized using Kellgren–Lawrence (KL) scores¹ on radiographs and presence of clinical symptoms². However by the time OA is recognized on radiographs, it has progressed to a level that may force patients to alter their lifestyles. Severe OA is the leading cause of chronic disability among the elderly population in the United States². Risk factors include genetic predisposition, obesity³ and both very low or very high levels of physical activity;⁴ the only preventative measures noted are measures to minimize exposure to risk factors⁵. Degenerative joint disease therapy of the knee includes self-management (weight loss, exercise), symptomatic medication (analgesics or intra-articular corticosteroids), and in advanced cases arthroplasty⁶.

Therapies such as knee braces or heel wedges have also been suggested, however, not one single therapy is known to be effective for all sufferers of OA. Guidelines from the American College of Rheumatology (ACR) recommend both drug therapy and non-pharmacologic interventions for patients with OA of the knee. ACR conditionally recommends acetaminophen, oral or topical non-steroidal antiinflammatory drugs (NSAIDs), tramadol, or intra-articular corticosteroid injections for the initial treatment of knee OA⁵⁻⁸.

Studies have shown that quantitative MR T₂ and T_{1ρ} relaxation time measurements can show changes in cartilage before abnormalities are visualized on radiographs and morphological magnetic resonance imaging (MRI)⁹⁻¹³. The extracellular matrix of the knee cartilage is comprised mostly of proteoglycans and collagen and water. Loss of proteoglycan molecules is an indicator of cartilage degeneration and because T_{1ρ} detects changes in proteoglycan content of the cartilage, T_{1ρ} is a viable tool for detecting early degenerative disease of cartilage¹⁴. T₂ has been shown to reflect the ability of free water protons to move within the cartilage matrix; changes in the collagen integrity and increase in water content of the cartilage increase the T₂ value, making it a viable biomarker for early cartilage matrix degeneration^{11-13,15}.

While T_{1ρ} and T₂ mapping techniques have been used for early detection of biochemical changes in cartilage of the knee¹⁶, there is limited information whether these measurements can predict longitudinal progression of degenerative joint disease. The purpose of this study was to evaluate whether T₂ and T_{1ρ} relaxation times of knee cartilage determined with 3T MRI at baseline predict longitudinal progression of cartilage degeneration.

Material and methods

Subjects

Subjects were recruited from the general public by advertisement, or through referral from the Orthopedic Institute of the University of California San Francisco. Subjects with self-reported clinical symptoms at the knee consistent with OA and/or radiographic evidence of OA and normal controls were studied. A total of 55 subjects (25 females and 30 males) with an age range of 25–75 years (mean age 49.9 ± 11.9) with radiographic KL scores between 0 and 3 were studied. Table I shows the demographic characteristics of our population along with KL and Western Ontario and McMaster University (WOMAC) scores. MR images of the knee were obtained in all subjects at baseline and 2-year follow-up. Exclusion factors included severe OA or KL scores of 4 and lack of follow-up MRI.

The study was approved by the Committee on Human Research at the University of California San Francisco. All subjects gave informed written consent prior to the study. To quantify pain, stiffness, and function in our cohort, subjects filled out the five-point scale WOMAC questionnaires^{17,18}.

MRI

MRIs were obtained with a 3T GE Excite Signa MR Scanner (General Electric, Milwaukee, WI, USA) and an eight-channel phased-array knee coil (*In vivo*, Orlando, FL, USA). Using acceleration factor (AF) = 2, parallel imaging was used with an array spatial sensitivity technique (ASSET), resulting in reduced imaging times. A sagittal intermediate-weighted sequence with fat-suppression (field of view (FOV): 13–16 cm; slice thickness: 4 mm; repetition time (TR): 4000 ms; echo time (TE): 40 ms) was obtained for the clinical morphological evaluation. T₂ and T_{1ρ} (3D MAPPs-magnetization-prepared angle-modulated partitioned-k-space Spoiled Gradient Recalled (SPGR) snapshot)^{19,20} sequence parameters are presented in detail in Table II. Morphologic MR studies were obtained at baseline and 2 years.

MR image analysis

Radiological progression—Baseline and follow-up MR images were reviewed by an experienced musculoskeletal radiologist (TML) without knowledge of clinical or radiographic findings in all subjects. Cartilage abnormalities at baseline were compared with those shown in the follow-up studies on a picture archiving and communication system (PACS) workstation (Agfa, Ridgefield Park, NJ, USA). Progression was defined as an increase in depth or width of a cartilage lesion over a period of a minimum of 2 years. Presence of new lesions (incidental lesions) was also defined as disease progression. The increase in depth was defined as mild (resulting in less than 50% cartilage thickness change) or severe (resulting in more than 50% cartilage thickness change). The increase in width was defined as mild (less than 5 mm) or severe (more than 5 mm). Severe change was diagnosed if either increase in depth and/or width were graded as severe. Change in bone marrow edema pattern and joint effusion/synovitis were not used to define progression. Changes in meniscal lesions were not observed in our cohort.

Based on radiographic evidence of OA (KL > 1) at the baseline, the progression and non-progression cohorts, distinguished on MRI images, were further divided into four subcohorts: normal controls showing no progression (NN), normal controls that progress (NP), OA subjects showing no progression (OAN) and, OA subjects that progress (OAP).

Morphological analysis—One of the most frequently used classifications for scoring degenerative abnormalities is the whole-organ magnetic resonance imaging score (WORMS)²¹ and a modified-WORMS classification has been introduced by our research group, tailored for assessing mild to moderate abnormalities^{22,23}. The modified-WORMS University of California, San Francisco (UCSF) classification reduces the number of the anatomical compartments from 15, evaluated by the classic WORMS to six: lateral tibia (LT), trochlea (T), medial tibia (MT), lateral femur (LF), medial femur (MF) and patella (PAT). Using this semi-quantitative scoring system, cartilage abnormalities were scored using an eight-point scale: 0 = normal thickness and signal; 1 = normal thickness but abnormal signal on fluid sensitive sequences; 2.0 = partial-thickness focal defect <1 cm in greatest width; 2.5 = full-thickness focal defect <1 cm in greatest width; 3 = multiple areas of partial-thickness (Grade 2.0) defects intermixed with areas of normal thickness, or a Grade 2.0 defect wider than 1 cm but <75% of the region; 4 = diffuse (< 75% of the region) partial-thickness loss; 5 = multiple areas of full-thickness loss (Grade 2.5) or a Grade 2.5 lesion wider than 1 cm but <75% of the region; 6 = diffuse (< 75% of the region) full-thickness loss. The WORMS max score was defined as the maximum of the WORMS scores in all compartments per patient, in addition WORMS average scores were calculated. All WORMS readings were performed by two board-certified radiologists (TML, LN).

Quantitative analysis—To determine $T_{1\rho}$ and T_2 relaxation time measurements images were analyzed on Sun Workstations (Sun Microsystems, Palo Alto, CA, USA). Segmentation of cartilage compartments [lateral femoral condyle (LFC), medial femoral condyle (MFC), PAT, LT, MT] was performed on high resolution SPGR images using in-house software (utilizing edge detection and Bezier splines) developed in Matlab (Mathworks, Natick, MA, USA); segmentation was semi-automatic and performed by two individuals (JS, AP) with prior segmenting experience. Using the Levenberg–Marquardt mono-exponential fitting algorithm described by the equation below, T_2 and $T_{1\rho}$ maps were generated:²⁴

$$S(\text{TSL}) \propto \exp(-\text{TSL}/T_{1\rho})(T_{1\rho})$$

$$S(\text{TE}) \propto \exp(-\text{TE}/T_2)(T_2)$$

The VTK CISG Registration Toolkit (T. Hartkens, London, UK) was used to rigidly register the generated reconstructed maps to the SPGR images. Segmentations derived from SPGR images were registered to the first echo. The rotations and translations from this registration were applied to the fitted $T_{1\rho}$ and T_2 maps, in order to extract quantitative data. For each compartment, T_1 rho and T_2 values were calculated on a pixel-by-pixel basis, and then averaged over the region of interest (ROI).

Statistical analysis

Statistics were calculated using JMP software, version 9.0 (SAS Institute, Cary, NC, USA). Using one-way analysis of variance (ANOVA), differences in both T_2 and $T_{1\rho}$ relaxation times by cartilage compartment were assessed between progression and non-progression cohorts. P -values of < 0.05 were considered significant. Outliers were eliminated using Chauvenet's criterion (values more than two standard deviations (SDs) from the mean were excluded)²⁵.

Two outliers were found for $T_{1\rho}$ baseline values: one in the LFC and one in the MT and no outliers were found at baseline for T_2 values based on the Chauvenet's criteria.

Student's t test was also performed by compartment and where t test and ANOVA results were significant, a *post-hoc* Tukey–Kramer Honestly Significant Differences (HSD) test was performed. In addition, nominal logistic regression models were used to assess the relationship between T_2 and $T_{1\rho}$ vs morphologic progression.

Results

Subject characteristics

Table III shows the subject characteristics stratified by progression – there was no significant difference between age, body mass index (BMI), gender, or WOMAC scores of progressors ($n = 27$) and non-progressors ($n = 28$). Linear regression was performed with age, BMI, WOMAC scores, and gender. Although age, BMI, and WOMAC scores showed a trend (increased values were associated with progression), no significant associations were found ($P > 0.05$). Females tended to progress more frequently (56% of females progressed whereas only 43% of males progressed) but differences were not significant ($P > 0.05$). Of the progression group, there were eight subjects who had KL grade 0 on radiographs, seven had KL grade 1, five had KL grade 2 and seven subjects had KL grade 3; in the non-progressors there were 12 subjects with KL grade 0, seven had KL grade 1, five had KL grade 2 and four had KL grade 3.

Morphological findings: WORMS analysis

At baseline the non-progression cohort, stratified by WORMS maximum score was characterized by 14 subjects with a score equal to 0 or 1, four subjects had a score of 2, three subjects a score of 3 and seven had a score of 5. In the progression cohort nine subjects had a score equal to 0 or 1, six subjects had a score of 2, one of 2.5, three of 3, six of 5 and two of 6. WORMS average scores were 2.1 and 2.6 for the non-progression and progression cohorts, respectively. Though higher scores in the progression cohort appeared more frequent and average scores were higher, no statistical significant difference in WORMS was noted between the two cohorts ($P = 0.07$).

Progression vs non-progression criteria analysis

In total 35 progressive lesions were found as demonstrated in Table IV. Ten of the 35 lesions were new lesions characterized by partial-thickness cartilage loss and a width less than 1 cm. The other 25 lesions were characterized by increase in width and/or depth of pre-existing lesions. Two of these lesions showed severe progression in both width (more than 1 cm) and depth, while 13 out of 25 showed a mild progression in both depth (none become a full-thickness lesion) and width (less than 5 mm). Ten lesions had a mild increase in width (less than 5 mm) without any increase in depth. Figure 1 shows an example of progressive lesions after 2 years of follow-up.

Twenty-one subjects developed one isolated new lesion each over the 2 years follow-up: 12 at the MF, four at the PAT and five at the T. Six subjects developed multiple lesions: in two subjects the lesions involved MF, MT and PAT compartments and in four both PAT and T compartments.

T₂ relaxation

Statistically significant higher baseline T₂ values were found in the progression compared to the non-progression cohort in all compartments ($P < 0.05$) except for the LT ($P = 0.21$; Fig. 2). Statistical significance was noted in the MFC ($P = 0.003$), MT ($P = 0.02$), LFC ($P = 0.01$), and PAT ($P = 0.02$). When examining the individual compartments of the subjects in the progression cohort, seven compartments (three LFC, one LT, one MFC, one MT and one PAT) in five different subjects had baseline T₂ values ≥ 1 SD below the mean (in the bottom 16th percentile of all observed values). The logistic regression analysis demonstrated that elevated T₂ values in the LFC [odds ratio (OR): 2.62, $P = 0.02$], LT (OR: 1.58, $P = 0.15$), MFC (OR: 2.12, $P = 0.03$), MT (OR: 2.12, $P = 0.02$) and PAT (OR: 2.20, $P = 0.02$) compartments were predictive of morphologic progression. Table V shows consistent results with higher ORs for individuals with progression for one SD increase in baseline T₂ values. However, no statistically significant differences in T₂ values were found when assessing the progression cohort subgroups with incident lesions, mild and severe progression of preexistent cartilage defects were compared ($P > 0.05$). Figure 3 shows an MR color map of a subject with non-progressive changes and low T₂ values (a-b-c) as well as high T₂ values in a subject with progressive disease (d-e-f).

T_{1ρ} relaxation

For T_{1ρ} values, statistically significant higher values were also noted in the progression cohort compared to the non-progression cohort in all compartments except the MT ($P = 0.12$), Fig. 4. Statistical significance was noted in the MFC ($P < 0.01$), LFC ($P = 0.03$), LT ($P = 0.01$), and PAT ($P = 0.01$). When examining the individual compartments of the subjects of the progression cohort, 14 compartments (two LFC, four LT, two MFC, two MT and three PAT) in 12 different subjects had baseline T_{1ρ} values ≥ 1 SD below the mean (in the bottom 16th percentile of all observed values). The logistic regression analysis

demonstrated that baseline $T_{1\rho}$ values were associated with morphologic joint progression, in LFC (OR: 2.15, $P=0.01$), LT (OR: 1.97, $P=0.03$), MFC (OR: 2.71, $P<0.01$), MT (OR: 1.79, $P=0.05$) and PAT (OR: 2.28, $P=0.014$).

Again, there were no statistically significant differences in $T_{1\rho}$ values in the progression cohort between the subgroups with incident lesions, mild and severe progression of preexistent cartilage defects.

Figure 5 shows MR color maps with low $T_{1\rho}$ values in a subject with non-progressive changes (a-b-c) and high $T_{1\rho}$ values in a subject with progressive disease (d-e-f).

$T_{1\rho}$ relaxation and T_2 relaxation in different subcohorts

Based on radiographic evidence of OA (KL > 1) at baseline and MRI criteria of progression/non-progression, the population was divided into four subcohorts: 19 subjects in the NN subcohort, 15 subjects in the NP subcohort, nine in the OAN subcohort and 12 in the OAP subcohort.

Statistically significant lower baseline T_2 values were found in the NN subcohort compared to the OAP subcohort in all compartments except the LT: MFC ($P<0.01$), MT ($P<0.01$), LFC ($P=0.02$), LT ($P=0.12$) and PAT ($P<0.01$). For $T_{1\rho}$, statistically significant lower values were also noted in the NN subcohort compared to the OAP subcohort in all compartments: MFC ($P<0.01$), MT ($P=0.04$), LFC ($P<0.01$), LT ($P<0.01$), PAT ($P<0.01$). No other statistically significant differences were found throughout all compartments in the remaining subcohorts.

Discussion

The results of our study show that quantitative T_2 and $T_{1\rho}$ relaxation time measurements predict the progression of cartilage degeneration in the knee, assessed with 3T MRI. Both T_2 and $T_{1\rho}$ were able to separate progression and non-progression cohorts and the percentage differences as well as the ORs were also comparable. To the best of our knowledge this is the first study to demonstrate that both T_2 and $T_{1\rho}$ relaxation time measurements may be suitable to predict morphological progression of cartilage degenerative disease.

Clinical findings

Our finding that females showed more overall progression than males, though not significant, is similar to findings of other studies: Vavken *et al.* found a 0.63 ratio of gender difference in incidence of OA. Also McAlindon *et al.*²⁶ demonstrated a higher prevalence of OA in women especially for the PAT-femur compartment where the prevalence in women older than 55 years was 8% and in men population was 2%. In our study clinical features were not significantly associated with progression and incidence of severe disease, which is also consistent with other studies: Link *et al.*²⁷ did not find consistent correlations between pain and radiographic and MRI findings of OA (cartilaginous, ligamentous, and meniscal abnormalities) or between pain and radiographic grades that are used to assess OA. Kornaat *et al.* also suggested that focal or diffuse cartilaginous abnormalities were not associated with pain but associated with larger joint effusion and osteophytes²⁸.

Morphological findings

The baseline WOMBS values did not show significant differences between progression and non-progression cohorts. The limited sample of subjects may explain these results, which were borderline significant and demonstrated a statistical trend, with the progression cohort having higher scores, consistent with prior work which describes a positive association

between severity and progression of lesions^{13,29}. However, in this same sample, $T_{1\rho}$ and T_2 were able to predict the morphological progression with statistical significance, thereby emphasizing the importance of these biochemical biomarkers.

A majority of our subjects showed more progression at the medial tibio-femoral compartment and at the PAT-femoral compartments than at the lateral femoral compartment. According to the literature, these two compartments are more frequently affected by OA of the knee^{26,30}. Although these two compartments display similar pathological trends with regard to OA, their biomechanical, biochemical properties, along with risk factors, will starkly differ. Specific risk factors for femoro-patellar OA are patellar malalignment (lateral patellar tilt or lateral dislocation or PAT tracking) and muscle weakness. Risk factors for tibio-femoral include BMI, varus/valgus malalignment and gait disorders³¹. The common pathogenesis of those causes is an increased stress at the articulation, which leads progressively to the degeneration of the cartilage with associated joint space narrowing. Squatting and kneeling have no relation with tibio-femoral OA but are strongly associated with PAT-femoral OA³². The compartment that displayed limited progression in our study was the lateral tibio-femoral joint compartment. This compartment has been already demonstrated to be less frequently associated with OA in other studies^{30,32}.

Quantitative findings

Previous studies have demonstrated that T_2 and $T_{1\rho}$ relaxation times show biochemical changes at the knee cartilage in the absence of radiographic or MR evidence^{33,34}, however, limited information is available whether they may also serve as predictors of progression of cartilage degenerative disease. Studies have shown that T_2 is effective in detecting biochemical changes associated with OA^{2,35}. T_2 values are associated with water content and collagen within the cartilage matrix, and have been shown to increase in moderate degenerative joint disease³⁵. T_2 relaxation measurements have also been shown to increase with severity of OA³⁶. These previous findings are all consistent with our findings that elevated T_2 levels at baseline are associated with increased progression of OA.

$T_{1\rho}$ relaxation time has been indicated in quantification of biochemical changes within the cartilage at the knee, displaying sensitivity to the proteoglycan content in the extracellular matrix³⁷⁻³⁹. Elevated $T_{1\rho}$ relaxation times are associated with OA in the patellar and femoral cartilage³⁷. This is consistent with our findings of elevated $T_{1\rho}$ times in the patellar and femoral cartilage within our progression cohort. We are not able to determine whether T_2 or $T_{1\rho}$ values better predict cartilage damage and future studies will be necessary to clarify which technique is better suited for predicting progression.

The comparison of subcohorts obtained using MRI and radiographic criteria strengthened our results; in particular the comparison between the NN and OAP subcohorts found again statistically significant difference for all knee-compartments when T_2 values were used as predictor of progression and in all knee-compartments except for MT when $T_{1\rho}$ values were used as predictor of progression of cartilage damage.

Both $T_{1\rho}$ and T_2 values were demonstrated to be superior to the modified-WORMS in predicting cartilage lesion progression. In the literature the WORMS classification has often been used as a reference for detecting morphological cartilage lesions^{12,15}, and most of the studies need a long term follow-up to demonstrate through WORMS that $T_{1\rho}$ and T_2 values are reliable predictors of cartilage lesion progression^{11,13}. Our results showed that the new and progression of cartilage lesions are earlier predicted by the $T_{1\rho}$ and T_2 biomarkers and the modified-WORMS may confirm this data just with a longer follow-up.

The limitations of our study include a relatively small patient population (especially for the subcohort analysis) and a variety of degenerative disease ranging from normal knees to those with moderate OA. We were unable, due to the small number of patients, to exclude higher KL grades, or to focus on one specific grade with our analysis. Our follow-up time was also relatively short as OA related cartilage changes occur over a period of many years. Another possible limitation of the study was the availability of just one morphological sequence for the WOMBS reading. The use of only one plane may underestimate cartilage lesions especially at patellar compartment. In this study, the definition of progression was based on morphological MR findings and not clinical findings – although MR findings maybe more sensitive and objective for measuring early signs of progression over shorter time periods. Finally the registration was able to mitigate most of the motion artifacts, which, however, persisted throughout all knee-compartments in three subjects only for the T₂ sequence.

In conclusion our study has shown significant differences in baseline T₂ and T_{1ρ} relaxation measurements between a cohort of individuals with and without progression of degenerative cartilage MR lesions; progression could be predicted measuring T₂ and T_{1ρ} at the femoral condyles and femoro-patellar joints, where progression of disease was also most advanced. Based on these findings, T₂ and T_{1ρ} relaxation times may serve as predictors of cartilage degenerative disease progression, and in a clinical setting, may potentially have a role not only in identifying high-risk patients, but also in more effectively recommending preventative strategies to protect the cartilage in the joint to these patients. Future studies in larger cohorts, with more homogeneous patient characteristics, with clinical metrics of OA and longer follow-up times are clearly warranted.

Acknowledgments

We would like to thank Sharmila Majumdar, Ph.D. for in-depth discussions. This study was supported by NIH R01-AR46905.

References

1. Kellgren JH, Lawrence JS. Radiological assessment of osteoarthritis. *Ann Rheum Dis* Dec. 1957; 16(4):494–502.
2. Majumdar, S., editor. *Advances in MRI of the Knee for Osteoarthritis*. 1. 2010.
3. Louer CR, Furman BD, Huebner JL, Kraus VB, Olson SA, Guilak F. Diet-induced obesity significantly increases the severity of post-traumatic arthritis in mice. *Arthritis Rheum*. 2012 Oct; 64(10):3220–30. [PubMed: 22576842]
4. Hovis KK, Stehling C, Souza RB, Haughom BD, Baum T, Nevitt M, et al. Physical activity is associated with magnetic resonance imaging-based knee cartilage T₂ measurements in asymptomatic subjects with and those without osteoarthritis risk factors. *Arthritis Rheum*. Aug; 2011 63(8):2248–56. [PubMed: 21538328]
5. Zhang W, Moskowitz RW, Nuki G, Abramson S, Altman RD, Arden N, et al. OARSI recommendations for the management of hip and knee osteoarthritis, Part I: critical appraisal of existing treatment guidelines and systematic review of current research evidence. *Osteoarthritis Cartilage*. Sep; 2007 15(9):981–1000. [PubMed: 17719803]
6. Richmond J, Hunter D, Irrgang J, Jones MH, Levy B, Marx R, et al. Treatment of osteoarthritis of the knee (nonarthroplasty). *J Am Acad Orthop Sur*. Sep; 2009 17(9):591–600.
7. Traynor K. Osteoarthritis guidelines take balanced approach to therapy. *Am J Health Syst Pharm*. Jun 1; 2012 69(11):906–8.
8. Michael JWP, Schluter-Brust KU, Eysel P. The epidemiology, etiology, diagnosis, and treatment of osteoarthritis of the knee. *Dtsch Arztebl Int*. Mar 5; 2010 107(9):152–69. [PubMed: 20305774]

9. Baum T, Joseph GB, Nardo L, Virayavanich W, Arulanandan A, Alizai H. MRI-based knee cartilage T2 measurements and focal knee lesions correlate with BMI – 36 month follow-up data from the Osteoarthritis initiative. *Arthritis Care Res (Hoboken)*. 2012 May 23. Epub ahead of print.
10. Joseph GB, Baum T, Alizai H, Carballido-Gamio J, Nardo L, Virayavanich W, et al. Baseline mean and heterogeneity of MR cartilage T(2) are associated with morphologic degeneration of cartilage, meniscus, and bone marrow over 3 years – data from the osteoarthritis initiative. *Osteoarthritis Cartilage*. Jul; 2012 20(7):727–35. [PubMed: 22503812]
11. Baum T, Joseph GB, Arulanandan A, Nardo L, Virayavanich W, Carballido-Gamio J, et al. Association of magnetic resonance imaging-based knee cartilage T2 measurements and focal knee lesions with knee pain: data from the osteoarthritis initiative. *Arthritis Care Res (Hoboken)*. Feb; 2012 64(2):248–55. [PubMed: 22012846]
12. Joseph GB, Baum T, Carballido-Gamio J, Nardo L, Virayavanich W, Alizai H, et al. Texture analysis of cartilage T2 maps: individuals with risk factors for OA have higher and more heterogeneous knee cartilage MR T2 compared to normal controls – data from the osteoarthritis initiative. *Arthritis Res Ther*. 2011; 13(5):R153. [PubMed: 21933394]
13. Laberge MA, Baum T, Virayavanich W, Nardo L, Nevitt MC, Lynch J, et al. Obesity increases the prevalence and severity of focal knee abnormalities diagnosed using 3T MRI in middle-aged subjects – data from the osteoarthritis initiative. *Skeletal Radiol*. Jun; 2012 41(6):633–41. [PubMed: 21887596]
14. Li X, Kuo D, Theologis A, Carballido-Gamio J, Stehling C, Link TM, et al. Cartilage in anterior cruciate ligament-reconstructed knees: MR imaging T1{rho} and T2 – initial experience with 1-year follow-up. *Radiology*. Feb; 2011 258(2):505–14. [PubMed: 21177392]
15. Keenan KE, Besier TF, Pauly JM, Han E, Rosenberg J, Smith RL, et al. Prediction of glycosaminoglycan content in human cartilage by age, T1 rho and T2 MRI. *Osteoarthritis Cartilage*. Feb; 2011 19(2):171–9. [PubMed: 21112409]
16. Jazrawi LM, Alaia MJ, Chang G, FitzGerald EF, Recht MP. Advances in magnetic resonance imaging of articular cartilage. *J Am Acad Orthop Sur*. Jul; 2011 19(7):420–9.
17. Wolfe F, Kong SX. Rasch analysis of the Western Ontario MacMaster Questionnaire (WOMAC) in 2205 patients with osteoarthritis, rheumatoid arthritis, and fibromyalgia. *Ann Rheum Dis*. Sep; 1999 58(9):563–8. [PubMed: 10460190]
18. Wolfe F. Determinants of WOMAC function, pain and stiffness scores: evidence for the role of low back pain, symptom counts, fatigue and depression in osteoarthritis, rheumatoid arthritis and fibromyalgia. *Rheumatology*. Apr; 1999 38(4):355–61. [PubMed: 10378714]
19. Crema MD, Roemer FW, Marra MD, Burstein D, Gold GE, Eckstein F, et al. Articular cartilage in the knee: current MR imaging techniques and applications in clinical practice and research. *Radiographics*. Jan-Feb;2011 31(1):37–61. [PubMed: 21257932]
20. Li X, Han ET, Busse RF, Majumdar S. In vivo T(1rho) mapping in cartilage using 3D magnetization-prepared angle-modulated partitioned k-space spoiled gradient echo snapshots (3D MAPSS). *Magn Reson Med*. Feb; 2008 59(2):298–307. [PubMed: 18228578]
21. Peterfy CG, Guermazi A, Zaim S, Tirman PF, Miaux Y, White D, et al. Whole-organ magnetic resonance imaging score (WORMS) of the knee in osteoarthritis. *Osteoarthritis Cartilage*. Mar; 2004 12(3):177–90. [PubMed: 14972335]
22. Stehling C, Lane NE, Nevitt MC, Lynch J, McCulloch CE, Link TM. Subjects with higher physical activity levels have more severe focal knee lesions diagnosed with 3 T MRI: analysis of a non-symptomatic cohort of the osteoarthritis initiative. *Osteoarthritis Cartilage*. Jun; 2010 18(6):776–86. [PubMed: 20202488]
23. Stehling C, Liebl H, Krug R, Lane NE, Nevitt MC, Lynch J, et al. Patellar cartilage: T2 values and morphologic abnormalities at 3.0-T MR imaging in relation to physical activity in asymptomatic subjects from the osteoarthritis initiative. *Radiology*. Feb; 2010 254(2):509–20. [PubMed: 20019141]
24. Zarins ZA, Bolbos RI, Pialat JB, Link TM, Li X, Souza RB, et al. Cartilage and meniscus assessment using T1rho and T2 measurements in healthy subjects and patients with osteoarthritis. *Osteoarthritis Cartilage*. Nov; 2010 18(11):1408–16. [PubMed: 20696262]

25. Taylor, JR., editor. *An Introduction to Error Analysis*. 2. Sausalito, California: University Science Books; 1997.
26. McAlindon TE, Snow S, Cooper C, Dieppe PA. Radiographic patterns of osteoarthritis of the knee joint in the community: the importance of the patellofemoral joint. *Ann Rheum Dis*. Jul; 1992 51(7):844–9. [PubMed: 1632657]
27. Link TM, Steinbach LS, Ghosh S, Ries M, Lu Y, Lane N, et al. Osteoarthritis: MR imaging findings in different stages of disease and correlation with clinical findings. *Radiology*. Feb; 2003 226(2):373–81. [PubMed: 12563128]
28. Kornaat PR, Bloem JL, Ceulemans RY, Riyazi N, Rosendaal FR, Nelissen RG, et al. Osteoarthritis of the knee: association between clinical features and MR imaging findings. *Radiology*. Jun; 2006 239(3):811–7. [PubMed: 16714463]
29. Kornaat PR, Bloem JL, Ceulemans RY, Riyazi N, Rosendaal FR, Nelissen RG, et al. Knee cartilage T2 characteristics and evolution in relation to morphologic abnormalities detected at 3-T MR imaging: a longitudinal study of the normal control cohort from the osteoarthritis initiative. *Radiology*. Nov; 2011 261(2):507–15. [PubMed: 21900614]
30. Chaisson CE, Gale DR, Gale E, Kazis L, Skinner K, Felson DT. Detecting radiographic knee osteoarthritis: what combination of views is optimal? *Rheumatology (Oxford)*. Nov; 2000 39(11):1218–21. [PubMed: 11085800]
31. Elahi S, Cahue S, Felson DT, Engelman L, Sharma L. The association between varus-valgus alignment and patellofemoral osteoarthritis. *Arthritis Rheum*. Aug; 2000 43(8):1874–80. [PubMed: 10943879]
32. Lin J, Li R, Kang X, Li H. Risk factors for radiographic tibiofemoral knee osteoarthritis: the wuchuan osteoarthritis study. *Int J Rheumatol*. 2010;2010:385826. [PubMed: 21234318]
33. Carballido-Gamio J, Stahl R, Blumenkrantz G, Romero A, Majumdar S, Link TM. Spatial analysis of magnetic resonance T1rho and T2 relaxation times improves classification between subjects with and without osteoarthritis. *Med Phys*. Sep; 2009 36(9):4059–67. [PubMed: 19810478]
34. Regatte RR, Akella SVS, Lonner JH, Kneeland JB, Reddy R. T-1p relaxation mapping in human osteoarthritis (OA) cartilage: comparison of T-1p with T-2. *J Magn Reson Imaging*. Apr; 2006 23(4):547–53. [PubMed: 16523468]
35. David-Vaudey E, Ghosh S, Ries M, Majumdar S. T-2 relaxation time measurements in osteoarthritis. *Magn Reson Imaging*. Jun; 2004 22(5):673–82. [PubMed: 15172061]
36. Dunn TC, Lu Y, Jin H, Ries MD, Majumdar S. T2 relaxation time of cartilage at MR imaging: comparison with severity of knee osteoarthritis. *Radiology*. Aug; 2004 232(2):592–8. [PubMed: 15215540]
37. Li X, Han ET, Ma CB, Link TM, Newitt DC, Majumdar S. In vivo 3T spiral imaging based multi-slice T(1rho) mapping of knee cartilage in osteoarthritis. *Magn Reson Med*. Oct; 2005 54(4):929–36. [PubMed: 16155867]
38. Li X, Benjamin Ma C, Link TM, Castillo DD, Blumenkrantz G, Lozano J, et al. In vivo T(1rho) and T(2) mapping of articular cartilage in osteoarthritis of the knee using 3 T MRI. *Osteoarthritis Cartilage*. Jul; 2007 15(7):789–97. [PubMed: 17307365]
39. Regatte RR, Akella SV, Wheaton AJ, Lech G, Borthakur A, Kneeland JB, et al. 3D-T-1 rho-relaxation mapping of articular cartilage: in vivo assessment of early degenerative changes in symptomatic osteoarthritic subjects. *Acad Radiol*. Jul; 2004 11(7):741–9. [PubMed: 15217591]

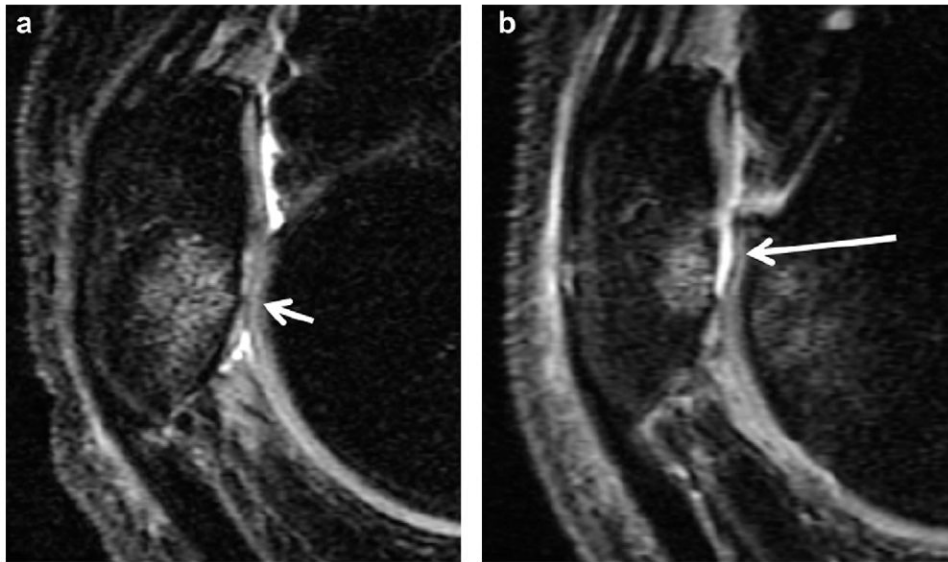


Fig. 1. Sagittal, intermediate-weighted MR images demonstrate progression of a cartilage lesion at the PAT: at baseline (a) a small amount of partial-thickness cartilage loss at the inferior pole of the patella (short arrow) associated with bone marrow edema is seen and at the 12 month-follow-up (b) extensive full-thickness cartilage loss is shown at the same site (long arrow).

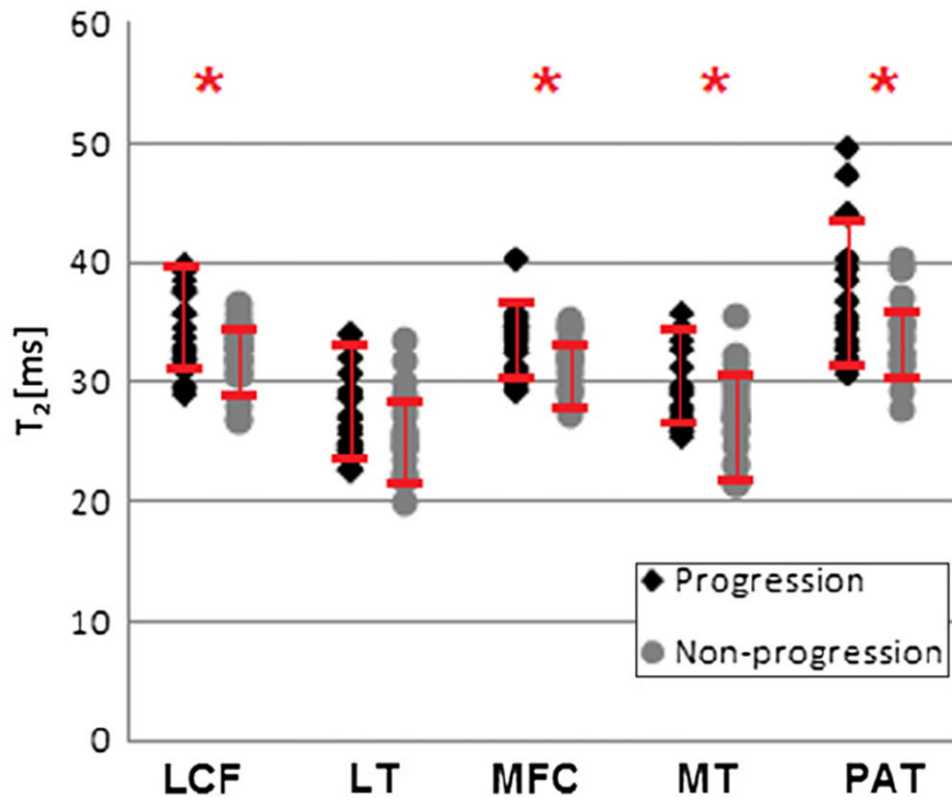


Fig. 2. Dot plot showing T₂ relaxation time values, stratified by progression vs non-progression. SDs are also depicted, asterisks (*) indicate statistical significance between the two groups ($P < 0.05$).

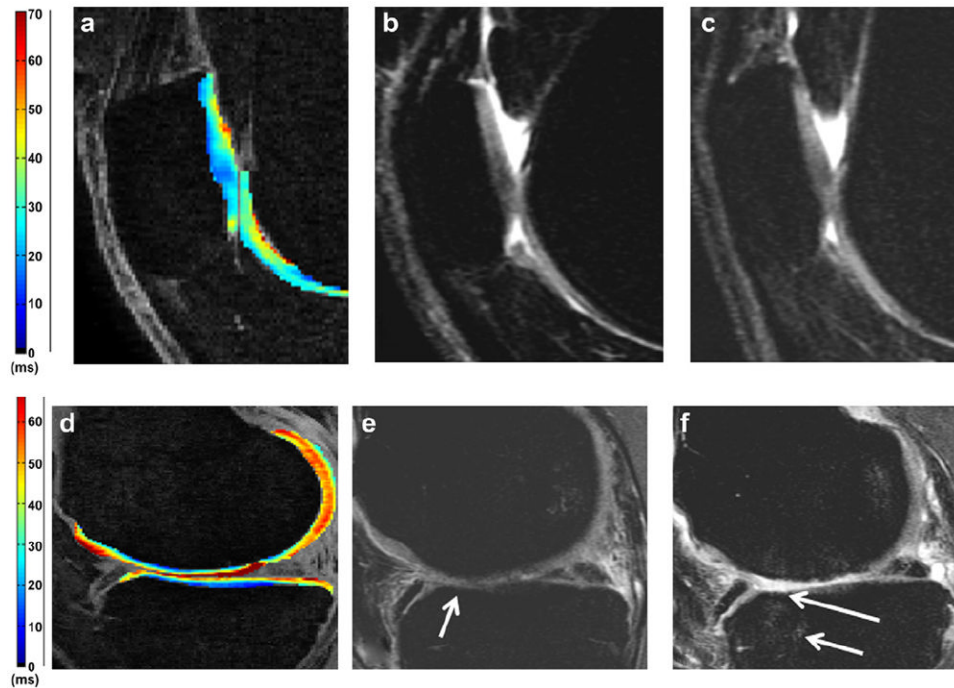


Fig. 3. Sagittal T_2 color maps (a, d) with baseline (b, e) and follow-up (c, f) sagittal intermediate-weighted MR images. Low T_2 values (a) are associated with intact patella cartilage both at the baseline (b) and at the follow-up (c) (non-progressor). High T_2 values (d) are associated with extensive progression of femoral and tibial cartilage degeneration: (e) partial femoral and tibial cartilage defects at baseline (arrow) progress in the follow-up (f) with full-thickness loss and partial-thickness cartilage loss at the tibia (long arrow). In addition new bone marrow edema pattern is shown at the femur and tibia (short arrow).

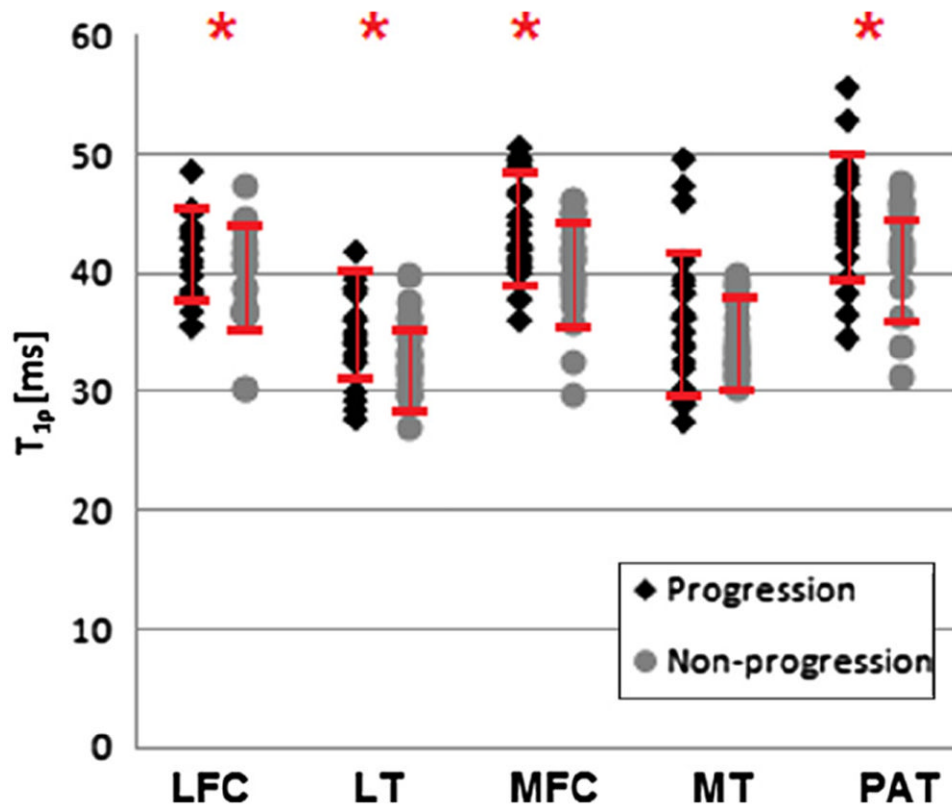


Fig. 4. Dot plot showing $T_{1\rho}$ relaxation time values, stratified by progression vs non-progression. SDs are also depicted, asterisks (*) indicate statistical significance between the two groups ($P < 0.05$).

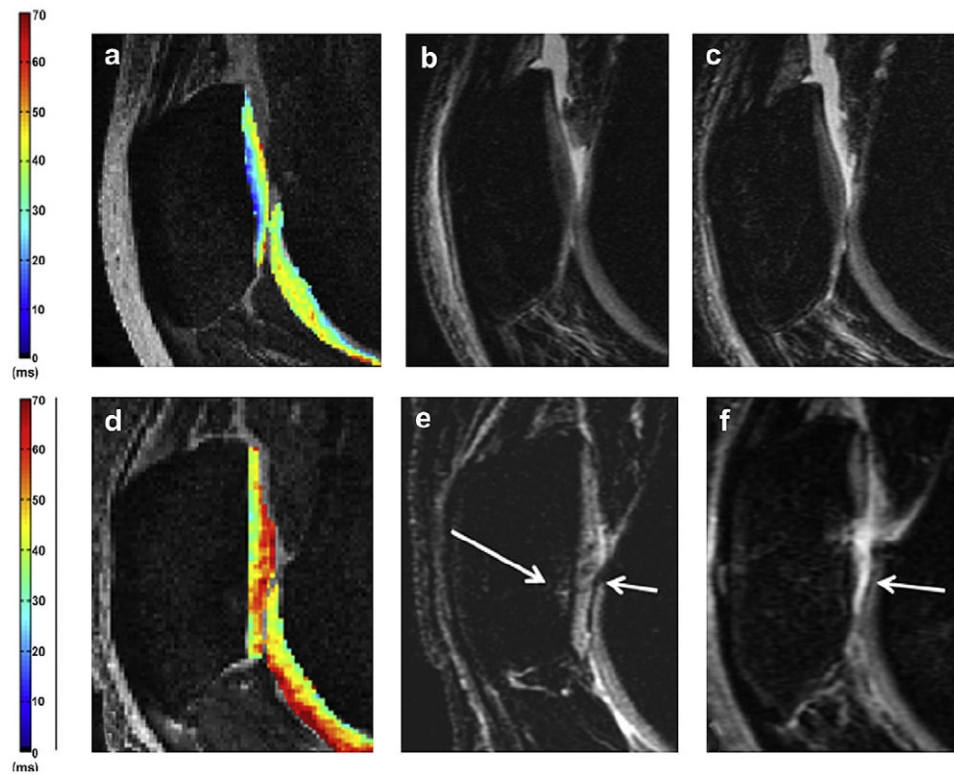


Fig. 5. Sagittal $T_{1\rho}$ color maps (a,d) with baseline (b,e) and follow-up (c,f) sagittal morphological MR images. In (a) the $T_{1\rho}$ color map demonstrates low patellar $T_{1\rho}$ values at baseline (average value 30). Baseline (b) and follow-up (c) depict intact patellar cartilage with no degeneration (c). In (d) the $T_{1\rho}$ color map shows high patellar values at baseline (average value about 40). Baseline (e) and follow-up (f) demonstrate progression of a cartilage lesion at the patella: at baseline mild fissuring of the cartilage at the patella is shown (short arrow) associated with bone marrow edema pattern (long arrow) and at the follow-up (f) progression to extensive full-thickness cartilage loss is noted at this site (arrow).

Table I

Demographic characteristics of the 55 subjects

Variables	N (%) or mean \pm SD
Male	30 (54.5%)
Female	25 (45.4%)
Age (years)	50.5 \pm 10.2
Race	
White	36 (65.5%)
Black	2 (3.6%)
Asian	13 (23.6%)
Other	4 (7.3%)
BMI (kg/m ²)	28.7 \pm 4.3
KL score	
0	20 (36.4%)
1	14 (25.5%)
2	10 (18.2)
3	11 (20.0%)
WOMAC	
Pain	4.1 \pm 4.3
Stiffness	2.1 \pm 2.0
Function	13.2 \pm 14.0

Table II

Parameters of SPGR, T₂ and T_{1ρ} MRI sequences

Sequence	TR (ms)	TE (ms)	FOV	Matrix	Slice thickness (mm)	Bandwidth (KHz)	Parameter	Acquisition time
SPGR (flip angle = 12)	15	6.7	14	512 × 512	1	31.25	Cartilage volume and thickness	6 min
Fast spin echo (FSE)	4300	51	14	512 × 256	2.5 (0.5 gap)	-	WORMS	-
3D T _{1ρ} * (TSL = 0/10/40/80 ms, FSL = 500 Hz)	9.3	3.7	14	256 × 192	3	-	T _{1ρ}	8 min
3D T ₂	9.3	3.1/13.5/23.9/44.8	14	256 × 192	3	-	T ₂	8 min

* Recovery time 1200 ms.

Table III

Subject characteristics stratified by progression and non-progression

	Age (years)	BMI (kg/m ²)	WOMAC pain	WOMAC stiffness	WOMAC function	Number of subjects
Progressors						
Mean *	52.55	26.55	3.96	2.62	13.37	Males = 13
SD *	10.44	5.08	3.64	2.95	13.20	Females = 14
Non-progressors						
Mean	47.32	24.70	3.96	1.89	12.32	Males = 17
SD	13.42	3.88	4.93	2.02	15.89	Females = 11
P-value	0.1135	0.1356	0.999	0.2875	0.7908	n/a

* Means and SDs of the two cohorts were not significantly different in this study.

Table IV

Summary of lesion location and type within the progression cohort

Compartments	Lesion #	New lesions (incidental lesion)	Increase of pre-existing (prevalent) lesion
MFC	14	5	9
MT	2	–	2
PAT	10	3	7
T	9	2	7
LFC	0	0	0
LT	0	0	0
Total	35	10	25

Table V

ORs for one SD change in T_2 and T_{1p}

	MFC	MT	LFC	LT	PAT
OR for one SD change in T_2	2.12	2.12	2.616	1.58	2.19
OR for one SD change in T_{1p}	2.71	1.79	2.15	1.97	2.28