

UCSF

UC San Francisco Previously Published Works

Title

Heterogeneity in primary dystonia: Lessons from THAP1, GNAL, and TOR1A in Amish-Mennonites

Permalink

<https://escholarship.org/uc/item/4c31g48x>

Journal

Movement Disorders, 29(6)

ISSN

0885-3185

Authors

Saunders-Pullman, Rachel

Fuchs, Tania

San Luciano, Marta

et al.

Publication Date

2014-05-01

DOI

10.1002/mds.25818

Peer reviewed



Published in final edited form as:

Mov Disord. 2014 May ; 29(6): 812–818. doi:10.1002/mds.25818.

Heterogeneity in primary dystonia: lessons from *THAP1*, *GNAL* and *TOR1A* in Amish-Mennonites

Rachel Saunders-Pullman, MD, MPH^{1,2}, Tania Fuchs, PhD³, Marta San Luciano, MD, MS⁴, Deborah Raymond, MS¹, Alison Brashear, MD⁵, Robert Ortega, MS¹, Andres Deik, MD¹, Laurie J. Ozelius, PhD^{3,6}, and Susan B. Bressman, MD^{1,2}

¹Department of Neurology, Beth Israel Medical Center, New York, NY

²Department of Neurology, Albert Einstein College of Medicine, Bronx, NY

³Department of Genetics and Genomic Sciences, Icahn School of Medicine at Mount Sinai, New York, NY

⁴Department of Neurology, University of California, San Francisco, CA

⁵Department of Neurology, Wake Forest School of Medicine, Winston Salem, NC

⁶Department of Neurology, Icahn School of Medicine at Mount Sinai, New York, NY

Abstract

Background—A founder mutation in the *THAP1* gene causing primary dystonia was originally described in the Amish-Mennonites. However there may be both genotypic and phenotypic heterogeneity of dystonia in this population that may also inform studies in other ethnic groups.

Methods—Genotyping for *THAP1*, and *GNAL* mutations and genotype-phenotype comparisons were performed for 76 individuals of Amish-Mennonites heritage with primary dystonia.

Results—27 had mutations in *THAP1*—most with the founder indel mutation, but two had different *THAP1* mutations; 8 had mutations in *GNAL*; and 1 had a *de novo* GAG deletion in

Corresponding author: Dr. Rachel Saunders-Pullman, The Alan and Barbara Mirken Department of Neurology, Beth Israel Medical Center, 10 Union Square East, Suite 5J, New York, NY 10003, Phone: 212-844-8719, Fax: 212-844-8461, rsaunder@chpnet.org.

Disclosures:

Dr. Brashear consults for Allergan, Merz and Ipsen and has had salary support from NINDS. Her conflict of interest is being managed by Wake Forest School of Medicine.

Dr. Fuchs has nothing to disclose

Dr. San Luciano received compensation from Merz Pharmaceuticals for consulting services.

Dr. Deik has nothing to disclose

Ms. Raymond has nothing to disclose.

Mr. Ortega has nothing to disclose.

Authors' Roles

Ms. Raymond – 1 B, C, 3 B

Dr. Brashear – 1 C, 3 B

Mr. Ortega – 1 C, 2 B, 3 B

Dr. Deik – 1 C, 3 B

Dr. Fuchs – 1 C, 3 B

Dr. San Luciano – 1 C, 2 B, 2 C, 3 B

Dr. Ozelius – 1 A, 1 B, 1 C, 3 B

Dr. Bressman – 1 A, 1 B, 1 C, 2 C, 3 B

Dr. Saunders-Pullman – 1 A, 1 B, 1 C, 2 A, 2 B, 2 C, 3 A, 3 B

TORIA. In the primary analysis comparing *THAPI* carriers to all non-*THAPI*, non-*GNAL*, non-*TORIA* individuals, age at onset was lower in *THAPI* carriers (15.46±9.20, range 5–38 vs. 39.18±17.65, range 1–70, $p<0.001$), carriers were more likely to have onset of dystonia in an arm (44.4% vs. 15%, $p=0.02$), and to have arm (88.9% vs. 22.5%, $p<0.01$), leg (51.9% vs. 10% $p=0.01$), and jaw/tongue (33.3% vs. 7.5%, $p=0.02$) involvement at final examination. Carriers were less likely to have dystonia restricted to a single site (11.11% in carriers vs. 65.85% ($p<0.01$)), and less likely to have dystonia onset in cervical regions (25.9% *THAPI* vs. 52.5% in non-carriers, $p=0.04$).

Conclusions—Primary dystonia in the Amish-Mennonites is genetically diverse, and includes not only the *THAPI* indel founder mutation but also different mutations in *THAPI* and *GNAL* as well as the *TORIA* GAG deletion. Phenotype, particularly age at onset combined with final distribution, may be highly specific for the genetic etiology.

Keywords

genetics; dystonia; *THAPI*; *GNAL*; Amish; Mennonites

Introduction

Dystonia due to mutations in *THAPI* (*DYT6*) is characterized by early onset primary dystonia with prominent cranio-cervical, and frequent arm involvement.¹ *DYT6* linkage was initially established in two large Amish-Mennonite families,² and the linked region was subsequently narrowed using two additional Amish-Mennonite families with a similar phenotype.³ We then determined that dystonia in these families, as well as in apparently non-Amish-Mennonite individuals, was due to an insertion/deletion (indel) mutation in exon 1 in the Thanatos-associated [THAP] domain-containing apoptosis-associated protein 1 gene (*THAPI*), which caused the insertion of a premature stop codon.⁴ To date, over 80 mutations have been reported as causative for *DYT6* in a wide range of ethnic groups including European (English, Dutch, German, French, Serbian, Swedish, Italian, Greek), Iranian, Indian and Chinese populations.^{1, 5–13}

Although the genetic etiology of *DYT6* was first determined in Amish-Mennonites, not all Amish-Mennonites affected with PTD share the *THAPI* founder mutation³ suggesting genetic heterogeneity in this population. Indeed, a previously reported case of an Amish-Mennonite man with primary torsion dystonia (PTD) with a *de novo TORIA* mutation¹⁴ and two Amish-Mennonite families with primary dystonia who did not show linkage to the *DYT6* region³ indicate that other genes are responsible for primary dystonia in this population. The elucidation of *THAPI* and more recent identification of *GNAL* as a causative gene for dystonia prompted us to study the role of the three primary dystonia genes, *TORIA*, *THAPI* and *GNAL* in the Amish-Mennonites. We also sought to determine whether apparent phenocopies in the Amish-Mennonites are attributable to other *THAPI* or *GNAL* mutations.

Methods

Participants

As part of a larger genetic study to identify a gene for dystonia in Amish-Mennonite individuals, we evaluated a total of 76 affected individuals from 40 families with at least one grandparent of Swiss-German Amish or Mennonite descent who settled in Pennsylvania, Ontario, Ohio, Indiana or Illinois. Individuals were referred by physicians and by the Dystonia Medical Research Foundation, or answered advertisements in an Amish newspaper. Because families were expanded to identify as many affected individuals as possible, there is a bias toward familial cases. While many of the Amish-Mennonites solely identify as Mennonite, in some families there are Amish ancestors; therefore, we have denoted the group overall as Amish-Mennonite.¹⁵ We excluded those individuals who descended exclusively from Dutch-Russian (Dutch-German) Mennonite ancestors, as this group is genetically distinct from the Amish-Mennonite (Swiss-German) group.¹⁶ One family having one grandparent of Dutch-Russian Mennonite background and one of Amish-Mennonite background was retained. All subjects gave informed consent prior to participation in this study, which was approved by the institutional review boards at Beth Israel Medical Center and Mount Sinai School of Medicine. The individuals were interviewed and examined according to previously published protocols,¹⁷ including videotaped examinations. Blood for DNA extraction was obtained. When possible, first- and second-degree family members were also examined, and blood samples were collected. Affected individuals reporting clinical signs or laboratory findings suggestive of secondary dystonia were excluded. Three authors (SBB, MSL, RSP) blinded to genotype results, reviewed standardized videotaped examinations. Definite dystonia was defined as characteristic overt twisting or directional movements and postures that were consistently present. Ratings for probable, possible and no dystonia were defined as previously reported.¹⁸ When in-person or videotaped examination was not possible, but medical records confirmed the diagnosis of dystonia, individuals were categorized as definite by history.

Final clinical status was determined by two authors (SBB and RSP), after considering the evaluations of on-site examiners, video review examiners, and any additional information available from medical records. Age and site at onset were determined by self-report and review of medical records. All clinical evaluations and the final decisions of affected status were made prior to ascertaining genotype.

Four Amish-Mennonite families were previously reported: three were clinically described (M, C, and R)^{2, 3} and reported as carrying the *THAPI* indel founder mutation,⁴ and the fourth was included in our report describing additional *THAPI* mutations.¹ Two *GNAL* families were described briefly in the initial publication describing *GNAL* mutations as causative for dystonia.¹⁹

In total, there were 76 affected individuals with clinical information and DNA available for analyses. Of the 76, 62 had in-person and videotaped exams, while 2 had video examinations and medical records available. The remaining 12 individuals were evaluated by neurologists specializing in movement disorders, and information was derived from

medical records and telephone interviews. If there were multiple examinations, information from the final examination is reported. The Beth Israel IRB approved this study.

Molecular Analysis

Blood samples were collected from participants and DNA was extracted using standard methods. Screening for the three base pair deletion in *TORIA* was performed as previously described.²⁰ For *THAPI*, we initially screened the index case from each of the 40 families by direct Sanger sequencing as previously described.⁴ In families with the *THAPI* indel mutation, haplotypes were constructed as previously reported.⁴ *GNAL* mutations were assessed as described.¹⁹

Statistical Analysis

Clinical features of all affected individuals from families with *THAPI* mutations were first compared to all individuals without *THAPI*, *GNAL* or *TORIA* mutations. Features included: gender, age at onset, site onset, final distribution, and final sites involved. As we included more than one member of a family, mixed effects logistic regression models were applied to account for the correlations among measurements of subjects from the same family. The analysis was then repeated comparing *THAPI* to *GNAL* mutation carriers. Analyses describing sensitivity and specificity of prescribed cut-points of age of onset, and sites previously described as associated with *THAPI* mutations were also performed.¹ Analyses were performed using SAS 9.3 (SAS Institute Inc., Cary, NC).

Results

Among the over 300 Amish–Mennonites evaluated as part of our Genetics of Primary Dystonia study since 1992, we report 76 with definite primary dystonia, among whom 27 had *THAPI* mutations, eight had *GNAL* mutations, and one a *TORIA* mutation. Of these 36 mutation positive affecteds (from 16 families) 31 were previously reported (1 *TORIA*, 23 *THAPI*, and 7 *GNAL*). We identified two new unique *THAPI* mutations, c.65T>C; p.F22S and c.67C>T; p.H23Y, as well as two new individuals with the insertion/deletion (indel) mutation c.135_139delinsGGGTTTA; p.F45fs73X, who were not known to be closely related to the originally described families (Table 1). All indel mutation individuals shared the common haplotype.⁴ The two new missense mutations were conserved across vertebrate *THAPI* orthologs and were not found in dbSNP137, ~3,500 European exomes in the NHLBI Exome Sequencing Project database or 572 control chromosomes that we tested.

The individual with the c.65T>C; p.F22S mutation (Family A) had onset at age 12 with cervical dystonia, which then spread to involve upper and lower face, including jaw and tongue, both arms, legs and trunk. Leg dystonia was mild and did not significantly impair her walking. Cervical dystonia improved with botulinum toxin A injections, and there was only partial response to anticholinergic medications. In addition, she had a distant cousin with a *de novo* *TORIA* mutation and classic early onset leg dystonia significantly affecting gait, but without cranial involvement,^{14, 21} and a first cousin once-removed with blepharospasm beginning at age 60 with neither a *THAPI* nor *TORIA* mutation (Figure 1, Pedigree). The second novel mutation carrier (c.67C>T; p.H23Y) developed right arm

dystonia by age 7, which spread to prominently involve her neck and eventually both legs. The remaining 40 subjects did not harbor *THAP1* mutations and included two families with predominant cervical dystonia. In addition to the two previously described *GNAL* mutations,¹⁹ we identified a novel *GNAL* mutation, c.514G>A; p.V172I, in a woman with onset of laryngeal dystonia at age 21, that progressed to involve cervical muscles. This mutation was not seen in dbSNP137, ~3,500 European exomes in the NHLBI Exome Sequencing Project database or 572 control chromosomes that we tested. The V172 amino acid is also conserved among *GNAL* orthologs. There was no family history of dystonia, but there was a strong history of tremor. The patient's father had voice and head tremor that began in his 50s, and her son and brother had arm tremor. As none of the family members were available for examination, we cannot comment on whether this tremor in the relatives was dystonic. However, the mutation was present in the son with arm tremor, the only other family member with a DNA sample. The three *GNAL* mutations were private in each family and no other *GNAL* mutations were identified in this population.

The clinical features of subjects with identified *THAP1* mutations are summarized in Table 2. The *THAP1* mutation positive group was younger at examination than the mutation negative group (15.5±9.2 years vs. 39.2±17.7, p<0.001) and the *GNAL* mutation group (50.3±10.4, p=0.07). Duration of dystonia was not different between groups: *THAP1*, 21.0±9.2 years; no mutation, 14.0±10.9; and *GNAL*, 21.3±13.3. Women were overrepresented in *THAP1* and mutation negative groups (70.4% of *THAP1* mutation carriers, and 67.5% in non-carriers), but not *GNAL* (37.5%).

The phenotype of the *THAP1* mutation positive individuals was characterized by dystonia onset in an arm for many (44.44%), followed by neck (25.93%) and craniofacial muscles (25.93%). A larger proportion of carriers had arm onset than those without mutations (44.4% vs. 15.0%, p=0.02), and mutation negative individuals were more likely to have cervical onset (52.5% vs. 25.9%, p=0.04). Only one individual had onset of dystonia in a leg and an arm, and another in both legs. Age at onset was lower in the *THAP1* mutation positive group than the mutation negative group (15.5±9.2, range 5–38 vs. 39.2±17.7, range 1–70, p<0.0001). Compared with non-carriers, *THAP1* mutation carriers were more likely to have arm (88.9% vs. 22.5%, p<0.001), leg (51.85% vs. 10.0%, p=0.01), and jaw or tongue (33.3 vs. 7.5, p=0.02) involvement at final examination. They were also more likely to have dystonia spread to another site (88.9% vs. 34.88%, p=0.02).

When compared with the *GNAL* mutation group, *THAP1* carriers were more likely to have onset in an arm (44.4% vs. 0.0%, p=0.023). Leg onset was infrequently present in both groups (12.5% of *GNAL* carriers and 7.4% of *THAP1* carriers, p=0.66). Compared with *GNAL* carriers, *THAP1* mutation carriers were more likely to have arm involvement at final examination (88.9% vs. 37.5%, p<0.02). Age at onset was lower in the *THAP1* group than the *GNAL* group (15.5±9.2 vs. 32.9±10.7, range 20–48, p<0.0001). While there was a greater proportion of women and girls affected in the *THAP1* group, this was not significantly different.

THAP1 mutation carriers represented 62.5% of the Amish-Mennonite group with onset at age 21 or younger, 54.8% of the group with onset less than age 30, and none were

represented in the group with onset at age 60 or older. *TORIA* was rare in this group, with a mutation in only one of 32 (3.1%) early-onset cases (onset \leq 21 years). Among subjects with onset \leq 21, sensitivity for arm AND speech involvement at final examination was low for *THAPI* mutation (7/21= 33%, 95% confidence interval (CI) 0.17–0.55), but specificity was high (7/9 =85%, CI 0.58–0.96). Specificity was slightly higher than final site involving speech alone in the \leq 21 year onset group (77%, CI 0.50–0.90, with sensitivity 38%, CI 0.21–0.59), and sensitivity was greatest for final site involving an arm in the early age of onset subgroup (86%, CI 0.65–0.95 and specificity 46%, CI 0.23–0.70).

Discussion

We demonstrate that in addition to the common *THAPI* founder mutation, at least two other *THAPI* mutations, multiple independent *GNAL* mutations and a *de novo TORIA* GAG deletion cause primary dystonia in Amish-Mennonites. Because *DYT6* was mapped in related Amish-Mennonite families and a founder haplotype and mutation in these families allowed for gene identification, the founder *THAPI* mutation is commonly equated with all primary torsion dystonia in this population. However, the findings of additional *THAPI* mutations, as well as *TORIA* and *GNAL* mutations and mutation-negative individuals of Amish-Mennonite descent, emphasizes the genetic heterogeneity of primary dystonia, even in this ethnic isolate. Our results also underscore that phenotype remains a major predictor in determining genotype. This has both counseling and treatment implications.

Although genotype specific therapies do not yet exist, knowing genotype may affect decisions regarding current symptomatic treatment. Specifically deep brain stimulation (DBS) response may vary by genetic etiology, with *DYT1* mutation carriers demonstrating a better response than *DYT6*. Individuals with *TORIA* mutations show more consistent improvement overall with bilateral globus pallidum (GPi) DBS than non-*DYT1* dystonia cases,²² and *THAPI* cases in particular,³ where there is usually incomplete resolution of dystonia.²⁴ However, the number of *THAPI* cases reported is small compared to *DYT1*, and response to GPi DBS among *THAPI* patients varies among series²³. If the potentially less robust response to DBS for *THAPI* is maintained in larger studies, this would have implications both for prognosticating surgical benefit with GPi stimulation and considering other targets in *DYT6* patients. The only patient in our cohort who underwent DBS, and for whom records are available was the *DYT1* carrier, who demonstrated excellent response bilateral GPi DBS surgery at age 42.

The typical *THAPI* dystonia phenotype is characterized by predominantly early disease onset with brachial and speech involvement, that often generalizes but with non-disabling mild leg dystonia.¹ Two studies concluded that mutations within the THAP DNA binding domain tend to manifest at an earlier age and exhibit more extensive anatomical distributions than mutations localized to other regions of *THAPI*.^{25, 26} We could not assess that correlation as all of the mutations we identified occurred in the DNA binding domain. However, within the families carrying the F45fs73X founder mutation, there is a wide range of phenotypes suggesting that other factors beyond mutation location influence phenotypic expression.

Although our study was not well powered to compare *GNAL* mutation carriers as a group to others, it is of interest that none of the seven *GNAL* carriers had the classic *THAPI* phenotype of early onset (< 21 years) with both arm and speech affected. Further, even among this small group, a relatively older age of onset was detected in comparison with *THAPI* mutation carriers. Overall, the phenotypes defined in the Mennonite population for *THAPI* and *GNAL* mutation carriers, are consistent with what has been reported for other primary dystonia cohorts.^{5, 11, 19, 24–35}

It is also important to note that there are Amish and Amish Mennonite founder mutations for several non-primary forms of dystonia including pantothenate kinase associated neurodegeneration (PKAN), glutaric aciduria type 1, and homocystinuria due to a founder mutation in methyltetrahydrofolate reductase (reviewed in¹⁵). Further, in our recruitment for genetic studies, we evaluated an 8-year-old Amish girl with prominent dystonia, but also ocular telangiectasias, oculomotor apraxia, chorea and ataxia, who was discovered to have one of the two Amish founder mutations in the *ATM* gene. While ataxia-telangiectasia in its classic and most common form presents with prominent ataxia and telangiectasia, its variant form may present as primary dystonia without cerebellar atrophy, ataxia or telangiectasia.³⁶ Hence the diagnostic net, even in apparently primary dystonia in Amish-Mennonites, should be broad.

Although we did not screen for the three recently identified primary dystonia genes, *ANO3*,³⁷ *TUBB4a*,^{38, 39} and *CIZ1*,⁴⁰ it is possible that these may be present in the mutation negative group. However, if mutations in these genes were identified in a small subset of non-mutation cases, this would only further support our findings of genetic heterogeneity in this population.

The genetic heterogeneity and relationship between phenotype and genotype is highlighted in Family A: the Amish-Mennonite proband with a classic *DYT6* phenotype with early onset dystonia involving both arm and cranial sites did not harbor the founder indel, but another *THAPI* mutation; her aunt with definite focal blepharospasm did not have any mutation in the three genes tested; and her distant cousin with early onset dystonia not involving cranial muscles/speech but which prominently affected the leg limiting gait, had a *de novo* *DYT1* mutation. For all three, the phenotype is helpful in determining genotype. Our analyses of all subjects further support using clinical features particularly age of onset and distribution, to guide testing decisions; we found excellent specificity but moderate sensitivity and the confidence intervals were broad. Larger samples, not biased for familial cases, are needed to further determine testing characteristics for *GNAL* and *THAPI* dystonia.

Acknowledgments

The authors thank all the individuals and family members who graciously participated in this study. RSP is supported by NIH NINDS K02 NS073836. Supported by the Bachmann-Strauss Dystonia and Parkinson Foundation- Jake's Ride for Dystonia Research (RSP), NINDS (NS26656 to SBB, NS037409, NS075881 LJO), and the Dystonia Medical Research Foundation (TF; RSP). The authors would like to thank the National Heart Lung Blood Institute GO Exome Sequencing Project and its ongoing studies which produced and provided exome variant calls for comparison: the Lung GO Sequencing Project (HL-102923), the WHI Sequencing Project (HL-102924), the Broad GO Sequencing Project (HL-102925), the Seattle GO Sequencing Project (HL-102926) and the Heart GO Sequencing Project (HL-103010).

Dr. Ozelius receives salary support from NIH [NS058949, NS037409, NS075881, DC011805]; and has received grant support from the Bachmann-Strauss Dystonia and Parkinson Foundation, the Benign Essential Blepharospasm Research Foundation and The Dystonia Medical Research Foundation. She is a current member of the scientific advisory boards of the National Spasmodic Dysphonia Association, the Benign Essential Blepharospasm Research Foundation and Tourette Syndrome Association, Inc. Dr. Ozelius receives royalty payments from Athena Diagnostics related to patents.

Dr. Bressman serves on the advisory boards of the Michael J. Fox Foundation, the Dystonia Medical Research Foundation, the Bachmann Strauss Dystonia and Parkinson's Foundation, and the Board of We Move. She has consulted for Bristol Meyer Squibb. She has received research support from the Michael J. Fox Foundation, National Institutes of Health (NIH), and Dystonia Medical Research Foundation. Dr. Bressman received royalty payments from Beth Israel/Mount Sinai/Athena for DYT6 testing.

Dr. Saunders-Pullman receives research support from the NIH (K02 NS073836), the Michael J Fox Foundation for Parkinson's Research, the Bachmann-Strauss Dystonia and Parkinson's Foundation, the Bigglesworth Foundation and the Empire State Clinical Research Training Program.

References

1. Bressman SB, Raymond D, Fuchs T, Heiman GA, Ozelius LJ, Saunders-Pullman R. Mutations in THAP1 (DYT6) in early-onset dystonia: a genetic screening study. *Lancet Neurol.* 2009; 8:441–446. [PubMed: 19345147]
2. Almasy L, Bressman SB, Raymond D, et al. Idiopathic torsion dystonia linked to chromosome 8 in two Mennonite families. *Ann Neurol.* 1997; 42:670–673. [PubMed: 9382482]
3. Saunders-Pullman R, Raymond D, Senthil G, et al. Narrowing the DYT6 dystonia region and evidence for locus heterogeneity in the Amish-Mennonites. *Am J Med Genet A.* 2007; 143A:2098–2105. [PubMed: 17702011]
4. Fuchs T, Gavarini S, Saunders-Pullman R, et al. Mutations in the THAP1 gene are responsible for DYT6 primary torsion dystonia. *Nat Genet.* 2009; 41:286–288. [PubMed: 19182804]
5. Lohmann K, Uflacker N, Erogullari A, et al. Identification and functional analysis of novel THAP1 mutations. *Eur J Hum Genet.* 2012; 20:171–175. [PubMed: 21847143]
6. Blanchard A, Roubertie A, Simonetta-Moreau M, et al. Singular DYT6 phenotypes in association with new THAP1 frameshift mutations. *Mov Disord.* 2011; 26:1775–1777. [PubMed: 21520283]
7. De Carvalho Aguiar P, Fuchs T, Borges V, et al. Screening of Brazilian families with primary dystonia reveals a novel THAP1 mutation and a de novo TOR1A GAG deletion. *Mov Disord.* 2010; 25:2854–2857. [PubMed: 20925076]
8. Cheng FB, Wan XH, Feng JC, Wang L, Yang YM, Cui LY. Clinical and genetic evaluation of DYT1 and DYT6 primary dystonia in China. *Eur J Neurol.* 2011; 18:497–503. [PubMed: 20825472]
9. Zittel S, Moll CK, Bruggemann N, et al. Clinical neuroimaging and electrophysiological assessment of three DYT6 dystonia families. *Mov Disord.* 2010; 25:2405–2412. [PubMed: 20687193]
10. Sohn AS, Glockle N, Doetzer AD, et al. Prevalence of THAP1 sequence variants in German patients with primary dystonia. *Mov Disord.* 2010; 25:1982–1986. [PubMed: 20669277]
11. Djarmati A, Schneider SA, Lohmann K, et al. Mutations in THAP1 (DYT6) and generalised dystonia with prominent spasmodic dysphonia: a genetic screening study. *Lancet Neurol.* 2009; 8:447–452. [PubMed: 19345148]
12. Bonetti M, Barzagli C, Brancati F, et al. Mutation screening of the DYT6/THAP1 gene in Italy. *Mov Disord.* 2009; 24:2424–2427. [PubMed: 19908325]
13. Ledoux MS, Xiao J, Rudzinska M, et al. Genotype-phenotype correlations in THAP1 dystonia: Molecular foundations and description of new cases. *Parkinsonism Relat Disord.* 2012; 18:414–425. [PubMed: 22377579]
14. Klein C, Brin MF, de Leon D, et al. De novo mutations (GAG deletion) in the DYT1 gene in two non-Jewish patients with early-onset dystonia. *Hum Mol Genet.* 1998; 7:1133–1136. [PubMed: 9618171]
15. Saunders-Pullman R, Verhagen L, Kompolti K. Dystonia in Amish and Amish-Mennonite Families. *Encyclopedia of Movement Disorders.* 2010:p375–p377.

16. Orton NC, Innes AM, Chudley AE, Bech-Hansen NT. Unique disease heritage of the Dutch-German Mennonite population. *Am J Med Genet A*. 2008; 146A:1072–1087. [PubMed: 18348259]
17. Bressman SB, de Leon D, Brin MF, et al. Idiopathic dystonia among Ashkenazi Jews: evidence for autosomal dominant inheritance. *Ann Neurol*. 1989; 26:612–620. [PubMed: 2817837]
18. Bressman SB, de Leon D, Raymond D, et al. Secondary dystonia and the DYT1 gene. *Neurology*. 1997; 48:1571–1577. [PubMed: 9191768]
19. Fuchs T, Saunders-Pullman R, Masuho I, et al. Mutations in GNAL cause primary torsion dystonia. *Nat Genet*. 2013; 45:88–92. [PubMed: 23222958]
20. Ozelius LJ, Hewett JW, Page CE, et al. The early-onset torsion dystonia gene (DYT1) encodes an ATP-binding protein. *Nat Genet*. 1997; 17:40–48. [PubMed: 9288096]
21. Bressman SB, Sabatti C, Raymond D, et al. The DYT1 phenotype and guidelines for diagnostic testing. *Neurology*. 2000; 54:1746–1752. [PubMed: 10802779]
22. Borggraefe I, Mehrkens JH, Telegravciska M, Berweck S, Botzel K, Heinen F. Bilateral pallidal stimulation in children and adolescents with primary generalized dystonia--report of six patients and literature-based analysis of predictive outcomes variables. *Brain Dev*. 2010; 32:223–228. [PubMed: 19403250]
23. Panov F, Tagliati M, Ozelius LJ, et al. Pallidal deep brain stimulation for DYT6 dystonia. *J Neurol Neurosurg Psychiatry*. 2012; 83:182–187. [PubMed: 21949105]
24. Groen JL, Ritz K, Contarino MF, et al. DYT6 dystonia: mutation screening, phenotype, and response to deep brain stimulation. *Mov Disord*. 2010; 25:2420–2427. [PubMed: 20687191]
25. LeDoux MS, Xiao J, Rudzinska M, et al. Genotype-phenotype correlations in THAP1 dystonia: molecular foundations and description of new cases. *Parkinsonism Relat Disord*. 2012; 18:414–425. [PubMed: 22377579]
26. Xiromerisiou G, Houlden H, Scarmeas N, et al. THAP1 mutations and dystonia phenotypes: genotype phenotype correlations. *Mov Disord*. 2012; 27:1290–1294. [PubMed: 22903657]
27. Dobricic VS, Kresojevic ND, Svetel MV, et al. Mutation screening of the DYT6/THAP1 gene in Serbian patients with primary dystonia. *J Neurol*. 2013; 260:1037–1042. [PubMed: 23180184]
28. Paisan-Ruiz C, Ruiz-Martinez J, Ruibal M, et al. Identification of a novel THAP1 mutation at R29 amino-acid residue in sporadic patients with early-onset dystonia. *Mov Disord*. 2009; 24:2428–2429. [PubMed: 19908320]
29. Houlden H, Schneider SA, Paudel R, et al. THAP1 mutations (DYT6) are an additional cause of early-onset dystonia. *Neurology*. 2010; 74:846–850. [PubMed: 20211909]
30. Van Gerpen JA, Ledoux MS, Wszolek ZK. Adult-onset leg dystonia due to a missense mutation in THAP1. *Mov Disord*. 2010; 25:1306–1307. [PubMed: 20629133]
31. Clot F, Grabli D, Burbaud P, et al. Screening of the THAP1 gene in patients with early-onset dystonia: myoclonic jerks are part of the dystonia 6 phenotype. *Neurogenetics*. 2011; 12:87–89. [PubMed: 21110056]
32. Schneider SA, Ramirez A, Shafiee K, et al. Homozygous THAP1 mutations as cause of early-onset generalized dystonia. *Mov Disord*. 2011; 26:858–861. [PubMed: 21425335]
33. Jech R, Bares M, Krepelova A, Urgosik D, Havrankova P, Ruzicka E. DYT 6--a novel THAP1 mutation with excellent effect on pallidal DBS. *Mov Disord*. 2011; 26:924–925. [PubMed: 21425341]
34. Xiromerisiou G, Dardiotis E, Tsironi EE, et al. THAP1 mutations in a Greek primary blepharospasm series. *Parkinsonism Relat Disord*. 2013; 19:404–405. [PubMed: 23036512]
35. Vemula SR, Puschmann A, Xiao J, et al. Role of Galpha(olf) in familial and sporadic adult-onset primary dystonia. *Hum Mol Genet*. 2013; 22:2510–2519. [PubMed: 23449625]
36. Saunders-Pullman R, Raymond D, Stoessl AJ, et al. Variant ataxia-telangiectasia presenting as primary-appearing dystonia in Canadian Mennonites. *Neurology*. 2012; 78:649–657. [PubMed: 22345219]
37. Charlesworth G, Plagnol V, Holmstrom KM, et al. Mutations in ANO3 cause dominant craniocervical dystonia: ion channel implicated in pathogenesis. *Am J Hum Genet*. 2012; 91:1041–1050. [PubMed: 23200863]

38. Hersheson J, Mencacci NE, Davis M, et al. Mutations in the autoregulatory domain of beta-tubulin 4a cause hereditary dystonia. *Ann Neurol*. 2013; 73:546–553. [PubMed: 23424103]
39. Lohmann K, Wilcox RA, Winkler S, et al. Whispering dysphonia (DYT4 dystonia) is caused by a mutation in the TUBB4 gene. *Ann Neurol*. 2013; 73:537–545. [PubMed: 23595291]
40. Xiao J, Uitti RJ, Zhao Y, et al. Mutations in CIZ1 cause adult onset primary cervical dystonia. *Ann Neurol*. 2012; 71:458–469. [PubMed: 22447717]

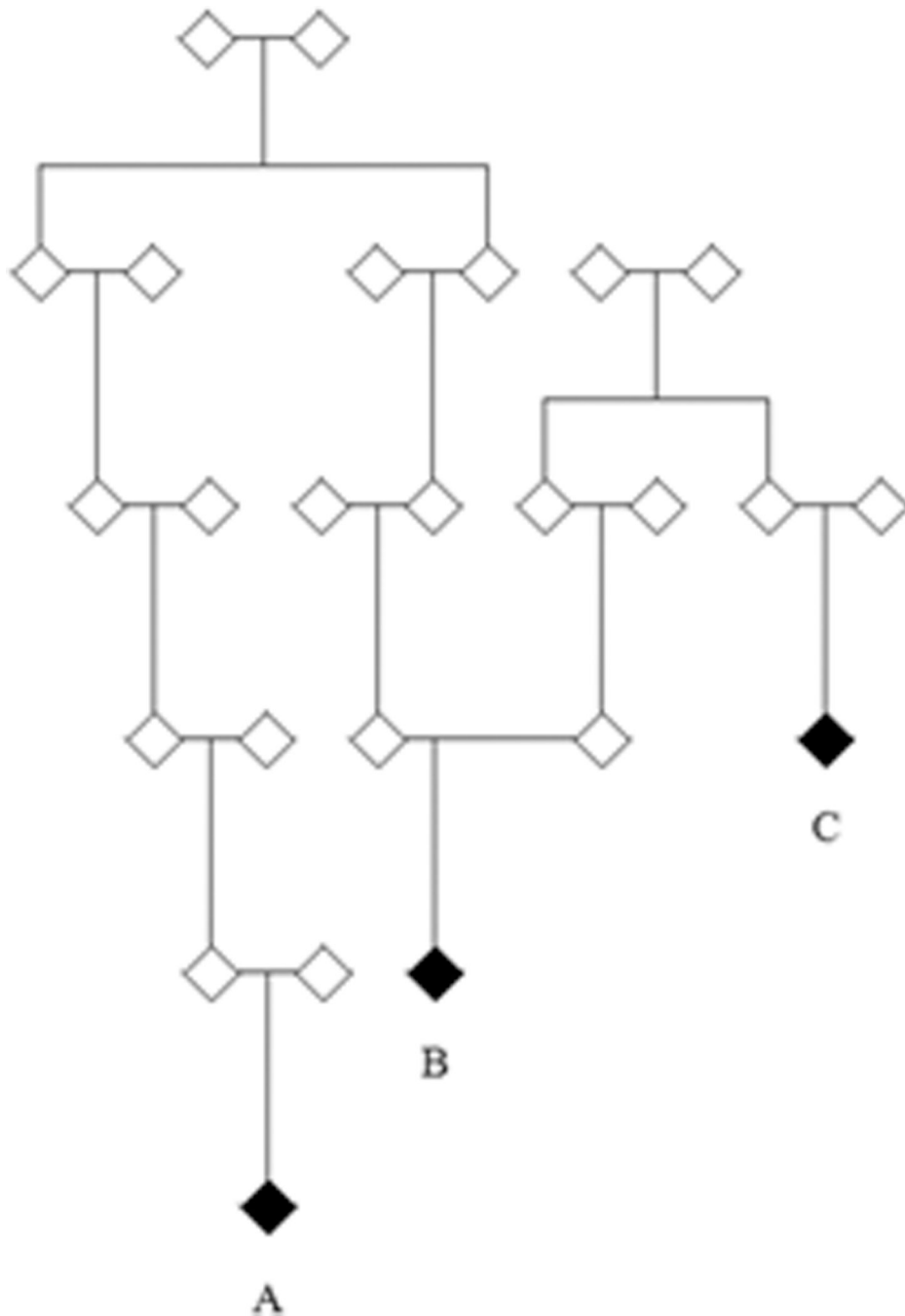


Figure 1. Pedigree demonstrating three different genetic etiologies of dystonia in the described extended Amish-Mennonite family **A** has childhood onset DYT1 dystonia with prominent leg involvement and no voice. **B** has childhood onset DYT6 dystonia with prominent cranio-cervical as well as arm and trunk dystonia that is due to a *THAP1* mutation not the founder. **C** has adult onset blepharospasm without a known mutation.

Age of onset by mutation

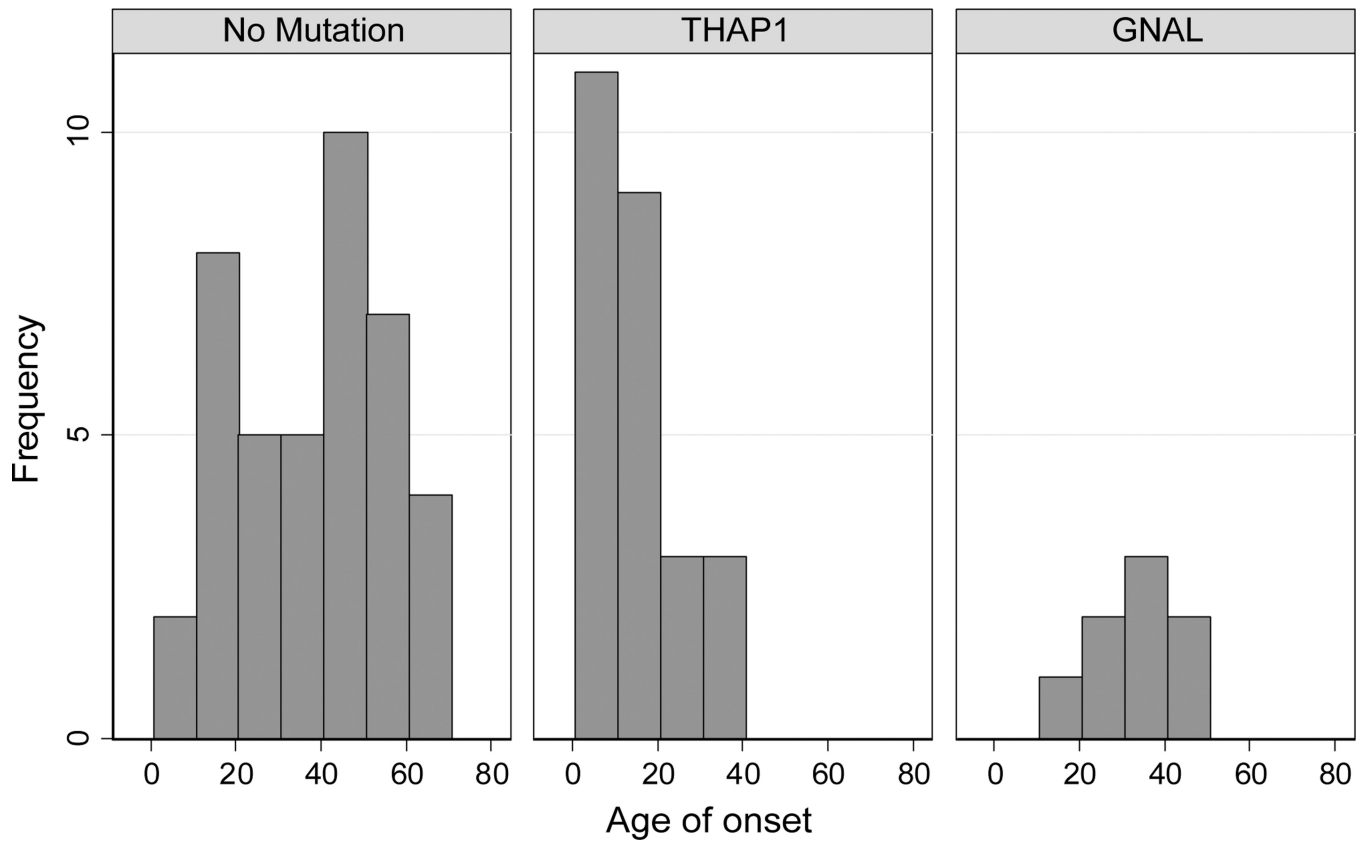


Figure 2. Age at onset curves comparing distributions by mutation

Table 1

Clinical features in the newly described *THAPI* mutation and *GNAL* mutation carriers

Person	Mutation <i>THAPI</i>	Sex	Age Onset	Age Exam	Site Onset	Sites ever involved	Distribution	Family history dystonia
1	c.67C>T p.H23Y	F	7	50	Arm	ANRG	generalized	no
2	c.65T>C p.F22S	F	12	31	Neck	FTJNAMKRG	generalized	yes
3	135_139delinsGGGTTTAp. F45fs73X	F	18	18	Neck	NAKMRG	generalized	no
4	135_139delinsGGGTTTAp. F45fs73X	F	10	53	Arm	ANF	segmental	yes
5	<i>GNAL</i> c.514G>A p.V172I	F	21	60	Larynx	LN	segmental	no

F=upper face, T=tongue, J=jaw, L=larynx, N=neck, A=right arm, M=left arm, K=trunk, R=right leg, L=left leg

Table 2

Clinical features comparing *THAP1* mutation group to no-mutation group and *GNAL* group

	<i>THAP1</i> Mutation positive n=27, families=7	Mutation negative (no <i>THAP1</i> , no <i>GNAL</i> , no <i>DYT1</i>)*** n=40, families=30	P-value <i>THAP1</i> vs. no mutation	<i>GNAL</i> mutation n=8, families=3	P-value <i>THAP1</i> vs. <i>GNAL</i>
Women	19 (70.4%)	27 (67.5%)	0.8	3 (37.5%)	0.09
Mean age onset (years ± SD, range)*	15.46±9.2 (5–38)	39.18±17.65 (1–70)	<0.001	32.9 ± 10.7 (20–48)	<0.001
Mean age at exam (years ± SD, range)	37.41 ± 18.78 (10–78)	53.18 ± 15.24 (20–82)	<0.001	50.25 ± 10.24 (38–68)	0.07
Mean duration of dystonia _i (years ± SD, range)	21 ± 17.28 (1–64)	14 ± 10.94 (1–53)	0.18	21.25 ± 13.25 (3–39)	0.66
Site of onset					
Arm	12 (44.44%)	6 (15%)	0.02	0 (0%)	0.02
Leg	2 (7.41%)	2 (5%)	0.69	1 (12.5%)	0.66
Cranial	7 (25.93%)	12 (30%)	0.72	1 (12.5%)	0.45
Face	2 (7.41%)	7 (17.5%)	0.26	0 (0%)	0.44
Jaw/tongue	2 (7.41%)	1 (2.5%)	0.57	0 (0%)	0.5
Larynx	3 (11.11%)	4 (10%)	0.92	1 (12.5%)	0.51
Cervical	7 (25.93%)	21 (52.5%)	0.04	6 (75%)	0.12
Sites at examination					
Arm	24 (88.89%)	9 (22.5%)	<0.001	3 (37.5%)	0.02
Leg	14 (51.85%)	4 (10%)	0.01	2 (25%)	0.27
Cranial	18 (66.67%)	20 (50%)	0.22	3 (37.5%)	0.16
Face	13 (48.15%)	15 (37.5%)	0.33	2 (25%)	0.23
Jaw/tongue	9 (33.33%)	3 (7.5%)	0.02	0 (0%)	0.09
Larynx	9 (33.33%)	8 (20%)	0.6	1 (12.50%)	0.74
Cervical	18 (66.67%)	25 (62.5%)	0.41	8 (100%)	0.18
Distribution					
Focal	3 (11.11%)	27 (67.5%)	<0.001***	3 (37.50%)	0.10***

	<i>THAPI</i> Mutation positive n=27, families=7	Mutation negative (no <i>THAPI</i> , no <i>GNAL</i> , no <i>DYT1</i>)* n=40, families=30	P-value <i>THAPI</i> vs. no mutation	<i>GNAL</i> mutation n=8, families=3	P-value <i>THAPI</i> vs. <i>GNAL</i>
Segmental	10 (37.04%)	9 (22.5%)		3 (37.50%)	
Multifocal	4 (14.81%)	2 (5%)		0 (0%)	
Generalized	10 (37.04%)	2 (5%)		2 (25%)	

* Age of onset missing for one *DYT6* carrier

** Group comparisons between focal vs. non-focal distribution

*** *DYT1* GAG deletion carrier is not included, therefore only 75 individuals described in the table