

UC Davis

Dermatology Online Journal

Title

Use of an adherent fenestrated drape to anchor an adjacent vertical sterile surgical towel

Permalink

<https://escholarship.org/uc/item/49q520hj>

Journal

Dermatology Online Journal, 26(5)

Authors

Downing, Malia B
Hooton, Tyler A
Wang, Ting
[et al.](#)

Publication Date

2020

DOI

10.5070/D3265048790

Copyright Information

Copyright 2020 by the author(s). This work is made available under the terms of a Creative Commons Attribution-NonCommercial-NoDerivatives License, available at <https://creativecommons.org/licenses/by-nc-nd/4.0/>

Use of an adherent fenestrated drape to anchor an adjacent vertical sterile surgical towel

Malia B Downing MD, Tyler A Hooton BS, Ting Wang MD, Anand Rajpara MD, Deede Y Liu MD, Daniel J Aires MD JD

Affiliations: Division of Dermatology, University of Kansas Medical Center, Kansas City, Kansas, USA

Corresponding Author: Malia Downing MD, Division of Dermatology, 4010 Wescoe Pavilion, University of Kansas Medical Center, 3901 Rainbow Boulevard, Kansas City, KS 66160, Email: mdowning3@kumc.edu

Abstract

Vertical surgical sites or those on reclining patients often present a challenge when establishing and securing a sterile field. The drape or towel most proximal to the physician is often vertically oriented. The forces of gravity and movements of surgery can shift or detach this vertical drape. Sterile clamps are not always available or are needed for securing other instruments. We present a method to secure this vulnerable drape using a central fenestrated adherent drape.

the patient via its superior and lateral adherent portions, with the vertical towel. Then place the remaining towels in typical fashion around the fenestrated drape. This method prevents shifting of the vertical towel, frees up sterile clamps to be used for securing other drapes or instruments such as hyfrecators, and allows the surgeon to rely on the stability of the sterile field.

Potential conflicts of interest

The authors declare no conflicts of interests.

Keywords: surgical technique, sterile draping, dermatology

To the Editor:

Sterile cloth or paper towels are commonly used to cover non-sterile areas around surgical fields [1]. Vertical surgical sites or those on a reclining patient often require that the sterile towel most proximal to the physician be positioned in a relatively vertical orientation (**Figure 1A**). Sterile clamps are usually needed to prevent the pull of gravity and the surgeon's movements from shifting or detaching the vertical towel [2]. If clamps are lacking surgery may be delayed.

We present a method that uses a central fenestrated adherent drape to securely anchor an adjacent vertical sterile towel. Start by placing the vertical towel, followed by the adherent fenestrated drape. Use the fenestrated drape's inferior adherent portion to secure the towel (**Figure 1B**). This will link the fenestrated drape, which is now securely attached to

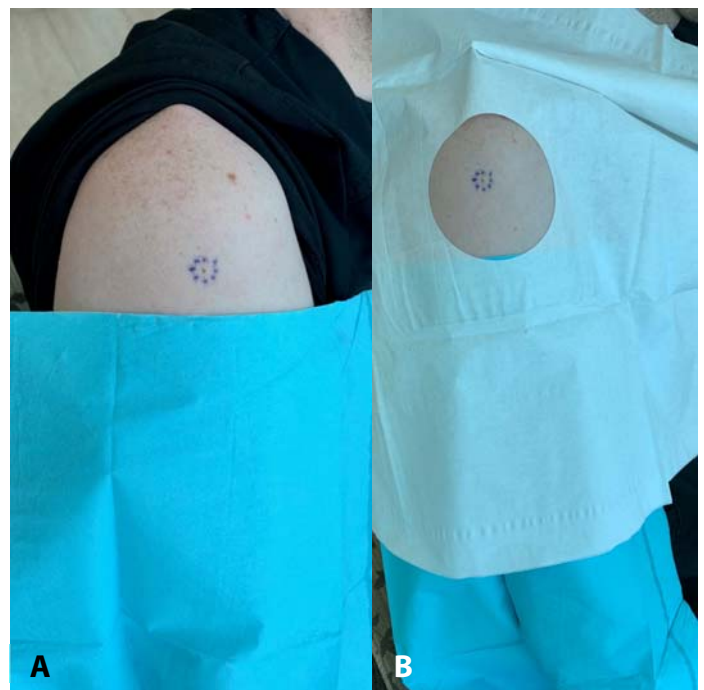


Figure 1. A) Vertically oriented sterile drape. **B)** Fenestrated adhesive draping securely fastens underlying vertical drape.

References

1. Sebben JE. Survey of sterile technique used by dermatologic surgeons. *J Am Acad Dermatol.* 1988;18:1107-1113. [PMID: 3385030.]
2. AORN Recommended Practices Committee. Recommended practices for maintaining a sterile field. *AORN J.* 2006;83:402-416. [PMID: 16544860].