

UCSF

UC San Francisco Previously Published Works

Title

Diagnosing Balamuthia mandrillaris Encephalitis with Metagenomic Deep Sequencing

Permalink

<https://escholarship.org/uc/item/45m7t9tj>

Journal

Annals of Neurology, 78(5)

ISSN

0364-5134

Authors

Wilson, MR
Shanbhag, NM
Reid, MJ
[et al.](#)

Publication Date

2015-11-01

DOI

10.1002/ana.24499

Peer reviewed

Diagnosing *Balamuthia mandrillaris* Encephalitis With Metagenomic Deep Sequencing

Michael R. Wilson MD,^{1,3} Niraj M. Shanbhag MD, PhD,³ Michael J. Reid MD,⁴
 Neel S. Singhal MD, PhD,³ Jeffrey M. Gelfand MD, MAS,³
 Hannah A. Sample BS,³ Barlas Benkli BA,⁵ Brian D. O'Donovan MS,¹
 Ibne K.M. Ali PhD,⁸ M. Kelly Keating DVM,⁹ Thelma H. Dunnebacke PhD,⁷
 Matthew D. Wood MD, PhD,⁶ Andrew Bollen MD,⁶ and Joseph L. DeRisi PhD^{1,2}

Objective: Identification of a particular cause of meningoencephalitis can be challenging owing to the myriad bacteria, viruses, fungi, and parasites that can produce overlapping clinical phenotypes, frequently delaying diagnosis and therapy. Metagenomic deep sequencing (MDS) approaches to infectious disease diagnostics are known for their ability to identify unusual or novel viruses and thus are well suited for investigating possible etiologies of meningoencephalitis.

Methods: We present the case of a 74-year-old woman with endophthalmitis followed by meningoencephalitis. MDS of her cerebrospinal fluid (CSF) was performed to identify an infectious agent.

Results: Sequences aligning to *Balamuthia mandrillaris* ribosomal RNA genes were identified in the CSF by MDS. Polymerase chain reaction subsequently confirmed the presence of *B. mandrillaris* in CSF, brain tissue, and vitreous fluid from the patient's infected eye. *B. mandrillaris* serology and immunohistochemistry for free-living amoebas on the brain biopsy tissue were positive.

Interpretation: The diagnosis was made using MDS after the patient had been hospitalized for several weeks and subjected to costly and invasive testing. MDS is a powerful diagnostic tool with the potential for rapid and unbiased pathogen identification leading to early therapeutic targeting.

ANN NEUROL 2015;00:000–000

Meningoencephalitis presents significant diagnostic challenges owing, in part, to the large number of possible underlying causes. These include infectious, inflammatory, paraneoplastic, and toxic-metabolic etiologies, many of which can present with similar clinical phenotypes. Furthermore, confirming an infectious etiology can be challenging, given that many pathogen-specific serological and polymerase chain reaction (PCR) assays are expensive, time-consuming, and have poor operating characteristics. Culture-based

approaches, though they can often detect multiple species, are also limited, given that many infectious agents require special culture conditions and prolonged incubation times. Standard culture protocols are also not commercially available for many organisms.

Metagenomics is the study of genetic material recovered from an environmental sample, including bodily fluids and tissues. Rapid advances in sequencing technology and bioinformatics have made an unbiased deep sequencing

View this article online at wileyonlinelibrary.com. DOI: 10.1002/ana.24499

Received Jun 3, 2015, and in revised form Jul 18, 2015. Accepted for publication Aug 2, 2015.

Address correspondence to Dr Michael Wilson, Department of Neurology, University of California San Francisco, 1500 Owens Street, San Francisco, CA 94158. E-mail: michael.wilson@ucsf.edu

From the ¹Department of Biochemistry and Biophysics, University of California, San Francisco, CA; ²Howard Hughes Medical Institute, Chevy Chase, MD; ³Department of Neurology, University of California, San Francisco, CA; ⁴Department of Medicine, Division of Infectious Diseases, University of California, San Francisco, CA; ⁵Koc University, Istanbul, Turkey; ⁶Department of Pathology, Division of Neuropathology, University of California, San Francisco, CA; ⁷California Department of Public Health, Viral and Rickettsial Disease Laboratory, Richmond, CA; ⁸Free-Living and Intestinal Amebas Laboratory, Centers for Disease Control and Prevention, Atlanta, GA; and ⁹Infectious Diseases Pathology Branch, Centers for Disease Control and Prevention, Atlanta, GA

© 2015 The Authors Annals of Neurology published by Wiley Periodicals, Inc. on behalf of American Neurological Association. This is an open access article under the terms of the Creative Commons Attribution-NonCommercial-NoDerivs License, which permits use and distribution in any medium, provided the original work is properly cited, the use is non-commercial and no modifications or adaptations are made. 1

approach to metagenomics an increasingly feasible method for rapidly interrogating all the genetic material contained in a sample. We previously reported on the ability of metagenomic deep sequencing (MDS) of cerebrospinal fluid (CSF) to identify the cause of infectious meningoencephalitis in real time, leading to a dramatic improvement in a patient's medical condition.¹ Here, we describe a case of meningoencephalitis in a 74-year-old woman that illustrates the ability of an MDS-based approach to identify an amoebic cause of meningoencephalitis. Our patient had had an extensive diagnostic workup, including two brain biopsies, but a final diagnosis was not reached before she died. Shortly before her death, a sample of CSF was submitted for MDS, which led to the identification of *Balamuthia mandrillaris*, a rare and almost uniformly fatal cause of meningoencephalitis. This diagnosis was later confirmed by the Centers for Disease Control and Prevention (CDC), the California Department of Public Health (CA DPH), and analysis of additional immunohistochemical stains and additional sections of brain biopsy tissue. MDS provides an efficient and unbiased diagnostic approach to identify culprit central nervous system (CNS) infections and may generate large cost savings when used to improve diagnosis rates in patients with costly conditions such as meningoencephalitis.² Early treatment guided by rapid and accurate diagnosis may also improve outcomes in cases such as these in which delayed diagnosis has likely contributed to historically poor outcomes.

Case Report

A 74-year-old Chinese woman with a history of rheumatoid arthritis treated with hydroxychloroquine sulfate presented to our hospital with altered mental status. She had immigrated to the United States from China approximately 8 years previously and had been independent in all her activities. She did not use tobacco, alcohol, or illicit drugs.

In the 4 weeks preceding hospitalization at our institution, she was admitted three times to two other facilities. On each occasion, she was evaluated for intermittent fevers and mildly altered mental status. On the second admission, she was diagnosed with endophthalmitis and treated empirically with intravitreal vancomycin, ceftazidime, and voriconazole, though vitreal and blood cultures eventually showed no growth, and PCRs on the vitreous fluid for herpes simplex virus, cytomegalovirus, and toxoplasmosis ultimately proved negative. In addition, she was started on therapy for *Toxoplasma gondii* in the setting of a positive serum immunoglobulin M (IgM) titer (see Table). Although her vision did not improve, she was briefly discharged, but then brought back to the hospital for a third admission when a cervical spine mag-

netic resonance imaging (MRI) study performed to evaluate spinal tenderness was incidentally noted to show a T2 hyperintensity in the pons. A subsequent brain MRI showed small areas of restricted diffusion in multiple vascular territories consistent with infarcts (see Fig A). A stroke workup, including a transesophageal echocardiogram, was unrevealing except for paroxysmal atrial fibrillation. The patient was discharged a third time, now on warfarin for presumed cardioembolic strokes.

Although she had been ruled out for acid-fast bacilli during her second hospitalization, the patient presented to our institution 2 days later for an evaluation at the city's tuberculosis (TB) clinic given her recent history of pneumonia and her demographic risk factors. At the TB clinic, it was found that her neurological status had significantly deteriorated since her discharge 2 days previously. She was transferred directly to the emergency department where her vital signs were: temperature, 103°F; heart rate, 111 beats per minute; blood pressure, 123/81mm Hg; and oxygen saturation, 93% on room air. She moved all four extremities spontaneously, but was unable to follow commands or verbalize, resulting in a Glasgow Coma Scale score of 6. At this point, she was intubated for airway protection and admitted to the intensive care unit (ICU).

Initial laboratory evaluation revealed a white blood cell count of 12.6×10^3 cells/ μ L, hemoglobin of 13.7g/dL, serum sodium of 129mEq/L, and serum glucose of 135mg/dL. CSF analysis demonstrated 13 red blood cells/mm³, 347 white blood cells/mm³ (57% neutrophils, 11% monocytes, 31% lymphocytes, and 1% eosinophils), glucose 30mg/dL, and protein 71mg/dL. Brain MRI demonstrated innumerable ring enhancing and diffusion-restricted supra- and infratentorial lesions that were felt to be most consistent with abscesses as well as severe obstructive hydrocephalus.

Based on her initial clinical and radiographic presentation, she was initiated on broad spectrum antimicrobial and anti-toxoplasmosis coverage including vancomycin, cefepime, metronidazole, pyrimethamine, sulfadiazine, and leucovorin. Blood, urine, and CSF bacterial and fungal cultures were eventually negative, as were CSF tests for neurosyphilis, TB, and *Cryptococcus* (see Table). Both CSF and serological tests for toxoplasmosis were negative. Despite broad antibiotic coverage, she continued to deteriorate with progressive loss of motor activity and brainstem reflexes over the following 16 days. On hospital day 10, a repeat lumbar puncture showed worsening pleocytosis with a more prominent eosinophilia (see Table). Given these findings, broad-spectrum antibiotics were stopped on day 10, and she was initiated on anti-TB and antifungal therapy. A brain

TABLE . Infectious Disease Diagnostic Test Results

Test	Site	First Hosp	Second Hosp	Third Hosp	Fourth Hosp	After Diagnosis
<i>T. gondii</i> IgG Ab	Serum		Negative	Negative	Negative	
<i>T. gondii</i> IgM Ab	Serum		11.4 IU/mL (<7.9 IU/mL)	Negative		
<i>T. gondii</i> IgM ELISA	Serum		Negative			
(1-3)-Beta-D-glucan	Serum		Negative			
AFB stain and culture	Tracheal aspirate		Negative		Negative (×5)	
<i>T. gondii</i> PCR	Vitreous		Negative			
HSV-1, -2 PCR	Vitreous		Negative			
CMV PCR	Vitreous		Negative			
VZV PCR	Vitreous		Negative			
<i>T. gondii</i> PCR	Vitreous		Negative			Negative
Fungal culture	Vitreous		Negative			
Fungal culture	Blood		Negative (×2)			
Bacterial culture	Blood	Negative (×2)	Negative (4)		Negative (×9)	
HIV-1 Ab	Serum		Negative	Negative	Negative	
HIV-1 viral load	Serum				Negative	
Hepatitis B surface Ag	Serum				Negative	
Hepatitis B core IgM Ab	Serum				Negative	
Hepatitis C Ab	Serum				Negative	
Gram stain	CSF				Negative (×3)	
VZV PCR and IgG	CSF				Negative	
VDRL	CSF				Negative	
Cryptococcal antigen	CSF				Negative (×2)	
AFB culture	CSF				Negative (×2)	
Bacterial culture	CSF				Negative (×3)	

TABLE : Continued

Test	Site	First Hosp	Second Hosp	Third Hosp	Fourth Hosp	After Diagnosis
Fungal culture	CSF				Negative (×2)	
<i>T. gondii</i> PCR	CSF				Negative	
<i>T. gondii</i> IgG Ab	CSF				Negative	
<i>M. tuberculosis</i> PCR	CSF				Negative	
Bacterial culture	Urine	>10K <i>E. coli</i>	Negative	Negative	Negative (×4); Mixed Gram + bacteria (×1)	
Histoplasma Ag	Urine				Negative	
<i>C. immitis</i> Ab	Serum				Negative	
Bacterial culture	Tracheal aspirate				Oral flora (×2)	
Gram Stain	Tracheal aspirate				Negative (×1); Oral flora (×1)	
<i>T. gondii</i> PCR	Blood			Negative		
RPR	Serum		Negative		Negative	
Bacterial culture	Sputum, induced	Negative	Negative	Negative	Negative	
Gram stain	Sputum, induced				Negative	
First pathology	Brain				Mild gliosis	
Second pathology	Brain				Vasculitis, encephalitis	
Bacterial culture	Brain				Negative (×2)	
Fungal culture	Brain				Negative (×2)	
AFB culture	Brain				Negative (×2)	
Gram stain	Brain				Negative (×2)	
<i>B. mandrillaris</i> IgG (CA DPH)	Serum					Borderline positive (1:32)

TABLE : Continued

Test	Site	First Hosp	Second Hosp	Third Hosp	Fourth Hosp	After Diagnosis
<i>A. castellanii</i> PCR (CDC)	CSF					Negative
<i>B. mandrillaris</i> PCR (CA DPH)	Brain					Positive
<i>B. mandrillaris</i> PCR (CDC)	Brain					Positive
<i>B. mandrillaris</i> IHC (CA DPH)	Brain					Positive
<i>B. mandrillaris</i> IHC (CDC)	Brain					Positive
<i>B. mandrillaris</i> 18s rRNA PCR (CDC)	CSF					Positive
<i>B. mandrillaris</i> 18s rRNA PCR (DeRisi Lab)	CSF					Positive
<i>B. mandrillaris</i> 18s rRNA PCR (DeRisi Lab)	Vitreous					Positive (raw fluid)
<i>B. mandrillaris</i> 18s rRNA PCR (CDC)	Vitreous					Negative (extracted DNA)
Hosp = hospitalization; Ab = antibody; ELISA = enzyme-linked immunosorbent assay; AFB = acid fast bacillus; PCR = polymerase chain reaction; HSV = herpes simplex virus; CMV = cytomegalovirus; VZV = varicella-zoster virus; HIV-1 = human immunodeficiency virus; Ag = antigen; VDRL = venereal disease research laboratory; RPR = rapid plasma reagin; CA DPH = California Department of Public Health; CDC = Centers for Disease Control; IHC = immunohistochemistry; rRNA = ribosomal RNA.						

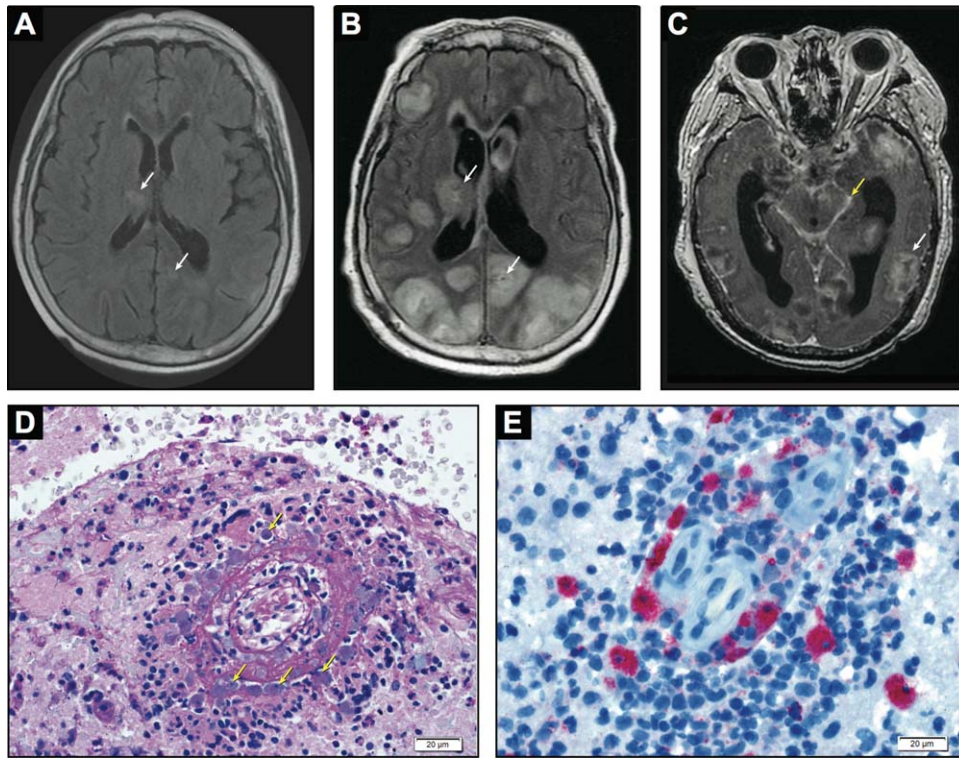


FIGURE : Neuroimaging and neuropathology. (A) Axial T2-weighted/fluid-attenuated inversion recovery (FLAIR) brain magnetic resonance imaging (MRI) demonstrating multiple hyperintensities (arrows), which correspond to areas of restricted diffusion on diffusion weighted imaging (not shown). (B) Axial T2-weighted/FLAIR brain MRI demonstrating progression in the size and number of hyperintensities (arrows) visualized in the MRI in (A). (C) Postcontrast axial T1-weighted brain MRI demonstrating multiple ring enhancing lesions (white arrow) and basilar meningitis (yellow arrow) as well as severe hydrocephalus. (D) Periodic acid-Schiff stained section of brain parenchyma shows necrotizing vasculitis, chronic inflammatory cells, and a population of amoebic trophozoites that closely resemble macrophages (arrows); 400 \times . The majority of the tissue showed a robust necrotizing vasculitis with mixed inflammation, including macrophages and numerous eosinophils. (E) Immunohistochemistry for free-living amoebas highlights numerous *B. mandrillaris* trophozoites; 400 \times (courtesy of M.K.K., CDC).

biopsy performed on day 4 was nondiagnostic, revealing only mild gliosis and no inflammatory infiltrate or microorganisms. A repeat biopsy 1 week later (day 11) demonstrated a severe necrotizing vasculitis of unclear etiology, with a prominent component of eosinophils, chronic inflammatory cells, and neutrophils, but without a significant granulomatous component. Repeat brain MRI on hospital day 14 demonstrated an increase in the number and size of her brain lesions as well as interval development of basilar meningitis (see Fig B, C). Her worsening cerebral edema was refractory to management with hyperosmolar therapy, as well as to the extraventricular drain that was placed during her second brain biopsy. The patient ultimately became hemodynamically unstable, likely owing to elevated intracranial pressure, and required multiple vasopressors. Her family opted for comfort care measures to be instituted, and the patient was extubated and expired on day 17 of her hospitalization.

Materials and Methods

On day 11 of the patient's hospitalization, a sample of CSF was submitted for unbiased MDS under a research protocol for

the identification of potential pathogens approved by the institutional review boards of San Francisco General Hospital (SFGH) and the University of California San Francisco (UCSF). Samples were processed for MDS analysis, as previously described.¹ Briefly, total RNA was extracted from CSF. Samples were randomly amplified to double-stranded cDNA using the NuGEN Ovation v.2 kit (NuGEN, San Carlos, CA) for low nucleic acid content samples, and MDS libraries were constructed using the Nextera protocol (Illumina, San Diego, CA), as previously described.¹ Library size and concentration were determined using the Blue Pippin (Sage Science, Beverly, MA) and Kapa Universal quantitative PCR kit (Kapa Biosystems, Woburn, MA), respectively. Samples were sequenced on an Illumina HiSeq 2500 instrument using 135/135-base-pair (bp) paired-end sequencing. The paired-end sequences were analyzed for pathogens using a rapid computational pipeline for pathogen detection, as described below.

Results

Identification of *Balamuthia* Sequences in CSF

The MDS of total RNA from the patient sample yielded 19,642,962 paired-end reads representing 5.2 gigabases total. The data were analyzed using a rapid computational pipeline

developed at our institution to classify MDS reads and identify potential pathogens by comparison to the entire National Center for Biotechnology Information (NCBI) nucleotide (nt) reference database. Briefly, paired-end reads were quality filtered using PriceSeqFilter, a component of the PRICE assembler, followed by alignment to the human reference genome (hg19) using bowtie2 v2.2.4.^{3,4} Unaligned reads that were at least 95% identical were compressed by cd-hit (v4.6.1), resulting in a total of 33,093 remaining reads, representing approximately 0.1% of the original data.^{5,6} These reads were then used as queries to search the NCBI nt database using gsnapl (v2014-10-16).⁷ Over 97% of these reads yielded gsnapl alignments to vertebrate sequences (human reads not filtered by bowtie), as well as known contaminants found in laboratory reagents.

After filtering, our analysis identified *B. mandrillaris* as the most highly represented organism, with 81 reads mapping to the three published *B. mandrillaris* genes in the NCBI repository. Twenty-nine other individually barcoded patient CSF samples (including a water control) were included in the same sequencing run, and none contained reads that aligned to *Balamuthia*, nor had *Balamuthia* reads ever been detected in this laboratory previously. The complete pipeline run time for this analysis was 1 hour 5 minutes.

These results informed a retrospective bioinformatic analysis of the original data set wherein the raw MDS reads were directly aligned to the three available *B. mandrillaris* gene sequences. The alignment yielded ~3,500 read pairs mapping concordantly to the *B. mandrillaris* genes, representing only 0.018% of the original data set. A random sample (30 reads) of the aligned sequences was used to seed an assembly using the targeted assembler PRICE (v1.2), ultimately generating an 806-nt contig corresponding to the *B. mandrillaris* 16S ribosomal RNA (rRNA) gene (GenBank accession number KP990616).³

Confirmatory Testing for *B. mandrillaris*

The presence of *B. mandrillaris* was confirmed by multiple methods. Using a published CDC PCR protocol, the 18S rRNA gene from *B. mandrillaris* was detected in the patient's formalin fixed brain biopsy tissue from the second brain biopsy, CSF, and vitreous fluid.⁸ The PCR products were Sanger sequenced (Quintara Biosciences, Albany, CA) and confirmed to be sequences from the *Balamuthia* 18S rRNA gene. Based on the findings of the CSF MDS study, material from the patient's second brain biopsy was re-evaluated with additional level sections, which revealed organisms consistent with amoeba within vessels and extending into the neural parenchyma (see Fig D). The Infectious Diseases Pathology Branch at

the CDC performed confirmatory immunohistochemistry for free-living amoeba on the brain biopsy tissue (see Fig E), and the CA DPH determined that the patient had a borderline positive serology for *B. mandrillaris* (see Table).⁹

Discussion

We present the case of a woman with several weeks of progressive meningoencephalitis that eventually proved fatal despite a 3-week ICU stay, various antimicrobial regimens, multiple serological and CSF studies, and two brain biopsies. This extensive testing did not reveal the cause of her syndrome; however, MDS of her CSF demonstrated the etiological agent, *B. mandrillaris*. This finding was subsequently confirmed by PCR and by immunohistochemistry of the brain biopsy tissue. To our knowledge, this is the first case in which unbiased MDS has proven useful for identifying an amoebic infection in the context of a critical illness. The identification of *B. mandrillaris* was particularly notable given that sequences for only three of the likely ~15,000 *B. mandrillaris* genes are publicly available in the NCBI database utilized by our bioinformatics pipeline for pathogen identification. Clearly, additional genomic information for this enigmatic pathogen would be useful in the context of future sequence-based diagnostic assays, and for the purpose of identifying new therapeutic targets.

Since it was first isolated in 1986, *B. mandrillaris* has been recognized as a rare cause of amoebic encephalitis in humans, with approximately 200 cases reported worldwide.^{10,11} The amoeba is distributed worldwide in soil, fresh, and saltwater sources and causes disease in both immunocompetent and -compromised hosts.¹⁰ In fact, heavy soil exposure has been cited as a possible risk factor for developing a *B. mandrillaris* infection.¹² Although our patient had a small garden behind her house, she was not known to be an avid gardener. She was also not heavily immunosuppressed for her rheumatoid arthritis. The infection commonly manifests with nonspecific symptoms, including fever, headache, nausea, vomiting, seizures, and focal neurological signs.^{13–16} As in the case presented here, imaging may reveal the presence of nodular lesions involving gray and white matter, with or without ring enhancement; disease progression commonly leads to vasogenic edema and mass effect.¹⁰

The period of incubation at the site of primary infection is variable, given that it may precede by months the development of encephalitis. From the initial site, the organisms migrate to the CNS by the bloodstream, where they proliferate, inducing a granulomatous inflammation that progresses for a period of weeks. Amoebic encephalitis can show various histological patterns, and

in this case no granulomatous component was observed in the brain biopsy specimen; *Balamuthia* in particular is known to present with a range of inflammatory patterns.^{17,18} To our knowledge, this is the first time that an ocular infection with *B. mandrillaris* has been described. An unsuccessful attempt was made to culture *B. mandrillaris* from the CSF, but no attempt at amoebic culture was made from the remaining vitreous fluid given its small volume (i.e., 30uL) and because it had been frozen for an extended period of time in a -70°C freezer. The vitreous fluid was collected in the hospital under sterile conditions when the patient first presented with endophthalmitis. All standard precautions were taken in the laboratory to prevent cross-contamination. A negative PCR water control conducted simultaneously was negative for *B. mandrillaris*. The positive vitreous fluid PCR result was repeated in triplicate and confirmed by Sanger sequencing.

There are only 10 reported cases of patients surviving *B. mandrillaris* meningoencephalitis, in part because of extensive disease at the time of diagnosis and a lack of well-developed treatment protocols. Pentamidine, clarithromycin, fluconazole, and sulfadiazine have been used in patients who have survived the infection.^{19,20} Recently, miltefosine, in combination with some of these other agents, has shown some promise and is approved by the U.S. Food and Drug Administration as an investigational treatment of granulomatous encephalitis caused by *B. mandrillaris*.²¹

Diagnosis of *B. mandrillaris* has traditionally relied on its identification in tissue samples. CSF analysis usually reveals a mononuclear pleocytosis, high protein levels, and normal-to-low glucose concentrations.^{22,23} Culturing *Balamuthia* amoebae is very challenging, requiring a feeder tissue monolayer, such as monkey kidney cells. Growth typically takes several weeks before the amoebae start to proliferate.²⁴ PCR and antibody detection assays have been developed as well; however, the diagnosis is not frequently entertained and extant assays are not widely available.^{8,9}

As an alternative to conventional assays, MDS represents an unbiased and rapid diagnostic tool, especially for vexing cases, such as the one presented here. One criticism of an MDS-based approach is the perceived high cost of the assay. However, we believe this technique represents a significant cost savings compared to the lengthy hospitalizations, diagnostic tests, and empiric therapies frequently associated with cases of idiopathic encephalitis.² For example, during our patient's final hospitalization, we estimate the reimbursement from insurance, which, after adjustments, was only 18% of charges billed, to be over \$140,000. We calculated

reimbursement for her antimicrobials alone to total \$8,000, the ICU stay over \$50,000, her laboratory testing over \$14,000, and brain biopsies \$30,000. Meanwhile, we estimate the cost of MDS for a single sample to total approximately \$2,000 for materials and labor. Given current trends in genomic technology development, this cost will likely continue to drop significantly. Furthermore, though turnaround time for MDS in this case was 6 days, this was largely owing to staffing for this experimental protocol. We have already shown that with adequate staffing, this protocol can be completed in under 48 hours.¹ This represents a significant advantage compared to many of the culture-dependent assays mentioned above. With continued decreases in cost and time, and corresponding increases in sequencing depth and advances in sequencing library preparation techniques, it is foreseeable that MDS could be deployed as a frontline diagnostic tool for patients with difficult-to-diagnose infectious syndromes such as encephalitis. Early diagnosis through MDS may eventually supplement or replace the numerous and costly diagnostic assays and procedures currently employed and, more important, potentially improve patient outcomes. Given that our patient's eye infection preceded her meningoencephalitis, it is tantalizing to envision how early detection of *B. mandrillaris* in the vitreous fluid by MDS may have created a treatment window that could have headed off the devastating and lethal CNS manifestations of her infection.

Acknowledgment

This work was supported by the American Brain Foundation Clinical Research Training Fellowship (to M.R.W.); Howard Hughes Medical Institute (to J.L.D.); National Center for Advancing Translational Sciences of the NIH (KL2TR000143; to M.R.W. and J.M.G.). The latter's contents are solely the responsibility of the authors and do not necessarily represent the official views of the NIH. The findings and conclusions are those of the authors and do not necessarily represent the official position of the U.S. Department of Health and Human Services.

We would like to thank Jessica Lund and Eric Chow at the UCSF Center for Advanced Technology for their expertise and assistance operating the Illumina sequencer.

Authorship

M.R.W. and J.L.D. conceived of and coordinated the study. M.R.W. generated the MDS libraries and J.L.D., M.R.W., B.B., and B.D.O. analyzed the MDS data. J.L.D. developed the computational pipeline for ultrarapid pathogen identification from MDS data. M.R.W., B.D.O., and I.K.M.A. performed the confirmatory PCR studies. N.M.S., N.S.S., M.J.R., and J.M.G. cared for the

patient and compiled clinical and pathology data. M.D.W., A.B., and M.K.K. performed the neuropathology studies. T.H.D. performed the amoeba serology and culture. J.L.D. contributed reagents/materials/analysis tools and prepared figures. H.A.S. coordinated sample collection, patient consent, and the health care cost analysis. M.R.W., N.M.S., M.J.R., J.M.G., and J.L.D. wrote the manuscript. M.R.W. and N.M.S. contributed equally to the article.

Potential Conflicts of Interest

Nothing to report.

References

1. Wilson MR, Naccache SN, Samayoa E, et al. Actionable diagnosis of neuroleptospirosis by next-generation sequencing. *N Engl J Med* 2014;370:2408–2417.
2. Vora NM, Holman RC, Mehal JM, et al. Burden of encephalitis-associated hospitalizations in the United States, 1998–2010. *Neurology* 2014;82:443–451.
3. Ruby JG, Bellare P, Derisi JL. PRICE: software for the targeted assembly of components of (Meta) genomic sequence data. *G3 (Bethesda)* 2013;3:865–880.
4. Langmead B, Salzberg SL. Fast gapped-read alignment with Bowtie 2. *Nature Methods* 2012;9:357–359.
5. Fu L, Niu B, Zhu Z, Wu S, Li W. CD-HIT: accelerated for clustering the next-generation sequencing data. *Bioinformatics* 2012;28:3150–3152.
6. Li W, Godzik A. Cd-hit: a fast program for clustering and comparing large sets of protein or nucleotide sequences. *Bioinformatics* 2006;22:1658–1659.
7. Wu TD, Nacu S. Fast and SNP-tolerant detection of complex variants and splicing in short reads. *Bioinformatics* 2010;26:873–881.
8. Qvarnstrom Y, Visvesvara GS, Sriram R, da Silva AJ. Multiplex real-time PCR assay for simultaneous detection of *Acanthamoeba* spp., *Balamuthia mandrillaris*, and *Naegleria fowleri*. *J Clin Microbiol* 2006;44:3589–3595.
9. Schuster FL, Yagi S, Wilkins PP, et al. *Balamuthia mandrillaris*, agent of amoebic encephalitis: detection of serum antibodies and antigenic similarity of isolates by enzyme immunoassay. *J Eukaryot Microbiol* 2008;55:313–320.
10. Lorenzo-Morales J, Cabello-Vilchez AM, Martin-Navarro CM, et al. Is *Balamuthia mandrillaris* a public health concern worldwide? *Trends Parasitol* 2013;29:483–488.
11. Visvesvara GS, Martinez AJ, Schuster FL, et al. Leptomyxid amoeba, a new agent of amoebic meningoencephalitis in humans and animals. *J Clin Microbiol* 1990;28:2750–2756.
12. Schuster FL, Glaser C, Honarmand S, Maguire JH, Visvesvara GS. *Balamuthia* amoebic encephalitis risk, Hispanic Americans. *Emerg Infect Dis* 2004;10:1510–1512.
13. Griesemer DA, Barton LL, Reese CM, et al. Amoebic meningoencephalitis caused by *Balamuthia mandrillaris*. *Pediatr Neurol* 1994;10:249–254.
14. Rowen JL, Doerr CA, Vogel H, Baker CJ. *Balamuthia mandrillaris*: a newly recognized agent for amoebic meningoencephalitis. *Pediatr Infect Dis J* 1995;14:705–710.
15. Denney CF, Iragui VJ, Uber-Zak LD, et al. Amoebic meningoencephalitis caused by *Balamuthia mandrillaris*: case report and review. *Clin Infect Dis* 1997;25:1354–1358.
16. Reed RP, Cooke-Yarborough CM, Jaquiere AL, et al. Fatal granulomatous amoebic encephalitis caused by *Balamuthia mandrillaris*. *Med J Aust* 1997;167:82–84.
17. Schuster FL, Yagi S, Gavali S, et al. Under the radar: *Balamuthia* amoebic encephalitis. *Clin Infect Dis* 2009;48:879–887.
18. Guarner J, Bartlett J, Shieh WJ, et al. Histopathologic spectrum and immunohistochemical diagnosis of amoebic meningoencephalitis. *Mod Pathol* 2007;20:1230–1237.
19. Schuster FL, Visvesvara GS. Axenic growth and drug sensitivity studies of *Balamuthia mandrillaris*, an agent of amoebic meningoencephalitis in humans and other animals. *J Clin Microbiol* 1996;34:385–388.
20. Deetz TR, Sawyer MH, Billman G, Schuster FL, Visvesvara GS. Successful treatment of *Balamuthia* amoebic encephalitis: presentation of 2 cases. *Clin Infect Dis* 2003;37:1304–1312.
21. Martinez DY, Seas C, Bravo F, et al. Successful treatment of *Balamuthia mandrillaris* amoebic infection with extensive neurological and cutaneous involvement. *Clin Infect Dis* 2010;51:e7–e11.
22. Jung S, Schelper RL, Visvesvara GS, Chang HT. *Balamuthia mandrillaris*. meningoencephalitis in an immunocompetent patient: an unusual clinical course and a favorable outcome. *Arch Pathol Lab Med* 2004;128:466–468.
23. Kodet R, Nohynkova E, Tichy M, Soukup J, Visvesvara GS. Amoebic encephalitis caused by *Balamuthia mandrillaris* in a Czech child: description of the first case from Europe. *Pathol Res Pract* 1998;194:423–429.
24. Schuster FL. Cultivation of pathogenic and opportunistic free-living amoebas. *Clin Microbiol Rev* 2002;15:342–354.