

UC Irvine

UC Irvine Previously Published Works

Title

Thinner bark increases sensitivity of wetter Amazonian tropical forests to fire

Permalink

<https://escholarship.org/uc/item/44s728t4>

Journal

Ecology Letters, 23(1)

ISSN

1461-023X

Authors

Staver, Ann Carla
Brando, Paulo M
Barlow, Jos
[et al.](#)

Publication Date

2020

DOI

10.1111/ele.13409

Peer reviewed

Thinner bark increases sensitivity of wetter Amazonian tropical forests to fire

Ann Carla Staver,^{1*} Paulo M. Brando,^{2,3,4} Jos Barlow,^{5,6} Douglas C. Morton,⁷ C.E. Timothy Paine,⁸ Yadvinder Malhi,⁹ Alejandro Araujo Murakami¹⁰ and Jhon del Aguila Pasquel¹¹

The peer review history for this article is available at <https://publons.com/publon/10.1111/ele.13409>

Abstract

Understory fires represent an accelerating threat to Amazonian tropical forests and can, during drought, affect larger areas than deforestation itself. These fires kill trees at rates varying from < 10 to c. 90% depending on fire intensity, forest disturbance history and tree functional traits. Here, we examine variation in bark thickness across the Amazon. Bark can protect trees from fires, but it is often assumed to be consistently thin across tropical forests. Here, we show that investment in bark varies, with thicker bark in dry forests and thinner in wetter forests. We also show that thinner bark translated into higher fire-driven tree mortality in wetter forests, with between 0.67 and 5.86 gigatonnes CO₂ lost in Amazon understory fires between 2001 and 2010. Trait-enabled global vegetation models that explicitly include variation in bark thickness are likely to improve the predictions of fire effects on carbon cycling in tropical forests.

Keywords

carbon cycle, Amazonia, tree mortality, tropical forest, functional traits.

Ecology Letters (2019)

INTRODUCTION

Fire has emerged as a primary threat to tropical forests in the Amazon over the past three decades, in response to a combination of deforestation and increasing severity and frequency of droughts (Cochrane 2003; Chen *et al.* 2014). Throughout the 20th century, fires were largely restricted to areas experiencing deforestation or existing cleared areas for agricultural maintenance (Alencar *et al.* 2011), but fires can now spread readily through forests that have not been otherwise disturbed (Morton *et al.* 2013), dramatically increasing burned areas. Today, during major droughts (including 2005, 2007, 2010 and 2015–2016), forest understory fires affected larger areas in the Amazon basin than deforestation itself (Aragão *et al.*, 2018) – in some years as much as five times larger (Morton *et al.* 2013). This trend is projected to continue in coming decades, with a greater frequency of Amazon droughts in response to anthropogenic global change (Le Page *et al.* 2017). Predicting forest responses to fires is increasingly imperative.

However, our understanding of the short- and long-term ecological impact of tropical forest understory fires is poorly developed, which limits assessments of fire impacts on ecosystems and the global carbon cycle (van der Werf *et al.* 2009;

Rappaport *et al.* 2018). One major source of uncertainty is the variability in rates of tree mortality across diverse forests in response to understory fires, with estimates ranging from < 10% to c. 90% (Barlow *et al.* 2012). Fire intensity clearly impacts tree mortality (Barlow *et al.* 2012; Brando *et al.* 2014; Rappaport *et al.* 2018), but even so, diverse forests can react differently to similar fire intensity (Hoffmann *et al.* 2009; Barlow *et al.* 2012; Brando *et al.* 2019). Forest history likely explains some part of these differences (Barlow & Peres 2008), but underlying fire-related traits may also vary geographically – a contribution which has, to date, been overlooked in the humid tropical forest context where fires are increasing in prevalence.

Among fire-related functional traits, bark is the most amenable to widespread sampling (e.g. (Rosell 2016), and appears broadly to govern fire-driven mortality of tree stems (Harmon 1984). The corky outer bark protects trees from fires by insulating tree cambium and xylem (Michaletz *et al.* 2012; Rosell 2016; Pausas 2017), thereby reducing mortality from cambial necrosis or cavitation due to excessive heating. Reductions in stem mortality among trees with thicker bark have been extensively described in more flammable systems, like savannas (Trollope & Tainton 1986; Gignoux *et al.* 1997; Hoffmann *et al.* 2009, 2012), but variation in bark thickness can also

¹Department of Ecology and Evolutionary Biology, Yale University, New Haven, CT 06511, USA

²Department of Earth System Science, University of California, Irvine, CA 92697, USA

³Woods Hole Research Center, Falmouth, MA, USA

⁴Instituto de Pesquisa Ambiental da Amazônia, Brasília, Brasil

⁵Lancaster Environment Center, University of Lancaster, Lancaster LA1 4YQ, UK

⁶Universidade Federal de Lavras, Lavras, CEP 37200-000, Brazil

⁷Biospheric Sciences Laboratory, NASA Goddard Space Flight Center, Greenbelt, MD 20771, USA

⁸Ecosystem Management, School of Environmental and Rural Sciences, University of New England, Armidale 2351 NSW, Australia

⁹Environmental Change Institute, School of Geography and the Environment, University of Oxford, Oxford OX1 3QY, UK

¹⁰Museo de Historia Natural Noel Kempff Mercado, Universidad Autónoma Gabriel René Moreno, Santa Cruz, Bolivia

¹¹Instituto de Investigaciones de la Amazonia Peruana, Iquitos, Peru

*Correspondence: carla.staver@yale.edu

determine size- and species-specific differences among trees in their susceptibility to fires even within tropical forests (Barlow *et al.* 2003; Hoffmann *et al.* 2009; Brando *et al.* 2011). However, while bark in savanna and other flammable systems has been the subject of large-scale synthesis (Dantas & Pausas 2013; Pellegrini *et al.* 2017), the extent and determinants of variation in bark thickness within humid tropical forests are not known, complicating efforts to predict carbon losses in the years following fires.

Known relationships of bark thickness variation to fire history (Pausas 2017) and abiotic drivers (Richardson *et al.* 2015) allow us to generate informed expectations. The null expectation is that bark is consistently thin and variation therefore minimal. After all, the contemporary literature often assumes that today's fire return intervals in Amazonia are a historical anomaly (Cochrane 2003), such that fire protection may be unnecessary for tropical forest trees. However, the paleo-literature suggests that some Amazonian forests may historically have burned, at least with relatively low frequency in the drier south and east (Bush *et al.* 2008; Power *et al.* 2008). Moreover, within sites, bark thickness varies in tropical forests (Paine *et al.* 2010), and work in temperate forests has documented patterns of variation linked to rainfall (Richardson *et al.* 2015) and fire occurrence (Abatzoglou & Williams 2016). A more plausible alternative hypothesis might therefore be that variation in bark thickness across the Amazon is substantial, reflecting varying evolutionary pressures across the basin, especially from fire (Bond & Midgley 2001; Pausas *et al.* 2006; Pausas 2017) but also from other processes (Rosell 2016). From a more applied perspective, understanding the variability in bark thickness in humid tropical forests will be a key step towards improving spatially explicit predictions of fire-driven tree mortality and the resulting carbon emissions.

Here, we evaluated the extent and degree of variation in bark thickness across Amazonian tropical forests, combining data from a total of 6280 trees in forests in 13 plots (*c.* 1 ha each), in diverse regions across Amazonia (see Extended Data Fig. 1, Extended Data Table 1), and evaluate variations with respect to climate [annual rainfall and maximum cumulative water deficit (MCWD)], yielding estimates of bark thickness across all Amazonian forests. We then combined these maps of bark thickness with published relationships between bark thickness and tree mortality (Hoffmann *et al.* 2009; Brando *et al.* 2011) to evaluate the potential contributions of bark thickness variation to estimates of tree mortality and biomass loss from understory fires in Amazon forests, evaluated against observed tree mortality and biomass loss synthesised from published studies.

MATERIALS AND METHODS

Functional traits and plot-level size class distributions

We measured bark thickness at 13 sites located throughout the Amazon between 2000 and 2013 (see Figure S1). At each site, we sampled all trees in plots to total *c.* 1 ha of area sampled at each site (see Table S1 for plot dimensions). Trees were identified to species at 12 sites (leveraging existing data) or morphospecies at one. At each tree, diameter was measured

at breast height (1.3 m), bark was sampled with a corer at 2–4 points around the trunk of a tree, 0.35 m \pm 0.05 m above the ground.

For comparison, where data were available, we also evaluated patterns of tree height and wood density across sites. Because tree height and wood density both contribute by definition to biomass (Chave *et al.* 2014), systematic variation in these traits can impact patterns of forest biomass (Quesada *et al.* 2012; Álvarez-Dávila *et al.* 2017), with downstream effects on estimates of biomass loss. Therefore, we examined these directly to control for their possible contributions to biomass loss estimates; they also provide a useful point of comparison for evaluating the magnitude of variation in bark thickness. Height was available at a subset of RAINFOR-associated sites (with height observations at a total of six sites), with height measurements following published RAINFOR protocols (Feldpausch *et al.* 2011). Wood density was extracted via the 'BIOMASS' R package from a freely available dataset published by Chave *et al.* (2014), with tree species, genus or family as the lookup for extraction.

Rainfall climatology and fire

Annual rainfall and maximum climatological water deficit (MCWD) was calculated from data from the Tropical Rainfall Measuring Mission (Nicholson *et al.* 2003; Brando *et al.* 2014) from 1998 to 2012 at 0.25 degree resolution. Annual rainfall was calculated by summing monthly rainfall products, and averaging across years to determine mean annual rainfall.

MCWD was calculated starting from the first month of the year (south of the Equator = January; north of the Equator = July), when climatological water deficit was defined as 0. Each month, we subtract the theoretical water demand (evaporation plus transpiration) of a typical tropical forest (100 mm monthly rainfall) from the incoming rainfall and add it to the existing water deficit; if the result is > 0 (i.e. there is excess rainfall), we reset the water deficit to 0. After the last month of the year, this yields the CWD for the year. MCWD is defined as the maximum of CWD across all years for each pixel (see also Aragão *et al.* 2007; Brando *et al.* 2010).

Fire occurrences were derived via two methods. First, we used the MODIS Active Fires Product (Giglio *et al.* 2016) at the 1 km scale; we used the Active Fires instead of the Burned Area product because the latter is considered somewhat more sensitive in detecting forest-understory fires that do not generate a typical ash or char reflectance values needed for burned area mapping. Pixels in which fires occurred were considered burned, but were then masked with tree cover from Hansen's Landsat-based tree cover estimates at a 1 km resolution (Hansen *et al.* 2013), to eliminate fires directly associated with deforestation from our predictions of fire-driven losses (a known limitation of the Active Fires product for estimating understory fire extent; (Morton *et al.* 2013). Each year, the burned area map was masked with all areas that experienced deforestation of at least 2% (that year or any previous year). A deforestation threshold of 2% is conservative, with the goal of eliminating direct deforestation fires and focusing instead on forest-understory fires. Overall, we see that fire extent has

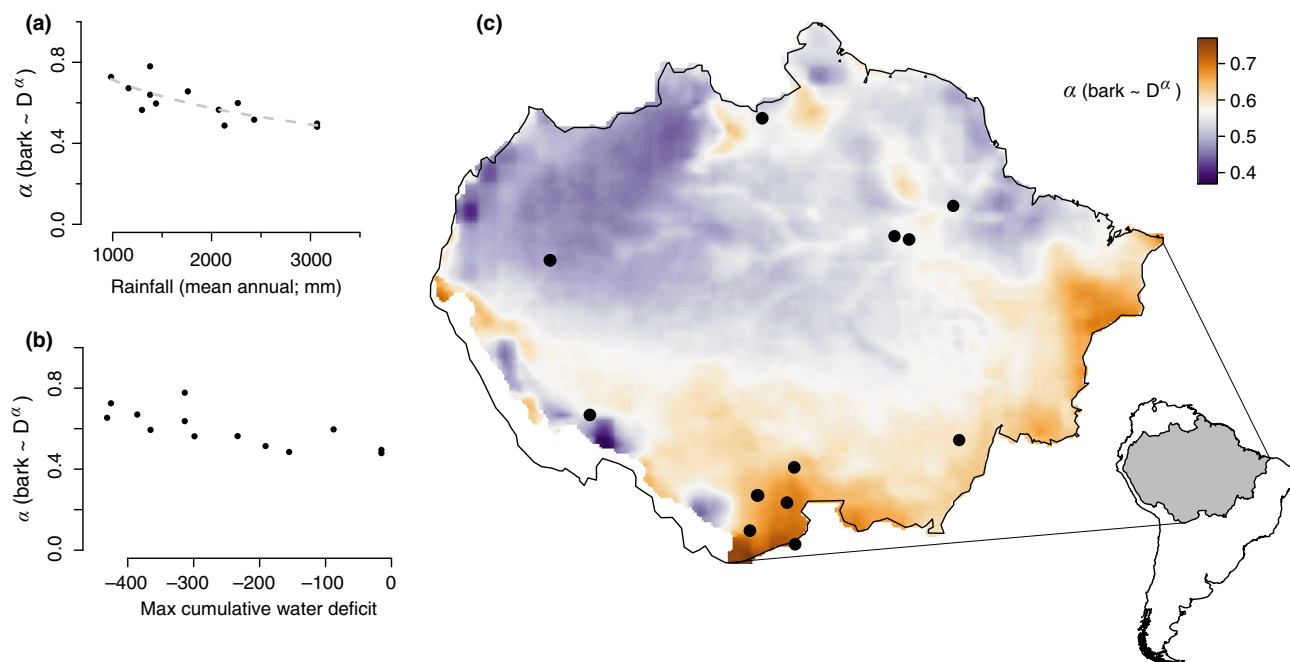


Figure 1 Response of community-wide bark thickness to rainfall (a) and maximum cumulative water deficit (b), and modelled bark thickness across the Amazon (c). Log-rainfall was the preferred explanatory variable (Table S2; $R^2 = 0.616$, d.f. = 11, $P = 0.0015$). Higher values of α indicate that bark accumulates more quickly as tree diameter increases (i.e. that bark is thicker). Thus, bark is thicker in lower-rainfall forests.

declined in MODIS Active Fire detections as deforestation has, suggesting some link, despite our efforts at masking. For this reason, we have also used an independently calibrated estimate of understory fire extent (Morton *et al.* 2013) (also using data from the MODIS satellite; referred to in figures as ‘Morton’), which is even more conservative in removing deforestation-linked fires. Both fire distribution products detect increases in fire activity during droughts associated with climate anomalies, suggesting that this is a robust finding. However, given the moderate resolution of these satellite-based data products, both likely underestimate the true spatial coverage of wildfires in closed canopy forests. For both products, we re-aggregated burned area to yield an estimate at the resolution of rainfall and MCWD calculations.

Climatological data were produced, extracted at each site and modelled to produce basin-wide estimates of bark thickness using the packages *sp*, *ncdf4*, and *raster* in R 3.2.2. Fire and tree cover data were managed in the same way.

Aboveground biomass

At each site for which we collected tree size and bark thickness, we calculated biomass using the *BIOMASS* package (Chave *et al.* 2014) in R 3.2.2, based on species-, genus- or (where necessary) family-level wood density and on plot location (as a proxy for tree height). To scale to basin-wide fire-driven biomass losses, we used a recently published biomass map for forests that integrates remote sensing with field-based biomass estimates from Avitabile & colleagues (2016). Biomass was also resampled to match the scale of the climatological data in R 3.2.2.

Effects of bark thickness on mortality in fires

Rates of mortality in fires were derived from two major studies examining forest tree mortality in fires (Hoffmann *et al.* 2009; Brando *et al.* 2011). The first considered the effects of bark thickness on stem mortality of forest trees in fires at the IBGE Reserve outside Brasilia by Hoffmann *et al.* (Hoffmann *et al.* 2009). We constructed a linear model of tree mortality probability with respect to bark thickness (see Fig. 2b) to model mortality of trees. As the model more representative of the range of forest understory fires (Fig. 2a), we used this for most calculations in the main body of the paper. Second, we also used stem mortality from a fire experiment in the southern Amazon (at Tanguro) for a more detailed data source [see Brando *et al.* for a formal analysis of these data (2011)]. Here, we considered mortality in the 3 years following a fire as fire-driven mortality, so this should be considered an estimate of short-term committed losses and not an estimate of instantaneous responses to a fire. Probability of mortality was modelled using a general linear model assuming an underlying binomial distribution (each tree survives or dies in/after a fire). Fires at Tanguro were mild during normal years and more intense during drought years (see Fig. 2a), with major effects on tree mortality (see Fig. 2b).

We modelled fire-driven mortality at each site using four different scenarios: (1) real trees, with measured diameters and bark thickness, (2) trees with measured diameters, with bark modelled according to the real community-wide bark allometric constant calculated at each site, (3) tree diameters drawn from an idealised diameter distribution calculated across all sites, and bark modelled according to the real bark allometric constant at each site and (4) an idealised diameter

distribution and bark modelled according to a bark allometric relationship modelled from climate at each site. In each scenario, we modelled the probability of mortality of each tree, from which we calculated proportional mortality and biomass losses.

Because mortality is a stochastic event (described by a deterministic rate), and because we propagated errors in bark allometry and diameter distribution estimates, we bootstrapped each scenario 100 times to calculate average probability of mortality and average biomass losses across sites. Scenarios reproduced qualitatively similar variation in tree mortality with respect to rainfall (see Fig. S6). We followed the same method (scenario 4) to calculate mortality rates and biomass losses across the entire Amazon.

Comparisons with observed mortality and biomass

Predictions were compared qualitatively and quantitatively with data from two meta-analyses of tree mortality in fires from across tropical forests by Hoffmann *et al.* (2009) and Barlow *et al.* (2012). The former included rainfall estimates but no locations, whereas the latter provided a map of study locations included in the synthesis (enabling comparison of rainfall vs. MCWD as drivers of forest tree stem mortality). Biomass loss estimates from Barlow *et al.* (2012) were also used to directly estimate biomass losses (via a relationship between rainfall vs. biomass loss; see Fig. 3b) for comparison with estimates generated via bark–mortality relationships.

RESULTS

Stem and region-level bark thickness varied substantially across the Amazon, constrained by a combination of tree size and climate. On individual stems, bark thickness varied from fractions of a millimetre to more than 4 cm of bark, and average bark thickness ranged from 0.5 mm to > 1 cm across

plots. At each site, bark thickness increased with diameter at breast height (DBH; Fig. S2), as expected (Hoffmann *et al.* 2003). This allometric relationship yields a constant for examining bark accumulation, controlling for tree size (α , where $\text{bark} = \text{DBH}^\alpha$). Bark accumulation varied with respect to climate (Fig. 1a and b, Figure S3), decreasing most predictably with rainfall ($R^2 = 0.62$, d.f. = 11, $P = 0.0015$; Table S2), providing the first spatial estimate of bark investment across the Amazon (Fig. 1c).

We next aimed to translate this variation in bark as a functional trait into predictions of tree mortality using published estimates linking bark thickness with tree stem mortality following tropical forest understory fires. These estimates are sparse in the literature, with forest work at only two sites, Amazon forests at Tanguro (Brando *et al.* 2011) and dense woodlands and riparian forests in the *cerrado* biome at the IBGE Reserve (Hoffmann *et al.* 2009). Stem mortality decreased with bark thickness and increased with increasing fire intensity (Barlow *et al.* 2012) (consistent with results from better-studied savanna systems [Williams *et al.* 1999]; Fig. 2b). However, tropical forests where fires have been studied in detail (Tanguro and IBGE) have experienced relatively low-intensity fires compared to the documented range of fire intensities possible across the Amazon (Fig. 2a).

In reality, stem mortality depends on actual bark thickness, not an allometric constant. Therefore, we also evaluated variations in realised tree bark thickness across sites that arose from variation in tree size across Amazonian forests. Whereas tree density increased markedly with rainfall (Figure S4), diameter class distributions showed no consistent trends (Figure S5). We also examined whether mortality estimates at each field site were sensitive to how we estimated bark thickness. Results were robust to all forms of bark thickness estimation (Figure S6), with no systematic biases introduced by general assumptions about size class distributions, although we note that local variations in tree size distributions might

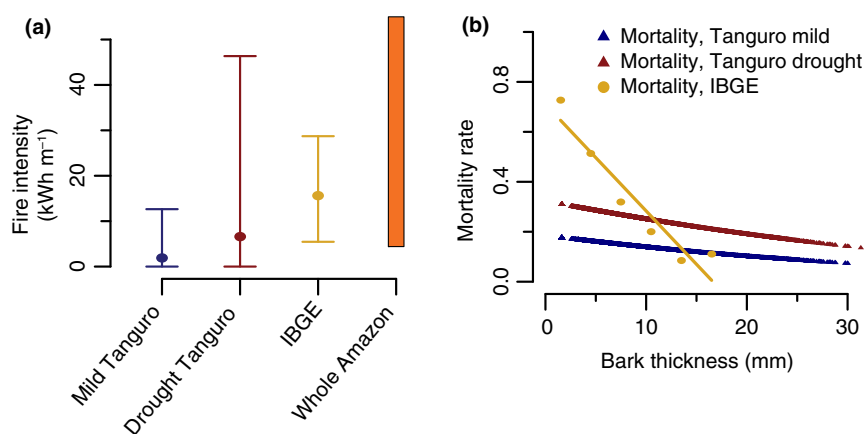


Figure 2 Fire intensity at Tanguro, the IBGE Reserve, and across the Amazon (a), and predicted mortality response to bark thickness from Tanguro and the IBGE Reserve (b). Fire intensities at Tanguro and IBGE were calculated from char height observations using equations given in [(Williams *et al.* 1998)]. At IBGE, the probability of tree mortality decreased with bark thickness ($R^2 = 0.909$, d.f. = 4, $P = 0.0032$). At Tanguro, a model including bark thickness, year (as a proxy for fire intensity and drought stress) and the interaction between them was used to predict tree mortality (see Brando *et al.* (2014) for a formal analysis) and explained 16.2% of variation in tree mortality. Tanguro data are drawn from Brando *et al.* (2011, 2014), IBGE data from Hoffmann *et al.* (2009), and whole-Amazon syntheses from Cochrane *et al.* (1999).

nonetheless change fire susceptibility depending on site history (Barlow & Peres 2008).

Thinner bark at high rainfall translated into consistently higher predicted mortality from understory fires (Fig. 3a), which, in turn, translated into increasing biomass loss with rainfall (Fig. 3b). We compared these predictions to observations of stem mortality rates from field observations across Amazonian forest fires (Hoffmann *et al.* 2009; Barlow *et al.* 2012), showing that stem mortality and biomass loss rates do actually increase with rainfall (Fig. 3), even more strongly than our modelled estimates. Taken together, these patterns suggest that bark variability may indeed contribute to variability in the effects of fires on forests. Drier forests near the biogeographic limit of Amazonian forests – where, incidentally, most research on the relationship between bark and fire-driven mortality has focused – are substantially more resistant to fires than forests in the wetter core of the Amazon.

We next calculated committed biomass-C fluxes across all Amazonian forests across years. The net result of incorporating variable bark into our predictions (from Fig. 1) was a 57.6% increase over constant-bark estimates in the basin-wide understory fire-driven biomass loss, with estimates that more closely match biomass losses estimated directly from plot-level mortality observations (Fig. 4; plot-level estimates in Fig. 3a). Trends and variation are evident through time, with overall decreases in fire extent based on MODIS active fires, likely reflecting decreases in deforestation-associated fires during the study period, and dramatic increases in fire extent during drought years (e.g. 2007 and 2010). Summing potential losses across years (see Fig. 4) yielded a total fire-driven above-ground biomass loss estimate ranging from 0.67 to 5.86 gigatonnes of CO₂ (0.18 to 1.60 gT C) to the atmosphere between 2001 and 2010.

DISCUSSION

Here, we find that tree investment in bark varies across Amazonian tropical forests, with thicker bark in dry forests and

thinner in wetter forests. Combining these patterns with published relationships between bark thickness and tree mortality (Hoffmann *et al.* 2009; Brando *et al.* 2011) suggests that fire-driven tree mortality and biomass loss are greater in wet forests than in dry ones, which is also supported by our synthesis of observed post-fire tree mortality across the Amazon. Overall, thinner bark in wetter tropical forests may make these forests more sensitive to fire, which substantially changes estimates of fire impacts on the Amazon-wide carbon cycle. This fuller understanding of bark variability is likely to improve estimates of the fire-driven carbon cycle in tropical forests.

Variation in bark investment across tropical forests raises an intriguing question: Why are there thick-barked species in forests at all (Paine *et al.* 2010)? One possibility is that fire may have been historically widespread (if infrequent) in drier tropical forests, making thick bark advantageous. Certainly, the paleo-fire literature suggests that fires probably did occur in the Amazon before the modern era in drier Amazonian forests (Bush *et al.* 2008; Power *et al.* 2008) and much less so wetter ones (McMichael *et al.* 2012). Patterns of bark investment observed here are roughly consistent with this, suggesting that fire may have had some ecological and evolutionary importance at the margins of Amazonia. Another possibility is that the functionality of bark is not limited to withstanding fires, and that bark plays a role in drought tolerance (Rosell *et al.* 2013; Rosell 2016), nutrient and water storage (Richardson *et al.* 2015), and herbivore and disease defence (Richardson *et al.* 2015). Drought and water storage hypotheses are weakly supported by the current evidence. First, past work has shown that bark has limited function in mitigating drought susceptibility (Paine *et al.* 2010). Second, resource storage by bark is usually associated with inner bark (Pausas 2017), not the more insulating corky outer bark (Brando *et al.* 2011; Michaletz *et al.* 2012), such that future work should clearly differentiate between these two features. Anecdotally, most of the thick bark in this study was corky, although we did observe a few instances of extremely thick inner bark (see also Roth 1981); that bark was mostly corky is consistent with

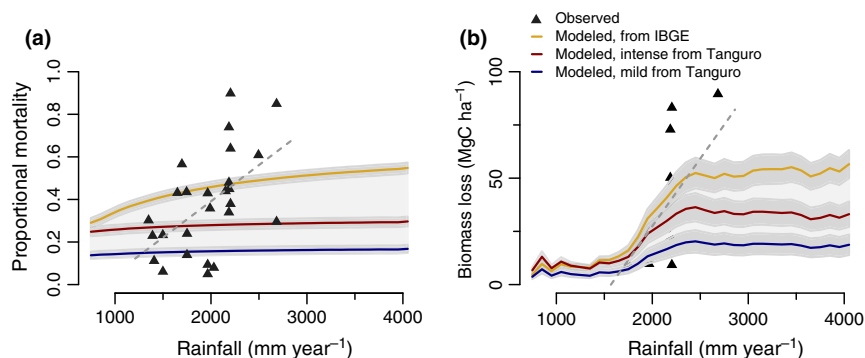


Figure 3 Modelled and observed fire-driven tree mortality (a) and biomass loss (b) in response to rainfall. Mortality (Hoffmann *et al.* 2009; Barlow *et al.* 2012) and biomass loss (Barlow *et al.* 2012) observations are drawn from published meta-analyses of field studies across the Amazon, and modelled fire-driven mortality is based on published relationships between tree bark and mortality at Tanguro in mild and intense fires (Brando *et al.* 2011) and at the IBGE reserve (Hoffmann *et al.* 2009). Observed fire-driven mortality rates increased with rainfall ($R^2 = 0.290$, d.f. = 24, $P = 0.0045$) more strongly than modelled mortality did. So too did biomass losses ($R^2 = 0.347$, d.f. = 10, $P = 0.044$). Note that in both cases, rainfall was a better predictor of observed mortality and biomass loss than MCWD ($R^2 = 0.121$, d.f. = 15, $P = 0.17$ and $R^2 = 0.331$, d.f. = 10, $P = 0.05$, respectively).

observations at Tanguro (included in this study) that bark thickness overall was more predictive of fire protection than bark traits than bark moisture or density (Brando *et al.* 2011). However, the defence hypothesis argues that thin bark has evolved to resist pathogens at high rainfall (Richardson *et al.* 2015) where pathogen loads are heavy (Swinfield *et al.* 2012), consistent with and potentially contributing to patterns observed here. Mechanisms that lead to bark differences, particularly within forest system, merit further direct consideration.

Of course, important caveats apply, especially relating to the time scales of these patterns and processes. First of all, we have documented decreases in bark thickness only with respect to modern rainfall patterns, without considering any historical or paleo-rainfall distributions. Second, humans have been an important influence on the ecology of the Amazon basin for the past 16,000 years at least, perhaps filtering the composition of marginal Amazonian forests towards the species most tolerant of disturbances from fire (e.g. Heckenberger *et al.* 2003). Although anthropogenic filtering cannot account for the existence of species with thick bark to begin with (i.e. for standing variation in bark thickness), it may have strengthened existing patterns.

Whatever its evolutionary or ecological origins, patterns of bark investment across the Amazon suggest that fire-driven

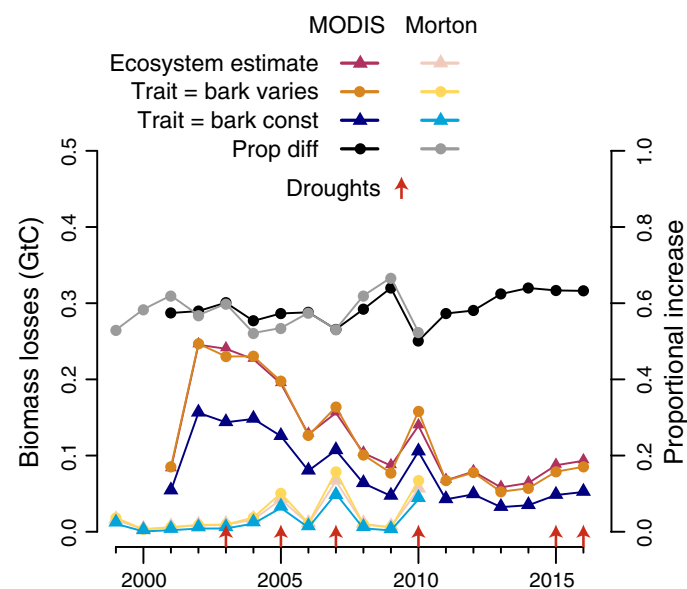


Figure 4 Predicted fire-driven losses of aboveground biomass (GtC) across all Amazonian forests, calculated from published estimates of biomass loss (Barlow *et al.* 2012) (magenta, pink) and modelled assuming constant bark thickness (navy, blue) vs. variable bark (orange, yellow) and a bark-mortality relationship from [(Hoffmann *et al.* 2009)]. For constant bark calculations, we assume bark equivalent to our four driest sites, near the southern edge of the Amazon. Fire extent was estimated directly from MODIS Active Fires data ('MODIS') (Giglio *et al.* 2016) and via independent MODIS-derived understory fire distributions ('Morton') (Morton *et al.* 2013). This reveals the effects of extrapolating current and future fire-driven losses from historical fire-driven losses in comparatively fire-tolerant forests. See Methods for detail. Including variations in bark thickness across the Amazon increases predicted fire-driven carbon losses by $57.6 \pm 3.9\%$ (see Table S2).

tree mortality should occur at higher rates in wet forests than in dry ones. These predictions are borne out in real mortality and biomass-loss estimates from understory fires (see Fig. 4), although, curiously, the observed response of mortality and biomass loss to rainfall was even stronger than our models predicted (Fig. 3). There are a number of possible reasons that our models may underestimate high stem mortality rates in wet forests (see also Cochrane 1999; Barlow *et al.* 2012; Rappaport *et al.* 2018). One probable contributor is that we have only poorly represented the effects of fires that are intense (at least by tropical forest standards; Fig. 2; Cochrane & Schulze 1999). This highlights a well-appreciated need for ways to quantify fire intensity, especially after fires have already occurred (see, e.g., Rappaport *et al.*, 2018), and for work across a broader range of forests and forest types.

Another possibility is that bark alone does not determine how trees respond to fire (Ryan & Williams 2011). For instance, hydraulic vulnerability may contribute to making the combination of drought and fire potent in killing tropical forest trees (Brando *et al.* 2014), if drought-induced water stress makes cavitation during fires more likely (Michaletz *et al.* 2012). Vulnerable hydraulic architecture – common in trees that have not experienced a history of drought or fire and perhaps also in taller forests – and root susceptibility to fires may both merit further examination as a contributor to fire-driven mortality of forest trees. Nonetheless, bark thickness clearly had major impacts on mortality and thus on biomass losses in understory fires.

An increased emphasis on plant functional responses to fire – via bark but also other traits – could further contribute to improving predictions of fire effects on tropical forests. For one, although fires often cause the mortality of the tree stem, they do not always kill the whole individual. Resprouting following fires (Hoffmann *et al.* 2009) can be widespread, and may dramatically speed forest community and biomass recovery following fires. Resprouting traits are understudied in tropical forests (Clarke *et al.* 2012), a critical gap if we are to understand the long-term implications of tropical understory fires for the carbon cycle. Conversely, repeated fires may slow post-fire forest succession. Changes in forest structure following an initial burn may predispose forests to additional fires (Barlow & Peres 2008), which in extreme cases can lead to grass invasion and eventual forest savannisation (Silvério *et al.* 2013), although the generality of this runaway feedback is an issue of some debate (Cochrane 1999). Bark traits may make this more likely, since many of the smaller trees that grow back after fires have thinner bark, and these pioneers are often highly susceptible to subsequent fires (Barlow & Peres 2008).

Here, we provide the first evidence of substantial variation in bark investment across Amazonian forests. Thinner bark in wetter forests provides a convincing explanation for extremely high local tree mortality in understory fires, which improves our understanding of both carbon emissions and biodiversity losses. Together with improved models for fire behaviour, a more comprehensive perspective on how plant functional traits (including bark thickness and resprouting) mediate ecosystem responses to global change will be critical to predicting the future of Amazonian forests and associated climate-carbon feedbacks, including fires (Cochrane 2003). In

this study, aboveground biomass loss estimates based on varying bark thickness suggest that Amazon understory fires have added between 0.67 and 5.86 gigatonnes of CO₂ to the atmosphere between 2001 and 2010 (Fig. 4), without accounting for regrowth. Ignoring fire-related functional traits thus risks missing a major ecological influence on forest responses to fire, with consequences for predictions of tropical forest impacts on global carbon cycles.

ACKNOWLEDGEMENTS

This work was made possible by a grant (#3413) to ACS and PB from the Gordon and Betty Moore Foundation and by Macrosystems Biology grants from the National Science Foundation (ACS: #1802453; PB: #1802754). We acknowledge help with field work from Madelon Case, Gabriel Hidalgo Pizango, Peter Wragg, Joice Ferreira and Amanda Cardoso.

AUTHOR CONTRIBUTIONS

All authors on this work contributed data, conversation and manuscript feedback. ACS synthesised and analysed data, prepared figures and data products, and wrote the paper.

DATA ACCESSIBILITY STATEMENT

Remotely sensed data are available freely online and RAINFOR plot-level tree size data are available at forestplots.net. <https://doi.org/10.5061/dryad.tht76hdv9>.

REFERENCES

- Abatzoglou, J.T. & Williams, A.P. (2016). Impact of anthropogenic climate change on wildfire across western US forests. *Proc. Natl Acad. Sci.*, 113, 11770–11775.
- Alencar, A., Asner, G.P., Knapp, D. & Zarin, D. (2011). Temporal variability of forest fires in eastern Amazonia. *Ecol. Appl.*, 21, 2397–2412.
- Álvarez-Dávila, E., Cayuela, L., González-Caro, S., Aldana, A., Stevenson, P., Phillips, O., et al. (2017). Forest biomass density across large climate gradients in northern South America is related to water availability but not with temperature. *PLoS ONE*, 12, e0171072–16.
- Aragão, L., Malhi, Y., Roman-Cuesta, R.M., Saatchi, S., Anderson, L.O. & Shimabukuro, Y.E. (2007). Spatial patterns and fire response of recent Amazonian droughts. *Geophys. Res. Lett.*, 34, L07701.
- Aragão, L., Anderson, L.O., Fonseca, M.G., Rosan, T.M., Vedovato, L.B., Wagner, F.H., et al. (2018). 21st Century drought-related fires counteract the decline of Amazon deforestation carbon emissions. *Nat. Commun.*, 1–12.
- Avitabile, V., Herold, M., Heuvelink, G.B.M., Lewis, S.L., Phillips, O.L., Asner, G.P., et al. (2016). An integrated pan-tropical biomass map using multiple reference datasets. *Global Change Biol.*, 22, 1406–1420.
- Barlow, J. & Peres, C.A. (2008). Fire-mediated dieback and compositional cascade in an Amazonian forest. *Philos. T. Roy. Soc. B*, 363, 1787–1794.
- Barlow, J., Lagan, B.O. & Peres, C.A. (2003). Morphological correlates of fire-induced tree mortality in a central Amazonian forest. *J. Trop. Ecol.*, 19, 291–299.
- Barlow, J., Parry, L., Gardner, T.A., Ferreira, J., Aragao, L., Carmenta, R., et al. (2012). The critical importance of considering fire in REDD+ programs. *Biol. Conserv.*, 154, 1–8.
- Bond, W. & Midgley, J. (2001). Ecology of sprouting in woody plants: the persistence niche. *Trends Ecol. Evol.*, 16, 45–51.
- Brando, P.M., Goetz, S.J., Baccini, A., Nepstad, D.C., Beck, P.S.A. & Christman, M.C. (2010). Seasonal and interannual variability of climate and vegetation indices across the Amazon. *Proc. Natl Acad. Sci. USA*, 107, 14685–14690.
- Brando, P.M., Nepstad, D.C., Balch, J.K., Bolker, B., Christman, M.C., Coe, M., et al. (2011). Fire-induced tree mortality in a neotropical forest: the roles of bark traits, tree size, wood density and fire behavior. *Global Change Biol.*, 18, 630–641.
- Brando, P.M., Balch, J.K., Nepstad, D.C., Morton, D.C., Putz, F.E., Coe, M.T., et al. (2014). Abrupt increases in Amazonian tree mortality due to drought-fire interactions. *Proc. Natl Acad. Sci.*, 111, 6347–6352.
- Brando, P.M., Paolucci, L., Ummerhofer, C.C., Ordway, E.M., Hartmann, H., Cattau, M.E., et al. (2019). Droughts, wildfires, and forest carbon cycling: a pantropical synthesis. *Annu. Rev. Earth Pl Sci*, 47, 555–581.
- Bush, M.B., Silman, M.R., McMichael, C. & Saatchi, S. (2008). Fire, climate change and biodiversity in Amazonia: a Late-Holocene perspective. *Philos. T. Roy. Soc. B*, 363, 1795–1802.
- Chave, J., Réjou-Méchain, M., Búrquez, A., Chidumayo, E., Colgan, M.S., Delitti, W.B.C., et al. (2014). Improved allometric models to estimate the aboveground biomass of tropical trees. *Global Change Biol.*, 20, 3177–3190.
- Chen, Y., Morton, D.C., Jin, Y., Collatz, G.J., Kasibhatla, P.S., van der Werf, G.R., et al. (2014). Long-term trends and interannual variability of forest, savanna and agricultural fires in South America. *Carbon Manag.*, 4, 617–638.
- Clarke, P.J., Lawes, M.J., Midgley, J.J., Lamont, B.B., Ojeda, F., Burrows, G.E., et al. (2012). Resprouting as a key functional trait: how buds, protection and resources drive persistence after fire. *New Phytol.*, 197, 19–35.
- Cochrane, M.A. (1999). Positive feedbacks in the fire dynamic of closed canopy tropical forests. *Science*, 284, 1832–1835.
- Cochrane, M.A. (2003). Fire science for rainforests. *Nature*, 421, 913–919.
- Cochrane, M. & Schulze, M. (1999). Fire as a recurrent event in tropical forests of the eastern Amazon: Effects on forest structure, biomass, and species composition. *Biotropica*, 31, 2–16.
- Dantas, V.L. & Pausas, J.G. (2013). The lanky and the corky: fire-escape strategies in savanna woody species. *J. Ecol.*, 101, 1265–1272.
- Feldpausch, T.R., Banin, L., Phillips, O.L., Baker, T.R., Lewis, S.L., Quesada, C.A., et al. (2011). Height-diameter allometry of tropical forest trees. *Biogeosciences*, 8, 1081–1106.
- Giglio, L., Schroeder, W. & Justice, C.O. (2016). The collection 6 MODIS active fire detection algorithm and fire products. *Remote Sens Environ.*, 178, 31–41.
- Gignoux, J., Clobert, J. & Menaut, J. (1997). Alternative fire resistance strategies in savanna trees. *Oecologia*, 110, 576–583.
- Hansen, M.C., Potapov, P.V., Moore, R., Hancher, M., Turubanova, S.A., Tyukavina, A., et al. (2013). High-resolution global Maps of 21st-century forest cover change. *Science*, 342, 850–853.
- Harmon, M. (1984). Survival of trees after low-intensity surface fires in Great Smoky Mountains National Park. *Ecology*, 65, 796–802.
- Heckenberger, M., Kuikuro, A., Kuikuro, U., Russell, J., Schmidt, M., Fausto, C., et al. (2003). Amazonia 1492: pristine forest or cultural Parkland? *Science*, 301, 1710.
- Hoffmann, W., Orthen, B. & Do Nascimento, P. (2003). Comparative fire ecology of tropical savanna and forest trees. *Funct. Ecology*, 17, 720–726.
- Hoffmann, W., Adasme, R., Haridasan, M., de Carvalho, T. M., Geiger, E., Pereira, M., et al. (2009). Tree topkill, not mortality, governs the dynamics of savanna-forest boundaries under frequent fire in central Brazil. *Ecology*, 90, 1326–1337.
- Hoffmann, W.A., Geiger, E.L., Gotsch, S.G., Rossatto, D.R., Silva, L.C.R., Lau, O.L., et al. (2012). Ecological thresholds at the savanna-forest boundary: how plant traits, resources and fire govern the distribution of tropical biomes. *Ecol. Letters*, 15, 759–768.
- Le Page, Y., Morton, D., Hartin, C., Bond-Lamberty, B., Pereira, J.M.C., Hurtt, G., et al. (2017). Synergy between land use and climate

- change increases future fire risk in Amazon forests. *Earth Syst. Dynam.*, 8, 1237–1246.
- McMichael, C.H., Correa-Metrio, A. & Bush, M.B. (2012). Pre-Columbian fire regimes in lowland tropical rainforests of southeastern Peru. *Palaeogeogr. Palaeoclimatol. Palaeoecol.*, 342–343, 73–83.
- Michaletz, S.T., Johnson, E.A. & Tyree, M.T. (2012). Moving beyond the cambium necrosis hypothesis of post-fire tree mortality: cavitation and deformation of xylem in forest fires. *New Phytol.*, 194, 254–263.
- Morton, D.C., Le Page, Y., DeFries, R., Collatz, G.J. & Hurtt, G.C. (2013). Understorey fire frequency and the fate of burned forests in southern Amazonia. *Philos T Roy Soc B*, 368, 20120163–20120163.
- Nicholson, S., Some, B., McCollum, J., Nelkin, E., Klotter, D., Berte, Y., et al. (2003). Validation of TRMM and Other Rainfall Estimates with a High-Density Gauge Dataset for West Africa. Part I: Validation of GPCP Rainfall Product and Pre-TRMM Satellite and Blended Products. *J. Appl. Meteorol.*, 42, 1337–1354.
- Paine, C.E.T., Stahl, C., Courtois, E.A., Patiño, S., Sarmiento, C. & Baraloto, C. (2010). Functional explanations for variation in bark thickness in tropical rain forest trees. *Funct. Ecology*, 24, 1202–1210.
- Pausas, J. (2017). Bark thickness and fire regime: another twist. *New Phytol.*, 2013, 13–15.
- Pausas, J.G., Keeley, J.E. & Verdú, M. (2006). Inferring differential evolutionary processes of plant persistence traits in Northern Hemisphere Mediterranean fire-prone ecosystems. *J. Ecol.*, 94, 31–39.
- Pellegrini, A.F.A., Anderegg, W.R.L., Paine, C.E.T., Hoffmann, W.A., Kartzinel, T., Rabin, S.S., et al. (2017). Convergence of bark investment according to fire and climate structures ecosystem vulnerability to future change. *Ecol. Letters*, 20, 307–316.
- Power, M.J., Marlon, J., Ortiz, N., Bartlein, P.J., Harrison, S.P., Mayle, F.E., et al. (2008). Changes in fire regimes since the Last Glacial Maximum: an assessment based on a global synthesis and analysis of charcoal data. *Clim. Dyn.*, 30, 887–907.
- Quesada, C.A., Phillips, O.L., Schwarz, M., Czimczik, C.I., Baker, T.R., Patino, S., et al. (2012). Basin-wide variations in Amazon forest structure and function are mediated by both soils and climate. *Biogeosciences*, 9, 2203–2246.
- Rappaport, D.I., Morton, D.C., Longo, M., Keller, M., Dubayah, R. & dos-Santos, M.N. (2018). Quantifying long-term changes in carbon stocks and forest structure from Amazon forest degradation. *Environ. Res. Lett.*, 13, 065013–12.
- Richardson, S.J., Laughlin, D.C., Lawes, M.J., Holdaway, R.J., Wilmshurst, J.M., Wright, M., et al. (2015). Functional and environmental determinants of bark thickness in fire-free temperate rain forest communities. *Am. J. Bot.*, 102, 1590–1598.
- Rosell, J.A. (2016). Bark thickness across the angiosperms: more than just fire. *New Phytol.*, 211, 90–102.
- Rosell, J.A., Gleason, S., Méndez-Alonzo, R., Chang, Y. & Westoby, M. (2013). Bark functional ecology: evidence for tradeoffs, functional coordination, and environment producing bark diversity. *New Phytol.*, 201, 486–497.
- Roth, I. (1981). *Structural Patterns of Tropical Barks*. Borntraeger, Berlin.
- Ryan, C.M. & Williams, M. (2011). How does fire intensity and frequency affect miombo woodland tree populations and biomass? *Ecol. Appl.*, 21, 48–60.
- Silvério, D.V., Brando, P.M., Balch, J.K., Putz, F.E., Nepstad, D.C., Oliveira-Santos, C., et al. (2013). Testing the Amazon savannization hypothesis: fire effects on invasion of a neotropical forest by native cerrado and exotic pasture grasses. *Philos T. Roy. Soc. B*, 368, 20120427.
- Swinfield T., Lewis O. T., Bagchi R., & Freckleton R. P. (2012). Consequences of changing rainfall for fungal pathogen-induced mortality in tropical tree seedlings. *Ecol. Evol.*, 2, 1408–1413.
- Trollope, W.S.W. & Tainton, N.M. (1986). Effect of fire intensity on the grass and bush components of the Eastern Cape thornveld. *J. Grassland Soc. Southern Africa*, 3, 37–42.
- van der Werf, G.R., Morton, D.C. & Defries, R.S. (2009). CO2 emissions from forest loss. *Nature*, 2, 737–738.
- Williams, R.J., Gill, A.M. & Moore, P. (1998). Seasonal changes in fire behaviour in a tropical Savanna in Northern Australia. *Int. J. Wildland Fire*, 8, 227–239.
- Williams, R., Cook, G., Gill, A. & Moore, P. (1999). Fire regime, fire intensity and tree survival in a tropical savanna in northern Australia. *Aust. J. Ecol.*, 24, 50–59.

SUPPORTING INFORMATION

Additional supporting information may be found online in the Supporting Information section at the end of the article.

Editor, Josep Penuelas

Manuscript received 6 August 2019

First decision made 4 September 2019

Manuscript accepted 20 September 2019