

UCSF

UC San Francisco Previously Published Works

Title

Standard-of-Care Axicabtagene Ciloleucel for Relapsed or Refractory Large B-Cell Lymphoma: Results From the US Lymphoma CAR T Consortium.

Permalink

<https://escholarship.org/uc/item/43d862h7>

Journal

Journal of Clinical Oncology, 38(27)

ISSN

0732-183X

Authors

Nastoupil, Loretta J
Jain, Michael D
Feng, Lei
[et al.](#)

Publication Date

2020-09-20

DOI

10.1200/jco.19.02104

Peer reviewed

Standard-of-Care Axicabtagene Ciloleucel for Relapsed or Refractory Large B-Cell Lymphoma: Results From the US Lymphoma CAR T Consortium

Loretta J. Nastoupil, MD¹; Michael D. Jain, MD, PhD²; Lei Feng, MD¹; Jay Y. Spiegel, MD³; Armin Ghobadi, MD⁴; Yi Lin, MD, PhD⁵; Saurabh Dahiya, MD⁶; Matthew Lunning, DO⁷; Lazaros Lekakis, MD⁸; Patrick Reagan, MD⁹; Olalekan Oluwole, MBBS¹⁰; Joseph McGuiirk, DO¹¹; Abhinav Deol, MD¹²; Alison R. Sehgal, MD¹³; Andre Goy, MD¹⁴; Brian T. Hill, MD, PhD¹⁵; Khoan Vu, MD¹⁶; Charalambos Andreadis, MD, MSCE¹⁶; Javier Munoz, MD, MS¹⁷; Jason Westin, MD¹; Julio C. Chavez, MD, MS²; Amanda Cashen, MD⁴; N. Nora Bennani, MD⁵; Aaron P. Rapoport, MD⁶; Julie M. Vose, MD⁷; David B. Miklos, MD, PhD³; Sattva S. Neelapu, MD¹; and Frederick L. Locke, MD²

abstract

PURPOSE Axicabtagene ciloleucel (axi-cel) is an autologous CD19-directed chimeric antigen receptor (CAR) T-cell therapy approved for relapsed/refractory large B-cell lymphoma (LBCL) on the basis of the single-arm phase II ZUMA-1 trial, which showed best overall and complete response rates in infused patients of 83% and 58%, respectively. We report clinical outcomes with axi-cel in the standard-of-care (SOC) setting for the approved indication.

PATIENTS AND METHODS Data were collected retrospectively from all patients with relapsed/refractory LBCL who underwent leukapheresis as of September 30, 2018, at 17 US institutions with the intent to receive SOC axi-cel. Toxicities were graded and managed according to each institution's guidelines. Responses were assessed as per Lugano 2014 classification.

RESULTS Of 298 patients who underwent leukapheresis, 275 (92%) received axi-cel therapy. Compared with the registrational ZUMA-1 trial, 129 patients (43%) in this SOC study would not have met ZUMA-1 eligibility criteria because of comorbidities at the time of leukapheresis. Among the axi-cel–treated patients, grade ≥ 3 cytokine release syndrome and neurotoxicity occurred in 7% and 31%, respectively. Nonrelapse mortality was 4.4%. Best overall and complete response rates in infused patients were 82% (95% CI, 77% to 86%) and 64% (95% CI, 58% to 69%), respectively. At a median follow-up of 12.9 months from the time of CAR T-cell infusion, median progression-free survival was 8.3 months (95% CI, 6.0 to 15.1 months), and median overall survival was not reached. Patients with poor Eastern Cooperative Oncology Group performance status of 2-4 and elevated lactate dehydrogenase had shorter progression-free and overall survival on univariable and multivariable analysis.

CONCLUSION The safety and efficacy of axi-cel in the SOC setting in patients with relapsed/refractory LBCL was comparable to the registrational ZUMA-1 trial.

J Clin Oncol 38:3119-3128. © 2020 by American Society of Clinical Oncology

INTRODUCTION

Diffuse large B-cell lymphoma (DLBCL) is the most common subtype of non-Hodgkin lymphoma in the United States.¹ Patients with chemorefractory DLBCL face dismal outcomes, with most succumbing to their disease. In the SCHOLAR-1 international multicohort retrospective analysis, median overall survival (OS) was 6.3 months among patients with refractory DLBCL, and only 20% of patients were alive at 2 years.² Although frontline anthracycline-based chemoimmunotherapy is curative for many patients,^{3,4} only a small fraction with relapsed disease achieve prolonged disease-free survival with salvage chemotherapy and autologous stem-cell transplantation (ASCT).^{2,4,5}

Chimeric antigen receptor (CAR) T-cell therapy, a gene-modified cellular therapy, has demonstrated substantial efficacy in patients with chemorefractory aggressive B-cell lymphomas.⁶⁻⁸ Axicabtagene ciloleucel (axi-cel) is an autologous anti-CD19 CAR T-cell therapy approved for the treatment of relapsed or refractory (R/R) large B-cell lymphomas (LBCLs), including DLBCL, primary mediastinal B-cell lymphoma, high-grade B-cell lymphoma, and transformed follicular lymphoma, after at least 2 prior lines of systemic therapy.⁹ In the multicenter ZUMA-1 registrational trial that tested axi-cel in patients with R/R LBCL, the objective response rate (ORR) and complete response (CR) rate were 83% and 58%, respectively.^{6,7} Grade ≥ 3 cytokine release syndrome (CRS) and neurologic

ASSOCIATED CONTENT

See accompanying editorial on page 3085

Appendix

Author affiliations and support information (if applicable) appear at the end of this article.

Accepted on March 24, 2020 and published at ascopubs.org/journal/jco on May 13, 2020; DOI <https://doi.org/10.1200/JCO.19.02104>

CONTEXT

Key Objective

Seventeen US centers set out to delineate the characteristics and outcomes of 298 patients apheresed with intention to be treated with commercially available axicabtagene ciloleucel, an autologous anti-CD19 CAR T-cell.

Knowledge Generated

Practice patterns varied from the registrational ZUMA-1 trial. 43% of patients had comorbidities or characteristics that would have deemed them ineligible. Despite this, safety and efficacy outcomes were comparable to ZUMA-1. We identified patient and disease characteristics associated with outcomes.

Relevance

Our findings suggest favorable outcomes reported in prospective trials with axicabtagene ciloleucel can be achieved across multiple centers in the United States using commercial product as a standard of care.

events were observed in 11% and 32% of the patients, respectively.⁷ With a median follow-up of 27.1 months, the median duration of response was 11.1 months (95% CI, 4.1 months to not estimable), 39% of patients remained in ongoing response, and the median OS was not reached.⁷ These 2-year follow-up data suggested that axi-cel can induce durable remissions and meaningful OS benefit in patients with R/R aggressive B-cell lymphoma.

Clinical trials often have stringent eligibility criteria, and the outcomes observed in clinical trials may or may not be observed in real-life clinical practice because the study population in the clinical trials may not be representative of those treated in clinical practice. Therefore, we set out to delineate the characteristics of patients treated with commercially available axi-cel and to evaluate its safety and effectiveness outside the confines of a clinical trial.

PATIENTS AND METHODS

Study Design and Participants

Seventeen US centers obtained independent institutional review board approval for this retrospective study conducted in accordance with the International Conference on Harmonization guidelines. All patients, at all centers, who underwent leukapheresis as of September 30, 2018, with the intent to manufacture commercial axi-cel for the treatment of R/R LBCL were included (Fig 1; Appendix Fig A1, online only). If the CAR T-cell product did not meet commercial release criteria, patients were offered treatment with the manufactured product in the ZUMA-9 expanded access study (ClinicalTrials.gov identifier: NCT03153462), and their results were included.

Treatment and Clinical Assessment

Disease status at leukapheresis was defined as primary refractory, never achieving end-of-treatment CR; refractory, not primary refractory and no response to the most recent therapy; or relapsed, responded to the most recent therapy and either relapsed or progressed. Bridging therapy was defined as any lymphoma-specific therapy administered

after leukapheresis and before conditioning chemotherapy. Cyclophosphamide and fludarabine conditioning followed by axi-cel infusion were performed as in ZUMA-1.⁶ Pathologic diagnoses and molecular classification of patients with DLBCL by Hans algorithm were determined locally.¹⁰ Toxicity grading and management were according to each institution's guidelines. CRS was graded according to the Lee et al¹¹ or CAR T-Cell Therapy–Associated Toxicity (CARTOX) criteria. Neurotoxicity was graded by CARTOX CAR-T-cell–related encephalopathy syndrome criteria in 7 centers¹² and Common Terminology Criteria for Adverse Events (version 4.03; CTCAE) in 10 centers. Severe CRS and neurotoxicity were defined as grade ≥ 3 . Tumor response assessments were performed locally per Lugano 2014 classification.¹³

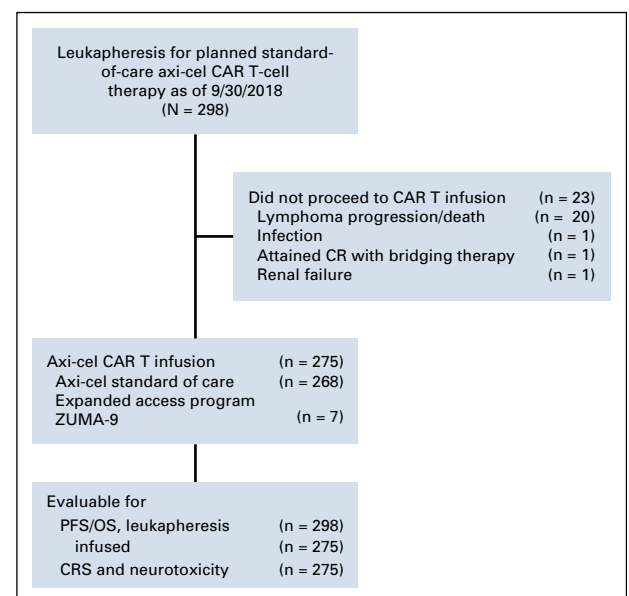


FIG 1. Patient flow diagram. Axi-cel, axicabtagene ciloleucel; CAR, chimeric antigen receptor; CR, complete response; CRS, cytokine release syndrome; OS, overall survival; PFS, progression-free survival.

TABLE 1. Baseline Patient Characteristics

| Characteristic | No. (%) |
|--|------------|
| No. of patients | 298 |
| Age, years | |
| < 60 | 144 (48.3) |
| ≥ 60 | 154 (51.7) |
| Median (range) | 60 (21-83) |
| Sex (male) | 192 (64.0) |
| ECOG PS | |
| 0 | 76 (25.5) |
| 1 | 164 (55.0) |
| 2 | 46 (15.4) |
| 3 | 11 (3.7) |
| 4 | 1 (< 1.0) |
| Disease stage | |
| I or II | 52 (17.6) |
| III or IV | 244 (82.4) |
| International Prognostic Index score ^a | |
| 0-2 | 136 (45.6) |
| 3-5 | 162 (54.4) |
| Disease type | |
| DLBCL | 203 (68.1) |
| PMBCL | 19 (6.4) |
| TFL | 76 (25.5) |
| GCB-like ^b | 158 (59.8) |
| Non-GCB ^b | 106 (40.1) |
| Double/triple-hit ^c | 64 (22.8) |
| Double expressor ^c | 98 (37.4) |
| CD19 status ^d | |
| Positive by flow cytometry | 137 (92.6) |
| Positive by IHC | 57 (87.7) |
| LDH > ULN at leukapheresis ^e | 157 (60.6) |
| LDH > ULN at conditioning ^e chemotherapy | 155 (59.4) |
| Bulky disease (≥ 10 cm) | 68 (22.7) |
| Prior therapies | |
| ≥ 3 prior lines of therapy | 222 (74.5) |
| Median No. of prior lines (range) | 3 (2-11) |
| History of primary refractory disease | 101 (33.9) |
| Refractory to most recent therapy | 125 (42.0) |
| Relapsed | 72 (24.0) |
| Prior ASCT | 98 (32.9) |
| Prior allogeneic SCT | 7 (2.4) |
| Prior CD-19-directed therapy ^f | 5 (1.7) |
| ZUMA-1 comorbidity exclusion criteria at the time of leukapheresis | |
| No. of patients with exclusion criteria | 129 (43.0) |

(continued in next column)

TABLE 1. Baseline Patient Characteristics (continued)

| Characteristic | No. (%) |
|--|-----------|
| 1 criterion | 76 (58.9) |
| ≥ 2 criteria | 53 (41.1) |
| ECOG PS > 1 | 58 (19.0) |
| Platelets < 75,000/μL | 34 (11.4) |
| DVT/PE within 6 months | 31 (10.4) |
| History of CNS disease | 21 (7.0) |
| Renal insufficiency (GFR < 60 mL/min/1.73 m ²) | 21 (7.0) |
| Prior checkpoint inhibitor therapy | 17 (5.7) |
| LVEF < 50% | 10 (3.4) |
| Symptomatic pleural effusion | 10 (3.4) |
| Bilirubin > 1.5 g/dL | 7 (2.4) |
| Prior CD19-directed therapy | 5 (1.7) |

Abbreviations: ASCT, autologous stem-cell transplantation; DLBCL, diffuse large B-cell lymphoma; DVT, deep vein thrombosis; ECOG PS, Eastern Cooperative Oncology Group performance status; GCB, germinal center B cell; GFR, glomerular filtration rate; IHC, immunohistochemistry; LDH, lactate dehydrogenase; LVEF, left ventricular ejection fraction; PE, pulmonary embolism; PMBCL, primary mediastinal B-cell lymphoma; SCT, stem-cell transplantation; TFL, transformed follicular lymphoma; ULN, upper limit of normal.

^aAt the time of relapse.

^bPercentages do not include 34 patients in whom cell of origin was unavailable.

^cPercentages do not include 18 patients in whom fluorescence in situ hybridization results were unavailable and 36 patients in whom IHC to determine double expression was unavailable.

^dPercentages do not include 150 patients in whom CD19 status by flow cytometry or 233 patients by IHC was unknown.

^ePercentages do not include 39 patients in whom LDH at leukapheresis or 37 patients before conditioning was unknown.

^fPrior CD19 chimeric antigen receptor T cells (n = 3), CD19 bispecific antibody (n = 1), or CD19 antibody (n = 1).

Statistical Methods

Descriptive statistics, including mean, standard deviation, median, and range for continuous variables, and percentages for categorical variables, are provided. Fisher's exact test or χ^2 test was used to evaluate the association between two categorical variables. Multivariable logistic regression model was fitted to assess the effect of important covariates on response. Wilcoxon rank sum test or Kruskal-Wallis test was used to evaluate the difference in a continuous variable between/among patient groups. Kaplan-Meier method was used to estimate PFS and OS rates, and log-rank test was used to evaluate the difference in PFS or OS between/among patient groups. For all patients who underwent leukapheresis, and alternatively for all that underwent axi-cel infusion, PFS and OS were computed since the procedure. The median follow-up time, in months, was calculated among patients still alive. Rates of toxicity and safety data were calculated in patients who received axi-cel.

Cox proportional hazards regression models were used for multivariable analysis to include significant covariates. The Schoenfeld residual was used to check the proportional hazards assumption. Variables with at least marginal association with PFS/OS from the univariable analysis ($P < 0.2$) were included in the initial multivariable model. A stepwise selection method was used and a significance level of .2 was the criterion for a variable to stay in the model. Collinearity diagnostics were performed for the final models and indicated no collinearity problem. SAS 9.4 (SAS Institute, Cary, NC) and Spotfire S+ 8.2 (TIBCO Software, Palo Alto, CA) statistical software were used for all the analyses.

Corticosteroids or tocilizumab use was not considered a baseline variable when assessing the association with PFS or OS. Corticosteroids or tocilizumab were initiated within 30 days of axi-cel in all patients, so landmark analysis that started at 30 days after axi-cel for PFS or OS by corticosteroid or tocilizumab use was performed. Patients with follow-up < 30 days were excluded from this landmark analysis.

RESULTS

Patient Characteristics and Disposition

As of September 30, 2018, 298 patients completed leukapheresis with intent to manufacture and receive commercial axi-cel at 17 centers. Median follow-up from leukapheresis was 13.8 months (range, 3.9-21.6 months). At leukapheresis, 129 patients (43%) had comorbidities that would have made them ineligible for ZUMA-1 (ClinicalTrials.gov identifier: [NCT02348216](#)). Patient characteristics are listed in [Table 1](#). The median time from leukapheresis to initiation of conditioning chemotherapy was 21 days (range, 11-71 days; interquartile range, 20-24 days). Bridging therapy, which was not permitted in ZUMA-1,⁶ was used in 158 patients (53%). Bridging therapies were chemotherapy with or without other therapy in 54%, corticosteroids in 23%, radiation with or without corticosteroids in 12%, and targeted therapies such as lenalidomide or ibrutinib alone in 10%. Characteristics of patients who received bridging therapy are listed in [Appendix Table A1](#) (online only).

After conditioning chemotherapy with cyclophosphamide and fludarabine, 275 patients (92%) received axi-cel infusion ([Fig 1](#)), with 12.9 months median follow-up from infusion (range, 3.2-20.7 months). Of these, 268 (97%) received commercial axi-cel, and 7 (3%) were treated under the ZUMA-9 study; 255 (93%) received axi-cel as an inpatient. Of 20 outpatient infusions, all required admission at median day 1 (range, days 0-8).

Safety

Median hospital stay was 14 days (range, 3-66 days). Any grade and grade ≥ 3 CRS occurred in 91% and 7% of patients, respectively ([Table 2](#)). One patient died as

a result of hemophagocytic lymphohistiocytosis (HLH).¹⁴ Any grade and grade ≥ 3 neurotoxicity occurred in 69% and 31%, respectively ([Table 2](#)). All neurotoxicity events resolved except for 1 event of grade 5 cerebral edema. Sixty-two percent received tocilizumab (median number of doses, 1; 1 dose, $n = 83$; 2 doses, $n = 46$; ≥ 3 doses, $n = 40$); 55% received glucocorticoids for CRS, neurologic events, or both; and 33% were transferred to the intensive care unit. Of all patients infused, 7% required vasopressors, 7% intubation/mechanical ventilation, and 3% dialysis.

Among patients who received axi-cel infusion, 97 died: 84 deaths were lymphoma related, and 12 were a result of nonrelapse mortality (4.4%). Causes of nonrelapse mortality included infection ($n = 8$), axi-cel-related toxicity ($n = 2$; 1 HLH and 1 cerebral edema), and unknown causes not attributable to lymphoma ($n = 2$). One additional patient died as a result of graft-versus-host disease, unrelated to axi-cel, after an allogeneic transplantation following axi-cel relapse ([Appendix Table A2](#), online only).

Univariable ([Appendix Table A3](#), online only) and multivariable ([Appendix Table A4](#), online only) analyses were performed to determine the association between baseline characteristics and risk of severe CRS and/or neurotoxicity. Multivariable analysis found that severe CRS was significantly associated with a poor Eastern Cooperative Oncology Group performance status (ECOG PS) of 2-4 (odds ratio [OR] 5.3; 95% CI, 2.0 to 14.3; $P = .001$) and elevated bilirubin (OR, 7.6; 95% CI, 2.0 to 14.3; $P = .001$). Severe neurotoxicity was significantly associated with bulky disease > 10 cm (OR, 2.2; 95% CI, 1.2 to 4.1; $P = .01$) and left ventricular ejection fraction < 50% (OR, 4.5; 95% CI, 1.05 to 19.3; $P = .04$) on multivariable analysis.

Response to Therapy

The best ORR and CR rate among the 275 patients who received axi-cel were 82% (95% CI, 77% to 86%) and 64% (95% CI, 58% to 69%), respectively. Median time to response was 30 days, and no patients achieved a first response beyond day 90. The majority of patients who achieved a CR ($n = 121$) at day 30 remained in CR at day 90 (78%). Among the 93 patients with a partial response (PR) at day 30, 32% improved to a CR at day 90, but only 1 (7%) of 14 patients with stable disease at day 30 improved to a CR at day 90. The median duration of response has not been reached (95% CI, 6.2 months to not reached; [Fig 2A](#)). Among the 24 patients who had no evidence of CRS, 75% had an objective response (CR, $n = 8$; PR, $n = 10$).

Univariable ([Appendix Table A3](#)) and multivariable ([Appendix Table A4](#)) analyses were performed to determine baseline characteristics associated with a best response of CR by 12 months. Multivariable analysis found associations with age > 60 years (OR, 2.3; 95% CI, 1.3 to 3.9; $P = .004$)

TABLE 2. Summary of Safety With Standard-of-Care Axicabtagene Ciloleucef

| Event and Grade | No. (%) |
|---------------------------------------|------------|
| Cytokine release syndrome | |
| Any | 251 (91.2) |
| 1 | 94 (34.2) |
| 2 | 138 (50.2) |
| 3 | 12 (4.4) |
| 4 | 6 (2.2) |
| 5 | 1 (0.4) |
| Median time to maximum severity, days | 3 |
| Range | 0-37 |
| Interquartile range | 1-5 |
| Neurotoxicity | |
| Any | 189 (68.7) |
| 1 | 49 (17.8) |
| 2 | 55 (20) |
| 3 | 66 (24) |
| 4 | 18 (6.6) |
| 5 | 1 (0.4) |
| Median time to maximum severity, days | 6 |
| Range | 0-27 |
| Interquartile range | 5-8 |
| Hospitalization | |
| Median hospital stay, days (range) | 14 (3-66) |
| Intensive care unit stay | 91 (33) |
| Tocilizumab use | 170 (62) |
| Corticosteroid use | 149 (54) |

and normal lactate dehydrogenase (LDH) at the time of conditioning (OR, 2.2; 95% CI, 1.2 to 4.0; $P = .007$).

PFS and OS

Of the 298 patients who underwent leukapheresis, the median PFS was 7.2 months from leukapheresis (95% CI, 5.7 to 12.4 months), with median OS not reached (Figs 2A and 2B). The 12-month PFS and OS estimates were 45% (95% CI, 39% to 51%) and 64% (95% CI, 59% to 70%), respectively.

For the 275 patients who received axi-cel, the median PFS was 8.3 months from infusion (95% CI, 6.0 to 15.1 months), with median OS not reached (Figs 2C and 2D). The 12-month PFS and OS estimates were 47% (95% CI, 41% to 53%) and 68% (95% CI, 63% to 74%), respectively. Baseline characteristics associated with worse PFS and OS in those receiving axi-cel were identified by univariable (Appendix Table A3) and multivariable (Table 3) analyses. Kaplan-Meier curves for ECOG PS ≥ 2 and elevated LDH are shown as common covariates that affect PFS and OS (Figs 3A-3D). Infused patients who were ineligible for ZUMA-1 because of comorbidities at the time

of leukapheresis had lower PFS and OS (Appendix Fig A2, online only). Efficacy outcomes compared with ZUMA-1 are listed in Appendix Table A5 (online only).

Day 30 landmark analysis revealed a significant univariable association between OS and corticosteroid use ($P = .04$) but not tocilizumab use ($P = .07$). However, in multivariable analysis using the day 30 landmark, neither tocilizumab (hazard ratio [HR], 1.7; 95% CI, 0.9 to 2.4; $P = .17$) nor corticosteroids (HR, 1.3; 95% CI, 0.8 to 2.2; $P = .2$) significantly affected OS.

DISCUSSION

We report clinical outcomes in a large observational cohort of 298 patients with R/R LBCL who underwent leukapheresis with the intent to administer SOC axi-cel at 17 US centers. Forty-three percent of patients would have been ineligible, on the basis of comorbidities, for the pivotal ZUMA-1 trial that resulted in approval of axi-cel.⁶ Despite this, axi-cel could be administered to 92% of the patients who underwent leukapheresis, comparable to the 91% administered in ZUMA-1.⁶ Of patients infused with axi-cel, most (97%) received commercial axi-cel, while 3% were treated in the ZUMA-9 expanded access study because of product specifications not meeting commercial release criteria. This demonstrated feasibility of axi-cel outside of clinical trials, with a high manufacturing success rate. Importantly, assessment of clinical outcomes after CAR T infusion showed that the safety and efficacy were comparable to ZUMA-1, which is noteworthy and suggests that this therapy is tolerable and effective in patients with comorbidities and a certain degree of organ dysfunction (Table 1).

The overall incidence of CRS was comparable to ZUMA-1, but grade ≥ 3 CRS was slightly lower at 7% v 11% in ZUMA-1.⁷ This observation might be accounted for by greater use of tocilizumab and corticosteroids (62% and 55%, respectively) in our study compared with ZUMA-1 (43% and 27%, respectively) in line with evolving practice patterns for toxicity management. In the ZUMA-1 trial, the use of tocilizumab and corticosteroids primarily for grade ≥ 3 CRS and neurotoxicity did not seem to affect ORR, CR rate, or durability of response.^{6,7} Similarly, we did not note significant differences in PFS or CR rates in patients treated with these agents. Corticosteroid use was associated with lower OS in a univariable landmark analysis that considered only patients alive at day 30 onward but was not significant upon multivariable analysis. Nonrelapse mortality in our study was 4.4% and comparable to ZUMA-1 (3.7%).⁷ A definition of the optimal infectious prophylaxis in these patients may further improve outcomes because 8 of the 12 deaths occurred as a result of infection (Appendix Table A2).

The rate of grade ≥ 3 neurotoxicity in our study was similar to ZUMA-1 (31% v. 32%).⁷ However, it should be noted that the scoring system for neurotoxicity has changed since

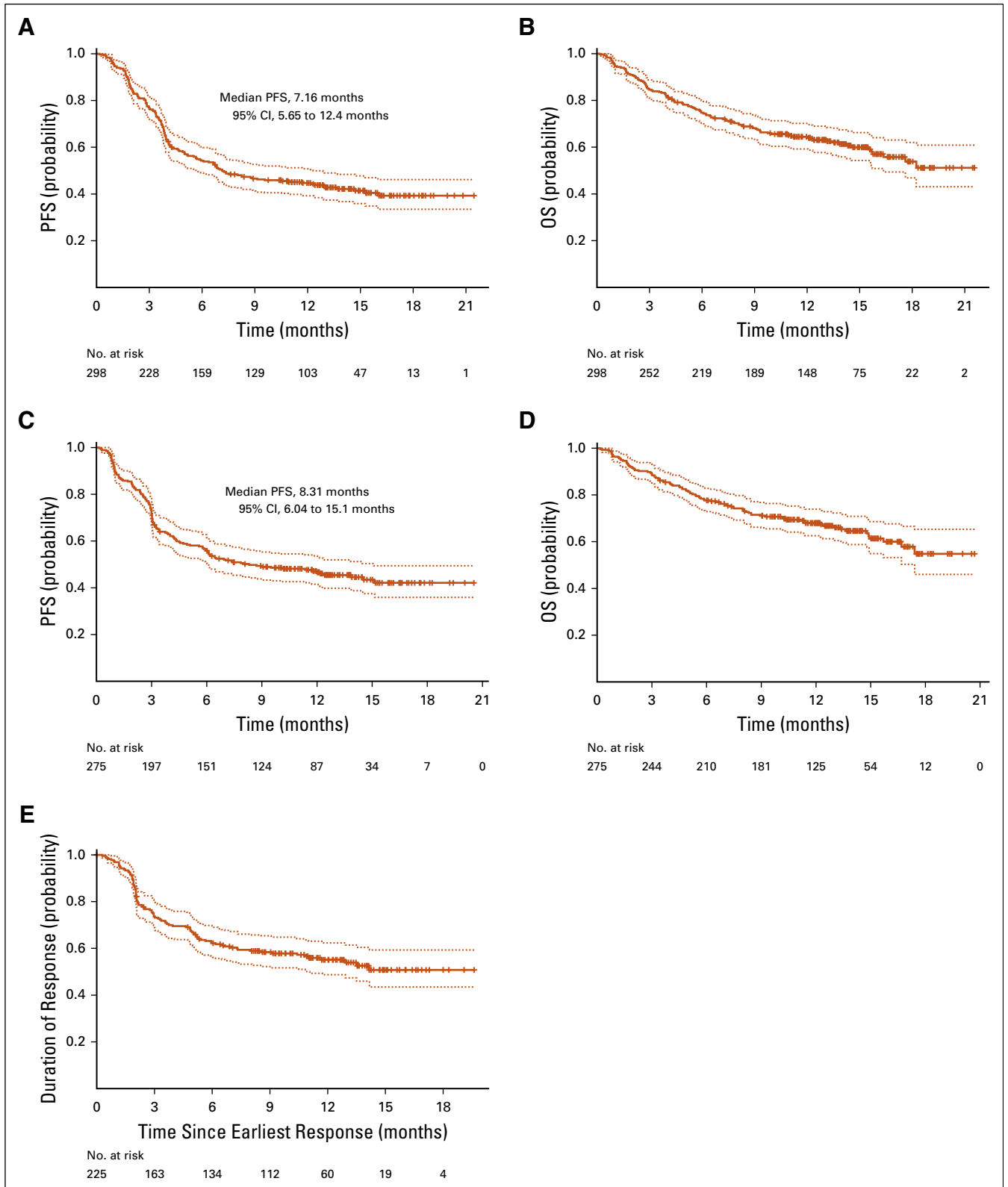


FIG 2. Duration of response, progression-free survival (PFS), and overall survival (OS) estimates. (A) PFS from leukapheresis. (B) OS from leukapheresis. (C) PFS from axi-cel infusion. (D) OS from axi-cel infusion. (E) Duration of response in axicabtagene ciloleucel (axicel) responders.

TABLE 3. Baseline Characteristics Significantly Associated With PFS and OS in Multivariable Models of Axicabtagene Ciloleucel–Treated Patients

| Characteristic | PFS | | OS | |
|------------------------------------|------|-------------------|-------|---------------------|
| | P | HR (95% CI) | P | HR (95% CI) |
| Total bilirubin > 1.5 g/dL | | | | |
| Yes v no | .009 | 3.9 (1.4 to 11.1) | .0020 | 5.1 (1.80 to 14.50) |
| LDH before conditioning | | | | |
| > ULN v normal | .001 | 1.9 (1.3 to 2.9) | .0001 | 3.0 (1.70 to 5.40) |
| Sex | | | | |
| Male v female | .005 | 1.8 (1.2 to 2.7) | .0400 | 1.7 (1.02 to 2.70) |
| ECOG PS | | | | |
| 2-4 v 0-1 | .010 | 1.7 (1.1 to 2.7) | .0200 | 1.8 (1.10 to 3.00) |
| Age, years | | | | |
| < 60 v ≥ 60 | .010 | 1.6 (1.1 to 2.3) | NA | NA |
| Cell of origin by Hans algorithm | | | | |
| ABC-like v GCB-like | .100 | 1.4 (0.9 to 2.0) | NA | NA |
| No. of prior lines of therapy | | | | |
| ≥ 3 v < 3 | .140 | 1.4 (0.9 to 2.1) | NA | NA |
| Prior checkpoint inhibitor therapy | | | | |
| No v yes | .120 | 2.1 (0.8 to 5.1) | NA | NA |
| Disease status at leukapheresis | | | | |
| Primary refractory v relapsed | NA | NA | .0400 | 1.9 (1.02 to 3.60) |
| Refractory v relapsed | NA | NA | .0800 | 1.8 (0.90 to 3.30) |
| Bridging therapy | | | | |
| Yes v no | NA | NA | .0300 | 1.7 (1.04 to 2.70) |

Abbreviations: ABC, activated B-cell-like; ECOG PS, Eastern Cooperative Group performance status; GCB, germinal center B-cell-like; HR, hazard ratio; LDH, lactate dehydrogenase; NA, not applicable (characteristic not a part of the multivariable-adjusted model for the listed outcome); OS, overall survival; PFS, progression-free survival; ULN, upper limit of normal.

the inception of ZUMA-1, with the majority of patients in our study graded using a more sensitive CARTOX grading system,¹² which was recently modified into the American Society for Transplantation and Cellular Therapy consensus grading system for neurotoxicity now referred to as immune effector cell–associated neurotoxicity syndrome.¹⁵ The effect of grading systems on neurotoxicity outcomes was studied in a patient-level analysis of the JULIET trial.¹⁶ When CTCAE and CARTOX assessments of neurotoxicity were compared, more patients were observed to have grade 1-2 toxicity by CARTOX than by CTCAE, although the number of patients scored as having grade ≥ 3 was similar. Therefore, it is likely that patients who experience severe neurotoxicity are captured by both grading systems and that the overall rate of severe neurotoxicity is similar between our cohort and ZUMA-1.

Multivariable analysis of baseline characteristics showed that high tumor burden was associated with severe neurotoxicity. Equally important are factors not significantly associated with the risk of severe neurotoxicity, including age, history of CNS lymphoma, or lymphoma-specific features such as subtype

or double-hit histology. It is likely that higher tumor burden may increase the risk of neurotoxicity by promoting greater expansion of CAR T cells.^{6,17}

The large sample size of this study also allowed analysis of covariates associated with efficacy. Consideration of some of these results in context is warranted. Among the covariates tested, baseline ECOG PS 2-4 and an elevated LDH at the time of conditioning chemotherapy seem to associate with poorer PFS and OS and were relatively common in our cohort. It is conceivable that these baseline characteristics may be a surrogate marker for patients with a different biology of disease that is less responsive to axi-cel therapy. Conversely, we found that younger patients (< 60 years old) had worse PFS and CR rates, which suggests that simple reliance on existing prognostic scoring systems validated with traditional therapies, such as the revised International Prognostic Index that assigns both elevated LDH and older age as poor prognostic factors,^{17a} may be inadequate. Additional investigation is needed to understand the mechanistic basis of these risk factors and build a better model to predict CAR T efficacy a priori. Interestingly,

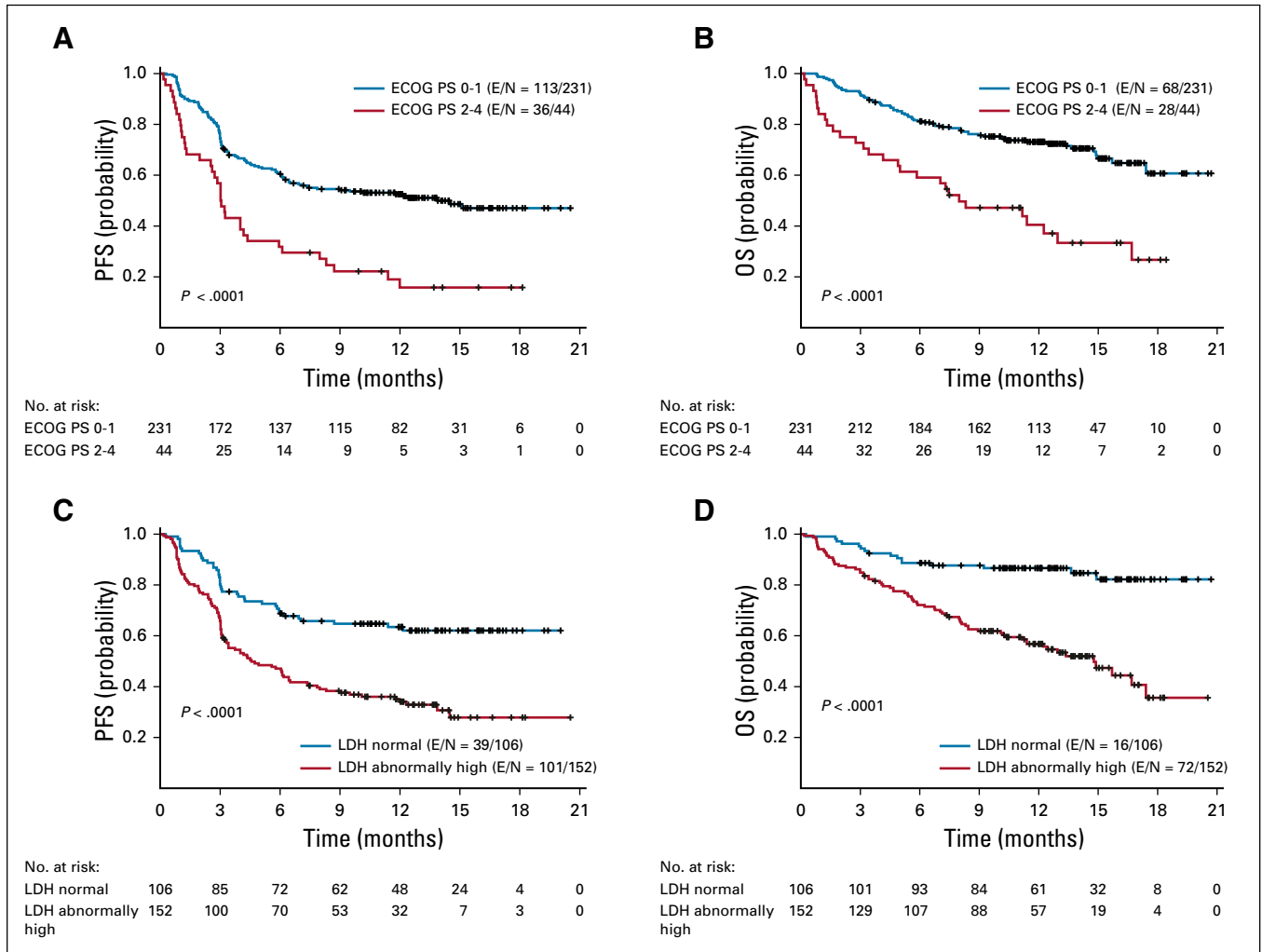


FIG 3. Progression-free survival (PFS) and overall survival (OS) estimates from axicabtagene ciloleucel (axi-cel) infusion, stratified by Eastern Cooperative Oncology Group performance status (ECOG PS) or baseline lactate dehydrogenase (LDH). (A) PFS by ECOG PS at baseline. (B) OS by ECOG PS at baseline. (C) PFS by LDH at conditioning. (D) OS by LDH at conditioning. E, events in a group; N, number of patients in a group.

females had significantly better outcomes than males after axi-cel, which has also been observed in patients with DLBCL treated with chemotherapy.¹⁸ Finally, we found that patients who required bridging therapy had worse OS. To fully understand these findings, a more focused and in-depth analysis of the contributions and interactions among baseline risk factors, specific bridging interventions, and disease biology is needed.

Our results suggest that patients need not meet ZUMA-1 eligibility criteria to benefit from axi-cel, nor should there be an upper age limit. We found that PFS and OS for patients who did not have comorbidities was particularly favorable compared with the ZUMA-1 study. It is possible that this may be a result of differences in certain baseline characteristics in this study versus ZUMA-1. In the current study, there was a higher proportion of patients with transformed follicular lymphoma and prior ASCT and a lower proportion of patients with disease refractory to most recent therapy. These subgroups were associated

with improved outcomes in the ZUMA-1 study.^{7,18a} Moreover, it is likely that in the SOC setting, because of increased availability of manufacturing slots, patients are being treated earlier after referral when they may have lower tumor burden, another factor associated with improved outcome.¹⁹ Although patients who would have been ineligible for ZUMA-1 because of comorbidities at the time of leukapheresis had worse PFS and OS (Appendix Fig A2), the 12-month PFS rate of 34% fell within the 95% CI of the 12-month PFS rate from ZUMA-1 (Appendix Table A5, online only). Some specific baseline features, in particular ECOG PS 2-4, a ZUMA-1 exclusion criterion, were associated with higher risk for severe toxicity and worse efficacy: Careful consideration before selecting these patients for axi-cel is warranted. Nevertheless, given our findings, broadening the eligibility criteria of prospective studies would improve access to more patients and help us to better characterize the risk factors for safety and efficacy.

There are several limitations of this study beyond its retrospective nature. First, there was heterogeneity in the grading of CRS and neurotoxicity across the centers. Future investigation should prospectively evaluate the concordance of various toxicity scales to allow comparability across trials. Second, a proinflammatory state before axi-cel was seen in some patients who experienced severe toxicity in ZUMA-1.^{7,20} However, we were unable to examine the association of inflammatory markers with acute toxicity because C-reactive protein and ferritin were not consistently captured across the 17 centers. Third, longer follow-up is required to determine whether axi-cel induces durable remissions at the same rate described in ZUMA-1.⁷ Finally, most baseline characteristics were captured at the time of leukapheresis, as in ZUMA-1, when earliest commitment to

axi-cel was made. Patients with R/R LBCL can have rapid changes in ECOG PS and other features during manufacture. For example, we found that elevated LDH before conditioning chemotherapy was more significantly associated with outcomes compared with LDH at leukapheresis. Future studies should evaluate covariates immediately before axi-cel infusion.

In conclusion, our study shows that delivery of axi-cel therapy is feasible outside clinical trials. Overall, our study demonstrates that the overall safety and efficacy of axi-cel in the SOC setting is comparable to what was observed on the pivotal ZUMA-1 trial, despite the observation that many patients would not have met eligibility criteria for the pivotal trial because of comorbidities.

AFFILIATIONS

¹The University of Texas MD Anderson Cancer Center, Houston, TX

²Moffitt Cancer Center, Tampa, FL

³Stanford University Medical Center, Stanford, CA

⁴Washington University School of Medicine and Siteman Cancer Center, St Louis, MO

⁵Mayo Clinic, Rochester, MN

⁶University of Maryland School of Medicine and Greenebaum Comprehensive Cancer Center, Baltimore, MD

⁷University of Nebraska Medical Center, Omaha, NE

⁸University of Miami Miller School of Medicine, Miami, FL

⁹University of Rochester Medical Center, Rochester, NY

¹⁰Vanderbilt-Ingram Cancer Center, Nashville, TN

¹¹University of Kansas Medical Center, Kansas City, KS

¹²Karmanos Cancer Institute, Wayne State University, Detroit, MI

¹³UPMC Hillman Cancer Center, Pittsburgh, PA

¹⁴John Theurer Cancer Center, Hackensack Meridian Health, Hackensack, NJ

¹⁵Cleveland Clinic, Cleveland, OH

¹⁶University of California, San Francisco, San Francisco, CA

¹⁷Banner MD Anderson Cancer Center, Gilbert, AZ

a Moffitt Cancer Center support grant (P30-CA076292), and a National Cancer Institute grant (CA201594).

AUTHORS' DISCLOSURES OF POTENTIAL CONFLICTS OF INTEREST AND DATA AVAILABILITY STATEMENT

Disclosures provided by the authors and data availability statement (if applicable) are available with this article at DOI <https://doi.org/10.1200/JCO.19.02104>.

AUTHOR CONTRIBUTIONS

Conception and design: Loretta J. Nastoupil, Michael D. Jain, Armin Ghobadi, Yi Lin, Saurabh Dahiya, Matthew Lunning, Olalekan Oluwole, Joseph McGuirk, Abhinav Deol, Andre Goy, Julie M. Vose, David B. Miklos, Sattva S. Neelapu, Frederick L. Locke

Administrative support: Frederick L. Locke

Provision of study material or patients: Loretta J. Nastoupil, Michael D. Jain, Jay Y. Spiegel, Armin Ghobadi, Yi Lin, Saurabh Dahiya, Lazaros Lekakis, Patrick Reagan, Olalekan Oluwole, Joseph McGuirk, Abhinav Deol, Alison R. Sehgal, Andre Goy, Brian T. Hill, Khoan Vu, Javier Munoz, Aaron P. Rapoport, Julie M. Vose, Sattva S. Neelapu, Frederick L. Locke

Collection and assembly of data: Loretta J. Nastoupil, Michael D. Jain, Jay Y. Spiegel, Armin Ghobadi, Yi Lin, Saurabh Dahiya, Matthew Lunning, Lazaros Lekakis, Patrick Reagan, Olalekan Oluwole, Joseph McGuirk, Abhinav Deol, Alison R. Sehgal, Andre Goy, Brian T. Hill, Khoan Vu, Charalambos Andreadis, Javier Munoz, Amanda Cashen, N. Nora Bennani, Aaron P. Rapoport, Julie M. Vose, David B. Miklos, Sattva S. Neelapu, Frederick L. Locke

Data analysis and interpretation: Loretta J. Nastoupil, Michael D. Jain, Lei Feng, Armin Ghobadi, Yi Lin, Matthew Lunning, Patrick Reagan, Olalekan Oluwole, Joseph McGuirk, Abhinav Deol, Alison R. Sehgal, Andre Goy, Brian T. Hill, Charalambos Andreadis, Javier Munoz, Jason Westin, Julio C. Chavez, Amanda Cashen, N. Nora Bennani, Aaron P. Rapoport, Julie M. Vose, David B. Miklos, Sattva S. Neelapu, Frederick L. Locke

Manuscript writing: All authors

Final approval of manuscript: All authors

Accountable for all aspects of the work: All authors

CORRESPONDING AUTHOR

Frederick L. Locke, MD, Moffitt Cancer Center, FOB 3, 12902 USF Magnolia Dr, Tampa, FL 33612; Twitter: @moffittnews; e-mail: frederick.locke@moffitt.org.

EQUAL CONTRIBUTION

L.J.N. and M.D.J. are co-first authors with equal contribution. D.B.M., S.S.N., and F.L.L. are co-senior authors.

PRIOR PRESENTATION

Presented at the American Society of Hematology 60th Annual Meeting and Exposition, San Diego, CA, December 1-4, 2018.

SUPPORT

Supported by The University of Texas MD Anderson Cancer Center support grant from National Institutes of Health (P30 CA016672),

REFERENCES

1. Teras LR, DeSantis CE, Cerhan JR, et al: 2016 US lymphoid malignancy statistics by World Health Organization subtypes. *CA Cancer J Clin* 66:443-459, 2016
2. Crump M, Neelapu SS, Farooq U, et al: Outcomes in refractory diffuse large B-cell lymphoma: Results from the international SCHOLAR-1 study. *Blood* 130:1800-1808, 2017 [Erratum: *Blood* 130:1800-1808, 2017]
3. Maurer MJ, Ghesquières H, Jais JP, et al: Event-free survival at 24 months is a robust end point for disease-related outcome in diffuse large B-cell lymphoma treated with immunochemotherapy. *J Clin Oncol* 32:1066-1073, 2014
4. Sehn LH, Gascoyne RD: Diffuse large B-cell lymphoma: Optimizing outcome in the context of clinical and biologic heterogeneity. *Blood* 125:22-32, 2015
5. Friedberg JW: Relapsed/refractory diffuse large B-cell lymphoma. *Hematology (Am Soc Hematol Educ Program)* 2011:498-505, 2011
6. Neelapu SS, Locke FL, Bartlett NL, et al: Axicabtagene ciloleucel CAR T-cell therapy in refractory large B-cell lymphoma. *N Engl J Med* 377:2531-2544, 2017
7. Locke FL, Ghobadi A, Jacobson CA, et al: Long-term safety and activity of axicabtagene ciloleucel in refractory large B-cell lymphoma (ZUMA-1): A single-arm, multicentre, phase 1-2 trial. *Lancet Oncol* 20:31-42, 2019
8. Schuster SJ, Bishop MR, Tam CS, et al: Tisagenlecleucel in adult relapsed or refractory diffuse large B-cell lymphoma. *N Engl J Med* 380:45-56, 2019
9. Kite Pharma: Yescarta (axicabtagene ciloleucel) [package insert]. <https://www.yescarta.com/files/yescarta-pi.pdf>
10. Hans CP, Weisenburger DD, Greiner TC, et al: Confirmation of the molecular classification of diffuse large B-cell lymphoma by immunohistochemistry using a tissue microarray. *Blood* 103:275-282, 2004
11. Lee DW, Gardner R, Porter DL, et al: Current concepts in the diagnosis and management of cytokine release syndrome. *Blood* 124:188-195, 2014
12. Neelapu SS, Tummala S, Kebriaei P, et al: Chimeric antigen receptor T-cell therapy—Assessment and management of toxicities. *Nat Rev Clin Oncol* 15:47-62, 2018
13. Cheson BD, Fisher RI, Barrington SF, et al: Recommendations for initial evaluation, staging, and response assessment of Hodgkin and non-Hodgkin lymphoma: The Lugano classification. *J Clin Oncol* 32:3059-3067, 2014
14. Hashmi H, Bachmeier C, Chavez JC, et al: Haemophagocytic lymphohistiocytosis has variable time to onset following CD19 chimeric antigen receptor T cell therapy. *Br J Haematol* 187:e35-e38, 2019
15. Lee DW, Santomaso BD, Locke FL, et al: ASTCT consensus grading for cytokine release syndrome and neurologic toxicity associated with immune effector cells. *Biol Blood Marrow Transplant* 25:625-638, 2019
16. Bishop MR, Maziarz RT, Waller EK, et al Tisagenlecleucel in relapsed/refractory diffuse large B-cell lymphoma patients without measurable disease at infusion. *Blood Adv* 3:2230-2236, 2019
17. Gust J, Hay KA, Hanafi LA, et al: Endothelial activation and blood-brain barrier disruption in neurotoxicity after adoptive immunotherapy with CD19 CAR-T cells. *Cancer Discov* 7:1404-1419, 2017
- 17a. Sehn LH, Berry B, Chhanabhai M, et al The revised International Prognostic Index (R-IPI) is a better predictor of outcome than the standard IPI for patients with diffuse large B-cell lymphoma treated with R-CHOP. *Blood* 109: 1857-1861, 2007
18. Pfreundschuh M: Age and sex in non-Hodgkin lymphoma therapy: It's not all created equal, or is it? *Am Soc Clin Oncol Educ Book* 37:505-511, 2017
- 18a. Locke FL, Neelapu SS, Bartlett NL, et al: Phase 1 Results of ZUMA-1: A Multicenter Study of KTE-C19 Anti-CD19 CAR T Cell Therapy in Refractory Aggressive Lymphoma. *Mol Ther* 25:285-295, 2017
19. Dean E, Lu H, Lazaryan A, et al: Association of high baseline metabolic tumor volume with response following axicabtagene ciloleucel in refractory large B-cell lymphoma. *J Clin Oncol* 37,2019 (suppl; abstr 7562)
20. Locke FL, Neelapu SS, Bartlett NL, et al: Phase 1 results of ZUMA-1: A multicenter study of KTE-C19 anti-CD19 CAR T cell therapy in refractory aggressive lymphoma. *Mol Ther* 25:285-295, 2017



AUTHORS' DISCLOSURES OF POTENTIAL CONFLICTS OF INTEREST**Standard-of-Care Axicabtagene Ciloleucel for Relapsed or Refractory Large B-Cell Lymphoma: Results From the US Lymphoma CAR T Consortium**

The following represents disclosure information provided by authors of this manuscript. All relationships are considered compensated unless otherwise noted. Relationships are self-held unless noted. I = Immediate Family Member, Inst = My Institution. Relationships may not relate to the subject matter of this manuscript. For more information about ASCO's conflict of interest policy, please refer to www.asco.org/rwc or ascopubs.org/jco/authors/author-center.

Open Payments is a public database containing information reported by companies about payments made to US-licensed physicians ([Open Payments](#)).

Loretta J. Nastoupil

Honoraria: Celgene, Gilead Sciences, Novartis, Spectrum Pharmaceuticals, Bayer AG, Janssen Oncology, Juno Therapeutics, Pfizer, Gamida Cell, TG Therapeutics

Research Funding: TG Therapeutics, Janssen Biotech, Celgene, Genentech, Roche, Karus Therapeutics, LAM Therapeutics

Michael D. Jain

Consulting or Advisory Role: Kite Pharma, Gilead Sciences, Novartis

Travel, Accommodations, Expenses: Kite Pharma, Gilead Sciences

Armin Ghobadi

Honoraria: Kite Pharma

Consulting or Advisory Role: Kite Pharma, Celgene, Amgen, Wugen

Speakers' Bureau: Kite Pharma

Research Funding: Amgen, Kite Pharma

Yi Lin

Consulting or Advisory Role: Kite Pharma (Inst), Gilead Sciences (Inst), Novartis (Inst), Bluebird Bio (Inst), Celgene (Inst), Juno Therapeutics (Inst), Bristol-Myers Squibb (Inst), Gamida Cell (Inst), Legend Biotech (Inst), Sorrento (Inst), Vinteli (Inst)

Research Funding: Janssen Oncology (Inst), Merck (Inst), Takeda Pharmaceuticals (Inst), Boston Scientific (Inst), Kite Pharma (Inst), Gilead Sciences (Inst), Bristol-Myers Squibb (Inst), Bluebird Bio (Inst)

Saurabh Dahiya

Consulting or Advisory Role: Kite Pharma, Gilead Sciences, Atara Biotherapeutics

Matthew Lunning

Consulting or Advisory Role: TG Therapeutics, Celgene, Gilead Sciences, Juno Therapeutics, Seattle Genetics, AbbVie, Pharmacyclics, Janssen Oncology, Verastem, Kite Pharma, Novartis, Spectrum Pharmaceuticals, Bristol-Myers Squibb

Research Funding: Celgene (Inst), Curis (Inst), Juno Therapeutics (Inst), Janssen Oncology (Inst), TG Therapeutics (Inst), TG Therapeutics (Inst), miRagen (Inst)

Lazaros Lekakis

Consulting or Advisory Role: Janssen Pharmaceuticals, Jazz Pharmaceuticals, Incyte

Patrick Reagan

Consulting or Advisory Role: Curis, Kite Pharma

Research Funding: Seattle Genetics

Olalekan Oluwole

Consulting or Advisory Role: Spectrum Pharmaceuticals, Pfizer, Bayer AG, Kite Pharma, Gilead Sciences

Joseph McGuirk

Honoraria: Kite Pharma, Novartis

Consulting or Advisory Role: Kite Pharma, Juno Therapeutics, Allovir

Speakers' Bureau: Kite Pharma, Gilead Sciences

Research Funding: Novartis (Inst), Fresenius Biotech (Inst), Astellas Pharma (Inst), Bellicum Pharmaceuticals (Inst), Novartis (Inst), Gamida Cell (Inst), Pluristem Therapeutics (Inst), Kite Pharma (Inst)

Travel, Accommodations, Expenses: Kite Pharma

Abhinav Deol

Consulting or Advisory Role: Novartis, Kite Pharma, Gilead Sciences, Agios, Juno Therapeutics, Celgene

Alison R. Sehgal

Research Funding: Kite Pharma, Gilead Sciences, Juno Therapeutics, Merck

Andre Goy

Employment: Regional Cancer Care Associates

Leadership: COTA

Stock and Other Ownership Interests: COTA

Honoraria: Kite Pharma, Gilead Sciences, Pharmacyclics, Janssen Pharmaceuticals, Celgene, AstraZeneca, Physician Education Resource, Practice Update Oncology, MJH Healthcare Holdings, Xcenda, Acerta Pharma

Consulting or Advisory Role: Acerta Pharma, Kite Pharma, Gilead Sciences, Pharmacyclics, Janssen Pharmaceuticals, AstraZeneca, Practice Update Oncology, Physician Education Resource, Xcenda

Research Funding: Takeda Pharmaceuticals, Kite Pharma, Gilead Sciences, Pharmacyclics, Janssen Pharmaceuticals, Genentech, Acerta

Expert Testimony: AstraZeneca

Travel, Accommodations, Expenses: Physicians Education Resource

Other Relationship: COTA, Celgene

Brian T. Hill

Honoraria: Pharmacyclics, Gilead Sciences, Genentech, AbbVie, Seattle Genetics, Bayer AG, AstraZeneca, Novartis, Pfizer, Celgene

Consulting or Advisory Role: Seattle Genetics, Novartis, AbbVie, Genentech

Research Funding: AbbVie (Inst), Karyopharm Therapeutics (Inst), Celgene (Inst), Takeda Pharmaceuticals (Inst), Amgen (Inst), Genentech (Inst), Kite Pharma (Inst), Gilead Sciences (Inst)

Khoan Vu

Stock and Other Ownership Interests: Celgene

Charalambos Andreadis

Employment: Genentech (I)

Stock and Other Ownership Interests: Roche (I), Genentech (I)

Consulting or Advisory Role: Gilead Sciences, Genentech, Roche, Astellas

Pharma, Kite Pharma, Bayer AG, Novartis, Celgene, Jazz Pharmaceuticals

Research Funding: Novartis, GlaxoSmithKline, Cellerant, Amgen, Karyopharm Therapeutics, Juno Therapeutics, Celgene, Merck

Travel, Accommodations, Expenses: Celgene, Novartis, Gilead Sciences, Kite Pharma, Bayer AG, Genentech, Jazz Pharmaceuticals

Javier Munoz

Honoraria: Kyowa Hakkō Kirin, Seattle Genetics

Consulting or Advisory Role: Kite Pharma, Pfizer, Pharmacyclics, Bayer AG, Alexion Pharmaceuticals, Bristol-Myers Squibb, Janssen Pharmaceuticals, Seattle Genetics, Gilead Sciences, Kyowa Hakkō Kirin, Juno Therapeutics, Genentech, Celgene, BeiGene, Fosunkite, Innovent

Speakers' Bureau: Kite Pharma, Bayer AG, Pharmacyclics, Janssen Pharmaceuticals, AstraZeneca, Gilead Sciences, Seattle Genetics, Kyowa Hakkō Kirin, Acrotech, BeiGene, Verastem, Celgene, AbbVie, Genentech

Research Funding: Kite Pharma, Celgene, Portola Pharmaceuticals, Incyte, Genentech, AbbVie, Pharmacyclics, Janssen Pharmaceuticals, Seattle Genetics, Millennium Pharmaceuticals

Jason Westin

Consulting or Advisory Role: Novartis, Celgene, Genentech, AbbVie, Kite

Pharma, Gilead Sciences, Janssen Scientific Affairs, Amgen, MorphoSys, Juno Therapeutics, Curis, Forty Seven

Research Funding: Celgene, Janssen Pharmaceuticals, Genentech, Novartis, Kite Pharma, Gilead Sciences, Bristol-Myers Squibb, Curis

Julio C. Chavez

Consulting or Advisory Role: Kite Pharma, Gilead Sciences, Novartis, Bayer AG, Karyopharm Therapeutics, Verastem, Pfizer, MorphoSys, TeneoBio, Juno Therapeutics, Celgene

Speakers' Bureau: Kite Pharma, Gilead Sciences, Genentech, AstraZeneca, BeiGene

Research Funding: Merck (Inst)

Amanda Cashen

Consulting or Advisory Role: Agios

Speakers' Bureau: Novartis, Celgene, Seattle Genetics

N. Nora Bennani

Consulting or Advisory Role: Purdue Pharma (Inst), Adicet Bio (Inst), Verastem (Inst), Seattle Genetics (Inst)

Research Funding: Kite Pharma (Inst)

Julie M. Vose

Honoraria: Novartis, AbbVie, Epizyme, Legend Biotech, Vaniam Group, Janssen Scientific Affairs, Kite Pharma, Gilead Sciences, Acerta Pharma, AstraZeneca, Verastem, Miltenyi Biotec

Consulting or Advisory Role: Bio Connections

Research Funding: Celgene (Inst), Incyte (Inst), Acerta Pharma (Inst), Kite Pharma (Inst), Seattle Genetics (Inst), Novartis (Inst), Bristol-Myers Squibb (Inst), AstraZeneca (Inst), Juno Therapeutics (Inst)

David B. Miklos

Consulting or Advisory Role: Kite Pharma, Adaptive Biotechnologies, Novartis, Juno Therapeutics, Celgene, Pharmacyclics, Janssen Pharmaceuticals, Precision Bioscience, Allogene, Miltenyi Biotec

Research Funding: Pharmacyclics, Novartis, Roche, Genentech, Kite Pharma, Adaptive Biotechnologies, Allogene, Novartis, Precision Biosciences

Patents, Royalties, Other Intellectual Property: Patent held with Pharmacyclics supporting ibrutinib for chronic graft-versus-host disease (no royalty claim)

Travel, Accommodations, Expenses: Kite Pharma, Pharmacyclics, Janssen Pharmaceuticals, Adaptive Biotechnologies, Juno Therapeutics, Miltenyi Biotec, Novartis

Sattva S. Neelapu

Honoraria: Bio Ascend, Medscape, Aptitude Health, MJH Life Sciences

Consulting or Advisory Role: Merck Sharp & Dohme, Celgene, Kite Pharma, Novartis, Unum Therapeutics, Cell Medica, Incyte, Gilead Sciences, Pfizer, Precision Biosciences, Allogene, Legend Biotech

Research Funding: Bristol-Myers Squibb

Research Funding: Merck Sharp & Dohme, Kite Pharma, Acerta Pharma, Cellectis, Poseida Therapeutics, Karus Therapeutics, Unum Therapeutics, Gilead Sciences, Allogene, Precision Biosciences

Patents, Royalties, Other Intellectual Property: Patents related to cellular therapy

Travel, Accommodations, Expenses: Medscape, Kite Pharma, Gilead Sciences, Merck, Unum Therapeutics, Celgene, Chugai Pharma, Precision Biosciences, Novartis, Pfizer, Allogene, Legend Biotech

Frederick L. Locke

Stock and Other Ownership Interests: Cellular Biomedicine Group

Consulting or Advisory Role: Novartis, Celgene, GammaDelta Therapeutics, Calibr, Wugen, Allogene, Cellular Biomedicine Group, Gerson Lehrman Group, EcoR1

Research Funding: Kite Pharma (Inst)

Patents, Royalties, Other Intellectual Property: Double mutant survivin vaccine US010414810B2 (Inst), CAR T cells with enhanced metabolic fitness serial number 62/939,727 (Inst), methods of enhancing CAR T cell therapies serial number 62/892,292 (Inst), evolutionary dynamics of non-Hodgkin lymphoma CAR-T cell therapy serial number 62/879,534 (Inst)

Travel, Accommodations, Expenses: Kite Pharma

No other potential conflicts of interest were reported.

APPENDIX

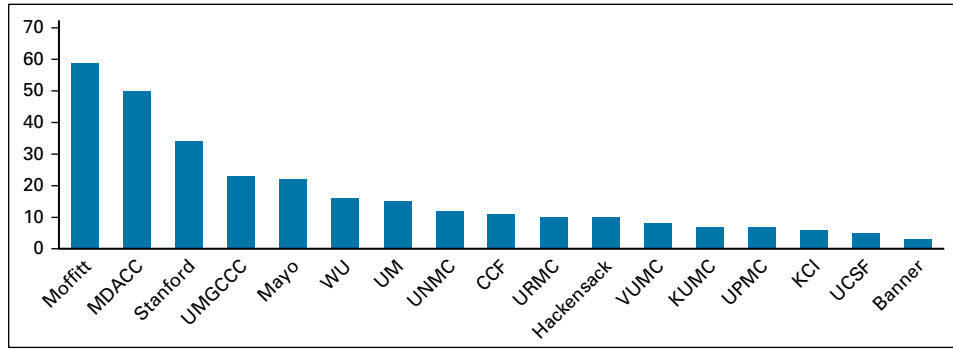


FIG A1. Contribution of patients by center. Banner, MD Anderson Cancer Center; CCF, Cleveland Clinic; KCI, Karmanos Cancer Institute; KUMC, University of Kansas Medical Center; Mayo, Mayo Clinic; MDACC, MD Anderson Cancer Center; Moffitt, H. Lee Moffitt Cancer Center & Research Institute; Stanford, Stanford University Medical Center; UCSF, University of California, San Francisco; UM, University of Miami; UMGCCC, University of Maryland Greenebaum Comprehensive Cancer Center; UNMC, University of Nebraska Medical Center; UPMC, University of Pittsburgh Medical Center; URMC, University of Rochester Medical Center; VUMC, Vanderbilt University Medical Center; WU, Washington University.

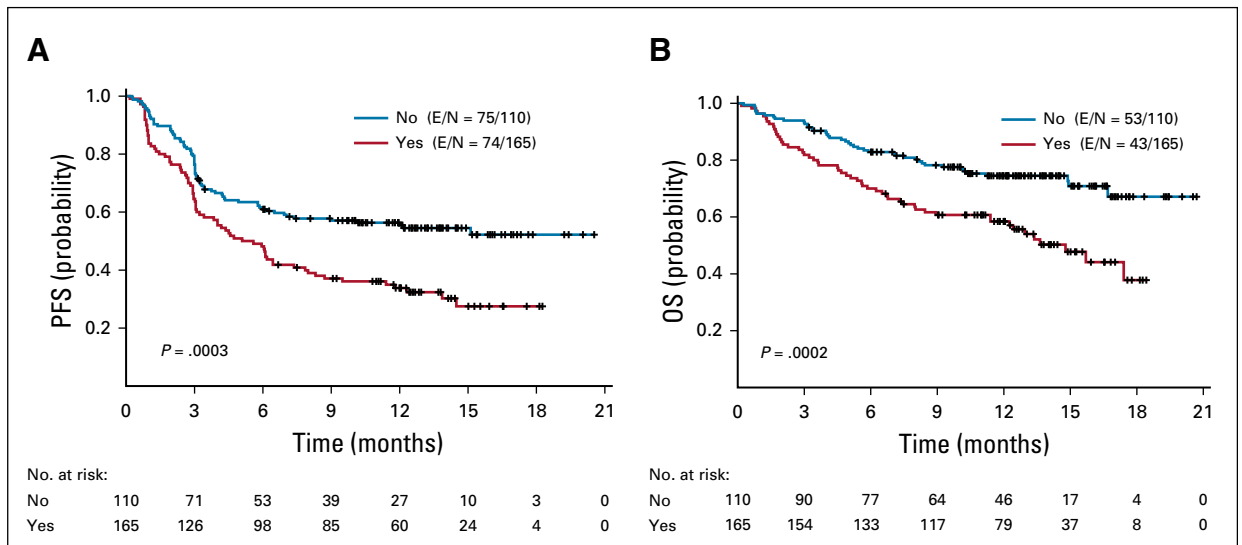


FIG A2. (A) Progression-free survival (PFS) and (B) overall survival (OS) in patients who received axicabtagene ciloleucel infusions, stratified by the presence (yes) or absence (no) of any comorbidity at the time of leukapheresis that was a ZUMA-1 exclusion criterion. E, events in a group; N, number of patients in a group.

TABLE A1. Characteristics of Patients Who Received Bridging Therapy

| Characteristic | No Bridging, No. (%) | Received Bridging, No. (%) | <i>P</i> |
|------------------------|-------------------------|----------------------------|----------|
| Age, years | | | |
| < 60 | 66 (48) | 78 (49) | .7500 |
| > 60 | 73 (53) | 80 (51) | |
| Sex | | | |
| Male | 88 (63) | 103 (65) | .7400 |
| ECOG PS | | | |
| 0-1 | 128 (92) | 111 (70) | < .0001 |
| 2-4 | 11 (8) | 47 (30) | |
| Disease type | | | |
| DLBCL | 96 (69) | 106 (67) | .0700 |
| PMBCL | 13 (9) | 6 (4) | |
| TFL | 30 (22) | 46 (29) | |
| Stage | | | |
| I/II | 35 (25) | 17 (11) | .0010 |
| III/IV | 104 (75) | 139 (89) | |
| IPI | | | |
| 0-2 | 87 (63) | 49 (31) | < .0001 |
| 3-5 | 52 (37) | 109 (69) | |
| Prior lines of therapy | | | |
| < 3 | 39 (29) | 37 (23) | .2500 |
| ≥ 3 | 97 (71) | 125 (77) | |
| Disease status | | | |
| Primary refractory | 39 (28) | 62 (39) | .1300 |
| Refractory | 63 (45) | 61 (39) | |
| Relapsed | 37 (27) | 35 (22) | |
| Bulky disease | | | |
| > 10 cm | 19 (14) | 49 (31) | .0004 |
| LDH > ULN | | | |
| At leukapheresis | 43 (36) | 113 (81) | < .0001 |
| At conditioning | 55 (45) | 100 (73) | < .0001 |

Abbreviations: DLBCL, diffuse large B-cell lymphoma; ECOG PS, Eastern Cooperative Group performance status; IPI, International Prognostic Index; LDH, lactate dehydrogenase; PMBCL, primary mediastinal B-cell lymphoma; TFL, transformed follicular lymphoma; ULN, upper limit of normal.

TABLE A2. Cause of Death in Patients Who Received Axicabtagene Ciloleucel

| Cause of Death | No. (%) |
|-----------------------|----------------|
| Toxicity (NRM) | 12 (4.4) |
| Infection | 8 |
| Bacterial | 5 |
| Fungal | 3 |
| Cerebral edema | 1 |
| HLH | 1 |
| Unknown | 2 |
| Lymphoma | 84 (31) |
| Other ^a | 1 (< 0.1) |

Abbreviations: HLH, hemophagocytic lymphohistiocytosis; NRM, nonrelapse mortality.

^aGraft-v-host disease after allogeneic stem-cell transplantation given post-axicabtagene ciloleucel relapse.

TABLE A3. Characteristics Associated With Grade ≥ 3 CRS, Grade ≥ 3 Neurotoxicity, Best Response of CR Up to 12 months, 12-Month PFS, and 12-Month OS in Patients Infused With Axicabtagene Ciloleucel, by Univariable Analysis

| Characteristic | CRS Grade ≥ 3 , No. (%) | P* | Neurotoxicity Grade ≥ 3 , No. (%) | P* | Best CR at 12 Months, No. (%) | P* | PFS Rate at 12 Months (%) | P* | OS Rate at 12 Months (%) | P* |
|--|------------------------------|--------------|--|-------------|-------------------------------|--------------|---------------------------|-------------------|--------------------------|-------------------|
| Age, years | | | | | | | | | | |
| < 60 v ≥ 60 | 8 (6) v 11 (8) | .5500 | 40 (30) v 45 (32) | .710 | 73 (55) v 102 (72) | .0020 | 42 v 51 | .0550 | 66 v 70 | .5200 |
| Sex | | | | | | | | | | |
| Female v male | 8 (8) v 11 (6) | .4700 | 36 (38) v 49 (27) | .070 | 65 (68) v 110 (61) | .2300 | 60 v 40 | .0300 | 75 v 64 | .0900 |
| ECOG PS | | | | | | | | | | |
| 0/1 v 2-4 | 10 (4) v 9 (21) | .0001 | 65 (28) v 20 (46) | .020 | 155 (67) v 20 (46) | .0060 | 53 v 16 | < .0001 | 73 v 40 | < .0001 |
| Lymphoma type | | | | | | | | | | |
| DLBCL v PMBCL v TFL | 15 (8) v 1 (5) v 3 (4) | .7300 | 59 (31) v 7 (37) v 19 (28) | .740 | 122 (65) v 11 (58) v 42 (62) | .7800 | 44 v 58 v 51 | .5100 | 65 v 84 v 70 | .3800 |
| Double hit | | | | | | | | | | |
| Yes v no | 3 (5) v 14 (7) | .9900 | 19 (34) v 63 (31) | .680 | 36 (64) v 127 (63) | .8100 | 39 v 48 | .4300 | 69 v 68 | .9900 |
| Double expressor | | | | | | | | | | |
| Yes v no | 4 (4) v 13 (9) | .3000 | 25 (27) v 51 (34) | .240 | 59 (63) v 94 (63) | .9000 | 39 v 51 | .1000 | 64 v 70 | .2400 |
| Cell of origin | | | | | | | | | | |
| GCB-like v ABC-like | 12 (8) v 5 (5) | .4500 | 46 (31) v 28 (29) | .710 | 95 (64) v 63 (65) | .4400 | 52 v 41 | .1000 | 68 v 67 | .6900 |
| Stage | | | | | | | | | | |
| I/II v III/IV | 2 (4) v 17 (8) | .5400 | 11 (22) v 74 (33) | .100 | 32 (63) v 142 (64) | .8300 | 54 v 45 | .1300 | 82 v 64 | .0100 |
| IPI | | | | | | | | | | |
| 0-2 v 3-5 | 5 (4) v 14 (10) | .0600 | 36 (27) v 49 (35) | .180 | 92 (69) v 83 (59) | .0600 | 58 v 37 | .0002 | 80 v 57 | < .0001 |
| Bulky disease (≥ 10 cm) | | | | | | | | | | |
| Yes v no | 6 (10) v 13 (6) | .2500 | 27 (47) v 58 (27) | .004 | 28 (48) v 147 (68) | .0060 | 36 v 49 | .0400 | 53 v 72 | .0050 |
| No. of prior therapies | | | | | | | | | | |
| 2 v ≥ 3 | 3 (4) v 16 (8) | .4200 | 19 (26) v 66 (33) | .250 | 54 (73) v 121 (60) | .0510 | 56 v 43 | .0200 | 81 v 63 | .0100 |
| Disease status | | | | | | | | | | |
| Primary refractory v refractory v relapsed | 8 (9) v 6 (5) v 5 (7) | .5400 | 34 (38) v 35 (30) v 16 (23) | .120 | 52 (58) v 72 (61) v 51 (74) | .1100 | 47 v 39 v 60 | .0300 | 62 v 66 v 79 | .0700 |
| Prior HDT/ASCT | | | | | | | | | | |
| Yes v no | 5 (6) v 14 (8) | .6200 | 22 (25) v 63 (34) | .120 | 65 (73) v 110 (59) | .0300 | 50 v 45 | .2000 | 74 v 65 | .0600 |
| Prior allogeneic SCT | | | | | | | | | | |
| Yes v NO | 0 v 19 (7) | .9900 | 1 (17) v 84(31) | .670 | 4 (67) v 171 (64) | .9900 | 0 v 47 | .0900 | 67 v 68 | .4900 |

(continued on following page)

TABLE A3. Characteristics Associated With Grade \geq 3 CRS, Grade \geq 3 Neurotoxicity, Best Response of CR Up to 12 months, 12-Month PFS, and 12-Month OS in Patients Infused With Axicabtagene Ciloleucel, by Univariable Analysis (continued)

| Characteristic | CRS Grade \geq 3, No. (%) | P* | Neurotoxicity Grade \geq 3, No. (%) | P* | Best CR at 12 Months, No. (%) | P* | PFS Rate at 12 Months (%) | P* | OS Rate at 12 Months (%) | P* |
|---|-----------------------------|-------|---------------------------------------|------|-------------------------------|-------|---------------------------|---------|--------------------------|---------|
| ZUMA-1 ineligible by comorbidity ^a | | | | | | | | | | |
| No v yes | 8 (5) v 11 (10) | .1000 | 46 (28) v 39 (36) | .180 | 114 (69) v 61 (56) | .0200 | 55 v 34 | .0003 | 74 v 58 | .0002 |
| Bridging therapy | | | | | | | | | | |
| Yes v no | 12 (9) vs. 7 (5) | .2800 | 48 (34) v 37 (28) | .250 | 81 (57) v 94 (70) | .0300 | 39 v 55 | .0090 | 56 v 81 | < .0001 |
| Platelets < 75,000/ μ L | | | | | | | | | | |
| Yes v no | 4 (17) v 15 (6) | .0700 | 11 (46) v 74 (30) | .100 | 13 (54) v 162 (65) | .3100 | 36 v 48 | .2400 | 48 v 70 | .0010 |
| LDH > ULN at leukapheresis | | | | | | | | | | |
| Yes v no | 14 (10) v 5 (5) | .2300 | 48 (34) v 25 (25) | .120 | 78 (56) v 75 (75) | .0020 | 36 v 56 | .0010 | 55 v 83 | < .0001 |
| LDH > ULN at conditioning chemotherapy | | | | | | | | | | |
| Yes v no | 14 (9) v 4 (4) | .1300 | 54 (36) v 27 (25) | .080 | 83 (55) v 82 (77) | .0002 | 34 v 63 | < .0001 | 57 v 87 | < .0001 |
| History of CNS disease | | | | | | | | | | |
| Yes v no | 3 (17) v 16 (6) | .1200 | 7 (43) v 78 (30) | .450 | 9 (50) v 166 (65) | .2100 | 44 v 47 | .2300 | 56 v 69 | .2100 |
| Prior CD19 therapy | | | | | | | | | | |
| Yes v no | 0 v 19 (7) | .9900 | 0 v 85 (32) | .330 | 3 (60) v 172 (64) | .9900 | 0 v 49 | .0070 | 40 v 69 | .0700 |
| GFR < 60 mL/min/1.73 m ² | | | | | | | | | | |
| Yes v no | 0 v 19 (7) | .6100 | 7 (44) v 78 (30) | .250 | 9 (56) v 166 (64) | .5300 | 38 v 47 | .3600 | 50 v 69 | .1700 |
| Prior checkpoint inhibitor | | | | | | | | | | |
| Yes v no | 2 (13) v 17 (7) | .3000 | 7 (44) v 78 (30) | .250 | 12 (75) v 163 (63) | .4300 | 69 v 45 | .1100 | 75 v 68 | .4700 |
| LVEF < 50% | | | | | | | | | | |
| Yes v no | 2 (22) v 17 (7) | .1200 | 6 (67) v 79 (30) | .030 | 6 (64) v 168 (64) | .9900 | 22 v 48 | .1200 | 67 v 68 | .5000 |
| Total bilirubin > 1.5 g/dL | | | | | | | | | | |
| Yes v no | 2 (40) v 17 (6) | .0400 | 2(40) v 83 (31) | .650 | 2 (40) v 173 (64) | .3600 | 20 v 47 | .1000 | 20 v 69 | .0030 |

NOTE. Boldface indicates significance at $P < .05$.

Abbreviations: ABC, activated B cell; ASCT, autologous stem-cell transplantation; CR, complete response; CRS, cytokine release syndrome; DLBCL, diffuse large B-cell lymphoma; ECOG PS, Eastern Cooperative Oncology Group performance status; GCB, germinal center B cell; GFR, glomerular filtration rate; HDT, high-dose therapy; IPI, International Prognostic Index; LDH, lactate dehydrogenase; LVEF, left ventricular ejection fraction; OS, overall survival; PFS, progression-free survival; PMBCL, primary mediastinal large B-cell lymphoma; SCT, stem-cell transplantation; TFL, transformed follicular lymphoma; ULN, upper limit of normal.

^aYes indicates that patient had at least 1 comorbidity that would have made them ineligible for ZUMA-1.

* P values not corrected for multiple comparisons.

TABLE A4. Multivariable Models for Grade \geq 3 CRS, Grade \geq 3 Neurotoxicity, and Best Response of CR up to 12 Months

| Effect | P | OR Estimate | Wald 95% CI |
|----------------------------------|----------|--------------------|--------------------|
| Grade \geq 3 CRS | | | |
| ECOG PS 2-4 | .001 | 5.3 | 2.0 to 14.3 |
| Total bilirubin > 1.5 g/dL | .047 | 7.6 | 1.03 to 56.8 |
| Grade \geq 3 neurotoxicity | | | |
| Male | .09 | 1.6 | 0.9 to 2.8 |
| Bulky disease \geq 10 cm | .01 | 2.2 | 1.2 to 4.1 |
| LVEF < 50% | .04 | 4.5 | 1.05 to 19.3 |
| Platelets < 75,000/ μ L | .07 | 2.2 | 0.9 to 5.4 |
| Best response of CR by 12 months | | | |
| Age > 60 | .004 | 2.3 | 1.3 to 3.9 |
| ECOG PS 0-1 v 2-4 | .07 | 2.0 | 0.9 to 4.1 |
| < 3 lines of therapy | .13 | 1.7 | 0.9 to 3.2 |
| Prior ASCT | .07 | 1.8 | 0.96 to 3.3 |
| LDH < ULN before conditioning | .007 | 2.2 | 1.2 to 4.0 |

Abbreviations: ASCT, autologous stem-cell transplantation; CR, complete response; CRS, cytokine release syndrome; ECOG PS, Eastern Cooperative Oncology Group performance status; LDH, lactate dehydrogenase; LVEF, left ventricular ejection fraction; OR, odds ratio; ULN, upper limit of normal.

TABLE A5. Large B-Cell Lymphoma Efficacy Outcomes After Infusion of SOC Axicabtagene CiloleuceL or in ZUMA-1

| Study | No. of Patients | ORR (%) | CR Rate (%) | Median PFS, Months (95% CI) | PFS Rate, % (95% CI) | | OS Rate, % (95% CI) | |
|--|-----------------|---------|-------------|--------------------------------|----------------------|---------------|---------------------|---------------|
| | | | | | 6 Month | 12 Month | 6 Month | 12 Month |
| ZUMA-1 ⁶ | | | | | | | | |
| Phase I and II (cohorts 1 and 2) | 108 | 82 | 58 | 5.8 (3.3 to NE) | 49 (39 to 58) | 44 (34 to 53) | 78 (69 to 85) | 59 (49 to 68) |
| SOC cohort | | | | | | | | |
| Total infused | 275 | 82 | 64 | 8.3 (6.0 to 15.1) | 56 (50 to 62) | 47 (41 to 53) | 78 (73 to 83) | 68 (63 to 74) |
| Infused with comorbidities that were ZUMA-1 exclusion criteria ^a | 110 | 74 | 56 | 5.3 (3.4 to 8.0) | 48 (40 to 58) | 34 (26 to 44) | 70 (62 to 79) | 58 (50 to 69) |
| Infused without comorbidities that were ZUMA-1 exclusion criteria ^a | 165 | 87 | 69 | NE (9.0 to NE) | 61 (54 to 69) | 55 (48 to 64) | 83 (77 to 87) | 74 (68 to 82) |

NOTE. For both published ZUMA-1 analysis and this SOC data set analysis, outcomes are calculated with infusion of axicabtagene ciloleuceL as day 0.

Abbreviations: CR, complete response; NE, not estimable; ORR, objective response rate; OS, overall survival; PFS, progression-free survival; SOC, standard of care.

^aPatients were considered ineligible for ZUMA-1 if they had ≥ 1 comorbid conditions that would have precluded eligibility for ZUMA-1 at the time of leukapheresis.