

UCSF

UC San Francisco Previously Published Works

Title

Single-cell atlas of early human brain development highlights heterogeneity of human neuroepithelial cells and early radial glia

Permalink

<https://escholarship.org/uc/item/4152559p>

Journal

Nature Neuroscience, 24(4)

ISSN

1097-6256

Authors

Eze, Ugomma C

Bhaduri, Aparna

Haeussler, Maximilian

et al.

Publication Date

2021-04-01

DOI

10.1038/s41593-020-00794-1

Copyright Information

This work is made available under the terms of a Creative Commons Attribution License, available at <https://creativecommons.org/licenses/by/4.0/>

Peer reviewed



OPEN

Single-cell atlas of early human brain development highlights heterogeneity of human neuroepithelial cells and early radial glia

Ugomma C. Eze^{1,2,5}, Aparna Bhaduri^{1,2,5}✉, Maximilian Haeussler³, Tomasz J. Nowakowski^{1,4} and Arnold R. Kriegstein^{1,2}✉

The human cortex comprises diverse cell types that emerge from an initially uniform neuroepithelium that gives rise to radial glia, the neural stem cells of the cortex. To characterize the earliest stages of human brain development, we performed single-cell RNA-sequencing across regions of the developing human brain, including the telencephalon, diencephalon, midbrain, hindbrain and cerebellum. We identify nine progenitor populations physically proximal to the telencephalon, suggesting more heterogeneity than previously described, including a highly prevalent mesenchymal-like population that disappears once neurogenesis begins. Comparison of human and mouse progenitor populations at corresponding stages identifies two progenitor clusters that are enriched in the early stages of human cortical development. We also find that organoid systems display low fidelity to neuroepithelial and early radial glia cell types, but improve as neurogenesis progresses. Overall, we provide a comprehensive molecular and spatial atlas of early stages of human brain and cortical development.

The human brain consists of billions of cells across several functionally interconnected structures that emerge from the neuroectoderm. Many of these structures are substantially expanded or distinct compared to other mammals, particularly the cerebral cortex, the outermost layer of the human brain responsible for perception and cognition. These differences emerge at developmental stages before birth, and thus exploring the cell types in the developing human brain is essential to better characterize how cell types across the brain are generated, how they may be affected during the emergence of neurodevelopmental disorders and how human neural stem cells can be directed to specific cell types for modeling or treatment purposes.

The brain exponentially increases in size after the neural tube closes¹. Later in development, across brain regions, a series of similar neurogenic and gliogenic processes give rise to the constituent cell types. However, at the molecular level, the sequence of events that leads to the emergence of these progenitor cells early in development is less well understood. The diversity of brain structures is known to emerge as a result of segmentation events that generate the prosencephalon, mesencephalon and rhombencephalon that are then further specified into the anatomical structures (telencephalon, diencephalon and so on) that were dissected in this study² (Supplementary Fig. 1a–c). It has been proposed that there are core gene regulatory programs that enable the specification of these regions and subsequent development of topographically relevant cell types³. We sought to explore whether our data could more comprehensively define regional signatures and also identify cell type-specific similarities and differences in these nascent brain structures.

The human cerebral cortex is more than three times expanded compared to our closest nonhuman primate relatives⁴. The cortex

emerges from an initially pseudostratified neuroepithelium that gives rise to radial glia, the neural stem cells of the cortex¹. Radial glia generate neurons, initially through direct neurogenesis and then indirectly through transit-amplifying IPCs⁵. A number of subtypes of radial glia have been identified as the cortex matures, and their primary role in neurogenesis declines late in the second trimester, at which point they generate the glial populations of the cortex⁶. Single-cell RNA-sequencing (scRNA-seq) has added substantially to our knowledge about cellular diversity and signaling networks, particularly during stages of peak neurogenesis. However, the first trimester of cortical development has not been described at this level of molecular detail, and important questions remain about the timing of neurogenesis, the presumed uniformity of the neuroepithelium and the signals that promote the transition to radial glia.

Results

Whole brain analysis. To identify cell types and trajectories that lay the foundation for the development of the human brain, we performed scRNA-seq using the droplet-based 10X Genomics Chromium platform. We sequenced cells from ten individuals during the first trimester of human development, spanning Carnegie stages (CS) 12 to 22, corresponding to gestational weeks 6–10. We also included cortical samples from one CS13 and one CS22 individual that were analyzed in a previous study⁷. To identify the chief cell populations across brain regions and to compare them to one another, we sampled all available and identifiable structures, including the telencephalon, diencephalon, midbrain, hindbrain, cerebellum, ganglionic eminences, thalamus, hypothalamus and cortex (Supplementary Figs. 1–3 and Supplementary Table 1). We validated that our sequencing did not contain substantial artifacts or cell debris, and that it represented highly expressed transcripts from

¹Department of Neurology, University of California, San Francisco (UCSF), San Francisco, CA, USA. ²The Eli and Edythe Broad Center of Regeneration Medicine and Stem Cell Research, University of California, San Francisco (UCSF), San Francisco, CA, USA. ³Genomics Institute, University of California, Santa Cruz, Santa Cruz, CA, USA. ⁴Department of Anatomy, University of California, San Francisco (UCSF), San Francisco, CA, USA. ⁵These authors contributed equally: Ugomma C. Eze, Aparna Bhaduri. ✉e-mail: Aparna.Bhaduri@ucsf.edu; Arnold.Kriegstein@ucsf.edu

bulk RNA-seq experiments⁸ (Supplementary Fig. 1). In total, we collected 289,000 cells passing quality control.

Across brain regions, hierarchical analysis initially identified two main cell classes; progenitors and neurons. To identify the developmental region-specific gene signatures for each brain area, including the hindbrain, midbrain, thalamus, ganglionic eminences and cortex, we performed differential gene expression across areas at each age (Supplementary Tables 2–4). Using samples at CS22, we generated data-driven regional signatures and explored when the most structure-specific genes emerged. We observed that characteristic transcription factor expression (such as *HOX* genes (hindbrain)⁹; *PAX7* (midbrain)¹⁰; *GBX2* (thalamus)¹¹; *NKX2-1* (medial ganglionic eminence)¹² and *FOXP1* (cerebral cortex)¹³) segregated these regions from one another as early as CS13. However, the cell type-defining gene expression programs were largely conserved across brain regions, resulting in subsets of progenitors or neurons that transcriptomically appear similar across regions (Supplementary Fig. 2b). This was reflected by the fact that co-clustering at the early stages could not segregate regional identities, but that this became possible at later stages. At the earliest timepoint, CS12, the differences between brain regions were minimal and did not resemble the more advanced region-specific programs that were identifiable later in the first trimester (Supplementary Figs. 2 and 3).

Single-cell sequencing of the telencephalon. To better understand the early stages of cortical development, we focused on the 59,000 cells in our dataset that originated from the telencephalon (earliest dissections) and the cortex specifically (when it was identifiable for subdissection). Clustering this data revealed minimal batch effects as most clusters contained contributions from multiple individuals, and clustering segregated the samples based on early and late first trimester stages (Fig. 1 and Supplementary Fig. 4). Each of the 63 identified clusters could be assigned to a cell type identity of neuroepithelial cells, radial glia, intermediate progenitor cells (IPCs), neurons or mesenchymal-like cells. To differentiate between the radial glia and neuroepithelial cells in our transcriptomic data, we examined whether *SOX2*-positive progenitor clusters contained evidence of neurogenic genes, considered to be a criteria of radial glia identity¹⁴. *SOX2*-positive progenitors that did not have these characteristics were labeled neuroepithelial cells. Additionally, we noted ‘other’ cell populations of endothelial cells, microglia and pericytes (Supplementary Tables 5,6). Furthermore, we observed that the mesenchymal cell population diminished over the course of the first trimester. Comparison of these clusters to previously published single-cell data, including a small number of first trimester cells, showed a strong cluster-level correlation, indicating that our larger dataset presented here recapitulated populations that were previously observed. Additionally, in our previous analysis, some clusters from these early samples were marked ‘unknown’ in identity¹⁵; our correlation analysis is sufficient to now assign cell type identities to these clusters (Supplementary Fig. 5).

We observed that although neurogenesis ramps up by the end of the second trimester, even the earliest samples contained a small

number of neurons (Fig. 1a). It seemed unlikely that they could be migratory populations from other cortical regions since migratory interneurons have not been identified until later developmental timepoints¹⁶. Presumably these neurons were produced locally by direct neurogenesis from radial glia that occurs early in nonhuman models of cortical development as well as human cortical organoids¹⁷, and would be consistent with the observation that the IPCs that mediate indirect neurogenesis are nearly absent until later in the first trimester (after CS16). However, without lineage tracing, the inference that the earliest neuronal populations are a product of direct neurogenesis remains a working hypothesis. Subclustering of the neuronal populations resulted in subtype clusters, some of which were strongly enriched in either younger samples (<CS16, presumed to result from direct neurogenesis) or older samples (>CS16) (Supplementary Fig. 6 and Supplementary Table 7). These included expected differences such as clusters marked by *NHLH1*, which was significantly higher in the older samples and has been associated with newborn neurons derived from IPCs¹⁸. Other genes significantly enriched in older samples included *NEUROD6* and *BCL11B* that are associated with neuronal and deep layer identity¹⁴, as well as *CALB2* that is expressed in migratory ventrally derived interneurons and a subset of excitatory neurons¹⁹. We noted significantly higher expression of *MEF2C* in the younger samples. This has been identified as a regulator of early neuronal differentiation and layer formation²⁰, but is also a factor involved in synaptic maturation at later stages²¹. We validated high expression of *MEF2C* at the earliest timepoints using in situ hybridization, although some of the expression was extra-cortical. By CS22 its expression had diminished, but *MEF2C* was highly expressed again by mid-gestation at gestational week 14 (Supplementary Fig. 7). This expression pattern is intriguing given the role of MEF2 transcription factors in regulating apoptosis²².

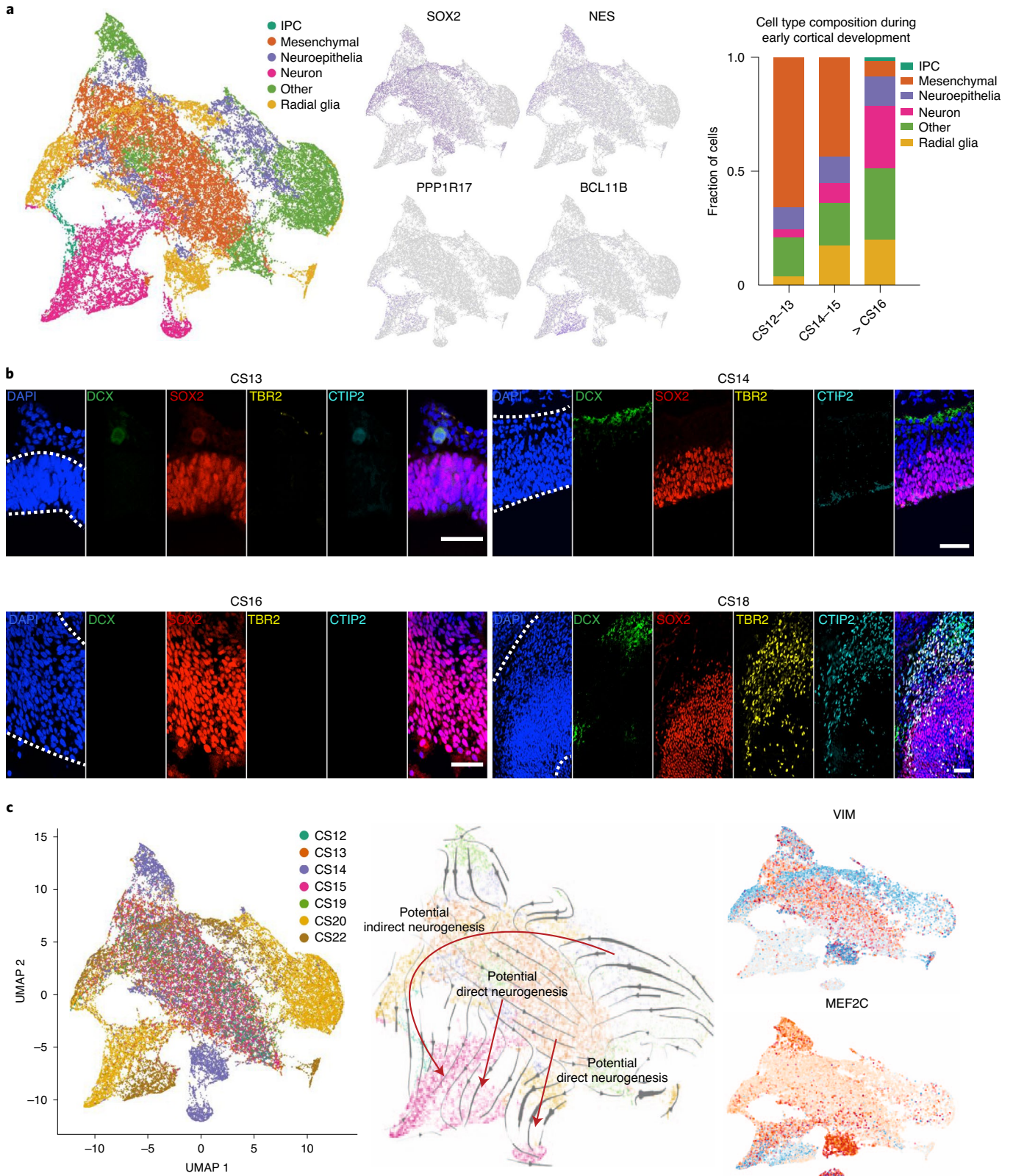
We also observed clusters marked by previously undescribed genes, including the younger sample-specific *LHX5-AS1* cluster. We validated that *LHX5-AS1* was strongly enriched at these early timepoints with broad expression at CS13, but restriction to the developing cortical plate by CS14 and CS16 (Supplementary Fig. 8). *LHX5-AS1* RNA had the same expression pattern as LHX5 protein (Supplementary Fig. 9), indicating that it may play a repressive role to the protein, which has been characterized in Cajal–Retzius cell development²³ but has largely remained unstudied in these early cell populations. The remaining clusters consisted of expected early-born neuronal populations including Cajal–Retzius cells marked by *RELN* (Supplementary Fig. 10), and subplate cells marked by *TLE4* and *NR4A2*. The subplate clusters were unexpectedly heterogeneous (Supplementary Fig. 6c,d) and contained marker genes not previously associated with subplate identity (Supplementary Table 7), suggesting our analysis may provide additional characterization of early neuronal cell type gene expression patterns.

We also sought to describe the spatial organization of the cortical populations across development. Thus, we performed immunostaining validation in five individuals from the first trimester compared to an early second trimester sample at gestational week 14.

Fig. 1 | Cell types in the early human cortex. **a**, scRNA-seq of early cortical development. UMAP plot of 58,145 telencephalon or cortical dissections colored by annotated cell type. Feature plots of markers of broad progenitors (*SOX2*), radial glia (*NES*), IPCs (*PPP1R17*) and neurons (*BCL11B*) are shown. Stacked bar chart shows cell type composition at earliest (CS12–13), middle (CS14–16) and late (CS19–22) first trimester. **b**, Spatial immunostaining of early cortical samples. Immunostaining for main cell type markers across first trimester stages. Because of limited sample availability, each sample was immunostained once. Nuclei shown in blue (4,6-diamidino-2-phenylindole (DAPI); dotted line demarcates cortical span), newborn neurons marked by DCX (green), progenitors by *SOX2* (red), IPCs by *TBR2* (yellow) and maturing neurons by *CTIP2* (cyan). Scale bars, 50 μ m; in CS13, 25 μ m. **c**, RNA velocity demonstrates streams of direct and indirect neurogenesis. UMAP colored by age shows the segregation of samples by early and late first trimester stages. RNA-velocity trajectories are depicted by gray arrows in the middle UMAP plot with underlying color by cell types as annotated in **a**. Line thickness of the arrows indicates the differences in gene signature between cell types, and red arrows show predicted direct and indirect neurogenesis trajectories. The velocity plots on the right show the intensity of scored velocity for a progenitor gene, *VIM*, and a neuronal gene, *MEF2C*. Velocities highlight the distinction between progenitors and neurons in the clustering and velocity analyses.

We observed FOXP1 staining as early as CS16, but not earlier, as has been described previously²⁴ (Supplementary Fig. 11). FOXP1 staining ensured that we were identifying cell types in the developing forebrain. We further defined cortical regional and progenitor identity by positive PAX6 expression and positive SOX2 expression. PAX6 expression has previously been identified as a determinant for

neuroectoderm fate²⁵ and SOX2 as a marker for stem cells. We were also confident of cortical identity based on the anatomical presence of the optic cups (Supplementary Fig. 12) just ventral, lateral and caudal, as well as the nasal ridge, (Supplementary Fig. 12) located just ventral to our regions of interest. Tilescan images of these markers are available for download and exploration in the image browser



we created in conjunction with this study (<https://cells-test.gi.ucsc.edu/?ds=early-brain>, images tab).

In concordance with our transcriptomic data, we observed prevalent SOX2 staining as early as CS13 that persisted through gestational week 14. Newborn neurons marked by doublecortin (DCX) were identifiable as early as CS14, but markers of maturing neuronal identity such as BCL11B (CTIP2) emerged after CS16. As expected, IPCs identified by TBR2 staining did not emerge until CS18 in the dorsal telencephalon²⁶ (Fig. 1b and Supplementary Fig. 13), although we and others have observed TBR2 staining at earlier timepoints (CS16) in the ventral telencephalon²⁷.

RNA-velocity analysis of lineage. To characterize the lineage relationship between chief cortical cell types, we performed RNA-velocity analysis using the scVelo algorithm²⁸. This algorithm incorporates messenger RNA levels and inherent expression variability of individual cells to infer steady states that contribute to potential lineage relationships. Across cortical cell types, the most apparent lineage stream originated in progenitor cell populations from older samples and followed a trajectory through IPCs to neurons (Fig. 1c). This trajectory of neurogenesis is well described and suggests that the stereotypical process of neuronal differentiation emerges after CS19. At earlier timepoints, there were local examples of radial glia giving rise to neurons, suggestive of potential direct neurogenesis and also lineage relationships between the progenitors themselves. In addition to velocity streams related to the excitatory lineage, there was also a stream from a collection of putative blood-brain barrier cells toward the middle mesenchymal mass. Given the age of these samples, this stream is suggestive of the onset of vasculogenesis that occurs at this time²⁹. This is supported by further velocity analysis demonstrating an increase in velocity (indicated in red) of presumptive endothelial (*FN1*) and pericyte (*RGS5*) markers, but not markers of microglia identity (*AIF1*) or the marker of the mesenchymal population (*LUM*) (Supplementary Fig. 4d).

The transition from neuroepithelial cells to radial glia has traditionally been characterized by the reorganization of tight junctions and the appearance of nestin RC2 (NES) immunoreactivity³⁰. We sought to visualize this process and its transition across our samples. Using NES as a marker of radial glia, TJP1 (ZO-1) as an indicator of neuroepithelial cells, and SOX2 as a label for all progenitor populations, we saw small numbers of nestin-positive radial glia at CS14, with substantial upregulation by CS22 that simultaneously corresponded to a waning of ZO-1 (Fig. 2a). By gestational week 14, ZO-1 staining dissipated and was largely constrained to presumed vascular structures. During the first trimester, we found a progressive, and incremental, shift away from neuroepithelial identity (Supplementary Fig. 14). To better understand the heterogeneity and spatiotemporal trajectories of neuroepithelial and radial glia progenitor populations, we subclustered the progenitors. Because the mesenchymal population also expressed strong progenitor cell markers including *VIM* and *SOX2*, we removed all neurons, IPCs and other cell populations (including microglia, pericytes and endothelial cells) and subclustered the remaining cells. The resulting

analysis yielded nine subclusters all marked by strong *VIM* and *SOX2* expression (Fig. 2b). Each of the nine clusters contained some cells from all first trimester age samples, suggesting that the velocity and maturation trajectories were not purely a function of age (Supplementary Fig. 15b and Supplementary Table 8). To examine if these trajectories correspond to expected cell identity transformations from neuroepithelial cells to radial glia, we explored the expression of *HES5* and *FGF10*, which have been described to mediate the transition between these progenitor populations^{31,32}. As expected, *HES5* was strongly enriched in radial glia compared to other cell types, and *FGF10* peaked in neuroepithelial populations (Supplementary Fig. 15). We explored whether any of these progenitors expressed gene signatures that defined excitatory neurons across cortical areas, and found that three-quarters of the progenitors uniquely expressed an areal identity while the rest were unspecified (Supplementary Fig. 15). We additionally performed weighted gene coexpression network analysis (WGCNA) of the progenitor clusters as an orthogonal metric to identify distinct populations^{15,33}. We found strong correspondence between clusters derived from WGCNA analysis and our nine progenitor subtypes, and also found strong enrichment for radial glia-like networks in later stage samples (Supplementary Fig. 15 and Supplementary Table 9).

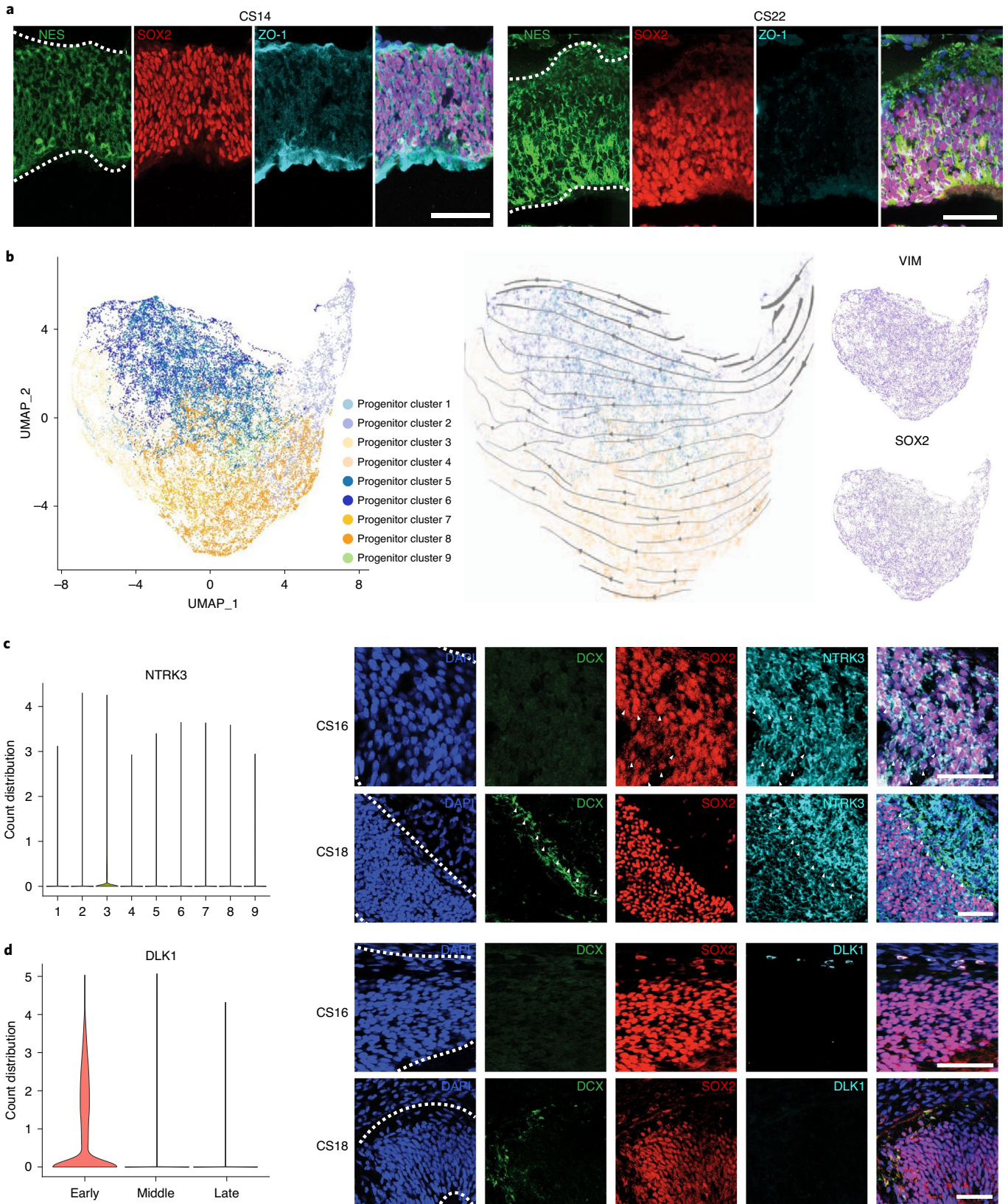
To examine whether this progenitor distribution was distinct at the earliest timepoints of our dataset, we subclustered the CS12 and CS13 samples individually. From this analysis we identified 29 populations that were characterized by *SOX2* (progenitor), *TOP2A* (dividing), *LHX5-ASI* (previously uncharacterized cell population) and *LUM* (mesenchymal cells). Comparison of these subpopulations to the nine progenitor subtypes identified across all samples demonstrated strong correspondence to these nine cell types, with additional heterogeneity in the CS12 and CS13 mesenchymal populations (Supplementary Fig. 5b and Supplementary Table 10). Velocity analysis identified a strong gradient across the populations from cluster 2 toward clusters 1 and 6. These data strongly indicated a gradient of identity across the nine progenitor populations (Supplementary Fig. 15d). We characterized the genes across all our velocity analyses that most strongly influenced the velocity stream (and thus would be hypothesized to be the chief regulators of cell fate transition). The drivers of velocity were enriched for genes that have been associated with neurodevelopmental or psychiatric disorders, including autism, cortical malformations and schizophrenia (Supplementary Table 11), indicating that very early events in cortical development may result in susceptibility or vulnerability to these disorders. More work at these early timepoints is required to fully characterize the developmental implications.

Progenitor heterogeneity. To explore the timing and spatial localization of each of the progenitor subpopulations, we performed immunostaining of the most specific gene markers for each cluster (Supplementary Figs. 7–10 and Supplementary Figs. 16–26). Each of these immunostainings is available as a tilescan of the entire brain section in our image browser (<https://cells-test.gi.ucsc.edu/?ds=early-brain>, images tab). *NTRK3* was a highly specific

Fig. 2 | Early progenitors can be divided into nine progenitor subtypes. **a**, Transition from primarily neuroepithelial to radial glia progenitor identity. Immunostaining of early first trimester samples (including CS14, shown here) show strong staining for all progenitors (SOX2, red), as well as tight junctions (ZO-1, cyan), but limited staining for radial glia (NES, green). By CS22, NES staining increases substantially, ZO-1 decreases and SOX2 expression is maintained. Scale bars, 50 μ m. **b**, scRNA-seq identifies nine progenitor subpopulations. Left: a UMAP plot depicts subclustered progenitor cells; middle: the velocity trajectory across progenitor subtypes. Right: feature plots show high expression of *VIM* and *SOX2* marking all progenitor populations. **c**, *NTRK3* marks progenitor populations before becoming a neuronally enriched marker. Progenitor cluster 3 is specifically and uniquely labeled by *NTRK3*, as shown in the violin plot. Immunostaining for *NTRK3* (cyan) shows early labeling of SOX2 (red) positive progenitors at CS16 (white arrows), but expression shifts to more closely coincide with newborn neurons marked by DCX (green) by CS18 (white arrows). Scale bars, 50 μ m. **d**, *DLK1* marks a subset of early progenitors. *DLK1* (cyan) is the top marker for progenitor cluster 8 and is exclusively expressed in early first trimester, as shown in the violin plot on the left. Immunostaining for *DLK1* at CS16 shows colocalization with low SOX2 (red) expressing cells at the boundary of the cortical edge. This staining disappears from the cortex entirely by CS18 when DCX (green) staining emerges. For all panels, each sample was immunostained once.

marker of Progenitor Cluster 3, and intrigued us because it is commonly described as a TrkC receptor that enables survival of specific neuronal populations³⁴ and has broad neocortical expression at later stages of mouse cortex development³⁵. We observed that at early

stages (CS14, CS16), *NTRK3* broadly colocalized with SOX2-positive progenitor cell populations (Fig. 2c and Supplementary Fig. 16), but after CS18, it shifted from progenitor to neuronal expression as would be expected. *DLK1* was a top marker gene for Progenitor



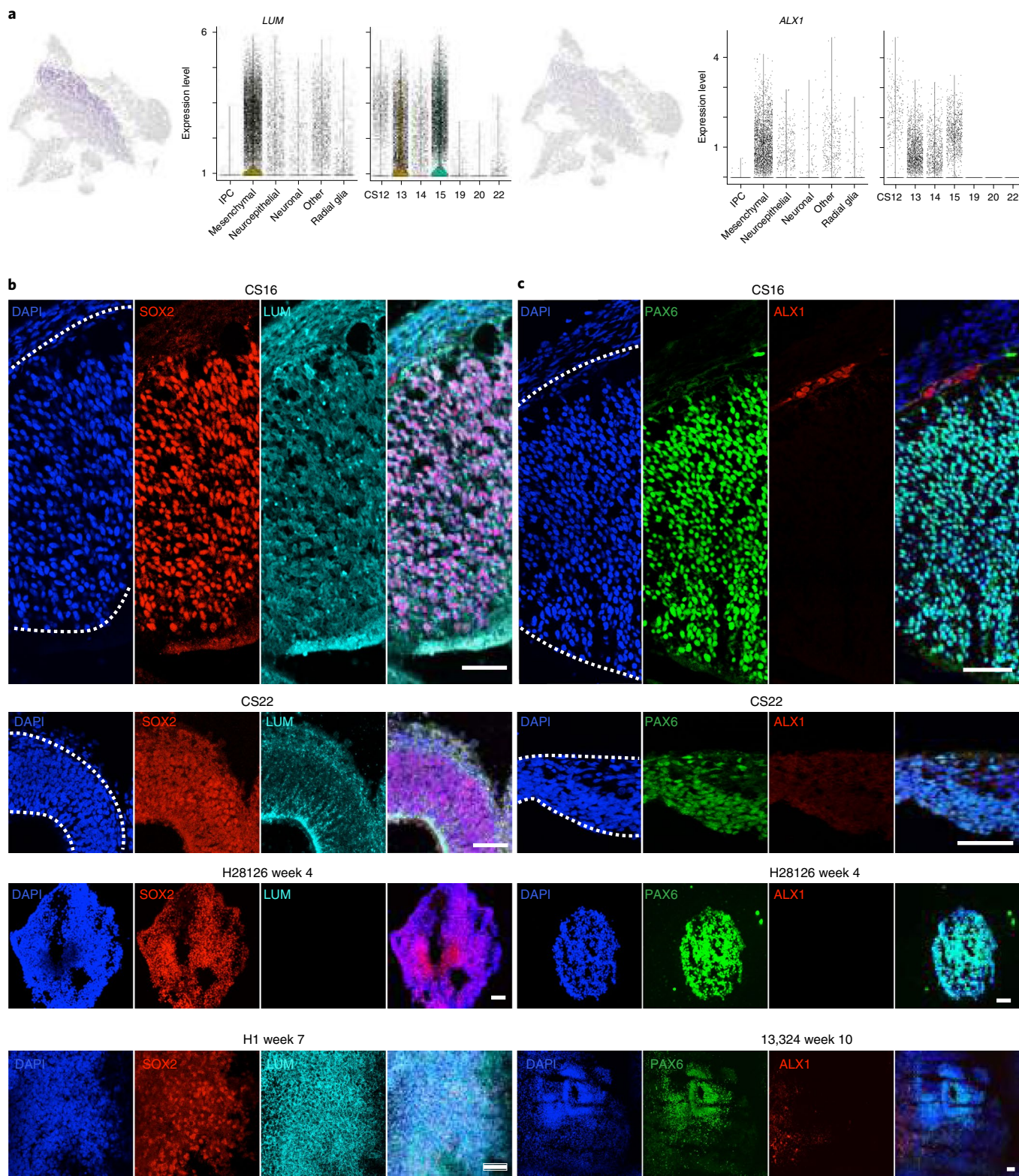


Fig. 3 | scRNA-seq identifies early mesenchymal cell population. *a*, *LUM* and *ALX1* are mesenchymal cell type and early sample markers. In both progenitor and cortex clusterings, *LUM* marks a separate population of cells, as shown by the feature plot on the left. *LUM* expression is highly specific to the mesenchymal cell type and is enriched in early samples. *ALX1* expression is highly correlated to *LUM* as shown in the right feature plot, and is similarly enriched in early, mesenchymal populations. **b**, *LUM* is widely expressed early and diminishes later. Immunostaining for *LUM* (cyan) shows prevalent expression in and between progenitors marked by *SOX2* (red) at CS16, but this expression dissipates by CS22. However, expression of *LUM* does not begin until week 7 in the H1 organoid. Scale bars are 50 μ m. **c**, *ALX1* is sparsely expressed early and diminishes later. Immunostaining for *ALX1* (cyan) shows sparse expression in *PAX6* (green) positive cells; it disappears from the cortex but is expressed in surrounding brain structures at CS22. *ALX1* expression does not begin until week 10 in the 13,324 cerebral organoids. For all panels, each sample was immunostained once. Scale bars, 50 μ m.

Cluster 8 and also was highly enriched in early samples. Although much of the *DLK1* staining was in stromal cells peripheral to the cortex, as has been previously reported³⁶, we observed a small number of *DLK1*-positive cells that expressed low *SOX2*-levels at early stages, such as CS16, after which *DLK1* expression completely disappeared (Fig. 2d and Supplementary Fig. 17). *DLK1* is a noncanonical ligand of Notch that inhibits its function and affects Notch 1 receptor distribution³⁷, although it is not widely expressed in the mammalian central nervous system during development³⁸. *DLK1* has also been described to play a role in enabling postnatal neurogenesis in the mouse³⁹, and may play a similar regulatory role at the earliest neurogenic timepoints of human cortical development. Both *NTRK3* and *DLK1* may play important roles in receptor/ligand communication, as integration with other brain regions increases (Supplementary Table 12). Across progenitor populations we describe known and new gene expression patterns that define the neuroepithelial and radial glia subpopulations and suggest that there exists an expression gradient that marks the transition from early to more mature progenitor populations.

Both in our initial clustering and in the more focused progenitor analysis, a mesenchymal-like population labeled by the gene *LUM* was distinctly segregated from other progenitor populations. Lumican, the protein encoded by *LUM*, is an extracellular matrix protein that is widely present in mesenchymal tissues throughout the adult body⁴⁰. It has also been used to promote folding in cortical structures when added exogenously to media⁴¹. In our data, *LUM* expression is highly enriched in the mesenchymal cell population and diminishes substantially after early developmental timepoints (Fig. 3a). Another marker of this cluster was *ALX1*, which also has one of the most correlated gene expression patterns to *LUM* (Fig. 3b). *ALX1* has been described as required in knockout mice for the development of the forebrain mesenchyme⁴², but has not been studied in humans. We observed prevalent *LUM* staining in our samples at or before CS16, with *ALX1* at the edges of the forebrain, including several colocalized *PAX6*-positive cells (Fig. 3c,d and Supplementary Figs. 18 and 19). *ALX1* staining substantially diminishes later in development.

Canonical developmental signaling pathway activation. Because canonical signaling pathways have been characterized for their role in patterning the human brain and cortex, we sought to explore the dynamics of their expression patterns in human cortical progenitors. scRNA-seq data showed dynamic expression of the genes that have been described as part of the FGF, Wnt, mTOR and Notch signaling pathways (Fig. 4a) in cortical progenitors. The FGF signaling family has been described to assign rostral identity in the developing neural tube. But FGF also plays a role in the transition to and maintenance of the radial glia progenitor pool, in part promoted by FGF10, by permitting the transition of neuroepithelial cells to radial glia and by preventing the transition into intermediate progenitors³². Furthermore, FGF signaling interacts with the Notch signaling pathway during cortical development. Classic studies have demonstrated that Notch signaling is generally required to preserve stem cell pools. Constitutive Notch 1 activation increases radial glial generation and leads to a decrease in the expression of proneural genes, such as Neurogenin-2 (*Ngn2*)⁴³. Consistent with this observation, here we find that Notch 1 staining peaks and is largely restricted to the ventricular zone at CS14 and CS16 (Fig. 4d).

mTOR activity in the developing forebrain has largely been uncharacterized at early developmental timepoints, and descriptions of its function have been restricted to its role in regulating oRG cells¹⁵. However, upregulation of CDC42-dependent mTOR signaling has been shown to be sufficient to generate neural progenitors, mediated through increased *HES5* and *PAX6* expression⁴⁴, suggesting that mTOR signaling early on may be important for driving the switch from neuroepithelial stem cell to radial glia.

We find that expression of phosphorylated S6 is highest in the earliest samples and then diminishes later in the first trimester (Fig. 4c), further supporting a role in the neuroepithelial to radial glia fate transition. Furthermore, Wnt signaling has also been implicated in medial-lateral patterning of the neural tube and in cell fate transitions. Constitutive Wnt activation leads to opposing actions of increasing the progenitor pool by preventing neurogenesis but also of increasing the neuronal pool by promoting IPC differentiation⁴⁵. This suggests that Wnt activity is variable and cell-dependent in cortical development. In this study, we discover that active Wnt signaling (phosphorylated β -catenin) peaks at CS16 and diminishes subsequently (Fig. 4b). These data further clarify our understanding of signaling in patterning cortical progenitors, with important implications for better modeling early stages of cortical development.

Conservation of progenitor populations across species. To evaluate the similarities and differences between early forebrain development in human and rodent, we performed scRNA-seq of the mouse forebrain at embryonic days (E) 9 and 10, which correspond to Theiler stages (TS) 14 and 16. Although the onset of neurogenesis differs between human and mouse⁴⁶, we used immunostaining to verify that at these mouse stages, the forebrain was already expressing *FOXG1* and undergoing neurogenesis, as marked by the presence of *DCX* (Supplementary Figs. 11 and 13). To compare mouse and human progenitor populations, we performed clustering and correlation analysis between the mouse clusters and our nine human progenitor populations. Using a correlative threshold, we observed that seven of the nine human populations had at least one corresponding cluster in the mouse single-cell data (Fig. 5a). However, there were no high correlations for Progenitor Cluster 4 (marked most highly by *C1orf61*) or Progenitor Cluster 7 (marked most highly by *ID4*). To test the hypothesis that these populations were underrepresented in the mouse data, we used immunostaining to explore the expression of the main progenitor population markers in the mouse. Indeed, no fluorescent *in situ* signal for *C1orf61* or immunostaining signal for *Id4* was identifiable in the mouse forebrain at TS14 or 16 (Fig. 5b and Supplementary Figs. 20–22). Although the TS14 and 16 samples were more advanced in terms of neurogenesis, they may be at timepoints that are relatively immature in other ways compared to our first trimester samples. To account for this difference, we also explored the single-cell trajectory of *Id4* from E9–E10 (our data) to E11.5–E17.5 (ref. 47). In the mouse, *Id4* peaks at E11.5 and is low after E13, whereas human *ID4* is sustained in its expression pattern after CS13 (Fig. 5d). By contrast, both *C1orf61* RNA and *ID4* protein were detectable in macaque embryonic tissue and chimpanzee induced pluripotent stem cell-derived organoids (Supplementary Fig. 23). *C1orf61* (*CROC-4*) has been characterized to be widely expressed during late developmental stages and in the adult brain, regulating *c-FOS* signaling⁴⁸, but is otherwise uncharacterized. In contrast, *Id4* has been identified in the developing mouse cortex at later stages (E15.5). *ID4*-deficient mice exhibit impaired brain size and mistimed neurogenesis⁴⁹, suggesting that earlier expression in human progenitors compared to mouse could indicate a potential mechanism by which early progenitors expand more rapidly in humans than in mice.

Despite the general conservation of cell types between the early development of the human and mouse cortex, the absence of specific human cell populations at early developmental stages in the mouse suggests that alternatives to mouse are required to fully model the earliest cell types involved in human cortical development. Cortical organoids are an attractive model because they can be generated from normal or patient-derived induced pluripotent stem cells and are amenable to genetic modulation. We previously generated an extensive catalog of single-cell sequencing data from multiple organoids derived from four pluripotent stem cell lines using three protocols analyzed from weeks 3 to 24 (ref. 7). Using

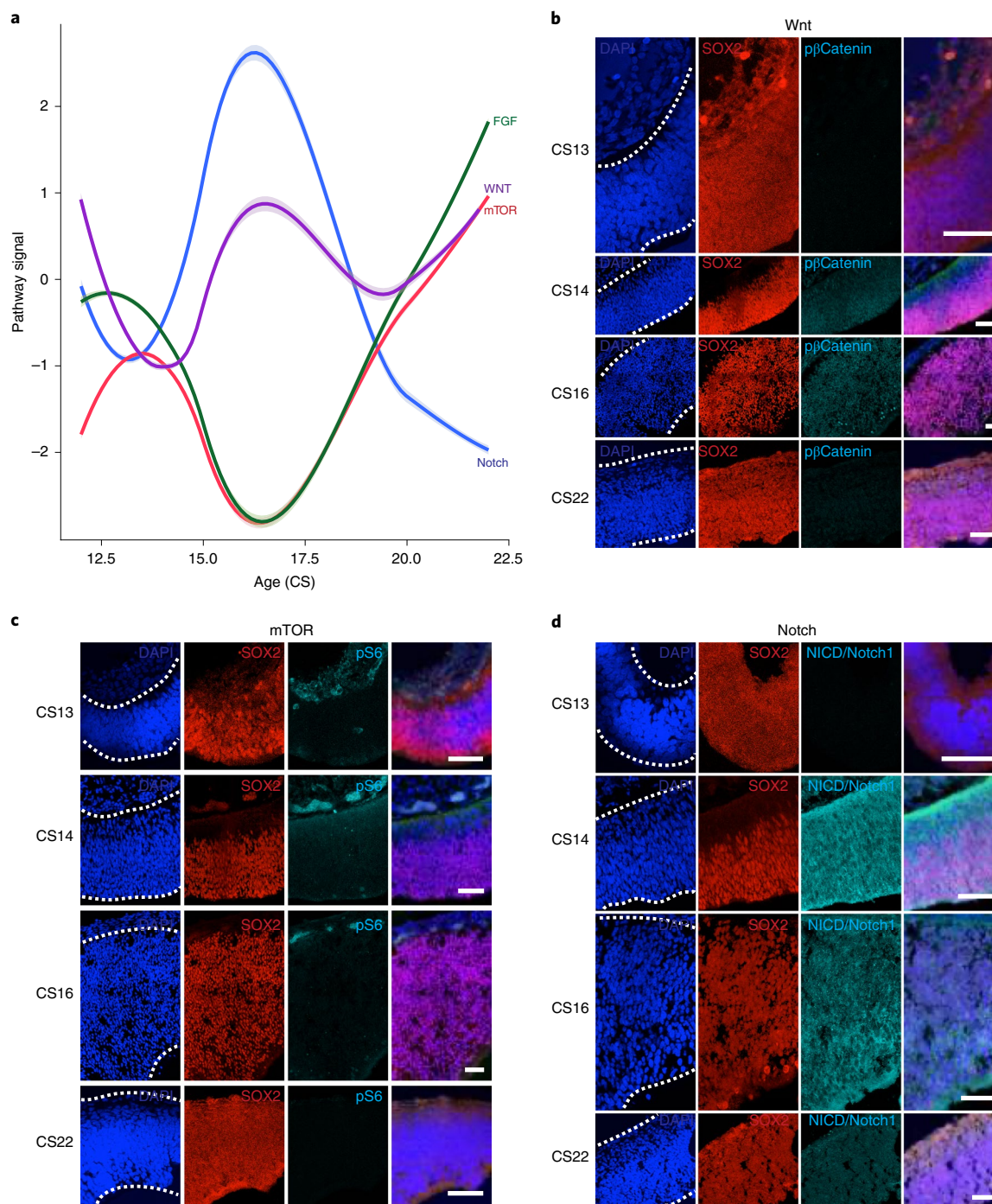


Fig. 4 | Signaling pathway oscillations in the first trimester human cortical progenitors. **a**, Signaling pathway oscillations in progenitor RNA expression patterns of the FGF (green), Wnt (purple), mTOR (red) and Notch (blue) signaling pathways, as defined by KEGG pathway designations in progenitors across ages sampled in this study. Error shading surrounding each bar indicates the loess regression 5–95% confidence interval. **b**, Wnt activity, as indicated by phosphorylated β -catenin (cyan), is highest in the CS14 and CS16 samples and colocalizes with progenitors (SOX2, red), but dissipates by CS22. **c**, mTOR activity, as indicated by phosphorylated S6 ribosomal protein (cyan), primarily localizes along the cortical plate (DCX, green) in the youngest samples and diminishes by CS22. **d**, Notch activity, as indicated by cleaved Notch intracellular domain (NICD) of Notch 1, peaks in expression at CS14 and localizes mainly to the ventricular zone. Nuclei are labeled by DAPI (blue). For all panels, each sample was immunostained once. Scale bars, 50 μ m.

108,593 cells derived from weeks 3 and 5 of this dataset, we explored the fidelity of organoid cell types to early human cortex. The preservation of excitatory neuronal identity mirrored that of later developmental stages (roughly 0.5, as we recently reported). However, the remaining primary cell types had much lower fidelity in organoids (average of 0.28) (Fig. 5c). These data indicate that early cell types in

organoids do not resemble their corresponding cortical progenitor counterparts, although the fidelity of cell types does improve at later stages of organoid culture. The two populations that were not well represented in mice at TS14 and 16 were identifiable in organoid cultures as evidenced by fluorescent in situ probing for *C1orf61* and immunostaining for *ID4* (Supplementary Fig. 23).

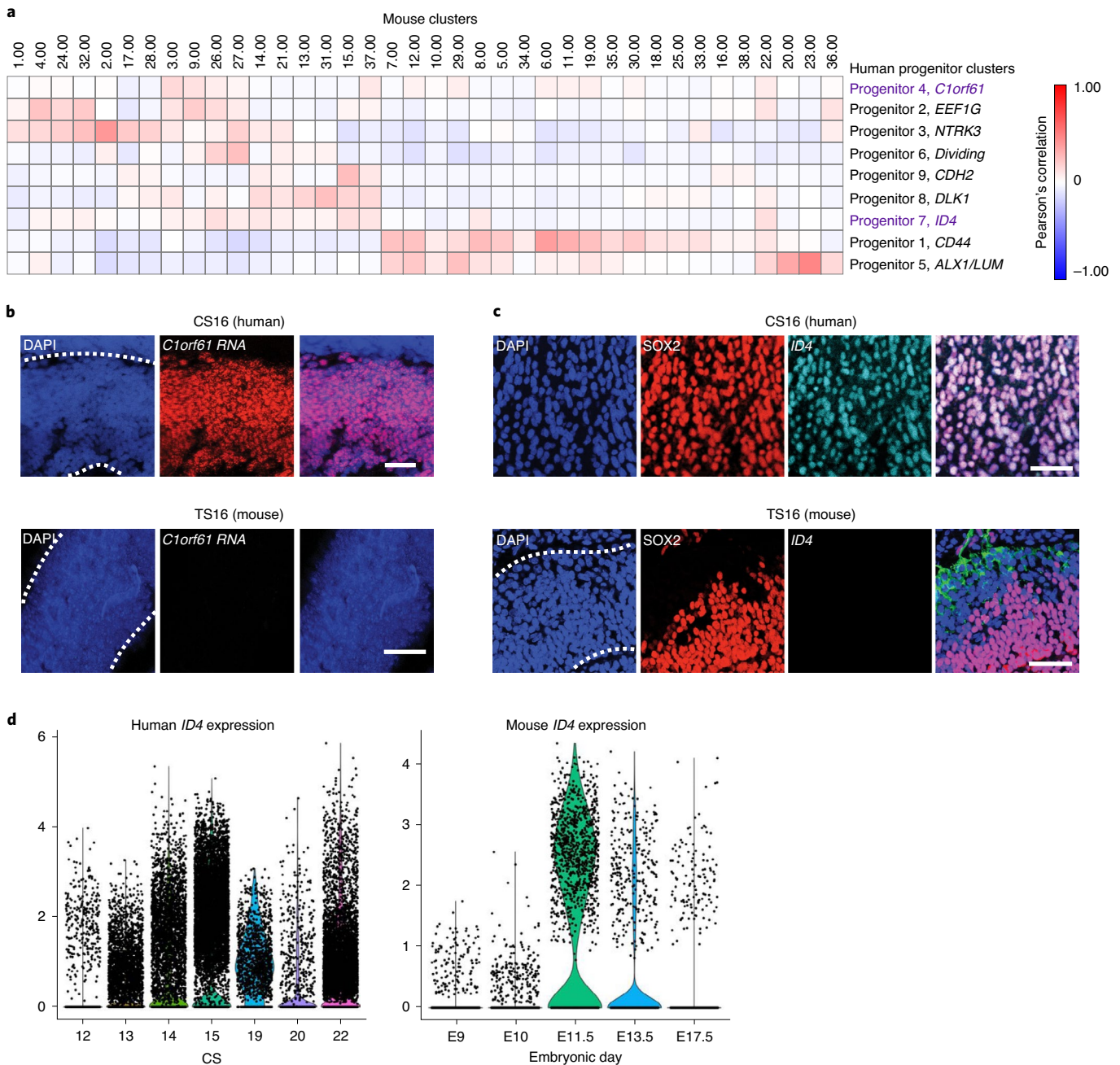


Fig. 5 | Mouse models different aspects of early cell types. **a**, Comparison of mouse forebrain clusters to primary progenitor cell types. Heatmap showing the comparison of mouse forebrain clusters from 16,053 cells to the primary progenitor populations identified in this dataset. Correlations are performed using Pearson correlations between cluster marker sets and identify that progenitor clusters 4 and 7 do not have a counterpart in mouse data. **b**, *C1orf61* is widely expressed in early human but not early mouse progenitors. Fluorescent in situ hybridization of human samples at CS16 shows broad expression of *C1orf61* (cyan) in progenitor cells labeled by SOX2 (red). Parallel in situ staining in TS16 mouse shows no *C1orf61* expression. Scale bars, 50 μ m. **c**, *ID4* is widely expressed in early human but not early mouse progenitors. Immunostaining of human samples at CS16 shows broad expression of *ID4* (cyan) in progenitor cells labeled by SOX2 (red). A parallel staining in TS16 mouse shows no *ID4* expression. Scale bars, 50 μ m. **d**, Violin plots of *ID4* RNA expression across several CSs (human) and embryonic days (mouse). *ID4* RNA expression in the human persists onward from CS13. However, *ID4* RNA expression in the mouse peaks at E11.5 (TS20) and dissipates. For all panels, each sample was immunostained once.

Discussion

Here, we present a comprehensive overview of scRNA-seq from the first trimester of human development. As these samples are rarely accessible, we seek to present both the single-cell sequencing as well as the immunostaining validation provided as part of this study as a community resource. Our analysis highlights the granular gene expression programs that emerge across brain structures and across

cell types in the human neocortex as development progresses, and provides a dataset by which other model organisms and in vitro cortical organoids can be compared to their primary human counterparts. The tissues used for the purpose of this study are fragile, and dissections rely on morphological hallmarks without knowledge of expression patterns before sample collection. As such, the single-cell analysis becomes even more essential as a tool to explore

and validate accurate regional identities. The gene signatures that we describe and validate may offer additional markers that can be used to mark these brain regions, as well as the transition from neuroepithelia to radial glia cell identity.

Our analysis of several brain regions highlights many similarities across progenitors that were only mildly distinguished by the expression of regional-specific transcription factors. These similarities in gene programs across the developing human brain suggest that the process by which initially uniform stem cells give rise to neuronal and glia heterogeneity characteristic of the adult brain are parallel across brain structures and that insights from one region, including the degree of heterogeneity and the trajectories of differentiation, may be able to cross-inform identification of regulatory gene programs across the brain. We aspired to annotate specific gene programs that distinguish progenitor groups within the cerebral cortex. Instead, we observed a gradient of expression patterns, with clear neuroepithelial and radial glia cell populations on the ends of the spectrum, indicating that the transition from one population to another may be gradual rather than distinct. However, because our data are limited by the snapshot view of each timepoint sampled, and by imperfect representation of all possible timepoints along this continuum, this conclusion will need to be further explored through additional sampling, validation and eventual mechanistic examination.

One unexpected population that was identified in our progenitor dataset was a population that appeared mesenchymal in origin (marked by ALX1 and LUM) by both single-cell sequencing and immunostaining, that comprised a large swath of the telencephalon at the earliest timepoints that we sampled. We hypothesize that the ALX1-positive cells may resemble previously described neural crest-derived cell populations that give rise to the meninges⁵⁰. These cells may be secreting LUM as a structural component to support the physical formation of the telencephalon before the emergence of the radial glial scaffold. In support of this hypothesis, we found that the ALX1-positive cells were in the presumptive stroma surrounding the cortex, while LUM was detected throughout the cortex. Although cortical organoids do not express ALX1 or LUM at early stages, their expression emerges after 7 weeks of development (Fig. 3b,c), further prompting questions about their function and role in cortical development.

Comparisons of primary data presented here to the single-cell sequencing of previous cortical organoid populations raises interesting differences between the systems. We were surprised to find limited cell type correspondence at the earliest stages of cortical organoid generation, and increased fidelity once the radial glia and neuronal populations emerged. This may indicate that terminal identity does not depend on a specific differentiation path. However, there were also differences in the timing and cell type composition between early human and mouse populations, further highlighting that no model system is ideal for the study of all biological questions. Moreover, populations present in primary human tissue that were not present in early organoids, including the LUM and ALX1 clusters, could be identified in mice (Supplementary Figs. 18 and 19), indicating that depending on the questions being investigated, either in vivo mouse or in vitro human models, may be most appropriate for the study of neuroepithelial and early radial glia populations. Our description of early human cortical cell populations may also enable further refinement of in vitro culture systems to better reflect human neuroepithelial and radial glia populations. Together, the data we present here represent a characterization of main cell types across the first trimester of human brain development and highlight the subpopulations of progenitor cells that form the basis for creating the human cortex.

Accession codes. The data analyzed in this study were produced through the Brain Initiative Cell Census Network (BICCN) (RRID:SCR_015820) and deposited in the Neuroscience Multi-omic

(NeMO) Archive (RRID:SCR_002001), <https://assets.nemoarchive.org/dat-Orsydy7>.

Online content

Any methods, additional references, Nature Research reporting summaries, source data, extended data, supplementary information, acknowledgements, peer review information; details of author contributions and competing interests; and statements of data and code availability are available at <https://doi.org/10.1038/s41593-020-00794-1>.

Received: 21 September 2020; Accepted: 23 December 2020;
Published online: 15 March 2021

References

- Breunig, J. J., Haydar, T. F. & Rakic, P. Neural stem cells: historical perspective and future prospects. *Neuron* **70**, 614–625 (2011).
- Wilson, S. W. & Houart, C. Early steps in the development of the forebrain. *Dev. Cell* **6**, 167–181 (2004).
- Beccari, L., Marco-Ferreres, R. & Bovolenta, P. The logic of gene regulatory networks in early vertebrate forebrain patterning. *Mech. Dev.* **130**, 95–111 (2013).
- Lui, J. H., Hansen, D. V. & Kriegstein, A. R. Development and evolution of the human neocortex. *Cell* **146**, 18–36 (2011).
- Gotz, M., Hartfuss, E. & Malatesta, P. Radial glial cells as neuronal precursors: a new perspective on the correlation of morphology and lineage restriction in the developing cerebral cortex of mice. *Brain Res. Bull.* **57**, 777–788 (2002).
- Miller, F. D. & Gauthier, A. S. Timing is everything: making neurons versus glia in the developing cortex. *Neuron* **54**, 357–369 (2007).
- Bhaduri, A. et al. Cell stress in cortical organoids impairs molecular subtype specification. *Nature* **578**, 142–148 (2020).
- Cardoso-Moreira, M. et al. Gene expression across mammalian organ development. *Nature* **571**, 505–509 (2019).
- Tumpel, S., Wiedemann, L. M. & Krumlauf, R. Hox genes and segmentation of the vertebrate hindbrain. *Curr. Top. Dev. Biol.* **88**, 103–137 (2009).
- Agoston, Z., Li, N., Haslinger, A., Wizenmann, A. & Schulte, D. Genetic and physical interaction of Meis2, Pax3 and Pax7 during dorsal midbrain development. *BMC Dev. Biol.* **12**, 10 (2012).
- Chen, L., Guo, Q. & Li, J. Y. Transcription factor Gbx2 acts cell-nonautonomously to regulate the formation of lineage-restriction boundaries of the thalamus. *Development* **136**, 1317–1326 (2009).
- Du, T., Xu, Q., Ocbina, P. J. & Anderson, S. A. NKX2.1 specifies cortical interneuron fate by activating Lhx6. *Development* **135**, 1559–1567 (2008).
- Tao, W. & Lai, E. Telencephalon-restricted expression of BF-1, a new member of the HNF-3/fork head gene family, in the developing rat brain. *Neuron* **8**, 957–966 (1992).
- Molyneaux, B. J., Arlotta, P., Hirata, T., Hibi, M. & Macklis, J. D. Fezl is required for the birth and specification of corticospinal motor neurons. *Neuron* **47**, 817–831 (2005).
- Nowakowski, T. J. et al. Spatiotemporal gene expression trajectories reveal developmental hierarchies of the human cortex. *Science* **358**, 1318–1323 (2017).
- Alzu'bi, A., Homman-Ludiyé, J., Bourne, J. A. & Clowry, G. J. Thalamocortical afferents innervate the cortical subplate much earlier in development in primate than in rodent. *Cereb. Cortex* **29**, 1706–1718 (2019).
- Cardenas, A. et al. Evolution of cortical neurogenesis in amniotes controlled by robo signaling levels. *Cell* **174**, 590–606 e521 (2018).
- Li, C. M., Yan, R. T. & Wang, S. Z. Misexpression of a bHLH gene, *cNSCL1*, results in abnormal brain development. *Dev. Dyn.* **215**, 238–247 (1999).
- Conde, F., Lund, J. S., Jacobowitz, D. M., Baimbridge, K. G. & Lewis, D. A. Local circuit neurons immunoreactive for calretinin, calbindin D-28k or parvalbumin in monkey prefrontal cortex: distribution and morphology. *J. Comp. Neurol.* **341**, 95–116 (1994).
- Li, H. et al. Transcription factor MEF2C influences neural stem/progenitor cell differentiation and maturation in vivo. *Proc. Natl Acad. Sci. USA* **105**, 9397–9402 (2008).
- Harrington, A. J. et al. MEF2C regulates cortical inhibitory and excitatory synapses and behaviors relevant to neurodevelopmental disorders. *eLife* <https://doi.org/10.7554/eLife.20059> (2016).
- Potthoff, M. J. & Olson, E. N. MEF2: a central regulator of diverse developmental programs. *Development* **134**, 4131–4140 (2007).
- Miquelajauregui, A. et al. LIM-homeobox gene *Lhx5* is required for normal development of Cajal–Retzius cells. *J. Neurosci.* **30**, 10551–10562 (2010).
- Manuel, M. N. et al. The transcription factor Foxg1 regulates telencephalic progenitor proliferation cell autonomously, in part by controlling Pax6 expression levels. *Neural Dev.* **6**, 9 (2011).

25. Zhang, X. et al. Pax6 is a human neuroectoderm cell fate determinant. *Cell Stem Cell* **7**, 90–100 (2010).
26. Subramanian, L., Bershteyn, M., Paredes, M. F. & Kriegstein, A. R. Dynamic behaviour of human neuroepithelial cells in the developing forebrain. *Nat. Commun.* **8**, 14167 (2017).
27. Qin, J. et al. Early forebrain neurons and scaffold fibers in human embryos. *Cereb. Cortex* **30**, 913–928 (2020).
28. Bergen, V., Lange, M., Peidli, S., Wolf, F. A. & Theis, F. J. Generalizing RNA velocity to transient cell states through dynamical modeling. *Nat. Biotech.* **38**, 1408–1414 (2020).
29. Virgintino, D. et al. Astroglia-microvessel relationship in the developing human telencephalon. *Int. J. Dev. Biol.* **42**, 1165–1168 (1998).
30. Aaku-Saraste, E., Hellwig, A. & Huttner, W. B. Loss of occludin and functional tight junctions, but not ZO-1, during neural tube closure—remodeling of the neuroepithelium prior to neurogenesis. *Dev. Biol.* **180**, 664–679 (1996).
31. Hatakeyama, J. et al. *Hes* genes regulate size, shape and histogenesis of the nervous system by control of the timing of neural stem cell differentiation. *Development* **131**, 5539–5550 (2004).
32. Sahara, S. & O’Leary, D. D. Fgf10 regulates transition period of cortical stem cell differentiation to radial glia controlling generation of neurons and basal progenitors. *Neuron* **63**, 48–62 (2009).
33. Langfelder, P. & Horvath, S. WGCNA: an R package for weighted correlation network analysis. *BMC Bioinform.* **9**, 559 (2008).
34. Qian, X., Riccio, A., Zhang, Y. & Ginty, D. D. Identification and characterization of novel substrates of Trk receptors in developing neurons. *Neuron* **21**, 1017–1029 (1998).
35. Tessarollo, L. et al. *trkC*, a receptor for neurotrophin-3, is widely expressed in the developing nervous system and in non-neuronal tissues. *Development* **118**, 463–475 (1993).
36. Pellegrini, L. et al. Human CNS barrier-forming organoids with cerebrospinal fluid production. *Science* <https://doi.org/10.1126/science.aaz5626> (2020).
37. Bray, S. J., Takada, S., Harrison, E., Shen, S. C. & Ferguson-Smith, A. C. The atypical mammalian ligand delta-like homologue 1 (*Dlk1*) can regulate Notch signalling in *Drosophila*. *BMC Dev. Biol.* **8**, 11 (2008).
38. Miller, A. J. & Cole, S. E. Multiple *Dlk1* splice variants are expressed during early mouse embryogenesis. *Int. J. Dev. Biol.* **58**, 65–70 (2014).
39. Ferron, S. R. et al. Postnatal loss of *Dlk1* imprinting in stem cells and niche astrocytes regulates neurogenesis. *Nature* **475**, 381–385 (2011).
40. Chakravarti, S. Functions of lumican and fibromodulin: lessons from knockout mice. *Glycoconj. J.* **19**, 287–293 (2002).
41. Long, K. R. et al. Extracellular matrix components HAPLN1, Lumican, and Collagen I cause hyaluronic acid-dependent folding of the developing human neocortex. *Neuron* **99**, 702–719 e706 (2018).
42. Zhao, Q., Behringer, R. R. & de Crombrughe, B. Prenatal folic acid treatment suppresses acrania and meroanencephaly in mice mutant for the *Cart1* homeobox gene. *Nat. Genet.* **13**, 275–283 (1996).
43. Gaiano, N., Nye, J. S. & Fishell, G. Radial glial identity is promoted by Notch1 signaling in the murine forebrain. *Neuron* **26**, 395–404 (2000).
44. Endo, M., Antonyak, M. A. & Cerione, R. A. Cdc42-mTOR signaling pathway controls *Hes5* and *Pax6* expression in retinoic acid-dependent neural differentiation. *J. Biol. Chem.* **284**, 5107–5118 (2009).
45. Harrison-Uy, S. J. & Pleasure, S. J. Wnt signaling and forebrain development. *Cold Spring Harb. Perspect. Biol.* **4**, a008094 (2012).
46. Bystron, I., Rakic, P., Molnar, Z. & Blakemore, C. The first neurons of the human cerebral cortex. *Nat. Neurosci.* **9**, 880–886 (2006).
47. Yuzwa, S. A. et al. Developmental emergence of adult neural stem cells as revealed by single-cell transcriptional profiling. *Cell Rep.* **21**, 3970–3986 (2017).
48. Jeffrey, P. L. et al. CROC-4: a novel brain specific transcriptional activator of *c-fos* expressed from proliferation through to maturation of multiple neuronal cell types. *Mol. Cell. Neurosci.* **16**, 185–196 (2000).
49. Bedford, L. et al. *Id4* is required for the correct timing of neural differentiation. *Dev. Biol.* **280**, 386–395 (2005).
50. Choe, Y., Zarbali, K. S. & Pleasure, S. J. Neural crest-derived mesenchymal cells require Wnt signaling for their development and drive invagination of the telencephalic midline. *PLoS ONE* **9**, e86025 (2014).

Publisher’s note Springer Nature remains neutral with regard to jurisdictional claims in published maps and institutional affiliations.



Open Access This article is licensed under a Creative Commons Attribution 4.0 International License, which permits use, sharing, adaptation, distribution and reproduction in any medium or format, as long as you give appropriate credit to the original author(s) and the source, provide a link to the Creative Commons license, and indicate if changes were made. The images or other third party material in this article are included in the article’s Creative Commons license, unless indicated otherwise in a credit line to the material. If material is not included in the article’s Creative Commons license and your intended use is not permitted by statutory regulation or exceeds the permitted use, you will need to obtain permission directly from the copyright holder. To view a copy of this license, visit <http://creativecommons.org/licenses/by/4.0/>.

© The Author(s) 2021

Methods

Additional methodological details can also be found in the Nature Research Reporting Summary included in the Supplementary Material.

Sample processing. Acquisition of all primary human tissue samples was approved by the UCSF Human Gamete, Embryo and Stem Cell Research Committee (approval nos. 10-03379 and 10-05113). All experiments were performed in accordance with protocol guidelines. Informed consent was obtained before sample collection and use for this study. First trimester human samples were collected from elective pregnancy terminations through the Human Developmental Biology Resource, staged using crown-rump length and shipped overnight on ice in Rosewell Park Memorial Institute media or in 4% paraformaldehyde. Samples were donated and deidentified for sex. Although we can infer sex for sequenced samples, we have not accounted for it because it is an unclear measurement during the first trimester. Fixed samples were used for downstream immunostaining and imaging. Mouse samples (CD-1 IGS Mouse) were killed at E9 and E10, and staged using the somite number. Mice were housed in shared housing, five mice to a cage with a 12 light/12 dark cycle and temperatures of roughly 18–23 °C (65–75 °F) with 40–60% humidity. Equal numbers of male and female embryonic mice were used. All mouse experiments were approved by and conducted according to the UCSF Institutional Animal Care and Use Committee (protocol AN078703-03A). Half of the mouse samples were randomly assigned for fixation in 4% paraformaldehyde and the remaining live samples were used for dissociation. Live samples were subdivided into identifiable regions and dissociated using papain (Worthington, LK003150) with DNase. Samples were minced and incubated in 1 ml activated papain for 15 min at 37 °C, according to the manufacturer's instructions. Samples were then inverted for several times and incubated for an additional 15 min. The dissociated cells were centrifuged at 300g for 5 min and the papain was removed. Macaque tissue sections (E64) were a gift from A. Pollen (UCSF), originally a gift from A. Tarantal (UC Davis).

scRNA-seq. Single-cell capture was performed following the 10X v.2 Chromium manufacturer's instructions. Each sample was its own batch. For each batch, 10,000 cells were targeted for capture and 12 cycles of amplification for each of the complementary DNA and library amplifications were performed. Libraries were sequenced according to the manufacturer's instructions on the Illumina NovaSeq 6000 S2 flow cell (RRID:SCR_016387).

scRNA analysis. scRNA-seq data were aligned to the GRCh38-0.1.2 reference genome, and cells were identified using Cell Ranger v.2 (RRID:SCR_017344). Quality control removed cells with fewer than 500 genes per cell and cells with greater than 10% mitochondrial content. Clustering and batch effect were performed as has been previously described in these established methods¹⁵. Batch effects (as pertaining to day of capture) were removed by normalizing all cells in a batch to the most counts, and then multiplying by the median counts in that batch. These normalized counts were merged together across samples and log₂ normalization was performed. Using default parameters of Seurat v.2, variable genes were identified. Batch was regressed out in the space of variable genes during scaling, again using default Seurat v.2 parameters. For three samples, there was only one individual per timepoint, which may have resulted in confounding age and batch, but because of the strong batch effects that result from 10X data, we moved ahead with the batch correction. In the space of the scaled, batch corrected variable genes, we performed principal component analysis. Significant principal components were carried forward, as identified using the calculation detailed in a previous publication. Using the RANN package, the top ten nearest neighbors were identified for each cell in the space of significant principal components. We used a custom script to calculate the Jaccard distance of these neighbors, and used igraph to perform Louvain clustering for each analysis. Clustering with batch effect correction was performed for each dissected area, and also without batch correction by each individual, both across all brain regions and within cortex only.

Cluster markers were interpreted and assigned cluster identity by using known literature cell type annotations, or by associating progenitor and neuronal genes to other identifiable details. Progenitors were distinguished as radial glia if they expressed neurogenic genes, else they were determined to be neuroepithelial (Supplementary Table 6).

Subclustering within the neurons was performed by selecting and clustering the cells from neuronal clusters and repeating the clustering procedure with batch effect correction. Progenitor cells were subclustered by removing neuronal, IPC and other (microglia, endothelial and pericyte) clusters from the data. After subclustering, neuronal populations were identified and removed iteratively until 54 subclusters were identified and did not include neuronal populations. These 54 subclusters were recombined by correlating marker genes to one another, and then performing a dendrogram cut to generate the nine clusters presented here.

Correlational analysis between mouse and human data was performed as we previously described¹. Briefly, cluster markers were generated for each dataset individually, and gene scores integrating the specificity and fold enrichment for each marker was calculated. A matrix for every marker gene and gene score was generated across all clusters and used for correlations. This was performed in the space of all mouse forebrain clusters as compared to primary human progenitor

clusters (Fig. 5), and in the space of all organoid clusters compared to the full set of primary human clusters in our dataset (Supplementary Fig. 23).

RNA velocity. Velocity estimates were calculated using the velocity.py v0.17 and scVelo (RRID:SCR_018168) algorithms. Reads that passed quality control after clustering were used as input for the velocity command line implementation. The human expressed repeat annotation file was retrieved from the UCSC genome browser (RRID:SCR_005780). The genome annotation file used was provided via Cell Ranger. The output loom file was used as input to estimate velocity through scVelo. For each individual analysis, cells were filtered based on the following parameters: minimum total counts ≥ 200 , minimum spliced counts ≥ 20 and minimum unspliced counts ≥ 10 . For the combined cortical analysis, the processed loom files for each individual analysis were combined to generate a new unique molecular identifier count matrix of 15,473 genes across 53,096 cells, for which the velocity embedding was estimated using the stochastic model. For the combined progenitor analysis, cells that were identified as progenitors were used to create the loom file. The loom files for each of the individuals were combined for a total count matrix of 14,207 genes across 30,562 cells for the velocity embedding using the same criteria. Each embedding was visualized using uniform manifold approximation and projection (UMAP) of dimension reduction.

Immunostaining. Primary human and mouse samples and organoids were collected, fixed in 4% paraformaldehyde, washed with 1× PBS and immersed in 30% sucrose in 1× PBS until saturated. Samples were embedded in cryomolds using 50% optimal temperature cutting (OCT) compound (Tissue-Tek catalog no. 4583) and 50% of 30% sucrose in 1× PBS and frozen at –80 °C. All samples were sectioned at 16 μ m onto SuperFrost Plus microscope slides. Citrate antigen retrieval (Vector Laboratories, catalog no. H-3300) was performed for 20 min at roughly 95–100 °C. Slides were then washed with 1× PBS and blocked using 5% donkey serum, 2% gelatin, 0.1% Triton in 1× PBS for 90 min at room temperature. Primary antibody incubation occurred in blocking buffer overnight at 4 °C, and washed five times using 0.3% Triton + 10 mM glycine. Secondary antibody incubation occurred in blocking buffer for 2–3 h at room temperature. Primary antibodies used were TRKC (1:200, R and D Systems catalog no. AF373, RRID:AB_355332); ALX1 (1:500, Santa Cruz Biotechnology catalog no. sc-130416, RRID:AB_2226324); ID4 (1:200, Santa Cruz Biotechnology catalog no. sc-365656, RRID:AB_10859382); N-CADHERIN (1:300, Abcam catalog no. ab18203, RRID:AB_444317); DLK1 (1:200, Abcam catalog no. ab119930, RRID:AB_10902607); DLK1 (1:100, Abcam catalog no. ab21682, RRID:AB_731965); CROC-4 (1:100, Aviva Systems catalog no. ARP34802_P050, RRID:AB_2827813); LUM (1:50, Thermo Fisher Scientific catalog no. MA5-29402, RRID:AB_2785270); ZO-1 (1:100, Thermo Fisher Scientific catalog no. 61-7300, RRID:AB_2533938); SOX2 (1:100, R and D Systems catalog no. AF2018, RRID:AB_355110); SOX2 (1:250, Santa Cruz Biotechnology catalog no. sc-365823, RRID:AB_10842165); CTIP2 (1:500, Abcam catalog no. ab18465, RRID:AB_2064130); KI67 (1:200, Thermo Fisher Scientific catalog no. 14-5698, RRID:AB_10854564); HOPX (1:250, Santa Cruz Biotechnology catalog no. sc-398703, RRID:AB_2687966); HOPX (1:200, Proteintech catalog no. 11419-1-AP, RRID:AB_10693525); TBR2 (1:250, Abcam catalog no. ab23345, RRID:AB_778267); TBR2 (1:250, R and D Systems catalog no. AF6166, RRID:AB_10569705); NESTIN (1:200, Millipore catalog no. MAB5326, RRID:AB_2251134); DCX (1:500, Aves Laboratories catalog no. DCX, RRID:AB_2313540); NEUN (1:250, Millipore catalog no. ABN91, RRID:AB_11205760); PAX6 (1:200, BioLegend catalog no. 901301, RRID:AB_2565003); FOXG1 (1:1000, Abcam catalog no. ab18259, RRID:AB_732415); SATB2 (1:250, Abcam catalog no. Ab51502, RRID:AB_882455); LHX5 (1:100, R and D Systems catalog no. AF6290, RRID:AB_10973257); REELIN (1:100, MBL catalog no. D223-3, RRID:AB_843523); Phospho- β -CATENIN (1:100, Cell Signaling Technology catalog no. 9561, RRID:AB_331729); Phospho-S6 (1:100, Cell Signaling Technology catalog no. 2211S, RRID:AB_331679) and NICD/NOTCH1 (1:100, Millipore catalog no. 07-1232, RRID:AB_1977387). All secondary antibodies were AlexaFluor used at a dilution of 1:1,000. Secondary antibodies used were donkey antimouse 488 (Thermo Fisher Scientific catalog no. A32766, RRID:AB_2762823); donkey antirabbit 488 (Thermo Fisher Scientific catalog no. A32790, RRID:AB_2762833); donkey antichick 488 (Jackson ImmunoResearch Laboratories catalog no. 703-545-155, RRID:AB_2340375); donkey antichick 594 (Jackson ImmunoResearch Laboratories catalog no. 703-585-155, RRID:AB_2340377); donkey antimouse 546 (Thermo Fisher Scientific catalog no. A10036, RRID:AB_2534012); donkey antimouse 594 (Thermo Fisher Scientific catalog no. A-21203, RRID:AB_141633); donkey antimouse 647 (Thermo Fisher Scientific catalog no. A32787, RRID:AB_2762830); donkey antimouse 680 (Thermo Fisher Scientific catalog no. A32788, RRID:AB_2762831); donkey antirabbit 546 (Thermo Fisher Scientific catalog no. A10040, RRID:AB_2534016); donkey antirabbit 594 (Thermo Fisher Scientific catalog no. A-21207, RRID:AB_141637); donkey antirabbit 647 (Thermo Fisher Scientific catalog no. A32795, RRID:AB_2762835); donkey antirat 594 (Thermo Fisher Scientific catalog no. A-21209, RRID:AB_2535795); donkey antirat 488 (Thermo Fisher Scientific catalog no. A-21208, RRID:AB_2535794); donkey antigoat 546 (Thermo Fisher Scientific catalog no. A-11056, RRID:AB_2534103); donkey antigoat 594

(Thermo Fisher Scientific catalog no. A-11058, RRID:AB_2534105); donkey antigoat 647 (Thermo Fisher Scientific catalog no. A32849, RRID:AB_2762840); donkey antisheep 546 (Thermo Fisher Scientific catalog no. A-21098, RRID:AB_2535752); donkey antisheep 594 (Thermo Fisher Scientific catalog no. A-11016, RRID:AB_2534083); donkey antisheep 647 (Thermo Fisher Scientific catalog no. A-21448, RRID:AB_2535865) and donkey antiguinea pig 647 (Jackson ImmunoResearch Laboratories catalog no. 706-605-148, RRID:AB_2340476).

In situ hybridization. Primary fixed samples were treated using the protocol for RNAScope Multiplex Fluorescence Assay v.2 (Advanced Cell Diagnostics catalog no. 323100) for *C1orf61* amplification, targeting nucleotides 60–897 of NM_006365.3 (Advanced Cell Diagnostics Probe Design no. NPR-0003991); MEF2C amplification, targeting nucleotides 1058–2575 of NM_002397.4 (Advanced Cell Diagnostics catalog no. 452881) and the protocol for BaseScope v.2 Assay (Advanced Cell Diagnostics catalog no. 323900) for chromogenic LHX5-AS1 amplification, targeting nucleotides 69–293 of NR_126425.1 (Advanced Cell Diagnostics Probe Design no. NPR-0003991).

Imaging and image processing. Images were collected on the Leica SP8 (RRID:SCR_018169) inverted confocal microscope using a $\times 40$ oil-immersion objective. Because of the scarcity of first trimester primary tissue, only one sample per panel was imaged. For each imaging panel, the parameters (including the gain, offset, pinhole and laser power) for image acquisition was left constant for all samples. Images were later processed using FIJI Image J (RRID:SCR_003070).

Statistical tests. No statistical methods were used to predetermine sample sizes. No randomization was used in this study. Distributions of the data were not tested. Data collection and analysis were not performed blind to the conditions of the experiments. The Wilcoxon rank sum test was used to calculate cluster markers within Seurat for a variety of analyses. A one-sided *t*-test was used in Supplementary Figs. 1e and 15c. A loess regression was used to estimate smoothed gene expression in Supplementary Fig. 11 and Fig. 4.

Reporting Summary. Further information on research design is available in the Nature Research Reporting Summary linked to this article.

Data availability

The data that support the findings of this study are available from the corresponding author upon request. Raw single-cell sequencing data are available from the NeMO Repository at <https://assets.nemoarchive.org/dat-0rsydy7>.

Processed single-cell sequencing data and full tilescan images are available for exploration and for download at our cell browser: <https://cells-test.gi.ucsc.edu/?ds=early-brain>.

Code availability

No custom code was used in this study. Open source algorithms were used as detailed in single-cell analysis methods. However, any details on how these algorithms were used are available from the corresponding author upon request.

Acknowledgements

We thank S. Wang, W. Walantus, M.G. Andrews, G. Wilkins, L. Subramanian, A. Pollen, M. Speir and members of the A.R.K. laboratory for providing resources, technical help and helpful discussions. scRNA-seq data have been deposited at the NeMO archive under dbGAP restricted access. All primary human tissue was obtained from the Human Developmental Biology Resource, with special thanks to S. Lisgo and M. Crosier.

Author contributions

This study was supported by National Institutes of Health award no. U01MH114825 to A.R.K., and nos. F32NS103266, K99NS111731 and the L'Oreal For Women in Science Award through the American Association for the Advancement of Science to A.B. A.B. and A.R.K. designed the study and conducted the analysis. Experiments were performed by U.C.E., A.B. and T.J.N. Data analysis was performed by U.C.E. and A.B. Data deposition into the NeMO Repository and configuration of the cell browser were prepared by M.H. The study was supervised by A.B. and A.R.K. This manuscript was prepared by A.B. and U.C.E. with input from all authors.

Competing interests

A.R.K. is a cofounder and board member of Neurona Therapeutics. The remaining authors declare no competing interests.

Additional information

Supplementary information The online version contains supplementary material available at <https://doi.org/10.1038/s41593-020-00794-1>.

Correspondence and requests for materials should be addressed to A.B. or A.R.K.

Peer review information *Nature Neuroscience* thanks Andre Goffinet and the other, anonymous, reviewer(s) for their contribution to the peer review of this work.

Reprints and permissions information is available at www.nature.com/reprints.

Reporting Summary

Nature Research wishes to improve the reproducibility of the work that we publish. This form provides structure for consistency and transparency in reporting. For further information on Nature Research policies, see [Authors & Referees](#) and the [Editorial Policy Checklist](#).

Statistics

For all statistical analyses, confirm that the following items are present in the figure legend, table legend, main text, or Methods section.

n/a Confirmed

- The exact sample size (n) for each experimental group/condition, given as a discrete number and unit of measurement
- A statement on whether measurements were taken from distinct samples or whether the same sample was measured repeatedly
- The statistical test(s) used AND whether they are one- or two-sided
Only common tests should be described solely by name; describe more complex techniques in the Methods section.
- A description of all covariates tested
- A description of any assumptions or corrections, such as tests of normality and adjustment for multiple comparisons
- A full description of the statistical parameters including central tendency (e.g. means) or other basic estimates (e.g. regression coefficient) AND variation (e.g. standard deviation) or associated estimates of uncertainty (e.g. confidence intervals)
- For null hypothesis testing, the test statistic (e.g. F , t , r) with confidence intervals, effect sizes, degrees of freedom and P value noted
Give P values as exact values whenever suitable.
- For Bayesian analysis, information on the choice of priors and Markov chain Monte Carlo settings
- For hierarchical and complex designs, identification of the appropriate level for tests and full reporting of outcomes
- Estimates of effect sizes (e.g. Cohen's d , Pearson's r), indicating how they were calculated

Our web collection on [statistics for biologists](#) contains articles on many of the points above.

Software and code

Policy information about [availability of computer code](#)

Data collection

No specialized software or code was used for data collection

Data analysis

Data analysis was performed with Cellranger v2, Seurat v2, R packages, scVelo and other open source packages as indicated in the Methods

For manuscripts utilizing custom algorithms or software that are central to the research but not yet described in published literature, software must be made available to editors/reviewers. We strongly encourage code deposition in a community repository (e.g. GitHub). See the Nature Research [guidelines for submitting code & software](#) for further information.

Data

Policy information about [availability of data](#)

All manuscripts must include a [data availability statement](#). This statement should provide the following information, where applicable:

- Accession codes, unique identifiers, or web links for publicly available datasets
- A list of figures that have associated raw data
- A description of any restrictions on data availability

The raw data for the provided figures is available via the UCSC Image Browser [<https://early-brain.cells.ucsc.edu>, Images tab], at this link the RNA-seq processed files are also available. The raw data is also available through dbGAP and the NeMO repository: <https://assets.nemoarchive.org/dat-Orsydy7>.

Other data used include the GRCh38-0.1.2 reference genome, downloaded with cellranger v2.

Field-specific reporting

Please select the one below that is the best fit for your research. If you are not sure, read the appropriate sections before making your selection.

Life sciences Behavioural & social sciences Ecological, evolutionary & environmental sciences

For a reference copy of the document with all sections, see [nature.com/documents/nr-reporting-summary-flat.pdf](https://www.nature.com/documents/nr-reporting-summary-flat.pdf)

Life sciences study design

All studies must disclose on these points even when the disclosure is negative.

Sample size	Because of the scarcity of first trimester human samples, we used one sample per age for each panel of figures. For the organoid and mouse samples, the data imaged represents a sample of 1. The single-cell data for the mouse samples represents a sample size of 3 individuals. Sample sizes were chosen based upon the ability to get representative data with the number of single-cells for the comparison. As such, we had 289,000 cells from the human and 16053 cells from mouse which is sufficient to identify cell types based upon numerous studies in the field.
Data exclusions	In all the single-cell analyses, we excluded all cells that had fewer than 500 genes per cell and had greater than 10% mitochondrial content. However, these data are available from the raw data. These exclusions were pre-established and were necessary to eliminate droplets that might not contain actual cells or that contain dead cells from downstream analysis.
Replication	All imaged primary human data had one replicate due to the scarcity of the tissue. For the single-cell data of the human tissue, there were two Carnegie Stage 14, Carnegie Stage 15 and Carnegie Stage 22 replicates each. There was one replicate for the remaining ages due to limited tissue availability. Each imaged mouse and organoid sample represents one replicate. All attempts for single-cell collection of data were successful.
Randomization	In each immunostaining panel, the same tissue sample from one individual was sectioned and slices were evenly distributed across all imaging panel conditions. No randomization was performed across other analysis, and this was not relevant because the data was processed with pre-determined conditions and compared between methods (different individuals, immunostaining, etc).
Blinding	Blinding was not performed, and it was not meaningful because only one sample was collected at one point. During analysis, blinding was not meaningful because all samples were treated equally by pre-determined analyses and thresholds. However, we used clearly defined imaging and image processing criteria (described in our methods) for all our analyses and analyzed all included samples using the same rigorous criteria in order to avoid bias.

Reporting for specific materials, systems and methods

We require information from authors about some types of materials, experimental systems and methods used in many studies. Here, indicate whether each material, system or method listed is relevant to your study. If you are not sure if a list item applies to your research, read the appropriate section before selecting a response.

Materials & experimental systems

n/a	Involved in the study
<input type="checkbox"/>	<input checked="" type="checkbox"/> Antibodies
<input type="checkbox"/>	<input checked="" type="checkbox"/> Eukaryotic cell lines
<input checked="" type="checkbox"/>	<input type="checkbox"/> Palaeontology
<input type="checkbox"/>	<input checked="" type="checkbox"/> Animals and other organisms
<input type="checkbox"/>	<input checked="" type="checkbox"/> Human research participants
<input checked="" type="checkbox"/>	<input type="checkbox"/> Clinical data

Methods

n/a	Involved in the study
<input checked="" type="checkbox"/>	<input type="checkbox"/> ChIP-seq
<input checked="" type="checkbox"/>	<input type="checkbox"/> Flow cytometry
<input checked="" type="checkbox"/>	<input type="checkbox"/> MRI-based neuroimaging

Antibodies

Antibodies used

All secondary antibodies were AlexaFluor used at a dilution 1:1000. Secondary antibodies: Donkey anti-Mouse 488 (Thermo Fisher Scientific Cat# A32766, RRID:AB_2762823); Donkey anti-Rabbit 488 (Thermo Fisher Scientific Cat# A32790, RRID:AB_2762833); Donkey anti-Chicken 488 (Jackson ImmunoResearch Labs Cat# 703-545-155, RRID:AB_2340375); Donkey anti-chicken 594 (Jackson ImmunoResearch Labs Cat# 703-585-155, RRID:AB_2340377); Donkey anti-Mouse 546 (Thermo Fisher Scientific Cat# A10036, RRID:AB_2534012); Donkey anti-Mouse 594 (Thermo Fisher Scientific Cat# A-21203, RRID:AB_141633); Donkey anti-Mouse 647 (Thermo Fisher Scientific Cat# A32787, RRID:AB_2762830); Donkey anti-Mouse 680 (Thermo Fisher Scientific Cat# A32788, RRID:AB_2762831); Donkey anti-Rabbit 546 (Thermo Fisher Scientific Cat# A10040, RRID:AB_2534016); Donkey anti-Rabbit 594 (Thermo Fisher Scientific Cat# A-21207, RRID:AB_141637); Donkey anti-Rabbit 647 (Thermo Fisher Scientific Cat# A32795, RRID:AB_2762835); Donkey anti-Rat 594 (Thermo Fisher Scientific Cat# A-21209, RRID:AB_2535795); Donkey anti-Rat 488 (Thermo Fisher Scientific Cat# A-21208, RRID:AB_2535794); Donkey anti-Goat 546 (Thermo Fisher Scientific Cat# A-11056, RRID:AB_2534103); Donkey anti-Goat 594 (Thermo Fisher Scientific Cat# A-11058, RRID:AB_2534105); Donkey anti-Goat 647 (Thermo Fisher Scientific Cat# A32849, RRID:AB_2762840); Donkey anti-Sheep 546 (Thermo Fisher Scientific Cat#

A-21098, RRID:AB_2535752); Donkey anti-Sheep 594 (Thermo Fisher Scientific Cat# A-11016, RRID:AB_2534083); Donkey anti-Sheep 647 (Thermo Fisher Scientific Cat# A-21448, RRID:AB_2535865); Donkey anti-Guinea Pig 647 (Jackson ImmunoResearch Labs Cat# 706-605-148, RRID:AB_2340476).

TRKC (1:200, R and D Systems Cat# AF373, RRID:AB_355332); ALX1 (1:500, Santa Cruz Biotechnology Cat# sc-130416, RRID:AB_2226324); ID4 (1:200, Santa Cruz Biotechnology Cat# sc-365656, RRID:AB_10859382); N-CADHERIN (1:300, Abcam Cat# ab18203, RRID:AB_444317); DLK1 (1:200, Abcam Cat# ab119930, RRID:AB_10902607); DLK1 (1:100, Abcam Cat# ab21682, RRID:AB_731965); CROC-4 (1:100, Aviva Systems Cat# ARP34802_P050, RRID:AB_2827813); LUM (1:50, Thermo Fisher Scientific Cat# MA5-29402, RRID:AB_2785270); ZO-1 (1:100, Thermo Fisher Scientific Cat# 61-7300, RRID:AB_2533938); SOX2 (1:100, R and D Systems Cat# AF2018, RRID:AB_355110); SOX2 (1:250, Santa Cruz Biotechnology Cat# sc-365823, RRID:AB_10842165); CTIP2 (1:500, Abcam Cat# ab18465, RRID:AB_2064130); KI67 (1:200, Thermo Fisher Scientific Cat# 14-5698, RRID:AB_10854564); HOPX (1:250, Santa Cruz Biotechnology Cat# sc-398703, RRID:AB_2687966); HOPX (1:200, Proteintech Cat# 11419-1-AP, RRID:AB_10693525); TBR2 (1:250, Abcam Cat# ab23345, RRID:AB_778267); TBR2 (1:250, R and D Systems Cat# AF6166, RRID:AB_10569705); NESTIN (1:200, Millipore Cat# MAB5326, RRID:AB_2251134), DCX (1:500, Aves Labs Cat# DCX, RRID:AB_2313540); NEUN (1:250, Millipore Cat# ABN91, RRID:AB_11205760); PAX6 (1:200, BioLegend Cat# 901301, RRID:AB_2565003); FOXG1 (1:1000, Abcam Cat# ab18259, RRID:AB_732415); SATB2 (1:250, Abcam Cat# Ab51502, RRID:AB_882455); LHX5 (1:100, R and D Systems Cat# AF6290, RRID:AB_10973257); REELIN (1:100, MBL Cat# D223-3, RRID:AB_843523); Phospho-B-CATENIN (1:100, Cell Signaling Technology Cat# 9561, RRID:AB_331729); Phospho-S6 (1:100, Cell Signaling Technology Cat# 22115, RRID:AB_331679); NICD/NOTCH1 (1:100, Millipore Cat# 07-1232, RRID:AB_1977387).

Validation

Validation:

TRKC R&D Systems, AF373: Western Blot validation at 164 kDa using the 12-230 kDa separation system under reducing conditions https://www.rndsystems.com/products/human-trkc-antibody_af373

ALX1 Santa Cruz, sc-130416: raised against recombinant ALX1 of human origin. Western Blot analysis shows validation at the ~44kDa. <https://www.scbt.com/p/alx1-antibody-96k>

ID4 Santa Cruz, sc-365656: raised against amino acids 1-70 mapping the N-terminus of Id4 of human origin. Western blot validation at ~20kDa. <https://www.scbt.com/p/id4-antibody-b-5>.

N-CADHERIN Abcam, ab18203: Synthetic peptide corresponding to Human N Cadherin aa 800-900 (internal sequence) conjugated to keyhole limpet haemocyanin. Western blot validation at 125 kDa. <https://www.abcam.com/n-cadherin-antibody-ab18203.html>

DLK1 Abcam, ab119930: Recombinant fragment corresponding to Human DLK-1 aa 174-349. Western blot validation at 41 kDa. <https://www.abcam.com/dlk-1-antibody-3a10-ab119930.html>

DLK1 Abcam, ab21682: Synthetic peptide corresponding to Human DLK-1 aa 350 to the C-terminus (C terminal) conjugated to keyhole limpet haemocyanin. Western Blot validation at 45 and 48 kDa. <https://www.abcam.com/dlk-1-antibody-ab21682.html>

CROC-4 Aviva Systems, ARP34802_P050: a synthetic peptide directed towards the N-terminal region of Human CROC4. Western Blot validation at ~35 and 22 kDa. <https://www.avivasysbio.com/c1orf61-antibody-n-terminal-region-arp34802-p050.html>

LUM Thermo Fisher, MA5-29402: recombinant protein targeting the recombinant human lumican protein. <https://www.thermofisher.com/antibody/product/LUM-Antibody-clone-77-Recombinant-Monoclonal/MA5-29402>

ZO-1 Thermo Fisher, 61-7300: A 69 kD fusion protein(1) corresponding to amino acids 463-1109 of human ZO-1 cDNA.(2) This sequence lies N-terminal to the 80 amino acid region (the alpha-motif) present in the a+ isoform but absent in the a- isoform due to alternative splicing. <https://www.thermofisher.com/antibody/product/ZO-1-Antibody-Polyclonal/61-7300>

SOX2 R&D Systems, AF2018: Polyclonal antibody raised against recombinant human SOX2. Western Blot validation at 36 kDa. https://www.rndsystems.com/products/human-mouse-rat-sox2-antibody_af2018

SOX2 Santa Cruz, sc-365823: specific for an epitope mapping between amino acids 170-201 within an internal region of Sox-2 of human origin. Western Blot validation at ~36 kDa. <https://www.scbt.com/p/sox-2-antibody-e-4>

CTIP2 Abcam, ab18465: Detects 2 bands representing Ctip2 at about 120kD (between aa 1-150 kDa). Western blot validation at ~128 and 129 kDa. <https://www.abcam.com/ctip2-antibody-25b6-chip-grade-ab18465.html>

KI67 Thermo Fisher, 14-5698: monoclonal antibody recognizes mouse and rat Ki-67, a 300 kDa nuclear protein. This Antibody was verified by Cell treatment to ensure that the antibody binds to the antigen stated. <https://www.thermofisher.com/antibody/product/Ki-67-Antibody-clone-SolA15-Monoclonal/14-5698-82>

HOPX Santa Cruz, sc-398703: raised against amino acids 1-73 representing full length Hop of human origin. Western Blot validation at ~15 kDa. <https://www.scbt.com/p/hop-antibody-e-1>

HOPX Proteintech, 11419-1-AP. HopX fusion protein. Western Blot validation at ~ 10kDa. <https://www.ptglab.com/Products/HOPX-Antibody-11419-1-AP.htm>

TBR2 Abcam, ab23345: Synthetic peptide corresponding to Mouse TBR2/ Eomes aa 650 to the C-terminus (C terminal) conjugated to keyhole limpet haemocyanin. Western blot validation at 85 kDa. <https://www.abcam.com/tbr2-eomes-antibody-chip-grade-ab23345.html>

TBR2 R&D Systems, AF6166: E. coli-derived recombinant human EOMES. Western blot validation at ~95 and 96 kDa. https://www.rndsystems.com/products/human-eomes-antibody_af6166

NESTIN Millipore Sigma, MAB5326: clone 10C2 for detection Nestin fusion protein. Western blot validation at 220 -240 kDa. <https://www.sigmaaldrich.com/catalog/product/mm/mab5326?lang=en®ion=US>

DCX Aves Labs, DCX: Two antipeptide antibodies were generated in chickens against sequences shared between the mouse (AAT58219.1), rat (NP_445831.3) and human (CAA06617.1) gene products. <https://www.aveslabs.com/products/doublecortin>

NEUN, Millipore Sigma, ABN91: GST-tagged recombinant protein corresponding to the N-terminus of mouse NeuN. Western Blot validation at ~45kDa. <https://www.sigmaaldrich.com/catalog/product/mm/abn91?lang=en®ion=US>

PAX6 Biolegend, 901301: antibody was generated against the peptide (QVPGSEPDMSQYWRLQ) derived from the C-terminus of the mouse Pax-6 protein. Western Blot validation at 46.6 and 48.2 kDa. <https://www.biolegend.com/en-us/products/purified-anti-pax-6-antibody-11511>

FOXP1 Abcam, ab18259: Synthetic peptide corresponding to Human FOXP1 aa 400 to the C-terminus (C terminal) conjugated to keyhole limpet haemocyanin. Western Blot validation at 50 kDa. <https://www.abcam.com/foxg1-antibody-chip-grade-ab18259.html>

SATB2 Abcam, ab51502: Recombinant fragment corresponding to the C-terminal of Human SATB2. Western blot validation at 82kDa. <https://www.abcam.com/satb2-antibody-satba4b10-c-terminal-ab51502.html>

LHX5 R and D Systems, AF6290: Detects recombinant human LHX5 at 55-60 kDa in Western Blot. https://www.rndsystems.com/products/human-mouse-rat-lhx5-antibody_af6290

REELIN MBL, D223-3: reacts with mouse Reelin. The CR-50 epitope is located between mouse Reelin amino acid 230 to 346. <https://www.mblintl.com/products/d223-3/>

Phospho-B-Catenin Cell Signaling, 9561: detects endogenous levels of β -catenin only when phosphorylated at serines 33, 37 or threonine 41. Polyclonal antibodies are produced by immunizing animals with a synthetic phosphopeptide corresponding to residues surrounding Ser33, Ser37 and Thr41 of human B-catenin. <https://www.cellsignal.com/products/primary-antibodies/phospho-b-catenin-ser33-37-thr41-antibody/>

Phospho-S6 Cell Signaling, 2211S: detects endogenous levels of ribosomal protein S6 only when phosphorylated at serine 235 and 236. Polyclonal antibodies are produced by immunizing animals with a synthetic phosphopeptide corresponding to residues surrounding Ser235 and Ser236 of human ribosomal protein S6. <https://www.cellsignal.com/products/primary-antibodies/phospho-s6-ribosomal-protein-ser235-236-antibody/>

NICD Millipore, 07-1232: Notch 1, cleaved N terminal. Only the cleaved intracellular (activated) form is detected. Synthetic peptide from the N-terminal sequence of the cleaved N intracellular domain (NICD) human Notch 1. Western blot detection at 80 kDa. <https://www.sigmaaldrich.com/catalog/product/mm/071232?lang=en®ion=US>

Eukaryotic cell lines

Policy information about [cell lines](#)

Cell line source(s)	H1 (WA01) embryonic stem cell line (source: WiCell) 1323-4 induced pluripotent stem cell line (source: Bruce Conklin, Gladstone Institute) H28126 induced pluripotent stem cell line (source: Yoav Gilad, University of Chicago) 4955 induced pluripotent stem cell line (source: Yoav Gilad, University of Chicago)
Authentication	Each stem cell line was karyotyped and validated for pluripotency, prior to receipt. Every 10 passages, stem cells are tested for karyotypic abnormalities and validated for pluripotency markers Sox2, Nanog, and Oct4.
Mycoplasma contamination	All cell lines tested negative for mycoplasma.
Commonly misidentified lines (See ICLAC register)	No commonly misidentified lines were used.

Animals and other organisms

Policy information about [studies involving animals](#); [ARRIVE guidelines](#) recommended for reporting animal research

Laboratory animals	CD-1 [®] IGS Mouse, sacrificed at E9 and E10 with equal numbers of male and female embryonic mice used. Housing conditions are described in the Methods.
Wild animals	No wild animals were used in this study.
Field-collected samples	No field-collected samples were used in this study.
Ethics oversight	All mouse experiments were approved by and conducted according to the UCSF Institutional Animal Care and Use Committee (protocol AN078703-03A).

Note that full information on the approval of the study protocol must also be provided in the manuscript.

Human research participants

Policy information about [studies involving human research participants](#)

Population characteristics	Because of the sensitivity of the samples, no population characteristics are known or recorded.
Recruitment	No recruitment criteria other than consent were required.
Ethics oversight	Acquisition of all primary human tissue samples was approved by the UCSF Human Gamete, Embryo and Stem Cell Research Committee (GESCR, approval 10-03379 and 10-05113). All experiments were performed in accordance with protocol guidelines. Informed consent was obtained before sample collection and use for this study.

Note that full information on the approval of the study protocol must also be provided in the manuscript.