

**UCLA**

**Recent Work**

**Title**

Los Angeles Neighborhoods and COVID-19 Medical Vulnerability Indicators: A Local Data Model for Equity in Public Health Decision-Making

**Permalink**

<https://escholarship.org/uc/item/3vd6d12p>

**Author**

Ong, Paul

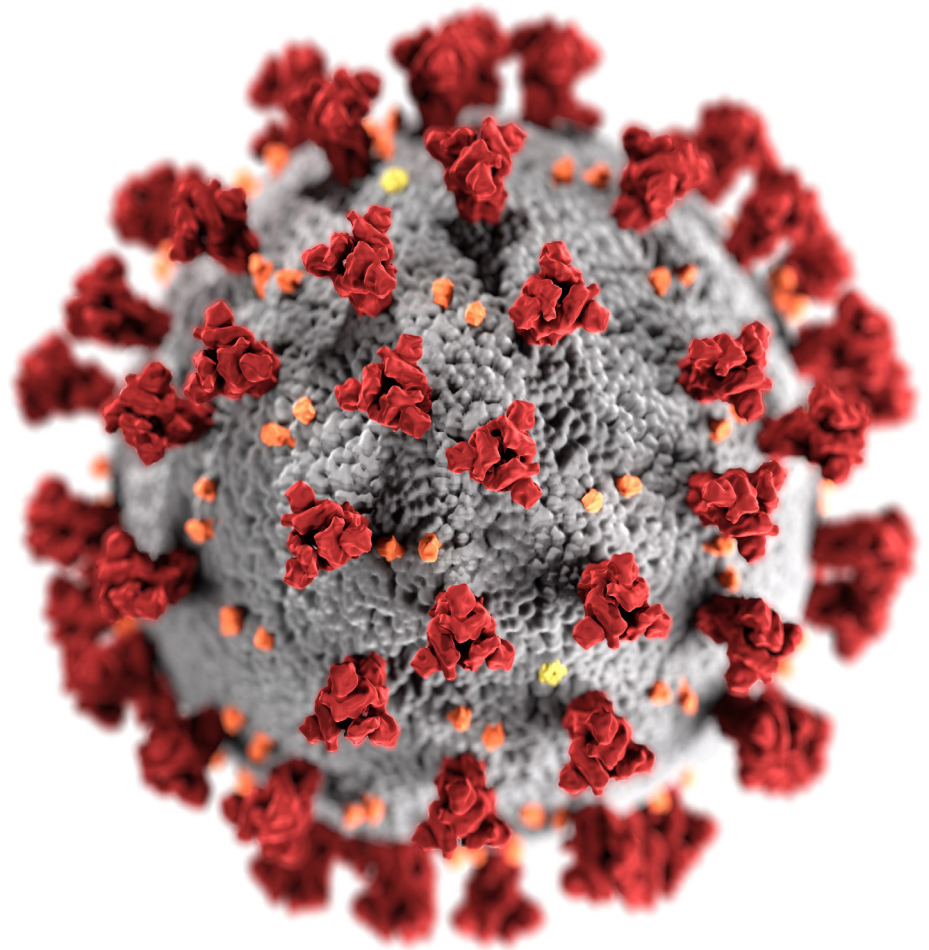
**Publication Date**

2020-11-18

**UCLA**

Center for Neighborhood  
Knowledge

**BRITE CENTER**  
for Science, Research & Policy



# Los Angeles Neighborhoods and COVID-19 Medical Vulnerability Indicators:

**A Local Data Model for Equity in Public Health Decision-Making**

Paul M. Ong, MUP, PhD, Chhandara Pech, MURP, Nataly Rios Gutierrez, BA, and Vickie M. Mays, PhD, MSPH

November 18, 2020. Revised on December 18, 2020.

# Table of Contents

Introduction.....	6
Part 1: Data and Methodology.....	8
Geographic Unit of Analysis.....	8
Data Sources.....	9
Construction of Indicators.....	10
Ranking Methodology.....	14
Part 2: Results.....	15
Maps.....	15
Data Analysis.....	21
Part 3: Conclusion.....	28

## Acknowledgments

As a land grant institution, the authors acknowledge the Gabrielino and Tongva peoples as the traditional land caretakers of Tovaangar (Los Angeles basin, Southern Channel Islands), and recognize that their displacement has enabled the flourishing of UCLA.

We also thank the UCLA's BRITE Center on Science, Research & Policy ([www.minoritydisparities.org](http://www.minoritydisparities.org)) (MD 006923) for providing partial support for this research and analyses. This project builds on the UCLA Center for Neighborhood Knowledge's (CNK) COVID-19 Equity Research Initiative, which includes studies examining how the negative economic impacts of COVID-19 are distributed across neighborhoods. We are grateful to the UCLA Latino Policy and Politics Initiative, UCLA Luskin Institute on Inequality and Democracy, UCLA Asian American Studies Center, UCLA American Indian Studies Center, UCLA Ziman Center for Real Estate, and the University of California Office of the President (CBCRP Grant #R00RG2606) for their partnership and collaboration with the Initiative. These organizations supported previous work that serve as a partial foundation for the analytical work in this report. Appendix A lists the Initiative's briefs. We are grateful to Abigail Fitzgibbon for developing the maps and to Christine Dunn for reviewing and copyediting the report.

## Information about the Authors

Dr. Paul Ong serves as the Director of the Center for Neighborhood Knowledge. He holds a Ph.D. in Economics for the University of California, Berkeley, and a Master of Urban Planning from the University of Washington. Chhandara Pech serves as the Assistant Director of the CNK and he holds a Master of Urban and Regional Planning (MURP) degree from UCLA. Nataly Rios Gutierrez is a Graduate Student Researcher at CNK. She holds a Bachelor of Arts in Sociology and is currently pursuing a MURP Degree at UCLA. Dr. Vickie Mays serves as the Director of the UCLA's BRITE Center on Science, Research and Policy. She holds a Ph.D. in Clinical Psychology and an M.S.P.H. in Health Services. For more information about the authors, please visit <https://knowledge.luskin.ucla.edu/about/team/> and <https://britecenter.org/about/about-the-director/>.

## Disclaimer

The views expressed herein are those of the authors and not necessarily those of the University of California, Los Angeles or the National Institute of Health as a whole. The authors alone are responsible for the content of this report.

This version of the document contains a correction to the definition of the English Language Barrier variable included in the Barriers to Accessing Services (BAS) indicator. Previously, we incorrectly stated that the variable is the share of the population aged five years of age or older who speaks English "less than well," which was used in an initial exploratory effort. The final BAS uses an alternative, the share of households that are limited English speaking households. This change does not have any significant impact on the BAS. Both versions of the BAS indicator are high correlation level (0.99 r-value).

## Citation

Suggestion for citing this report:

Ong, P., Pech, C., Rios Gutierrez, N., Mays, V. (2020). "Los Angeles Neighborhoods and COVID-19 Vulnerability: A Local Data Model for Equity in Public Health Decision-Making" The Center for Neighborhood Knowledge and BRITE Center of Science, Research, and Policy. doi: <https://doi.org/10.1101/2020.11.02.20215657>

## Contact

For questions, please contact the UCLA Center for Neighborhood Knowledge ([knowledge@luskin.ucla.edu](mailto:knowledge@luskin.ucla.edu)) or UCLA BRITE Center for Science, Research, and Policy ([mays@ucla.edu](mailto:mays@ucla.edu)).

## Foreword

### *Local Data And Resource Allocation*

This brief is an important contribution to identifying and prioritizing the needs of Los Angeles County public health in responding to the COVID-19 pandemic crisis. The authors develop a framework for, in effect, disaggregating a diverse population's complex vulnerabilities to COVID-19 and identifying subpopulations at different risks geographically. They've used these different risk aspects of COVID-19 to produce a framework for identifying how to allocate resources among interventions and subpopulations to achieve the most effective impact.

The brief shows the importance of detailed local data, that is, of being able to divide the population into relatively small geographic areas with information on the demographics of the subpopulations along with the factors that make the population vulnerable to COVID-19. The framework is based on four types of risk which can be displayed geographically, in effect partitioning Los Angeles County into a set of communities characterized by their demographics and the four risks (or vulnerabilities). This is an ideal framework for resource allocation decisions. Coupling this with the constraints on interventions including their costs and limitations in materiel and health care workers becomes an analytic structure to inform decision makers. One reason creative use of local data is particularly beneficial in Los Angeles in 2020 is that one of the criteria for relaxing COVID induced restrictions relates to improvements in health equity within the overall county population. This state imposed equity metric is designed to ensure that the test positivity rates in its most disadvantaged neighborhoods do not significantly lag behind the overall county positivity rate. Each county must submit a plan demonstrating targeted investments to eliminate disparities in levels of COVID transmission. Local data is an essential to that task, both in plan submission and evaluation over time.

The crucial sources for the detailed data invaluable for addressing COVID and many other population health risks and conditions are the American Community Survey and AskCHIS Neighborhood Edition: they can be analyzed on a geographic base of small areas, Zip Code Tabulation Areas. The data source on parks and open space is an important adjunct. The importance of local data is emphasized in recommendations on how to achieve the newly released objectives of Healthy People 2030 (HP 2030)<sup>1</sup>, the fifth decade of a national program to set national health goals. Over the next decade HP 2030's data will be used to guide and evaluate progress in meeting the objectives. HP 2030's Secretary's Advisory Committee emphasized the importance of having data that can be used at local levels to evaluate progress and identify barriers and challenges to effecting change<sup>2</sup>. It is at the local or community level where population change must be achieved to improve health outcomes.

The brief's local data-based framework need not be exclusive to California. In fact, the American Community Survey's data are available aggregated at the level of zip code tabulation areas with five-year estimates for most of the US population. This is an excellent start to address the HP 2030 objectives. However, Los Angeles is fortunate to have another key element in using local data as the basis for health interventions: a wide base in expertise in the use of data, mapping, linking interventions to measures of vulnerability and maintaining this framework. The authors have made a major step forward and we look to our country building on this expertise. Further, we look forward to research to meld this framework with the extensive ongoing COVID-19 modeling. The insights should be extremely helpful in bringing the pandemic under control.

**Edward Sondik, PhD**, is the former director of the Centers for Disease Control and Prevention, National Center for Health Statistics

**Jonathan E. Fielding M.D., M.P.H., M.A., M.B.A.** is the former director and health officer of the Los Angeles County Department of Public Health. He is a Distinguished Professor at UCLA in the Fielding School of Public Health and the David Geffen School of Medicine.



MASK TEHRAN  
2000  
EN149:2001-A1:2014  
M12000 - FFP2

# Introduction

Los Angeles County, like the rest of the country, is facing a high number of COVID-19 infections and deaths. The county has been affected by the virus at especially high rates, with a total of 330,514 infections and 7,221 deaths as of November 13, 2020.<sup>3</sup> While originally it was thought that all persons had the same level of susceptibility to COVID-19, not all persons nor communities have been equally affected by this disease. Considered the “hotspot” for COVID-19 infections in the state of California, the number of COVID-19 infections and deaths in Los Angeles County have not been similarly distributed across neighborhoods.<sup>4</sup> In examining county data, analyses show significant disparities in reported cases and deaths by race and socioeconomic status. These analyses support the notion of inequality in vulnerability in the SARS-CoV-2 (COVID-19) pandemic.<sup>5,6,7</sup>

Understanding how the geographic patterns of social determinants of health and social risk contribute to the medical vulnerability for COVID-19 is useful in helping public health and social service agencies, as well as other stakeholders, to develop and target interventions to the communities at greatest risk for the infectious transmission of COVID-19. This requires developing a comprehensive monitoring system that combines multiple sources of local spatial data to precisely track the temporal and geographic pattern of new cases and to uncover the factors and mechanisms behind the transmission. Such knowledge is critical to slowing and hopefully stopping the pandemic. We are still short of meeting the goal of having a fully operational monitoring system, but there has been progress. The indicators in this brief contribute to that effort, with a focus on identifying vulnerable neighborhoods.

This brief draws on recent scientific literature on COVID-19 medical vulnerability, as well as expert methodological input, to better understand factors contributing to the unequal burden of COVID-19 across communities and populations in Los Angeles County. Several studies have identified preexisting conditions, such as Type 2 diabetes, chronic kidney disease, immunocompromised state, and/or severe obesity, that increase risk of COVID-19 infection and complications.<sup>8,9,10,11,12,13</sup> Additionally, limited access to both health-protecting equipment and risk and care information can increase the likelihood COVID-19 comorbidities. Furthermore, lack of access to quality health care services and social policies, such as access to health insurance, sick days, and the ability quarantine in isolation, can further exacerbate the inequality in COVID-19 outcomes.<sup>14,15,16,17,18,19</sup> Beyond factors directly associated with health, structural factors further increases COVID-19 inequity.<sup>20</sup> Previous research has found that existing spatial inequality is reproduced over time, specifically that urban spatial structures produce and reproduce socioeconomic inequalities.<sup>21,22</sup> The racial discrepancies among COVID-19 outcomes in the United States have not only been attributed to COVID-19 comorbidities but also to the social, economic, and physical factors that provide communities with the capacity to safely practice physical distancing to reduce COVID-19 community spread.<sup>23,24</sup> While much has been made of herd immunity<sup>25,26</sup> in the absence of a vaccine that can attempt to accomplish that status, far more important at this point is focusing on how to employ data to identify communities whose medical vulnerabilities occur in the context of social and environmental risks and make them highly likely to be exposed, become infected, and potentially suffer significant and costly morbidity and mortality outcomes.<sup>27,28</sup>

The purpose of this project is to develop multiple indicators that point to probable communities (geographic places defined by the Census Bureau’s Zip Code Tabulation Areas [ZCTA]) and populations at risk in Los Angeles County with high probability of COVID-19 infection and death across different dimensions. To achieve this, we developed a medical vulnerability index of four indicators: preexisting health vulnerability, barriers to accessing services, built environment risk, and social vulnerability. We hope that these indicators will be helpful for policy makers, local jurisdictions, foundations, and community organizations to identify areas with a high need of resources to protect against a potential second wave of COVID-19 infections. Additionally, we hope this

information will help determine equitable distribution of resources to stem new infections such as testing and vaccination, if available, to create more equitable and healthy neighborhoods, especially for medically vulnerable populations that live in those neighborhoods. It is our hope that this brief can help guide local communities in how to aggregate their own local data to help drive initiatives that can respond to COVID-19 with greater equity. Local regions will vary in the ability to harness local data and even in our instance there were many discussions devoted to wanting data sources that were either not available or would be time or cost prohibitive to develop.

The rest of this document is organized into three parts. Part 1 presents a detailed description of our methodology. The description includes information about our data sources as well as information on how we developed each of our four indicators. Part 2 presents two different sets of visualizations. First, we include multiple maps to illustrate vulnerability across the four indicators. Second, we present two different analytical components: 1) an analysis showcasing the racial distribution across each of the four indicators; and 2) an analysis showcasing the average vulnerability scores by majority ethnoracial groups. Part 3 includes the conclusion. Our major findings reveal that while racial patterns exist, they are not consistent across all indicators. Therefore, it is important to develop multiple measures to better understand the complexity of COVID-19 racial disparities.





# Part I: Data and Methodology

The project focuses on identifying neighborhoods in Los Angeles County that may be at an elevated risk of exposure and positive infection for contracting COVID-19. To achieve this, we developed four different indicators of medical vulnerability: 1) Preexisting Health Condition, 2) Barriers to Accessing Services, 3) Built Environment Risk, and 4) Social Vulnerability. Selection of the components used to construct the first three indicators were guided by existing research literature and input from health experts. The fourth indicator, the Social Vulnerability Index (SVI), mirrors the Center for Disease Control's (CDC's) 2018 Social Vulnerability Index<sup>29</sup> but constructed for a different geographic unit of analysis than what is made available by the CDC.

## Geographic Unit of Analysis

The basic geographic unit of analysis for this report is the ZCTA. We utilize the ZCTA because our main source of population-level health data, the California Health Interview Survey, was only available to use in ZCTA format. The ZCTA is defined by the Bureau of the Census (BOC) as “generalized area representations of United States Postal Service (USPS) ZIP Code service areas.”<sup>30</sup> Zip Codes created by USPS for mail delivery purposes are constantly changing. ZCTAs do not represent actual Zip Codes per se but are made by the BOC to approximate Zip Codes and their boundaries are defined every 10 years with the Decennial Enumeration. Through ZCTAs, the BOC is able to provide census-related data (e.g., demographic, socioeconomic, housing characteristics) to a geography that closely mirrors USPS Zip Codes.

In some cases, there are occurrences where some of the data used to construct the indicators are reported in a different geography other than ZCTAs. When there are incidents of this, we use a geographic crosswalk to allocate the information into the ZCTA. The geographic crosswalk comes from the Missouri Census Data Center's (Geocorr 2018 edition). For example, census tracts do not fall completely within ZCTA boundaries. As such, a crosswalk is needed to allocate tract-level data into ZCTAs. The spatial assignments take into account differences in population across tracts and therefore a population weighted approach is used to assign tracts to ZCTAs. In the following text, we indicate which variables are reported in a different geography other than ZCTA and therefore require using the geographic crosswalk to assign to ZCTAs.

For the purpose of this report, ZCTAs are used to represent neighborhoods and the two terms are used interchangeably.

## Data Sources

Three major data sources are used to construct the four indicators of medical vulnerability. These datasets are described in the following text.

### *AskCHIS Neighborhood Edition*

The AskCHIS Neighborhood Edition (AskCHIS NE) database provides health estimates for California down to the ZCTA<sup>31</sup>. The information for AskCHIS NE comes from the California Health Interview Survey (CHIS). CHIS is conducted by the UCLA Center for Health Policy Research (CHPR) in collaboration with the California Department of Public Health and the Department of Health Care Services. CHIS is the largest state health survey in the nation. Conducted since 2001, CHIS surveys adults, adolescents, and children sampled from every county in California. This report uses the responses related to adults. CHIS collects extensive information for all age groups on sociodemographic, health status, health conditions, health-related behaviors, health insurance coverage, access to health care services, and other health-related issues.

The AskCHIS NE data used for this project represents data collected for 2015-16 (hereinafter referred to as 2016), which is the most current data available from AskCHIS NE. The data was purchased directly from the CHPR and is not publicly available for download.

### *American Community Survey*

The American Community Survey (ACS) is an ongoing survey conducted by the U.S. Census Bureau to collect housing, demographic, social, and economic information<sup>32</sup>. The data utilized in this project comes from the 2014-18 5-year ACS estimates. For small geographies, including ZCTAs, statistics from the ACS are only reported in the five-year average dataset. Small geographic areas reported by the BOC are defined as any area with less than 65,000 persons. Each annual ACS survey represents a sample of about 2.0-2.5 percent of households and individuals, with the five-year ACS representing roughly 12.5 percent.

### *California Department of Parks and Recreation*

The California Department of Parks and Recreation (DPR) provides data on the availability of parks and open space in California<sup>33</sup>. For this project, we included the DPR's data on park acres per 1,000 residents, which is reported at the census tract level. Because of the difference in reporting geography, we allocated DPR's census tract data into ZCTAs using a geographic crosswalk from census tracts to ZCTAs, weighted by the population of each tract.

## Construction of the Indicators

### *Preexisting Health Vulnerability*

The Preexisting Health Vulnerability indicator is meant to capture risks of COVID-19 infection and death due to preexisting health conditions that have been identified in scientific journals and through input from health experts consulted for this project. This indicator is comprised of six different variables, all of which are derived from the AskCHIS NE 2016 database, and are described in the following text:

- Diabetes, defined as any adult respondent over the age of 18 ever diagnosed with diabetes by a doctor. Diabetes has been identified in the literature as a preexisting condition increasing risk of COVID-19 infection or death.<sup>34,35,36</sup>
- Obesity, defined as any adult respondent over the age of 18 with a body mass index (BMI) of 30.0 or above. Obesity has also been identified as a preexisting condition that increases likelihood of COVID-19 complications.<sup>37,38,39,40</sup>
- Heart Disease, defined as any adult respondent over the age of 18 ever diagnosed with heart disease by a doctor. We included heart disease as a dimension in lieu of specific data on hypertension that has been identified as one of the most common comorbidities related to increased COVID-19 risk.<sup>41,42,43</sup>
- Health Status, defined as any adult respondents ages 18-64 with fair or poor health. We included health status as a measure of fair or poor health as a substitute for other preexisting health conditions absent from our data sources.<sup>1</sup>
- Mental Health, defined as any adult respondent over the age of 18 who reported serious psychological distress in the past 12 months, constructed using the Kessler 6 scale (K6 score greater or equal to 13). Severe mental health is correlated with higher levels of preexisting conditions, such as Type 2 diabetes and heart disease.<sup>44</sup>
- Food Insecurity, defined as any adult respondent over the age of 18 with income less than 200 percent below the federal poverty line who self-identified their ability to afford enough food.<sup>45</sup> We included this variable as a measure of poor nutrition. Poor nutrition is a leading factor in contributing to widespread instances of diabetes and obesity across the world.<sup>46</sup>

---

<sup>1</sup> The AskCHIS NE dataset also includes a separate variable on the health status of the elderly (ages 65 and older). We constructed two versions of the preexisting health indicator, one that only includes ages 18-64 and an alternative that includes both ages 18-64 and 65 and up. The two indicators are highly correlated (r value of 0.9897). However, the version that includes the elderly had many more ZCTAs with no data, which is most likely a result of data suppression due to small sample size. The indicator including the elderly covers 251 ZCTAs, while the one that excludes the elderly covers 260 ZCTAs. Because the two are highly correlated and the indicator without the elderly covered more ZCTAs overall, we opted to use 18-64 in the final index.

## *Barriers to Accessing Services*

The indicator on Barriers to Accessing Services is meant to capture barriers that increase difficulty in accessing COVID-19 and other general health care services. This indicator is composed of five different variables, all derived from the 2014-18 5-year ACS data:

- Non-U.S. Citizens, defined as the share of immigrants who are not U.S. citizens. We include non-U.S. citizens because this population often faces cultural and legal barriers to accessing services. Most of this group are from non-Western countries, and may risk being labeled a “public charge,” which could potentially jeopardize their immigrant status. A disproportionate number also have limited English ability, and lack of health insurance, which are factors included separately in the indicator.
- English Language Barrier is defined as the share of households that are designated by the Bureau of Census as “limited English speaking households”. The Bureau of Census defines limited English speaking households as “households in which no member 14 years old and over (1) speaks only English or (2) speaks a non-English language and speaks English ‘very well.’” In other words, all persons 14 years old or over in a household have at least some difficulty speaking English. Language barriers can often prevent people from accessing important information in a timely manner. Many organizations lack the resources necessary to provide documents in multiple languages. Even if organizations have enough resources, it takes time to provide all the necessary information in languages that are accessible to different communities. This delay in translation applies to information regarding COVID-19 risk and prevention.
- Lack of Broadband Access, defined as the share of households with a computer but without broadband Internet access. Lack of broadband hinders access to important information distributed by local and federal health agencies regarding COVID-19, such as where to find the closest COVID-19 testing center.
- Lack of Health Insurance, defined as the share of individuals without health insurance. Despite the fact that the Coronavirus Aid, Relief, and Economic Security Act (CARES Act) reimburses the medical cost of those with COVID-19, lack of health care insurance may cause delays in accessing preventive care and seeking other health-related benefits. Moreover, many individuals may not know about this provision in the CARES Act.
- Vehicles per Person, defined as the inverted ratio of vehicles available per person. We inverted the ratio to indicate a higher level of vulnerability for households that have fewer cars per person. Depending on the number of cars available per person, having the availability to use a car for medical purposes might not be an option given that there might be other priorities such as getting to work or school that prevents people in the household from getting the health care they need. Moreover, some COVID-19 testing sites in Los Angeles require that people arrive in a motorized vehicle. For example, Dodger Stadium serves as LA County’s largest coronavirus drive-thru testing site.

## *Built Environment Risk*

The built environment risk indicator is meant to identify areas at higher risk of COVID-19 infection due to lack of adequate space available to adhere to shelter-in-place mandates and other precautions that aim to limit the spread of COVID-19. The indicator is composed of four variables:

- Population Density, operationally defined as the total number of persons divided by the ZCTA's land area in square miles. Counts of the population are derived from the 2014-18 5-year ACS. Places that are densely populated increases the chances of encountering people, which limits the ability to maintain social distancing guidelines and increases the likelihood of encountering a COVID-19 carrier.
- Building Structure Density, operationally defined as housing structures with 10 or more units divided by the total housing stock (i.e., as a share of all housing units in the ZCTA). Similar to population density, building density also increases chances of encountering people, which limits social distance guidelines and increases likelihood of encountering a COVID-19 carrier. We focus on 10 or more units because as opposed to including all multiunits (e.g., duplexes, triplexes), structures with 10 or more units are more likely to increase one odds of encountering people in common areas (e.g., lobby, hallway, mailroom) and therefore increases the risk and COVID-19 contagion.
- In-unit Housing Crowding, operationally defined as having 1.01 or more persons per room. In-unit crowding can increase a person's risk to COVID-19 infection. If someone in a household becomes infected with COVID-19 and there is not a room for them to quarantine in, the rest of the household has a higher risk of contracting the disease. A study recently found that areas with the highest number of COVID-19 cases faced three times the level of overcrowding than areas with the lowest number of COVID-19 cases.<sup>47</sup>
- Availability of Parks and Open Space per 1,000 residents. Areas with more parks and open space enable individuals to more easily keep physically and mentally fit through outdoor exercise or activity.

## *Social Vulnerability Index*

The SVI is a close replica of the 2018 Social Vulnerability Index, which was created by the CDC to identify vulnerable areas in need of preparation and response to hazardous events or natural disasters. The SVI indicator addresses the level to which a community experiences different social conditions, such as unemployment, and that might affect its ability to prepare and respond to hazardous events, such as the COVID-19 pandemic. The CDC's SVI is only available at the census tract level. We utilize the same data source used by the CDC to construct their SVI, 2014–18 5-year ACS, and adopted the same methodological approach to construct the SVI for ZCTAs. A total of 15 variables, organized into four dimensions, are used to construct the SVI for ZCTAs in Los Angeles County. Each component of the SVI is described in the following text.

### Socioeconomic Status

- Persons below Poverty, defined as the share of persons with income below the federal poverty line;
- Unemployed, defined as the share of civilian labor force population (ages 16 and up) who are unemployed;
- Per capita Income, defined as a measure of the amount of income earned per person; and
- No High School Diploma, defined as share of persons age 25 and older with no high school diploma.

### Household Composition

- Persons Aged 65 or Older as a share of the total population;
- Persons Aged 17 or Younger as a share of the total population;
- Civilian Noninstitutionalized Population with a Disability, defined as any individuals age five years or older with a disability; and
- Single-Parent Households with children under 18 as a share of total households.

### Minority Status and Language

- Racial Minority Population, defined as the share of the population who are not non-Hispanic White (e.g., total population minus non-Hispanic White); and
- Speaks English “Less Than Well”; defined as the share of the population aged five years of older that speak English “less than well.”

### Housing Type and Transportation

- Multiunit Structure, defined as the share of housing structures with 10 housing units or more;
- Mobile Homes, defined as the share of mobile homes;
- In-unit Housing Crowding, defined as having 1.01 or more persons per room;
- No Vehicle Households, defined as households with no vehicles available as a share of all households; and
- Group Quarters, defined as share of persons in institutionalized group quarters.

## Ranking Methodology

The project adopts a ranking approach to construct each of the four composite indicators. Only ZCTAs within Los Angeles County are included in this process.<sup>2</sup> We adopted the ranking approach utilized by the CDC to construct their SVI.<sup>3</sup> The advantage of utilizing this approach across all four indicators is consistency in method.

For each of the four composite indicators, we first rank each of the key underlying variables used to construct each index. Using the ranking procedure in SAS, a statistical software, we rank each individual variable, with ranking values ranging from 0 to 99, which represent percentile rankings. After ranking each underlying variable, we then summed the percentiles ranking, and conducted a second wave of ranking using the summed percentiles. This in the end represents the actual composite score.

In the case of the SVI, which is composed of multiple variables organized by four key dimensions, three rankings are involved: ranking each variable in each dimension, ranking of the sum of the key variables, and lastly a ranking of a sum of all the variables and dimensions combined.

It is important to note that there are cases in which a ZCTA may not have values or data across all underlying variables. In these cases, the ZCTA was excluded. In other words, a ZCTA must have a reported value (no missing data) for each of the underlying variables that is needed to construct the index. If there is missing data for one of the components, then no index is calculated for the ZCTA.

For analytical purposes and for mapping, we rank indicators into quintiles, from lowest to highest vulnerability. Each quintile group contains roughly 56 ZCTAs. Maps for each of the four vulnerability indicators are displayed in the next section.

---

<sup>2</sup> We utilized the geographic crosswalk (ZCTAs to county) from the Missouri Data Center (2018 Geocorr) to identify ZCTAs in Los Angeles County. Only those ZCTAs that have at least an allocation score of 90 percent were included. The allocation factor indicates what proportion of the ZCTA, weighted by population, belongs in Los Angeles County (there are some ZCTAs that cross into neighboring counties).

<sup>3</sup> For further details on the CDC's SVI methodology see: [https://svi.cdc.gov/Documents/Data/2018\\_SVI\\_Data/SVI2018Documentation.pdf](https://svi.cdc.gov/Documents/Data/2018_SVI_Data/SVI2018Documentation.pdf) . August 20, 2020.

# Part 2: Results

## Maps

The following maps display neighborhoods in Los Angeles County by their level of vulnerability across each of the four indicators: preexisting conditions, barriers to accessing services, built environment risk, and social vulnerability. ZCTAs are grouped into quintile categories (five groups) based on their composite scores for each of the four indicators, ranging from lowest to highest vulnerability. Each quintile group contains roughly 20 percent of all ZCTAs within Los Angeles County.

The brown areas represent neighborhoods that are vulnerable, with darker brown denoting the greatest vulnerability. The green areas represent neighborhoods that are less vulnerable, with the darker green denoting the lowest vulnerability. We also provide a map, displayed in Figure 1, using regions defined by the Los Angeles Times to provide as visual aid for understanding the layout of neighborhoods across Los Angeles.<sup>48</sup>

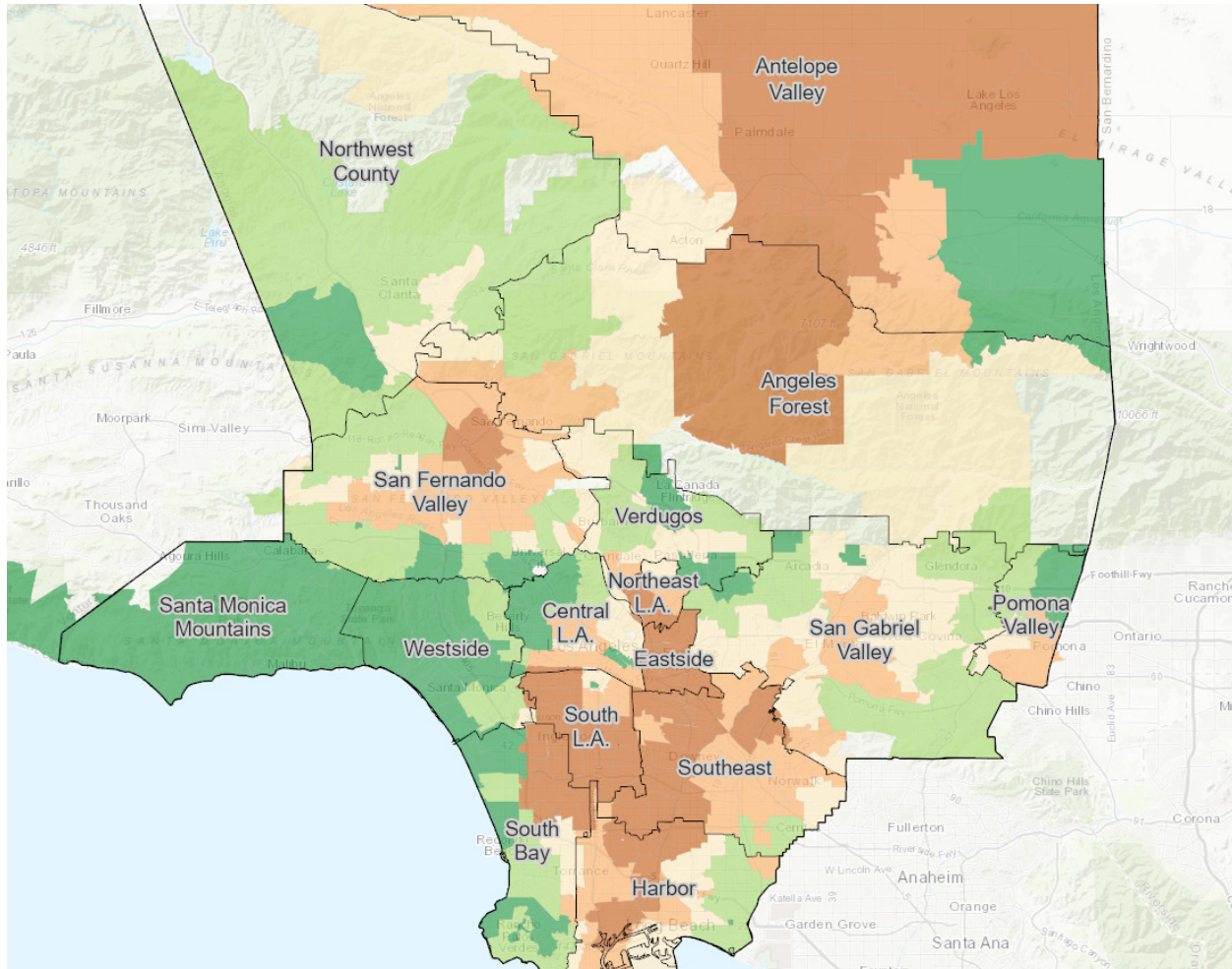
Overall, we find that neighborhoods located in areas around South Los Angeles and the eastern side of the San Fernando Valley are within the highest vulnerability quintile across all indicators. These areas have a disproportionately high number of low-income households and people of color. In contrast, communities located along the coast and the Northwest County are within the lowest vulnerability across all four indicators. The residents in these neighborhoods are disproportionately non-Hispanic White and high income.





Figure 1. Los Angeles County Regions

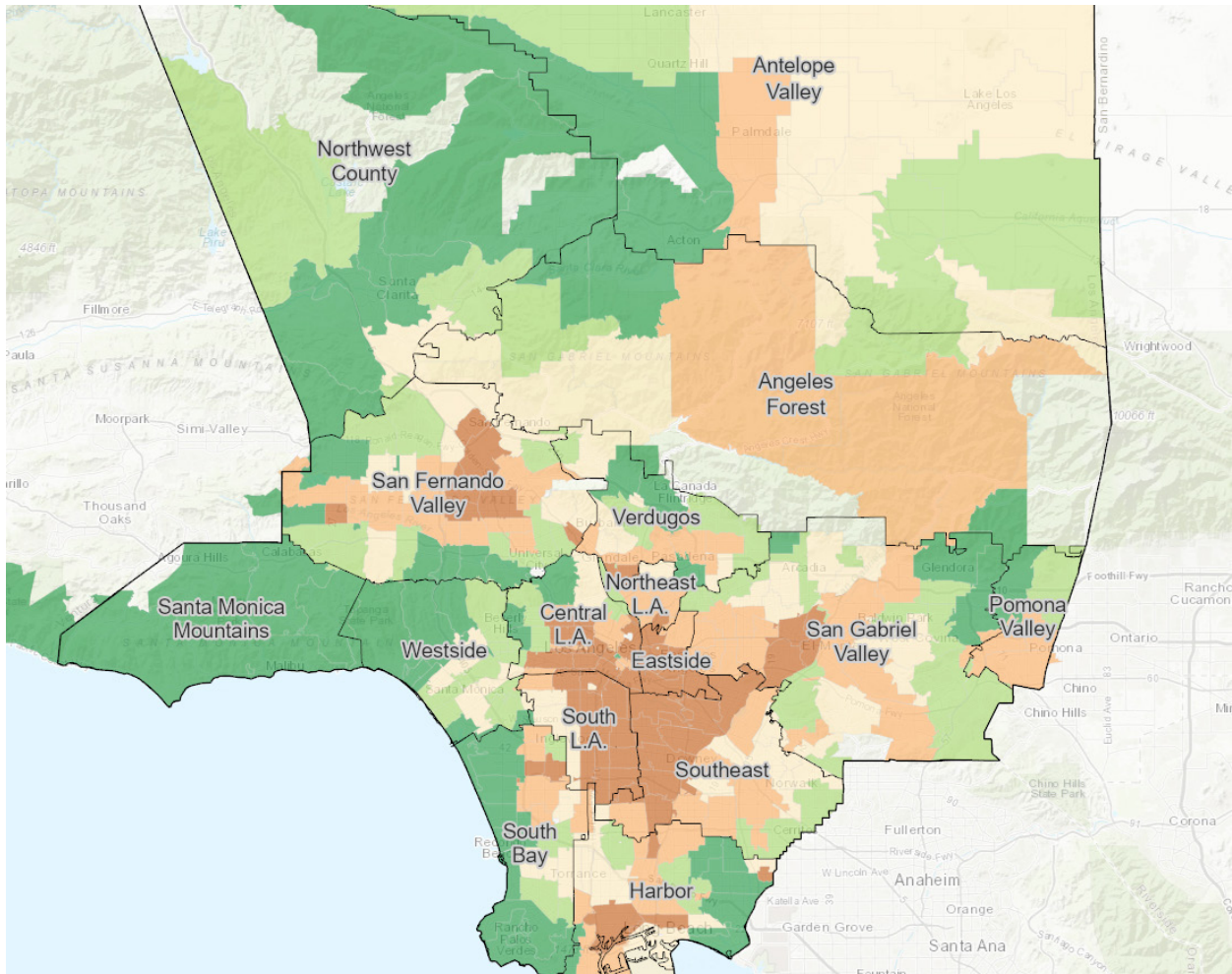
In the Preexisting Health Vulnerability map, **Figure 2**, neighborhoods in the high or highest vulnerability quintiles include those in the Antelope Valley, the San Fernando Valley, Boyle Heights and East Los Angeles, and neighborhoods in South Los Angeles. In contrast, the least vulnerable neighborhoods are located in Northwest County as well as across all coastal neighborhoods.



**Figure 2. Preexisting Health Vulnerability, Los Angeles County**



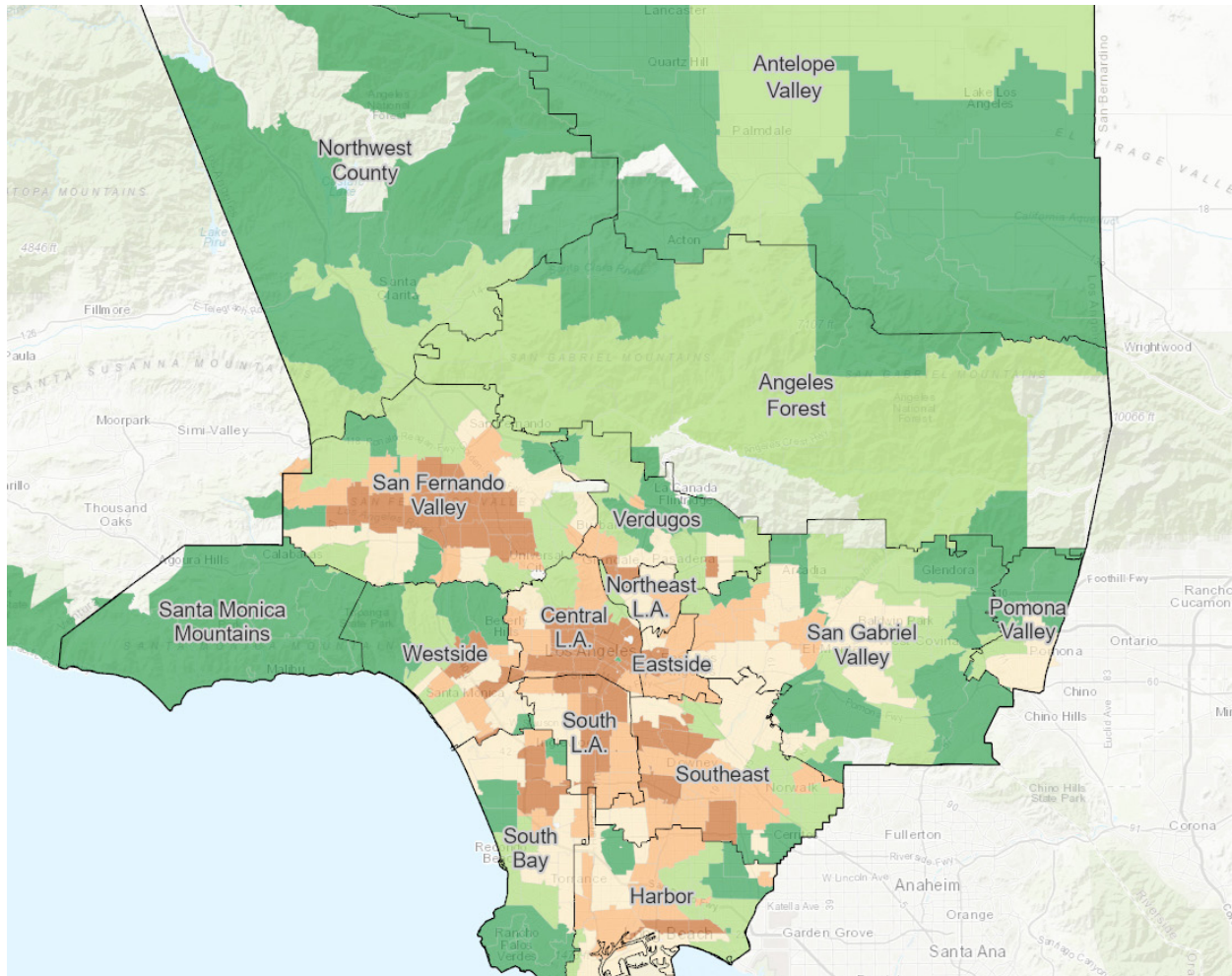
**Figure 3** displays the map for the *Barriers to Accessing Services* indicator. Neighborhoods that are in the high or highest vulnerability are located mainly in Central Los Angeles, South and Southeast Los Angeles, as well as pockets of neighborhoods in the San Fernando and San Gabriel Valley. The neighborhoods falling within the lowest vulnerability are again located along the coast and in Northwest County.



**Figure 3. Barriers to Accessing Services, Los Angeles County**



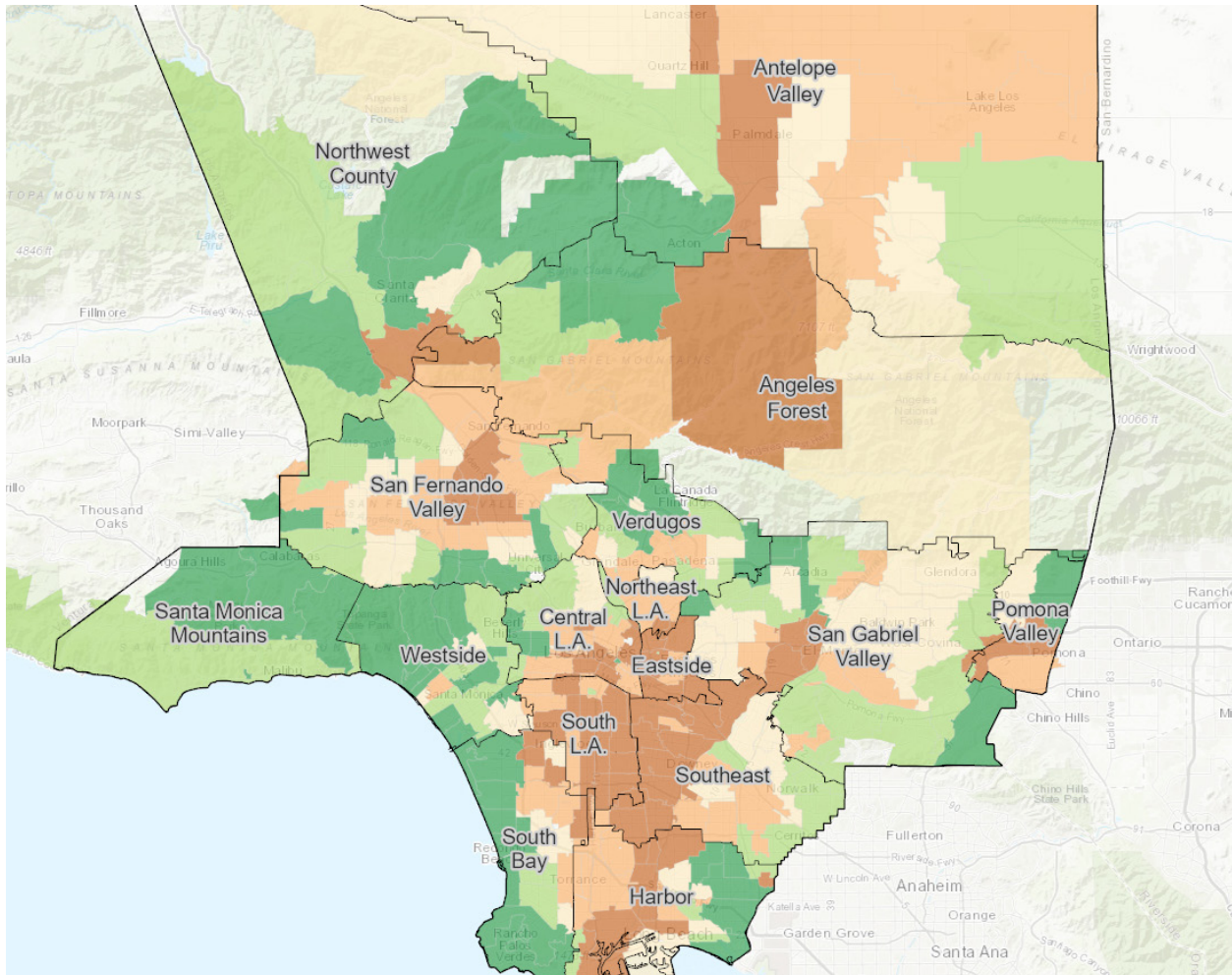
For the *Built Environment Risk* indicator, **Figure 4**, regions in the high or highest vulnerability quintile are again concentrated in Central Los Angeles, Eastside Los Angeles, South Los Angeles, and San Fernando Valley. In contrast, communities within the lowest quintiles expand around the city’s outskirts and include neighborhoods in Northwest County, and the Santa Monica Mountains.



**Figure 4.** Built Environment Risk, Los Angeles County



Finally, neighborhoods in the high and highest vulnerability quintiles for the *Social Vulnerability Index*, **Figure 5**, are located in the Antelope Valley, the San Fernando Valley, Northeast Los Angeles, Eastside, South and Southeast Los Angeles, and the Harbor. The lowest SVI vulnerability neighborhoods are the coastal communities and in Northwest County.



**Figure 5.** Social Vulnerability Index, Los Angeles County



## Data Analysis

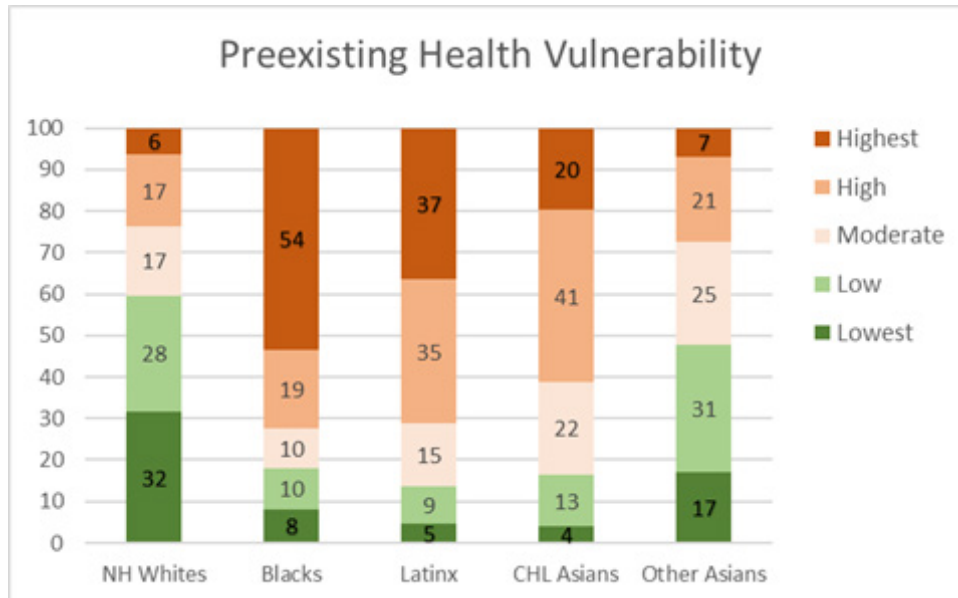
For this report’s analytical component, we investigated the racial distribution of vulnerability across each of the four indicators. We further explore racial parity by examining the level of vulnerability across the four indicators based on the majority race for each ZCTA. Majority race is defined as having an ethnoracial composition greater or equal to 50 percent for a particular ZCTA (e.g., if the population of Blacks in a ZCTA is 50 percent or more then the ZCTA is designated as a “Majority Black” neighborhood). (Appendix B includes additional analysis of variations by neighborhood sociodemographic characteristics.)

### *Ethnoracial Distribution of Vulnerability*

The purpose of this analysis is to understand the distribution of different ethnoracial groups across each vulnerability indicator. In each of the figures in the following text, each bar represents a given racial group, and segments denote the percent population within a given vulnerability quintile for each indicator. The data is ranked from the lowest to the highest vulnerability. Brown indicates a high vulnerability, with a darker brown indicating a higher vulnerability level. Green represents lower vulnerability, with a darker green indicating a lower level of vulnerability.

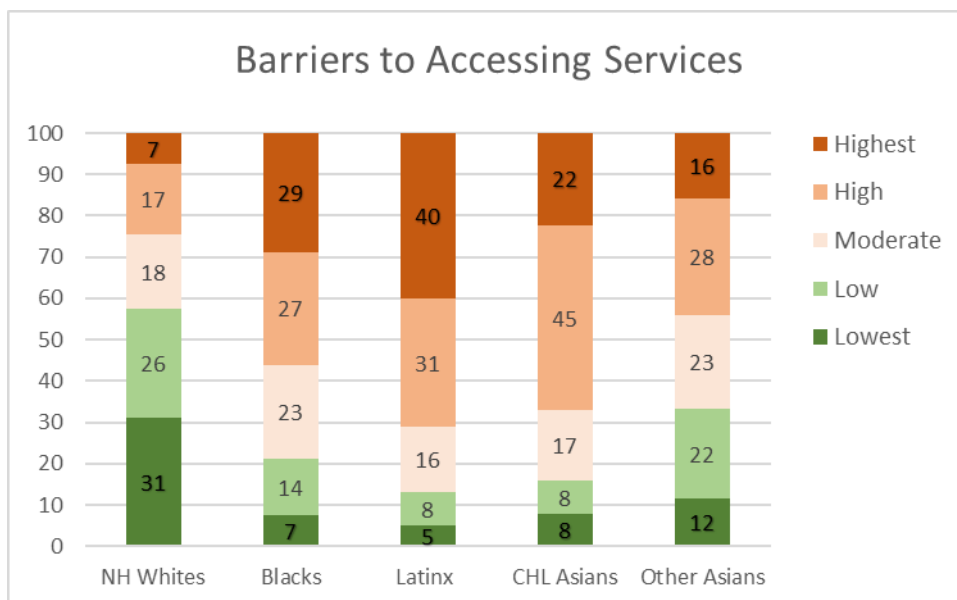
We included five ethnoracial groups: Non-Hispanic White (NH White); Black; Latinx; Cambodians, Hmongs, and Laotians combined (CHL Asians); and Other Asians. Asian Americans are a heterogeneous ethnoracial group and also diverse with respect to socioeconomic outcomes. We separate out Cambodians, Hmongs, and Laotians from other Asians because these groups tend to be among the most economically disadvantaged within the Asian American subgroups.

**Figure 6**, illustrates the uneven distribution of Preexisting Health Vulnerability across racial groups. Black individuals carry the highest burden of preexisting health conditions. Nearly three-quarters (73 percent) of the African American population in the county reside in neighborhoods designated as either high or highest vulnerability as measured by the preexisting health condition index. In contrast, only 8 percent of the Black population reside in neighborhoods with the lowest level of vulnerability. Similarly, a high share of the Latinx and CHL Asian populations also reside in the most vulnerable neighborhoods. About 70 percent of the Latinx and 60 percent of the CHL Asian population reside in neighborhoods with either high or highest levels of vulnerability. In comparison, only about 5 percent and 4 percent of their respective population live in neighborhoods with the lowest level of vulnerability. Conversely, neighborhoods in the lowest vulnerable category contain a higher percent of NH whites when compared with the highest vulnerable category. Close to 60 percent of the NH White population in the county reside in either the low or lowest vulnerable neighborhoods.



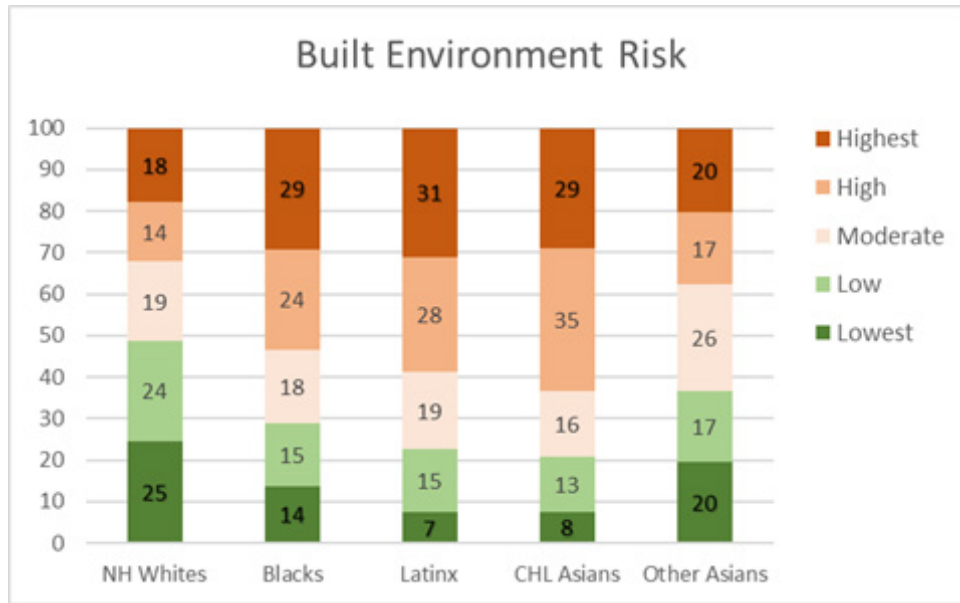
**Figure 6.** Ethnoracial Distribution by Preexisting Health Vulnerability

Similarly, in **Figure 7**, we find that people of color are more likely to reside in neighborhoods with more Barriers to Accessing Services. Forty percent of the Latinx population reside in neighborhoods with the highest level of vulnerability, while only 5 percent of the population reside in neighborhoods with the lowest level of vulnerability. Black, CHL Asian, and Other Asians are also disproportionately located in neighborhoods with the highest level of vulnerability (29 percent, 22 percent, and 16 percent, respectively). In contrast, 7 percent of the NH White population resides in neighborhoods with the highest level of vulnerability, while 31 percent of Whites reside in neighborhoods with the lowest level of vulnerability



**Figure 7.** Ethnoracial Distribution by Neighborhood Barriers to Accessing Services

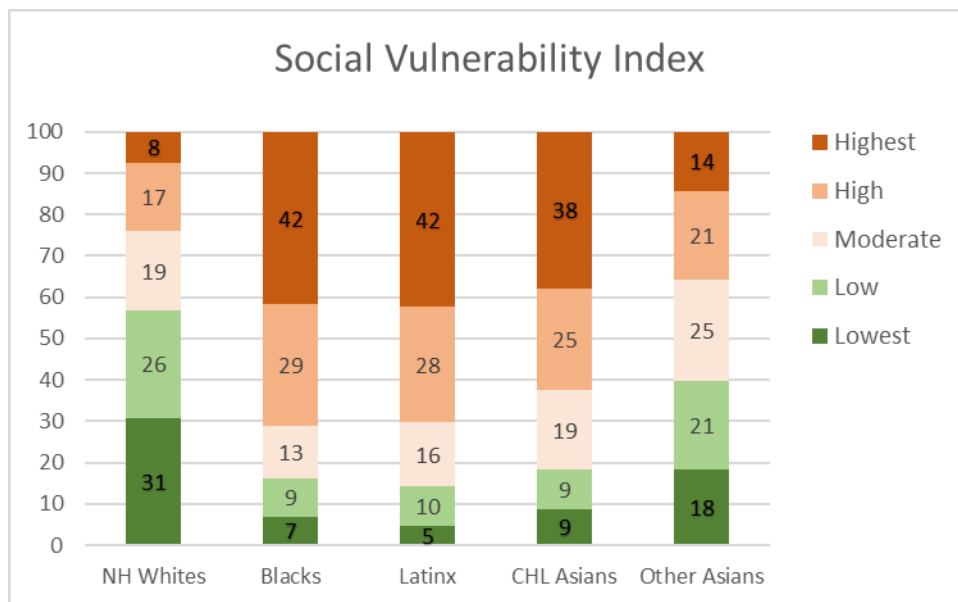
In **Figure 8**, we observe that in the Built-Environment Risk indicator, Black, Latinx, and CHL Asian populations are heavily concentrated in neighborhoods designated as either high or highest levels of vulnerability (53 percent, 55 percent, 63 percent, respectively). In contrast, about one-third (32 percent) of the county’s NH White population reside in high or highest vulnerability neighborhoods as it relates to the built environment, while almost half (49 percent) reside in neighborhoods with the lowest level of vulnerability.



**Figure 8.** Ethnoracial Distribution by Neighborhood Built Environment Vulnerability



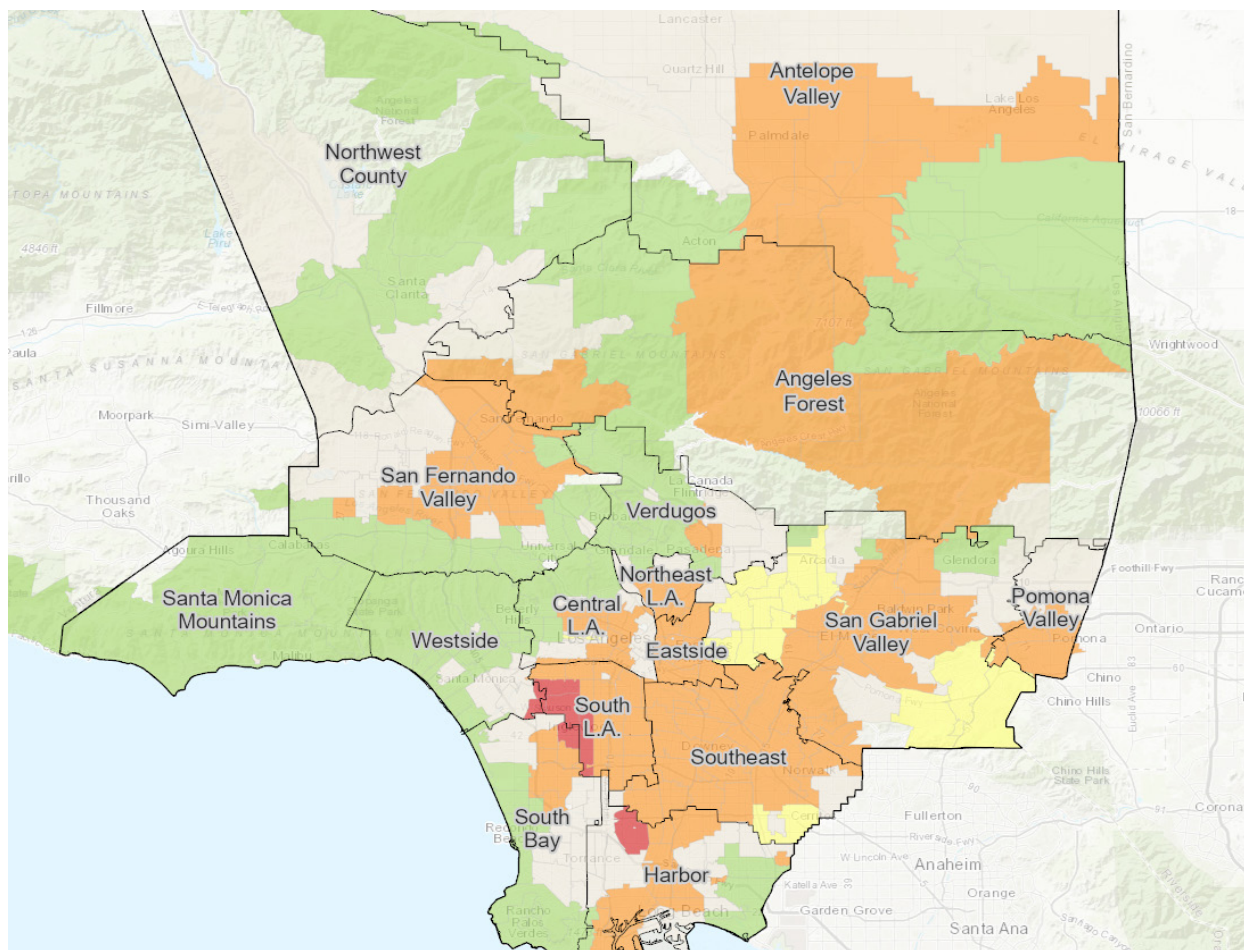
Lastly, **Figure 9** displays the five ethnoracial groups distribution by the neighborhoods' SVI. This process is partly tautological because the SVI includes the share of minority population; nonetheless, the graph does demonstrate a disproportionate distribution of social vulnerability across different racial and ethnic communities. The Black, Hispanic, and CHL Asian populations reside in neighborhoods with the highest level of social vulnerability. About 42 percent of the Black population resides in neighborhoods with the highest vulnerability, while only 7 percent reside in neighborhoods with the lowest vulnerability. Similarly, about 42 percent of the Latinx population resides in neighborhoods with the highest vulnerability, while only 5 percent reside in neighborhoods with the lowest vulnerability. Likewise, about 38 percent of the CHL Asian population reside in neighborhoods with the highest vulnerability, while only 9 percent reside in neighborhoods with the lowest vulnerability. Again, the NH White population resides mainly in neighborhoods with the lowest level of vulnerability (31 percent) as measured by the SVI, while only a small share of their population (8 percent) resides in neighborhoods with the highest level of vulnerability.



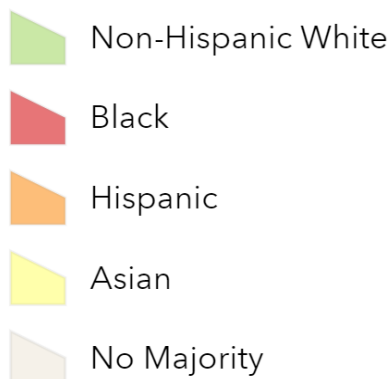
**Figure 9.** Ethnoracial Distribution by Neighborhood Social Vulnerability Index

## Vulnerability Levels by Racial Majority Group

We further analyzed the four indicators of COVID-19 vulnerability by categorizing ZCTA's into racial majorities and comparing their average vulnerability scores. Ethnoracial majority was assigned based on the racial and ethnic composition of each ZCTA. For instance, if a group makes up 50 percent or more of the population in the ZCTA then that group is assigned as being the majority ethnoracial group for that ZCTA. ZCTAs with no majority of one ethnoracial group are designated as "No Majority."<sup>4</sup> Figure 10 displays ZCTAs by their majority ethnoracial desi

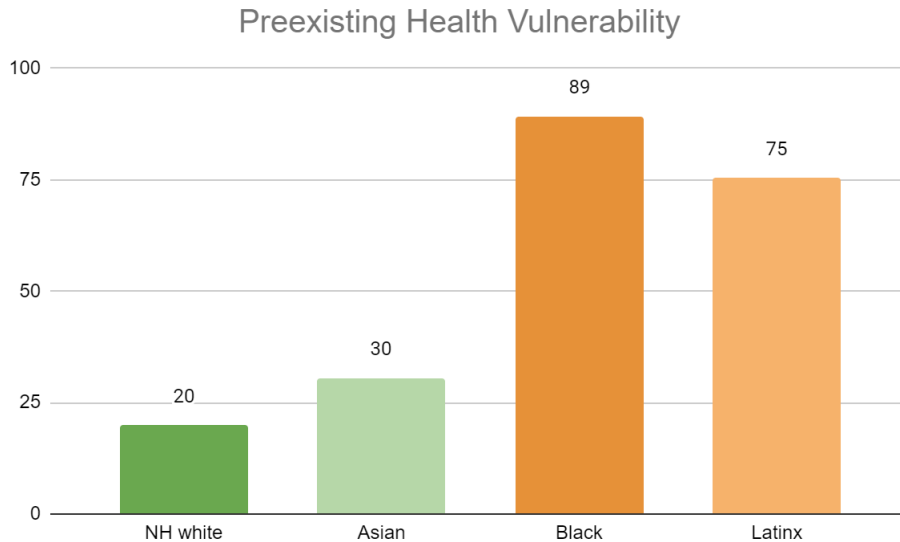


**Figure 10.** ZCTAs by Majority Ethnoracial Group

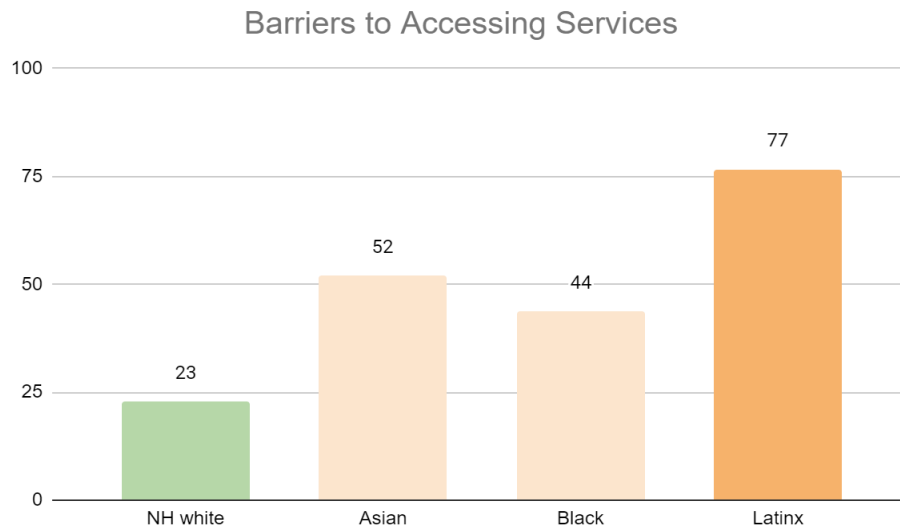


<sup>4</sup> Of the 284 ZCTAs utilized in this analysis, 84 are majority NH White, 6 majority Black, 101 majority Latinx, 15 majority Asian, and 78 are "No Majority" ZCTAs.

We weighted each ZCTA by the area's total population and then calculated the average vulnerability score for each neighborhood type. The higher the average value the more vulnerability. Across all four indicators, we see changes in the racial patterns of vulnerability. In Figure 11, majority Black and Latinx neighborhoods tend to have the highest preexisting health vulnerability compared to other racial groups. In contrast, majority NH White neighborhoods tend to have the lowest level vulnerability. Additionally, as illustrated in Figure 12, neighborhoods with a majority Latinx population have the highest level of barriers to accessing services, followed by neighborhoods with majority Asian populations. This is not surprising given that these two groups are largely immigrant populations and many with English language barriers. In contrast, majority NH White neighborhoods have the lowest level of barriers to accessing services.

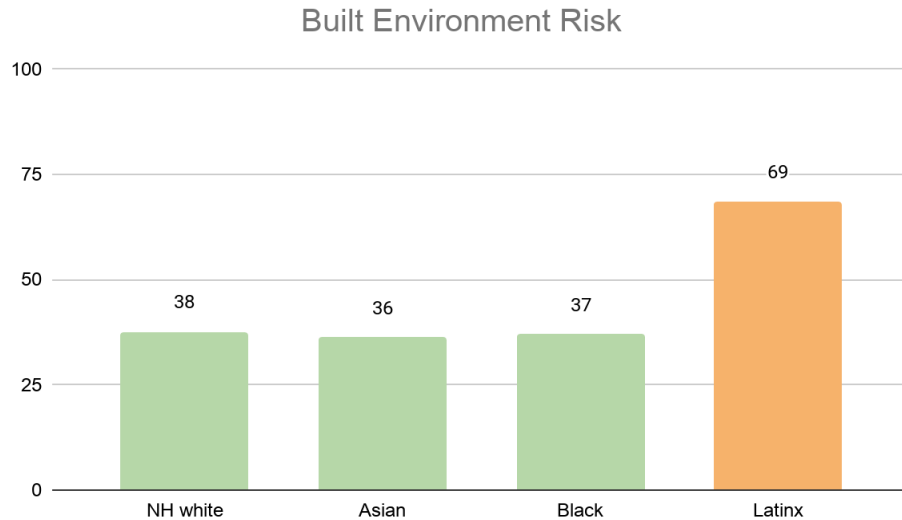


**Figure 11.** Average Preexisting Health Vulnerability by Neighborhood's Racial Majority



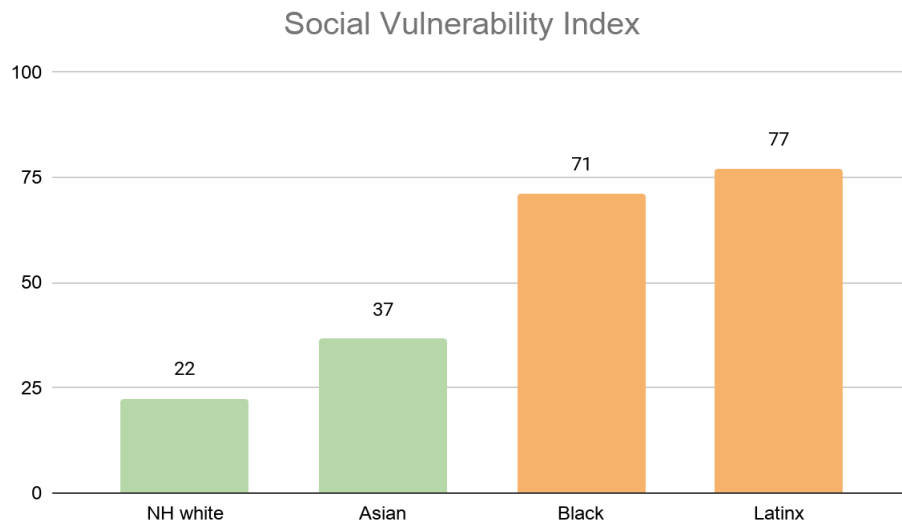
**Figure 12.** Average Barriers to Accessing Services by Neighborhood's Racial Majority

**Figure 13**, illustrates the distribution of built environment risk across racial groups. Majority Latinx neighborhoods tend to be more vulnerable to built environment risk compared to other groups. Interestingly enough, NH White, Asian, and Black majority neighborhoods are all within the low vulnerability range. Neighborhoods with a majority Black population have the lowest level of built environment risk. One probable explanation could be due to the location of these majority neighborhoods for Asians and Blacks, which in Los Angeles County, tend to be in less dense neighborhoods (out of the central city) with more single-family homes as in the case of Inglewood for African Americans and San Gabriel Valley for Asians



**Figure 13.** Average Built Environment Risk Index by Neighborhood’s Racial Majority

Finally, the SVI, illustrated in **Figure 14**, shows that neighborhoods with majority Latinx and majority Black populations have the highest level of social vulnerability, while majority non-White neighborhoods have the lowest vulnerability.



**Figure 14.** Average Social Vulnerability Index by Neighborhood’s Racial Majority

# Part 3: Conclusion

This project developed four key indicators capturing different dimensions of COVID-19-related vulnerabilities. These indicators address multiple factors associated with increased risk of COVID-19 infections and mortality: preexisting health conditions, barriers to accessing services, built environment risk, and social vulnerability. We map each of the indicators to illustrate the different levels of vulnerability across Los Angeles County.

These four indicators share commonalities but are not identical. The analyses presented in the previous sections review similarities in terms of the most vulnerable neighborhoods. For instance, the most vulnerable neighborhoods across all indicators tend to be concentrated in areas within South Los Angeles and the San Fernando Valley. These places are marked by low income racial communities, while neighborhoods that showed up as being the least vulnerable are along the coastal regions of the county marked by less density, higher incomes and higher proportions of non-Hispanic Whites. In addition to mapping the four indicators, we presented a quantitative analysis of the socioeconomic and demographic profiles of the most and least vulnerable neighborhoods. Consistently across all indicators, the highest vulnerable are disproportionately people of color and low income, relative to communities at the other end of the spectrum.

At the same time, there are variations across dimensions. The four indicators have low to high correlations ( $r$  values range from 0.38 for built environment risk and preexisting health to 0.89 for SVI and barriers to accessing services), indicating that each indicator is partially capturing unique elements of vulnerability. (See Appendix C for full correlation table.) In other words, systemic inequality of vulnerability is complex, requiring multiple indices to fully understand the systematic pattern. This also means that addressing one vulnerability along one dimension does not automatically translate into addressing risks along the other dimensions. (For example, alternating colors and shades of colors in the preceding maps shows that places in the northeastern section of Los Angeles County are not highly vulnerable to one type of risk but are highly vulnerable to another type of risk.)

The usefulness of the indicators varies with the types of policies and plans being developed to assist those most at risk from COVID-19's direct and indirect impacts. For example, health practitioners would be more focused on preexisting health conditions, and urban planners would be more focused on the built environment. Resources to prevent new infections and associated morbidities should be provided to neighborhoods in the areas identified and prioritized by relevant indicators. We are providing information that combines medical needs with the social determinants of health outcomes.

We believe that the local data can enable public health agencies to better target scarce funds to improve the effectiveness of testing and monitoring of the disease. Local data can provide crucial knowledge and insights to social service providers, emergency agencies, and volunteers on where to direct their time and resources, such as where to set up distribution sites for food and other necessities. The ability to integrate these neighborhood factors to COVID-19 prevention plans is essential in determining where to secure hotel rooms for quarantine and social isolation. These informed and evidence-based actions are critical elements in slowing the spread of the disease. The data will continue to be valuable over the foreseeable future. Knowing where and who needs assistance allows responsible agencies to plan for the next wave of COVID-19 and for future pandemics to assist people dealing with housing, mental health, suicide, and substance abuse issues.

While the information is useful to more efficiently allocate existing resources, we believe that more resources are needed. It is vital that state and local officials increase or shift funding to provide appropriate health care services and coverage for neighborhoods with high preexisting health and social vulnerabilities. It is also necessary that state and local officials provide significantly more preventive resources and adequate health information to communities with high barriers to accessing services. Furthermore, state officials and local policy makers should focus their efforts to physically transform neighborhoods with high built-environment risk and social vulnerabilities, to make these spaces safe for social distancing and quarantine efforts. Our data clearly show that communities with high built environment risk contain small living quarters, have dense conditions, and lack parks and greenery. We need community development that makes the neighborhood into healthy places.

It is our hope that our neighborhood and medical vulnerability indicators will be employed by local agencies to reduce and potentially halt new infections in areas of particularly high risk. This can be part of 'local efforts' to move the county into conditions that can facilitate greater opening up of the county and its cities in order to support economic recovery. Further, it is our hope that these results can help guide Los Angeles and the state of California to move towards a science-base and equitable opening to help the most vulnerable neighborhoods.

# Appendix A: Related UCLA Center for Neighborhood Knowledge and UCLA BRITE Center Briefs on COVID-19

Ong, Paul M., Mar, Don, Larson, Tom, and Peoples, James H., Jr. September 9, 2020. "Inequality and COVID-19 Job Displacement." UCLA Center for Neighborhood Knowledge and Ong & Associates.

<https://drive.google.com/file/d/1JE0kWRggo8zvYOdP5r1bsviDimyLPxg7/view?usp=sharing>

Wong, Karna, Ong, Paul M., and González, Silvia R. August 27, 2020. "Systemic Racial Inequality and the COVID-19 Homeowner Crisis." UCLA Center for Neighborhood Knowledge, UCLA Ziman Center for Real Estate, and Ong & Associates.

[https://www.anderson.ucla.edu/documents/areas/ctr/ziman/Systemic-Racial-Inequality-and-COVID-19-Homeowner-Crisis\\_Wong\\_Ong\\_González.pdf](https://www.anderson.ucla.edu/documents/areas/ctr/ziman/Systemic-Racial-Inequality-and-COVID-19-Homeowner-Crisis_Wong_Ong_González.pdf)

Ong, Paul M. August 7, 2020. "Systemic Racial Inequality and the COVID-19 Renter Crisis." Technical Report. UCLA Institute on Inequality and Democracy, Ong & Associates, and UCLA Center for Neighborhood Knowledge.

<https://drive.google.com/file/d/1jSRYH2EEemWeP12Db0QKDjjW8sD3L45u6/view>

Ong, Paul M., and Ong, Jonathan. August 18, 2020. "Persistent Shortfalls and Racial/Class Disparities." Technical Report. UCLA Asian American Studies Center, UCLA Center for Neighborhood Knowledge, and Ong & Associates.

[http://www.aasc.ucla.edu/resources/policyreports/COVID19\\_CensusUpdate\\_CNK\\_AASC.pdf](http://www.aasc.ucla.edu/resources/policyreports/COVID19_CensusUpdate_CNK_AASC.pdf)

Mar, Donald, and Ong, Paul M. July 20, 2020. "COVID-19's Employment Disruption to Asian Americans." Technical Report. Ong & Associates, UCLA Center for Neighborhood Knowledge, and UCLA Asian American Studies Center.

[http://www.aasc.ucla.edu/resources/policyreports/COVID19\\_Employment\\_CNK-AASC\\_072020.pdf](http://www.aasc.ucla.edu/resources/policyreports/COVID19_Employment_CNK-AASC_072020.pdf)

McKeever, James, Ong, Jonathan, and Ong, Paul M. June 25, 2020. "Economic Impact of the COVID-19, Pandemic in Riverside County, Unemployment Insurance Coverage and Regional Inequality." Economy White Paper Series. UC Riverside Center for Economic Forecasting and Development and UCLA Center for Neighborhood Knowledge.

[https://knowledge.luskin.ucla.edu/wp-content/uploads/2020/06/UCR-Economy-White-Paper\\_COVID\\_UL.pdf](https://knowledge.luskin.ucla.edu/wp-content/uploads/2020/06/UCR-Economy-White-Paper_COVID_UL.pdf)

Ong, Paul M., and Ong, Jonathan. June 11, 2020. "Persistent Shortfall and Racial/Class Disparities, 2020 Census Self-Response Rate." UCLA Luskin School of Public Affairs and UCLA Center for Neighborhood Knowledge.

[https://knowledge.luskin.ucla.edu/wp-content/uploads/2020/06/Census\\_2020\\_RR\\_States\\_6.14.2020.pdf](https://knowledge.luskin.ucla.edu/wp-content/uploads/2020/06/Census_2020_RR_States_6.14.2020.pdf)

Ong, Paul M., González, Silvia R., Pech, Chhandara, Diaz, Sonja, Ong, Jonathan, Ong, Elena, and Aguilar, Julie. June 11, 2020. "Jobless during a Global Pandemic: The Disparate Impact of COVID-19 on Workers of Color in the World's Fifth Largest Economy." Technical Report. UCLA Latino Policy & Politics Initiative and Center for Neighborhood Knowledge.

<https://knowledge.luskin.ucla.edu/wp-content/uploads/2020/07/LPPI-CNK-Unemployment-Report-res-1.pdf>

Ong, Paul M., González, Silvia R., Pech, Chhandara, Diaz, Sonja, Ong, Jonathan, Ong, Elena, and Aguilar, Julie. May 19, 2020. "Struggling to Stay Home: How COVID-19 Shelter in Place Policies Affect Los Angeles County's Black and Latino Neighborhoods." Technical Report. UCLA Latino Policy & Politics Initiative and Center for Neighborhood Knowledge.

<https://latino.ucla.edu/wp-content/uploads/2020/05/LPPI-CNK-3-Shelter-in-Place-res-1.pdf>

Akee, Randall, Ong, Paul M., and Rodriguez-Lonebear, Desi. "US Census Response Rates on American Indian Reservations in the 2020 Census and in the 2010 Census." Technical Report. UCLA Center for Neighborhood Knowledge and American Indian Studies Center.

<https://knowledge.luskin.ucla.edu/wp-content/uploads/2020/05/US-Census-Response-Rates-on-American-Indian-Reservations-051520.pdf>

Mar, Don, and Ong, Jonathan. “At-Risk Workers of Covid-19 by Neighborhood in the San Francisco Bay Area.” Technical Report. UCLA Center for Neighborhood Knowledge.

<https://knowledge.luskin.ucla.edu/wp-content/uploads/2020/05/Covid-19SFBayArea.pdf>

Ong, Paul M., Ong, Elena, and Ong, Jonathan. May 7 and May 12, 2020. “Los Angeles County 2020 Census Response Rate Falling behind 11 Percentage Points and a Third of a Million Lower Than 2010.” Technical Report. UCLA Center for Neighborhood Knowledge.

[https://knowledge.luskin.ucla.edu/wp-content/uploads/2020/05/Census\\_2020\\_RR\\_LACo\\_final.pdf](https://knowledge.luskin.ucla.edu/wp-content/uploads/2020/05/Census_2020_RR_LACo_final.pdf)

Ong, Paul M., Pech, Chhandara, Ong, Elena, González, Silvia R., and Ong, Jonathan. “Economic Impacts of the COVID-19 Crisis in Los Angeles: Identifying Renter-Vulnerable Neighborhoods.” Technical Report. UCLA Center for Neighborhood Knowledge and UCLA Ziman Center for Real Estate.

[https://www.anderson.ucla.edu/documents/areas/ctr/ziman/UCLA-CNK\\_OngAssoc\\_LA\\_Renter\\_Vulnerability\\_4-30-20.pdf](https://www.anderson.ucla.edu/documents/areas/ctr/ziman/UCLA-CNK_OngAssoc_LA_Renter_Vulnerability_4-30-20.pdf)

Parks, Virginia, Houston, Douglas, Ong, Paul M., and Kim, Youjin B. April 24, 2020. “Economic Impacts of the COVID-19 Crisis in Orange County, California: Neighborhood Gaps in Unemployment-Insurance Coverage.” Technical Report. UCLA Center for Neighborhood Knowledge and UC Irvine Urban Planning.

[https://socialecology.uci.edu/sites/default/files/users/mkcruz/oc\\_economic\\_impacts\\_of\\_covid\\_apr24\\_2020-2.pdf](https://socialecology.uci.edu/sites/default/files/users/mkcruz/oc_economic_impacts_of_covid_apr24_2020-2.pdf)

Ong, Paul M., and Sonja Diaz. April 23, 2020. “Supporting Latino and Asian Communities During COVID-19.” Opinion piece for NBC News.

<https://latino.ucla.edu/wp-content/uploads/2020/04/LPPI-CNK-Brief-2-with-added-notes-res.pdf>

Ong, Paul M., Ong, Jonathan, Ong, Elena, and Carrasquillo, Andrés. April 22, 2020. “Neighborhood Inequality in Shelter-in-Place Burden: Impacts of COVID-19 in Los Angeles.” Technical Report. UCLA Center for Neighborhood Knowledge and UCLA Institute on Inequality and Democracy.

<https://ucla.app.box.com/s/ihyb5sfqbgjrkp8jvmwiwv7bsb0u83c4>

Ong, Paul M., Pech, Chhandara, González, Silvia R., Diaz, Sonja, Ong, Jonathan, and Ong, Elena. April 14, 2020. “Left behind during a Global Pandemic: An Analysis of Los Angeles County Neighborhoods at Risk of Not Receiving Individual Stimulus Rebates under the CARES Act.” Technical Report. UCLA Latino Policy & Politics Initiative and Center for Neighborhood Knowledge.

<https://latino.ucla.edu/wp-content/uploads/2020/04/LPPI-CNK-Brief-2-with-added-notes-res.pdf>

Ong, Paul M., Pech, Chhandara, González, Silvia R., and Vasquez-Noriega, Carla. April 1, 2020. “Implications of COVID-19 on at Risk Workers by Neighborhood in Los Angeles.” Technical Report. UCLA Latino Policy & Politics Initiative and Center for Neighborhood Knowledge. <https://latino.ucla.edu/wp-content/uploads/2020/04/LPPI-Implications-from-COVID-19-res2.pdf>

Inequality and COVID-19 Food Insecurity Tom Larson, Paul M. Ong, Don Mar, and James H. Peoples Jr. November 11, 2020. <https://drive.google.com/file/d/1-fZfjx08aR7b8iobhmxlyllqT8KmiKb/view>

COVID-19 Impacts on Minority Businesses and Systemic Inequality Paul Ong, Andre Comandom, Nicholas DiRago, and Lauren Harper. October, 30, 2020. <https://drive.google.com/file/d/1gOYT6c-McpX3NoknUEF-fKHg4gCkvzd5o/view>

COVID-19 and the Digital Divide in Virtual Learning James H. Peoples Jr., Paul M. Ong, Don Mar, and Tom Larson. October 28, 2020. [https://drive.google.com/file/d/13oCZ4InfmYeYNPnEiAfC8SY\\_8G9WINLX/view?usp=sharing](https://drive.google.com/file/d/13oCZ4InfmYeYNPnEiAfC8SY_8G9WINLX/view?usp=sharing)

Mays, V.M. (2020). Interview About Covid-19 Vaccine <https://www.popsci.com/story/health/covid-19-black-doctor-taskforce/>



Mays, V.M. (2020). COVID-19 Risk And The Black Population: What Are We Overlooking?<https://curiosityshots.com/covid-19-risk-and-the-black-population-what-are-we-overlooking/>

Mays, V.M. (2020). Black Lives Matter--Racial Disparities Highlighted by Covid-19 <https://knowyourvax.com/2020/06/30/black-lives-matter-racial-disparities-highlighted-by-covid-19/>

Mays, V.M. (2020) California African Americans Skip Taking the Vaccine Study <https://www.newsbreak.com/news/1574144663554/qa-for-black-men-wearing-a-mask-may-be-a-health-risk-greater-than-covid-19-ucla-psychology-professor-vickie-mays-on-how-better-data-could-help-prevent-the-virus-spread>  
<https://ktla.com/news/california/many-californians-particularly-black-residents-would-skip-taking-covid-19-vaccine-today-survey-finds/>

Mays, V.M. (2020). Covid-19: The Psychology of Social Distancing. Contagion Live: Infectious Disease <https://www.contagionlive.com/view/covid-19-the-psychology-of-social-distancing>  
<https://www.facebook.com/ContagionLive/photos/a.572009339621645/1594109627411606/?type=3>

Mays, V.M. (2020). For Black Men, Wearing a Mask May Be A Health Risk Greater Than COVID-19. <https://newsroom.ucla.edu/releases/interview-vickie-mays-black-communities-covid19>  
<https://newsabode.com/tag/ucla-professor-vickie-mays/>  
<https://www.newsbreak.com/news/1574144663554/qa-for-black-men-wearing-a-mask-may-be-a-health-risk-greater-than-covid-19-ucla-psychology-professor-vickie-mays-on-how-better-data-could-help-prevent-the-virus-spread>  
<https://www.statnews.com/2020/06/03/which-deamany-black-men-fear-wearing-mask-more-than-coronavirus/>  
<https://phys.org/news/2020-05-qa-black-men-mask-health.html>  
<https://www.beckershospitalreview.com/public-health/for-many-black-men-fear-of-wearing-a-mask-outweighs-covid-19-risks.html>  
<https://minoritynurse.com/tag/covid-19/>  
[https://www.ucc.org/daily\\_covid\\_19\\_brief\\_issue\\_58](https://www.ucc.org/daily_covid_19_brief_issue_58)  
<https://www.medpagetoday.com/nursing/nursing/88197>

Mays, V.M. (2020). Social Determinants of Covid-19 <https://www.diabetestechology.org/cds/bios/2020/mays.html> (Proceedings in press).

Williams, R, Mays, V.M. et al. (2020). The Battle to Save Black Lives <https://abc7.com/covid-19-black-lives-minorities-town-hall/6138488/>  
<https://abc11.com/covid-19-black-lives-minorities-town-hall/6138488/>

Mays, V.M. (2020). Covid-19, Black Lives, and the need for data <https://labn.org/2020/05/23/qampa-with-ucla-psychologist-vickie-mays-on-covid-19-black-lives-and-the-need-for-data/>

Mays, V.M. (2020). Will Americans Actually Comply With a Long-Term Lockdown? <https://www.thedailybeast.com/will-americans-actually-comply-with-a-long-term-coronavirus-lockdown>

Mays, V.M. (2020). A helping ear, and social stability: Inside China's mental-health response to a deadly virus <https://www.theglobeandmail.com/world/article-a-helping-ear-and-social-stability-inside-chinas-mental-health/>

## Appendix B: Neighborhood Sociodemographic Characteristics by Levels of Medical Vulnerability

We also examine how each of the indicators correlate with neighborhood sociodemographic characteristics. The focus is on whether burdens are higher in disadvantaged communities (lower income, predominantly communities of color, and neighborhoods with a relatively large number of individuals with language barriers). It's important to note that some of these sociodemographic variables analyzed are also embedded in some of the indices as underlying variables. In each of the tables in the following text, neighborhoods are ranked from lowest to highest quintiles for each of the vulnerability indicators. The reported values represent the average (mean) of each variable for all the ZCTAs in each neighborhood group (quintiles).

The results in **Table A-1** illustrate the distribution of race, language barriers, and income across neighborhoods with different levels of preexisting health vulnerability. Neighborhoods with the highest vulnerability disproportionately have a higher percentage of Latinx residents while neighborhoods in the lowest vulnerability have a higher percentage of non-Hispanic White individuals. Additionally, neighborhoods with higher levels of vulnerability also disproportionately have more residents with language barriers (speaks English “less than well”) and have lower per capita income. For example, on average, the highest vulnerable neighborhoods have four times more residents with English language barrier than the lowest vulnerable neighborhoods. Additionally, the average per capita income in the highest vulnerable neighborhood is nearly 3.5 times less than the lowest vulnerable neighborhoods.

	Lowest	Low	Moderate	High	Highest
Distribution by Race					
%NH White	60%	42%	31%	19%	7%
%Black	5%	6%	5%	6% 33	19%
%Latinx	15%	25%	41%	61%	68%
%Asian	16%	24%	20%	12%	4%
% Speaks English “less than well”	4%	8%	12%	16%	16%
Per Capita Income	\$67.4k	\$40.6k	\$31.9k	\$23.9k	\$19.6k
N (ZCTAs)	51	52	52	53	52

**Table A-1.** Neighborhood Sociodemographic Characteristics by Preexisting Health Vulnerability

Similar patterns are found in **Tables A-2, A-3, and A-4**, with the neighborhoods in the highest level of vulnerability for each of the indicators consisting of predominately Latinx and Black residents compared to neighborhoods in the lowest level of vulnerability. In contrast, the lowest vulnerable neighborhoods disproportionately have more non-Hispanic White residents. Furthermore, higher vulnerable neighborhoods across all indicators have a higher share of residents with English language barriers and lower income residents as opposed to the lower vulnerable neighborhoods.

	Lowest	Low	Moderate	High	Highest
Distribution by Race					
%NH White	60%	48%	31%	21%	8%
%Black	4%	5%	7%	11%	13%
%Latinx	15%	26%	40%	52%	70%
%Asian	16%	18%	19%	14%	9%
% Speaks English “less than well”	3%	6%	10%	15%	20%
Per Capita Income	\$63.9k	\$49.0	\$33.3k	\$26.5	\$18.6
N (ZCTAs)	55	56	55	56	55

**Table A-2.** Neighborhood Sociodemographic Characteristics by Level of Social Vulnerability

..

	Lowest	Low	Moderate	High	Highest
Distribution by Race					
%NH White	62%	47%	29%	20%	10%
%Black	5%	7%	9%	9%	9%
%Latinx	17%	24%	41%	52%	70%
%Asian	12%	18%	18%	18%	10%
% Speaks English “less than well”	2%	5%	9%	15%	23%
Per Capita Income	\$66.0k	\$48.4k	\$31.7k	\$26.3k	\$19.0k
N (ZCTAs)	55	56	55	56	55

**Table A-3.** Neighborhood Sociodemographic Characteristics by Level of Barriers to Accessing Services

	Lowest	Low	Moderate	High	Highest
Distribution by Race					
%NH White	49%	40%	30%	25%	23%
%Black	8%	6%	7%	9%	9%
%Latinx	23%	37%	41%	50%	51%
%Asian	16%	14%	19%	13%	14%
% Speaks English “less than well”	4%	7%	11%	14%	18%
Per Capita Income	\$51.4k	\$43.6k	\$36.3k	\$31.5k	\$28.5k
N (ZCTAs)	55	56	55	56	55

**Table A-4.** Neighborhood Sociodemographic Characteristics by Built Environment Vulnerability

## Appendix C: Correlation of Vulnerability Indicators

Prob >  r  under H0: Rho=0				
Number of Observations				
	Preexisting Condition	Social Vulnerability Index	Barriers to Accessing Services	Built Environment Risk
Preexisting Condition	1	0.81828	0.73217	0.38435
		<.0001	<.0001	<.0001
	260	259	259	259
Social Vulnerability Index	0.81828	1	0.89218	0.58566
	<.0001		<.0001	<.0001
	259	277	277	277
Barriers to Accessing Services	0.73217	0.89218	1	0.73708
	<.0001	<.0001		<.0001
	259	277	277	277
Built Environment Risk	0.38435	0.58566	0.73708	1
	<.0001	<.0001	<.0001	
	259	277	277	277

## Appendix D: Access to the Data Portal

To access the virtual maps and the data portal for this project, visit the following links

<https://www.britecenter.org> or <https://www.knowledge.luskin.ucla.edu/covid-19-medical-vulnerability/>

All data in this portal is made available for use but with no intent to identify individuals, to stigmatize neighborhoods or populations because of the excessive risk of infection to Covid-19. Risk of Covid-19 infection is seen as not just a matter of pre-existing health conditions but inequities in risk and risk factors. We hope that this data will be used in the spirit of addressing these inequities through actionable activities.

# Endnotes

- 1 Healthy People 2030 <https://health.gov/healthypeople> at accessed on 10/26/2020 12:43 PM
- 2 Secretary's Advisory Committee, Report #9 Recommendations for Building a Data Partnership Infrastructure for Healthy People 2030. [https://www.healthypeople.gov/sites/default/files/Report%209\\_Data%20Partnerships\\_2019.12.2\\_508.pdf](https://www.healthypeople.gov/sites/default/files/Report%209_Data%20Partnerships_2019.12.2_508.pdf) accessed on 10/26/2020 12:48 PM
- 3 Tracking the coronavirus in Los Angeles County. (2020). Los Angeles Times. <https://www.latimes.com/projects/california-coronavirus-cases-tracking-outbreak/los-angeles-county/>. Accessed November 13, 2020.
- 4 Coronavirus ravages poorer L.A. communities while slowing in wealthier ones, data show. (2020). Los Angeles Times. <https://www.latimes.com/california/story/2020-05-28/coronavirus-surge-in-poor-l-a-county-neighborhoods-reveals-two-americas>. Accessed August 8, 2020.
- 5 Gross, C. P., Essien, U. R., Pasha, S., Gross, J. R., Wang, S. Y., & Nunez-Smith, M. (2020). Racial and Ethnic Disparities in Population-Level Covid-19 Mortality. *Journal of General Internal Medicine*, 1–3. Advance online publication. <https://doi.org/10.1007/s11606-020-06081-w>
- 6 DiMaggio, C., Klein, M., Berry, C., & Frangos, S. (2020). Blacks/African American Communities Are at Highest Risk of COVID-19: Spatial Modeling of New York City ZIP Code-Level Testing Results. *Annals of Epidemiology*, 51, 7–13. <https://doi.org/10.1016/j.annepidem.2020.08.012>
- 7 Wiemers, E. E., Abrahams, S., Al Fakhri, M., Hotz, V. J., Schoeni, R. F., & Seltzer, J. A. (2020). *Disparities in Vulnerability to Severe Complications from COVID-19 in the United States* (No. w27294). National Bureau of Economic Research.
- 8 Myers, L. C., Parodi, S. M., Escobar, G. J., & Liu, V. X. (2020). Characteristics of Hospitalized Adults with COVID-19 in an Integrated Health Care System in California. *JAMA*, 323(21), 2195–2198. <https://doi.org/10.1001/jama.2020.7202>
- 9 Hajifathalian, K., Kumar, S., Newberry, C., Shah, S., Fortune, B., Krisko, T., ... & Sharaiha, R. Z. (2020). Obesity Is Associated with Worse Outcomes in COVID-19: Analysis of Early Data From New York City. *Obesity (Silver Spring, Md.)*, 28(9), 1606–1612. <https://doi.org/10.1002/oby.22923>
- 10 Richardson, S., Hirsch, J. S., Narasimhan, M., Crawford, J. M., McGinn, T., Davidson, K. W., ... & Cookingham, J. (2020). Presenting Characteristics, Comorbidities, and Outcomes among 5,700 Patients Hospitalized with COVID-19 in the New York City Area. *JAMA*, 323(20), 2052–2059. <https://doi.org/10.1001/jama.2020.6775>
- 11 Kalligeros, M., Shehadeh, F., Mylona, E. K., Benitez, G., Beckwith, C. G., Chan, P. A., & Mylonakis, E. (2020). Association of Obesity with Disease Severity among Patients with COVID-19. *Obesity (Silver Spring, Md.)*, 28(7), 1200–1204. <https://doi.org/10.1002/oby.22859>
- 12 Argenziano, M. G., Bruce, S. L., Slater, C. L., Tiao, J. R., Baldwin, M. R., Barr, R. G., ... & Goyal, P. (2020). Characterization and Clinical Course of 1,000 Patients with Coronavirus Disease 2019 In New York: Retrospective Case Series. *BMJ (Clinical research ed.)*, 369, m1996. <https://doi.org/10.1136/bmj.m1996>
- 13 CDC COVID-19 Response Team (2020). Preliminary Estimates of the Prevalence of Selected Underlying Health Conditions among Patients with Coronavirus Disease 2019—United States, February 12–March 28, 2020. *Morbidity and Mortality Weekly Report* 69(13), 382.
- 14 Macias Gil, R., Marcelin, J. R., Zuniga-Blanco, B., Marquez, C., Mathew, T., & Piggott, D. A. (2020). COVID-19 Pandemic: Disparate Health Impact on the Hispanic/Latinx Population in the United States. *The Journal of Infectious Diseases*, 222(10), 1592–1595. <https://doi.org/10.1093/infdis/jiaa474>
- 15 Yancy, C. W. (2020). COVID-19 and African Americans. *JAMA*, 323(19), 1891–1892. <https://doi.org/10.1001/jama.2020.6548>
- 16 Kanter, G. P., Segal, A. G., & Groeneveld, P. W. (2020). Income Disparities in Access to Critical Care Services: Study Examines Disparities in Community Intensive Care Unit Beds by US Communities' Median Household Income. *Health Affairs* 39(8), 1362–67.

- 17 Fortuna, L. R., Tolou-Shams, M., Robles-Ramamurthy, B., & Porche, M. V. (2020). Inequity and the Disproportionate Impact of COVID-19 on Communities of Color in the United States: The Need for a Trauma-Informed Social Justice Response. *Psychological Trauma: Theory, Research, Practice, and Policy*, 12(5), 443–445. <https://doi.org/10.1037/tra0000889>
- 18 Azar, K. M., Shen, Z., Romanelli, R. J., Lockhart, S. H., Smits, K., Robinson, S., ... & Pressman, A. R. (2020). Disparities in Outcomes among COVID-19 Patients in a Large Health Care System In California: Study Examines Disparities in Access and Outcomes for COVID-19 Patients Who Are Members of Racial and Ethnic Minorities and Socioeconomically Disadvantaged Groups. *Health Affairs, (Project Hope)*, 39(7), 1253–1262. <https://doi.org/10.1377/hlthaff.2020.00598>
- 19 Macias Gil, R., Marcelin, J. R., Zuniga-Blanco, B., Marquez, C., Mathew, T., & Piggott, D. A. (2020). COVID-19 Pandemic: Disparate Health Impact on the Hispanic/Latinx Population in the United States. *The Journal of Infectious Diseases*, 222(10), 1592–1595. <https://doi.org/10.1093/infdis/jiaa474>
- 20 Tai, D. B. G., Shah, A., Doubeni, C. A., Sia, I. G., & Wieland, M. L. (2020). The Disproportionate Impact of COVID-19 on Racial and Ethnic Minorities in the United States. *Clinical Infectious Diseases*, ciaa815. Advance online publication. <https://doi.org/10.1093/cid/ciaa815>
- 21 Davis, J. B. (2015). Stratification Economics and Identity Economics. *Cambridge Journal of Economics* 39(5), 1215–29.
- 22 Ong, P. M., & González, S. R. (2019). *Uneven Urbanscape: Spatial Structures and Ethnoracial Inequality*. Cambridge University Press.
- 23 Yancy, C. W. (2020)..
- 24 van Dorn, A., Cooney, R. E., & Sabin, M. L. (2020). COVID-19 Exacerbating Inequalities in the US. *Lancet* 395(10232), 1243.
- 25 Fontanet, A., & Cauchemez, S. (2020). COVID-19 Herd Immunity: Where Are We? *Nature Reviews Immunology*, 1–2.
- 26 Kwok, K. O., Lai, F., Wei, W. I., Wong, S. Y. S., & Tang, J. W. (2020). Herd Immunity—Estimating the Level Required to Halt the COVID-19 Epidemics in Affected Countries. *Journal of Infection* 80(6), e32–e33.
- 27 CDC COVID-19 Response Team (2020).
- 28 Patel, J. A., Nielsen, F. B. H., Badiani, A. A., Assi, S., Unadkat, V. A., Patel, B., ... & Wardle, H. (2020). Poverty, Inequality and COVID-19: The Forgotten Vulnerable. *Public Health* 183, 110.
- 29 Centers for Disease Control and Prevention/Agency for Toxic Substances and Disease Registry/Geospatial Research, Analysis, and Services Program. Social Vulnerability Index 2018 Documentation. [https://svi.cdc.gov/Documents/Data/2018\\_SVI\\_Data/SVI2018Documentation-508.pdf](https://svi.cdc.gov/Documents/Data/2018_SVI_Data/SVI2018Documentation-508.pdf). Accessed August 10, 2020.
- 30 U.S. Census Bureau (2017). ZIP Code Tabulation Areas (ZCTAs). <https://www.census.gov/programs-surveys/geography/guidance/geo-areas/zctas.html>. Accessed August 10, 2020.
- 31 AskCHIS Neighborhood Edition. <https://askchisne.ucla.edu/ask/layouts/ne/dashboard.aspx>. Accessed September 30, 2020.
- 32 “About the American Community Survey.” <https://www.census.gov/programs-survey/acs>. U.S. Census Bureau. Accessed September 30, 2020.
- 33 Parks for California. <https://www.parksforcalifornia.org/methods>. Accessed September 30, 2020.
- 34 Myers, L. C., et al. (2020).
- 35 Richardson, S., et al. (2020).
- 36 Argenziano, M. G., et al. (2020).
- 37 Hajifathalian, et al. (2020).
- 38 Richardson, S., et al. (2020).
- 39 Kalligeros, M., et al. (2020).
- 40 Argenziano, M. G., et al. (2020).
- 41 Myers, L. C., et al. (2020).
- 42 Richardson, S., et al. (2020).
- 43 Argenziano, M. G., et al. (2020).

- 44 Kavour, A. R. (2020). COVID-19 in People with Mental Illness: Challenges and Vulnerabilities. *Asian Journal of Psychiatry*, 51, 102051. <https://doi.org/10.1016/j.ajp.2020.102051>
- 45 AskCHIS NE Indicator Definitions. <https://healthpolicy.ucla.edu/Lists/AskCHIS%20NE%20Definitions/AllItems.aspx>. Accessed September 30, 2020.
- 46 Butler, M. J., & Barrientos, R. M. (2020). The Impact of Nutrition on COVID-19 Susceptibility and Long-Term Consequences. *Brain, Behavior, and Immunity*, 87, 53–54. <https://doi.org/10.1016/j.bbi.2020.04.040>
- 47 Botts, Jackie (2020, June 12). “California Divide: How We Analyzed the Link between COVID-19 and Crowded Housing in California,” CalMatters. <https://calmatters.org/projects/california-coronavirus-over-crowded-housing-data-analysis/>. Access August 12, 2020.
- 48 Los Angeles Times. “Mapping L.A. Boundaries API.” <https://boundaries.latimes.com/set/>. Accessed September 30, 2020.

## Photo Credit

Page 1, Gerd Altmann

Page 3, Ashkan Forouzani

Page 7, Thomas de Luzey

**UCLA**

**Center for Neighborhood  
Knowledge**

 KnowledgeLuskin

 UCLACenterforNeighborhoodKnowledge  
knowledge@luskin.ucla.edu

**BRITE CENTER**  
for Science, Research & Policy



 BRITECenter

 BRITECenter  
mays@ucla.edu