

UC Davis

UC Davis Previously Published Works

Title

Molecular Pathways: Targeting Protein Tyrosine Phosphatases in Cancer

Permalink

<https://escholarship.org/uc/item/3sc3d89g>

Journal

Clinical Cancer Research, 23(9)

ISSN

1078-0432

Authors

Bollu, Lakshmi Reddy
Mazumdar, Abhijit
Savage, Michelle I
et al.

Publication Date

2017-05-01

DOI

10.1158/1078-0432.ccr-16-0934

Peer reviewed



HHS Public Access

Author manuscript

Clin Cancer Res. Author manuscript; available in PMC 2017 November 01.

Published in final edited form as:

Clin Cancer Res. 2017 May 01; 23(9): 2136–2142. doi:10.1158/1078-0432.CCR-16-0934.

Molecular Pathways: Targeting Protein Tyrosine Phosphatases in Cancer

Lakshmi Reddy Bollu¹, Abhijit Mazumdar¹, Michelle I. Savage¹, and Powel H. Brown^{1,†}

¹Department of Clinical Cancer Prevention, The University of Texas M.D. Anderson Cancer Center, Houston, TX, USA

Abstract

The aberrant activation of oncogenic signaling pathways is a universal phenomenon in cancer and drives tumorigenesis and malignant transformation. This abnormal activation of signaling pathways in cancer is due to the altered expression of protein kinases and phosphatases. In response to extra cellular signals, protein kinases activate downstream signaling pathways through a series of protein phosphorylation events, ultimately producing a signal response. Protein tyrosine phosphatases (PTPs) are a family of enzymes that hydrolytically remove phosphate groups from proteins. Initially, PTPs were shown to act as tumor suppressor genes by terminating signal responses through the dephosphorylation of oncogenic kinases. More recently, it has become clear that several PTPs overexpressed in human cancers do not suppress tumor growth; instead, they positively regulate signaling pathways and promote tumor development and progression. In this review, we discuss both types of PTPs; those that have tumor suppressor activities, as well as those that act as oncogene. We also discuss the potential of PTP inhibitors for cancer therapy.

Keywords

protein tyrosine phosphatase (PTP); signal transduction; tumorigenesis; oncogenesis; PTP inhibitors

Background

Signal transduction is a complex process that transmits extracellular signals effectively through a cascade of events involving protein phosphorylation/dephosphorylation to produce a broad spectrum of signal responses. Protein phosphorylation, mediated by protein kinases, is a reversible post-translational modification that leads to the activation of signal transduction pathways involved in cell biological processes such as growth, proliferation, metabolism, differentiation and cell death. Uncontrolled activation of these pathways results in abnormal cell growth and proliferation leading to tumorigenesis. Dephosphorylation of proteins is mediated by protein tyrosine phosphatases that lead to the termination of

[†]Corresponding Author: Correspondence should be addressed to: Powel H. Brown, MD, PhD, Department of Clinical Cancer Prevention, The University of Texas M. D. Anderson Cancer Center, Houston, TX 77030. Phone: 713-792-4509, Fax: 713-794-4679, phbrown@mdanderson.org.

Conflict of interest: PH Brown is on the Scientific Advisory Board of Susan G. Komen for the Cure. All remaining authors declare no actual, potential, or perceived conflict of interest that would prejudice the impartiality of this article.

signaling pathways resulting in the inhibition of growth, proliferation and differentiation. In normal cells, the balance between the activation and termination of signaling pathways is accomplished through coordination between these protein kinases and phosphatases, which subsequently controls the amplitude and duration of a signal response. Loss or disruption of the balance of signal pathways is implicated in many human diseases. Dysregulation of this balance in human cancers is due to the hyper-activation of protein kinases or loss of protein tyrosine phosphatases, which dephosphorylate oncogenic protein kinases. Our recent study was the first report to extensively profile the expression of protein tyrosine phosphatases (PTPs) altered in human breast cancer samples (1). In this review, we will discuss tumor suppressor and oncogenic PTPs in cancer and discuss the current status of PTP inhibitors for cancer therapy.

Protein tyrosine phosphatases belong to a super family of enzymes that hydrolytically remove phosphate groups from proteins (2). Genome sequencing studies have shown that the human genome includes over 100 genes that encode protein tyrosine phosphatases (3,4). These enzymes function as holoenzymes, and share a consensus sequence (known as the HCX₅R motif, where X is any amino acid) in the active site of the enzyme (5). PTPs are classified based on their cellular localization, specificity and function. Cellular localization determines whether PTPs are grouped as receptor-type PTPs (PTPRs), which are localized to the plasma membrane, or non-receptor type PTPs (PTPNs), which are localized in the cytosol. Similarly, based on their specificity, PTPs are grouped into either tyrosine-specific phosphatases or dual-specific phosphatases (DSPs; which remove a phosphate group from tyrosine and/or serine/threonine residues).

PTPs are broadly classified into two groups based on their function; tumor suppressor PTPs or oncogenic PTPs. These tumor suppressor/oncogenic PTPs may belong to the other groups described above based on their cellular localization and specificity. The loss of tumor suppressor PTP function is often observed in cancer due to gene deletions, mutations and epigenetic modifications, such as promoter methylation. Loss of these tumor suppressor PTPs leads to the hyper-activation of signaling pathways and promotes tumorigenesis. Phosphatase and tensin homolog (PTEN) is the most frequently mutated phosphatase leading to hyper-activation of phosphatidylinositol-4,5-bisphosphate 3-kinase (PI3K) signaling pathway in many human cancers. Similar to PTEN, under expression of inositol polyphosphate-5-phosphatase J (INPP5J) is observed in triple-negative breast cancer and increases *in vivo* PI3K/Akt signaling and oncogene-induced transformation and tumor growth while reducing metastasis in mouse models (6).

Phosphatases as Tumor Suppressors

Several tumor suppressor PTPs have been identified whose loss has been shown to promote tumorigenesis, growth and metastasis in *in vitro* and *in vivo* models (Table 1). The first tumor suppressor phosphatase identified was PTEN, which was found to be frequently lost or mutated in many human cancers at high frequency (reviewed in (7,8)). PTEN dephosphorylates phosphoinositide substrates, which leads to inhibition of the AKT/PKB kinase cascade. Mutation or loss of PTEN results in unopposed activation of AKT, leading to growth promotion and tumor development. Laboratory studies have shown that deletion of

PTEN in normal cells promotes transformation of these cells (9), and that PTEN-deficient mice develop cancers (10).

More recently, other tumor suppressor phosphatases have been identified. These include DEP1 (also known as PTP receptor (PTPR) type J) that is frequently deleted or mutated in many human cancers, including breast and colon cancers (11) (Table 1). Loss of DEP1 is associated with increased growth factor receptor signaling and promotes cell growth (12). Recently, Mazumdar *et al.* identified dual specificity phosphatase 4 (DUSP4) as the most commonly underexpressed protein phosphatase in ER-negative breast cancers, and showed that ectopic expression of DUSP4 inhibits the growth and invasive properties of ER-negative breast cancer cells by dephosphorylating growth promoting signaling proteins (13). Similarly, loss of DUSP4 promotes the progression of intraepithelial neoplasms into invasive carcinoma in the pancreas (14). Moreover, loss of DUSP4 activates the activation of MAPK pathway, thereby promoting a stem cell-like phenotype and dampening the response to neo-adjuvant therapy in breast cancer (15,16).

Further studies identified loss of function mutations in 6 other PTPs in several human cancers (including colorectal, lung, breast, and gastric cancer): PTPRF, PTPRG, PTPRT, PTP non-receptor type (PTPN) 3 (PTPN3), PTPN13, and PTPN14 (17) (Table 1). Expression of the wild-type form of these mutated genes suppresses the growth of colon cancer cells (17).

Sun and colleagues identified PTPN12 as a tumor suppressor through a genetic screen, and showed that PTPN12 inactivation promotes the transformation of mammary epithelial cells through activation of the EGFR/HER2 signaling axis (18) (Table 1). In addition to gene deletions and inactivating mutations, loss of tumor suppressor PTP function may be due to loss of expression by epigenetic modifications in the promoter region. Analysis of the methylation patterns of CpG islands within the promoter regions has revealed that loss of PTPRF, PTPRM and PTPRK expression is due to the hyper-methylation in leukemia samples (19). Loss of PTPRK leads to hyper-activation of Akt signaling and promotes colon cancer progression (20). PTPRK also functions as a tumor suppressor by inhibiting the phosphorylation of epidermal growth factor receptor (EGFR) (21) and signal transducer and activator of transcription 3 (STAT3), and subsequently inhibiting tumor growth and invasive ability (22).

Hyper-methylation of promoter regions may suppress the expression of several other tumor suppressor phosphatases. Promoter methylation silences the expression of DUSP6 in primary pancreatic cancers (23), and PTPRO in hepatocellular carcinoma, lung cancer and leukemia (24) (Table 1). Overexpression of PTPRO induces anti-proliferative/transformational and apoptotic properties in leukemia and lung cancer cells (25), and PTPRO promoter methylation is a predictive marker for poor prognosis in HER2-positive breast cancer patients (26). Hyper-methylation of the SHP1 (PTPN6) promoter has been reported in leukemias/lymphomas, and treatment with a DNA methylation inhibitor reactivated SHP1 expression. Loss of SHP1 is associated with both clinical stage and pathogenesis of leukemia and lymphomas (27). DNA methylase I and STAT3 signaling mediate the silencing of SHP1 expression (28).

Phosphatases as Oncogenes

Recent studies have demonstrated that PTPs can also function as oncogenes to promote tumor development (Table 2). The expression of these oncogenic PTPs is aberrantly elevated in several human cancers which lead to tumor formation, growth, and metastasis, ultimately leading to diminished survival.

Src-homology 2 (SH2) domain containing protein tyrosine phosphatase 2 (SHP2), also known as PTPN11, was the first oncogenic PTP to be reported (Table 2). Despite sharing homologous structure and sequence with the tumor suppressor SHP1 (PTPN6), SHP2 functions as an oncogene, and its overexpression has been reported in human leukemia (29) and breast cancers (30). Activating SHP2 somatic mutations were initially identified in Noonan syndrome patients; however, these mutations are associated with childhood (but not adult) malignancies, such as chronic myelomonocytic leukemia (CMML, ~35%) and acute myeloid leukemia (AML) (31). SHP2 contains two SH2 domains, a PTP catalytic domain, and a C-terminal domain with tyrosine phosphorylation sites and a proline-rich domain that mediate protein-protein interactions. SHP2 is a non-receptor type PTP that, contrary to tumor suppressor PTPs, positively regulates cell signaling pathways activated by growth factors, cytokines and hormones, and promotes cell growth, motility, differentiation and survival. Upon EGF stimulation, EGFR activates SHP2 through growth factor receptor bound protein 2 (GRB2) associated binding protein 1 (GAB1) (32), and several studies have demonstrated that activated SHP2 promotes the Ras-ERK pathway by dephosphorylating RasGAP, a negative regulator of Ras activation (33). A recent study by Bunda *et al.* demonstrates that SHP2 activates the Ras signaling pathway in glioma by dephosphorylating Ras at tyrosine residue 32, which blocks Ras-Raf binding (34). In addition, SHP2 inhibition reduces the growth and invasiveness of breast cancer cells by inhibiting the Ras-ERK and PI3K-Akt signaling pathways (35).

PTP1B, a non-receptor type oncogenic PTP, also known as PTPN1, is involved in growth factor signaling (Table 2). The PTP1B gene is frequently amplified in ovarian, gastric, prostate and breast cancers, and correlates with poor prognosis (36-39). Knockdown of PTP1B reduces cell growth and induces both cell cycle arrest and apoptosis. Knockdown of PTP1B reduces migration and invasion by reversing the EMT process (40). PTP1B expression is elevated in HER2-transformed human breast epithelial cells and tumors. Knockout of PTP1B or use of a pharmacological PTP1B inhibitor delays the onset of mammary tumor formation and reduces lung metastasis in the MMTV Her2/NeuT mouse model by reducing Ras-MAPK and Akt signaling (41). Furthermore, tissue-specific overexpression of PTP1B alone induces mammary tumorigenesis (41). Consistently, the elevated PTP1B expression promotes cell proliferation and metastasis in non-small cell lung cancer (NSCLC) through activation of the Src/Ras/ERK and PI3K/Akt signaling pathways (42). However, in contrast to its oncogenic role, PTP1B can also function as a tumor suppressor, as genetic depletion of PTP1B has been shown to accelerate lymphomagenesis in p53-null mice (43).

PTP4A3, another oncogenic PTP (also known as PRL3), is highly expressed in breast, colon, gastric, and liver cancers, and has been shown to play an important role in cell

proliferation and metastasis (Table 2). Src-dependent phosphorylation of PTP4A3 promotes cell motility and invasion through activation of Rho (44). In contrast, tyrosine phosphatome analysis has revealed that overexpression of PTP4A3 induces aberrant Src-activation, suggesting that PTP4A3 works both downstream and upstream of Src (45). Furthermore, PDGF, integrin and Eph receptors are key players in PTP4A3 overexpressing cells (45). PTP4A3 directly binds integrin-beta 1, suggesting an involvement in focal adhesion signaling.

den Hollander *et al* (2016), explored the expression levels of PTPs in 102 human breast cancer samples to identify PTPs that are differentially overexpressed in triple-negative breast cancer (TNBC). In this study, 146 PTPs were differentially expressed in TNBC as compared to estrogen receptor-positive (ER-positive) breast cancer samples. 19 of these PTPs were significantly upregulated and 27 were downregulated in TNBC. Of these 19 upregulated PTPs, the growth of triple-negative compared to ER-positive breast cancer cells was significantly reduced with the knockdown of 6 PTPs: PTP4A3, phospholipid phosphatase 3 (PPAP2B), discs large homolog associated protein 5 (DLGAP5), cell division cycle 25B (CDC25B), phosphoserine phosphatase (PSPH), and translocase of inner mitochondrial membrane 50 (TIMM50) (Table 2). Further screening of these PTPs through anchorage-independent growth assays and cell cycle progression analyses, demonstrated that knockdown of PTP4A3 was found to have the greatest suppression of cell growth. In addition, analysis of publicly available breast cancer datasets revealed that PTP4A3 expression is significantly elevated in TNBC samples, and *in silico* analysis revealed that increased PTP4A3 expression is due to gene amplification in 29% of basal like breast cancers. Depletion of PTP4A3 reduced TNBC tumor growth *in vivo* by reducing proliferation marker (Ki67), phospho-ERK1/2 and p38 levels, while increasing apoptotic markers (1). Highly elevated PTP4A3 expression is also associated with enhanced tumor formation and metastasis by reducing tumor initiating cells in colon cancer mouse models (46). Collectively, these studies demonstrate that oncogenic PTPs play a critical role in tumor initiation, progression and metastasis by enhancing signaling pathways and serving as valuable targets for cancer therapy.

Clinical-Translational Advances

It is now clear that several types of human cancer are associated with abnormal PTP signaling. PTPs fall into two broad groups: tumor suppressing and oncogenic phosphatases, with tumor suppressor PTP expression lost in cancers, and oncogenic PTP expression elevated in cancers. Increasing evidence highlights the physiological importance of PTPs in tumor initiation, growth and invasiveness, and has consequently fueled interest in developing PTP-targeted therapies for treating cancer. The concept of targeting PTPs for human diseases initially arose from the discovery that genetic depletion of PTP1B increases insulin sensitivity and resistance to high fat diet-induced obesity (47).

Since the disruption and/or loss of tumor suppressor PTP function in cancer is due to gene deletions, mutations or epigenetic modifications, it is not feasible to reactivate the function or expression of tumor suppressor PTPs that are deleted at both loci. Somatic mutations inactivate 6 of the PTPs in colon cancer, and there are no drugs currently available that

reactivate the wild-type function of these mutant PTPs. The last subset of tumor suppressor PTPs are silenced due to epigenetic modifications (e.g., hypermethylation of the promoter region); however, the specific DNA methylases and/or methyltransferases must be identified in order to develop DNA methylation inhibitors capable of reactivating PTP expression, and thereby serving as potential agents for cancer therapy. To date, the FDA has approved one DNA methylation inhibitor, 5-Aza-cytidine (nucleoside analog), for the treatment of hematological malignancies. The expansion of the application of this drug to other cancers with epigenetically silenced tumor suppressor PTPs could greatly impact future cancer therapy and possibly cancer prevention.

Overexpression of oncogenic PTPs has been shown to be critical for tumor development, growth and metastasis, as evidenced by reduced tumor formation, growth and lung metastasis in PTP1B knockout MMTV Her2 mice (39). Similarly, several other studies have demonstrated the importance of oncogenic PTPs, including SHP2 and PTP4A3, in a variety of tumor types, as discussed above.

Inhibitors of oncogenic phosphatases

Although oncogenic PTPs are attractive molecules for the development of targeted therapies, the development of PTP inhibitors remains challenging. Selectivity poses a major challenge in developing PTP inhibitors due to the high level of conservation in the active site of both tumor suppressor and oncogenic PTP subtypes. Thus, the inhibitors that target the active sites of oncogenic PTPs also inhibit tumor suppressor PTPs in normal healthy tissues of patients, and potentially result in adverse side effects. However, these adverse side effects could be resolved by designing selective PTP inhibitors that bind to regions located externally to the PTP active site.

The oncogenic role of PTP1B has been well characterized using both *in vitro* and *in vivo* models for various human cancers. In 2003, Xie *et al.* reported the first potent PTP1B inhibitor (48). Using a second non-conserved aryl phosphate binding site adjacent to the active site of PTP1B, Xie *et al.* developed bidentate ligands as PTP1B inhibitors. These bidentate ligands bind to both the active site and a unique adjacent aryl phosphate binding site. These bidentate PTP1B inhibitors are the most potent inhibitors of PTP1B to date (K_i value: 2.4nM), providing as much as 1,000 to 10,000-fold selectivity for PTP1B as compared to other PTPs; however, the initial PTP1B inhibitor did not affect cancer cell growth due to a lack of cell permeability properties (48). Therefore, this bidentate ligand was modified with a fatty acid moiety, thereby increasing its cell membrane permeability; the resulting analog of this compound is highly active in blocking PTP1B and shows remarkable anti-growth effects in several cancer cell lines (49). A number of additional PTP1B inhibitors have also been developed in recent years. Scapin *et al.* developed benzotriazole inhibitors of PTP1B with an IC₅₀ of 5nM; unfortunately, these inhibitors had limited cell permeability (50). Another compound, difluoromethyl phosphonate (DFMP) developed at Merck has been shown to significantly delay tumor formation and prevent lung metastasis in MMTV-Her2 mice (41). Through high-throughput screening analyses using enzymatic assays, Wyeth-Ayerst research has identified a potent PTP1B inhibitor, Ertiprotafib (51). This drug entered clinical trial for type II diabetes patients, but was

stopped after Phase II testing showed toxicity concerns. Recently, Genaera Corporation developed a non-competitive PTP1B inhibitor, Trodusquemine (MSI-1436C), with an IC50 of 1 μ M and a 200-fold sensitivity over TCPTP, a tumor suppressor PTP homologous to PTP1B) (Figure 1 and Table 3). This drug has been tested in a Phase I trial for the treatment of type II diabetes (NCT00606112), and a Phase II trial is currently in development (52). Given the significant role of PTP1B in cancer, MSI-1436C is now being tested in a Phase I clinical trial for the treatment of metastatic breast cancer (NCT02524951).

As SHP2 overexpression is associated with several human cancers, inhibitors of the SHP2 oncogene also represent attractive agents for the treatment of cancers. However, similar to the specificity issues associated with PTP1B inhibitors, SHP2 inhibitors face problems with selectivity due to the high sequence similarity between SHP2 and SHP1, which functions as a tumor suppressor in opposition to SHP2. Although several research groups and pharmaceutical companies are actively developing SHP2 inhibitors, there are currently no SHP2-specific inhibitors. Sodium stibogluconate (SSG) is a potent inhibitor of both SHP2 and SHP1, and has been used for treating leishmaniasis (53) (Figure 1 and Table 3). SSG represents the first SHP2 drug to enter the clinical trial setting, and was studied in combination with IFN-alpha-2b for the treatment of patients with advanced solid tumors, lymphoma, or melanoma. IFN-alpha-2b is approved by FDA for the treatment of solid tumors including advanced melanoma. SHP2 is a negative regulator of IFN-signaling pathways, and inhibition of SHP2 by SGG sensitizes IFN-alpha refractory melanoma tumors to IFN alpha 2b (54,55). More recently, Kundu *et al.* identified a quinone-type SHP2 inhibitor with a higher potency than SSG; their studies have shown promising results in both cell-based assays and preclinical melanoma mice models (56). SSG is currently being tested in a Phase I clinical trial for the treatment of leishmaniasis (NCT00662012), stage IV melanoma (NCT00498979) and advanced solid tumors (NCT00629200). Chen *et al.* in (2015) identified a novel SHP2 inhibitor, fumosorinone (derived from fungi), which selectively inhibits SHP2-dependent signaling and inhibits EGF-induced invasion *in vitro* (57). Similarly, Bunda *et al.* have shown that pharmacological inhibition of SHP2 by a salicylic acid-based SHP2 inhibitor attenuates growth and progression of gliomas (34,58).

Future of Phosphatase Inhibitors for Cancer Therapy

Recent research has demonstrated that oncogenic PTPs are attractive candidates for the development of targeted therapies for multiple cancer types. However, the development of specific PTP inhibitors has been challenging, resulting in a lack of effective and safe PTP inhibitors for clinical use. The results of a Phase 1 trial with the SHP2 inhibitor SSG showed that patients with advanced solid tumors and stage IV melanoma well tolerated concentrations of 900 mg/m² and 1200 mg/m², respectively (59,60). Similarly, positive results from the ongoing Phase I clinical trial of the PTP1B inhibitor MSI-1436C defining its safety and tolerability in treating metastatic breast cancer patients will be instrumental to the translation of this drug to the clinical setting. While several additional phosphatases have also been shown to be attractive targets for cancer therapy, further research is required to identify specific critical sites located outside the active sites to successfully develop highly specific PTP inhibitors for cancer therapy.

Recent advances in the study of phosphatases in cancer have demonstrated that phosphatases are critical growth regulatory molecules that are as potentially “druggable” as kinases. However, the fact that many phosphatases are constitutively active, and that they are often regulated by subunits or binding partners makes targeting them much more difficult than kinases. The biologic results reviewed here demonstrate that inhibition of oncogenic phosphatases can suppress the growth of human cancers. The challenge now for the scientific and pharmaceutical communities is to discover effective and safe methods to target these cancer promoting molecules. Once this challenge is overcome, a whole new class of drugs for cancer treatment will become available to treat many life-threatening cancers.

Acknowledgments

We would like to thank Sam Short for her assistance with this submission.

Financial Support: This work was funded by a Susan G Komen Promise Grant (KG081694, P.H.B.), a Komen SAB grant (P.H.B.), A Breast Cancer Research Foundation grant (P.H.B.), a Norman Brinker Award for Research Excellence (P.H.B.), a John Charles Cain Distinguished Chair Award (P.H.B.), a Mariam Rogers Fund for Breast/Women’s Cancer Research (P.H.B.), a John F. & Julie Young Award (P.H.B.), and a Cancer Center Support Grant (5 P30 CA016672-38).

References

- den Hollander P, Rawls K, Tsimelzon A, Shepherd J, Mazumdar A, Hill J, et al. Phosphatase PTP4A3 Promotes Triple-Negative Breast Cancer Growth and Predicts Poor Patient Survival. *Cancer research*. 2016; 76(7):1942–53. DOI: 10.1158/0008-5472.can-14-0673 [PubMed: 26921331]
- Tonks NK. Protein tyrosine phosphatases: from genes, to function, to disease. *Nature reviews Molecular cell biology*. 2006; 7(11):833–46. DOI: 10.1038/nrm2039 [PubMed: 17057753]
- Alonso A, Sasin J, Bottini N, Friedberg I, Friedberg I, Osterman A, et al. Protein tyrosine phosphatases in the human genome. *Cell*. 2004; 117(6):699–711. DOI: 10.1016/j.cell.2004.05.018 [PubMed: 15186772]
- Andersen JN, Jansen PG, Echwald SM, Mortensen OH, Fukada T, Del Vecchio R, et al. A genomic perspective on protein tyrosine phosphatases: gene structure, pseudogenes, and genetic disease linkage. *FASEB journal : official publication of the Federation of American Societies for Experimental Biology*. 2004; 18(1):8–30. DOI: 10.1096/fj.02-1212rev [PubMed: 14718383]
- Andersen JN, Mortensen OH, Peters GH, Drake PG, Iversen LF, Olsen OH, et al. Structural and evolutionary relationships among protein tyrosine phosphatase domains. *Molecular and cellular biology*. 2001; 21(21):7117–36. DOI: 10.1128/mcb.21.21.7117-7136.2001 [PubMed: 11585896]
- Ooms LM, Binge LC, Davies EM, Rahman P, Conway JR, Gurung R, et al. The Inositol Polyphosphate 5-Phosphatase PIPP Regulates AKT1-Dependent Breast Cancer Growth and Metastasis. *Cancer cell*. 2015; 28(2):155–69. DOI: 10.1016/j.ccell.2015.07.003 [PubMed: 26267533]
- Hollander MC, Blumenthal GM, Dennis PA. PTEN loss in the continuum of common cancers, rare syndromes and mouse models. *Nat Rev Cancer*. 2011; 11(4):289–301. DOI: 10.1038/nrc3037 [PubMed: 21430697]
- Song MS, Salmena L, Pandolfi PP. The functions and regulation of the PTEN tumour suppressor. *Nature reviews Molecular cell biology*. 2012; 13(5):283–96. DOI: 10.1038/nrm3330 [PubMed: 22473468]
- Kinross KM, Montgomery KG, Kleinschmidt M, Waring P, Iveta I, Tikoo A, et al. An activating Pik3ca mutation coupled with Pten loss is sufficient to initiate ovarian tumorigenesis in mice. *J Clin Invest*. 2012; 122(2):553–7. DOI: 10.1172/JCI59309 [PubMed: 22214849]
- Petrocelli T, Slingerland JM. PTEN deficiency: a role in mammary carcinogenesis. *Breast Cancer Res*. 2001; 3(6):356–60. [PubMed: 11737885]

11. Ruivenkamp CA, van Wezel T, Zanon C, Stassen AP, Vlcek C, Csikos T, et al. Ptpnj is a candidate for the mouse colon-cancer susceptibility locus *Sccl* and is frequently deleted in human cancers. *Nature genetics*. 2002; 31(3):295–300. DOI: 10.1038/ng903 [PubMed: 12089527]
12. Arora D, Stopp S, Bohmer SA, Schons J, Godfrey R, Masson K, et al. Protein-tyrosine phosphatase DEP-1 controls receptor tyrosine kinase FLT3 signaling. *The Journal of biological chemistry*. 2011; 286(13):10918–29. DOI: 10.1074/jbc.M110.205021 [PubMed: 21262971]
13. Mazumdar A, Poage GM, Shepherd J, Tsimelzon A, Hartman ZC, Den Hollander P, et al. Analysis of phosphatases in ER-negative breast cancers identifies DUSP4 as a critical regulator of growth and invasion. *Breast cancer research and treatment*. 2016; 158(3):441–54. DOI: 10.1007/s10549-016-3892-y [PubMed: 27393618]
14. Hijiya N, Tsukamoto Y, Nakada C, Tung Nguyen L, Kai T, Matsuura K, et al. Genomic Loss of DUSP4 Contributes to the Progression of Intraepithelial Neoplasm of Pancreas to Invasive Carcinoma. *Cancer research*. 2016; 76(9):2612–25. DOI: 10.1158/0008-5472.can-15-1846 [PubMed: 26941286]
15. Balko JM, Cook RS, Vaught DB, Kuba MG, Miller TW, Bhola NE, et al. Profiling of residual breast cancers after neoadjuvant chemotherapy identifies DUSP4 deficiency as a mechanism of drug resistance. *Nature medicine*. 2012; 18(7):1052–9. DOI: 10.1038/nm.2795
16. Balko JM, Schwarz LJ, Bhola NE, Kurupi R, Owens P, Miller TW, et al. Activation of MAPK pathways due to DUSP4 loss promotes cancer stem cell-like phenotypes in basal-like breast cancer. *Cancer research*. 2013; 73(20):6346–58. DOI: 10.1158/0008-5472.can-13-1385 [PubMed: 23966295]
17. Wang Z, Shen D, Parsons DW, Bardelli A, Sager J, Szabo S, et al. Mutational analysis of the tyrosine phosphatome in colorectal cancers. *Science (New York, NY)*. 2004; 304(5674):1164–6. DOI: 10.1126/science.1096096
18. Sun T, Aceto N, Meerbrey KL, Kessler JD, Zhou C, Migliaccio I, et al. Activation of multiple proto-oncogenic tyrosine kinases in breast cancer via loss of the PTPN12 phosphatase. *Cell*. 2011; 144(5):703–18. DOI: 10.1016/j.cell.2011.02.003 [PubMed: 21376233]
19. Stevenson WS, Best OG, Przybylla A, Chen Q, Singh N, Koleth M, et al. DNA methylation of membrane-bound tyrosine phosphatase genes in acute lymphoblastic leukaemia. *Leukemia*. 2014; 28(4):787–93. DOI: 10.1038/leu.2013.270 [PubMed: 24045499]
20. Shimozato O, Waraya M, Nakashima K, Souda H, Takiguchi N, Yamamoto H, et al. Receptor-type protein tyrosine phosphatase kappa directly dephosphorylates CD133 and regulates downstream AKT activation. *Oncogene*. 2015; 34(15):1949–60. DOI: 10.1038/onc.2014.141 [PubMed: 24882578]
21. Xu Y, Xue S, Zhou J, Voorhees JJ, Fisher GJ. Notch and TGF-beta pathways cooperatively regulate receptor protein tyrosine phosphatase-kappa (PTPRK) gene expression in human primary keratinocytes. *Molecular biology of the cell*. 2015; 26(6):1199–206. DOI: 10.1091/mbc.E14-12-1591 [PubMed: 25609089]
22. Chen YW, Guo T, Shen L, Wong KY, Tao Q, Choi WW, et al. Receptor-type tyrosine-protein phosphatase kappa directly targets STAT3 activation for tumor suppression in nasal NK/T-cell lymphoma. *Blood*. 2015; 125(10):1589–600. DOI: 10.1182/blood-2014-07-588970 [PubMed: 25612622]
23. Xu S, Furukawa T, Kanai N, Sunamura M, Horii A. Abrogation of DUSP6 by hypermethylation in human pancreatic cancer. *Journal of human genetics*. 2005; 50(4):159–67. DOI: 10.1007/s10038-005-0235-y [PubMed: 15824892]
24. Motiwala T, Ghoshal K, Das A, Majumder S, Weichenhan D, Wu YZ, et al. Suppression of the protein tyrosine phosphatase receptor type O gene (PTPRO) by methylation in hepatocellular carcinomas. *Oncogene*. 2003; 22(41):6319–31. DOI: 10.1038/sj.onc.1206750 [PubMed: 14508512]
25. Motiwala T, Kutay H, Ghoshal K, Bai S, Seimiya H, Tsuruo T, et al. Protein tyrosine phosphatase receptor-type O (PTPRO) exhibits characteristics of a candidate tumor suppressor in human lung cancer. *Proceedings of the National Academy of Sciences of the United States of America*. 2004; 101(38):13844–9. DOI: 10.1073/pnas.0405451101 [PubMed: 15356345]

26. Huang YT, Li FF, Ke C, Li Z, Li ZT, Zou XF, et al. PTPRO promoter methylation is predictive of poorer outcome for HER2-positive breast cancer: indication for personalized therapy. *Journal of translational medicine*. 2013; 11:245.doi: 10.1186/1479-5876-11-245 [PubMed: 24090193]
27. Oka T, Ouchida M, Koyama M, Ogama Y, Takada S, Nakatani Y, et al. Gene silencing of the tyrosine phosphatase SHP1 gene by aberrant methylation in leukemias/lymphomas. *Cancer research*. 2002; 62(22):6390–4. [PubMed: 12438221]
28. Cheng J, Zhang D, Zhou C, Marasco WA. Down-regulation of SHP1 and up-regulation of negative regulators of JAK/STAT signaling in HTLV-1 transformed cell lines and freshly transformed human peripheral blood CD4+ T-cells. *Leukemia research*. 2004; 28(1):71–82. [PubMed: 14630083]
29. Xu R, Yu Y, Zheng S, Zhao X, Dong Q, He Z, et al. Overexpression of Shp2 tyrosine phosphatase is implicated in leukemogenesis in adult human leukemia. *Blood*. 2005; 106(9):3142–9. DOI: 10.1182/blood-2004-10-4057 [PubMed: 16030196]
30. Zhou X, Coad J, Ducatman B, Agazie YM. SHP2 is up-regulated in breast cancer cells and in infiltrating ductal carcinoma of the breast, implying its involvement in breast oncogenesis. *Histopathology*. 2008; 53(4):389–402. DOI: 10.1111/j.1365-2559.2008.03103.x [PubMed: 18643929]
31. Tartaglia M, Cotter PD, Zampino G, Gelb BD, Rauen KA. Exclusion of PTPN11 mutations in Costello syndrome: further evidence for distinct genetic etiologies for Noonan, cardio-faciocutaneous and Costello syndromes. *Clinical genetics*. 2003; 63(5):423–6. [PubMed: 12752577]
32. Diaz ME, Gonzalez L, Miquet JG, Martinez CS, Sotelo AI, Bartke A, et al. Growth hormone modulation of EGF-induced PI3K-Akt pathway in mice liver. *Cellular signalling*. 2012; 24(2): 514–23. DOI: 10.1016/j.cellsig.2011.10.001 [PubMed: 22019461]
33. Dance M, Montagner A, Salles JP, Yart A, Raynal P. The molecular functions of Shp2 in the Ras/Mitogen-activated protein kinase (ERK1/2) pathway. *Cellular signalling*. 2008; 20(3):453–9. DOI: 10.1016/j.cellsig.2007.10.002 [PubMed: 17993263]
34. Bunda S, Burrell K, Heir P, Zeng L, Alamsahebpour A, Kano Y, et al. Inhibition of SHP2-mediated dephosphorylation of Ras suppresses oncogenesis. *Nature communications*. 2015; 6:8859.doi: 10.1038/ncomms9859
35. Zhou XD, Agazie YM. Inhibition of SHP2 leads to mesenchymal to epithelial transition in breast cancer cells. *Cell death and differentiation*. 2008; 15(6):988–96. DOI: 10.1038/cdd.2008.54 [PubMed: 18421299]
36. Wiener JR, Hurteau JA, Kerns BJ, Whitaker RS, Conaway MR, Berchuck A, et al. Overexpression of the tyrosine phosphatase PTP1B is associated with human ovarian carcinomas. *American journal of obstetrics and gynecology*. 1994; 170(4):1177–83. [PubMed: 8166206]
37. Wang J, Liu B, Chen X, Su L, Wu P, Wu J, et al. PTP1B expression contributes to gastric cancer progression. *Medical oncology (Northwood, London, England)*. 2012; 29(2):948–56. DOI: 10.1007/s12032-011-9911-2
38. Wang N, She J, Liu W, Shi J, Yang Q, Shi B, et al. Frequent amplification of PTP1B is associated with poor survival of gastric cancer patients. *Cell cycle (Georgetown, Tex)*. 2015; 14(5):732–43. DOI: 10.1080/15384101.2014.998047
39. Bentires-Alj M, Neel BG. Protein-tyrosine phosphatase 1B is required for HER2/Neu-induced breast cancer. *Cancer research*. 2007; 67(6):2420–4. DOI: 10.1158/0008-5472.can-06-4610 [PubMed: 17347513]
40. Hoekstra E, Das AM, Swets M, Cao W, van der Woude CJ, Bruno MJ, et al. Increased PTP1B expression and phosphatase activity in colorectal cancer results in a more invasive phenotype and worse patient outcome. *Oncotarget*. 2016; doi: 10.18632/oncotarget.7829
41. Julien SG, Dube N, Read M, Penney J, Paquet M, Han Y, et al. Protein tyrosine phosphatase 1B deficiency or inhibition delays ErbB2-induced mammary tumorigenesis and protects from lung metastasis. *Nature genetics*. 2007; 39(3):338–46. DOI: 10.1038/ng1963 [PubMed: 17259984]
42. Liu H, Wu Y, Zhu S, Liang W, Wang Z, Wang Y, et al. PTP1B promotes cell proliferation and metastasis through activating src and ERK1/2 in non-small cell lung cancer. *Cancer letters*. 2015; 359(2):218–25. DOI: 10.1016/j.canlet.2015.01.020 [PubMed: 25617799]

43. Dube N, Bourdeau A, Heinonen KM, Cheng A, Loy AL, Tremblay ML. Genetic ablation of protein tyrosine phosphatase 1B accelerates lymphomagenesis of p53-null mice through the regulation of B-cell development. *Cancer research*. 2005; 65(21):10088–95. DOI: 10.1158/0008-5472.can-05-1353 [PubMed: 16267035]
44. Fiordalisi JJ, Dewar BJ, Graves LM, Madigan JP, Cox AD. Src-mediated phosphorylation of the tyrosine phosphatase PRL-3 is required for PRL-3 promotion of Rho activation, motility and invasion. *PLoS one*. 2013; 8(5):e64309.doi: 10.1371/journal.pone.0064309 [PubMed: 23691193]
45. Walls CD, Iliuk A, Bai Y, Wang M, Tao WA, Zhang ZY. Phosphatase of regenerating liver 3 (PRL3) provokes a tyrosine phosphoproteome to drive prometastatic signal transduction. *Molecular & cellular proteomics : MCP*. 2013; 12(12):3759–77. DOI: 10.1074/mcp.M113.028886 [PubMed: 24030100]
46. Cramer JM, Zimmerman MW, Thompson T, Homanics GE, Lazo JS, Lagasse E. Deletion of Ptp4a3 reduces clonogenicity and tumor-initiation ability of colitis-associated cancer cells in mice. *Stem cell research*. 2014; 13(1):164–71. DOI: 10.1016/j.scr.2014.05.004 [PubMed: 24950307]
47. Elchebly M, Payette P, Michaliszyn E, Cromlish W, Collins S, Loy AL, et al. Increased insulin sensitivity and obesity resistance in mice lacking the protein tyrosine phosphatase-1B gene. *Science (New York, NY)*. 1999; 283(5407):1544–8.
48. Xie L, Lee SY, Andersen JN, Waters S, Shen K, Guo XL, et al. Cellular effects of small molecule PTP1B inhibitors on insulin signaling. *Biochemistry*. 2003; 42(44):12792–804. DOI: 10.1021/bi035238p [PubMed: 14596593]
49. Boutselis IG, Yu X, Zhang ZY, Borch RF. Synthesis and cell-based activity of a potent and selective protein tyrosine phosphatase 1B inhibitor prodrug. *Journal of medicinal chemistry*. 2007; 50(4):856–64. DOI: 10.1021/jm061146x [PubMed: 17249650]
50. Scapin G, Patel SB, Becker JW, Wang Q, Despots C, Waddleton D, et al. The structural basis for the selectivity of benzotriazole inhibitors of PTP1B. *Biochemistry*. 2003; 42(39):11451–9. DOI: 10.1021/bi035098j [PubMed: 14516196]
51. Erbe DV, Wang S, Zhang YL, Harding K, Kung L, Tam M, et al. Ertiprotafib improves glycemic control and lowers lipids via multiple mechanisms. *Molecular pharmacology*. 2005; 67(1):69–77. DOI: 10.1124/mol.104.005553 [PubMed: 15475571]
52. Lantz KA, Hart SG, Planey SL, Roitman MF, Ruiz-White IA, Wolfe HR, et al. Inhibition of PTP1B by trodusquemine (MSI-1436) causes fat-specific weight loss in diet-induced obese mice. *Obesity (Silver Spring, Md)*. 2010; 18(8):1516–23. DOI: 10.1038/oby.2009.444
53. Pathak MK, Yi T. Sodium stibogluconate is a potent inhibitor of protein tyrosine phosphatases and augments cytokine responses in hemopoietic cell lines. *Journal of immunology (Baltimore, Md : 1950)*. 2001; 167(6):3391–7.
54. Yi T, Pathak MK, Lindner DJ, Ketterer ME, Farver C, Borden EC. Anticancer activity of sodium stibogluconate in synergy with IFNs. *Journal of immunology (Baltimore, Md : 1950)*. 2002; 169(10):5978–85.
55. You M, Yu DH, Feng GS. Shp-2 tyrosine phosphatase functions as a negative regulator of the interferon-stimulated Jak/STAT pathway. *Molecular and cellular biology*. 1999; 19(3):2416–24. [PubMed: 10022928]
56. Kundu S, Fan K, Cao M, Lindner DJ, Zhao ZJ, Borden E, et al. Novel SHP-1 inhibitors tyrosine phosphatase inhibitor-1 and analogs with preclinical anti-tumor activities as tolerated oral agents. *Journal of immunology (Baltimore, Md : 1950)*. 2010; 184(11):6529–36. DOI: 10.4049/jimmunol.0903562
57. Chen C, Cao M, Zhu S, Wang C, Liang F, Yan L, et al. Discovery of a Novel Inhibitor of the Protein Tyrosine Phosphatase Shp2. *Scientific reports*. 2015; 5:17626.doi: 10.1038/srep17626 [PubMed: 26626996]
58. Zhang X, He Y, Liu S, Yu Z, Jiang ZX, Yang Z, et al. Salicylic acid based small molecule inhibitor for the oncogenic Src homology-2 domain containing protein tyrosine phosphatase-2 (SHP2). *Journal of medicinal chemistry*. 2010; 53(6):2482–93. DOI: 10.1021/jm901645u [PubMed: 20170098]

59. Naing A, Reuben JM, Camacho LH, Gao H, Lee BN, Cohen EN, et al. Phase I Dose Escalation Study of Sodium Stibogluconate (SSG), a Protein Tyrosine Phosphatase Inhibitor, Combined with Interferon Alpha for Patients with Solid Tumors. *J Cancer*. 2011; 2:81–9. [PubMed: 21326629]
60. Yi T, Elson P, Mitsuhashi M, Jacobs B, Hollovary E, Budd TG, et al. Phosphatase inhibitor, sodium stibogluconate, in combination with interferon (IFN) alpha 2b: phase I trials to identify pharmacodynamic and clinical effects. *Oncotarget*. 2011; 2(12):1155–64. DOI: 10.18632/oncotarget.393 [PubMed: 22201704]

Author Manuscript

Author Manuscript

Author Manuscript

Author Manuscript

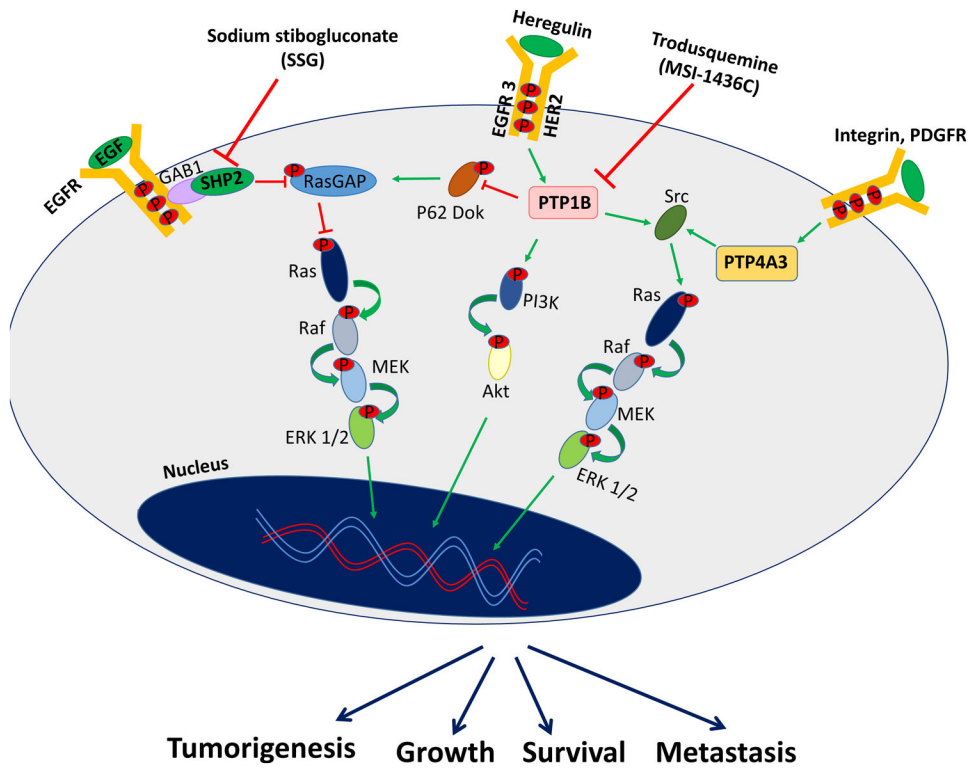


Figure 1. Targeting molecular pathway. Activation of oncogenic PTPs, (SHP2, PTP1B and PTP4A3) by growth factor receptors promotes tumorigenesis, growth, survival and metastasis through activating Ras/raf/MAPK and PI3K/Akt pathways in several human cancers. Targeting these phosphatases reduces the tumor formation, growth, survival and metastatic potential.

Table 1
Tumor suppressor PTPs and Cancer

PTP	Cancer	Mechanism for Reduced Expression	Altered Signaling Pathway	Reference
PTEN	Prostate & breast	Mutations & deletions	PI3K	(7-10)
INPP5J	Breast	Transcriptional repression	PI3K	(2)
SHP1	Leukemia & lymphomas	Methylation of promoter	JAK/STAT signaling	(27,28)
DEP1	Breast & colon	Mutations & deletions	FLT3, Erk1/2 & Akt signaling	(11,12)
PTPRF PTPRG PTPRT PTPN3 PTPN13 PTPN14	Colon, breast & lung	<ul style="list-style-type: none"> • Somatic mutations • Deletions • Methylation of promoter regions 	<ul style="list-style-type: none"> • PDGF, Akt and PLC • JAK and integrin • STAT3 and Paxillin • EGFR/MAPK signaling • Src signaling • YAP signaling 	(17)
PTPN12	Breast	Mutations	EGFR, HER2, mTOR	(18)
PTPRK	Colon & lymphoma	Methylation of promoter	EGFR and Akt signaling	(19,20)
DUSP6	Leukemia, lung & liver	Methylation of promoter	MAPK signaling	(27)
DUSP4	Breast, pancreas & thyroid	Copy number loss	MAPK, JNK, Rb and NFkB	(13-16)
PTPRO	Leukemia, lung & breast	Methylation of promoter	P53/FOXM1	(24-26)

Table 2
Oncogenic PTPs and Cancer

PTP	Cancer	Expression	Altered Signaling Pathway	Reference
SHP2 (PTPN11)	Breast, leukemia & gliomas	Overexpression & activating mutations	EGFR/Ras/MAPK	(29-35)
PTP1B (PTPN1)	Ovarian, gastric, prostate & breast	Overexpression	Src/Ras/Erk & PI3K/Akt	(36-43)
PTP4A3 (PRL3)	Breast, gastric & colon	Overexpression	PDGF, Integrin & EphA signaling	(1,44-46)

Author Manuscript

Author Manuscript

Author Manuscript

Author Manuscript

Table 3

PTP inhibitors and Clinical trials*

PTP Inhibitor	PTP	Sponsor	CT Identifier	Disease	Clinical Trial
Trodsuquimine	PTPIB	Genaera	NCT00606112	Type II diabetes & obesity	Phase I completed
MSI-1436C	PTPIB	Northwell Health	NCT02524951	Metastatic breast cancers	Phase I (Recruiting)
Sodium Stibogluconate	SHP2	U.S. Army Medical Research & Materiel Command	NCT00662012	Leishmaniasis	Phase I completed
Sodium Stibogluconate	SHP2	Case Comprehensive Cancer Center	NCT00498979	Stage IV melanoma	Phase I completed
Sodium Stibogluconate	SHP2	M.D. Anderson Cancer Center	NCT00629200	Advanced solid tumors	Phase I completed

* Data obtained from clinicaltrials.gov/.